

Data Path : Z:\pestpcbsrv\HPCHEM1\ECD_P\Data\PP080624\
 Data File : PP066629.D
 Signal(s) : Signal #1: ECD1A.ch Signal #2: ECD2B.ch
 Acq On : 06 Aug 2024 21:57
 Operator : YP\AJ
 Sample : P3390-02
 Misc : AR1242 LOQ 50 PPB
 ALS Vial : 35 Sample Multiplier: 1

Instrument :
 ECD_P
 ClientSampleId :

Integration File signal 1: autoint1.e
 Integration File signal 2: autoint2.e
 Quant Time: Aug 07 07:41:12 2024
 Quant Method : Z:\pestpcbsrv\HPCHEM1\ECD_P\methods\PP080524.M
 Quant Title : GC EXTRACTABLES
 QLast Update : Tue Aug 06 04:00:13 2024
 Response via : Initial Calibration
 Integrator: ChemStation

Volume Inj. : 2 µl
 Signal #1 Phase : ZB-MR2 Signal #2 Phase: ZB-MR2
 Signal #1 Info : 30Mx0.32mmx 0.50µ Signal #2 Info : 30M x 0.32mm x 0.25µm

Compound	RT#1	RT#2	Resp#1	Resp#2	ng/ml	ng/ml

System Monitoring Compounds						
1) SA Tetrachlo...	4.791	4.024	42642429	46694804	22.548	22.173
2) SA Decachlor...	10.820f	9.226f	49376494	30602497	23.632	23.021
Target Compounds						
3) L1 AR-1016-1	5.980f	5.145	2963169	2558193	39.904	41.547
4) L1 AR-1016-2	5.980	5.145	2963169	2558193	26.860	29.426
5) L1 AR-1016-3	6.067f	5.349f	2951630	1677229	44.048	36.830
6) L1 AR-1016-4	6.168f	5.387f	2131723	1295246	38.608	36.392
7) L1 AR-1016-5	6.464f	5.609f	2355212	1679291	43.042	37.352
8) L2 AR-1221-1	4.995	0.000	274098	0	11.410	N.D. #
9) L2 AR-1221-2	5.104f	4.336	802845	944804	44.008	47.023
10) L2 AR-1221-3	5.168	4.411	1359975	1546138	24.443	26.904
11) L3 AR-1232-1	5.168	4.411	1359975	1546138	30.164	32.981
12) L3 AR-1232-2	5.708f	5.145	2144482	2558193	80.493	62.171
13) L3 AR-1232-3	5.980	5.349f	2963169	1677229	59.011	75.413 #
14) L3 AR-1232-4	6.168f	5.431	2131723	1351588	79.336	70.480
15) L3 AR-1232-5	6.255f	5.609f	2122432	1679291	107.447	83.669
16) L4 AR-1242-1	5.980f	5.145	2963169	2558193	49.850	51.624
17) L4 AR-1242-2	5.980	5.145	2963169	2558193	33.515	36.769
18) L4 AR-1242-3	6.067f	5.349f	2951630	1677229	54.630	45.540
19) L4 AR-1242-4	6.168f	5.431f	2131723	1351588	47.909	37.878
20) L4 AR-1242-5	6.871f	5.933f	2400728	906160	47.131	21.471 #
21) L5 AR-1248-1	5.980f	5.145	2963169	2558193	61.293	63.990
22) L5 AR-1248-2	6.255f	5.387	2122432	1295246	29.944	24.457
23) L5 AR-1248-3	6.464f	5.431	2355212	1351588	30.477	24.671
24) L5 AR-1248-4	6.844	5.609f	1663559	1679291	18.712	26.760 #
25) L5 AR-1248-5	6.871f	6.010f	2400728	1387812	27.179	23.969
26) L6 AR-1254-1	6.844f	5.967f	1663559	1877480	18.531	22.023
27) L6 AR-1254-2	7.071f	0.000	2246723	0	16.622	N.D. #
28) L6 AR-1254-3	7.401	0.000	218242	0	1.633	N.D. #
29) L6 AR-1254-4	7.723f	0.000	914125	0	8.891	N.D. #
30) L6 AR-1254-5	8.097f	0.000	434342	0	3.986	N.D. #
31) L7 AR-1260-1	7.577	0.000	120013	0	1.130	N.D. #
32) L7 AR-1260-2	7.810	0.000	3968083	0	31.074	N.D. #
33) L7 AR-1260-3	8.211f	7.016f	134236	1807491	1.495	17.121 #
34) L7 AR-1260-4	8.425	0.000	109822	0	1.154	N.D. #
36) L8 AR-1262-1	8.274f	0.000	201596	0	3.222	N.D. #

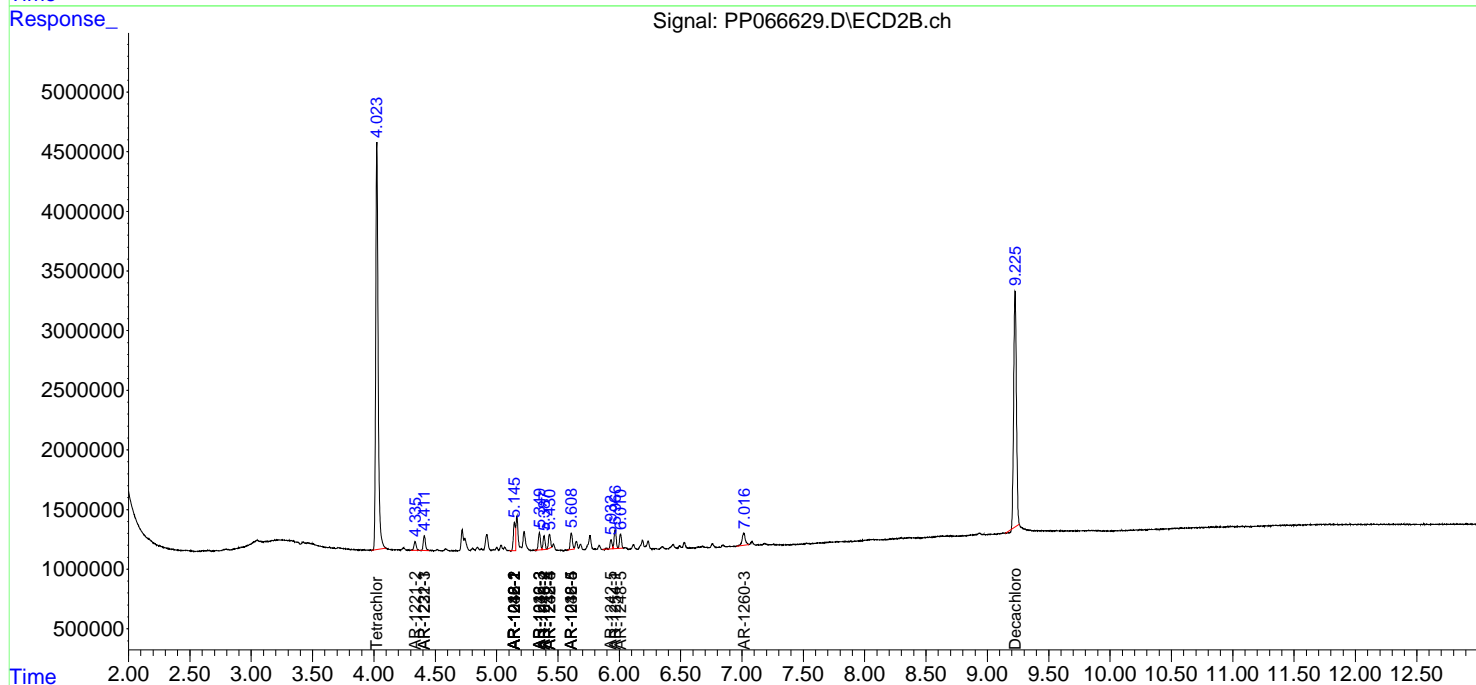
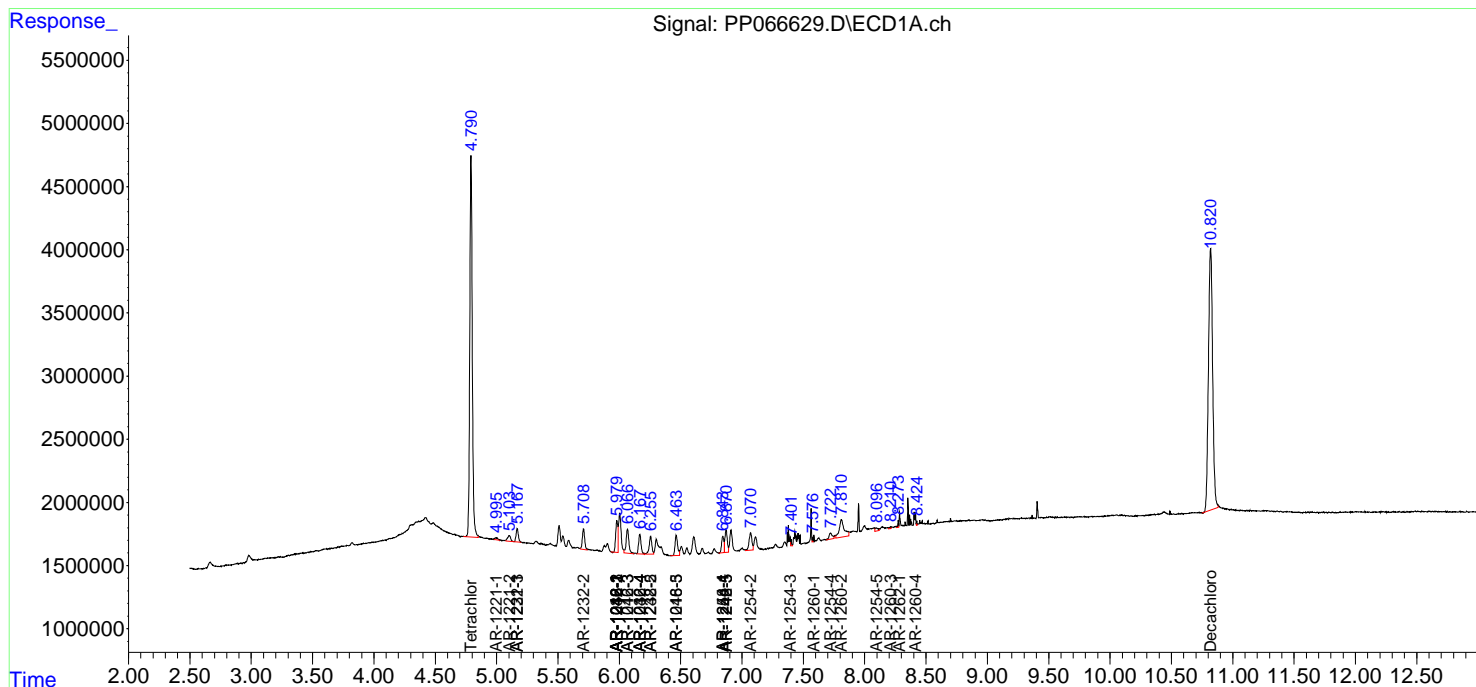
(f)=RT Delta > 1/2 Window (#)=Amounts differ by > 25% (m)=manual int.

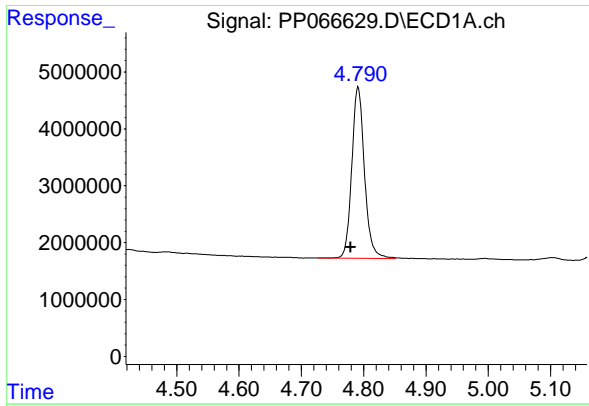
Data Path : Z:\pestpcbsrv\HPCHEM1\ECD_P\Data\PP080624\
 Data File : PP066629.D
 Signal(s) : Signal #1: ECD1A.ch Signal #2: ECD2B.ch
 Acq On : 06 Aug 2024 21:57
 Operator : YP\AJ
 Sample : P3390-02
 Misc : AR1242 LOQ 50 PPB
 ALS Vial : 35 Sample Multiplier: 1

Instrument :
 ECD_P
 ClientSampleId :

Integration File signal 1: autoint1.e
 Integration File signal 2: autoint2.e
 Quant Time: Aug 07 07:41:12 2024
 Quant Method : Z:\pestpcbsrv\HPCHEM1\ECD_P\methods\PP080524.M
 Quant Title : GC EXTRACTABLES
 QLast Update : Tue Aug 06 04:00:13 2024
 Response via : Initial Calibration
 Integrator: ChemStation

Volume Inj. : 2 µl
 Signal #1 Phase : ZB-MR1 Signal #2 Phase: ZB-MR2
 Signal #1 Info : 30Mx0.32mmx 0.50µ Signal #2 Info : 30M x 0.32mm x 0.25µm

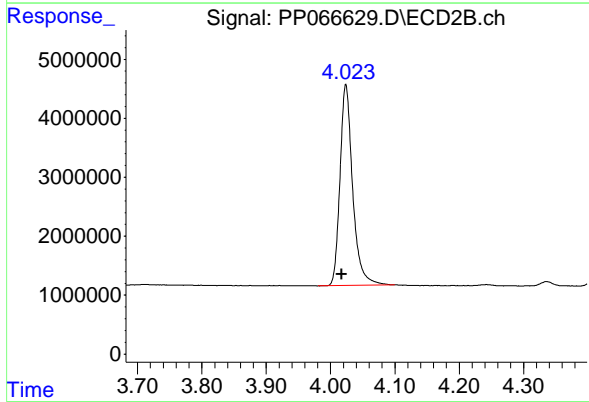




#1 Tetrachloro-m-xylene

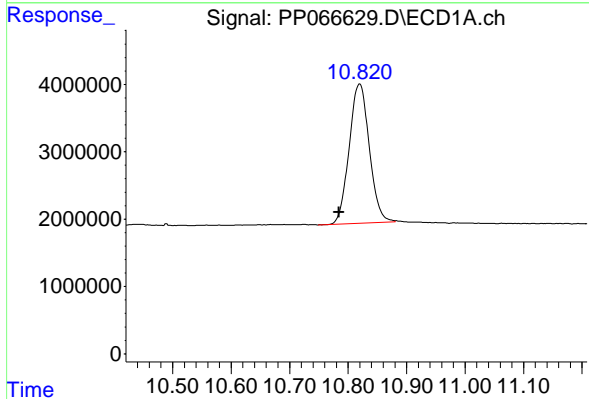
R.T.: 4.791 min
 Delta R.T.: 0.012 min
 Response: 42642429
 Conc: 22.55 ng/ml

Instrument :
 ECD_P
 ClientSampleId :



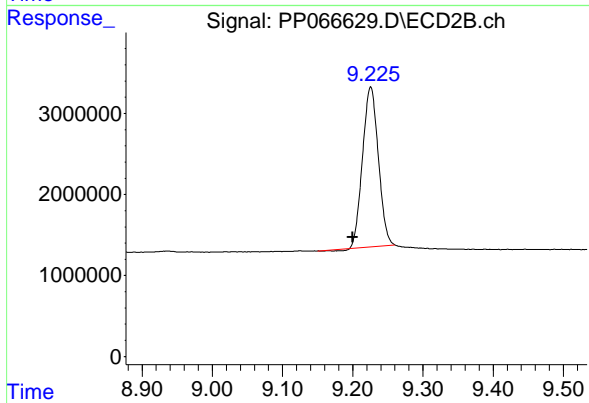
#1 Tetrachloro-m-xylene

R.T.: 4.024 min
 Delta R.T.: 0.006 min
 Response: 46694804
 Conc: 22.17 ng/ml



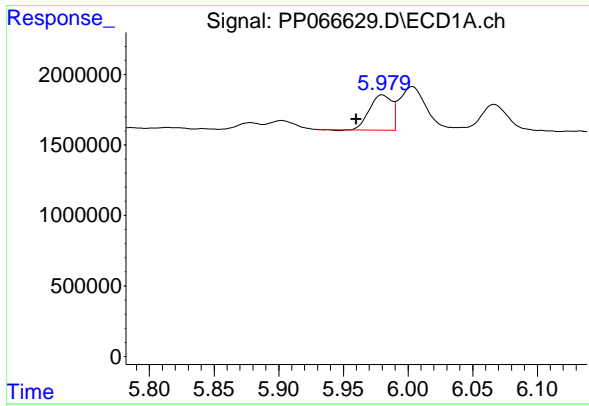
#2 Decachlorobiphenyl

R.T.: 10.820 min
 Delta R.T.: 0.036 min
 Response: 49376494
 Conc: 23.63 ng/ml



#2 Decachlorobiphenyl

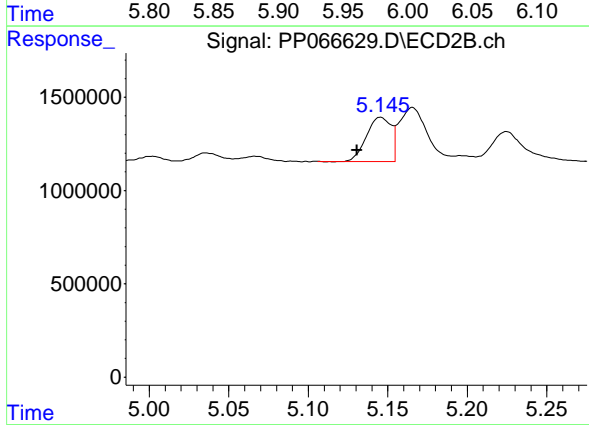
R.T.: 9.226 min
 Delta R.T.: 0.026 min
 Response: 30602497
 Conc: 23.02 ng/ml



#3 AR-1016-1

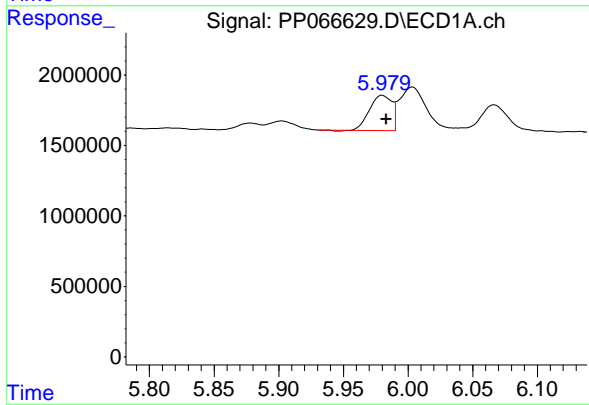
R.T.: 5.980 min
 Delta R.T.: 0.020 min
 Response: 2963169
 Conc: 39.90 ng/ml

Instrument :
 ECD_P
 ClientSampleId :



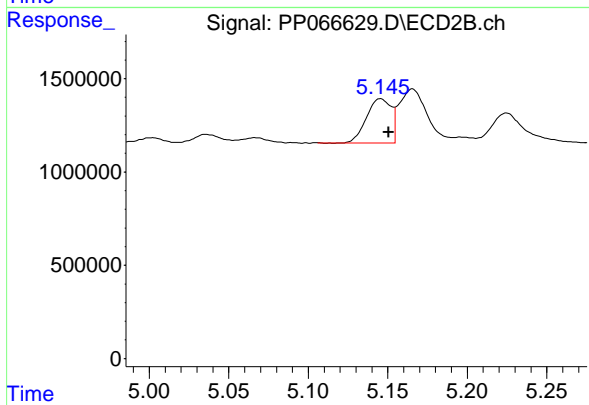
#3 AR-1016-1

R.T.: 5.145 min
 Delta R.T.: 0.015 min
 Response: 2558193
 Conc: 41.55 ng/ml



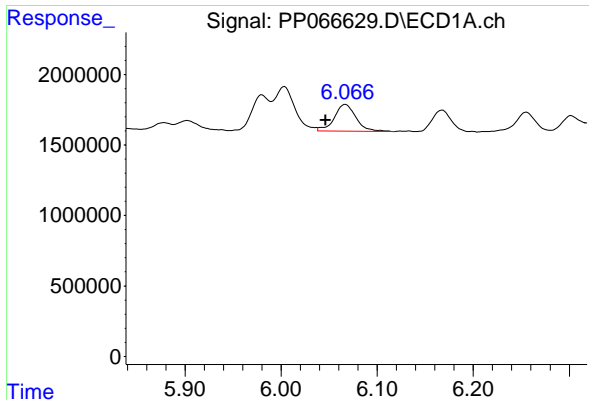
#4 AR-1016-2

R.T.: 5.980 min
 Delta R.T.: -0.003 min
 Response: 2963169
 Conc: 26.86 ng/ml



#4 AR-1016-2

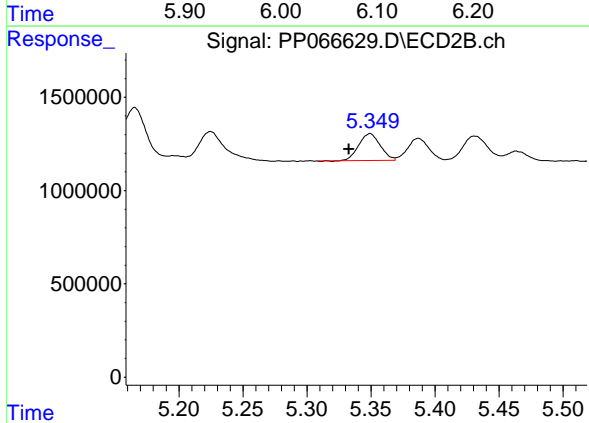
R.T.: 5.145 min
 Delta R.T.: -0.005 min
 Response: 2558193
 Conc: 29.43 ng/ml



#5 AR-1016-3

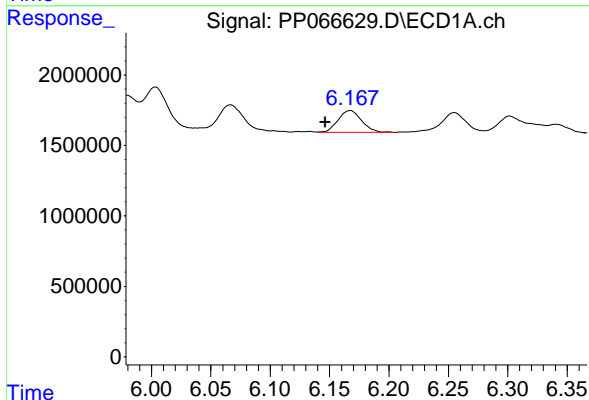
R.T.: 6.067 min
 Delta R.T.: 0.020 min
 Response: 2951630
 Conc: 44.05 ng/ml

Instrument :
 ECD_P
 ClientSampleId :



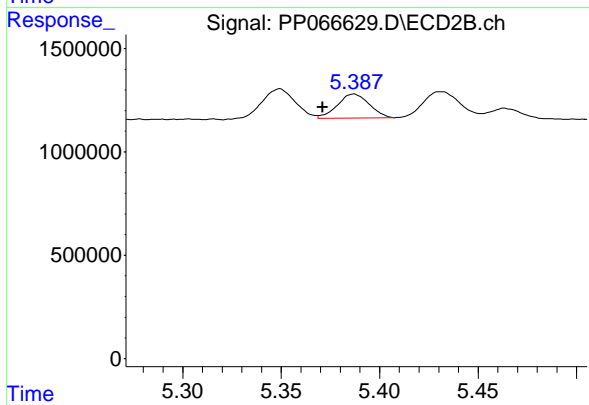
#5 AR-1016-3

R.T.: 5.349 min
 Delta R.T.: 0.016 min
 Response: 1677229
 Conc: 36.83 ng/ml



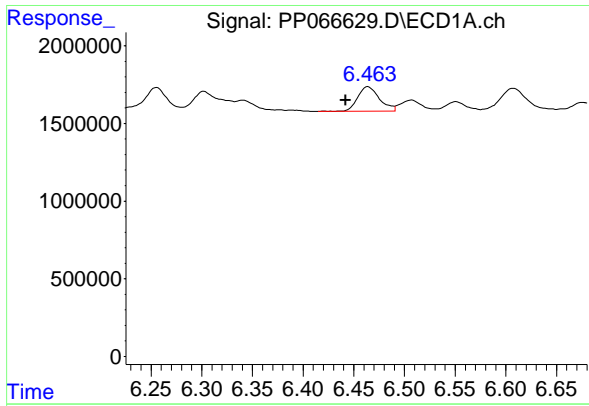
#6 AR-1016-4

R.T.: 6.168 min
 Delta R.T.: 0.021 min
 Response: 2131723
 Conc: 38.61 ng/ml



#6 AR-1016-4

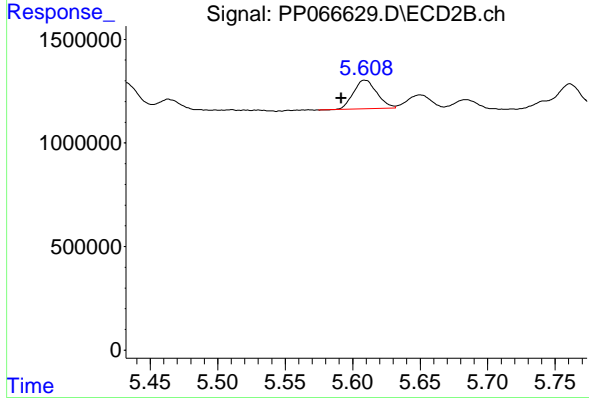
R.T.: 5.387 min
 Delta R.T.: 0.016 min
 Response: 1295246
 Conc: 36.39 ng/ml



#7 AR-1016-5

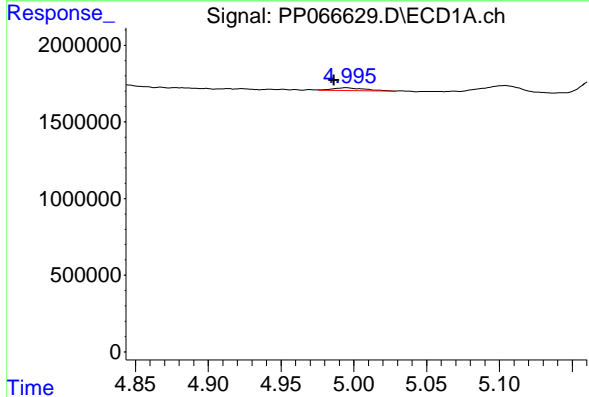
R.T.: 6.464 min
 Delta R.T.: 0.022 min
 Response: 2355212
 Conc: 43.04 ng/ml

Instrument :
 ECD_P
 ClientSampleId :



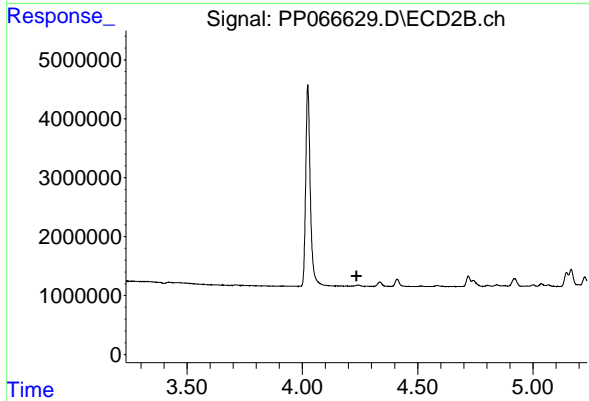
#7 AR-1016-5

R.T.: 5.609 min
 Delta R.T.: 0.017 min
 Response: 1679291
 Conc: 37.35 ng/ml



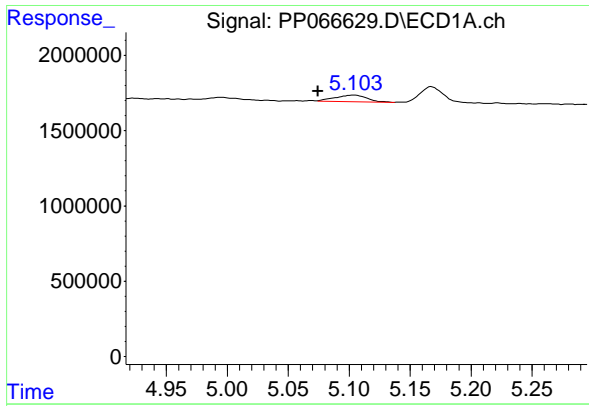
#8 AR-1221-1

R.T.: 4.995 min
 Delta R.T.: 0.009 min
 Response: 274098
 Conc: 11.41 ng/ml



#8 AR-1221-1

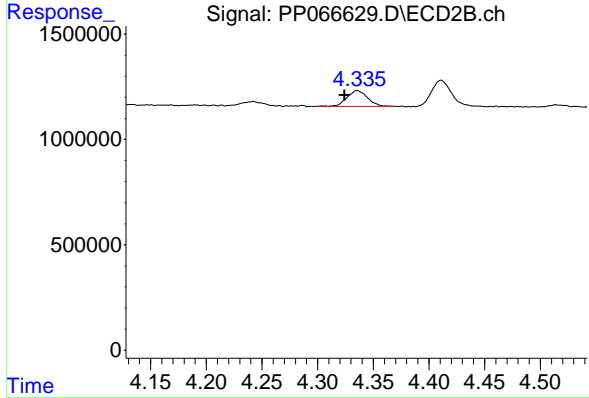
R.T.: 0.000 min
 Exp R.T. : 4.235 min
 Response: 0
 Conc: N.D.



#9 AR-1221-2

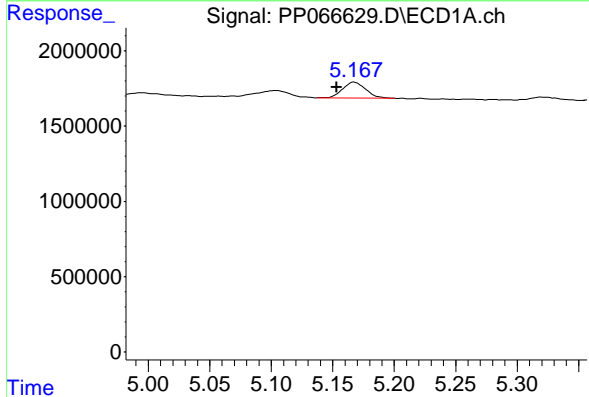
R.T.: 5.104 min
 Delta R.T.: 0.029 min
 Response: 802845
 Conc: 44.01 ng/ml

Instrument : ECD_P
 ClientSampleId :



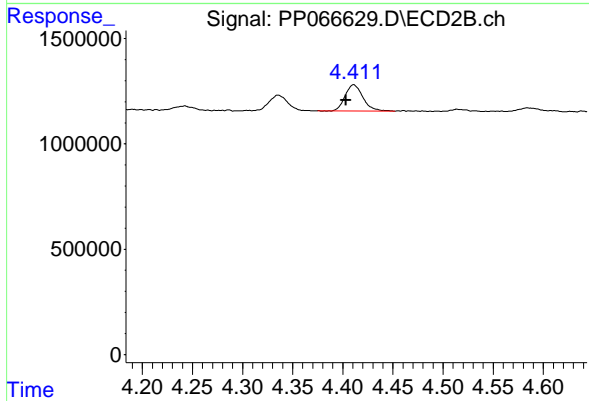
#9 AR-1221-2

R.T.: 4.336 min
 Delta R.T.: 0.011 min
 Response: 944804
 Conc: 47.02 ng/ml



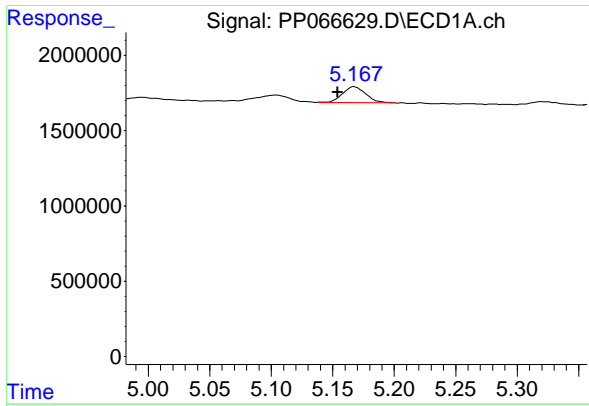
#10 AR-1221-3

R.T.: 5.168 min
 Delta R.T.: 0.014 min
 Response: 1359975
 Conc: 24.44 ng/ml



#10 AR-1221-3

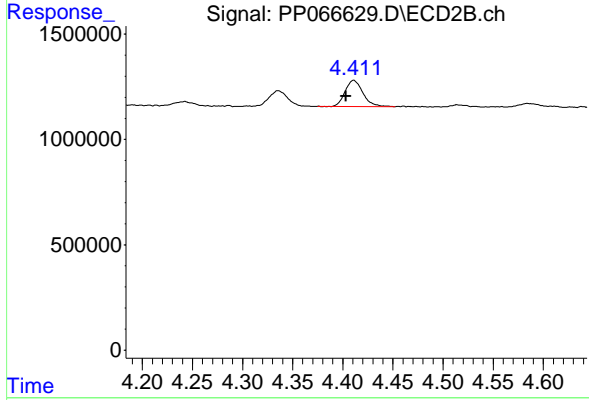
R.T.: 4.411 min
 Delta R.T.: 0.008 min
 Response: 1546138
 Conc: 26.90 ng/ml



#11 AR-1232-1

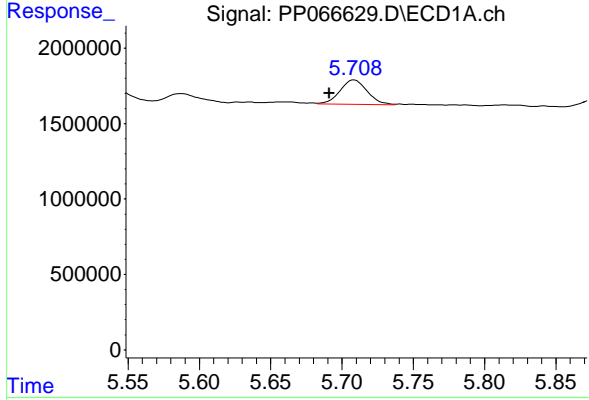
R.T.: 5.168 min
 Delta R.T.: 0.014 min
 Response: 1359975
 Conc: 30.16 ng/ml

Instrument :
 ECD_P
 ClientSampleId :



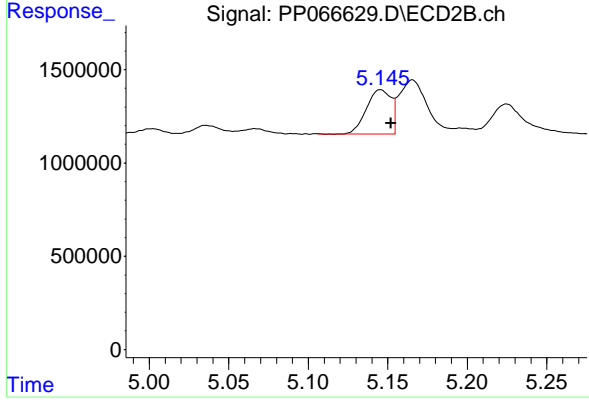
#11 AR-1232-1

R.T.: 4.411 min
 Delta R.T.: 0.008 min
 Response: 1546138
 Conc: 32.98 ng/ml



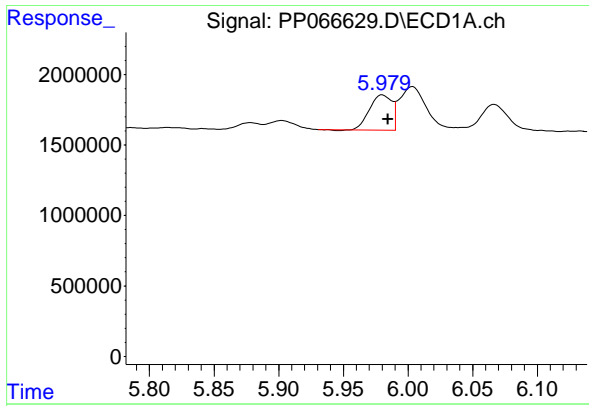
#12 AR-1232-2

R.T.: 5.708 min
 Delta R.T.: 0.017 min
 Response: 2144482
 Conc: 80.49 ng/ml



#12 AR-1232-2

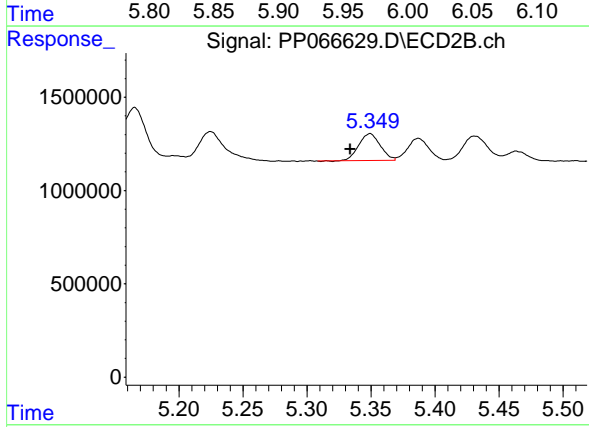
R.T.: 5.145 min
 Delta R.T.: -0.007 min
 Response: 2558193
 Conc: 62.17 ng/ml



#13 AR-1232-3

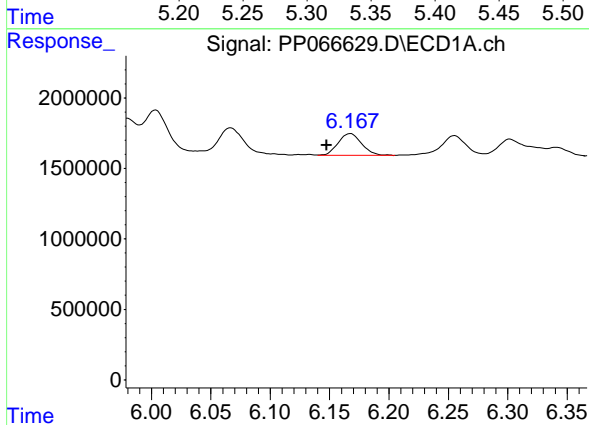
R.T.: 5.980 min
 Delta R.T.: -0.004 min
 Response: 2963169
 Conc: 59.01 ng/ml

Instrument :
 ECD_P
 ClientSampleId :



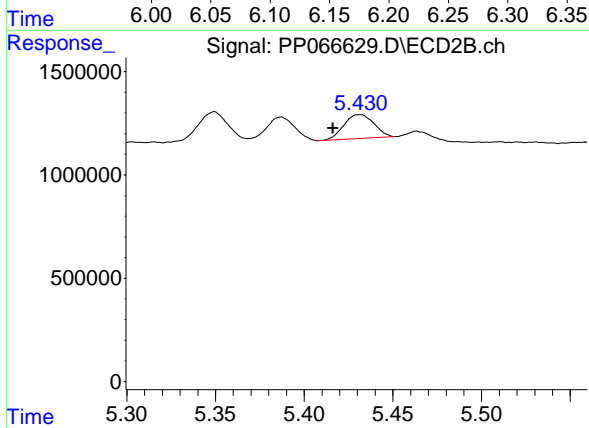
#13 AR-1232-3

R.T.: 5.349 min
 Delta R.T.: 0.015 min
 Response: 1677229
 Conc: 75.41 ng/ml



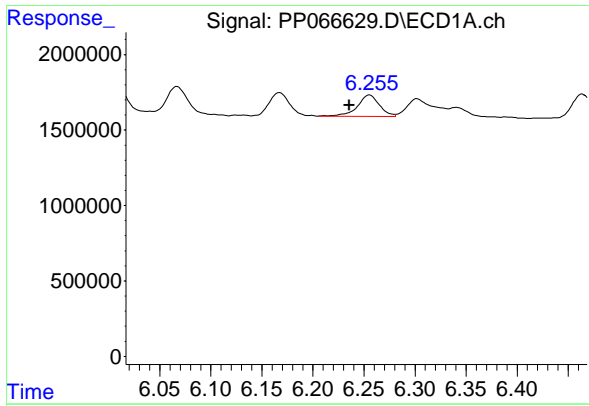
#14 AR-1232-4

R.T.: 6.168 min
 Delta R.T.: 0.020 min
 Response: 2131723
 Conc: 79.34 ng/ml



#14 AR-1232-4

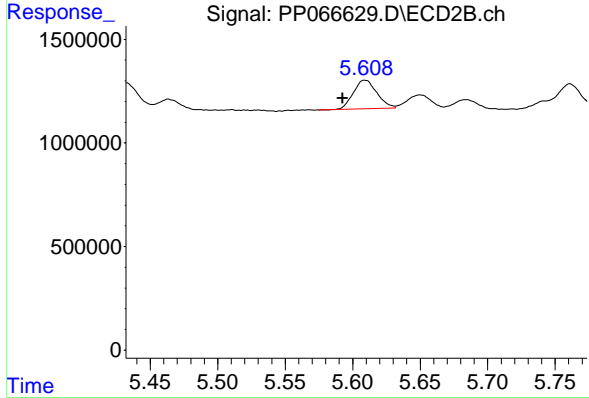
R.T.: 5.431 min
 Delta R.T.: 0.015 min
 Response: 1351588
 Conc: 70.48 ng/ml



#15 AR-1232-5

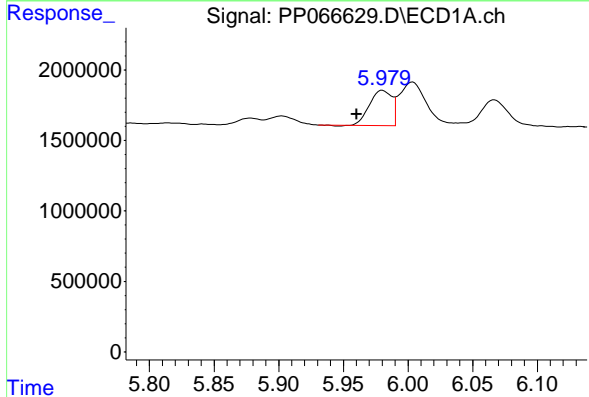
R.T.: 6.255 min
 Delta R.T.: 0.020 min
 Response: 2122432
 Conc: 107.45 ng/ml

Instrument :
 ECD_P
 ClientSampleId :



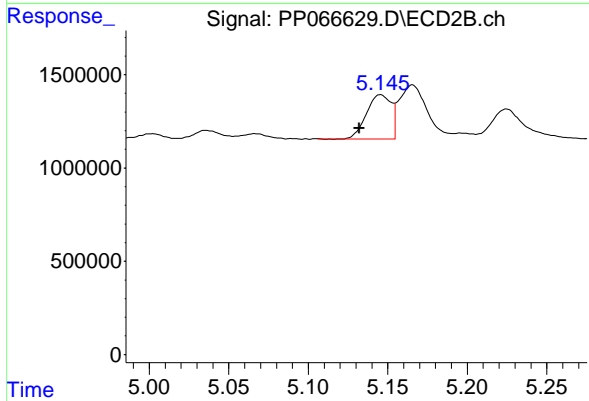
#15 AR-1232-5

R.T.: 5.609 min
 Delta R.T.: 0.017 min
 Response: 1679291
 Conc: 83.67 ng/ml



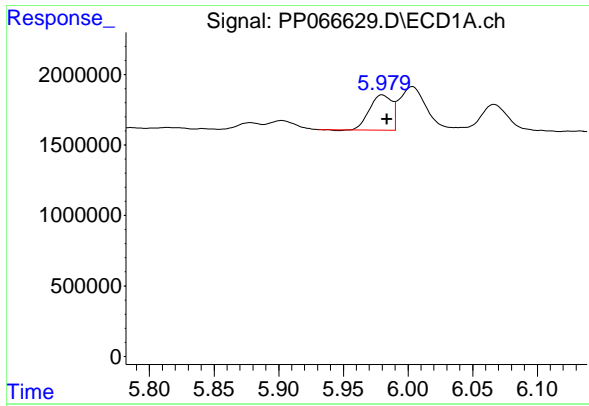
#16 AR-1242-1

R.T.: 5.980 min
 Delta R.T.: 0.020 min
 Response: 2963169
 Conc: 49.85 ng/ml



#16 AR-1242-1

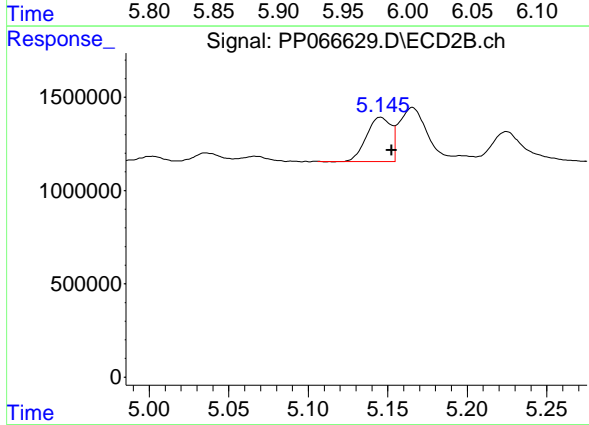
R.T.: 5.145 min
 Delta R.T.: 0.013 min
 Response: 2558193
 Conc: 51.62 ng/ml



#17 AR-1242-2

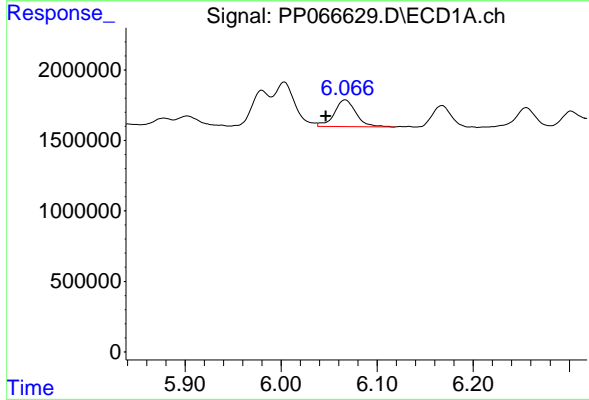
R.T.: 5.980 min
 Delta R.T.: -0.003 min
 Response: 2963169
 Conc: 33.52 ng/ml

Instrument :
 ECD_P
 ClientSampleId :



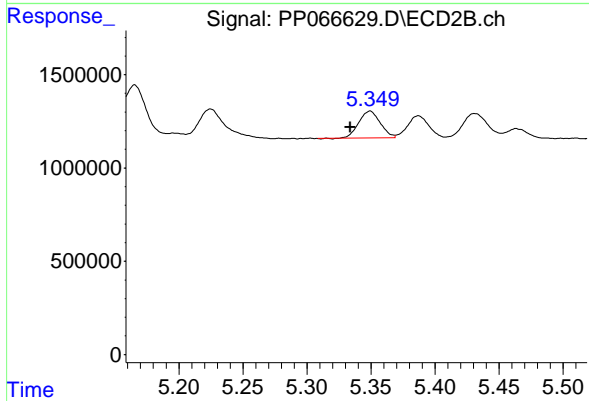
#17 AR-1242-2

R.T.: 5.145 min
 Delta R.T.: -0.007 min
 Response: 2558193
 Conc: 36.77 ng/ml



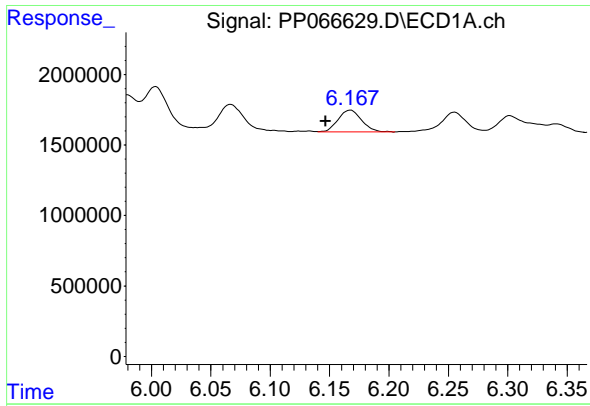
#18 AR-1242-3

R.T.: 6.067 min
 Delta R.T.: 0.020 min
 Response: 2951630
 Conc: 54.63 ng/ml



#18 AR-1242-3

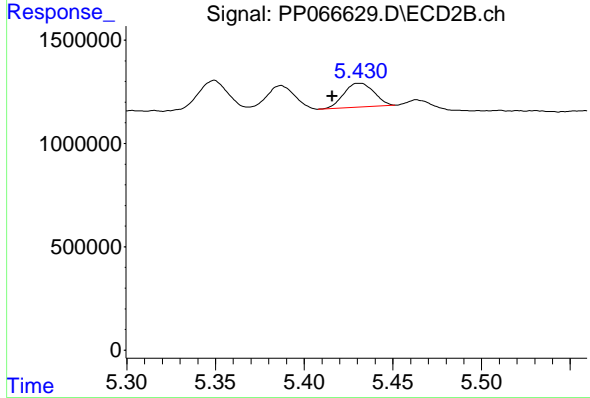
R.T.: 5.349 min
 Delta R.T.: 0.015 min
 Response: 1677229
 Conc: 45.54 ng/ml



#19 AR-1242-4

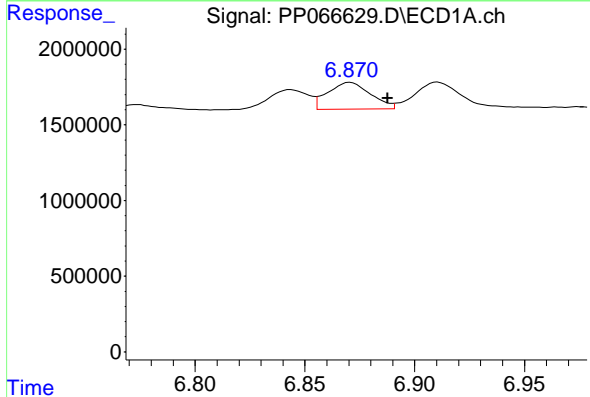
R.T.: 6.168 min
 Delta R.T.: 0.021 min
 Response: 2131723
 Conc: 47.91 ng/ml

Instrument :
 ECD_P
 ClientSampleId :



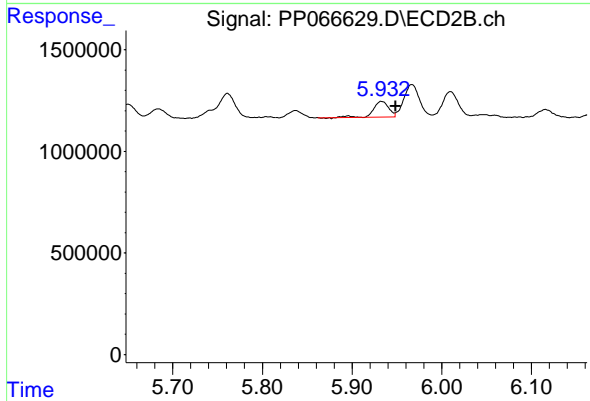
#19 AR-1242-4

R.T.: 5.431 min
 Delta R.T.: 0.015 min
 Response: 1351588
 Conc: 37.88 ng/ml



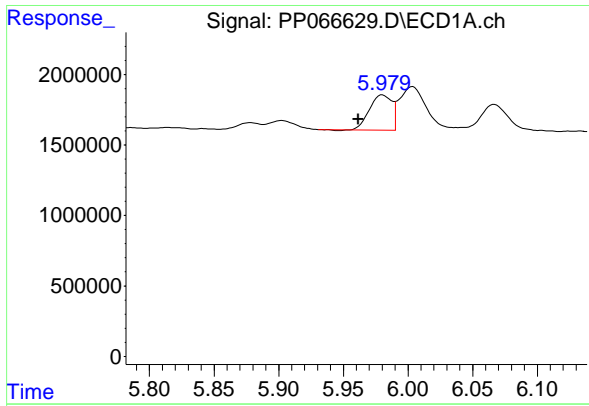
#20 AR-1242-5

R.T.: 6.871 min
 Delta R.T.: -0.017 min
 Response: 2400728
 Conc: 47.13 ng/ml



#20 AR-1242-5

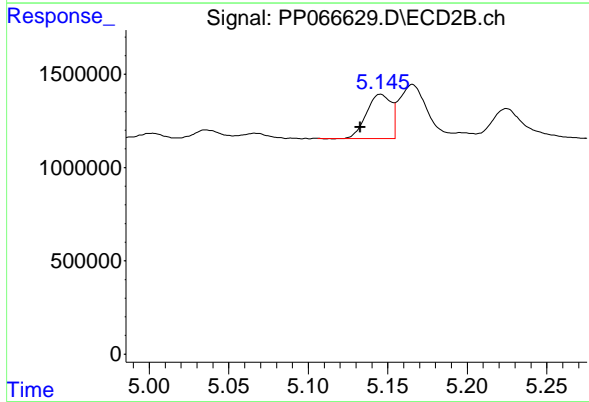
R.T.: 5.933 min
 Delta R.T.: -0.016 min
 Response: 906160
 Conc: 21.47 ng/ml



#21 AR-1248-1

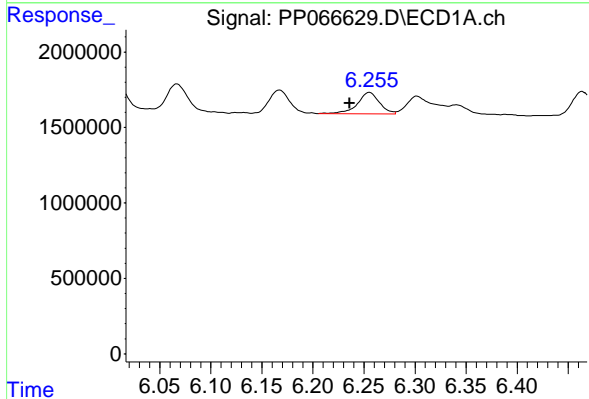
R.T.: 5.980 min
 Delta R.T.: 0.019 min
 Response: 2963169
 Conc: 61.29 ng/ml

Instrument :
 ECD_P
 ClientSampleId :



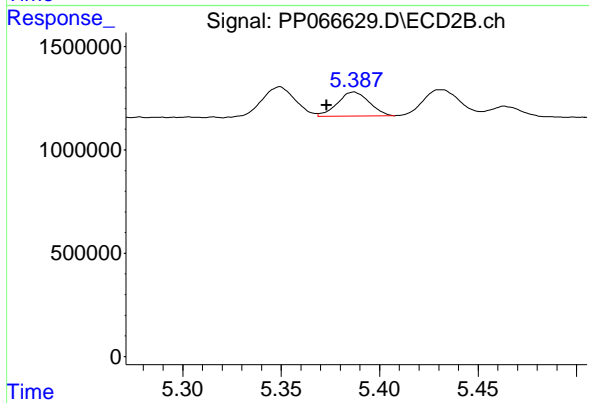
#21 AR-1248-1

R.T.: 5.145 min
 Delta R.T.: 0.013 min
 Response: 2558193
 Conc: 63.99 ng/ml



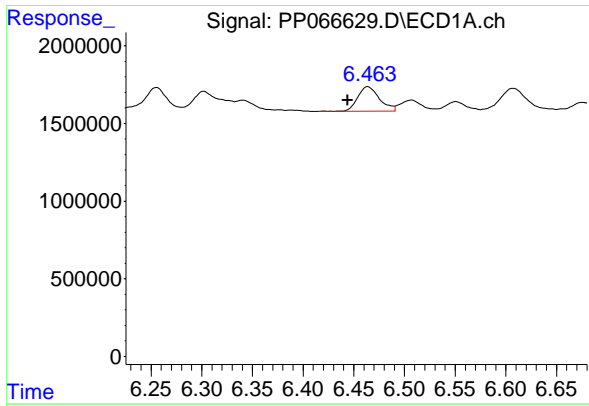
#22 AR-1248-2

R.T.: 6.255 min
 Delta R.T.: 0.019 min
 Response: 2122432
 Conc: 29.94 ng/ml



#22 AR-1248-2

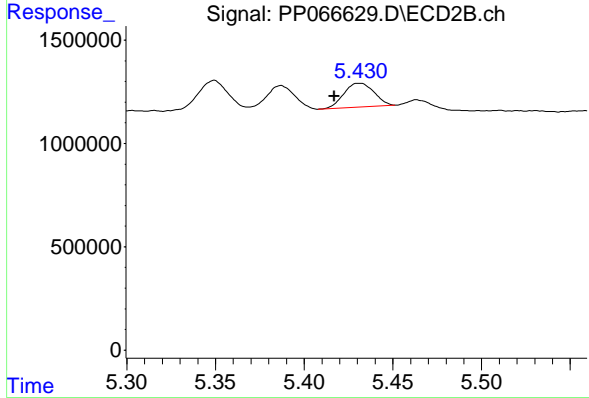
R.T.: 5.387 min
 Delta R.T.: 0.014 min
 Response: 1295246
 Conc: 24.46 ng/ml



#23 AR-1248-3

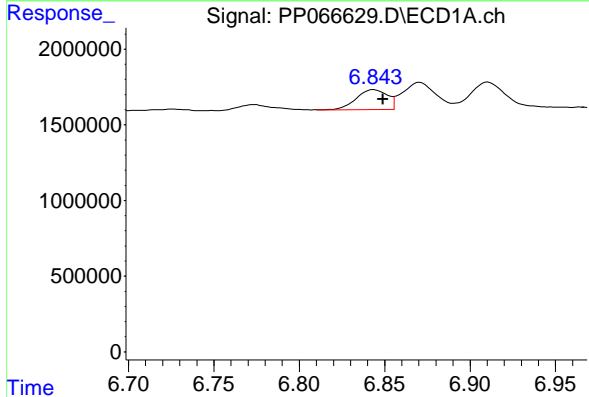
R.T.: 6.464 min
 Delta R.T.: 0.020 min
 Response: 2355212
 Conc: 30.48 ng/ml

Instrument :
 ECD_P
 ClientSampleId :



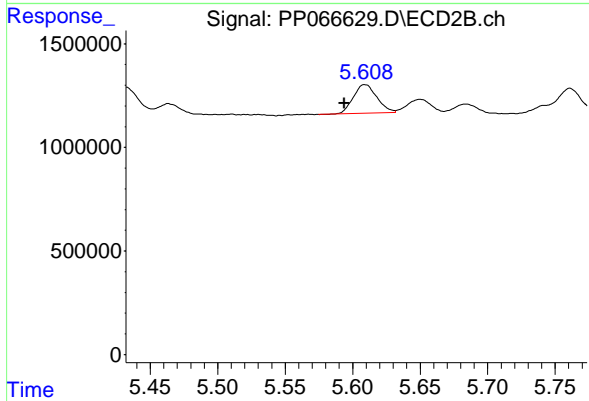
#23 AR-1248-3

R.T.: 5.431 min
 Delta R.T.: 0.014 min
 Response: 1351588
 Conc: 24.67 ng/ml



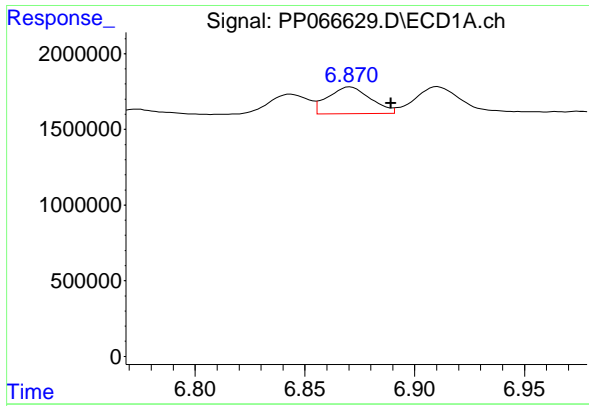
#24 AR-1248-4

R.T.: 6.844 min
 Delta R.T.: -0.005 min
 Response: 1663559
 Conc: 18.71 ng/ml



#24 AR-1248-4

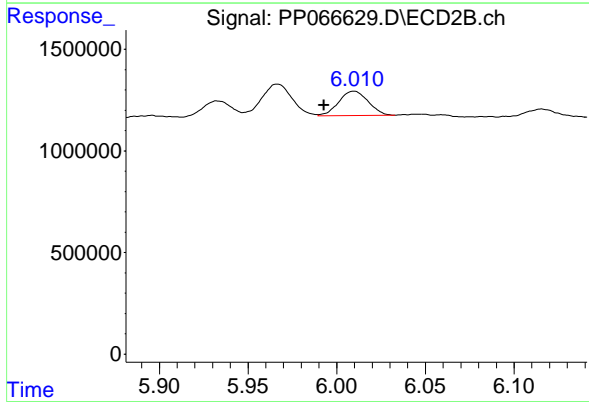
R.T.: 5.609 min
 Delta R.T.: 0.015 min
 Response: 1679291
 Conc: 26.76 ng/ml



#25 AR-1248-5

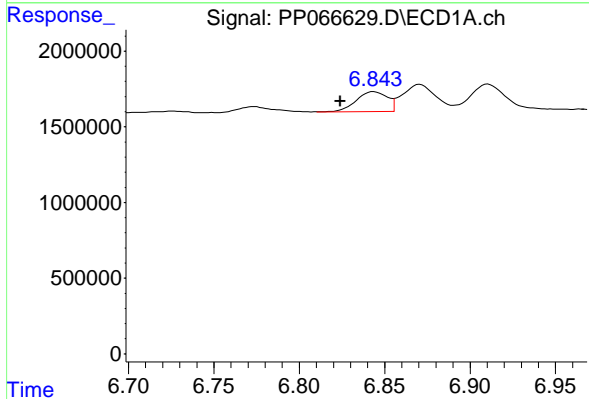
R.T.: 6.871 min
 Delta R.T.: -0.019 min
 Response: 240728
 Conc: 27.18 ng/ml

Instrument :
 ECD_P
 ClientSampleId :



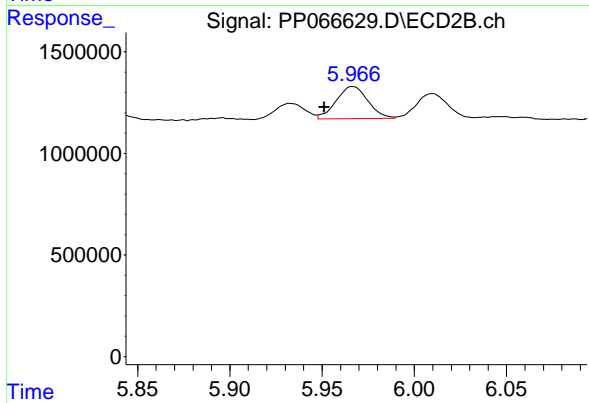
#25 AR-1248-5

R.T.: 6.010 min
 Delta R.T.: 0.017 min
 Response: 1387812
 Conc: 23.97 ng/ml



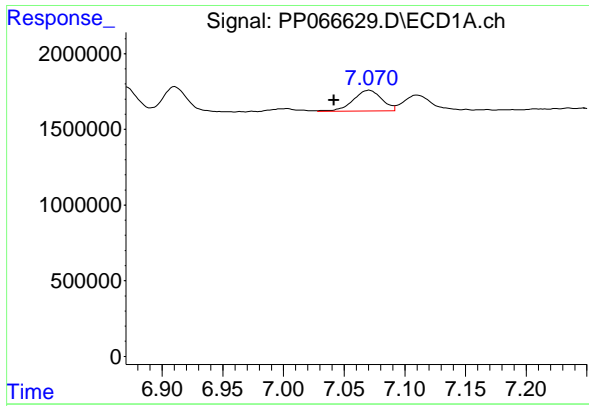
#26 AR-1254-1

R.T.: 6.844 min
 Delta R.T.: 0.020 min
 Response: 1663559
 Conc: 18.53 ng/ml



#26 AR-1254-1

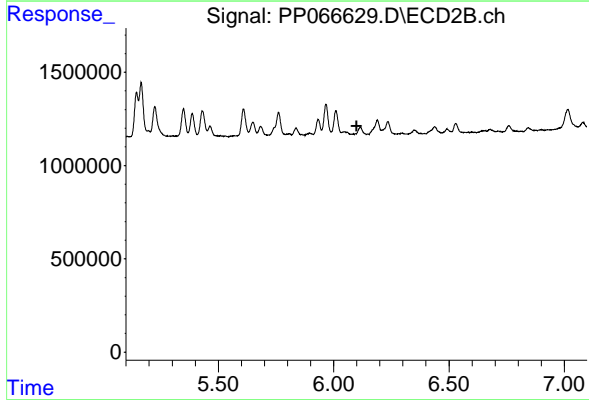
R.T.: 5.967 min
 Delta R.T.: 0.015 min
 Response: 1877480
 Conc: 22.02 ng/ml



#27 AR-1254-2

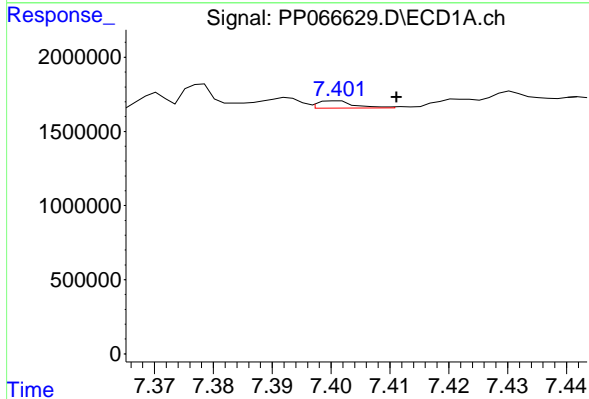
R.T.: 7.071 min
 Delta R.T.: 0.029 min
 Response: 2246723
 Conc: 16.62 ng/ml

Instrument :
 ECD_P
 ClientSampleId :



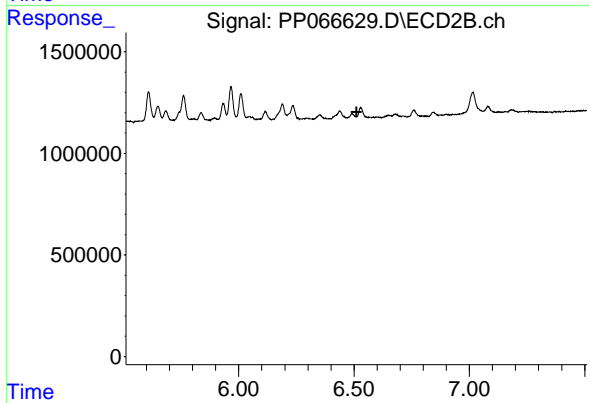
#27 AR-1254-2

R.T.: 0.000 min
 Exp R.T. : 6.099 min
 Response: 0
 Conc: N.D.



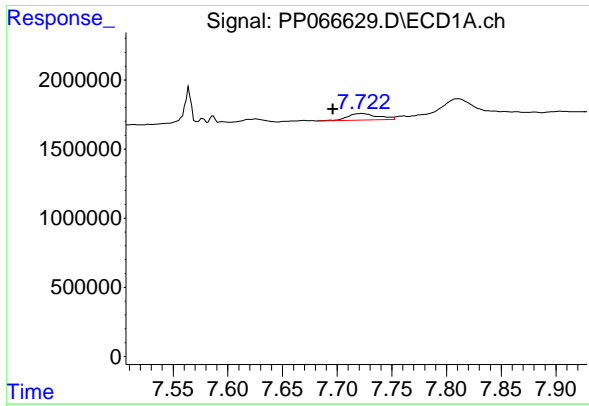
#28 AR-1254-3

R.T.: 7.401 min
 Delta R.T.: -0.010 min
 Response: 218242
 Conc: 1.63 ng/ml



#28 AR-1254-3

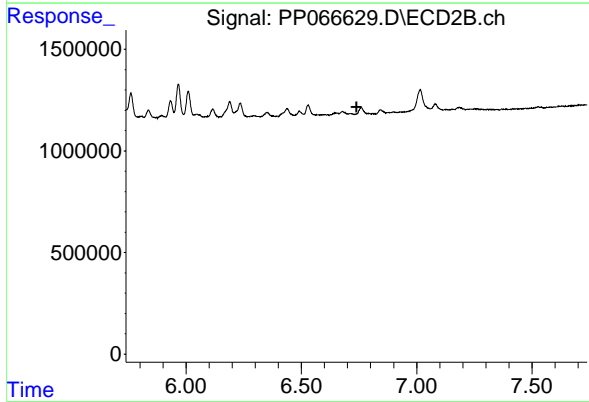
R.T.: 0.000 min
 Exp R.T. : 6.511 min
 Response: 0
 Conc: N.D.



#29 AR-1254-4

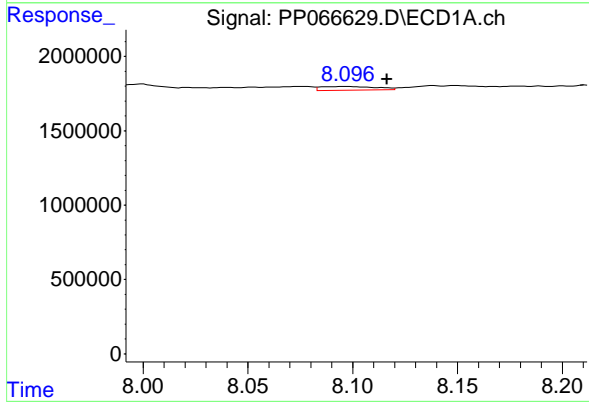
R.T.: 7.723 min
 Delta R.T.: 0.026 min
 Response: 914125
 Conc: 8.89 ng/ml

Instrument :
 ECD_P
 ClientSampleId :



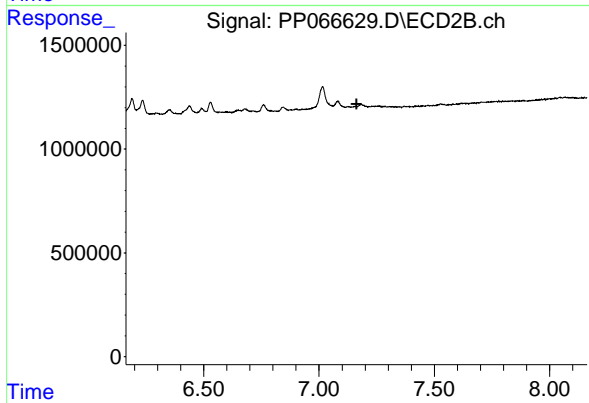
#29 AR-1254-4

R.T.: 0.000 min
 Exp R.T. : 6.739 min
 Response: 0
 Conc: N.D.



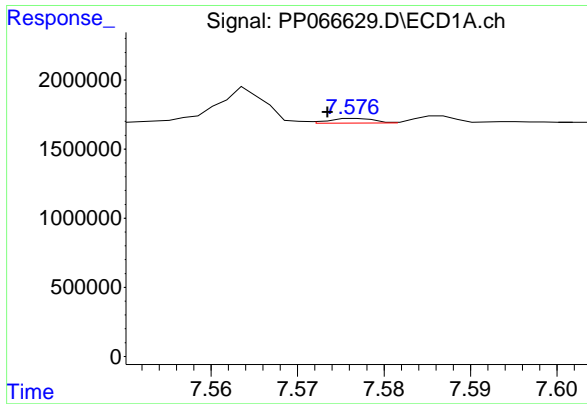
#30 AR-1254-5

R.T.: 8.097 min
 Delta R.T.: -0.019 min
 Response: 434342
 Conc: 3.99 ng/ml



#30 AR-1254-5

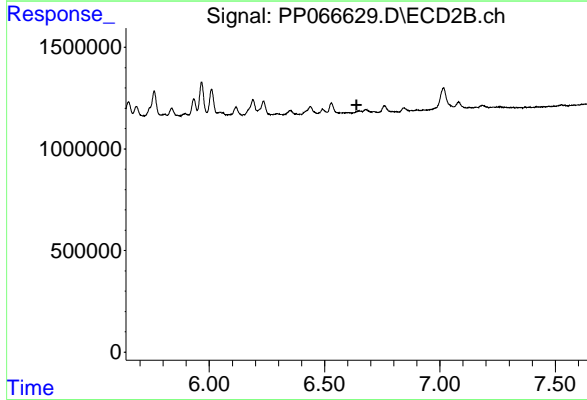
R.T.: 0.000 min
 Exp R.T. : 7.162 min
 Response: 0
 Conc: N.D.



#31 AR-1260-1

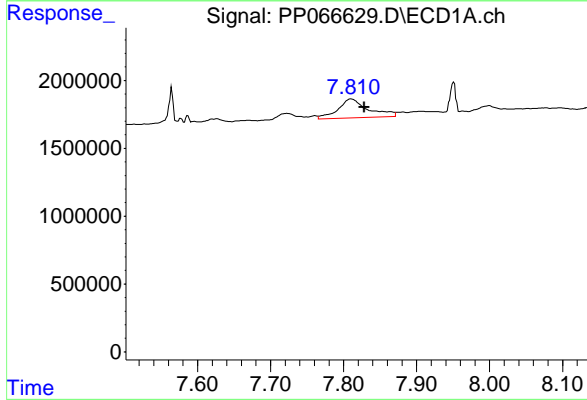
R.T.: 7.577 min
 Delta R.T.: 0.004 min
 Response: 120013
 Conc: 1.13 ng/ml

Instrument :
 ECD_P
 ClientSampleId :



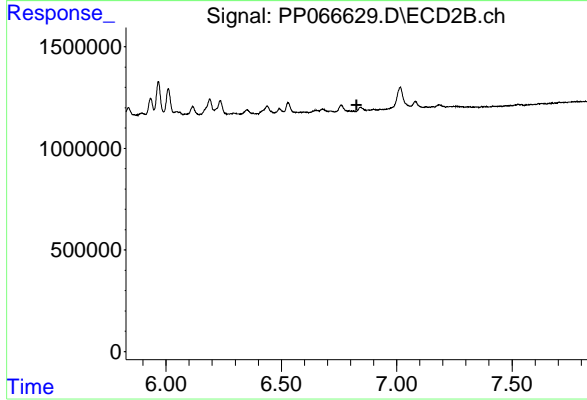
#31 AR-1260-1

R.T.: 0.000 min
 Exp R.T. : 6.638 min
 Response: 0
 Conc: N.D.



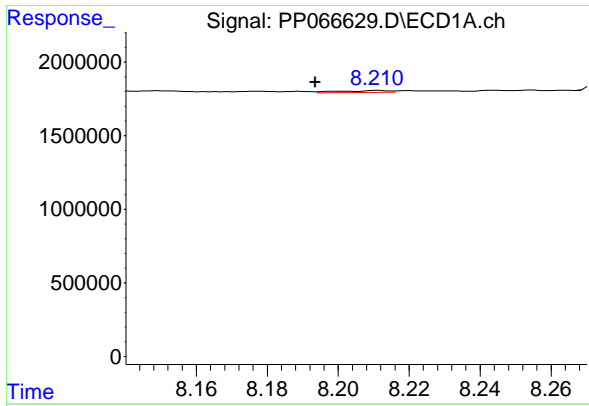
#32 AR-1260-2

R.T.: 7.810 min
 Delta R.T.: -0.018 min
 Response: 3968083
 Conc: 31.07 ng/ml



#32 AR-1260-2

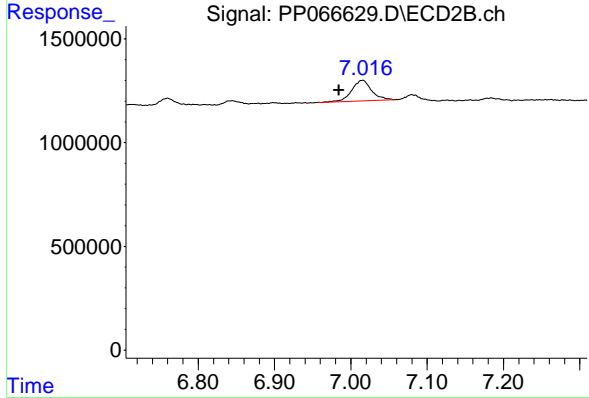
R.T.: 0.000 min
 Exp R.T. : 6.826 min
 Response: 0
 Conc: N.D.



#33 AR-1260-3

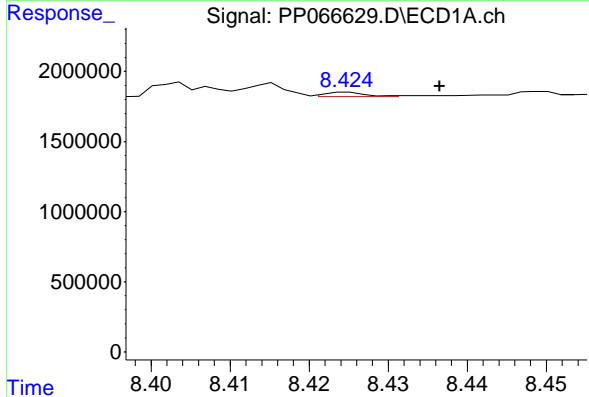
R.T.: 8.211 min
 Delta R.T.: 0.018 min
 Response: 134236
 Conc: 1.50 ng/ml

Instrument :
 ECD_P
 ClientSampleId :



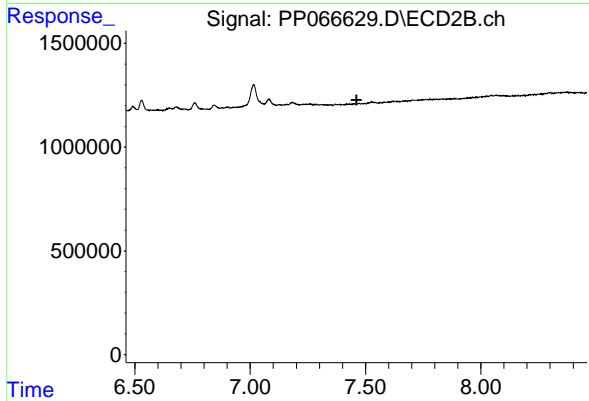
#33 AR-1260-3

R.T.: 7.016 min
 Delta R.T.: 0.031 min
 Response: 1807491
 Conc: 17.12 ng/ml



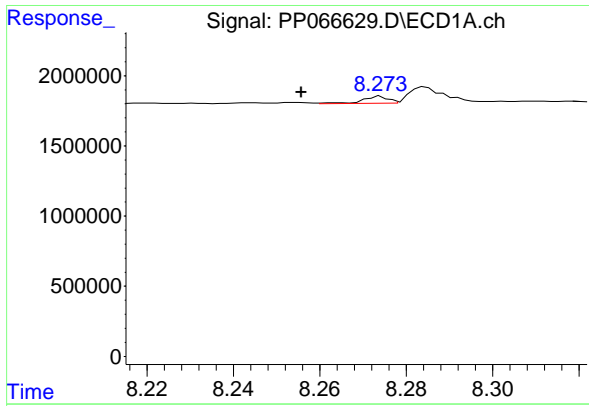
#34 AR-1260-4

R.T.: 8.425 min
 Delta R.T.: -0.012 min
 Response: 109822
 Conc: 1.15 ng/ml



#34 AR-1260-4

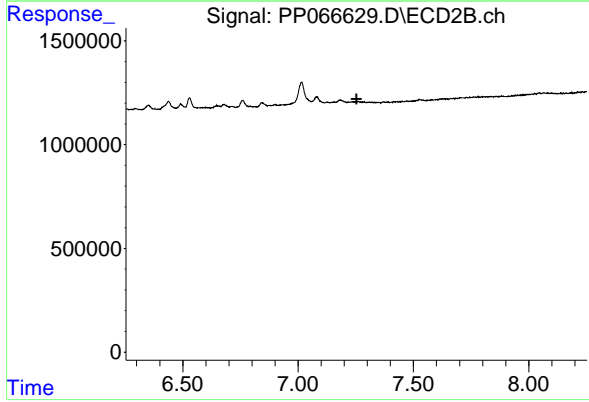
R.T.: 0.000 min
 Exp R.T. : 7.461 min
 Response: 0
 Conc: N.D.



#36 AR-1262-1

R.T.: 8.274 min
Delta R.T.: 0.018 min
Response: 201596
Conc: 3.22 ng/ml

Instrument :
ECD_P
ClientSampleId :



#36 AR-1262-1

R.T.: 0.000 min
Exp R.T. : 7.253 min
Response: 0
Conc: N.D.