

Data Path : Z:\pestpcbsrv\HPCHEM1\ECD\_P\Data\PP080718\  
 Data File : PP026981.D  
 Signal(s) : Signal #1: ECD1A.CH Signal #2: ECD2B.CH  
 Acq On : 07 Aug 2018 17:17  
 Operator : EI\MA  
 Sample : J4345-03  
 Misc :  
 ALS Vial : 15 Sample Multiplier: 1

Instrument :  
 ECD\_P  
 ClientSampleId :  
 RBR200035

Integration File signal 1: autoint1.e  
 Integration File signal 2: autoint2.e  
 Quant Time: Aug 08 01:05:04 2018  
 Quant Method : Z:\pestpcbsrv\HPCHEM1\ECD\_P\methods\PP073018.M  
 Quant Title : 8080.M  
 QLast Update : Tue Jul 31 01:31:14 2018  
 Response via : Initial Calibration  
 Integrator: ChemStation 6890 Scale Mode: Large solvent peaks clipped

Volume Inj. : 2 µl  
 Signal #1 Phase : ZB-CLPesticides-1 Signal #2 Phase: ZB-CLPesticides-2  
 Signal #1 Info : 30M x 0.32mm x0.5 Signal #2 Info : 30M x 0.32mm x 0.25µm

Compound	RT#1	RT#2	Resp#1	Resp#2	ng/ml	ng/ml
-----						
System Monitoring Compounds						
4) S 2,4-DCAA	12.044	12.155	144.8E6	184.1E6	606.223	454.669
Target Compounds						
3) T 4-Nitroph...	11.684	0.000	700797	0	1.528	N.D. #
5) T DICAMBA	0.000	12.400	0	1475682	N.D.	0.907 #
6) T MCPPE	12.725	0.000	4655008	0	11.998	N.D. #
15) T Picloram	17.565	0.000	5337998	0	1.292	N.D. #
-----						

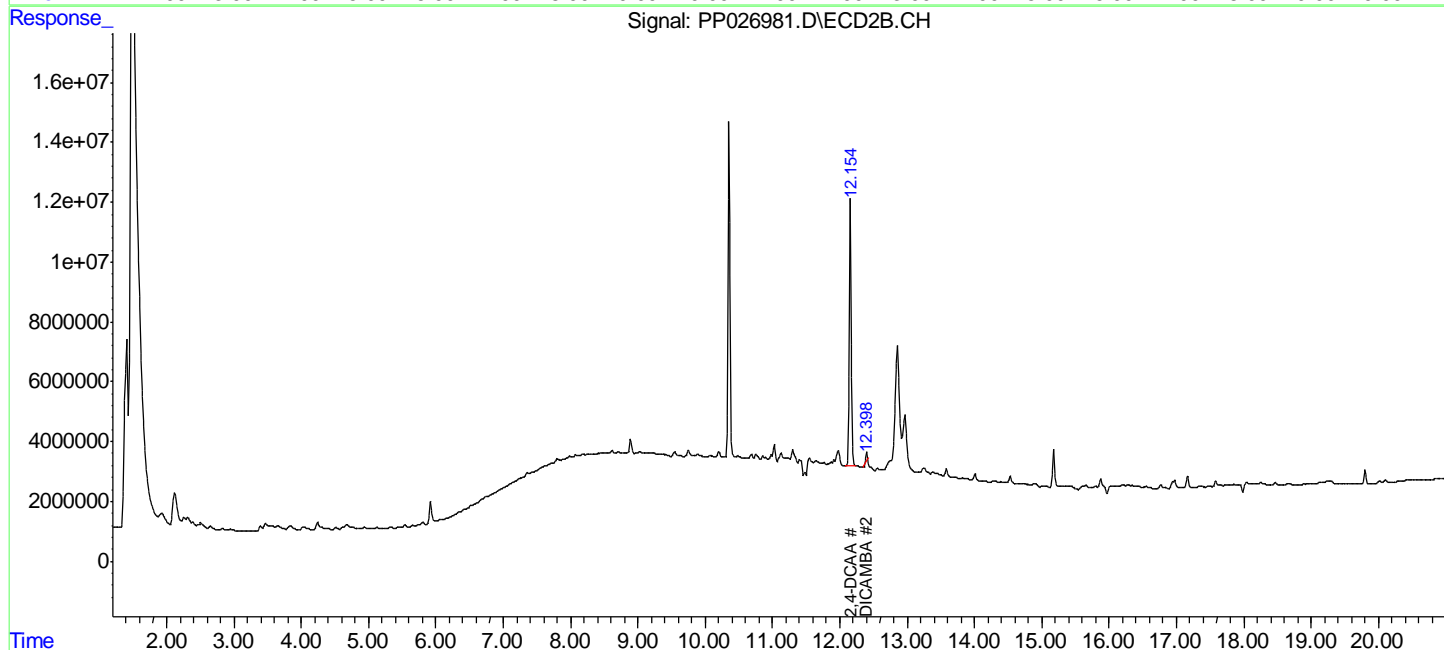
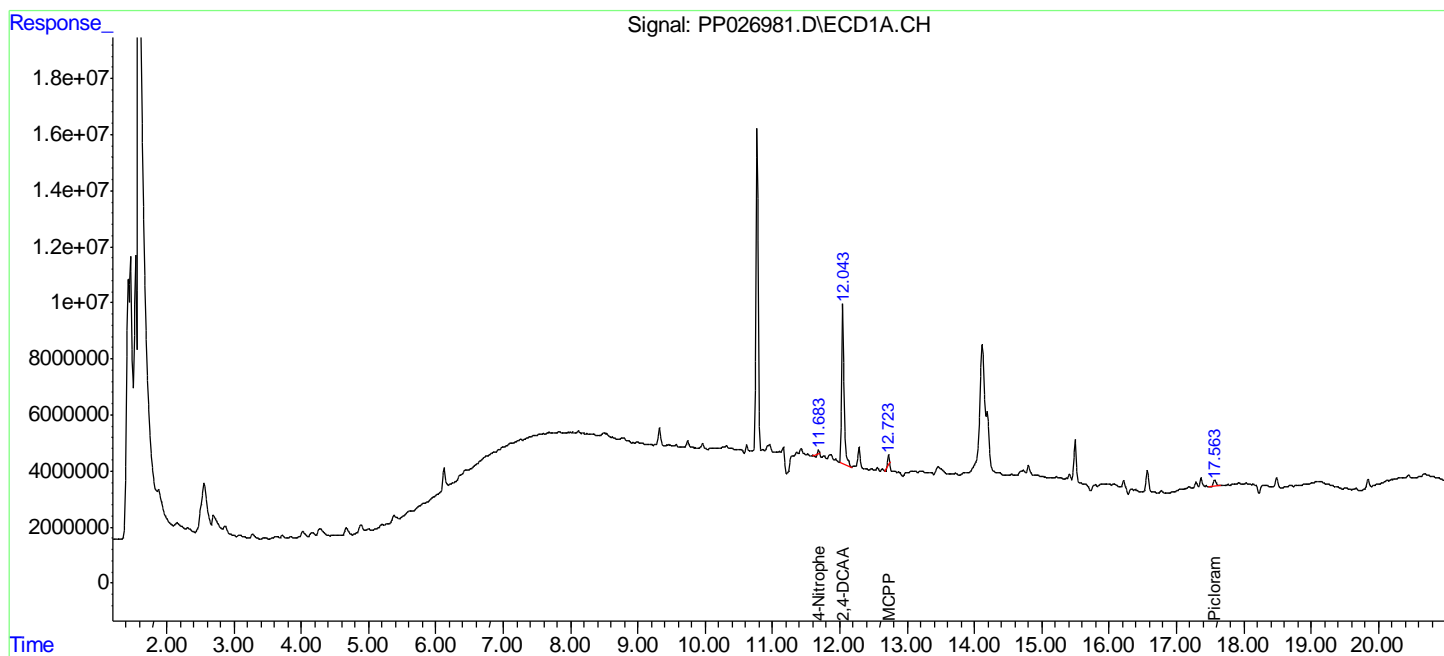
(f)=RT Delta > 1/2 Window (#)=Amounts differ by > 25% (m)=manual int.

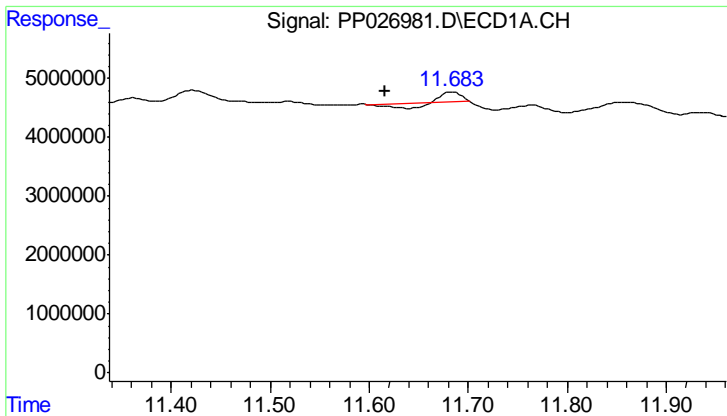
Data Path : Z:\pestpcbsrv\HPCHEM1\ECD\_P\Data\PP080718\  
 Data File : PP026981.D  
 Signal(s) : Signal #1: ECD1A.CH Signal #2: ECD2B.CH  
 Acq On : 07 Aug 2018 17:17  
 Operator : EI\MA  
 Sample : J4345-03  
 Misc :  
 ALS Vial : 15 Sample Multiplier: 1

Instrument :  
 ECD\_P  
 ClientSampled :  
 RBR200035

Integration File signal 1: autoint1.e  
 Integration File signal 2: autoint2.e  
 Quant Time: Aug 08 01:05:04 2018  
 Quant Method : Z:\pestpcbsrv\HPCHEM1\ECD\_P\methods\PP073018.M  
 Quant Title : 8080.M  
 QLast Update : Tue Jul 31 01:31:14 2018  
 Response via : Initial Calibration  
 Integrator: ChemStation 6890 Scale Mode: Large solvent peaks clipped

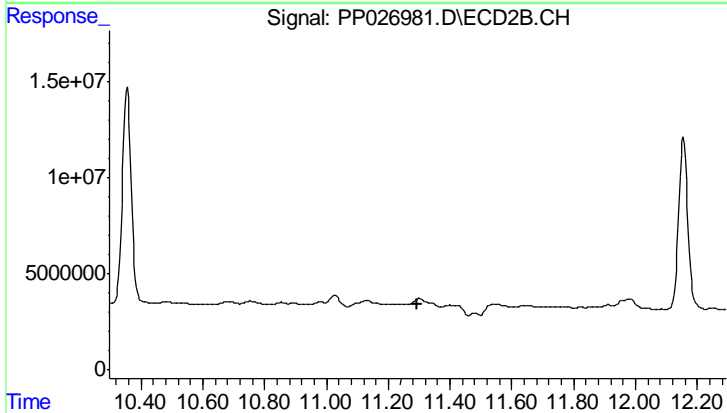
Volume Inj. : 2 µl  
 Signal #1 Phase : ZB-CLPesticides-1 Signal #2 Phase: ZB-CLPesticides-2  
 Signal #1 Info : 30M x 0.32mm x0.5 Signal #2 Info : 30M x 0.32mm x 0.25µm



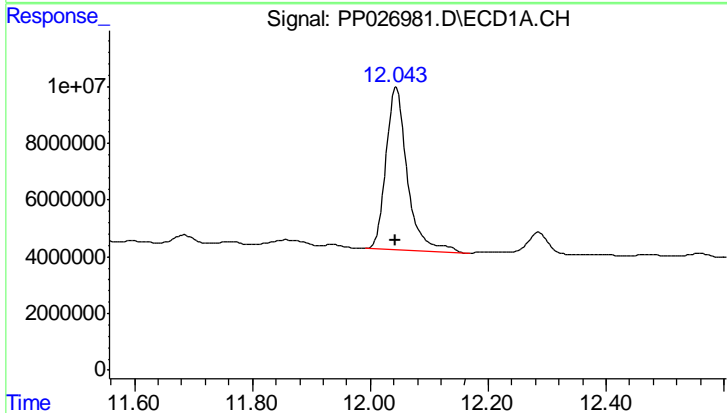


#3 4-Nitrophenol  
 R.T.: 11.684 min  
 Delta R.T.: 0.068 min  
 Response: 700797  
 Conc: 1.53 ng/ml

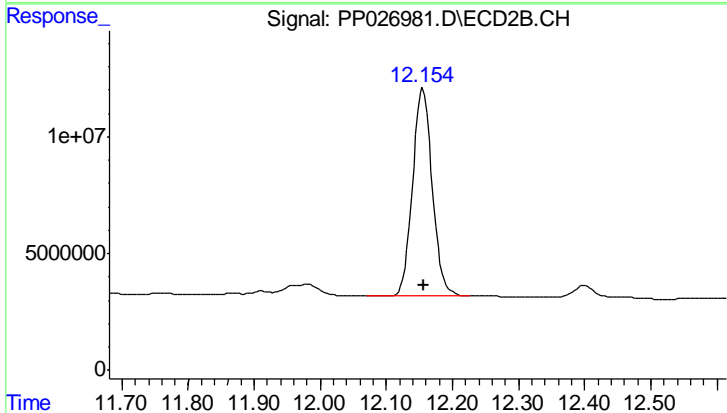
Instrument :  
 ECD\_P  
 ClientSampled :  
 RBR200035



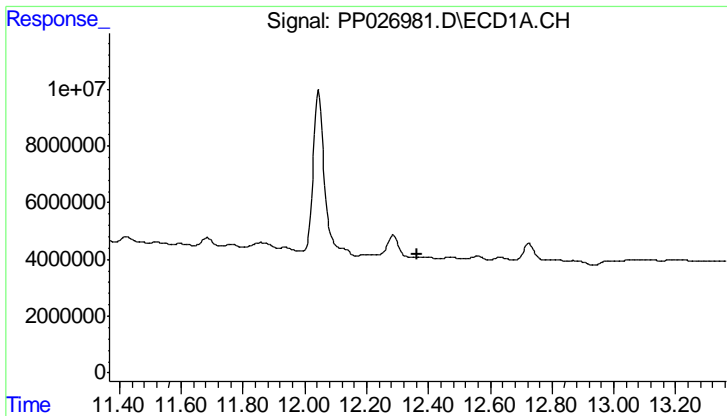
#3 4-Nitrophenol  
 R.T.: 0.000 min  
 Exp R.T.: 11.295 min  
 Response: 0  
 Conc: N.D.



#4 2,4-DCAA  
 R.T.: 12.044 min  
 Delta R.T.: 0.000 min  
 Response: 144779874  
 Conc: 606.22 ng/ml



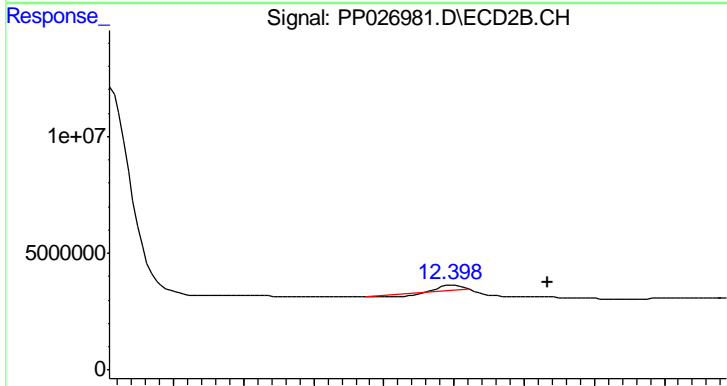
#4 2,4-DCAA  
 R.T.: 12.155 min  
 Delta R.T.: 0.000 min  
 Response: 184109965  
 Conc: 454.67 ng/ml



#5 DICAMBA

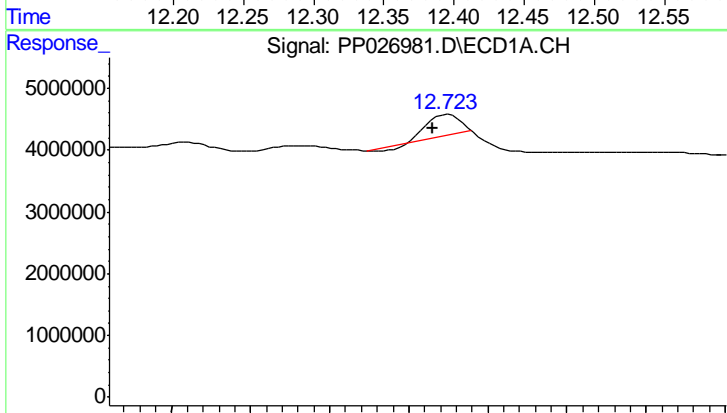
R.T.: 0.000 min  
 Exp R.T.: 12.365 min  
 Response: 0  
 Conc: N.D.

Instrument :  
 ECD\_P  
 ClientSampleId :  
 RBR200035



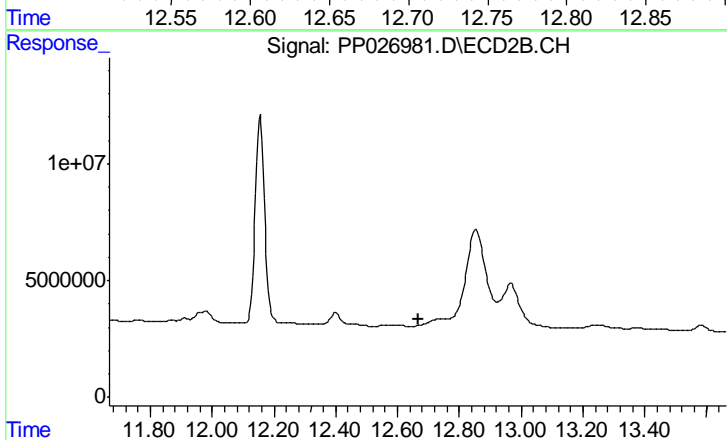
#5 DICAMBA

R.T.: 12.400 min  
 Delta R.T.: -0.067 min  
 Response: 1475682  
 Conc: 0.91 ng/ml



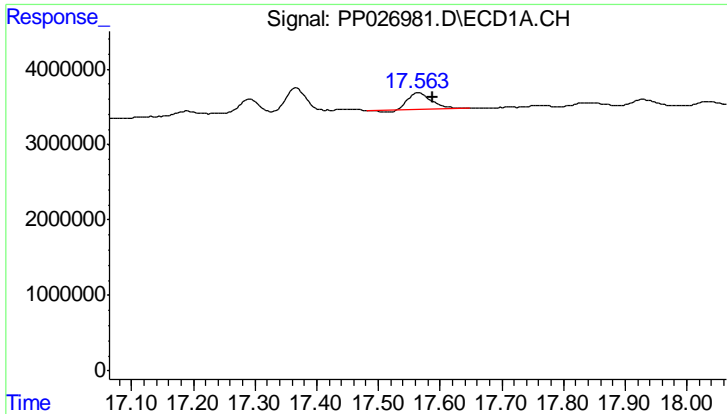
#6 MCPP

R.T.: 12.725 min  
 Delta R.T.: 0.010 min  
 Response: 4655008  
 Conc: 12.00 ug/ml



#6 MCPP

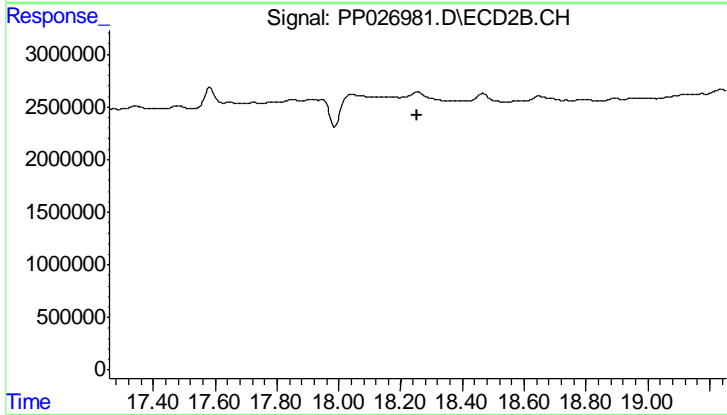
R.T.: 0.000 min  
 Exp R.T.: 12.667 min  
 Response: 0  
 Conc: N.D.



#15 Picloram

R.T.: 17.565 min  
Delta R.T.: -0.022 min  
Response: 5337998  
Conc: 1.29 ng/ml

Instrument :  
ECD\_P  
ClientSampleId :  
RBR200035



#15 Picloram

R.T.: 0.000 min  
Exp R.T. : 18.255 min  
Response: 0  
Conc: N.D.