

Data Path : Z:\pestpcbsrv\HPCHEM1\ECD_P\Data\PP080723\
 Data File : PP059175.D
 Signal(s) : Signal #1: ECD1A.ch Signal #2: ECD2B.ch
 Acq On : 07 Aug 2023 17:12
 Operator : YP\AJ
 Sample : AR1242ICC050
 Misc :
 ALS Vial : 14 Sample Multiplier: 1

Instrument :
 ECD_P
 ClientSampleId :

Integration File signal 1: autoint1.e
 Integration File signal 2: autoint2.e
 Quant Time: Aug 07 23:00:46 2023
 Quant Method : Z:\pestpcbsrv\HPCHEM1\ECD_P\methods\PP080723.M
 Quant Title : GC EXTRACTABLES
 QLast Update : Mon Aug 07 22:59:06 2023
 Response via : Initial Calibration
 Integrator: ChemStation

Volume Inj. : 2 µl
 Signal #1 Phase : ZB-MR1 Signal #2 Phase: ZB-MR2
 Signal #1 Info : 30Mx0.32mmx 0.50µ Signal #2 Info : 30M x 0.32mm x 0.25µm

Compound	RT#1	RT#2	Resp#1	Resp#2	ng/ml	ng/ml

System Monitoring Compounds						
1) SA Tetrachlo...	4.423	3.657	9088614	13450212	4.849	4.571
2) SA Decachlor...	10.218	8.693	5798069	9319127	5.170	5.375
Target Compounds						
16) L4 AR-1242-1	5.599	4.751	2865678	4100456	50.987	51.868
17) L4 AR-1242-2	5.621	4.770	4049459	5753821	50.741	50.572
18) L4 AR-1242-3	5.684	4.946	2589385	3003877	50.262	48.640
19) L4 AR-1242-4	5.783	5.031	2104429	3298604	49.845	51.599
20) L4 AR-1242-5	6.523	5.556	2221853	3719910	48.646	50.190

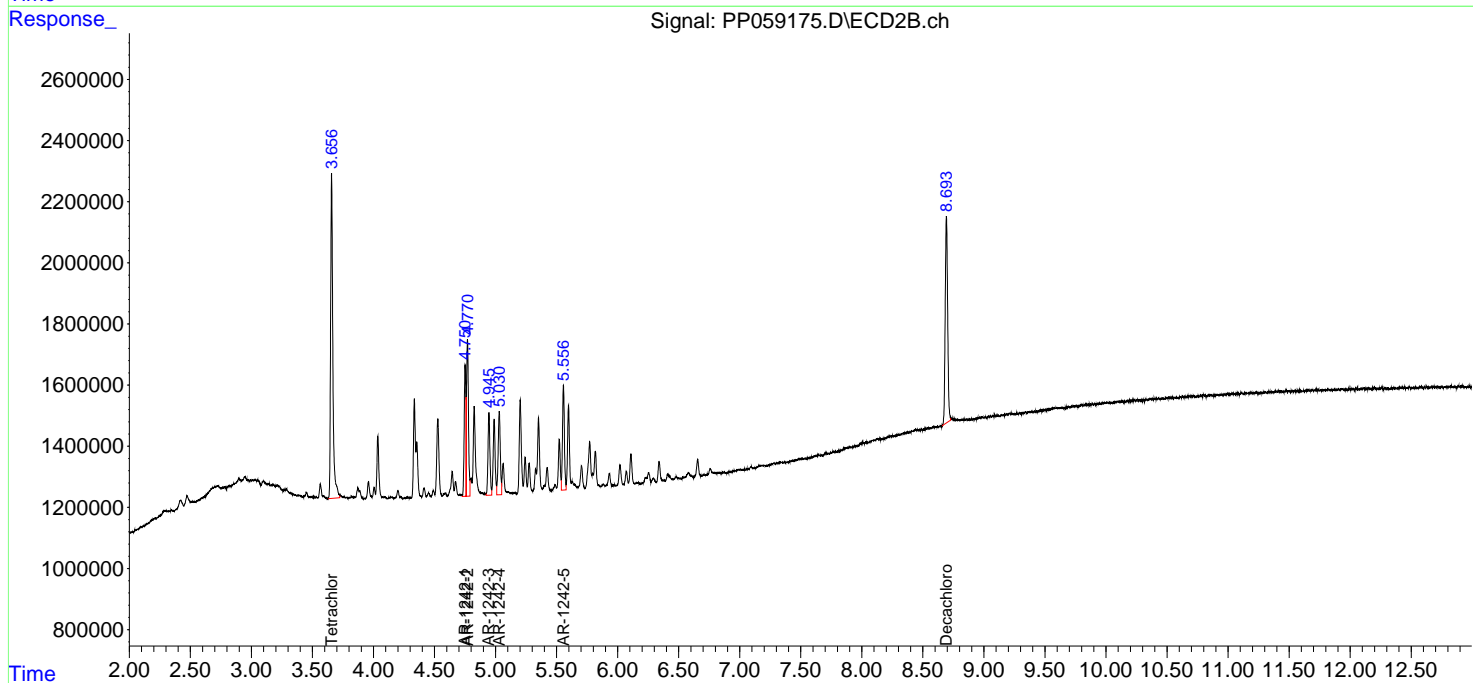
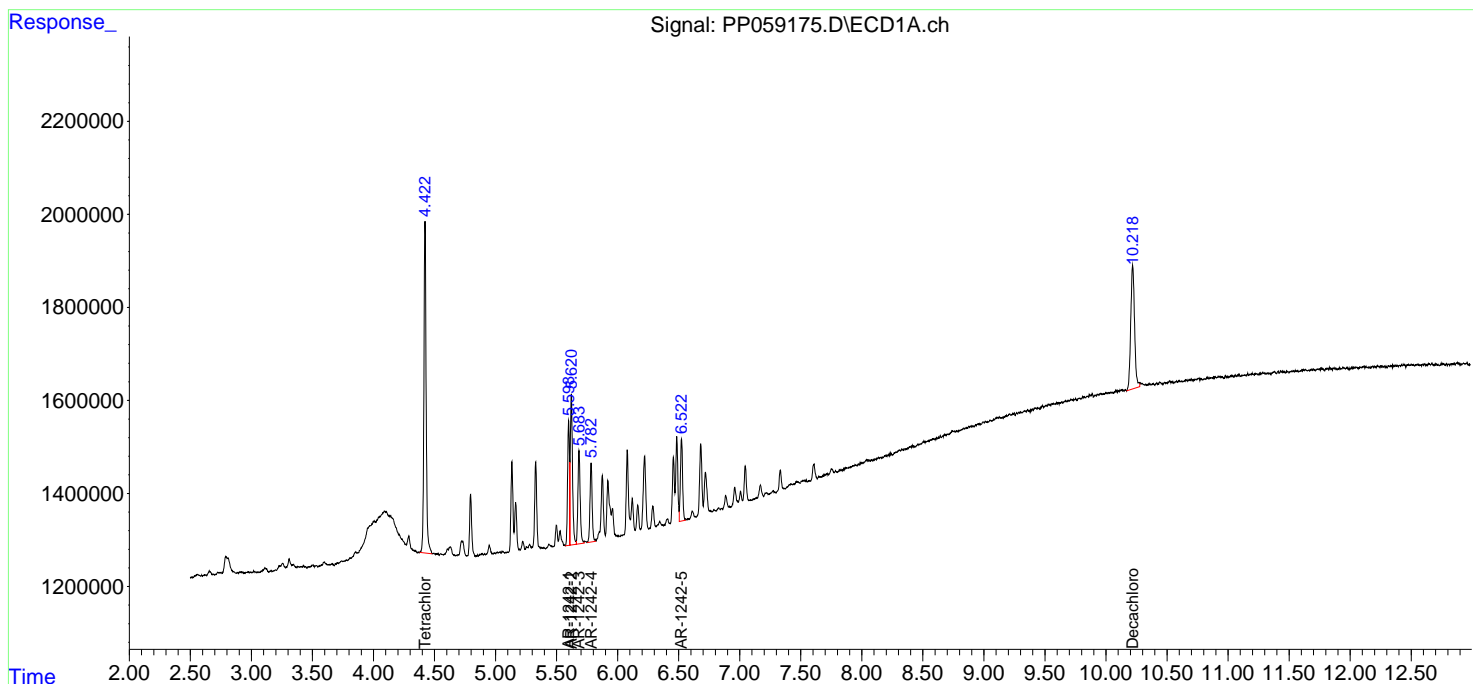
(f)=RT Delta > 1/2 Window (#)=Amounts differ by > 25% (m)=manual int.

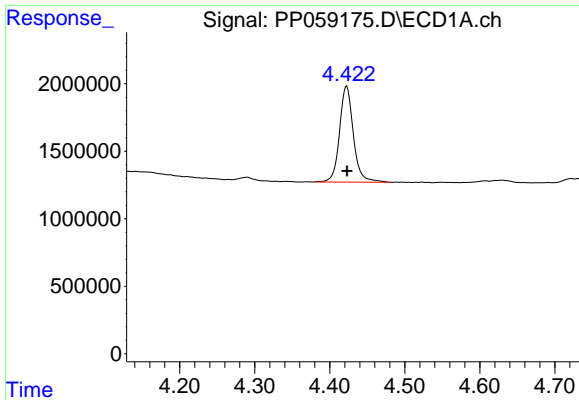
Data Path : Z:\pestpcbsrv\HPCHEM1\ECD_P\Data\PP080723\
 Data File : PP059175.D
 Signal(s) : Signal #1: ECD1A.ch Signal #2: ECD2B.ch
 Acq On : 07 Aug 2023 17:12
 Operator : YP\AJ
 Sample : AR1242IC050
 Misc :
 ALS Vial : 14 Sample Multiplier: 1

Instrument :
 ECD_P
 ClientSampleId :

Integration File signal 1: autoint1.e
 Integration File signal 2: autoint2.e
 Quant Time: Aug 07 23:00:46 2023
 Quant Method : Z:\pestpcbsrv\HPCHEM1\ECD_P\methods\PP080723.M
 Quant Title : GC EXTRACTABLES
 QLast Update : Mon Aug 07 22:59:06 2023
 Response via : Initial Calibration
 Integrator: ChemStation

Volume Inj. : 2 µl
 Signal #1 Phase : ZB-MR1 Signal #2 Phase: ZB-MR2
 Signal #1 Info : 30Mx0.32mmx 0.50µ Signal #2 Info : 30M x 0.32mm x 0.25µm

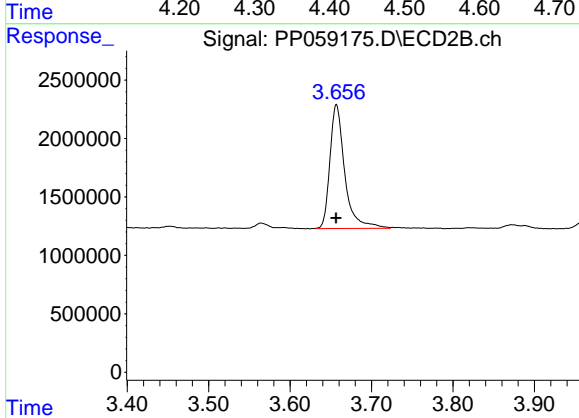




#1 Tetrachloro-m-xylene

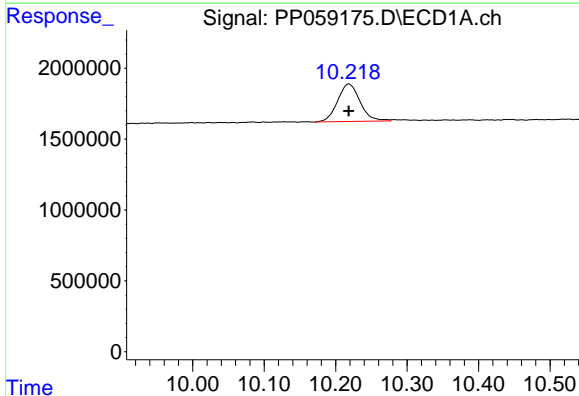
R.T.: 4.423 min
 Delta R.T.: 0.000 min
 Response: 9088614
 Conc: 4.85 ng/ml

Instrument :
 ECD_P
 ClientSampleId :



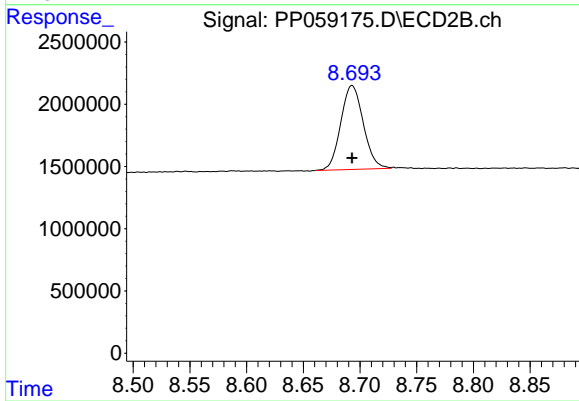
#1 Tetrachloro-m-xylene

R.T.: 3.657 min
 Delta R.T.: 0.000 min
 Response: 13450212
 Conc: 4.57 ng/ml



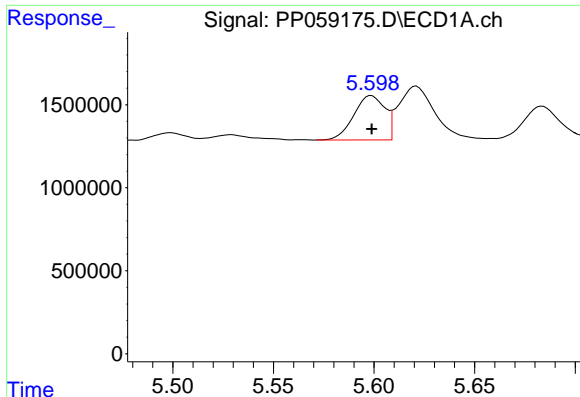
#2 Decachlorobiphenyl

R.T.: 10.218 min
 Delta R.T.: 0.000 min
 Response: 5798069
 Conc: 5.17 ng/ml



#2 Decachlorobiphenyl

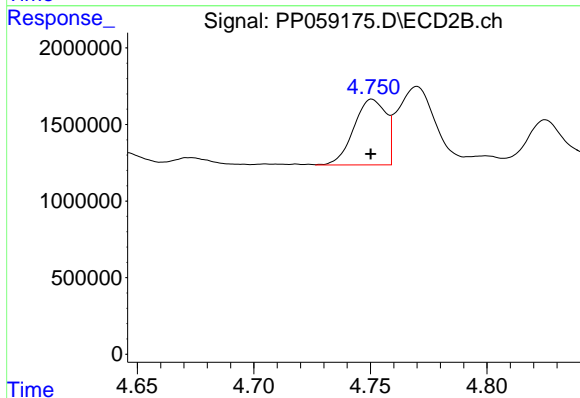
R.T.: 8.693 min
 Delta R.T.: 0.000 min
 Response: 9319127
 Conc: 5.37 ng/ml



#16 AR-1242-1

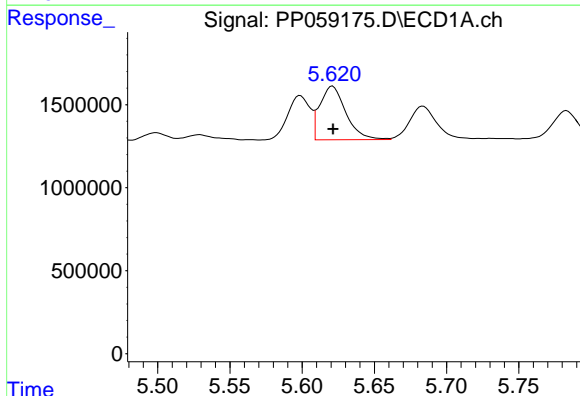
R.T.: 5.599 min
 Delta R.T.: 0.000 min
 Response: 2865678
 Conc: 50.99 ng/ml

Instrument :
 ECD_P
 ClientSampleId :



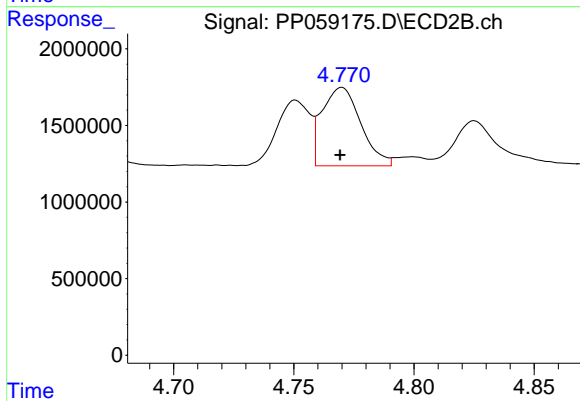
#16 AR-1242-1

R.T.: 4.751 min
 Delta R.T.: 0.000 min
 Response: 4100456
 Conc: 51.87 ng/ml



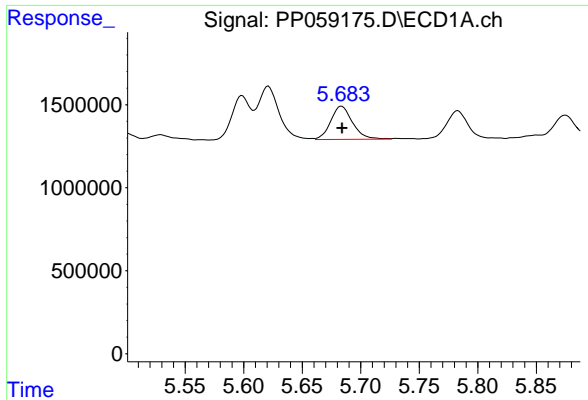
#17 AR-1242-2

R.T.: 5.621 min
 Delta R.T.: 0.000 min
 Response: 4049459
 Conc: 50.74 ng/ml



#17 AR-1242-2

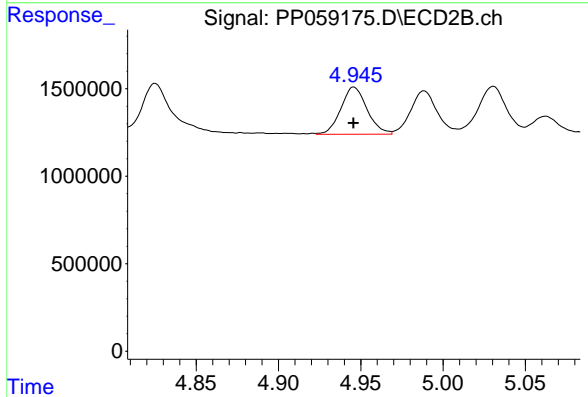
R.T.: 4.770 min
 Delta R.T.: 0.000 min
 Response: 5753821
 Conc: 50.57 ng/ml



#18 AR-1242-3

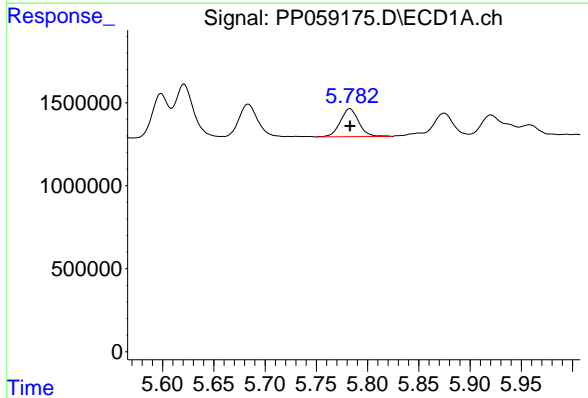
R.T.: 5.684 min
 Delta R.T.: 0.000 min
 Response: 2589385
 Conc: 50.26 ng/ml

Instrument :
 ECD_P
 ClientSampleId :



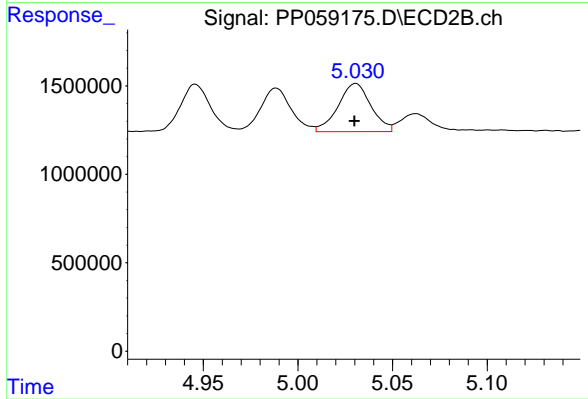
#18 AR-1242-3

R.T.: 4.946 min
 Delta R.T.: 0.000 min
 Response: 3003877
 Conc: 48.64 ng/ml



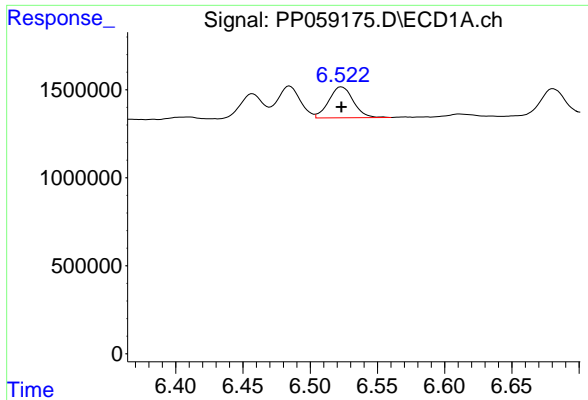
#19 AR-1242-4

R.T.: 5.783 min
 Delta R.T.: 0.000 min
 Response: 2104429
 Conc: 49.84 ng/ml



#19 AR-1242-4

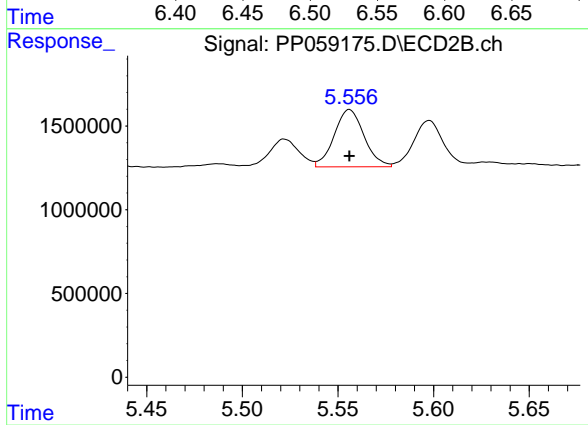
R.T.: 5.031 min
 Delta R.T.: 0.000 min
 Response: 3298604
 Conc: 51.60 ng/ml



#20 AR-1242-5

R.T.: 6.523 min
Delta R.T.: 0.000 min
Response: 2221853
Conc: 48.65 ng/ml

Instrument :
ECD_P
ClientSampleId :



#20 AR-1242-5

R.T.: 5.556 min
Delta R.T.: 0.000 min
Response: 3719910
Conc: 50.19 ng/ml