

Data Path : Z:\pestpcbsrv\HPCHEM1\ECD\_P\Data\PP080725\  
 Data File : PP074269.D  
 Signal(s) : Signal #1: ECD1A.ch Signal #2: ECD2B.ch  
 Acq On : 07 Aug 2025 12:33  
 Operator : YP\AJ  
 Sample : PB169152BL  
 Misc :  
 ALS Vial : 8 Sample Multiplier: 1

Instrument :  
 ECD\_P  
 ClientSampleId :  
 PB169152BL

Integration File signal 1: autoint1.e  
 Integration File signal 2: autoint2.e  
 Quant Time: Aug 08 05:29:31 2025  
 Quant Method : Z:\pestpcbsrv\HPCHEM1\ECD\_P\methods\PP080125.M  
 Quant Title : GC EXTRACTABLES  
 QLast Update : Mon Aug 04 11:01:49 2025  
 Response via : Initial Calibration  
 Integrator: ChemStation

Volume Inj. : 2 µl  
 Signal #1 Phase : ZB-MR1 Signal #2 Phase: ZB-MR2  
 Signal #1 Info : 30Mx0.32mmx 0.50µ Signal #2 Info : 30M x 0.32mm x 0.25µm

Compound	RT#1	RT#2	Resp#1	Resp#2	ng/ml	ng/ml
-----						
System Monitoring Compounds						
1) SA Tetrachlo...	4.654	3.799	23580976	74524962	21.086	19.436
2) SA Decachlor...	10.433	8.816	21573881	120.8E6	22.215	20.088

Target Compounds

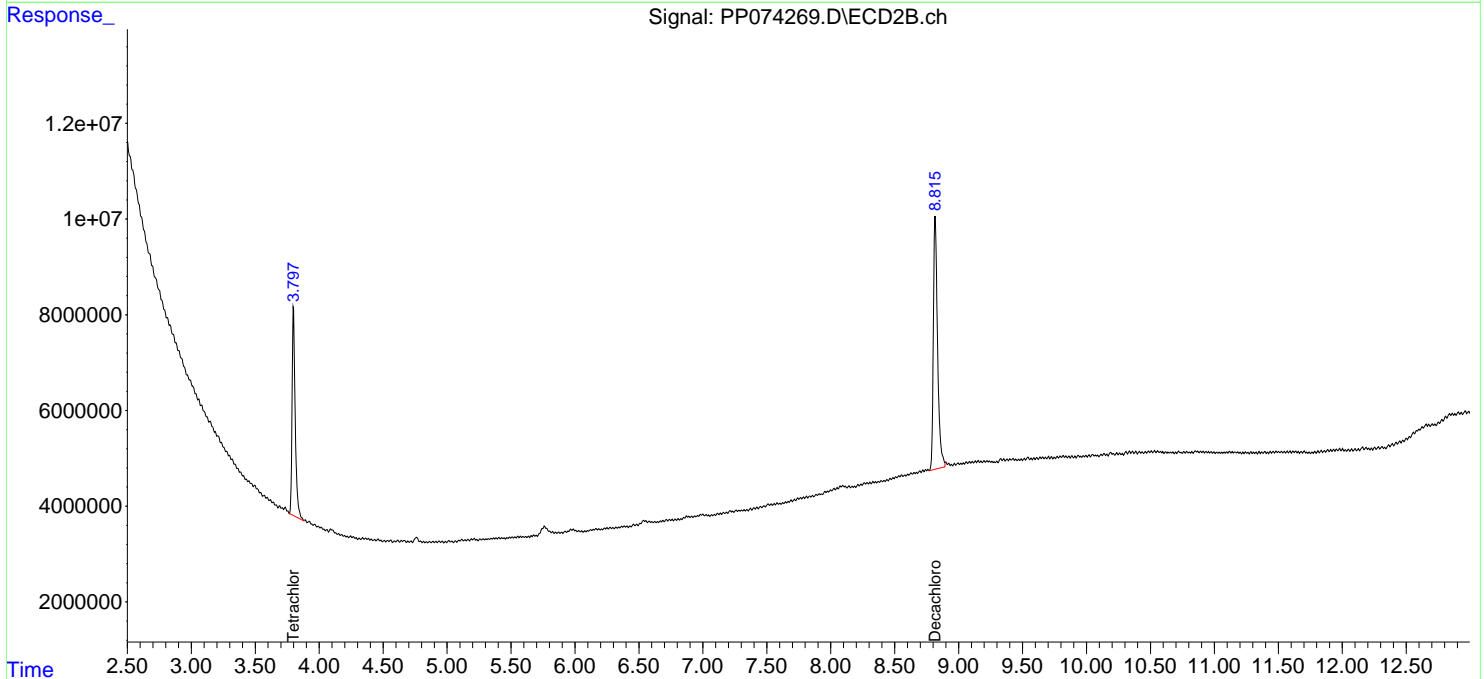
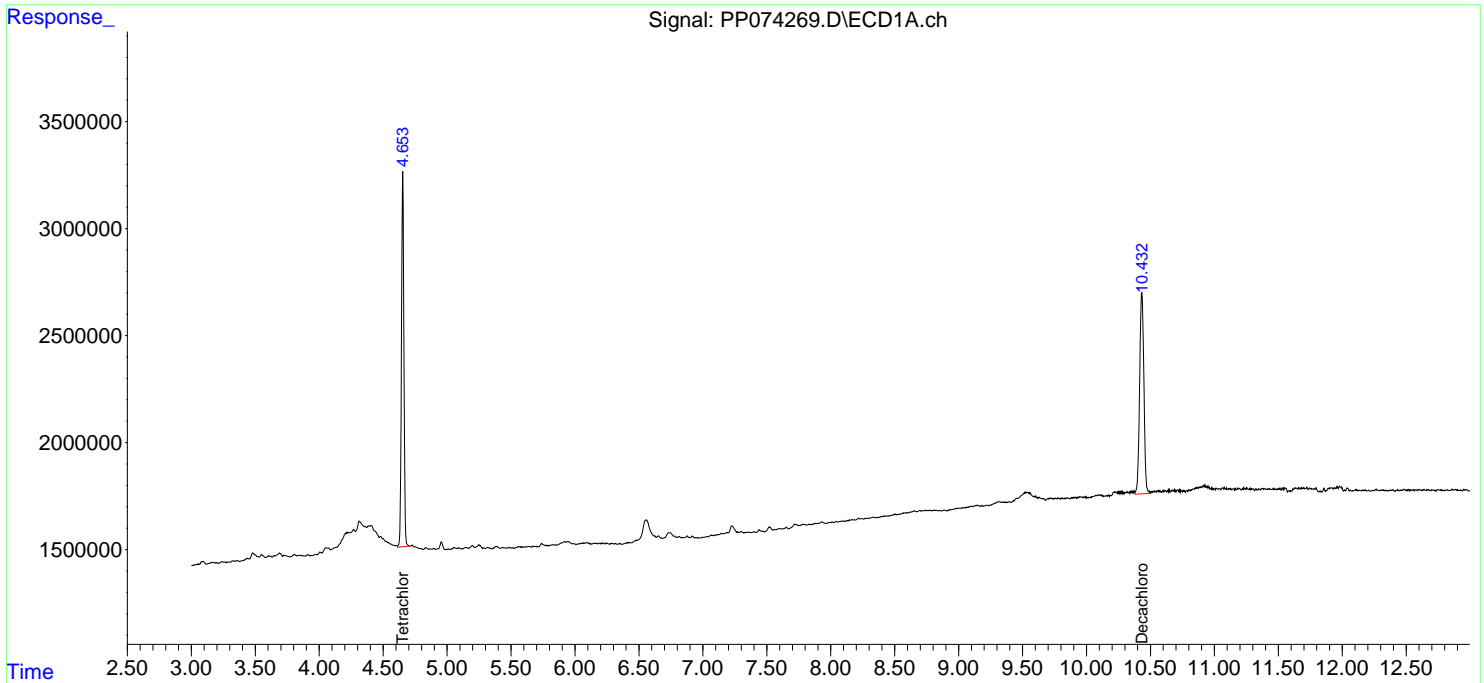
-----  
 (f)=RT Delta > 1/2 Window (#)=Amounts differ by > 25% (m)=manual int.

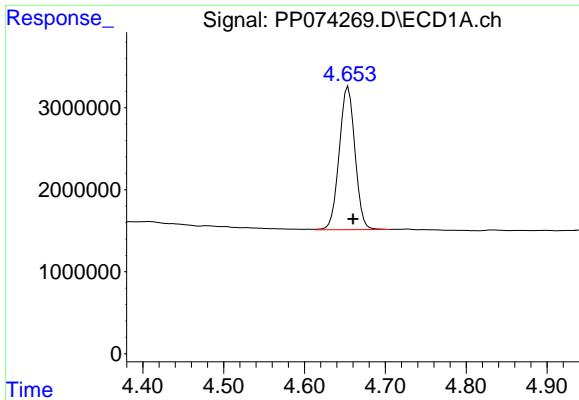
Data Path : Z:\pestpcbsrv\HPCHEM1\ECD\_P\Data\PP080725\  
 Data File : PP074269.D  
 Signal(s) : Signal #1: ECD1A.ch Signal #2: ECD2B.ch  
 Acq On : 07 Aug 2025 12:33  
 Operator : YP\AJ  
 Sample : PB169152BL  
 Misc :  
 ALS Vial : 8 Sample Multiplier: 1

**Instrument :**  
 ECD\_P  
**ClientSampleId :**  
 PB169152BL

Integration File signal 1: autoint1.e  
 Integration File signal 2: autoint2.e  
 Quant Time: Aug 08 05:29:31 2025  
 Quant Method : Z:\pestpcbsrv\HPCHEM1\ECD\_P\methods\PP080125.M  
 Quant Title : GC EXTRACTABLES  
 QLast Update : Mon Aug 04 11:01:49 2025  
 Response via : Initial Calibration  
 Integrator: ChemStation

Volume Inj. : 2 µl  
 Signal #1 Phase : ZB-MR1 Signal #2 Phase: ZB-MR2  
 Signal #1 Info : 30Mx0.32mmx 0.50µ Signal #2 Info : 30M x 0.32mm x 0.25µm

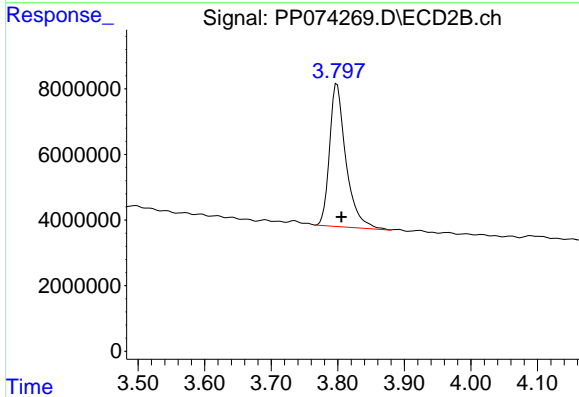




#1 Tetrachloro-m-xylene

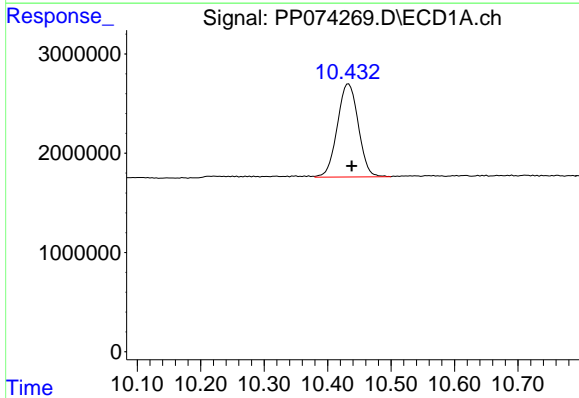
R.T.: 4.654 min  
 Delta R.T.: -0.006 min  
 Response: 23580976  
 Conc: 21.09 ng/ml

Instrument :  
 ECD\_P  
 ClientSampleId :  
 PB169152BL



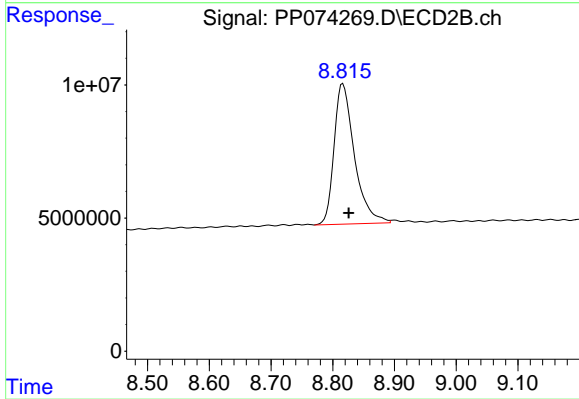
#1 Tetrachloro-m-xylene

R.T.: 3.799 min  
 Delta R.T.: -0.007 min  
 Response: 74524962  
 Conc: 19.44 ng/ml



#2 Decachlorobiphenyl

R.T.: 10.433 min  
 Delta R.T.: -0.005 min  
 Response: 21573881  
 Conc: 22.21 ng/ml



#2 Decachlorobiphenyl

R.T.: 8.816 min  
 Delta R.T.: -0.009 min  
 Response: 120803312  
 Conc: 20.09 ng/ml