

Data Path : Z:\pestpcbsrv\HPCHEM1\ECD_P\Data\PP080725\
 Data File : PP074279.D
 Signal(s) : Signal #1: ECD1A.ch Signal #2: ECD2B.ch
 Acq On : 07 Aug 2025 16:03
 Operator : YP\AJ
 Sample : AR1254CCC500
 Misc :
 ALS Vial : 5 Sample Multiplier: 1

Instrument :
 ECD_P
ClientSampleId :
 AR1254CCC500

Manual Integrations
APPROVED
 Reviewed By :Yogesh Patel 08/08/2025
 Supervised By :mohammad ahmed 08/11/2025

Integration File signal 1: autoint1.e
 Integration File signal 2: autoint2.e
 Quant Time: Aug 08 05:32:12 2025
 Quant Method : Z:\pestpcbsrv\HPCHEM1\ECD_P\methods\PP080125.M
 Quant Title : GC EXTRACTABLES
 QLast Update : Mon Aug 04 11:01:49 2025
 Response via : Initial Calibration
 Integrator: ChemStation

Volume Inj. : 2 µl
 Signal #1 Phase : ZB-MR1 Signal #2 Phase: ZB-MR2
 Signal #1 Info : 30Mx0.32mmx 0.50µ Signal #2 Info : 30M x 0.32mm x 0.25µm

Compound	RT#1	RT#2	Resp#1	Resp#2	ng/ml	ng/ml

System Monitoring Compounds						
1) SA Tetrachlo...	4.659	3.804	55394763	208.2E6	49.535	54.310
2) SA Decachlor...	10.432	8.822	44728554	275.4E6	46.057	45.801
Target Compounds						
26) L6 AR-1254-1	6.657	5.688	25645532	201.2E6	487.177m	549.538
27) L6 AR-1254-2	6.875	5.834	35771512	146.7E6	449.930	527.151
28) L6 AR-1254-3	7.237	6.237	38675915	253.2E6	442.941	517.520
29) L6 AR-1254-4	7.518	6.464	29124674	183.2E6	456.432	498.365
30) L6 AR-1254-5	7.934	6.880	36113170	185.1E6	445.046	480.475

(f)=RT Delta > 1/2 Window (#)=Amounts differ by > 25% (m)=manual int.

Data Path : Z:\pestpcbsrv\HPCHEM1\ECD_P\Data\PP080725\
 Data File : PP074279.D
 Signal(s) : Signal #1: ECD1A.ch Signal #2: ECD2B.ch
 Acq On : 07 Aug 2025 16:03
 Operator : YP\AJ
 Sample : AR1254CCC500
 Misc :
 ALS Vial : 5 Sample Multiplier: 1

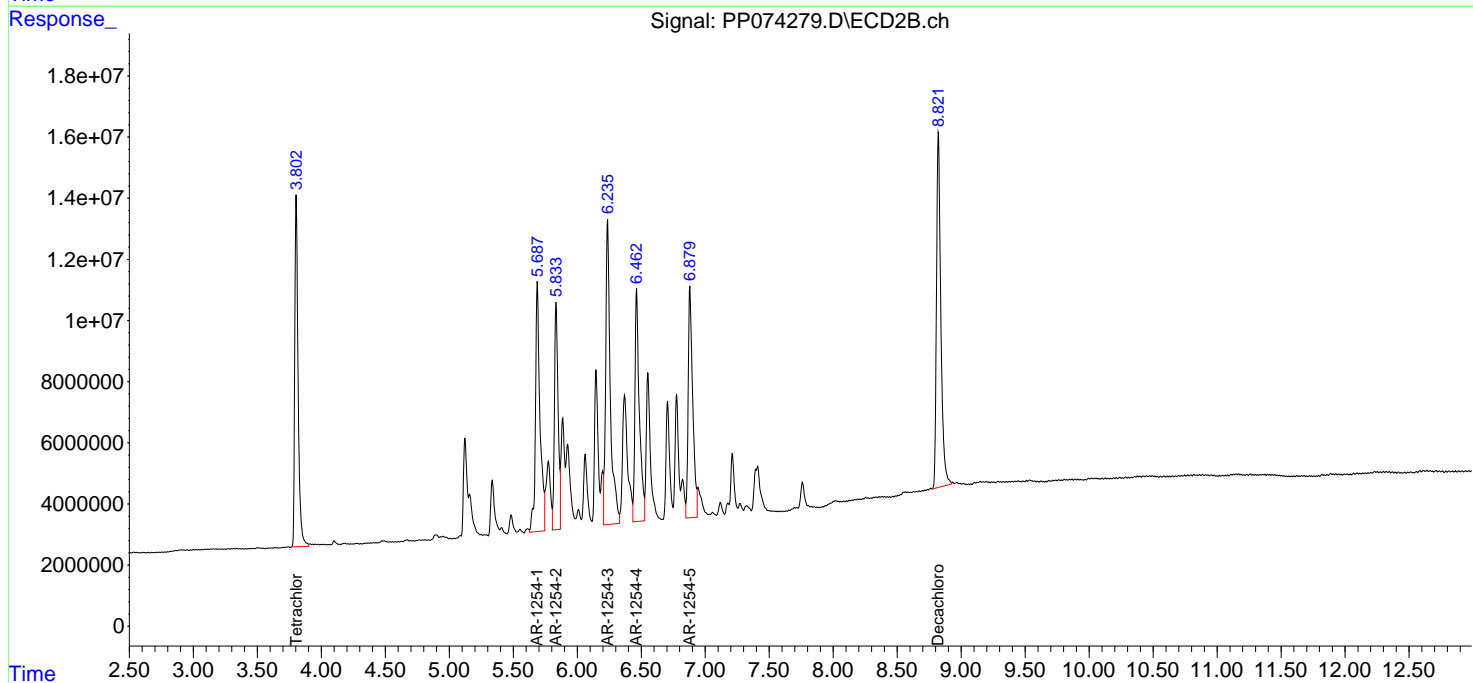
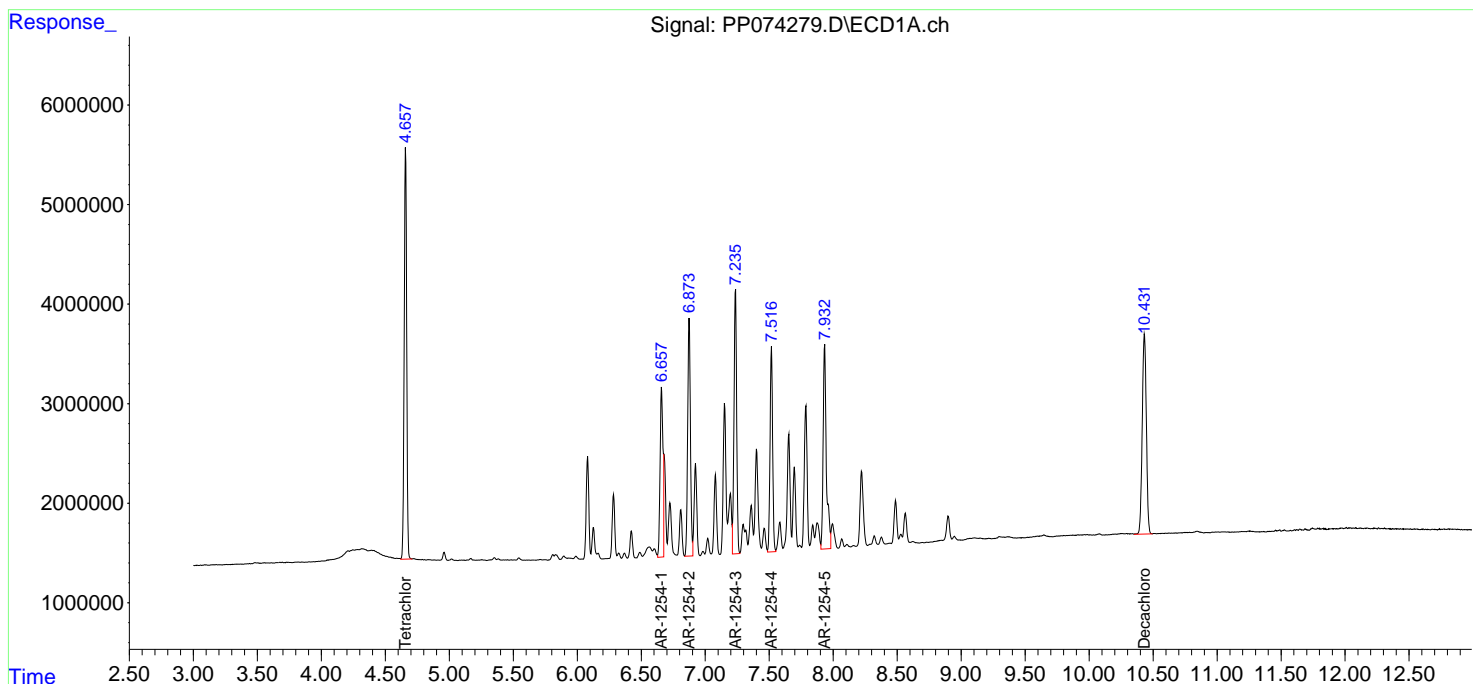
Instrument :
 ECD_P
ClientSampleId :
 AR1254CCC500

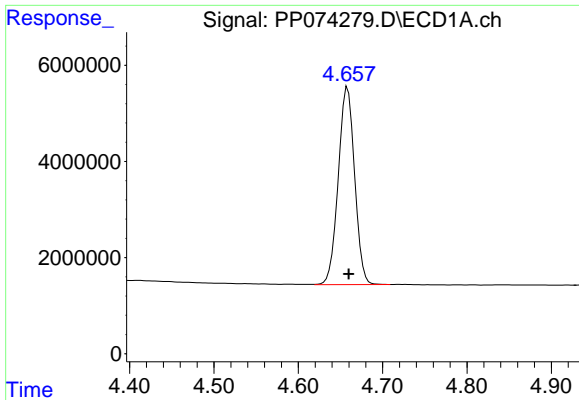
Manual Integrations
APPROVED

Reviewed By :Yogesh Patel 08/08/2025
 Supervised By :mohammad ahmed 08/11/2025

Integration File signal 1: autoint1.e
 Integration File signal 2: autoint2.e
 Quant Time: Aug 08 05:32:12 2025
 Quant Method : Z:\pestpcbsrv\HPCHEM1\ECD_P\methods\PP080125.M
 Quant Title : GC EXTRACTABLES
 QLast Update : Mon Aug 04 11:01:49 2025
 Response via : Initial Calibration
 Integrator: ChemStation

Volume Inj. : 2 µl
 Signal #1 Phase : ZB-MR1 Signal #2 Phase: ZB-MR2
 Signal #1 Info : 30Mx0.32mmx 0.50µ Signal #2 Info : 30M x 0.32mm x 0.25µm





#1 Tetrachloro-m-xylene

R.T.: 4.659 min
 Delta R.T.: -0.001 min
 Response: 55394763
 Conc: 49.53 ng/ml

Instrument :

ECD_P

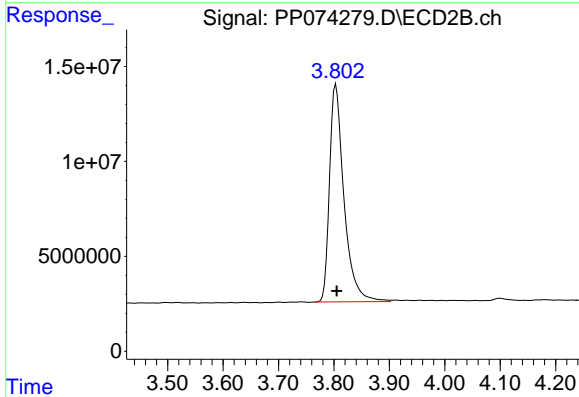
ClientSampleId :

AR1254CCC500

Manual Integrations

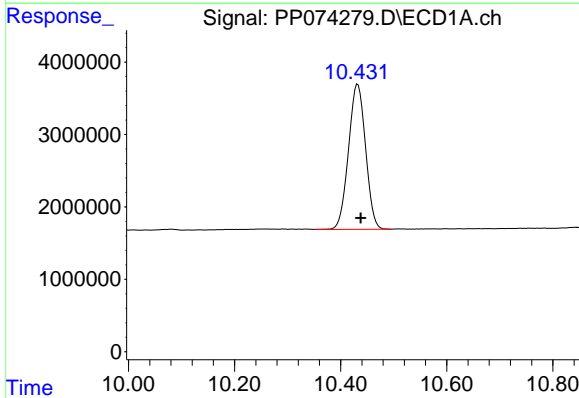
APPROVED

Reviewed By :Yogesh Patel 08/08/2025
 Supervised By :mohammad ahmed 08/11/2025



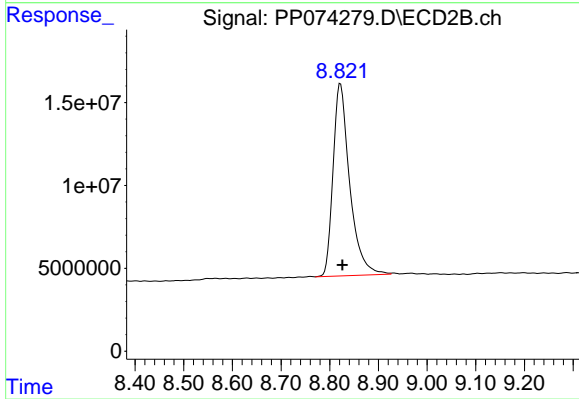
#1 Tetrachloro-m-xylene

R.T.: 3.804 min
 Delta R.T.: -0.002 min
 Response: 208248990
 Conc: 54.31 ng/ml



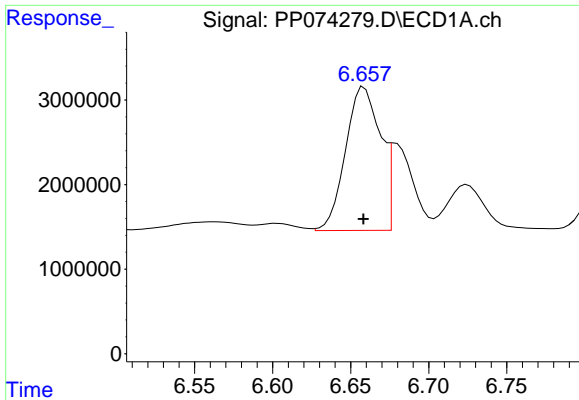
#2 Decachlorobiphenyl

R.T.: 10.432 min
 Delta R.T.: -0.006 min
 Response: 44728554
 Conc: 46.06 ng/ml



#2 Decachlorobiphenyl

R.T.: 8.822 min
 Delta R.T.: -0.004 min
 Response: 275430754
 Conc: 45.80 ng/ml



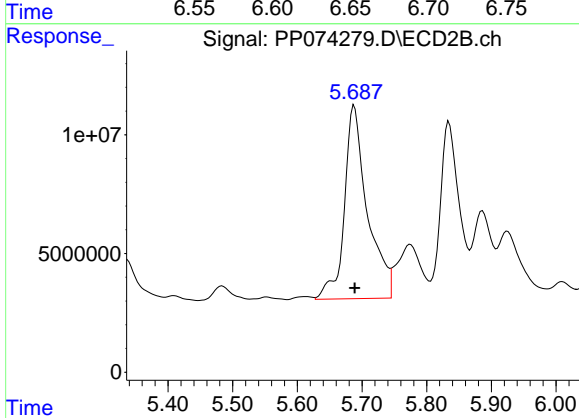
#26 AR-1254-1

R.T.: 6.657 min
 Delta R.T.: 0.000 min
 Response: 25645532
 Conc: 487.18 ng/ml

Instrument :
 ECD_P
 ClientSampleId :
 AR1254CCC500

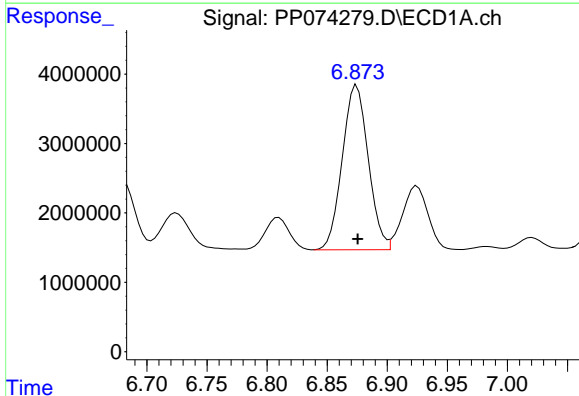
Manual Integrations
 APPROVED

Reviewed By :Yogesh Patel 08/08/2025
 Supervised By :mohammad ahmed 08/11/2025



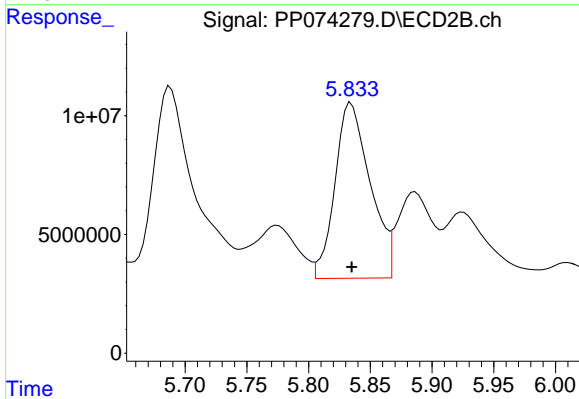
#26 AR-1254-1

R.T.: 5.688 min
 Delta R.T.: 0.000 min
 Response: 201230831
 Conc: 549.54 ng/ml



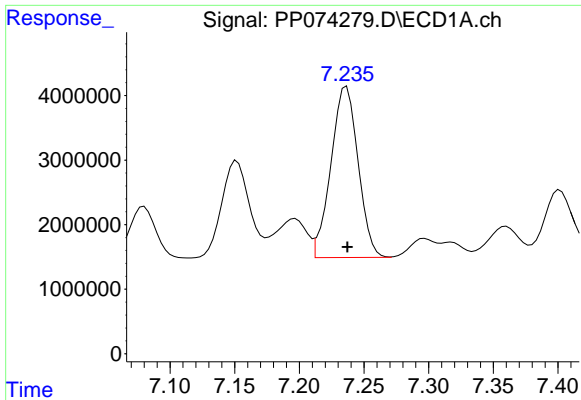
#27 AR-1254-2

R.T.: 6.875 min
 Delta R.T.: 0.000 min
 Response: 35771512
 Conc: 449.93 ng/ml



#27 AR-1254-2

R.T.: 5.834 min
 Delta R.T.: 0.000 min
 Response: 146662360
 Conc: 527.15 ng/ml



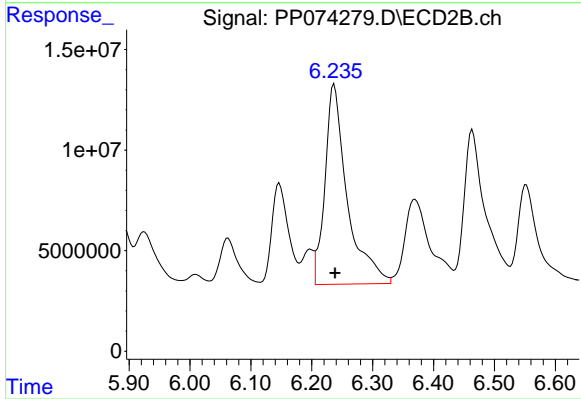
#28 AR-1254-3

R.T.: 7.237 min
 Delta R.T.: 0.000 min
 Response: 38675915
 Conc: 442.94 ng/ml

Instrument :
 ECD_P
 ClientSampleId :
 AR1254CCC500

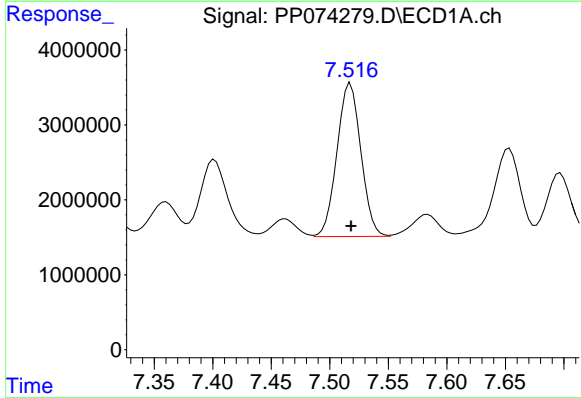
Manual Integrations
 APPROVED

Reviewed By :Yogesh Patel 08/08/2025
 Supervised By :mohammad ahmed 08/11/2025



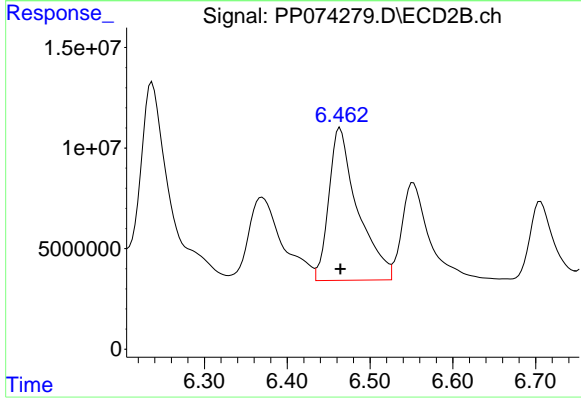
#28 AR-1254-3

R.T.: 6.237 min
 Delta R.T.: -0.001 min
 Response: 253176478
 Conc: 517.52 ng/ml



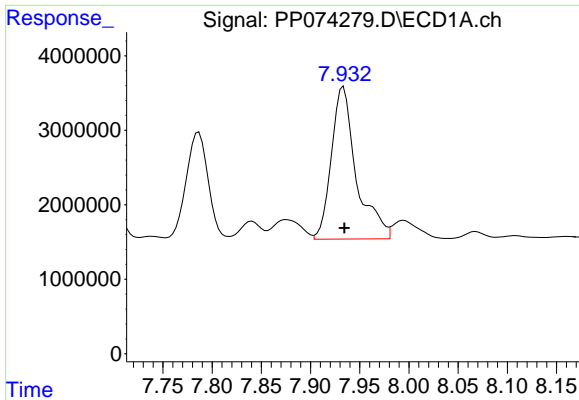
#29 AR-1254-4

R.T.: 7.518 min
 Delta R.T.: 0.000 min
 Response: 29124674
 Conc: 456.43 ng/ml



#29 AR-1254-4

R.T.: 6.464 min
 Delta R.T.: 0.000 min
 Response: 183181591
 Conc: 498.36 ng/ml



#30 AR-1254-5

R.T.: 7.934 min
 Delta R.T.: 0.000 min
 Response: 36113170
 Conc: 445.05 ng/ml

Instrument :

ECD_P

ClientSampleId :

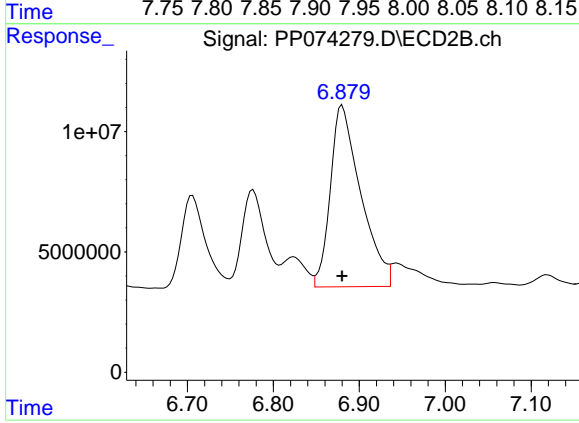
AR1254CCC500

Manual Integrations

APPROVED

Reviewed By :Yogesh Patel 08/08/2025

Supervised By :mohammad ahmed 08/11/2025



#30 AR-1254-5

R.T.: 6.880 min
 Delta R.T.: 0.000 min
 Response: 185063194
 Conc: 480.48 ng/ml