

Data Path : Z:\pestpcbsrv\HPCHEM1\ECD_P\Data\PP080923\
 Data File : PP059267.D
 Signal(s) : Signal #1: ECD1A.ch Signal #2: ECD2B.ch
 Acq On : 09 Aug 2023 15:13
 Operator : YP\AJ
 Sample : 03572-08
 Misc : AR1268 LOQ 50 PPB
 ALS Vial : 12 Sample Multiplier: 1

Instrument :
 ECD_P
 ClientSampleId :

Integration File signal 1: autoint1.e
 Integration File signal 2: autoint2.e
 Quant Time: Aug 09 16:09:38 2023
 Quant Method : Z:\pestpcbsrv\HPCHEM1\ECD_P\methods\PP080823.M
 Quant Title : GC EXTRACTABLES
 QLast Update : Wed Aug 09 02:30:13 2023
 Response via : Initial Calibration
 Integrator: ChemStation

Volume Inj. : 2 µl
 Signal #1 Phase : ZB-MR1 Signal #2 Phase: ZB-MR2
 Signal #1 Info : 30Mx0.32mmx 0.50µ Signal #2 Info : 30M x 0.32mm x 0.25µm

Compound	RT#1	RT#2	Resp#1	Resp#2	ng/ml	ng/ml
System Monitoring Compounds						
1) SA Tetrachlo...	4.415	3.648	21400322	36689630	17.441	18.108
2) SA Decachlor...	10.208	8.684	19616386	36530658	25.702	25.967
Target Compounds						
3) L1 AR-1016-1	5.595	4.750	31288	128723	0.796	2.007 #
4) L1 AR-1016-2	5.619	4.761	36295	45357	0.640	0.499
5) L1 AR-1016-3	5.679	4.935	58543	33830	1.632	0.704 #
6) L1 AR-1016-4	5.782	4.988	23007	858194	0.794	20.784 #
7) L1 AR-1016-5	6.080	5.194	31975	29341	1.057	0.564 #
8) L2 AR-1221-1	4.597f	3.866	69962	12397	4.441	0.457 #
9) L2 AR-1221-2	4.725	3.951	428245	531087	36.264	26.675 #
10) L2 AR-1221-3	4.791	4.028	65006	27218	1.846	0.457 #
11) L3 AR-1232-1	4.791	4.028	65006	27218	2.211	0.574 #
12) L3 AR-1232-2	5.324	4.761	50318	45357	3.228	1.069 #
13) L3 AR-1232-3	5.619	4.935	36295	33830	1.375	1.525
14) L3 AR-1232-4	5.782	5.020	23007	43409	1.738	2.056
15) L3 AR-1232-5	5.846f	5.194	27588	29341	2.417	1.280 #
16) L4 AR-1242-1	5.595	4.750	31288	128723	0.914	2.300 #
17) L4 AR-1242-2	5.619	4.761	36295	45357	0.740	0.569
18) L4 AR-1242-3	5.679	4.935	58543	33830	1.863	0.794 #
19) L4 AR-1242-4	5.782	5.020	23007	43409	0.897	0.994
20) L4 AR-1242-5	6.521	5.546	55908	76112	2.164	1.532 #
21) L5 AR-1248-1	5.595	4.750	31288	128723	1.233	3.129 #
22) L5 AR-1248-2	5.846f	4.988	27588	858194	0.713	14.252 #
23) L5 AR-1248-3	6.080	5.020	31975	43409	0.757	0.705
24) L5 AR-1248-4	6.482	5.194	40419	29341	0.971	0.408 #
25) L5 AR-1248-5	6.521	5.582	55908	42521	1.371	0.644 #
26) L6 AR-1254-1	6.452	5.550	196401	37688	4.204	0.372 #
27) L6 AR-1254-2	6.677	5.697	99105	48040	1.440	0.544 #
28) L6 AR-1254-3	7.041	6.102	158999	20790	2.304	0.150 #
29) L6 AR-1254-4	7.342	6.331	45540	27037	1.012	0.336 #
30) L6 AR-1254-5	7.756	6.753	67704	37128	1.441	0.310 #
31) L7 AR-1260-1	7.223	6.233	86354	29006	1.578	0.293 #
32) L7 AR-1260-2	7.477	6.424	132878	59399	2.232	0.513 #
33) L7 AR-1260-3	7.823	6.575	1128449	97955	28.674	0.881 #
34) L7 AR-1260-4	8.070f	7.045	1572204	3101530	35.399	35.775
35) L7 AR-1260-5	8.371	7.291	581242	1400328	7.268	7.597
36) L8 AR-1262-1	7.823	6.843	1128449	119185	17.717	2.072 #
37) L8 AR-1262-2	8.371	7.045	581242	3101530	6.329	26.285 #
38) L8 AR-1262-3	8.683	7.575	5330078	10975519	82.826	128.973 #
39) L8 AR-1262-4	8.779	7.640	4840536	9820783	145.770	65.012 #
40) L8 AR-1262-5	9.441	8.137	1548680	3870253	51.897	60.685
41) L9 AR-1268-1	8.683	7.575	5330078	10975519	46.933	45.009

Data Path : Z:\pestpcbsrv\HPCHEM1\ECD_P\Data\PP080923\
 Data File : PP059267.D
 Signal(s) : Signal #1: ECD1A.ch Signal #2: ECD2B.ch
 Acq On : 09 Aug 2023 15:13
 Operator : YP\AJ
 Sample : 03572-08
 Misc : AR1268 LOQ 50 PPB
 ALS Vial : 12 Sample Multiplier: 1

Instrument :
 ECD_P
 ClientSampleId :

Integration File signal 1: autoint1.e
 Integration File signal 2: autoint2.e
 Quant Time: Aug 09 16:09:38 2023
 Quant Method : Z:\pestpcbsrv\HPCHEM1\ECD_P\methods\PP080823.M
 Quant Title : GC EXTRACTABLES
 QLast Update : Wed Aug 09 02:30:13 2023
 Response via : Initial Calibration
 Integrator: ChemStation

Volume Inj. : 2 µl
 Signal #1 Phase : ZB-MR1 Signal #2 Phase: ZB-MR2
 Signal #1 Info : 30Mx0.32mmx 0.50µ Signal #2 Info : 30M x 0.32mm x 0.25µm

	Compound	RT#1	RT#2	Resp#1	Resp#2	ng/ml	ng/ml
42)	L9 AR-1268-2	8.779	7.640	4840536	9820783	49.184	44.840
43)	L9 AR-1268-3	9.010	7.848	4161104	9034154	44.885	46.203
44)	L9 AR-1268-4	9.441	8.137	1548680	3870253	48.547	55.615
45)	L9 AR-1268-5	9.863	8.428	12612289	23600736	46.460	45.525

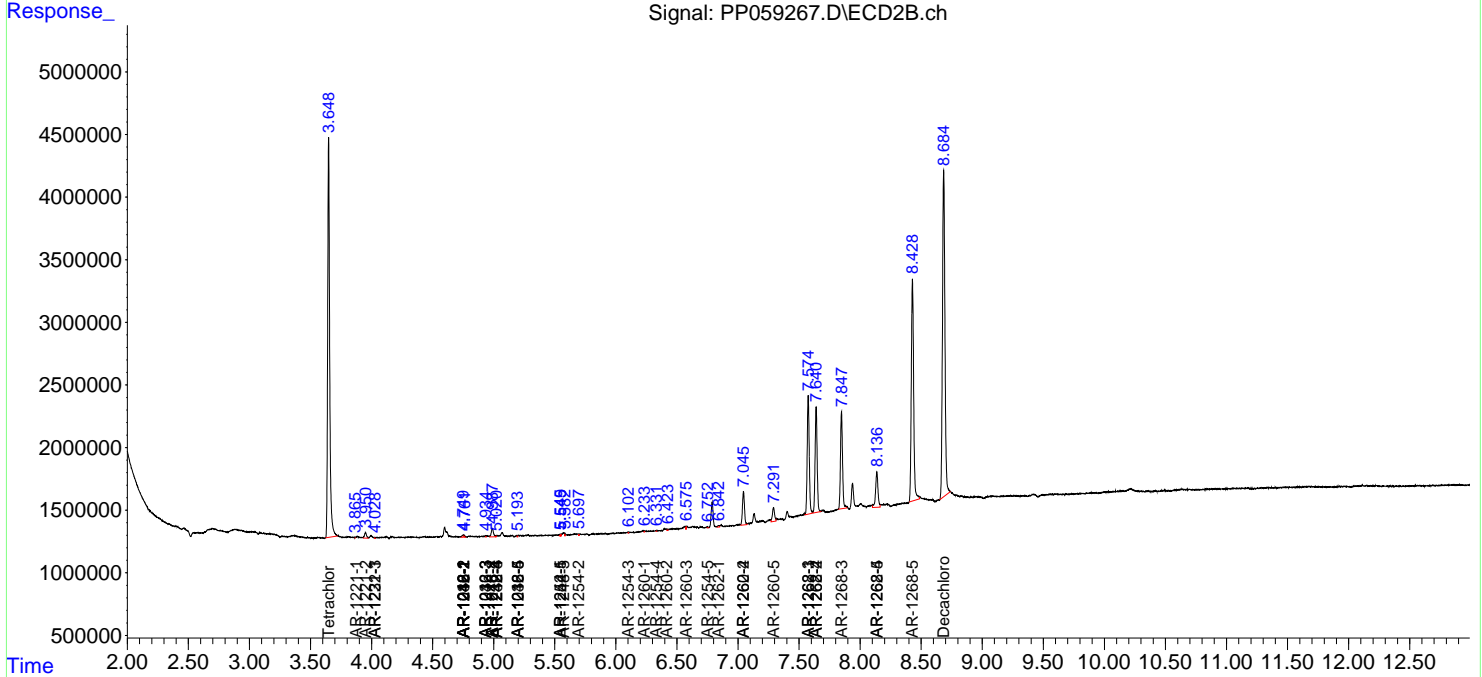
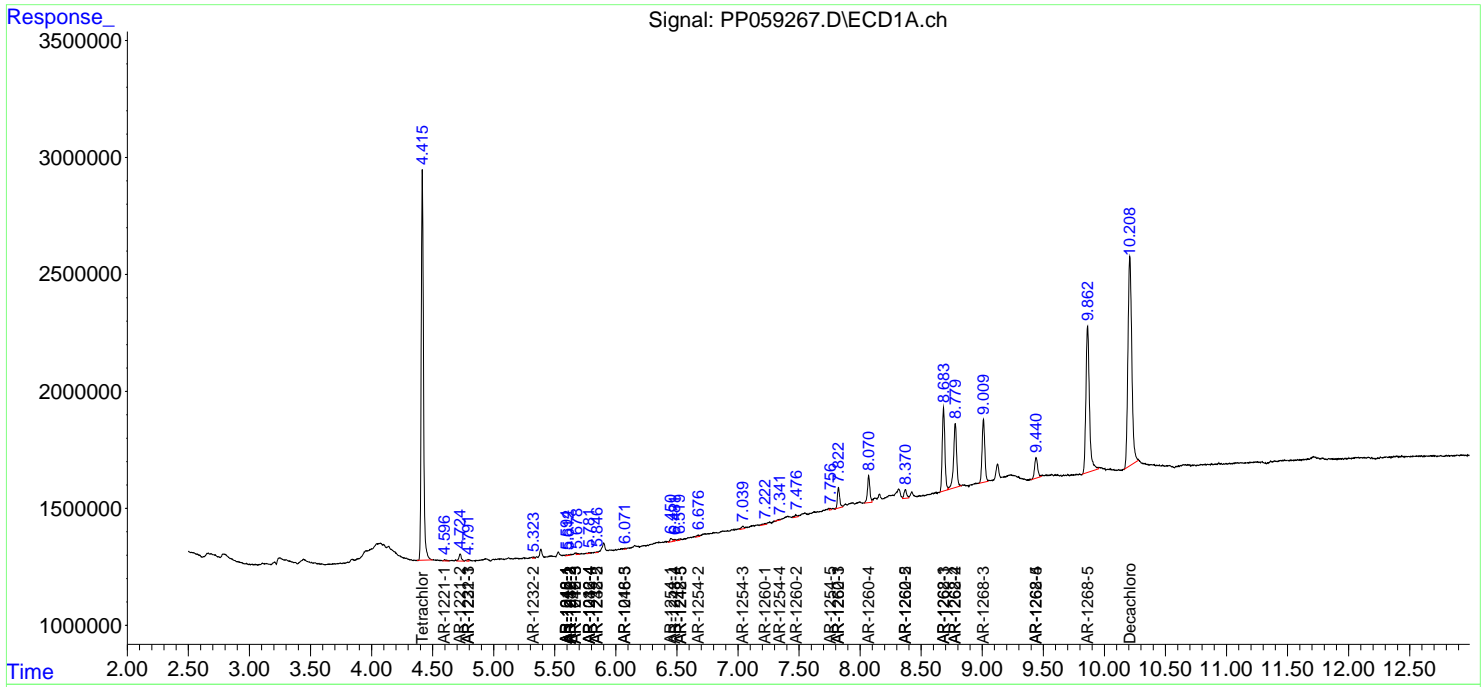
(f)=RT Delta > 1/2 Window (#)=Amounts differ by > 25% (m)=manual int.

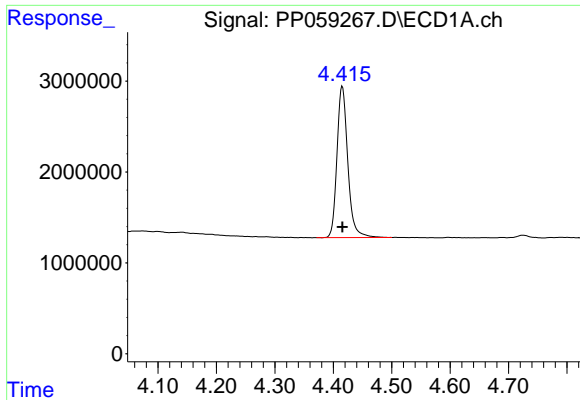
Data Path : Z:\pestpcbsrv\HPCHEM1\ECD_P\Data\PP080923\
 Data File : PP059267.D
 Signal(s) : Signal #1: ECD1A.ch Signal #2: ECD2B.ch
 Acq On : 09 Aug 2023 15:13
 Operator : YP\AJ
 Sample : 03572-08
 Misc : AR1268 LOQ 50 PPB
 ALS Vial : 12 Sample Multiplier: 1

Instrument :
 ECD_P
 ClientSampleId :

Integration File signal 1: autoint1.e
 Integration File signal 2: autoint2.e
 Quant Time: Aug 09 16:09:38 2023
 Quant Method : Z:\pestpcbsrv\HPCHEM1\ECD_P\methods\PP080823.M
 Quant Title : GC EXTRACTABLES
 QLast Update : Wed Aug 09 02:30:13 2023
 Response via : Initial Calibration
 Integrator: ChemStation

Volume Inj. : 2 µl
 Signal #1 Phase : ZB-MR1 Signal #2 Phase: ZB-MR2
 Signal #1 Info : 30Mx0.32mmx 0.50µ Signal #2 Info : 30M x 0.32mm x 0.25µm

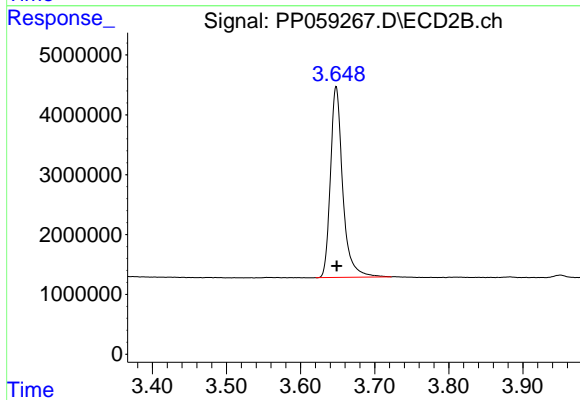




#1 Tetrachloro-m-xylene

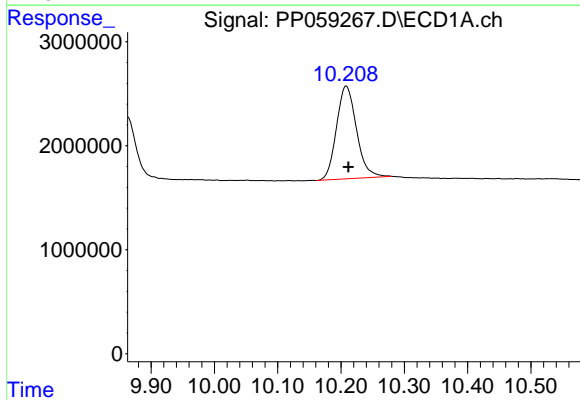
R.T.: 4.415 min
 Delta R.T.: 0.000 min
 Response: 21400322
 Conc: 17.44 ng/ml

Instrument :
 ECD_P
 ClientSampleId :



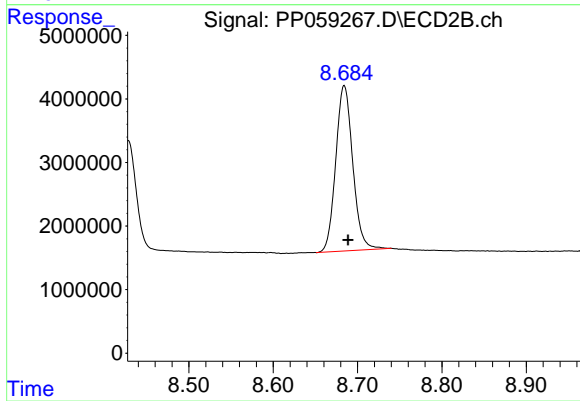
#1 Tetrachloro-m-xylene

R.T.: 3.648 min
 Delta R.T.: 0.000 min
 Response: 36689630
 Conc: 18.11 ng/ml



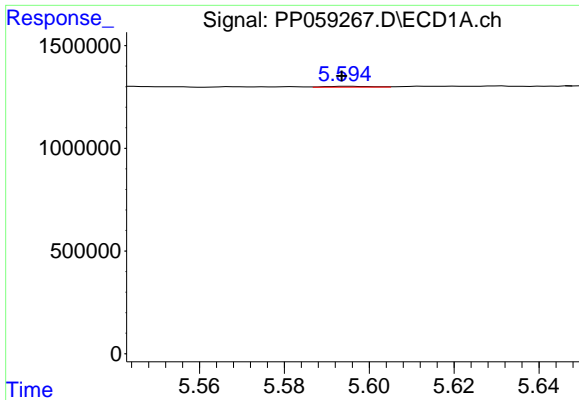
#2 Decachlorobiphenyl

R.T.: 10.208 min
 Delta R.T.: -0.003 min
 Response: 19616386
 Conc: 25.70 ng/ml



#2 Decachlorobiphenyl

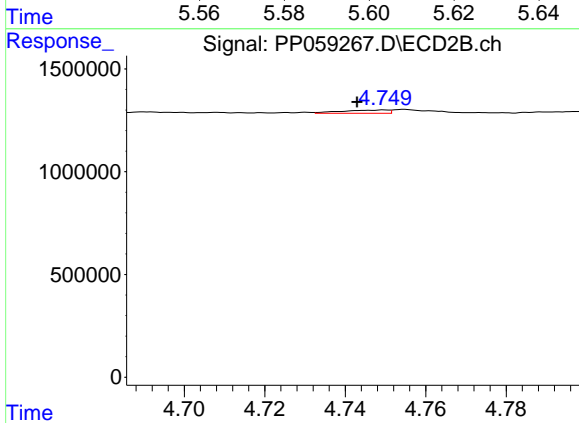
R.T.: 8.684 min
 Delta R.T.: -0.004 min
 Response: 36530658
 Conc: 25.97 ng/ml



#3 AR-1016-1

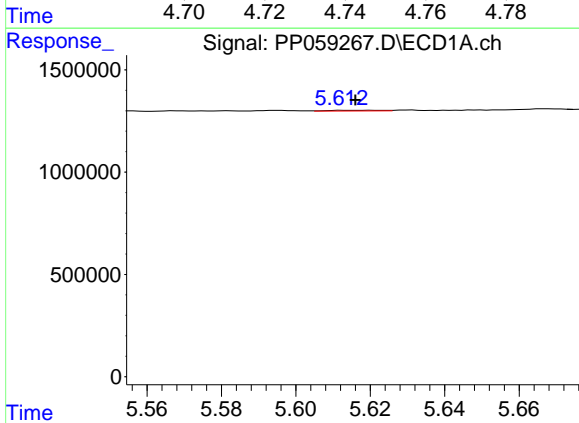
R.T.: 5.595 min
 Delta R.T.: 0.002 min
 Response: 31288
 Conc: 0.80 ng/ml

Instrument :
 ECD_P
 ClientSampleId :



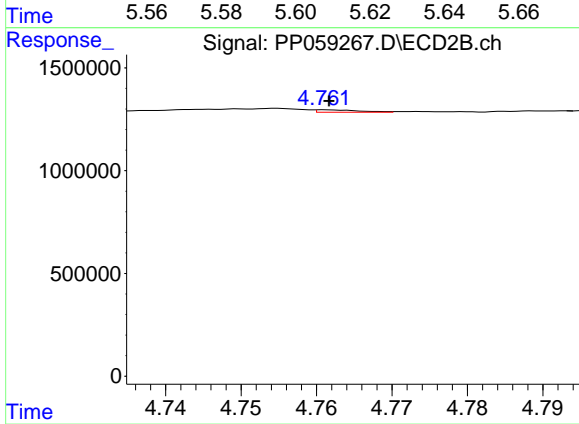
#3 AR-1016-1

R.T.: 4.750 min
 Delta R.T.: 0.007 min
 Response: 128723
 Conc: 2.01 ng/ml



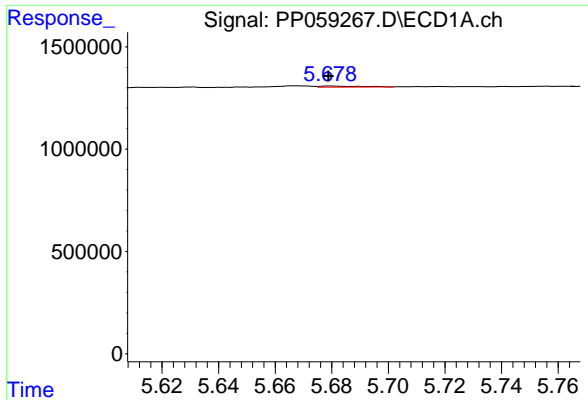
#4 AR-1016-2

R.T.: 5.619 min
 Delta R.T.: 0.003 min
 Response: 36295
 Conc: 0.64 ng/ml



#4 AR-1016-2

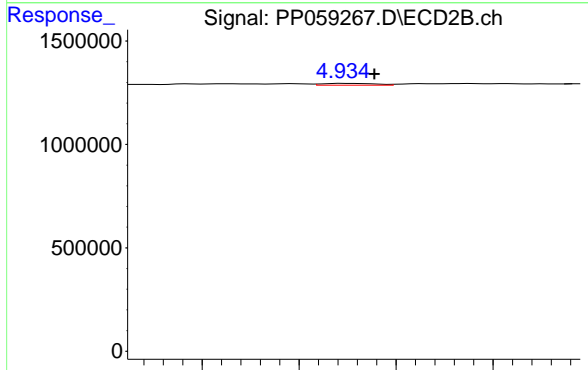
R.T.: 4.761 min
 Delta R.T.: 0.000 min
 Response: 45357
 Conc: 0.50 ng/ml



#5 AR-1016-3

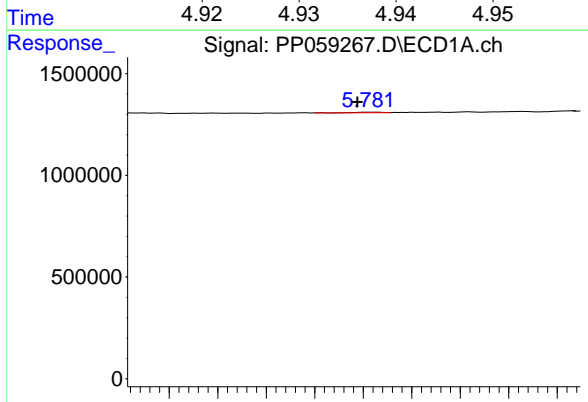
R.T.: 5.679 min
 Delta R.T.: 0.000 min
 Response: 58543
 Conc: 1.63 ng/ml

Instrument :
 ECD_P
 ClientSampleId :



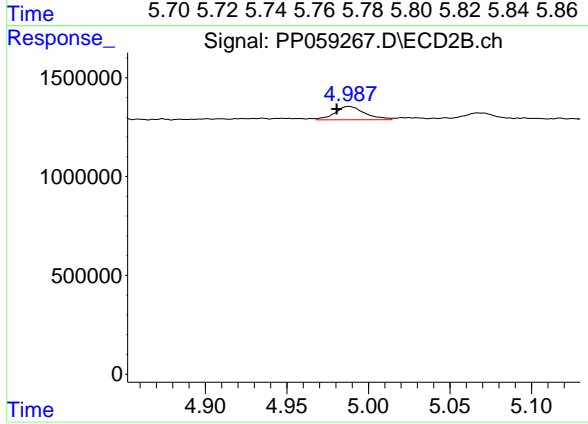
#5 AR-1016-3

R.T.: 4.935 min
 Delta R.T.: -0.003 min
 Response: 33830
 Conc: 0.70 ng/ml



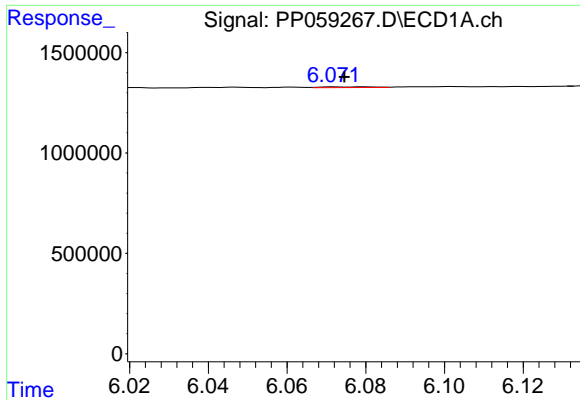
#6 AR-1016-4

R.T.: 5.782 min
 Delta R.T.: 0.005 min
 Response: 23007
 Conc: 0.79 ng/ml



#6 AR-1016-4

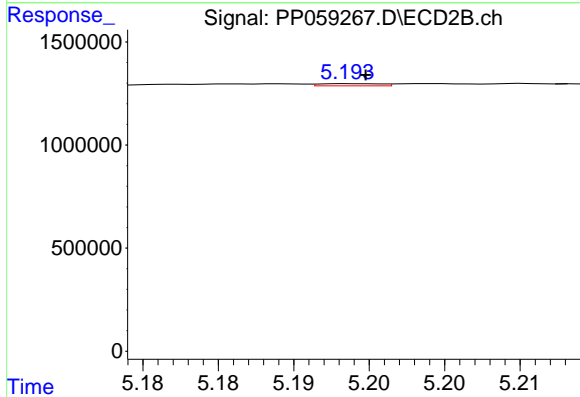
R.T.: 4.988 min
 Delta R.T.: 0.007 min
 Response: 858194
 Conc: 20.78 ng/ml



#7 AR-1016-5

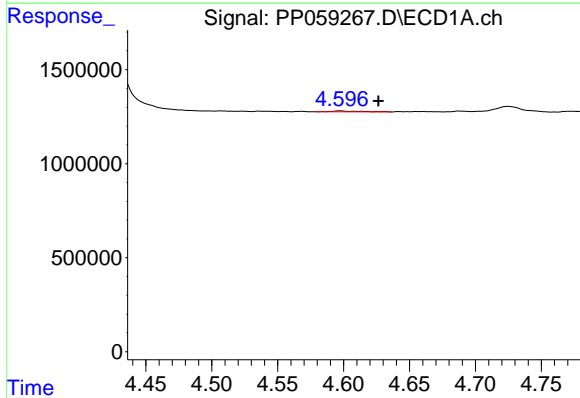
R.T.: 6.080 min
 Delta R.T.: 0.005 min
 Response: 31975
 Conc: 1.06 ng/ml

Instrument :
 ECD_P
 ClientSampleId :



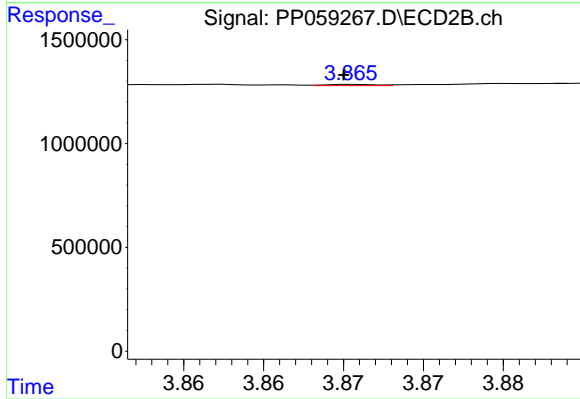
#7 AR-1016-5

R.T.: 5.194 min
 Delta R.T.: 0.000 min
 Response: 29341
 Conc: 0.56 ng/ml



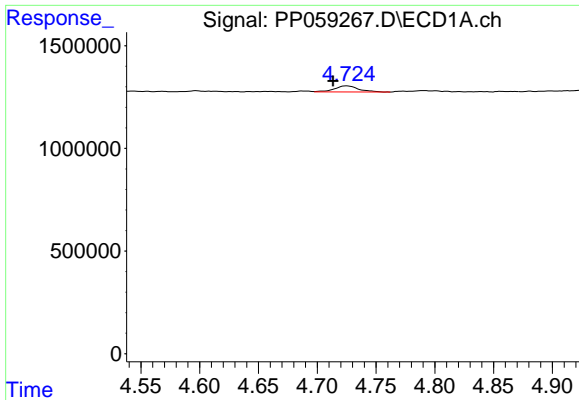
#8 AR-1221-1

R.T.: 4.597 min
 Delta R.T.: -0.029 min
 Response: 69962
 Conc: 4.44 ng/ml



#8 AR-1221-1

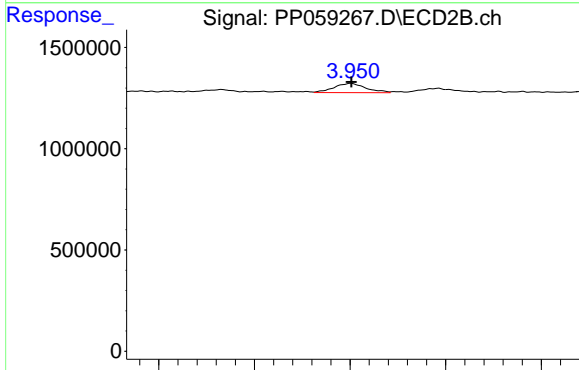
R.T.: 3.866 min
 Delta R.T.: 0.000 min
 Response: 12397
 Conc: 0.46 ng/ml



#9 AR-1221-2

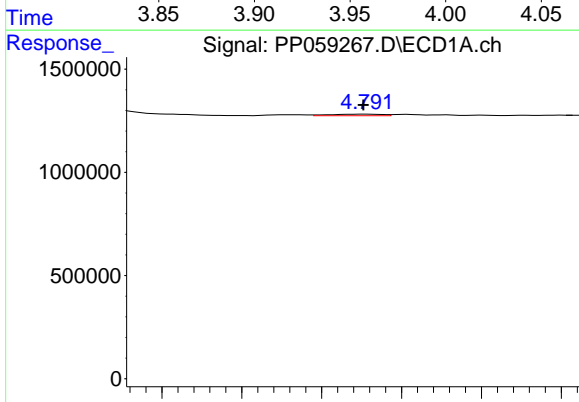
R.T.: 4.725 min
 Delta R.T.: 0.012 min
 Response: 428245
 Conc: 36.26 ng/ml

Instrument :
 ECD_P
 ClientSampleId :



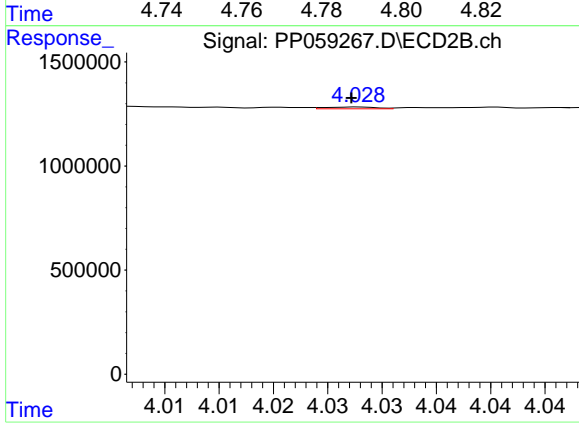
#9 AR-1221-2

R.T.: 3.951 min
 Delta R.T.: 0.000 min
 Response: 531087
 Conc: 26.67 ng/ml



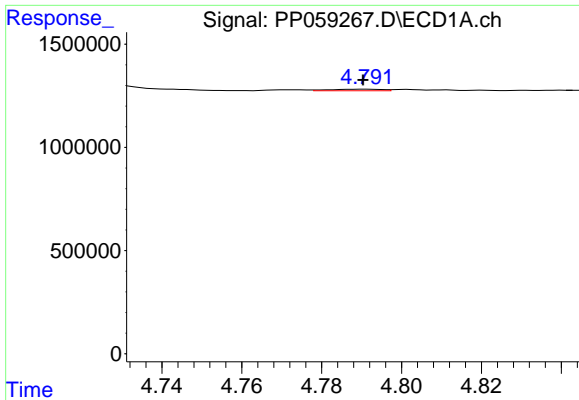
#10 AR-1221-3

R.T.: 4.791 min
 Delta R.T.: 0.000 min
 Response: 65006
 Conc: 1.85 ng/ml



#10 AR-1221-3

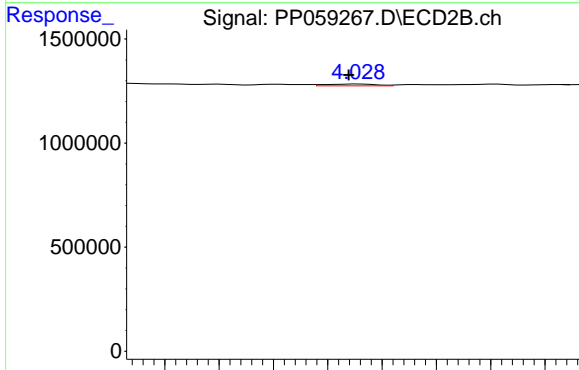
R.T.: 4.028 min
 Delta R.T.: 0.000 min
 Response: 27218
 Conc: 0.46 ng/ml



#11 AR-1232-1

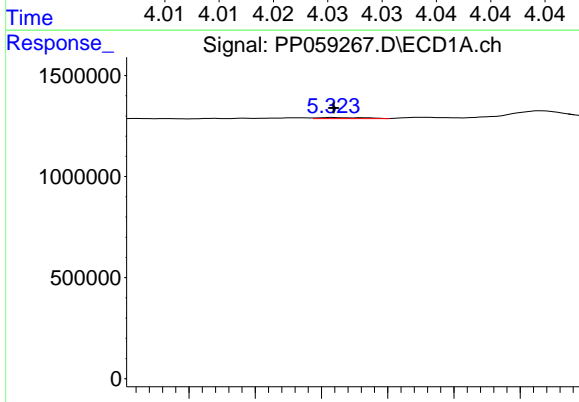
R.T.: 4.791 min
 Delta R.T.: 0.000 min
 Response: 65006
 Conc: 2.21 ng/ml

Instrument :
 ECD_P
 ClientSampleId :



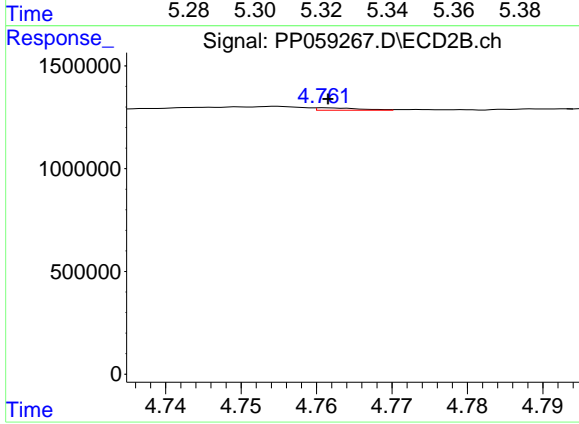
#11 AR-1232-1

R.T.: 4.028 min
 Delta R.T.: 0.001 min
 Response: 27218
 Conc: 0.57 ng/ml



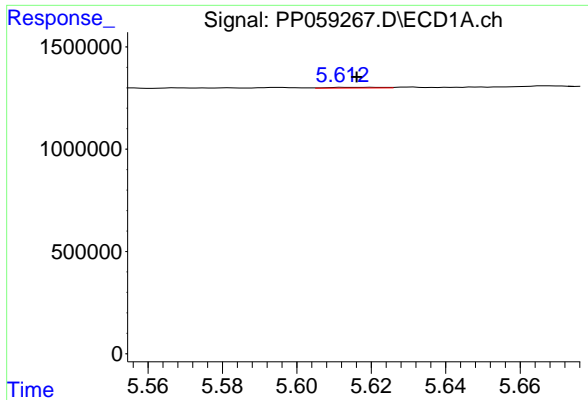
#12 AR-1232-2

R.T.: 5.324 min
 Delta R.T.: 0.000 min
 Response: 50318
 Conc: 3.23 ng/ml



#12 AR-1232-2

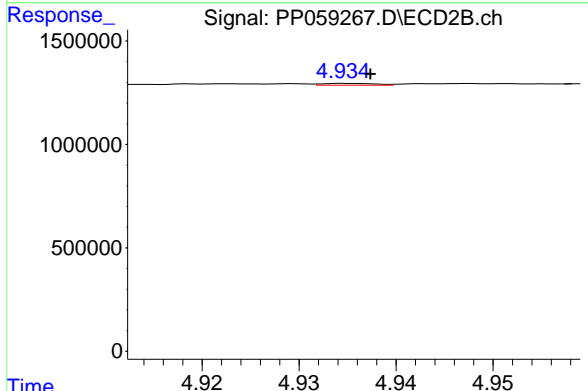
R.T.: 4.761 min
 Delta R.T.: 0.000 min
 Response: 45357
 Conc: 1.07 ng/ml



#13 AR-1232-3

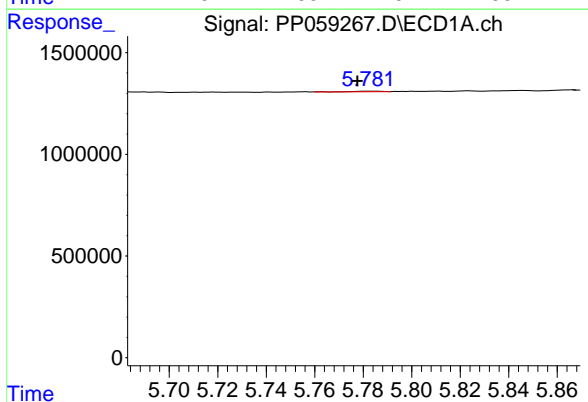
R.T.: 5.619 min
 Delta R.T.: 0.003 min
 Response: 36295
 Conc: 1.37 ng/ml

Instrument :
 ECD_P
 ClientSampleId :



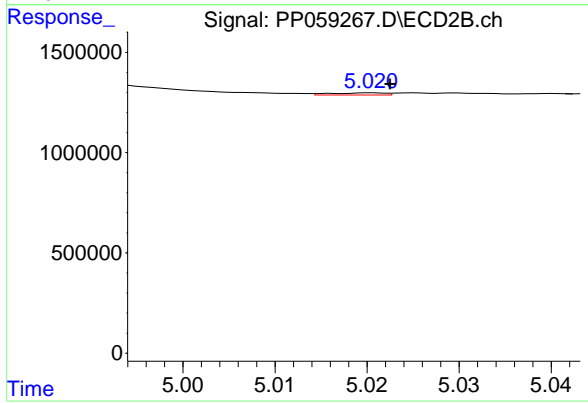
#13 AR-1232-3

R.T.: 4.935 min
 Delta R.T.: -0.002 min
 Response: 33830
 Conc: 1.52 ng/ml



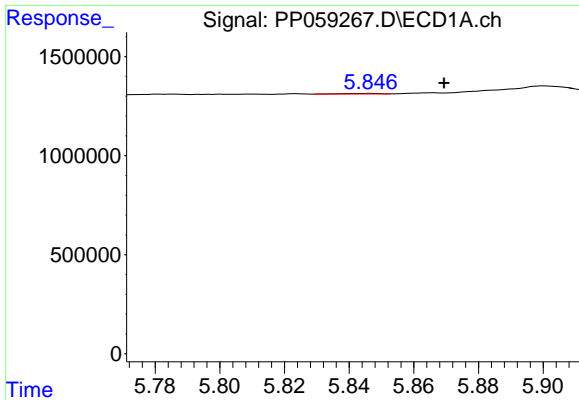
#14 AR-1232-4

R.T.: 5.782 min
 Delta R.T.: 0.005 min
 Response: 23007
 Conc: 1.74 ng/ml



#14 AR-1232-4

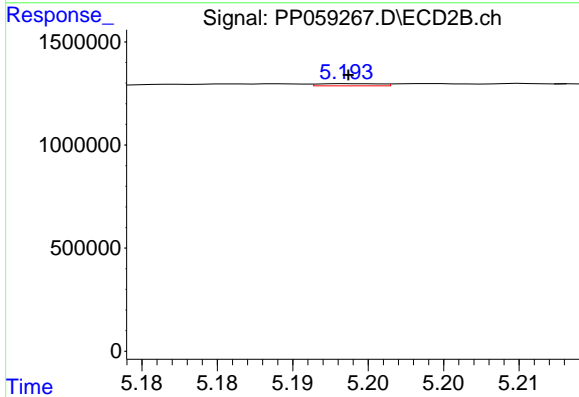
R.T.: 5.020 min
 Delta R.T.: -0.002 min
 Response: 43409
 Conc: 2.06 ng/ml



#15 AR-1232-5

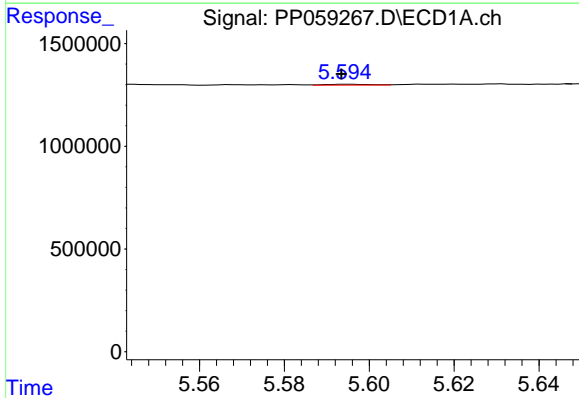
R.T.: 5.846 min
 Delta R.T.: -0.023 min
 Response: 27588
 Conc: 2.42 ng/ml

Instrument :
 ECD_P
 ClientSampleId :



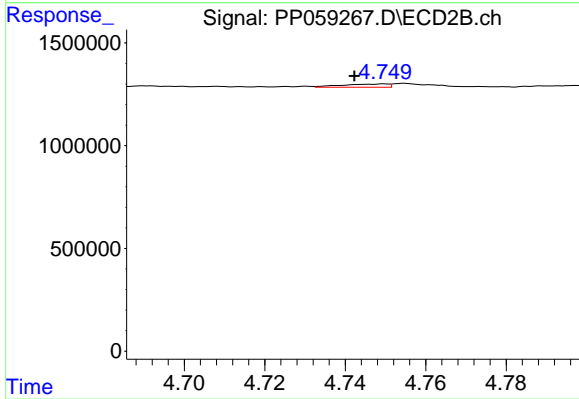
#15 AR-1232-5

R.T.: 5.194 min
 Delta R.T.: 0.000 min
 Response: 29341
 Conc: 1.28 ng/ml



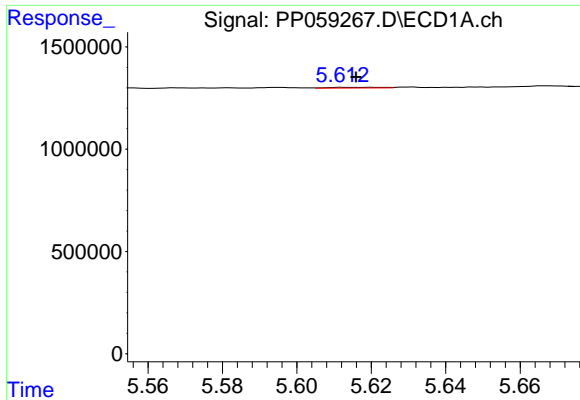
#16 AR-1242-1

R.T.: 5.595 min
 Delta R.T.: 0.002 min
 Response: 31288
 Conc: 0.91 ng/ml



#16 AR-1242-1

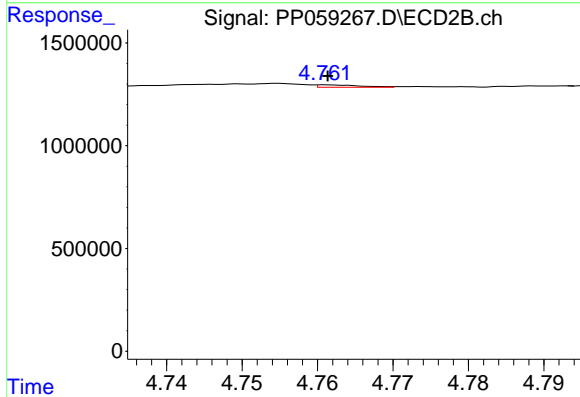
R.T.: 4.750 min
 Delta R.T.: 0.007 min
 Response: 128723
 Conc: 2.30 ng/ml



#17 AR-1242-2

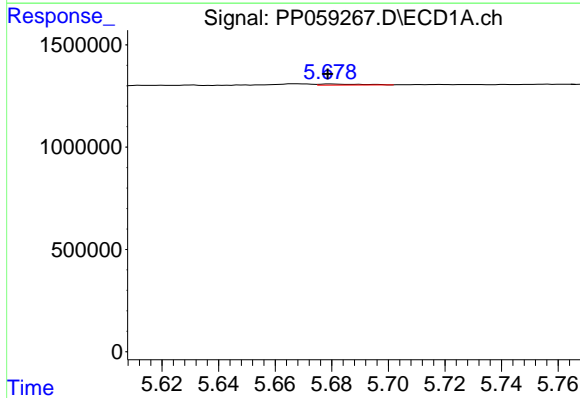
R.T.: 5.619 min
 Delta R.T.: 0.003 min
 Response: 36295
 Conc: 0.74 ng/ml

Instrument :
 ECD_P
 ClientSampleId :



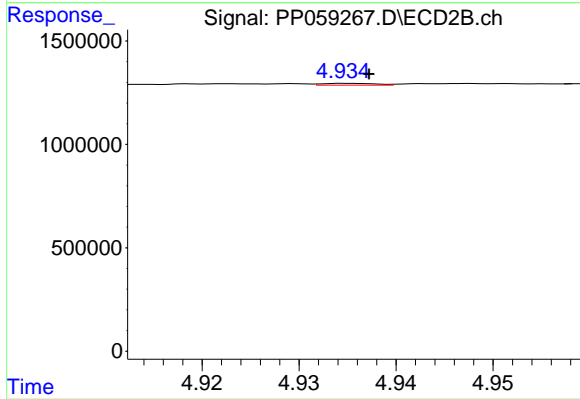
#17 AR-1242-2

R.T.: 4.761 min
 Delta R.T.: 0.000 min
 Response: 45357
 Conc: 0.57 ng/ml



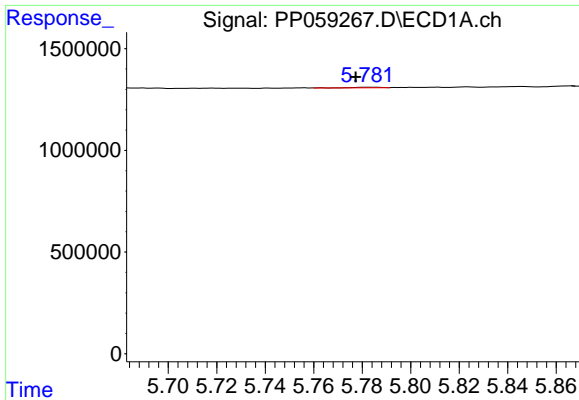
#18 AR-1242-3

R.T.: 5.679 min
 Delta R.T.: 0.000 min
 Response: 58543
 Conc: 1.86 ng/ml



#18 AR-1242-3

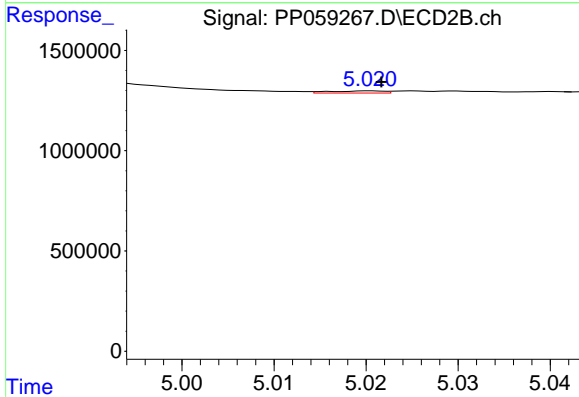
R.T.: 4.935 min
 Delta R.T.: -0.002 min
 Response: 33830
 Conc: 0.79 ng/ml



#19 AR-1242-4

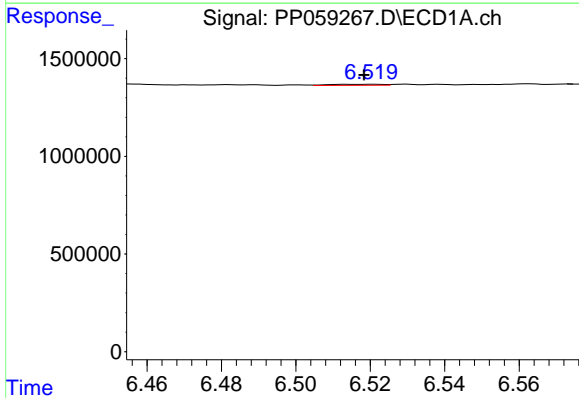
R.T.: 5.782 min
 Delta R.T.: 0.005 min
 Response: 23007
 Conc: 0.90 ng/ml

Instrument :
 ECD_P
 ClientSampleId :



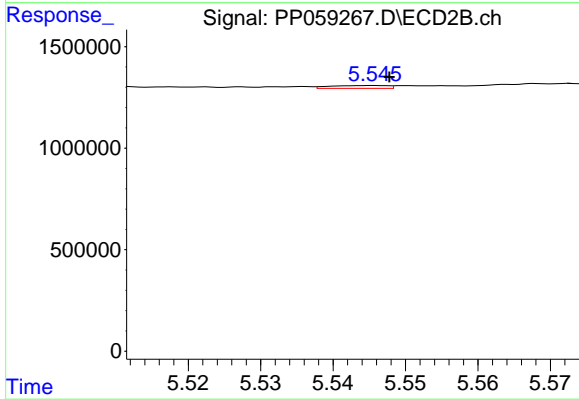
#19 AR-1242-4

R.T.: 5.020 min
 Delta R.T.: -0.001 min
 Response: 43409
 Conc: 0.99 ng/ml



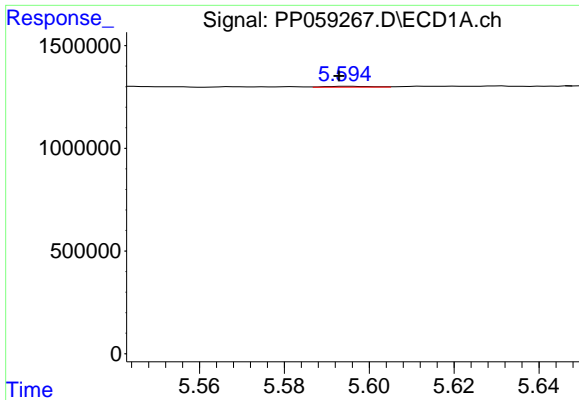
#20 AR-1242-5

R.T.: 6.521 min
 Delta R.T.: 0.003 min
 Response: 55908
 Conc: 2.16 ng/ml



#20 AR-1242-5

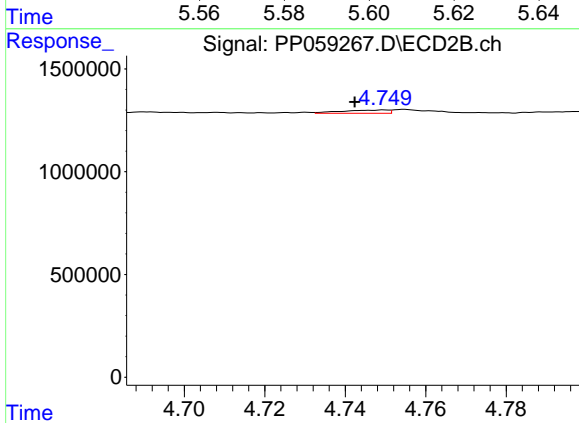
R.T.: 5.546 min
 Delta R.T.: -0.002 min
 Response: 76112
 Conc: 1.53 ng/ml



#21 AR-1248-1

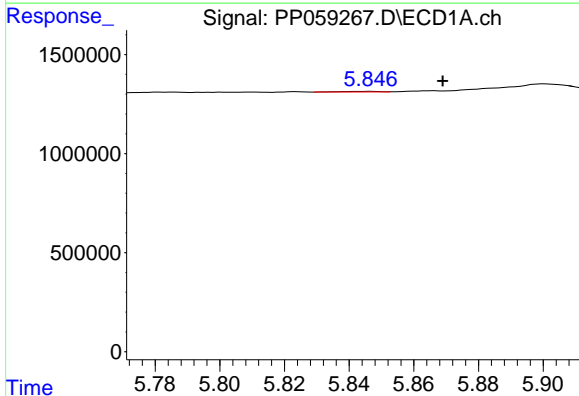
R.T.: 5.595 min
 Delta R.T.: 0.002 min
 Response: 31288
 Conc: 1.23 ng/ml

Instrument :
 ECD_P
 ClientSampleId :



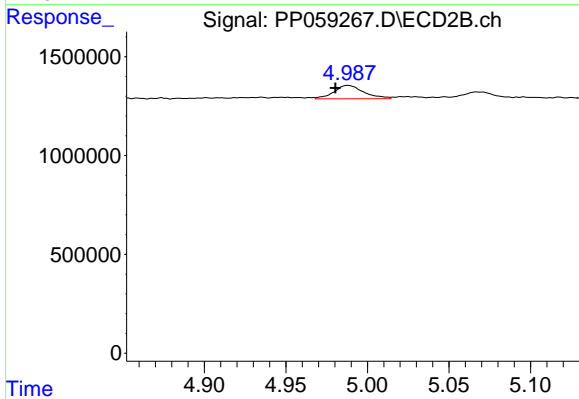
#21 AR-1248-1

R.T.: 4.750 min
 Delta R.T.: 0.007 min
 Response: 128723
 Conc: 3.13 ng/ml



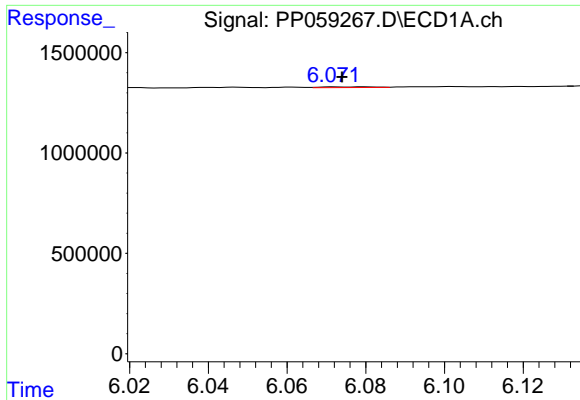
#22 AR-1248-2

R.T.: 5.846 min
 Delta R.T.: -0.023 min
 Response: 27588
 Conc: 0.71 ng/ml



#22 AR-1248-2

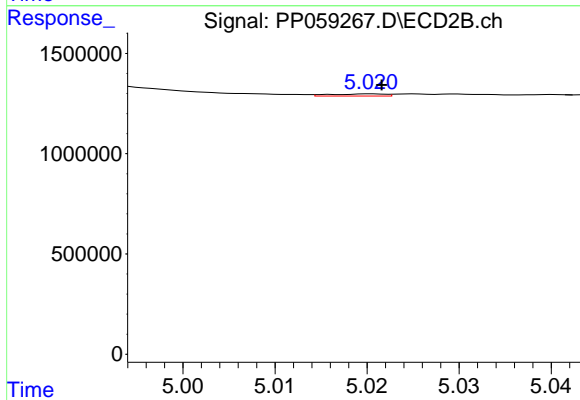
R.T.: 4.988 min
 Delta R.T.: 0.008 min
 Response: 858194
 Conc: 14.25 ng/ml



#23 AR-1248-3

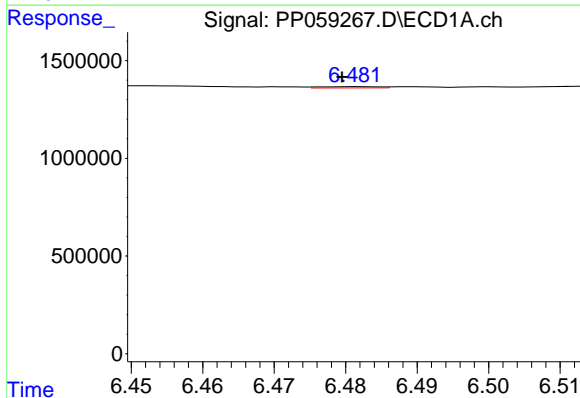
R.T.: 6.080 min
 Delta R.T.: 0.006 min
 Response: 31975
 Conc: 0.76 ng/ml

Instrument :
 ECD_P
 ClientSampleId :



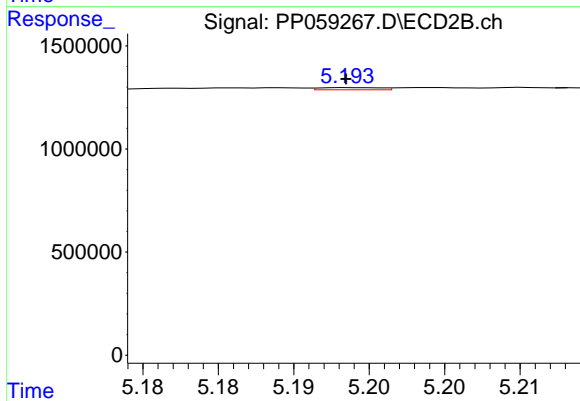
#23 AR-1248-3

R.T.: 5.020 min
 Delta R.T.: -0.001 min
 Response: 43409
 Conc: 0.70 ng/ml



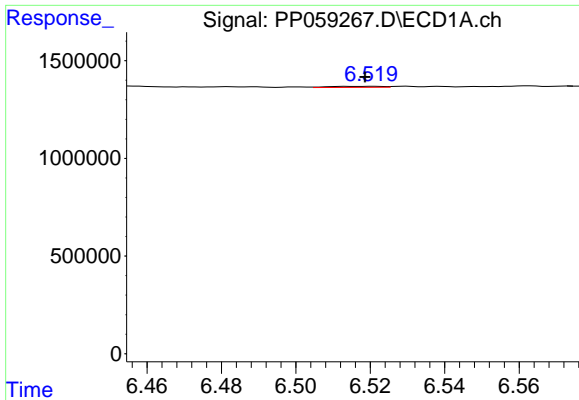
#24 AR-1248-4

R.T.: 6.482 min
 Delta R.T.: 0.002 min
 Response: 40419
 Conc: 0.97 ng/ml



#24 AR-1248-4

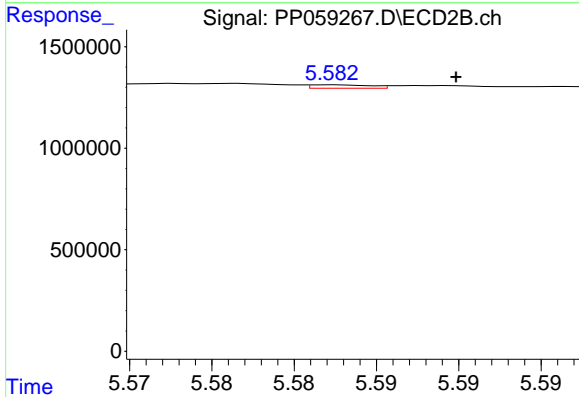
R.T.: 5.194 min
 Delta R.T.: 0.000 min
 Response: 29341
 Conc: 0.41 ng/ml



#25 AR-1248-5

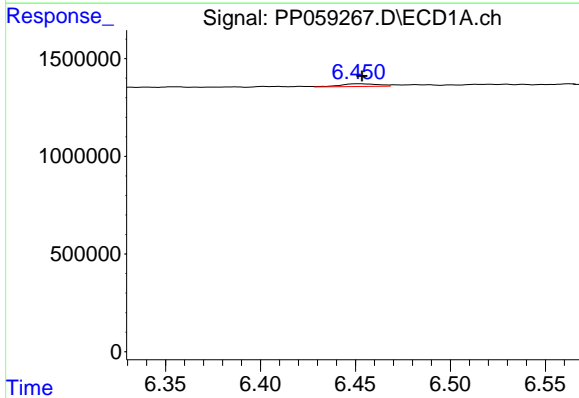
R.T.: 6.521 min
 Delta R.T.: 0.002 min
 Response: 55908
 Conc: 1.37 ng/ml

Instrument :
 ECD_P
 ClientSampleId :



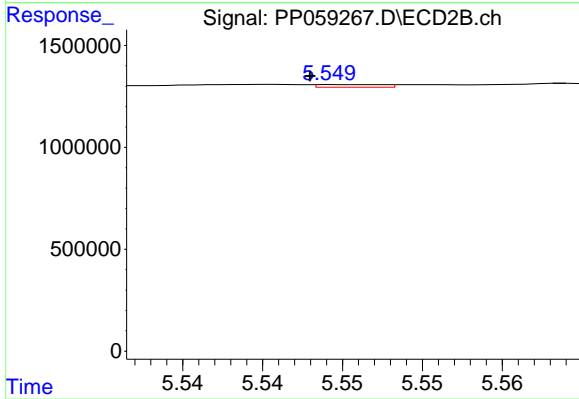
#25 AR-1248-5

R.T.: 5.582 min
 Delta R.T.: -0.008 min
 Response: 42521
 Conc: 0.64 ng/ml



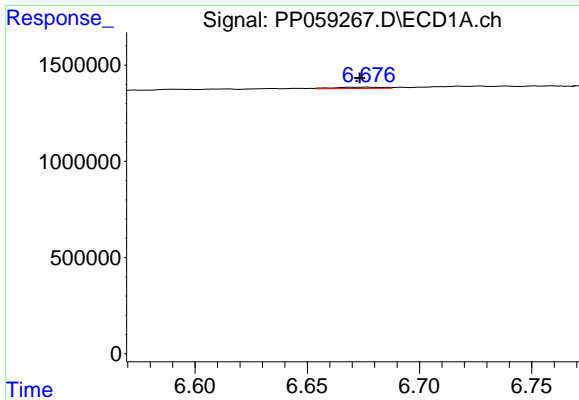
#26 AR-1254-1

R.T.: 6.452 min
 Delta R.T.: -0.002 min
 Response: 196401
 Conc: 4.20 ng/ml



#26 AR-1254-1

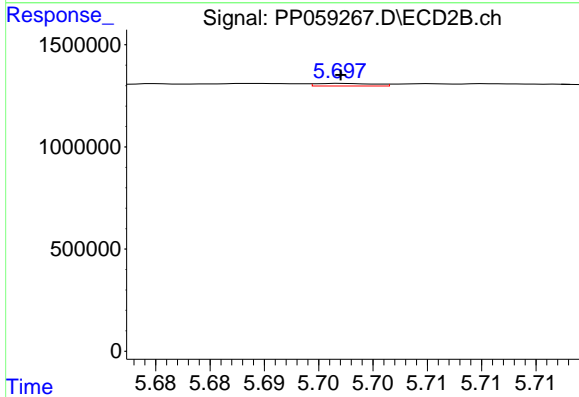
R.T.: 5.550 min
 Delta R.T.: 0.002 min
 Response: 37688
 Conc: 0.37 ng/ml



#27 AR-1254-2

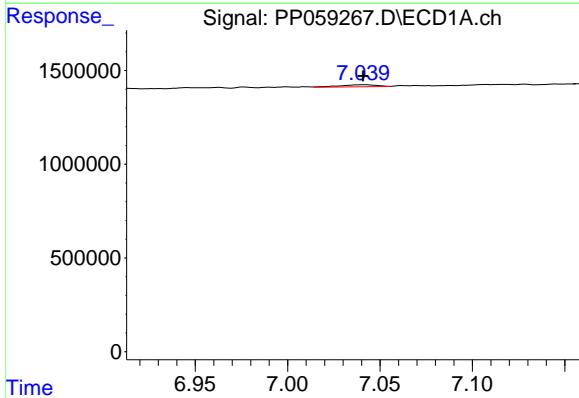
R.T.: 6.677 min
 Delta R.T.: 0.004 min
 Response: 99105
 Conc: 1.44 ng/ml

Instrument :
 ECD_P
 ClientSampleId :



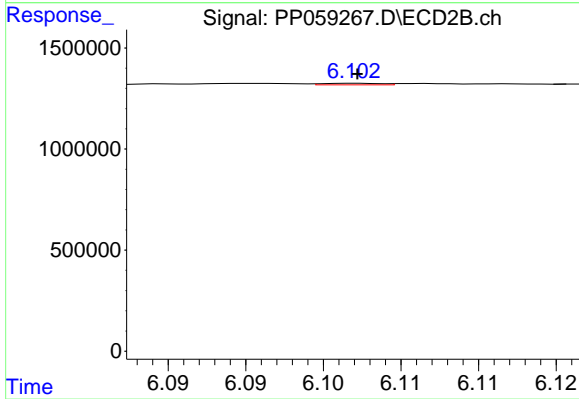
#27 AR-1254-2

R.T.: 5.697 min
 Delta R.T.: 0.000 min
 Response: 48040
 Conc: 0.54 ng/ml



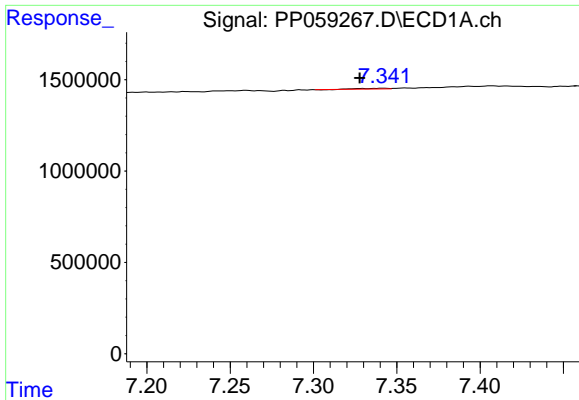
#28 AR-1254-3

R.T.: 7.041 min
 Delta R.T.: 0.000 min
 Response: 158999
 Conc: 2.30 ng/ml



#28 AR-1254-3

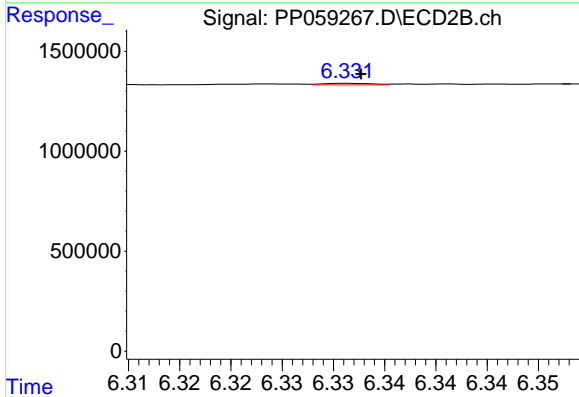
R.T.: 6.102 min
 Delta R.T.: 0.000 min
 Response: 20790
 Conc: 0.15 ng/ml



#29 AR-1254-4

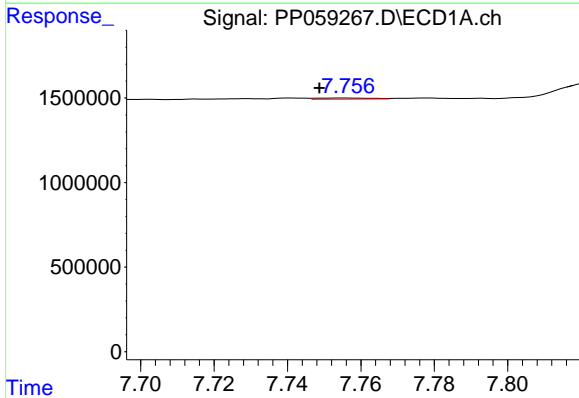
R.T.: 7.342 min
 Delta R.T.: 0.014 min
 Response: 45540
 Conc: 1.01 ng/ml

Instrument :
 ECD_P
 ClientSampleId :



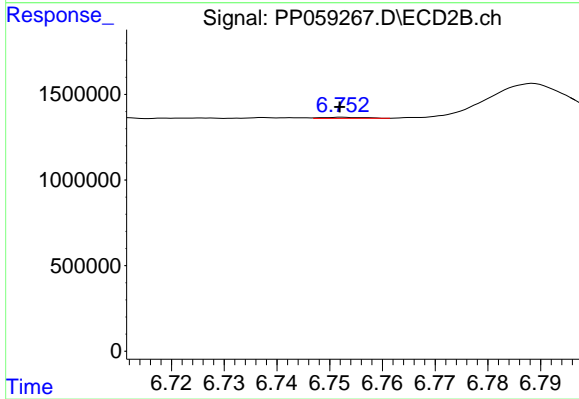
#29 AR-1254-4

R.T.: 6.331 min
 Delta R.T.: -0.001 min
 Response: 27037
 Conc: 0.34 ng/ml



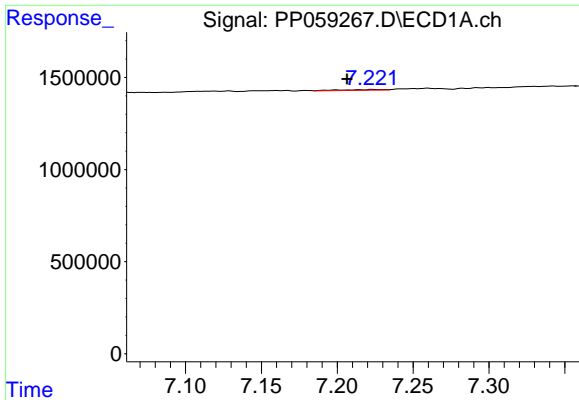
#30 AR-1254-5

R.T.: 7.756 min
 Delta R.T.: 0.007 min
 Response: 67704
 Conc: 1.44 ng/ml



#30 AR-1254-5

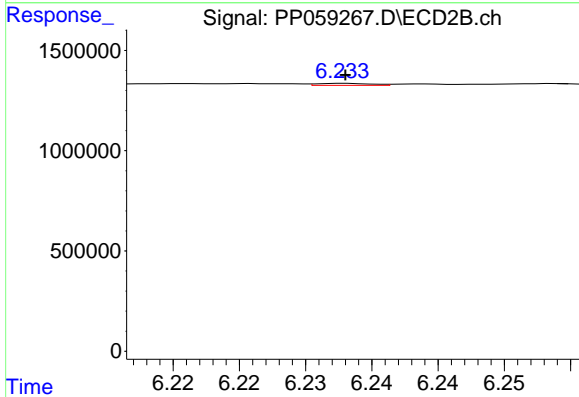
R.T.: 6.753 min
 Delta R.T.: 0.000 min
 Response: 37128
 Conc: 0.31 ng/ml



#31 AR-1260-1

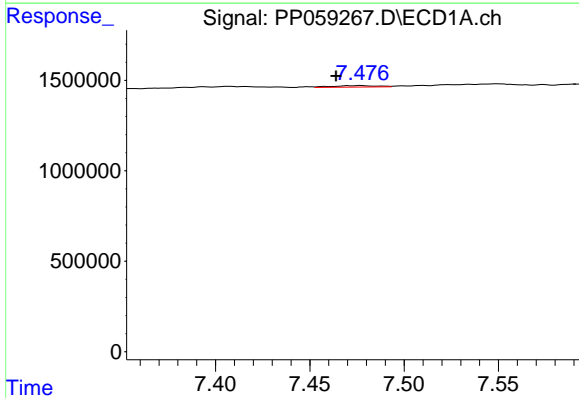
R.T.: 7.223 min
 Delta R.T.: 0.017 min
 Response: 86354
 Conc: 1.58 ng/ml

Instrument :
 ECD_P
 ClientSampleId :



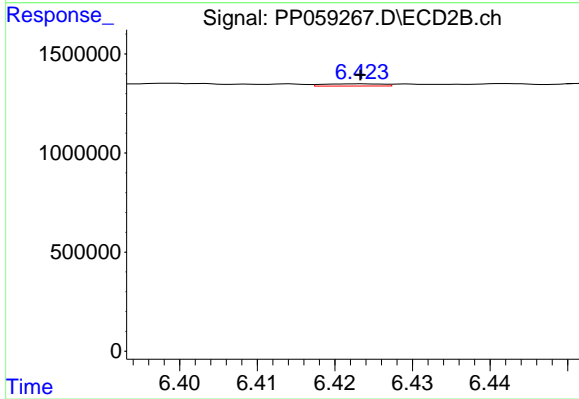
#31 AR-1260-1

R.T.: 6.233 min
 Delta R.T.: 0.000 min
 Response: 29006
 Conc: 0.29 ng/ml



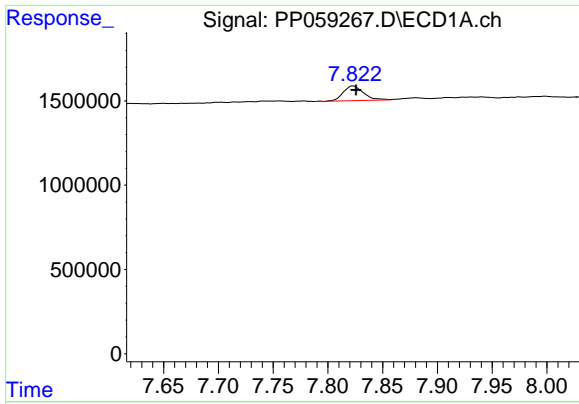
#32 AR-1260-2

R.T.: 7.477 min
 Delta R.T.: 0.013 min
 Response: 132878
 Conc: 2.23 ng/ml



#32 AR-1260-2

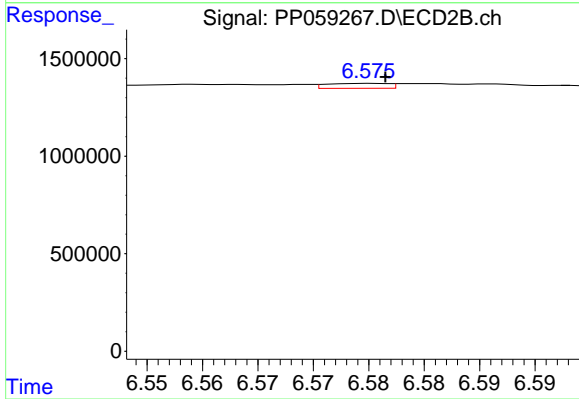
R.T.: 6.424 min
 Delta R.T.: 0.000 min
 Response: 59399
 Conc: 0.51 ng/ml



#33 AR-1260-3

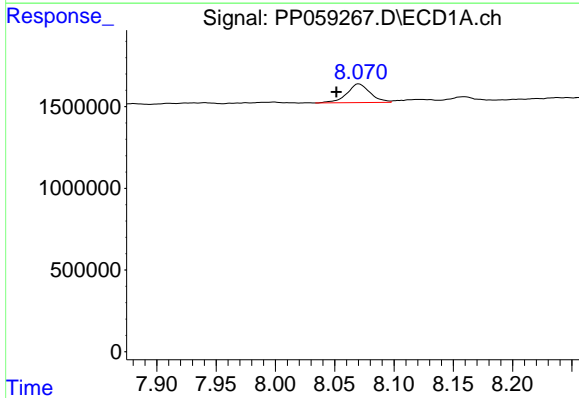
R.T.: 7.823 min
 Delta R.T.: -0.003 min
 Response: 1128449
 Conc: 28.67 ng/ml

Instrument :
 ECD_P
 ClientSampleId :



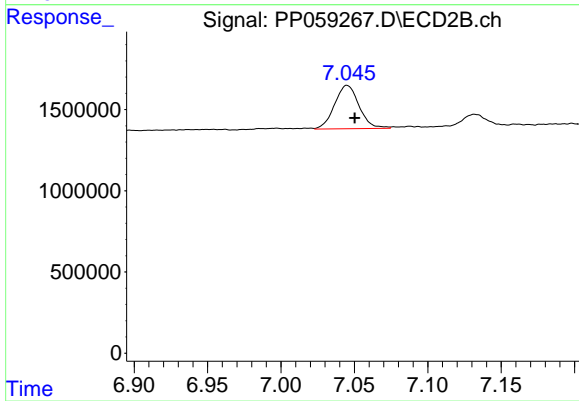
#33 AR-1260-3

R.T.: 6.575 min
 Delta R.T.: -0.001 min
 Response: 97955
 Conc: 0.88 ng/ml



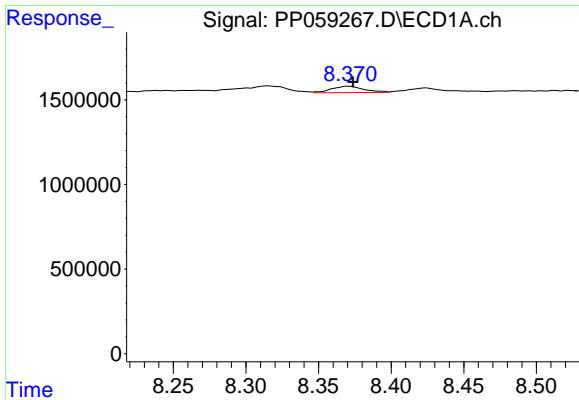
#34 AR-1260-4

R.T.: 8.070 min
 Delta R.T.: 0.019 min
 Response: 1572204
 Conc: 35.40 ng/ml



#34 AR-1260-4

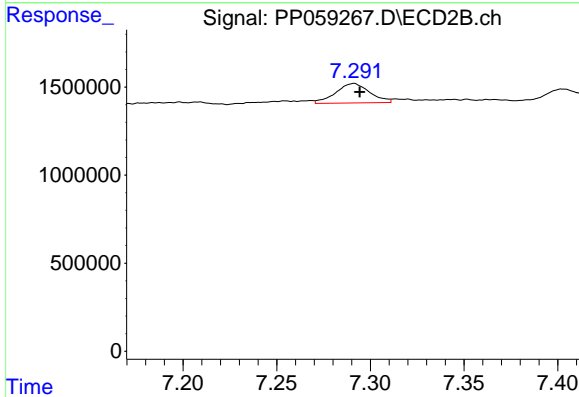
R.T.: 7.045 min
 Delta R.T.: -0.005 min
 Response: 3101530
 Conc: 35.78 ng/ml



#35 AR-1260-5

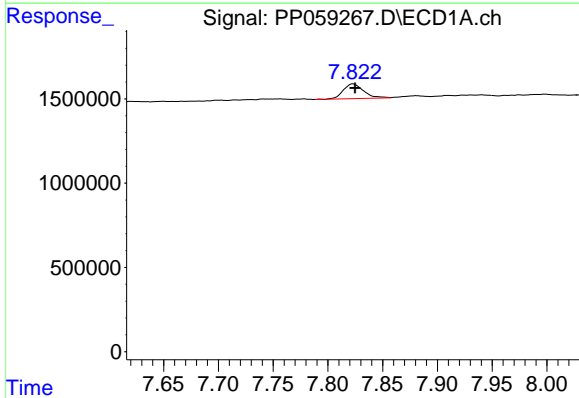
R.T.: 8.371 min
 Delta R.T.: -0.003 min
 Response: 581242
 Conc: 7.27 ng/ml

Instrument :
 ECD_P
 ClientSampleId :



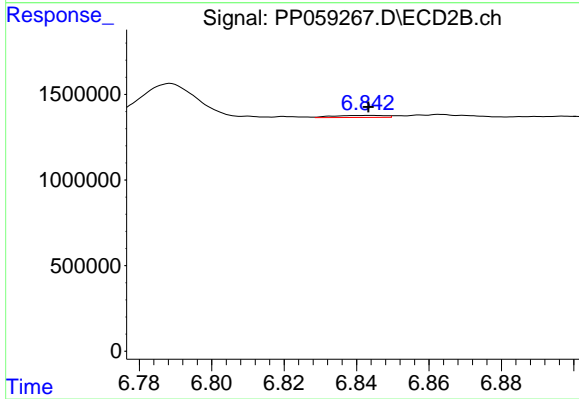
#35 AR-1260-5

R.T.: 7.291 min
 Delta R.T.: -0.003 min
 Response: 1400328
 Conc: 7.60 ng/ml



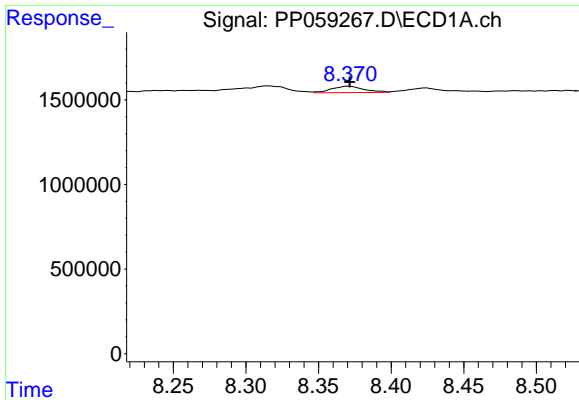
#36 AR-1262-1

R.T.: 7.823 min
 Delta R.T.: -0.002 min
 Response: 1128449
 Conc: 17.72 ng/ml



#36 AR-1262-1

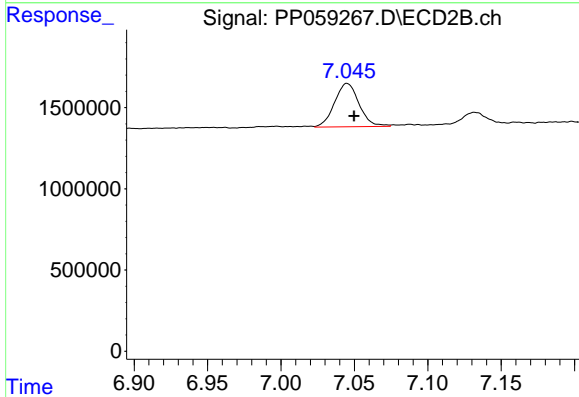
R.T.: 6.843 min
 Delta R.T.: 0.000 min
 Response: 119185
 Conc: 2.07 ng/ml



#37 AR-1262-2

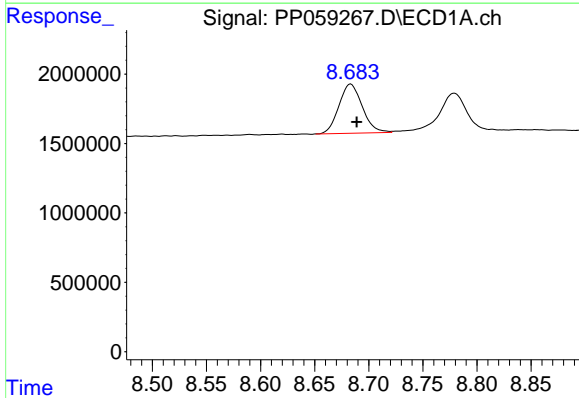
R.T.: 8.371 min
 Delta R.T.: 0.000 min
 Response: 581242
 Conc: 6.33 ng/ml

Instrument :
 ECD_P
 ClientSampleId :



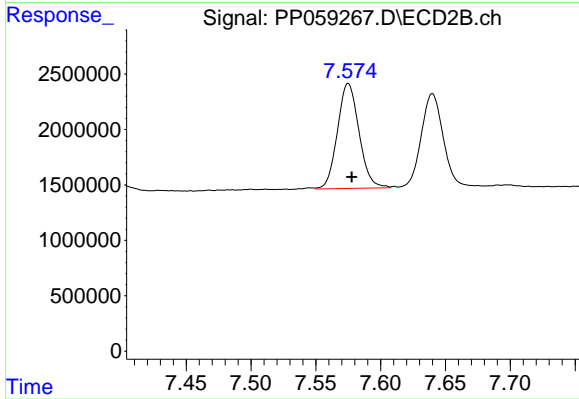
#37 AR-1262-2

R.T.: 7.045 min
 Delta R.T.: -0.005 min
 Response: 3101530
 Conc: 26.28 ng/ml



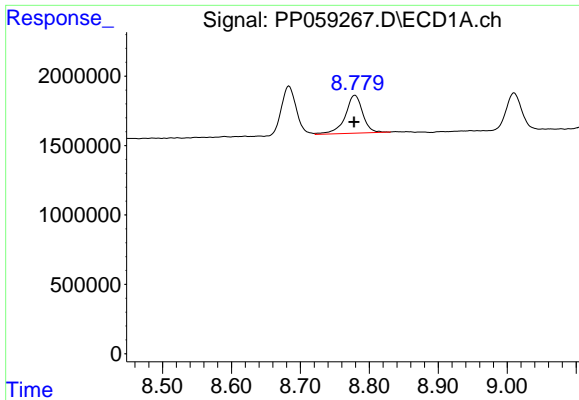
#38 AR-1262-3

R.T.: 8.683 min
 Delta R.T.: -0.005 min
 Response: 5330078
 Conc: 82.83 ng/ml



#38 AR-1262-3

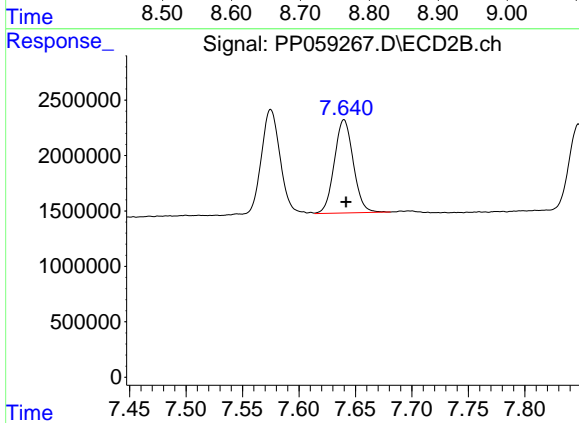
R.T.: 7.575 min
 Delta R.T.: -0.003 min
 Response: 10975519
 Conc: 128.97 ng/ml



#39 AR-1262-4

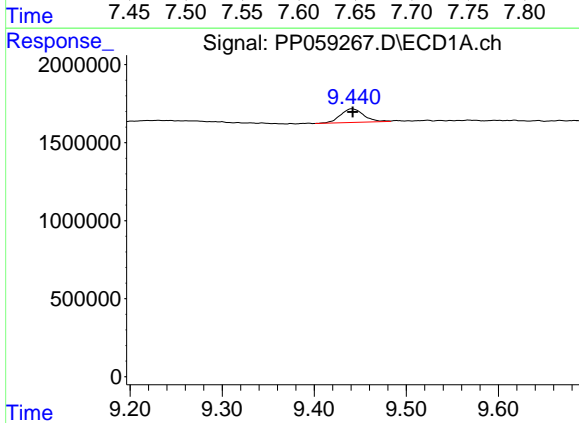
R.T.: 8.779 min
 Delta R.T.: 0.001 min
 Response: 4840536
 Conc: 145.77 ng/ml

Instrument :
 ECD_P
 ClientSampleId :



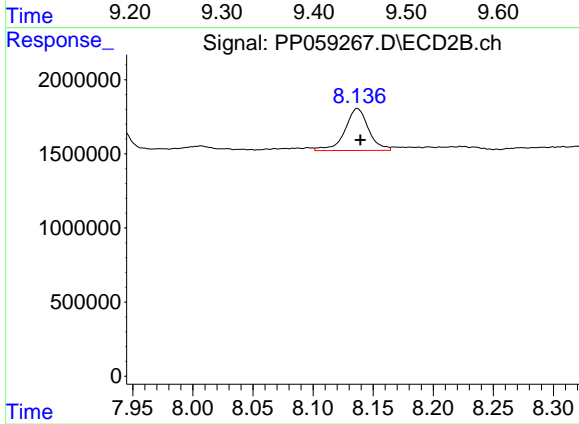
#39 AR-1262-4

R.T.: 7.640 min
 Delta R.T.: -0.002 min
 Response: 9820783
 Conc: 65.01 ng/ml



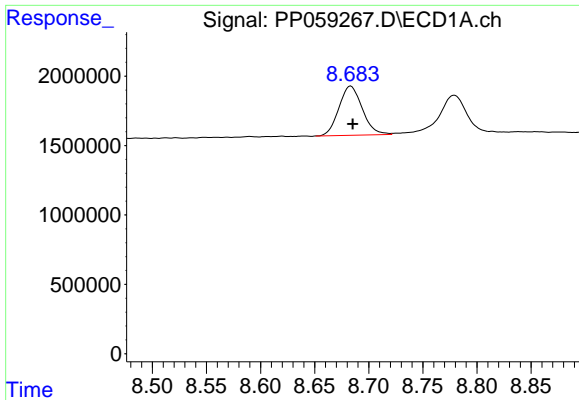
#40 AR-1262-5

R.T.: 9.441 min
 Delta R.T.: 0.000 min
 Response: 1548680
 Conc: 51.90 ng/ml



#40 AR-1262-5

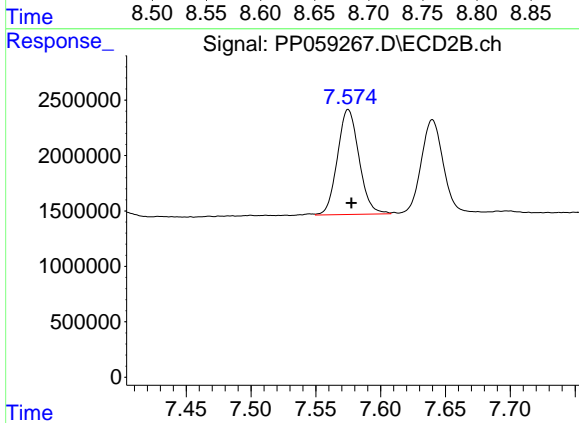
R.T.: 8.137 min
 Delta R.T.: -0.003 min
 Response: 3870253
 Conc: 60.69 ng/ml



#41 AR-1268-1

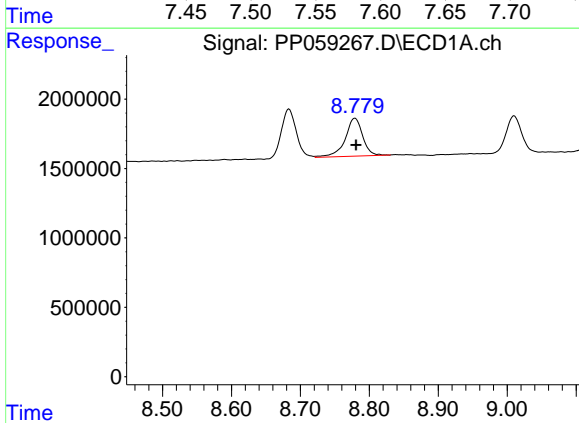
R.T.: 8.683 min
 Delta R.T.: -0.002 min
 Response: 5330078
 Conc: 46.93 ng/ml

Instrument :
 ECD_P
 ClientSampleId :



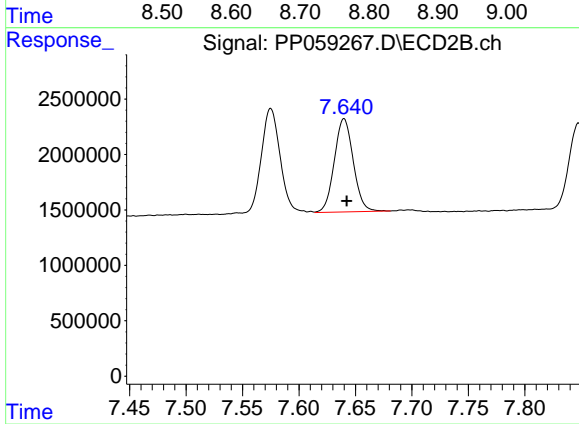
#41 AR-1268-1

R.T.: 7.575 min
 Delta R.T.: -0.002 min
 Response: 10975519
 Conc: 45.01 ng/ml



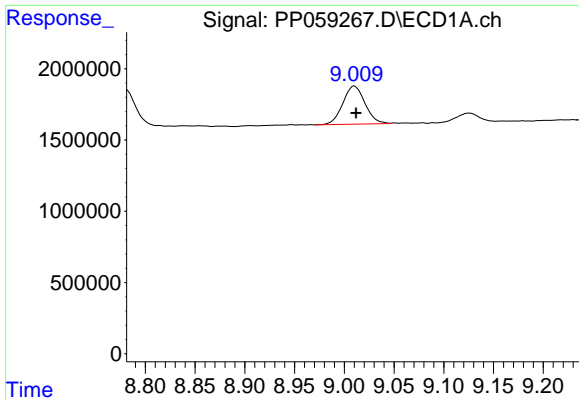
#42 AR-1268-2

R.T.: 8.779 min
 Delta R.T.: -0.002 min
 Response: 4840536
 Conc: 49.18 ng/ml



#42 AR-1268-2

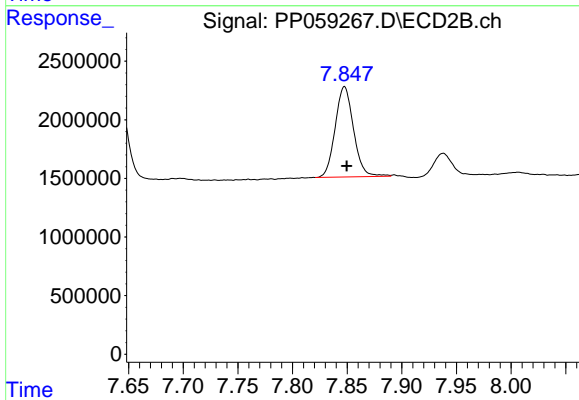
R.T.: 7.640 min
 Delta R.T.: -0.002 min
 Response: 9820783
 Conc: 44.84 ng/ml



#43 AR-1268-3

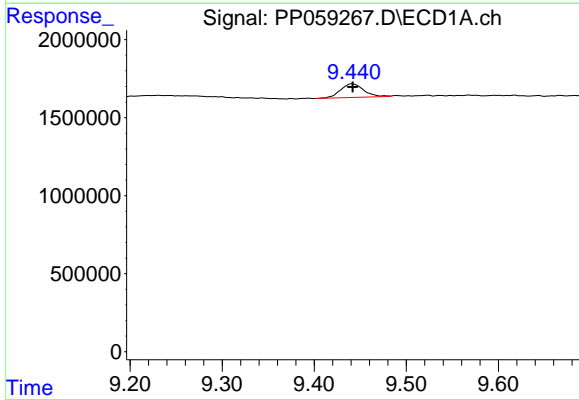
R.T.: 9.010 min
 Delta R.T.: -0.002 min
 Response: 4161104
 Conc: 44.89 ng/ml

Instrument :
 ECD_P
 ClientSampleId :



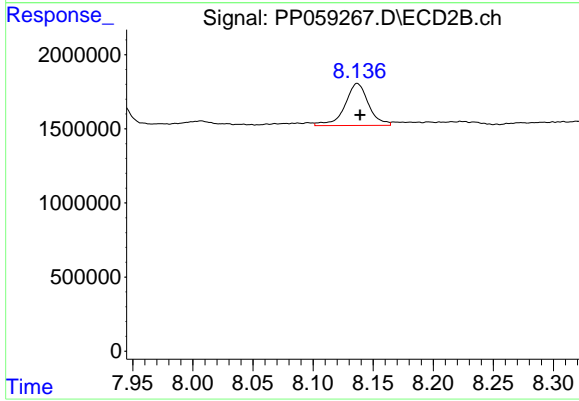
#43 AR-1268-3

R.T.: 7.848 min
 Delta R.T.: -0.002 min
 Response: 9034154
 Conc: 46.20 ng/ml



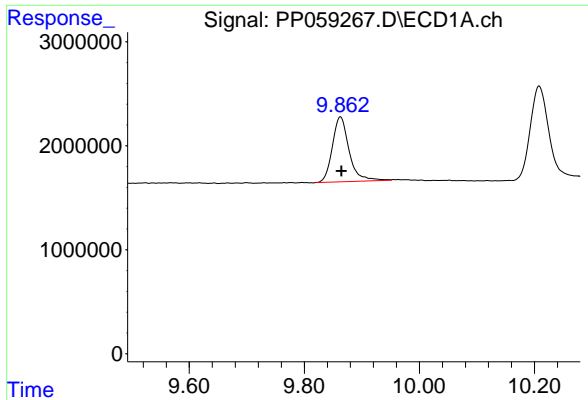
#44 AR-1268-4

R.T.: 9.441 min
 Delta R.T.: 0.000 min
 Response: 1548680
 Conc: 48.55 ng/ml



#44 AR-1268-4

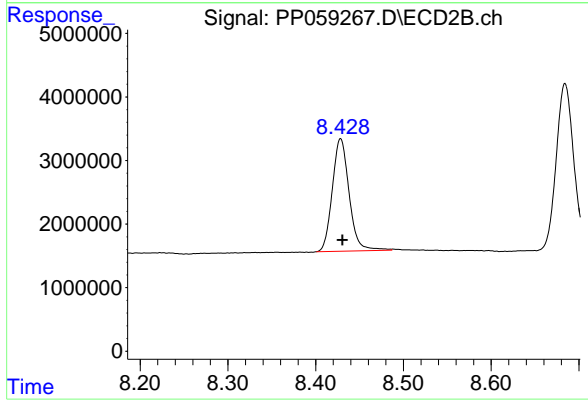
R.T.: 8.137 min
 Delta R.T.: -0.002 min
 Response: 3870253
 Conc: 55.61 ng/ml



#45 AR-1268-5

R.T.: 9.863 min
Delta R.T.: -0.002 min
Response: 12612289
Conc: 46.46 ng/ml

Instrument :
ECD_P
ClientSampleId :



#45 AR-1268-5

R.T.: 8.428 min
Delta R.T.: -0.002 min
Response: 23600736
Conc: 45.53 ng/ml