

Data Path : Z:\pestpcbsrv\HPCHEM1\ECD_P\Data\PP081122\
 Data File : PP050470.D
 Signal(s) : Signal #1: ECD1A.ch Signal #2: ECD2B.ch
 Acq On : 11 Aug 2022 15:18
 Operator : YP\AJ
 Sample : PB146927BS
 Misc :
 ALS Vial : 17 Sample Multiplier: 1

Instrument :
 ECD_P
 ClientSampleId :
 PB146927BS

Integration File signal 1: autoint1.e
 Integration File signal 2: autoint2.e
 Quant Time: Aug 11 23:08:14 2022
 Quant Method : Z:\pestpcbsrv\HPCHEM1\ECD_P\methods\PP080622.M
 Quant Title : GC EXTRACTABLES
 QLast Update : Tue Aug 09 11:38:04 2022
 Response via : Initial Calibration
 Integrator: ChemStation

Volume Inj. : 2 µl
 Signal #1 Phase : ZB-MR2 Signal #2 Phase: ZB-MR2
 Signal #1 Info : 30Mx0.32mmx 0.50µ Signal #2 Info : 30M x 0.32mm x 0.25µm

Compound	RT#1	RT#2	Resp#1	Resp#2	ng/ml	ng/ml

System Monitoring Compounds						
1) SA Tetrachlo...	4.346	3.592	35120704	64222017	21.819	20.504
2) SA Decachlor...	10.096	8.558	36914538	33004093	20.963	21.444
Target Compounds						
3) L1 AR-1016-1	5.523	4.664	30346403	48564682	484.649	477.787
4) L1 AR-1016-2	5.545	4.683	43681909	67984052	493.281	470.014
5) L1 AR-1016-3	5.608	4.858	25896056	35687993	473.824	470.302
6) L1 AR-1016-4	5.709	4.899	22454147	27344903	486.926	469.312
7) L1 AR-1016-5	6.003	5.111	21200328	34529496	474.492	451.922
31) L7 AR-1260-1	7.130	6.137	41601701	52860168	455.502	466.479
32) L7 AR-1260-2	7.389	6.325	50711018	66733507	443.861	496.750
33) L7 AR-1260-3	7.748	6.478	32858947	56596306	385.864	469.819
34) L7 AR-1260-4	7.975	6.948	40177398	37282384	422.089	420.565
35) L7 AR-1260-5	8.297	7.189	77292232	88106811	413.483	451.968

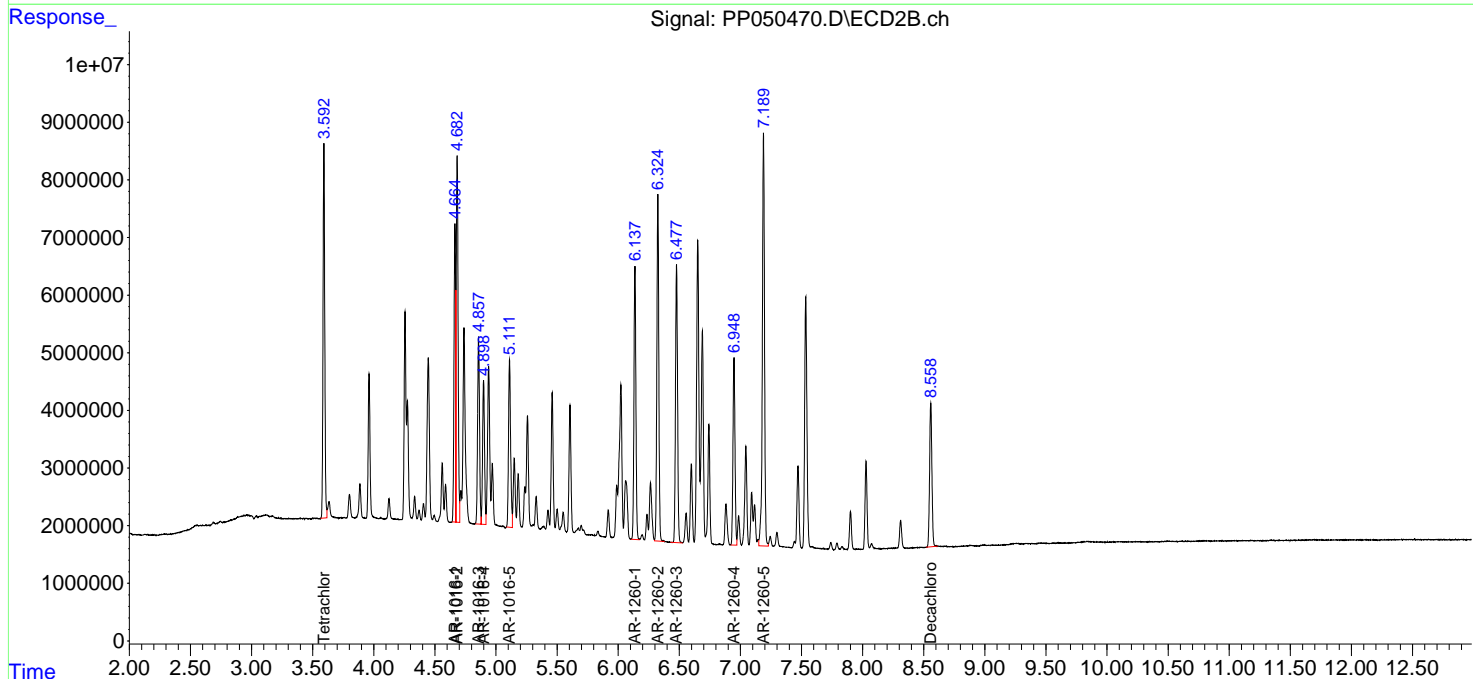
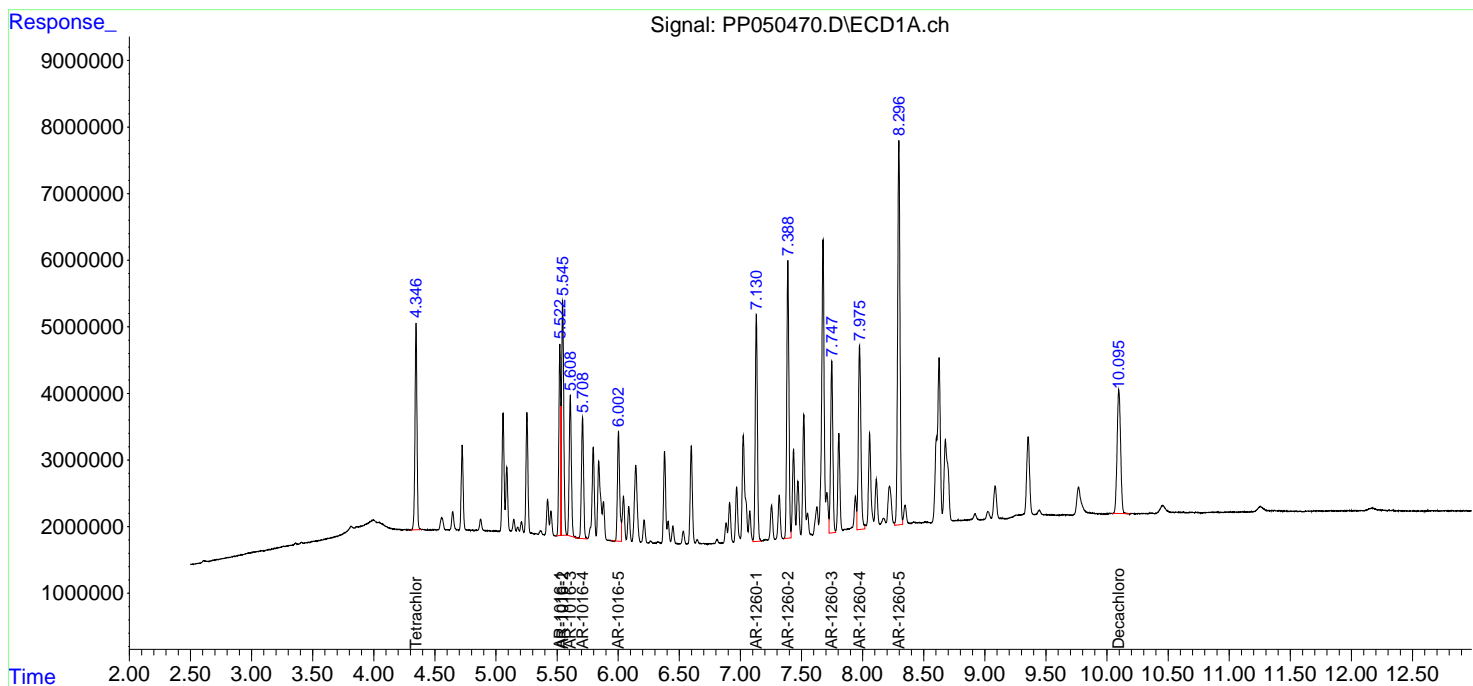
(f)=RT Delta > 1/2 Window (#)=Amounts differ by > 25% (m)=manual int.

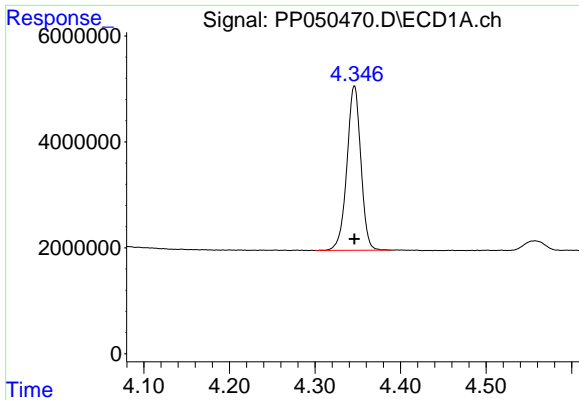
Data Path : Z:\pestpcbsrv\HPCHEM1\ECD_P\Data\PP081122\
 Data File : PP050470.D
 Signal(s) : Signal #1: ECD1A.ch Signal #2: ECD2B.ch
 Acq On : 11 Aug 2022 15:18
 Operator : YP\AJ
 Sample : PB146927BS
 Misc :
 ALS Vial : 17 Sample Multiplier: 1

Instrument :
 ECD_P
 ClientSampleId :
 PB146927BS

Integration File signal 1: autoint1.e
 Integration File signal 2: autoint2.e
 Quant Time: Aug 11 23:08:14 2022
 Quant Method : Z:\pestpcbsrv\HPCHEM1\ECD_P\methods\PP080622.M
 Quant Title : GC EXTRACTABLES
 QLast Update : Tue Aug 09 11:38:04 2022
 Response via : Initial Calibration
 Integrator: ChemStation

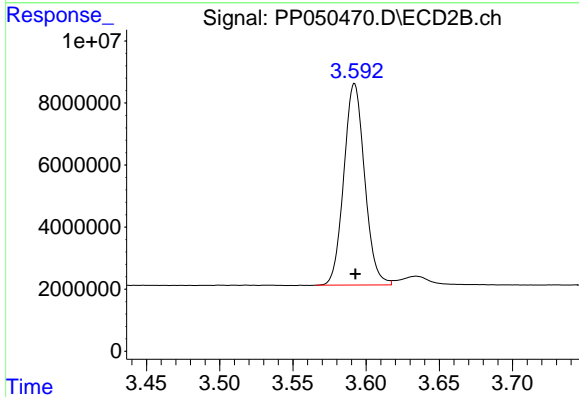
Volume Inj. : 2 µl
 Signal #1 Phase : ZB-MR1 Signal #2 Phase: ZB-MR2
 Signal #1 Info : 30Mx0.32mmx 0.50µ Signal #2 Info : 30M x 0.32mm x 0.25µm



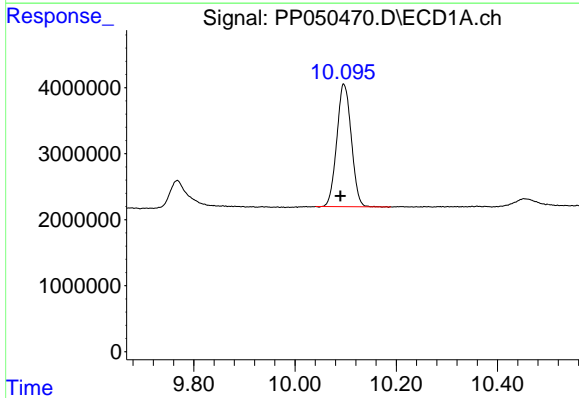


#1 Tetrachloro-m-xylene
 R.T.: 4.346 min
 Delta R.T.: 0.000 min
 Response: 35120704
 Conc: 21.82 ng/ml

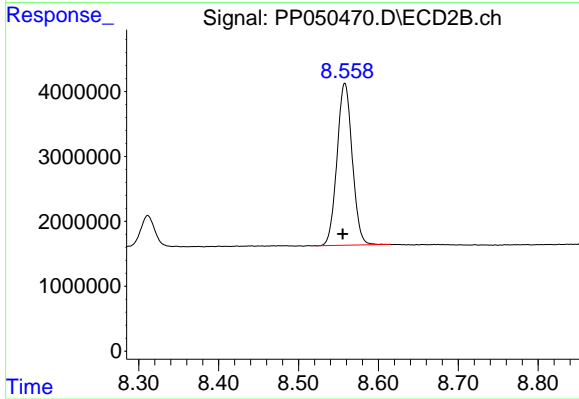
Instrument :
 ECD_P
 ClientSampleId :
 PB146927BS



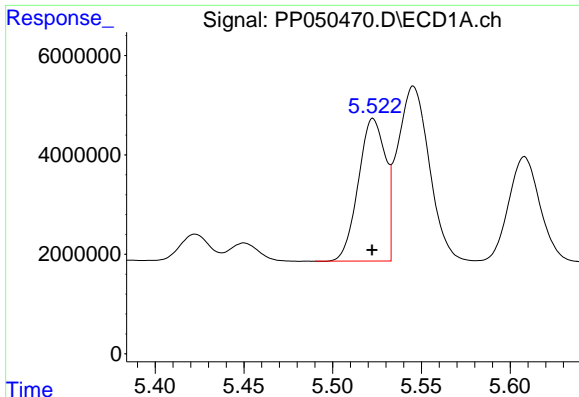
#1 Tetrachloro-m-xylene
 R.T.: 3.592 min
 Delta R.T.: 0.000 min
 Response: 64222017
 Conc: 20.50 ng/ml



#2 Decachlorobiphenyl
 R.T.: 10.096 min
 Delta R.T.: 0.006 min
 Response: 36914538
 Conc: 20.96 ng/ml



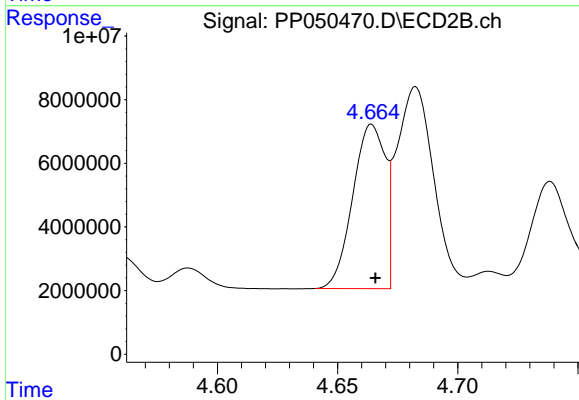
#2 Decachlorobiphenyl
 R.T.: 8.558 min
 Delta R.T.: 0.003 min
 Response: 33004093
 Conc: 21.44 ng/ml



#3 AR-1016-1

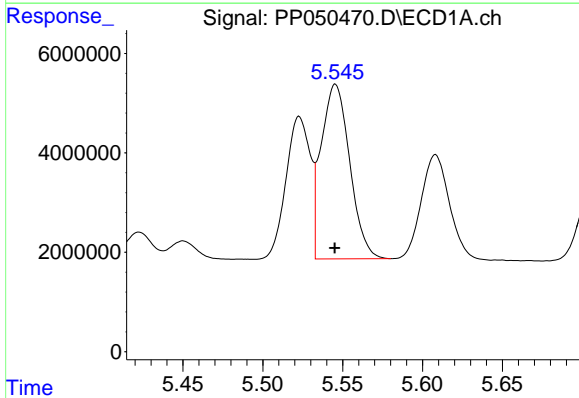
R.T.: 5.523 min
 Delta R.T.: 0.000 min
 Response: 30346403
 Conc: 484.65 ng/ml

Instrument :
 ECD_P
 ClientSampleId :
 PB146927BS



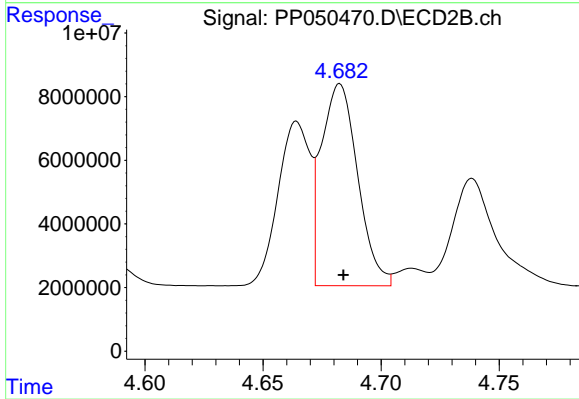
#3 AR-1016-1

R.T.: 4.664 min
 Delta R.T.: -0.002 min
 Response: 48564682
 Conc: 477.79 ng/ml



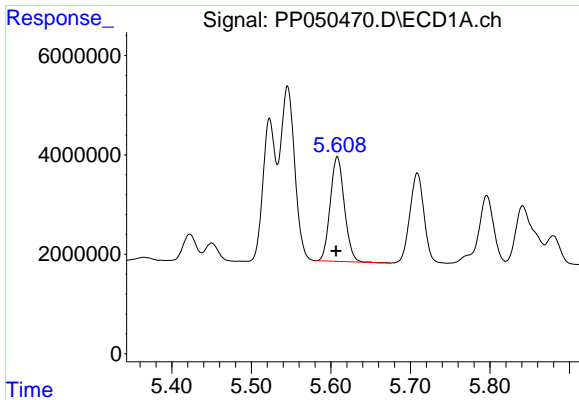
#4 AR-1016-2

R.T.: 5.545 min
 Delta R.T.: 0.000 min
 Response: 43681909
 Conc: 493.28 ng/ml



#4 AR-1016-2

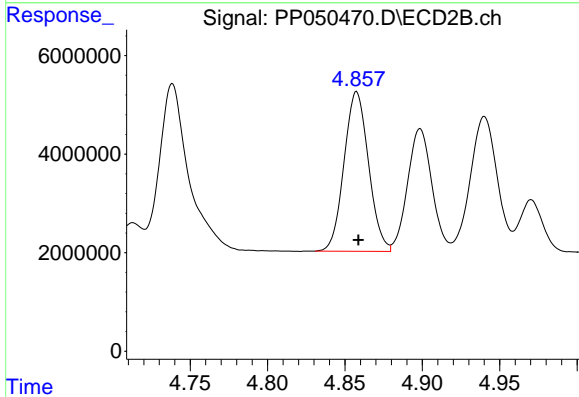
R.T.: 4.683 min
 Delta R.T.: -0.001 min
 Response: 67984052
 Conc: 470.01 ng/ml



#5 AR-1016-3

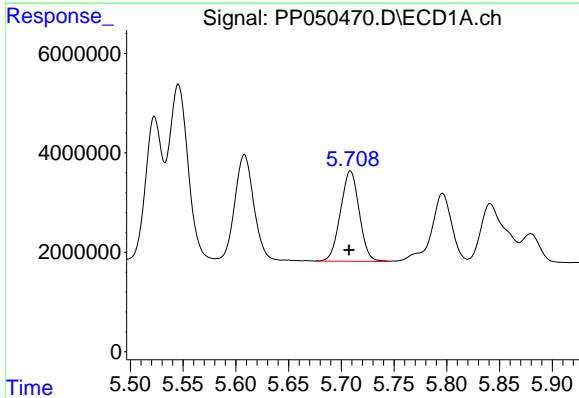
R.T.: 5.608 min
 Delta R.T.: 0.002 min
 Response: 25896056
 Conc: 473.82 ng/ml

Instrument :
 ECD_P
 ClientSampleId :
 PB146927BS



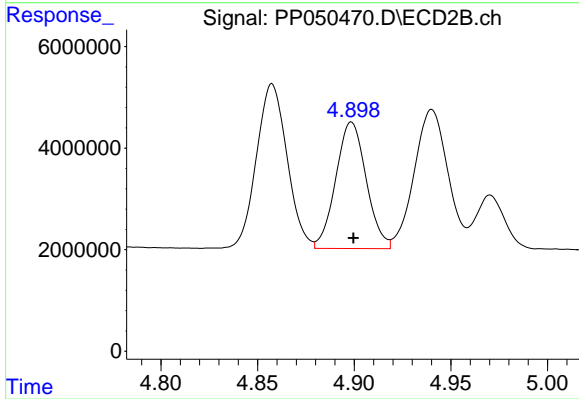
#5 AR-1016-3

R.T.: 4.858 min
 Delta R.T.: -0.001 min
 Response: 35687993
 Conc: 470.30 ng/ml



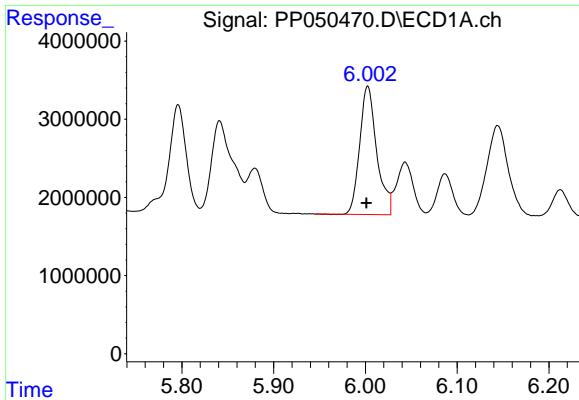
#6 AR-1016-4

R.T.: 5.709 min
 Delta R.T.: 0.001 min
 Response: 22454147
 Conc: 486.93 ng/ml



#6 AR-1016-4

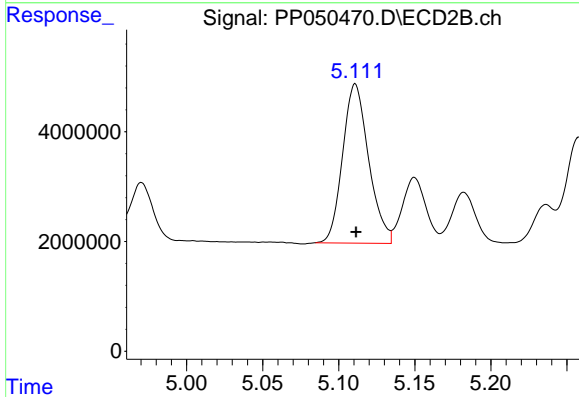
R.T.: 4.899 min
 Delta R.T.: 0.000 min
 Response: 27344903
 Conc: 469.31 ng/ml



#7 AR-1016-5

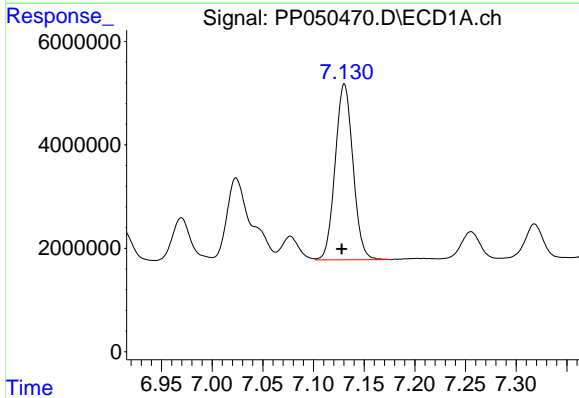
R.T.: 6.003 min
 Delta R.T.: 0.001 min
 Response: 21200328
 Conc: 474.49 ng/ml

Instrument :
 ECD_P
 ClientSampleId :
 PB146927BS



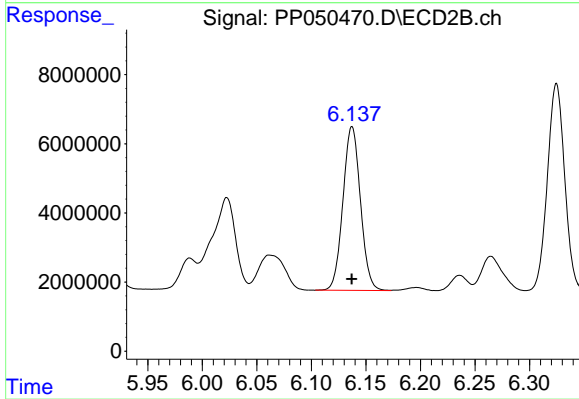
#7 AR-1016-5

R.T.: 5.111 min
 Delta R.T.: 0.000 min
 Response: 34529496
 Conc: 451.92 ng/ml



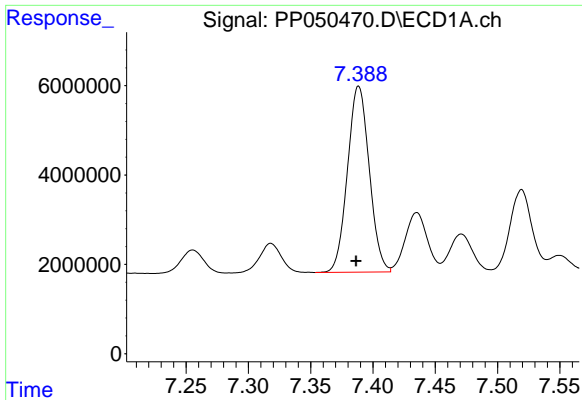
#31 AR-1260-1

R.T.: 7.130 min
 Delta R.T.: 0.003 min
 Response: 41601701
 Conc: 455.50 ng/ml



#31 AR-1260-1

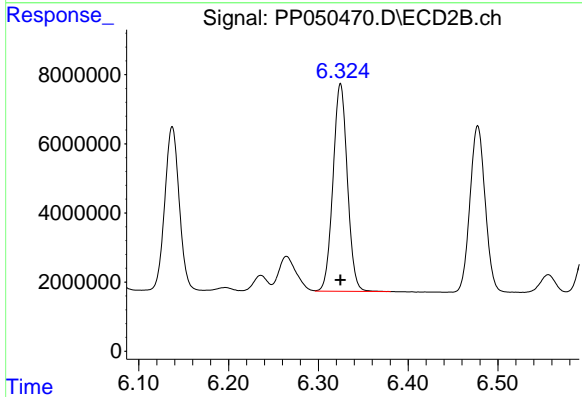
R.T.: 6.137 min
 Delta R.T.: 0.000 min
 Response: 52860168
 Conc: 466.48 ng/ml



#32 AR-1260-2

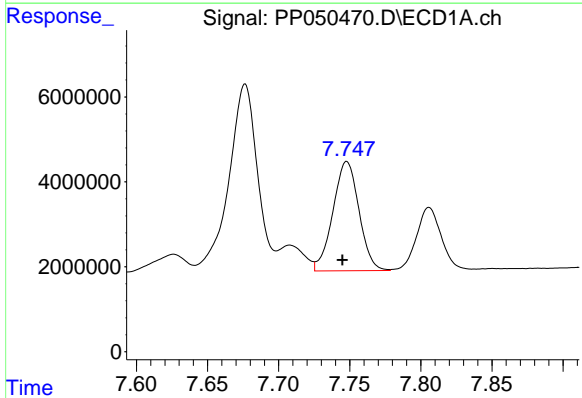
R.T.: 7.389 min
 Delta R.T.: 0.002 min
 Response: 50711018
 Conc: 443.86 ng/ml

Instrument :
 ECD_P
 ClientSampleId :
 PB146927BS



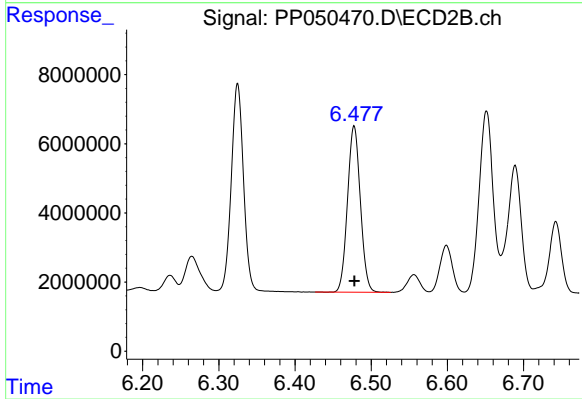
#32 AR-1260-2

R.T.: 6.325 min
 Delta R.T.: 0.000 min
 Response: 66733507
 Conc: 496.75 ng/ml



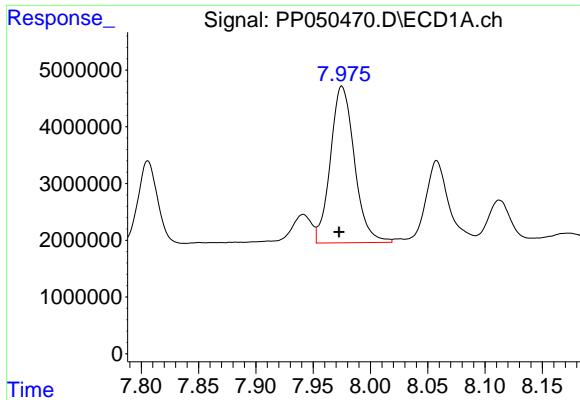
#33 AR-1260-3

R.T.: 7.748 min
 Delta R.T.: 0.003 min
 Response: 32858947
 Conc: 385.86 ng/ml



#33 AR-1260-3

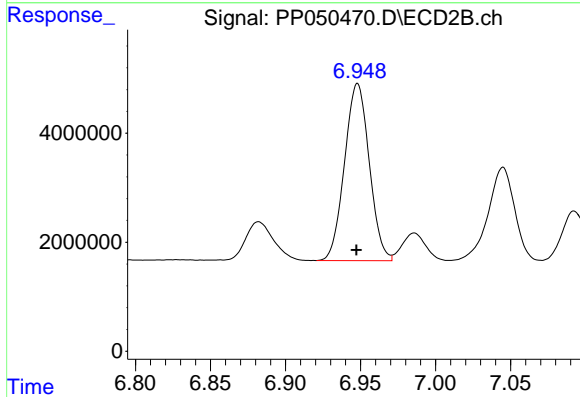
R.T.: 6.478 min
 Delta R.T.: 0.000 min
 Response: 56596306
 Conc: 469.82 ng/ml



#34 AR-1260-4

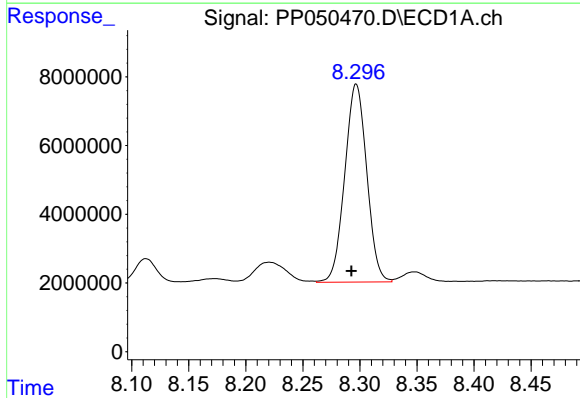
R.T.: 7.975 min
 Delta R.T.: 0.002 min
 Response: 40177398
 Conc: 422.09 ng/ml

Instrument :
 ECD_P
 ClientSampleId :
 PB146927BS



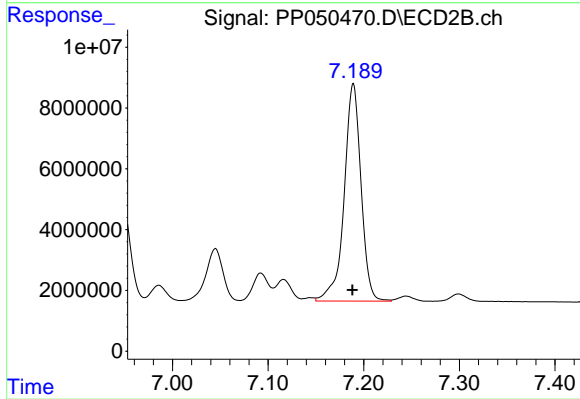
#34 AR-1260-4

R.T.: 6.948 min
 Delta R.T.: 0.000 min
 Response: 37282384
 Conc: 420.57 ng/ml



#35 AR-1260-5

R.T.: 8.297 min
 Delta R.T.: 0.004 min
 Response: 77292232
 Conc: 413.48 ng/ml



#35 AR-1260-5

R.T.: 7.189 min
 Delta R.T.: 0.000 min
 Response: 88106811
 Conc: 451.97 ng/ml