

Data Path : Z:\pestpcbsrv\HPCHEM1\ECD_P\Data\PP081122\
 Data File : PP050505.D
 Signal(s) : Signal #1: ECD1A.ch Signal #2: ECD2B.ch
 Acq On : 12 Aug 2022 06:18
 Operator : YP\AJ
 Sample : AR1248CCC500
 Misc :
 ALS Vial : 5 Sample Multiplier: 1

Instrument :
 ECD_P
ClientSampleId :
 AR1248CCC500

Integration File signal 1: autoint1.e
 Integration File signal 2: autoint2.e
 Quant Time: Aug 12 06:53:04 2022
 Quant Method : Z:\pestpcbsrv\HPCHEM1\ECD_P\methods\PP080622.M
 Quant Title : GC EXTRACTABLES
 QLast Update : Tue Aug 09 11:38:04 2022
 Response via : Initial Calibration
 Integrator: ChemStation

Volume Inj. : 2 µl
 Signal #1 Phase : ZB-MR1 Signal #2 Phase: ZB-MR2
 Signal #1 Info : 30Mx0.32mmx 0.50µ Signal #2 Info : 30M x 0.32mm x 0.25µm

Compound	RT#1	RT#2	Resp#1	Resp#2	ng/ml	ng/ml

System Monitoring Compounds						
1) SA Tetrachlo...	4.343	3.589	84049810	169.4E6	52.216	54.088
2) SA Decachlor...	10.089	8.552	78314832	72261514	44.474	46.951
Target Compounds						
21) L5 AR-1248-1	5.520	4.661	19924440	33201850	493.457	496.778
22) L5 AR-1248-2	5.793	4.894	27441619	43410401	491.202	502.527
23) L5 AR-1248-3	5.998	4.936	30645201	44985160	479.059	496.223
24) L5 AR-1248-4	6.405	5.106	36547688	51556976	462.026	489.161
25) L5 AR-1248-5	6.444	5.497	34924324	48932803	460.050	492.833

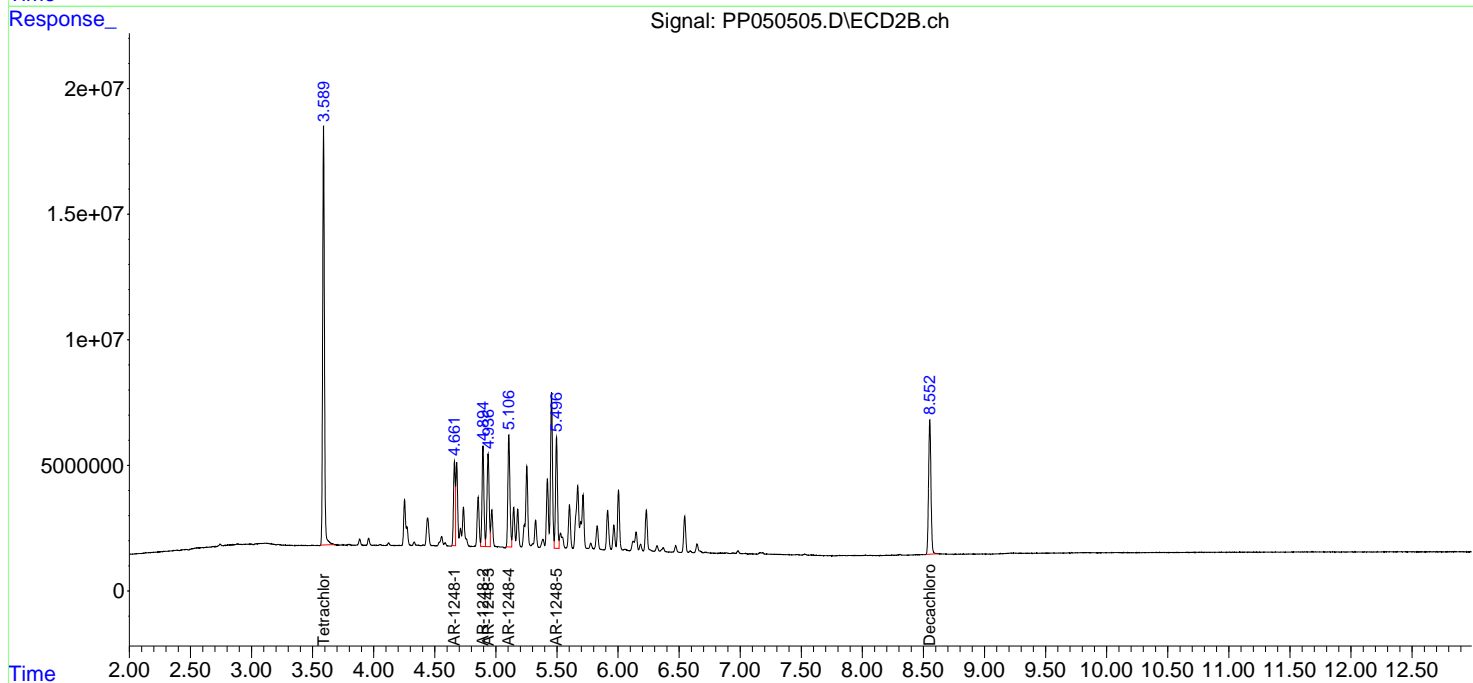
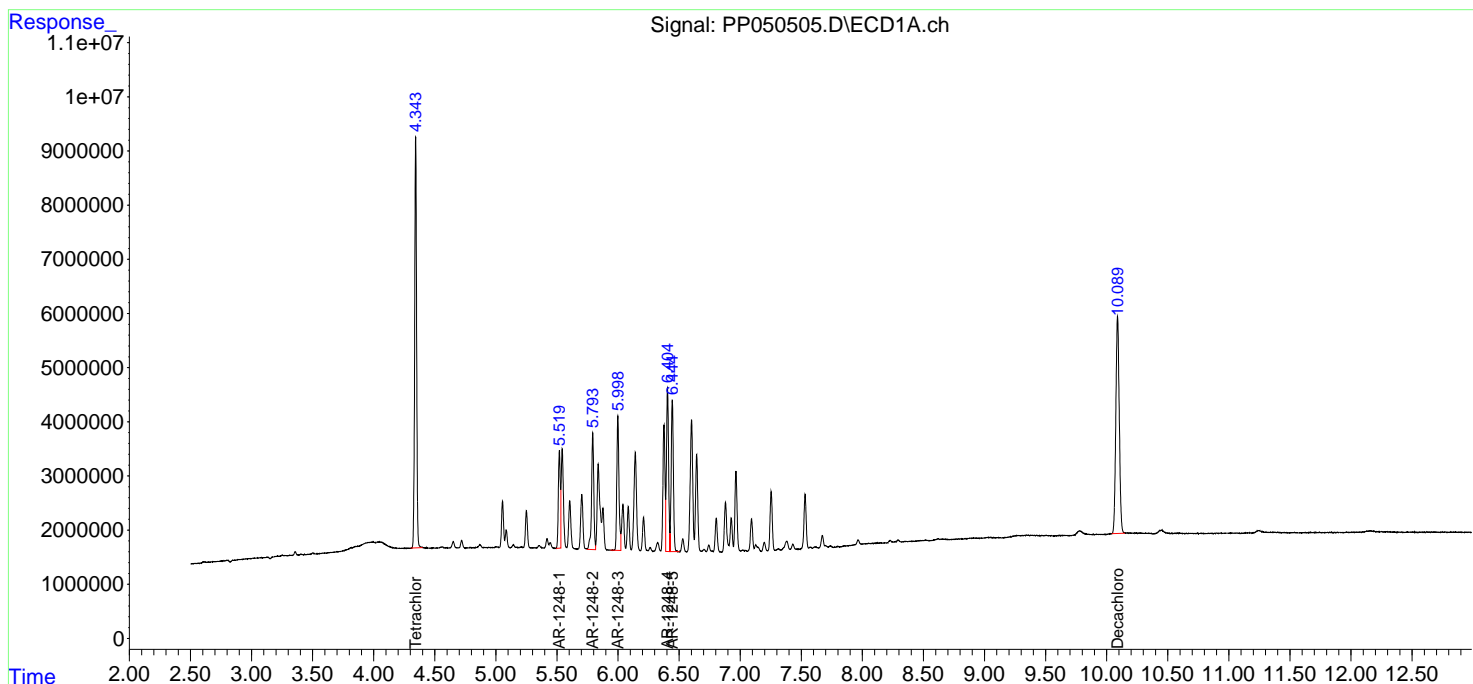
(f)=RT Delta > 1/2 Window (#)=Amounts differ by > 25% (m)=manual int.

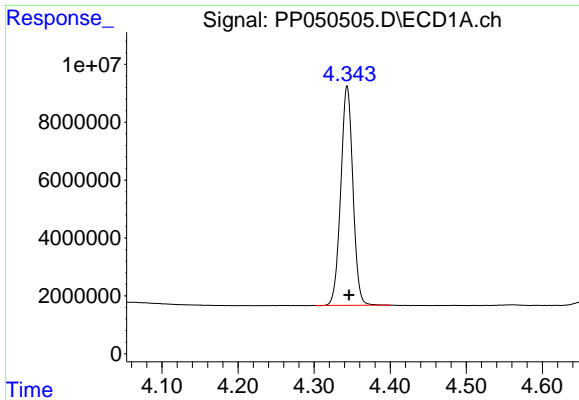
Data Path : Z:\pestpcbsrv\HPCHEM1\ECD_P\Data\PP081122\
 Data File : PP050505.D
 Signal(s) : Signal #1: ECD1A.ch Signal #2: ECD2B.ch
 Acq On : 12 Aug 2022 06:18
 Operator : YP\AJ
 Sample : AR1248CCC500
 Misc :
 ALS Vial : 5 Sample Multiplier: 1

Instrument :
 ECD_P
 ClientSampleId :
 AR1248CCC500

Integration File signal 1: autoint1.e
 Integration File signal 2: autoint2.e
 Quant Time: Aug 12 06:53:04 2022
 Quant Method : Z:\pestpcbsrv\HPCHEM1\ECD_P\methods\PP080622.M
 Quant Title : GC EXTRACTABLES
 QLast Update : Tue Aug 09 11:38:04 2022
 Response via : Initial Calibration
 Integrator: ChemStation

Volume Inj. : 2 µl
 Signal #1 Phase : ZB-MR1 Signal #2 Phase: ZB-MR2
 Signal #1 Info : 30Mx0.32mmx 0.50µ Signal #2 Info : 30M x 0.32mm x 0.25µm

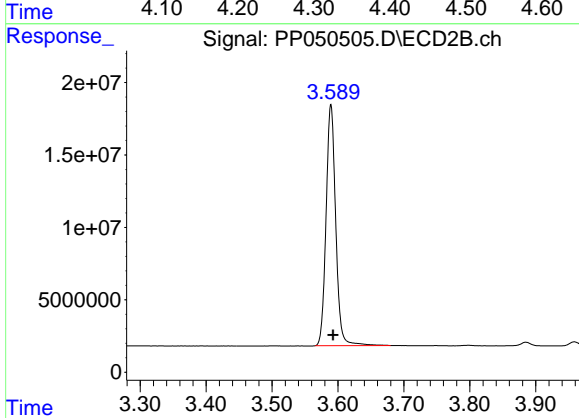




#1 Tetrachloro-m-xylene

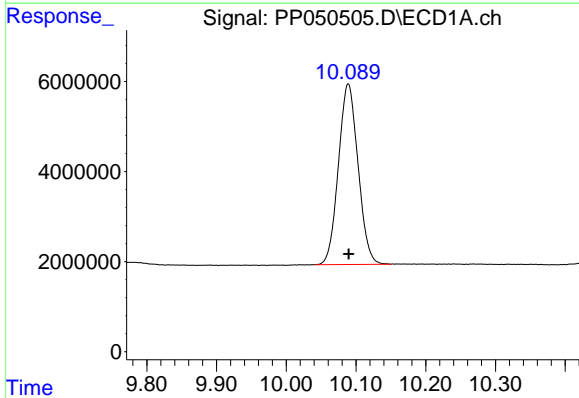
R.T.: 4.343 min
Delta R.T.: -0.003 min
Response: 84049810
Conc: 52.22 ng/ml

Instrument :
ECD_P
ClientSampleId :
AR1248CCC500



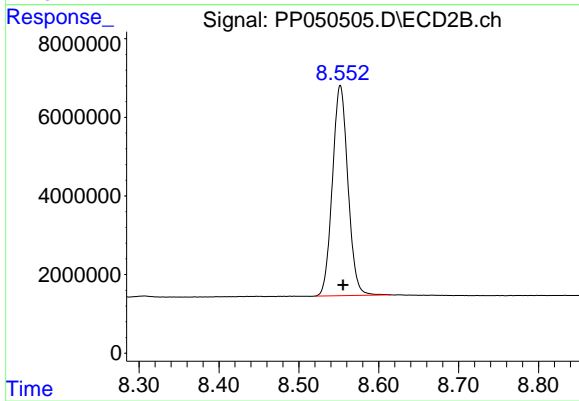
#1 Tetrachloro-m-xylene

R.T.: 3.589 min
Delta R.T.: -0.003 min
Response: 169416031
Conc: 54.09 ng/ml



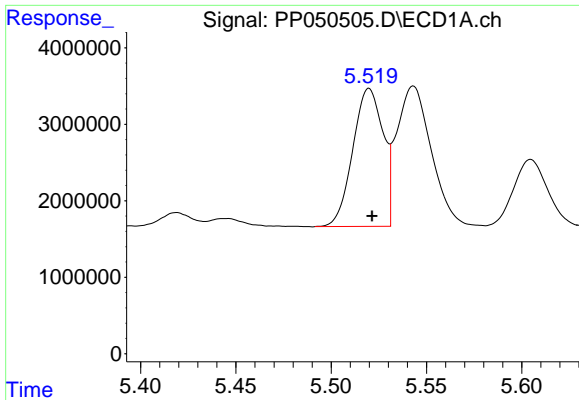
#2 Decachlorobiphenyl

R.T.: 10.089 min
Delta R.T.: 0.000 min
Response: 78314832
Conc: 44.47 ng/ml



#2 Decachlorobiphenyl

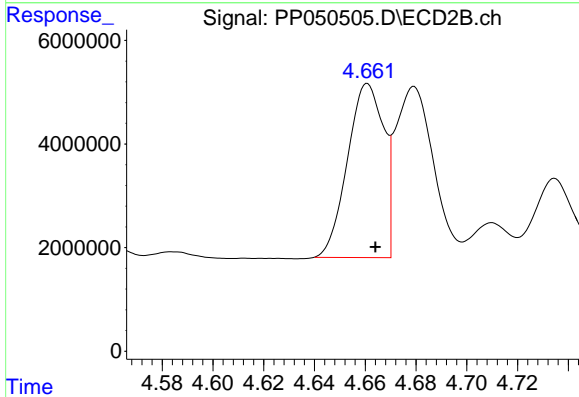
R.T.: 8.552 min
Delta R.T.: -0.003 min
Response: 72261514
Conc: 46.95 ng/ml



#21 AR-1248-1

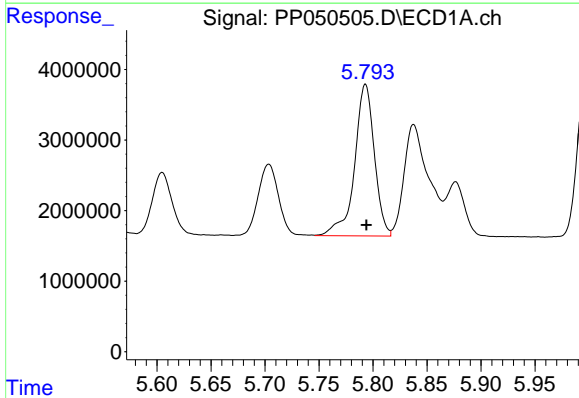
R.T.: 5.520 min
 Delta R.T.: -0.002 min
 Response: 19924440
 Conc: 493.46 ng/ml

Instrument :
 ECD_P
 ClientSampleId :
 AR1248CCC500



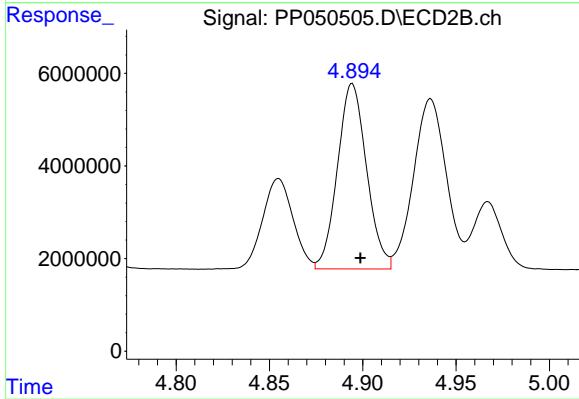
#21 AR-1248-1

R.T.: 4.661 min
 Delta R.T.: -0.003 min
 Response: 33201850
 Conc: 496.78 ng/ml



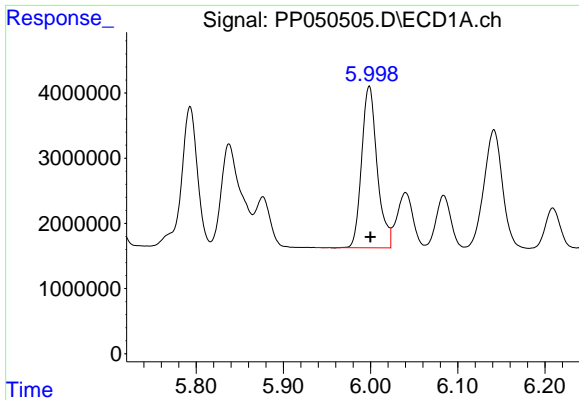
#22 AR-1248-2

R.T.: 5.793 min
 Delta R.T.: -0.001 min
 Response: 27441619
 Conc: 491.20 ng/ml



#22 AR-1248-2

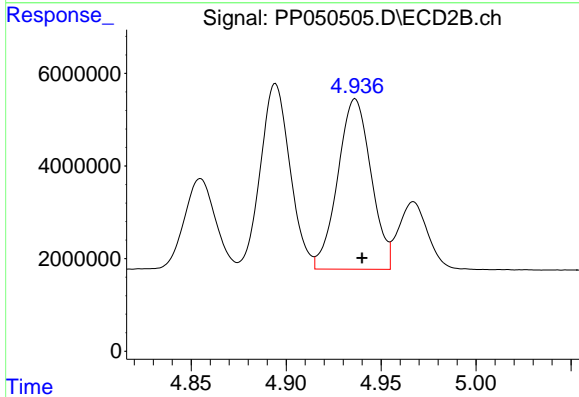
R.T.: 4.894 min
 Delta R.T.: -0.004 min
 Response: 43410401
 Conc: 502.53 ng/ml



#23 AR-1248-3

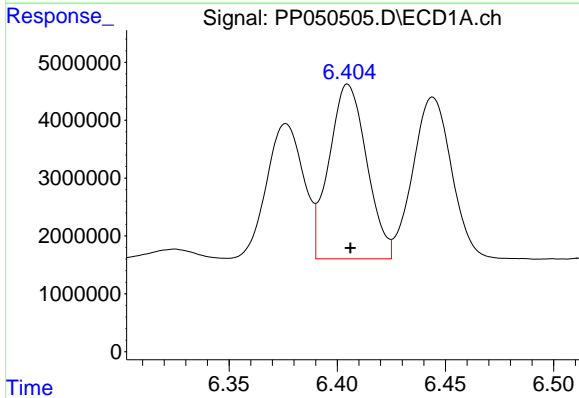
R.T.: 5.998 min
 Delta R.T.: -0.001 min
 Response: 30645201
 Conc: 479.06 ng/ml

Instrument :
 ECD_P
 ClientSampleId :
 AR1248CCC500



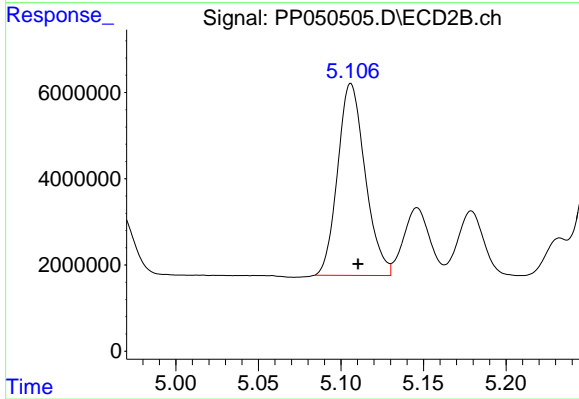
#23 AR-1248-3

R.T.: 4.936 min
 Delta R.T.: -0.004 min
 Response: 44985160
 Conc: 496.22 ng/ml



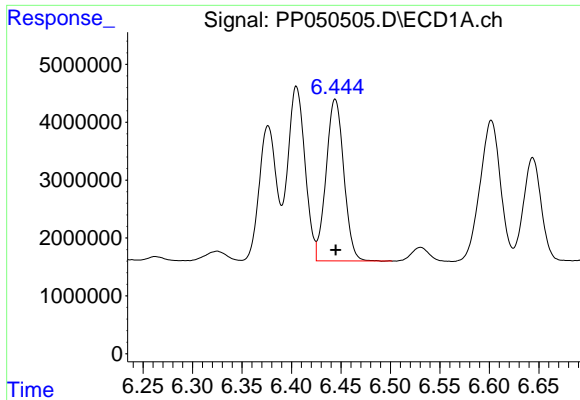
#24 AR-1248-4

R.T.: 6.405 min
 Delta R.T.: -0.001 min
 Response: 36547688
 Conc: 462.03 ng/ml



#24 AR-1248-4

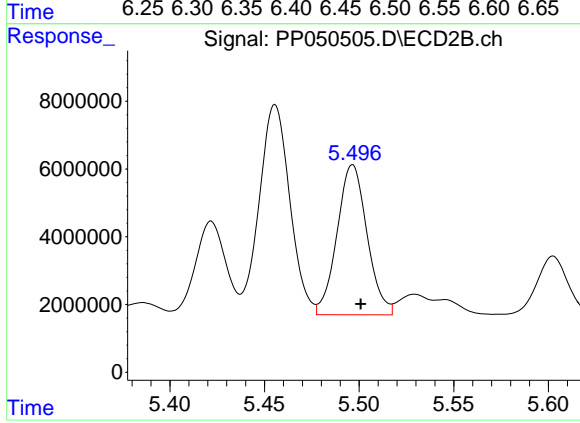
R.T.: 5.106 min
 Delta R.T.: -0.004 min
 Response: 51556976
 Conc: 489.16 ng/ml



#25 AR-1248-5

R.T.: 6.444 min
Delta R.T.: 0.000 min
Response: 34924324
Conc: 460.05 ng/ml

Instrument :
ECD_P
ClientSampleId :
AR1248CCC500



#25 AR-1248-5

R.T.: 5.497 min
Delta R.T.: -0.004 min
Response: 48932803
Conc: 492.83 ng/ml