

Data Path : Z:\pestpcbsrv\HPCHEM1\ECD_P\Data\PP081225\
 Data File : PP074301.D
 Signal(s) : Signal #1: ECD1A.ch Signal #2: ECD2B.ch
 Acq On : 12 Aug 2025 09:35
 Operator : YP\AJ
 Sample : HEXANE
 Misc :
 ALS Vial : 1 Sample Multiplier: 1

Instrument :
 ECD_P
 ClientSampleId :
 HEXANE

Integration File signal 1: autoint1.e
 Integration File signal 2: autoint2.e
 Quant Time: Aug 12 11:29:12 2025
 Quant Method : Z:\pestpcbsrv\HPCHEM1\ECD_P\methods\PP080125.M
 Quant Title : GC EXTRACTABLES
 QLast Update : Mon Aug 04 11:01:49 2025
 Response via : Initial Calibration
 Integrator: ChemStation

Volume Inj. : 2 µl
 Signal #1 Phase : ZB-MR2 Signal #2 Phase: ZB-MR2
 Signal #1 Info : 30Mx0.32mmx 0.50µ Signal #2 Info : 30M x 0.32mm x 0.25µm

Compound	RT#1	RT#2	Resp#1	Resp#2	ng/ml	ng/ml

System Monitoring Compounds						
1) SA Tetrachlo...	4.683	3.807	149985	91068	0.134	0.024 #
2) SA Decachlor...	0.000	8.829	0	395249	N.D.	0.066 #
Target Compounds						
3) L1 AR-1016-1	0.000	4.922	0	442977	N.D.	1.111 #
4) L1 AR-1016-2	0.000	4.955	0	482397	N.D.	2.569 #
5) L1 AR-1016-3	5.912	5.073	174999	357887	4.412	3.374
6) L1 AR-1016-4	5.959	5.125	151919	399821	4.668	3.661
7) L1 AR-1016-5	0.000	5.327	0	569793	N.D.	4.872 #
8) L2 AR-1221-1	0.000	4.028	0	383033	N.D.	7.803 #
9) L2 AR-1221-2	0.000	4.112	0	318004	N.D.	8.861 #
10) L2 AR-1221-3	0.000	4.170	0	235205	N.D.	1.739 #
11) L3 AR-1232-1	0.000	4.170	0	235205	N.D.	2.320 #
12) L3 AR-1232-2	0.000	4.922	0	442977	N.D.	2.542 #
13) L3 AR-1232-3	0.000	5.073	0	357887	N.D.	7.811 #
14) L3 AR-1232-4	5.959	5.153	151919	432488	9.821	7.455
15) L3 AR-1232-5	0.000	5.327	0	569793	N.D.	12.129 #
16) L4 AR-1242-1	0.000	4.922	0	442977	N.D.	1.283 #
17) L4 AR-1242-2	0.000	4.955	0	482397	N.D.	2.953 #
18) L4 AR-1242-3	5.912	5.073	174999	357887	4.897	3.880
19) L4 AR-1242-4	5.959	5.153	151919	432488	5.199	3.622 #
20) L4 AR-1242-5	6.705	5.691	170776	708930	4.803	4.740
21) L5 AR-1248-1	0.000	4.885	0	365541	N.D.	1.709 #
22) L5 AR-1248-2	0.000	5.125	0	399821	N.D.	2.733 #
23) L5 AR-1248-3	0.000	5.153	0	432488	N.D.	2.522 #
24) L5 AR-1248-4	6.690	5.327	102769	569793	1.975	3.425 #
25) L5 AR-1248-5	6.705	5.750	170776	4589228	2.999	15.772 #
26) L6 AR-1254-1	6.652	5.691	428102	708930	8.132	1.936 #
27) L6 AR-1254-2	6.881	5.827	45330	839920	0.570	3.019 #
28) L6 AR-1254-3	7.226	6.232	1359511	344181	15.570	0.704 #
29) L6 AR-1254-4	7.520	6.475	256855	622477	4.025	1.694 #
30) L6 AR-1254-5	7.938	6.871	244031	806232	3.007	2.093 #
31) L7 AR-1260-1	7.398	6.575	66826	417036	1.186	1.032
32) L7 AR-1260-2	7.653	6.718	173773	726452	2.550	2.323
33) L7 AR-1260-3	8.003	6.904	64339	686612	1.207	1.742 #
34) L7 AR-1260-4	8.240	7.183	136842	485106	2.185	1.667
35) L7 AR-1260-5	8.559	7.415	128688	619955	1.136	0.819 #
36) L8 AR-1262-1	8.240	6.904	136842	686612	1.806	1.219 #
37) L8 AR-1262-2	8.559	7.183	128688	485106	0.987	1.210
38) L8 AR-1262-3	0.000	7.701	0	408257	N.D.	1.136 #
39) L8 AR-1262-4	8.980	7.757	58675	569769	0.805	0.854
40) L8 AR-1262-5	9.651	8.241	57054	341136	1.120	1.204
41) L9 AR-1268-1	0.000	7.701	0	408257	N.D.	0.374 #

Data Path : Z:\pestpcbsrv\HPCHEM1\ECD_P\Data\PP081225\
 Data File : PP074301.D
 Signal(s) : Signal #1: ECD1A.ch Signal #2: ECD2B.ch
 Acq On : 12 Aug 2025 09:35
 Operator : YP\AJ
 Sample : HEXANE
 Misc :
 ALS Vial : 1 Sample Multiplier: 1

Instrument :
 ECD_P
 ClientSampleId :
 HEXANE

Integration File signal 1: autoint1.e
 Integration File signal 2: autoint2.e
 Quant Time: Aug 12 11:29:12 2025
 Quant Method : Z:\pestpcbsrv\HPCHEM1\ECD_P\methods\PP080125.M
 Quant Title : GC EXTRACTABLES
 QLast Update : Mon Aug 04 11:01:49 2025
 Response via : Initial Calibration
 Integrator: ChemStation

Volume Inj. : 2 µl
 Signal #1 Phase : ZB-MR1 Signal #2 Phase: ZB-MR2
 Signal #1 Info : 30Mx0.32mmx 0.50µ Signal #2 Info : 30M x 0.32mm x 0.25µm

	Compound	RT#1	RT#2	Resp#1	Resp#2	ng/ml	ng/ml
42)	L9 AR-1268-2	8.980	7.757	58675	569769	0.409	0.537 #
43)	L9 AR-1268-3	9.234	7.985	160814	801894	1.346	0.964 #
44)	L9 AR-1268-4	9.651	8.270	57054	465821	0.970	1.512 #
45)	L9 AR-1268-5	10.095	8.555	34443	919294	0.098	0.360 #

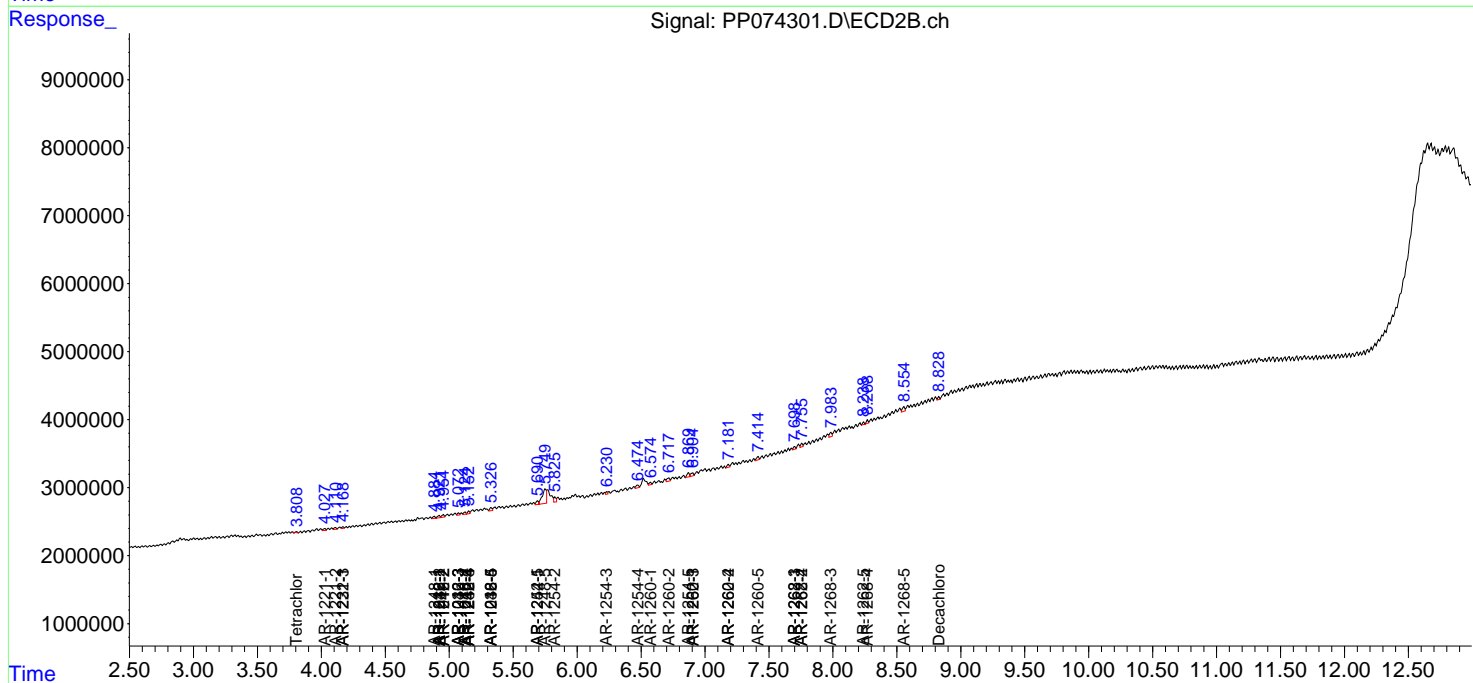
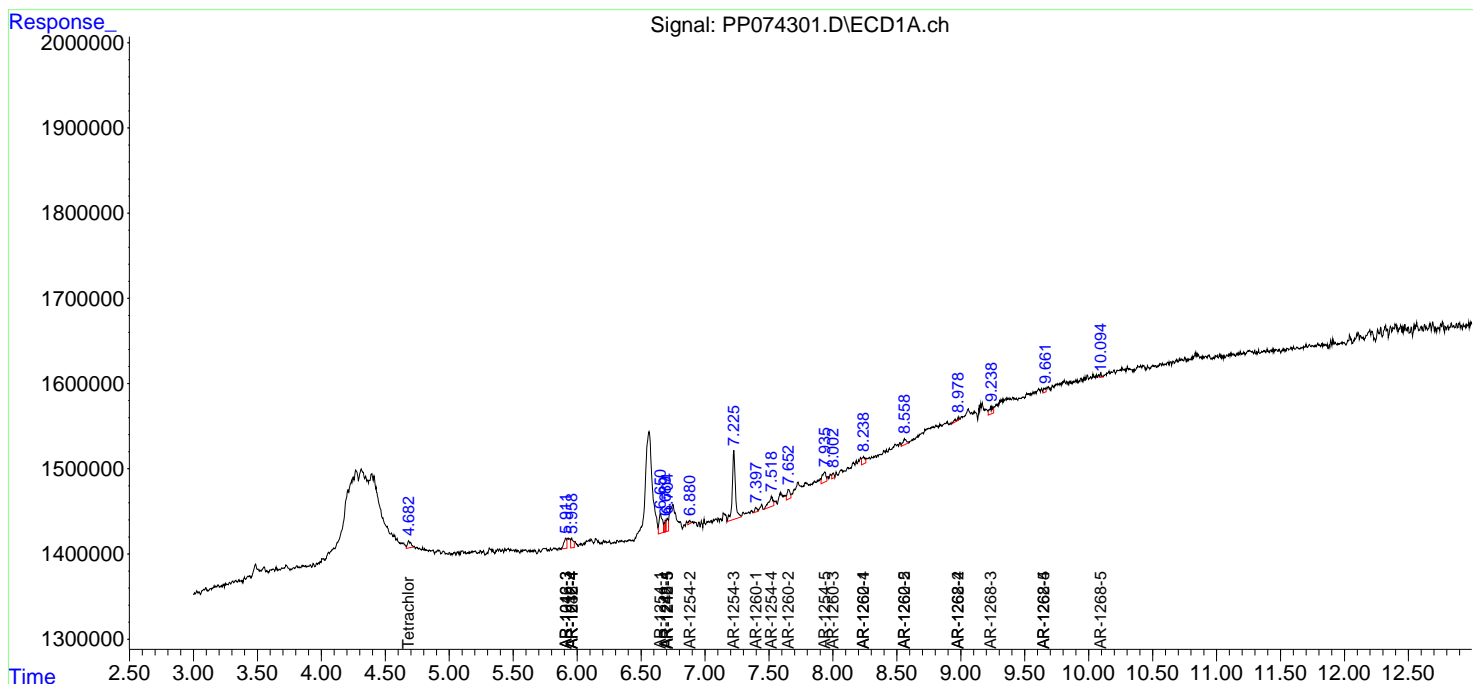
(f)=RT Delta > 1/2 Window (#)=Amounts differ by > 25% (m)=manual int.

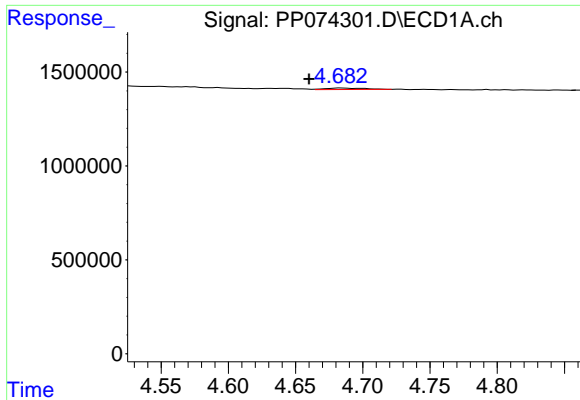
Data Path : Z:\pestpcbsrv\HPCHEM1\ECD_P\Data\PP081225\
 Data File : PP074301.D
 Signal(s) : Signal #1: ECD1A.ch Signal #2: ECD2B.ch
 Acq On : 12 Aug 2025 09:35
 Operator : YP\AJ
 Sample : HEXANE
 Misc :
 ALS Vial : 1 Sample Multiplier: 1

Instrument :
 ECD_P
 ClientSampleId :
 HEXANE

Integration File signal 1: autoint1.e
 Integration File signal 2: autoint2.e
 Quant Time: Aug 12 11:29:12 2025
 Quant Method : Z:\pestpcbsrv\HPCHEM1\ECD_P\methods\PP080125.M
 Quant Title : GC EXTRACTABLES
 QLast Update : Mon Aug 04 11:01:49 2025
 Response via : Initial Calibration
 Integrator: ChemStation

Volume Inj. : 2 µl
 Signal #1 Phase : ZB-MR1 Signal #2 Phase: ZB-MR2
 Signal #1 Info : 30Mx0.32mmx 0.50µ Signal #2 Info : 30M x 0.32mm x 0.25µm

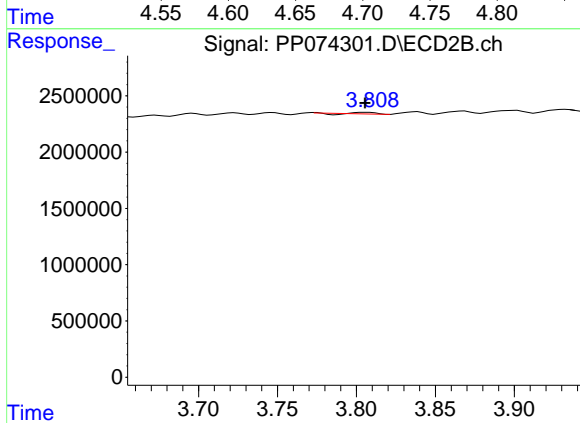




#1 Tetrachloro-m-xylene

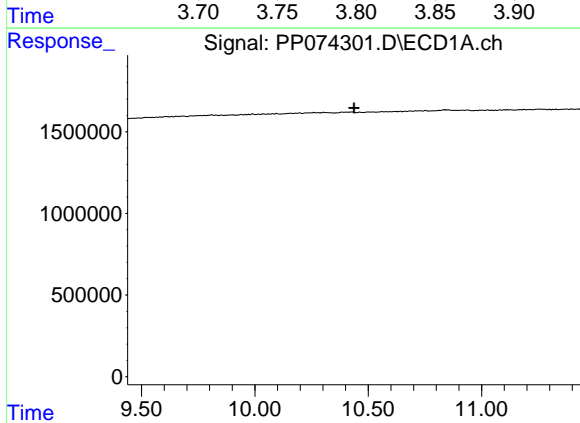
R.T.: 4.683 min
 Delta R.T.: 0.023 min
 Response: 149985
 Conc: 0.13 ng/ml

Instrument :
 ECD_P
 ClientSampleId :
 HEXANE



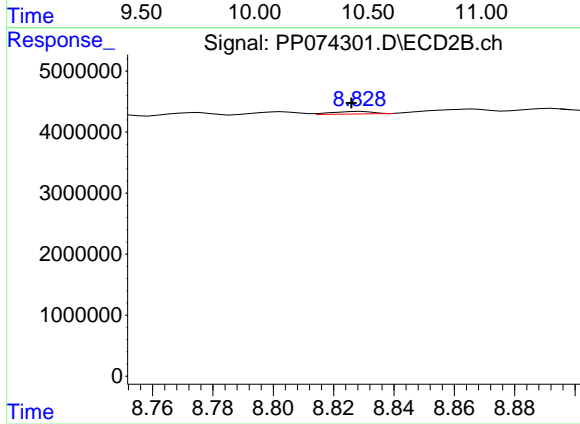
#1 Tetrachloro-m-xylene

R.T.: 3.807 min
 Delta R.T.: 0.001 min
 Response: 91068
 Conc: 0.02 ng/ml



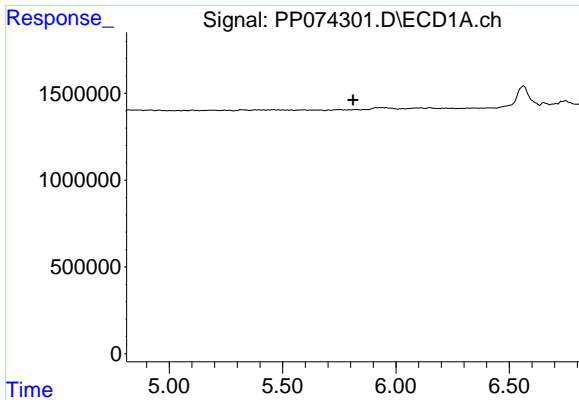
#2 Decachlorobiphenyl

R.T.: 0.000 min
 Exp R.T. : 10.438 min
 Response: 0
 Conc: N.D.



#2 Decachlorobiphenyl

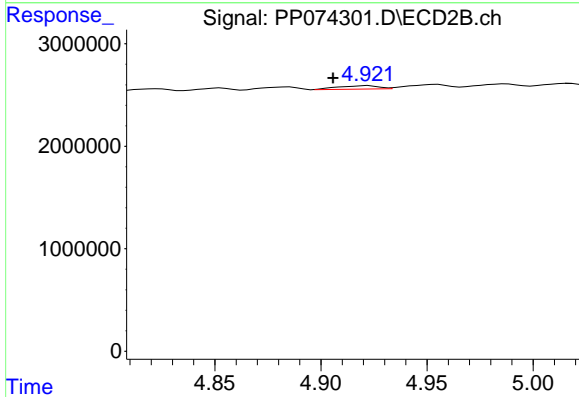
R.T.: 8.829 min
 Delta R.T.: 0.003 min
 Response: 395249
 Conc: 0.07 ng/ml



#3 AR-1016-1

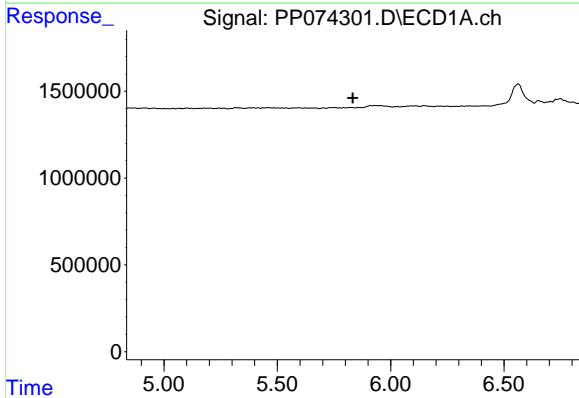
R.T.: 0.000 min
 Exp R.T.: 5.812 min
 Response: 0
 Conc: N.D.

Instrument : ECD_P
 ClientSampleId : HEXANE



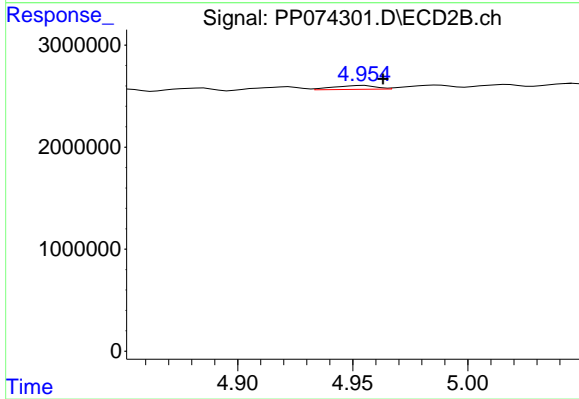
#3 AR-1016-1

R.T.: 4.922 min
 Delta R.T.: 0.016 min
 Response: 442977
 Conc: 1.11 ng/ml



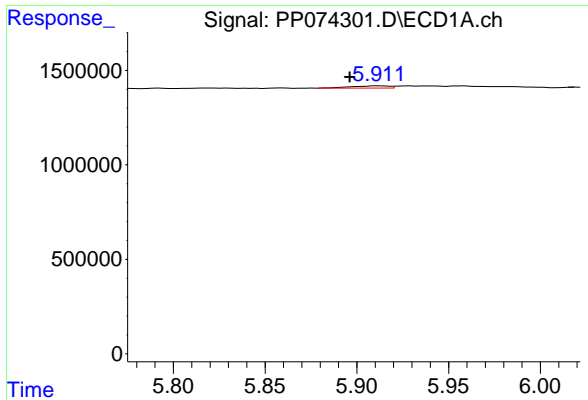
#4 AR-1016-2

R.T.: 0.000 min
 Exp R.T.: 5.833 min
 Response: 0
 Conc: N.D.



#4 AR-1016-2

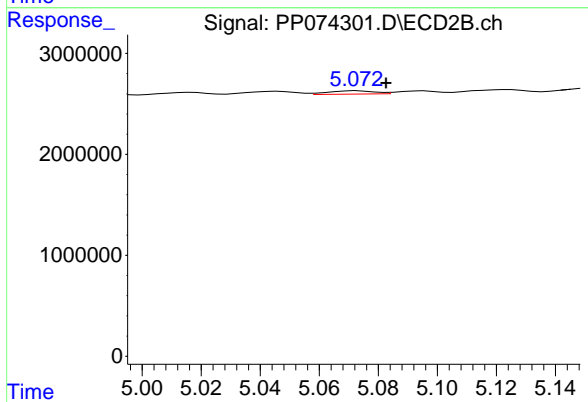
R.T.: 4.955 min
 Delta R.T.: -0.008 min
 Response: 482397
 Conc: 2.57 ng/ml



#5 AR-1016-3

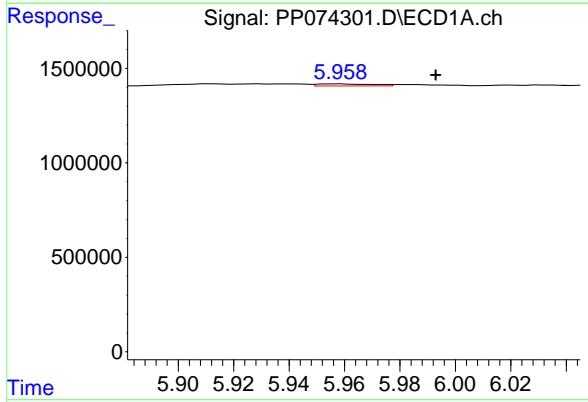
R.T.: 5.912 min
 Delta R.T.: 0.016 min
 Response: 174999
 Conc: 4.41 ng/ml

Instrument :
 ECD_P
 ClientSampleId :
 HEXANE



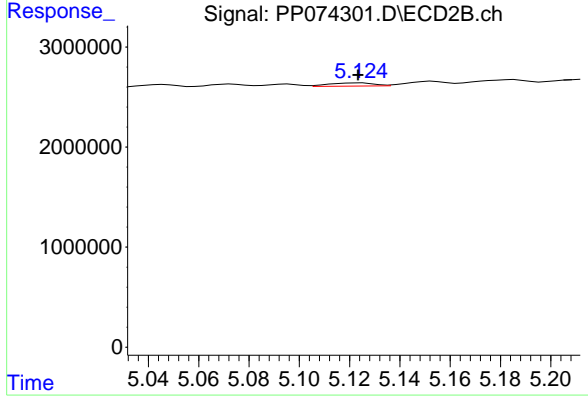
#5 AR-1016-3

R.T.: 5.073 min
 Delta R.T.: -0.010 min
 Response: 357887
 Conc: 3.37 ng/ml



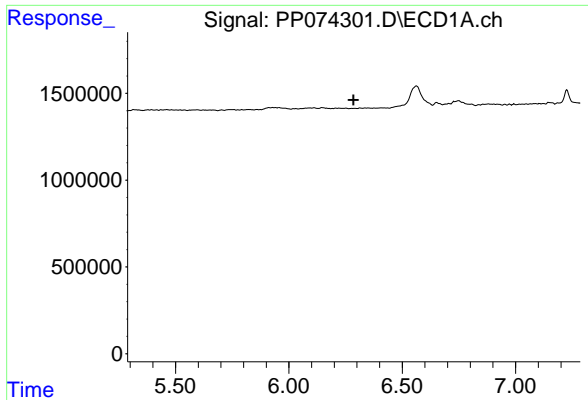
#6 AR-1016-4

R.T.: 5.959 min
 Delta R.T.: -0.034 min
 Response: 151919
 Conc: 4.67 ng/ml



#6 AR-1016-4

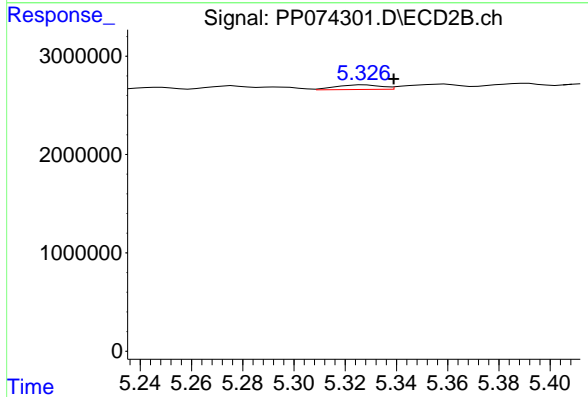
R.T.: 5.125 min
 Delta R.T.: 0.001 min
 Response: 399821
 Conc: 3.66 ng/ml



#7 AR-1016-5

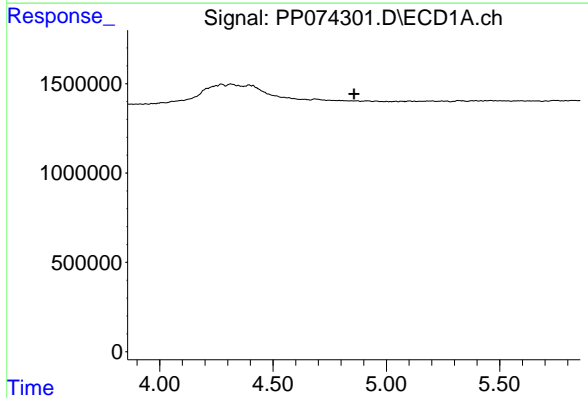
R.T.: 0.000 min
 Exp R.T.: 6.286 min
 Response: 0
 Conc: N.D.

Instrument :
 ECD_P
 ClientSampleId :
 HEXANE



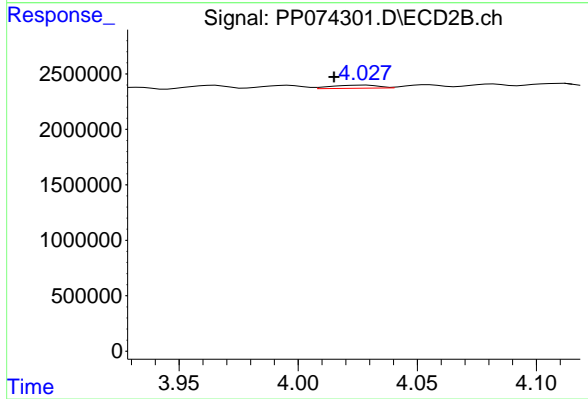
#7 AR-1016-5

R.T.: 5.327 min
 Delta R.T.: -0.012 min
 Response: 569793
 Conc: 4.87 ng/ml



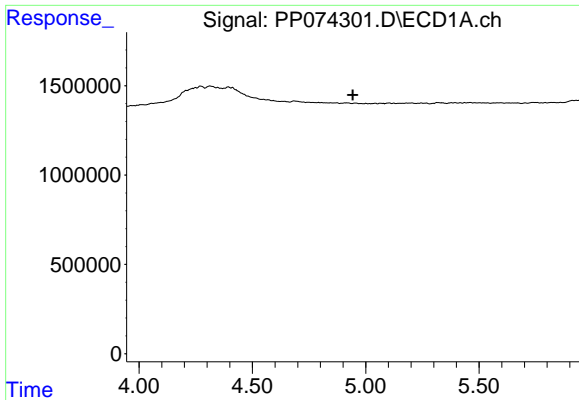
#8 AR-1221-1

R.T.: 0.000 min
 Exp R.T.: 4.858 min
 Response: 0
 Conc: N.D.



#8 AR-1221-1

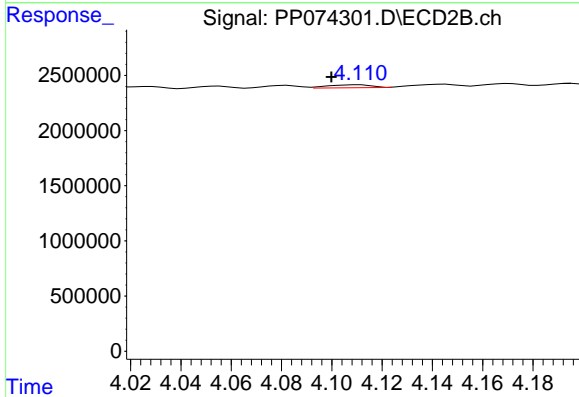
R.T.: 4.028 min
 Delta R.T.: 0.013 min
 Response: 383033
 Conc: 7.80 ng/ml



#9 AR-1221-2

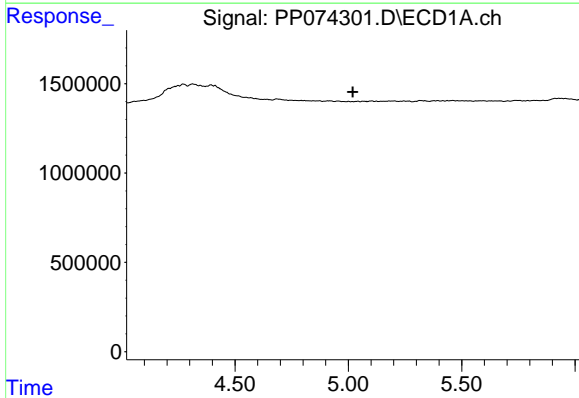
R.T.: 0.000 min
 Exp R.T. : 4.944 min
 Response: 0
 Conc: N.D.

Instrument :
 ECD_P
 ClientSampleId :
 HEXANE



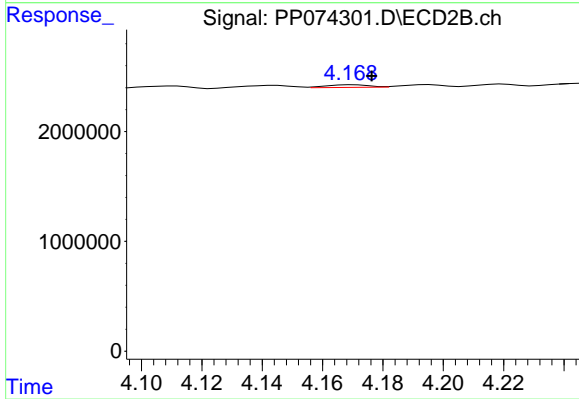
#9 AR-1221-2

R.T.: 4.112 min
 Delta R.T.: 0.012 min
 Response: 318004
 Conc: 8.86 ng/ml



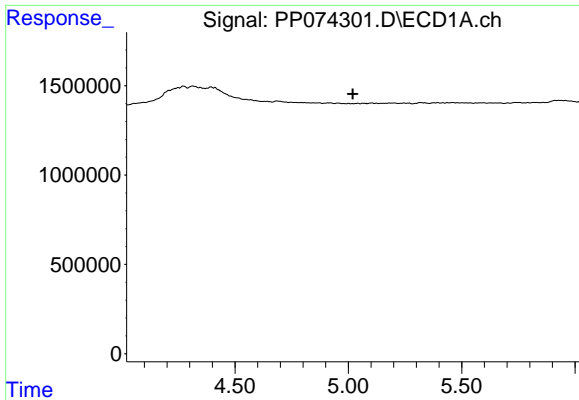
#10 AR-1221-3

R.T.: 0.000 min
 Exp R.T. : 5.019 min
 Response: 0
 Conc: N.D.



#10 AR-1221-3

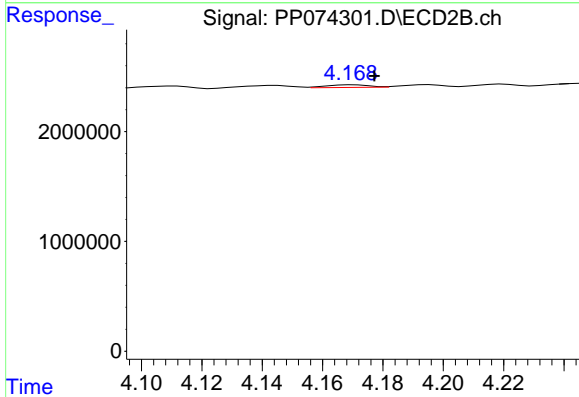
R.T.: 4.170 min
 Delta R.T.: -0.006 min
 Response: 235205
 Conc: 1.74 ng/ml



#11 AR-1232-1

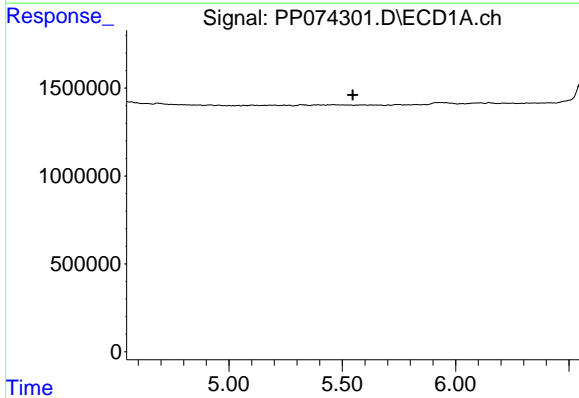
R.T.: 0.000 min
 Exp R.T. : 5.020 min
 Response: 0
 Conc: N.D.

Instrument :
 ECD_P
 ClientSampleId :
 HEXANE



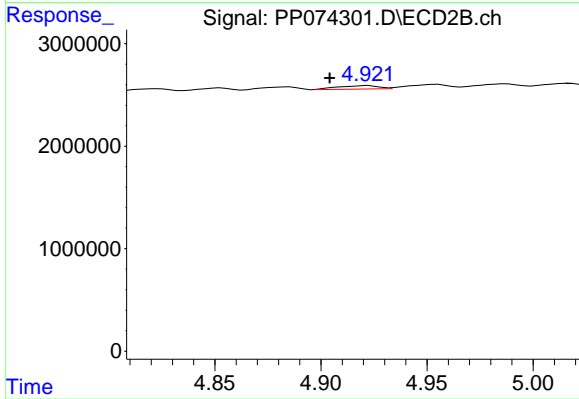
#11 AR-1232-1

R.T.: 4.170 min
 Delta R.T.: -0.007 min
 Response: 235205
 Conc: 2.32 ng/ml



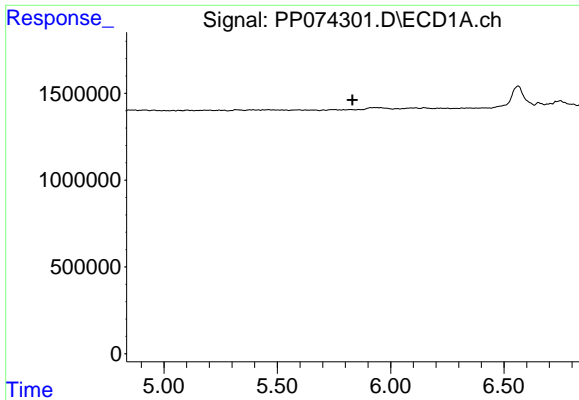
#12 AR-1232-2

R.T.: 0.000 min
 Exp R.T. : 5.546 min
 Response: 0
 Conc: N.D.



#12 AR-1232-2

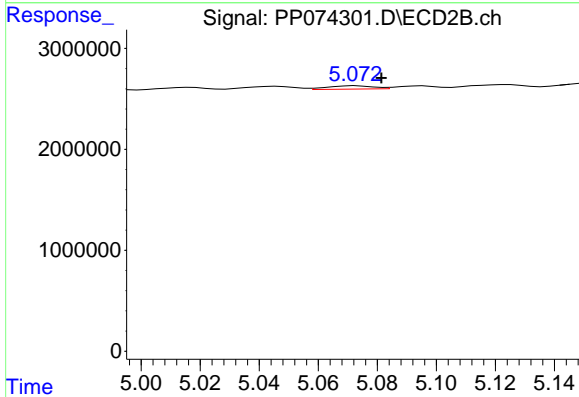
R.T.: 4.922 min
 Delta R.T.: 0.018 min
 Response: 442977
 Conc: 2.54 ng/ml



#13 AR-1232-3

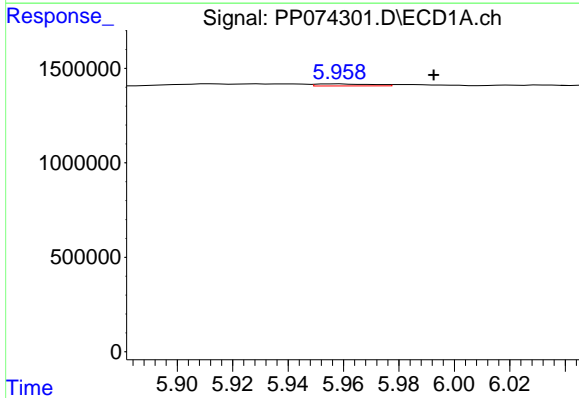
R.T.: 0.000 min
 Exp R.T.: 5.832 min
 Response: 0
 Conc: N.D.

Instrument :
 ECD_P
 ClientSampleId :
 HEXANE



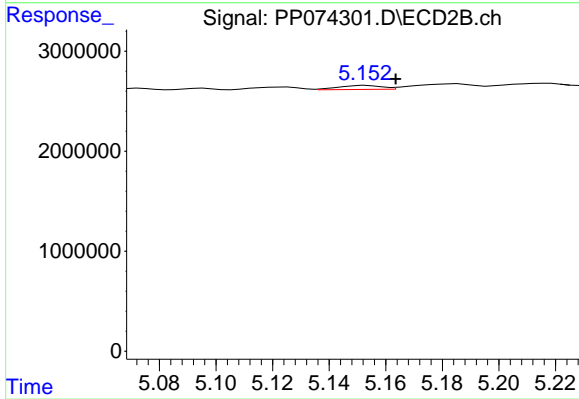
#13 AR-1232-3

R.T.: 5.073 min
 Delta R.T.: -0.008 min
 Response: 357887
 Conc: 7.81 ng/ml



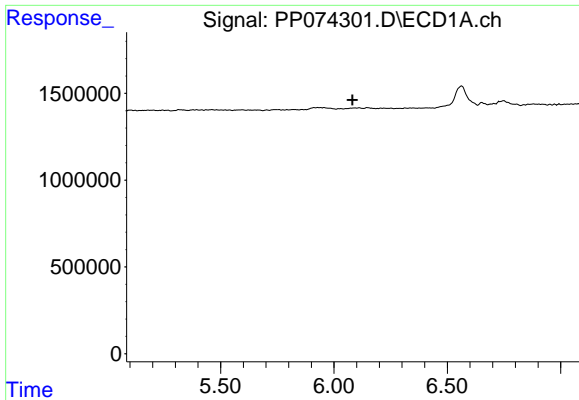
#14 AR-1232-4

R.T.: 5.959 min
 Delta R.T.: -0.034 min
 Response: 151919
 Conc: 9.82 ng/ml



#14 AR-1232-4

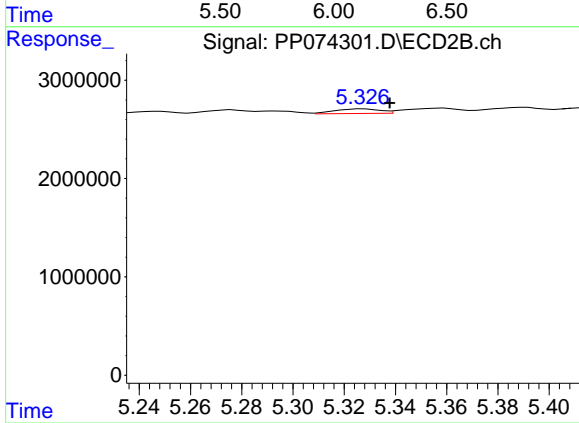
R.T.: 5.153 min
 Delta R.T.: -0.010 min
 Response: 432488
 Conc: 7.46 ng/ml



#15 AR-1232-5

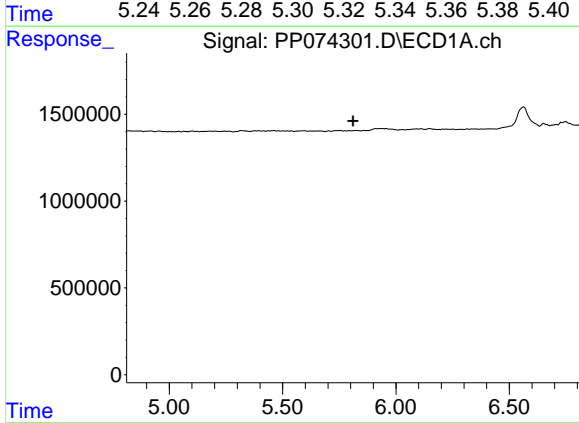
R.T.: 0.000 min
 Exp R.T. : 6.082 min
 Response: 0
 Conc: N.D.

Instrument :
 ECD_P
 ClientSampleId :
 HEXANE



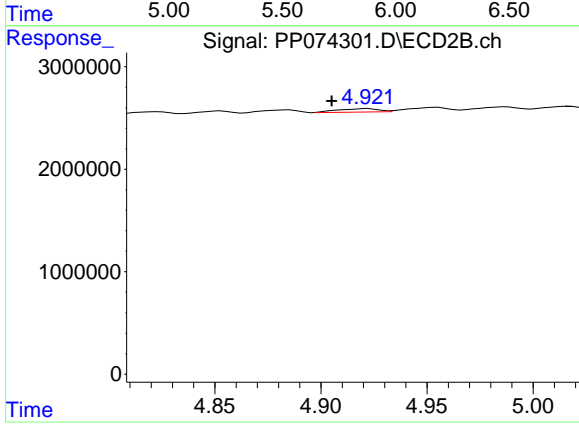
#15 AR-1232-5

R.T.: 5.327 min
 Delta R.T.: -0.010 min
 Response: 569793
 Conc: 12.13 ng/ml



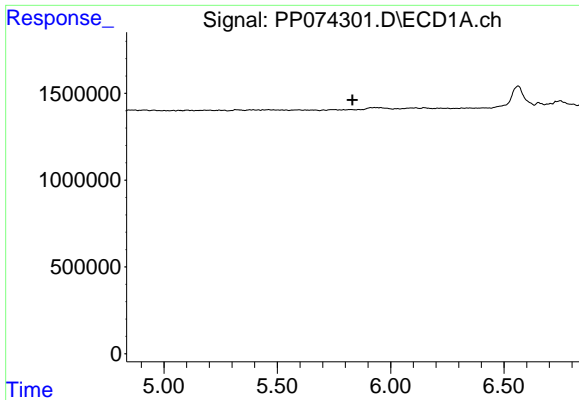
#16 AR-1242-1

R.T.: 0.000 min
 Exp R.T. : 5.811 min
 Response: 0
 Conc: N.D.



#16 AR-1242-1

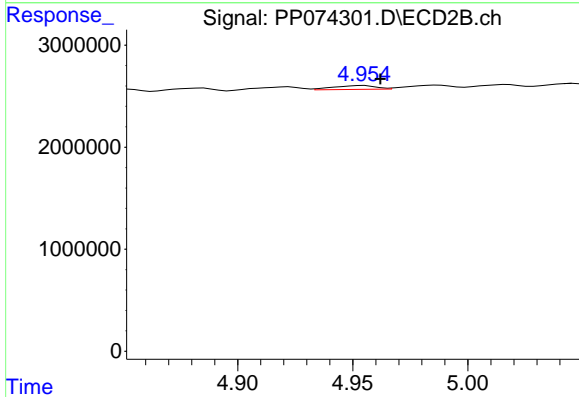
R.T.: 4.922 min
 Delta R.T.: 0.017 min
 Response: 442977
 Conc: 1.28 ng/ml



#17 AR-1242-2

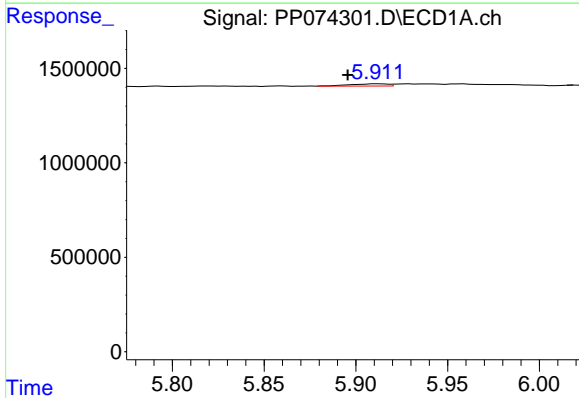
R.T.: 0.000 min
 Exp R.T.: 5.832 min
 Response: 0
 Conc: N.D.

Instrument :
 ECD_P
 ClientSampleId :
 HEXANE



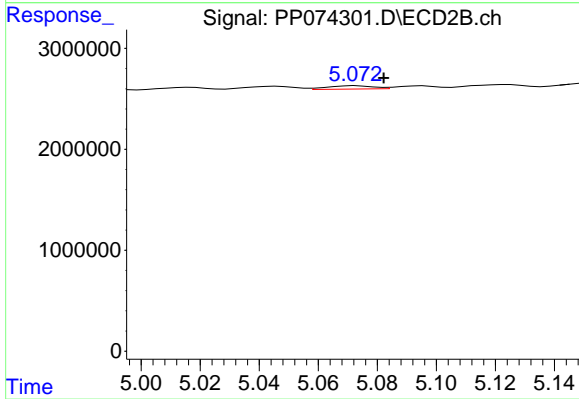
#17 AR-1242-2

R.T.: 4.955 min
 Delta R.T.: -0.007 min
 Response: 482397
 Conc: 2.95 ng/ml



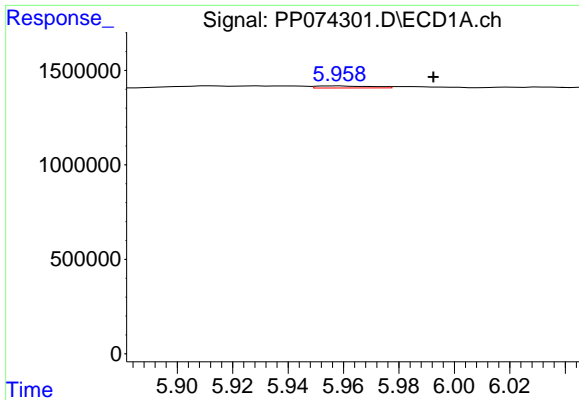
#18 AR-1242-3

R.T.: 5.912 min
 Delta R.T.: 0.017 min
 Response: 174999
 Conc: 4.90 ng/ml



#18 AR-1242-3

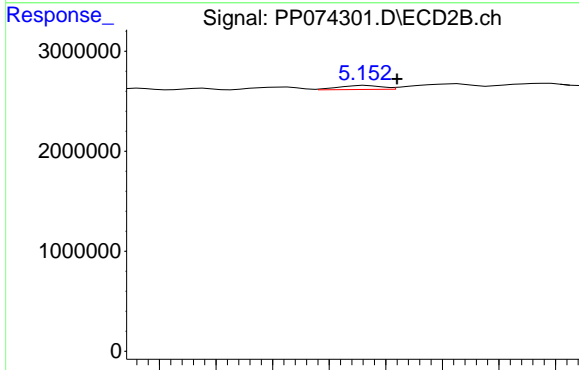
R.T.: 5.073 min
 Delta R.T.: -0.009 min
 Response: 357887
 Conc: 3.88 ng/ml



#19 AR-1242-4

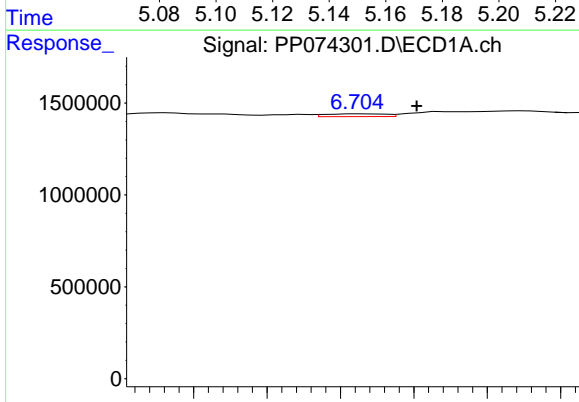
R.T.: 5.959 min
 Delta R.T.: -0.034 min
 Response: 151919
 Conc: 5.20 ng/ml

Instrument :
 ECD_P
 ClientSampleId :
 HEXANE



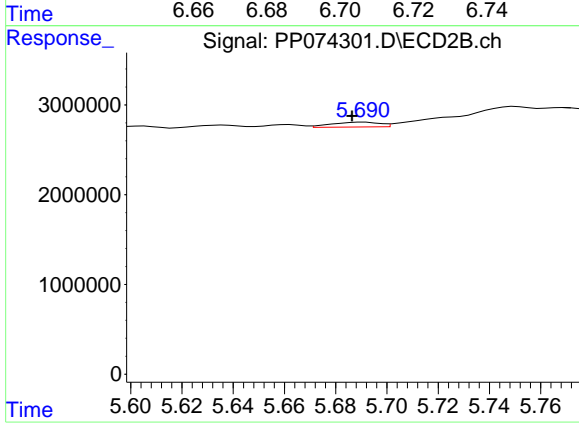
#19 AR-1242-4

R.T.: 5.153 min
 Delta R.T.: -0.011 min
 Response: 432488
 Conc: 3.62 ng/ml



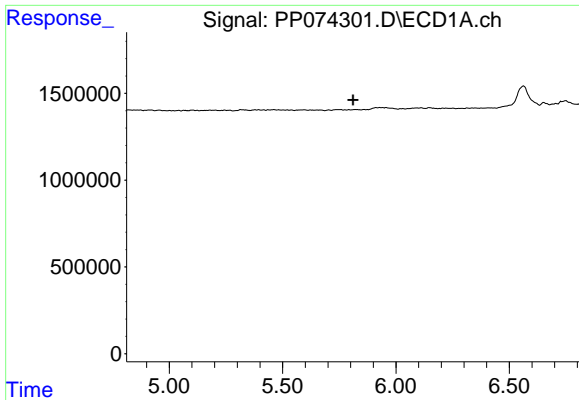
#20 AR-1242-5

R.T.: 6.705 min
 Delta R.T.: -0.015 min
 Response: 170776
 Conc: 4.80 ng/ml



#20 AR-1242-5

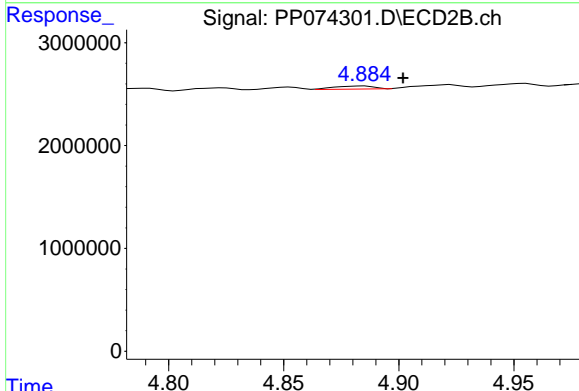
R.T.: 5.691 min
 Delta R.T.: 0.005 min
 Response: 708930
 Conc: 4.74 ng/ml



#21 AR-1248-1

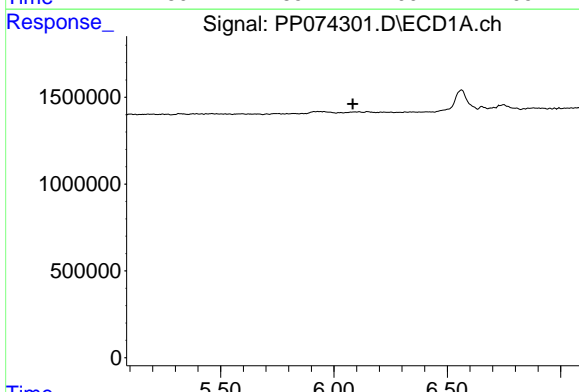
R.T.: 0.000 min
 Exp R.T.: 5.811 min
 Response: 0
 Conc: N.D.

Instrument : ECD_P
 ClientSampleId : HEXANE



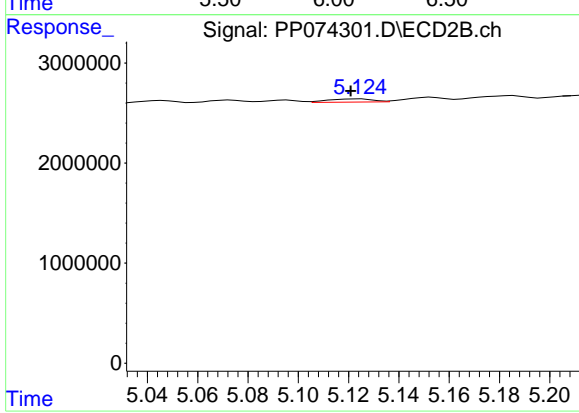
#21 AR-1248-1

R.T.: 4.885 min
 Delta R.T.: -0.017 min
 Response: 365541
 Conc: 1.71 ng/ml



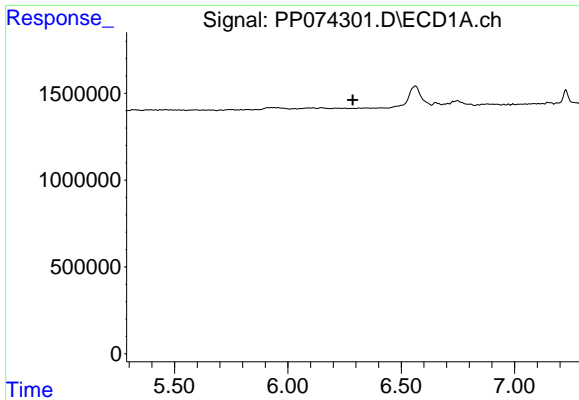
#22 AR-1248-2

R.T.: 0.000 min
 Exp R.T.: 6.083 min
 Response: 0
 Conc: N.D.



#22 AR-1248-2

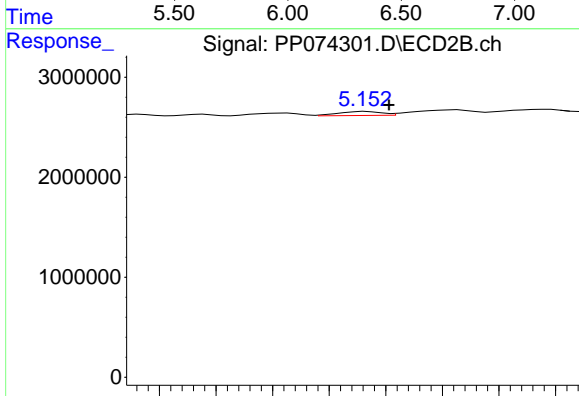
R.T.: 5.125 min
 Delta R.T.: 0.004 min
 Response: 399821
 Conc: 2.73 ng/ml



#23 AR-1248-3

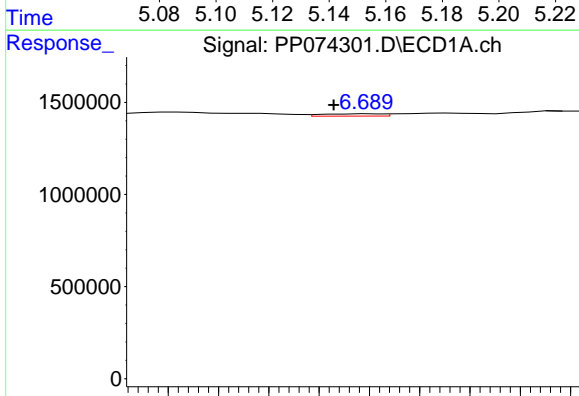
R.T.: 0.000 min
 Exp R.T.: 6.286 min
 Response: 0
 Conc: N.D.

Instrument :
 ECD_P
 ClientSampleId :
 HEXANE



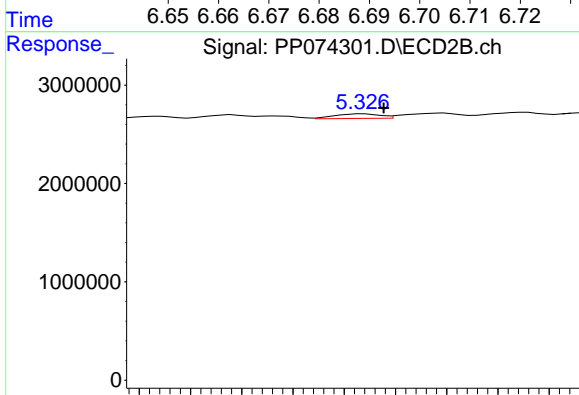
#23 AR-1248-3

R.T.: 5.153 min
 Delta R.T.: -0.008 min
 Response: 432488
 Conc: 2.52 ng/ml



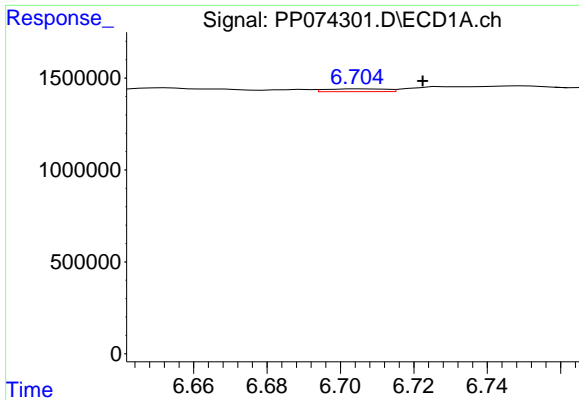
#24 AR-1248-4

R.T.: 6.690 min
 Delta R.T.: 0.007 min
 Response: 102769
 Conc: 1.97 ng/ml



#24 AR-1248-4

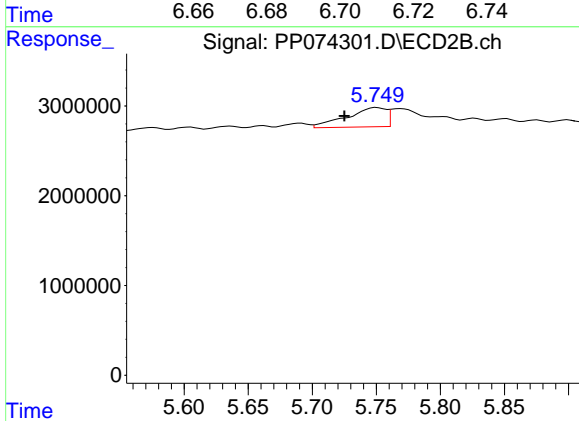
R.T.: 5.327 min
 Delta R.T.: -0.008 min
 Response: 569793
 Conc: 3.42 ng/ml



#25 AR-1248-5

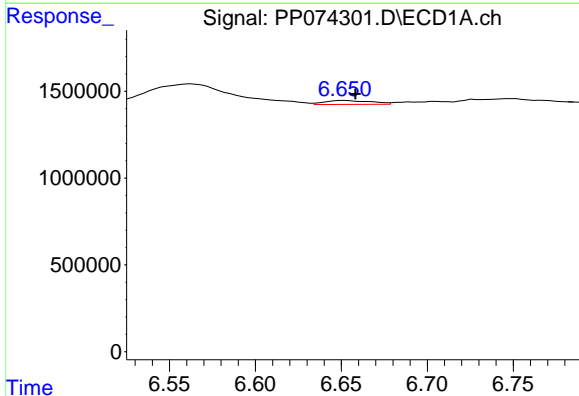
R.T.: 6.705 min
 Delta R.T.: -0.017 min
 Response: 170776
 Conc: 3.00 ng/ml

Instrument :
 ECD_P
 ClientSampleId :
 HEXANE



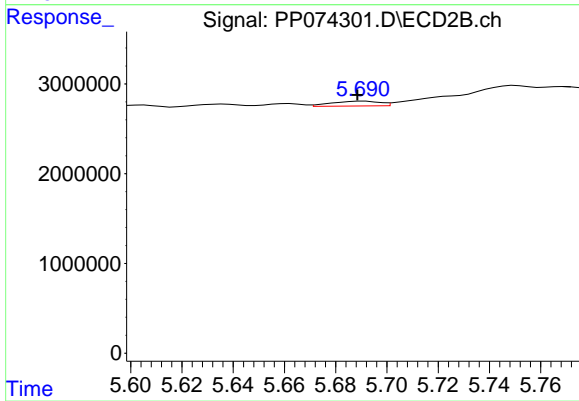
#25 AR-1248-5

R.T.: 5.750 min
 Delta R.T.: 0.025 min
 Response: 4589228
 Conc: 15.77 ng/ml



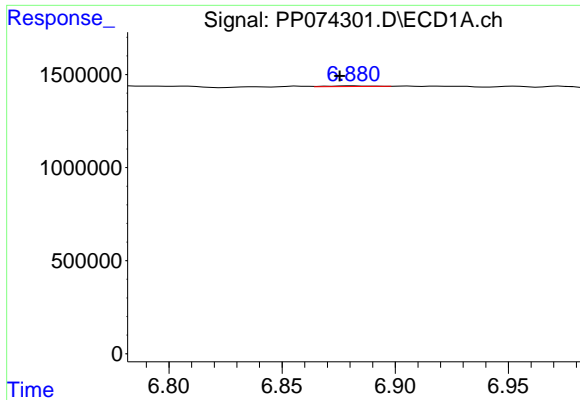
#26 AR-1254-1

R.T.: 6.652 min
 Delta R.T.: -0.006 min
 Response: 428102
 Conc: 8.13 ng/ml



#26 AR-1254-1

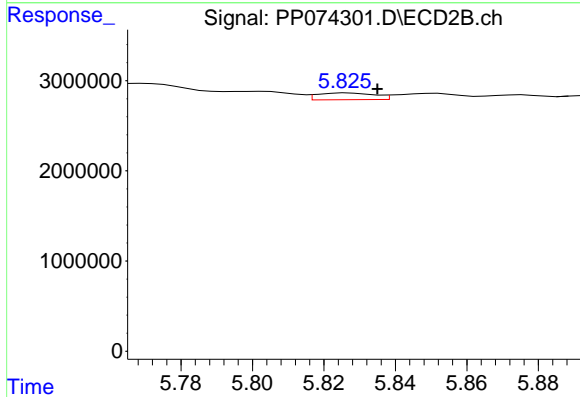
R.T.: 5.691 min
 Delta R.T.: 0.002 min
 Response: 708930
 Conc: 1.94 ng/ml



#27 AR-1254-2

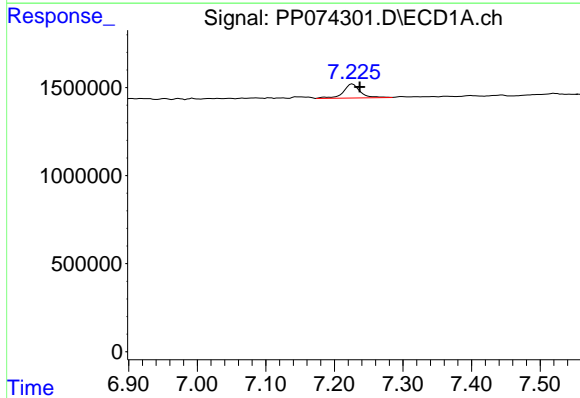
R.T.: 6.881 min
 Delta R.T.: 0.005 min
 Response: 45330
 Conc: 0.57 ng/ml

Instrument :
 ECD_P
 ClientSampleId :
 HEXANE



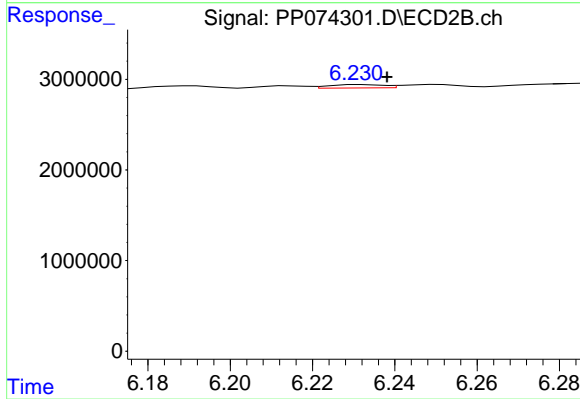
#27 AR-1254-2

R.T.: 5.827 min
 Delta R.T.: -0.008 min
 Response: 839920
 Conc: 3.02 ng/ml



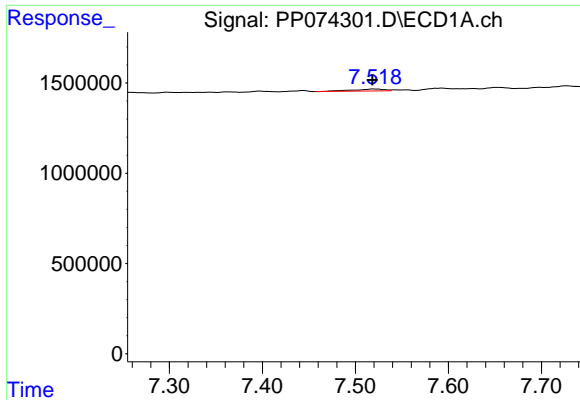
#28 AR-1254-3

R.T.: 7.226 min
 Delta R.T.: -0.011 min
 Response: 1359511
 Conc: 15.57 ng/ml



#28 AR-1254-3

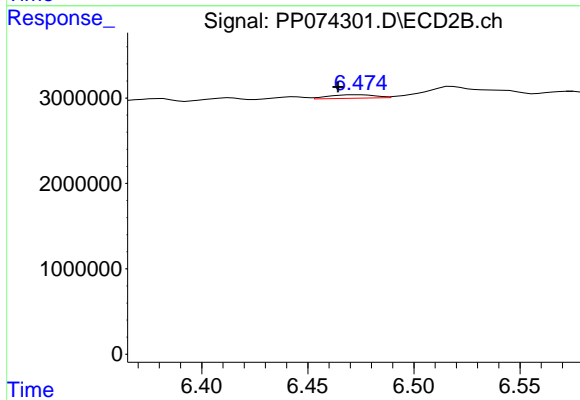
R.T.: 6.232 min
 Delta R.T.: -0.006 min
 Response: 344181
 Conc: 0.70 ng/ml



#29 AR-1254-4

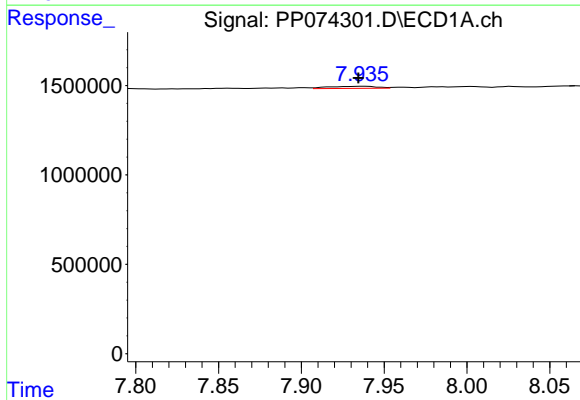
R.T.: 7.520 min
 Delta R.T.: 0.002 min
 Response: 256855
 Conc: 4.03 ng/ml

Instrument :
 ECD_P
 ClientSampleId :
 HEXANE



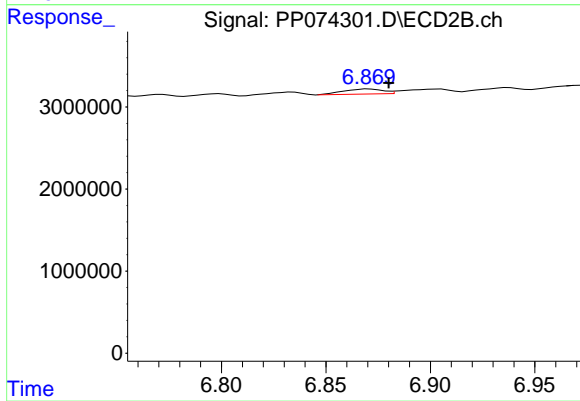
#29 AR-1254-4

R.T.: 6.475 min
 Delta R.T.: 0.010 min
 Response: 622477
 Conc: 1.69 ng/ml



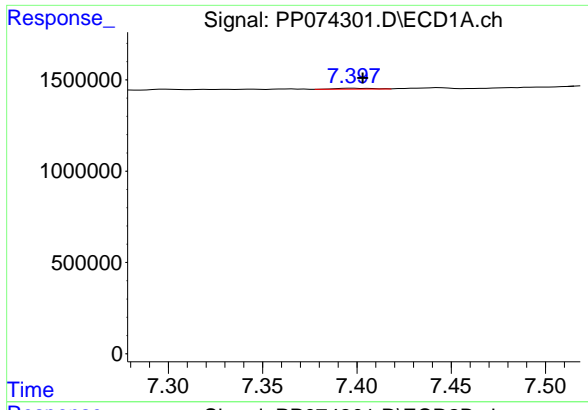
#30 AR-1254-5

R.T.: 7.938 min
 Delta R.T.: 0.003 min
 Response: 244031
 Conc: 3.01 ng/ml



#30 AR-1254-5

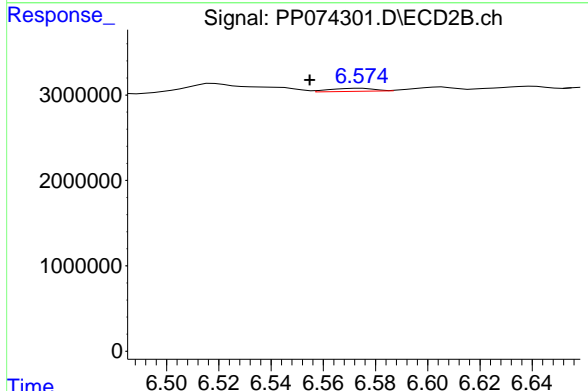
R.T.: 6.871 min
 Delta R.T.: -0.009 min
 Response: 806232
 Conc: 2.09 ng/ml



#31 AR-1260-1

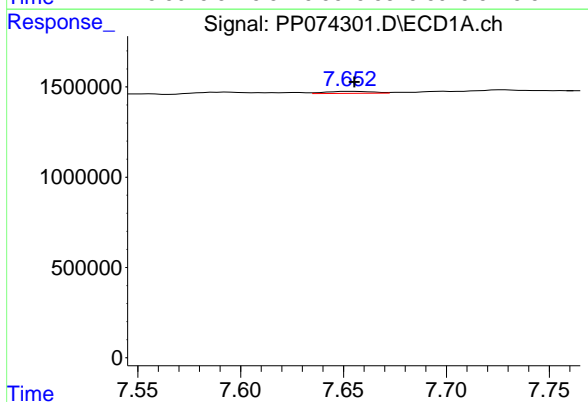
R.T.: 7.398 min
 Delta R.T.: -0.005 min
 Response: 66826
 Conc: 1.19 ng/ml

Instrument :
 ECD_P
 ClientSampleId :
 HEXANE



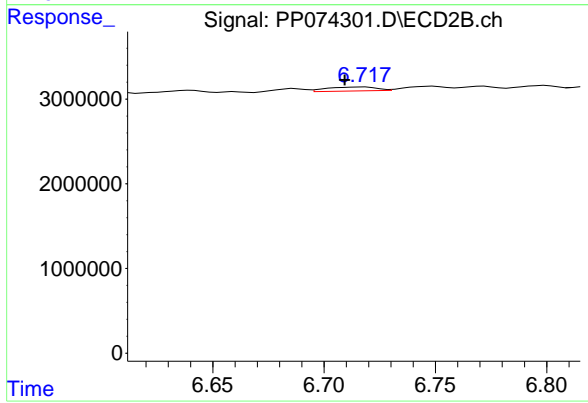
#31 AR-1260-1

R.T.: 6.575 min
 Delta R.T.: 0.020 min
 Response: 417036
 Conc: 1.03 ng/ml



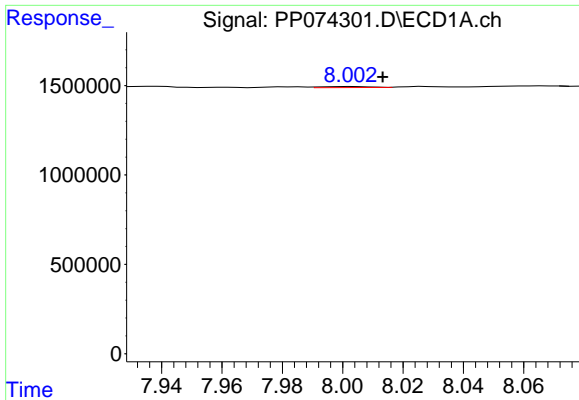
#32 AR-1260-2

R.T.: 7.653 min
 Delta R.T.: -0.002 min
 Response: 173773
 Conc: 2.55 ng/ml



#32 AR-1260-2

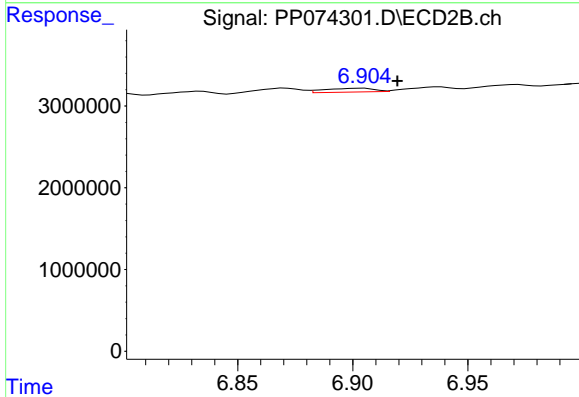
R.T.: 6.718 min
 Delta R.T.: 0.008 min
 Response: 726452
 Conc: 2.32 ng/ml



#33 AR-1260-3

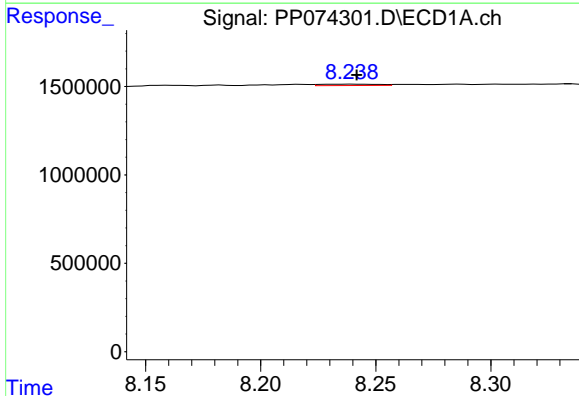
R.T.: 8.003 min
 Delta R.T.: -0.010 min
 Response: 64339
 Conc: 1.21 ng/ml

Instrument :
 ECD_P
 ClientSampleId :
 HEXANE



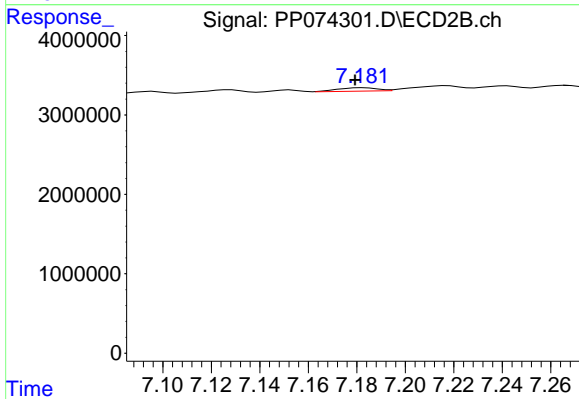
#33 AR-1260-3

R.T.: 6.904 min
 Delta R.T.: -0.015 min
 Response: 686612
 Conc: 1.74 ng/ml



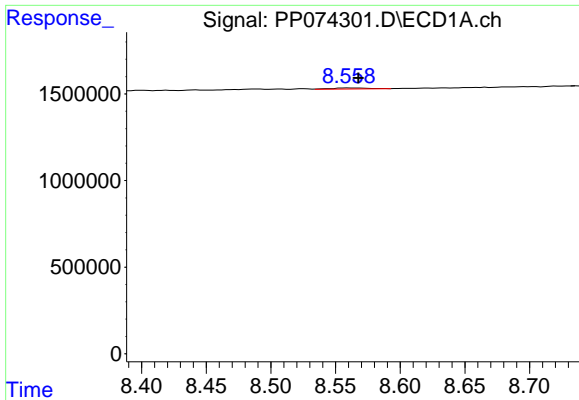
#34 AR-1260-4

R.T.: 8.240 min
 Delta R.T.: -0.002 min
 Response: 136842
 Conc: 2.19 ng/ml



#34 AR-1260-4

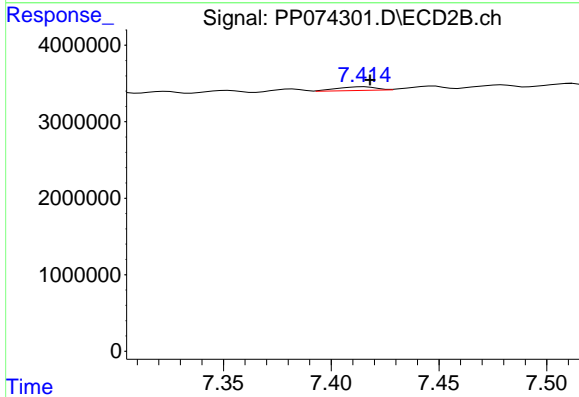
R.T.: 7.183 min
 Delta R.T.: 0.003 min
 Response: 485106
 Conc: 1.67 ng/ml



#35 AR-1260-5

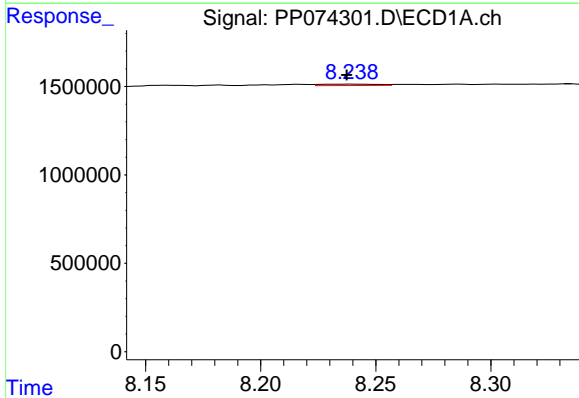
R.T.: 8.559 min
 Delta R.T.: -0.008 min
 Response: 128688
 Conc: 1.14 ng/ml

Instrument :
 ECD_P
 ClientSampleId :
 HEXANE



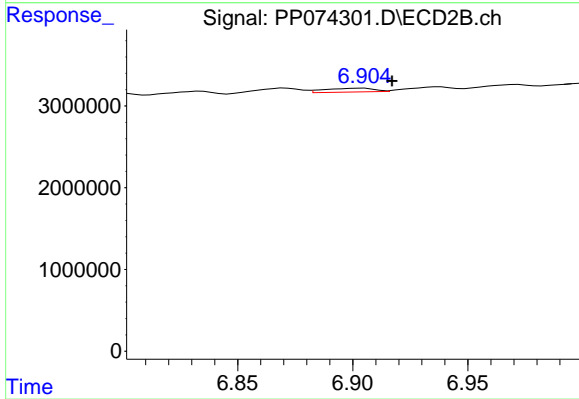
#35 AR-1260-5

R.T.: 7.415 min
 Delta R.T.: -0.003 min
 Response: 619955
 Conc: 0.82 ng/ml



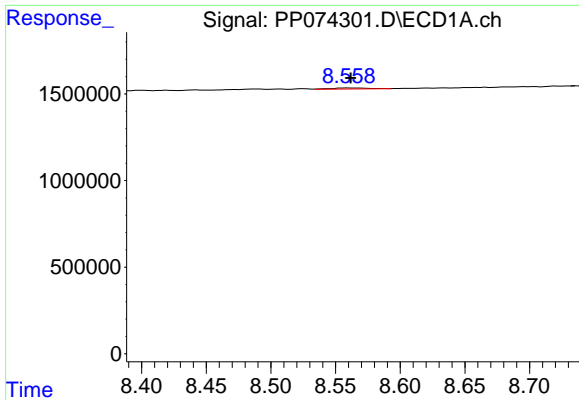
#36 AR-1262-1

R.T.: 8.240 min
 Delta R.T.: 0.002 min
 Response: 136842
 Conc: 1.81 ng/ml



#36 AR-1262-1

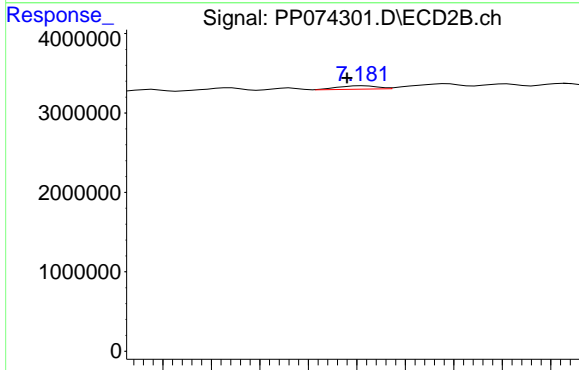
R.T.: 6.904 min
 Delta R.T.: -0.013 min
 Response: 686612
 Conc: 1.22 ng/ml



#37 AR-1262-2

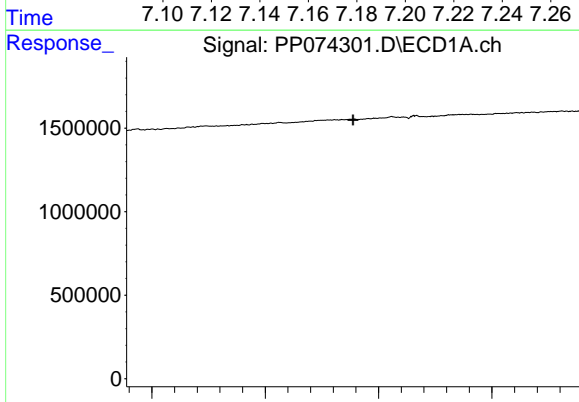
R.T.: 8.559 min
 Delta R.T.: -0.002 min
 Response: 128688
 Conc: 0.99 ng/ml

Instrument :
 ECD_P
 ClientSampleId :
 HEXANE



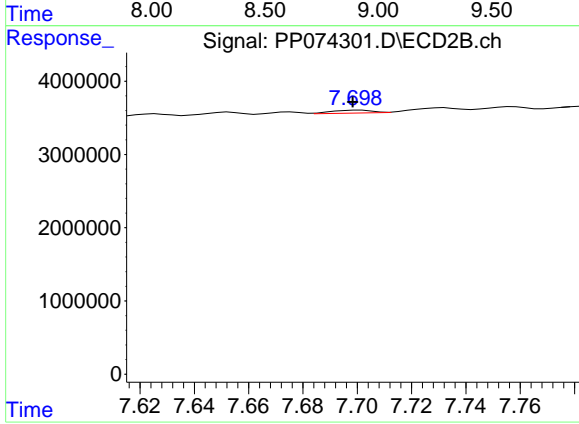
#37 AR-1262-2

R.T.: 7.183 min
 Delta R.T.: 0.007 min
 Response: 485106
 Conc: 1.21 ng/ml



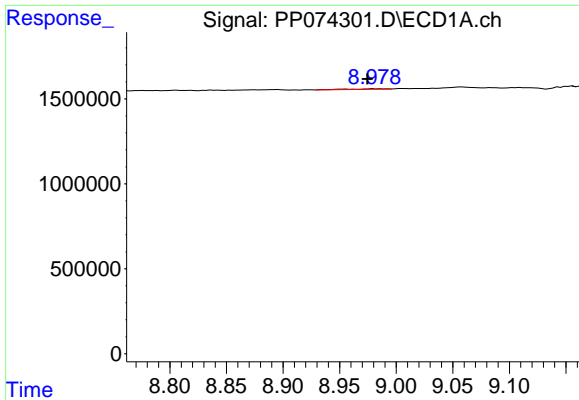
#38 AR-1262-3

R.T.: 0.000 min
 Exp R.T. : 8.888 min
 Response: 0
 Conc: N.D.



#38 AR-1262-3

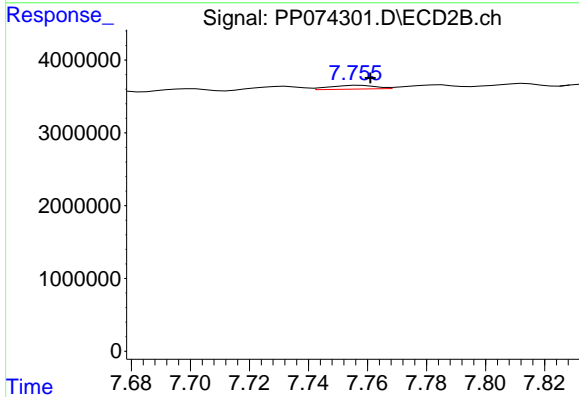
R.T.: 7.701 min
 Delta R.T.: 0.003 min
 Response: 408257
 Conc: 1.14 ng/ml



#39 AR-1262-4

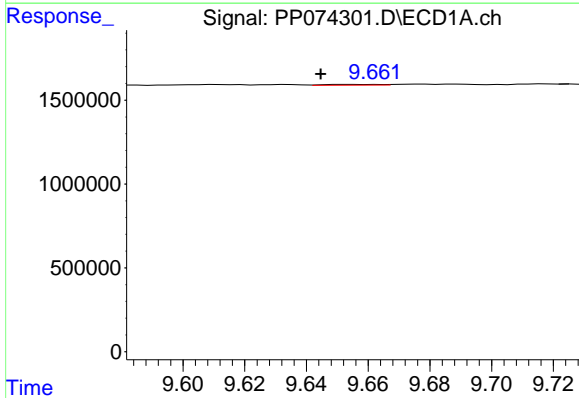
R.T.: 8.980 min
 Delta R.T.: 0.005 min
 Response: 58675
 Conc: 0.81 ng/ml

Instrument :
 ECD_P
 ClientSampleId :
 HEXANE



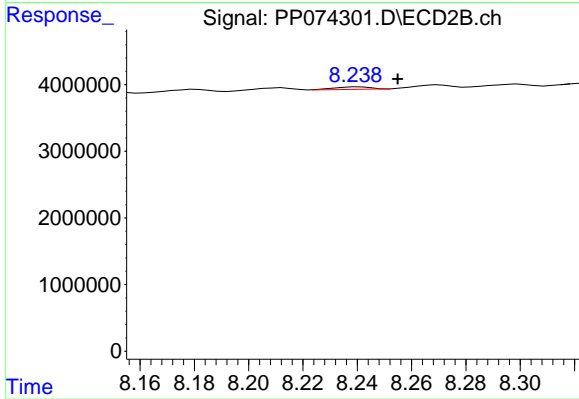
#39 AR-1262-4

R.T.: 7.757 min
 Delta R.T.: -0.004 min
 Response: 569769
 Conc: 0.85 ng/ml



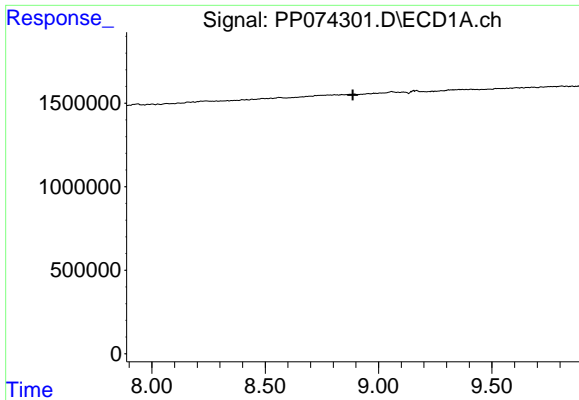
#40 AR-1262-5

R.T.: 9.651 min
 Delta R.T.: 0.007 min
 Response: 57054
 Conc: 1.12 ng/ml



#40 AR-1262-5

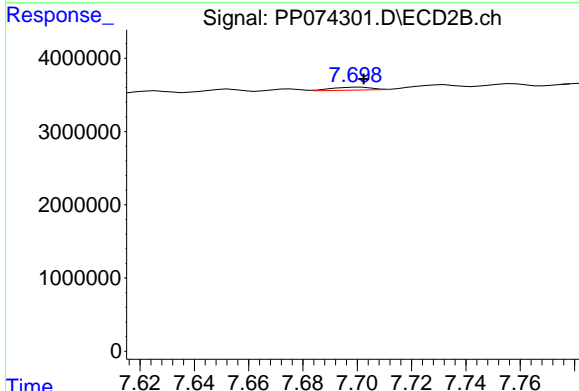
R.T.: 8.241 min
 Delta R.T.: -0.014 min
 Response: 341136
 Conc: 1.20 ng/ml



#41 AR-1268-1

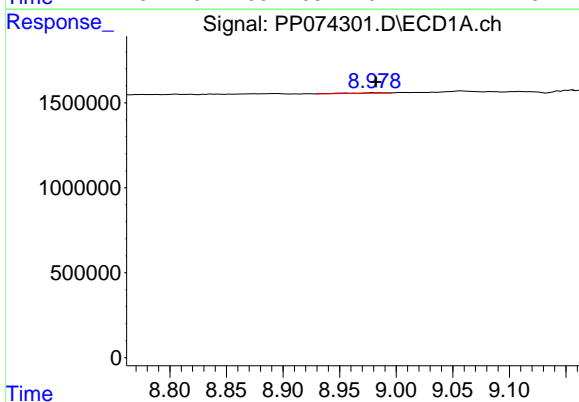
R.T.: 0.000 min
 Exp R.T.: 8.886 min
 Response: 0
 Conc: N.D.

Instrument : ECD_P
 ClientSampleId : HEXANE



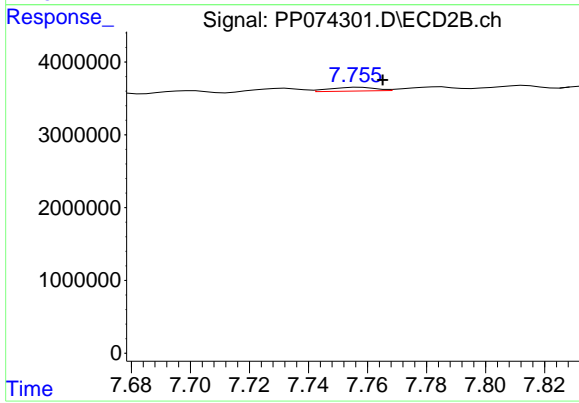
#41 AR-1268-1

R.T.: 7.701 min
 Delta R.T.: -0.002 min
 Response: 408257
 Conc: 0.37 ng/ml



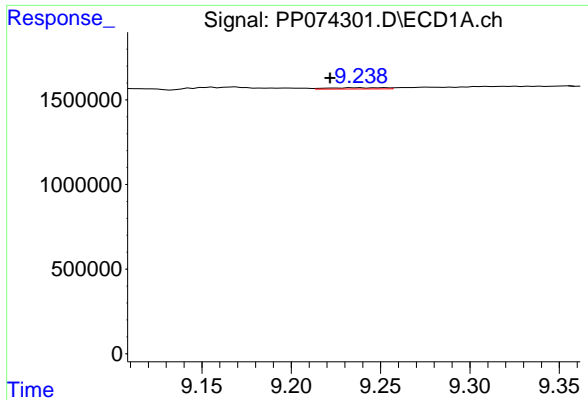
#42 AR-1268-2

R.T.: 8.980 min
 Delta R.T.: -0.003 min
 Response: 58675
 Conc: 0.41 ng/ml



#42 AR-1268-2

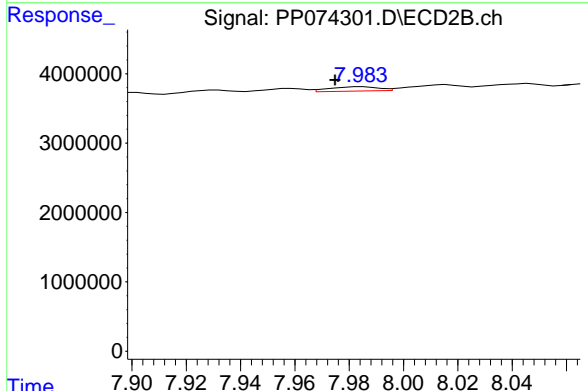
R.T.: 7.757 min
 Delta R.T.: -0.008 min
 Response: 569769
 Conc: 0.54 ng/ml



#43 AR-1268-3

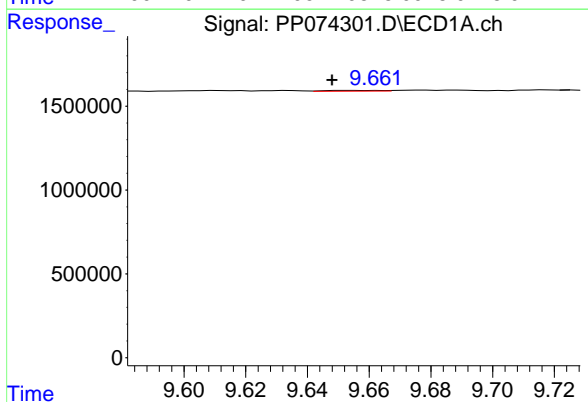
R.T.: 9.234 min
 Delta R.T.: 0.012 min
 Response: 160814
 Conc: 1.35 ng/ml

Instrument : ECD_P
 ClientSampleId : HEXANE



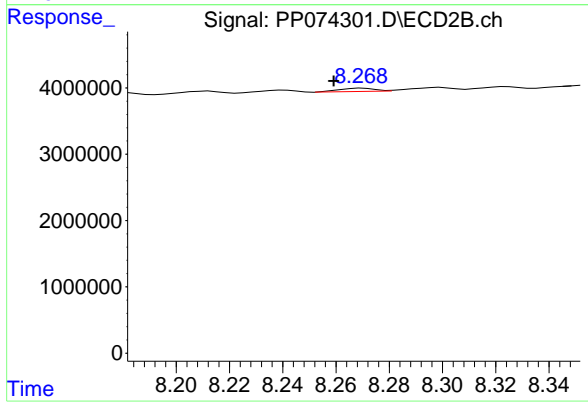
#43 AR-1268-3

R.T.: 7.985 min
 Delta R.T.: 0.010 min
 Response: 801894
 Conc: 0.96 ng/ml



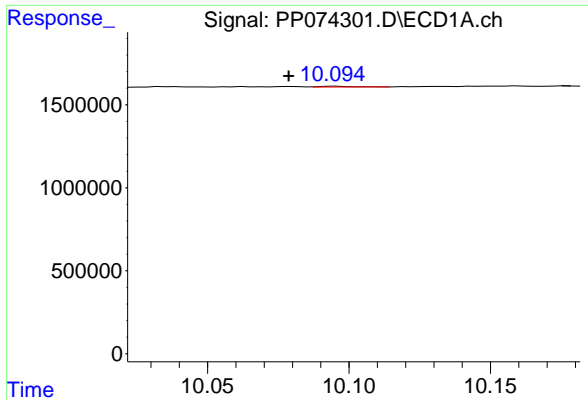
#44 AR-1268-4

R.T.: 9.651 min
 Delta R.T.: 0.003 min
 Response: 57054
 Conc: 0.97 ng/ml



#44 AR-1268-4

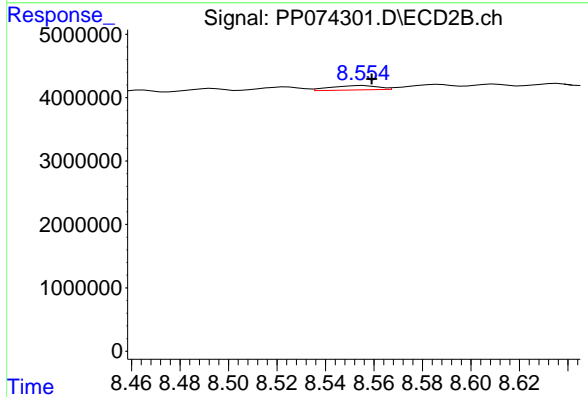
R.T.: 8.270 min
 Delta R.T.: 0.011 min
 Response: 465821
 Conc: 1.51 ng/ml



#45 AR-1268-5

R.T.: 10.095 min
 Delta R.T.: 0.017 min
 Response: 34443
 Conc: 0.10 ng/ml

Instrument :
 ECD_P
 ClientSampleId :
 HEXANE



#45 AR-1268-5

R.T.: 8.555 min
 Delta R.T.: -0.004 min
 Response: 919294
 Conc: 0.36 ng/ml