

Data Path : Z:\pestpcbsrv\HPCHEM1\ECD_P\Data\PP081225\
 Data File : PP074302.D
 Signal(s) : Signal #1: ECD1A.ch Signal #2: ECD2B.ch
 Acq On : 12 Aug 2025 09:51
 Operator : YP\AJ
 Sample : AR1660CCC500
 Misc :
 ALS Vial : 3 Sample Multiplier: 1

Instrument :
 ECD_P
 ClientSampleId :
 AR1660CCC500

Integration File signal 1: autoint1.e
 Integration File signal 2: autoint2.e
 Quant Time: Aug 12 11:29:45 2025
 Quant Method : Z:\pestpcbsrv\HPCHEM1\ECD_P\methods\PP080125.M
 Quant Title : GC EXTRACTABLES
 QLast Update : Mon Aug 04 11:01:49 2025
 Response via : Initial Calibration
 Integrator: ChemStation

Volume Inj. : 2 µl
 Signal #1 Phase : ZB-MR1 Signal #2 Phase: ZB-MR2
 Signal #1 Info : 30Mx0.32mmx 0.50µ Signal #2 Info : 30M x 0.32mm x 0.25µm

Compound	RT#1	RT#2	Resp#1	Resp#2	ng/ml	ng/ml
System Monitoring Compounds						
1) SA Tetrachlo...	4.657	3.802	63412779	236.3E6	56.704	61.629
2) SA Decachlor...	10.432	8.818	49396168	317.9E6	50.863	52.859
Target Compounds						
3) L1 AR-1016-1	5.809	4.901	22324389	232.6E6	541.108	583.175
4) L1 AR-1016-2	5.830	4.958	32934644	113.0E6	542.208	601.822
5) L1 AR-1016-3	5.894	5.080	21660183	61308172	546.140	577.999
6) L1 AR-1016-4	5.990	5.120	17890857	64465367	549.736	590.234
7) L1 AR-1016-5	6.283	5.335	17779139	69316623	547.589	592.636
8) L2 AR-1221-1	4.853	4.013	2702303	7347552	161.200	149.690
9) L2 AR-1221-2	4.943	4.099	4048236	10279884	321.262	286.433
10) L2 AR-1221-3	5.018	4.175	13414021	46175581	366.151	341.473
11) L3 AR-1232-1	5.018	4.175	13414021	46175581	461.958	455.549
12) L3 AR-1232-2	5.544	4.901	17186608	232.6E6	1142.520	1334.862
13) L3 AR-1232-3	5.830	5.080	32934644	61308172	1135.610	1338.121
14) L3 AR-1232-4	5.990	5.162	17890857	112.8E6	1156.575	1945.292 #
15) L3 AR-1232-5	6.080	5.335	15972315	69316623	1363.289	1475.467
16) L4 AR-1242-1	5.809	4.901	22324389	232.6E6	599.058	673.990
17) L4 AR-1242-2	5.830	4.958	32934644	113.0E6	605.317	691.818
18) L4 AR-1242-3	5.894	5.080	21660183	61308172	606.119	664.598
19) L4 AR-1242-4	5.990	5.162	17890857	112.8E6	612.310	944.952 #
20) L4 AR-1242-5	6.720	5.684	6551465	81892355	184.247	547.555 #
21) L5 AR-1248-1	5.809	4.901	22324389	232.6E6	796.886	1087.362 #
22) L5 AR-1248-2	6.080	5.120	15972315	64465367	396.719	440.600
23) L5 AR-1248-3	6.283	5.162	17779139	112.8E6	398.872	658.158 #
24) L5 AR-1248-4	6.657	5.335	22793134	69316623	438.016	416.632
25) L5 AR-1248-5	6.720	5.720	6551465	30444461	115.053	104.632
26) L6 AR-1254-1	6.657	5.684	22793134	81892355	432.992	223.638 #
27) L6 AR-1254-2	6.872	5.831	14435648	62919136	181.570	226.151
28) L6 AR-1254-3	7.235	6.248	8918890	136.3E6	102.145	278.700 #
29) L6 AR-1254-4	7.517	6.459	5916884	12244707	92.727	33.313 #
30) L6 AR-1254-5	7.931	6.876	45500820	181.7E6	560.736	471.633
31) L7 AR-1260-1	7.400	6.551	29327545	222.2E6	520.397	549.999
32) L7 AR-1260-2	7.653	6.705	34227789	173.5E6	502.225	554.959
33) L7 AR-1260-3	8.010	6.915	27187361	224.6E6	510.121	569.795
34) L7 AR-1260-4	8.239	7.174	31861536	169.3E6	508.848	581.890
35) L7 AR-1260-5	8.564	7.413	55364530	445.1E6	488.633	587.662
36) L8 AR-1262-1	8.239	6.915	31861536	224.6E6	420.394	398.774
37) L8 AR-1262-2	8.564	7.174	55364530	169.3E6	424.477	422.215
38) L8 AR-1262-3	8.895	7.697	38172600	89262389	405.786	248.317 #
39) L8 AR-1262-4	8.974	7.760	12137663	287.8E6	166.608	431.531 #
40) L8 AR-1262-5	9.647	8.254	18501798	97659023	363.331	344.758
41) L9 AR-1268-1	8.895	7.697	38172600	89262389	245.274	81.872 #

Data Path : Z:\pestpcbsrv\HPCHEM1\ECD_P\Data\PP081225\
 Data File : PP074302.D
 Signal(s) : Signal #1: ECD1A.ch Signal #2: ECD2B.ch
 Acq On : 12 Aug 2025 09:51
 Operator : YP\AJ
 Sample : AR1660CCC500
 Misc :
 ALS Vial : 3 Sample Multiplier: 1

Instrument :
 ECD_P
ClientSampleId :
 AR1660CCC500

Integration File signal 1: autoint1.e
 Integration File signal 2: autoint2.e
 Quant Time: Aug 12 11:29:45 2025
 Quant Method : Z:\pestpcbsrv\HPCHEM1\ECD_P\methods\PP080125.M
 Quant Title : GC EXTRACTABLES
 QLast Update : Mon Aug 04 11:01:49 2025
 Response via : Initial Calibration
 Integrator: ChemStation

Volume Inj. : 2 µl
 Signal #1 Phase : ZB-MR1 Signal #2 Phase: ZB-MR2
 Signal #1 Info : 30Mx0.32mmx 0.50µ Signal #2 Info : 30M x 0.32mm x 0.25µm

	Compound	RT#1	RT#2	Resp#1	Resp#2	ng/ml	ng/ml
42)	L9 AR-1268-2	8.974	7.760	12137663	287.8E6	84.627	271.168 #
43)	L9 AR-1268-3	9.220	7.964	984967	4137552	8.244	4.973 #
44)	L9 AR-1268-4	9.647	8.254	18501798	97659023	314.589	317.014
45)	L9 AR-1268-5	10.078	8.552	5485944	22340241	15.598	8.761 #

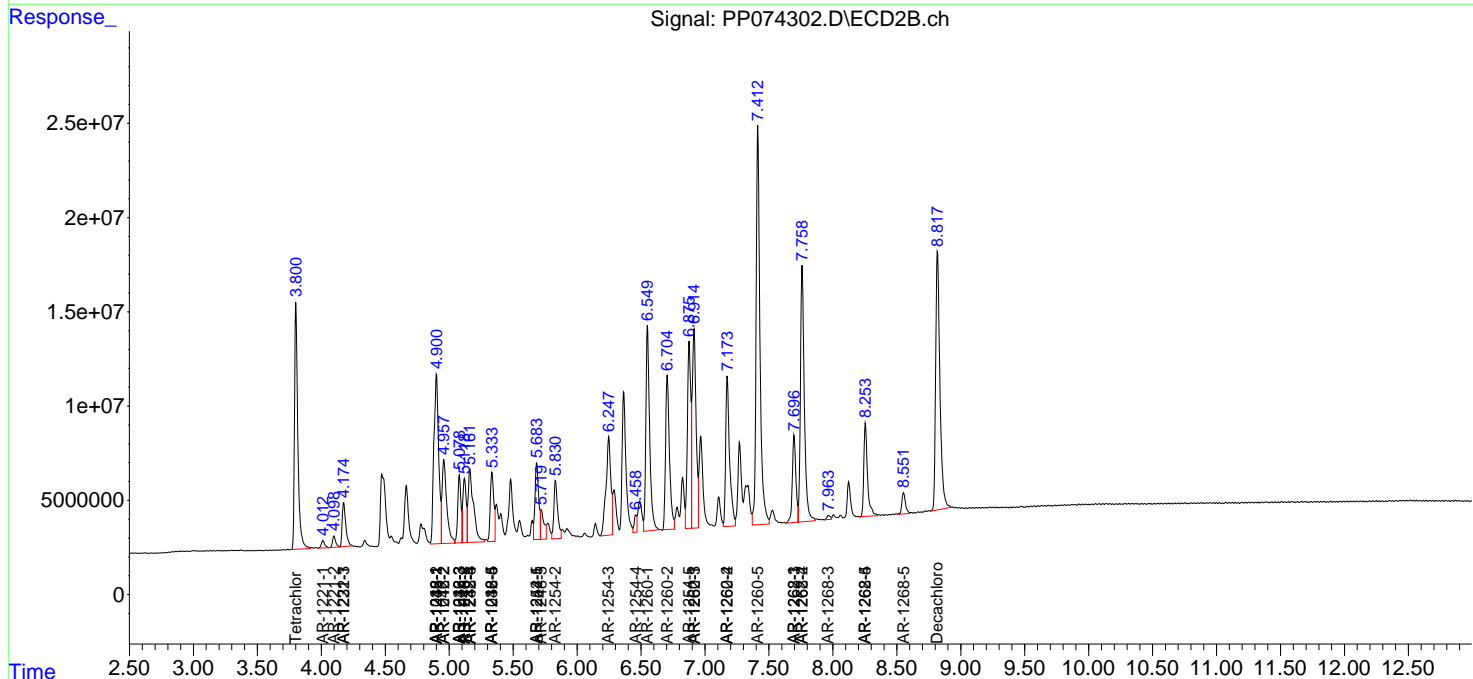
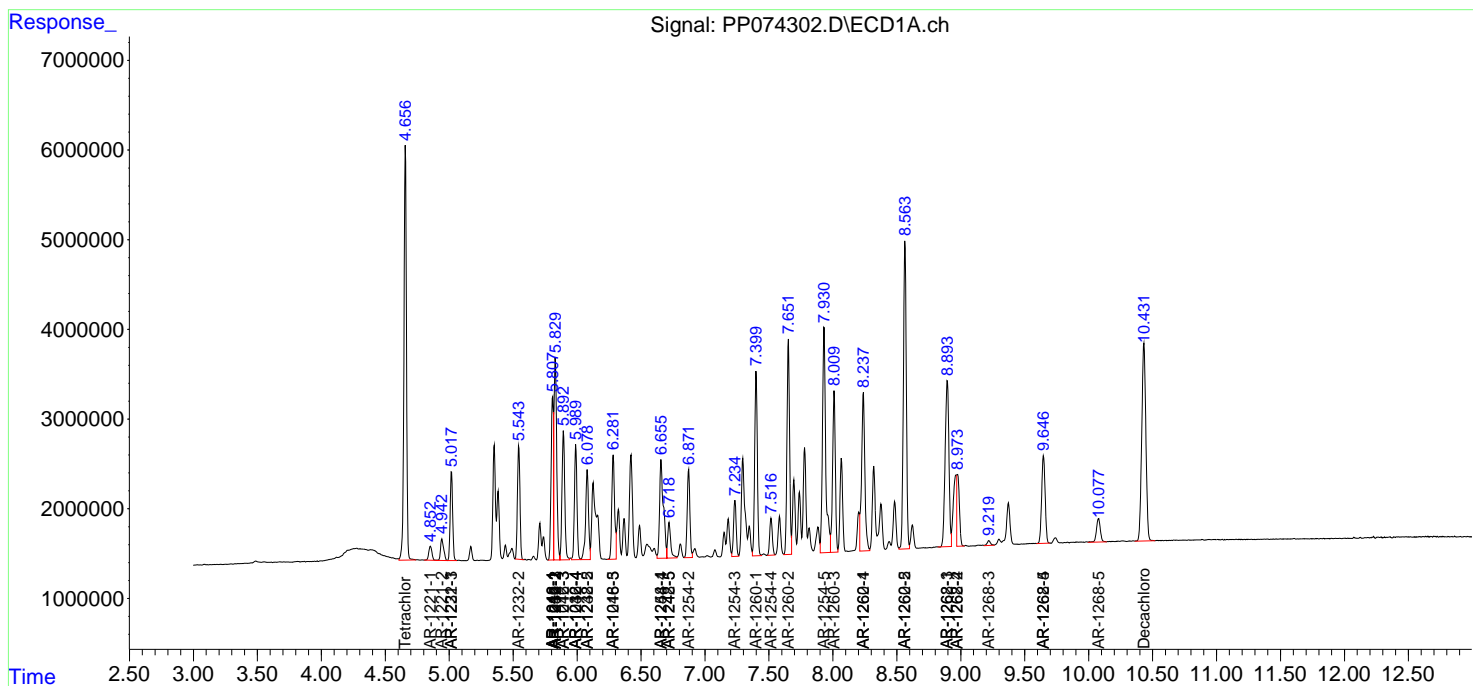
(f)=RT Delta > 1/2 Window (#)=Amounts differ by > 25% (m)=manual int.

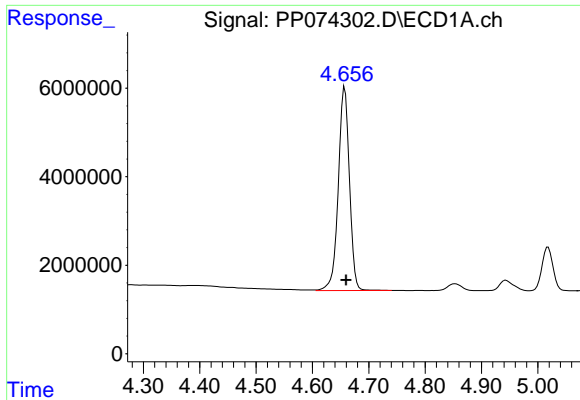
Data Path : Z:\pestpcbsrv\HPCHEM1\ECD_P\Data\PP081225\
 Data File : PP074302.D
 Signal(s) : Signal #1: ECD1A.ch Signal #2: ECD2B.ch
 Acq On : 12 Aug 2025 09:51
 Operator : YP\AJ
 Sample : AR1660CCC500
 Misc :
 ALS Vial : 3 Sample Multiplier: 1

Instrument :
 ECD_P
 ClientSampleId :
 AR1660CCC500

Integration File signal 1: autoint1.e
 Integration File signal 2: autoint2.e
 Quant Time: Aug 12 11:29:45 2025
 Quant Method : Z:\pestpcbsrv\HPCHEM1\ECD_P\methods\PP080125.M
 Quant Title : GC EXTRACTABLES
 QLast Update : Mon Aug 04 11:01:49 2025
 Response via : Initial Calibration
 Integrator: ChemStation

Volume Inj. : 2 µl
 Signal #1 Phase : ZB-MR1 Signal #2 Phase: ZB-MR2
 Signal #1 Info : 30Mx0.32mmx 0.50µ Signal #2 Info : 30M x 0.32mm x 0.25µm

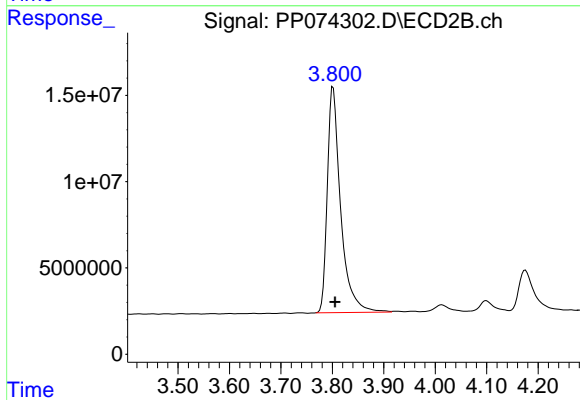




#1 Tetrachloro-m-xylene

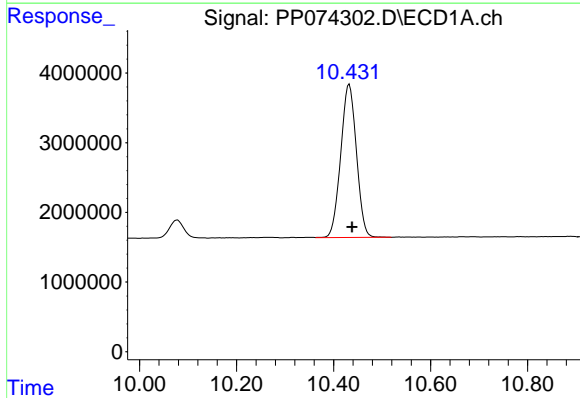
R.T.: 4.657 min
 Delta R.T.: -0.003 min
 Response: 63412779
 Conc: 56.70 ng/ml

Instrument :
 ECD_P
 ClientSampleId :
 AR1660CCC500



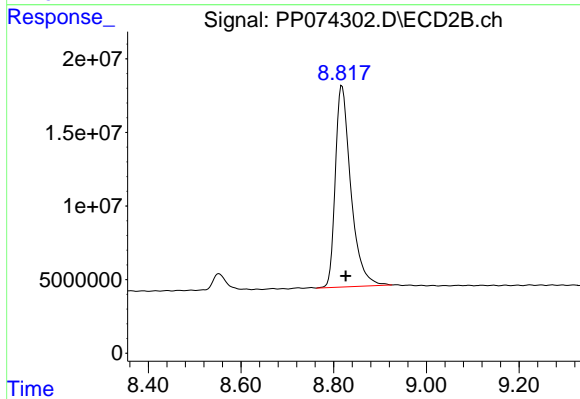
#1 Tetrachloro-m-xylene

R.T.: 3.802 min
 Delta R.T.: -0.004 min
 Response: 236312344
 Conc: 61.63 ng/ml



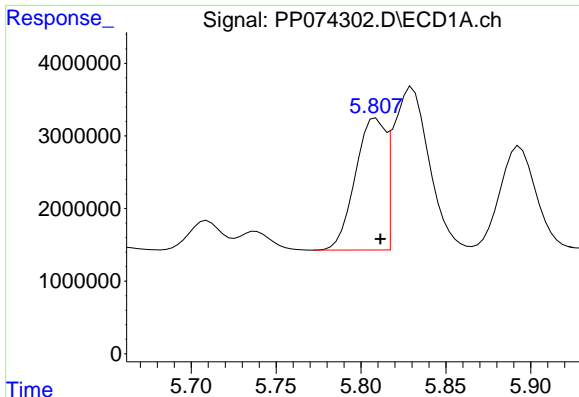
#2 Decachlorobiphenyl

R.T.: 10.432 min
 Delta R.T.: -0.006 min
 Response: 49396168
 Conc: 50.86 ng/ml



#2 Decachlorobiphenyl

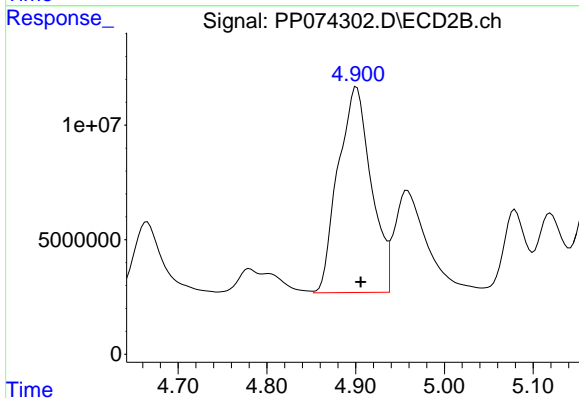
R.T.: 8.818 min
 Delta R.T.: -0.008 min
 Response: 317876418
 Conc: 52.86 ng/ml



#3 AR-1016-1

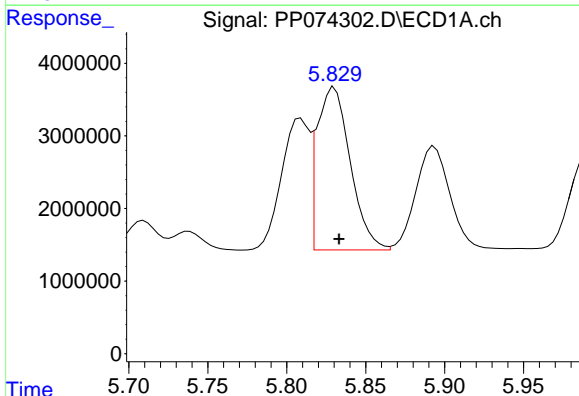
R.T.: 5.809 min
 Delta R.T.: -0.003 min
 Response: 22324389
 Conc: 541.11 ng/ml

Instrument :
 ECD_P
 ClientSampleId :
 AR1660CCC500



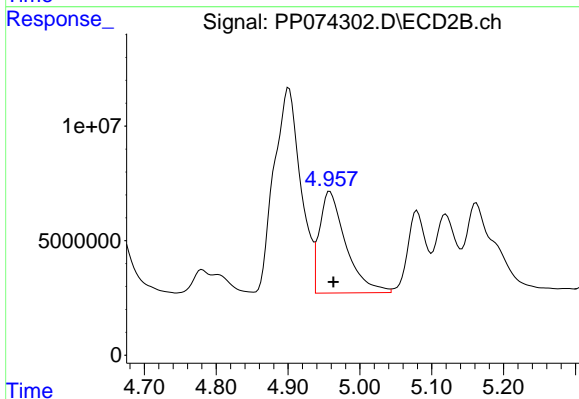
#3 AR-1016-1

R.T.: 4.901 min
 Delta R.T.: -0.005 min
 Response: 232621277
 Conc: 583.18 ng/ml



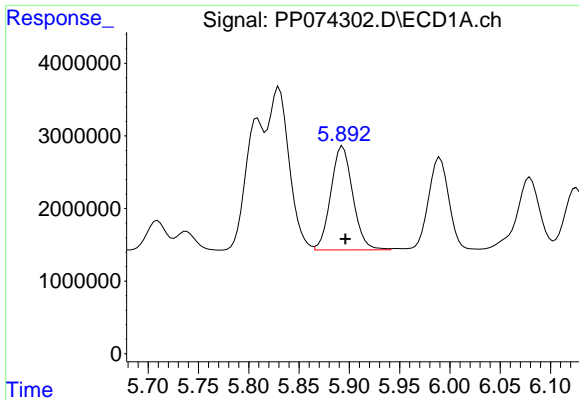
#4 AR-1016-2

R.T.: 5.830 min
 Delta R.T.: -0.003 min
 Response: 32934644
 Conc: 542.21 ng/ml



#4 AR-1016-2

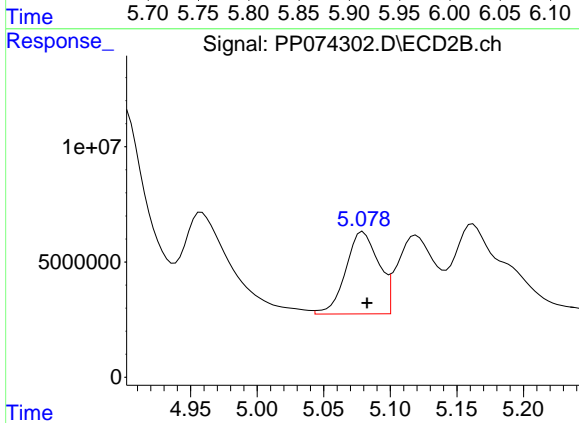
R.T.: 4.958 min
 Delta R.T.: -0.005 min
 Response: 113027618
 Conc: 601.82 ng/ml



#5 AR-1016-3

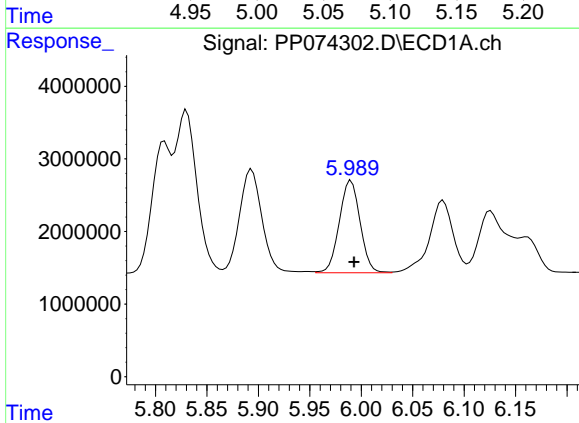
R.T.: 5.894 min
 Delta R.T.: -0.003 min
 Response: 21660183
 Conc: 546.14 ng/ml

Instrument :
 ECD_P
 ClientSampleId :
 AR1660CCC500



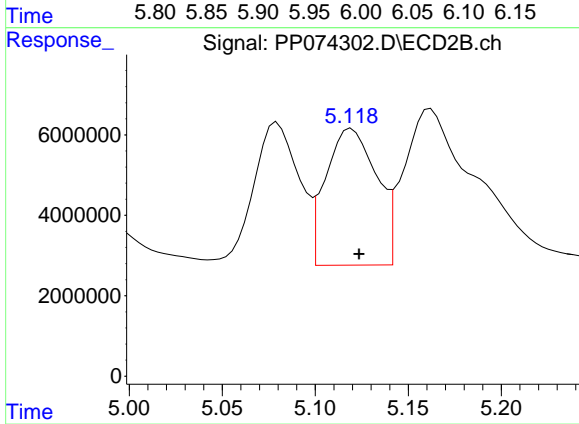
#5 AR-1016-3

R.T.: 5.080 min
 Delta R.T.: -0.003 min
 Response: 61308172
 Conc: 578.00 ng/ml



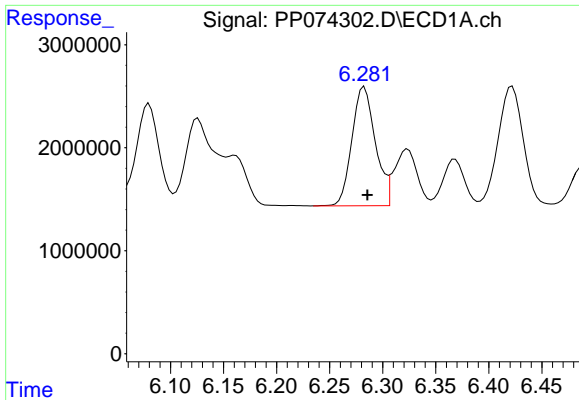
#6 AR-1016-4

R.T.: 5.990 min
 Delta R.T.: -0.003 min
 Response: 17890857
 Conc: 549.74 ng/ml



#6 AR-1016-4

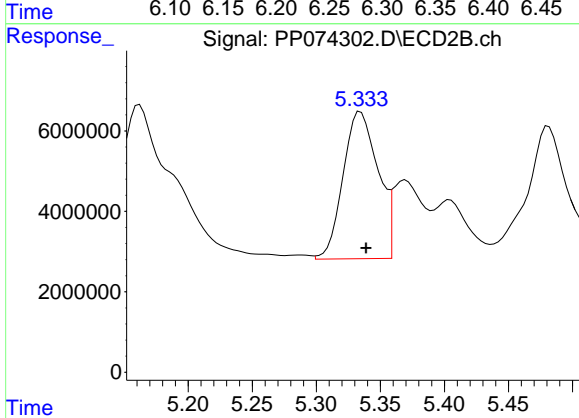
R.T.: 5.120 min
 Delta R.T.: -0.004 min
 Response: 64465367
 Conc: 590.23 ng/ml



#7 AR-1016-5

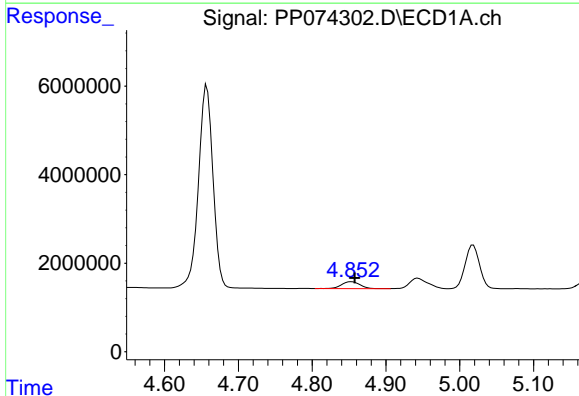
R.T.: 6.283 min
 Delta R.T.: -0.003 min
 Response: 17779139
 Conc: 547.59 ng/ml

Instrument :
 ECD_P
 ClientSampleId :
 AR1660CCC500



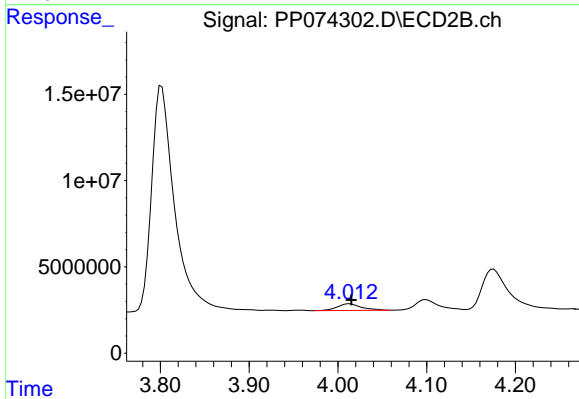
#7 AR-1016-5

R.T.: 5.335 min
 Delta R.T.: -0.004 min
 Response: 69316623
 Conc: 592.64 ng/ml



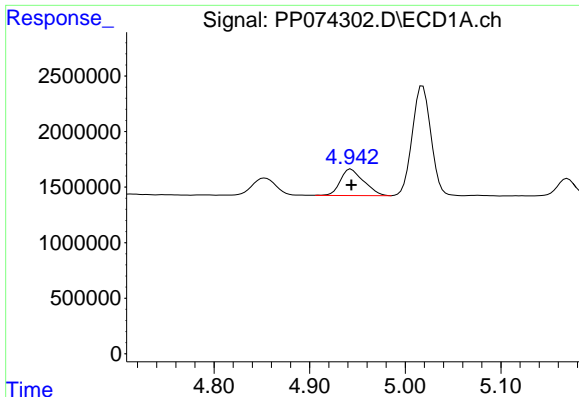
#8 AR-1221-1

R.T.: 4.853 min
 Delta R.T.: -0.004 min
 Response: 2702303
 Conc: 161.20 ng/ml



#8 AR-1221-1

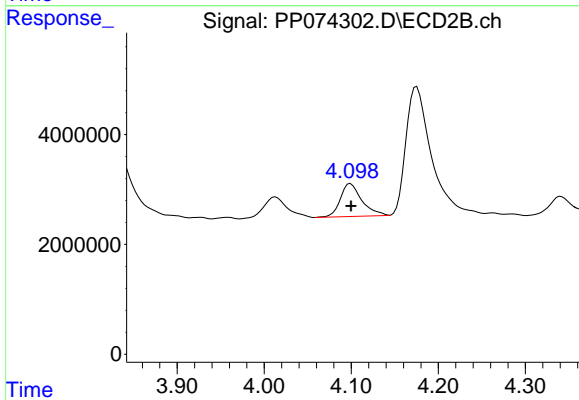
R.T.: 4.013 min
 Delta R.T.: -0.002 min
 Response: 7347552
 Conc: 149.69 ng/ml



#9 AR-1221-2

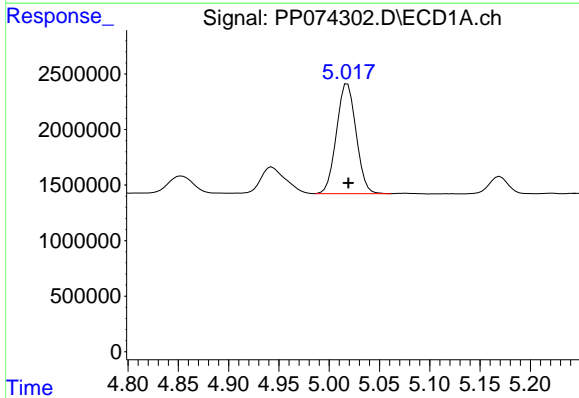
R.T.: 4.943 min
 Delta R.T.: 0.000 min
 Response: 4048236
 Conc: 321.26 ng/ml

Instrument :
 ECD_P
 ClientSampleId :
 AR1660CCC500



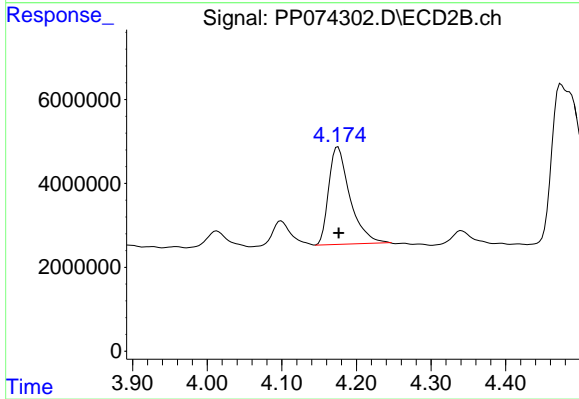
#9 AR-1221-2

R.T.: 4.099 min
 Delta R.T.: 0.000 min
 Response: 10279884
 Conc: 286.43 ng/ml



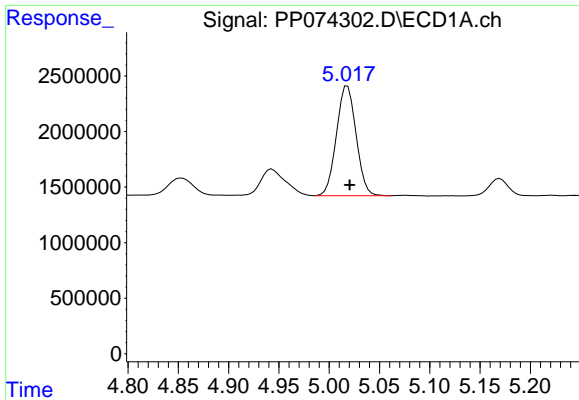
#10 AR-1221-3

R.T.: 5.018 min
 Delta R.T.: -0.001 min
 Response: 13414021
 Conc: 366.15 ng/ml



#10 AR-1221-3

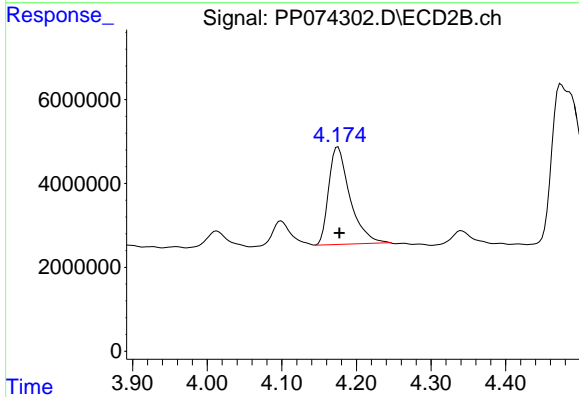
R.T.: 4.175 min
 Delta R.T.: 0.000 min
 Response: 46175581
 Conc: 341.47 ng/ml



#11 AR-1232-1

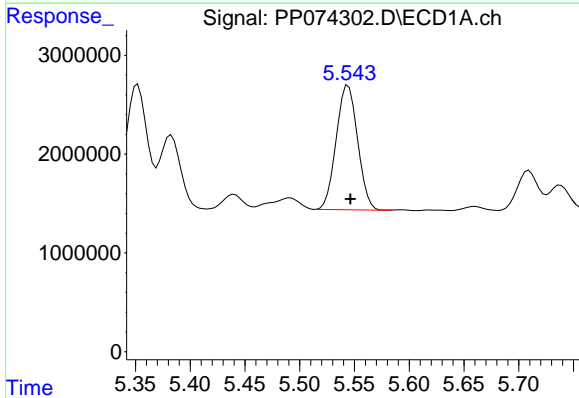
R.T.: 5.018 min
 Delta R.T.: -0.002 min
 Response: 13414021
 Conc: 461.96 ng/ml

Instrument :
 ECD_P
 ClientSampleId :
 AR1660CCC500



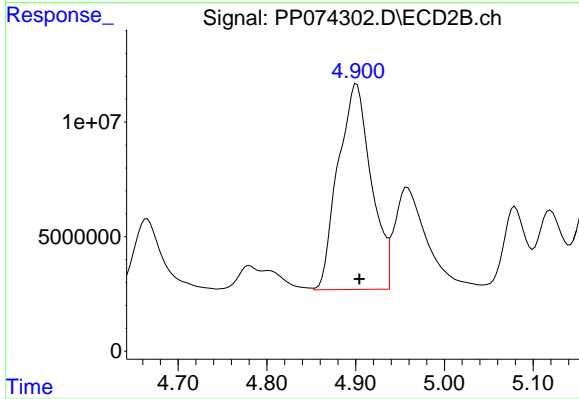
#11 AR-1232-1

R.T.: 4.175 min
 Delta R.T.: -0.002 min
 Response: 46175581
 Conc: 455.55 ng/ml



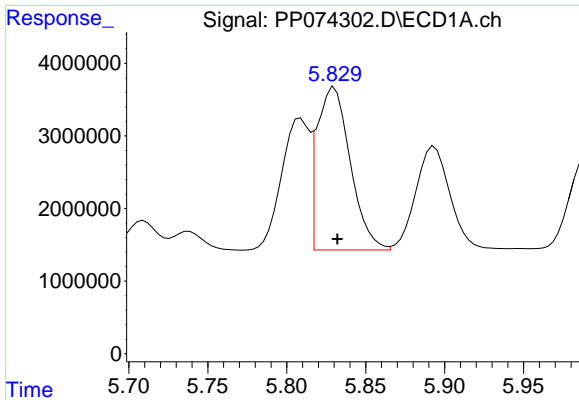
#12 AR-1232-2

R.T.: 5.544 min
 Delta R.T.: -0.002 min
 Response: 17186608
 Conc: 1142.52 ng/ml



#12 AR-1232-2

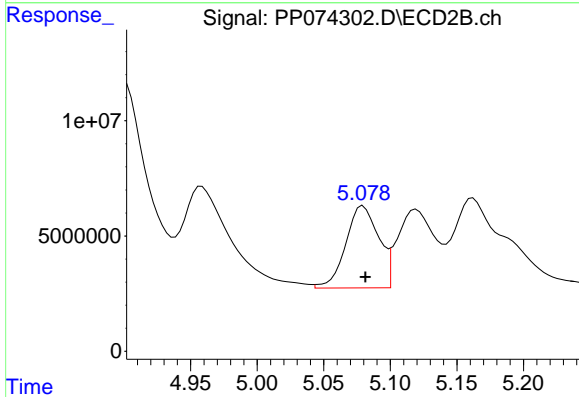
R.T.: 4.901 min
 Delta R.T.: -0.003 min
 Response: 232621277
 Conc: 1334.86 ng/ml



#13 AR-1232-3

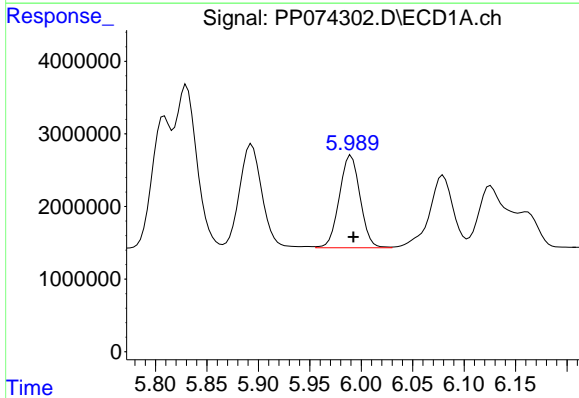
R.T.: 5.830 min
 Delta R.T.: -0.002 min
 Response: 32934644
 Conc: 1135.61 ng/ml

Instrument :
 ECD_P
 ClientSampleId :
 AR1660CCC500



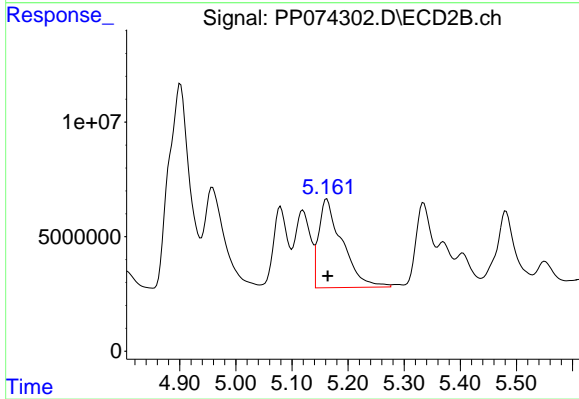
#13 AR-1232-3

R.T.: 5.080 min
 Delta R.T.: -0.002 min
 Response: 61308172
 Conc: 1338.12 ng/ml



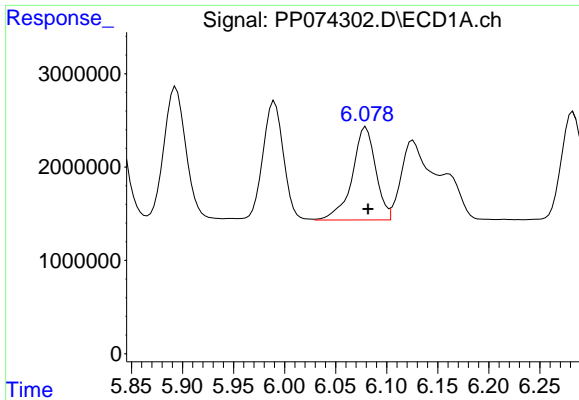
#14 AR-1232-4

R.T.: 5.990 min
 Delta R.T.: -0.002 min
 Response: 17890857
 Conc: 1156.57 ng/ml



#14 AR-1232-4

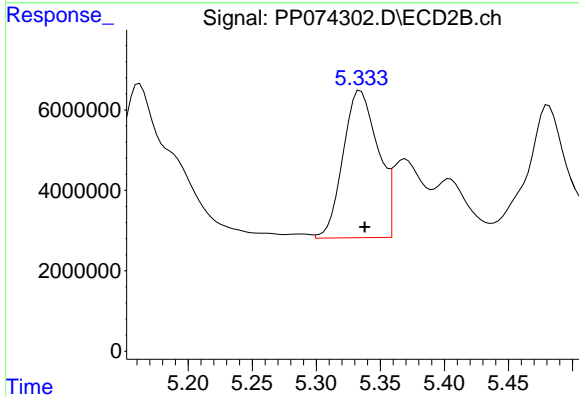
R.T.: 5.162 min
 Delta R.T.: -0.001 min
 Response: 112847757
 Conc: 1945.29 ng/ml



#15 AR-1232-5

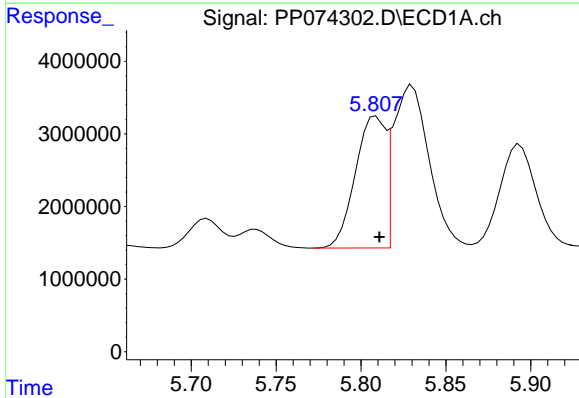
R.T.: 6.080 min
 Delta R.T.: -0.002 min
 Response: 15972315
 Conc: 1363.29 ng/ml

Instrument :
 ECD_P
 ClientSampleId :
 AR1660CCC500



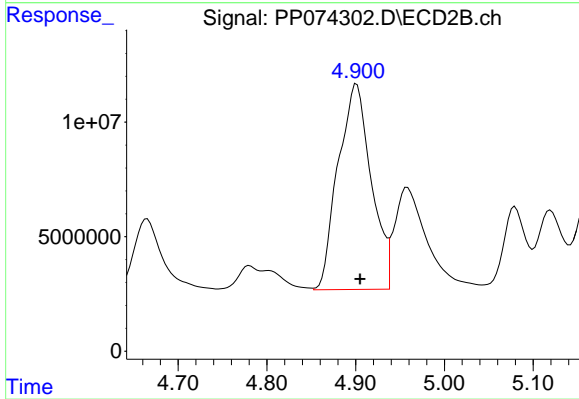
#15 AR-1232-5

R.T.: 5.335 min
 Delta R.T.: -0.003 min
 Response: 69316623
 Conc: 1475.47 ng/ml



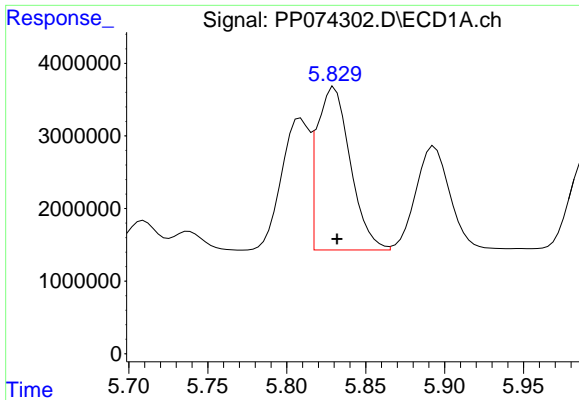
#16 AR-1242-1

R.T.: 5.809 min
 Delta R.T.: -0.002 min
 Response: 22324389
 Conc: 599.06 ng/ml



#16 AR-1242-1

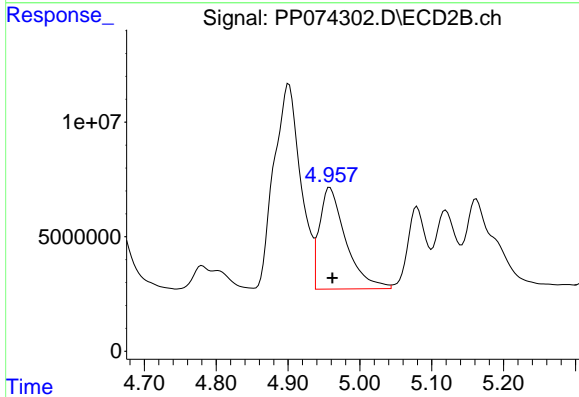
R.T.: 4.901 min
 Delta R.T.: -0.004 min
 Response: 232621277
 Conc: 673.99 ng/ml



#17 AR-1242-2

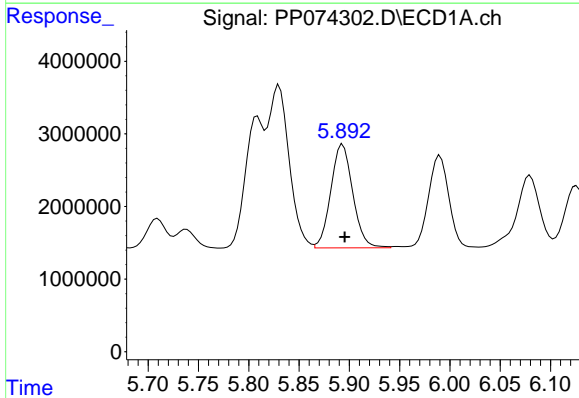
R.T.: 5.830 min
 Delta R.T.: -0.002 min
 Response: 32934644
 Conc: 605.32 ng/ml

Instrument :
 ECD_P
 ClientSampleId :
 AR1660CCC500



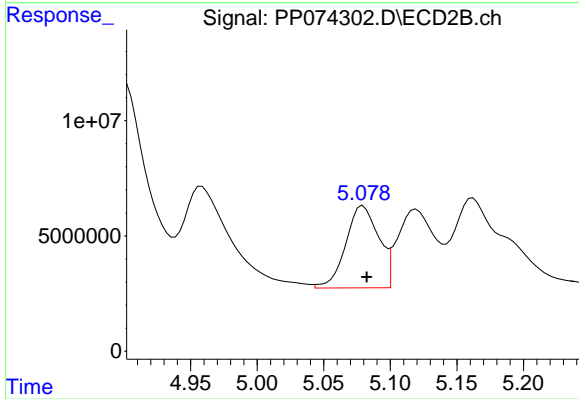
#17 AR-1242-2

R.T.: 4.958 min
 Delta R.T.: -0.004 min
 Response: 113027618
 Conc: 691.82 ng/ml



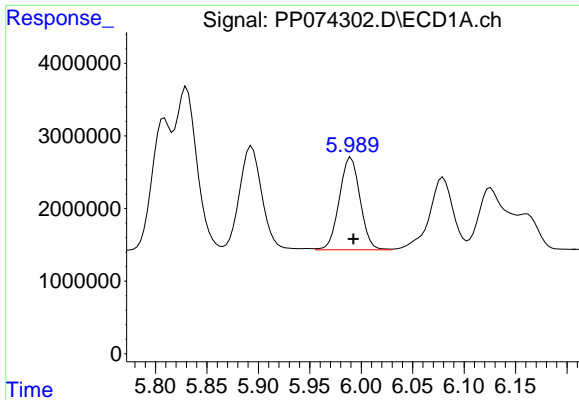
#18 AR-1242-3

R.T.: 5.894 min
 Delta R.T.: -0.002 min
 Response: 21660183
 Conc: 606.12 ng/ml



#18 AR-1242-3

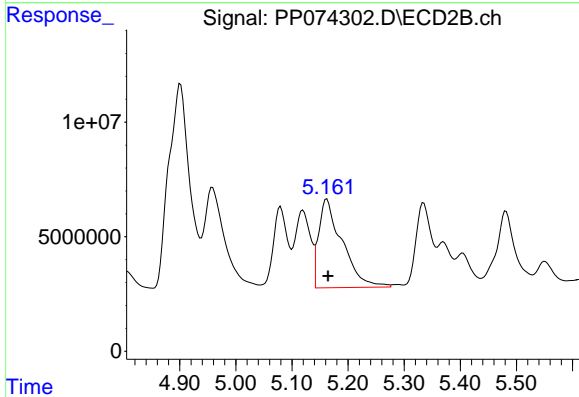
R.T.: 5.080 min
 Delta R.T.: -0.003 min
 Response: 61308172
 Conc: 664.60 ng/ml



#19 AR-1242-4

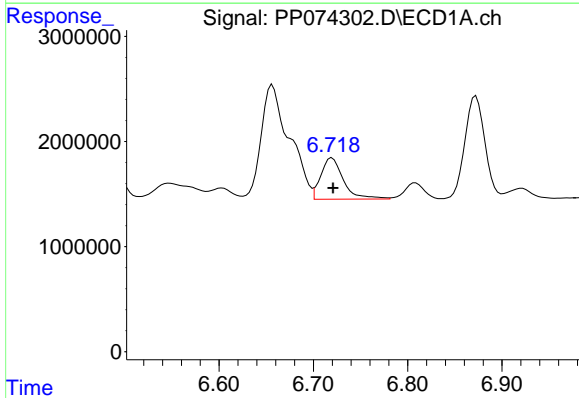
R.T.: 5.990 min
 Delta R.T.: -0.002 min
 Response: 17890857
 Conc: 612.31 ng/ml

Instrument :
 ECD_P
 ClientSampleId :
 AR1660CCC500



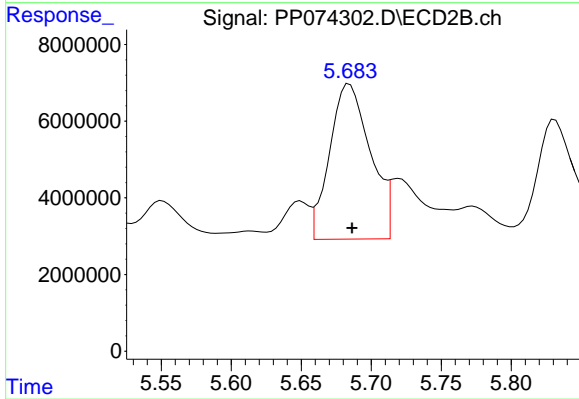
#19 AR-1242-4

R.T.: 5.162 min
 Delta R.T.: -0.002 min
 Response: 112847757
 Conc: 944.95 ng/ml



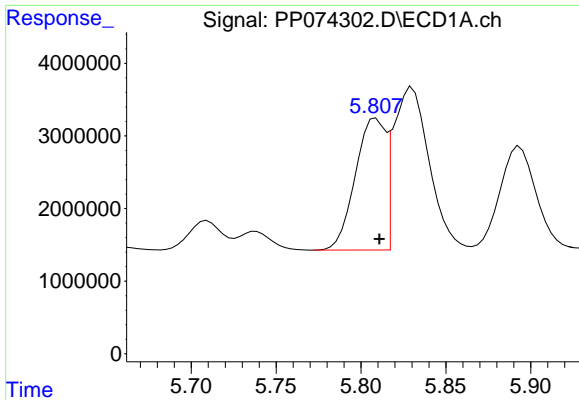
#20 AR-1242-5

R.T.: 6.720 min
 Delta R.T.: -0.001 min
 Response: 6551465
 Conc: 184.25 ng/ml



#20 AR-1242-5

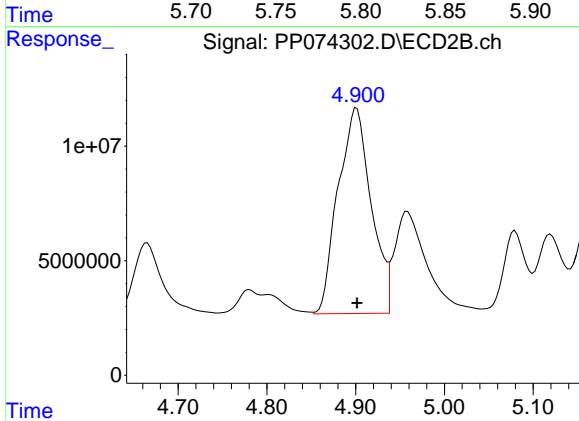
R.T.: 5.684 min
 Delta R.T.: -0.002 min
 Response: 81892355
 Conc: 547.56 ng/ml



#21 AR-1248-1

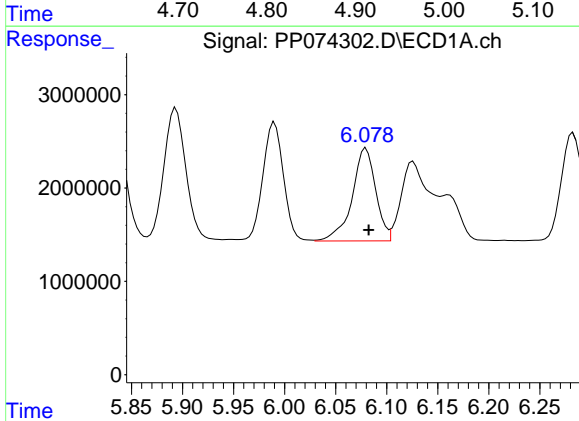
R.T.: 5.809 min
 Delta R.T.: -0.002 min
 Response: 22324389
 Conc: 796.89 ng/ml

Instrument :
 ECD_P
 ClientSampleId :
 AR1660CCC500



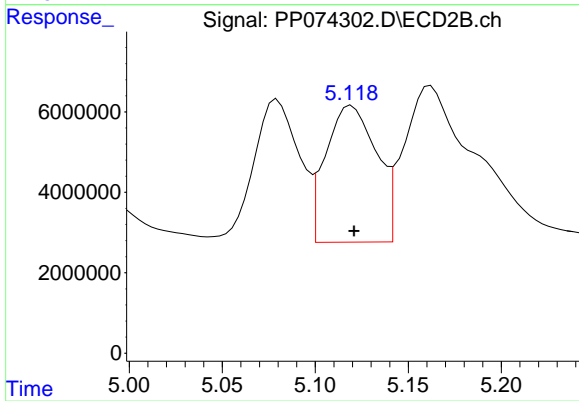
#21 AR-1248-1

R.T.: 4.901 min
 Delta R.T.: 0.000 min
 Response: 232621277
 Conc: 1087.36 ng/ml



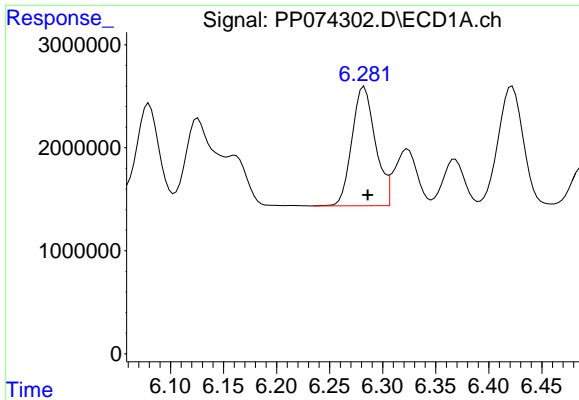
#22 AR-1248-2

R.T.: 6.080 min
 Delta R.T.: -0.003 min
 Response: 15972315
 Conc: 396.72 ng/ml



#22 AR-1248-2

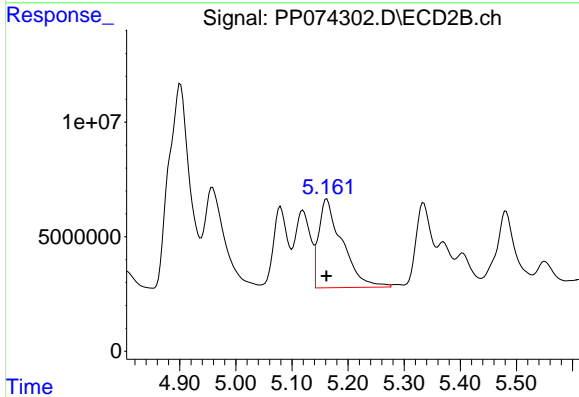
R.T.: 5.120 min
 Delta R.T.: -0.001 min
 Response: 64465367
 Conc: 440.60 ng/ml



#23 AR-1248-3

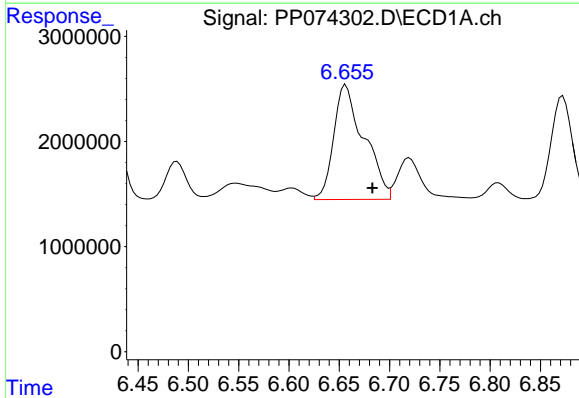
R.T.: 6.283 min
 Delta R.T.: -0.003 min
 Response: 17779139
 Conc: 398.87 ng/ml

Instrument :
 ECD_P
 ClientSampleId :
 AR1660CCC500



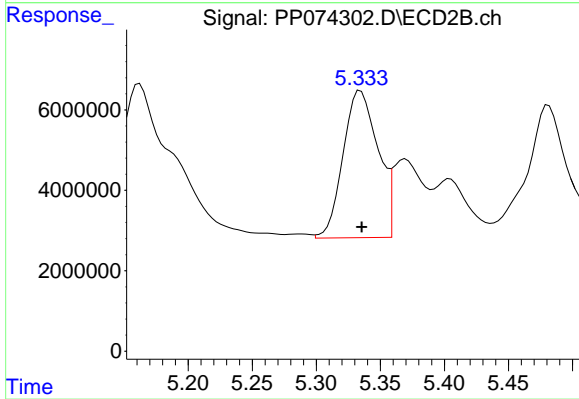
#23 AR-1248-3

R.T.: 5.162 min
 Delta R.T.: 0.000 min
 Response: 112847757
 Conc: 658.16 ng/ml



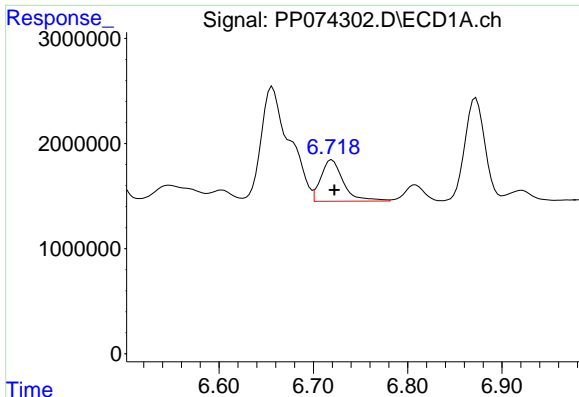
#24 AR-1248-4

R.T.: 6.657 min
 Delta R.T.: -0.026 min
 Response: 22793134
 Conc: 438.02 ng/ml



#24 AR-1248-4

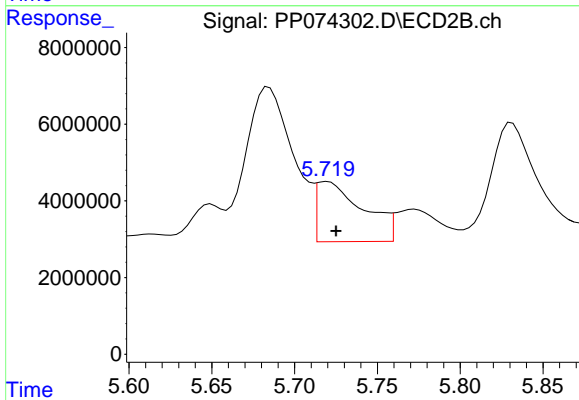
R.T.: 5.335 min
 Delta R.T.: 0.000 min
 Response: 69316623
 Conc: 416.63 ng/ml



#25 AR-1248-5

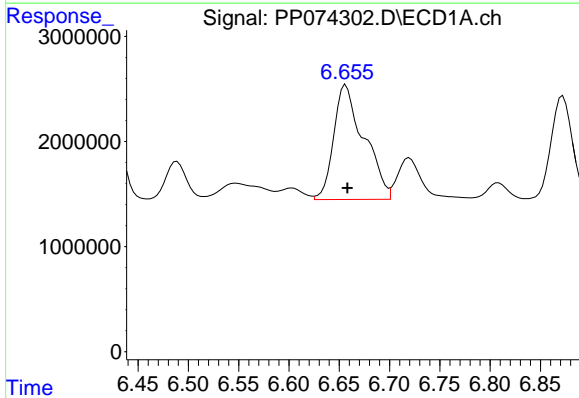
R.T.: 6.720 min
 Delta R.T.: -0.003 min
 Response: 6551465
 Conc: 115.05 ng/ml

Instrument :
 ECD_P
 ClientSampleId :
 AR1660CCC500



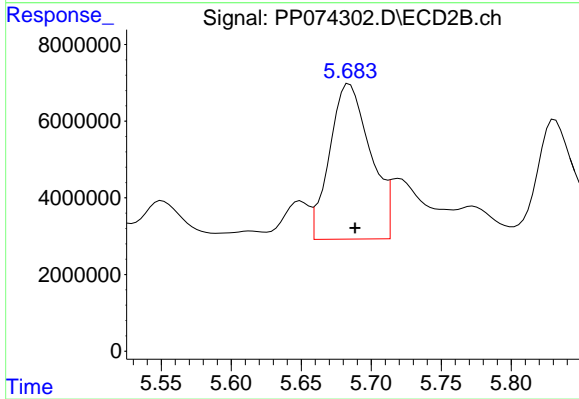
#25 AR-1248-5

R.T.: 5.720 min
 Delta R.T.: -0.005 min
 Response: 30444461
 Conc: 104.63 ng/ml



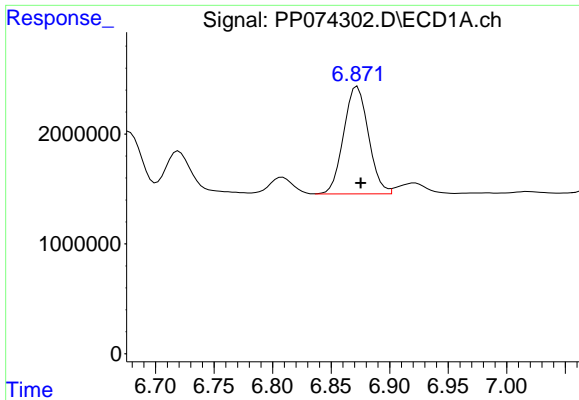
#26 AR-1254-1

R.T.: 6.657 min
 Delta R.T.: -0.002 min
 Response: 22793134
 Conc: 432.99 ng/ml



#26 AR-1254-1

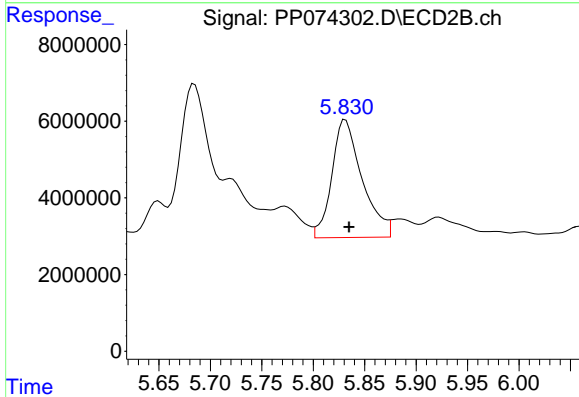
R.T.: 5.684 min
 Delta R.T.: -0.004 min
 Response: 81892355
 Conc: 223.64 ng/ml



#27 AR-1254-2

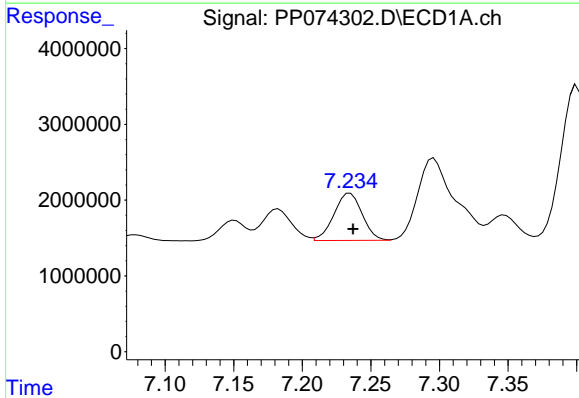
R.T.: 6.872 min
 Delta R.T.: -0.003 min
 Response: 14435648
 Conc: 181.57 ng/ml

Instrument :
 ECD_P
 ClientSampleId :
 AR1660CCC500



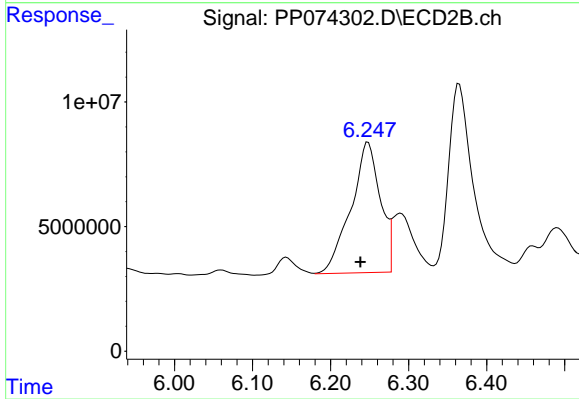
#27 AR-1254-2

R.T.: 5.831 min
 Delta R.T.: -0.004 min
 Response: 62919136
 Conc: 226.15 ng/ml



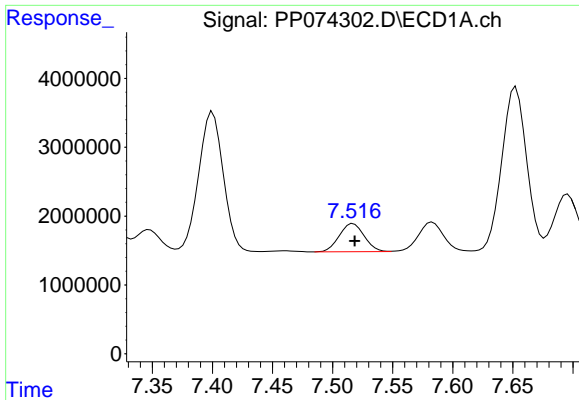
#28 AR-1254-3

R.T.: 7.235 min
 Delta R.T.: -0.002 min
 Response: 8918890
 Conc: 102.14 ng/ml



#28 AR-1254-3

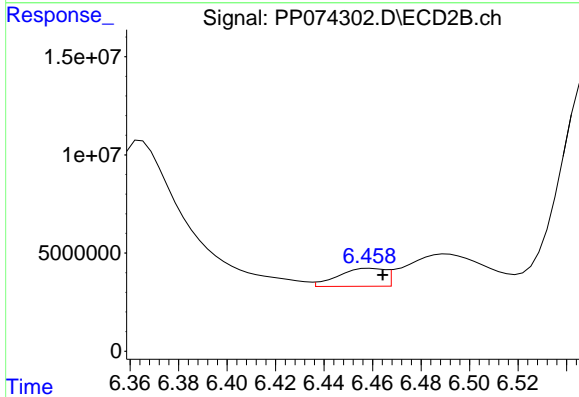
R.T.: 6.248 min
 Delta R.T.: 0.010 min
 Response: 136343094
 Conc: 278.70 ng/ml



#29 AR-1254-4

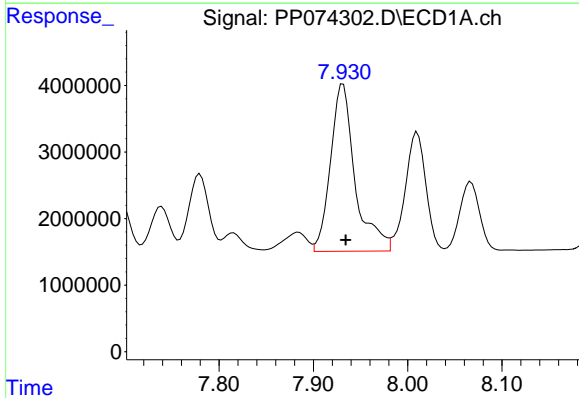
R.T.: 7.517 min
 Delta R.T.: -0.001 min
 Response: 5916884
 Conc: 92.73 ng/ml

Instrument :
 ECD_P
 ClientSampleId :
 AR1660CCC500



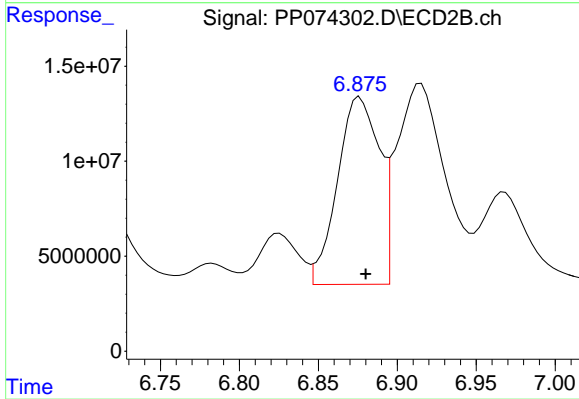
#29 AR-1254-4

R.T.: 6.459 min
 Delta R.T.: -0.005 min
 Response: 12244707
 Conc: 33.31 ng/ml



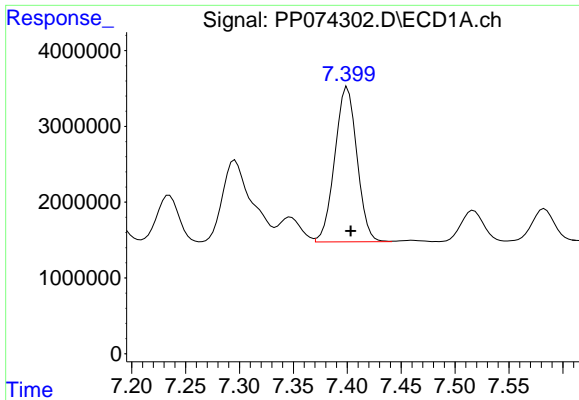
#30 AR-1254-5

R.T.: 7.931 min
 Delta R.T.: -0.003 min
 Response: 45500820
 Conc: 560.74 ng/ml



#30 AR-1254-5

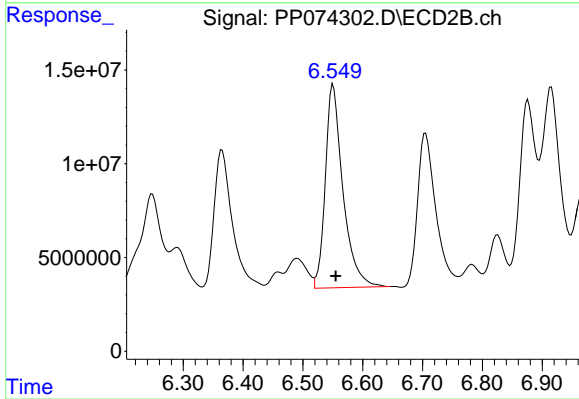
R.T.: 6.876 min
 Delta R.T.: -0.004 min
 Response: 181657529
 Conc: 471.63 ng/ml



#31 AR-1260-1

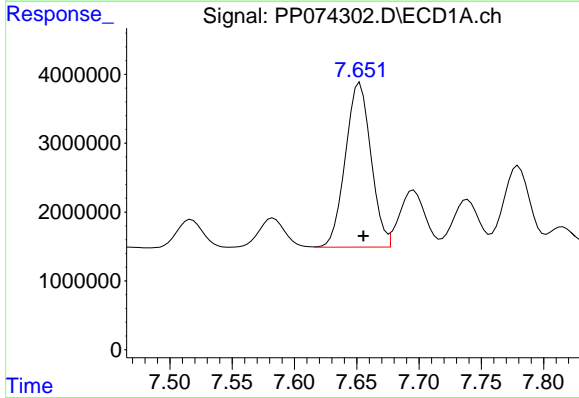
R.T.: 7.400 min
Delta R.T.: -0.003 min
Response: 29327545
Conc: 520.40 ng/ml

Instrument :
ECD_P
ClientSampleId :
AR1660CCC500



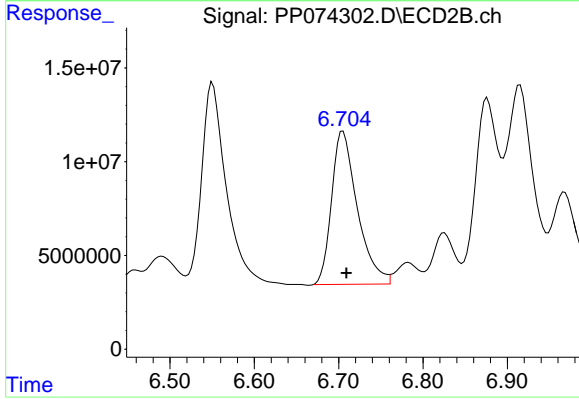
#31 AR-1260-1

R.T.: 6.551 min
Delta R.T.: -0.004 min
Response: 222175958
Conc: 550.00 ng/ml



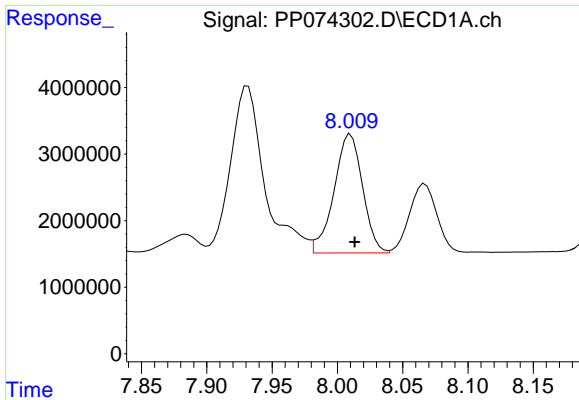
#32 AR-1260-2

R.T.: 7.653 min
Delta R.T.: -0.003 min
Response: 34227789
Conc: 502.22 ng/ml



#32 AR-1260-2

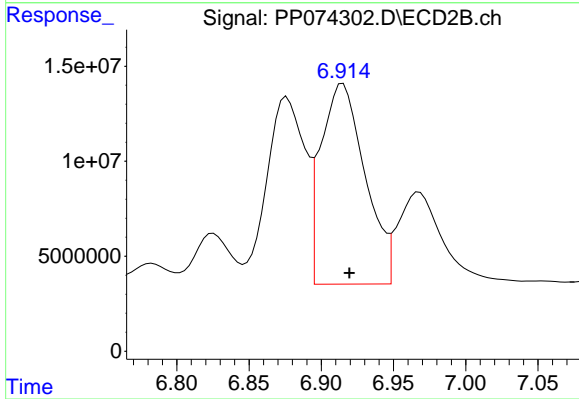
R.T.: 6.705 min
Delta R.T.: -0.004 min
Response: 173534930
Conc: 554.96 ng/ml



#33 AR-1260-3

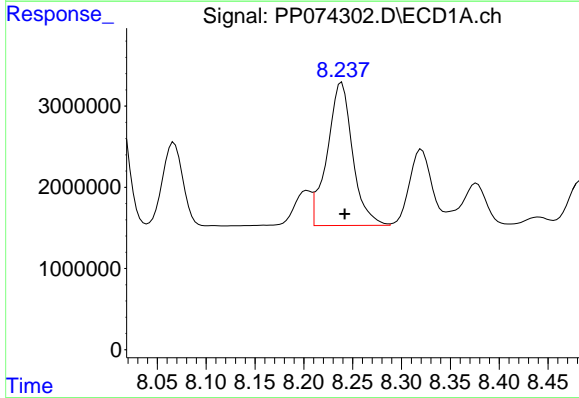
R.T.: 8.010 min
 Delta R.T.: -0.003 min
 Response: 27187361
 Conc: 510.12 ng/ml

Instrument :
 ECD_P
 ClientSampleId :
 AR1660CCC500



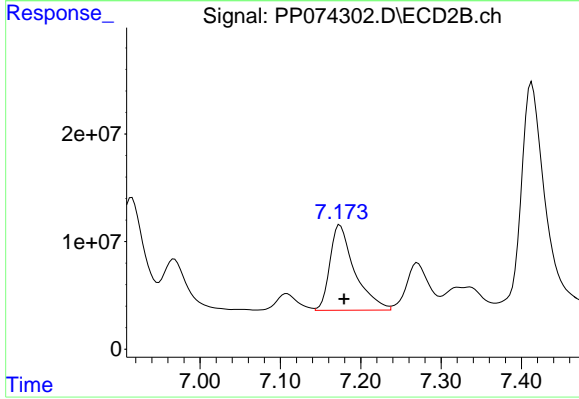
#33 AR-1260-3

R.T.: 6.915 min
 Delta R.T.: -0.004 min
 Response: 224566541
 Conc: 569.79 ng/ml



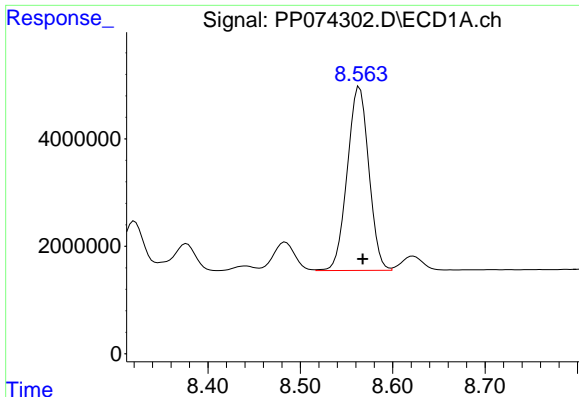
#34 AR-1260-4

R.T.: 8.239 min
 Delta R.T.: -0.003 min
 Response: 31861536
 Conc: 508.85 ng/ml



#34 AR-1260-4

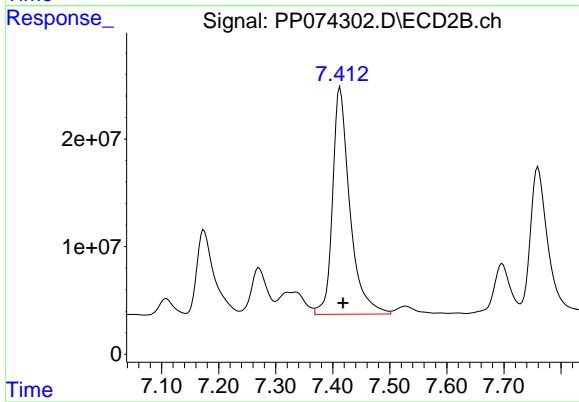
R.T.: 7.174 min
 Delta R.T.: -0.005 min
 Response: 169318007
 Conc: 581.89 ng/ml



#35 AR-1260-5

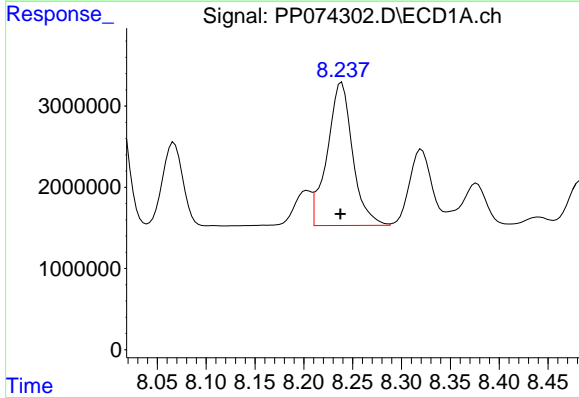
R.T.: 8.564 min
Delta R.T.: -0.003 min
Response: 55364530
Conc: 488.63 ng/ml

Instrument :
ECD_P
ClientSampleId :
AR1660CCC500



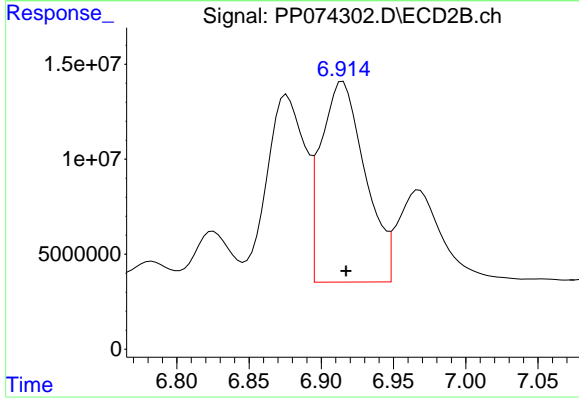
#35 AR-1260-5

R.T.: 7.413 min
Delta R.T.: -0.005 min
Response: 445101278
Conc: 587.66 ng/ml



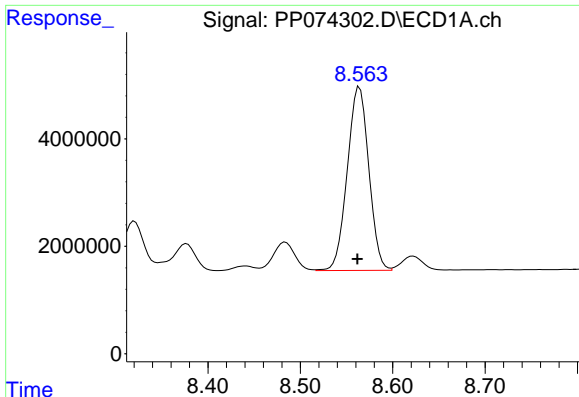
#36 AR-1262-1

R.T.: 8.239 min
Delta R.T.: 0.001 min
Response: 31861536
Conc: 420.39 ng/ml



#36 AR-1262-1

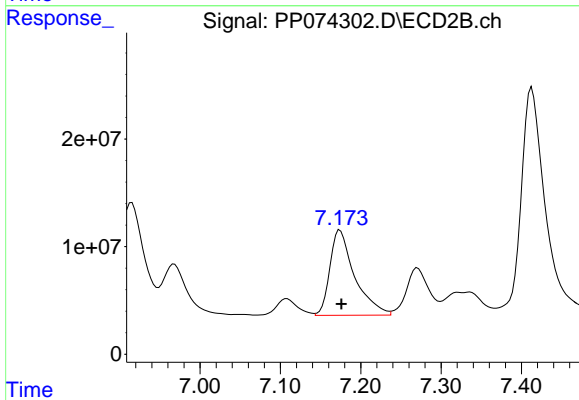
R.T.: 6.915 min
Delta R.T.: -0.002 min
Response: 224566541
Conc: 398.77 ng/ml



#37 AR-1262-2

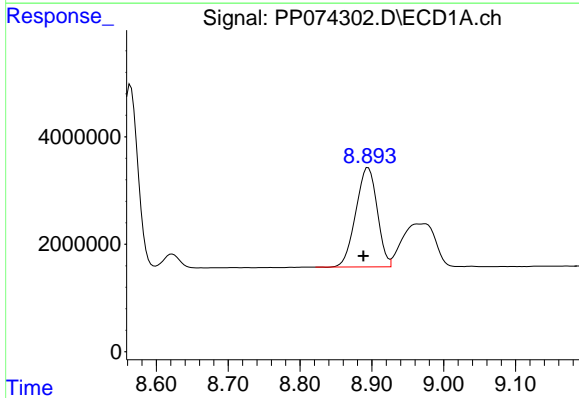
R.T.: 8.564 min
 Delta R.T.: 0.002 min
 Response: 55364530
 Conc: 424.48 ng/ml

Instrument :
 ECD_P
 ClientSampleId :
 AR1660CCC500



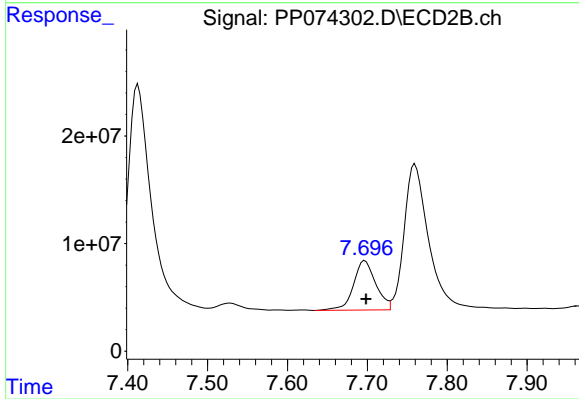
#37 AR-1262-2

R.T.: 7.174 min
 Delta R.T.: -0.002 min
 Response: 169318007
 Conc: 422.21 ng/ml



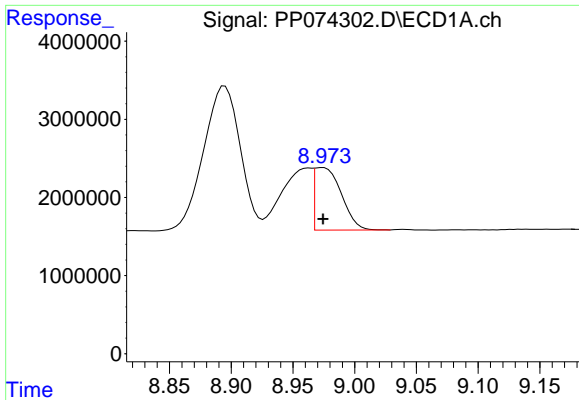
#38 AR-1262-3

R.T.: 8.895 min
 Delta R.T.: 0.007 min
 Response: 38172600
 Conc: 405.79 ng/ml



#38 AR-1262-3

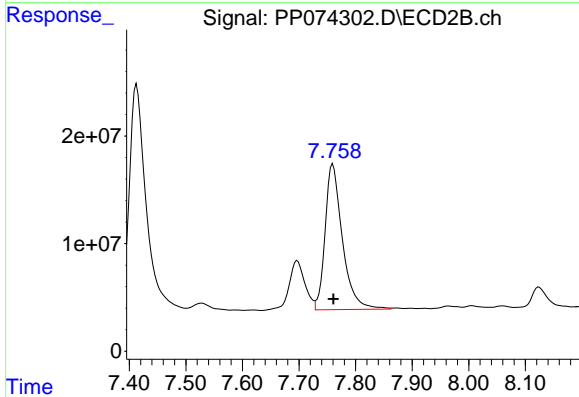
R.T.: 7.697 min
 Delta R.T.: -0.001 min
 Response: 89262389
 Conc: 248.32 ng/ml



#39 AR-1262-4

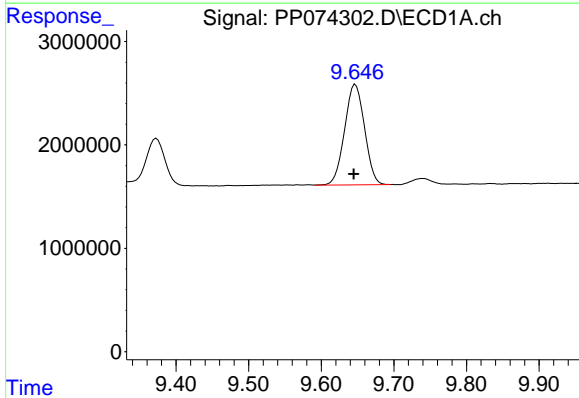
R.T.: 8.974 min
Delta R.T.: 0.000 min
Response: 12137663
Conc: 166.61 ng/ml

Instrument :
ECD_P
ClientSampleId :
AR1660CCC500



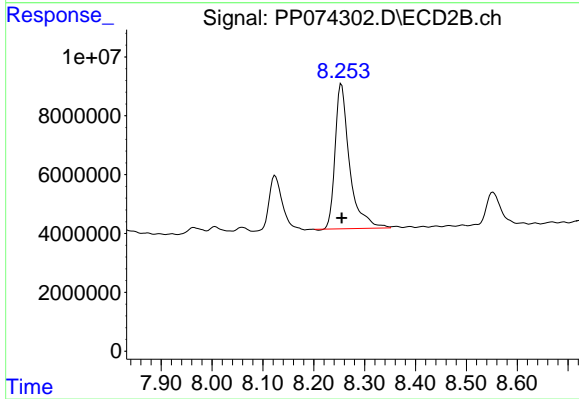
#39 AR-1262-4

R.T.: 7.760 min
Delta R.T.: -0.001 min
Response: 287797424
Conc: 431.53 ng/ml



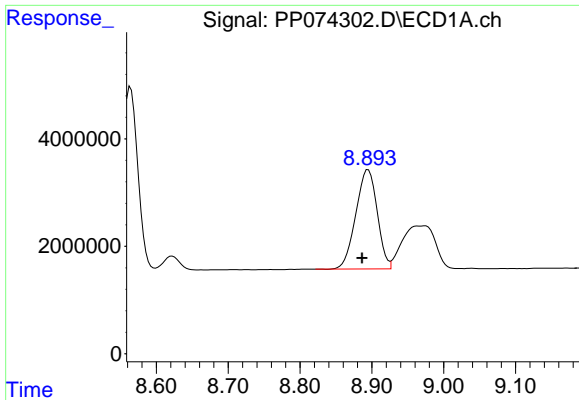
#40 AR-1262-5

R.T.: 9.647 min
Delta R.T.: 0.003 min
Response: 18501798
Conc: 363.33 ng/ml



#40 AR-1262-5

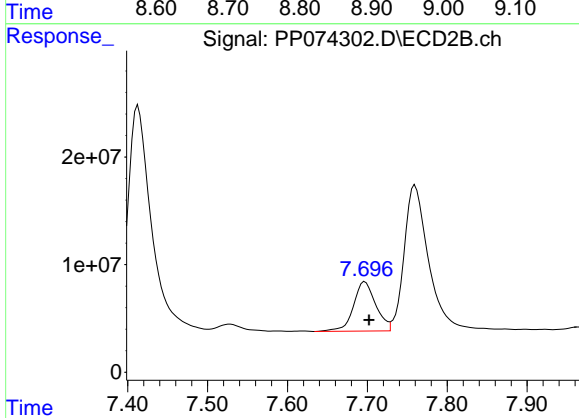
R.T.: 8.254 min
Delta R.T.: 0.000 min
Response: 97659023
Conc: 344.76 ng/ml



#41 AR-1268-1

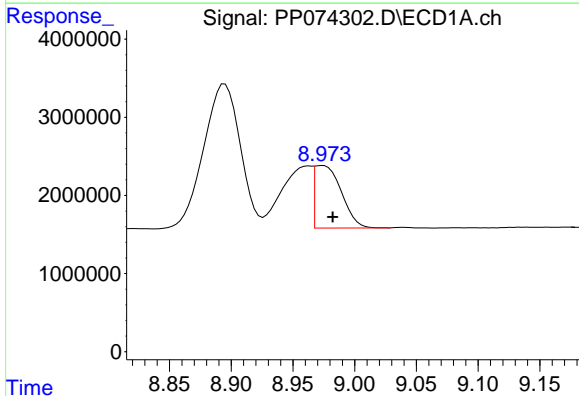
R.T.: 8.895 min
 Delta R.T.: 0.009 min
 Response: 38172600
 Conc: 245.27 ng/ml

Instrument :
 ECD_P
 ClientSampleId :
 AR1660CCC500



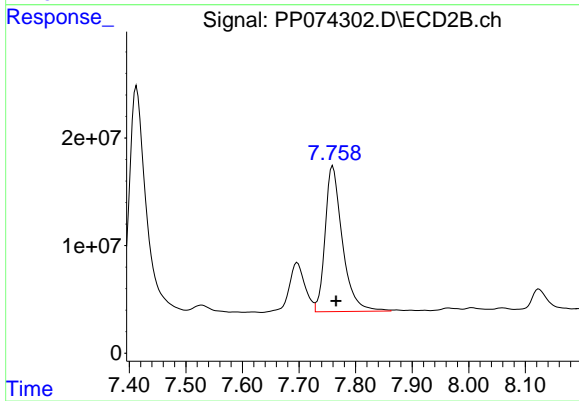
#41 AR-1268-1

R.T.: 7.697 min
 Delta R.T.: -0.005 min
 Response: 89262389
 Conc: 81.87 ng/ml



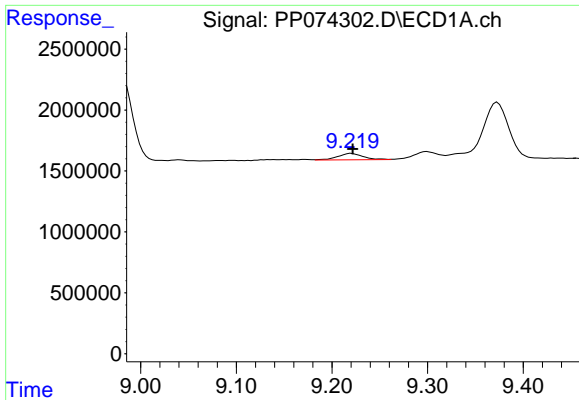
#42 AR-1268-2

R.T.: 8.974 min
 Delta R.T.: -0.008 min
 Response: 12137663
 Conc: 84.63 ng/ml



#42 AR-1268-2

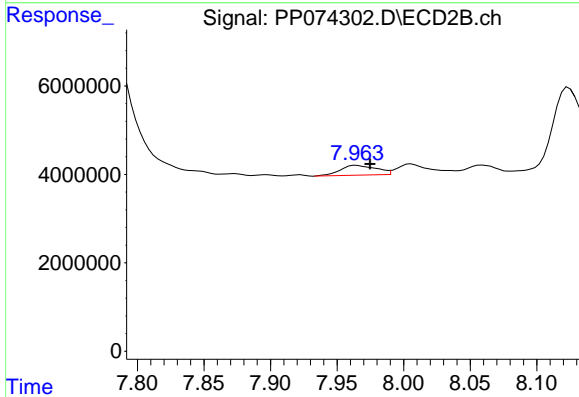
R.T.: 7.760 min
 Delta R.T.: -0.006 min
 Response: 287797424
 Conc: 271.17 ng/ml



#43 AR-1268-3

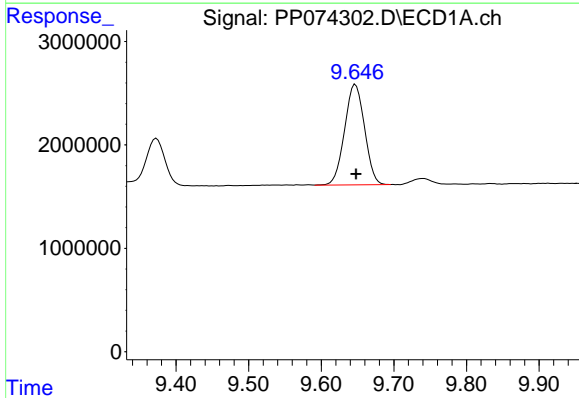
R.T.: 9.220 min
 Delta R.T.: -0.002 min
 Response: 984967
 Conc: 8.24 ng/ml

Instrument :
 ECD_P
 ClientSampleId :
 AR1660CCC500



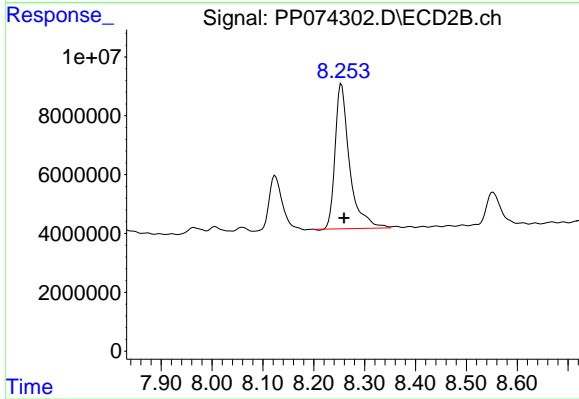
#43 AR-1268-3

R.T.: 7.964 min
 Delta R.T.: -0.010 min
 Response: 4137552
 Conc: 4.97 ng/ml



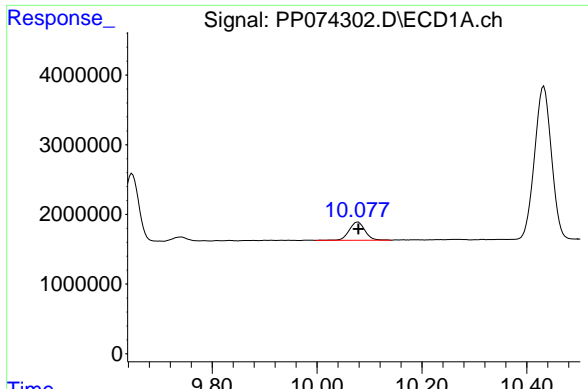
#44 AR-1268-4

R.T.: 9.647 min
 Delta R.T.: 0.000 min
 Response: 18501798
 Conc: 314.59 ng/ml



#44 AR-1268-4

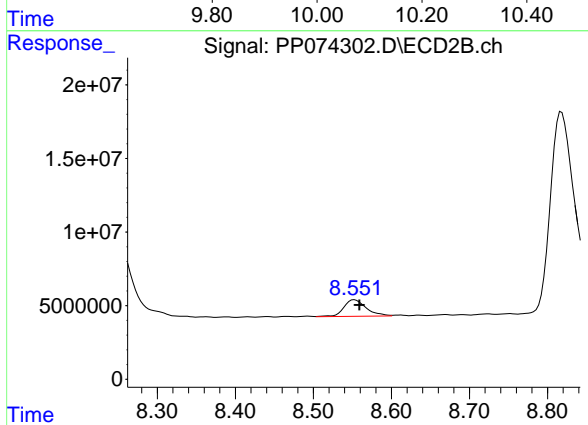
R.T.: 8.254 min
 Delta R.T.: -0.005 min
 Response: 97659023
 Conc: 317.01 ng/ml



#45 AR-1268-5

R.T.: 10.078 min
Delta R.T.: 0.000 min
Response: 5485944
Conc: 15.60 ng/ml

Instrument :
ECD_P
ClientSampleId :
AR1660CCC500



#45 AR-1268-5

R.T.: 8.552 min
Delta R.T.: -0.007 min
Response: 22340241
Conc: 8.76 ng/ml