

Data Path : Z:\pestpcbsrv\HPCHEM1\ECD_P\Data\PP081225\
 Data File : PP074306.D
 Signal(s) : Signal #1: ECD1A.ch Signal #2: ECD2B.ch
 Acq On : 12 Aug 2025 10:59
 Operator : YP\AJ
 Sample : DDT ANALOG
 Misc :
 ALS Vial : 6 Sample Multiplier: 1

Instrument :
 ECD_P
 ClientSampleId :
 DDT ANALOG

Integration File signal 1: autoint1.e
 Integration File signal 2: autoint2.e
 Quant Time: Aug 12 11:31:58 2025
 Quant Method : Z:\pestpcbsrv\HPCHEM1\ECD_P\methods\PP080125.M
 Quant Title : GC EXTRACTABLES
 QLast Update : Mon Aug 04 11:01:49 2025
 Response via : Initial Calibration
 Integrator: ChemStation

Volume Inj. : 2 µl
 Signal #1 Phase : ZB-MR1 Signal #2 Phase: ZB-MR2
 Signal #1 Info : 30Mx0.32mmx 0.50µ Signal #2 Info : 30M x 0.32mm x 0.25µm

Compound	RT#1	RT#2	Resp#1	Resp#2	ng/ml	ng/ml
System Monitoring Compounds						
1) SA Tetrachlo...	4.692f	3.813	235930	90558	0.211	0.024 #
2) SA Decachlor...	10.450	8.821	145198	504368	0.150	0.084 #
Target Compounds						
3) L1 AR-1016-1	5.865f	4.898	101560	202994	2.462	0.509 #
4) L1 AR-1016-2	5.865	4.956	101560	814640	1.672	4.338 #
5) L1 AR-1016-3	5.923	5.085	587264	773120	14.807	7.289 #
6) L1 AR-1016-4	5.978	5.131	571822	466583	17.570	4.272 #
7) L1 AR-1016-5	0.000	5.332	0	872347	N.D.	7.458 #
8) L2 AR-1221-1	0.000	4.015	0	254506	N.D.	5.185 #
9) L2 AR-1221-2	0.000	4.104	0	115042	N.D.	3.205 #
10) L2 AR-1221-3	0.000	4.175	0	150648	N.D.	1.114 #
11) L3 AR-1232-1	0.000	4.175	0	150648	N.D.	1.486 #
12) L3 AR-1232-2	5.596f	4.898	56128	202994	3.731	1.165 #
13) L3 AR-1232-3	5.865	5.085	101560	773120	3.502	16.874 #
14) L3 AR-1232-4	5.978	5.170	571822	725578	36.966	12.508 #
15) L3 AR-1232-5	6.073	5.332	347135	872347	29.629	18.569 #
16) L4 AR-1242-1	5.865f	4.898	101560	202994	2.725	0.588 #
17) L4 AR-1242-2	5.865	4.956	101560	814640	1.867	4.986 #
18) L4 AR-1242-3	5.923	5.085	587264	773120	16.433	8.381 #
19) L4 AR-1242-4	5.978	5.170	571822	725578	19.570	6.076 #
20) L4 AR-1242-5	6.738	5.675	1638065	712988	46.067	4.767 #
21) L5 AR-1248-1	5.865f	4.898	101560	202994	3.625	0.949 #
22) L5 AR-1248-2	6.073	5.131	347135	466583	8.622	3.189 #
23) L5 AR-1248-3	0.000	5.170	0	725578	N.D.	4.232 #
24) L5 AR-1248-4	6.632f	5.332	3229304	872347	62.058	5.243 #
25) L5 AR-1248-5	6.738	5.699	1638065	593090	28.767	2.038 #
26) L6 AR-1254-1	6.632	5.699	3229304	593090	61.346	1.620 #
27) L6 AR-1254-2	6.867	5.855	5632559	20243660	70.846	72.762
28) L6 AR-1254-3	7.233	6.246	4492325	22257745	51.449	45.497
29) L6 AR-1254-4	7.520	6.474	738807	816782	11.578	2.222 #
30) L6 AR-1254-5	7.951	6.878	438.2E6	2933.3E6	5400.260	7615.773 #
31) L7 AR-1260-1	7.370	6.556	123803	4154264	2.197	10.284 #
32) L7 AR-1260-2	7.636	0.000	631.4E6	0	9263.832	N.D. #
33) L7 AR-1260-3	7.951f	6.878f	438.2E6	2933.3E6	8222.069	7442.804
34) L7 AR-1260-4	8.225	7.191	118996	312614	1.900	1.074 #
35) L7 AR-1260-5	8.565	7.406	106665	249966	0.941	0.330 #
36) L8 AR-1262-1	8.225	6.878f	118996	2933.3E6	1.570	5208.886 #
37) L8 AR-1262-2	8.565	7.164	106665	193506	0.818	0.483 #
38) L8 AR-1262-3	8.905	7.708	81132	660370	0.862	1.837 #
39) L8 AR-1262-4	8.976	7.762	47413	548782	0.651	0.823 #
40) L8 AR-1262-5	9.675	8.262	74533	301156	1.464	1.063 #
41) L9 AR-1268-1	8.905	7.708	81132	660370	0.521	0.606

Data Path : Z:\pestpcbsrv\HPCHEM1\ECD_P\Data\PP081225\
 Data File : PP074306.D
 Signal(s) : Signal #1: ECD1A.ch Signal #2: ECD2B.ch
 Acq On : 12 Aug 2025 10:59
 Operator : YP\AJ
 Sample : DDT ANALOG
 Misc :
 ALS Vial : 6 Sample Multiplier: 1

Instrument :
 ECD_P
ClientSampleId :
 DDT ANALOG

Integration File signal 1: autoint1.e
 Integration File signal 2: autoint2.e
 Quant Time: Aug 12 11:31:58 2025
 Quant Method : Z:\pestpcbsrv\HPCHEM1\ECD_P\methods\PP080125.M
 Quant Title : GC EXTRACTABLES
 QLast Update : Mon Aug 04 11:01:49 2025
 Response via : Initial Calibration
 Integrator: ChemStation

Volume Inj. : 2 µl
 Signal #1 Phase : ZB-MR1 Signal #2 Phase: ZB-MR2
 Signal #1 Info : 30Mx0.32mmx 0.50µ Signal #2 Info : 30M x 0.32mm x 0.25µm

	Compound	RT#1	RT#2	Resp#1	Resp#2	ng/ml	ng/ml
42)	L9 AR-1268-2	8.976	7.762	47413	548782	0.331	0.517 #
43)	L9 AR-1268-3	9.222	7.966	94588	355287	0.792	0.427 #
44)	L9 AR-1268-4	9.675	8.262	74533	301156	1.267	0.978
45)	L9 AR-1268-5	10.088	8.554	20619	321067	0.059	0.126 #

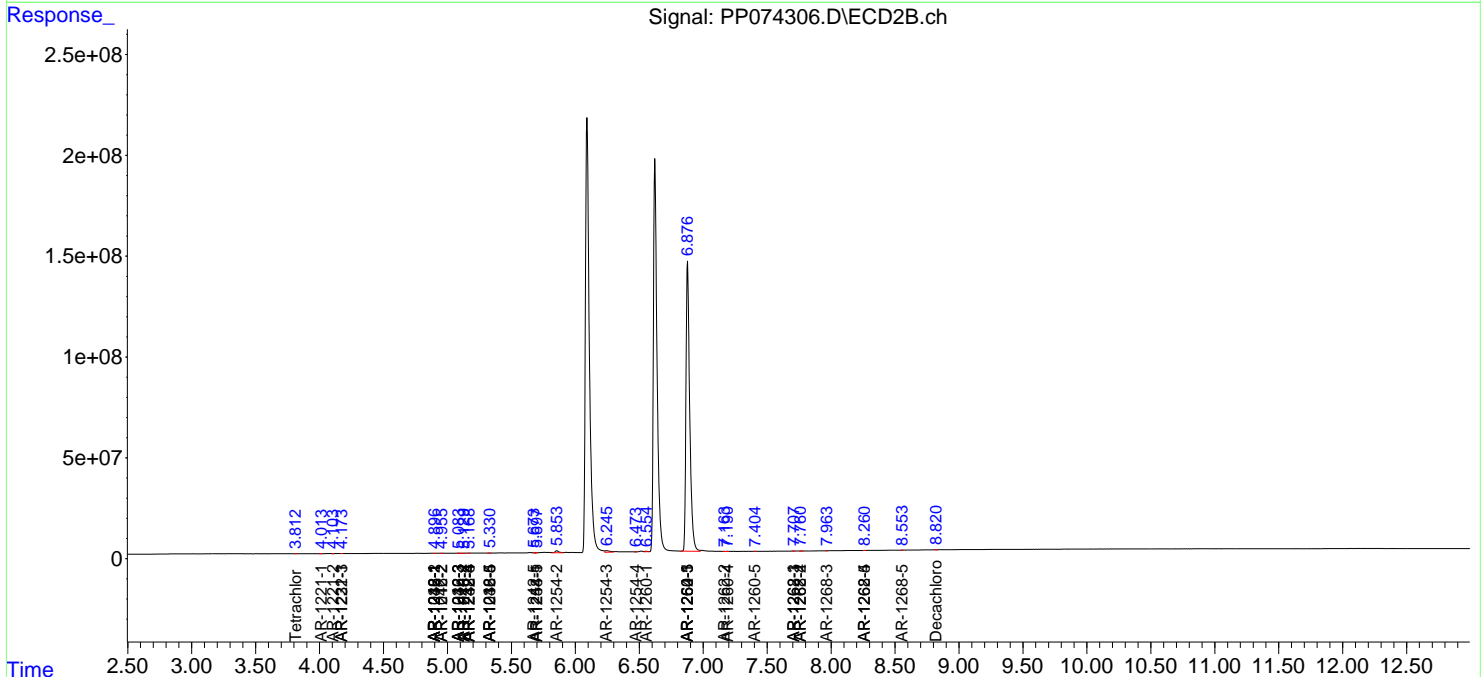
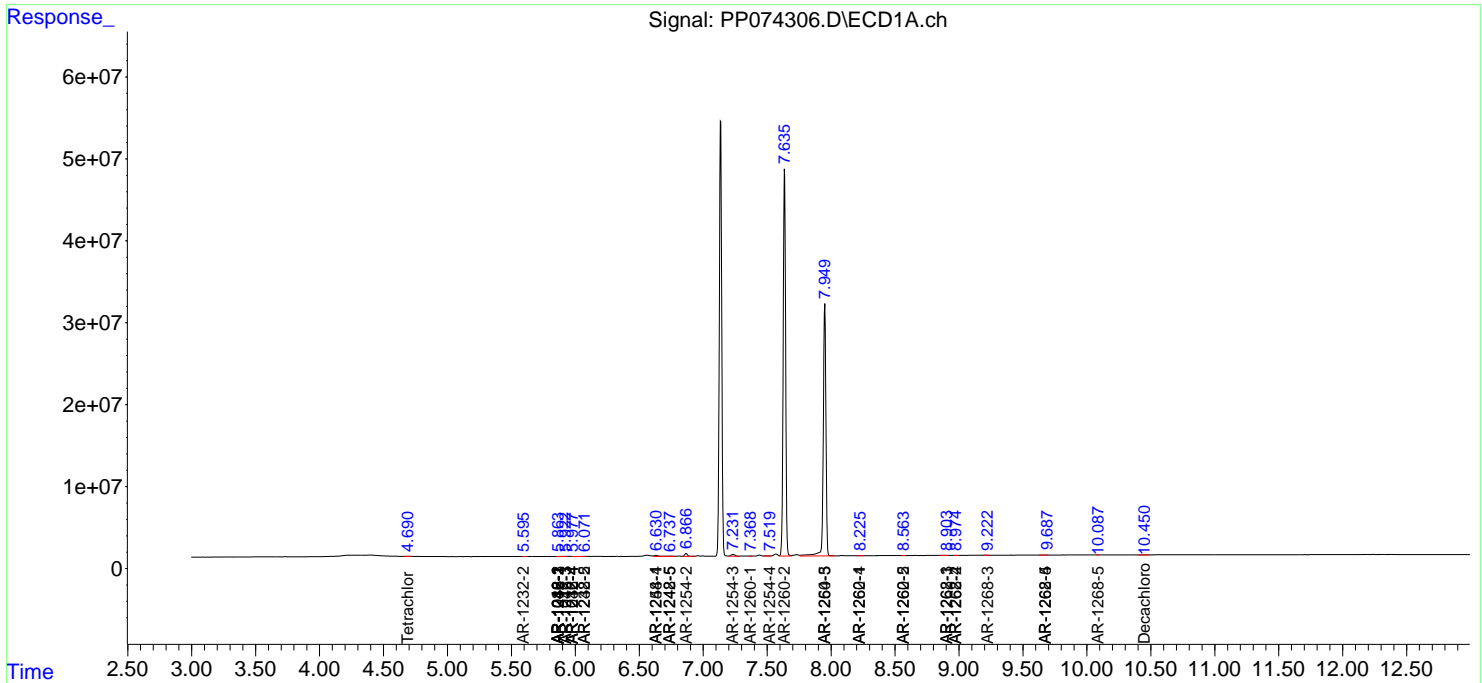
(f)=RT Delta > 1/2 Window (#)=Amounts differ by > 25% (m)=manual int.

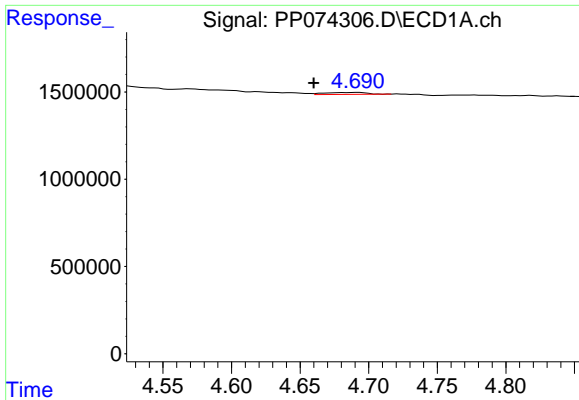
Data Path : Z:\pestpcbsrv\HPCHEM1\ECD_P\Data\PP081225\
 Data File : PP074306.D
 Signal(s) : Signal #1: ECD1A.ch Signal #2: ECD2B.ch
 Acq On : 12 Aug 2025 10:59
 Operator : YP\AJ
 Sample : DDT ANALOG
 Misc :
 ALS Vial : 6 Sample Multiplier: 1

Instrument :
 ECD_P
ClientSampleId :
 DDT ANALOG

Integration File signal 1: autoint1.e
 Integration File signal 2: autoint2.e
 Quant Time: Aug 12 11:31:58 2025
 Quant Method : Z:\pestpcbsrv\HPCHEM1\ECD_P\methods\PP080125.M
 Quant Title : GC EXTRACTABLES
 QLast Update : Mon Aug 04 11:01:49 2025
 Response via : Initial Calibration
 Integrator: ChemStation

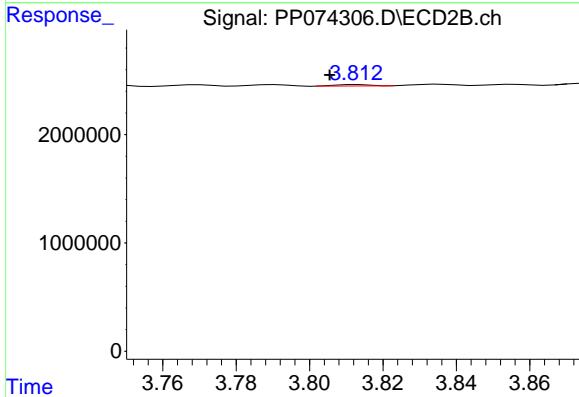
Volume Inj. : 2 µl
 Signal #1 Phase : ZB-MR1 Signal #2 Phase: ZB-MR2
 Signal #1 Info : 30Mx0.32mmx 0.50µ Signal #2 Info : 30M x 0.32mm x 0.25µm



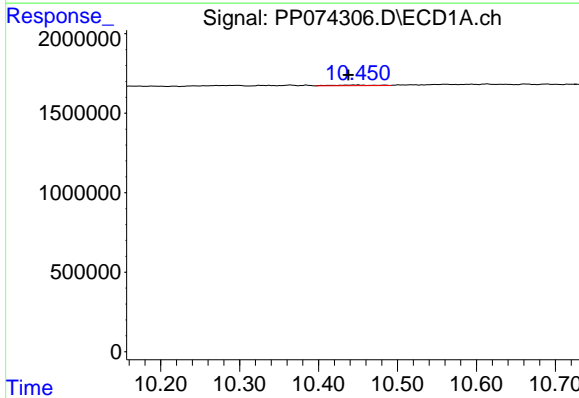


#1 Tetrachloro-m-xylene
 R.T.: 4.692 min
 Delta R.T.: 0.032 min
 Response: 235930
 Conc: 0.21 ng/ml

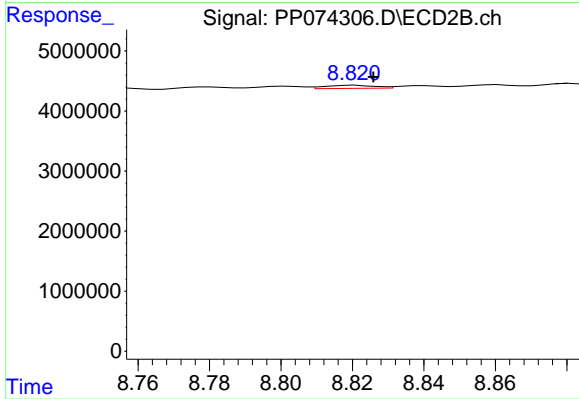
Instrument :
 ECD_P
 ClientSampleId :
 DDT ANALOG



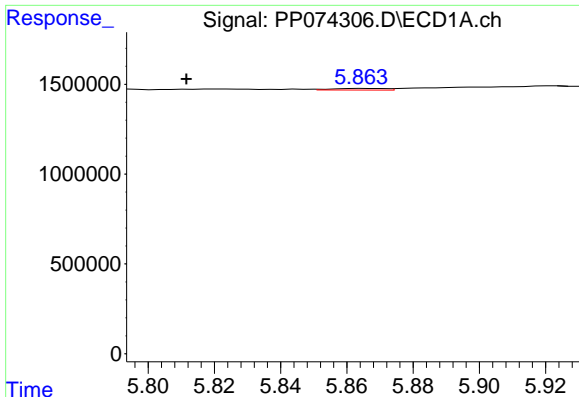
#1 Tetrachloro-m-xylene
 R.T.: 3.813 min
 Delta R.T.: 0.008 min
 Response: 90558
 Conc: 0.02 ng/ml



#2 Decachlorobiphenyl
 R.T.: 10.450 min
 Delta R.T.: 0.012 min
 Response: 145198
 Conc: 0.15 ng/ml



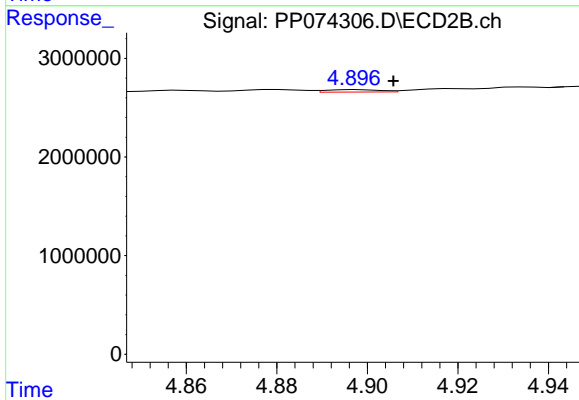
#2 Decachlorobiphenyl
 R.T.: 8.821 min
 Delta R.T.: -0.005 min
 Response: 504368
 Conc: 0.08 ng/ml



#3 AR-1016-1

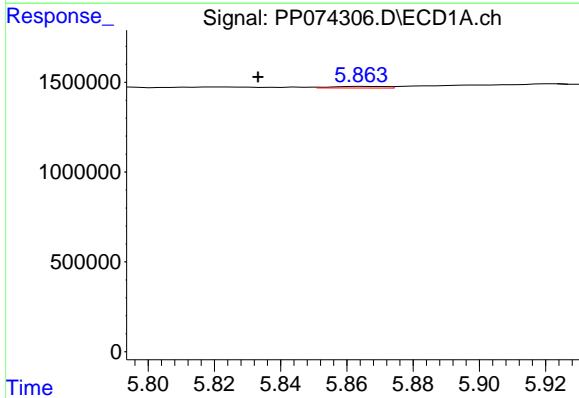
R.T.: 5.865 min
 Delta R.T.: 0.053 min
 Response: 101560
 Conc: 2.46 ng/ml

Instrument :
 ECD_P
 ClientSampleId :
 DDT ANALOG



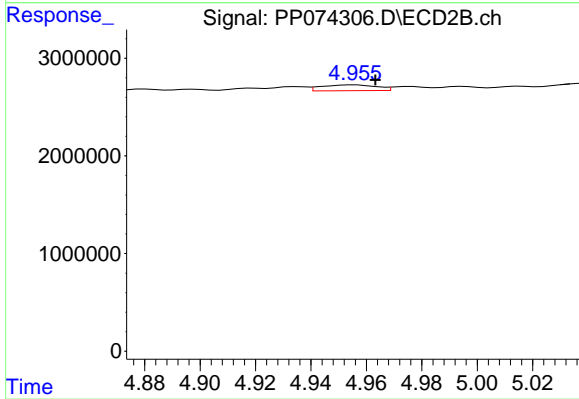
#3 AR-1016-1

R.T.: 4.898 min
 Delta R.T.: -0.008 min
 Response: 202994
 Conc: 0.51 ng/ml



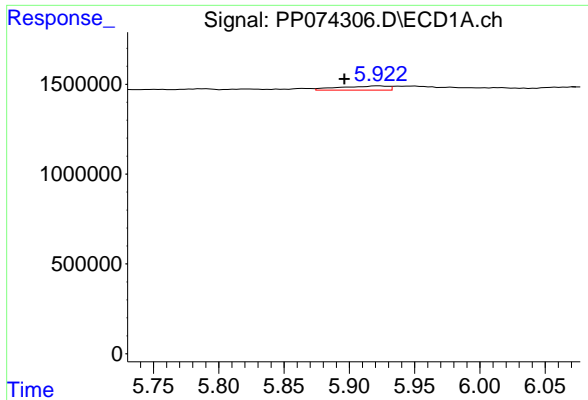
#4 AR-1016-2

R.T.: 5.865 min
 Delta R.T.: 0.032 min
 Response: 101560
 Conc: 1.67 ng/ml



#4 AR-1016-2

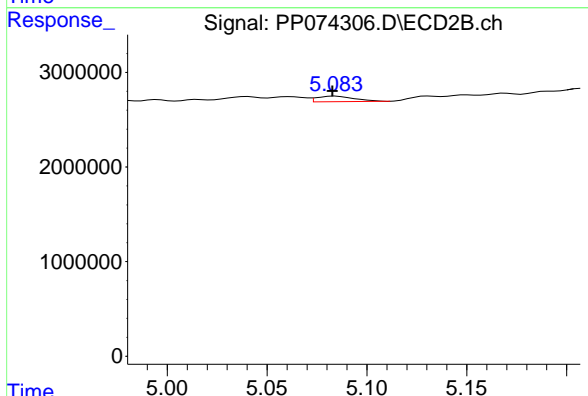
R.T.: 4.956 min
 Delta R.T.: -0.007 min
 Response: 814640
 Conc: 4.34 ng/ml



#5 AR-1016-3

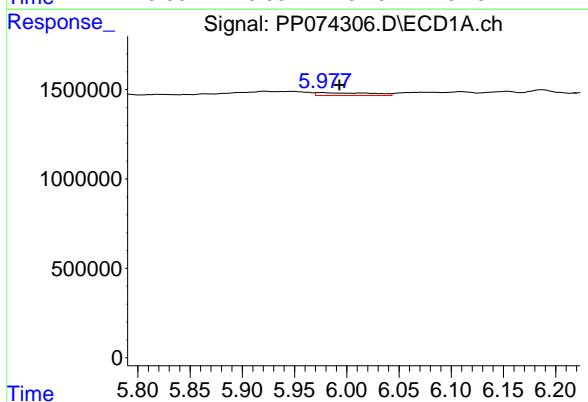
R.T.: 5.923 min
 Delta R.T.: 0.027 min
 Response: 587264
 Conc: 14.81 ng/ml

Instrument :
 ECD_P
 ClientSampleId :
 DDT ANALOG



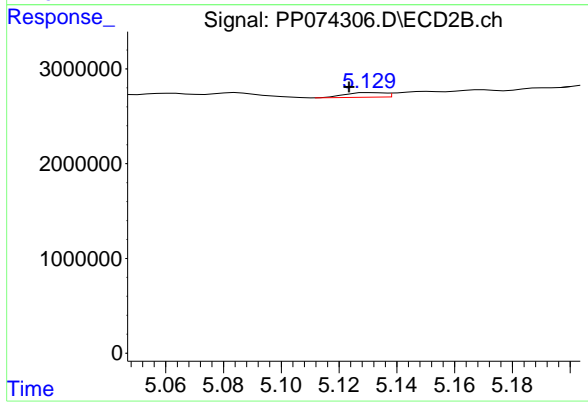
#5 AR-1016-3

R.T.: 5.085 min
 Delta R.T.: 0.002 min
 Response: 773120
 Conc: 7.29 ng/ml



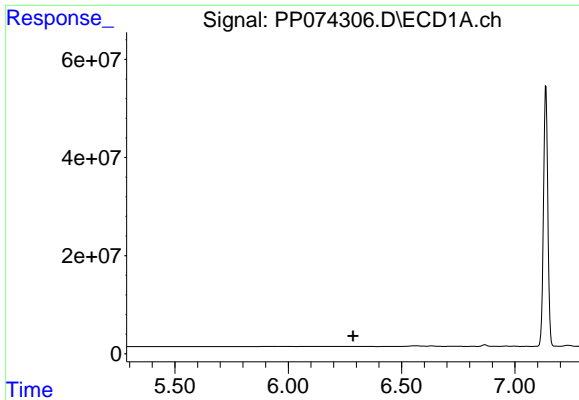
#6 AR-1016-4

R.T.: 5.978 min
 Delta R.T.: -0.015 min
 Response: 571822
 Conc: 17.57 ng/ml



#6 AR-1016-4

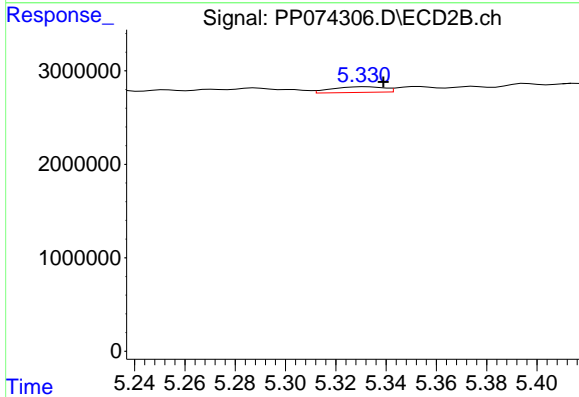
R.T.: 5.131 min
 Delta R.T.: 0.008 min
 Response: 466583
 Conc: 4.27 ng/ml



#7 AR-1016-5

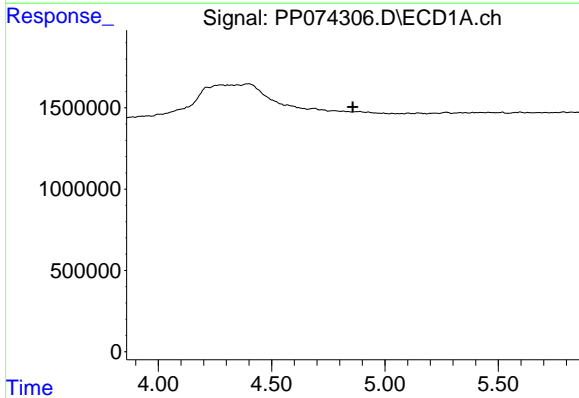
R.T.: 0.000 min
 Exp R.T. : 6.286 min
 Response: 0
 Conc: N.D.

Instrument :
 ECD_P
 ClientSampleId :
 DDT ANALOG



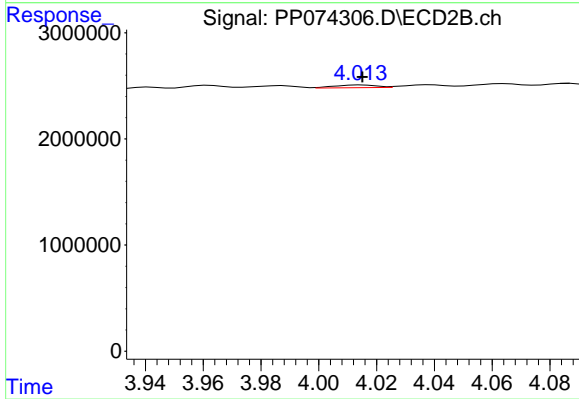
#7 AR-1016-5

R.T.: 5.332 min
 Delta R.T.: -0.007 min
 Response: 872347
 Conc: 7.46 ng/ml



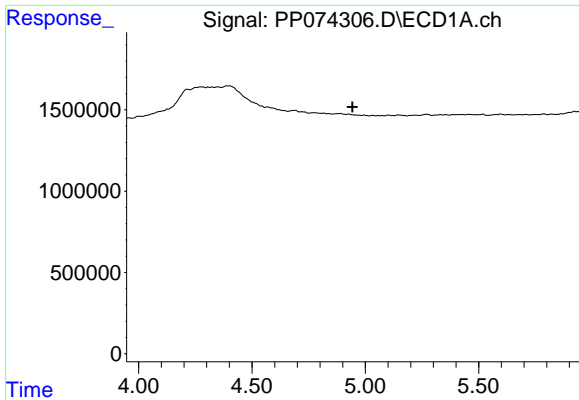
#8 AR-1221-1

R.T.: 0.000 min
 Exp R.T. : 4.858 min
 Response: 0
 Conc: N.D.



#8 AR-1221-1

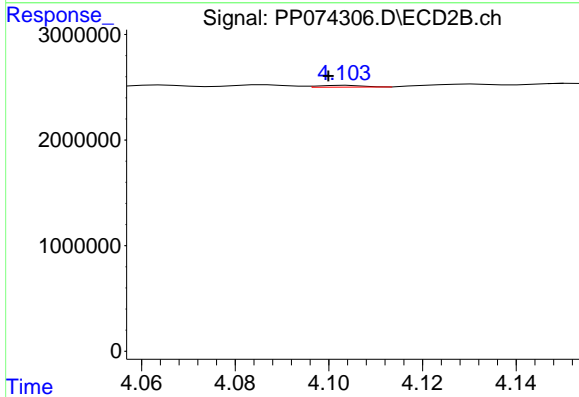
R.T.: 4.015 min
 Delta R.T.: 0.000 min
 Response: 254506
 Conc: 5.18 ng/ml



#9 AR-1221-2

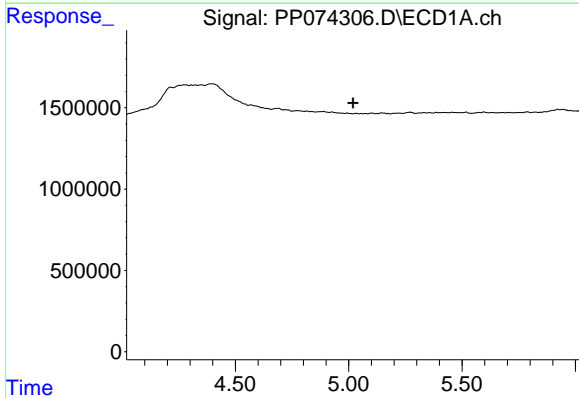
R.T.: 0.000 min
 Exp R.T.: 4.944 min
 Response: 0
 Conc: N.D.

Instrument :
 ECD_P
 ClientSampleId :
 DDT ANALOG



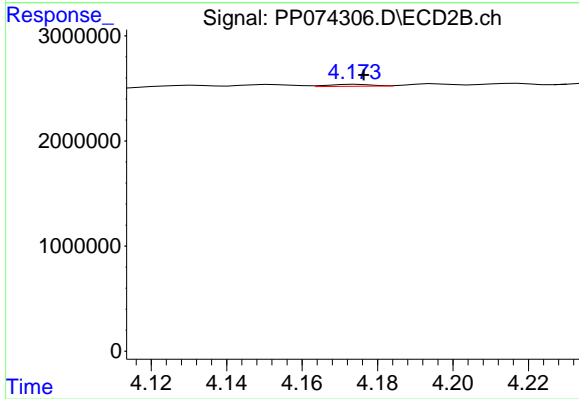
#9 AR-1221-2

R.T.: 4.104 min
 Delta R.T.: 0.004 min
 Response: 115042
 Conc: 3.21 ng/ml



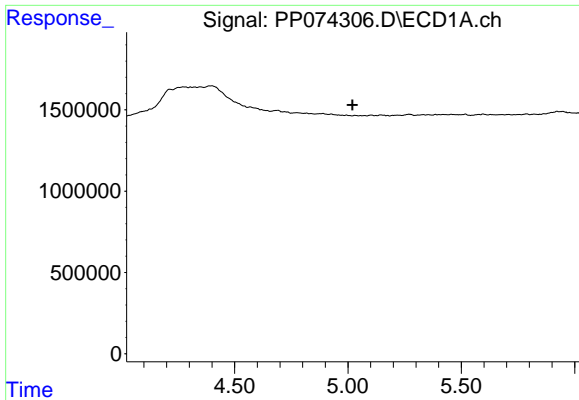
#10 AR-1221-3

R.T.: 0.000 min
 Exp R.T.: 5.019 min
 Response: 0
 Conc: N.D.



#10 AR-1221-3

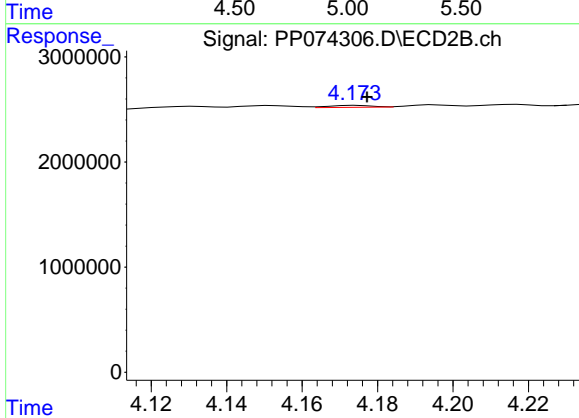
R.T.: 4.175 min
 Delta R.T.: -0.002 min
 Response: 150648
 Conc: 1.11 ng/ml



#11 AR-1232-1

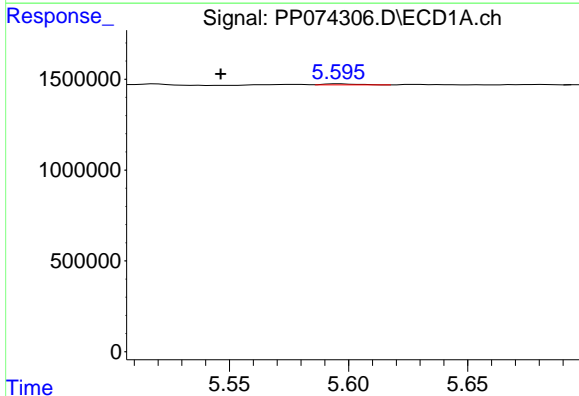
R.T.: 0.000 min
 Exp R.T.: 5.020 min
 Response: 0
 Conc: N.D.

Instrument :
 ECD_P
 ClientSampleId :
 DDT ANALOG



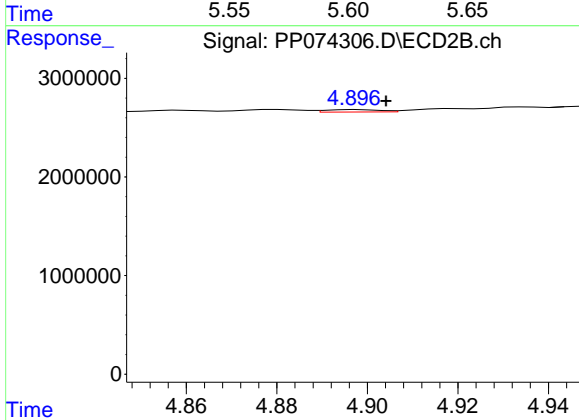
#11 AR-1232-1

R.T.: 4.175 min
 Delta R.T.: -0.003 min
 Response: 150648
 Conc: 1.49 ng/ml



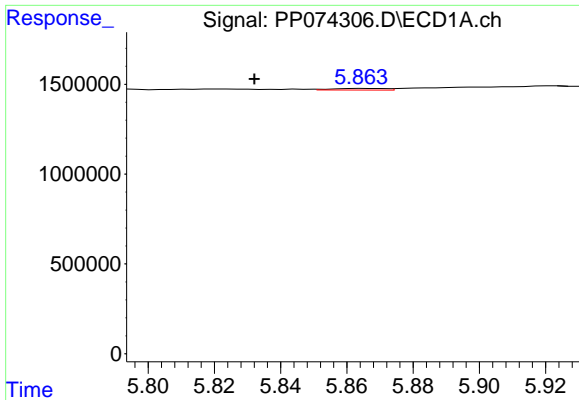
#12 AR-1232-2

R.T.: 5.596 min
 Delta R.T.: 0.050 min
 Response: 56128
 Conc: 3.73 ng/ml



#12 AR-1232-2

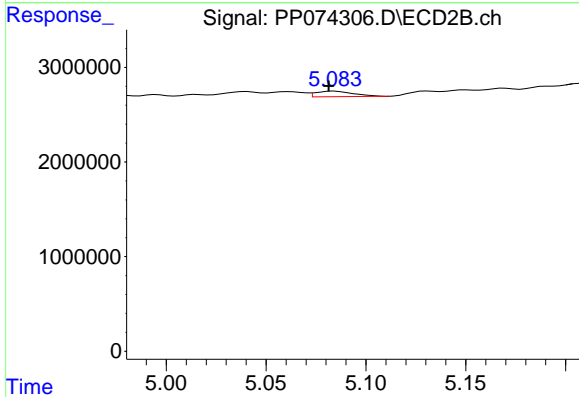
R.T.: 4.898 min
 Delta R.T.: -0.006 min
 Response: 202994
 Conc: 1.16 ng/ml



#13 AR-1232-3

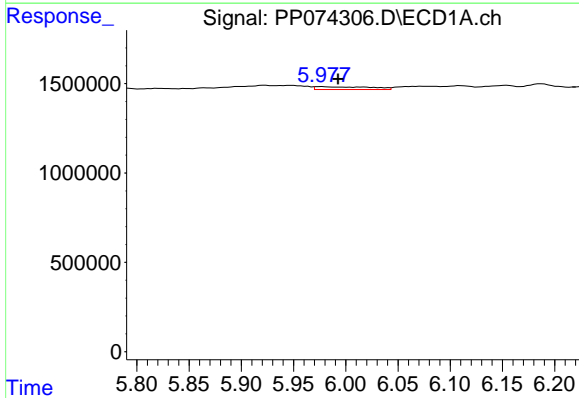
R.T.: 5.865 min
 Delta R.T.: 0.033 min
 Response: 101560
 Conc: 3.50 ng/ml

Instrument :
 ECD_P
 ClientSampleId :
 DDT ANALOG



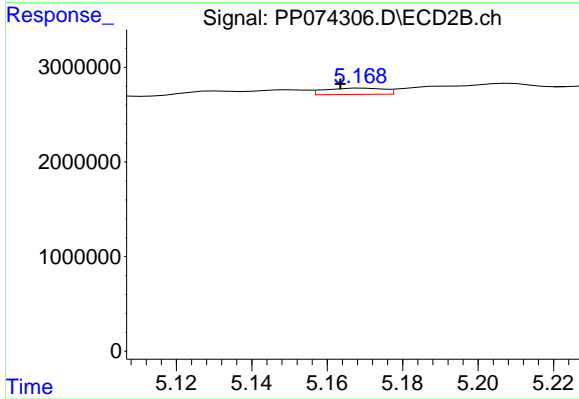
#13 AR-1232-3

R.T.: 5.085 min
 Delta R.T.: 0.003 min
 Response: 773120
 Conc: 16.87 ng/ml



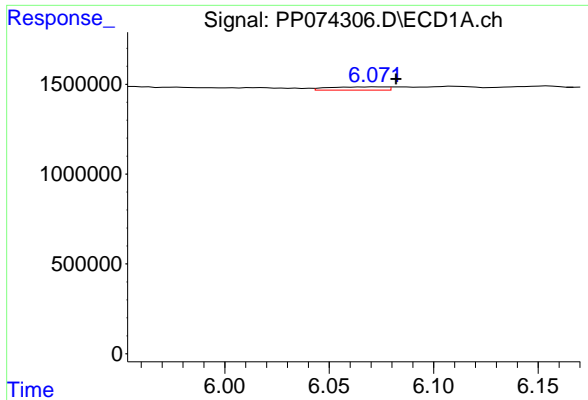
#14 AR-1232-4

R.T.: 5.978 min
 Delta R.T.: -0.015 min
 Response: 571822
 Conc: 36.97 ng/ml



#14 AR-1232-4

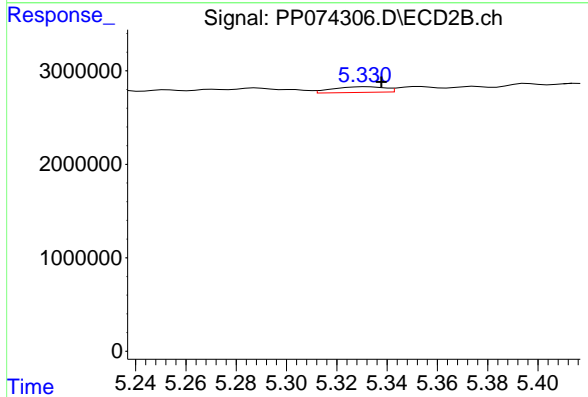
R.T.: 5.170 min
 Delta R.T.: 0.006 min
 Response: 725578
 Conc: 12.51 ng/ml



#15 AR-1232-5

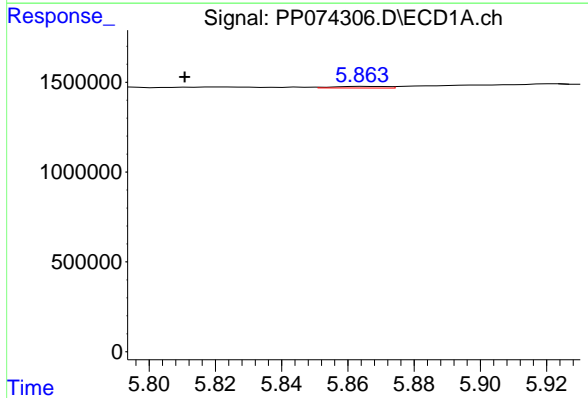
R.T.: 6.073 min
 Delta R.T.: -0.009 min
 Response: 347135
 Conc: 29.63 ng/ml

Instrument :
 ECD_P
 ClientSampleId :
 DDT ANALOG



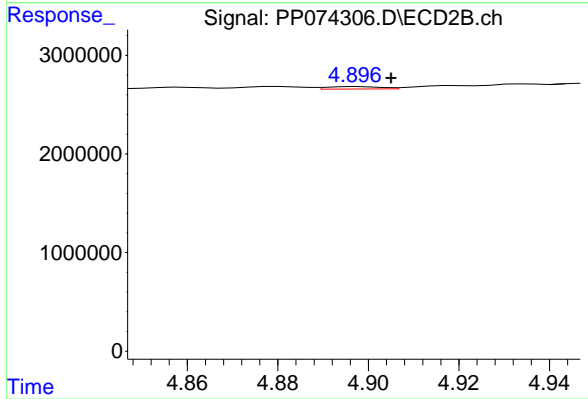
#15 AR-1232-5

R.T.: 5.332 min
 Delta R.T.: -0.006 min
 Response: 872347
 Conc: 18.57 ng/ml



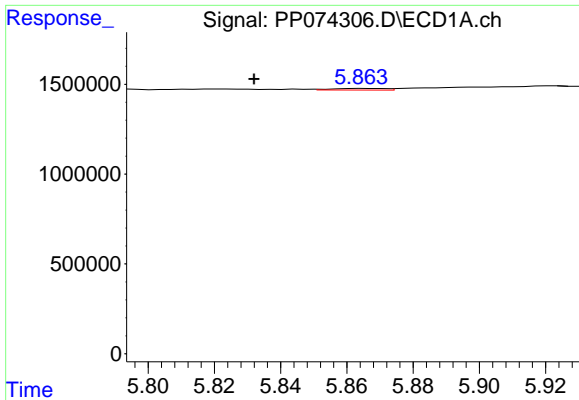
#16 AR-1242-1

R.T.: 5.865 min
 Delta R.T.: 0.054 min
 Response: 101560
 Conc: 2.73 ng/ml



#16 AR-1242-1

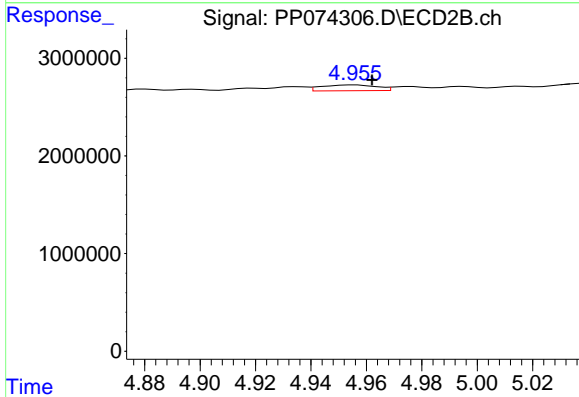
R.T.: 4.898 min
 Delta R.T.: -0.007 min
 Response: 202994
 Conc: 0.59 ng/ml



#17 AR-1242-2

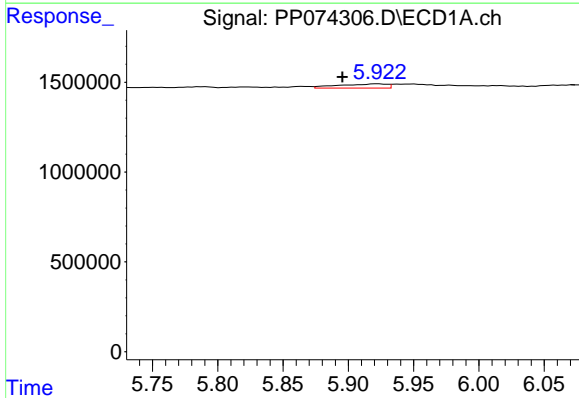
R.T.: 5.865 min
 Delta R.T.: 0.033 min
 Response: 101560
 Conc: 1.87 ng/ml

Instrument :
 ECD_P
 ClientSampleId :
 DDT ANALOG



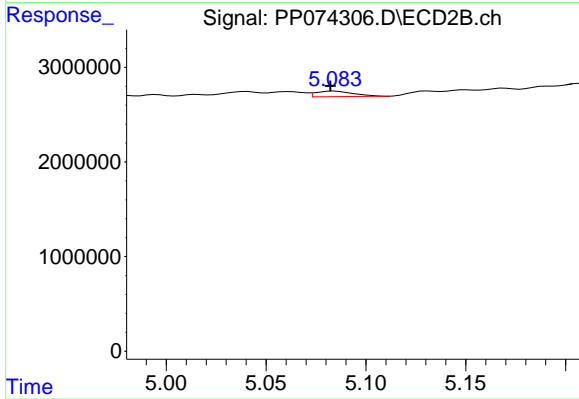
#17 AR-1242-2

R.T.: 4.956 min
 Delta R.T.: -0.006 min
 Response: 814640
 Conc: 4.99 ng/ml



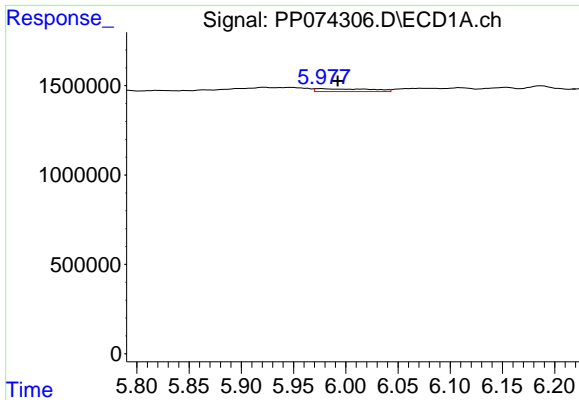
#18 AR-1242-3

R.T.: 5.923 min
 Delta R.T.: 0.027 min
 Response: 587264
 Conc: 16.43 ng/ml



#18 AR-1242-3

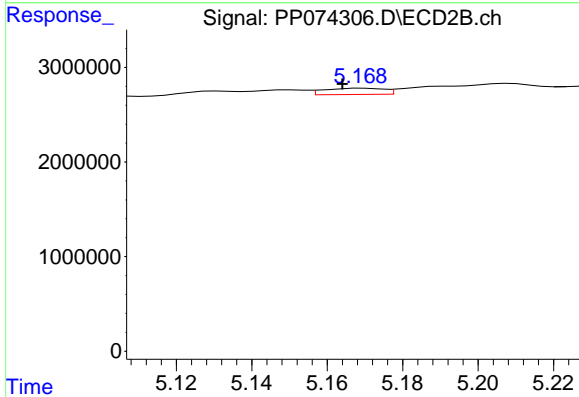
R.T.: 5.085 min
 Delta R.T.: 0.002 min
 Response: 773120
 Conc: 8.38 ng/ml



#19 AR-1242-4

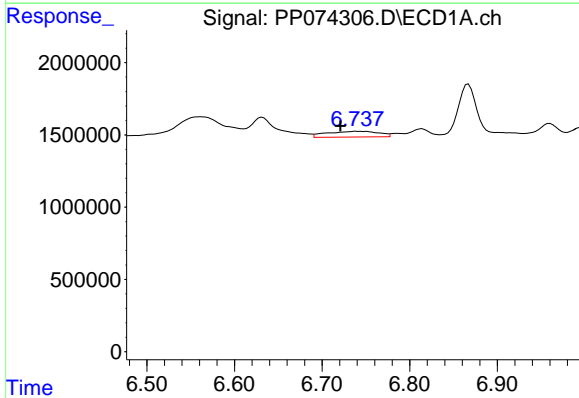
R.T.: 5.978 min
 Delta R.T.: -0.015 min
 Response: 571822
 Conc: 19.57 ng/ml

Instrument :
 ECD_P
 ClientSampleId :
 DDT ANALOG



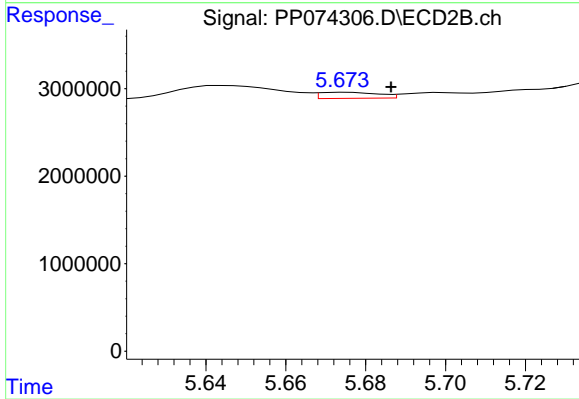
#19 AR-1242-4

R.T.: 5.170 min
 Delta R.T.: 0.006 min
 Response: 725578
 Conc: 6.08 ng/ml



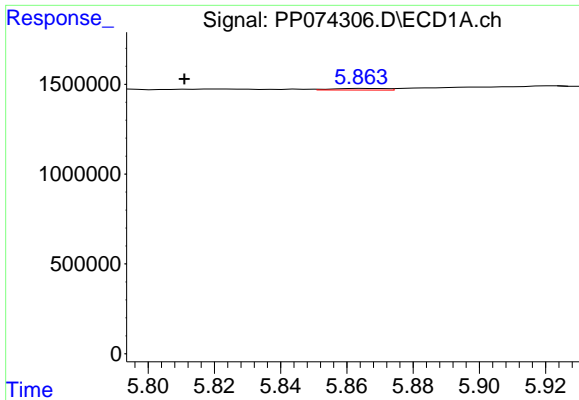
#20 AR-1242-5

R.T.: 6.738 min
 Delta R.T.: 0.018 min
 Response: 1638065
 Conc: 46.07 ng/ml



#20 AR-1242-5

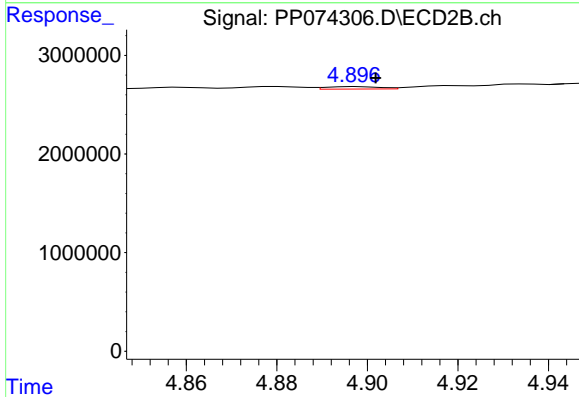
R.T.: 5.675 min
 Delta R.T.: -0.011 min
 Response: 712988
 Conc: 4.77 ng/ml



#21 AR-1248-1

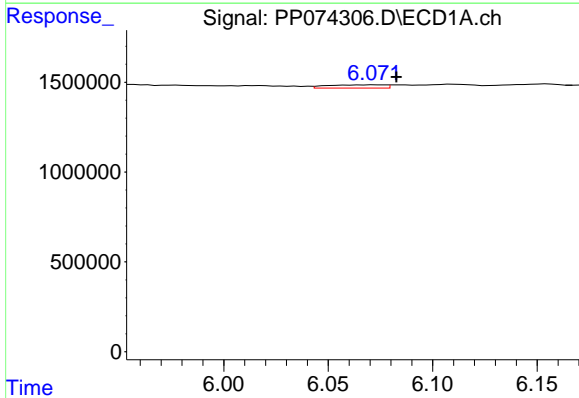
R.T.: 5.865 min
 Delta R.T.: 0.054 min
 Response: 101560
 Conc: 3.63 ng/ml

Instrument :
 ECD_P
 ClientSampleId :
 DDT ANALOG



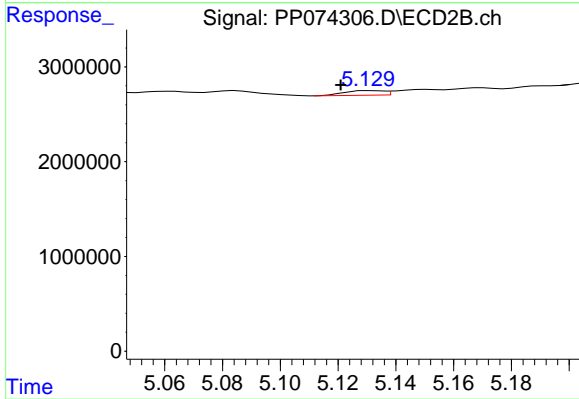
#21 AR-1248-1

R.T.: 4.898 min
 Delta R.T.: -0.004 min
 Response: 202994
 Conc: 0.95 ng/ml



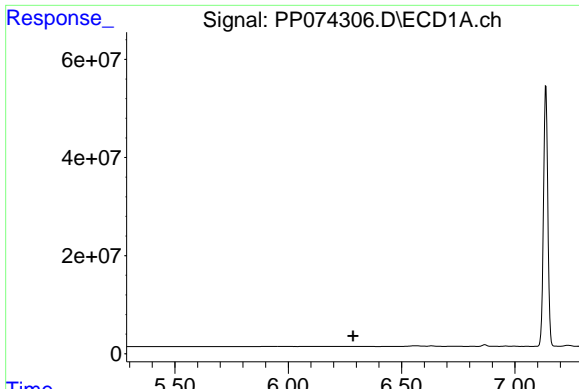
#22 AR-1248-2

R.T.: 6.073 min
 Delta R.T.: -0.010 min
 Response: 347135
 Conc: 8.62 ng/ml



#22 AR-1248-2

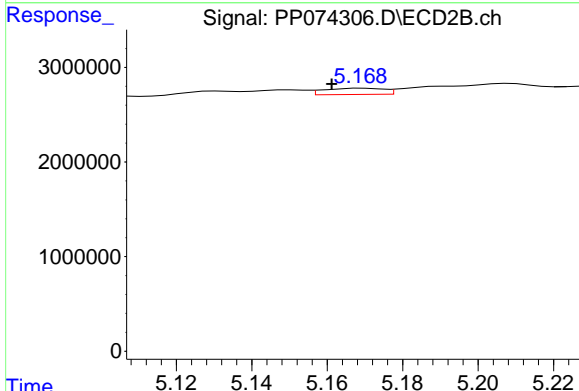
R.T.: 5.131 min
 Delta R.T.: 0.010 min
 Response: 466583
 Conc: 3.19 ng/ml



#23 AR-1248-3

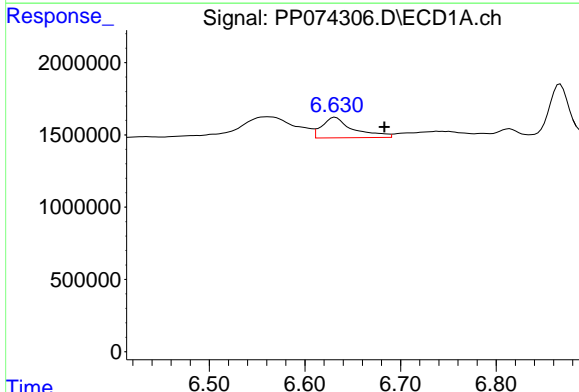
R.T.: 0.000 min
 Exp R.T.: 6.286 min
 Response: 0
 Conc: N.D.

Instrument :
 ECD_P
 ClientSampleId :
 DDT ANALOG



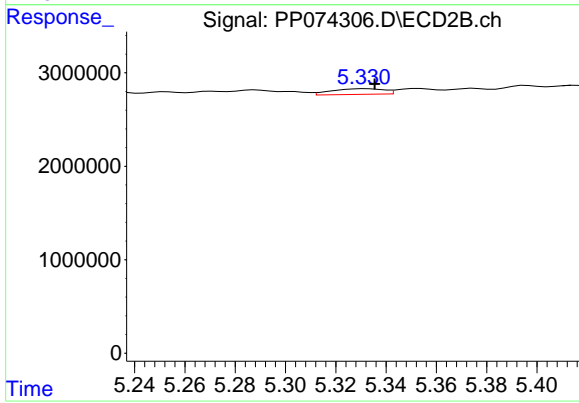
#23 AR-1248-3

R.T.: 5.170 min
 Delta R.T.: 0.008 min
 Response: 725578
 Conc: 4.23 ng/ml



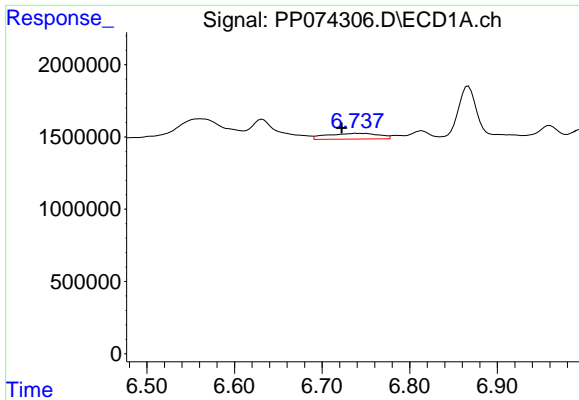
#24 AR-1248-4

R.T.: 6.632 min
 Delta R.T.: -0.051 min
 Response: 3229304
 Conc: 62.06 ng/ml



#24 AR-1248-4

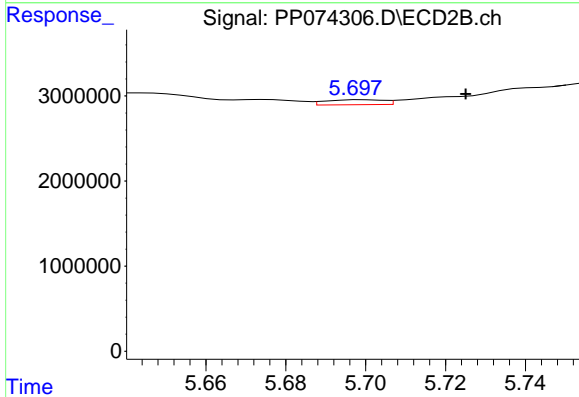
R.T.: 5.332 min
 Delta R.T.: -0.003 min
 Response: 872347
 Conc: 5.24 ng/ml



#25 AR-1248-5

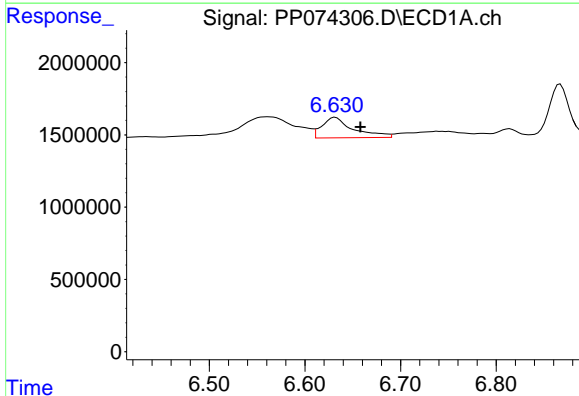
R.T.: 6.738 min
 Delta R.T.: 0.016 min
 Response: 1638065
 Conc: 28.77 ng/ml

Instrument :
 ECD_P
 ClientSampleId :
 DDT ANALOG



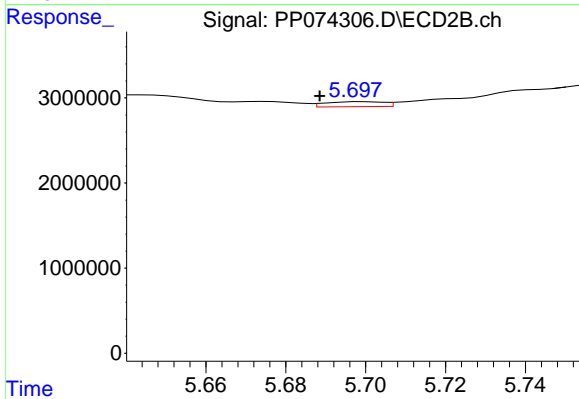
#25 AR-1248-5

R.T.: 5.699 min
 Delta R.T.: -0.026 min
 Response: 593090
 Conc: 2.04 ng/ml



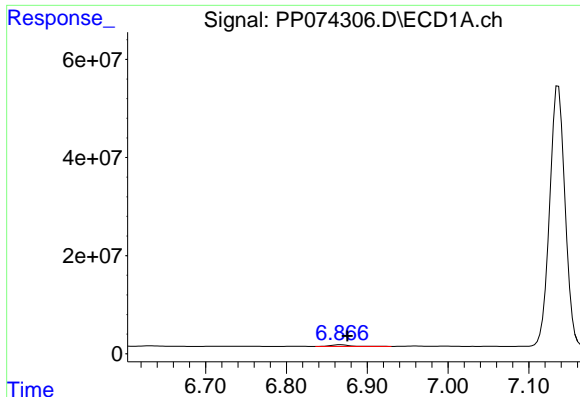
#26 AR-1254-1

R.T.: 6.632 min
 Delta R.T.: -0.026 min
 Response: 3229304
 Conc: 61.35 ng/ml



#26 AR-1254-1

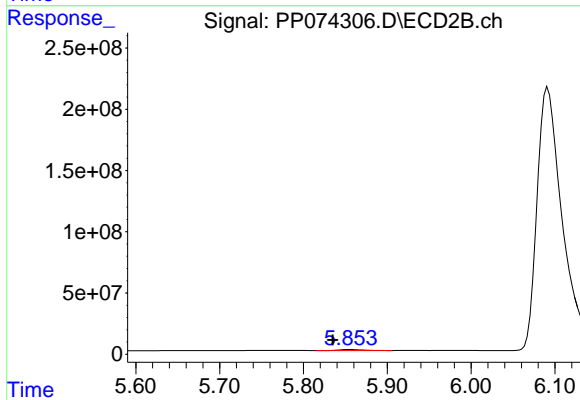
R.T.: 5.699 min
 Delta R.T.: 0.010 min
 Response: 593090
 Conc: 1.62 ng/ml



#27 AR-1254-2

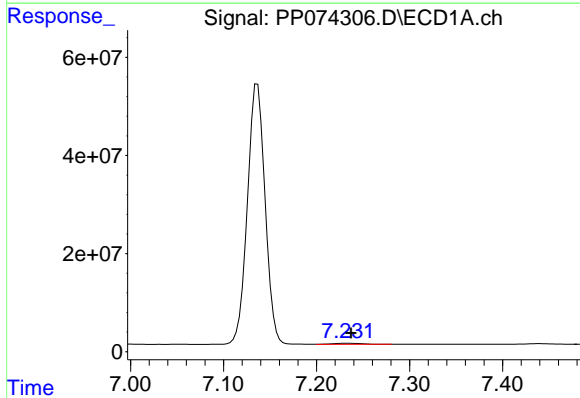
R.T.: 6.867 min
 Delta R.T.: -0.008 min
 Response: 5632559
 Conc: 70.85 ng/ml

Instrument :
 ECD_P
 ClientSampleId :
 DDT ANALOG



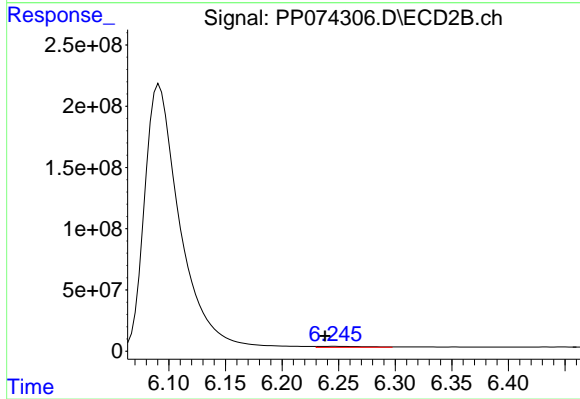
#27 AR-1254-2

R.T.: 5.855 min
 Delta R.T.: 0.020 min
 Response: 20243660
 Conc: 72.76 ng/ml



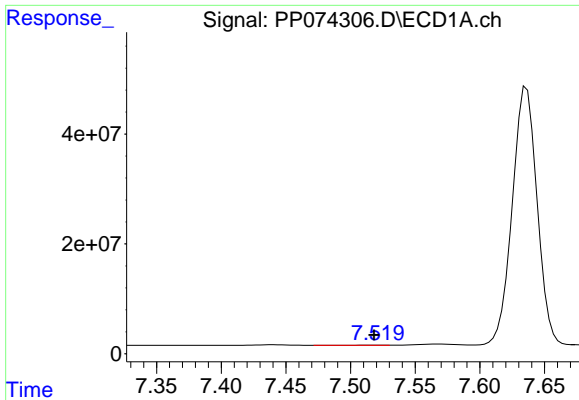
#28 AR-1254-3

R.T.: 7.233 min
 Delta R.T.: -0.004 min
 Response: 4492325
 Conc: 51.45 ng/ml



#28 AR-1254-3

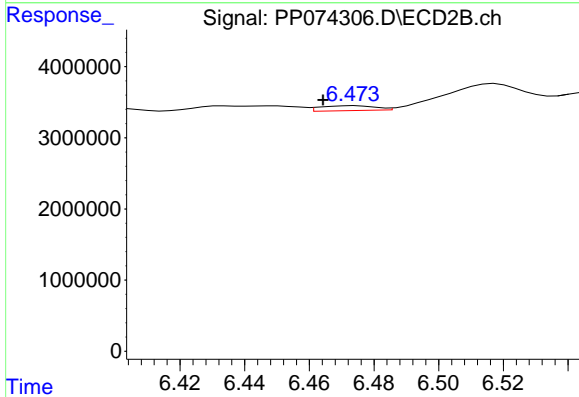
R.T.: 6.246 min
 Delta R.T.: 0.008 min
 Response: 22257745
 Conc: 45.50 ng/ml



#29 AR-1254-4

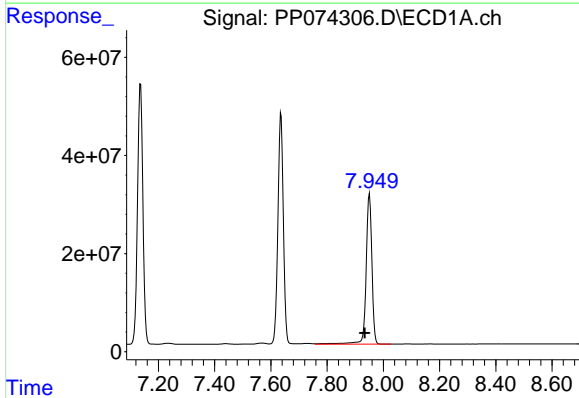
R.T.: 7.520 min
 Delta R.T.: 0.001 min
 Response: 738807
 Conc: 11.58 ng/ml

Instrument :
 ECD_P
 ClientSampleId :
 DDT ANALOG



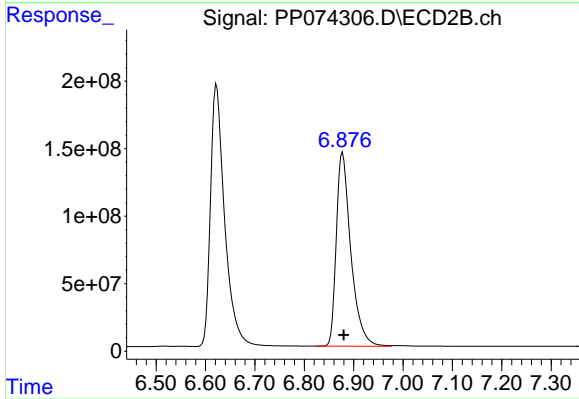
#29 AR-1254-4

R.T.: 6.474 min
 Delta R.T.: 0.010 min
 Response: 816782
 Conc: 2.22 ng/ml



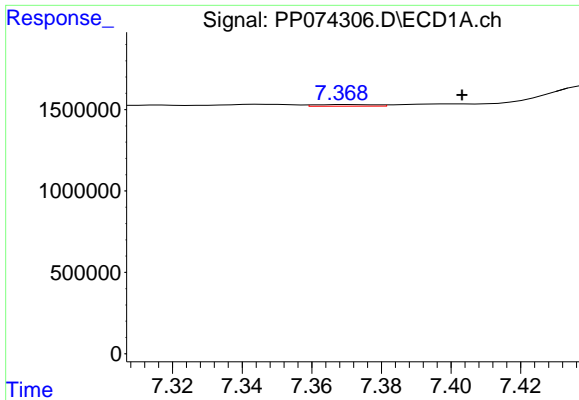
#30 AR-1254-5

R.T.: 7.951 min
 Delta R.T.: 0.016 min
 Response: 438202816
 Conc: 5400.26 ng/ml



#30 AR-1254-5

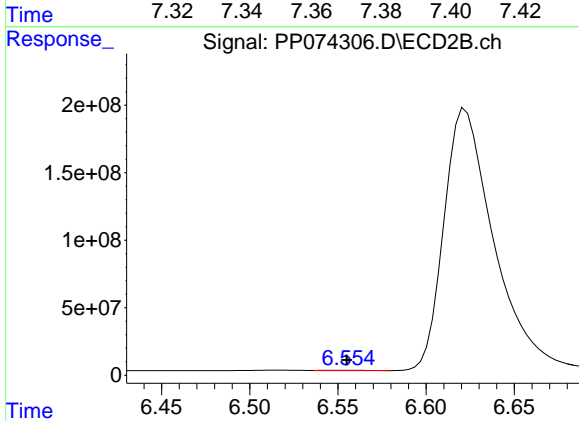
R.T.: 6.878 min
 Delta R.T.: -0.002 min
 Response: 2933345331
 Conc: 7615.77 ng/ml



#31 AR-1260-1

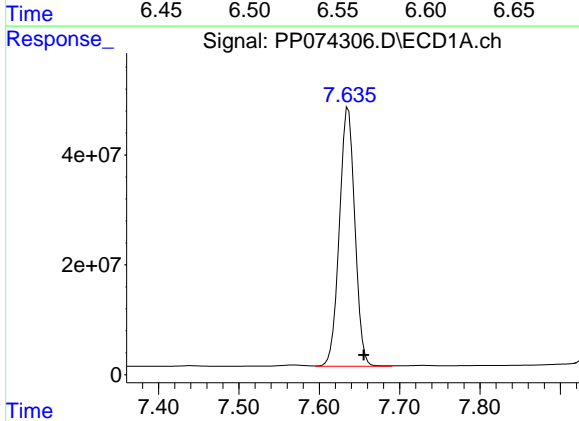
R.T.: 7.370 min
 Delta R.T.: -0.034 min
 Response: 123803
 Conc: 2.20 ng/ml

Instrument :
 ECD_P
 ClientSampleId :
 DDT ANALOG



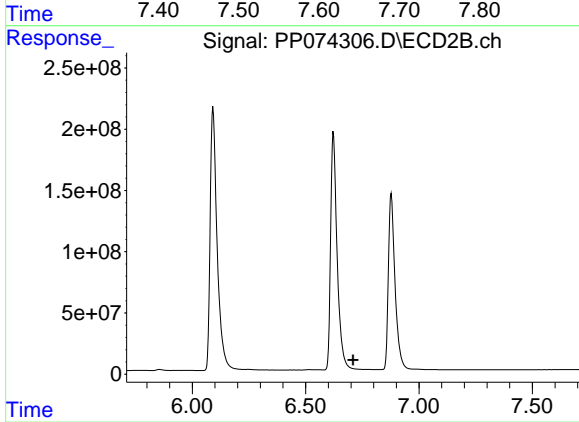
#31 AR-1260-1

R.T.: 6.556 min
 Delta R.T.: 0.000 min
 Response: 4154264
 Conc: 10.28 ng/ml



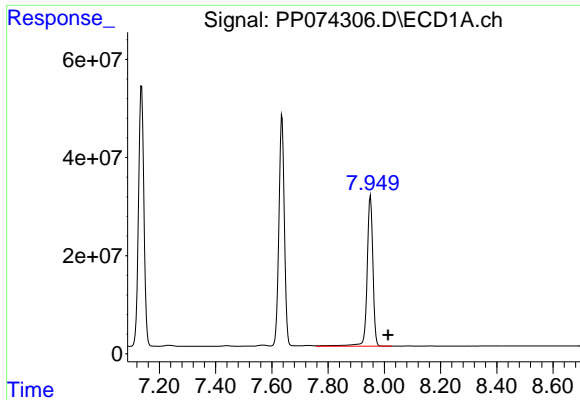
#32 AR-1260-2

R.T.: 7.636 min
 Delta R.T.: -0.019 min
 Response: 631352054
 Conc: 9263.83 ng/ml



#32 AR-1260-2

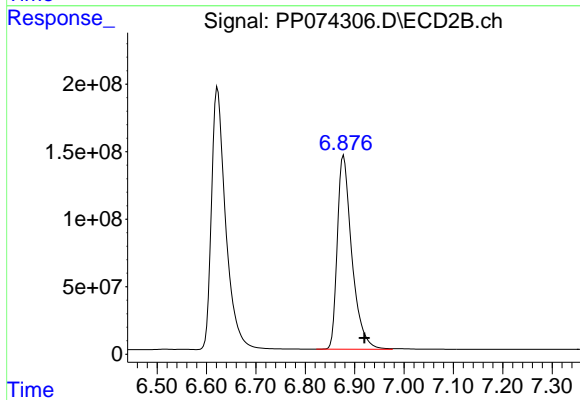
R.T.: 0.000 min
 Exp R.T. : 6.709 min
 Response: 0
 Conc: N.D.



#33 AR-1260-3

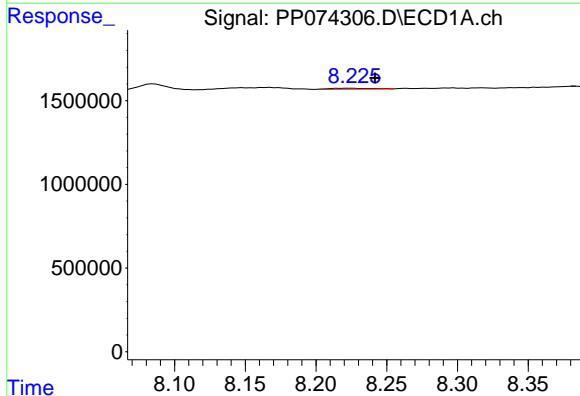
R.T.: 7.951 min
 Delta R.T.: -0.063 min
 Response: 438202816
 Conc: 8222.07 ng/ml

Instrument :
 ECD_P
 ClientSampleId :
 DDT ANALOG



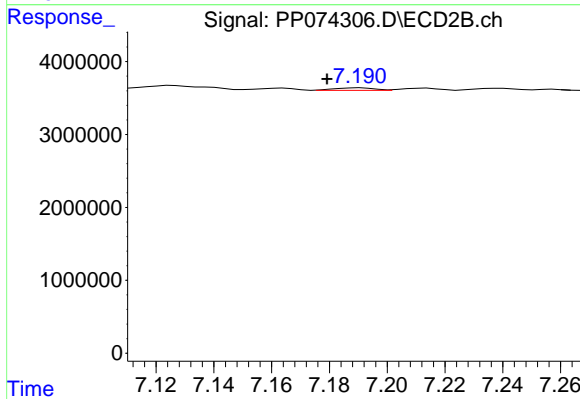
#33 AR-1260-3

R.T.: 6.878 min
 Delta R.T.: -0.042 min
 Response: 2933345331
 Conc: 7442.80 ng/ml



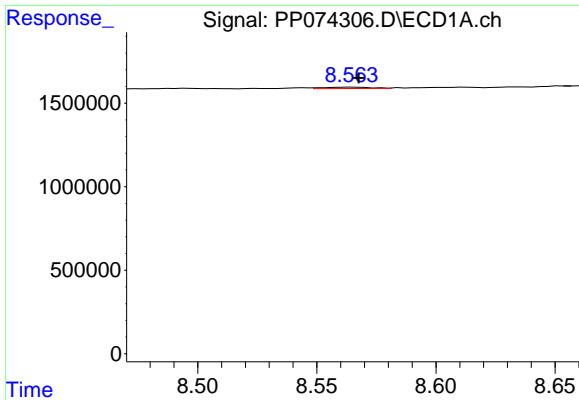
#34 AR-1260-4

R.T.: 8.225 min
 Delta R.T.: -0.016 min
 Response: 118996
 Conc: 1.90 ng/ml



#34 AR-1260-4

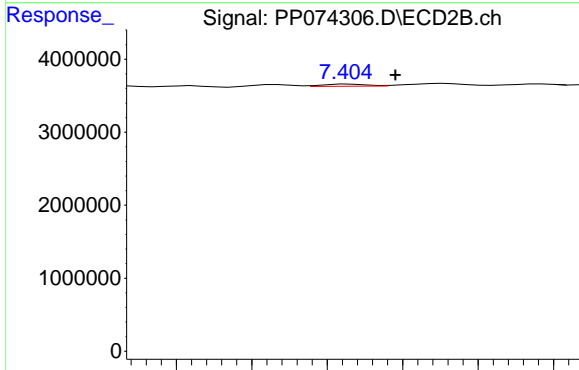
R.T.: 7.191 min
 Delta R.T.: 0.012 min
 Response: 312614
 Conc: 1.07 ng/ml



#35 AR-1260-5

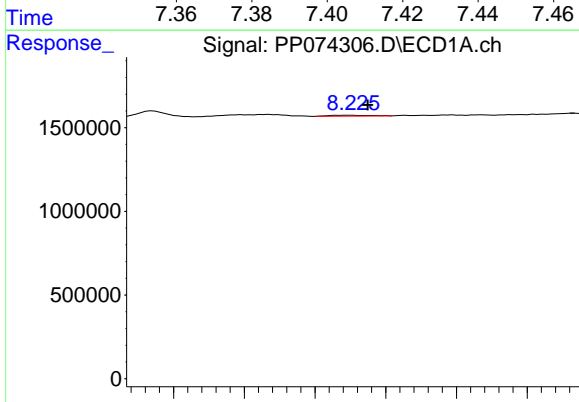
R.T.: 8.565 min
 Delta R.T.: -0.002 min
 Response: 106665
 Conc: 0.94 ng/ml

Instrument :
 ECD_P
 ClientSampleId :
 DDT ANALOG



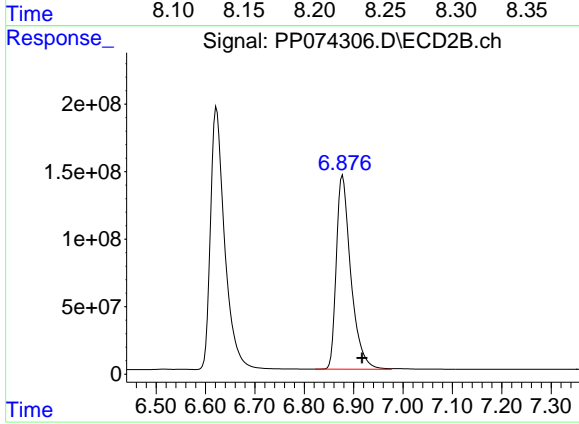
#35 AR-1260-5

R.T.: 7.406 min
 Delta R.T.: -0.012 min
 Response: 249966
 Conc: 0.33 ng/ml



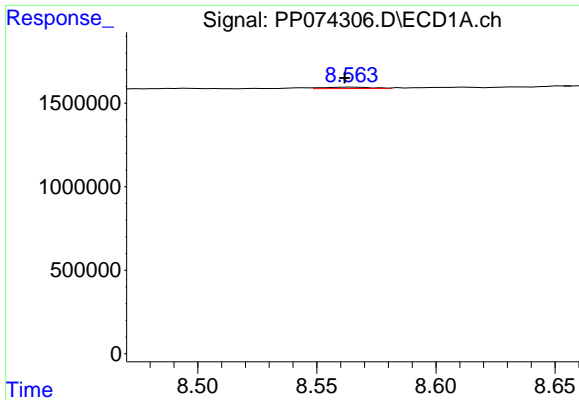
#36 AR-1262-1

R.T.: 8.225 min
 Delta R.T.: -0.012 min
 Response: 118996
 Conc: 1.57 ng/ml



#36 AR-1262-1

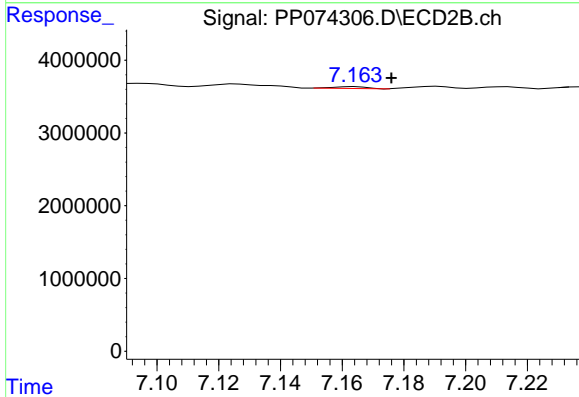
R.T.: 6.878 min
 Delta R.T.: -0.039 min
 Response: 2933345331
 Conc: 5208.89 ng/ml



#37 AR-1262-2

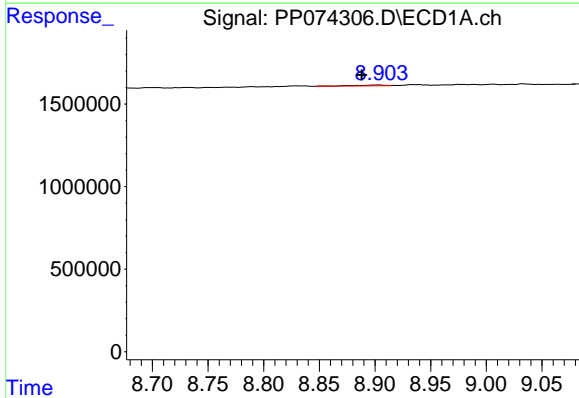
R.T.: 8.565 min
 Delta R.T.: 0.004 min
 Response: 106665
 Conc: 0.82 ng/ml

Instrument :
 ECD_P
 ClientSampleId :
 DDT ANALOG



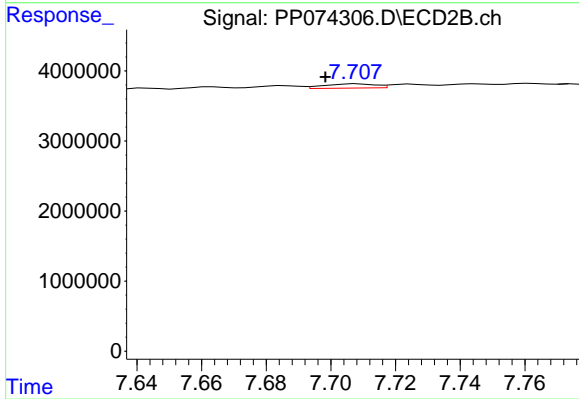
#37 AR-1262-2

R.T.: 7.164 min
 Delta R.T.: -0.012 min
 Response: 193506
 Conc: 0.48 ng/ml



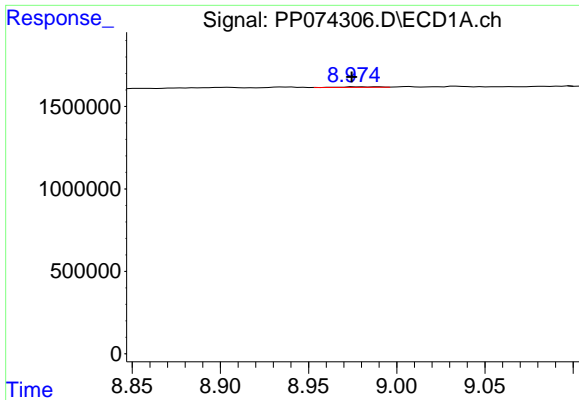
#38 AR-1262-3

R.T.: 8.905 min
 Delta R.T.: 0.017 min
 Response: 81132
 Conc: 0.86 ng/ml



#38 AR-1262-3

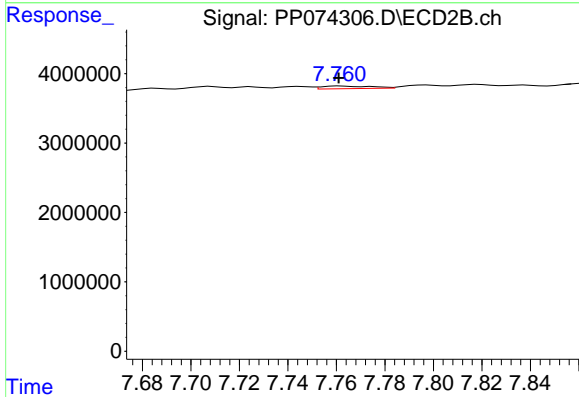
R.T.: 7.708 min
 Delta R.T.: 0.010 min
 Response: 660370
 Conc: 1.84 ng/ml



#39 AR-1262-4

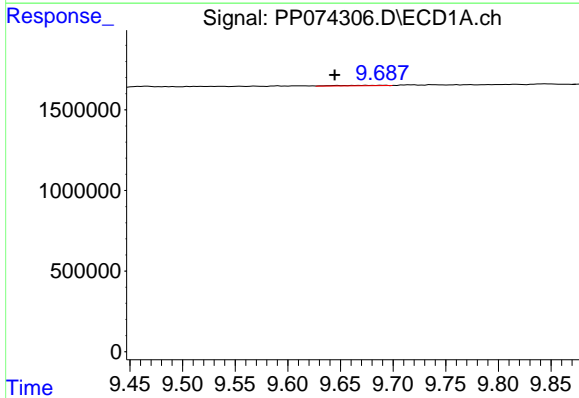
R.T.: 8.976 min
 Delta R.T.: 0.001 min
 Response: 47413
 Conc: 0.65 ng/ml

Instrument :
 ECD_P
 ClientSampleId :
 DDT ANALOG



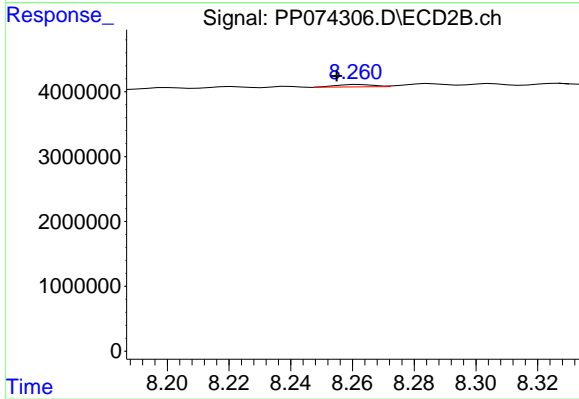
#39 AR-1262-4

R.T.: 7.762 min
 Delta R.T.: 0.000 min
 Response: 548782
 Conc: 0.82 ng/ml



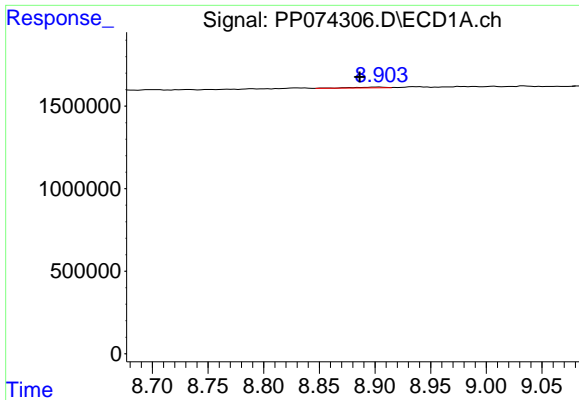
#40 AR-1262-5

R.T.: 9.675 min
 Delta R.T.: 0.030 min
 Response: 74533
 Conc: 1.46 ng/ml



#40 AR-1262-5

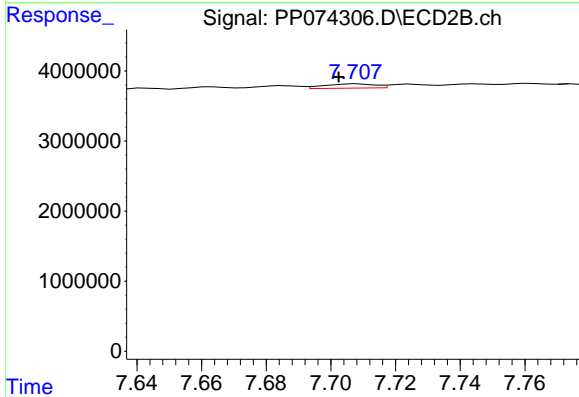
R.T.: 8.262 min
 Delta R.T.: 0.007 min
 Response: 301156
 Conc: 1.06 ng/ml



#41 AR-1268-1

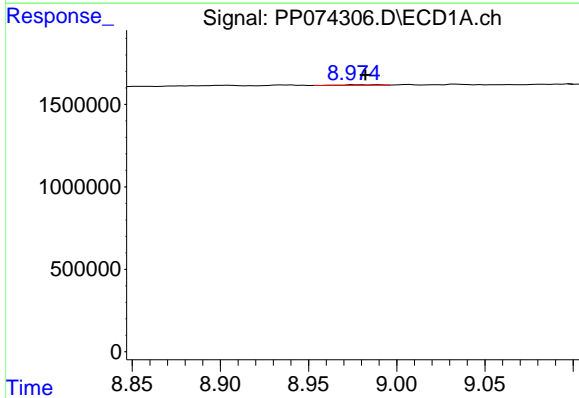
R.T.: 8.905 min
 Delta R.T.: 0.019 min
 Response: 81132
 Conc: 0.52 ng/ml

Instrument :
 ECD_P
 ClientSampleId :
 DDT ANALOG



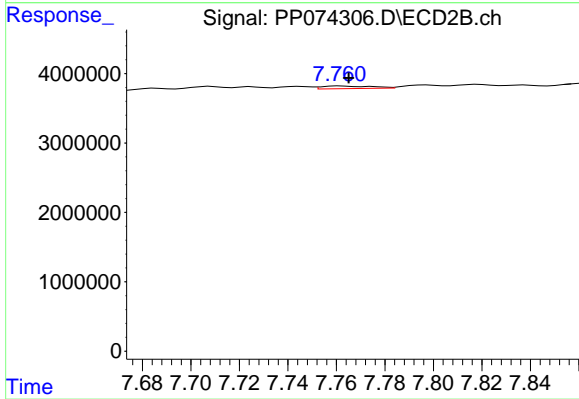
#41 AR-1268-1

R.T.: 7.708 min
 Delta R.T.: 0.006 min
 Response: 660370
 Conc: 0.61 ng/ml



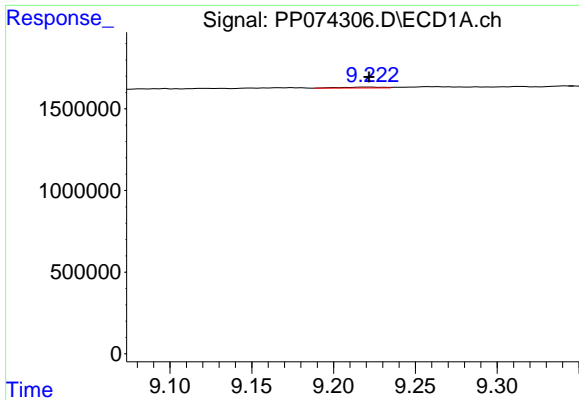
#42 AR-1268-2

R.T.: 8.976 min
 Delta R.T.: -0.007 min
 Response: 47413
 Conc: 0.33 ng/ml



#42 AR-1268-2

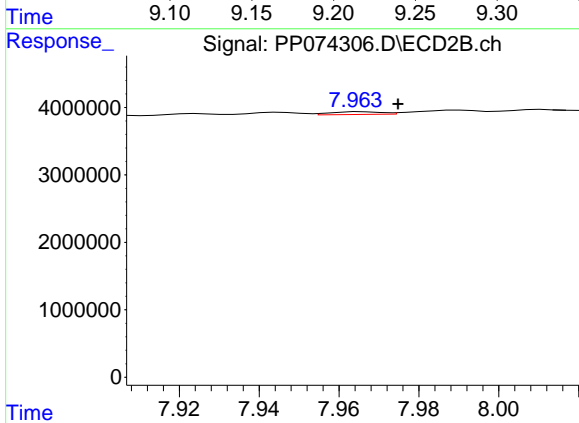
R.T.: 7.762 min
 Delta R.T.: -0.003 min
 Response: 548782
 Conc: 0.52 ng/ml



#43 AR-1268-3

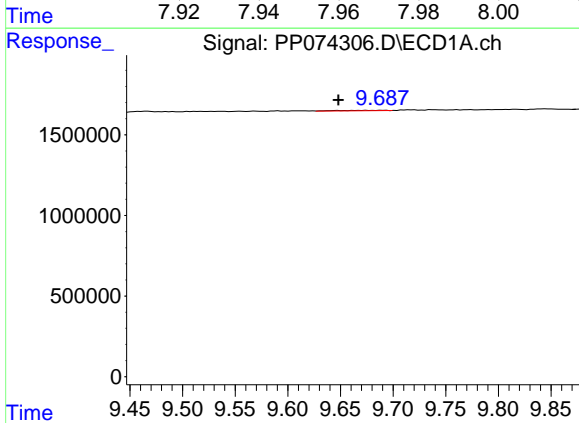
R.T.: 9.222 min
 Delta R.T.: 0.000 min
 Response: 94588
 Conc: 0.79 ng/ml

Instrument :
 ECD_P
 ClientSampleId :
 DDT ANALOG



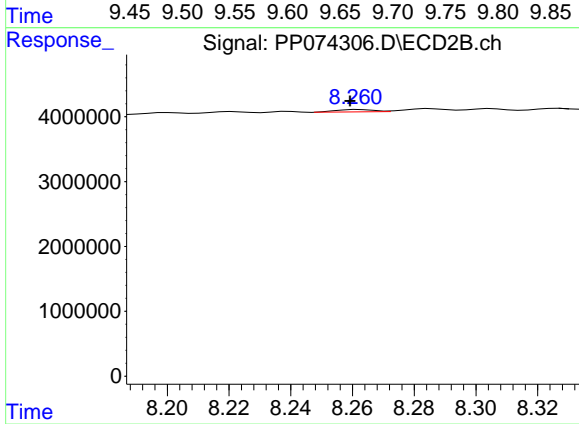
#43 AR-1268-3

R.T.: 7.966 min
 Delta R.T.: -0.009 min
 Response: 355287
 Conc: 0.43 ng/ml



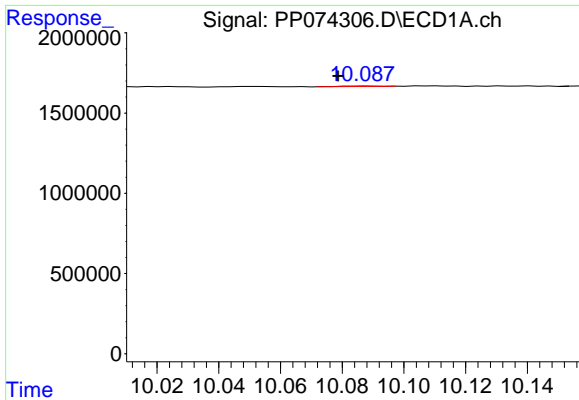
#44 AR-1268-4

R.T.: 9.675 min
 Delta R.T.: 0.027 min
 Response: 74533
 Conc: 1.27 ng/ml



#44 AR-1268-4

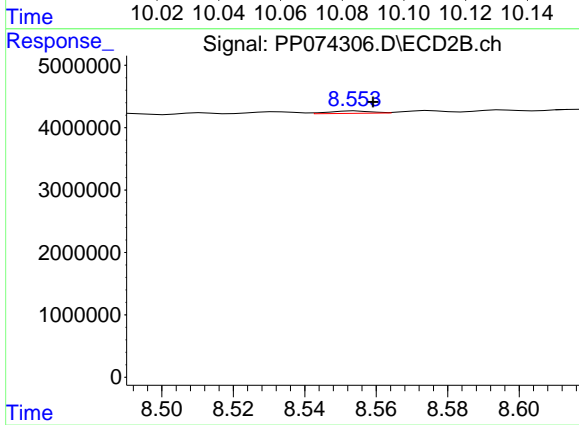
R.T.: 8.262 min
 Delta R.T.: 0.003 min
 Response: 301156
 Conc: 0.98 ng/ml



#45 AR-1268-5

R.T.: 10.088 min
 Delta R.T.: 0.009 min
 Response: 20619
 Conc: 0.06 ng/ml

Instrument :
 ECD_P
 ClientSampleId :
 DDT ANALOG



#45 AR-1268-5

R.T.: 8.554 min
 Delta R.T.: -0.005 min
 Response: 321067
 Conc: 0.13 ng/ml