

Data Path : Z:\pestpcbsrv\HPCHEM1\ECD_P\Data\PP081225\
 Data File : PP074308.D
 Signal(s) : Signal #1: ECD1A.ch Signal #2: ECD2B.ch
 Acq On : 12 Aug 2025 12:48
 Operator : YP\AJ
 Sample : PB169205BL
 Misc :
 ALS Vial : 8 Sample Multiplier: 1

Instrument :
 ECD_P
 ClientSampleId :
 PB169205BL

Integration File signal 1: autoint1.e
 Integration File signal 2: autoint2.e
 Quant Time: Aug 12 13:31:26 2025
 Quant Method : Z:\pestpcbsrv\HPCHEM1\ECD_P\methods\PP080125.M
 Quant Title : GC EXTRACTABLES
 QLast Update : Mon Aug 04 11:01:49 2025
 Response via : Initial Calibration
 Integrator: ChemStation

Volume Inj. : 2 µl
 Signal #1 Phase : ZB-MR1 Signal #2 Phase: ZB-MR2
 Signal #1 Info : 30Mx0.32mmx 0.50µ Signal #2 Info : 30M x 0.32mm x 0.25µm

Compound	RT#1	RT#2	Resp#1	Resp#2	ng/ml	ng/ml

System Monitoring Compounds						
1) SA Tetrachlo...	4.656	3.798	25834612	77167851	23.102	20.125
2) SA Decachlor...	10.439	8.817	21524564	120.6E6	22.164	20.052
Target Compounds						
3) L1 AR-1016-1	5.742f	4.910	187905	96730	4.555	0.242 #
4) L1 AR-1016-2	0.000	4.967	0	295006	N.D.	1.571 #
5) L1 AR-1016-3	5.943f	5.077	510565	210572	12.873	1.985 #
6) L1 AR-1016-4	5.943f	5.134	510565	339510	15.688	3.108 #
7) L1 AR-1016-5	0.000	5.332	0	308507	N.D.	2.638 #
8) L2 AR-1221-1	0.000	4.030	0	505007	N.D.	10.288 #
9) L2 AR-1221-2	4.957	4.099	416019	671732	33.015	18.717 #
10) L2 AR-1221-3	4.957f	4.184	416019	273129	11.356	2.020 #
11) L3 AR-1232-1	4.957f	4.184	416019	273129	14.327	2.695 #
12) L3 AR-1232-2	0.000	4.910	0	96730	N.D.	0.555 #
13) L3 AR-1232-3	0.000	5.077	0	210572	N.D.	4.596 #
14) L3 AR-1232-4	5.943f	5.159	510565	331800	33.006	5.720 #
15) L3 AR-1232-5	0.000	5.332	0	308507	N.D.	6.567 #
16) L4 AR-1242-1	5.742f	4.910	187905	96730	5.042	0.280 #
17) L4 AR-1242-2	0.000	4.967	0	295006	N.D.	1.806 #
18) L4 AR-1242-3	5.943f	5.077	510565	210572	14.287	2.283 #
19) L4 AR-1242-4	5.943f	5.159	510565	331800	17.474	2.778 #
20) L4 AR-1242-5	6.748	5.694	988357	383585	27.796	2.565 #
21) L5 AR-1248-1	5.742f	4.910	187905	96730	6.707	0.452 #
22) L5 AR-1248-2	0.000	5.134	0	339510	N.D.	2.320 #
23) L5 AR-1248-3	0.000	5.159	0	331800	N.D.	1.935 #
24) L5 AR-1248-4	6.689	5.332	182099	308507	3.499	1.854 #
25) L5 AR-1248-5	6.748	5.750	988357	4765406	17.357	16.378
26) L6 AR-1254-1	6.650	5.694	412804	383585	7.842	1.048 #
27) L6 AR-1254-2	6.870	5.834	85649	931616	1.077	3.349 #
28) L6 AR-1254-3	7.226	6.236	426186	240877	4.881	0.492 #
29) L6 AR-1254-4	0.000	6.462	0	420975	N.D.	1.145 #
30) L6 AR-1254-5	7.934	6.884	128966	778701	1.589	2.022 #
31) L7 AR-1260-1	7.442f	6.544	83900	620707	1.489	1.537
32) L7 AR-1260-2	7.652	6.717	103998	375176	1.526	1.200
33) L7 AR-1260-3	8.002	6.911	76485	627989	1.435	1.593
34) L7 AR-1260-4	8.254	7.174	183301	277097	2.927	0.952 #
35) L7 AR-1260-5	8.579	7.431	38114	551791	0.336	0.729 #
36) L8 AR-1262-1	8.222	6.911	112673	627989	1.487	1.115
37) L8 AR-1262-2	8.553	7.174	20845	277097	0.160	0.691 #
38) L8 AR-1262-3	8.898	7.701	130294	464455	1.385	1.292
39) L8 AR-1262-4	8.978	7.761	58782	559736	0.807	0.839
40) L8 AR-1262-5	9.602f	8.248	15337	438559	0.301	1.548 #
41) L9 AR-1268-1	8.898	7.701	130294	464455	0.837	0.426 #

Data Path : Z:\pestpcbsrv\HPCHEM1\ECD_P\Data\PP081225\
 Data File : PP074308.D
 Signal(s) : Signal #1: ECD1A.ch Signal #2: ECD2B.ch
 Acq On : 12 Aug 2025 12:48
 Operator : YP\AJ
 Sample : PB169205BL
 Misc :
 ALS Vial : 8 Sample Multiplier: 1

Instrument :
 ECD_P
ClientSampleId :
 PB169205BL

Integration File signal 1: autoint1.e
 Integration File signal 2: autoint2.e
 Quant Time: Aug 12 13:31:26 2025
 Quant Method : Z:\pestpcbsrv\HPCHEM1\ECD_P\methods\PP080125.M
 Quant Title : GC EXTRACTABLES
 QLast Update : Mon Aug 04 11:01:49 2025
 Response via : Initial Calibration
 Integrator: ChemStation

Volume Inj. : 2 µl
 Signal #1 Phase : ZB-MR1 Signal #2 Phase: ZB-MR2
 Signal #1 Info : 30Mx0.32mmx 0.50µ Signal #2 Info : 30M x 0.32mm x 0.25µm

	Compound	RT#1	RT#2	Resp#1	Resp#2	ng/ml	ng/ml
42)	L9 AR-1268-2	8.978	7.761	58782	559736	0.410	0.527 #
43)	L9 AR-1268-3	9.222	7.975	63713	648590	0.533	0.780 #
44)	L9 AR-1268-4	9.602f	8.248	15337	438559	0.261	1.424 #
45)	L9 AR-1268-5	10.081	8.550	53705	663590	0.153	0.260 #

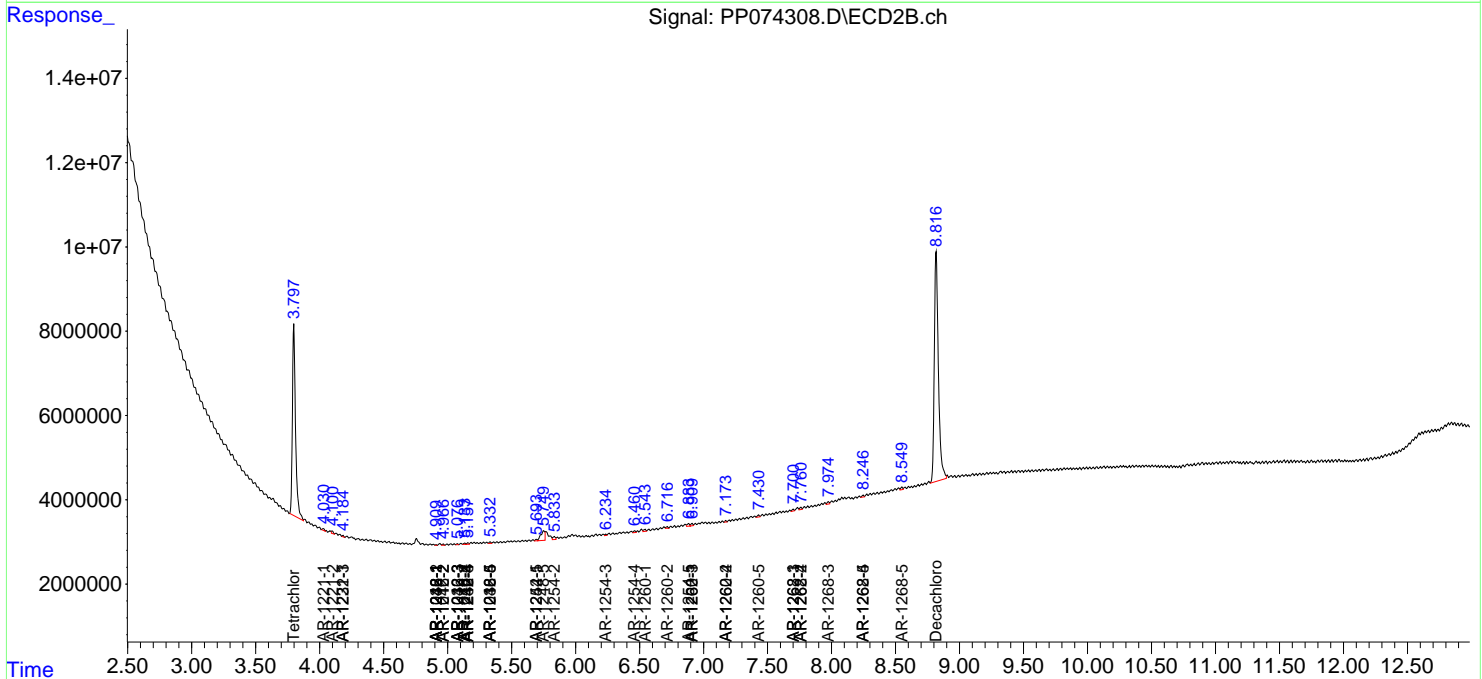
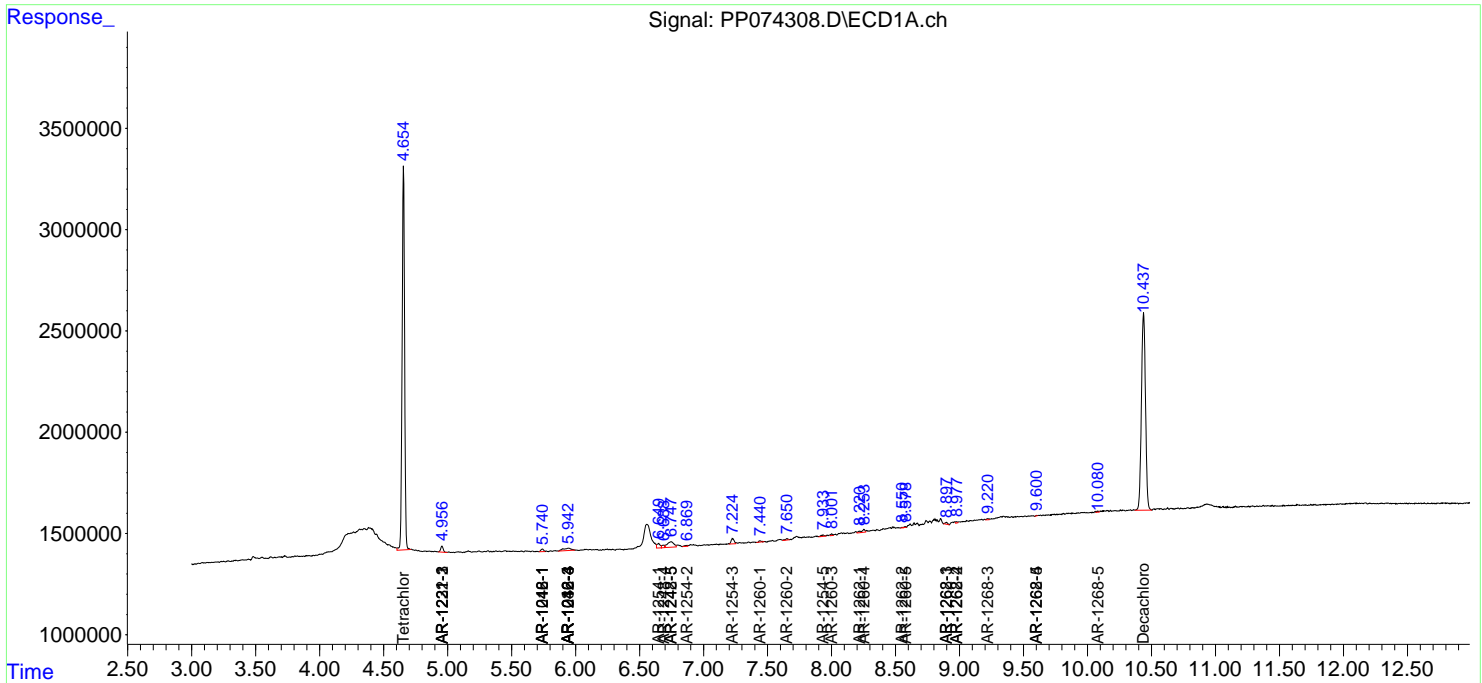
(f)=RT Delta > 1/2 Window (#)=Amounts differ by > 25% (m)=manual int.

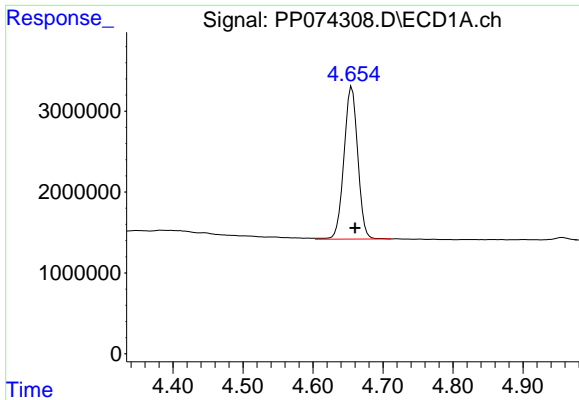
Data Path : Z:\pestpcbsrv\HPCHEM1\ECD_P\Data\PP081225\
 Data File : PP074308.D
 Signal(s) : Signal #1: ECD1A.ch Signal #2: ECD2B.ch
 Acq On : 12 Aug 2025 12:48
 Operator : YP\AJ
 Sample : PB169205BL
 Misc :
 ALS Vial : 8 Sample Multiplier: 1

Instrument :
 ECD_P
 ClientSampleId :
 PB169205BL

Integration File signal 1: autoint1.e
 Integration File signal 2: autoint2.e
 Quant Time: Aug 12 13:31:26 2025
 Quant Method : Z:\pestpcbsrv\HPCHEM1\ECD_P\methods\PP080125.M
 Quant Title : GC EXTRACTABLES
 QLast Update : Mon Aug 04 11:01:49 2025
 Response via : Initial Calibration
 Integrator: ChemStation

Volume Inj. : 2 µl
 Signal #1 Phase : ZB-MR1 Signal #2 Phase: ZB-MR2
 Signal #1 Info : 30Mx0.32mmx 0.50µ Signal #2 Info : 30M x 0.32mm x 0.25µm

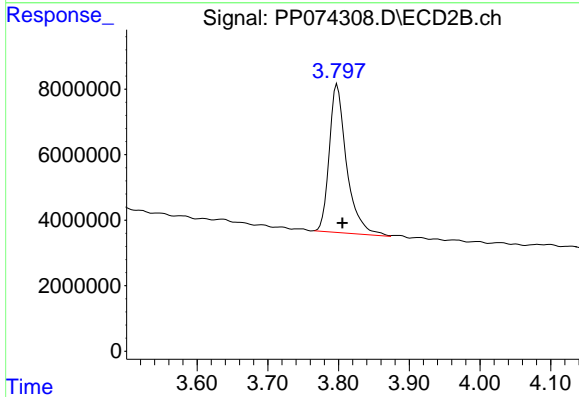




#1 Tetrachloro-m-xylene

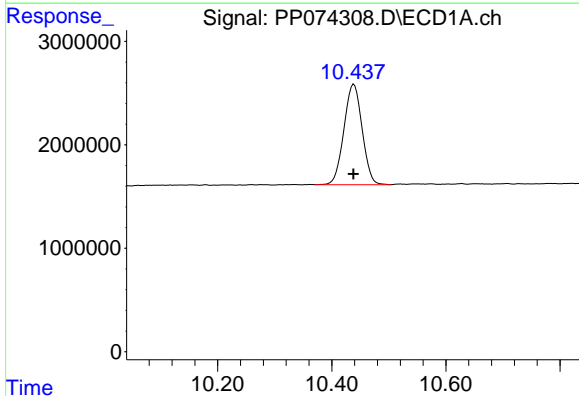
R.T.: 4.656 min
 Delta R.T.: -0.004 min
 Response: 25834612
 Conc: 23.10 ng/ml

Instrument :
 ECD_P
 ClientSampleId :
 PB169205BL



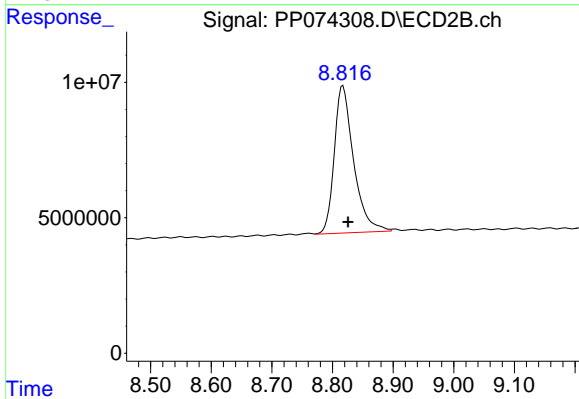
#1 Tetrachloro-m-xylene

R.T.: 3.798 min
 Delta R.T.: -0.007 min
 Response: 77167851
 Conc: 20.13 ng/ml



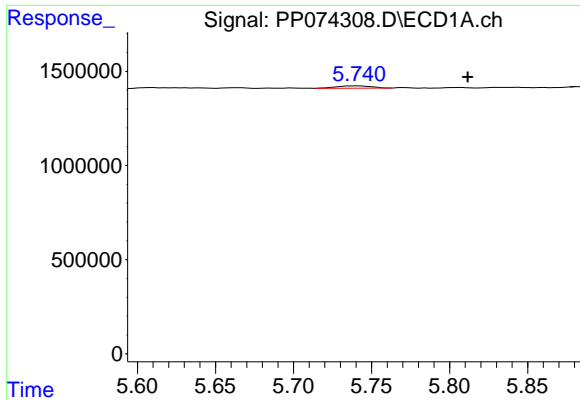
#2 Decachlorobiphenyl

R.T.: 10.439 min
 Delta R.T.: 0.000 min
 Response: 21524564
 Conc: 22.16 ng/ml



#2 Decachlorobiphenyl

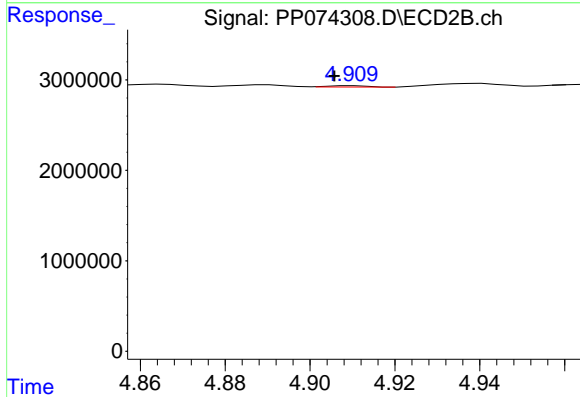
R.T.: 8.817 min
 Delta R.T.: -0.009 min
 Response: 120583654
 Conc: 20.05 ng/ml



#3 AR-1016-1

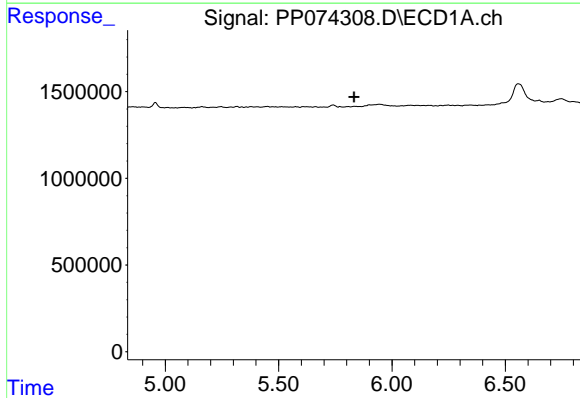
R.T.: 5.742 min
 Delta R.T.: -0.070 min
 Response: 187905
 Conc: 4.55 ng/ml

Instrument :
 ECD_P
 ClientSampleId :
 PB169205BL



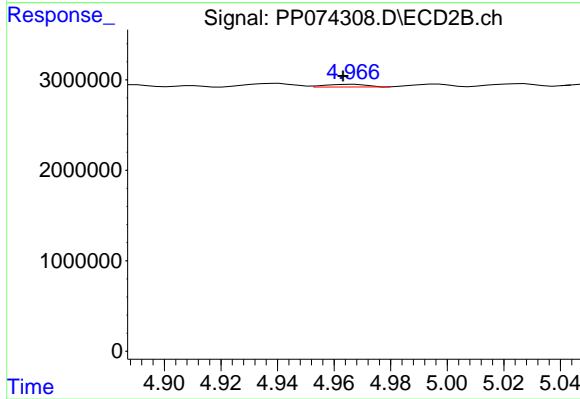
#3 AR-1016-1

R.T.: 4.910 min
 Delta R.T.: 0.004 min
 Response: 96730
 Conc: 0.24 ng/ml



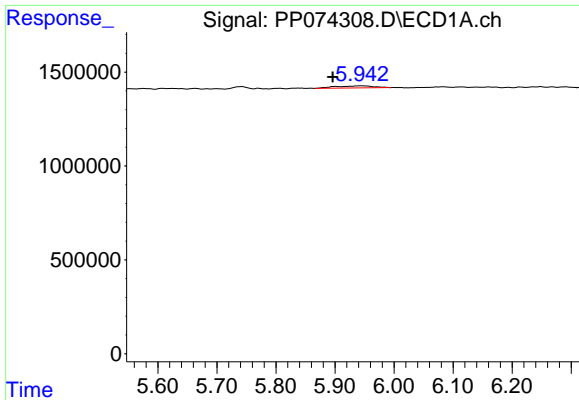
#4 AR-1016-2

R.T.: 0.000 min
 Exp R.T. : 5.833 min
 Response: 0
 Conc: N.D.



#4 AR-1016-2

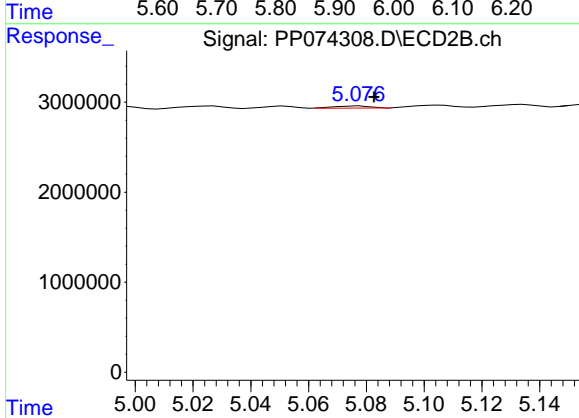
R.T.: 4.967 min
 Delta R.T.: 0.004 min
 Response: 295006
 Conc: 1.57 ng/ml



#5 AR-1016-3

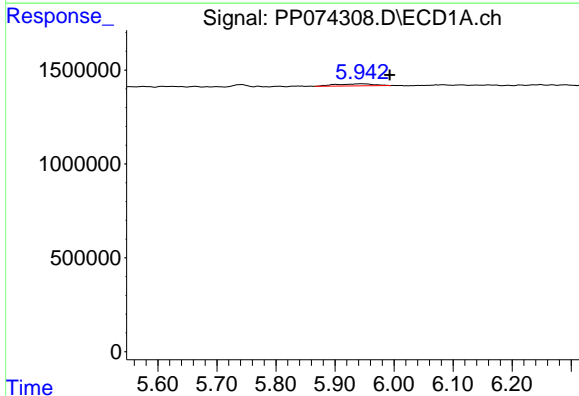
R.T.: 5.943 min
 Delta R.T.: 0.047 min
 Response: 510565
 Conc: 12.87 ng/ml

Instrument :
 ECD_P
 ClientSampleId :
 PB169205BL



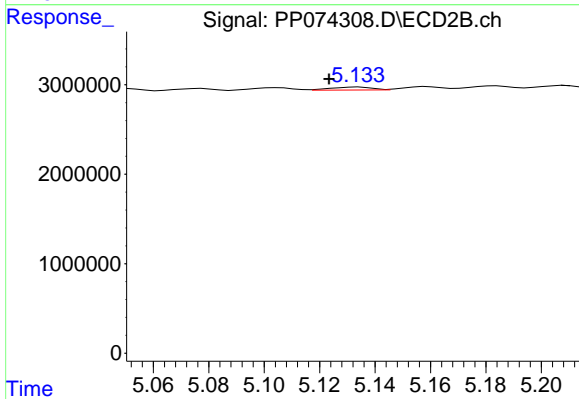
#5 AR-1016-3

R.T.: 5.077 min
 Delta R.T.: -0.005 min
 Response: 210572
 Conc: 1.99 ng/ml



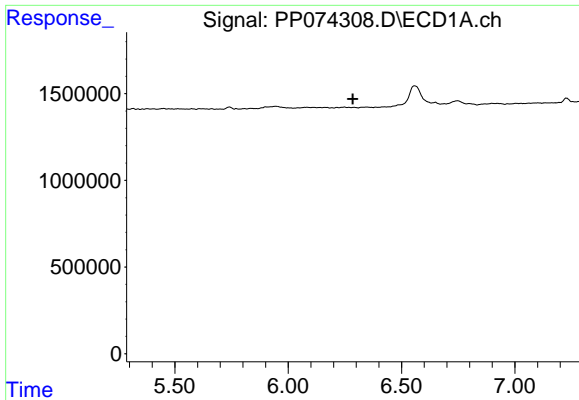
#6 AR-1016-4

R.T.: 5.943 min
 Delta R.T.: -0.050 min
 Response: 510565
 Conc: 15.69 ng/ml



#6 AR-1016-4

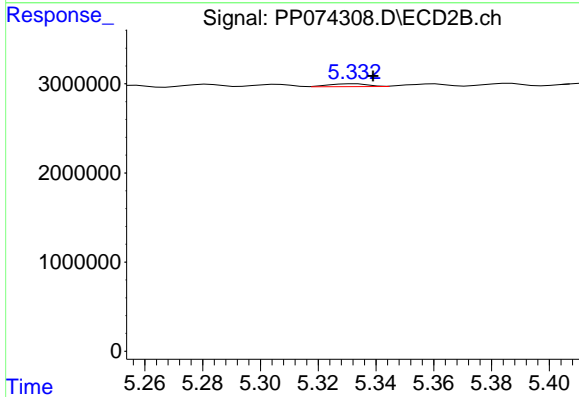
R.T.: 5.134 min
 Delta R.T.: 0.011 min
 Response: 339510
 Conc: 3.11 ng/ml



#7 AR-1016-5

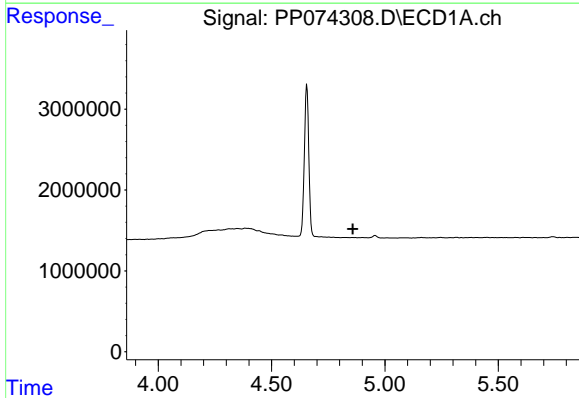
R.T.: 0.000 min
 Exp R.T.: 6.286 min
 Response: 0
 Conc: N.D.

Instrument : ECD_P
 ClientSampleId : PB169205BL



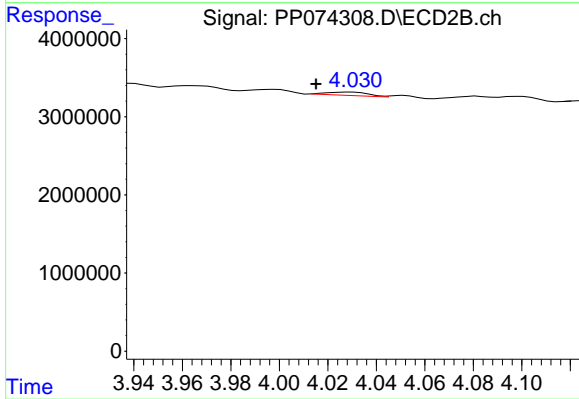
#7 AR-1016-5

R.T.: 5.332 min
 Delta R.T.: -0.007 min
 Response: 308507
 Conc: 2.64 ng/ml



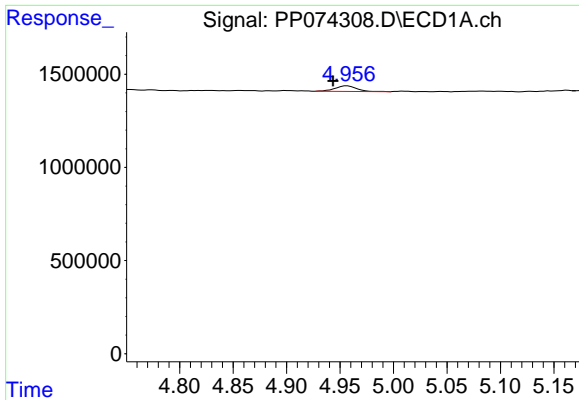
#8 AR-1221-1

R.T.: 0.000 min
 Exp R.T.: 4.858 min
 Response: 0
 Conc: N.D.



#8 AR-1221-1

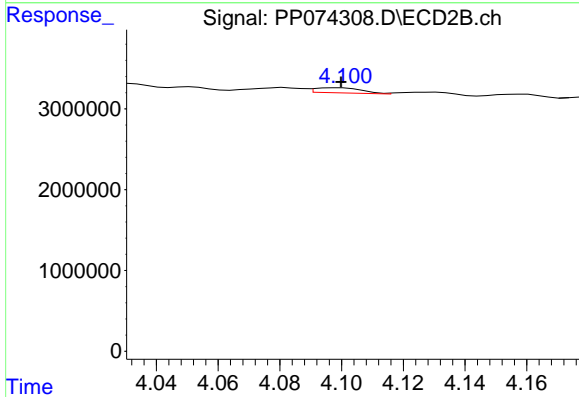
R.T.: 4.030 min
 Delta R.T.: 0.015 min
 Response: 505007
 Conc: 10.29 ng/ml



#9 AR-1221-2

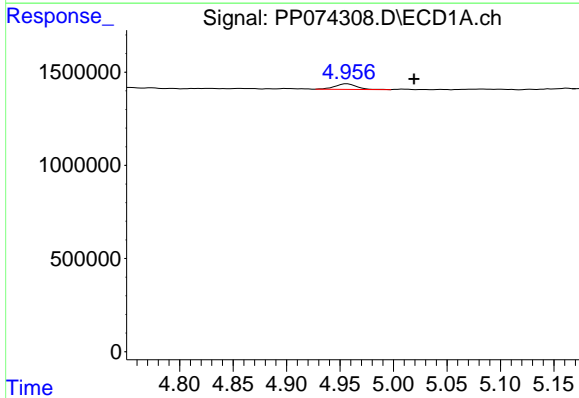
R.T.: 4.957 min
 Delta R.T.: 0.013 min
 Response: 416019
 Conc: 33.01 ng/ml

Instrument :
 ECD_P
 ClientSampleId :
 PB169205BL



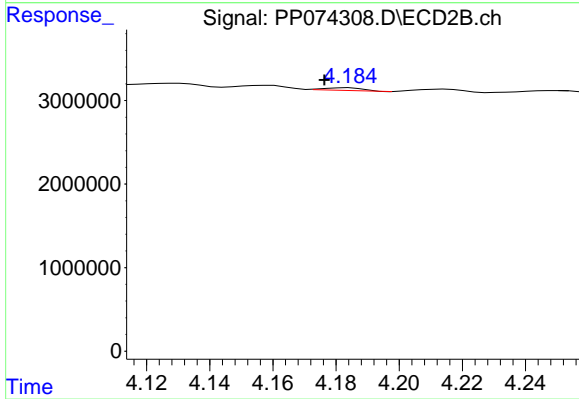
#9 AR-1221-2

R.T.: 4.099 min
 Delta R.T.: 0.000 min
 Response: 671732
 Conc: 18.72 ng/ml



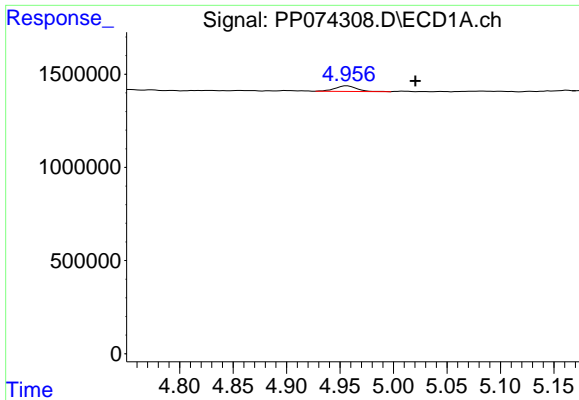
#10 AR-1221-3

R.T.: 4.957 min
 Delta R.T.: -0.063 min
 Response: 416019
 Conc: 11.36 ng/ml



#10 AR-1221-3

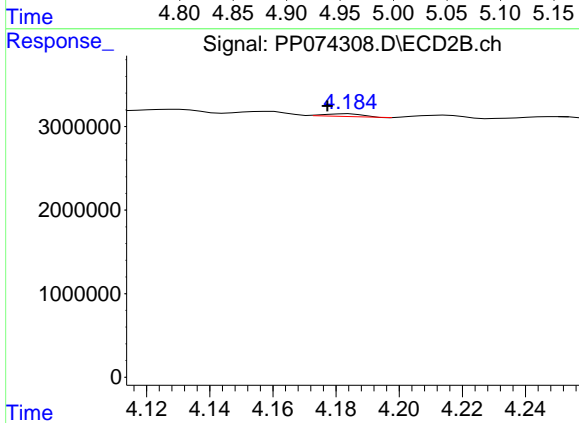
R.T.: 4.184 min
 Delta R.T.: 0.007 min
 Response: 273129
 Conc: 2.02 ng/ml



#11 AR-1232-1

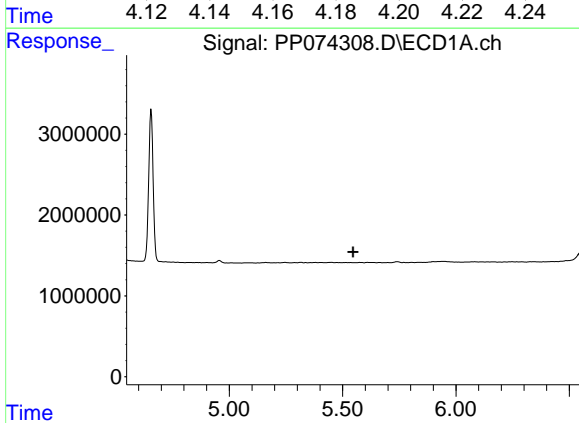
R.T.: 4.957 min
 Delta R.T.: -0.064 min
 Response: 416019
 Conc: 14.33 ng/ml

Instrument :
 ECD_P
 ClientSampleId :
 PB169205BL



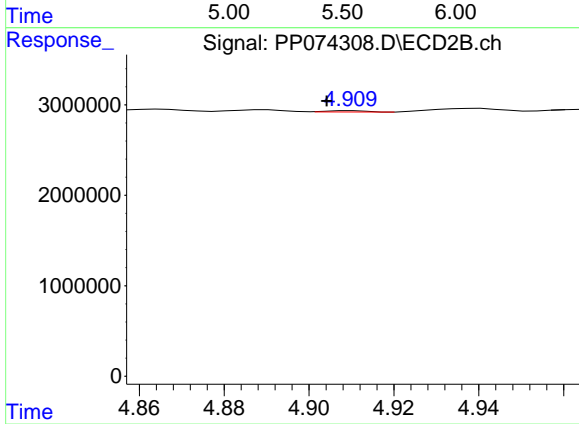
#11 AR-1232-1

R.T.: 4.184 min
 Delta R.T.: 0.007 min
 Response: 273129
 Conc: 2.69 ng/ml



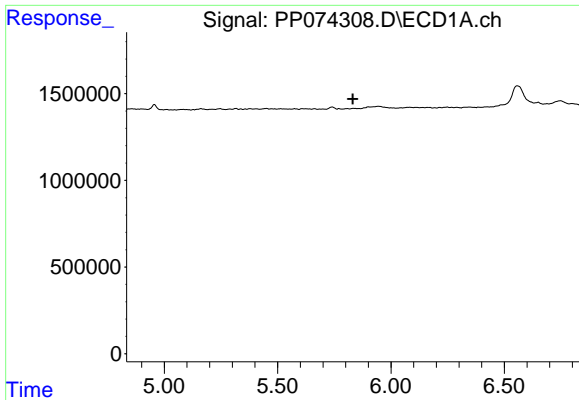
#12 AR-1232-2

R.T.: 0.000 min
 Exp R.T. : 5.546 min
 Response: 0
 Conc: N.D.



#12 AR-1232-2

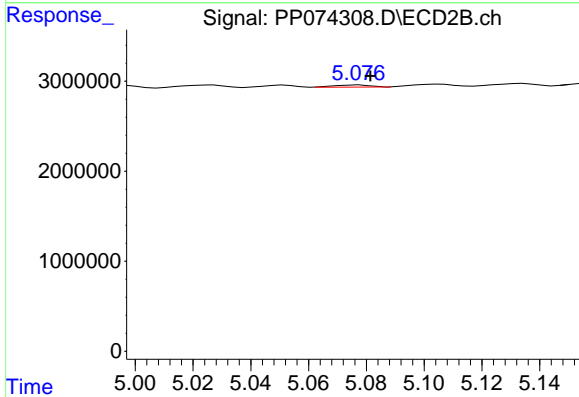
R.T.: 4.910 min
 Delta R.T.: 0.006 min
 Response: 96730
 Conc: 0.56 ng/ml



#13 AR-1232-3

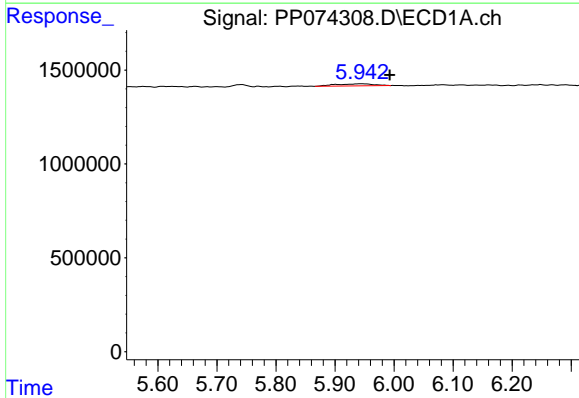
R.T.: 0.000 min
 Exp R.T.: 5.832 min
 Response: 0
 Conc: N.D.

Instrument :
 ECD_P
 ClientSampleId :
 PB169205BL



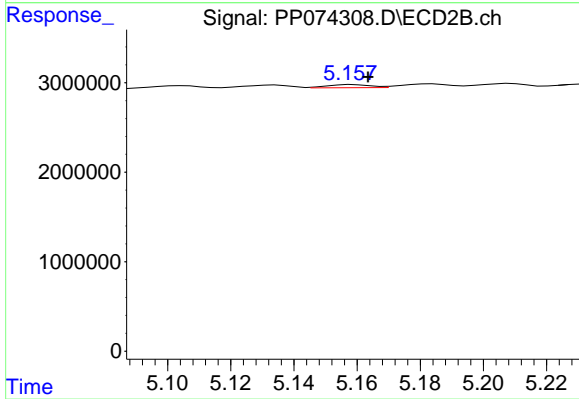
#13 AR-1232-3

R.T.: 5.077 min
 Delta R.T.: -0.004 min
 Response: 210572
 Conc: 4.60 ng/ml



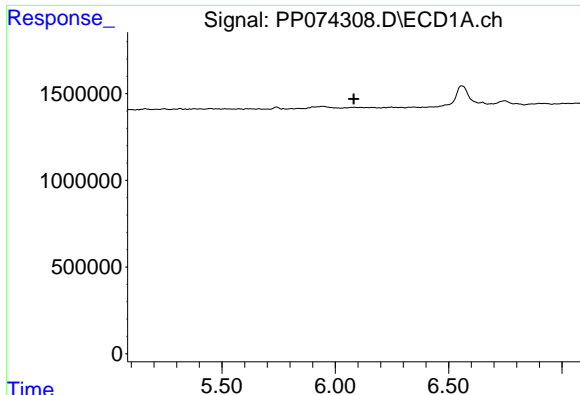
#14 AR-1232-4

R.T.: 5.943 min
 Delta R.T.: -0.049 min
 Response: 510565
 Conc: 33.01 ng/ml



#14 AR-1232-4

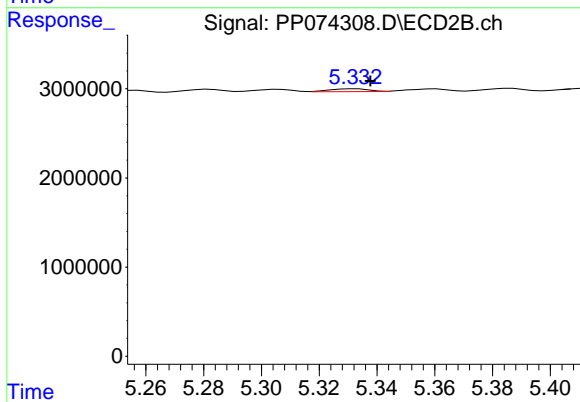
R.T.: 5.159 min
 Delta R.T.: -0.005 min
 Response: 331800
 Conc: 5.72 ng/ml



#15 AR-1232-5

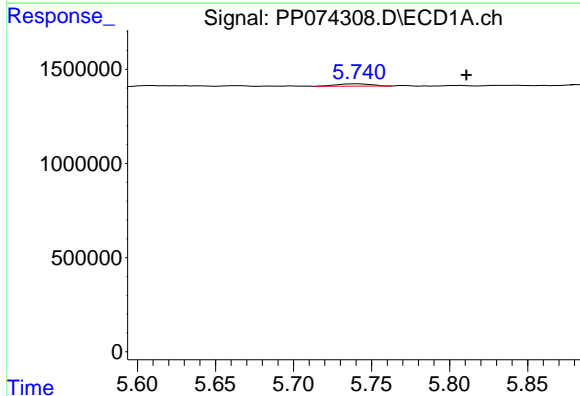
R.T.: 0.000 min
 Exp R.T.: 6.082 min
 Response: 0
 Conc: N.D.

Instrument :
 ECD_P
 ClientSampleId :
 PB169205BL



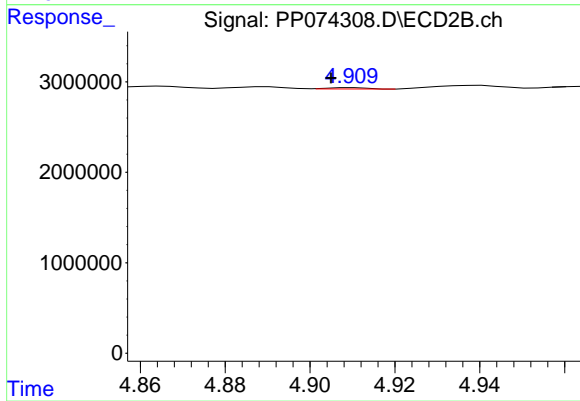
#15 AR-1232-5

R.T.: 5.332 min
 Delta R.T.: -0.005 min
 Response: 308507
 Conc: 6.57 ng/ml



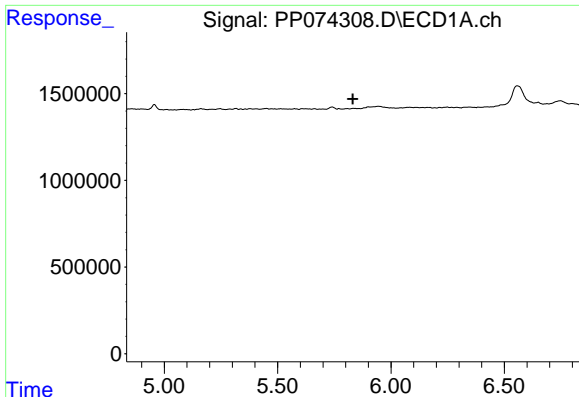
#16 AR-1242-1

R.T.: 5.742 min
 Delta R.T.: -0.069 min
 Response: 187905
 Conc: 5.04 ng/ml



#16 AR-1242-1

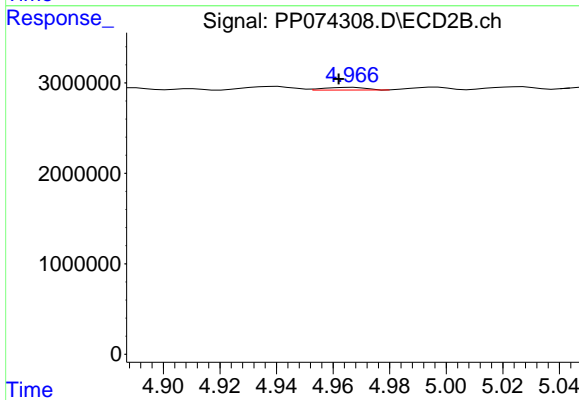
R.T.: 4.910 min
 Delta R.T.: 0.005 min
 Response: 96730
 Conc: 0.28 ng/ml



#17 AR-1242-2

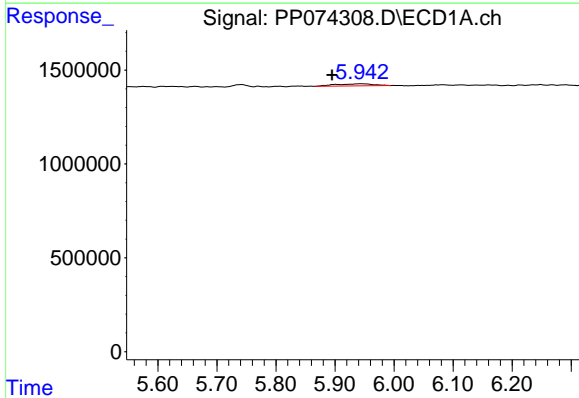
R.T.: 0.000 min
 Exp R.T.: 5.832 min
 Response: 0
 Conc: N.D.

Instrument :
 ECD_P
 ClientSampleId :
 PB169205BL



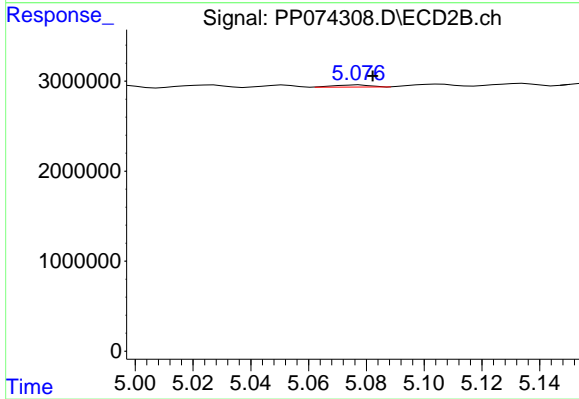
#17 AR-1242-2

R.T.: 4.967 min
 Delta R.T.: 0.005 min
 Response: 295006
 Conc: 1.81 ng/ml



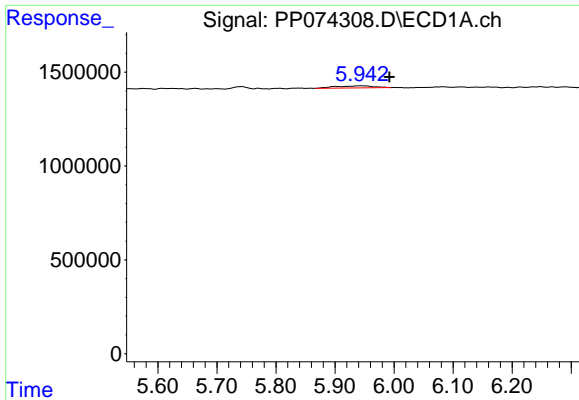
#18 AR-1242-3

R.T.: 5.943 min
 Delta R.T.: 0.048 min
 Response: 510565
 Conc: 14.29 ng/ml



#18 AR-1242-3

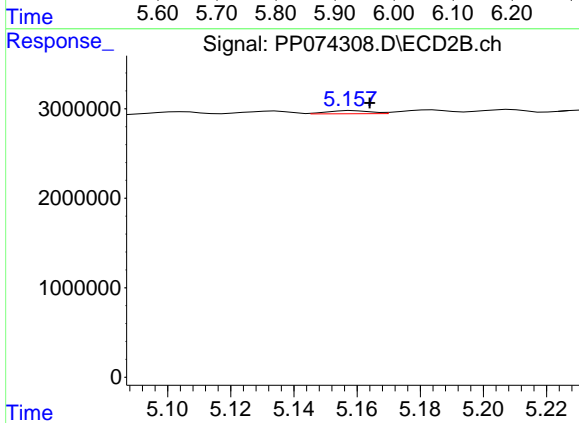
R.T.: 5.077 min
 Delta R.T.: -0.005 min
 Response: 210572
 Conc: 2.28 ng/ml



#19 AR-1242-4

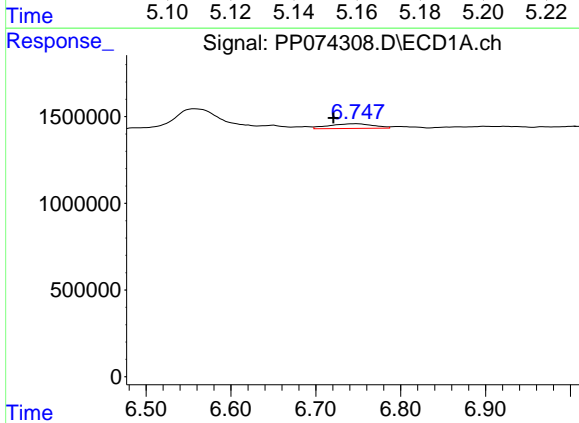
R.T.: 5.943 min
 Delta R.T.: -0.049 min
 Response: 510565
 Conc: 17.47 ng/ml

Instrument :
 ECD_P
 ClientSampleId :
 PB169205BL



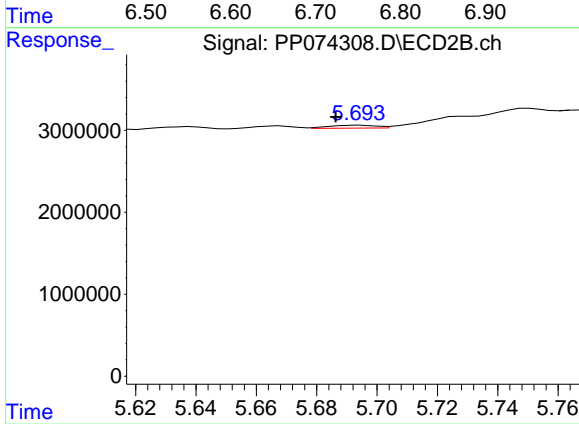
#19 AR-1242-4

R.T.: 5.159 min
 Delta R.T.: -0.005 min
 Response: 331800
 Conc: 2.78 ng/ml



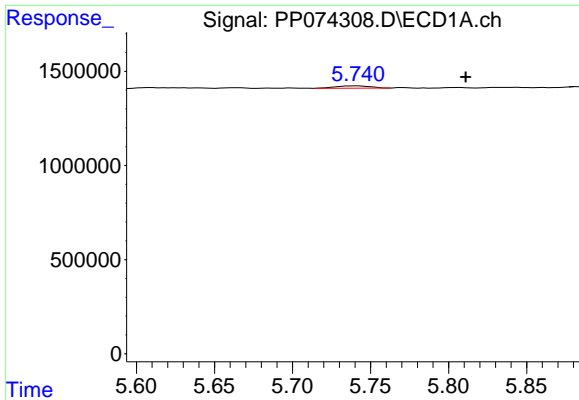
#20 AR-1242-5

R.T.: 6.748 min
 Delta R.T.: 0.027 min
 Response: 988357
 Conc: 27.80 ng/ml



#20 AR-1242-5

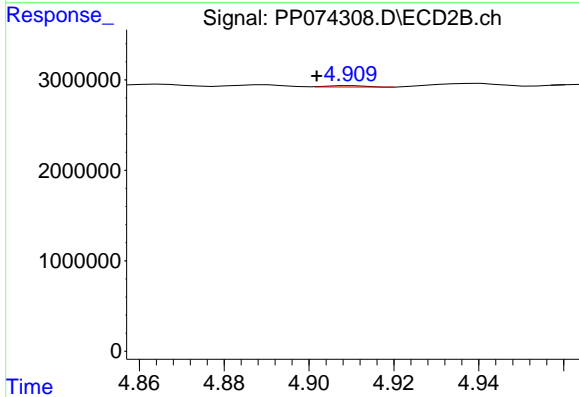
R.T.: 5.694 min
 Delta R.T.: 0.008 min
 Response: 383585
 Conc: 2.56 ng/ml



#21 AR-1248-1

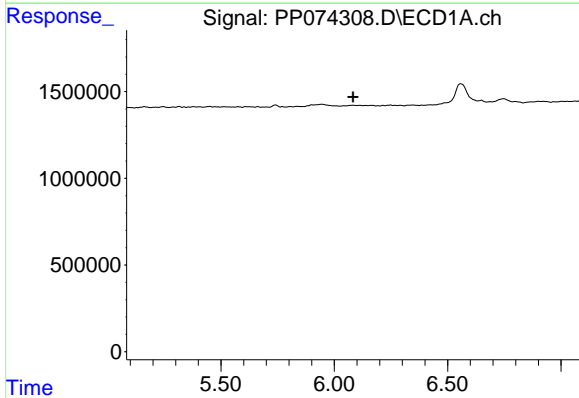
R.T.: 5.742 min
 Delta R.T.: -0.069 min
 Response: 187905
 Conc: 6.71 ng/ml

Instrument :
 ECD_P
 ClientSampleId :
 PB169205BL



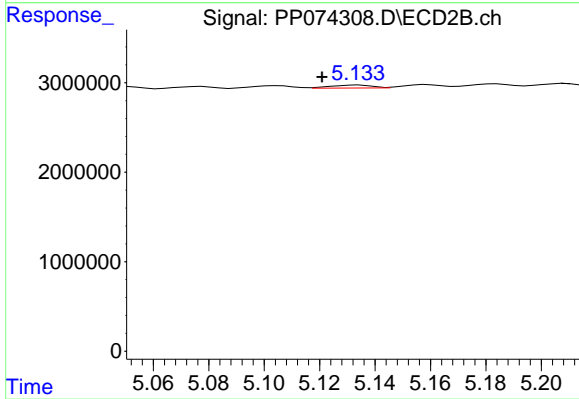
#21 AR-1248-1

R.T.: 4.910 min
 Delta R.T.: 0.008 min
 Response: 96730
 Conc: 0.45 ng/ml



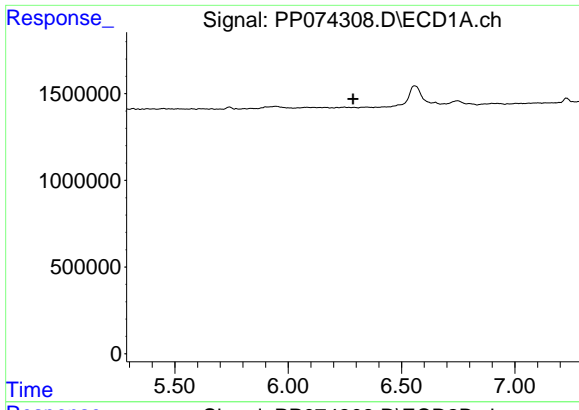
#22 AR-1248-2

R.T.: 0.000 min
 Exp R.T. : 6.083 min
 Response: 0
 Conc: N.D.



#22 AR-1248-2

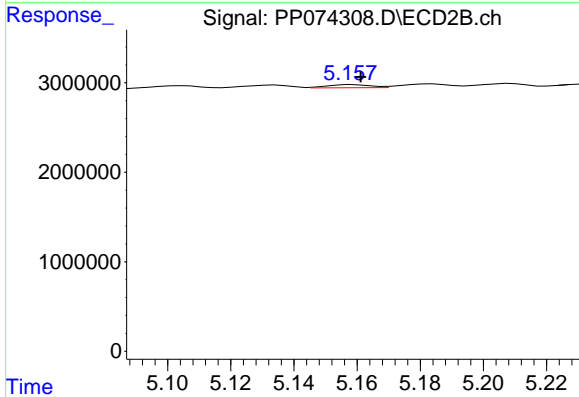
R.T.: 5.134 min
 Delta R.T.: 0.013 min
 Response: 339510
 Conc: 2.32 ng/ml



#23 AR-1248-3

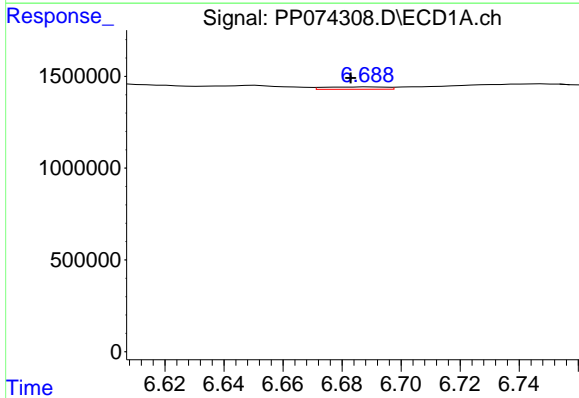
R.T.: 0.000 min
 Exp R.T.: 6.286 min
 Response: 0
 Conc: N.D.

Instrument :
 ECD_P
 ClientSampleId :
 PB169205BL



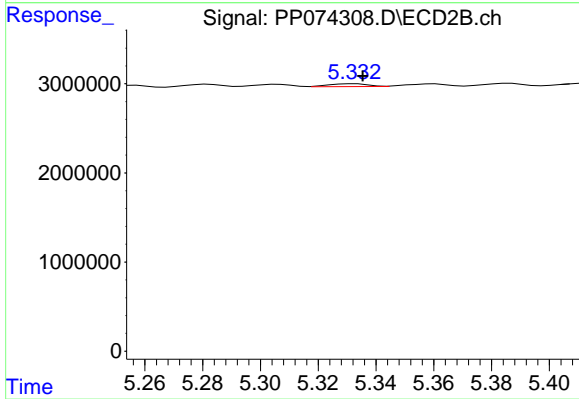
#23 AR-1248-3

R.T.: 5.159 min
 Delta R.T.: -0.003 min
 Response: 331800
 Conc: 1.94 ng/ml



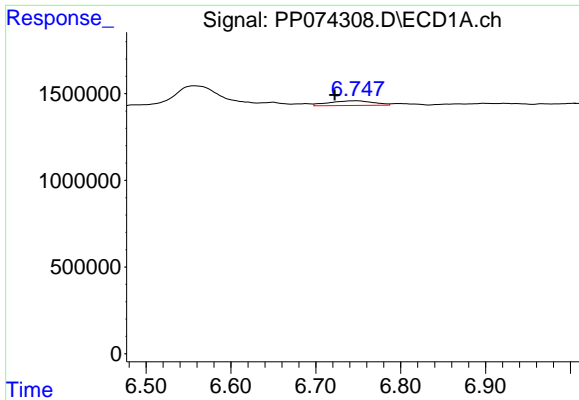
#24 AR-1248-4

R.T.: 6.689 min
 Delta R.T.: 0.006 min
 Response: 182099
 Conc: 3.50 ng/ml



#24 AR-1248-4

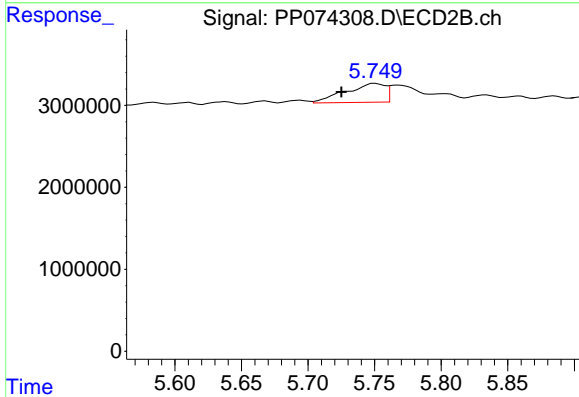
R.T.: 5.332 min
 Delta R.T.: -0.003 min
 Response: 308507
 Conc: 1.85 ng/ml



#25 AR-1248-5

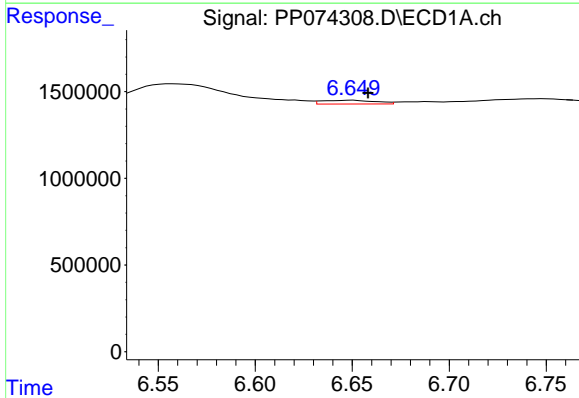
R.T.: 6.748 min
 Delta R.T.: 0.026 min
 Response: 988357
 Conc: 17.36 ng/ml

Instrument :
 ECD_P
 ClientSampleId :
 PB169205BL



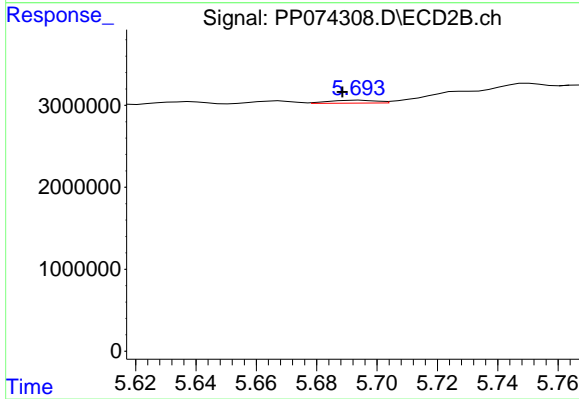
#25 AR-1248-5

R.T.: 5.750 min
 Delta R.T.: 0.025 min
 Response: 4765406
 Conc: 16.38 ng/ml



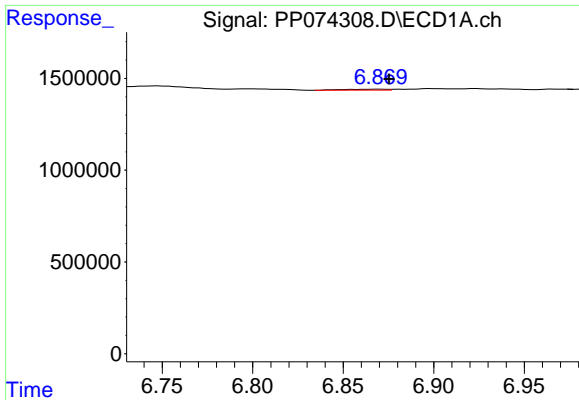
#26 AR-1254-1

R.T.: 6.650 min
 Delta R.T.: -0.008 min
 Response: 412804
 Conc: 7.84 ng/ml



#26 AR-1254-1

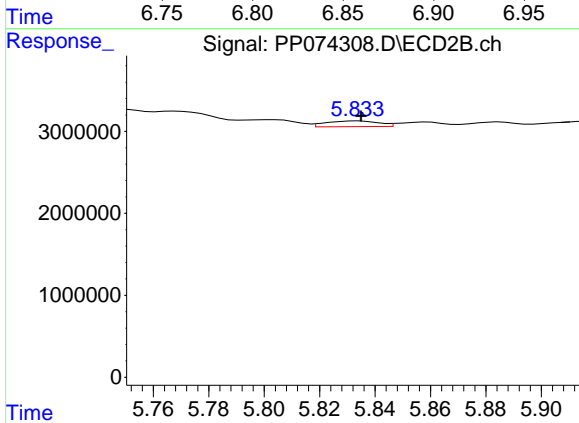
R.T.: 5.694 min
 Delta R.T.: 0.006 min
 Response: 383585
 Conc: 1.05 ng/ml



#27 AR-1254-2

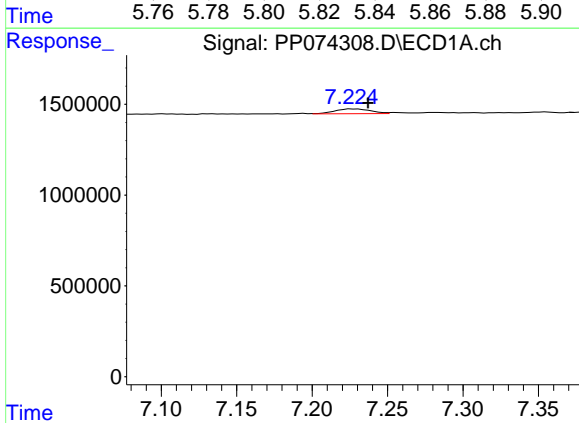
R.T.: 6.870 min
 Delta R.T.: -0.005 min
 Response: 85649
 Conc: 1.08 ng/ml

Instrument :
 ECD_P
 ClientSampleId :
 PB169205BL



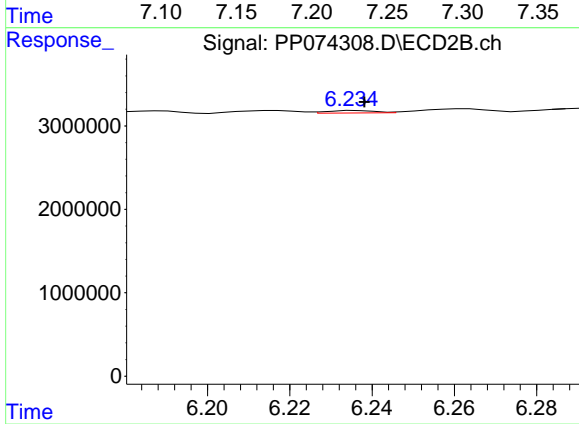
#27 AR-1254-2

R.T.: 5.834 min
 Delta R.T.: -0.001 min
 Response: 931616
 Conc: 3.35 ng/ml



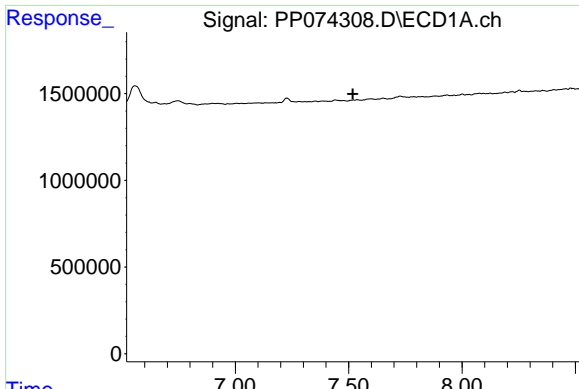
#28 AR-1254-3

R.T.: 7.226 min
 Delta R.T.: -0.011 min
 Response: 426186
 Conc: 4.88 ng/ml



#28 AR-1254-3

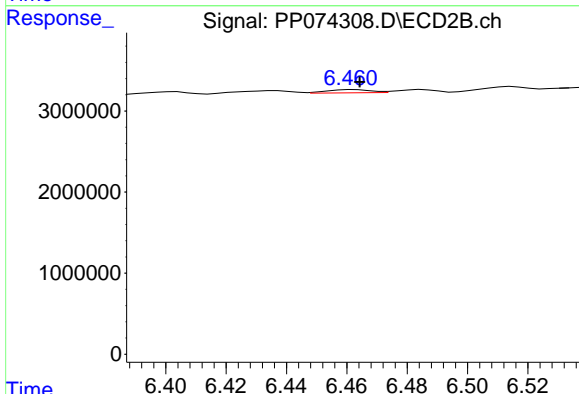
R.T.: 6.236 min
 Delta R.T.: -0.002 min
 Response: 240877
 Conc: 0.49 ng/ml



#29 AR-1254-4

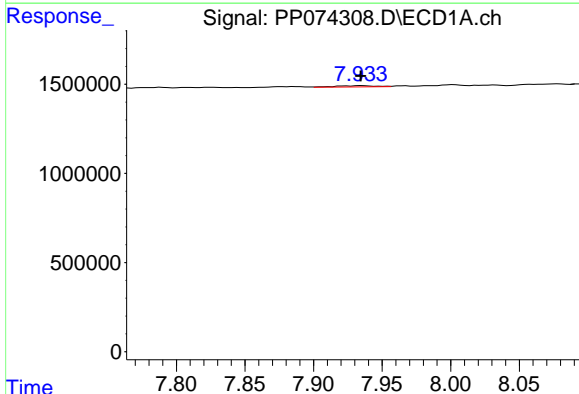
R.T.: 0.000 min
 Exp R.T.: 7.518 min
 Response: 0
 Conc: N.D.

Instrument :
 ECD_P
 ClientSampleId :
 PB169205BL



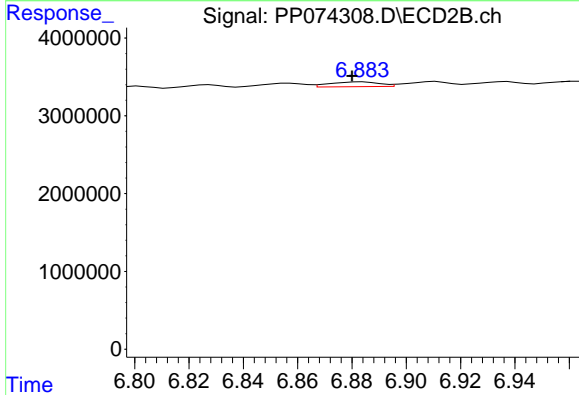
#29 AR-1254-4

R.T.: 6.462 min
 Delta R.T.: -0.002 min
 Response: 420975
 Conc: 1.15 ng/ml



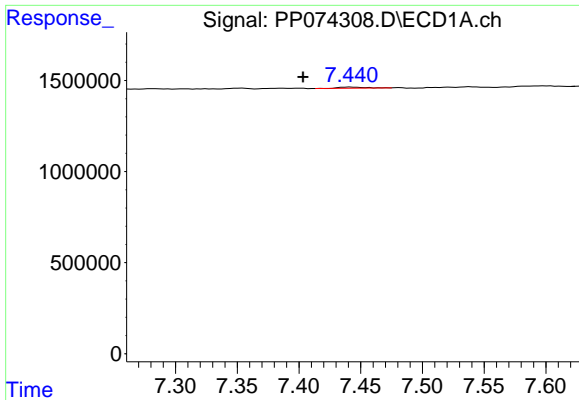
#30 AR-1254-5

R.T.: 7.934 min
 Delta R.T.: 0.000 min
 Response: 128966
 Conc: 1.59 ng/ml



#30 AR-1254-5

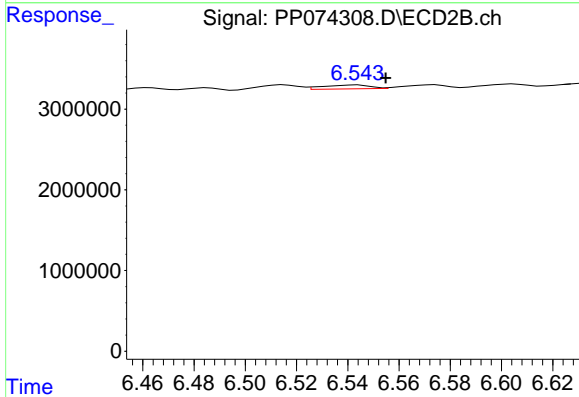
R.T.: 6.884 min
 Delta R.T.: 0.004 min
 Response: 778701
 Conc: 2.02 ng/ml



#31 AR-1260-1

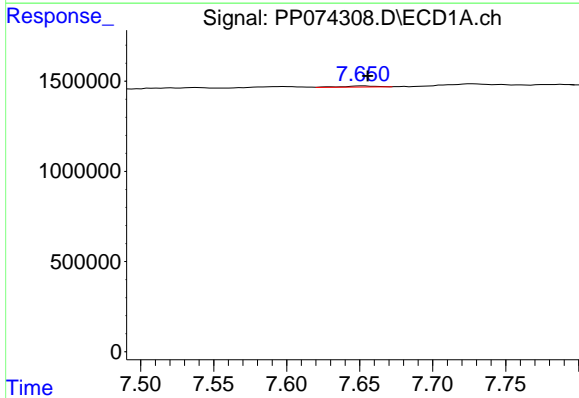
R.T.: 7.442 min
 Delta R.T.: 0.039 min
 Response: 83900
 Conc: 1.49 ng/ml

Instrument :
 ECD_P
 ClientSampleId :
 PB169205BL



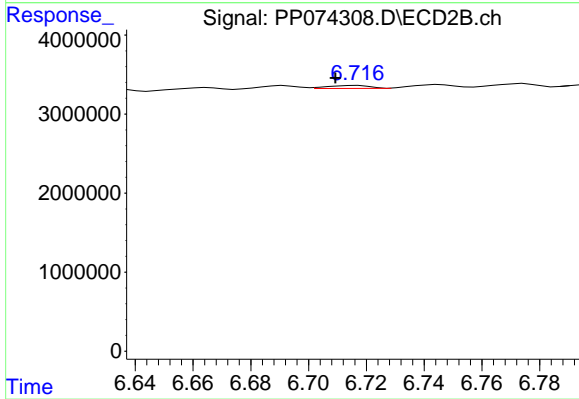
#31 AR-1260-1

R.T.: 6.544 min
 Delta R.T.: -0.011 min
 Response: 620707
 Conc: 1.54 ng/ml



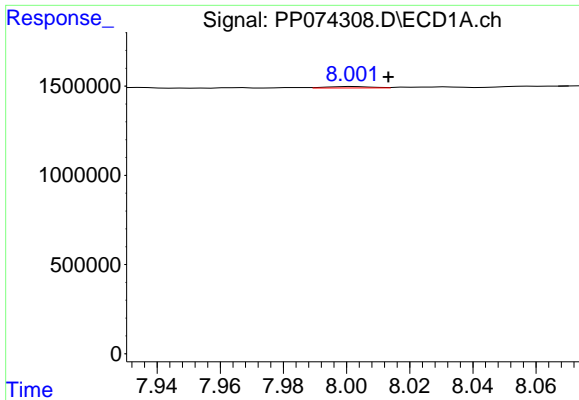
#32 AR-1260-2

R.T.: 7.652 min
 Delta R.T.: -0.003 min
 Response: 103998
 Conc: 1.53 ng/ml



#32 AR-1260-2

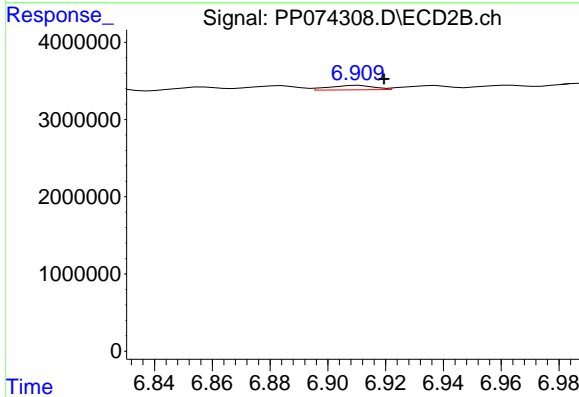
R.T.: 6.717 min
 Delta R.T.: 0.008 min
 Response: 375176
 Conc: 1.20 ng/ml



#33 AR-1260-3

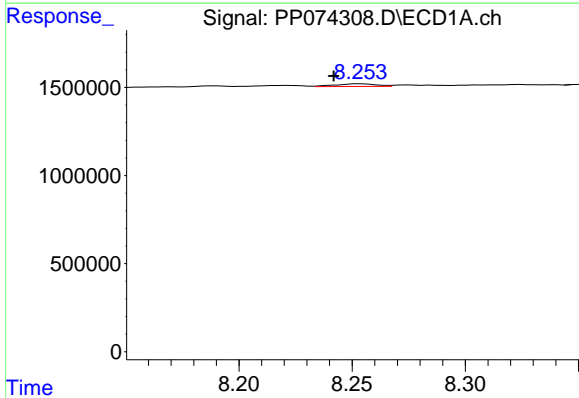
R.T.: 8.002 min
 Delta R.T.: -0.011 min
 Response: 76485
 Conc: 1.44 ng/ml

Instrument :
 ECD_P
 ClientSampleId :
 PB169205BL



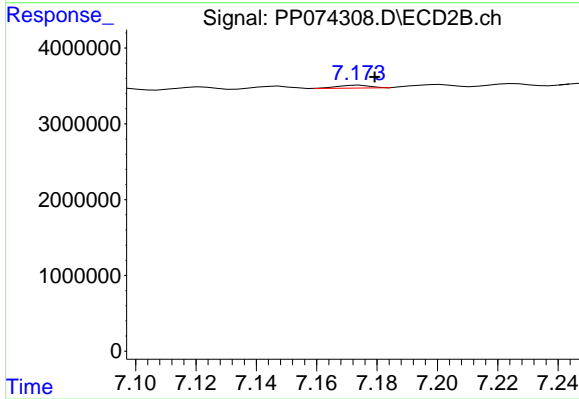
#33 AR-1260-3

R.T.: 6.911 min
 Delta R.T.: -0.009 min
 Response: 627989
 Conc: 1.59 ng/ml



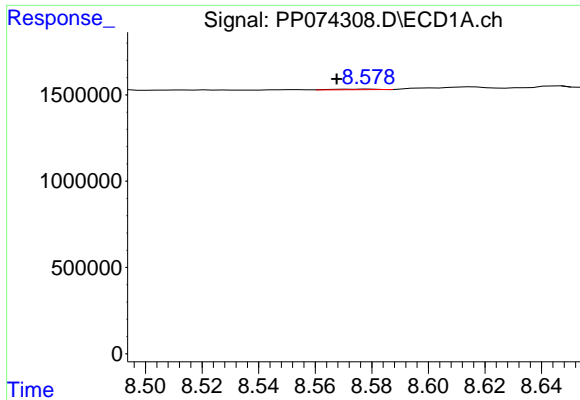
#34 AR-1260-4

R.T.: 8.254 min
 Delta R.T.: 0.012 min
 Response: 183301
 Conc: 2.93 ng/ml



#34 AR-1260-4

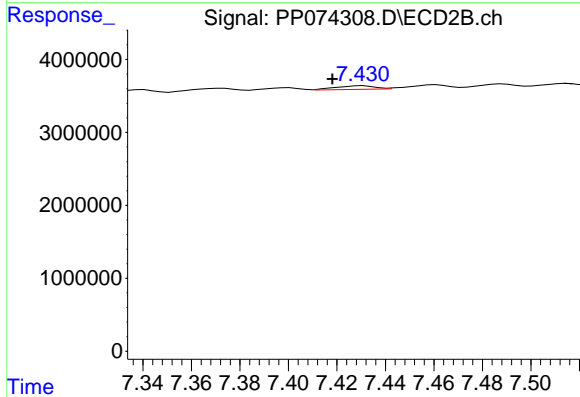
R.T.: 7.174 min
 Delta R.T.: -0.005 min
 Response: 277097
 Conc: 0.95 ng/ml



#35 AR-1260-5

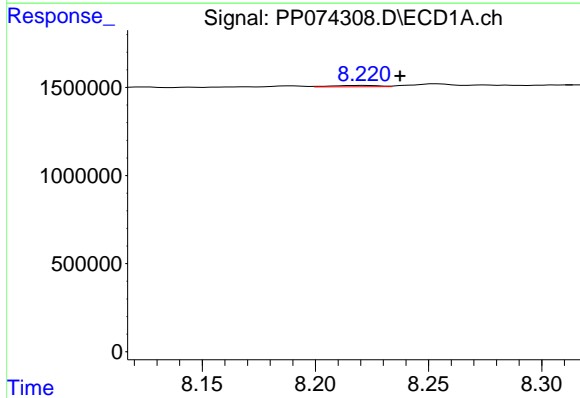
R.T.: 8.579 min
 Delta R.T.: 0.012 min
 Response: 38114
 Conc: 0.34 ng/ml

Instrument :
 ECD_P
 ClientSampleId :
 PB169205BL



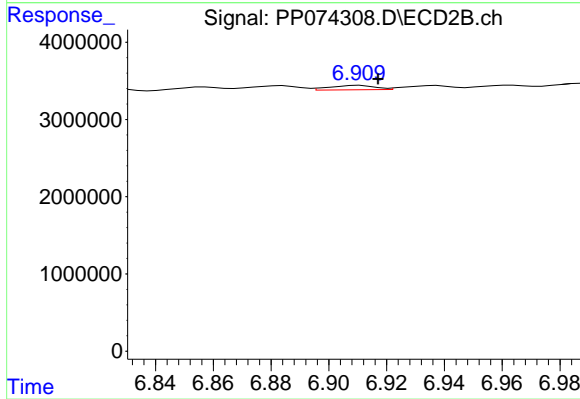
#35 AR-1260-5

R.T.: 7.431 min
 Delta R.T.: 0.013 min
 Response: 551791
 Conc: 0.73 ng/ml



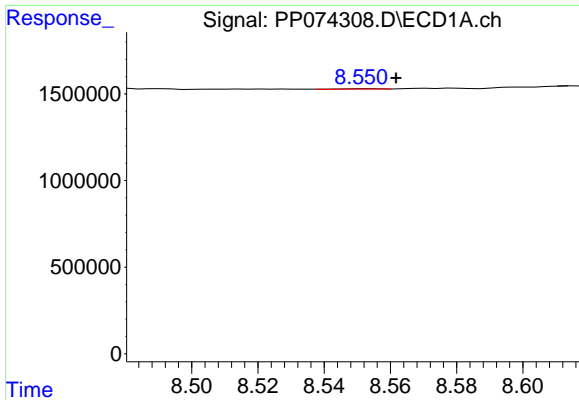
#36 AR-1262-1

R.T.: 8.222 min
 Delta R.T.: -0.015 min
 Response: 112673
 Conc: 1.49 ng/ml



#36 AR-1262-1

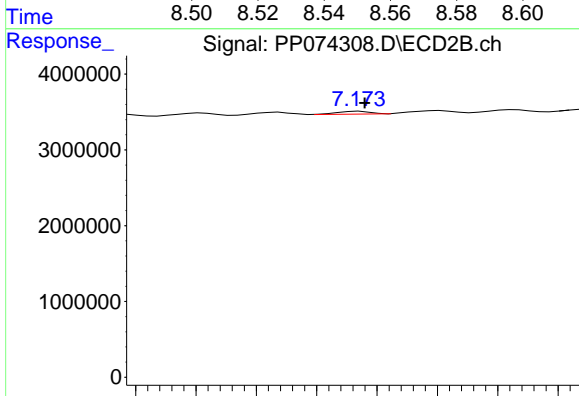
R.T.: 6.911 min
 Delta R.T.: -0.006 min
 Response: 627989
 Conc: 1.12 ng/ml



#37 AR-1262-2

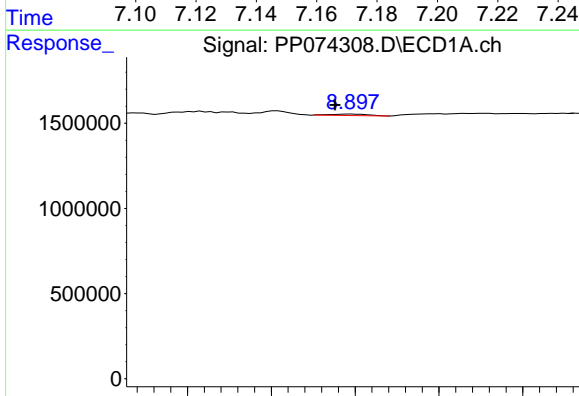
R.T.: 8.553 min
 Delta R.T.: -0.009 min
 Response: 20845
 Conc: 0.16 ng/ml

Instrument :
 ECD_P
 ClientSampleId :
 PB169205BL



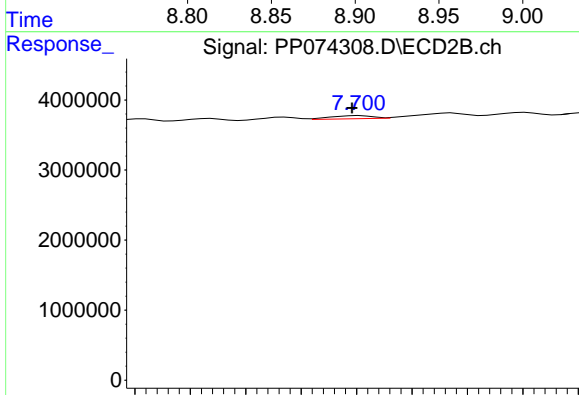
#37 AR-1262-2

R.T.: 7.174 min
 Delta R.T.: -0.001 min
 Response: 277097
 Conc: 0.69 ng/ml



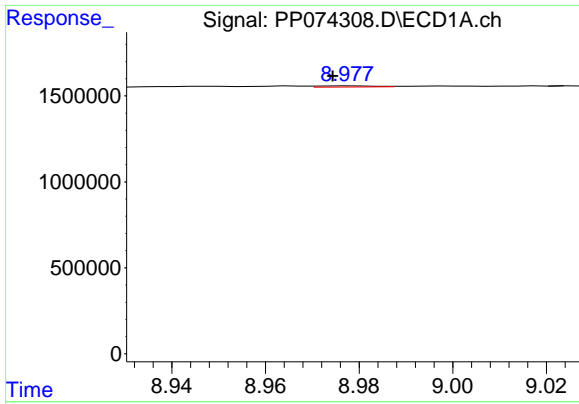
#38 AR-1262-3

R.T.: 8.898 min
 Delta R.T.: 0.010 min
 Response: 130294
 Conc: 1.39 ng/ml



#38 AR-1262-3

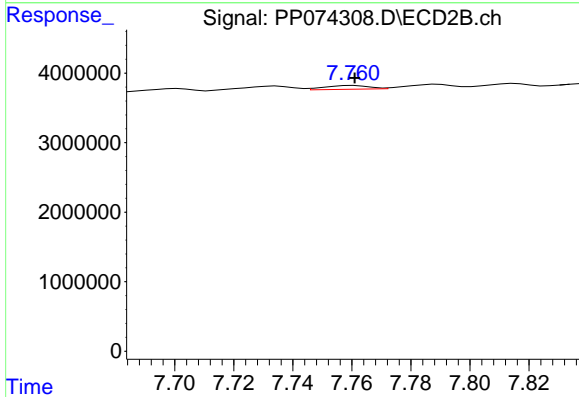
R.T.: 7.701 min
 Delta R.T.: 0.003 min
 Response: 464455
 Conc: 1.29 ng/ml



#39 AR-1262-4

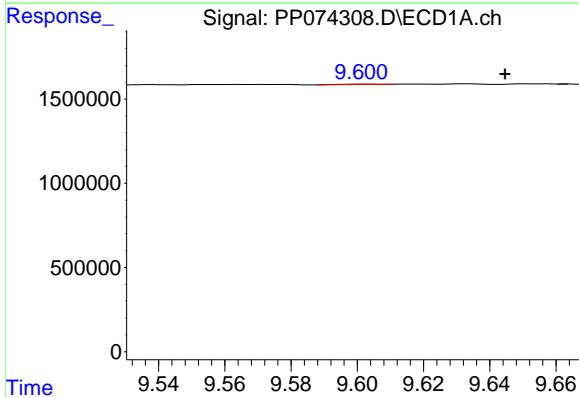
R.T.: 8.978 min
 Delta R.T.: 0.004 min
 Response: 58782
 Conc: 0.81 ng/ml

Instrument :
 ECD_P
 ClientSampleId :
 PB169205BL



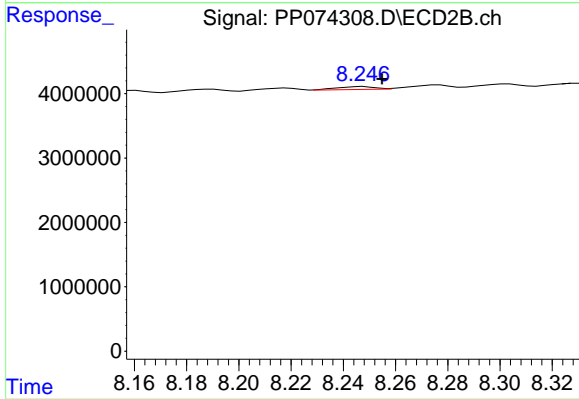
#39 AR-1262-4

R.T.: 7.761 min
 Delta R.T.: 0.000 min
 Response: 559736
 Conc: 0.84 ng/ml



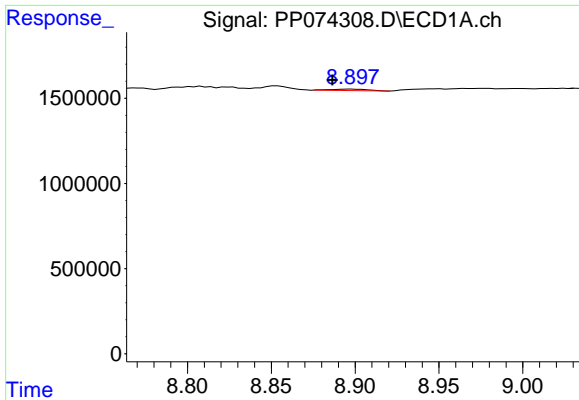
#40 AR-1262-5

R.T.: 9.602 min
 Delta R.T.: -0.042 min
 Response: 15337
 Conc: 0.30 ng/ml



#40 AR-1262-5

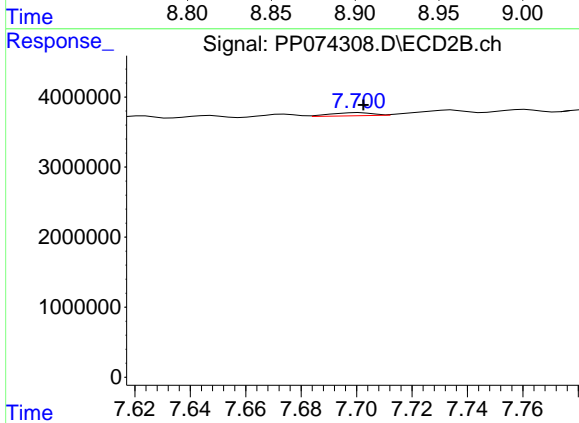
R.T.: 8.248 min
 Delta R.T.: -0.007 min
 Response: 438559
 Conc: 1.55 ng/ml



#41 AR-1268-1

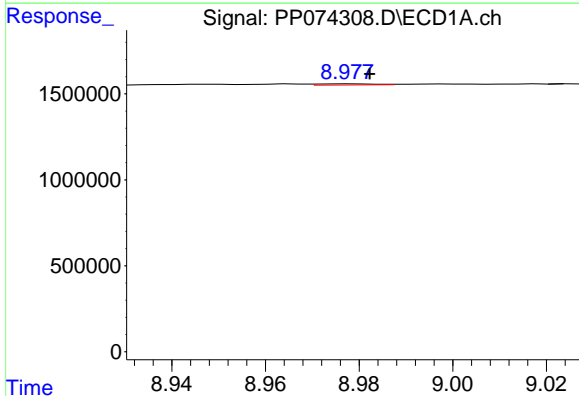
R.T.: 8.898 min
 Delta R.T.: 0.011 min
 Response: 130294
 Conc: 0.84 ng/ml

Instrument :
 ECD_P
 ClientSampleId :
 PB169205BL



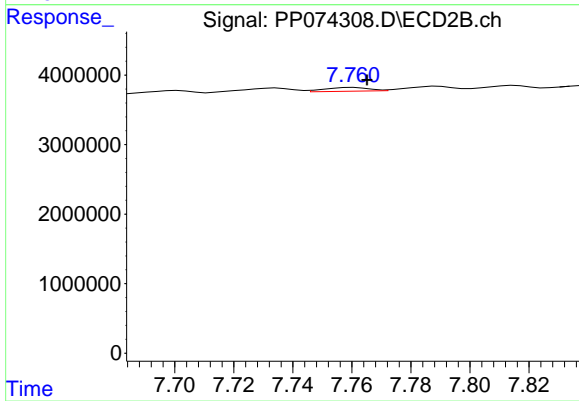
#41 AR-1268-1

R.T.: 7.701 min
 Delta R.T.: -0.001 min
 Response: 464455
 Conc: 0.43 ng/ml



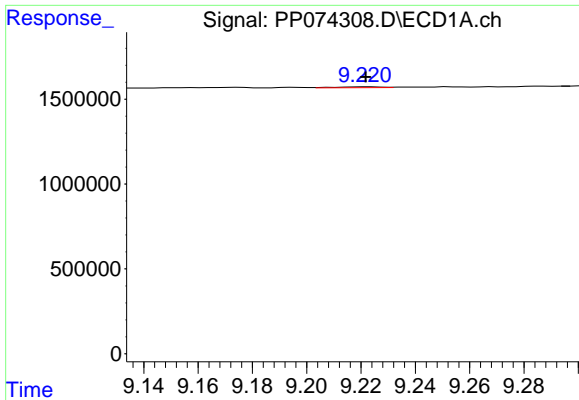
#42 AR-1268-2

R.T.: 8.978 min
 Delta R.T.: -0.004 min
 Response: 58782
 Conc: 0.41 ng/ml



#42 AR-1268-2

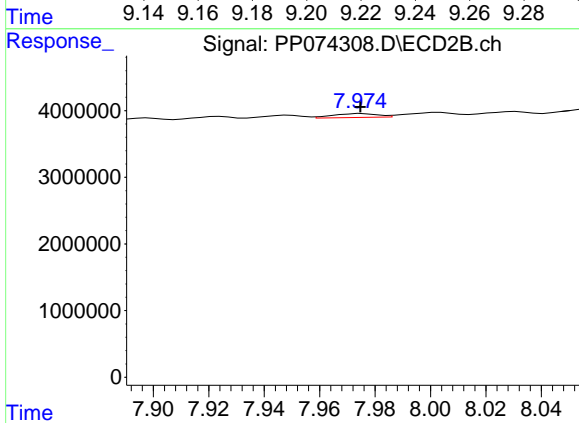
R.T.: 7.761 min
 Delta R.T.: -0.004 min
 Response: 559736
 Conc: 0.53 ng/ml



#43 AR-1268-3

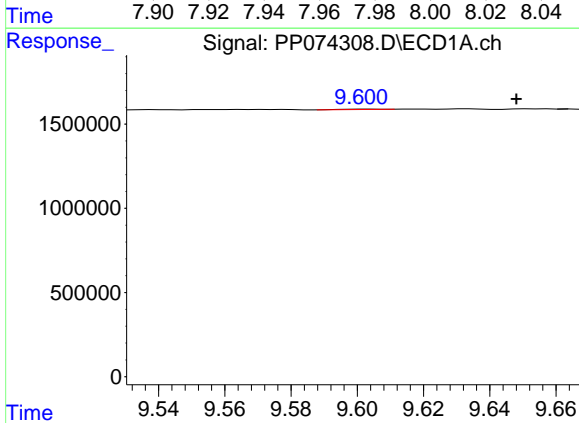
R.T.: 9.222 min
 Delta R.T.: 0.000 min
 Response: 63713
 Conc: 0.53 ng/ml

Instrument :
 ECD_P
 ClientSampleId :
 PB169205BL



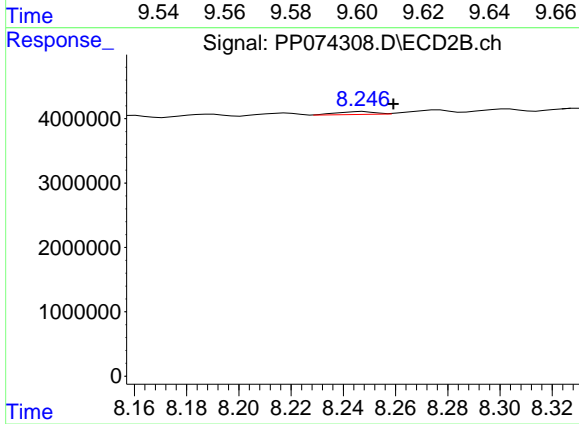
#43 AR-1268-3

R.T.: 7.975 min
 Delta R.T.: 0.000 min
 Response: 648590
 Conc: 0.78 ng/ml



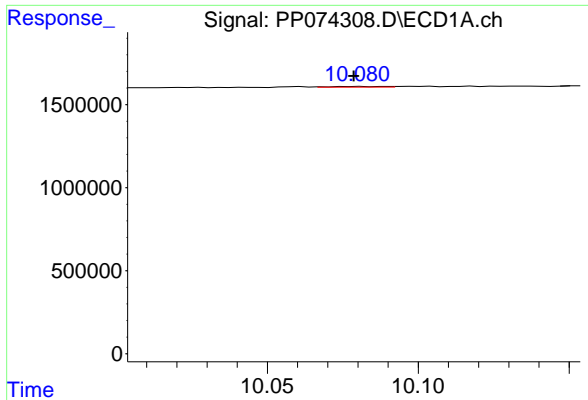
#44 AR-1268-4

R.T.: 9.602 min
 Delta R.T.: -0.046 min
 Response: 15337
 Conc: 0.26 ng/ml



#44 AR-1268-4

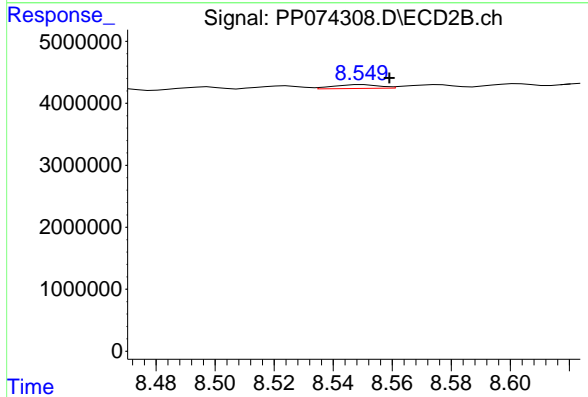
R.T.: 8.248 min
 Delta R.T.: -0.012 min
 Response: 438559
 Conc: 1.42 ng/ml



#45 AR-1268-5

R.T.: 10.081 min
Delta R.T.: 0.002 min
Response: 53705
Conc: 0.15 ng/ml

Instrument :
ECD_P
ClientSampleId :
PB169205BL



#45 AR-1268-5

R.T.: 8.550 min
Delta R.T.: -0.009 min
Response: 663590
Conc: 0.26 ng/ml