

Data Path : Z:\pestpcbsrv\HPCHEM1\ECD_P\Data\PP081225\
 Data File : PP074309.D
 Signal(s) : Signal #1: ECD1A.ch Signal #2: ECD2B.ch
 Acq On : 12 Aug 2025 13:05
 Operator : YP\AJ
 Sample : PB169205BS
 Misc :
 ALS Vial : 9 Sample Multiplier: 1

Instrument :
 ECD_P
 ClientSampleId :
 PB169205BS

Integration File signal 1: autoint1.e
 Integration File signal 2: autoint2.e
 Quant Time: Aug 12 13:31:58 2025
 Quant Method : Z:\pestpcbsrv\HPCHEM1\ECD_P\methods\PP080125.M
 Quant Title : GC EXTRACTABLES
 QLast Update : Mon Aug 04 11:01:49 2025
 Response via : Initial Calibration
 Integrator: ChemStation

Volume Inj. : 2 µl
 Signal #1 Phase : ZB-MR1 Signal #2 Phase: ZB-MR2
 Signal #1 Info : 30Mx0.32mmx 0.50µ Signal #2 Info : 30M x 0.32mm x 0.25µm

Compound	RT#1	RT#2	Resp#1	Resp#2	ng/ml	ng/ml
System Monitoring Compounds						
1) SA Tetrachlo...	4.657	3.801	27178701	79780335	24.303	20.806
2) SA Decachlor...	10.438	8.821	21836747	120.3E6	22.485	20.000
Target Compounds						
3) L1 AR-1016-1	5.809	4.902	22669527	228.6E6	549.474	573.187
4) L1 AR-1016-2	5.830	4.959	34110297	104.5E6	561.563	556.666
5) L1 AR-1016-3	5.893	5.080	22276842	56001049	561.688	527.965
6) L1 AR-1016-4	5.990	5.121	18317589	56446484	562.848	516.814
7) L1 AR-1016-5	6.283	5.334	17574695	66942868	541.292	572.341
8) L2 AR-1221-1	4.853	4.013	2634639	6691268	157.164	136.320
9) L2 AR-1221-2	4.942	4.098	3253773	8154385	258.214	227.209
10) L2 AR-1221-3	5.018	4.175	13169343	42774973	359.472	316.325
11) L3 AR-1232-1	5.018	4.175	13169343	42774973	453.532	422.000
12) L3 AR-1232-2	5.544	4.902	17607365	228.6E6	1170.491	1311.998
13) L3 AR-1232-3	5.830	5.080	34110297	56001049	1176.148	1222.287
14) L3 AR-1232-4	5.990	5.163	18317589	109.7E6	1184.161	1890.439 #
15) L3 AR-1232-5	6.080	5.334	15956878	66942868	1361.972	1424.939
16) L4 AR-1242-1	5.809	4.902	22669527	228.6E6	608.320	662.445
17) L4 AR-1242-2	5.830	4.959	34110297	104.5E6	626.925	639.909
18) L4 AR-1242-3	5.893	5.080	22276842	56001049	623.375	607.067
19) L4 AR-1242-4	5.990	5.163	18317589	109.7E6	626.914	918.307 #
20) L4 AR-1242-5	6.720	5.686	3662834	76796260	103.010	513.481 #
21) L5 AR-1248-1	5.809	4.902	22669527	228.6E6	809.206	1068.737 #
22) L5 AR-1248-2	6.080	5.121	15956878	56446484	396.335	385.794
23) L5 AR-1248-3	6.283	5.163	17574695	109.7E6	394.285	639.599 #
24) L5 AR-1248-4	6.658	5.334	17077329	66942868	328.176	402.365
25) L5 AR-1248-5	6.720	5.686f	3662834	76796260	64.324	263.936 #
26) L6 AR-1254-1	6.658	5.686	17077329	76796260	324.411	209.722 #
27) L6 AR-1254-2	6.873	5.832	14942029	64358610	187.939	231.325
28) L6 AR-1254-3	7.236	6.250	8784278	129.8E6	100.603	265.237 #
29) L6 AR-1254-4	7.519	6.462	5607113	9342145	87.873	25.416 #
30) L6 AR-1254-5	7.933	6.878	49832102	203.5E6	614.114	528.324
31) L7 AR-1260-1	7.401	6.551	31033148	236.1E6	550.662	584.486
32) L7 AR-1260-2	7.653	6.706	36070118	182.5E6	529.257	583.716
33) L7 AR-1260-3	8.012	6.915	24314378	204.9E6	456.215	519.977
34) L7 AR-1260-4	8.240	7.175	34948406	149.4E6	558.148	513.385
35) L7 AR-1260-5	8.566	7.415	51128845	382.8E6	451.250	505.423
36) L8 AR-1262-1	8.240	6.915	34948406	204.9E6	461.123	363.909
37) L8 AR-1262-2	8.566	7.175	51128845	149.4E6	392.002	372.508
38) L8 AR-1262-3	8.899	7.698	35659813	68577315	379.074	190.773 #
39) L8 AR-1262-4	8.976	7.761	8821459	247.5E6	121.088	371.067 #
40) L8 AR-1262-5	9.651	8.257	14529552	71597111	285.326	252.754
41) L9 AR-1268-1	8.899	7.698	35659813	68577315	229.128	62.900 #

Data Path : Z:\pestpcbsrv\HPCHEM1\ECD_P\Data\PP081225\
 Data File : PP074309.D
 Signal(s) : Signal #1: ECD1A.ch Signal #2: ECD2B.ch
 Acq On : 12 Aug 2025 13:05
 Operator : YP\AJ
 Sample : PB169205BS
 Misc :
 ALS Vial : 9 Sample Multiplier: 1

Instrument :
 ECD_P
 ClientSampleId :
 PB169205BS

Integration File signal 1: autoint1.e
 Integration File signal 2: autoint2.e
 Quant Time: Aug 12 13:31:58 2025
 Quant Method : Z:\pestpcbsrv\HPCHEM1\ECD_P\methods\PP080125.M
 Quant Title : GC EXTRACTABLES
 QLast Update : Mon Aug 04 11:01:49 2025
 Response via : Initial Calibration
 Integrator: ChemStation

Volume Inj. : 2 µl
 Signal #1 Phase : ZB-MR1 Signal #2 Phase: ZB-MR2
 Signal #1 Info : 30Mx0.32mmx 0.50µ Signal #2 Info : 30M x 0.32mm x 0.25µm

	Compound	RT#1	RT#2	Resp#1	Resp#2	ng/ml	ng/ml
42)	L9 AR-1268-2	8.976	7.761	8821459	247.5E6	61.505	233.173 #
43)	L9 AR-1268-3	9.224	7.969	1133561	5277612	9.488	6.344 #
44)	L9 AR-1268-4	9.651	8.257	14529552	71597111	247.048	232.413
45)	L9 AR-1268-5	10.082	8.556	4915065	21332104	13.975	8.365 #

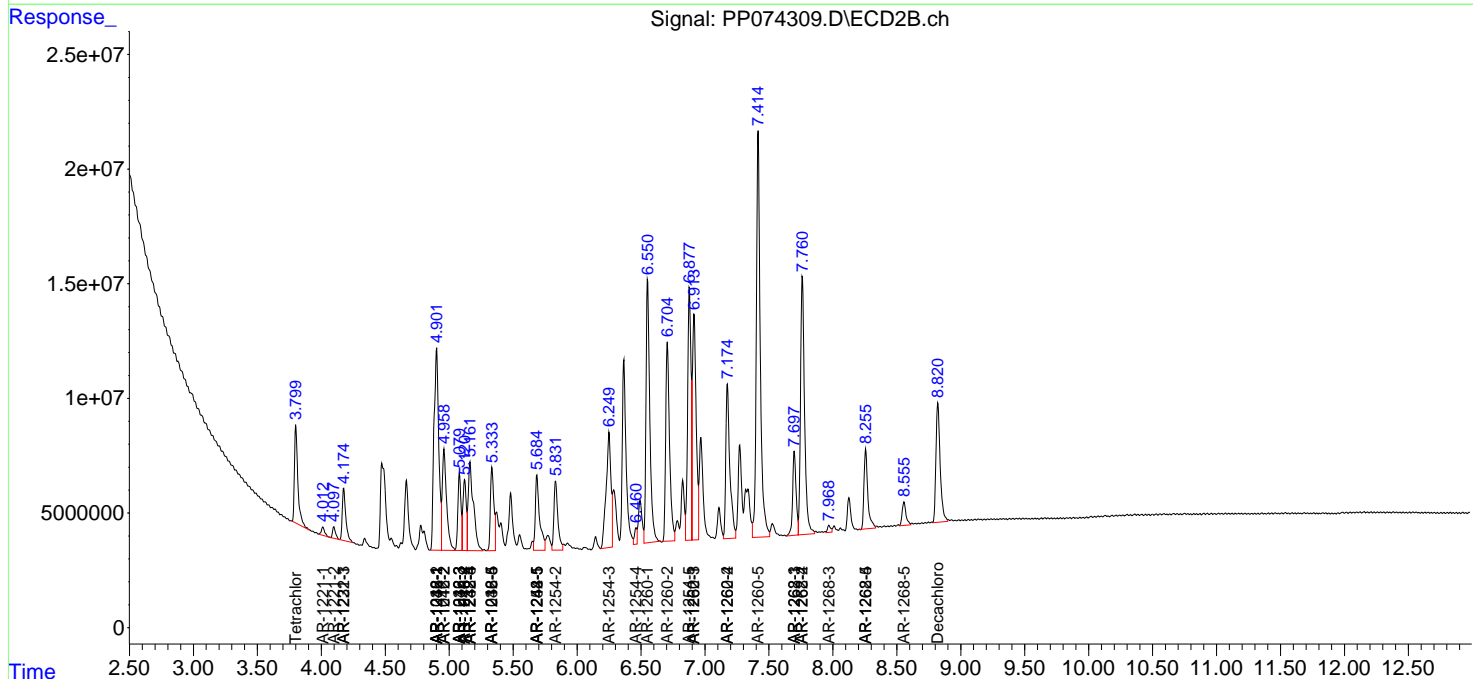
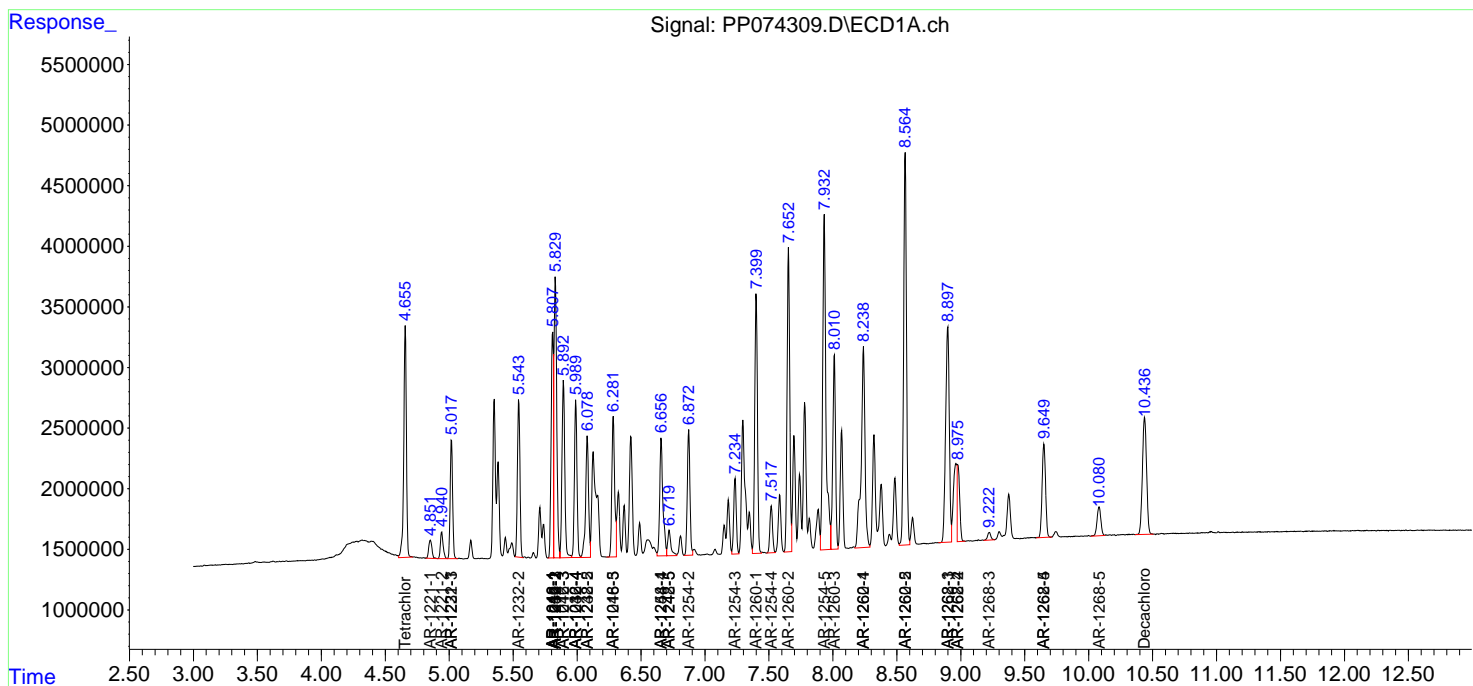
(f)=RT Delta > 1/2 Window (#)=Amounts differ by > 25% (m)=manual int.

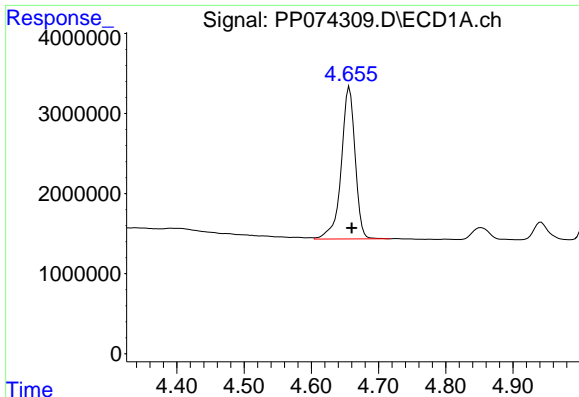
Data Path : Z:\pestpcbsrv\HPCHEM1\ECD_P\Data\PP081225\
 Data File : PP074309.D
 Signal(s) : Signal #1: ECD1A.ch Signal #2: ECD2B.ch
 Acq On : 12 Aug 2025 13:05
 Operator : YP\AJ
 Sample : PB169205BS
 Misc :
 ALS Vial : 9 Sample Multiplier: 1

Instrument :
 ECD_P
 ClientSampleId :
 PB169205BS

Integration File signal 1: autoint1.e
 Integration File signal 2: autoint2.e
 Quant Time: Aug 12 13:31:58 2025
 Quant Method : Z:\pestpcbsrv\HPCHEM1\ECD_P\methods\PP080125.M
 Quant Title : GC EXTRACTABLES
 QLast Update : Mon Aug 04 11:01:49 2025
 Response via : Initial Calibration
 Integrator: ChemStation

Volume Inj. : 2 µl
 Signal #1 Phase : ZB-MR1 Signal #2 Phase: ZB-MR2
 Signal #1 Info : 30Mx0.32mmx 0.50µ Signal #2 Info : 30M x 0.32mm x 0.25µm

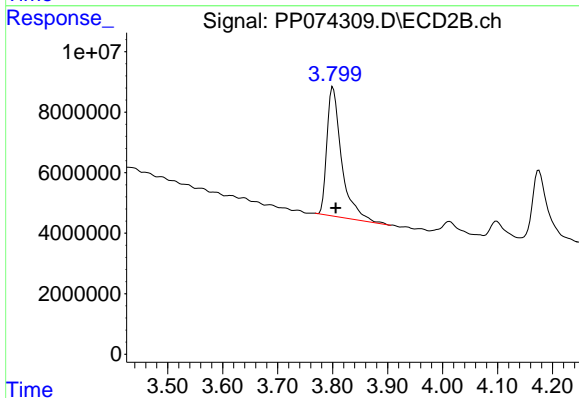




#1 Tetrachloro-m-xylene

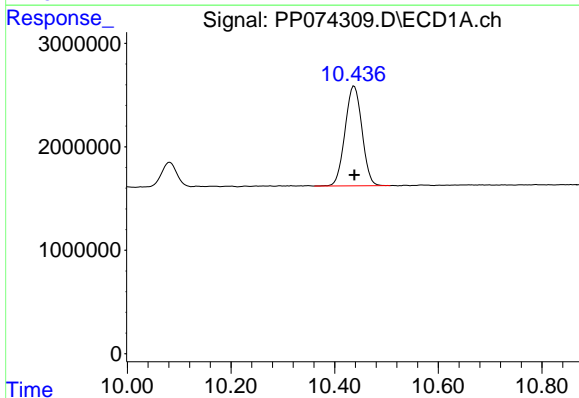
R.T.: 4.657 min
Delta R.T.: -0.003 min
Response: 27178701
Conc: 24.30 ng/ml

Instrument :
ECD_P
ClientSampleId :
PB169205BS



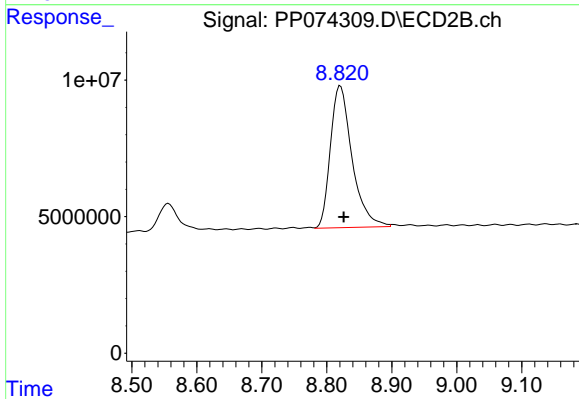
#1 Tetrachloro-m-xylene

R.T.: 3.801 min
Delta R.T.: -0.005 min
Response: 79780335
Conc: 20.81 ng/ml



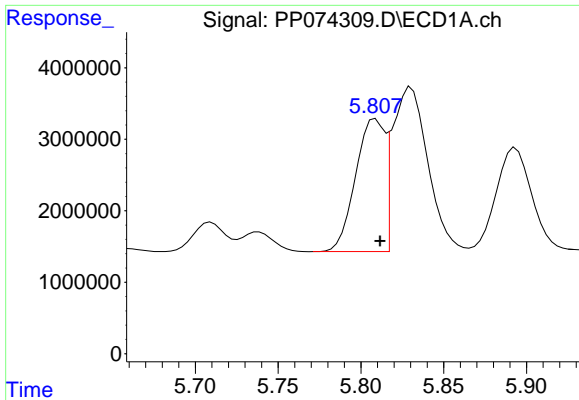
#2 Decachlorobiphenyl

R.T.: 10.438 min
Delta R.T.: 0.000 min
Response: 21836747
Conc: 22.49 ng/ml



#2 Decachlorobiphenyl

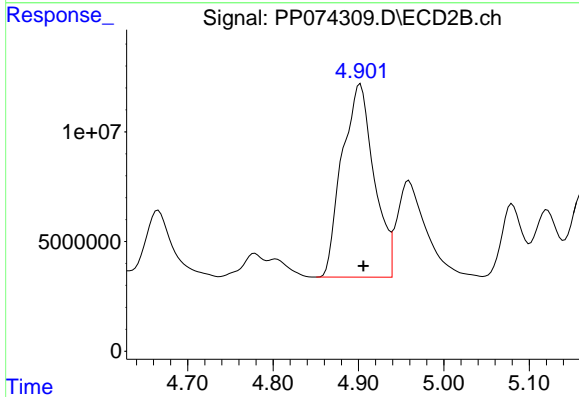
R.T.: 8.821 min
Delta R.T.: -0.005 min
Response: 120271397
Conc: 20.00 ng/ml



#3 AR-1016-1

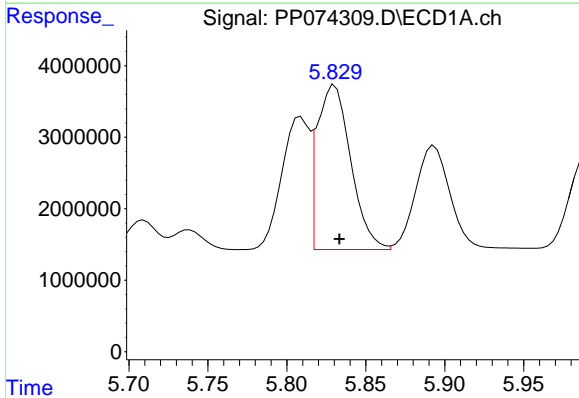
R.T.: 5.809 min
 Delta R.T.: -0.003 min
 Response: 22669527
 Conc: 549.47 ng/ml

Instrument :
 ECD_P
 ClientSampleId :
 PB169205BS



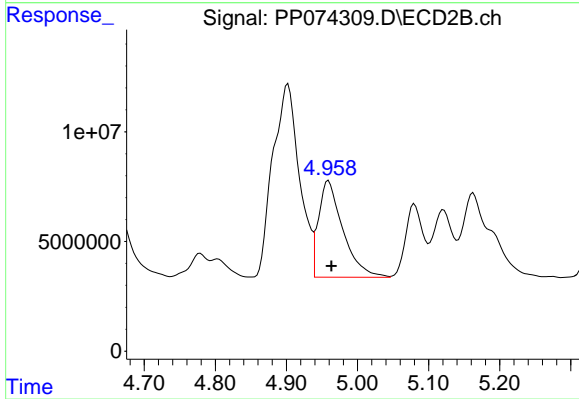
#3 AR-1016-1

R.T.: 4.902 min
 Delta R.T.: -0.003 min
 Response: 228636880
 Conc: 573.19 ng/ml



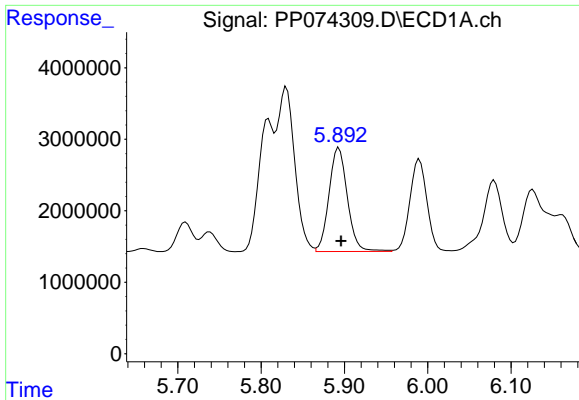
#4 AR-1016-2

R.T.: 5.830 min
 Delta R.T.: -0.003 min
 Response: 34110297
 Conc: 561.56 ng/ml



#4 AR-1016-2

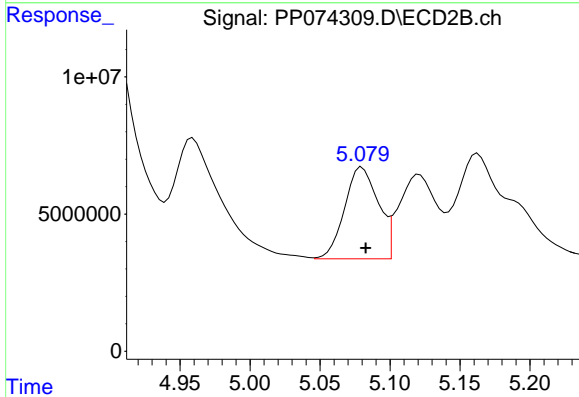
R.T.: 4.959 min
 Delta R.T.: -0.004 min
 Response: 104546878
 Conc: 556.67 ng/ml



#5 AR-1016-3

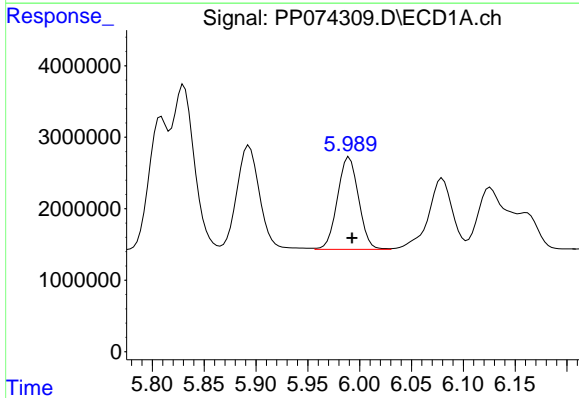
R.T.: 5.893 min
 Delta R.T.: -0.003 min
 Response: 22276842
 Conc: 561.69 ng/ml

Instrument :
 ECD_P
 ClientSampleId :
 PB169205BS



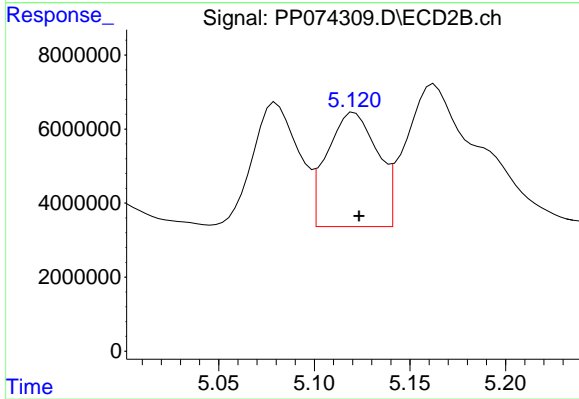
#5 AR-1016-3

R.T.: 5.080 min
 Delta R.T.: -0.003 min
 Response: 56001049
 Conc: 527.96 ng/ml



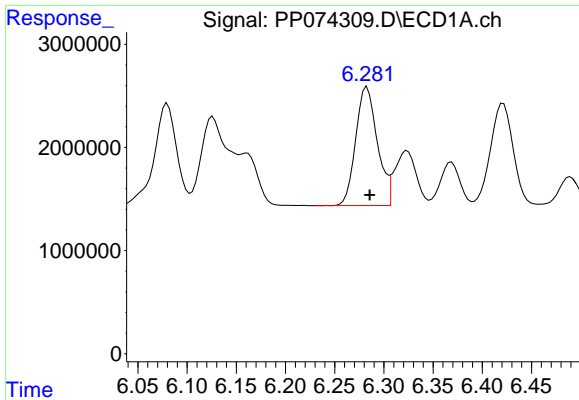
#6 AR-1016-4

R.T.: 5.990 min
 Delta R.T.: -0.003 min
 Response: 18317589
 Conc: 562.85 ng/ml



#6 AR-1016-4

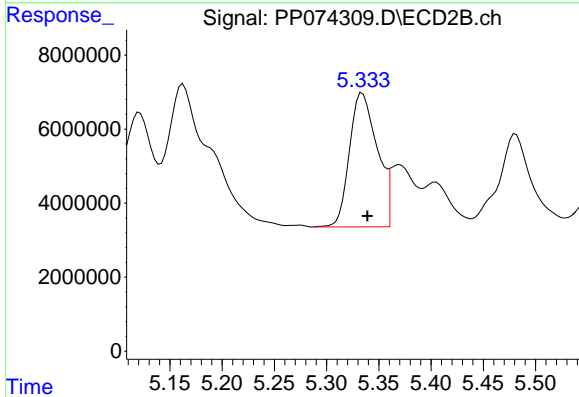
R.T.: 5.121 min
 Delta R.T.: -0.002 min
 Response: 56446484
 Conc: 516.81 ng/ml



#7 AR-1016-5

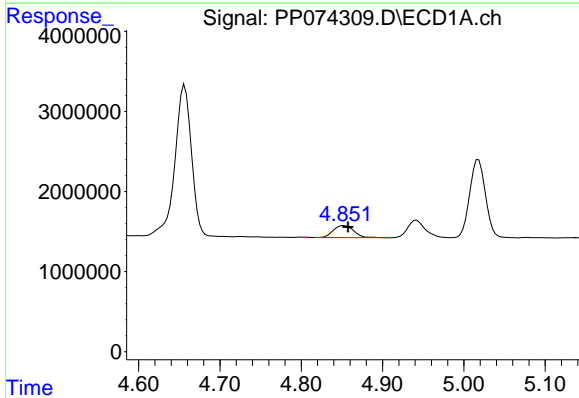
R.T.: 6.283 min
 Delta R.T.: -0.003 min
 Response: 17574695
 Conc: 541.29 ng/ml

Instrument :
 ECD_P
 ClientSampleId :
 PB169205BS



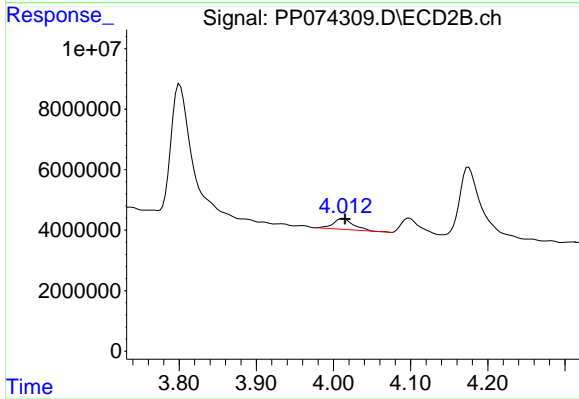
#7 AR-1016-5

R.T.: 5.334 min
 Delta R.T.: -0.005 min
 Response: 66942868
 Conc: 572.34 ng/ml



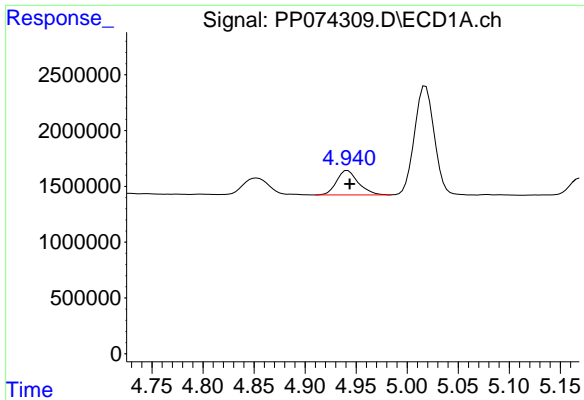
#8 AR-1221-1

R.T.: 4.853 min
 Delta R.T.: -0.005 min
 Response: 2634639
 Conc: 157.16 ng/ml



#8 AR-1221-1

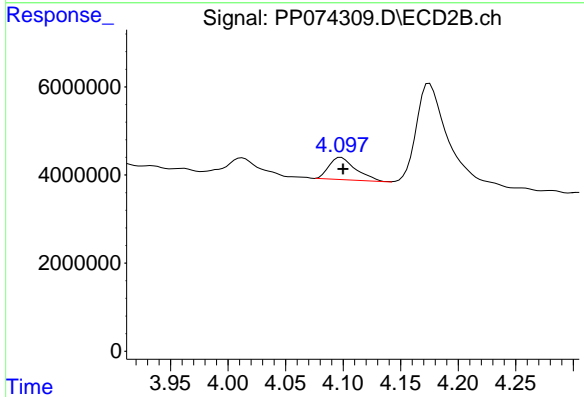
R.T.: 4.013 min
 Delta R.T.: -0.003 min
 Response: 6691268
 Conc: 136.32 ng/ml



#9 AR-1221-2

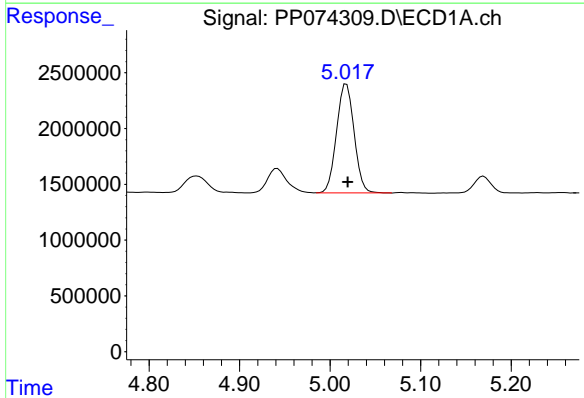
R.T.: 4.942 min
 Delta R.T.: -0.002 min
 Response: 3253773
 Conc: 258.21 ng/ml

Instrument :
 ECD_P
 ClientSampleId :
 PB169205BS



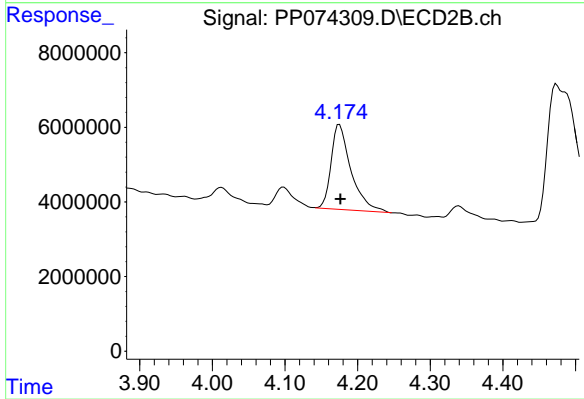
#9 AR-1221-2

R.T.: 4.098 min
 Delta R.T.: -0.002 min
 Response: 8154385
 Conc: 227.21 ng/ml



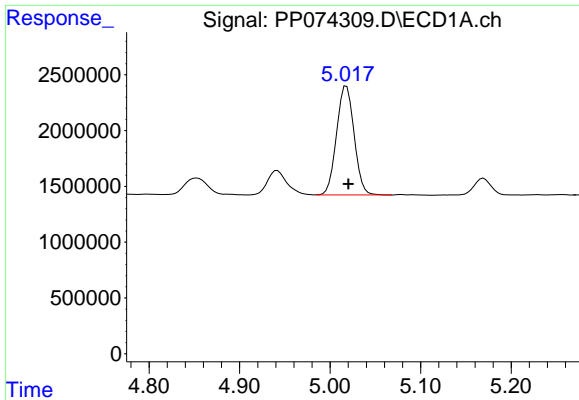
#10 AR-1221-3

R.T.: 5.018 min
 Delta R.T.: -0.001 min
 Response: 13169343
 Conc: 359.47 ng/ml



#10 AR-1221-3

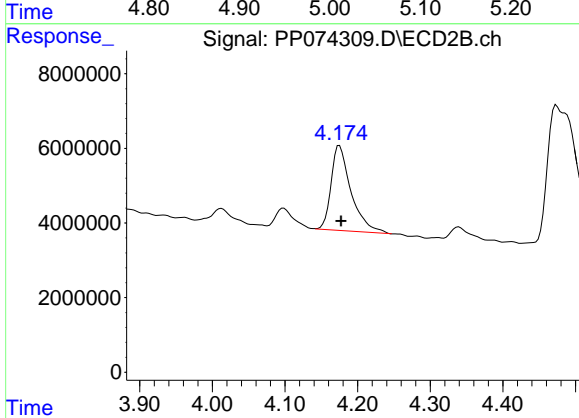
R.T.: 4.175 min
 Delta R.T.: -0.001 min
 Response: 42774973
 Conc: 316.33 ng/ml



#11 AR-1232-1

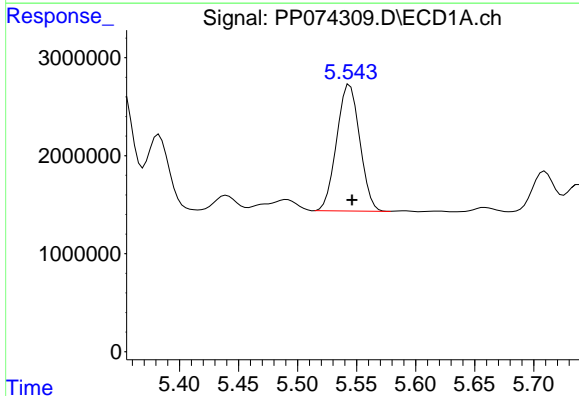
R.T.: 5.018 min
 Delta R.T.: -0.002 min
 Response: 13169343
 Conc: 453.53 ng/ml

Instrument :
 ECD_P
 ClientSampleId :
 PB169205BS



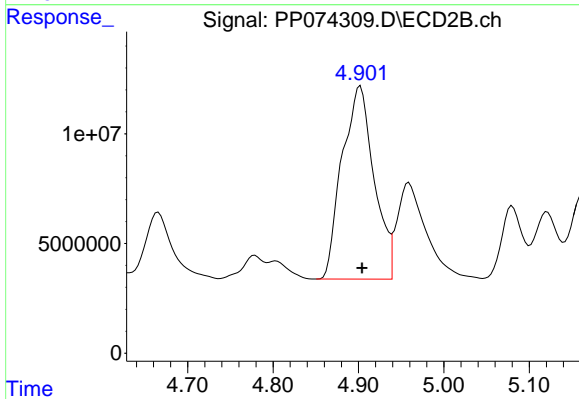
#11 AR-1232-1

R.T.: 4.175 min
 Delta R.T.: -0.002 min
 Response: 42774973
 Conc: 422.00 ng/ml



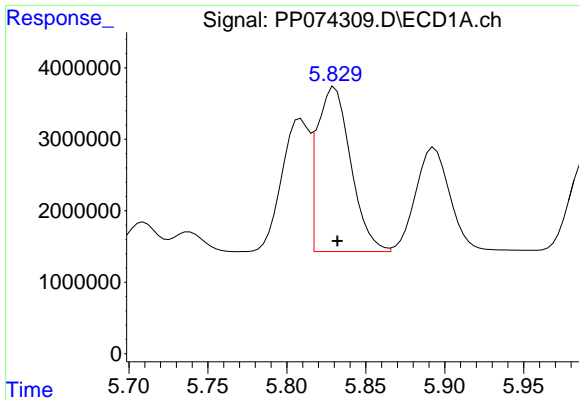
#12 AR-1232-2

R.T.: 5.544 min
 Delta R.T.: -0.002 min
 Response: 17607365
 Conc: 1170.49 ng/ml



#12 AR-1232-2

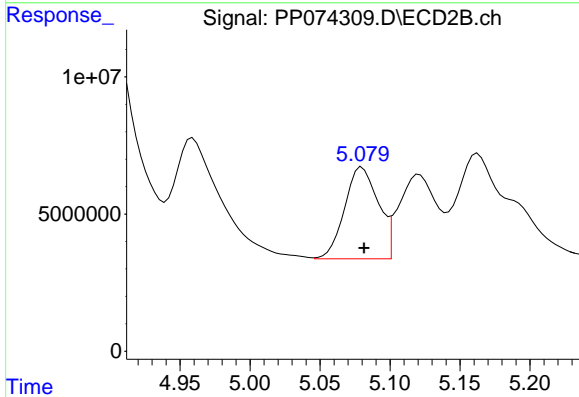
R.T.: 4.902 min
 Delta R.T.: -0.002 min
 Response: 228636880
 Conc: 1312.00 ng/ml



#13 AR-1232-3

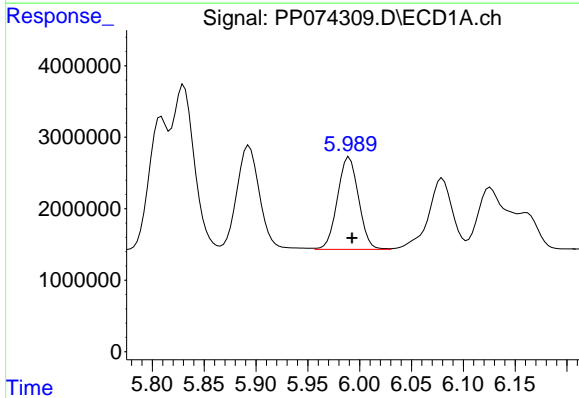
R.T.: 5.830 min
 Delta R.T.: -0.002 min
 Response: 34110297
 Conc: 1176.15 ng/ml

Instrument :
 ECD_P
 ClientSampleId :
 PB169205BS



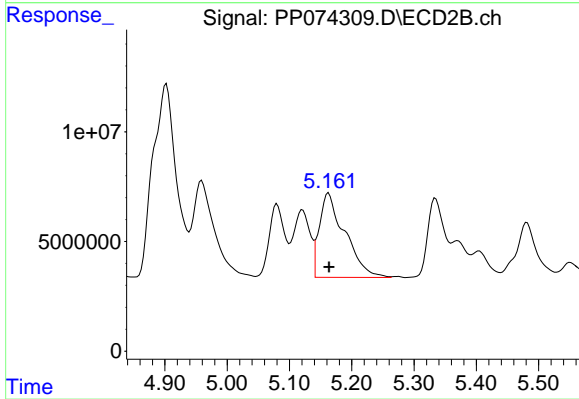
#13 AR-1232-3

R.T.: 5.080 min
 Delta R.T.: -0.001 min
 Response: 56001049
 Conc: 1222.29 ng/ml



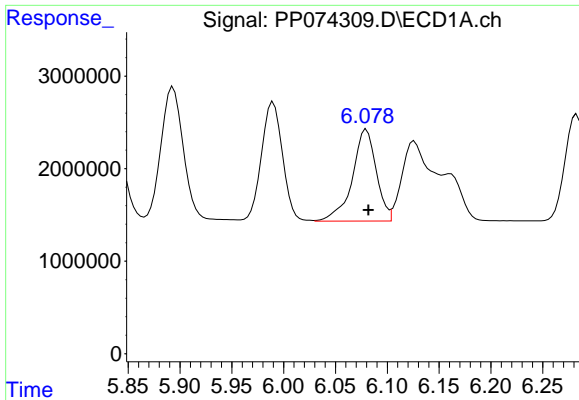
#14 AR-1232-4

R.T.: 5.990 min
 Delta R.T.: -0.002 min
 Response: 18317589
 Conc: 1184.16 ng/ml



#14 AR-1232-4

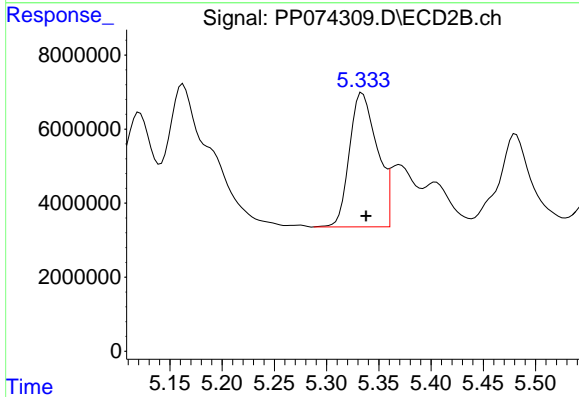
R.T.: 5.163 min
 Delta R.T.: 0.000 min
 Response: 109665710
 Conc: 1890.44 ng/ml



#15 AR-1232-5

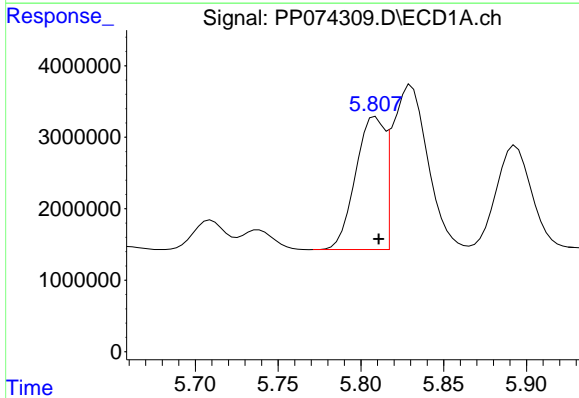
R.T.: 6.080 min
 Delta R.T.: -0.002 min
 Response: 15956878
 Conc: 1361.97 ng/ml

Instrument :
 ECD_P
 ClientSampleId :
 PB169205BS



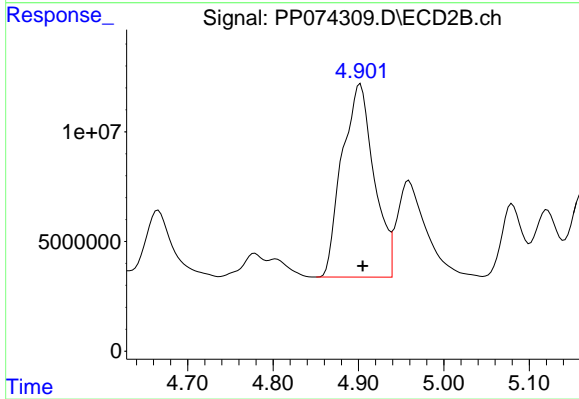
#15 AR-1232-5

R.T.: 5.334 min
 Delta R.T.: -0.003 min
 Response: 66942868
 Conc: 1424.94 ng/ml



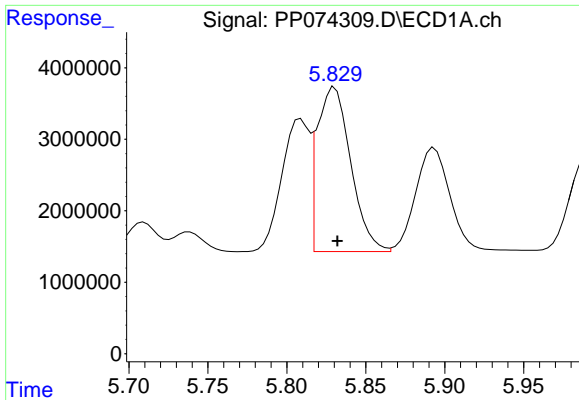
#16 AR-1242-1

R.T.: 5.809 min
 Delta R.T.: -0.002 min
 Response: 22669527
 Conc: 608.32 ng/ml



#16 AR-1242-1

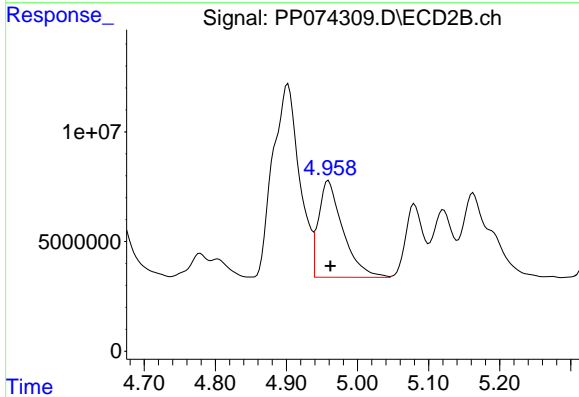
R.T.: 4.902 min
 Delta R.T.: -0.003 min
 Response: 228636880
 Conc: 662.45 ng/ml



#17 AR-1242-2

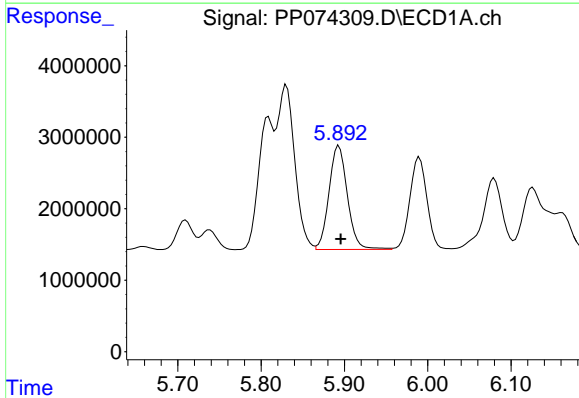
R.T.: 5.830 min
 Delta R.T.: -0.002 min
 Response: 34110297
 Conc: 626.92 ng/ml

Instrument :
 ECD_P
 ClientSampleId :
 PB169205BS



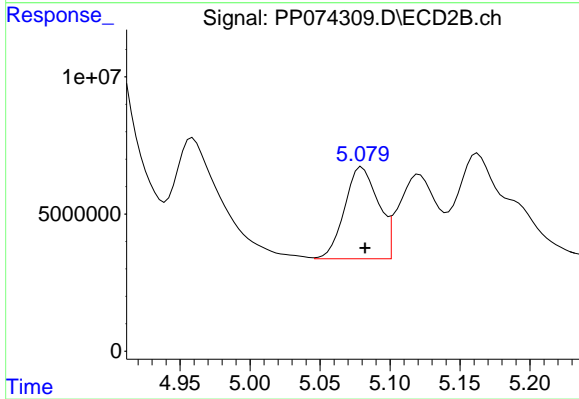
#17 AR-1242-2

R.T.: 4.959 min
 Delta R.T.: -0.003 min
 Response: 104546878
 Conc: 639.91 ng/ml



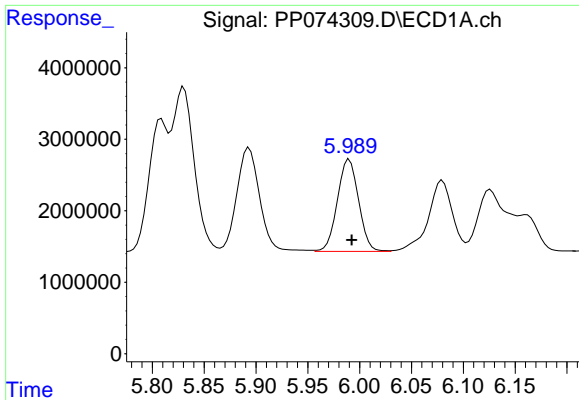
#18 AR-1242-3

R.T.: 5.893 min
 Delta R.T.: -0.002 min
 Response: 22276842
 Conc: 623.38 ng/ml



#18 AR-1242-3

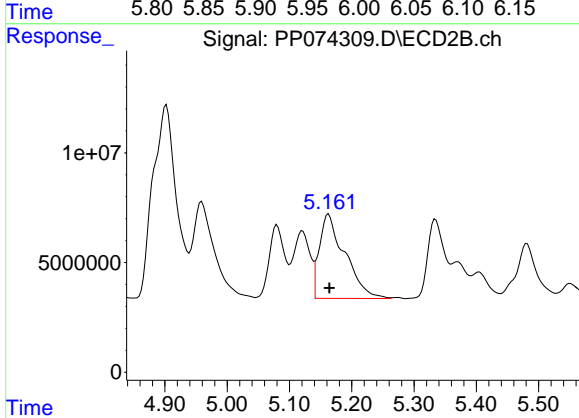
R.T.: 5.080 min
 Delta R.T.: -0.002 min
 Response: 56001049
 Conc: 607.07 ng/ml



#19 AR-1242-4

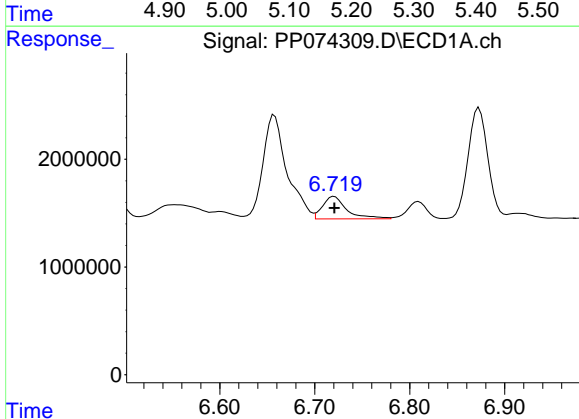
R.T.: 5.990 min
Delta R.T.: -0.002 min
Response: 18317589
Conc: 626.91 ng/ml

Instrument :
ECD_P
ClientSampleId :
PB169205BS



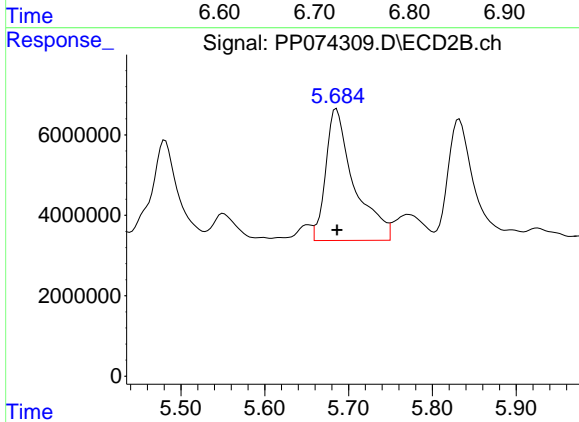
#19 AR-1242-4

R.T.: 5.163 min
Delta R.T.: -0.001 min
Response: 109665710
Conc: 918.31 ng/ml



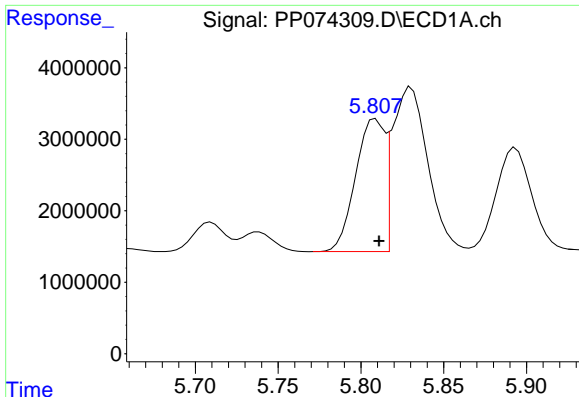
#20 AR-1242-5

R.T.: 6.720 min
Delta R.T.: 0.000 min
Response: 3662834
Conc: 103.01 ng/ml



#20 AR-1242-5

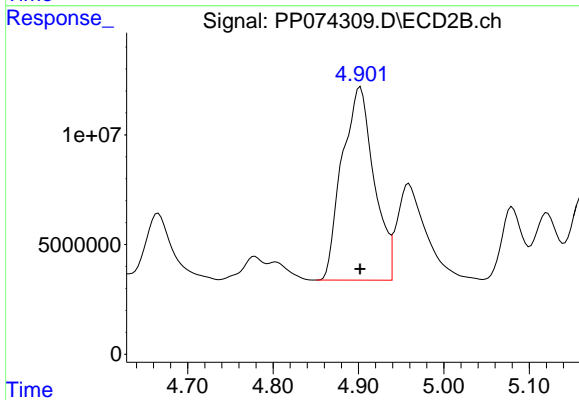
R.T.: 5.686 min
Delta R.T.: 0.000 min
Response: 76796260
Conc: 513.48 ng/ml



#21 AR-1248-1

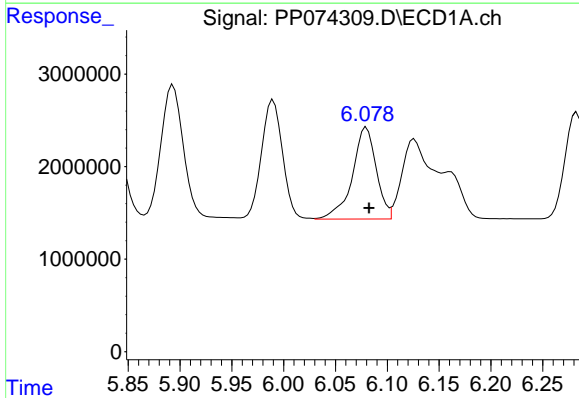
R.T.: 5.809 min
 Delta R.T.: -0.002 min
 Response: 22669527
 Conc: 809.21 ng/ml

Instrument :
 ECD_P
 ClientSampleId :
 PB169205BS



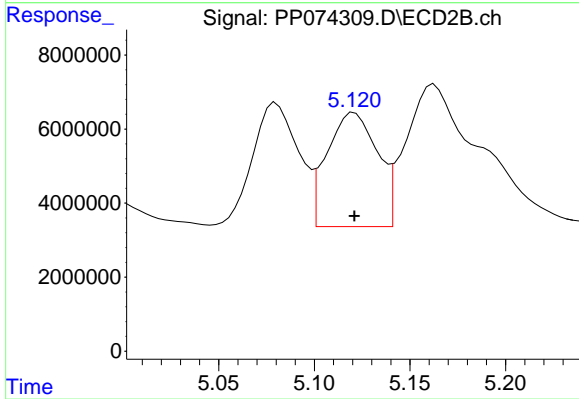
#21 AR-1248-1

R.T.: 4.902 min
 Delta R.T.: 0.000 min
 Response: 228636880
 Conc: 1068.74 ng/ml



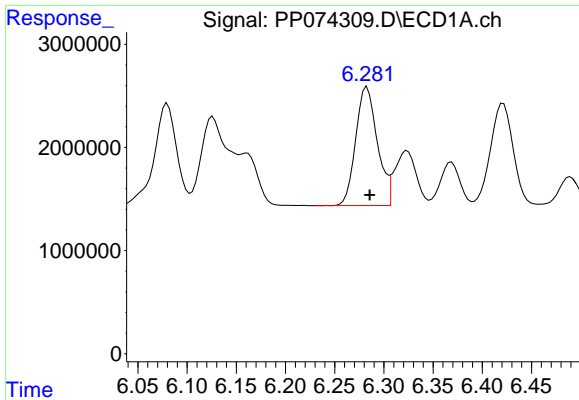
#22 AR-1248-2

R.T.: 6.080 min
 Delta R.T.: -0.003 min
 Response: 15956878
 Conc: 396.34 ng/ml



#22 AR-1248-2

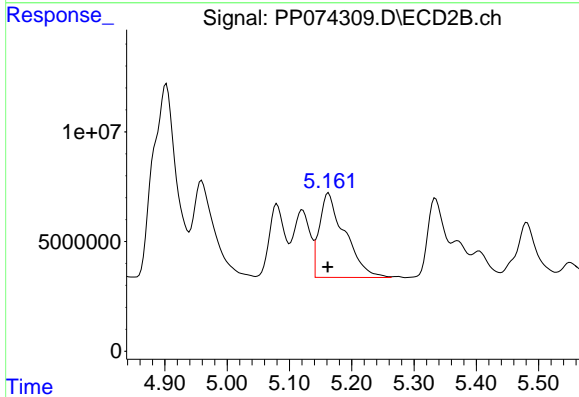
R.T.: 5.121 min
 Delta R.T.: 0.000 min
 Response: 56446484
 Conc: 385.79 ng/ml



#23 AR-1248-3

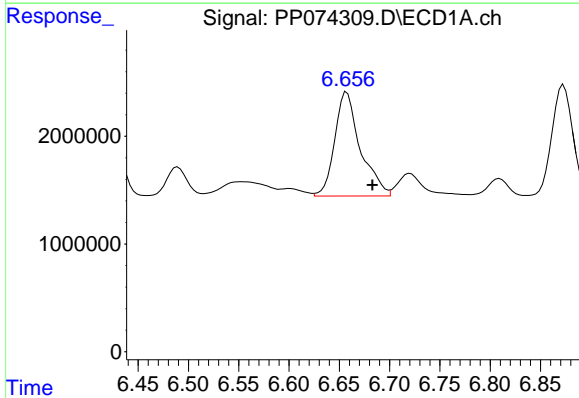
R.T.: 6.283 min
 Delta R.T.: -0.003 min
 Response: 17574695
 Conc: 394.29 ng/ml

Instrument :
 ECD_P
 ClientSampleId :
 PB169205BS



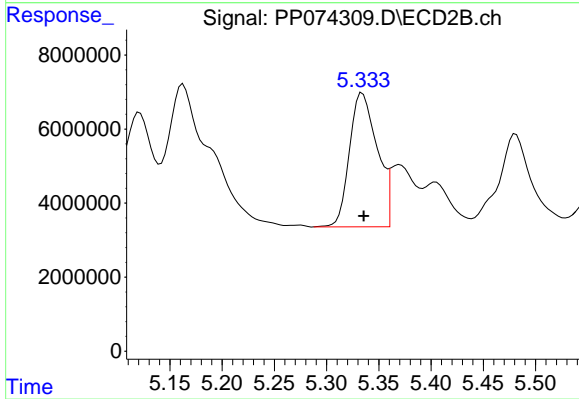
#23 AR-1248-3

R.T.: 5.163 min
 Delta R.T.: 0.001 min
 Response: 109665710
 Conc: 639.60 ng/ml



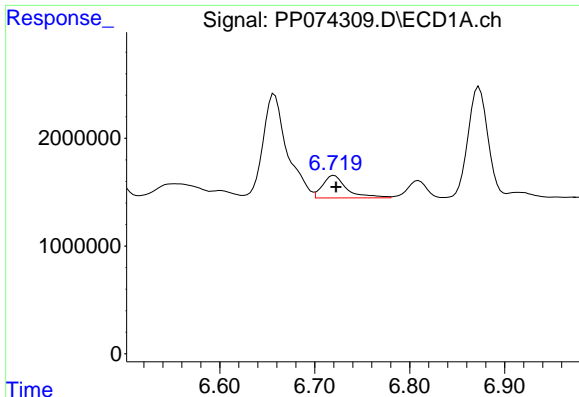
#24 AR-1248-4

R.T.: 6.658 min
 Delta R.T.: -0.025 min
 Response: 17077329
 Conc: 328.18 ng/ml



#24 AR-1248-4

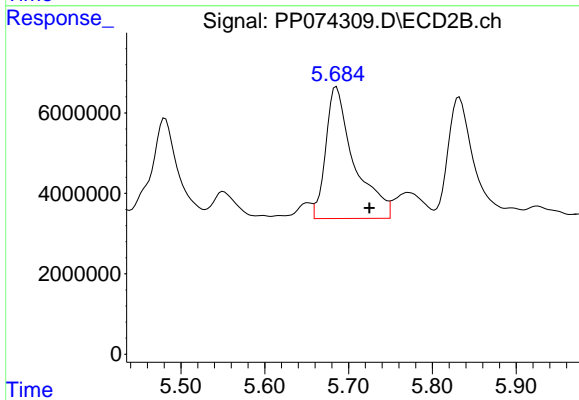
R.T.: 5.334 min
 Delta R.T.: -0.001 min
 Response: 66942868
 Conc: 402.36 ng/ml



#25 AR-1248-5

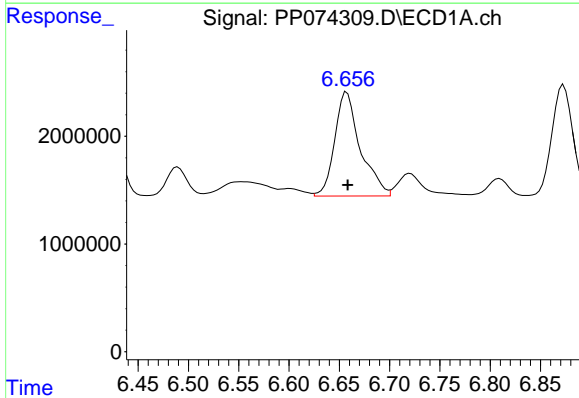
R.T.: 6.720 min
 Delta R.T.: -0.002 min
 Response: 3662834
 Conc: 64.32 ng/ml

Instrument :
 ECD_P
 ClientSampleId :
 PB169205BS



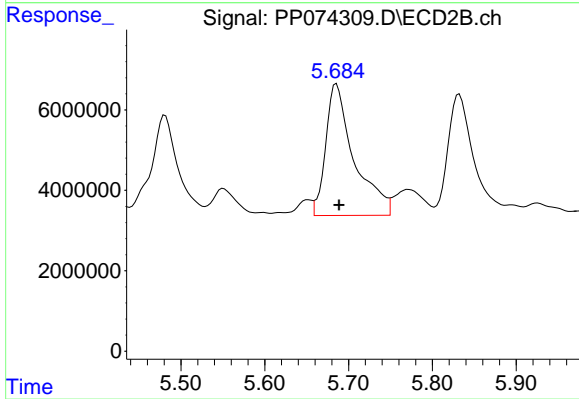
#25 AR-1248-5

R.T.: 5.686 min
 Delta R.T.: -0.040 min
 Response: 76796260
 Conc: 263.94 ng/ml



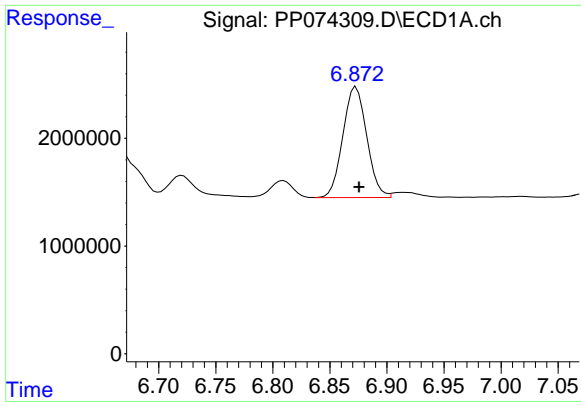
#26 AR-1254-1

R.T.: 6.658 min
 Delta R.T.: 0.000 min
 Response: 17077329
 Conc: 324.41 ng/ml



#26 AR-1254-1

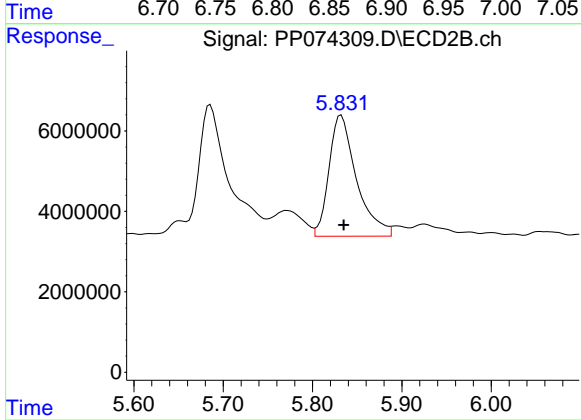
R.T.: 5.686 min
 Delta R.T.: -0.003 min
 Response: 76796260
 Conc: 209.72 ng/ml



#27 AR-1254-2

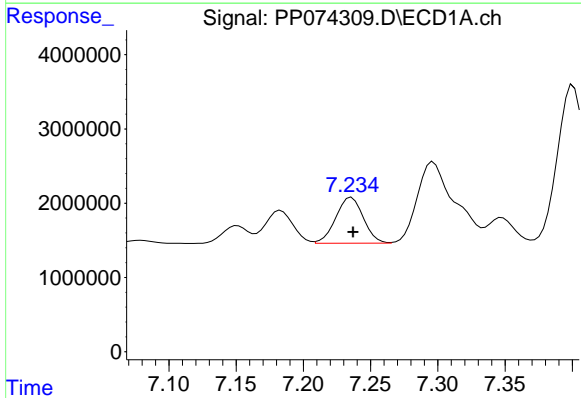
R.T.: 6.873 min
 Delta R.T.: -0.002 min
 Response: 14942029
 Conc: 187.94 ng/ml

Instrument :
 ECD_P
 ClientSampleId :
 PB169205BS



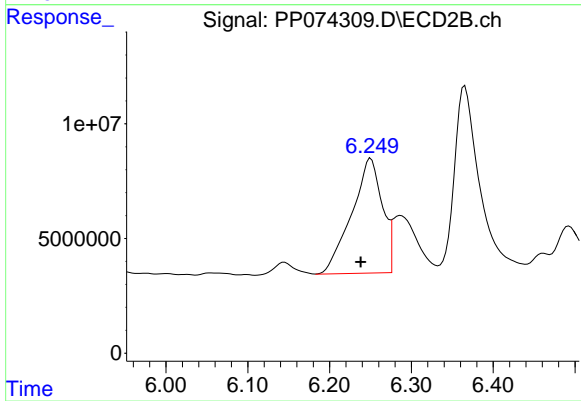
#27 AR-1254-2

R.T.: 5.832 min
 Delta R.T.: -0.003 min
 Response: 64358610
 Conc: 231.33 ng/ml



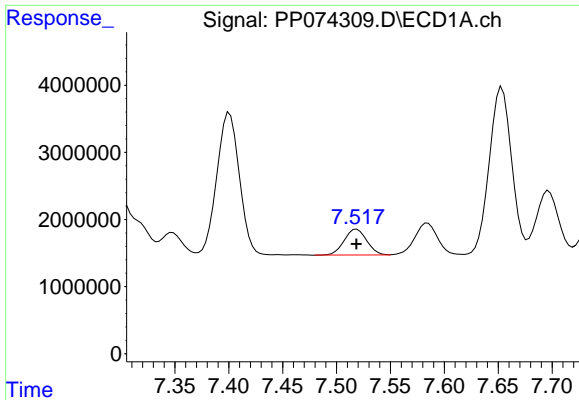
#28 AR-1254-3

R.T.: 7.236 min
 Delta R.T.: -0.001 min
 Response: 8784278
 Conc: 100.60 ng/ml



#28 AR-1254-3

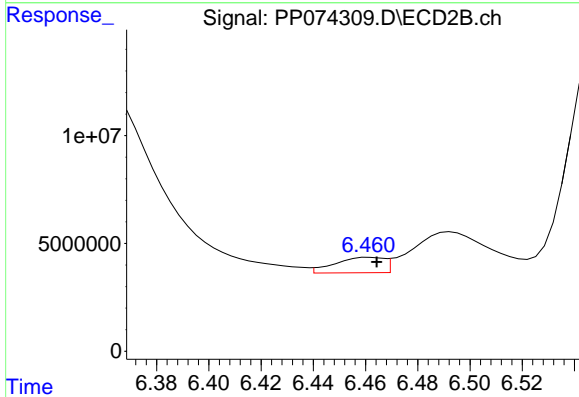
R.T.: 6.250 min
 Delta R.T.: 0.012 min
 Response: 129756889
 Conc: 265.24 ng/ml



#29 AR-1254-4

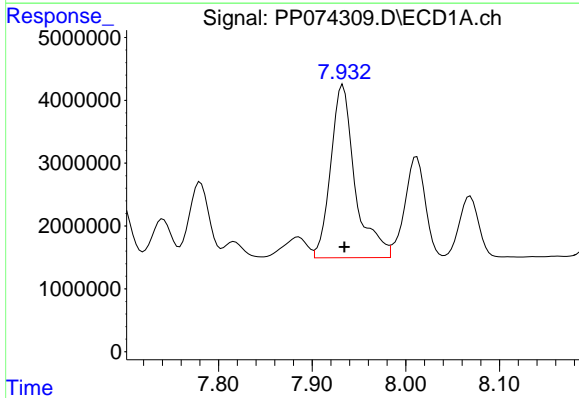
R.T.: 7.519 min
 Delta R.T.: 0.000 min
 Response: 5607113
 Conc: 87.87 ng/ml

Instrument :
 ECD_P
 ClientSampleId :
 PB169205BS



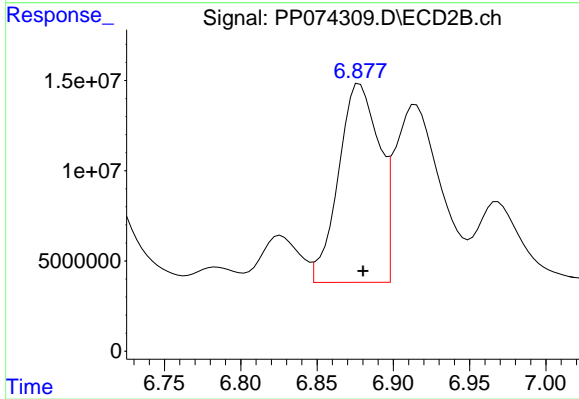
#29 AR-1254-4

R.T.: 6.462 min
 Delta R.T.: -0.003 min
 Response: 9342145
 Conc: 25.42 ng/ml



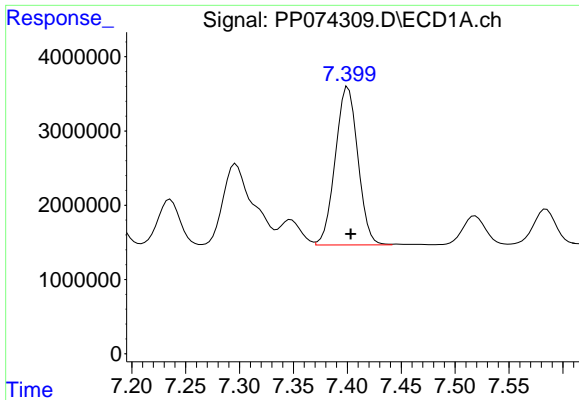
#30 AR-1254-5

R.T.: 7.933 min
 Delta R.T.: -0.001 min
 Response: 49832102
 Conc: 614.11 ng/ml



#30 AR-1254-5

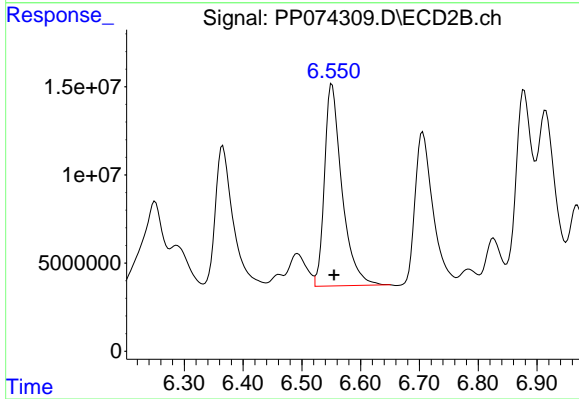
R.T.: 6.878 min
 Delta R.T.: -0.002 min
 Response: 203492933
 Conc: 528.32 ng/ml



#31 AR-1260-1

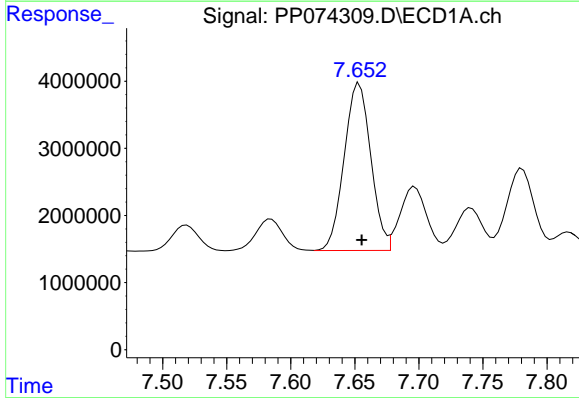
R.T.: 7.401 min
 Delta R.T.: -0.002 min
 Response: 31033148
 Conc: 550.66 ng/ml

Instrument :
 ECD_P
 ClientSampleId :
 PB169205BS



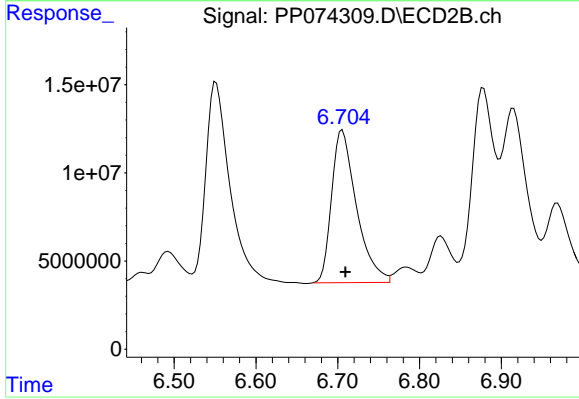
#31 AR-1260-1

R.T.: 6.551 min
 Delta R.T.: -0.004 min
 Response: 236107273
 Conc: 584.49 ng/ml



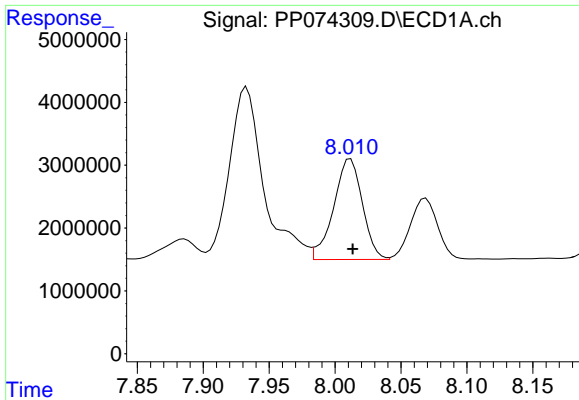
#32 AR-1260-2

R.T.: 7.653 min
 Delta R.T.: -0.002 min
 Response: 36070118
 Conc: 529.26 ng/ml



#32 AR-1260-2

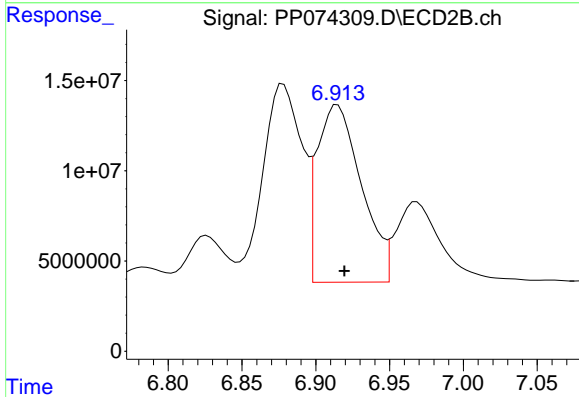
R.T.: 6.706 min
 Delta R.T.: -0.004 min
 Response: 182527346
 Conc: 583.72 ng/ml



#33 AR-1260-3

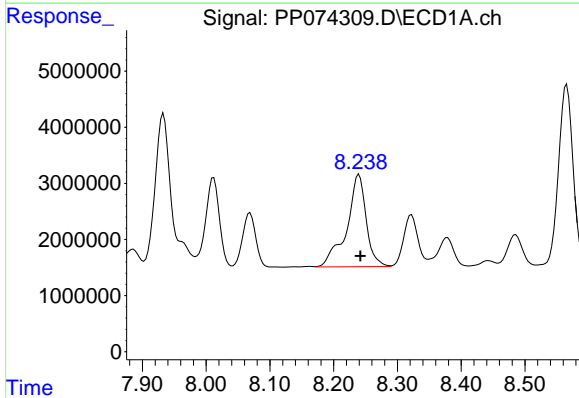
R.T.: 8.012 min
 Delta R.T.: -0.002 min
 Response: 24314378
 Conc: 456.21 ng/ml

Instrument :
 ECD_P
 ClientSampleId :
 PB169205BS



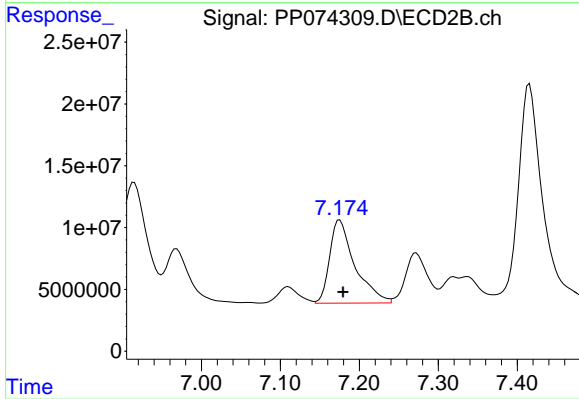
#33 AR-1260-3

R.T.: 6.915 min
 Delta R.T.: -0.005 min
 Response: 204932581
 Conc: 519.98 ng/ml



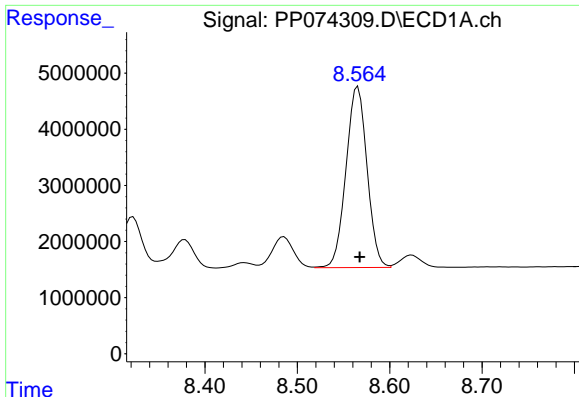
#34 AR-1260-4

R.T.: 8.240 min
 Delta R.T.: -0.002 min
 Response: 34948406
 Conc: 558.15 ng/ml



#34 AR-1260-4

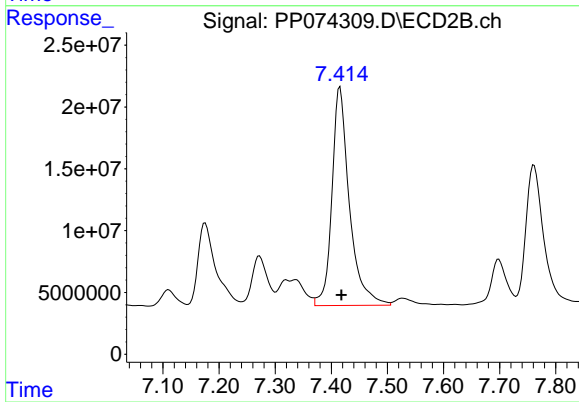
R.T.: 7.175 min
 Delta R.T.: -0.004 min
 Response: 149384307
 Conc: 513.38 ng/ml



#35 AR-1260-5

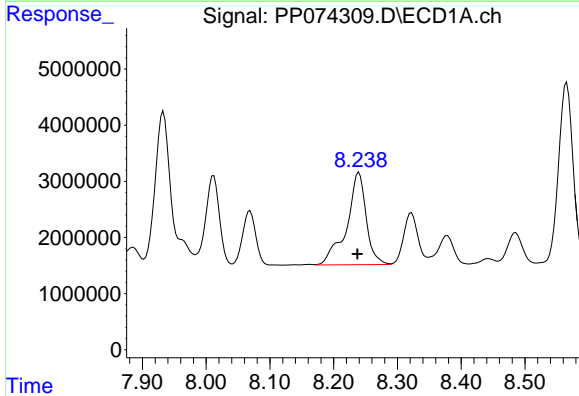
R.T.: 8.566 min
 Delta R.T.: -0.002 min
 Response: 51128845
 Conc: 451.25 ng/ml

Instrument :
 ECD_P
 ClientSampleId :
 PB169205BS



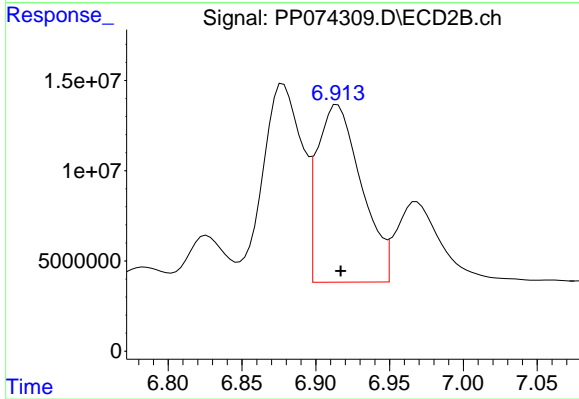
#35 AR-1260-5

R.T.: 7.415 min
 Delta R.T.: -0.003 min
 Response: 382812137
 Conc: 505.42 ng/ml



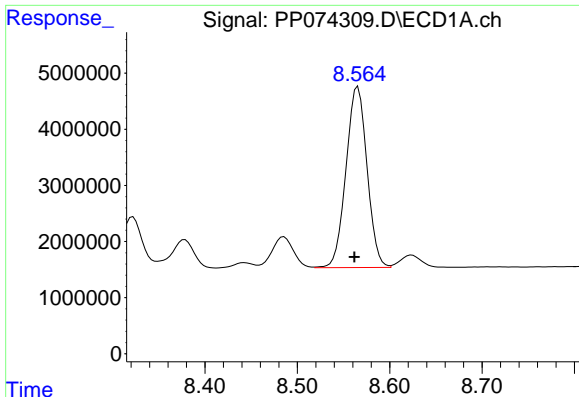
#36 AR-1262-1

R.T.: 8.240 min
 Delta R.T.: 0.002 min
 Response: 34948406
 Conc: 461.12 ng/ml



#36 AR-1262-1

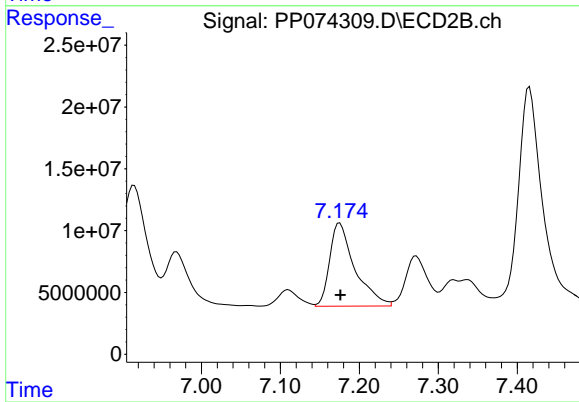
R.T.: 6.915 min
 Delta R.T.: -0.002 min
 Response: 204932581
 Conc: 363.91 ng/ml



#37 AR-1262-2

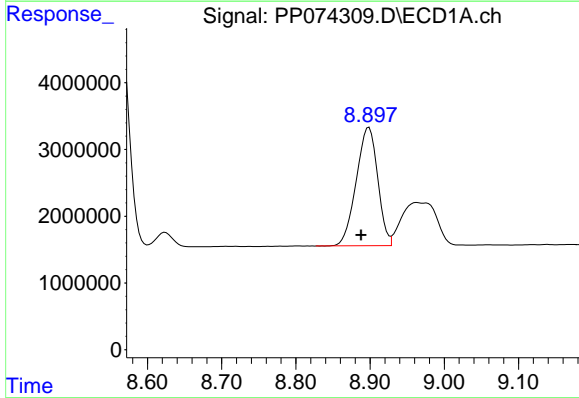
R.T.: 8.566 min
 Delta R.T.: 0.004 min
 Response: 51128845
 Conc: 392.00 ng/ml

Instrument :
 ECD_P
 ClientSampleId :
 PB169205BS



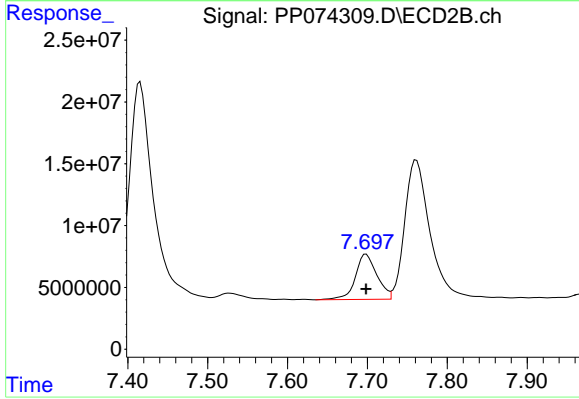
#37 AR-1262-2

R.T.: 7.175 min
 Delta R.T.: 0.000 min
 Response: 149384307
 Conc: 372.51 ng/ml



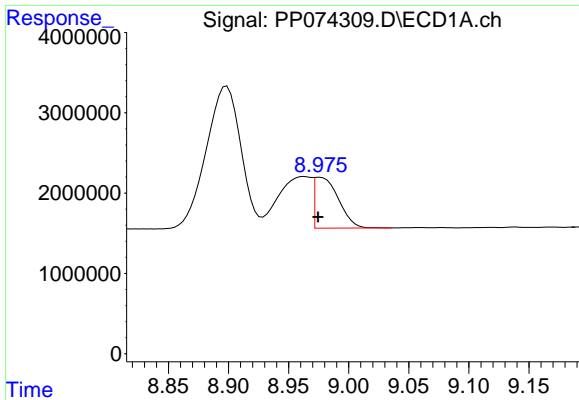
#38 AR-1262-3

R.T.: 8.899 min
 Delta R.T.: 0.010 min
 Response: 35659813
 Conc: 379.07 ng/ml



#38 AR-1262-3

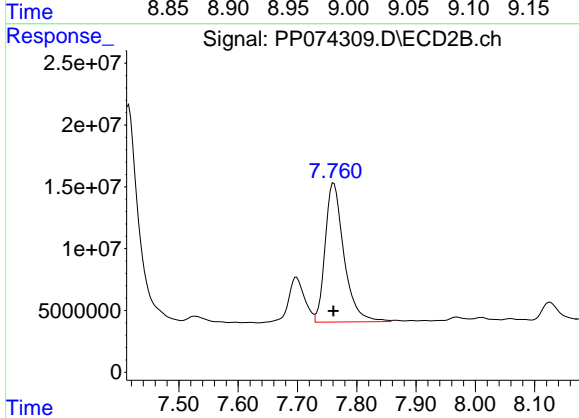
R.T.: 7.698 min
 Delta R.T.: 0.000 min
 Response: 68577315
 Conc: 190.77 ng/ml



#39 AR-1262-4

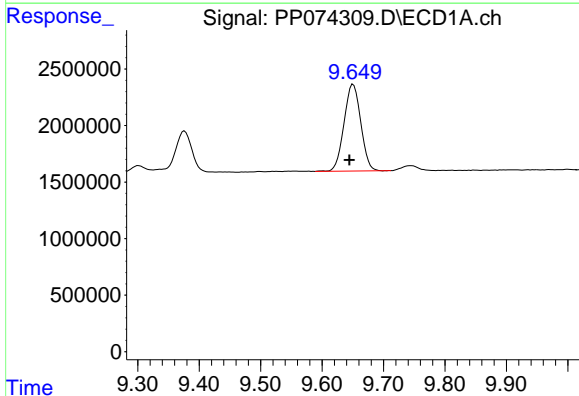
R.T.: 8.976 min
 Delta R.T.: 0.002 min
 Response: 8821459
 Conc: 121.09 ng/ml

Instrument :
 ECD_P
 ClientSampleId :
 PB169205BS



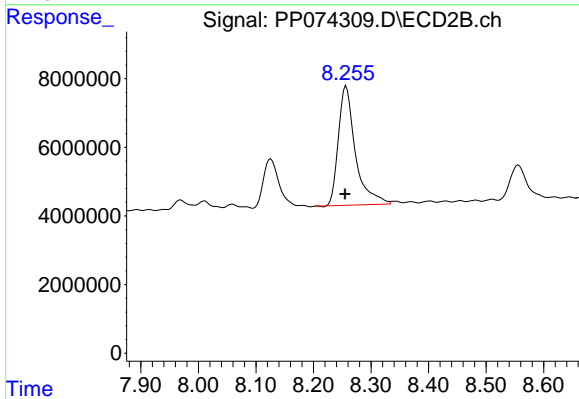
#39 AR-1262-4

R.T.: 7.761 min
 Delta R.T.: 0.000 min
 Response: 247472529
 Conc: 371.07 ng/ml



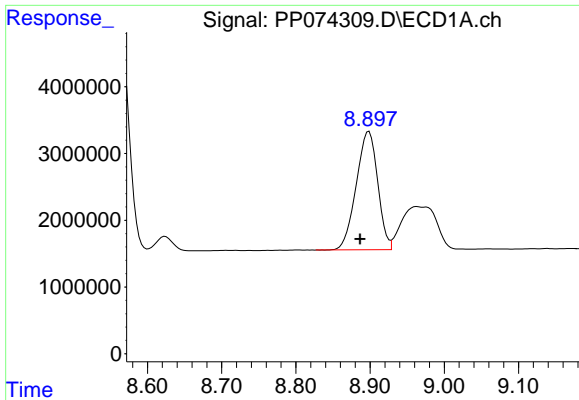
#40 AR-1262-5

R.T.: 9.651 min
 Delta R.T.: 0.006 min
 Response: 14529552
 Conc: 285.33 ng/ml



#40 AR-1262-5

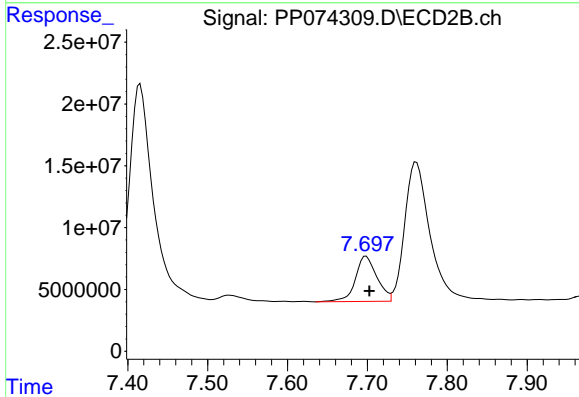
R.T.: 8.257 min
 Delta R.T.: 0.002 min
 Response: 71597111
 Conc: 252.75 ng/ml



#41 AR-1268-1

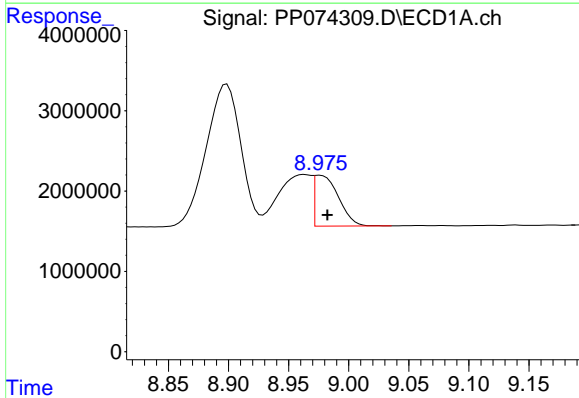
R.T.: 8.899 min
 Delta R.T.: 0.012 min
 Response: 35659813
 Conc: 229.13 ng/ml

Instrument :
 ECD_P
 ClientSampleId :
 PB169205BS



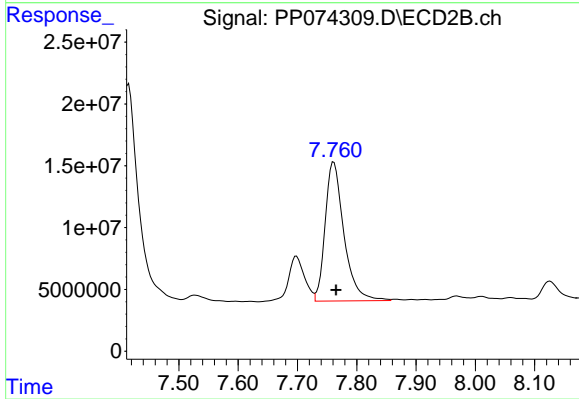
#41 AR-1268-1

R.T.: 7.698 min
 Delta R.T.: -0.004 min
 Response: 68577315
 Conc: 62.90 ng/ml



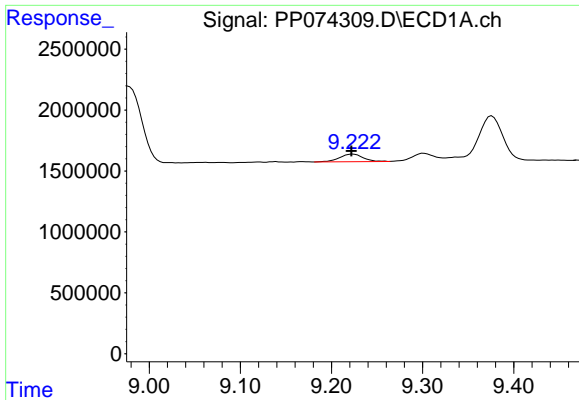
#42 AR-1268-2

R.T.: 8.976 min
 Delta R.T.: -0.006 min
 Response: 8821459
 Conc: 61.51 ng/ml



#42 AR-1268-2

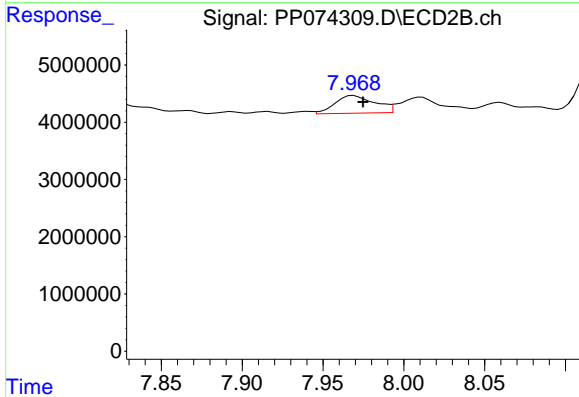
R.T.: 7.761 min
 Delta R.T.: -0.004 min
 Response: 247472529
 Conc: 233.17 ng/ml



#43 AR-1268-3

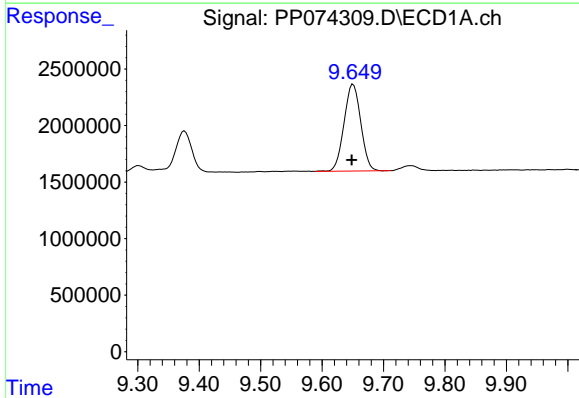
R.T.: 9.224 min
 Delta R.T.: 0.002 min
 Response: 1133561
 Conc: 9.49 ng/ml

Instrument :
 ECD_P
 ClientSampleId :
 PB169205BS



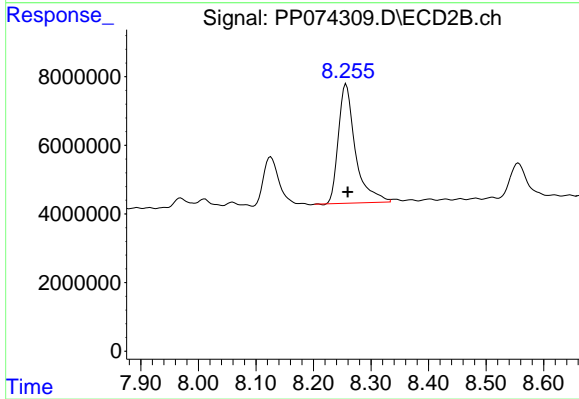
#43 AR-1268-3

R.T.: 7.969 min
 Delta R.T.: -0.006 min
 Response: 5277612
 Conc: 6.34 ng/ml



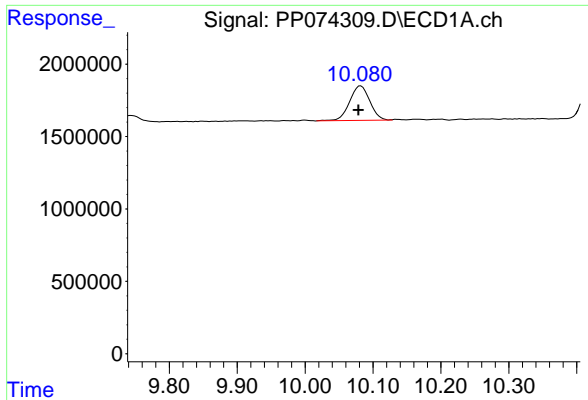
#44 AR-1268-4

R.T.: 9.651 min
 Delta R.T.: 0.003 min
 Response: 14529552
 Conc: 247.05 ng/ml



#44 AR-1268-4

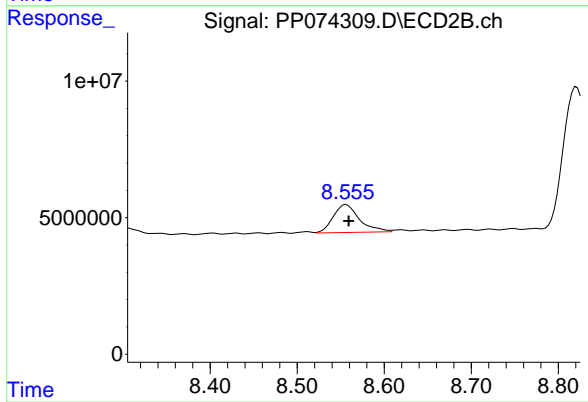
R.T.: 8.257 min
 Delta R.T.: -0.002 min
 Response: 71597111
 Conc: 232.41 ng/ml



#45 AR-1268-5

R.T.: 10.082 min
Delta R.T.: 0.003 min
Response: 4915065
Conc: 13.98 ng/ml

Instrument :
ECD_P
ClientSampleId :
PB169205BS



#45 AR-1268-5

R.T.: 8.556 min
Delta R.T.: -0.003 min
Response: 21332104
Conc: 8.37 ng/ml