

Data Path : Z:\pestpcbsrv\HPCHEM1\ECD\_P\Data\PP081225\  
 Data File : PP074311.D  
 Signal(s) : Signal #1: ECD1A.ch Signal #2: ECD2B.ch  
 Acq On : 12 Aug 2025 13:37  
 Operator : YP\AJ  
 Sample : Q2830-01MS  
 Misc :  
 ALS Vial : 11 Sample Multiplier: 1

Instrument :  
 ECD\_P  
 ClientSampleId :  
 BIN0009-DRIVEWAY-TP-SOUTH-EASTMS

Integration File signal 1: autoint1.e  
 Integration File signal 2: autoint2.e  
 Quant Time: Aug 12 14:50:12 2025  
 Quant Method : Z:\pestpcbsrv\HPCHEM1\ECD\_P\methods\PP080125.M  
 Quant Title : GC EXTRACTABLES  
 QLast Update : Mon Aug 04 11:01:49 2025  
 Response via : Initial Calibration  
 Integrator: ChemStation

Volume Inj. : 2 µl  
 Signal #1 Phase : ZB-MR1 Signal #2 Phase: ZB-MR2  
 Signal #1 Info : 30Mx0.32mmx 0.50µ Signal #2 Info : 30M x 0.32mm x 0.25µm

Compound	RT#1	RT#2	Resp#1	Resp#2	ng/ml	ng/ml
System Monitoring Compounds						
1) SA Tetrachlo...	4.657	3.800	29282786	84433109	26.185	22.020
2) SA Decachlor...	10.437	8.820	19335273	105.2E6	19.909	17.488
Target Compounds						
3) L1 AR-1016-1	5.809	4.901	21480557	221.4E6	520.655	555.093
4) L1 AR-1016-2	5.831	4.958	31794685	105.4E6	523.441	561.178
5) L1 AR-1016-3	5.894	5.079	20638950	60560553	520.390	570.951
6) L1 AR-1016-4	5.991	5.119	17736155	58694992	544.982	537.401
7) L1 AR-1016-5	6.283	5.334	16474757	64653966	507.414	552.772
8) L2 AR-1221-1	4.853	4.014	2579183	7629131	153.856	155.426
9) L2 AR-1221-2	4.942	4.093	3210890	10889786	254.811	303.427
10) L2 AR-1221-3	5.018	4.174	12557806	45555195	342.780	336.886
11) L3 AR-1232-1	5.018	4.174	12557806	45555195	432.471	449.429
12) L3 AR-1232-2	5.545	4.901	16277760	221.4E6	1082.103	1270.582
13) L3 AR-1232-3	5.831	5.079	31794685	60560553	1096.304	1321.803
14) L3 AR-1232-4	5.991	5.161	17736155	109.7E6	1146.574	1891.791 #
15) L3 AR-1232-5	6.080	5.334	15686090	64653966	1338.859	1376.218
16) L4 AR-1242-1	5.809	4.901	21480557	221.4E6	576.415	641.534
17) L4 AR-1242-2	5.831	4.958	31794685	105.4E6	584.365	645.096
18) L4 AR-1242-3	5.894	5.079	20638950	60560553	577.542	656.494
19) L4 AR-1242-4	5.991	5.161	17736155	109.7E6	607.015	918.964 #
20) L4 AR-1242-5	6.720	5.684	3440400	76642613	96.755	512.454 #
21) L5 AR-1248-1	5.809	4.901	21480557	221.4E6	766.765	1035.001 #
22) L5 AR-1248-2	6.080	5.119	15686090	58694992	389.609	401.162
23) L5 AR-1248-3	6.283	5.161	16474757	109.7E6	369.608	640.057 #
24) L5 AR-1248-4	6.657	5.334	15791645	64653966	303.469	388.607 #
25) L5 AR-1248-5	6.720	5.684f	3440400	76642613	60.418	263.407 #
26) L6 AR-1254-1	6.657	5.684	15791645	76642613	299.987	209.302 #
27) L6 AR-1254-2	6.873	5.831	13769891	62702065	173.196	225.371 #
28) L6 AR-1254-3	7.236	6.249	7976373	123.3E6	91.350	252.126 #
29) L6 AR-1254-4	7.518	6.459	5089508	8449703	79.761	22.988 #
30) L6 AR-1254-5	7.933	6.877	44898403	177.0E6	553.312	459.617
31) L7 AR-1260-1	7.400	6.550	28140334	207.0E6	499.331	512.404
32) L7 AR-1260-2	7.653	6.704	32575808	157.6E6	477.985	503.902
33) L7 AR-1260-3	8.012	6.914	21771827	176.5E6	408.508	447.876
34) L7 AR-1260-4	8.240	7.175	32485197	132.7E6	518.809	455.876
35) L7 AR-1260-5	8.566	7.413	45863963	335.1E6	404.784	442.376
36) L8 AR-1262-1	8.240	6.914	32485197	176.5E6	428.623	313.448 #
37) L8 AR-1262-2	8.566	7.175	45863963	132.7E6	351.637	330.780
38) L8 AR-1262-3	8.898	7.697	31725032	60525419	337.246	168.374 #
39) L8 AR-1262-4	8.974	7.759	18734714	215.3E6	257.162	322.852 #
40) L8 AR-1262-5	9.651	8.255	13091860	62242150	257.093	219.729
41) L9 AR-1268-1	8.898	7.697	31725032	60525419	203.845	55.514 #

Data Path : Z:\pestpcbsrv\HPCHEM1\ECD\_P\Data\PP081225\  
 Data File : PP074311.D  
 Signal(s) : Signal #1: ECD1A.ch Signal #2: ECD2B.ch  
 Acq On : 12 Aug 2025 13:37  
 Operator : YP\AJ  
 Sample : Q2830-01MS  
 Misc :  
 ALS Vial : 11 Sample Multiplier: 1

**Instrument :**  
 ECD\_P  
**ClientSampleId :**  
 BIN0009-DRIVEWAY-TP-SOUTH-EASTMS

Integration File signal 1: autoint1.e  
 Integration File signal 2: autoint2.e  
 Quant Time: Aug 12 14:50:12 2025  
 Quant Method : Z:\pestpcbsrv\HPCHEM1\ECD\_P\methods\PP080125.M  
 Quant Title : GC EXTRACTABLES  
 QLast Update : Mon Aug 04 11:01:49 2025  
 Response via : Initial Calibration  
 Integrator: ChemStation

Volume Inj. : 2 µl  
 Signal #1 Phase : ZB-MR1 Signal #2 Phase: ZB-MR2  
 Signal #1 Info : 30Mx0.32mmx 0.50µ Signal #2 Info : 30M x 0.32mm x 0.25µm

	Compound	RT#1	RT#2	Resp#1	Resp#2	ng/ml	ng/ml
42)	L9 AR-1268-2	8.974	7.759	18734714	215.3E6	130.623	202.875 #
43)	L9 AR-1268-3	9.223	7.969	1275907	4368524	10.679	5.251 #
44)	L9 AR-1268-4	9.651	8.255	13091860	62242150	222.603	202.046
45)	L9 AR-1268-5	10.081	8.554	4477807	18194131	12.732	7.135 #

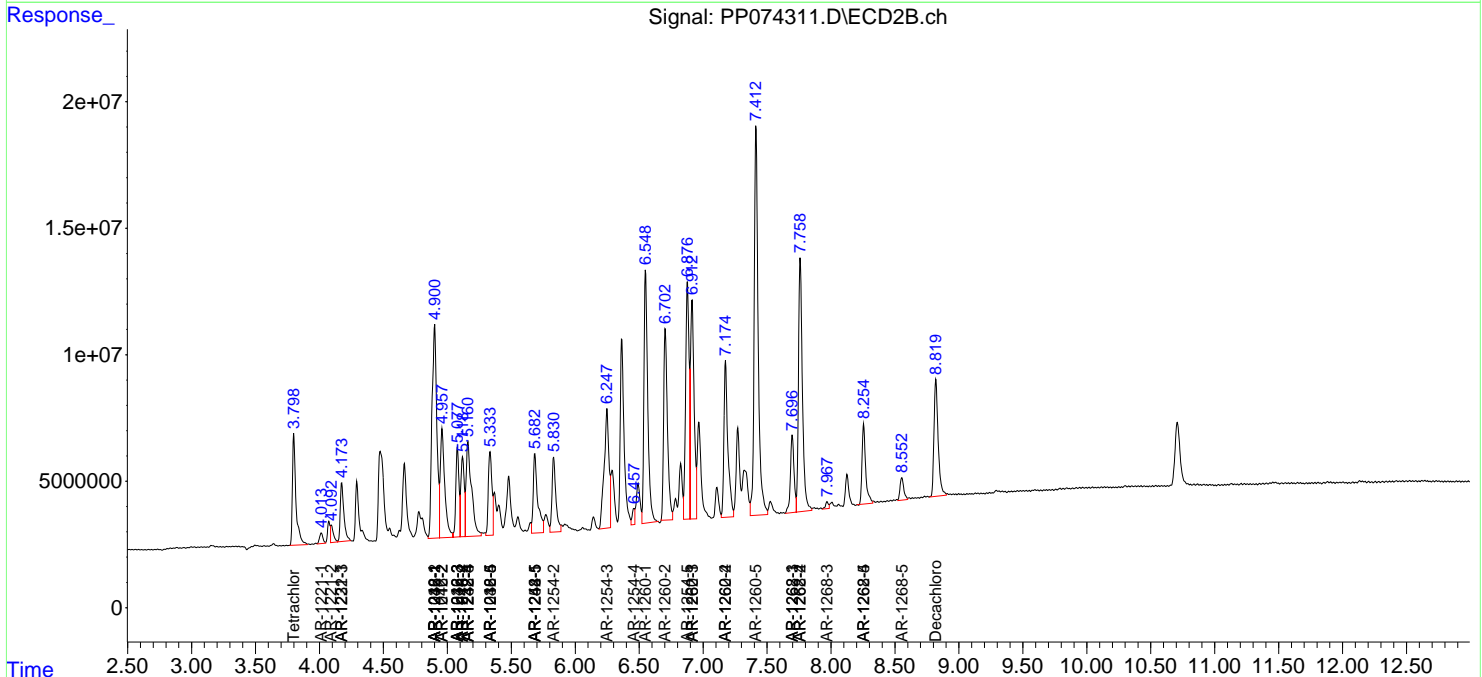
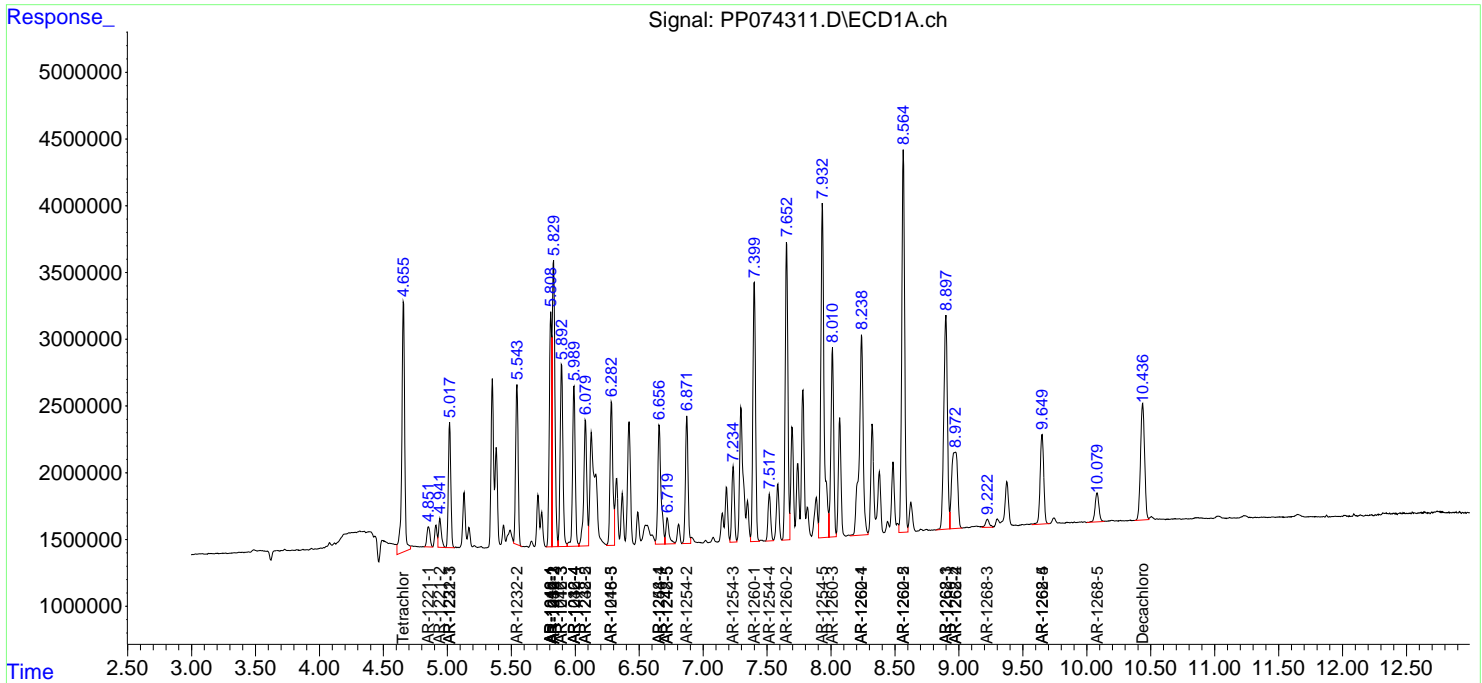
(f)=RT Delta > 1/2 Window (#)=Amounts differ by > 25% (m)=manual int.

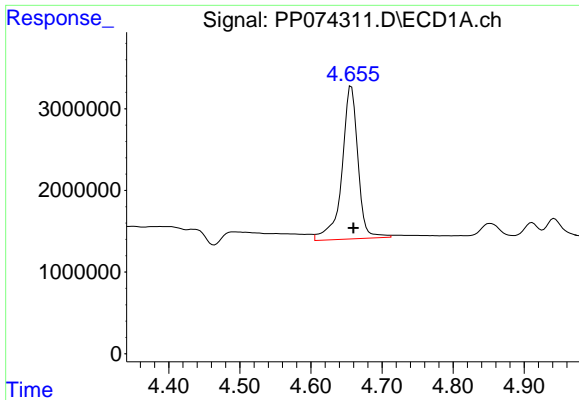
Data Path : Z:\pestpcbsrv\HPCHEM1\ECD\_P\Data\PP081225\  
 Data File : PP074311.D  
 Signal(s) : Signal #1: ECD1A.ch Signal #2: ECD2B.ch  
 Acq On : 12 Aug 2025 13:37  
 Operator : YP\AJ  
 Sample : Q2830-01MS  
 Misc :  
 ALS Vial : 11 Sample Multiplier: 1

**Instrument :**  
 ECD\_P  
**ClientSampleId :**  
 BIN0009-DRIVEWAY-TP-SOUTH-EASTMS

Integration File signal 1: autoint1.e  
 Integration File signal 2: autoint2.e  
 Quant Time: Aug 12 14:50:12 2025  
 Quant Method : Z:\pestpcbsrv\HPCHEM1\ECD\_P\methods\PP080125.M  
 Quant Title : GC EXTRACTABLES  
 QLast Update : Mon Aug 04 11:01:49 2025  
 Response via : Initial Calibration  
 Integrator: ChemStation

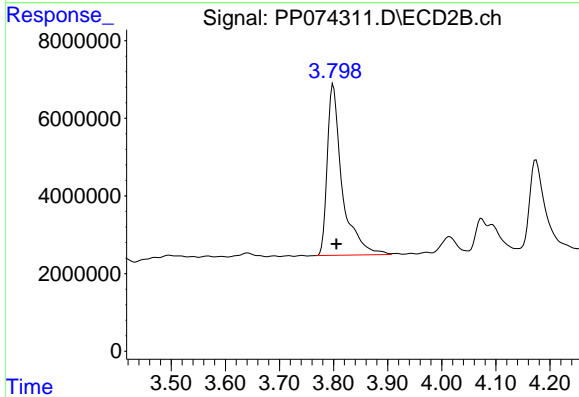
Volume Inj. : 2 µl  
 Signal #1 Phase : ZB-MR1 Signal #2 Phase: ZB-MR2  
 Signal #1 Info : 30Mx0.32mmx 0.50µ Signal #2 Info : 30M x 0.32mm x 0.25µm



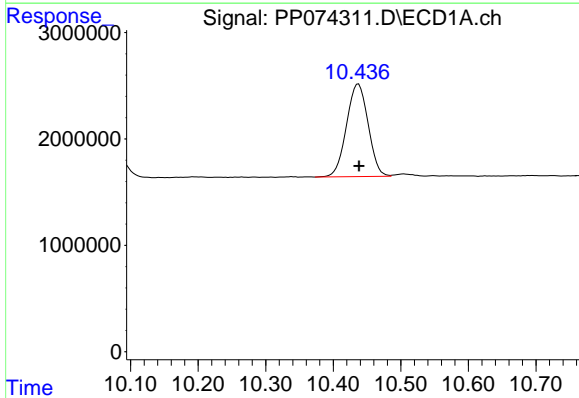


#1 Tetrachloro-m-xylene  
 R.T.: 4.657 min  
 Delta R.T.: -0.003 min  
 Response: 29282786  
 Conc: 26.18 ng/ml

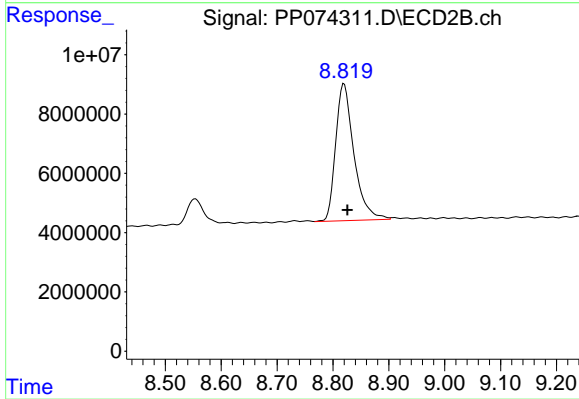
Instrument : ECD\_P  
 ClientSampleId : BIN0009-DRIVEWAY-TP-SOUTH-EASTMS



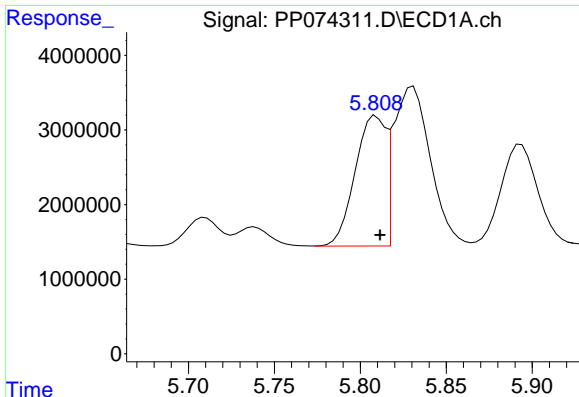
#1 Tetrachloro-m-xylene  
 R.T.: 3.800 min  
 Delta R.T.: -0.006 min  
 Response: 84433109  
 Conc: 22.02 ng/ml



#2 Decachlorobiphenyl  
 R.T.: 10.437 min  
 Delta R.T.: 0.000 min  
 Response: 19335273  
 Conc: 19.91 ng/ml



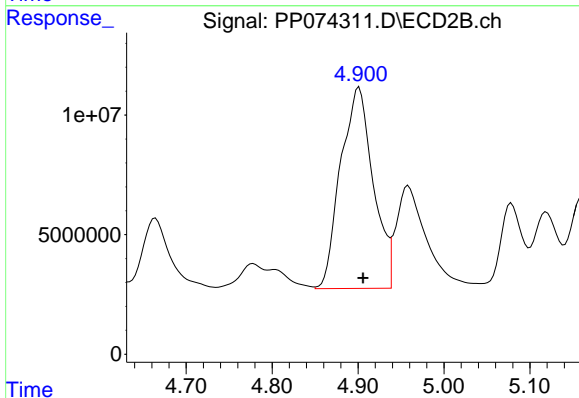
#2 Decachlorobiphenyl  
 R.T.: 8.820 min  
 Delta R.T.: -0.006 min  
 Response: 105164574  
 Conc: 17.49 ng/ml



#3 AR-1016-1

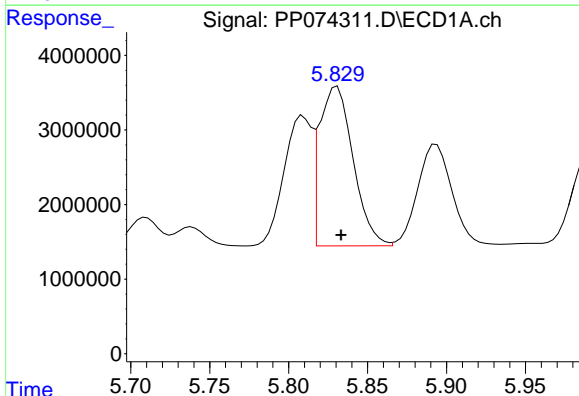
R.T.: 5.809 min  
 Delta R.T.: -0.002 min  
 Response: 21480557  
 Conc: 520.65 ng/ml

Instrument :  
 ECD\_P  
 ClientSampleId :  
 BIN0009-DRIVEWAY-TP-SOUTH-EASTMS



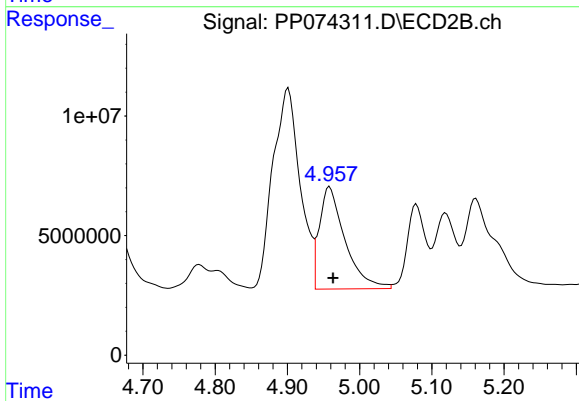
#3 AR-1016-1

R.T.: 4.901 min  
 Delta R.T.: -0.004 min  
 Response: 221419556  
 Conc: 555.09 ng/ml



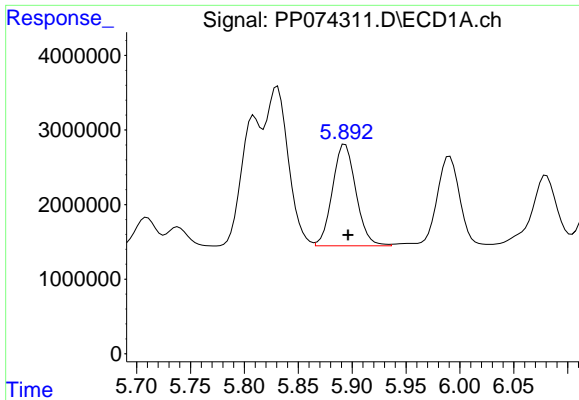
#4 AR-1016-2

R.T.: 5.831 min  
 Delta R.T.: -0.003 min  
 Response: 31794685  
 Conc: 523.44 ng/ml



#4 AR-1016-2

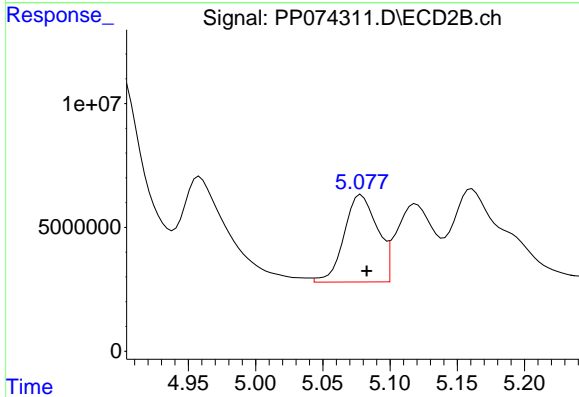
R.T.: 4.958 min  
 Delta R.T.: -0.005 min  
 Response: 105394294  
 Conc: 561.18 ng/ml



#5 AR-1016-3

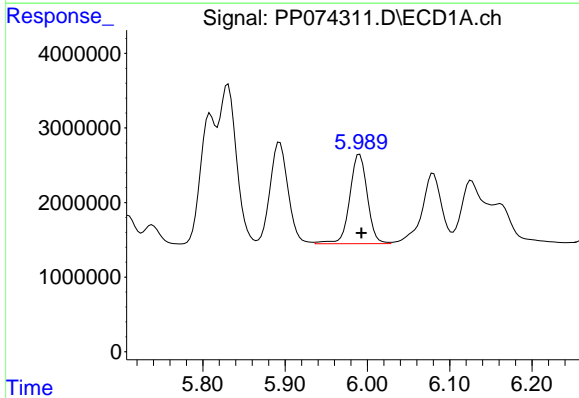
R.T.: 5.894 min  
 Delta R.T.: -0.003 min  
 Response: 20638950  
 Conc: 520.39 ng/ml

Instrument :  
 ECD\_P  
 ClientSampleId :  
 BIN0009-DRIVEWAY-TP-SOUTH-EASTMS



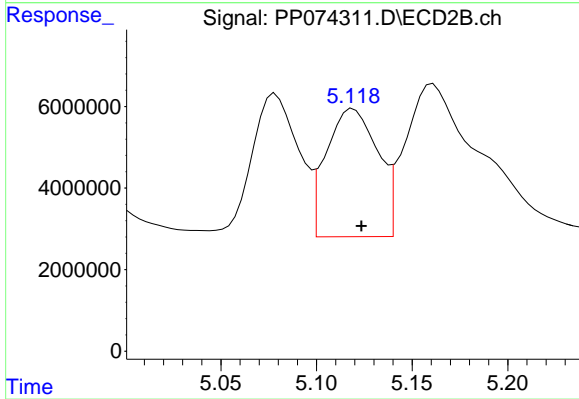
#5 AR-1016-3

R.T.: 5.079 min  
 Delta R.T.: -0.004 min  
 Response: 60560553  
 Conc: 570.95 ng/ml



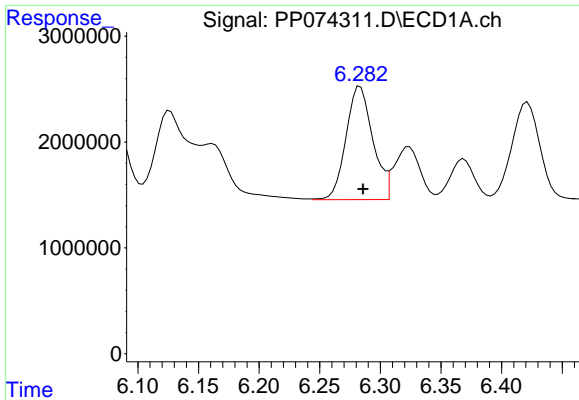
#6 AR-1016-4

R.T.: 5.991 min  
 Delta R.T.: -0.002 min  
 Response: 17736155  
 Conc: 544.98 ng/ml



#6 AR-1016-4

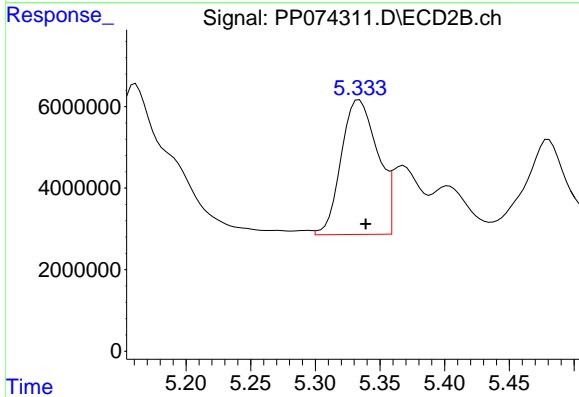
R.T.: 5.119 min  
 Delta R.T.: -0.004 min  
 Response: 58694992  
 Conc: 537.40 ng/ml



#7 AR-1016-5

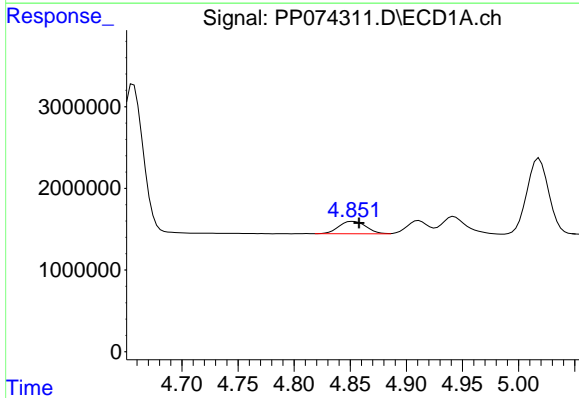
R.T.: 6.283 min  
 Delta R.T.: -0.002 min  
 Response: 16474757  
 Conc: 507.41 ng/ml

Instrument :  
 ECD\_P  
 ClientSampleId :  
 BIN0009-DRIVEWAY-TP-SOUTH-EASTMS



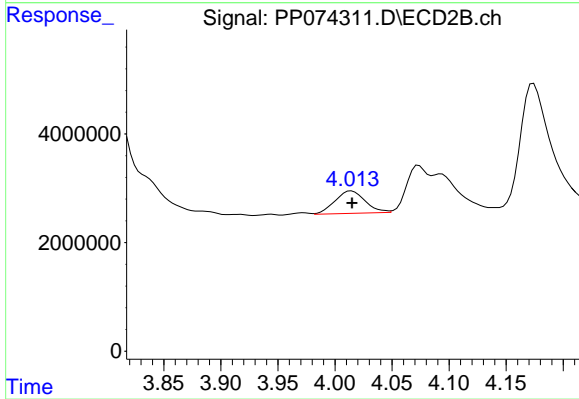
#7 AR-1016-5

R.T.: 5.334 min  
 Delta R.T.: -0.005 min  
 Response: 64653966  
 Conc: 552.77 ng/ml



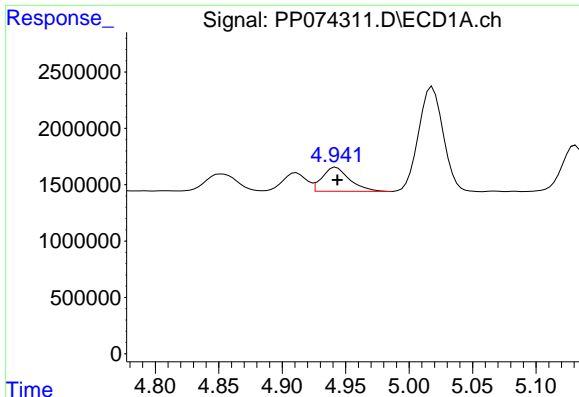
#8 AR-1221-1

R.T.: 4.853 min  
 Delta R.T.: -0.005 min  
 Response: 2579183  
 Conc: 153.86 ng/ml



#8 AR-1221-1

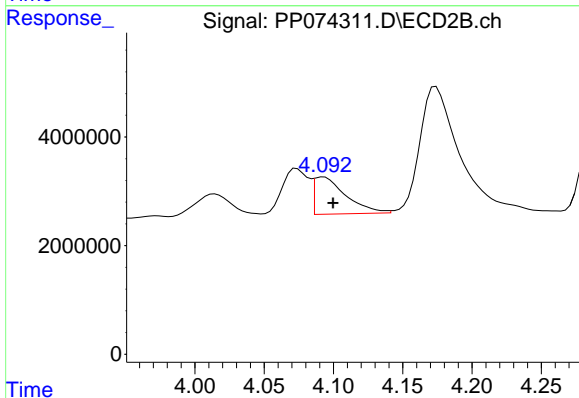
R.T.: 4.014 min  
 Delta R.T.: 0.000 min  
 Response: 7629131  
 Conc: 155.43 ng/ml



#9 AR-1221-2

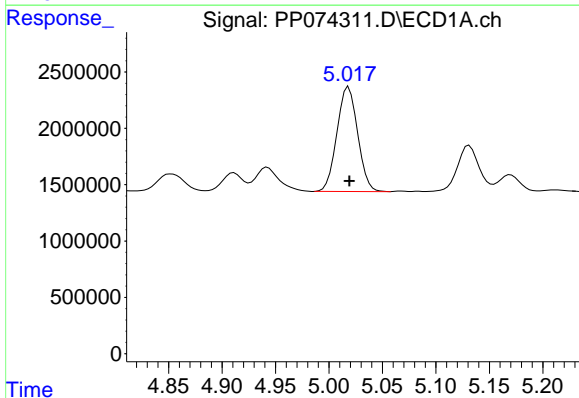
R.T.: 4.942 min  
 Delta R.T.: -0.001 min  
 Response: 3210890  
 Conc: 254.81 ng/ml

Instrument :  
 ECD\_P  
 ClientSampleId :  
 BIN0009-DRIVEWAY-TP-SOUTH-EASTMS



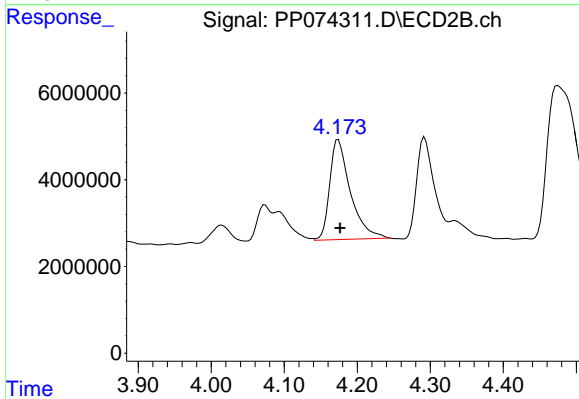
#9 AR-1221-2

R.T.: 4.093 min  
 Delta R.T.: -0.007 min  
 Response: 10889786  
 Conc: 303.43 ng/ml



#10 AR-1221-3

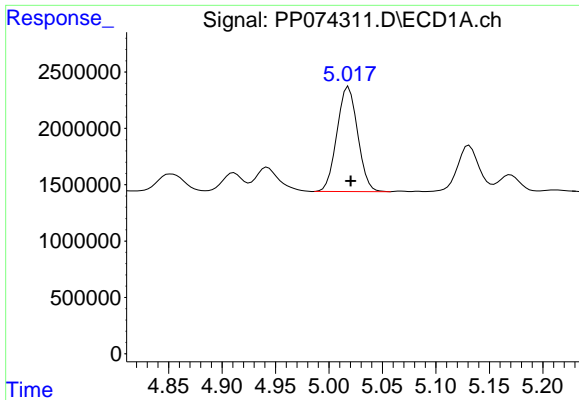
R.T.: 5.018 min  
 Delta R.T.: 0.000 min  
 Response: 12557806  
 Conc: 342.78 ng/ml



#10 AR-1221-3

R.T.: 4.174 min  
 Delta R.T.: -0.002 min  
 Response: 45555195  
 Conc: 336.89 ng/ml

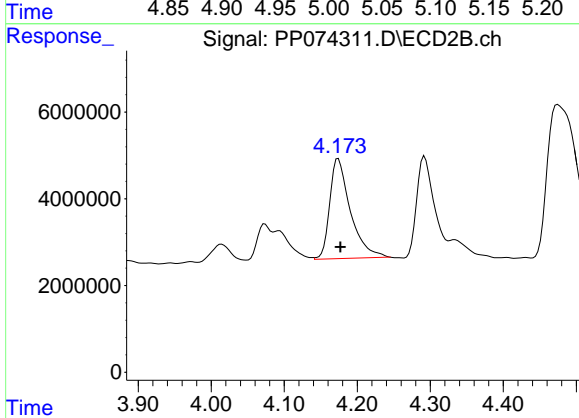




#11 AR-1232-1

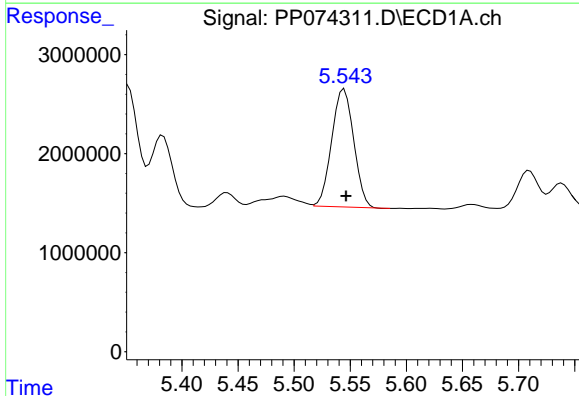
R.T.: 5.018 min  
 Delta R.T.: -0.002 min  
 Response: 12557806  
 Conc: 432.47 ng/ml

Instrument :  
 ECD\_P  
 ClientSampleId :  
 BIN0009-DRIVEWAY-TP-SOUTH-EASTMS



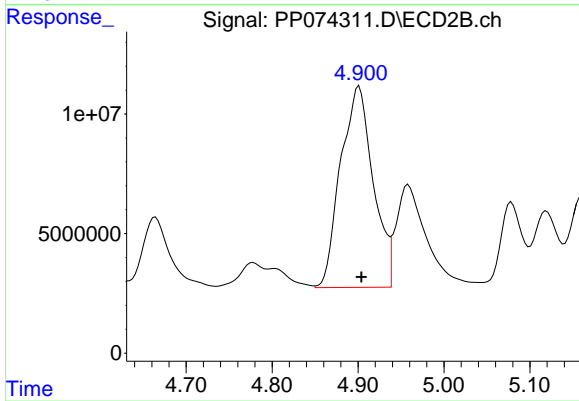
#11 AR-1232-1

R.T.: 4.174 min  
 Delta R.T.: -0.003 min  
 Response: 45555195  
 Conc: 449.43 ng/ml



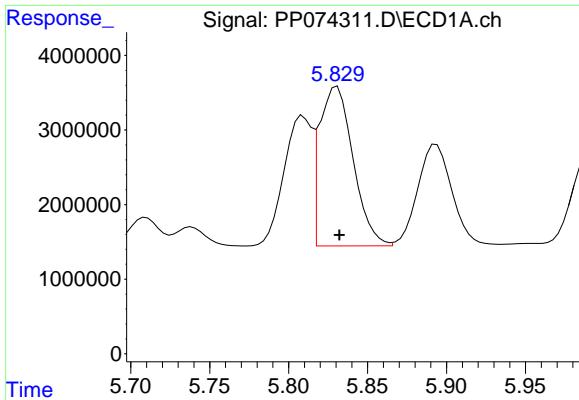
#12 AR-1232-2

R.T.: 5.545 min  
 Delta R.T.: -0.002 min  
 Response: 16277760  
 Conc: 1082.10 ng/ml



#12 AR-1232-2

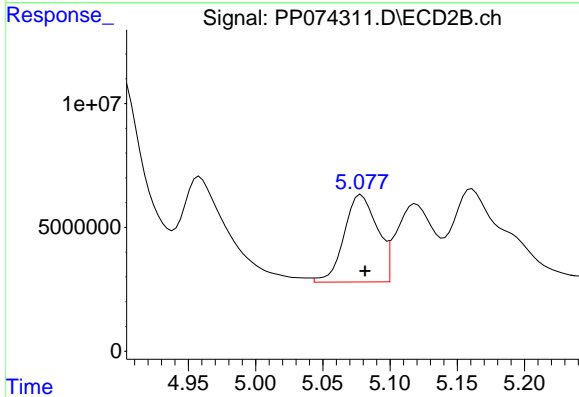
R.T.: 4.901 min  
 Delta R.T.: -0.003 min  
 Response: 221419556  
 Conc: 1270.58 ng/ml



#13 AR-1232-3

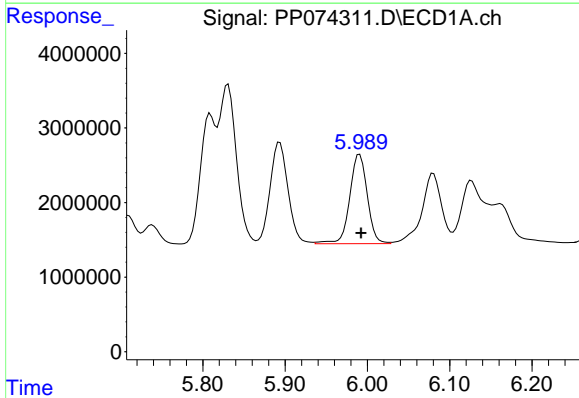
R.T.: 5.831 min  
 Delta R.T.: -0.001 min  
 Response: 31794685  
 Conc: 1096.30 ng/m

**Instrument :**  
 ECD\_P  
**ClientSampleId :**  
 BIN0009-DRIVEWAY-TP-SOUTH-EASTMS



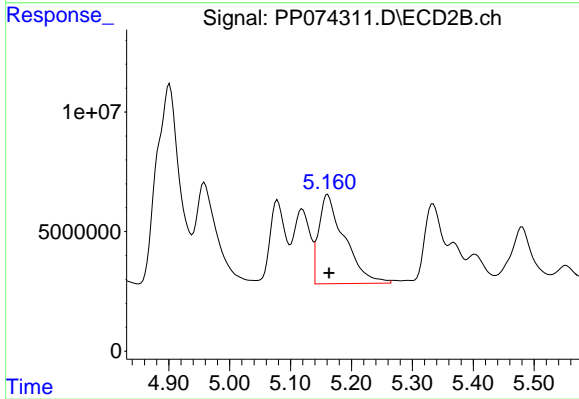
#13 AR-1232-3

R.T.: 5.079 min  
 Delta R.T.: -0.003 min  
 Response: 60560553  
 Conc: 1321.80 ng/ml



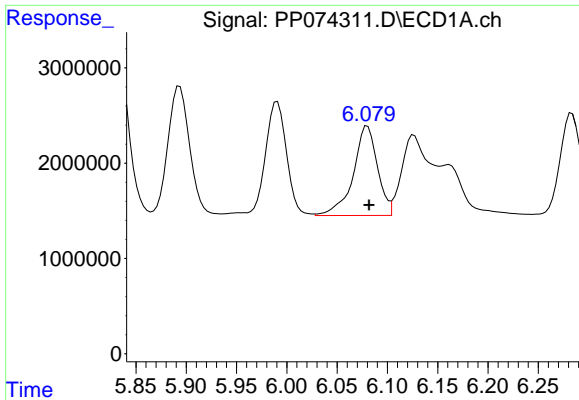
#14 AR-1232-4

R.T.: 5.991 min  
 Delta R.T.: -0.002 min  
 Response: 17736155  
 Conc: 1146.57 ng/ml



#14 AR-1232-4

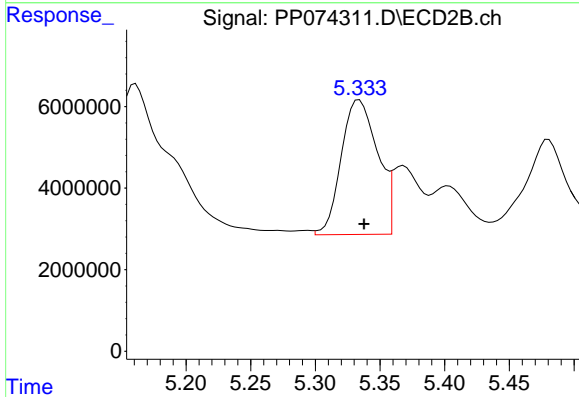
R.T.: 5.161 min  
 Delta R.T.: -0.003 min  
 Response: 109744140  
 Conc: 1891.79 ng/ml



#15 AR-1232-5

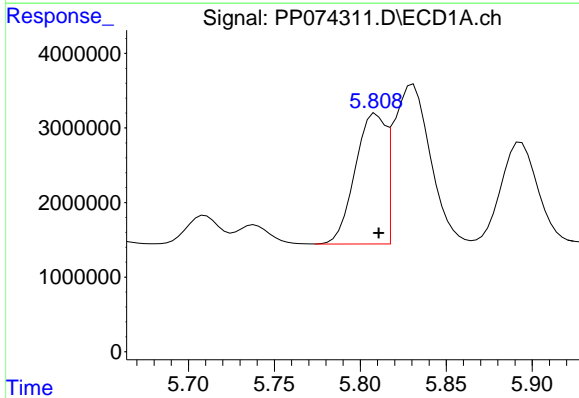
R.T.: 6.080 min  
 Delta R.T.: -0.002 min  
 Response: 15686090  
 Conc: 1338.86 ng/ml

Instrument :  
 ECD\_P  
 ClientSampleId :  
 BIN0009-DRIVEWAY-TP-SOUTH-EASTMS



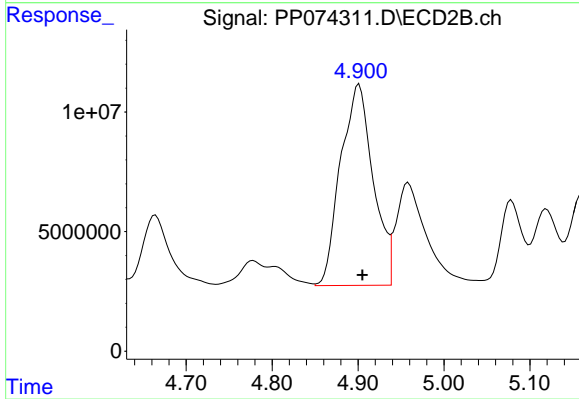
#15 AR-1232-5

R.T.: 5.334 min  
 Delta R.T.: -0.004 min  
 Response: 64653966  
 Conc: 1376.22 ng/ml



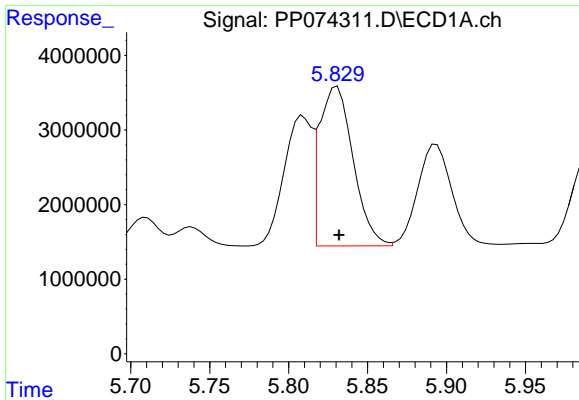
#16 AR-1242-1

R.T.: 5.809 min  
 Delta R.T.: -0.002 min  
 Response: 21480557  
 Conc: 576.41 ng/ml



#16 AR-1242-1

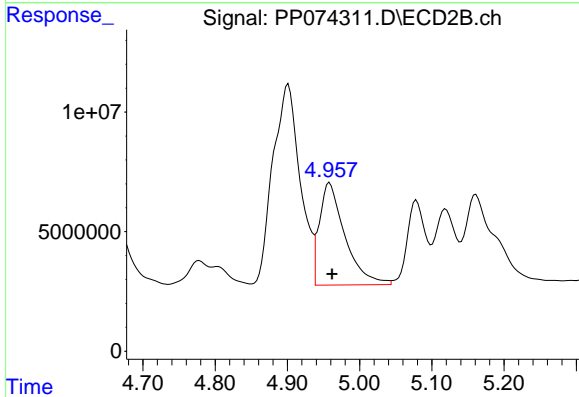
R.T.: 4.901 min  
 Delta R.T.: -0.004 min  
 Response: 221419556  
 Conc: 641.53 ng/ml



#17 AR-1242-2

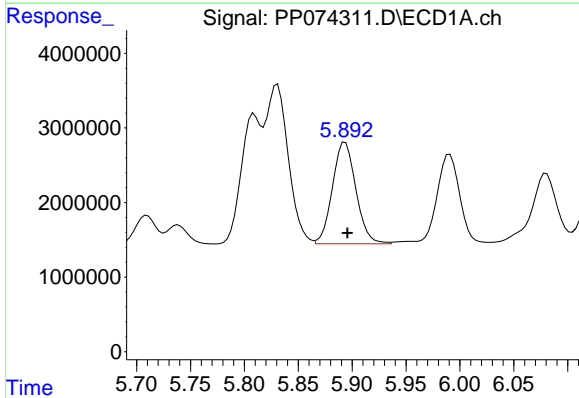
R.T.: 5.831 min  
 Delta R.T.: -0.001 min  
 Response: 31794685  
 Conc: 584.37 ng/ml

Instrument :  
 ECD\_P  
 ClientSampleId :  
 BIN0009-DRIVEWAY-TP-SOUTH-EASTMS



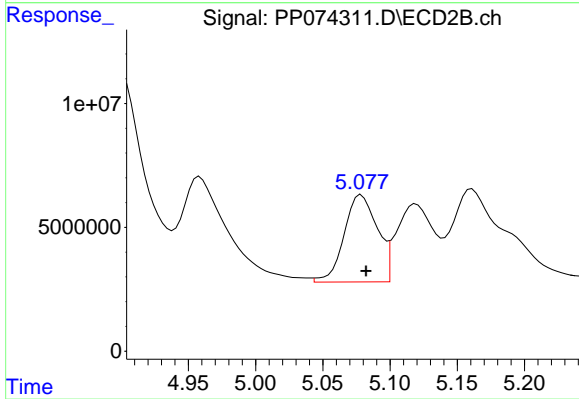
#17 AR-1242-2

R.T.: 4.958 min  
 Delta R.T.: -0.004 min  
 Response: 105394294  
 Conc: 645.10 ng/ml



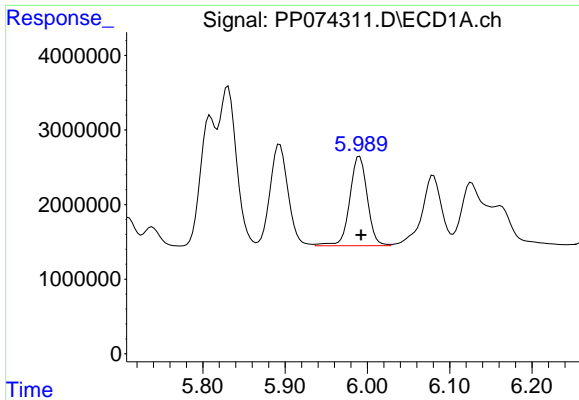
#18 AR-1242-3

R.T.: 5.894 min  
 Delta R.T.: -0.002 min  
 Response: 20638950  
 Conc: 577.54 ng/ml



#18 AR-1242-3

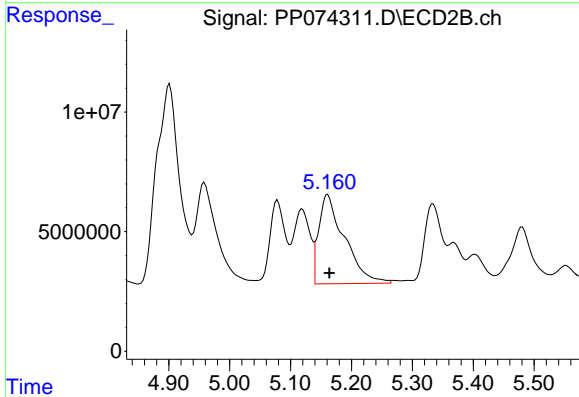
R.T.: 5.079 min  
 Delta R.T.: -0.004 min  
 Response: 60560553  
 Conc: 656.49 ng/ml



#19 AR-1242-4

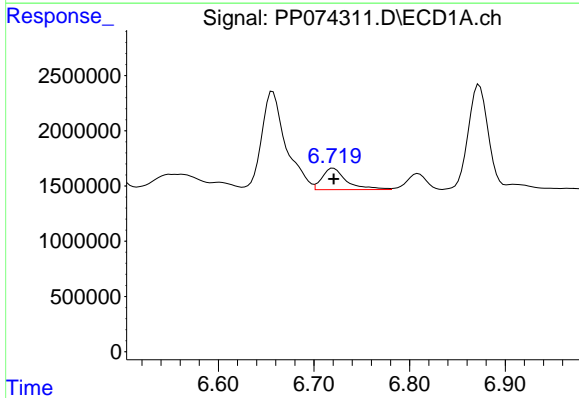
R.T.: 5.991 min  
 Delta R.T.: -0.002 min  
 Response: 17736155  
 Conc: 607.01 ng/ml

Instrument :  
 ECD\_P  
 ClientSampleId :  
 BIN0009-DRIVEWAY-TP-SOUTH-EASTMS



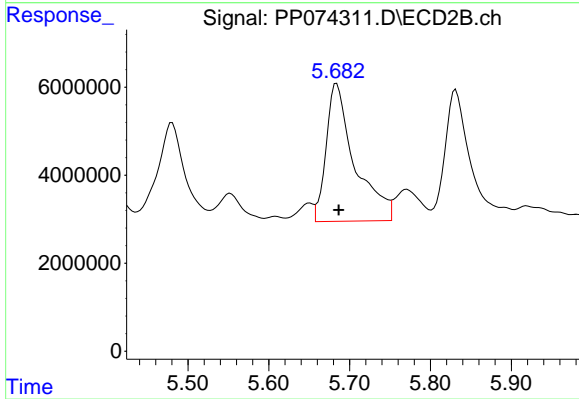
#19 AR-1242-4

R.T.: 5.161 min  
 Delta R.T.: -0.003 min  
 Response: 109744140  
 Conc: 918.96 ng/ml



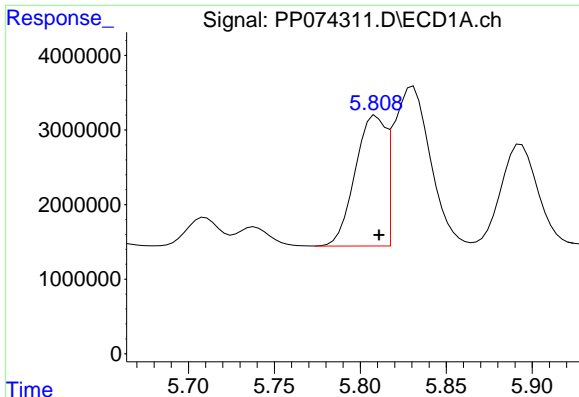
#20 AR-1242-5

R.T.: 6.720 min  
 Delta R.T.: 0.000 min  
 Response: 3440400  
 Conc: 96.75 ng/ml



#20 AR-1242-5

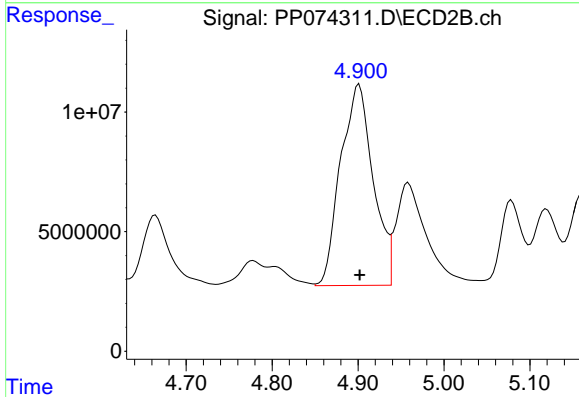
R.T.: 5.684 min  
 Delta R.T.: -0.002 min  
 Response: 76642613  
 Conc: 512.45 ng/ml



#21 AR-1248-1

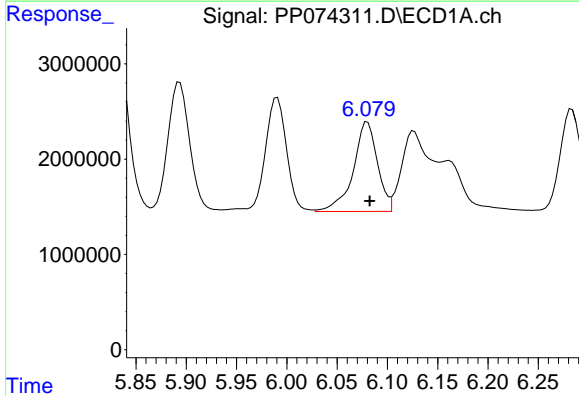
R.T.: 5.809 min  
 Delta R.T.: -0.002 min  
 Response: 21480557  
 Conc: 766.76 ng/ml

Instrument :  
 ECD\_P  
 ClientSampleId :  
 BIN0009-DRIVEWAY-TP-SOUTH-EASTMS



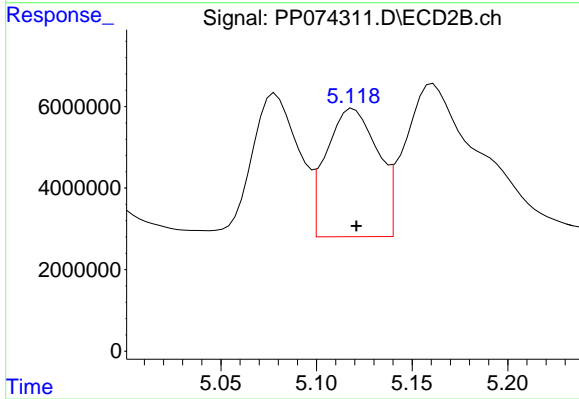
#21 AR-1248-1

R.T.: 4.901 min  
 Delta R.T.: 0.000 min  
 Response: 221419556  
 Conc: 1035.00 ng/ml



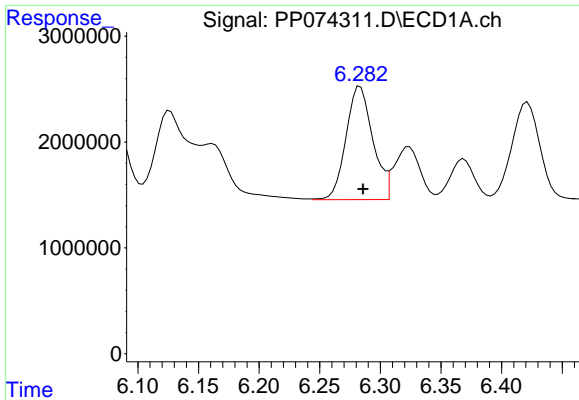
#22 AR-1248-2

R.T.: 6.080 min  
 Delta R.T.: -0.002 min  
 Response: 15686090  
 Conc: 389.61 ng/ml



#22 AR-1248-2

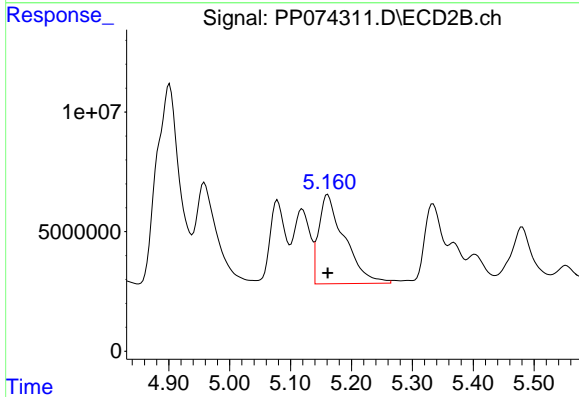
R.T.: 5.119 min  
 Delta R.T.: -0.002 min  
 Response: 58694992  
 Conc: 401.16 ng/ml



#23 AR-1248-3

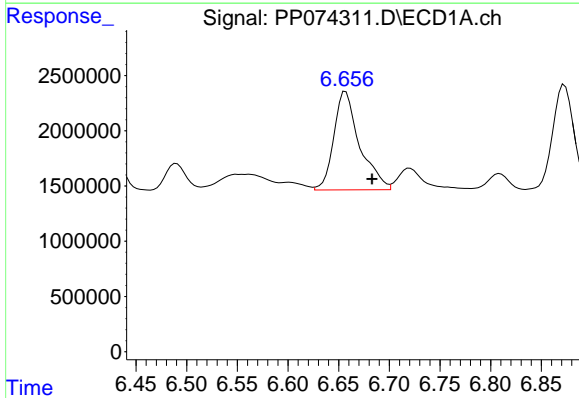
R.T.: 6.283 min  
 Delta R.T.: -0.002 min  
 Response: 16474757  
 Conc: 369.61 ng/ml

Instrument :  
 ECD\_P  
 ClientSampleId :  
 BIN0009-DRIVEWAY-TP-SOUTH-EASTMS



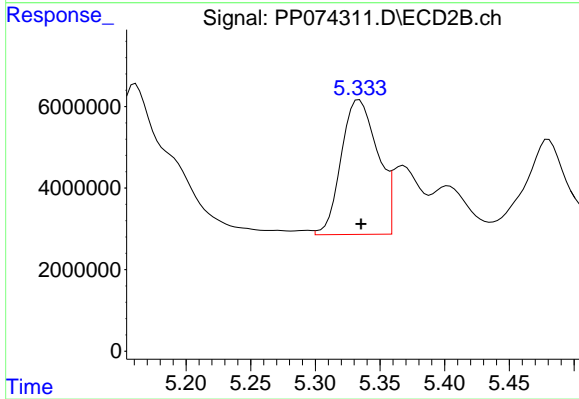
#23 AR-1248-3

R.T.: 5.161 min  
 Delta R.T.: 0.000 min  
 Response: 109744140  
 Conc: 640.06 ng/ml



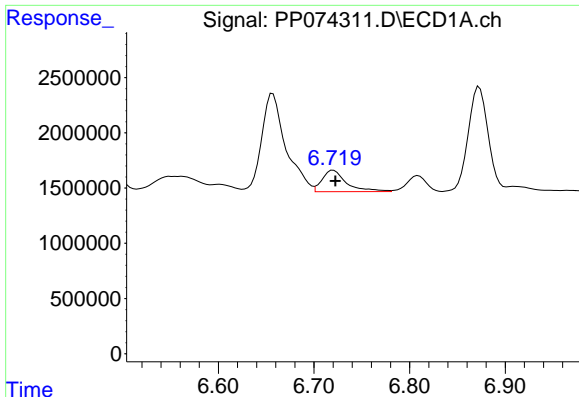
#24 AR-1248-4

R.T.: 6.657 min  
 Delta R.T.: -0.026 min  
 Response: 15791645  
 Conc: 303.47 ng/ml



#24 AR-1248-4

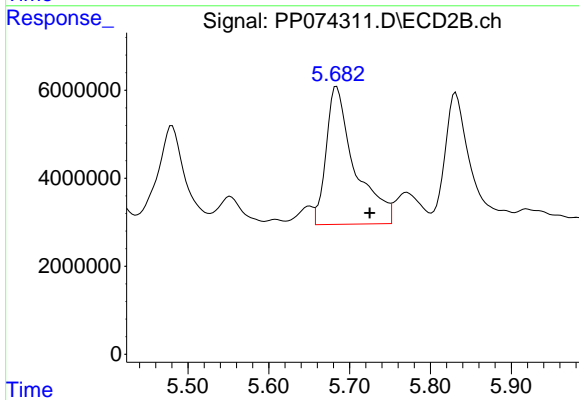
R.T.: 5.334 min  
 Delta R.T.: -0.001 min  
 Response: 64653966  
 Conc: 388.61 ng/ml



#25 AR-1248-5

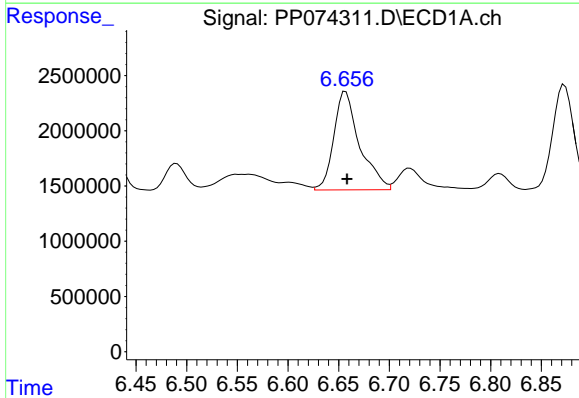
R.T.: 6.720 min  
 Delta R.T.: -0.002 min  
 Response: 3440400  
 Conc: 60.42 ng/ml

Instrument :  
 ECD\_P  
 ClientSampleId :  
 BIN0009-DRIVEWAY-TP-SOUTH-EASTMS



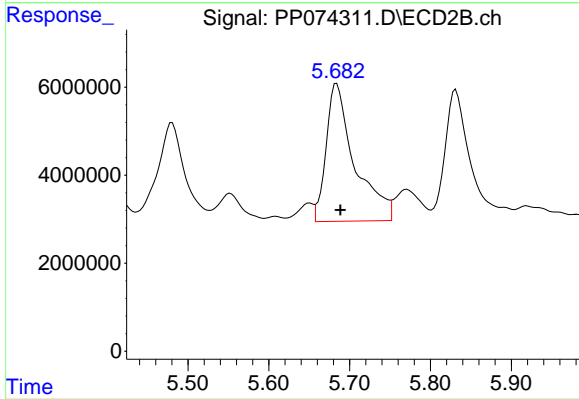
#25 AR-1248-5

R.T.: 5.684 min  
 Delta R.T.: -0.041 min  
 Response: 76642613  
 Conc: 263.41 ng/ml



#26 AR-1254-1

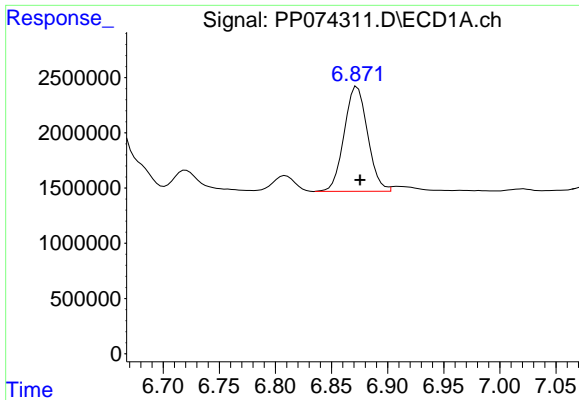
R.T.: 6.657 min  
 Delta R.T.: -0.001 min  
 Response: 15791645  
 Conc: 299.99 ng/ml



#26 AR-1254-1

R.T.: 5.684 min  
 Delta R.T.: -0.004 min  
 Response: 76642613  
 Conc: 209.30 ng/ml

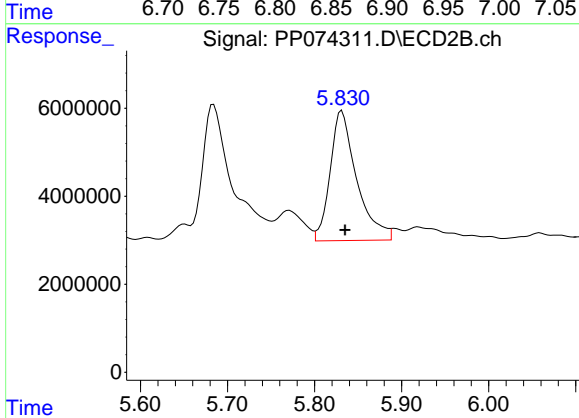




#27 AR-1254-2

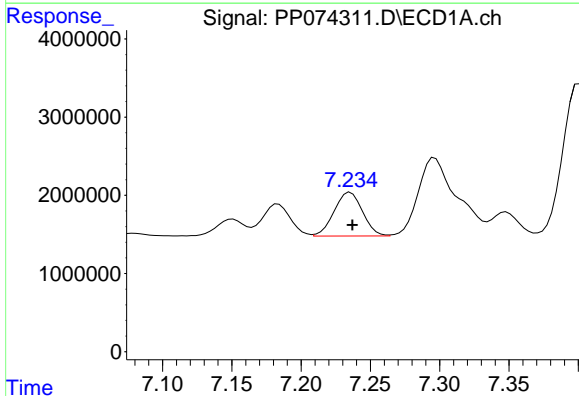
R.T.: 6.873 min  
 Delta R.T.: -0.003 min  
 Response: 13769891  
 Conc: 173.20 ng/ml

Instrument :  
 ECD\_P  
 ClientSampleId :  
 BIN0009-DRIVEWAY-TP-SOUTH-EASTMS



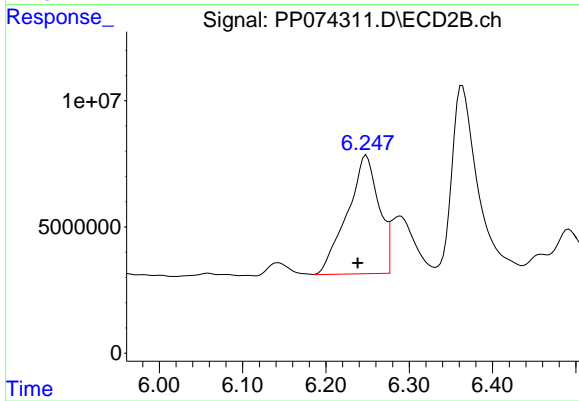
#27 AR-1254-2

R.T.: 5.831 min  
 Delta R.T.: -0.004 min  
 Response: 62702065  
 Conc: 225.37 ng/ml



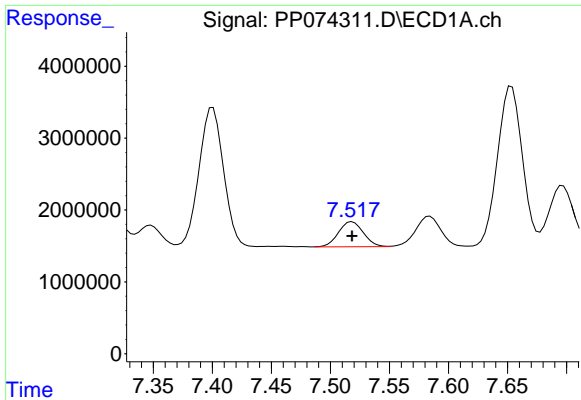
#28 AR-1254-3

R.T.: 7.236 min  
 Delta R.T.: -0.001 min  
 Response: 7976373  
 Conc: 91.35 ng/ml



#28 AR-1254-3

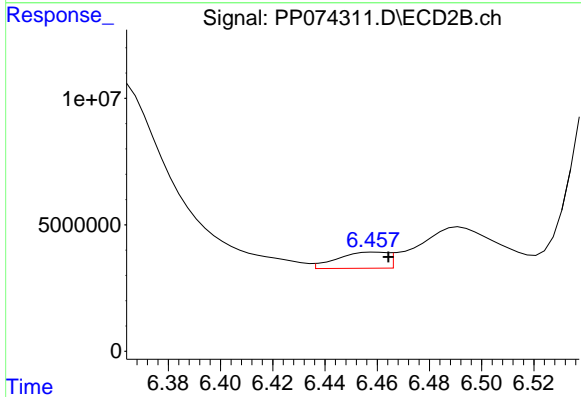
R.T.: 6.249 min  
 Delta R.T.: 0.010 min  
 Response: 123342780  
 Conc: 252.13 ng/ml



#29 AR-1254-4

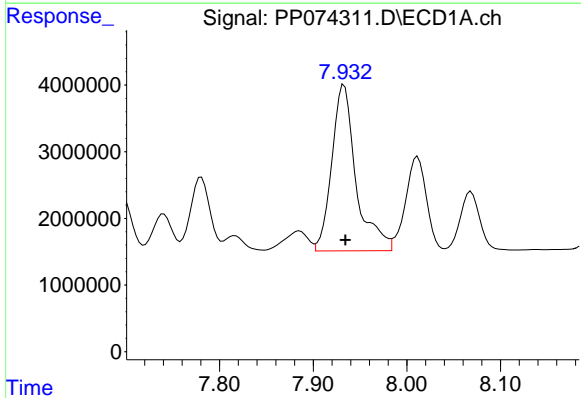
R.T.: 7.518 min  
 Delta R.T.: 0.000 min  
 Response: 5089508  
 Conc: 79.76 ng/ml

Instrument :  
 ECD\_P  
 ClientSampleId :  
 BIN0009-DRIVEWAY-TP-SOUTH-EASTMS



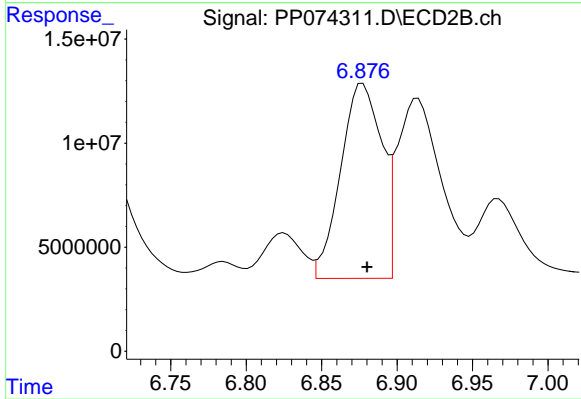
#29 AR-1254-4

R.T.: 6.459 min  
 Delta R.T.: -0.005 min  
 Response: 8449703  
 Conc: 22.99 ng/ml



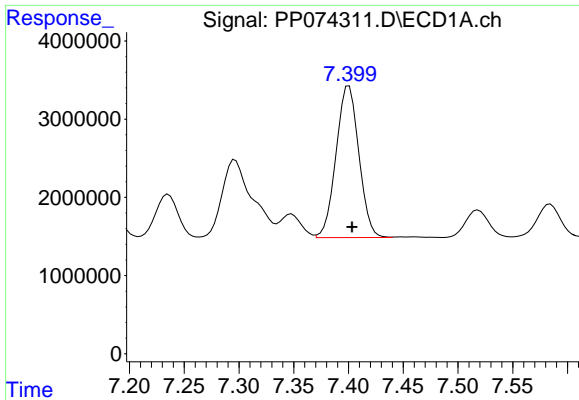
#30 AR-1254-5

R.T.: 7.933 min  
 Delta R.T.: -0.001 min  
 Response: 44898403  
 Conc: 553.31 ng/ml



#30 AR-1254-5

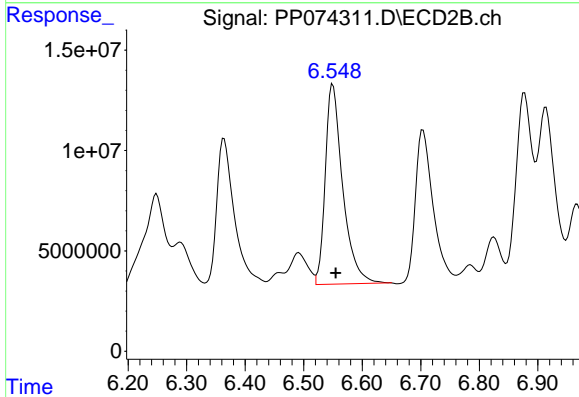
R.T.: 6.877 min  
 Delta R.T.: -0.003 min  
 Response: 177029272  
 Conc: 459.62 ng/ml



#31 AR-1260-1

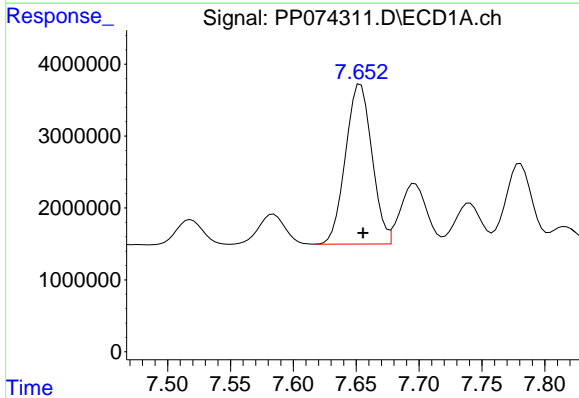
R.T.: 7.400 min  
 Delta R.T.: -0.003 min  
 Response: 28140334  
 Conc: 499.33 ng/ml

Instrument :  
 ECD\_P  
 ClientSampleId :  
 BIN0009-DRIVEWAY-TP-SOUTH-EASTMS



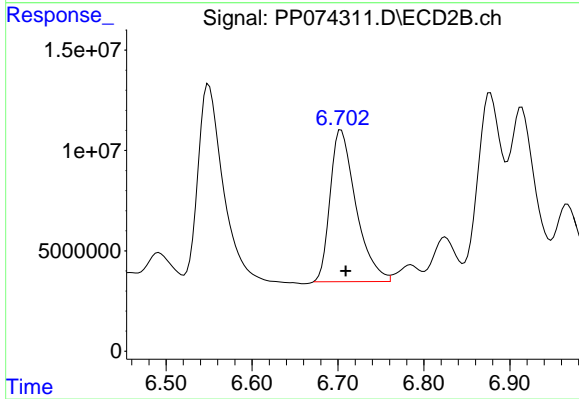
#31 AR-1260-1

R.T.: 6.550 min  
 Delta R.T.: -0.005 min  
 Response: 206989419  
 Conc: 512.40 ng/ml



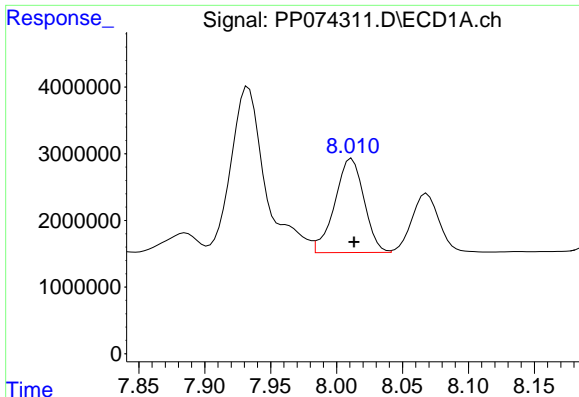
#32 AR-1260-2

R.T.: 7.653 min  
 Delta R.T.: -0.002 min  
 Response: 32575808  
 Conc: 477.98 ng/ml



#32 AR-1260-2

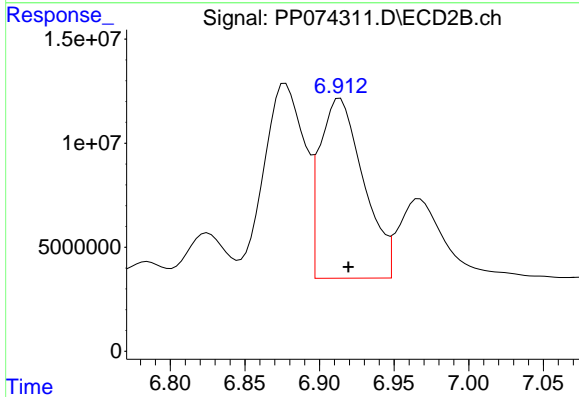
R.T.: 6.704 min  
 Delta R.T.: -0.005 min  
 Response: 157569693  
 Conc: 503.90 ng/ml



#33 AR-1260-3

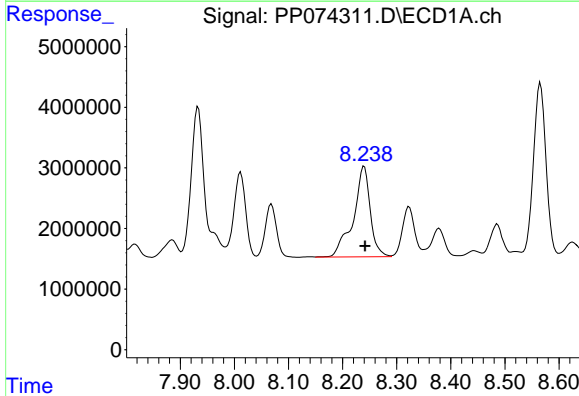
R.T.: 8.012 min  
 Delta R.T.: -0.002 min  
 Response: 21771827  
 Conc: 408.51 ng/ml

Instrument :  
 ECD\_P  
 ClientSampleId :  
 BIN0009-DRIVEWAY-TP-SOUTH-EASTMS



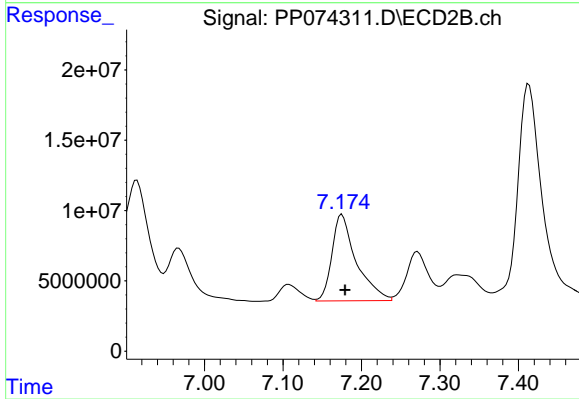
#33 AR-1260-3

R.T.: 6.914 min  
 Delta R.T.: -0.006 min  
 Response: 176516117  
 Conc: 447.88 ng/ml



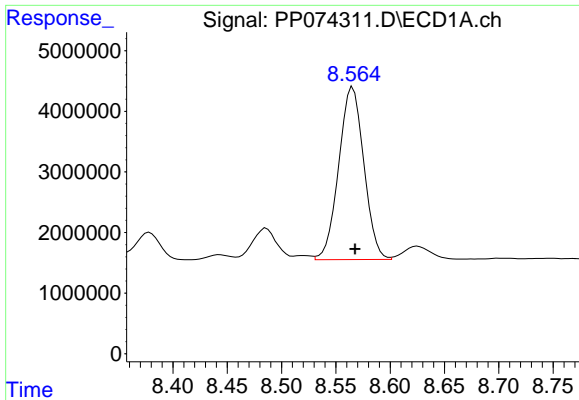
#34 AR-1260-4

R.T.: 8.240 min  
 Delta R.T.: -0.002 min  
 Response: 32485197  
 Conc: 518.81 ng/ml



#34 AR-1260-4

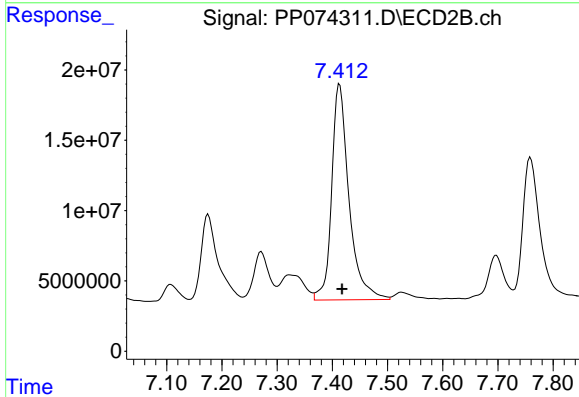
R.T.: 7.175 min  
 Delta R.T.: -0.004 min  
 Response: 132650496  
 Conc: 455.88 ng/ml



#35 AR-1260-5

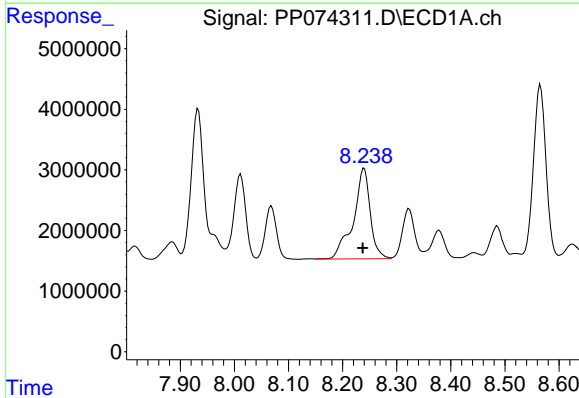
R.T.: 8.566 min  
 Delta R.T.: -0.002 min  
 Response: 45863963  
 Conc: 404.78 ng/ml

Instrument :  
 ECD\_P  
 ClientSampleId :  
 BIN0009-DRIVEWAY-TP-SOUTH-EASTMS



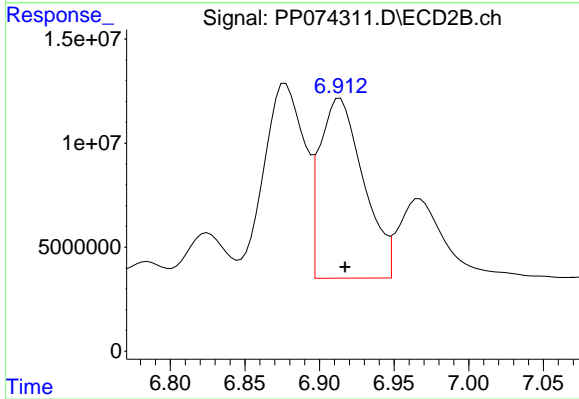
#35 AR-1260-5

R.T.: 7.413 min  
 Delta R.T.: -0.005 min  
 Response: 335060197  
 Conc: 442.38 ng/ml



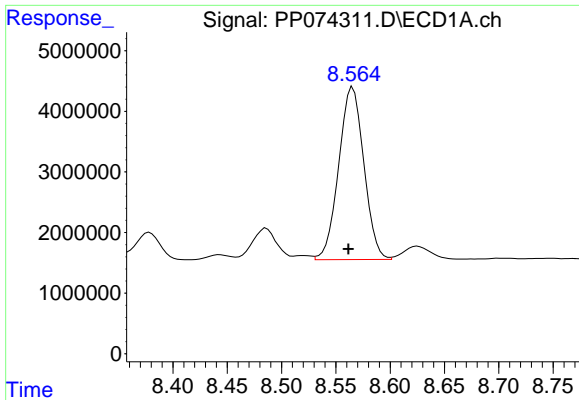
#36 AR-1262-1

R.T.: 8.240 min  
 Delta R.T.: 0.002 min  
 Response: 32485197  
 Conc: 428.62 ng/ml



#36 AR-1262-1

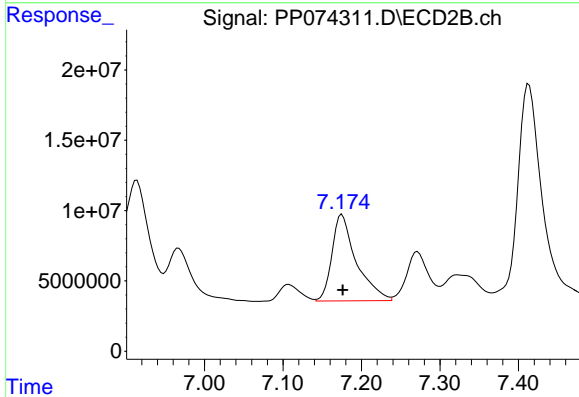
R.T.: 6.914 min  
 Delta R.T.: -0.003 min  
 Response: 176516117  
 Conc: 313.45 ng/ml



#37 AR-1262-2

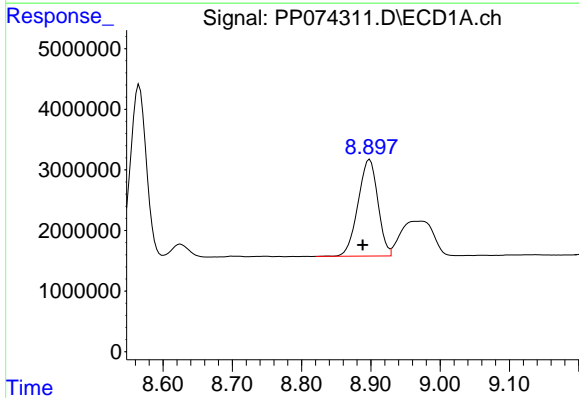
R.T.: 8.566 min  
 Delta R.T.: 0.004 min  
 Response: 45863963  
 Conc: 351.64 ng/ml

Instrument :  
 ECD\_P  
 ClientSampleId :  
 BIN0009-DRIVEWAY-TP-SOUTH-EASTMS



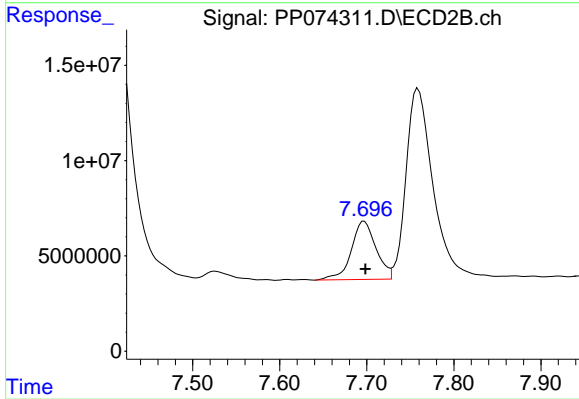
#37 AR-1262-2

R.T.: 7.175 min  
 Delta R.T.: 0.000 min  
 Response: 132650496  
 Conc: 330.78 ng/ml



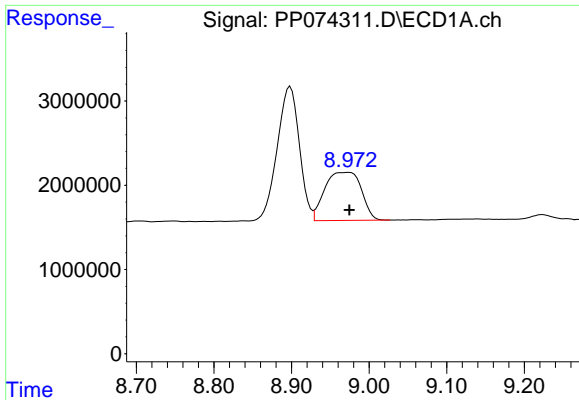
#38 AR-1262-3

R.T.: 8.898 min  
 Delta R.T.: 0.010 min  
 Response: 31725032  
 Conc: 337.25 ng/ml



#38 AR-1262-3

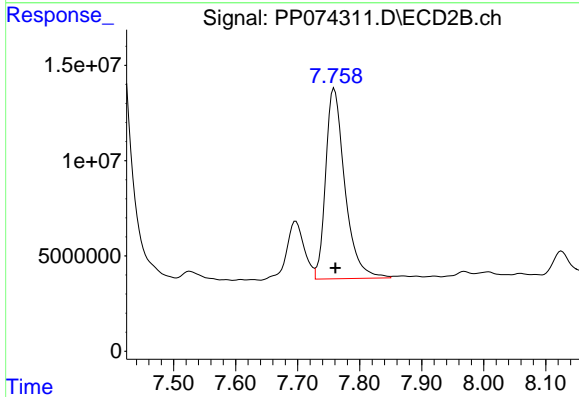
R.T.: 7.697 min  
 Delta R.T.: -0.001 min  
 Response: 60525419  
 Conc: 168.37 ng/ml



#39 AR-1262-4

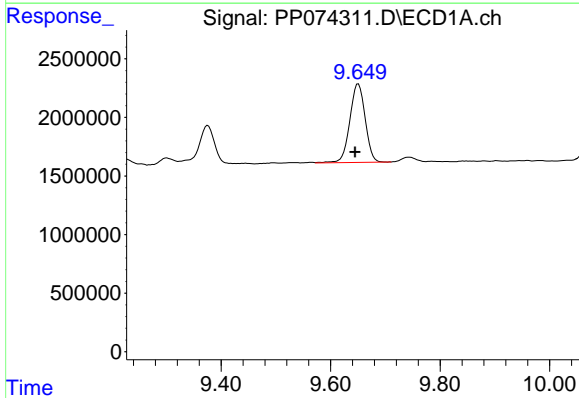
R.T.: 8.974 min  
 Delta R.T.: 0.000 min  
 Response: 18734714  
 Conc: 257.16 ng/ml

Instrument :  
 ECD\_P  
 ClientSampleId :  
 BIN0009-DRIVEWAY-TP-SOUTH-EASTMS



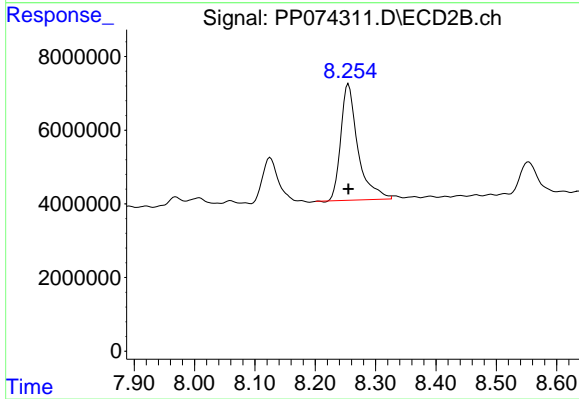
#39 AR-1262-4

R.T.: 7.759 min  
 Delta R.T.: -0.002 min  
 Response: 215316810  
 Conc: 322.85 ng/ml



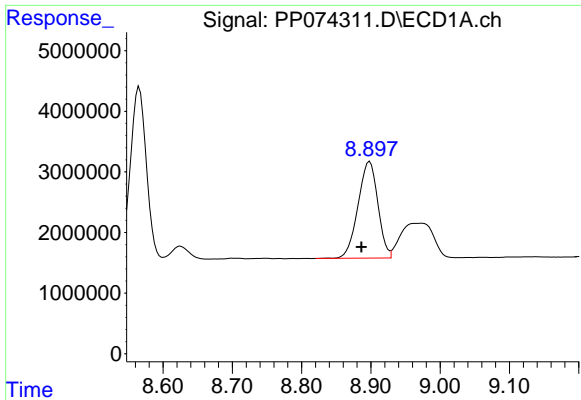
#40 AR-1262-5

R.T.: 9.651 min  
 Delta R.T.: 0.006 min  
 Response: 13091860  
 Conc: 257.09 ng/ml



#40 AR-1262-5

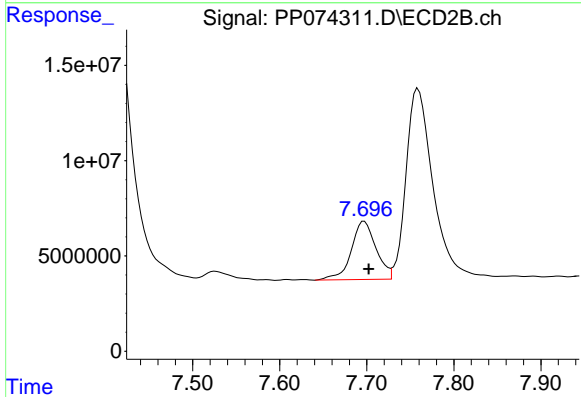
R.T.: 8.255 min  
 Delta R.T.: 0.000 min  
 Response: 62242150  
 Conc: 219.73 ng/ml



#41 AR-1268-1

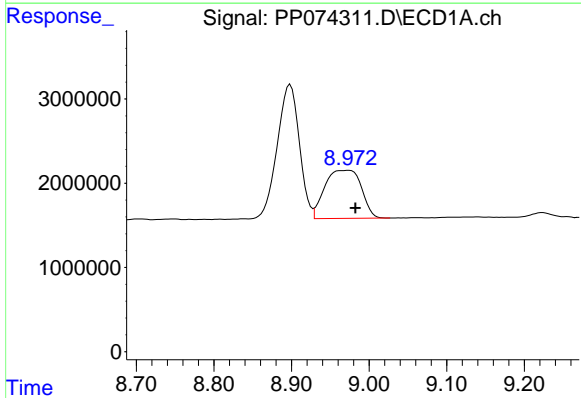
R.T.: 8.898 min  
 Delta R.T.: 0.012 min  
 Response: 31725032  
 Conc: 203.85 ng/ml

Instrument :  
 ECD\_P  
 ClientSampleId :  
 BIN0009-DRIVEWAY-TP-SOUTH-EASTMS



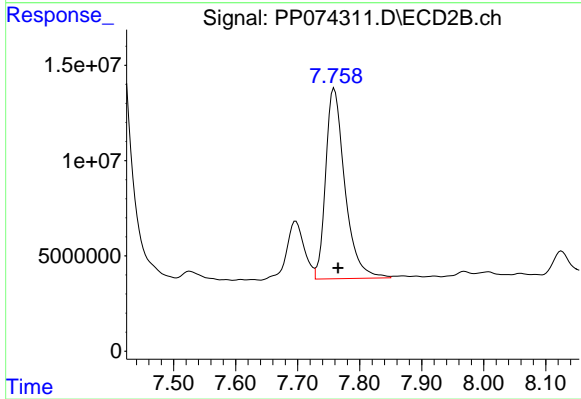
#41 AR-1268-1

R.T.: 7.697 min  
 Delta R.T.: -0.005 min  
 Response: 60525419  
 Conc: 55.51 ng/ml



#42 AR-1268-2

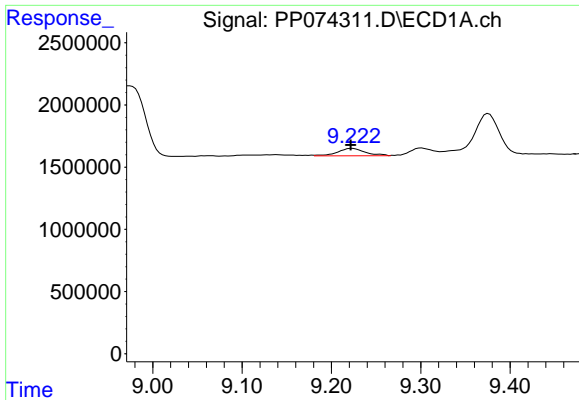
R.T.: 8.974 min  
 Delta R.T.: -0.009 min  
 Response: 18734714  
 Conc: 130.62 ng/ml



#42 AR-1268-2

R.T.: 7.759 min  
 Delta R.T.: -0.006 min  
 Response: 215316810  
 Conc: 202.88 ng/ml

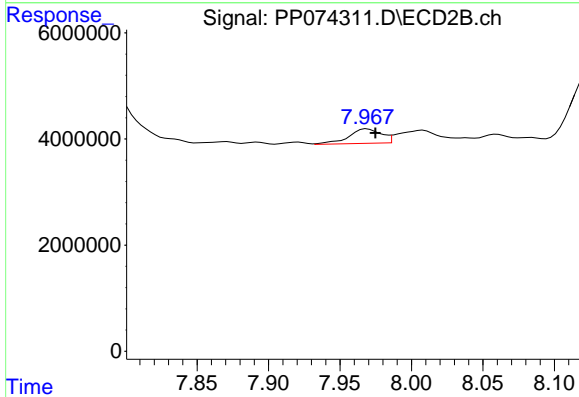




#43 AR-1268-3

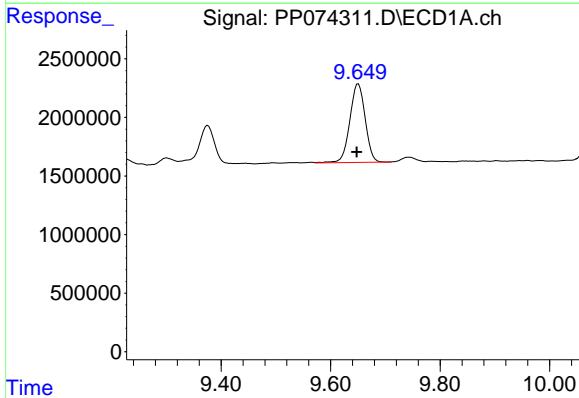
R.T.: 9.223 min  
 Delta R.T.: 0.002 min  
 Response: 1275907  
 Conc: 10.68 ng/ml

**Instrument :**  
 ECD\_P  
**ClientSampleId :**  
 BIN0009-DRIVEWAY-TP-SOUTH-EASTMS



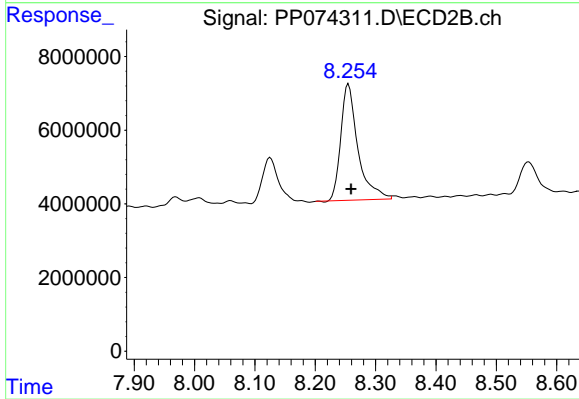
#43 AR-1268-3

R.T.: 7.969 min  
 Delta R.T.: -0.006 min  
 Response: 4368524  
 Conc: 5.25 ng/ml



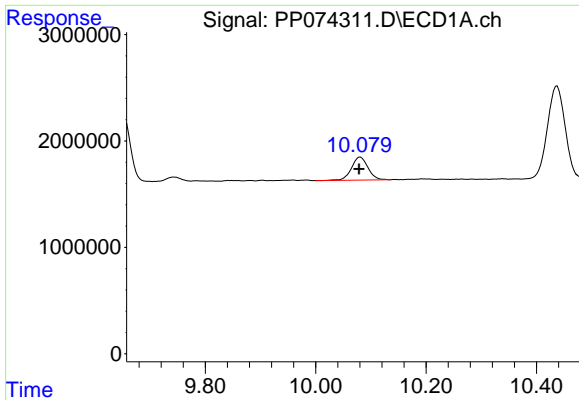
#44 AR-1268-4

R.T.: 9.651 min  
 Delta R.T.: 0.003 min  
 Response: 13091860  
 Conc: 222.60 ng/ml



#44 AR-1268-4

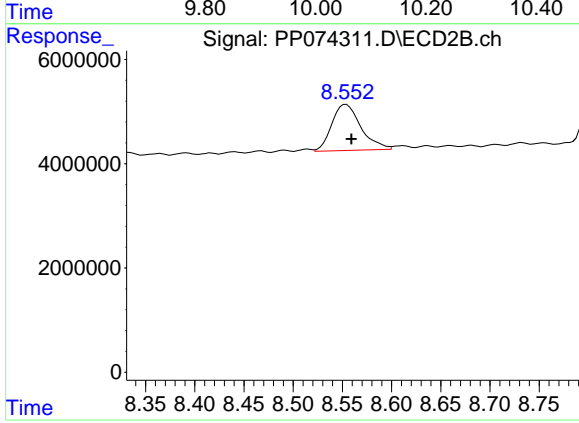
R.T.: 8.255 min  
 Delta R.T.: -0.004 min  
 Response: 62242150  
 Conc: 202.05 ng/ml



#45 AR-1268-5

R.T.: 10.081 min  
Delta R.T.: 0.002 min  
Response: 4477807  
Conc: 12.73 ng/ml

Instrument :  
ECD\_P  
ClientSampleId :  
BIN0009-DRIVEWAY-TP-SOUTH-EASTMS



#45 AR-1268-5

R.T.: 8.554 min  
Delta R.T.: -0.005 min  
Response: 18194131  
Conc: 7.13 ng/ml