

Data Path : Z:\pestpcbsrv\HPCHEM1\ECD_P\Data\PP081225\
 Data File : PP074312.D
 Signal(s) : Signal #1: ECD1A.ch Signal #2: ECD2B.ch
 Acq On : 12 Aug 2025 13:53
 Operator : YP\AJ
 Sample : Q2830-01MSD
 Misc :
 ALS Vial : 12 Sample Multiplier: 1

Instrument :
 ECD_P
ClientSampleId :
 BIN0009-DRIVEWAY-TP-SOUTH-EASTMSD

Integration File signal 1: autoint1.e
 Integration File signal 2: autoint2.e
 Quant Time: Aug 12 14:50:47 2025
 Quant Method : Z:\pestpcbsrv\HPCHEM1\ECD_P\methods\PP080125.M
 Quant Title : GC EXTRACTABLES
 QLast Update : Mon Aug 04 11:01:49 2025
 Response via : Initial Calibration
 Integrator: ChemStation

Volume Inj. : 2 µl
 Signal #1 Phase : ZB-MR1 Signal #2 Phase: ZB-MR2
 Signal #1 Info : 30Mx0.32mmx 0.50µ Signal #2 Info : 30M x 0.32mm x 0.25µm

Compound	RT#1	RT#2	Resp#1	Resp#2	ng/ml	ng/ml
System Monitoring Compounds						
1) SA Tetrachlo...	4.659	3.803	28248603	84782674	25.260	22.111
2) SA Decachlor...	10.436	8.820	19391247	107.3E6	19.967	17.849
Target Compounds						
3) L1 AR-1016-1	5.811	4.904	22025300	229.5E6	533.859	575.363
4) L1 AR-1016-2	5.832	4.961	31957321	109.0E6	526.118	580.403
5) L1 AR-1016-3	5.895	5.081	21162376	59483478	533.588	560.796
6) L1 AR-1016-4	5.992	5.122	21722805	62077143	667.481	568.368
7) L1 AR-1016-5	6.284	5.337	16835913	66799585	518.538	571.116
8) L2 AR-1221-1	4.855	4.015	2799503	7506274	166.999	152.923
9) L2 AR-1221-2	4.944	4.096	3234077	11463855	256.651	319.422
10) L2 AR-1221-3	5.020	4.177	12623046	44378559	344.560	328.184
11) L3 AR-1232-1	5.020	4.177	12623046	44378559	434.718	437.821
12) L3 AR-1232-2	5.546	4.904	16536497	229.5E6	1099.303	1316.979
13) L3 AR-1232-3	5.832	5.081	31957321	59483478	1101.912	1298.295
14) L3 AR-1232-4	5.992	5.165	21722805	110.3E6	1404.296	1900.645 #
15) L3 AR-1232-5	6.082	5.337	21659891	66799585	1848.743	1421.889
16) L4 AR-1242-1	5.811	4.904	22025300	229.5E6	591.032	664.961
17) L4 AR-1242-2	5.832	4.961	31957321	109.0E6	587.354	667.196
18) L4 AR-1242-3	5.895	5.081	21162376	59483478	592.189	644.818
19) L4 AR-1242-4	5.992	5.165	21722805	110.3E6	743.457	923.265
20) L4 AR-1242-5	6.721	5.687	3619251	78352361	101.784	523.886 #
21) L5 AR-1248-1	5.811	4.904	22025300	229.5E6	786.210	1072.795 #
22) L5 AR-1248-2	6.082	5.122	21659891	62077143	537.986	424.278
23) L5 AR-1248-3	6.284	5.165	16835913	110.3E6	377.711	643.052 #
24) L5 AR-1248-4	6.659	5.337	16084366	66799585	309.094	401.504 #
25) L5 AR-1248-5	6.721	5.687f	3619251	78352361	63.559	269.284 #
26) L6 AR-1254-1	6.659	5.687	16084366	78352361	305.548	213.971 #
27) L6 AR-1254-2	6.874	5.833	14315175	64254931	180.055	230.953 #
28) L6 AR-1254-3	7.236	6.251	7875880	128.3E6	90.200	262.171 #
29) L6 AR-1254-4	7.519	6.461	5330889	8960018	83.544	24.377 #
30) L6 AR-1254-5	7.933	6.879	45905141	181.8E6	565.719	472.046
31) L7 AR-1260-1	7.402	6.552	28910383	216.7E6	512.995	536.408
32) L7 AR-1260-2	7.654	6.707	33152517	164.0E6	486.447	524.348
33) L7 AR-1260-3	8.012	6.916	22216794	183.6E6	416.857	465.809
34) L7 AR-1260-4	8.240	7.176	33304829	137.0E6	531.899	470.828
35) L7 AR-1260-5	8.565	7.415	47018435	347.3E6	414.973	458.490
36) L8 AR-1262-1	8.240	6.916	33304829	183.6E6	439.437	325.999 #
37) L8 AR-1262-2	8.565	7.176	47018435	137.0E6	360.488	341.629
38) L8 AR-1262-3	8.898	7.699	32396274	62513496	344.382	173.905 #
39) L8 AR-1262-4	8.965	7.761	19192646	222.6E6	263.448	333.746 #
40) L8 AR-1262-5	9.650	8.257	13192444	65413925	259.068	230.926
41) L9 AR-1268-1	8.898	7.699	32396274	62513496	208.158	57.338 #

Data Path : Z:\pestpcbsrv\HPCHEM1\ECD_P\Data\PP081225\
 Data File : PP074312.D
 Signal(s) : Signal #1: ECD1A.ch Signal #2: ECD2B.ch
 Acq On : 12 Aug 2025 13:53
 Operator : YP\AJ
 Sample : Q2830-01MSD
 Misc :
 ALS Vial : 12 Sample Multiplier: 1

Instrument :
 ECD_P
ClientSampleId :
 BIN0009-DRIVEWAY-TP-SOUTH-EASTMSD

Integration File signal 1: autoint1.e
 Integration File signal 2: autoint2.e
 Quant Time: Aug 12 14:50:47 2025
 Quant Method : Z:\pestpcbsrv\HPCHEM1\ECD_P\methods\PP080125.M
 Quant Title : GC EXTRACTABLES
 QLast Update : Mon Aug 04 11:01:49 2025
 Response via : Initial Calibration
 Integrator: ChemStation

Volume Inj. : 2 µl
 Signal #1 Phase : ZB-MR1 Signal #2 Phase: ZB-MR2
 Signal #1 Info : 30Mx0.32mmx 0.50µ Signal #2 Info : 30M x 0.32mm x 0.25µm

	Compound	RT#1	RT#2	Resp#1	Resp#2	ng/ml	ng/ml
42)	L9 AR-1268-2	8.965	7.761	19192646	222.6E6	133.816	209.721 #
43)	L9 AR-1268-3	9.223	7.970	1061987	4622455	8.889	5.556 #
44)	L9 AR-1268-4	9.650	8.257	13192444	65413925	224.313	212.342
45)	L9 AR-1268-5	10.081	8.555	4521037	19485839	12.855	7.641 #

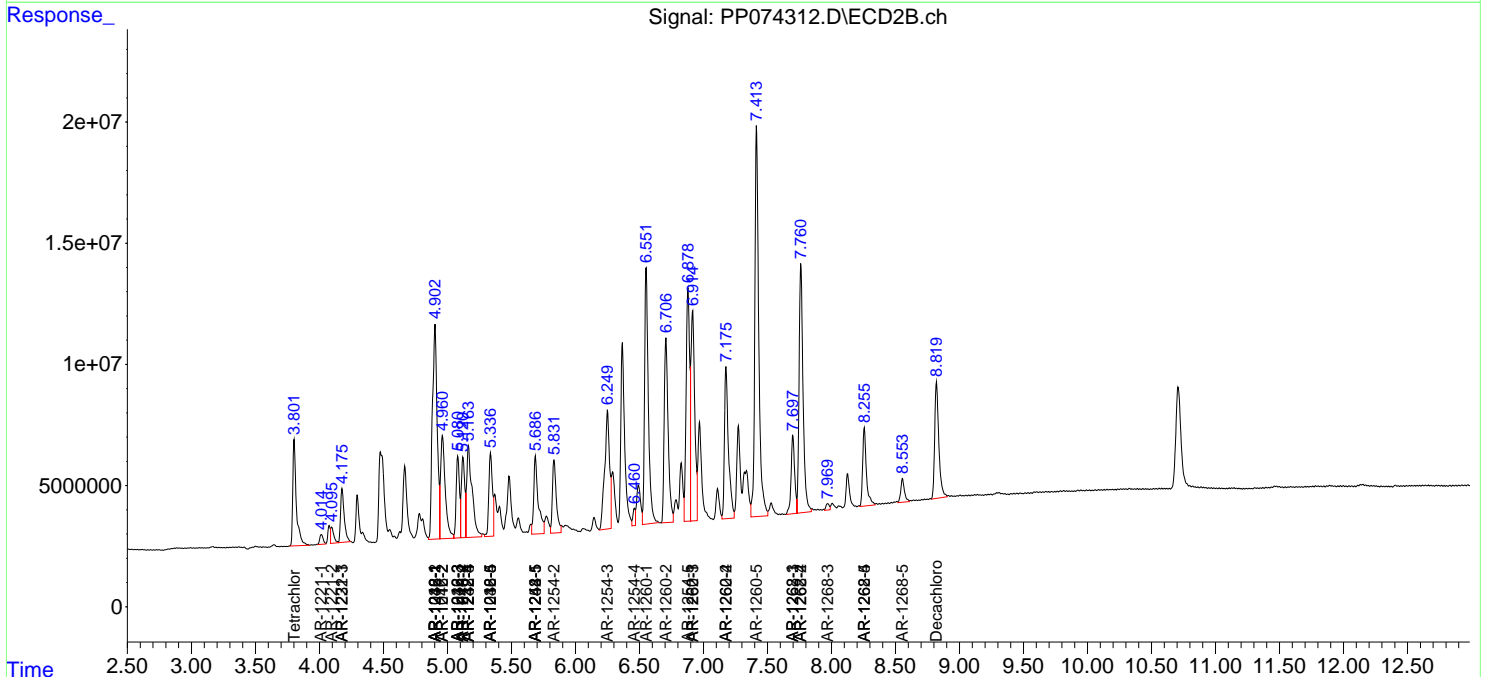
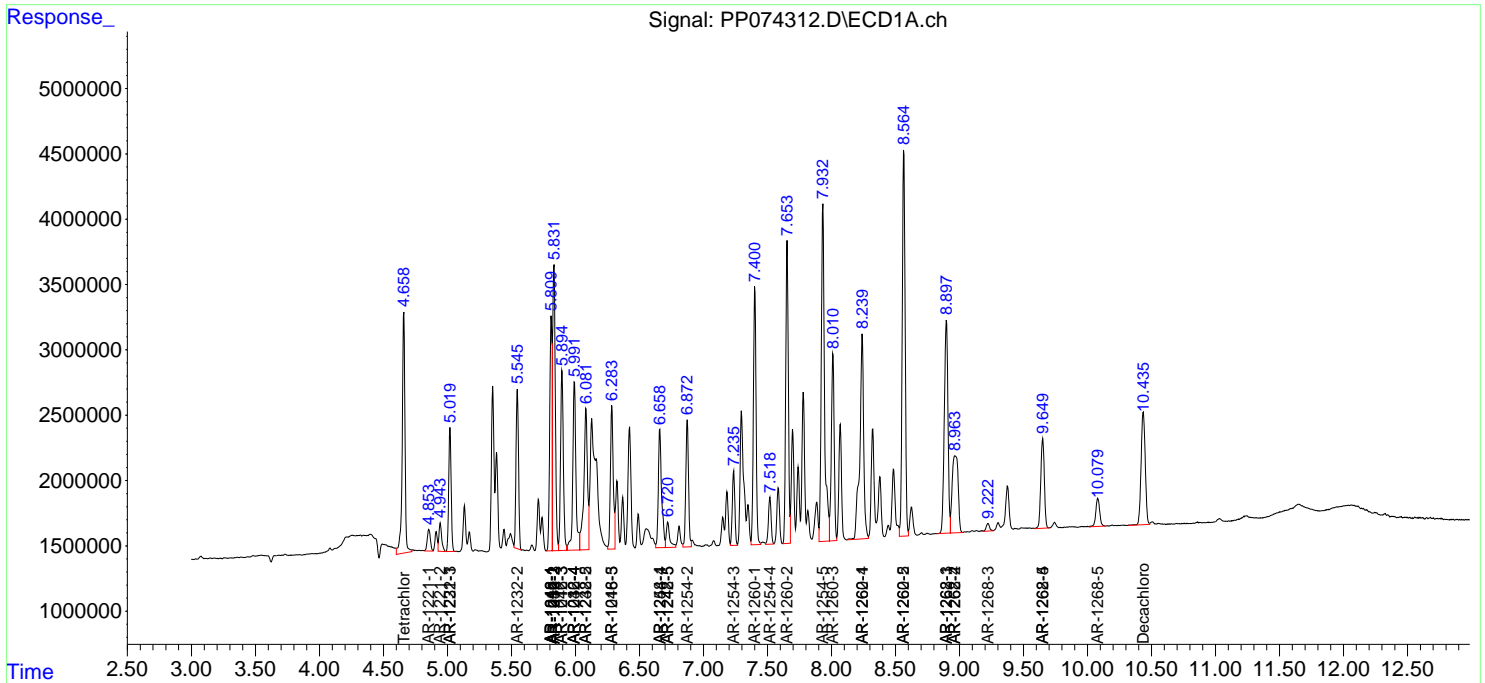
(f)=RT Delta > 1/2 Window (#)=Amounts differ by > 25% (m)=manual int.

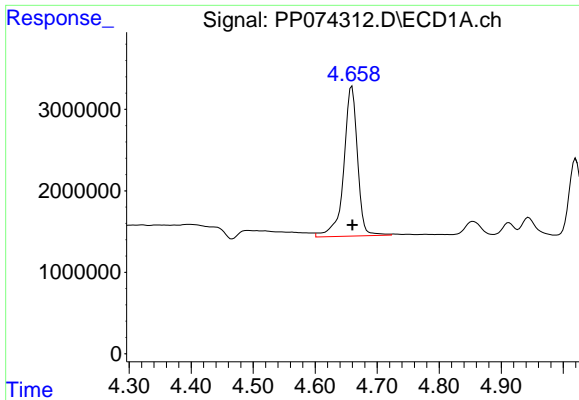
Data Path : Z:\pestpcbsrv\HPCHEM1\ECD_P\Data\PP081225\
 Data File : PP074312.D
 Signal(s) : Signal #1: ECD1A.ch Signal #2: ECD2B.ch
 Acq On : 12 Aug 2025 13:53
 Operator : YP\AJ
 Sample : Q2830-01MSD
 Misc :
 ALS Vial : 12 Sample Multiplier: 1

Instrument :
 ECD_P
ClientSampleId :
 BIN0009-DRIVEWAY-TP-SOUTH-EASTMSD

Integration File signal 1: autoint1.e
 Integration File signal 2: autoint2.e
 Quant Time: Aug 12 14:50:47 2025
 Quant Method : Z:\pestpcbsrv\HPCHEM1\ECD_P\methods\PP080125.M
 Quant Title : GC EXTRACTABLES
 QLast Update : Mon Aug 04 11:01:49 2025
 Response via : Initial Calibration
 Integrator: ChemStation

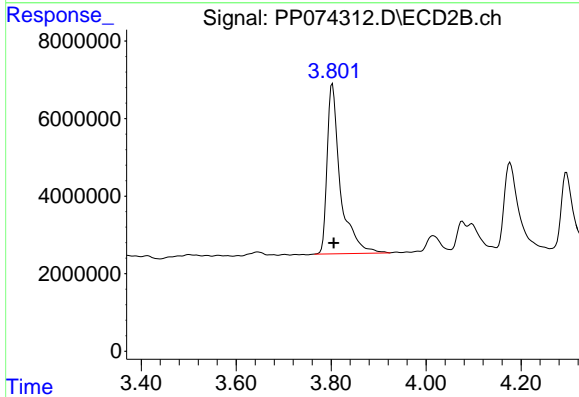
Volume Inj. : 2 µl
 Signal #1 Phase : ZB-MR1 Signal #2 Phase: ZB-MR2
 Signal #1 Info : 30Mx0.32mmx 0.50µ Signal #2 Info : 30M x 0.32mm x 0.25µm



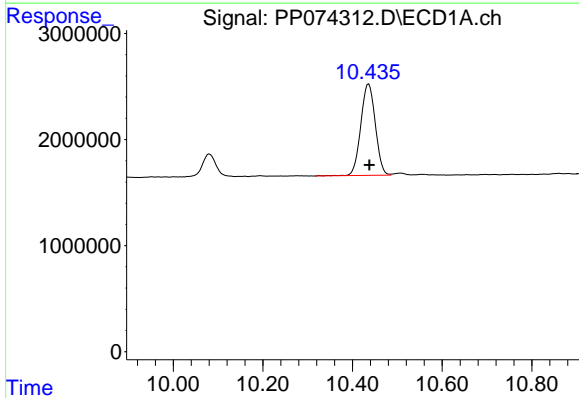


#1 Tetrachloro-m-xylene
 R.T.: 4.659 min
 Delta R.T.: 0.000 min
 Response: 28248603
 Conc: 25.26 ng/ml

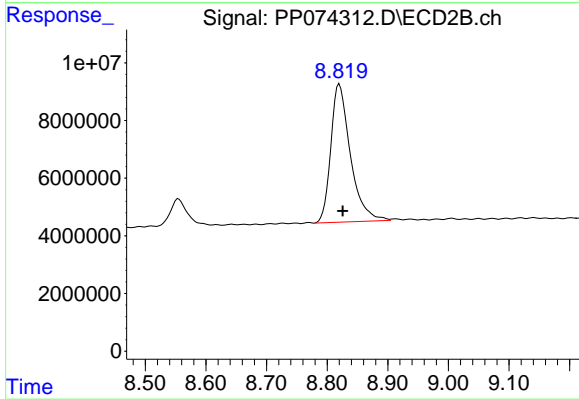
Instrument :
 ECD_P
 ClientSampleId :
 BIN0009-DRIVEWAY-TP-SOUTH-EASTMSD



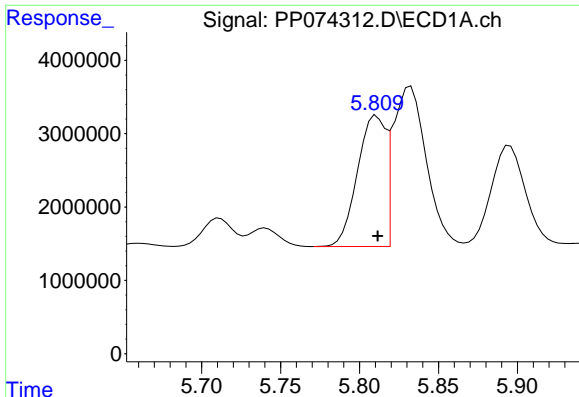
#1 Tetrachloro-m-xylene
 R.T.: 3.803 min
 Delta R.T.: -0.003 min
 Response: 84782674
 Conc: 22.11 ng/ml



#2 Decachlorobiphenyl
 R.T.: 10.436 min
 Delta R.T.: -0.002 min
 Response: 19391247
 Conc: 19.97 ng/ml



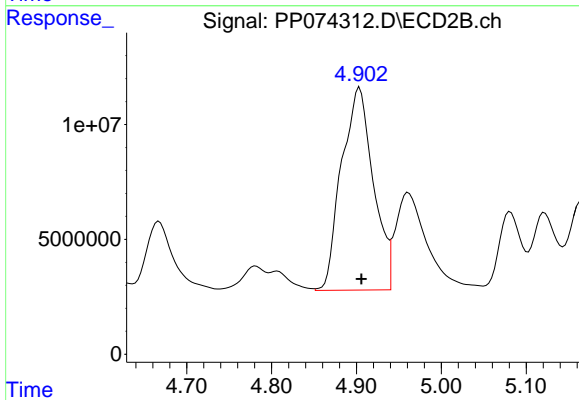
#2 Decachlorobiphenyl
 R.T.: 8.820 min
 Delta R.T.: -0.006 min
 Response: 107334950
 Conc: 17.85 ng/ml



#3 AR-1016-1

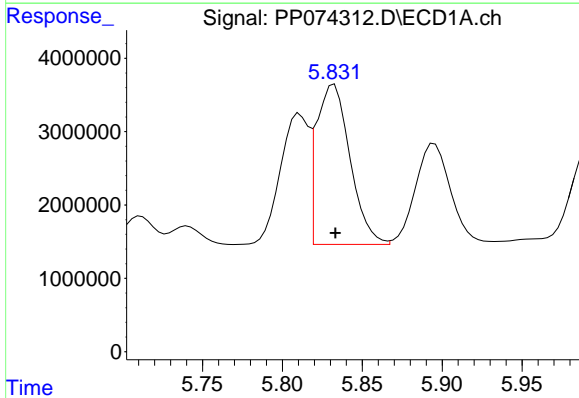
R.T.: 5.811 min
 Delta R.T.: 0.000 min
 Response: 22025300
 Conc: 533.86 ng/ml

Instrument :
 ECD_P
 ClientSampleId :
 BIN0009-DRIVEWAY-TP-SOUTH-EASTMSD



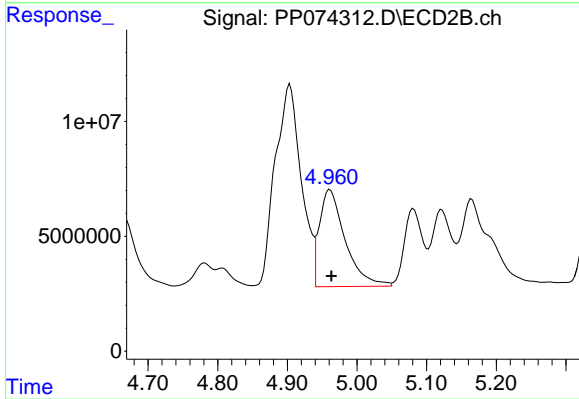
#3 AR-1016-1

R.T.: 4.904 min
 Delta R.T.: -0.002 min
 Response: 229504954
 Conc: 575.36 ng/ml



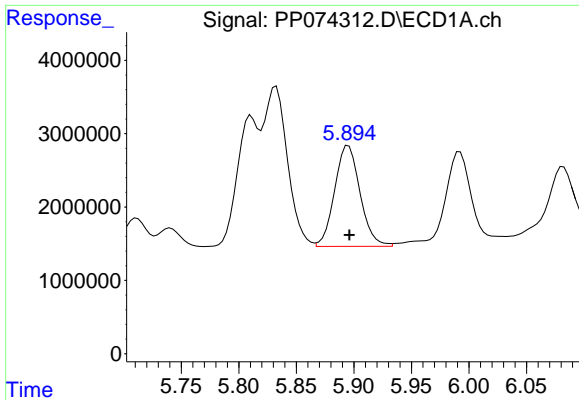
#4 AR-1016-2

R.T.: 5.832 min
 Delta R.T.: 0.000 min
 Response: 31957321
 Conc: 526.12 ng/ml



#4 AR-1016-2

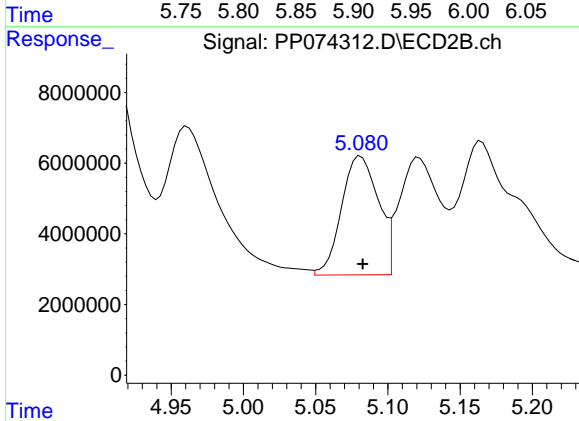
R.T.: 4.961 min
 Delta R.T.: -0.002 min
 Response: 109004993
 Conc: 580.40 ng/ml



#5 AR-1016-3

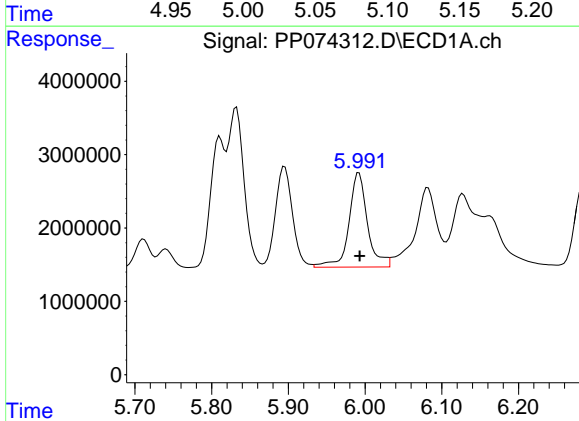
R.T.: 5.895 min
 Delta R.T.: 0.000 min
 Response: 21162376
 Conc: 533.59 ng/ml

Instrument :
 ECD_P
 ClientSampleId :
 BIN0009-DRIVEWAY-TP-SOUTH-EASTMSD



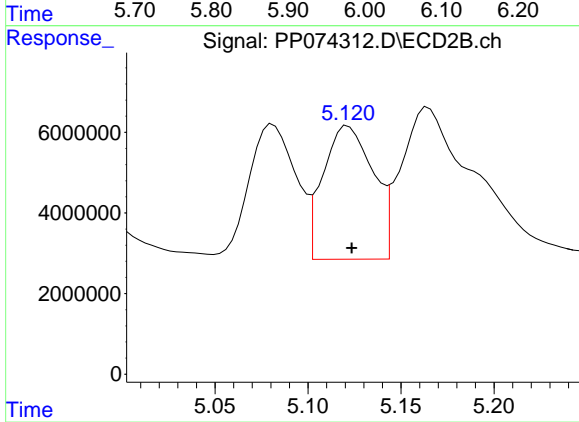
#5 AR-1016-3

R.T.: 5.081 min
 Delta R.T.: -0.001 min
 Response: 59483478
 Conc: 560.80 ng/ml



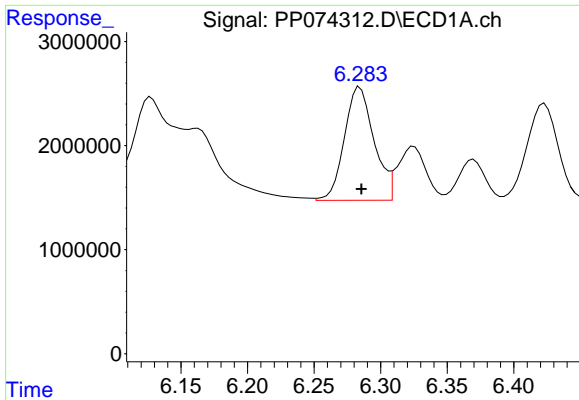
#6 AR-1016-4

R.T.: 5.992 min
 Delta R.T.: 0.000 min
 Response: 21722805
 Conc: 667.48 ng/ml



#6 AR-1016-4

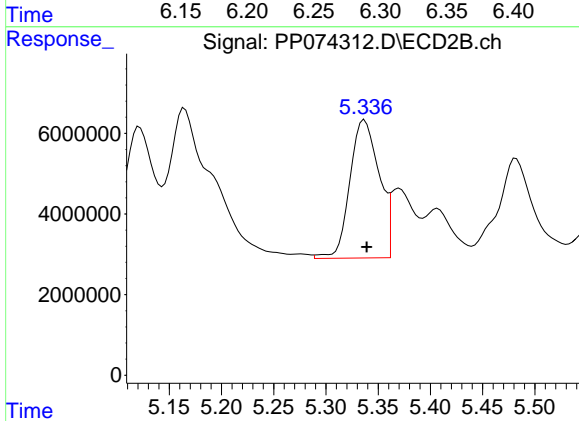
R.T.: 5.122 min
 Delta R.T.: -0.002 min
 Response: 62077143
 Conc: 568.37 ng/ml



#7 AR-1016-5

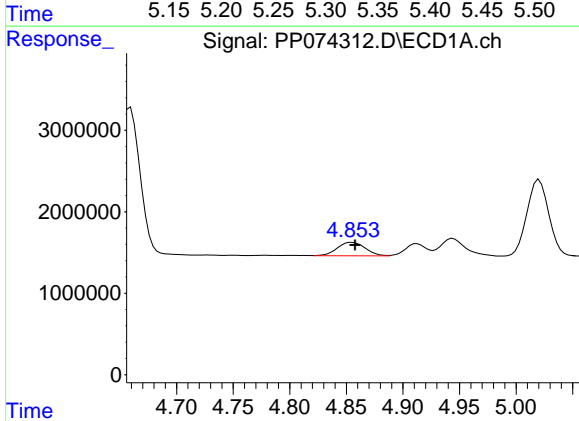
R.T.: 6.284 min
 Delta R.T.: -0.001 min
 Response: 16835913
 Conc: 518.54 ng/ml

Instrument :
 ECD_P
 ClientSampleId :
 BIN0009-DRIVEWAY-TP-SOUTH-EASTMSD



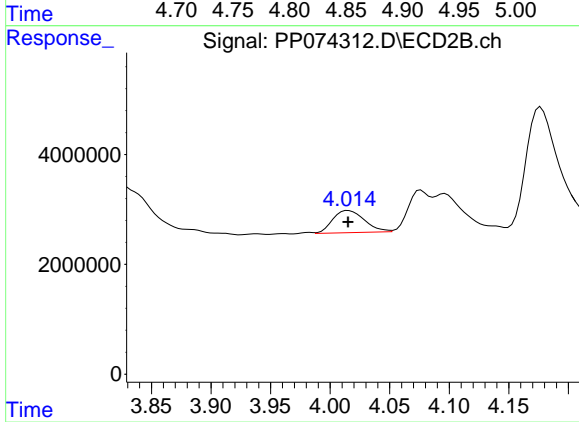
#7 AR-1016-5

R.T.: 5.337 min
 Delta R.T.: -0.002 min
 Response: 66799585
 Conc: 571.12 ng/ml



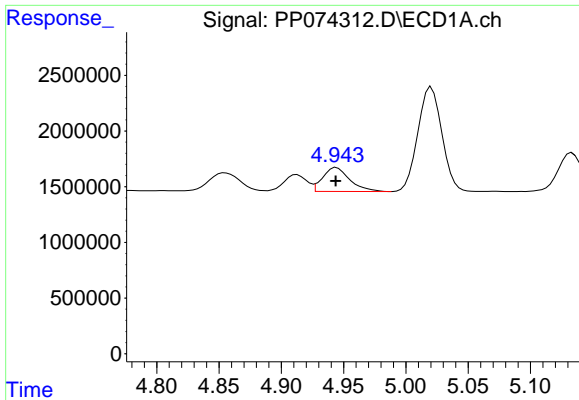
#8 AR-1221-1

R.T.: 4.855 min
 Delta R.T.: -0.003 min
 Response: 2799503
 Conc: 167.00 ng/ml



#8 AR-1221-1

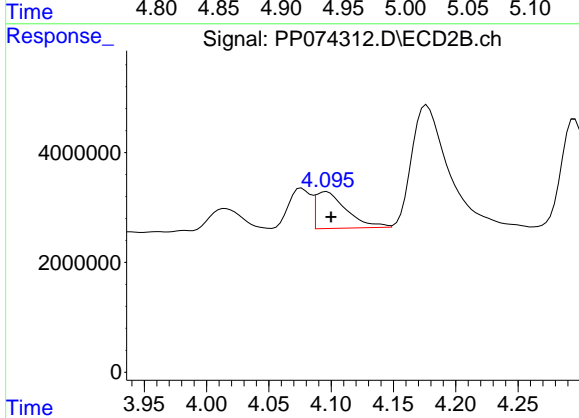
R.T.: 4.015 min
 Delta R.T.: 0.000 min
 Response: 7506274
 Conc: 152.92 ng/ml



#9 AR-1221-2

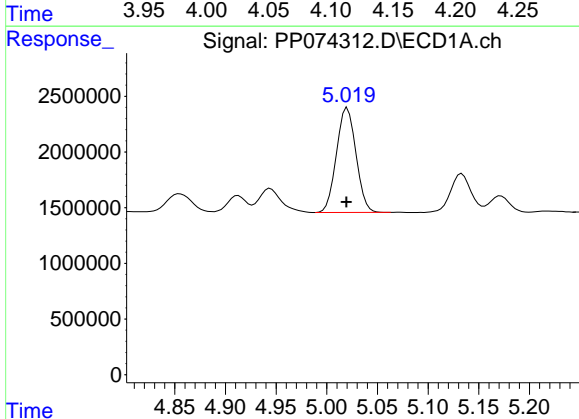
R.T.: 4.944 min
 Delta R.T.: 0.000 min
 Response: 3234077
 Conc: 256.65 ng/ml

Instrument :
 ECD_P
 ClientSampleId :
 BIN0009-DRIVEWAY-TP-SOUTH-EASTMSD



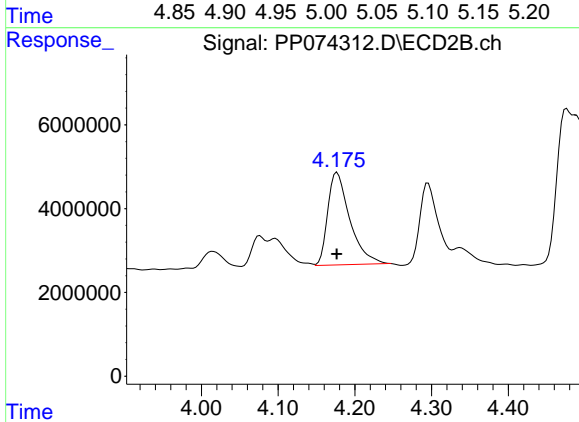
#9 AR-1221-2

R.T.: 4.096 min
 Delta R.T.: -0.003 min
 Response: 11463855
 Conc: 319.42 ng/ml



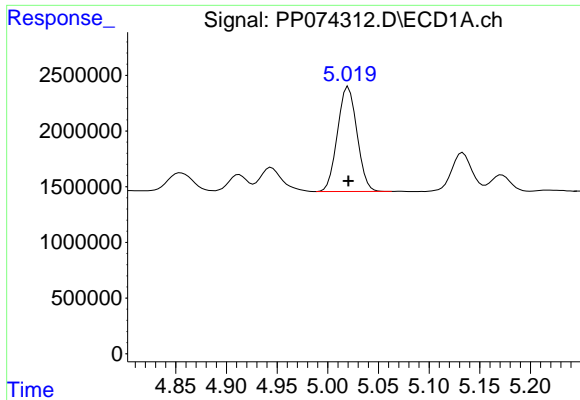
#10 AR-1221-3

R.T.: 5.020 min
 Delta R.T.: 0.001 min
 Response: 12623046
 Conc: 344.56 ng/ml



#10 AR-1221-3

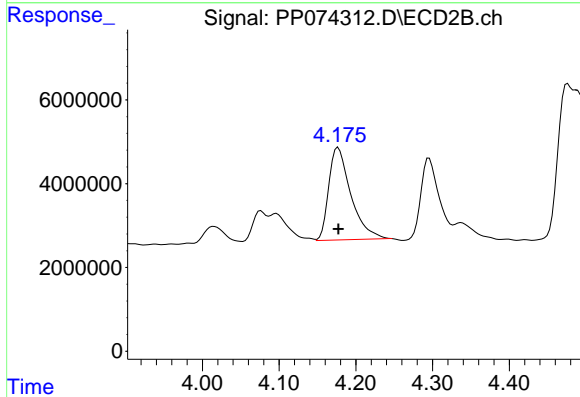
R.T.: 4.177 min
 Delta R.T.: 0.000 min
 Response: 44378559
 Conc: 328.18 ng/ml



#11 AR-1232-1

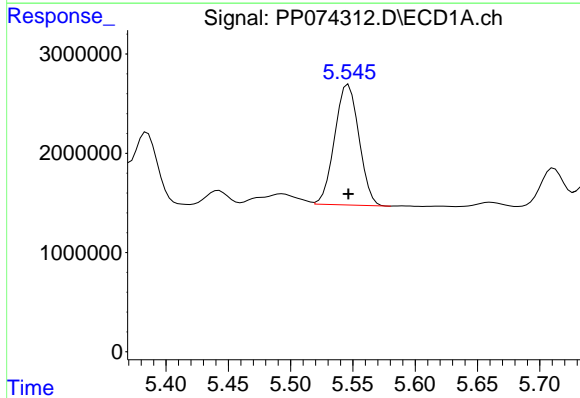
R.T.: 5.020 min
 Delta R.T.: 0.000 min
 Response: 12623046
 Conc: 434.72 ng/ml

Instrument :
 ECD_P
 ClientSampleId :
 BIN0009-DRIVEWAY-TP-SOUTH-EASTMSD



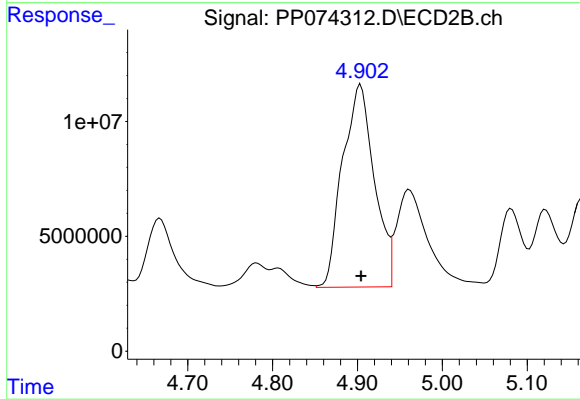
#11 AR-1232-1

R.T.: 4.177 min
 Delta R.T.: 0.000 min
 Response: 44378559
 Conc: 437.82 ng/ml



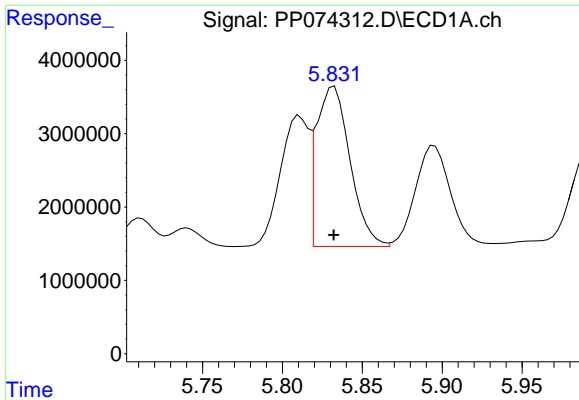
#12 AR-1232-2

R.T.: 5.546 min
 Delta R.T.: 0.000 min
 Response: 16536497
 Conc: 1099.30 ng/ml



#12 AR-1232-2

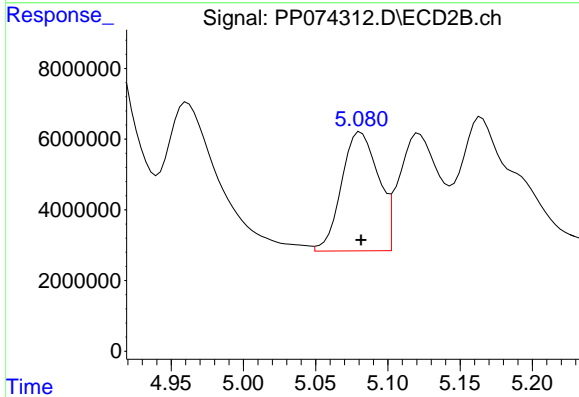
R.T.: 4.904 min
 Delta R.T.: 0.000 min
 Response: 229504954
 Conc: 1316.98 ng/ml



#13 AR-1232-3

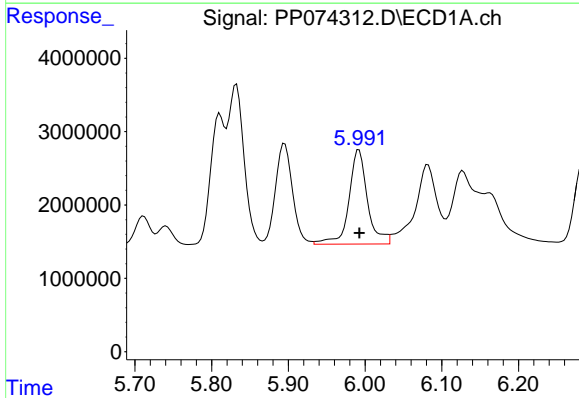
R.T.: 5.832 min
 Delta R.T.: 0.000 min
 Response: 31957321
 Conc: 1101.91 ng/ml

Instrument :
 ECD_P
 ClientSampleId :
 BIN0009-DRIVEWAY-TP-SOUTH-EASTMSD



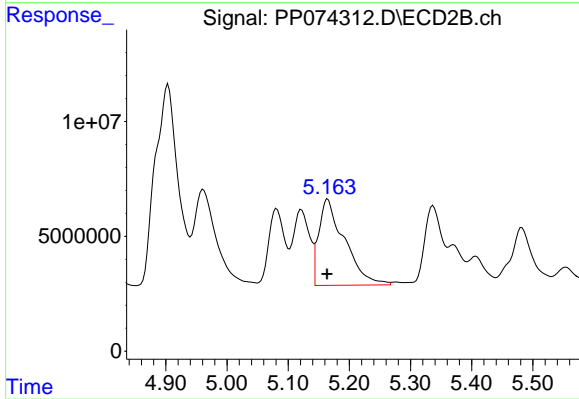
#13 AR-1232-3

R.T.: 5.081 min
 Delta R.T.: 0.000 min
 Response: 59483478
 Conc: 1298.29 ng/ml



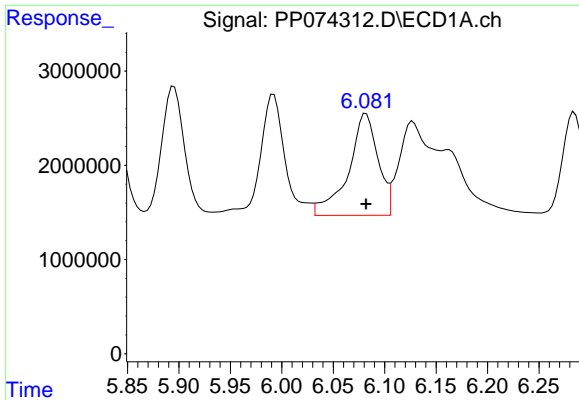
#14 AR-1232-4

R.T.: 5.992 min
 Delta R.T.: 0.000 min
 Response: 21722805
 Conc: 1404.30 ng/ml



#14 AR-1232-4

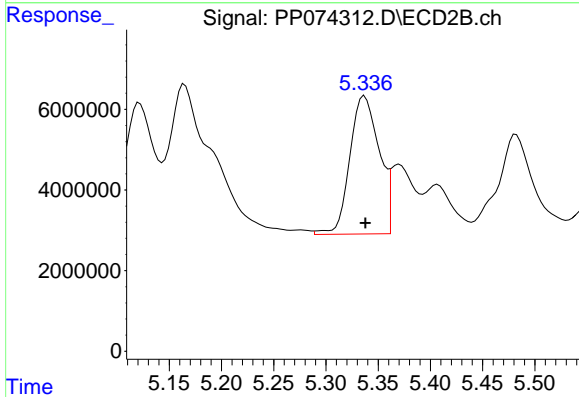
R.T.: 5.165 min
 Delta R.T.: 0.001 min
 Response: 110257786
 Conc: 1900.65 ng/ml



#15 AR-1232-5

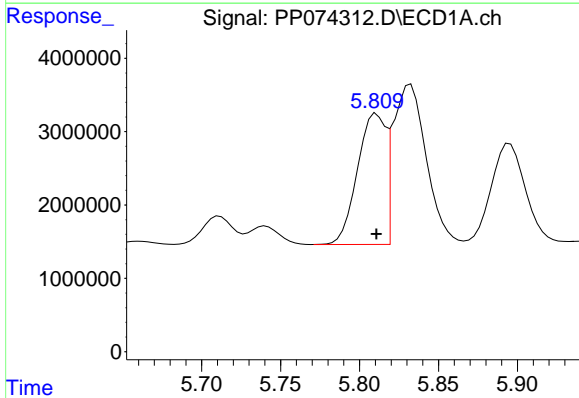
R.T.: 6.082 min
 Delta R.T.: 0.000 min
 Response: 21659891
 Conc: 1848.74 ng/ml

Instrument :
 ECD_P
 ClientSampleId :
 BIN0009-DRIVEWAY-TP-SOUTH-EASTMSD



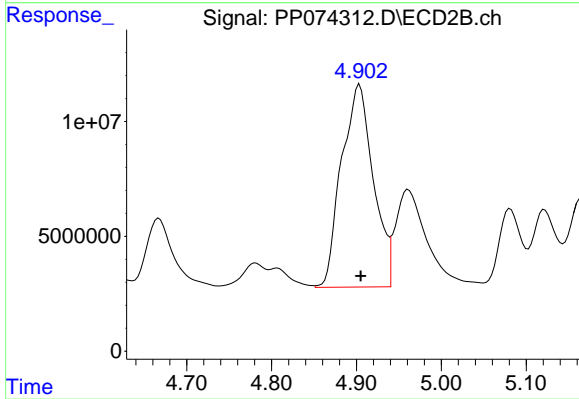
#15 AR-1232-5

R.T.: 5.337 min
 Delta R.T.: 0.000 min
 Response: 66799585
 Conc: 1421.89 ng/ml



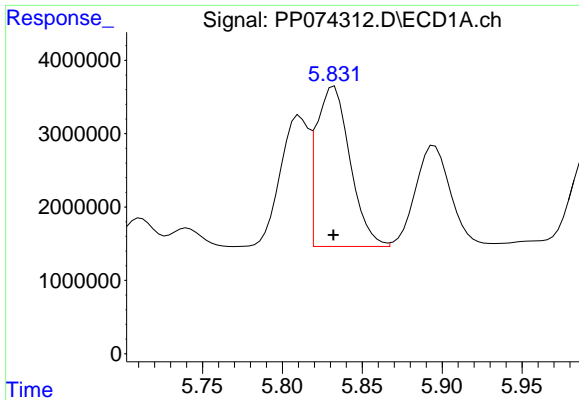
#16 AR-1242-1

R.T.: 5.811 min
 Delta R.T.: 0.000 min
 Response: 22025300
 Conc: 591.03 ng/ml



#16 AR-1242-1

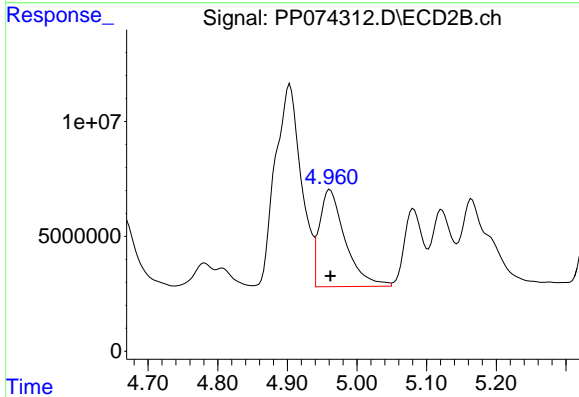
R.T.: 4.904 min
 Delta R.T.: -0.001 min
 Response: 229504954
 Conc: 664.96 ng/ml



#17 AR-1242-2

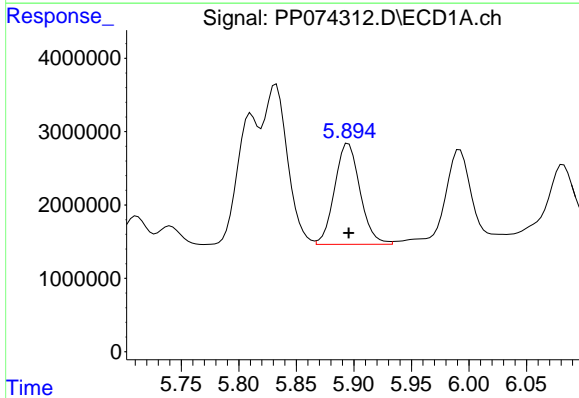
R.T.: 5.832 min
 Delta R.T.: 0.000 min
 Response: 31957321
 Conc: 587.35 ng/ml

Instrument :
 ECD_P
 ClientSampleId :
 BIN0009-DRIVEWAY-TP-SOUTH-EASTMSD



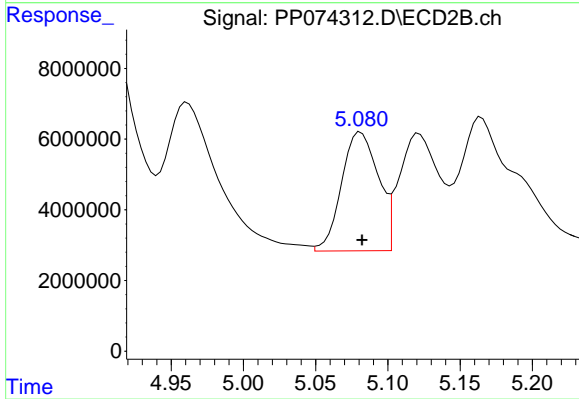
#17 AR-1242-2

R.T.: 4.961 min
 Delta R.T.: 0.000 min
 Response: 109004993
 Conc: 667.20 ng/ml



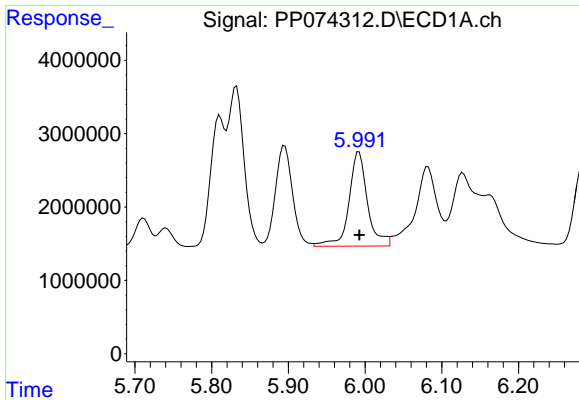
#18 AR-1242-3

R.T.: 5.895 min
 Delta R.T.: 0.000 min
 Response: 21162376
 Conc: 592.19 ng/ml



#18 AR-1242-3

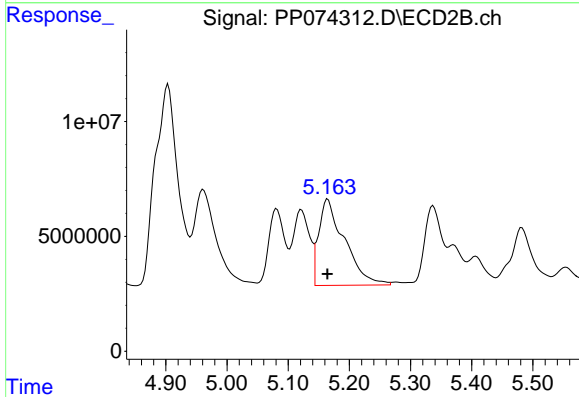
R.T.: 5.081 min
 Delta R.T.: 0.000 min
 Response: 59483478
 Conc: 644.82 ng/ml



#19 AR-1242-4

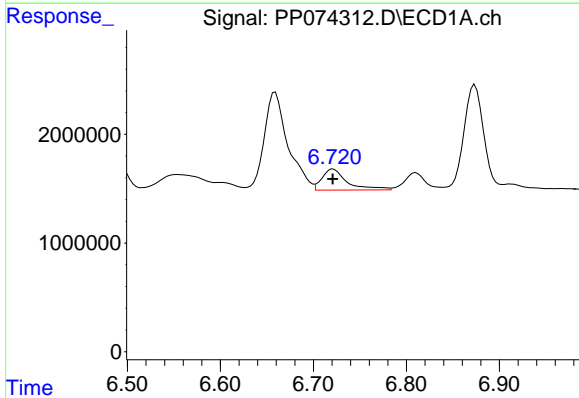
R.T.: 5.992 min
 Delta R.T.: 0.000 min
 Response: 21722805
 Conc: 743.46 ng/ml

Instrument :
 ECD_P
ClientSampleId :
 BIN0009-DRIVEWAY-TP-SOUTH-EASTMSD



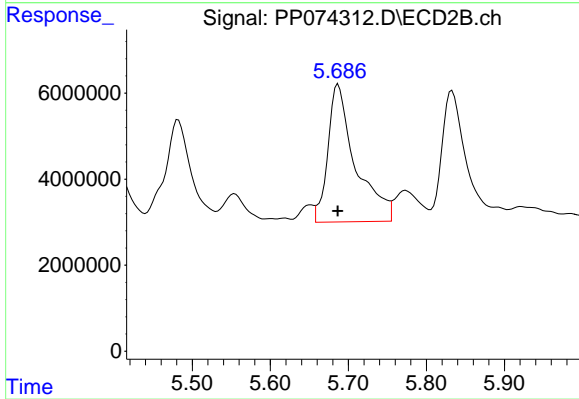
#19 AR-1242-4

R.T.: 5.165 min
 Delta R.T.: 0.000 min
 Response: 110257786
 Conc: 923.26 ng/ml



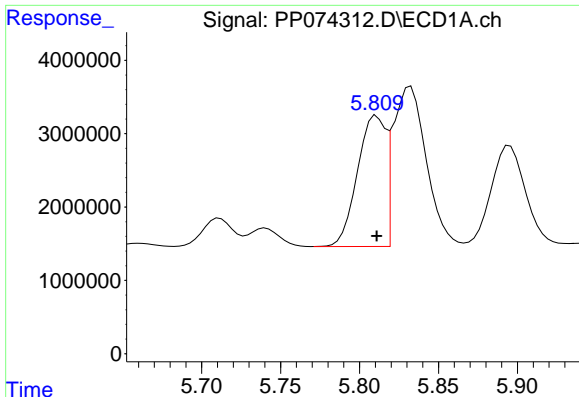
#20 AR-1242-5

R.T.: 6.721 min
 Delta R.T.: 0.000 min
 Response: 3619251
 Conc: 101.78 ng/ml



#20 AR-1242-5

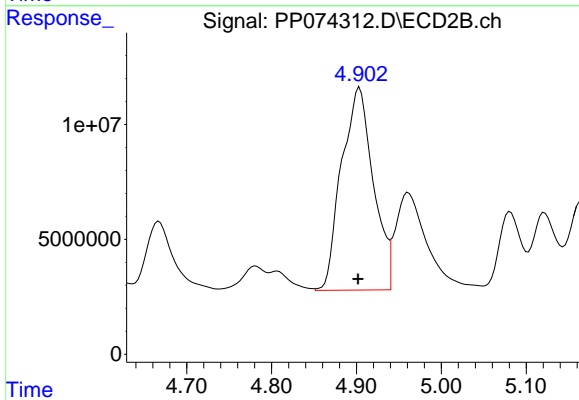
R.T.: 5.687 min
 Delta R.T.: 0.000 min
 Response: 78352361
 Conc: 523.89 ng/ml



#21 AR-1248-1

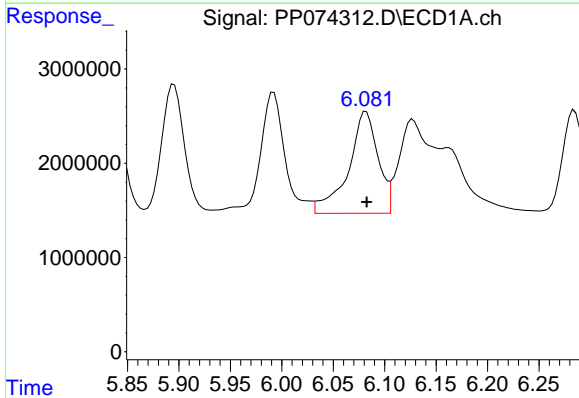
R.T.: 5.811 min
 Delta R.T.: 0.000 min
 Response: 22025300
 Conc: 786.21 ng/ml

Instrument :
 ECD_P
 ClientSampleId :
 BIN0009-DRIVEWAY-TP-SOUTH-EASTMSD



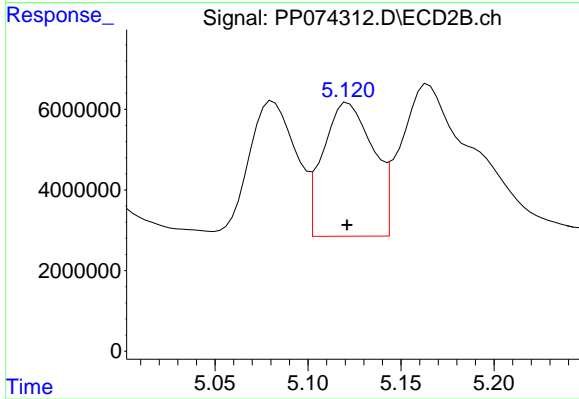
#21 AR-1248-1

R.T.: 4.904 min
 Delta R.T.: 0.002 min
 Response: 229504954
 Conc: 1072.80 ng/ml



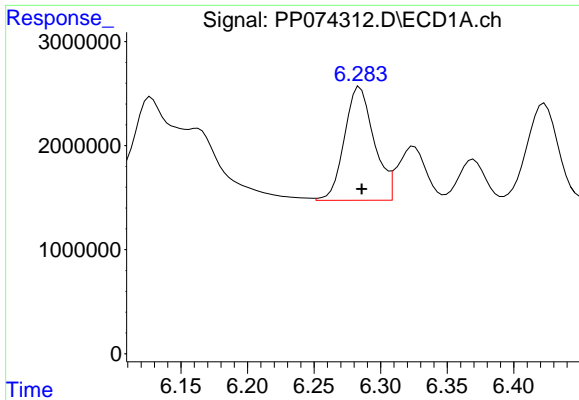
#22 AR-1248-2

R.T.: 6.082 min
 Delta R.T.: 0.000 min
 Response: 21659891
 Conc: 537.99 ng/ml



#22 AR-1248-2

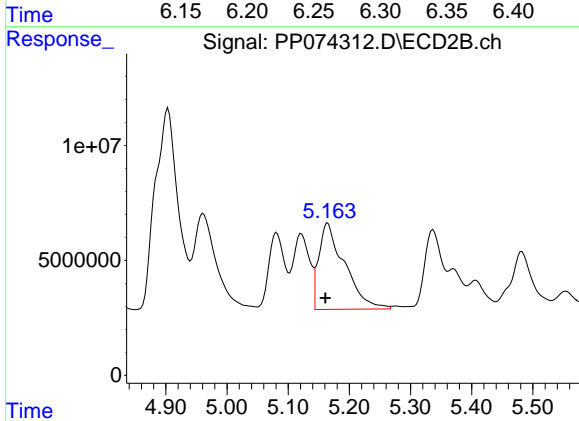
R.T.: 5.122 min
 Delta R.T.: 0.000 min
 Response: 62077143
 Conc: 424.28 ng/ml



#23 AR-1248-3

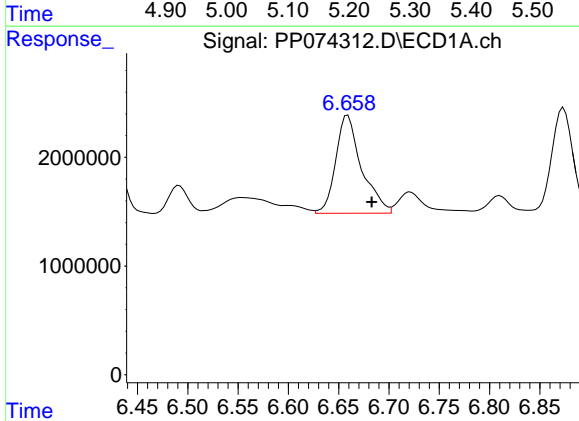
R.T.: 6.284 min
 Delta R.T.: -0.001 min
 Response: 16835913
 Conc: 377.71 ng/ml

Instrument :
 ECD_P
ClientSampleId :
 BIN0009-DRIVEWAY-TP-SOUTH-EASTMSD



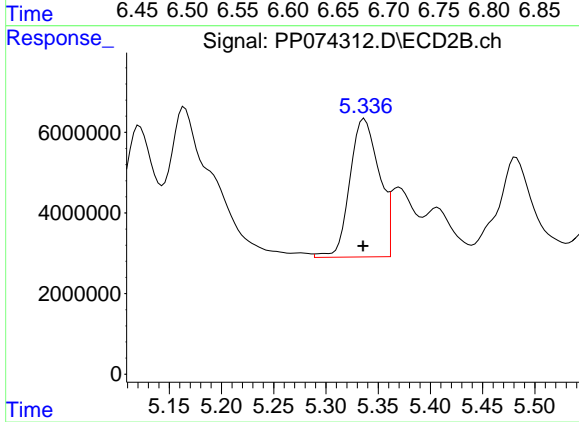
#23 AR-1248-3

R.T.: 5.165 min
 Delta R.T.: 0.004 min
 Response: 110257786
 Conc: 643.05 ng/ml



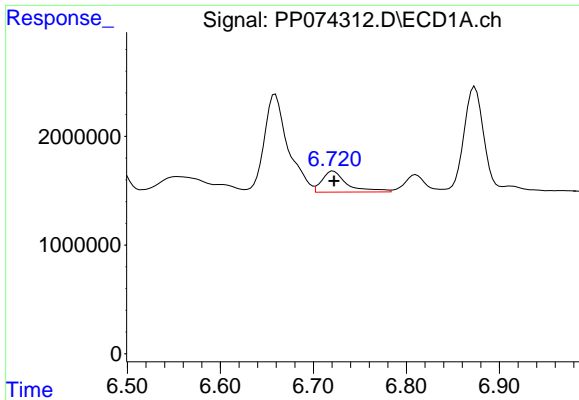
#24 AR-1248-4

R.T.: 6.659 min
 Delta R.T.: -0.024 min
 Response: 16084366
 Conc: 309.09 ng/ml



#24 AR-1248-4

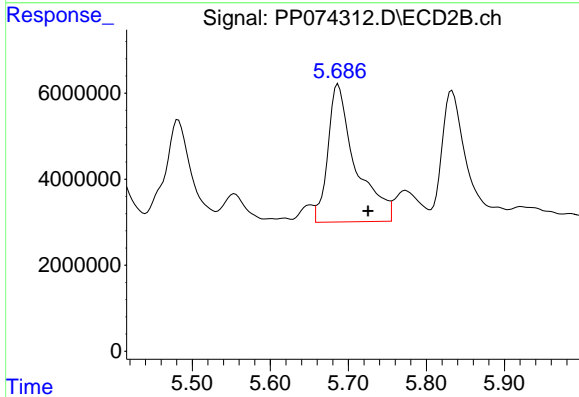
R.T.: 5.337 min
 Delta R.T.: 0.002 min
 Response: 66799585
 Conc: 401.50 ng/ml



#25 AR-1248-5

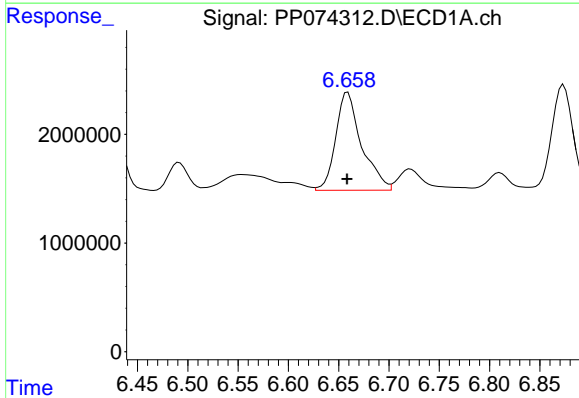
R.T.: 6.721 min
 Delta R.T.: 0.000 min
 Response: 3619251
 Conc: 63.56 ng/ml

Instrument :
 ECD_P
 ClientSampleId :
 BIN0009-DRIVEWAY-TP-SOUTH-EASTMSD



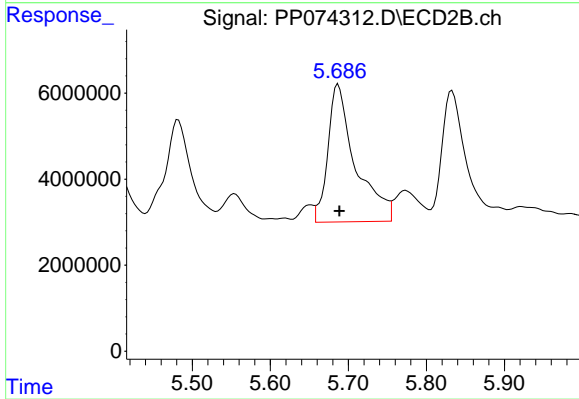
#25 AR-1248-5

R.T.: 5.687 min
 Delta R.T.: -0.038 min
 Response: 78352361
 Conc: 269.28 ng/ml



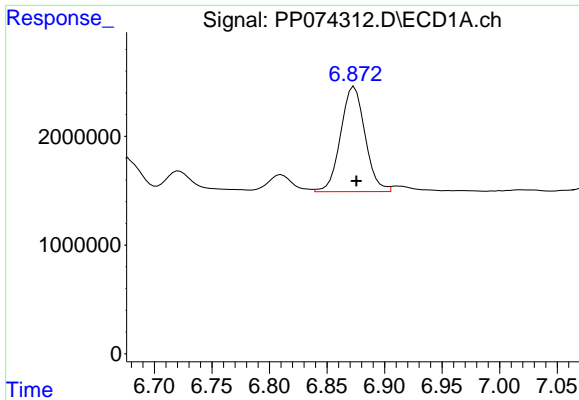
#26 AR-1254-1

R.T.: 6.659 min
 Delta R.T.: 0.000 min
 Response: 16084366
 Conc: 305.55 ng/ml



#26 AR-1254-1

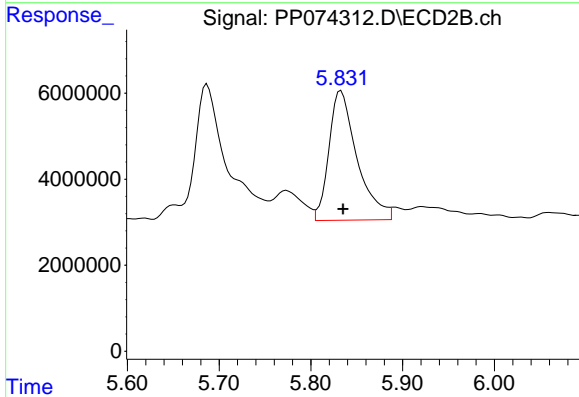
R.T.: 5.687 min
 Delta R.T.: -0.002 min
 Response: 78352361
 Conc: 213.97 ng/ml



#27 AR-1254-2

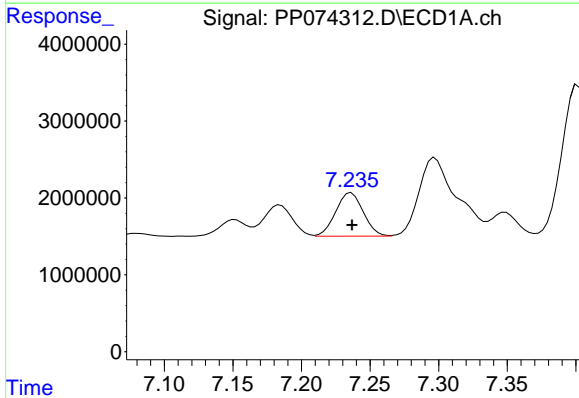
R.T.: 6.874 min
 Delta R.T.: -0.002 min
 Response: 14315175
 Conc: 180.05 ng/ml

Instrument :
 ECD_P
 ClientSampleId :
 BIN0009-DRIVEWAY-TP-SOUTH-EASTMSD



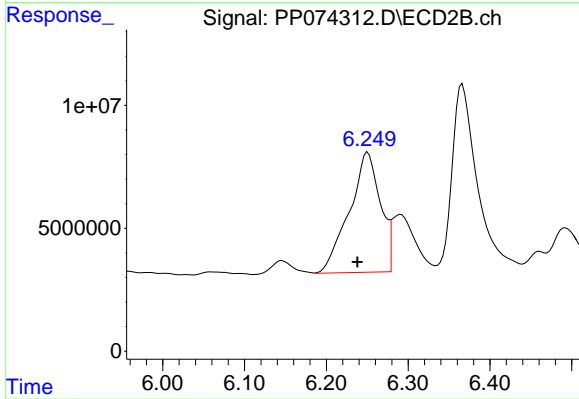
#27 AR-1254-2

R.T.: 5.833 min
 Delta R.T.: -0.002 min
 Response: 64254931
 Conc: 230.95 ng/ml



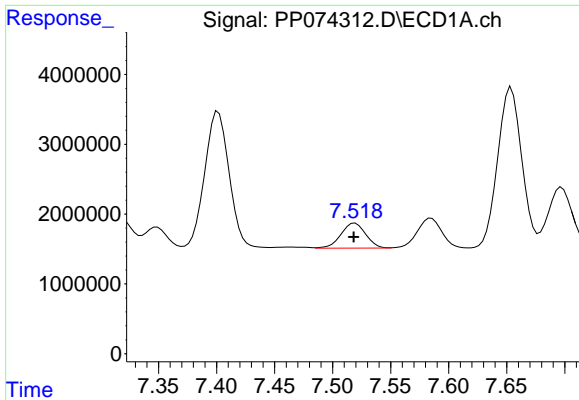
#28 AR-1254-3

R.T.: 7.236 min
 Delta R.T.: 0.000 min
 Response: 7875880
 Conc: 90.20 ng/ml



#28 AR-1254-3

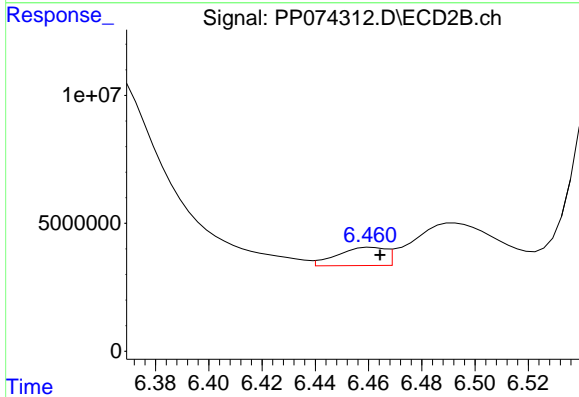
R.T.: 6.251 min
 Delta R.T.: 0.013 min
 Response: 128256966
 Conc: 262.17 ng/ml



#29 AR-1254-4

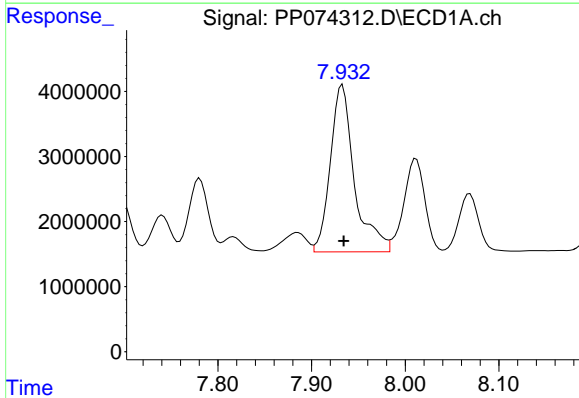
R.T.: 7.519 min
 Delta R.T.: 0.000 min
 Response: 5330889
 Conc: 83.54 ng/ml

Instrument :
 ECD_P
 ClientSampleId :
 BIN0009-DRIVEWAY-TP-SOUTH-EASTMSD



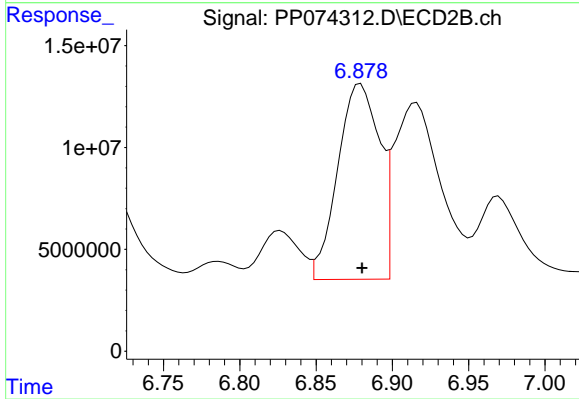
#29 AR-1254-4

R.T.: 6.461 min
 Delta R.T.: -0.003 min
 Response: 8960018
 Conc: 24.38 ng/ml



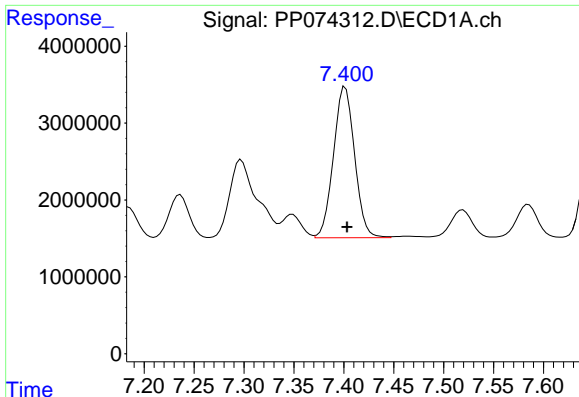
#30 AR-1254-5

R.T.: 7.933 min
 Delta R.T.: -0.001 min
 Response: 45905141
 Conc: 565.72 ng/ml



#30 AR-1254-5

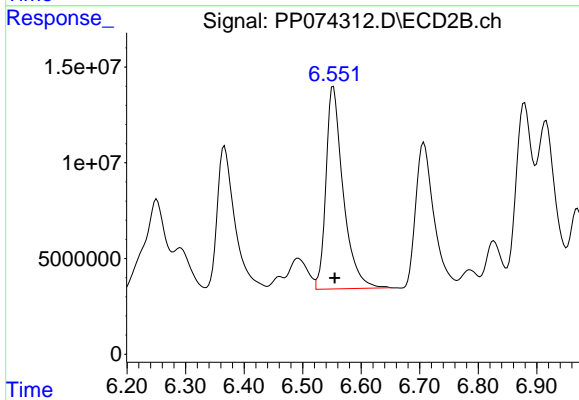
R.T.: 6.879 min
 Delta R.T.: 0.000 min
 Response: 181816593
 Conc: 472.05 ng/ml



#31 AR-1260-1

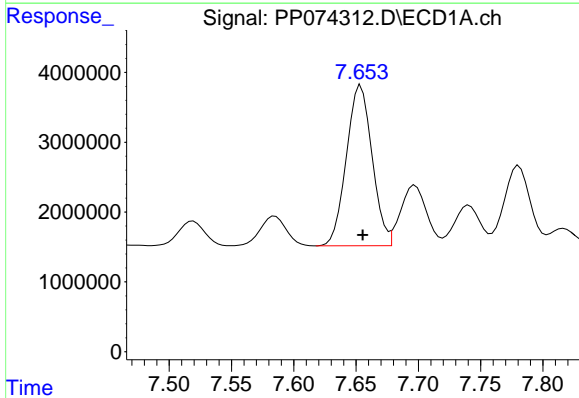
R.T.: 7.402 min
 Delta R.T.: -0.002 min
 Response: 28910383
 Conc: 513.00 ng/ml

Instrument :
 ECD_P
 ClientSampleId :
 BIN0009-DRIVEWAY-TP-SOUTH-EASTMSD



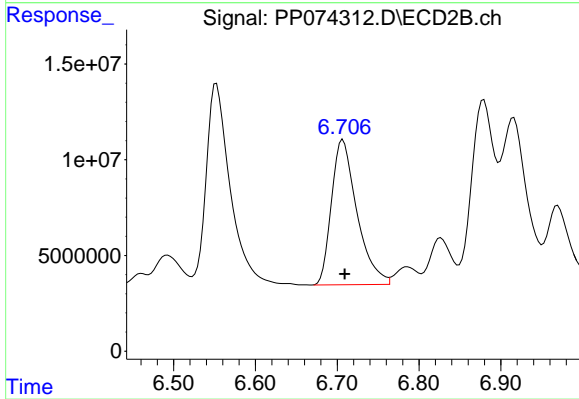
#31 AR-1260-1

R.T.: 6.552 min
 Delta R.T.: -0.002 min
 Response: 216685736
 Conc: 536.41 ng/ml



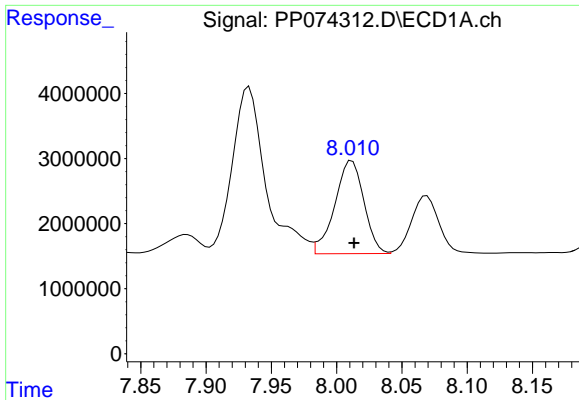
#32 AR-1260-2

R.T.: 7.654 min
 Delta R.T.: -0.002 min
 Response: 33152517
 Conc: 486.45 ng/ml



#32 AR-1260-2

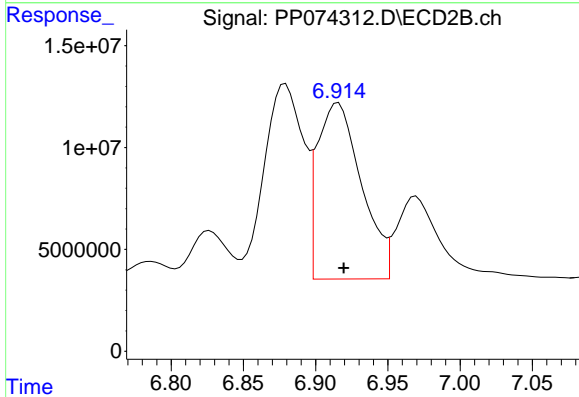
R.T.: 6.707 min
 Delta R.T.: -0.002 min
 Response: 163962965
 Conc: 524.35 ng/ml



#33 AR-1260-3

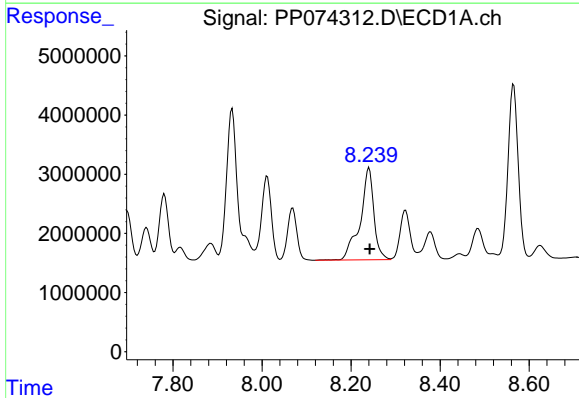
R.T.: 8.012 min
Delta R.T.: -0.002 min
Response: 22216794
Conc: 416.86 ng/ml

Instrument :
ECD_P
ClientSampleId :
BIN0009-DRIVEWAY-TP-SOUTH-EASTMSD



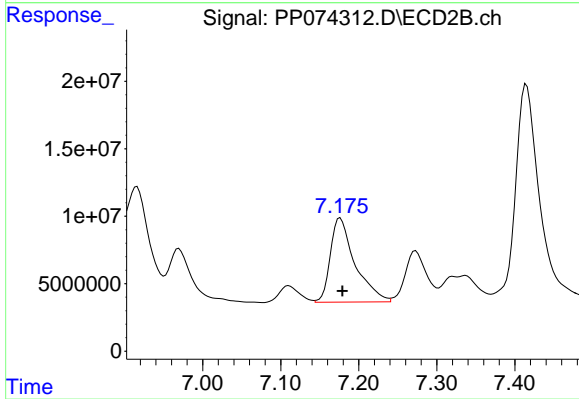
#33 AR-1260-3

R.T.: 6.916 min
Delta R.T.: -0.004 min
Response: 183583696
Conc: 465.81 ng/ml



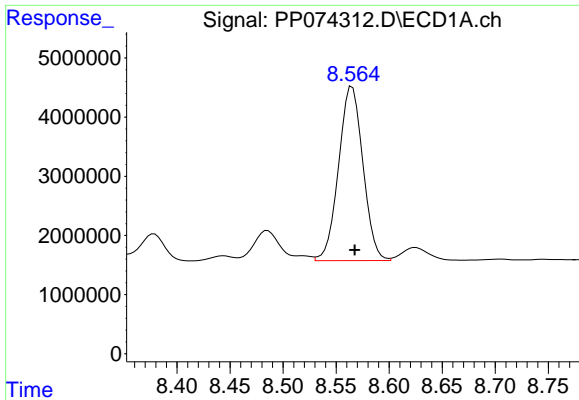
#34 AR-1260-4

R.T.: 8.240 min
Delta R.T.: -0.001 min
Response: 33304829
Conc: 531.90 ng/ml



#34 AR-1260-4

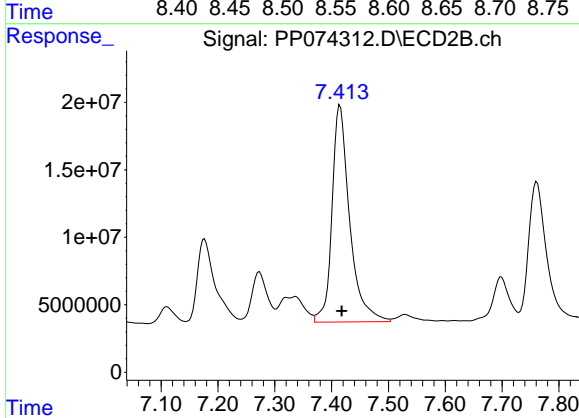
R.T.: 7.176 min
Delta R.T.: -0.003 min
Response: 137001180
Conc: 470.83 ng/ml



#35 AR-1260-5

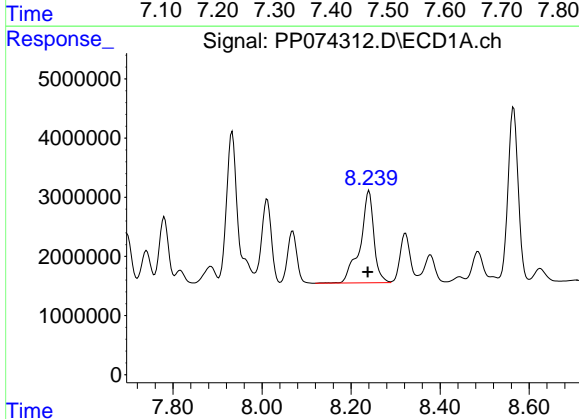
R.T.: 8.565 min
 Delta R.T.: -0.002 min
 Response: 47018435
 Conc: 414.97 ng/ml

Instrument :
 ECD_P
 ClientSampleId :
 BIN0009-DRIVEWAY-TP-SOUTH-EASTMSD



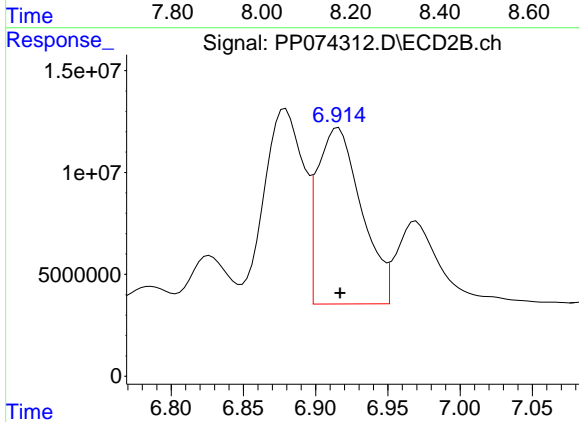
#35 AR-1260-5

R.T.: 7.415 min
 Delta R.T.: -0.003 min
 Response: 347264975
 Conc: 458.49 ng/ml



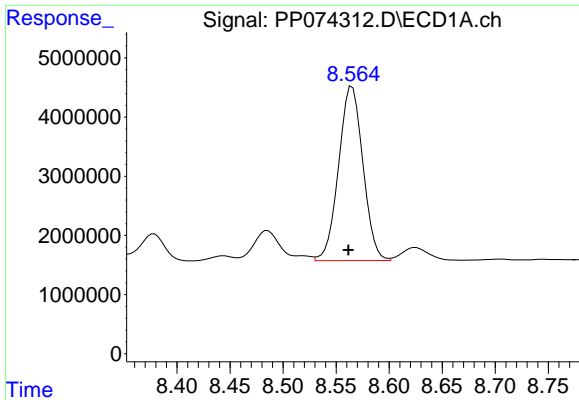
#36 AR-1262-1

R.T.: 8.240 min
 Delta R.T.: 0.003 min
 Response: 33304829
 Conc: 439.44 ng/ml



#36 AR-1262-1

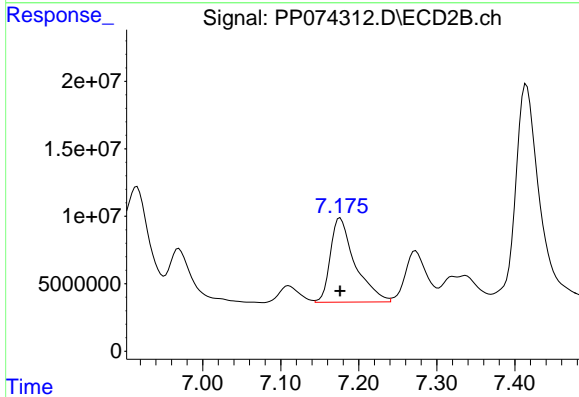
R.T.: 6.916 min
 Delta R.T.: -0.001 min
 Response: 183583696
 Conc: 326.00 ng/ml



#37 AR-1262-2

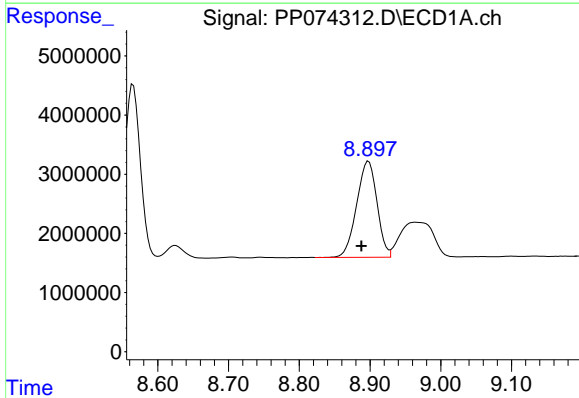
R.T.: 8.565 min
 Delta R.T.: 0.003 min
 Response: 47018435
 Conc: 360.49 ng/ml

Instrument :
 ECD_P
 ClientSampleId :
 BIN0009-DRIVEWAY-TP-SOUTH-EASTMSD



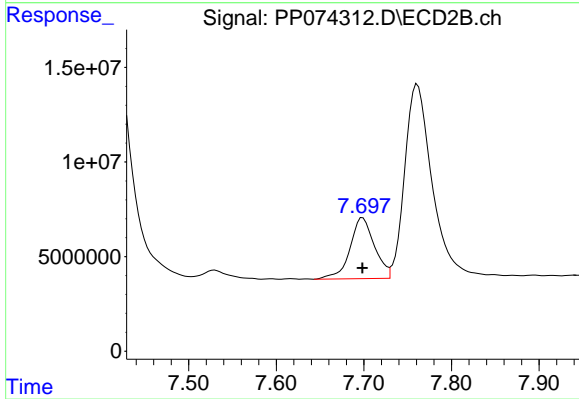
#37 AR-1262-2

R.T.: 7.176 min
 Delta R.T.: 0.000 min
 Response: 137001180
 Conc: 341.63 ng/ml



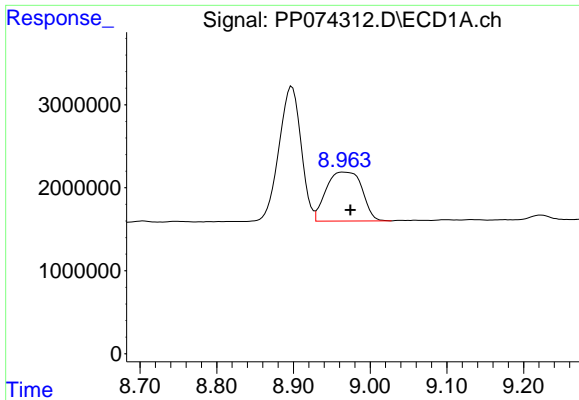
#38 AR-1262-3

R.T.: 8.898 min
 Delta R.T.: 0.010 min
 Response: 32396274
 Conc: 344.38 ng/ml



#38 AR-1262-3

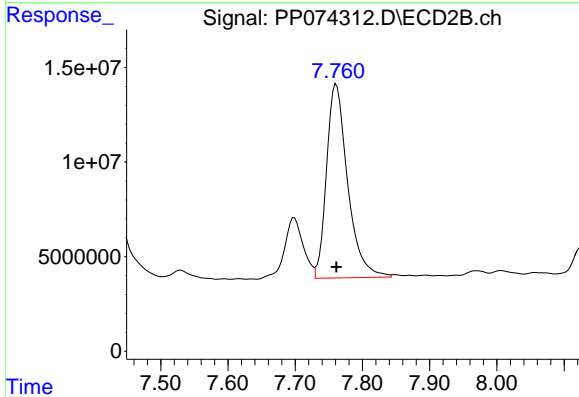
R.T.: 7.699 min
 Delta R.T.: 0.000 min
 Response: 62513496
 Conc: 173.90 ng/ml



#39 AR-1262-4

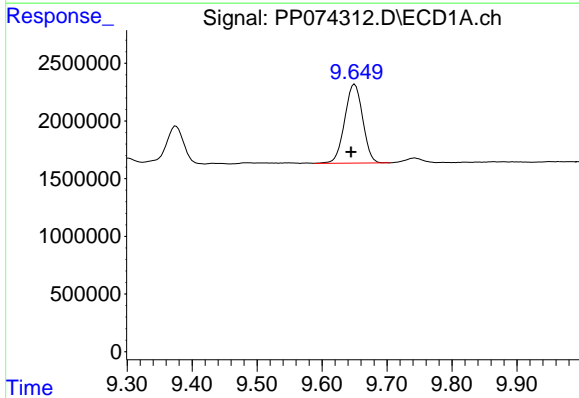
R.T.: 8.965 min
 Delta R.T.: -0.009 min
 Response: 19192646
 Conc: 263.45 ng/ml

Instrument :
 ECD_P
ClientSampleId :
 BIN0009-DRIVEWAY-TP-SOUTH-EASTMSD



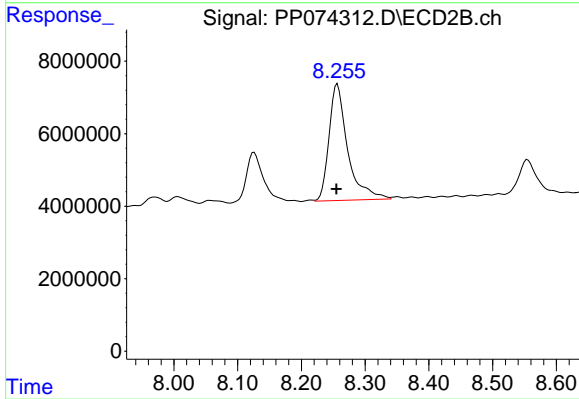
#39 AR-1262-4

R.T.: 7.761 min
 Delta R.T.: 0.000 min
 Response: 222582802
 Conc: 333.75 ng/ml



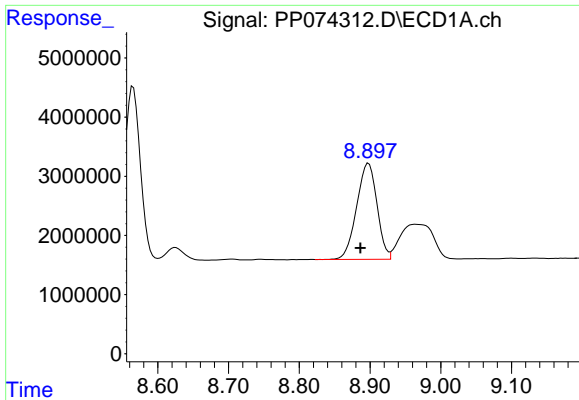
#40 AR-1262-5

R.T.: 9.650 min
 Delta R.T.: 0.006 min
 Response: 13192444
 Conc: 259.07 ng/ml



#40 AR-1262-5

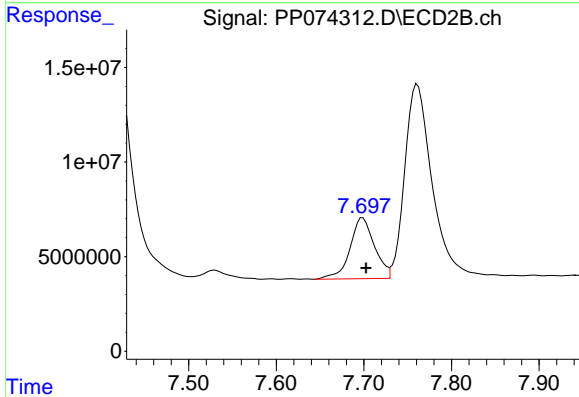
R.T.: 8.257 min
 Delta R.T.: 0.002 min
 Response: 65413925
 Conc: 230.93 ng/ml



#41 AR-1268-1

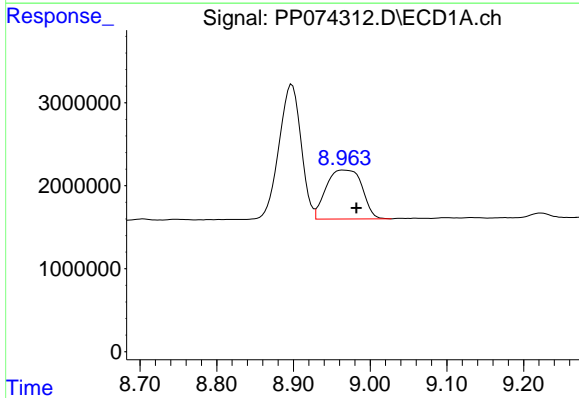
R.T.: 8.898 min
 Delta R.T.: 0.012 min
 Response: 32396274
 Conc: 208.16 ng/ml

Instrument :
 ECD_P
 ClientSampleId :
 BIN0009-DRIVEWAY-TP-SOUTH-EASTMSD



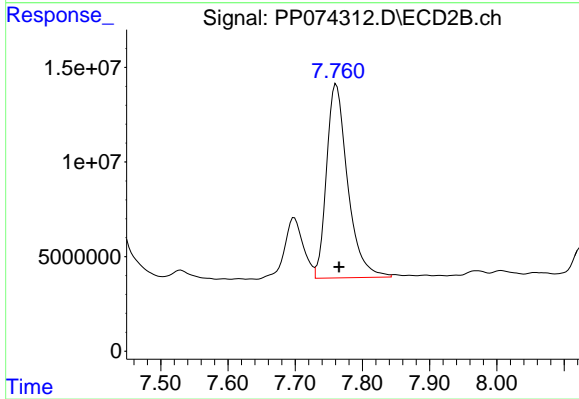
#41 AR-1268-1

R.T.: 7.699 min
 Delta R.T.: -0.004 min
 Response: 62513496
 Conc: 57.34 ng/ml



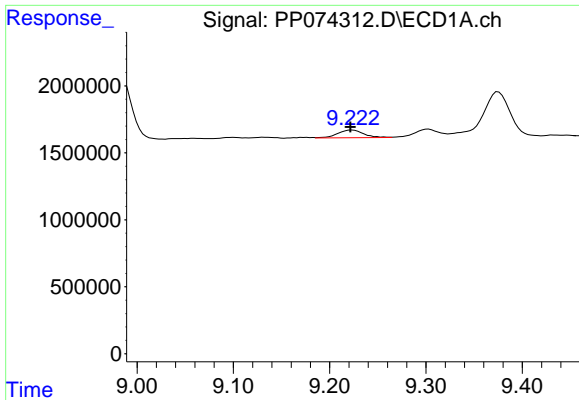
#42 AR-1268-2

R.T.: 8.965 min
 Delta R.T.: -0.017 min
 Response: 19192646
 Conc: 133.82 ng/ml



#42 AR-1268-2

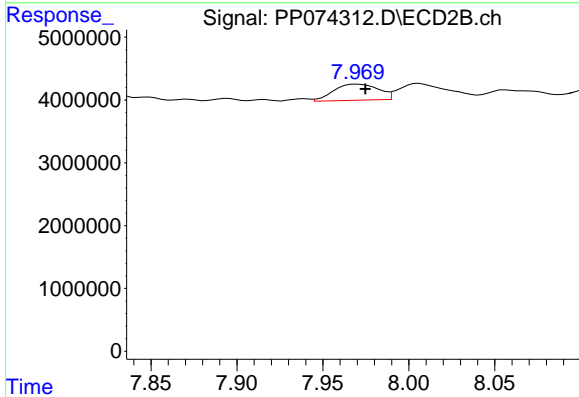
R.T.: 7.761 min
 Delta R.T.: -0.004 min
 Response: 222582802
 Conc: 209.72 ng/ml



#43 AR-1268-3

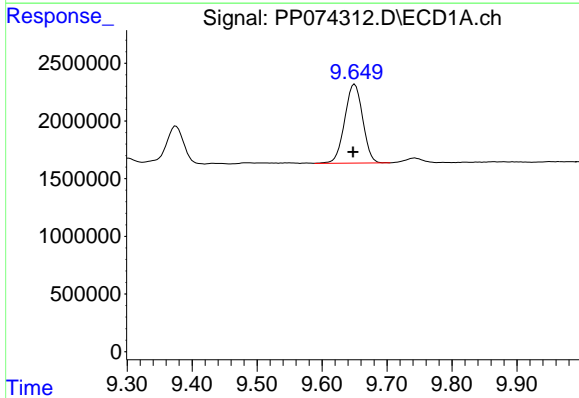
R.T.: 9.223 min
 Delta R.T.: 0.001 min
 Response: 1061987
 Conc: 8.89 ng/ml

Instrument : ECD_P
 ClientSampleId : BIN0009-DRIVEWAY-TP-SOUTH-EASTMSD



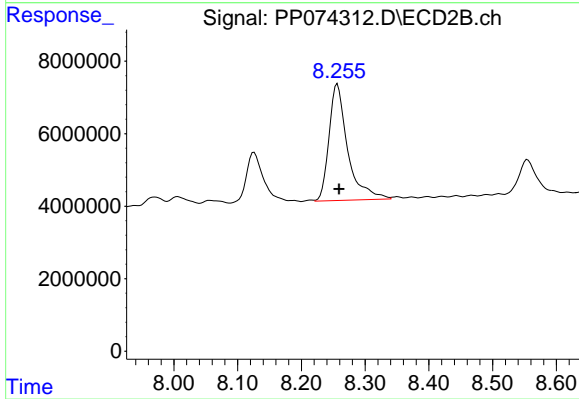
#43 AR-1268-3

R.T.: 7.970 min
 Delta R.T.: -0.005 min
 Response: 4622455
 Conc: 5.56 ng/ml



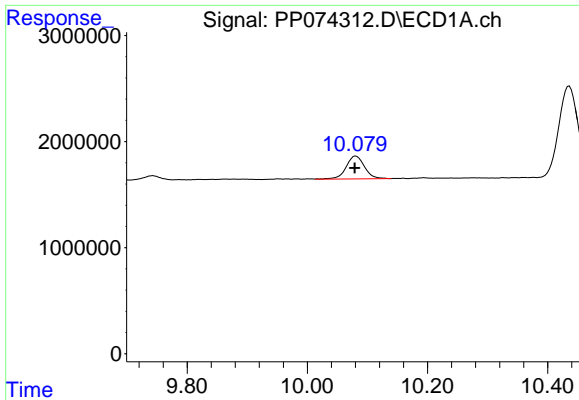
#44 AR-1268-4

R.T.: 9.650 min
 Delta R.T.: 0.002 min
 Response: 13192444
 Conc: 224.31 ng/ml



#44 AR-1268-4

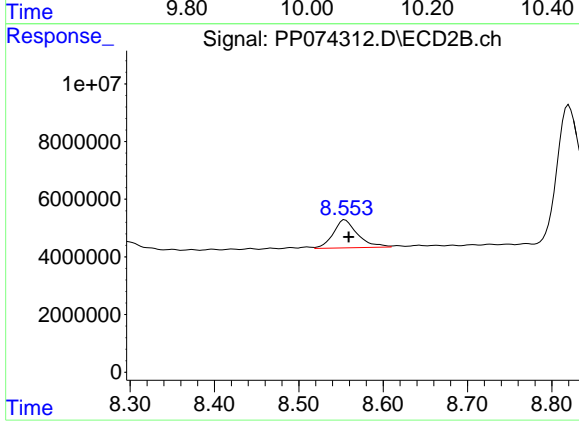
R.T.: 8.257 min
 Delta R.T.: -0.003 min
 Response: 65413925
 Conc: 212.34 ng/ml



#45 AR-1268-5

R.T.: 10.081 min
 Delta R.T.: 0.002 min
 Response: 4521037
 Conc: 12.85 ng/ml

Instrument : ECD_P
 ClientSampleId : BIN0009-DRIVEWAY-TP-SOUTH-EASTMSD



#45 AR-1268-5

R.T.: 8.555 min
 Delta R.T.: -0.004 min
 Response: 19485839
 Conc: 7.64 ng/ml