

Data Path : Z:\pestpcbsrv\HPCHEM1\ECD_P\Data\PP081225\
 Data File : PP074314.D
 Signal(s) : Signal #1: ECD1A.ch Signal #2: ECD2B.ch
 Acq On : 12 Aug 2025 14:26
 Operator : YP\AJ
 Sample : Q2830-07
 Misc :
 ALS Vial : 14 Sample Multiplier: 1

Instrument :
 ECD_P
ClientSampleId :
 BIN0009-DRIVEWAY-TP-EASTSIDE

Integration File signal 1: autoint1.e
 Integration File signal 2: autoint2.e
 Quant Time: Aug 12 14:51:56 2025
 Quant Method : Z:\pestpcbsrv\HPCHEM1\ECD_P\methods\PP080125.M
 Quant Title : GC EXTRACTABLES
 QLast Update : Mon Aug 04 11:01:49 2025
 Response via : Initial Calibration
 Integrator: ChemStation

Volume Inj. : 2 µl
 Signal #1 Phase : ZB-MR1 Signal #2 Phase: ZB-MR2
 Signal #1 Info : 30Mx0.32mmx 0.50µ Signal #2 Info : 30M x 0.32mm x 0.25µm

Compound	RT#1	RT#2	Resp#1	Resp#2	ng/ml	ng/ml
System Monitoring Compounds						
1) SA Tetrachlo...	4.658	3.803	24705562	68578848	22.092	17.885
2) SA Decachlor...	10.435	8.820	15293757	82209523	15.748	13.671
Target Compounds						
3) L1 AR-1016-1	5.812	4.898	466479	4105431	11.307	10.292
4) L1 AR-1016-2	5.831	4.964	692514	1827522	11.401	9.731
5) L1 AR-1016-3	5.896	5.084	777139	1448913	19.595	13.660 #
6) L1 AR-1016-4	5.981	5.125	1587920	2321413	48.792	21.254 #
7) L1 AR-1016-5	6.283	5.336	565412	3753081	17.414	32.088 #
8) L2 AR-1221-1	4.857	4.005	1224440	118935	73.042	2.423 #
9) L2 AR-1221-2	4.959	4.104	529686	1732981	42.035	48.287
10) L2 AR-1221-3	5.019	4.178	217146	572503	5.927	4.234 #
11) L3 AR-1232-1	5.019	4.178	217146	572503	7.478	5.648
12) L3 AR-1232-2	5.539	4.898	1688072	4105431	112.219	23.558 #
13) L3 AR-1232-3	5.831	5.084	692514	1448913	23.878	31.624 #
14) L3 AR-1232-4	5.981	5.165	1587920	2581592	102.653	44.502 #
15) L3 AR-1232-5	6.081	5.336	1209280	3753081	103.216	79.888
16) L4 AR-1242-1	5.812	4.898	466479	4105431	12.518	11.895
17) L4 AR-1242-2	5.831	4.964	692514	1827522	12.728	11.186
18) L4 AR-1242-3	5.896	5.084	777139	1448913	21.747	15.707 #
19) L4 AR-1242-4	5.981	5.165	1587920	2581592	54.346	21.617 #
20) L4 AR-1242-5	6.721	5.685	1818057	2640458	51.129	17.655 #
21) L5 AR-1248-1	5.812	4.898	466479	4105431	16.651	19.190
22) L5 AR-1248-2	6.081	5.125	1209280	2321413	30.036	15.866 #
23) L5 AR-1248-3	6.283	5.165	565412	2581592	12.685	15.057
24) L5 AR-1248-4	6.678	5.336	1029825	3753081	19.790	22.558
25) L5 AR-1248-5	6.721	5.746	1818057	5040433	31.928	17.323 #
26) L6 AR-1254-1	6.658	5.685	1076280	2640458	20.446	7.211 #
27) L6 AR-1254-2	6.873	5.830	1469118	1902168	18.478	6.837 #
28) L6 AR-1254-3	7.234	6.238	1151248	2140956	13.185	4.376 #
29) L6 AR-1254-4	7.517	6.459	383422	1260342	6.009	3.429 #
30) L6 AR-1254-5	7.932	6.875	508178	1302734	6.263	3.382 #
31) L7 AR-1260-1	7.399	6.553	180384	920716	3.201	2.279 #
32) L7 AR-1260-2	7.635	6.706	918924	1112829	13.483	3.559 #
33) L7 AR-1260-3	8.010	6.910	150754	481349	2.829	1.221 #
34) L7 AR-1260-4	8.211	7.172	1122067	635463	17.920	2.184 #
35) L7 AR-1260-5	8.564	7.418	302996	715976	2.674	0.945 #
36) L8 AR-1262-1	8.211	6.910	1122067	481349	14.805	0.855 #
37) L8 AR-1262-2	8.564	7.172	302996	635463	2.323	1.585 #
38) L8 AR-1262-3	8.889	7.694	502868	271557	5.346	0.755 #
39) L8 AR-1262-4	8.975	7.758	257467	861599	3.534	1.292 #
40) L8 AR-1262-5	0.000	8.246	0	192224	N.D.	0.679 #
41) L9 AR-1268-1	8.889	7.694	502868	271557	3.231	0.249 #

Data Path : Z:\pestpcbsrv\HPCHEM1\ECD_P\Data\PP081225\
 Data File : PP074314.D
 Signal(s) : Signal #1: ECD1A.ch Signal #2: ECD2B.ch
 Acq On : 12 Aug 2025 14:26
 Operator : YP\AJ
 Sample : Q2830-07
 Misc :
 ALS Vial : 14 Sample Multiplier: 1

Instrument :
 ECD_P
ClientSampleId :
 BIN0009-DRIVEWAY-TP-EASTSIDE

Integration File signal 1: autoint1.e
 Integration File signal 2: autoint2.e
 Quant Time: Aug 12 14:51:56 2025
 Quant Method : Z:\pestpcbsrv\HPCHEM1\ECD_P\methods\PP080125.M
 Quant Title : GC EXTRACTABLES
 QLast Update : Mon Aug 04 11:01:49 2025
 Response via : Initial Calibration
 Integrator: ChemStation

Volume Inj. : 2 µl
 Signal #1 Phase : ZB-MR1 Signal #2 Phase: ZB-MR2
 Signal #1 Info : 30Mx0.32mmx 0.50µ Signal #2 Info : 30M x 0.32mm x 0.25µm

	Compound	RT#1	RT#2	Resp#1	Resp#2	ng/ml	ng/ml
42)	L9 AR-1268-2	8.975	7.758	257467	861599	1.795	0.812 #
43)	L9 AR-1268-3	9.215	7.979	39580	560113	0.331	0.673 #
44)	L9 AR-1268-4	0.000	8.265	0	260759	N.D.	0.846 #
45)	L9 AR-1268-5	10.084	8.566	160001	323533	0.455	0.127 #

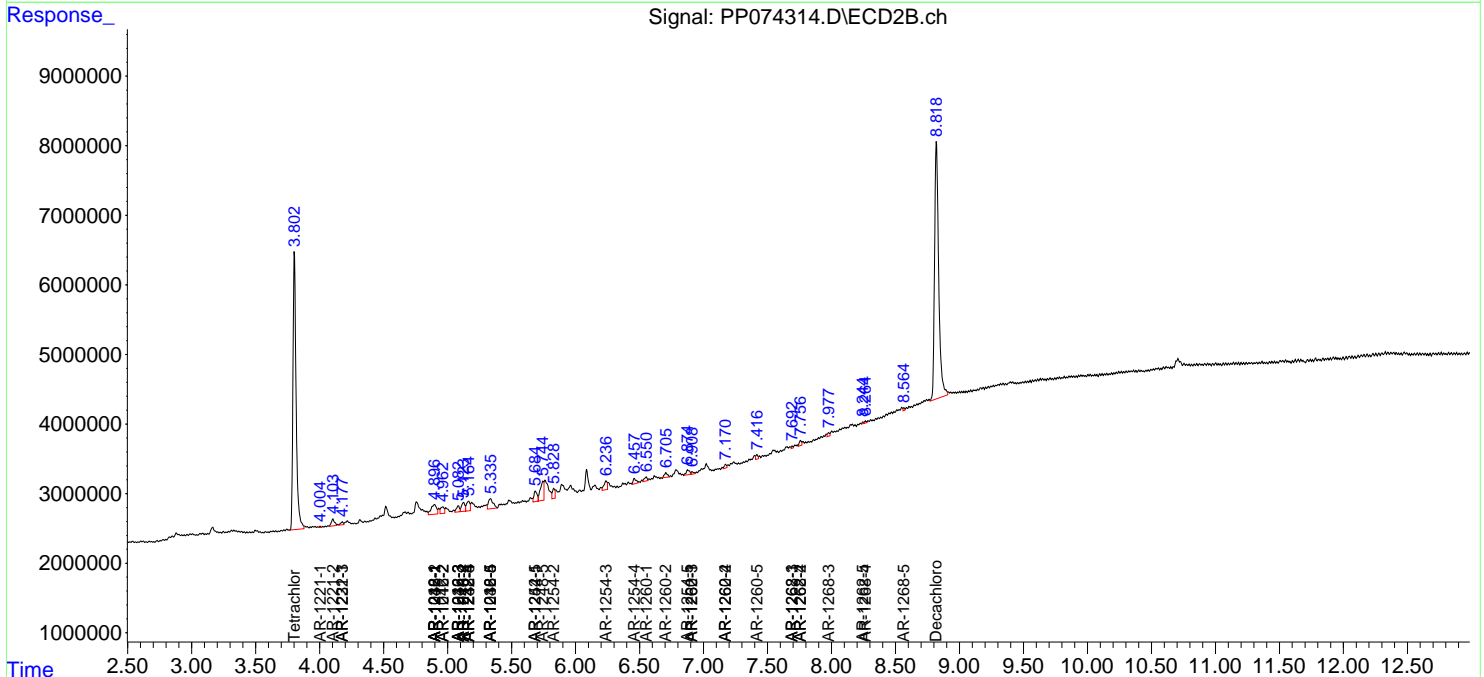
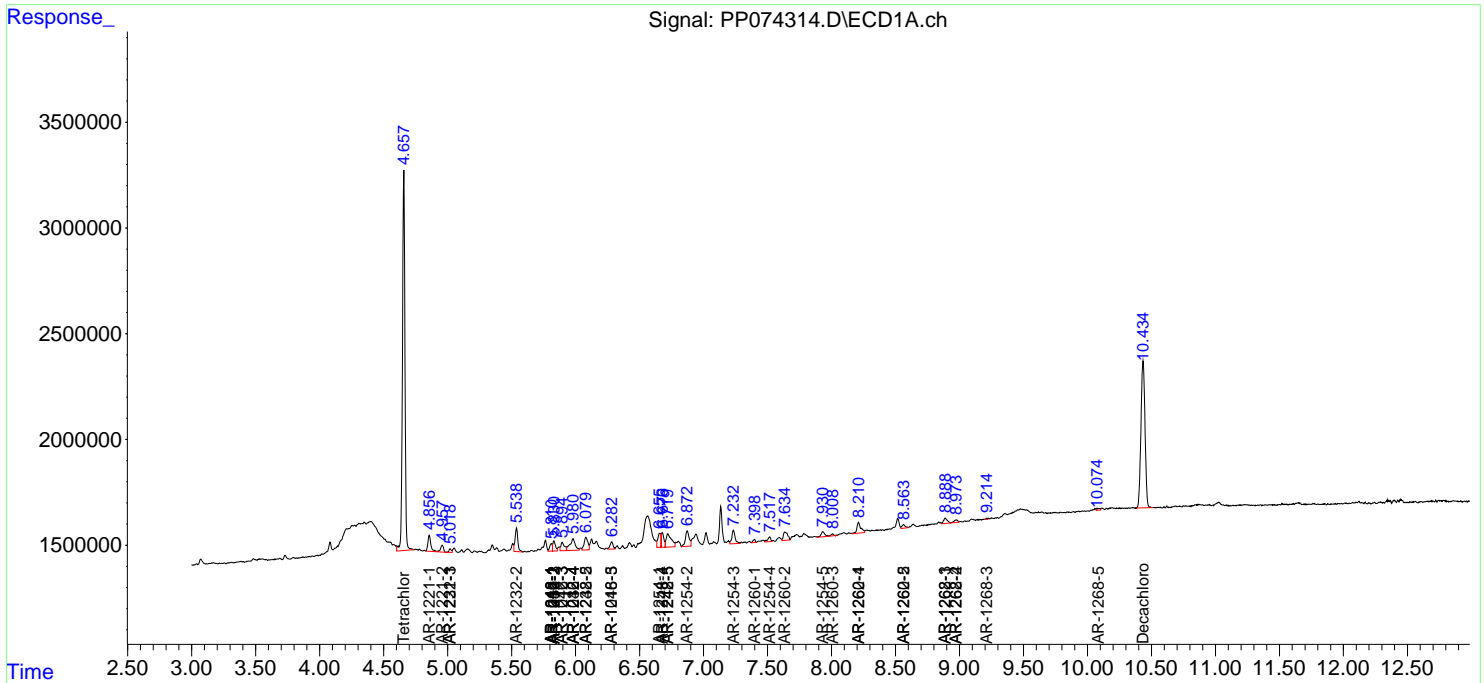
(f)=RT Delta > 1/2 Window (#)=Amounts differ by > 25% (m)=manual int.

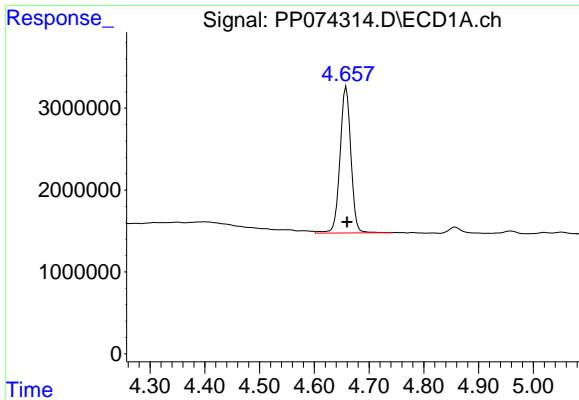
Data Path : Z:\pestpcbsrv\HPCHEM1\ECD_P\Data\PP081225\
 Data File : PP074314.D
 Signal(s) : Signal #1: ECD1A.ch Signal #2: ECD2B.ch
 Acq On : 12 Aug 2025 14:26
 Operator : YP\AJ
 Sample : Q2830-07
 Misc :
 ALS Vial : 14 Sample Multiplier: 1

Instrument :
 ECD_P
ClientSampleId :
 BIN0009-DRIVEWAY-TP-EASTSIDE

Integration File signal 1: autoint1.e
 Integration File signal 2: autoint2.e
 Quant Time: Aug 12 14:51:56 2025
 Quant Method : Z:\pestpcbsrv\HPCHEM1\ECD_P\methods\PP080125.M
 Quant Title : GC EXTRACTABLES
 QLast Update : Mon Aug 04 11:01:49 2025
 Response via : Initial Calibration
 Integrator: ChemStation

Volume Inj. : 2 µl
 Signal #1 Phase : ZB-MR1 Signal #2 Phase: ZB-MR2
 Signal #1 Info : 30Mx0.32mmx 0.50µ Signal #2 Info : 30M x 0.32mm x 0.25µm

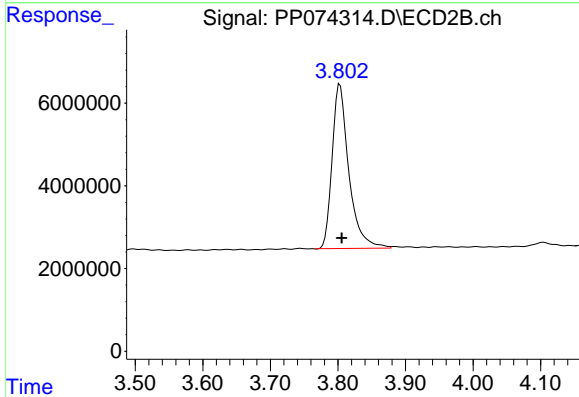




#1 Tetrachloro-m-xylene

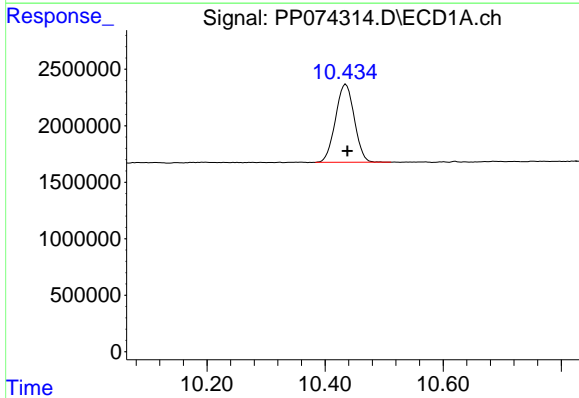
R.T.: 4.658 min
 Delta R.T.: -0.002 min
 Response: 24705562
 Conc: 22.09 ng/ml

Instrument :
 ECD_P
 ClientSampleId :
 BIN0009-DRIVEWAY-TP-EASTSIDE



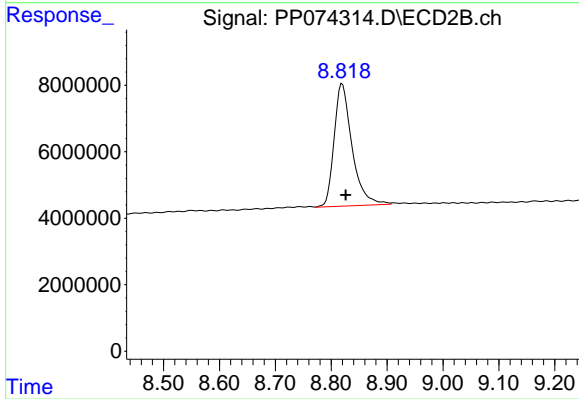
#1 Tetrachloro-m-xylene

R.T.: 3.803 min
 Delta R.T.: -0.002 min
 Response: 68578848
 Conc: 17.89 ng/ml



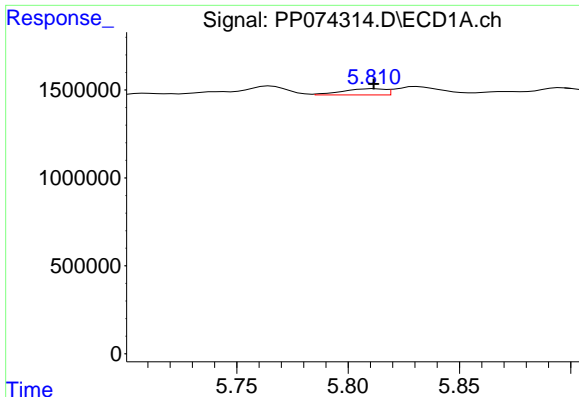
#2 Decachlorobiphenyl

R.T.: 10.435 min
 Delta R.T.: -0.003 min
 Response: 15293757
 Conc: 15.75 ng/ml



#2 Decachlorobiphenyl

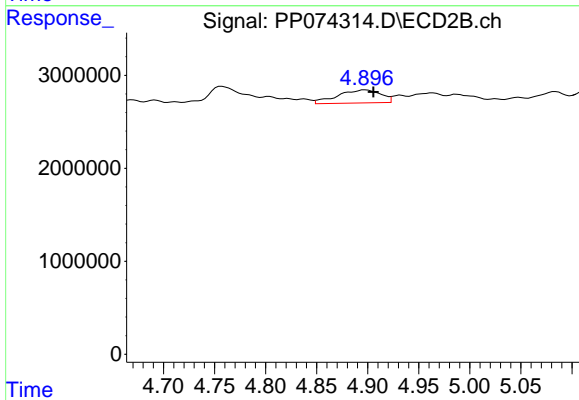
R.T.: 8.820 min
 Delta R.T.: -0.006 min
 Response: 82209523
 Conc: 13.67 ng/ml



#3 AR-1016-1

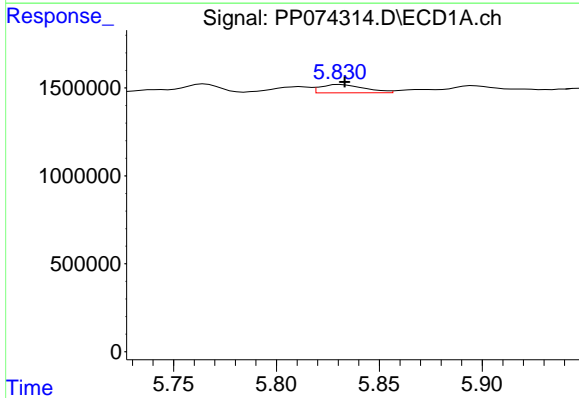
R.T.: 5.812 min
 Delta R.T.: 0.000 min
 Response: 466479
 Conc: 11.31 ng/ml

Instrument :
 ECD_P
 ClientSampleId :
 BIN0009-DRIVEWAY-TP-EASTSIDE



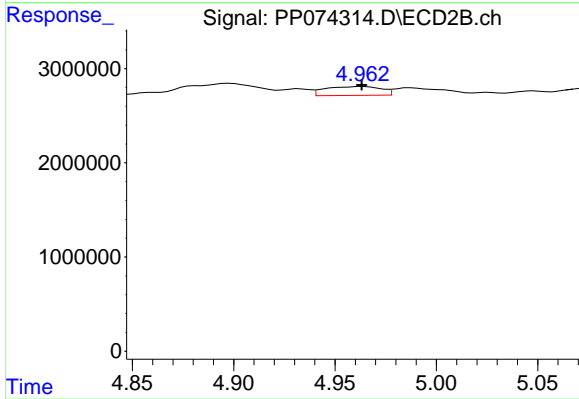
#3 AR-1016-1

R.T.: 4.898 min
 Delta R.T.: -0.008 min
 Response: 4105431
 Conc: 10.29 ng/ml



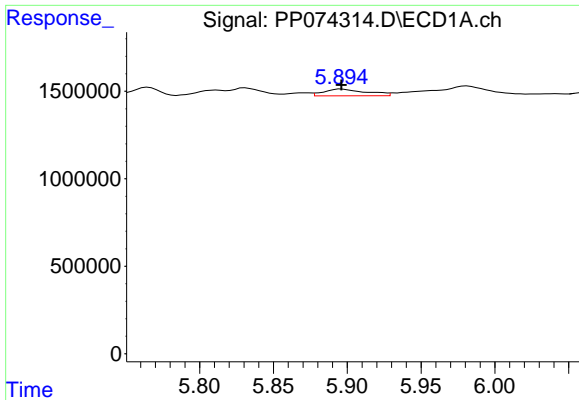
#4 AR-1016-2

R.T.: 5.831 min
 Delta R.T.: -0.002 min
 Response: 692514
 Conc: 11.40 ng/ml



#4 AR-1016-2

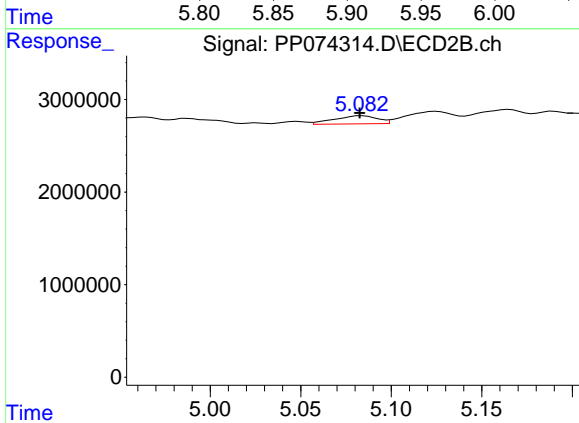
R.T.: 4.964 min
 Delta R.T.: 0.000 min
 Response: 1827522
 Conc: 9.73 ng/ml



#5 AR-1016-3

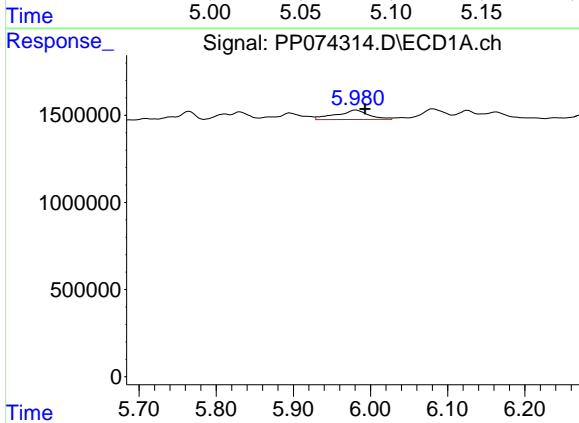
R.T.: 5.896 min
 Delta R.T.: 0.000 min
 Response: 777139
 Conc: 19.59 ng/ml

Instrument :
 ECD_P
 ClientSampleId :
 BIN0009-DRIVEWAY-TP-EASTSIDE



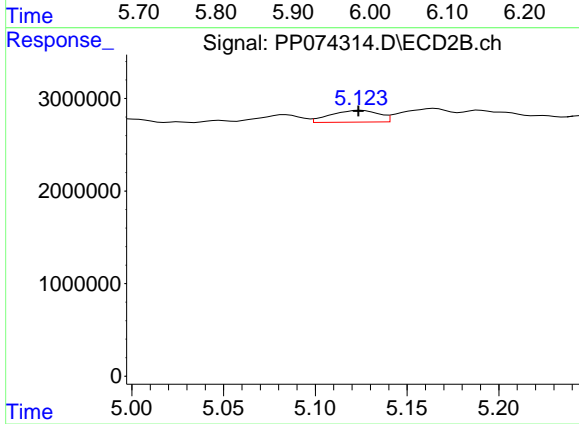
#5 AR-1016-3

R.T.: 5.084 min
 Delta R.T.: 0.001 min
 Response: 1448913
 Conc: 13.66 ng/ml



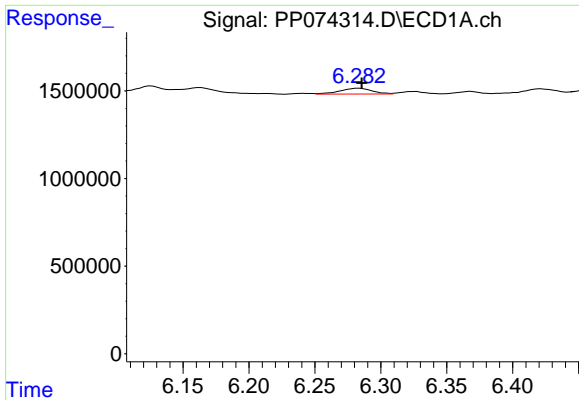
#6 AR-1016-4

R.T.: 5.981 min
 Delta R.T.: -0.012 min
 Response: 1587920
 Conc: 48.79 ng/ml



#6 AR-1016-4

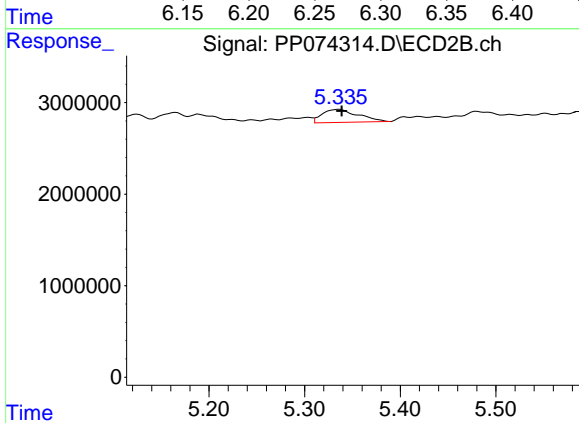
R.T.: 5.125 min
 Delta R.T.: 0.001 min
 Response: 2321413
 Conc: 21.25 ng/ml



#7 AR-1016-5

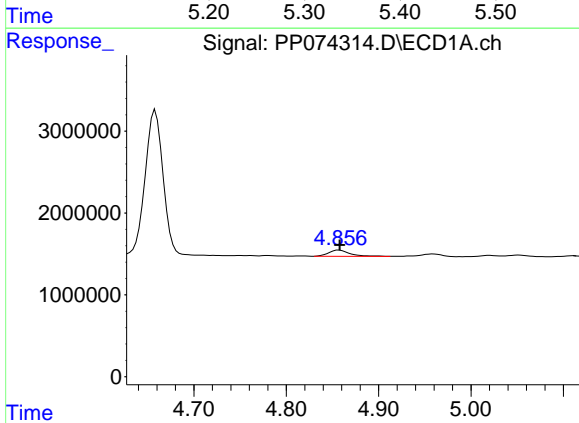
R.T.: 6.283 min
 Delta R.T.: -0.003 min
 Response: 565412
 Conc: 17.41 ng/ml

Instrument :
 ECD_P
 ClientSampleId :
 BIN0009-DRIVEWAY-TP-EASTSIDE



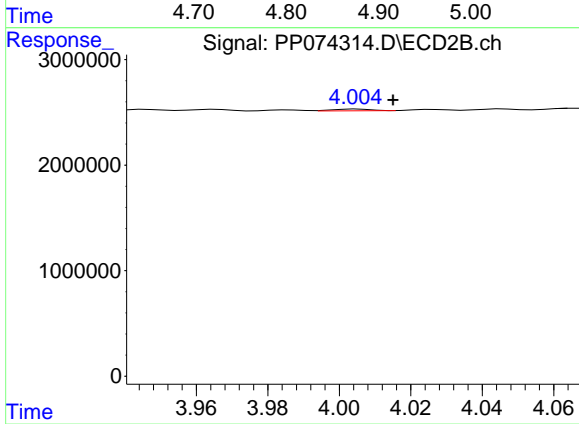
#7 AR-1016-5

R.T.: 5.336 min
 Delta R.T.: -0.003 min
 Response: 3753081
 Conc: 32.09 ng/ml



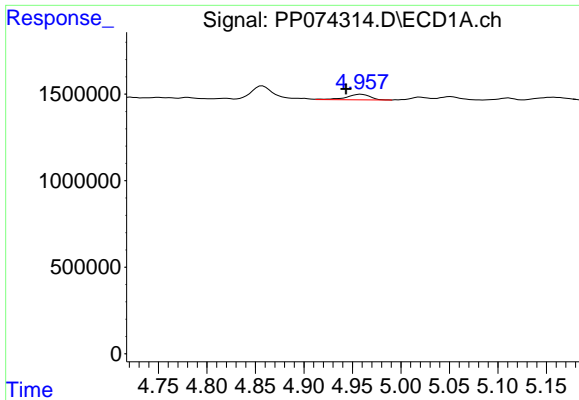
#8 AR-1221-1

R.T.: 4.857 min
 Delta R.T.: 0.000 min
 Response: 1224440
 Conc: 73.04 ng/ml



#8 AR-1221-1

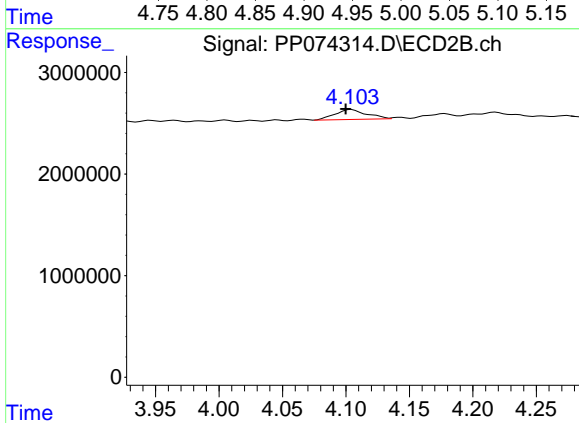
R.T.: 4.005 min
 Delta R.T.: -0.010 min
 Response: 118935
 Conc: 2.42 ng/ml



#9 AR-1221-2

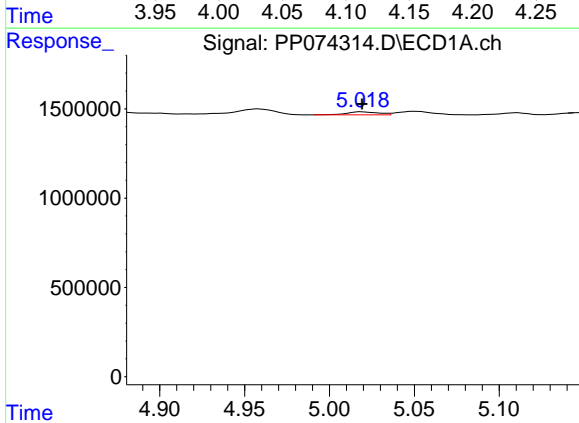
R.T.: 4.959 min
 Delta R.T.: 0.015 min
 Response: 529686
 Conc: 42.04 ng/ml

Instrument : ECD_P
 ClientSampleId : BIN0009-DRIVEWAY-TP-EASTSIDE



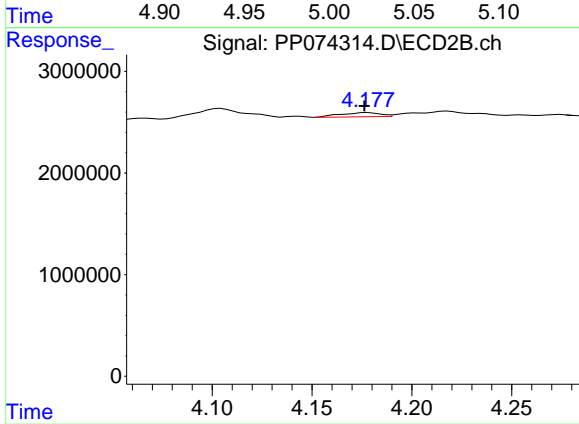
#9 AR-1221-2

R.T.: 4.104 min
 Delta R.T.: 0.005 min
 Response: 1732981
 Conc: 48.29 ng/ml



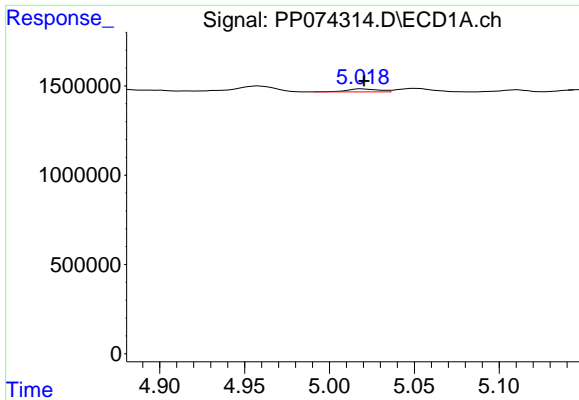
#10 AR-1221-3

R.T.: 5.019 min
 Delta R.T.: 0.000 min
 Response: 217146
 Conc: 5.93 ng/ml



#10 AR-1221-3

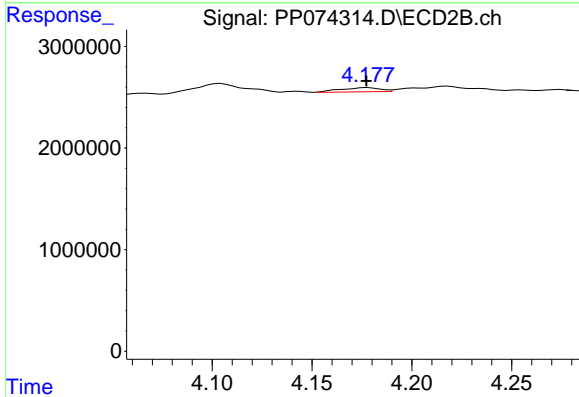
R.T.: 4.178 min
 Delta R.T.: 0.002 min
 Response: 572503
 Conc: 4.23 ng/ml



#11 AR-1232-1

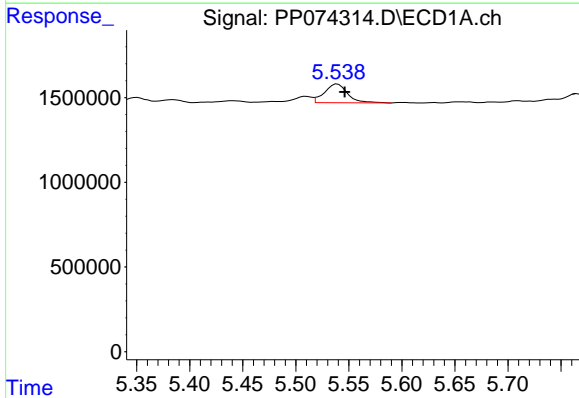
R.T.: 5.019 min
 Delta R.T.: 0.000 min
 Response: 217146
 Conc: 7.48 ng/ml

Instrument : ECD_P
 ClientSampleId : BIN0009-DRIVEWAY-TP-EASTSIDE



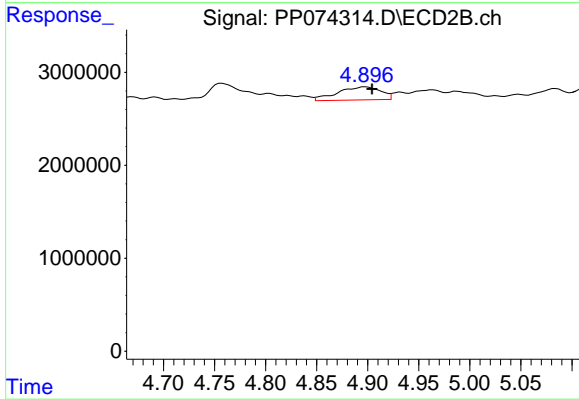
#11 AR-1232-1

R.T.: 4.178 min
 Delta R.T.: 0.000 min
 Response: 572503
 Conc: 5.65 ng/ml



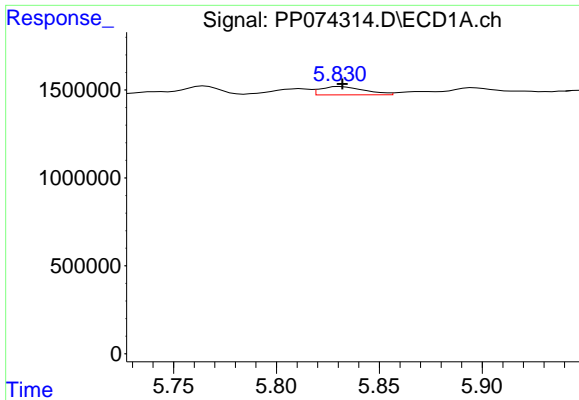
#12 AR-1232-2

R.T.: 5.539 min
 Delta R.T.: -0.007 min
 Response: 1688072
 Conc: 112.22 ng/ml



#12 AR-1232-2

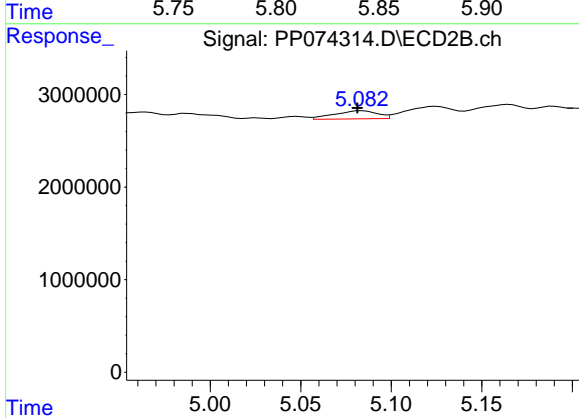
R.T.: 4.898 min
 Delta R.T.: -0.006 min
 Response: 4105431
 Conc: 23.56 ng/ml



#13 AR-1232-3

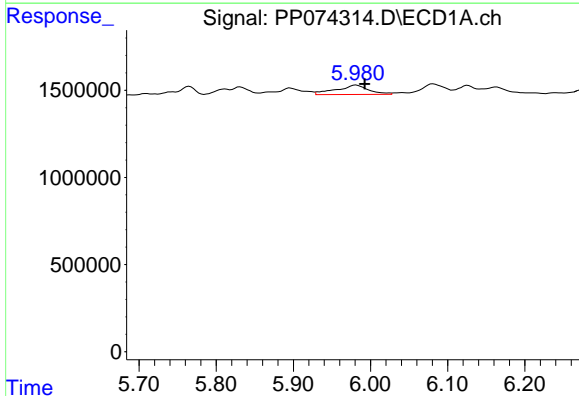
R.T.: 5.831 min
 Delta R.T.: -0.001 min
 Response: 692514
 Conc: 23.88 ng/ml

Instrument :
 ECD_P
 ClientSampleId :
 BIN0009-DRIVEWAY-TP-EASTSIDE



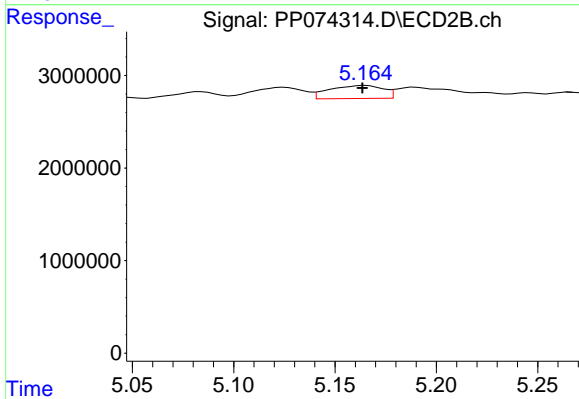
#13 AR-1232-3

R.T.: 5.084 min
 Delta R.T.: 0.002 min
 Response: 1448913
 Conc: 31.62 ng/ml



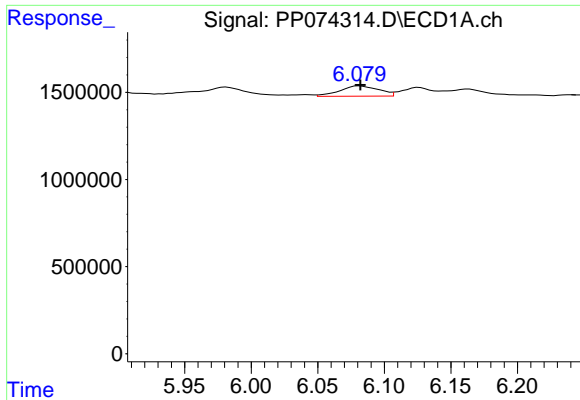
#14 AR-1232-4

R.T.: 5.981 min
 Delta R.T.: -0.011 min
 Response: 1587920
 Conc: 102.65 ng/ml



#14 AR-1232-4

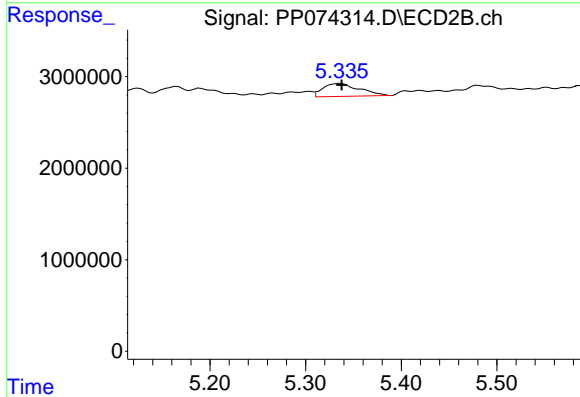
R.T.: 5.165 min
 Delta R.T.: 0.002 min
 Response: 2581592
 Conc: 44.50 ng/ml



#15 AR-1232-5

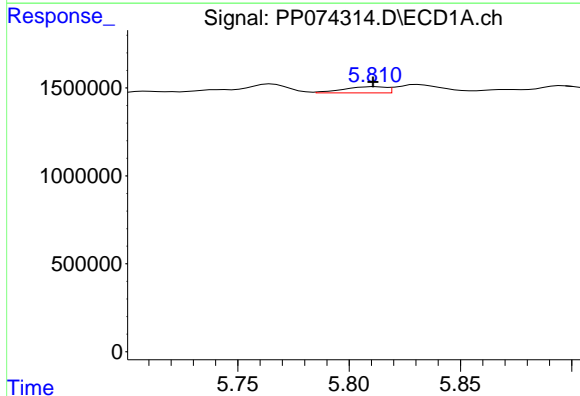
R.T.: 6.081 min
 Delta R.T.: -0.001 min
 Response: 1209280
 Conc: 103.22 ng/ml

Instrument :
 ECD_P
 ClientSampleId :
 BIN0009-DRIVEWAY-TP-EASTSIDE



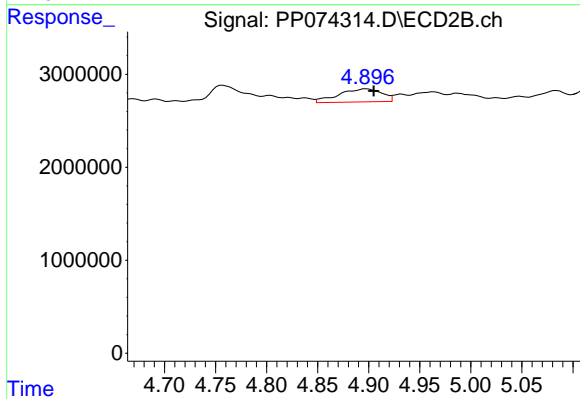
#15 AR-1232-5

R.T.: 5.336 min
 Delta R.T.: -0.002 min
 Response: 3753081
 Conc: 79.89 ng/ml



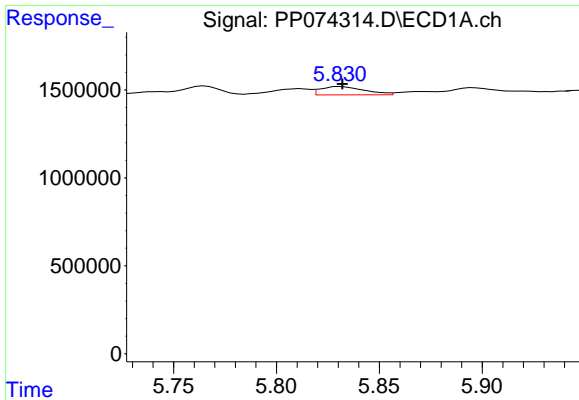
#16 AR-1242-1

R.T.: 5.812 min
 Delta R.T.: 0.000 min
 Response: 466479
 Conc: 12.52 ng/ml



#16 AR-1242-1

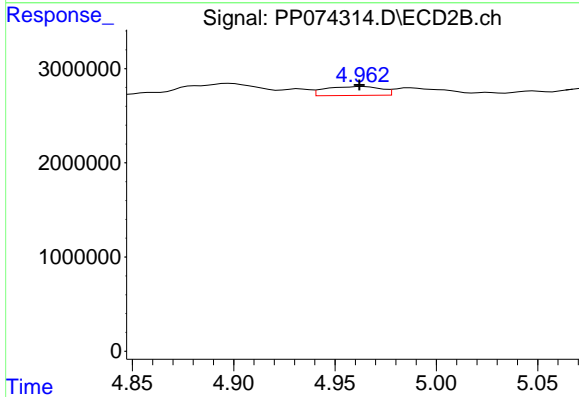
R.T.: 4.898 min
 Delta R.T.: -0.007 min
 Response: 4105431
 Conc: 11.89 ng/ml



#17 AR-1242-2

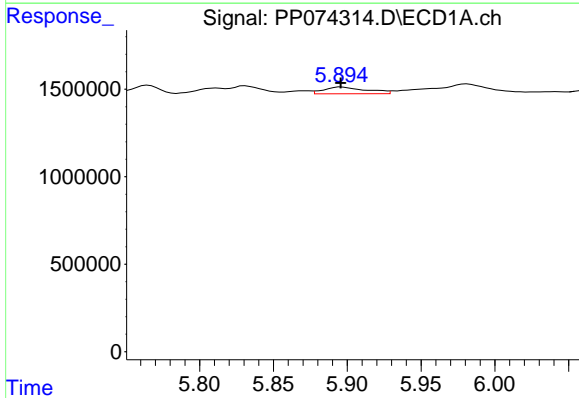
R.T.: 5.831 min
 Delta R.T.: 0.000 min
 Response: 692514
 Conc: 12.73 ng/ml

Instrument :
 ECD_P
 ClientSampleId :
 BIN0009-DRIVEWAY-TP-EASTSIDE



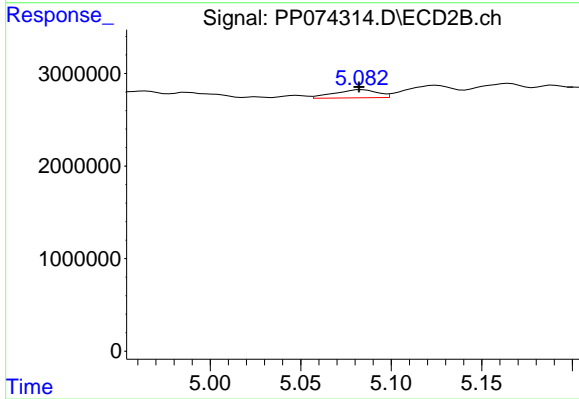
#17 AR-1242-2

R.T.: 4.964 min
 Delta R.T.: 0.002 min
 Response: 1827522
 Conc: 11.19 ng/ml



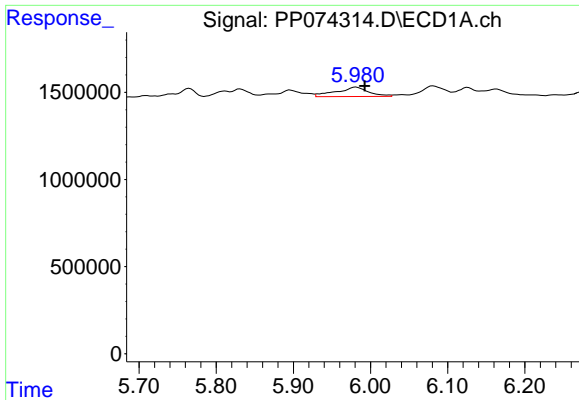
#18 AR-1242-3

R.T.: 5.896 min
 Delta R.T.: 0.000 min
 Response: 777139
 Conc: 21.75 ng/ml



#18 AR-1242-3

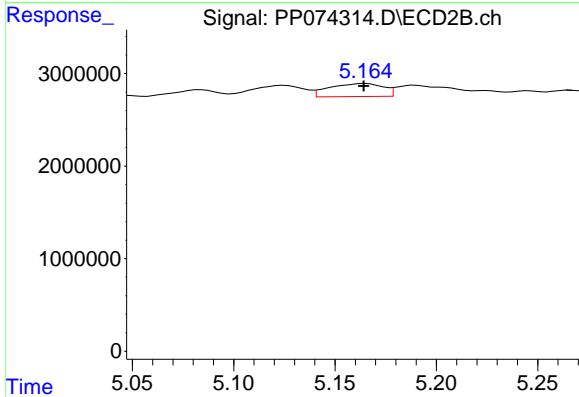
R.T.: 5.084 min
 Delta R.T.: 0.002 min
 Response: 1448913
 Conc: 15.71 ng/ml



#19 AR-1242-4

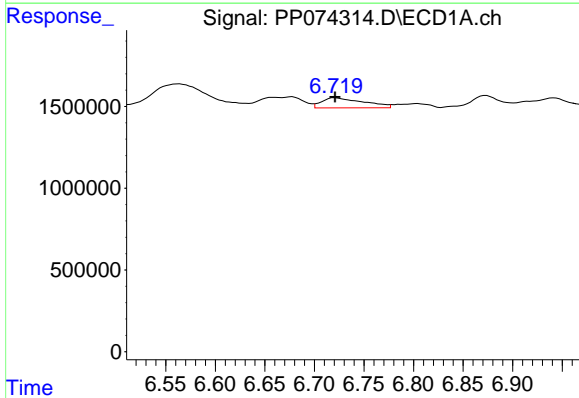
R.T.: 5.981 min
 Delta R.T.: -0.011 min
 Response: 1587920
 Conc: 54.35 ng/ml

Instrument :
 ECD_P
ClientSampleId :
 BIN0009-DRIVEWAY-TP-EASTSIDE



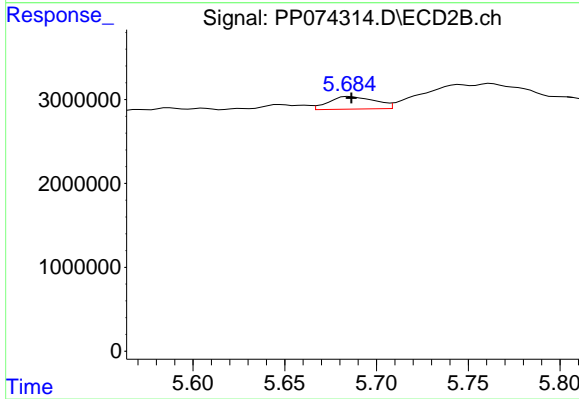
#19 AR-1242-4

R.T.: 5.165 min
 Delta R.T.: 0.001 min
 Response: 2581592
 Conc: 21.62 ng/ml



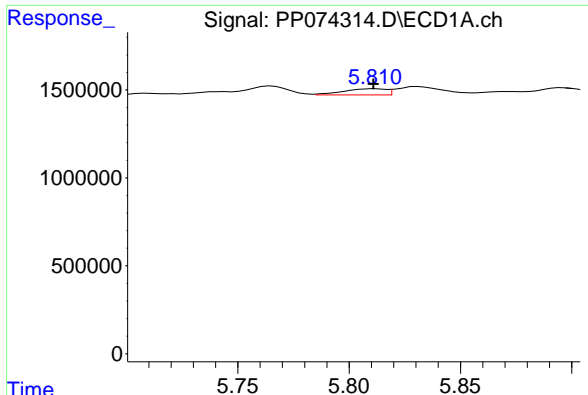
#20 AR-1242-5

R.T.: 6.721 min
 Delta R.T.: 0.000 min
 Response: 1818057
 Conc: 51.13 ng/ml



#20 AR-1242-5

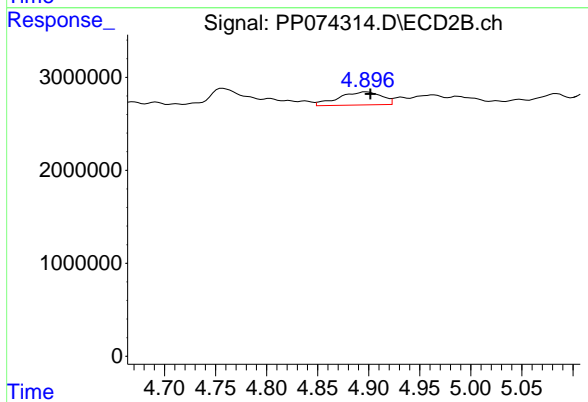
R.T.: 5.685 min
 Delta R.T.: 0.000 min
 Response: 2640458
 Conc: 17.65 ng/ml



#21 AR-1248-1

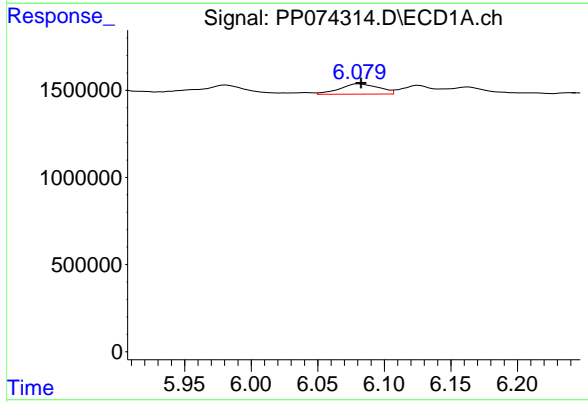
R.T.: 5.812 min
 Delta R.T.: 0.000 min
 Response: 466479
 Conc: 16.65 ng/ml

Instrument : ECD_P
 ClientSampleId : BIN0009-DRIVEWAY-TP-EASTSIDE



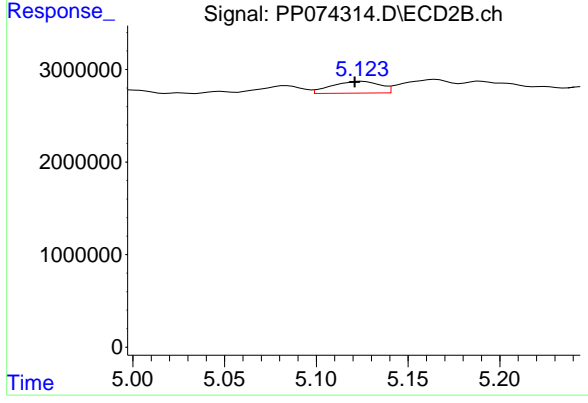
#21 AR-1248-1

R.T.: 4.898 min
 Delta R.T.: -0.004 min
 Response: 4105431
 Conc: 19.19 ng/ml



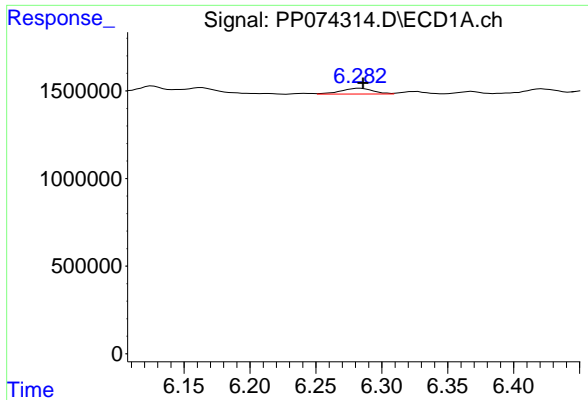
#22 AR-1248-2

R.T.: 6.081 min
 Delta R.T.: -0.002 min
 Response: 1209280
 Conc: 30.04 ng/ml



#22 AR-1248-2

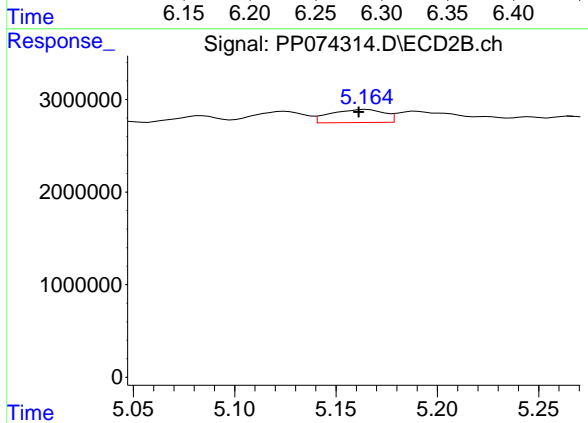
R.T.: 5.125 min
 Delta R.T.: 0.004 min
 Response: 2321413
 Conc: 15.87 ng/ml



#23 AR-1248-3

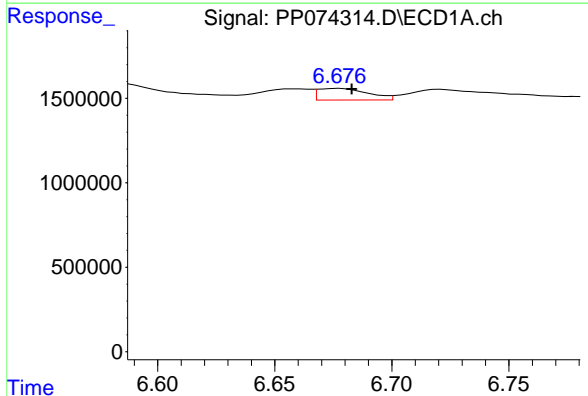
R.T.: 6.283 min
 Delta R.T.: -0.003 min
 Response: 565412
 Conc: 12.68 ng/ml

Instrument :
 ECD_P
ClientSampleId :
 BIN0009-DRIVEWAY-TP-EASTSIDE



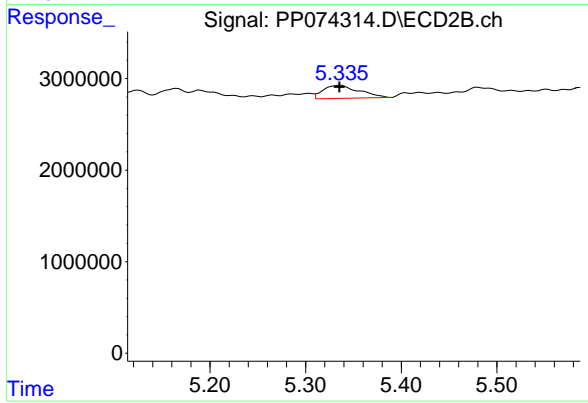
#23 AR-1248-3

R.T.: 5.165 min
 Delta R.T.: 0.004 min
 Response: 2581592
 Conc: 15.06 ng/ml



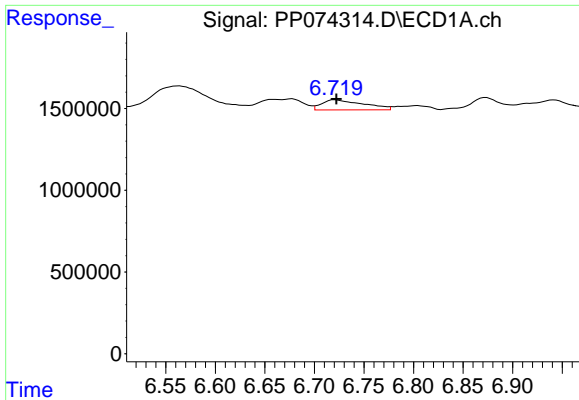
#24 AR-1248-4

R.T.: 6.678 min
 Delta R.T.: -0.005 min
 Response: 1029825
 Conc: 19.79 ng/ml



#24 AR-1248-4

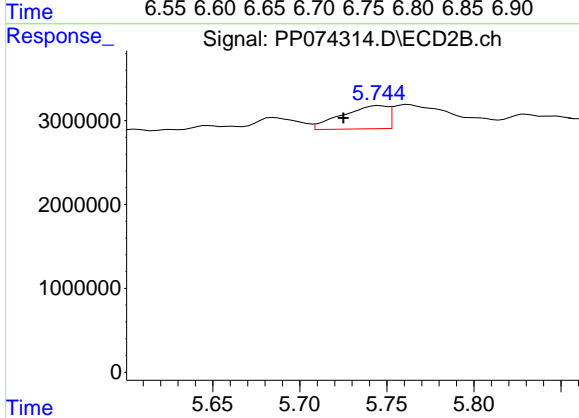
R.T.: 5.336 min
 Delta R.T.: 0.000 min
 Response: 3753081
 Conc: 22.56 ng/ml



#25 AR-1248-5

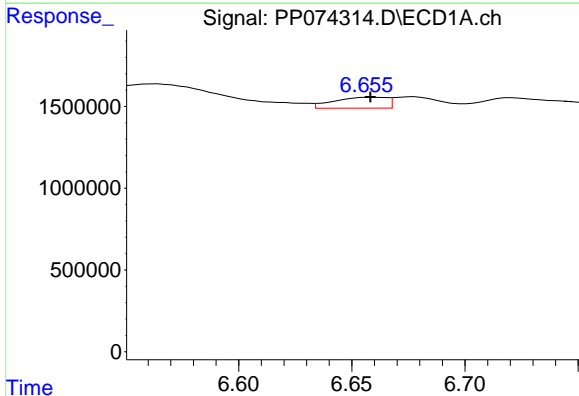
R.T.: 6.721 min
 Delta R.T.: -0.002 min
 Response: 1818057
 Conc: 31.93 ng/ml

Instrument :
 ECD_P
 ClientSampleId :
 BIN0009-DRIVEWAY-TP-EASTSIDE



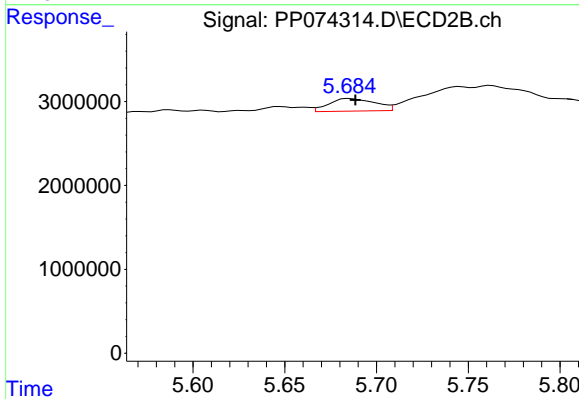
#25 AR-1248-5

R.T.: 5.746 min
 Delta R.T.: 0.021 min
 Response: 5040433
 Conc: 17.32 ng/ml



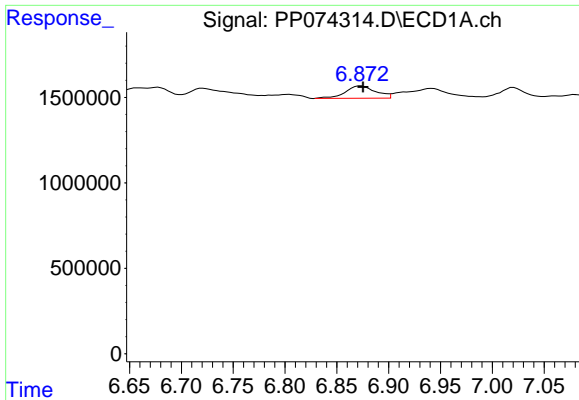
#26 AR-1254-1

R.T.: 6.658 min
 Delta R.T.: 0.000 min
 Response: 1076280
 Conc: 20.45 ng/ml



#26 AR-1254-1

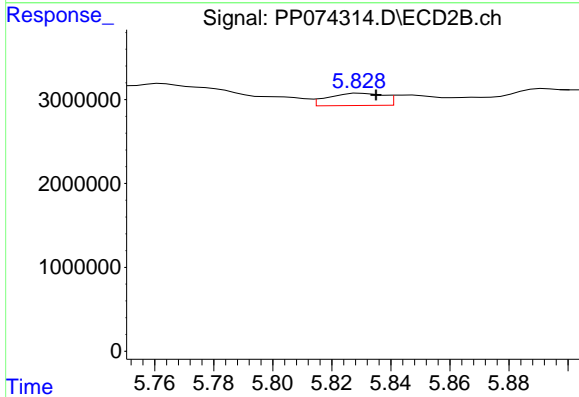
R.T.: 5.685 min
 Delta R.T.: -0.003 min
 Response: 2640458
 Conc: 7.21 ng/ml



#27 AR-1254-2

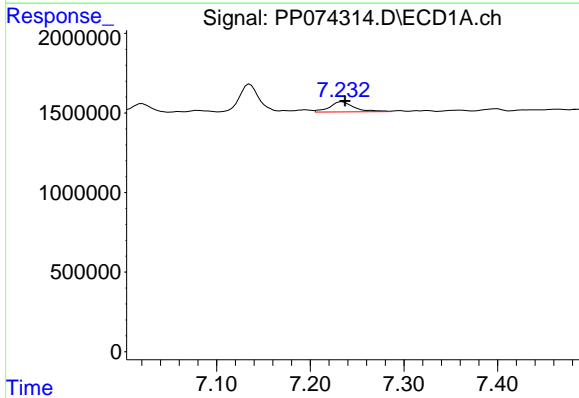
R.T.: 6.873 min
 Delta R.T.: -0.002 min
 Response: 1469118
 Conc: 18.48 ng/ml

Instrument : ECD_P
 ClientSampleId : BIN0009-DRIVEWAY-TP-EASTSIDE



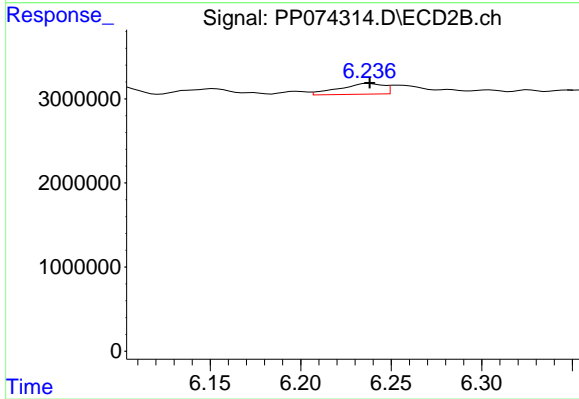
#27 AR-1254-2

R.T.: 5.830 min
 Delta R.T.: -0.005 min
 Response: 1902168
 Conc: 6.84 ng/ml



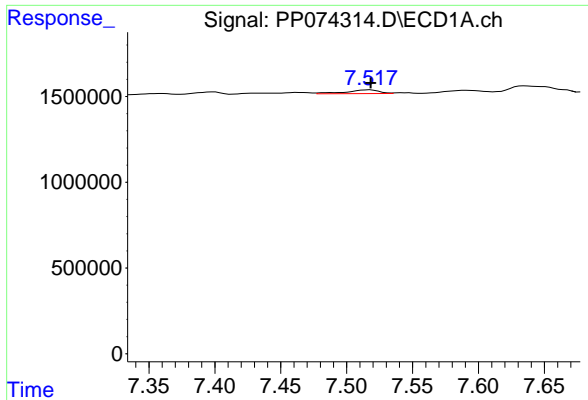
#28 AR-1254-3

R.T.: 7.234 min
 Delta R.T.: -0.003 min
 Response: 1151248
 Conc: 13.18 ng/ml



#28 AR-1254-3

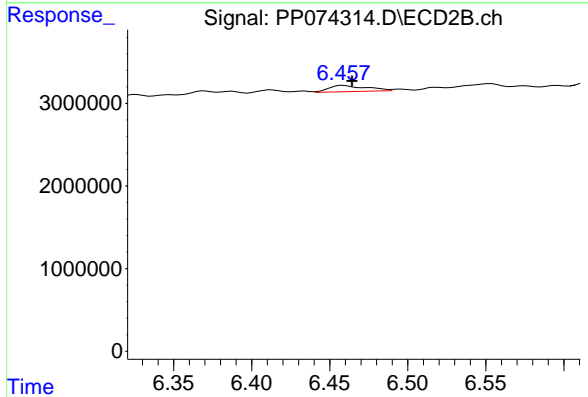
R.T.: 6.238 min
 Delta R.T.: 0.000 min
 Response: 2140956
 Conc: 4.38 ng/ml



#29 AR-1254-4

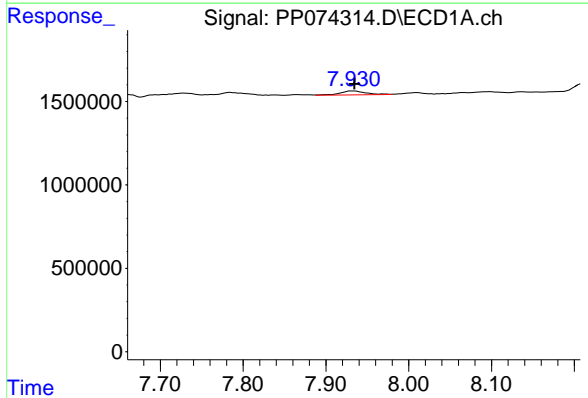
R.T.: 7.517 min
 Delta R.T.: 0.000 min
 Response: 383422
 Conc: 6.01 ng/ml

Instrument : ECD_P
 ClientSampleId : BIN0009-DRIVEWAY-TP-EASTSIDE



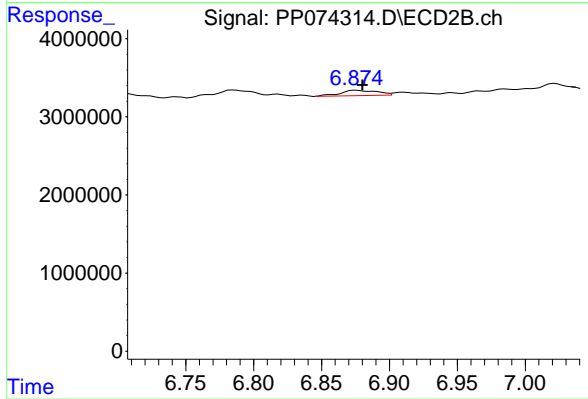
#29 AR-1254-4

R.T.: 6.459 min
 Delta R.T.: -0.005 min
 Response: 1260342
 Conc: 3.43 ng/ml



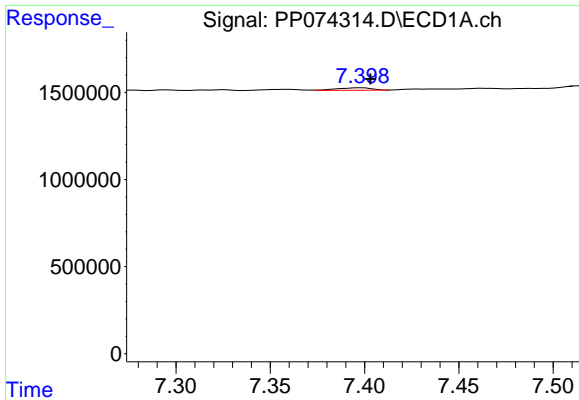
#30 AR-1254-5

R.T.: 7.932 min
 Delta R.T.: -0.003 min
 Response: 508178
 Conc: 6.26 ng/ml



#30 AR-1254-5

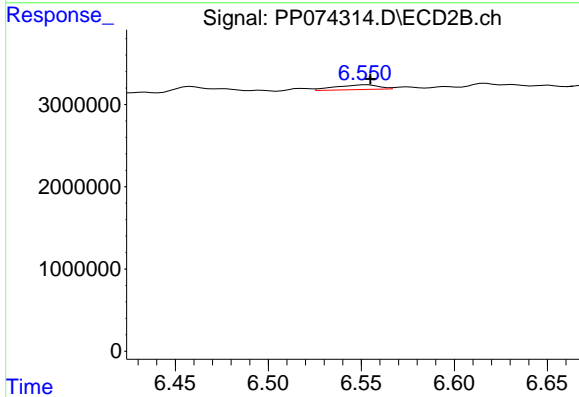
R.T.: 6.875 min
 Delta R.T.: -0.005 min
 Response: 1302734
 Conc: 3.38 ng/ml



#31 AR-1260-1

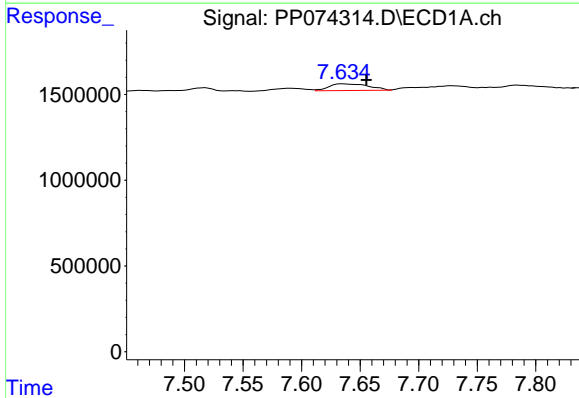
R.T.: 7.399 min
 Delta R.T.: -0.004 min
 Response: 180384
 Conc: 3.20 ng/ml

Instrument : ECD_P
 ClientSampleId : BIN0009-DRIVEWAY-TP-EASTSIDE



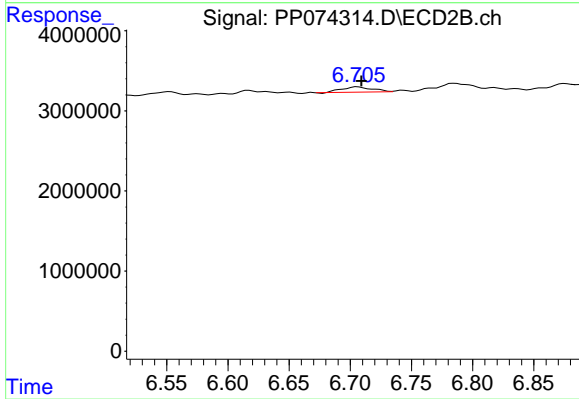
#31 AR-1260-1

R.T.: 6.553 min
 Delta R.T.: -0.002 min
 Response: 920716
 Conc: 2.28 ng/ml



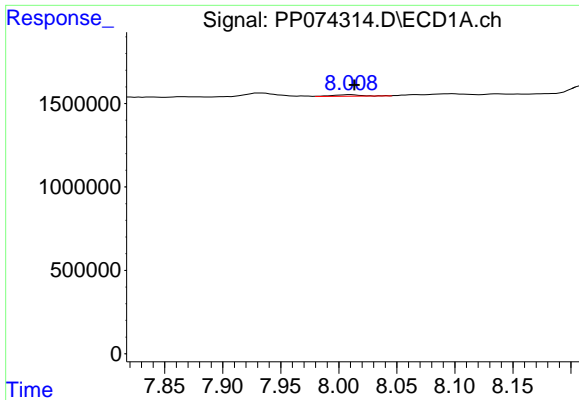
#32 AR-1260-2

R.T.: 7.635 min
 Delta R.T.: -0.020 min
 Response: 918924
 Conc: 13.48 ng/ml



#32 AR-1260-2

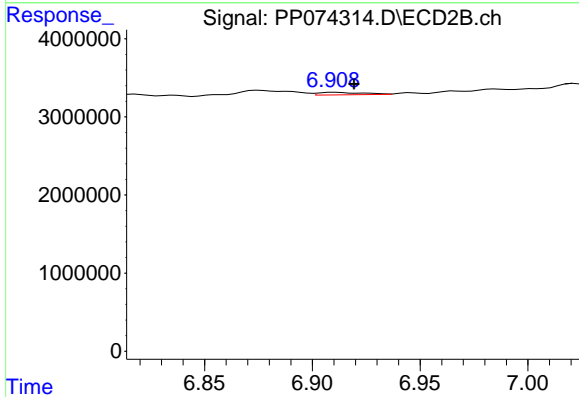
R.T.: 6.706 min
 Delta R.T.: -0.003 min
 Response: 1112829
 Conc: 3.56 ng/ml



#33 AR-1260-3

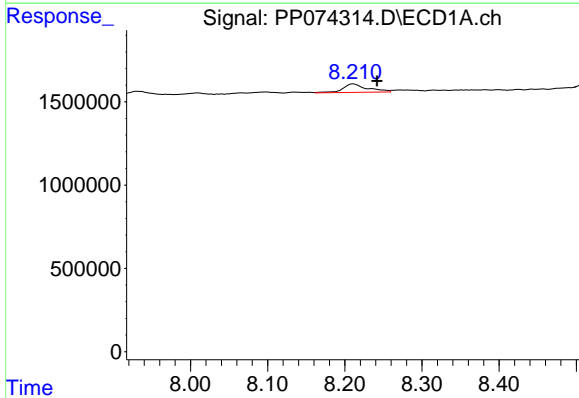
R.T.: 8.010 min
 Delta R.T.: -0.003 min
 Response: 150754
 Conc: 2.83 ng/ml

Instrument : ECD_P
 ClientSampleId : BIN0009-DRIVEWAY-TP-EASTSIDE



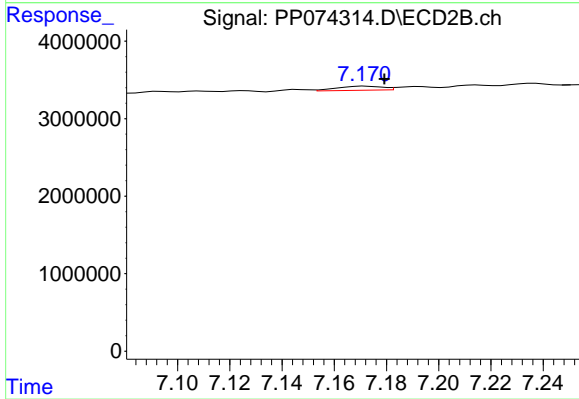
#33 AR-1260-3

R.T.: 6.910 min
 Delta R.T.: -0.009 min
 Response: 481349
 Conc: 1.22 ng/ml



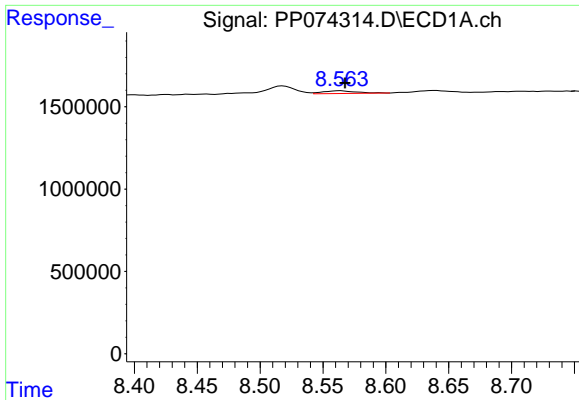
#34 AR-1260-4

R.T.: 8.211 min
 Delta R.T.: -0.030 min
 Response: 1122067
 Conc: 17.92 ng/ml



#34 AR-1260-4

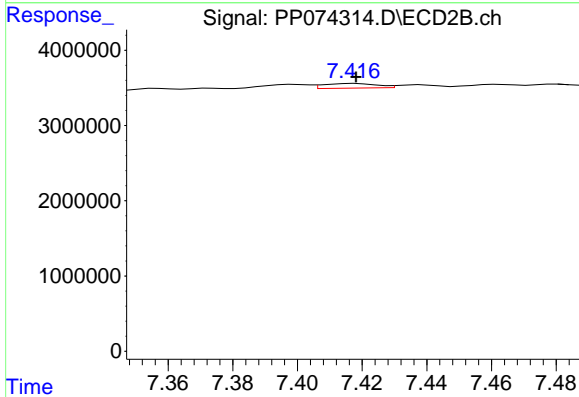
R.T.: 7.172 min
 Delta R.T.: -0.007 min
 Response: 635463
 Conc: 2.18 ng/ml



#35 AR-1260-5

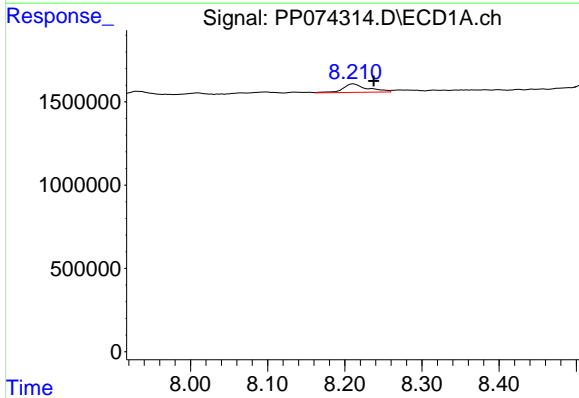
R.T.: 8.564 min
 Delta R.T.: -0.004 min
 Response: 302996
 Conc: 2.67 ng/ml

Instrument :
 ECD_P
 ClientSampleId :
 BIN0009-DRIVEWAY-TP-EASTSIDE



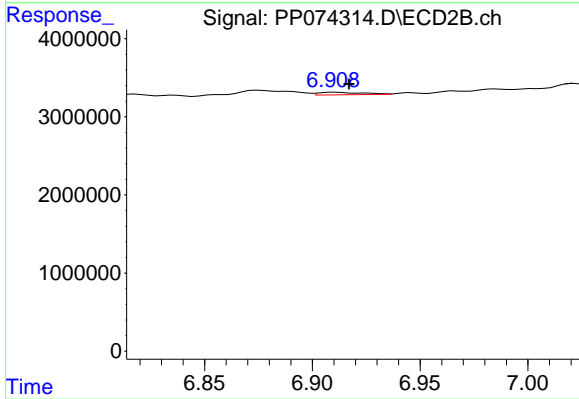
#35 AR-1260-5

R.T.: 7.418 min
 Delta R.T.: 0.000 min
 Response: 715976
 Conc: 0.95 ng/ml



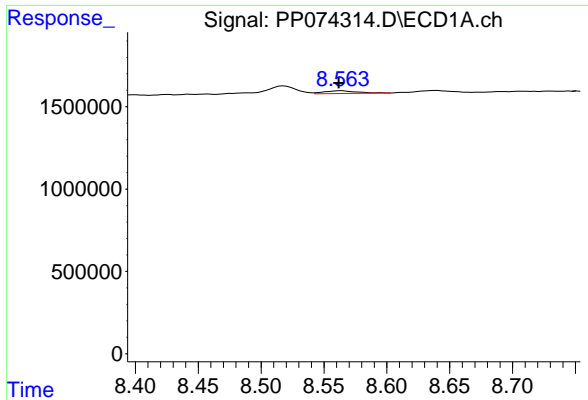
#36 AR-1262-1

R.T.: 8.211 min
 Delta R.T.: -0.026 min
 Response: 1122067
 Conc: 14.81 ng/ml



#36 AR-1262-1

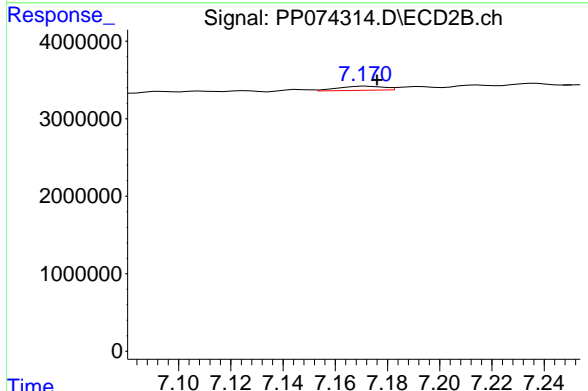
R.T.: 6.910 min
 Delta R.T.: -0.007 min
 Response: 481349
 Conc: 0.85 ng/ml



#37 AR-1262-2

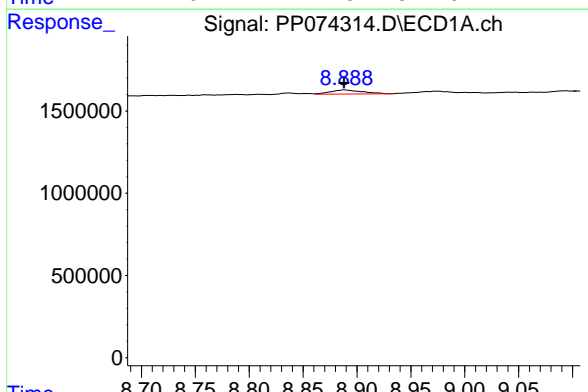
R.T.: 8.564 min
 Delta R.T.: 0.002 min
 Response: 302996
 Conc: 2.32 ng/ml

Instrument : ECD_P
 ClientSampleId : BIN0009-DRIVEWAY-TP-EASTSIDE



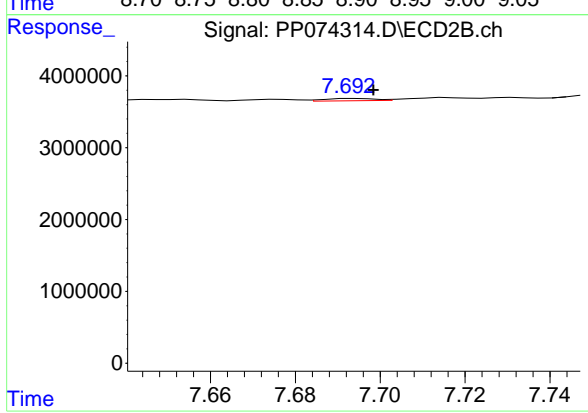
#37 AR-1262-2

R.T.: 7.172 min
 Delta R.T.: -0.004 min
 Response: 635463
 Conc: 1.58 ng/ml



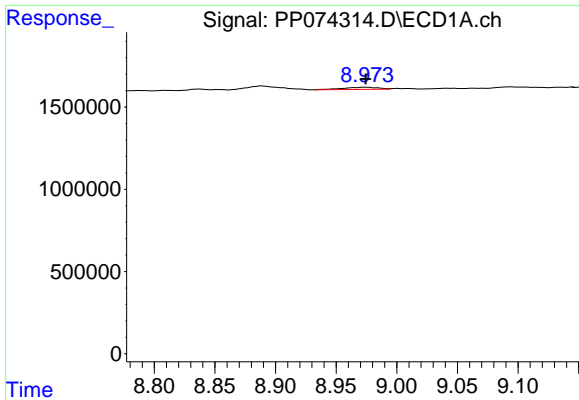
#38 AR-1262-3

R.T.: 8.889 min
 Delta R.T.: 0.001 min
 Response: 502868
 Conc: 5.35 ng/ml



#38 AR-1262-3

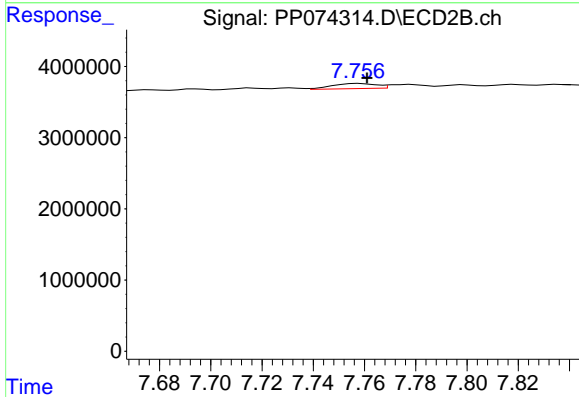
R.T.: 7.694 min
 Delta R.T.: -0.004 min
 Response: 271557
 Conc: 0.76 ng/ml



#39 AR-1262-4

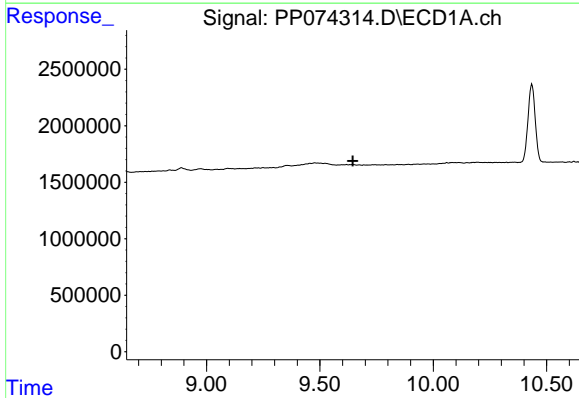
R.T.: 8.975 min
 Delta R.T.: 0.000 min
 Response: 257467
 Conc: 3.53 ng/ml

Instrument : ECD_P
 ClientSampleId : BIN0009-DRIVEWAY-TP-EASTSIDE



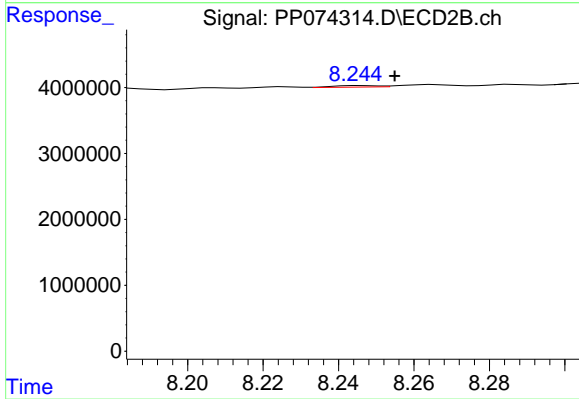
#39 AR-1262-4

R.T.: 7.758 min
 Delta R.T.: -0.003 min
 Response: 861599
 Conc: 1.29 ng/ml



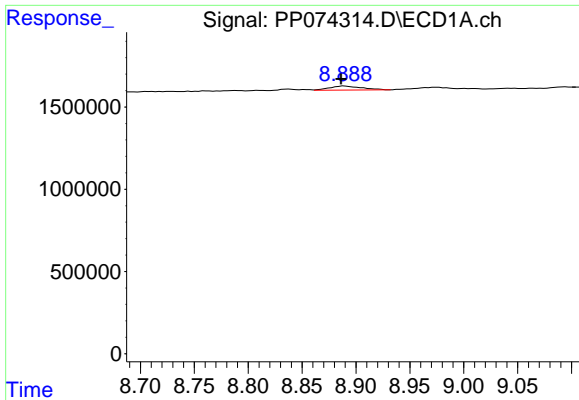
#40 AR-1262-5

R.T.: 0.000 min
 Exp R.T. : 9.645 min
 Response: 0
 Conc: N.D.



#40 AR-1262-5

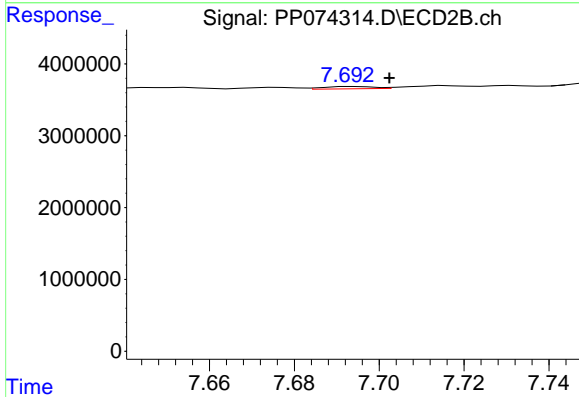
R.T.: 8.246 min
 Delta R.T.: -0.009 min
 Response: 192224
 Conc: 0.68 ng/ml



#41 AR-1268-1

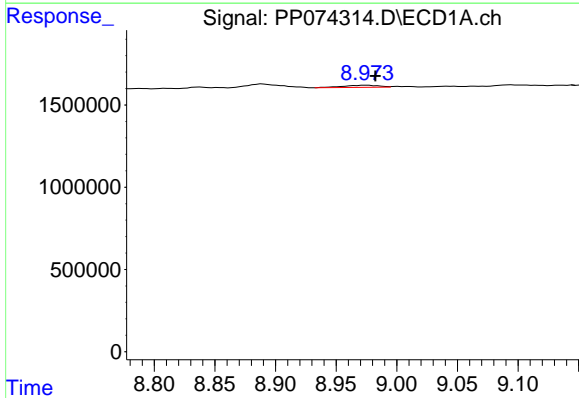
R.T.: 8.889 min
 Delta R.T.: 0.003 min
 Response: 502868
 Conc: 3.23 ng/ml

Instrument :
 ECD_P
 ClientSampleId :
 BIN0009-DRIVEWAY-TP-EASTSIDE



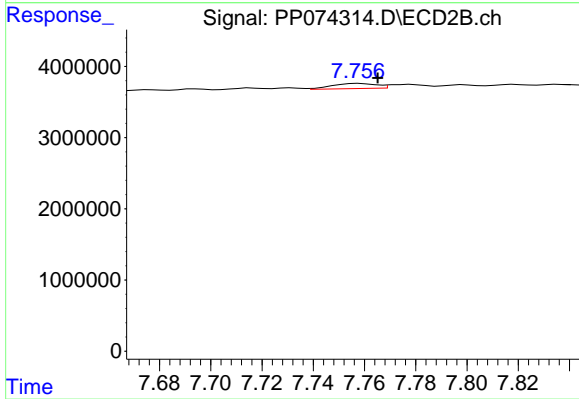
#41 AR-1268-1

R.T.: 7.694 min
 Delta R.T.: -0.008 min
 Response: 271557
 Conc: 0.25 ng/ml



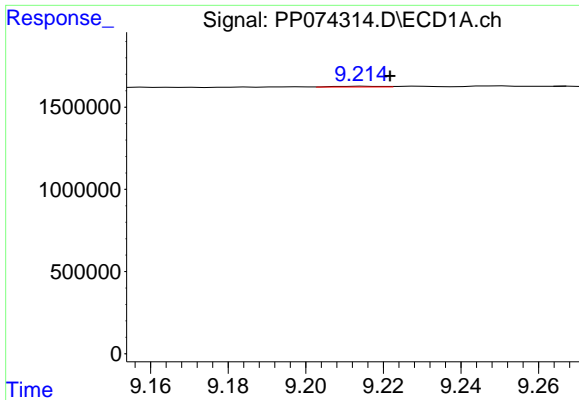
#42 AR-1268-2

R.T.: 8.975 min
 Delta R.T.: -0.008 min
 Response: 257467
 Conc: 1.80 ng/ml



#42 AR-1268-2

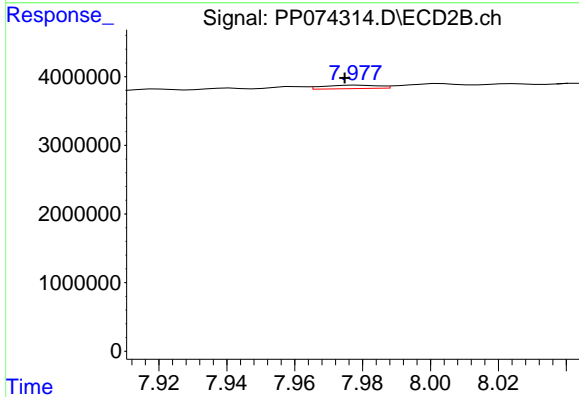
R.T.: 7.758 min
 Delta R.T.: -0.007 min
 Response: 861599
 Conc: 0.81 ng/ml



#43 AR-1268-3

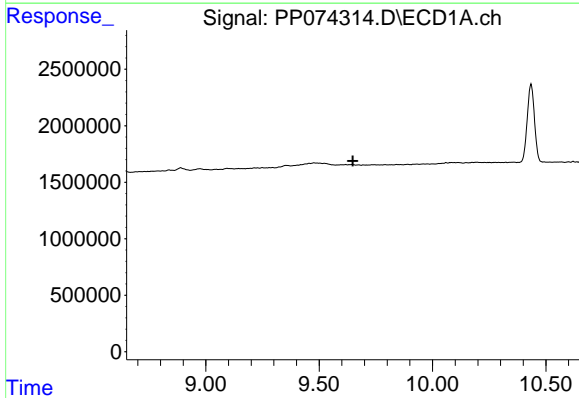
R.T.: 9.215 min
 Delta R.T.: -0.007 min
 Response: 39580
 Conc: 0.33 ng/ml

Instrument :
 ECD_P
ClientSampleId :
 BIN0009-DRIVEWAY-TP-EASTSIDE



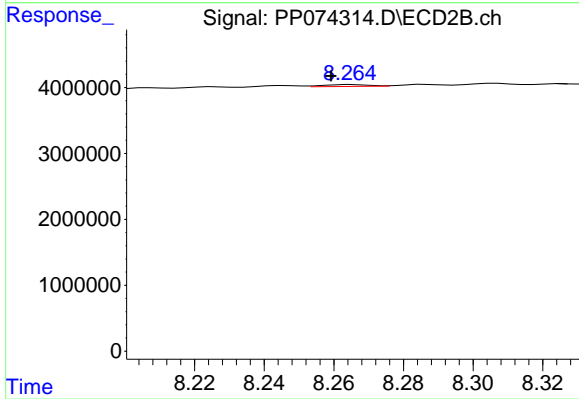
#43 AR-1268-3

R.T.: 7.979 min
 Delta R.T.: 0.004 min
 Response: 560113
 Conc: 0.67 ng/ml



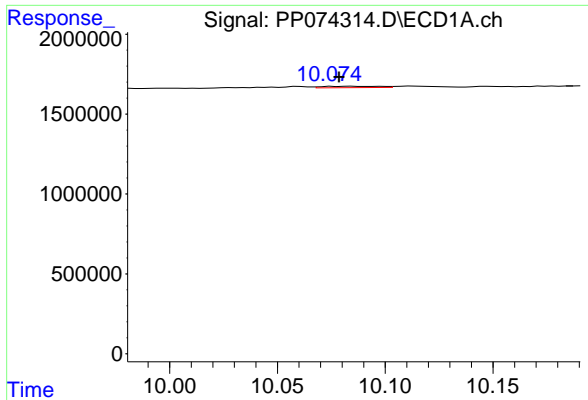
#44 AR-1268-4

R.T.: 0.000 min
 Exp R.T. : 9.648 min
 Response: 0
 Conc: N.D.



#44 AR-1268-4

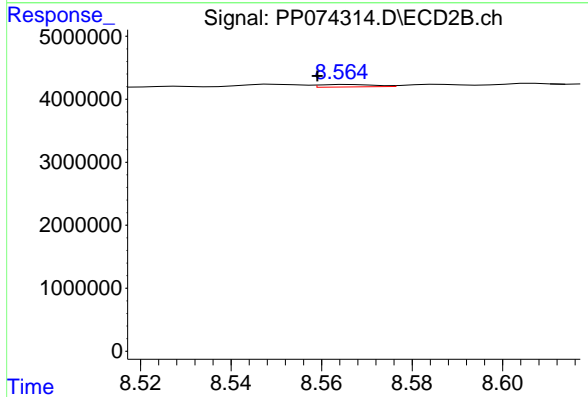
R.T.: 8.265 min
 Delta R.T.: 0.006 min
 Response: 260759
 Conc: 0.85 ng/ml



#45 AR-1268-5

R.T.: 10.084 min
 Delta R.T.: 0.006 min
 Response: 160001
 Conc: 0.45 ng/ml

Instrument : ECD_P
 ClientSampleId : BIN0009-DRIVEWAY-TP-EASTSIDE



#45 AR-1268-5

R.T.: 8.566 min
 Delta R.T.: 0.007 min
 Response: 323533
 Conc: 0.13 ng/ml