

Data Path : Z:\pestpcbsrv\HPCHEM1\ECD_P\Data\PP081225\
 Data File : PP074315.D
 Signal(s) : Signal #1: ECD1A.ch Signal #2: ECD2B.ch
 Acq On : 12 Aug 2025 14:42
 Operator : YP\AJ
 Sample : Q2831-01
 Misc :
 ALS Vial : 15 Sample Multiplier: 1

Instrument :
 ECD_P
 ClientSampleId :
 VNJ-238

Integration File signal 1: autoint1.e
 Integration File signal 2: autoint2.e
 Quant Time: Aug 13 01:53:55 2025
 Quant Method : Z:\pestpcbsrv\HPCHEM1\ECD_P\methods\PP080125.M
 Quant Title : GC EXTRACTABLES
 QLast Update : Mon Aug 04 11:01:49 2025
 Response via : Initial Calibration
 Integrator: ChemStation

Volume Inj. : 2 µl
 Signal #1 Phase : ZB-MR1 Signal #2 Phase: ZB-MR2
 Signal #1 Info : 30Mx0.32mmx 0.50µ Signal #2 Info : 30M x 0.32mm x 0.25µm

Compound	RT#1	RT#2	Resp#1	Resp#2	ng/ml	ng/ml
System Monitoring Compounds						
1) SA Tetrachlo...	4.660	3.804	28150652	88275989	25.173	23.022
2) SA Decachlor...	10.436	8.820	19813949	125.3E6	20.402	20.843
Target Compounds						
3) L1 AR-1016-1	5.845	4.888	7299924	3672605	176.939	9.207 #
4) L1 AR-1016-2	5.845	4.962	7299924	1836460	120.180	9.778 #
5) L1 AR-1016-3	5.899	5.091	2784836	3751550	70.217	35.369 #
6) L1 AR-1016-4	5.975	5.125	9098869	6562910	279.583	60.089 #
7) L1 AR-1016-5	6.253	5.350	10292729	16954834	317.011	144.959 #
8) L2 AR-1221-1	4.848	3.999	750307	1518954	44.758	30.945 #
9) L2 AR-1221-2	4.963	4.100	694470	1376057	55.112	38.342 #
10) L2 AR-1221-3	5.038	4.179	108847	225604	2.971	1.668 #
11) L3 AR-1232-1	5.038	4.179	108847	225604	3.749	2.226 #
12) L3 AR-1232-2	5.511f	4.888	1776907	3672605	118.124	21.075 #
13) L3 AR-1232-3	5.845	5.091	7299924	3751550	251.707	81.882 #
14) L3 AR-1232-4	5.975	5.191	9098869	4608705	588.207	79.446 #
15) L3 AR-1232-5	6.090	5.350	3287577	16954834	280.605	360.899 #
16) L4 AR-1242-1	5.845	4.888	7299924	3672605	195.888	10.641 #
17) L4 AR-1242-2	5.845	4.962	7299924	1836460	134.168	11.241 #
18) L4 AR-1242-3	5.899	5.091	2784836	3751550	77.928	40.668 #
19) L4 AR-1242-4	5.975	5.191	9098869	4608705	311.406	38.592 #
20) L4 AR-1242-5	6.702	5.687	12341089	12795010	347.069	85.551 #
21) L5 AR-1248-1	5.845	4.888	7299924	3672605	260.576	17.167 #
22) L5 AR-1248-2	6.090	5.125	3287577	6562910	81.656	44.855 #
23) L5 AR-1248-3	6.253	5.191	10292729	4608705	230.916	26.879 #
24) L5 AR-1248-4	6.702	5.350	12341089	16954834	237.159	101.908 #
25) L5 AR-1248-5	6.702	5.687f	12341089	12795010	216.726	43.974 #
26) L6 AR-1254-1	6.657	5.687	8356015	12795010	158.736	34.942 #
27) L6 AR-1254-2	6.876	5.831	7493310	11836121	94.250	42.543 #
28) L6 AR-1254-3	7.241	6.240	5657523	20447172	64.794	41.796 #
29) L6 AR-1254-4	7.514	6.461	4598623	6801608	72.068	18.504 #
30) L6 AR-1254-5	7.947	6.877	12792718	35373863	157.653	91.840 #
31) L7 AR-1260-1	7.401	6.552	4934695	12507310	87.563	30.962 #
32) L7 AR-1260-2	7.653	6.704	10640969	1412955	156.135	4.519 #
33) L7 AR-1260-3	8.011	6.877f	3540086	35373863	66.423	89.754 #
34) L7 AR-1260-4	8.237	7.182	9655977	18845544	154.212	64.766 #
35) L7 AR-1260-5	8.564	7.414	4640792	17252606	40.958	22.778 #
36) L8 AR-1262-1	8.237	6.877f	9655977	35373863	127.405	62.815 #
37) L8 AR-1262-2	8.564	7.182	4640792	18845544	35.581	46.994 #
38) L8 AR-1262-3	8.897	7.698	1763072	10481253	18.742	29.158 #
39) L8 AR-1262-4	8.977	7.760	1313086	12532596	18.024	18.792
40) L8 AR-1262-5	9.651	8.288	591686	81481	11.619	0.288 #
41) L9 AR-1268-1	8.897	7.698	1763072	10481253	11.328	9.613

Data Path : Z:\pestpcbsrv\HPCHEM1\ECD_P\Data\PP081225\
 Data File : PP074315.D
 Signal(s) : Signal #1: ECD1A.ch Signal #2: ECD2B.ch
 Acq On : 12 Aug 2025 14:42
 Operator : YP\AJ
 Sample : Q2831-01
 Misc :
 ALS Vial : 15 Sample Multiplier: 1

Instrument :
 ECD_P
 ClientSampleId :
 VNJ-238

Integration File signal 1: autoint1.e
 Integration File signal 2: autoint2.e
 Quant Time: Aug 13 01:53:55 2025
 Quant Method : Z:\pestpcbsrv\HPCHEM1\ECD_P\methods\PP080125.M
 Quant Title : GC EXTRACTABLES
 QLast Update : Mon Aug 04 11:01:49 2025
 Response via : Initial Calibration
 Integrator: ChemStation

Volume Inj. : 2 µl
 Signal #1 Phase : ZB-MR1 Signal #2 Phase: ZB-MR2
 Signal #1 Info : 30Mx0.32mmx 0.50µ Signal #2 Info : 30M x 0.32mm x 0.25µm

	Compound	RT#1	RT#2	Resp#1	Resp#2	ng/ml	ng/ml
42)	L9 AR-1268-2	8.977	7.760	1313086	12532596	9.155	11.808 #
43)	L9 AR-1268-3	9.218	7.963	242860	2637399	2.033	3.170 #
44)	L9 AR-1268-4	9.651	8.288	591686	81481	10.061	0.264 #
45)	L9 AR-1268-5	10.084	8.552	1504889	4285873	4.279	1.681 #

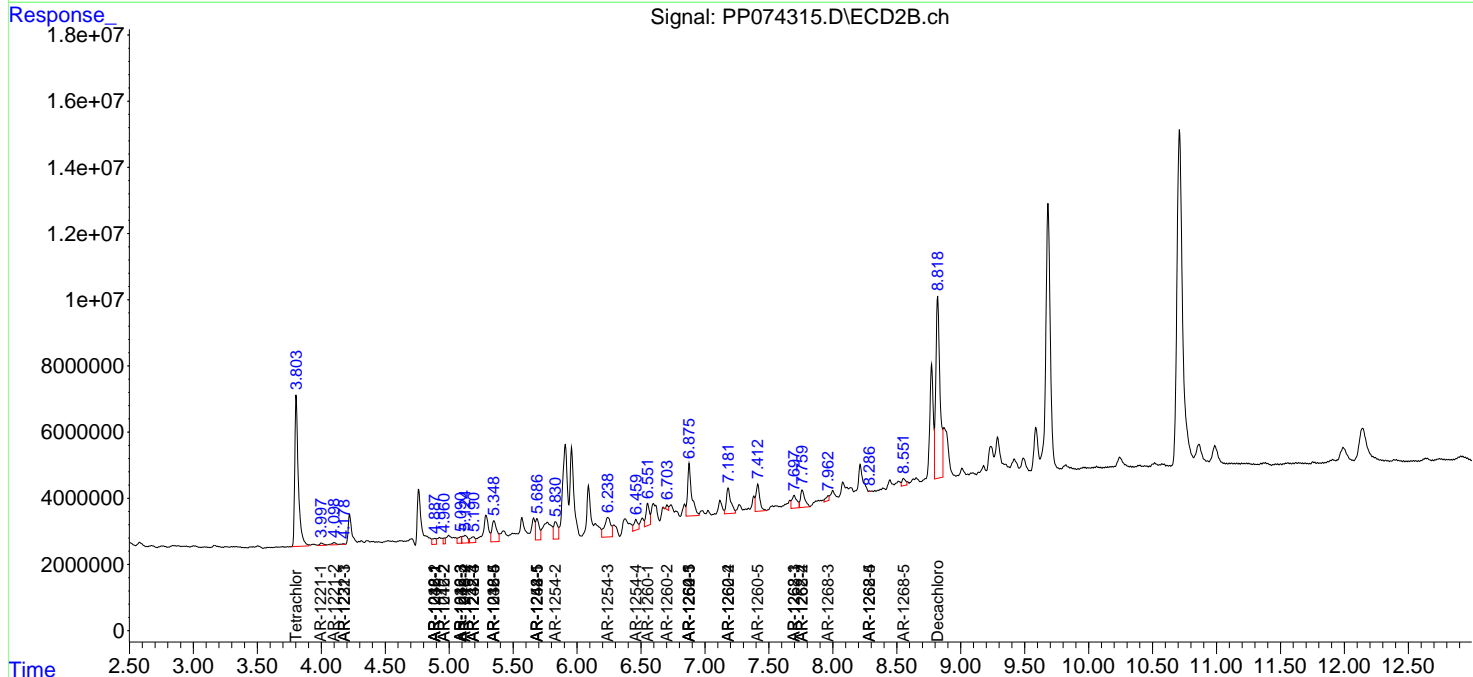
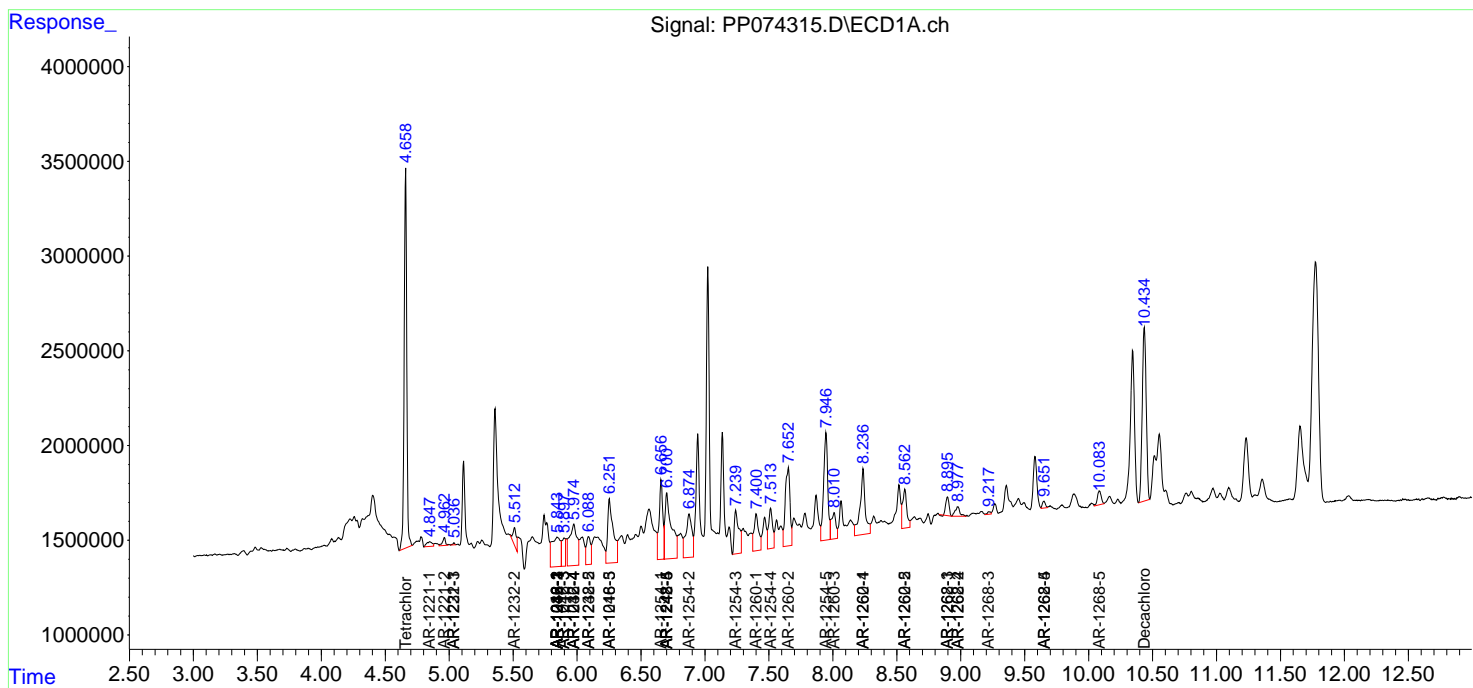
(f)=RT Delta > 1/2 Window (#)=Amounts differ by > 25% (m)=manual int.

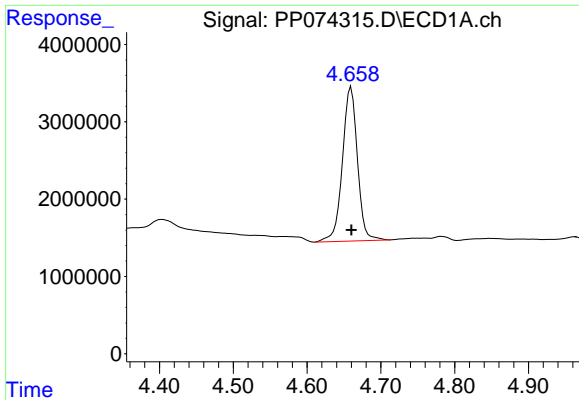
Data Path : Z:\pestpcbsrv\HPCHEM1\ECD_P\Data\PP081225\
 Data File : PP074315.D
 Signal(s) : Signal #1: ECD1A.ch Signal #2: ECD2B.ch
 Acq On : 12 Aug 2025 14:42
 Operator : YP\AJ
 Sample : Q2831-01
 Misc :
 ALS Vial : 15 Sample Multiplier: 1

Instrument :
 ECD_P
 ClientSampleId :
 VNJ-238

Integration File signal 1: autoint1.e
 Integration File signal 2: autoint2.e
 Quant Time: Aug 13 01:53:55 2025
 Quant Method : Z:\pestpcbsrv\HPCHEM1\ECD_P\methods\PP080125.M
 Quant Title : GC EXTRACTABLES
 QLast Update : Mon Aug 04 11:01:49 2025
 Response via : Initial Calibration
 Integrator: ChemStation

Volume Inj. : 2 µl
 Signal #1 Phase : ZB-MR1 Signal #2 Phase: ZB-MR2
 Signal #1 Info : 30Mx0.32mmx 0.50µ Signal #2 Info : 30M x 0.32mm x 0.25µm

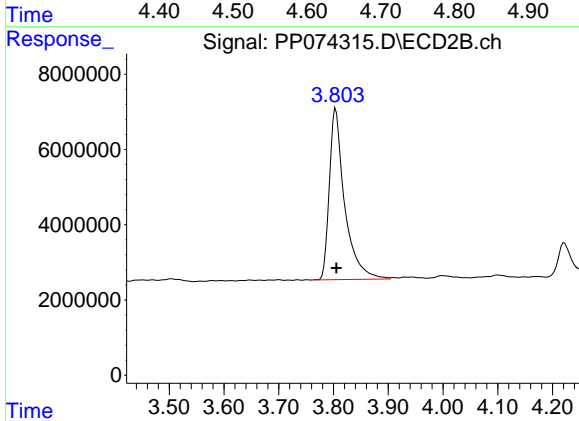




#1 Tetrachloro-m-xylene

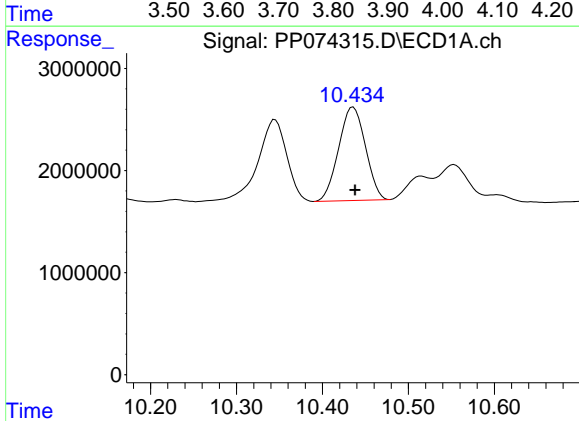
R.T.: 4.660 min
 Delta R.T.: 0.000 min
 Response: 28150652
 Conc: 25.17 ng/ml

Instrument :
 ECD_P
 ClientSampleId :
 VNJ-238



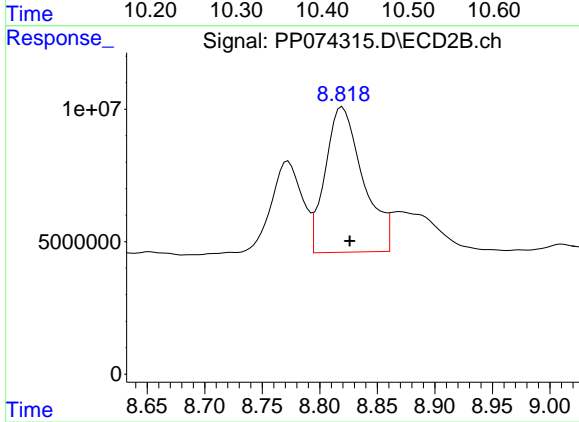
#1 Tetrachloro-m-xylene

R.T.: 3.804 min
 Delta R.T.: -0.001 min
 Response: 88275989
 Conc: 23.02 ng/ml



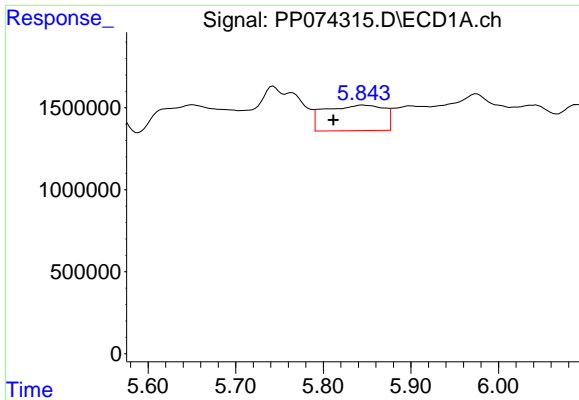
#2 Decachlorobiphenyl

R.T.: 10.436 min
 Delta R.T.: -0.002 min
 Response: 19813949
 Conc: 20.40 ng/ml



#2 Decachlorobiphenyl

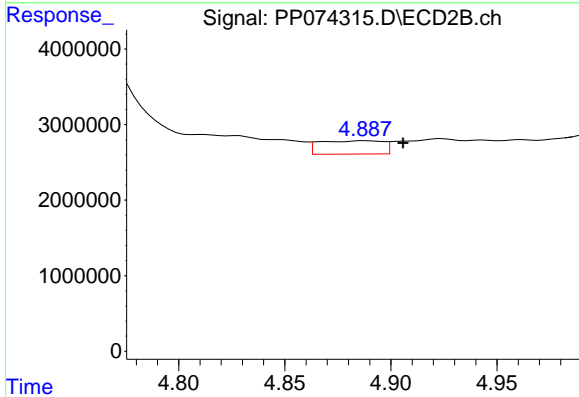
R.T.: 8.820 min
 Delta R.T.: -0.006 min
 Response: 125342177
 Conc: 20.84 ng/ml



#3 AR-1016-1

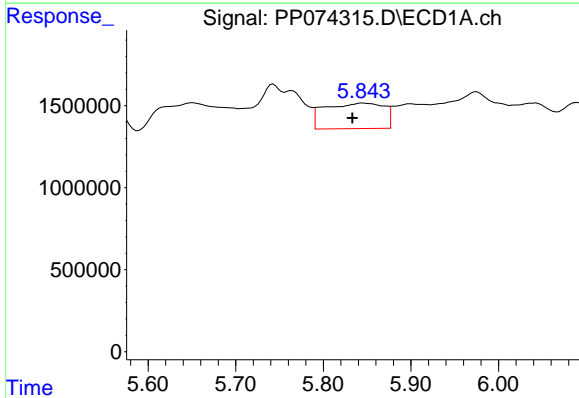
R.T.: 5.845 min
 Delta R.T.: 0.033 min
 Response: 7299924
 Conc: 176.94 ng/ml

Instrument :
 ECD_P
 ClientSampleId :
 VNJ-238



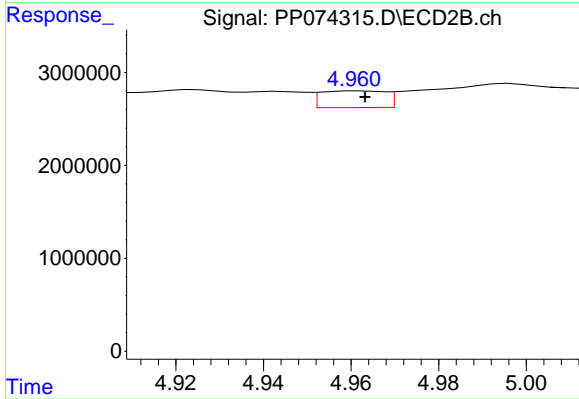
#3 AR-1016-1

R.T.: 4.888 min
 Delta R.T.: -0.018 min
 Response: 3672605
 Conc: 9.21 ng/ml



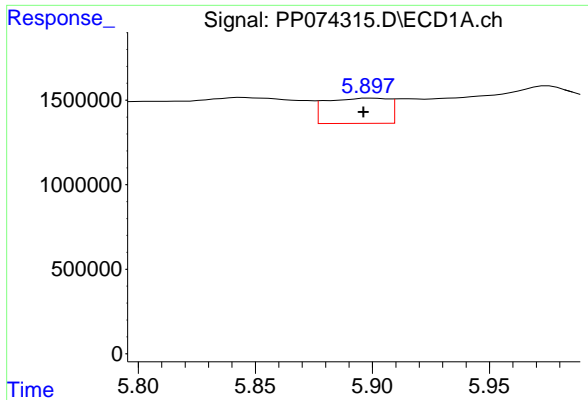
#4 AR-1016-2

R.T.: 5.845 min
 Delta R.T.: 0.011 min
 Response: 7299924
 Conc: 120.18 ng/ml



#4 AR-1016-2

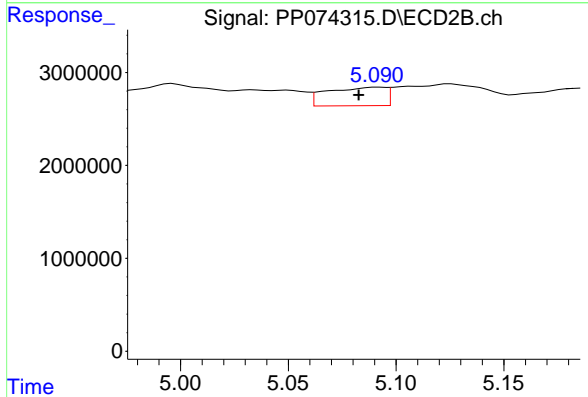
R.T.: 4.962 min
 Delta R.T.: -0.001 min
 Response: 1836460
 Conc: 9.78 ng/ml



#5 AR-1016-3

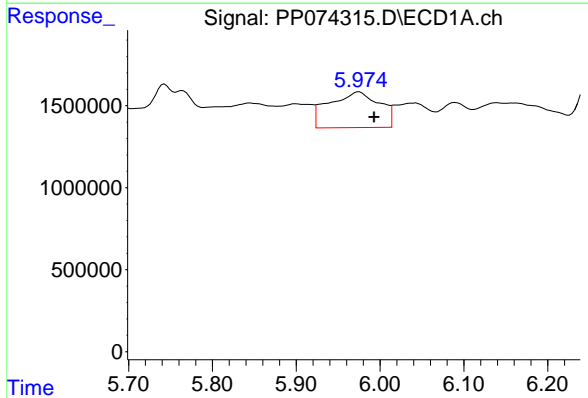
R.T.: 5.899 min
 Delta R.T.: 0.003 min
 Response: 2784836
 Conc: 70.22 ng/ml

Instrument :
 ECD_P
 ClientSampleId :
 VNJ-238



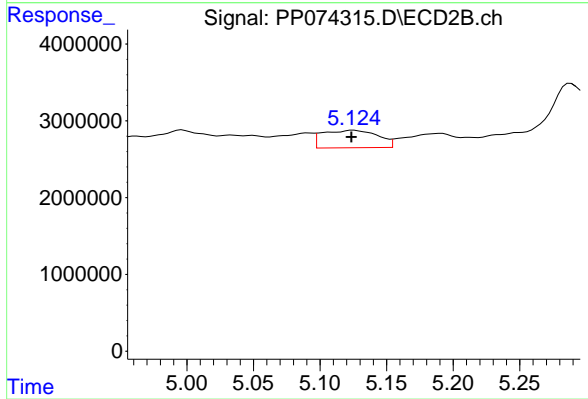
#5 AR-1016-3

R.T.: 5.091 min
 Delta R.T.: 0.009 min
 Response: 3751550
 Conc: 35.37 ng/ml



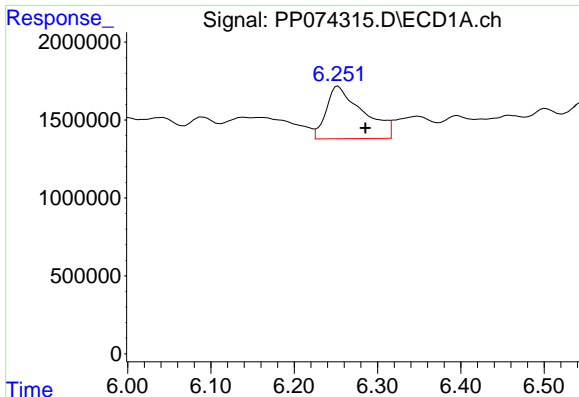
#6 AR-1016-4

R.T.: 5.975 min
 Delta R.T.: -0.018 min
 Response: 9098869
 Conc: 279.58 ng/ml



#6 AR-1016-4

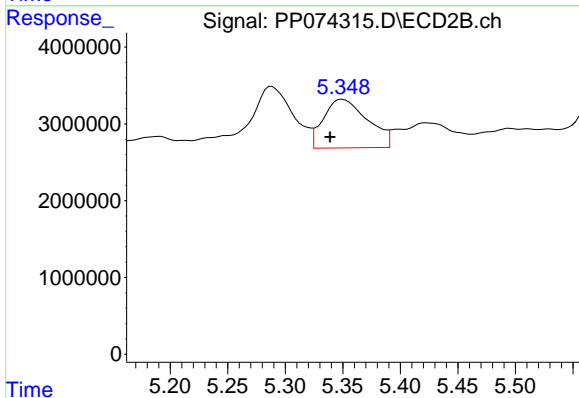
R.T.: 5.125 min
 Delta R.T.: 0.002 min
 Response: 6562910
 Conc: 60.09 ng/ml



#7 AR-1016-5

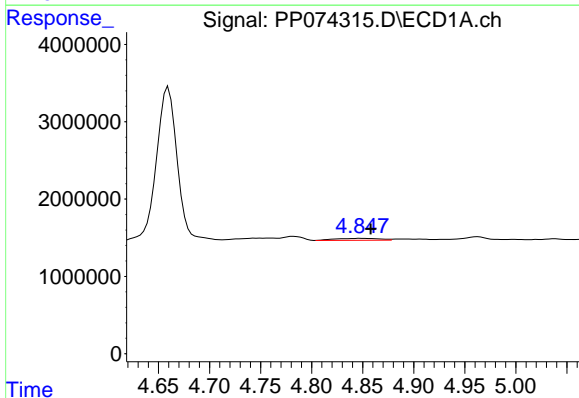
R.T.: 6.253 min
 Delta R.T.: -0.033 min
 Response: 10292729
 Conc: 317.01 ng/ml

Instrument :
 ECD_P
 ClientSampleId :
 VNJ-238



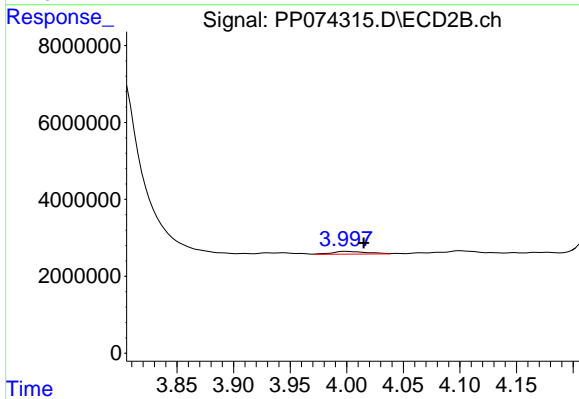
#7 AR-1016-5

R.T.: 5.350 min
 Delta R.T.: 0.011 min
 Response: 16954834
 Conc: 144.96 ng/ml



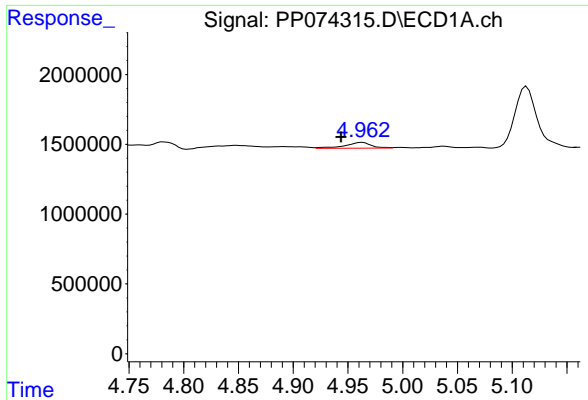
#8 AR-1221-1

R.T.: 4.848 min
 Delta R.T.: -0.009 min
 Response: 750307
 Conc: 44.76 ng/ml



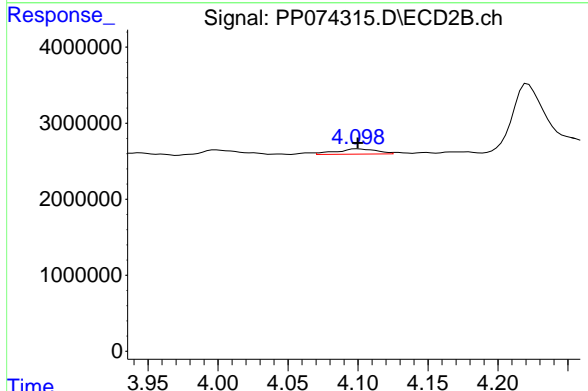
#8 AR-1221-1

R.T.: 3.999 min
 Delta R.T.: -0.016 min
 Response: 1518954
 Conc: 30.95 ng/ml

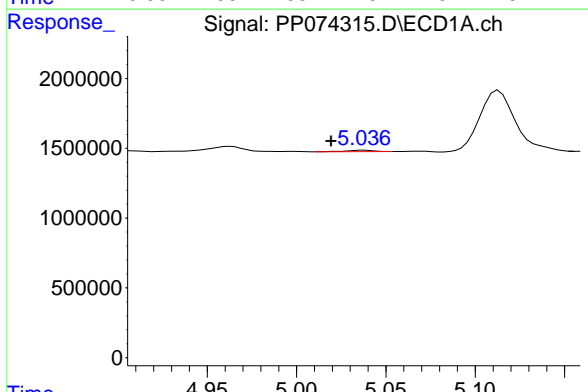


#9 AR-1221-2
 R.T.: 4.963 min
 Delta R.T.: 0.019 min
 Response: 694470
 Conc: 55.11 ng/ml

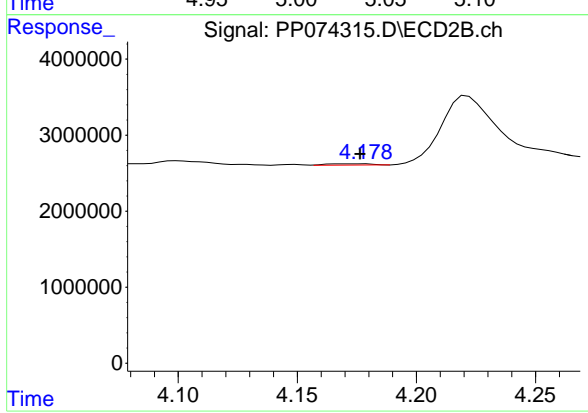
Instrument :
 ECD_P
 ClientSampleId :
 VNJ-238



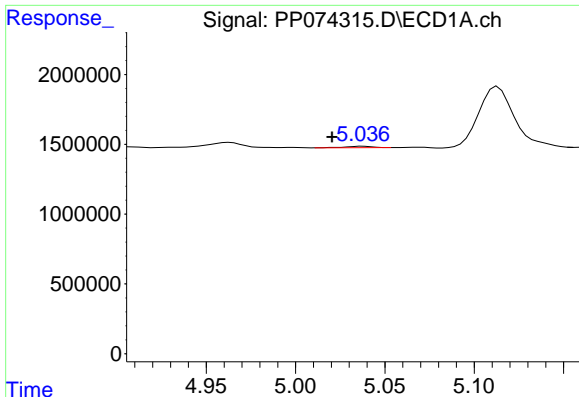
#9 AR-1221-2
 R.T.: 4.100 min
 Delta R.T.: 0.000 min
 Response: 1376057
 Conc: 38.34 ng/ml



#10 AR-1221-3
 R.T.: 5.038 min
 Delta R.T.: 0.019 min
 Response: 108847
 Conc: 2.97 ng/ml



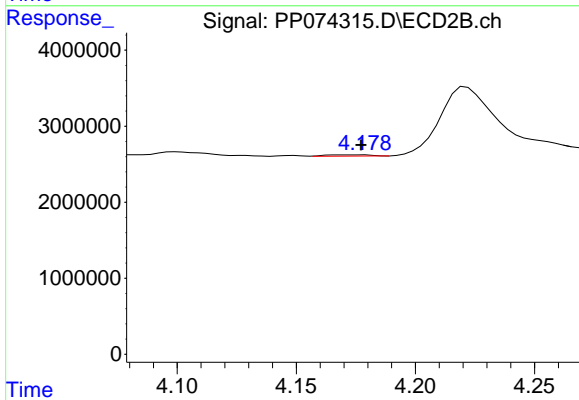
#10 AR-1221-3
 R.T.: 4.179 min
 Delta R.T.: 0.002 min
 Response: 225604
 Conc: 1.67 ng/ml



#11 AR-1232-1

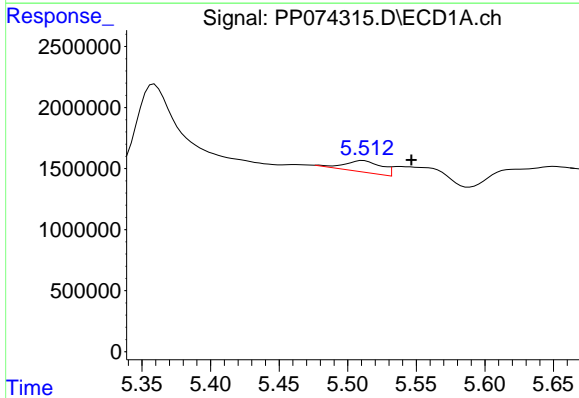
R.T.: 5.038 min
 Delta R.T.: 0.017 min
 Response: 108847
 Conc: 3.75 ng/ml

Instrument :
 ECD_P
 ClientSampleId :
 VNJ-238



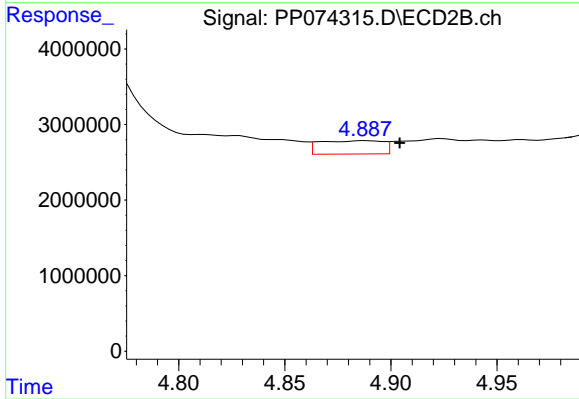
#11 AR-1232-1

R.T.: 4.179 min
 Delta R.T.: 0.002 min
 Response: 225604
 Conc: 2.23 ng/ml



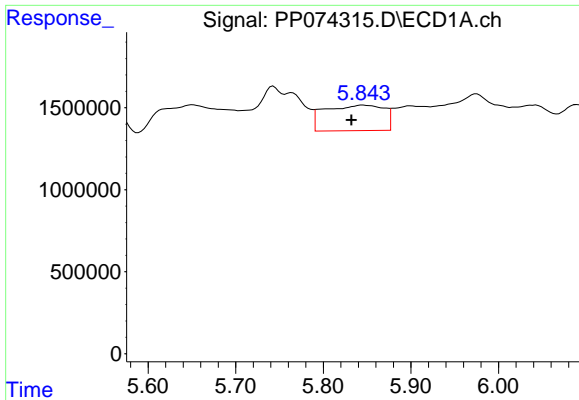
#12 AR-1232-2

R.T.: 5.511 min
 Delta R.T.: -0.035 min
 Response: 1776907
 Conc: 118.12 ng/ml



#12 AR-1232-2

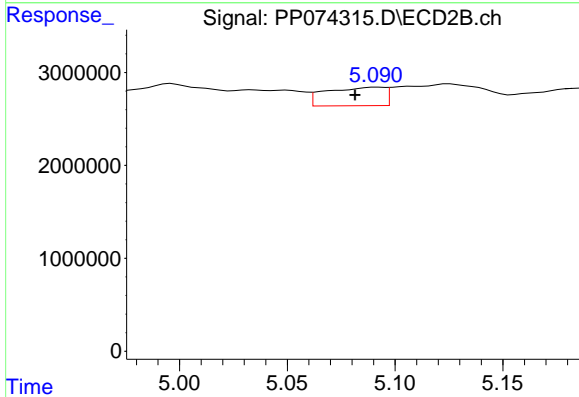
R.T.: 4.888 min
 Delta R.T.: -0.016 min
 Response: 3672605
 Conc: 21.07 ng/ml



#13 AR-1232-3

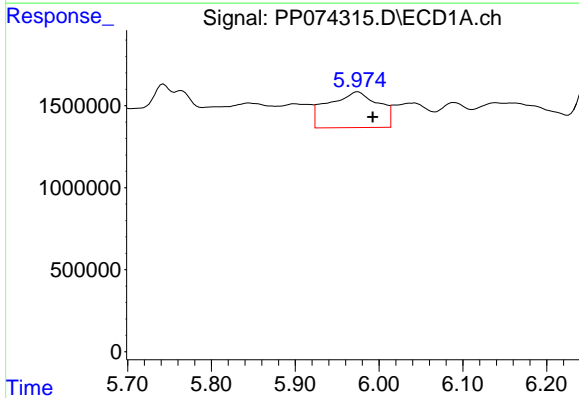
R.T.: 5.845 min
 Delta R.T.: 0.013 min
 Response: 7299924
 Conc: 251.71 ng/ml

Instrument :
 ECD_P
 ClientSampleId :
 VNJ-238



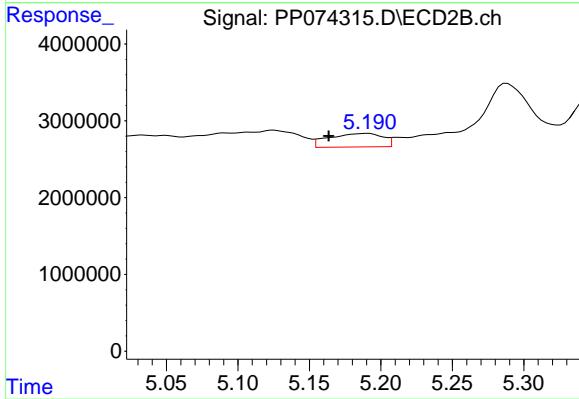
#13 AR-1232-3

R.T.: 5.091 min
 Delta R.T.: 0.010 min
 Response: 3751550
 Conc: 81.88 ng/ml



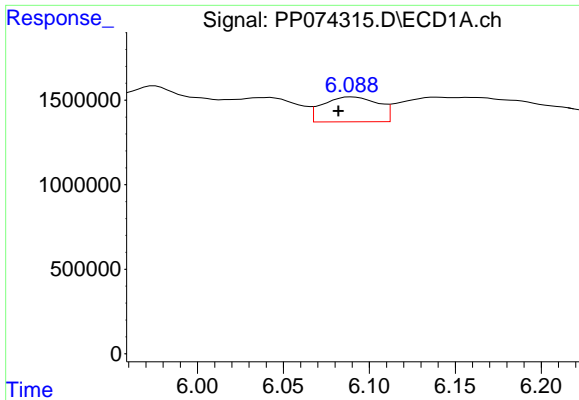
#14 AR-1232-4

R.T.: 5.975 min
 Delta R.T.: -0.017 min
 Response: 9098869
 Conc: 588.21 ng/ml



#14 AR-1232-4

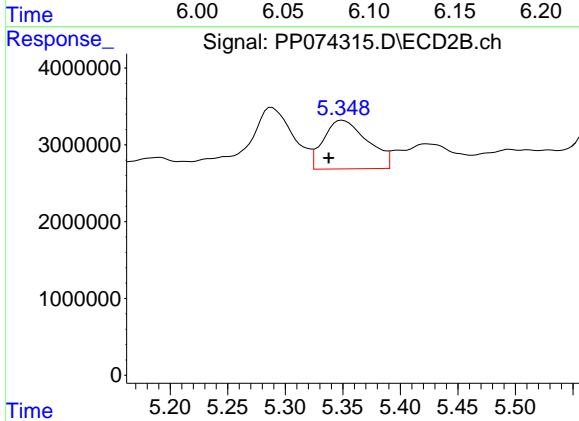
R.T.: 5.191 min
 Delta R.T.: 0.028 min
 Response: 4608705
 Conc: 79.45 ng/ml



#15 AR-1232-5

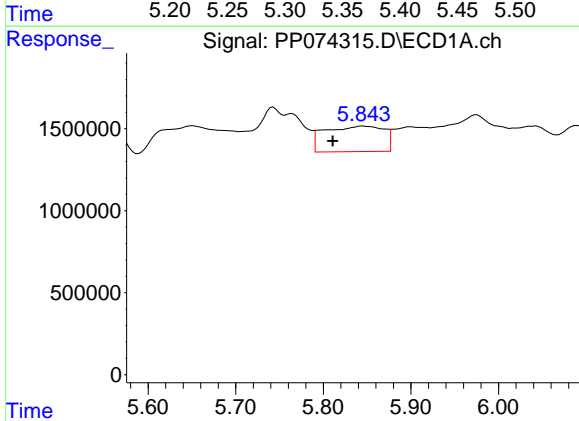
R.T.: 6.090 min
 Delta R.T.: 0.008 min
 Response: 3287577
 Conc: 280.61 ng/ml

Instrument :
 ECD_P
 ClientSampleId :
 VNJ-238



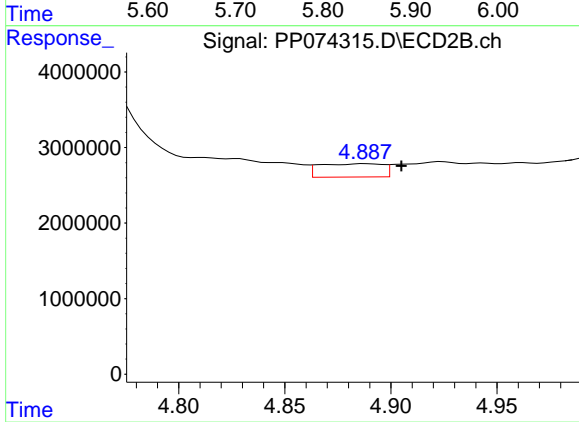
#15 AR-1232-5

R.T.: 5.350 min
 Delta R.T.: 0.012 min
 Response: 16954834
 Conc: 360.90 ng/ml



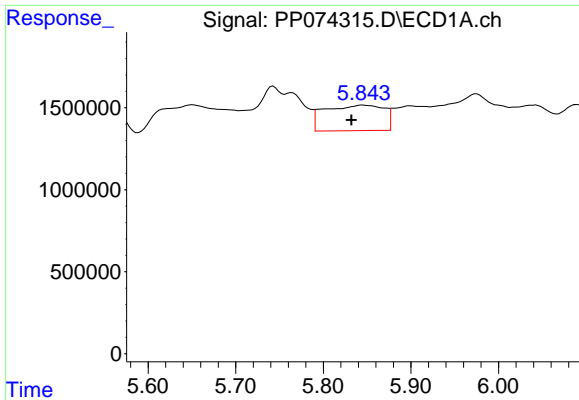
#16 AR-1242-1

R.T.: 5.845 min
 Delta R.T.: 0.034 min
 Response: 7299924
 Conc: 195.89 ng/ml



#16 AR-1242-1

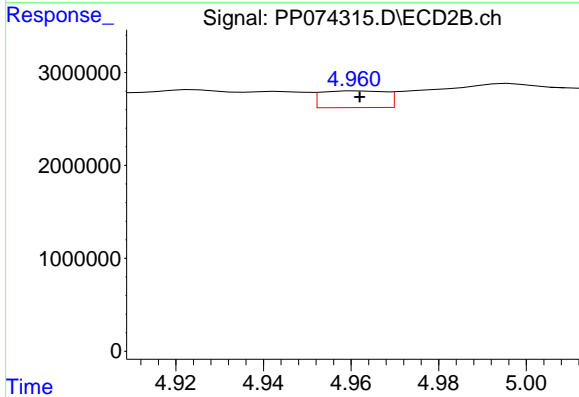
R.T.: 4.888 min
 Delta R.T.: -0.017 min
 Response: 3672605
 Conc: 10.64 ng/ml



#17 AR-1242-2

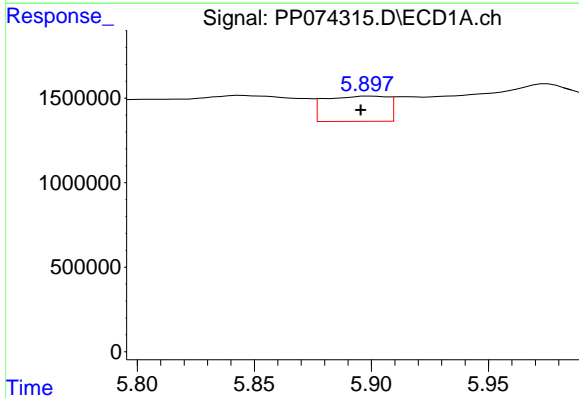
R.T.: 5.845 min
 Delta R.T.: 0.013 min
 Response: 7299924
 Conc: 134.17 ng/ml

Instrument :
 ECD_P
 ClientSampleId :
 VNJ-238



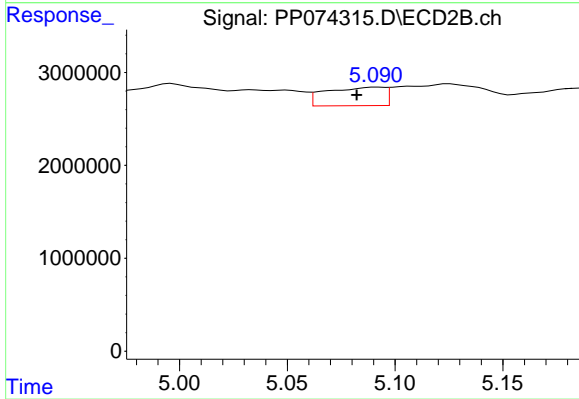
#17 AR-1242-2

R.T.: 4.962 min
 Delta R.T.: 0.000 min
 Response: 1836460
 Conc: 11.24 ng/ml



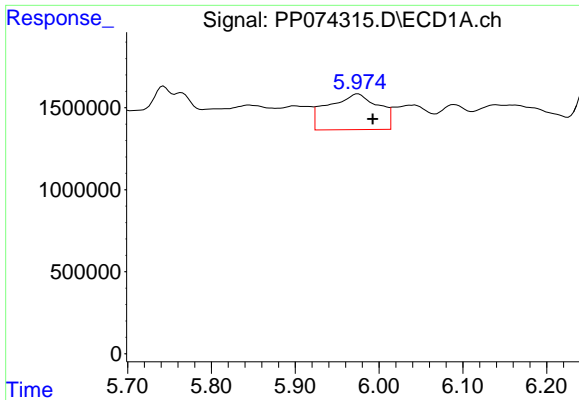
#18 AR-1242-3

R.T.: 5.899 min
 Delta R.T.: 0.004 min
 Response: 2784836
 Conc: 77.93 ng/ml



#18 AR-1242-3

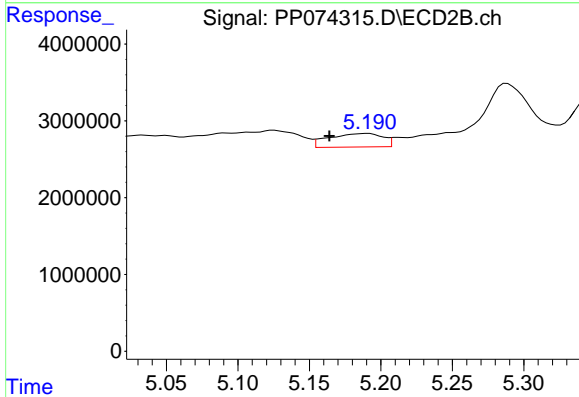
R.T.: 5.091 min
 Delta R.T.: 0.009 min
 Response: 3751550
 Conc: 40.67 ng/ml



#19 AR-1242-4

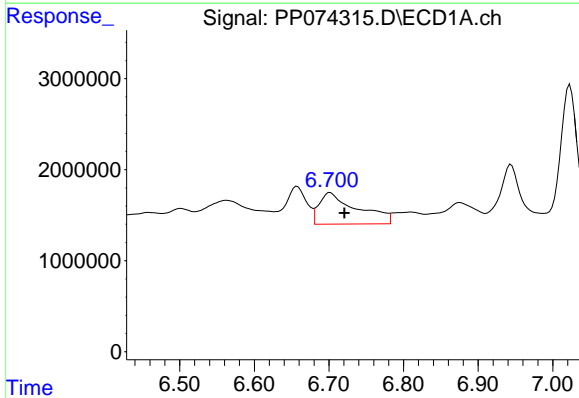
R.T.: 5.975 min
 Delta R.T.: -0.017 min
 Response: 9098869
 Conc: 311.41 ng/ml

Instrument :
 ECD_P
 ClientSampleId :
 VNJ-238



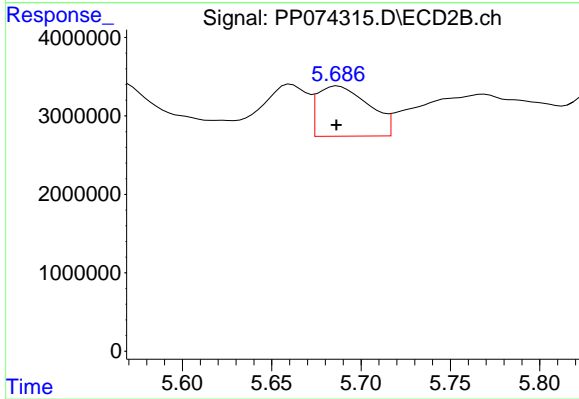
#19 AR-1242-4

R.T.: 5.191 min
 Delta R.T.: 0.027 min
 Response: 4608705
 Conc: 38.59 ng/ml



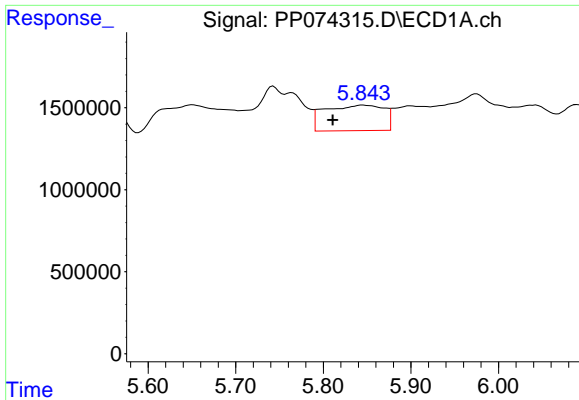
#20 AR-1242-5

R.T.: 6.702 min
 Delta R.T.: -0.019 min
 Response: 12341089
 Conc: 347.07 ng/ml



#20 AR-1242-5

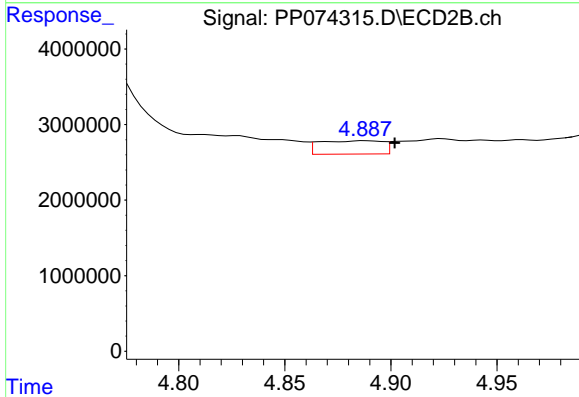
R.T.: 5.687 min
 Delta R.T.: 0.000 min
 Response: 12795010
 Conc: 85.55 ng/ml



#21 AR-1248-1

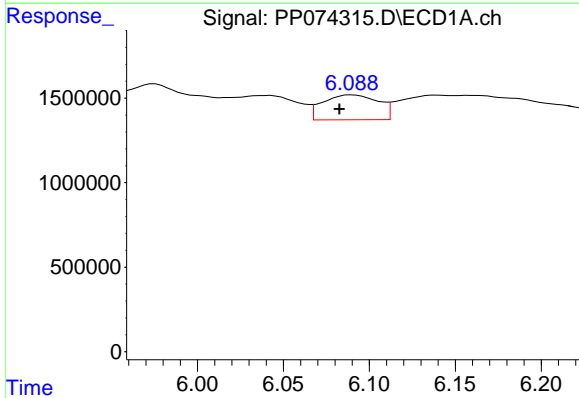
R.T.: 5.845 min
 Delta R.T.: 0.034 min
 Response: 7299924
 Conc: 260.58 ng/ml

Instrument :
 ECD_P
 ClientSampleId :
 VNJ-238



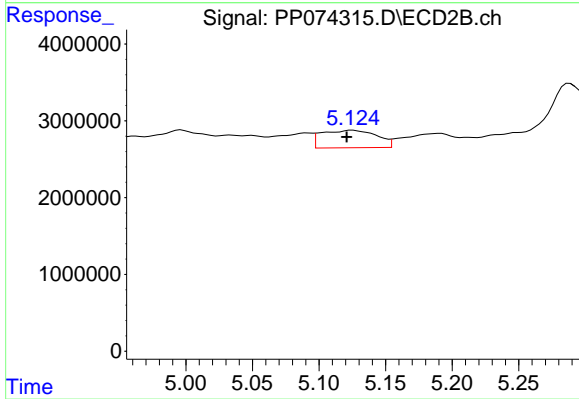
#21 AR-1248-1

R.T.: 4.888 min
 Delta R.T.: -0.014 min
 Response: 3672605
 Conc: 17.17 ng/ml



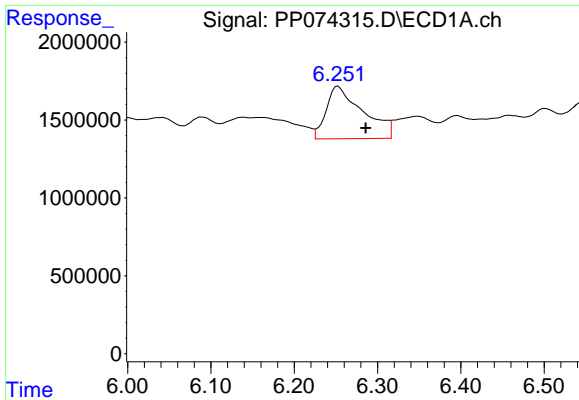
#22 AR-1248-2

R.T.: 6.090 min
 Delta R.T.: 0.007 min
 Response: 3287577
 Conc: 81.66 ng/ml



#22 AR-1248-2

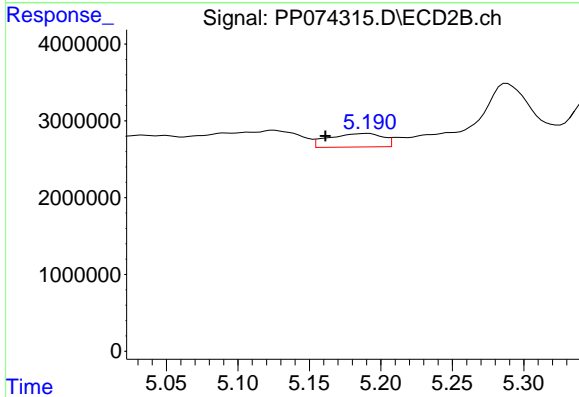
R.T.: 5.125 min
 Delta R.T.: 0.004 min
 Response: 6562910
 Conc: 44.86 ng/ml



#23 AR-1248-3

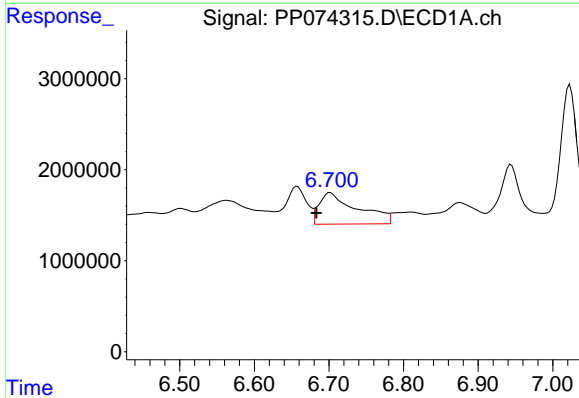
R.T.: 6.253 min
 Delta R.T.: -0.033 min
 Response: 10292729
 Conc: 230.92 ng/ml

Instrument :
 ECD_P
 ClientSampleId :
 VNJ-238



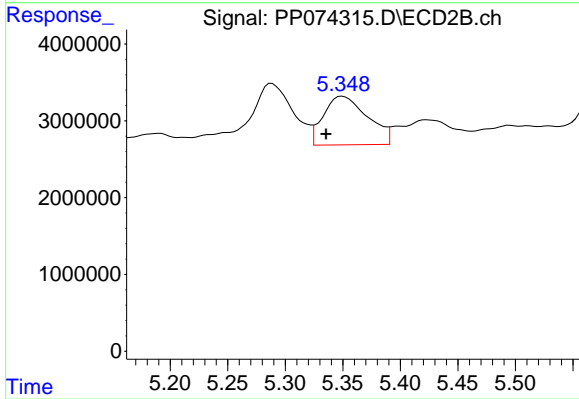
#23 AR-1248-3

R.T.: 5.191 min
 Delta R.T.: 0.030 min
 Response: 4608705
 Conc: 26.88 ng/ml



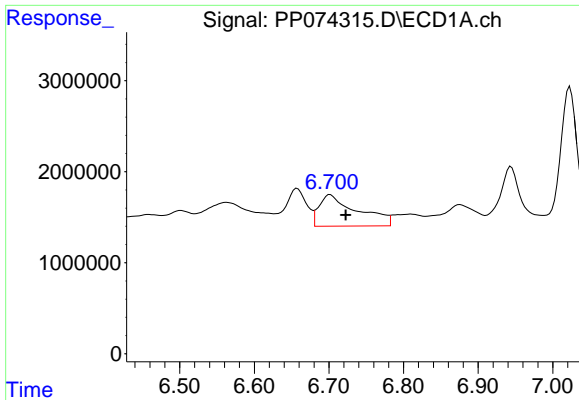
#24 AR-1248-4

R.T.: 6.702 min
 Delta R.T.: 0.019 min
 Response: 12341089
 Conc: 237.16 ng/ml



#24 AR-1248-4

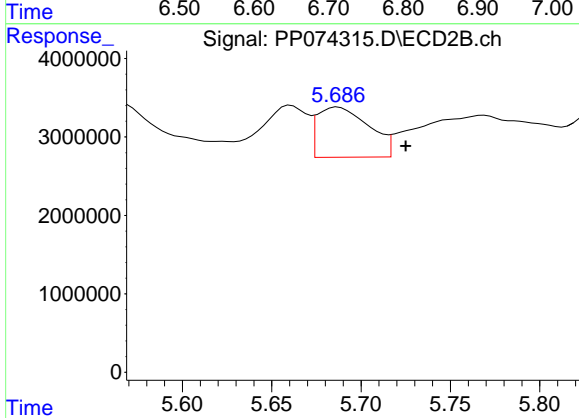
R.T.: 5.350 min
 Delta R.T.: 0.014 min
 Response: 16954834
 Conc: 101.91 ng/ml



#25 AR-1248-5

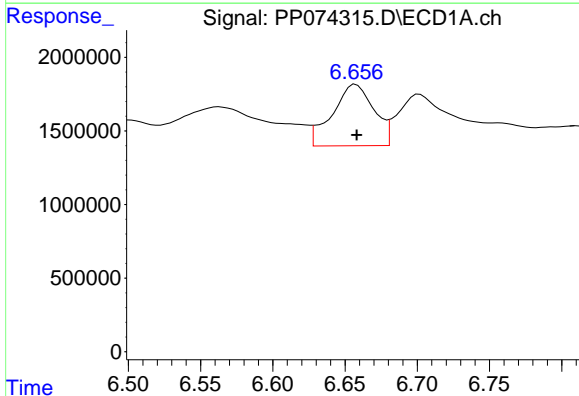
R.T.: 6.702 min
 Delta R.T.: -0.021 min
 Response: 12341089
 Conc: 216.73 ng/ml

Instrument :
 ECD_P
 ClientSampleId :
 VNJ-238



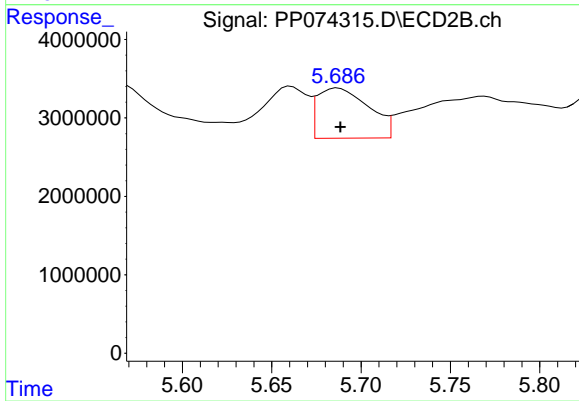
#25 AR-1248-5

R.T.: 5.687 min
 Delta R.T.: -0.038 min
 Response: 12795010
 Conc: 43.97 ng/ml



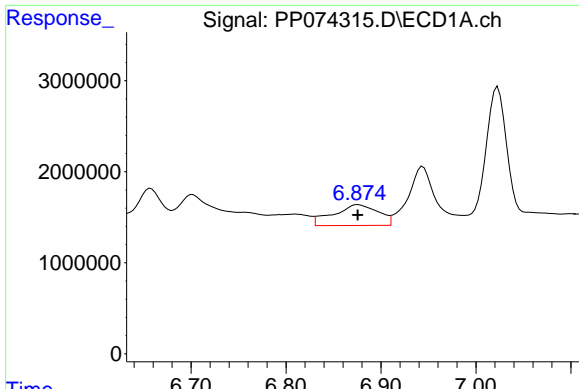
#26 AR-1254-1

R.T.: 6.657 min
 Delta R.T.: 0.000 min
 Response: 8356015
 Conc: 158.74 ng/ml



#26 AR-1254-1

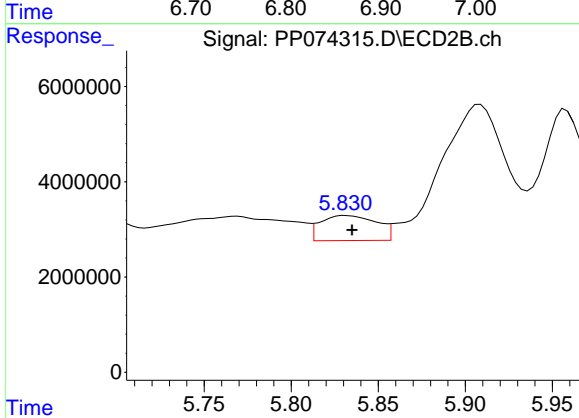
R.T.: 5.687 min
 Delta R.T.: -0.001 min
 Response: 12795010
 Conc: 34.94 ng/ml



#27 AR-1254-2

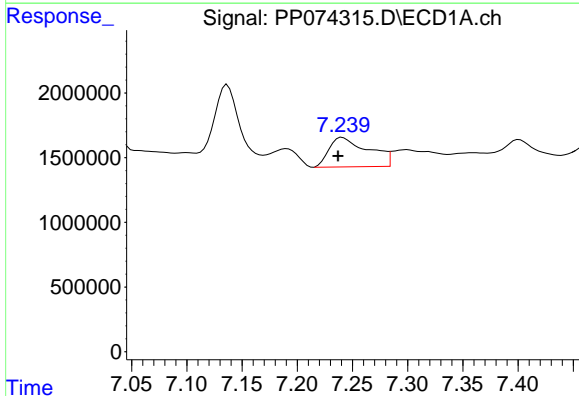
R.T.: 6.876 min
 Delta R.T.: 0.000 min
 Response: 7493310
 Conc: 94.25 ng/ml

Instrument :
 ECD_P
 ClientSampleId :
 VNJ-238



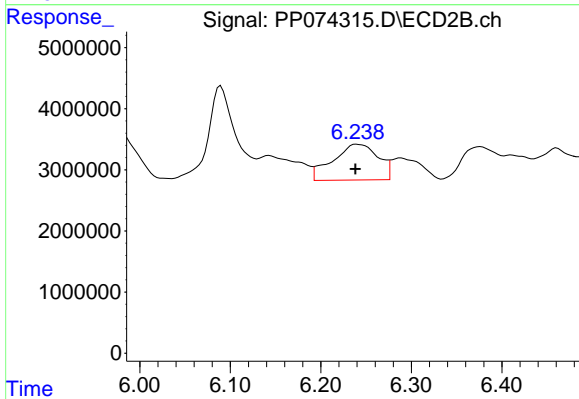
#27 AR-1254-2

R.T.: 5.831 min
 Delta R.T.: -0.004 min
 Response: 11836121
 Conc: 42.54 ng/ml



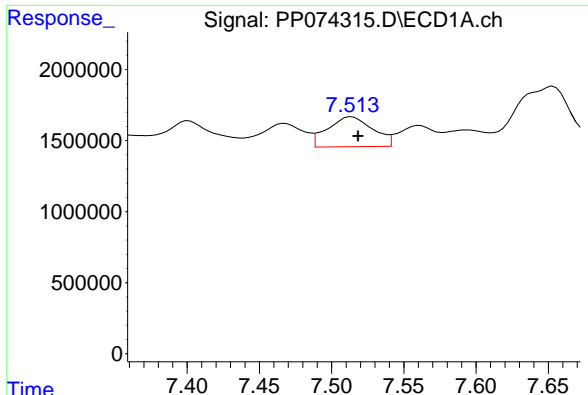
#28 AR-1254-3

R.T.: 7.241 min
 Delta R.T.: 0.004 min
 Response: 5657523
 Conc: 64.79 ng/ml



#28 AR-1254-3

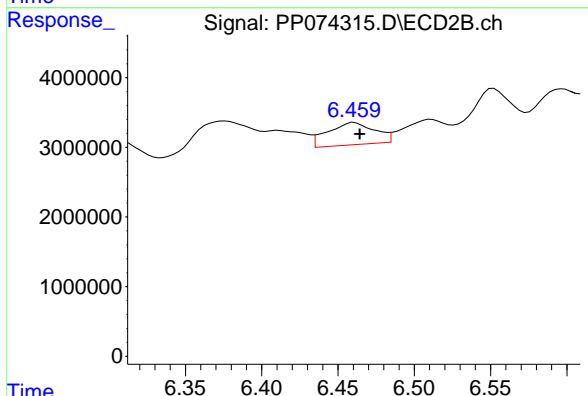
R.T.: 6.240 min
 Delta R.T.: 0.001 min
 Response: 20447172
 Conc: 41.80 ng/ml



#29 AR-1254-4

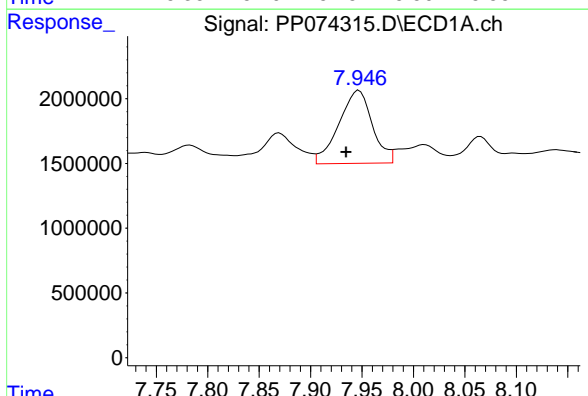
R.T.: 7.514 min
 Delta R.T.: -0.004 min
 Response: 4598623
 Conc: 72.07 ng/ml

Instrument :
 ECD_P
 ClientSampleId :
 VNJ-238



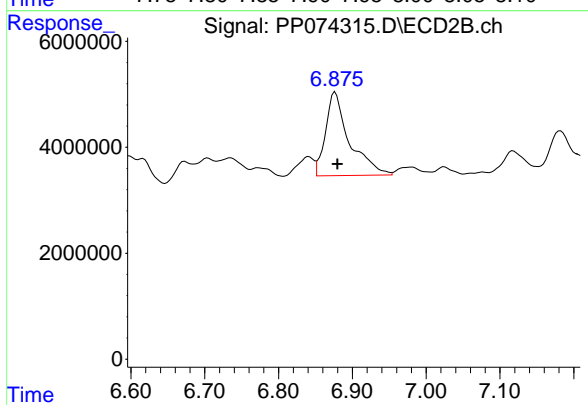
#29 AR-1254-4

R.T.: 6.461 min
 Delta R.T.: -0.004 min
 Response: 6801608
 Conc: 18.50 ng/ml



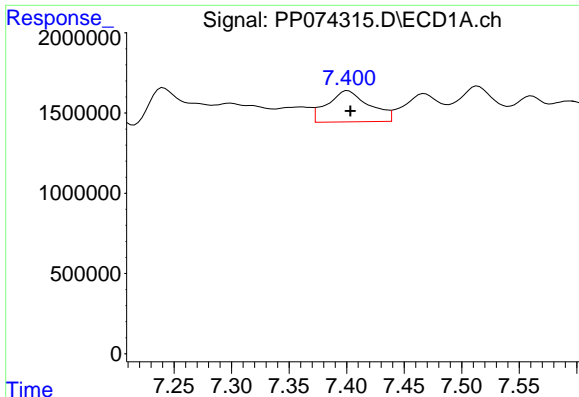
#30 AR-1254-5

R.T.: 7.947 min
 Delta R.T.: 0.013 min
 Response: 12792718
 Conc: 157.65 ng/ml



#30 AR-1254-5

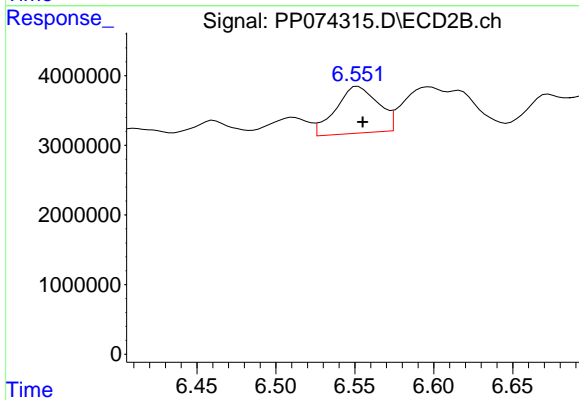
R.T.: 6.877 min
 Delta R.T.: -0.003 min
 Response: 35373863
 Conc: 91.84 ng/ml



#31 AR-1260-1

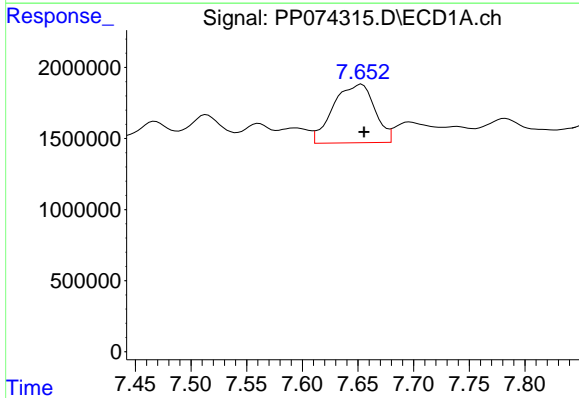
R.T.: 7.401 min
 Delta R.T.: -0.002 min
 Response: 4934695
 Conc: 87.56 ng/ml

Instrument :
 ECD_P
 ClientSampleId :
 VNJ-238



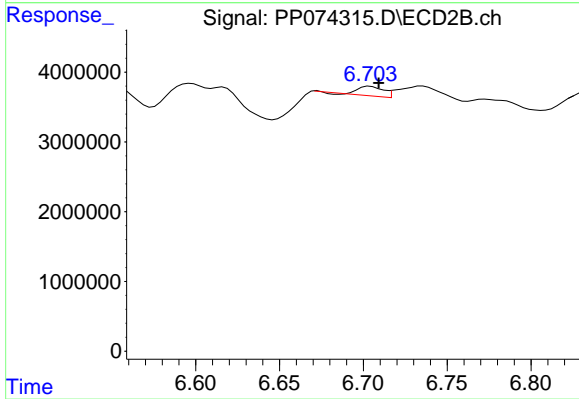
#31 AR-1260-1

R.T.: 6.552 min
 Delta R.T.: -0.003 min
 Response: 12507310
 Conc: 30.96 ng/ml



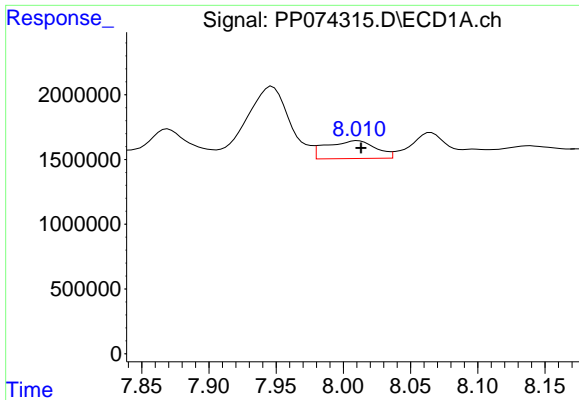
#32 AR-1260-2

R.T.: 7.653 min
 Delta R.T.: -0.002 min
 Response: 10640969
 Conc: 156.13 ng/ml



#32 AR-1260-2

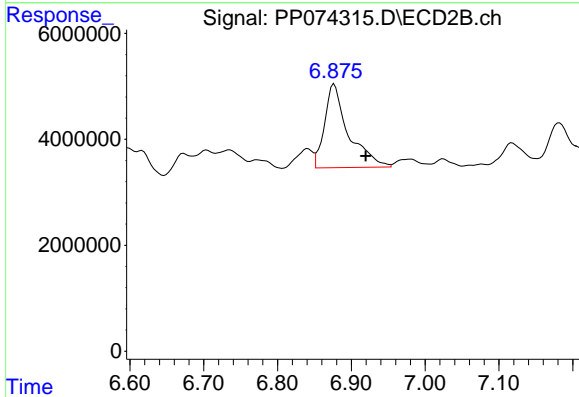
R.T.: 6.704 min
 Delta R.T.: -0.005 min
 Response: 1412955
 Conc: 4.52 ng/ml



#33 AR-1260-3

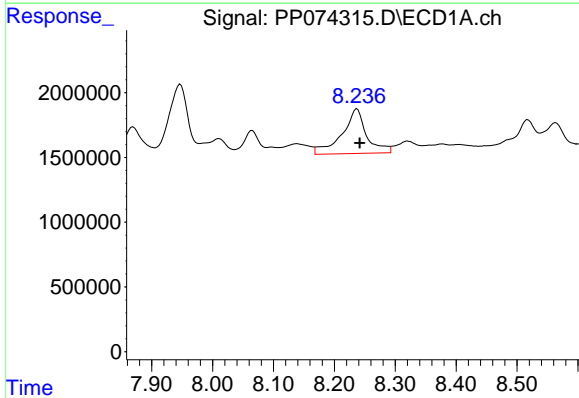
R.T.: 8.011 min
 Delta R.T.: -0.002 min
 Response: 3540086
 Conc: 66.42 ng/ml

Instrument :
 ECD_P
 ClientSampleId :
 VNJ-238



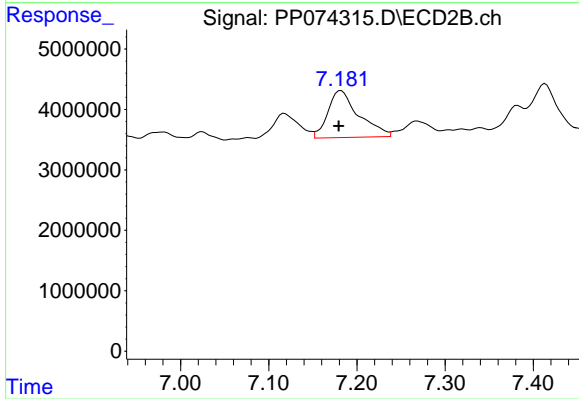
#33 AR-1260-3

R.T.: 6.877 min
 Delta R.T.: -0.043 min
 Response: 35373863
 Conc: 89.75 ng/ml



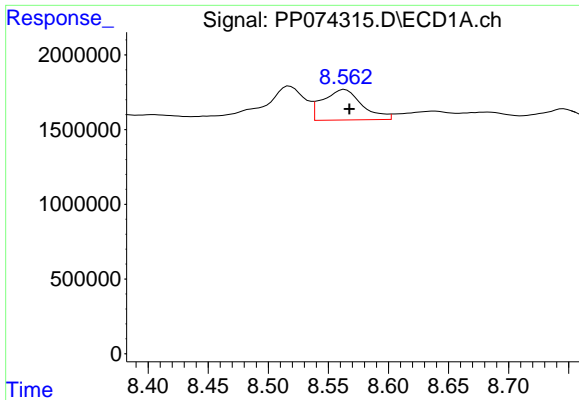
#34 AR-1260-4

R.T.: 8.237 min
 Delta R.T.: -0.005 min
 Response: 9655977
 Conc: 154.21 ng/ml



#34 AR-1260-4

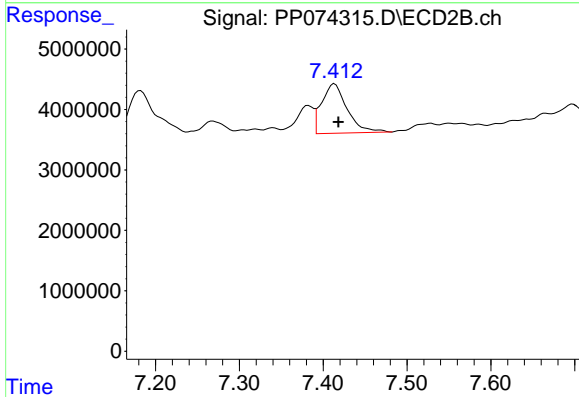
R.T.: 7.182 min
 Delta R.T.: 0.003 min
 Response: 18845544
 Conc: 64.77 ng/ml



#35 AR-1260-5

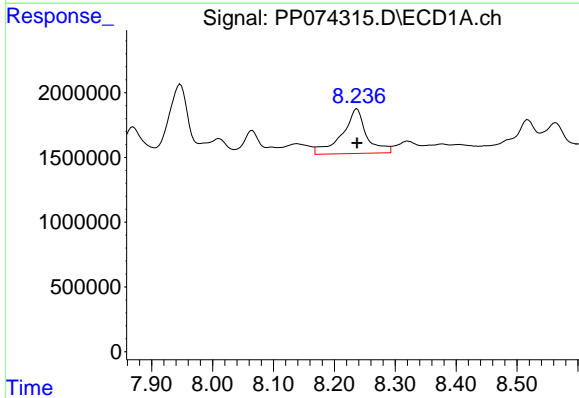
R.T.: 8.564 min
 Delta R.T.: -0.004 min
 Response: 4640792
 Conc: 40.96 ng/ml

Instrument :
 ECD_P
 ClientSampleId :
 VNJ-238



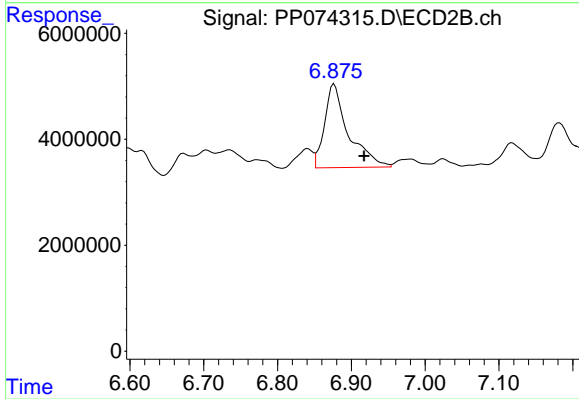
#35 AR-1260-5

R.T.: 7.414 min
 Delta R.T.: -0.004 min
 Response: 17252606
 Conc: 22.78 ng/ml



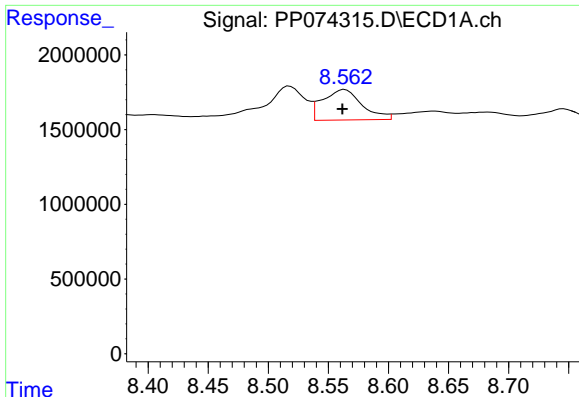
#36 AR-1262-1

R.T.: 8.237 min
 Delta R.T.: 0.000 min
 Response: 9655977
 Conc: 127.40 ng/ml



#36 AR-1262-1

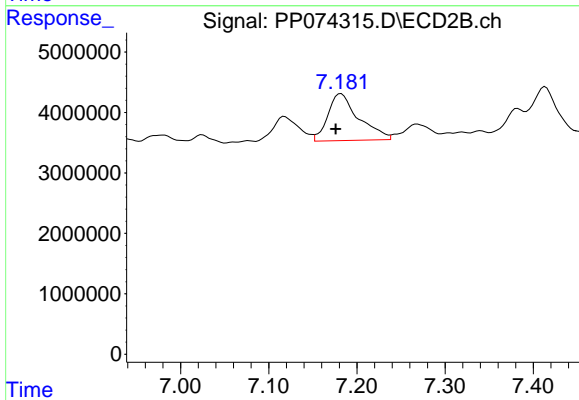
R.T.: 6.877 min
 Delta R.T.: -0.040 min
 Response: 35373863
 Conc: 62.82 ng/ml



#37 AR-1262-2

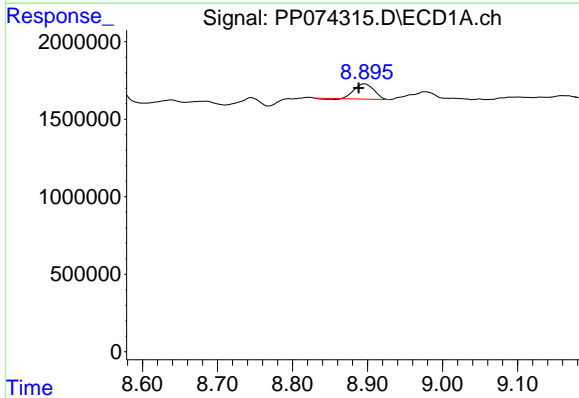
R.T.: 8.564 min
 Delta R.T.: 0.002 min
 Response: 4640792
 Conc: 35.58 ng/ml

Instrument :
 ECD_P
 ClientSampleId :
 VNJ-238



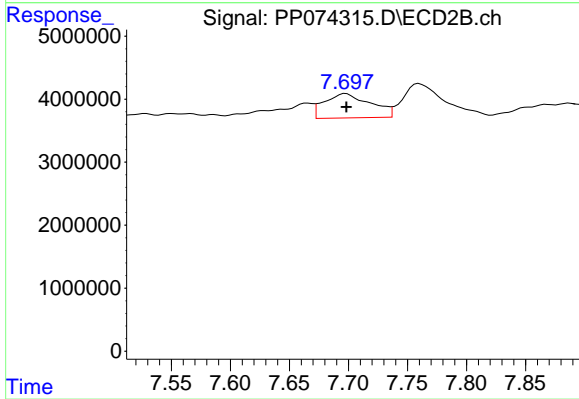
#37 AR-1262-2

R.T.: 7.182 min
 Delta R.T.: 0.006 min
 Response: 18845544
 Conc: 46.99 ng/ml



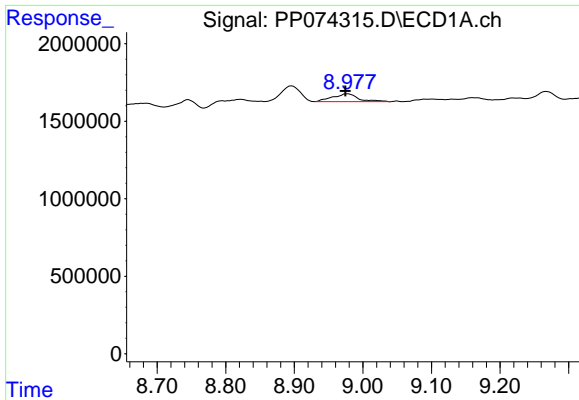
#38 AR-1262-3

R.T.: 8.897 min
 Delta R.T.: 0.009 min
 Response: 1763072
 Conc: 18.74 ng/ml



#38 AR-1262-3

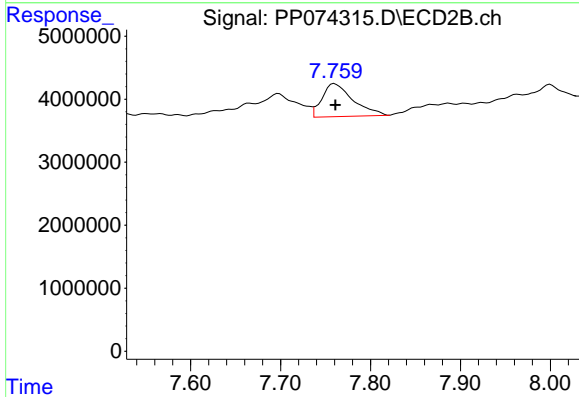
R.T.: 7.698 min
 Delta R.T.: 0.000 min
 Response: 10481253
 Conc: 29.16 ng/ml



#39 AR-1262-4

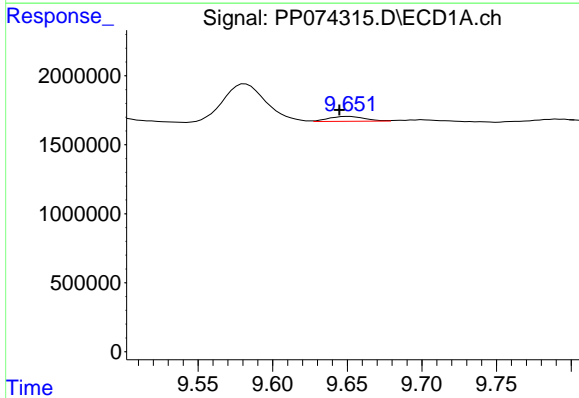
R.T.: 8.977 min
 Delta R.T.: 0.003 min
 Response: 1313086
 Conc: 18.02 ng/ml

Instrument :
 ECD_P
 ClientSampleId :
 VNJ-238



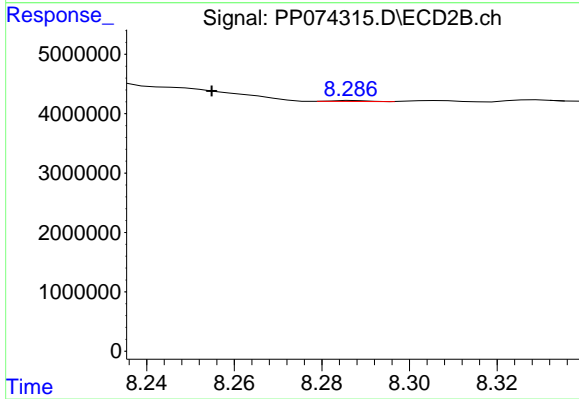
#39 AR-1262-4

R.T.: 7.760 min
 Delta R.T.: -0.001 min
 Response: 12532596
 Conc: 18.79 ng/ml



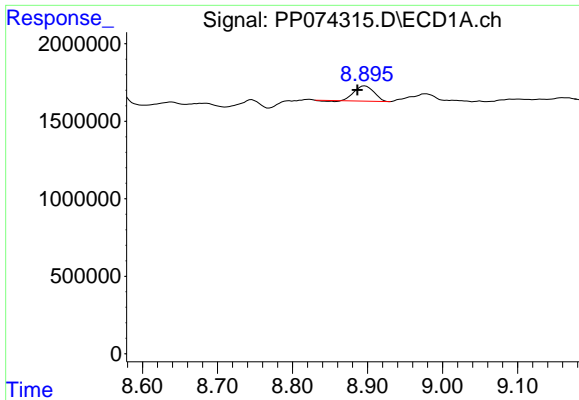
#40 AR-1262-5

R.T.: 9.651 min
 Delta R.T.: 0.007 min
 Response: 591686
 Conc: 11.62 ng/ml



#40 AR-1262-5

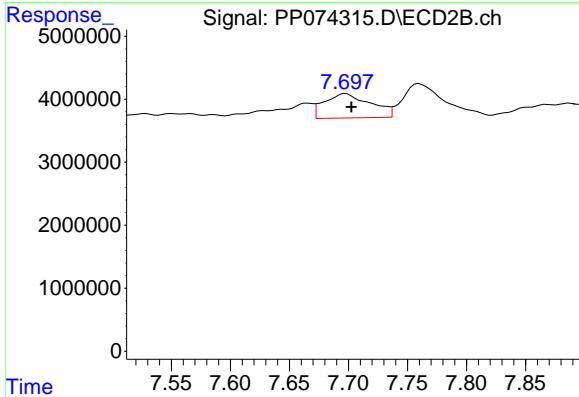
R.T.: 8.288 min
 Delta R.T.: 0.033 min
 Response: 81481
 Conc: 0.29 ng/ml



#41 AR-1268-1

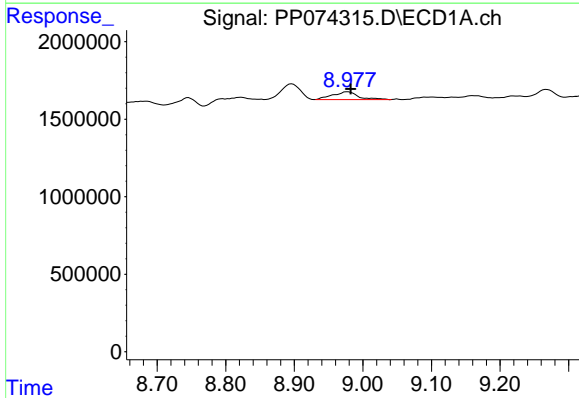
R.T.: 8.897 min
 Delta R.T.: 0.010 min
 Response: 1763072
 Conc: 11.33 ng/ml

Instrument :
 ECD_P
 ClientSampleId :
 VNJ-238



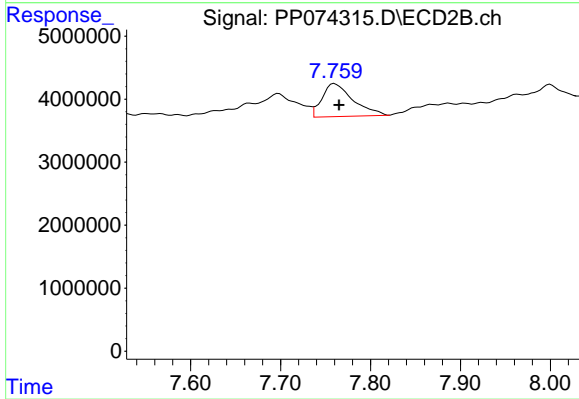
#41 AR-1268-1

R.T.: 7.698 min
 Delta R.T.: -0.004 min
 Response: 10481253
 Conc: 9.61 ng/ml



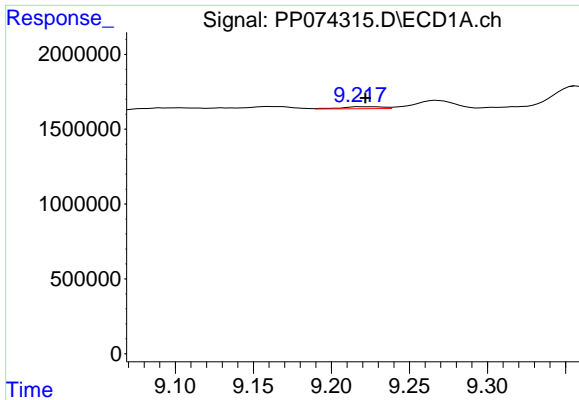
#42 AR-1268-2

R.T.: 8.977 min
 Delta R.T.: -0.005 min
 Response: 1313086
 Conc: 9.16 ng/ml



#42 AR-1268-2

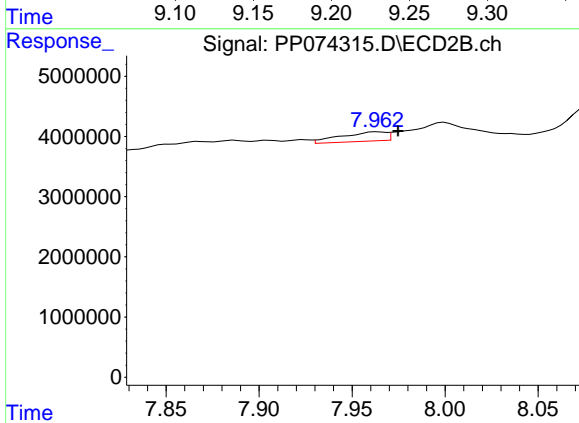
R.T.: 7.760 min
 Delta R.T.: -0.005 min
 Response: 12532596
 Conc: 11.81 ng/ml



#43 AR-1268-3

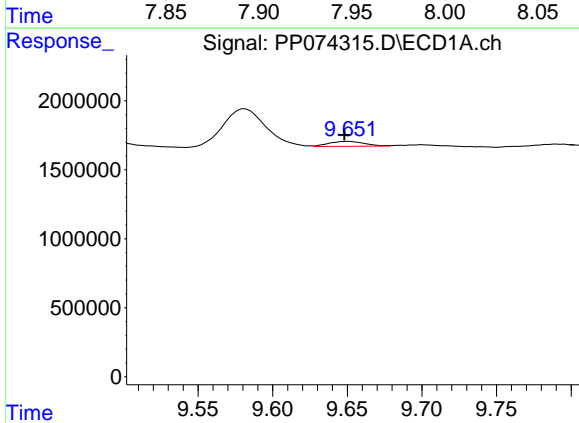
R.T.: 9.218 min
 Delta R.T.: -0.003 min
 Response: 242860
 Conc: 2.03 ng/ml

Instrument :
 ECD_P
 ClientSampleId :
 VNJ-238



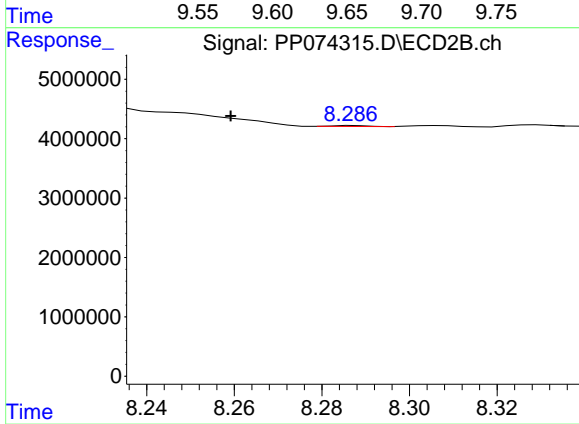
#43 AR-1268-3

R.T.: 7.963 min
 Delta R.T.: -0.011 min
 Response: 2637399
 Conc: 3.17 ng/ml



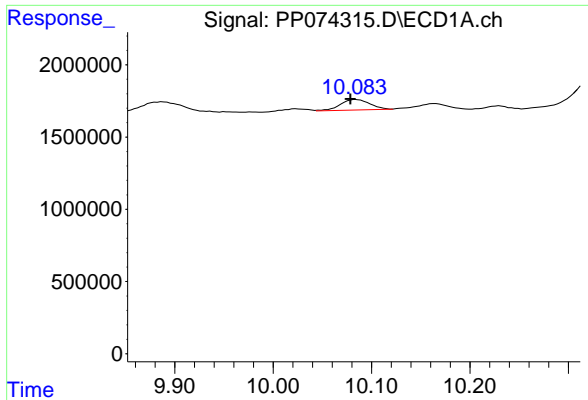
#44 AR-1268-4

R.T.: 9.651 min
 Delta R.T.: 0.003 min
 Response: 591686
 Conc: 10.06 ng/ml



#44 AR-1268-4

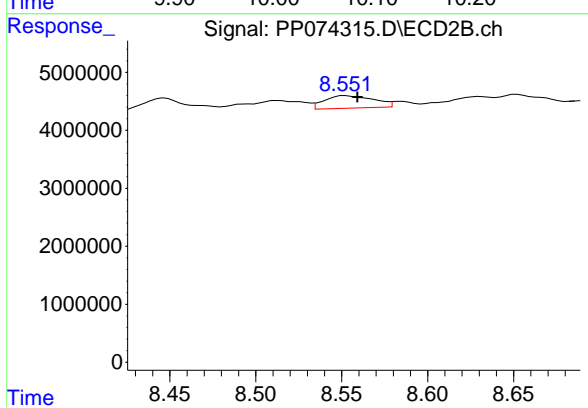
R.T.: 8.288 min
 Delta R.T.: 0.028 min
 Response: 81481
 Conc: 0.26 ng/ml



#45 AR-1268-5

R.T.: 10.084 min
 Delta R.T.: 0.006 min
 Response: 1504889
 Conc: 4.28 ng/ml

Instrument : ECD_P
 ClientSampleId : VNJ-238



#45 AR-1268-5

R.T.: 8.552 min
 Delta R.T.: -0.007 min
 Response: 4285873
 Conc: 1.68 ng/ml