

Data Path : Z:\pestpcbsrv\HPCHEM1\ECD_P\Data\PP081225\
 Data File : PP074323.D
 Signal(s) : Signal #1: ECD1A.ch Signal #2: ECD2B.ch
 Acq On : 12 Aug 2025 18:14
 Operator : YP\AJ
 Sample : Q2839-11 10X
 Misc :
 ALS Vial : 19 Sample Multiplier: 1

Instrument :
 ECD_P
 ClientSampleId :
 BC226751-1-1

Integration File signal 1: autoint1.e
 Integration File signal 2: autoint2.e
 Quant Time: Aug 13 01:55:41 2025
 Quant Method : Z:\pestpcbsrv\HPCHEM1\ECD_P\methods\PP080125.M
 Quant Title : GC EXTRACTABLES
 QLast Update : Mon Aug 04 11:01:49 2025
 Response via : Initial Calibration
 Integrator: ChemStation

Volume Inj. : 2 µl
 Signal #1 Phase : ZB-MR1 Signal #2 Phase: ZB-MR2
 Signal #1 Info : 30Mx0.32mmx 0.50µ Signal #2 Info : 30M x 0.32mm x 0.25µm

Compound	RT#1	RT#2	Resp#1	Resp#2	ng/ml	ng/ml
System Monitoring Compounds						
1) SA Tetrachlo...	4.659	3.803	3064220	4370236	2.740	1.140 #
2) SA Decachlor...	10.434	8.823	2667897	7649431	2.747	1.272 #
Target Compounds						
3) L1 AR-1016-1	0.000	4.918	0	164607	N.D.	0.413 #
4) L1 AR-1016-2	0.000	4.957	0	165753	N.D.	0.883 #
5) L1 AR-1016-3	0.000	5.090	0	163817	N.D.	1.544 #
6) L1 AR-1016-4	6.049f	5.125	166426	263544	5.114	2.413 #
7) L1 AR-1016-5	0.000	5.341	0	389633	N.D.	3.331 #
8) L2 AR-1221-1	0.000	4.015	0	176630	N.D.	3.598 #
9) L2 AR-1221-2	0.000	4.101	0	149764	N.D.	4.173 #
10) L2 AR-1221-3	0.000	4.184	0	105631	N.D.	0.781 #
11) L3 AR-1232-1	0.000	4.184	0	105631	N.D.	1.042 #
12) L3 AR-1232-2	0.000	4.893	0	118028	N.D.	0.677 #
13) L3 AR-1232-3	0.000	5.074	0	198756	N.D.	4.338 #
14) L3 AR-1232-4	6.049f	5.169	166426	475533	10.759	8.197
15) L3 AR-1232-5	6.101	5.341	502380	389633	42.880	8.294 #
16) L4 AR-1242-1	0.000	4.893	0	118028	N.D.	0.342 #
17) L4 AR-1242-2	0.000	4.957	0	165753	N.D.	1.015 #
18) L4 AR-1242-3	0.000	5.090	0	163817	N.D.	1.776 #
19) L4 AR-1242-4	6.049f	5.169	166426	475533	5.696	3.982 #
20) L4 AR-1242-5	6.733	5.694	854074	233609	24.019	1.562 #
21) L5 AR-1248-1	0.000	4.893	0	118028	N.D.	0.552 #
22) L5 AR-1248-2	6.101	5.125	502380	263544	12.478	1.801 #
23) L5 AR-1248-3	0.000	5.169	0	475533	N.D.	2.773 #
24) L5 AR-1248-4	6.681	5.341	256642	389633	4.932	2.342 #
25) L5 AR-1248-5	6.733	5.694	854074	233609	14.999	0.803 #
26) L6 AR-1254-1	6.640	5.694	771700	233609	14.660	0.638 #
27) L6 AR-1254-2	0.000	5.835	0	67510	N.D.	0.243 #
28) L6 AR-1254-3	7.229	6.236	434729	200344	4.979	0.410 #
29) L6 AR-1254-4	7.520	6.468	322140	138920	5.048	0.378 #
30) L6 AR-1254-5	7.936	6.872	277269	105621	3.417	0.274 #
31) L7 AR-1260-1	7.421	6.545	115723	137487	2.053	0.340 #
32) L7 AR-1260-2	7.661	6.704	260463	383744	3.822	1.227 #
33) L7 AR-1260-3	8.019	6.928	247057	155914	4.636	0.396 #
34) L7 AR-1260-4	8.235	7.187	162475	232174	2.595	0.798 #
35) L7 AR-1260-5	8.577	7.414	113633	275719	1.003	0.364 #
36) L8 AR-1262-1	8.235	6.910	162475	137389	2.144	0.244 #
37) L8 AR-1262-2	8.551	7.170	160465	166692	1.230	0.416 #
38) L8 AR-1262-3	8.884	7.701	62835	187217	0.668	0.521
39) L8 AR-1262-4	9.001	7.752	39334	194266	0.540	0.291 #
40) L8 AR-1262-5	9.638	8.259	34269	103855	0.673	0.367 #
41) L9 AR-1268-1	8.884	7.701	62835	187217	0.404	0.172 #

Data Path : Z:\pestpcbsrv\HPCHEM1\ECD_P\Data\PP081225\
 Data File : PP074323.D
 Signal(s) : Signal #1: ECD1A.ch Signal #2: ECD2B.ch
 Acq On : 12 Aug 2025 18:14
 Operator : YP\AJ
 Sample : Q2839-11 10X
 Misc :
 ALS Vial : 19 Sample Multiplier: 1

Instrument :
 ECD_P
 ClientSampleId :
 BC226751-1-1

Integration File signal 1: autoint1.e
 Integration File signal 2: autoint2.e
 Quant Time: Aug 13 01:55:41 2025
 Quant Method : Z:\pestpcbsrv\HPCHEM1\ECD_P\methods\PP080125.M
 Quant Title : GC EXTRACTABLES
 QLast Update : Mon Aug 04 11:01:49 2025
 Response via : Initial Calibration
 Integrator: ChemStation

Volume Inj. : 2 µl
 Signal #1 Phase : ZB-MR1 Signal #2 Phase: ZB-MR2
 Signal #1 Info : 30Mx0.32mmx 0.50µ Signal #2 Info : 30M x 0.32mm x 0.25µm

	Compound	RT#1	RT#2	Resp#1	Resp#2	ng/ml	ng/ml
42)	L9 AR-1268-2	9.001	7.772	39334	179988	0.274	0.170 #
43)	L9 AR-1268-3	9.233	7.977	154013	592090	1.289	0.712 #
44)	L9 AR-1268-4	9.638	8.259	34269	103855	0.583	0.337 #
45)	L9 AR-1268-5	10.133f	8.545	293293	324581	0.834	0.127 #

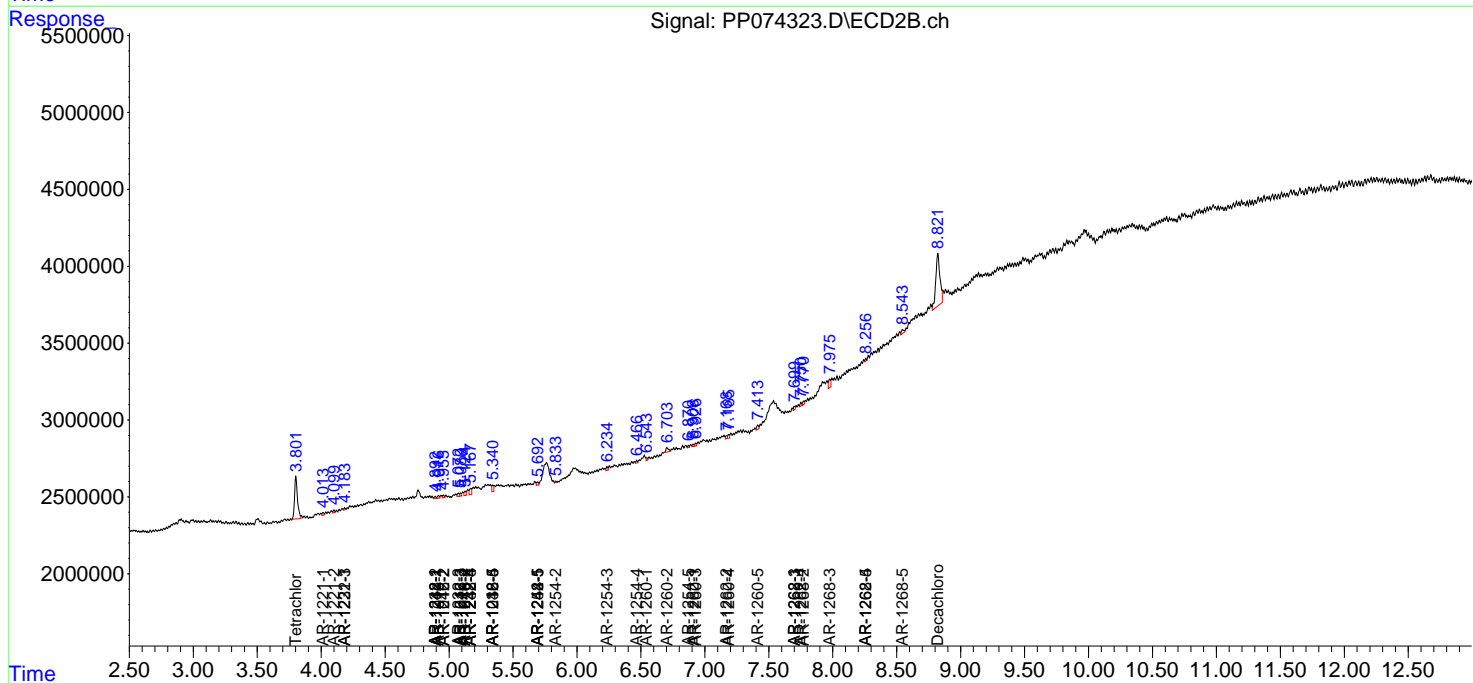
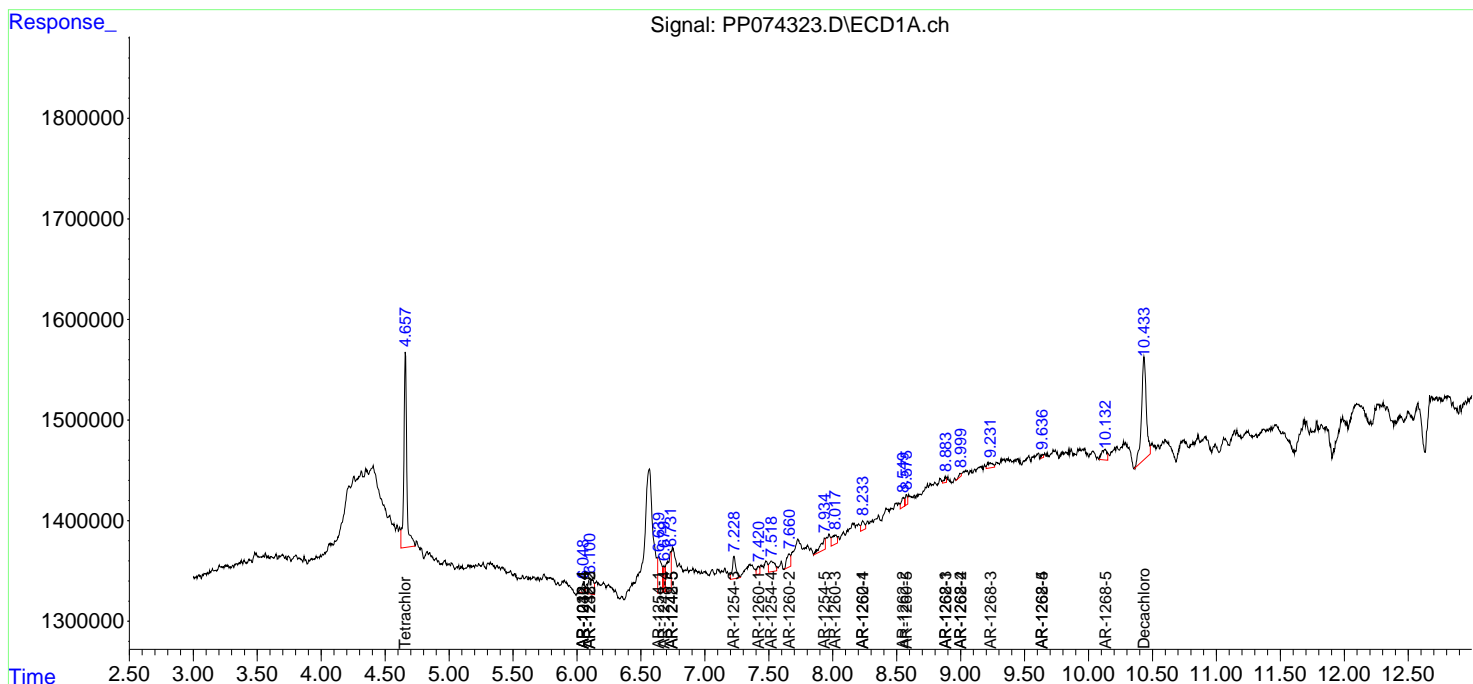
(f)=RT Delta > 1/2 Window (#)=Amounts differ by > 25% (m)=manual int.

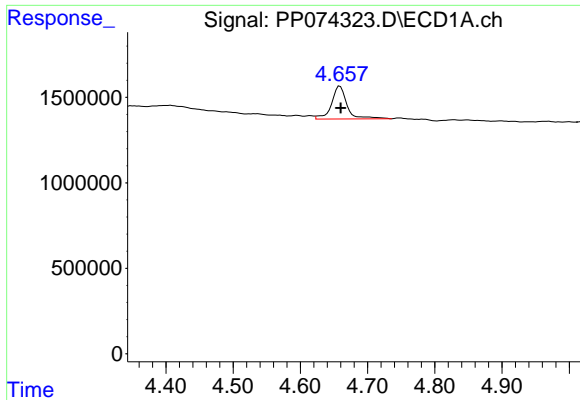
Data Path : Z:\pestpcbsrv\HPCHEM1\ECD_P\Data\PP081225\
 Data File : PP074323.D
 Signal(s) : Signal #1: ECD1A.ch Signal #2: ECD2B.ch
 Acq On : 12 Aug 2025 18:14
 Operator : YP\AJ
 Sample : Q2839-11 10X
 Misc :
 ALS Vial : 19 Sample Multiplier: 1

Instrument :
 ECD_P
 ClientSampleId :
 BC226751-1-1

Integration File signal 1: autoint1.e
 Integration File signal 2: autoint2.e
 Quant Time: Aug 13 01:55:41 2025
 Quant Method : Z:\pestpcbsrv\HPCHEM1\ECD_P\methods\PP080125.M
 Quant Title : GC EXTRACTABLES
 QLast Update : Mon Aug 04 11:01:49 2025
 Response via : Initial Calibration
 Integrator: ChemStation

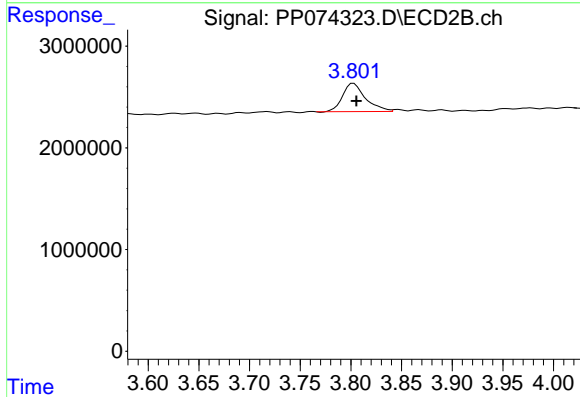
Volume Inj. : 2 µl
 Signal #1 Phase : ZB-MR1 Signal #2 Phase: ZB-MR2
 Signal #1 Info : 30Mx0.32mmx 0.50µ Signal #2 Info : 30M x 0.32mm x 0.25µm



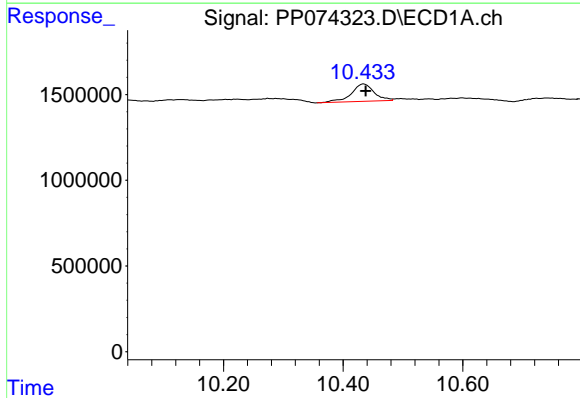


#1 Tetrachloro-m-xylene
 R.T.: 4.659 min
 Delta R.T.: -0.001 min
 Response: 3064220
 Conc: 2.74 ng/ml

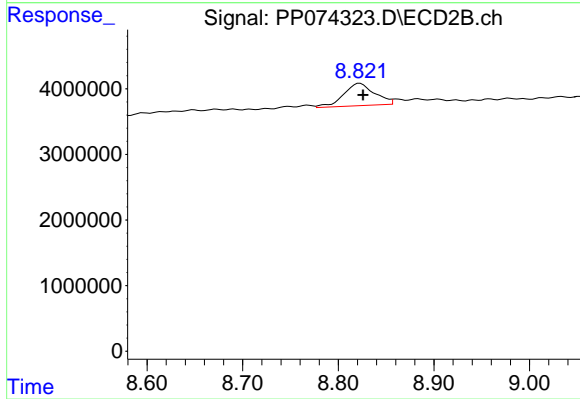
Instrument :
 ECD_P
 ClientSampleId :
 BC226751-1-1



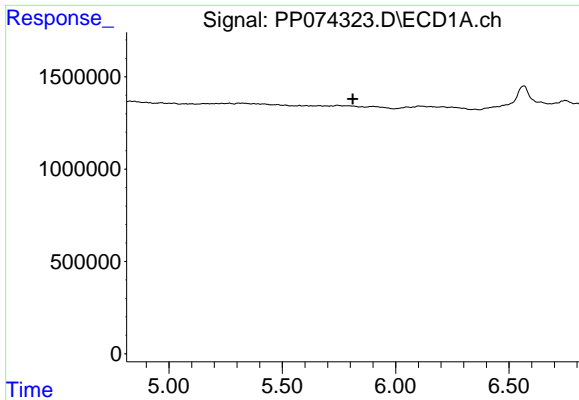
#1 Tetrachloro-m-xylene
 R.T.: 3.803 min
 Delta R.T.: -0.003 min
 Response: 4370236
 Conc: 1.14 ng/ml



#2 Decachlorobiphenyl
 R.T.: 10.434 min
 Delta R.T.: -0.004 min
 Response: 2667897
 Conc: 2.75 ng/ml



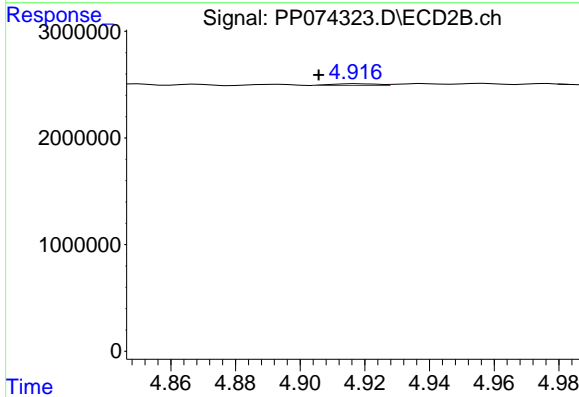
#2 Decachlorobiphenyl
 R.T.: 8.823 min
 Delta R.T.: -0.003 min
 Response: 7649431
 Conc: 1.27 ng/ml



#3 AR-1016-1

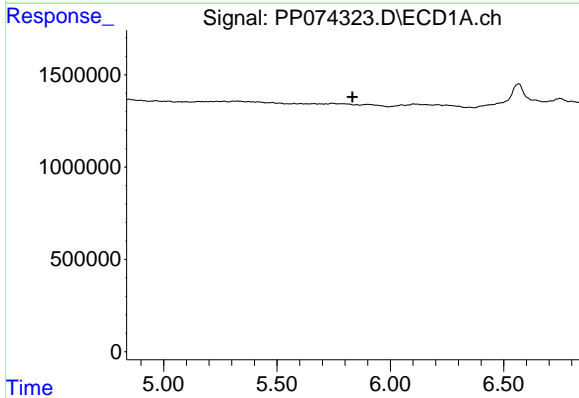
R.T.: 0.000 min
 Exp R.T.: 5.812 min
 Response: 0
 Conc: N.D.

Instrument : ECD_P
 ClientSampleId : BC226751-1-1



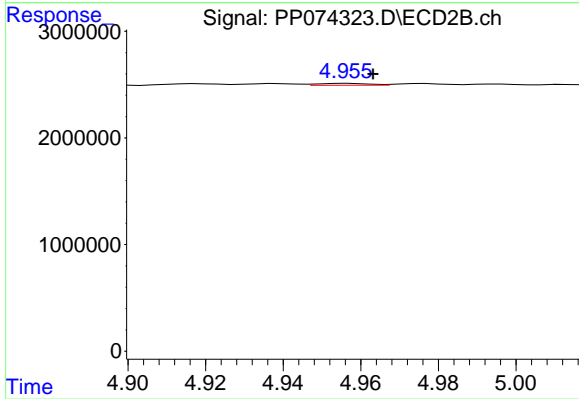
#3 AR-1016-1

R.T.: 4.918 min
 Delta R.T.: 0.012 min
 Response: 164607
 Conc: 0.41 ng/ml



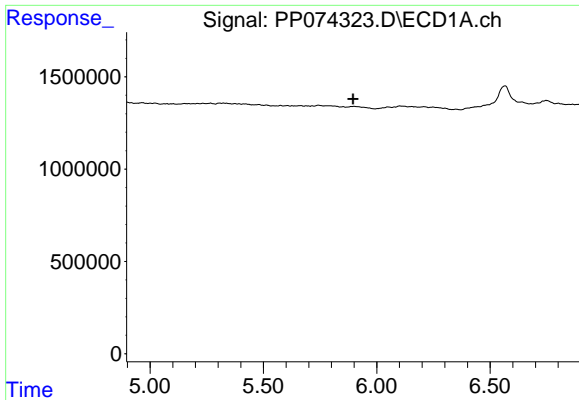
#4 AR-1016-2

R.T.: 0.000 min
 Exp R.T.: 5.833 min
 Response: 0
 Conc: N.D.



#4 AR-1016-2

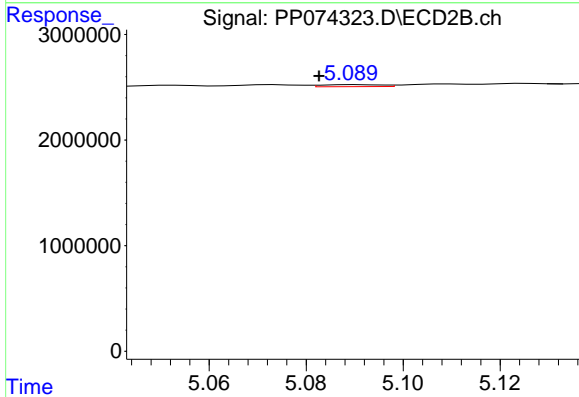
R.T.: 4.957 min
 Delta R.T.: -0.007 min
 Response: 165753
 Conc: 0.88 ng/ml



#5 AR-1016-3

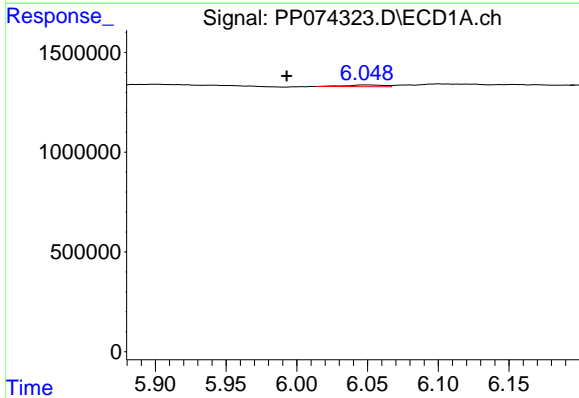
R.T.: 0.000 min
 Exp R.T.: 5.896 min
 Response: 0
 Conc: N.D.

Instrument : ECD_P
 ClientSampleId : BC226751-1-1



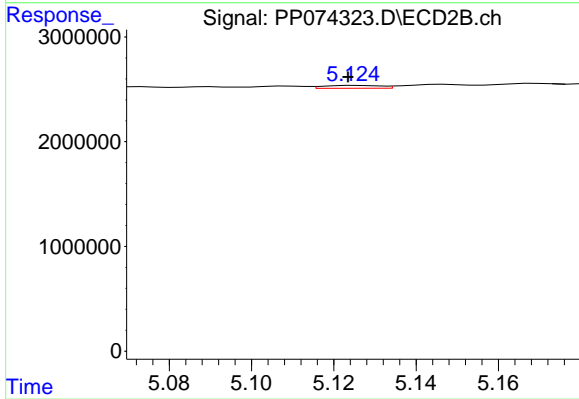
#5 AR-1016-3

R.T.: 5.090 min
 Delta R.T.: 0.007 min
 Response: 163817
 Conc: 1.54 ng/ml



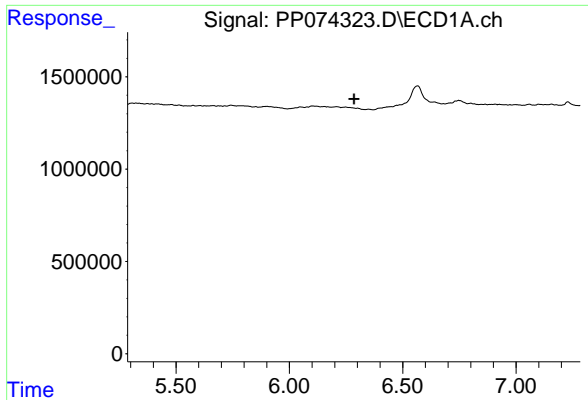
#6 AR-1016-4

R.T.: 6.049 min
 Delta R.T.: 0.056 min
 Response: 166426
 Conc: 5.11 ng/ml



#6 AR-1016-4

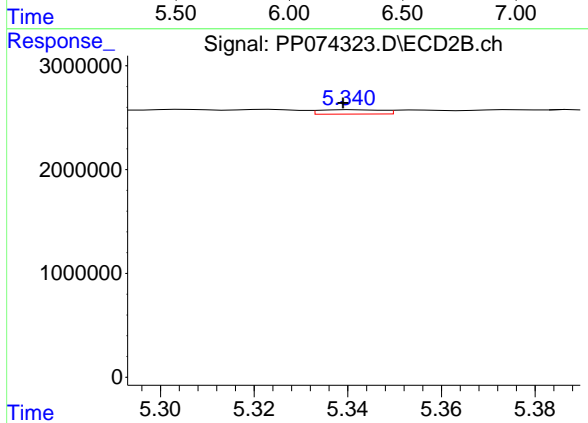
R.T.: 5.125 min
 Delta R.T.: 0.002 min
 Response: 263544
 Conc: 2.41 ng/ml



#7 AR-1016-5

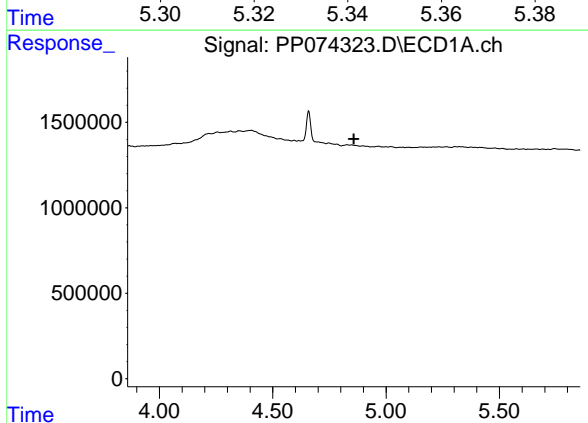
R.T.: 0.000 min
 Exp R.T.: 6.286 min
 Response: 0
 Conc: N.D.

Instrument : ECD_P
 ClientSampleId : BC226751-1-1



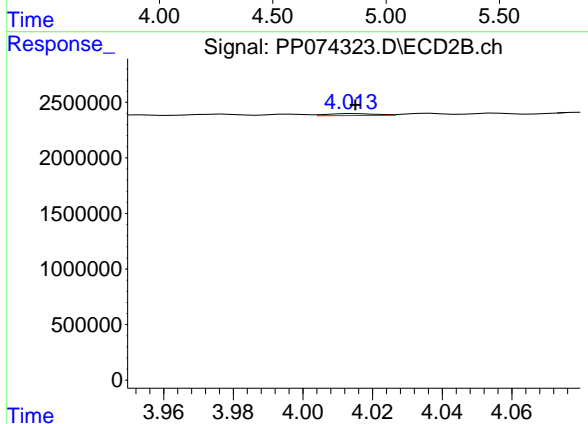
#7 AR-1016-5

R.T.: 5.341 min
 Delta R.T.: 0.002 min
 Response: 389633
 Conc: 3.33 ng/ml



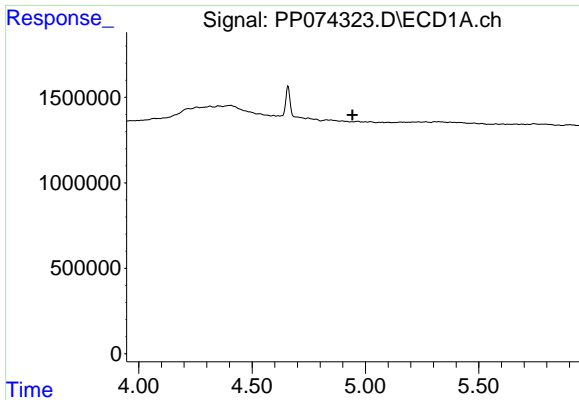
#8 AR-1221-1

R.T.: 0.000 min
 Exp R.T.: 4.858 min
 Response: 0
 Conc: N.D.



#8 AR-1221-1

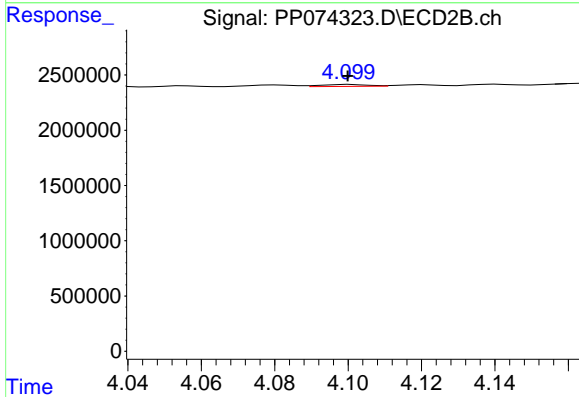
R.T.: 4.015 min
 Delta R.T.: 0.000 min
 Response: 176630
 Conc: 3.60 ng/ml



#9 AR-1221-2

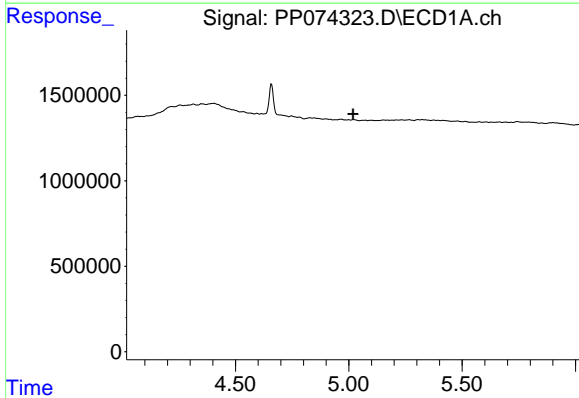
R.T.: 0.000 min
 Exp R.T. : 4.944 min
 Response: 0
 Conc: N.D.

Instrument :
 ECD_P
 ClientSampleId :
 BC226751-1-1



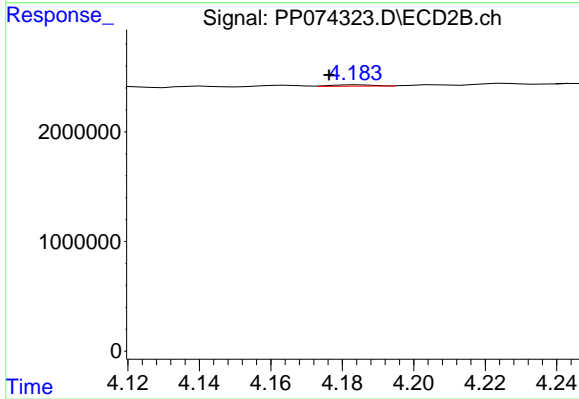
#9 AR-1221-2

R.T.: 4.101 min
 Delta R.T.: 0.000 min
 Response: 149764
 Conc: 4.17 ng/ml



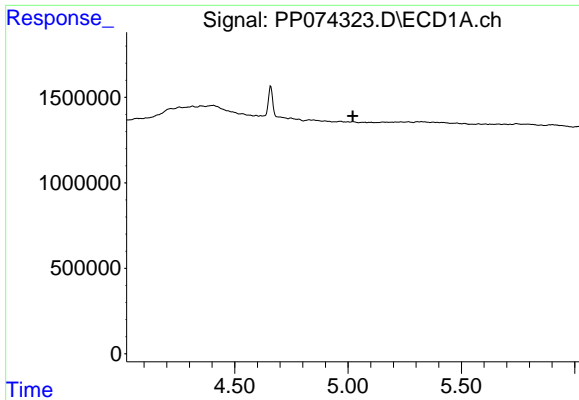
#10 AR-1221-3

R.T.: 0.000 min
 Exp R.T. : 5.019 min
 Response: 0
 Conc: N.D.



#10 AR-1221-3

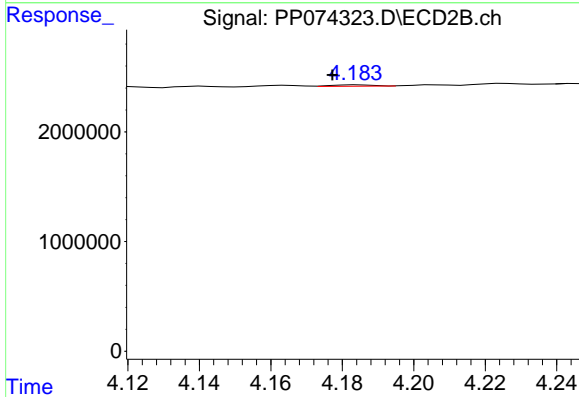
R.T.: 4.184 min
 Delta R.T.: 0.008 min
 Response: 105631
 Conc: 0.78 ng/ml



#11 AR-1232-1

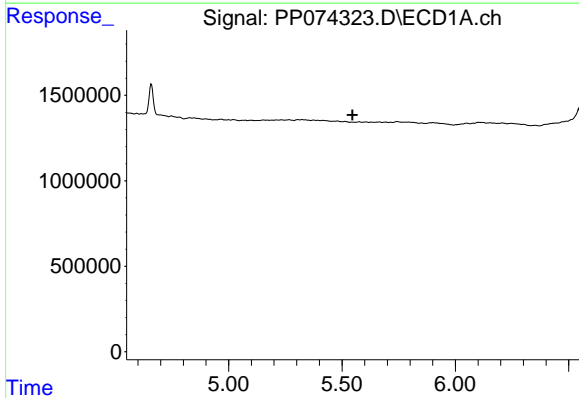
R.T.: 0.000 min
 Exp R.T. : 5.020 min
 Response: 0
 Conc: N.D.

Instrument :
 ECD_P
 ClientSampleId :
 BC226751-1-1



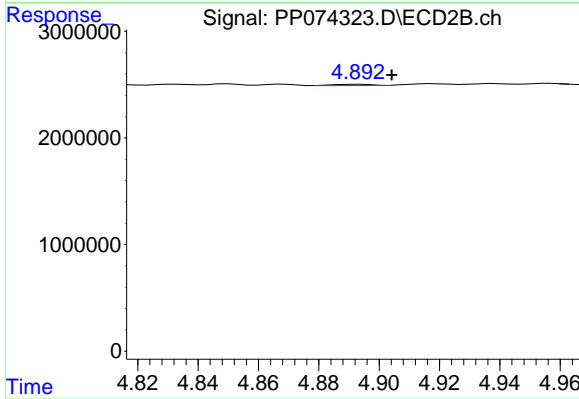
#11 AR-1232-1

R.T.: 4.184 min
 Delta R.T.: 0.007 min
 Response: 105631
 Conc: 1.04 ng/ml



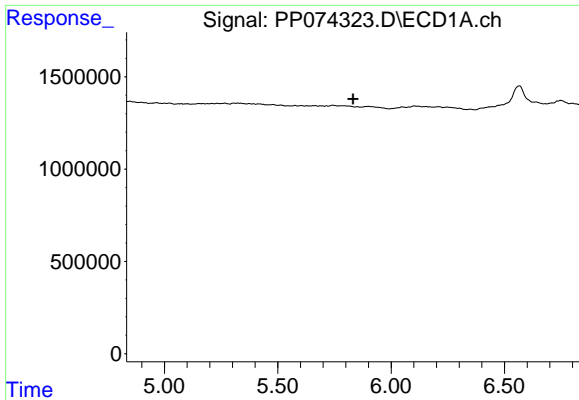
#12 AR-1232-2

R.T.: 0.000 min
 Exp R.T. : 5.546 min
 Response: 0
 Conc: N.D.



#12 AR-1232-2

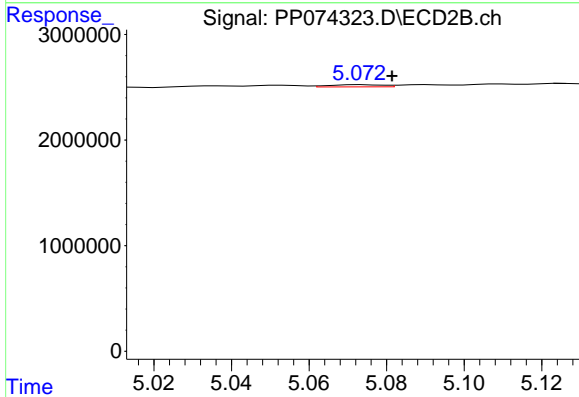
R.T.: 4.893 min
 Delta R.T.: -0.011 min
 Response: 118028
 Conc: 0.68 ng/ml



#13 AR-1232-3

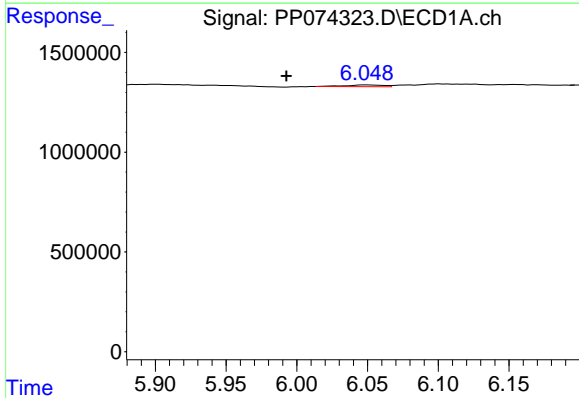
R.T.: 0.000 min
 Exp R.T.: 5.832 min
 Response: 0
 Conc: N.D.

Instrument : ECD_P
 ClientSampleId : BC226751-1-1



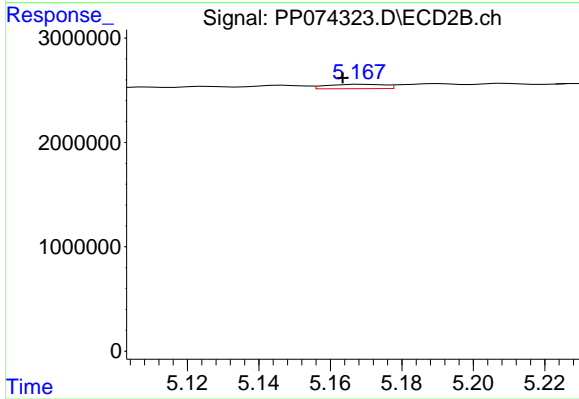
#13 AR-1232-3

R.T.: 5.074 min
 Delta R.T.: -0.008 min
 Response: 198756
 Conc: 4.34 ng/ml



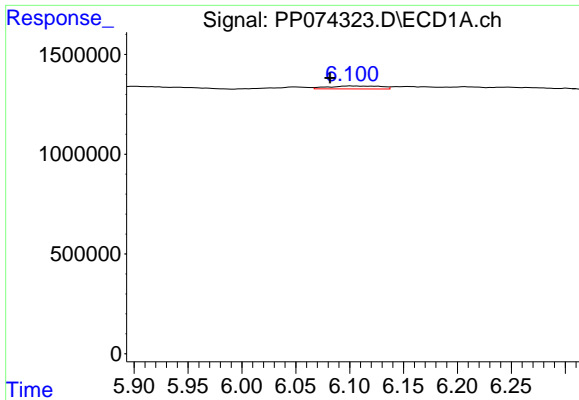
#14 AR-1232-4

R.T.: 6.049 min
 Delta R.T.: 0.056 min
 Response: 166426
 Conc: 10.76 ng/ml



#14 AR-1232-4

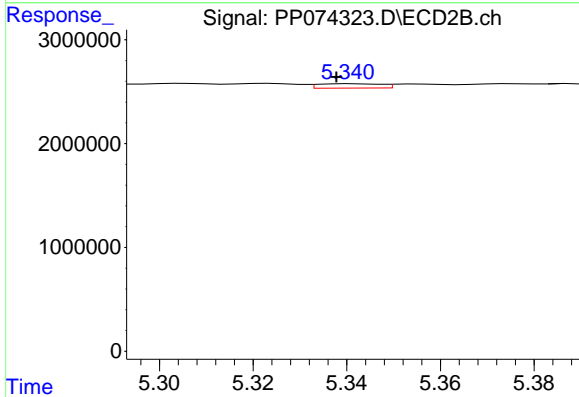
R.T.: 5.169 min
 Delta R.T.: 0.006 min
 Response: 475533
 Conc: 8.20 ng/ml



#15 AR-1232-5

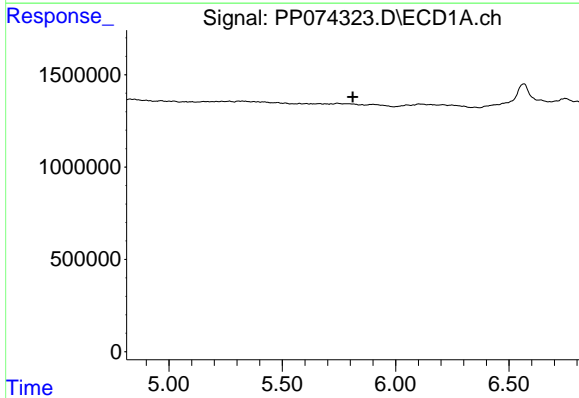
R.T.: 6.101 min
 Delta R.T.: 0.019 min
 Response: 502380
 Conc: 42.88 ng/ml

Instrument :
 ECD_P
 ClientSampleId :
 BC226751-1-1



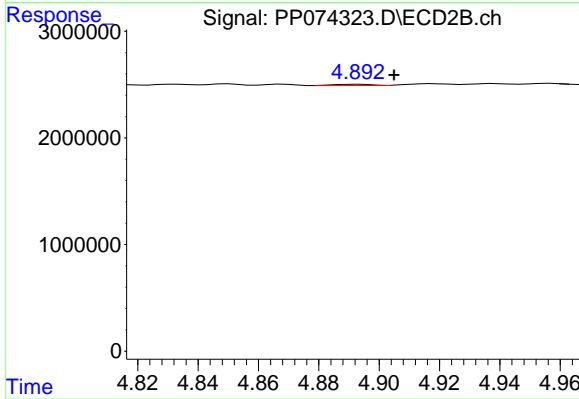
#15 AR-1232-5

R.T.: 5.341 min
 Delta R.T.: 0.004 min
 Response: 389633
 Conc: 8.29 ng/ml



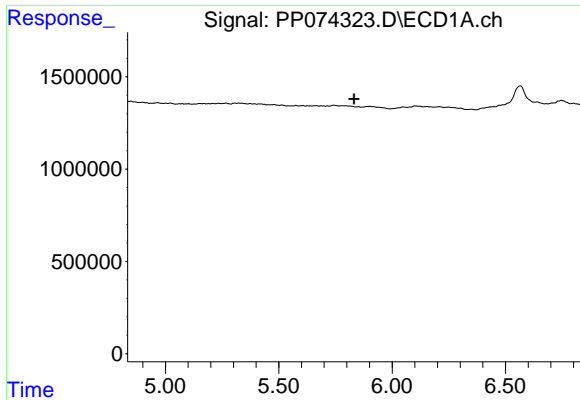
#16 AR-1242-1

R.T.: 0.000 min
 Exp R.T. : 5.811 min
 Response: 0
 Conc: N.D.



#16 AR-1242-1

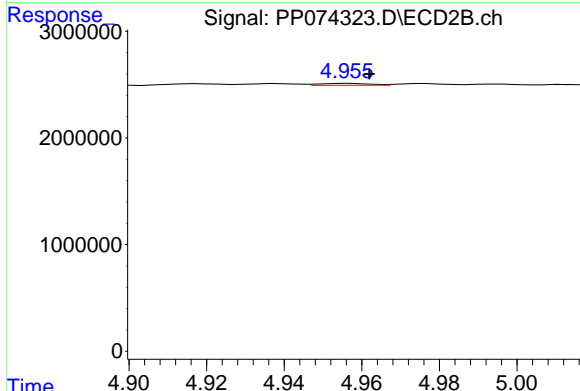
R.T.: 4.893 min
 Delta R.T.: -0.012 min
 Response: 118028
 Conc: 0.34 ng/ml



#17 AR-1242-2

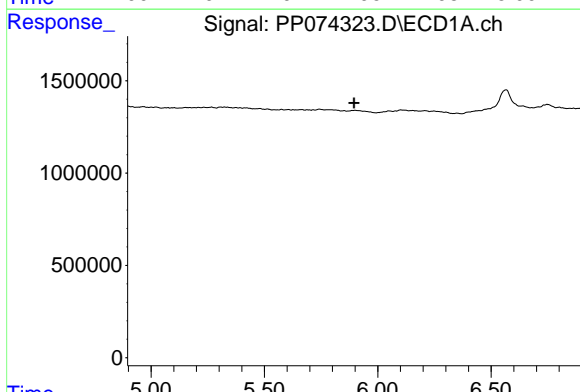
R.T.: 0.000 min
 Exp R.T.: 5.832 min
 Response: 0
 Conc: N.D.

Instrument :
 ECD_P
 ClientSampleId :
 BC226751-1-1



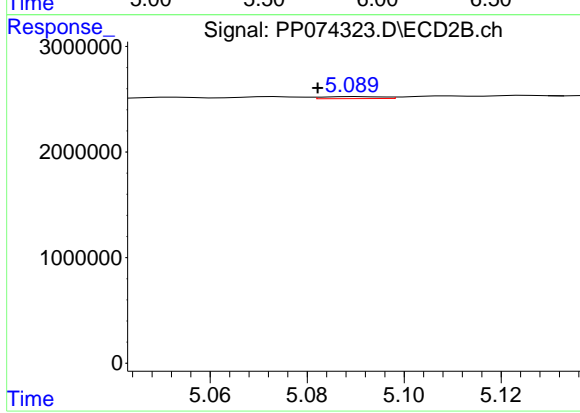
#17 AR-1242-2

R.T.: 4.957 min
 Delta R.T.: -0.005 min
 Response: 165753
 Conc: 1.01 ng/ml



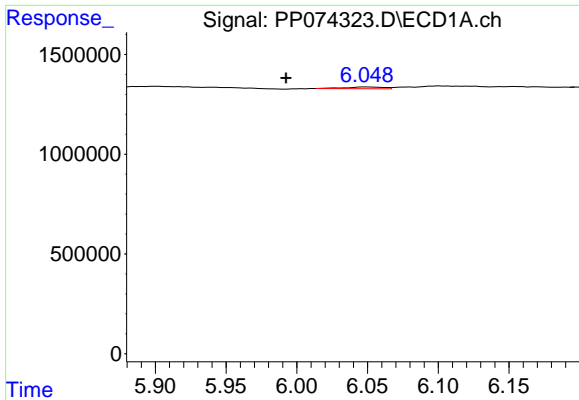
#18 AR-1242-3

R.T.: 0.000 min
 Exp R.T.: 5.896 min
 Response: 0
 Conc: N.D.



#18 AR-1242-3

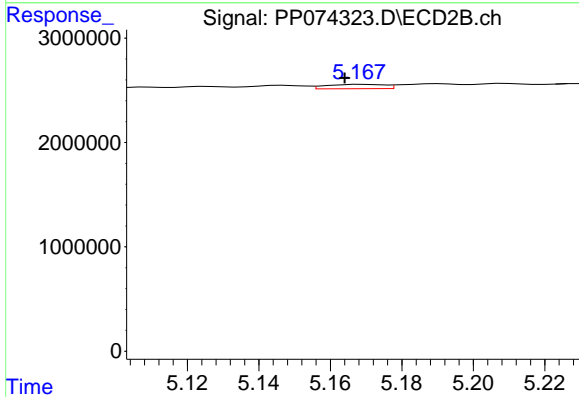
R.T.: 5.090 min
 Delta R.T.: 0.008 min
 Response: 163817
 Conc: 1.78 ng/ml



#19 AR-1242-4

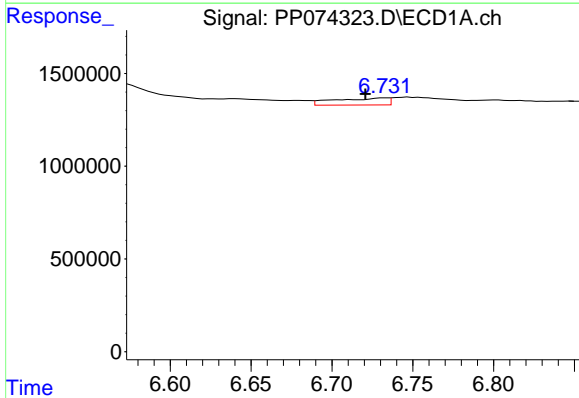
R.T.: 6.049 min
 Delta R.T.: 0.056 min
 Response: 166426
 Conc: 5.70 ng/ml

Instrument :
 ECD_P
 ClientSampleId :
 BC226751-1-1



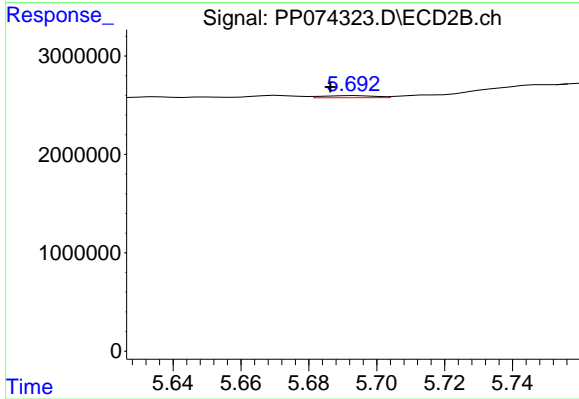
#19 AR-1242-4

R.T.: 5.169 min
 Delta R.T.: 0.005 min
 Response: 475533
 Conc: 3.98 ng/ml



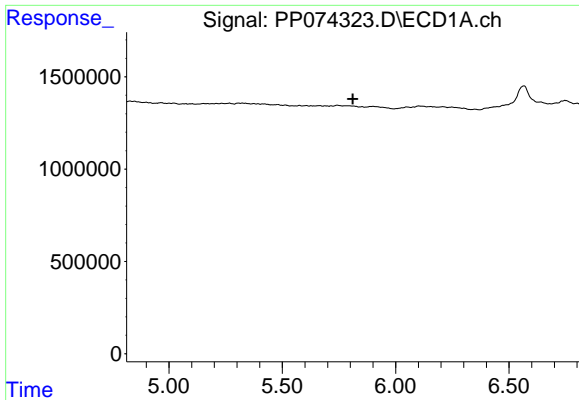
#20 AR-1242-5

R.T.: 6.733 min
 Delta R.T.: 0.013 min
 Response: 854074
 Conc: 24.02 ng/ml



#20 AR-1242-5

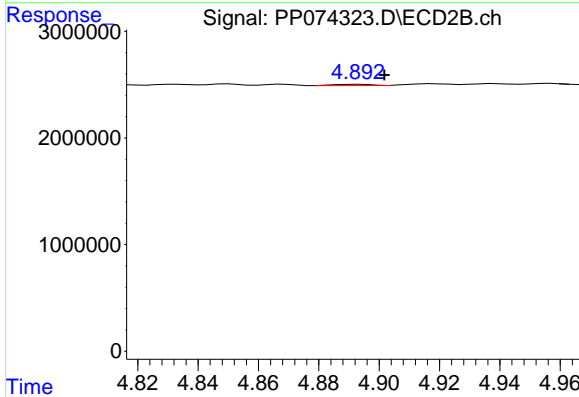
R.T.: 5.694 min
 Delta R.T.: 0.007 min
 Response: 233609
 Conc: 1.56 ng/ml



#21 AR-1248-1

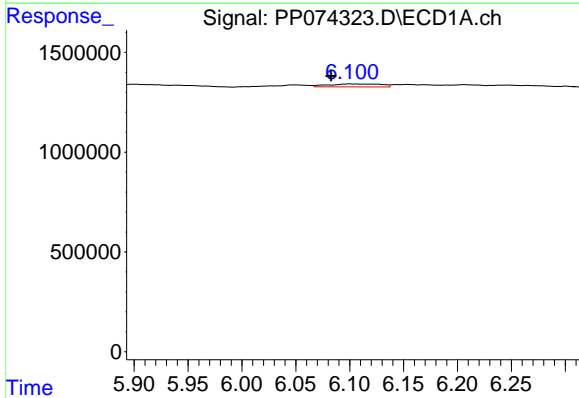
R.T.: 0.000 min
 Exp R.T.: 5.811 min
 Response: 0
 Conc: N.D.

Instrument :
 ECD_P
 ClientSampleId :
 BC226751-1-1



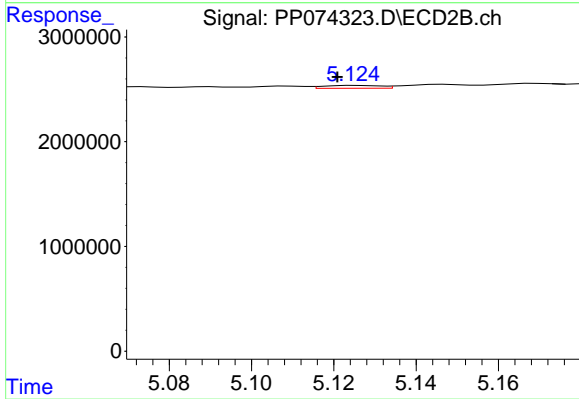
#21 AR-1248-1

R.T.: 4.893 min
 Delta R.T.: -0.009 min
 Response: 118028
 Conc: 0.55 ng/ml



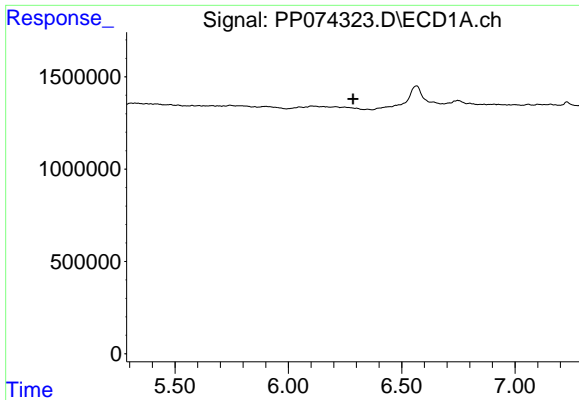
#22 AR-1248-2

R.T.: 6.101 min
 Delta R.T.: 0.018 min
 Response: 502380
 Conc: 12.48 ng/ml



#22 AR-1248-2

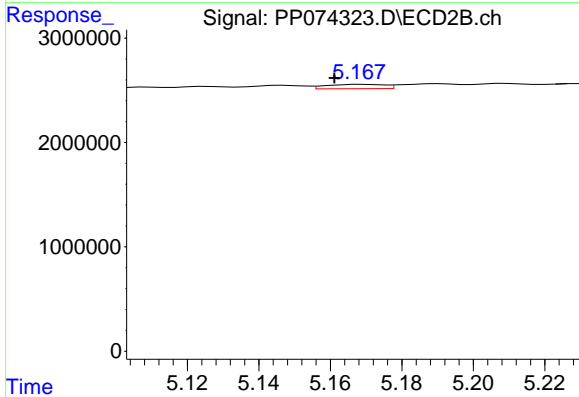
R.T.: 5.125 min
 Delta R.T.: 0.005 min
 Response: 263544
 Conc: 1.80 ng/ml



#23 AR-1248-3

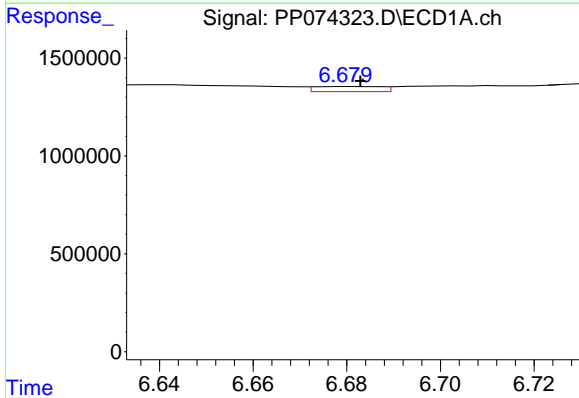
R.T.: 0.000 min
 Exp R.T.: 6.286 min
 Response: 0
 Conc: N.D.

Instrument :
 ECD_P
 ClientSampleId :
 BC226751-1-1



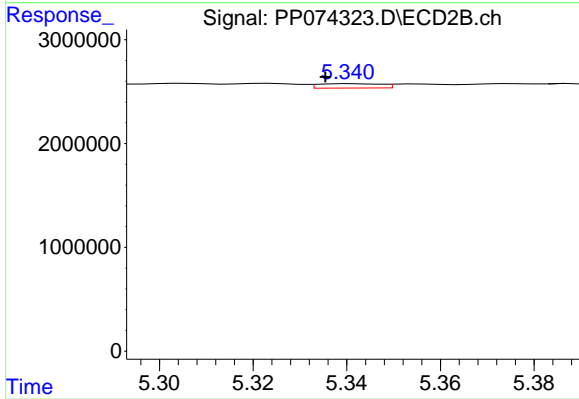
#23 AR-1248-3

R.T.: 5.169 min
 Delta R.T.: 0.008 min
 Response: 475533
 Conc: 2.77 ng/ml



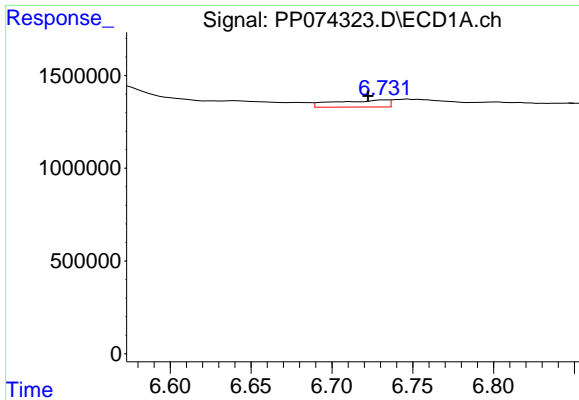
#24 AR-1248-4

R.T.: 6.681 min
 Delta R.T.: -0.002 min
 Response: 256642
 Conc: 4.93 ng/ml



#24 AR-1248-4

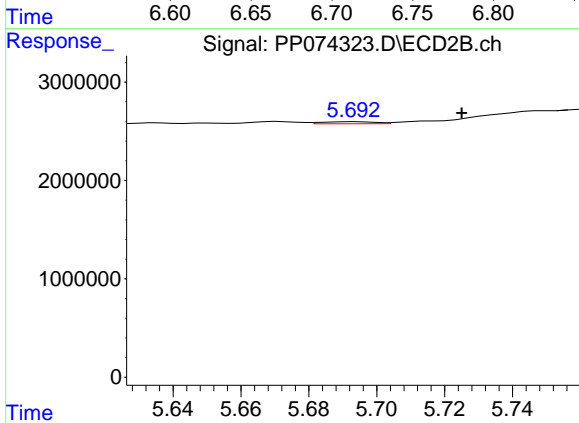
R.T.: 5.341 min
 Delta R.T.: 0.006 min
 Response: 389633
 Conc: 2.34 ng/ml



#25 AR-1248-5

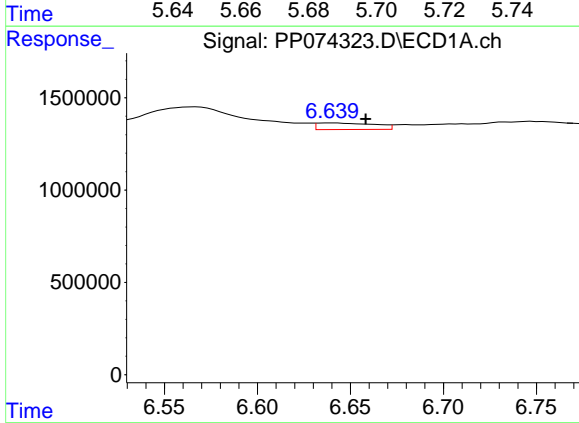
R.T.: 6.733 min
 Delta R.T.: 0.011 min
 Response: 854074
 Conc: 15.00 ng/ml

Instrument :
 ECD_P
 ClientSampleId :
 BC226751-1-1



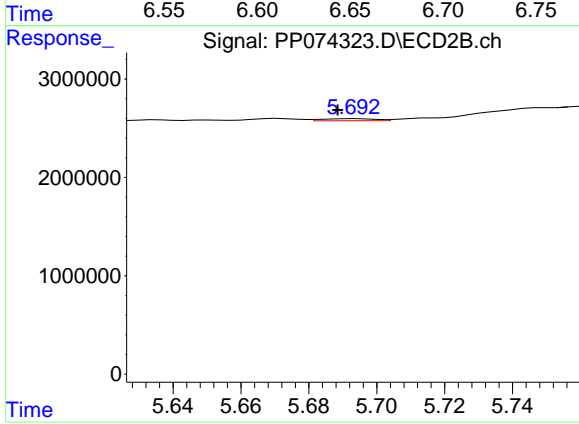
#25 AR-1248-5

R.T.: 5.694 min
 Delta R.T.: -0.031 min
 Response: 233609
 Conc: 0.80 ng/ml



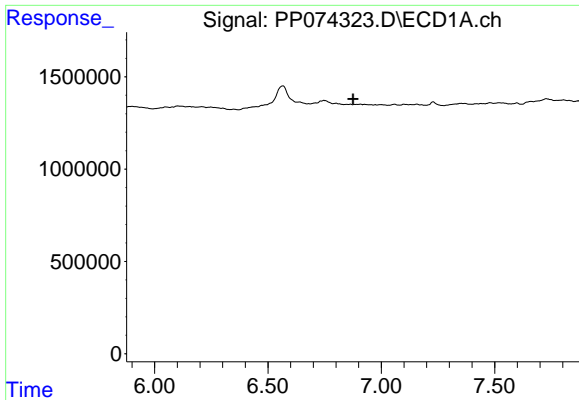
#26 AR-1254-1

R.T.: 6.640 min
 Delta R.T.: -0.018 min
 Response: 771700
 Conc: 14.66 ng/ml



#26 AR-1254-1

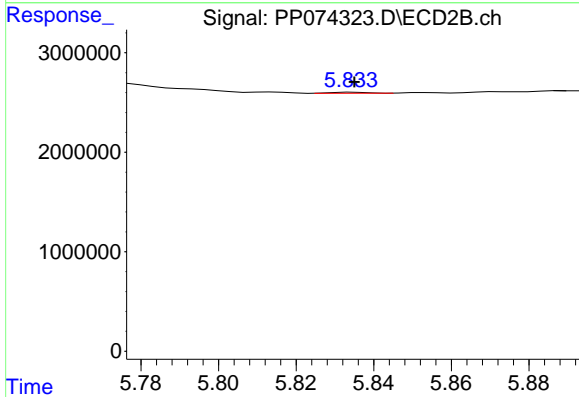
R.T.: 5.694 min
 Delta R.T.: 0.005 min
 Response: 233609
 Conc: 0.64 ng/ml



#27 AR-1254-2

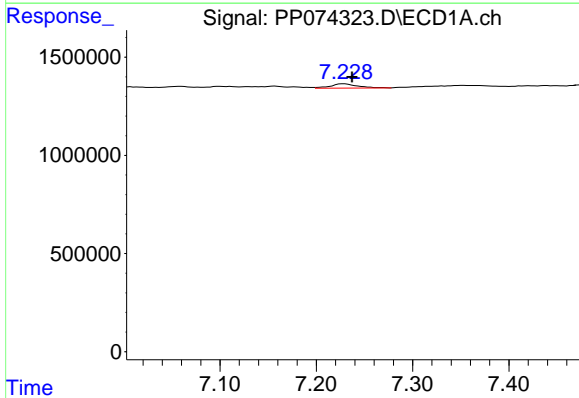
R.T.: 0.000 min
 Exp R.T.: 6.875 min
 Response: 0
 Conc: N.D.

Instrument :
 ECD_P
 ClientSampleId :
 BC226751-1-1



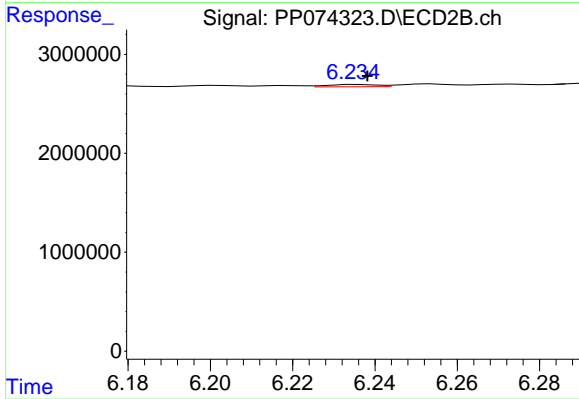
#27 AR-1254-2

R.T.: 5.835 min
 Delta R.T.: 0.000 min
 Response: 67510
 Conc: 0.24 ng/ml



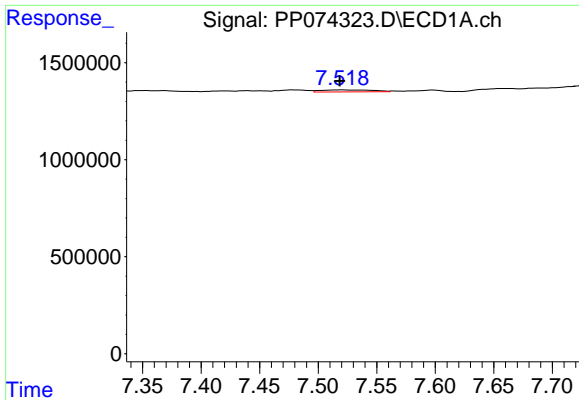
#28 AR-1254-3

R.T.: 7.229 min
 Delta R.T.: -0.008 min
 Response: 434729
 Conc: 4.98 ng/ml



#28 AR-1254-3

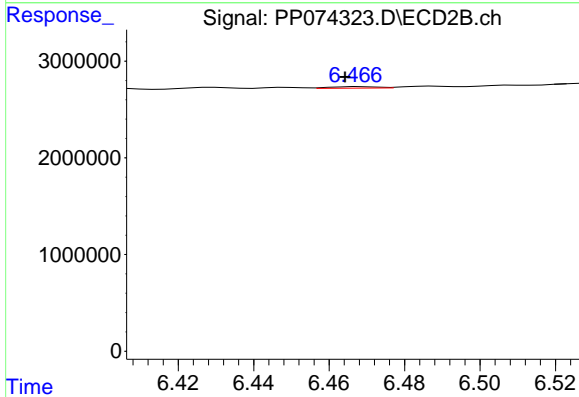
R.T.: 6.236 min
 Delta R.T.: -0.002 min
 Response: 200344
 Conc: 0.41 ng/ml



#29 AR-1254-4

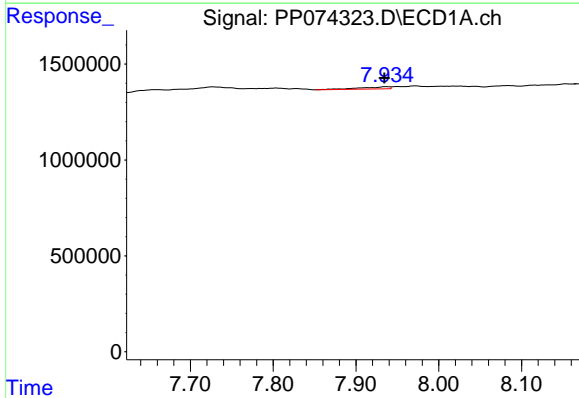
R.T.: 7.520 min
 Delta R.T.: 0.002 min
 Response: 322140
 Conc: 5.05 ng/ml

Instrument :
 ECD_P
 ClientSampleId :
 BC226751-1-1



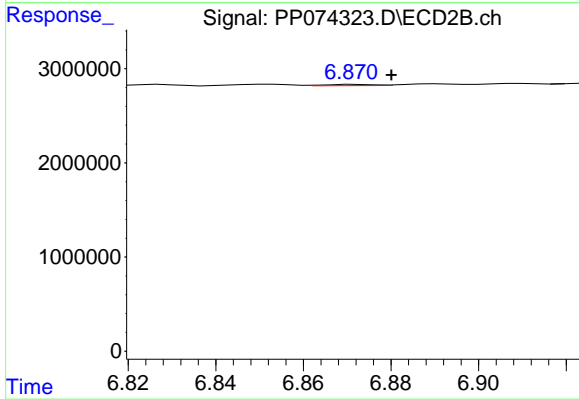
#29 AR-1254-4

R.T.: 6.468 min
 Delta R.T.: 0.004 min
 Response: 138920
 Conc: 0.38 ng/ml



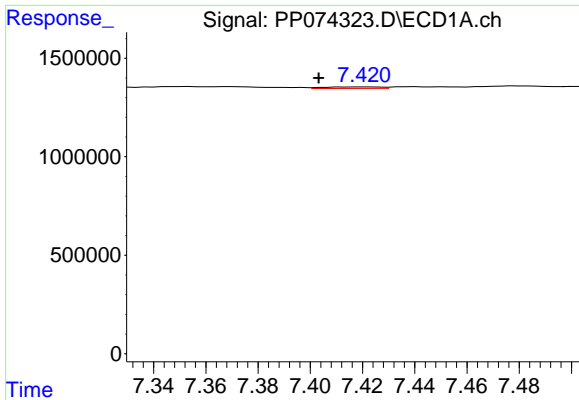
#30 AR-1254-5

R.T.: 7.936 min
 Delta R.T.: 0.002 min
 Response: 277269
 Conc: 3.42 ng/ml



#30 AR-1254-5

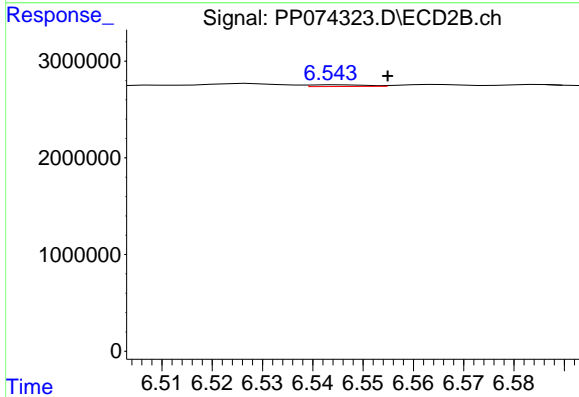
R.T.: 6.872 min
 Delta R.T.: -0.008 min
 Response: 105621
 Conc: 0.27 ng/ml



#31 AR-1260-1

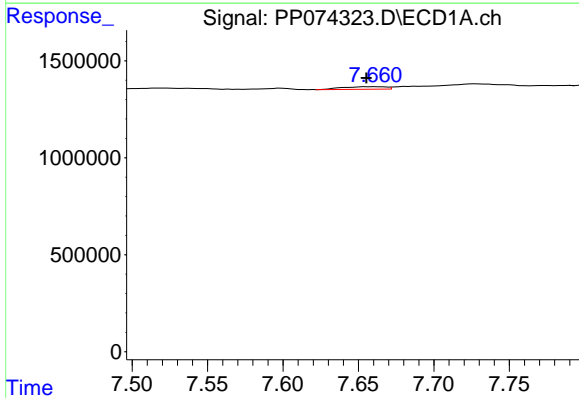
R.T.: 7.421 min
 Delta R.T.: 0.018 min
 Response: 115723
 Conc: 2.05 ng/ml

Instrument :
 ECD_P
 ClientSampleId :
 BC226751-1-1



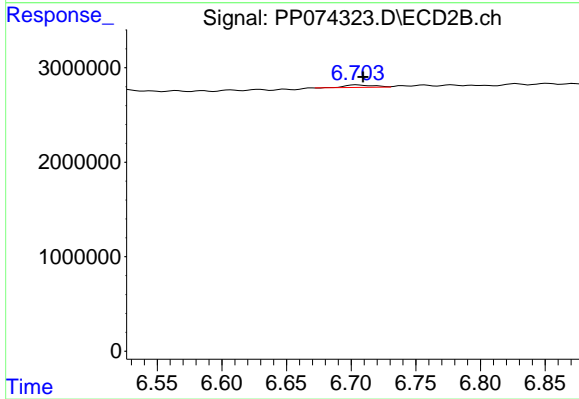
#31 AR-1260-1

R.T.: 6.545 min
 Delta R.T.: -0.010 min
 Response: 137487
 Conc: 0.34 ng/ml



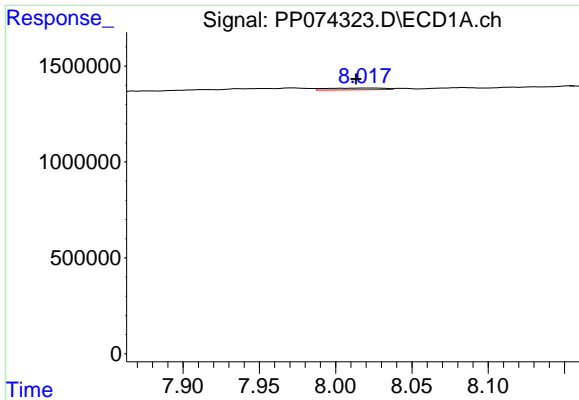
#32 AR-1260-2

R.T.: 7.661 min
 Delta R.T.: 0.006 min
 Response: 260463
 Conc: 3.82 ng/ml



#32 AR-1260-2

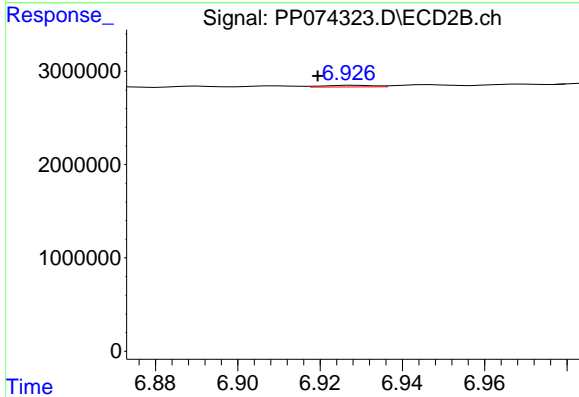
R.T.: 6.704 min
 Delta R.T.: -0.005 min
 Response: 383744
 Conc: 1.23 ng/ml



#33 AR-1260-3

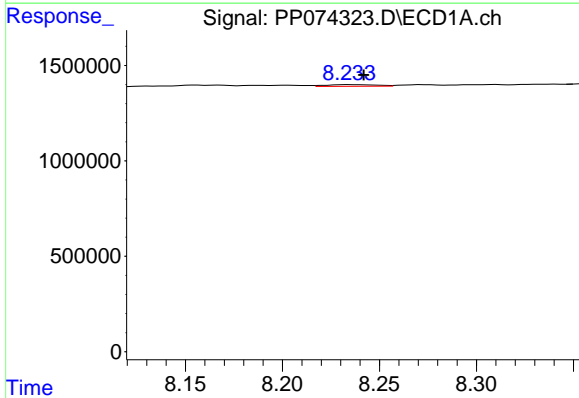
R.T.: 8.019 min
 Delta R.T.: 0.006 min
 Response: 247057
 Conc: 4.64 ng/ml

Instrument :
 ECD_P
 ClientSampleId :
 BC226751-1-1



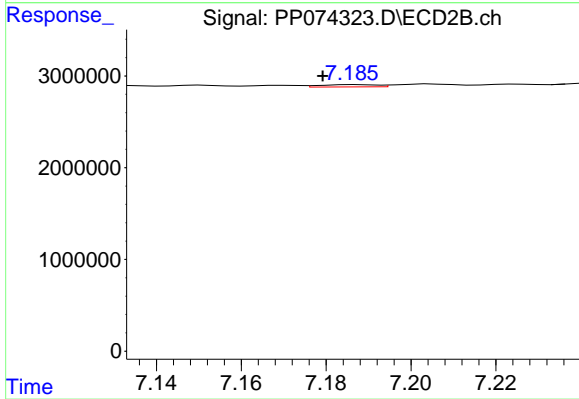
#33 AR-1260-3

R.T.: 6.928 min
 Delta R.T.: 0.009 min
 Response: 155914
 Conc: 0.40 ng/ml



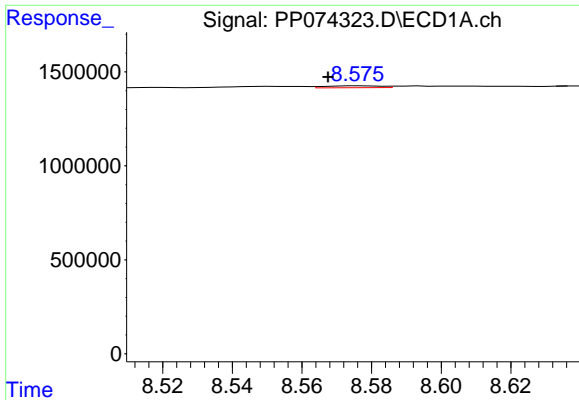
#34 AR-1260-4

R.T.: 8.235 min
 Delta R.T.: -0.007 min
 Response: 162475
 Conc: 2.59 ng/ml



#34 AR-1260-4

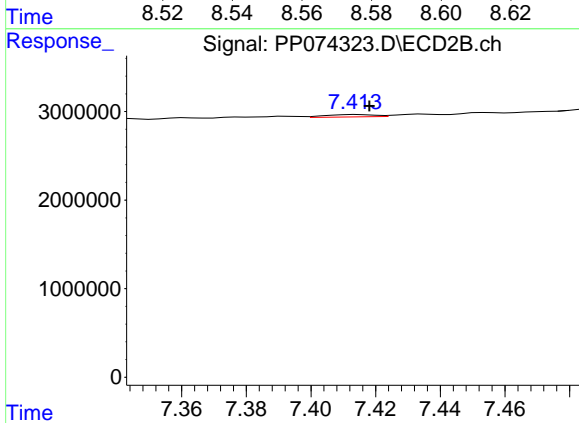
R.T.: 7.187 min
 Delta R.T.: 0.008 min
 Response: 232174
 Conc: 0.80 ng/ml



#35 AR-1260-5

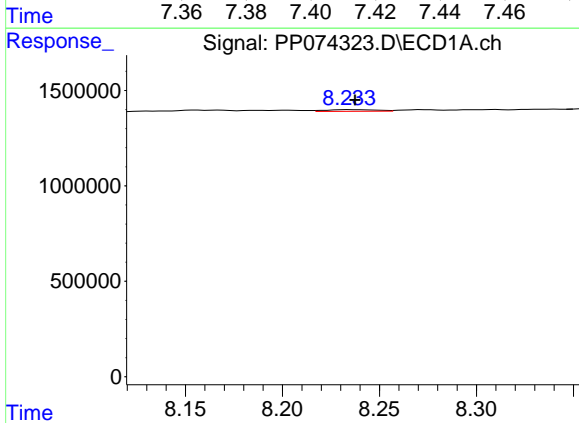
R.T.: 8.577 min
 Delta R.T.: 0.009 min
 Response: 113633
 Conc: 1.00 ng/ml

Instrument :
 ECD_P
 ClientSampleId :
 BC226751-1-1



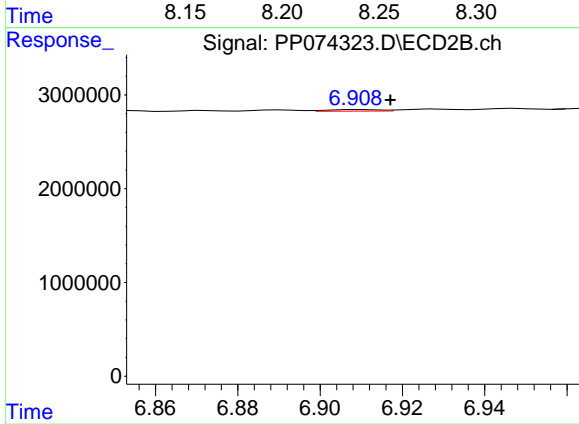
#35 AR-1260-5

R.T.: 7.414 min
 Delta R.T.: -0.004 min
 Response: 275719
 Conc: 0.36 ng/ml



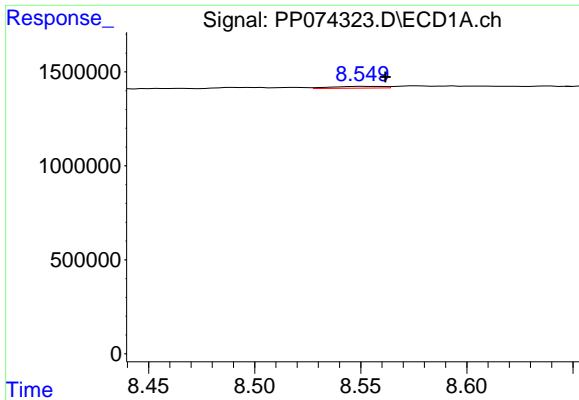
#36 AR-1262-1

R.T.: 8.235 min
 Delta R.T.: -0.002 min
 Response: 162475
 Conc: 2.14 ng/ml



#36 AR-1262-1

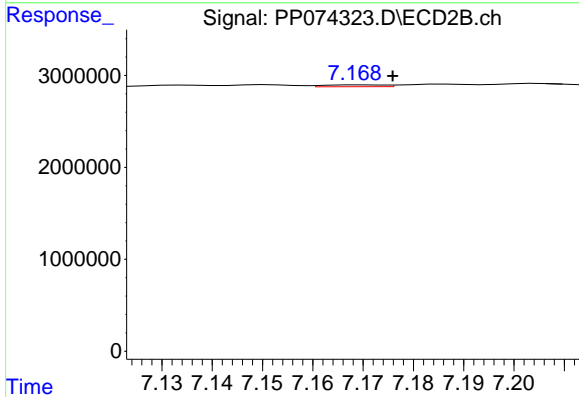
R.T.: 6.910 min
 Delta R.T.: -0.007 min
 Response: 137389
 Conc: 0.24 ng/ml



#37 AR-1262-2

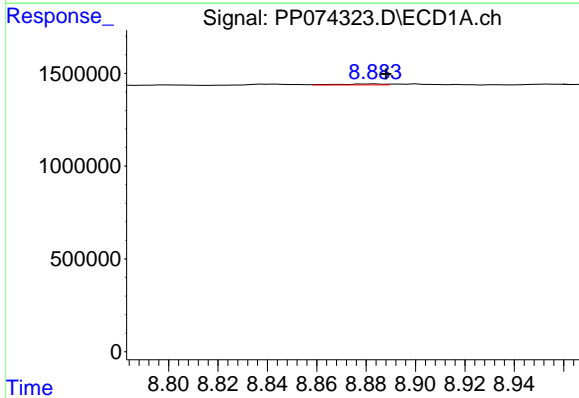
R.T.: 8.551 min
 Delta R.T.: -0.011 min
 Response: 160465
 Conc: 1.23 ng/ml

Instrument :
 ECD_P
 ClientSampleId :
 BC226751-1-1



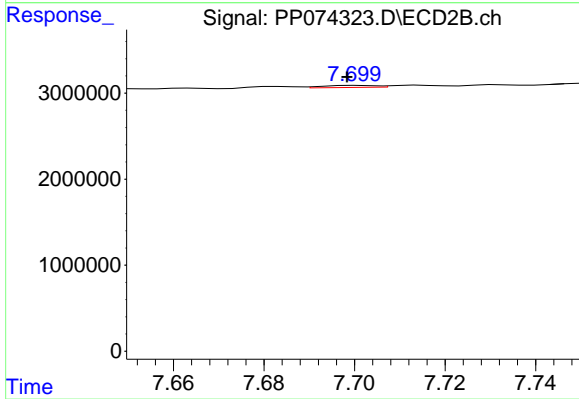
#37 AR-1262-2

R.T.: 7.170 min
 Delta R.T.: -0.006 min
 Response: 166692
 Conc: 0.42 ng/ml



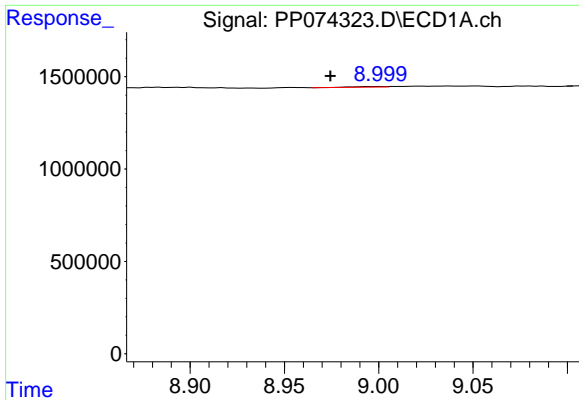
#38 AR-1262-3

R.T.: 8.884 min
 Delta R.T.: -0.005 min
 Response: 62835
 Conc: 0.67 ng/ml



#38 AR-1262-3

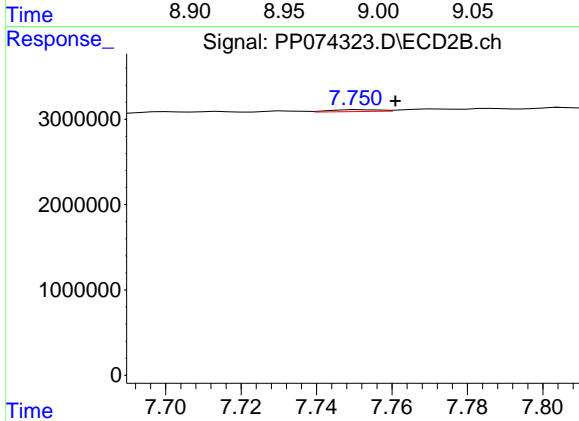
R.T.: 7.701 min
 Delta R.T.: 0.003 min
 Response: 187217
 Conc: 0.52 ng/ml



#39 AR-1262-4

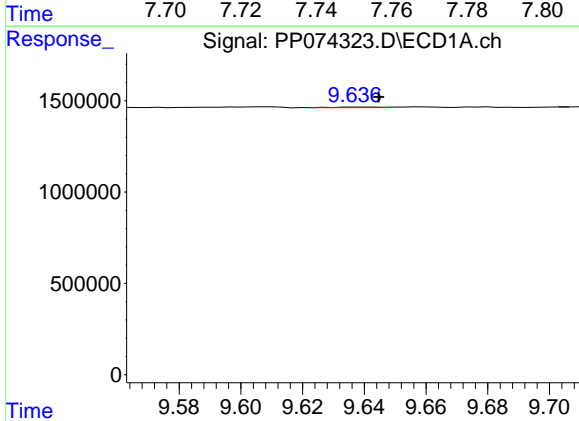
R.T.: 9.001 min
 Delta R.T.: 0.026 min
 Response: 39334
 Conc: 0.54 ng/ml

Instrument :
 ECD_P
 ClientSampleId :
 BC226751-1-1



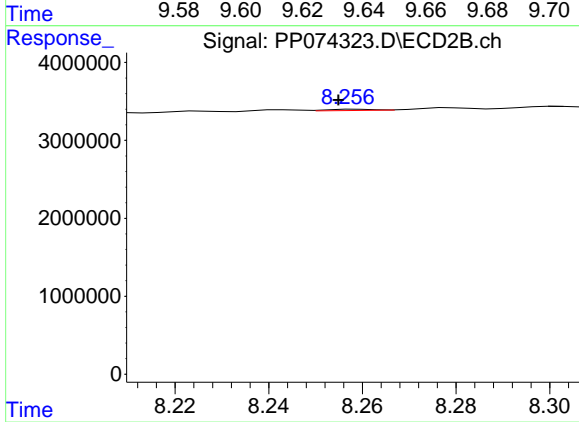
#39 AR-1262-4

R.T.: 7.752 min
 Delta R.T.: -0.009 min
 Response: 194266
 Conc: 0.29 ng/ml



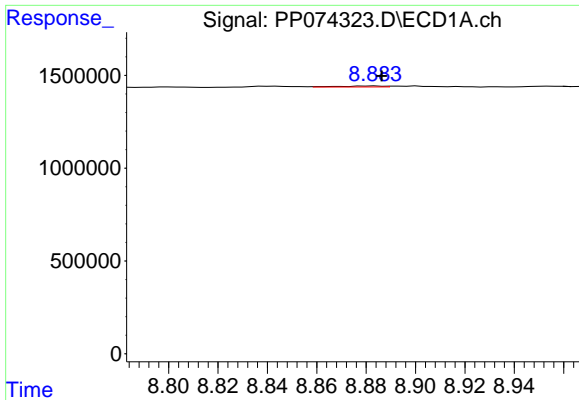
#40 AR-1262-5

R.T.: 9.638 min
 Delta R.T.: -0.007 min
 Response: 34269
 Conc: 0.67 ng/ml



#40 AR-1262-5

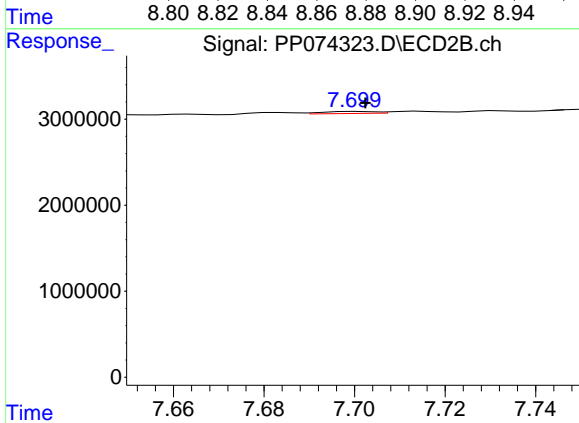
R.T.: 8.259 min
 Delta R.T.: 0.004 min
 Response: 103855
 Conc: 0.37 ng/ml



#41 AR-1268-1

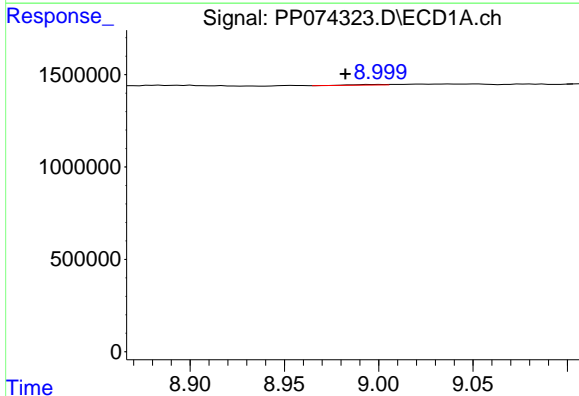
R.T.: 8.884 min
 Delta R.T.: -0.003 min
 Response: 62835
 Conc: 0.40 ng/ml

Instrument :
 ECD_P
 ClientSampleId :
 BC226751-1-1



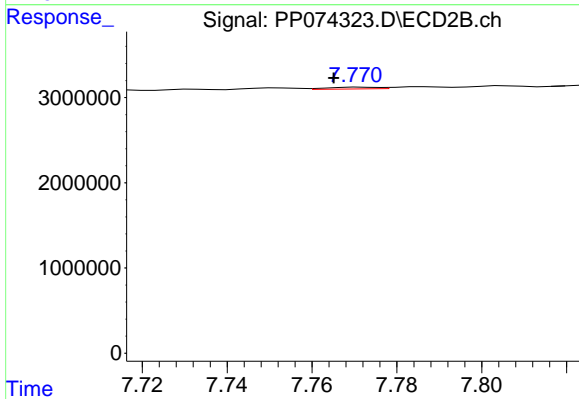
#41 AR-1268-1

R.T.: 7.701 min
 Delta R.T.: -0.002 min
 Response: 187217
 Conc: 0.17 ng/ml



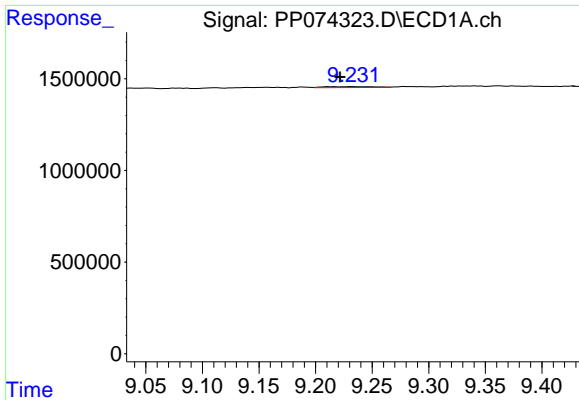
#42 AR-1268-2

R.T.: 9.001 min
 Delta R.T.: 0.018 min
 Response: 39334
 Conc: 0.27 ng/ml



#42 AR-1268-2

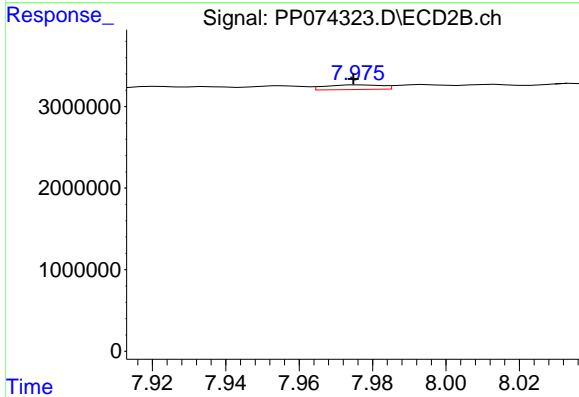
R.T.: 7.772 min
 Delta R.T.: 0.006 min
 Response: 179988
 Conc: 0.17 ng/ml



#43 AR-1268-3

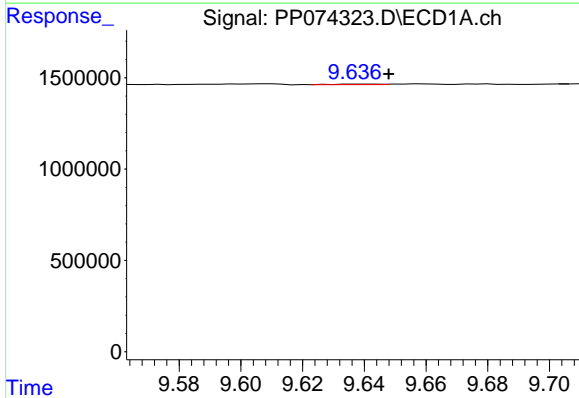
R.T.: 9.233 min
 Delta R.T.: 0.011 min
 Response: 154013
 Conc: 1.29 ng/ml

Instrument :
 ECD_P
 ClientSampleId :
 BC226751-1-1



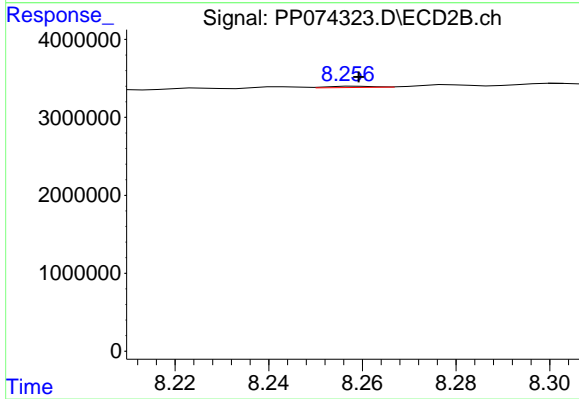
#43 AR-1268-3

R.T.: 7.977 min
 Delta R.T.: 0.002 min
 Response: 592090
 Conc: 0.71 ng/ml



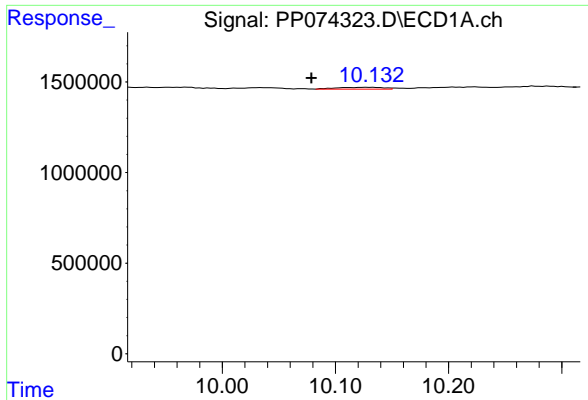
#44 AR-1268-4

R.T.: 9.638 min
 Delta R.T.: -0.010 min
 Response: 34269
 Conc: 0.58 ng/ml



#44 AR-1268-4

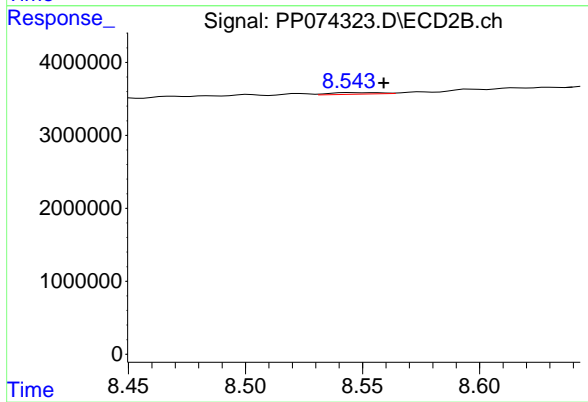
R.T.: 8.259 min
 Delta R.T.: 0.000 min
 Response: 103855
 Conc: 0.34 ng/ml



#45 AR-1268-5

R.T.: 10.133 min
Delta R.T.: 0.054 min
Response: 293293
Conc: 0.83 ng/ml

Instrument :
ECD_P
ClientSampleId :
BC226751-1-1



#45 AR-1268-5

R.T.: 8.545 min
Delta R.T.: -0.014 min
Response: 324581
Conc: 0.13 ng/ml