

Data Path : Z:\pestpcbsrv\HPCHEM1\ECD\_P\Data\PP081225\  
 Data File : PP074324.D  
 Signal(s) : Signal #1: ECD1A.ch Signal #2: ECD2B.ch  
 Acq On : 12 Aug 2025 18:31  
 Operator : YP\AJ  
 Sample : Q2839-12 10X  
 Misc :  
 ALS Vial : 20 Sample Multiplier: 1

Instrument :  
 ECD\_P  
 ClientSampleId :  
 BC226751-1-2

Integration File signal 1: autoint1.e  
 Integration File signal 2: autoint2.e  
 Quant Time: Aug 13 01:55:54 2025  
 Quant Method : Z:\pestpcbsrv\HPCHEM1\ECD\_P\methods\PP080125.M  
 Quant Title : GC EXTRACTABLES  
 QLast Update : Mon Aug 04 11:01:49 2025  
 Response via : Initial Calibration  
 Integrator: ChemStation

Volume Inj. : 2 µl  
 Signal #1 Phase : ZB-MR1 Signal #2 Phase: ZB-MR2  
 Signal #1 Info : 30Mx0.32mmx 0.50µ Signal #2 Info : 30M x 0.32mm x 0.25µm

Compound	RT#1	RT#2	Resp#1	Resp#2	ng/ml	ng/ml
-----						
System Monitoring Compounds						
1) SA Tetrachlo...	4.658	3.801	2634626	4287359	2.356	1.118 #
2) SA Decachlor...	10.436	8.822	2450724	7519708	2.523	1.250 #
Target Compounds						
3) L1 AR-1016-1	5.746f	4.913	252574	185618	6.122	0.465 #
4) L1 AR-1016-2	0.000	4.953	0	124200	N.D.	0.661 #
5) L1 AR-1016-3	5.904	5.082	166668	159030	4.202	1.499 #
6) L1 AR-1016-4	6.023	5.126	22545	293702	0.693	2.689 #
7) L1 AR-1016-5	0.000	5.343	0	287041	N.D.	2.454 #
8) L2 AR-1221-1	0.000	4.023	0	86104	N.D.	1.754 #
9) L2 AR-1221-2	0.000	4.107	0	91082	N.D.	2.538 #
10) L2 AR-1221-3	0.000	4.164	0	63513	N.D.	0.470 #
11) L3 AR-1232-1	0.000	4.190	0	205084	N.D.	2.023 #
12) L3 AR-1232-2	0.000	4.913	0	185618	N.D.	1.065 #
13) L3 AR-1232-3	0.000	5.082	0	159030	N.D.	3.471 #
14) L3 AR-1232-4	6.023	5.147	22545	613114	1.457	10.569 #
15) L3 AR-1232-5	6.086	5.343	125476	287041	10.710	6.110 #
16) L4 AR-1242-1	5.746f	4.913	252574	185618	6.778	0.538 #
17) L4 AR-1242-2	0.000	4.953	0	124200	N.D.	0.760 #
18) L4 AR-1242-3	5.904	5.082	166668	159030	4.664	1.724 #
19) L4 AR-1242-4	6.023	5.147	22545	613114	0.772	5.134 #
20) L4 AR-1242-5	6.738	5.691	2030260	280973	57.097	1.879 #
21) L5 AR-1248-1	5.746f	4.913	252574	185618	9.016	0.868 #
22) L5 AR-1248-2	6.086	5.126	125476	293702	3.117	2.007 #
23) L5 AR-1248-3	0.000	5.147	0	613114	N.D.	3.576 #
24) L5 AR-1248-4	6.679	5.343	653172	287041	12.552	1.725 #
25) L5 AR-1248-5	6.738	5.758	2030260	5730925	35.654	19.696 #
26) L6 AR-1254-1	6.656	5.691	777702	280973	14.774	0.767 #
27) L6 AR-1254-2	0.000	5.843	0	292754	N.D.	1.052 #
28) L6 AR-1254-3	7.227	6.239	635612	606449	7.279	1.240 #
29) L6 AR-1254-4	7.517	6.460	120623	32797	1.890	0.089 #
30) L6 AR-1254-5	0.000	6.873	0	75690	N.D.	0.197 #
31) L7 AR-1260-1	7.395	6.559	272131	80923	4.829	0.200 #
32) L7 AR-1260-2	7.644	6.704	477592	484402	7.008	1.549 #
33) L7 AR-1260-3	0.000	6.912	0	31015	N.D.	0.079 #
34) L7 AR-1260-4	8.246	7.175	451320	209032	7.208	0.718 #
35) L7 AR-1260-5	0.000	7.411	0	159556	N.D.	0.211 #
36) L8 AR-1262-1	8.246	6.912	451320	31015	5.955	0.055 #
37) L8 AR-1262-2	0.000	7.175	0	209032	N.D.	0.521 #
38) L8 AR-1262-3	8.940f	7.708	41118	223882	0.437	0.623 #
39) L8 AR-1262-4	8.940	7.760	41118	123637	0.564	0.185 #
40) L8 AR-1262-5	0.000	8.251	0	65890	N.D.	0.233 #
41) L9 AR-1268-1	8.940f	7.708	41118	223882	0.264	0.205

Data Path : Z:\pestpcbsrv\HPCHEM1\ECD\_P\Data\PP081225\  
 Data File : PP074324.D  
 Signal(s) : Signal #1: ECD1A.ch Signal #2: ECD2B.ch  
 Acq On : 12 Aug 2025 18:31  
 Operator : YP\AJ  
 Sample : Q2839-12 10X  
 Misc :  
 ALS Vial : 20 Sample Multiplier: 1

Instrument :  
 ECD\_P  
 ClientSampleId :  
 BC226751-1-2

Integration File signal 1: autoint1.e  
 Integration File signal 2: autoint2.e  
 Quant Time: Aug 13 01:55:54 2025  
 Quant Method : Z:\pestpcbsrv\HPCHEM1\ECD\_P\methods\PP080125.M  
 Quant Title : GC EXTRACTABLES  
 QLast Update : Mon Aug 04 11:01:49 2025  
 Response via : Initial Calibration  
 Integrator: ChemStation

Volume Inj. : 2 µl  
 Signal #1 Phase : ZB-MR1 Signal #2 Phase: ZB-MR2  
 Signal #1 Info : 30Mx0.32mmx 0.50µ Signal #2 Info : 30M x 0.32mm x 0.25µm

	Compound	RT#1	RT#2	Resp#1	Resp#2	ng/ml	ng/ml
42)	L9 AR-1268-2	8.940f	7.760	41118	123637	0.287	0.116 #
43)	L9 AR-1268-3	0.000	7.974	0	341616	N.D.	0.411 #
44)	L9 AR-1268-4	0.000	8.251	0	65890	N.D.	0.214 #
45)	L9 AR-1268-5	10.128f	8.551	126179	183329	0.359	0.072 #

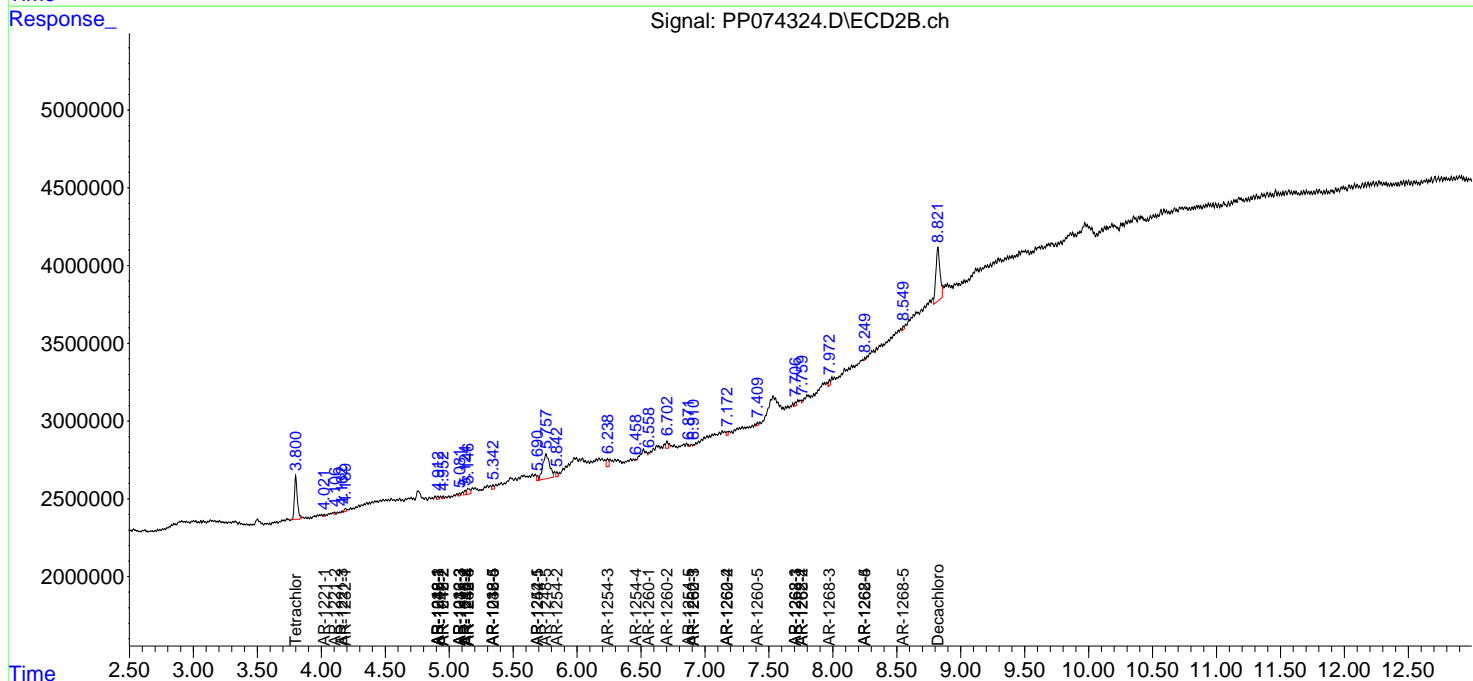
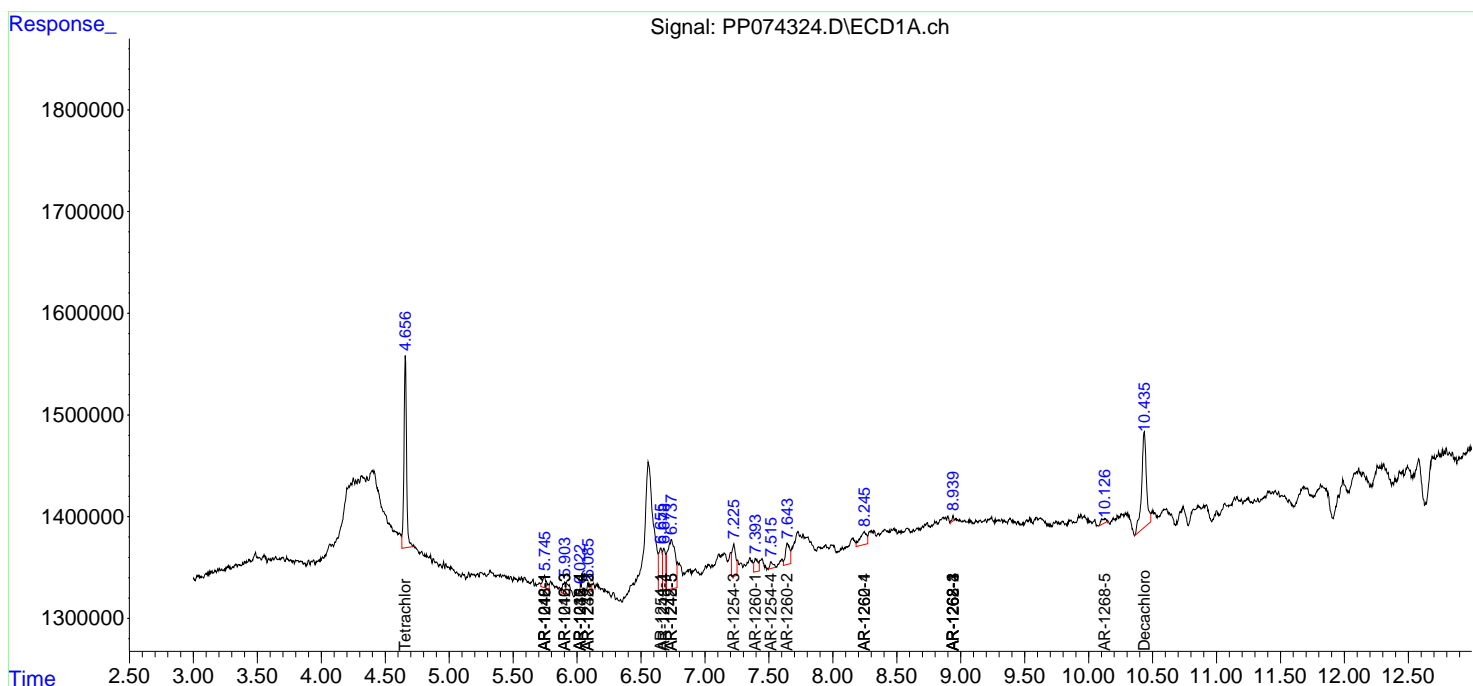
(f)=RT Delta > 1/2 Window (#)=Amounts differ by > 25% (m)=manual int.

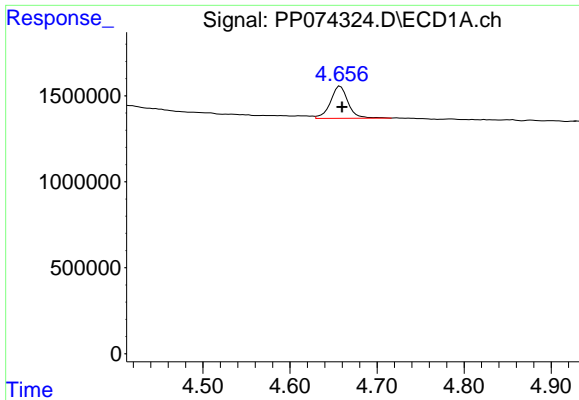
Data Path : Z:\pestpcbsrv\HPCHEM1\ECD\_P\Data\PP081225\  
 Data File : PP074324.D  
 Signal(s) : Signal #1: ECD1A.ch Signal #2: ECD2B.ch  
 Acq On : 12 Aug 2025 18:31  
 Operator : YP\AJ  
 Sample : Q2839-12 10X  
 Misc :  
 ALS Vial : 20 Sample Multiplier: 1

**Instrument :**  
 ECD\_P  
**ClientSampleId :**  
 BC226751-1-2

Integration File signal 1: autoint1.e  
 Integration File signal 2: autoint2.e  
 Quant Time: Aug 13 01:55:54 2025  
 Quant Method : Z:\pestpcbsrv\HPCHEM1\ECD\_P\methods\PP080125.M  
 Quant Title : GC EXTRACTABLES  
 QLast Update : Mon Aug 04 11:01:49 2025  
 Response via : Initial Calibration  
 Integrator: ChemStation

Volume Inj. : 2 µl  
 Signal #1 Phase : ZB-MR1 Signal #2 Phase: ZB-MR2  
 Signal #1 Info : 30Mx0.32mmx 0.50µ Signal #2 Info : 30M x 0.32mm x 0.25µm

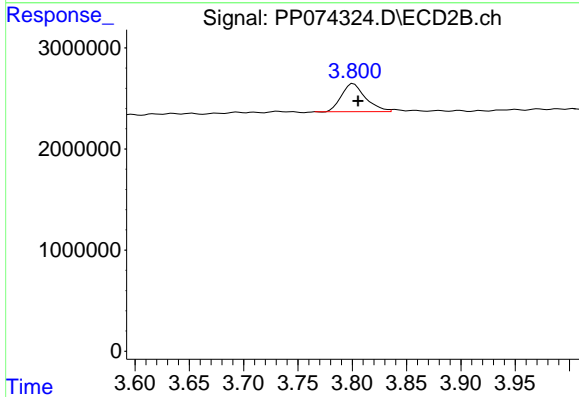




#1 Tetrachloro-m-xylene

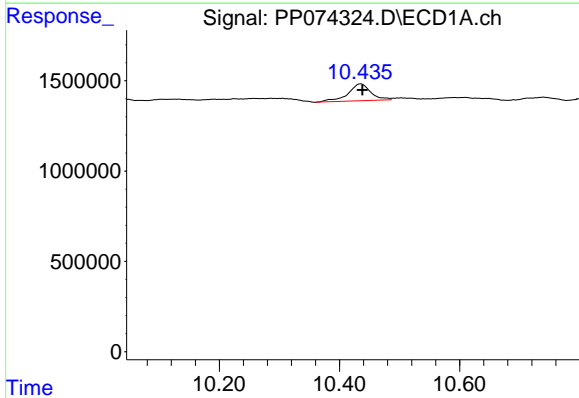
R.T.: 4.658 min  
 Delta R.T.: -0.002 min  
 Response: 2634626  
 Conc: 2.36 ng/ml

Instrument :  
 ECD\_P  
 ClientSampleId :  
 BC226751-1-2



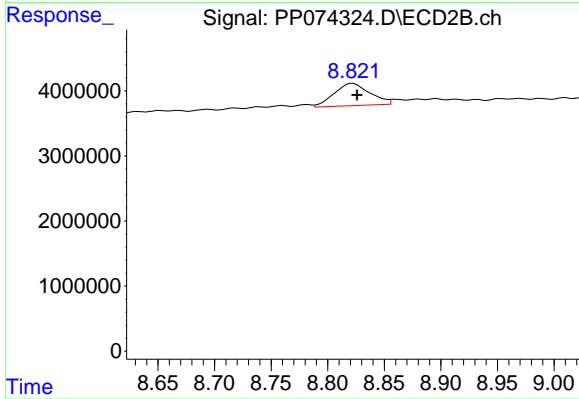
#1 Tetrachloro-m-xylene

R.T.: 3.801 min  
 Delta R.T.: -0.004 min  
 Response: 4287359  
 Conc: 1.12 ng/ml



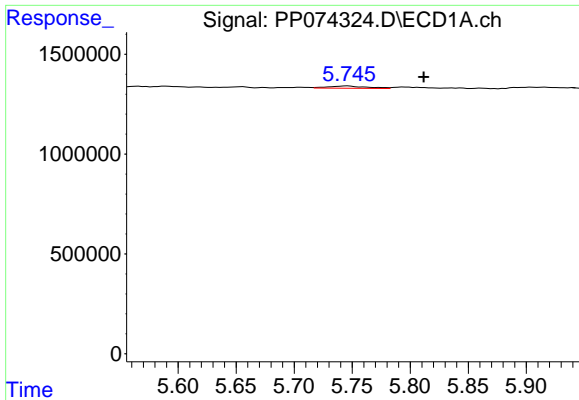
#2 Decachlorobiphenyl

R.T.: 10.436 min  
 Delta R.T.: -0.002 min  
 Response: 2450724  
 Conc: 2.52 ng/ml



#2 Decachlorobiphenyl

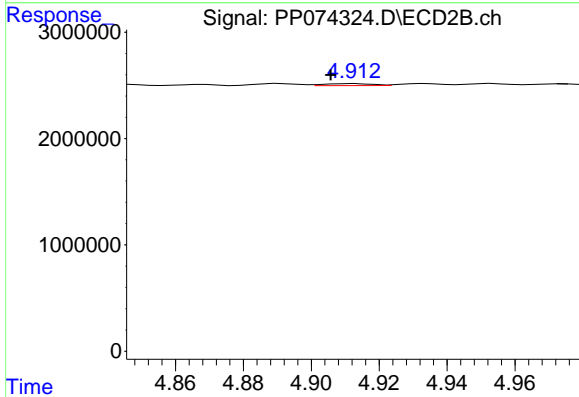
R.T.: 8.822 min  
 Delta R.T.: -0.004 min  
 Response: 7519708  
 Conc: 1.25 ng/ml



#3 AR-1016-1

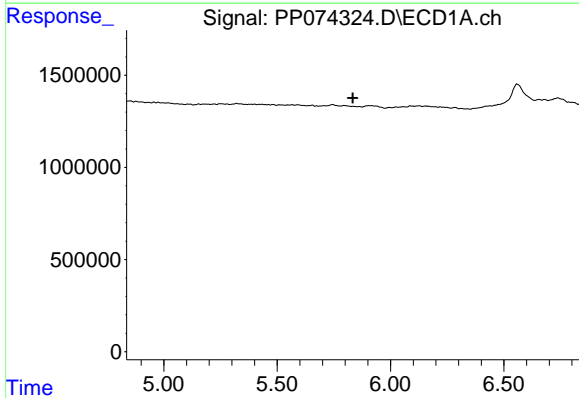
R.T.: 5.746 min  
 Delta R.T.: -0.065 min  
 Response: 252574  
 Conc: 6.12 ng/ml

Instrument :  
 ECD\_P  
 ClientSampleId :  
 BC226751-1-2



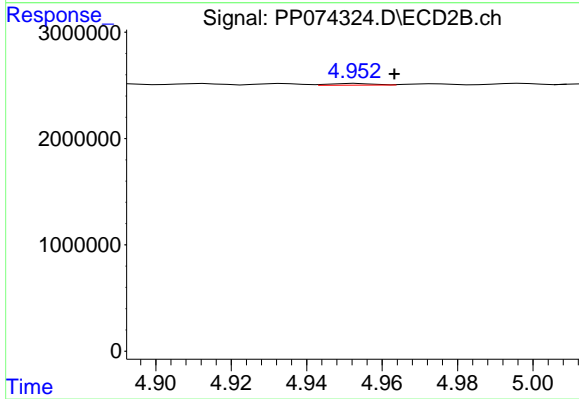
#3 AR-1016-1

R.T.: 4.913 min  
 Delta R.T.: 0.007 min  
 Response: 185618  
 Conc: 0.47 ng/ml



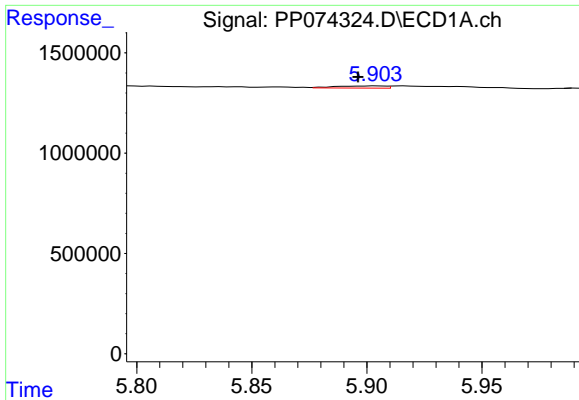
#4 AR-1016-2

R.T.: 0.000 min  
 Exp R.T. : 5.833 min  
 Response: 0  
 Conc: N.D.



#4 AR-1016-2

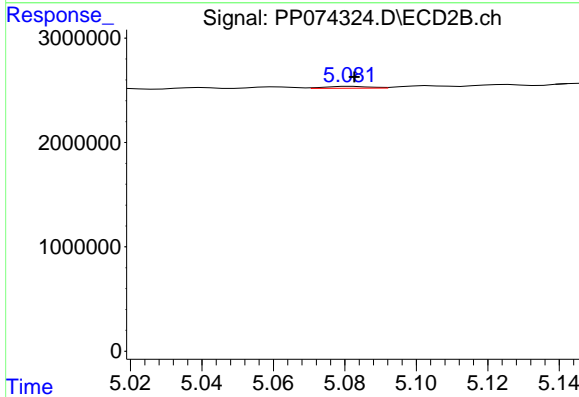
R.T.: 4.953 min  
 Delta R.T.: -0.010 min  
 Response: 124200  
 Conc: 0.66 ng/ml



#5 AR-1016-3

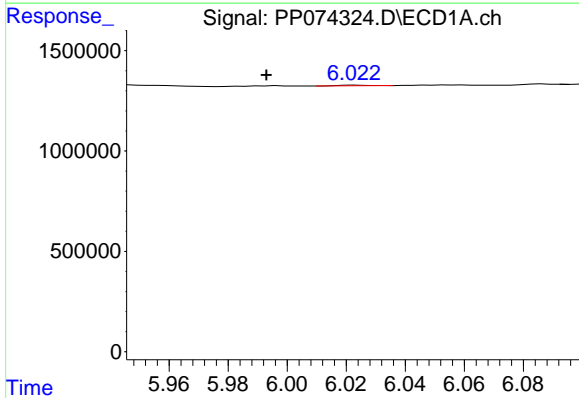
R.T.: 5.904 min  
 Delta R.T.: 0.008 min  
 Response: 166668  
 Conc: 4.20 ng/ml

Instrument :  
 ECD\_P  
 ClientSampleId :  
 BC226751-1-2



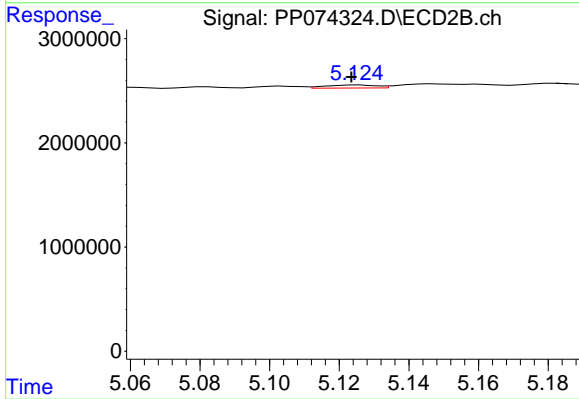
#5 AR-1016-3

R.T.: 5.082 min  
 Delta R.T.: 0.000 min  
 Response: 159030  
 Conc: 1.50 ng/ml



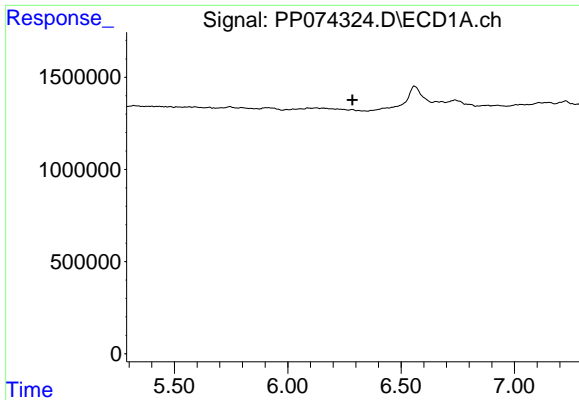
#6 AR-1016-4

R.T.: 6.023 min  
 Delta R.T.: 0.030 min  
 Response: 22545  
 Conc: 0.69 ng/ml



#6 AR-1016-4

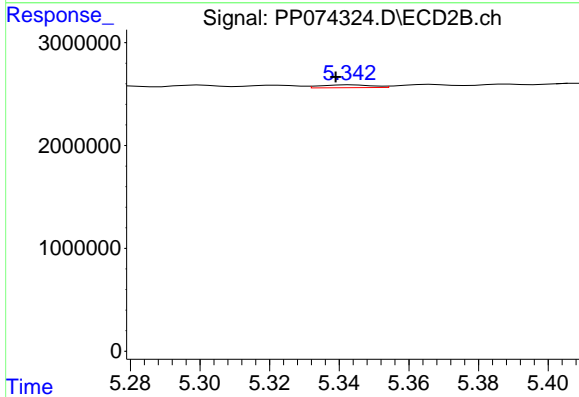
R.T.: 5.126 min  
 Delta R.T.: 0.002 min  
 Response: 293702  
 Conc: 2.69 ng/ml



#7 AR-1016-5

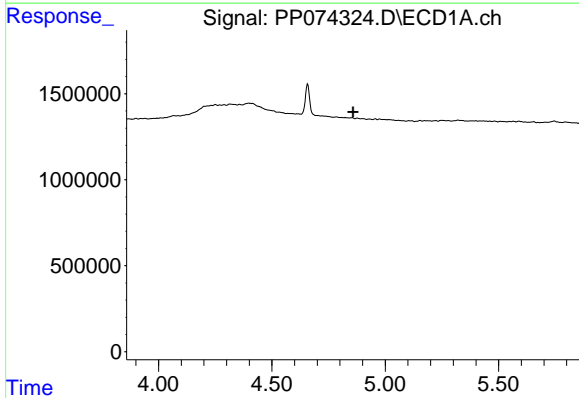
R.T.: 0.000 min  
 Exp R.T. : 6.286 min  
 Response: 0  
 Conc: N.D.

Instrument :  
 ECD\_P  
 ClientSampleId :  
 BC226751-1-2



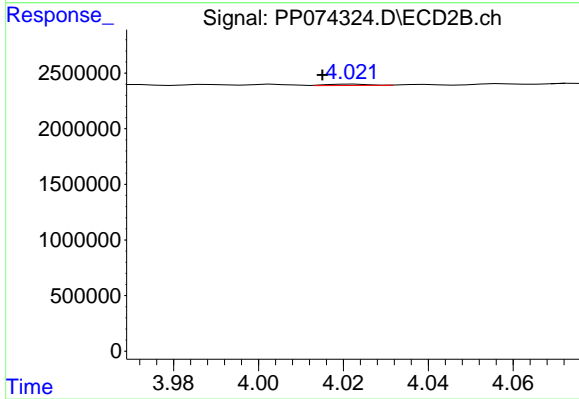
#7 AR-1016-5

R.T.: 5.343 min  
 Delta R.T.: 0.005 min  
 Response: 287041  
 Conc: 2.45 ng/ml



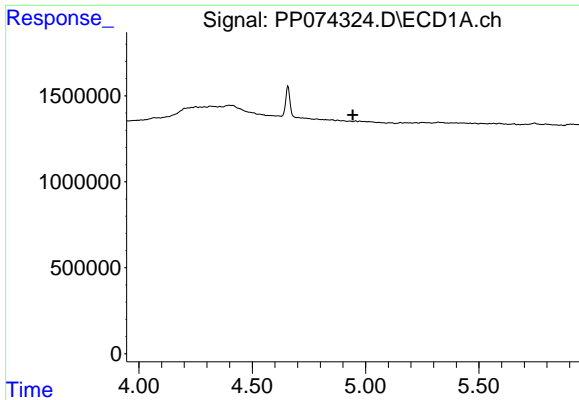
#8 AR-1221-1

R.T.: 0.000 min  
 Exp R.T. : 4.858 min  
 Response: 0  
 Conc: N.D.



#8 AR-1221-1

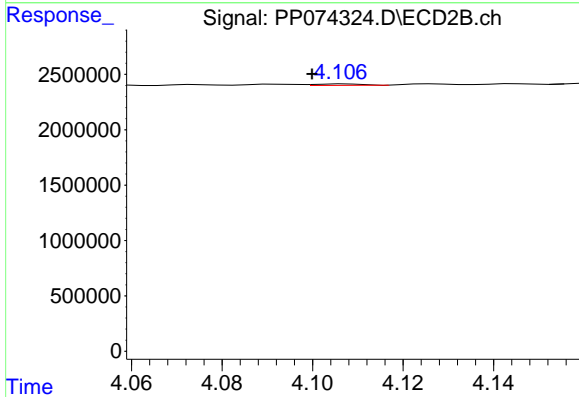
R.T.: 4.023 min  
 Delta R.T.: 0.008 min  
 Response: 86104  
 Conc: 1.75 ng/ml



#9 AR-1221-2

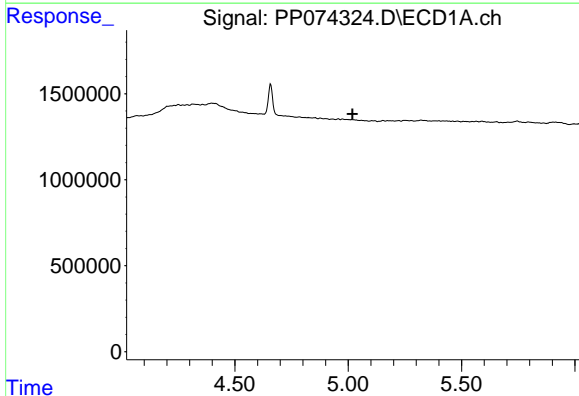
R.T.: 0.000 min  
 Exp R.T. : 4.944 min  
 Response: 0  
 Conc: N.D.

Instrument :  
 ECD\_P  
 ClientSampleId :  
 BC226751-1-2



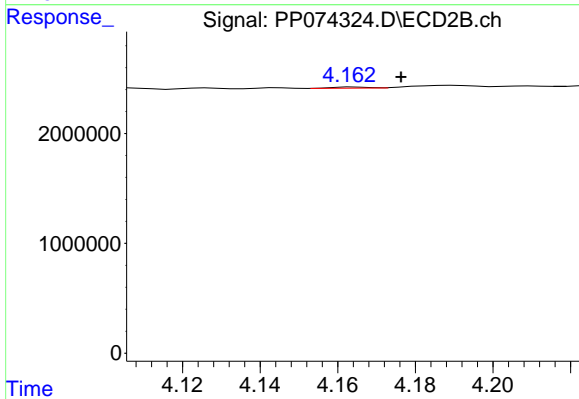
#9 AR-1221-2

R.T.: 4.107 min  
 Delta R.T.: 0.007 min  
 Response: 91082  
 Conc: 2.54 ng/ml



#10 AR-1221-3

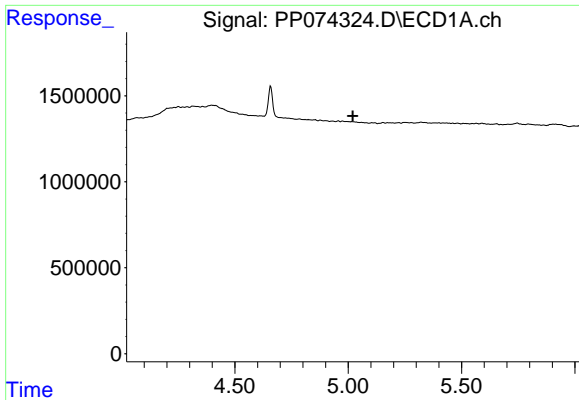
R.T.: 0.000 min  
 Exp R.T. : 5.019 min  
 Response: 0  
 Conc: N.D.



#10 AR-1221-3

R.T.: 4.164 min  
 Delta R.T.: -0.012 min  
 Response: 63513  
 Conc: 0.47 ng/ml

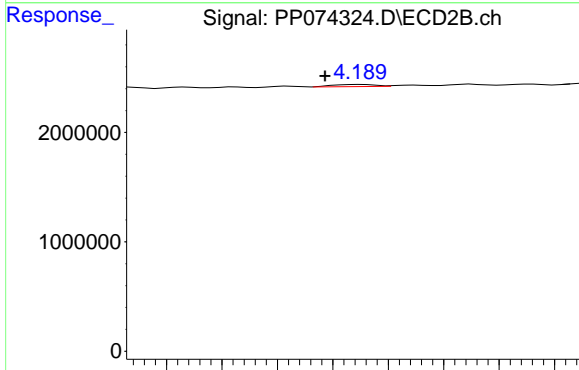




#11 AR-1232-1

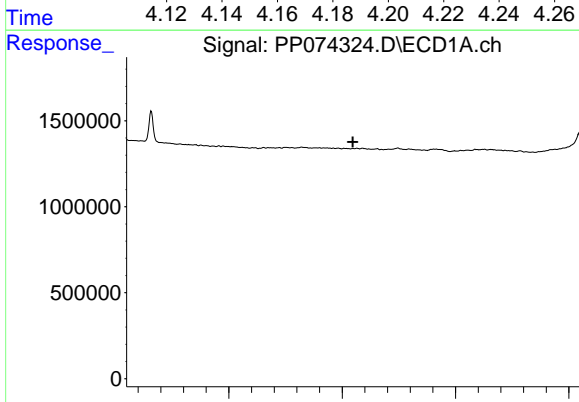
R.T.: 0.000 min  
 Exp R.T. : 5.020 min  
 Response: 0  
 Conc: N.D.

Instrument :  
 ECD\_P  
 ClientSampleId :  
 BC226751-1-2



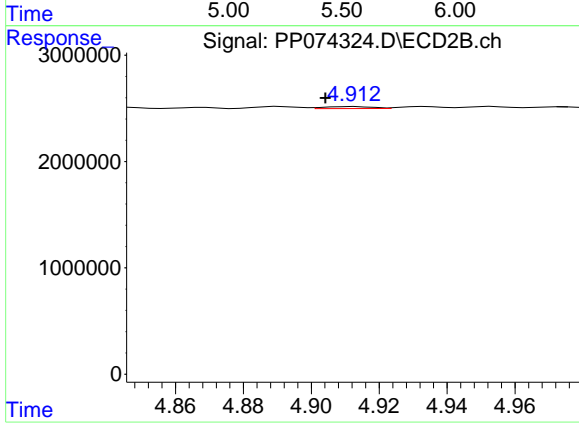
#11 AR-1232-1

R.T.: 4.190 min  
 Delta R.T.: 0.013 min  
 Response: 205084  
 Conc: 2.02 ng/ml



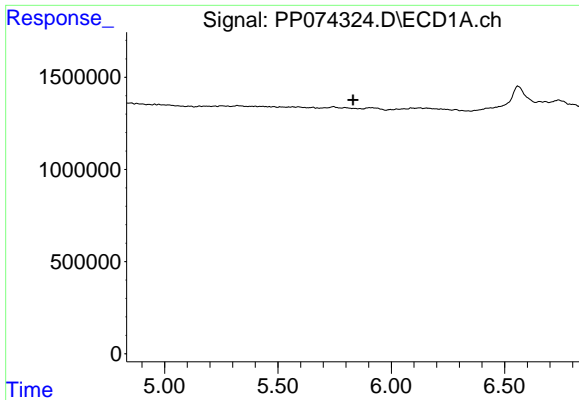
#12 AR-1232-2

R.T.: 0.000 min  
 Exp R.T. : 5.546 min  
 Response: 0  
 Conc: N.D.



#12 AR-1232-2

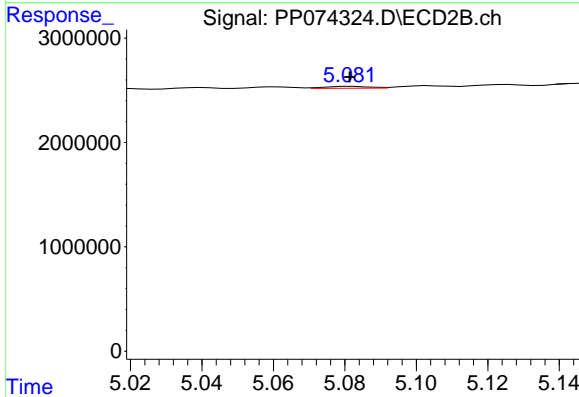
R.T.: 4.913 min  
 Delta R.T.: 0.009 min  
 Response: 185618  
 Conc: 1.07 ng/ml



#13 AR-1232-3

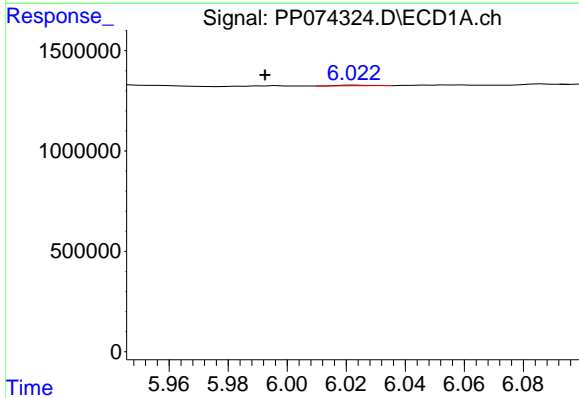
R.T.: 0.000 min  
 Exp R.T.: 5.832 min  
 Response: 0  
 Conc: N.D.

Instrument : ECD\_P  
 ClientSampleId : BC226751-1-2



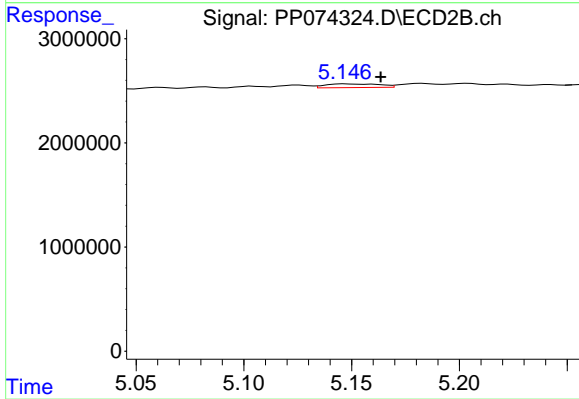
#13 AR-1232-3

R.T.: 5.082 min  
 Delta R.T.: 0.000 min  
 Response: 159030  
 Conc: 3.47 ng/ml



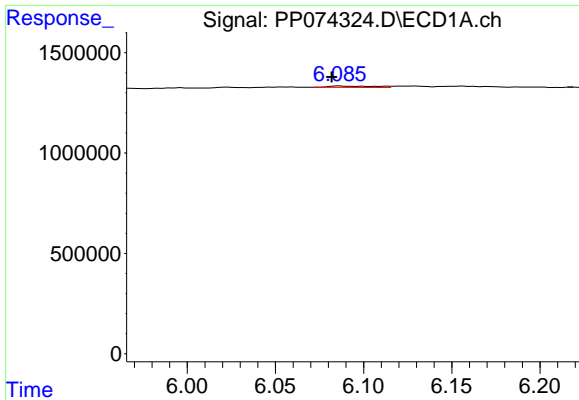
#14 AR-1232-4

R.T.: 6.023 min  
 Delta R.T.: 0.031 min  
 Response: 22545  
 Conc: 1.46 ng/ml



#14 AR-1232-4

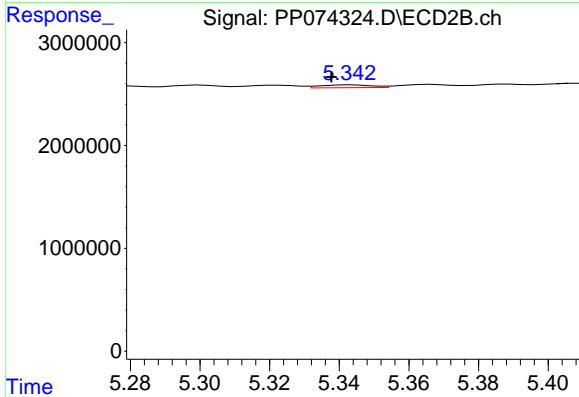
R.T.: 5.147 min  
 Delta R.T.: -0.017 min  
 Response: 613114  
 Conc: 10.57 ng/ml



#15 AR-1232-5

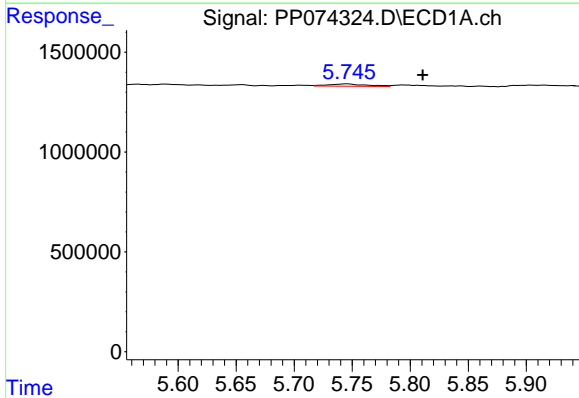
R.T.: 6.086 min  
 Delta R.T.: 0.004 min  
 Response: 125476  
 Conc: 10.71 ng/ml

Instrument :  
 ECD\_P  
 ClientSampleId :  
 BC226751-1-2



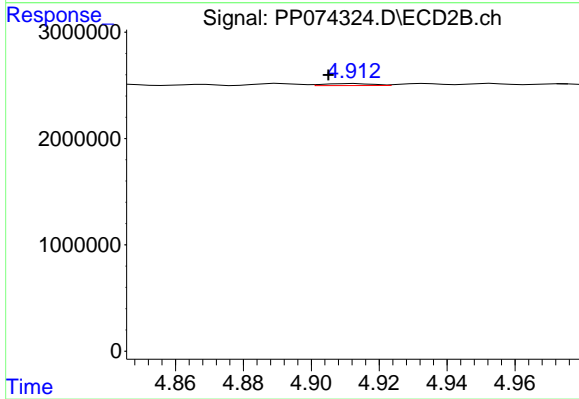
#15 AR-1232-5

R.T.: 5.343 min  
 Delta R.T.: 0.006 min  
 Response: 287041  
 Conc: 6.11 ng/ml



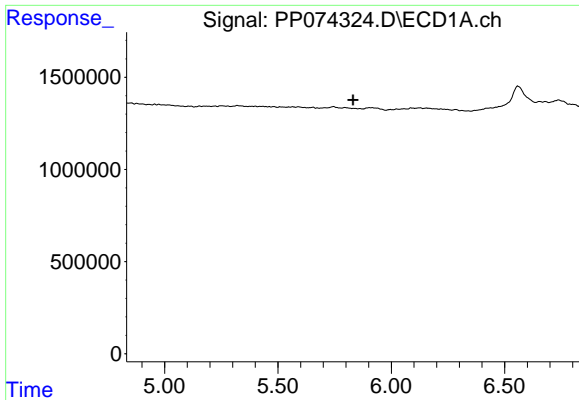
#16 AR-1242-1

R.T.: 5.746 min  
 Delta R.T.: -0.065 min  
 Response: 252574  
 Conc: 6.78 ng/ml



#16 AR-1242-1

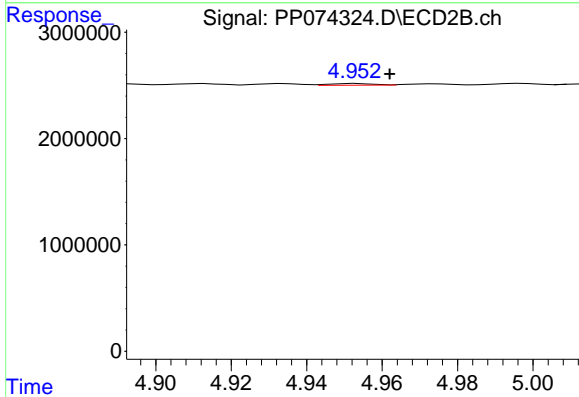
R.T.: 4.913 min  
 Delta R.T.: 0.008 min  
 Response: 185618  
 Conc: 0.54 ng/ml



#17 AR-1242-2

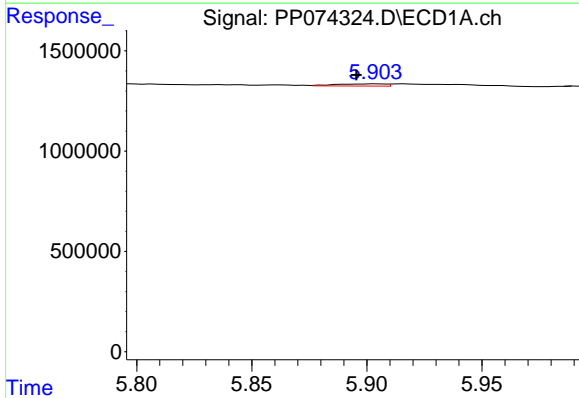
R.T.: 0.000 min  
 Exp R.T.: 5.832 min  
 Response: 0  
 Conc: N.D.

Instrument : ECD\_P  
 ClientSampleId : BC226751-1-2



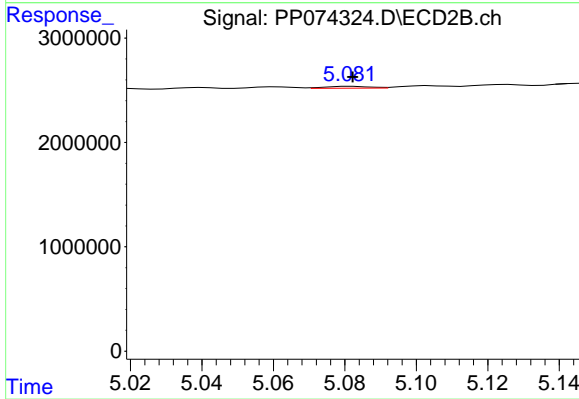
#17 AR-1242-2

R.T.: 4.953 min  
 Delta R.T.: -0.009 min  
 Response: 124200  
 Conc: 0.76 ng/ml



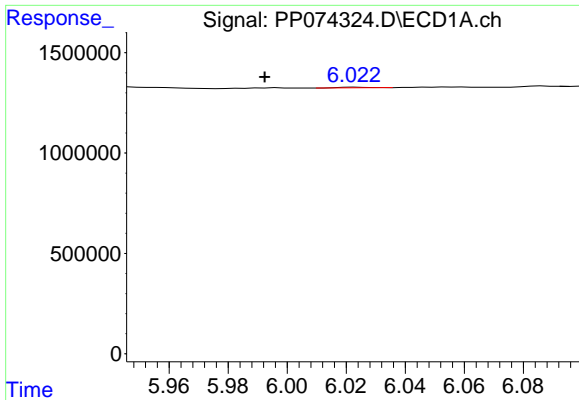
#18 AR-1242-3

R.T.: 5.904 min  
 Delta R.T.: 0.009 min  
 Response: 166668  
 Conc: 4.66 ng/ml



#18 AR-1242-3

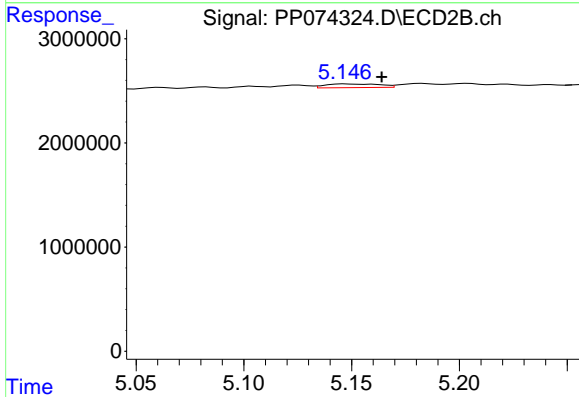
R.T.: 5.082 min  
 Delta R.T.: 0.000 min  
 Response: 159030  
 Conc: 1.72 ng/ml



#19 AR-1242-4

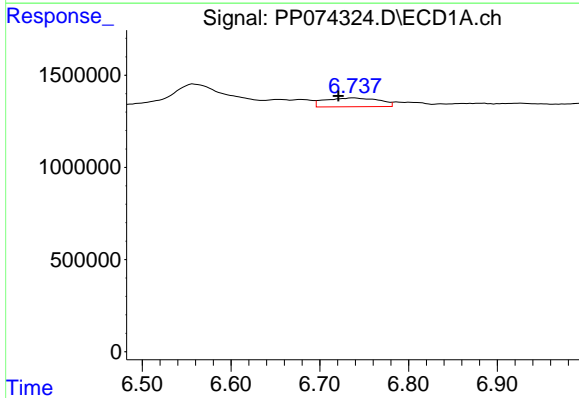
R.T.: 6.023 min  
 Delta R.T.: 0.031 min  
 Response: 22545  
 Conc: 0.77 ng/ml

Instrument :  
 ECD\_P  
 ClientSampleId :  
 BC226751-1-2



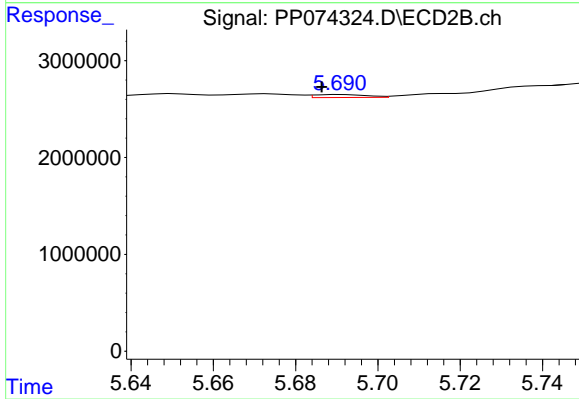
#19 AR-1242-4

R.T.: 5.147 min  
 Delta R.T.: -0.017 min  
 Response: 613114  
 Conc: 5.13 ng/ml



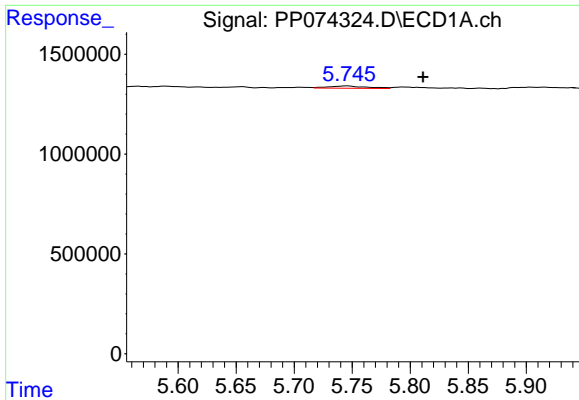
#20 AR-1242-5

R.T.: 6.738 min  
 Delta R.T.: 0.017 min  
 Response: 2030260  
 Conc: 57.10 ng/ml



#20 AR-1242-5

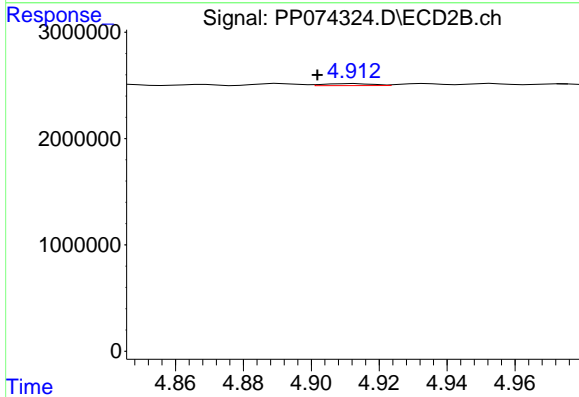
R.T.: 5.691 min  
 Delta R.T.: 0.005 min  
 Response: 280973  
 Conc: 1.88 ng/ml



#21 AR-1248-1

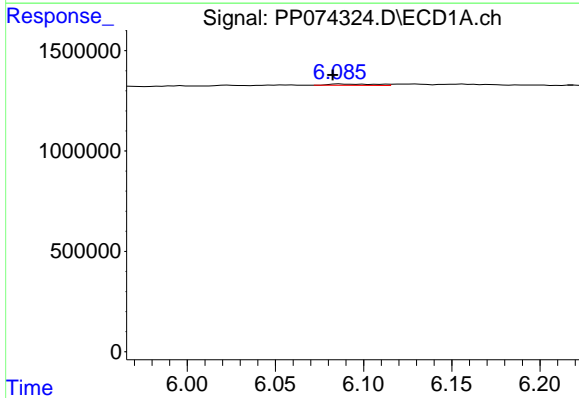
R.T.: 5.746 min  
 Delta R.T.: -0.065 min  
 Response: 252574  
 Conc: 9.02 ng/ml

Instrument :  
 ECD\_P  
 ClientSampleId :  
 BC226751-1-2



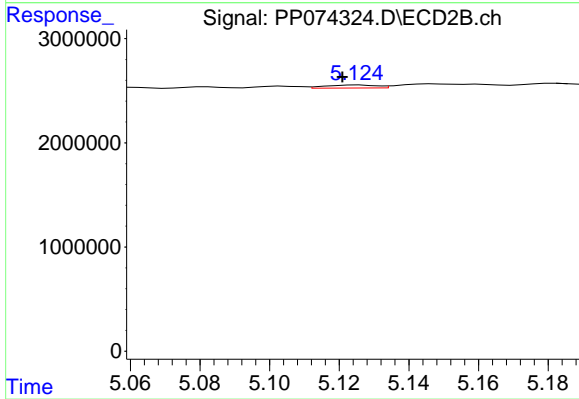
#21 AR-1248-1

R.T.: 4.913 min  
 Delta R.T.: 0.011 min  
 Response: 185618  
 Conc: 0.87 ng/ml



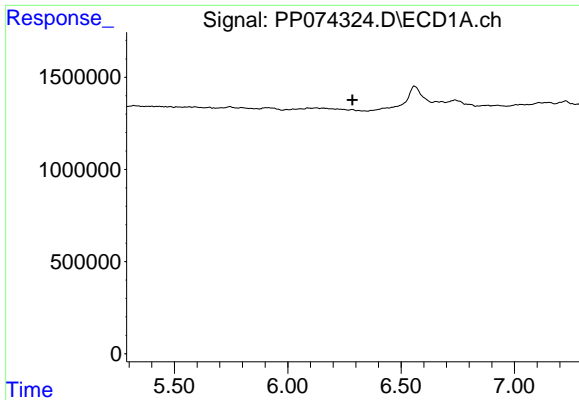
#22 AR-1248-2

R.T.: 6.086 min  
 Delta R.T.: 0.004 min  
 Response: 125476  
 Conc: 3.12 ng/ml



#22 AR-1248-2

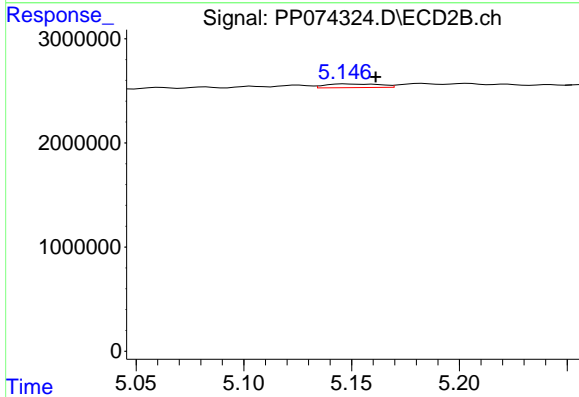
R.T.: 5.126 min  
 Delta R.T.: 0.005 min  
 Response: 293702  
 Conc: 2.01 ng/ml



#23 AR-1248-3

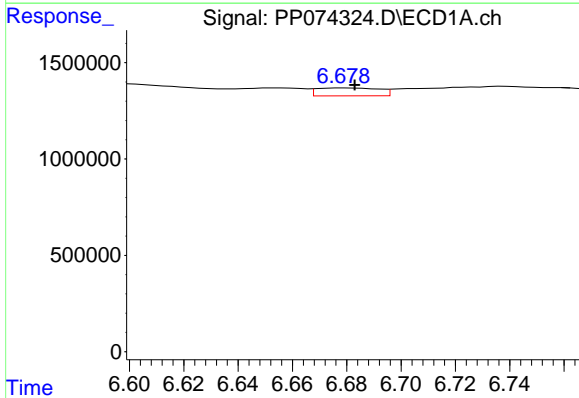
R.T.: 0.000 min  
 Exp R.T.: 6.286 min  
 Response: 0  
 Conc: N.D.

Instrument : ECD\_P  
 ClientSampleId : BC226751-1-2



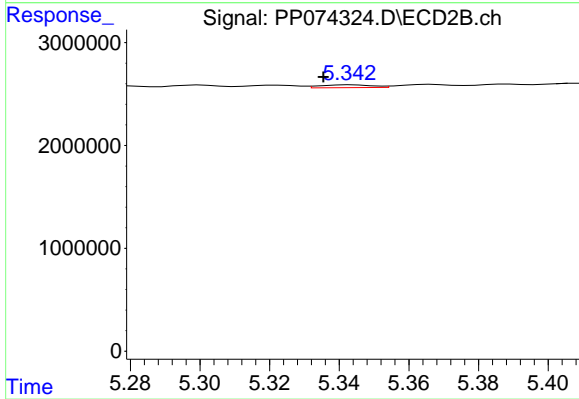
#23 AR-1248-3

R.T.: 5.147 min  
 Delta R.T.: -0.014 min  
 Response: 613114  
 Conc: 3.58 ng/ml



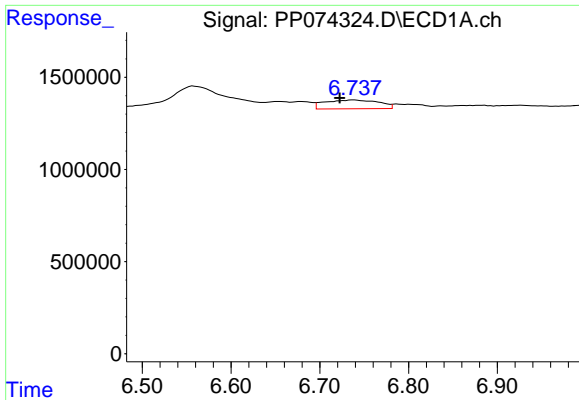
#24 AR-1248-4

R.T.: 6.679 min  
 Delta R.T.: -0.004 min  
 Response: 653172  
 Conc: 12.55 ng/ml



#24 AR-1248-4

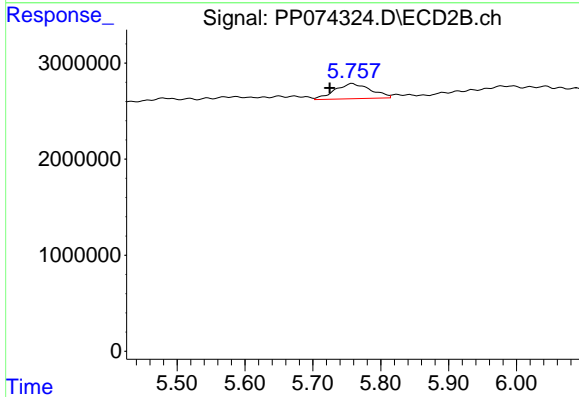
R.T.: 5.343 min  
 Delta R.T.: 0.008 min  
 Response: 287041  
 Conc: 1.73 ng/ml



#25 AR-1248-5

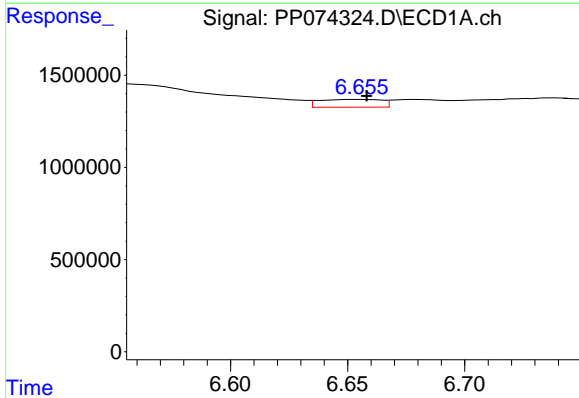
R.T.: 6.738 min  
 Delta R.T.: 0.016 min  
 Response: 2030260  
 Conc: 35.65 ng/ml

Instrument :  
 ECD\_P  
 ClientSampleId :  
 BC226751-1-2



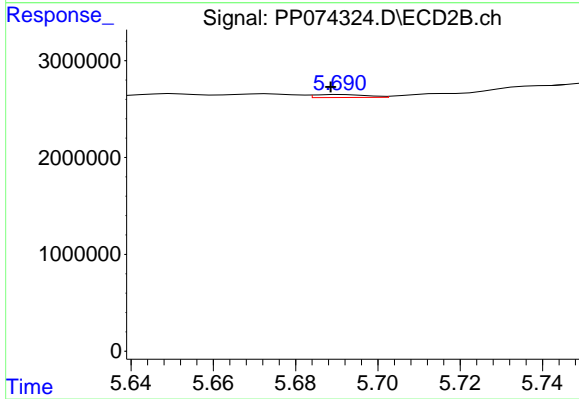
#25 AR-1248-5

R.T.: 5.758 min  
 Delta R.T.: 0.033 min  
 Response: 5730925  
 Conc: 19.70 ng/ml



#26 AR-1254-1

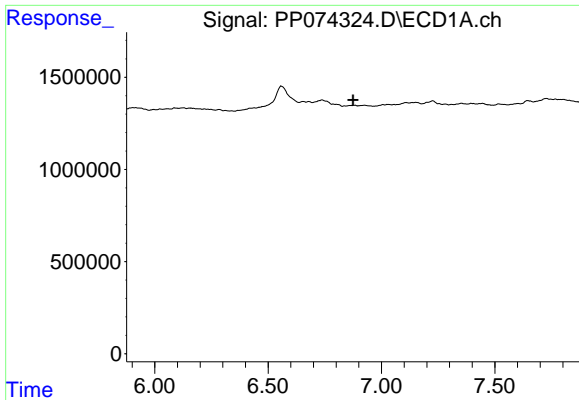
R.T.: 6.656 min  
 Delta R.T.: -0.002 min  
 Response: 777702  
 Conc: 14.77 ng/ml



#26 AR-1254-1

R.T.: 5.691 min  
 Delta R.T.: 0.003 min  
 Response: 280973  
 Conc: 0.77 ng/ml

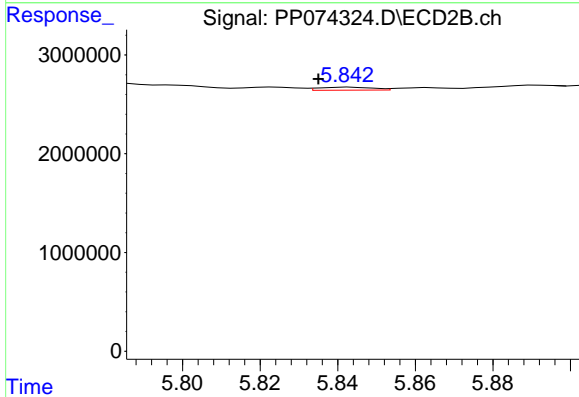




#27 AR-1254-2

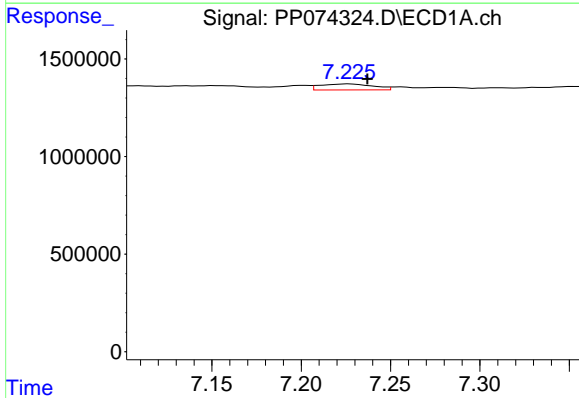
R.T.: 0.000 min  
 Exp R.T.: 6.875 min  
 Response: 0  
 Conc: N.D.

Instrument :  
 ECD\_P  
 ClientSampleId :  
 BC226751-1-2



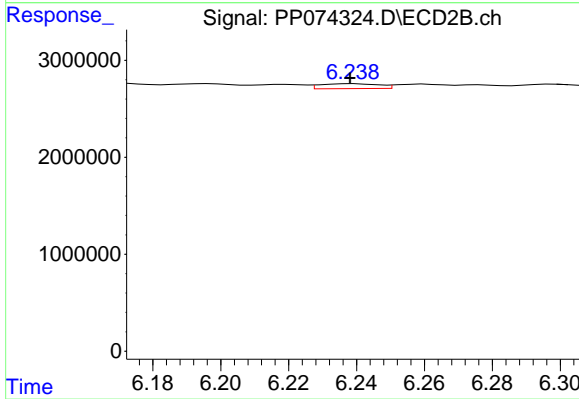
#27 AR-1254-2

R.T.: 5.843 min  
 Delta R.T.: 0.008 min  
 Response: 292754  
 Conc: 1.05 ng/ml



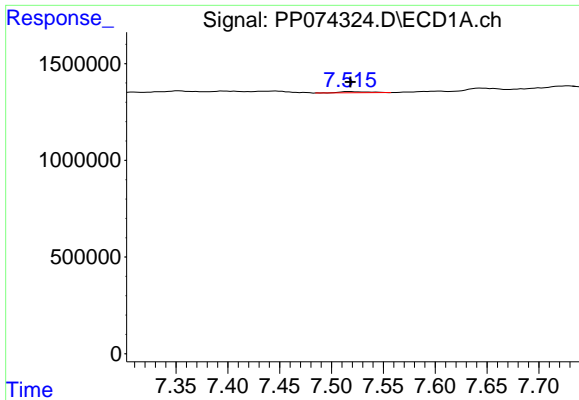
#28 AR-1254-3

R.T.: 7.227 min  
 Delta R.T.: -0.010 min  
 Response: 635612  
 Conc: 7.28 ng/ml



#28 AR-1254-3

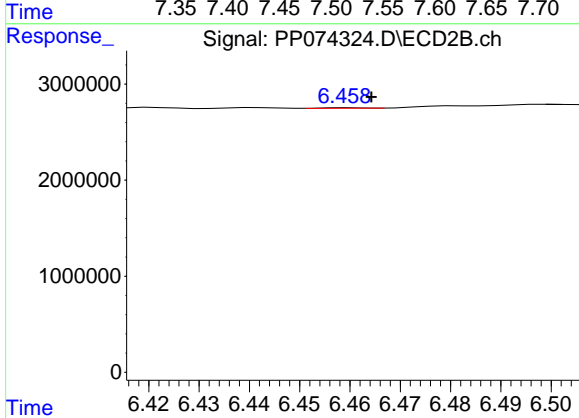
R.T.: 6.239 min  
 Delta R.T.: 0.001 min  
 Response: 606449  
 Conc: 1.24 ng/ml



#29 AR-1254-4

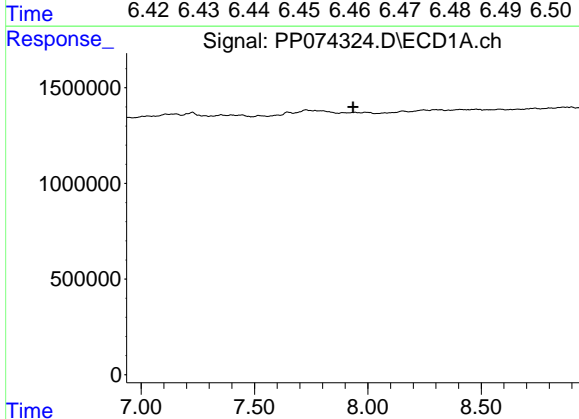
R.T.: 7.517 min  
 Delta R.T.: -0.001 min  
 Response: 120623  
 Conc: 1.89 ng/ml

Instrument :  
 ECD\_P  
 ClientSampleId :  
 BC226751-1-2



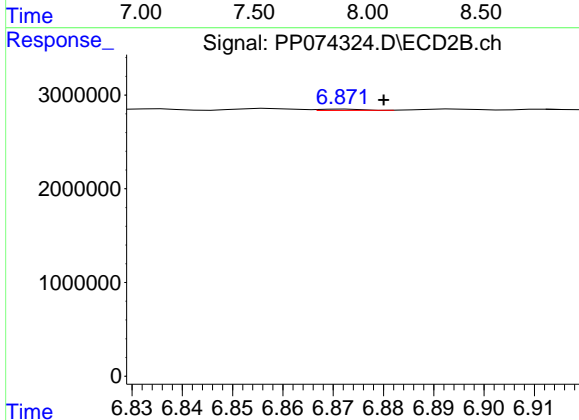
#29 AR-1254-4

R.T.: 6.460 min  
 Delta R.T.: -0.005 min  
 Response: 32797  
 Conc: 0.09 ng/ml



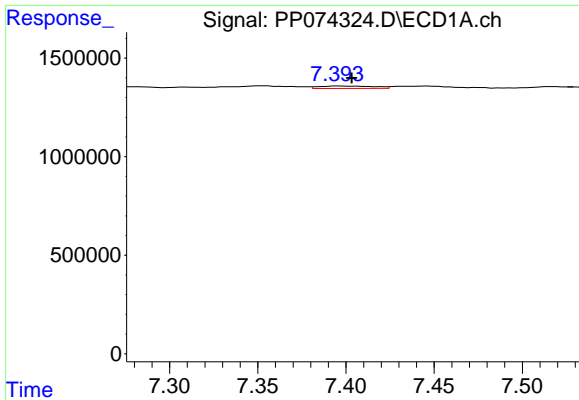
#30 AR-1254-5

R.T.: 0.000 min  
 Exp R.T. : 7.934 min  
 Response: 0  
 Conc: N.D.



#30 AR-1254-5

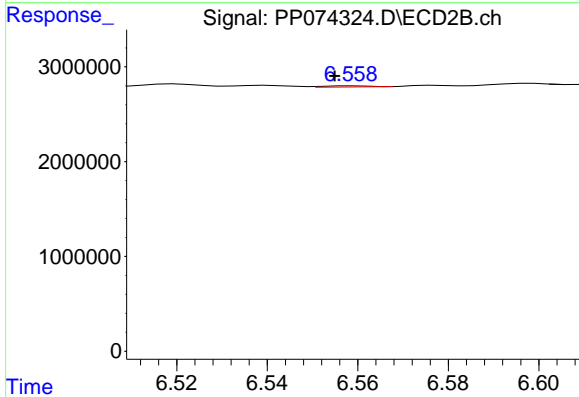
R.T.: 6.873 min  
 Delta R.T.: -0.007 min  
 Response: 75690  
 Conc: 0.20 ng/ml



#31 AR-1260-1

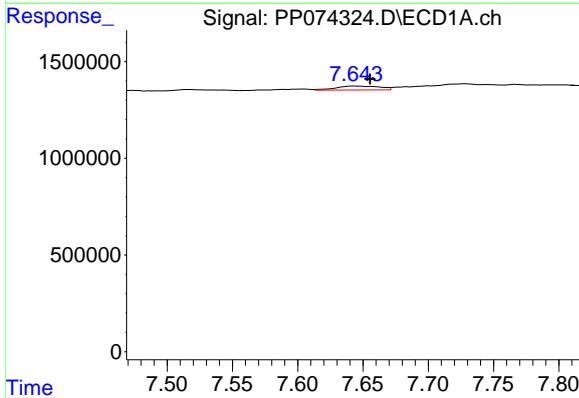
R.T.: 7.395 min  
 Delta R.T.: -0.008 min  
 Response: 272131  
 Conc: 4.83 ng/ml

Instrument :  
 ECD\_P  
 ClientSampleId :  
 BC226751-1-2



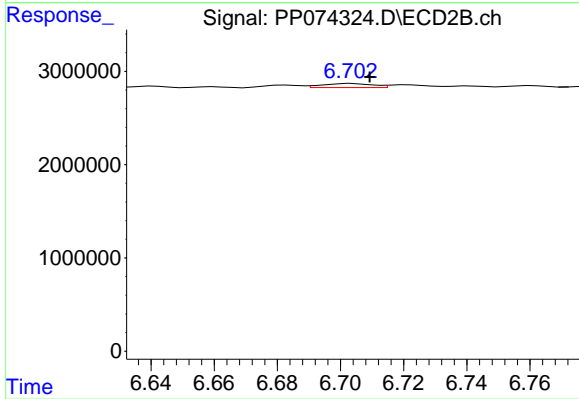
#31 AR-1260-1

R.T.: 6.559 min  
 Delta R.T.: 0.004 min  
 Response: 80923  
 Conc: 0.20 ng/ml



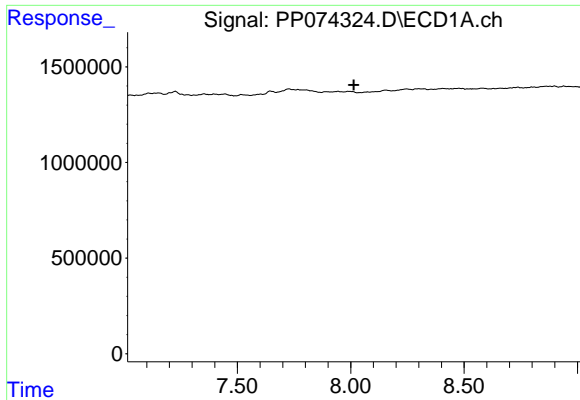
#32 AR-1260-2

R.T.: 7.644 min  
 Delta R.T.: -0.011 min  
 Response: 477592  
 Conc: 7.01 ng/ml



#32 AR-1260-2

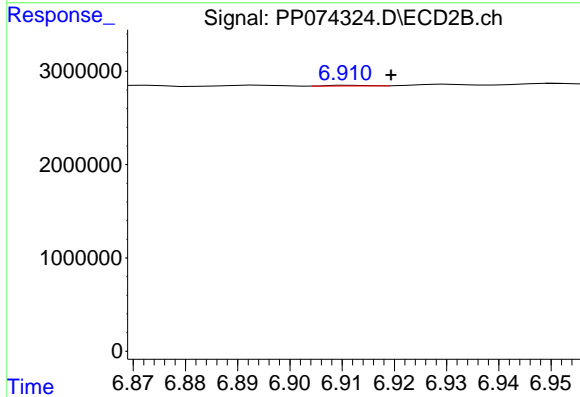
R.T.: 6.704 min  
 Delta R.T.: -0.005 min  
 Response: 484402  
 Conc: 1.55 ng/ml



#33 AR-1260-3

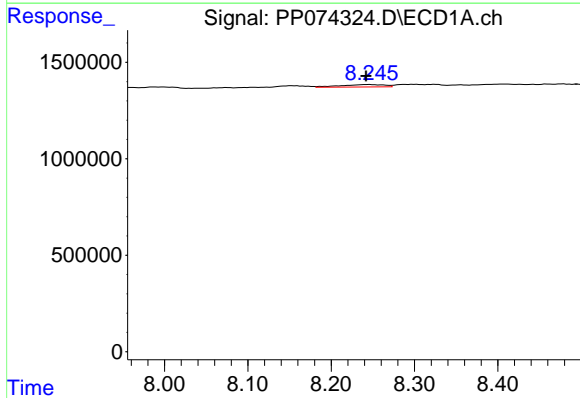
R.T.: 0.000 min  
 Exp R.T.: 8.013 min  
 Response: 0  
 Conc: N.D.

Instrument :  
 ECD\_P  
 ClientSampleId :  
 BC226751-1-2



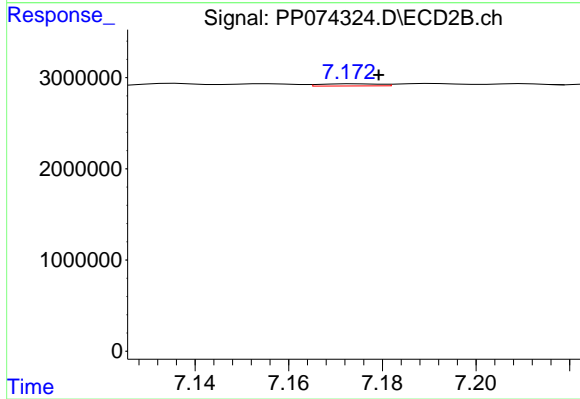
#33 AR-1260-3

R.T.: 6.912 min  
 Delta R.T.: -0.008 min  
 Response: 31015  
 Conc: 0.08 ng/ml



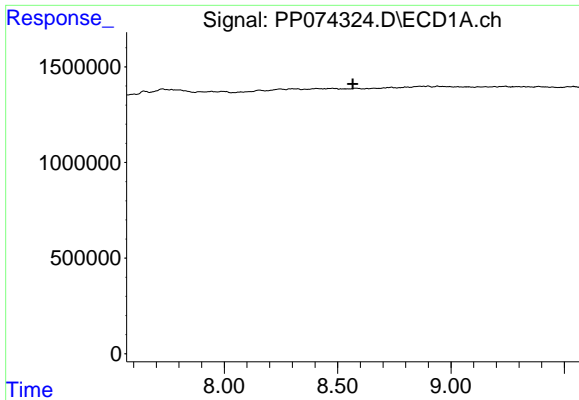
#34 AR-1260-4

R.T.: 8.246 min  
 Delta R.T.: 0.005 min  
 Response: 451320  
 Conc: 7.21 ng/ml



#34 AR-1260-4

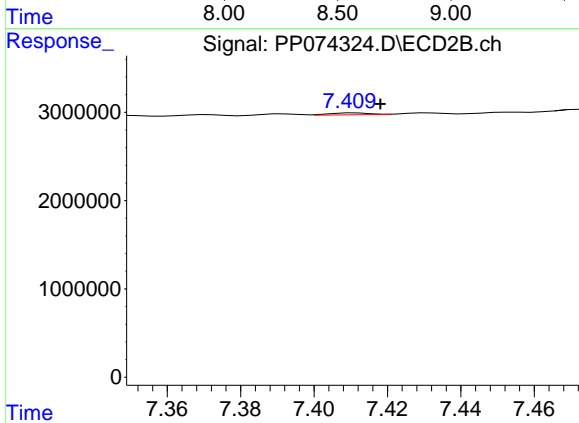
R.T.: 7.175 min  
 Delta R.T.: -0.005 min  
 Response: 209032  
 Conc: 0.72 ng/ml



#35 AR-1260-5

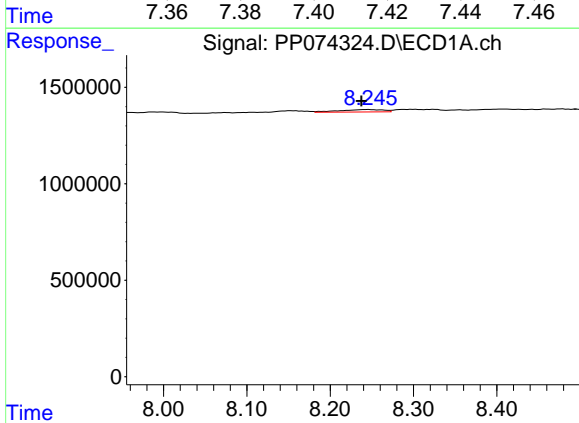
R.T.: 0.000 min  
 Exp R.T.: 8.568 min  
 Response: 0  
 Conc: N.D.

Instrument : ECD\_P  
 ClientSampleId : BC226751-1-2



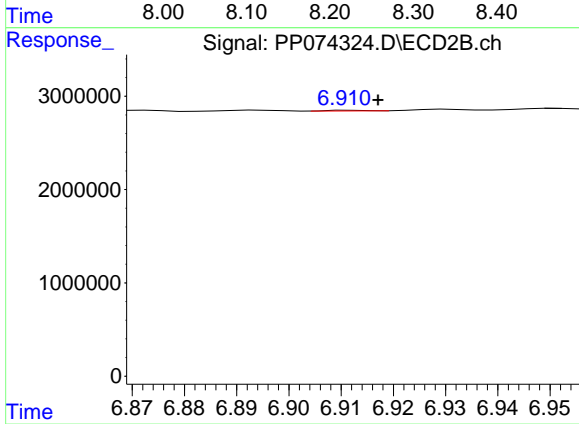
#35 AR-1260-5

R.T.: 7.411 min  
 Delta R.T.: -0.007 min  
 Response: 159556  
 Conc: 0.21 ng/ml



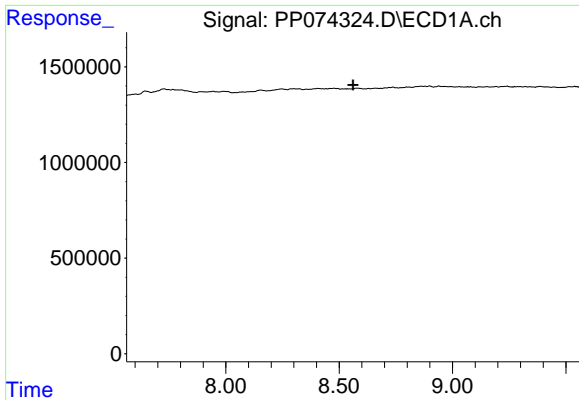
#36 AR-1262-1

R.T.: 8.246 min  
 Delta R.T.: 0.009 min  
 Response: 451320  
 Conc: 5.95 ng/ml



#36 AR-1262-1

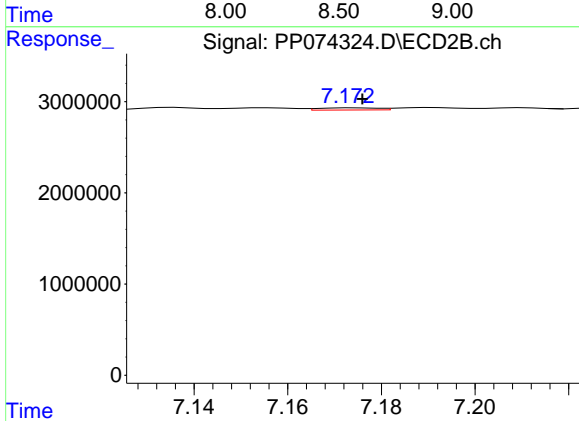
R.T.: 6.912 min  
 Delta R.T.: -0.005 min  
 Response: 31015  
 Conc: 0.06 ng/ml



#37 AR-1262-2

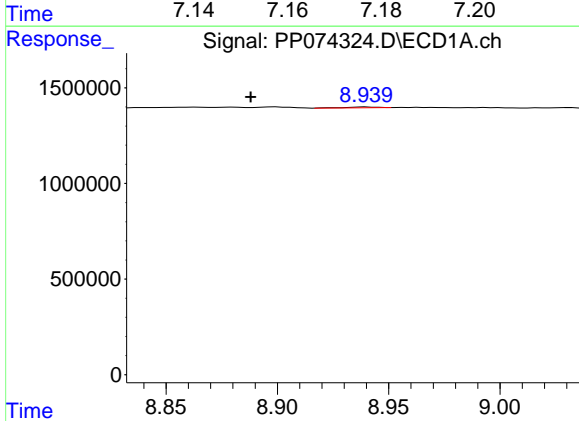
R.T.: 0.000 min  
 Exp R.T.: 8.562 min  
 Response: 0  
 Conc: N.D.

Instrument :  
 ECD\_P  
 ClientSampleId :  
 BC226751-1-2



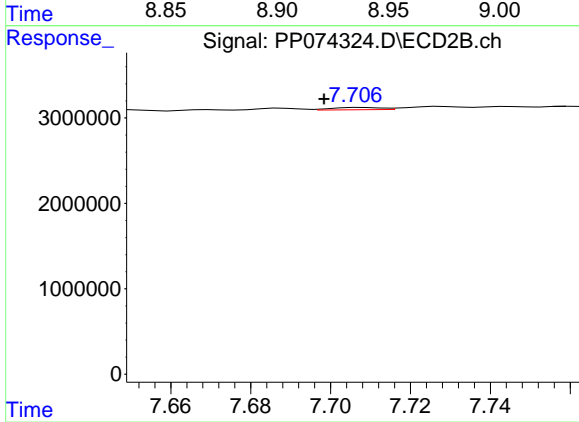
#37 AR-1262-2

R.T.: 7.175 min  
 Delta R.T.: -0.001 min  
 Response: 209032  
 Conc: 0.52 ng/ml



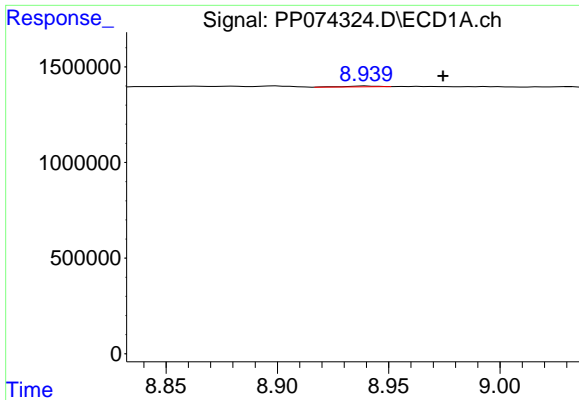
#38 AR-1262-3

R.T.: 8.940 min  
 Delta R.T.: 0.052 min  
 Response: 41118  
 Conc: 0.44 ng/ml



#38 AR-1262-3

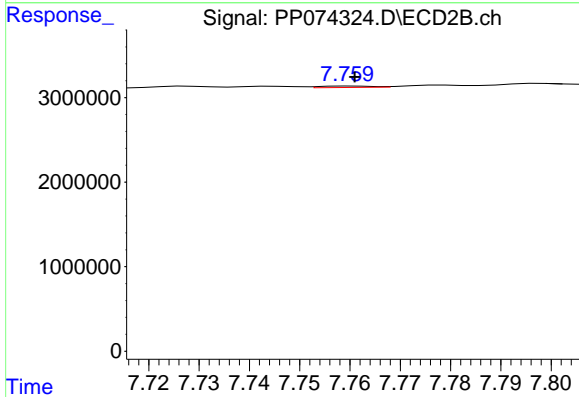
R.T.: 7.708 min  
 Delta R.T.: 0.010 min  
 Response: 223882  
 Conc: 0.62 ng/ml



#39 AR-1262-4

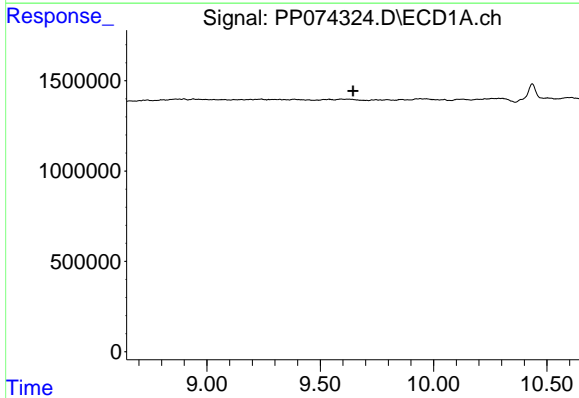
R.T.: 8.940 min  
 Delta R.T.: -0.034 min  
 Response: 41118  
 Conc: 0.56 ng/ml

Instrument :  
 ECD\_P  
 ClientSampleId :  
 BC226751-1-2



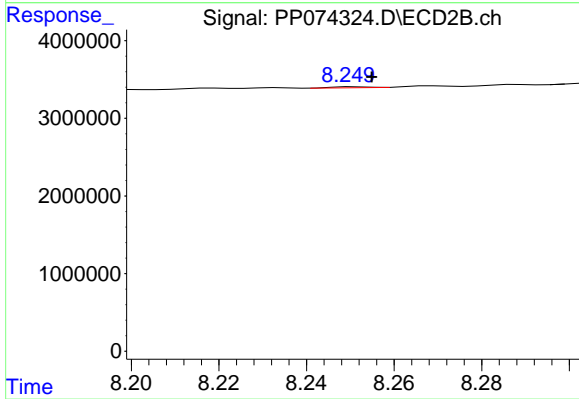
#39 AR-1262-4

R.T.: 7.760 min  
 Delta R.T.: 0.000 min  
 Response: 123637  
 Conc: 0.19 ng/ml



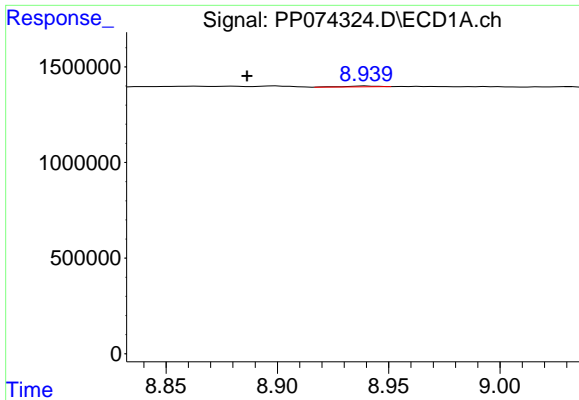
#40 AR-1262-5

R.T.: 0.000 min  
 Exp R.T. : 9.645 min  
 Response: 0  
 Conc: N.D.



#40 AR-1262-5

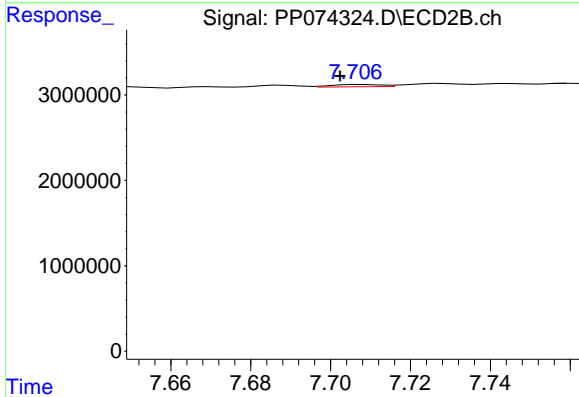
R.T.: 8.251 min  
 Delta R.T.: -0.004 min  
 Response: 65890  
 Conc: 0.23 ng/ml



#41 AR-1268-1

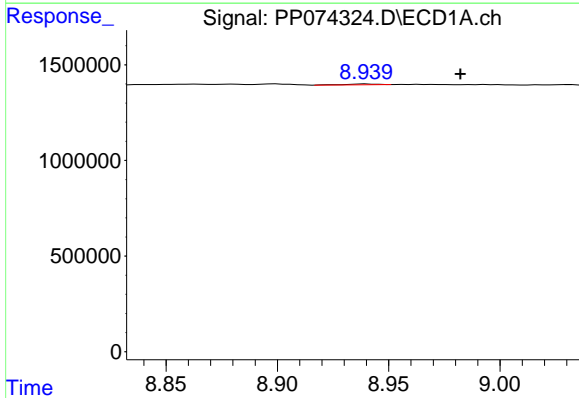
R.T.: 8.940 min  
 Delta R.T.: 0.054 min  
 Response: 41118  
 Conc: 0.26 ng/ml

Instrument :  
 ECD\_P  
 ClientSampleId :  
 BC226751-1-2



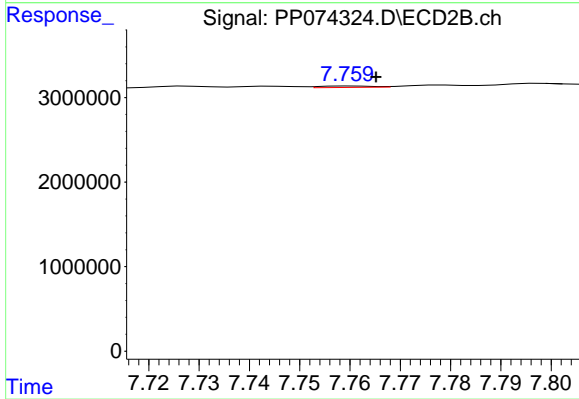
#41 AR-1268-1

R.T.: 7.708 min  
 Delta R.T.: 0.006 min  
 Response: 223882  
 Conc: 0.21 ng/ml



#42 AR-1268-2

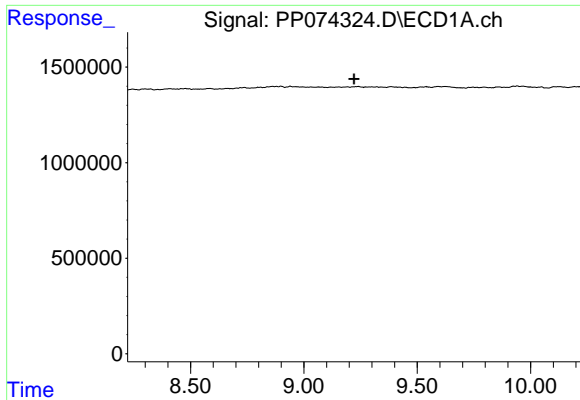
R.T.: 8.940 min  
 Delta R.T.: -0.042 min  
 Response: 41118  
 Conc: 0.29 ng/ml



#42 AR-1268-2

R.T.: 7.760 min  
 Delta R.T.: -0.005 min  
 Response: 123637  
 Conc: 0.12 ng/ml

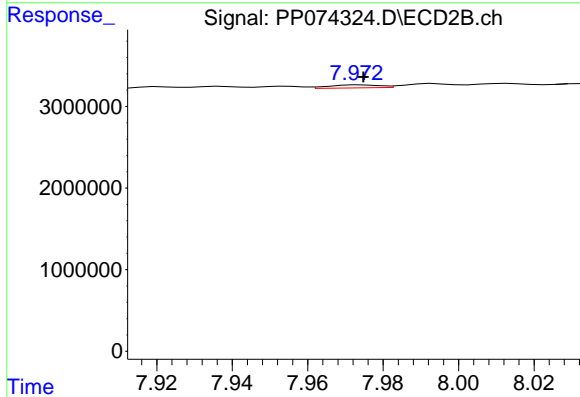




#43 AR-1268-3

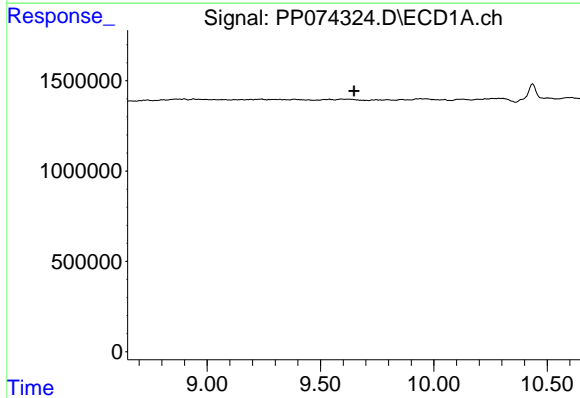
R.T.: 0.000 min  
 Exp R.T. : 9.222 min  
 Response: 0  
 Conc: N.D.

Instrument :  
 ECD\_P  
 ClientSampleId :  
 BC226751-1-2



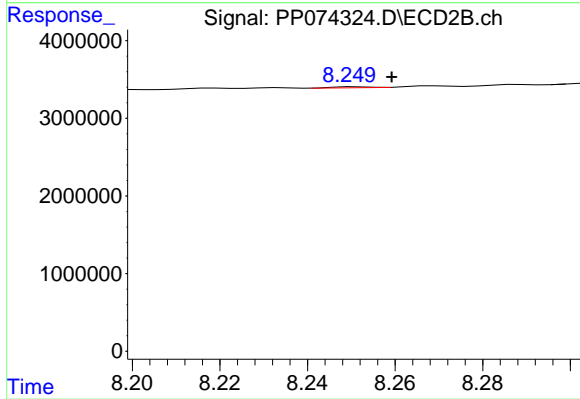
#43 AR-1268-3

R.T.: 7.974 min  
 Delta R.T.: 0.000 min  
 Response: 341616  
 Conc: 0.41 ng/ml



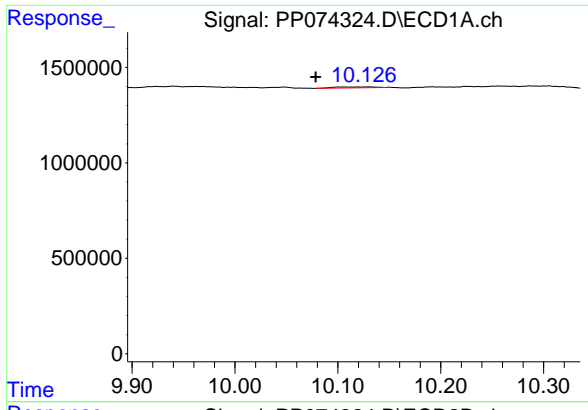
#44 AR-1268-4

R.T.: 0.000 min  
 Exp R.T. : 9.648 min  
 Response: 0  
 Conc: N.D.



#44 AR-1268-4

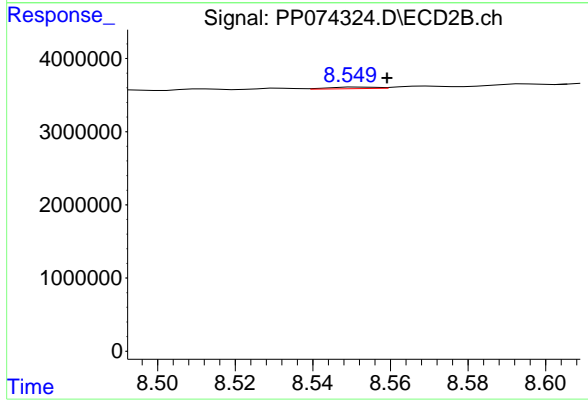
R.T.: 8.251 min  
 Delta R.T.: -0.008 min  
 Response: 65890  
 Conc: 0.21 ng/ml



#45 AR-1268-5

R.T.: 10.128 min  
 Delta R.T.: 0.049 min  
 Response: 126179  
 Conc: 0.36 ng/ml

Instrument :  
 ECD\_P  
 ClientSampleId :  
 BC226751-1-2



#45 AR-1268-5

R.T.: 8.551 min  
 Delta R.T.: -0.008 min  
 Response: 183329  
 Conc: 0.07 ng/ml