

Data Path : Z:\pestpcbsrv\HPCHEM1\ECD_P\Data\PP081225\
 Data File : PP074329.D
 Signal(s) : Signal #1: ECD1A.ch Signal #2: ECD2B.ch
 Acq On : 12 Aug 2025 20:41
 Operator : YP\AJ
 Sample : AR1660CCC500
 Misc :
 ALS Vial : 3 Sample Multiplier: 1

Instrument :
 ECD_P
 ClientSampleId :
 AR1660CCC500

Integration File signal 1: autoint1.e
 Integration File signal 2: autoint2.e
 Quant Time: Aug 13 01:57:01 2025
 Quant Method : Z:\pestpcbsrv\HPCHEM1\ECD_P\methods\PP080125.M
 Quant Title : GC EXTRACTABLES
 QLast Update : Mon Aug 04 11:01:49 2025
 Response via : Initial Calibration
 Integrator: ChemStation

Volume Inj. : 2 µl
 Signal #1 Phase : ZB-MR1 Signal #2 Phase: ZB-MR2
 Signal #1 Info : 30Mx0.32mmx 0.50µ Signal #2 Info : 30M x 0.32mm x 0.25µm

Compound	RT#1	RT#2	Resp#1	Resp#2	ng/ml	ng/ml

System Monitoring Compounds						
1) SA Tetrachlo...	4.660	3.804	53586030	196.1E6	47.917	51.143
2) SA Decachlor...	10.437	8.820	42086605	276.2E6	43.336	45.935
Target Compounds						
3) L1 AR-1016-1	5.811	4.903	18537193	199.4E6	449.312	499.783
4) L1 AR-1016-2	5.833	4.961	27508385	95354896	452.875	507.723
5) L1 AR-1016-3	5.896	5.082	18112230	53087154	456.682	500.493
6) L1 AR-1016-4	5.993	5.122	14850799	53494826	456.323	489.789
7) L1 AR-1016-5	6.285	5.336	14618834	60289626	450.253	515.458
8) L2 AR-1221-1	4.856	4.015	2356144	6424456	140.551	130.884
9) L2 AR-1221-2	4.946	4.101	3453602	8842987	274.072	246.396
10) L2 AR-1221-3	5.021	4.176	11214414	40709230	306.110	301.049
11) L3 AR-1232-1	5.021	4.176	11214414	40709230	386.207	401.620
12) L3 AR-1232-2	5.547	4.903	14339428	199.4E6	953.247	1143.981
13) L3 AR-1232-3	5.833	5.082	27508385	53087154	948.509	1158.688
14) L3 AR-1232-4	5.993	5.165	14850799	97729352	960.047	1684.678 #
15) L3 AR-1232-5	6.083	5.336	13116638	60289626	1119.548	1283.319
16) L4 AR-1242-1	5.811	4.903	18537193	199.4E6	497.432	577.612
17) L4 AR-1242-2	5.833	4.961	27508385	95354896	505.586	583.647
18) L4 AR-1242-3	5.896	5.082	18112230	53087154	506.836	575.480
19) L4 AR-1242-4	5.993	5.165	14850799	97729352	508.264	818.356 #
20) L4 AR-1242-5	6.722	5.687	5512020	74017231	155.015	494.900 #
21) L5 AR-1248-1	5.811	4.903	18537193	199.4E6	661.699	931.873 #
22) L5 AR-1248-2	6.083	5.122	13116638	53494826	325.790	365.620
23) L5 AR-1248-3	6.285	5.165	14618834	97729352	327.971	569.983 #
24) L5 AR-1248-4	6.659	5.336	19013744	60289626	365.388	362.375
25) L5 AR-1248-5	6.722	5.723	5512020	21193674	96.798	72.839
26) L6 AR-1254-1	6.659	5.687	19013744	74017231	361.196	202.132 #
27) L6 AR-1254-2	6.876	5.833	11924121	54155932	149.980	194.654 #
28) L6 AR-1254-3	7.237	6.250	8268977	109.8E6	94.702	224.524 #
29) L6 AR-1254-4	7.520	6.464	4887343	10180862	76.593	27.698 #
30) L6 AR-1254-5	7.934	6.879	38027219	147.5E6	468.634	382.888
31) L7 AR-1260-1	7.402	6.552	24374992	191.3E6	432.518	473.486
32) L7 AR-1260-2	7.655	6.708	28656742	145.2E6	420.481	464.227
33) L7 AR-1260-3	8.013	6.917	22485572	191.3E6	421.900	485.501
34) L7 AR-1260-4	8.241	7.177	26945836	137.0E6	430.342	470.765
35) L7 AR-1260-5	8.567	7.415	47694567	366.4E6	420.940	483.801
36) L8 AR-1262-1	8.241	6.917	26945836	191.3E6	355.534	339.781
37) L8 AR-1262-2	8.567	7.177	47694567	137.0E6	365.672	341.583
38) L8 AR-1262-3	8.898	7.698	32365487	78032511	344.054	217.077 #
39) L8 AR-1262-4	8.976	7.762	21611128	244.3E6	296.646	366.334
40) L8 AR-1262-5	9.650	8.257	15783065	84866841	309.942	299.599
41) L9 AR-1268-1	8.898	7.698	32365487	78032511	207.961	71.572 #

Data Path : Z:\pestpcbsrv\HPCHEM1\ECD_P\Data\PP081225\
 Data File : PP074329.D
 Signal(s) : Signal #1: ECD1A.ch Signal #2: ECD2B.ch
 Acq On : 12 Aug 2025 20:41
 Operator : YP\AJ
 Sample : AR1660CCC500
 Misc :
 ALS Vial : 3 Sample Multiplier: 1

Instrument :
 ECD_P
ClientSampleId :
 AR1660CCC500

Integration File signal 1: autoint1.e
 Integration File signal 2: autoint2.e
 Quant Time: Aug 13 01:57:01 2025
 Quant Method : Z:\pestpcbsrv\HPCHEM1\ECD_P\methods\PP080125.M
 Quant Title : GC EXTRACTABLES
 QLast Update : Mon Aug 04 11:01:49 2025
 Response via : Initial Calibration
 Integrator: ChemStation

Volume Inj. : 2 µl
 Signal #1 Phase : ZB-MR1 Signal #2 Phase: ZB-MR2
 Signal #1 Info : 30Mx0.32mmx 0.50µ Signal #2 Info : 30M x 0.32mm x 0.25µm

	Compound	RT#1	RT#2	Resp#1	Resp#2	ng/ml	ng/ml
42)	L9 AR-1268-2	8.976	7.762	21611128	244.3E6	150.678	230.199 #
43)	L9 AR-1268-3	9.223	7.971	785489	3146383	6.575	3.782 #
44)	L9 AR-1268-4	9.650	8.257	15783065	84866841	268.362	275.489
45)	L9 AR-1268-5	10.081	8.556	4489515	20824843	12.765	8.166 #

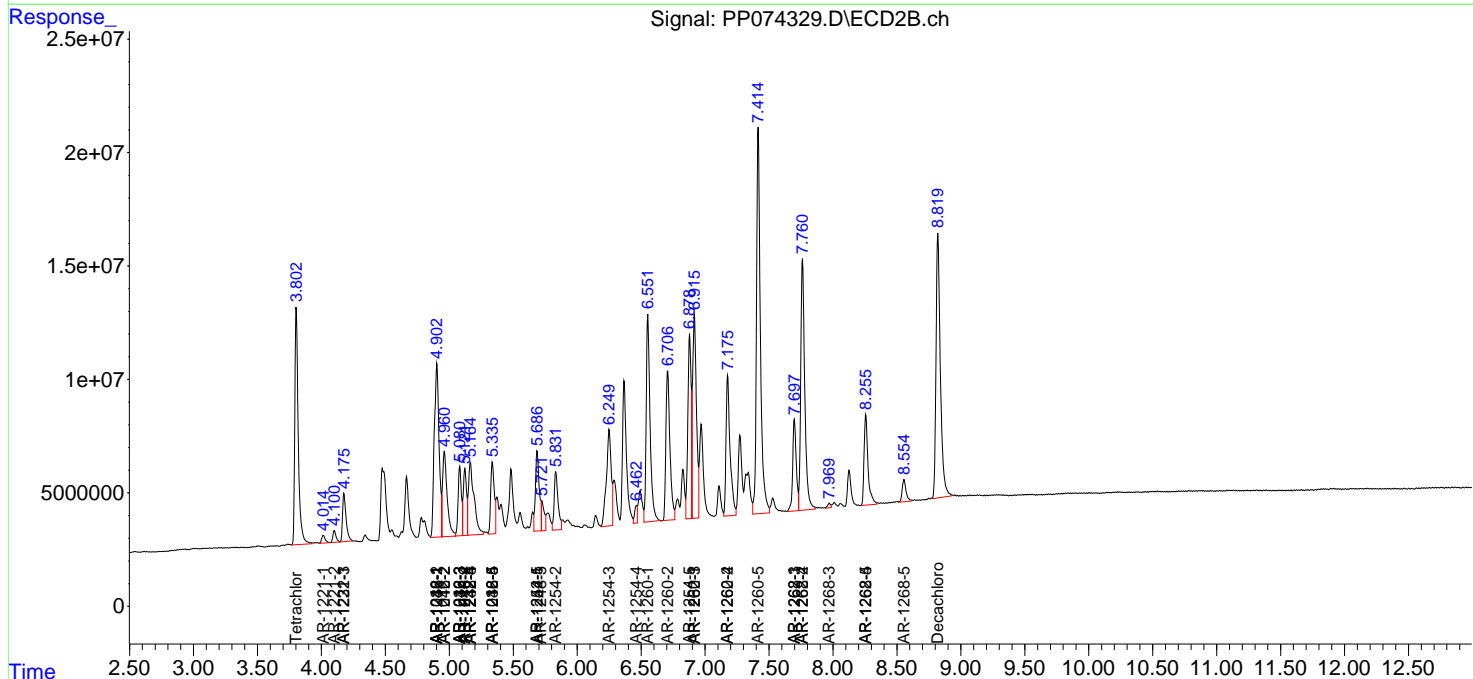
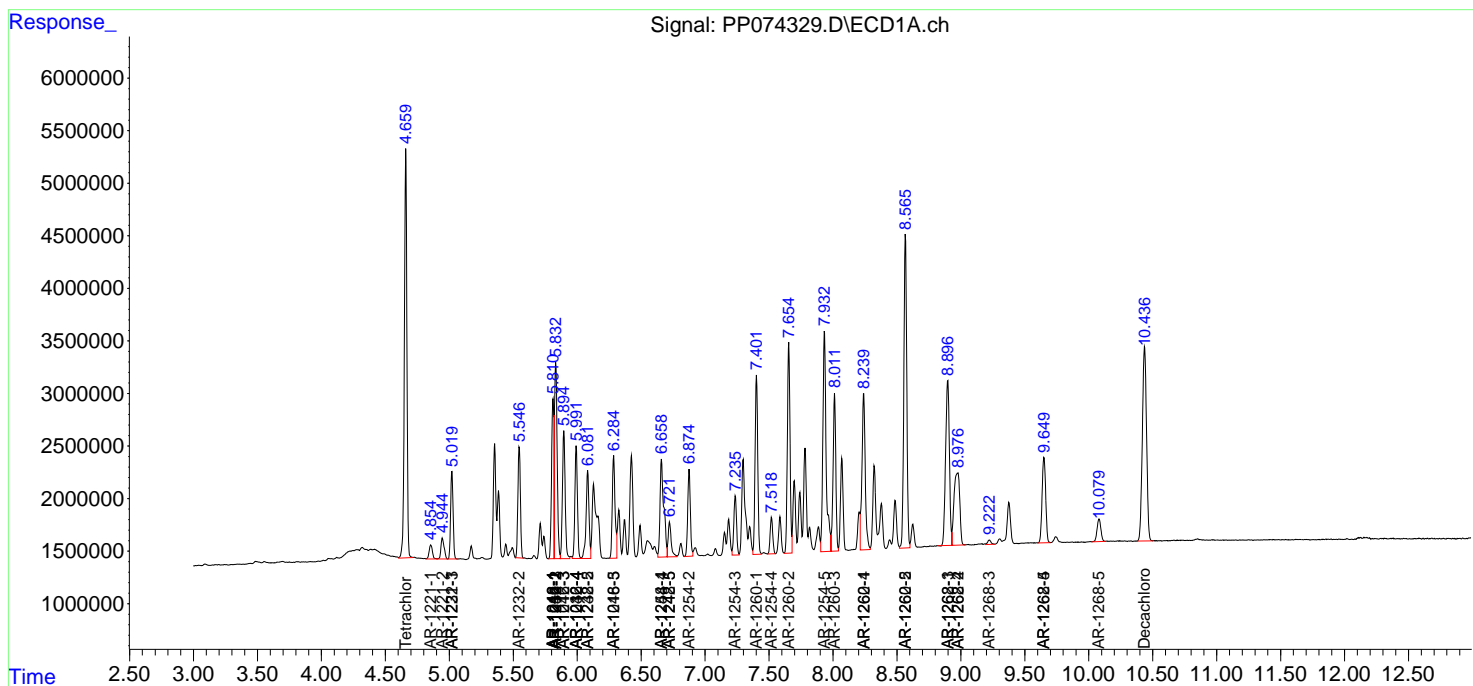
(f)=RT Delta > 1/2 Window (#)=Amounts differ by > 25% (m)=manual int.

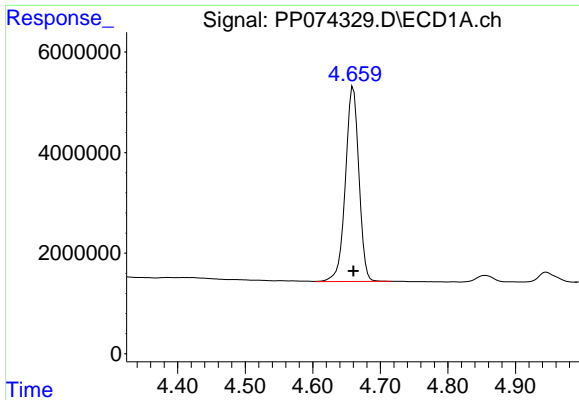
Data Path : Z:\pestpcbsrv\HPCHEM1\ECD_P\Data\PP081225\
 Data File : PP074329.D
 Signal(s) : Signal #1: ECD1A.ch Signal #2: ECD2B.ch
 Acq On : 12 Aug 2025 20:41
 Operator : YP\AJ
 Sample : AR1660CCC500
 Misc :
 ALS Vial : 3 Sample Multiplier: 1

Instrument :
 ECD_P
 ClientSampleId :
 AR1660CCC500

Integration File signal 1: autoint1.e
 Integration File signal 2: autoint2.e
 Quant Time: Aug 13 01:57:01 2025
 Quant Method : Z:\pestpcbsrv\HPCHEM1\ECD_P\methods\PP080125.M
 Quant Title : GC EXTRACTABLES
 QLast Update : Mon Aug 04 11:01:49 2025
 Response via : Initial Calibration
 Integrator: ChemStation

Volume Inj. : 2 µl
 Signal #1 Phase : ZB-MR1 Signal #2 Phase: ZB-MR2
 Signal #1 Info : 30Mx0.32mmx 0.50µ Signal #2 Info : 30M x 0.32mm x 0.25µm

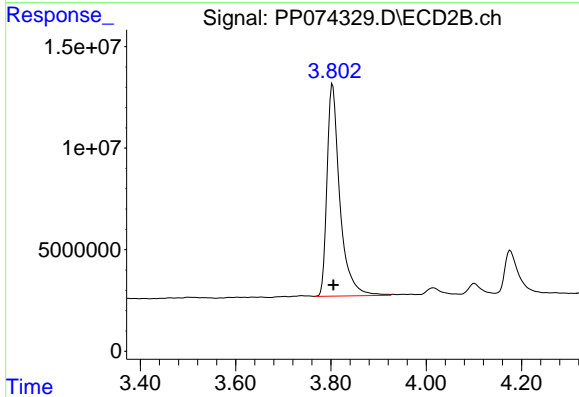




#1 Tetrachloro-m-xylene

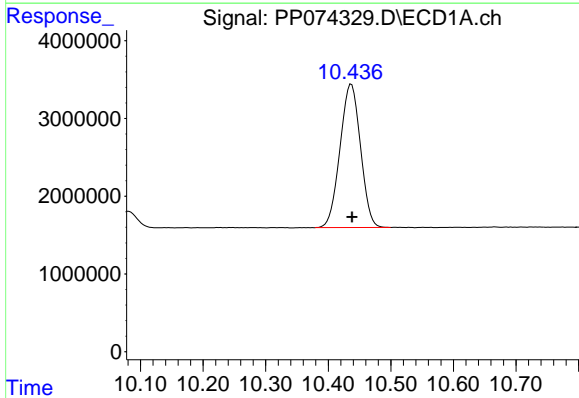
R.T.: 4.660 min
 Delta R.T.: 0.000 min
 Response: 53586030
 Conc: 47.92 ng/ml

Instrument :
 ECD_P
 ClientSampleId :
 AR1660CCC500



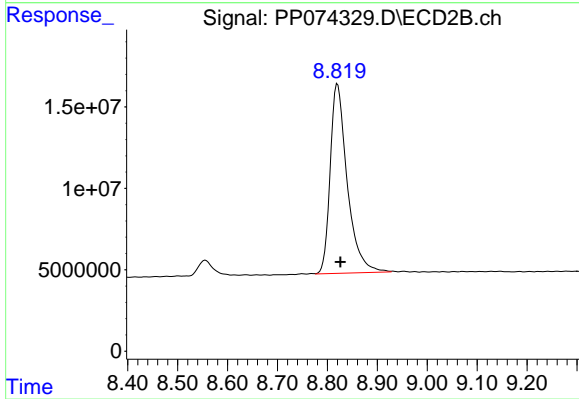
#1 Tetrachloro-m-xylene

R.T.: 3.804 min
 Delta R.T.: -0.002 min
 Response: 196102273
 Conc: 51.14 ng/ml



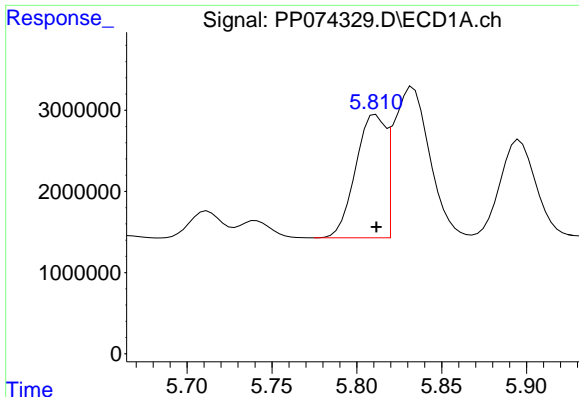
#2 Decachlorobiphenyl

R.T.: 10.437 min
 Delta R.T.: -0.001 min
 Response: 42086605
 Conc: 43.34 ng/ml



#2 Decachlorobiphenyl

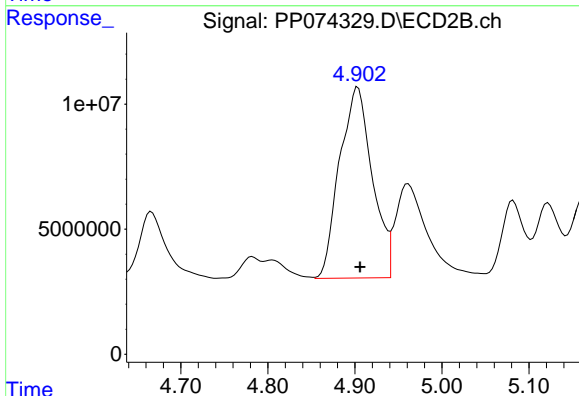
R.T.: 8.820 min
 Delta R.T.: -0.006 min
 Response: 276236473
 Conc: 45.94 ng/ml



#3 AR-1016-1

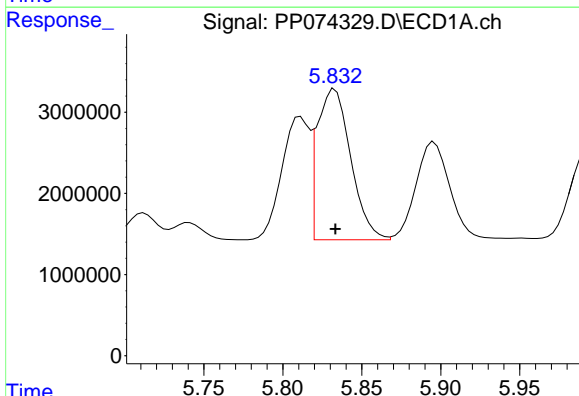
R.T.: 5.811 min
 Delta R.T.: 0.000 min
 Response: 18537193
 Conc: 449.31 ng/ml

Instrument :
 ECD_P
 ClientSampleId :
 AR1660CCC500



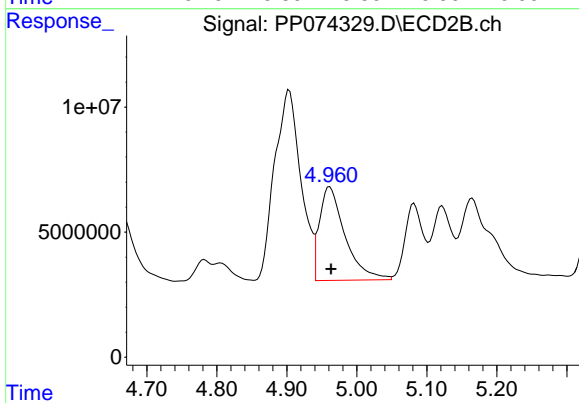
#3 AR-1016-1

R.T.: 4.903 min
 Delta R.T.: -0.002 min
 Response: 199357260
 Conc: 499.78 ng/ml



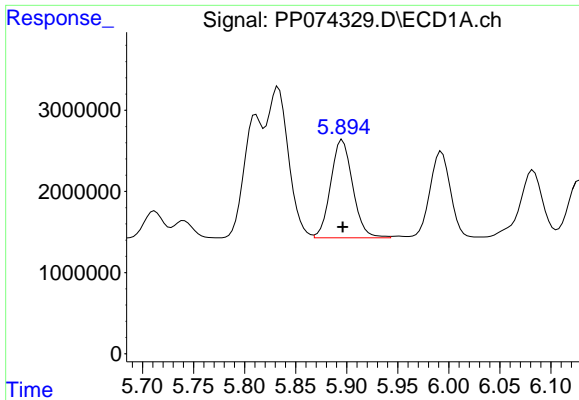
#4 AR-1016-2

R.T.: 5.833 min
 Delta R.T.: 0.000 min
 Response: 27508385
 Conc: 452.87 ng/ml



#4 AR-1016-2

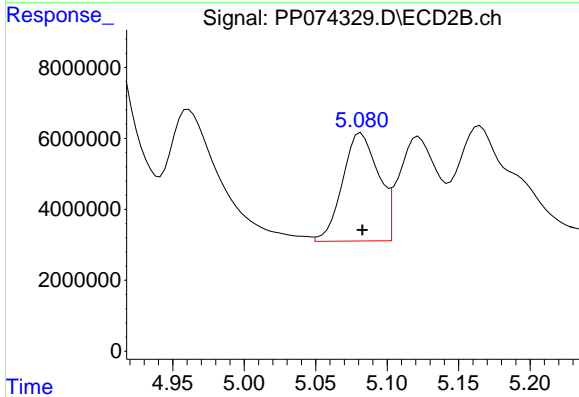
R.T.: 4.961 min
 Delta R.T.: -0.002 min
 Response: 95354896
 Conc: 507.72 ng/ml



#5 AR-1016-3

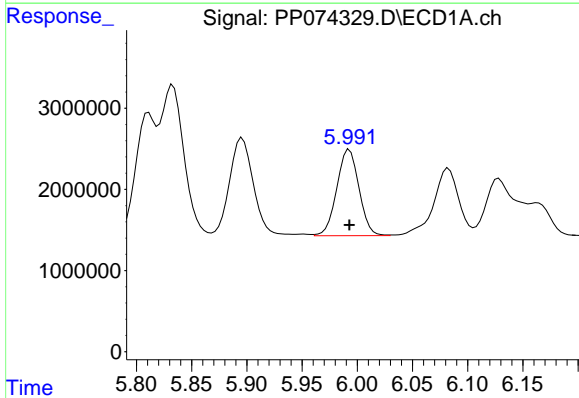
R.T.: 5.896 min
 Delta R.T.: 0.000 min
 Response: 18112230
 Conc: 456.68 ng/ml

Instrument :
 ECD_P
 ClientSampleId :
 AR1660CCC500



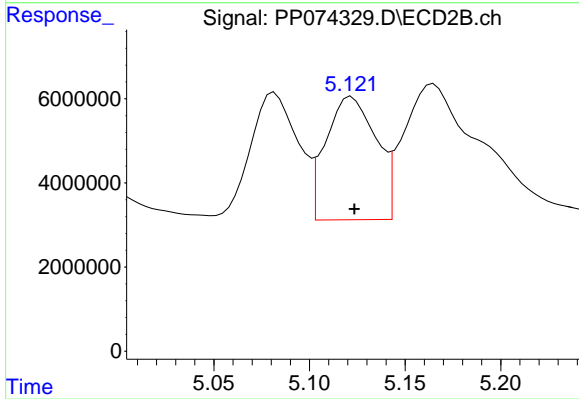
#5 AR-1016-3

R.T.: 5.082 min
 Delta R.T.: 0.000 min
 Response: 53087154
 Conc: 500.49 ng/ml



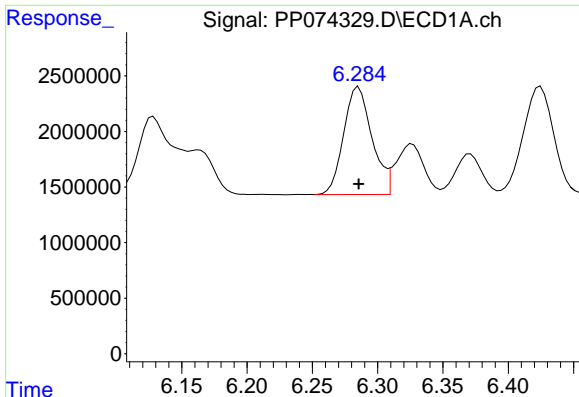
#6 AR-1016-4

R.T.: 5.993 min
 Delta R.T.: 0.000 min
 Response: 14850799
 Conc: 456.32 ng/ml



#6 AR-1016-4

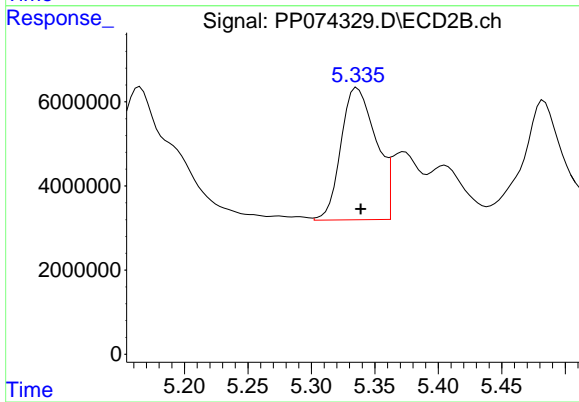
R.T.: 5.122 min
 Delta R.T.: -0.001 min
 Response: 53494826
 Conc: 489.79 ng/ml



#7 AR-1016-5

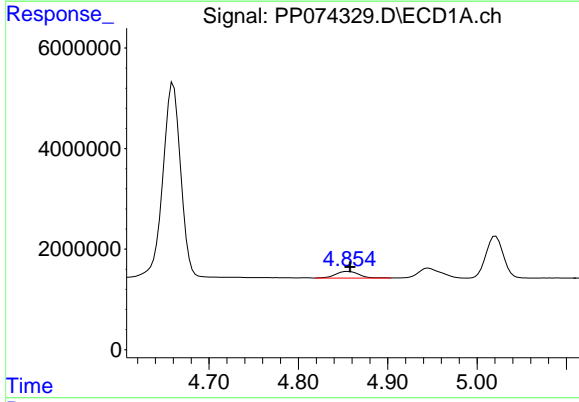
R.T.: 6.285 min
 Delta R.T.: 0.000 min
 Response: 14618834
 Conc: 450.25 ng/ml

Instrument :
 ECD_P
 ClientSampleId :
 AR1660CCC500



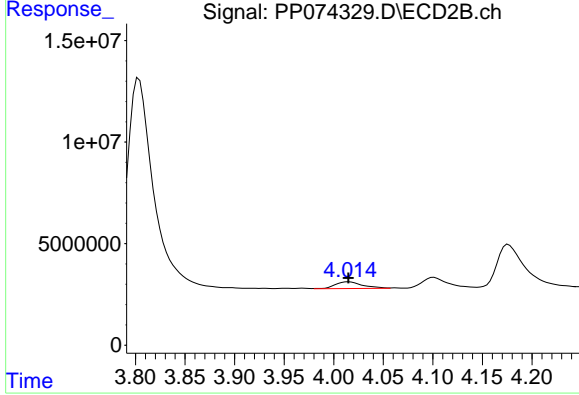
#7 AR-1016-5

R.T.: 5.336 min
 Delta R.T.: -0.003 min
 Response: 60289626
 Conc: 515.46 ng/ml



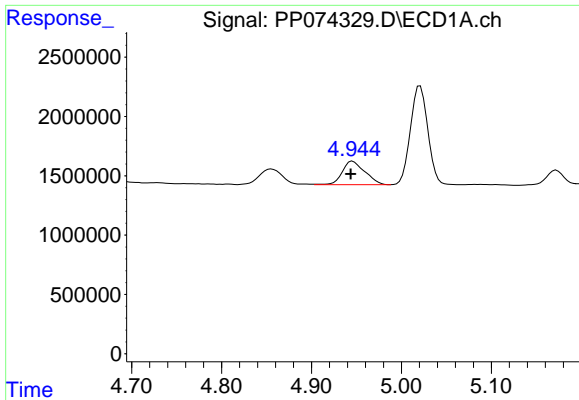
#8 AR-1221-1

R.T.: 4.856 min
 Delta R.T.: -0.002 min
 Response: 2356144
 Conc: 140.55 ng/ml



#8 AR-1221-1

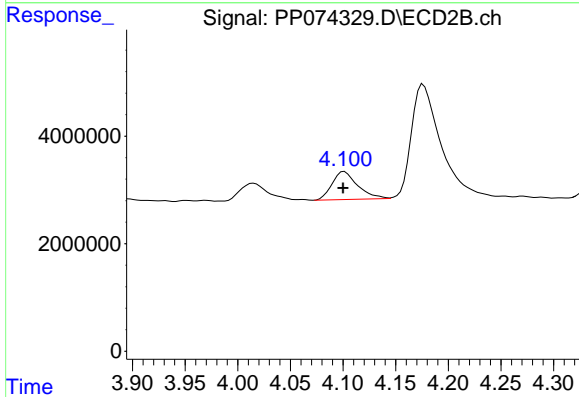
R.T.: 4.015 min
 Delta R.T.: 0.000 min
 Response: 6424456
 Conc: 130.88 ng/ml



#9 AR-1221-2

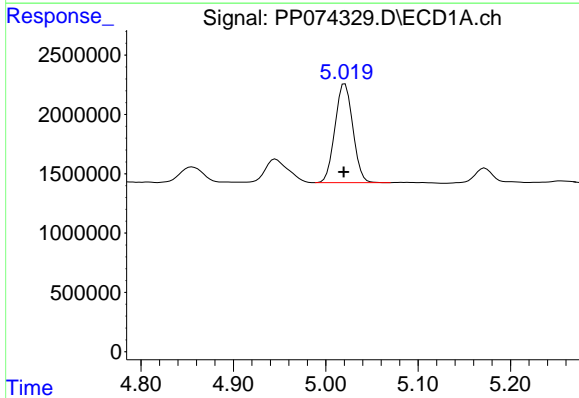
R.T.: 4.946 min
 Delta R.T.: 0.002 min
 Response: 3453602
 Conc: 274.07 ng/ml

Instrument :
 ECD_P
 ClientSampleId :
 AR1660CCC500



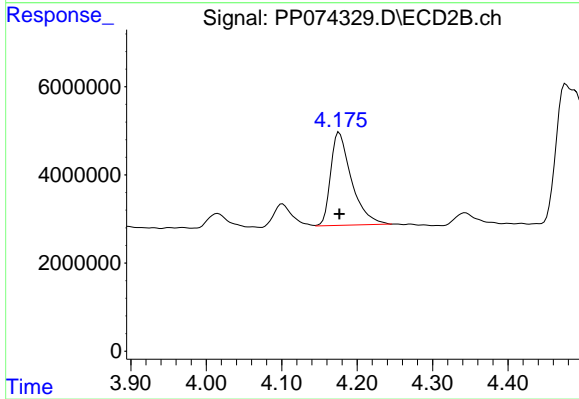
#9 AR-1221-2

R.T.: 4.101 min
 Delta R.T.: 0.001 min
 Response: 8842987
 Conc: 246.40 ng/ml



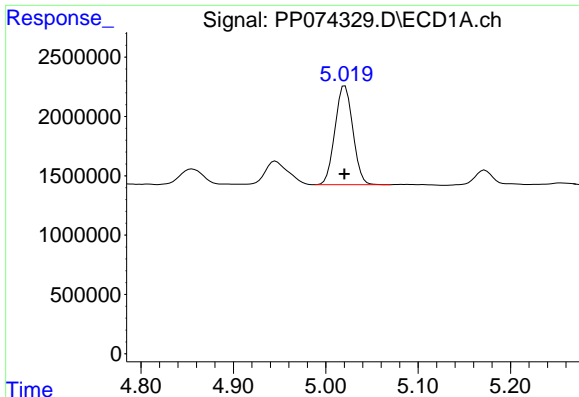
#10 AR-1221-3

R.T.: 5.021 min
 Delta R.T.: 0.002 min
 Response: 11214414
 Conc: 306.11 ng/ml



#10 AR-1221-3

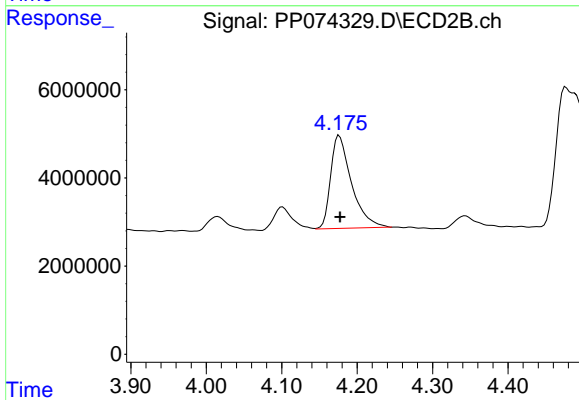
R.T.: 4.176 min
 Delta R.T.: 0.000 min
 Response: 40709230
 Conc: 301.05 ng/ml



#11 AR-1232-1

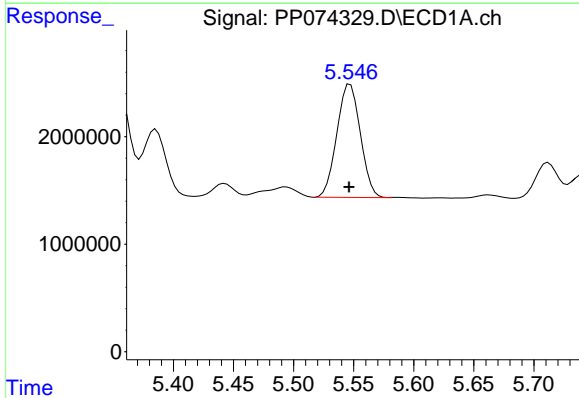
R.T.: 5.021 min
 Delta R.T.: 0.000 min
 Response: 11214414
 Conc: 386.21 ng/ml

Instrument :
 ECD_P
 ClientSampleId :
 AR1660CCC500



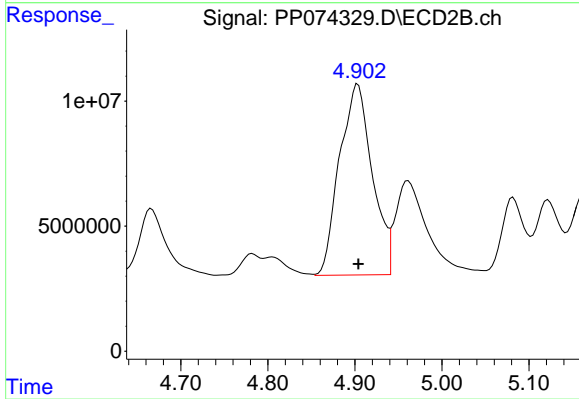
#11 AR-1232-1

R.T.: 4.176 min
 Delta R.T.: 0.000 min
 Response: 40709230
 Conc: 401.62 ng/ml



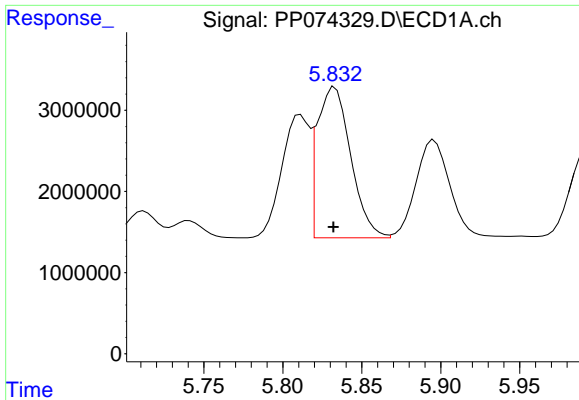
#12 AR-1232-2

R.T.: 5.547 min
 Delta R.T.: 0.000 min
 Response: 14339428
 Conc: 953.25 ng/ml



#12 AR-1232-2

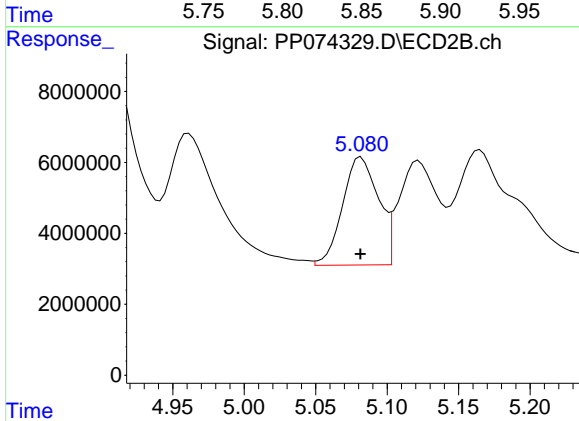
R.T.: 4.903 min
 Delta R.T.: 0.000 min
 Response: 199357260
 Conc: 1143.98 ng/ml



#13 AR-1232-3

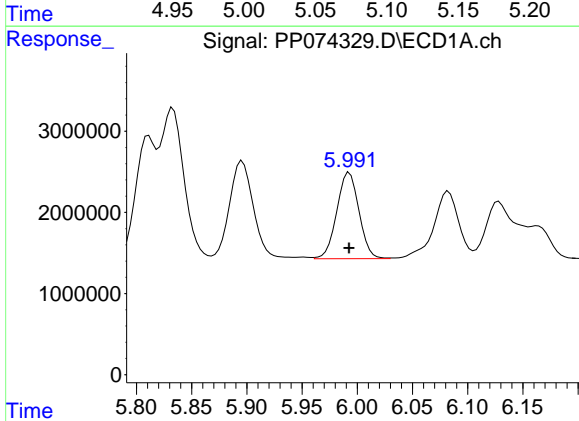
R.T.: 5.833 min
 Delta R.T.: 0.000 min
 Response: 27508385
 Conc: 948.51 ng/ml

Instrument :
 ECD_P
 ClientSampleId :
 AR1660CCC500



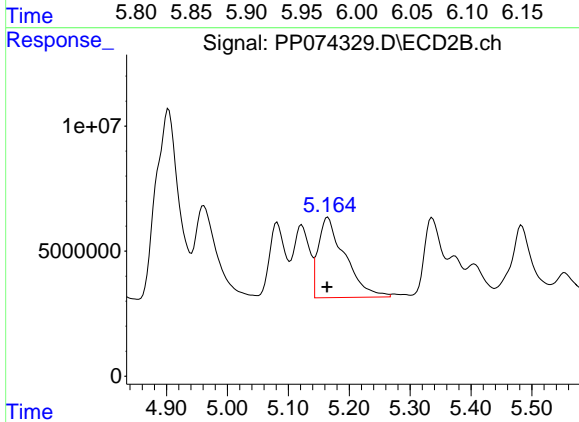
#13 AR-1232-3

R.T.: 5.082 min
 Delta R.T.: 0.000 min
 Response: 53087154
 Conc: 1158.69 ng/ml



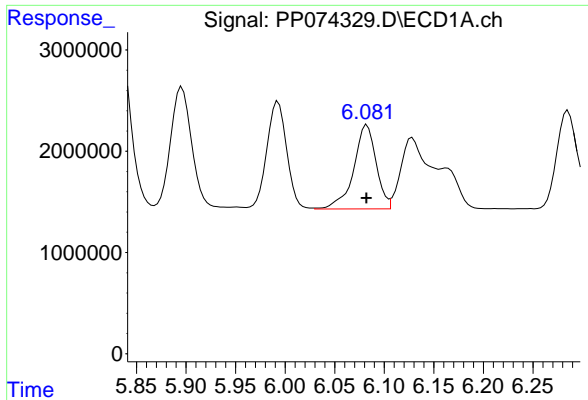
#14 AR-1232-4

R.T.: 5.993 min
 Delta R.T.: 0.000 min
 Response: 14850799
 Conc: 960.05 ng/ml



#14 AR-1232-4

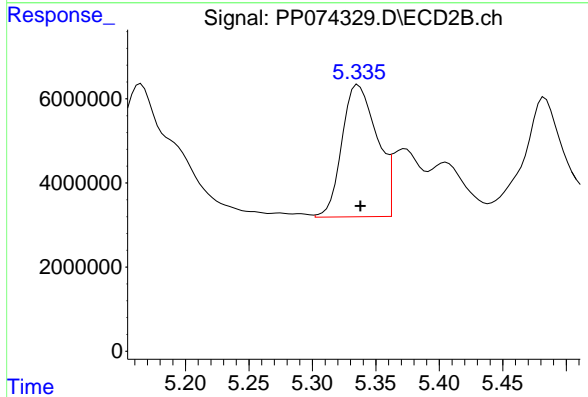
R.T.: 5.165 min
 Delta R.T.: 0.001 min
 Response: 97729352
 Conc: 1684.68 ng/ml



#15 AR-1232-5

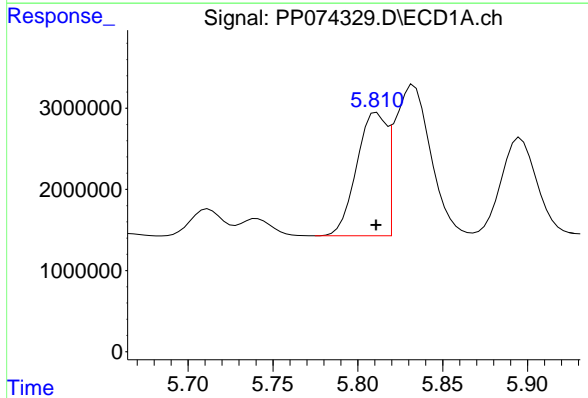
R.T.: 6.083 min
 Delta R.T.: 0.000 min
 Response: 13116638
 Conc: 1119.55 ng/ml

Instrument :
 ECD_P
 ClientSampleId :
 AR1660CCC500



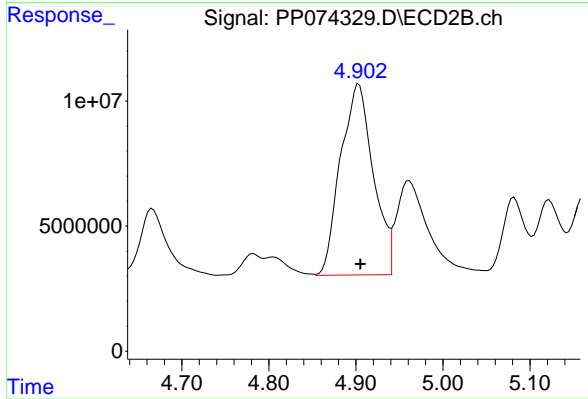
#15 AR-1232-5

R.T.: 5.336 min
 Delta R.T.: -0.002 min
 Response: 60289626
 Conc: 1283.32 ng/ml



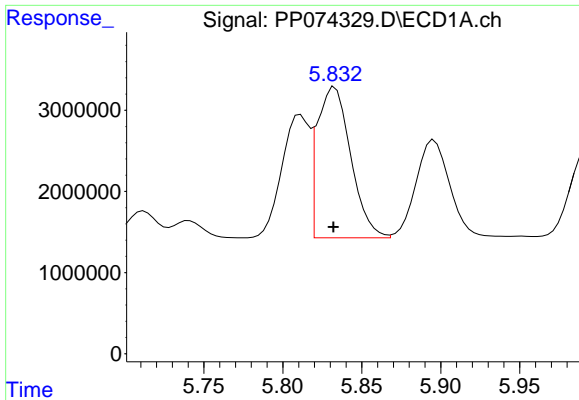
#16 AR-1242-1

R.T.: 5.811 min
 Delta R.T.: 0.000 min
 Response: 18537193
 Conc: 497.43 ng/ml



#16 AR-1242-1

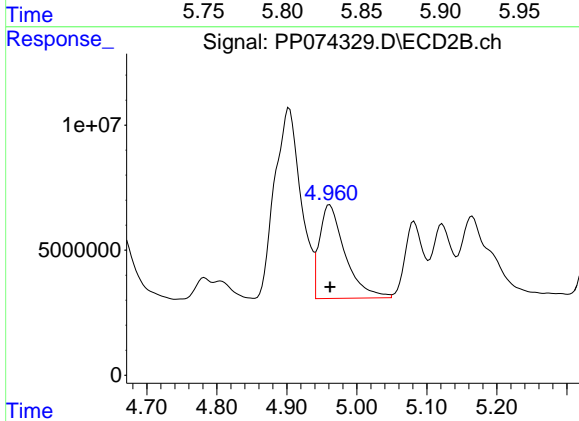
R.T.: 4.903 min
 Delta R.T.: -0.002 min
 Response: 199357260
 Conc: 577.61 ng/ml



#17 AR-1242-2

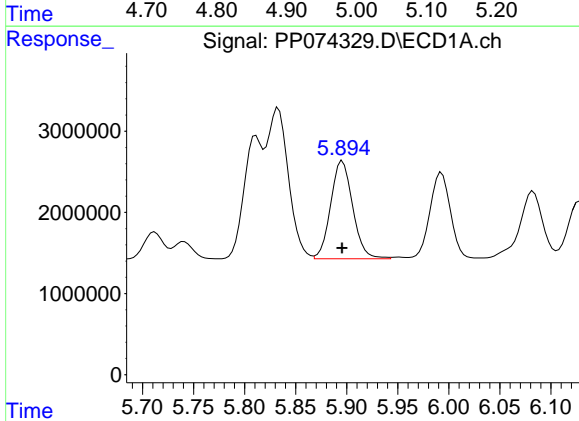
R.T.: 5.833 min
 Delta R.T.: 0.000 min
 Response: 27508385
 Conc: 505.59 ng/ml

Instrument :
 ECD_P
 ClientSampleId :
 AR1660CCC500



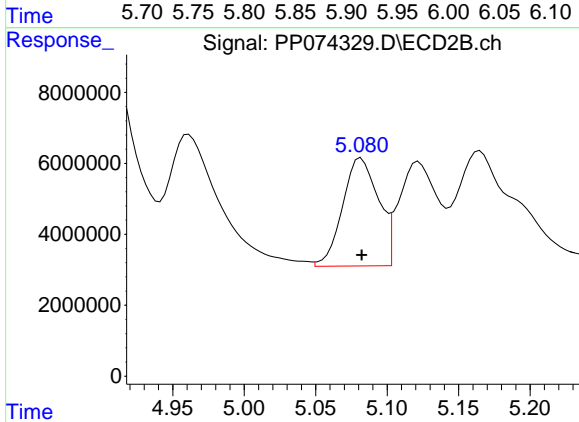
#17 AR-1242-2

R.T.: 4.961 min
 Delta R.T.: 0.000 min
 Response: 95354896
 Conc: 583.65 ng/ml



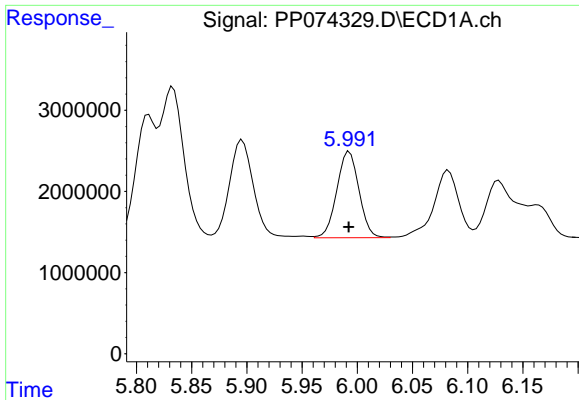
#18 AR-1242-3

R.T.: 5.896 min
 Delta R.T.: 0.000 min
 Response: 18112230
 Conc: 506.84 ng/ml



#18 AR-1242-3

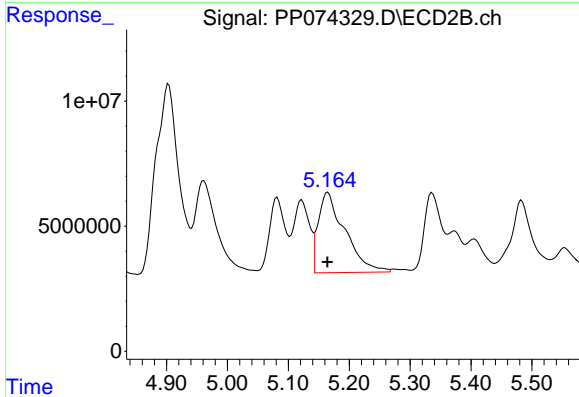
R.T.: 5.082 min
 Delta R.T.: 0.000 min
 Response: 53087154
 Conc: 575.48 ng/ml



#19 AR-1242-4

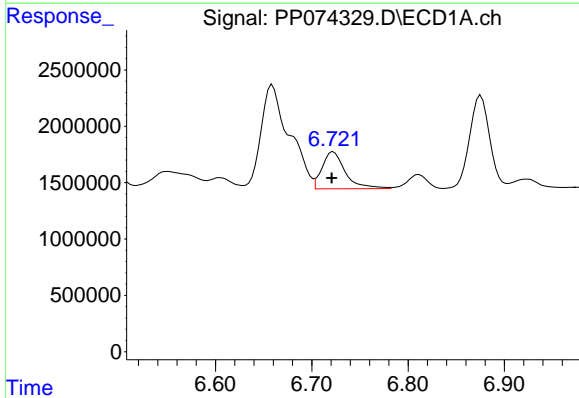
R.T.: 5.993 min
 Delta R.T.: 0.000 min
 Response: 14850799
 Conc: 508.26 ng/ml

Instrument :
 ECD_P
 ClientSampleId :
 AR1660CCC500



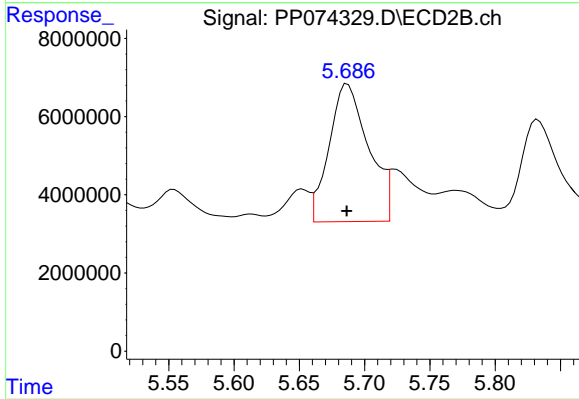
#19 AR-1242-4

R.T.: 5.165 min
 Delta R.T.: 0.000 min
 Response: 97729352
 Conc: 818.36 ng/ml



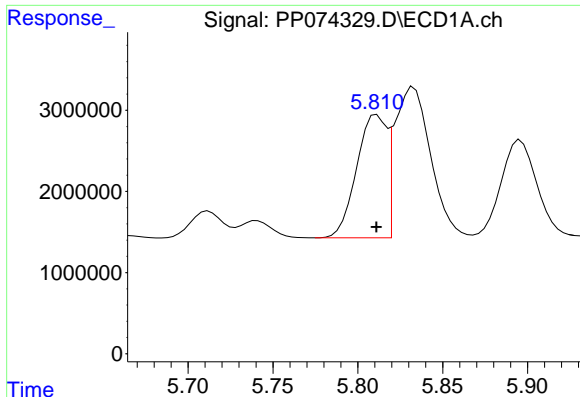
#20 AR-1242-5

R.T.: 6.722 min
 Delta R.T.: 0.002 min
 Response: 5512020
 Conc: 155.01 ng/ml



#20 AR-1242-5

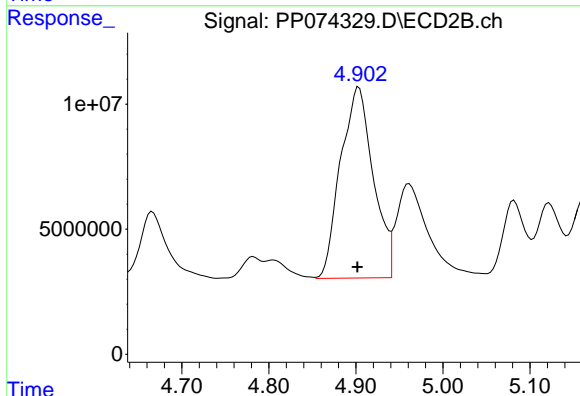
R.T.: 5.687 min
 Delta R.T.: 0.000 min
 Response: 74017231
 Conc: 494.90 ng/ml



#21 AR-1248-1

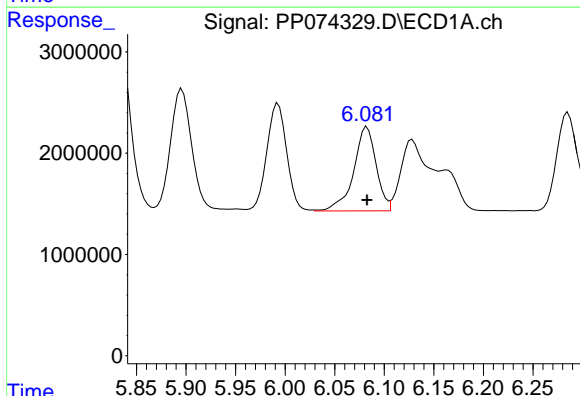
R.T.: 5.811 min
 Delta R.T.: 0.000 min
 Response: 18537193
 Conc: 661.70 ng/ml

Instrument :
 ECD_P
 ClientSampleId :
 AR1660CCC500



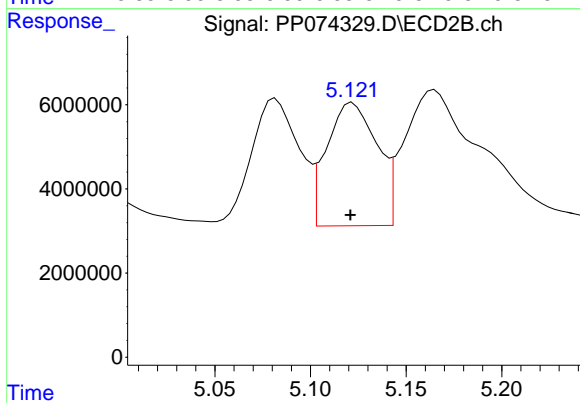
#21 AR-1248-1

R.T.: 4.903 min
 Delta R.T.: 0.002 min
 Response: 199357260
 Conc: 931.87 ng/ml



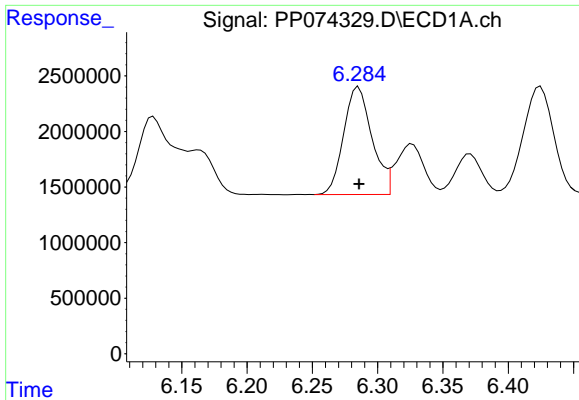
#22 AR-1248-2

R.T.: 6.083 min
 Delta R.T.: 0.000 min
 Response: 13116638
 Conc: 325.79 ng/ml



#22 AR-1248-2

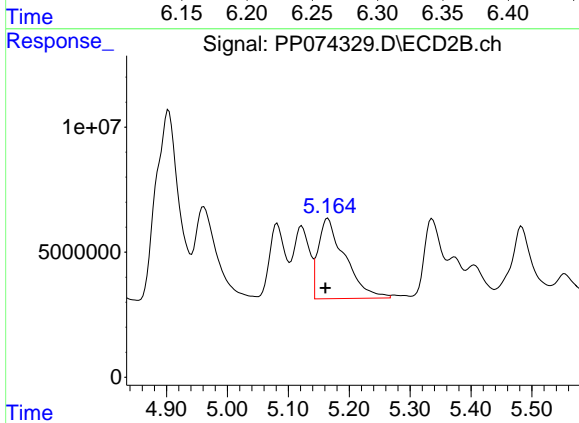
R.T.: 5.122 min
 Delta R.T.: 0.001 min
 Response: 53494826
 Conc: 365.62 ng/ml



#23 AR-1248-3

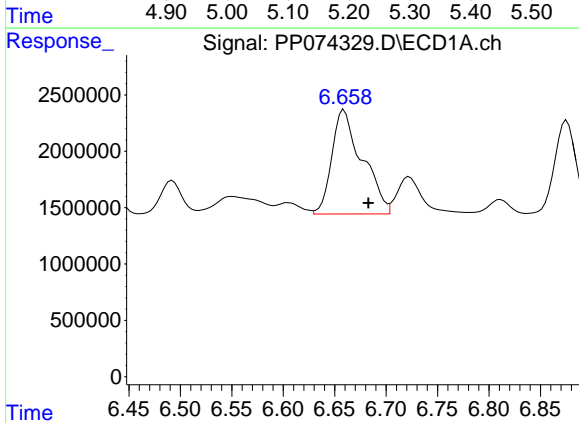
R.T.: 6.285 min
 Delta R.T.: 0.000 min
 Response: 14618834
 Conc: 327.97 ng/ml

Instrument :
 ECD_P
 ClientSampleId :
 AR1660CCC500



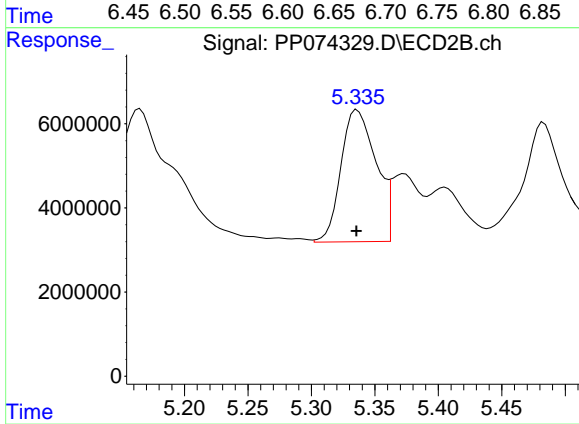
#23 AR-1248-3

R.T.: 5.165 min
 Delta R.T.: 0.004 min
 Response: 97729352
 Conc: 569.98 ng/ml



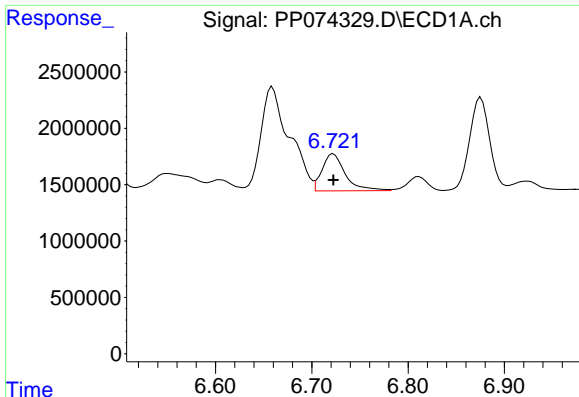
#24 AR-1248-4

R.T.: 6.659 min
 Delta R.T.: -0.024 min
 Response: 19013744
 Conc: 365.39 ng/ml



#24 AR-1248-4

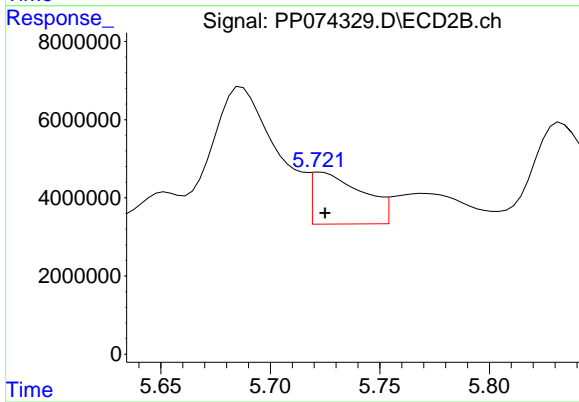
R.T.: 5.336 min
 Delta R.T.: 0.000 min
 Response: 60289626
 Conc: 362.37 ng/ml



#25 AR-1248-5

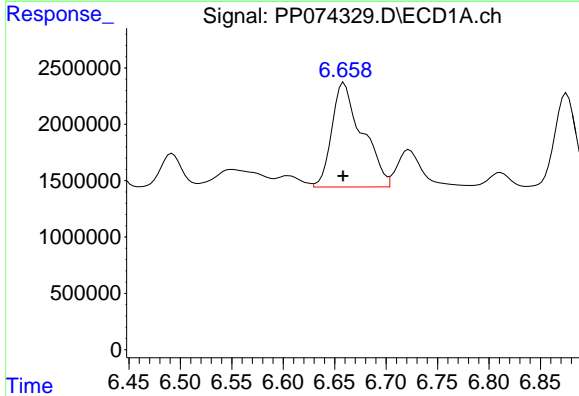
R.T.: 6.722 min
 Delta R.T.: 0.000 min
 Response: 5512020
 Conc: 96.80 ng/ml

Instrument :
 ECD_P
 ClientSampleId :
 AR1660CCC500



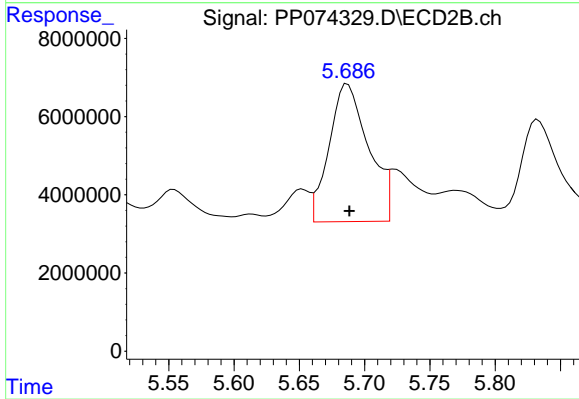
#25 AR-1248-5

R.T.: 5.723 min
 Delta R.T.: -0.003 min
 Response: 21193674
 Conc: 72.84 ng/ml



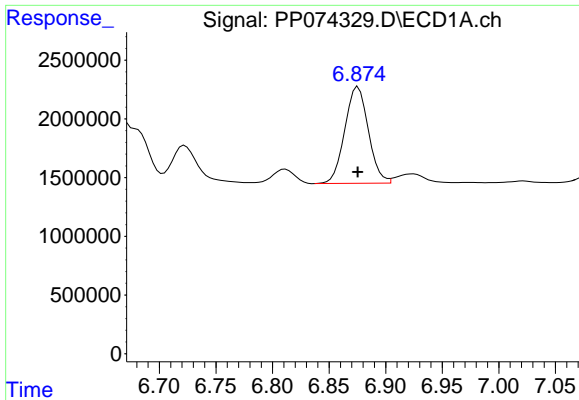
#26 AR-1254-1

R.T.: 6.659 min
 Delta R.T.: 0.000 min
 Response: 19013744
 Conc: 361.20 ng/ml



#26 AR-1254-1

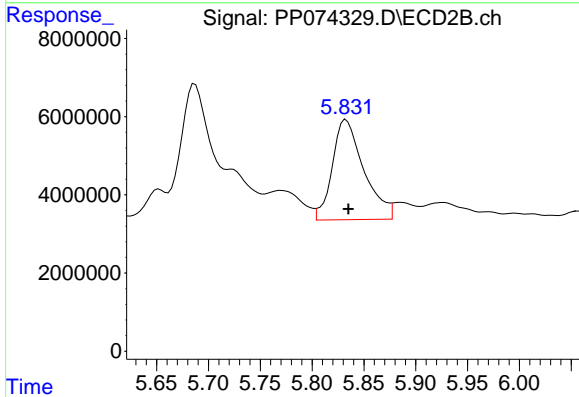
R.T.: 5.687 min
 Delta R.T.: -0.001 min
 Response: 74017231
 Conc: 202.13 ng/ml



#27 AR-1254-2

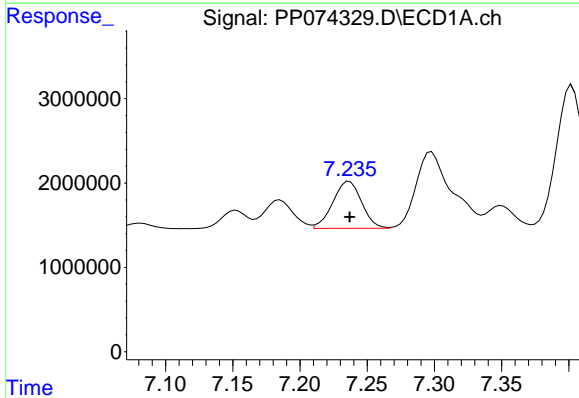
R.T.: 6.876 min
 Delta R.T.: 0.000 min
 Response: 11924121
 Conc: 149.98 ng/ml

Instrument :
 ECD_P
 ClientSampleId :
 AR1660CCC500



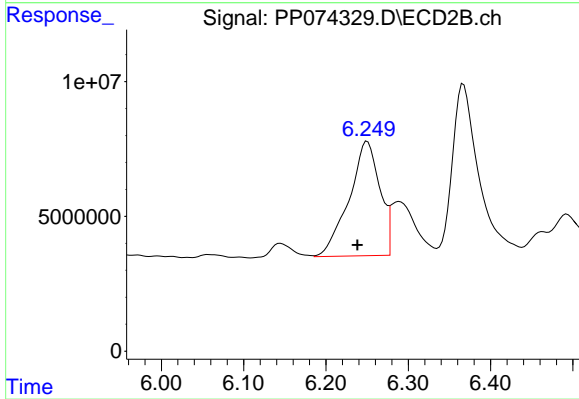
#27 AR-1254-2

R.T.: 5.833 min
 Delta R.T.: -0.002 min
 Response: 54155932
 Conc: 194.65 ng/ml



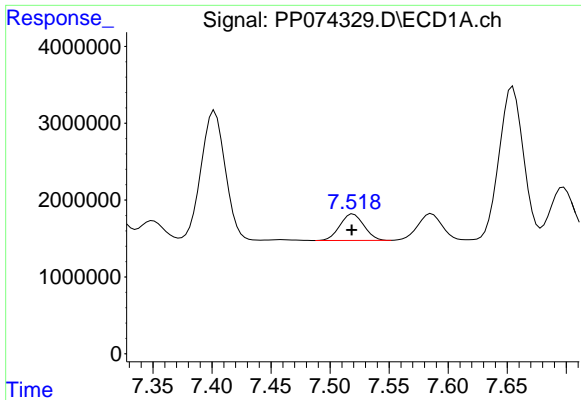
#28 AR-1254-3

R.T.: 7.237 min
 Delta R.T.: 0.000 min
 Response: 8268977
 Conc: 94.70 ng/ml



#28 AR-1254-3

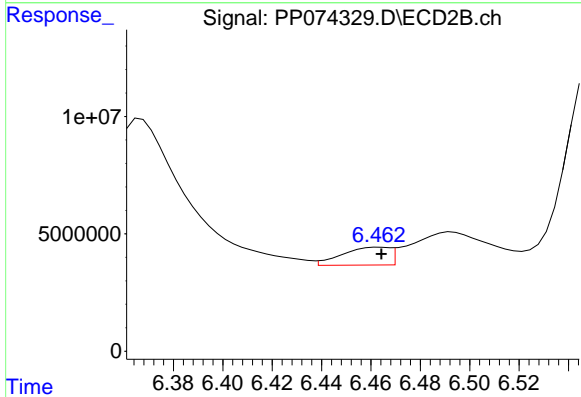
R.T.: 6.250 min
 Delta R.T.: 0.012 min
 Response: 109839775
 Conc: 224.52 ng/ml



#29 AR-1254-4

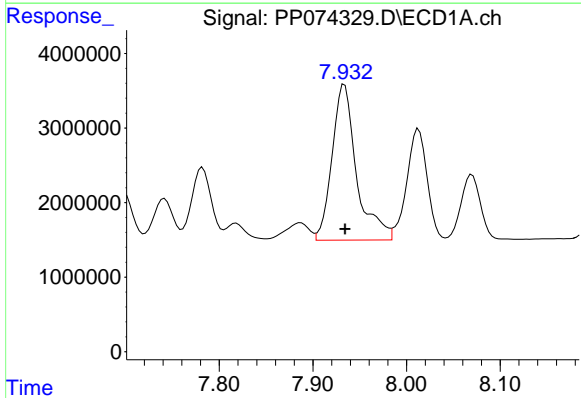
R.T.: 7.520 min
 Delta R.T.: 0.001 min
 Response: 4887343
 Conc: 76.59 ng/ml

Instrument :
 ECD_P
 ClientSampleId :
 AR1660CCC500



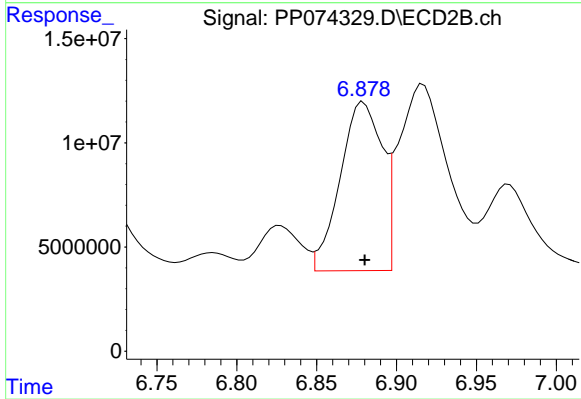
#29 AR-1254-4

R.T.: 6.464 min
 Delta R.T.: 0.000 min
 Response: 10180862
 Conc: 27.70 ng/ml



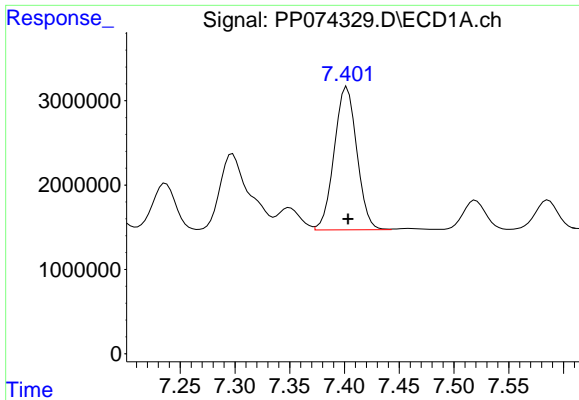
#30 AR-1254-5

R.T.: 7.934 min
 Delta R.T.: 0.000 min
 Response: 38027219
 Conc: 468.63 ng/ml



#30 AR-1254-5

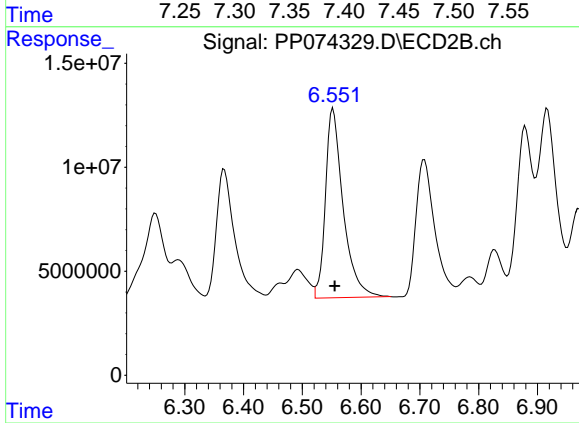
R.T.: 6.879 min
 Delta R.T.: 0.000 min
 Response: 147476019
 Conc: 382.89 ng/ml



#31 AR-1260-1

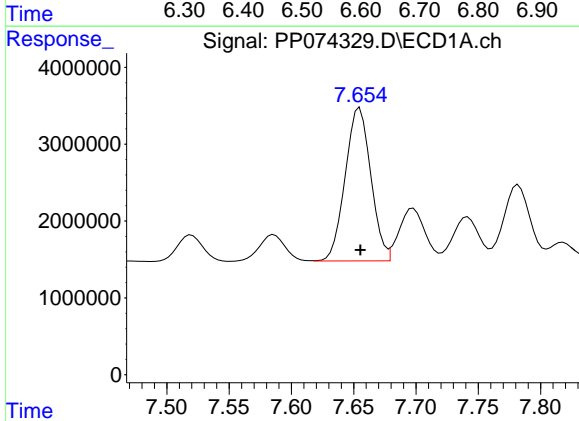
R.T.: 7.402 min
 Delta R.T.: 0.000 min
 Response: 24374992
 Conc: 432.52 ng/ml

Instrument :
 ECD_P
 ClientSampleId :
 AR1660CCC500



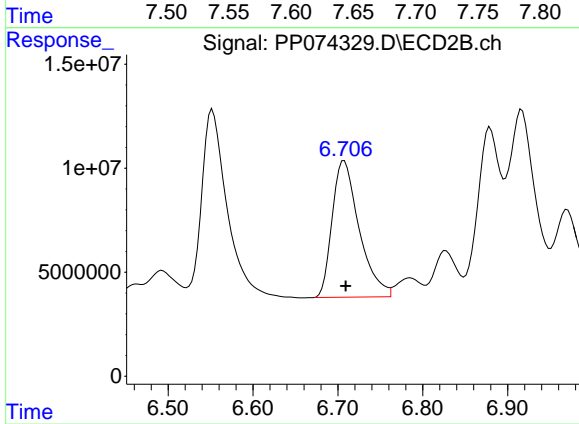
#31 AR-1260-1

R.T.: 6.552 min
 Delta R.T.: -0.003 min
 Response: 191267915
 Conc: 473.49 ng/ml



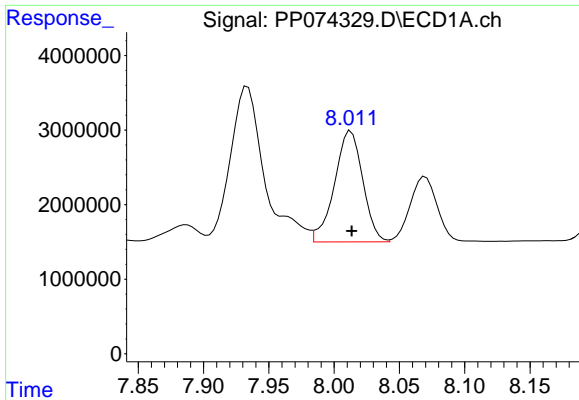
#32 AR-1260-2

R.T.: 7.655 min
 Delta R.T.: 0.000 min
 Response: 28656742
 Conc: 420.48 ng/ml



#32 AR-1260-2

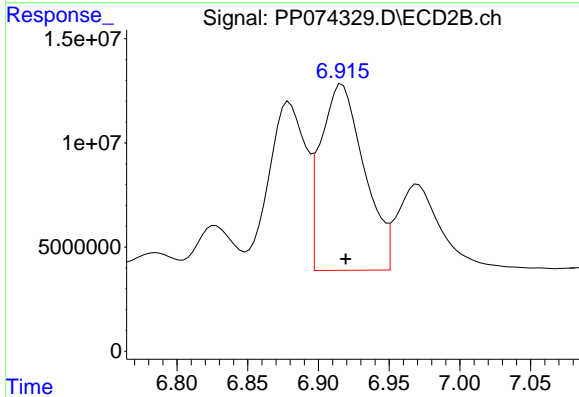
R.T.: 6.708 min
 Delta R.T.: -0.002 min
 Response: 145163279
 Conc: 464.23 ng/ml



#33 AR-1260-3

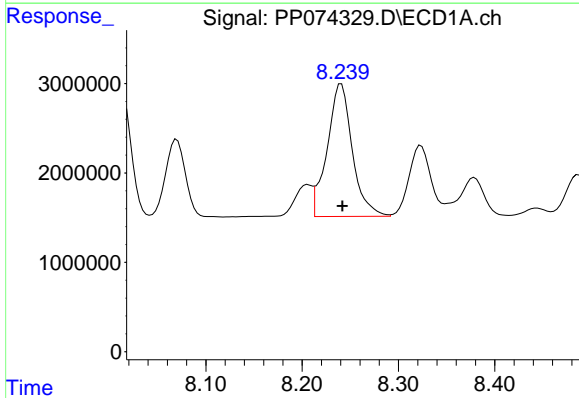
R.T.: 8.013 min
 Delta R.T.: 0.000 min
 Response: 22485572
 Conc: 421.90 ng/ml

Instrument :
 ECD_P
 ClientSampleId :
 AR1660CCC500



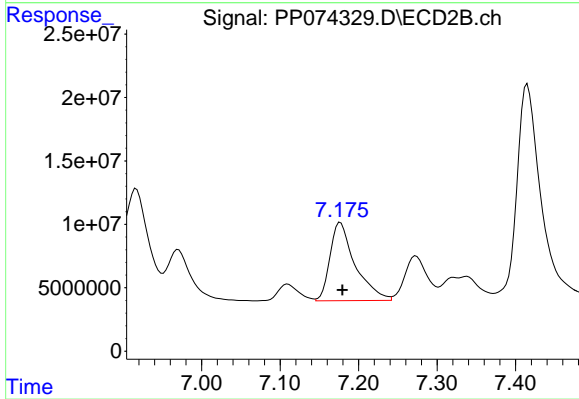
#33 AR-1260-3

R.T.: 6.917 min
 Delta R.T.: -0.003 min
 Response: 191344964
 Conc: 485.50 ng/ml



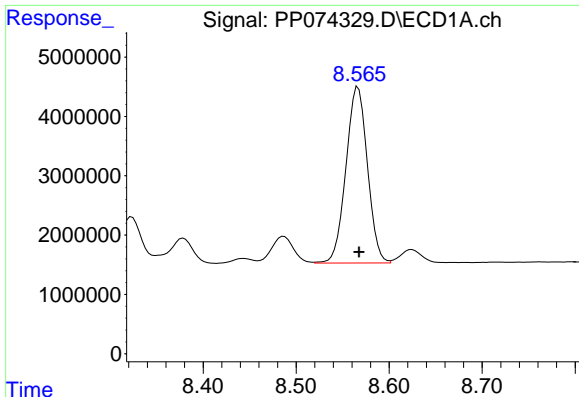
#34 AR-1260-4

R.T.: 8.241 min
 Delta R.T.: -0.001 min
 Response: 26945836
 Conc: 430.34 ng/ml



#34 AR-1260-4

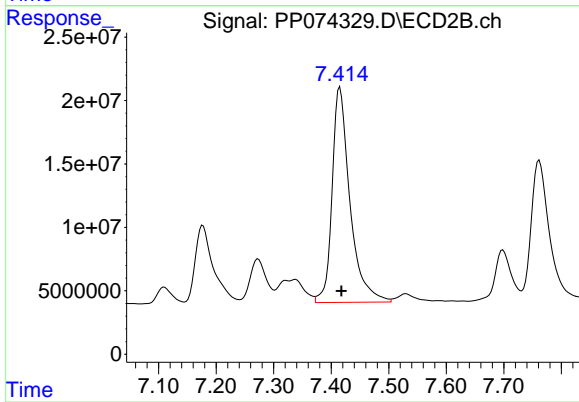
R.T.: 7.177 min
 Delta R.T.: -0.002 min
 Response: 136982839
 Conc: 470.76 ng/ml



#35 AR-1260-5

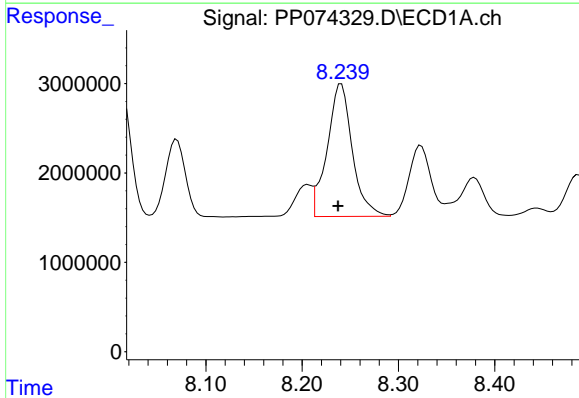
R.T.: 8.567 min
 Delta R.T.: 0.000 min
 Response: 47694567
 Conc: 420.94 ng/ml

Instrument :
 ECD_P
 ClientSampleId :
 AR1660CCC500



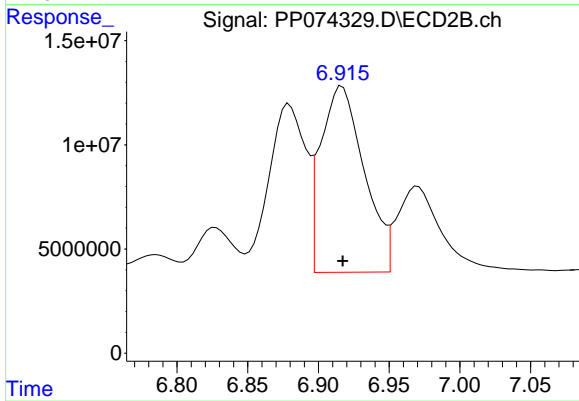
#35 AR-1260-5

R.T.: 7.415 min
 Delta R.T.: -0.003 min
 Response: 366435645
 Conc: 483.80 ng/ml



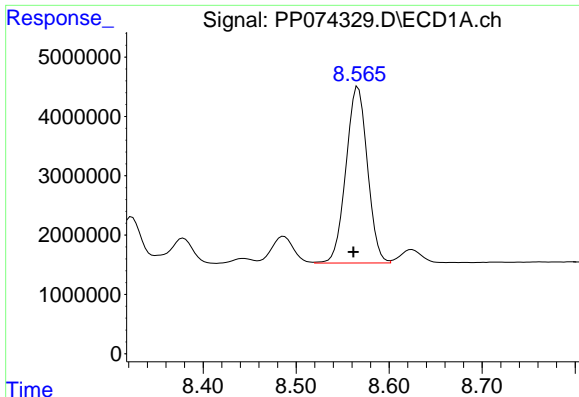
#36 AR-1262-1

R.T.: 8.241 min
 Delta R.T.: 0.003 min
 Response: 26945836
 Conc: 355.53 ng/ml



#36 AR-1262-1

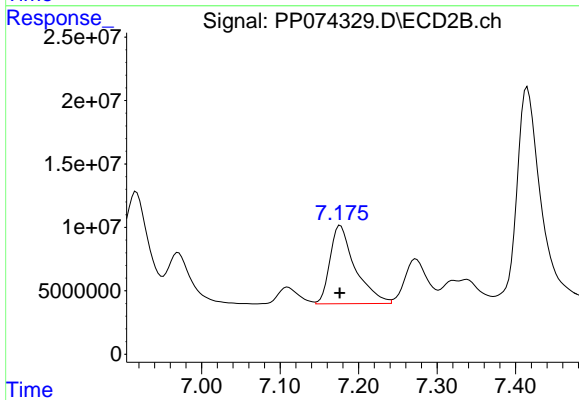
R.T.: 6.917 min
 Delta R.T.: 0.000 min
 Response: 191344964
 Conc: 339.78 ng/ml



#37 AR-1262-2

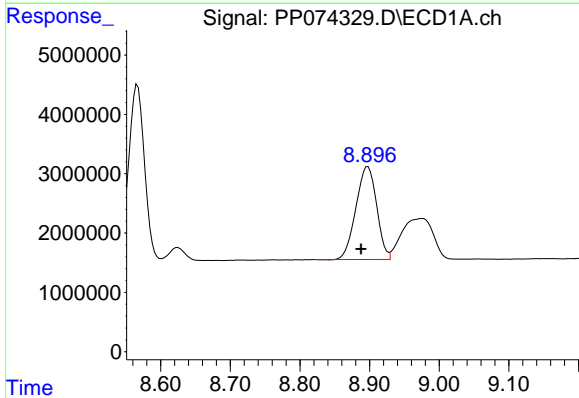
R.T.: 8.567 min
 Delta R.T.: 0.005 min
 Response: 47694567
 Conc: 365.67 ng/ml

Instrument :
 ECD_P
 ClientSampleId :
 AR1660CCC500



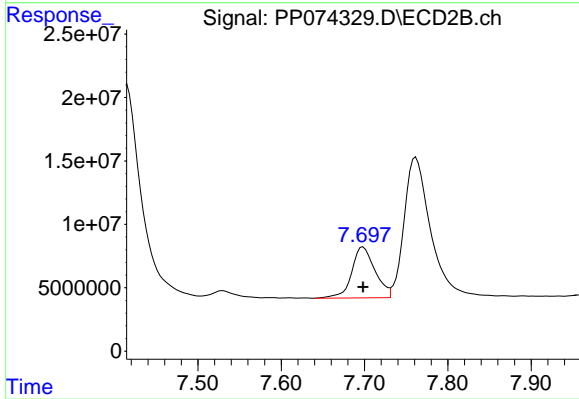
#37 AR-1262-2

R.T.: 7.177 min
 Delta R.T.: 0.000 min
 Response: 136982839
 Conc: 341.58 ng/ml



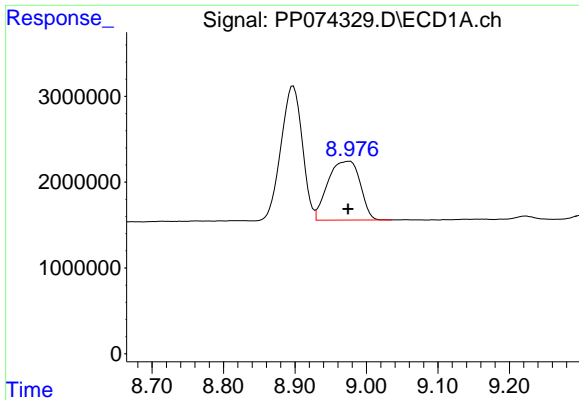
#38 AR-1262-3

R.T.: 8.898 min
 Delta R.T.: 0.010 min
 Response: 32365487
 Conc: 344.05 ng/ml



#38 AR-1262-3

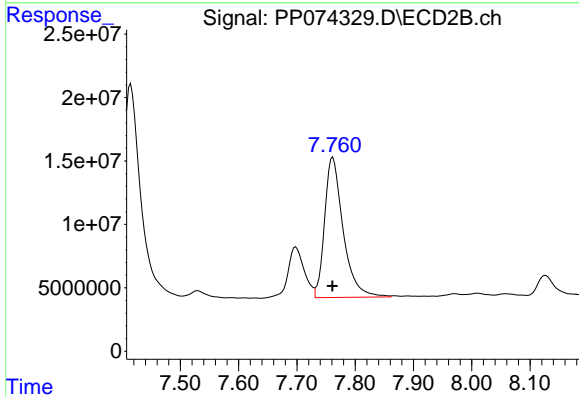
R.T.: 7.698 min
 Delta R.T.: 0.000 min
 Response: 78032511
 Conc: 217.08 ng/ml



#39 AR-1262-4

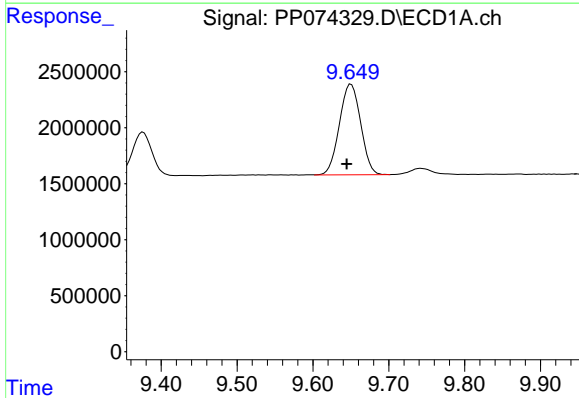
R.T.: 8.976 min
 Delta R.T.: 0.002 min
 Response: 21611128
 Conc: 296.65 ng/ml

Instrument :
 ECD_P
 ClientSampleId :
 AR1660CCC500



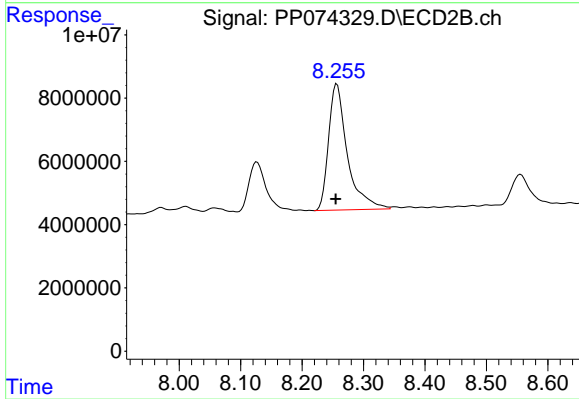
#39 AR-1262-4

R.T.: 7.762 min
 Delta R.T.: 0.000 min
 Response: 244315872
 Conc: 366.33 ng/ml



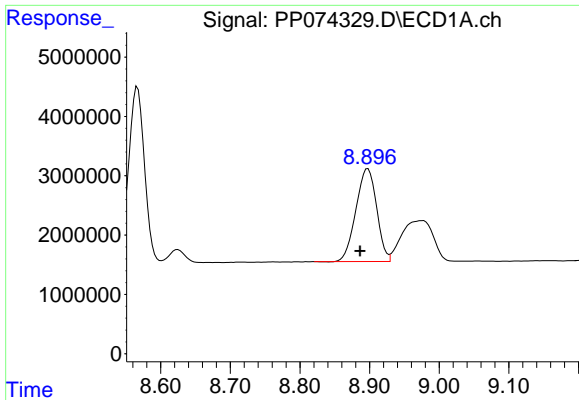
#40 AR-1262-5

R.T.: 9.650 min
 Delta R.T.: 0.006 min
 Response: 15783065
 Conc: 309.94 ng/ml



#40 AR-1262-5

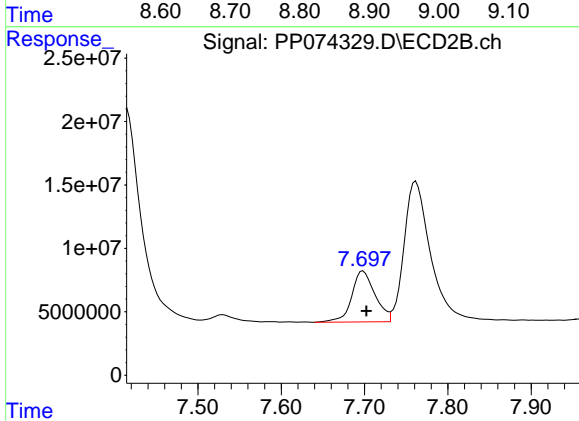
R.T.: 8.257 min
 Delta R.T.: 0.002 min
 Response: 84866841
 Conc: 299.60 ng/ml



#41 AR-1268-1

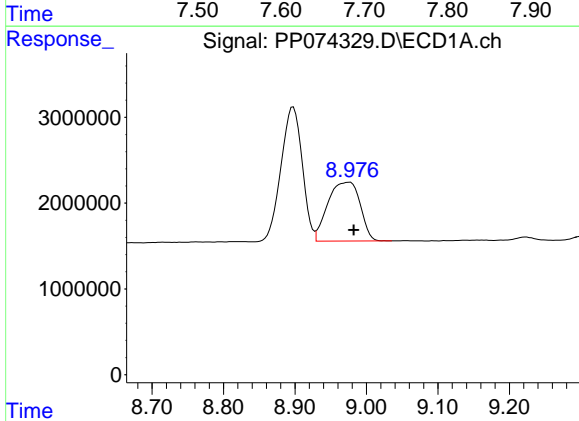
R.T.: 8.898 min
 Delta R.T.: 0.011 min
 Response: 32365487
 Conc: 207.96 ng/ml

Instrument :
 ECD_P
 ClientSampleId :
 AR1660CCC500



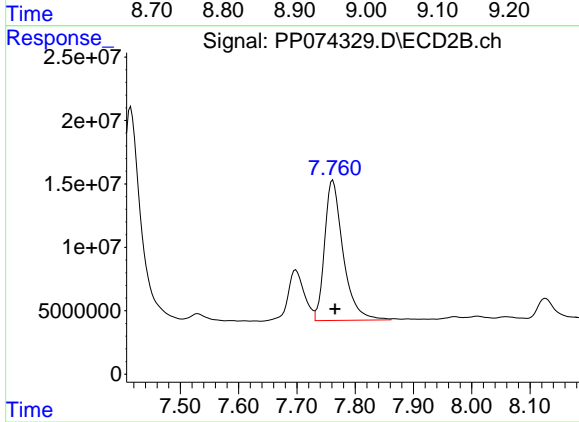
#41 AR-1268-1

R.T.: 7.698 min
 Delta R.T.: -0.004 min
 Response: 78032511
 Conc: 71.57 ng/ml



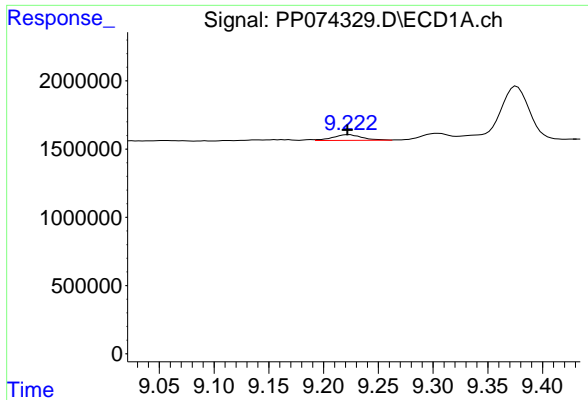
#42 AR-1268-2

R.T.: 8.976 min
 Delta R.T.: -0.006 min
 Response: 21611128
 Conc: 150.68 ng/ml



#42 AR-1268-2

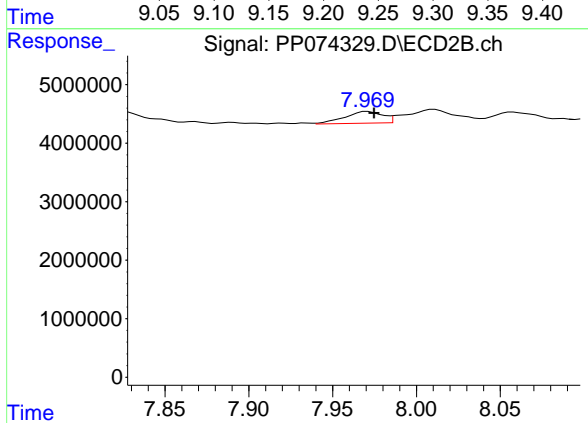
R.T.: 7.762 min
 Delta R.T.: -0.003 min
 Response: 244315872
 Conc: 230.20 ng/ml



#43 AR-1268-3

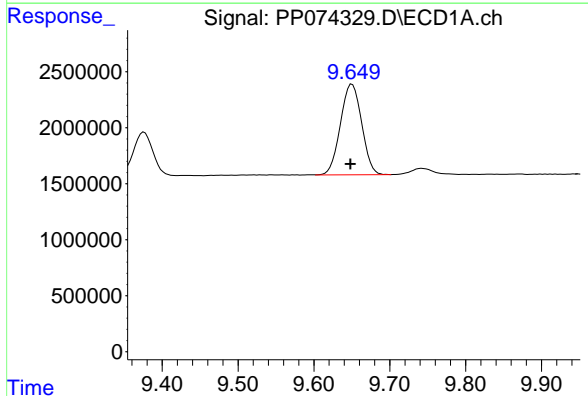
R.T.: 9.223 min
 Delta R.T.: 0.002 min
 Response: 785489
 Conc: 6.57 ng/ml

Instrument :
 ECD_P
 ClientSampleId :
 AR1660CCC500



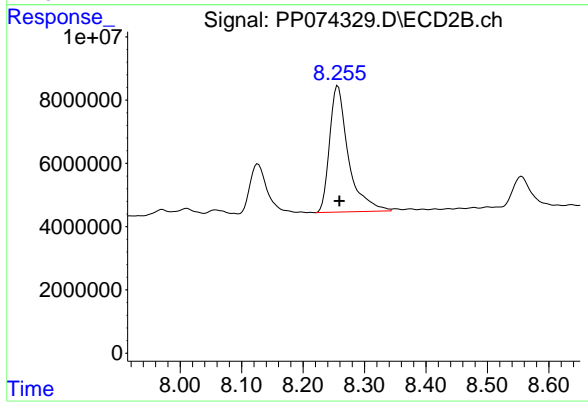
#43 AR-1268-3

R.T.: 7.971 min
 Delta R.T.: -0.004 min
 Response: 3146383
 Conc: 3.78 ng/ml



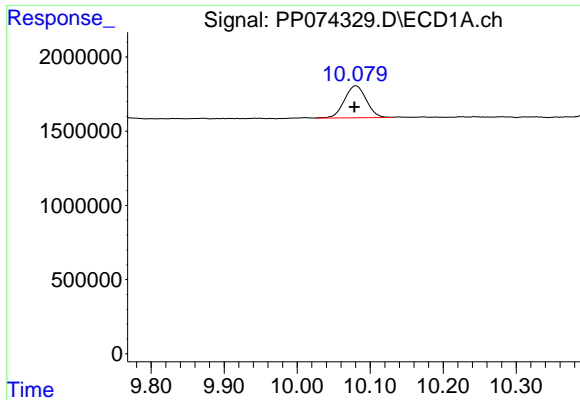
#44 AR-1268-4

R.T.: 9.650 min
 Delta R.T.: 0.002 min
 Response: 15783065
 Conc: 268.36 ng/ml



#44 AR-1268-4

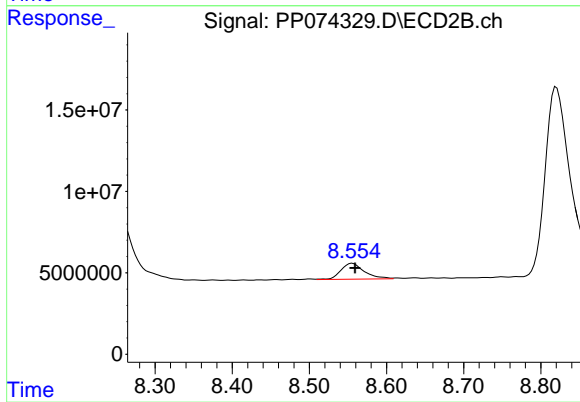
R.T.: 8.257 min
 Delta R.T.: -0.002 min
 Response: 84866841
 Conc: 275.49 ng/ml



#45 AR-1268-5

R.T.: 10.081 min
Delta R.T.: 0.002 min
Response: 4489515
Conc: 12.77 ng/ml

Instrument :
ECD_P
ClientSampleId :
AR1660CCC500



#45 AR-1268-5

R.T.: 8.556 min
Delta R.T.: -0.003 min
Response: 20824843
Conc: 8.17 ng/ml