

Data Path : Z:\pestpcbsrv\HPCHEM1\ECD_P\Data\PP081225\
 Data File : PP074331.D
 Signal(s) : Signal #1: ECD1A.ch Signal #2: ECD2B.ch
 Acq On : 12 Aug 2025 21:46
 Operator : YP\AJ
 Sample : AR1254CCC500
 Misc :
 ALS Vial : 5 Sample Multiplier: 1

Instrument :
 ECD_P
 ClientSampleId :
 AR1254CCC500

Integration File signal 1: autoint1.e
 Integration File signal 2: autoint2.e
 Quant Time: Aug 13 01:57:36 2025
 Quant Method : Z:\pestpcbsrv\HPCHEM1\ECD_P\methods\PP080125.M
 Quant Title : GC EXTRACTABLES
 QLast Update : Mon Aug 04 11:01:49 2025
 Response via : Initial Calibration
 Integrator: ChemStation

Volume Inj. : 2 µl
 Signal #1 Phase : ZB-MR2 Signal #2 Phase: ZB-MR2
 Signal #1 Info : 30Mx0.32mmx 0.50µ Signal #2 Info : 30M x 0.32mm x 0.25µm

Compound	RT#1	RT#2	Resp#1	Resp#2	ng/ml	ng/ml
System Monitoring Compounds						
1) SA Tetrachlo...	4.658	3.802	61274654	233.8E6	54.792	60.983
2) SA Decachlor...	10.434	8.819	49461147	331.6E6	50.930	55.145
Target Compounds						
3) L1 AR-1016-1	5.809	4.903	772057	1810018	18.713	4.538 #
4) L1 AR-1016-2	5.832	4.959	978269	1570955	16.105	8.365 #
5) L1 AR-1016-3	5.895	5.121f	724404	70420429	18.265	663.908 #
6) L1 AR-1016-4	5.990	5.121	540935	70420429	16.621	644.757 #
7) L1 AR-1016-5	6.283	5.334	9919884	42735074	305.528	365.372
8) L2 AR-1221-1	0.000	4.014	0	436210	N.D.	8.887 #
9) L2 AR-1221-2	4.960	4.101	1131540	2961205	89.797	82.509
10) L2 AR-1221-3	5.018	4.183	190139	660076	5.190	4.881
11) L3 AR-1232-1	5.018	4.183	190139	660076	6.548	6.512
12) L3 AR-1232-2	5.545	4.903	299459	1810018	19.907	10.387 #
13) L3 AR-1232-3	5.832	5.121f	978269	70420429	33.731	1537.006 #
14) L3 AR-1232-4	5.990	5.158	540935	34401745	34.969	593.024 #
15) L3 AR-1232-5	6.081	5.334	16055809	42735074	1370.416	909.655 #
16) L4 AR-1242-1	5.809	4.903	772057	1810018	20.718	5.244 #
17) L4 AR-1242-2	5.832	4.959	978269	1570955	17.980	9.615 #
18) L4 AR-1242-3	5.895	5.121f	724404	70420429	20.271	763.377 #
19) L4 AR-1242-4	5.990	5.158	540935	34401745	18.513	288.070 #
20) L4 AR-1242-5	6.724	5.686	10084674	217.4E6	283.612	1453.922 #
21) L5 AR-1248-1	5.809	4.903	772057	1810018	27.559	8.461 #
22) L5 AR-1248-2	6.081	5.121	16055809	70420429	398.792	481.301
23) L5 AR-1248-3	6.283	5.158	9919884	34401745	222.551	200.640
24) L5 AR-1248-4	6.659	5.334	41232928	42735074	792.374	256.862 #
25) L5 AR-1248-5	6.724	5.686f	10084674	217.4E6	177.100	747.333 #
26) L6 AR-1254-1	6.659	5.686	41232928	217.4E6	783.285	593.826
27) L6 AR-1254-2	6.874	5.833	40264798	169.1E6	506.446	607.620
28) L6 AR-1254-3	7.236	6.235	43283658	296.3E6	495.712	605.721
29) L6 AR-1254-4	7.517	6.462	32426445	220.6E6	508.176	600.120
30) L6 AR-1254-5	7.934	6.879	40906336	253.3E6	504.116	657.680 #
31) L7 AR-1260-1	7.401	6.551	18676919	131.5E6	331.409	325.436
32) L7 AR-1260-2	7.653	6.704	20524103	92159491	301.150	294.723
33) L7 AR-1260-3	7.994	6.879f	5188459	253.3E6	97.352	642.742 #
34) L7 AR-1260-4	8.223	7.175	15274290	6355355	243.940	21.841 #
35) L7 AR-1260-5	8.564	7.407	5567306	60447981	49.136	79.809 #
36) L8 AR-1262-1	8.223	6.879f	15274290	253.3E6	201.535	449.827 #
37) L8 AR-1262-2	8.564	7.175	5567306	6355355	42.684	15.848 #
38) L8 AR-1262-3	8.899	7.701	4655200	1644414	49.486	4.575 #
39) L8 AR-1262-4	8.949	7.758	1040053	22877342	14.276	34.303 #
40) L8 AR-1262-5	9.648	8.250	243975	470016	4.791	1.659 #
41) L9 AR-1268-1	8.899	7.701	4655200	1644414	29.911	1.508 #

Data Path : Z:\pestpcbsrv\HPCHEM1\ECD_P\Data\PP081225\
 Data File : PP074331.D
 Signal(s) : Signal #1: ECD1A.ch Signal #2: ECD2B.ch
 Acq On : 12 Aug 2025 21:46
 Operator : YP\AJ
 Sample : AR1254CCC500
 Misc :
 ALS Vial : 5 Sample Multiplier: 1

Instrument :
 ECD_P
ClientSampleId :
 AR1254CCC500

Integration File signal 1: autoint1.e
 Integration File signal 2: autoint2.e
 Quant Time: Aug 13 01:57:36 2025
 Quant Method : Z:\pestpcbsrv\HPCHEM1\ECD_P\methods\PP080125.M
 Quant Title : GC EXTRACTABLES
 QLast Update : Mon Aug 04 11:01:49 2025
 Response via : Initial Calibration
 Integrator: ChemStation

Volume Inj. : 2 µl
 Signal #1 Phase : ZB-MR1 Signal #2 Phase: ZB-MR2
 Signal #1 Info : 30Mx0.32mmx 0.50µ Signal #2 Info : 30M x 0.32mm x 0.25µm

	Compound	RT#1	RT#2	Resp#1	Resp#2	ng/ml	ng/ml
42)	L9 AR-1268-2	8.949	7.758	1040053	22877342	7.252	21.555 #
43)	L9 AR-1268-3	9.224	7.977	128874	1469951	1.079	1.767 #
44)	L9 AR-1268-4	9.648	8.263	243975	451962	4.148	1.467 #
45)	L9 AR-1268-5	10.075	8.566	379061	685621	1.078	0.269 #

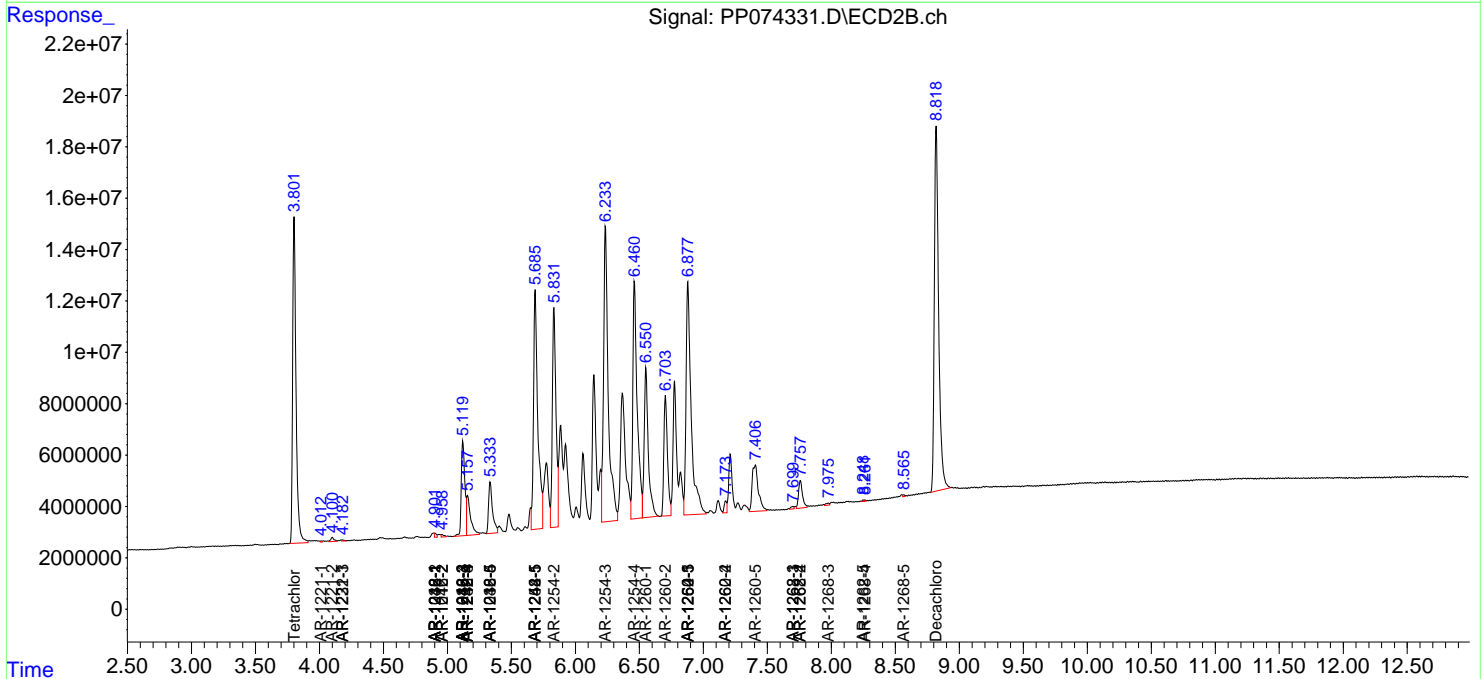
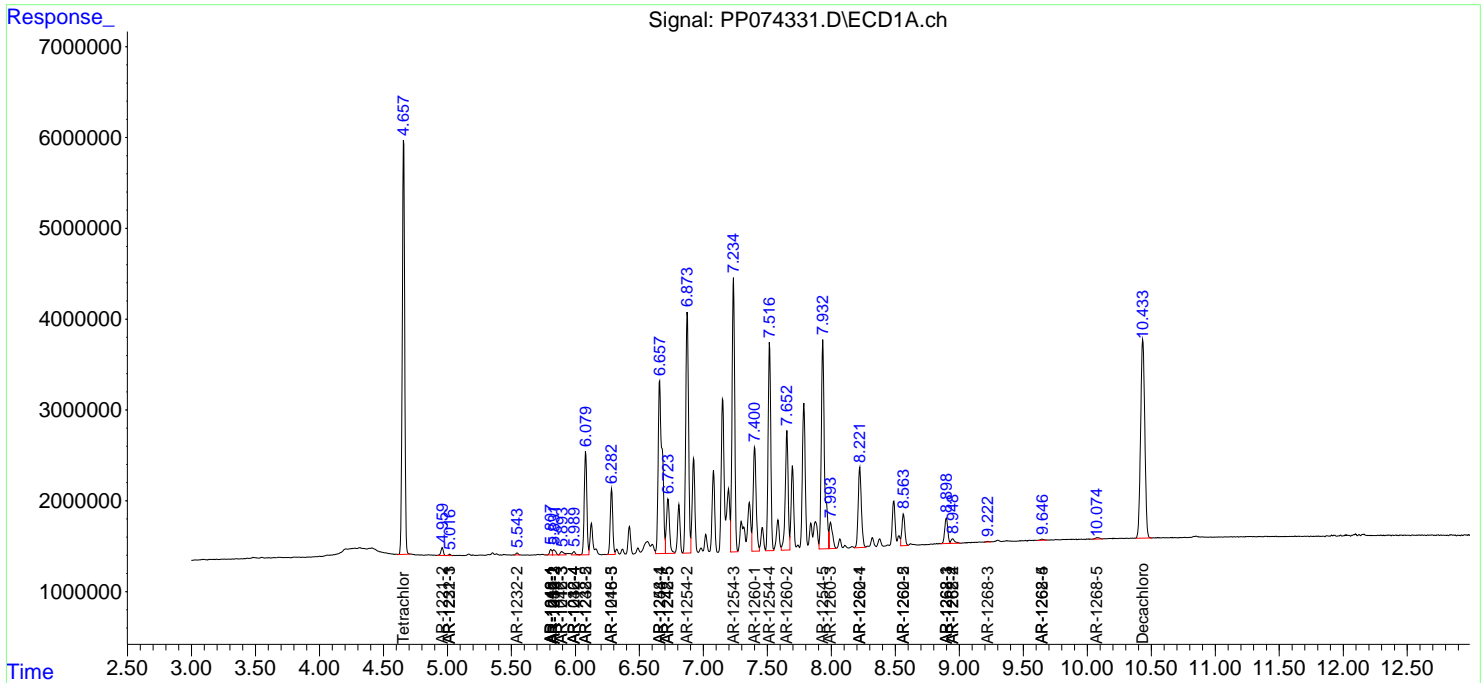
(f)=RT Delta > 1/2 Window (#)=Amounts differ by > 25% (m)=manual int.

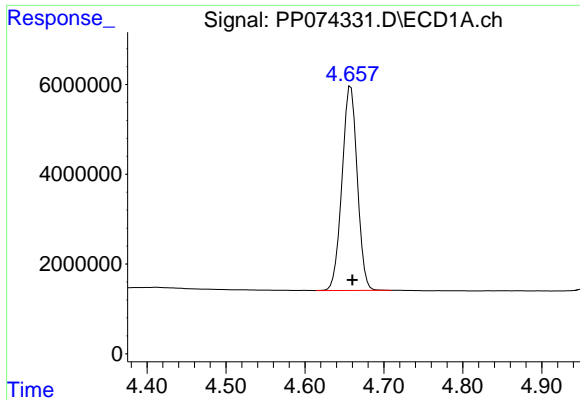
Data Path : Z:\pestpcbsrv\HPCHEM1\ECD_P\Data\PP081225\
 Data File : PP074331.D
 Signal(s) : Signal #1: ECD1A.ch Signal #2: ECD2B.ch
 Acq On : 12 Aug 2025 21:46
 Operator : YP\AJ
 Sample : AR1254CCC500
 Misc :
 ALS Vial : 5 Sample Multiplier: 1

Instrument :
 ECD_P
 ClientSampleId :
 AR1254CCC500

Integration File signal 1: autoint1.e
 Integration File signal 2: autoint2.e
 Quant Time: Aug 13 01:57:36 2025
 Quant Method : Z:\pestpcbsrv\HPCHEM1\ECD_P\methods\PP080125.M
 Quant Title : GC EXTRACTABLES
 QLast Update : Mon Aug 04 11:01:49 2025
 Response via : Initial Calibration
 Integrator: ChemStation

Volume Inj. : 2 µl
 Signal #1 Phase : ZB-MR1 Signal #2 Phase: ZB-MR2
 Signal #1 Info : 30Mx0.32mmx 0.50µ Signal #2 Info : 30M x 0.32mm x 0.25µm

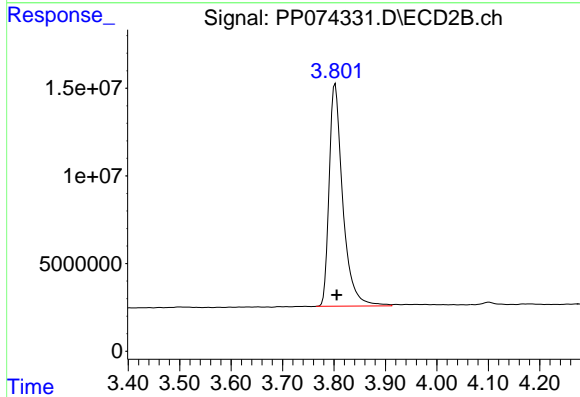




#1 Tetrachloro-m-xylene

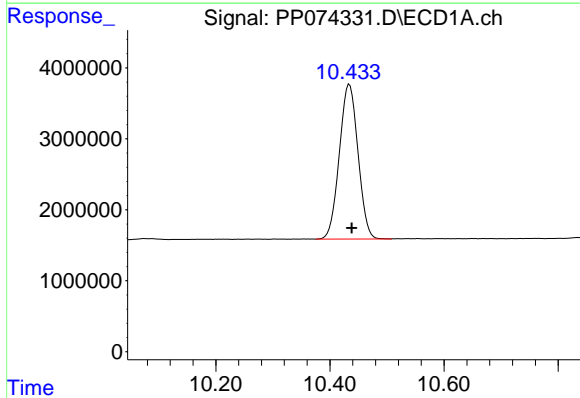
R.T.: 4.658 min
 Delta R.T.: -0.002 min
 Response: 61274654
 Conc: 54.79 ng/ml

Instrument :
 ECD_P
 ClientSampleId :
 AR1254CCC500



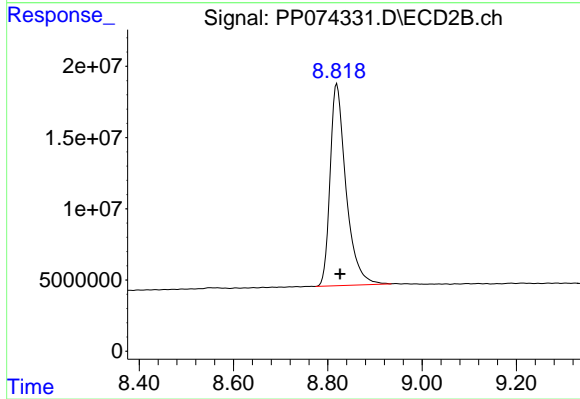
#1 Tetrachloro-m-xylene

R.T.: 3.802 min
 Delta R.T.: -0.003 min
 Response: 233834530
 Conc: 60.98 ng/ml



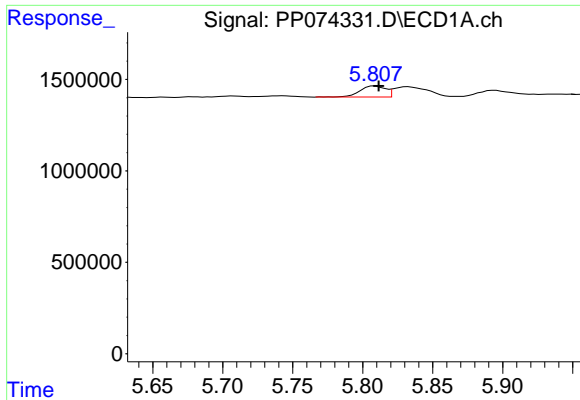
#2 Decachlorobiphenyl

R.T.: 10.434 min
 Delta R.T.: -0.004 min
 Response: 49461147
 Conc: 50.93 ng/ml



#2 Decachlorobiphenyl

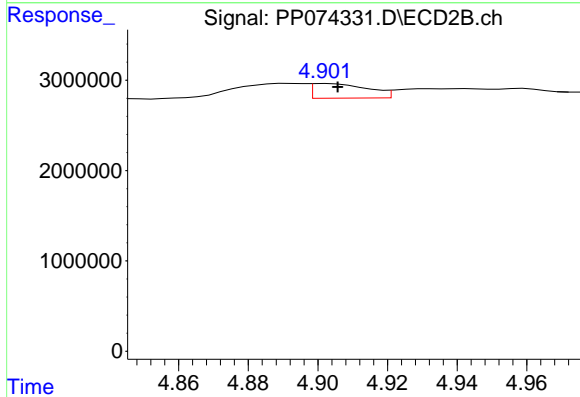
R.T.: 8.819 min
 Delta R.T.: -0.007 min
 Response: 331619670
 Conc: 55.14 ng/ml



#3 AR-1016-1

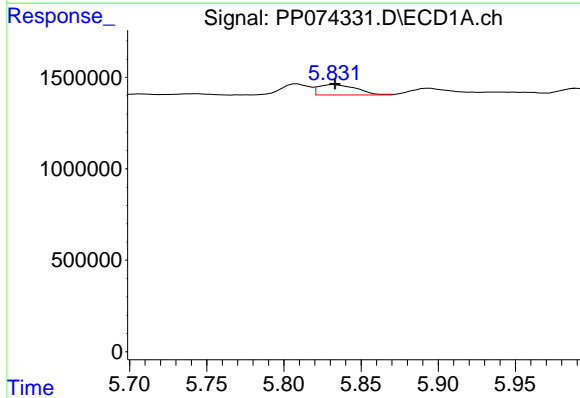
R.T.: 5.809 min
 Delta R.T.: -0.003 min
 Response: 772057
 Conc: 18.71 ng/ml

Instrument :
 ECD_P
 ClientSampleId :
 AR1254CCC500



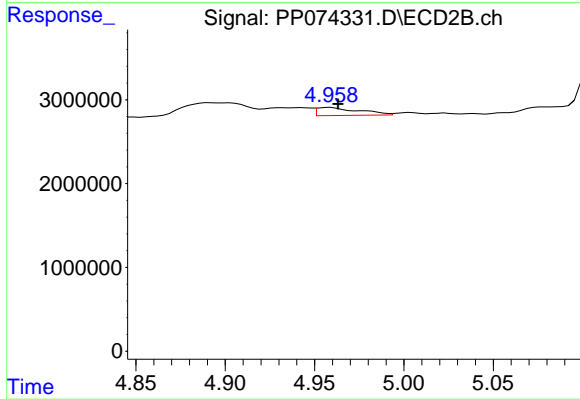
#3 AR-1016-1

R.T.: 4.903 min
 Delta R.T.: -0.003 min
 Response: 1810018
 Conc: 4.54 ng/ml



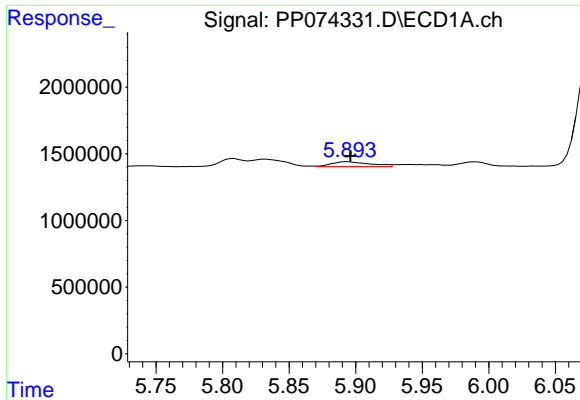
#4 AR-1016-2

R.T.: 5.832 min
 Delta R.T.: 0.000 min
 Response: 978269
 Conc: 16.11 ng/ml



#4 AR-1016-2

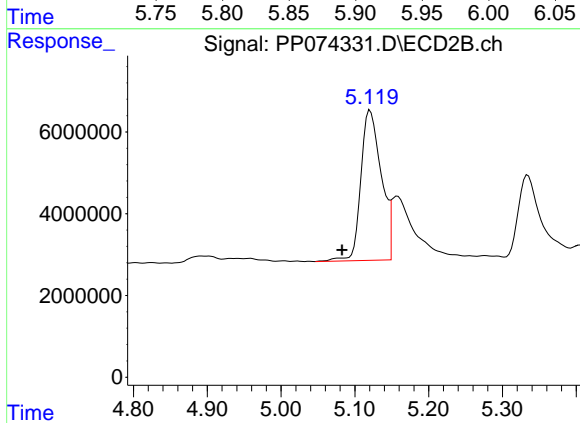
R.T.: 4.959 min
 Delta R.T.: -0.004 min
 Response: 1570955
 Conc: 8.36 ng/ml



#5 AR-1016-3

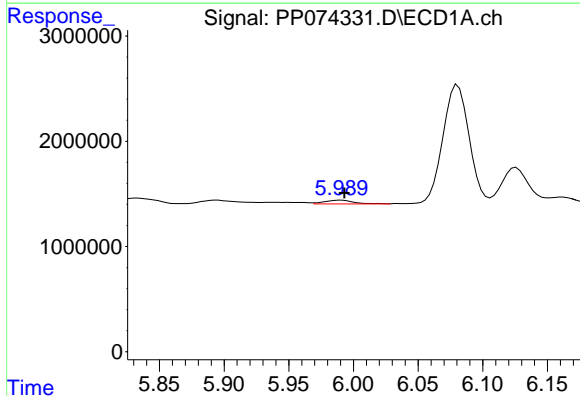
R.T.: 5.895 min
 Delta R.T.: -0.001 min
 Response: 724404
 Conc: 18.27 ng/ml

Instrument :
 ECD_P
 ClientSampleId :
 AR1254CCC500



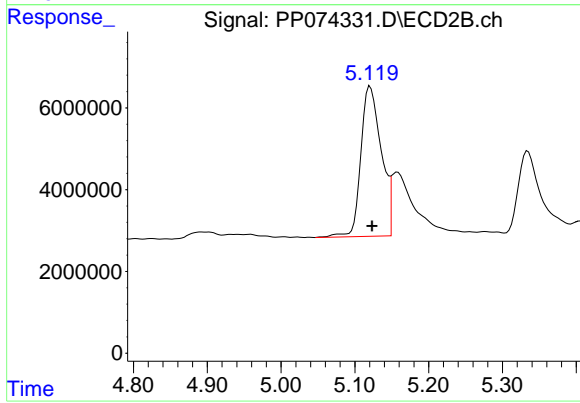
#5 AR-1016-3

R.T.: 5.121 min
 Delta R.T.: 0.038 min
 Response: 70420429
 Conc: 663.91 ng/ml



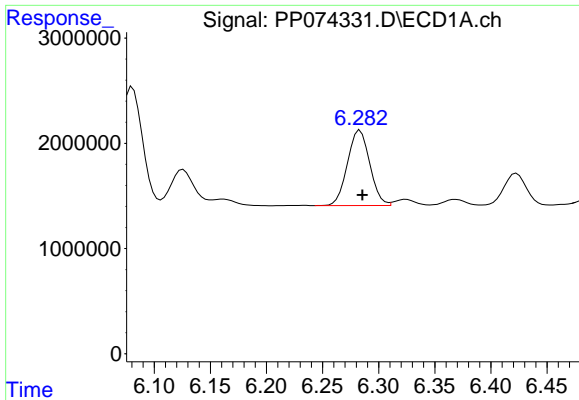
#6 AR-1016-4

R.T.: 5.990 min
 Delta R.T.: -0.003 min
 Response: 540935
 Conc: 16.62 ng/ml



#6 AR-1016-4

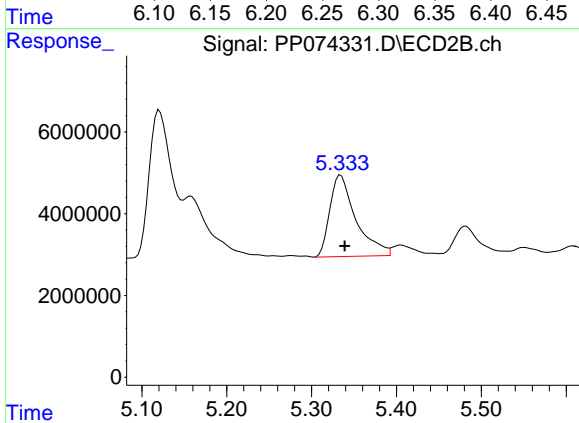
R.T.: 5.121 min
 Delta R.T.: -0.003 min
 Response: 70420429
 Conc: 644.76 ng/ml



#7 AR-1016-5

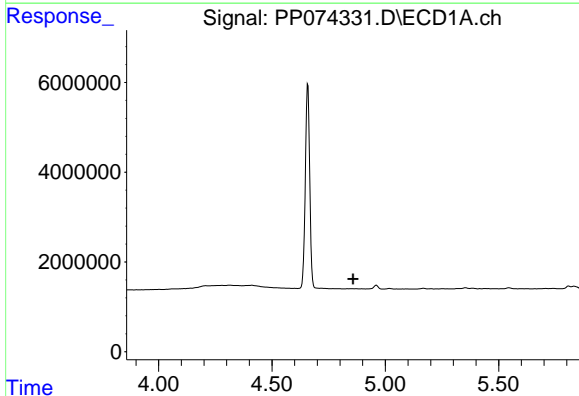
R.T.: 6.283 min
 Delta R.T.: -0.002 min
 Response: 9919884
 Conc: 305.53 ng/ml

Instrument :
 ECD_P
 ClientSampleId :
 AR1254CCC500



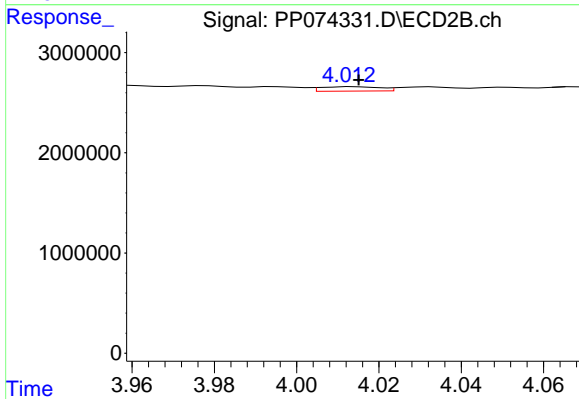
#7 AR-1016-5

R.T.: 5.334 min
 Delta R.T.: -0.005 min
 Response: 42735074
 Conc: 365.37 ng/ml



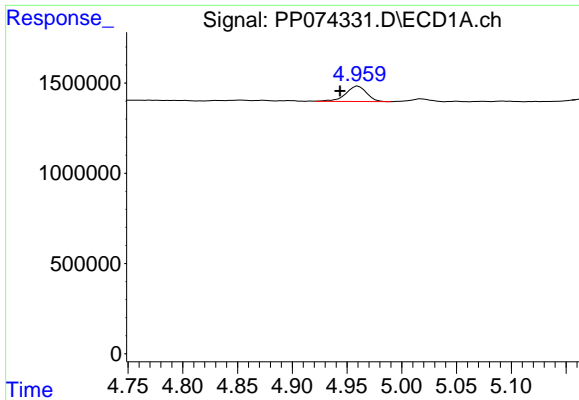
#8 AR-1221-1

R.T.: 0.000 min
 Exp R.T. : 4.858 min
 Response: 0
 Conc: N.D.



#8 AR-1221-1

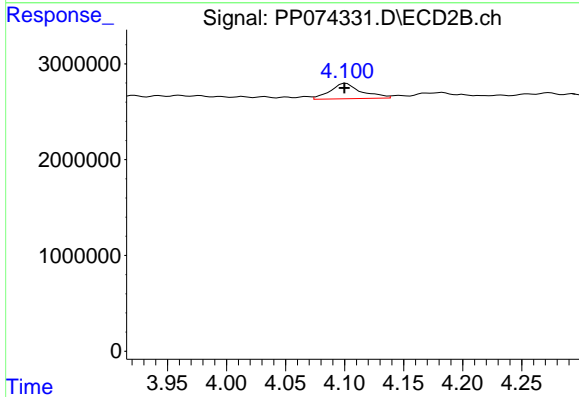
R.T.: 4.014 min
 Delta R.T.: -0.001 min
 Response: 436210
 Conc: 8.89 ng/ml



#9 AR-1221-2

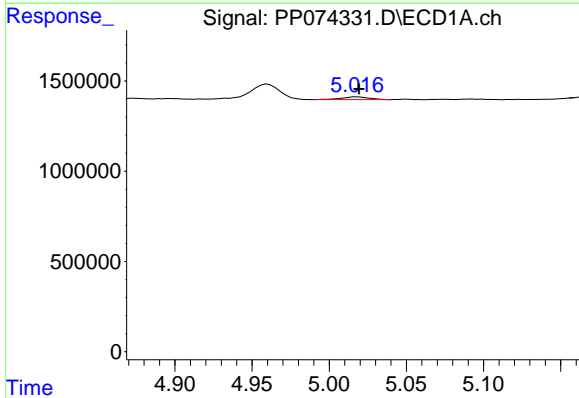
R.T.: 4.960 min
 Delta R.T.: 0.017 min
 Response: 1131540
 Conc: 89.80 ng/ml

Instrument :
 ECD_P
 ClientSampleId :
 AR1254CCC500



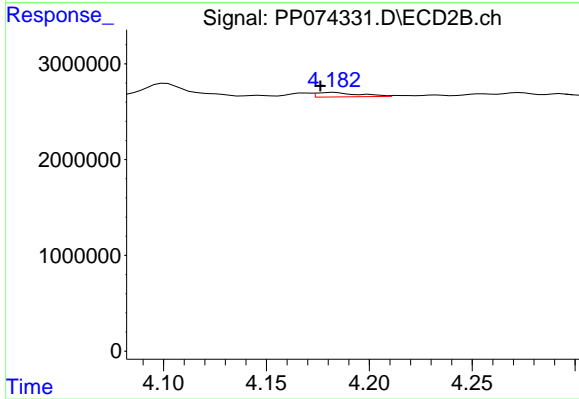
#9 AR-1221-2

R.T.: 4.101 min
 Delta R.T.: 0.001 min
 Response: 2961205
 Conc: 82.51 ng/ml



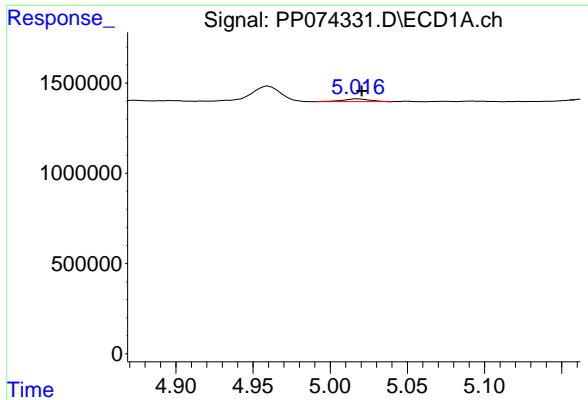
#10 AR-1221-3

R.T.: 5.018 min
 Delta R.T.: -0.001 min
 Response: 190139
 Conc: 5.19 ng/ml



#10 AR-1221-3

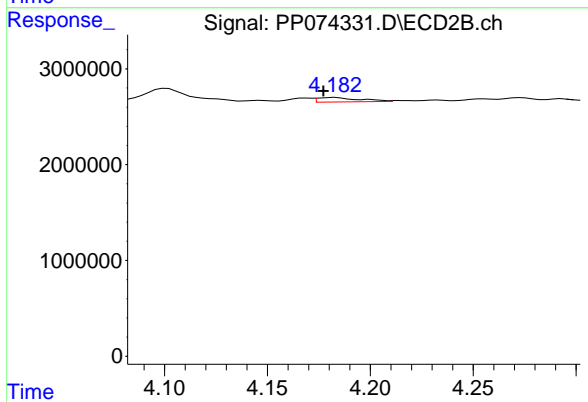
R.T.: 4.183 min
 Delta R.T.: 0.006 min
 Response: 660076
 Conc: 4.88 ng/ml



#11 AR-1232-1

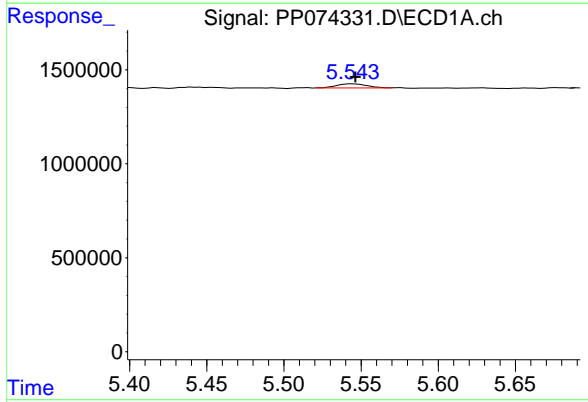
R.T.: 5.018 min
 Delta R.T.: -0.003 min
 Response: 190139
 Conc: 6.55 ng/ml

Instrument :
 ECD_P
 ClientSampleId :
 AR1254CCC500



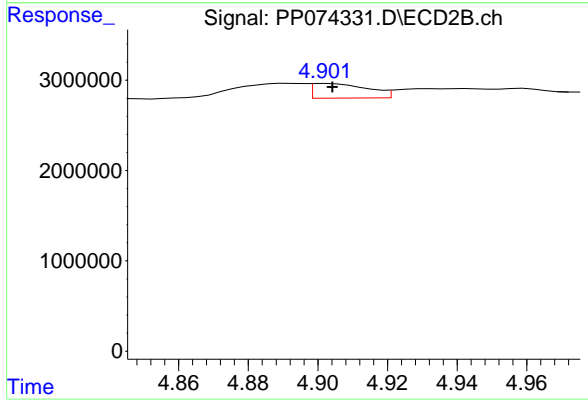
#11 AR-1232-1

R.T.: 4.183 min
 Delta R.T.: 0.005 min
 Response: 660076
 Conc: 6.51 ng/ml



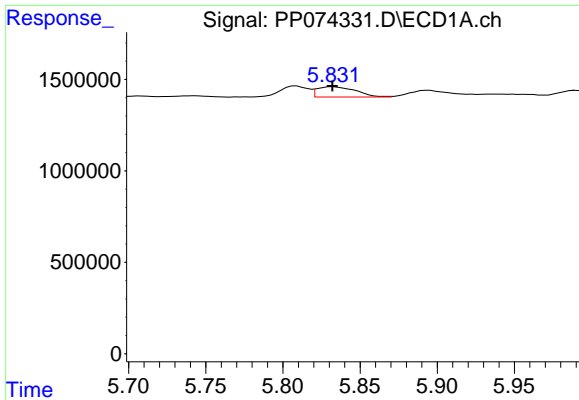
#12 AR-1232-2

R.T.: 5.545 min
 Delta R.T.: -0.002 min
 Response: 299459
 Conc: 19.91 ng/ml



#12 AR-1232-2

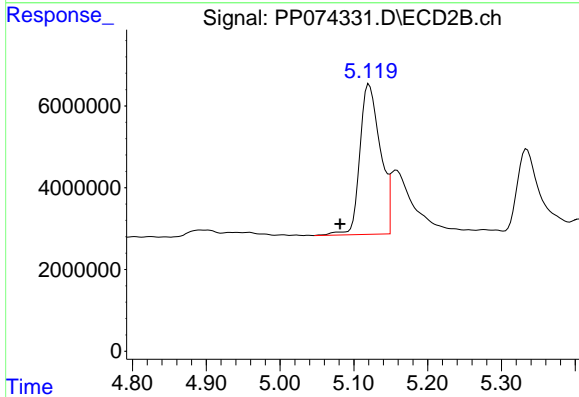
R.T.: 4.903 min
 Delta R.T.: -0.002 min
 Response: 1810018
 Conc: 10.39 ng/ml



#13 AR-1232-3

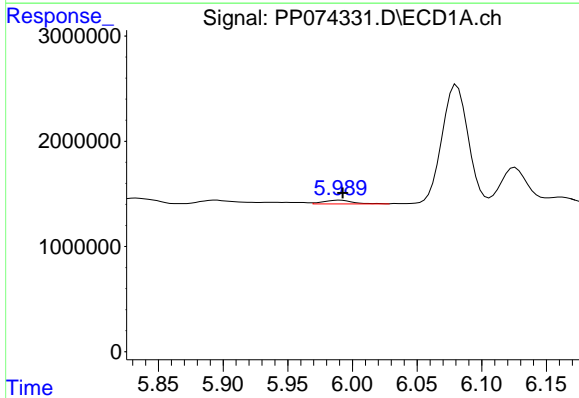
R.T.: 5.832 min
 Delta R.T.: 0.000 min
 Response: 978269
 Conc: 33.73 ng/ml

Instrument :
 ECD_P
 ClientSampleId :
 AR1254CCC500



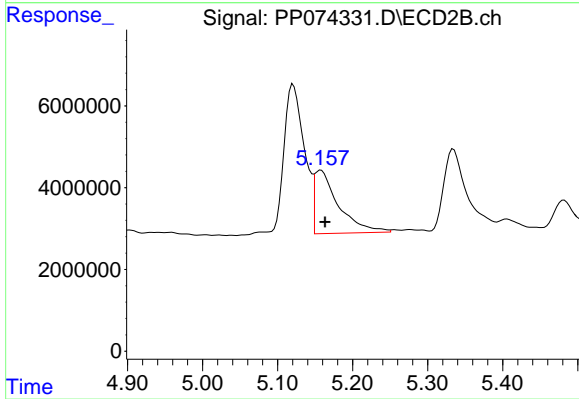
#13 AR-1232-3

R.T.: 5.121 min
 Delta R.T.: 0.039 min
 Response: 70420429
 Conc: 1537.01 ng/ml



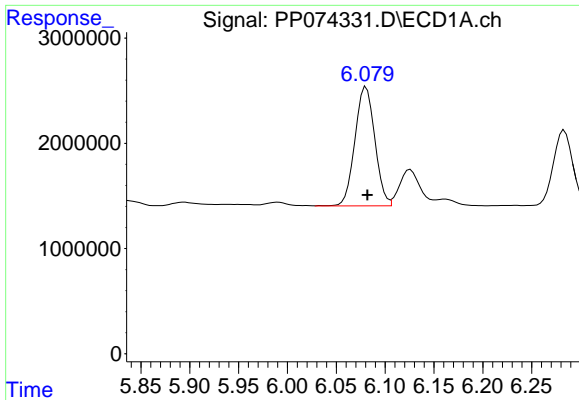
#14 AR-1232-4

R.T.: 5.990 min
 Delta R.T.: -0.002 min
 Response: 540935
 Conc: 34.97 ng/ml



#14 AR-1232-4

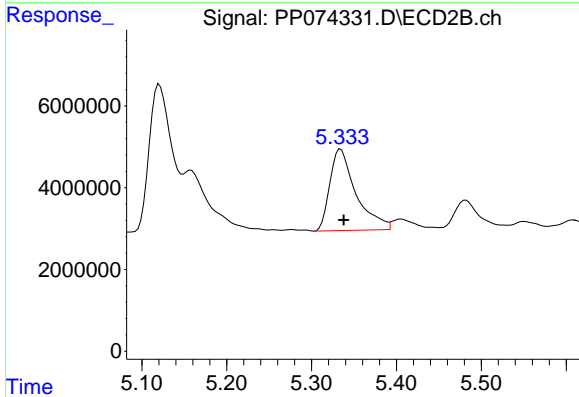
R.T.: 5.158 min
 Delta R.T.: -0.006 min
 Response: 34401745
 Conc: 593.02 ng/ml



#15 AR-1232-5

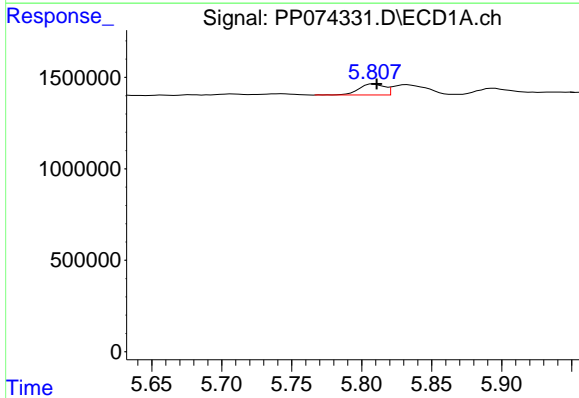
R.T.: 6.081 min
 Delta R.T.: -0.001 min
 Response: 16055809
 Conc: 1370.42 ng/ml

Instrument :
 ECD_P
 ClientSampleId :
 AR1254CCC500



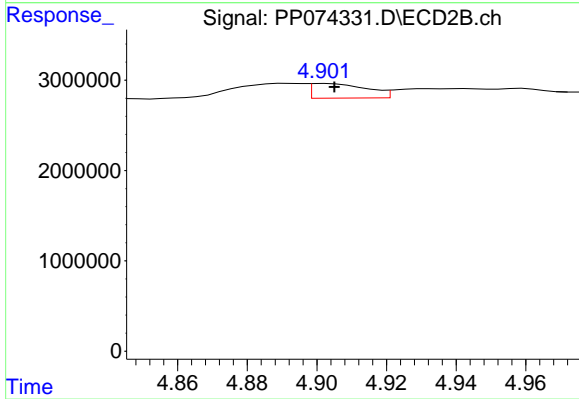
#15 AR-1232-5

R.T.: 5.334 min
 Delta R.T.: -0.003 min
 Response: 42735074
 Conc: 909.65 ng/ml



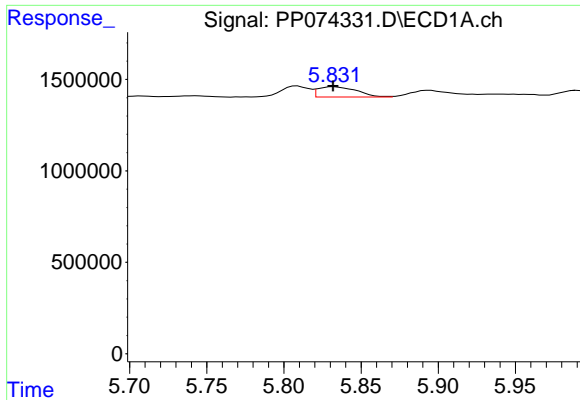
#16 AR-1242-1

R.T.: 5.809 min
 Delta R.T.: -0.002 min
 Response: 772057
 Conc: 20.72 ng/ml



#16 AR-1242-1

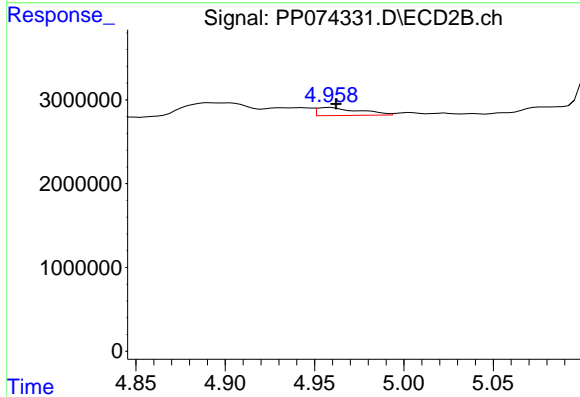
R.T.: 4.903 min
 Delta R.T.: -0.002 min
 Response: 1810018
 Conc: 5.24 ng/ml



#17 AR-1242-2

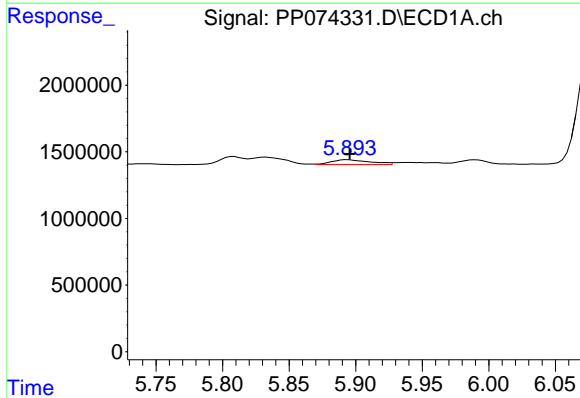
R.T.: 5.832 min
 Delta R.T.: 0.000 min
 Response: 978269
 Conc: 17.98 ng/ml

Instrument :
 ECD_P
 ClientSampleId :
 AR1254CCC500



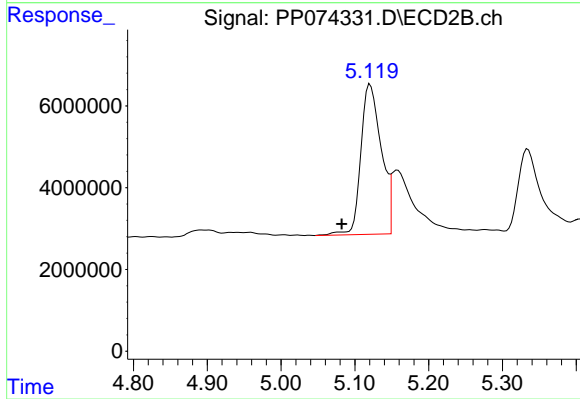
#17 AR-1242-2

R.T.: 4.959 min
 Delta R.T.: -0.003 min
 Response: 1570955
 Conc: 9.62 ng/ml



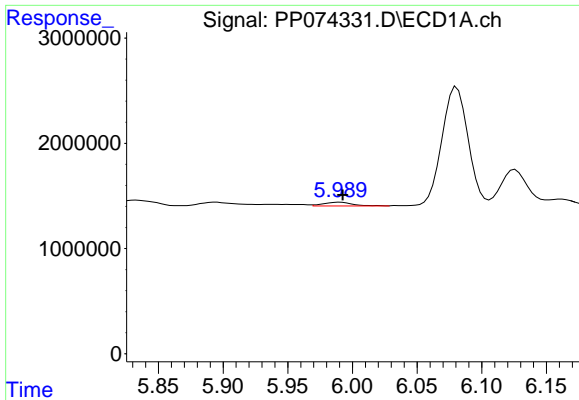
#18 AR-1242-3

R.T.: 5.895 min
 Delta R.T.: 0.000 min
 Response: 724404
 Conc: 20.27 ng/ml



#18 AR-1242-3

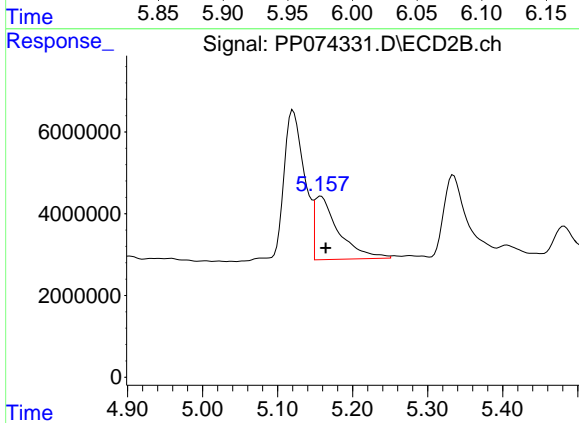
R.T.: 5.121 min
 Delta R.T.: 0.039 min
 Response: 70420429
 Conc: 763.38 ng/ml



#19 AR-1242-4

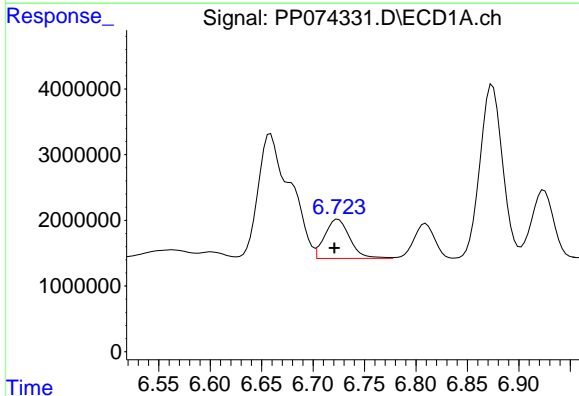
R.T.: 5.990 min
 Delta R.T.: -0.002 min
 Response: 540935
 Conc: 18.51 ng/ml

Instrument :
 ECD_P
 ClientSampleId :
 AR1254CCC500



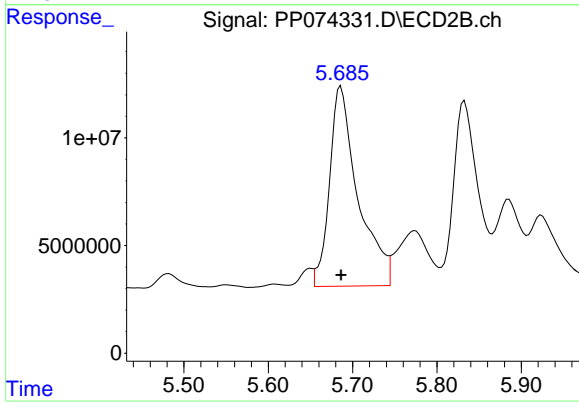
#19 AR-1242-4

R.T.: 5.158 min
 Delta R.T.: -0.006 min
 Response: 34401745
 Conc: 288.07 ng/ml



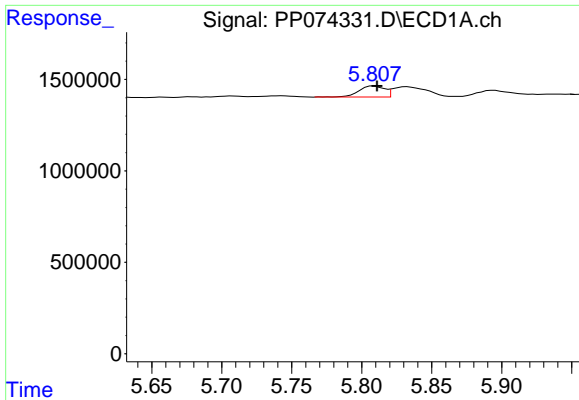
#20 AR-1242-5

R.T.: 6.724 min
 Delta R.T.: 0.003 min
 Response: 10084674
 Conc: 283.61 ng/ml



#20 AR-1242-5

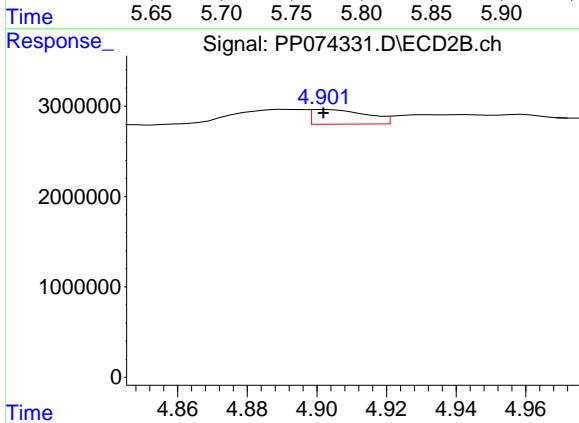
R.T.: 5.686 min
 Delta R.T.: 0.000 min
 Response: 217448543
 Conc: 1453.92 ng/ml



#21 AR-1248-1

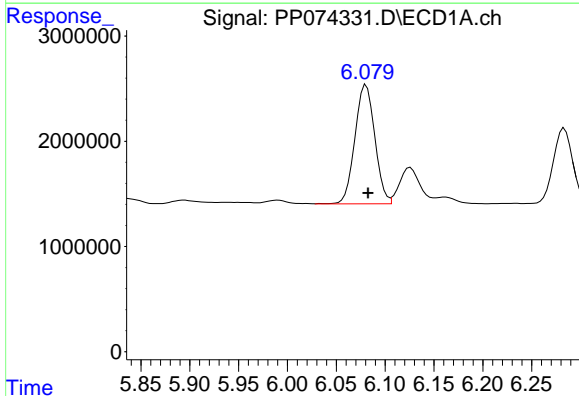
R.T.: 5.809 min
 Delta R.T.: -0.002 min
 Response: 772057
 Conc: 27.56 ng/ml

Instrument :
 ECD_P
 ClientSampleId :
 AR1254CCC500



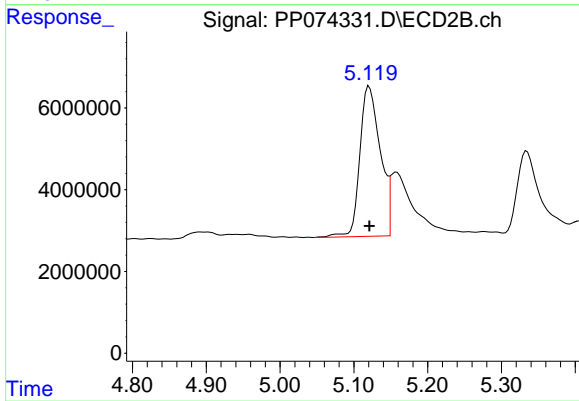
#21 AR-1248-1

R.T.: 4.903 min
 Delta R.T.: 0.000 min
 Response: 1810018
 Conc: 8.46 ng/ml



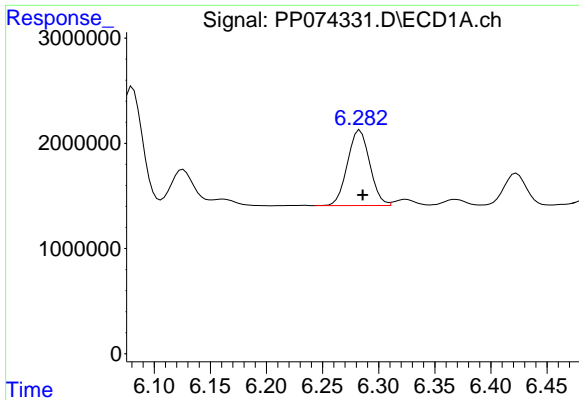
#22 AR-1248-2

R.T.: 6.081 min
 Delta R.T.: -0.002 min
 Response: 16055809
 Conc: 398.79 ng/ml



#22 AR-1248-2

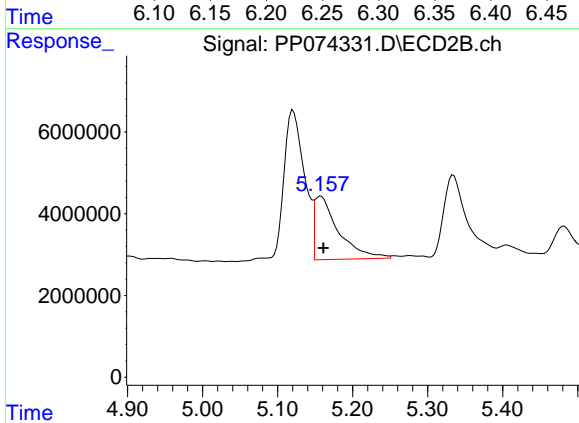
R.T.: 5.121 min
 Delta R.T.: 0.000 min
 Response: 70420429
 Conc: 481.30 ng/ml



#23 AR-1248-3

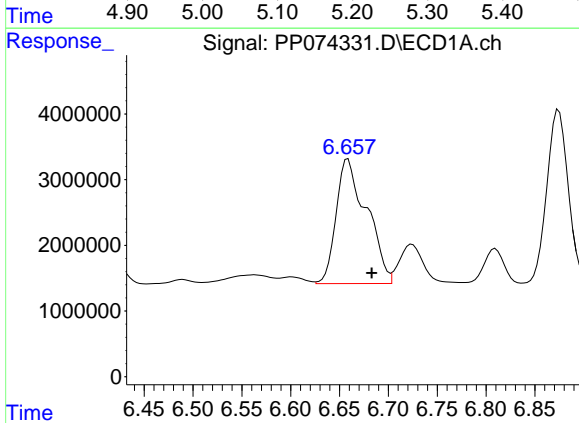
R.T.: 6.283 min
 Delta R.T.: -0.002 min
 Response: 9919884
 Conc: 222.55 ng/ml

Instrument :
 ECD_P
 ClientSampleId :
 AR1254CCC500



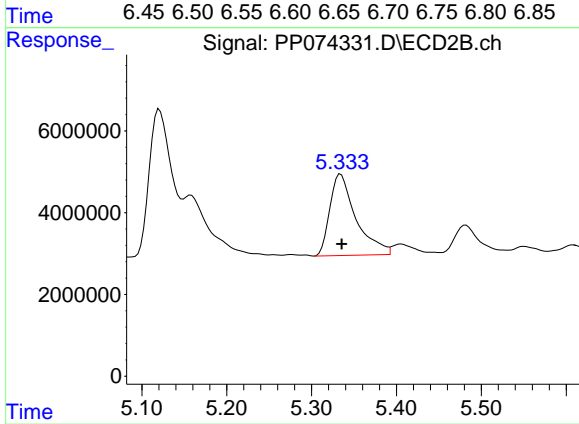
#23 AR-1248-3

R.T.: 5.158 min
 Delta R.T.: -0.003 min
 Response: 34401745
 Conc: 200.64 ng/ml



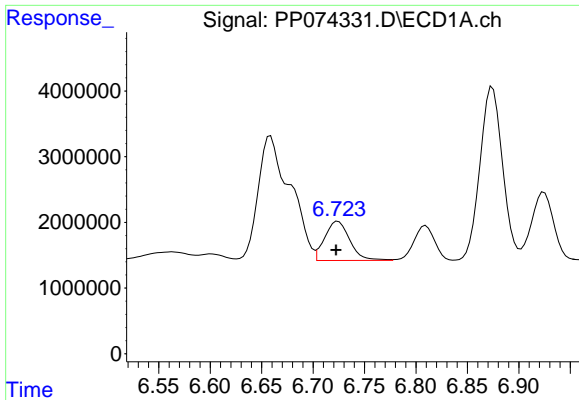
#24 AR-1248-4

R.T.: 6.659 min
 Delta R.T.: -0.024 min
 Response: 41232928
 Conc: 792.37 ng/ml



#24 AR-1248-4

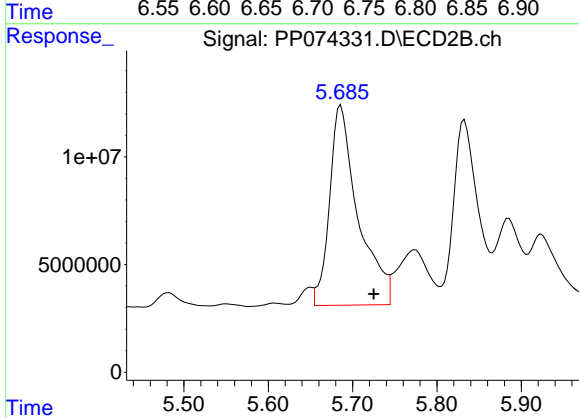
R.T.: 5.334 min
 Delta R.T.: -0.001 min
 Response: 42735074
 Conc: 256.86 ng/ml



#25 AR-1248-5

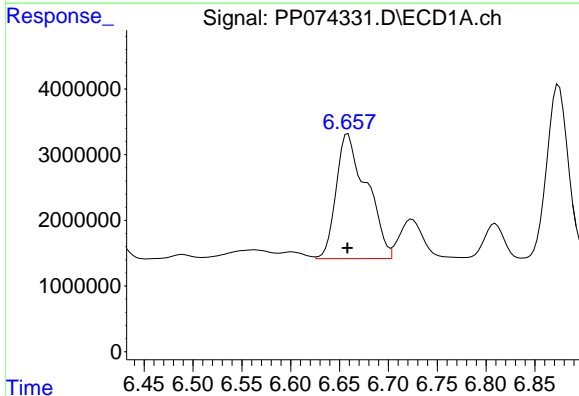
R.T.: 6.724 min
 Delta R.T.: 0.002 min
 Response: 10084674
 Conc: 177.10 ng/ml

Instrument :
 ECD_P
 ClientSampleId :
 AR1254CCC500



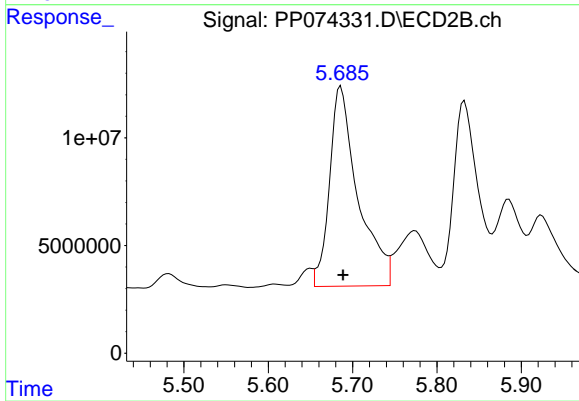
#25 AR-1248-5

R.T.: 5.686 min
 Delta R.T.: -0.039 min
 Response: 217448543
 Conc: 747.33 ng/ml



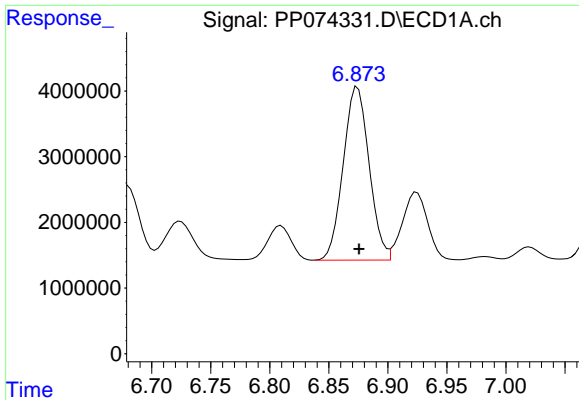
#26 AR-1254-1

R.T.: 6.659 min
 Delta R.T.: 0.000 min
 Response: 41232928
 Conc: 783.28 ng/ml



#26 AR-1254-1

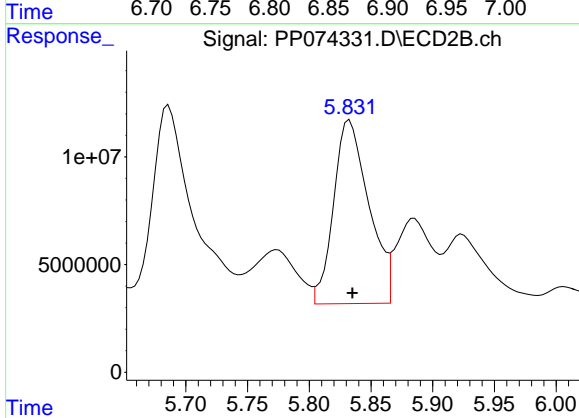
R.T.: 5.686 min
 Delta R.T.: -0.002 min
 Response: 217448543
 Conc: 593.83 ng/ml



#27 AR-1254-2

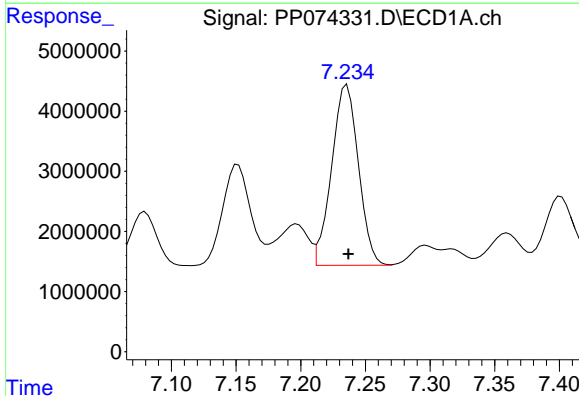
R.T.: 6.874 min
Delta R.T.: -0.001 min
Response: 40264798
Conc: 506.45 ng/ml

Instrument :
ECD_P
ClientSampleId :
AR1254CCC500



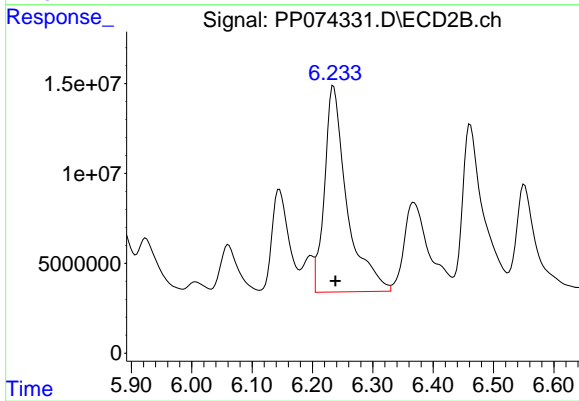
#27 AR-1254-2

R.T.: 5.833 min
Delta R.T.: -0.002 min
Response: 169050287
Conc: 607.62 ng/ml



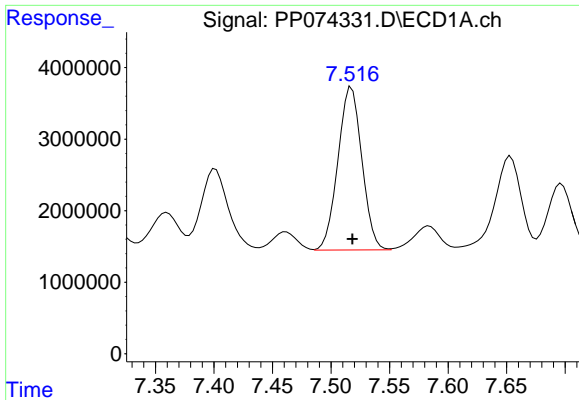
#28 AR-1254-3

R.T.: 7.236 min
Delta R.T.: -0.001 min
Response: 43283658
Conc: 495.71 ng/ml



#28 AR-1254-3

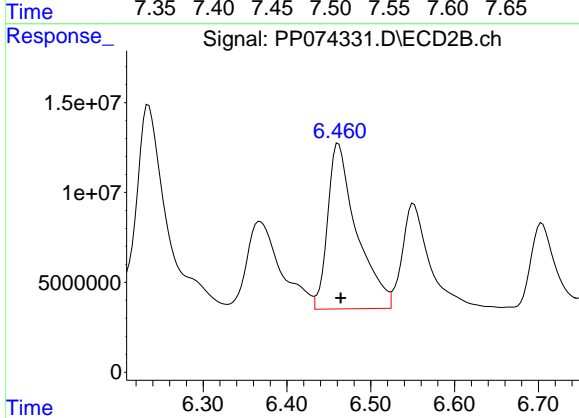
R.T.: 6.235 min
Delta R.T.: -0.003 min
Response: 296325521
Conc: 605.72 ng/ml



#29 AR-1254-4

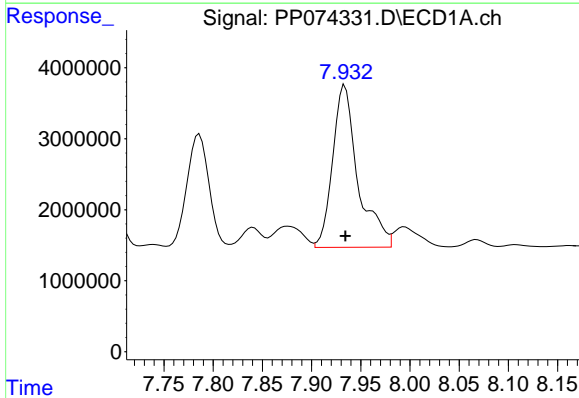
R.T.: 7.517 min
Delta R.T.: 0.000 min
Response: 32426445
Conc: 508.18 ng/ml

Instrument :
ECD_P
ClientSampleId :
AR1254CCC500



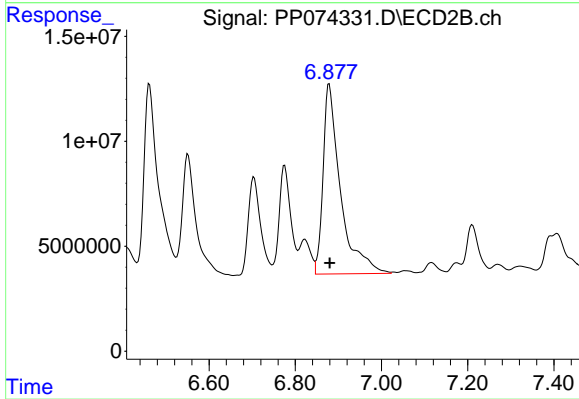
#29 AR-1254-4

R.T.: 6.462 min
Delta R.T.: -0.003 min
Response: 220583255
Conc: 600.12 ng/ml



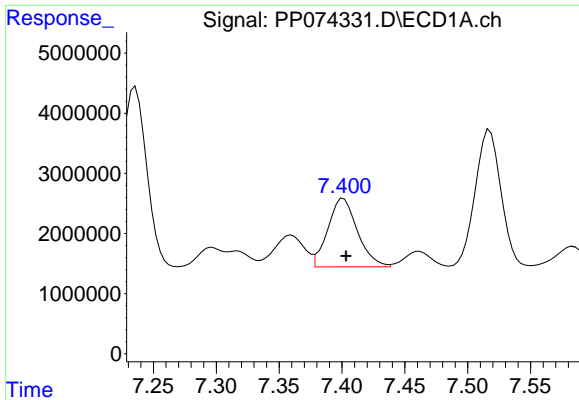
#30 AR-1254-5

R.T.: 7.934 min
Delta R.T.: 0.000 min
Response: 40906336
Conc: 504.12 ng/ml



#30 AR-1254-5

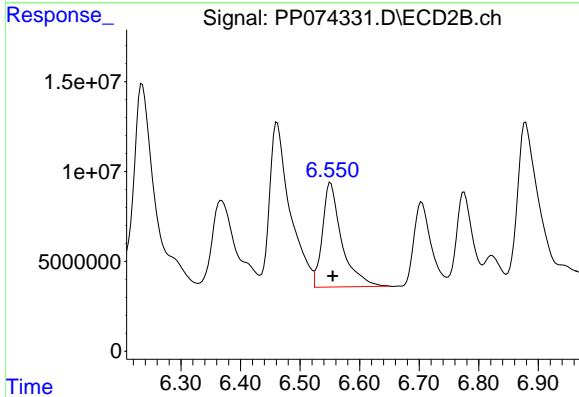
R.T.: 6.879 min
Delta R.T.: -0.001 min
Response: 253316550
Conc: 657.68 ng/ml



#31 AR-1260-1

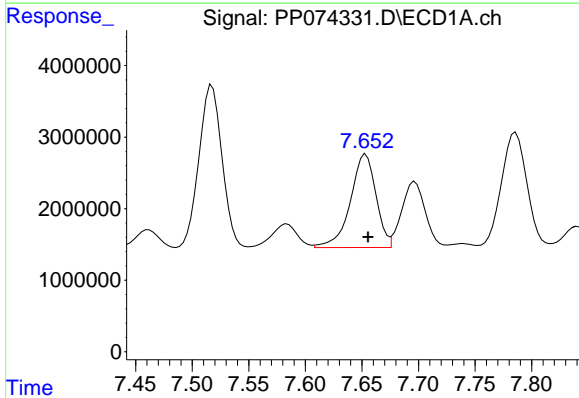
R.T.: 7.401 min
 Delta R.T.: -0.002 min
 Response: 18676919
 Conc: 331.41 ng/ml

Instrument :
 ECD_P
 ClientSampleId :
 AR1254CCC500



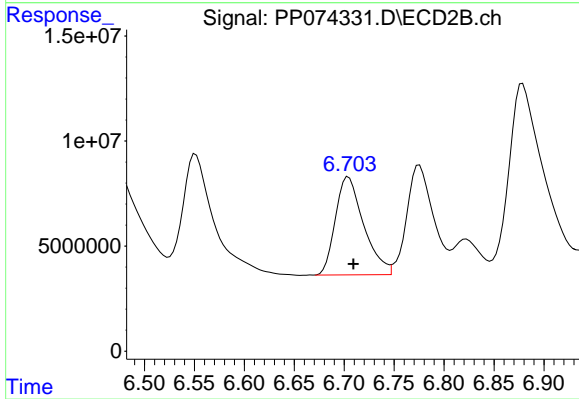
#31 AR-1260-1

R.T.: 6.551 min
 Delta R.T.: -0.004 min
 Response: 131462351
 Conc: 325.44 ng/ml



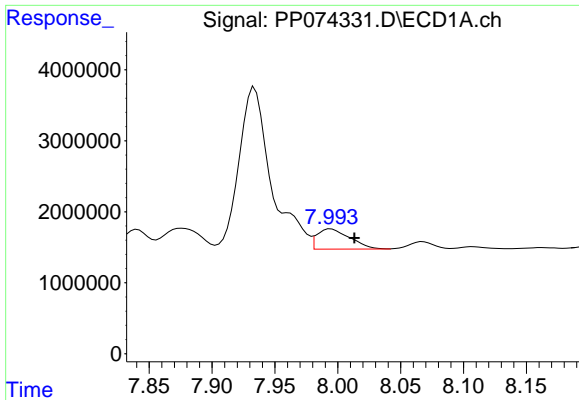
#32 AR-1260-2

R.T.: 7.653 min
 Delta R.T.: -0.002 min
 Response: 20524103
 Conc: 301.15 ng/ml



#32 AR-1260-2

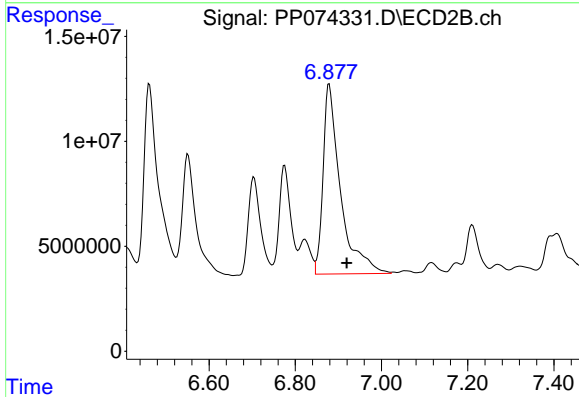
R.T.: 6.704 min
 Delta R.T.: -0.005 min
 Response: 92159491
 Conc: 294.72 ng/ml



#33 AR-1260-3

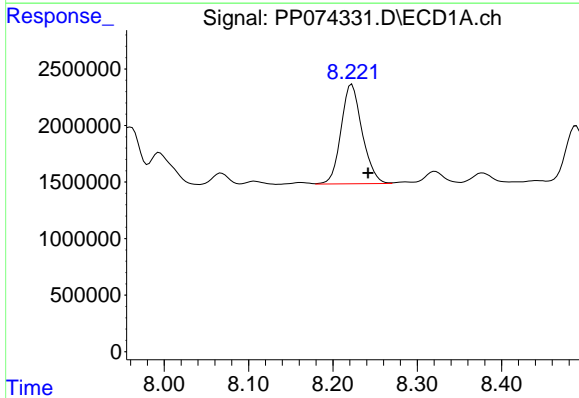
R.T.: 7.994 min
 Delta R.T.: -0.019 min
 Response: 5188459
 Conc: 97.35 ng/ml

Instrument :
 ECD_P
 ClientSampleId :
 AR1254CCC500



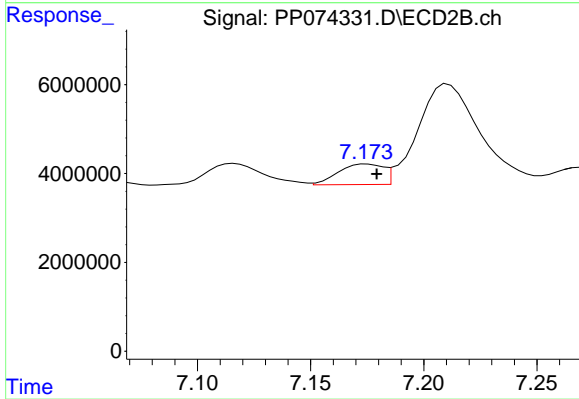
#33 AR-1260-3

R.T.: 6.879 min
 Delta R.T.: -0.041 min
 Response: 253316550
 Conc: 642.74 ng/ml



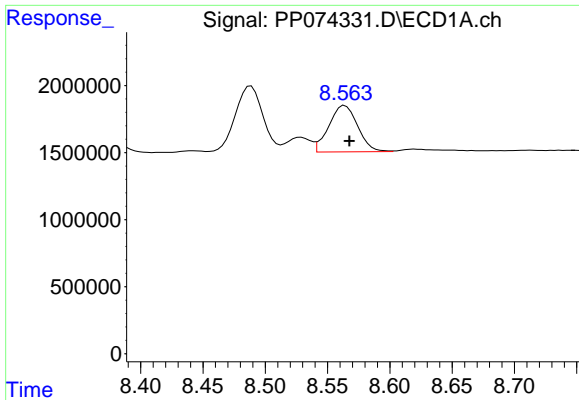
#34 AR-1260-4

R.T.: 8.223 min
 Delta R.T.: -0.019 min
 Response: 15274290
 Conc: 243.94 ng/ml



#34 AR-1260-4

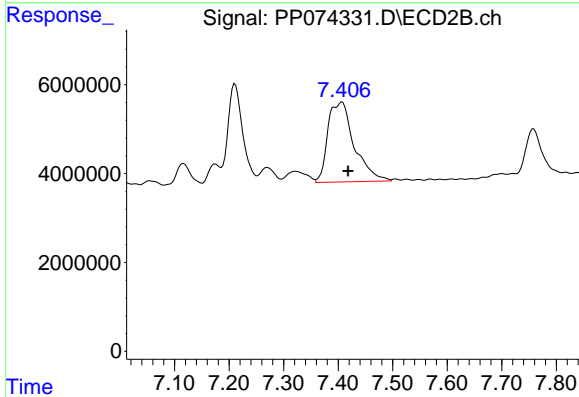
R.T.: 7.175 min
 Delta R.T.: -0.004 min
 Response: 6355355
 Conc: 21.84 ng/ml



#35 AR-1260-5

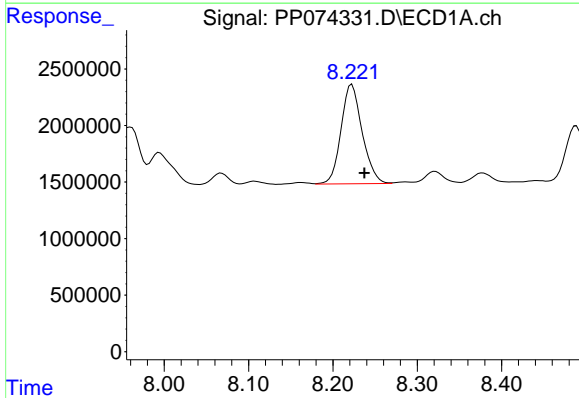
R.T.: 8.564 min
 Delta R.T.: -0.004 min
 Response: 5567306
 Conc: 49.14 ng/ml

Instrument :
 ECD_P
 ClientSampleId :
 AR1254CCC500



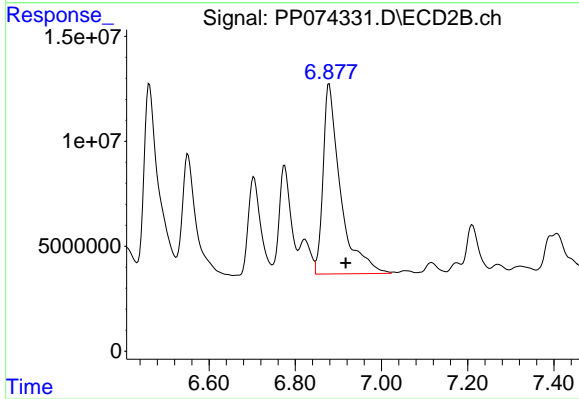
#35 AR-1260-5

R.T.: 7.407 min
 Delta R.T.: -0.011 min
 Response: 60447981
 Conc: 79.81 ng/ml



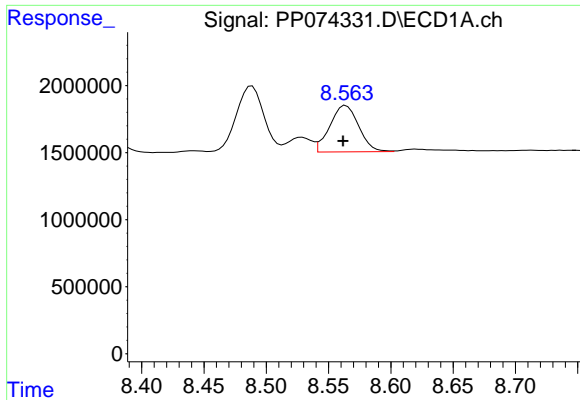
#36 AR-1262-1

R.T.: 8.223 min
 Delta R.T.: -0.015 min
 Response: 15274290
 Conc: 201.54 ng/ml



#36 AR-1262-1

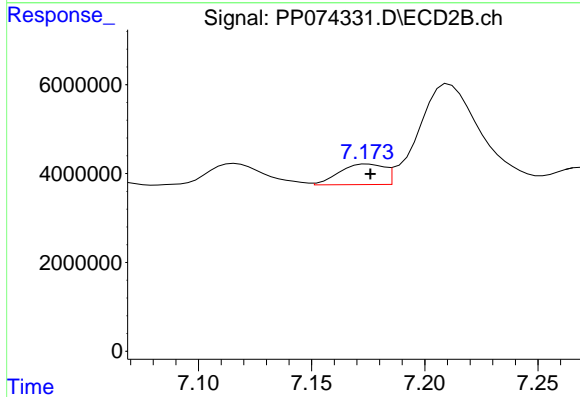
R.T.: 6.879 min
 Delta R.T.: -0.038 min
 Response: 253316550
 Conc: 449.83 ng/ml



#37 AR-1262-2

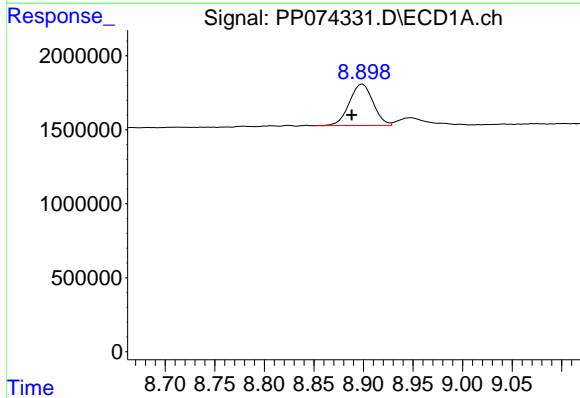
R.T.: 8.564 min
 Delta R.T.: 0.002 min
 Response: 5567306
 Conc: 42.68 ng/ml

Instrument :
 ECD_P
 ClientSampleId :
 AR1254CCC500



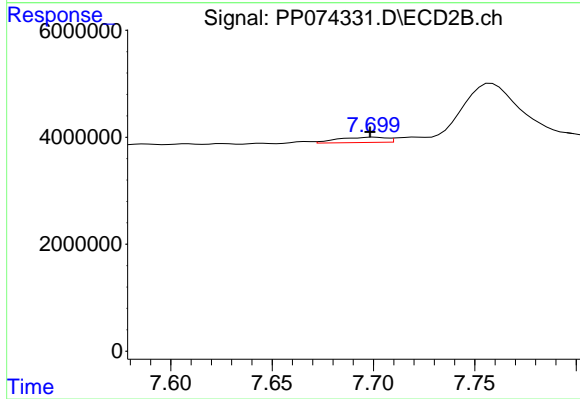
#37 AR-1262-2

R.T.: 7.175 min
 Delta R.T.: -0.001 min
 Response: 6355355
 Conc: 15.85 ng/ml



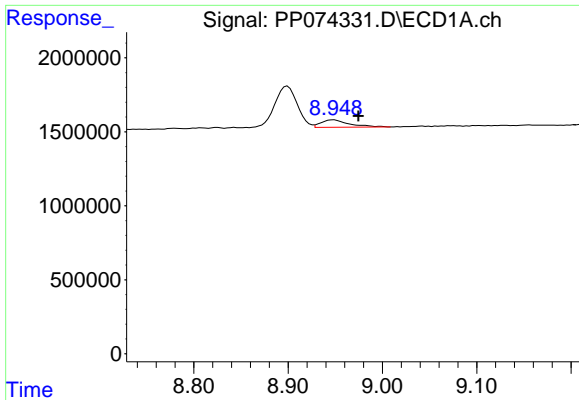
#38 AR-1262-3

R.T.: 8.899 min
 Delta R.T.: 0.011 min
 Response: 4655200
 Conc: 49.49 ng/ml



#38 AR-1262-3

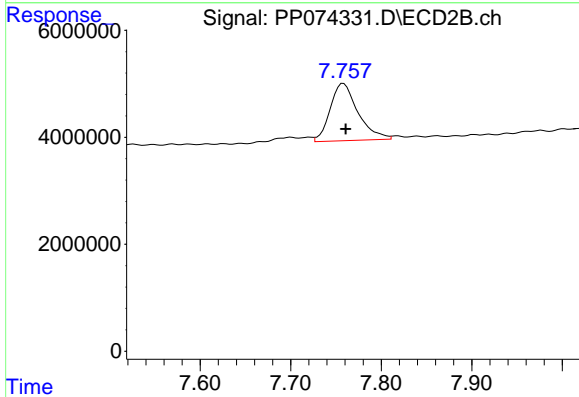
R.T.: 7.701 min
 Delta R.T.: 0.002 min
 Response: 1644414
 Conc: 4.57 ng/ml



#39 AR-1262-4

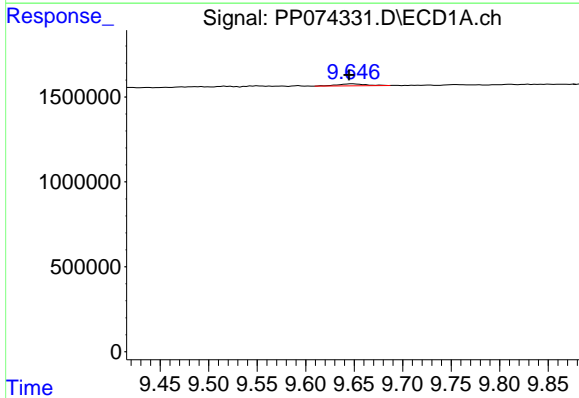
R.T.: 8.949 min
 Delta R.T.: -0.025 min
 Response: 1040053
 Conc: 14.28 ng/ml

Instrument :
 ECD_P
 ClientSampleId :
 AR1254CCC500



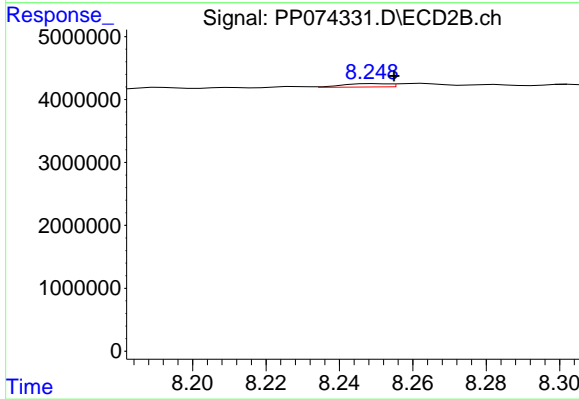
#39 AR-1262-4

R.T.: 7.758 min
 Delta R.T.: -0.003 min
 Response: 22877342
 Conc: 34.30 ng/ml



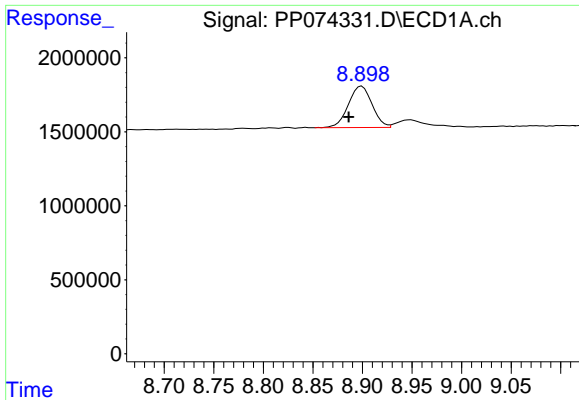
#40 AR-1262-5

R.T.: 9.648 min
 Delta R.T.: 0.003 min
 Response: 243975
 Conc: 4.79 ng/ml



#40 AR-1262-5

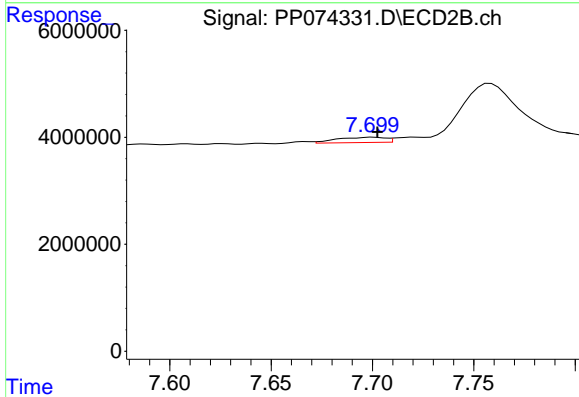
R.T.: 8.250 min
 Delta R.T.: -0.005 min
 Response: 470016
 Conc: 1.66 ng/ml



#41 AR-1268-1

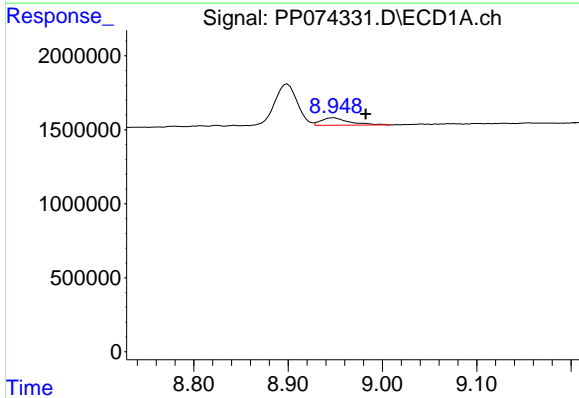
R.T.: 8.899 min
 Delta R.T.: 0.013 min
 Response: 4655200
 Conc: 29.91 ng/ml

Instrument :
 ECD_P
 ClientSampleId :
 AR1254CCC500



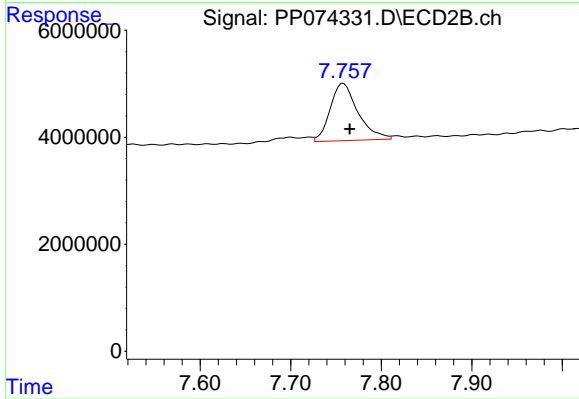
#41 AR-1268-1

R.T.: 7.701 min
 Delta R.T.: -0.002 min
 Response: 1644414
 Conc: 1.51 ng/ml



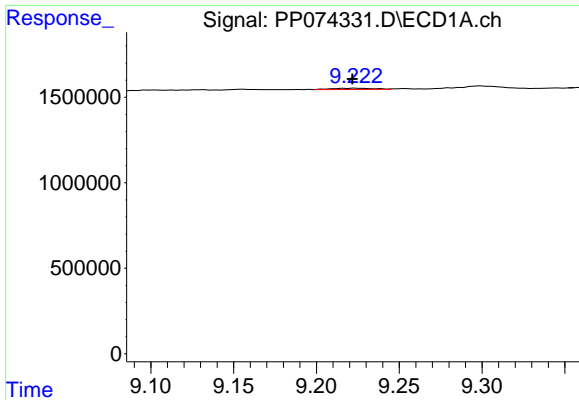
#42 AR-1268-2

R.T.: 8.949 min
 Delta R.T.: -0.033 min
 Response: 1040053
 Conc: 7.25 ng/ml



#42 AR-1268-2

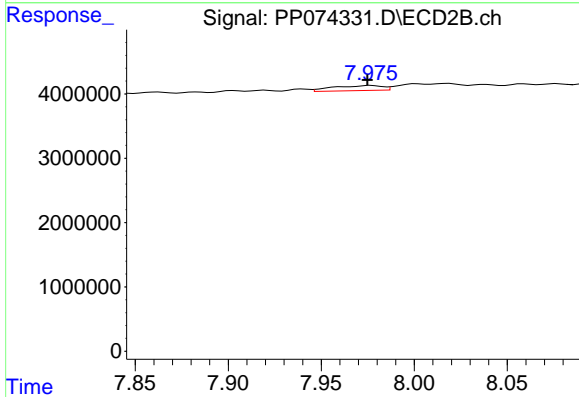
R.T.: 7.758 min
 Delta R.T.: -0.007 min
 Response: 22877342
 Conc: 21.56 ng/ml



#43 AR-1268-3

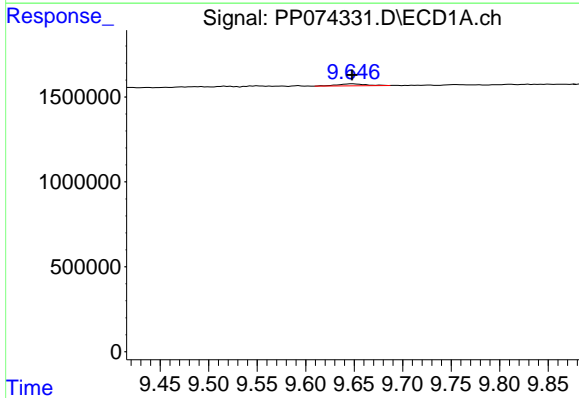
R.T.: 9.224 min
 Delta R.T.: 0.002 min
 Response: 128874
 Conc: 1.08 ng/ml

Instrument :
 ECD_P
 ClientSampleId :
 AR1254CCC500



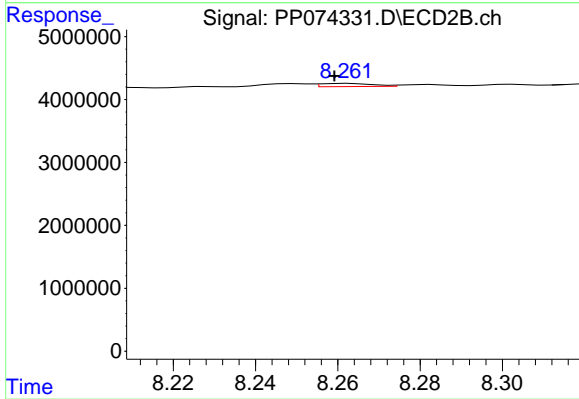
#43 AR-1268-3

R.T.: 7.977 min
 Delta R.T.: 0.002 min
 Response: 1469951
 Conc: 1.77 ng/ml



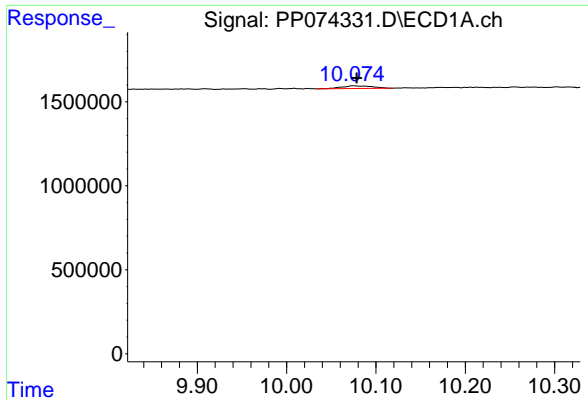
#44 AR-1268-4

R.T.: 9.648 min
 Delta R.T.: 0.000 min
 Response: 243975
 Conc: 4.15 ng/ml



#44 AR-1268-4

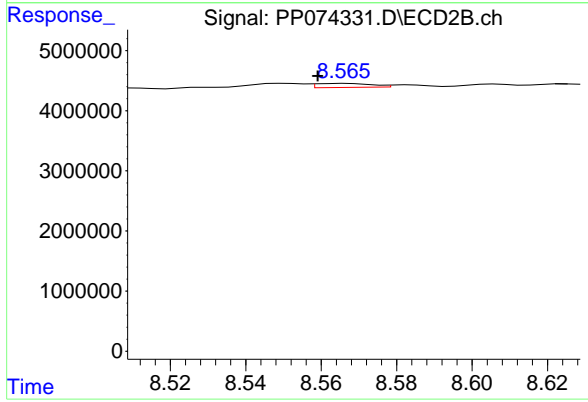
R.T.: 8.263 min
 Delta R.T.: 0.003 min
 Response: 451962
 Conc: 1.47 ng/ml



#45 AR-1268-5

R.T.: 10.075 min
Delta R.T.: -0.003 min
Response: 379061
Conc: 1.08 ng/ml

Instrument :
ECD_P
ClientSampleId :
AR1254CCC500



#45 AR-1268-5

R.T.: 8.566 min
Delta R.T.: 0.007 min
Response: 685621
Conc: 0.27 ng/ml