

Data Path : Z:\pestpcbsrv\HPCHEM1\ECD_P\Data\PP081225\
 Data File : PP074332.D
 Signal(s) : Signal #1: ECD1A.ch Signal #2: ECD2B.ch
 Acq On : 12 Aug 2025 22:02
 Operator : YP\AJ
 Sample : I.BLK
 Misc :
 ALS Vial : 2 Sample Multiplier: 1

Instrument :
 ECD_P
 ClientSampleId :
 I.BLK

Integration File signal 1: autoint1.e
 Integration File signal 2: autoint2.e
 Quant Time: Aug 13 01:57:53 2025
 Quant Method : Z:\pestpcbsrv\HPCHEM1\ECD_P\methods\PP080125.M
 Quant Title : GC EXTRACTABLES
 QLast Update : Mon Aug 04 11:01:49 2025
 Response via : Initial Calibration
 Integrator: ChemStation

Volume Inj. : 2 µl
 Signal #1 Phase : ZB-MR1 Signal #2 Phase: ZB-MR2
 Signal #1 Info : 30Mx0.32mmx 0.50µ Signal #2 Info : 30M x 0.32mm x 0.25µm

| Compound | RT#1 | RT#2 | Resp#1 | Resp#2 | ng/ml | ng/ml |
|-----------------------------|--------|--------|----------|----------|--------|----------|
| ----- | | | | | | |
| System Monitoring Compounds | | | | | | |
| 1) SA Tetrachlo... | 4.661 | 3.804 | 24650812 | 76186380 | 22.043 | 19.869 |
| 2) SA Decachlor... | 10.438 | 8.823 | 20451848 | 116.6E6 | 21.059 | 19.382 |
| Target Compounds | | | | | | |
| 3) L1 AR-1016-1 | 5.745f | 4.915 | 404375 | 119120 | 9.801 | 0.299 # |
| 4) L1 AR-1016-2 | 0.000 | 4.959 | 0 | 221614 | N.D. | 1.180 # |
| 5) L1 AR-1016-3 | 5.913 | 5.082 | 365903 | 291978 | 9.226 | 2.753 # |
| 6) L1 AR-1016-4 | 5.946f | 5.118 | 554653 | 203448 | 17.043 | 1.863 # |
| 7) L1 AR-1016-5 | 0.000 | 5.353 | 0 | 753448 | N.D. | 6.442 # |
| 8) L2 AR-1221-1 | 4.855 | 4.032 | 251416 | 127602 | 14.998 | 2.600 # |
| 9) L2 AR-1221-2 | 4.964 | 4.101 | 476063 | 960042 | 37.780 | 26.750 # |
| 10) L2 AR-1221-3 | 4.964f | 4.185 | 476063 | 132640 | 12.995 | 0.981 # |
| 11) L3 AR-1232-1 | 4.964f | 4.185 | 476063 | 132640 | 16.395 | 1.309 # |
| 12) L3 AR-1232-2 | 0.000 | 4.893 | 0 | 117526 | N.D. | 0.674 # |
| 13) L3 AR-1232-3 | 0.000 | 5.082 | 0 | 291978 | N.D. | 6.373 # |
| 14) L3 AR-1232-4 | 5.946f | 5.157 | 554653 | 390362 | 35.856 | 6.729 # |
| 15) L3 AR-1232-5 | 6.111 | 5.353 | 254883 | 753448 | 21.755 | 16.038 # |
| 16) L4 AR-1242-1 | 5.745f | 4.915 | 404375 | 119120 | 10.851 | 0.345 # |
| 17) L4 AR-1242-2 | 0.000 | 4.959 | 0 | 221614 | N.D. | 1.356 # |
| 18) L4 AR-1242-3 | 5.913 | 5.082 | 365903 | 291978 | 10.239 | 3.165 # |
| 19) L4 AR-1242-4 | 5.946f | 5.157 | 554653 | 390362 | 18.983 | 3.269 # |
| 20) L4 AR-1242-5 | 6.747 | 5.648f | 1381469 | 260795 | 38.851 | 1.744 # |
| 21) L5 AR-1248-1 | 5.745f | 4.893 | 404375 | 117526 | 14.434 | 0.549 # |
| 22) L5 AR-1248-2 | 6.111 | 5.118 | 254883 | 203448 | 6.331 | 1.391 # |
| 23) L5 AR-1248-3 | 0.000 | 5.157 | 0 | 390362 | N.D. | 2.277 # |
| 24) L5 AR-1248-4 | 6.658 | 5.353 | 1039146 | 753448 | 19.969 | 4.529 # |
| 25) L5 AR-1248-5 | 6.747 | 5.759 | 1381469 | 12734104 | 24.260 | 43.765 # |
| 26) L6 AR-1254-1 | 6.658 | 5.648f | 1039146 | 260795 | 19.740 | 0.712 # |
| 27) L6 AR-1254-2 | 6.878 | 5.828 | 210496 | 1062434 | 2.648 | 3.819 # |
| 28) L6 AR-1254-3 | 7.231 | 6.232 | 2035666 | 783444 | 23.314 | 1.601 # |
| 29) L6 AR-1254-4 | 7.523 | 6.455 | 342507 | 378314 | 5.368 | 1.029 # |
| 30) L6 AR-1254-5 | 7.935 | 6.873 | 289731 | 306457 | 3.571 | 0.796 # |
| 31) L7 AR-1260-1 | 7.405 | 6.577 | 129880 | 378683 | 2.305 | 0.937 # |
| 32) L7 AR-1260-2 | 7.657 | 6.714 | 371254 | 384905 | 5.447 | 1.231 # |
| 33) L7 AR-1260-3 | 8.014 | 6.931 | 122439 | 275931 | 2.297 | 0.700 # |
| 34) L7 AR-1260-4 | 8.230 | 7.184 | 84138 | 265265 | 1.344 | 0.912 # |
| 35) L7 AR-1260-5 | 8.555 | 7.428 | 125300 | 252275 | 1.106 | 0.333 # |
| 36) L8 AR-1262-1 | 8.230 | 6.908 | 84138 | 152557 | 1.110 | 0.271 # |
| 37) L8 AR-1262-2 | 8.555 | 7.184 | 125300 | 265265 | 0.961 | 0.661 # |
| 38) L8 AR-1262-3 | 8.904 | 7.718 | 53878 | 4213192 | 0.573 | 11.721 # |
| 39) L8 AR-1262-4 | 8.984 | 7.759 | 61998 | 1536106 | 0.851 | 2.303 # |
| 40) L8 AR-1262-5 | 9.647 | 8.249 | 83157 | 161086 | 1.633 | 0.569 # |
| 41) L9 AR-1268-1 | 8.904 | 7.718 | 53878 | 4213192 | 0.346 | 3.864 # |

Data Path : Z:\pestpcbsrv\HPCHEM1\ECD_P\Data\PP081225\
 Data File : PP074332.D
 Signal(s) : Signal #1: ECD1A.ch Signal #2: ECD2B.ch
 Acq On : 12 Aug 2025 22:02
 Operator : YP\AJ
 Sample : I.BLK
 Misc :
 ALS Vial : 2 Sample Multiplier: 1

Instrument :
 ECD_P
 ClientSampleId :
 I.BLK

Integration File signal 1: autoint1.e
 Integration File signal 2: autoint2.e
 Quant Time: Aug 13 01:57:53 2025
 Quant Method : Z:\pestpcbsrv\HPCHEM1\ECD_P\methods\PP080125.M
 Quant Title : GC EXTRACTABLES
 QLast Update : Mon Aug 04 11:01:49 2025
 Response via : Initial Calibration
 Integrator: ChemStation

Volume Inj. : 2 µl
 Signal #1 Phase : ZB-MR1 Signal #2 Phase: ZB-MR2
 Signal #1 Info : 30Mx0.32mmx 0.50µ Signal #2 Info : 30M x 0.32mm x 0.25µm

| | Compound | RT#1 | RT#2 | Resp#1 | Resp#2 | ng/ml | ng/ml |
|-----|--------------|--------|-------|--------|---------|-------|---------|
| 42) | L9 AR-1268-2 | 8.984 | 7.759 | 61998 | 1536106 | 0.432 | 1.447 # |
| 43) | L9 AR-1268-3 | 9.218 | 7.983 | 82186 | 736811 | 0.688 | 0.886 # |
| 44) | L9 AR-1268-4 | 9.647 | 8.249 | 83157 | 161086 | 1.414 | 0.523 # |
| 45) | L9 AR-1268-5 | 10.082 | 8.554 | 155426 | 399301 | 0.442 | 0.157 # |

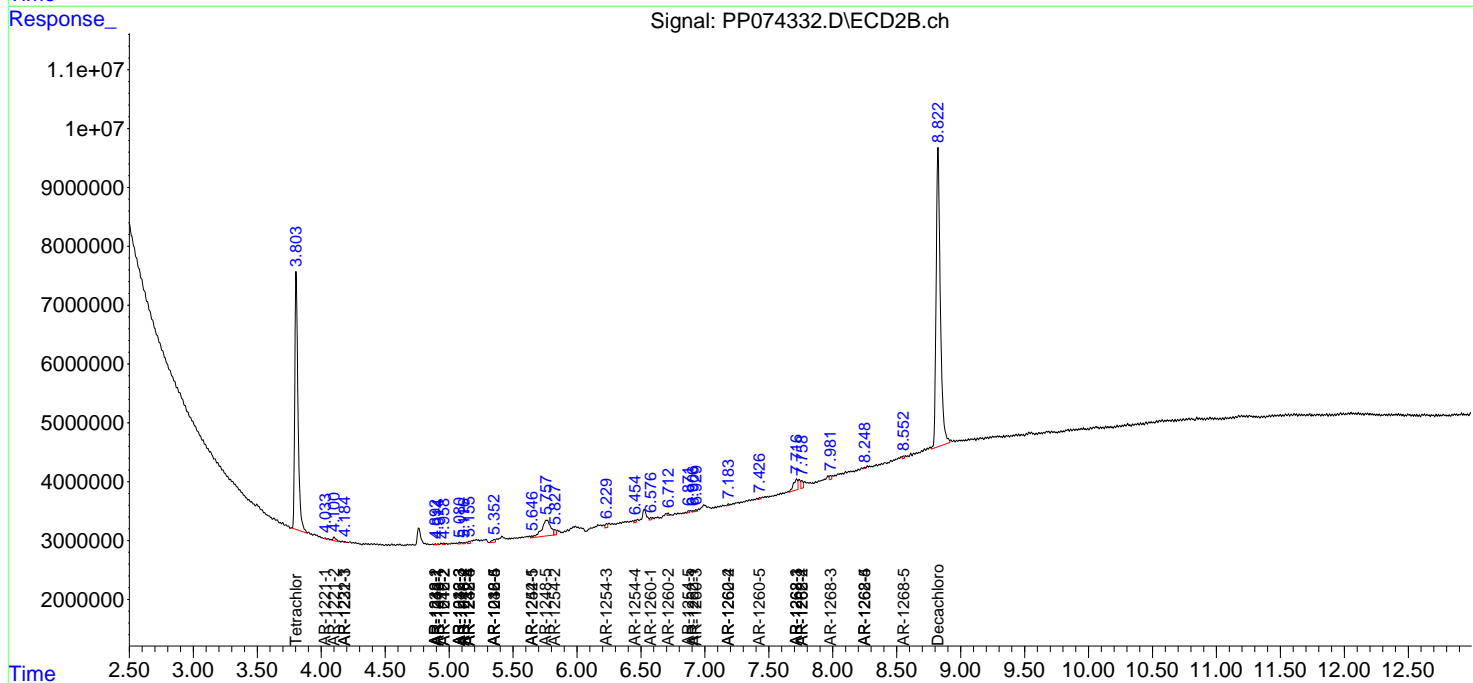
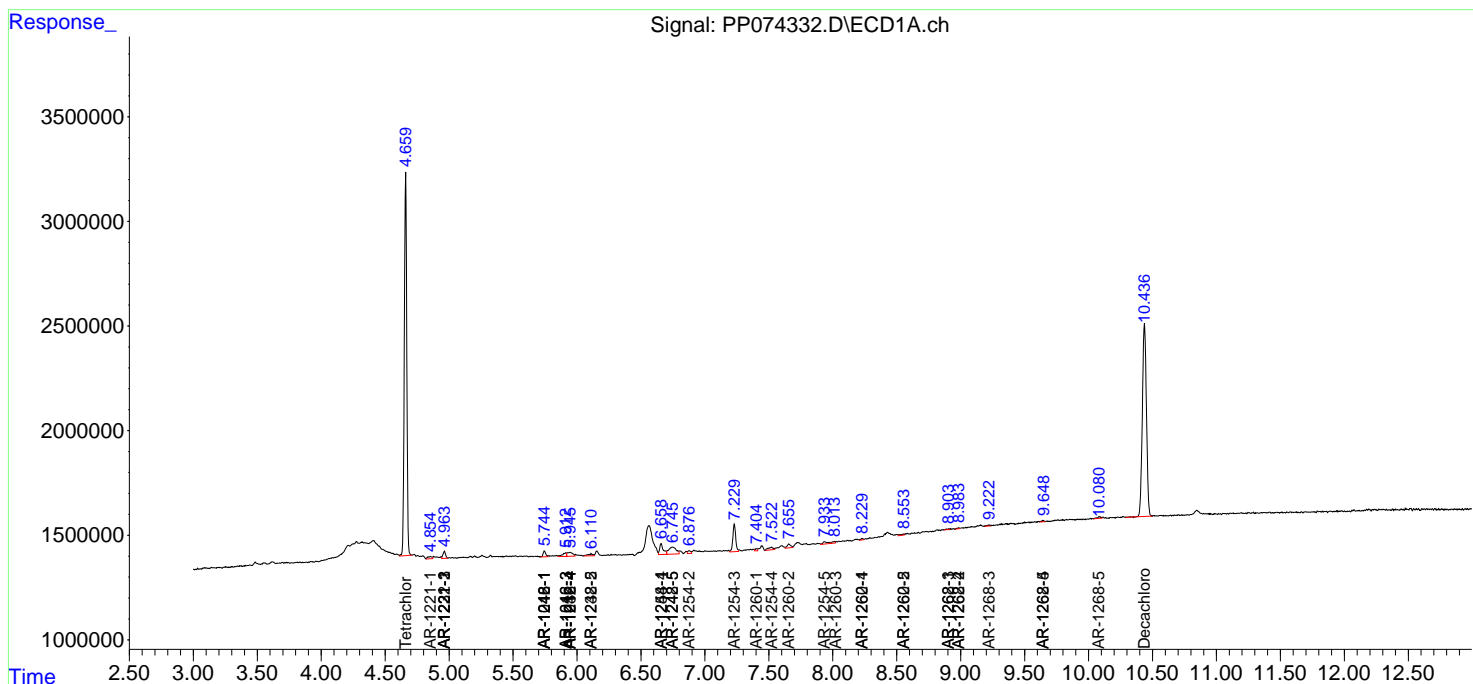
(f)=RT Delta > 1/2 Window (#)=Amounts differ by > 25% (m)=manual int.

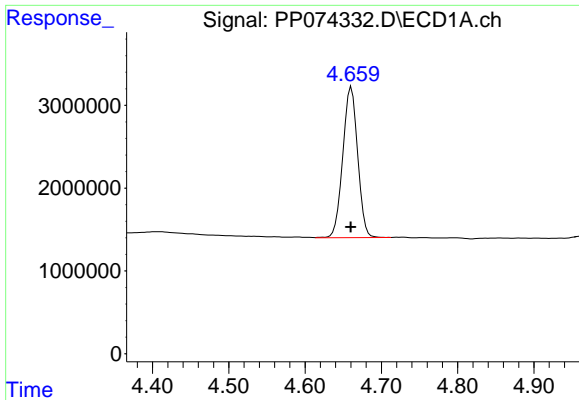
Data Path : Z:\pestpcbsrv\HPCHEM1\ECD_P\Data\PP081225\
 Data File : PP074332.D
 Signal(s) : Signal #1: ECD1A.ch Signal #2: ECD2B.ch
 Acq On : 12 Aug 2025 22:02
 Operator : YP\AJ
 Sample : I.BLK
 Misc :
 ALS Vial : 2 Sample Multiplier: 1

Instrument :
 ECD_P
 ClientSampleId :
 I.BLK

Integration File signal 1: autoint1.e
 Integration File signal 2: autoint2.e
 Quant Time: Aug 13 01:57:53 2025
 Quant Method : Z:\pestpcbsrv\HPCHEM1\ECD_P\methods\PP080125.M
 Quant Title : GC EXTRACTABLES
 QLast Update : Mon Aug 04 11:01:49 2025
 Response via : Initial Calibration
 Integrator: ChemStation

Volume Inj. : 2 µl
 Signal #1 Phase : ZB-MR1 Signal #2 Phase: ZB-MR2
 Signal #1 Info : 30Mx0.32mmx 0.50µ Signal #2 Info : 30M x 0.32mm x 0.25µm

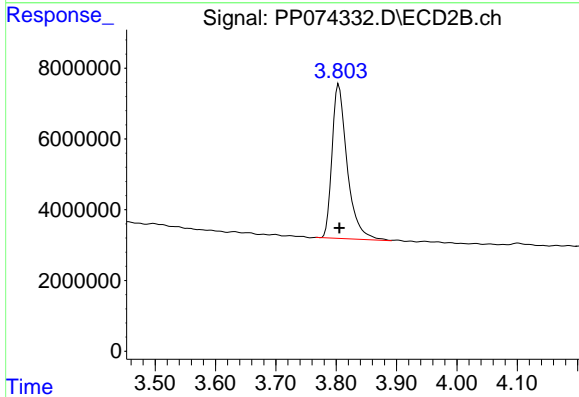




#1 Tetrachloro-m-xylene

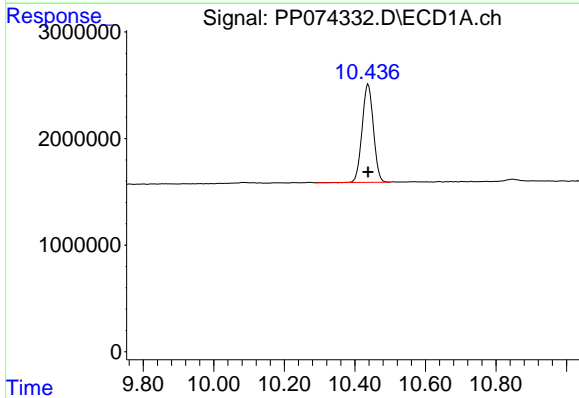
R.T.: 4.661 min
 Delta R.T.: 0.000 min
 Response: 24650812
 Conc: 22.04 ng/ml

Instrument :
 ECD_P
 ClientSampleId :
 I.BLK



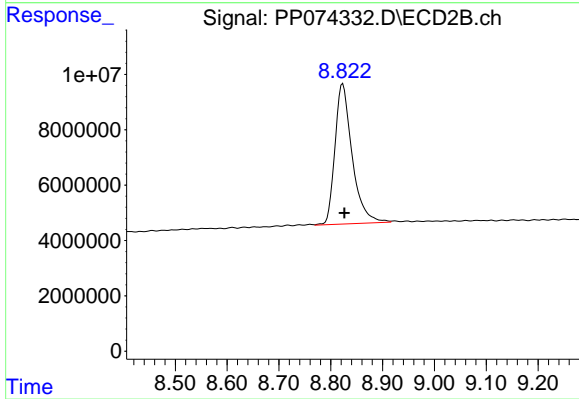
#1 Tetrachloro-m-xylene

R.T.: 3.804 min
 Delta R.T.: -0.001 min
 Response: 76186380
 Conc: 19.87 ng/ml



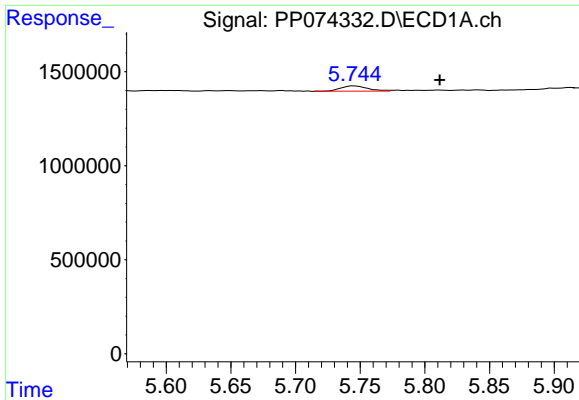
#2 Decachlorobiphenyl

R.T.: 10.438 min
 Delta R.T.: 0.000 min
 Response: 20451848
 Conc: 21.06 ng/ml



#2 Decachlorobiphenyl

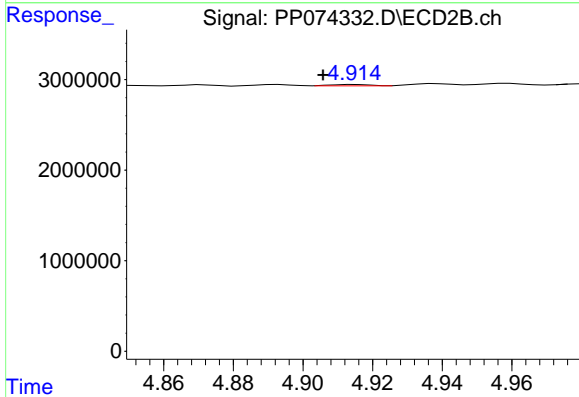
R.T.: 8.823 min
 Delta R.T.: -0.003 min
 Response: 116554926
 Conc: 19.38 ng/ml



#3 AR-1016-1

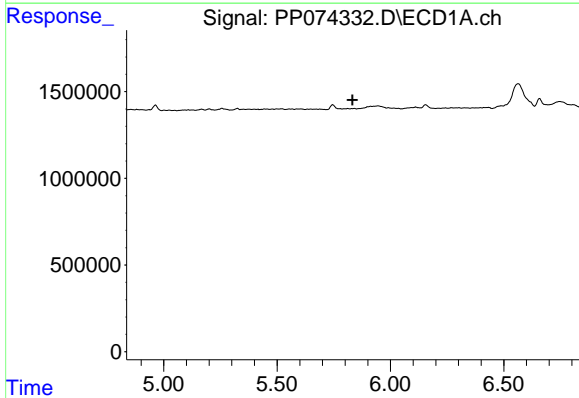
R.T.: 5.745 min
 Delta R.T.: -0.066 min
 Response: 404375
 Conc: 9.80 ng/ml

Instrument :
 ECD_P
 ClientSampleId :
 I.BLK



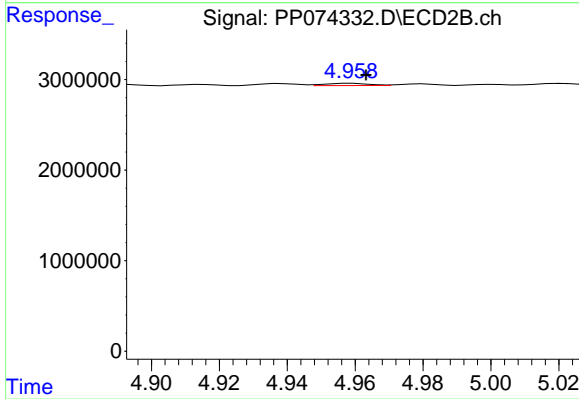
#3 AR-1016-1

R.T.: 4.915 min
 Delta R.T.: 0.010 min
 Response: 119120
 Conc: 0.30 ng/ml



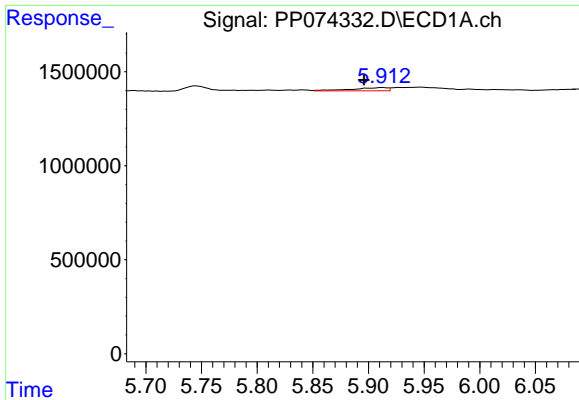
#4 AR-1016-2

R.T.: 0.000 min
 Exp R.T. : 5.833 min
 Response: 0
 Conc: N.D.



#4 AR-1016-2

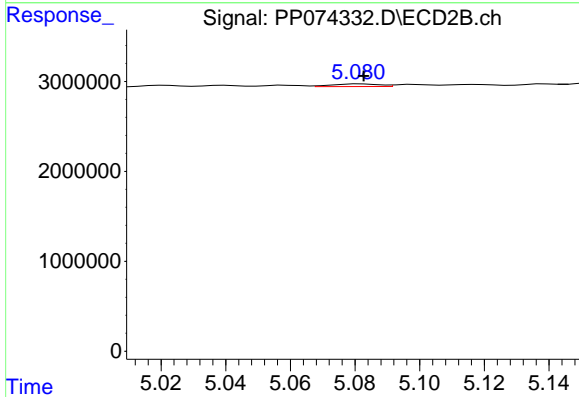
R.T.: 4.959 min
 Delta R.T.: -0.004 min
 Response: 221614
 Conc: 1.18 ng/ml



#5 AR-1016-3

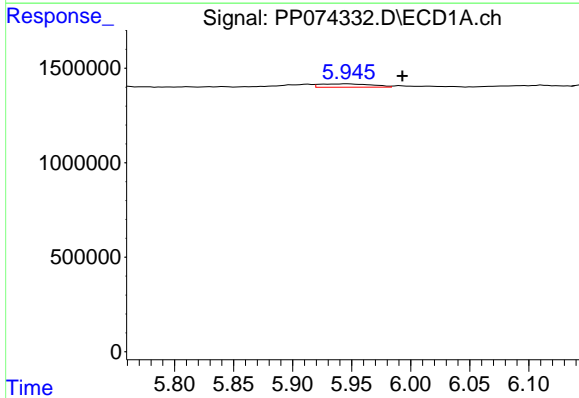
R.T.: 5.913 min
 Delta R.T.: 0.017 min
 Response: 365903
 Conc: 9.23 ng/ml

Instrument :
 ECD_P
 ClientSampleId :
 I.BLK



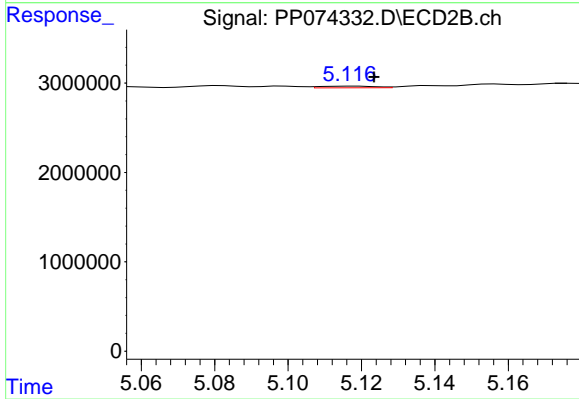
#5 AR-1016-3

R.T.: 5.082 min
 Delta R.T.: 0.000 min
 Response: 291978
 Conc: 2.75 ng/ml



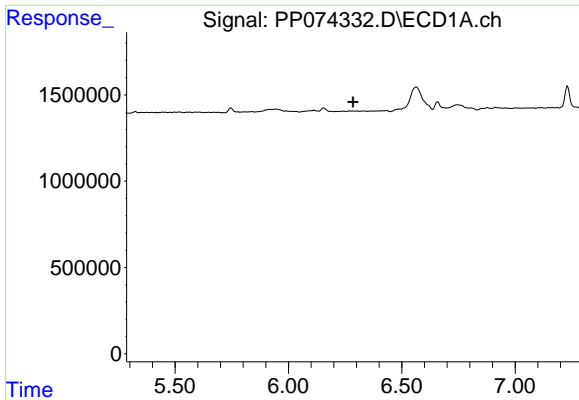
#6 AR-1016-4

R.T.: 5.946 min
 Delta R.T.: -0.047 min
 Response: 554653
 Conc: 17.04 ng/ml



#6 AR-1016-4

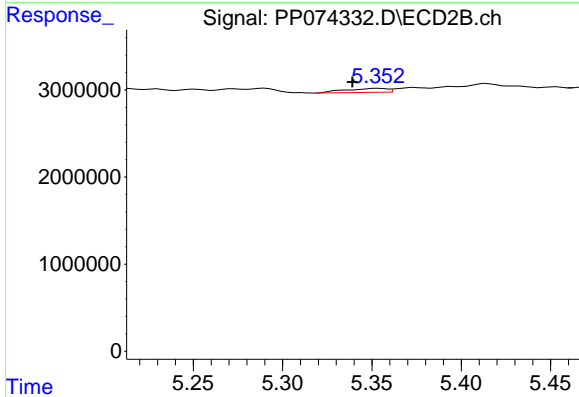
R.T.: 5.118 min
 Delta R.T.: -0.006 min
 Response: 203448
 Conc: 1.86 ng/ml



#7 AR-1016-5

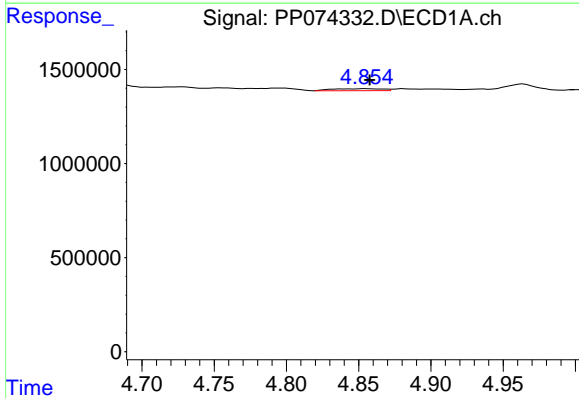
R.T.: 0.000 min
 Exp R.T.: 6.286 min
 Response: 0
 Conc: N.D.

Instrument :
 ECD_P
 ClientSampleId :
 I.BLK



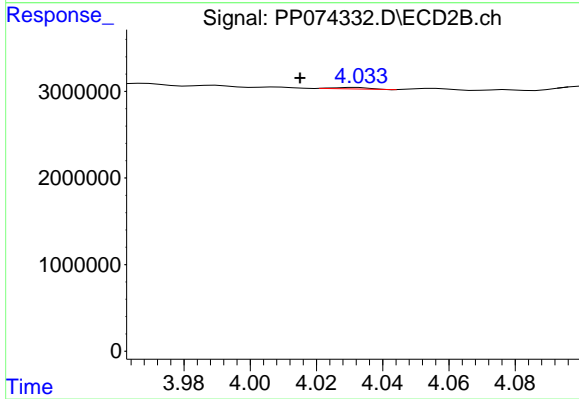
#7 AR-1016-5

R.T.: 5.353 min
 Delta R.T.: 0.014 min
 Response: 753448
 Conc: 6.44 ng/ml



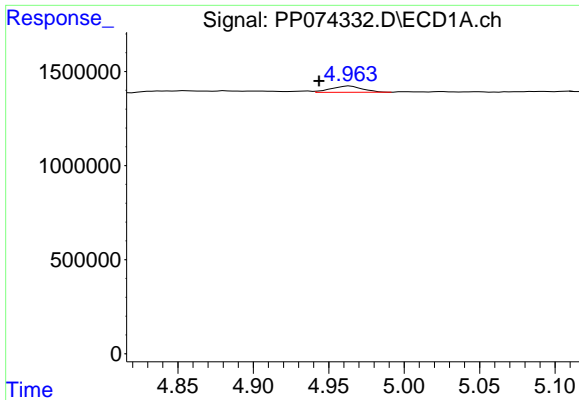
#8 AR-1221-1

R.T.: 4.855 min
 Delta R.T.: -0.002 min
 Response: 251416
 Conc: 15.00 ng/ml



#8 AR-1221-1

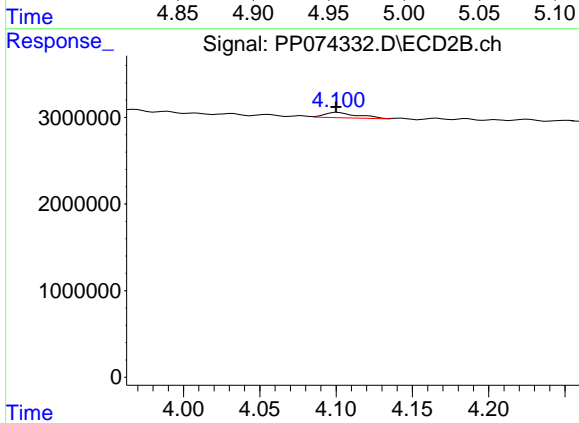
R.T.: 4.032 min
 Delta R.T.: 0.017 min
 Response: 127602
 Conc: 2.60 ng/ml



#9 AR-1221-2

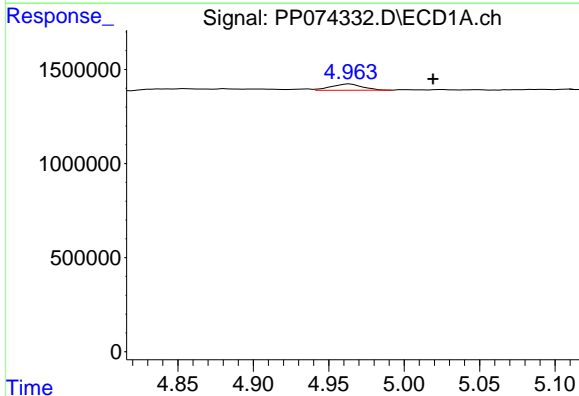
R.T.: 4.964 min
 Delta R.T.: 0.020 min
 Response: 476063
 Conc: 37.78 ng/ml

Instrument :
 ECD_P
 ClientSampleId :
 I.BLK



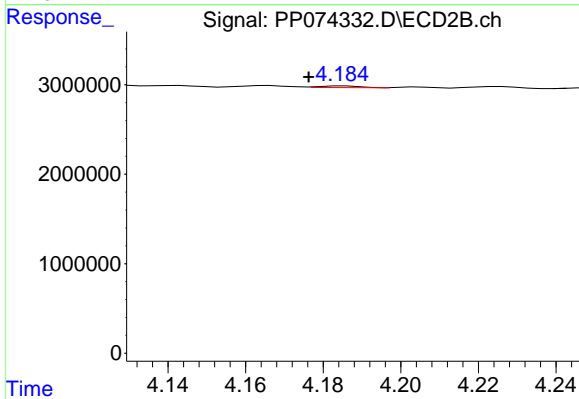
#9 AR-1221-2

R.T.: 4.101 min
 Delta R.T.: 0.001 min
 Response: 960042
 Conc: 26.75 ng/ml



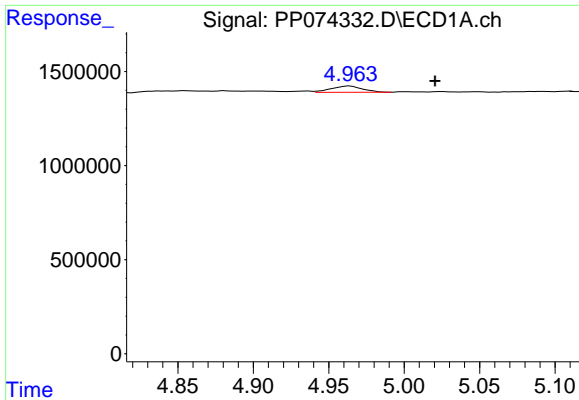
#10 AR-1221-3

R.T.: 4.964 min
 Delta R.T.: -0.055 min
 Response: 476063
 Conc: 12.99 ng/ml



#10 AR-1221-3

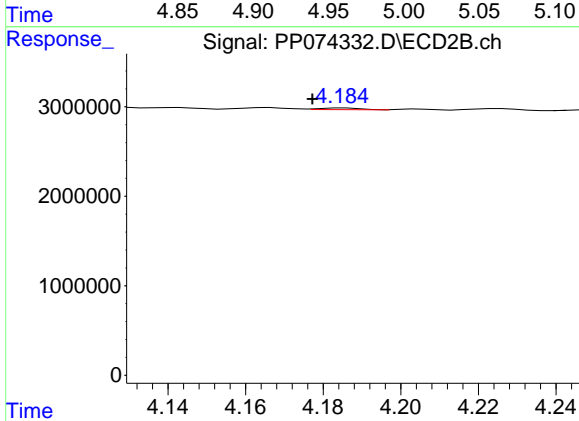
R.T.: 4.185 min
 Delta R.T.: 0.009 min
 Response: 132640
 Conc: 0.98 ng/ml



#11 AR-1232-1

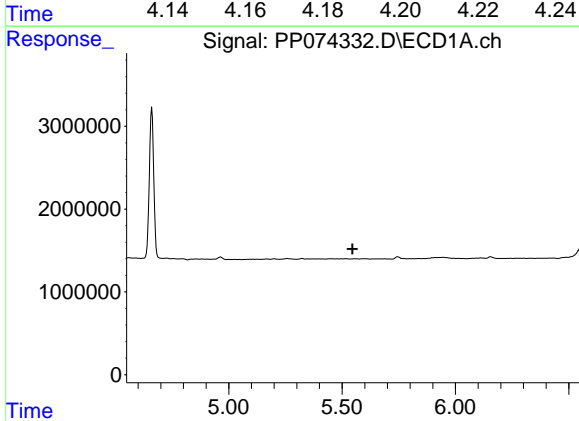
R.T.: 4.964 min
 Delta R.T.: -0.056 min
 Response: 476063
 Conc: 16.39 ng/ml

Instrument :
 ECD_P
 ClientSampleId :
 I.BLK



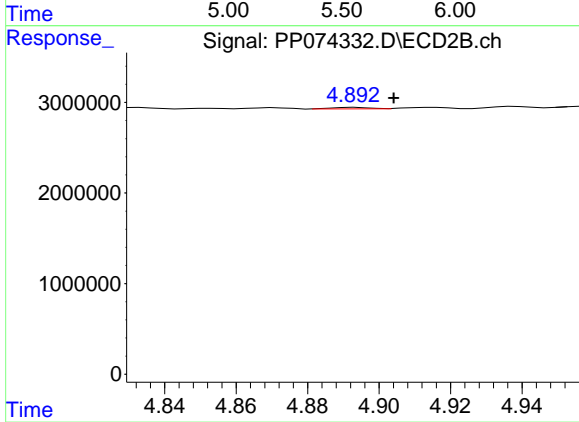
#11 AR-1232-1

R.T.: 4.185 min
 Delta R.T.: 0.008 min
 Response: 132640
 Conc: 1.31 ng/ml



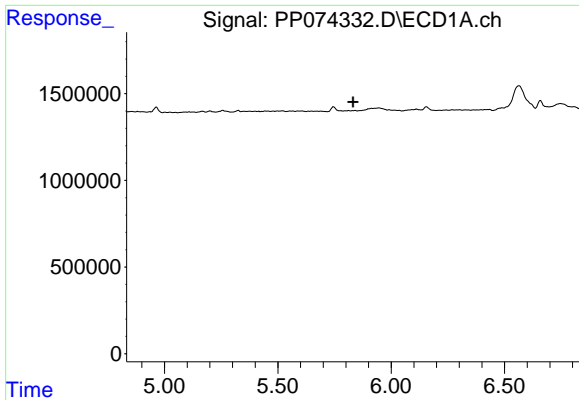
#12 AR-1232-2

R.T.: 0.000 min
 Exp R.T. : 5.546 min
 Response: 0
 Conc: N.D.



#12 AR-1232-2

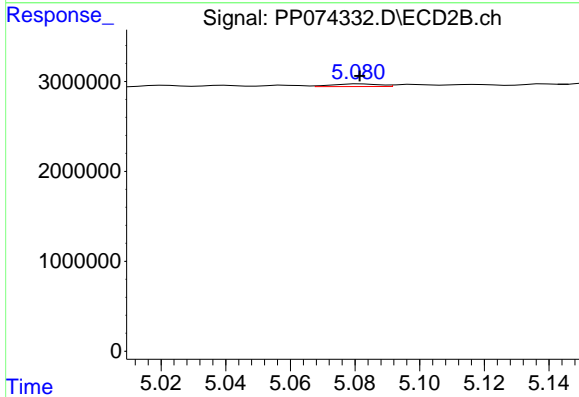
R.T.: 4.893 min
 Delta R.T.: -0.011 min
 Response: 117526
 Conc: 0.67 ng/ml



#13 AR-1232-3

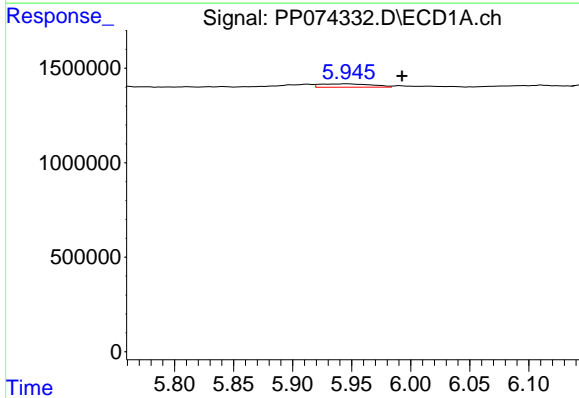
R.T.: 0.000 min
 Exp R.T.: 5.832 min
 Response: 0
 Conc: N.D.

Instrument :
 ECD_P
 ClientSampleId :
 I.BLK



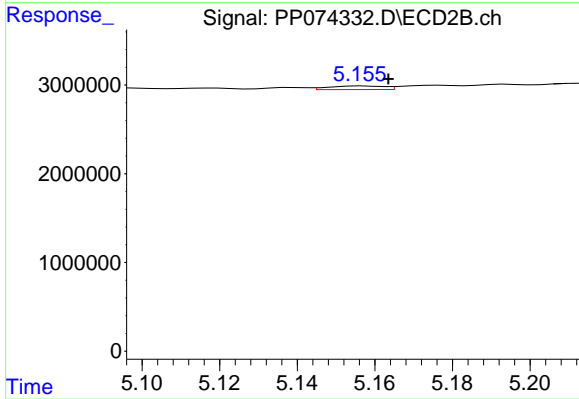
#13 AR-1232-3

R.T.: 5.082 min
 Delta R.T.: 0.000 min
 Response: 291978
 Conc: 6.37 ng/ml



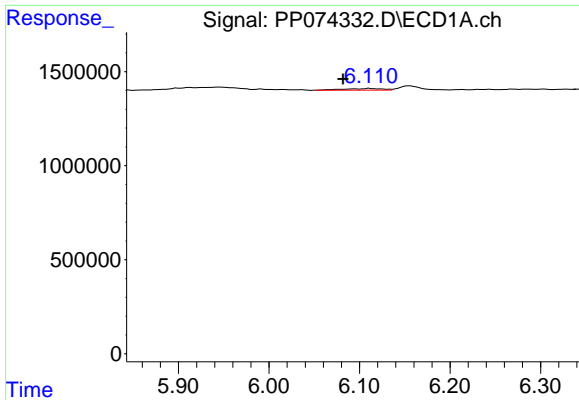
#14 AR-1232-4

R.T.: 5.946 min
 Delta R.T.: -0.046 min
 Response: 554653
 Conc: 35.86 ng/ml



#14 AR-1232-4

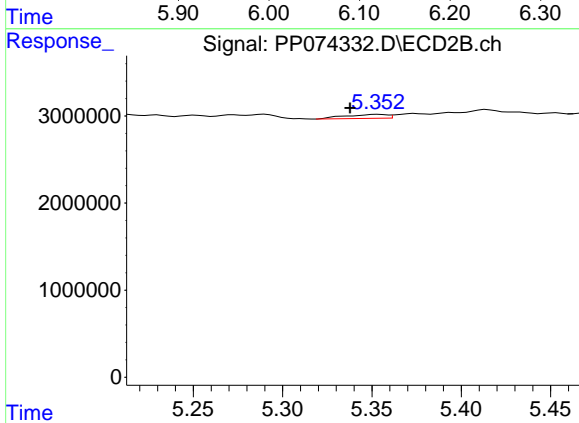
R.T.: 5.157 min
 Delta R.T.: -0.007 min
 Response: 390362
 Conc: 6.73 ng/ml



#15 AR-1232-5

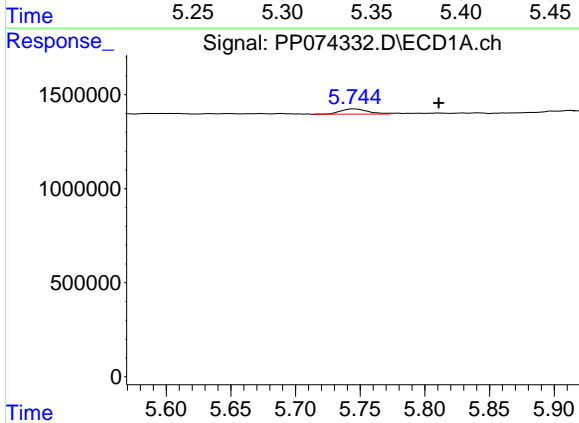
R.T.: 6.111 min
 Delta R.T.: 0.029 min
 Response: 254883
 Conc: 21.76 ng/ml

Instrument :
 ECD_P
 ClientSampleId :
 I.BLK



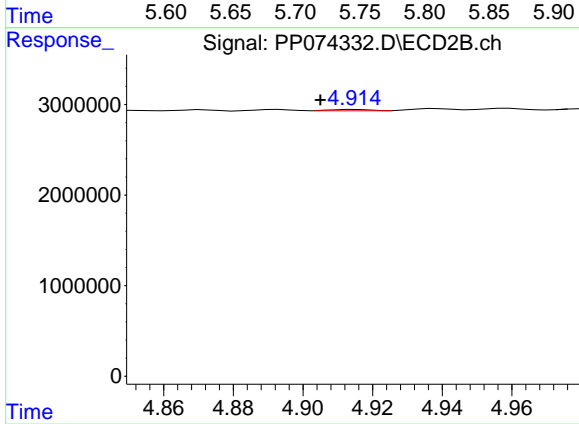
#15 AR-1232-5

R.T.: 5.353 min
 Delta R.T.: 0.016 min
 Response: 753448
 Conc: 16.04 ng/ml



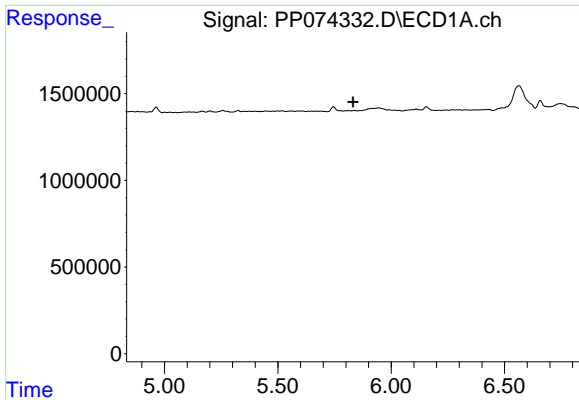
#16 AR-1242-1

R.T.: 5.745 min
 Delta R.T.: -0.066 min
 Response: 404375
 Conc: 10.85 ng/ml



#16 AR-1242-1

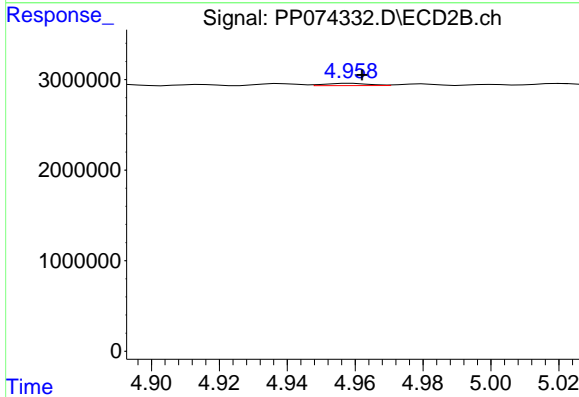
R.T.: 4.915 min
 Delta R.T.: 0.010 min
 Response: 119120
 Conc: 0.35 ng/ml



#17 AR-1242-2

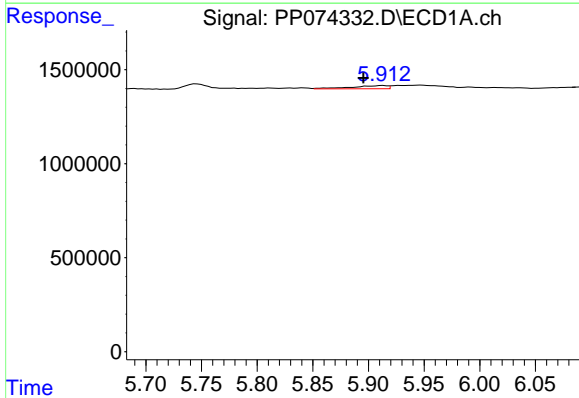
R.T.: 0.000 min
 Exp R.T.: 5.832 min
 Response: 0
 Conc: N.D.

Instrument :
 ECD_P
 ClientSampleId :
 I.BLK



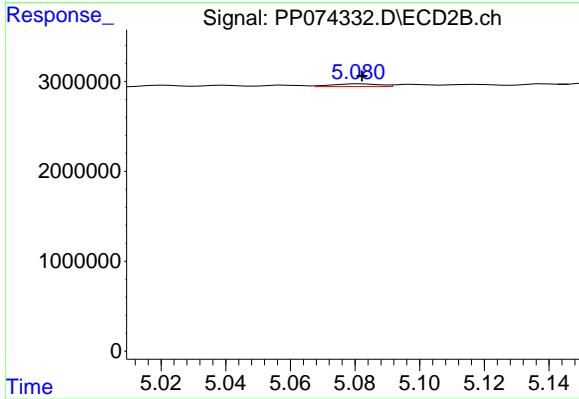
#17 AR-1242-2

R.T.: 4.959 min
 Delta R.T.: -0.003 min
 Response: 221614
 Conc: 1.36 ng/ml



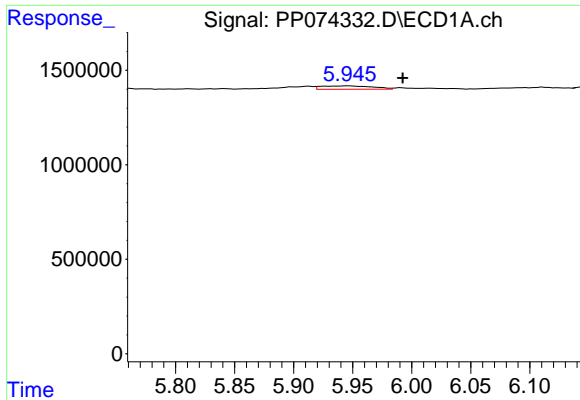
#18 AR-1242-3

R.T.: 5.913 min
 Delta R.T.: 0.018 min
 Response: 365903
 Conc: 10.24 ng/ml



#18 AR-1242-3

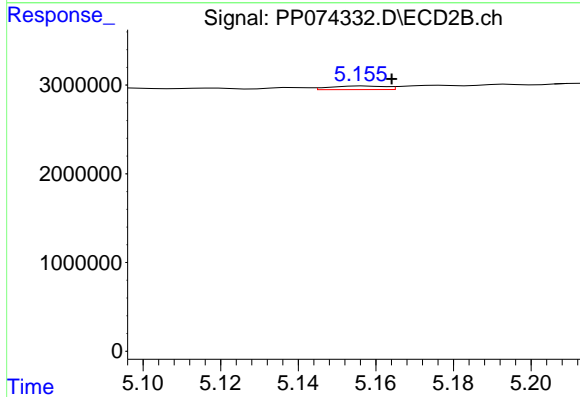
R.T.: 5.082 min
 Delta R.T.: 0.000 min
 Response: 291978
 Conc: 3.17 ng/ml



#19 AR-1242-4

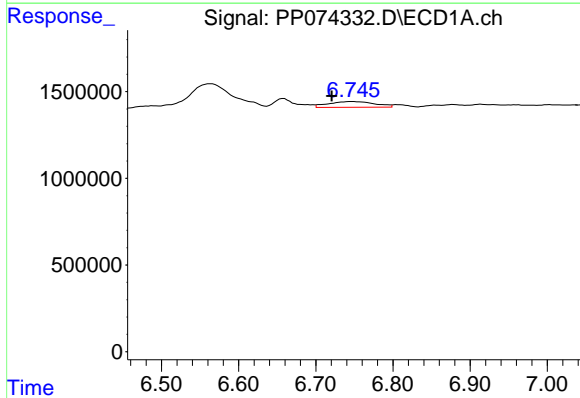
R.T.: 5.946 min
 Delta R.T.: -0.046 min
 Response: 554653
 Conc: 18.98 ng/ml

Instrument :
 ECD_P
 ClientSampleId :
 I.BLK



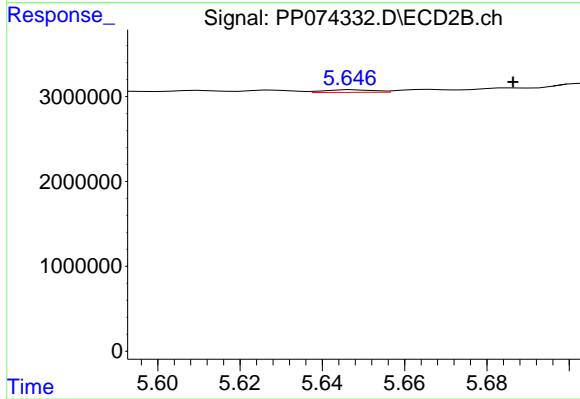
#19 AR-1242-4

R.T.: 5.157 min
 Delta R.T.: -0.007 min
 Response: 390362
 Conc: 3.27 ng/ml



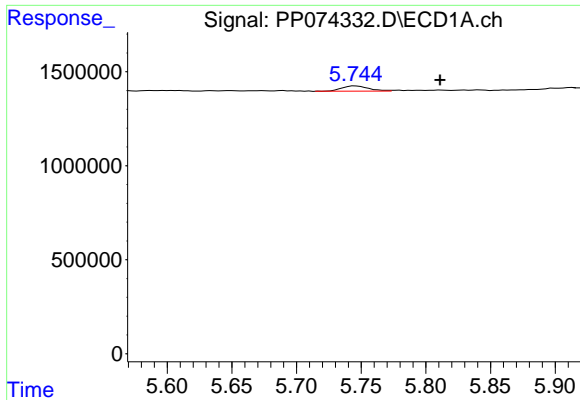
#20 AR-1242-5

R.T.: 6.747 min
 Delta R.T.: 0.026 min
 Response: 1381469
 Conc: 38.85 ng/ml



#20 AR-1242-5

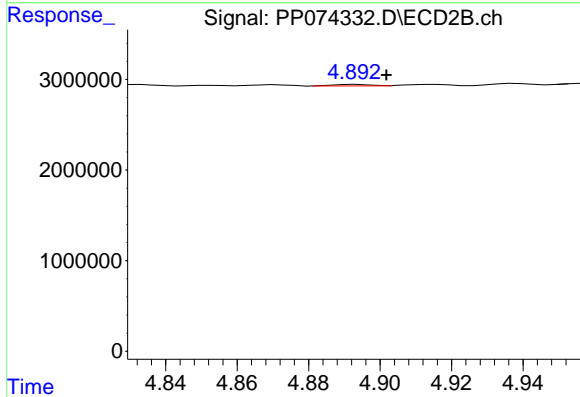
R.T.: 5.648 min
 Delta R.T.: -0.039 min
 Response: 260795
 Conc: 1.74 ng/ml



#21 AR-1248-1

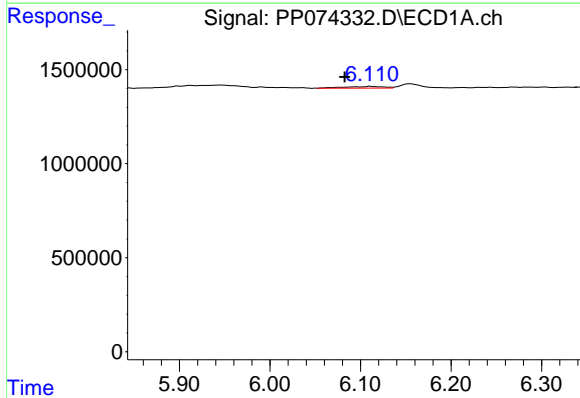
R.T.: 5.745 min
 Delta R.T.: -0.066 min
 Response: 404375
 Conc: 14.43 ng/ml

Instrument :
 ECD_P
 ClientSampleId :
 I.BLK



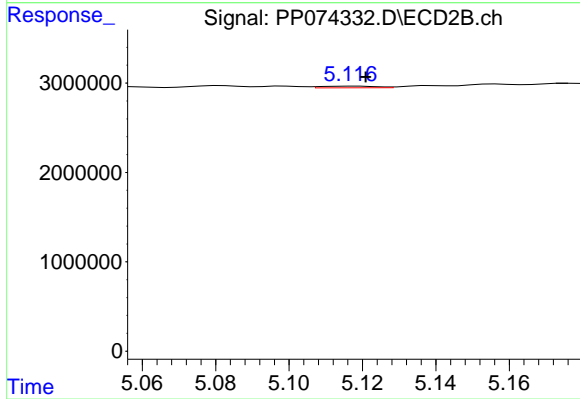
#21 AR-1248-1

R.T.: 4.893 min
 Delta R.T.: -0.009 min
 Response: 117526
 Conc: 0.55 ng/ml



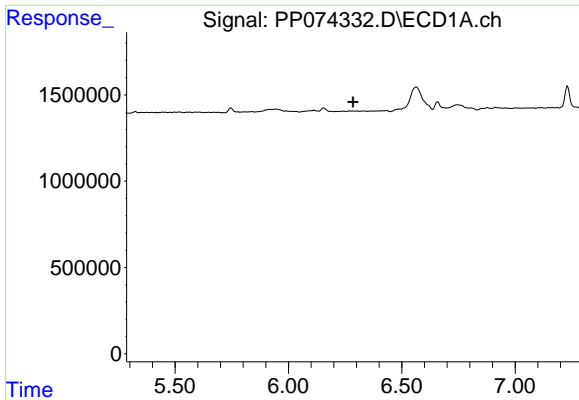
#22 AR-1248-2

R.T.: 6.111 min
 Delta R.T.: 0.029 min
 Response: 254883
 Conc: 6.33 ng/ml



#22 AR-1248-2

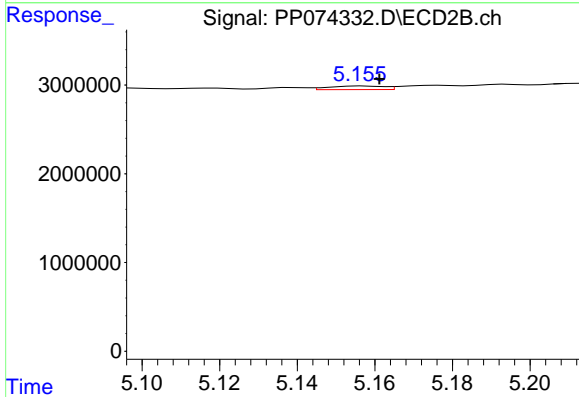
R.T.: 5.118 min
 Delta R.T.: -0.003 min
 Response: 203448
 Conc: 1.39 ng/ml



#23 AR-1248-3

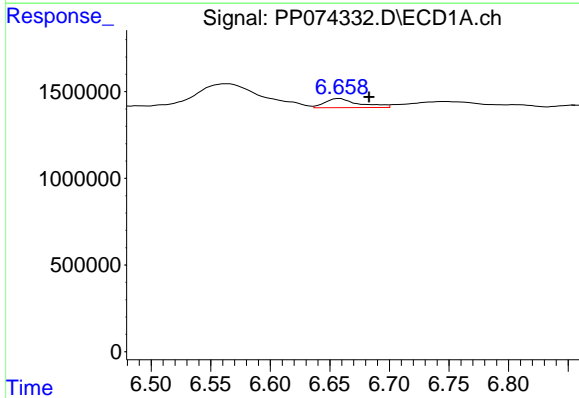
R.T.: 0.000 min
 Exp R.T.: 6.286 min
 Response: 0
 Conc: N.D.

Instrument :
 ECD_P
 ClientSampleId :
 I.BLK



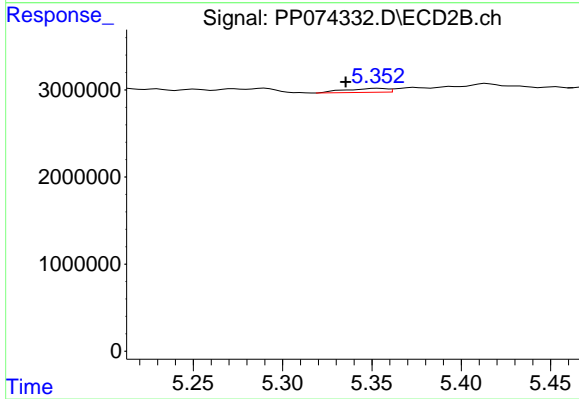
#23 AR-1248-3

R.T.: 5.157 min
 Delta R.T.: -0.004 min
 Response: 390362
 Conc: 2.28 ng/ml



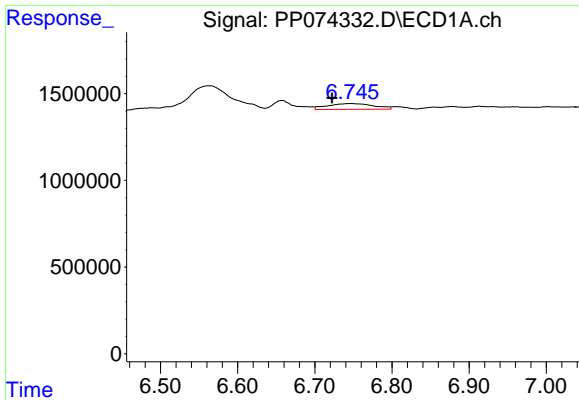
#24 AR-1248-4

R.T.: 6.658 min
 Delta R.T.: -0.024 min
 Response: 1039146
 Conc: 19.97 ng/ml



#24 AR-1248-4

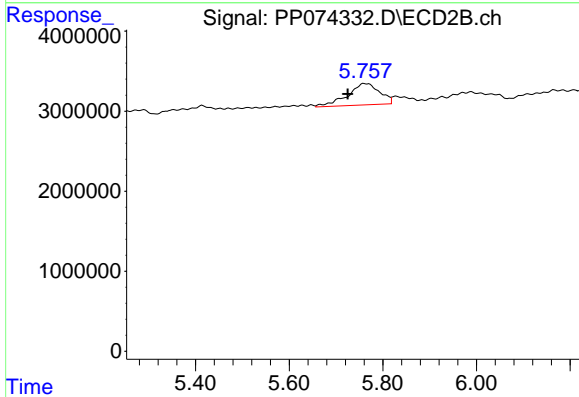
R.T.: 5.353 min
 Delta R.T.: 0.018 min
 Response: 753448
 Conc: 4.53 ng/ml



#25 AR-1248-5

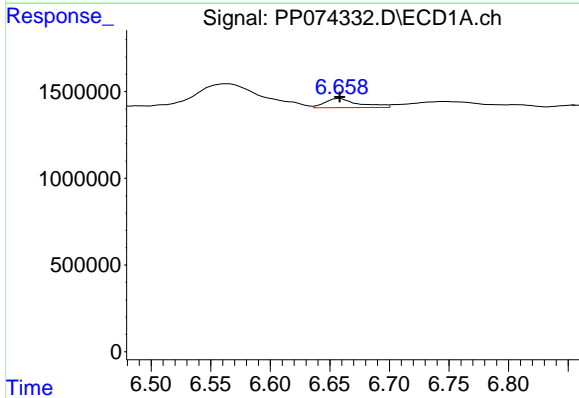
R.T.: 6.747 min
 Delta R.T.: 0.025 min
 Response: 1381469
 Conc: 24.26 ng/ml

Instrument :
 ECD_P
 ClientSampleId :
 I.BLK



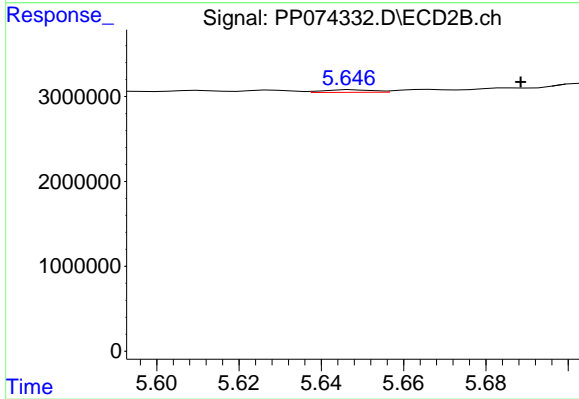
#25 AR-1248-5

R.T.: 5.759 min
 Delta R.T.: 0.034 min
 Response: 12734104
 Conc: 43.76 ng/ml



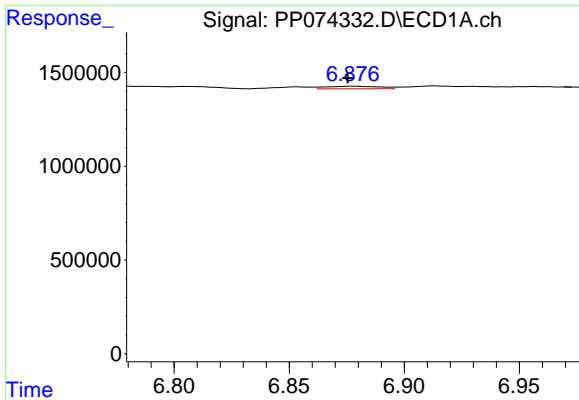
#26 AR-1254-1

R.T.: 6.658 min
 Delta R.T.: 0.000 min
 Response: 1039146
 Conc: 19.74 ng/ml



#26 AR-1254-1

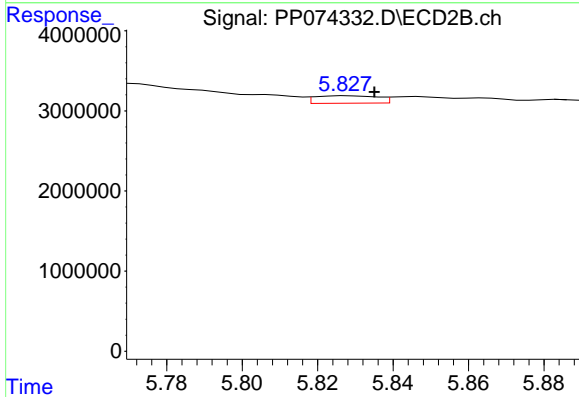
R.T.: 5.648 min
 Delta R.T.: -0.041 min
 Response: 260795
 Conc: 0.71 ng/ml



#27 AR-1254-2

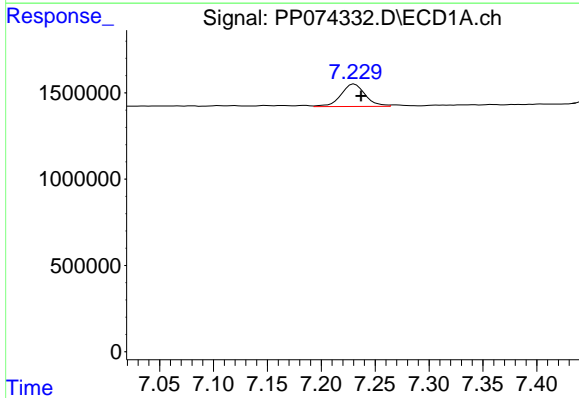
R.T.: 6.878 min
 Delta R.T.: 0.002 min
 Response: 210496
 Conc: 2.65 ng/ml

Instrument :
 ECD_P
 ClientSampleId :
 I.BLK



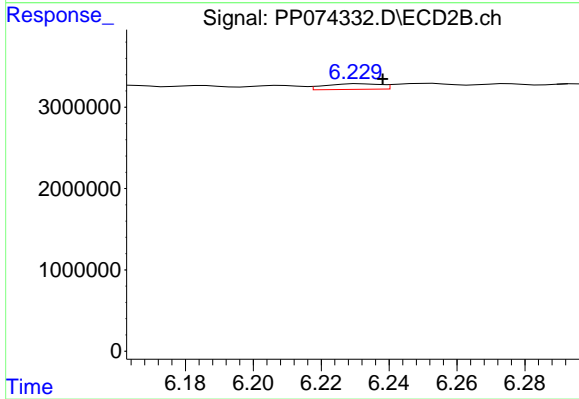
#27 AR-1254-2

R.T.: 5.828 min
 Delta R.T.: -0.007 min
 Response: 1062434
 Conc: 3.82 ng/ml



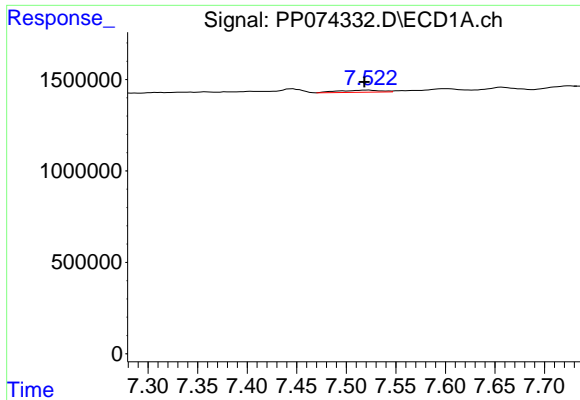
#28 AR-1254-3

R.T.: 7.231 min
 Delta R.T.: -0.006 min
 Response: 2035666
 Conc: 23.31 ng/ml



#28 AR-1254-3

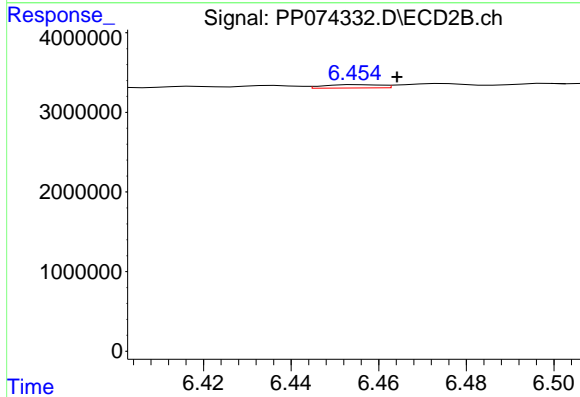
R.T.: 6.232 min
 Delta R.T.: -0.007 min
 Response: 783444
 Conc: 1.60 ng/ml



#29 AR-1254-4

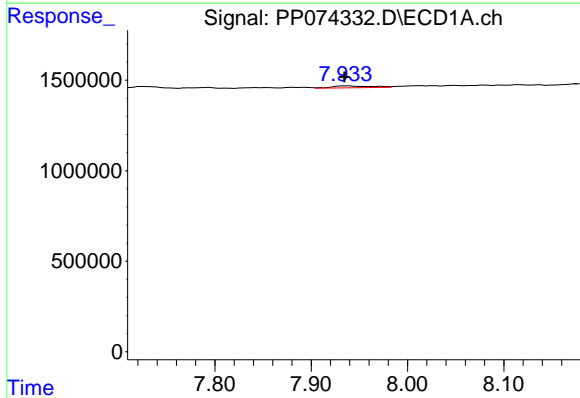
R.T.: 7.523 min
 Delta R.T.: 0.005 min
 Response: 342507
 Conc: 5.37 ng/ml

Instrument :
 ECD_P
 ClientSampleId :
 I.BLK



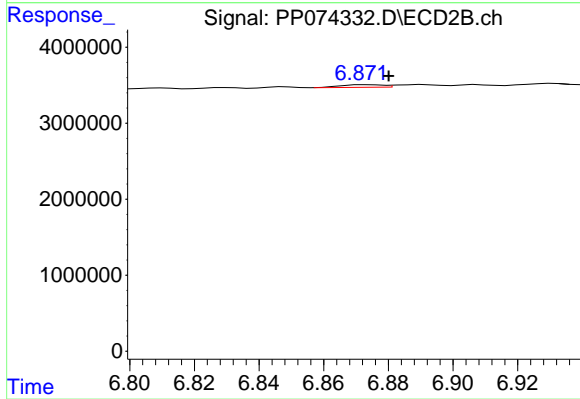
#29 AR-1254-4

R.T.: 6.455 min
 Delta R.T.: -0.009 min
 Response: 378314
 Conc: 1.03 ng/ml



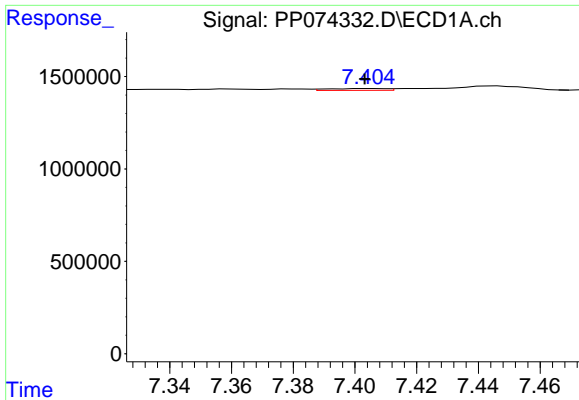
#30 AR-1254-5

R.T.: 7.935 min
 Delta R.T.: 0.000 min
 Response: 289731
 Conc: 3.57 ng/ml



#30 AR-1254-5

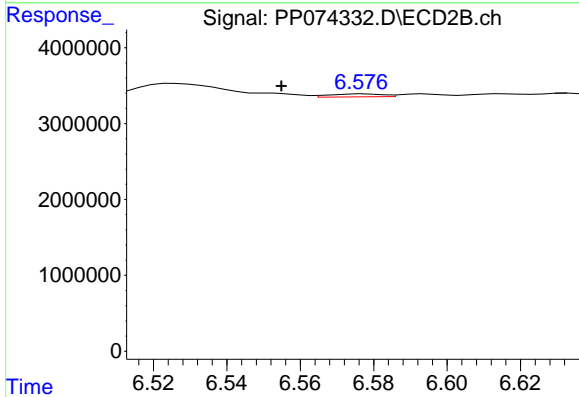
R.T.: 6.873 min
 Delta R.T.: -0.007 min
 Response: 306457
 Conc: 0.80 ng/ml



#31 AR-1260-1

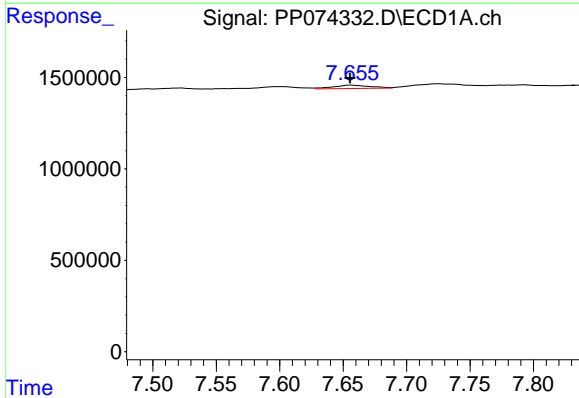
R.T.: 7.405 min
 Delta R.T.: 0.002 min
 Response: 129880
 Conc: 2.30 ng/ml

Instrument :
 ECD_P
 ClientSampleId :
 I.BLK



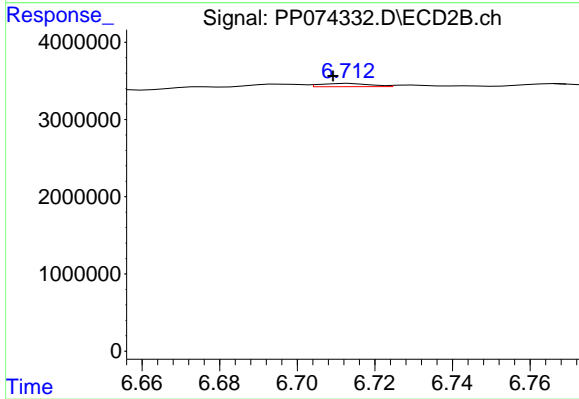
#31 AR-1260-1

R.T.: 6.577 min
 Delta R.T.: 0.022 min
 Response: 378683
 Conc: 0.94 ng/ml



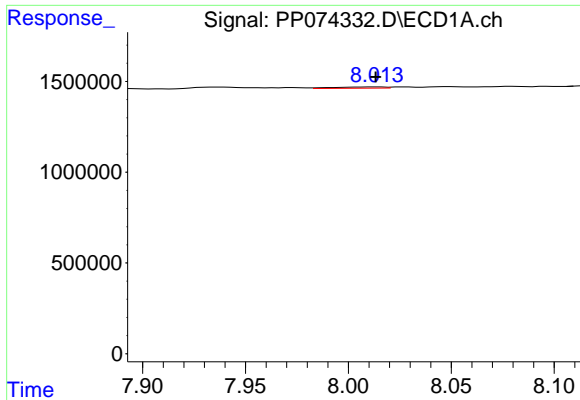
#32 AR-1260-2

R.T.: 7.657 min
 Delta R.T.: 0.001 min
 Response: 371254
 Conc: 5.45 ng/ml



#32 AR-1260-2

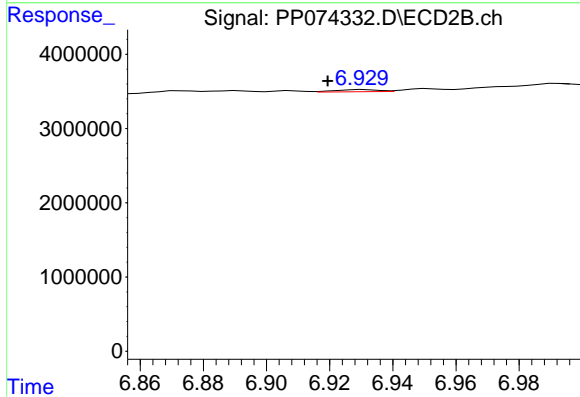
R.T.: 6.714 min
 Delta R.T.: 0.004 min
 Response: 384905
 Conc: 1.23 ng/ml



#33 AR-1260-3

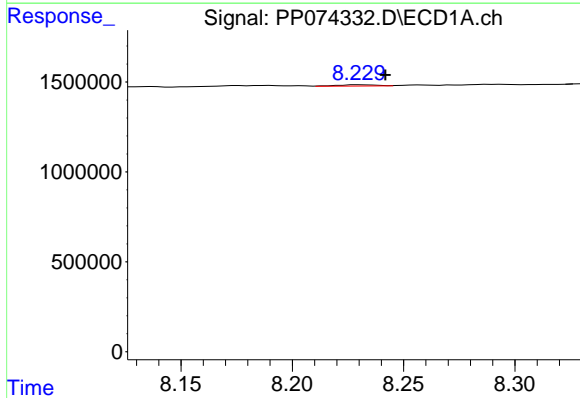
R.T.: 8.014 min
 Delta R.T.: 0.000 min
 Response: 122439
 Conc: 2.30 ng/ml

Instrument :
 ECD_P
 ClientSampleId :
 I.BLK



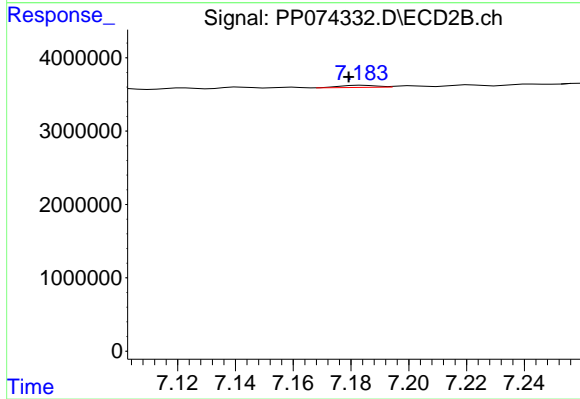
#33 AR-1260-3

R.T.: 6.931 min
 Delta R.T.: 0.011 min
 Response: 275931
 Conc: 0.70 ng/ml



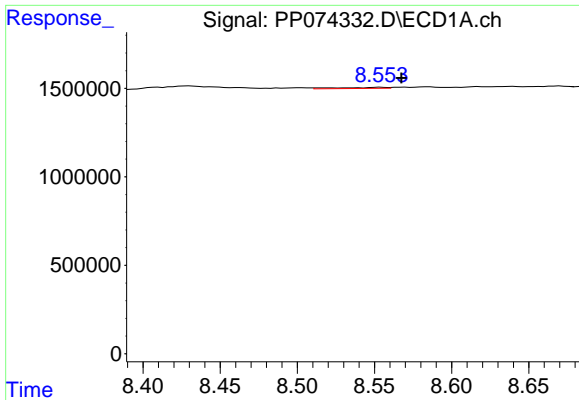
#34 AR-1260-4

R.T.: 8.230 min
 Delta R.T.: -0.011 min
 Response: 84138
 Conc: 1.34 ng/ml



#34 AR-1260-4

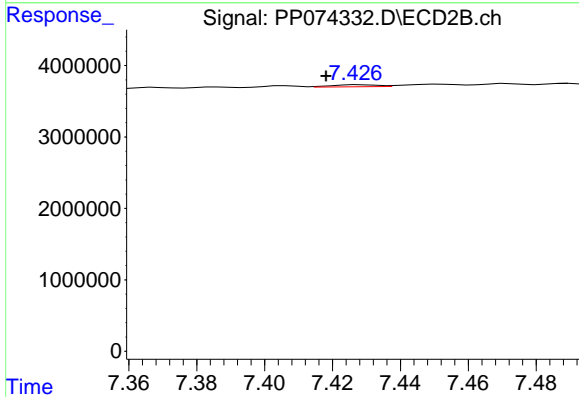
R.T.: 7.184 min
 Delta R.T.: 0.005 min
 Response: 265265
 Conc: 0.91 ng/ml



#35 AR-1260-5

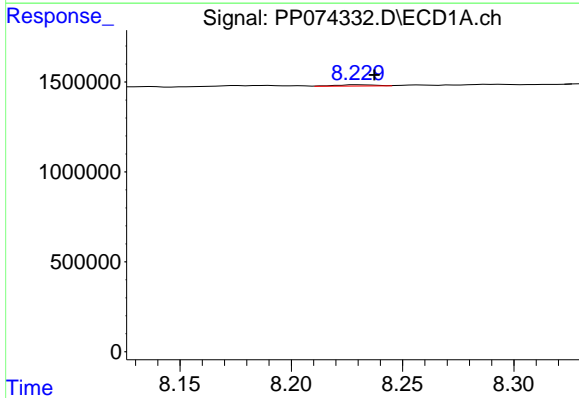
R.T.: 8.555 min
 Delta R.T.: -0.013 min
 Response: 125300
 Conc: 1.11 ng/ml

Instrument :
 ECD_P
 ClientSampleId :
 I.BLK



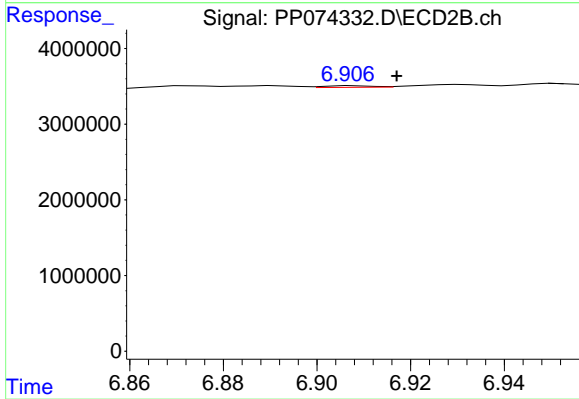
#35 AR-1260-5

R.T.: 7.428 min
 Delta R.T.: 0.010 min
 Response: 252275
 Conc: 0.33 ng/ml



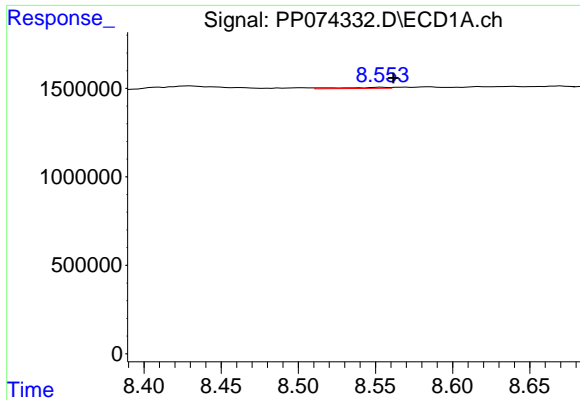
#36 AR-1262-1

R.T.: 8.230 min
 Delta R.T.: -0.007 min
 Response: 84138
 Conc: 1.11 ng/ml



#36 AR-1262-1

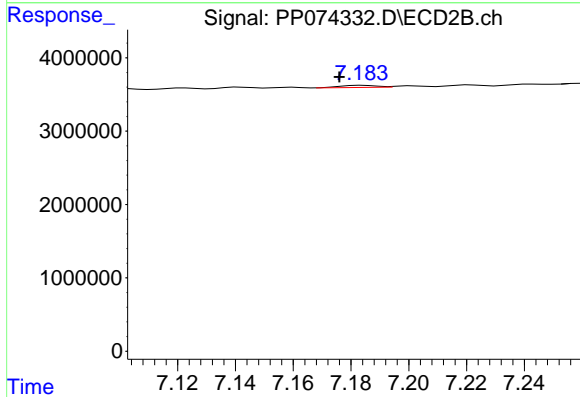
R.T.: 6.908 min
 Delta R.T.: -0.009 min
 Response: 152557
 Conc: 0.27 ng/ml



#37 AR-1262-2

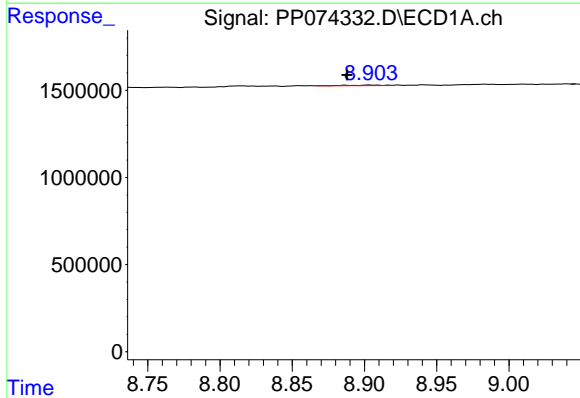
R.T.: 8.555 min
 Delta R.T.: -0.007 min
 Response: 125300
 Conc: 0.96 ng/ml

Instrument :
 ECD_P
 ClientSampleId :
 I.BLK



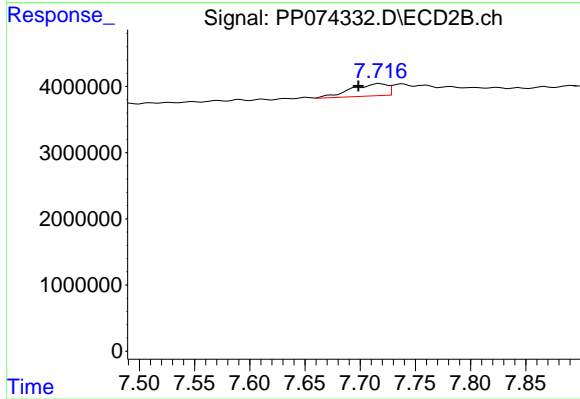
#37 AR-1262-2

R.T.: 7.184 min
 Delta R.T.: 0.008 min
 Response: 265265
 Conc: 0.66 ng/ml



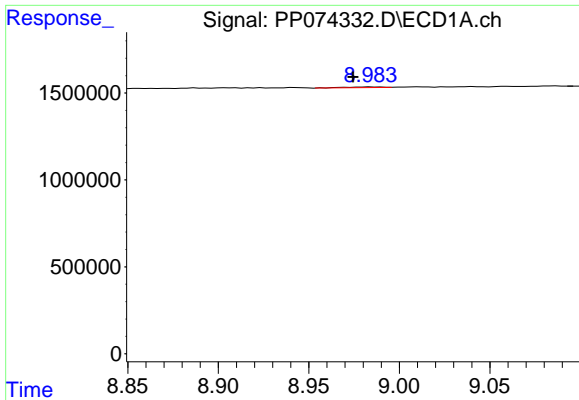
#38 AR-1262-3

R.T.: 8.904 min
 Delta R.T.: 0.016 min
 Response: 53878
 Conc: 0.57 ng/ml



#38 AR-1262-3

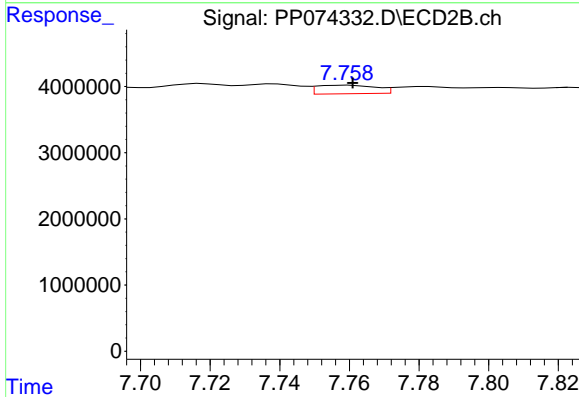
R.T.: 7.718 min
 Delta R.T.: 0.019 min
 Response: 4213192
 Conc: 11.72 ng/ml



#39 AR-1262-4

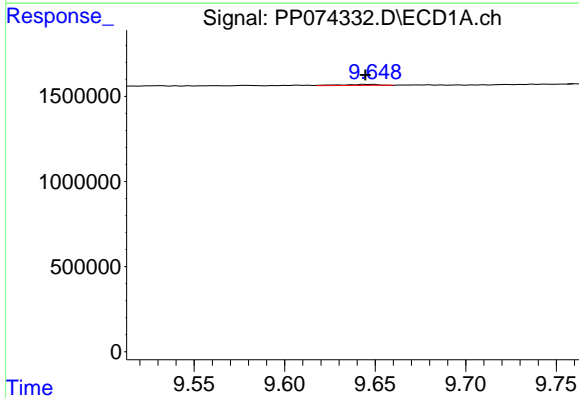
R.T.: 8.984 min
 Delta R.T.: 0.009 min
 Response: 61998
 Conc: 0.85 ng/ml

Instrument :
 ECD_P
 ClientSampleId :
 I.BLK



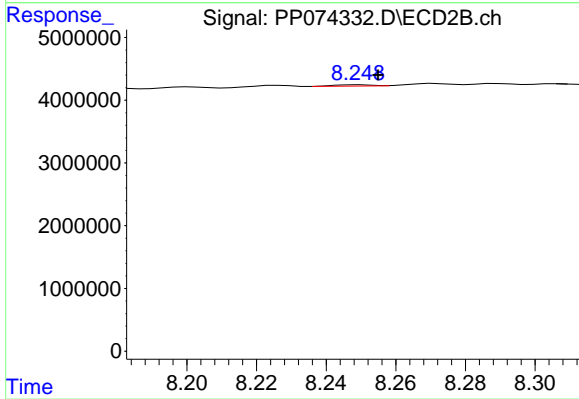
#39 AR-1262-4

R.T.: 7.759 min
 Delta R.T.: -0.002 min
 Response: 1536106
 Conc: 2.30 ng/ml



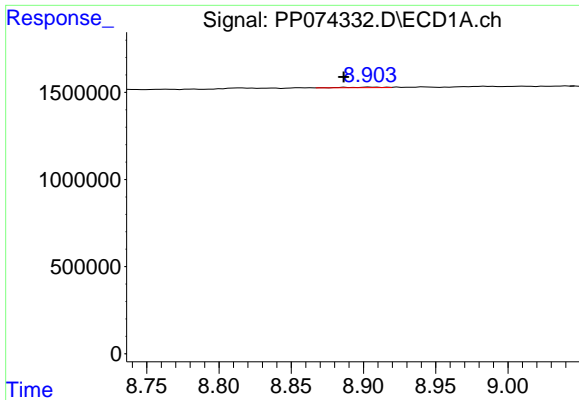
#40 AR-1262-5

R.T.: 9.647 min
 Delta R.T.: 0.002 min
 Response: 83157
 Conc: 1.63 ng/ml



#40 AR-1262-5

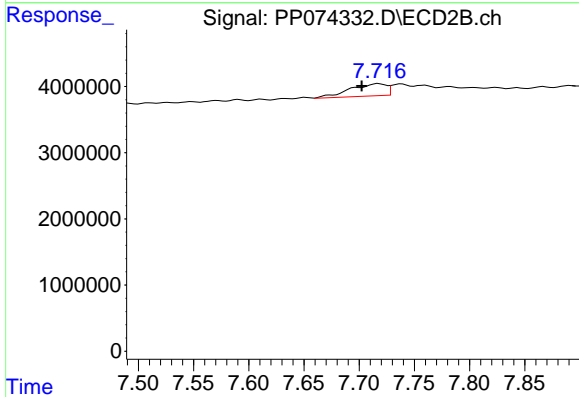
R.T.: 8.249 min
 Delta R.T.: -0.005 min
 Response: 161086
 Conc: 0.57 ng/ml



#41 AR-1268-1

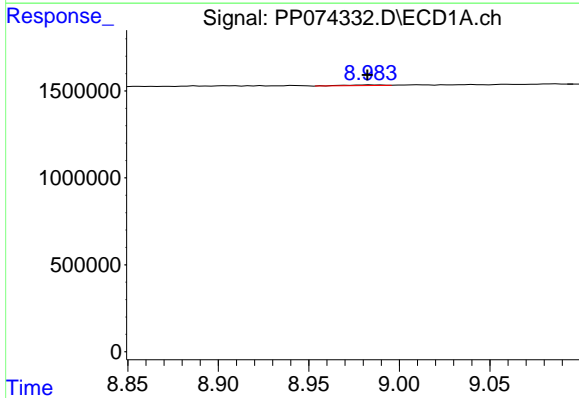
R.T.: 8.904 min
 Delta R.T.: 0.018 min
 Response: 53878
 Conc: 0.35 ng/ml

Instrument :
 ECD_P
 ClientSampleId :
 I.BLK



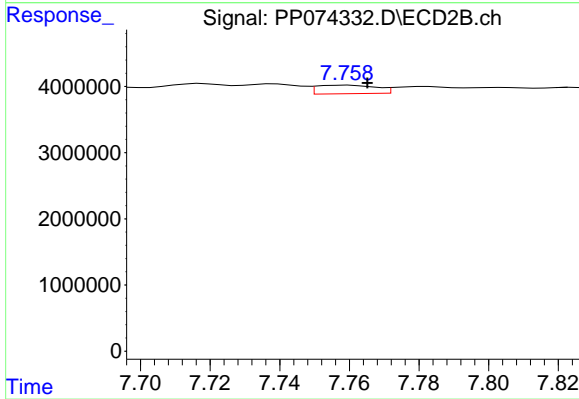
#41 AR-1268-1

R.T.: 7.718 min
 Delta R.T.: 0.015 min
 Response: 4213192
 Conc: 3.86 ng/ml



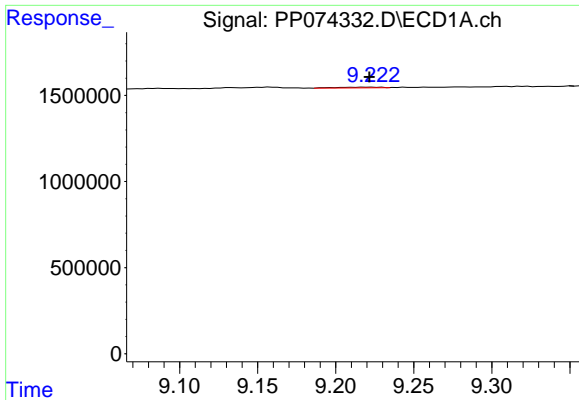
#42 AR-1268-2

R.T.: 8.984 min
 Delta R.T.: 0.001 min
 Response: 61998
 Conc: 0.43 ng/ml



#42 AR-1268-2

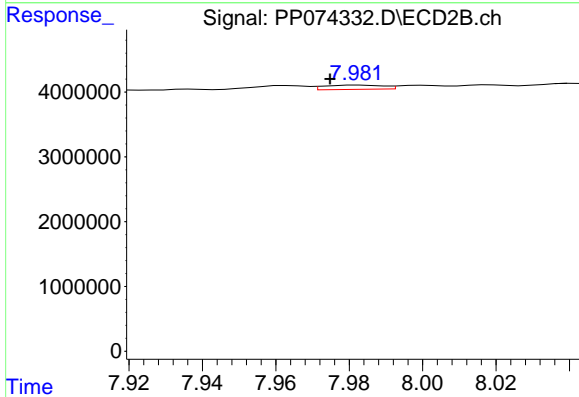
R.T.: 7.759 min
 Delta R.T.: -0.006 min
 Response: 1536106
 Conc: 1.45 ng/ml



#43 AR-1268-3

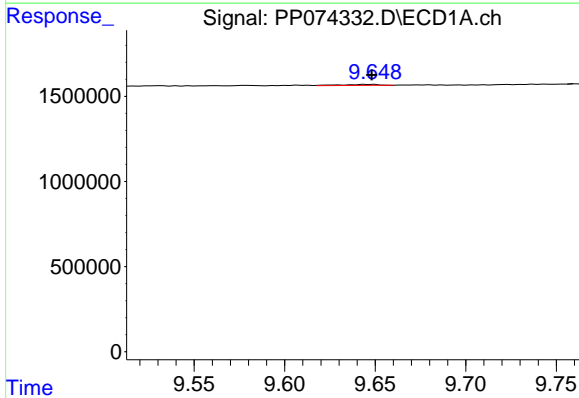
R.T.: 9.218 min
 Delta R.T.: -0.004 min
 Response: 82186
 Conc: 0.69 ng/ml

Instrument :
 ECD_P
 ClientSampleId :
 I.BLK



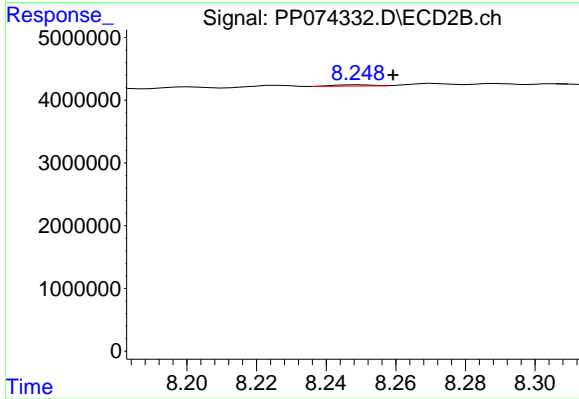
#43 AR-1268-3

R.T.: 7.983 min
 Delta R.T.: 0.008 min
 Response: 736811
 Conc: 0.89 ng/ml



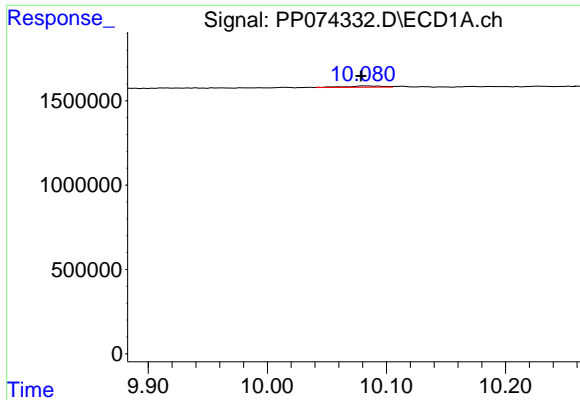
#44 AR-1268-4

R.T.: 9.647 min
 Delta R.T.: -0.001 min
 Response: 83157
 Conc: 1.41 ng/ml



#44 AR-1268-4

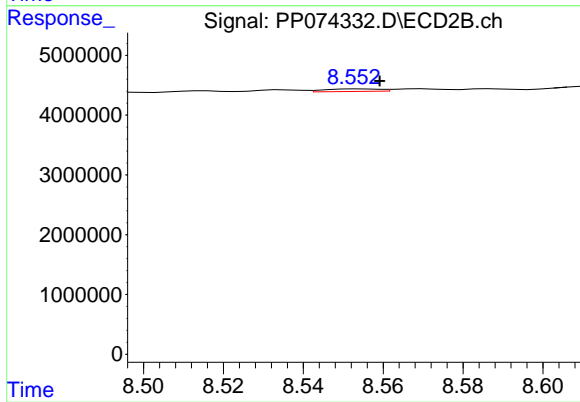
R.T.: 8.249 min
 Delta R.T.: -0.010 min
 Response: 161086
 Conc: 0.52 ng/ml



#45 AR-1268-5

R.T.: 10.082 min
 Delta R.T.: 0.004 min
 Response: 155426
 Conc: 0.44 ng/ml

Instrument :
 ECD_P
 ClientSampleId :
 I.BLK



#45 AR-1268-5

R.T.: 8.554 min
 Delta R.T.: -0.006 min
 Response: 399301
 Conc: 0.16 ng/ml