

Data Path : Z:\pestpcbsrv\HPCHEM1\ECD_P\Data\PP081321\
 Data File : PP038385.D
 Signal(s) : Signal #1: ECD1A.CH Signal #2: ECD2B.CH
 Acq On : 13 Aug 2021 22:28
 Operator : AJ\MA
 Sample : I.BLK
 Misc :
 ALS Vial : 2 Sample Multiplier: 1

Instrument :
 ECD_P
 ClientSampleId :
 I.BLK

Integration File signal 1: autoint1.e
 Integration File signal 2: autoint2.e
 Quant Time: Aug 16 01:28:21 2021
 Quant Method : Z:\pestpcbsrv\HPCHEM1\ECD_P\methods\PP080521.M
 Quant Title : GC EXTRACTABLES
 QLast Update : Fri Aug 06 03:08:47 2021
 Response via : Initial Calibration
 Integrator: ChemStation 6890 Scale Mode: Small noise peaks clipped

Volume Inj. : 2 µl
 Signal #1 Phase : ZB-MR1 Signal #2 Phase: ZB-MR2
 Signal #1 Info : 30Mx0.32mmx 0.50µ Signal #2 Info : 30M x 0.32mm x 0.25µm

Compound	RT#1	RT#2	Resp#1	Resp#2	ng/ml	ng/ml

System Monitoring Compounds						
1) SA Tetrachlo...	4.889	3.876	894288	524042	20.123	20.347
2) SA Decachlor...	10.877	9.138	544059	576155	23.916	22.269
Target Compounds						
20) L4 AR-1242-5	7.165f	0.000	3993	0	4.843	N.D. #
24) L5 AR-1248-4	7.165	0.000	3993	0	2.958	N.D. #
25) L5 AR-1248-5	7.165f	0.000	3993	0	3.020	N.D. #
26) L6 AR-1254-1	7.125	0.000	64785	0	49.719	N.D. #
28) L6 AR-1254-3	7.748	0.000	25952	0	13.081	N.D. #

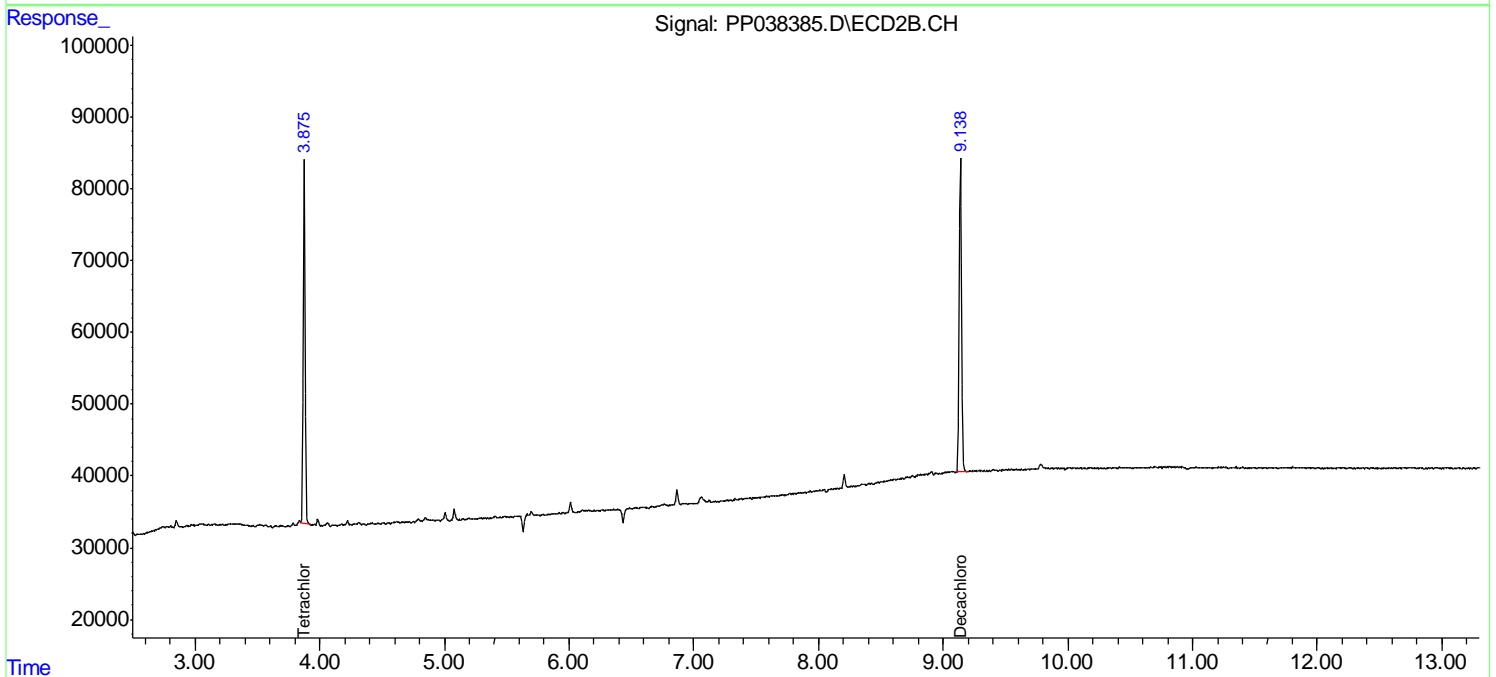
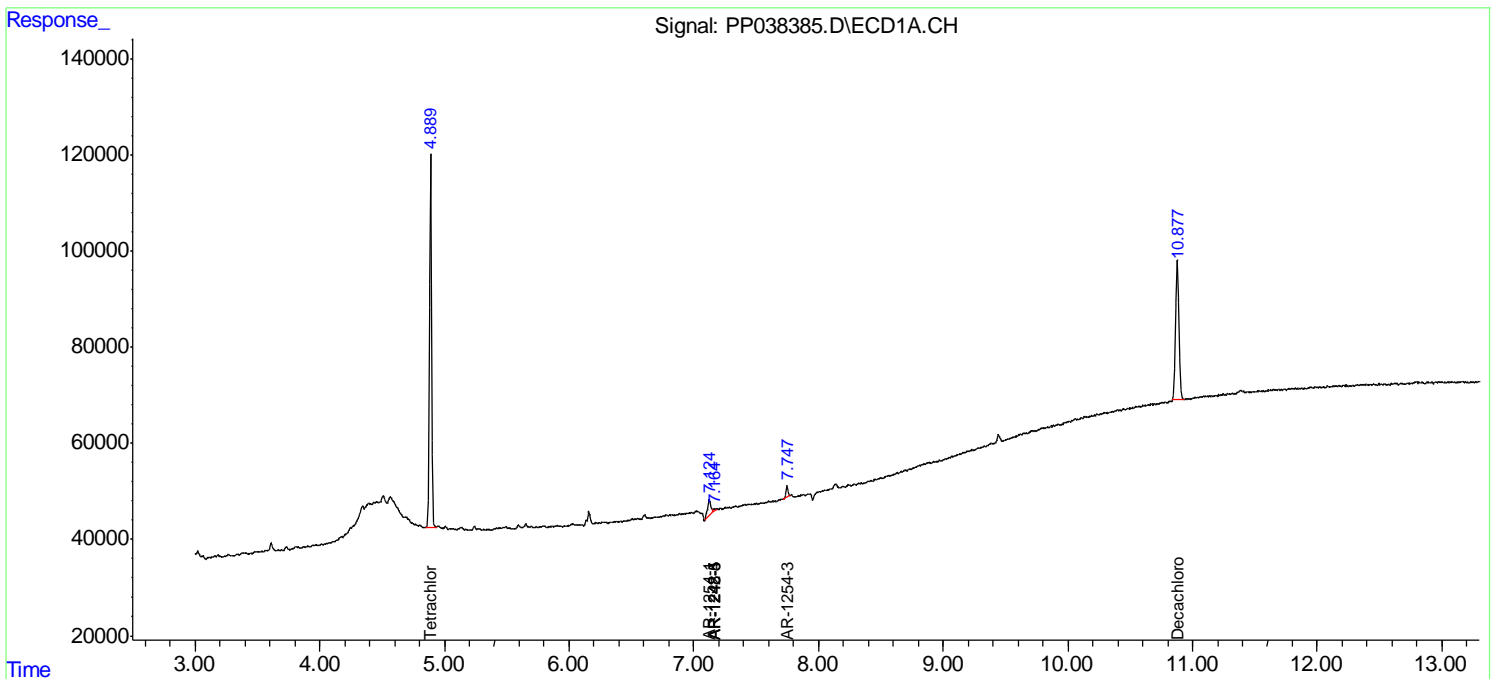
(f)=RT Delta > 1/2 Window (#)=Amounts differ by > 25% (m)=manual int.

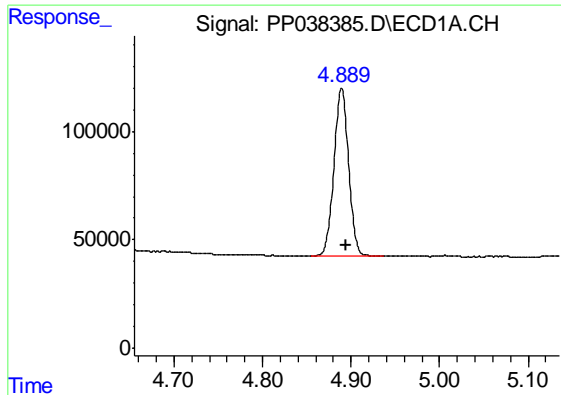
Data Path : Z:\pestpcbsrv\HPCHEM1\ECD_P\Data\PP081321\
 Data File : PP038385.D
 Signal(s) : Signal #1: ECD1A.CH Signal #2: ECD2B.CH
 Acq On : 13 Aug 2021 22:28
 Operator : AJ\MA
 Sample : I.BLK
 Misc :
 ALS Vial : 2 Sample Multiplier: 1

Instrument :
 ECD_P
 ClientSampleId :
 I.BLK

Integration File signal 1: autoint1.e
 Integration File signal 2: autoint2.e
 Quant Time: Aug 16 01:28:21 2021
 Quant Method : Z:\pestpcbsrv\HPCHEM1\ECD_P\methods\PP080521.M
 Quant Title : GC EXTRACTABLES
 QLast Update : Fri Aug 06 03:08:47 2021
 Response via : Initial Calibration
 Integrator: ChemStation 6890 Scale Mode: Small noise peaks clipped

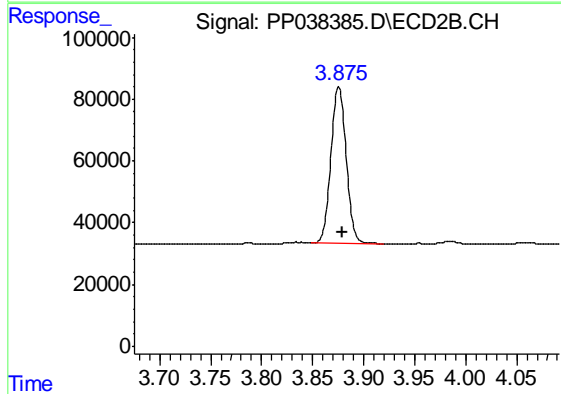
Volume Inj. : 2 µl
 Signal #1 Phase : ZB-MR1 Signal #2 Phase: ZB-MR2
 Signal #1 Info : 30Mx0.32mmx 0.50µ Signal #2 Info : 30M x 0.32mm x 0.25µm



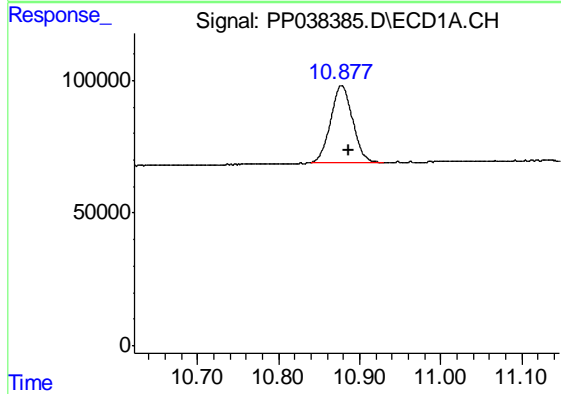


#1 Tetrachloro-m-xylene
 R.T.: 4.889 min
 Delta R.T.: -0.005 min
 Response: 894288
 Conc: 20.12 ng/ml

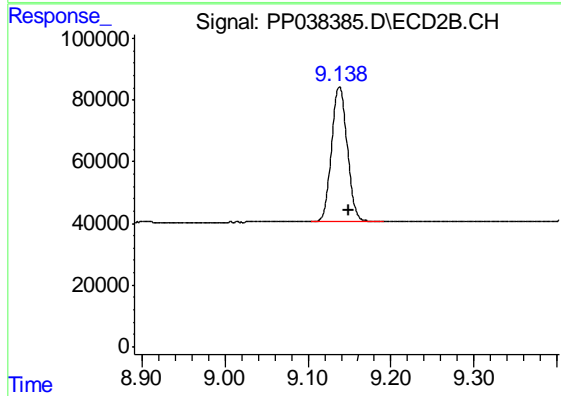
Instrument :
 ECD_P
 ClientSampled :
 I.BLK



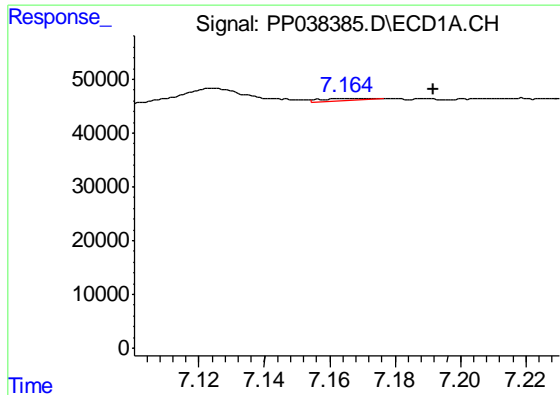
#1 Tetrachloro-m-xylene
 R.T.: 3.876 min
 Delta R.T.: -0.003 min
 Response: 524042
 Conc: 20.35 ng/ml



#2 Decachlorobiphenyl
 R.T.: 10.877 min
 Delta R.T.: -0.008 min
 Response: 544059
 Conc: 23.92 ng/ml



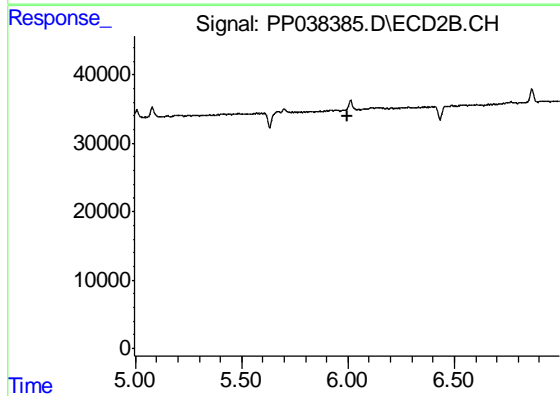
#2 Decachlorobiphenyl
 R.T.: 9.138 min
 Delta R.T.: -0.011 min
 Response: 576155
 Conc: 22.27 ng/ml



#20 AR-1242-5

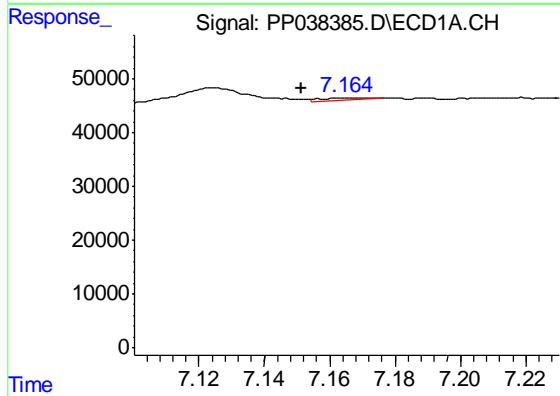
R.T.: 7.165 min
 Delta R.T.: -0.026 min
 Response: 3993
 Conc: 4.84 ng/ml

Instrument :
 ECD_P
 ClientSampled :
 I.BLK



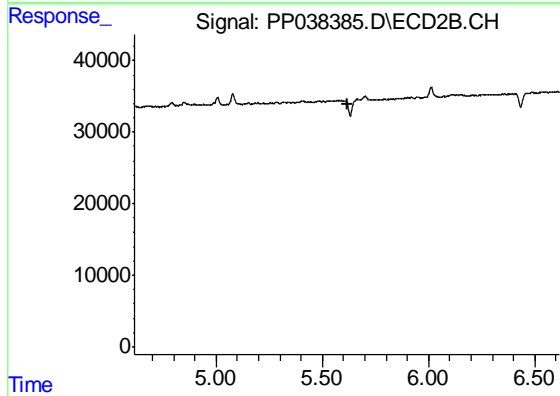
#20 AR-1242-5

R.T.: 0.000 min
 Exp R.T. : 5.995 min
 Response: 0
 Conc: N.D.



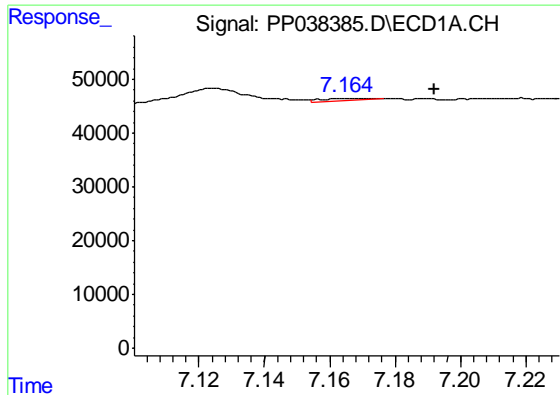
#24 AR-1248-4

R.T.: 7.165 min
 Delta R.T.: 0.014 min
 Response: 3993
 Conc: 2.96 ng/ml



#24 AR-1248-4

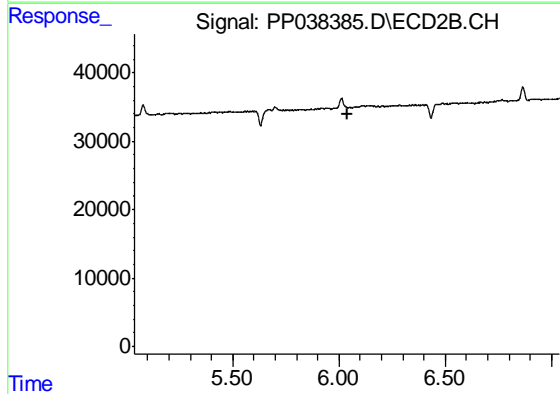
R.T.: 0.000 min
 Exp R.T. : 5.616 min
 Response: 0
 Conc: N.D.



#25 AR-1248-5

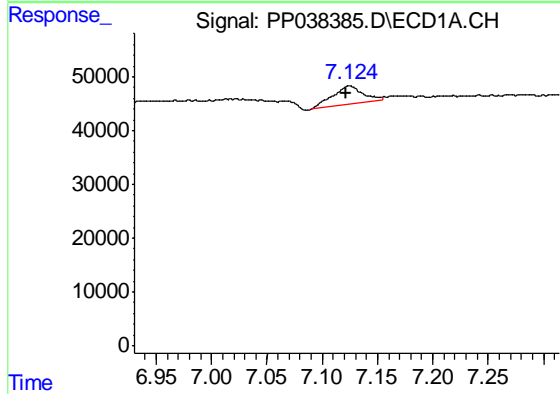
R.T.: 7.165 min
 Delta R.T.: -0.027 min
 Response: 3993
 Conc: 3.02 ng/ml

Instrument :
 ECD_P
 ClientSampled :
 I.BLK



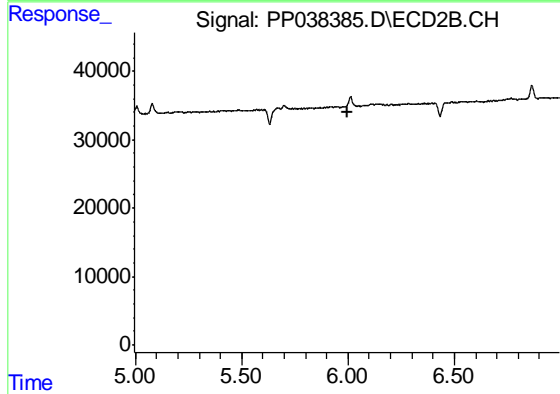
#25 AR-1248-5

R.T.: 0.000 min
 Exp R.T. : 6.037 min
 Response: 0
 Conc: N.D.



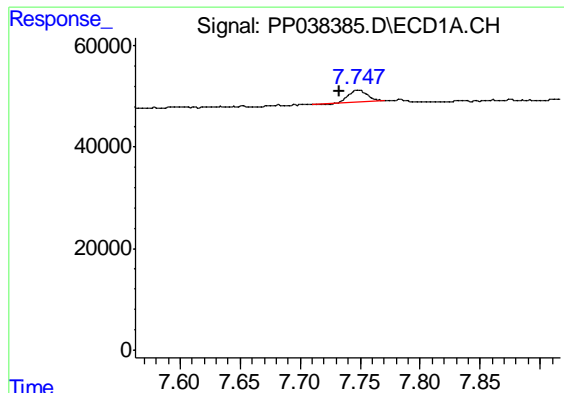
#26 AR-1254-1

R.T.: 7.125 min
 Delta R.T.: 0.003 min
 Response: 64785
 Conc: 49.72 ng/ml



#26 AR-1254-1

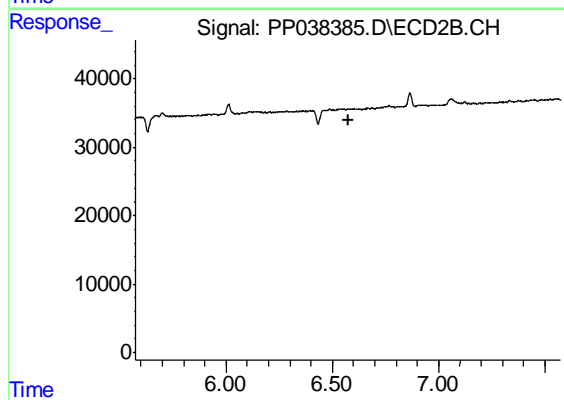
R.T.: 0.000 min
 Exp R.T. : 5.995 min
 Response: 0
 Conc: N.D.



#28 AR-1254-3

R.T.: 7.748 min
Delta R.T.: 0.015 min
Response: 25952
Conc: 13.08 ng/ml

Instrument :
ECD_P
ClientSampleId :
I.BLK



#28 AR-1254-3

R.T.: 0.000 min
Exp R.T. : 6.573 min
Response: 0
Conc: N.D.