

Data Path : Z:\pestpcbsrv\HPCHEM1\ECD\_P\Data\PP081325\  
 Data File : PP074333.D  
 Signal(s) : Signal #1: ECD1A.ch Signal #2: ECD2B.ch  
 Acq On : 13 Aug 2025 08:47  
 Operator : YP\AJ  
 Sample : HEXANE  
 Misc :  
 ALS Vial : 1 Sample Multiplier: 1

Instrument :  
 ECD\_P  
 ClientSampleId :  
 HEXANE

Integration File signal 1: autoint1.e  
 Integration File signal 2: autoint2.e  
 Quant Time: Aug 13 11:43:36 2025  
 Quant Method : Z:\pestpcbsrv\HPCHEM1\ECD\_P\methods\PP080125.M  
 Quant Title : GC EXTRACTABLES  
 QLast Update : Mon Aug 04 11:01:49 2025  
 Response via : Initial Calibration  
 Integrator: ChemStation

Volume Inj. : 2 µl  
 Signal #1 Phase : ZB-MR1 Signal #2 Phase: ZB-MR2  
 Signal #1 Info : 30Mx0.32mmx 0.50µ Signal #2 Info : 30M x 0.32mm x 0.25µm

Compound	RT#1	RT#2	Resp#1	Resp#2	ng/ml	ng/ml
-----						
System Monitoring Compounds						
1) SA Tetrachlo...	4.686f	3.807	52305	88762	0.047	0.023 #
2) SA Decachlor...	0.000	8.831	0	257223	N.D.	0.043 #
Target Compounds						
3) L1 AR-1016-1	0.000	4.903	0	410113	N.D.	1.028 #
4) L1 AR-1016-2	0.000	4.954	0	480452	N.D.	2.558 #
5) L1 AR-1016-3	5.909	5.086	302865	316003	7.636	2.979 #
6) L1 AR-1016-4	5.939f	5.132	477487	212360	14.672	1.944 #
7) L1 AR-1016-5	0.000	5.333	0	271421	N.D.	2.321 #
8) L2 AR-1221-1	0.000	4.020	0	180235	N.D.	3.672 #
9) L2 AR-1221-2	0.000	4.109	0	194095	N.D.	5.408 #
10) L2 AR-1221-3	0.000	4.181	0	190592	N.D.	1.409 #
11) L3 AR-1232-1	0.000	4.181	0	190592	N.D.	1.880 #
12) L3 AR-1232-2	0.000	4.903	0	410113	N.D.	2.353 #
13) L3 AR-1232-3	0.000	5.086	0	316003	N.D.	6.897 #
14) L3 AR-1232-4	5.939f	5.157	477487	389646	30.868	6.717 #
15) L3 AR-1232-5	6.078	5.333	99234	271421	8.470	5.777 #
16) L4 AR-1242-1	0.000	4.903	0	410113	N.D.	1.188 #
17) L4 AR-1242-2	0.000	4.954	0	480452	N.D.	2.941 #
18) L4 AR-1242-3	5.909	5.086	302865	316003	8.475	3.426 #
19) L4 AR-1242-4	5.939f	5.157	477487	389646	16.342	3.263 #
20) L4 AR-1242-5	6.696	5.684	137706	310182	3.873	2.074 #
21) L5 AR-1248-1	0.000	4.903	0	410113	N.D.	1.917 #
22) L5 AR-1248-2	6.078	5.110	99234	248185	2.465	1.696 #
23) L5 AR-1248-3	0.000	5.157	0	389646	N.D.	2.273 #
24) L5 AR-1248-4	6.696	5.333	137706	271421	2.646	1.631 #
25) L5 AR-1248-5	6.696	5.709	137706	578231	2.418	1.987
26) L6 AR-1254-1	6.653	5.684	620743	310182	11.792	0.847 #
27) L6 AR-1254-2	0.000	5.846	0	640393	N.D.	2.302 #
28) L6 AR-1254-3	7.229	6.239	1188364	635831	13.610	1.300 #
29) L6 AR-1254-4	7.518	6.462	95455	289602	1.496	0.788 #
30) L6 AR-1254-5	7.936	6.880	120198	212188	1.481	0.551 #
31) L7 AR-1260-1	7.443f	6.557	72321	341635	1.283	0.846 #
32) L7 AR-1260-2	7.657	6.700	147047	171875	2.158	0.550 #
33) L7 AR-1260-3	8.028	6.930	92177	204929	1.730	0.520 #
34) L7 AR-1260-4	8.240	7.184	31955	202827	0.510	0.697 #
35) L7 AR-1260-5	8.579	7.418	56613	360819	0.500	0.476
36) L8 AR-1262-1	8.240	6.907	31955	273622	0.422	0.486
37) L8 AR-1262-2	8.553	7.184	28867	202827	0.221	0.506 #
38) L8 AR-1262-3	8.914	7.692	40334	563900	0.429	1.569 #
39) L8 AR-1262-4	8.984	7.769	46660	622044	0.640	0.933 #
40) L8 AR-1262-5	9.636	8.257	39969	165145	0.785	0.583 #
41) L9 AR-1268-1	8.914	7.692	40334	563900	0.259	0.517 #

Data Path : Z:\pestpcbsrv\HPCHEM1\ECD\_P\Data\PP081325\  
 Data File : PP074333.D  
 Signal(s) : Signal #1: ECD1A.ch Signal #2: ECD2B.ch  
 Acq On : 13 Aug 2025 08:47  
 Operator : YP\AJ  
 Sample : HEXANE  
 Misc :  
 ALS Vial : 1 Sample Multiplier: 1

Instrument :  
 ECD\_P  
 ClientSampleId :  
 HEXANE

Integration File signal 1: autoint1.e  
 Integration File signal 2: autoint2.e  
 Quant Time: Aug 13 11:43:36 2025  
 Quant Method : Z:\pestpcbsrv\HPCHEM1\ECD\_P\methods\PP080125.M  
 Quant Title : GC EXTRACTABLES  
 QLast Update : Mon Aug 04 11:01:49 2025  
 Response via : Initial Calibration  
 Integrator: ChemStation

Volume Inj. : 2 µl  
 Signal #1 Phase : ZB-MR1 Signal #2 Phase: ZB-MR2  
 Signal #1 Info : 30Mx0.32mmx 0.50µ Signal #2 Info : 30M x 0.32mm x 0.25µm

	Compound	RT#1	RT#2	Resp#1	Resp#2	ng/ml	ng/ml
42)	L9 AR-1268-2	8.984	7.769	46660	622044	0.325	0.586 #
43)	L9 AR-1268-3	9.221	7.973	33204	672634	0.278	0.809 #
44)	L9 AR-1268-4	9.636	8.257	39969	165145	0.680	0.536
45)	L9 AR-1268-5	10.060	8.560	56615	545146	0.161	0.214 #

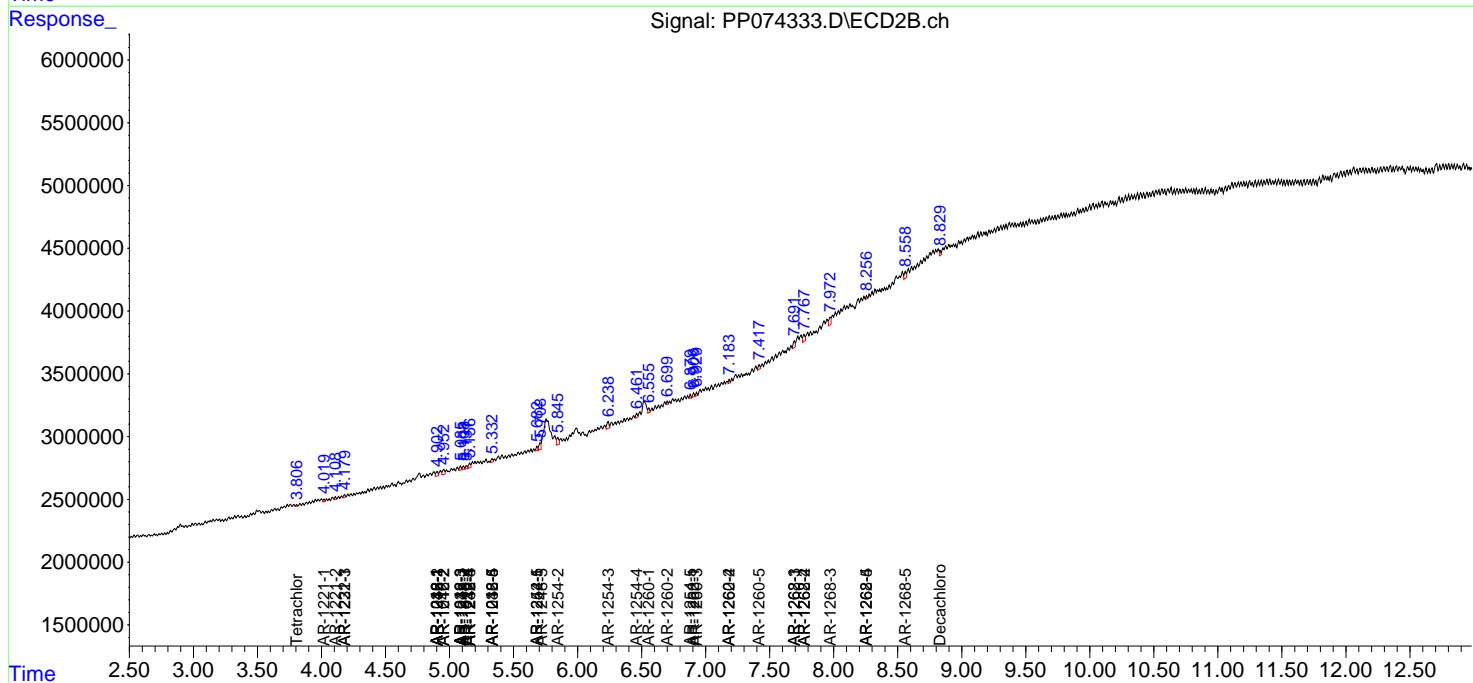
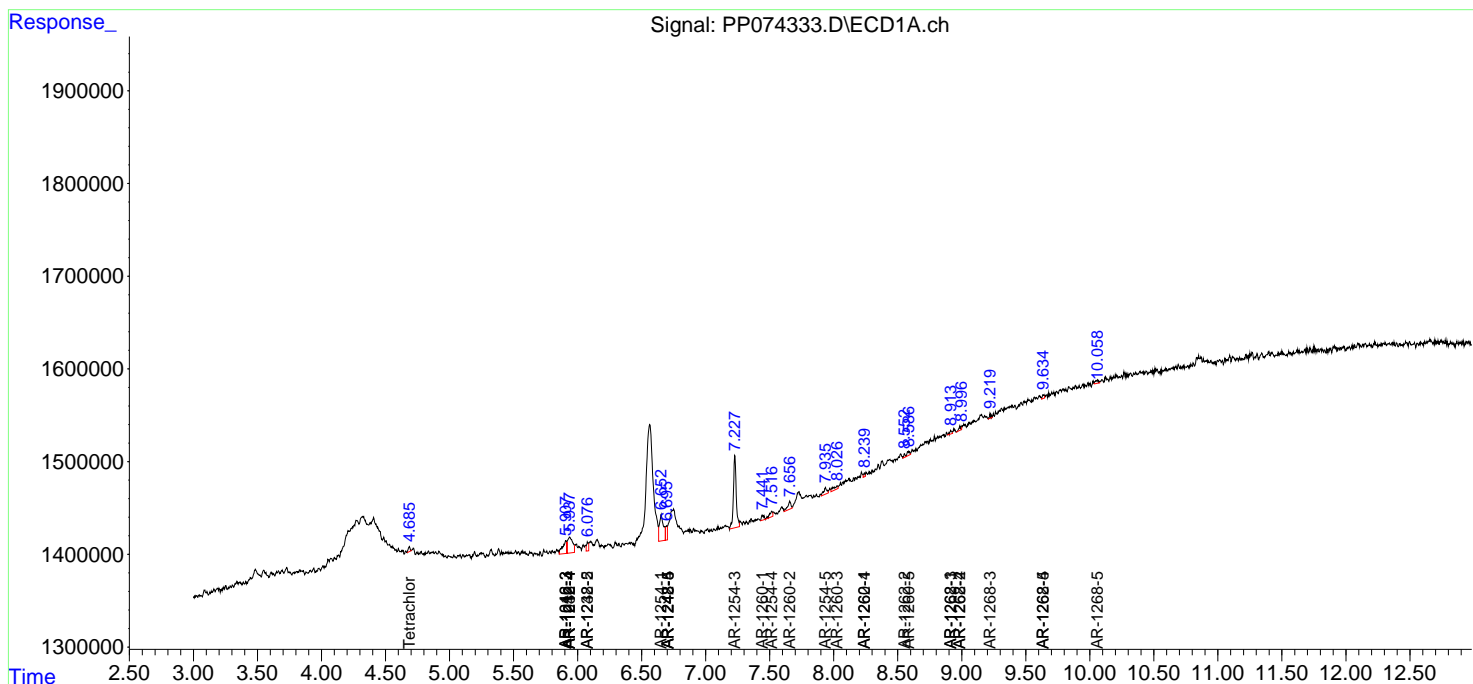
(f)=RT Delta > 1/2 Window (#)=Amounts differ by > 25% (m)=manual int.

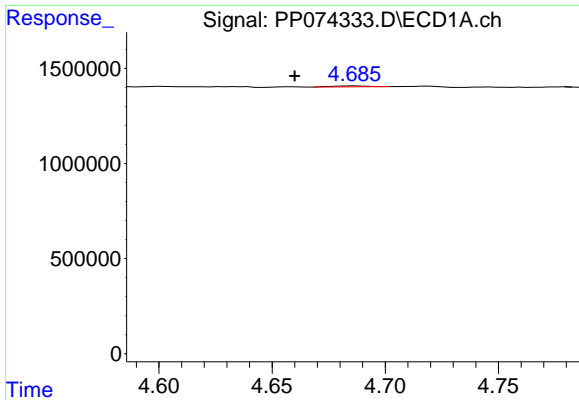
Data Path : Z:\pestpcbsrv\HPCHEM1\ECD\_P\Data\PP081325\  
 Data File : PP074333.D  
 Signal(s) : Signal #1: ECD1A.ch Signal #2: ECD2B.ch  
 Acq On : 13 Aug 2025 08:47  
 Operator : YP\AJ  
 Sample : HEXANE  
 Misc :  
 ALS Vial : 1 Sample Multiplier: 1

Instrument :  
 ECD\_P  
 ClientSampleId :  
 HEXANE

Integration File signal 1: autoint1.e  
 Integration File signal 2: autoint2.e  
 Quant Time: Aug 13 11:43:36 2025  
 Quant Method : Z:\pestpcbsrv\HPCHEM1\ECD\_P\methods\PP080125.M  
 Quant Title : GC EXTRACTABLES  
 QLast Update : Mon Aug 04 11:01:49 2025  
 Response via : Initial Calibration  
 Integrator: ChemStation

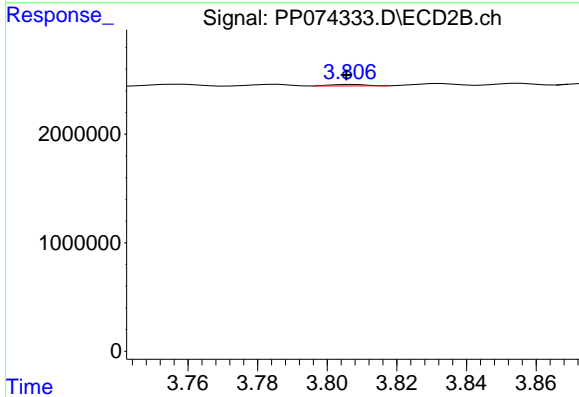
Volume Inj. : 2 µl  
 Signal #1 Phase : ZB-MR1 Signal #2 Phase: ZB-MR2  
 Signal #1 Info : 30Mx0.32mmx 0.50µ Signal #2 Info : 30M x 0.32mm x 0.25µm



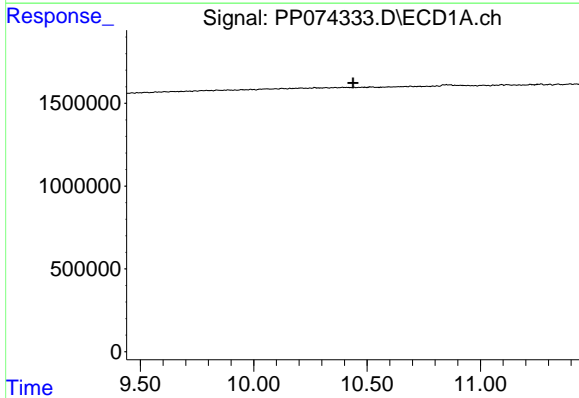


#1 Tetrachloro-m-xylene  
 R.T.: 4.686 min  
 Delta R.T.: 0.026 min  
 Response: 52305  
 Conc: 0.05 ng/ml

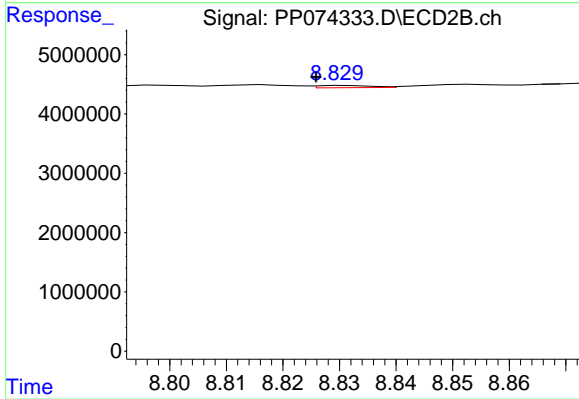
Instrument :  
 ECD\_P  
 ClientSampleId :  
 HEXANE



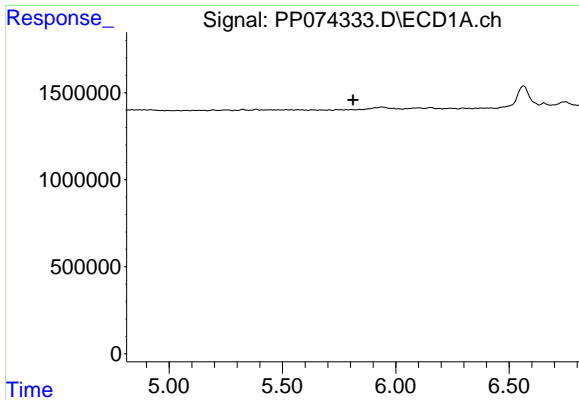
#1 Tetrachloro-m-xylene  
 R.T.: 3.807 min  
 Delta R.T.: 0.002 min  
 Response: 88762  
 Conc: 0.02 ng/ml



#2 Decachlorobiphenyl  
 R.T.: 0.000 min  
 Exp R.T. : 10.438 min  
 Response: 0  
 Conc: N.D.



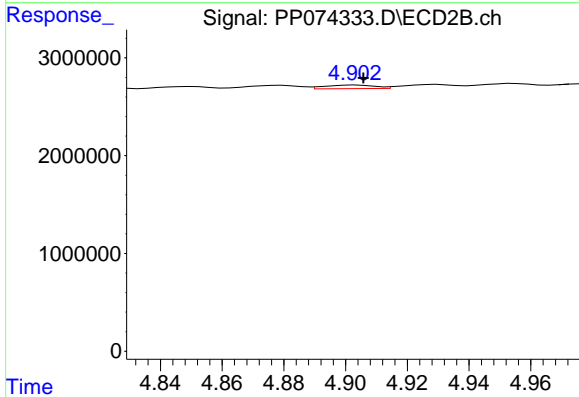
#2 Decachlorobiphenyl  
 R.T.: 8.831 min  
 Delta R.T.: 0.005 min  
 Response: 257223  
 Conc: 0.04 ng/ml



#3 AR-1016-1

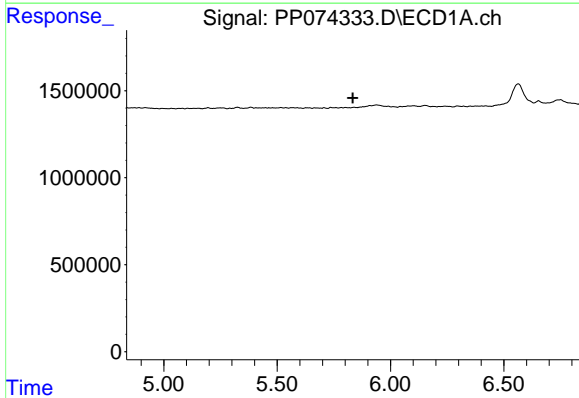
R.T.: 0.000 min  
 Exp R.T.: 5.812 min  
 Response: 0  
 Conc: N.D.

Instrument :  
 ECD\_P  
 ClientSampleId :  
 HEXANE



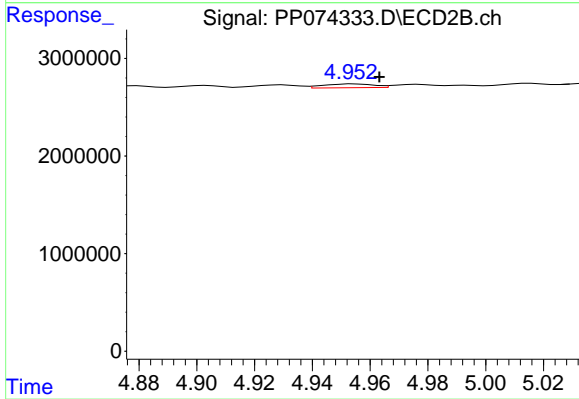
#3 AR-1016-1

R.T.: 4.903 min  
 Delta R.T.: -0.002 min  
 Response: 410113  
 Conc: 1.03 ng/ml



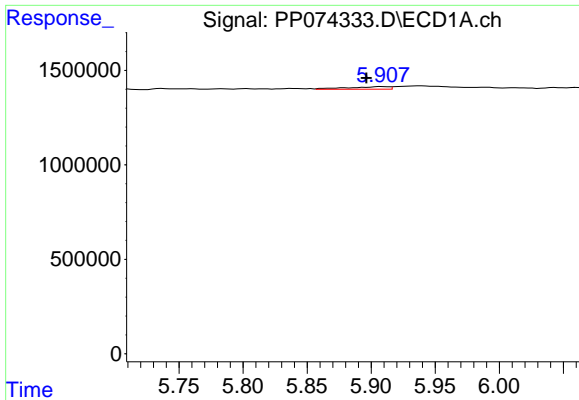
#4 AR-1016-2

R.T.: 0.000 min  
 Exp R.T.: 5.833 min  
 Response: 0  
 Conc: N.D.



#4 AR-1016-2

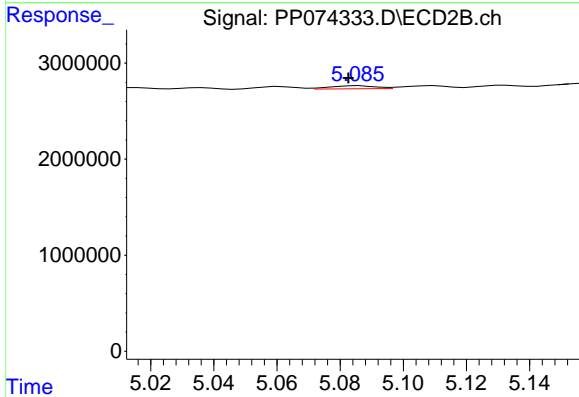
R.T.: 4.954 min  
 Delta R.T.: -0.009 min  
 Response: 480452  
 Conc: 2.56 ng/ml



#5 AR-1016-3

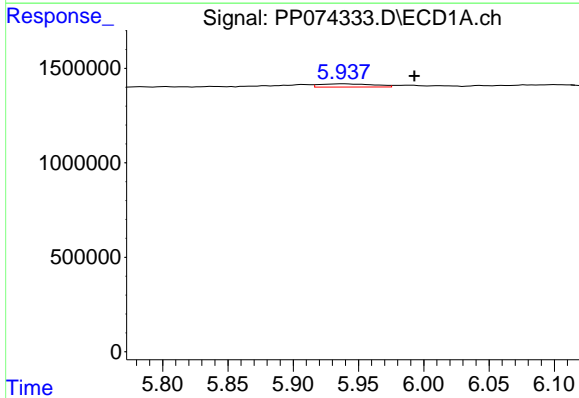
R.T.: 5.909 min  
 Delta R.T.: 0.013 min  
 Response: 302865  
 Conc: 7.64 ng/ml

Instrument :  
 ECD\_P  
 ClientSampleId :  
 HEXANE



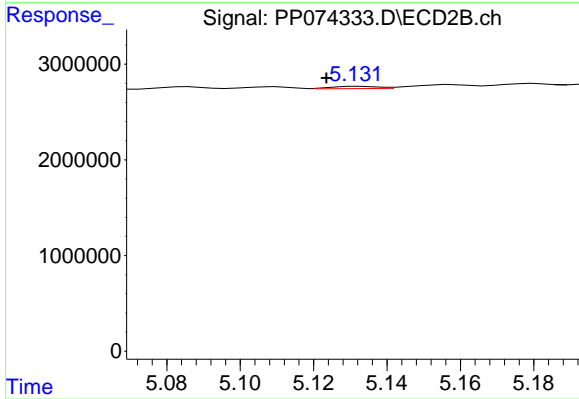
#5 AR-1016-3

R.T.: 5.086 min  
 Delta R.T.: 0.004 min  
 Response: 316003  
 Conc: 2.98 ng/ml



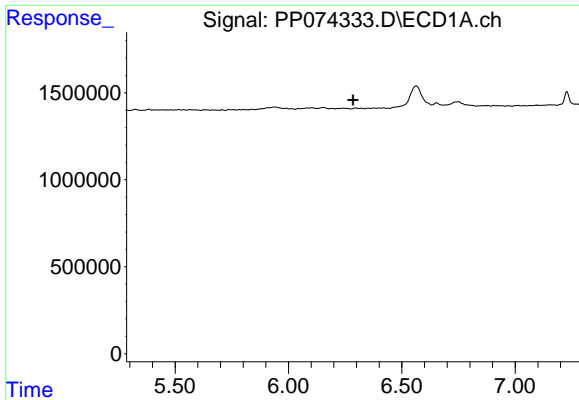
#6 AR-1016-4

R.T.: 5.939 min  
 Delta R.T.: -0.054 min  
 Response: 477487  
 Conc: 14.67 ng/ml



#6 AR-1016-4

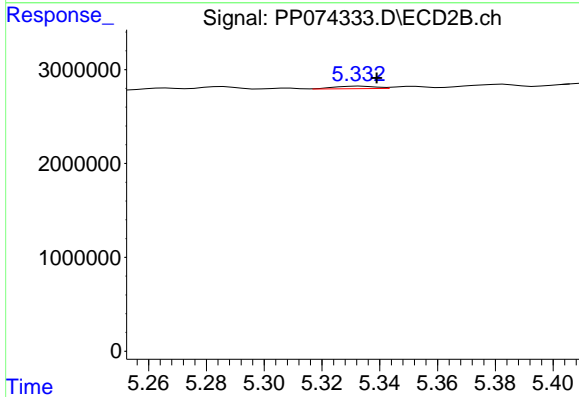
R.T.: 5.132 min  
 Delta R.T.: 0.009 min  
 Response: 212360  
 Conc: 1.94 ng/ml



#7 AR-1016-5

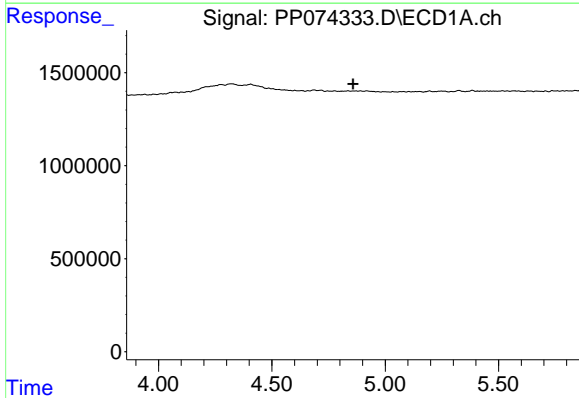
R.T.: 0.000 min  
 Exp R.T.: 6.286 min  
 Response: 0  
 Conc: N.D.

Instrument : ECD\_P  
 ClientSampleId : HEXANE



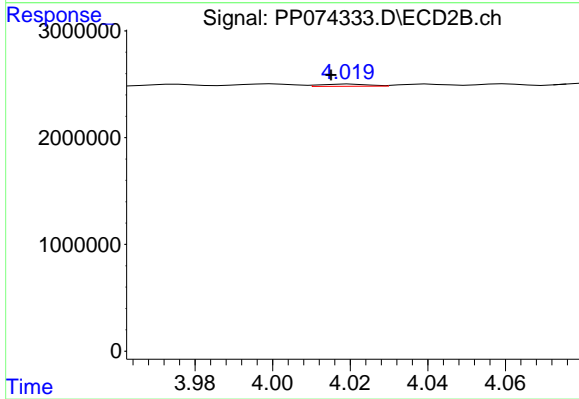
#7 AR-1016-5

R.T.: 5.333 min  
 Delta R.T.: -0.006 min  
 Response: 271421  
 Conc: 2.32 ng/ml



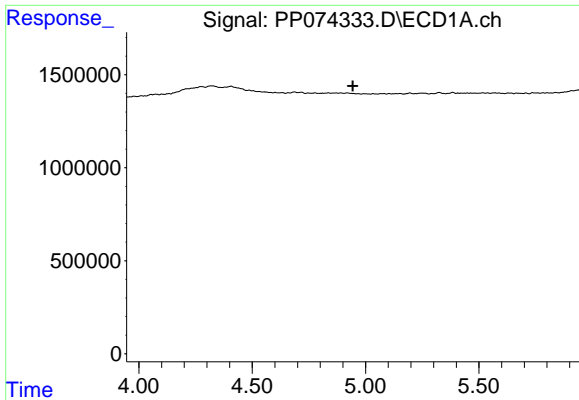
#8 AR-1221-1

R.T.: 0.000 min  
 Exp R.T.: 4.858 min  
 Response: 0  
 Conc: N.D.



#8 AR-1221-1

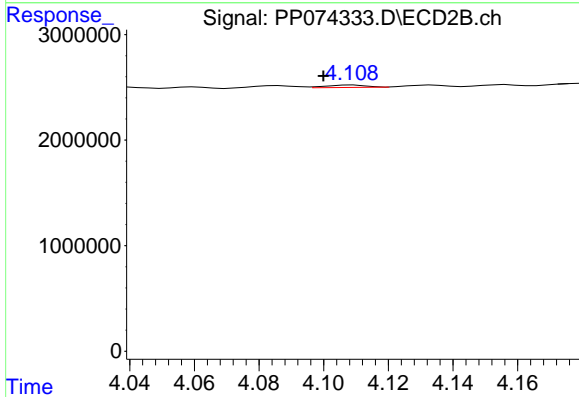
R.T.: 4.020 min  
 Delta R.T.: 0.005 min  
 Response: 180235  
 Conc: 3.67 ng/ml



#9 AR-1221-2

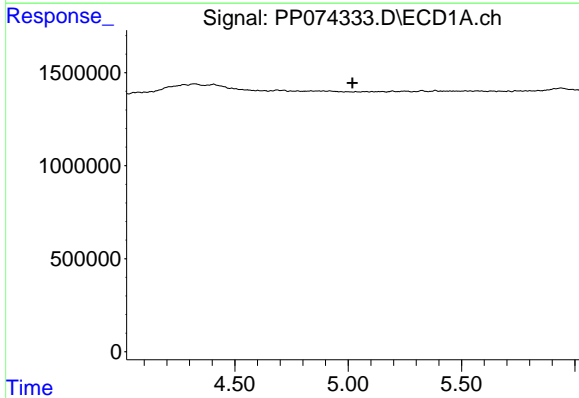
R.T.: 0.000 min  
 Exp R.T. : 4.944 min  
 Response: 0  
 Conc: N.D.

Instrument :  
 ECD\_P  
 ClientSampleId :  
 HEXANE



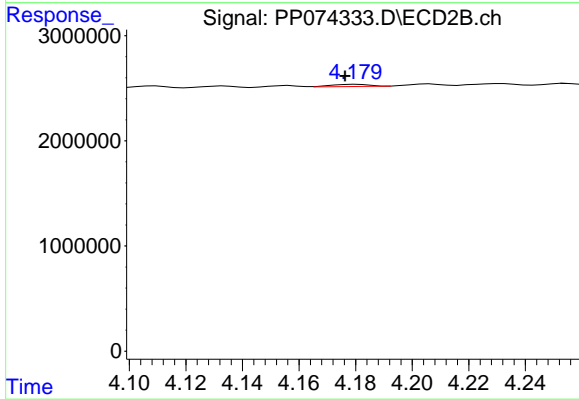
#9 AR-1221-2

R.T.: 4.109 min  
 Delta R.T.: 0.009 min  
 Response: 194095  
 Conc: 5.41 ng/ml



#10 AR-1221-3

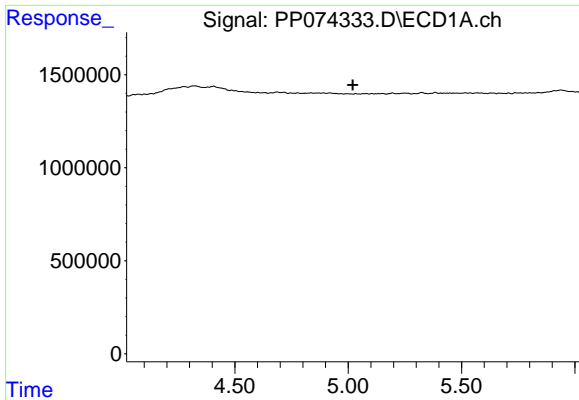
R.T.: 0.000 min  
 Exp R.T. : 5.019 min  
 Response: 0  
 Conc: N.D.



#10 AR-1221-3

R.T.: 4.181 min  
 Delta R.T.: 0.004 min  
 Response: 190592  
 Conc: 1.41 ng/ml

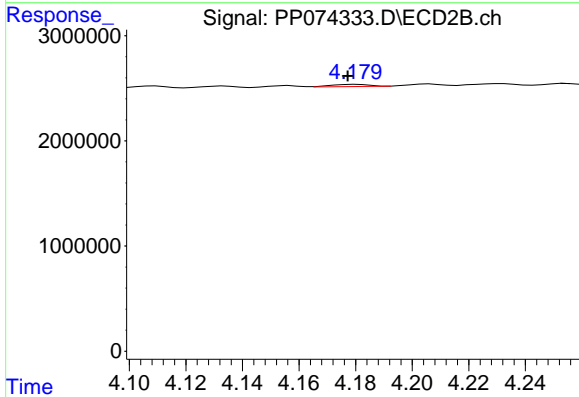




#11 AR-1232-1

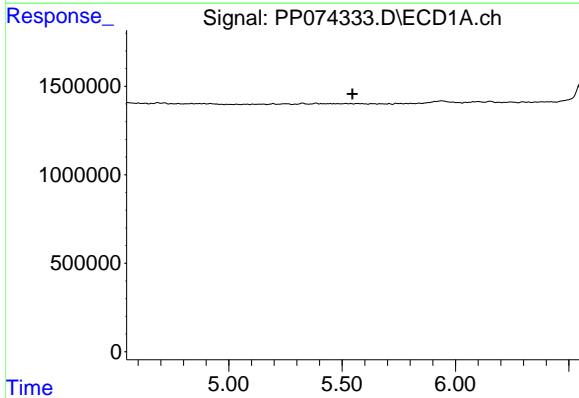
R.T.: 0.000 min  
 Exp R.T. : 5.020 min  
 Response: 0  
 Conc: N.D.

Instrument : ECD\_P  
 ClientSampleId : HEXANE



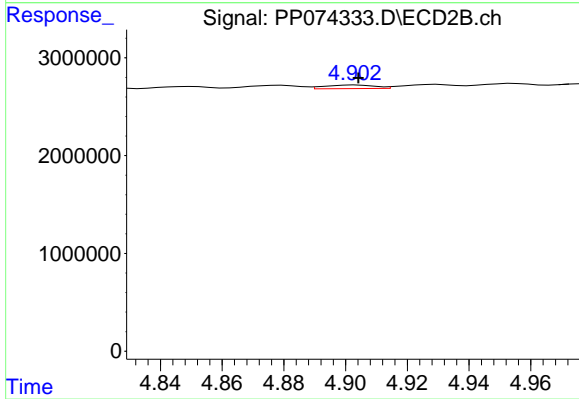
#11 AR-1232-1

R.T.: 4.181 min  
 Delta R.T.: 0.003 min  
 Response: 190592  
 Conc: 1.88 ng/ml



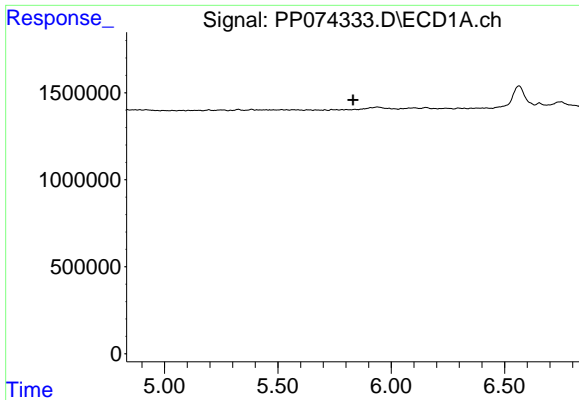
#12 AR-1232-2

R.T.: 0.000 min  
 Exp R.T. : 5.546 min  
 Response: 0  
 Conc: N.D.



#12 AR-1232-2

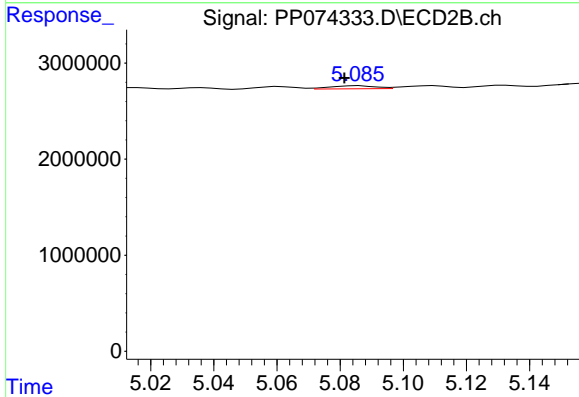
R.T.: 4.903 min  
 Delta R.T.: 0.000 min  
 Response: 410113  
 Conc: 2.35 ng/ml



#13 AR-1232-3

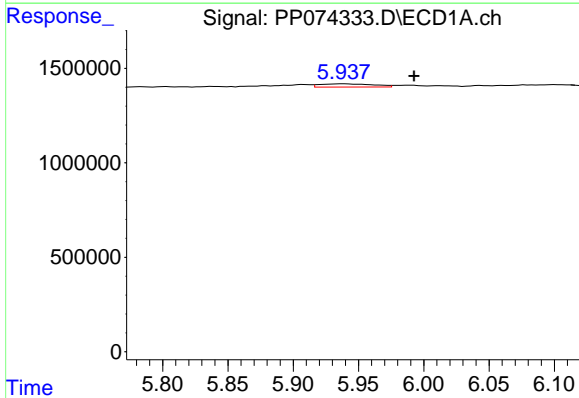
R.T.: 0.000 min  
 Exp R.T.: 5.832 min  
 Response: 0  
 Conc: N.D.

Instrument :  
 ECD\_P  
 ClientSampleId :  
 HEXANE



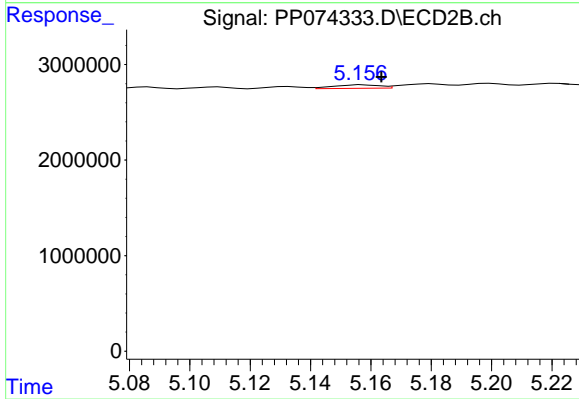
#13 AR-1232-3

R.T.: 5.086 min  
 Delta R.T.: 0.005 min  
 Response: 316003  
 Conc: 6.90 ng/ml



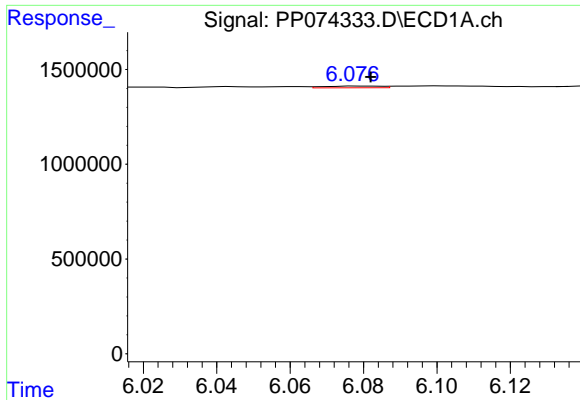
#14 AR-1232-4

R.T.: 5.939 min  
 Delta R.T.: -0.054 min  
 Response: 477487  
 Conc: 30.87 ng/ml



#14 AR-1232-4

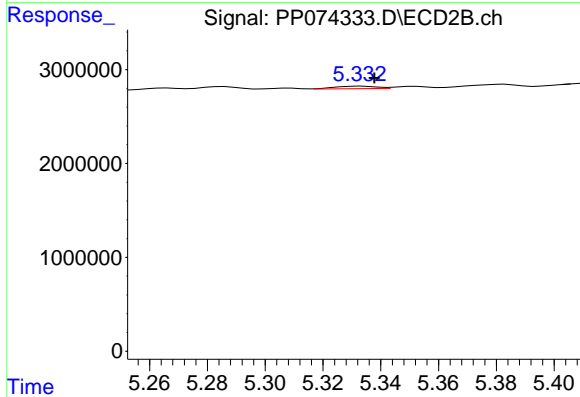
R.T.: 5.157 min  
 Delta R.T.: -0.006 min  
 Response: 389646  
 Conc: 6.72 ng/ml



#15 AR-1232-5

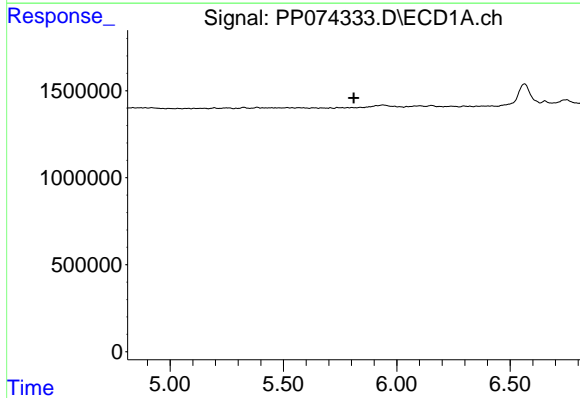
R.T.: 6.078 min  
 Delta R.T.: -0.004 min  
 Response: 99234  
 Conc: 8.47 ng/ml

Instrument :  
 ECD\_P  
 ClientSampleId :  
 HEXANE



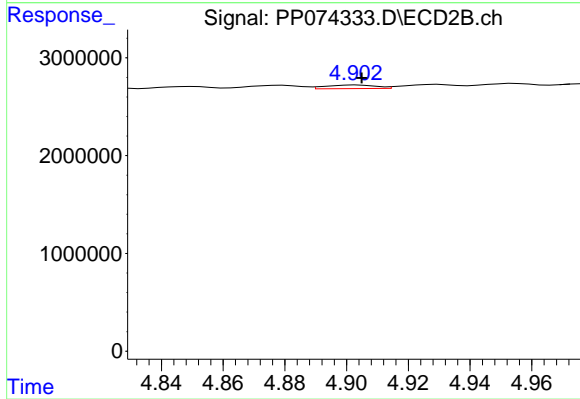
#15 AR-1232-5

R.T.: 5.333 min  
 Delta R.T.: -0.005 min  
 Response: 271421  
 Conc: 5.78 ng/ml



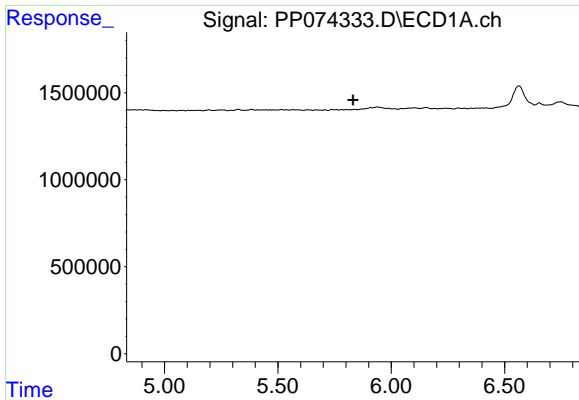
#16 AR-1242-1

R.T.: 0.000 min  
 Exp R.T. : 5.811 min  
 Response: 0  
 Conc: N.D.



#16 AR-1242-1

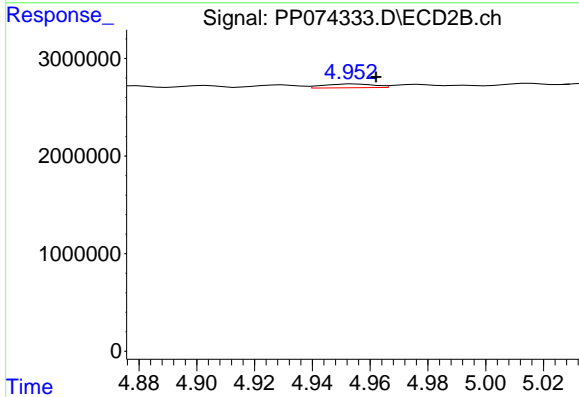
R.T.: 4.903 min  
 Delta R.T.: -0.002 min  
 Response: 410113  
 Conc: 1.19 ng/ml



#17 AR-1242-2

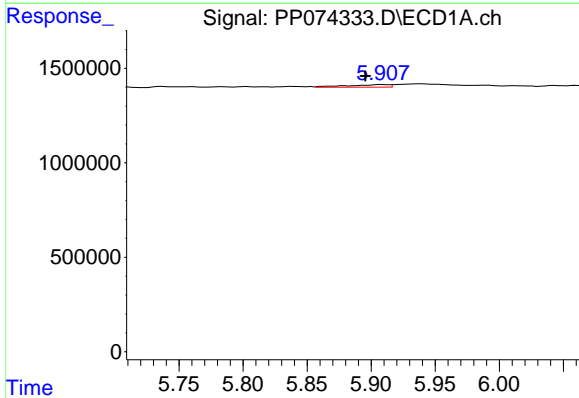
R.T.: 0.000 min  
 Exp R.T.: 5.832 min  
 Response: 0  
 Conc: N.D.

Instrument :  
 ECD\_P  
 ClientSampleId :  
 HEXANE



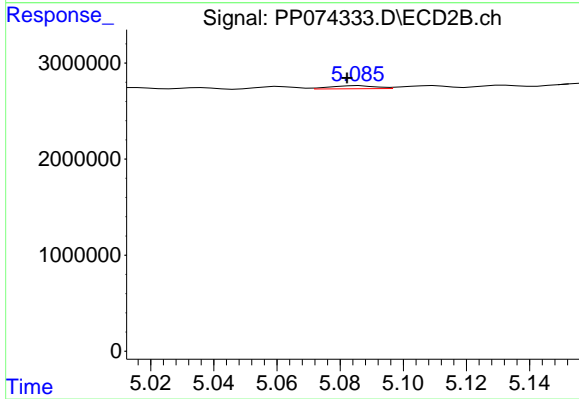
#17 AR-1242-2

R.T.: 4.954 min  
 Delta R.T.: -0.008 min  
 Response: 480452  
 Conc: 2.94 ng/ml



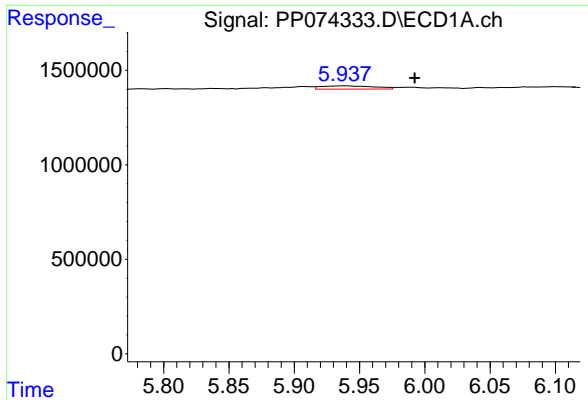
#18 AR-1242-3

R.T.: 5.909 min  
 Delta R.T.: 0.013 min  
 Response: 302865  
 Conc: 8.48 ng/ml



#18 AR-1242-3

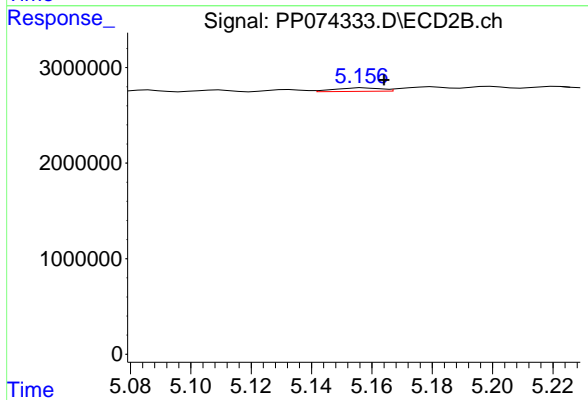
R.T.: 5.086 min  
 Delta R.T.: 0.004 min  
 Response: 316003  
 Conc: 3.43 ng/ml



#19 AR-1242-4

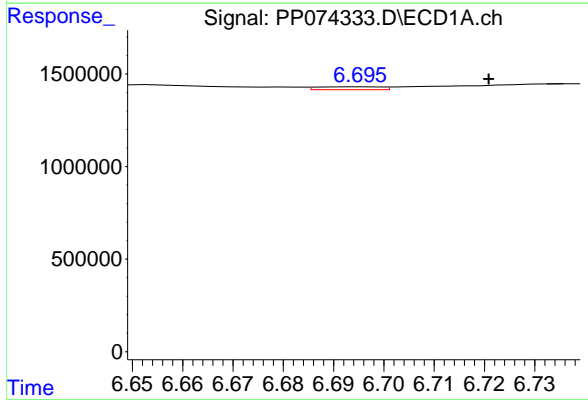
R.T.: 5.939 min  
 Delta R.T.: -0.054 min  
 Response: 477487  
 Conc: 16.34 ng/ml

Instrument :  
 ECD\_P  
 ClientSampleId :  
 HEXANE



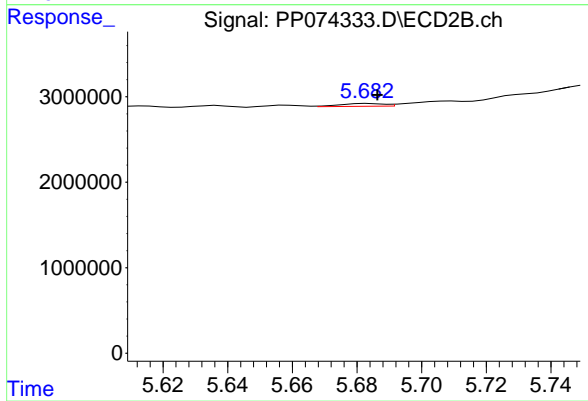
#19 AR-1242-4

R.T.: 5.157 min  
 Delta R.T.: -0.007 min  
 Response: 389646  
 Conc: 3.26 ng/ml



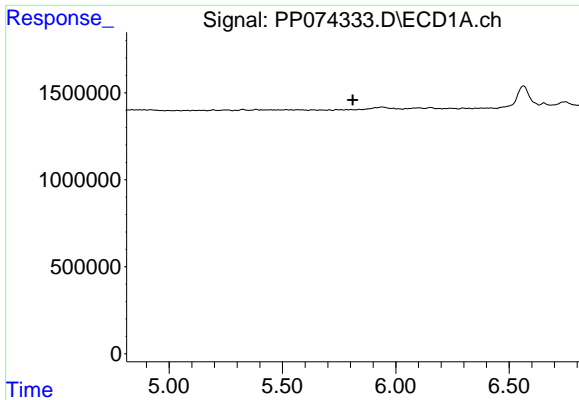
#20 AR-1242-5

R.T.: 6.696 min  
 Delta R.T.: -0.025 min  
 Response: 137706  
 Conc: 3.87 ng/ml



#20 AR-1242-5

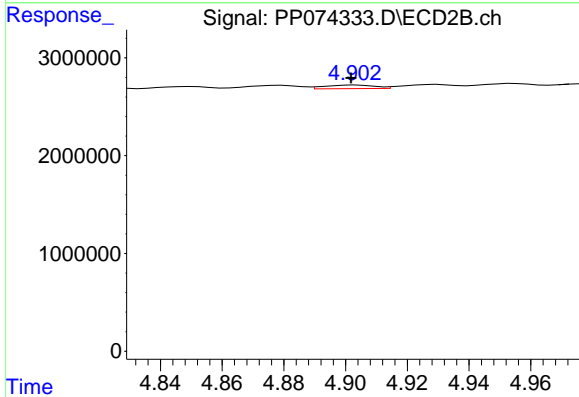
R.T.: 5.684 min  
 Delta R.T.: -0.003 min  
 Response: 310182  
 Conc: 2.07 ng/ml



#21 AR-1248-1

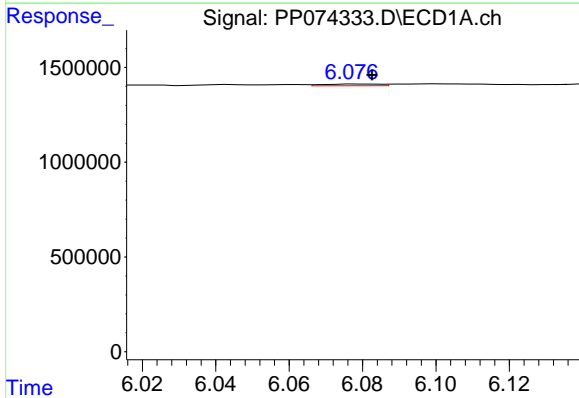
R.T.: 0.000 min  
 Exp R.T.: 5.811 min  
 Response: 0  
 Conc: N.D.

Instrument :  
 ECD\_P  
 ClientSampleId :  
 HEXANE



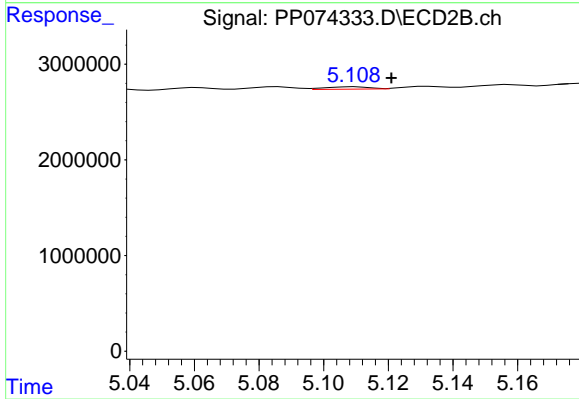
#21 AR-1248-1

R.T.: 4.903 min  
 Delta R.T.: 0.002 min  
 Response: 410113  
 Conc: 1.92 ng/ml



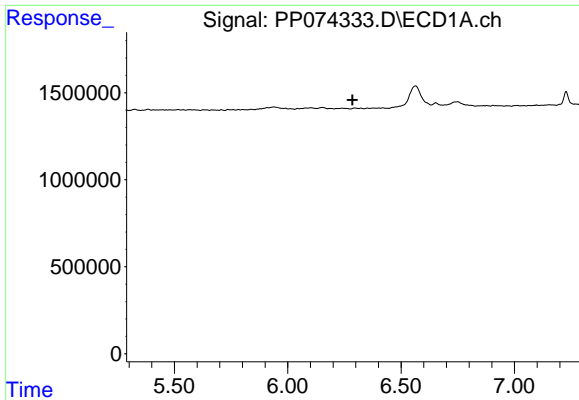
#22 AR-1248-2

R.T.: 6.078 min  
 Delta R.T.: -0.005 min  
 Response: 99234  
 Conc: 2.46 ng/ml



#22 AR-1248-2

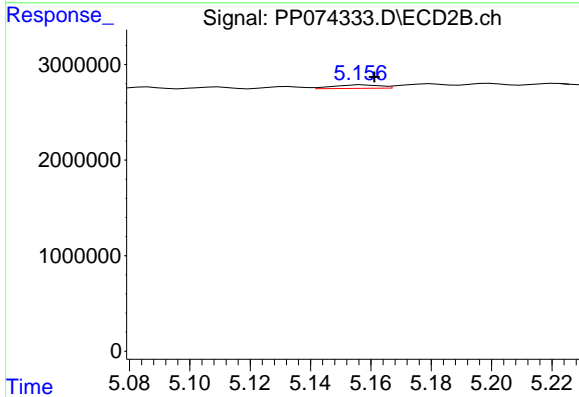
R.T.: 5.110 min  
 Delta R.T.: -0.011 min  
 Response: 248185  
 Conc: 1.70 ng/ml



#23 AR-1248-3

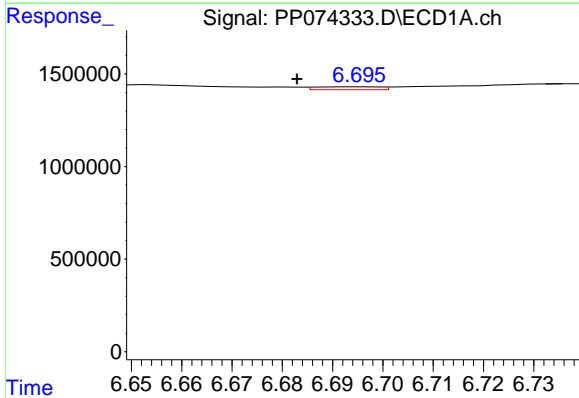
R.T.: 0.000 min  
 Exp R.T.: 6.286 min  
 Response: 0  
 Conc: N.D.

Instrument :  
 ECD\_P  
 ClientSampleId :  
 HEXANE



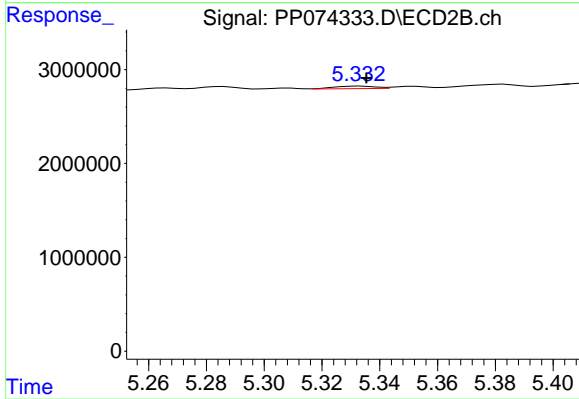
#23 AR-1248-3

R.T.: 5.157 min  
 Delta R.T.: -0.004 min  
 Response: 389646  
 Conc: 2.27 ng/ml



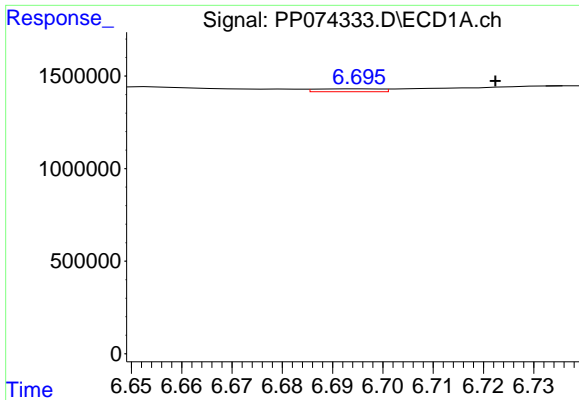
#24 AR-1248-4

R.T.: 6.696 min  
 Delta R.T.: 0.013 min  
 Response: 137706  
 Conc: 2.65 ng/ml



#24 AR-1248-4

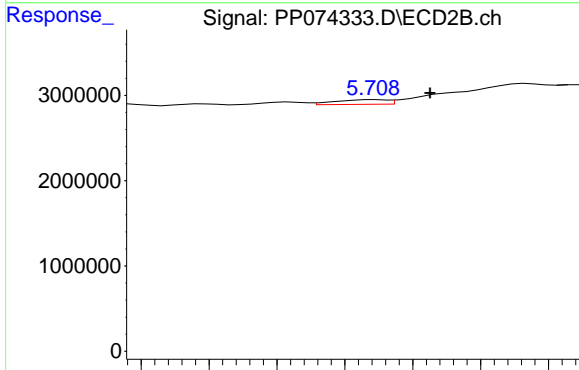
R.T.: 5.333 min  
 Delta R.T.: -0.002 min  
 Response: 271421  
 Conc: 1.63 ng/ml



#25 AR-1248-5

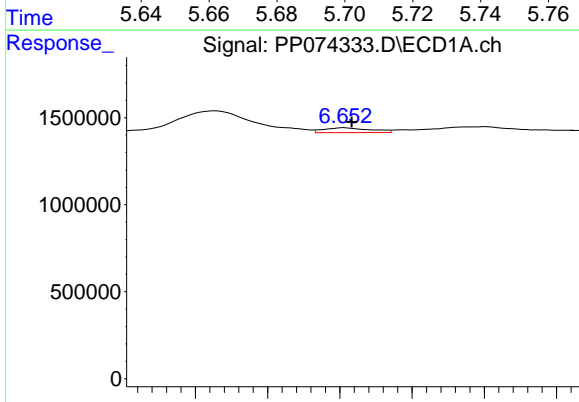
R.T.: 6.696 min  
 Delta R.T.: -0.027 min  
 Response: 137706  
 Conc: 2.42 ng/ml

Instrument :  
 ECD\_P  
 ClientSampleId :  
 HEXANE



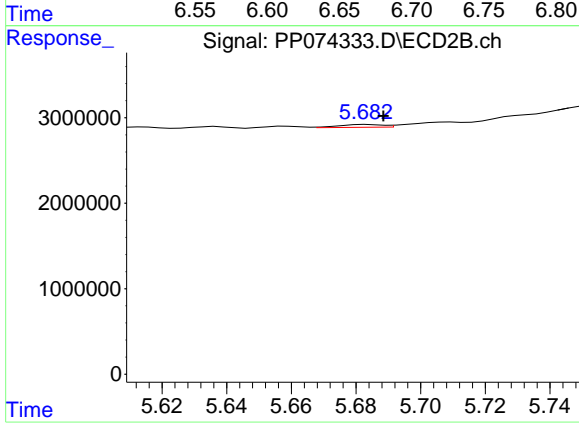
#25 AR-1248-5

R.T.: 5.709 min  
 Delta R.T.: -0.016 min  
 Response: 578231  
 Conc: 1.99 ng/ml



#26 AR-1254-1

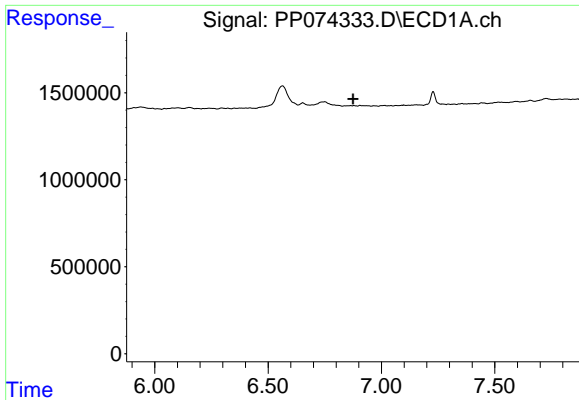
R.T.: 6.653 min  
 Delta R.T.: -0.005 min  
 Response: 620743  
 Conc: 11.79 ng/ml



#26 AR-1254-1

R.T.: 5.684 min  
 Delta R.T.: -0.005 min  
 Response: 310182  
 Conc: 0.85 ng/ml

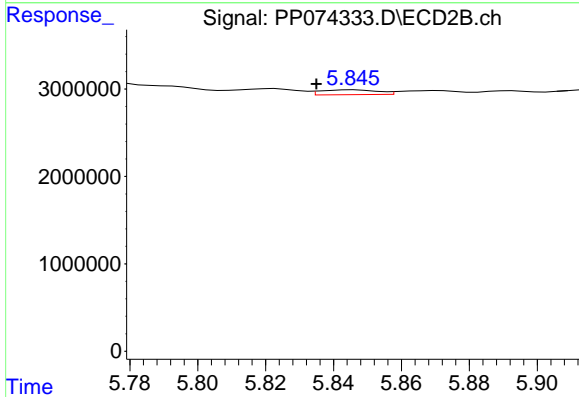




#27 AR-1254-2

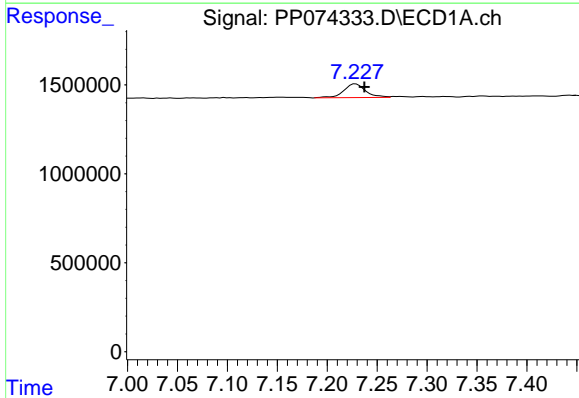
R.T.: 0.000 min  
 Exp R.T.: 6.875 min  
 Response: 0  
 Conc: N.D.

Instrument :  
 ECD\_P  
 ClientSampleId :  
 HEXANE



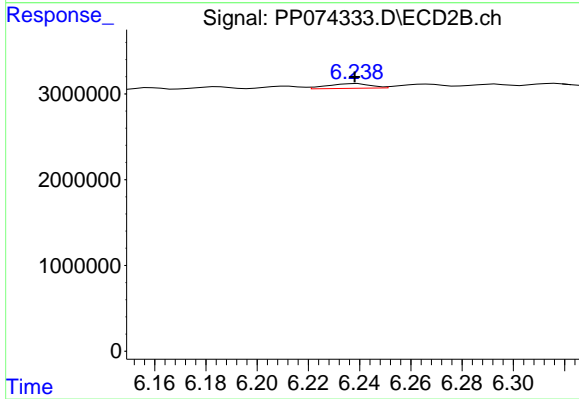
#27 AR-1254-2

R.T.: 5.846 min  
 Delta R.T.: 0.011 min  
 Response: 640393  
 Conc: 2.30 ng/ml



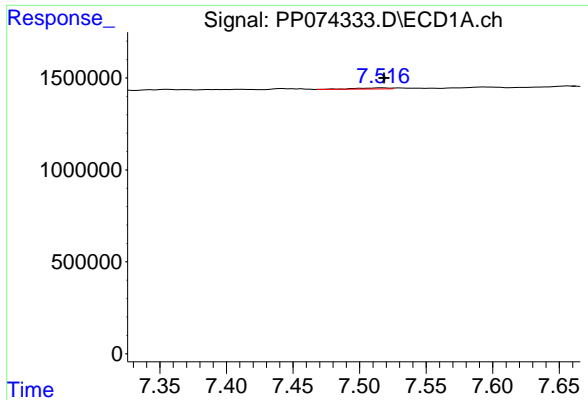
#28 AR-1254-3

R.T.: 7.229 min  
 Delta R.T.: -0.009 min  
 Response: 1188364  
 Conc: 13.61 ng/ml



#28 AR-1254-3

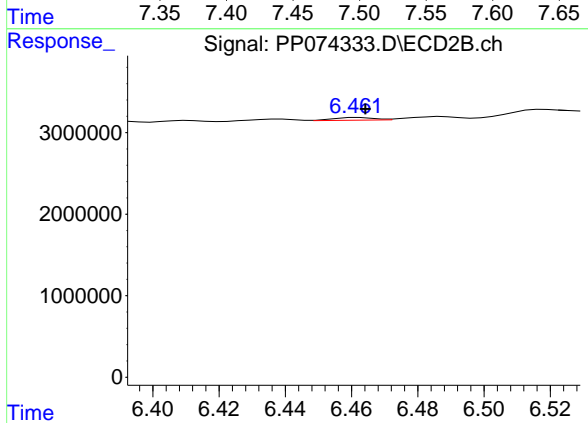
R.T.: 6.239 min  
 Delta R.T.: 0.000 min  
 Response: 635831  
 Conc: 1.30 ng/ml



#29 AR-1254-4

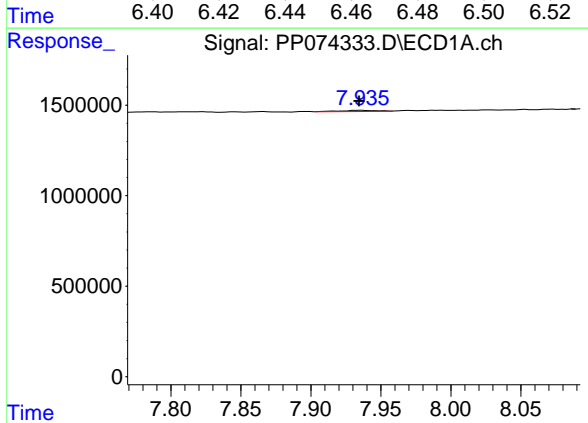
R.T.: 7.518 min  
 Delta R.T.: 0.000 min  
 Response: 95455  
 Conc: 1.50 ng/ml

Instrument :  
 ECD\_P  
 ClientSampleId :  
 HEXANE



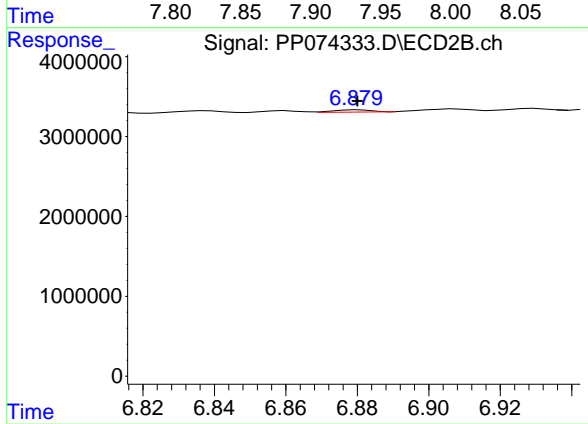
#29 AR-1254-4

R.T.: 6.462 min  
 Delta R.T.: -0.002 min  
 Response: 289602  
 Conc: 0.79 ng/ml



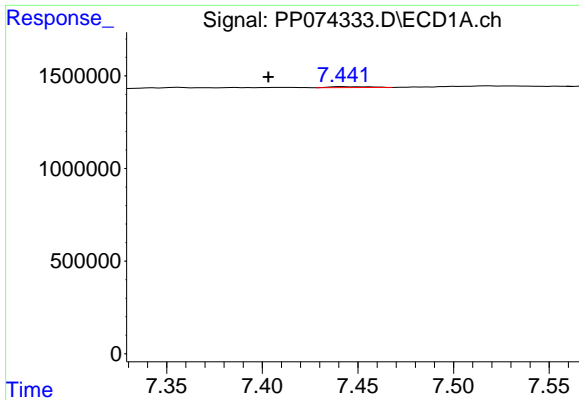
#30 AR-1254-5

R.T.: 7.936 min  
 Delta R.T.: 0.002 min  
 Response: 120198  
 Conc: 1.48 ng/ml



#30 AR-1254-5

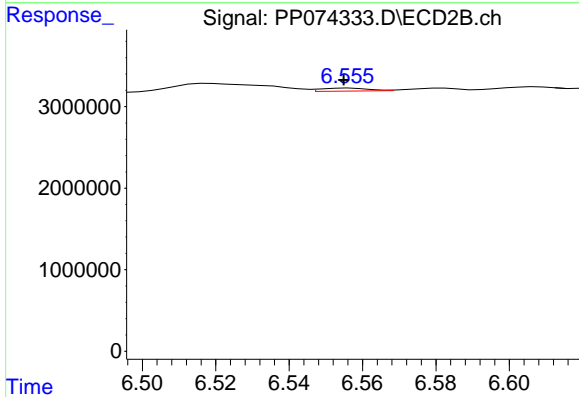
R.T.: 6.880 min  
 Delta R.T.: 0.000 min  
 Response: 212188  
 Conc: 0.55 ng/ml



#31 AR-1260-1

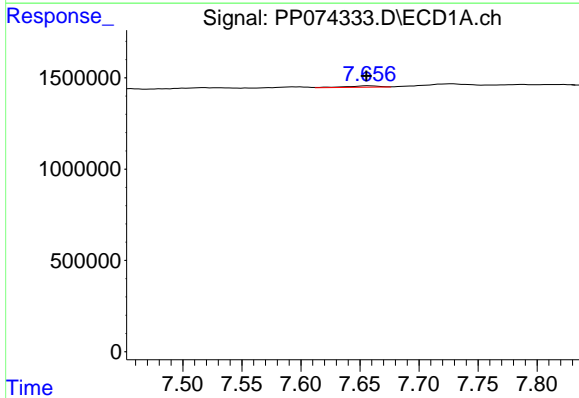
R.T.: 7.443 min  
 Delta R.T.: 0.039 min  
 Response: 72321  
 Conc: 1.28 ng/ml

Instrument :  
 ECD\_P  
 ClientSampleId :  
 HEXANE



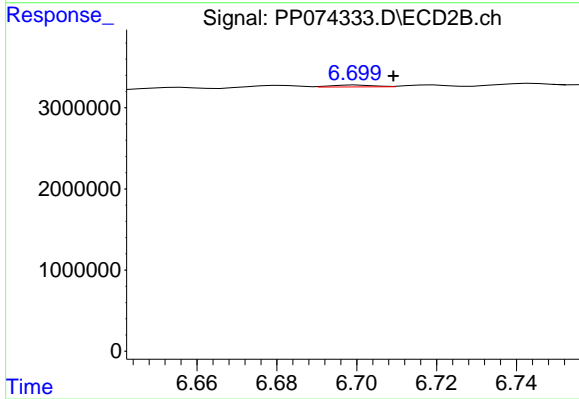
#31 AR-1260-1

R.T.: 6.557 min  
 Delta R.T.: 0.002 min  
 Response: 341635  
 Conc: 0.85 ng/ml



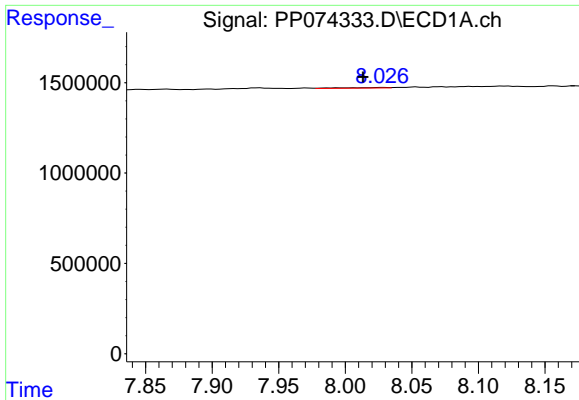
#32 AR-1260-2

R.T.: 7.657 min  
 Delta R.T.: 0.002 min  
 Response: 147047  
 Conc: 2.16 ng/ml



#32 AR-1260-2

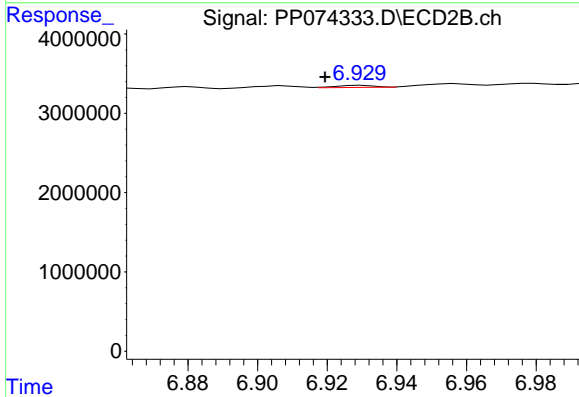
R.T.: 6.700 min  
 Delta R.T.: -0.009 min  
 Response: 171875  
 Conc: 0.55 ng/ml



#33 AR-1260-3

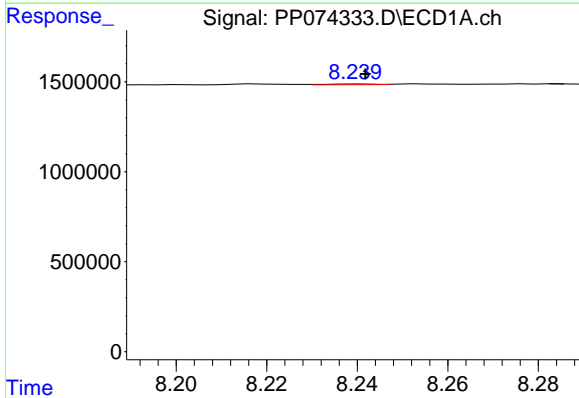
R.T.: 8.028 min  
 Delta R.T.: 0.015 min  
 Response: 92177  
 Conc: 1.73 ng/ml

Instrument :  
 ECD\_P  
 ClientSampleId :  
 HEXANE



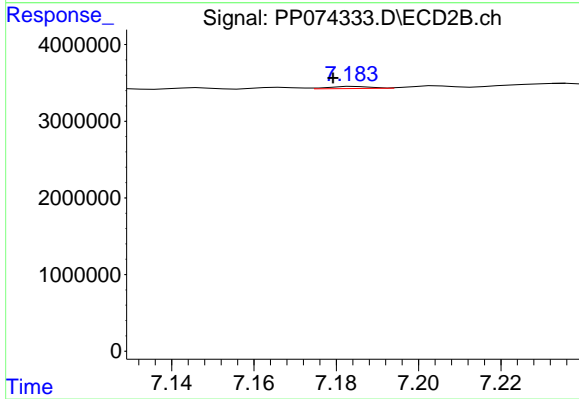
#33 AR-1260-3

R.T.: 6.930 min  
 Delta R.T.: 0.010 min  
 Response: 204929  
 Conc: 0.52 ng/ml



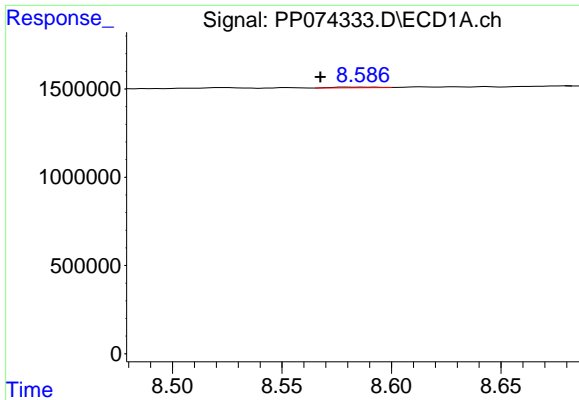
#34 AR-1260-4

R.T.: 8.240 min  
 Delta R.T.: -0.002 min  
 Response: 31955  
 Conc: 0.51 ng/ml



#34 AR-1260-4

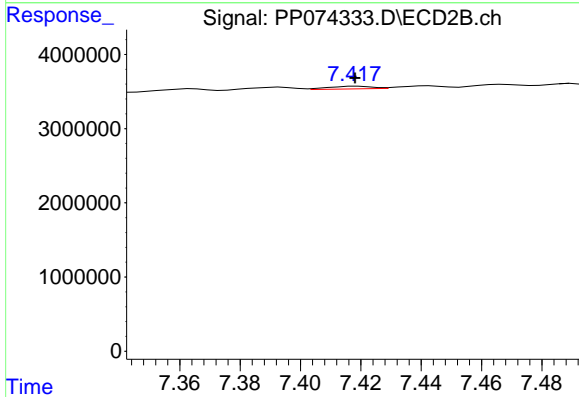
R.T.: 7.184 min  
 Delta R.T.: 0.005 min  
 Response: 202827  
 Conc: 0.70 ng/ml



#35 AR-1260-5

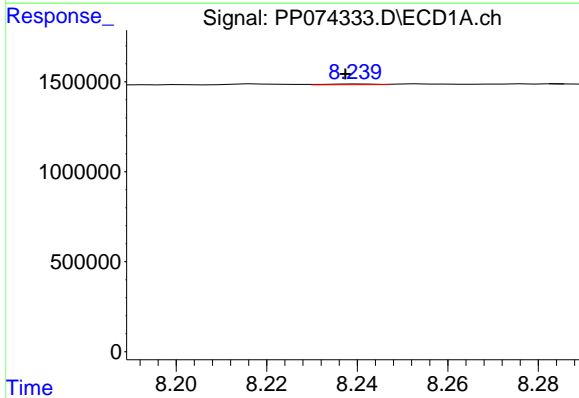
R.T.: 8.579 min  
 Delta R.T.: 0.012 min  
 Response: 56613  
 Conc: 0.50 ng/ml

Instrument :  
 ECD\_P  
 ClientSampleId :  
 HEXANE



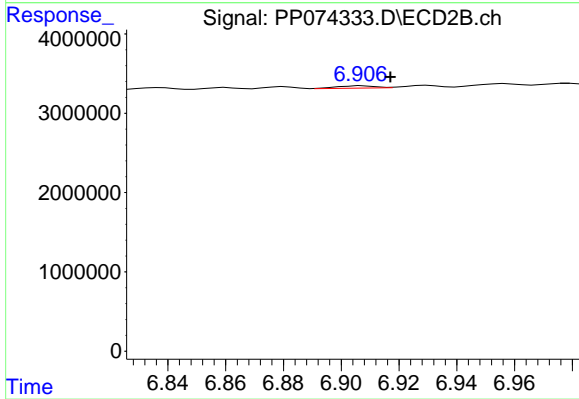
#35 AR-1260-5

R.T.: 7.418 min  
 Delta R.T.: 0.000 min  
 Response: 360819  
 Conc: 0.48 ng/ml



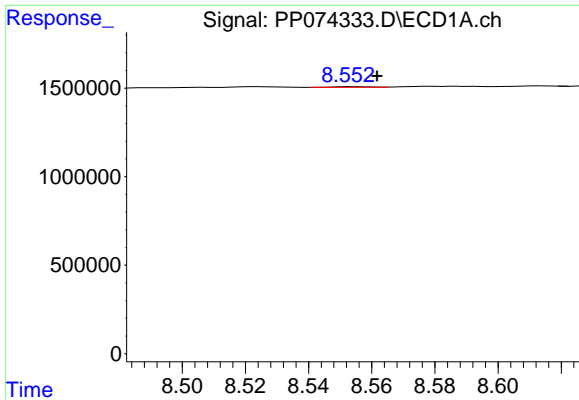
#36 AR-1262-1

R.T.: 8.240 min  
 Delta R.T.: 0.003 min  
 Response: 31955  
 Conc: 0.42 ng/ml



#36 AR-1262-1

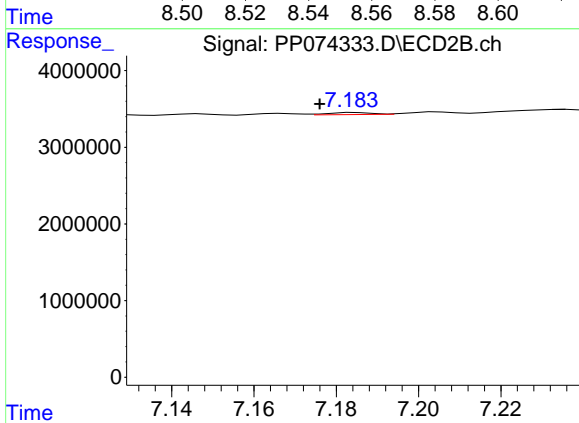
R.T.: 6.907 min  
 Delta R.T.: -0.010 min  
 Response: 273622  
 Conc: 0.49 ng/ml



#37 AR-1262-2

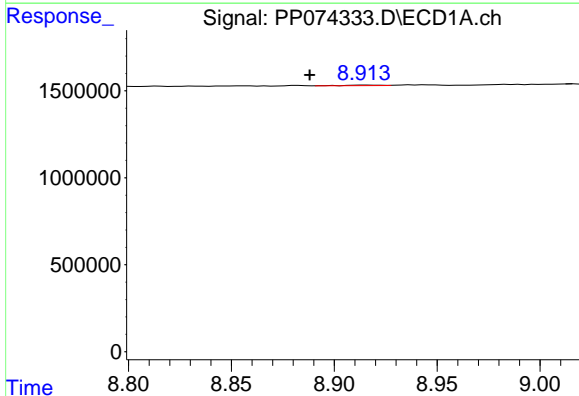
R.T.: 8.553 min  
 Delta R.T.: -0.009 min  
 Response: 28867  
 Conc: 0.22 ng/ml

Instrument :  
 ECD\_P  
 ClientSampleId :  
 HEXANE



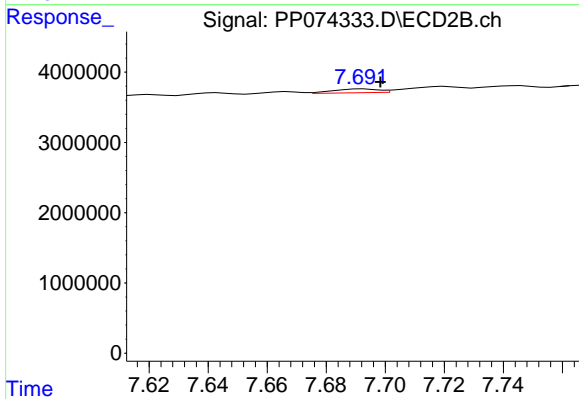
#37 AR-1262-2

R.T.: 7.184 min  
 Delta R.T.: 0.008 min  
 Response: 202827  
 Conc: 0.51 ng/ml



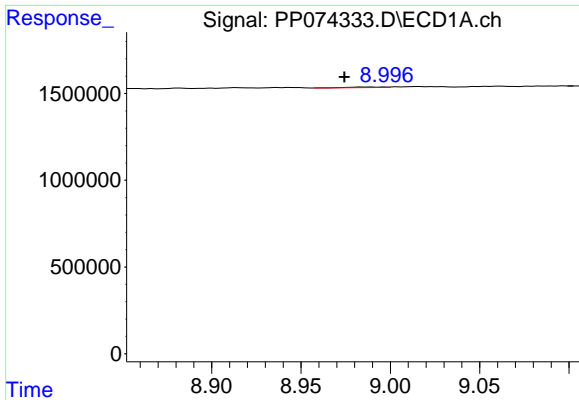
#38 AR-1262-3

R.T.: 8.914 min  
 Delta R.T.: 0.026 min  
 Response: 40334  
 Conc: 0.43 ng/ml



#38 AR-1262-3

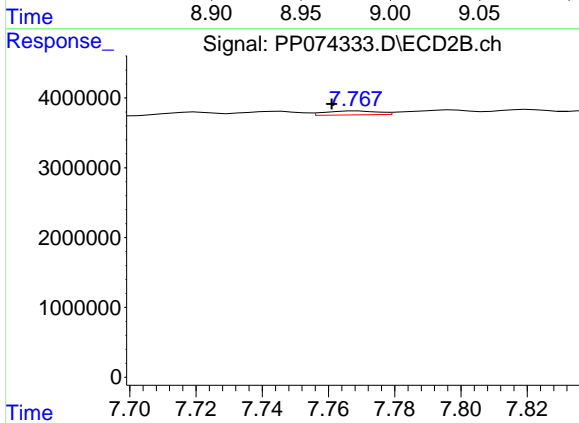
R.T.: 7.692 min  
 Delta R.T.: -0.006 min  
 Response: 563900  
 Conc: 1.57 ng/ml



#39 AR-1262-4

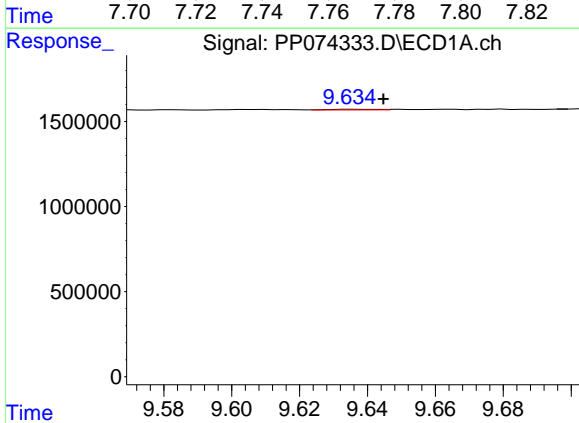
R.T.: 8.984 min  
 Delta R.T.: 0.010 min  
 Response: 46660  
 Conc: 0.64 ng/ml

Instrument :  
 ECD\_P  
 ClientSampleId :  
 HEXANE



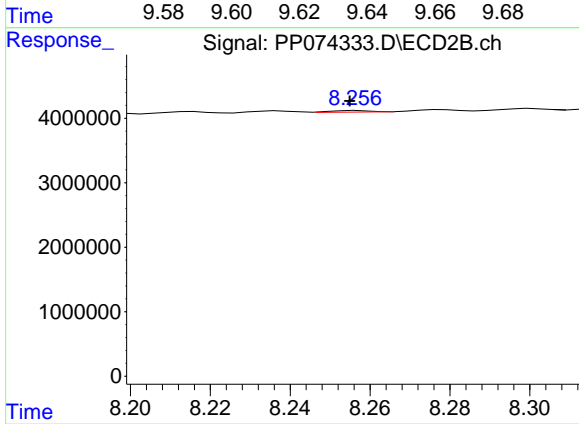
#39 AR-1262-4

R.T.: 7.769 min  
 Delta R.T.: 0.008 min  
 Response: 622044  
 Conc: 0.93 ng/ml



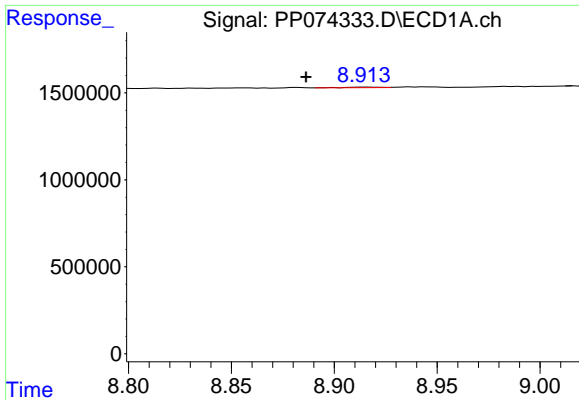
#40 AR-1262-5

R.T.: 9.636 min  
 Delta R.T.: -0.009 min  
 Response: 39969  
 Conc: 0.78 ng/ml



#40 AR-1262-5

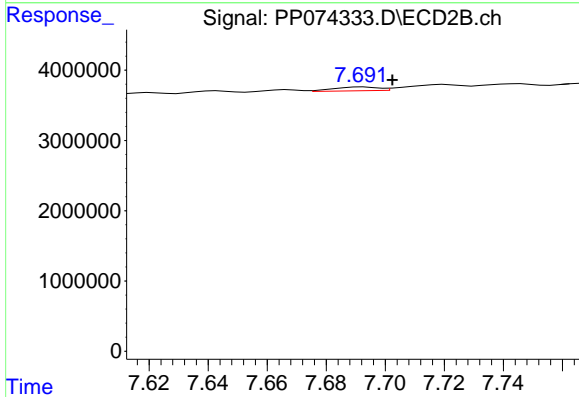
R.T.: 8.257 min  
 Delta R.T.: 0.002 min  
 Response: 165145  
 Conc: 0.58 ng/ml



#41 AR-1268-1

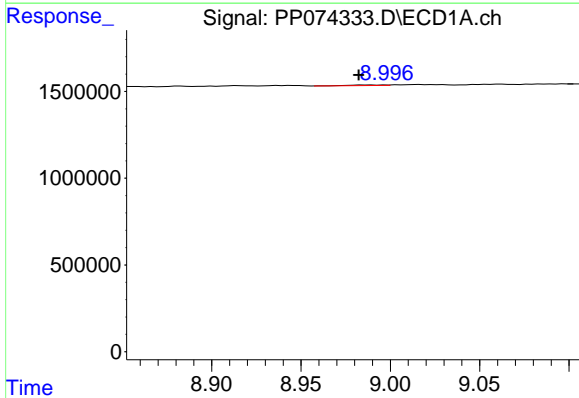
R.T.: 8.914 min  
 Delta R.T.: 0.028 min  
 Response: 40334  
 Conc: 0.26 ng/ml

Instrument : ECD\_P  
 ClientSampleId : HEXANE



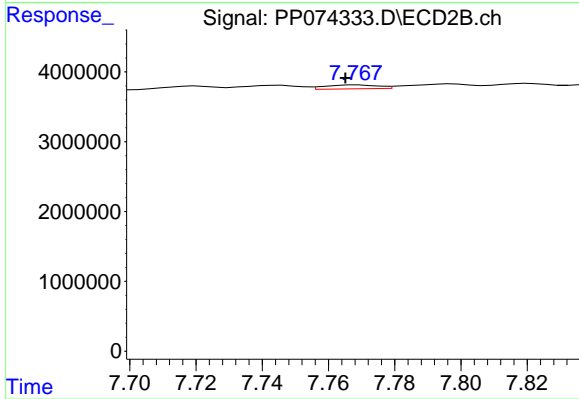
#41 AR-1268-1

R.T.: 7.692 min  
 Delta R.T.: -0.010 min  
 Response: 563900  
 Conc: 0.52 ng/ml



#42 AR-1268-2

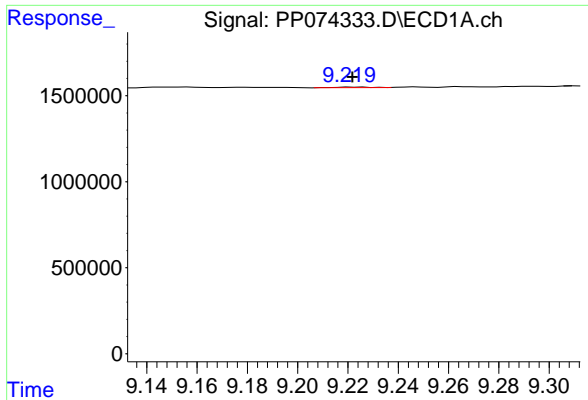
R.T.: 8.984 min  
 Delta R.T.: 0.002 min  
 Response: 46660  
 Conc: 0.33 ng/ml



#42 AR-1268-2

R.T.: 7.769 min  
 Delta R.T.: 0.004 min  
 Response: 622044  
 Conc: 0.59 ng/ml

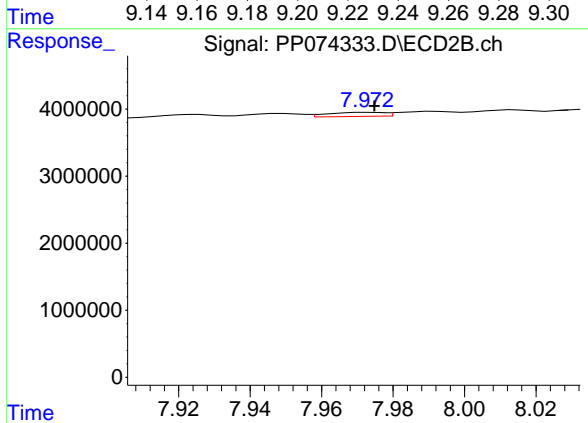




#43 AR-1268-3

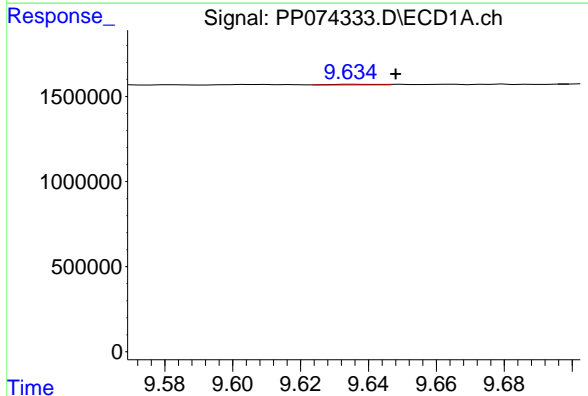
R.T.: 9.221 min  
 Delta R.T.: -0.001 min  
 Response: 33204  
 Conc: 0.28 ng/ml

Instrument :  
 ECD\_P  
 ClientSampleId :  
 HEXANE



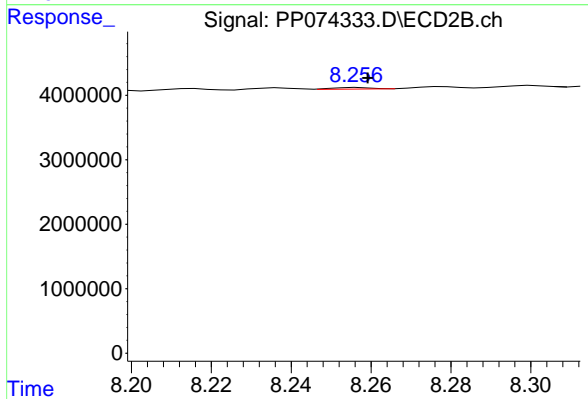
#43 AR-1268-3

R.T.: 7.973 min  
 Delta R.T.: -0.001 min  
 Response: 672634  
 Conc: 0.81 ng/ml



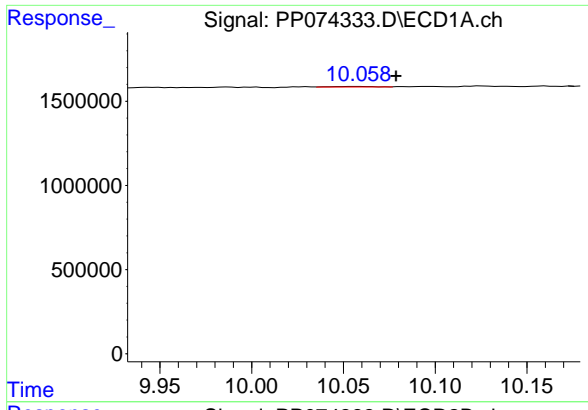
#44 AR-1268-4

R.T.: 9.636 min  
 Delta R.T.: -0.012 min  
 Response: 39969  
 Conc: 0.68 ng/ml



#44 AR-1268-4

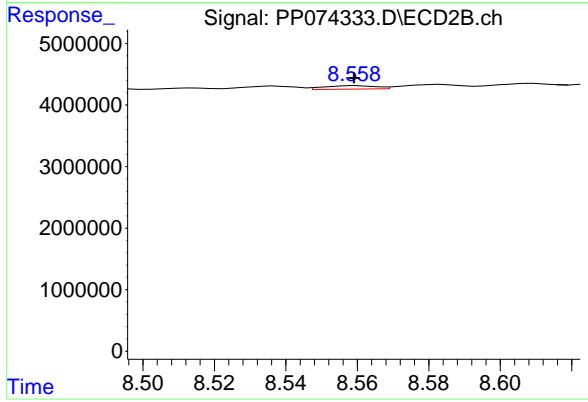
R.T.: 8.257 min  
 Delta R.T.: -0.002 min  
 Response: 165145  
 Conc: 0.54 ng/ml



#45 AR-1268-5

R.T.: 10.060 min  
 Delta R.T.: -0.019 min  
 Response: 56615  
 Conc: 0.16 ng/ml

Instrument :  
 ECD\_P  
 ClientSampleId :  
 HEXANE



#45 AR-1268-5

R.T.: 8.560 min  
 Delta R.T.: 0.000 min  
 Response: 545146  
 Conc: 0.21 ng/ml