

Data Path : Z:\pestpcbsrv\HPCHEM1\ECD_P\Data\PP081325\
 Data File : PP074334.D
 Signal(s) : Signal #1: ECD1A.ch Signal #2: ECD2B.ch
 Acq On : 13 Aug 2025 09:04
 Operator : YP\AJ
 Sample : AR1660CCC500
 Misc :
 ALS Vial : 3 Sample Multiplier: 1

Instrument :
 ECD_P
 ClientSampleId :
 AR1660CCC500

Integration File signal 1: autoint1.e
 Integration File signal 2: autoint2.e
 Quant Time: Aug 13 11:44:15 2025
 Quant Method : Z:\pestpcbsrv\HPCHEM1\ECD_P\methods\PP080125.M
 Quant Title : GC EXTRACTABLES
 QLast Update : Mon Aug 04 11:01:49 2025
 Response via : Initial Calibration
 Integrator: ChemStation

Volume Inj. : 2 µl
 Signal #1 Phase : ZB-MR1 Signal #2 Phase: ZB-MR2
 Signal #1 Info : 30Mx0.32mmx 0.50µ Signal #2 Info : 30M x 0.32mm x 0.25µm

Compound	RT#1	RT#2	Resp#1	Resp#2	ng/ml	ng/ml
System Monitoring Compounds						
1) SA Tetrachlo...	4.657	3.801	60699336	228.8E6	54.278	59.683
2) SA Decachlor...	10.436	8.819	47494711	317.4E6	48.905	52.781
Target Compounds						
3) L1 AR-1016-1	5.809	4.900	21431398	226.5E6	519.463	567.909
4) L1 AR-1016-2	5.830	4.958	31817130	108.4E6	523.810	577.259
5) L1 AR-1016-3	5.893	5.079	21118183	59799212	532.474	563.773
6) L1 AR-1016-4	5.990	5.119	17405958	62295116	534.836	570.363
7) L1 AR-1016-5	6.283	5.334	17110565	69184133	526.997	591.503
8) L2 AR-1221-1	4.853	4.011	2636746	7605843	157.290	154.952
9) L2 AR-1221-2	4.943	4.097	3940446	9790784	312.708	272.805
10) L2 AR-1221-3	5.018	4.174	12943852	44994551	353.317	332.740
11) L3 AR-1232-1	5.018	4.174	12943852	44994551	445.766	443.898
12) L3 AR-1232-2	5.544	4.900	16543110	226.5E6	1099.742	1299.917
13) L3 AR-1232-3	5.830	5.079	31817130	59799212	1097.078	1305.186
14) L3 AR-1232-4	5.990	5.161	17405958	113.6E6	1125.228	1957.876 #
15) L3 AR-1232-5	6.080	5.334	15362214	69184133	1311.215	1472.647
16) L4 AR-1242-1	5.809	4.900	21431398	226.5E6	575.095	656.346
17) L4 AR-1242-2	5.830	4.958	31817130	108.4E6	584.778	663.582
18) L4 AR-1242-3	5.893	5.079	21118183	59799212	590.952	648.240
19) L4 AR-1242-4	5.990	5.161	17405958	113.6E6	595.714	951.066 #
20) L4 AR-1242-5	6.720	5.685	6445000	111.2E6	181.253	743.387 #
21) L5 AR-1248-1	5.809	4.900	21431398	226.5E6	765.010	1058.897 #
22) L5 AR-1248-2	6.080	5.119	15362214	62295116	381.565	425.767
23) L5 AR-1248-3	6.283	5.161	17110565	113.6E6	383.873	662.416 #
24) L5 AR-1248-4	6.657	5.334	22076266	69184133	424.240	415.836
25) L5 AR-1248-5	6.720	5.685	6445000	111.2E6	113.183	382.110 #
26) L6 AR-1254-1	6.657	5.685	22076266	111.2E6	419.374	303.622 #
27) L6 AR-1254-2	6.873	5.831	13976300	69369454	175.792	249.336 #
28) L6 AR-1254-3	7.235	6.248	8549466	129.2E6	97.914	264.152 #
29) L6 AR-1254-4	7.518	6.460	5809318	12949449	91.042	35.230 #
30) L6 AR-1254-5	7.932	6.877	43945477	171.9E6	541.569	446.387
31) L7 AR-1260-1	7.400	6.550	28408257	220.4E6	504.085	545.642
32) L7 AR-1260-2	7.653	6.705	33046210	168.3E6	484.887	538.092
33) L7 AR-1260-3	8.011	6.915	26246958	222.6E6	492.476	564.732
34) L7 AR-1260-4	8.239	7.175	30941970	159.8E6	494.162	549.315
35) L7 AR-1260-5	8.565	7.414	53781862	418.8E6	474.665	552.872
36) L8 AR-1262-1	8.239	6.915	30941970	222.6E6	408.261	395.231
37) L8 AR-1262-2	8.565	7.175	53781862	159.8E6	412.343	398.579
38) L8 AR-1262-3	8.896	7.697	37373686	89226273	397.293	248.216 #
39) L8 AR-1262-4	8.975	7.760	25127175	279.6E6	344.909	419.199
40) L8 AR-1262-5	9.649	8.255	17943548	96618711	352.369	341.086
41) L9 AR-1268-1	8.896	7.697	37373686	89226273	240.140	81.839 #

Data Path : Z:\pestpcbsrv\HPCHEM1\ECD_P\Data\PP081325\
 Data File : PP074334.D
 Signal(s) : Signal #1: ECD1A.ch Signal #2: ECD2B.ch
 Acq On : 13 Aug 2025 09:04
 Operator : YP\AJ
 Sample : AR1660CCC500
 Misc :
 ALS Vial : 3 Sample Multiplier: 1

Instrument :
 ECD_P
 ClientSampleId :
 AR1660CCC500

Integration File signal 1: autoint1.e
 Integration File signal 2: autoint2.e
 Quant Time: Aug 13 11:44:15 2025
 Quant Method : Z:\pestpcbsrv\HPCHEM1\ECD_P\methods\PP080125.M
 Quant Title : GC EXTRACTABLES
 QLast Update : Mon Aug 04 11:01:49 2025
 Response via : Initial Calibration
 Integrator: ChemStation

Volume Inj. : 2 µl
 Signal #1 Phase : ZB-MR1 Signal #2 Phase: ZB-MR2
 Signal #1 Info : 30Mx0.32mmx 0.50µ Signal #2 Info : 30M x 0.32mm x 0.25µm

	Compound	RT#1	RT#2	Resp#1	Resp#2	ng/ml	ng/ml
42)	L9 AR-1268-2	8.975	7.760	25127175	279.6E6	175.193	263.419 #
43)	L9 AR-1268-3	9.222	7.971	1029033	4225604	8.613	5.079 #
44)	L9 AR-1268-4	9.649	8.255	17943548	96618711	305.097	313.637
45)	L9 AR-1268-5	10.080	8.553	5178125	22962322	14.723	9.005 #

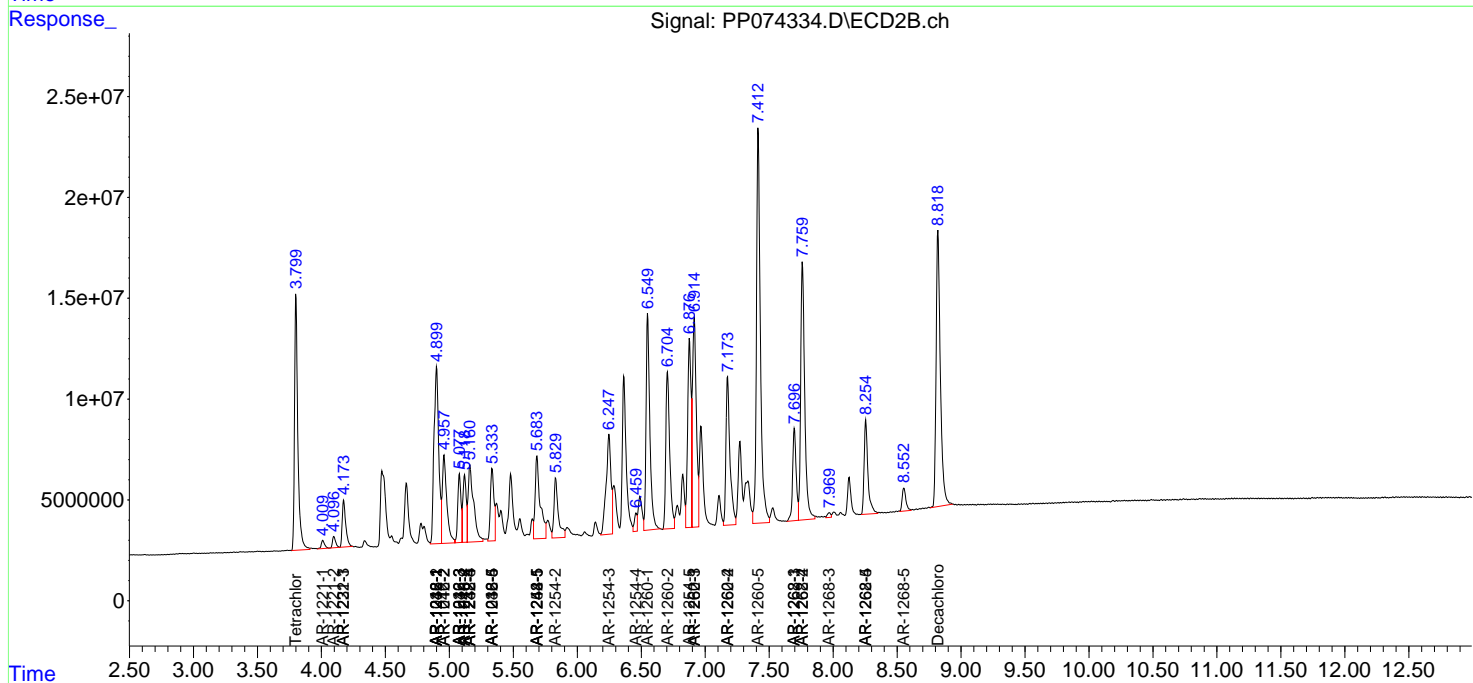
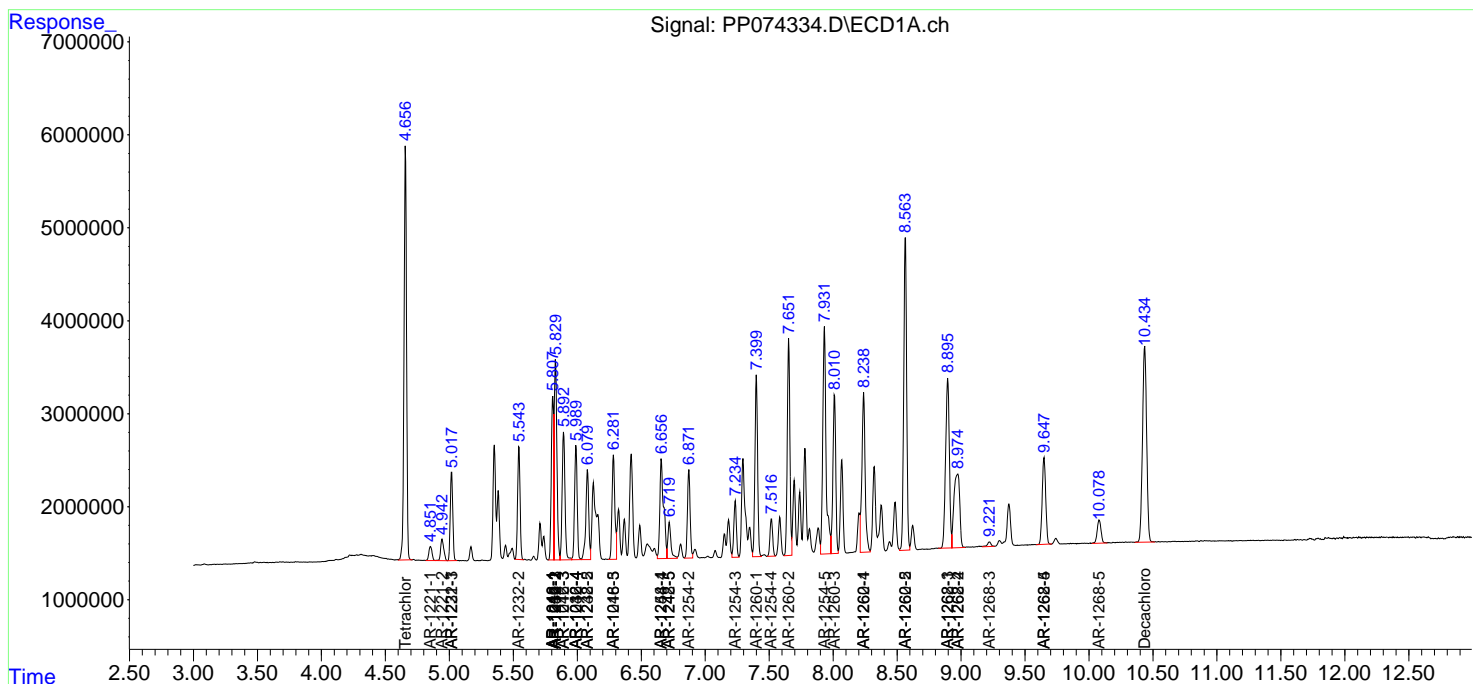
(f)=RT Delta > 1/2 Window (#)=Amounts differ by > 25% (m)=manual int.

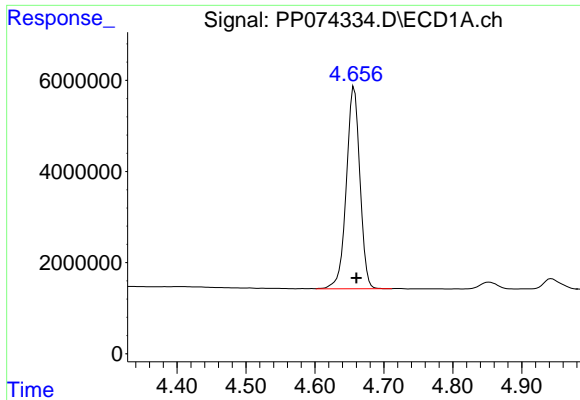
Data Path : Z:\pestpcbsrv\HPCHEM1\ECD_P\Data\PP081325\
 Data File : PP074334.D
 Signal(s) : Signal #1: ECD1A.ch Signal #2: ECD2B.ch
 Acq On : 13 Aug 2025 09:04
 Operator : YP\AJ
 Sample : AR1660CCC500
 Misc :
 ALS Vial : 3 Sample Multiplier: 1

Instrument :
 ECD_P
 ClientSampleId :
 AR1660CCC500

Integration File signal 1: autoint1.e
 Integration File signal 2: autoint2.e
 Quant Time: Aug 13 11:44:15 2025
 Quant Method : Z:\pestpcbsrv\HPCHEM1\ECD_P\methods\PP080125.M
 Quant Title : GC EXTRACTABLES
 QLast Update : Mon Aug 04 11:01:49 2025
 Response via : Initial Calibration
 Integrator: ChemStation

Volume Inj. : 2 µl
 Signal #1 Phase : ZB-MR1 Signal #2 Phase: ZB-MR2
 Signal #1 Info : 30Mx0.32mmx 0.50µ Signal #2 Info : 30M x 0.32mm x 0.25µm

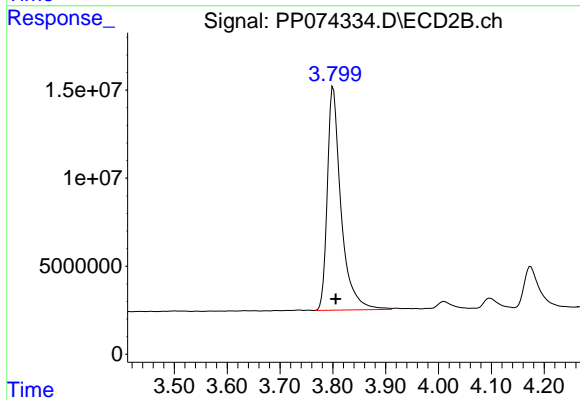




#1 Tetrachloro-m-xylene

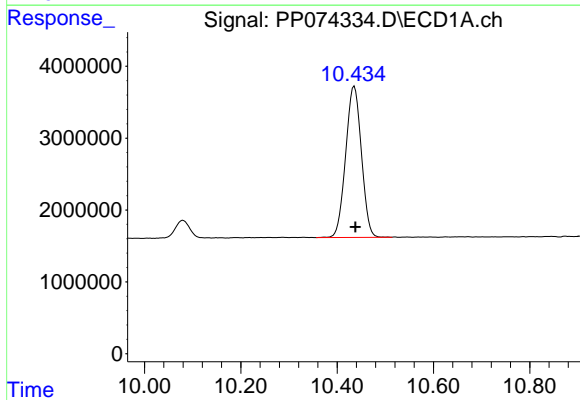
R.T.: 4.657 min
 Delta R.T.: -0.003 min
 Response: 60699336
 Conc: 54.28 ng/ml

Instrument :
 ECD_P
 ClientSampleId :
 AR1660CCC500



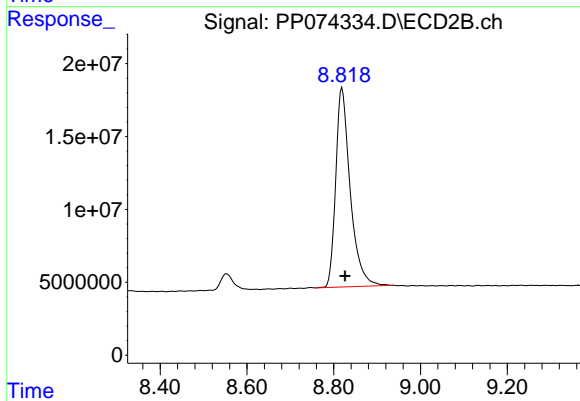
#1 Tetrachloro-m-xylene

R.T.: 3.801 min
 Delta R.T.: -0.005 min
 Response: 228848491
 Conc: 59.68 ng/ml



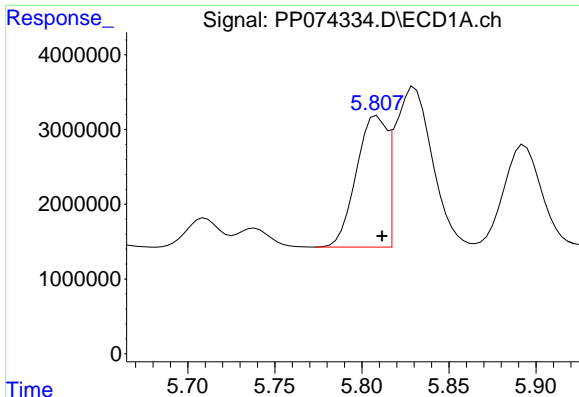
#2 Decachlorobiphenyl

R.T.: 10.436 min
 Delta R.T.: -0.002 min
 Response: 47494711
 Conc: 48.91 ng/ml



#2 Decachlorobiphenyl

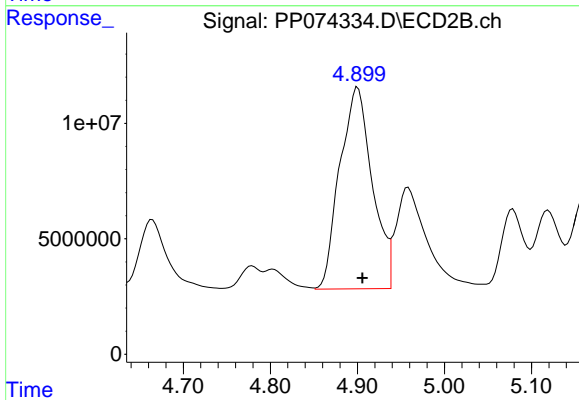
R.T.: 8.819 min
 Delta R.T.: -0.007 min
 Response: 317403824
 Conc: 52.78 ng/ml



#3 AR-1016-1

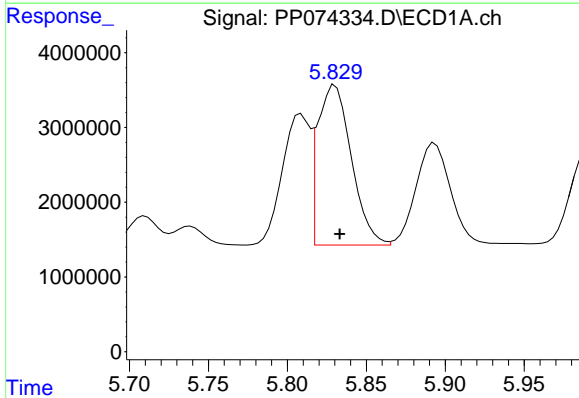
R.T.: 5.809 min
 Delta R.T.: -0.003 min
 Response: 21431398
 Conc: 519.46 ng/ml

Instrument :
 ECD_P
 ClientSampleId :
 AR1660CCC500



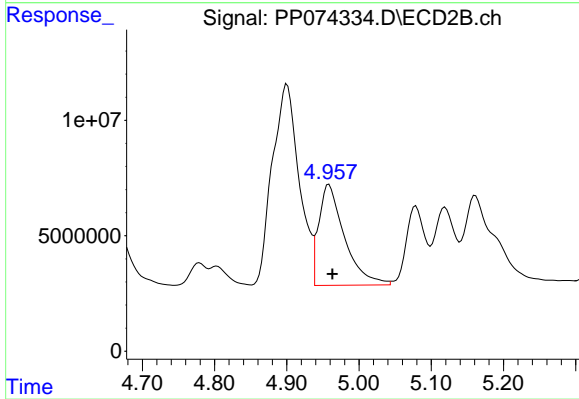
#3 AR-1016-1

R.T.: 4.900 min
 Delta R.T.: -0.005 min
 Response: 226531618
 Conc: 567.91 ng/ml



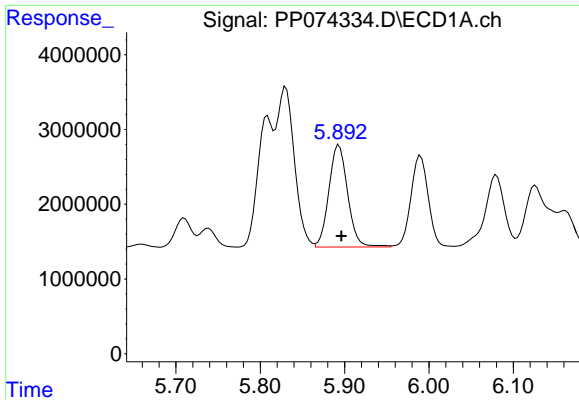
#4 AR-1016-2

R.T.: 5.830 min
 Delta R.T.: -0.003 min
 Response: 31817130
 Conc: 523.81 ng/ml



#4 AR-1016-2

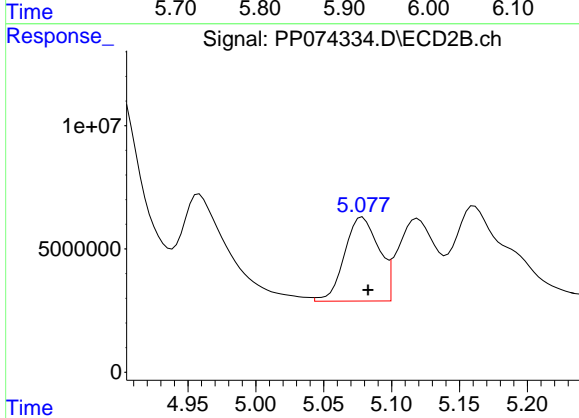
R.T.: 4.958 min
 Delta R.T.: -0.005 min
 Response: 108414514
 Conc: 577.26 ng/ml



#5 AR-1016-3

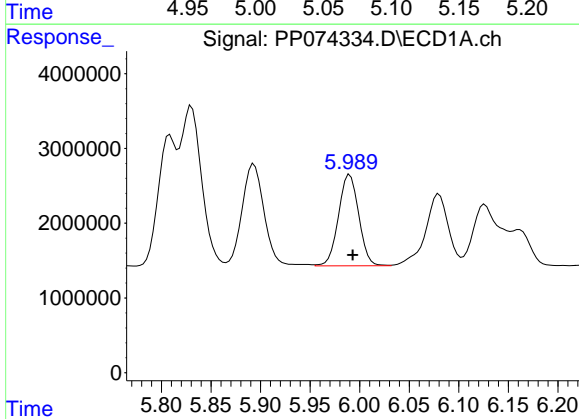
R.T.: 5.893 min
 Delta R.T.: -0.003 min
 Response: 21118183
 Conc: 532.47 ng/ml

Instrument :
 ECD_P
 ClientSampleId :
 AR1660CCC500



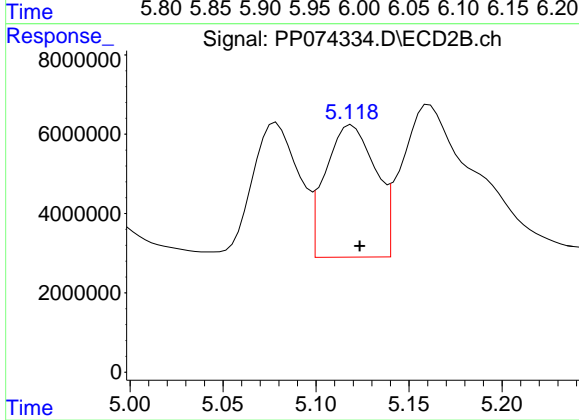
#5 AR-1016-3

R.T.: 5.079 min
 Delta R.T.: -0.004 min
 Response: 59799212
 Conc: 563.77 ng/ml



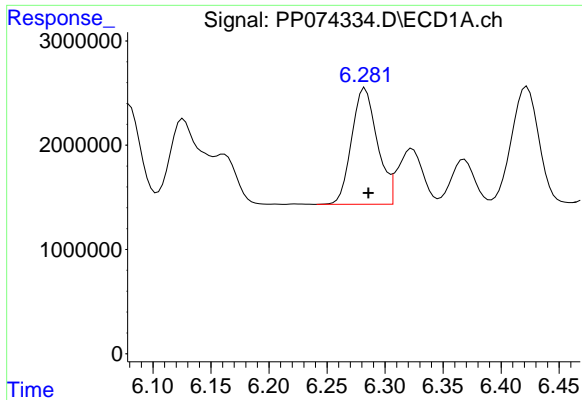
#6 AR-1016-4

R.T.: 5.990 min
 Delta R.T.: -0.003 min
 Response: 17405958
 Conc: 534.84 ng/ml



#6 AR-1016-4

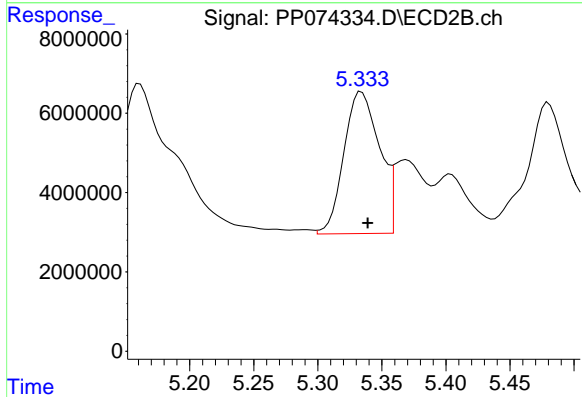
R.T.: 5.119 min
 Delta R.T.: -0.004 min
 Response: 62295116
 Conc: 570.36 ng/ml



#7 AR-1016-5

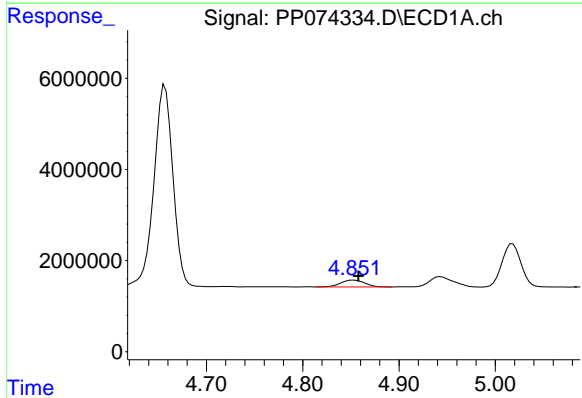
R.T.: 6.283 min
 Delta R.T.: -0.003 min
 Response: 17110565
 Conc: 527.00 ng/ml

Instrument :
 ECD_P
 ClientSampleId :
 AR1660CCC500



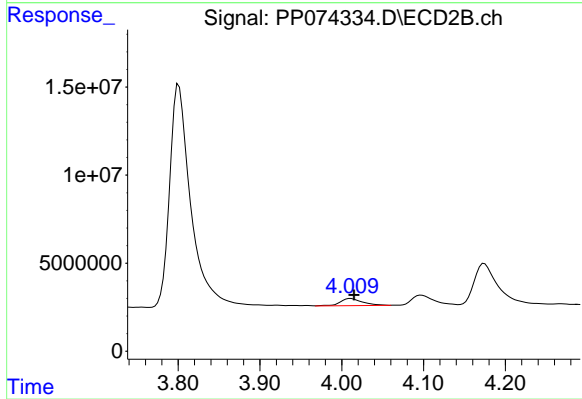
#7 AR-1016-5

R.T.: 5.334 min
 Delta R.T.: -0.005 min
 Response: 69184133
 Conc: 591.50 ng/ml



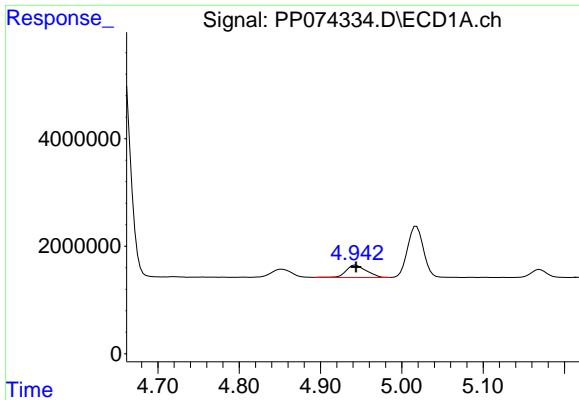
#8 AR-1221-1

R.T.: 4.853 min
 Delta R.T.: -0.005 min
 Response: 2636746
 Conc: 157.29 ng/ml



#8 AR-1221-1

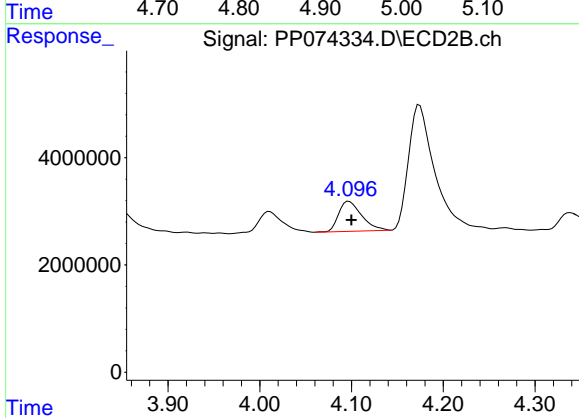
R.T.: 4.011 min
 Delta R.T.: -0.004 min
 Response: 7605843
 Conc: 154.95 ng/ml



#9 AR-1221-2

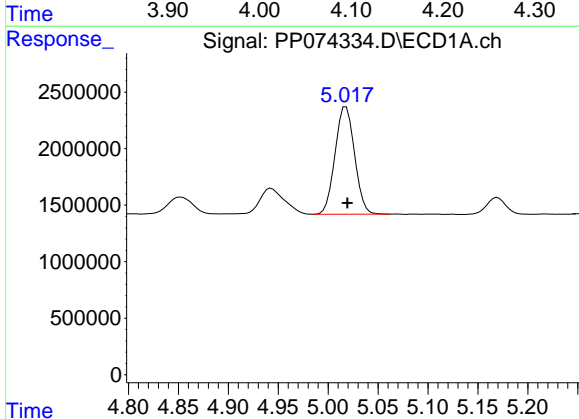
R.T.: 4.943 min
 Delta R.T.: 0.000 min
 Response: 3940446
 Conc: 312.71 ng/ml

Instrument :
 ECD_P
 ClientSampleId :
 AR1660CCC500



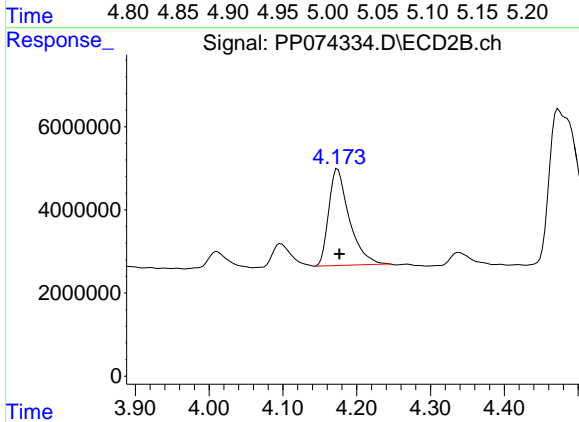
#9 AR-1221-2

R.T.: 4.097 min
 Delta R.T.: -0.003 min
 Response: 9790784
 Conc: 272.80 ng/ml



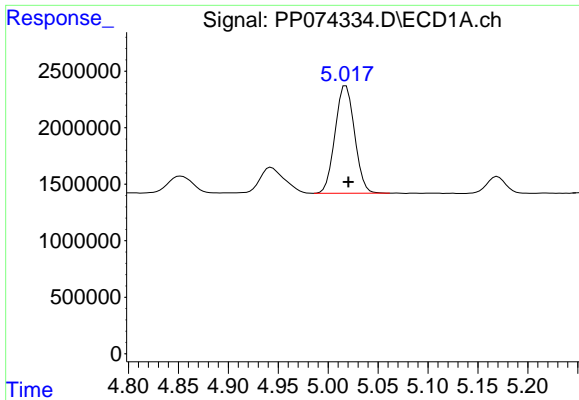
#10 AR-1221-3

R.T.: 5.018 min
 Delta R.T.: -0.001 min
 Response: 12943852
 Conc: 353.32 ng/ml



#10 AR-1221-3

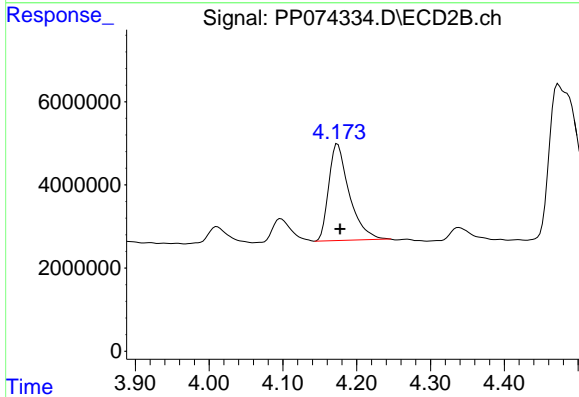
R.T.: 4.174 min
 Delta R.T.: -0.002 min
 Response: 44994551
 Conc: 332.74 ng/ml



#11 AR-1232-1

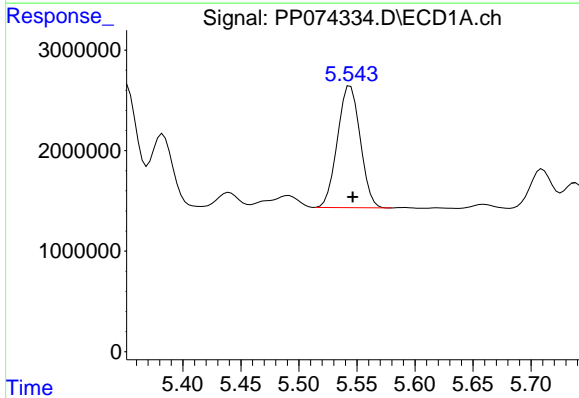
R.T.: 5.018 min
 Delta R.T.: -0.003 min
 Response: 12943852
 Conc: 445.77 ng/ml

Instrument :
 ECD_P
 ClientSampleId :
 AR1660CCC500



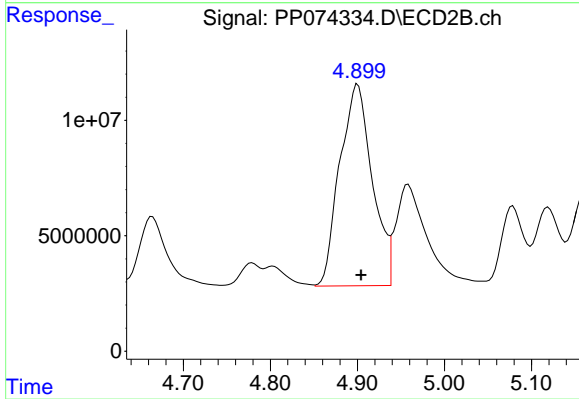
#11 AR-1232-1

R.T.: 4.174 min
 Delta R.T.: -0.003 min
 Response: 44994551
 Conc: 443.90 ng/ml



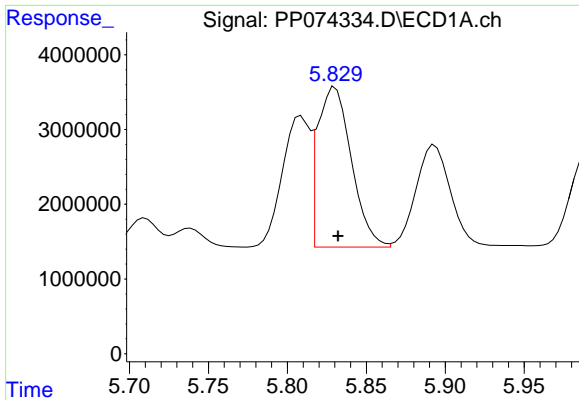
#12 AR-1232-2

R.T.: 5.544 min
 Delta R.T.: -0.002 min
 Response: 16543110
 Conc: 1099.74 ng/ml



#12 AR-1232-2

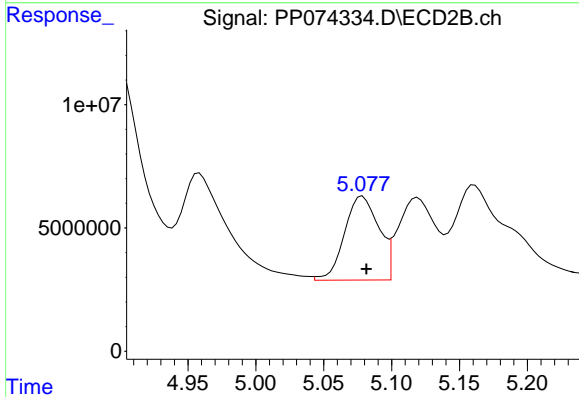
R.T.: 4.900 min
 Delta R.T.: -0.004 min
 Response: 226531618
 Conc: 1299.92 ng/ml



#13 AR-1232-3

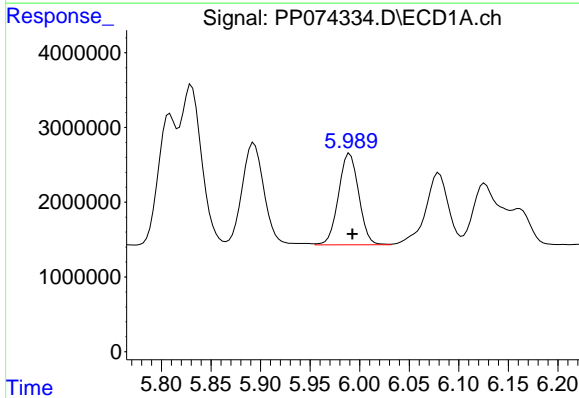
R.T.: 5.830 min
 Delta R.T.: -0.002 min
 Response: 31817130
 Conc: 1097.08 ng/ml

Instrument :
 ECD_P
 ClientSampleId :
 AR1660CCC500



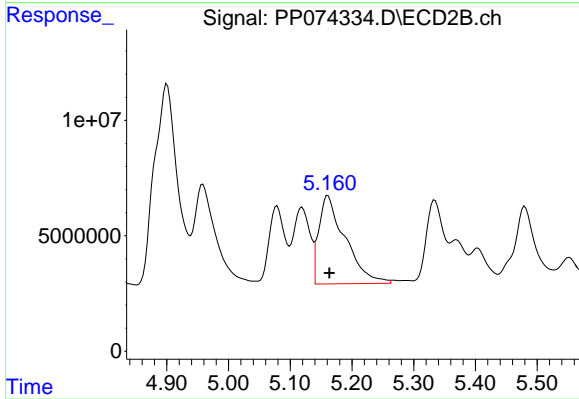
#13 AR-1232-3

R.T.: 5.079 min
 Delta R.T.: -0.003 min
 Response: 59799212
 Conc: 1305.19 ng/ml



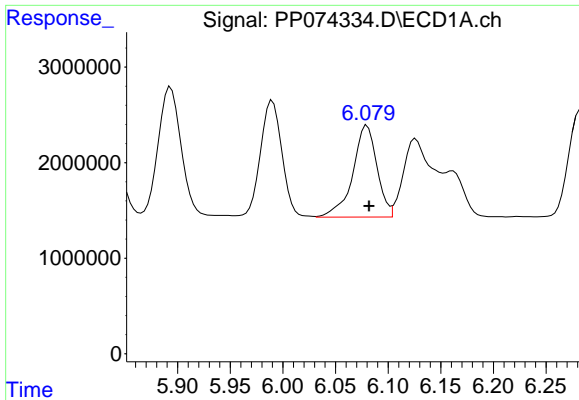
#14 AR-1232-4

R.T.: 5.990 min
 Delta R.T.: -0.002 min
 Response: 17405958
 Conc: 1125.23 ng/ml



#14 AR-1232-4

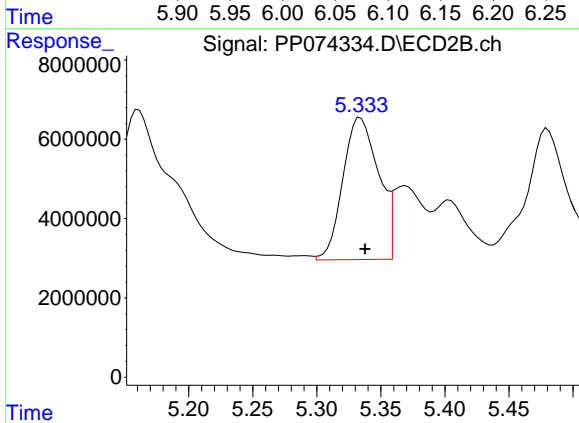
R.T.: 5.161 min
 Delta R.T.: -0.003 min
 Response: 113577798
 Conc: 1957.88 ng/ml



#15 AR-1232-5

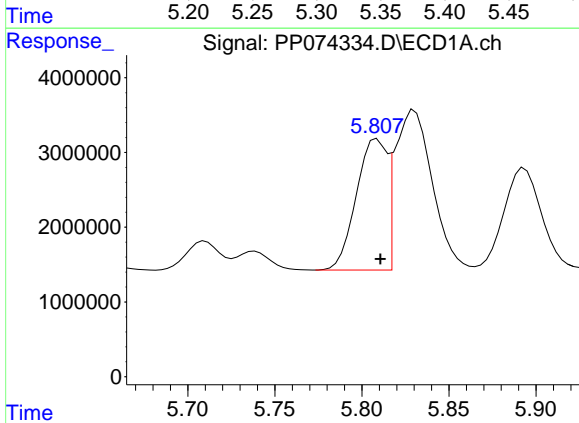
R.T.: 6.080 min
 Delta R.T.: -0.002 min
 Response: 15362214
 Conc: 1311.22 ng/ml

Instrument :
 ECD_P
 ClientSampleId :
 AR1660CCC500



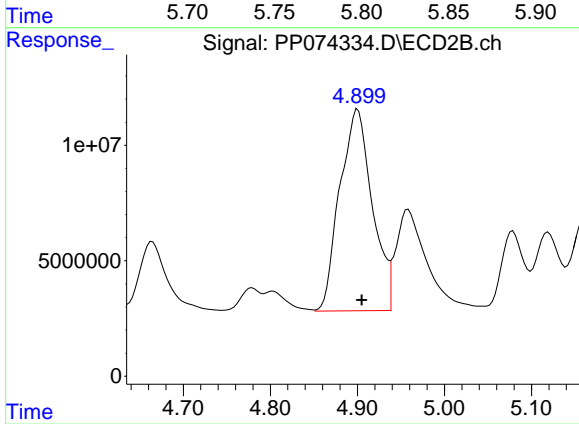
#15 AR-1232-5

R.T.: 5.334 min
 Delta R.T.: -0.004 min
 Response: 69184133
 Conc: 1472.65 ng/ml



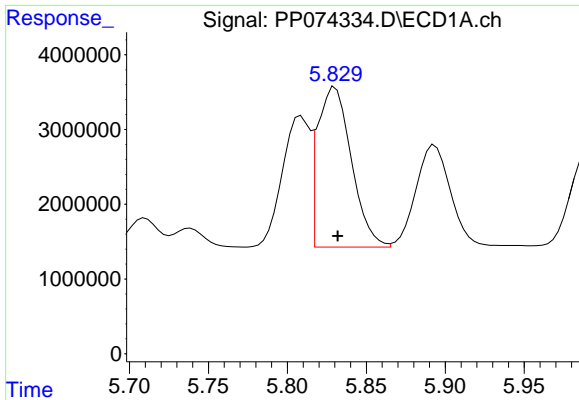
#16 AR-1242-1

R.T.: 5.809 min
 Delta R.T.: -0.002 min
 Response: 21431398
 Conc: 575.10 ng/ml



#16 AR-1242-1

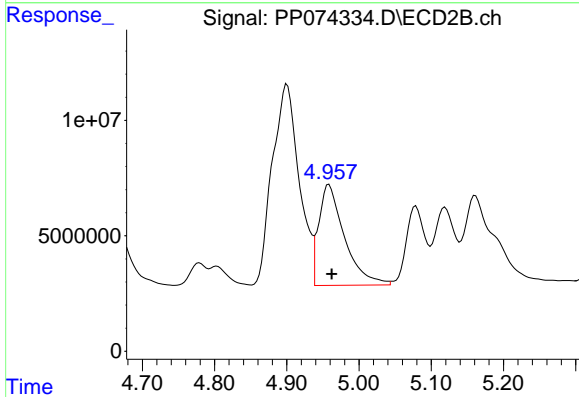
R.T.: 4.900 min
 Delta R.T.: -0.005 min
 Response: 226531618
 Conc: 656.35 ng/ml



#17 AR-1242-2

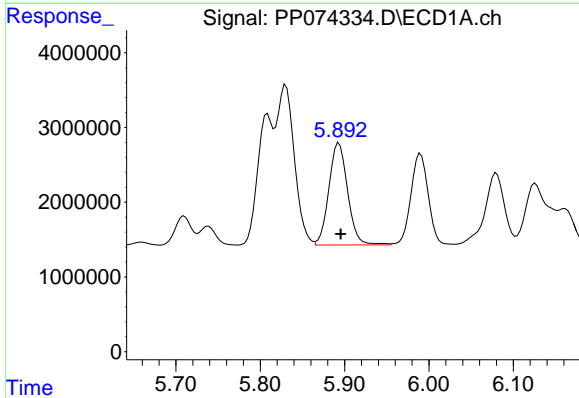
R.T.: 5.830 min
 Delta R.T.: -0.002 min
 Response: 31817130
 Conc: 584.78 ng/ml

Instrument :
 ECD_P
 ClientSampleId :
 AR1660CCC500



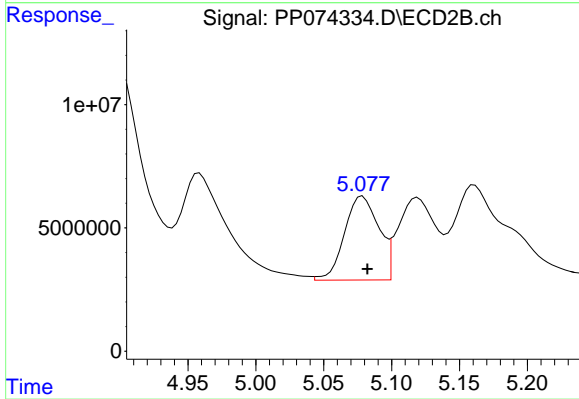
#17 AR-1242-2

R.T.: 4.958 min
 Delta R.T.: -0.004 min
 Response: 108414514
 Conc: 663.58 ng/ml



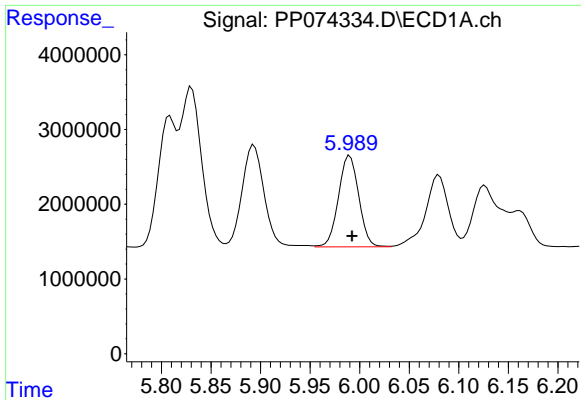
#18 AR-1242-3

R.T.: 5.893 min
 Delta R.T.: -0.002 min
 Response: 21118183
 Conc: 590.95 ng/ml



#18 AR-1242-3

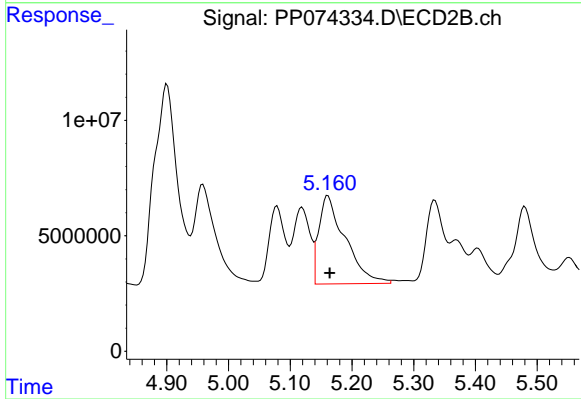
R.T.: 5.079 min
 Delta R.T.: -0.004 min
 Response: 59799212
 Conc: 648.24 ng/ml



#19 AR-1242-4

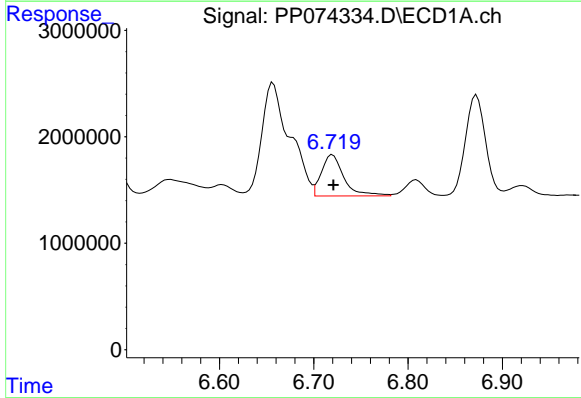
R.T.: 5.990 min
 Delta R.T.: -0.002 min
 Response: 17405958
 Conc: 595.71 ng/ml

Instrument :
 ECD_P
 ClientSampleId :
 AR1660CCC500



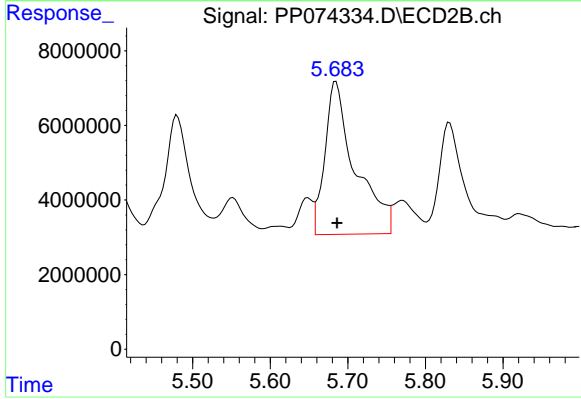
#19 AR-1242-4

R.T.: 5.161 min
 Delta R.T.: -0.003 min
 Response: 113577798
 Conc: 951.07 ng/ml



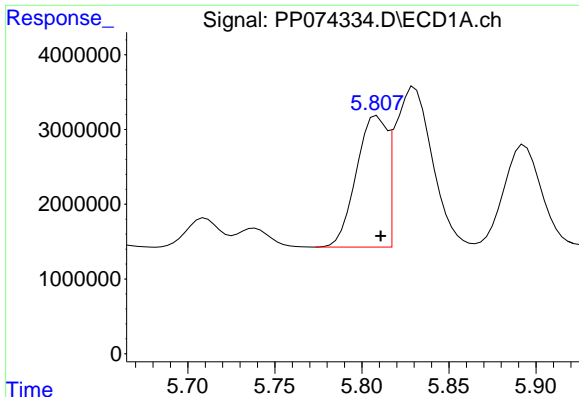
#20 AR-1242-5

R.T.: 6.720 min
 Delta R.T.: 0.000 min
 Response: 6445000
 Conc: 181.25 ng/ml



#20 AR-1242-5

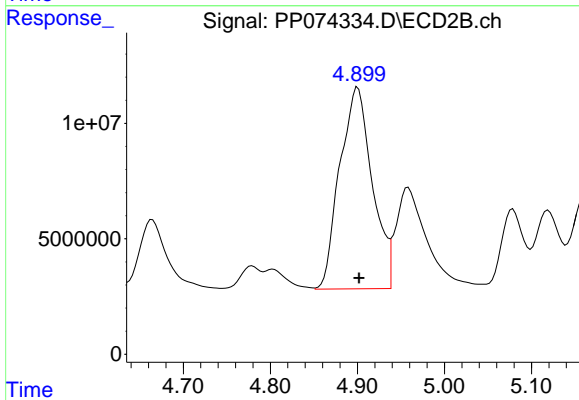
R.T.: 5.685 min
 Delta R.T.: -0.002 min
 Response: 111181033
 Conc: 743.39 ng/ml



#21 AR-1248-1

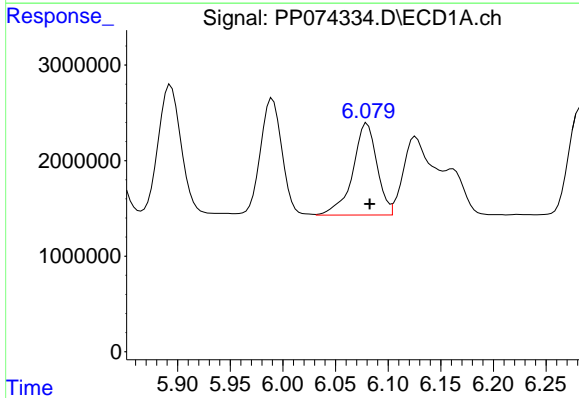
R.T.: 5.809 min
 Delta R.T.: -0.002 min
 Response: 21431398
 Conc: 765.01 ng/ml

Instrument :
 ECD_P
 ClientSampleId :
 AR1660CCC500



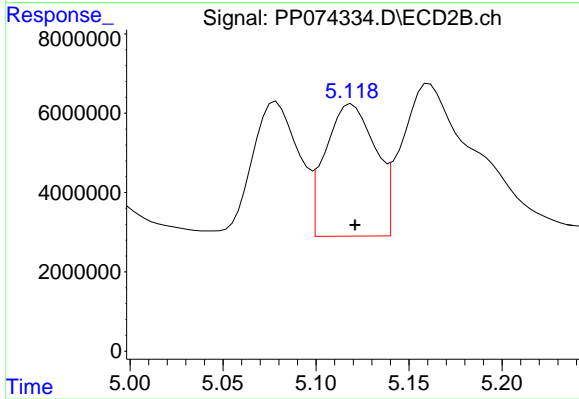
#21 AR-1248-1

R.T.: 4.900 min
 Delta R.T.: -0.001 min
 Response: 226531618
 Conc: 1058.90 ng/ml



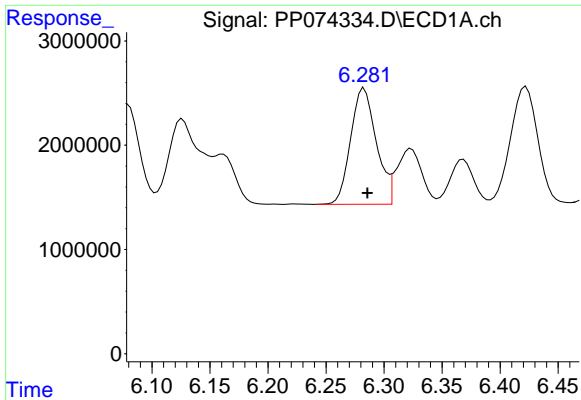
#22 AR-1248-2

R.T.: 6.080 min
 Delta R.T.: -0.003 min
 Response: 15362214
 Conc: 381.57 ng/ml



#22 AR-1248-2

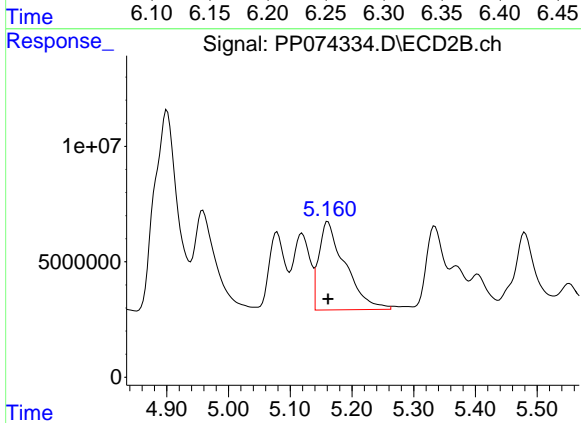
R.T.: 5.119 min
 Delta R.T.: -0.002 min
 Response: 62295116
 Conc: 425.77 ng/ml



#23 AR-1248-3

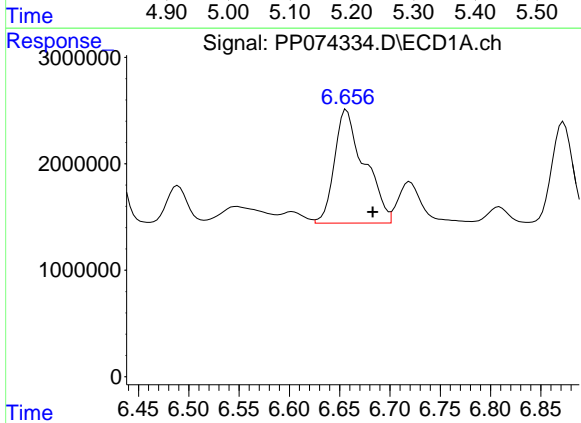
R.T.: 6.283 min
 Delta R.T.: -0.003 min
 Response: 17110565
 Conc: 383.87 ng/ml

Instrument :
 ECD_P
 ClientSampleId :
 AR1660CCC500



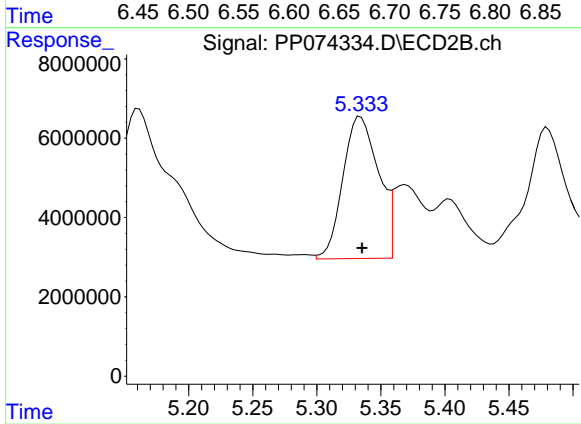
#23 AR-1248-3

R.T.: 5.161 min
 Delta R.T.: 0.000 min
 Response: 113577798
 Conc: 662.42 ng/ml



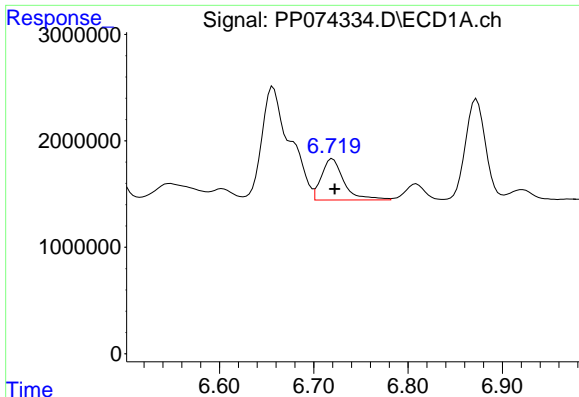
#24 AR-1248-4

R.T.: 6.657 min
 Delta R.T.: -0.026 min
 Response: 22076266
 Conc: 424.24 ng/ml



#24 AR-1248-4

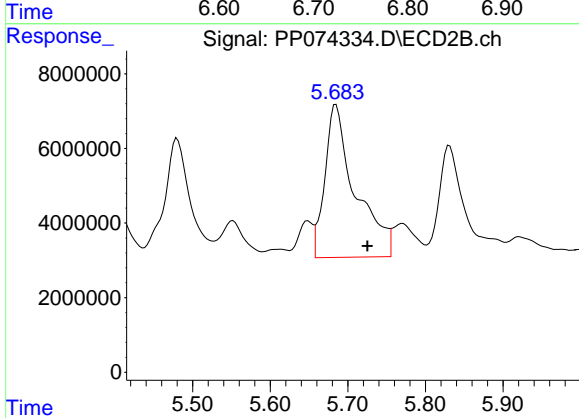
R.T.: 5.334 min
 Delta R.T.: -0.001 min
 Response: 69184133
 Conc: 415.84 ng/ml



#25 AR-1248-5

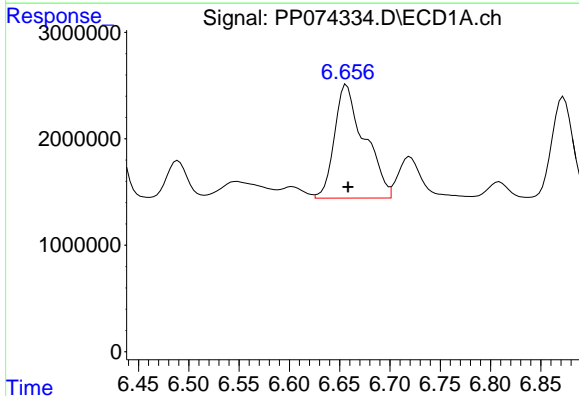
R.T.: 6.720 min
 Delta R.T.: -0.002 min
 Response: 6445000
 Conc: 113.18 ng/ml

Instrument :
 ECD_P
 ClientSampleId :
 AR1660CCC500



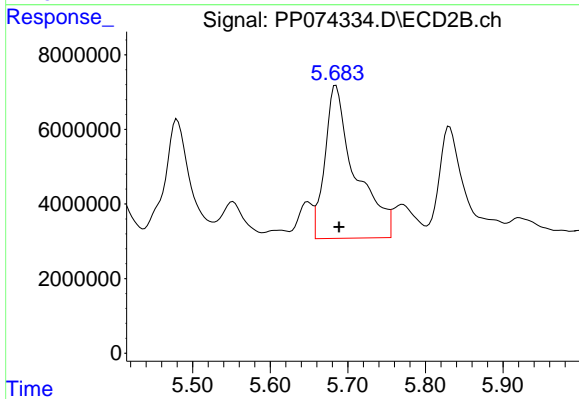
#25 AR-1248-5

R.T.: 5.685 min
 Delta R.T.: -0.040 min
 Response: 111181033
 Conc: 382.11 ng/ml



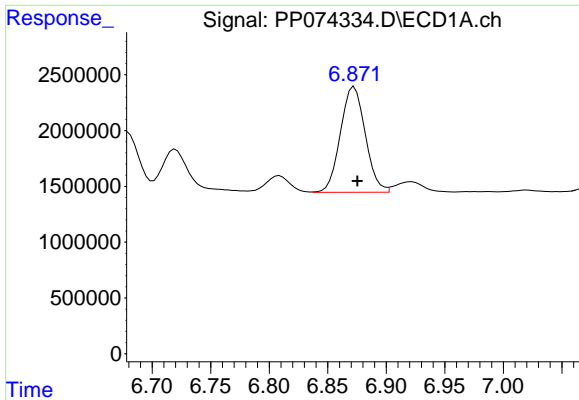
#26 AR-1254-1

R.T.: 6.657 min
 Delta R.T.: -0.001 min
 Response: 22076266
 Conc: 419.37 ng/ml



#26 AR-1254-1

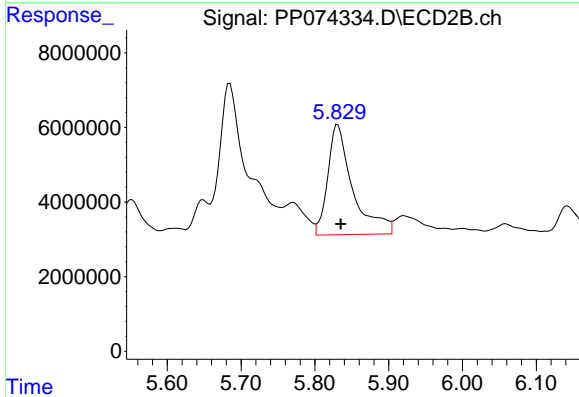
R.T.: 5.685 min
 Delta R.T.: -0.004 min
 Response: 111181033
 Conc: 303.62 ng/ml



#27 AR-1254-2

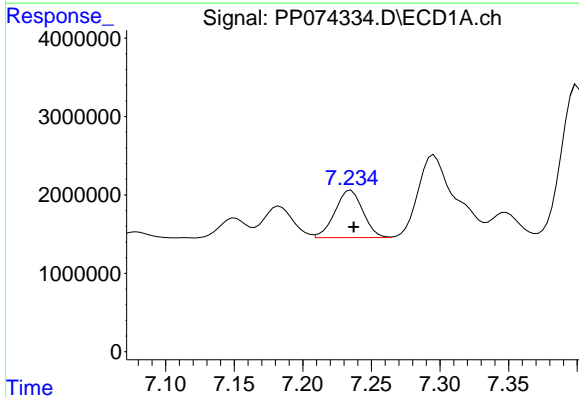
R.T.: 6.873 min
 Delta R.T.: -0.003 min
 Response: 13976300
 Conc: 175.79 ng/ml

Instrument :
 ECD_P
 ClientSampleId :
 AR1660CCC500



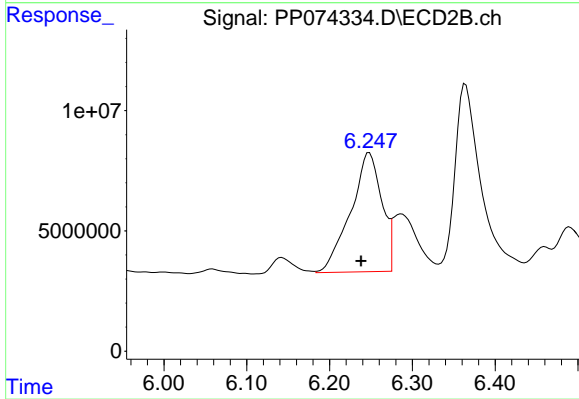
#27 AR-1254-2

R.T.: 5.831 min
 Delta R.T.: -0.004 min
 Response: 69369454
 Conc: 249.34 ng/ml



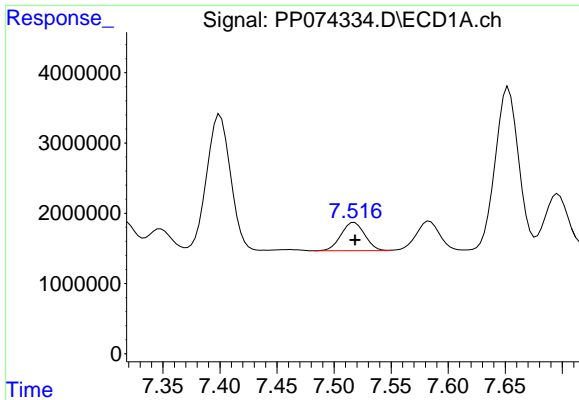
#28 AR-1254-3

R.T.: 7.235 min
 Delta R.T.: -0.002 min
 Response: 8549466
 Conc: 97.91 ng/ml



#28 AR-1254-3

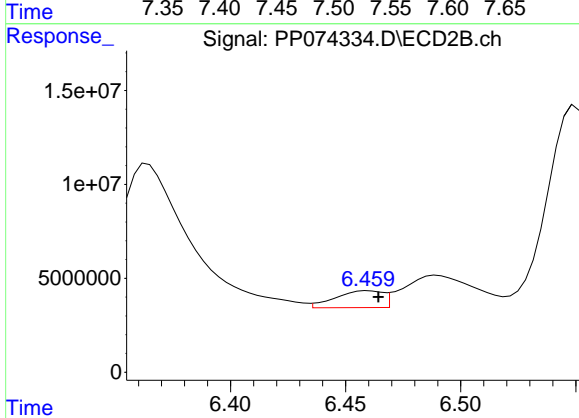
R.T.: 6.248 min
 Delta R.T.: 0.010 min
 Response: 129226040
 Conc: 264.15 ng/ml



#29 AR-1254-4

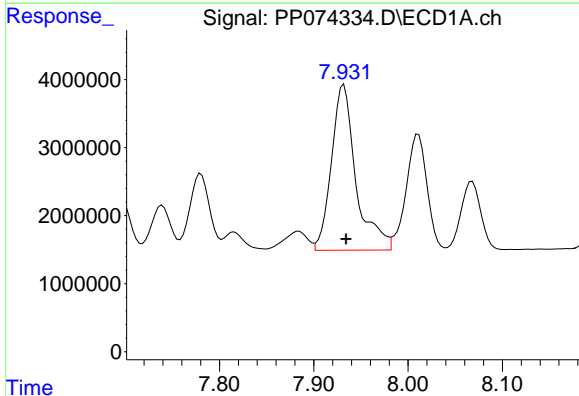
R.T.: 7.518 min
 Delta R.T.: 0.000 min
 Response: 5809318
 Conc: 91.04 ng/ml

Instrument :
 ECD_P
 ClientSampleId :
 AR1660CCC500



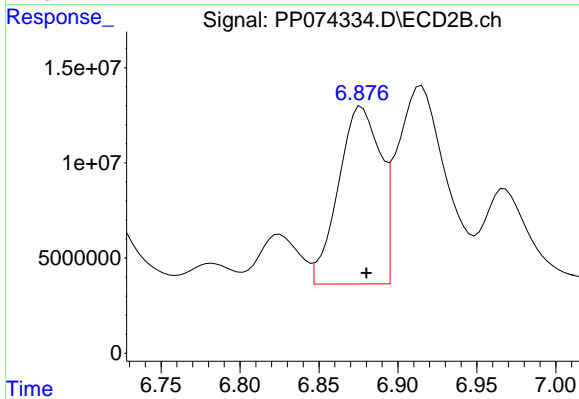
#29 AR-1254-4

R.T.: 6.460 min
 Delta R.T.: -0.004 min
 Response: 12949449
 Conc: 35.23 ng/ml



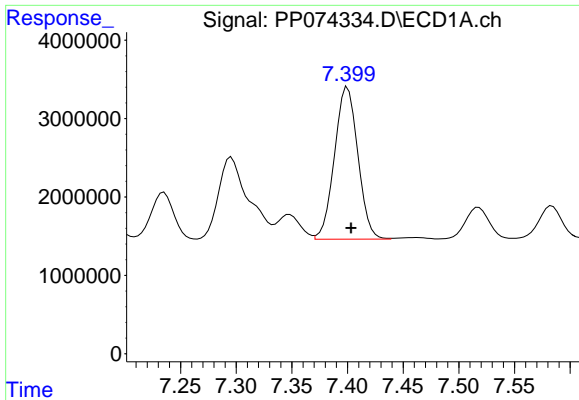
#30 AR-1254-5

R.T.: 7.932 min
 Delta R.T.: -0.002 min
 Response: 43945477
 Conc: 541.57 ng/ml



#30 AR-1254-5

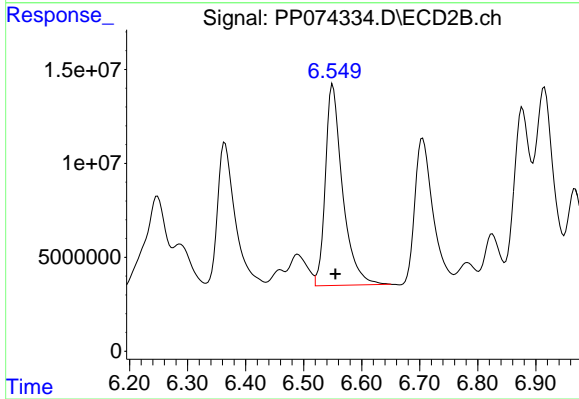
R.T.: 6.877 min
 Delta R.T.: -0.003 min
 Response: 171933768
 Conc: 446.39 ng/ml



#31 AR-1260-1

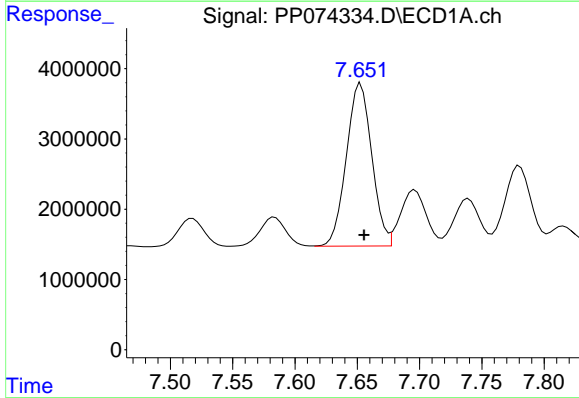
R.T.: 7.400 min
 Delta R.T.: -0.003 min
 Response: 28408257
 Conc: 504.09 ng/ml

Instrument :
 ECD_P
 ClientSampleId :
 AR1660CCC500



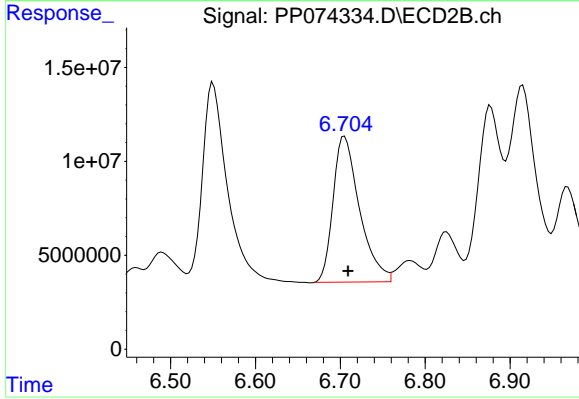
#31 AR-1260-1

R.T.: 6.550 min
 Delta R.T.: -0.005 min
 Response: 220415978
 Conc: 545.64 ng/ml



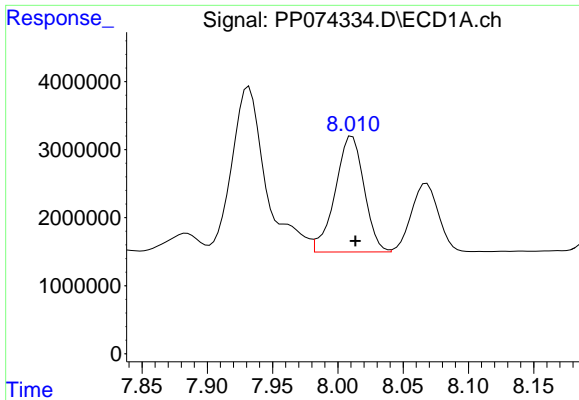
#32 AR-1260-2

R.T.: 7.653 min
 Delta R.T.: -0.003 min
 Response: 33046210
 Conc: 484.89 ng/ml



#32 AR-1260-2

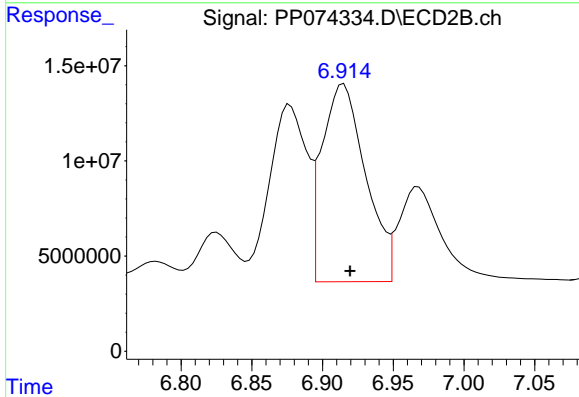
R.T.: 6.705 min
 Delta R.T.: -0.004 min
 Response: 168260876
 Conc: 538.09 ng/ml



#33 AR-1260-3

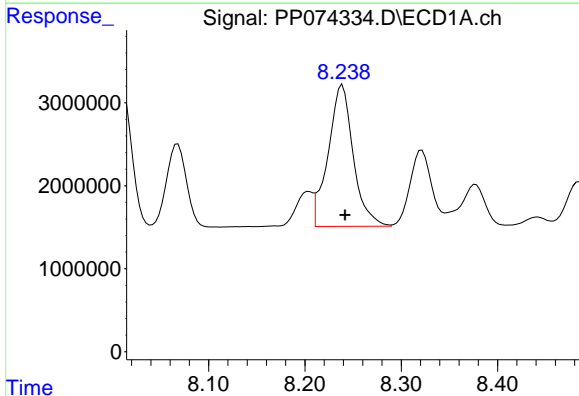
R.T.: 8.011 min
 Delta R.T.: -0.002 min
 Response: 26246958
 Conc: 492.48 ng/ml

Instrument :
 ECD_P
 ClientSampleId :
 AR1660CCC500



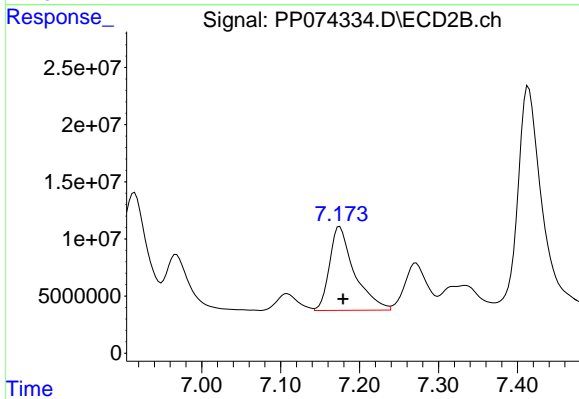
#33 AR-1260-3

R.T.: 6.915 min
 Delta R.T.: -0.004 min
 Response: 222571251
 Conc: 564.73 ng/ml



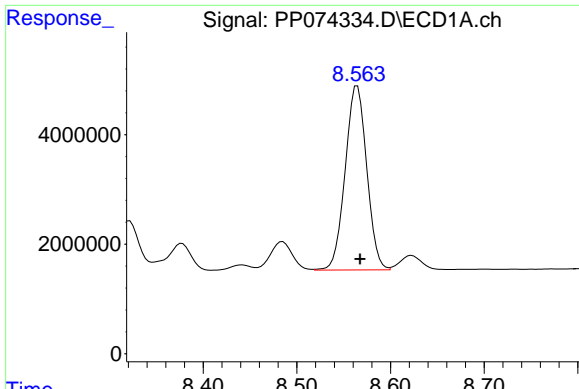
#34 AR-1260-4

R.T.: 8.239 min
 Delta R.T.: -0.003 min
 Response: 30941970
 Conc: 494.16 ng/ml



#34 AR-1260-4

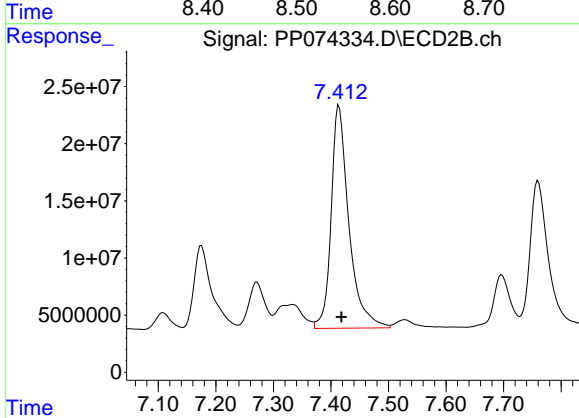
R.T.: 7.175 min
 Delta R.T.: -0.004 min
 Response: 159839444
 Conc: 549.32 ng/ml



#35 AR-1260-5

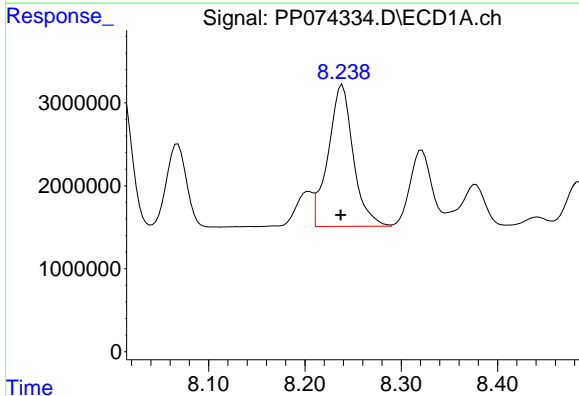
R.T.: 8.565 min
 Delta R.T.: -0.003 min
 Response: 53781862
 Conc: 474.66 ng/ml

Instrument :
 ECD_P
 ClientSampleId :
 AR1660CCC500



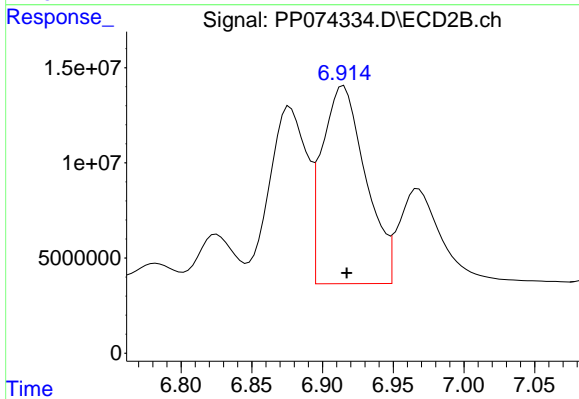
#35 AR-1260-5

R.T.: 7.414 min
 Delta R.T.: -0.004 min
 Response: 418750478
 Conc: 552.87 ng/ml



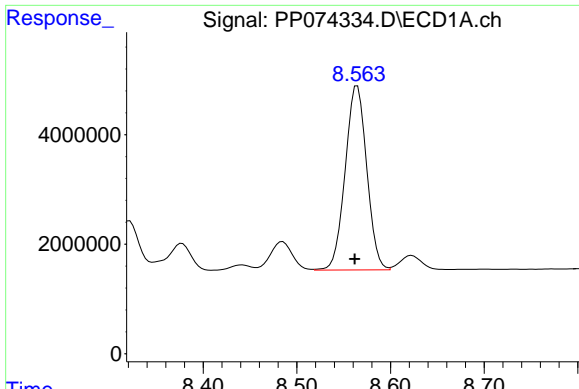
#36 AR-1262-1

R.T.: 8.239 min
 Delta R.T.: 0.002 min
 Response: 30941970
 Conc: 408.26 ng/ml



#36 AR-1262-1

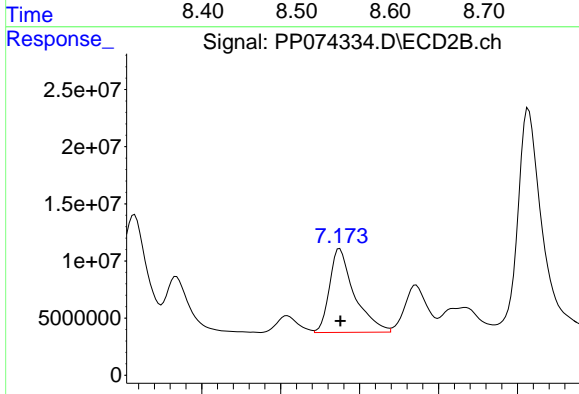
R.T.: 6.915 min
 Delta R.T.: -0.002 min
 Response: 222571251
 Conc: 395.23 ng/ml



#37 AR-1262-2

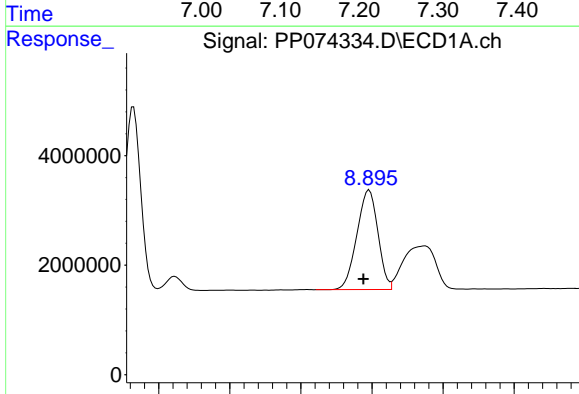
R.T.: 8.565 min
 Delta R.T.: 0.003 min
 Response: 53781862
 Conc: 412.34 ng/ml

Instrument :
 ECD_P
 ClientSampleId :
 AR1660CCC500



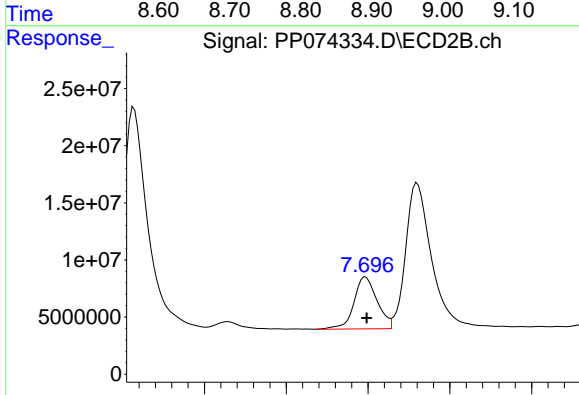
#37 AR-1262-2

R.T.: 7.175 min
 Delta R.T.: -0.001 min
 Response: 159839444
 Conc: 398.58 ng/ml



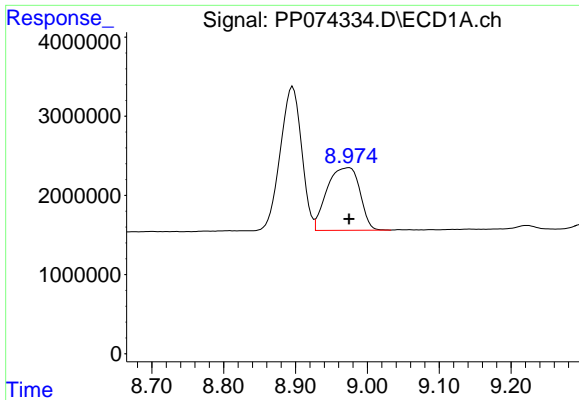
#38 AR-1262-3

R.T.: 8.896 min
 Delta R.T.: 0.008 min
 Response: 37373686
 Conc: 397.29 ng/ml



#38 AR-1262-3

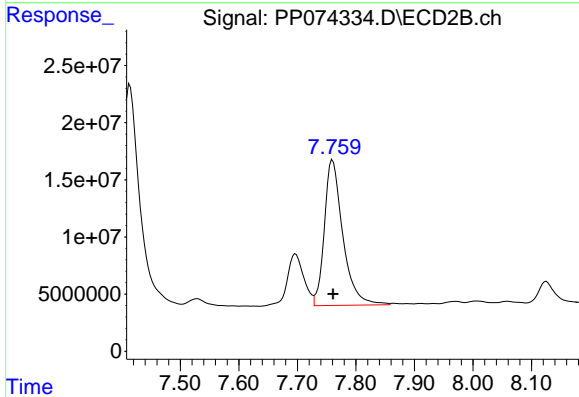
R.T.: 7.697 min
 Delta R.T.: -0.001 min
 Response: 89226273
 Conc: 248.22 ng/ml



#39 AR-1262-4

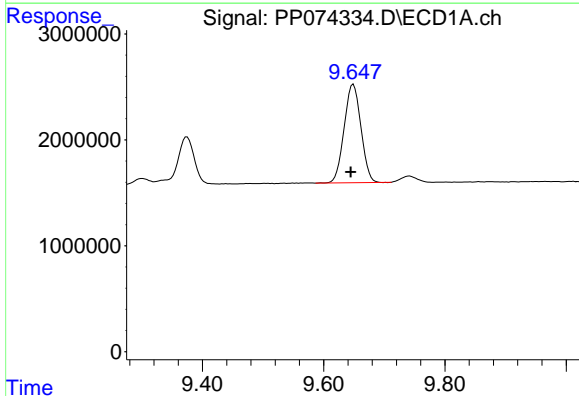
R.T.: 8.975 min
 Delta R.T.: 0.000 min
 Response: 25127175
 Conc: 344.91 ng/ml

Instrument :
 ECD_P
 ClientSampleId :
 AR1660CCC500



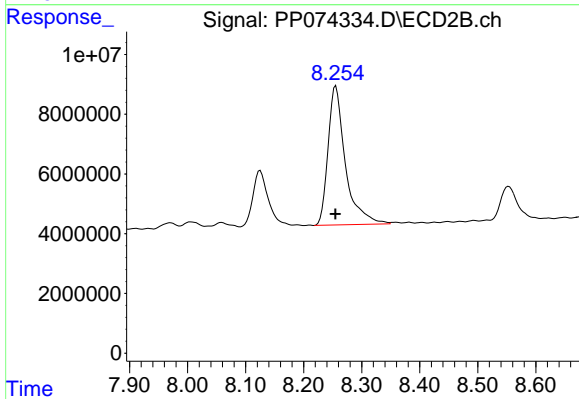
#39 AR-1262-4

R.T.: 7.760 min
 Delta R.T.: 0.000 min
 Response: 279573231
 Conc: 419.20 ng/ml



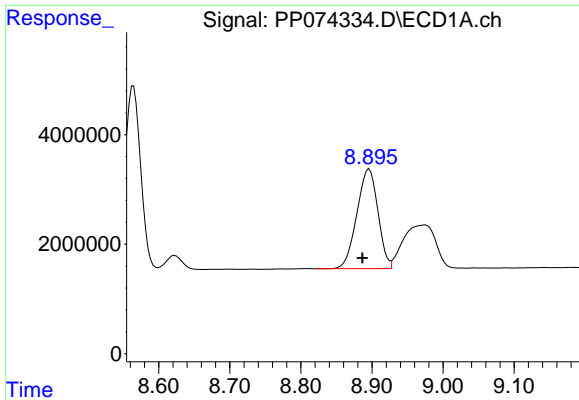
#40 AR-1262-5

R.T.: 9.649 min
 Delta R.T.: 0.004 min
 Response: 17943548
 Conc: 352.37 ng/ml



#40 AR-1262-5

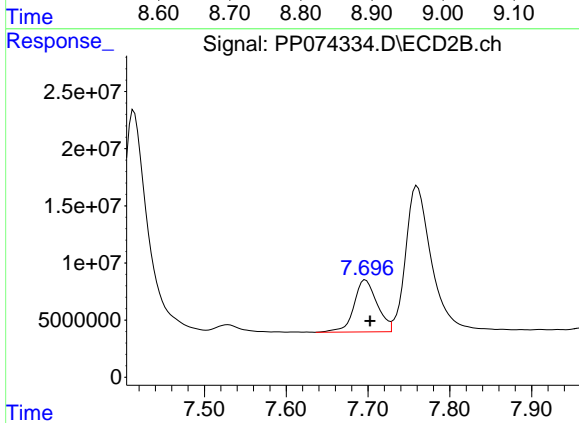
R.T.: 8.255 min
 Delta R.T.: 0.000 min
 Response: 96618711
 Conc: 341.09 ng/ml



#41 AR-1268-1

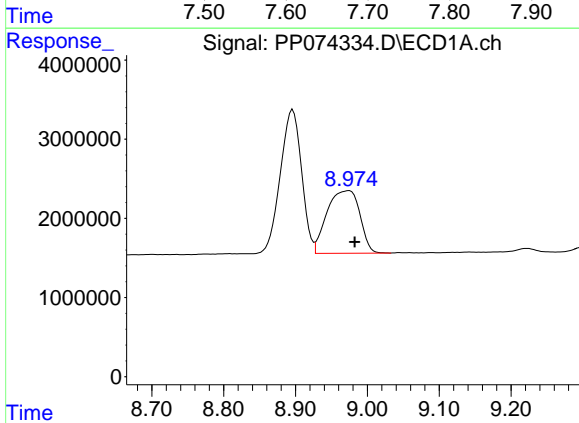
R.T.: 8.896 min
 Delta R.T.: 0.010 min
 Response: 37373686
 Conc: 240.14 ng/ml

Instrument :
 ECD_P
 ClientSampleId :
 AR1660CCC500



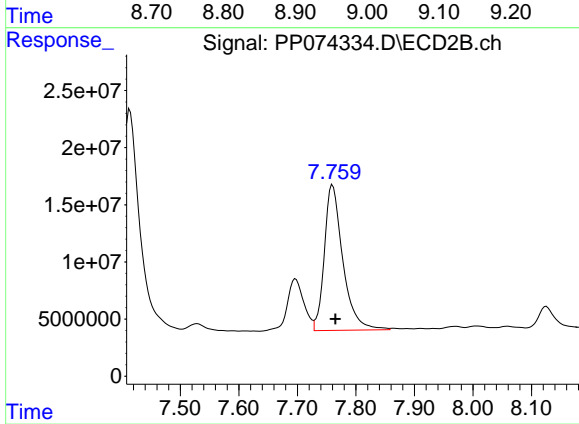
#41 AR-1268-1

R.T.: 7.697 min
 Delta R.T.: -0.005 min
 Response: 89226273
 Conc: 81.84 ng/ml



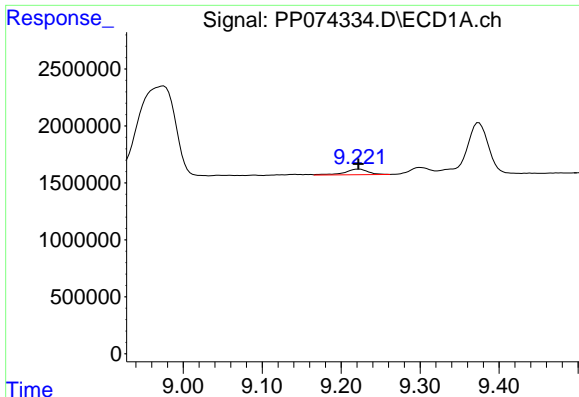
#42 AR-1268-2

R.T.: 8.975 min
 Delta R.T.: -0.007 min
 Response: 25127175
 Conc: 175.19 ng/ml



#42 AR-1268-2

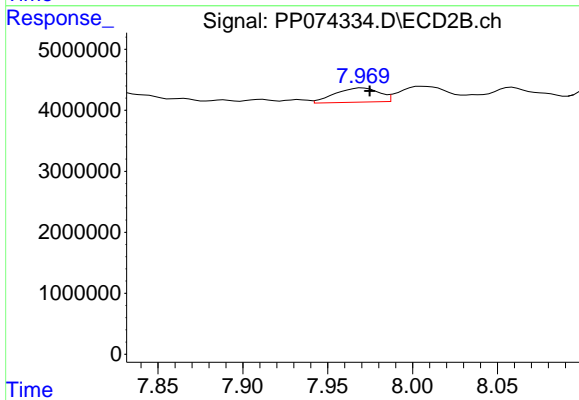
R.T.: 7.760 min
 Delta R.T.: -0.005 min
 Response: 279573231
 Conc: 263.42 ng/ml



#43 AR-1268-3

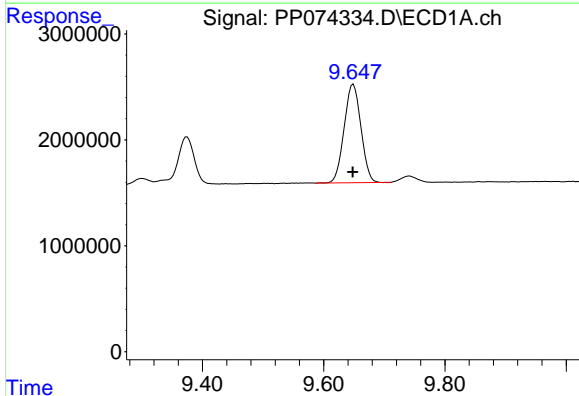
R.T.: 9.222 min
 Delta R.T.: 0.000 min
 Response: 1029033
 Conc: 8.61 ng/ml

Instrument :
 ECD_P
 ClientSampleId :
 AR1660CCC500



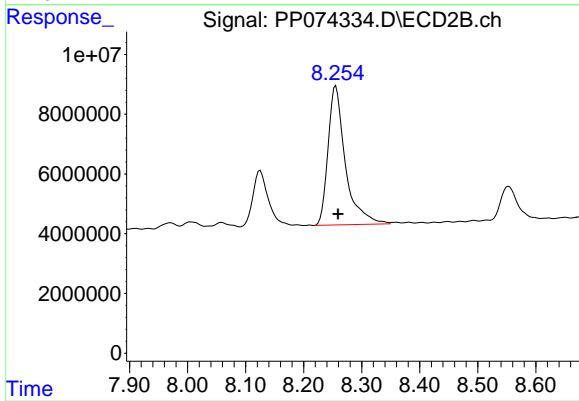
#43 AR-1268-3

R.T.: 7.971 min
 Delta R.T.: -0.004 min
 Response: 4225604
 Conc: 5.08 ng/ml



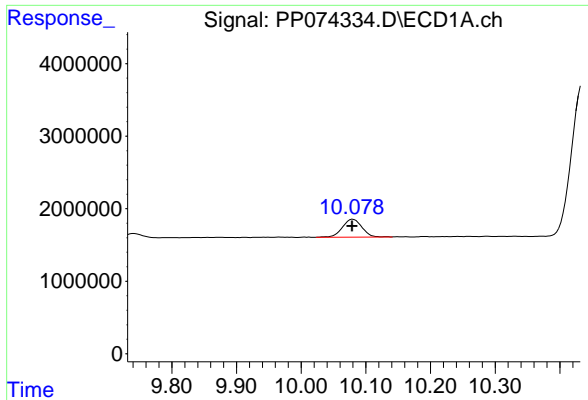
#44 AR-1268-4

R.T.: 9.649 min
 Delta R.T.: 0.000 min
 Response: 17943548
 Conc: 305.10 ng/ml



#44 AR-1268-4

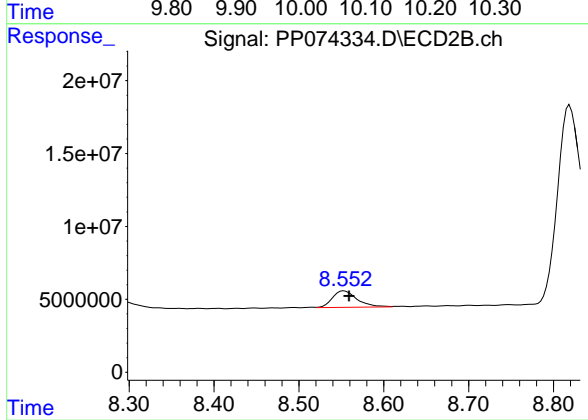
R.T.: 8.255 min
 Delta R.T.: -0.004 min
 Response: 96618711
 Conc: 313.64 ng/ml



#45 AR-1268-5

R.T.: 10.080 min
Delta R.T.: 0.001 min
Response: 5178125
Conc: 14.72 ng/ml

Instrument :
ECD_P
ClientSampleId :
AR1660CCC500



#45 AR-1268-5

R.T.: 8.553 min
Delta R.T.: -0.006 min
Response: 22962322
Conc: 9.00 ng/ml