

Data Path : Z:\pestpcbsrv\HPCHEM1\ECD_P\Data\PP081325\
 Data File : PP074336.D
 Signal(s) : Signal #1: ECD1A.ch Signal #2: ECD2B.ch
 Acq On : 13 Aug 2025 09:51
 Operator : YP\AJ
 Sample : AR1254CCC500
 Misc :
 ALS Vial : 5 Sample Multiplier: 1

Instrument :
 ECD_P
 ClientSampleId :
 AR1254CCC500

Integration File signal 1: autoint1.e
 Integration File signal 2: autoint2.e
 Quant Time: Aug 13 11:46:38 2025
 Quant Method : Z:\pestpcbsrv\HPCHEM1\ECD_P\methods\PP080125.M
 Quant Title : GC EXTRACTABLES
 QLast Update : Mon Aug 04 11:01:49 2025
 Response via : Initial Calibration
 Integrator: ChemStation

Volume Inj. : 2 µl
 Signal #1 Phase : ZB-MR1 Signal #2 Phase: ZB-MR2
 Signal #1 Info : 30Mx0.32mmx 0.50µ Signal #2 Info : 30M x 0.32mm x 0.25µm

Compound	RT#1	RT#2	Resp#1	Resp#2	ng/ml	ng/ml
System Monitoring Compounds						
1) SA Tetrachlo...	4.661	3.803	62351076	236.3E6	55.755	61.637
2) SA Decachlor...	10.441	8.822	49713130	336.0E6	51.189	55.875
Target Compounds						
3) L1 AR-1016-1	5.813	4.903	906292	2060688	21.967	5.166 #
4) L1 AR-1016-2	5.839	4.956	1070185	2113537	17.619	11.254 #
5) L1 AR-1016-3	5.898	5.047f	799816	97223	20.167	0.917 #
6) L1 AR-1016-4	5.994	5.122	580602	72303826	17.840	662.001 #
7) L1 AR-1016-5	6.286	5.335	10005142	44036488	308.153	376.498
8) L2 AR-1221-1	0.000	4.013	0	539363	N.D.	10.988 #
9) L2 AR-1221-2	4.962	4.099	1215500	3009556	96.460	83.857
10) L2 AR-1221-3	5.022	4.174	228157	881036	6.228	6.515
11) L3 AR-1232-1	5.022	4.174	228157	881036	7.857	8.692
12) L3 AR-1232-2	5.547	4.903	368524	2060688	24.499	11.825 #
13) L3 AR-1232-3	5.839	5.047	1070185	97223	36.901	2.122 #
14) L3 AR-1232-4	5.994	5.159	580602	34411712	37.534	593.196 #
15) L3 AR-1232-5	6.083	5.335	16271711	44036488	1388.844	937.356 #
16) L4 AR-1242-1	5.813	4.903	906292	2060688	24.320	5.971 #
17) L4 AR-1242-2	5.839	4.956	1070185	2113537	19.669	12.937 #
18) L4 AR-1242-3	5.898	5.047f	799816	97223	22.381	1.054 #
19) L4 AR-1242-4	5.994	5.159	580602	34411712	19.871	288.153 #
20) L4 AR-1242-5	6.727	5.687	10295856	229.5E6	289.551	1534.231 #
21) L5 AR-1248-1	5.813	4.903	906292	2060688	32.351	9.632 #
22) L5 AR-1248-2	6.083	5.122	16271711	72303826	404.155	494.174
23) L5 AR-1248-3	6.286	5.159	10005142	34411712	224.464	200.698
24) L5 AR-1248-4	6.662	5.335	41849509	44036488	804.223	264.684 #
25) L5 AR-1248-5	6.727	5.687f	10295856	229.5E6	180.809	788.613 #
26) L6 AR-1254-1	6.662	5.687	41849509	229.5E6	794.998	626.627
27) L6 AR-1254-2	6.878	5.834	40903489	165.3E6	514.480	594.004
28) L6 AR-1254-3	7.239	6.237	43396847	301.3E6	497.008	615.938
29) L6 AR-1254-4	7.521	6.463	32697550	217.8E6	512.425	592.659
30) L6 AR-1254-5	7.937	6.881	41228735	228.2E6	508.089	592.388
31) L7 AR-1260-1	7.405	6.553	18873947	130.6E6	334.905	323.240
32) L7 AR-1260-2	7.657	6.705	20737622	94876922	304.283	303.413
33) L7 AR-1260-3	7.999	6.944	5124516	24334419	96.152	61.744 #
34) L7 AR-1260-4	8.226	7.176	15298102	6599491	244.320	22.680 #
35) L7 AR-1260-5	8.568	7.410	5531342	38582051	48.818	50.939
36) L8 AR-1262-1	8.226	6.944	15298102	24334419	201.849	43.212 #
37) L8 AR-1262-2	8.568	7.176	5531342	6599491	42.408	16.457 #
38) L8 AR-1262-3	8.903	7.708	4923258	1163249	52.336	3.236 #
39) L8 AR-1262-4	8.952	7.759	1162776	22314196	15.961	33.458 #
40) L8 AR-1262-5	9.656	8.253	369640	622955	7.259	2.199 #
41) L9 AR-1268-1	8.903	7.708	4923258	1163249	31.634	1.067 #

Data Path : Z:\pestpcbsrv\HPCHEM1\ECD_P\Data\PP081325\
 Data File : PP074336.D
 Signal(s) : Signal #1: ECD1A.ch Signal #2: ECD2B.ch
 Acq On : 13 Aug 2025 09:51
 Operator : YP\AJ
 Sample : AR1254CCC500
 Misc :
 ALS Vial : 5 Sample Multiplier: 1

Instrument :
 ECD_P
ClientSampleId :
 AR1254CCC500

Integration File signal 1: autoint1.e
 Integration File signal 2: autoint2.e
 Quant Time: Aug 13 11:46:38 2025
 Quant Method : Z:\pestpcbsrv\HPCHEM1\ECD_P\methods\PP080125.M
 Quant Title : GC EXTRACTABLES
 QLast Update : Mon Aug 04 11:01:49 2025
 Response via : Initial Calibration
 Integrator: ChemStation

Volume Inj. : 2 µl
 Signal #1 Phase : ZB-MR1 Signal #2 Phase: ZB-MR2
 Signal #1 Info : 30Mx0.32mmx 0.50µ Signal #2 Info : 30M x 0.32mm x 0.25µm

	Compound	RT#1	RT#2	Resp#1	Resp#2	ng/ml	ng/ml
42)	L9 AR-1268-2	8.952	7.759	1162776	22314196	8.107	21.025 #
43)	L9 AR-1268-3	9.228	7.983	96573	724309	0.808	0.871
44)	L9 AR-1268-4	9.656	8.253	369640	622955	6.285	2.022 #
45)	L9 AR-1268-5	10.083	8.553	234097	858013	0.666	0.336 #

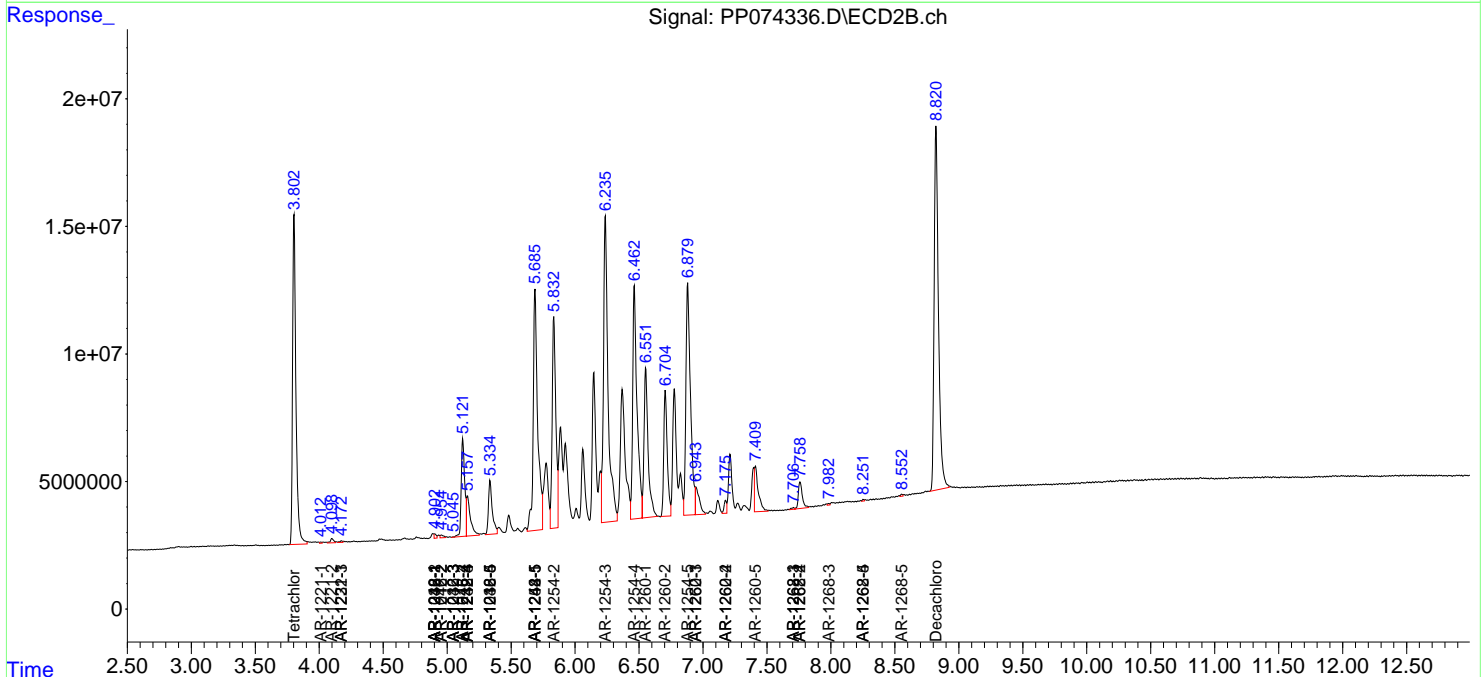
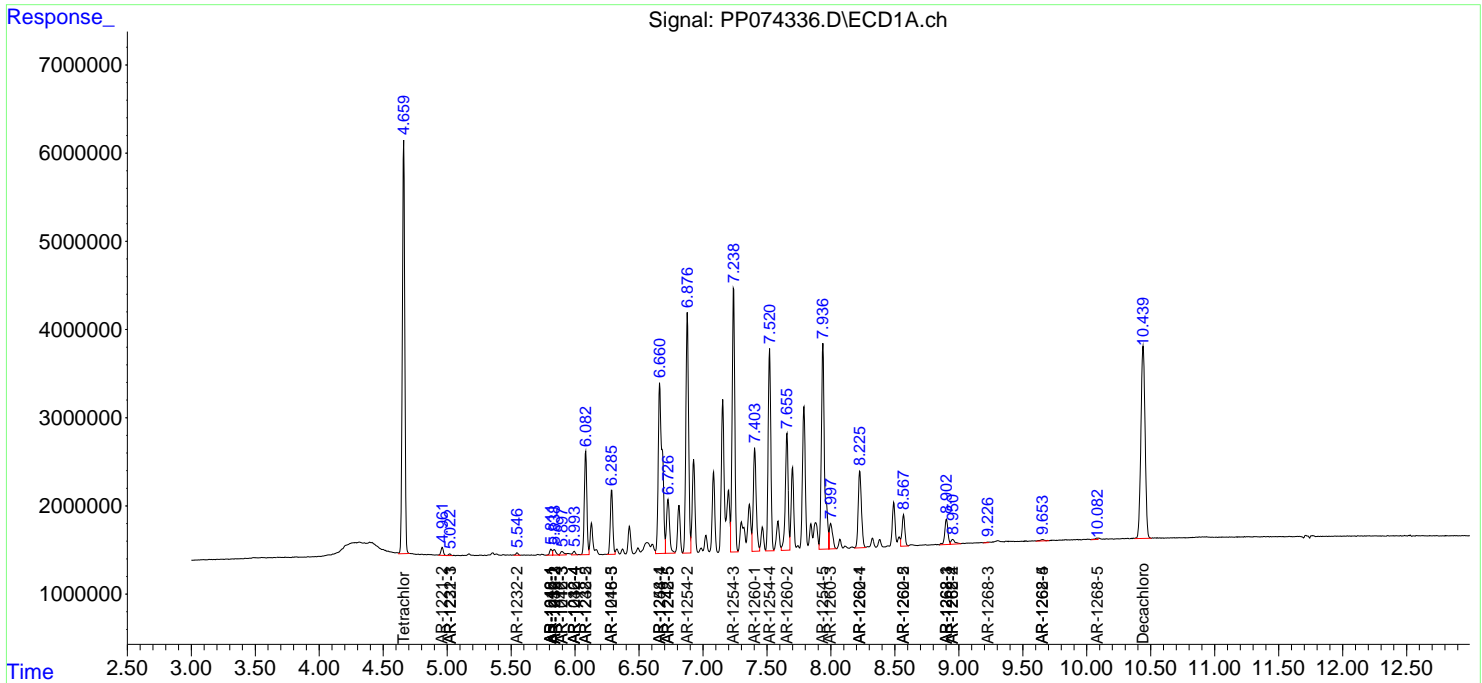
(f)=RT Delta > 1/2 Window (#)=Amounts differ by > 25% (m)=manual int.

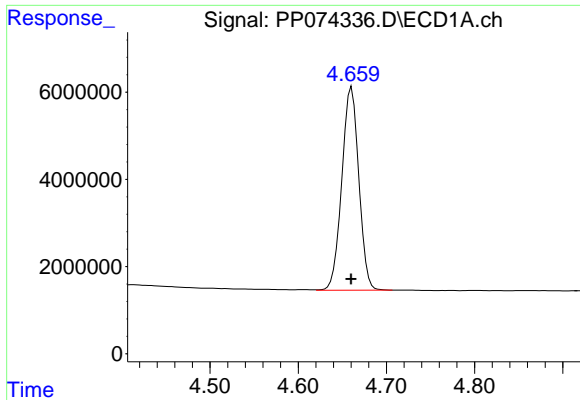
Data Path : Z:\pestpcbsrv\HPCHEM1\ECD_P\Data\PP081325\
 Data File : PP074336.D
 Signal(s) : Signal #1: ECD1A.ch Signal #2: ECD2B.ch
 Acq On : 13 Aug 2025 09:51
 Operator : YP\AJ
 Sample : AR1254CCC500
 Misc :
 ALS Vial : 5 Sample Multiplier: 1

Instrument :
 ECD_P
 ClientSampleId :
 AR1254CCC500

Integration File signal 1: autoint1.e
 Integration File signal 2: autoint2.e
 Quant Time: Aug 13 11:46:38 2025
 Quant Method : Z:\pestpcbsrv\HPCHEM1\ECD_P\methods\PP080125.M
 Quant Title : GC EXTRACTABLES
 QLast Update : Mon Aug 04 11:01:49 2025
 Response via : Initial Calibration
 Integrator: ChemStation

Volume Inj. : 2 µl
 Signal #1 Phase : ZB-MR1 Signal #2 Phase: ZB-MR2
 Signal #1 Info : 30Mx0.32mmx 0.50µ Signal #2 Info : 30M x 0.32mm x 0.25µm

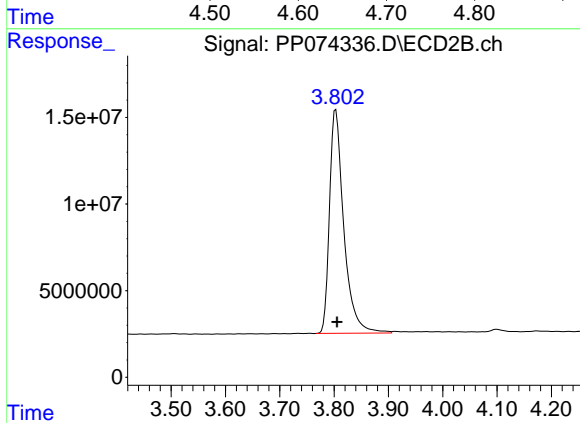




#1 Tetrachloro-m-xylene

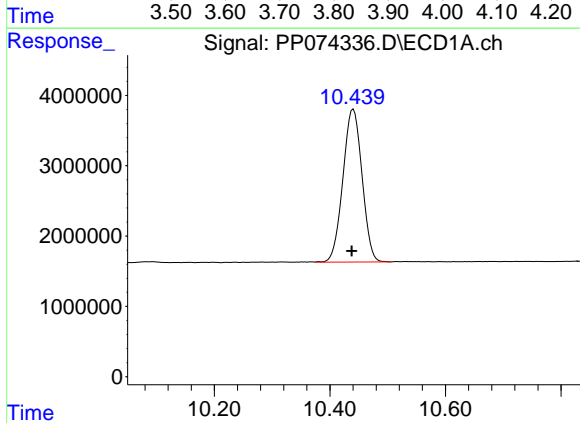
R.T.: 4.661 min
 Delta R.T.: 0.000 min
 Response: 62351076
 Conc: 55.75 ng/ml

Instrument :
 ECD_P
 ClientSampleId :
 AR1254CCC500



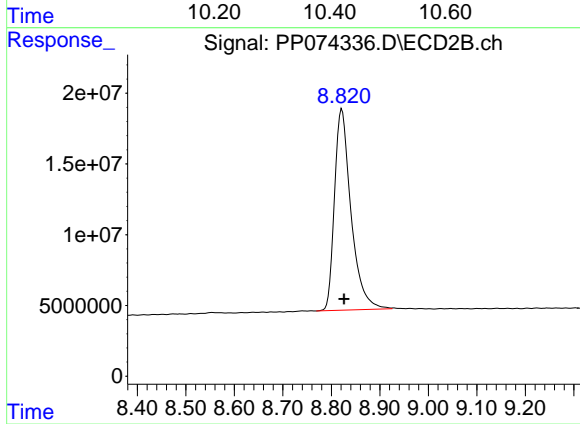
#1 Tetrachloro-m-xylene

R.T.: 3.803 min
 Delta R.T.: -0.002 min
 Response: 236344214
 Conc: 61.64 ng/ml



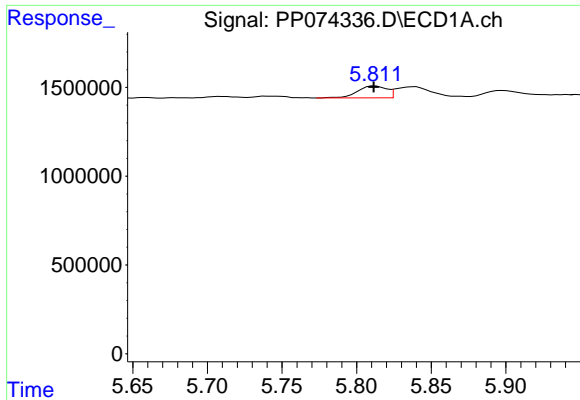
#2 Decachlorobiphenyl

R.T.: 10.441 min
 Delta R.T.: 0.003 min
 Response: 49713130
 Conc: 51.19 ng/ml



#2 Decachlorobiphenyl

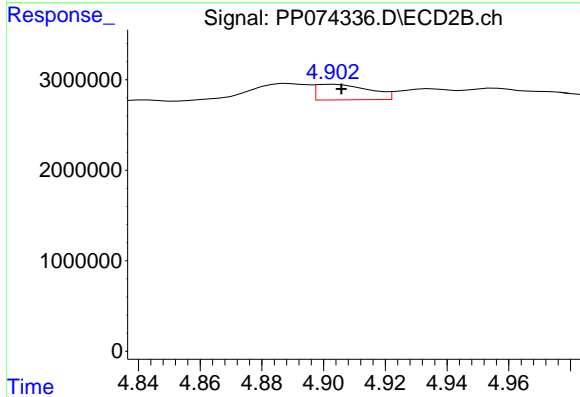
R.T.: 8.822 min
 Delta R.T.: -0.004 min
 Response: 336013732
 Conc: 55.88 ng/ml



#3 AR-1016-1

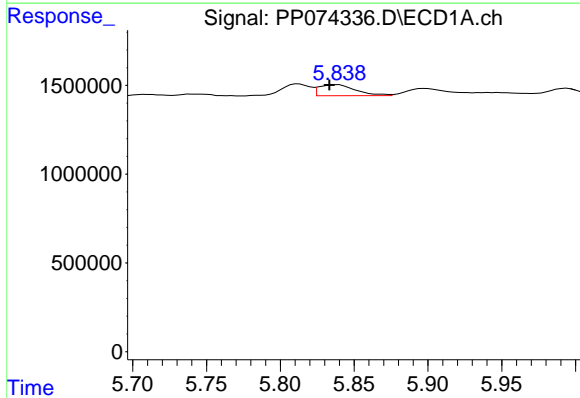
R.T.: 5.813 min
 Delta R.T.: 0.000 min
 Response: 906292
 Conc: 21.97 ng/ml

Instrument :
 ECD_P
 ClientSampleId :
 AR1254CCC500



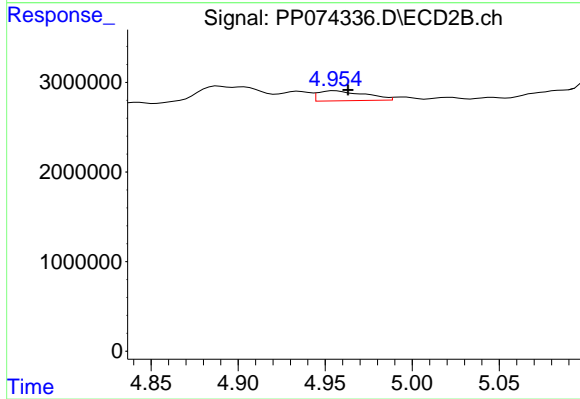
#3 AR-1016-1

R.T.: 4.903 min
 Delta R.T.: -0.002 min
 Response: 2060688
 Conc: 5.17 ng/ml



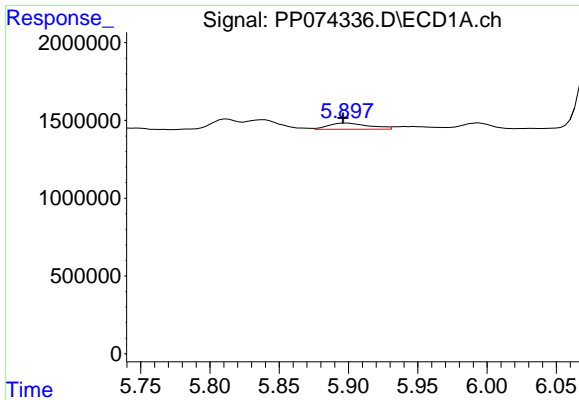
#4 AR-1016-2

R.T.: 5.839 min
 Delta R.T.: 0.006 min
 Response: 1070185
 Conc: 17.62 ng/ml



#4 AR-1016-2

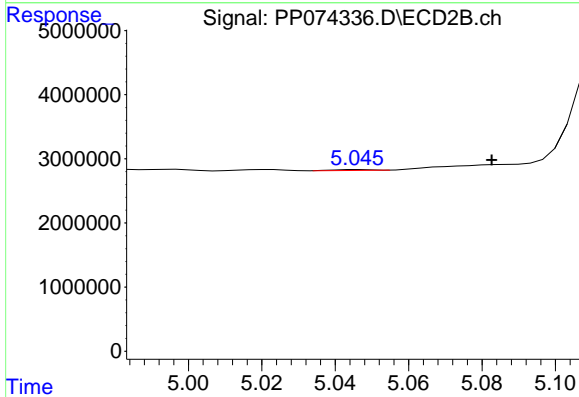
R.T.: 4.956 min
 Delta R.T.: -0.007 min
 Response: 2113537
 Conc: 11.25 ng/ml



#5 AR-1016-3

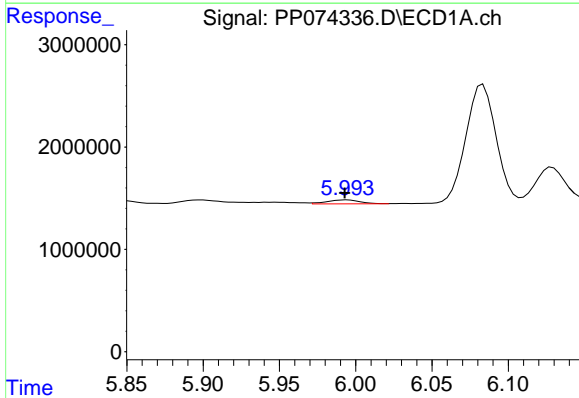
R.T.: 5.898 min
 Delta R.T.: 0.002 min
 Response: 799816
 Conc: 20.17 ng/ml

Instrument :
 ECD_P
 ClientSampleId :
 AR1254CCC500



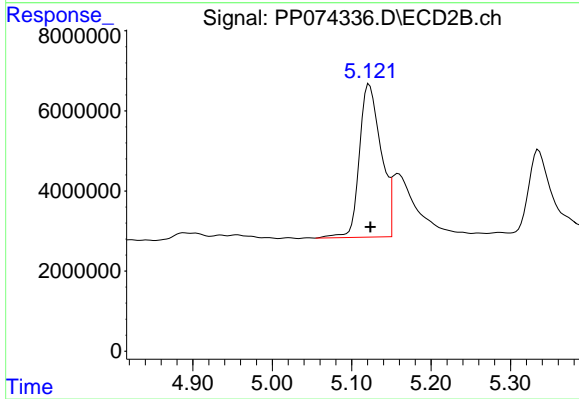
#5 AR-1016-3

R.T.: 5.047 min
 Delta R.T.: -0.036 min
 Response: 97223
 Conc: 0.92 ng/ml



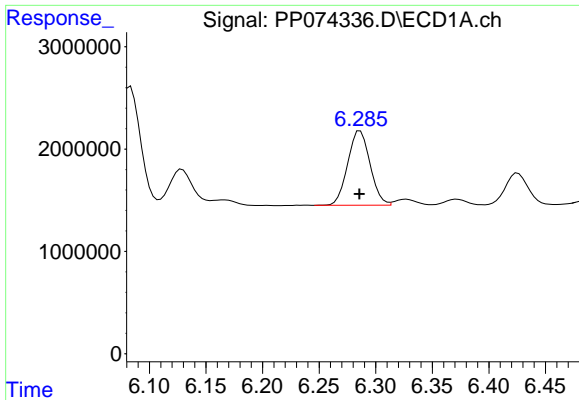
#6 AR-1016-4

R.T.: 5.994 min
 Delta R.T.: 0.001 min
 Response: 580602
 Conc: 17.84 ng/ml



#6 AR-1016-4

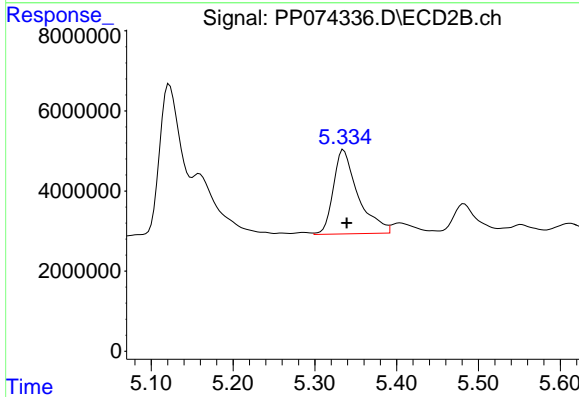
R.T.: 5.122 min
 Delta R.T.: -0.001 min
 Response: 72303826
 Conc: 662.00 ng/ml



#7 AR-1016-5

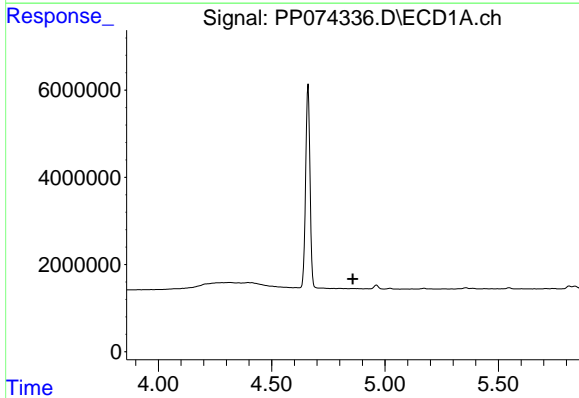
R.T.: 6.286 min
 Delta R.T.: 0.000 min
 Response: 10005142
 Conc: 308.15 ng/ml

Instrument :
 ECD_P
 ClientSampleId :
 AR1254CCC500



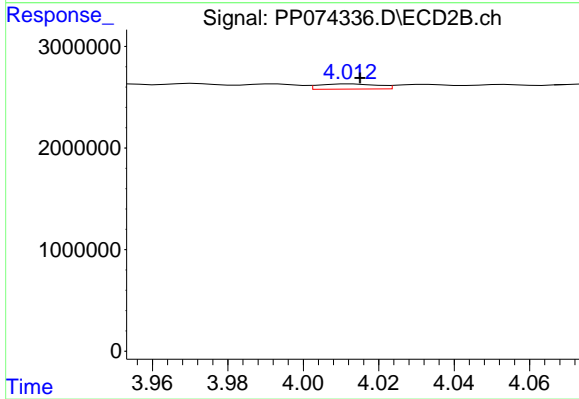
#7 AR-1016-5

R.T.: 5.335 min
 Delta R.T.: -0.004 min
 Response: 44036488
 Conc: 376.50 ng/ml



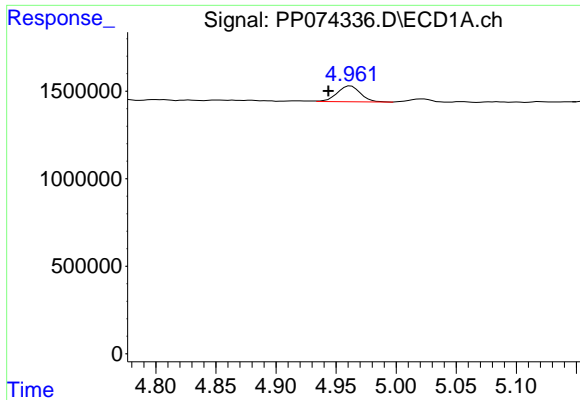
#8 AR-1221-1

R.T.: 0.000 min
 Exp R.T. : 4.858 min
 Response: 0
 Conc: N.D.



#8 AR-1221-1

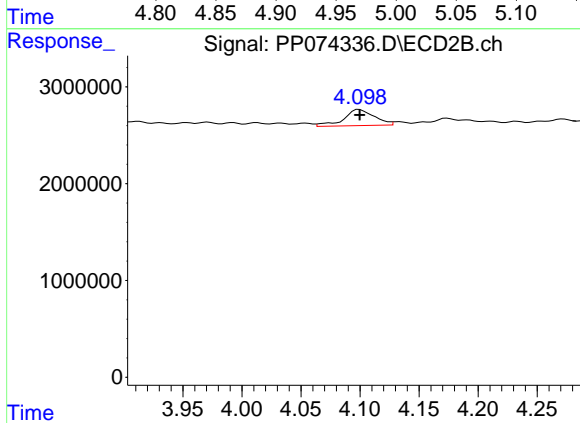
R.T.: 4.013 min
 Delta R.T.: -0.002 min
 Response: 539363
 Conc: 10.99 ng/ml



#9 AR-1221-2

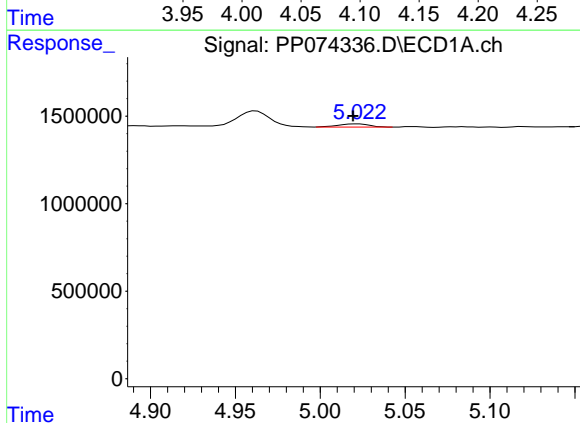
R.T.: 4.962 min
 Delta R.T.: 0.019 min
 Response: 1215500
 Conc: 96.46 ng/ml

Instrument :
 ECD_P
 ClientSampleId :
 AR1254CCC500



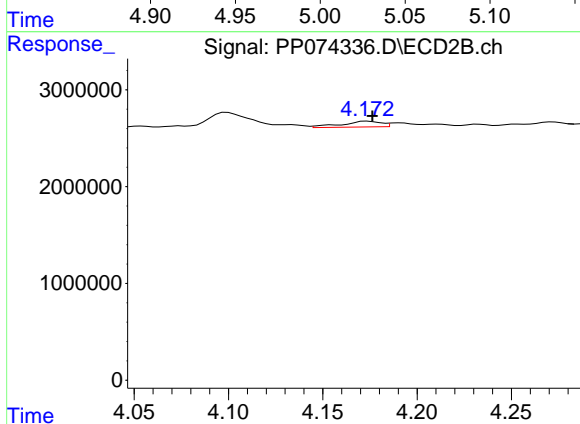
#9 AR-1221-2

R.T.: 4.099 min
 Delta R.T.: 0.000 min
 Response: 3009556
 Conc: 83.86 ng/ml



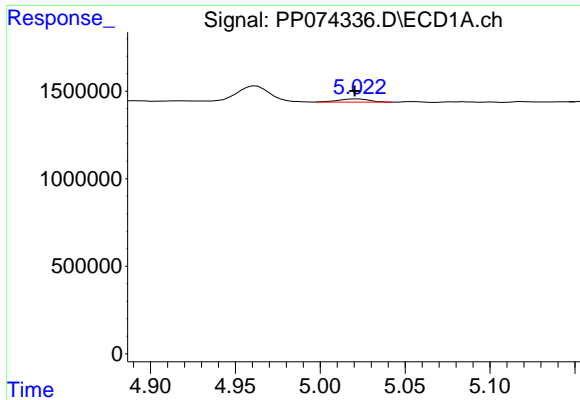
#10 AR-1221-3

R.T.: 5.022 min
 Delta R.T.: 0.003 min
 Response: 228157
 Conc: 6.23 ng/ml



#10 AR-1221-3

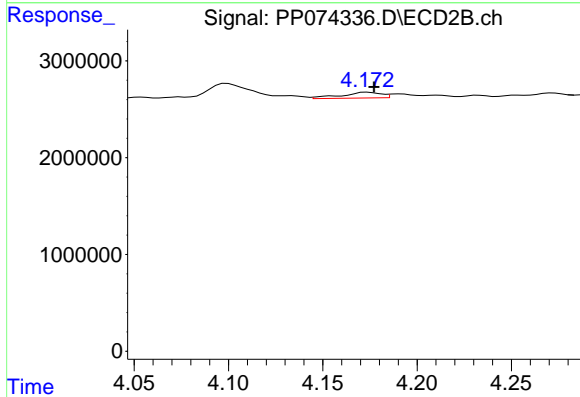
R.T.: 4.174 min
 Delta R.T.: -0.003 min
 Response: 881036
 Conc: 6.52 ng/ml



#11 AR-1232-1

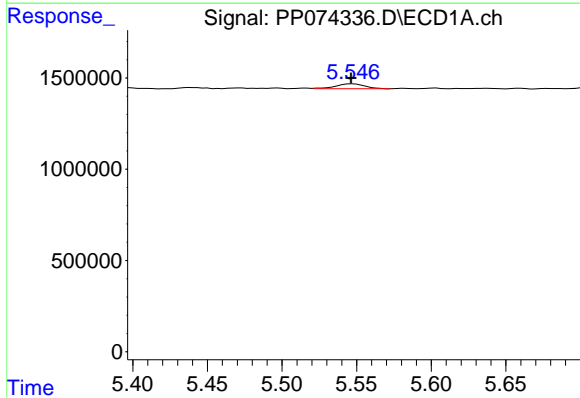
R.T.: 5.022 min
 Delta R.T.: 0.002 min
 Response: 228157
 Conc: 7.86 ng/ml

Instrument :
 ECD_P
 ClientSampleId :
 AR1254CCC500



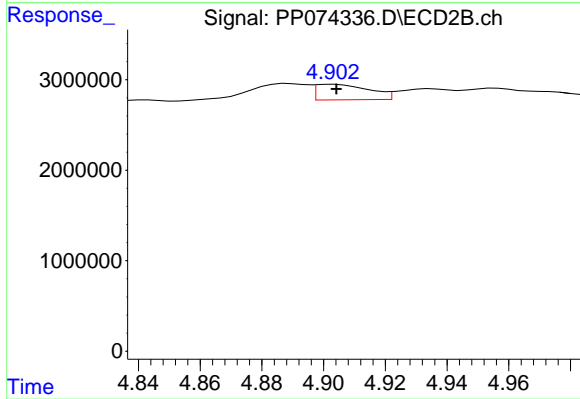
#11 AR-1232-1

R.T.: 4.174 min
 Delta R.T.: -0.003 min
 Response: 881036
 Conc: 8.69 ng/ml



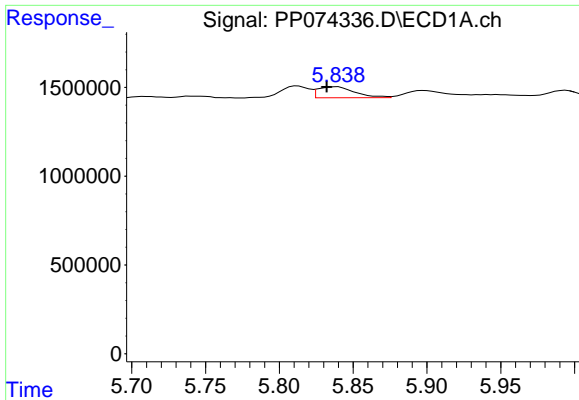
#12 AR-1232-2

R.T.: 5.547 min
 Delta R.T.: 0.001 min
 Response: 368524
 Conc: 24.50 ng/ml



#12 AR-1232-2

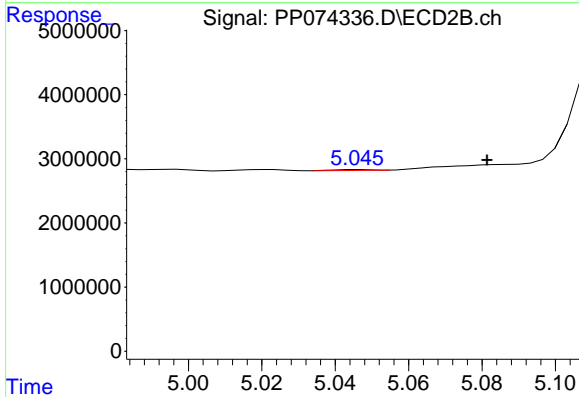
R.T.: 4.903 min
 Delta R.T.: 0.000 min
 Response: 2060688
 Conc: 11.82 ng/ml



#13 AR-1232-3

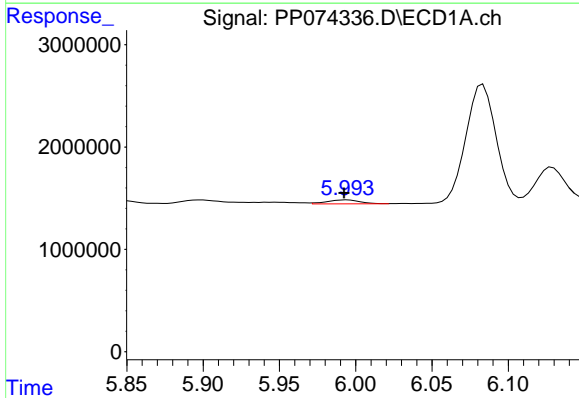
R.T.: 5.839 min
 Delta R.T.: 0.007 min
 Response: 1070185
 Conc: 36.90 ng/ml

Instrument :
 ECD_P
 ClientSampleId :
 AR1254CCC500



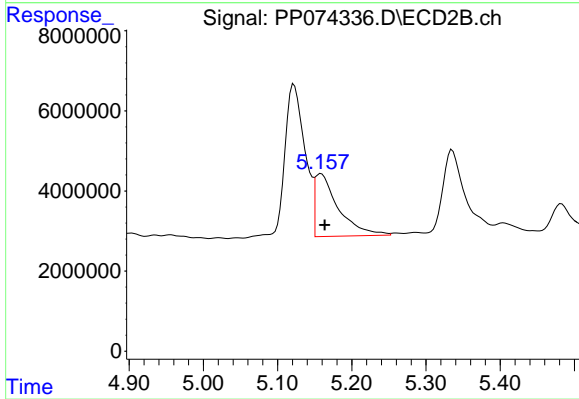
#13 AR-1232-3

R.T.: 5.047 min
 Delta R.T.: -0.035 min
 Response: 97223
 Conc: 2.12 ng/ml



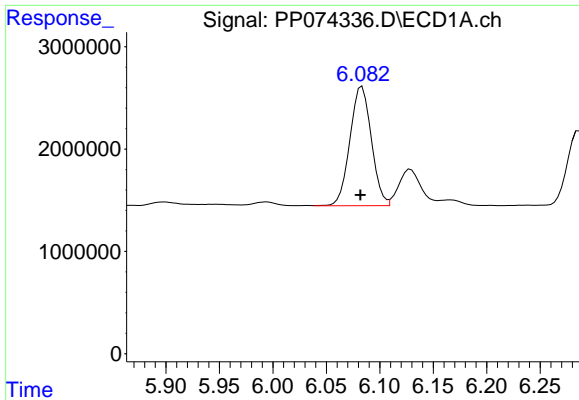
#14 AR-1232-4

R.T.: 5.994 min
 Delta R.T.: 0.002 min
 Response: 580602
 Conc: 37.53 ng/ml



#14 AR-1232-4

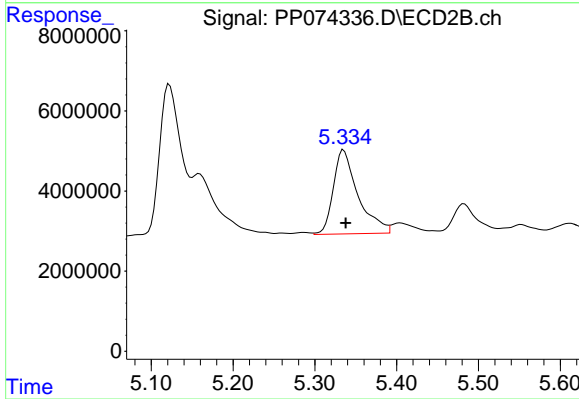
R.T.: 5.159 min
 Delta R.T.: -0.005 min
 Response: 34411712
 Conc: 593.20 ng/ml



#15 AR-1232-5

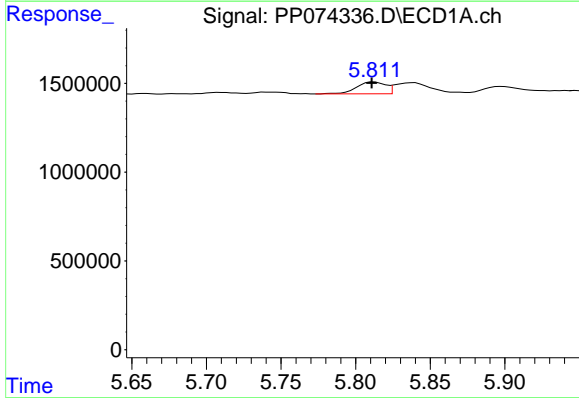
R.T.: 6.083 min
 Delta R.T.: 0.001 min
 Response: 16271711
 Conc: 1388.84 ng/ml

Instrument :
 ECD_P
 ClientSampleId :
 AR1254CCC500



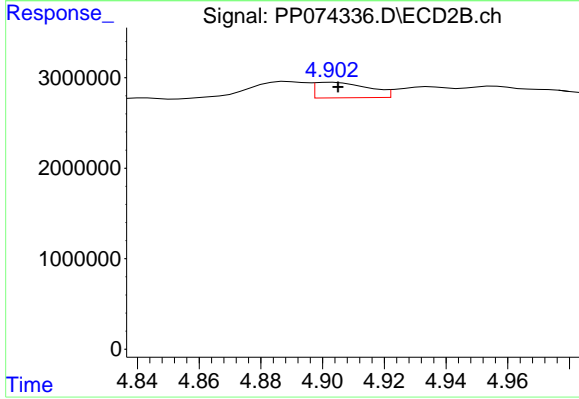
#15 AR-1232-5

R.T.: 5.335 min
 Delta R.T.: -0.002 min
 Response: 44036488
 Conc: 937.36 ng/ml



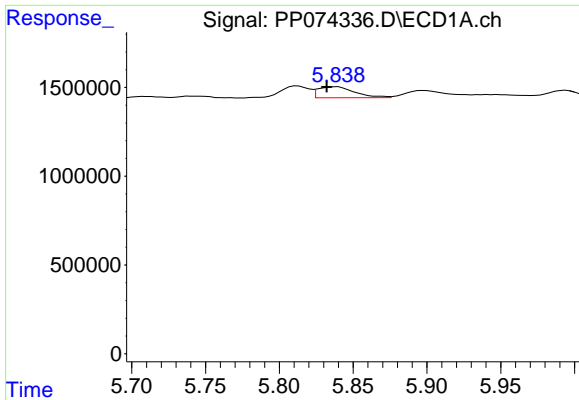
#16 AR-1242-1

R.T.: 5.813 min
 Delta R.T.: 0.002 min
 Response: 906292
 Conc: 24.32 ng/ml



#16 AR-1242-1

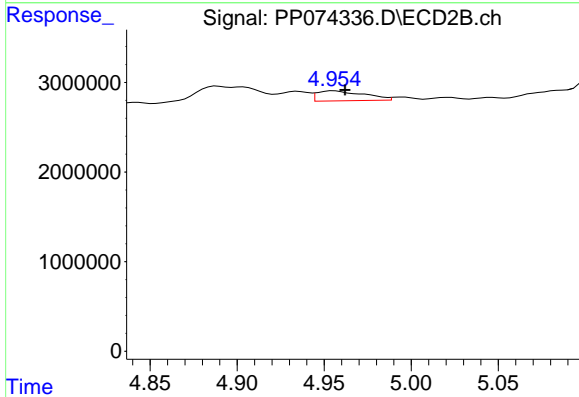
R.T.: 4.903 min
 Delta R.T.: -0.002 min
 Response: 2060688
 Conc: 5.97 ng/ml



#17 AR-1242-2

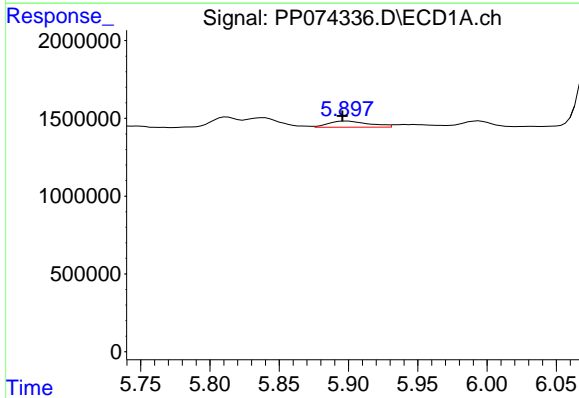
R.T.: 5.839 min
 Delta R.T.: 0.007 min
 Response: 1070185
 Conc: 19.67 ng/ml

Instrument :
 ECD_P
 ClientSampleId :
 AR1254CCC500



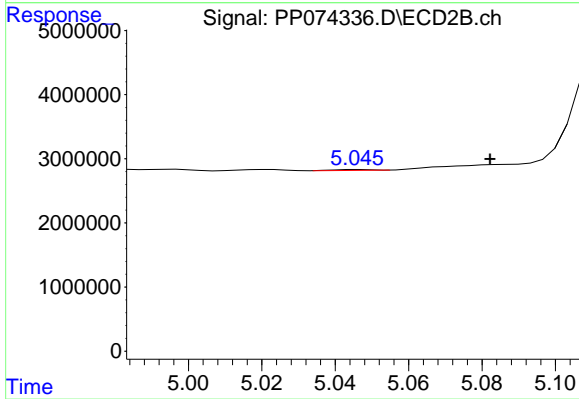
#17 AR-1242-2

R.T.: 4.956 min
 Delta R.T.: -0.006 min
 Response: 2113537
 Conc: 12.94 ng/ml



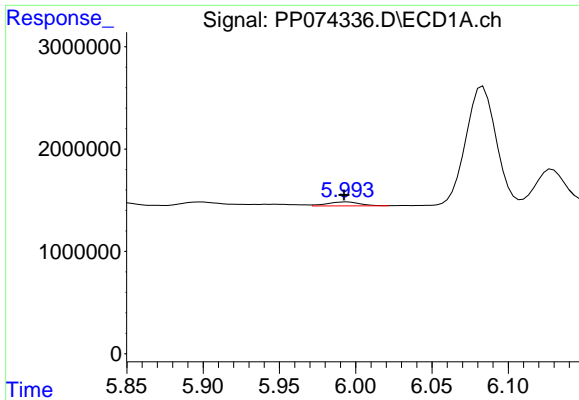
#18 AR-1242-3

R.T.: 5.898 min
 Delta R.T.: 0.003 min
 Response: 799816
 Conc: 22.38 ng/ml



#18 AR-1242-3

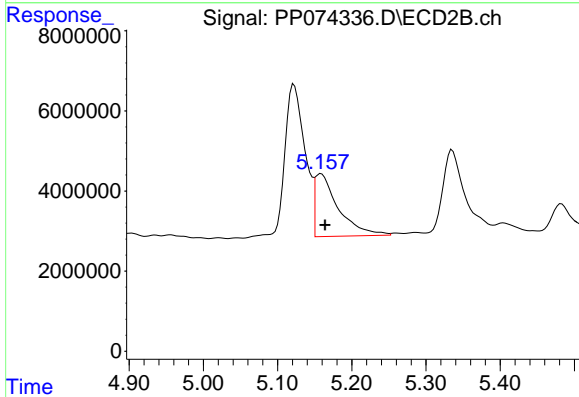
R.T.: 5.047 min
 Delta R.T.: -0.036 min
 Response: 97223
 Conc: 1.05 ng/ml



#19 AR-1242-4

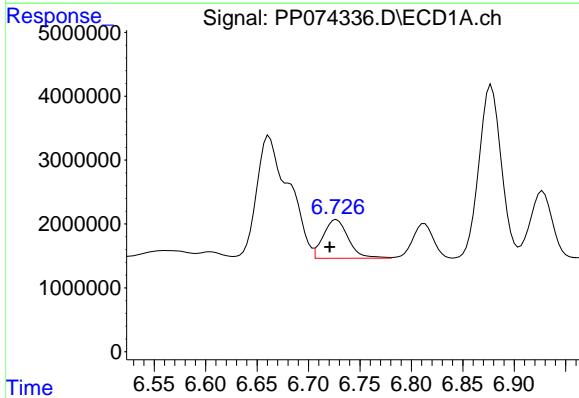
R.T.: 5.994 min
 Delta R.T.: 0.002 min
 Response: 580602
 Conc: 19.87 ng/ml

Instrument :
 ECD_P
 ClientSampleId :
 AR1254CCC500



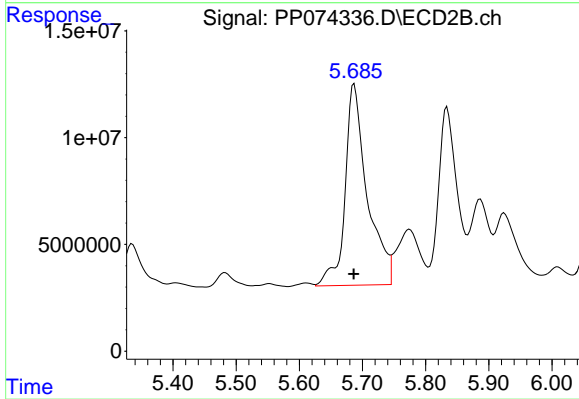
#19 AR-1242-4

R.T.: 5.159 min
 Delta R.T.: -0.005 min
 Response: 34411712
 Conc: 288.15 ng/ml



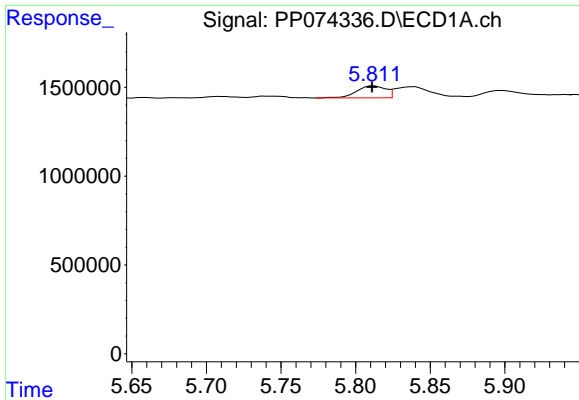
#20 AR-1242-5

R.T.: 6.727 min
 Delta R.T.: 0.007 min
 Response: 10295856
 Conc: 289.55 ng/ml



#20 AR-1242-5

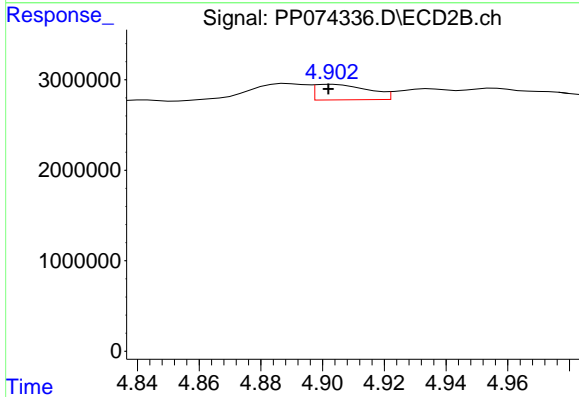
R.T.: 5.687 min
 Delta R.T.: 0.000 min
 Response: 229459661
 Conc: 1534.23 ng/ml



#21 AR-1248-1

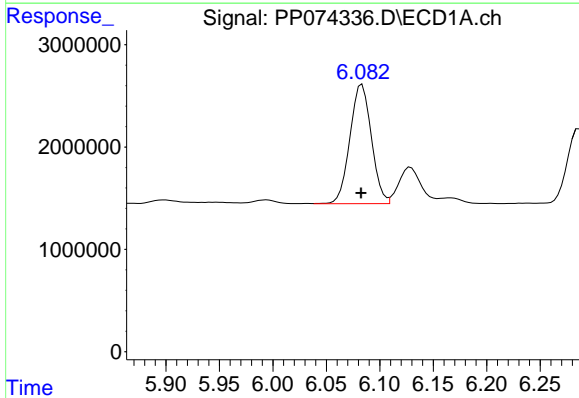
R.T.: 5.813 min
 Delta R.T.: 0.002 min
 Response: 906292
 Conc: 32.35 ng/ml

Instrument :
 ECD_P
 ClientSampleId :
 AR1254CCC500



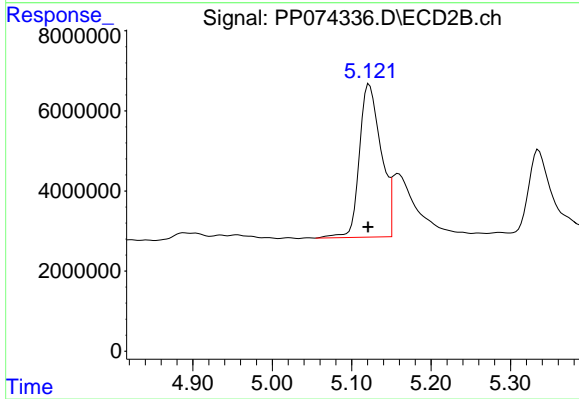
#21 AR-1248-1

R.T.: 4.903 min
 Delta R.T.: 0.002 min
 Response: 2060688
 Conc: 9.63 ng/ml



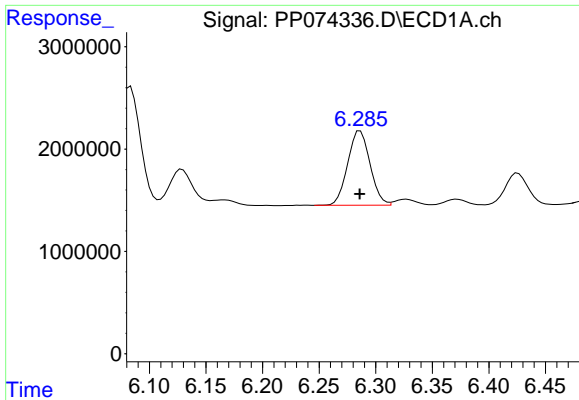
#22 AR-1248-2

R.T.: 6.083 min
 Delta R.T.: 0.000 min
 Response: 16271711
 Conc: 404.15 ng/ml



#22 AR-1248-2

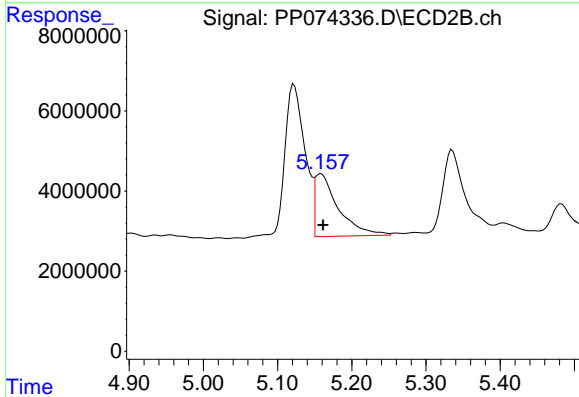
R.T.: 5.122 min
 Delta R.T.: 0.001 min
 Response: 72303826
 Conc: 494.17 ng/ml



#23 AR-1248-3

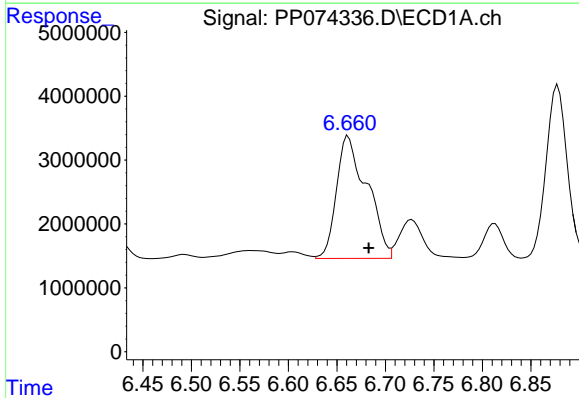
R.T.: 6.286 min
 Delta R.T.: 0.000 min
 Response: 10005142
 Conc: 224.46 ng/ml

Instrument :
 ECD_P
 ClientSampleId :
 AR1254CCC500



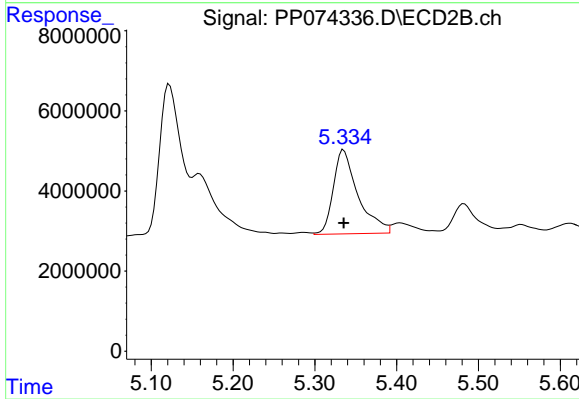
#23 AR-1248-3

R.T.: 5.159 min
 Delta R.T.: -0.002 min
 Response: 34411712
 Conc: 200.70 ng/ml



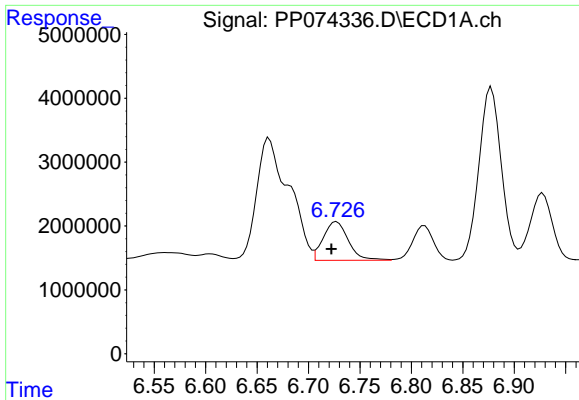
#24 AR-1248-4

R.T.: 6.662 min
 Delta R.T.: -0.021 min
 Response: 41849509
 Conc: 804.22 ng/ml



#24 AR-1248-4

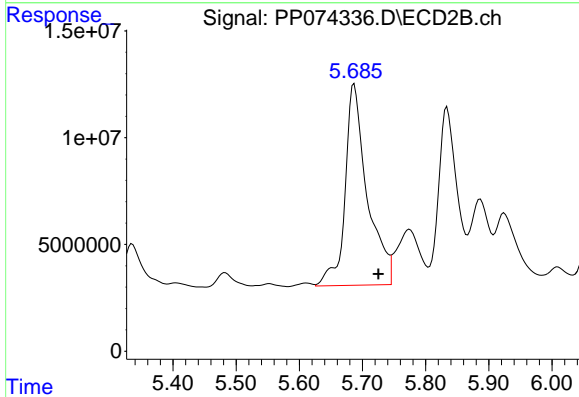
R.T.: 5.335 min
 Delta R.T.: 0.000 min
 Response: 44036488
 Conc: 264.68 ng/ml



#25 AR-1248-5

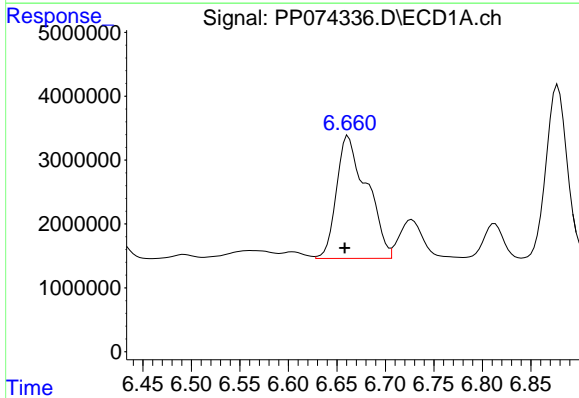
R.T.: 6.727 min
 Delta R.T.: 0.005 min
 Response: 10295856
 Conc: 180.81 ng/ml

Instrument :
 ECD_P
 ClientSampleId :
 AR1254CCC500



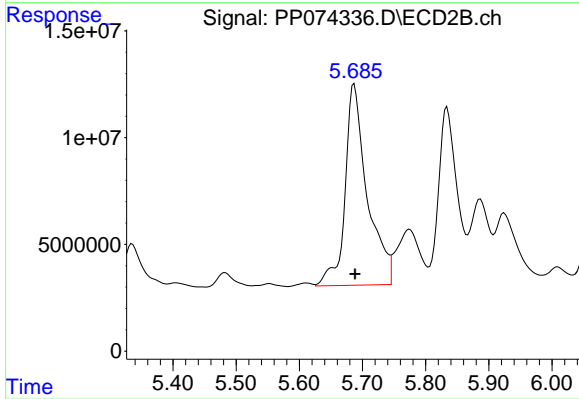
#25 AR-1248-5

R.T.: 5.687 min
 Delta R.T.: -0.038 min
 Response: 229459661
 Conc: 788.61 ng/ml



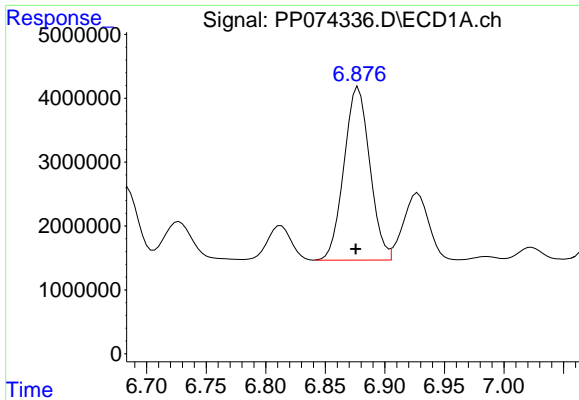
#26 AR-1254-1

R.T.: 6.662 min
 Delta R.T.: 0.004 min
 Response: 41849509
 Conc: 795.00 ng/ml



#26 AR-1254-1

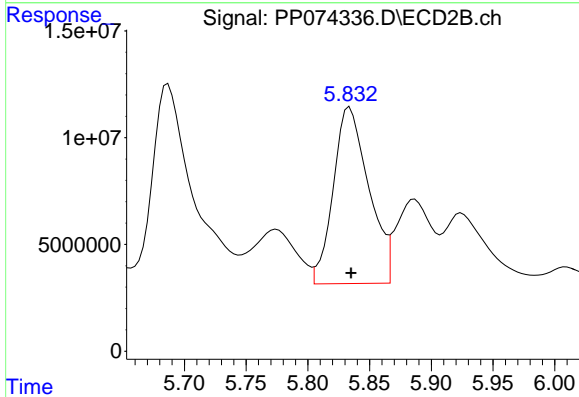
R.T.: 5.687 min
 Delta R.T.: -0.002 min
 Response: 229459661
 Conc: 626.63 ng/ml



#27 AR-1254-2

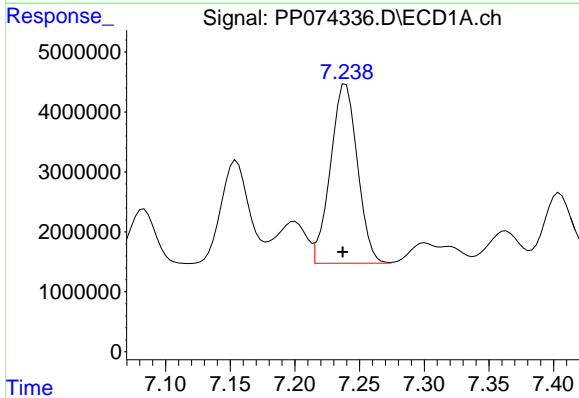
R.T.: 6.878 min
 Delta R.T.: 0.002 min
 Response: 40903489
 Conc: 514.48 ng/ml

Instrument :
 ECD_P
 ClientSampleId :
 AR1254CCC500



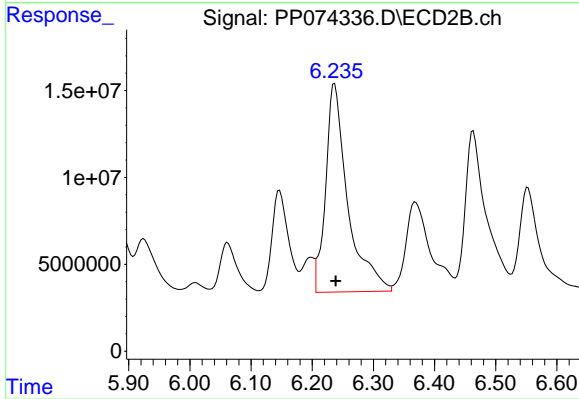
#27 AR-1254-2

R.T.: 5.834 min
 Delta R.T.: -0.001 min
 Response: 165261883
 Conc: 594.00 ng/ml



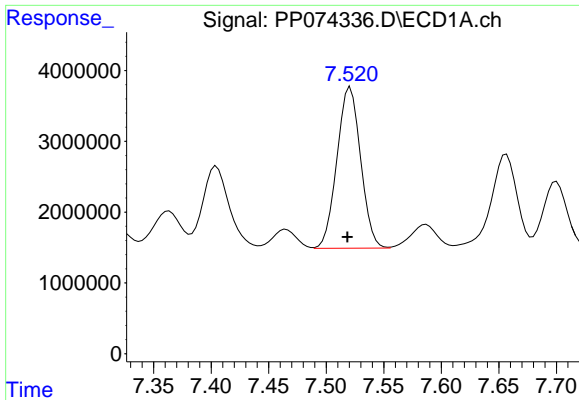
#28 AR-1254-3

R.T.: 7.239 min
 Delta R.T.: 0.002 min
 Response: 43396847
 Conc: 497.01 ng/ml



#28 AR-1254-3

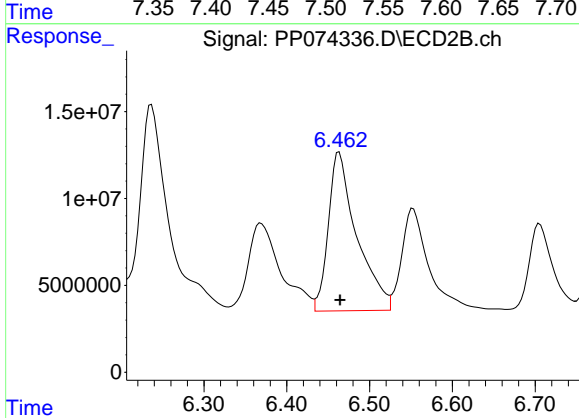
R.T.: 6.237 min
 Delta R.T.: -0.002 min
 Response: 301323770
 Conc: 615.94 ng/ml



#29 AR-1254-4

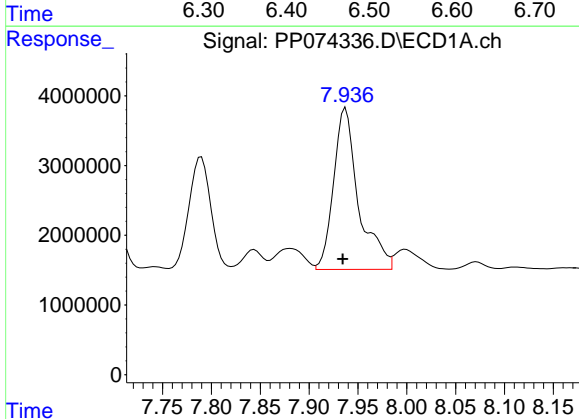
R.T.: 7.521 min
 Delta R.T.: 0.003 min
 Response: 32697550
 Conc: 512.42 ng/ml

Instrument :
 ECD_P
 ClientSampleId :
 AR1254CCC500



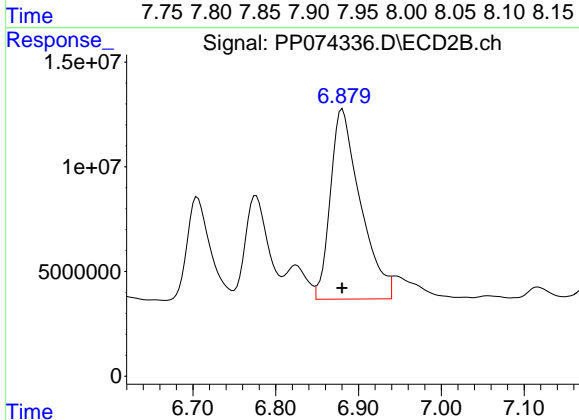
#29 AR-1254-4

R.T.: 6.463 min
 Delta R.T.: 0.000 min
 Response: 217840755
 Conc: 592.66 ng/ml



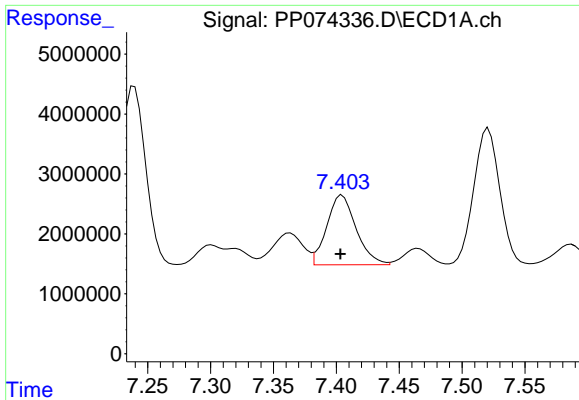
#30 AR-1254-5

R.T.: 7.937 min
 Delta R.T.: 0.003 min
 Response: 41228735
 Conc: 508.09 ng/ml



#30 AR-1254-5

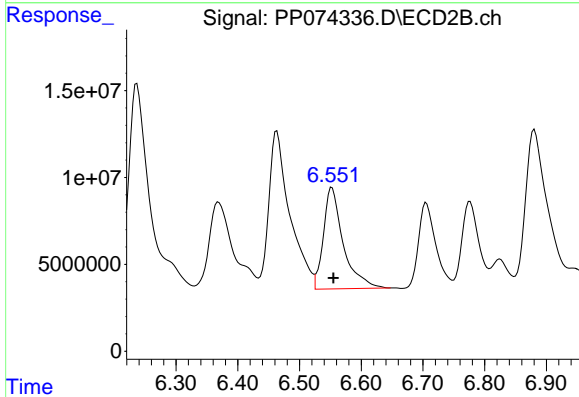
R.T.: 6.881 min
 Delta R.T.: 0.000 min
 Response: 228168275
 Conc: 592.39 ng/ml



#31 AR-1260-1

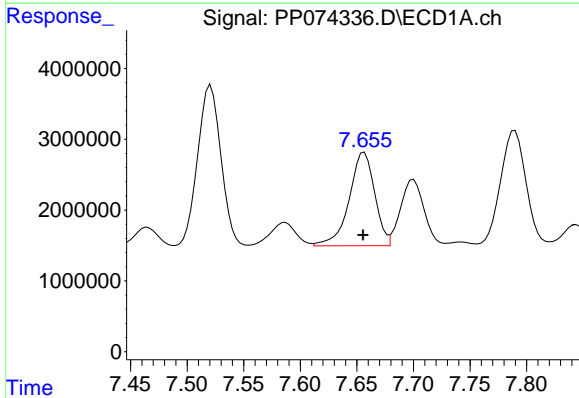
R.T.: 7.405 min
 Delta R.T.: 0.002 min
 Response: 18873947
 Conc: 334.91 ng/ml

Instrument :
 ECD_P
 ClientSampleId :
 AR1254CCC500



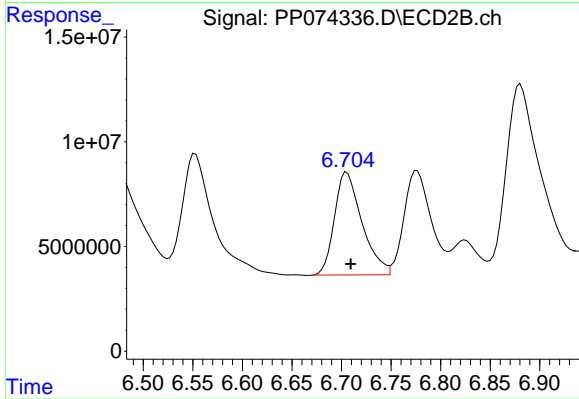
#31 AR-1260-1

R.T.: 6.553 min
 Delta R.T.: -0.002 min
 Response: 130575132
 Conc: 323.24 ng/ml



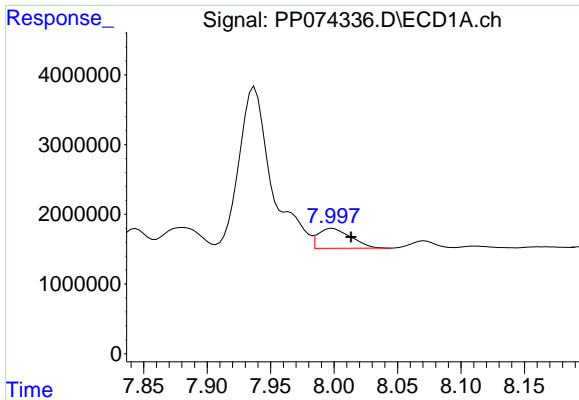
#32 AR-1260-2

R.T.: 7.657 min
 Delta R.T.: 0.001 min
 Response: 20737622
 Conc: 304.28 ng/ml



#32 AR-1260-2

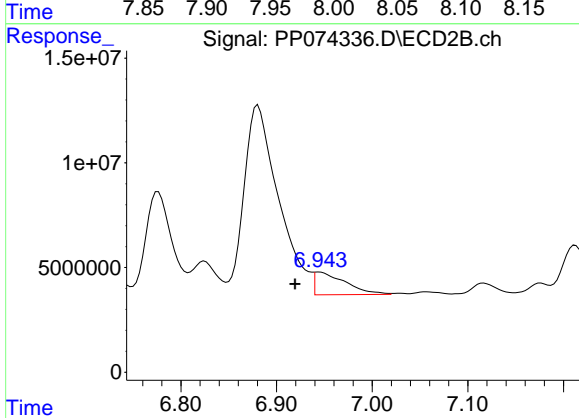
R.T.: 6.705 min
 Delta R.T.: -0.004 min
 Response: 94876922
 Conc: 303.41 ng/ml



#33 AR-1260-3

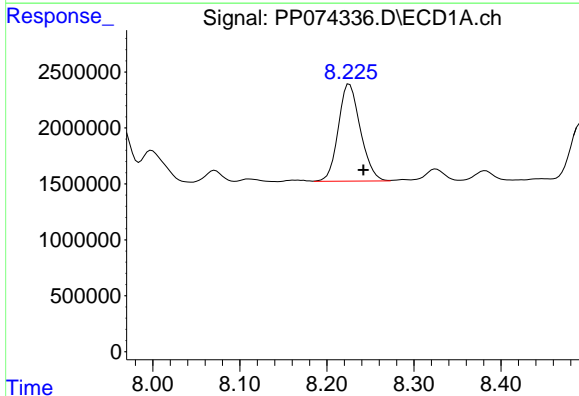
R.T.: 7.999 min
 Delta R.T.: -0.015 min
 Response: 5124516
 Conc: 96.15 ng/ml

Instrument :
 ECD_P
 ClientSampleId :
 AR1254CCC500



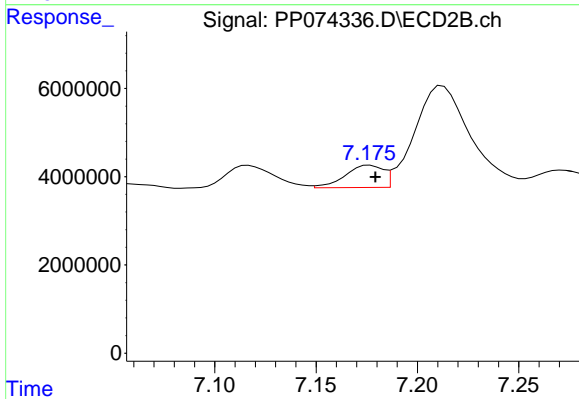
#33 AR-1260-3

R.T.: 6.944 min
 Delta R.T.: 0.025 min
 Response: 24334419
 Conc: 61.74 ng/ml



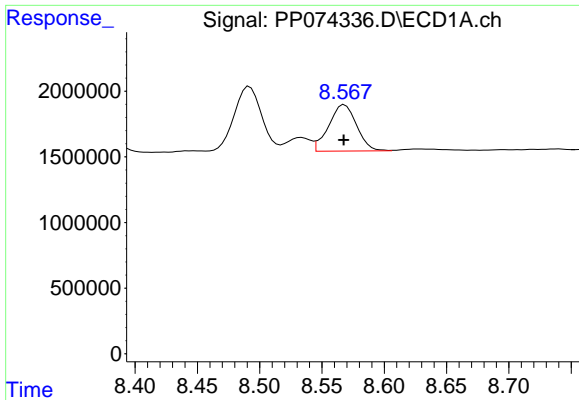
#34 AR-1260-4

R.T.: 8.226 min
 Delta R.T.: -0.016 min
 Response: 15298102
 Conc: 244.32 ng/ml



#34 AR-1260-4

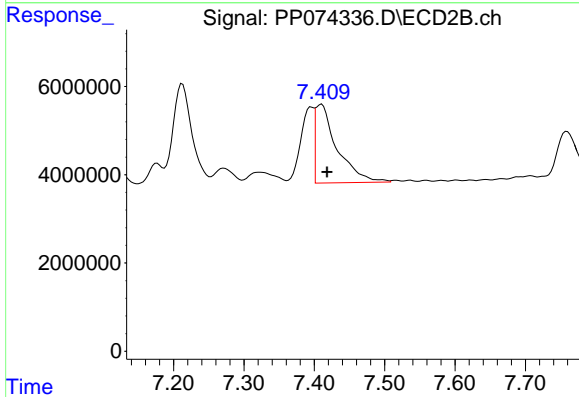
R.T.: 7.176 min
 Delta R.T.: -0.003 min
 Response: 6599491
 Conc: 22.68 ng/ml



#35 AR-1260-5

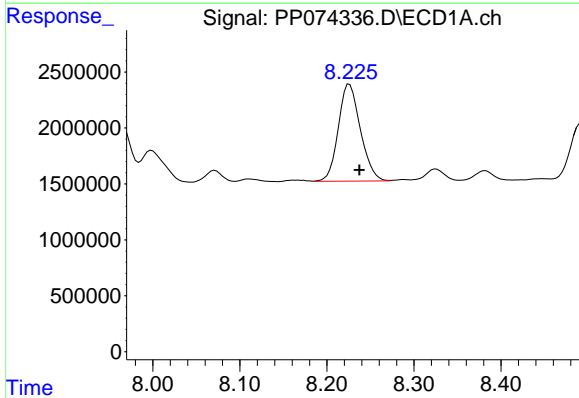
R.T.: 8.568 min
 Delta R.T.: 0.000 min
 Response: 5531342
 Conc: 48.82 ng/ml

Instrument :
 ECD_P
 ClientSampleId :
 AR1254CCC500



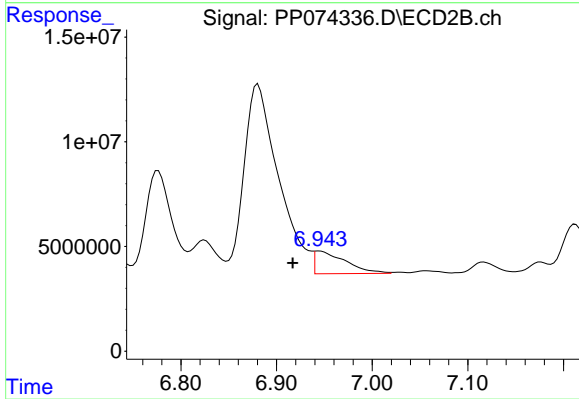
#35 AR-1260-5

R.T.: 7.410 min
 Delta R.T.: -0.008 min
 Response: 38582051
 Conc: 50.94 ng/ml



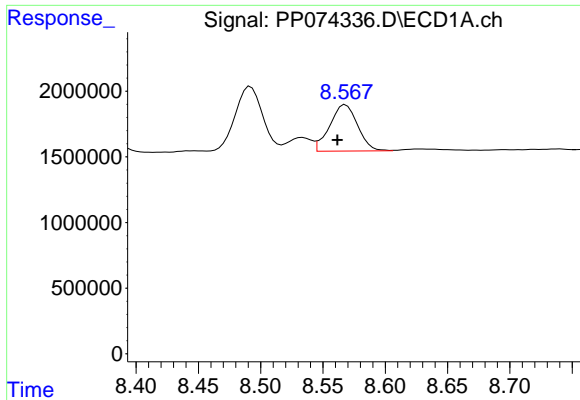
#36 AR-1262-1

R.T.: 8.226 min
 Delta R.T.: -0.011 min
 Response: 15298102
 Conc: 201.85 ng/ml



#36 AR-1262-1

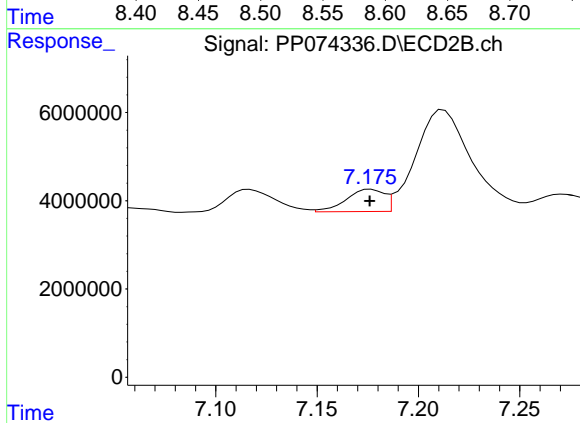
R.T.: 6.944 min
 Delta R.T.: 0.027 min
 Response: 24334419
 Conc: 43.21 ng/ml



#37 AR-1262-2

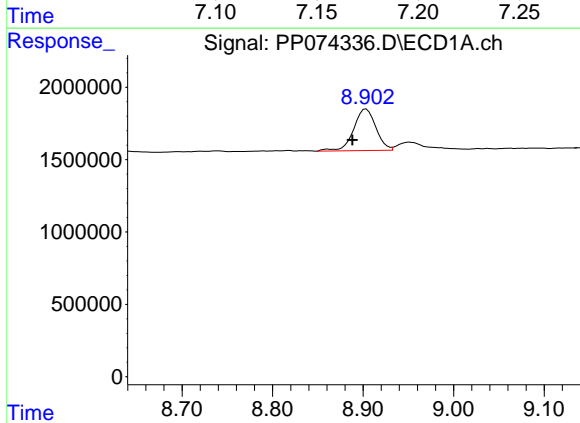
R.T.: 8.568 min
 Delta R.T.: 0.006 min
 Response: 5531342
 Conc: 42.41 ng/ml

Instrument :
 ECD_P
 ClientSampleId :
 AR1254CCC500



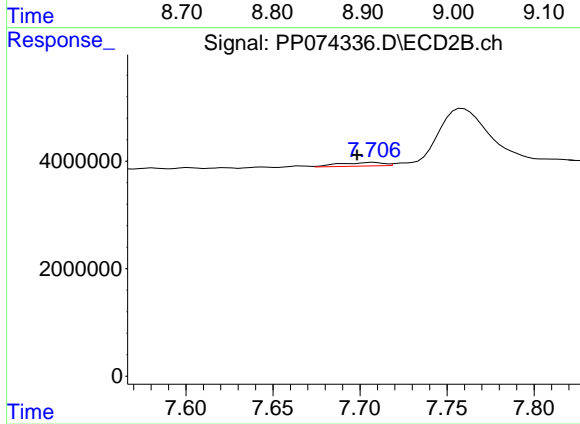
#37 AR-1262-2

R.T.: 7.176 min
 Delta R.T.: 0.000 min
 Response: 6599491
 Conc: 16.46 ng/ml



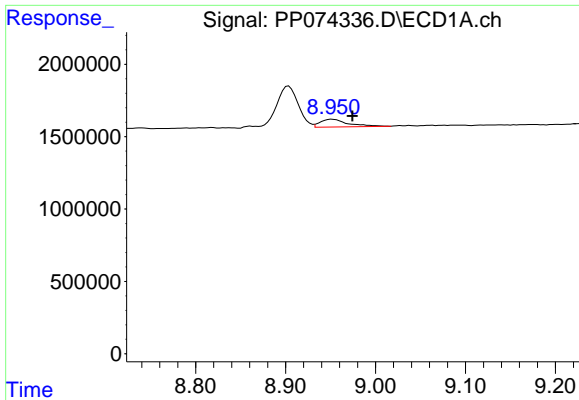
#38 AR-1262-3

R.T.: 8.903 min
 Delta R.T.: 0.015 min
 Response: 4923258
 Conc: 52.34 ng/ml



#38 AR-1262-3

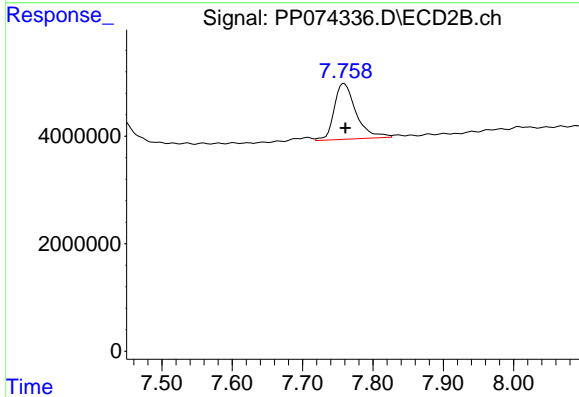
R.T.: 7.708 min
 Delta R.T.: 0.009 min
 Response: 1163249
 Conc: 3.24 ng/ml



#39 AR-1262-4

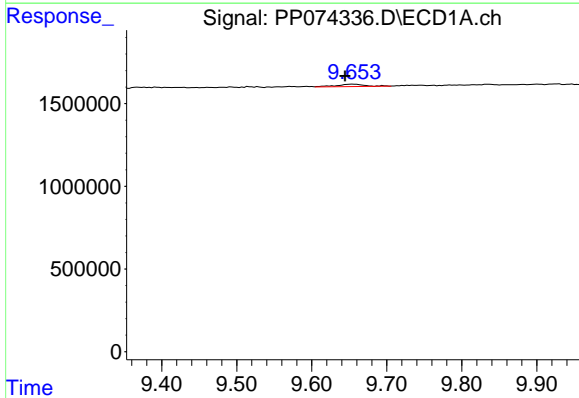
R.T.: 8.952 min
 Delta R.T.: -0.023 min
 Response: 1162776
 Conc: 15.96 ng/ml

Instrument :
 ECD_P
 ClientSampleId :
 AR1254CCC500



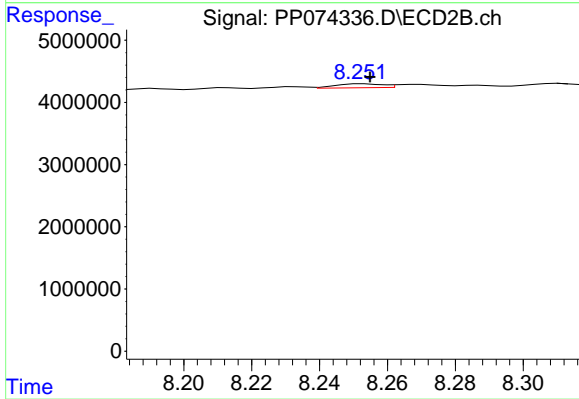
#39 AR-1262-4

R.T.: 7.759 min
 Delta R.T.: -0.002 min
 Response: 22314196
 Conc: 33.46 ng/ml



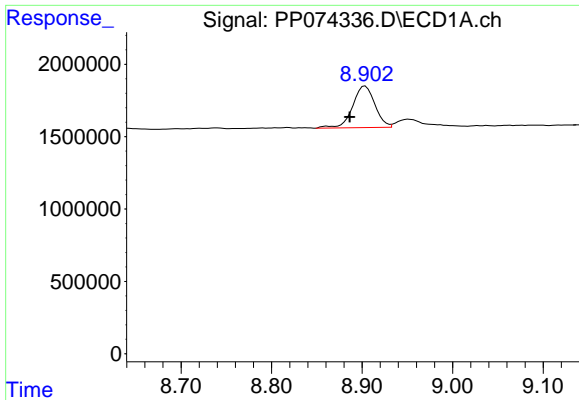
#40 AR-1262-5

R.T.: 9.656 min
 Delta R.T.: 0.011 min
 Response: 369640
 Conc: 7.26 ng/ml



#40 AR-1262-5

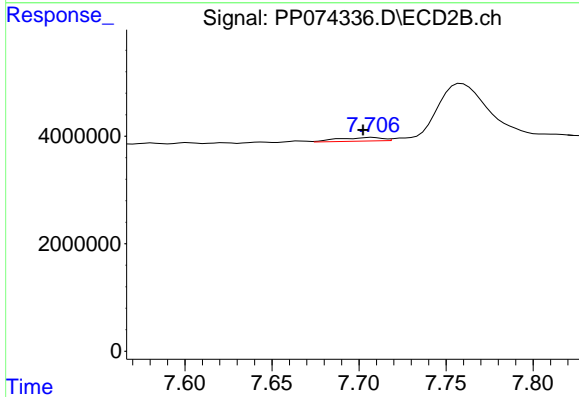
R.T.: 8.253 min
 Delta R.T.: -0.002 min
 Response: 622955
 Conc: 2.20 ng/ml



#41 AR-1268-1

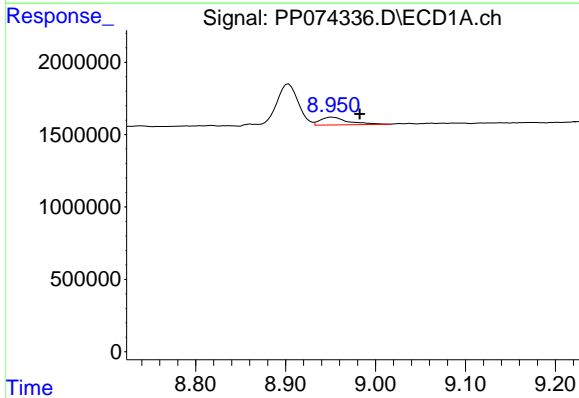
R.T.: 8.903 min
 Delta R.T.: 0.017 min
 Response: 4923258
 Conc: 31.63 ng/ml

Instrument :
 ECD_P
 ClientSampleId :
 AR1254CCC500



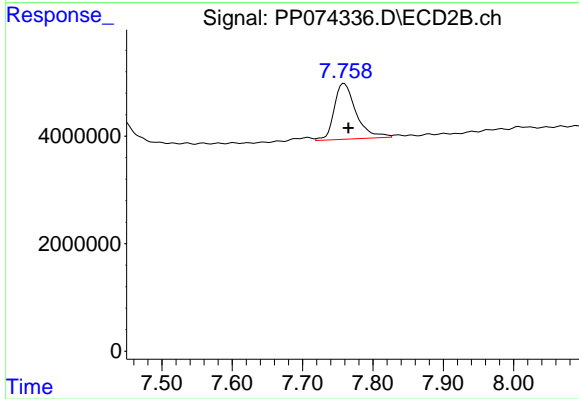
#41 AR-1268-1

R.T.: 7.708 min
 Delta R.T.: 0.005 min
 Response: 1163249
 Conc: 1.07 ng/ml



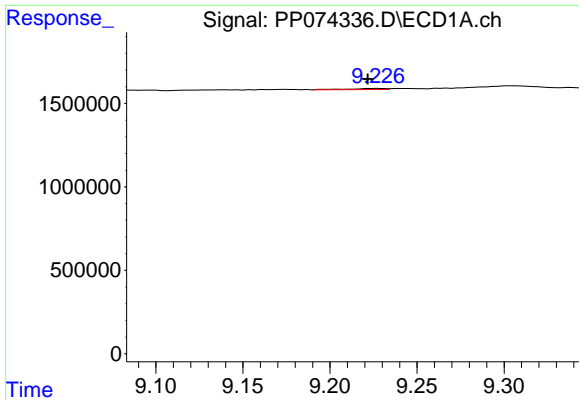
#42 AR-1268-2

R.T.: 8.952 min
 Delta R.T.: -0.031 min
 Response: 1162776
 Conc: 8.11 ng/ml



#42 AR-1268-2

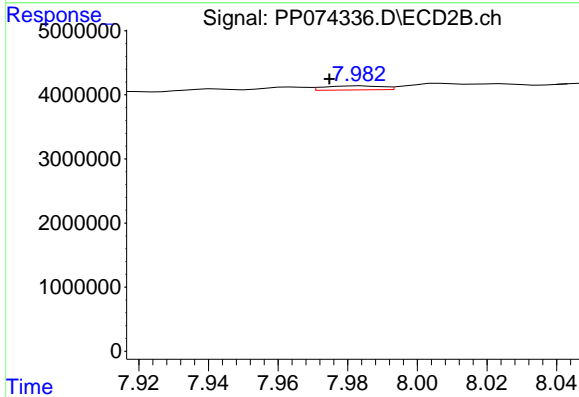
R.T.: 7.759 min
 Delta R.T.: -0.006 min
 Response: 22314196
 Conc: 21.02 ng/ml



#43 AR-1268-3

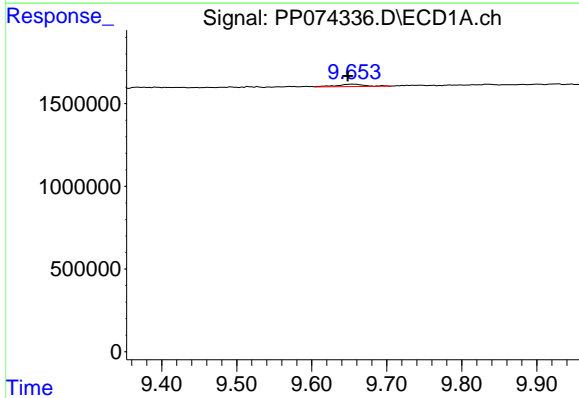
R.T.: 9.228 min
 Delta R.T.: 0.006 min
 Response: 96573
 Conc: 0.81 ng/ml

Instrument :
 ECD_P
 ClientSampleId :
 AR1254CCC500



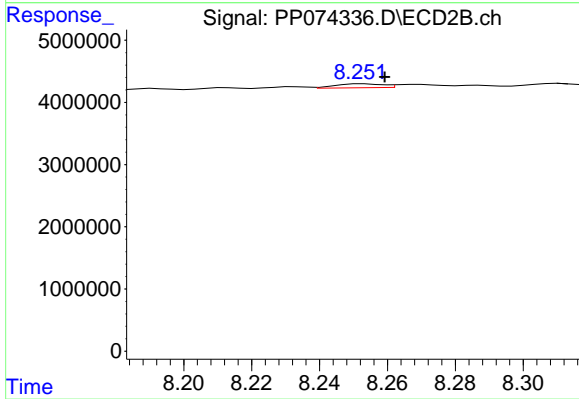
#43 AR-1268-3

R.T.: 7.983 min
 Delta R.T.: 0.009 min
 Response: 724309
 Conc: 0.87 ng/ml



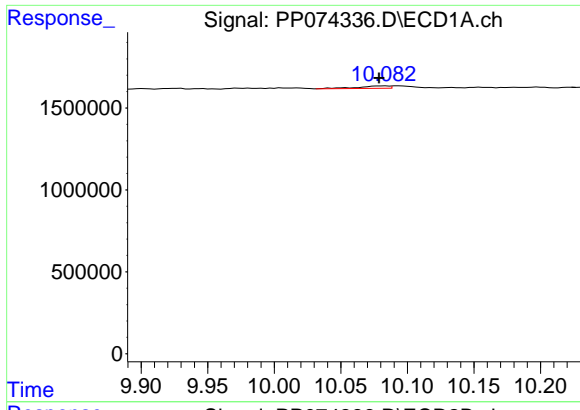
#44 AR-1268-4

R.T.: 9.656 min
 Delta R.T.: 0.008 min
 Response: 369640
 Conc: 6.29 ng/ml



#44 AR-1268-4

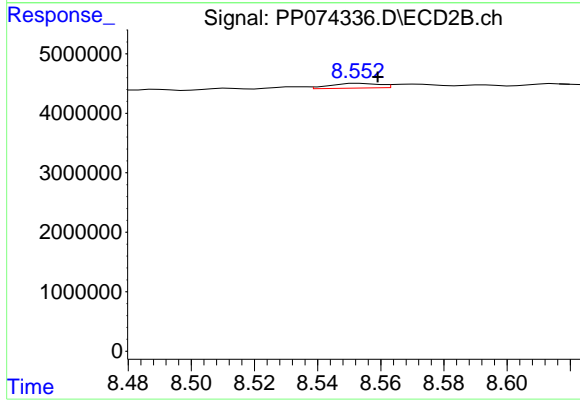
R.T.: 8.253 min
 Delta R.T.: -0.006 min
 Response: 622955
 Conc: 2.02 ng/ml



#45 AR-1268-5

R.T.: 10.083 min
 Delta R.T.: 0.004 min
 Response: 234097
 Conc: 0.67 ng/ml

Instrument :
 ECD_P
 ClientSampleId :
 AR1254CCC500



#45 AR-1268-5

R.T.: 8.553 min
 Delta R.T.: -0.006 min
 Response: 858013
 Conc: 0.34 ng/ml