

Data Path : Z:\pestpcbsrv\HPCHEM1\ECD_P\Data\PP081325\
 Data File : PP074337.D
 Signal(s) : Signal #1: ECD1A.ch Signal #2: ECD2B.ch
 Acq On : 13 Aug 2025 10:07
 Operator : YP\AJ
 Sample : I.BLK
 Misc :
 ALS Vial : 2 Sample Multiplier: 1

Instrument :
 ECD_P
 ClientSampleId :
 I.BLK

Integration File signal 1: autoint1.e
 Integration File signal 2: autoint2.e
 Quant Time: Aug 13 11:47:13 2025
 Quant Method : Z:\pestpcbsrv\HPCHEM1\ECD_P\methods\PP080125.M
 Quant Title : GC EXTRACTABLES
 QLast Update : Mon Aug 04 11:01:49 2025
 Response via : Initial Calibration
 Integrator: ChemStation

Volume Inj. : 2 µl
 Signal #1 Phase : ZB-MR1 Signal #2 Phase: ZB-MR2
 Signal #1 Info : 30Mx0.32mmx 0.50µ Signal #2 Info : 30M x 0.32mm x 0.25µm

Compound	RT#1	RT#2	Resp#1	Resp#2	ng/ml	ng/ml

System Monitoring Compounds						
1) SA Tetrachlo...	4.657	3.801	21551484	62697128	19.272	16.351
2) SA Decachlor...	10.436	8.818	17935142	97672289	18.468	16.242
Target Compounds						
3) L1 AR-1016-1	5.742f	4.904	238732	135951	5.786	0.341 #
4) L1 AR-1016-2	0.000	4.966	0	151617	N.D.	0.807 #
5) L1 AR-1016-3	5.941f	5.076	901340	216657	22.726	2.043 #
6) L1 AR-1016-4	6.006	5.120	88966	234528	2.734	2.147
7) L1 AR-1016-5	0.000	5.337	0	370712	N.D.	3.169 #
8) L2 AR-1221-1	4.870	4.004	341908	128806	20.396	2.624 #
9) L2 AR-1221-2	4.959	4.095	449839	747917	35.699	20.840 #
10) L2 AR-1221-3	4.959f	4.178	449839	129827	12.279	0.960 #
11) L3 AR-1232-1	4.959f	4.178	449839	129827	15.492	1.281 #
12) L3 AR-1232-2	0.000	4.904	0	135951	N.D.	0.780 #
13) L3 AR-1232-3	0.000	5.076	0	216657	N.D.	4.729 #
14) L3 AR-1232-4	6.006	5.164	88966	418014	5.751	7.206 #
15) L3 AR-1232-5	6.079	5.337	95749	370712	8.172	7.891
16) L4 AR-1242-1	5.742f	4.904	238732	135951	6.406	0.394 #
17) L4 AR-1242-2	0.000	4.966	0	151617	N.D.	0.928 #
18) L4 AR-1242-3	5.941f	5.076	901340	216657	25.222	2.349 #
19) L4 AR-1242-4	6.006	5.164	88966	418014	3.045	3.500
20) L4 AR-1242-5	6.742	5.691	1647798	315351	46.341	2.109 #
21) L5 AR-1248-1	5.742f	4.904	238732	135951	8.522	0.635 #
22) L5 AR-1248-2	6.079	5.120	95749	234528	2.378	1.603 #
23) L5 AR-1248-3	0.000	5.164	0	418014	N.D.	2.438 #
24) L5 AR-1248-4	6.680	5.337	91208	370712	1.753	2.228 #
25) L5 AR-1248-5	6.742	5.691	1647798	315351	28.938	1.084 #
26) L6 AR-1254-1	6.647	5.691	461561	315351	8.768	0.861 #
27) L6 AR-1254-2	6.875	5.839	70058	528700	0.881	1.900 #
28) L6 AR-1254-3	7.229	6.237	460601	202975	5.275	0.415 #
29) L6 AR-1254-4	7.513	6.464	62803	446625	0.984	1.215
30) L6 AR-1254-5	7.935	6.875	112600	281669	1.388	0.731 #
31) L7 AR-1260-1	7.397	6.553	141367	379497	2.508	0.939 #
32) L7 AR-1260-2	7.660	6.713	254042	444353	3.728	1.421 #
33) L7 AR-1260-3	8.002	6.918	87046	314513	1.633	0.798 #
34) L7 AR-1260-4	8.258	7.184	50971	258541	0.814	0.889
35) L7 AR-1260-5	8.567	7.420	80241	294978	0.708	0.389 #
36) L8 AR-1262-1	8.258	6.918	50971	314513	0.673	0.558
37) L8 AR-1262-2	8.567	7.184	80241	258541	0.615	0.645
38) L8 AR-1262-3	8.910	7.700	48953	210812	0.520	0.586
39) L8 AR-1262-4	8.939f	7.759	48364	360184	0.664	0.540
40) L8 AR-1262-5	9.645	8.243	125419	312093	2.463	1.102 #
41) L9 AR-1268-1	8.910	7.700	48953	210812	0.315	0.193 #

Data Path : Z:\pestpcbsrv\HPCHEM1\ECD_P\Data\PP081325\
 Data File : PP074337.D
 Signal(s) : Signal #1: ECD1A.ch Signal #2: ECD2B.ch
 Acq On : 13 Aug 2025 10:07
 Operator : YP\AJ
 Sample : I.BLK
 Misc :
 ALS Vial : 2 Sample Multiplier: 1

Instrument :
 ECD_P
 ClientSampleId :
 I.BLK

Integration File signal 1: autoint1.e
 Integration File signal 2: autoint2.e
 Quant Time: Aug 13 11:47:13 2025
 Quant Method : Z:\pestpcbsrv\HPCHEM1\ECD_P\methods\PP080125.M
 Quant Title : GC EXTRACTABLES
 QLast Update : Mon Aug 04 11:01:49 2025
 Response via : Initial Calibration
 Integrator: ChemStation

Volume Inj. : 2 µl
 Signal #1 Phase : ZB-MR1 Signal #2 Phase: ZB-MR2
 Signal #1 Info : 30Mx0.32mmx 0.50µ Signal #2 Info : 30M x 0.32mm x 0.25µm

	Compound	RT#1	RT#2	Resp#1	Resp#2	ng/ml	ng/ml
42)	L9 AR-1268-2	9.023f	7.759	32933	360184	0.230	0.339 #
43)	L9 AR-1268-3	9.238	7.981	110238	560835	0.923	0.674 #
44)	L9 AR-1268-4	9.645	8.267	125419	376954	2.133	1.224 #
45)	L9 AR-1268-5	10.082	8.561	189851	258021	0.540	0.101 #

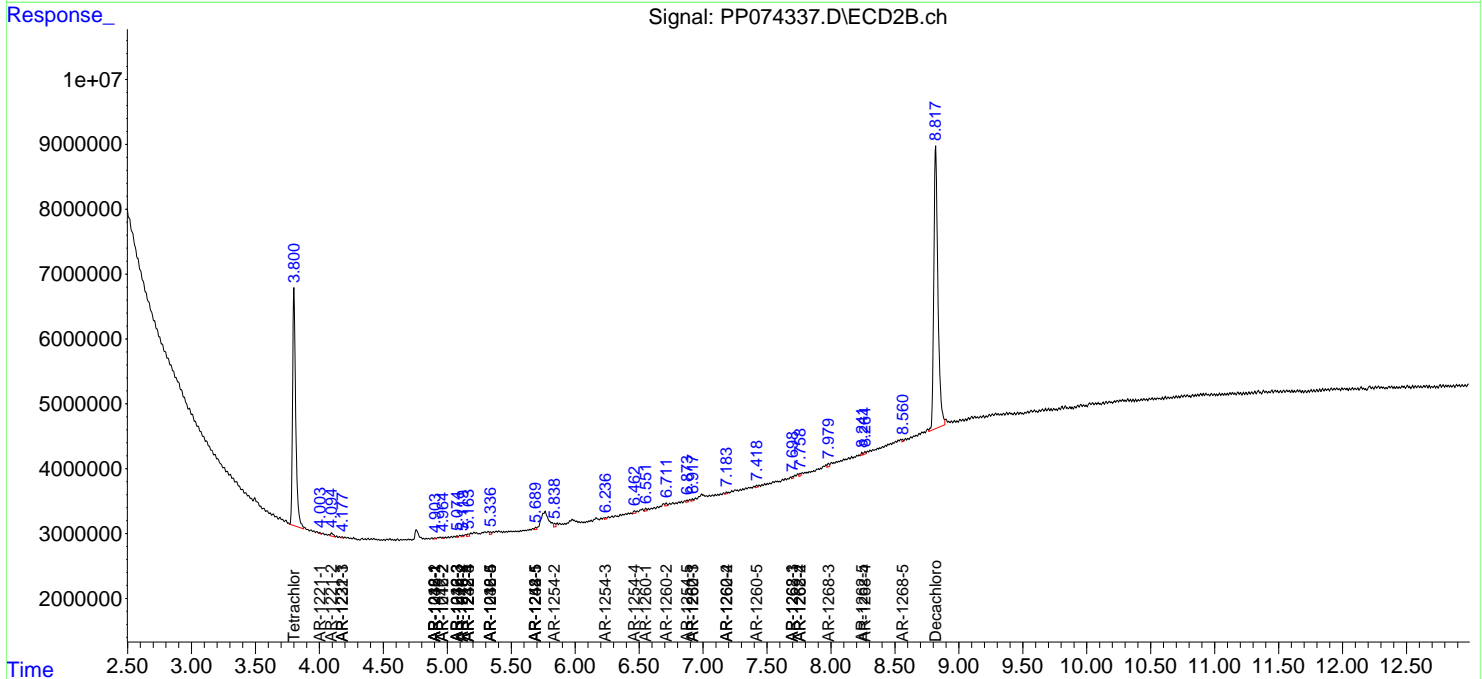
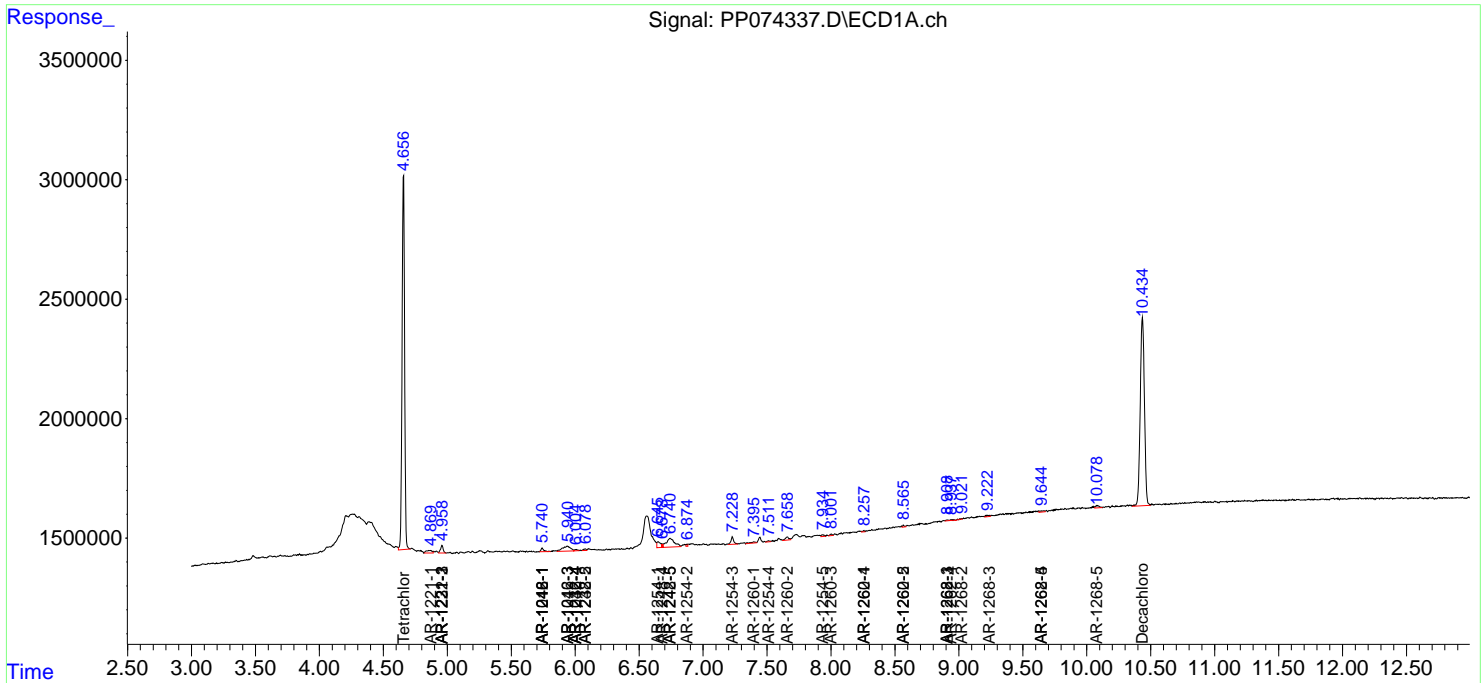
(f)=RT Delta > 1/2 Window (#)=Amounts differ by > 25% (m)=manual int.

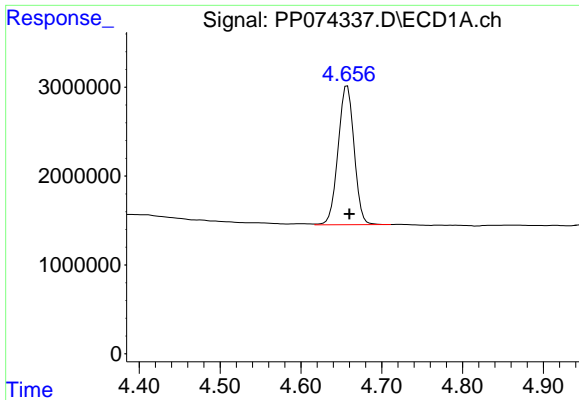
Data Path : Z:\pestpcbsrv\HPCHEM1\ECD_P\Data\PP081325\
 Data File : PP074337.D
 Signal(s) : Signal #1: ECD1A.ch Signal #2: ECD2B.ch
 Acq On : 13 Aug 2025 10:07
 Operator : YP\AJ
 Sample : I.BLK
 Misc :
 ALS Vial : 2 Sample Multiplier: 1

Instrument :
 ECD_P
 ClientSampleId :
 I.BLK

Integration File signal 1: autoint1.e
 Integration File signal 2: autoint2.e
 Quant Time: Aug 13 11:47:13 2025
 Quant Method : Z:\pestpcbsrv\HPCHEM1\ECD_P\methods\PP080125.M
 Quant Title : GC EXTRACTABLES
 QLast Update : Mon Aug 04 11:01:49 2025
 Response via : Initial Calibration
 Integrator: ChemStation

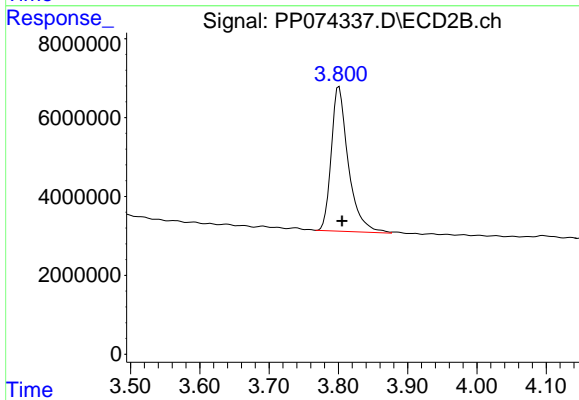
Volume Inj. : 2 µl
 Signal #1 Phase : ZB-MR1 Signal #2 Phase: ZB-MR2
 Signal #1 Info : 30Mx0.32mmx 0.50µ Signal #2 Info : 30M x 0.32mm x 0.25µm



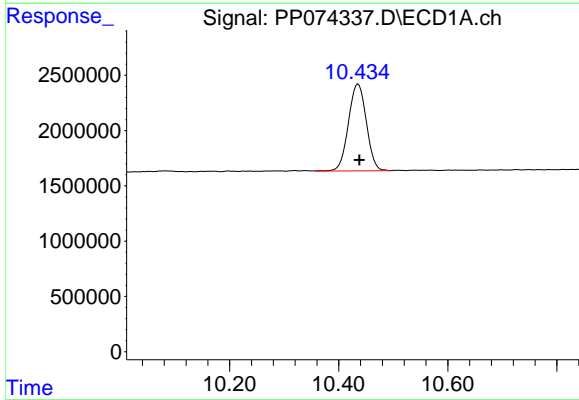


#1 Tetrachloro-m-xylene
 R.T.: 4.657 min
 Delta R.T.: -0.003 min
 Response: 21551484
 Conc: 19.27 ng/ml

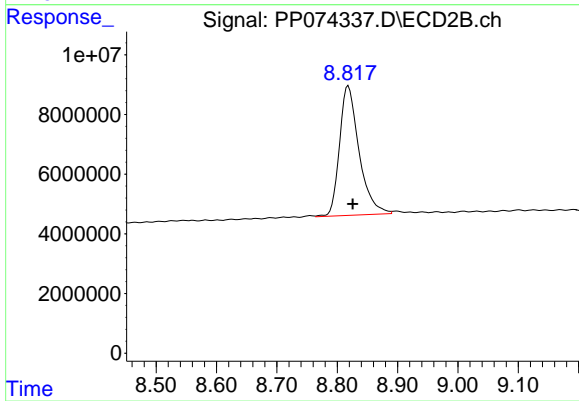
Instrument :
 ECD_P
 ClientSampleId :
 I.BLK



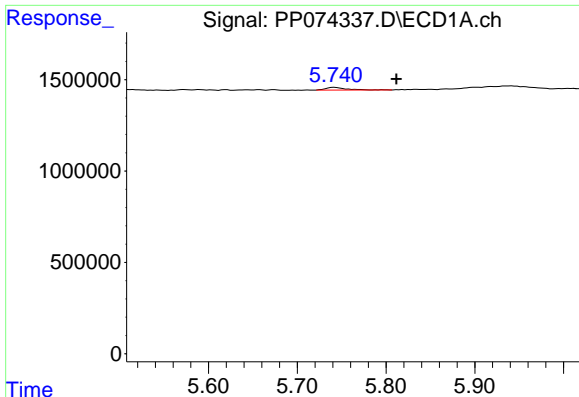
#1 Tetrachloro-m-xylene
 R.T.: 3.801 min
 Delta R.T.: -0.004 min
 Response: 62697128
 Conc: 16.35 ng/ml



#2 Decachlorobiphenyl
 R.T.: 10.436 min
 Delta R.T.: -0.002 min
 Response: 17935142
 Conc: 18.47 ng/ml



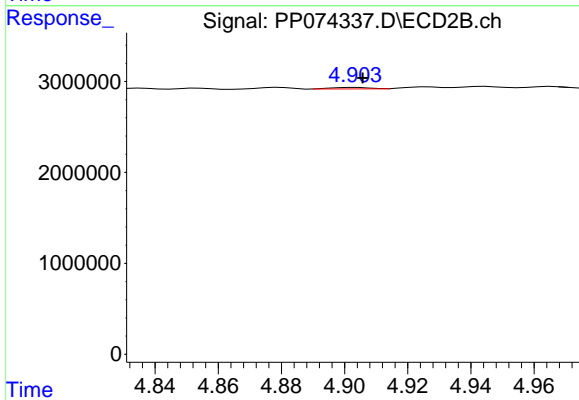
#2 Decachlorobiphenyl
 R.T.: 8.818 min
 Delta R.T.: -0.008 min
 Response: 97672289
 Conc: 16.24 ng/ml



#3 AR-1016-1

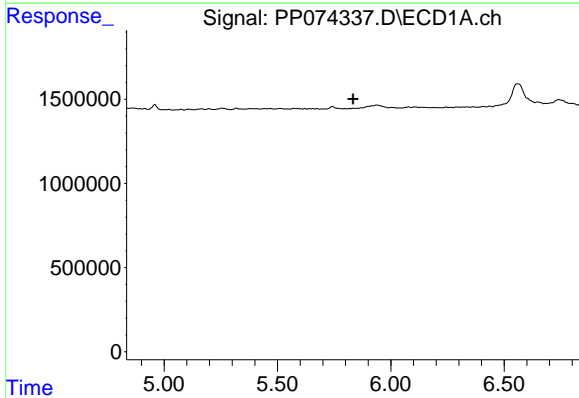
R.T.: 5.742 min
 Delta R.T.: -0.070 min
 Response: 238732
 Conc: 5.79 ng/ml

Instrument :
 ECD_P
 ClientSampleId :
 I.BLK



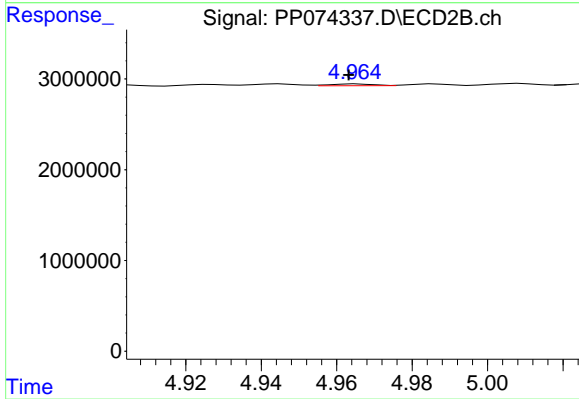
#3 AR-1016-1

R.T.: 4.904 min
 Delta R.T.: -0.002 min
 Response: 135951
 Conc: 0.34 ng/ml



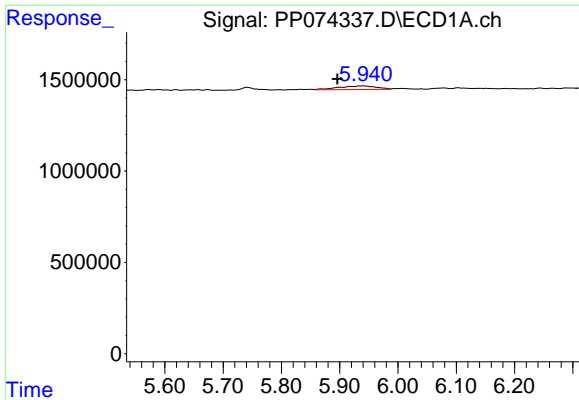
#4 AR-1016-2

R.T.: 0.000 min
 Exp R.T. : 5.833 min
 Response: 0
 Conc: N.D.



#4 AR-1016-2

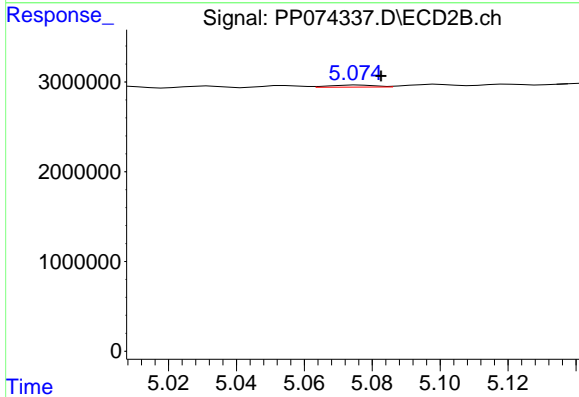
R.T.: 4.966 min
 Delta R.T.: 0.002 min
 Response: 151617
 Conc: 0.81 ng/ml



#5 AR-1016-3

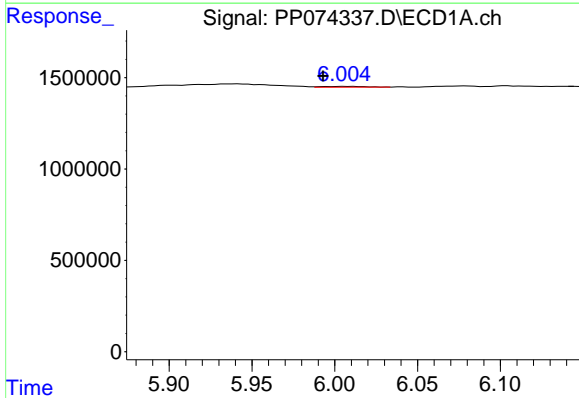
R.T.: 5.941 min
 Delta R.T.: 0.045 min
 Response: 901340
 Conc: 22.73 ng/ml

Instrument :
 ECD_P
 ClientSampleId :
 I.BLK



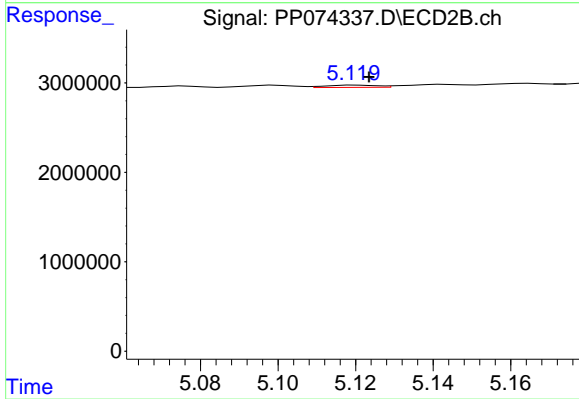
#5 AR-1016-3

R.T.: 5.076 min
 Delta R.T.: -0.007 min
 Response: 216657
 Conc: 2.04 ng/ml



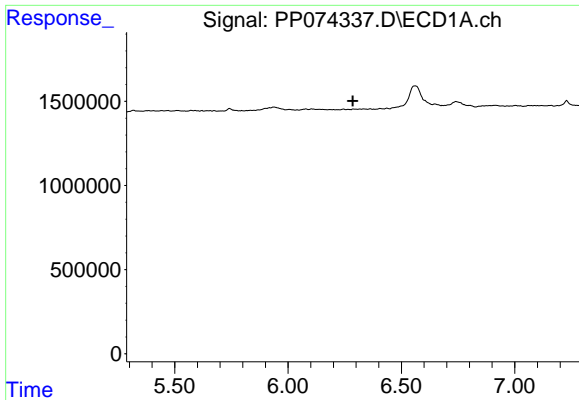
#6 AR-1016-4

R.T.: 6.006 min
 Delta R.T.: 0.013 min
 Response: 88966
 Conc: 2.73 ng/ml



#6 AR-1016-4

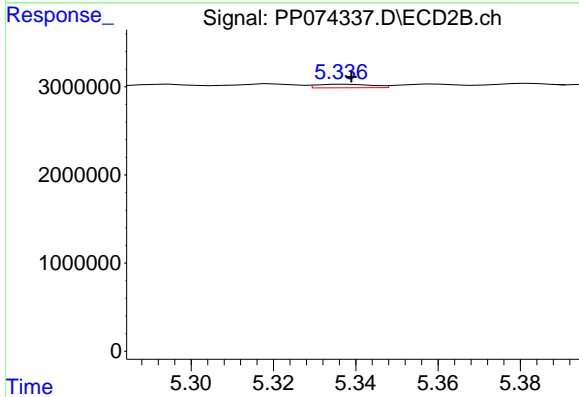
R.T.: 5.120 min
 Delta R.T.: -0.003 min
 Response: 234528
 Conc: 2.15 ng/ml



#7 AR-1016-5

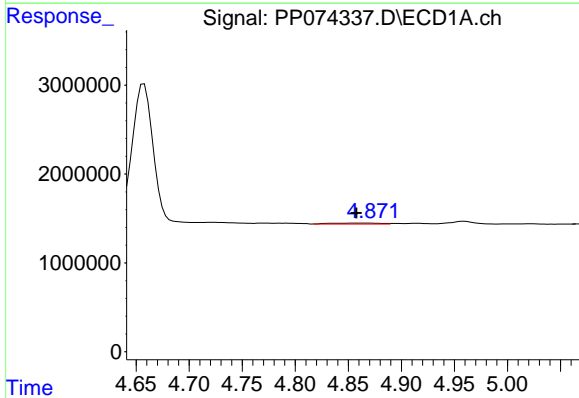
R.T.: 0.000 min
 Exp R.T.: 6.286 min
 Response: 0
 Conc: N.D.

Instrument :
 ECD_P
 ClientSampleId :
 I.BLK



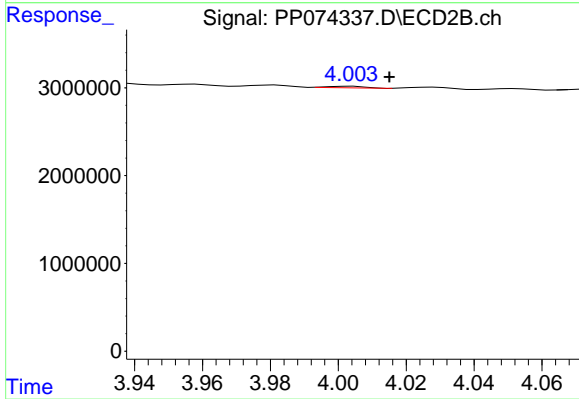
#7 AR-1016-5

R.T.: 5.337 min
 Delta R.T.: -0.002 min
 Response: 370712
 Conc: 3.17 ng/ml



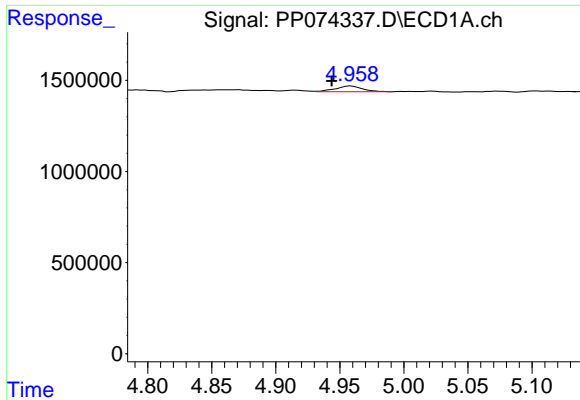
#8 AR-1221-1

R.T.: 4.870 min
 Delta R.T.: 0.012 min
 Response: 341908
 Conc: 20.40 ng/ml



#8 AR-1221-1

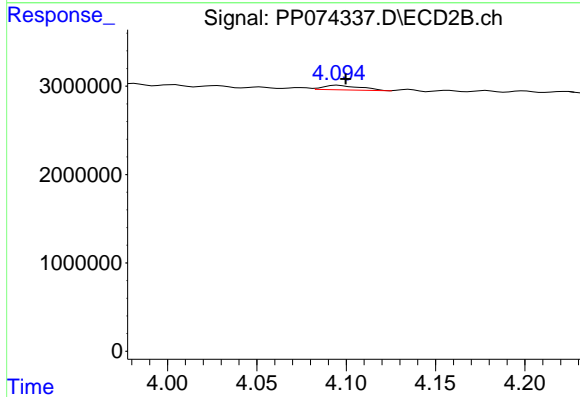
R.T.: 4.004 min
 Delta R.T.: -0.011 min
 Response: 128806
 Conc: 2.62 ng/ml



#9 AR-1221-2

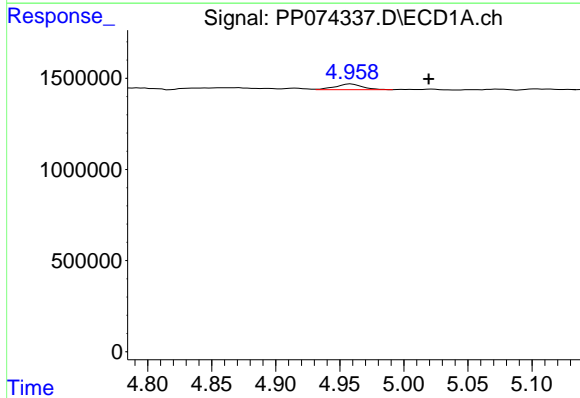
R.T.: 4.959 min
 Delta R.T.: 0.015 min
 Response: 449839
 Conc: 35.70 ng/ml

Instrument :
 ECD_P
 ClientSampleId :
 I.BLK



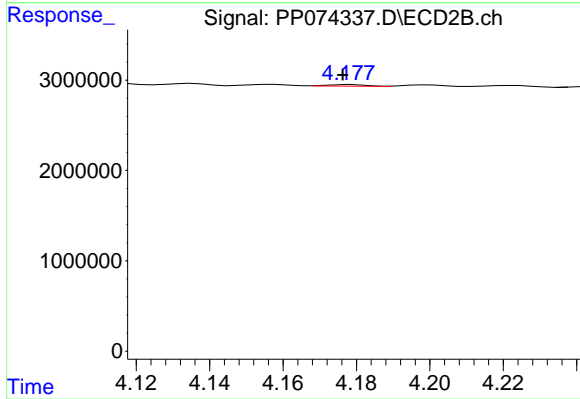
#9 AR-1221-2

R.T.: 4.095 min
 Delta R.T.: -0.005 min
 Response: 747917
 Conc: 20.84 ng/ml



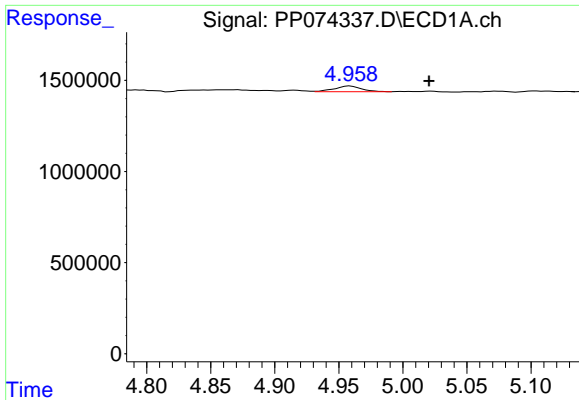
#10 AR-1221-3

R.T.: 4.959 min
 Delta R.T.: -0.060 min
 Response: 449839
 Conc: 12.28 ng/ml



#10 AR-1221-3

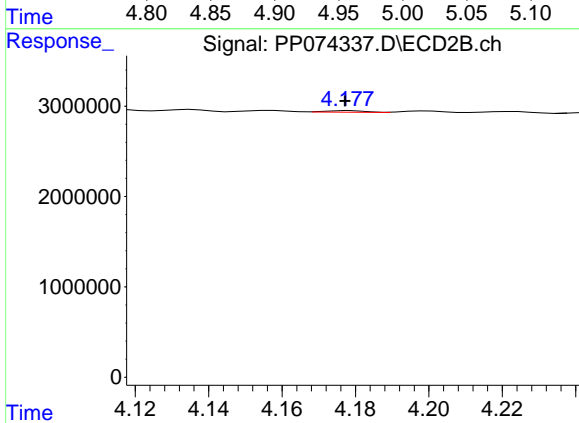
R.T.: 4.178 min
 Delta R.T.: 0.002 min
 Response: 129827
 Conc: 0.96 ng/ml



#11 AR-1232-1

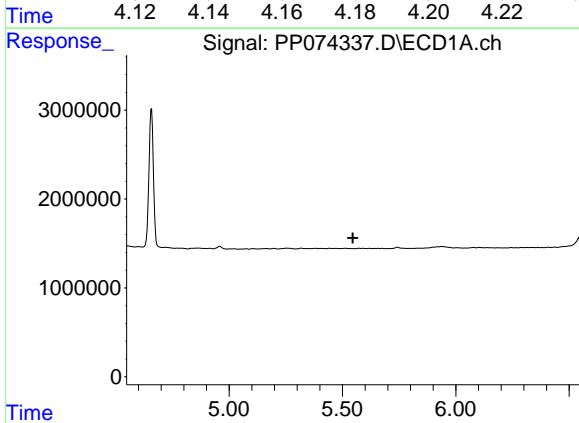
R.T.: 4.959 min
 Delta R.T.: -0.061 min
 Response: 449839
 Conc: 15.49 ng/ml

Instrument :
 ECD_P
 ClientSampleId :
 I.BLK



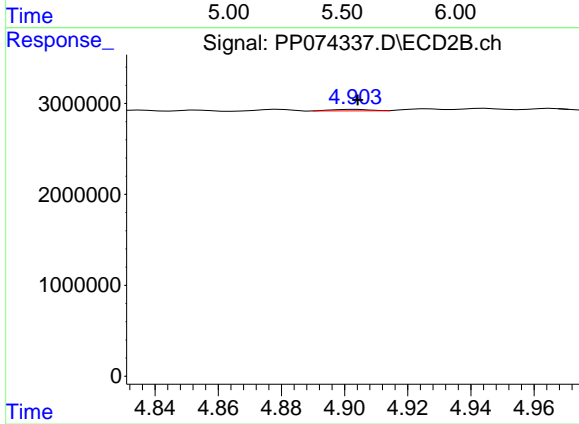
#11 AR-1232-1

R.T.: 4.178 min
 Delta R.T.: 0.001 min
 Response: 129827
 Conc: 1.28 ng/ml



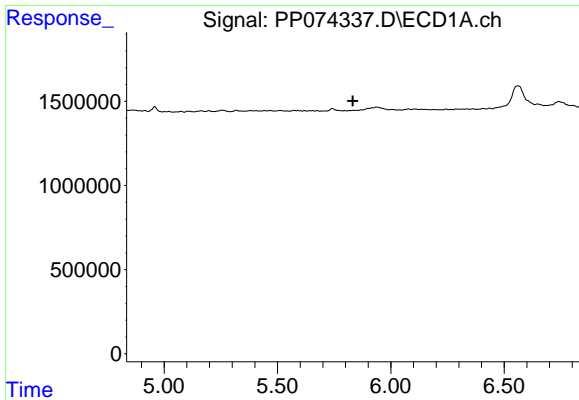
#12 AR-1232-2

R.T.: 0.000 min
 Exp R.T. : 5.546 min
 Response: 0
 Conc: N.D.



#12 AR-1232-2

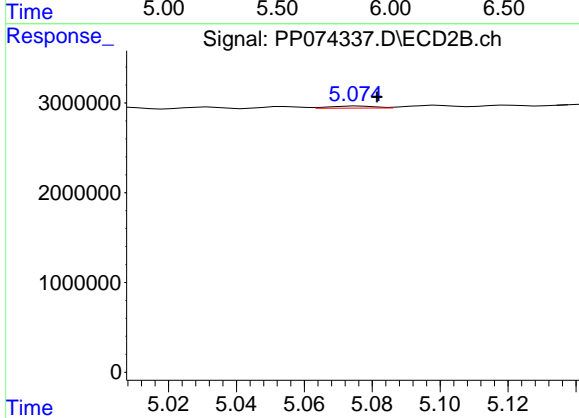
R.T.: 4.904 min
 Delta R.T.: 0.000 min
 Response: 135951
 Conc: 0.78 ng/ml



#13 AR-1232-3

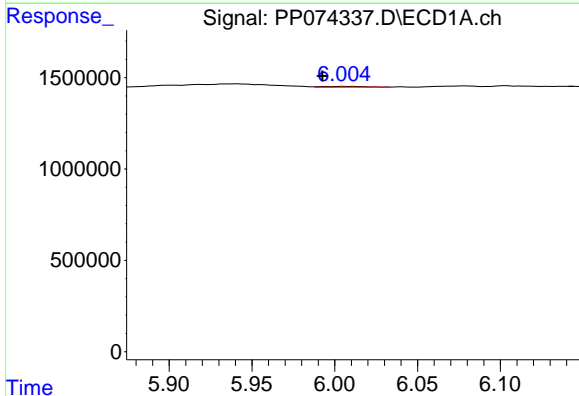
R.T.: 0.000 min
 Exp R.T.: 5.832 min
 Response: 0
 Conc: N.D.

Instrument :
 ECD_P
 ClientSampleId :
 I.BLK



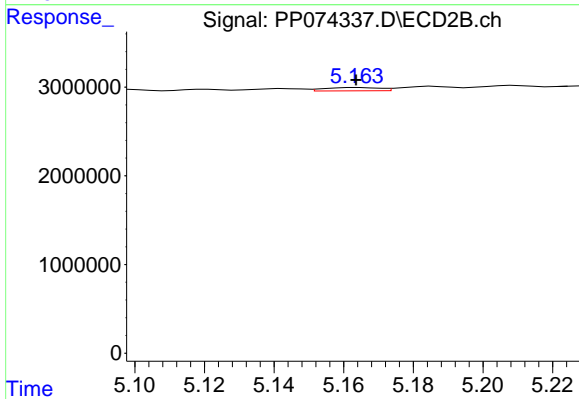
#13 AR-1232-3

R.T.: 5.076 min
 Delta R.T.: -0.006 min
 Response: 216657
 Conc: 4.73 ng/ml



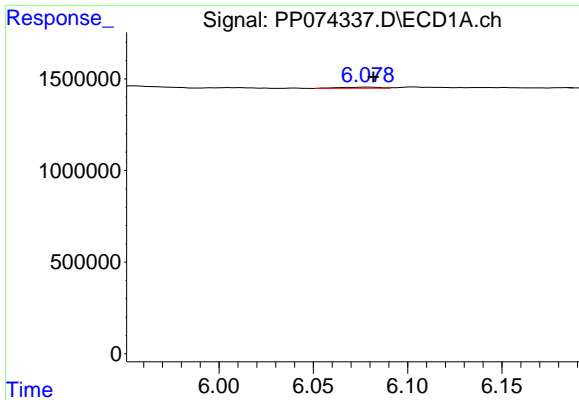
#14 AR-1232-4

R.T.: 6.006 min
 Delta R.T.: 0.013 min
 Response: 88966
 Conc: 5.75 ng/ml



#14 AR-1232-4

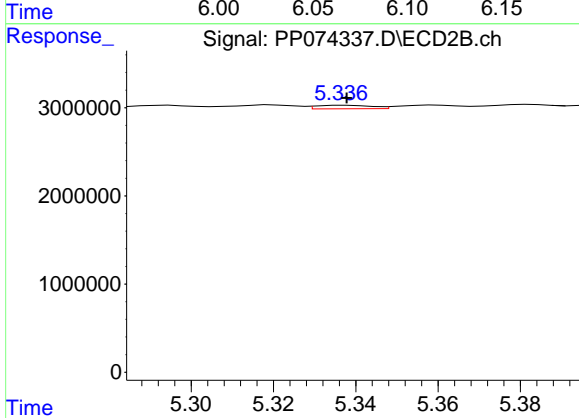
R.T.: 5.164 min
 Delta R.T.: 0.000 min
 Response: 418014
 Conc: 7.21 ng/ml



#15 AR-1232-5

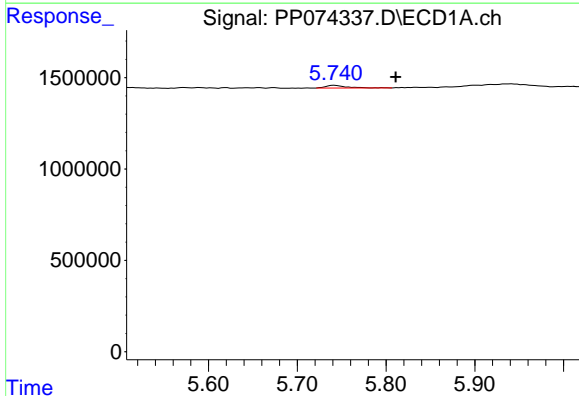
R.T.: 6.079 min
 Delta R.T.: -0.003 min
 Response: 95749
 Conc: 8.17 ng/ml

Instrument :
 ECD_P
 ClientSampleId :
 I.BLK



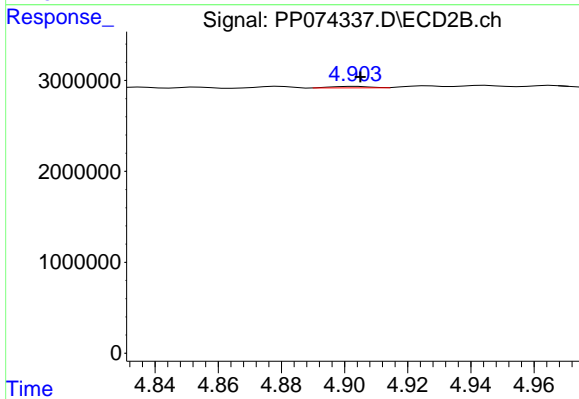
#15 AR-1232-5

R.T.: 5.337 min
 Delta R.T.: 0.000 min
 Response: 370712
 Conc: 7.89 ng/ml



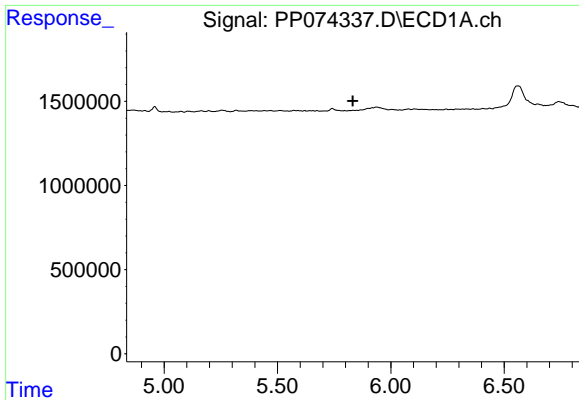
#16 AR-1242-1

R.T.: 5.742 min
 Delta R.T.: -0.069 min
 Response: 238732
 Conc: 6.41 ng/ml



#16 AR-1242-1

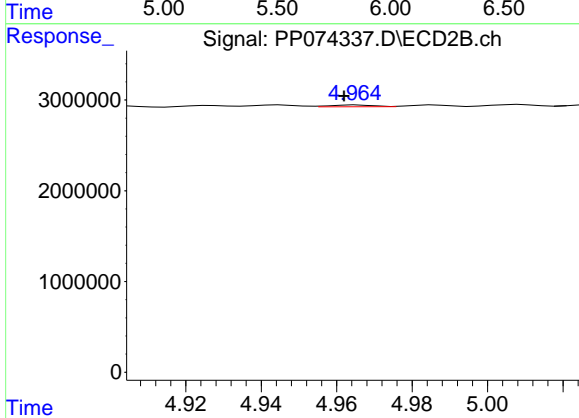
R.T.: 4.904 min
 Delta R.T.: -0.001 min
 Response: 135951
 Conc: 0.39 ng/ml



#17 AR-1242-2

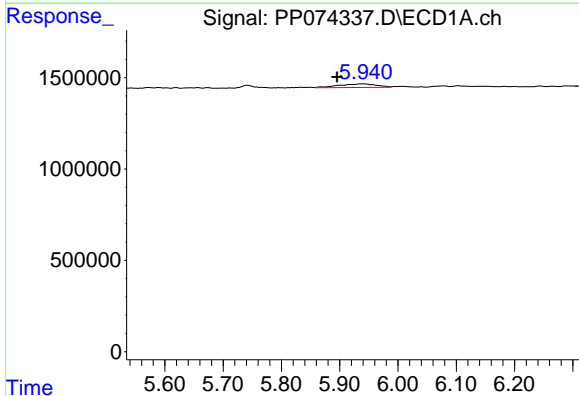
R.T.: 0.000 min
 Exp R.T.: 5.832 min
 Response: 0
 Conc: N.D.

Instrument :
 ECD_P
 ClientSampleId :
 I.BLK



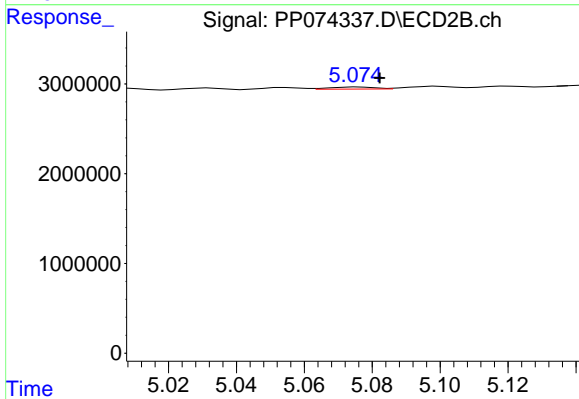
#17 AR-1242-2

R.T.: 4.966 min
 Delta R.T.: 0.004 min
 Response: 151617
 Conc: 0.93 ng/ml



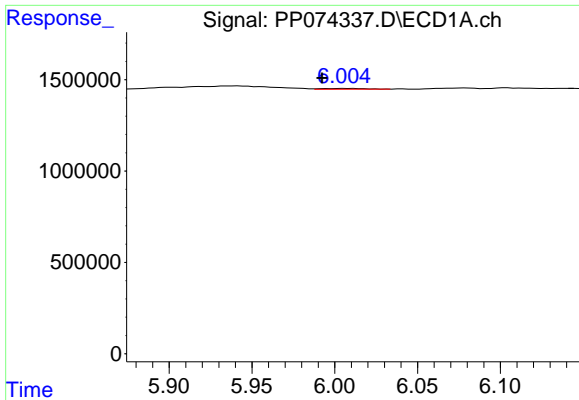
#18 AR-1242-3

R.T.: 5.941 min
 Delta R.T.: 0.046 min
 Response: 901340
 Conc: 25.22 ng/ml



#18 AR-1242-3

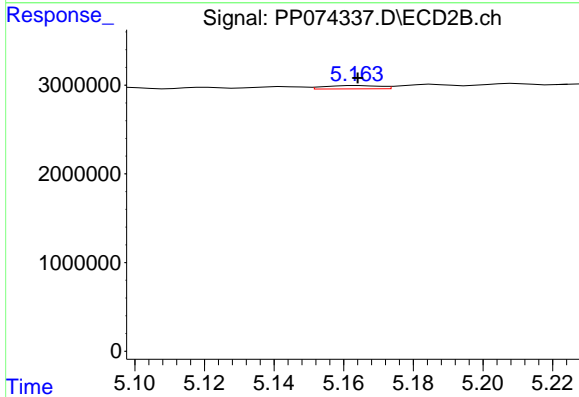
R.T.: 5.076 min
 Delta R.T.: -0.006 min
 Response: 216657
 Conc: 2.35 ng/ml



#19 AR-1242-4

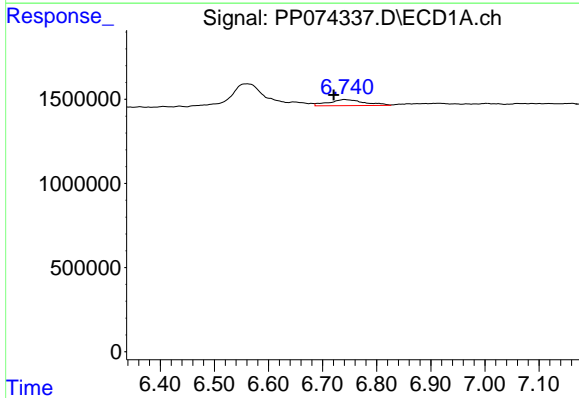
R.T.: 6.006 min
 Delta R.T.: 0.013 min
 Response: 88966
 Conc: 3.04 ng/ml

Instrument :
 ECD_P
 ClientSampleId :
 I.BLK



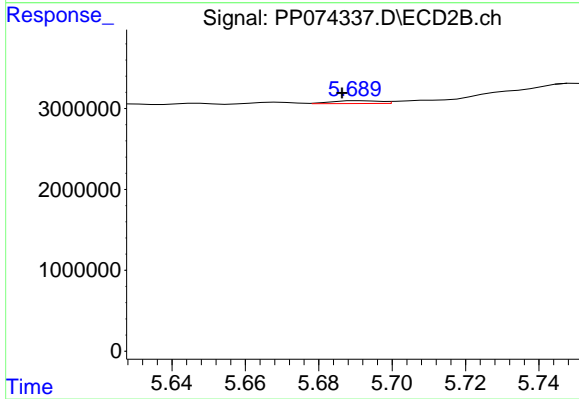
#19 AR-1242-4

R.T.: 5.164 min
 Delta R.T.: 0.000 min
 Response: 418014
 Conc: 3.50 ng/ml



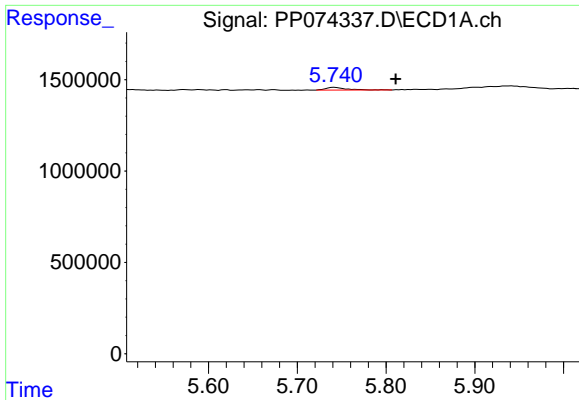
#20 AR-1242-5

R.T.: 6.742 min
 Delta R.T.: 0.021 min
 Response: 1647798
 Conc: 46.34 ng/ml



#20 AR-1242-5

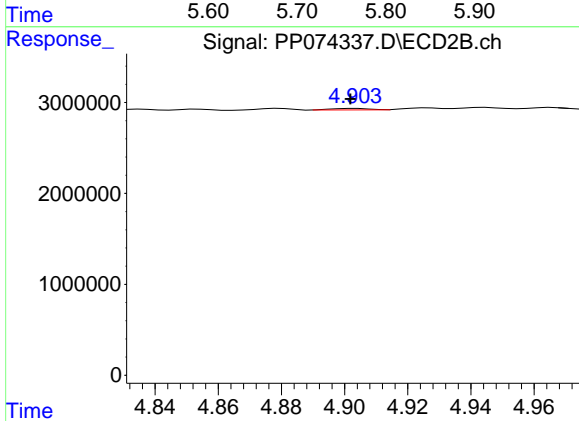
R.T.: 5.691 min
 Delta R.T.: 0.005 min
 Response: 315351
 Conc: 2.11 ng/ml



#21 AR-1248-1

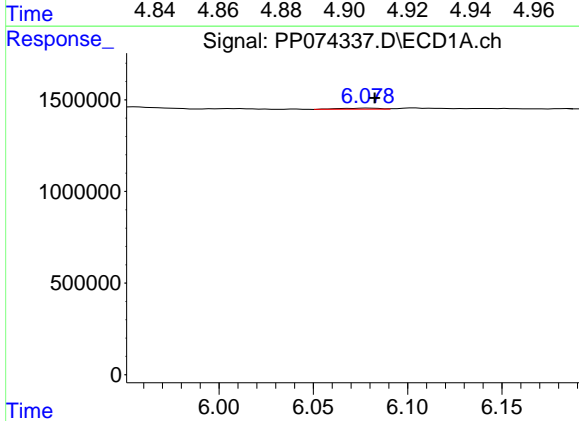
R.T.: 5.742 min
 Delta R.T.: -0.069 min
 Response: 238732
 Conc: 8.52 ng/ml

Instrument :
 ECD_P
 ClientSampleId :
 I.BLK



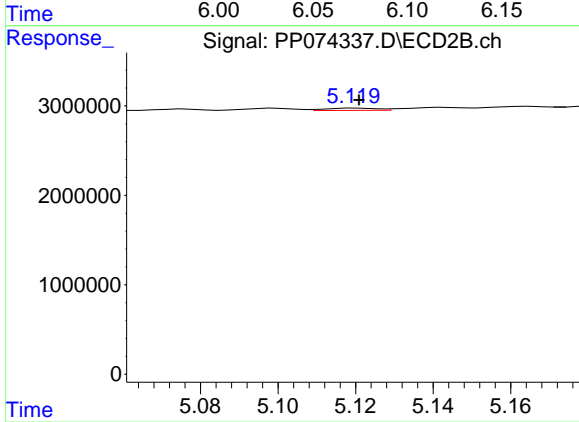
#21 AR-1248-1

R.T.: 4.904 min
 Delta R.T.: 0.002 min
 Response: 135951
 Conc: 0.64 ng/ml



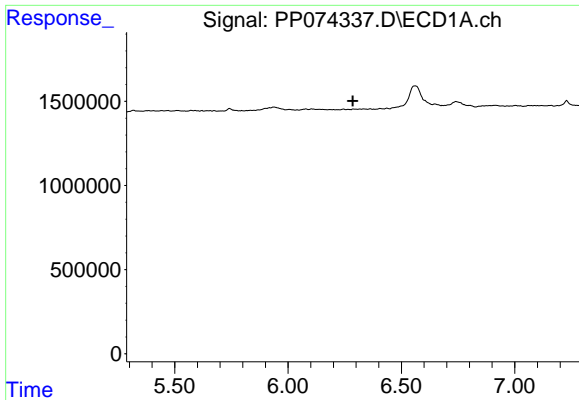
#22 AR-1248-2

R.T.: 6.079 min
 Delta R.T.: -0.004 min
 Response: 95749
 Conc: 2.38 ng/ml



#22 AR-1248-2

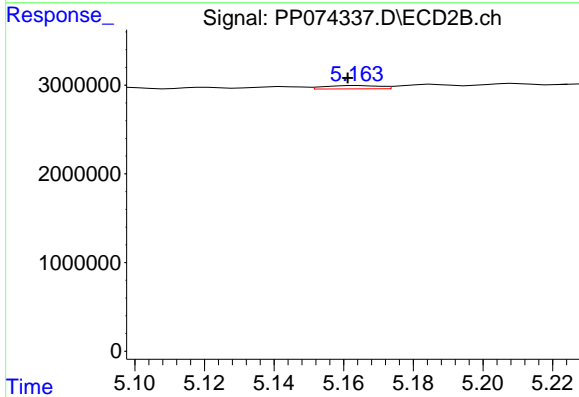
R.T.: 5.120 min
 Delta R.T.: 0.000 min
 Response: 234528
 Conc: 1.60 ng/ml



#23 AR-1248-3

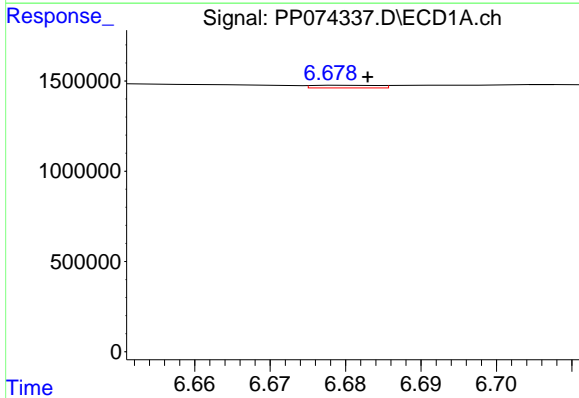
R.T.: 0.000 min
 Exp R.T.: 6.286 min
 Response: 0
 Conc: N.D.

Instrument :
 ECD_P
 ClientSampleId :
 I.BLK



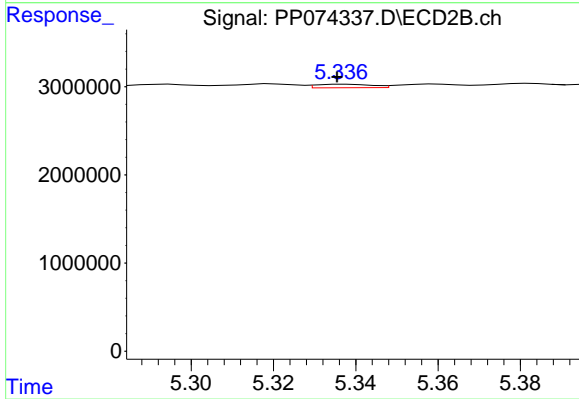
#23 AR-1248-3

R.T.: 5.164 min
 Delta R.T.: 0.003 min
 Response: 418014
 Conc: 2.44 ng/ml



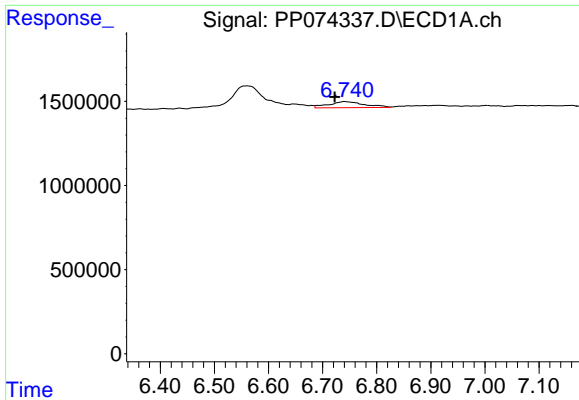
#24 AR-1248-4

R.T.: 6.680 min
 Delta R.T.: -0.003 min
 Response: 91208
 Conc: 1.75 ng/ml



#24 AR-1248-4

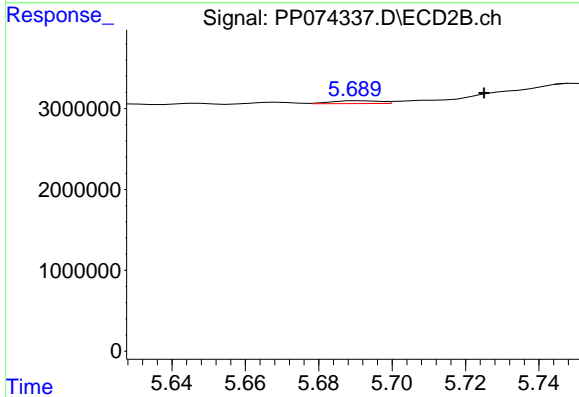
R.T.: 5.337 min
 Delta R.T.: 0.002 min
 Response: 370712
 Conc: 2.23 ng/ml



#25 AR-1248-5

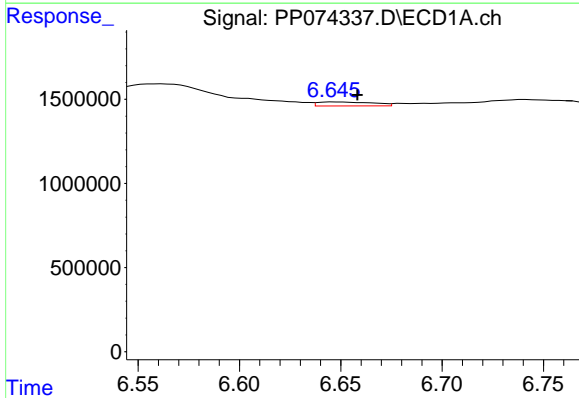
R.T.: 6.742 min
 Delta R.T.: 0.019 min
 Response: 1647798
 Conc: 28.94 ng/ml

Instrument :
 ECD_P
 ClientSampleId :
 I.BLK



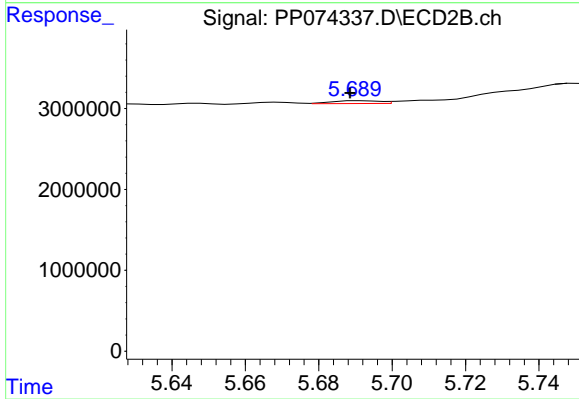
#25 AR-1248-5

R.T.: 5.691 min
 Delta R.T.: -0.034 min
 Response: 315351
 Conc: 1.08 ng/ml



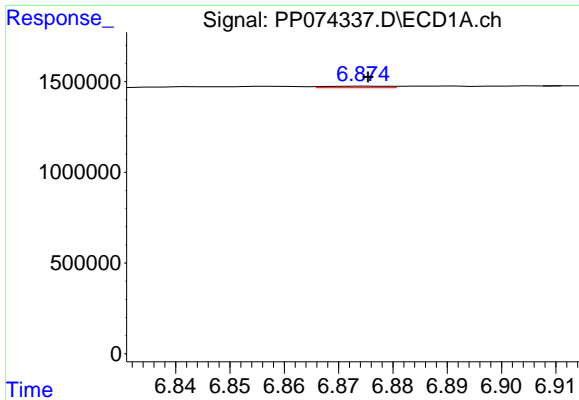
#26 AR-1254-1

R.T.: 6.647 min
 Delta R.T.: -0.011 min
 Response: 461561
 Conc: 8.77 ng/ml



#26 AR-1254-1

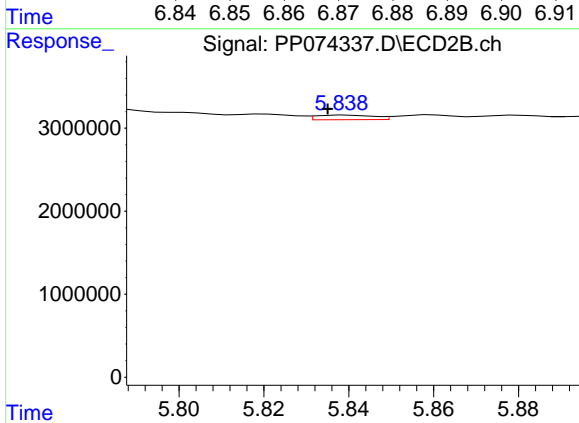
R.T.: 5.691 min
 Delta R.T.: 0.002 min
 Response: 315351
 Conc: 0.86 ng/ml



#27 AR-1254-2

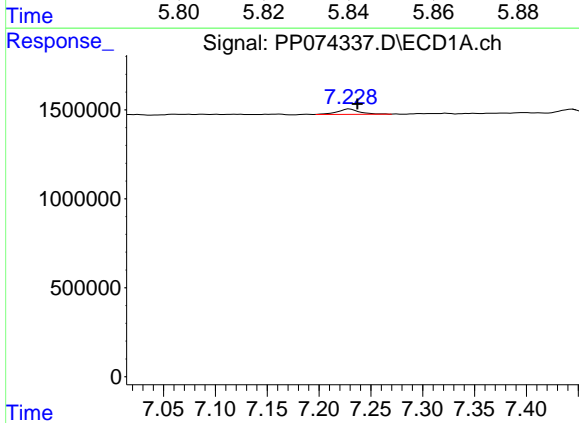
R.T.: 6.875 min
 Delta R.T.: 0.000 min
 Response: 70058
 Conc: 0.88 ng/ml

Instrument :
 ECD_P
 ClientSampleId :
 I.BLK



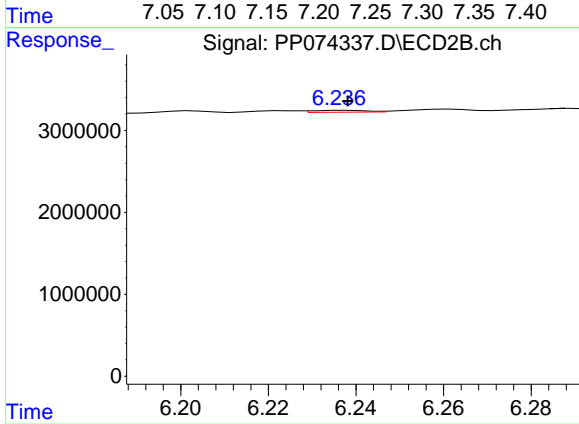
#27 AR-1254-2

R.T.: 5.839 min
 Delta R.T.: 0.004 min
 Response: 528700
 Conc: 1.90 ng/ml



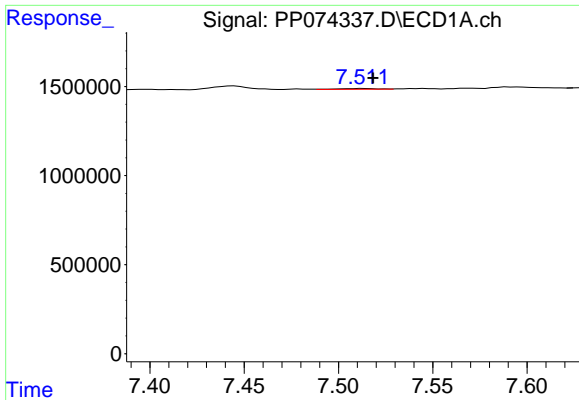
#28 AR-1254-3

R.T.: 7.229 min
 Delta R.T.: -0.008 min
 Response: 460601
 Conc: 5.28 ng/ml



#28 AR-1254-3

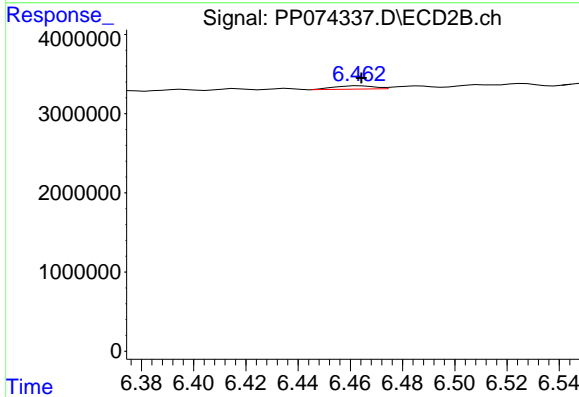
R.T.: 6.237 min
 Delta R.T.: -0.001 min
 Response: 202975
 Conc: 0.41 ng/ml



#29 AR-1254-4

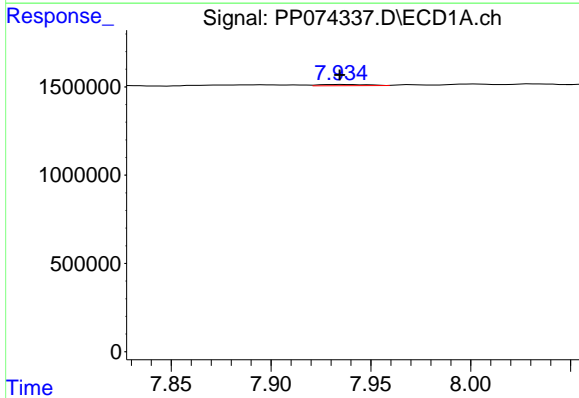
R.T.: 7.513 min
 Delta R.T.: -0.006 min
 Response: 62803
 Conc: 0.98 ng/ml

Instrument :
 ECD_P
 ClientSampleId :
 I.BLK



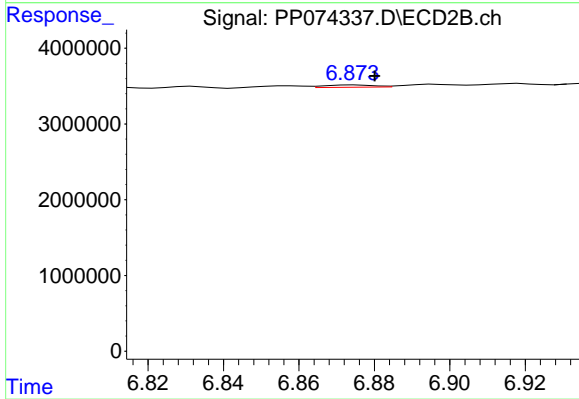
#29 AR-1254-4

R.T.: 6.464 min
 Delta R.T.: 0.000 min
 Response: 446625
 Conc: 1.22 ng/ml



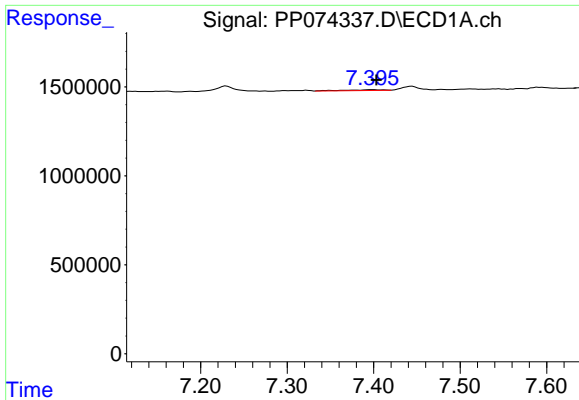
#30 AR-1254-5

R.T.: 7.935 min
 Delta R.T.: 0.000 min
 Response: 112600
 Conc: 1.39 ng/ml



#30 AR-1254-5

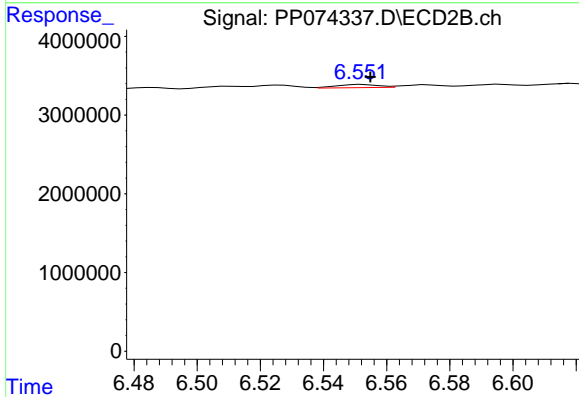
R.T.: 6.875 min
 Delta R.T.: -0.005 min
 Response: 281669
 Conc: 0.73 ng/ml



#31 AR-1260-1

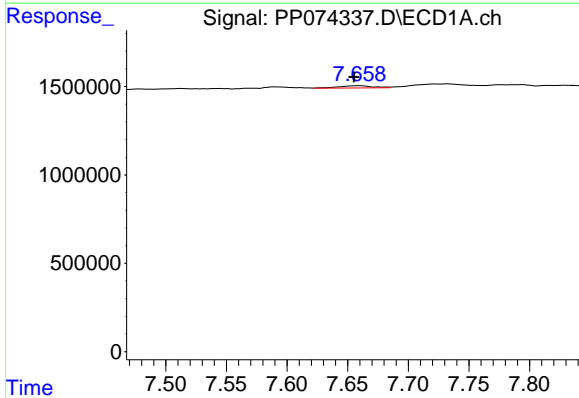
R.T.: 7.397 min
 Delta R.T.: -0.006 min
 Response: 141367
 Conc: 2.51 ng/ml

Instrument :
 ECD_P
 ClientSampleId :
 I.BLK



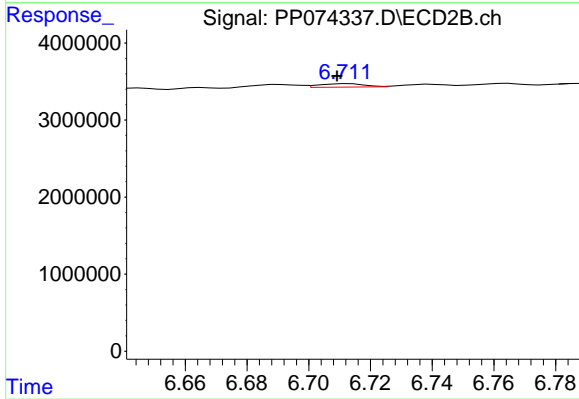
#31 AR-1260-1

R.T.: 6.553 min
 Delta R.T.: -0.002 min
 Response: 379497
 Conc: 0.94 ng/ml



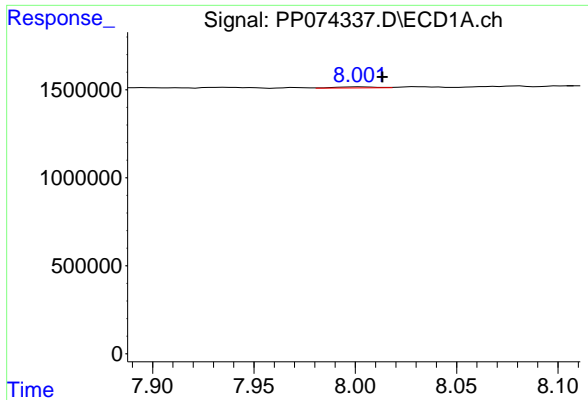
#32 AR-1260-2

R.T.: 7.660 min
 Delta R.T.: 0.004 min
 Response: 254042
 Conc: 3.73 ng/ml



#32 AR-1260-2

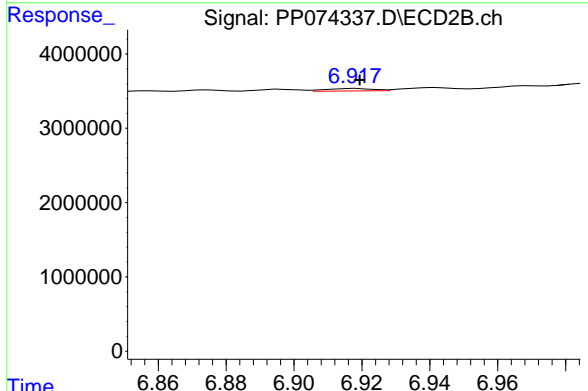
R.T.: 6.713 min
 Delta R.T.: 0.004 min
 Response: 444353
 Conc: 1.42 ng/ml



#33 AR-1260-3

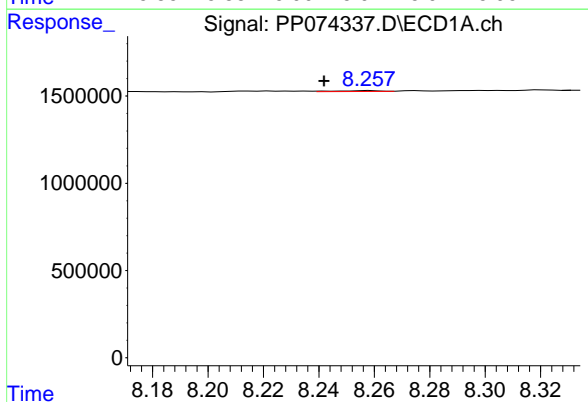
R.T.: 8.002 min
 Delta R.T.: -0.011 min
 Response: 87046
 Conc: 1.63 ng/ml

Instrument :
 ECD_P
 ClientSampleId :
 I.BLK



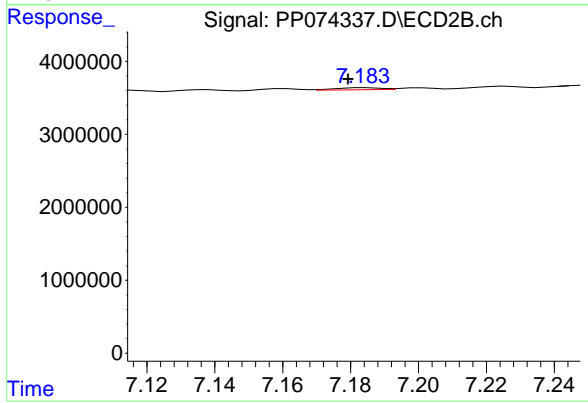
#33 AR-1260-3

R.T.: 6.918 min
 Delta R.T.: -0.001 min
 Response: 314513
 Conc: 0.80 ng/ml



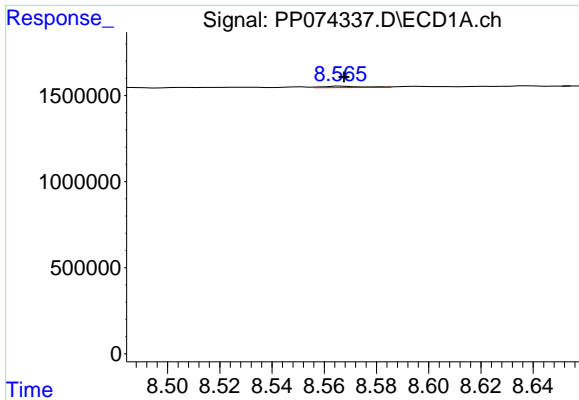
#34 AR-1260-4

R.T.: 8.258 min
 Delta R.T.: 0.016 min
 Response: 50971
 Conc: 0.81 ng/ml



#34 AR-1260-4

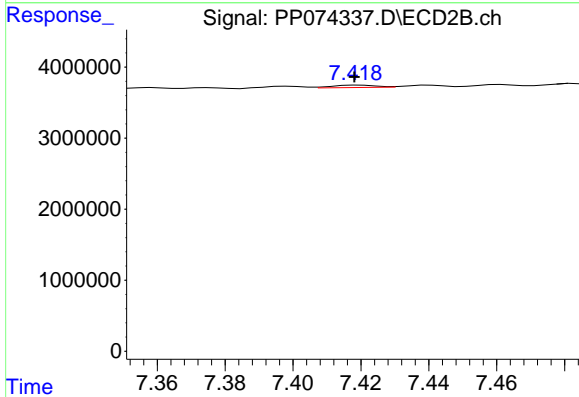
R.T.: 7.184 min
 Delta R.T.: 0.005 min
 Response: 258541
 Conc: 0.89 ng/ml



#35 AR-1260-5

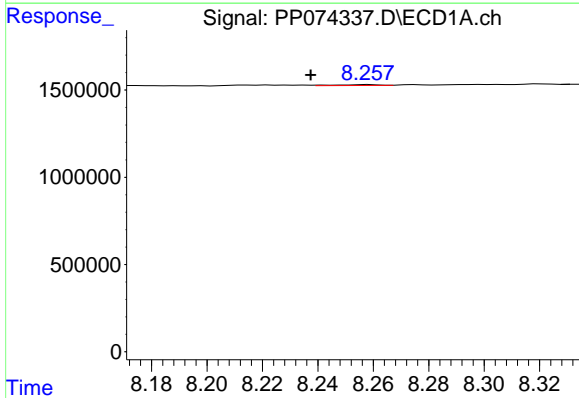
R.T.: 8.567 min
 Delta R.T.: 0.000 min
 Response: 80241
 Conc: 0.71 ng/ml

Instrument :
 ECD_P
 ClientSampleId :
 I.BLK



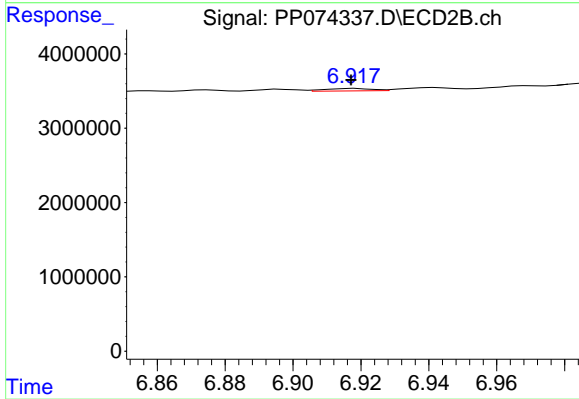
#35 AR-1260-5

R.T.: 7.420 min
 Delta R.T.: 0.002 min
 Response: 294978
 Conc: 0.39 ng/ml



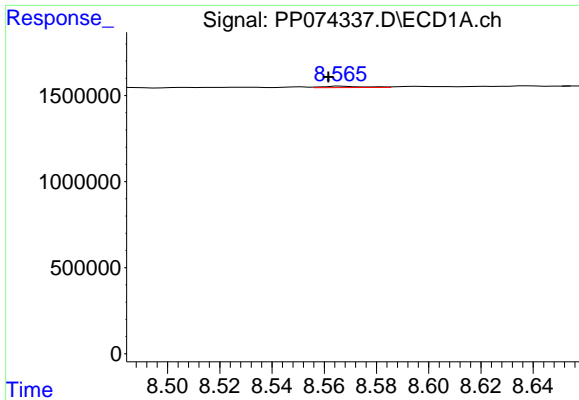
#36 AR-1262-1

R.T.: 8.258 min
 Delta R.T.: 0.021 min
 Response: 50971
 Conc: 0.67 ng/ml



#36 AR-1262-1

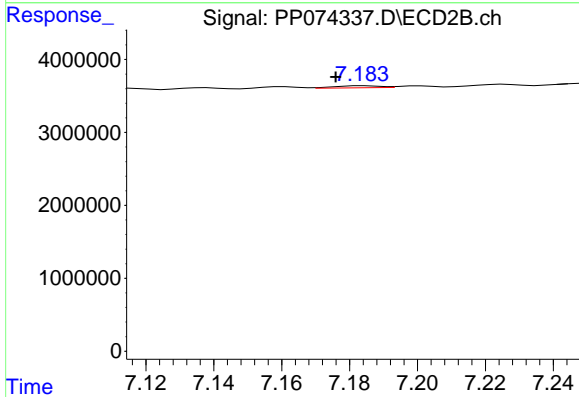
R.T.: 6.918 min
 Delta R.T.: 0.001 min
 Response: 314513
 Conc: 0.56 ng/ml



#37 AR-1262-2

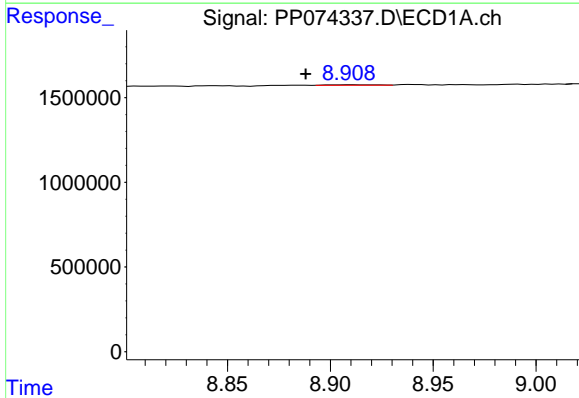
R.T.: 8.567 min
 Delta R.T.: 0.005 min
 Response: 80241
 Conc: 0.62 ng/ml

Instrument :
 ECD_P
 ClientSampleId :
 I.BLK



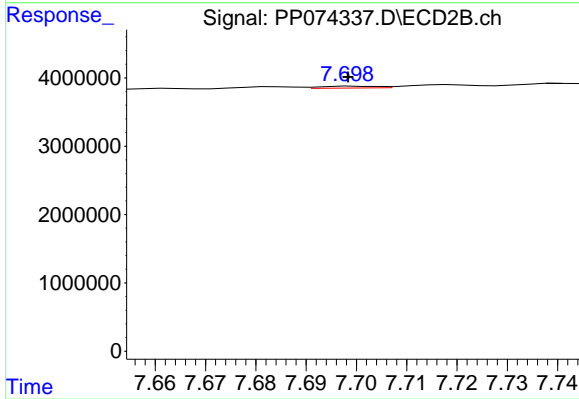
#37 AR-1262-2

R.T.: 7.184 min
 Delta R.T.: 0.008 min
 Response: 258541
 Conc: 0.64 ng/ml



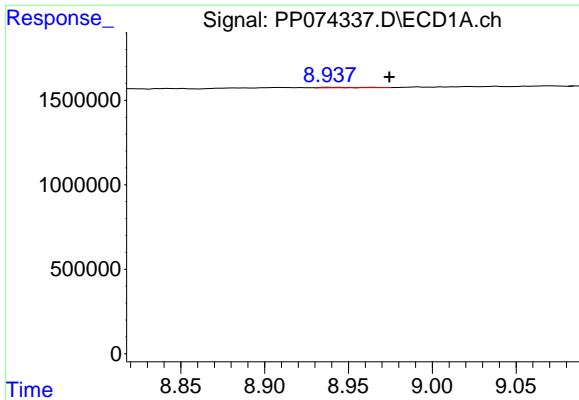
#38 AR-1262-3

R.T.: 8.910 min
 Delta R.T.: 0.022 min
 Response: 48953
 Conc: 0.52 ng/ml



#38 AR-1262-3

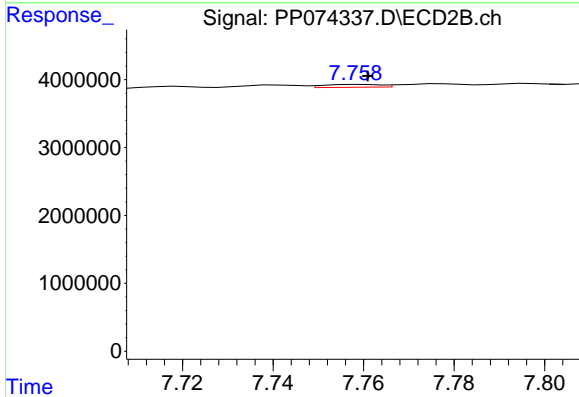
R.T.: 7.700 min
 Delta R.T.: 0.002 min
 Response: 210812
 Conc: 0.59 ng/ml



#39 AR-1262-4

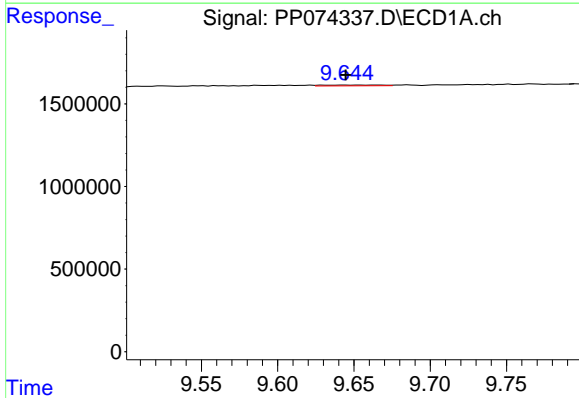
R.T.: 8.939 min
 Delta R.T.: -0.036 min
 Response: 48364
 Conc: 0.66 ng/ml

Instrument :
 ECD_P
 ClientSampleId :
 I.BLK



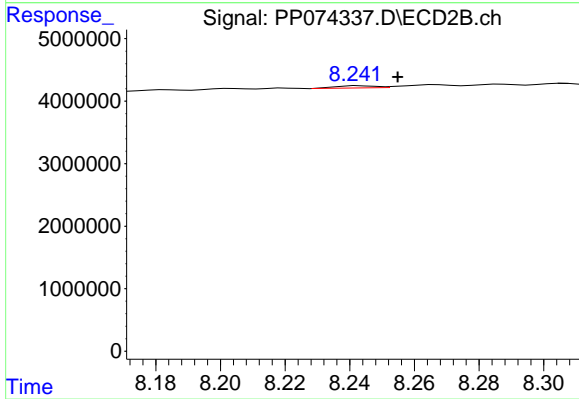
#39 AR-1262-4

R.T.: 7.759 min
 Delta R.T.: -0.002 min
 Response: 360184
 Conc: 0.54 ng/ml



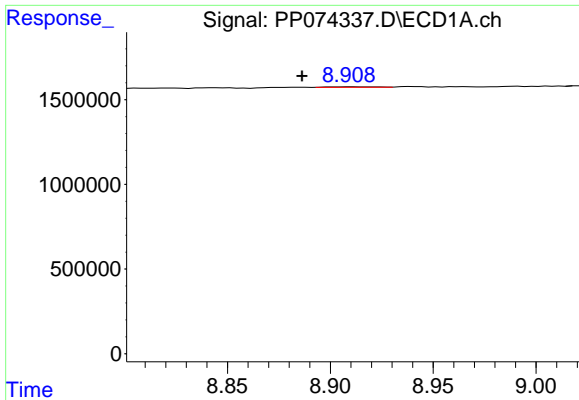
#40 AR-1262-5

R.T.: 9.645 min
 Delta R.T.: 0.000 min
 Response: 125419
 Conc: 2.46 ng/ml



#40 AR-1262-5

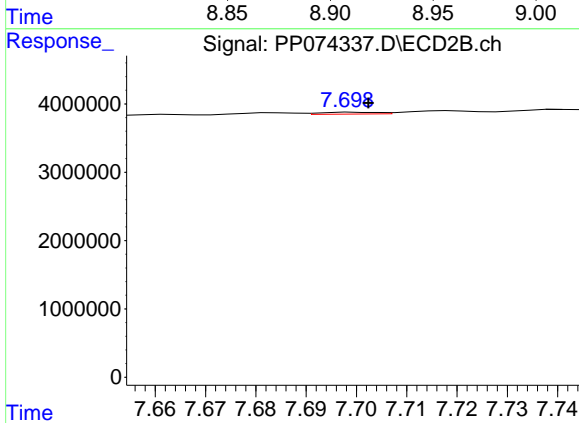
R.T.: 8.243 min
 Delta R.T.: -0.012 min
 Response: 312093
 Conc: 1.10 ng/ml



#41 AR-1268-1

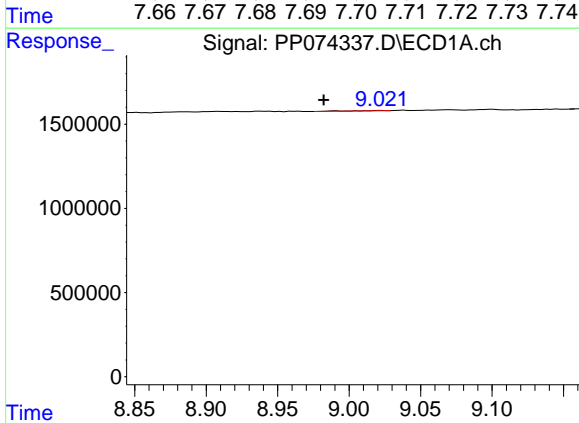
R.T.: 8.910 min
 Delta R.T.: 0.023 min
 Response: 48953
 Conc: 0.31 ng/ml

Instrument :
 ECD_P
 ClientSampleId :
 I.BLK



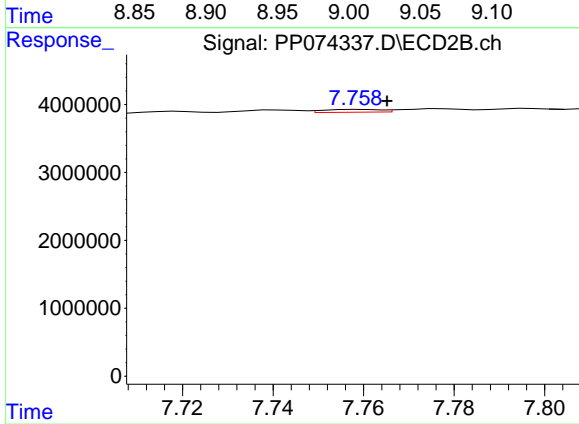
#41 AR-1268-1

R.T.: 7.700 min
 Delta R.T.: -0.003 min
 Response: 210812
 Conc: 0.19 ng/ml



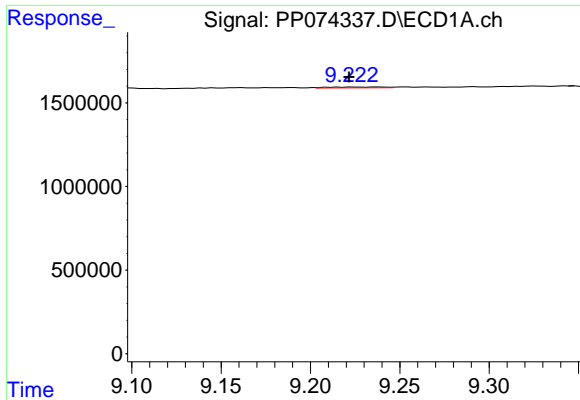
#42 AR-1268-2

R.T.: 9.023 min
 Delta R.T.: 0.040 min
 Response: 32933
 Conc: 0.23 ng/ml



#42 AR-1268-2

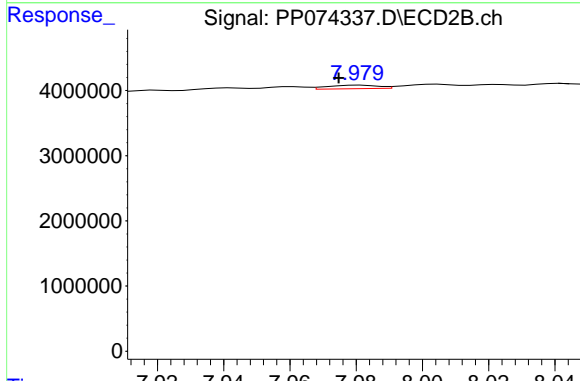
R.T.: 7.759 min
 Delta R.T.: -0.006 min
 Response: 360184
 Conc: 0.34 ng/ml



#43 AR-1268-3

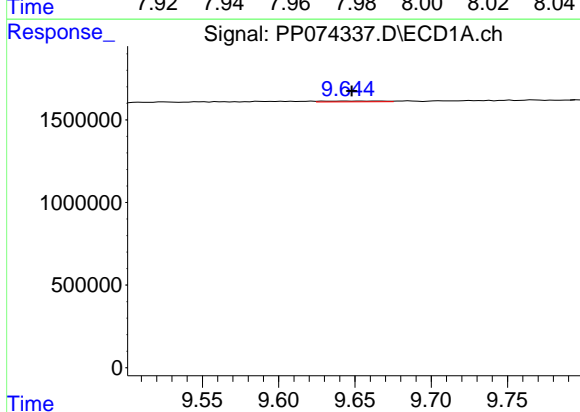
R.T.: 9.238 min
 Delta R.T.: 0.017 min
 Response: 110238
 Conc: 0.92 ng/ml

Instrument :
 ECD_P
 ClientSampleId :
 I.BLK



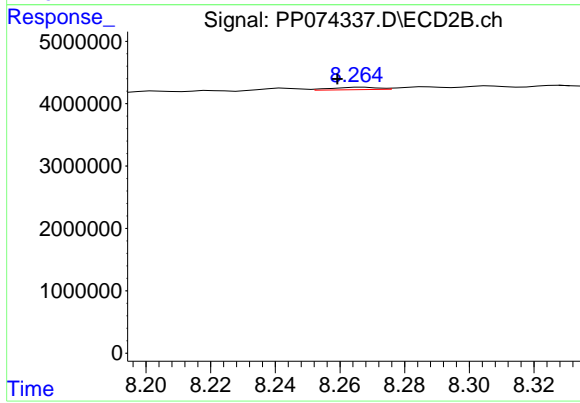
#43 AR-1268-3

R.T.: 7.981 min
 Delta R.T.: 0.006 min
 Response: 560835
 Conc: 0.67 ng/ml



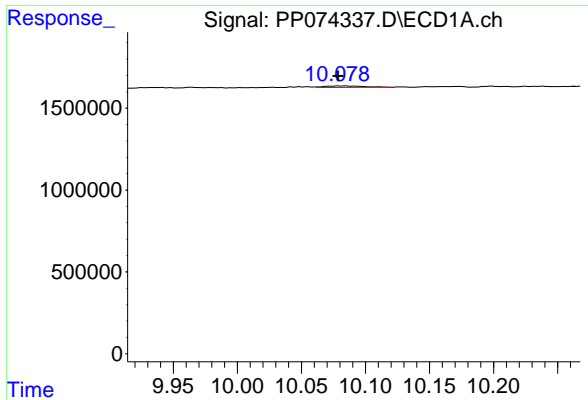
#44 AR-1268-4

R.T.: 9.645 min
 Delta R.T.: -0.003 min
 Response: 125419
 Conc: 2.13 ng/ml



#44 AR-1268-4

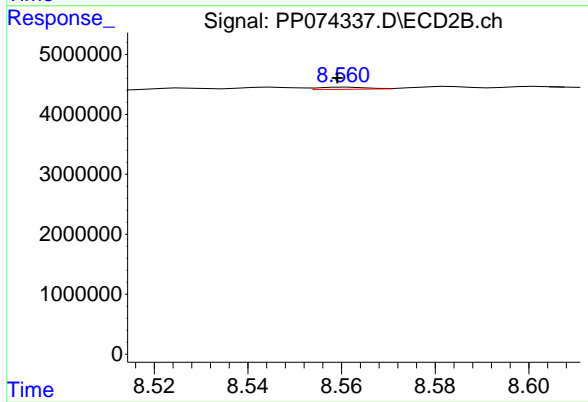
R.T.: 8.267 min
 Delta R.T.: 0.008 min
 Response: 376954
 Conc: 1.22 ng/ml



#45 AR-1268-5

R.T.: 10.082 min
Delta R.T.: 0.003 min
Response: 189851
Conc: 0.54 ng/ml

Instrument :
ECD_P
ClientSampleId :
I.BLK



#45 AR-1268-5

R.T.: 8.561 min
Delta R.T.: 0.002 min
Response: 258021
Conc: 0.10 ng/ml