

Data Path : Z:\pestpcbsrv\HPCHEM1\ECD_P\Data\PP081325\
 Data File : PP074338.D
 Signal(s) : Signal #1: ECD1A.ch Signal #2: ECD2B.ch
 Acq On : 13 Aug 2025 10:23
 Operator : YP\AJ
 Sample : DDT ANALOG
 Misc :
 ALS Vial : 6 Sample Multiplier: 1

Instrument :
 ECD_P
 ClientSampleId :
 DDT ANALOG

Integration File signal 1: autoint1.e
 Integration File signal 2: autoint2.e
 Quant Time: Aug 13 11:47:52 2025
 Quant Method : Z:\pestpcbsrv\HPCHEM1\ECD_P\methods\PP080125.M
 Quant Title : GC EXTRACTABLES
 QLast Update : Mon Aug 04 11:01:49 2025
 Response via : Initial Calibration
 Integrator: ChemStation

Volume Inj. : 2 µl
 Signal #1 Phase : ZB-MR2 Signal #2 Phase: ZB-MR2
 Signal #1 Info : 30Mx0.32mmx 0.50µ Signal #2 Info : 30M x 0.32mm x 0.25µm

Compound	RT#1	RT#2	Resp#1	Resp#2	ng/ml	ng/ml
System Monitoring Compounds						
1) SA Tetrachlo...	4.685	3.797	380327	97657	0.340	0.025 #
2) SA Decachlor...	10.443	8.829	82537	606866	0.085	0.101
Target Compounds						
3) L1 AR-1016-1	0.000	4.901	0	489210	N.D.	1.226 #
4) L1 AR-1016-2	0.000	4.965	0	711838	N.D.	3.790 #
5) L1 AR-1016-3	5.917	5.085	799683	971370	20.163	9.158 #
6) L1 AR-1016-4	5.951f	5.132	692102	373969	21.266	3.424 #
7) L1 AR-1016-5	0.000	5.330	0	673873	N.D.	5.761 #
8) L2 AR-1221-1	0.000	4.004	0	227374	N.D.	4.632 #
9) L2 AR-1221-2	0.000	4.096	0	210212	N.D.	5.857 #
10) L2 AR-1221-3	0.000	4.167	0	205119	N.D.	1.517 #
11) L3 AR-1232-1	0.000	4.167	0	205119	N.D.	2.024 #
12) L3 AR-1232-2	5.570	4.901	125046	489210	8.313	2.807 #
13) L3 AR-1232-3	0.000	5.085	0	971370	N.D.	21.201 #
14) L3 AR-1232-4	5.951f	5.165	692102	551179	44.742	9.501 #
15) L3 AR-1232-5	6.066	5.330	361230	673873	30.832	14.344 #
16) L4 AR-1242-1	0.000	4.901	0	489210	N.D.	1.417 #
17) L4 AR-1242-2	0.000	4.965	0	711838	N.D.	4.357 #
18) L4 AR-1242-3	5.917	5.085	799683	971370	22.378	10.530 #
19) L4 AR-1242-4	5.951f	5.165	692102	551179	23.687	4.615 #
20) L4 AR-1242-5	6.728	5.681	432075	674045	12.151	4.507 #
21) L5 AR-1248-1	0.000	4.901	0	489210	N.D.	2.287 #
22) L5 AR-1248-2	6.066	5.132	361230	373969	8.972	2.556 #
23) L5 AR-1248-3	0.000	5.165	0	551179	N.D.	3.215 #
24) L5 AR-1248-4	6.695	5.330	186328	673873	3.581	4.050
25) L5 AR-1248-5	6.728	5.703	432075	1193476	7.588	4.102 #
26) L6 AR-1254-1	6.631	5.681	3557305	674045	67.577	1.841 #
27) L6 AR-1254-2	6.866	5.854	5112518	18168242	64.305	65.302
28) L6 AR-1254-3	7.230	6.248	5567007	31271299	63.757	63.922
29) L6 AR-1254-4	7.519	6.467	614248	1042264	9.626	2.836 #
30) L6 AR-1254-5	7.950	6.877	516.6E6	3494.3E6	6366.839	9072.075 #
31) L7 AR-1260-1	7.402	6.553	265021	4029787	4.703	9.976 #
32) L7 AR-1260-2	7.635	0.000	705.4E6	0	10350.089	N.D. #
33) L7 AR-1260-3	7.950f	6.877f	516.6E6	3494.3E6	9693.717	8866.031
34) L7 AR-1260-4	8.223	7.178	130862	97428	2.090	0.335 #
35) L7 AR-1260-5	8.568	7.415	254890	354459	2.250	0.468 #
36) L8 AR-1262-1	8.223	6.877f	130862	3494.3E6	1.727	6204.939 #
37) L8 AR-1262-2	8.568	7.178	254890	97428	1.954	0.243 #
38) L8 AR-1262-3	8.897	7.702	101316	2668470	1.077	7.423 #
39) L8 AR-1262-4	8.979	7.764	68861	1320266	0.945	1.980 #
40) L8 AR-1262-5	9.642	8.254	79151	169538	1.554	0.599 #
41) L9 AR-1268-1	8.897	7.702	101316	2668470	0.651	2.448 #

Data Path : Z:\pestpcbsrv\HPCHEM1\ECD_P\Data\PP081325\
 Data File : PP074338.D
 Signal(s) : Signal #1: ECD1A.ch Signal #2: ECD2B.ch
 Acq On : 13 Aug 2025 10:23
 Operator : YP\AJ
 Sample : DDT ANALOG
 Misc :
 ALS Vial : 6 Sample Multiplier: 1

Instrument :
 ECD_P
ClientSampleId :
 DDT ANALOG

Integration File signal 1: autoint1.e
 Integration File signal 2: autoint2.e
 Quant Time: Aug 13 11:47:52 2025
 Quant Method : Z:\pestpcbsrv\HPCHEM1\ECD_P\methods\PP080125.M
 Quant Title : GC EXTRACTABLES
 QLast Update : Mon Aug 04 11:01:49 2025
 Response via : Initial Calibration
 Integrator: ChemStation

Volume Inj. : 2 µl
 Signal #1 Phase : ZB-MR1 Signal #2 Phase: ZB-MR2
 Signal #1 Info : 30Mx0.32mmx 0.50µ Signal #2 Info : 30M x 0.32mm x 0.25µm

	Compound	RT#1	RT#2	Resp#1	Resp#2	ng/ml	ng/ml
42)	L9 AR-1268-2	8.979	7.764	68861	1320266	0.480	1.244 #
43)	L9 AR-1268-3	9.239	7.984	146763	507081	1.228	0.610 #
44)	L9 AR-1268-4	9.642	8.254	79151	169538	1.346	0.550 #
45)	L9 AR-1268-5	10.079	8.557	47139	332847	0.134	0.131

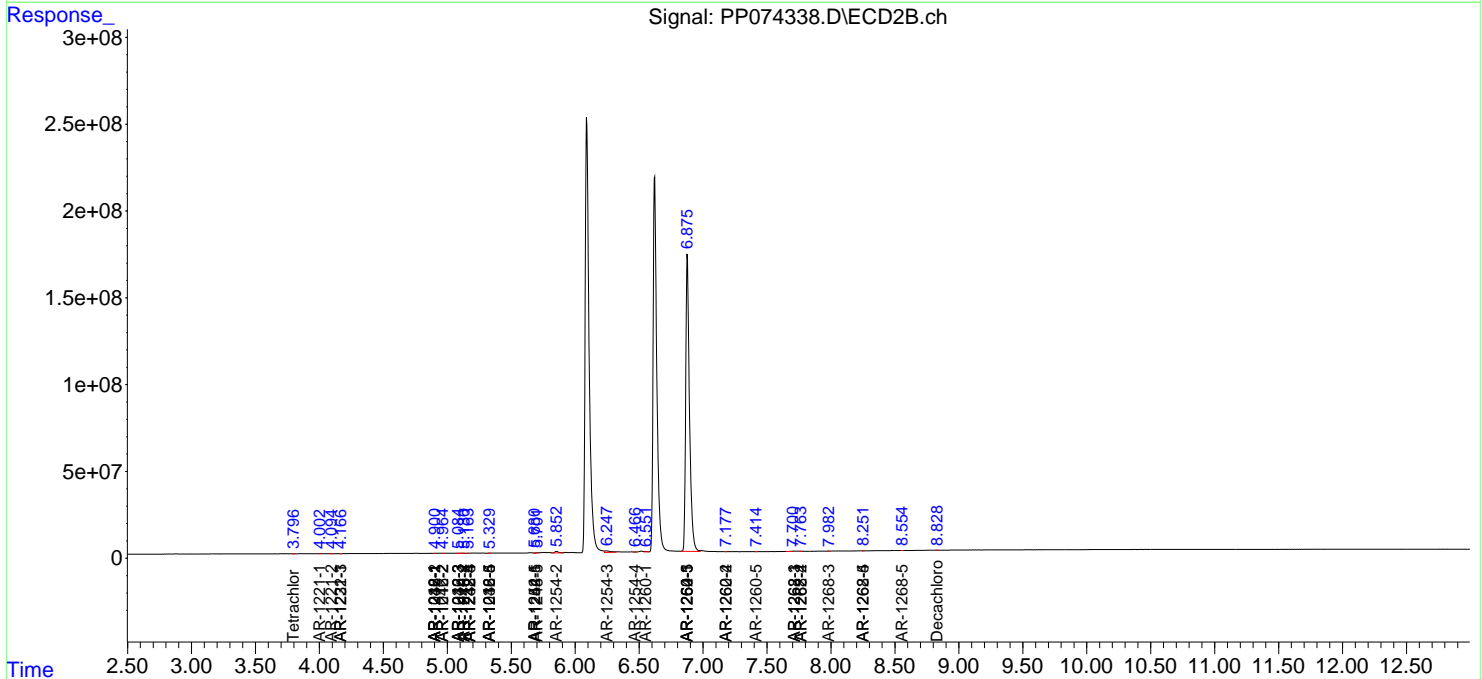
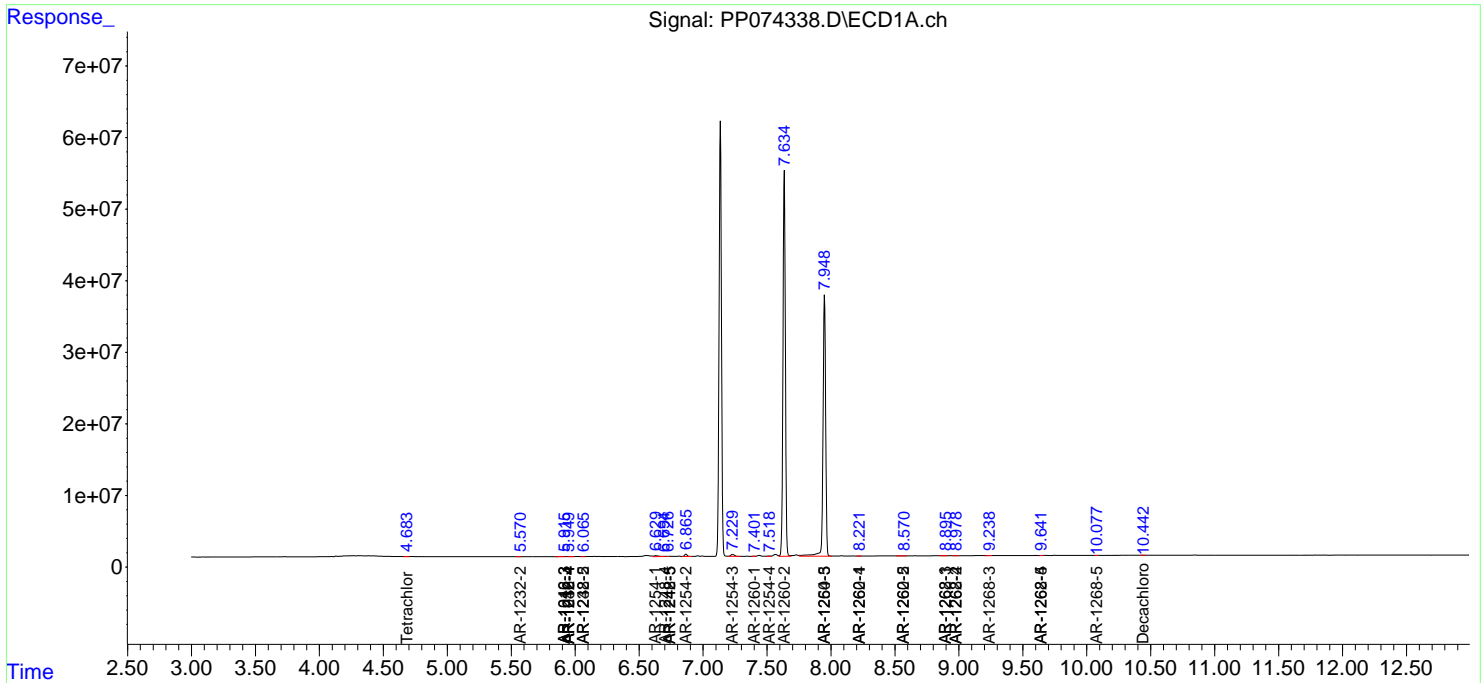
(f)=RT Delta > 1/2 Window (#)=Amounts differ by > 25% (m)=manual int.

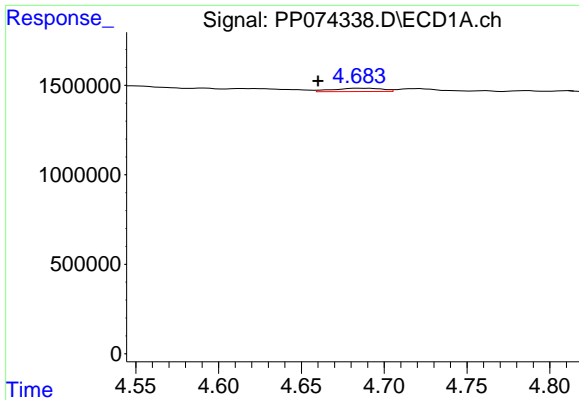
Data Path : Z:\pestpcbsrv\HPCHEM1\ECD_P\Data\PP081325\
 Data File : PP074338.D
 Signal(s) : Signal #1: ECD1A.ch Signal #2: ECD2B.ch
 Acq On : 13 Aug 2025 10:23
 Operator : YP\AJ
 Sample : DDT ANALOG
 Misc :
 ALS Vial : 6 Sample Multiplier: 1

Instrument :
 ECD_P
 ClientSampleId :
 DDT ANALOG

Integration File signal 1: autoint1.e
 Integration File signal 2: autoint2.e
 Quant Time: Aug 13 11:47:52 2025
 Quant Method : Z:\pestpcbsrv\HPCHEM1\ECD_P\methods\PP080125.M
 Quant Title : GC EXTRACTABLES
 QLast Update : Mon Aug 04 11:01:49 2025
 Response via : Initial Calibration
 Integrator: ChemStation

Volume Inj. : 2 µl
 Signal #1 Phase : ZB-MR1 Signal #2 Phase: ZB-MR2
 Signal #1 Info : 30Mx0.32mmx 0.50µ Signal #2 Info : 30M x 0.32mm x 0.25µm

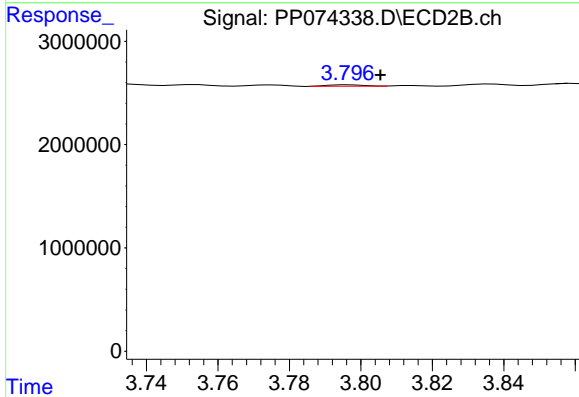




#1 Tetrachloro-m-xylene

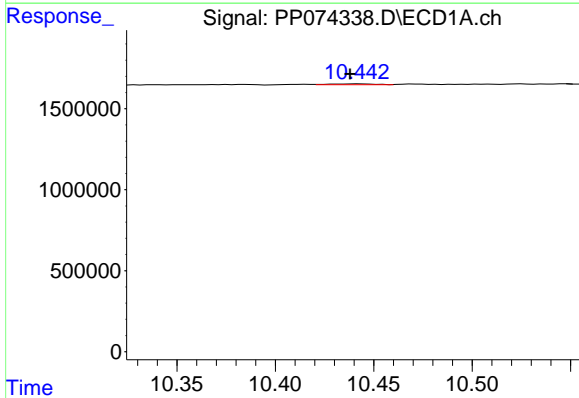
R.T.: 4.685 min
 Delta R.T.: 0.025 min
 Response: 380327
 Conc: 0.34 ng/ml

Instrument :
 ECD_P
 ClientSampleId :
 DDT ANALOG



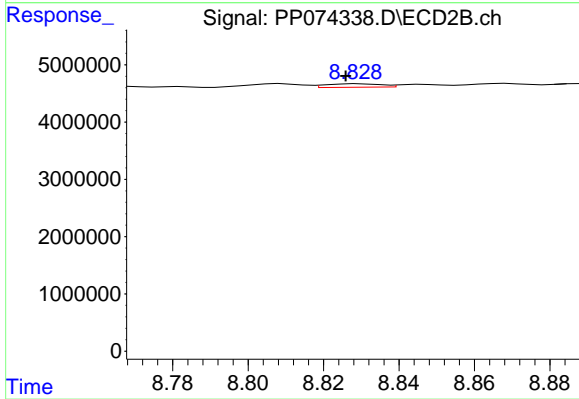
#1 Tetrachloro-m-xylene

R.T.: 3.797 min
 Delta R.T.: -0.009 min
 Response: 97657
 Conc: 0.03 ng/ml



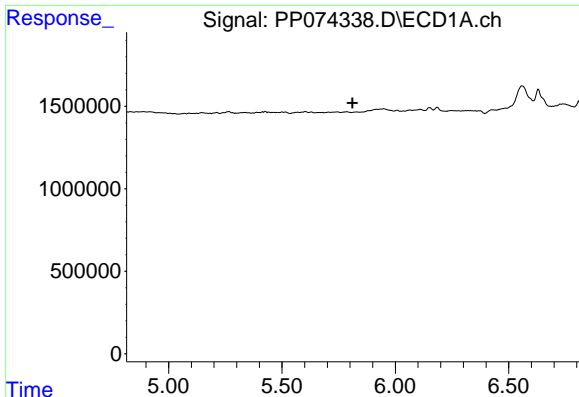
#2 Decachlorobiphenyl

R.T.: 10.443 min
 Delta R.T.: 0.005 min
 Response: 82537
 Conc: 0.08 ng/ml



#2 Decachlorobiphenyl

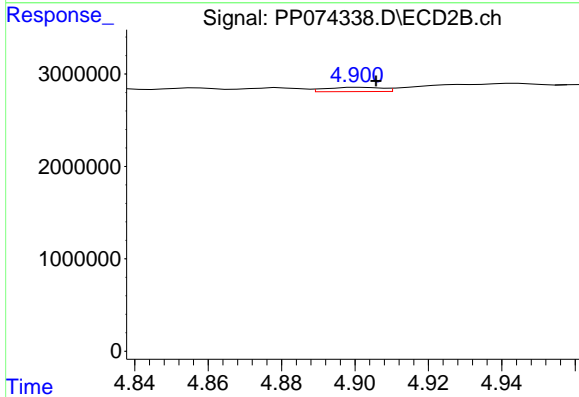
R.T.: 8.829 min
 Delta R.T.: 0.004 min
 Response: 606866
 Conc: 0.10 ng/ml



#3 AR-1016-1

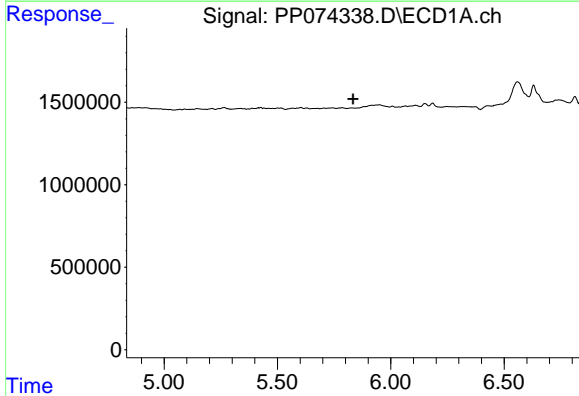
R.T.: 0.000 min
 Exp R.T.: 5.812 min
 Response: 0
 Conc: N.D.

Instrument :
 ECD_P
 ClientSampleId :
 DDT ANALOG



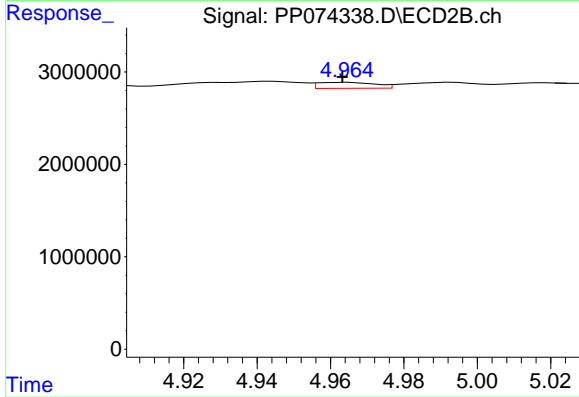
#3 AR-1016-1

R.T.: 4.901 min
 Delta R.T.: -0.004 min
 Response: 489210
 Conc: 1.23 ng/ml



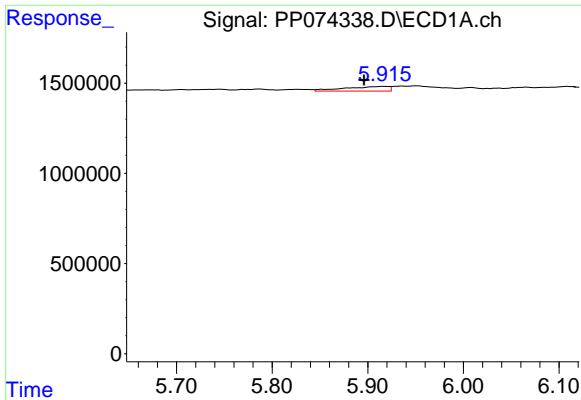
#4 AR-1016-2

R.T.: 0.000 min
 Exp R.T.: 5.833 min
 Response: 0
 Conc: N.D.



#4 AR-1016-2

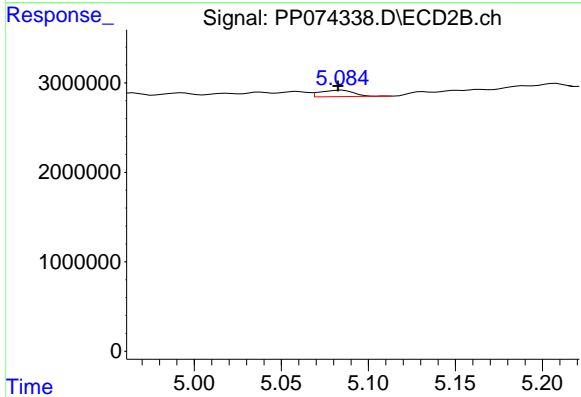
R.T.: 4.965 min
 Delta R.T.: 0.002 min
 Response: 711838
 Conc: 3.79 ng/ml



#5 AR-1016-3

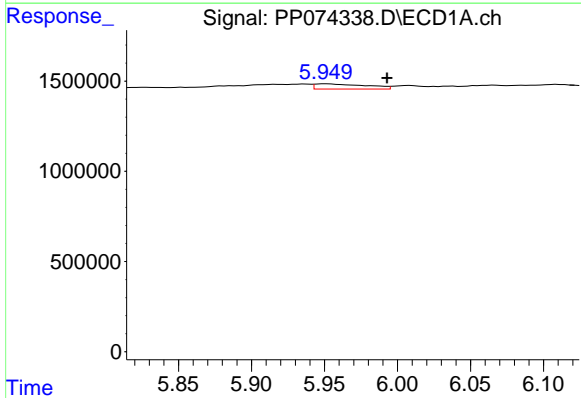
R.T.: 5.917 min
 Delta R.T.: 0.021 min
 Response: 799683
 Conc: 20.16 ng/ml

Instrument :
 ECD_P
 ClientSampleId :
 DDT ANALOG



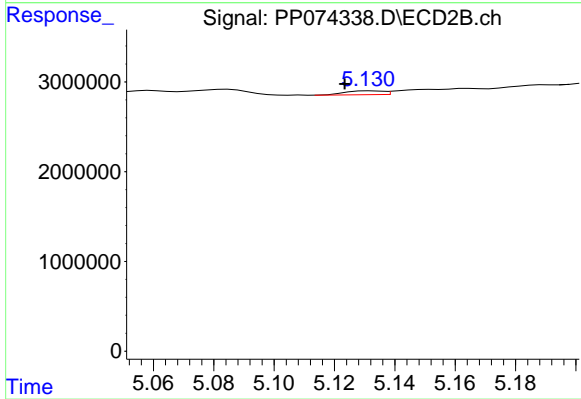
#5 AR-1016-3

R.T.: 5.085 min
 Delta R.T.: 0.002 min
 Response: 971370
 Conc: 9.16 ng/ml



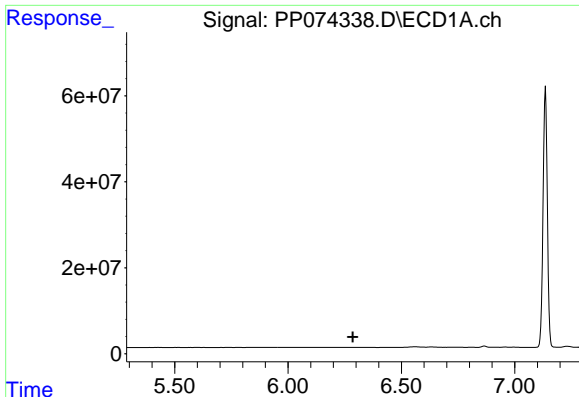
#6 AR-1016-4

R.T.: 5.951 min
 Delta R.T.: -0.042 min
 Response: 692102
 Conc: 21.27 ng/ml



#6 AR-1016-4

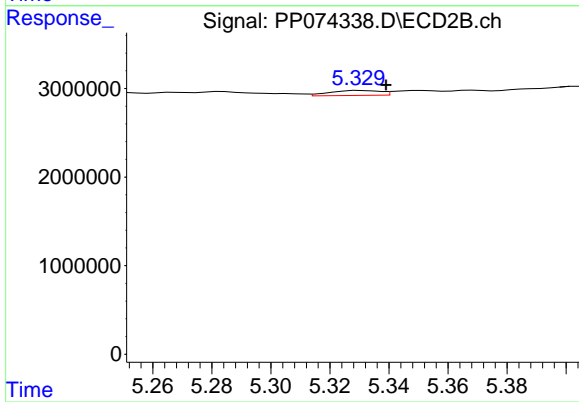
R.T.: 5.132 min
 Delta R.T.: 0.008 min
 Response: 373969
 Conc: 3.42 ng/ml



#7 AR-1016-5

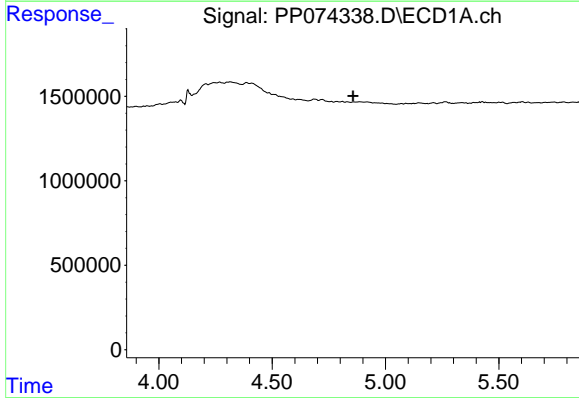
R.T.: 0.000 min
 Exp R.T.: 6.286 min
 Response: 0
 Conc: N.D.

Instrument :
 ECD_P
 ClientSampleId :
 DDT ANALOG



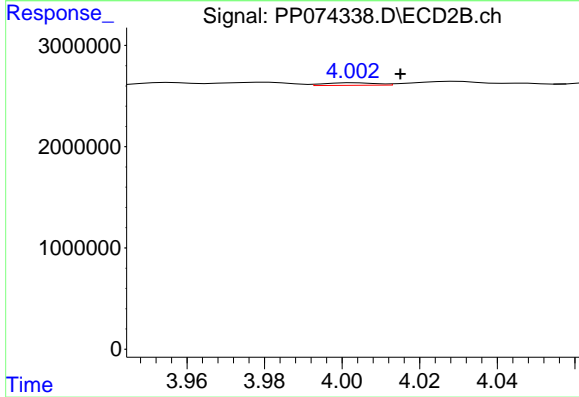
#7 AR-1016-5

R.T.: 5.330 min
 Delta R.T.: -0.009 min
 Response: 673873
 Conc: 5.76 ng/ml



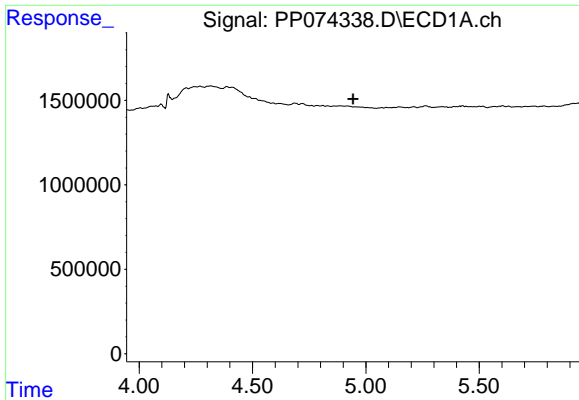
#8 AR-1221-1

R.T.: 0.000 min
 Exp R.T.: 4.858 min
 Response: 0
 Conc: N.D.



#8 AR-1221-1

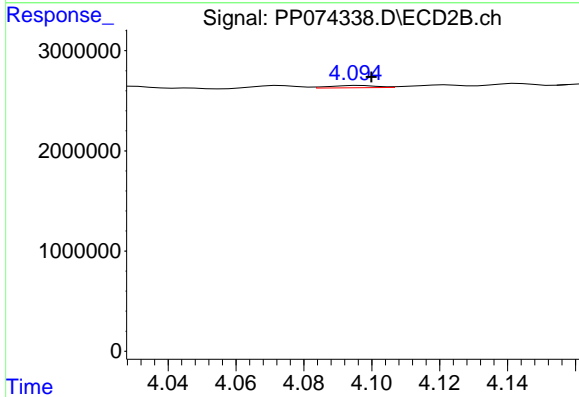
R.T.: 4.004 min
 Delta R.T.: -0.011 min
 Response: 227374
 Conc: 4.63 ng/ml



#9 AR-1221-2

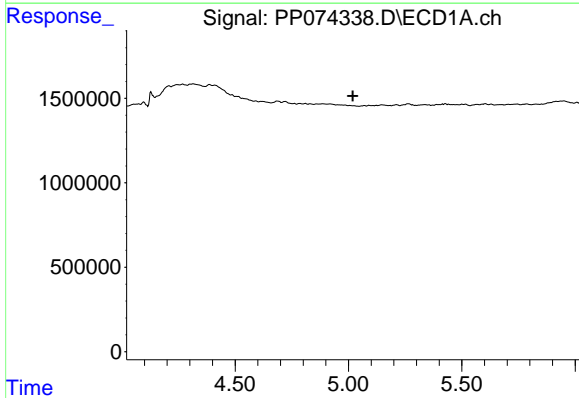
R.T.: 0.000 min
 Exp R.T.: 4.944 min
 Response: 0
 Conc: N.D.

Instrument :
 ECD_P
 ClientSampleId :
 DDT ANALOG



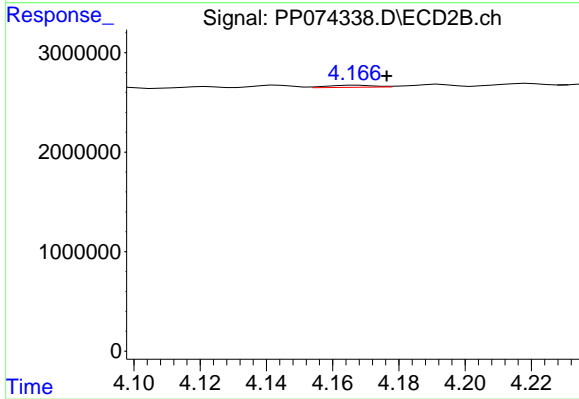
#9 AR-1221-2

R.T.: 4.096 min
 Delta R.T.: -0.004 min
 Response: 210212
 Conc: 5.86 ng/ml



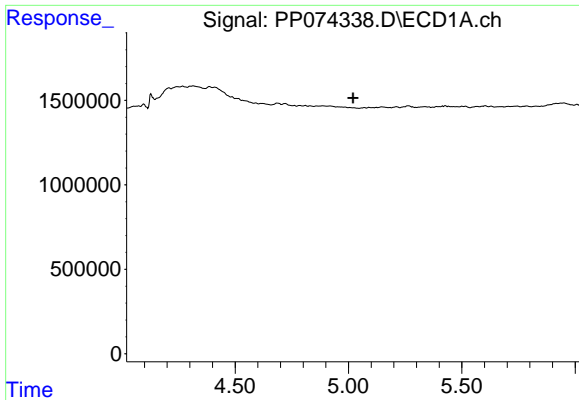
#10 AR-1221-3

R.T.: 0.000 min
 Exp R.T.: 5.019 min
 Response: 0
 Conc: N.D.



#10 AR-1221-3

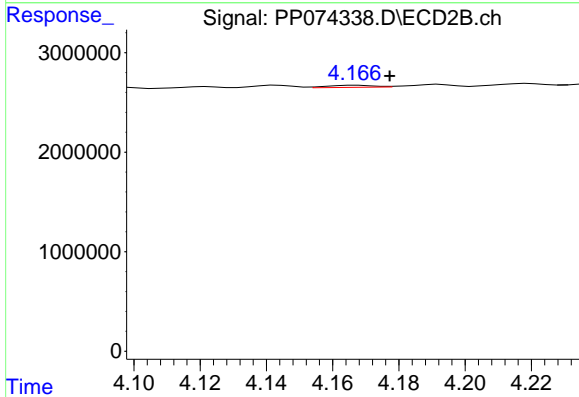
R.T.: 4.167 min
 Delta R.T.: -0.009 min
 Response: 205119
 Conc: 1.52 ng/ml



#11 AR-1232-1

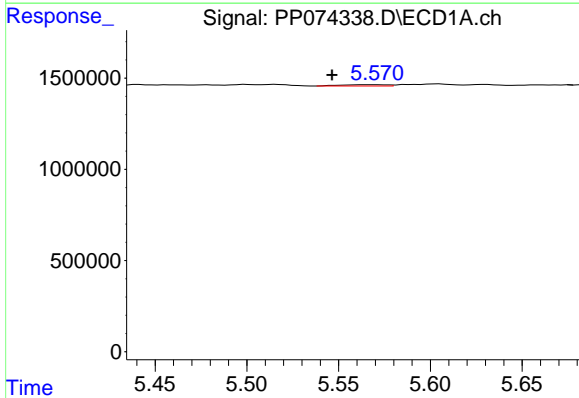
R.T.: 0.000 min
 Exp R.T.: 5.020 min
 Response: 0
 Conc: N.D.

Instrument :
 ECD_P
 ClientSampleId :
 DDT ANALOG



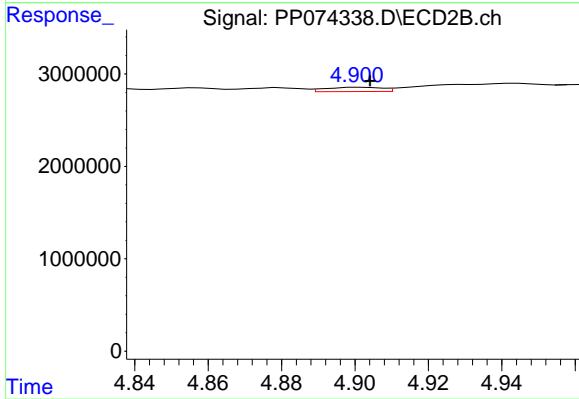
#11 AR-1232-1

R.T.: 4.167 min
 Delta R.T.: -0.010 min
 Response: 205119
 Conc: 2.02 ng/ml



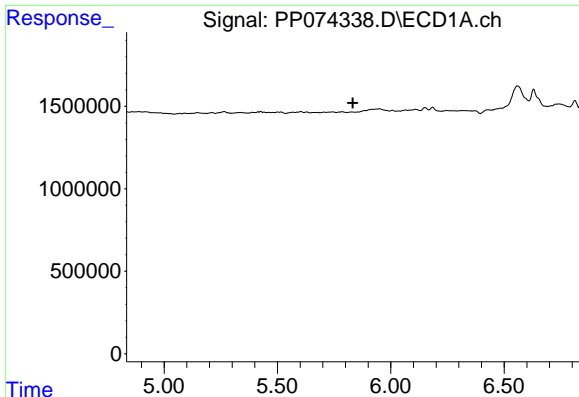
#12 AR-1232-2

R.T.: 5.570 min
 Delta R.T.: 0.024 min
 Response: 125046
 Conc: 8.31 ng/ml



#12 AR-1232-2

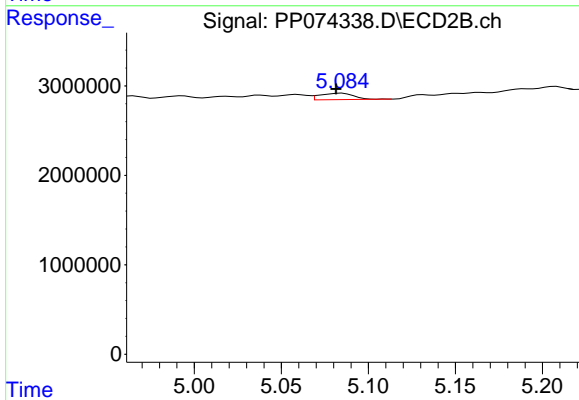
R.T.: 4.901 min
 Delta R.T.: -0.003 min
 Response: 489210
 Conc: 2.81 ng/ml



#13 AR-1232-3

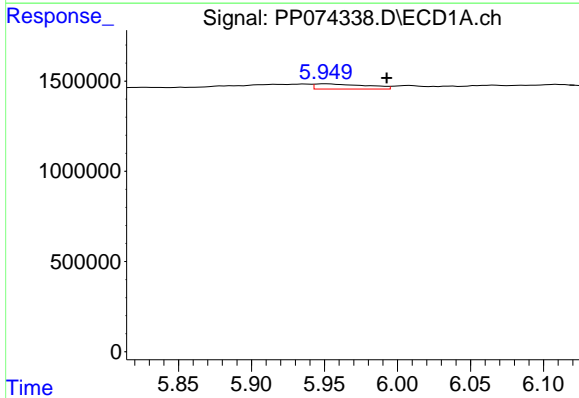
R.T.: 0.000 min
 Exp R.T.: 5.832 min
 Response: 0
 Conc: N.D.

Instrument :
 ECD_P
 ClientSampleId :
 DDT ANALOG



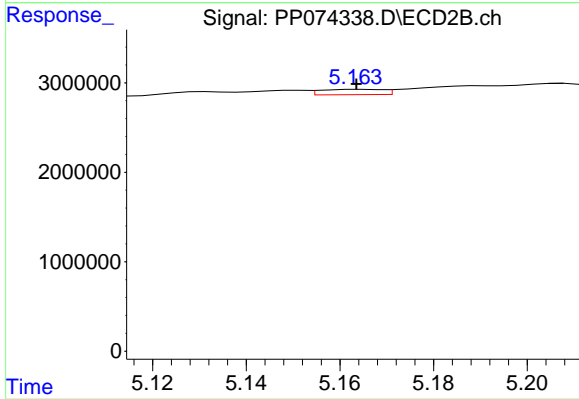
#13 AR-1232-3

R.T.: 5.085 min
 Delta R.T.: 0.004 min
 Response: 971370
 Conc: 21.20 ng/ml



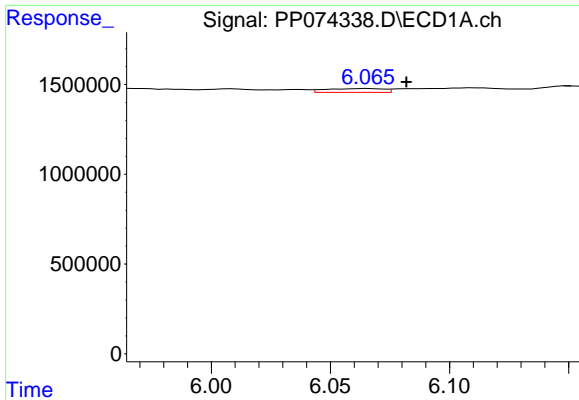
#14 AR-1232-4

R.T.: 5.951 min
 Delta R.T.: -0.042 min
 Response: 692102
 Conc: 44.74 ng/ml



#14 AR-1232-4

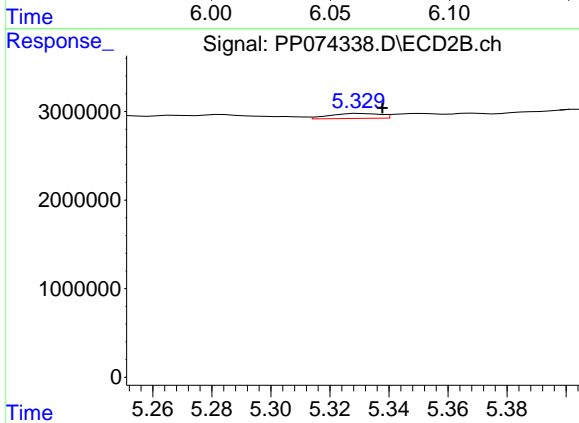
R.T.: 5.165 min
 Delta R.T.: 0.001 min
 Response: 551179
 Conc: 9.50 ng/ml



#15 AR-1232-5

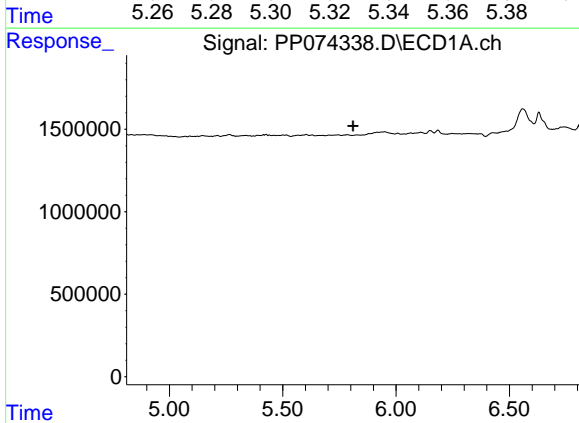
R.T.: 6.066 min
 Delta R.T.: -0.016 min
 Response: 361230
 Conc: 30.83 ng/ml

Instrument :
 ECD_P
 ClientSampleId :
 DDT ANALOG



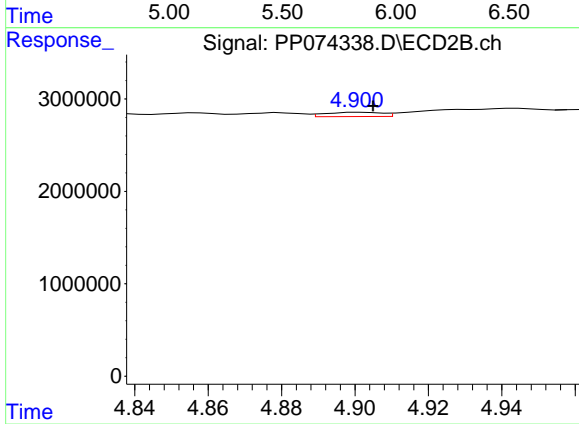
#15 AR-1232-5

R.T.: 5.330 min
 Delta R.T.: -0.007 min
 Response: 673873
 Conc: 14.34 ng/ml



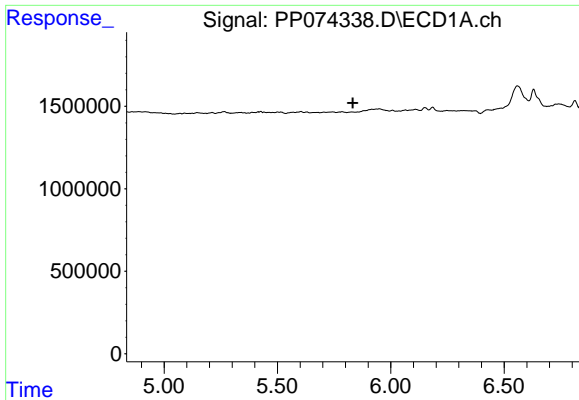
#16 AR-1242-1

R.T.: 0.000 min
 Exp R.T. : 5.811 min
 Response: 0
 Conc: N.D.



#16 AR-1242-1

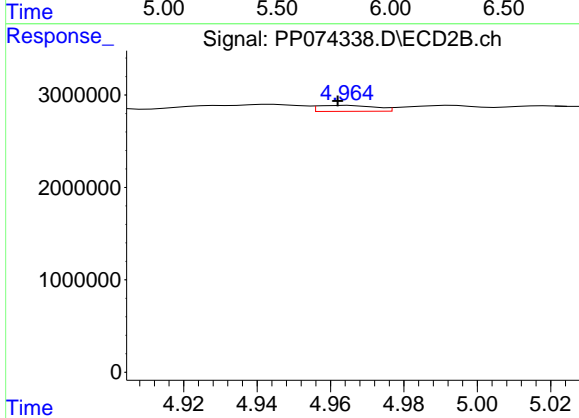
R.T.: 4.901 min
 Delta R.T.: -0.004 min
 Response: 489210
 Conc: 1.42 ng/ml



#17 AR-1242-2

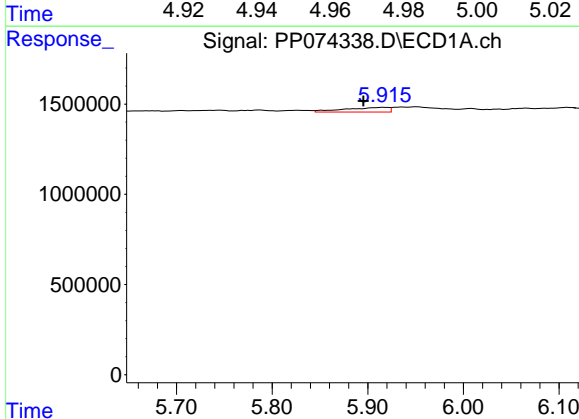
R.T.: 0.000 min
 Exp R.T.: 5.832 min
 Response: 0
 Conc: N.D.

Instrument :
 ECD_P
 ClientSampleId :
 DDT ANALOG



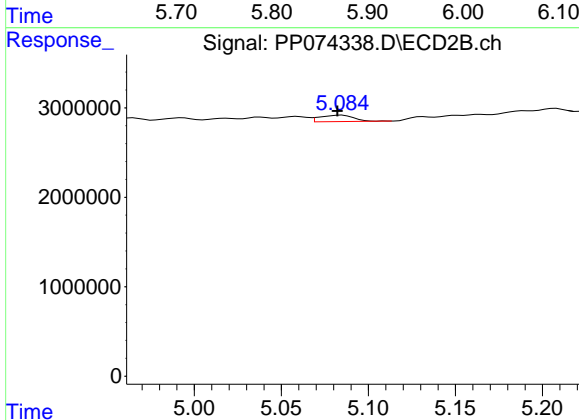
#17 AR-1242-2

R.T.: 4.965 min
 Delta R.T.: 0.003 min
 Response: 711838
 Conc: 4.36 ng/ml



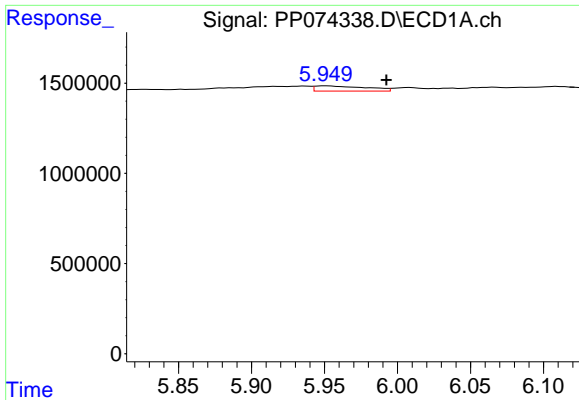
#18 AR-1242-3

R.T.: 5.917 min
 Delta R.T.: 0.021 min
 Response: 799683
 Conc: 22.38 ng/ml



#18 AR-1242-3

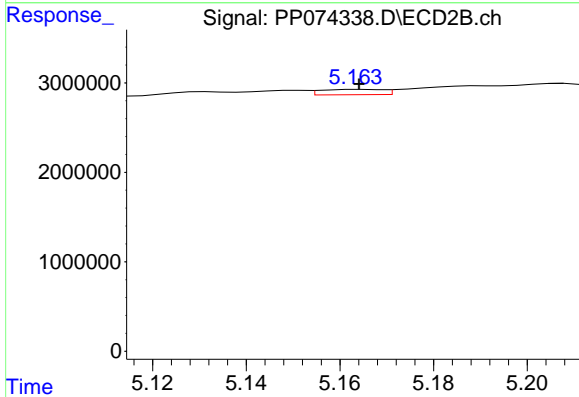
R.T.: 5.085 min
 Delta R.T.: 0.003 min
 Response: 971370
 Conc: 10.53 ng/ml



#19 AR-1242-4

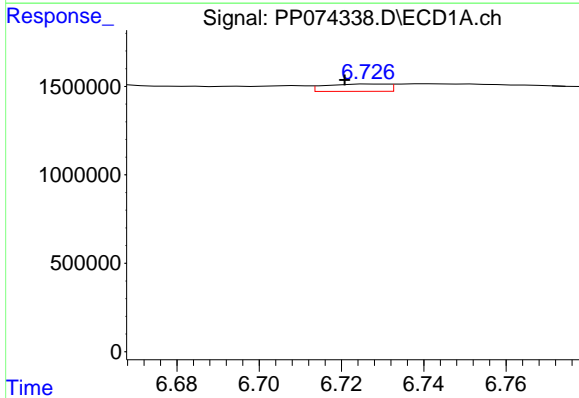
R.T.: 5.951 min
 Delta R.T.: -0.042 min
 Response: 692102
 Conc: 23.69 ng/ml

Instrument :
 ECD_P
 ClientSampleId :
 DDT ANALOG



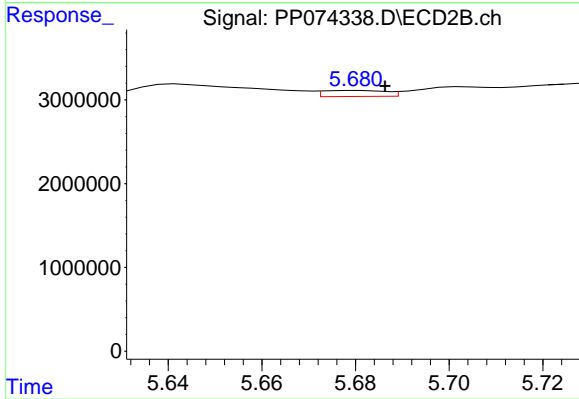
#19 AR-1242-4

R.T.: 5.165 min
 Delta R.T.: 0.000 min
 Response: 551179
 Conc: 4.62 ng/ml



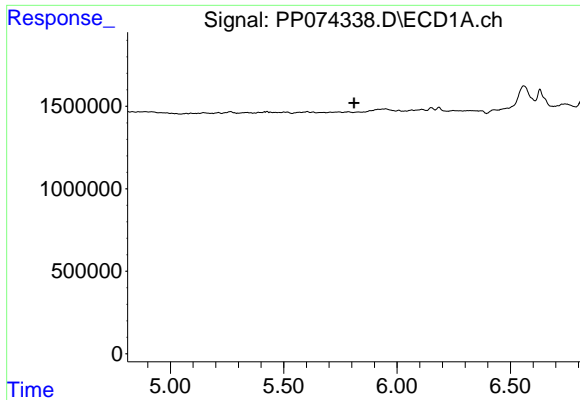
#20 AR-1242-5

R.T.: 6.728 min
 Delta R.T.: 0.007 min
 Response: 432075
 Conc: 12.15 ng/ml



#20 AR-1242-5

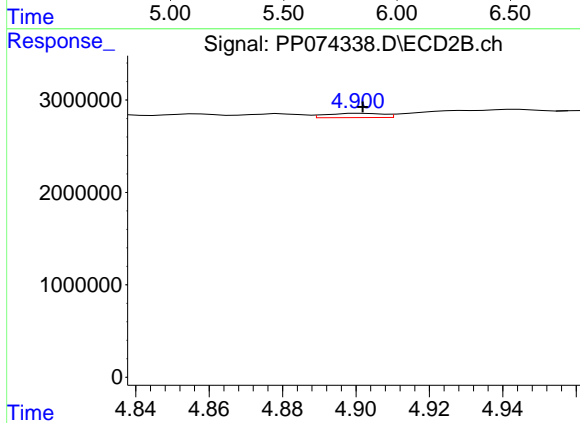
R.T.: 5.681 min
 Delta R.T.: -0.006 min
 Response: 674045
 Conc: 4.51 ng/ml



#21 AR-1248-1

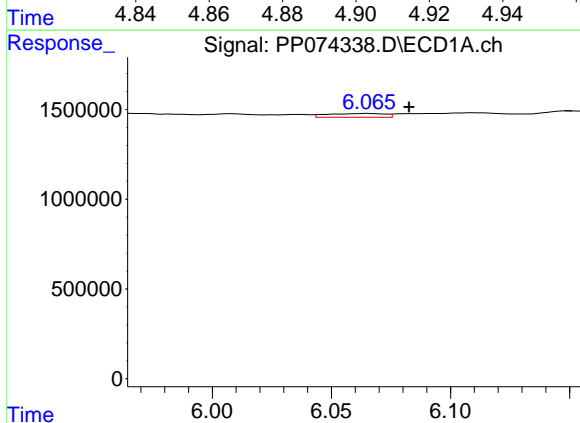
R.T.: 0.000 min
 Exp R.T.: 5.811 min
 Response: 0
 Conc: N.D.

Instrument :
 ECD_P
 ClientSampleId :
 DDT ANALOG



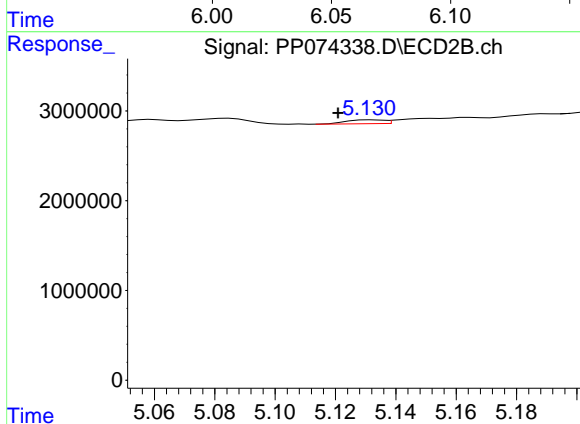
#21 AR-1248-1

R.T.: 4.901 min
 Delta R.T.: 0.000 min
 Response: 489210
 Conc: 2.29 ng/ml



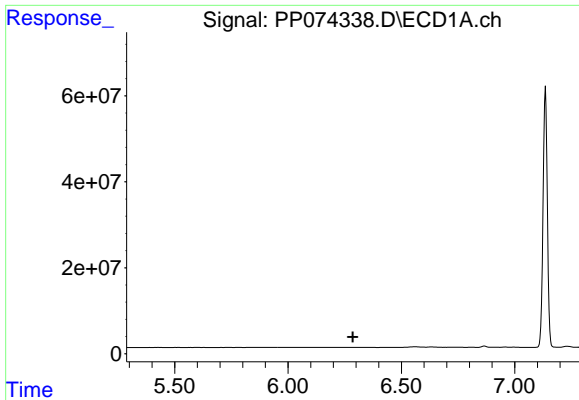
#22 AR-1248-2

R.T.: 6.066 min
 Delta R.T.: -0.017 min
 Response: 361230
 Conc: 8.97 ng/ml



#22 AR-1248-2

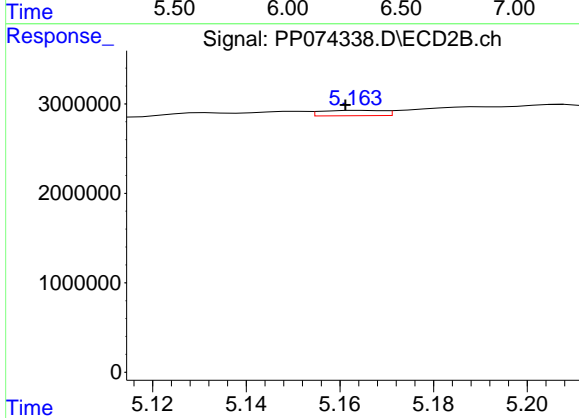
R.T.: 5.132 min
 Delta R.T.: 0.011 min
 Response: 373969
 Conc: 2.56 ng/ml



#23 AR-1248-3

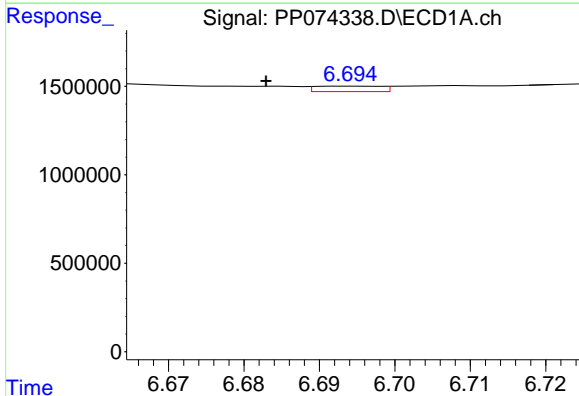
R.T.: 0.000 min
 Exp R.T.: 6.286 min
 Response: 0
 Conc: N.D.

Instrument :
 ECD_P
 ClientSampleId :
 DDT ANALOG



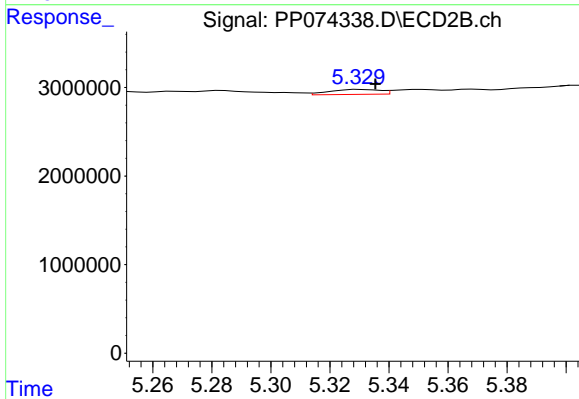
#23 AR-1248-3

R.T.: 5.165 min
 Delta R.T.: 0.004 min
 Response: 551179
 Conc: 3.21 ng/ml



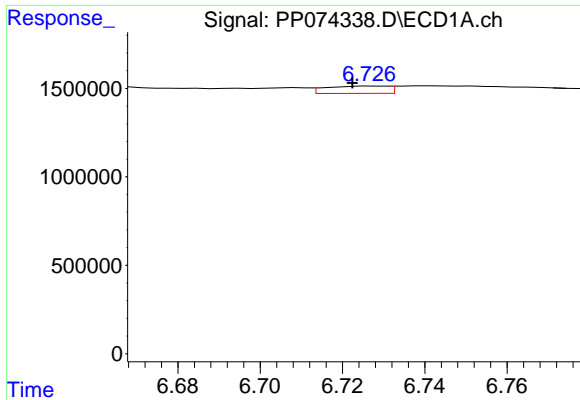
#24 AR-1248-4

R.T.: 6.695 min
 Delta R.T.: 0.012 min
 Response: 186328
 Conc: 3.58 ng/ml



#24 AR-1248-4

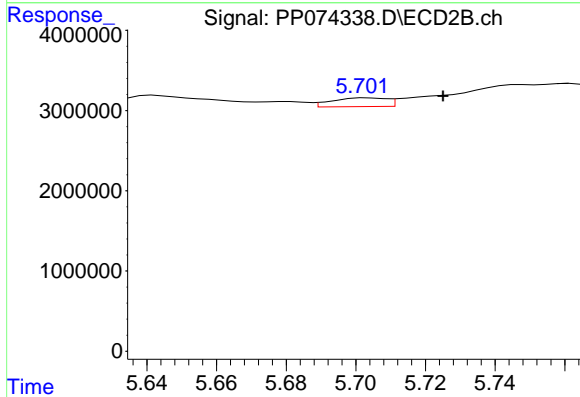
R.T.: 5.330 min
 Delta R.T.: -0.005 min
 Response: 673873
 Conc: 4.05 ng/ml



#25 AR-1248-5

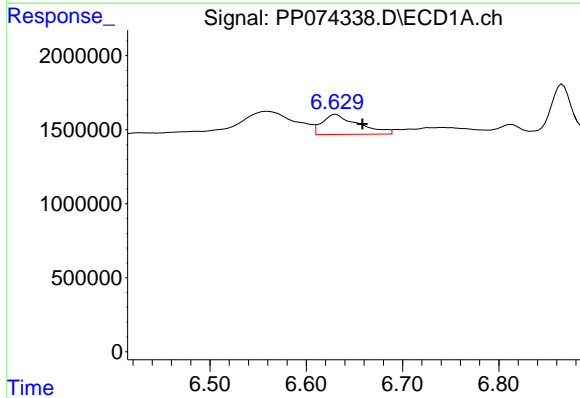
R.T.: 6.728 min
 Delta R.T.: 0.006 min
 Response: 432075
 Conc: 7.59 ng/ml

Instrument :
 ECD_P
 ClientSampleId :
 DDT ANALOG



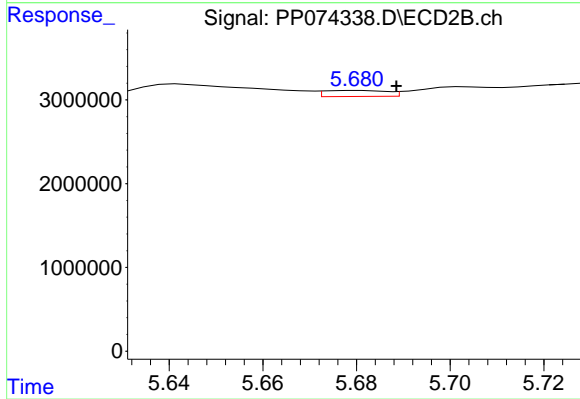
#25 AR-1248-5

R.T.: 5.703 min
 Delta R.T.: -0.022 min
 Response: 1193476
 Conc: 4.10 ng/ml



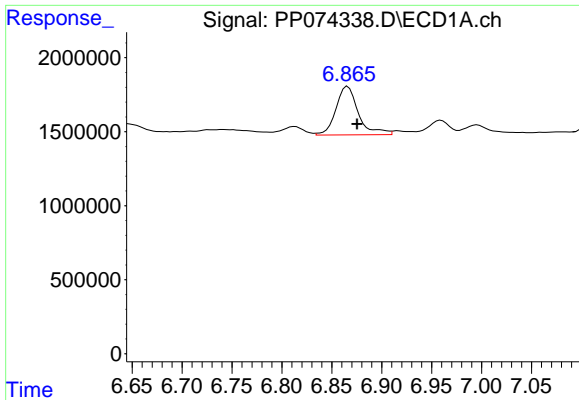
#26 AR-1254-1

R.T.: 6.631 min
 Delta R.T.: -0.027 min
 Response: 3557305
 Conc: 67.58 ng/ml



#26 AR-1254-1

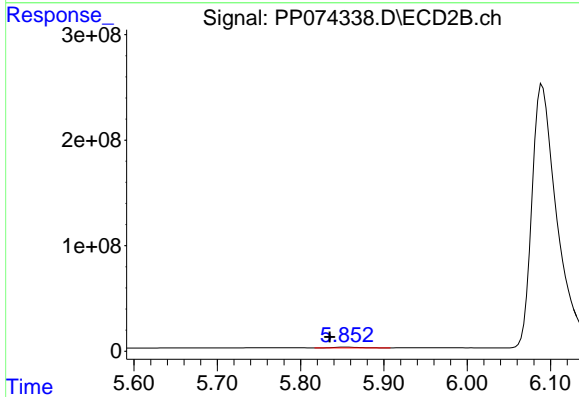
R.T.: 5.681 min
 Delta R.T.: -0.008 min
 Response: 674045
 Conc: 1.84 ng/ml



#27 AR-1254-2

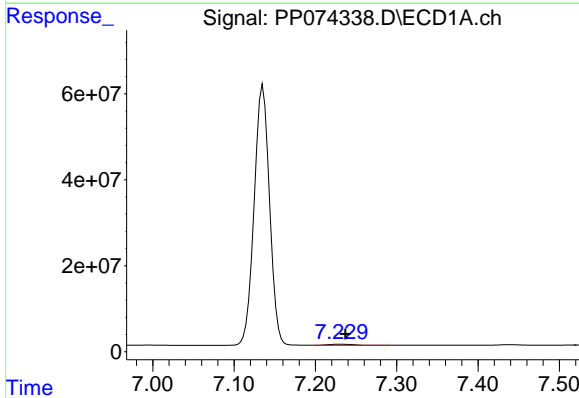
R.T.: 6.866 min
 Delta R.T.: -0.009 min
 Response: 5112518
 Conc: 64.30 ng/ml

Instrument :
 ECD_P
 ClientSampleId :
 DDT ANALOG



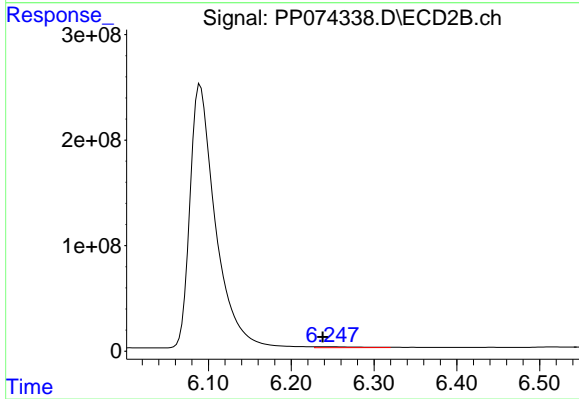
#27 AR-1254-2

R.T.: 5.854 min
 Delta R.T.: 0.019 min
 Response: 18168242
 Conc: 65.30 ng/ml



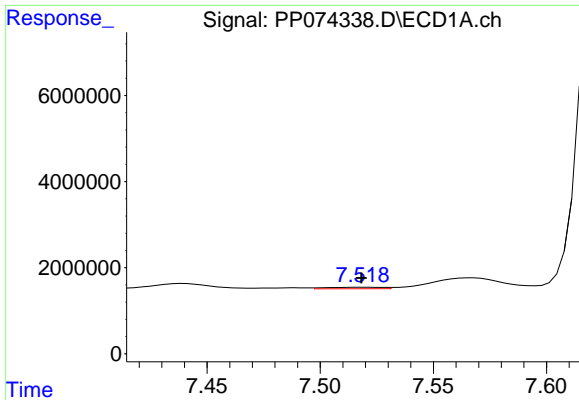
#28 AR-1254-3

R.T.: 7.230 min
 Delta R.T.: -0.007 min
 Response: 5567007
 Conc: 63.76 ng/ml



#28 AR-1254-3

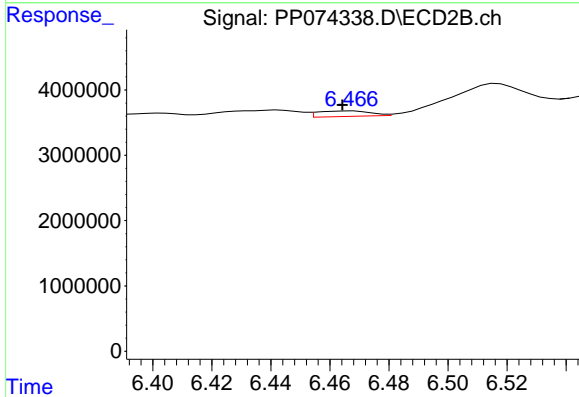
R.T.: 6.248 min
 Delta R.T.: 0.010 min
 Response: 31271299
 Conc: 63.92 ng/ml



#29 AR-1254-4

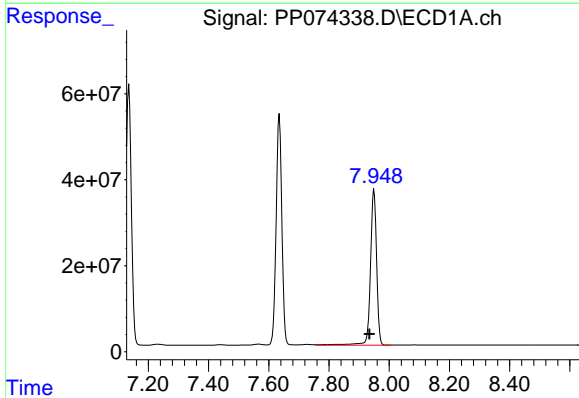
R.T.: 7.519 min
 Delta R.T.: 0.000 min
 Response: 614248
 Conc: 9.63 ng/ml

Instrument :
 ECD_P
 ClientSampleId :
 DDT ANALOG



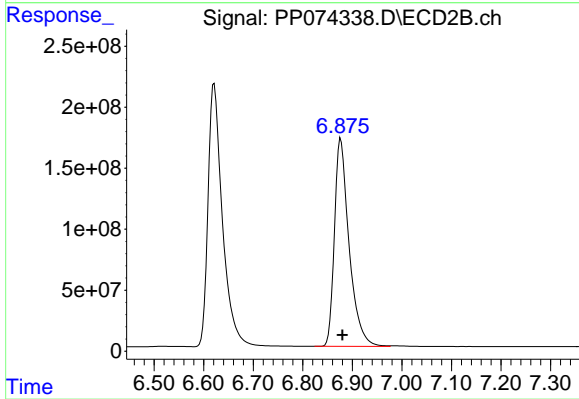
#29 AR-1254-4

R.T.: 6.467 min
 Delta R.T.: 0.003 min
 Response: 1042264
 Conc: 2.84 ng/ml



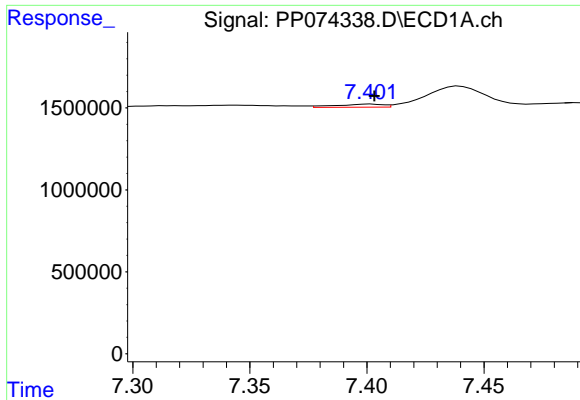
#30 AR-1254-5

R.T.: 7.950 min
 Delta R.T.: 0.015 min
 Response: 516635667
 Conc: 6366.84 ng/ml



#30 AR-1254-5

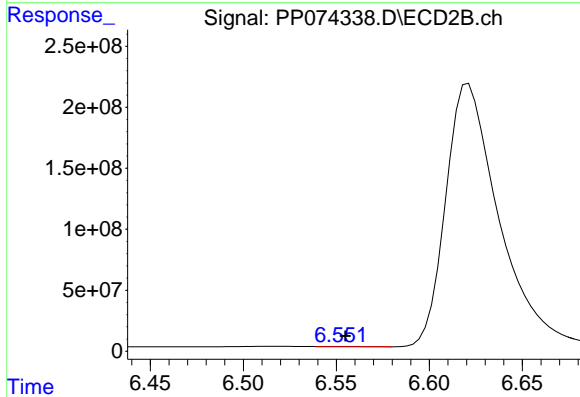
R.T.: 6.877 min
 Delta R.T.: -0.003 min
 Response: 3494264905
 Conc: 9072.08 ng/ml



#31 AR-1260-1

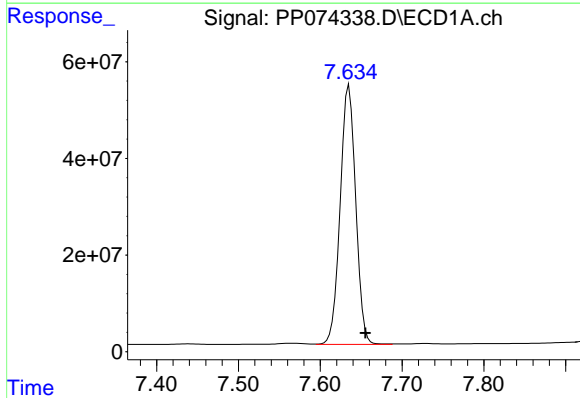
R.T.: 7.402 min
 Delta R.T.: -0.001 min
 Response: 265021
 Conc: 4.70 ng/ml

Instrument :
 ECD_P
 ClientSampleId :
 DDT ANALOG



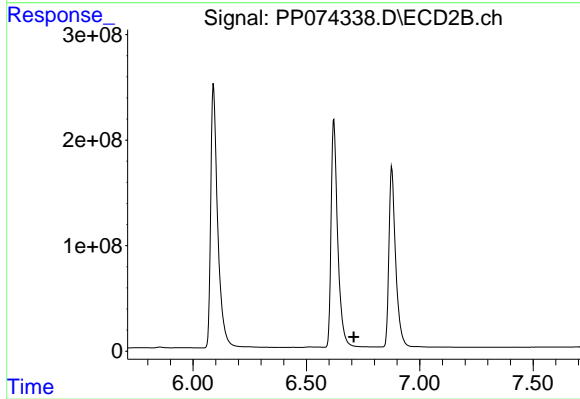
#31 AR-1260-1

R.T.: 6.553 min
 Delta R.T.: -0.002 min
 Response: 4029787
 Conc: 9.98 ng/ml



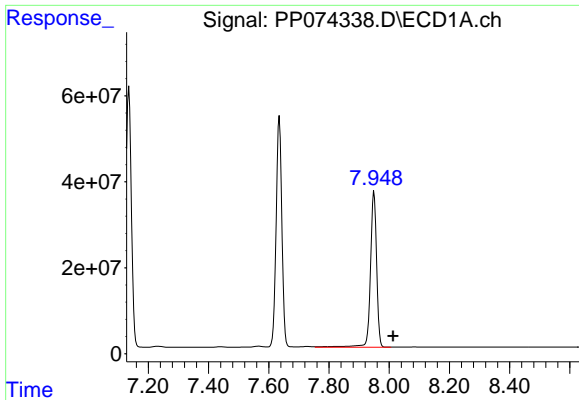
#32 AR-1260-2

R.T.: 7.635 min
 Delta R.T.: -0.020 min
 Response: 705383054
 Conc: 10350.09 ng/ml



#32 AR-1260-2

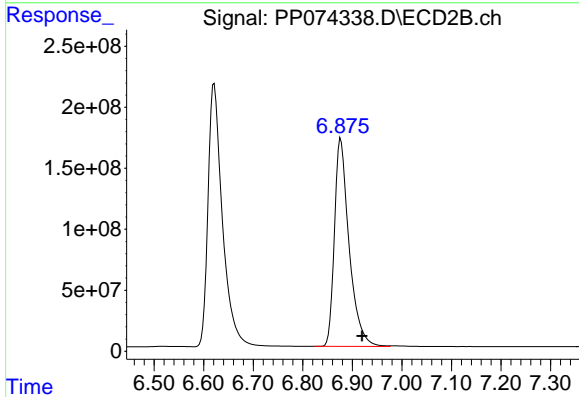
R.T.: 0.000 min
 Exp R.T. : 6.709 min
 Response: 0
 Conc: N.D.



#33 AR-1260-3

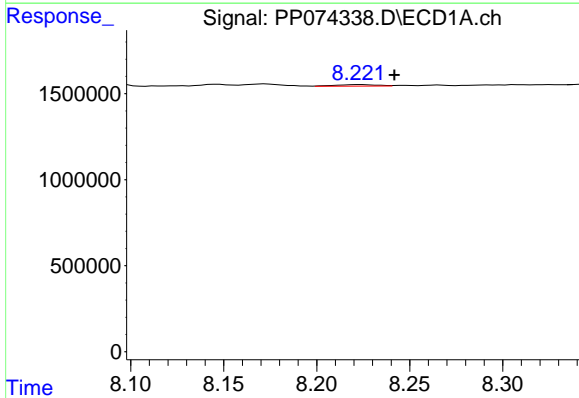
R.T.: 7.950 min
 Delta R.T.: -0.064 min
 Response: 516635667
 Conc: 9693.72 ng/ml

Instrument :
 ECD_P
 ClientSampleId :
 DDT ANALOG



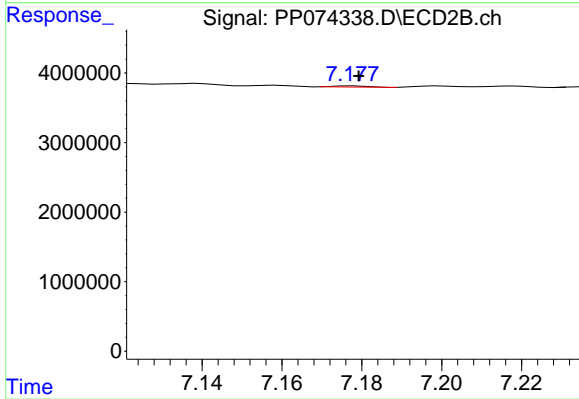
#33 AR-1260-3

R.T.: 6.877 min
 Delta R.T.: -0.043 min
 Response: 3494264905
 Conc: 8866.03 ng/ml



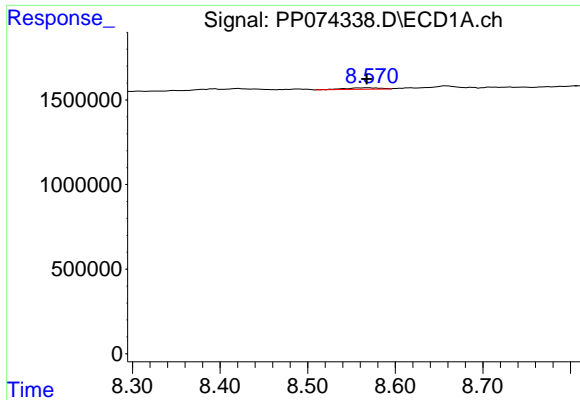
#34 AR-1260-4

R.T.: 8.223 min
 Delta R.T.: -0.018 min
 Response: 130862
 Conc: 2.09 ng/ml



#34 AR-1260-4

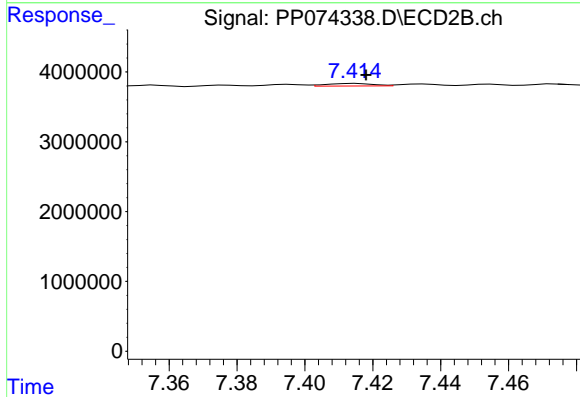
R.T.: 7.178 min
 Delta R.T.: 0.000 min
 Response: 97428
 Conc: 0.33 ng/ml



#35 AR-1260-5

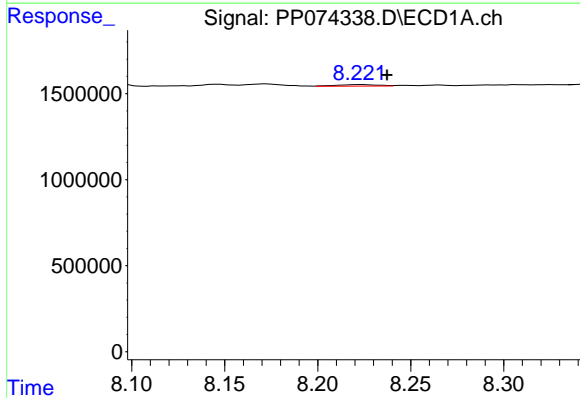
R.T.: 8.568 min
 Delta R.T.: 0.000 min
 Response: 254890
 Conc: 2.25 ng/ml

Instrument :
 ECD_P
 ClientSampleId :
 DDT ANALOG



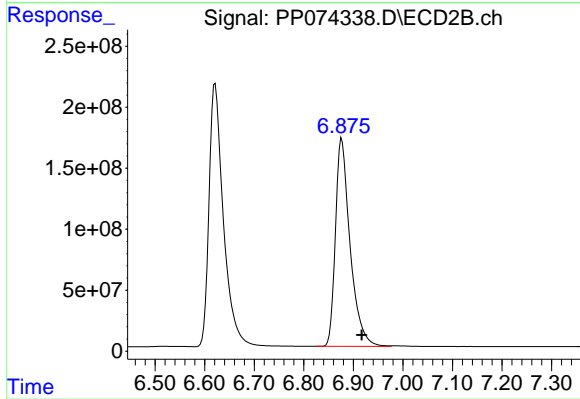
#35 AR-1260-5

R.T.: 7.415 min
 Delta R.T.: -0.003 min
 Response: 354459
 Conc: 0.47 ng/ml



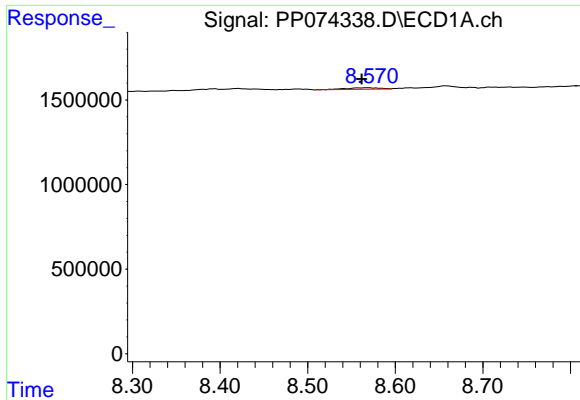
#36 AR-1262-1

R.T.: 8.223 min
 Delta R.T.: -0.014 min
 Response: 130862
 Conc: 1.73 ng/ml



#36 AR-1262-1

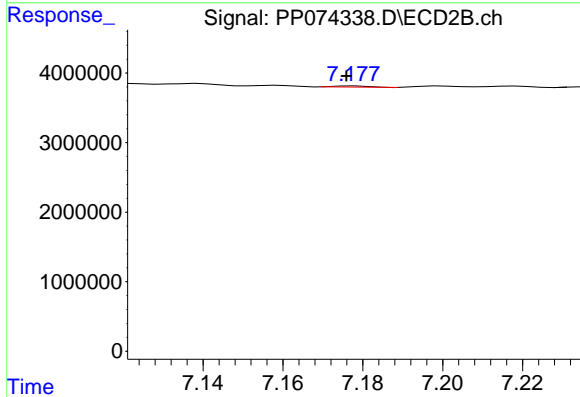
R.T.: 6.877 min
 Delta R.T.: -0.040 min
 Response: 3494264905
 Conc: 6204.94 ng/ml



#37 AR-1262-2

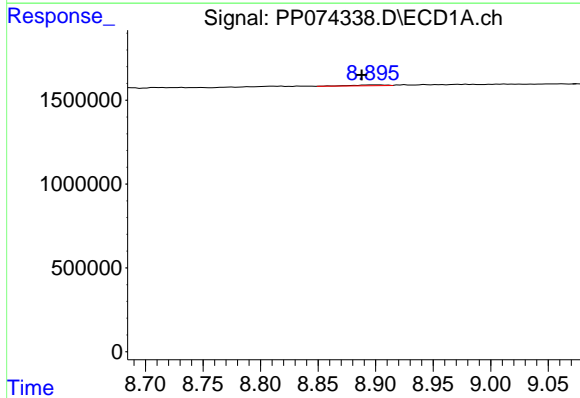
R.T.: 8.568 min
 Delta R.T.: 0.006 min
 Response: 254890
 Conc: 1.95 ng/ml

Instrument :
 ECD_P
 ClientSampleId :
 DDT ANALOG



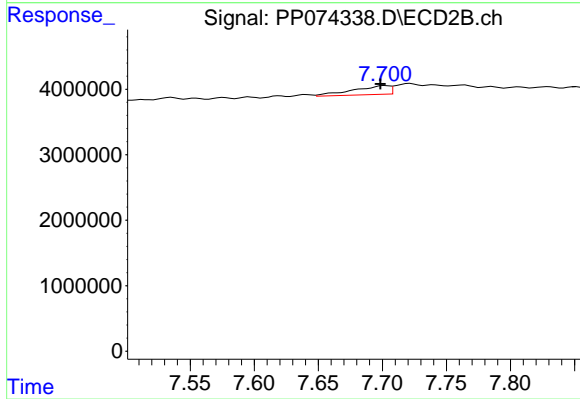
#37 AR-1262-2

R.T.: 7.178 min
 Delta R.T.: 0.002 min
 Response: 97428
 Conc: 0.24 ng/ml



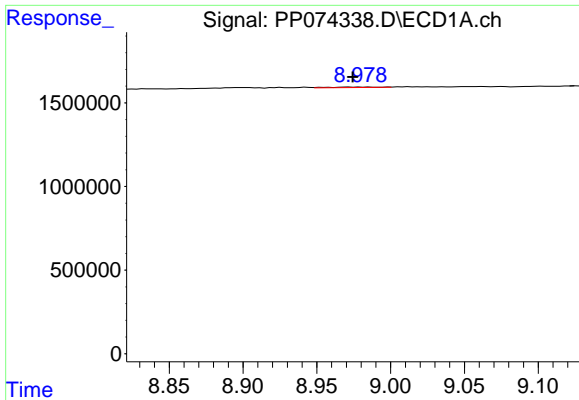
#38 AR-1262-3

R.T.: 8.897 min
 Delta R.T.: 0.009 min
 Response: 101316
 Conc: 1.08 ng/ml



#38 AR-1262-3

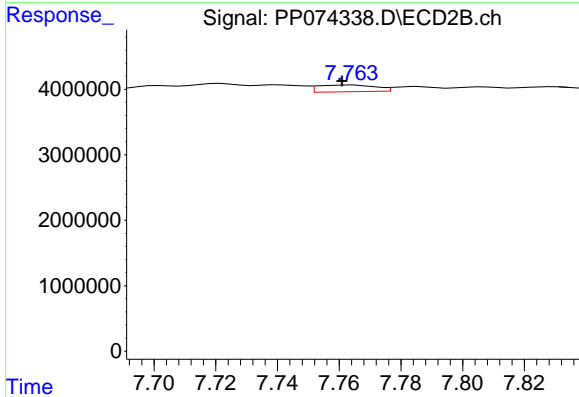
R.T.: 7.702 min
 Delta R.T.: 0.003 min
 Response: 2668470
 Conc: 7.42 ng/ml



#39 AR-1262-4

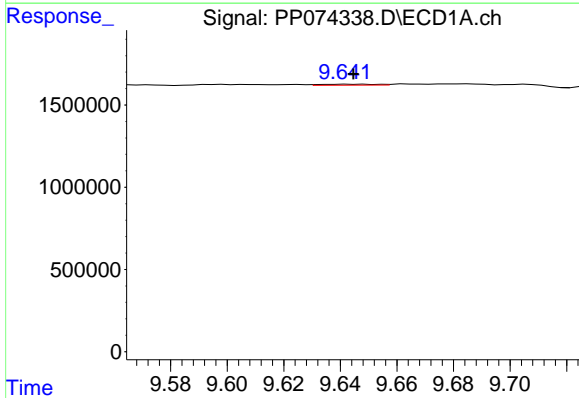
R.T.: 8.979 min
 Delta R.T.: 0.005 min
 Response: 68861
 Conc: 0.95 ng/ml

Instrument :
 ECD_P
 ClientSampleId :
 DDT ANALOG



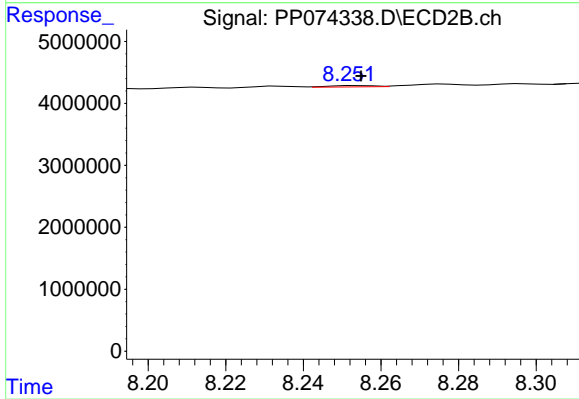
#39 AR-1262-4

R.T.: 7.764 min
 Delta R.T.: 0.003 min
 Response: 1320266
 Conc: 1.98 ng/ml



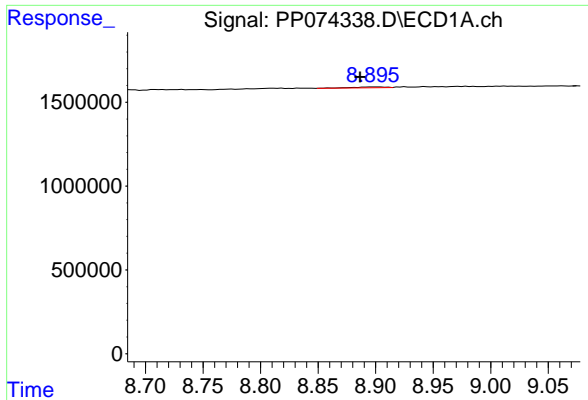
#40 AR-1262-5

R.T.: 9.642 min
 Delta R.T.: -0.003 min
 Response: 79151
 Conc: 1.55 ng/ml



#40 AR-1262-5

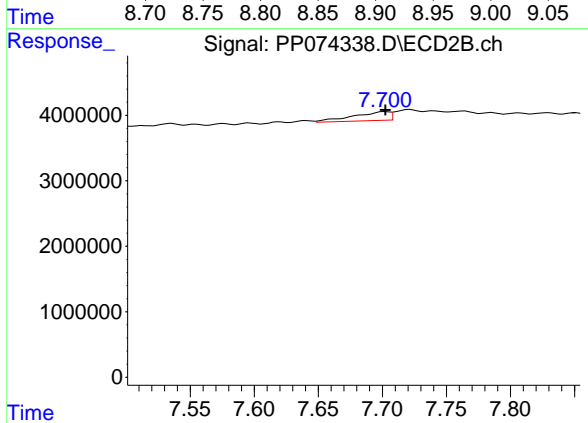
R.T.: 8.254 min
 Delta R.T.: 0.000 min
 Response: 169538
 Conc: 0.60 ng/ml



#41 AR-1268-1

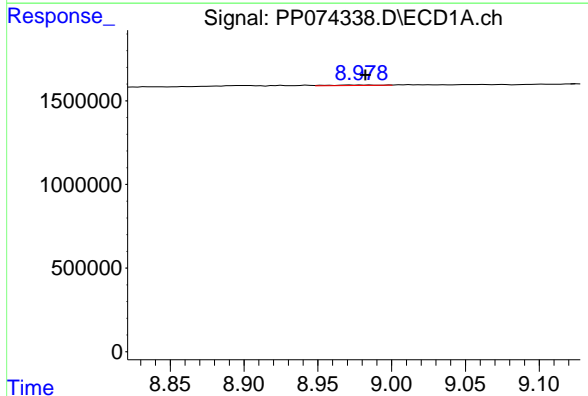
R.T.: 8.897 min
 Delta R.T.: 0.010 min
 Response: 101316
 Conc: 0.65 ng/ml

Instrument :
 ECD_P
 ClientSampleId :
 DDT ANALOG



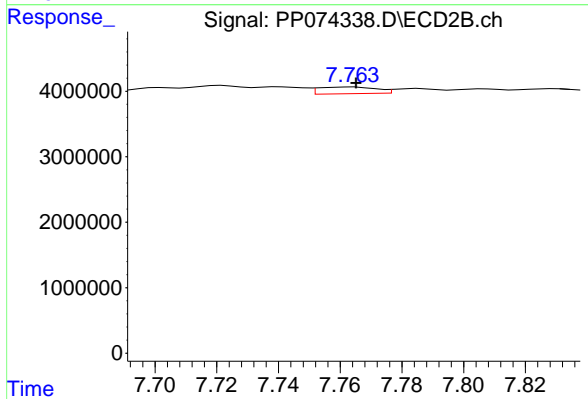
#41 AR-1268-1

R.T.: 7.702 min
 Delta R.T.: 0.000 min
 Response: 2668470
 Conc: 2.45 ng/ml



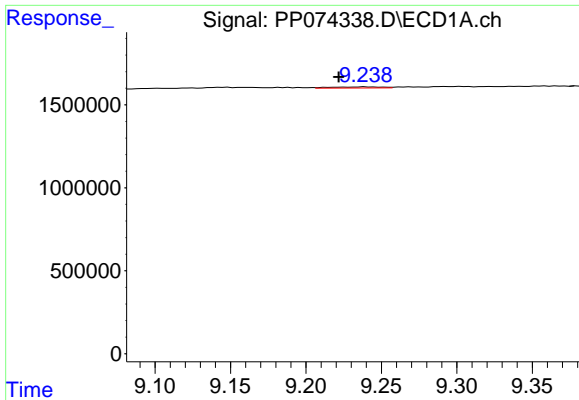
#42 AR-1268-2

R.T.: 8.979 min
 Delta R.T.: -0.003 min
 Response: 68861
 Conc: 0.48 ng/ml



#42 AR-1268-2

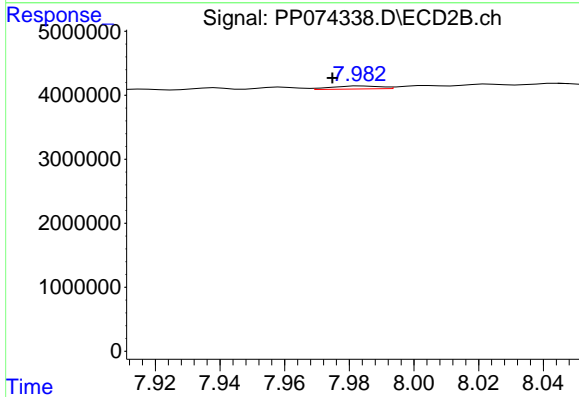
R.T.: 7.764 min
 Delta R.T.: -0.001 min
 Response: 1320266
 Conc: 1.24 ng/ml



#43 AR-1268-3

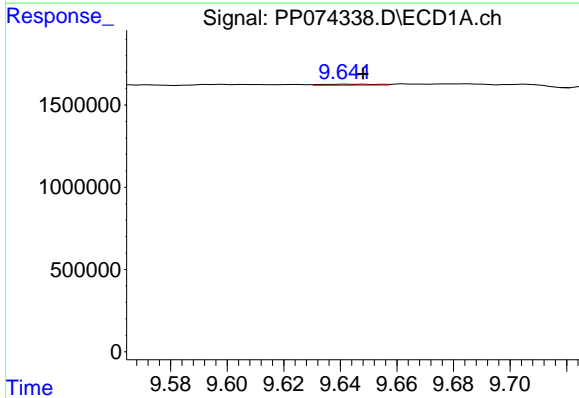
R.T.: 9.239 min
 Delta R.T.: 0.017 min
 Response: 146763
 Conc: 1.23 ng/ml

Instrument :
 ECD_P
 ClientSampleId :
 DDT ANALOG



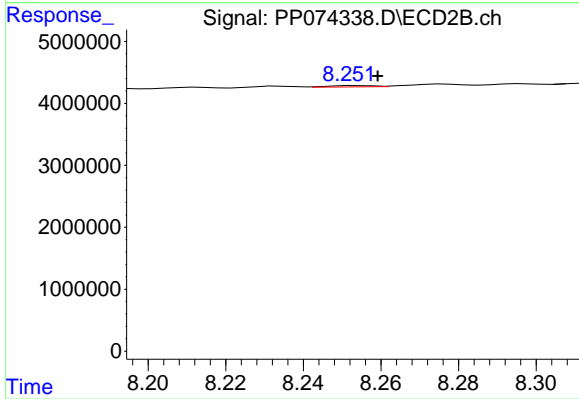
#43 AR-1268-3

R.T.: 7.984 min
 Delta R.T.: 0.009 min
 Response: 507081
 Conc: 0.61 ng/ml



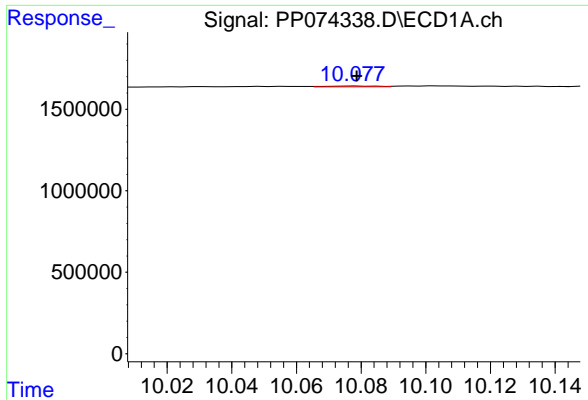
#44 AR-1268-4

R.T.: 9.642 min
 Delta R.T.: -0.006 min
 Response: 79151
 Conc: 1.35 ng/ml



#44 AR-1268-4

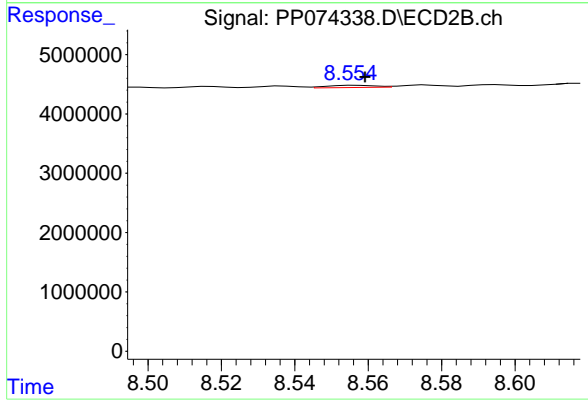
R.T.: 8.254 min
 Delta R.T.: -0.005 min
 Response: 169538
 Conc: 0.55 ng/ml



#45 AR-1268-5

R.T.: 10.079 min
 Delta R.T.: 0.000 min
 Response: 47139
 Conc: 0.13 ng/ml

Instrument :
 ECD_P
 ClientSampleId :
 DDT ANALOG



#45 AR-1268-5

R.T.: 8.557 min
 Delta R.T.: -0.002 min
 Response: 332847
 Conc: 0.13 ng/ml