

Data Path : Z:\pestpcbsrv\HPCHEM1\ECD\_P\Data\PP081325\  
 Data File : PP074339.D  
 Signal(s) : Signal #1: ECD1A.ch Signal #2: ECD2B.ch  
 Acq On : 13 Aug 2025 12:38  
 Operator : YP\AJ  
 Sample : PB169227BL  
 Misc :  
 ALS Vial : 7 Sample Multiplier: 1

Instrument :  
 ECD\_P  
 ClientSampleId :  
 PB169227BL

Integration File signal 1: autoint1.e  
 Integration File signal 2: autoint2.e  
 Quant Time: Aug 13 15:39:35 2025  
 Quant Method : Z:\pestpcbsrv\HPCHEM1\ECD\_P\methods\PP080125.M  
 Quant Title : GC EXTRACTABLES  
 QLast Update : Mon Aug 04 11:01:49 2025  
 Response via : Initial Calibration  
 Integrator: ChemStation

Volume Inj. : 2 µl  
 Signal #1 Phase : ZB-MR1 Signal #2 Phase: ZB-MR2  
 Signal #1 Info : 30Mx0.32mmx 0.50µ Signal #2 Info : 30M x 0.32mm x 0.25µm

Compound	RT#1	RT#2	Resp#1	Resp#2	ng/ml	ng/ml
System Monitoring Compounds						
1) SA Tetrachlo...	4.656	3.798	27219062	81722874	24.340	21.313
2) SA Decachlor...	10.438	8.818	22893081	128.4E6	23.573	21.357
Target Compounds						
3) L1 AR-1016-1	0.000	4.896	0	183935	N.D.	0.461 #
4) L1 AR-1016-2	0.000	4.970	0	257000	N.D.	1.368 #
5) L1 AR-1016-3	5.941f	5.092	709251	245811	17.883	2.317 #
6) L1 AR-1016-4	5.941f	5.117	709251	384783	21.793	3.523 #
7) L1 AR-1016-5	0.000	5.338	0	203763	N.D.	1.742 #
8) L2 AR-1221-1	4.845	4.000	94193	230947	5.619	4.705
9) L2 AR-1221-2	4.956	4.091	432551	1027670	34.327	28.634
10) L2 AR-1221-3	4.956f	4.182	432551	231258	11.807	1.710 #
11) L3 AR-1232-1	4.956f	4.182	432551	231258	14.896	2.281 #
12) L3 AR-1232-2	0.000	4.896	0	183935	N.D.	1.055 #
13) L3 AR-1232-3	0.000	5.092	0	245811	N.D.	5.365 #
14) L3 AR-1232-4	5.941f	5.163	709251	303398	45.850	5.230 #
15) L3 AR-1232-5	0.000	5.338	0	203763	N.D.	4.337 #
16) L4 AR-1242-1	0.000	4.896	0	183935	N.D.	0.533 #
17) L4 AR-1242-2	0.000	4.970	0	257000	N.D.	1.573 #
18) L4 AR-1242-3	5.941f	5.092	709251	245811	19.847	2.665 #
19) L4 AR-1242-4	5.941f	5.163	709251	303398	24.274	2.541 #
20) L4 AR-1242-5	6.747	5.695	1123333	299494	31.592	2.003 #
21) L5 AR-1248-1	0.000	4.896	0	183935	N.D.	0.860 #
22) L5 AR-1248-2	0.000	5.117	0	384783	N.D.	2.630 #
23) L5 AR-1248-3	0.000	5.163	0	303398	N.D.	1.769 #
24) L5 AR-1248-4	6.650	5.338	374866	203763	7.204	1.225 #
25) L5 AR-1248-5	6.747	5.747	1123333	3842386	19.727	13.206 #
26) L6 AR-1254-1	6.650	5.695	374866	299494	7.121	0.818 #
27) L6 AR-1254-2	6.895	5.838	171224	892750	2.154	3.209 #
28) L6 AR-1254-3	7.228	6.237	623430	425673	7.140	0.870 #
29) L6 AR-1254-4	7.516	6.463	68041	223028	1.066	0.607 #
30) L6 AR-1254-5	7.927	6.870	77771	509118	0.958	1.322 #
31) L7 AR-1260-1	7.442f	6.557	299610	241709	5.316	0.598 #
32) L7 AR-1260-2	7.652	6.705	124226	314516	1.823	1.006 #
33) L7 AR-1260-3	8.015	6.913	29479	412214	0.553	1.046 #
34) L7 AR-1260-4	8.246	7.187	54971	318691	0.878	1.095
35) L7 AR-1260-5	8.562	7.414	50645	222316	0.447	0.294 #
36) L8 AR-1262-1	8.246	6.913	54971	412214	0.725	0.732
37) L8 AR-1262-2	8.562	7.187	50645	318691	0.388	0.795 #
38) L8 AR-1262-3	0.000	7.696	0	396761	N.D.	1.104 #
39) L8 AR-1262-4	9.000	7.769	58236	463905	0.799	0.696
40) L8 AR-1262-5	9.654	8.253	46137	227648	0.906	0.804
41) L9 AR-1268-1	0.000	7.696	0	396761	N.D.	0.364 #

Data Path : Z:\pestpcbsrv\HPCHEM1\ECD\_P\Data\PP081325\  
 Data File : PP074339.D  
 Signal(s) : Signal #1: ECD1A.ch Signal #2: ECD2B.ch  
 Acq On : 13 Aug 2025 12:38  
 Operator : YP\AJ  
 Sample : PB169227BL  
 Misc :  
 ALS Vial : 7 Sample Multiplier: 1

Instrument :  
 ECD\_P  
 ClientSampleId :  
 PB169227BL

Integration File signal 1: autoint1.e  
 Integration File signal 2: autoint2.e  
 Quant Time: Aug 13 15:39:35 2025  
 Quant Method : Z:\pestpcbsrv\HPCHEM1\ECD\_P\methods\PP080125.M  
 Quant Title : GC EXTRACTABLES  
 QLast Update : Mon Aug 04 11:01:49 2025  
 Response via : Initial Calibration  
 Integrator: ChemStation

Volume Inj. : 2 µl  
 Signal #1 Phase : ZB-MR1 Signal #2 Phase: ZB-MR2  
 Signal #1 Info : 30Mx0.32mmx 0.50µ Signal #2 Info : 30M x 0.32mm x 0.25µm

	Compound	RT#1	RT#2	Resp#1	Resp#2	ng/ml	ng/ml
42)	L9 AR-1268-2	9.000	7.769	58236	463905	0.406	0.437
43)	L9 AR-1268-3	9.214	7.987	44214	762791	0.370	0.917 #
44)	L9 AR-1268-4	9.654	8.253	46137	227648	0.784	0.739
45)	L9 AR-1268-5	10.094	8.568	114025	388496	0.324	0.152 #

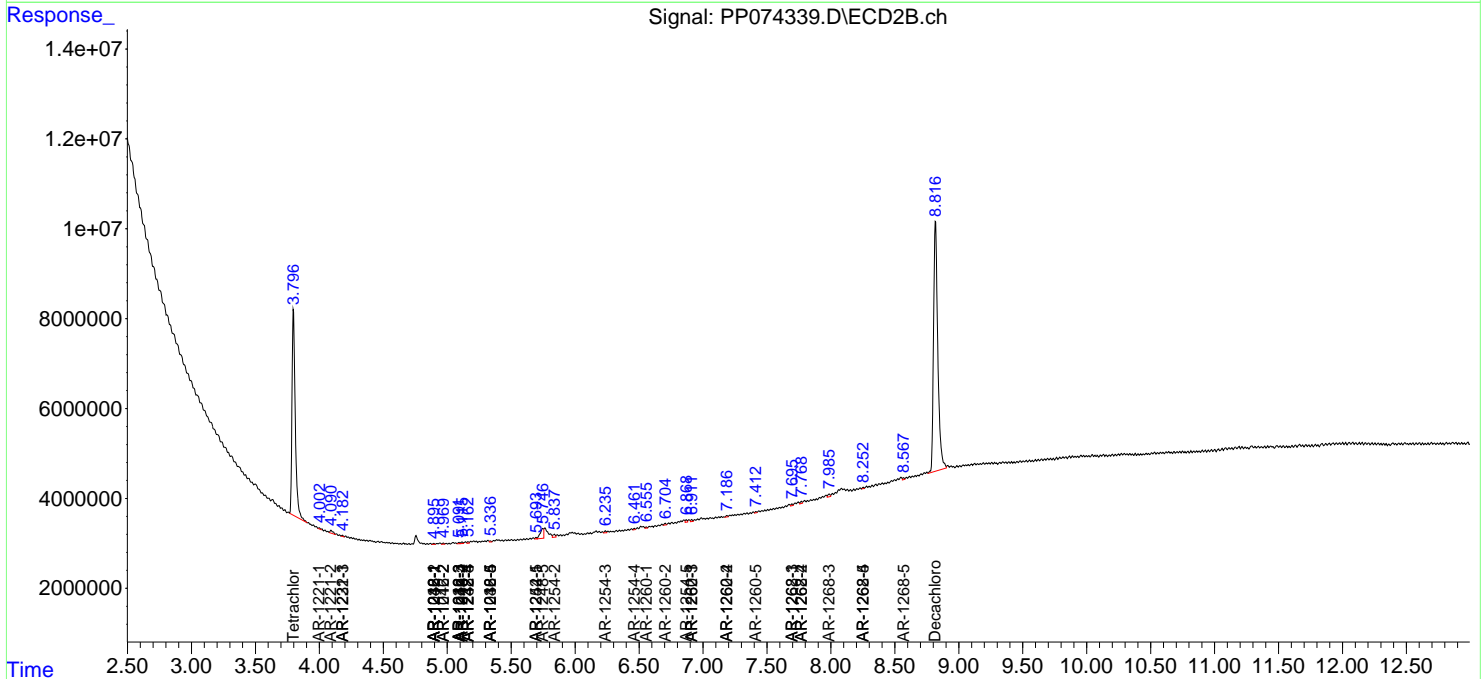
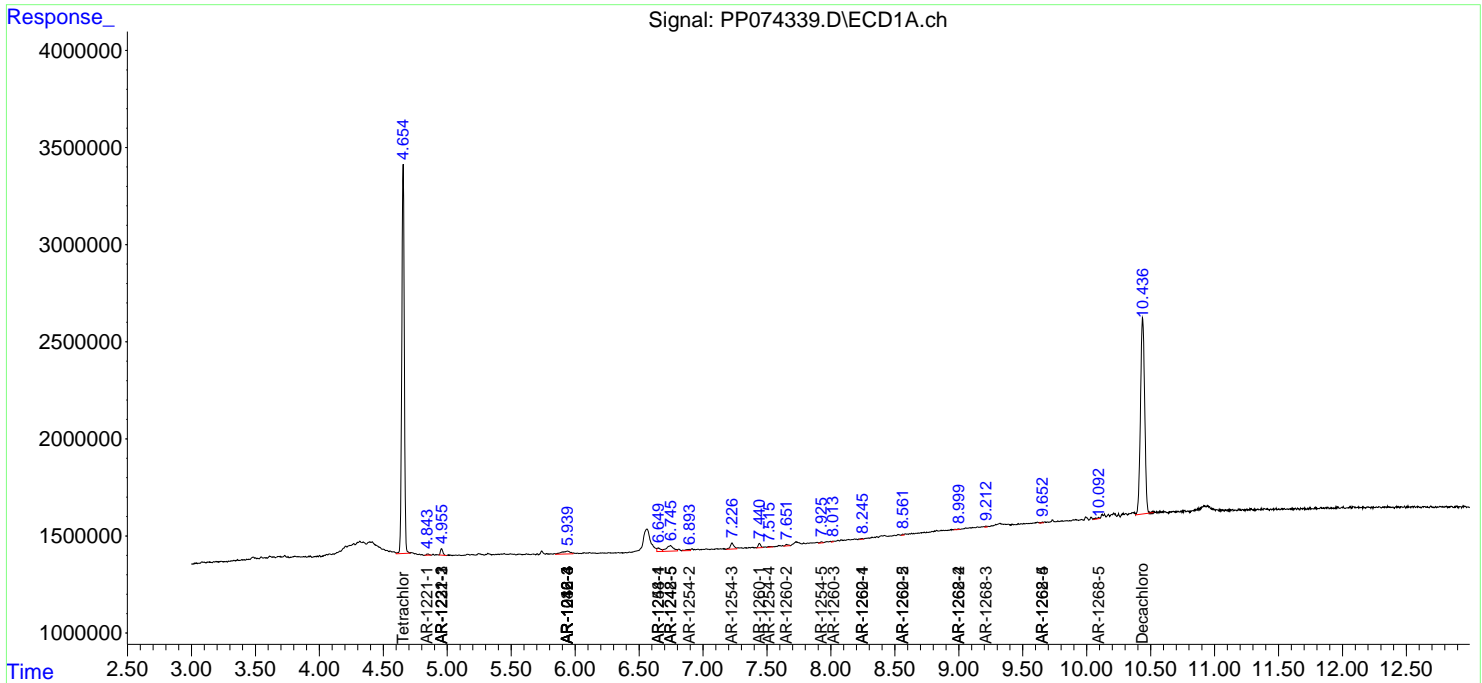
(f)=RT Delta > 1/2 Window (#)=Amounts differ by > 25% (m)=manual int.

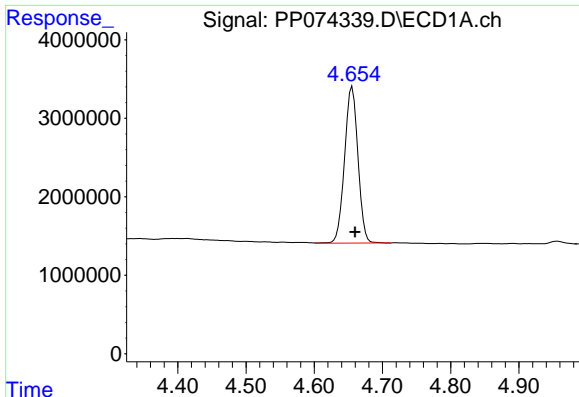
Data Path : Z:\pestpcbsrv\HPCHEM1\ECD\_P\Data\PP081325\  
 Data File : PP074339.D  
 Signal(s) : Signal #1: ECD1A.ch Signal #2: ECD2B.ch  
 Acq On : 13 Aug 2025 12:38  
 Operator : YP\AJ  
 Sample : PB169227BL  
 Misc :  
 ALS Vial : 7 Sample Multiplier: 1

Instrument :  
 ECD\_P  
 ClientSampleId :  
 PB169227BL

Integration File signal 1: autoint1.e  
 Integration File signal 2: autoint2.e  
 Quant Time: Aug 13 15:39:35 2025  
 Quant Method : Z:\pestpcbsrv\HPCHEM1\ECD\_P\methods\PP080125.M  
 Quant Title : GC EXTRACTABLES  
 QLast Update : Mon Aug 04 11:01:49 2025  
 Response via : Initial Calibration  
 Integrator: ChemStation

Volume Inj. : 2 µl  
 Signal #1 Phase : ZB-MR1 Signal #2 Phase: ZB-MR2  
 Signal #1 Info : 30Mx0.32mmx 0.50µ Signal #2 Info : 30M x 0.32mm x 0.25µm

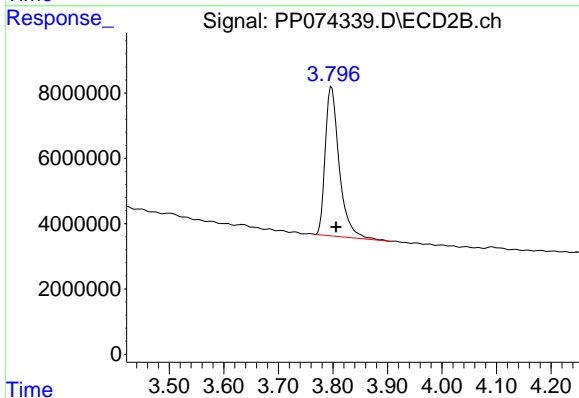




#1 Tetrachloro-m-xylene

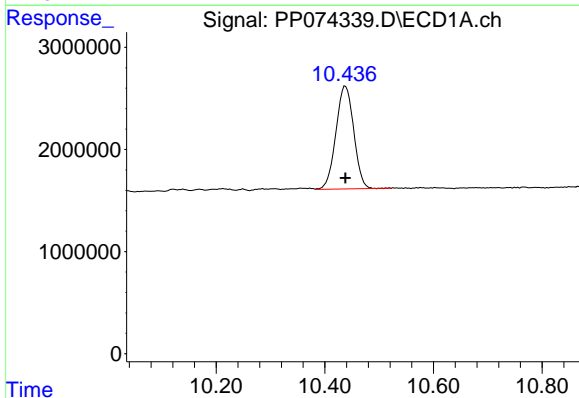
R.T.: 4.656 min  
 Delta R.T.: -0.004 min  
 Response: 27219062  
 Conc: 24.34 ng/ml

Instrument :  
 ECD\_P  
 ClientSampleId :  
 PB169227BL



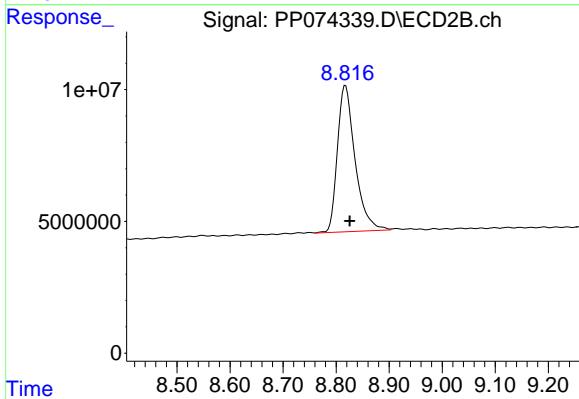
#1 Tetrachloro-m-xylene

R.T.: 3.798 min  
 Delta R.T.: -0.008 min  
 Response: 81722874  
 Conc: 21.31 ng/ml



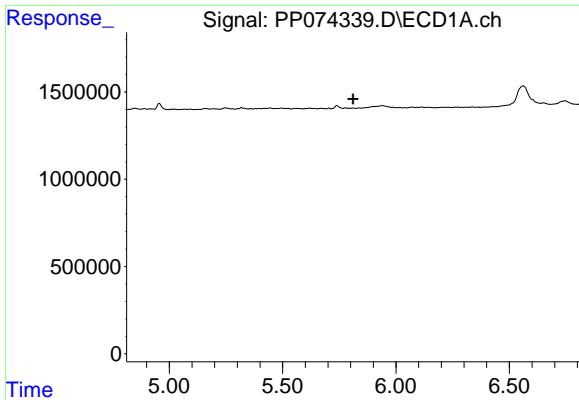
#2 Decachlorobiphenyl

R.T.: 10.438 min  
 Delta R.T.: 0.000 min  
 Response: 22893081  
 Conc: 23.57 ng/ml



#2 Decachlorobiphenyl

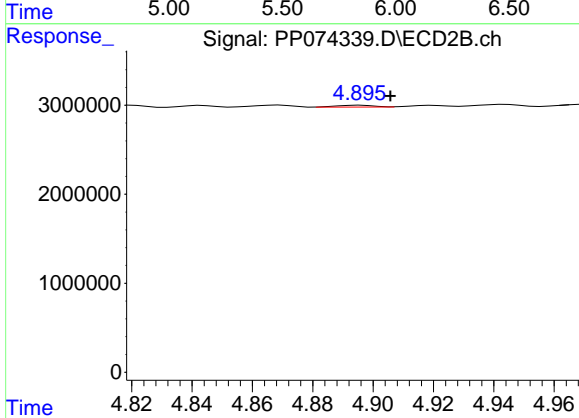
R.T.: 8.818 min  
 Delta R.T.: -0.008 min  
 Response: 128433425  
 Conc: 21.36 ng/ml



#3 AR-1016-1

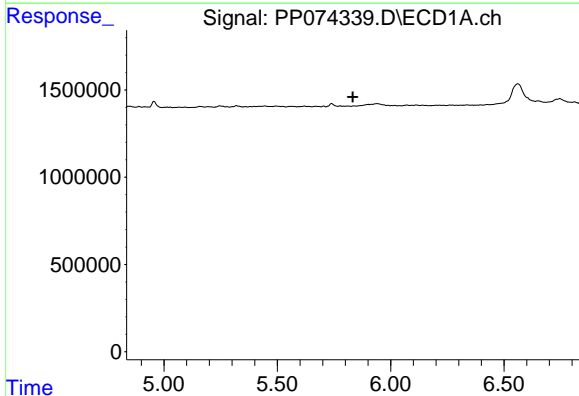
R.T.: 0.000 min  
 Exp R.T.: 5.812 min  
 Response: 0  
 Conc: N.D.

Instrument :  
 ECD\_P  
 ClientSampleId :  
 PB169227BL



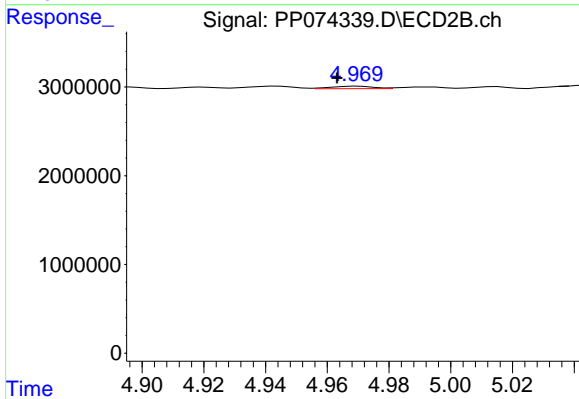
#3 AR-1016-1

R.T.: 4.896 min  
 Delta R.T.: -0.010 min  
 Response: 183935  
 Conc: 0.46 ng/ml



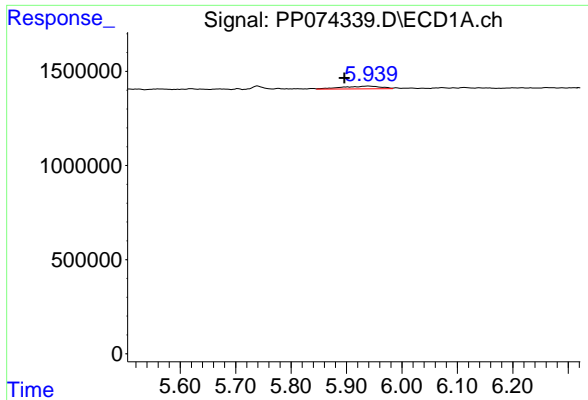
#4 AR-1016-2

R.T.: 0.000 min  
 Exp R.T.: 5.833 min  
 Response: 0  
 Conc: N.D.



#4 AR-1016-2

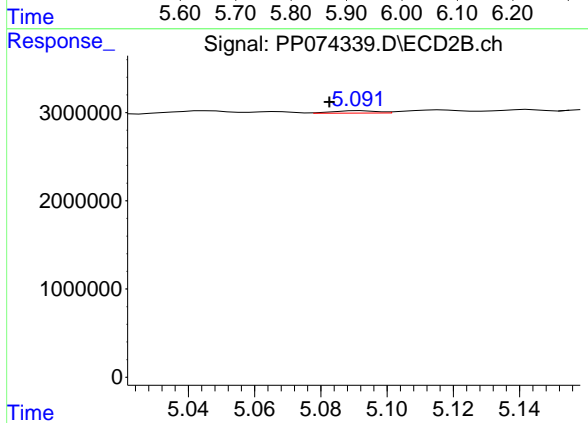
R.T.: 4.970 min  
 Delta R.T.: 0.007 min  
 Response: 257000  
 Conc: 1.37 ng/ml



#5 AR-1016-3

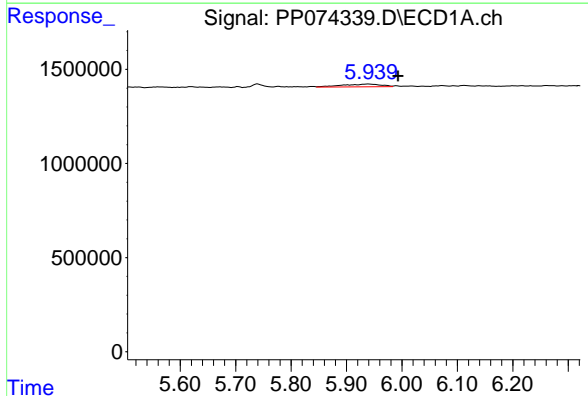
R.T.: 5.941 min  
 Delta R.T.: 0.045 min  
 Response: 709251  
 Conc: 17.88 ng/ml

Instrument :  
 ECD\_P  
 ClientSampleId :  
 PB169227BL



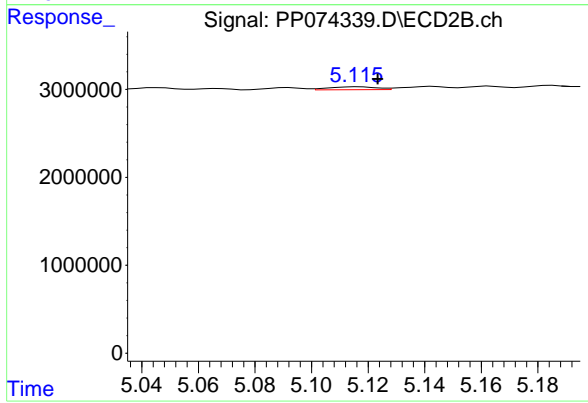
#5 AR-1016-3

R.T.: 5.092 min  
 Delta R.T.: 0.009 min  
 Response: 245811  
 Conc: 2.32 ng/ml



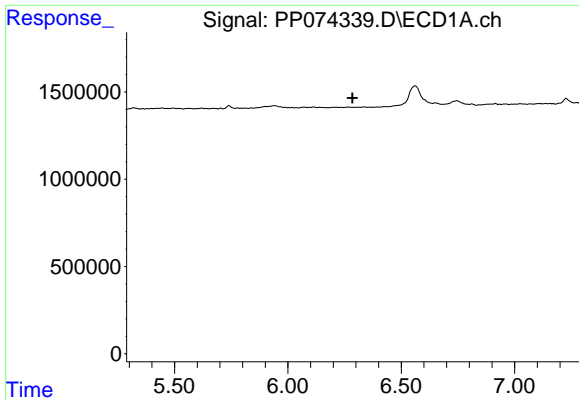
#6 AR-1016-4

R.T.: 5.941 min  
 Delta R.T.: -0.052 min  
 Response: 709251  
 Conc: 21.79 ng/ml



#6 AR-1016-4

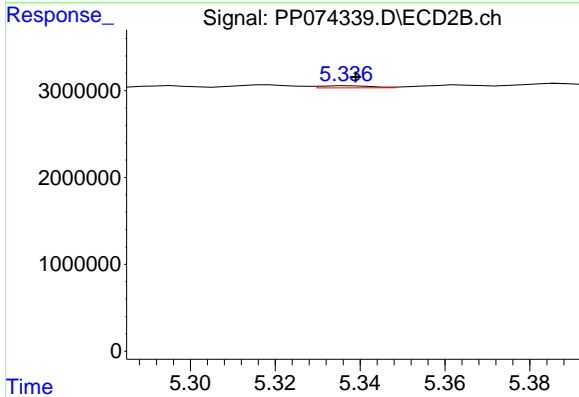
R.T.: 5.117 min  
 Delta R.T.: -0.007 min  
 Response: 384783  
 Conc: 3.52 ng/ml



#7 AR-1016-5

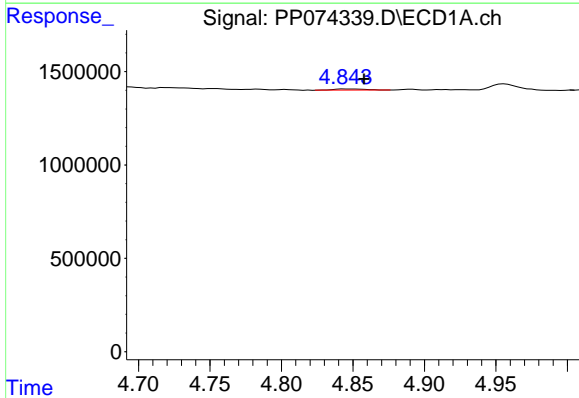
R.T.: 0.000 min  
 Exp R.T.: 6.286 min  
 Response: 0  
 Conc: N.D.

Instrument :  
 ECD\_P  
 ClientSampleId :  
 PB169227BL



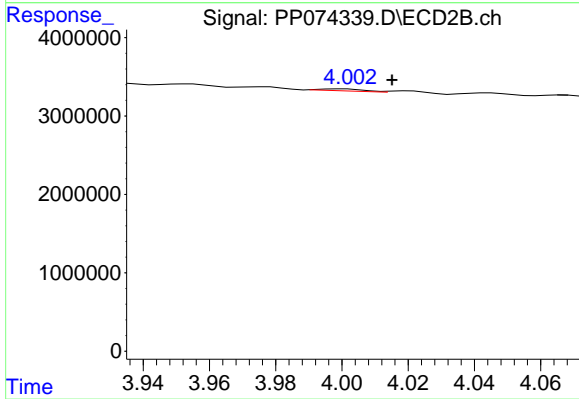
#7 AR-1016-5

R.T.: 5.338 min  
 Delta R.T.: -0.001 min  
 Response: 203763  
 Conc: 1.74 ng/ml



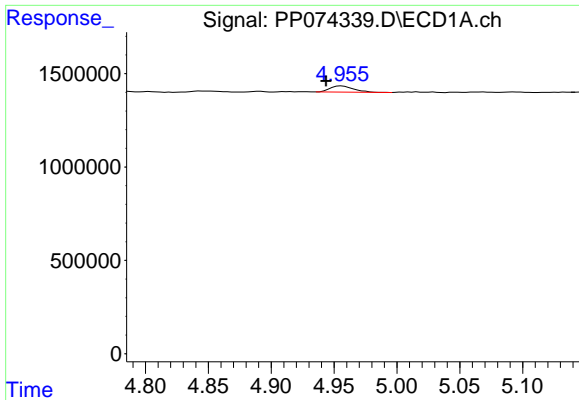
#8 AR-1221-1

R.T.: 4.845 min  
 Delta R.T.: -0.013 min  
 Response: 94193  
 Conc: 5.62 ng/ml



#8 AR-1221-1

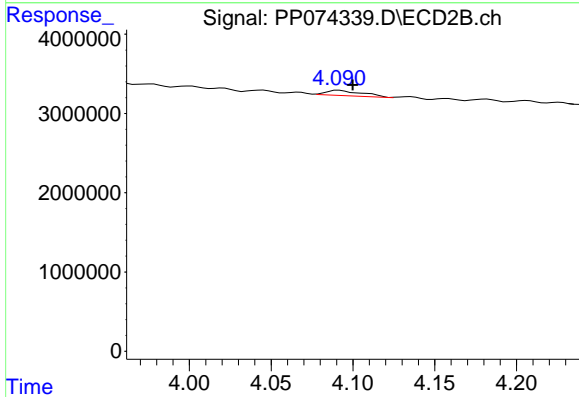
R.T.: 4.000 min  
 Delta R.T.: -0.015 min  
 Response: 230947  
 Conc: 4.71 ng/ml



#9 AR-1221-2

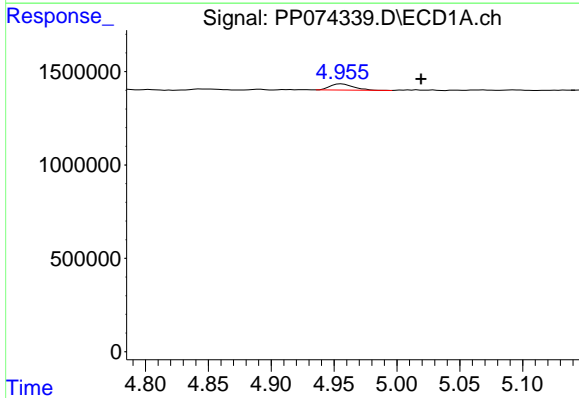
R.T.: 4.956 min  
 Delta R.T.: 0.012 min  
 Response: 432551  
 Conc: 34.33 ng/ml

Instrument :  
 ECD\_P  
 ClientSampleId :  
 PB169227BL



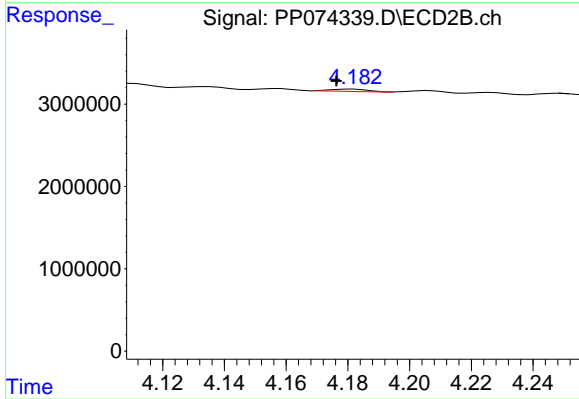
#9 AR-1221-2

R.T.: 4.091 min  
 Delta R.T.: -0.008 min  
 Response: 1027670  
 Conc: 28.63 ng/ml



#10 AR-1221-3

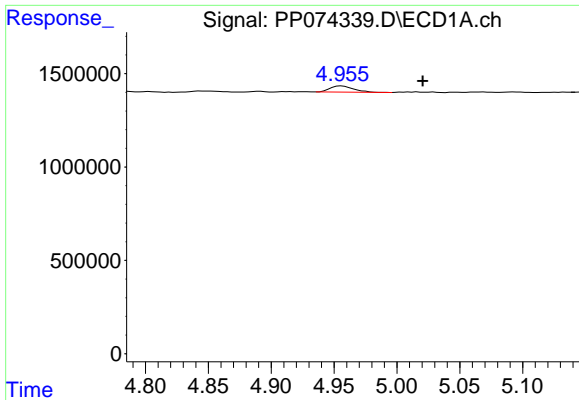
R.T.: 4.956 min  
 Delta R.T.: -0.063 min  
 Response: 432551  
 Conc: 11.81 ng/ml



#10 AR-1221-3

R.T.: 4.182 min  
 Delta R.T.: 0.005 min  
 Response: 231258  
 Conc: 1.71 ng/ml

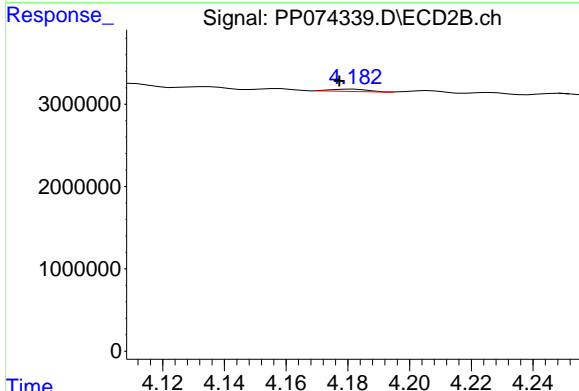




#11 AR-1232-1

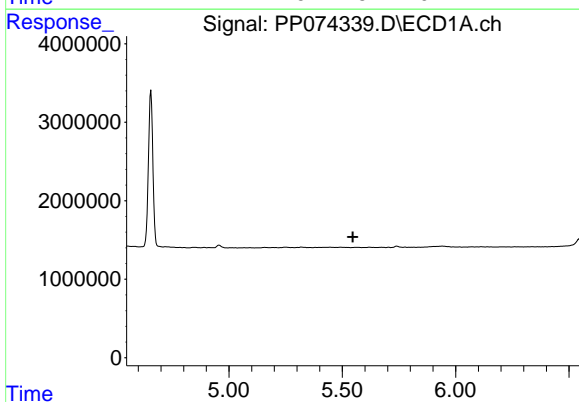
R.T.: 4.956 min  
 Delta R.T.: -0.064 min  
 Response: 432551  
 Conc: 14.90 ng/ml

Instrument :  
 ECD\_P  
 ClientSampleId :  
 PB169227BL



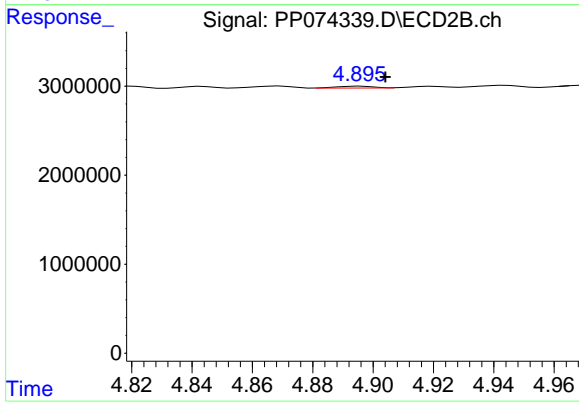
#11 AR-1232-1

R.T.: 4.182 min  
 Delta R.T.: 0.004 min  
 Response: 231258  
 Conc: 2.28 ng/ml



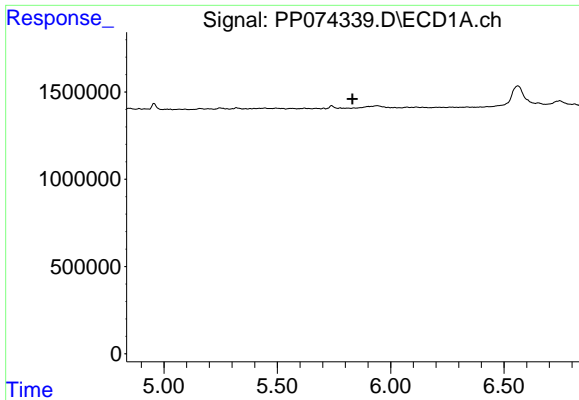
#12 AR-1232-2

R.T.: 0.000 min  
 Exp R.T. : 5.546 min  
 Response: 0  
 Conc: N.D.



#12 AR-1232-2

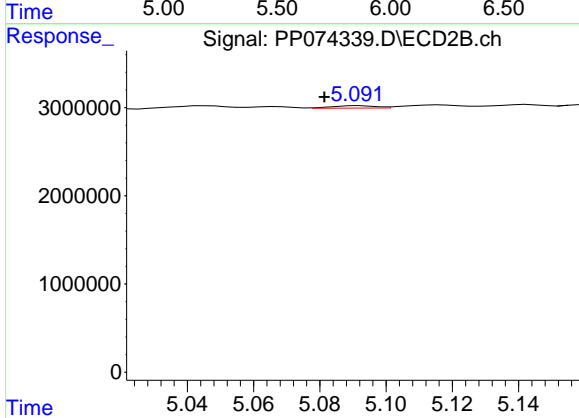
R.T.: 4.896 min  
 Delta R.T.: -0.008 min  
 Response: 183935  
 Conc: 1.06 ng/ml



#13 AR-1232-3

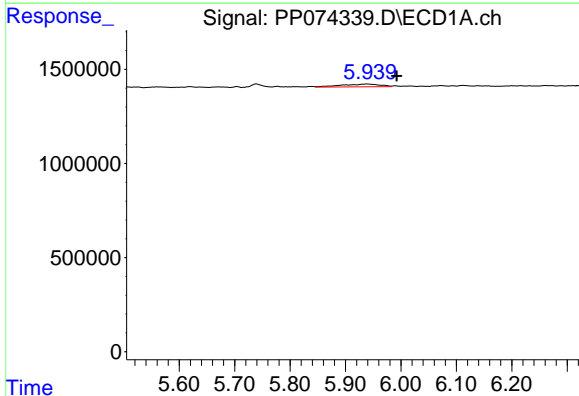
R.T.: 0.000 min  
 Exp R.T.: 5.832 min  
 Response: 0  
 Conc: N.D.

Instrument :  
 ECD\_P  
 ClientSampleId :  
 PB169227BL



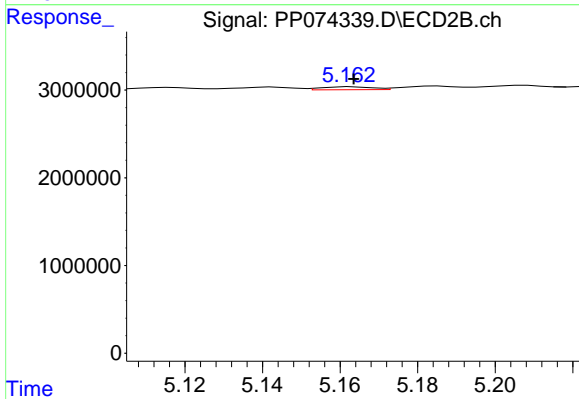
#13 AR-1232-3

R.T.: 5.092 min  
 Delta R.T.: 0.010 min  
 Response: 245811  
 Conc: 5.37 ng/ml



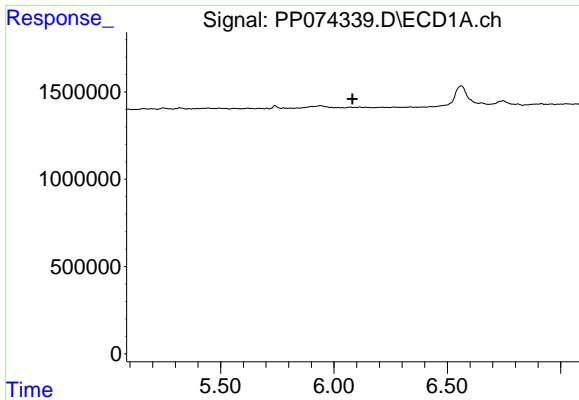
#14 AR-1232-4

R.T.: 5.941 min  
 Delta R.T.: -0.052 min  
 Response: 709251  
 Conc: 45.85 ng/ml



#14 AR-1232-4

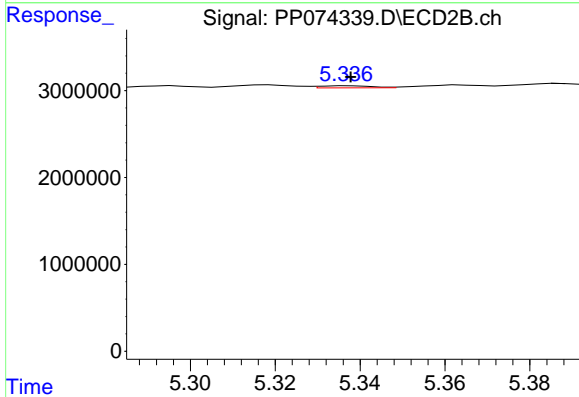
R.T.: 5.163 min  
 Delta R.T.: 0.000 min  
 Response: 303398  
 Conc: 5.23 ng/ml



#15 AR-1232-5

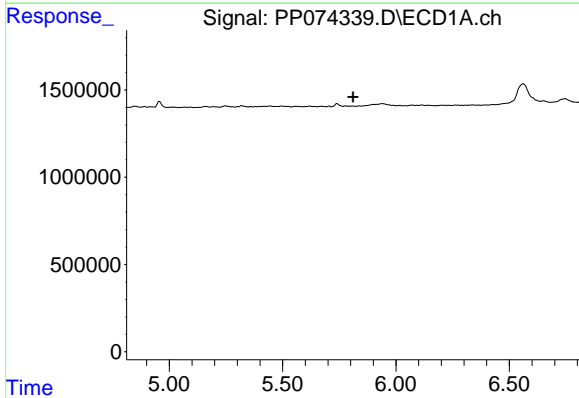
R.T.: 0.000 min  
 Exp R.T.: 6.082 min  
 Response: 0  
 Conc: N.D.

Instrument :  
 ECD\_P  
 ClientSampleId :  
 PB169227BL



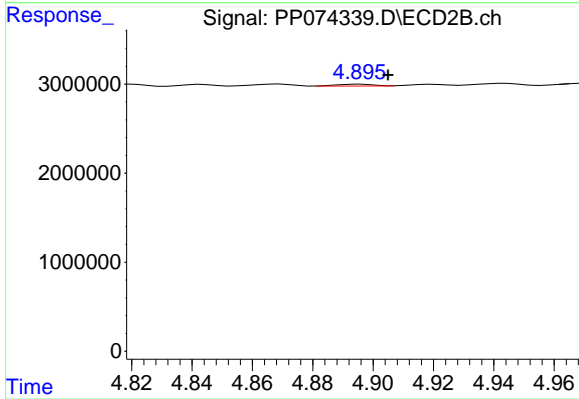
#15 AR-1232-5

R.T.: 5.338 min  
 Delta R.T.: 0.000 min  
 Response: 203763  
 Conc: 4.34 ng/ml



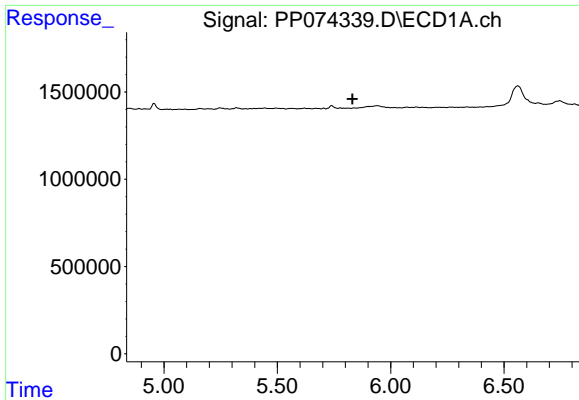
#16 AR-1242-1

R.T.: 0.000 min  
 Exp R.T.: 5.811 min  
 Response: 0  
 Conc: N.D.



#16 AR-1242-1

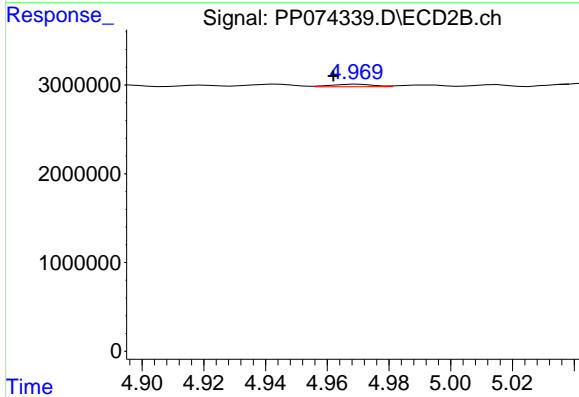
R.T.: 4.896 min  
 Delta R.T.: -0.009 min  
 Response: 183935  
 Conc: 0.53 ng/ml



#17 AR-1242-2

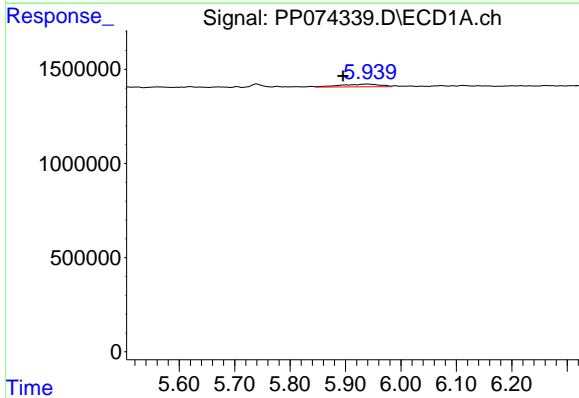
R.T.: 0.000 min  
 Exp R.T.: 5.832 min  
 Response: 0  
 Conc: N.D.

Instrument :  
 ECD\_P  
 ClientSampleId :  
 PB169227BL



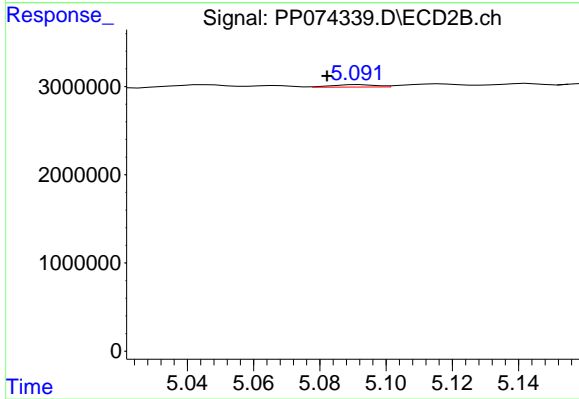
#17 AR-1242-2

R.T.: 4.970 min  
 Delta R.T.: 0.008 min  
 Response: 257000  
 Conc: 1.57 ng/ml



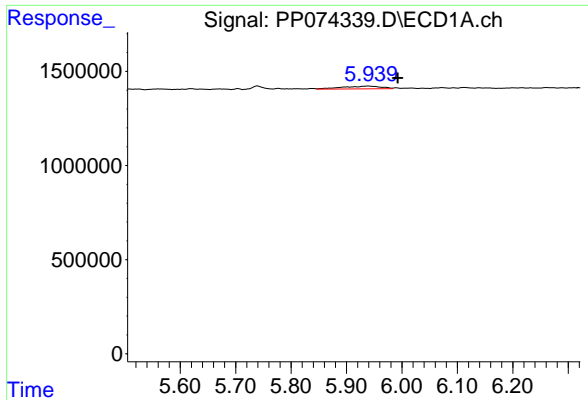
#18 AR-1242-3

R.T.: 5.941 min  
 Delta R.T.: 0.045 min  
 Response: 709251  
 Conc: 19.85 ng/ml



#18 AR-1242-3

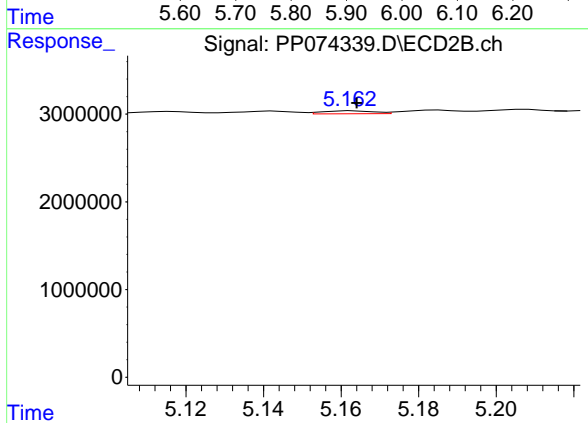
R.T.: 5.092 min  
 Delta R.T.: 0.010 min  
 Response: 245811  
 Conc: 2.66 ng/ml



#19 AR-1242-4

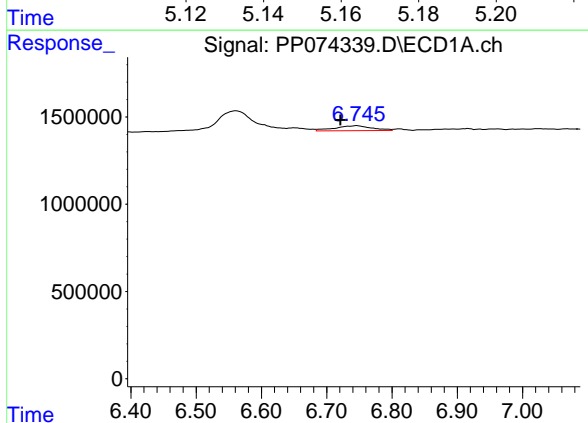
R.T.: 5.941 min  
 Delta R.T.: -0.052 min  
 Response: 709251  
 Conc: 24.27 ng/ml

Instrument :  
 ECD\_P  
 ClientSampleId :  
 PB169227BL



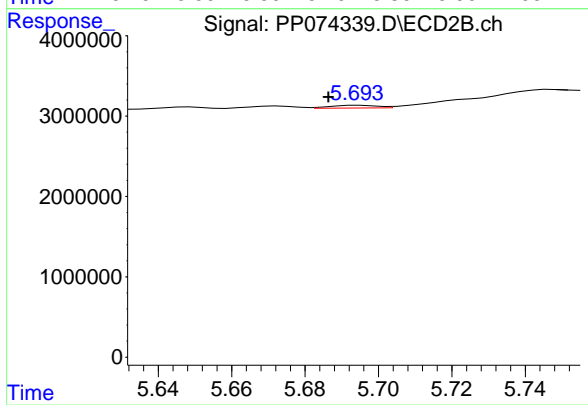
#19 AR-1242-4

R.T.: 5.163 min  
 Delta R.T.: -0.001 min  
 Response: 303398  
 Conc: 2.54 ng/ml



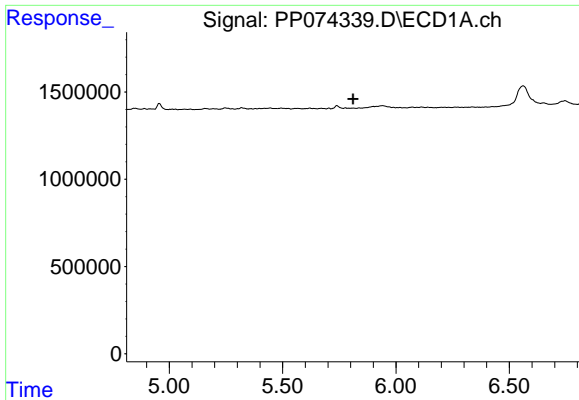
#20 AR-1242-5

R.T.: 6.747 min  
 Delta R.T.: 0.026 min  
 Response: 1123333  
 Conc: 31.59 ng/ml



#20 AR-1242-5

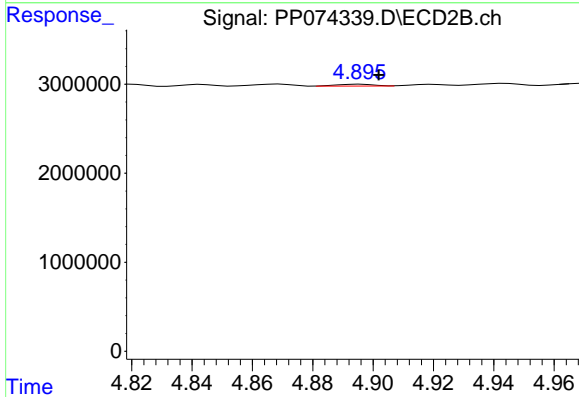
R.T.: 5.695 min  
 Delta R.T.: 0.009 min  
 Response: 299494  
 Conc: 2.00 ng/ml



#21 AR-1248-1

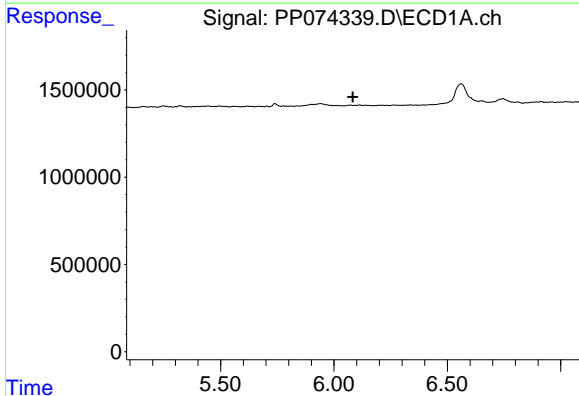
R.T.: 0.000 min  
 Exp R.T.: 5.811 min  
 Response: 0  
 Conc: N.D.

Instrument :  
 ECD\_P  
 ClientSampleId :  
 PB169227BL



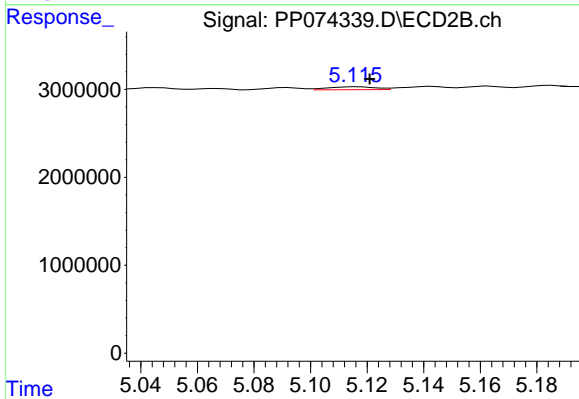
#21 AR-1248-1

R.T.: 4.896 min  
 Delta R.T.: -0.006 min  
 Response: 183935  
 Conc: 0.86 ng/ml



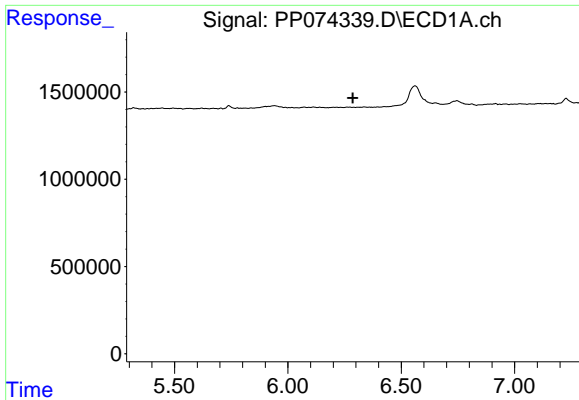
#22 AR-1248-2

R.T.: 0.000 min  
 Exp R.T.: 6.083 min  
 Response: 0  
 Conc: N.D.



#22 AR-1248-2

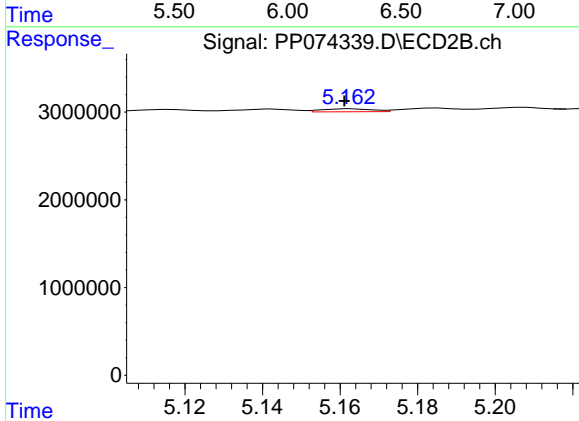
R.T.: 5.117 min  
 Delta R.T.: -0.004 min  
 Response: 384783  
 Conc: 2.63 ng/ml



#23 AR-1248-3

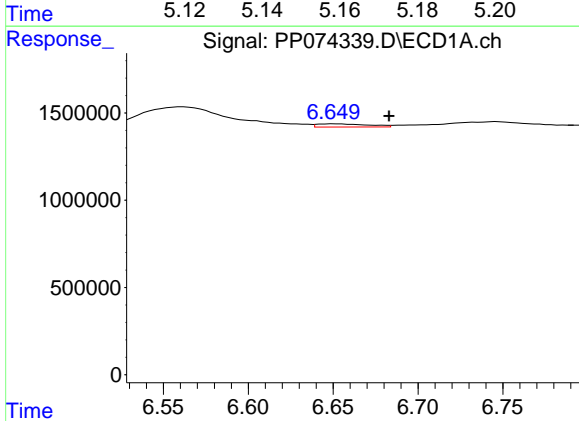
R.T.: 0.000 min  
 Exp R.T.: 6.286 min  
 Response: 0  
 Conc: N.D.

Instrument :  
 ECD\_P  
 ClientSampleId :  
 PB169227BL



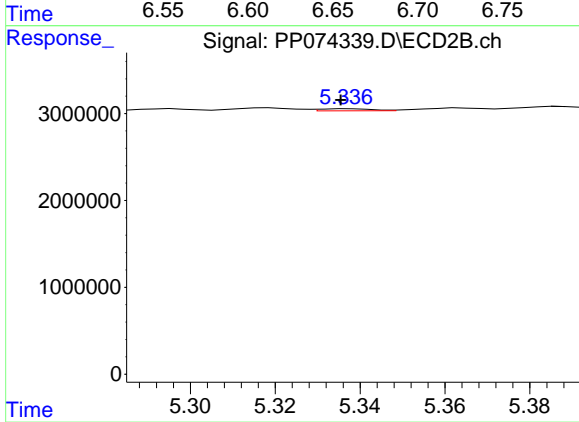
#23 AR-1248-3

R.T.: 5.163 min  
 Delta R.T.: 0.002 min  
 Response: 303398  
 Conc: 1.77 ng/ml



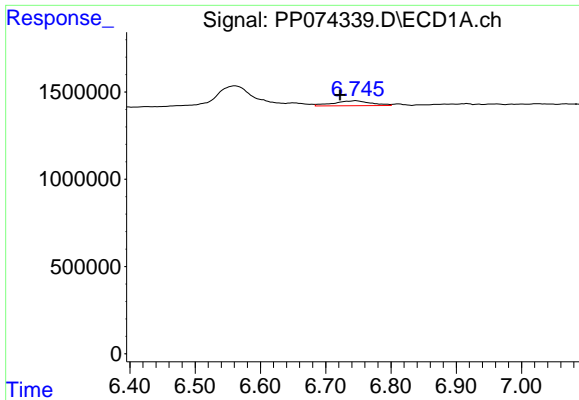
#24 AR-1248-4

R.T.: 6.650 min  
 Delta R.T.: -0.033 min  
 Response: 374866  
 Conc: 7.20 ng/ml



#24 AR-1248-4

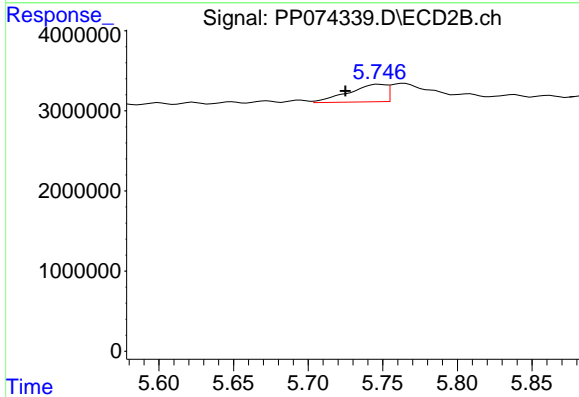
R.T.: 5.338 min  
 Delta R.T.: 0.002 min  
 Response: 203763  
 Conc: 1.22 ng/ml



#25 AR-1248-5

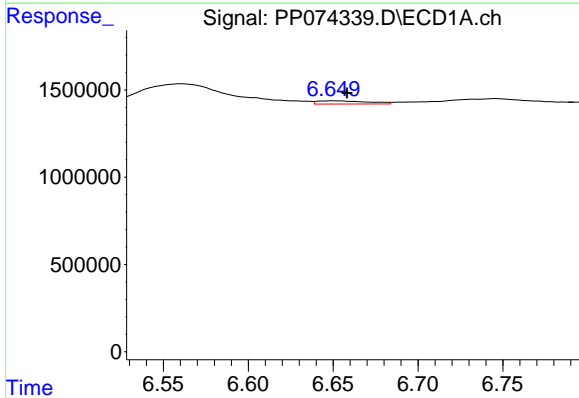
R.T.: 6.747 min  
 Delta R.T.: 0.024 min  
 Response: 1123333  
 Conc: 19.73 ng/ml

Instrument :  
 ECD\_P  
 ClientSampleId :  
 PB169227BL



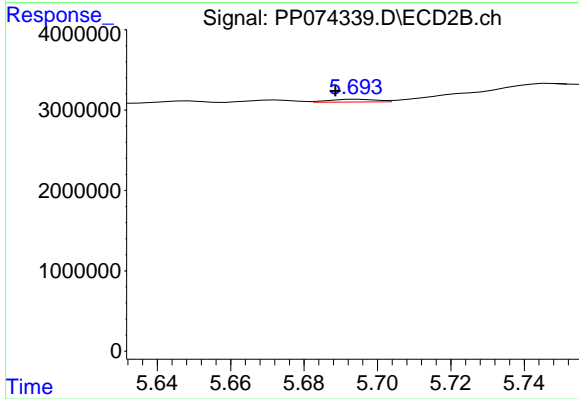
#25 AR-1248-5

R.T.: 5.747 min  
 Delta R.T.: 0.022 min  
 Response: 3842386  
 Conc: 13.21 ng/ml



#26 AR-1254-1

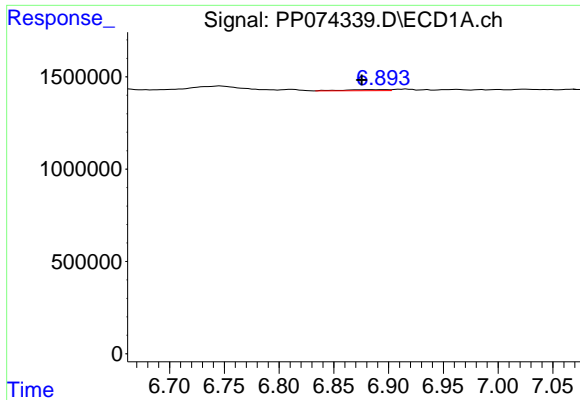
R.T.: 6.650 min  
 Delta R.T.: -0.008 min  
 Response: 374866  
 Conc: 7.12 ng/ml



#26 AR-1254-1

R.T.: 5.695 min  
 Delta R.T.: 0.006 min  
 Response: 299494  
 Conc: 0.82 ng/ml

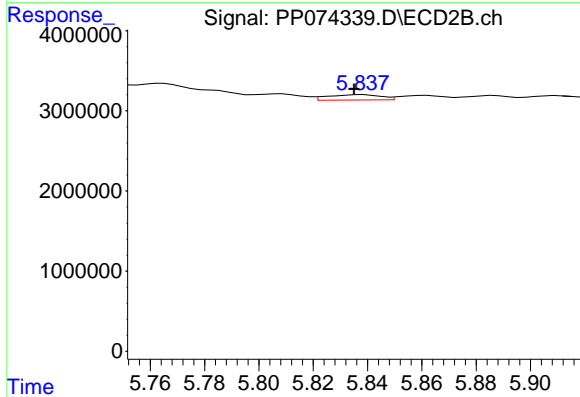




#27 AR-1254-2

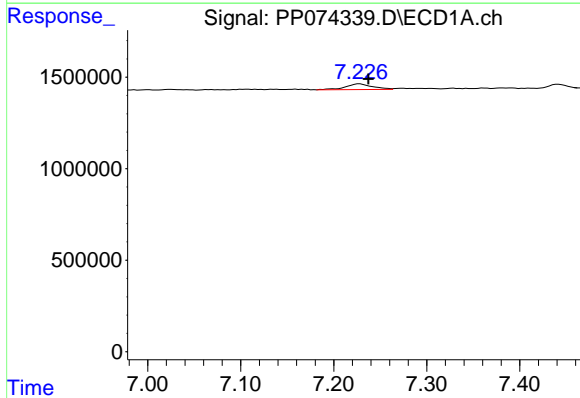
R.T.: 6.895 min  
 Delta R.T.: 0.019 min  
 Response: 171224  
 Conc: 2.15 ng/ml

Instrument :  
 ECD\_P  
 ClientSampleId :  
 PB169227BL



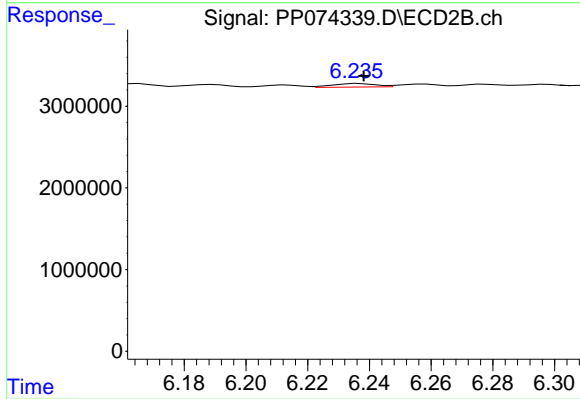
#27 AR-1254-2

R.T.: 5.838 min  
 Delta R.T.: 0.003 min  
 Response: 892750  
 Conc: 3.21 ng/ml



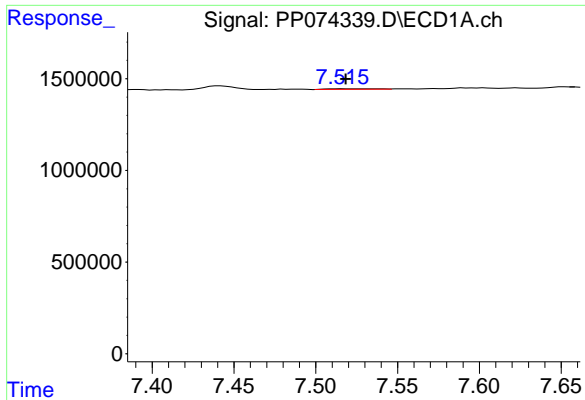
#28 AR-1254-3

R.T.: 7.228 min  
 Delta R.T.: -0.009 min  
 Response: 623430  
 Conc: 7.14 ng/ml



#28 AR-1254-3

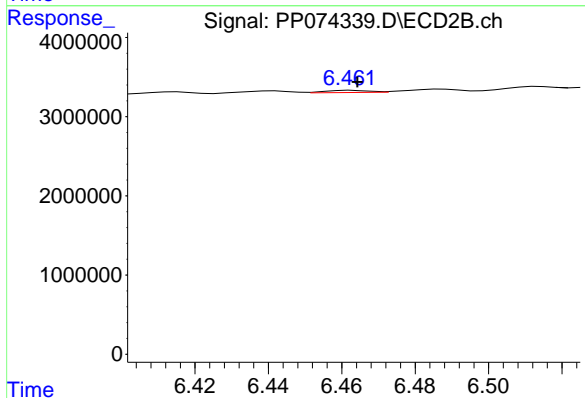
R.T.: 6.237 min  
 Delta R.T.: -0.002 min  
 Response: 425673  
 Conc: 0.87 ng/ml



#29 AR-1254-4

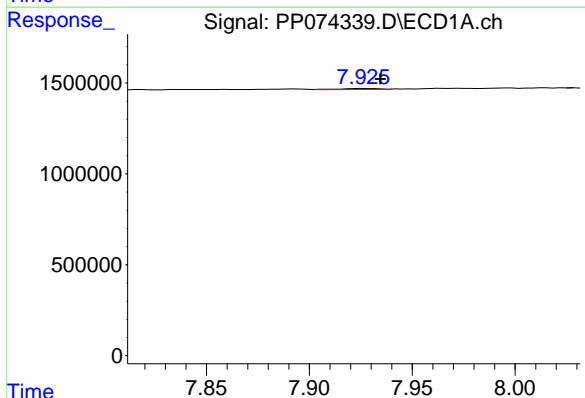
R.T.: 7.516 min  
 Delta R.T.: -0.003 min  
 Response: 68041  
 Conc: 1.07 ng/ml

Instrument :  
 ECD\_P  
 ClientSampleId :  
 PB169227BL



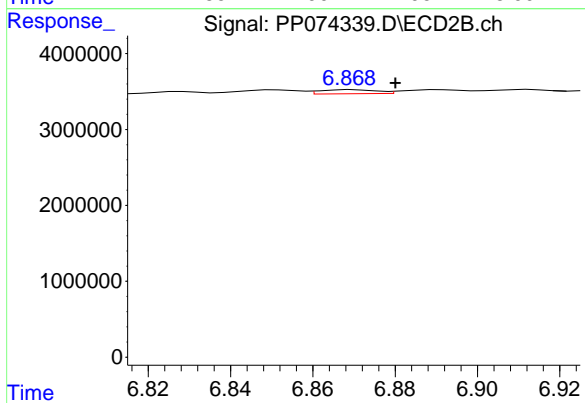
#29 AR-1254-4

R.T.: 6.463 min  
 Delta R.T.: -0.002 min  
 Response: 223028  
 Conc: 0.61 ng/ml



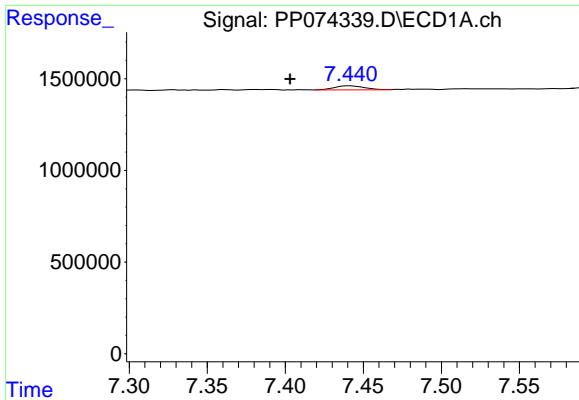
#30 AR-1254-5

R.T.: 7.927 min  
 Delta R.T.: -0.007 min  
 Response: 77771  
 Conc: 0.96 ng/ml



#30 AR-1254-5

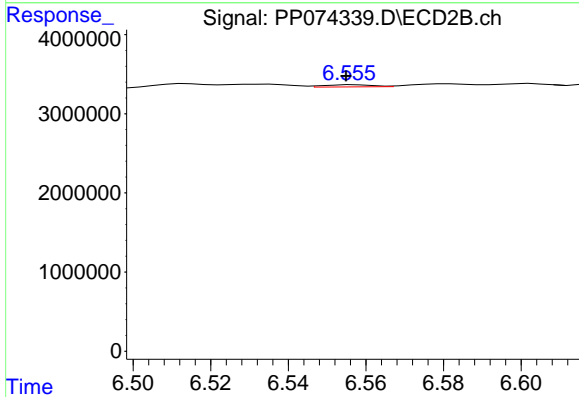
R.T.: 6.870 min  
 Delta R.T.: -0.010 min  
 Response: 509118  
 Conc: 1.32 ng/ml



#31 AR-1260-1

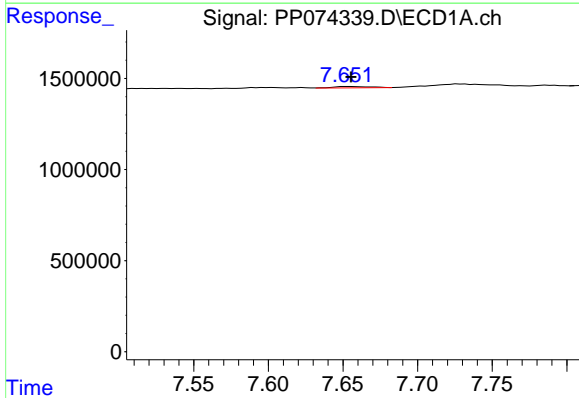
R.T.: 7.442 min  
 Delta R.T.: 0.038 min  
 Response: 299610  
 Conc: 5.32 ng/ml

Instrument :  
 ECD\_P  
 ClientSampleId :  
 PB169227BL



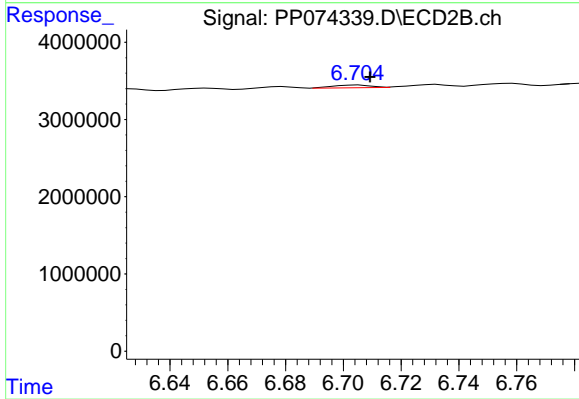
#31 AR-1260-1

R.T.: 6.557 min  
 Delta R.T.: 0.002 min  
 Response: 241709  
 Conc: 0.60 ng/ml



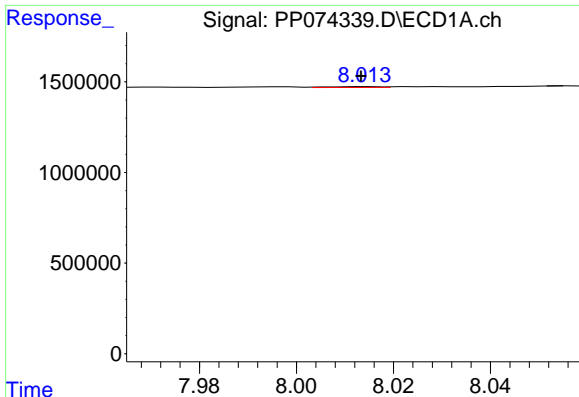
#32 AR-1260-2

R.T.: 7.652 min  
 Delta R.T.: -0.003 min  
 Response: 124226  
 Conc: 1.82 ng/ml



#32 AR-1260-2

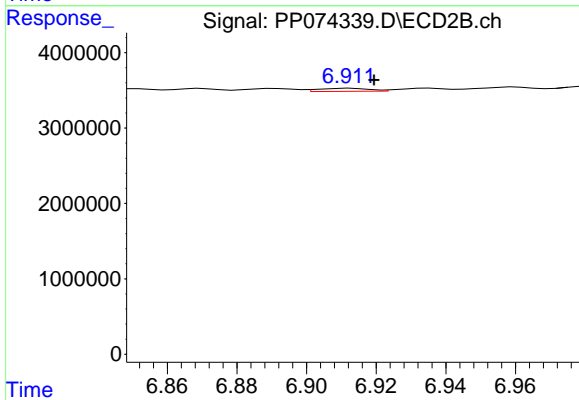
R.T.: 6.705 min  
 Delta R.T.: -0.004 min  
 Response: 314516  
 Conc: 1.01 ng/ml



#33 AR-1260-3

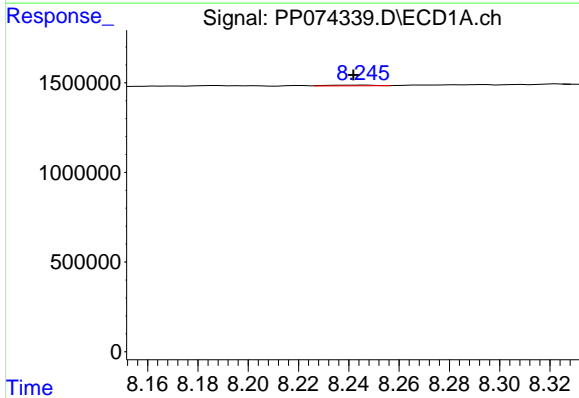
R.T.: 8.015 min  
 Delta R.T.: 0.002 min  
 Response: 29479  
 Conc: 0.55 ng/ml

Instrument :  
 ECD\_P  
 ClientSampleId :  
 PB169227BL



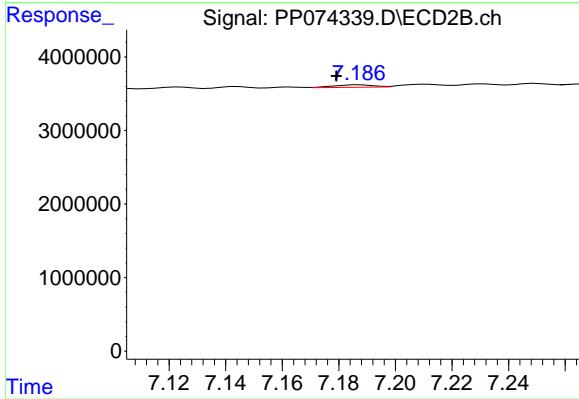
#33 AR-1260-3

R.T.: 6.913 min  
 Delta R.T.: -0.007 min  
 Response: 412214  
 Conc: 1.05 ng/ml



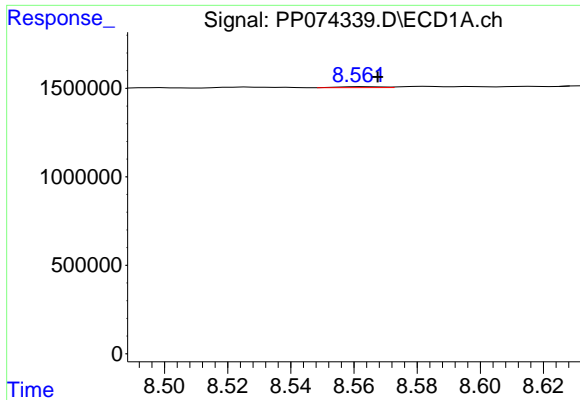
#34 AR-1260-4

R.T.: 8.246 min  
 Delta R.T.: 0.004 min  
 Response: 54971  
 Conc: 0.88 ng/ml



#34 AR-1260-4

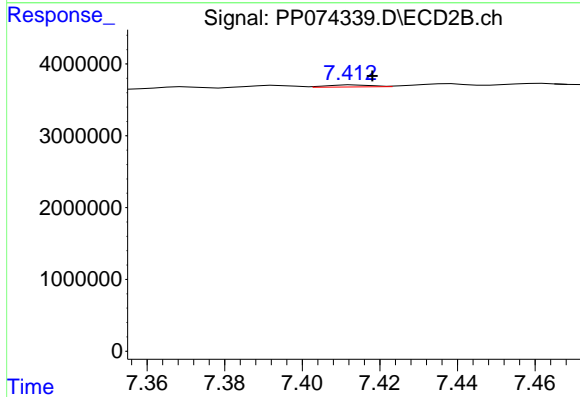
R.T.: 7.187 min  
 Delta R.T.: 0.008 min  
 Response: 318691  
 Conc: 1.10 ng/ml



#35 AR-1260-5

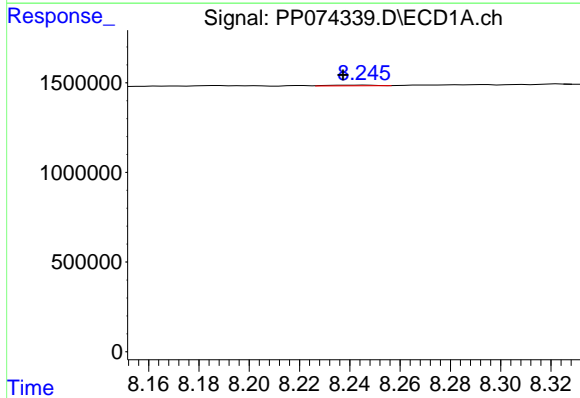
R.T.: 8.562 min  
 Delta R.T.: -0.005 min  
 Response: 50645  
 Conc: 0.45 ng/ml

Instrument :  
 ECD\_P  
 ClientSampleId :  
 PB169227BL



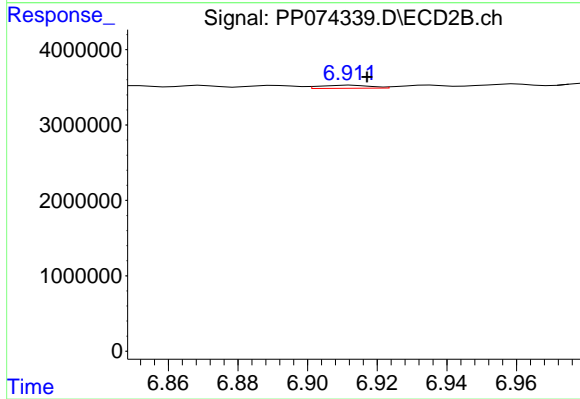
#35 AR-1260-5

R.T.: 7.414 min  
 Delta R.T.: -0.005 min  
 Response: 222316  
 Conc: 0.29 ng/ml



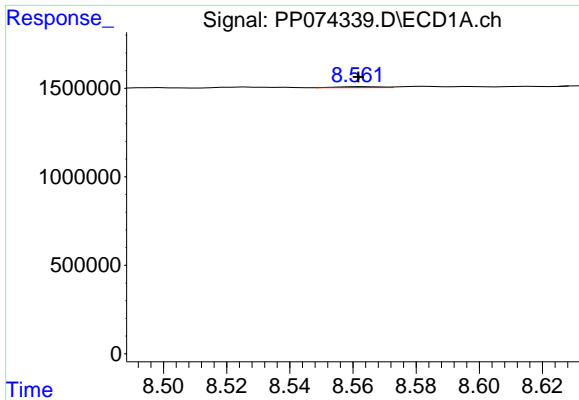
#36 AR-1262-1

R.T.: 8.246 min  
 Delta R.T.: 0.008 min  
 Response: 54971  
 Conc: 0.73 ng/ml



#36 AR-1262-1

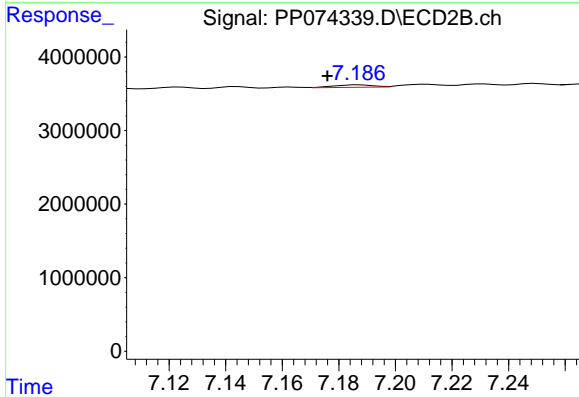
R.T.: 6.913 min  
 Delta R.T.: -0.004 min  
 Response: 412214  
 Conc: 0.73 ng/ml



#37 AR-1262-2

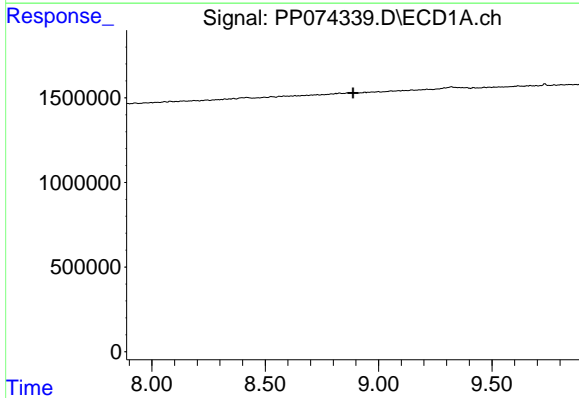
R.T.: 8.562 min  
 Delta R.T.: 0.000 min  
 Response: 50645  
 Conc: 0.39 ng/ml

Instrument :  
 ECD\_P  
 ClientSampleId :  
 PB169227BL



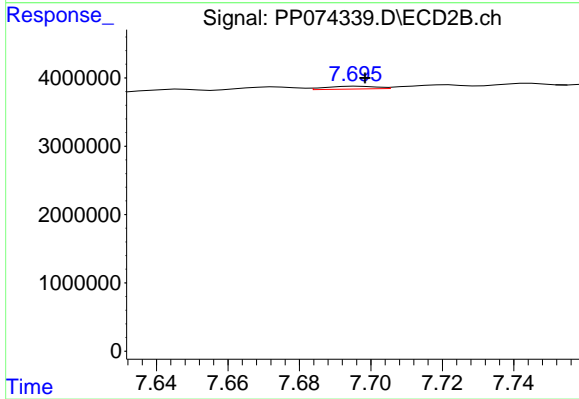
#37 AR-1262-2

R.T.: 7.187 min  
 Delta R.T.: 0.011 min  
 Response: 318691  
 Conc: 0.79 ng/ml



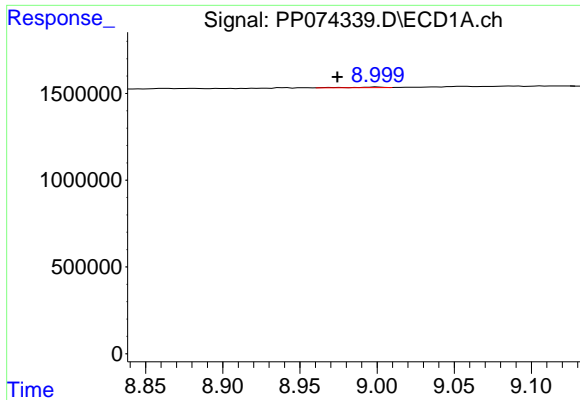
#38 AR-1262-3

R.T.: 0.000 min  
 Exp R.T. : 8.888 min  
 Response: 0  
 Conc: N.D.



#38 AR-1262-3

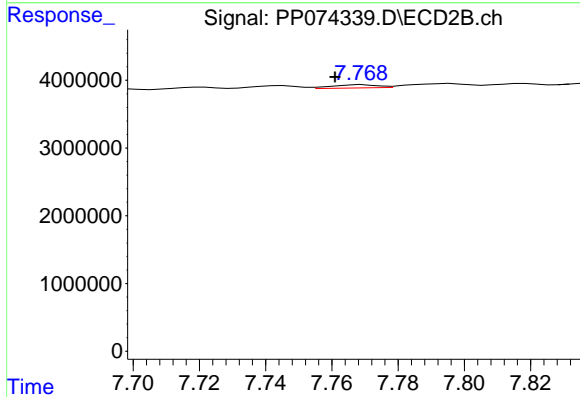
R.T.: 7.696 min  
 Delta R.T.: -0.002 min  
 Response: 396761  
 Conc: 1.10 ng/ml



#39 AR-1262-4

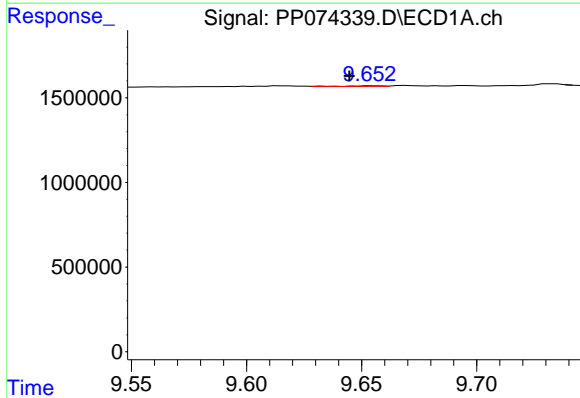
R.T.: 9.000 min  
 Delta R.T.: 0.026 min  
 Response: 58236  
 Conc: 0.80 ng/ml

Instrument :  
 ECD\_P  
 ClientSampleId :  
 PB169227BL



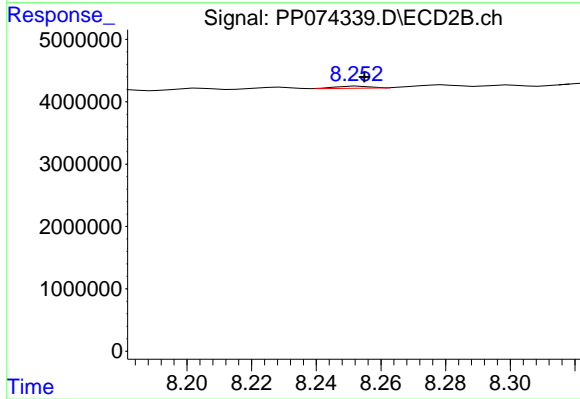
#39 AR-1262-4

R.T.: 7.769 min  
 Delta R.T.: 0.008 min  
 Response: 463905  
 Conc: 0.70 ng/ml



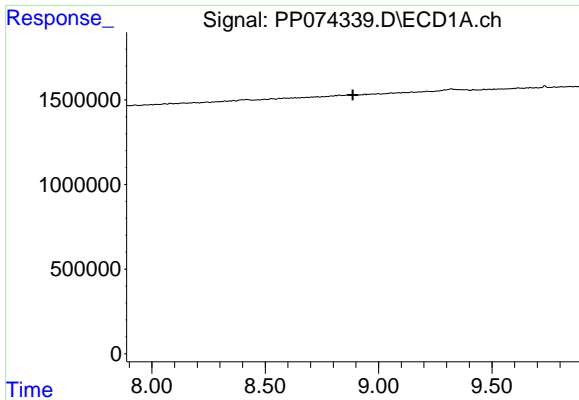
#40 AR-1262-5

R.T.: 9.654 min  
 Delta R.T.: 0.009 min  
 Response: 46137  
 Conc: 0.91 ng/ml



#40 AR-1262-5

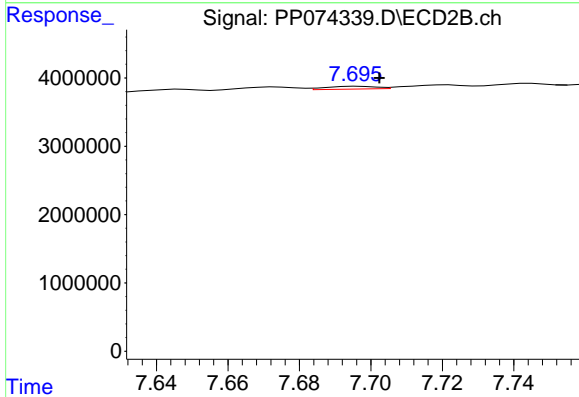
R.T.: 8.253 min  
 Delta R.T.: -0.002 min  
 Response: 227648  
 Conc: 0.80 ng/ml



#41 AR-1268-1

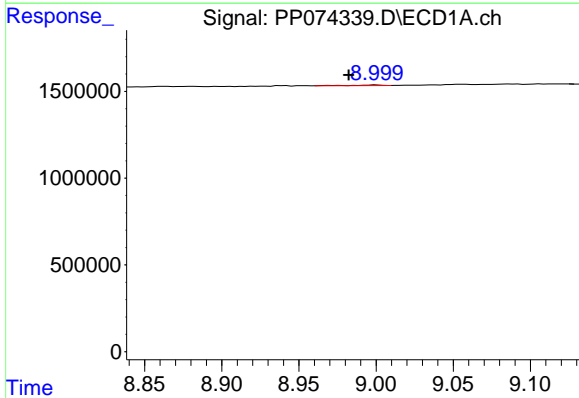
R.T.: 0.000 min  
 Exp R.T.: 8.886 min  
 Response: 0  
 Conc: N.D.

Instrument :  
 ECD\_P  
 ClientSampleId :  
 PB169227BL



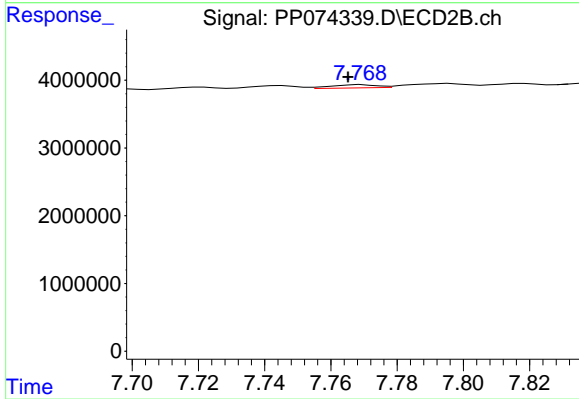
#41 AR-1268-1

R.T.: 7.696 min  
 Delta R.T.: -0.006 min  
 Response: 396761  
 Conc: 0.36 ng/ml



#42 AR-1268-2

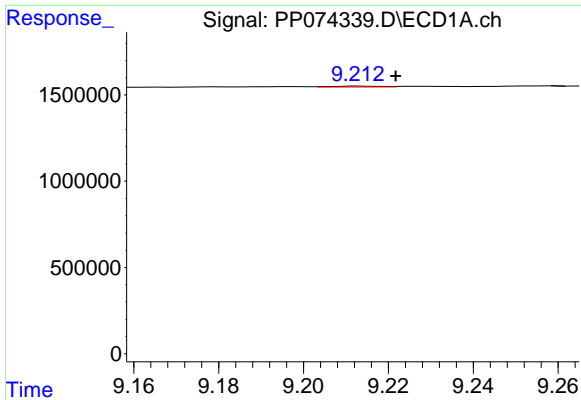
R.T.: 9.000 min  
 Delta R.T.: 0.018 min  
 Response: 58236  
 Conc: 0.41 ng/ml



#42 AR-1268-2

R.T.: 7.769 min  
 Delta R.T.: 0.004 min  
 Response: 463905  
 Conc: 0.44 ng/ml

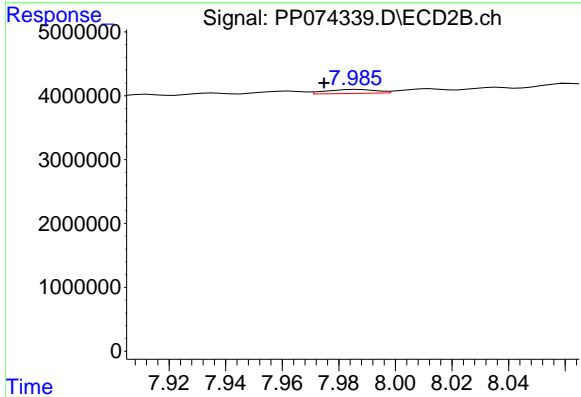




#43 AR-1268-3

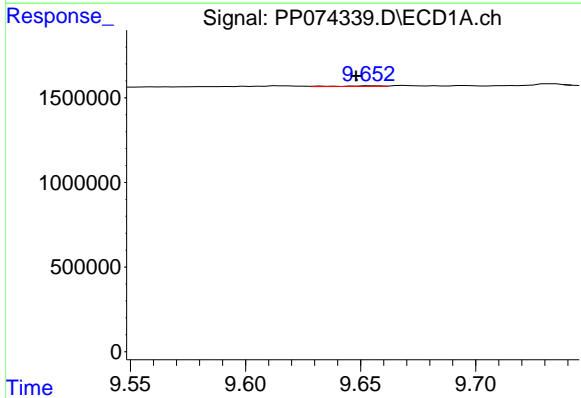
R.T.: 9.214 min  
 Delta R.T.: -0.008 min  
 Response: 44214  
 Conc: 0.37 ng/ml

Instrument :  
 ECD\_P  
 ClientSampleId :  
 PB169227BL



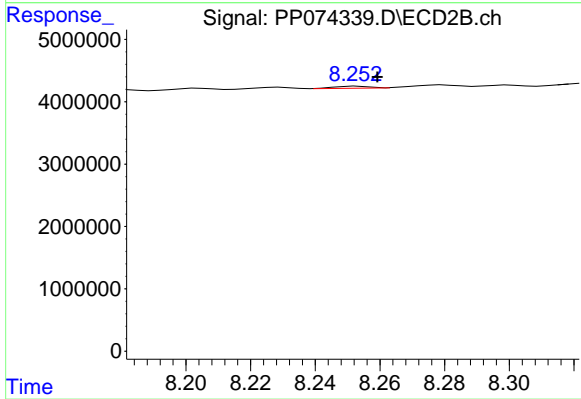
#43 AR-1268-3

R.T.: 7.987 min  
 Delta R.T.: 0.013 min  
 Response: 762791  
 Conc: 0.92 ng/ml



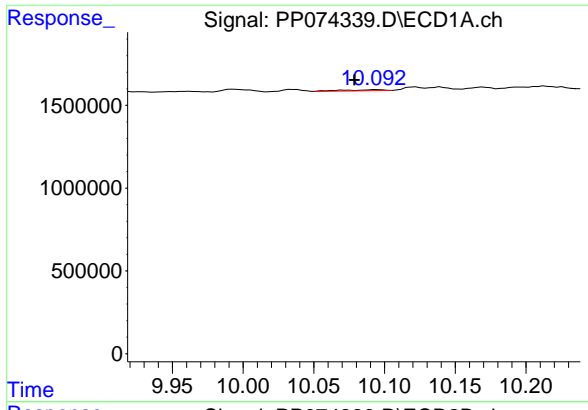
#44 AR-1268-4

R.T.: 9.654 min  
 Delta R.T.: 0.006 min  
 Response: 46137  
 Conc: 0.78 ng/ml



#44 AR-1268-4

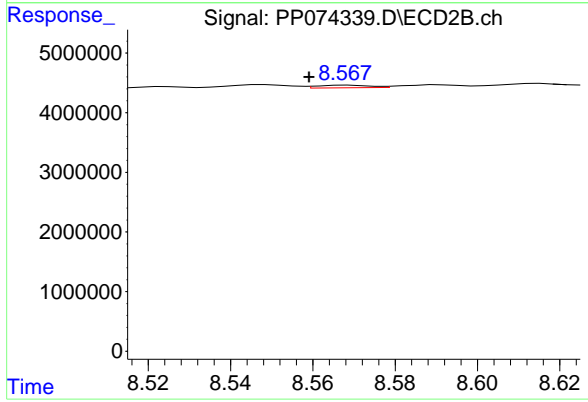
R.T.: 8.253 min  
 Delta R.T.: -0.006 min  
 Response: 227648  
 Conc: 0.74 ng/ml



#45 AR-1268-5

R.T.: 10.094 min  
 Delta R.T.: 0.015 min  
 Response: 114025  
 Conc: 0.32 ng/ml

Instrument :  
 ECD\_P  
 ClientSampleId :  
 PB169227BL



#45 AR-1268-5

R.T.: 8.568 min  
 Delta R.T.: 0.009 min  
 Response: 388496  
 Conc: 0.15 ng/ml