

Data Path : Z:\pestpcbsrv\HPCHEM1\ECD_P\Data\PP081325\
 Data File : PP074340.D
 Signal(s) : Signal #1: ECD1A.ch Signal #2: ECD2B.ch
 Acq On : 13 Aug 2025 12:55
 Operator : YP\AJ
 Sample : PB169227BS
 Misc :
 ALS Vial : 8 Sample Multiplier: 1

Instrument :
 ECD_P
 ClientSampleId :
 PB169227BS

Integration File signal 1: autoint1.e
 Integration File signal 2: autoint2.e
 Quant Time: Aug 13 15:40:24 2025
 Quant Method : Z:\pestpcbsrv\HPCHEM1\ECD_P\methods\PP080125.M
 Quant Title : GC EXTRACTABLES
 QLast Update : Mon Aug 04 11:01:49 2025
 Response via : Initial Calibration
 Integrator: ChemStation

Volume Inj. : 2 µl
 Signal #1 Phase : ZB-MR1 Signal #2 Phase: ZB-MR2
 Signal #1 Info : 30Mx0.32mmx 0.50µ Signal #2 Info : 30M x 0.32mm x 0.25µm

Compound	RT#1	RT#2	Resp#1	Resp#2	ng/ml	ng/ml
System Monitoring Compounds						
1) SA Tetrachlo...	4.661	3.804	28352685	87432459	25.353	22.802
2) SA Decachlor...	10.442	8.823	22930914	131.2E6	23.612	21.822
Target Compounds						
3) L1 AR-1016-1	5.813	4.904	23924041	236.9E6	579.881	593.980
4) L1 AR-1016-2	5.834	4.962	35302593	109.4E6	581.192	582.355
5) L1 AR-1016-3	5.898	5.081	23152195	62749044	583.759	591.583
6) L1 AR-1016-4	5.995	5.122	19044781	62848392	585.192	575.429
7) L1 AR-1016-5	6.287	5.336	18310597	68747144	563.957	587.767
8) L2 AR-1221-1	4.856	4.015	2790131	7036209	166.440	143.347
9) L2 AR-1221-2	4.946	4.100	3474932	8758951	275.765	244.055
10) L2 AR-1221-3	5.022	4.177	13722684	43359586	374.576	320.649
11) L3 AR-1232-1	5.022	4.177	13722684	43359586	472.588	427.768
12) L3 AR-1232-2	5.548	4.904	18159432	236.9E6	1207.191	1359.593
13) L3 AR-1232-3	5.834	5.081	35302593	62749044	1217.259	1369.569
14) L3 AR-1232-4	5.995	5.164	19044781	111.7E6	1231.172	1926.222 #
15) L3 AR-1232-5	6.084	5.336	16664923	68747144	1422.406	1463.345
16) L4 AR-1242-1	5.813	4.904	23924041	236.9E6	641.984	686.477
17) L4 AR-1242-2	5.834	4.962	35302593	109.4E6	648.838	669.440
18) L4 AR-1242-3	5.898	5.081	23152195	62749044	647.870	680.217
19) L4 AR-1242-4	5.995	5.164	19044781	111.7E6	651.802	935.689 #
20) L4 AR-1242-5	6.724	5.688	3867985	79743458	108.780	533.187 #
21) L5 AR-1248-1	5.813	4.904	23924041	236.9E6	853.987	1107.507 #
22) L5 AR-1248-2	6.084	5.122	16664923	62848392	413.922	429.549
23) L5 AR-1248-3	6.287	5.164	18310597	111.7E6	410.795	651.706 #
24) L5 AR-1248-4	6.662	5.336	17897104	68747144	343.929	413.209
25) L5 AR-1248-5	6.724	5.688	3867985	79743458	67.927	274.065 #
26) L6 AR-1254-1	6.662	5.688	17897104	79743458	339.984	217.770 #
27) L6 AR-1254-2	6.877	5.834	15636078	71986455	196.669	258.742 #
28) L6 AR-1254-3	7.240	6.251	9303766	137.4E6	106.553	280.772 #
29) L6 AR-1254-4	7.523	6.465	5888637	9556117	92.285	25.998 #
30) L6 AR-1254-5	7.937	6.880	51678898	217.1E6	636.873	563.585
31) L7 AR-1260-1	7.405	6.554	32200623	241.9E6	571.378	598.800
32) L7 AR-1260-2	7.658	6.708	37222394	190.9E6	546.164	610.604
33) L7 AR-1260-3	8.016	6.918	25253920	211.8E6	473.843	537.418
34) L7 AR-1260-4	8.244	7.178	36630558	159.2E6	585.013	547.072
35) L7 AR-1260-5	8.570	7.418	53626648	411.3E6	473.295	543.079
36) L8 AR-1262-1	8.244	6.918	36630558	211.8E6	483.318	376.115
37) L8 AR-1262-2	8.570	7.178	53626648	159.2E6	411.153	396.951
38) L8 AR-1262-3	8.903	7.701	37218499	71775742	395.643	199.671 #
39) L8 AR-1262-4	8.971	7.763	22104331	267.9E6	303.415	401.680 #
40) L8 AR-1262-5	9.656	8.258	15125726	77565632	297.033	273.824
41) L9 AR-1268-1	8.903	7.701	37218499	71775742	239.143	65.833 #

Data Path : Z:\pestpcbsrv\HPCHEM1\ECD_P\Data\PP081325\
 Data File : PP074340.D
 Signal(s) : Signal #1: ECD1A.ch Signal #2: ECD2B.ch
 Acq On : 13 Aug 2025 12:55
 Operator : YP\AJ
 Sample : PB169227BS
 Misc :
 ALS Vial : 8 Sample Multiplier: 1

Instrument :
 ECD_P
ClientSampleId :
 PB169227BS

Integration File signal 1: autoint1.e
 Integration File signal 2: autoint2.e
 Quant Time: Aug 13 15:40:24 2025
 Quant Method : Z:\pestpcbsrv\HPCHEM1\ECD_P\methods\PP080125.M
 Quant Title : GC EXTRACTABLES
 QLast Update : Mon Aug 04 11:01:49 2025
 Response via : Initial Calibration
 Integrator: ChemStation

Volume Inj. : 2 µl
 Signal #1 Phase : ZB-MR1 Signal #2 Phase: ZB-MR2
 Signal #1 Info : 30Mx0.32mmx 0.50µ Signal #2 Info : 30M x 0.32mm x 0.25µm

	Compound	RT#1	RT#2	Resp#1	Resp#2	ng/ml	ng/ml
42)	L9 AR-1268-2	8.971	7.763	22104331	267.9E6	154.117	252.410 #
43)	L9 AR-1268-3	9.227	7.974	1368603	4782651	11.455	5.749 #
44)	L9 AR-1268-4	9.656	8.258	15125726	77565632	257.185	251.788
45)	L9 AR-1268-5	10.088	8.558	5159772	22550536	14.671	8.843 #

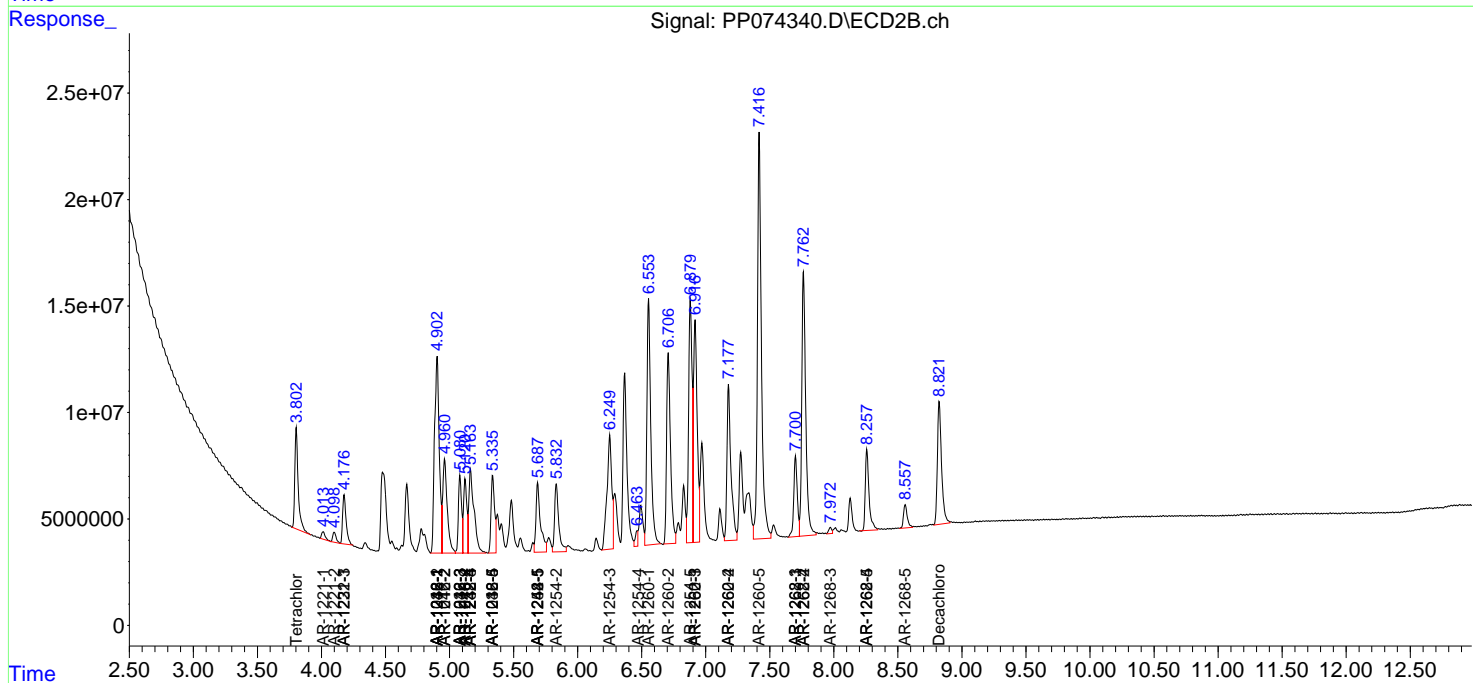
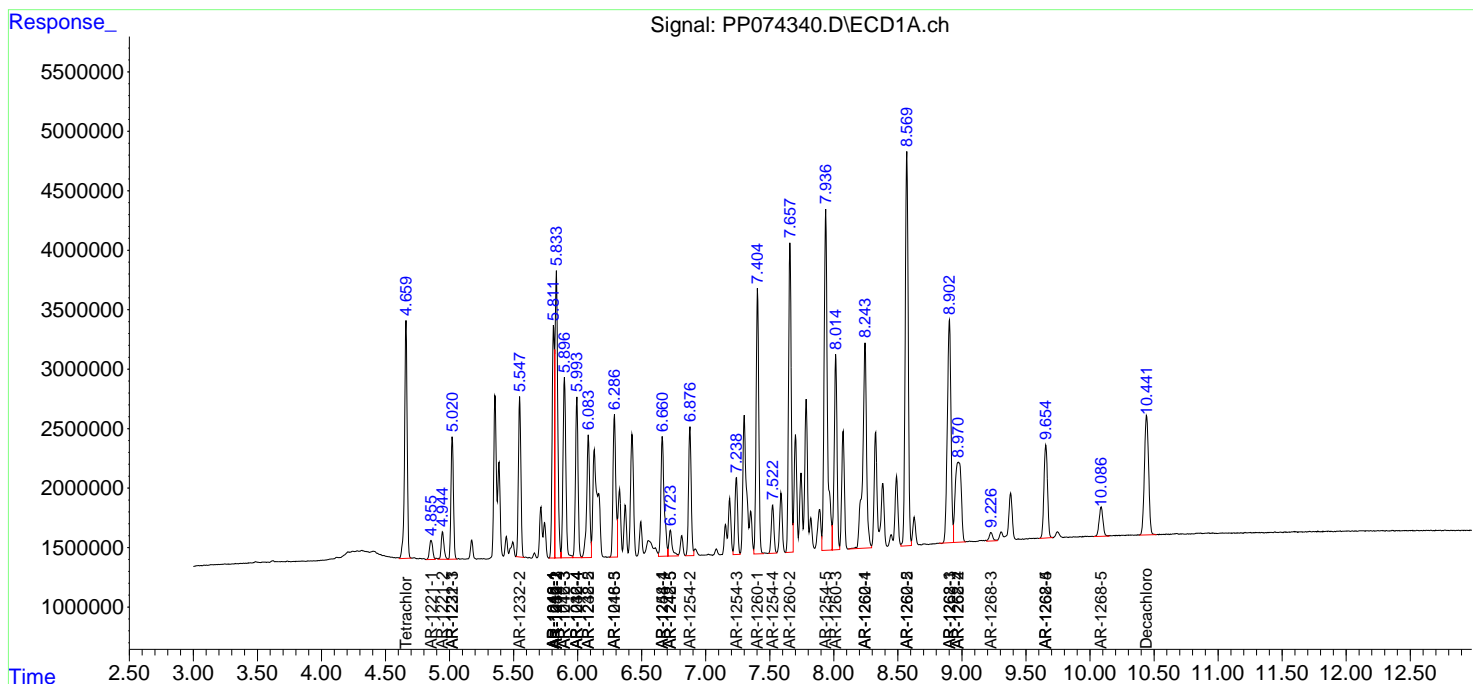
(f)=RT Delta > 1/2 Window (#)=Amounts differ by > 25% (m)=manual int.

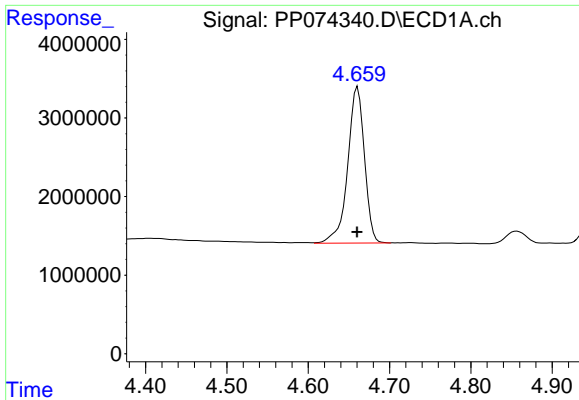
Data Path : Z:\pestpcbsrv\HPCHEM1\ECD_P\Data\PP081325\
 Data File : PP074340.D
 Signal(s) : Signal #1: ECD1A.ch Signal #2: ECD2B.ch
 Acq On : 13 Aug 2025 12:55
 Operator : YP\AJ
 Sample : PB169227BS
 Misc :
 ALS Vial : 8 Sample Multiplier: 1

Instrument :
 ECD_P
 ClientSampleId :
 PB169227BS

Integration File signal 1: autoint1.e
 Integration File signal 2: autoint2.e
 Quant Time: Aug 13 15:40:24 2025
 Quant Method : Z:\pestpcbsrv\HPCHEM1\ECD_P\methods\PP080125.M
 Quant Title : GC EXTRACTABLES
 QLast Update : Mon Aug 04 11:01:49 2025
 Response via : Initial Calibration
 Integrator: ChemStation

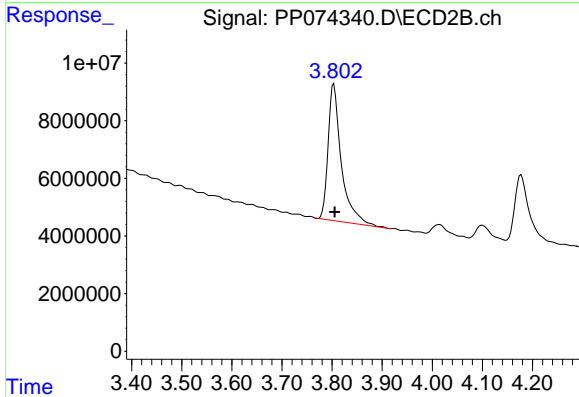
Volume Inj. : 2 µl
 Signal #1 Phase : ZB-MR1 Signal #2 Phase: ZB-MR2
 Signal #1 Info : 30Mx0.32mmx 0.50µ Signal #2 Info : 30M x 0.32mm x 0.25µm



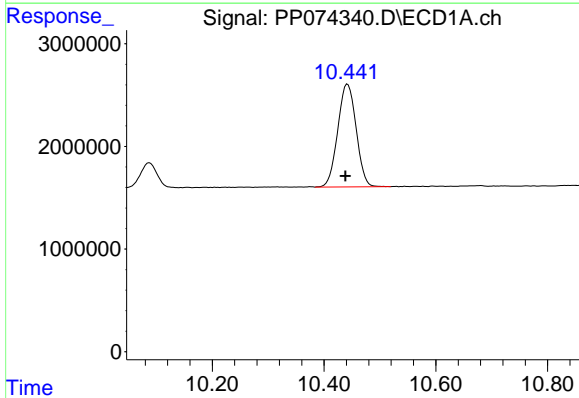


#1 Tetrachloro-m-xylene
 R.T.: 4.661 min
 Delta R.T.: 0.000 min
 Response: 28352685
 Conc: 25.35 ng/ml

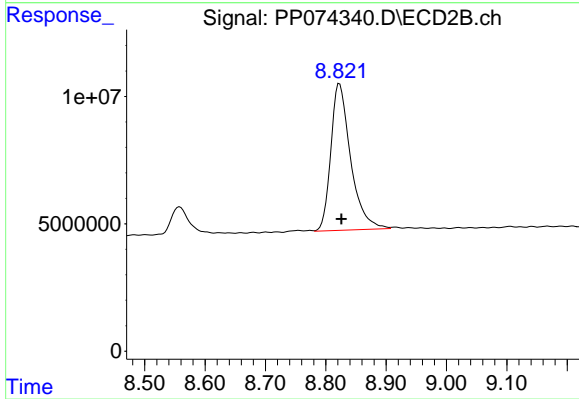
Instrument :
 ECD_P
 ClientSampleId :
 PB169227BS



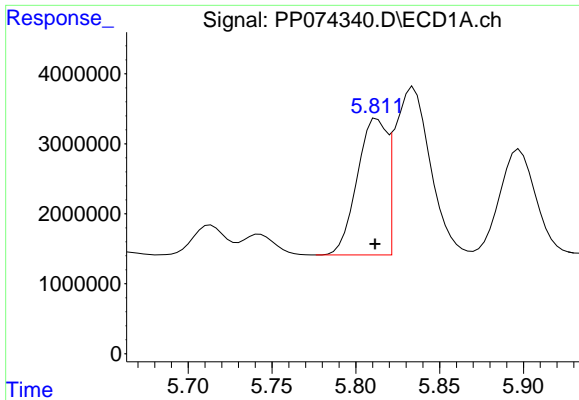
#1 Tetrachloro-m-xylene
 R.T.: 3.804 min
 Delta R.T.: -0.002 min
 Response: 87432459
 Conc: 22.80 ng/ml



#2 Decachlorobiphenyl
 R.T.: 10.442 min
 Delta R.T.: 0.004 min
 Response: 22930914
 Conc: 23.61 ng/ml



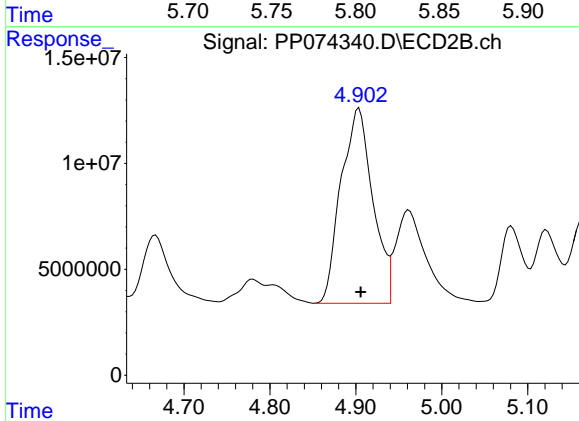
#2 Decachlorobiphenyl
 R.T.: 8.823 min
 Delta R.T.: -0.003 min
 Response: 131227547
 Conc: 21.82 ng/ml



#3 AR-1016-1

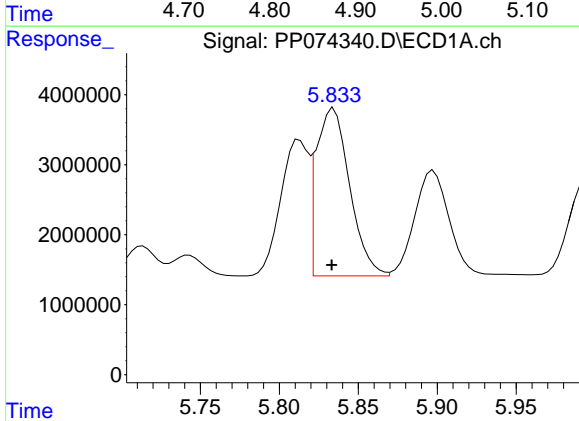
R.T.: 5.813 min
 Delta R.T.: 0.001 min
 Response: 23924041
 Conc: 579.88 ng/ml

Instrument :
 ECD_P
 ClientSampleId :
 PB169227BS



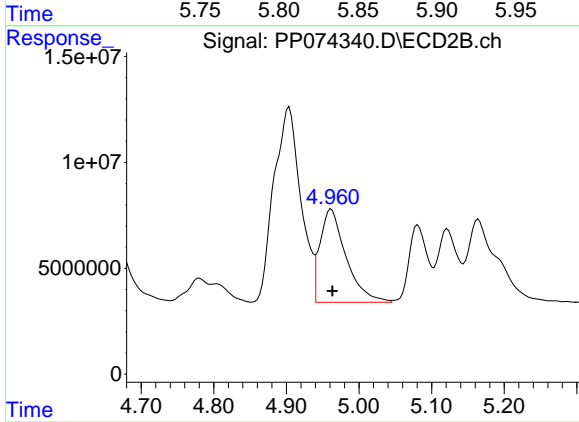
#3 AR-1016-1

R.T.: 4.904 min
 Delta R.T.: -0.002 min
 Response: 236931050
 Conc: 593.98 ng/ml



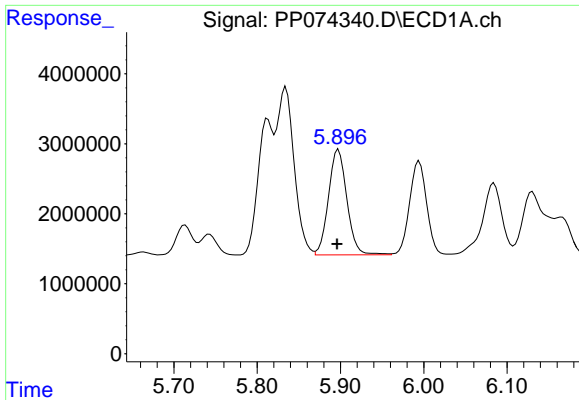
#4 AR-1016-2

R.T.: 5.834 min
 Delta R.T.: 0.001 min
 Response: 35302593
 Conc: 581.19 ng/ml



#4 AR-1016-2

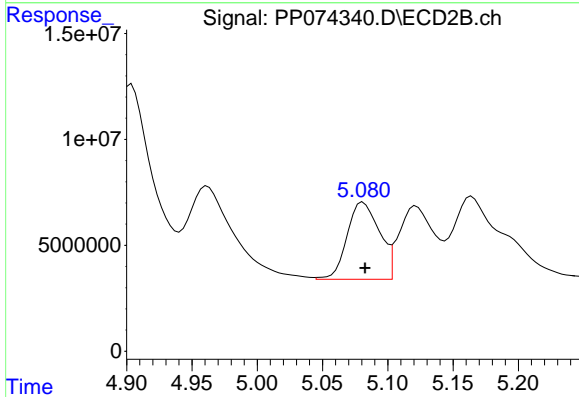
R.T.: 4.962 min
 Delta R.T.: -0.001 min
 Response: 109371589
 Conc: 582.36 ng/ml



#5 AR-1016-3

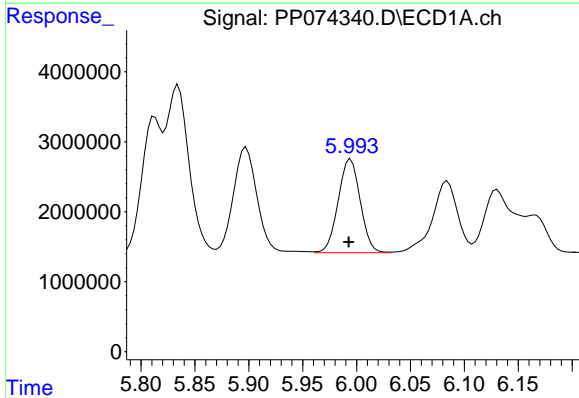
R.T.: 5.898 min
 Delta R.T.: 0.001 min
 Response: 23152195
 Conc: 583.76 ng/ml

Instrument :
 ECD_P
 ClientSampleId :
 PB169227BS



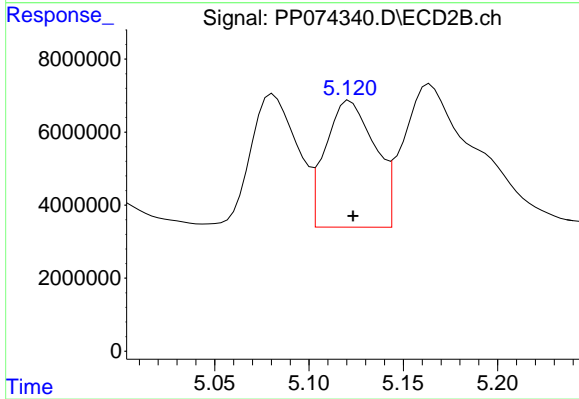
#5 AR-1016-3

R.T.: 5.081 min
 Delta R.T.: -0.002 min
 Response: 62749044
 Conc: 591.58 ng/ml



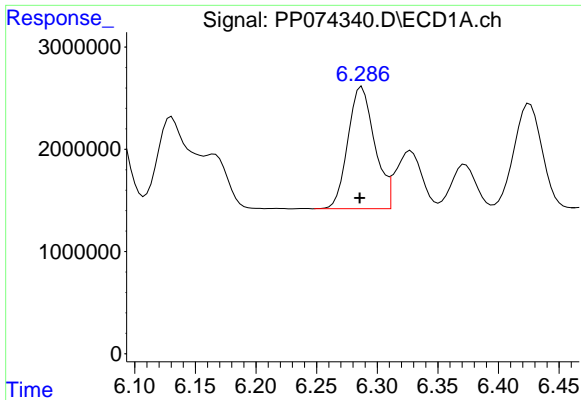
#6 AR-1016-4

R.T.: 5.995 min
 Delta R.T.: 0.002 min
 Response: 19044781
 Conc: 585.19 ng/ml



#6 AR-1016-4

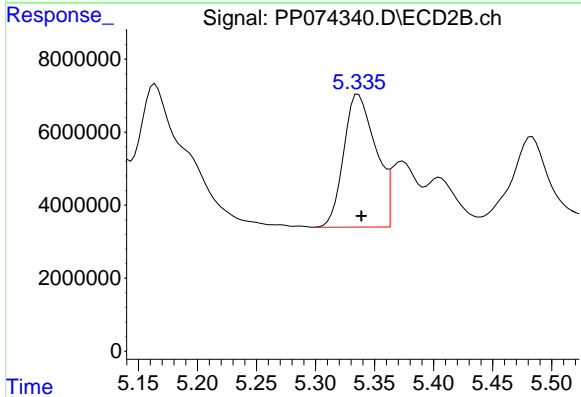
R.T.: 5.122 min
 Delta R.T.: -0.002 min
 Response: 62848392
 Conc: 575.43 ng/ml



#7 AR-1016-5

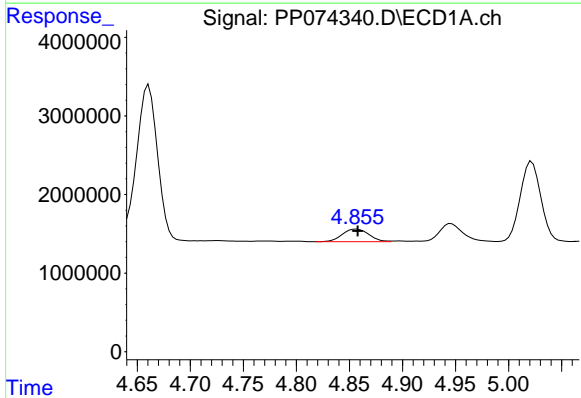
R.T.: 6.287 min
 Delta R.T.: 0.002 min
 Response: 18310597
 Conc: 563.96 ng/ml

Instrument :
 ECD_P
 ClientSampleId :
 PB169227BS



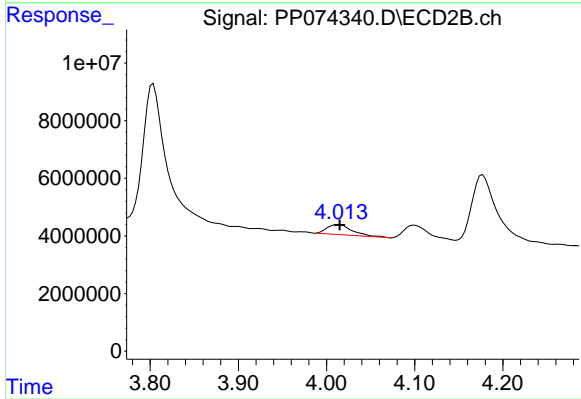
#7 AR-1016-5

R.T.: 5.336 min
 Delta R.T.: -0.003 min
 Response: 68747144
 Conc: 587.77 ng/ml



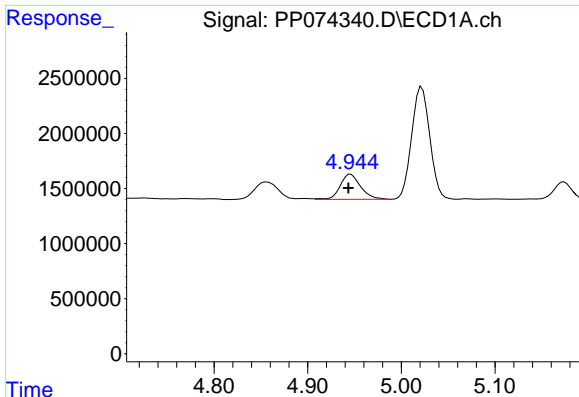
#8 AR-1221-1

R.T.: 4.856 min
 Delta R.T.: -0.001 min
 Response: 2790131
 Conc: 166.44 ng/ml



#8 AR-1221-1

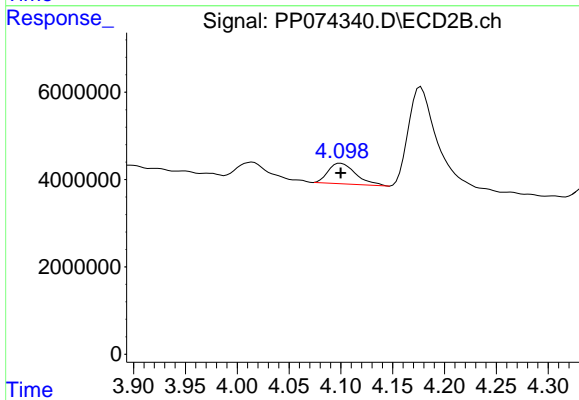
R.T.: 4.015 min
 Delta R.T.: 0.000 min
 Response: 7036209
 Conc: 143.35 ng/ml



#9 AR-1221-2

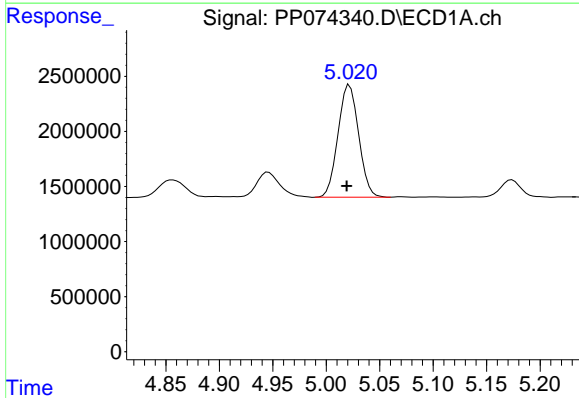
R.T.: 4.946 min
 Delta R.T.: 0.002 min
 Response: 3474932
 Conc: 275.77 ng/ml

Instrument :
 ECD_P
 ClientSampleId :
 PB169227BS



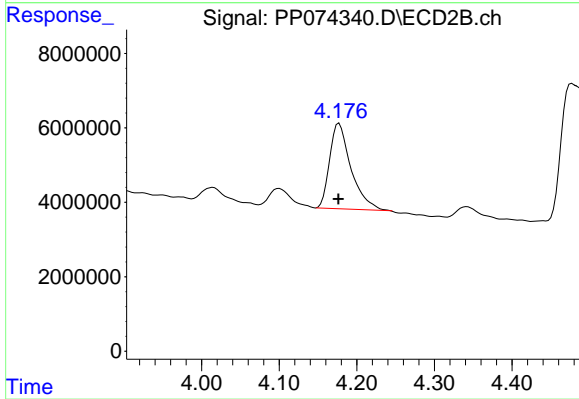
#9 AR-1221-2

R.T.: 4.100 min
 Delta R.T.: 0.000 min
 Response: 8758951
 Conc: 244.05 ng/ml



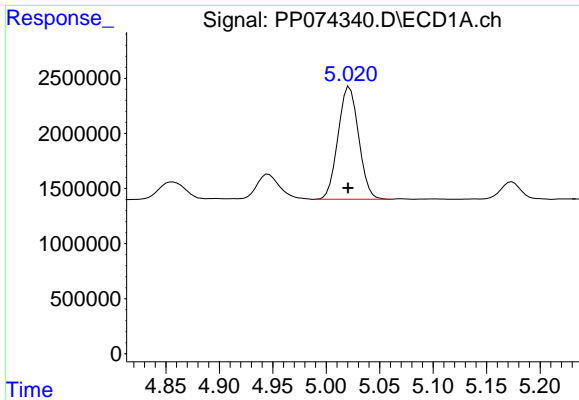
#10 AR-1221-3

R.T.: 5.022 min
 Delta R.T.: 0.003 min
 Response: 13722684
 Conc: 374.58 ng/ml



#10 AR-1221-3

R.T.: 4.177 min
 Delta R.T.: 0.000 min
 Response: 43359586
 Conc: 320.65 ng/ml

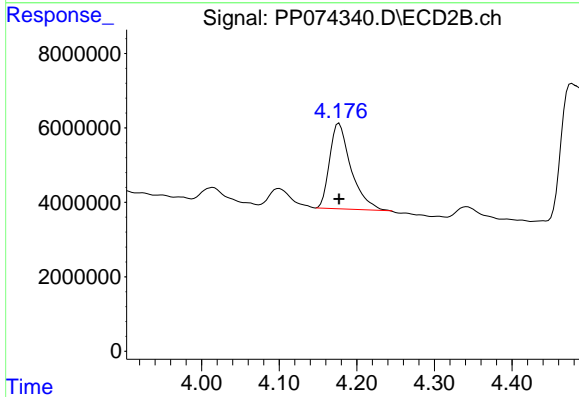


#11 AR-1232-1

R.T.: 5.022 min
 Delta R.T.: 0.001 min
 Response: 13722684
 Conc: 472.59 ng/ml

Instrument :
 ECD_P
 ClientSampleId :
 PB169227BS

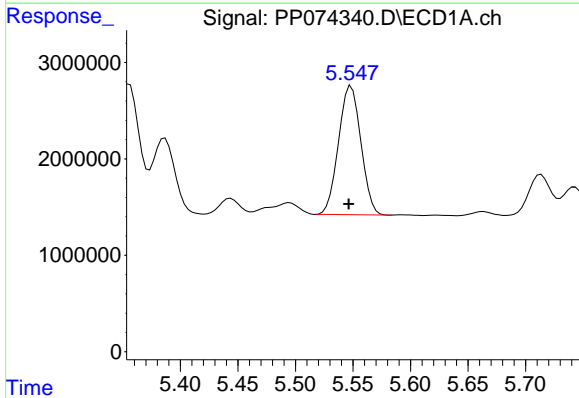
Time 4.85 4.90 4.95 5.00 5.05 5.10 5.15 5.20



#11 AR-1232-1

R.T.: 4.177 min
 Delta R.T.: 0.000 min
 Response: 43359586
 Conc: 427.77 ng/ml

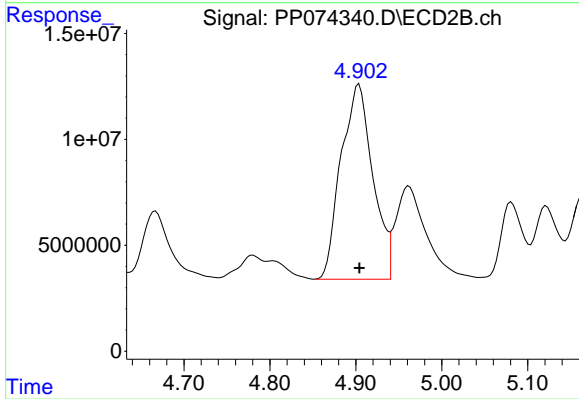
Time 4.00 4.10 4.20 4.30 4.40



#12 AR-1232-2

R.T.: 5.548 min
 Delta R.T.: 0.002 min
 Response: 18159432
 Conc: 1207.19 ng/ml

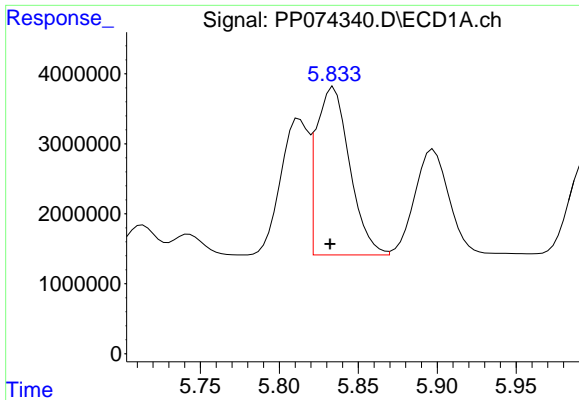
Time 5.40 5.45 5.50 5.55 5.60 5.65 5.70



#12 AR-1232-2

R.T.: 4.904 min
 Delta R.T.: 0.000 min
 Response: 236931050
 Conc: 1359.59 ng/ml

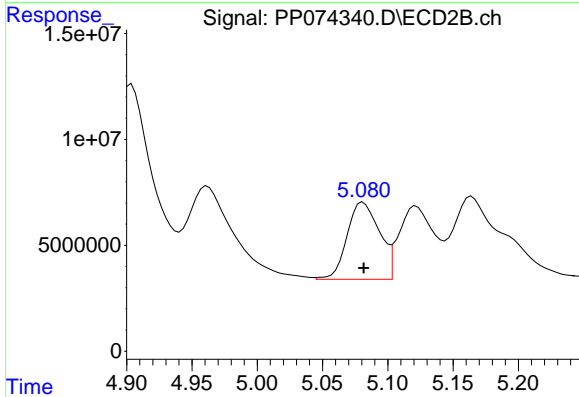
Time 4.70 4.80 4.90 5.00 5.10



#13 AR-1232-3

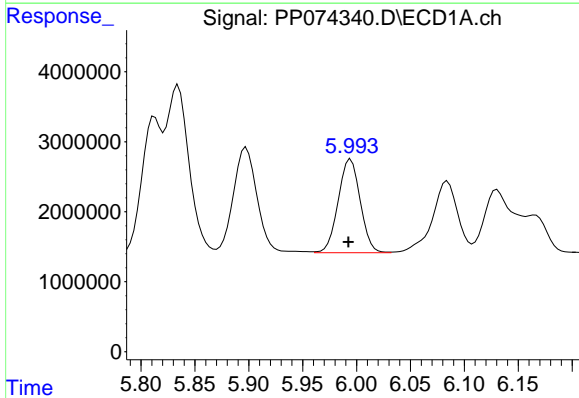
R.T.: 5.834 min
 Delta R.T.: 0.002 min
 Response: 35302593
 Conc: 1217.26 ng/ml

Instrument :
 ECD_P
 ClientSampleId :
 PB169227BS



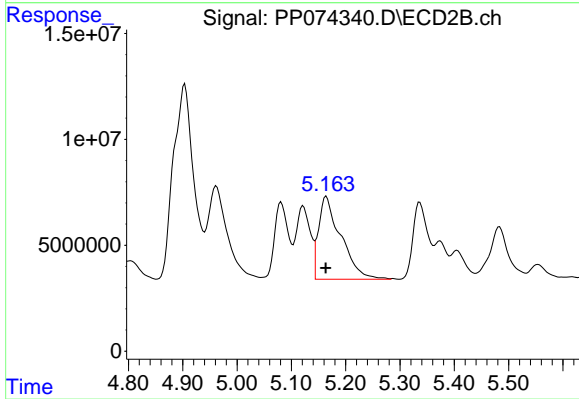
#13 AR-1232-3

R.T.: 5.081 min
 Delta R.T.: 0.000 min
 Response: 62749044
 Conc: 1369.57 ng/ml



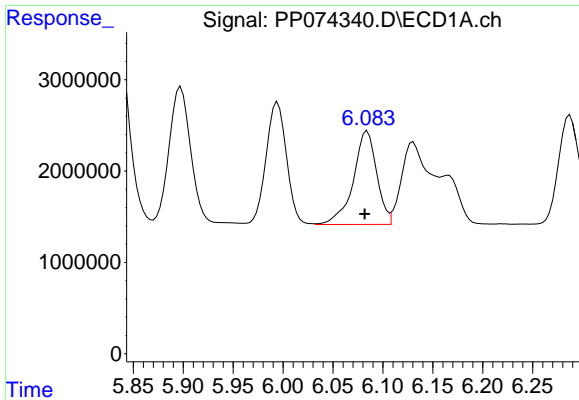
#14 AR-1232-4

R.T.: 5.995 min
 Delta R.T.: 0.002 min
 Response: 19044781
 Conc: 1231.17 ng/ml



#14 AR-1232-4

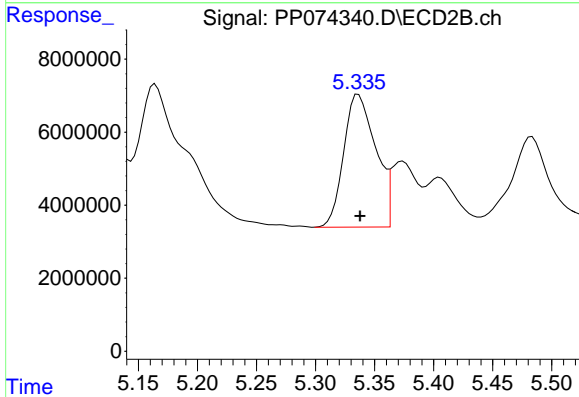
R.T.: 5.164 min
 Delta R.T.: 0.000 min
 Response: 111741509
 Conc: 1926.22 ng/ml



#15 AR-1232-5

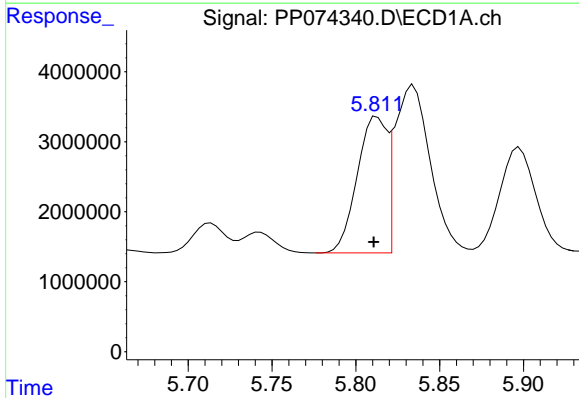
R.T.: 6.084 min
 Delta R.T.: 0.002 min
 Response: 16664923
 Conc: 1422.41 ng/ml

Instrument :
 ECD_P
 ClientSampleId :
 PB169227BS



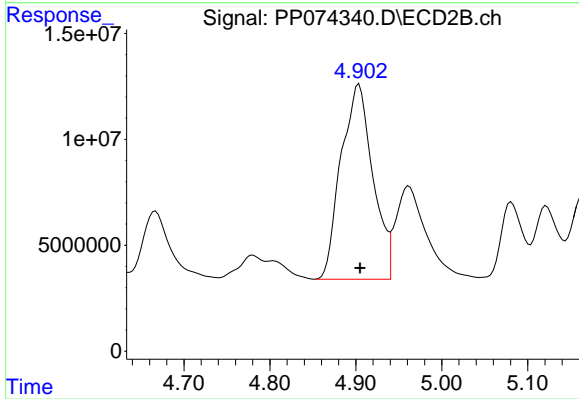
#15 AR-1232-5

R.T.: 5.336 min
 Delta R.T.: -0.001 min
 Response: 68747144
 Conc: 1463.34 ng/ml



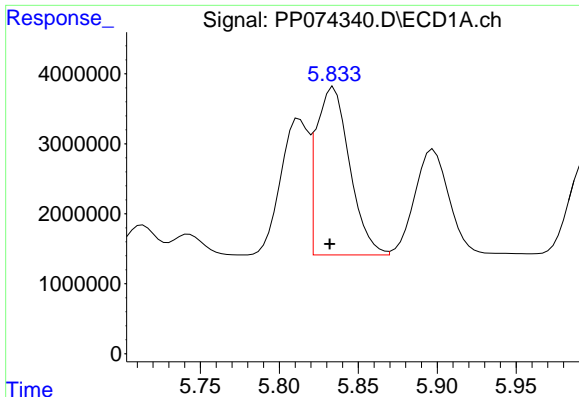
#16 AR-1242-1

R.T.: 5.813 min
 Delta R.T.: 0.002 min
 Response: 23924041
 Conc: 641.98 ng/ml



#16 AR-1242-1

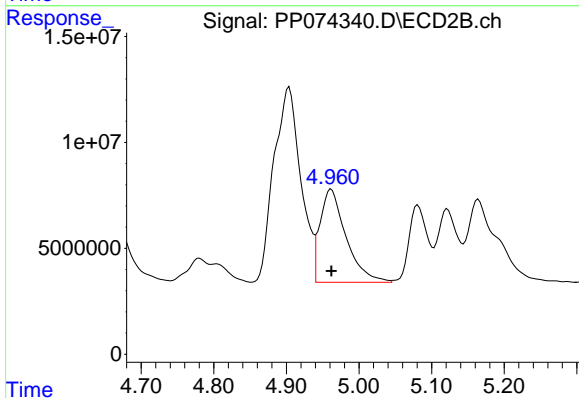
R.T.: 4.904 min
 Delta R.T.: -0.001 min
 Response: 236931050
 Conc: 686.48 ng/ml



#17 AR-1242-2

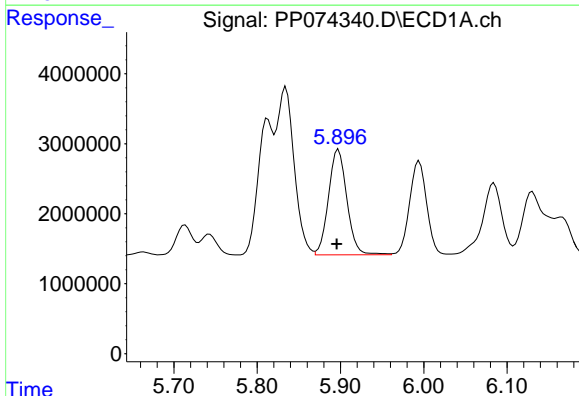
R.T.: 5.834 min
 Delta R.T.: 0.002 min
 Response: 35302593
 Conc: 648.84 ng/ml

Instrument :
 ECD_P
 ClientSampleId :
 PB169227BS



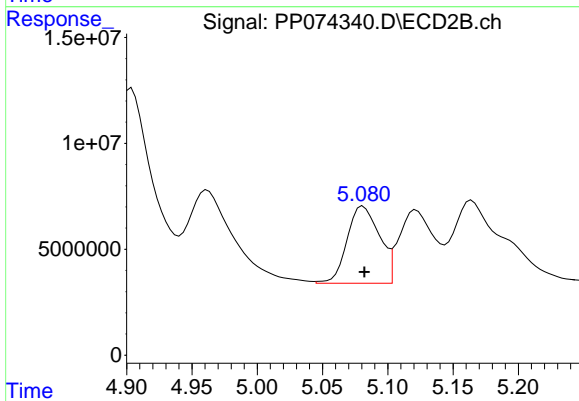
#17 AR-1242-2

R.T.: 4.962 min
 Delta R.T.: 0.000 min
 Response: 109371589
 Conc: 669.44 ng/ml



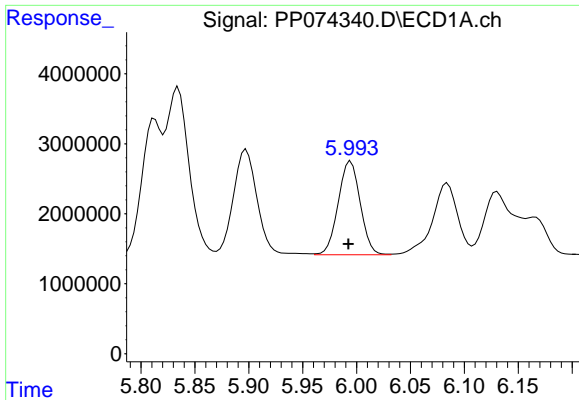
#18 AR-1242-3

R.T.: 5.898 min
 Delta R.T.: 0.002 min
 Response: 23152195
 Conc: 647.87 ng/ml



#18 AR-1242-3

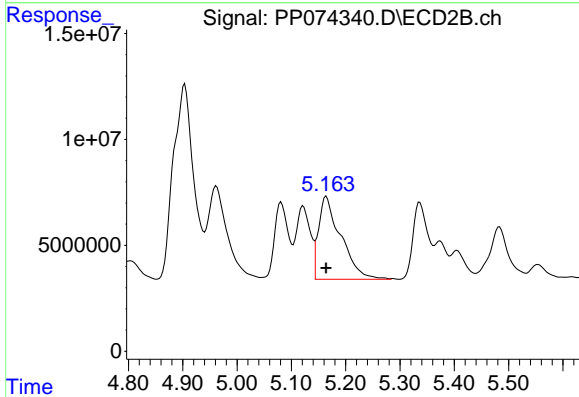
R.T.: 5.081 min
 Delta R.T.: -0.001 min
 Response: 62749044
 Conc: 680.22 ng/ml



#19 AR-1242-4

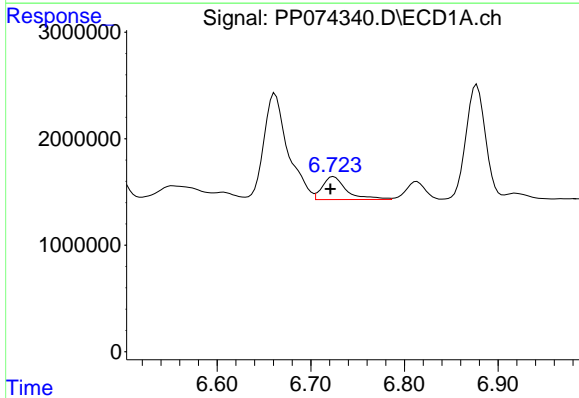
R.T.: 5.995 min
 Delta R.T.: 0.002 min
 Response: 19044781
 Conc: 651.80 ng/ml

Instrument :
 ECD_P
 ClientSampleId :
 PB169227BS



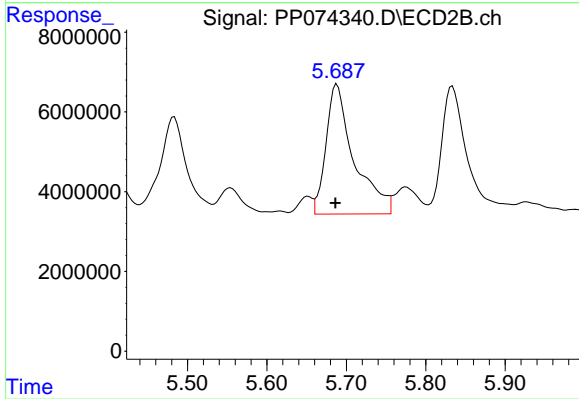
#19 AR-1242-4

R.T.: 5.164 min
 Delta R.T.: 0.000 min
 Response: 111741509
 Conc: 935.69 ng/ml



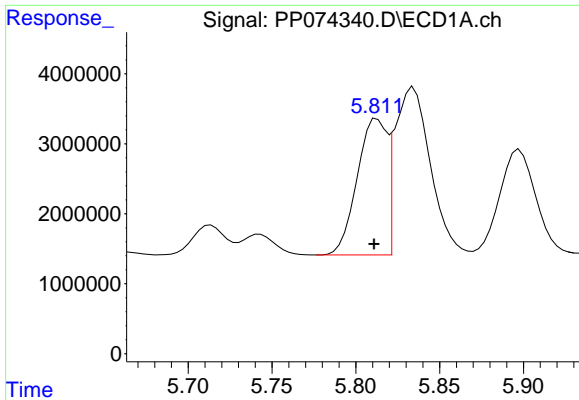
#20 AR-1242-5

R.T.: 6.724 min
 Delta R.T.: 0.004 min
 Response: 3867985
 Conc: 108.78 ng/ml



#20 AR-1242-5

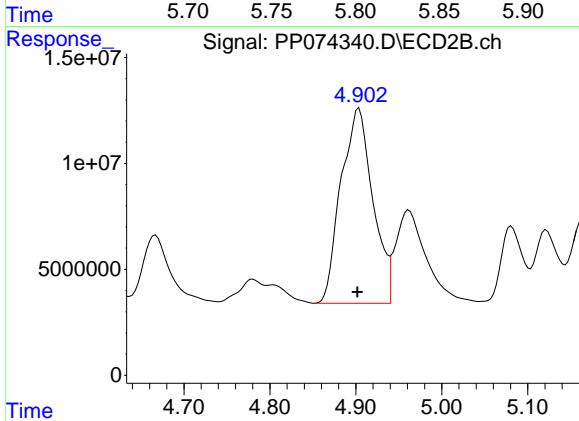
R.T.: 5.688 min
 Delta R.T.: 0.002 min
 Response: 79743458
 Conc: 533.19 ng/ml



#21 AR-1248-1

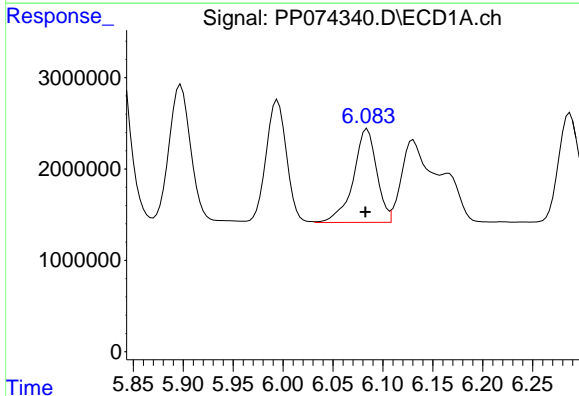
R.T.: 5.813 min
 Delta R.T.: 0.002 min
 Response: 23924041
 Conc: 853.99 ng/ml

Instrument :
 ECD_P
 ClientSampleId :
 PB169227BS



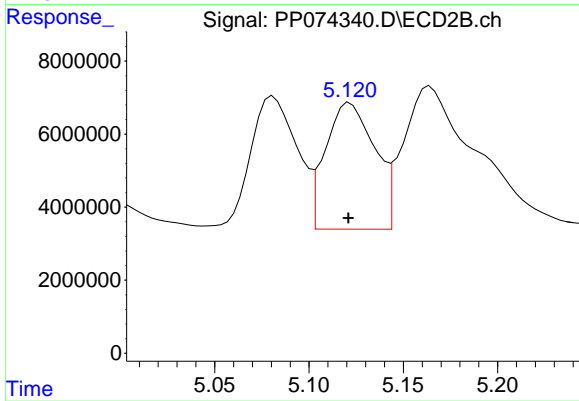
#21 AR-1248-1

R.T.: 4.904 min
 Delta R.T.: 0.002 min
 Response: 236931050
 Conc: 1107.51 ng/ml



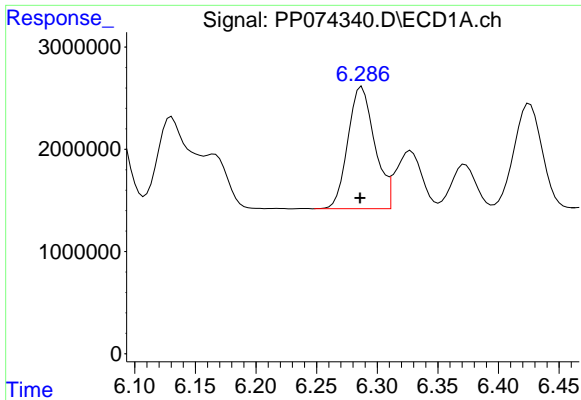
#22 AR-1248-2

R.T.: 6.084 min
 Delta R.T.: 0.002 min
 Response: 16664923
 Conc: 413.92 ng/ml



#22 AR-1248-2

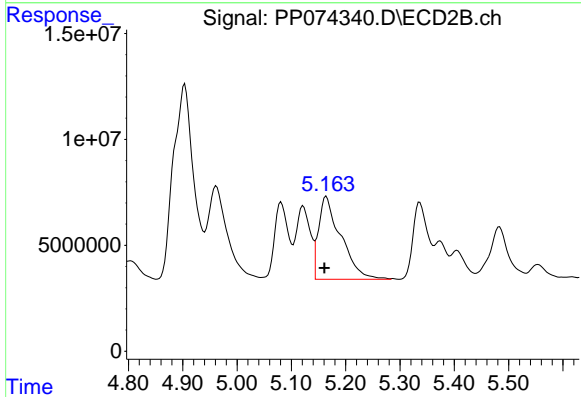
R.T.: 5.122 min
 Delta R.T.: 0.000 min
 Response: 62848392
 Conc: 429.55 ng/ml



#23 AR-1248-3

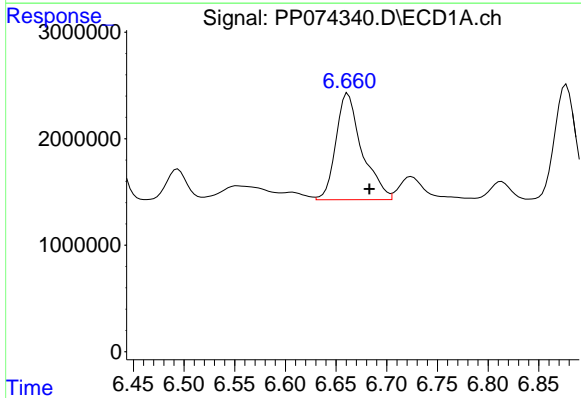
R.T.: 6.287 min
 Delta R.T.: 0.002 min
 Response: 18310597
 Conc: 410.80 ng/ml

Instrument :
 ECD_P
 ClientSampleId :
 PB169227BS



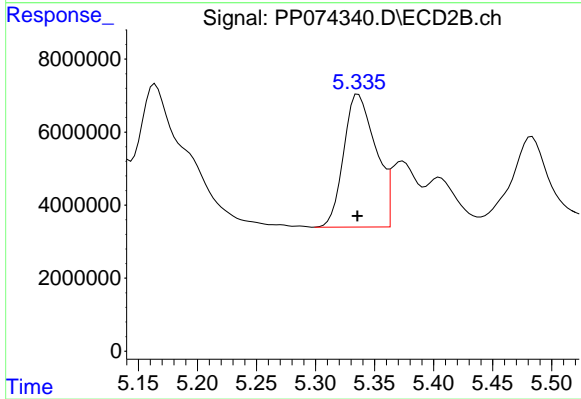
#23 AR-1248-3

R.T.: 5.164 min
 Delta R.T.: 0.003 min
 Response: 111741509
 Conc: 651.71 ng/ml



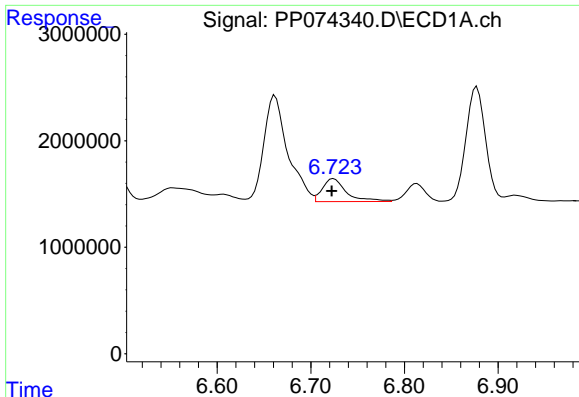
#24 AR-1248-4

R.T.: 6.662 min
 Delta R.T.: -0.021 min
 Response: 17897104
 Conc: 343.93 ng/ml



#24 AR-1248-4

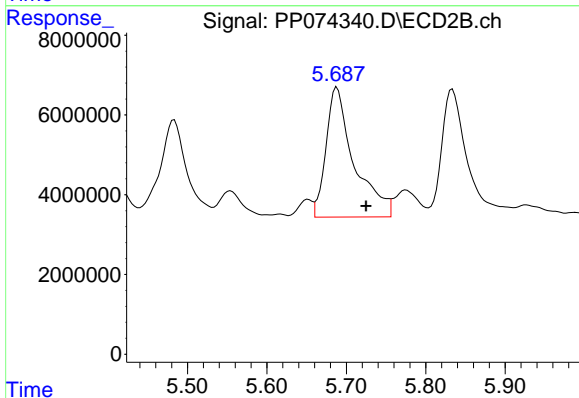
R.T.: 5.336 min
 Delta R.T.: 0.000 min
 Response: 68747144
 Conc: 413.21 ng/ml



#25 AR-1248-5

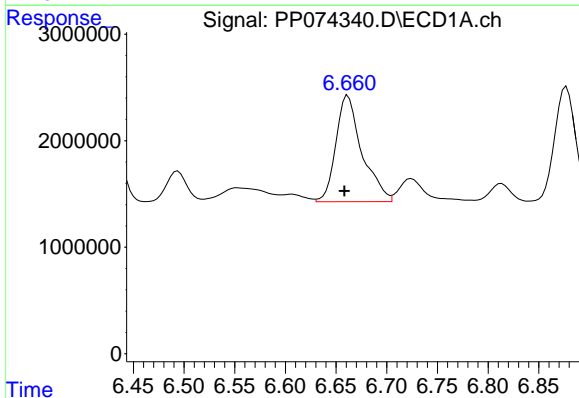
R.T.: 6.724 min
 Delta R.T.: 0.002 min
 Response: 3867985
 Conc: 67.93 ng/ml

Instrument :
 ECD_P
 ClientSampleId :
 PB169227BS



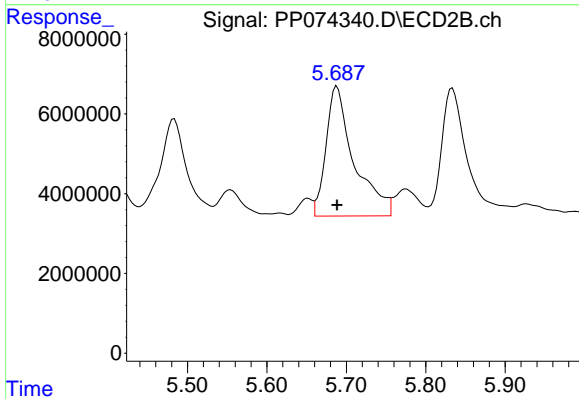
#25 AR-1248-5

R.T.: 5.688 min
 Delta R.T.: -0.037 min
 Response: 79743458
 Conc: 274.06 ng/ml



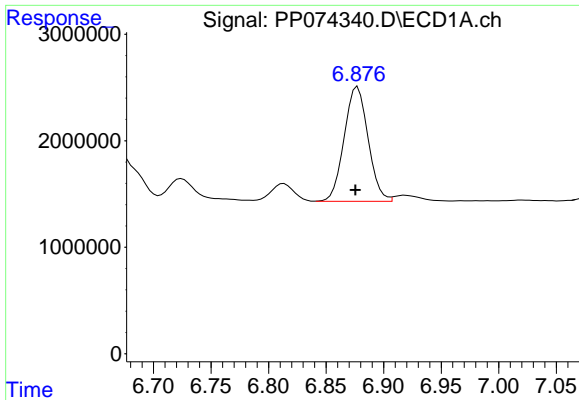
#26 AR-1254-1

R.T.: 6.662 min
 Delta R.T.: 0.004 min
 Response: 17897104
 Conc: 339.98 ng/ml



#26 AR-1254-1

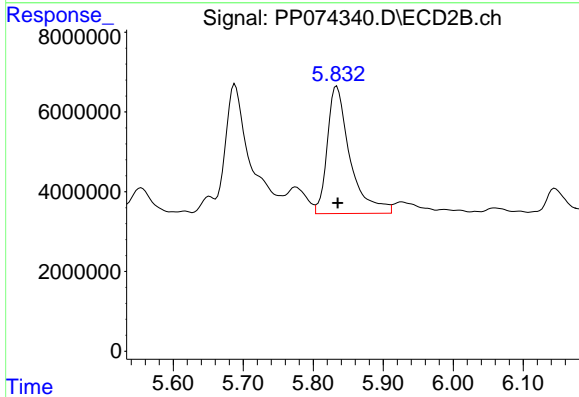
R.T.: 5.688 min
 Delta R.T.: 0.000 min
 Response: 79743458
 Conc: 217.77 ng/ml



#27 AR-1254-2

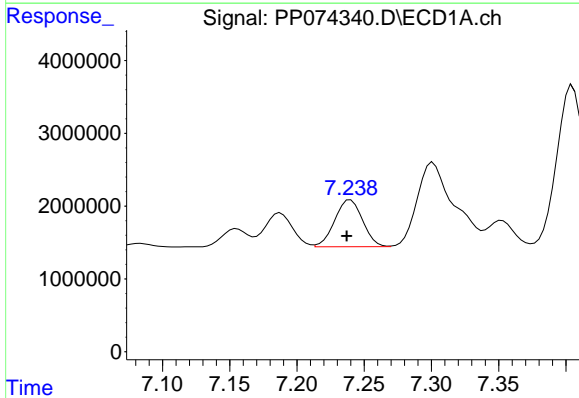
R.T.: 6.877 min
 Delta R.T.: 0.002 min
 Response: 15636078
 Conc: 196.67 ng/ml

Instrument :
 ECD_P
 ClientSampleId :
 PB169227BS



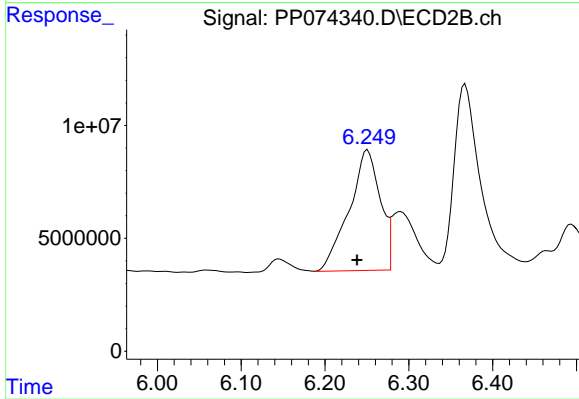
#27 AR-1254-2

R.T.: 5.834 min
 Delta R.T.: -0.001 min
 Response: 71986455
 Conc: 258.74 ng/ml



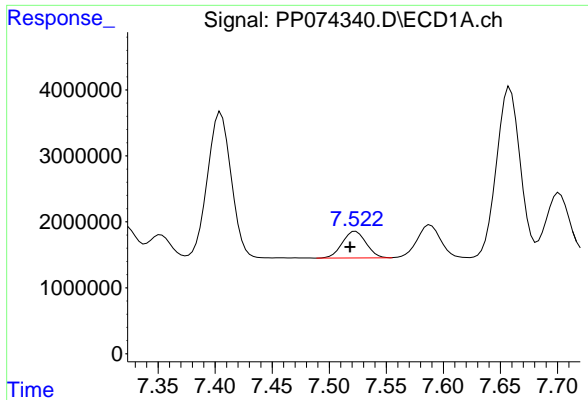
#28 AR-1254-3

R.T.: 7.240 min
 Delta R.T.: 0.003 min
 Response: 9303766
 Conc: 106.55 ng/ml



#28 AR-1254-3

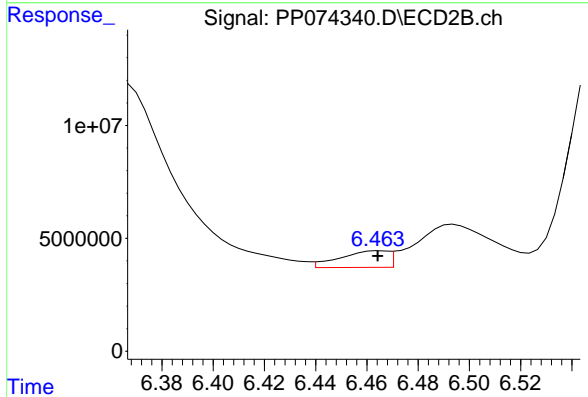
R.T.: 6.251 min
 Delta R.T.: 0.013 min
 Response: 137356953
 Conc: 280.77 ng/ml



#29 AR-1254-4

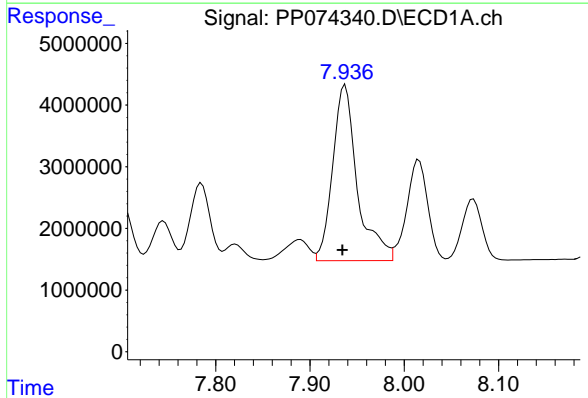
R.T.: 7.523 min
 Delta R.T.: 0.005 min
 Response: 5888637
 Conc: 92.28 ng/ml

Instrument :
 ECD_P
 ClientSampleId :
 PB169227BS



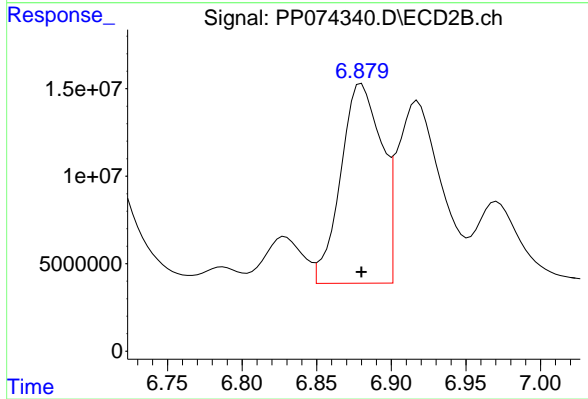
#29 AR-1254-4

R.T.: 6.465 min
 Delta R.T.: 0.000 min
 Response: 9556117
 Conc: 26.00 ng/ml



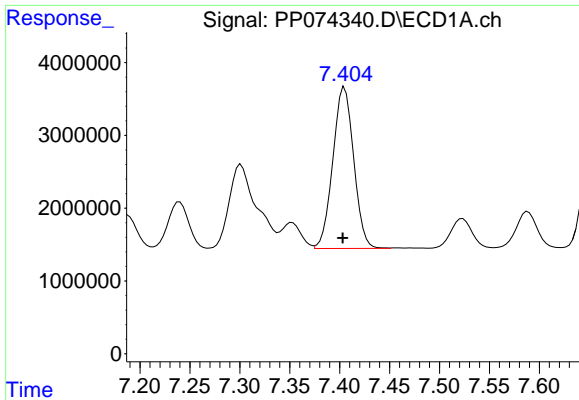
#30 AR-1254-5

R.T.: 7.937 min
 Delta R.T.: 0.003 min
 Response: 51678898
 Conc: 636.87 ng/ml



#30 AR-1254-5

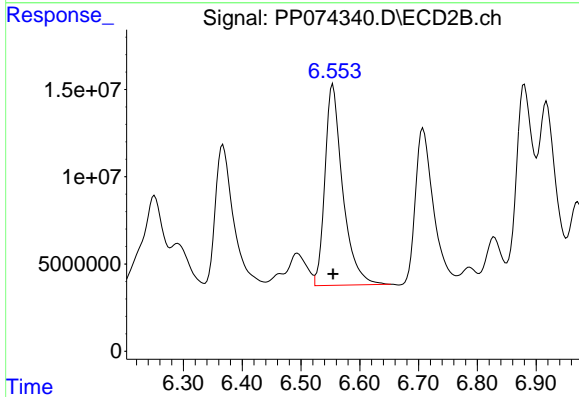
R.T.: 6.880 min
 Delta R.T.: 0.000 min
 Response: 217074296
 Conc: 563.58 ng/ml



#31 AR-1260-1

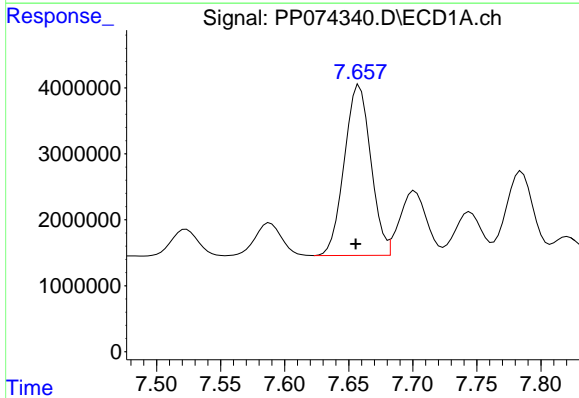
R.T.: 7.405 min
 Delta R.T.: 0.002 min
 Response: 32200623
 Conc: 571.38 ng/ml

Instrument :
 ECD_P
 ClientSampleId :
 PB169227BS



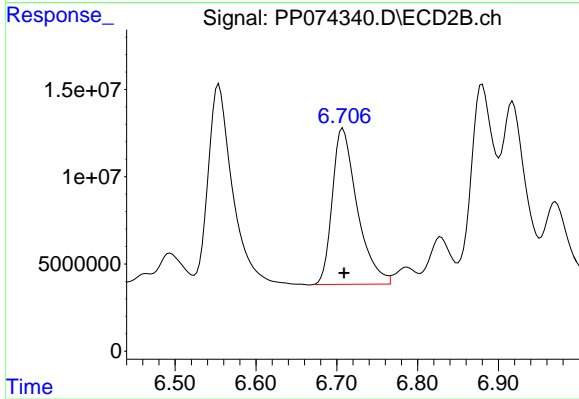
#31 AR-1260-1

R.T.: 6.554 min
 Delta R.T.: 0.000 min
 Response: 241889459
 Conc: 598.80 ng/ml



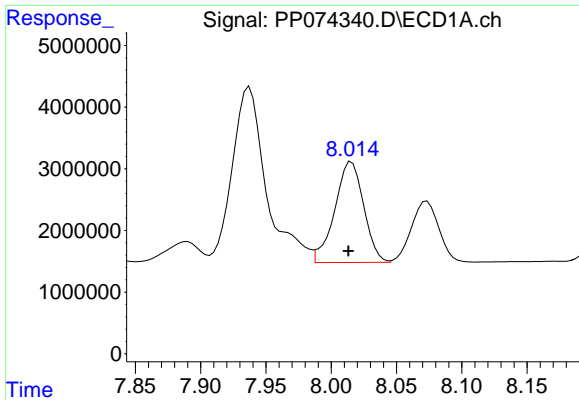
#32 AR-1260-2

R.T.: 7.658 min
 Delta R.T.: 0.003 min
 Response: 37222394
 Conc: 546.16 ng/ml



#32 AR-1260-2

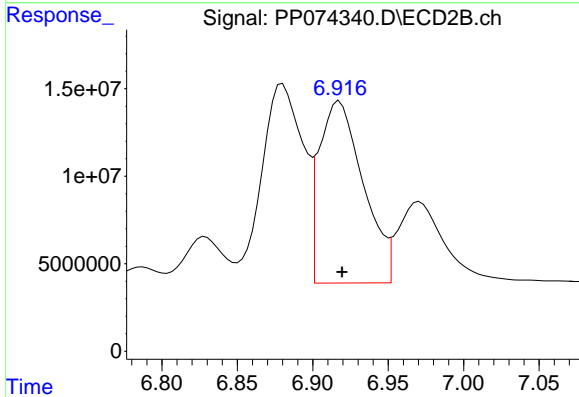
R.T.: 6.708 min
 Delta R.T.: -0.001 min
 Response: 190935160
 Conc: 610.60 ng/ml



#33 AR-1260-3

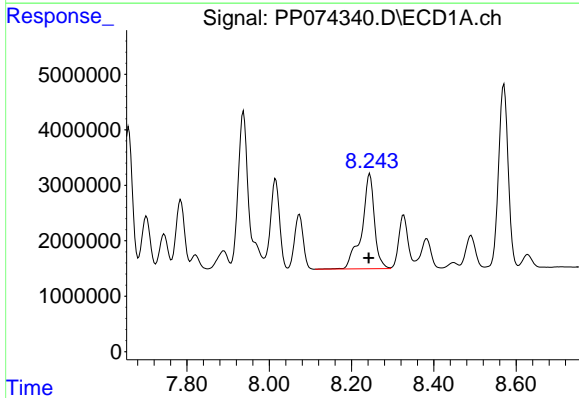
R.T.: 8.016 min
 Delta R.T.: 0.002 min
 Response: 25253920
 Conc: 473.84 ng/ml

Instrument :
 ECD_P
 ClientSampleId :
 PB169227BS



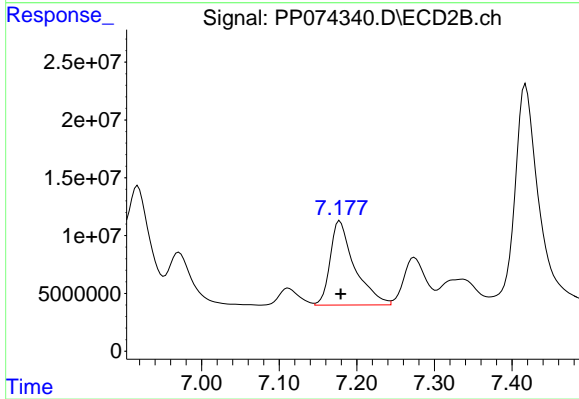
#33 AR-1260-3

R.T.: 6.918 min
 Delta R.T.: -0.002 min
 Response: 211806284
 Conc: 537.42 ng/ml



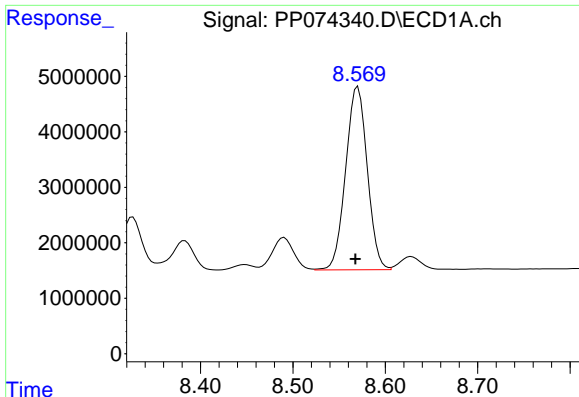
#34 AR-1260-4

R.T.: 8.244 min
 Delta R.T.: 0.002 min
 Response: 36630558
 Conc: 585.01 ng/ml



#34 AR-1260-4

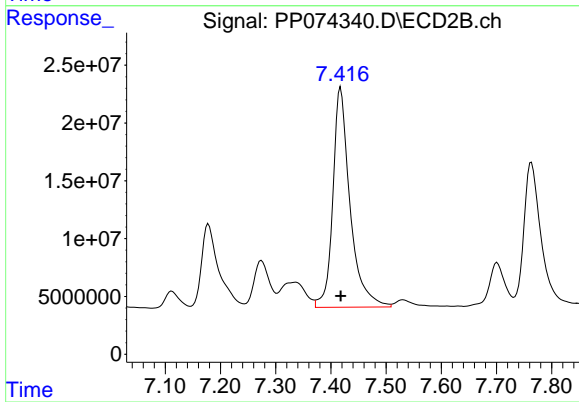
R.T.: 7.178 min
 Delta R.T.: -0.001 min
 Response: 159186702
 Conc: 547.07 ng/ml



#35 AR-1260-5

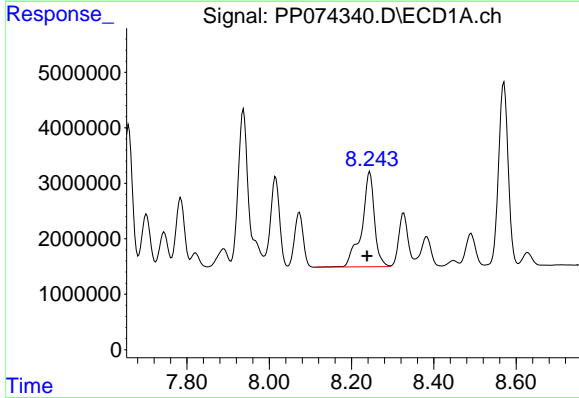
R.T.: 8.570 min
 Delta R.T.: 0.003 min
 Response: 53626648
 Conc: 473.30 ng/ml

Instrument :
 ECD_P
 ClientSampleId :
 PB169227BS



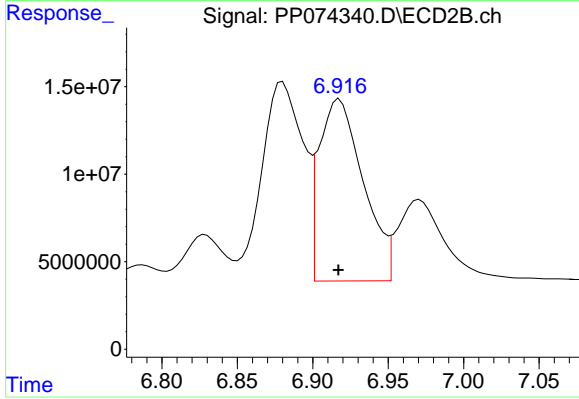
#35 AR-1260-5

R.T.: 7.418 min
 Delta R.T.: 0.000 min
 Response: 411333033
 Conc: 543.08 ng/ml



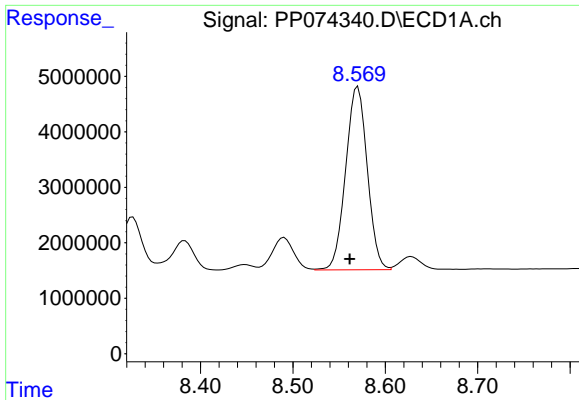
#36 AR-1262-1

R.T.: 8.244 min
 Delta R.T.: 0.007 min
 Response: 36630558
 Conc: 483.32 ng/ml



#36 AR-1262-1

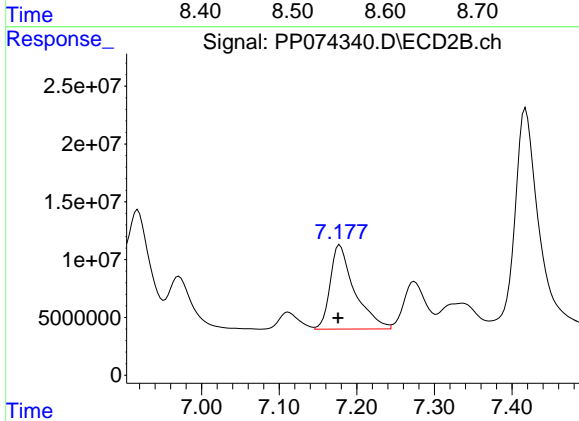
R.T.: 6.918 min
 Delta R.T.: 0.000 min
 Response: 211806284
 Conc: 376.11 ng/ml



#37 AR-1262-2

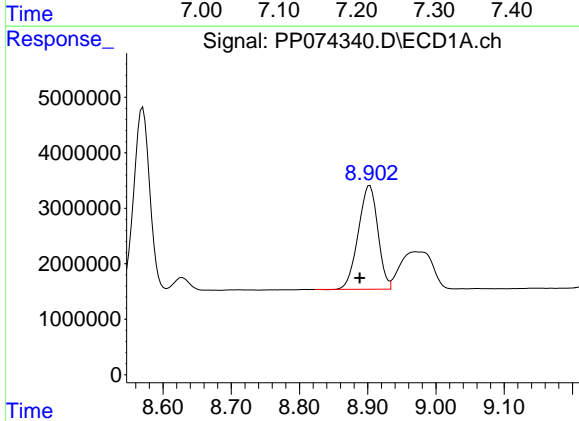
R.T.: 8.570 min
 Delta R.T.: 0.009 min
 Response: 53626648
 Conc: 411.15 ng/ml

Instrument :
 ECD_P
 ClientSampleId :
 PB169227BS



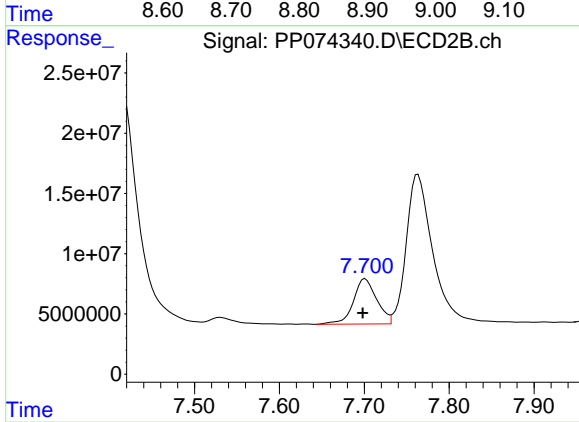
#37 AR-1262-2

R.T.: 7.178 min
 Delta R.T.: 0.002 min
 Response: 159186702
 Conc: 396.95 ng/ml



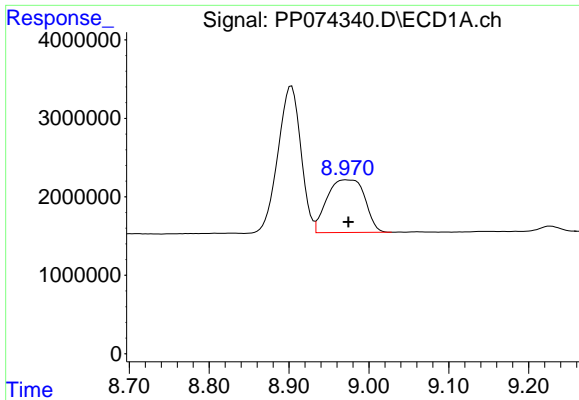
#38 AR-1262-3

R.T.: 8.903 min
 Delta R.T.: 0.015 min
 Response: 37218499
 Conc: 395.64 ng/ml



#38 AR-1262-3

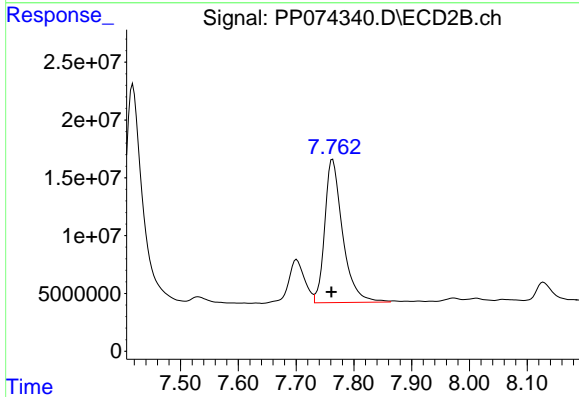
R.T.: 7.701 min
 Delta R.T.: 0.003 min
 Response: 71775742
 Conc: 199.67 ng/ml



#39 AR-1262-4

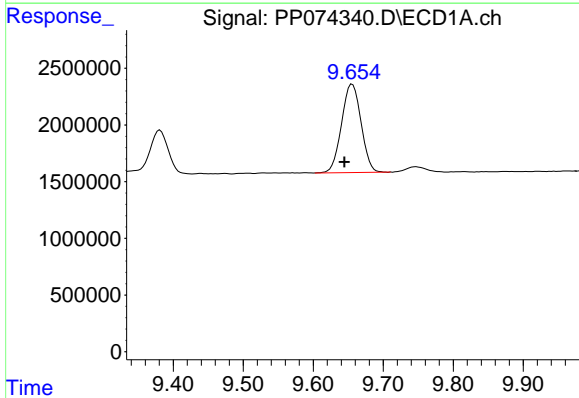
R.T.: 8.971 min
 Delta R.T.: -0.003 min
 Response: 22104331
 Conc: 303.42 ng/ml

Instrument :
 ECD_P
 ClientSampleId :
 PB169227BS



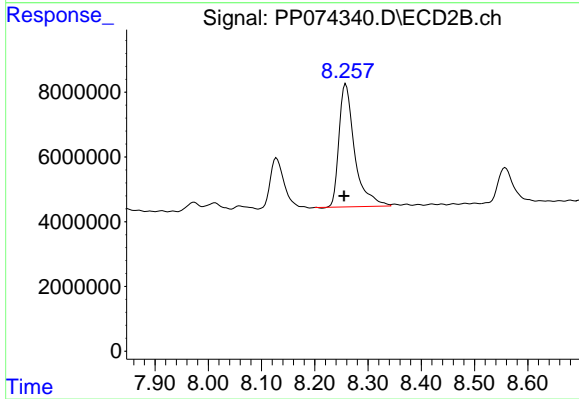
#39 AR-1262-4

R.T.: 7.763 min
 Delta R.T.: 0.002 min
 Response: 267889201
 Conc: 401.68 ng/ml



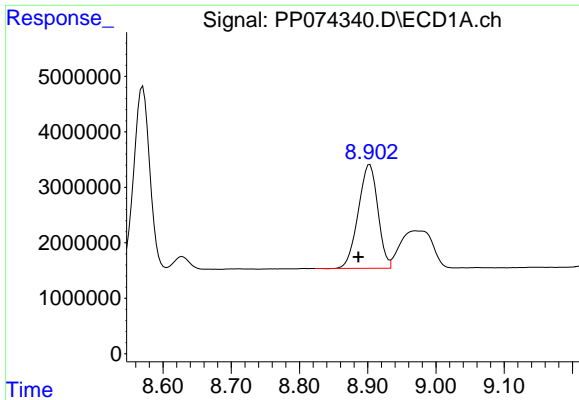
#40 AR-1262-5

R.T.: 9.656 min
 Delta R.T.: 0.011 min
 Response: 15125726
 Conc: 297.03 ng/ml



#40 AR-1262-5

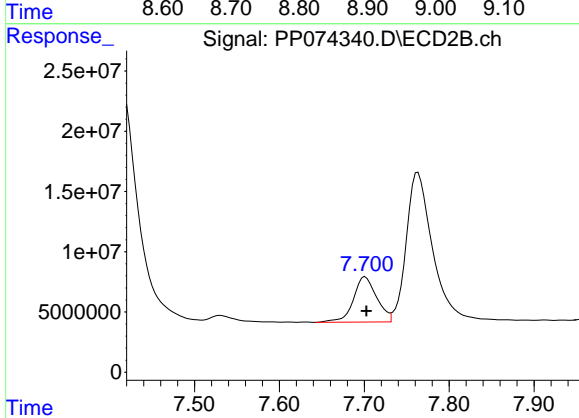
R.T.: 8.258 min
 Delta R.T.: 0.003 min
 Response: 77565632
 Conc: 273.82 ng/ml



#41 AR-1268-1

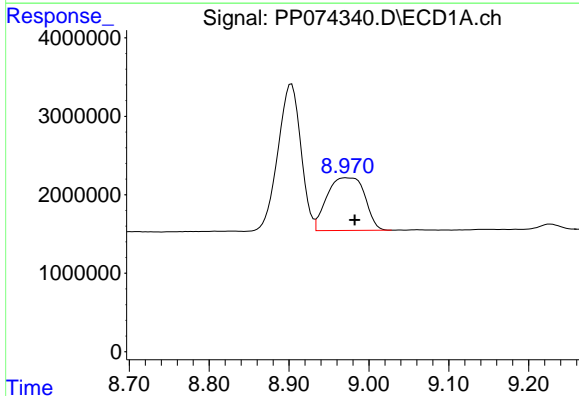
R.T.: 8.903 min
 Delta R.T.: 0.017 min
 Response: 37218499
 Conc: 239.14 ng/ml

Instrument :
 ECD_P
 ClientSampleId :
 PB169227BS



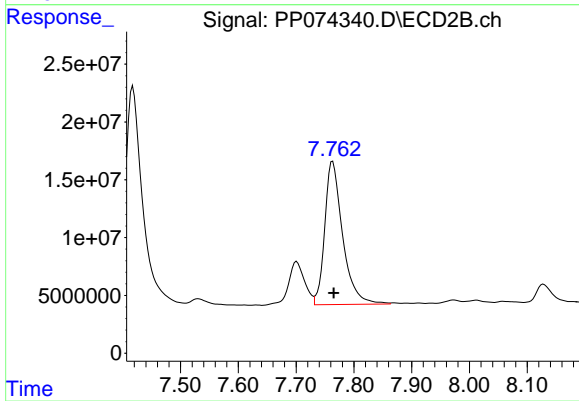
#41 AR-1268-1

R.T.: 7.701 min
 Delta R.T.: -0.001 min
 Response: 71775742
 Conc: 65.83 ng/ml



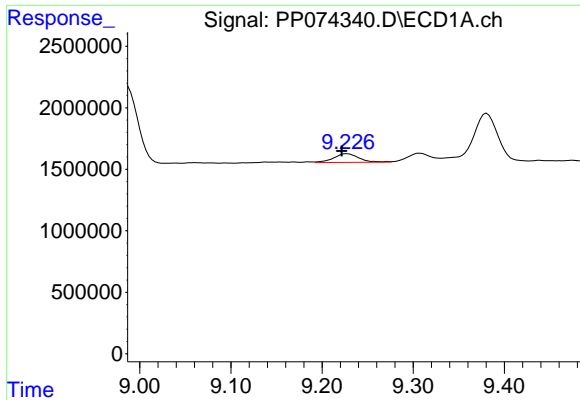
#42 AR-1268-2

R.T.: 8.971 min
 Delta R.T.: -0.011 min
 Response: 22104331
 Conc: 154.12 ng/ml



#42 AR-1268-2

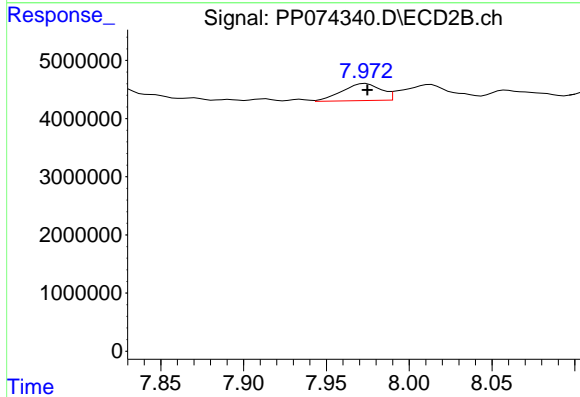
R.T.: 7.763 min
 Delta R.T.: -0.002 min
 Response: 267889201
 Conc: 252.41 ng/ml



#43 AR-1268-3

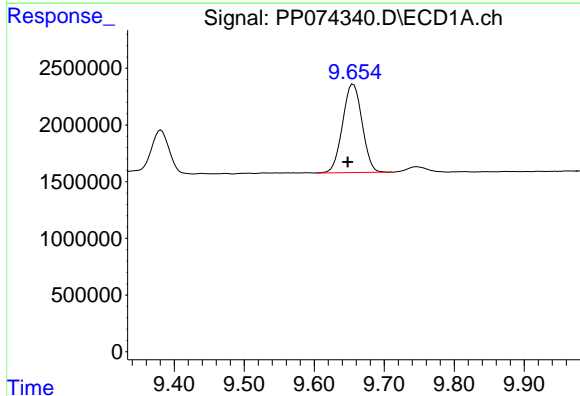
R.T.: 9.227 min
 Delta R.T.: 0.006 min
 Response: 1368603
 Conc: 11.46 ng/ml

Instrument :
 ECD_P
 ClientSampleId :
 PB169227BS



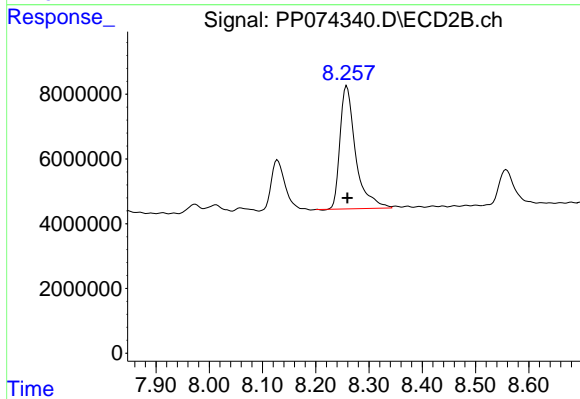
#43 AR-1268-3

R.T.: 7.974 min
 Delta R.T.: -0.001 min
 Response: 4782651
 Conc: 5.75 ng/ml



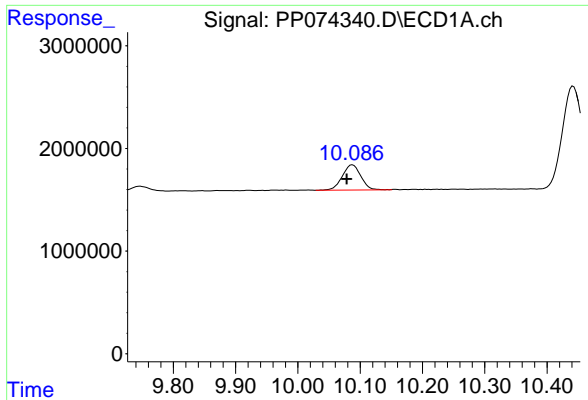
#44 AR-1268-4

R.T.: 9.656 min
 Delta R.T.: 0.008 min
 Response: 15125726
 Conc: 257.19 ng/ml



#44 AR-1268-4

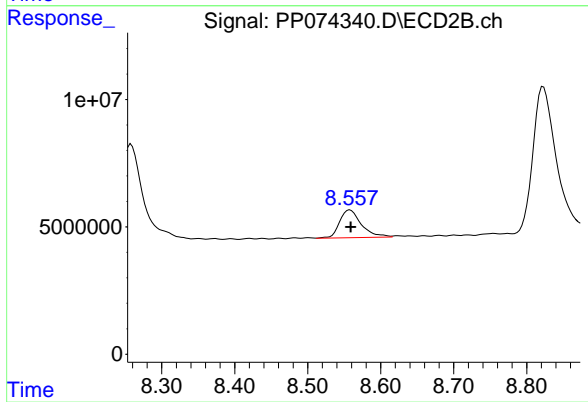
R.T.: 8.258 min
 Delta R.T.: 0.000 min
 Response: 77565632
 Conc: 251.79 ng/ml



#45 AR-1268-5

R.T.: 10.088 min
Delta R.T.: 0.009 min
Response: 5159772
Conc: 14.67 ng/ml

Instrument :
ECD_P
ClientSampleId :
PB169227BS



#45 AR-1268-5

R.T.: 8.558 min
Delta R.T.: -0.001 min
Response: 22550536
Conc: 8.84 ng/ml