

Data Path : Z:\pestpcbsrv\HPCHEM1\ECD_P\Data\PP081325\
 Data File : PP074341.D
 Signal(s) : Signal #1: ECD1A.ch Signal #2: ECD2B.ch
 Acq On : 13 Aug 2025 13:11
 Operator : YP\AJ
 Sample : Q2732-02
 Misc :
 ALS Vial : 9 Sample Multiplier: 1

Instrument :
 ECD_P
 ClientSampleId :
 WC-A7-01-C

Integration File signal 1: autoint1.e
 Integration File signal 2: autoint2.e
 Quant Time: Aug 13 15:41:36 2025
 Quant Method : Z:\pestpcbsrv\HPCHEM1\ECD_P\methods\PP080125.M
 Quant Title : GC EXTRACTABLES
 QLast Update : Mon Aug 04 11:01:49 2025
 Response via : Initial Calibration
 Integrator: ChemStation

Volume Inj. : 2 µl
 Signal #1 Phase : ZB-MR1 Signal #2 Phase: ZB-MR2
 Signal #1 Info : 30Mx0.32mmx 0.50µ Signal #2 Info : 30M x 0.32mm x 0.25µm

Compound	RT#1	RT#2	Resp#1	Resp#2	ng/ml	ng/ml
System Monitoring Compounds						
1) SA Tetrachlo...	4.655	3.804	25082507	237.6E6	22.429	61.960 #
2) SA Decachlor...	10.435	8.816	20906950	113.6E6	21.528	18.888
Target Compounds						
3) L1 AR-1016-1	5.820	4.919	5269026	5617535	127.713	14.083 #
4) L1 AR-1016-2	5.820	4.973	5269026	8154837	86.745	43.421 #
5) L1 AR-1016-3	5.908	5.098	4993387	3698375	125.903	34.867 #
6) L1 AR-1016-4	6.033f	5.125	9072052	4464036	278.759	40.872 #
7) L1 AR-1016-5	6.270	5.346	6461530	92565326	199.012	791.405 #
8) L2 AR-1221-1	4.832	4.023	1754053	11319080	104.635	230.601 #
9) L2 AR-1221-2	4.959	4.091	5386323	6670147	427.450	185.853 #
10) L2 AR-1221-3	5.029	4.179	1989190	84048	54.297	0.622 #
11) L3 AR-1232-1	5.029	4.179	1989190	84048	68.505	0.829 #
12) L3 AR-1232-2	5.548	4.919	3142373	5617535	208.897	32.235 #
13) L3 AR-1232-3	5.820	5.098	5269026	3698375	181.680	80.721 #
14) L3 AR-1232-4	6.033f	5.178	9072052	2222691	586.473	38.315 #
15) L3 AR-1232-5	6.087	5.346	2052284	92565326	175.169	1970.336 #
16) L4 AR-1242-1	5.820	4.919	5269026	5617535	141.390	16.276 #
17) L4 AR-1242-2	5.820	4.973	5269026	8154837	96.841	49.914 #
18) L4 AR-1242-3	5.908	5.098	4993387	3698375	139.730	40.091 #
19) L4 AR-1242-4	6.033f	5.178	9072052	2222691	310.488	18.612 #
20) L4 AR-1242-5	6.730	5.687	7319149	2005206	205.837	13.407 #
21) L5 AR-1248-1	5.820	4.919	5269026	5617535	188.082	26.259 #
22) L5 AR-1248-2	6.087	5.125	2052284	4464036	50.974	30.510 #
23) L5 AR-1248-3	6.270	5.178	6461530	2222691	144.963	12.963 #
24) L5 AR-1248-4	6.638f	5.346	5937054	92565326	114.093	556.370 #
25) L5 AR-1248-5	6.730	5.723	7319149	3159313	128.534	10.858 #
26) L6 AR-1254-1	6.638	5.687	5937054	2005206	112.784	5.476 #
27) L6 AR-1254-2	6.894	5.823	2714577	27165719	34.144	97.642 #
28) L6 AR-1254-3	7.250	6.244	7602407	22193441	87.068	45.366 #
29) L6 AR-1254-4	7.517	6.456	4498756	511286	70.503	1.391 #
30) L6 AR-1254-5	7.936	6.882	4496547	1595350	55.414	4.142 #
31) L7 AR-1260-1	7.387	6.559	10782760	1938161	191.333	4.798 #
32) L7 AR-1260-2	7.630	6.729	2896647	20251322	42.503	64.763 #
33) L7 AR-1260-3	8.005	6.938	3855929	1735986	72.349	4.405 #
34) L7 AR-1260-4	8.241	7.175	14859914	10869591	237.322	37.355 #
35) L7 AR-1260-5	8.570	7.459f	8203843	1890819	72.405	2.496 #
36) L8 AR-1262-1	8.241	6.938	14859914	1735986	196.068	3.083 #
37) L8 AR-1262-2	8.570	7.175	8203843	10869591	62.898	27.105 #
38) L8 AR-1262-3	8.882	7.702	206332	1563838	2.193	4.350 #
39) L8 AR-1262-4	8.957	7.771	212126	1808250	2.912	2.711
40) L8 AR-1262-5	9.666	8.266	311071	402709	6.109	1.422 #
41) L9 AR-1268-1	8.882	7.702	206332	1563838	1.326	1.434

Data Path : Z:\pestpcbsrv\HPCHEM1\ECD_P\Data\PP081325\
 Data File : PP074341.D
 Signal(s) : Signal #1: ECD1A.ch Signal #2: ECD2B.ch
 Acq On : 13 Aug 2025 13:11
 Operator : YP\AJ
 Sample : Q2732-02
 Misc :
 ALS Vial : 9 Sample Multiplier: 1

Instrument :
 ECD_P
 ClientSampleId :
 WC-A7-01-C

Integration File signal 1: autoint1.e
 Integration File signal 2: autoint2.e
 Quant Time: Aug 13 15:41:36 2025
 Quant Method : Z:\pestpcbsrv\HPCHEM1\ECD_P\methods\PP080125.M
 Quant Title : GC EXTRACTABLES
 QLast Update : Mon Aug 04 11:01:49 2025
 Response via : Initial Calibration
 Integrator: ChemStation

Volume Inj. : 2 µl
 Signal #1 Phase : ZB-MR1 Signal #2 Phase: ZB-MR2
 Signal #1 Info : 30Mx0.32mmx 0.50µ Signal #2 Info : 30M x 0.32mm x 0.25µm

	Compound	RT#1	RT#2	Resp#1	Resp#2	ng/ml	ng/ml
42)	L9 AR-1268-2	8.957	7.771	212126	1808250	1.479	1.704
43)	L9 AR-1268-3	9.236	7.975	823154	1530796	6.890	1.840 #
44)	L9 AR-1268-4	9.666	8.266	311071	402709	5.289	1.307 #
45)	L9 AR-1268-5	10.069	8.541	179135	3737266	0.509	1.466 #

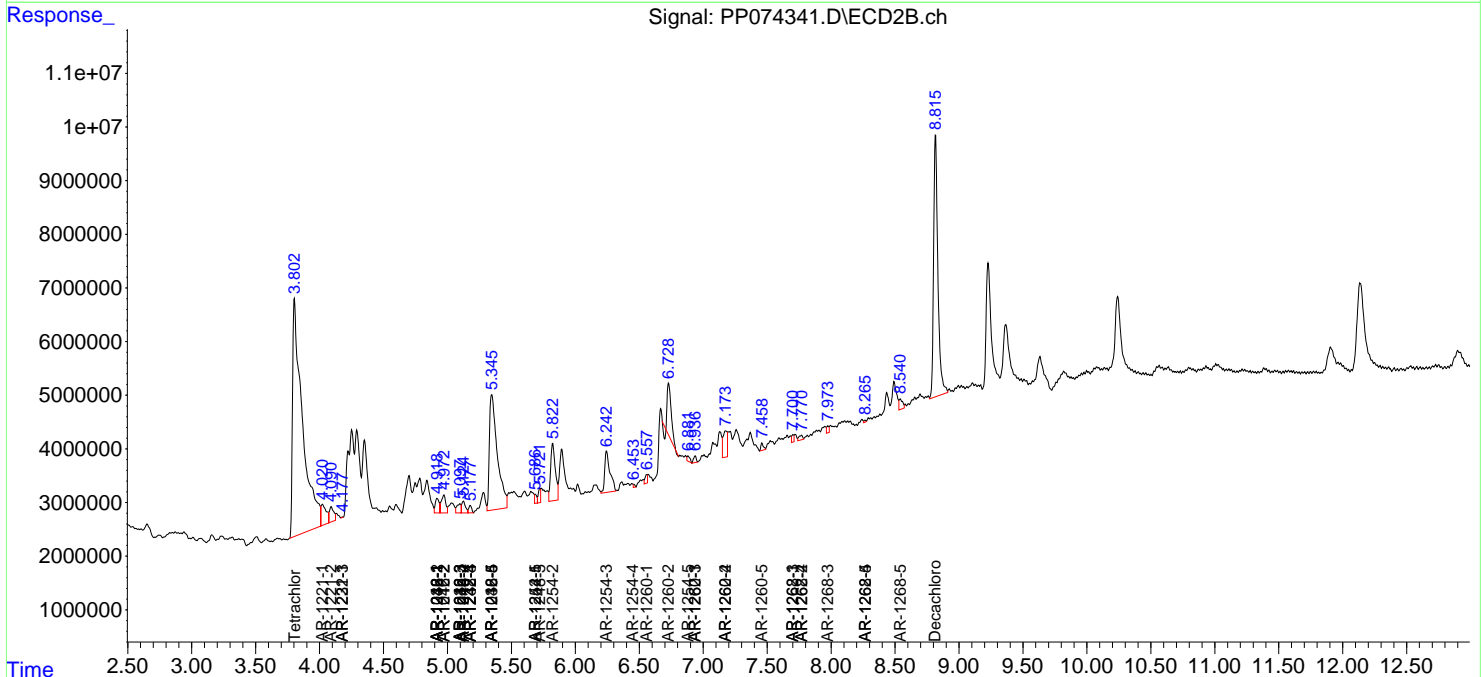
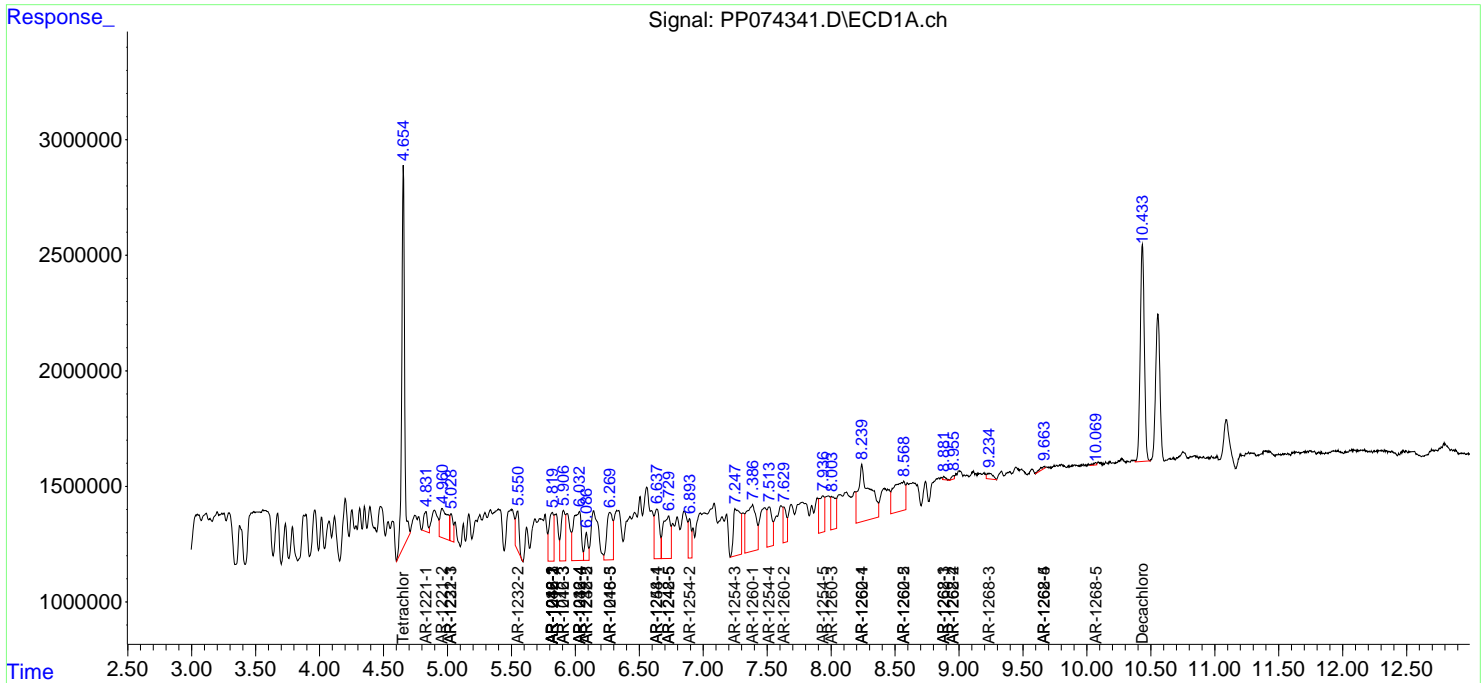
(f)=RT Delta > 1/2 Window (#)=Amounts differ by > 25% (m)=manual int.

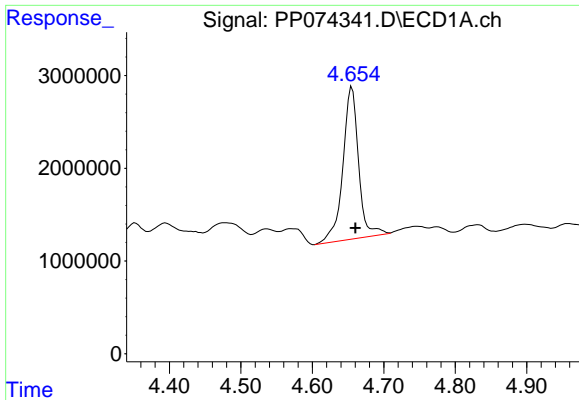
Data Path : Z:\pestpcbsrv\HPCHEM1\ECD_P\Data\PP081325\
 Data File : PP074341.D
 Signal(s) : Signal #1: ECD1A.ch Signal #2: ECD2B.ch
 Acq On : 13 Aug 2025 13:11
 Operator : YP\AJ
 Sample : Q2732-02
 Misc :
 ALS Vial : 9 Sample Multiplier: 1

Instrument :
 ECD_P
 ClientSampleId :
 WC-A7-01-C

Integration File signal 1: autoint1.e
 Integration File signal 2: autoint2.e
 Quant Time: Aug 13 15:41:36 2025
 Quant Method : Z:\pestpcbsrv\HPCHEM1\ECD_P\methods\PP080125.M
 Quant Title : GC EXTRACTABLES
 QLast Update : Mon Aug 04 11:01:49 2025
 Response via : Initial Calibration
 Integrator: ChemStation

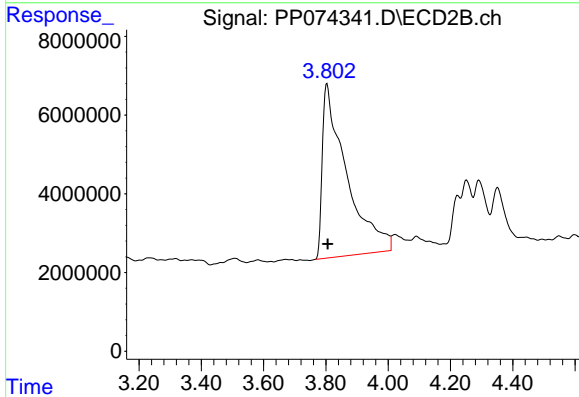
Volume Inj. : 2 µl
 Signal #1 Phase : ZB-MR1 Signal #2 Phase: ZB-MR2
 Signal #1 Info : 30Mx0.32mmx 0.50µ Signal #2 Info : 30M x 0.32mm x 0.25µm



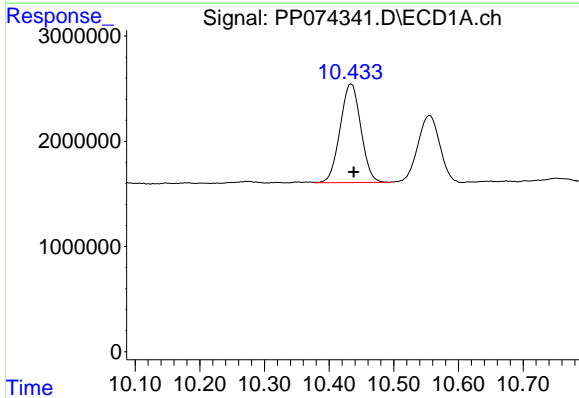


#1 Tetrachloro-m-xylene
R.T.: 4.655 min
Delta R.T.: -0.005 min
Response: 25082507
Conc: 22.43 ng/ml

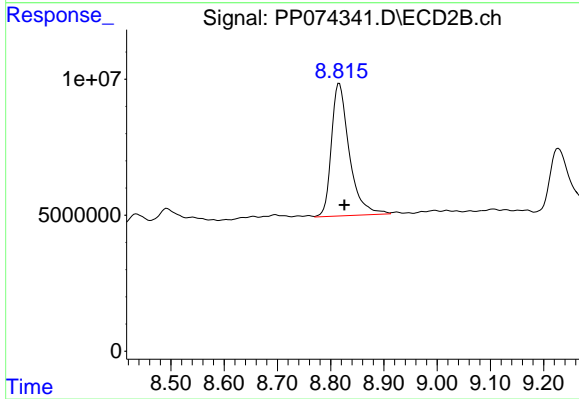
Instrument :
ECD_P
ClientSampleId :
WC-A7-01-C



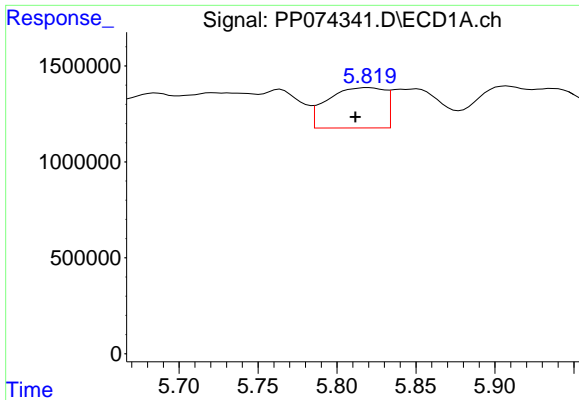
#1 Tetrachloro-m-xylene
R.T.: 3.804 min
Delta R.T.: -0.002 min
Response: 237581979
Conc: 61.96 ng/ml



#2 Decachlorobiphenyl
R.T.: 10.435 min
Delta R.T.: -0.003 min
Response: 20906950
Conc: 21.53 ng/ml



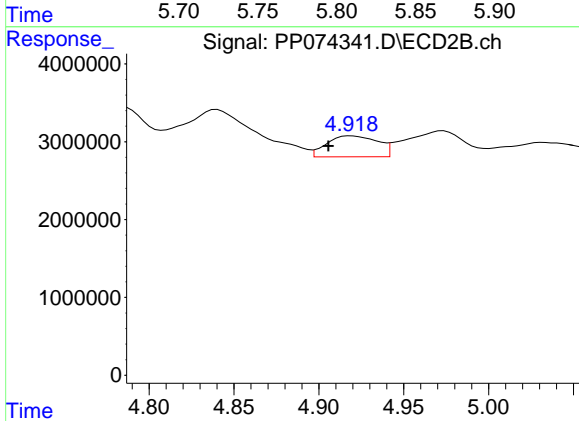
#2 Decachlorobiphenyl
R.T.: 8.816 min
Delta R.T.: -0.010 min
Response: 113585453
Conc: 18.89 ng/ml



#3 AR-1016-1

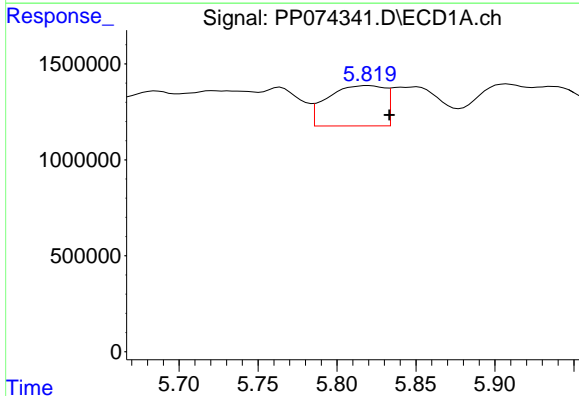
R.T.: 5.820 min
 Delta R.T.: 0.009 min
 Response: 5269026
 Conc: 127.71 ng/ml

Instrument :
 ECD_P
 ClientSampleId :
 WC-A7-01-C



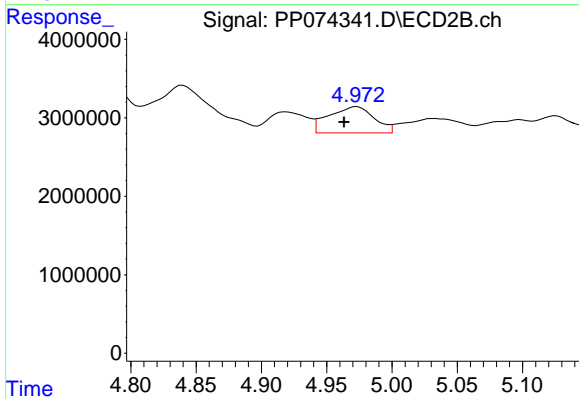
#3 AR-1016-1

R.T.: 4.919 min
 Delta R.T.: 0.013 min
 Response: 5617535
 Conc: 14.08 ng/ml



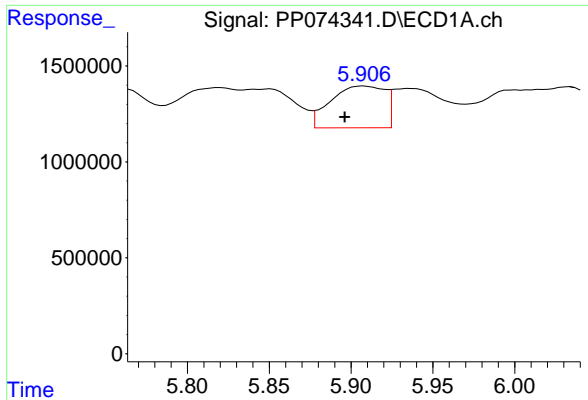
#4 AR-1016-2

R.T.: 5.820 min
 Delta R.T.: -0.013 min
 Response: 5269026
 Conc: 86.74 ng/ml



#4 AR-1016-2

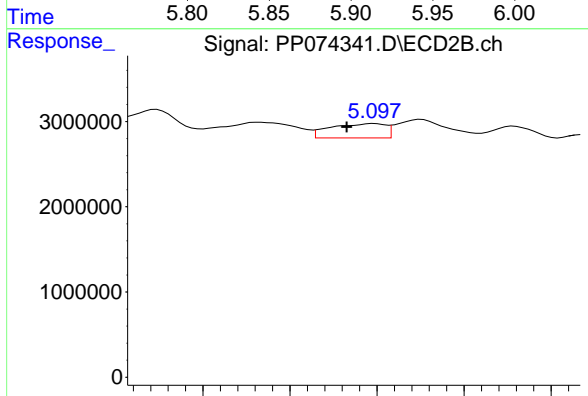
R.T.: 4.973 min
 Delta R.T.: 0.010 min
 Response: 8154837
 Conc: 43.42 ng/ml



#5 AR-1016-3

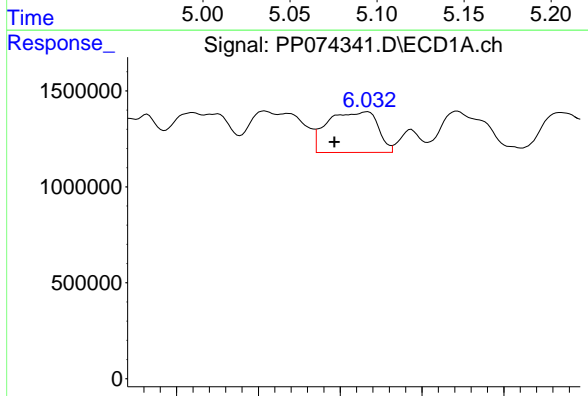
R.T.: 5.908 min
 Delta R.T.: 0.012 min
 Response: 4993387
 Conc: 125.90 ng/ml

Instrument :
 ECD_P
 ClientSampleId :
 WC-A7-01-C



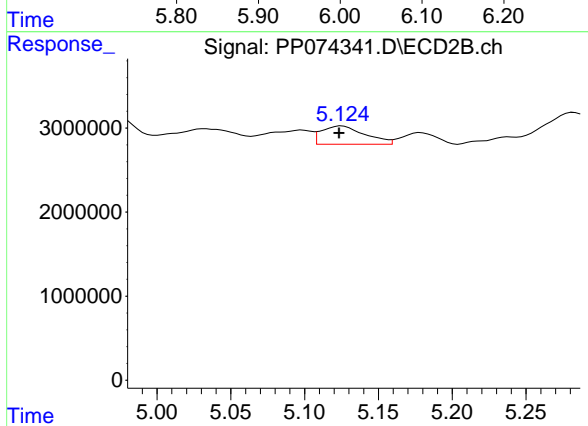
#5 AR-1016-3

R.T.: 5.098 min
 Delta R.T.: 0.016 min
 Response: 3698375
 Conc: 34.87 ng/ml



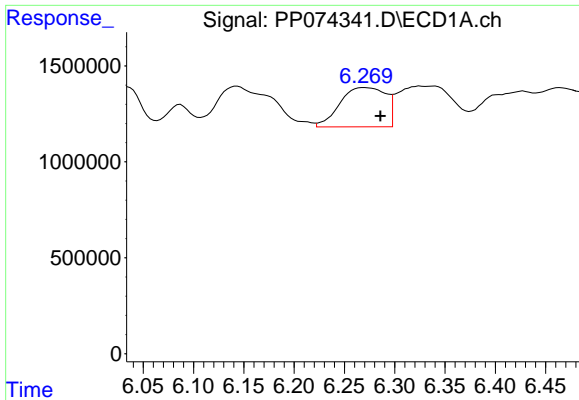
#6 AR-1016-4

R.T.: 6.033 min
 Delta R.T.: 0.040 min
 Response: 9072052
 Conc: 278.76 ng/ml



#6 AR-1016-4

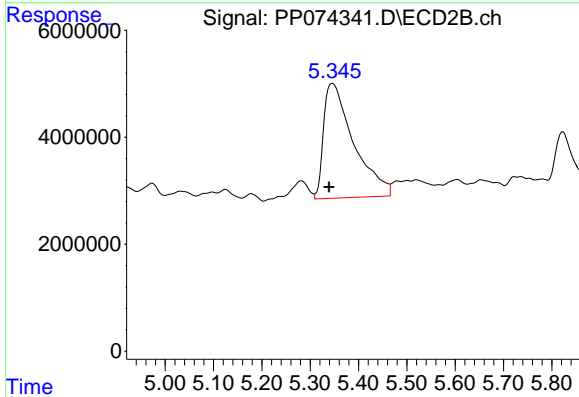
R.T.: 5.125 min
 Delta R.T.: 0.002 min
 Response: 4464036
 Conc: 40.87 ng/ml



#7 AR-1016-5

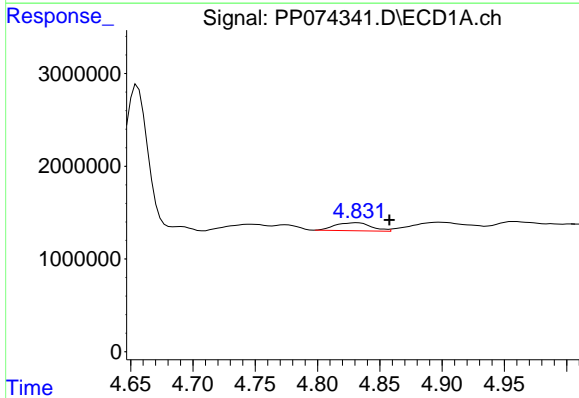
R.T.: 6.270 min
 Delta R.T.: -0.015 min
 Response: 6461530
 Conc: 199.01 ng/ml

Instrument :
 ECD_P
 ClientSampleId :
 WC-A7-01-C



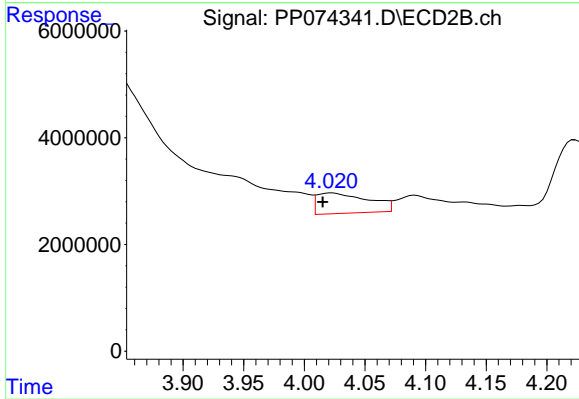
#7 AR-1016-5

R.T.: 5.346 min
 Delta R.T.: 0.007 min
 Response: 92565326
 Conc: 791.41 ng/ml



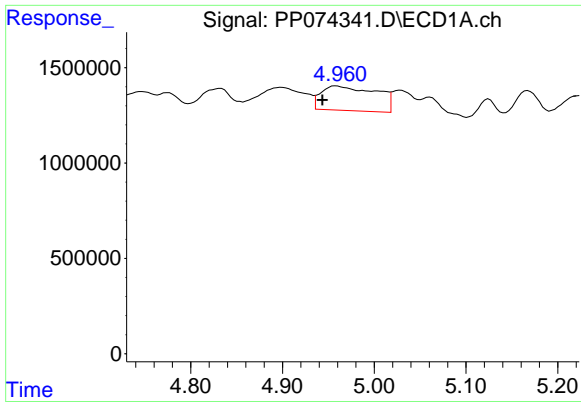
#8 AR-1221-1

R.T.: 4.832 min
 Delta R.T.: -0.026 min
 Response: 1754053
 Conc: 104.63 ng/ml



#8 AR-1221-1

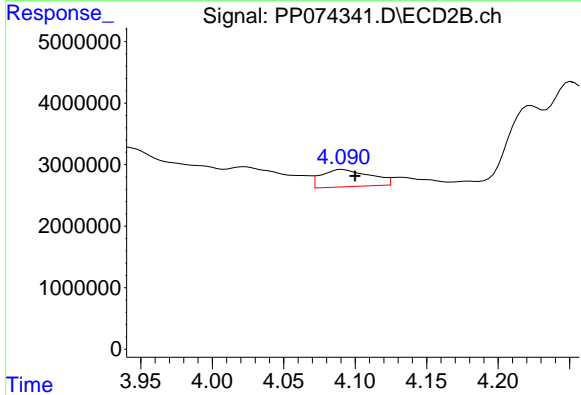
R.T.: 4.023 min
 Delta R.T.: 0.008 min
 Response: 11319080
 Conc: 230.60 ng/ml



#9 AR-1221-2

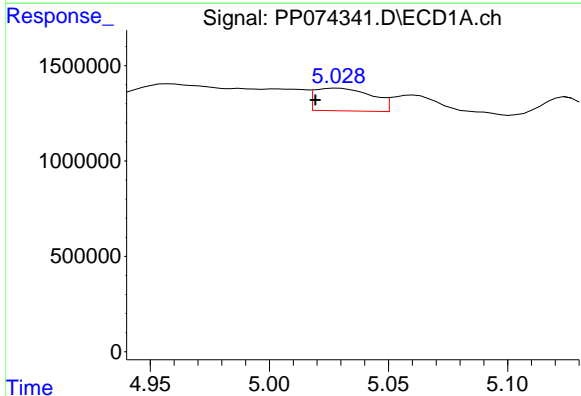
R.T.: 4.959 min
 Delta R.T.: 0.015 min
 Response: 5386323
 Conc: 427.45 ng/ml

Instrument :
 ECD_P
 ClientSampleId :
 WC-A7-01-C



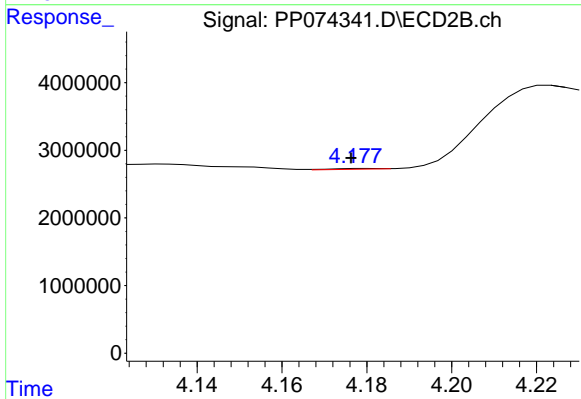
#9 AR-1221-2

R.T.: 4.091 min
 Delta R.T.: -0.008 min
 Response: 6670147
 Conc: 185.85 ng/ml



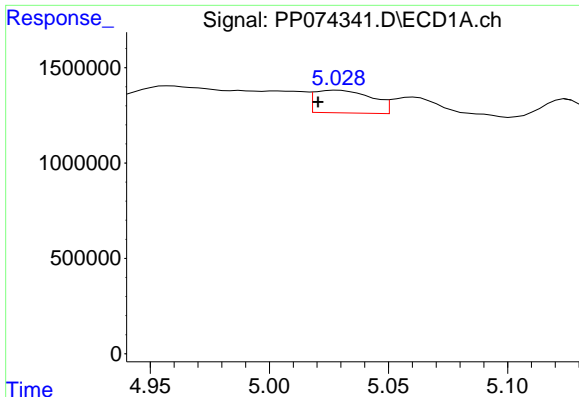
#10 AR-1221-3

R.T.: 5.029 min
 Delta R.T.: 0.009 min
 Response: 1989190
 Conc: 54.30 ng/ml



#10 AR-1221-3

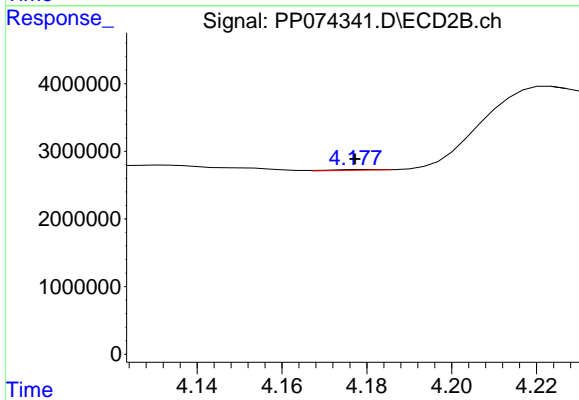
R.T.: 4.179 min
 Delta R.T.: 0.003 min
 Response: 84048
 Conc: 0.62 ng/ml



#11 AR-1232-1

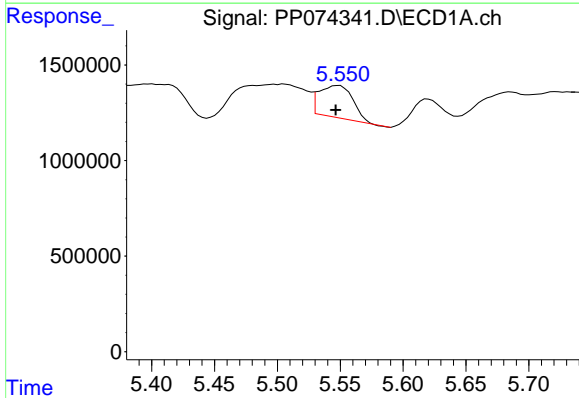
R.T.: 5.029 min
 Delta R.T.: 0.008 min
 Response: 1989190
 Conc: 68.50 ng/ml

Instrument :
 ECD_P
 ClientSampleId :
 WC-A7-01-C



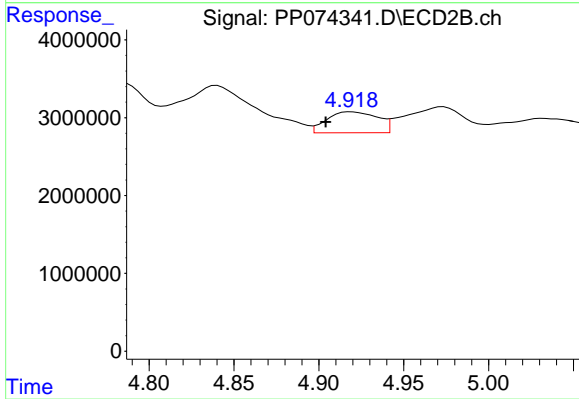
#11 AR-1232-1

R.T.: 4.179 min
 Delta R.T.: 0.002 min
 Response: 84048
 Conc: 0.83 ng/ml



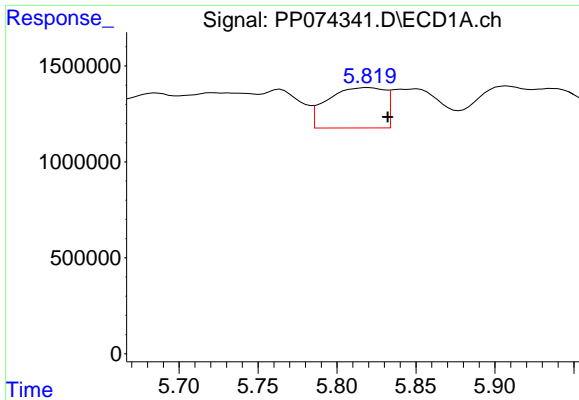
#12 AR-1232-2

R.T.: 5.548 min
 Delta R.T.: 0.002 min
 Response: 3142373
 Conc: 208.90 ng/ml



#12 AR-1232-2

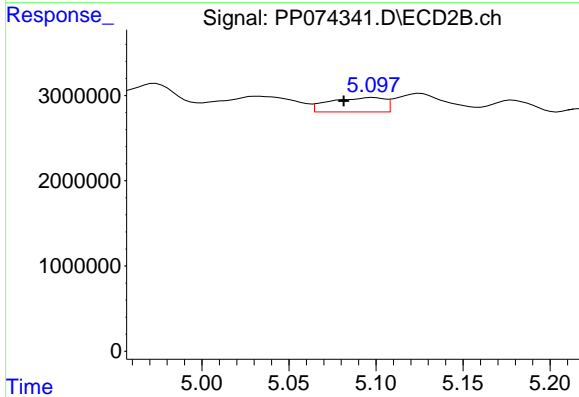
R.T.: 4.919 min
 Delta R.T.: 0.015 min
 Response: 5617535
 Conc: 32.24 ng/ml



#13 AR-1232-3

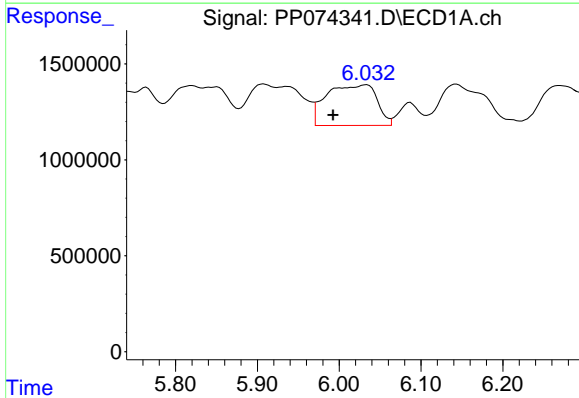
R.T.: 5.820 min
 Delta R.T.: -0.012 min
 Response: 5269026
 Conc: 181.68 ng/ml

Instrument :
 ECD_P
 ClientSampleId :
 WC-A7-01-C



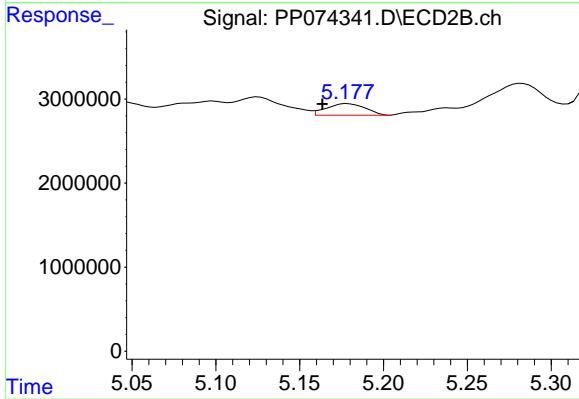
#13 AR-1232-3

R.T.: 5.098 min
 Delta R.T.: 0.017 min
 Response: 3698375
 Conc: 80.72 ng/ml



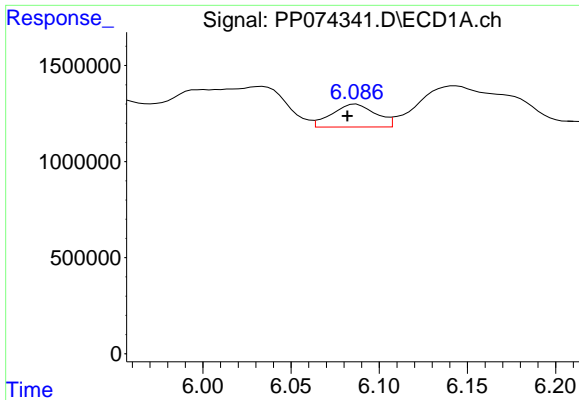
#14 AR-1232-4

R.T.: 6.033 min
 Delta R.T.: 0.040 min
 Response: 9072052
 Conc: 586.47 ng/ml



#14 AR-1232-4

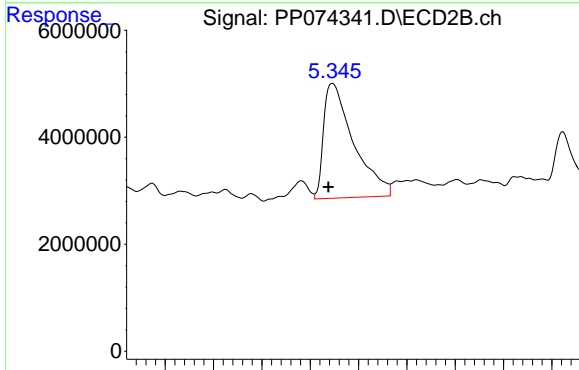
R.T.: 5.178 min
 Delta R.T.: 0.015 min
 Response: 2222691
 Conc: 38.32 ng/ml



#15 AR-1232-5

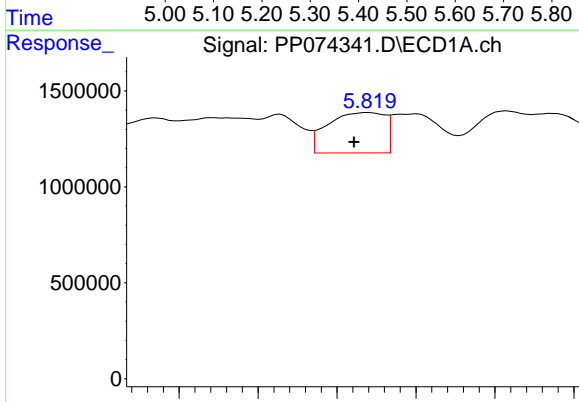
R.T.: 6.087 min
 Delta R.T.: 0.005 min
 Response: 2052284
 Conc: 175.17 ng/ml

Instrument :
 ECD_P
 ClientSampleId :
 WC-A7-01-C



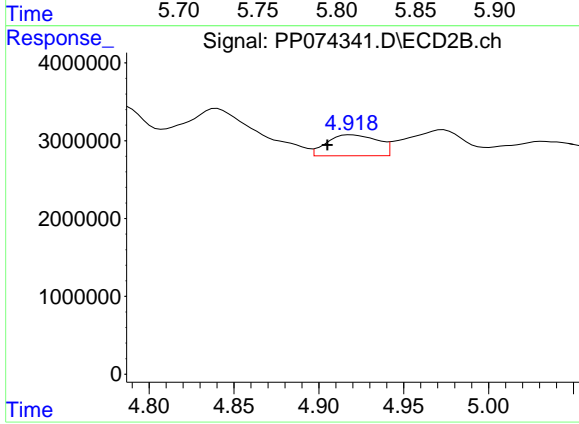
#15 AR-1232-5

R.T.: 5.346 min
 Delta R.T.: 0.009 min
 Response: 92565326
 Conc: 1970.34 ng/ml



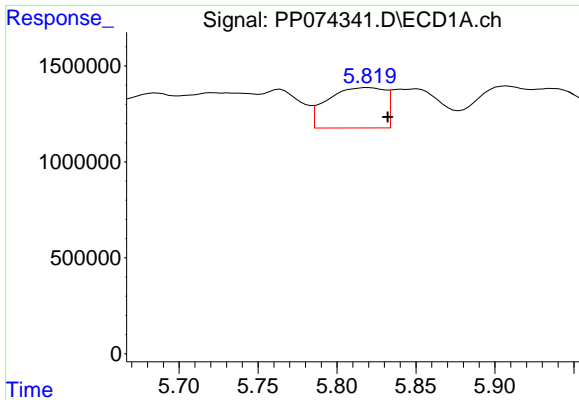
#16 AR-1242-1

R.T.: 5.820 min
 Delta R.T.: 0.010 min
 Response: 5269026
 Conc: 141.39 ng/ml



#16 AR-1242-1

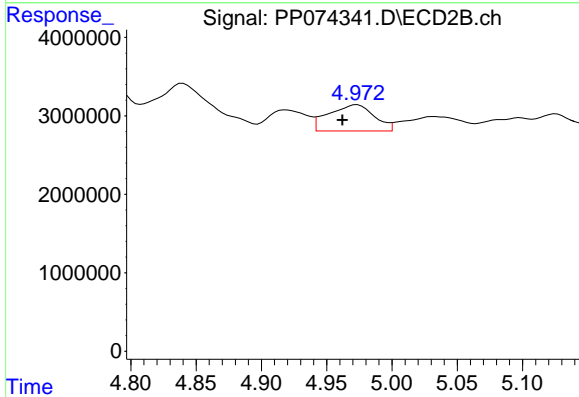
R.T.: 4.919 min
 Delta R.T.: 0.014 min
 Response: 5617535
 Conc: 16.28 ng/ml



#17 AR-1242-2

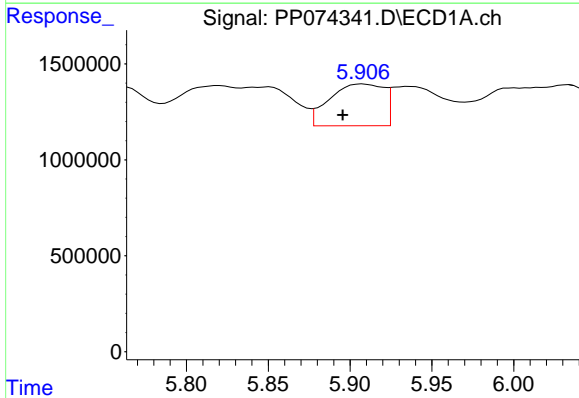
R.T.: 5.820 min
 Delta R.T.: -0.012 min
 Response: 5269026
 Conc: 96.84 ng/ml

Instrument :
 ECD_P
 ClientSampleId :
 WC-A7-01-C



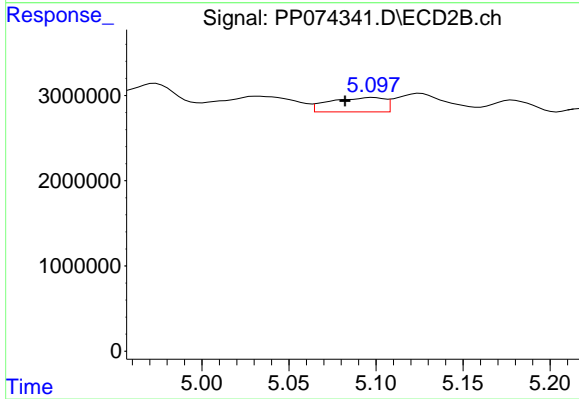
#17 AR-1242-2

R.T.: 4.973 min
 Delta R.T.: 0.011 min
 Response: 8154837
 Conc: 49.91 ng/ml



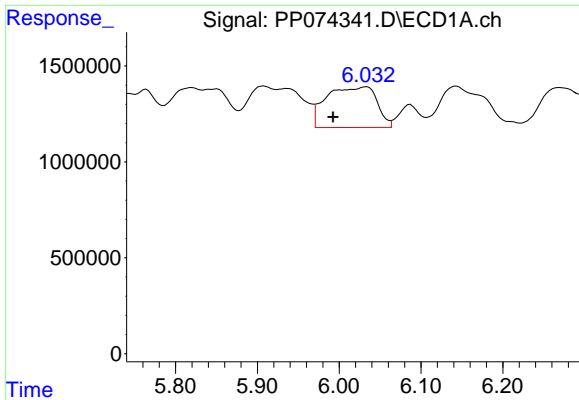
#18 AR-1242-3

R.T.: 5.908 min
 Delta R.T.: 0.012 min
 Response: 4993387
 Conc: 139.73 ng/ml



#18 AR-1242-3

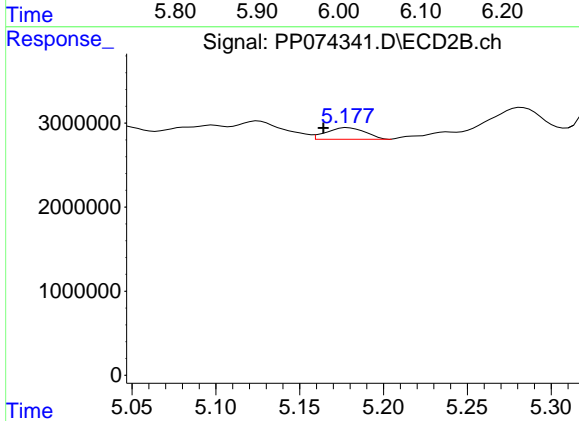
R.T.: 5.098 min
 Delta R.T.: 0.016 min
 Response: 3698375
 Conc: 40.09 ng/ml



#19 AR-1242-4

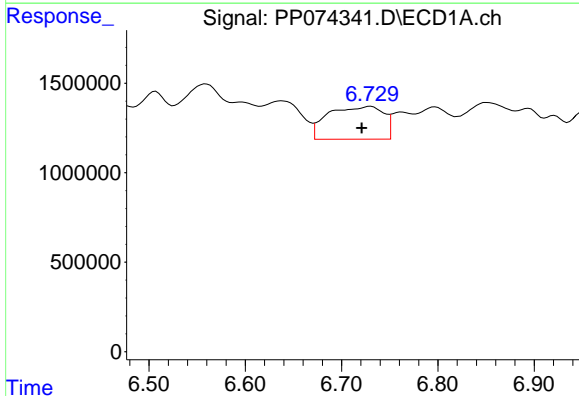
R.T.: 6.033 min
 Delta R.T.: 0.041 min
 Response: 9072052
 Conc: 310.49 ng/ml

Instrument :
 ECD_P
 ClientSampleId :
 WC-A7-01-C



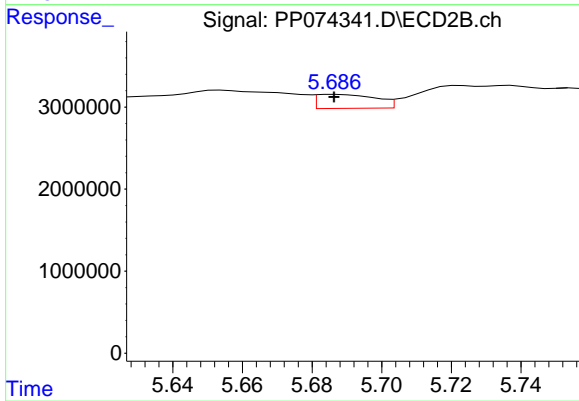
#19 AR-1242-4

R.T.: 5.178 min
 Delta R.T.: 0.014 min
 Response: 2222691
 Conc: 18.61 ng/ml



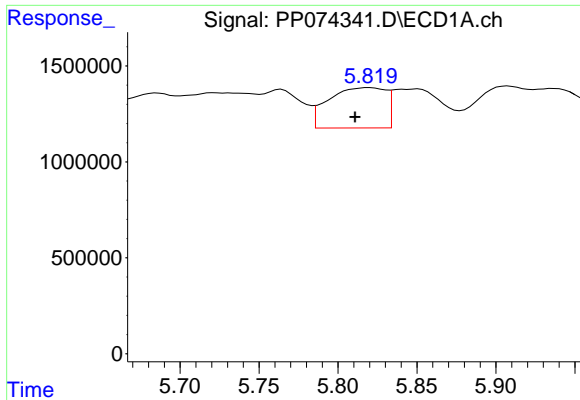
#20 AR-1242-5

R.T.: 6.730 min
 Delta R.T.: 0.009 min
 Response: 7319149
 Conc: 205.84 ng/ml



#20 AR-1242-5

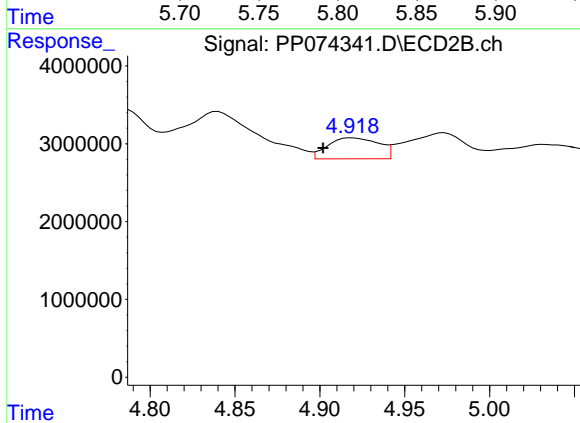
R.T.: 5.687 min
 Delta R.T.: 0.000 min
 Response: 2005206
 Conc: 13.41 ng/ml



#21 AR-1248-1

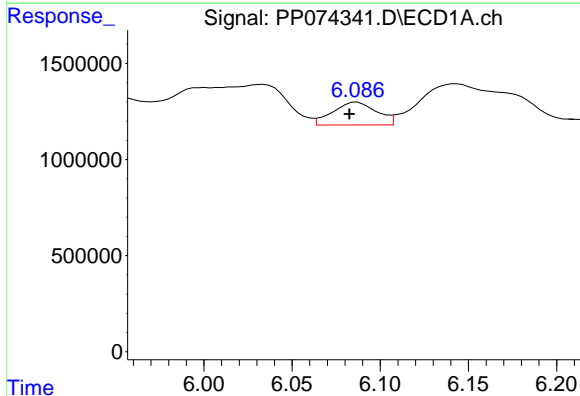
R.T.: 5.820 min
 Delta R.T.: 0.009 min
 Response: 5269026
 Conc: 188.08 ng/ml

Instrument :
 ECD_P
 ClientSampleId :
 WC-A7-01-C



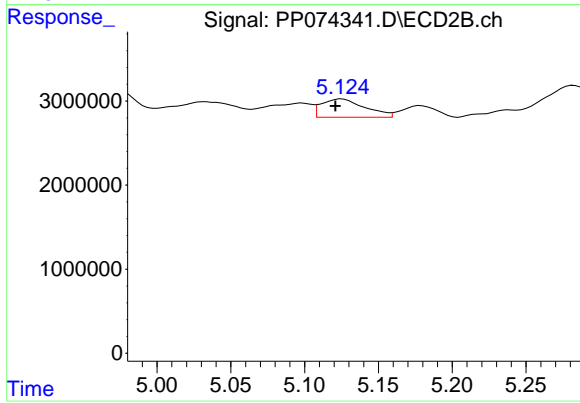
#21 AR-1248-1

R.T.: 4.919 min
 Delta R.T.: 0.017 min
 Response: 5617535
 Conc: 26.26 ng/ml



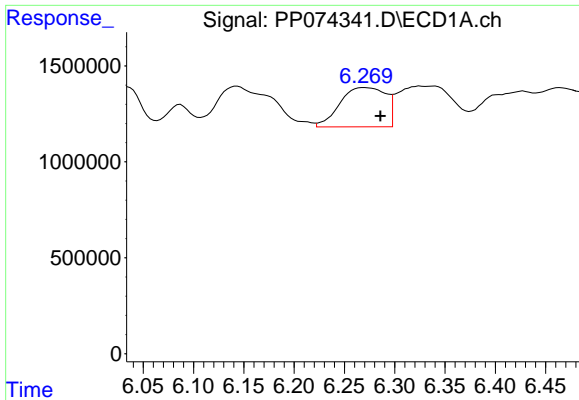
#22 AR-1248-2

R.T.: 6.087 min
 Delta R.T.: 0.004 min
 Response: 2052284
 Conc: 50.97 ng/ml



#22 AR-1248-2

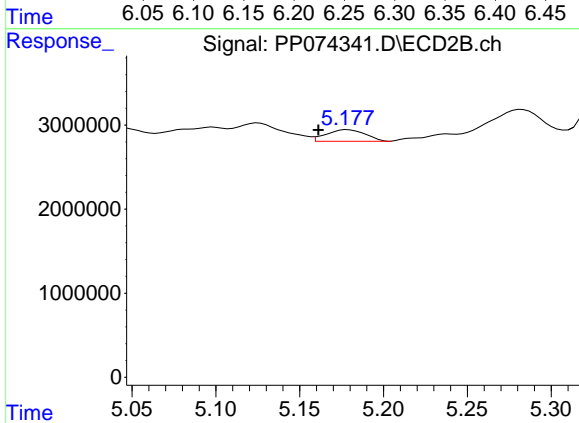
R.T.: 5.125 min
 Delta R.T.: 0.005 min
 Response: 4464036
 Conc: 30.51 ng/ml



#23 AR-1248-3

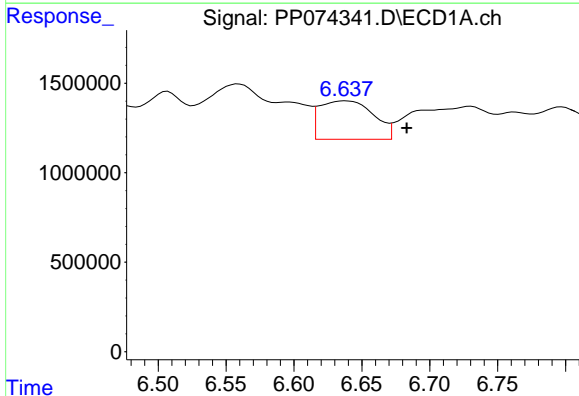
R.T.: 6.270 min
 Delta R.T.: -0.016 min
 Response: 6461530
 Conc: 144.96 ng/ml

Instrument :
 ECD_P
 ClientSampleId :
 WC-A7-01-C



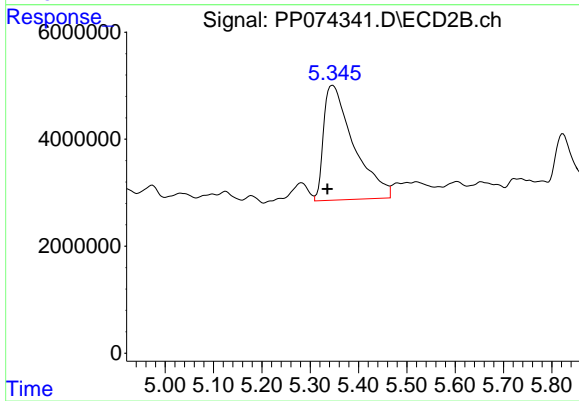
#23 AR-1248-3

R.T.: 5.178 min
 Delta R.T.: 0.017 min
 Response: 2222691
 Conc: 12.96 ng/ml



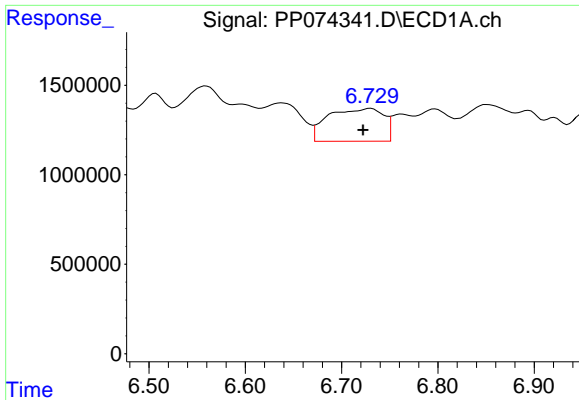
#24 AR-1248-4

R.T.: 6.638 min
 Delta R.T.: -0.045 min
 Response: 5937054
 Conc: 114.09 ng/ml



#24 AR-1248-4

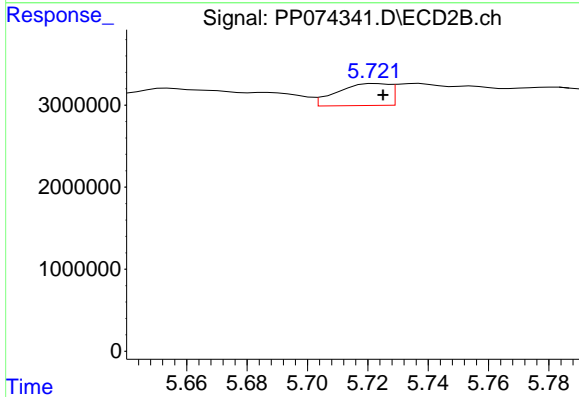
R.T.: 5.346 min
 Delta R.T.: 0.011 min
 Response: 92565326
 Conc: 556.37 ng/ml



#25 AR-1248-5

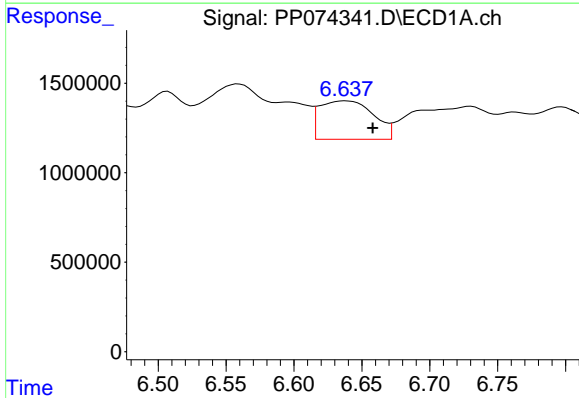
R.T.: 6.730 min
 Delta R.T.: 0.008 min
 Response: 7319149
 Conc: 128.53 ng/ml

Instrument :
 ECD_P
 ClientSampleId :
 WC-A7-01-C



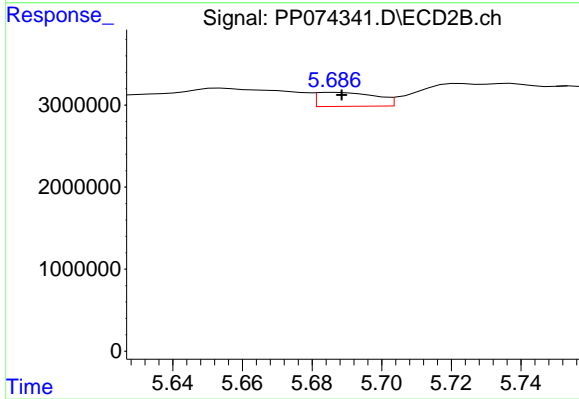
#25 AR-1248-5

R.T.: 5.723 min
 Delta R.T.: -0.002 min
 Response: 3159313
 Conc: 10.86 ng/ml



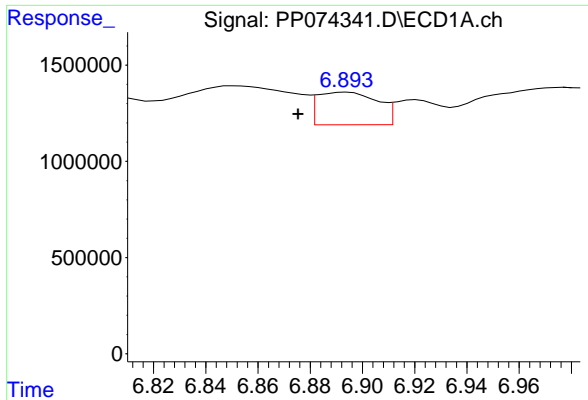
#26 AR-1254-1

R.T.: 6.638 min
 Delta R.T.: -0.020 min
 Response: 5937054
 Conc: 112.78 ng/ml



#26 AR-1254-1

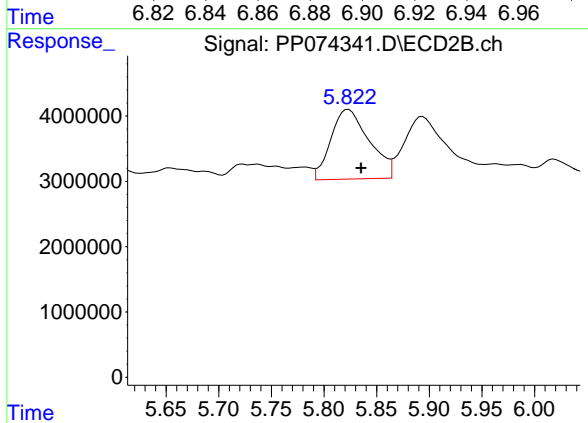
R.T.: 5.687 min
 Delta R.T.: -0.002 min
 Response: 2005206
 Conc: 5.48 ng/ml



#27 AR-1254-2

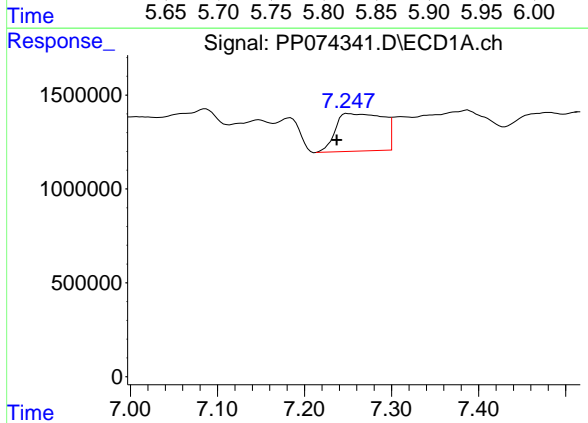
R.T.: 6.894 min
 Delta R.T.: 0.018 min
 Response: 2714577
 Conc: 34.14 ng/ml

Instrument :
 ECD_P
 ClientSampleId :
 WC-A7-01-C



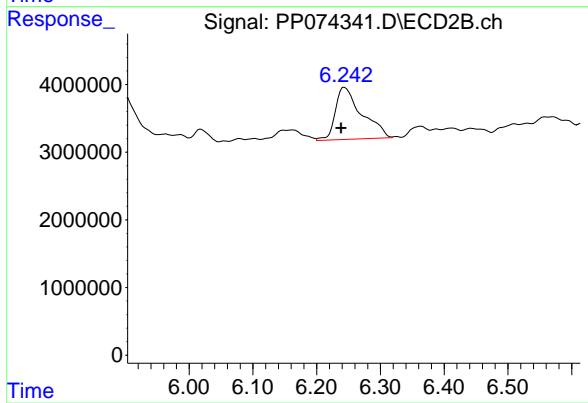
#27 AR-1254-2

R.T.: 5.823 min
 Delta R.T.: -0.012 min
 Response: 27165719
 Conc: 97.64 ng/ml



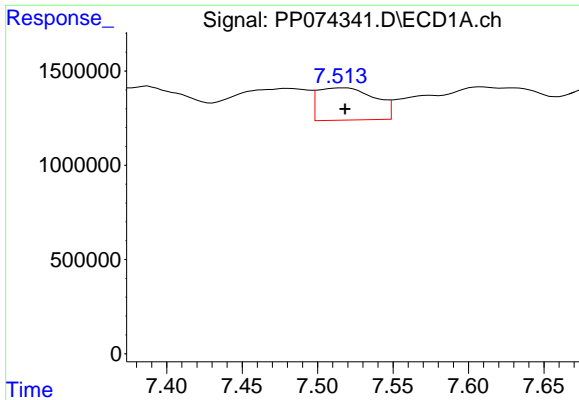
#28 AR-1254-3

R.T.: 7.250 min
 Delta R.T.: 0.013 min
 Response: 7602407
 Conc: 87.07 ng/ml



#28 AR-1254-3

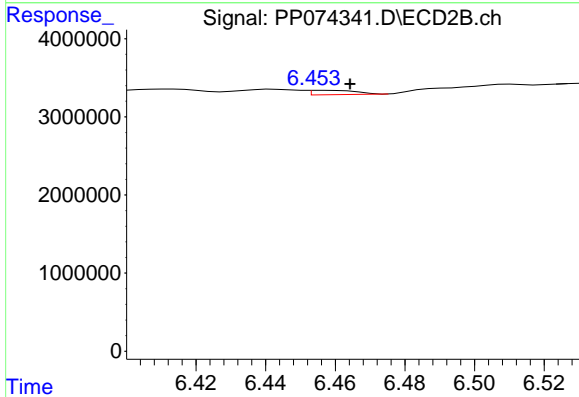
R.T.: 6.244 min
 Delta R.T.: 0.006 min
 Response: 22193441
 Conc: 45.37 ng/ml



#29 AR-1254-4

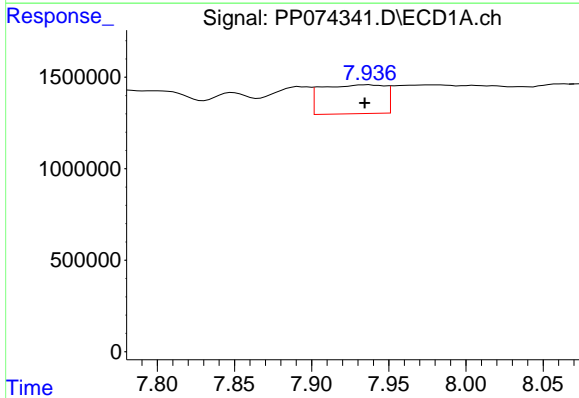
R.T.: 7.517 min
 Delta R.T.: -0.001 min
 Response: 4498756
 Conc: 70.50 ng/ml

Instrument :
 ECD_P
 ClientSampleId :
 WC-A7-01-C



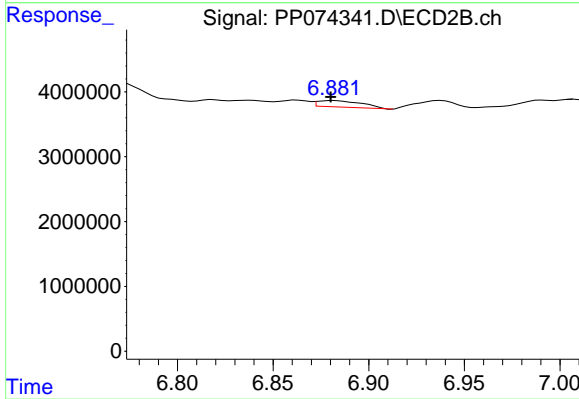
#29 AR-1254-4

R.T.: 6.456 min
 Delta R.T.: -0.008 min
 Response: 511286
 Conc: 1.39 ng/ml



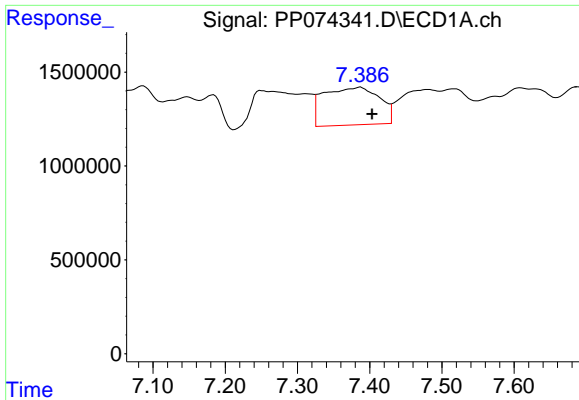
#30 AR-1254-5

R.T.: 7.936 min
 Delta R.T.: 0.002 min
 Response: 4496547
 Conc: 55.41 ng/ml



#30 AR-1254-5

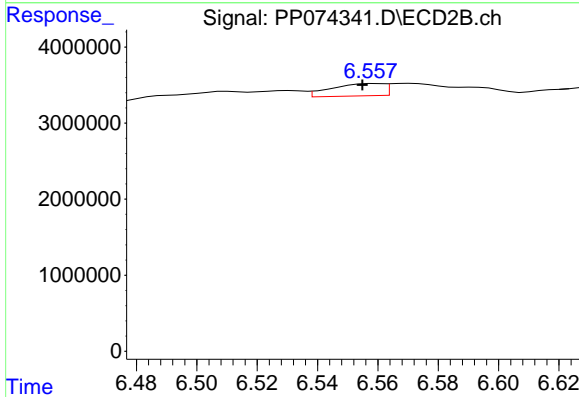
R.T.: 6.882 min
 Delta R.T.: 0.002 min
 Response: 1595350
 Conc: 4.14 ng/ml



#31 AR-1260-1

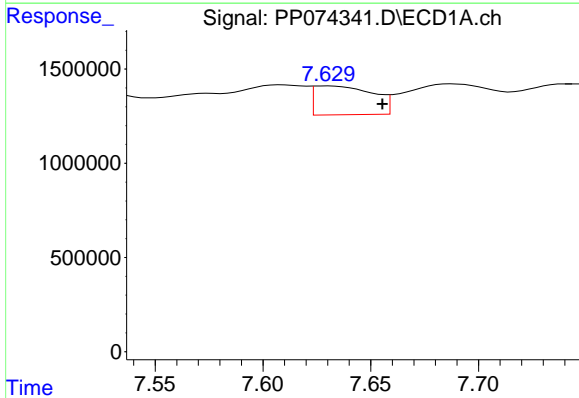
R.T.: 7.387 min
 Delta R.T.: -0.016 min
 Response: 10782760
 Conc: 191.33 ng/ml

Instrument :
 ECD_P
 ClientSampleId :
 WC-A7-01-C



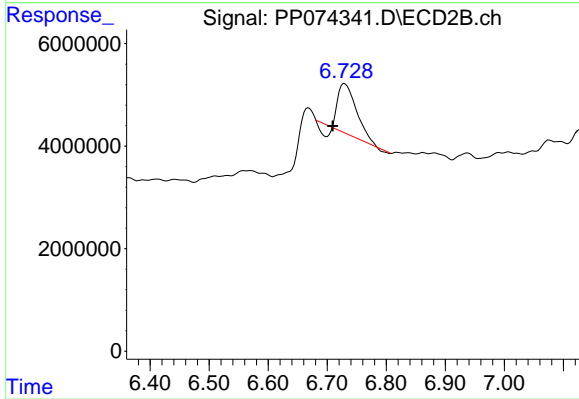
#31 AR-1260-1

R.T.: 6.559 min
 Delta R.T.: 0.004 min
 Response: 1938161
 Conc: 4.80 ng/ml



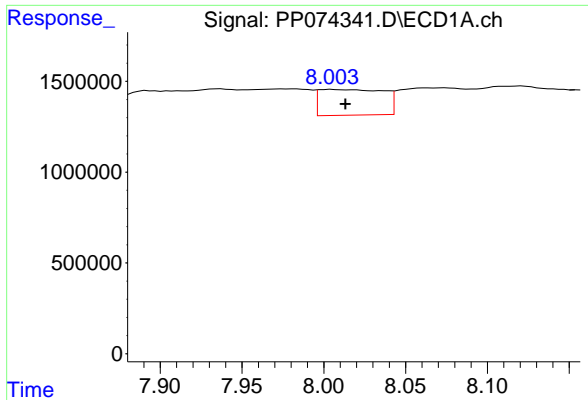
#32 AR-1260-2

R.T.: 7.630 min
 Delta R.T.: -0.026 min
 Response: 2896647
 Conc: 42.50 ng/ml



#32 AR-1260-2

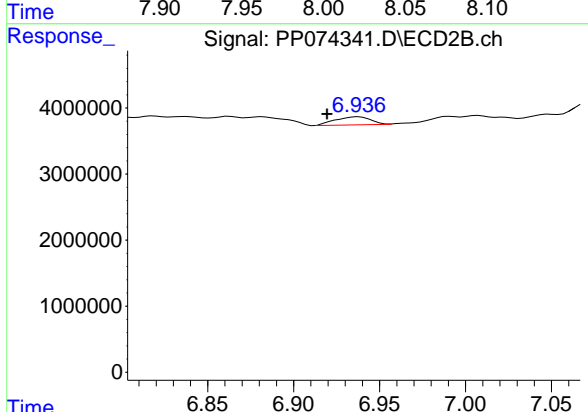
R.T.: 6.729 min
 Delta R.T.: 0.020 min
 Response: 20251322
 Conc: 64.76 ng/ml



#33 AR-1260-3

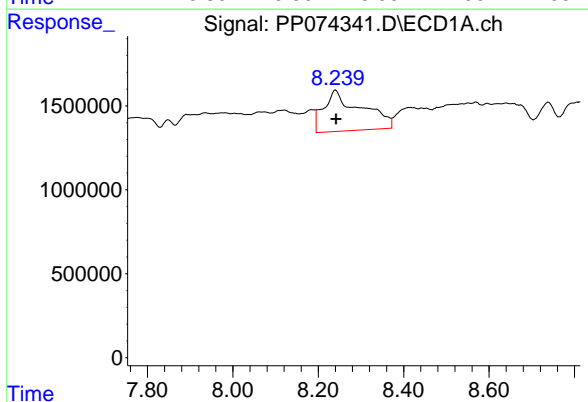
R.T.: 8.005 min
 Delta R.T.: -0.009 min
 Response: 3855929
 Conc: 72.35 ng/ml

Instrument :
 ECD_P
 ClientSampleId :
 WC-A7-01-C



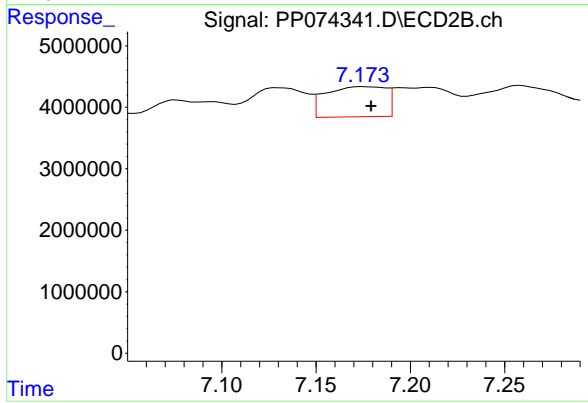
#33 AR-1260-3

R.T.: 6.938 min
 Delta R.T.: 0.018 min
 Response: 1735986
 Conc: 4.40 ng/ml



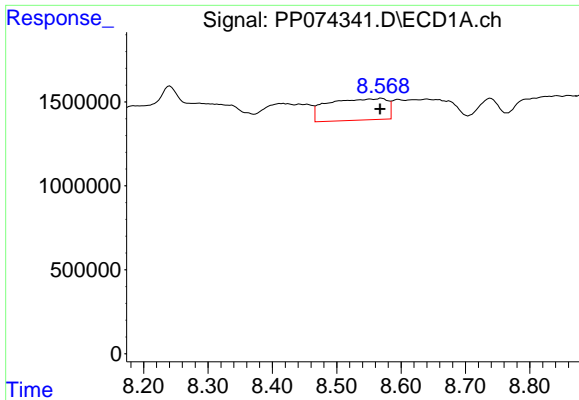
#34 AR-1260-4

R.T.: 8.241 min
 Delta R.T.: -0.001 min
 Response: 14859914
 Conc: 237.32 ng/ml



#34 AR-1260-4

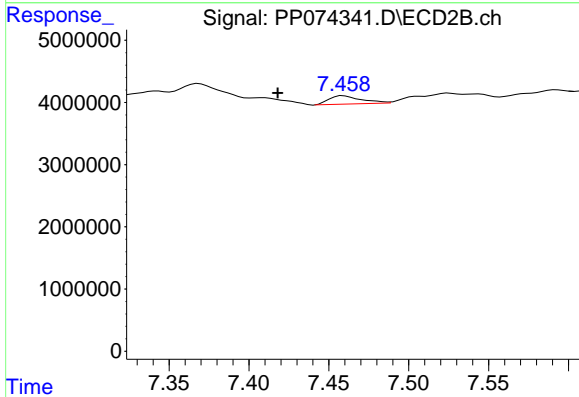
R.T.: 7.175 min
 Delta R.T.: -0.004 min
 Response: 10869591
 Conc: 37.36 ng/ml



#35 AR-1260-5

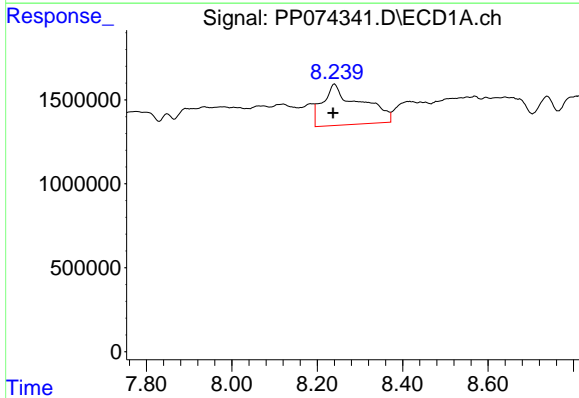
R.T.: 8.570 min
 Delta R.T.: 0.002 min
 Response: 8203843
 Conc: 72.41 ng/ml

Instrument :
 ECD_P
 ClientSampleId :
 WC-A7-01-C



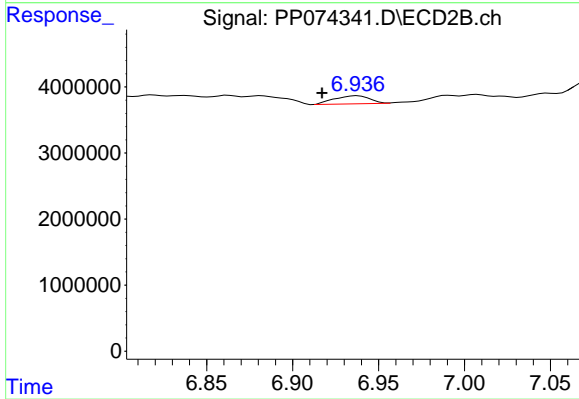
#35 AR-1260-5

R.T.: 7.459 min
 Delta R.T.: 0.041 min
 Response: 1890819
 Conc: 2.50 ng/ml



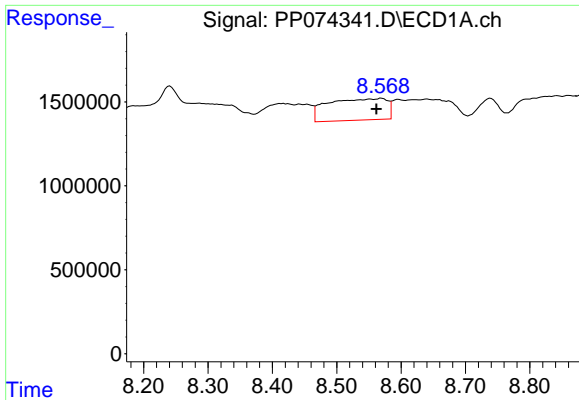
#36 AR-1262-1

R.T.: 8.241 min
 Delta R.T.: 0.003 min
 Response: 14859914
 Conc: 196.07 ng/ml



#36 AR-1262-1

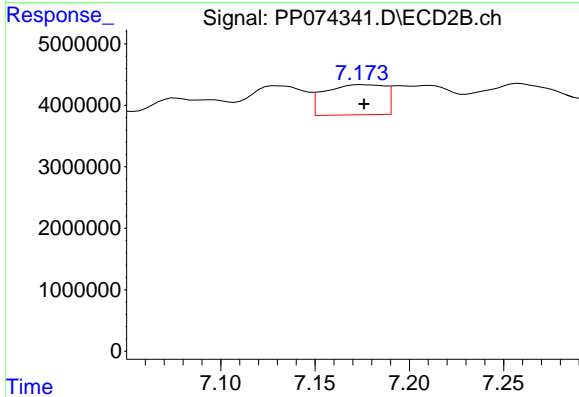
R.T.: 6.938 min
 Delta R.T.: 0.021 min
 Response: 1735986
 Conc: 3.08 ng/ml



#37 AR-1262-2

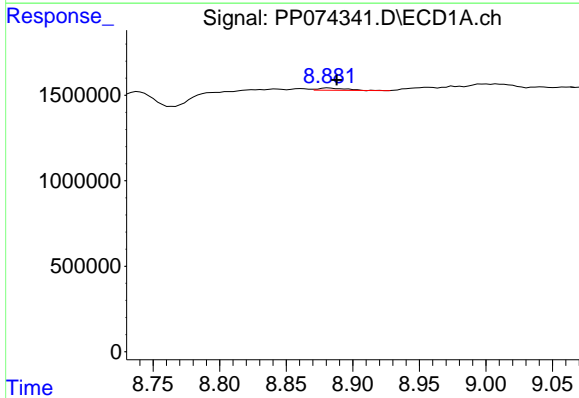
R.T.: 8.570 min
 Delta R.T.: 0.008 min
 Response: 8203843
 Conc: 62.90 ng/ml

Instrument :
 ECD_P
 ClientSampleId :
 WC-A7-01-C



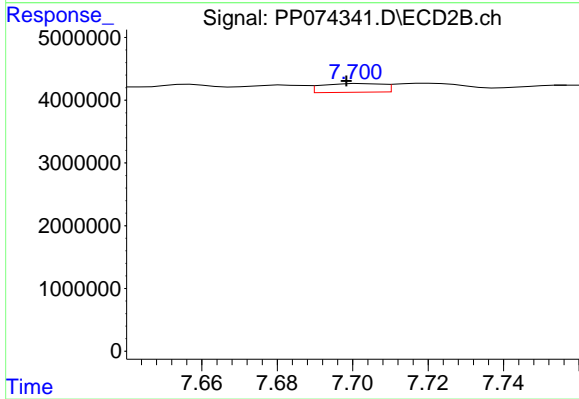
#37 AR-1262-2

R.T.: 7.175 min
 Delta R.T.: -0.001 min
 Response: 10869591
 Conc: 27.10 ng/ml



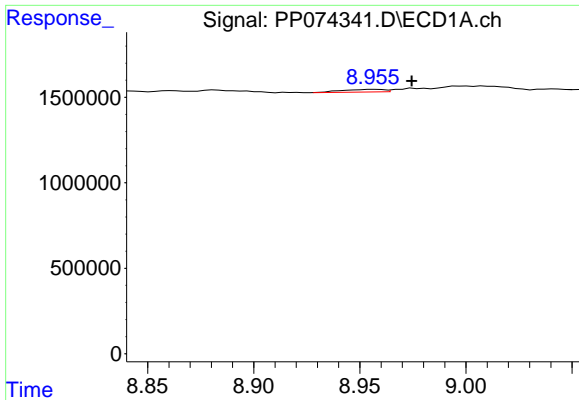
#38 AR-1262-3

R.T.: 8.882 min
 Delta R.T.: -0.006 min
 Response: 206332
 Conc: 2.19 ng/ml



#38 AR-1262-3

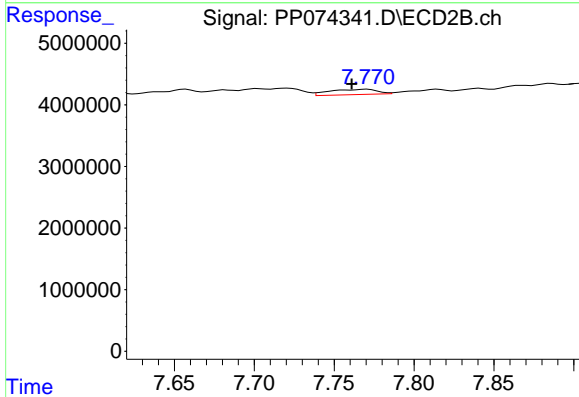
R.T.: 7.702 min
 Delta R.T.: 0.004 min
 Response: 1563838
 Conc: 4.35 ng/ml



#39 AR-1262-4

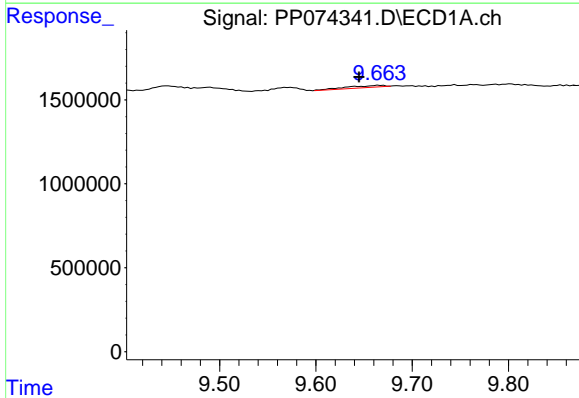
R.T.: 8.957 min
 Delta R.T.: -0.018 min
 Response: 212126
 Conc: 2.91 ng/ml

Instrument :
 ECD_P
 ClientSampleId :
 WC-A7-01-C



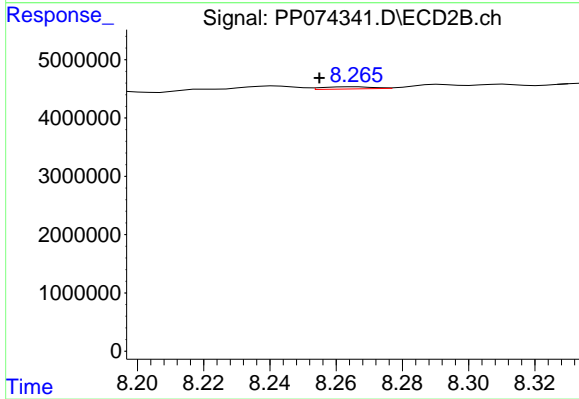
#39 AR-1262-4

R.T.: 7.771 min
 Delta R.T.: 0.010 min
 Response: 1808250
 Conc: 2.71 ng/ml



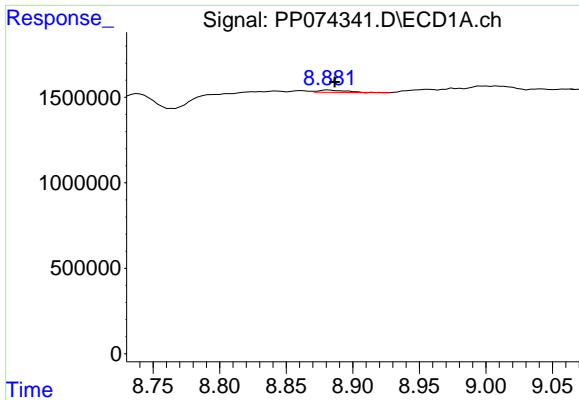
#40 AR-1262-5

R.T.: 9.666 min
 Delta R.T.: 0.022 min
 Response: 311071
 Conc: 6.11 ng/ml



#40 AR-1262-5

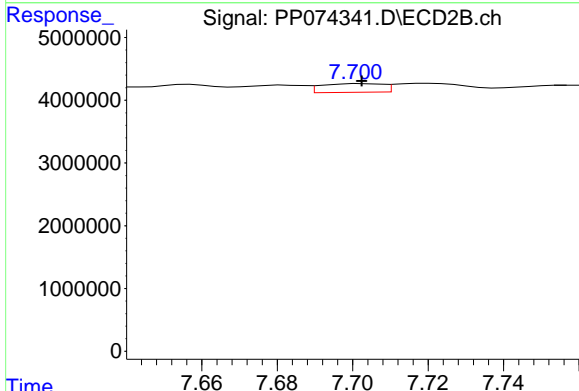
R.T.: 8.266 min
 Delta R.T.: 0.011 min
 Response: 402709
 Conc: 1.42 ng/ml



#41 AR-1268-1

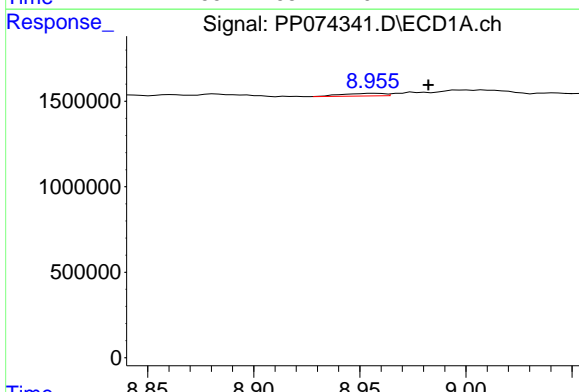
R.T.: 8.882 min
 Delta R.T.: -0.004 min
 Response: 206332
 Conc: 1.33 ng/ml

Instrument :
 ECD_P
 ClientSampleId :
 WC-A7-01-C



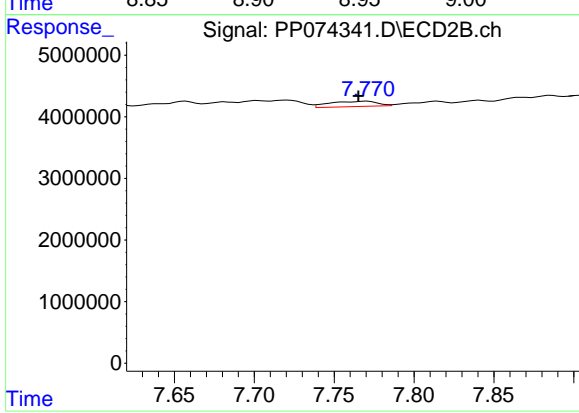
#41 AR-1268-1

R.T.: 7.702 min
 Delta R.T.: 0.000 min
 Response: 1563838
 Conc: 1.43 ng/ml



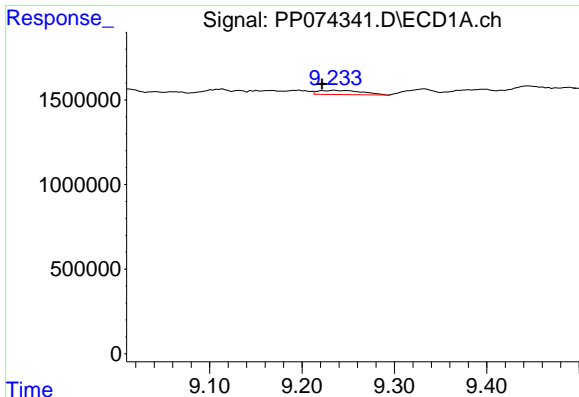
#42 AR-1268-2

R.T.: 8.957 min
 Delta R.T.: -0.025 min
 Response: 212126
 Conc: 1.48 ng/ml



#42 AR-1268-2

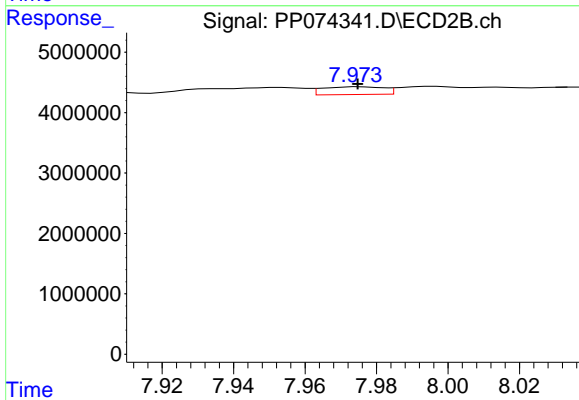
R.T.: 7.771 min
 Delta R.T.: 0.006 min
 Response: 1808250
 Conc: 1.70 ng/ml



#43 AR-1268-3

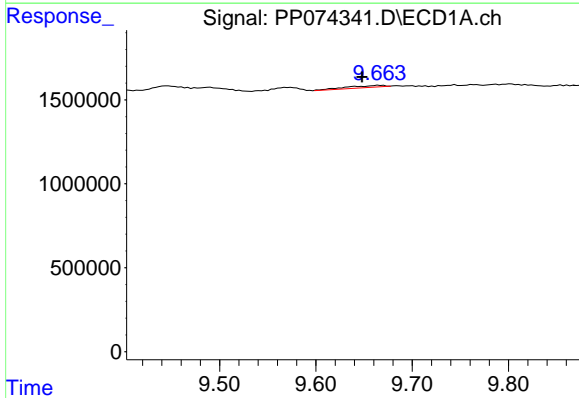
R.T.: 9.236 min
 Delta R.T.: 0.014 min
 Response: 823154
 Conc: 6.89 ng/ml

Instrument :
 ECD_P
 ClientSampleId :
 WC-A7-01-C



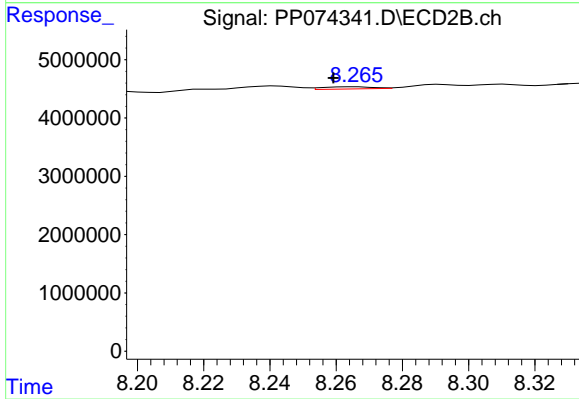
#43 AR-1268-3

R.T.: 7.975 min
 Delta R.T.: 0.000 min
 Response: 1530796
 Conc: 1.84 ng/ml



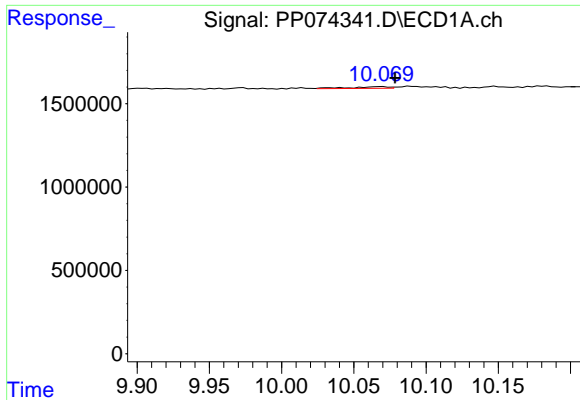
#44 AR-1268-4

R.T.: 9.666 min
 Delta R.T.: 0.018 min
 Response: 311071
 Conc: 5.29 ng/ml



#44 AR-1268-4

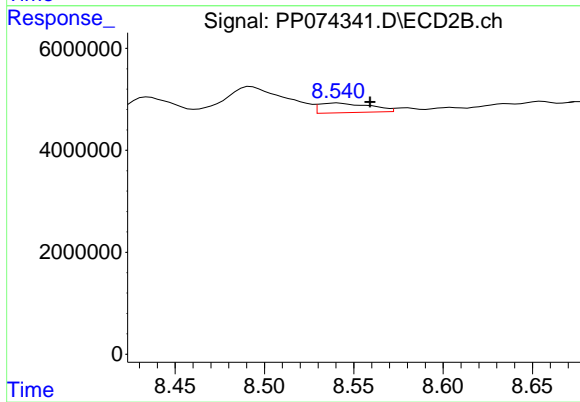
R.T.: 8.266 min
 Delta R.T.: 0.007 min
 Response: 402709
 Conc: 1.31 ng/ml



#45 AR-1268-5

R.T.: 10.069 min
 Delta R.T.: -0.010 min
 Response: 179135
 Conc: 0.51 ng/ml

Instrument :
 ECD_P
 ClientSampleId :
 WC-A7-01-C



#45 AR-1268-5

R.T.: 8.541 min
 Delta R.T.: -0.018 min
 Response: 3737266
 Conc: 1.47 ng/ml