

Data Path : Z:\pestpcbsrv\HPCHEM1\ECD\_P\Data\PP081325\  
 Data File : PP074343.D  
 Signal(s) : Signal #1: ECD1A.ch Signal #2: ECD2B.ch  
 Acq On : 13 Aug 2025 13:44  
 Operator : YP\AJ  
 Sample : Q2832-03  
 Misc :  
 ALS Vial : 11 Sample Multiplier: 1

Instrument :  
 ECD\_P  
 ClientSampleId :  
 TG-S02

Integration File signal 1: autoint1.e  
 Integration File signal 2: autoint2.e  
 Quant Time: Aug 13 15:42:42 2025  
 Quant Method : Z:\pestpcbsrv\HPCHEM1\ECD\_P\methods\PP080125.M  
 Quant Title : GC EXTRACTABLES  
 QLast Update : Mon Aug 04 11:01:49 2025  
 Response via : Initial Calibration  
 Integrator: ChemStation

Volume Inj. : 2 µl  
 Signal #1 Phase : ZB-MR1 Signal #2 Phase: ZB-MR2  
 Signal #1 Info : 30Mx0.32mmx 0.50µ Signal #2 Info : 30M x 0.32mm x 0.25µm

Compound	RT#1	RT#2	Resp#1	Resp#2	ng/ml	ng/ml
System Monitoring Compounds						
1) SA Tetrachlo...	4.662	3.804	30414749	108.8E6	27.197	28.382
2) SA Decachlor...	10.443	8.823	23891234	140.8E6	24.601	23.420
Target Compounds						
3) L1 AR-1016-1	5.837	4.903	9061005	2116800	219.624	5.307 #
4) L1 AR-1016-2	5.837	4.958	9061005	1929476	149.173	10.274 #
5) L1 AR-1016-3	5.903	5.046f	4177412	1411939	105.329	13.311 #
6) L1 AR-1016-4	5.998	5.126	3282153	11133806	100.851	101.939
7) L1 AR-1016-5	6.287	5.351	6577209	33626444	202.575	287.496 #
8) L2 AR-1221-1	4.856	3.999	1938946	1926912	115.664	39.256 #
9) L2 AR-1221-2	4.932	4.099	246020	2232251	19.524	62.198 #
10) L2 AR-1221-3	5.040	4.171	520477	223279	14.207	1.651 #
11) L3 AR-1232-1	5.040	4.171	520477	223279	17.924	2.203 #
12) L3 AR-1232-2	5.556	4.903	2893576	2116800	192.357	12.147 #
13) L3 AR-1232-3	5.837	5.046	9061005	1411939	312.430	30.817 #
14) L3 AR-1232-4	5.998	5.191	3282153	3609037	212.179	62.213 #
15) L3 AR-1232-5	6.089	5.351	3825834	33626444	326.547	715.769 #
16) L4 AR-1242-1	5.837	4.903	9061005	2116800	243.145	6.133 #
17) L4 AR-1242-2	5.837	4.958	9061005	1929476	166.535	11.810 #
18) L4 AR-1242-3	5.903	5.046f	4177412	1411939	116.897	15.306 #
19) L4 AR-1242-4	5.998	5.191	3282153	3609037	112.331	30.221 #
20) L4 AR-1242-5	6.729	5.689	6663212	54218126	187.390	362.518 #
21) L5 AR-1248-1	5.837	4.903	9061005	2116800	323.439	9.895 #
22) L5 AR-1248-2	6.089	5.126	3825834	11133806	95.026	76.096
23) L5 AR-1248-3	6.287	5.191	6577209	3609037	147.559	21.049 #
24) L5 AR-1248-4	6.662	5.351	15823443	33626444	304.080	202.114 #
25) L5 AR-1248-5	6.729	5.689f	6663212	54218126	117.015	186.338 #
26) L6 AR-1254-1	6.662	5.689	15823443	54218126	300.591	148.063 #
27) L6 AR-1254-2	6.878	5.835	18773100	53755847	236.126	193.216
28) L6 AR-1254-3	7.242	6.246	26407736	222.3E6	302.438	454.489 #
29) L6 AR-1254-4	7.522	6.465	23600144	46244825	369.853	125.814 #
30) L6 AR-1254-5	7.939	6.882	114.7E6	491.3E6	1413.380	1275.428
31) L7 AR-1260-1	7.406	6.555	50718949	419.9E6	899.973	1039.442
32) L7 AR-1260-2	7.658	6.709	65823985	267.9E6	965.836	856.763
33) L7 AR-1260-3	8.017	6.917	47509906	414.8E6	891.436	1052.557
34) L7 AR-1260-4	8.244	7.180	80854322	334.6E6	1291.294	1149.912
35) L7 AR-1260-5	8.571	7.418	110.4E6	921.5E6	974.275	1216.631
36) L8 AR-1262-1	8.244	6.917	80854322	414.8E6	1066.825	736.638 #
37) L8 AR-1262-2	8.571	7.180	110.4E6	334.6E6	846.356	834.367
38) L8 AR-1262-3	8.904	7.702	75335384	158.6E6	800.836	441.156 #
39) L8 AR-1262-4	8.971	7.766	44233572	574.1E6	607.173	860.889 #
40) L8 AR-1262-5	9.657	8.260	31191800	183.3E6	612.533	647.118
41) L9 AR-1268-1	8.904	7.702	75335384	158.6E6	484.059	145.453 #

Data Path : Z:\pestpcbsrv\HPCHEM1\ECD\_P\Data\PP081325\  
 Data File : PP074343.D  
 Signal(s) : Signal #1: ECD1A.ch Signal #2: ECD2B.ch  
 Acq On : 13 Aug 2025 13:44  
 Operator : YP\AJ  
 Sample : Q2832-03  
 Misc :  
 ALS Vial : 11 Sample Multiplier: 1

Instrument :  
 ECD\_P  
 ClientSampleId :  
 TG-S02

Integration File signal 1: autoint1.e  
 Integration File signal 2: autoint2.e  
 Quant Time: Aug 13 15:42:42 2025  
 Quant Method : Z:\pestpcbsrv\HPCHEM1\ECD\_P\methods\PP080125.M  
 Quant Title : GC EXTRACTABLES  
 QLast Update : Mon Aug 04 11:01:49 2025  
 Response via : Initial Calibration  
 Integrator: ChemStation

Volume Inj. : 2 µl  
 Signal #1 Phase : ZB-MR1 Signal #2 Phase: ZB-MR2  
 Signal #1 Info : 30Mx0.32mmx 0.50µ Signal #2 Info : 30M x 0.32mm x 0.25µm

	Compound	RT#1	RT#2	Resp#1	Resp#2	ng/ml	ng/ml
42)	L9 AR-1268-2	8.971	7.766	44233572	574.1E6	308.407	540.970 #
43)	L9 AR-1268-3	9.228	7.972	2133580	9032124	17.858	10.857 #
44)	L9 AR-1268-4	9.657	8.260	31191800	183.3E6	530.359	595.041
45)	L9 AR-1268-5	10.087	8.558	8800168	62691606	25.022	24.584

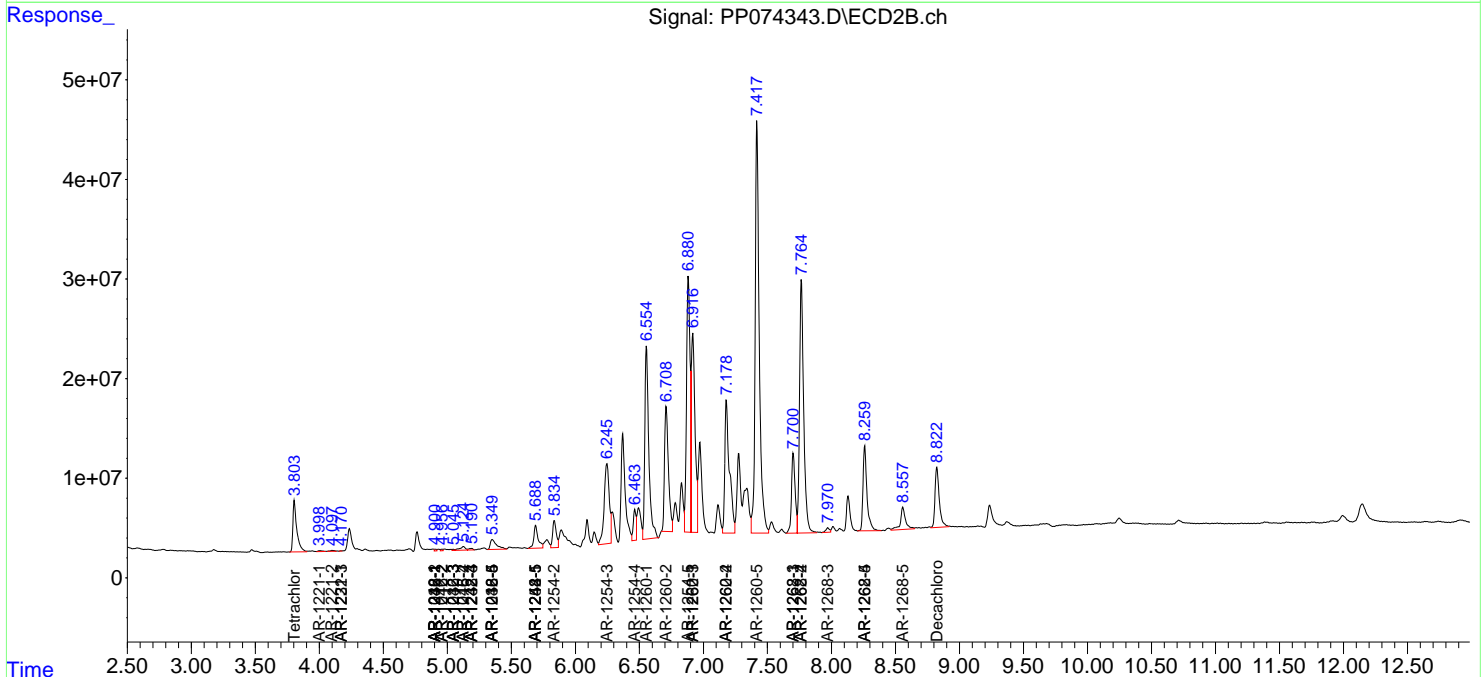
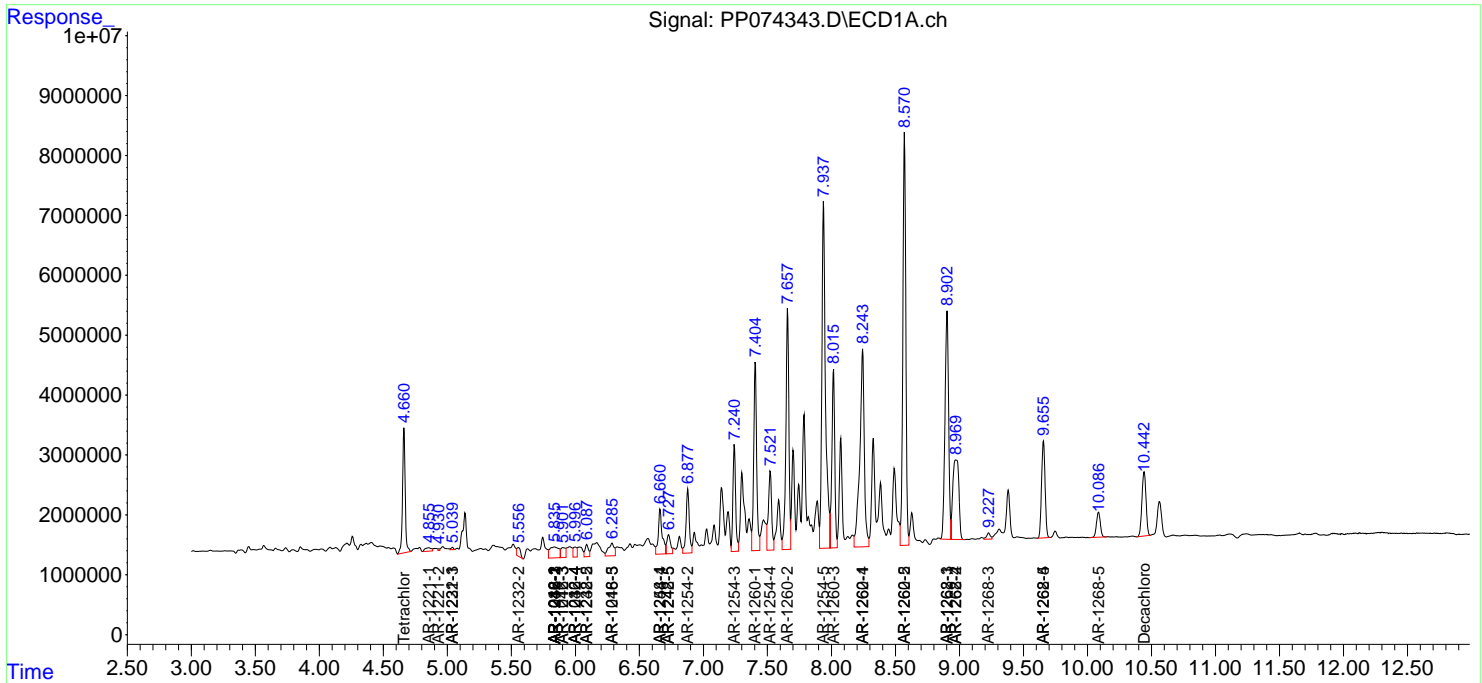
(f)=RT Delta > 1/2 Window (#)=Amounts differ by > 25% (m)=manual int.

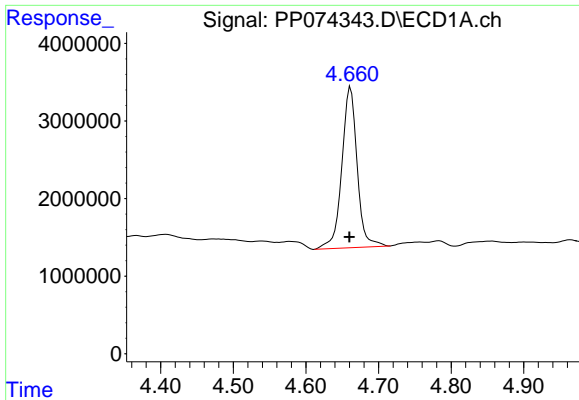
Data Path : Z:\pestpcbsrv\HPCHEM1\ECD\_P\Data\PP081325\  
 Data File : PP074343.D  
 Signal(s) : Signal #1: ECD1A.ch Signal #2: ECD2B.ch  
 Acq On : 13 Aug 2025 13:44  
 Operator : YP\AJ  
 Sample : Q2832-03  
 Misc :  
 ALS Vial : 11 Sample Multiplier: 1

Instrument :  
 ECD\_P  
 ClientSampleId :  
 TG-S02

Integration File signal 1: autoint1.e  
 Integration File signal 2: autoint2.e  
 Quant Time: Aug 13 15:42:42 2025  
 Quant Method : Z:\pestpcbsrv\HPCHEM1\ECD\_P\methods\PP080125.M  
 Quant Title : GC EXTRACTABLES  
 QLast Update : Mon Aug 04 11:01:49 2025  
 Response via : Initial Calibration  
 Integrator: ChemStation

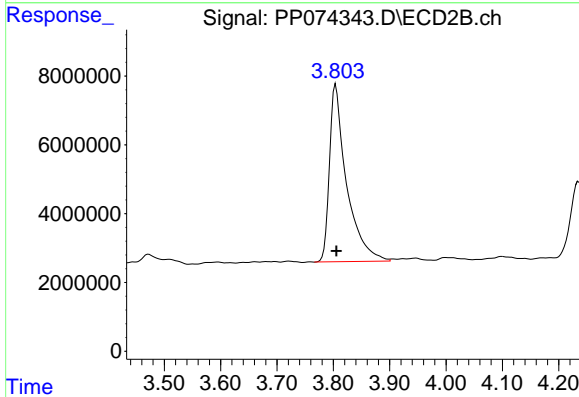
Volume Inj. : 2 µl  
 Signal #1 Phase : ZB-MR1 Signal #2 Phase: ZB-MR2  
 Signal #1 Info : 30Mx0.32mmx 0.50µ Signal #2 Info : 30M x 0.32mm x 0.25µm



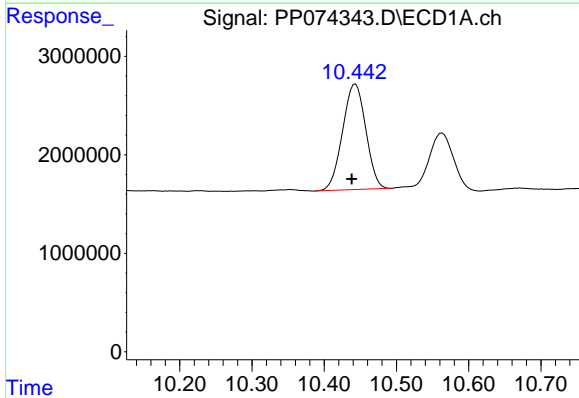


#1 Tetrachloro-m-xylene  
 R.T.: 4.662 min  
 Delta R.T.: 0.002 min  
 Response: 30414749  
 Conc: 27.20 ng/ml

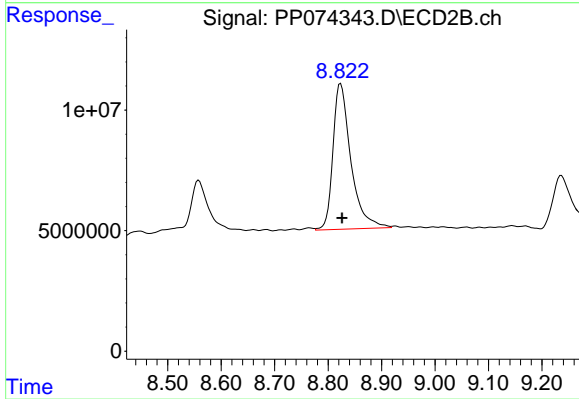
Instrument :  
 ECD\_P  
 ClientSampleId :  
 TG-S02



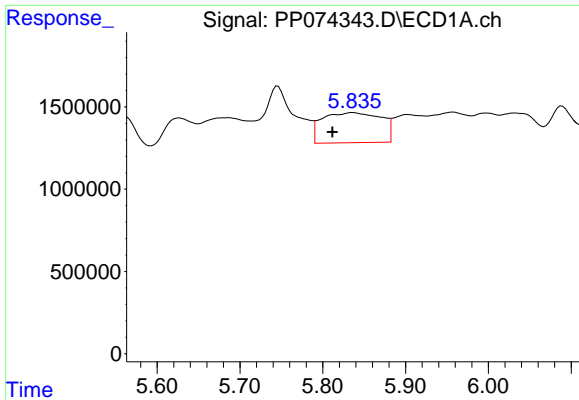
#1 Tetrachloro-m-xylene  
 R.T.: 3.804 min  
 Delta R.T.: -0.001 min  
 Response: 108829574  
 Conc: 28.38 ng/ml



#2 Decachlorobiphenyl  
 R.T.: 10.443 min  
 Delta R.T.: 0.005 min  
 Response: 23891234  
 Conc: 24.60 ng/ml



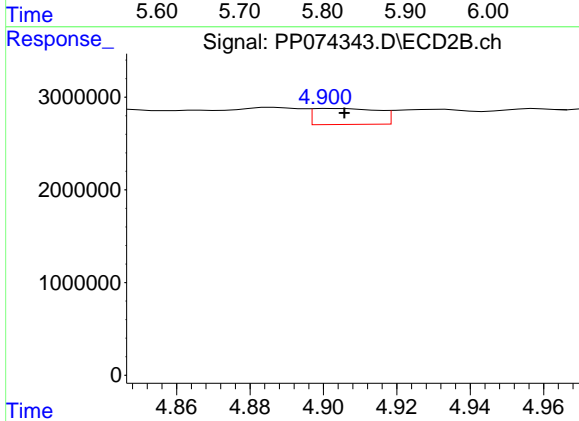
#2 Decachlorobiphenyl  
 R.T.: 8.823 min  
 Delta R.T.: -0.002 min  
 Response: 140836648  
 Conc: 23.42 ng/ml



#3 AR-1016-1

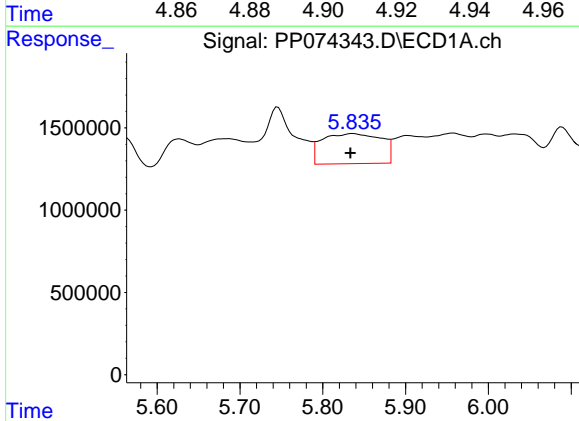
R.T.: 5.837 min  
 Delta R.T.: 0.025 min  
 Response: 9061005  
 Conc: 219.62 ng/ml

Instrument :  
 ECD\_P  
 ClientSampleId :  
 TG-S02



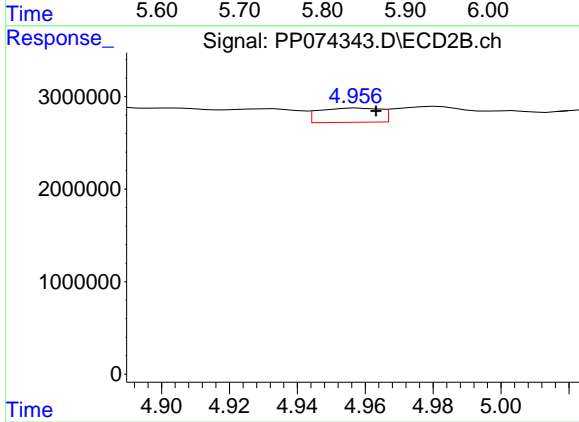
#3 AR-1016-1

R.T.: 4.903 min  
 Delta R.T.: -0.003 min  
 Response: 2116800  
 Conc: 5.31 ng/ml



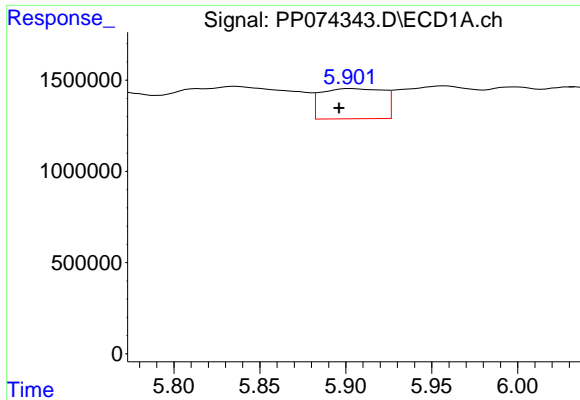
#4 AR-1016-2

R.T.: 5.837 min  
 Delta R.T.: 0.003 min  
 Response: 9061005  
 Conc: 149.17 ng/ml



#4 AR-1016-2

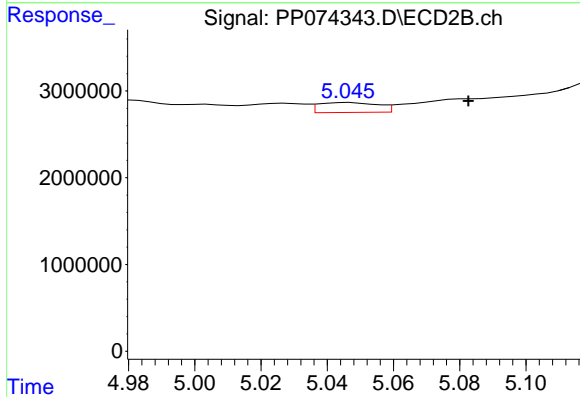
R.T.: 4.958 min  
 Delta R.T.: -0.005 min  
 Response: 1929476  
 Conc: 10.27 ng/ml



#5 AR-1016-3

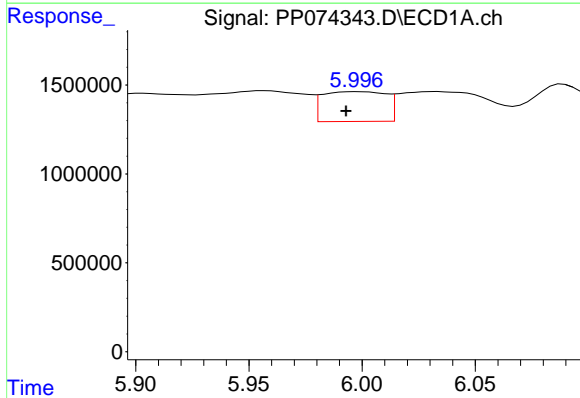
R.T.: 5.903 min  
 Delta R.T.: 0.007 min  
 Response: 4177412  
 Conc: 105.33 ng/ml

Instrument :  
 ECD\_P  
 ClientSampleId :  
 TG-S02



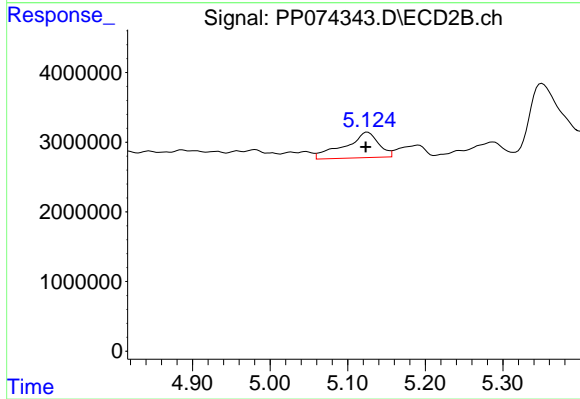
#5 AR-1016-3

R.T.: 5.046 min  
 Delta R.T.: -0.036 min  
 Response: 1411939  
 Conc: 13.31 ng/ml



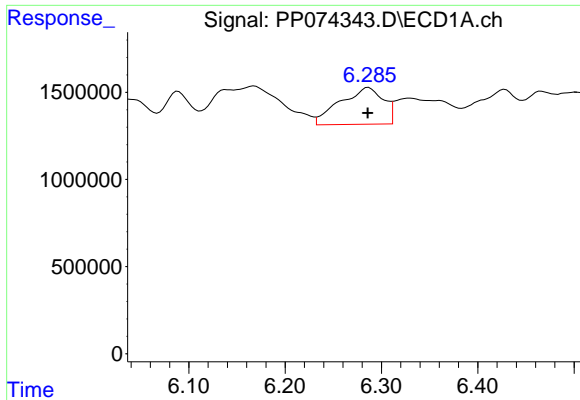
#6 AR-1016-4

R.T.: 5.998 min  
 Delta R.T.: 0.005 min  
 Response: 3282153  
 Conc: 100.85 ng/ml



#6 AR-1016-4

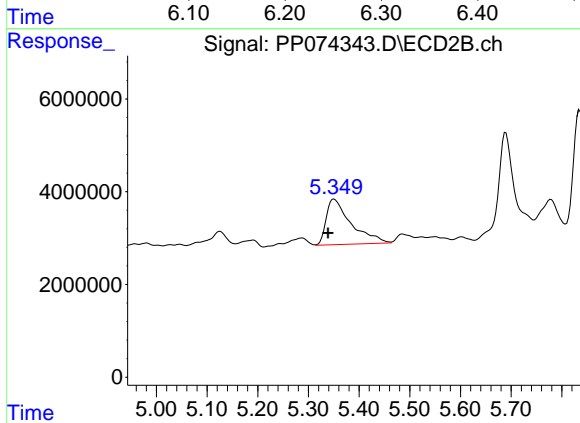
R.T.: 5.126 min  
 Delta R.T.: 0.002 min  
 Response: 11133806  
 Conc: 101.94 ng/ml



#7 AR-1016-5

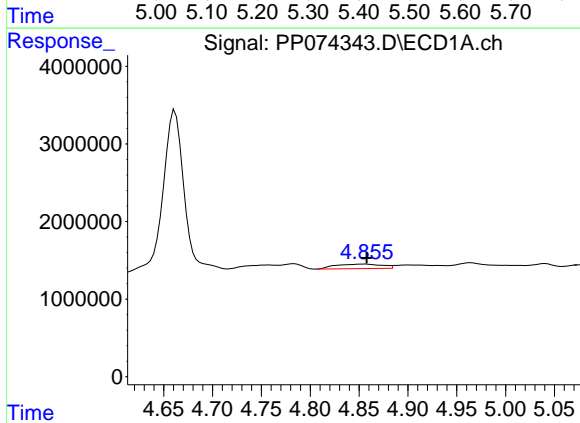
R.T.: 6.287 min  
 Delta R.T.: 0.000 min  
 Response: 6577209  
 Conc: 202.57 ng/ml

Instrument :  
 ECD\_P  
 ClientSampleId :  
 TG-S02



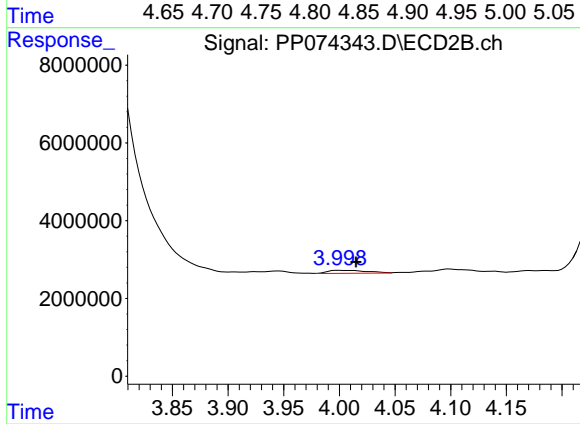
#7 AR-1016-5

R.T.: 5.351 min  
 Delta R.T.: 0.012 min  
 Response: 33626444  
 Conc: 287.50 ng/ml



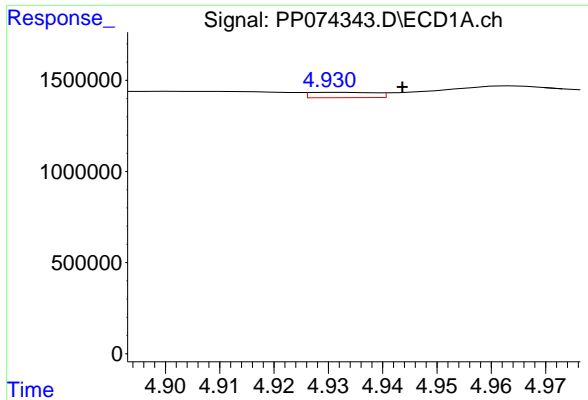
#8 AR-1221-1

R.T.: 4.856 min  
 Delta R.T.: -0.002 min  
 Response: 1938946  
 Conc: 115.66 ng/ml



#8 AR-1221-1

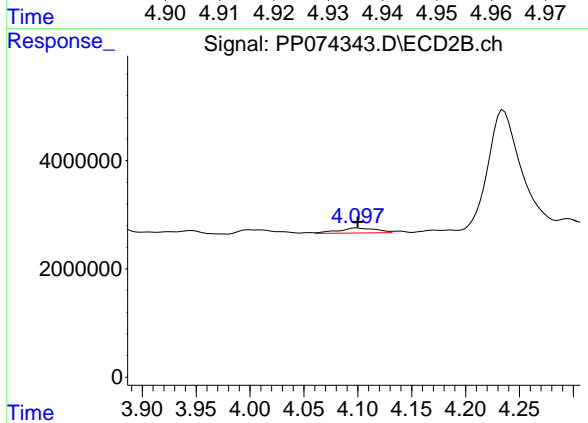
R.T.: 3.999 min  
 Delta R.T.: -0.016 min  
 Response: 1926912  
 Conc: 39.26 ng/ml



#9 AR-1221-2

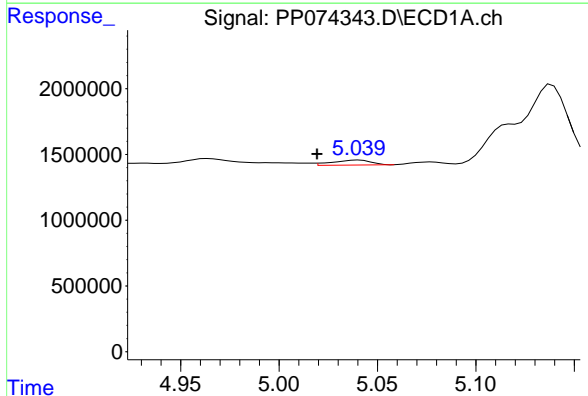
R.T.: 4.932 min  
 Delta R.T.: -0.012 min  
 Response: 246020  
 Conc: 19.52 ng/ml

Instrument :  
 ECD\_P  
 ClientSampleId :  
 TG-S02



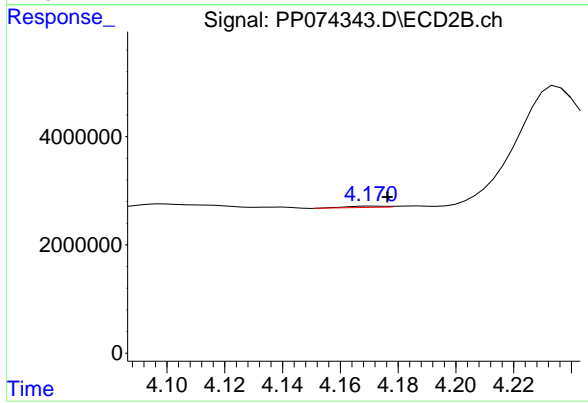
#9 AR-1221-2

R.T.: 4.099 min  
 Delta R.T.: -0.001 min  
 Response: 2232251  
 Conc: 62.20 ng/ml



#10 AR-1221-3

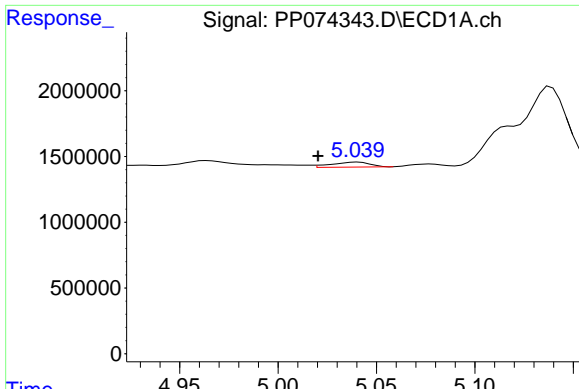
R.T.: 5.040 min  
 Delta R.T.: 0.021 min  
 Response: 520477  
 Conc: 14.21 ng/ml



#10 AR-1221-3

R.T.: 4.171 min  
 Delta R.T.: -0.005 min  
 Response: 223279  
 Conc: 1.65 ng/ml

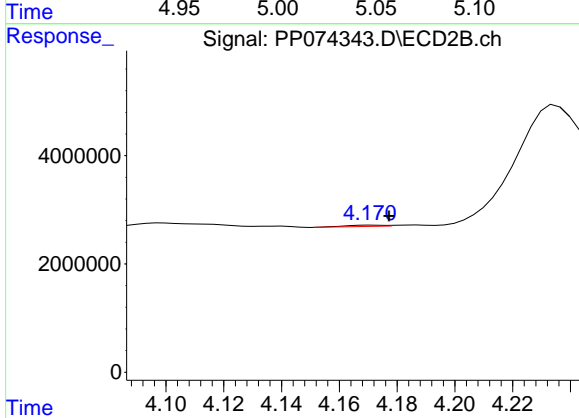




#11 AR-1232-1

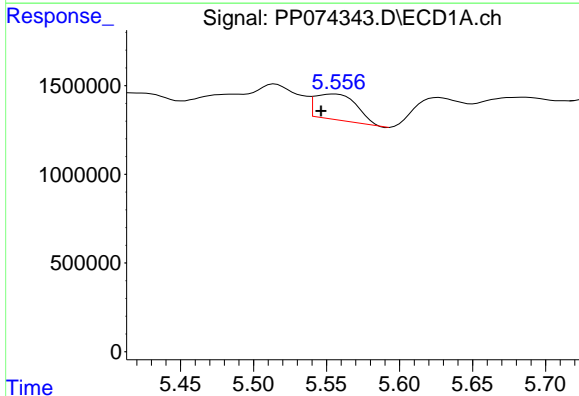
R.T.: 5.040 min  
 Delta R.T.: 0.020 min  
 Response: 520477  
 Conc: 17.92 ng/ml

Instrument :  
 ECD\_P  
 ClientSampleId :  
 TG-S02



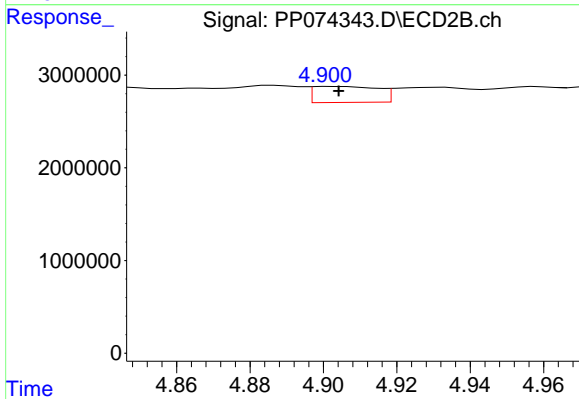
#11 AR-1232-1

R.T.: 4.171 min  
 Delta R.T.: -0.006 min  
 Response: 223279  
 Conc: 2.20 ng/ml



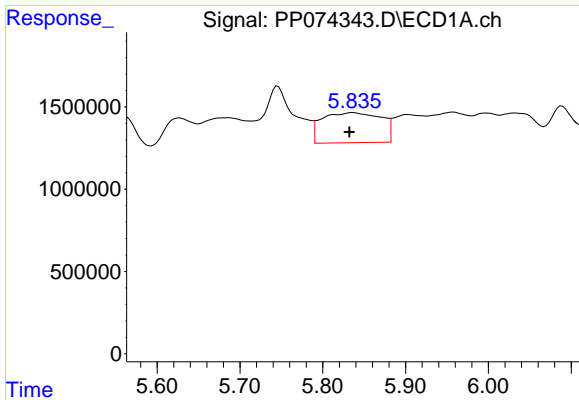
#12 AR-1232-2

R.T.: 5.556 min  
 Delta R.T.: 0.010 min  
 Response: 2893576  
 Conc: 192.36 ng/ml



#12 AR-1232-2

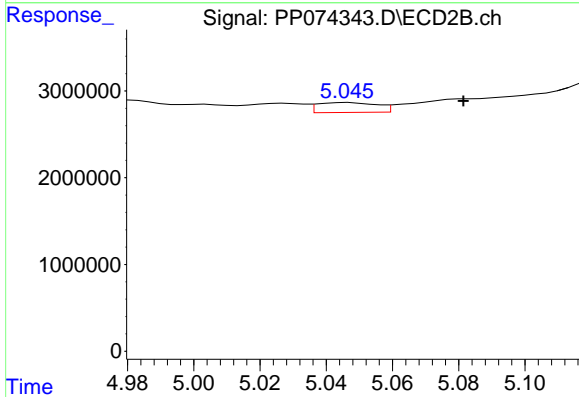
R.T.: 4.903 min  
 Delta R.T.: -0.002 min  
 Response: 2116800  
 Conc: 12.15 ng/ml



#13 AR-1232-3

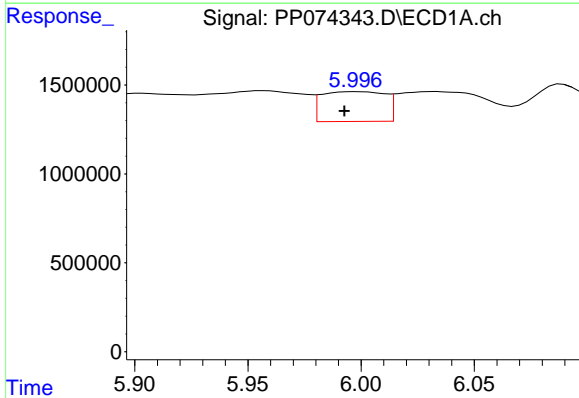
R.T.: 5.837 min  
 Delta R.T.: 0.004 min  
 Response: 9061005  
 Conc: 312.43 ng/ml

Instrument :  
 ECD\_P  
 ClientSampleId :  
 TG-S02



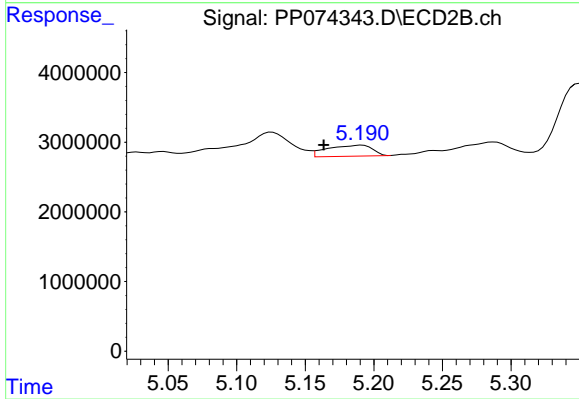
#13 AR-1232-3

R.T.: 5.046 min  
 Delta R.T.: -0.035 min  
 Response: 1411939  
 Conc: 30.82 ng/ml



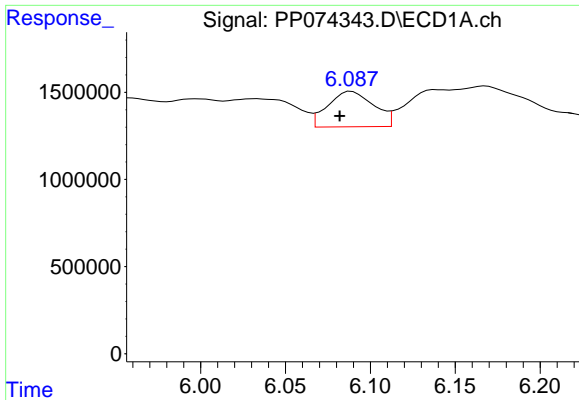
#14 AR-1232-4

R.T.: 5.998 min  
 Delta R.T.: 0.006 min  
 Response: 3282153  
 Conc: 212.18 ng/ml



#14 AR-1232-4

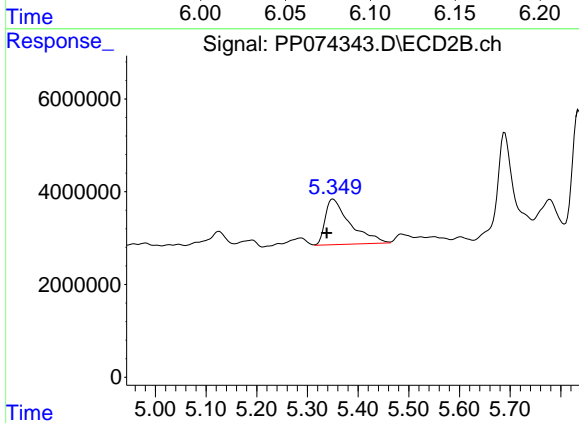
R.T.: 5.191 min  
 Delta R.T.: 0.028 min  
 Response: 3609037  
 Conc: 62.21 ng/ml



#15 AR-1232-5

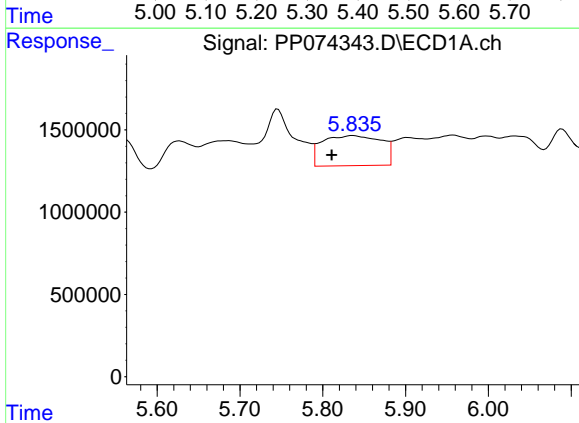
R.T.: 6.089 min  
 Delta R.T.: 0.007 min  
 Response: 3825834  
 Conc: 326.55 ng/ml

Instrument :  
 ECD\_P  
 ClientSampleId :  
 TG-S02



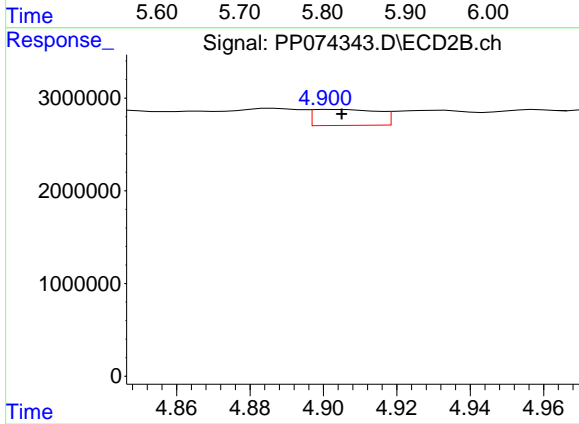
#15 AR-1232-5

R.T.: 5.351 min  
 Delta R.T.: 0.013 min  
 Response: 33626444  
 Conc: 715.77 ng/ml



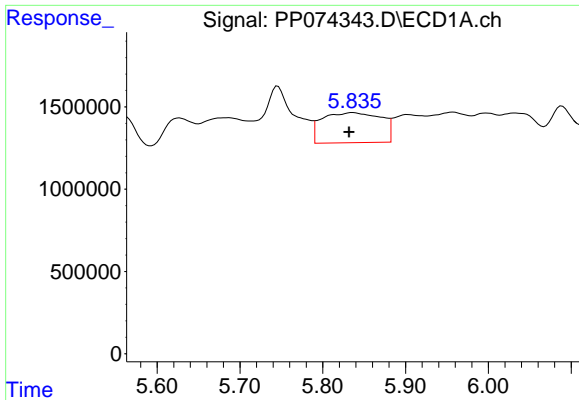
#16 AR-1242-1

R.T.: 5.837 min  
 Delta R.T.: 0.026 min  
 Response: 9061005  
 Conc: 243.15 ng/ml



#16 AR-1242-1

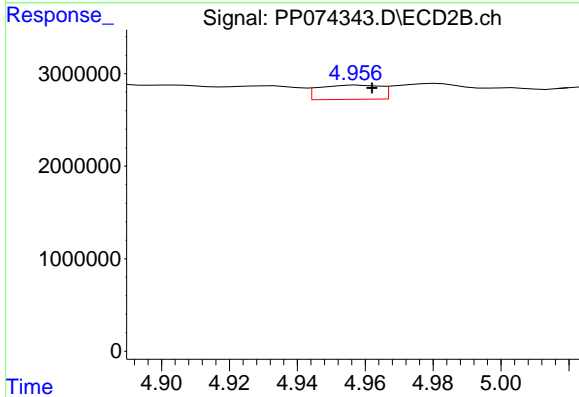
R.T.: 4.903 min  
 Delta R.T.: -0.002 min  
 Response: 2116800  
 Conc: 6.13 ng/ml



#17 AR-1242-2

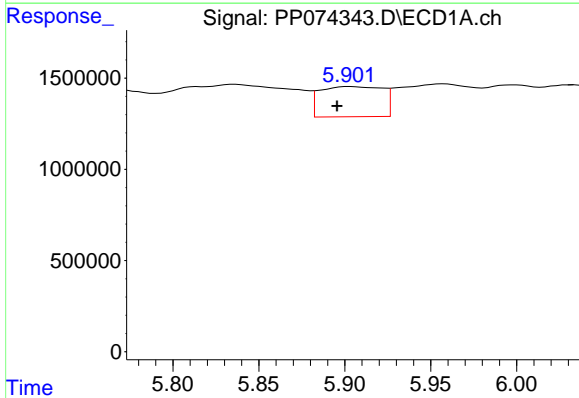
R.T.: 5.837 min  
 Delta R.T.: 0.005 min  
 Response: 9061005  
 Conc: 166.54 ng/ml

Instrument :  
 ECD\_P  
 ClientSampleId :  
 TG-S02



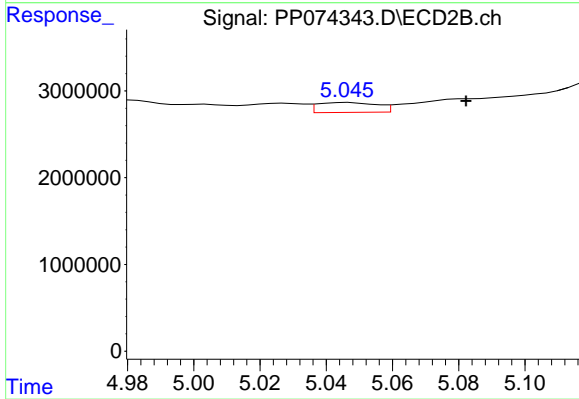
#17 AR-1242-2

R.T.: 4.958 min  
 Delta R.T.: -0.004 min  
 Response: 1929476  
 Conc: 11.81 ng/ml



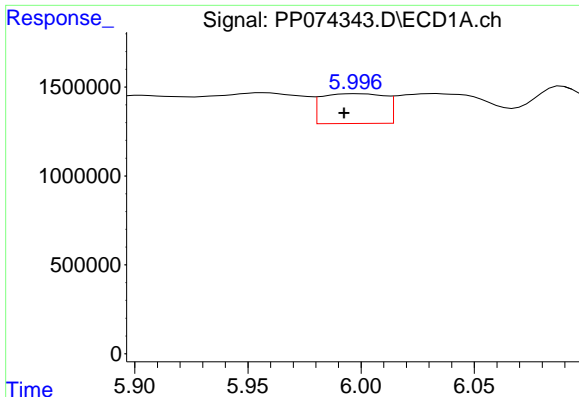
#18 AR-1242-3

R.T.: 5.903 min  
 Delta R.T.: 0.007 min  
 Response: 4177412  
 Conc: 116.90 ng/ml



#18 AR-1242-3

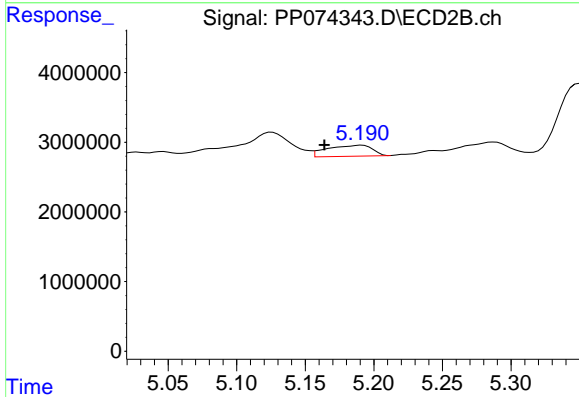
R.T.: 5.046 min  
 Delta R.T.: -0.036 min  
 Response: 1411939  
 Conc: 15.31 ng/ml



#19 AR-1242-4

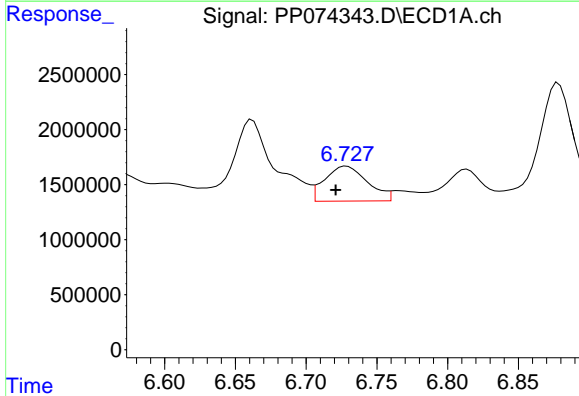
R.T.: 5.998 min  
 Delta R.T.: 0.006 min  
 Response: 3282153  
 Conc: 112.33 ng/ml

Instrument :  
 ECD\_P  
 ClientSampleId :  
 TG-S02



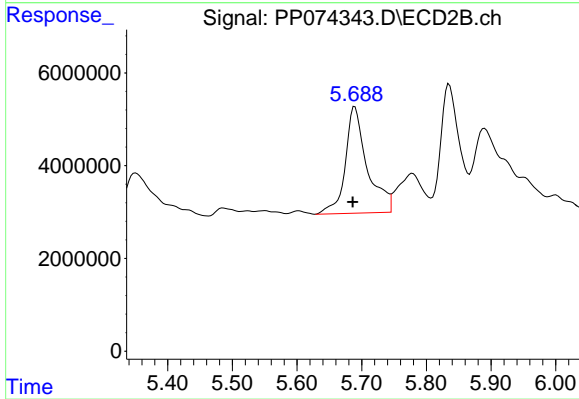
#19 AR-1242-4

R.T.: 5.191 min  
 Delta R.T.: 0.027 min  
 Response: 3609037  
 Conc: 30.22 ng/ml



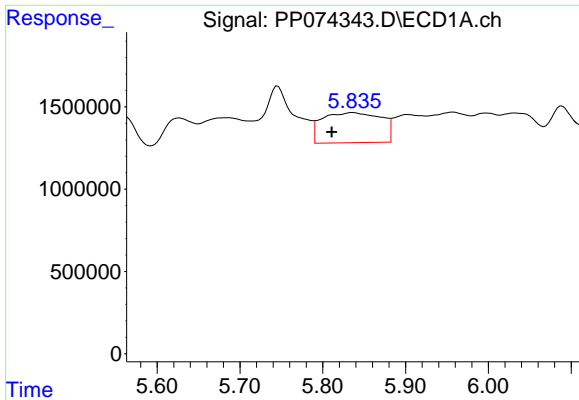
#20 AR-1242-5

R.T.: 6.729 min  
 Delta R.T.: 0.008 min  
 Response: 6663212  
 Conc: 187.39 ng/ml



#20 AR-1242-5

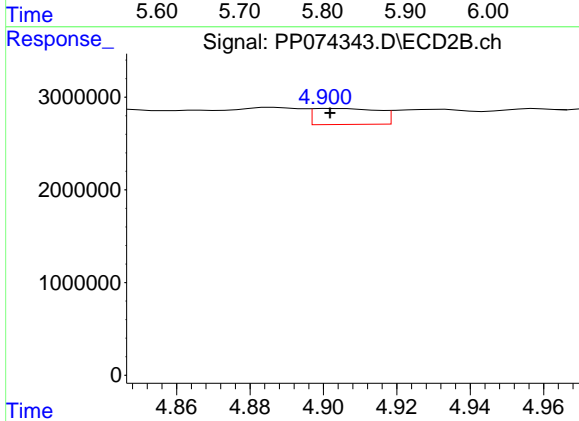
R.T.: 5.689 min  
 Delta R.T.: 0.003 min  
 Response: 54218126  
 Conc: 362.52 ng/ml



#21 AR-1248-1

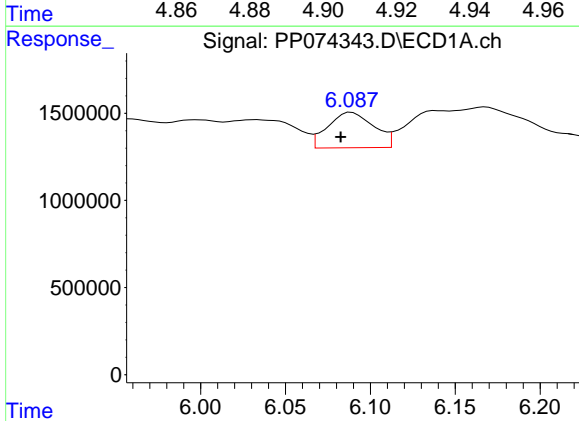
R.T.: 5.837 min  
 Delta R.T.: 0.026 min  
 Response: 9061005  
 Conc: 323.44 ng/ml

Instrument :  
 ECD\_P  
 ClientSampleId :  
 TG-S02



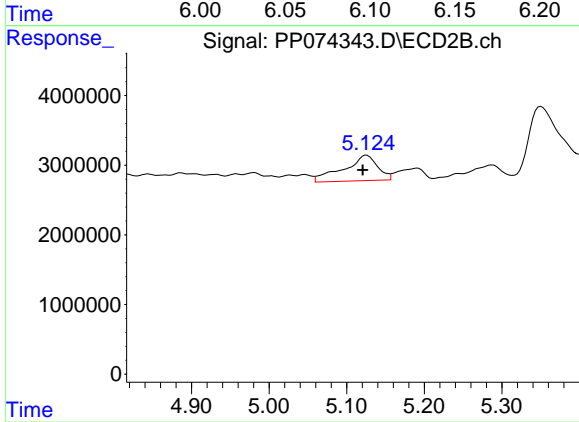
#21 AR-1248-1

R.T.: 4.903 min  
 Delta R.T.: 0.000 min  
 Response: 2116800  
 Conc: 9.89 ng/ml



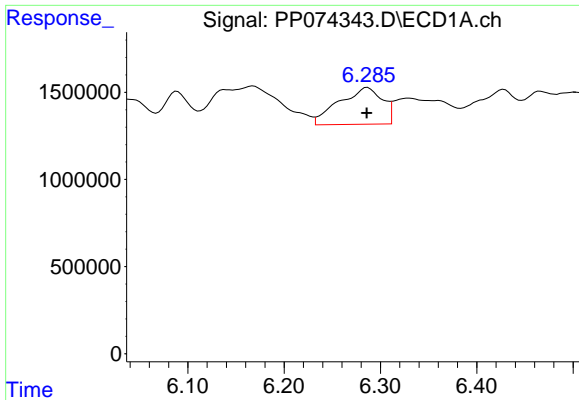
#22 AR-1248-2

R.T.: 6.089 min  
 Delta R.T.: 0.006 min  
 Response: 3825834  
 Conc: 95.03 ng/ml



#22 AR-1248-2

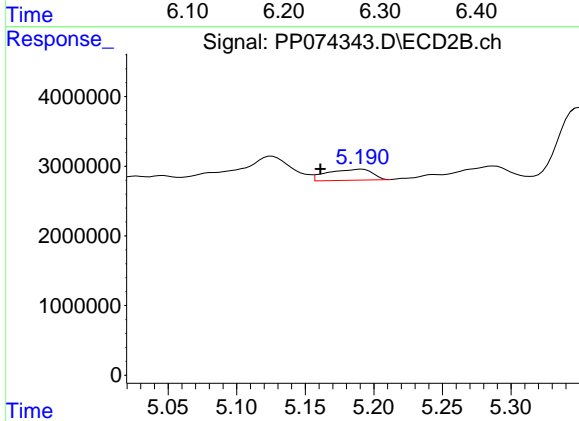
R.T.: 5.126 min  
 Delta R.T.: 0.005 min  
 Response: 11133806  
 Conc: 76.10 ng/ml



#23 AR-1248-3

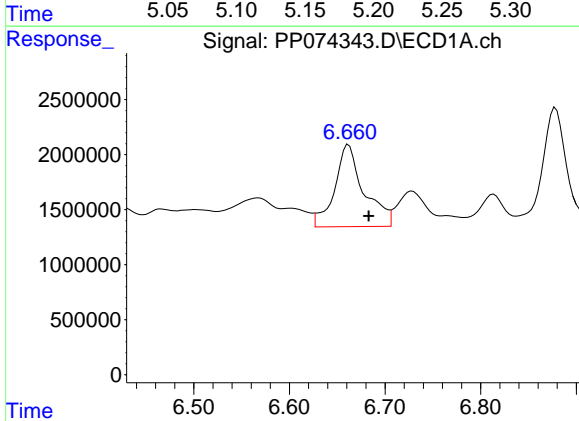
R.T.: 6.287 min  
 Delta R.T.: 0.000 min  
 Response: 6577209  
 Conc: 147.56 ng/ml

Instrument :  
 ECD\_P  
 ClientSampleId :  
 TG-S02



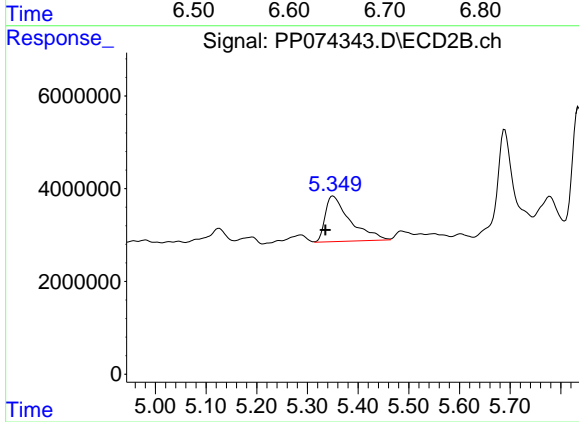
#23 AR-1248-3

R.T.: 5.191 min  
 Delta R.T.: 0.030 min  
 Response: 3609037  
 Conc: 21.05 ng/ml



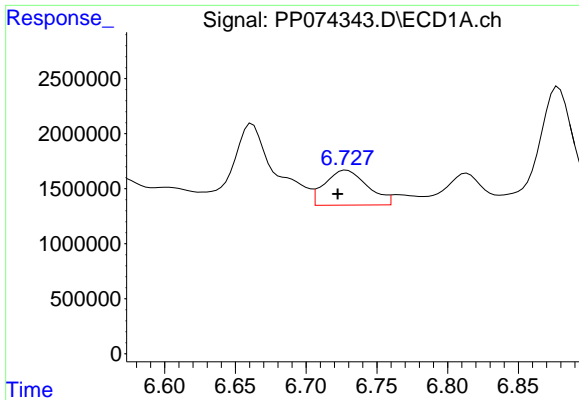
#24 AR-1248-4

R.T.: 6.662 min  
 Delta R.T.: -0.021 min  
 Response: 15823443  
 Conc: 304.08 ng/ml



#24 AR-1248-4

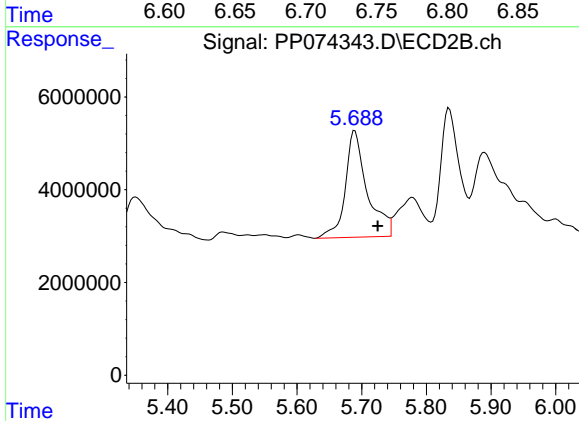
R.T.: 5.351 min  
 Delta R.T.: 0.015 min  
 Response: 33626444  
 Conc: 202.11 ng/ml



#25 AR-1248-5

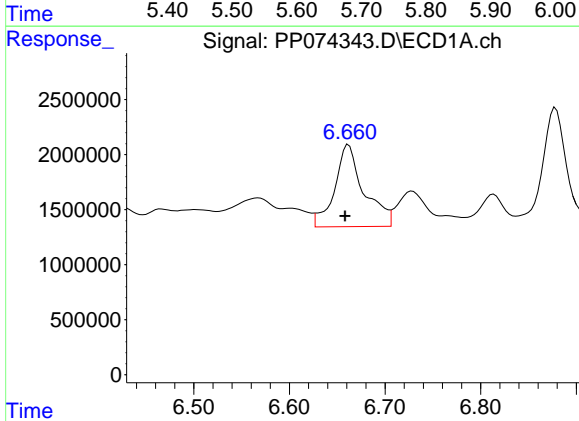
R.T.: 6.729 min  
 Delta R.T.: 0.006 min  
 Response: 6663212  
 Conc: 117.01 ng/ml

Instrument :  
 ECD\_P  
 ClientSampleId :  
 TG-S02



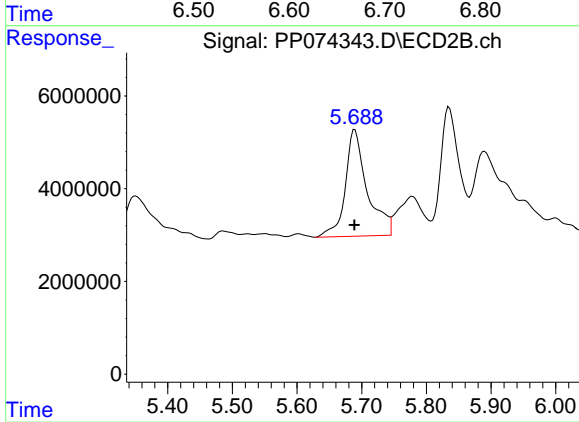
#25 AR-1248-5

R.T.: 5.689 min  
 Delta R.T.: -0.036 min  
 Response: 54218126  
 Conc: 186.34 ng/ml



#26 AR-1254-1

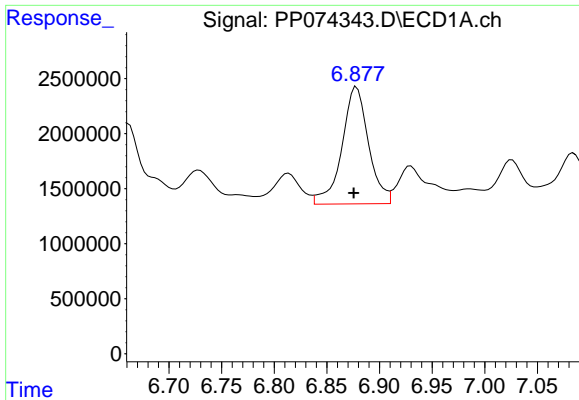
R.T.: 6.662 min  
 Delta R.T.: 0.004 min  
 Response: 15823443  
 Conc: 300.59 ng/ml



#26 AR-1254-1

R.T.: 5.689 min  
 Delta R.T.: 0.000 min  
 Response: 54218126  
 Conc: 148.06 ng/ml

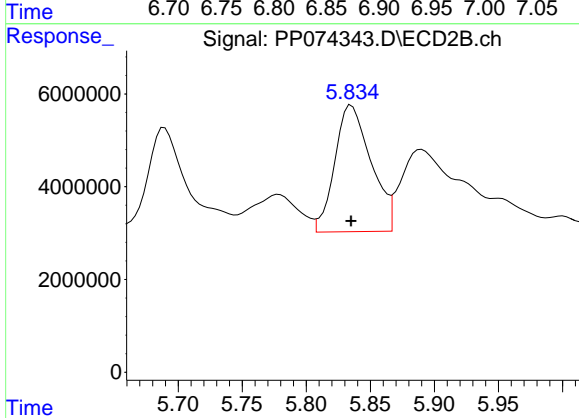




#27 AR-1254-2

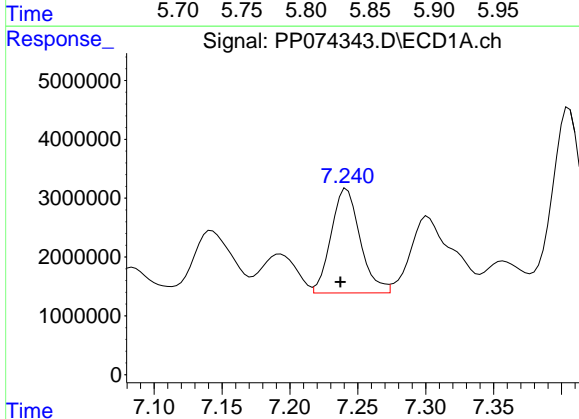
R.T.: 6.878 min  
 Delta R.T.: 0.003 min  
 Response: 18773100  
 Conc: 236.13 ng/ml

Instrument :  
 ECD\_P  
 ClientSampleId :  
 TG-S02



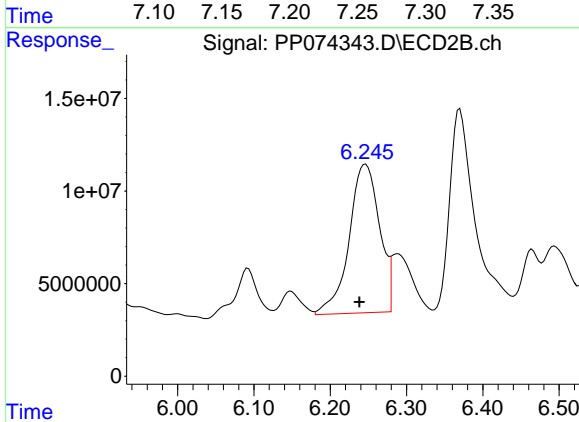
#27 AR-1254-2

R.T.: 5.835 min  
 Delta R.T.: 0.000 min  
 Response: 53755847  
 Conc: 193.22 ng/ml



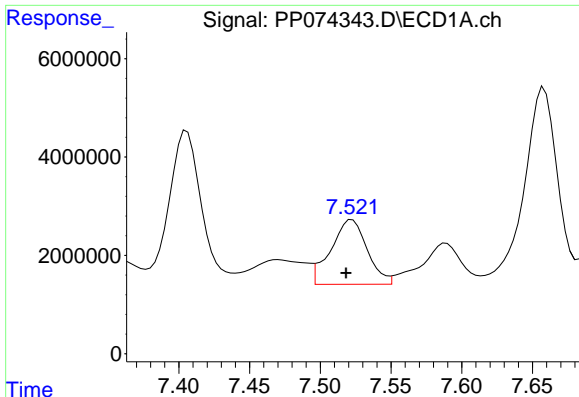
#28 AR-1254-3

R.T.: 7.242 min  
 Delta R.T.: 0.005 min  
 Response: 26407736  
 Conc: 302.44 ng/ml



#28 AR-1254-3

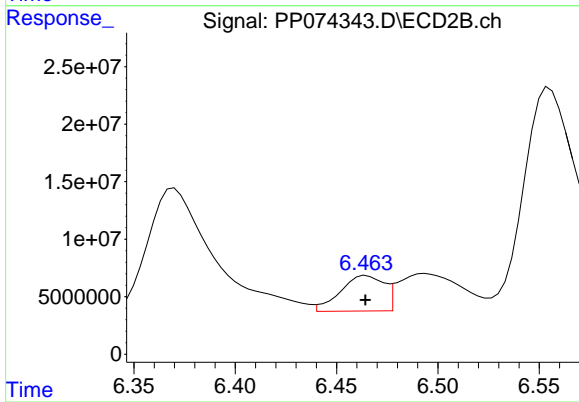
R.T.: 6.246 min  
 Delta R.T.: 0.008 min  
 Response: 222341367  
 Conc: 454.49 ng/ml



#29 AR-1254-4

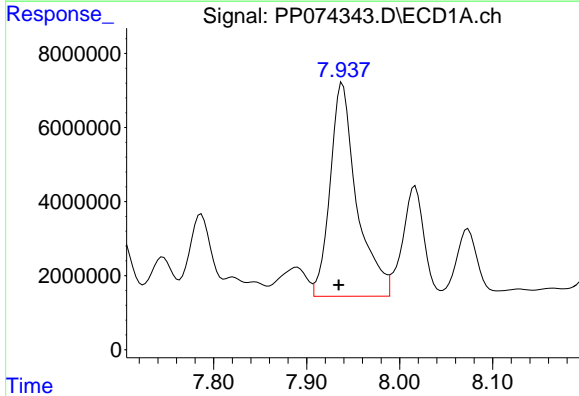
R.T.: 7.522 min  
 Delta R.T.: 0.004 min  
 Response: 23600144  
 Conc: 369.85 ng/ml

Instrument :  
 ECD\_P  
 ClientSampleId :  
 TG-S02



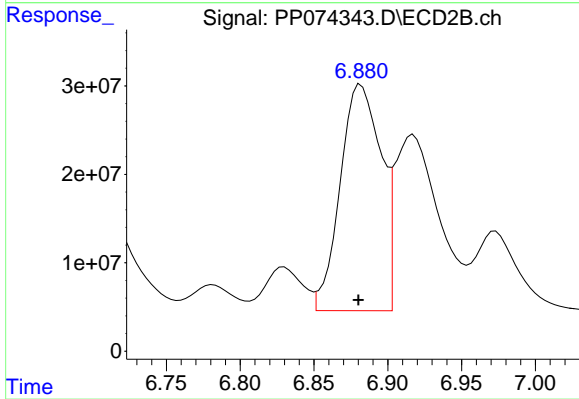
#29 AR-1254-4

R.T.: 6.465 min  
 Delta R.T.: 0.000 min  
 Response: 46244825  
 Conc: 125.81 ng/ml



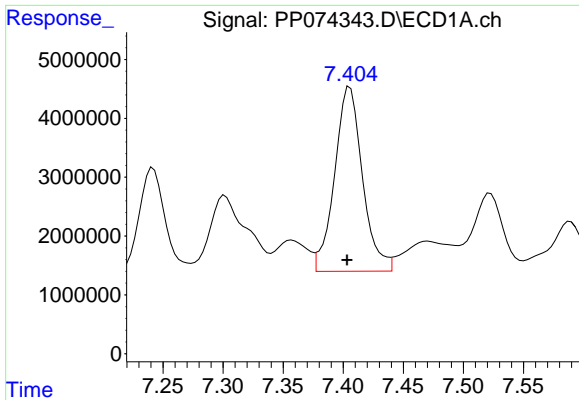
#30 AR-1254-5

R.T.: 7.939 min  
 Delta R.T.: 0.004 min  
 Response: 114688416  
 Conc: 1413.38 ng/ml



#30 AR-1254-5

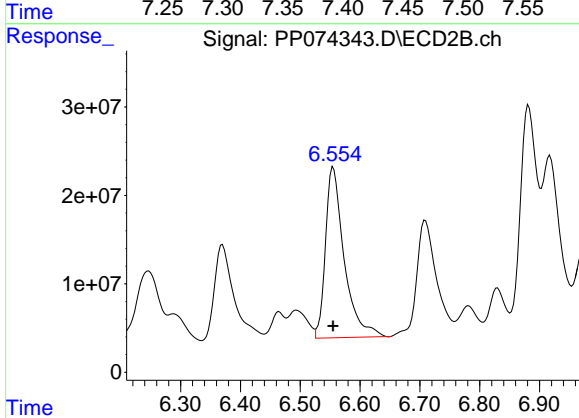
R.T.: 6.882 min  
 Delta R.T.: 0.002 min  
 Response: 491253054  
 Conc: 1275.43 ng/ml



#31 AR-1260-1

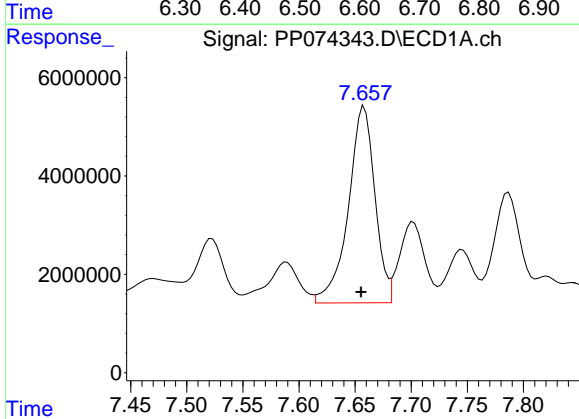
R.T.: 7.406 min  
 Delta R.T.: 0.003 min  
 Response: 50718949  
 Conc: 899.97 ng/ml

Instrument :  
 ECD\_P  
 ClientSampleId :  
 TG-S02



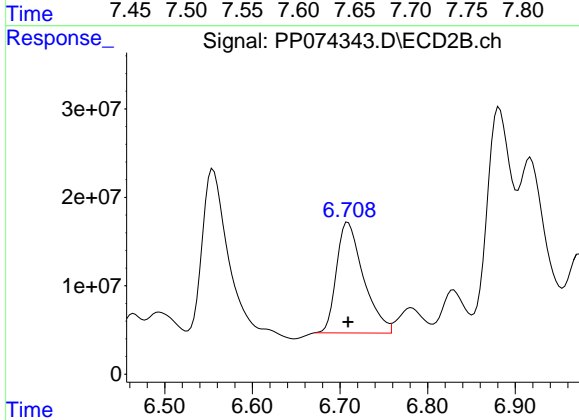
#31 AR-1260-1

R.T.: 6.555 min  
 Delta R.T.: 0.000 min  
 Response: 419890109  
 Conc: 1039.44 ng/ml



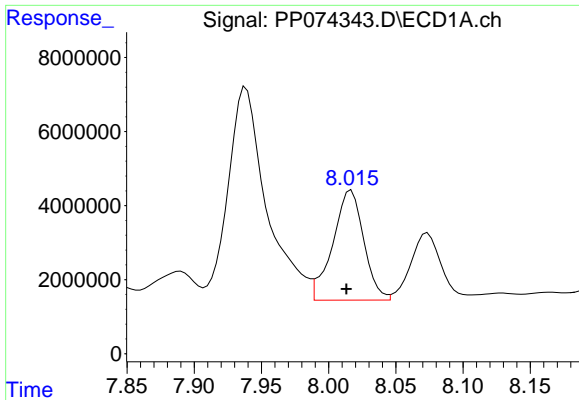
#32 AR-1260-2

R.T.: 7.658 min  
 Delta R.T.: 0.003 min  
 Response: 65823985  
 Conc: 965.84 ng/ml



#32 AR-1260-2

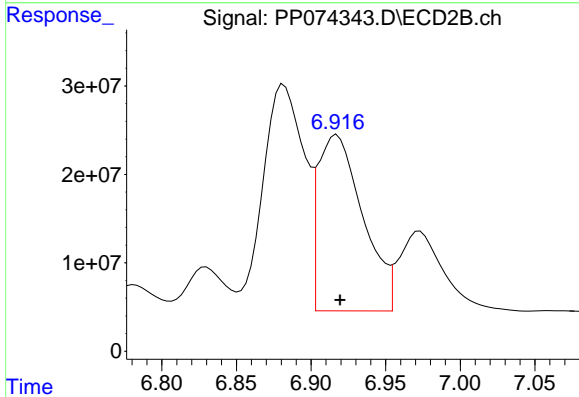
R.T.: 6.709 min  
 Delta R.T.: 0.000 min  
 Response: 267908750  
 Conc: 856.76 ng/ml



#33 AR-1260-3

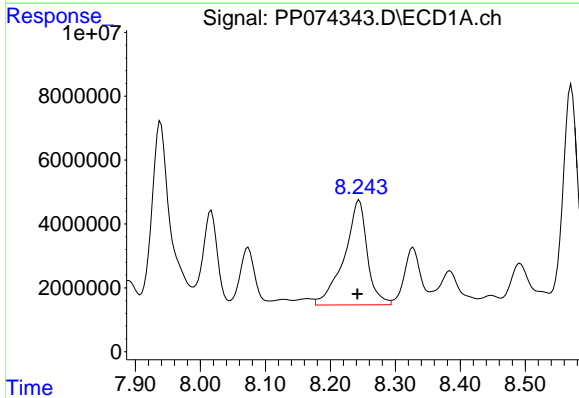
R.T.: 8.017 min  
 Delta R.T.: 0.004 min  
 Response: 47509906  
 Conc: 891.44 ng/ml

Instrument :  
 ECD\_P  
 ClientSampleId :  
 TG-S02



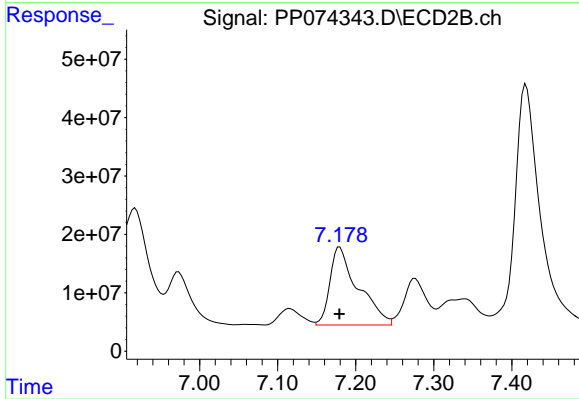
#33 AR-1260-3

R.T.: 6.917 min  
 Delta R.T.: -0.002 min  
 Response: 414832047  
 Conc: 1052.56 ng/ml



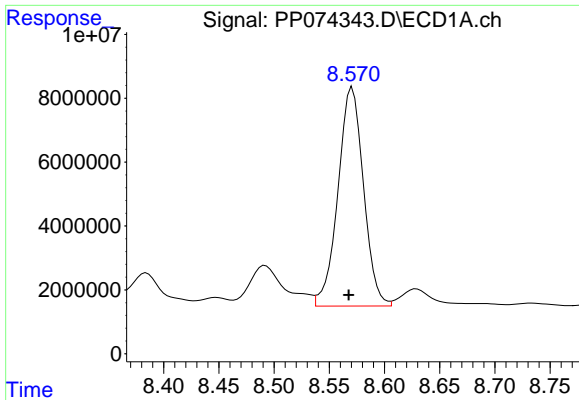
#34 AR-1260-4

R.T.: 8.244 min  
 Delta R.T.: 0.003 min  
 Response: 80854322  
 Conc: 1291.29 ng/ml



#34 AR-1260-4

R.T.: 7.180 min  
 Delta R.T.: 0.000 min  
 Response: 334600561  
 Conc: 1149.91 ng/ml

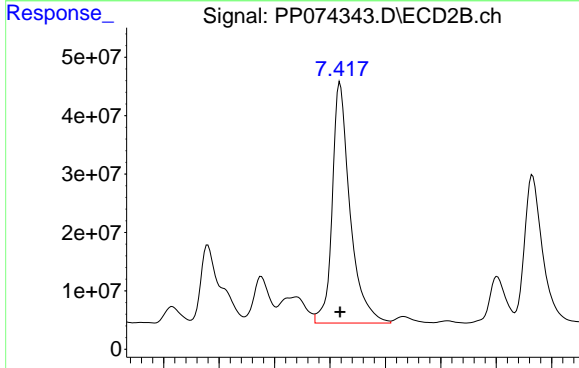


#35 AR-1260-5

R.T.: 8.571 min  
 Delta R.T.: 0.003 min  
 Response: 110390181  
 Conc: 974.28 ng/ml

Instrument :  
 ECD\_P  
 ClientSampleId :  
 TG-S02

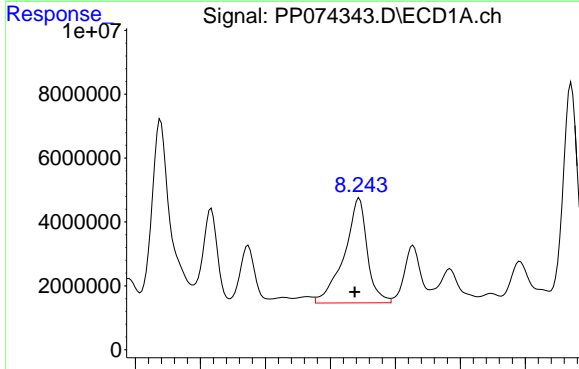
Time



#35 AR-1260-5

R.T.: 7.418 min  
 Delta R.T.: 0.000 min  
 Response: 921488463  
 Conc: 1216.63 ng/ml

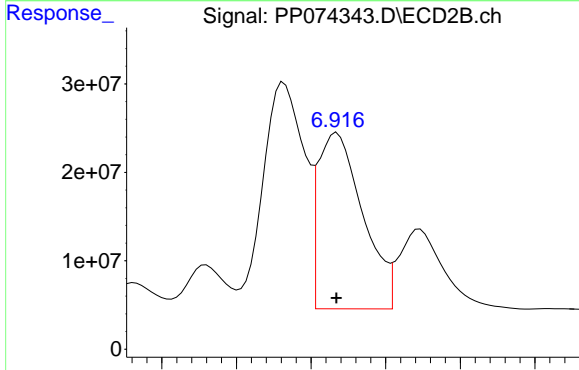
Time



#36 AR-1262-1

R.T.: 8.244 min  
 Delta R.T.: 0.007 min  
 Response: 80854322  
 Conc: 1066.82 ng/ml

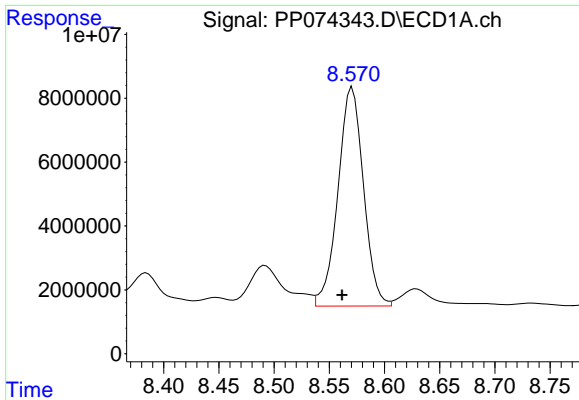
Time



#36 AR-1262-1

R.T.: 6.917 min  
 Delta R.T.: 0.000 min  
 Response: 414832047  
 Conc: 736.64 ng/ml

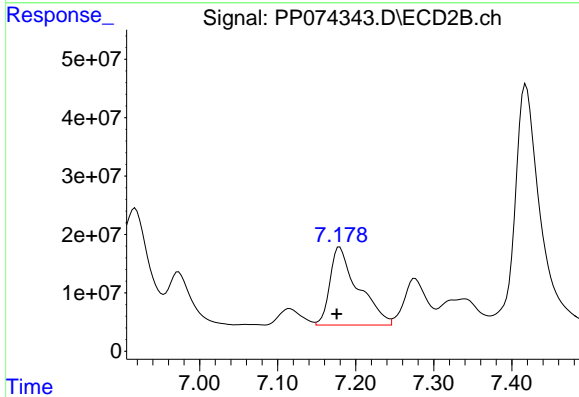
Time



#37 AR-1262-2

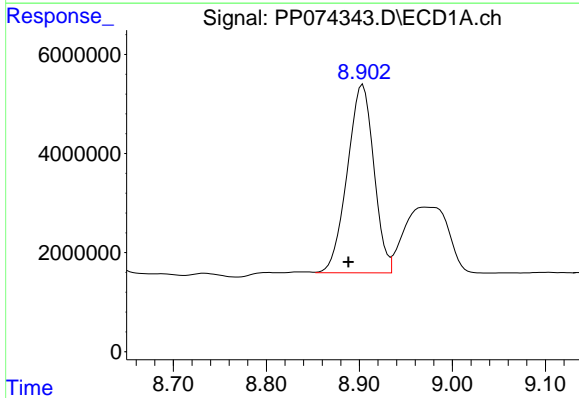
R.T.: 8.571 min  
 Delta R.T.: 0.009 min  
 Response: 110390181  
 Conc: 846.36 ng/ml

Instrument :  
 ECD\_P  
 ClientSampleId :  
 TG-S02



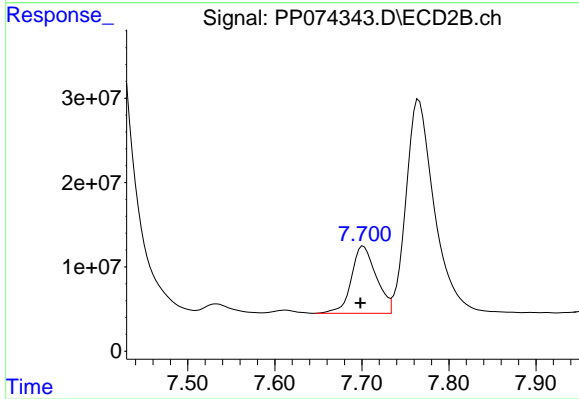
#37 AR-1262-2

R.T.: 7.180 min  
 Delta R.T.: 0.004 min  
 Response: 334600561  
 Conc: 834.37 ng/ml



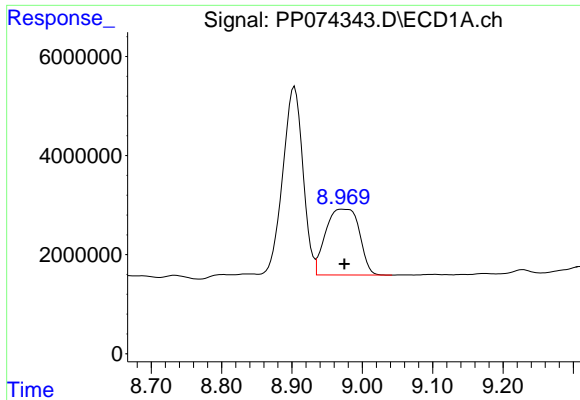
#38 AR-1262-3

R.T.: 8.904 min  
 Delta R.T.: 0.016 min  
 Response: 75335384  
 Conc: 800.84 ng/ml



#38 AR-1262-3

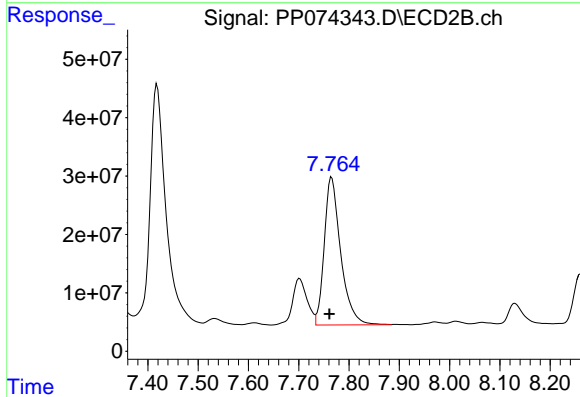
R.T.: 7.702 min  
 Delta R.T.: 0.003 min  
 Response: 158582309  
 Conc: 441.16 ng/ml



#39 AR-1262-4

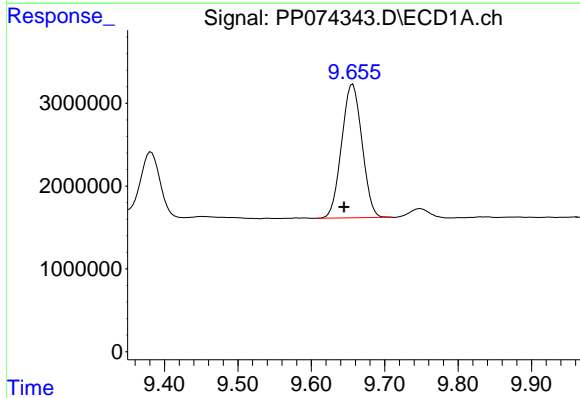
R.T.: 8.971 min  
 Delta R.T.: -0.004 min  
 Response: 44233572  
 Conc: 607.17 ng/ml

Instrument :  
 ECD\_P  
 ClientSampleId :  
 TG-S02



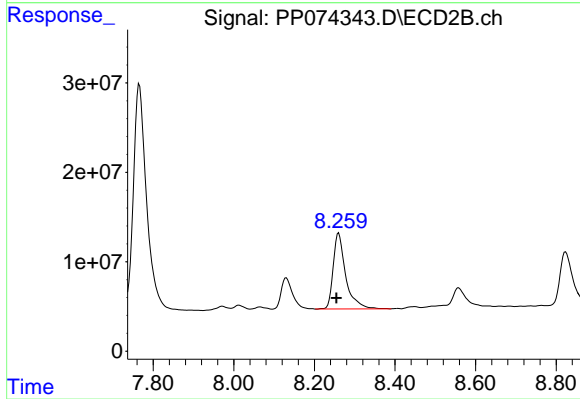
#39 AR-1262-4

R.T.: 7.766 min  
 Delta R.T.: 0.005 min  
 Response: 574145833  
 Conc: 860.89 ng/ml



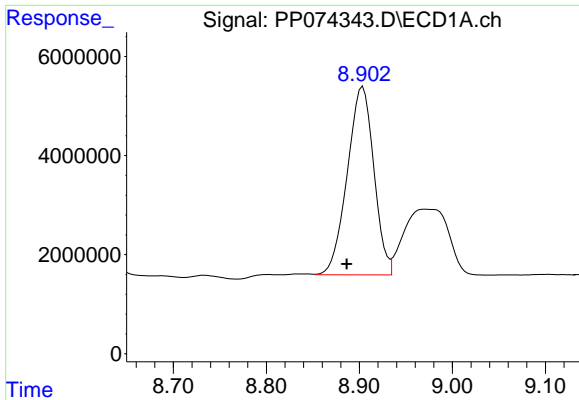
#40 AR-1262-5

R.T.: 9.657 min  
 Delta R.T.: 0.012 min  
 Response: 31191800  
 Conc: 612.53 ng/ml



#40 AR-1262-5

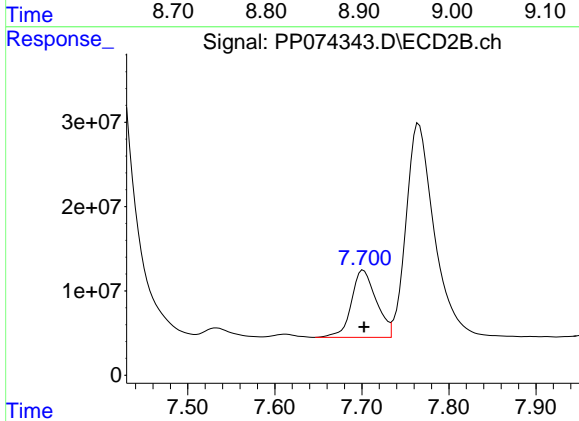
R.T.: 8.260 min  
 Delta R.T.: 0.005 min  
 Response: 183307866  
 Conc: 647.12 ng/ml



#41 AR-1268-1

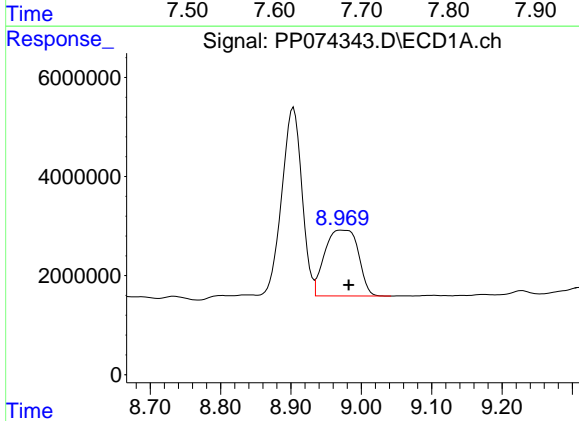
R.T.: 8.904 min  
 Delta R.T.: 0.017 min  
 Response: 75335384  
 Conc: 484.06 ng/ml

Instrument :  
 ECD\_P  
 ClientSampleId :  
 TG-S02



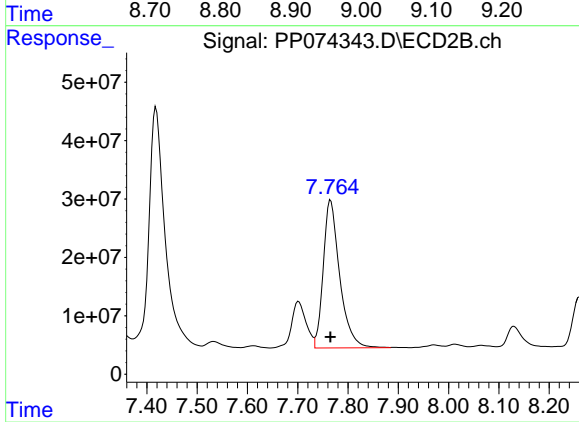
#41 AR-1268-1

R.T.: 7.702 min  
 Delta R.T.: 0.000 min  
 Response: 158582309  
 Conc: 145.45 ng/ml



#42 AR-1268-2

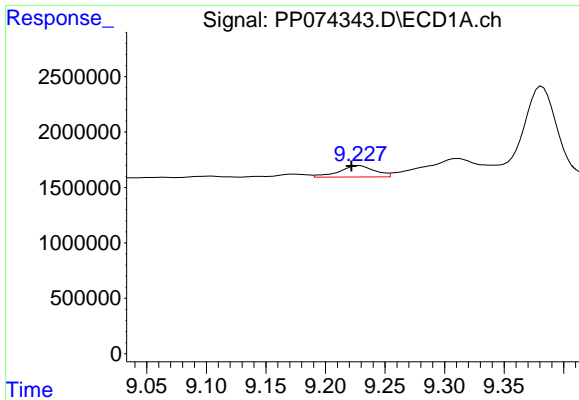
R.T.: 8.971 min  
 Delta R.T.: -0.012 min  
 Response: 44233572  
 Conc: 308.41 ng/ml



#42 AR-1268-2

R.T.: 7.766 min  
 Delta R.T.: 0.000 min  
 Response: 574145833  
 Conc: 540.97 ng/ml

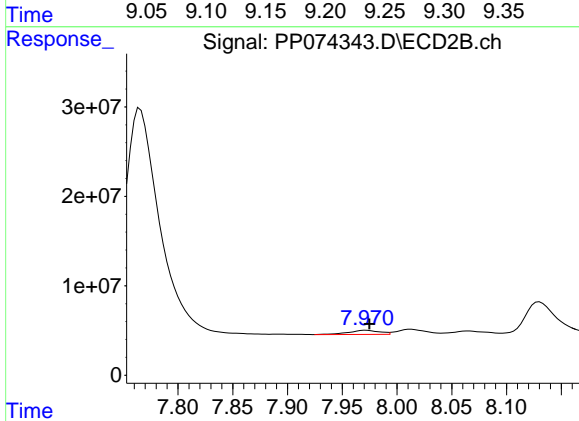




#43 AR-1268-3

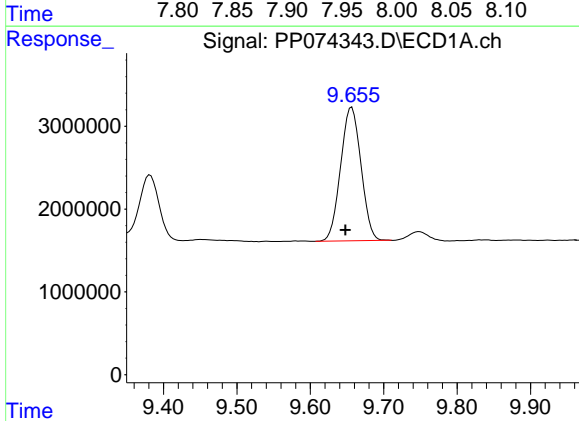
R.T.: 9.228 min  
 Delta R.T.: 0.007 min  
 Response: 2133580  
 Conc: 17.86 ng/ml

Instrument :  
 ECD\_P  
 ClientSampleId :  
 TG-S02



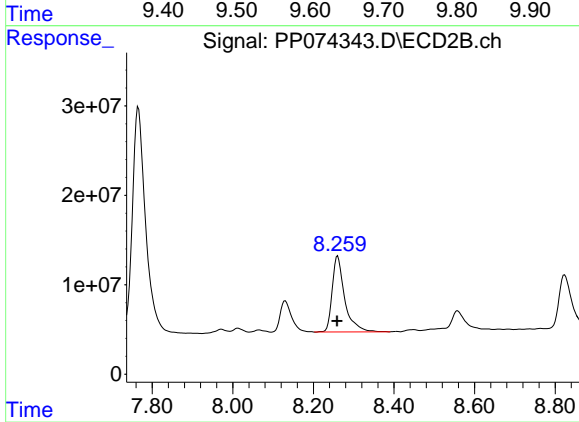
#43 AR-1268-3

R.T.: 7.972 min  
 Delta R.T.: -0.003 min  
 Response: 9032124  
 Conc: 10.86 ng/ml



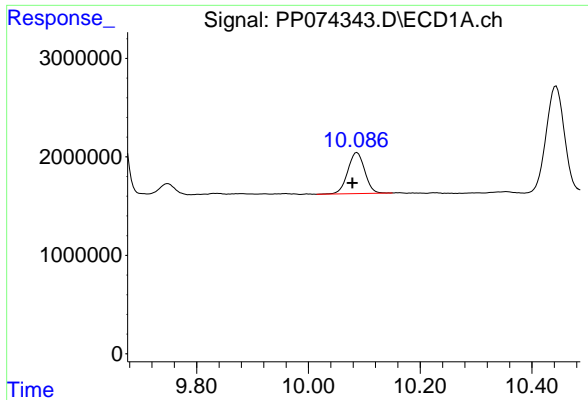
#44 AR-1268-4

R.T.: 9.657 min  
 Delta R.T.: 0.009 min  
 Response: 31191800  
 Conc: 530.36 ng/ml



#44 AR-1268-4

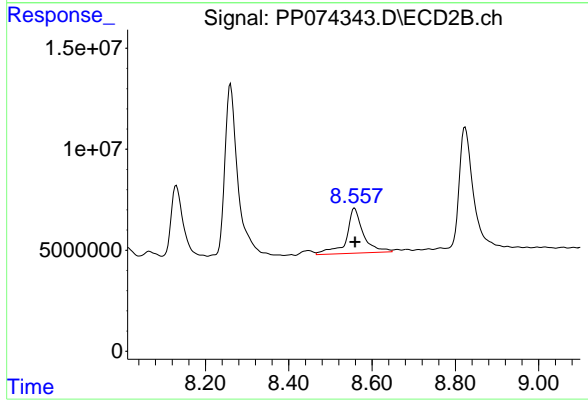
R.T.: 8.260 min  
 Delta R.T.: 0.000 min  
 Response: 183307866  
 Conc: 595.04 ng/ml



#45 AR-1268-5

R.T.: 10.087 min  
 Delta R.T.: 0.008 min  
 Response: 8800168  
 Conc: 25.02 ng/ml

Instrument :  
 ECD\_P  
 ClientSampleId :  
 TG-S02



#45 AR-1268-5

R.T.: 8.558 min  
 Delta R.T.: -0.001 min  
 Response: 62691606  
 Conc: 24.58 ng/ml