

Data Path : Z:\pestpcbsrv\HPCHEM1\ECD_P\Data\PP081325\
 Data File : PP074345.D
 Signal(s) : Signal #1: ECD1A.ch Signal #2: ECD2B.ch
 Acq On : 13 Aug 2025 14:16
 Operator : YP\AJ
 Sample : Q2832-03MSD
 Misc :
 ALS Vial : 13 Sample Multiplier: 1

Instrument :
 ECD_P
 ClientSampleId :
 TG-S02MSD

Integration File signal 1: autoint1.e
 Integration File signal 2: autoint2.e
 Quant Time: Aug 13 15:43:47 2025
 Quant Method : Z:\pestpcbsrv\HPCHEM1\ECD_P\methods\PP080125.M
 Quant Title : GC EXTRACTABLES
 QLast Update : Mon Aug 04 11:01:49 2025
 Response via : Initial Calibration
 Integrator: ChemStation

Volume Inj. : 2 µl
 Signal #1 Phase : ZB-MR1 Signal #2 Phase: ZB-MR2
 Signal #1 Info : 30Mx0.32mmx 0.50µ Signal #2 Info : 30M x 0.32mm x 0.25µm

Compound	RT#1	RT#2	Resp#1	Resp#2	ng/ml	ng/ml
System Monitoring Compounds						
1) SA Tetrachlo...	4.661	3.804	27089049	84124648	24.223	21.939
2) SA Decachlor...	10.445	8.825	22290571	132.0E6	22.952	21.953
Target Compounds						
3) L1 AR-1016-1	5.813	4.905	24326925	217.9E6	589.646	546.325
4) L1 AR-1016-2	5.835	4.962	35316025	107.2E6	581.413	570.527
5) L1 AR-1016-3	5.898	5.083	24991267	59697212	630.130	562.812
6) L1 AR-1016-4	5.995	5.124	21512751	63545144	661.026	581.808
7) L1 AR-1016-5	6.287	5.339	21221415	69778245	653.609	596.583
8) L2 AR-1221-1	4.856	4.014	3502246	7794699	208.919	158.799
9) L2 AR-1221-2	4.947	4.100	3514217	8692244	278.883	242.196
10) L2 AR-1221-3	5.022	4.177	12962921	27965052	353.838	206.805 #
11) L3 AR-1232-1	5.022	4.177	12962921	27965052	446.423	275.892 #
12) L3 AR-1232-2	5.549	4.905	19280465	217.9E6	1281.714	1250.514
13) L3 AR-1232-3	5.835	5.083	35316025	59697212	1217.722	1302.960
14) L3 AR-1232-4	5.995	5.167	21512751	101.0E6	1390.716	1741.449 #
15) L3 AR-1232-5	6.085	5.339	19481879	69778245	1662.842	1485.293
16) L4 AR-1242-1	5.813	4.905	24326925	217.9E6	652.795	631.401
17) L4 AR-1242-2	5.835	4.962	35316025	107.2E6	649.085	655.843
18) L4 AR-1242-3	5.898	5.083	24991267	59697212	699.333	647.135
19) L4 AR-1242-4	5.995	5.167	21512751	101.0E6	736.268	845.933
20) L4 AR-1242-5	6.727	5.689	10261283	130.9E6	288.579	875.308 #
21) L5 AR-1248-1	5.813	4.905	24326925	217.9E6	868.368	1018.653
22) L5 AR-1248-2	6.085	5.124	19481879	63545144	483.889	434.311
23) L5 AR-1248-3	6.287	5.167	21221415	101.0E6	476.099	589.191
24) L5 AR-1248-4	6.662	5.339	27784635	69778245	533.938	419.407
25) L5 AR-1248-5	6.727	5.689f	10261283	130.9E6	180.202	449.919 #
26) L6 AR-1254-1	6.662	5.689	27784635	130.9E6	527.813	357.503 #
27) L6 AR-1254-2	6.878	5.836	31636285	105.5E6	397.918	379.343
28) L6 AR-1254-3	7.242	6.251	33616722	371.2E6	385.000	758.832 #
29) L6 AR-1254-4	7.523	6.465	29913134	61502674	468.788	167.324 #
30) L6 AR-1254-5	7.938	6.883	158.9E6	731.5E6	1957.762	1899.176
31) L7 AR-1260-1	7.406	6.555	77444421	692.2E6	1374.199	1713.600
32) L7 AR-1260-2	7.658	6.710	93011734	453.0E6	1364.762	1448.730
33) L7 AR-1260-3	8.016	6.918	68577617	682.4E6	1286.733	1731.550 #
34) L7 AR-1260-4	8.245	7.180	123.6E6	573.5E6	1974.131	1970.853
35) L7 AR-1260-5	8.571	7.419	161.3E6	1502.2E6	1423.342	1983.310 #
36) L8 AR-1262-1	8.245	6.918	123.6E6	682.4E6	1630.962	1211.834 #
37) L8 AR-1262-2	8.571	7.180	161.3E6	573.5E6	1236.461	1430.036
38) L8 AR-1262-3	8.903	7.703	113.0E6	311.4E6	1201.729	866.198 #
39) L8 AR-1262-4	8.985	7.766	72350741	1001.2E6	993.124	1501.263 #
40) L8 AR-1262-5	9.658	8.261	50518714	327.8E6	992.068	1157.064
41) L9 AR-1268-1	8.903	7.703	113.0E6	311.4E6	726.374	285.593 #

Data Path : Z:\pestpcbsrv\HPCHEM1\ECD_P\Data\PP081325\
 Data File : PP074345.D
 Signal(s) : Signal #1: ECD1A.ch Signal #2: ECD2B.ch
 Acq On : 13 Aug 2025 14:16
 Operator : YP\AJ
 Sample : Q2832-03MSD
 Misc :
 ALS Vial : 13 Sample Multiplier: 1

Instrument :
 ECD_P
 ClientSampleId :
 TG-S02MSD

Integration File signal 1: autoint1.e
 Integration File signal 2: autoint2.e
 Quant Time: Aug 13 15:43:47 2025
 Quant Method : Z:\pestpcbsrv\HPCHEM1\ECD_P\methods\PP080125.M
 Quant Title : GC EXTRACTABLES
 QLast Update : Mon Aug 04 11:01:49 2025
 Response via : Initial Calibration
 Integrator: ChemStation

Volume Inj. : 2 µl
 Signal #1 Phase : ZB-MR1 Signal #2 Phase: ZB-MR2
 Signal #1 Info : 30Mx0.32mmx 0.50µ Signal #2 Info : 30M x 0.32mm x 0.25µm

	Compound	RT#1	RT#2	Resp#1	Resp#2	ng/ml	ng/ml
42)	L9 AR-1268-2	8.985	7.766	72350741	1001.2E6	504.447	943.371 #
43)	L9 AR-1268-3	9.231	7.974	4514407	23251764	37.786	27.949 #
44)	L9 AR-1268-4	9.658	8.261	50518714	327.8E6	858.978	1063.949
45)	L9 AR-1268-5	10.089	8.560	26136041	149.8E6	74.314	58.742

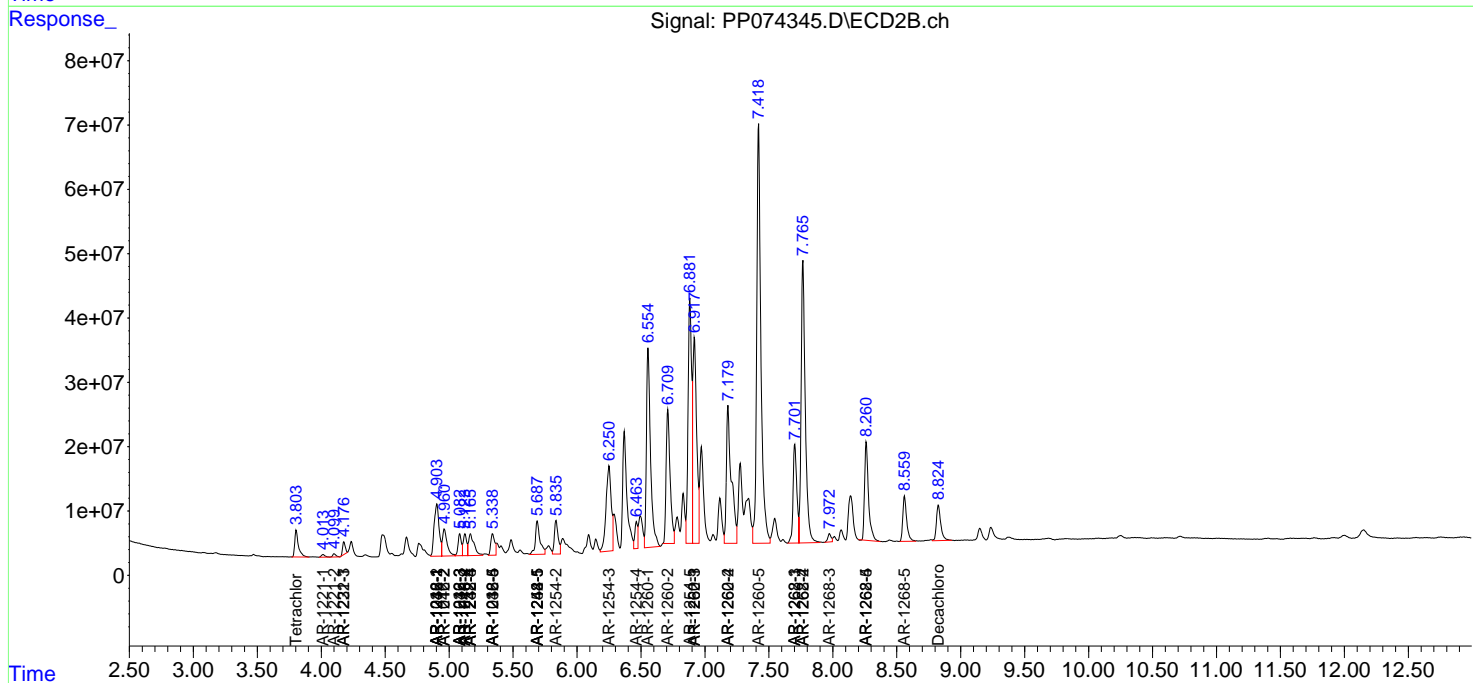
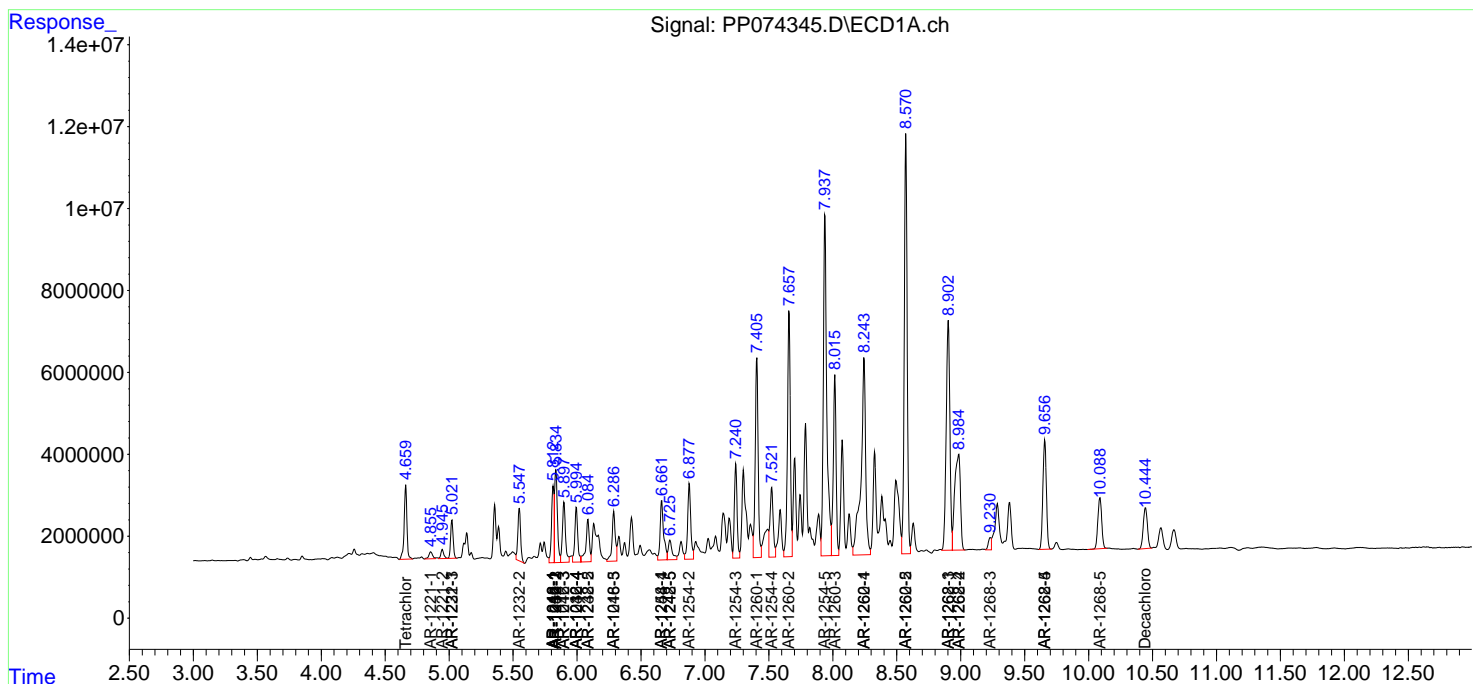
(f)=RT Delta > 1/2 Window (#)=Amounts differ by > 25% (m)=manual int.

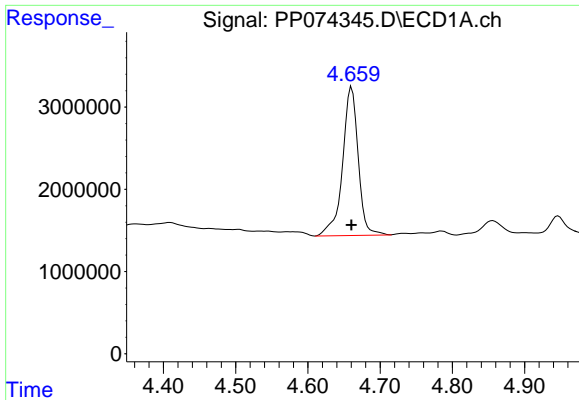
Data Path : Z:\pestpcbsrv\HPCHEM1\ECD_P\Data\PP081325\
 Data File : PP074345.D
 Signal(s) : Signal #1: ECD1A.ch Signal #2: ECD2B.ch
 Acq On : 13 Aug 2025 14:16
 Operator : YP\AJ
 Sample : Q2832-03MSD
 Misc :
 ALS Vial : 13 Sample Multiplier: 1

Instrument :
 ECD_P
 ClientSampleId :
 TG-S02MSD

Integration File signal 1: autoint1.e
 Integration File signal 2: autoint2.e
 Quant Time: Aug 13 15:43:47 2025
 Quant Method : Z:\pestpcbsrv\HPCHEM1\ECD_P\methods\PP080125.M
 Quant Title : GC EXTRACTABLES
 QLast Update : Mon Aug 04 11:01:49 2025
 Response via : Initial Calibration
 Integrator: ChemStation

Volume Inj. : 2 µl
 Signal #1 Phase : ZB-MR1 Signal #2 Phase: ZB-MR2
 Signal #1 Info : 30Mx0.32mmx 0.50µ Signal #2 Info : 30M x 0.32mm x 0.25µm

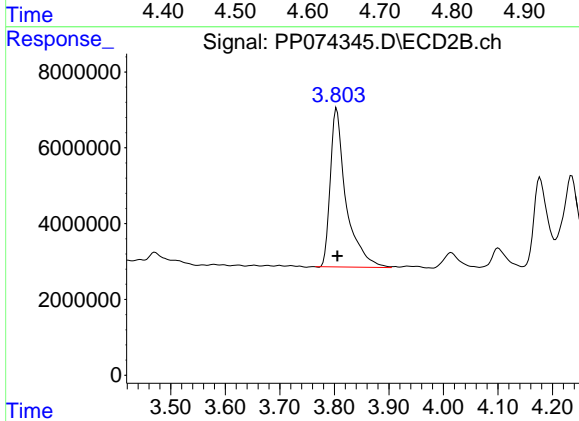




#1 Tetrachloro-m-xylene

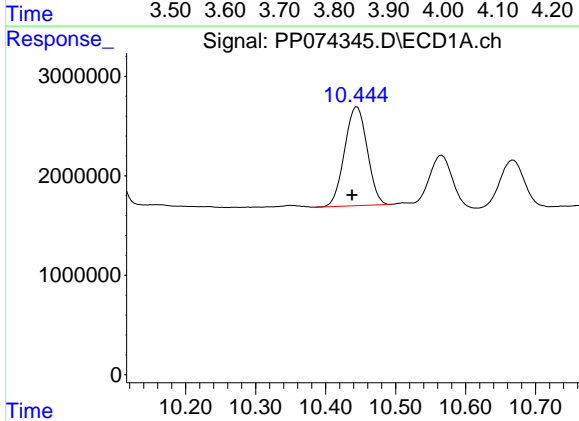
R.T.: 4.661 min
 Delta R.T.: 0.000 min
 Response: 27089049
 Conc: 24.22 ng/ml

Instrument :
 ECD_P
 ClientSampleId :
 TG-S02MSD



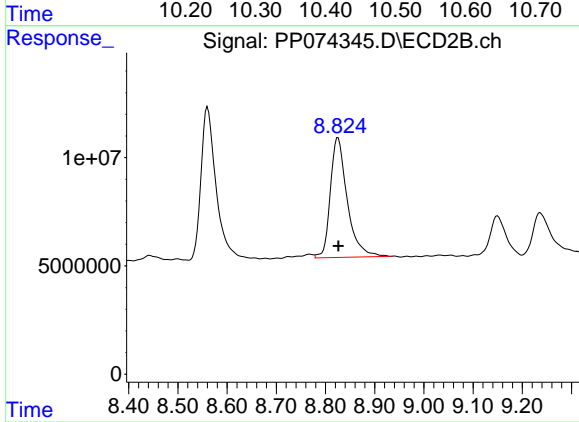
#1 Tetrachloro-m-xylene

R.T.: 3.804 min
 Delta R.T.: -0.001 min
 Response: 84124648
 Conc: 21.94 ng/ml



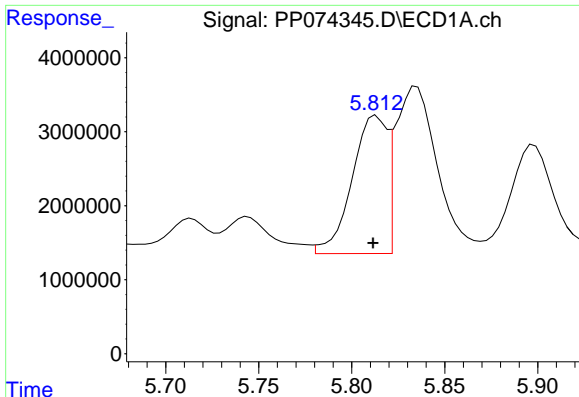
#2 Decachlorobiphenyl

R.T.: 10.445 min
 Delta R.T.: 0.007 min
 Response: 22290571
 Conc: 22.95 ng/ml



#2 Decachlorobiphenyl

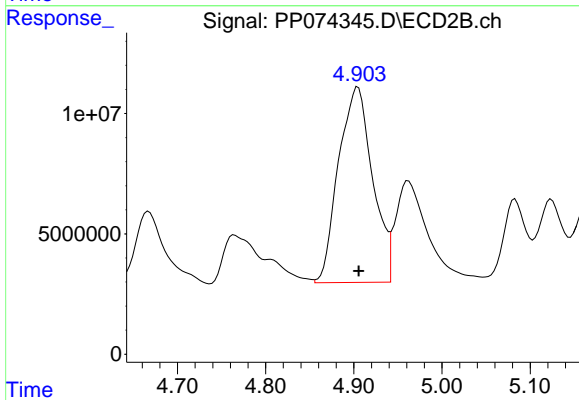
R.T.: 8.825 min
 Delta R.T.: 0.000 min
 Response: 132018346
 Conc: 21.95 ng/ml



#3 AR-1016-1

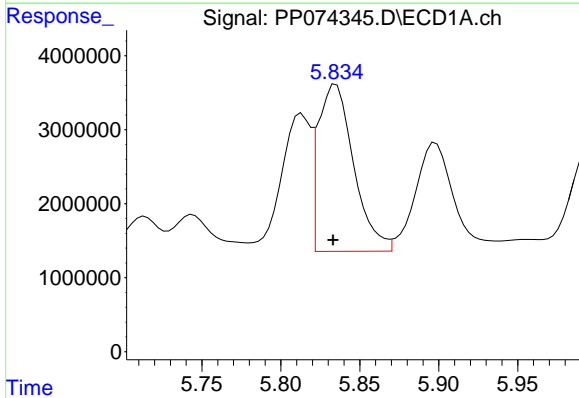
R.T.: 5.813 min
 Delta R.T.: 0.002 min
 Response: 24326925
 Conc: 589.65 ng/ml

Instrument :
 ECD_P
 ClientSampleId :
 TG-S02MSD



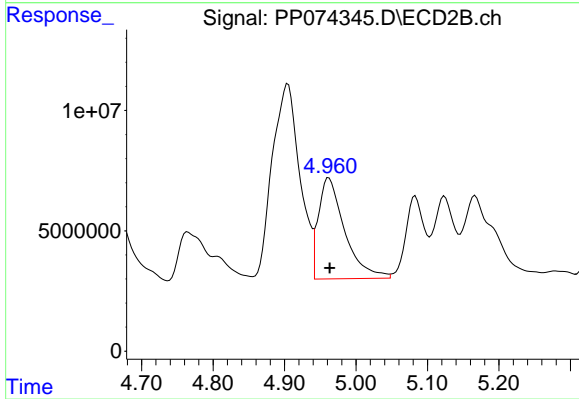
#3 AR-1016-1

R.T.: 4.905 min
 Delta R.T.: 0.000 min
 Response: 217922237
 Conc: 546.33 ng/ml



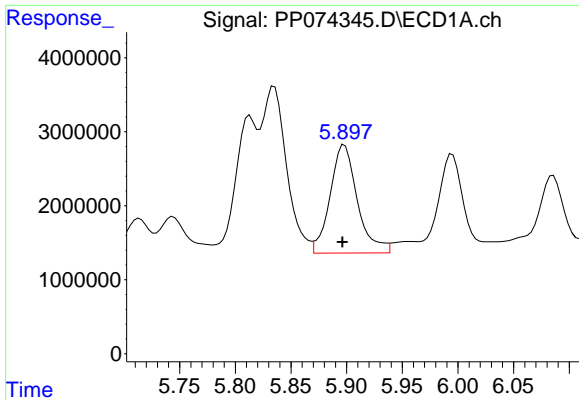
#4 AR-1016-2

R.T.: 5.835 min
 Delta R.T.: 0.002 min
 Response: 35316025
 Conc: 581.41 ng/ml



#4 AR-1016-2

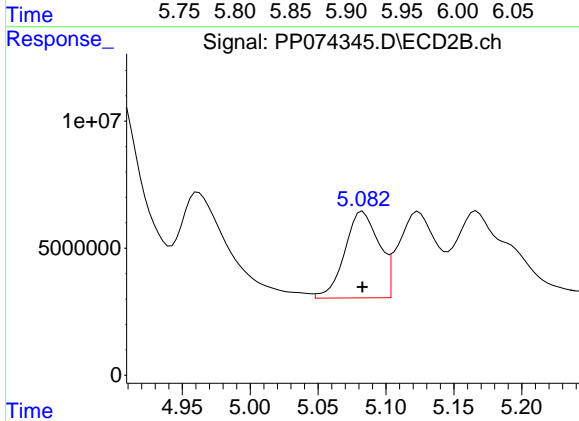
R.T.: 4.962 min
 Delta R.T.: -0.001 min
 Response: 107150016
 Conc: 570.53 ng/ml



#5 AR-1016-3

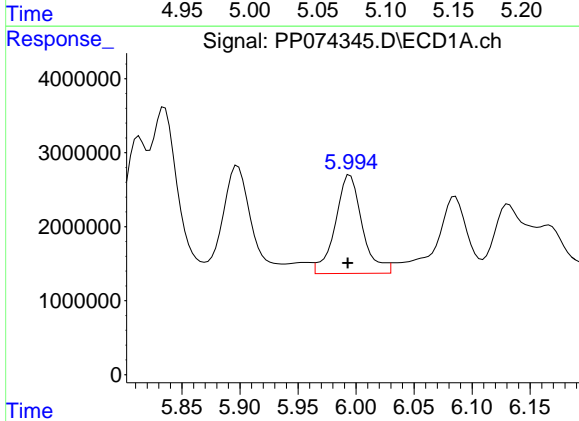
R.T.: 5.898 min
 Delta R.T.: 0.002 min
 Response: 24991267
 Conc: 630.13 ng/ml

Instrument :
 ECD_P
 ClientSampleId :
 TG-S02MSD



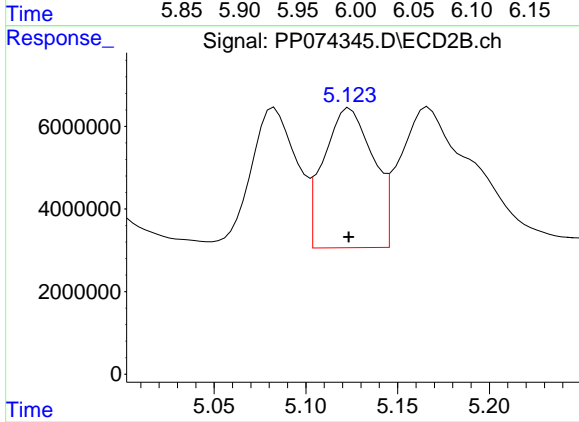
#5 AR-1016-3

R.T.: 5.083 min
 Delta R.T.: 0.000 min
 Response: 59697212
 Conc: 562.81 ng/ml



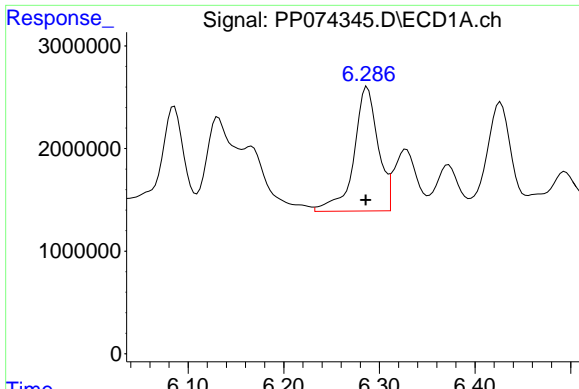
#6 AR-1016-4

R.T.: 5.995 min
 Delta R.T.: 0.002 min
 Response: 21512751
 Conc: 661.03 ng/ml



#6 AR-1016-4

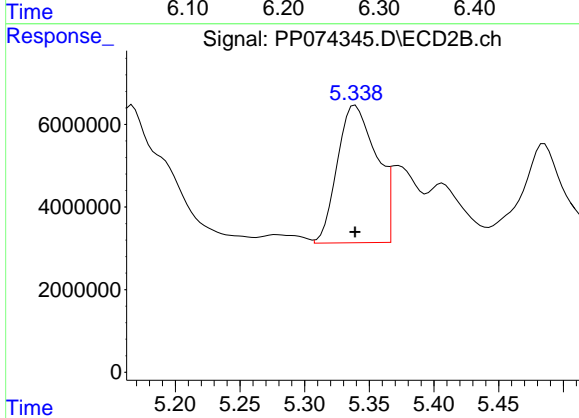
R.T.: 5.124 min
 Delta R.T.: 0.000 min
 Response: 63545144
 Conc: 581.81 ng/ml



#7 AR-1016-5

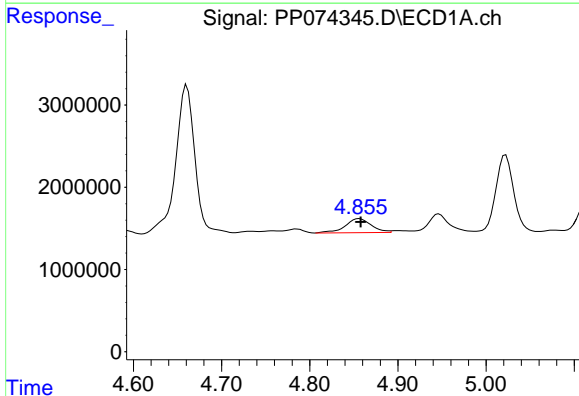
R.T.: 6.287 min
 Delta R.T.: 0.002 min
 Response: 21221415
 Conc: 653.61 ng/ml

Instrument :
 ECD_P
 ClientSampleId :
 TG-S02MSD



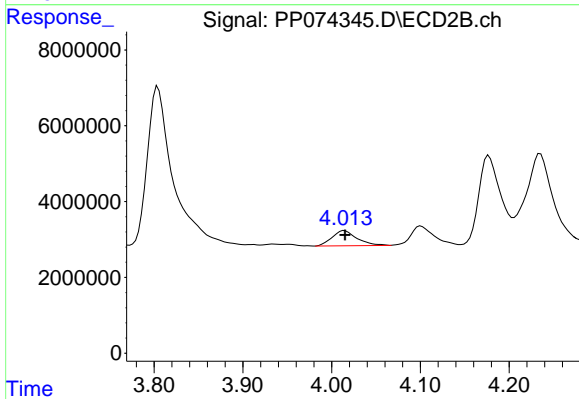
#7 AR-1016-5

R.T.: 5.339 min
 Delta R.T.: 0.000 min
 Response: 69778245
 Conc: 596.58 ng/ml



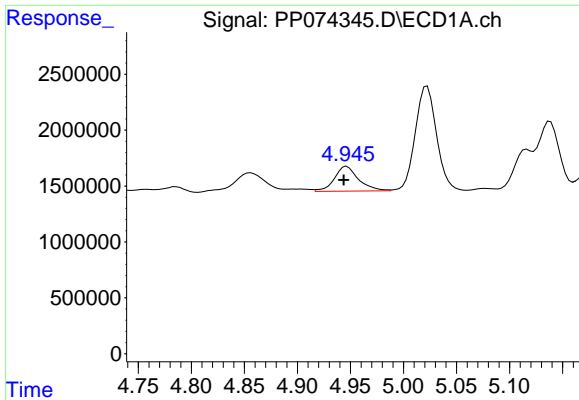
#8 AR-1221-1

R.T.: 4.856 min
 Delta R.T.: -0.002 min
 Response: 3502246
 Conc: 208.92 ng/ml



#8 AR-1221-1

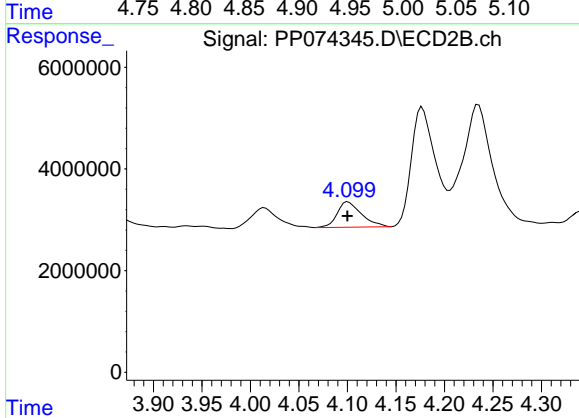
R.T.: 4.014 min
 Delta R.T.: 0.000 min
 Response: 7794699
 Conc: 158.80 ng/ml



#9 AR-1221-2

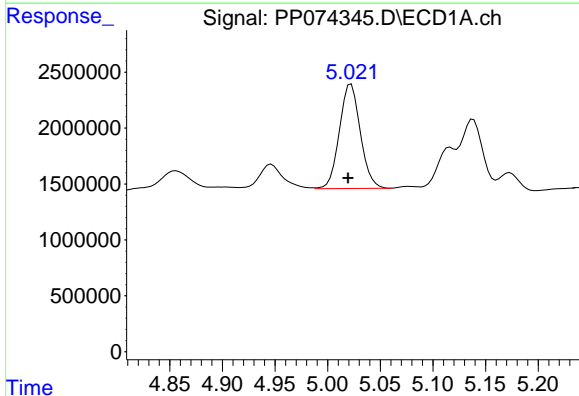
R.T.: 4.947 min
 Delta R.T.: 0.003 min
 Response: 3514217
 Conc: 278.88 ng/ml

Instrument :
 ECD_P
 ClientSampleId :
 TG-S02MSD



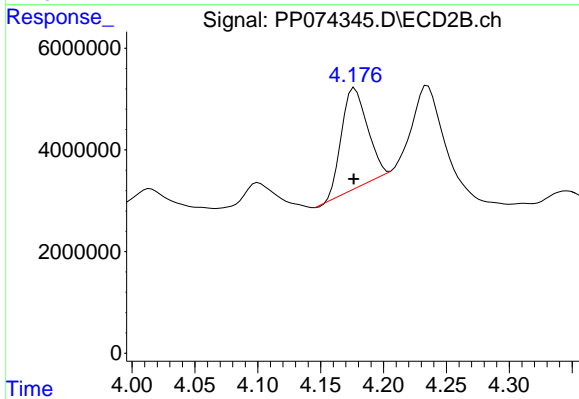
#9 AR-1221-2

R.T.: 4.100 min
 Delta R.T.: 0.000 min
 Response: 8692244
 Conc: 242.20 ng/ml



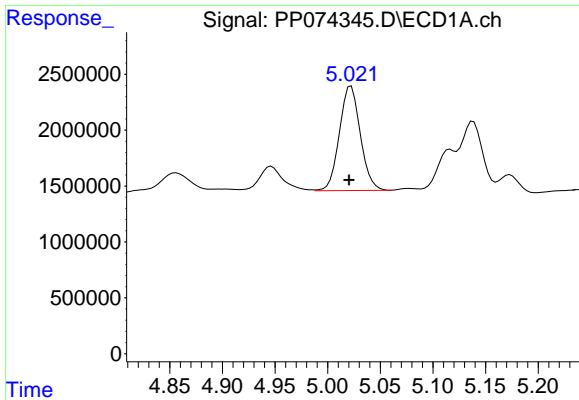
#10 AR-1221-3

R.T.: 5.022 min
 Delta R.T.: 0.003 min
 Response: 12962921
 Conc: 353.84 ng/ml



#10 AR-1221-3

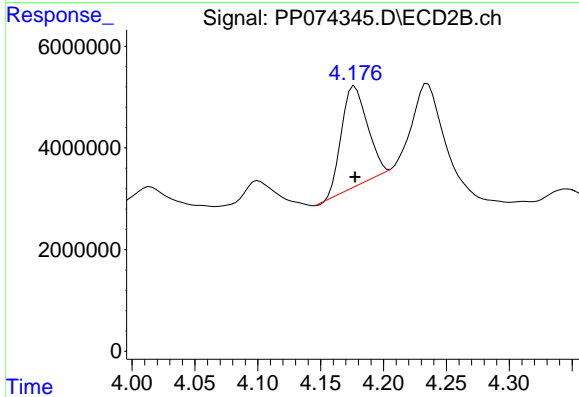
R.T.: 4.177 min
 Delta R.T.: 0.000 min
 Response: 27965052
 Conc: 206.80 ng/ml



#11 AR-1232-1

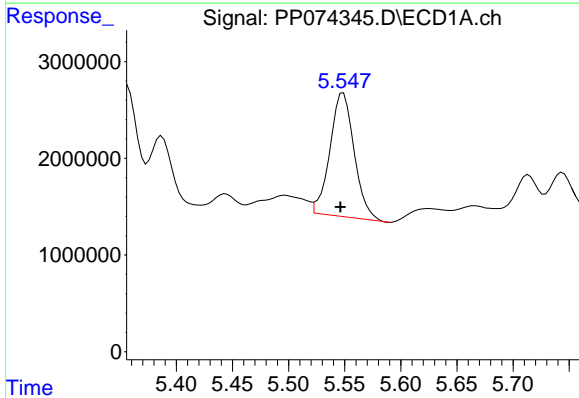
R.T.: 5.022 min
 Delta R.T.: 0.002 min
 Response: 12962921
 Conc: 446.42 ng/ml

Instrument :
 ECD_P
 ClientSampleId :
 TG-S02MSD



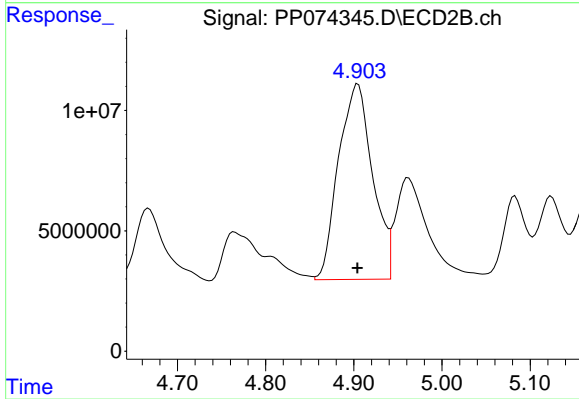
#11 AR-1232-1

R.T.: 4.177 min
 Delta R.T.: 0.000 min
 Response: 27965052
 Conc: 275.89 ng/ml



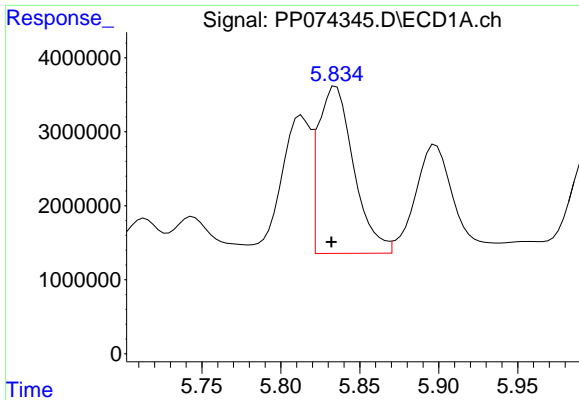
#12 AR-1232-2

R.T.: 5.549 min
 Delta R.T.: 0.002 min
 Response: 19280465
 Conc: 1281.71 ng/ml



#12 AR-1232-2

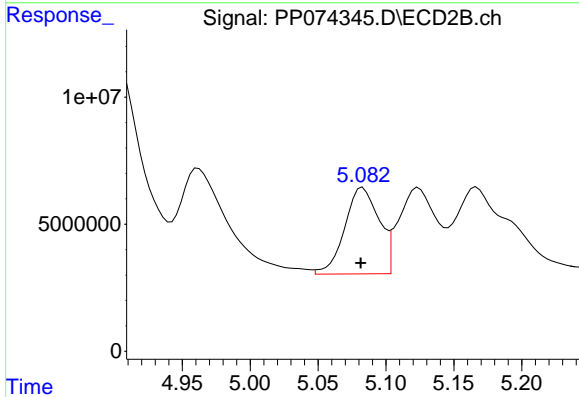
R.T.: 4.905 min
 Delta R.T.: 0.000 min
 Response: 217922237
 Conc: 1250.51 ng/ml



#13 AR-1232-3

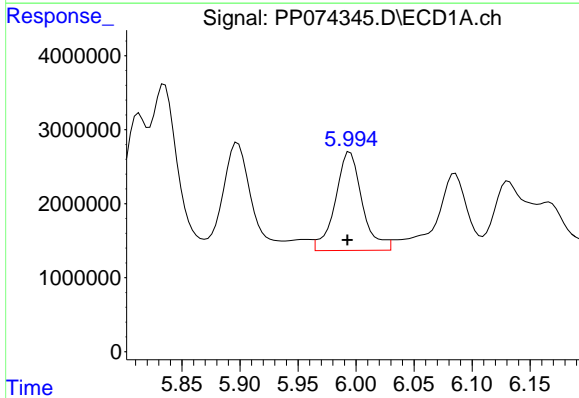
R.T.: 5.835 min
 Delta R.T.: 0.003 min
 Response: 35316025
 Conc: 1217.72 ng/m

Instrument :
 ECD_P
 ClientSampleId :
 TG-S02MSD



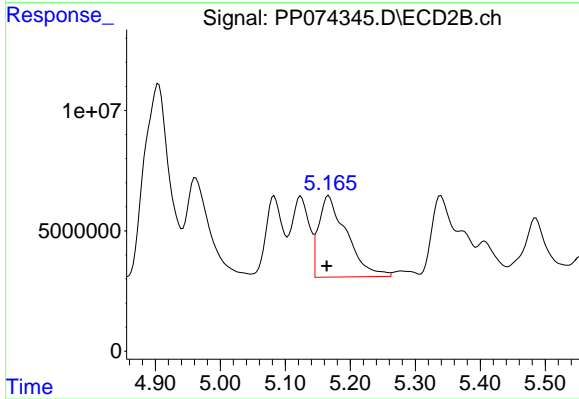
#13 AR-1232-3

R.T.: 5.083 min
 Delta R.T.: 0.002 min
 Response: 59697212
 Conc: 1302.96 ng/ml



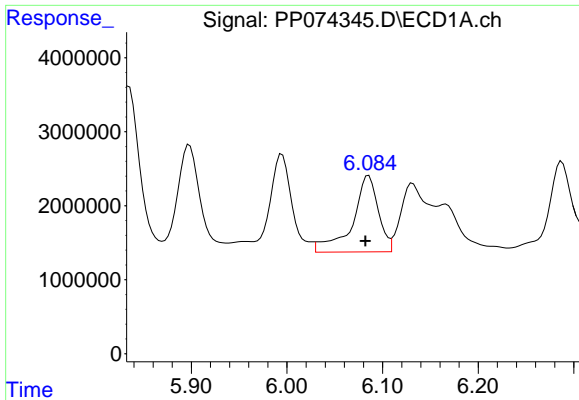
#14 AR-1232-4

R.T.: 5.995 min
 Delta R.T.: 0.002 min
 Response: 21512751
 Conc: 1390.72 ng/ml



#14 AR-1232-4

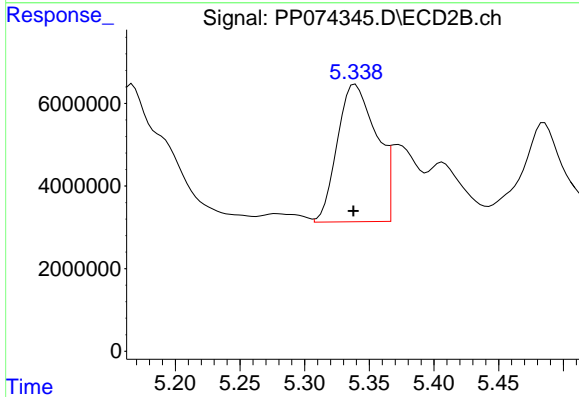
R.T.: 5.167 min
 Delta R.T.: 0.003 min
 Response: 101022687
 Conc: 1741.45 ng/ml



#15 AR-1232-5

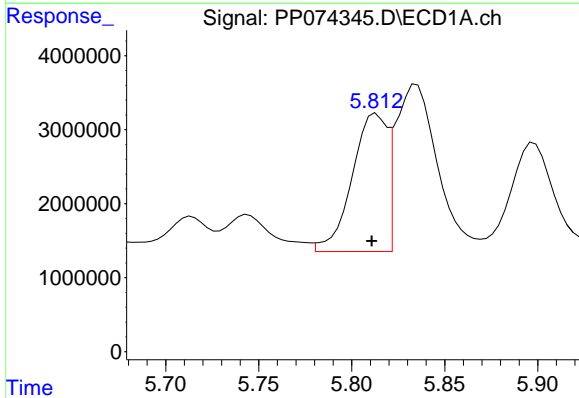
R.T.: 6.085 min
 Delta R.T.: 0.004 min
 Response: 19481879
 Conc: 1662.84 ng/ml

Instrument :
 ECD_P
 ClientSampleId :
 TG-S02MSD



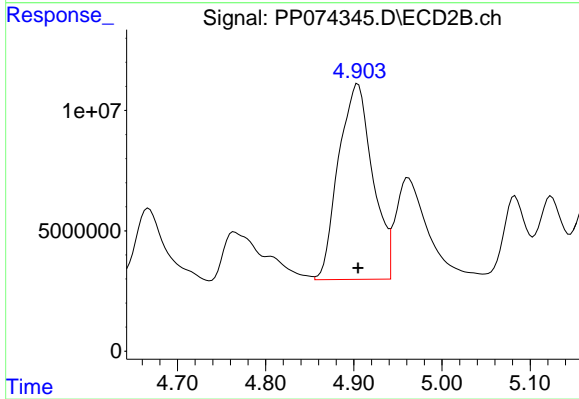
#15 AR-1232-5

R.T.: 5.339 min
 Delta R.T.: 0.001 min
 Response: 69778245
 Conc: 1485.29 ng/ml



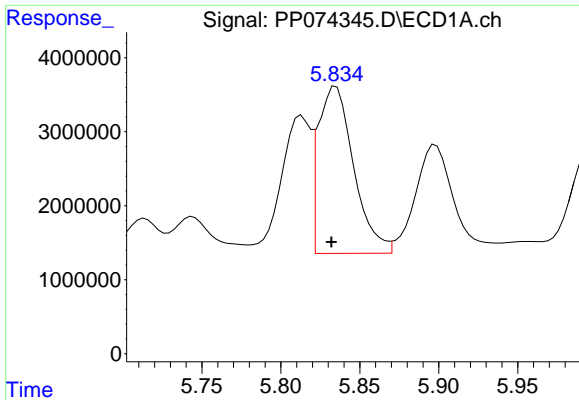
#16 AR-1242-1

R.T.: 5.813 min
 Delta R.T.: 0.002 min
 Response: 24326925
 Conc: 652.79 ng/ml



#16 AR-1242-1

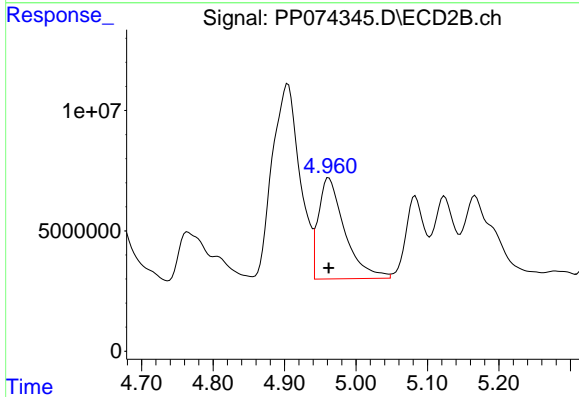
R.T.: 4.905 min
 Delta R.T.: 0.000 min
 Response: 217922237
 Conc: 631.40 ng/ml



#17 AR-1242-2

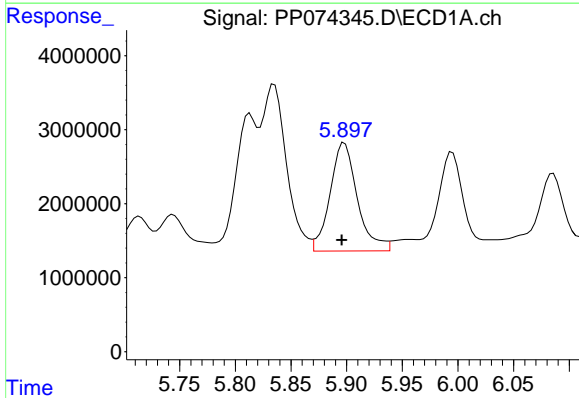
R.T.: 5.835 min
 Delta R.T.: 0.003 min
 Response: 35316025
 Conc: 649.09 ng/ml

Instrument :
 ECD_P
 ClientSampleId :
 TG-S02MSD



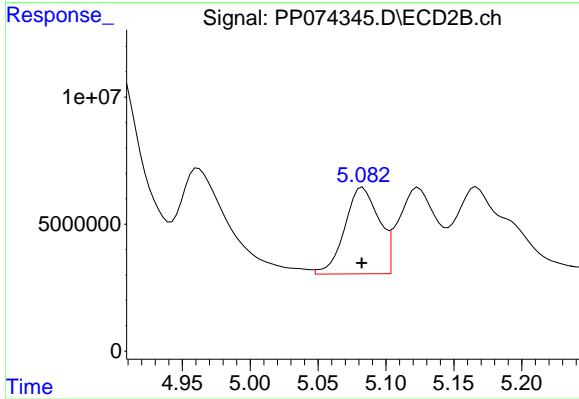
#17 AR-1242-2

R.T.: 4.962 min
 Delta R.T.: 0.000 min
 Response: 107150016
 Conc: 655.84 ng/ml



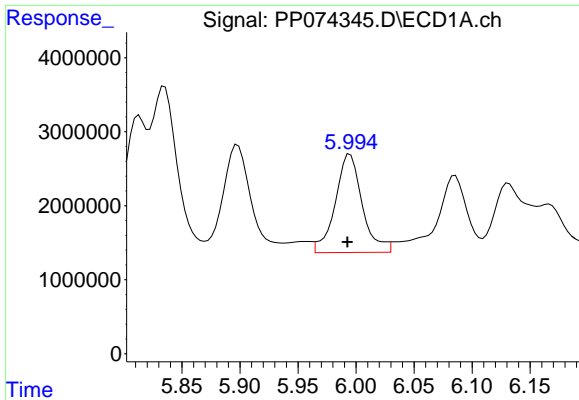
#18 AR-1242-3

R.T.: 5.898 min
 Delta R.T.: 0.003 min
 Response: 24991267
 Conc: 699.33 ng/ml



#18 AR-1242-3

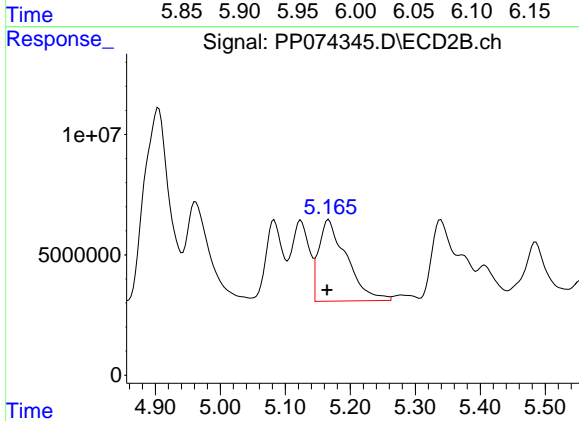
R.T.: 5.083 min
 Delta R.T.: 0.000 min
 Response: 59697212
 Conc: 647.13 ng/ml



#19 AR-1242-4

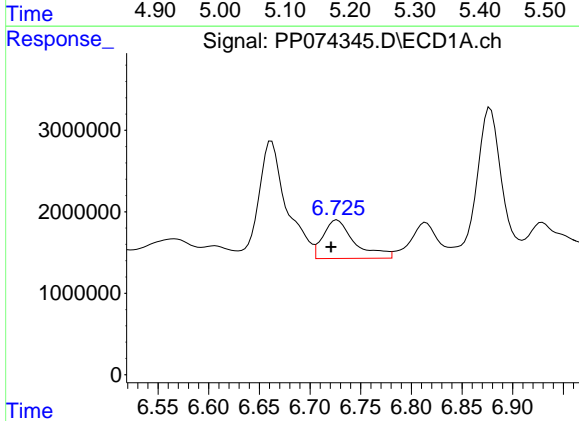
R.T.: 5.995 min
 Delta R.T.: 0.003 min
 Response: 21512751
 Conc: 736.27 ng/ml

Instrument :
 ECD_P
 ClientSampleId :
 TG-S02MSD



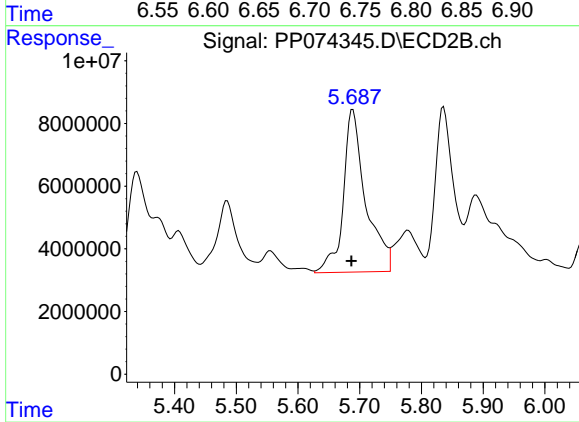
#19 AR-1242-4

R.T.: 5.167 min
 Delta R.T.: 0.003 min
 Response: 101022687
 Conc: 845.93 ng/ml



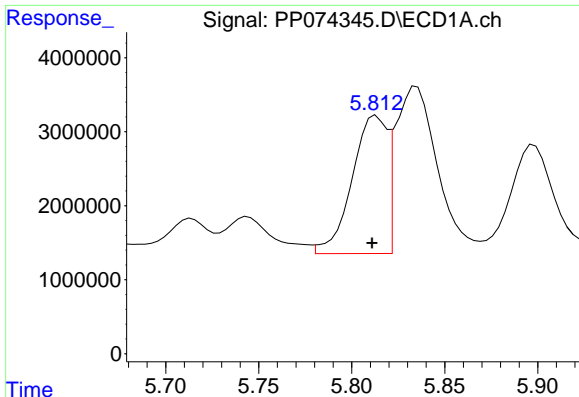
#20 AR-1242-5

R.T.: 6.727 min
 Delta R.T.: 0.006 min
 Response: 10261283
 Conc: 288.58 ng/ml



#20 AR-1242-5

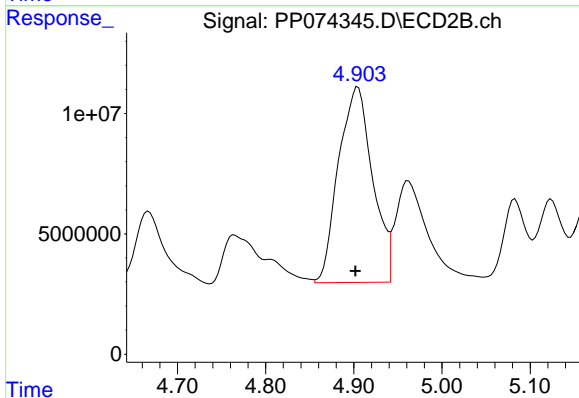
R.T.: 5.689 min
 Delta R.T.: 0.003 min
 Response: 130911138
 Conc: 875.31 ng/ml



#21 AR-1248-1

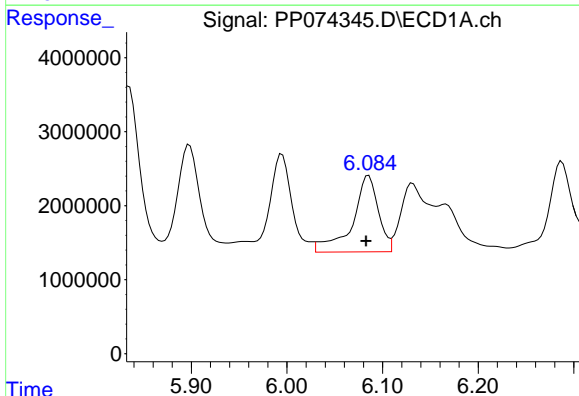
R.T.: 5.813 min
 Delta R.T.: 0.002 min
 Response: 24326925
 Conc: 868.37 ng/ml

Instrument :
 ECD_P
 ClientSampleId :
 TG-S02MSD



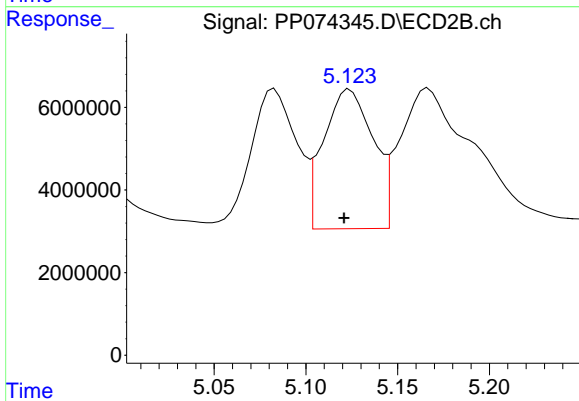
#21 AR-1248-1

R.T.: 4.905 min
 Delta R.T.: 0.003 min
 Response: 217922237
 Conc: 1018.65 ng/ml



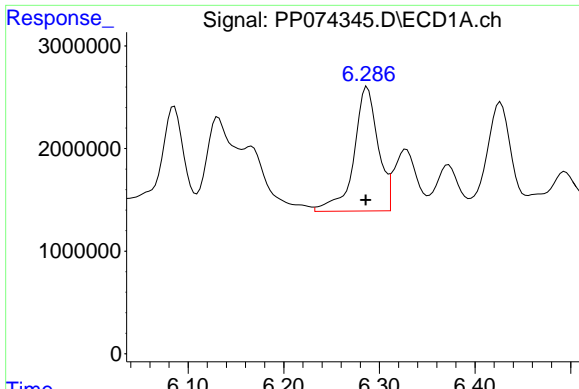
#22 AR-1248-2

R.T.: 6.085 min
 Delta R.T.: 0.003 min
 Response: 19481879
 Conc: 483.89 ng/ml



#22 AR-1248-2

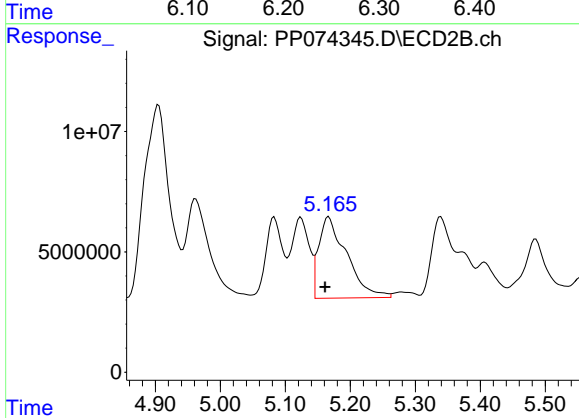
R.T.: 5.124 min
 Delta R.T.: 0.003 min
 Response: 63545144
 Conc: 434.31 ng/ml



#23 AR-1248-3

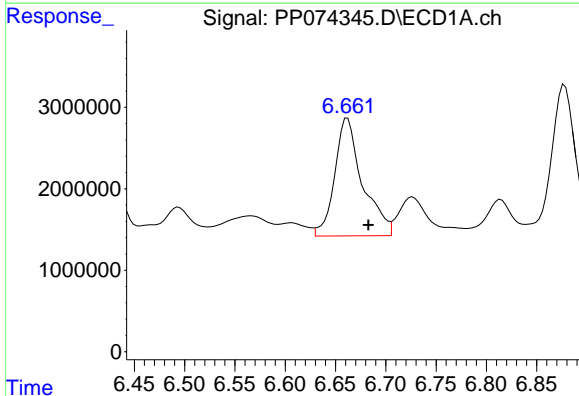
R.T.: 6.287 min
 Delta R.T.: 0.002 min
 Response: 21221415
 Conc: 476.10 ng/ml

Instrument :
 ECD_P
 ClientSampleId :
 TG-S02MSD



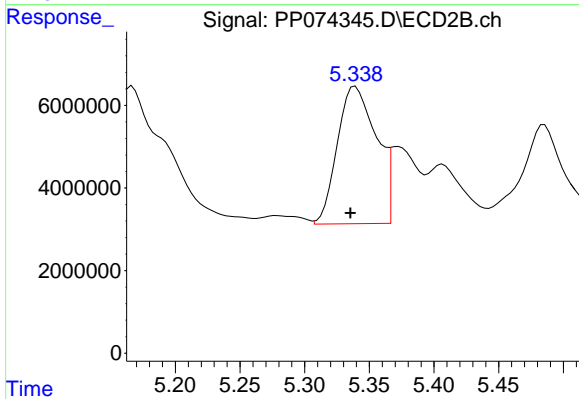
#23 AR-1248-3

R.T.: 5.167 min
 Delta R.T.: 0.006 min
 Response: 101022687
 Conc: 589.19 ng/ml



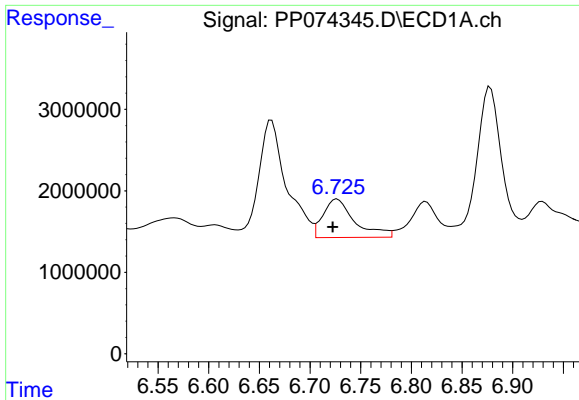
#24 AR-1248-4

R.T.: 6.662 min
 Delta R.T.: -0.021 min
 Response: 27784635
 Conc: 533.94 ng/ml



#24 AR-1248-4

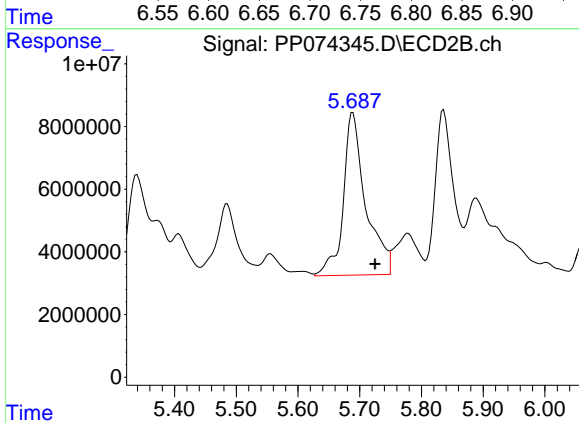
R.T.: 5.339 min
 Delta R.T.: 0.004 min
 Response: 69778245
 Conc: 419.41 ng/ml



#25 AR-1248-5

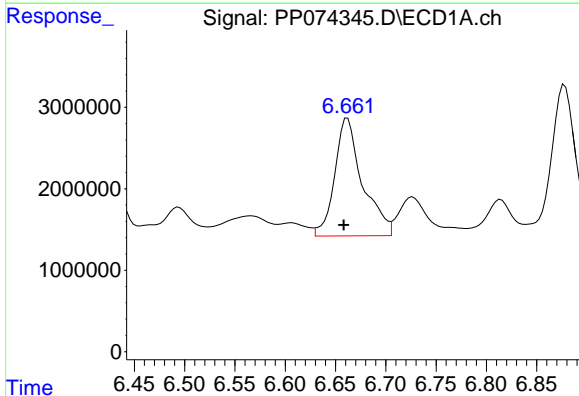
R.T.: 6.727 min
 Delta R.T.: 0.004 min
 Response: 10261283
 Conc: 180.20 ng/ml

Instrument :
 ECD_P
 ClientSampleId :
 TG-S02MSD



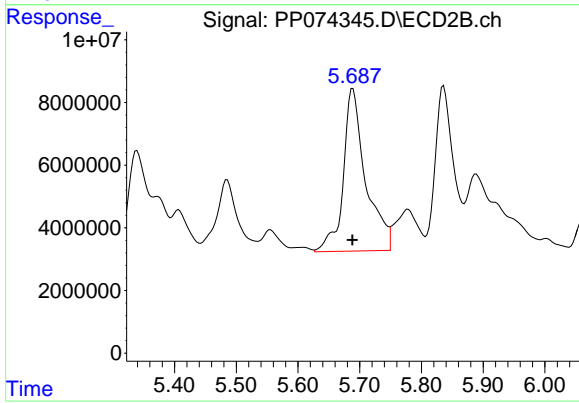
#25 AR-1248-5

R.T.: 5.689 min
 Delta R.T.: -0.036 min
 Response: 130911138
 Conc: 449.92 ng/ml



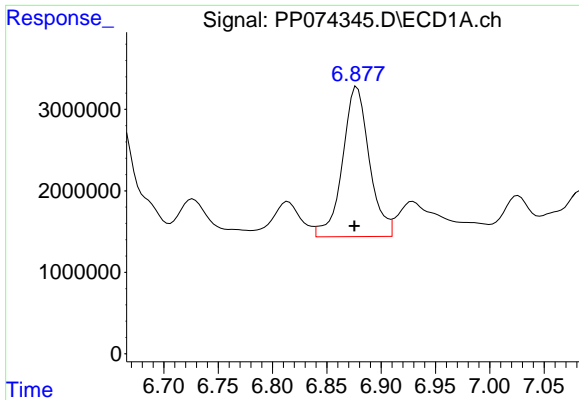
#26 AR-1254-1

R.T.: 6.662 min
 Delta R.T.: 0.004 min
 Response: 27784635
 Conc: 527.81 ng/ml



#26 AR-1254-1

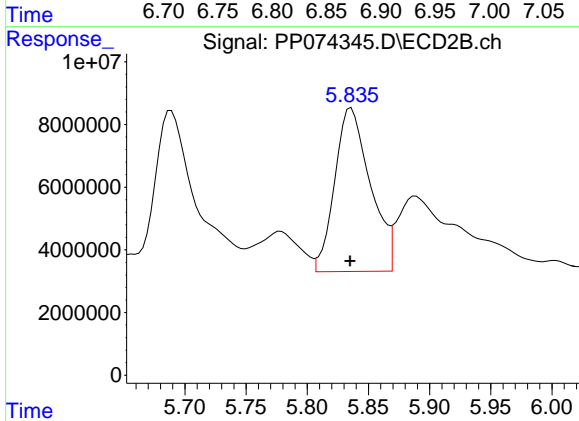
R.T.: 5.689 min
 Delta R.T.: 0.000 min
 Response: 130911138
 Conc: 357.50 ng/ml



#27 AR-1254-2

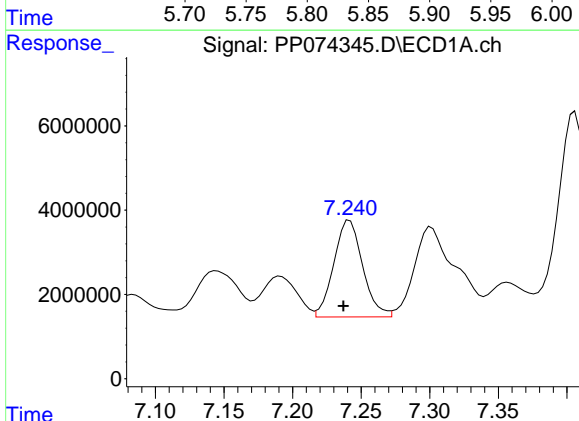
R.T.: 6.878 min
 Delta R.T.: 0.002 min
 Response: 31636285
 Conc: 397.92 ng/ml

Instrument :
 ECD_P
 ClientSampleId :
 TG-S02MSD



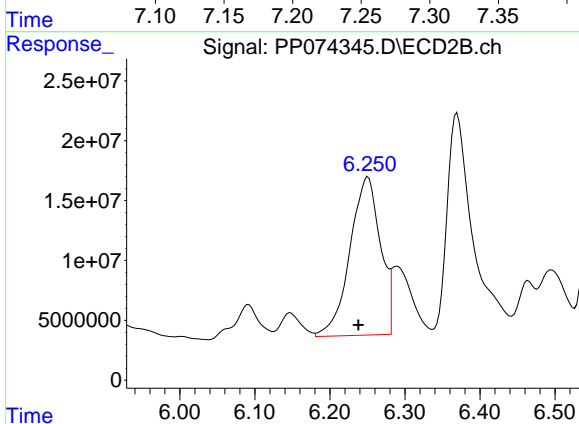
#27 AR-1254-2

R.T.: 5.836 min
 Delta R.T.: 0.000 min
 Response: 105539738
 Conc: 379.34 ng/ml



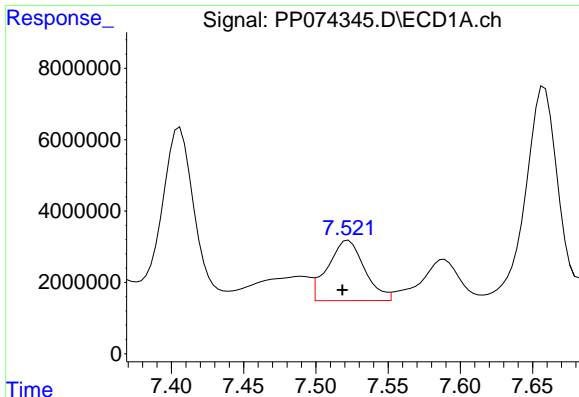
#28 AR-1254-3

R.T.: 7.242 min
 Delta R.T.: 0.005 min
 Response: 33616722
 Conc: 385.00 ng/ml



#28 AR-1254-3

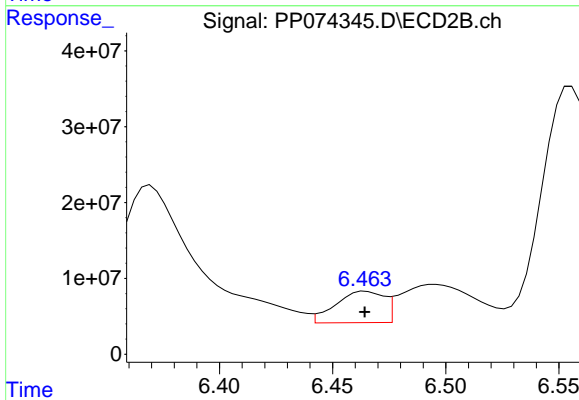
R.T.: 6.251 min
 Delta R.T.: 0.013 min
 Response: 371229031
 Conc: 758.83 ng/ml



#29 AR-1254-4

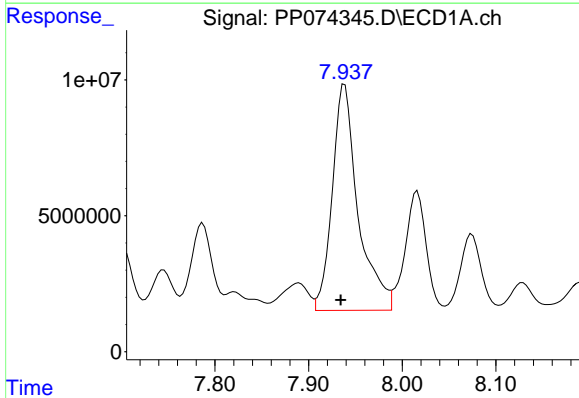
R.T.: 7.523 min
 Delta R.T.: 0.004 min
 Response: 29913134
 Conc: 468.79 ng/ml

Instrument :
 ECD_P
 ClientSampleId :
 TG-S02MSD



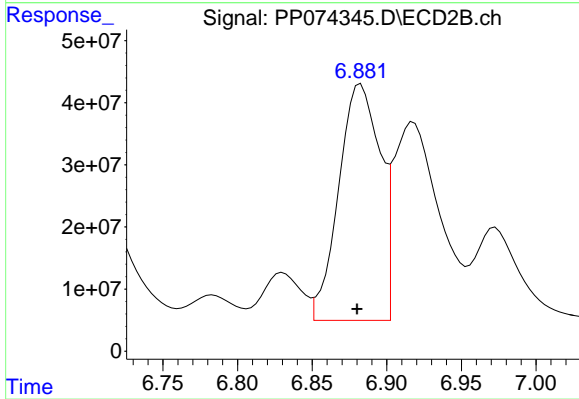
#29 AR-1254-4

R.T.: 6.465 min
 Delta R.T.: 0.000 min
 Response: 61502674
 Conc: 167.32 ng/ml



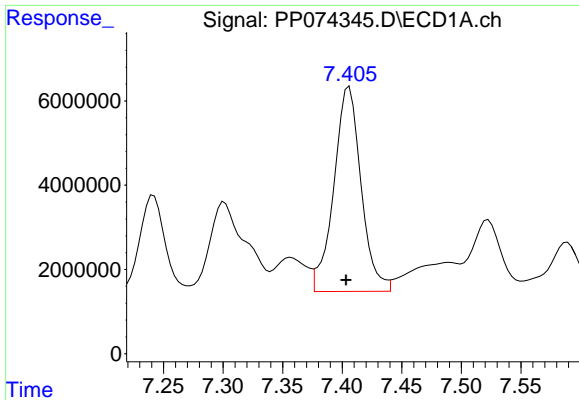
#30 AR-1254-5

R.T.: 7.938 min
 Delta R.T.: 0.004 min
 Response: 158862098
 Conc: 1957.76 ng/ml



#30 AR-1254-5

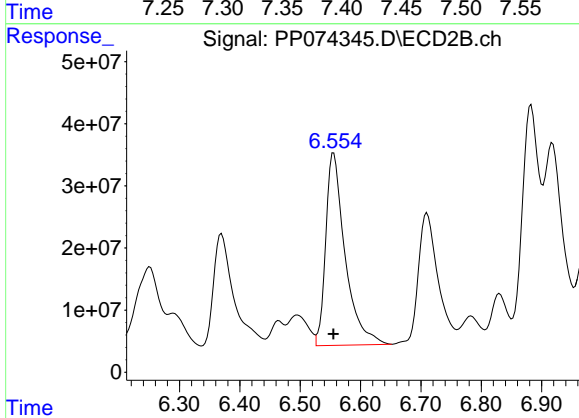
R.T.: 6.883 min
 Delta R.T.: 0.003 min
 Response: 731500166
 Conc: 1899.18 ng/ml



#31 AR-1260-1

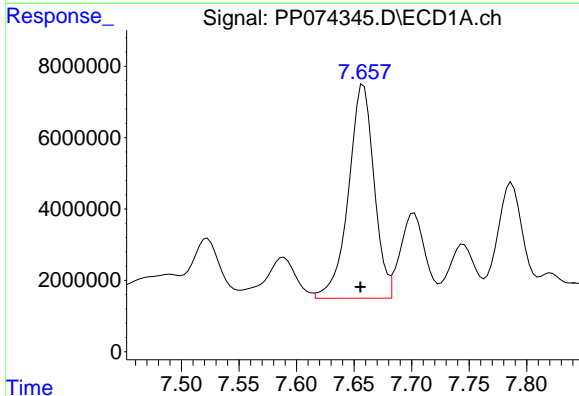
R.T.: 7.406 min
 Delta R.T.: 0.003 min
 Response: 77444421
 Conc: 1374.20 ng/m

Instrument :
 ECD_P
 ClientSampleId :
 TG-S02MSD



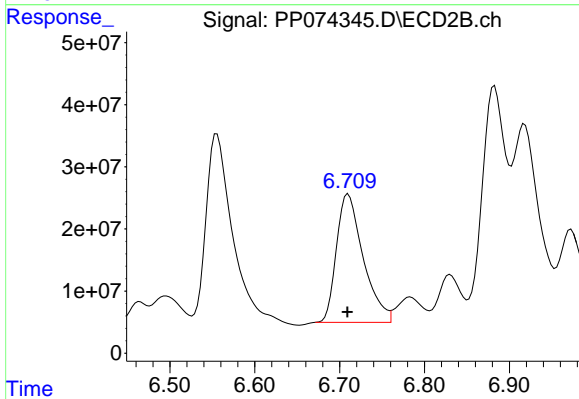
#31 AR-1260-1

R.T.: 6.555 min
 Delta R.T.: 0.000 min
 Response: 692220819
 Conc: 1713.60 ng/ml



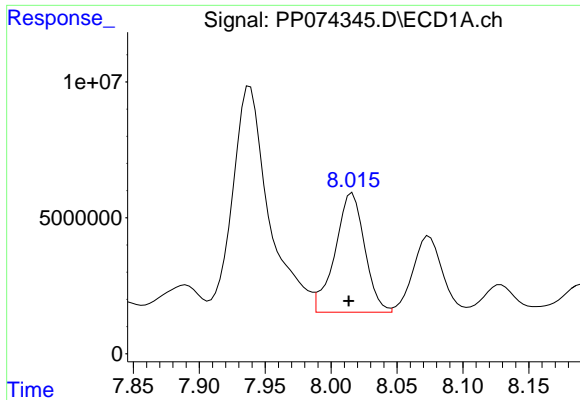
#32 AR-1260-2

R.T.: 7.658 min
 Delta R.T.: 0.003 min
 Response: 93011734
 Conc: 1364.76 ng/ml



#32 AR-1260-2

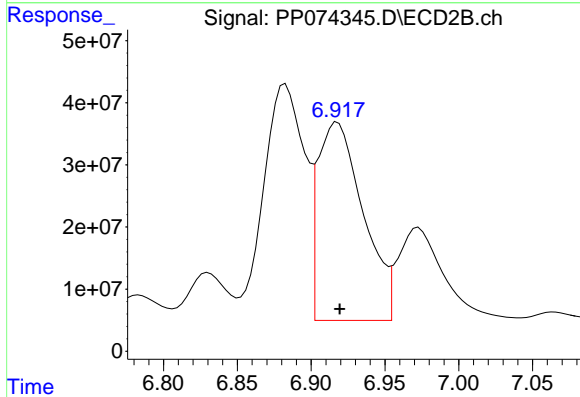
R.T.: 6.710 min
 Delta R.T.: 0.000 min
 Response: 453016284
 Conc: 1448.73 ng/ml



#33 AR-1260-3

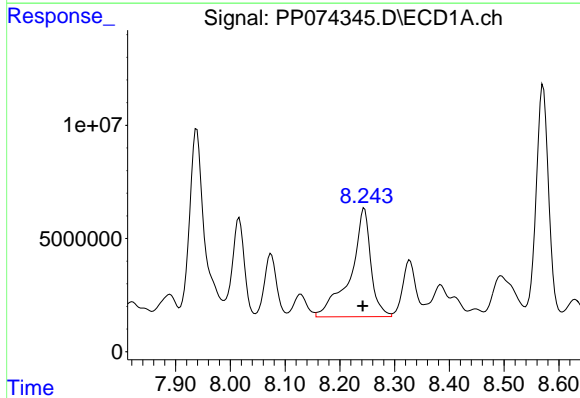
R.T.: 8.016 min
 Delta R.T.: 0.003 min
 Response: 68577617
 Conc: 1286.73 ng/ml

Instrument :
 ECD_P
 ClientSampleId :
 TG-S02MSD



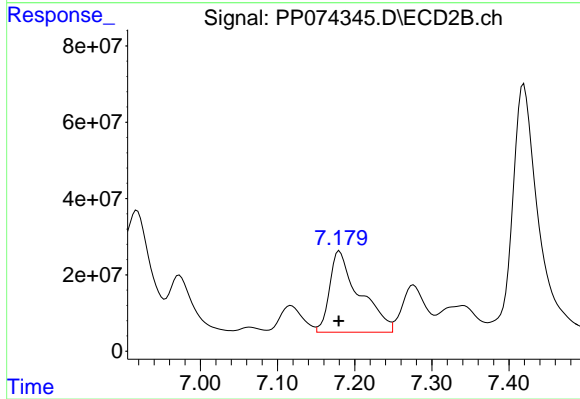
#33 AR-1260-3

R.T.: 6.918 min
 Delta R.T.: -0.001 min
 Response: 682435376
 Conc: 1731.55 ng/ml



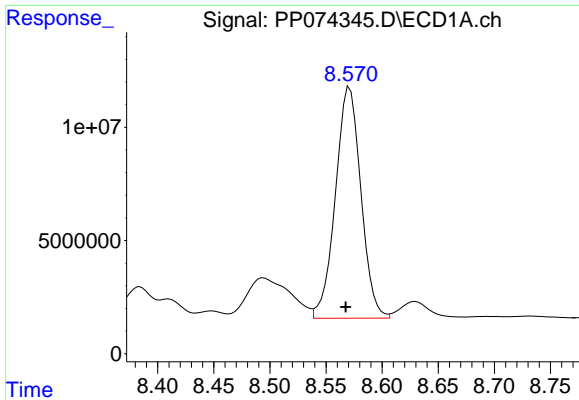
#34 AR-1260-4

R.T.: 8.245 min
 Delta R.T.: 0.003 min
 Response: 123610144
 Conc: 1974.13 ng/ml



#34 AR-1260-4

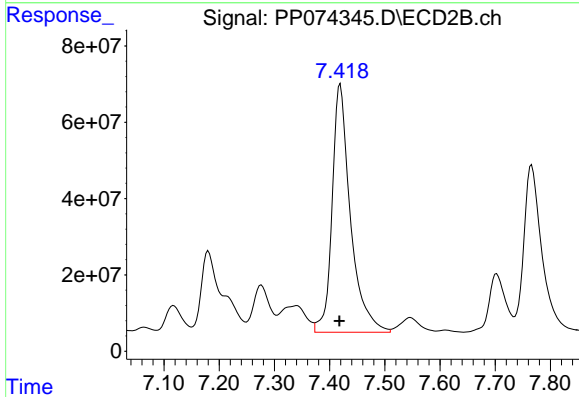
R.T.: 7.180 min
 Delta R.T.: 0.001 min
 Response: 573477600
 Conc: 1970.85 ng/ml



#35 AR-1260-5

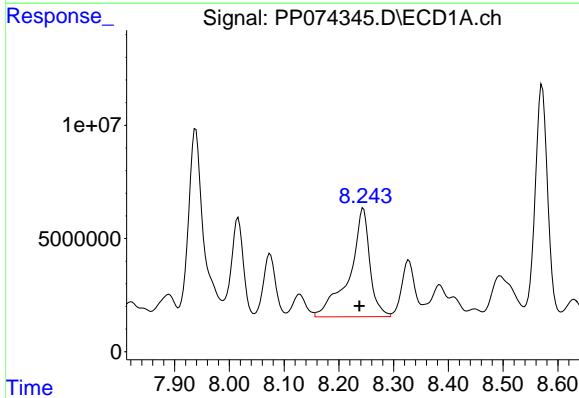
R.T.: 8.571 min
 Delta R.T.: 0.004 min
 Response: 161271685
 Conc: 1423.34 ng/ml

Instrument :
 ECD_P
 ClientSampleId :
 TG-S02MSD



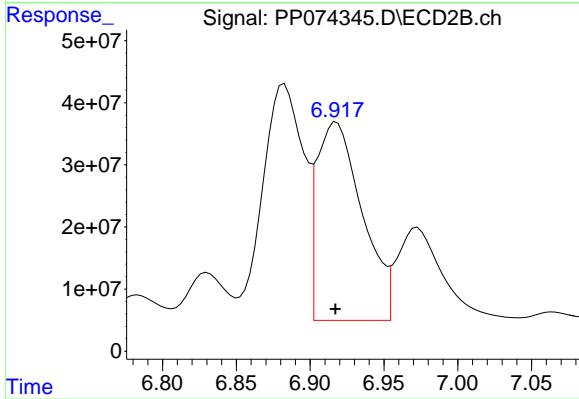
#35 AR-1260-5

R.T.: 7.419 min
 Delta R.T.: 0.001 min
 Response: 1502178423
 Conc: 1983.31 ng/ml



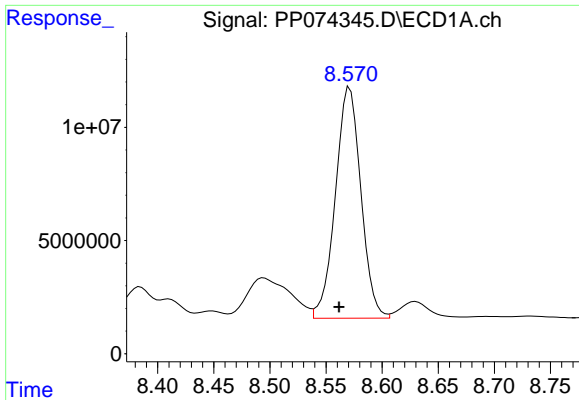
#36 AR-1262-1

R.T.: 8.245 min
 Delta R.T.: 0.007 min
 Response: 123610144
 Conc: 1630.96 ng/ml



#36 AR-1262-1

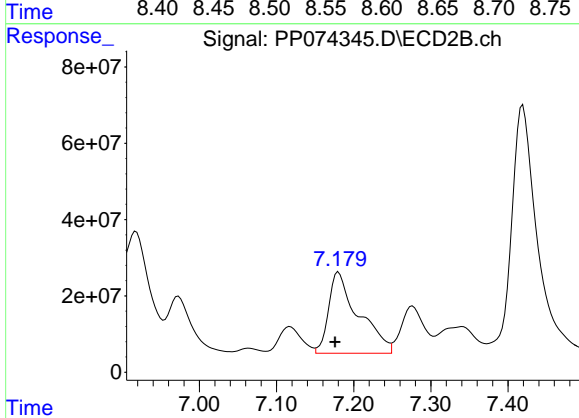
R.T.: 6.918 min
 Delta R.T.: 0.000 min
 Response: 682435376
 Conc: 1211.83 ng/ml



#37 AR-1262-2

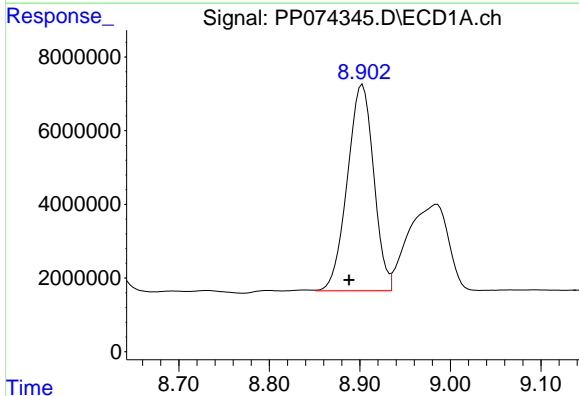
R.T.: 8.571 min
 Delta R.T.: 0.010 min
 Response: 161271685
 Conc: 1236.46 ng/ml

Instrument :
 ECD_P
 ClientSampleId :
 TG-S02MSD



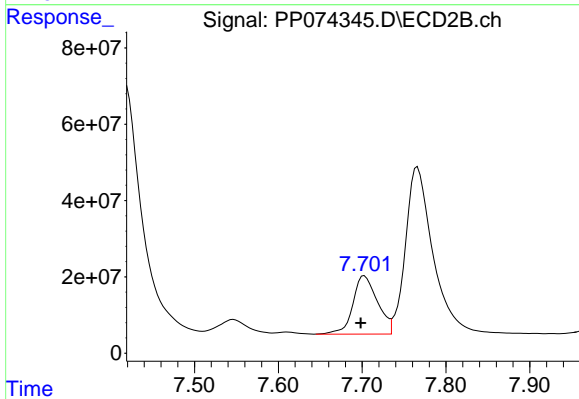
#37 AR-1262-2

R.T.: 7.180 min
 Delta R.T.: 0.004 min
 Response: 573477600
 Conc: 1430.04 ng/ml



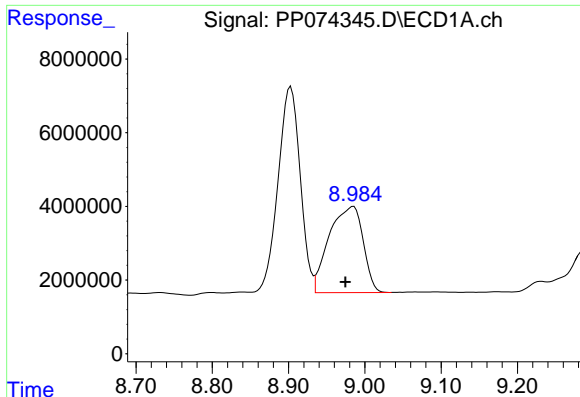
#38 AR-1262-3

R.T.: 8.903 min
 Delta R.T.: 0.015 min
 Response: 113047664
 Conc: 1201.73 ng/ml



#38 AR-1262-3

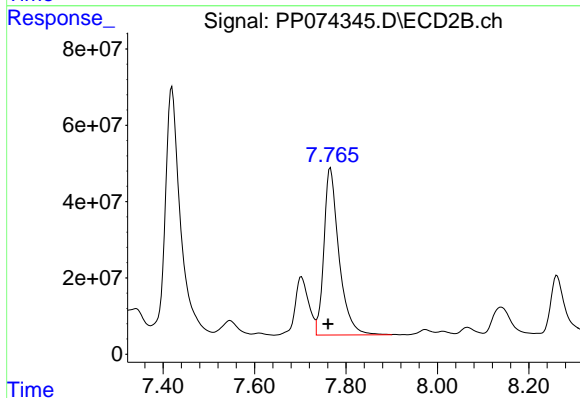
R.T.: 7.703 min
 Delta R.T.: 0.004 min
 Response: 311372126
 Conc: 866.20 ng/ml



#39 AR-1262-4

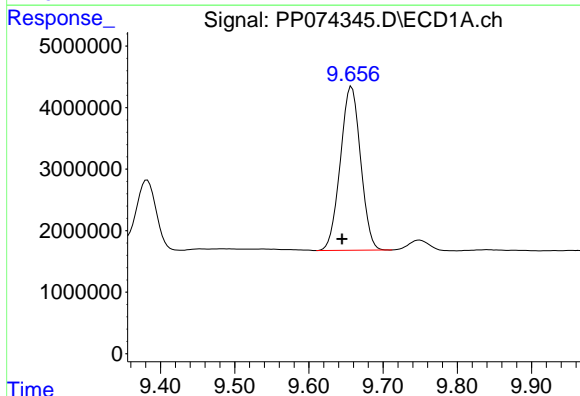
R.T.: 8.985 min
 Delta R.T.: 0.011 min
 Response: 72350741
 Conc: 993.12 ng/ml

Instrument :
 ECD_P
 ClientSampleId :
 TG-S02MSD



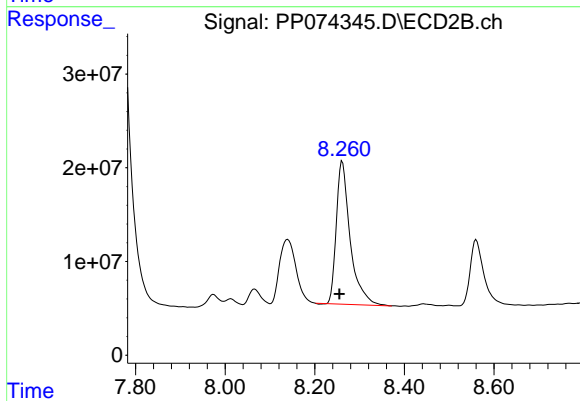
#39 AR-1262-4

R.T.: 7.766 min
 Delta R.T.: 0.005 min
 Response: 1001225172
 Conc: 1501.26 ng/ml



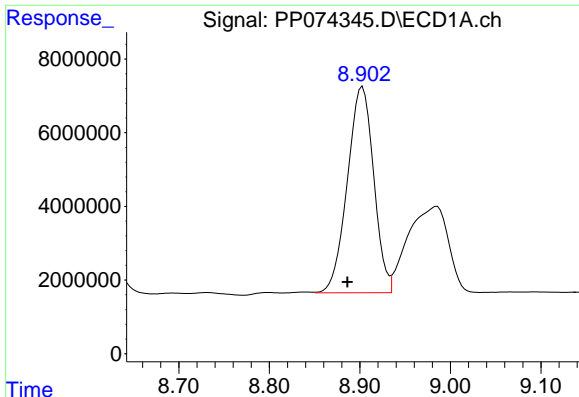
#40 AR-1262-5

R.T.: 9.658 min
 Delta R.T.: 0.013 min
 Response: 50518714
 Conc: 992.07 ng/ml



#40 AR-1262-5

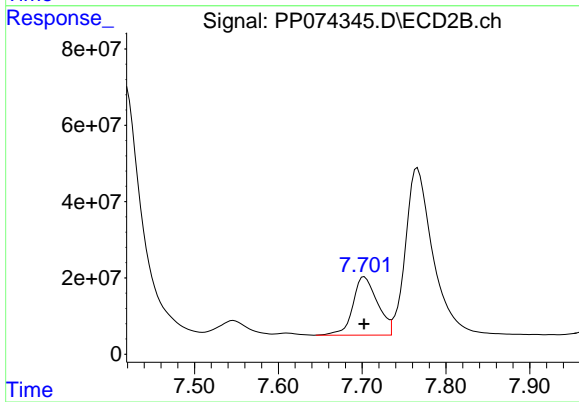
R.T.: 8.261 min
 Delta R.T.: 0.006 min
 Response: 327759257
 Conc: 1157.06 ng/ml



#41 AR-1268-1

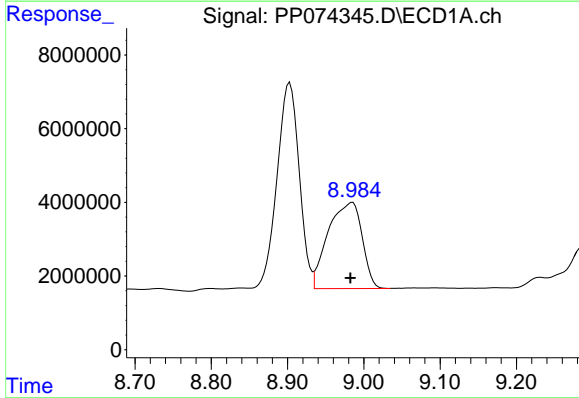
R.T.: 8.903 min
Delta R.T.: 0.017 min
Response: 113047664
Conc: 726.37 ng/ml

Instrument :
ECD_P
ClientSampleId :
TG-S02MSD



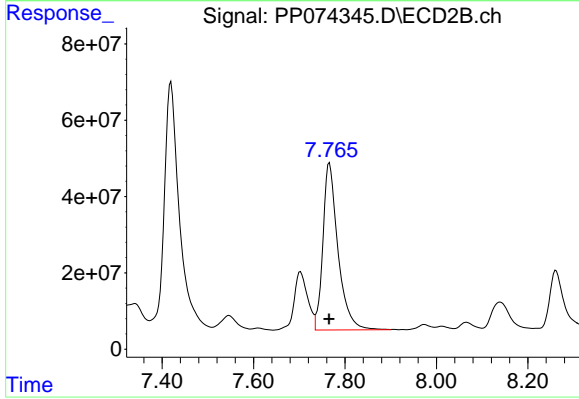
#41 AR-1268-1

R.T.: 7.703 min
Delta R.T.: 0.000 min
Response: 311372126
Conc: 285.59 ng/ml



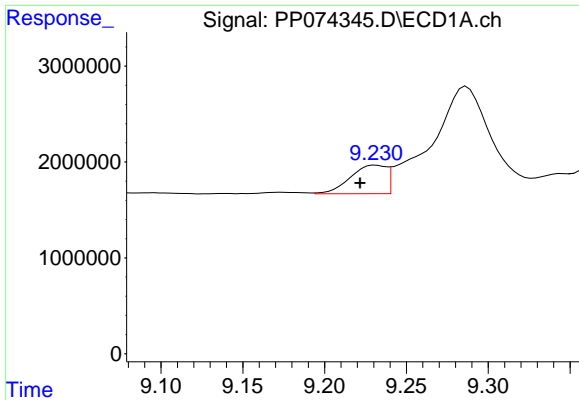
#42 AR-1268-2

R.T.: 8.985 min
Delta R.T.: 0.003 min
Response: 72350741
Conc: 504.45 ng/ml



#42 AR-1268-2

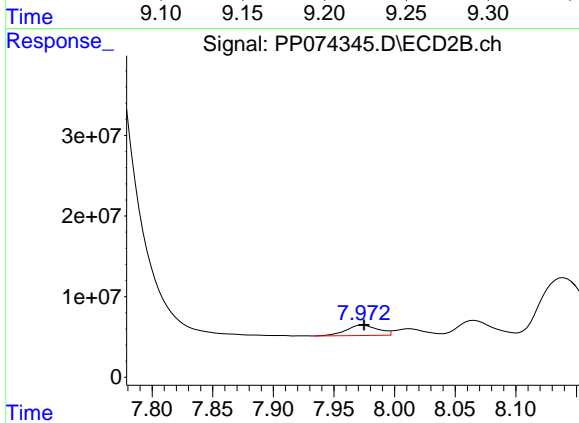
R.T.: 7.766 min
Delta R.T.: 0.000 min
Response: 1001225172
Conc: 943.37 ng/ml



#43 AR-1268-3

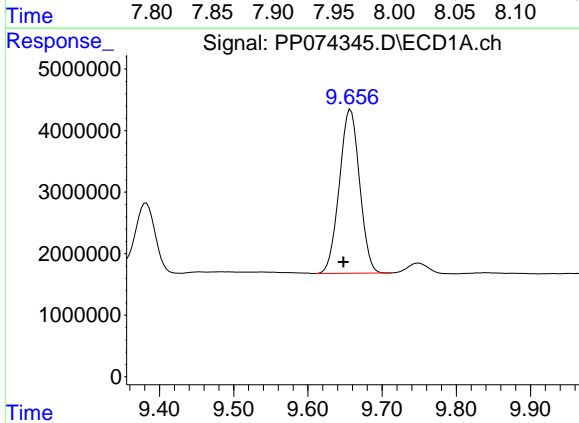
R.T.: 9.231 min
 Delta R.T.: 0.010 min
 Response: 4514407
 Conc: 37.79 ng/ml

Instrument :
 ECD_P
 ClientSampleId :
 TG-S02MSD



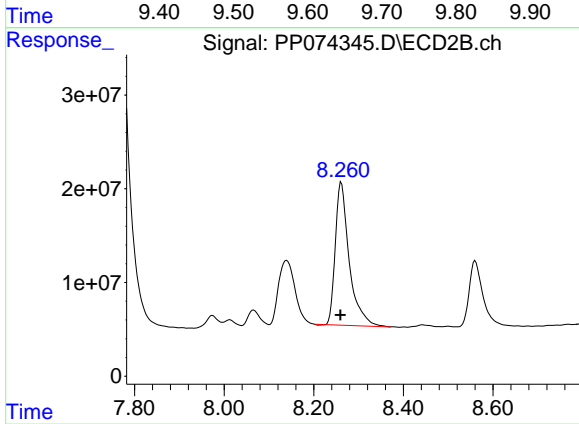
#43 AR-1268-3

R.T.: 7.974 min
 Delta R.T.: 0.000 min
 Response: 23251764
 Conc: 27.95 ng/ml



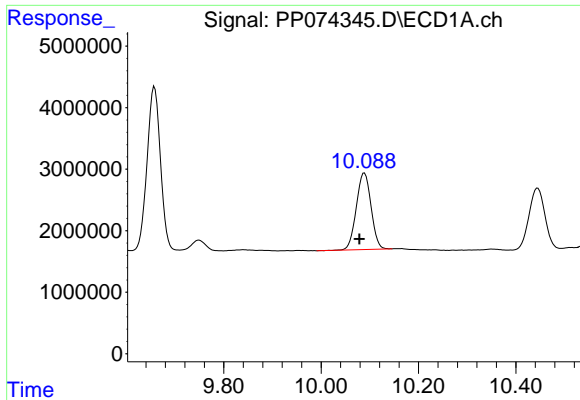
#44 AR-1268-4

R.T.: 9.658 min
 Delta R.T.: 0.010 min
 Response: 50518714
 Conc: 858.98 ng/ml



#44 AR-1268-4

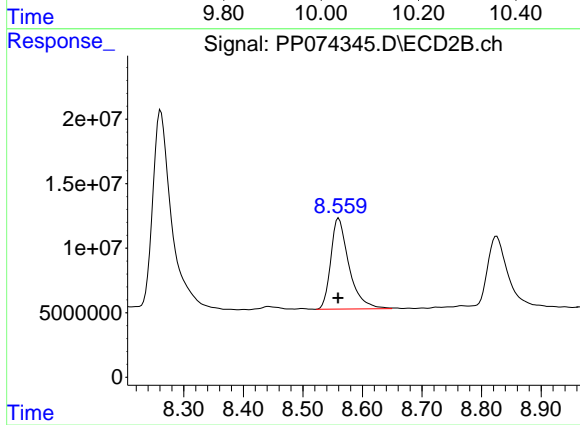
R.T.: 8.261 min
 Delta R.T.: 0.002 min
 Response: 327759257
 Conc: 1063.95 ng/ml



#45 AR-1268-5

R.T.: 10.089 min
Delta R.T.: 0.010 min
Response: 26136041
Conc: 74.31 ng/ml

Instrument :
ECD_P
ClientSampleId :
TG-S02MSD



#45 AR-1268-5

R.T.: 8.560 min
Delta R.T.: 0.001 min
Response: 149796125
Conc: 58.74 ng/ml