

Data Path : Z:\pestpcbsrv\HPCHEM1\ECD_P\Data\PP081325\
 Data File : PP074346.D
 Signal(s) : Signal #1: ECD1A.ch Signal #2: ECD2B.ch
 Acq On : 13 Aug 2025 14:32
 Operator : YP\AJ
 Sample : Q2832-05
 Misc :
 ALS Vial : 14 Sample Multiplier: 1

Instrument :
 ECD_P
 ClientSampleId :
 TG-S03

Integration File signal 1: autoint1.e
 Integration File signal 2: autoint2.e
 Quant Time: Aug 13 15:45:21 2025
 Quant Method : Z:\pestpcbsrv\HPCHEM1\ECD_P\methods\PP080125.M
 Quant Title : GC EXTRACTABLES
 QLast Update : Mon Aug 04 11:01:49 2025
 Response via : Initial Calibration
 Integrator: ChemStation

Volume Inj. : 2 µl
 Signal #1 Phase : ZB-MR1 Signal #2 Phase: ZB-MR2
 Signal #1 Info : 30Mx0.32mmx 0.50µ Signal #2 Info : 30M x 0.32mm x 0.25µm

Compound	RT#1	RT#2	Resp#1	Resp#2	ng/ml	ng/ml
System Monitoring Compounds						
1) SA Tetrachlo...	4.660	3.803	29241603	108.7E6	26.148	28.336
2) SA Decachlor...	10.444	8.823	21319341	132.4E6	21.952	22.017
Target Compounds						
3) L1 AR-1016-1	5.835	4.904	11562767	17103177	280.263	42.877 #
4) L1 AR-1016-2	5.835	4.972	11562767	3795293	190.360	20.208 #
5) L1 AR-1016-3	5.899	5.089	5551445	5217421	139.974	49.189 #
6) L1 AR-1016-4	5.994	5.122	5214671	20395405	160.232	186.737
7) L1 AR-1016-5	6.287	5.343	11375704	43938357	350.366	375.659
8) L2 AR-1221-1	4.856	4.003	1892724	3159184	112.907	64.361 #
9) L2 AR-1221-2	4.931	4.103	311972	2441617	24.758	68.032 #
10) L2 AR-1221-3	5.039	4.174	1137763	733439	31.057	5.424 #
11) L3 AR-1232-1	5.039	4.174	1137763	733439	39.183	7.236 #
12) L3 AR-1232-2	5.550	4.904	3381434	17103177	224.789	98.144 #
13) L3 AR-1232-3	5.835	5.089	11562767	5217421	398.693	113.876 #
14) L3 AR-1232-4	5.994	5.164	5214671	12151785	337.108	209.475 #
15) L3 AR-1232-5	6.085	5.343	7607997	43938357	649.367	935.268 #
16) L4 AR-1242-1	5.835	4.904	11562767	17103177	310.278	49.554 #
17) L4 AR-1242-2	5.835	4.972	11562767	3795293	212.516	23.230 #
18) L4 AR-1242-3	5.899	5.089	5551445	5217421	155.347	56.558 #
19) L4 AR-1242-4	5.994	5.164	5214671	12151785	178.471	101.755 #
20) L4 AR-1242-5	6.726	5.688	18015295	97126146	506.645	649.413 #
21) L5 AR-1248-1	5.835	4.904	11562767	17103177	412.742	79.947 #
22) L5 AR-1248-2	6.085	5.122	7607997	20395405	188.967	139.396 #
23) L5 AR-1248-3	6.287	5.164	11375704	12151785	255.212	70.872 #
24) L5 AR-1248-4	6.662	5.343	28109489	43938357	540.181	264.095 #
25) L5 AR-1248-5	6.726	5.726	18015295	37394458	316.373	128.518 #
26) L6 AR-1254-1	6.662	5.688	28109489	97126146	533.984	265.240 #
27) L6 AR-1254-2	6.878	5.835	31780565	91681427	399.733	329.532
28) L6 AR-1254-3	7.241	6.242	52757137	415.7E6	604.208	849.831 #
29) L6 AR-1254-4	7.522	6.464	39702549	97023078	622.205	263.961 #
30) L6 AR-1254-5	7.938	6.881	171.1E6	791.0E6	2108.810	2053.665
31) L7 AR-1260-1	7.405	6.554	70086157	637.4E6	1243.631	1577.844 #
32) L7 AR-1260-2	7.658	6.709	88161952	401.5E6	1293.601	1283.864
33) L7 AR-1260-3	8.016	6.916	66345973	638.0E6	1244.860	1618.836 #
34) L7 AR-1260-4	8.244	7.179	114.7E6	518.3E6	1832.549	1781.068
35) L7 AR-1260-5	8.571	7.417	158.3E6	1424.2E6	1397.405	1880.412 #
36) L8 AR-1262-1	8.244	6.916	114.7E6	638.0E6	1513.992	1132.951 #
37) L8 AR-1262-2	8.571	7.179	158.3E6	518.3E6	1213.929	1292.329
38) L8 AR-1262-3	8.904	7.701	109.1E6	257.1E6	1159.424	715.272 #
39) L8 AR-1262-4	8.982	7.764	62453629	918.5E6	857.271	1377.254 #
40) L8 AR-1262-5	9.657	8.259	44742794	288.2E6	878.642	1017.458
41) L9 AR-1268-1	8.904	7.701	109.1E6	257.1E6	700.804	235.832 #

Data Path : Z:\pestpcbsrv\HPCHEM1\ECD_P\Data\PP081325\
 Data File : PP074346.D
 Signal(s) : Signal #1: ECD1A.ch Signal #2: ECD2B.ch
 Acq On : 13 Aug 2025 14:32
 Operator : YP\AJ
 Sample : Q2832-05
 Misc :
 ALS Vial : 14 Sample Multiplier: 1

Instrument :
 ECD_P
 ClientSampleId :
 TG-S03

Integration File signal 1: autoint1.e
 Integration File signal 2: autoint2.e
 Quant Time: Aug 13 15:45:21 2025
 Quant Method : Z:\pestpcbsrv\HPCHEM1\ECD_P\methods\PP080125.M
 Quant Title : GC EXTRACTABLES
 QLast Update : Mon Aug 04 11:01:49 2025
 Response via : Initial Calibration
 Integrator: ChemStation

Volume Inj. : 2 µl
 Signal #1 Phase : ZB-MR1 Signal #2 Phase: ZB-MR2
 Signal #1 Info : 30Mx0.32mmx 0.50µ Signal #2 Info : 30M x 0.32mm x 0.25µm

	Compound	RT#1	RT#2	Resp#1	Resp#2	ng/ml	ng/ml
42)	L9 AR-1268-2	8.982	7.764	62453629	918.5E6	435.442	865.446 #
43)	L9 AR-1268-3	9.228	7.969	2752217	12938012	23.036	15.552 #
44)	L9 AR-1268-4	9.657	8.259	44742794	288.2E6	760.769	935.578
45)	L9 AR-1268-5	10.088	8.558	12537164	64204903	35.647	25.178 #

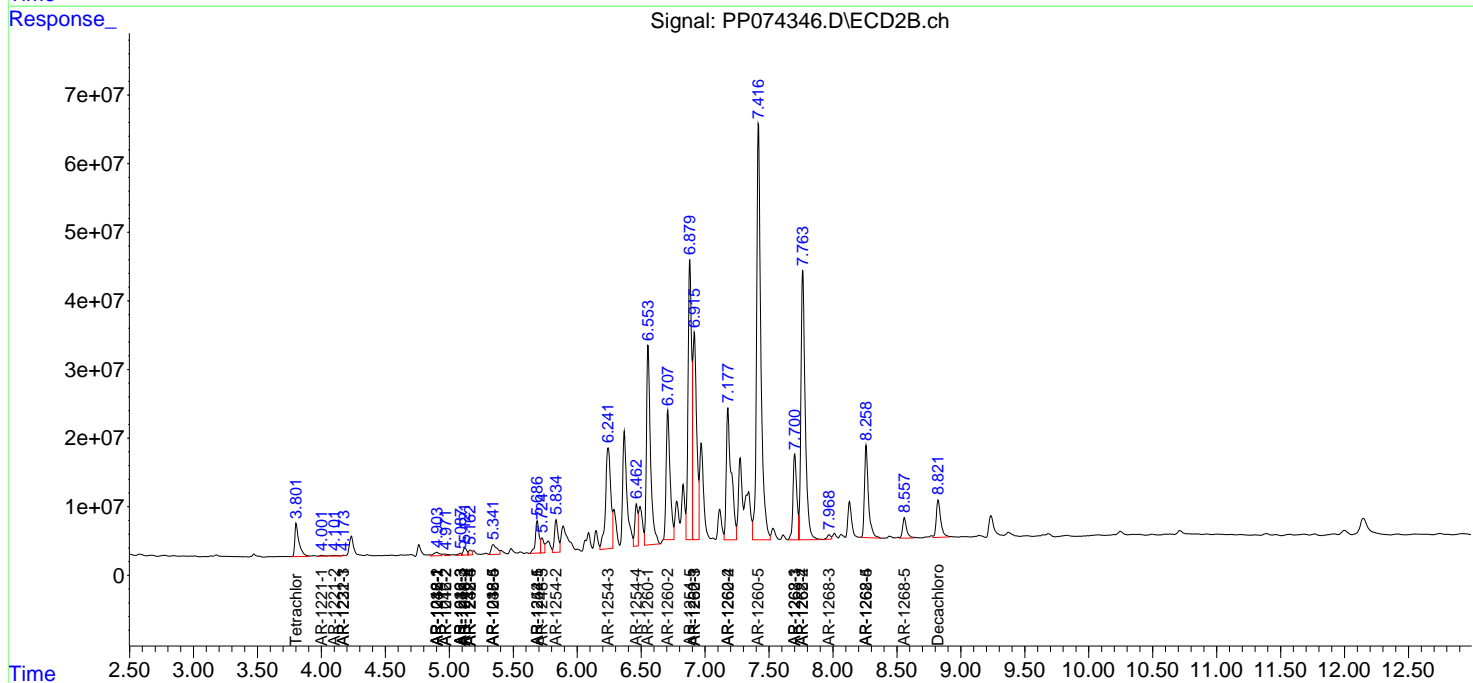
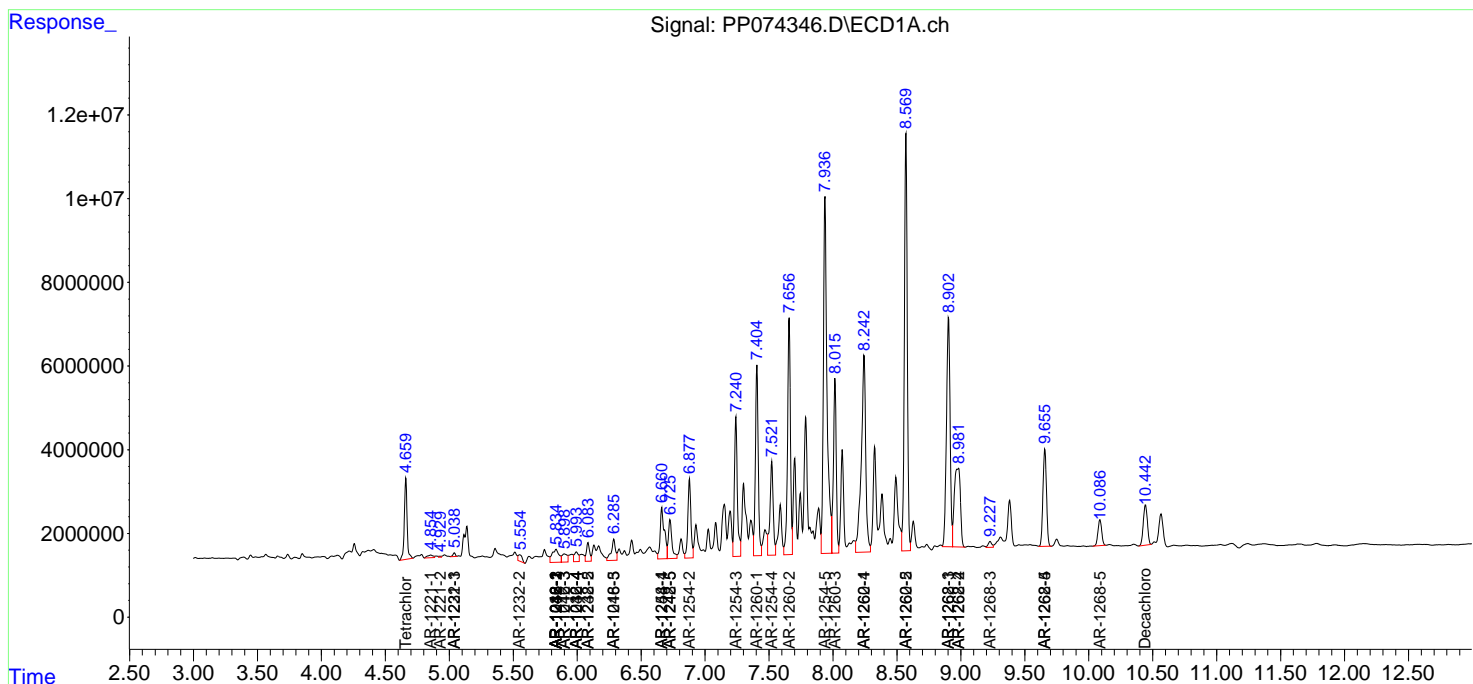
(f)=RT Delta > 1/2 Window (#)=Amounts differ by > 25% (m)=manual int.

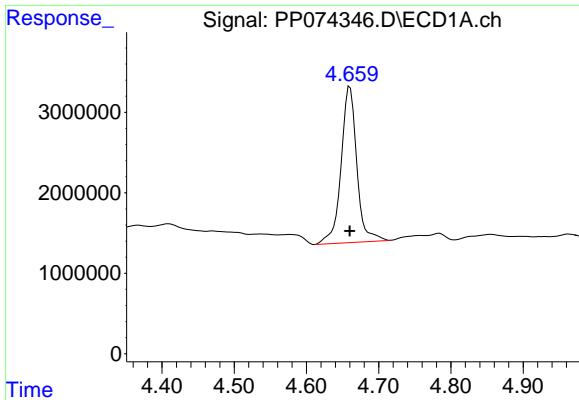
Data Path : Z:\pestpcbsrv\HPCHEM1\ECD_P\Data\PP081325\
 Data File : PP074346.D
 Signal(s) : Signal #1: ECD1A.ch Signal #2: ECD2B.ch
 Acq On : 13 Aug 2025 14:32
 Operator : YP\AJ
 Sample : Q2832-05
 Misc :
 ALS Vial : 14 Sample Multiplier: 1

Instrument :
 ECD_P
 ClientSampleId :
 TG-S03

Integration File signal 1: autoint1.e
 Integration File signal 2: autoint2.e
 Quant Time: Aug 13 15:45:21 2025
 Quant Method : Z:\pestpcbsrv\HPCHEM1\ECD_P\methods\PP080125.M
 Quant Title : GC EXTRACTABLES
 QLast Update : Mon Aug 04 11:01:49 2025
 Response via : Initial Calibration
 Integrator: ChemStation

Volume Inj. : 2 µl
 Signal #1 Phase : ZB-MR1 Signal #2 Phase: ZB-MR2
 Signal #1 Info : 30Mx0.32mmx 0.50µ Signal #2 Info : 30M x 0.32mm x 0.25µm

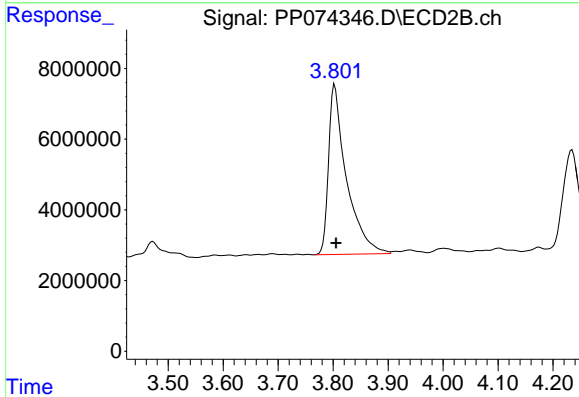




#1 Tetrachloro-m-xylene

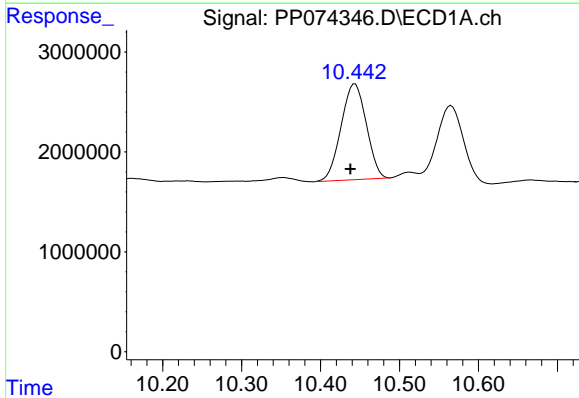
R.T.: 4.660 min
 Delta R.T.: 0.000 min
 Response: 29241603
 Conc: 26.15 ng/ml

Instrument :
 ECD_P
 ClientSampleId :
 TG-S03



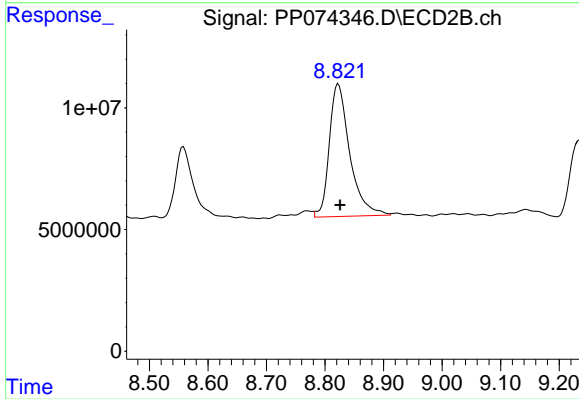
#1 Tetrachloro-m-xylene

R.T.: 3.803 min
 Delta R.T.: -0.002 min
 Response: 108651540
 Conc: 28.34 ng/ml



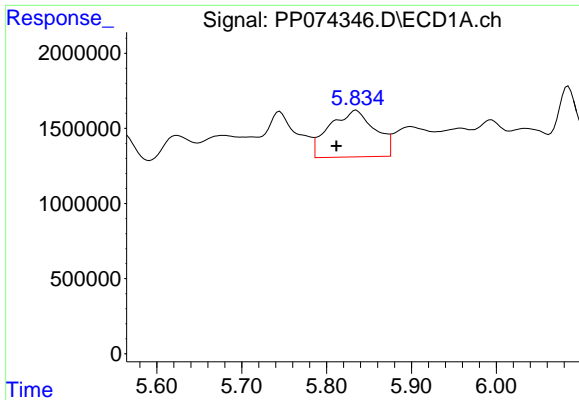
#2 Decachlorobiphenyl

R.T.: 10.444 min
 Delta R.T.: 0.006 min
 Response: 21319341
 Conc: 21.95 ng/ml



#2 Decachlorobiphenyl

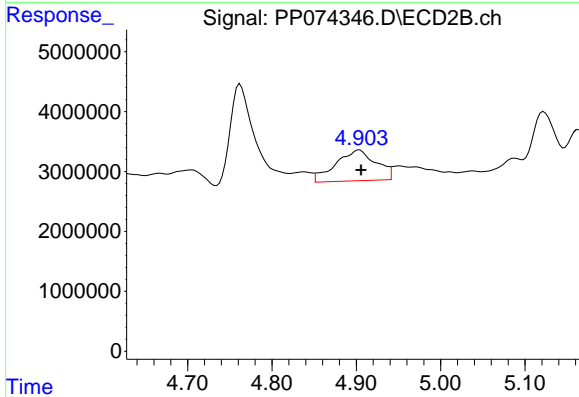
R.T.: 8.823 min
 Delta R.T.: -0.003 min
 Response: 132399507
 Conc: 22.02 ng/ml



#3 AR-1016-1

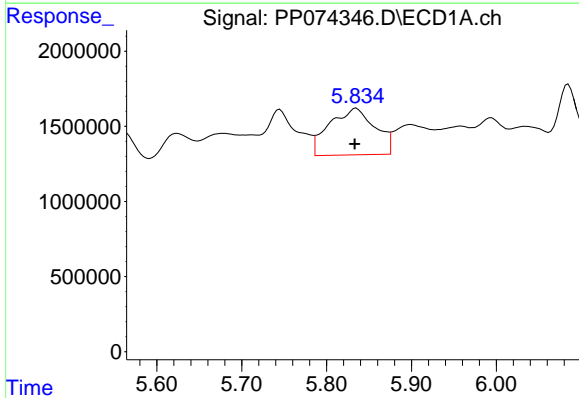
R.T.: 5.835 min
 Delta R.T.: 0.023 min
 Response: 11562767
 Conc: 280.26 ng/ml

Instrument :
 ECD_P
 ClientSampleId :
 TG-S03



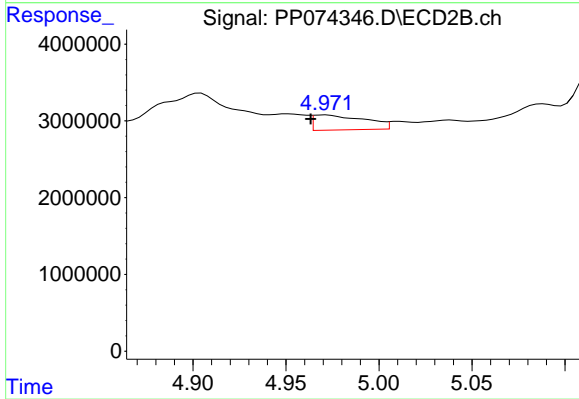
#3 AR-1016-1

R.T.: 4.904 min
 Delta R.T.: -0.002 min
 Response: 17103177
 Conc: 42.88 ng/ml



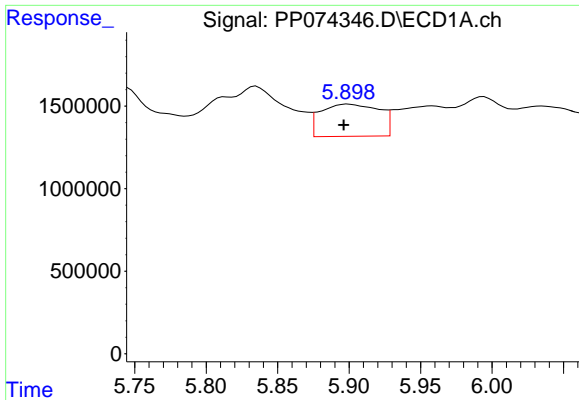
#4 AR-1016-2

R.T.: 5.835 min
 Delta R.T.: 0.002 min
 Response: 11562767
 Conc: 190.36 ng/ml



#4 AR-1016-2

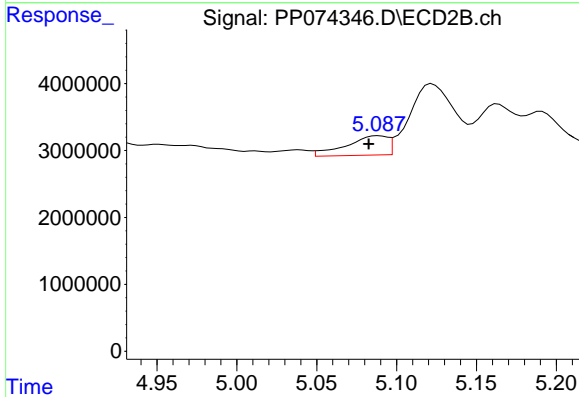
R.T.: 4.972 min
 Delta R.T.: 0.008 min
 Response: 3795293
 Conc: 20.21 ng/ml



#5 AR-1016-3

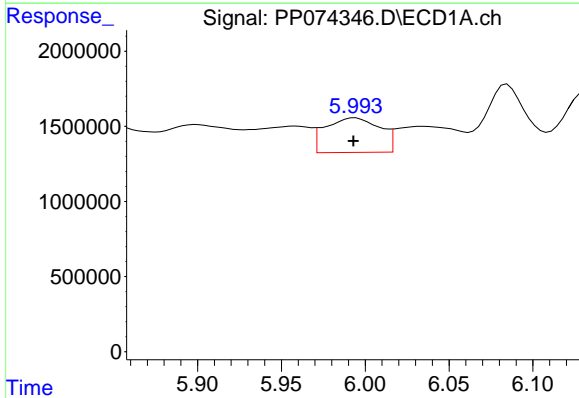
R.T.: 5.899 min
 Delta R.T.: 0.003 min
 Response: 5551445
 Conc: 139.97 ng/ml

Instrument :
 ECD_P
 ClientSampleId :
 TG-S03



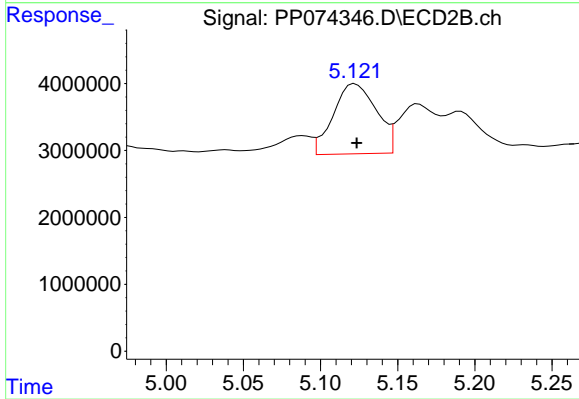
#5 AR-1016-3

R.T.: 5.089 min
 Delta R.T.: 0.006 min
 Response: 5217421
 Conc: 49.19 ng/ml



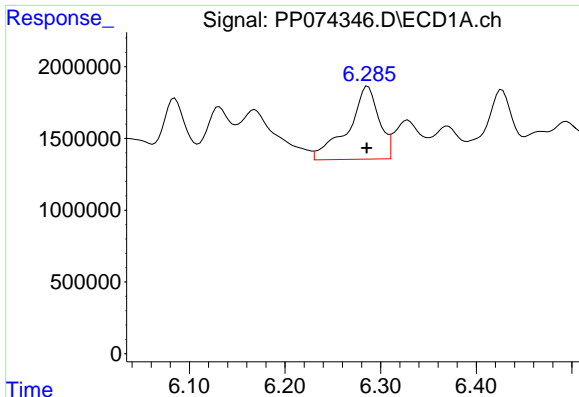
#6 AR-1016-4

R.T.: 5.994 min
 Delta R.T.: 0.001 min
 Response: 5214671
 Conc: 160.23 ng/ml



#6 AR-1016-4

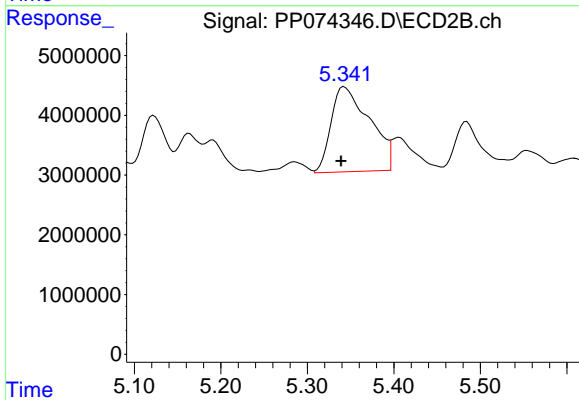
R.T.: 5.122 min
 Delta R.T.: -0.001 min
 Response: 20395405
 Conc: 186.74 ng/ml



#7 AR-1016-5

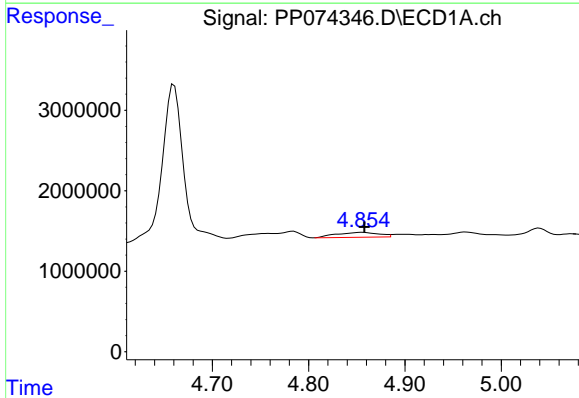
R.T.: 6.287 min
 Delta R.T.: 0.001 min
 Response: 11375704
 Conc: 350.37 ng/ml

Instrument :
 ECD_P
 ClientSampleId :
 TG-S03



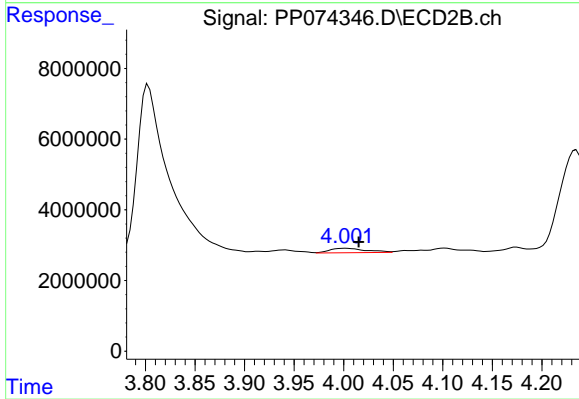
#7 AR-1016-5

R.T.: 5.343 min
 Delta R.T.: 0.004 min
 Response: 43938357
 Conc: 375.66 ng/ml



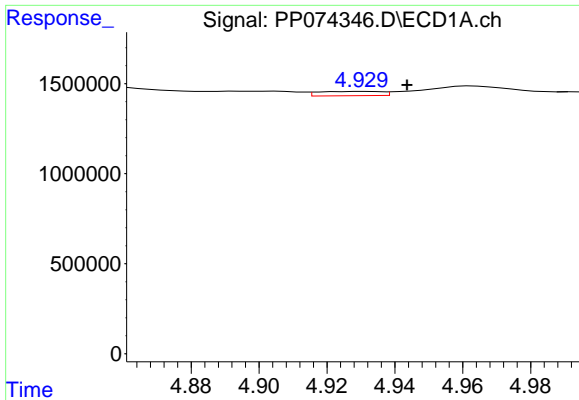
#8 AR-1221-1

R.T.: 4.856 min
 Delta R.T.: -0.002 min
 Response: 1892724
 Conc: 112.91 ng/ml



#8 AR-1221-1

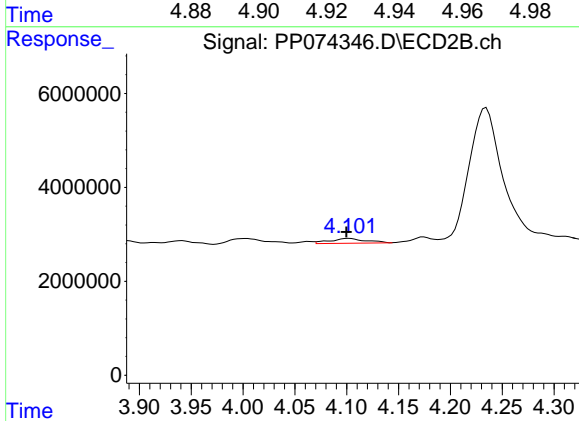
R.T.: 4.003 min
 Delta R.T.: -0.012 min
 Response: 3159184
 Conc: 64.36 ng/ml



#9 AR-1221-2

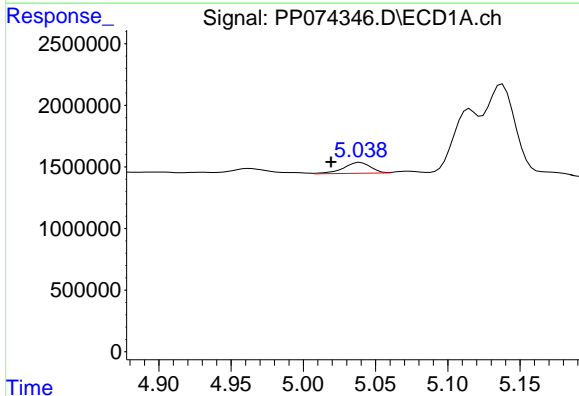
R.T.: 4.931 min
 Delta R.T.: -0.013 min
 Response: 311972
 Conc: 24.76 ng/ml

Instrument :
 ECD_P
 ClientSampleId :
 TG-S03



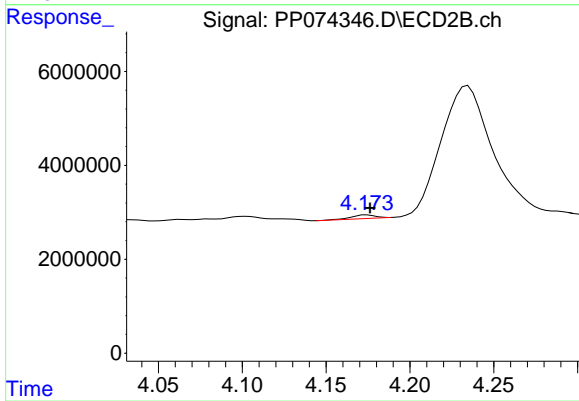
#9 AR-1221-2

R.T.: 4.103 min
 Delta R.T.: 0.003 min
 Response: 2441617
 Conc: 68.03 ng/ml



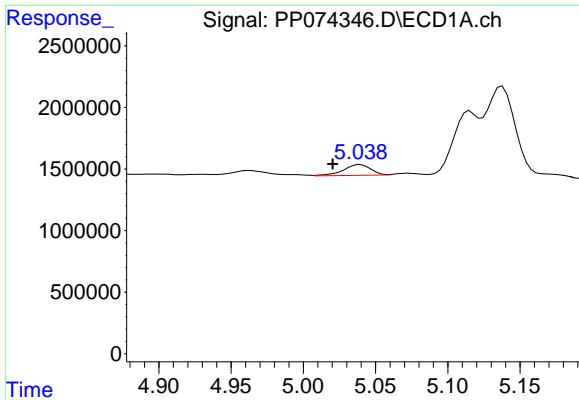
#10 AR-1221-3

R.T.: 5.039 min
 Delta R.T.: 0.020 min
 Response: 1137763
 Conc: 31.06 ng/ml



#10 AR-1221-3

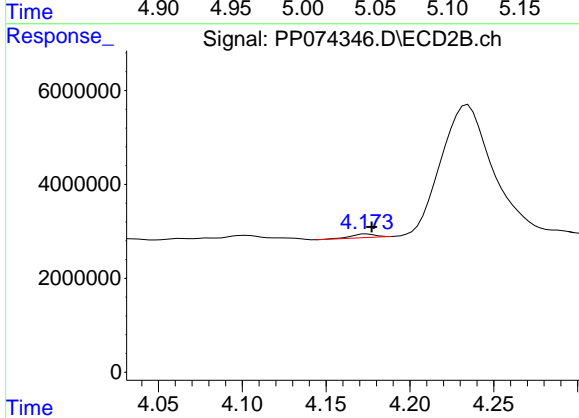
R.T.: 4.174 min
 Delta R.T.: -0.002 min
 Response: 733439
 Conc: 5.42 ng/ml



#11 AR-1232-1

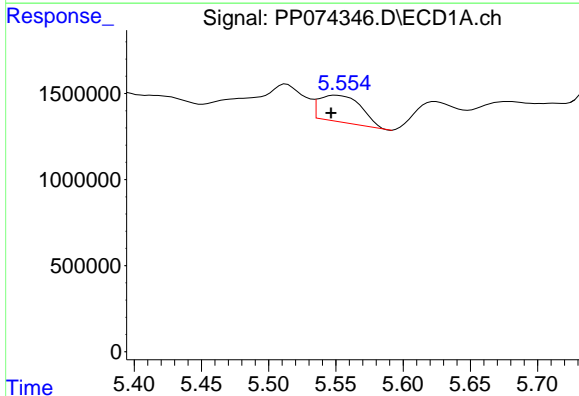
R.T.: 5.039 min
 Delta R.T.: 0.019 min
 Response: 1137763
 Conc: 39.18 ng/ml

Instrument :
 ECD_P
 ClientSampleId :
 TG-S03



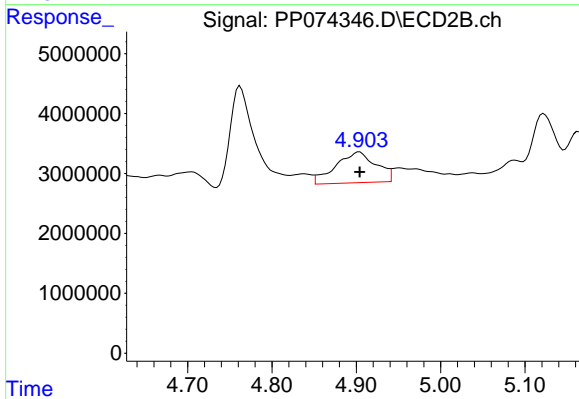
#11 AR-1232-1

R.T.: 4.174 min
 Delta R.T.: -0.003 min
 Response: 733439
 Conc: 7.24 ng/ml



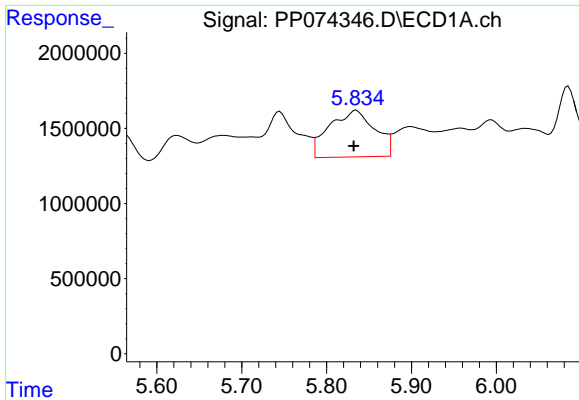
#12 AR-1232-2

R.T.: 5.550 min
 Delta R.T.: 0.004 min
 Response: 3381434
 Conc: 224.79 ng/ml



#12 AR-1232-2

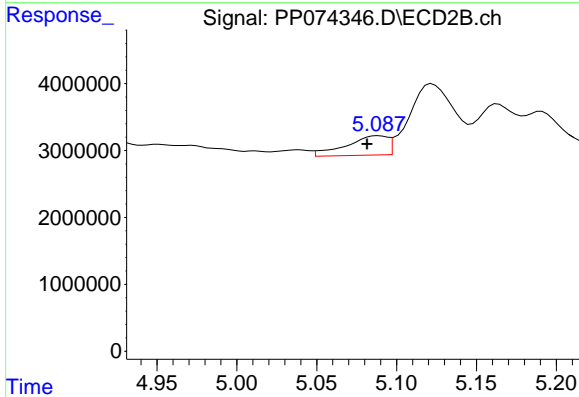
R.T.: 4.904 min
 Delta R.T.: 0.000 min
 Response: 17103177
 Conc: 98.14 ng/ml



#13 AR-1232-3

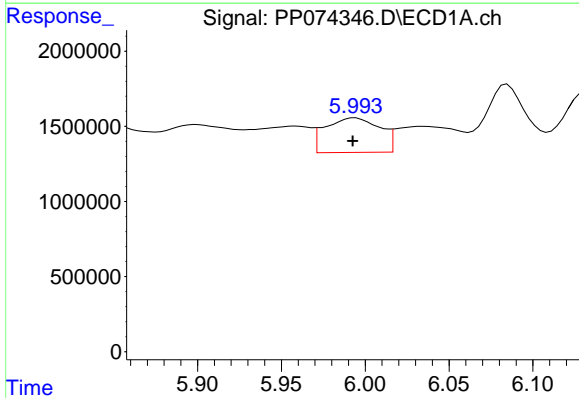
R.T.: 5.835 min
 Delta R.T.: 0.003 min
 Response: 11562767
 Conc: 398.69 ng/ml

Instrument :
 ECD_P
 ClientSampleId :
 TG-S03



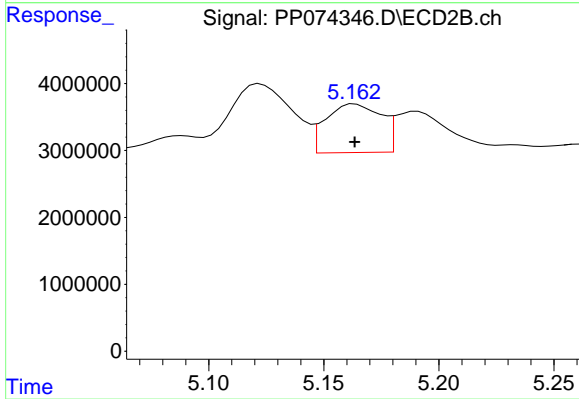
#13 AR-1232-3

R.T.: 5.089 min
 Delta R.T.: 0.007 min
 Response: 5217421
 Conc: 113.88 ng/ml



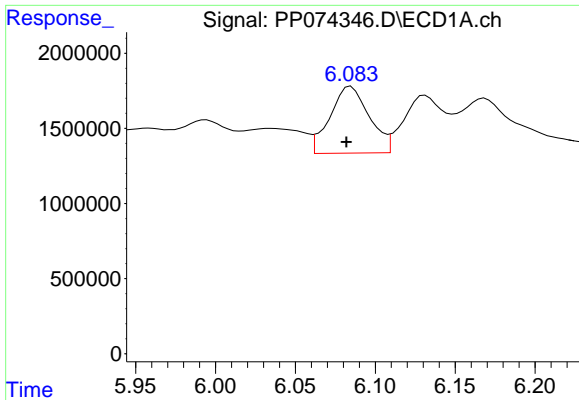
#14 AR-1232-4

R.T.: 5.994 min
 Delta R.T.: 0.002 min
 Response: 5214671
 Conc: 337.11 ng/ml



#14 AR-1232-4

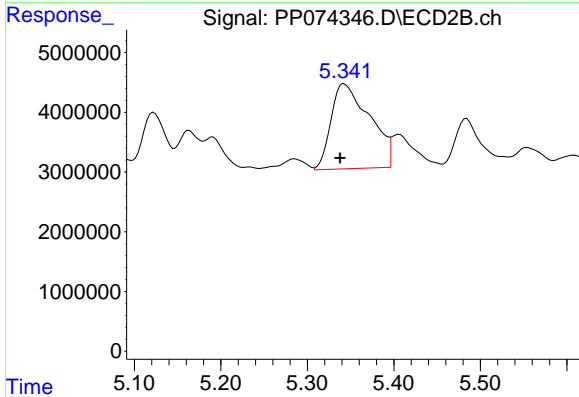
R.T.: 5.164 min
 Delta R.T.: 0.000 min
 Response: 12151785
 Conc: 209.47 ng/ml



#15 AR-1232-5

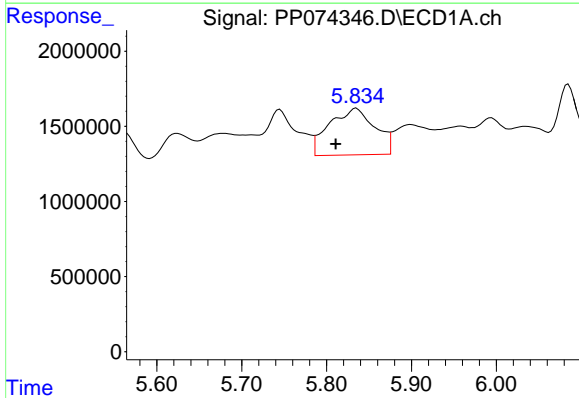
R.T.: 6.085 min
 Delta R.T.: 0.003 min
 Response: 7607997
 Conc: 649.37 ng/ml

Instrument :
 ECD_P
 ClientSampleId :
 TG-S03



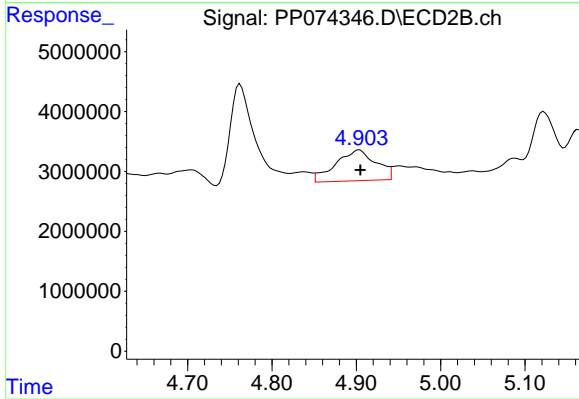
#15 AR-1232-5

R.T.: 5.343 min
 Delta R.T.: 0.005 min
 Response: 43938357
 Conc: 935.27 ng/ml



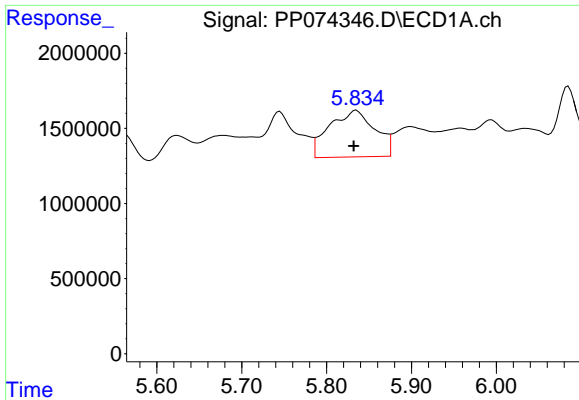
#16 AR-1242-1

R.T.: 5.835 min
 Delta R.T.: 0.024 min
 Response: 11562767
 Conc: 310.28 ng/ml



#16 AR-1242-1

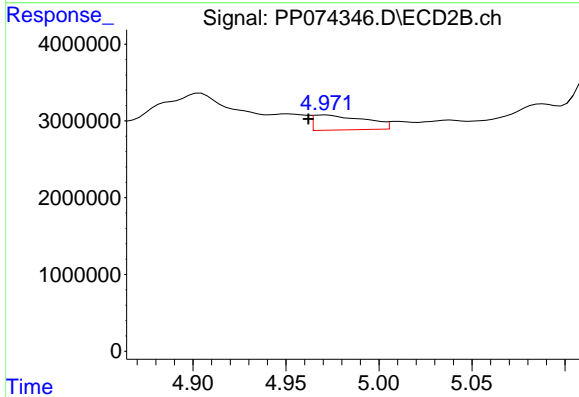
R.T.: 4.904 min
 Delta R.T.: 0.000 min
 Response: 17103177
 Conc: 49.55 ng/ml



#17 AR-1242-2

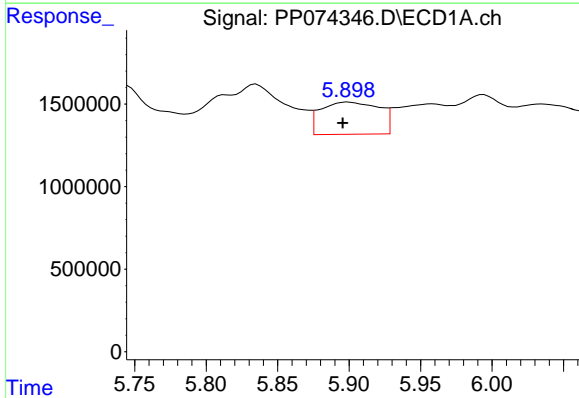
R.T.: 5.835 min
 Delta R.T.: 0.003 min
 Response: 11562767
 Conc: 212.52 ng/ml

Instrument :
 ECD_P
 ClientSampleId :
 TG-S03



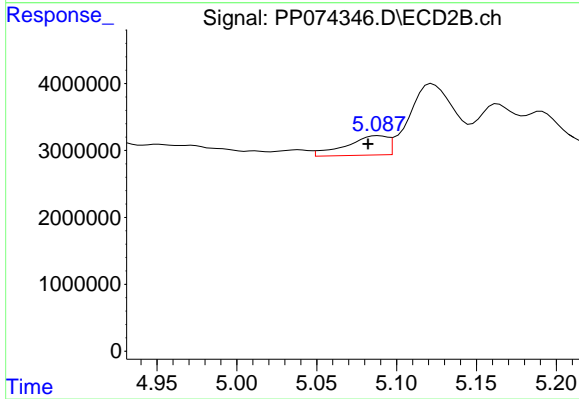
#17 AR-1242-2

R.T.: 4.972 min
 Delta R.T.: 0.010 min
 Response: 3795293
 Conc: 23.23 ng/ml



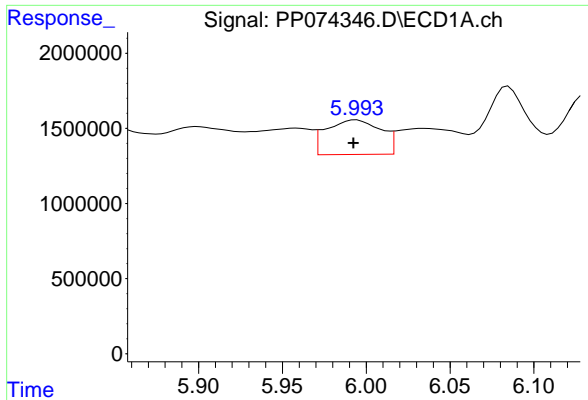
#18 AR-1242-3

R.T.: 5.899 min
 Delta R.T.: 0.004 min
 Response: 5551445
 Conc: 155.35 ng/ml



#18 AR-1242-3

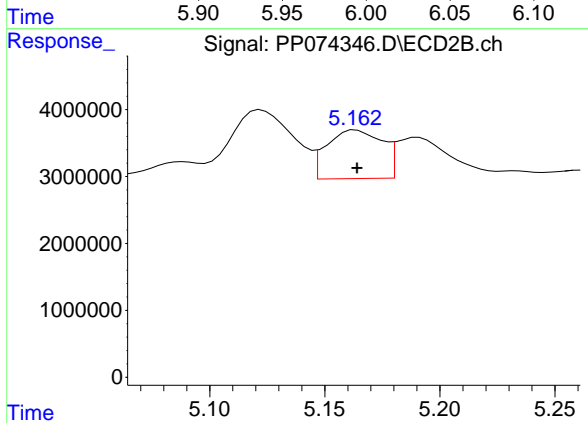
R.T.: 5.089 min
 Delta R.T.: 0.006 min
 Response: 5217421
 Conc: 56.56 ng/ml



#19 AR-1242-4

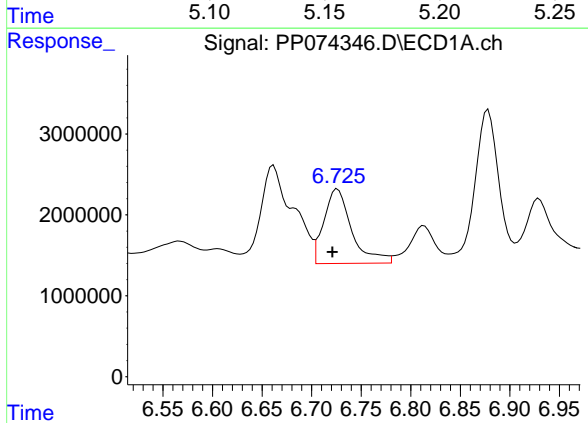
R.T.: 5.994 min
 Delta R.T.: 0.002 min
 Response: 5214671
 Conc: 178.47 ng/ml

Instrument :
 ECD_P
 ClientSampleId :
 TG-S03



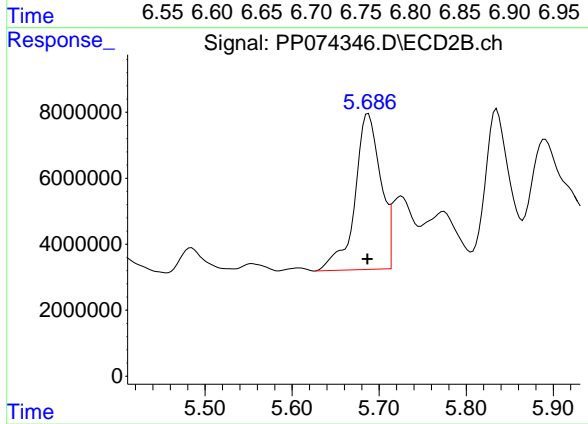
#19 AR-1242-4

R.T.: 5.164 min
 Delta R.T.: 0.000 min
 Response: 12151785
 Conc: 101.76 ng/ml



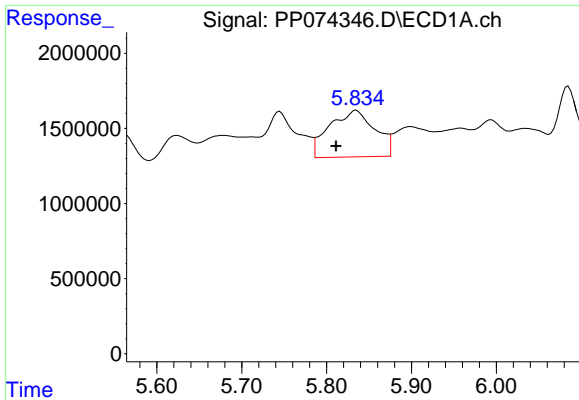
#20 AR-1242-5

R.T.: 6.726 min
 Delta R.T.: 0.005 min
 Response: 18015295
 Conc: 506.65 ng/ml



#20 AR-1242-5

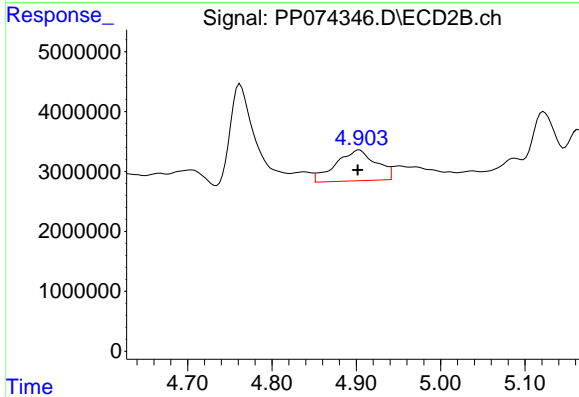
R.T.: 5.688 min
 Delta R.T.: 0.001 min
 Response: 97126146
 Conc: 649.41 ng/ml



#21 AR-1248-1

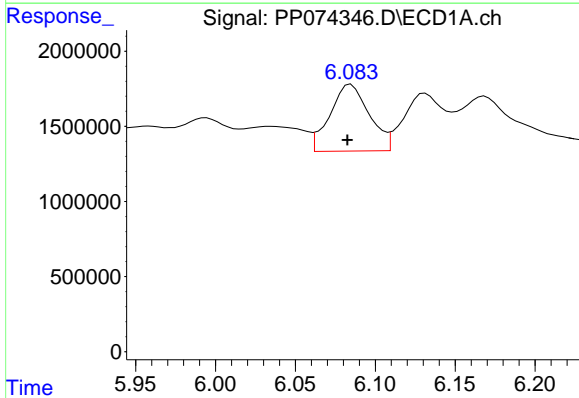
R.T.: 5.835 min
 Delta R.T.: 0.024 min
 Response: 11562767
 Conc: 412.74 ng/ml

Instrument :
 ECD_P
 ClientSampleId :
 TG-S03



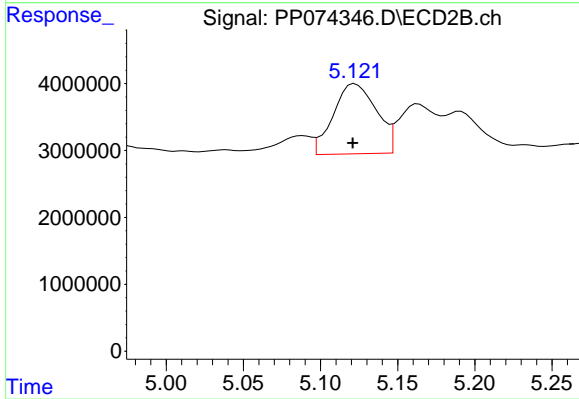
#21 AR-1248-1

R.T.: 4.904 min
 Delta R.T.: 0.002 min
 Response: 17103177
 Conc: 79.95 ng/ml



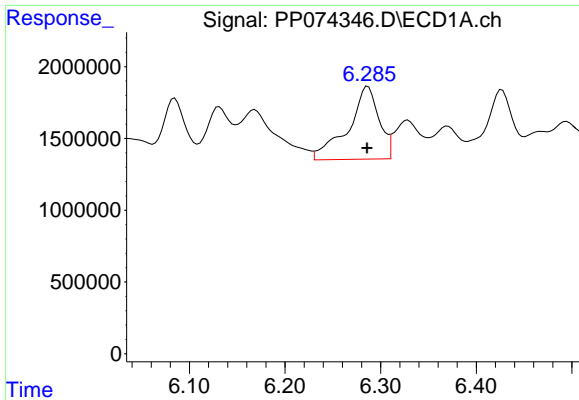
#22 AR-1248-2

R.T.: 6.085 min
 Delta R.T.: 0.002 min
 Response: 7607997
 Conc: 188.97 ng/ml



#22 AR-1248-2

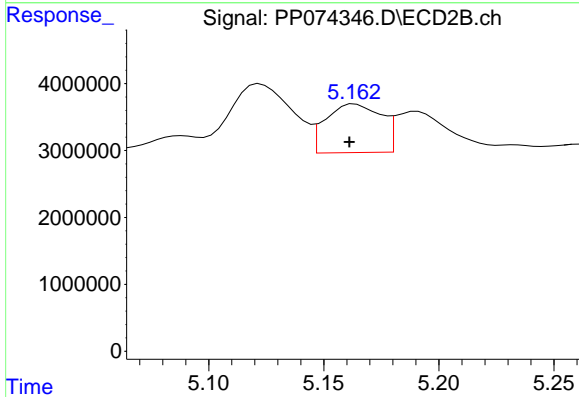
R.T.: 5.122 min
 Delta R.T.: 0.002 min
 Response: 20395405
 Conc: 139.40 ng/ml



#23 AR-1248-3

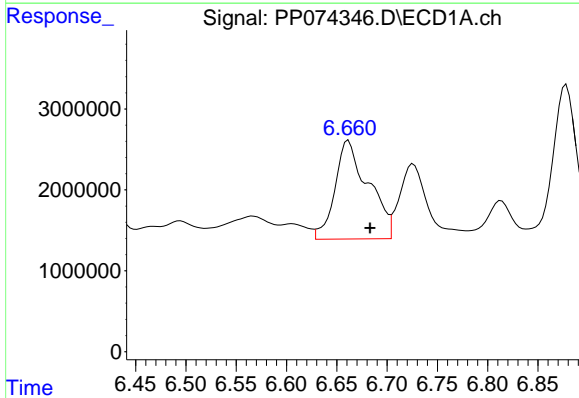
R.T.: 6.287 min
 Delta R.T.: 0.000 min
 Response: 11375704
 Conc: 255.21 ng/ml

Instrument :
 ECD_P
 ClientSampleId :
 TG-S03



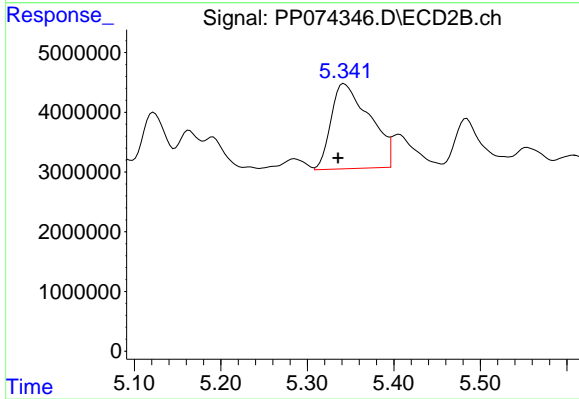
#23 AR-1248-3

R.T.: 5.164 min
 Delta R.T.: 0.002 min
 Response: 12151785
 Conc: 70.87 ng/ml



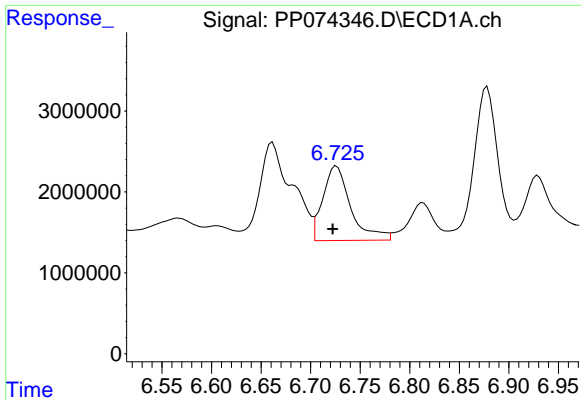
#24 AR-1248-4

R.T.: 6.662 min
 Delta R.T.: -0.021 min
 Response: 28109489
 Conc: 540.18 ng/ml



#24 AR-1248-4

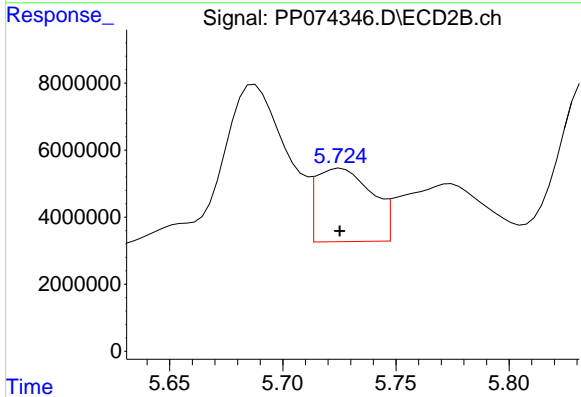
R.T.: 5.343 min
 Delta R.T.: 0.007 min
 Response: 43938357
 Conc: 264.09 ng/ml



#25 AR-1248-5

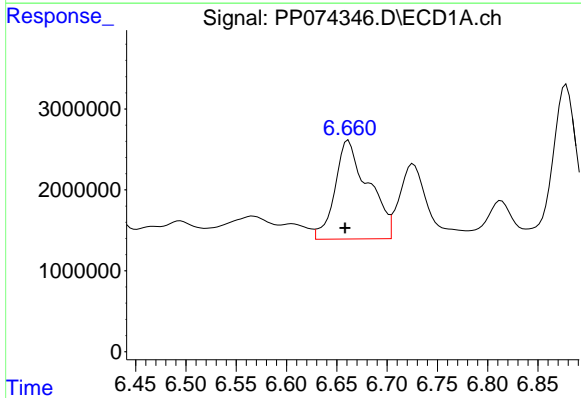
R.T.: 6.726 min
 Delta R.T.: 0.004 min
 Response: 18015295
 Conc: 316.37 ng/ml

Instrument :
 ECD_P
 ClientSampleId :
 TG-S03



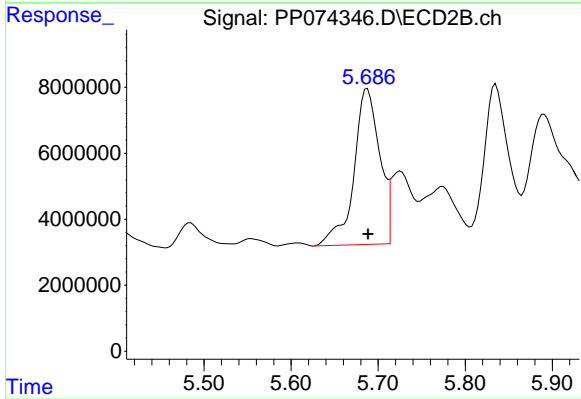
#25 AR-1248-5

R.T.: 5.726 min
 Delta R.T.: 0.000 min
 Response: 37394458
 Conc: 128.52 ng/ml



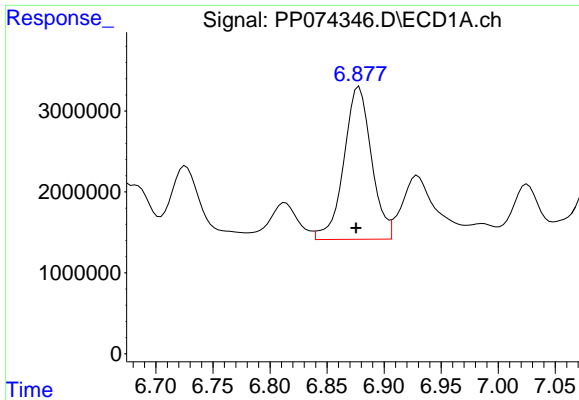
#26 AR-1254-1

R.T.: 6.662 min
 Delta R.T.: 0.003 min
 Response: 28109489
 Conc: 533.98 ng/ml



#26 AR-1254-1

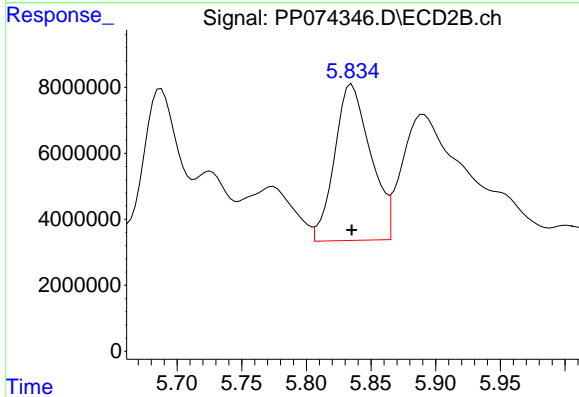
R.T.: 5.688 min
 Delta R.T.: 0.000 min
 Response: 97126146
 Conc: 265.24 ng/ml



#27 AR-1254-2

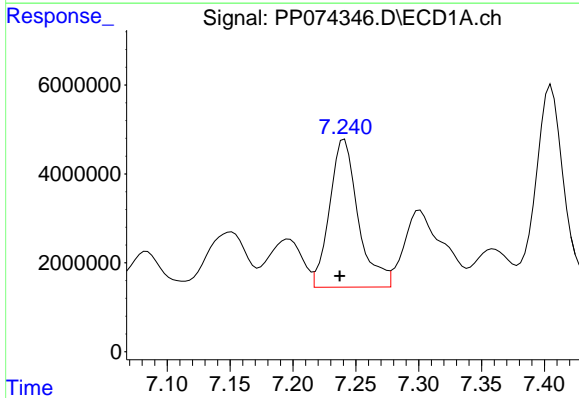
R.T.: 6.878 min
 Delta R.T.: 0.003 min
 Response: 31780565
 Conc: 399.73 ng/ml

Instrument :
 ECD_P
 ClientSampleId :
 TG-S03



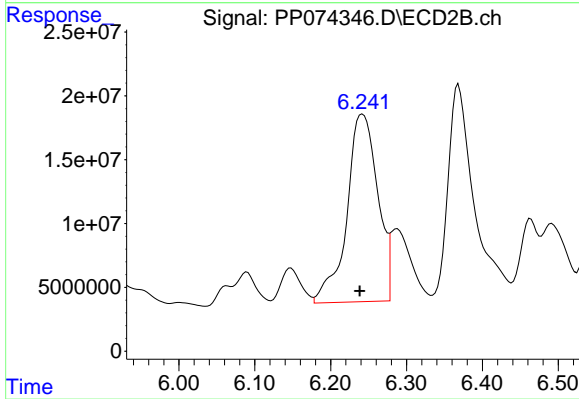
#27 AR-1254-2

R.T.: 5.835 min
 Delta R.T.: 0.000 min
 Response: 91681427
 Conc: 329.53 ng/ml



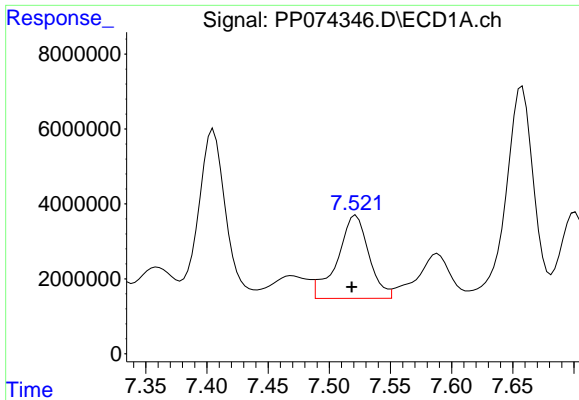
#28 AR-1254-3

R.T.: 7.241 min
 Delta R.T.: 0.004 min
 Response: 52757137
 Conc: 604.21 ng/ml



#28 AR-1254-3

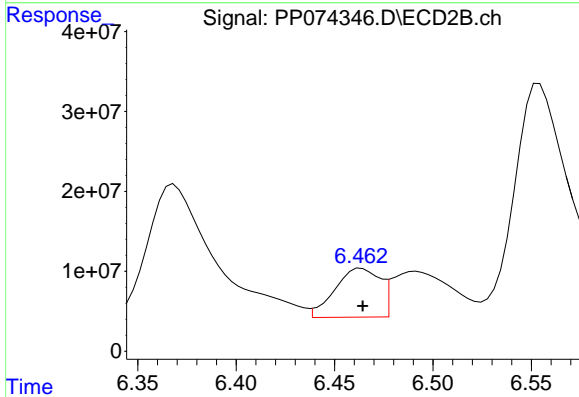
R.T.: 6.242 min
 Delta R.T.: 0.004 min
 Response: 415746969
 Conc: 849.83 ng/ml



#29 AR-1254-4

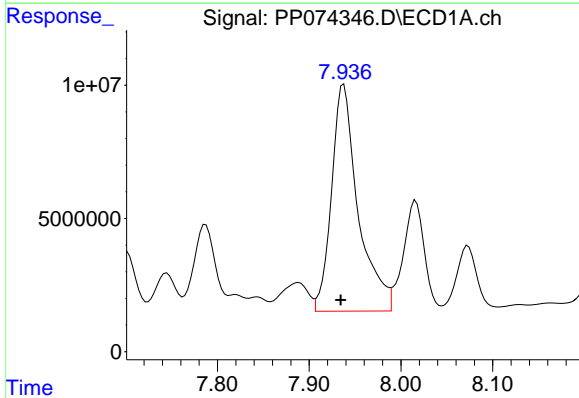
R.T.: 7.522 min
 Delta R.T.: 0.004 min
 Response: 39702549
 Conc: 622.20 ng/ml

Instrument :
 ECD_P
 ClientSampleId :
 TG-S03



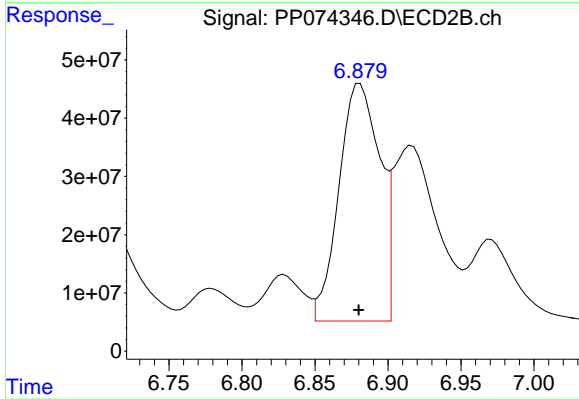
#29 AR-1254-4

R.T.: 6.464 min
 Delta R.T.: 0.000 min
 Response: 97023078
 Conc: 263.96 ng/ml



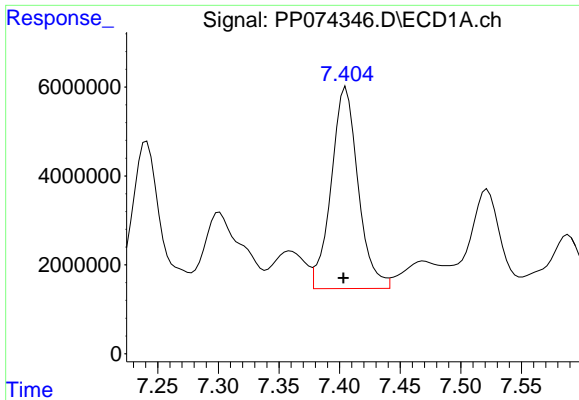
#30 AR-1254-5

R.T.: 7.938 min
 Delta R.T.: 0.003 min
 Response: 171118873
 Conc: 2108.81 ng/ml



#30 AR-1254-5

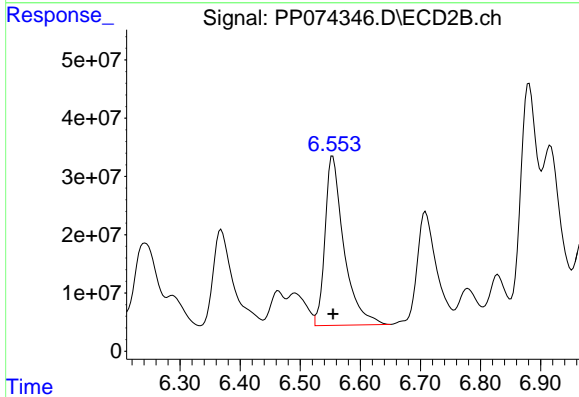
R.T.: 6.881 min
 Delta R.T.: 0.000 min
 Response: 791004345
 Conc: 2053.67 ng/ml



#31 AR-1260-1

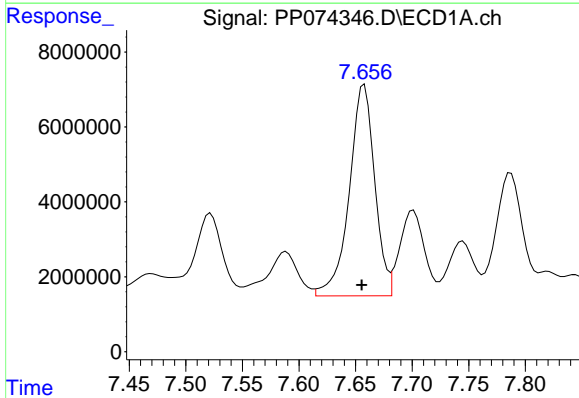
R.T.: 7.405 min
 Delta R.T.: 0.002 min
 Response: 70086157
 Conc: 1243.63 ng/m

Instrument :
 ECD_P
 ClientSampleId :
 TG-S03



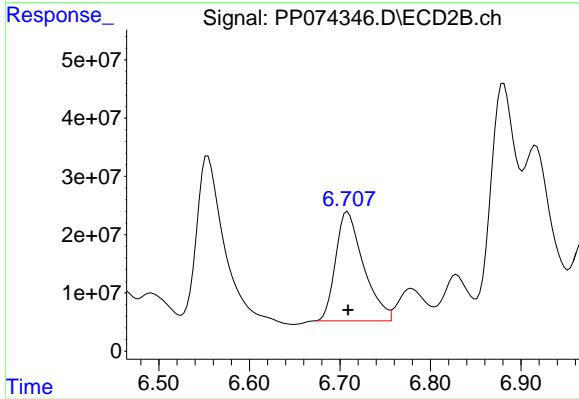
#31 AR-1260-1

R.T.: 6.554 min
 Delta R.T.: 0.000 min
 Response: 637381281
 Conc: 1577.84 ng/ml



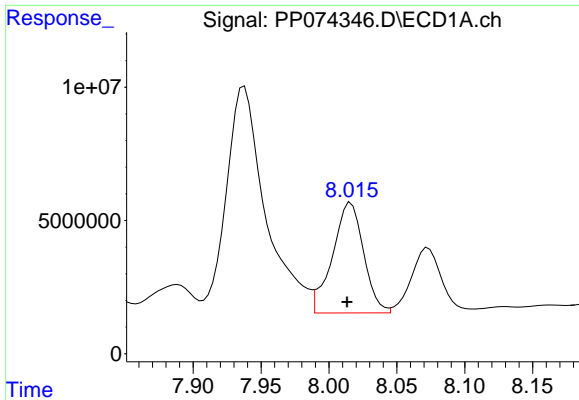
#32 AR-1260-2

R.T.: 7.658 min
 Delta R.T.: 0.002 min
 Response: 88161952
 Conc: 1293.60 ng/ml



#32 AR-1260-2

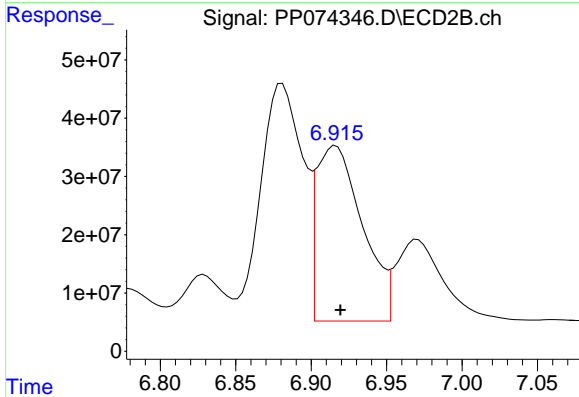
R.T.: 6.709 min
 Delta R.T.: 0.000 min
 Response: 401462719
 Conc: 1283.86 ng/ml



#33 AR-1260-3

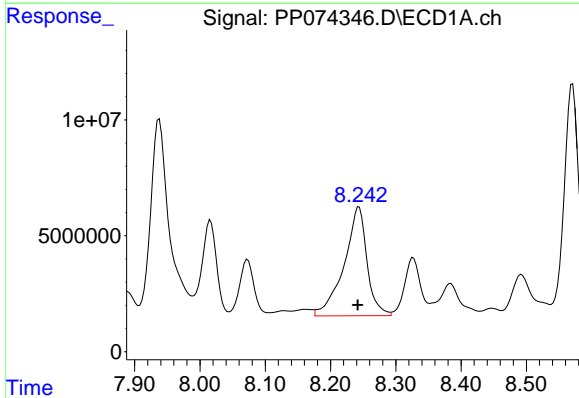
R.T.: 8.016 min
 Delta R.T.: 0.003 min
 Response: 66345973
 Conc: 1244.86 ng/m

Instrument :
 ECD_P
 ClientSampleId :
 TG-S03



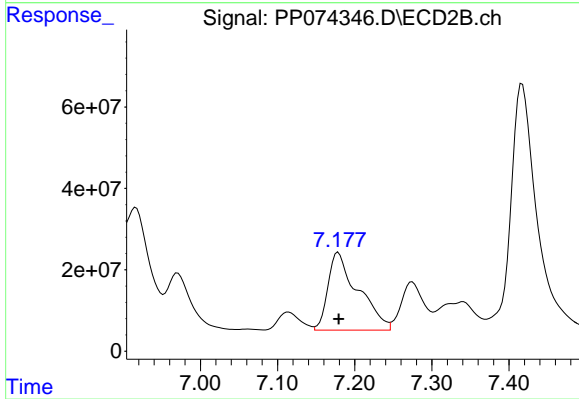
#33 AR-1260-3

R.T.: 6.916 min
 Delta R.T.: -0.003 min
 Response: 638012936
 Conc: 1618.84 ng/ml



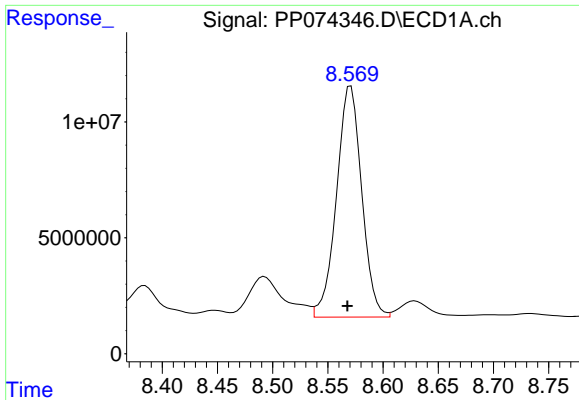
#34 AR-1260-4

R.T.: 8.244 min
 Delta R.T.: 0.002 min
 Response: 114744987
 Conc: 1832.55 ng/ml



#34 AR-1260-4

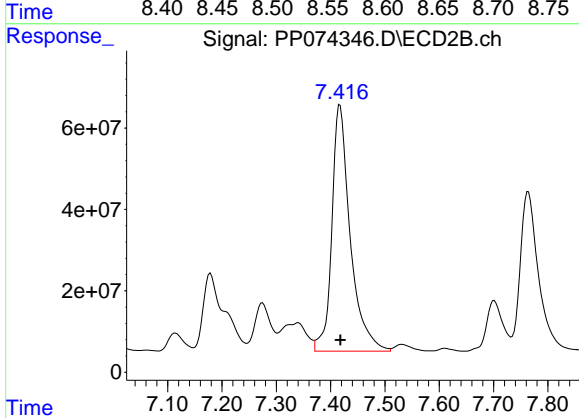
R.T.: 7.179 min
 Delta R.T.: 0.000 min
 Response: 518254024
 Conc: 1781.07 ng/ml



#35 AR-1260-5

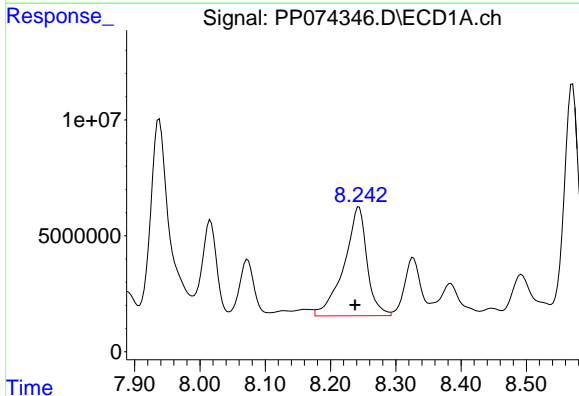
R.T.: 8.571 min
Delta R.T.: 0.003 min
Response: 158332846
Conc: 1397.40 ng/ml

Instrument :
ECD_P
ClientSampleId :
TG-S03



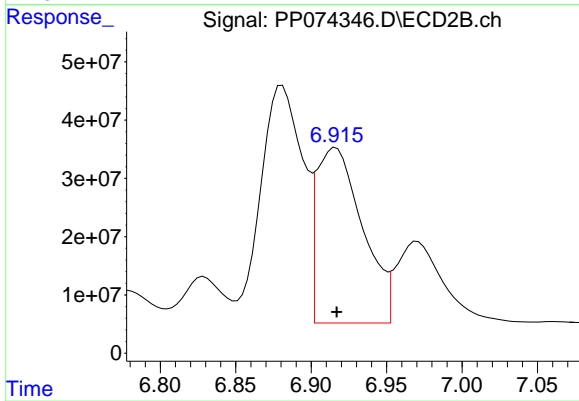
#35 AR-1260-5

R.T.: 7.417 min
Delta R.T.: 0.000 min
Response: 1424242438
Conc: 1880.41 ng/ml



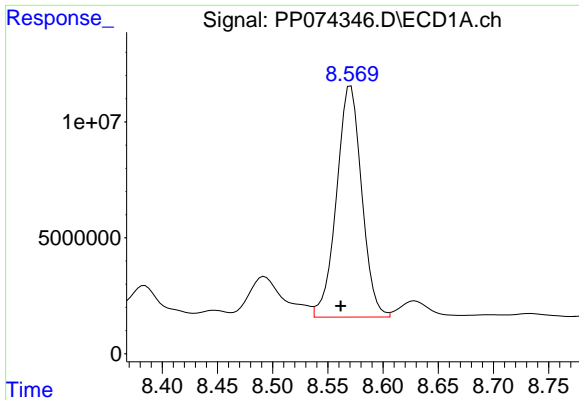
#36 AR-1262-1

R.T.: 8.244 min
Delta R.T.: 0.006 min
Response: 114744987
Conc: 1513.99 ng/ml



#36 AR-1262-1

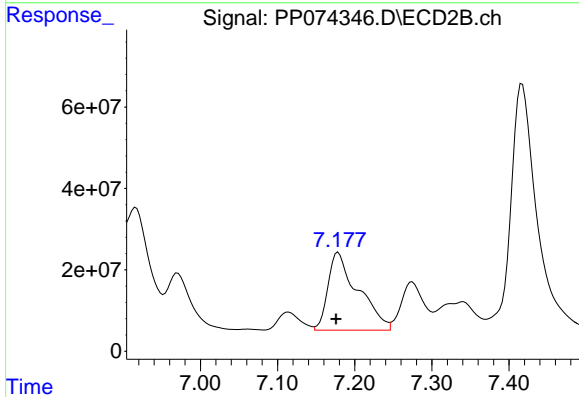
R.T.: 6.916 min
Delta R.T.: 0.000 min
Response: 638012936
Conc: 1132.95 ng/ml



#37 AR-1262-2

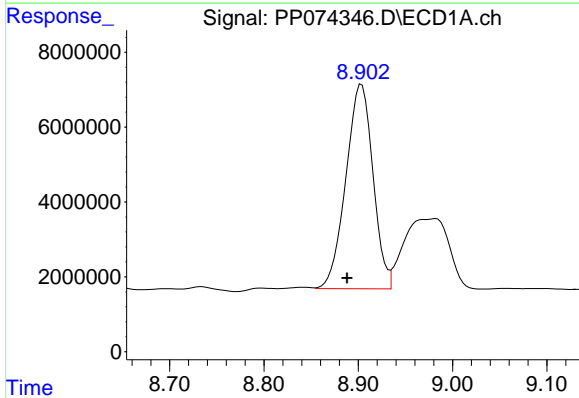
R.T.: 8.571 min
 Delta R.T.: 0.009 min
 Response: 158332846
 Conc: 1213.93 ng/ml

Instrument :
 ECD_P
 ClientSampleId :
 TG-S03



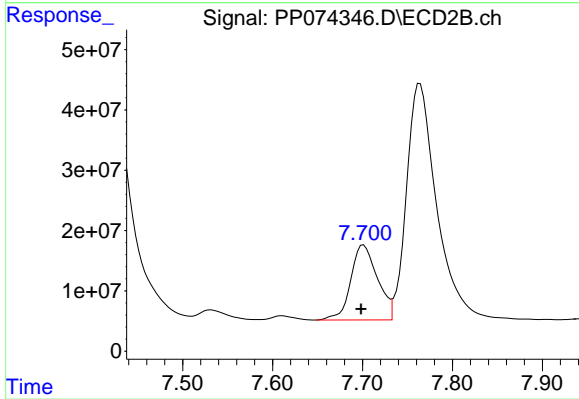
#37 AR-1262-2

R.T.: 7.179 min
 Delta R.T.: 0.003 min
 Response: 518254024
 Conc: 1292.33 ng/ml



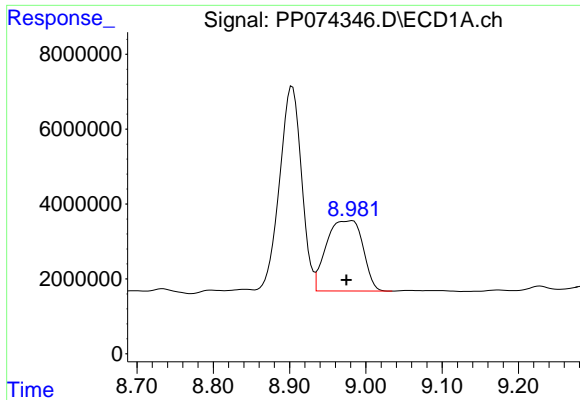
#38 AR-1262-3

R.T.: 8.904 min
 Delta R.T.: 0.016 min
 Response: 109068079
 Conc: 1159.42 ng/ml



#38 AR-1262-3

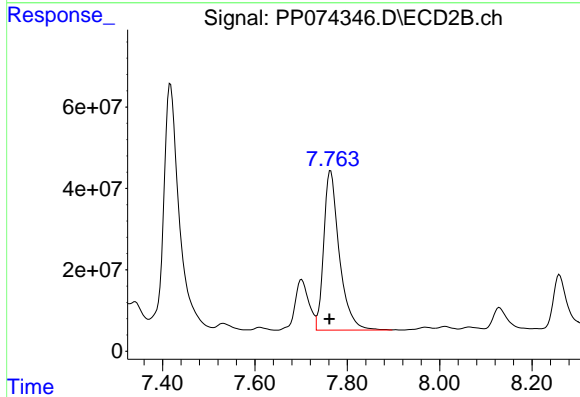
R.T.: 7.701 min
 Delta R.T.: 0.003 min
 Response: 257118730
 Conc: 715.27 ng/ml



#39 AR-1262-4

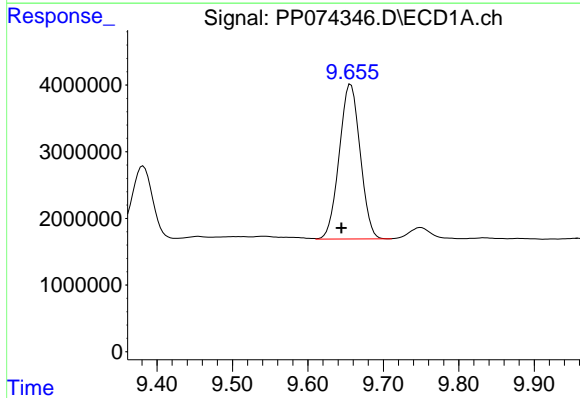
R.T.: 8.982 min
 Delta R.T.: 0.008 min
 Response: 62453629
 Conc: 857.27 ng/ml

Instrument :
 ECD_P
 ClientSampleId :
 TG-S03



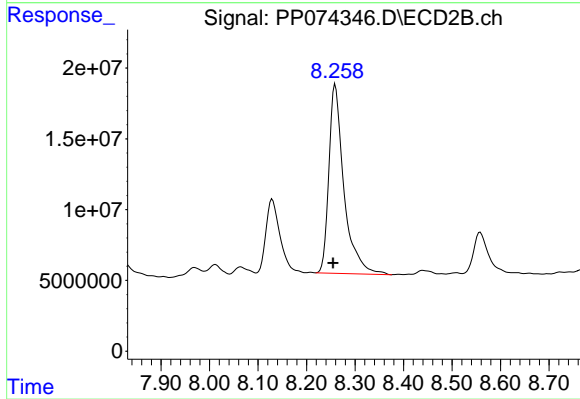
#39 AR-1262-4

R.T.: 7.764 min
 Delta R.T.: 0.003 min
 Response: 918520592
 Conc: 1377.25 ng/ml



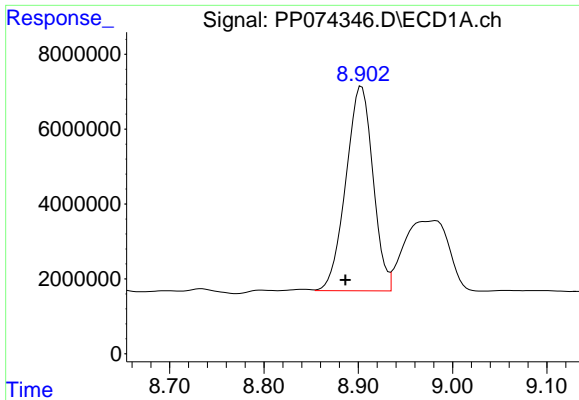
#40 AR-1262-5

R.T.: 9.657 min
 Delta R.T.: 0.012 min
 Response: 44742794
 Conc: 878.64 ng/ml



#40 AR-1262-5

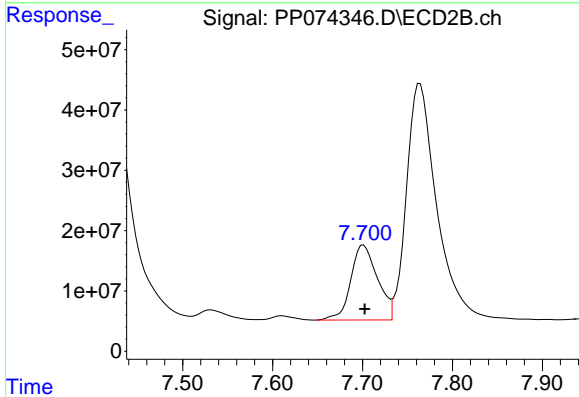
R.T.: 8.259 min
 Delta R.T.: 0.004 min
 Response: 288213554
 Conc: 1017.46 ng/ml



#41 AR-1268-1

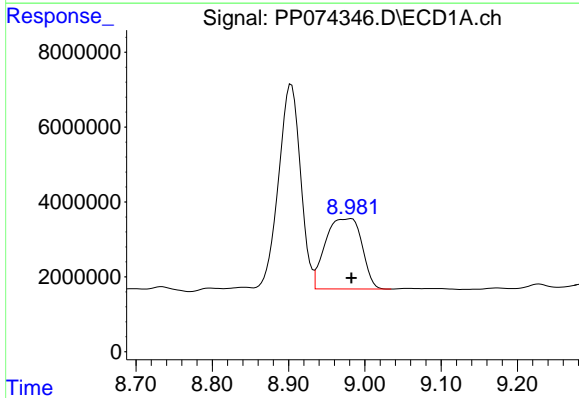
R.T.: 8.904 min
 Delta R.T.: 0.017 min
 Response: 109068079
 Conc: 700.80 ng/ml

Instrument :
 ECD_P
 ClientSampleId :
 TG-S03



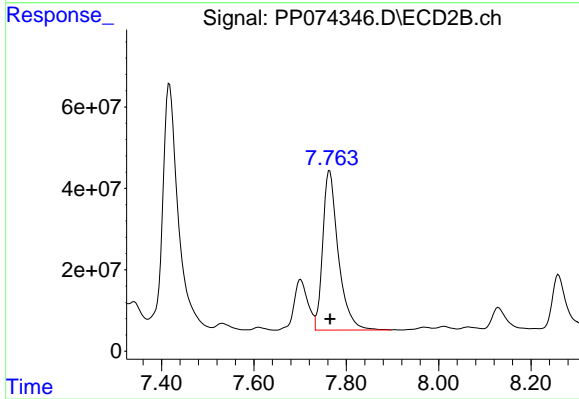
#41 AR-1268-1

R.T.: 7.701 min
 Delta R.T.: -0.001 min
 Response: 257118730
 Conc: 235.83 ng/ml



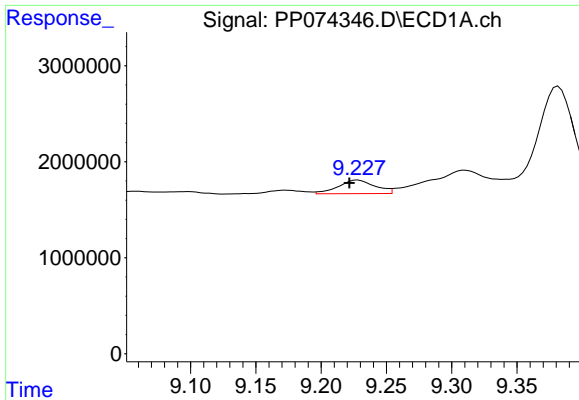
#42 AR-1268-2

R.T.: 8.982 min
 Delta R.T.: 0.000 min
 Response: 62453629
 Conc: 435.44 ng/ml



#42 AR-1268-2

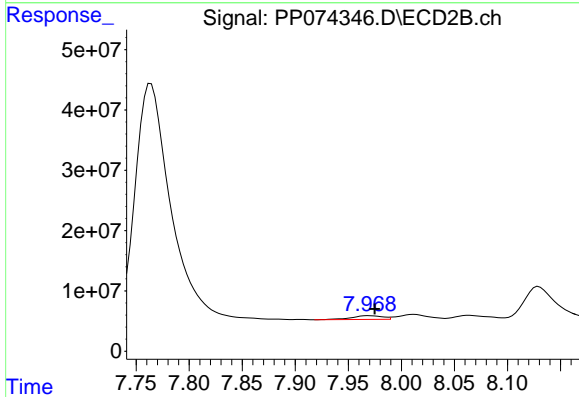
R.T.: 7.764 min
 Delta R.T.: -0.001 min
 Response: 918520592
 Conc: 865.45 ng/ml



#43 AR-1268-3

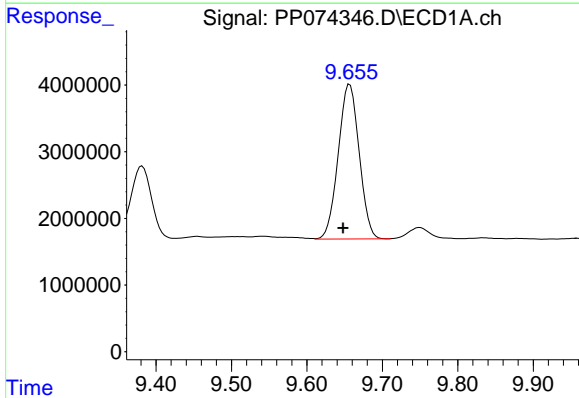
R.T.: 9.228 min
 Delta R.T.: 0.007 min
 Response: 2752217
 Conc: 23.04 ng/ml

Instrument :
 ECD_P
 ClientSampleId :
 TG-S03



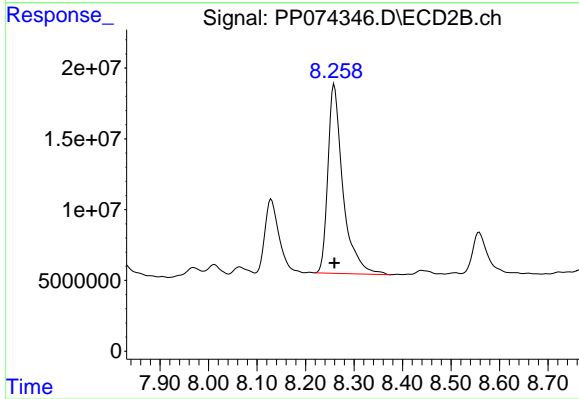
#43 AR-1268-3

R.T.: 7.969 min
 Delta R.T.: -0.006 min
 Response: 12938012
 Conc: 15.55 ng/ml



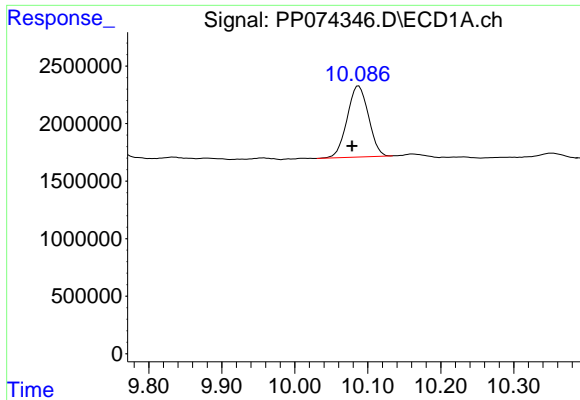
#44 AR-1268-4

R.T.: 9.657 min
 Delta R.T.: 0.009 min
 Response: 44742794
 Conc: 760.77 ng/ml



#44 AR-1268-4

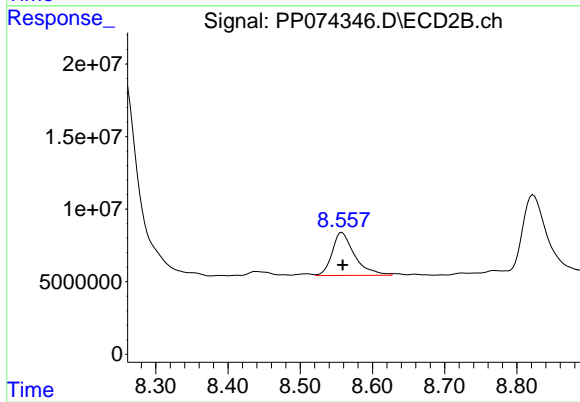
R.T.: 8.259 min
 Delta R.T.: 0.000 min
 Response: 288213554
 Conc: 935.58 ng/ml



#45 AR-1268-5

R.T.: 10.088 min
Delta R.T.: 0.009 min
Response: 12537164
Conc: 35.65 ng/ml

Instrument :
ECD_P
ClientSampleId :
TG-S03



#45 AR-1268-5

R.T.: 8.558 min
Delta R.T.: -0.001 min
Response: 64204903
Conc: 25.18 ng/ml