

Data Path : Z:\pestpcbsrv\HPCHEM1\ECD\_P\Data\PP081325\  
 Data File : PP074347.D  
 Signal(s) : Signal #1: ECD1A.ch Signal #2: ECD2B.ch  
 Acq On : 13 Aug 2025 15:05  
 Operator : YP\AJ  
 Sample : Q2820-09RX  
 Misc :  
 ALS Vial : 15 Sample Multiplier: 1

Instrument :  
 ECD\_P  
 ClientSampleId :  
 705R-S

Integration File signal 1: autoint1.e  
 Integration File signal 2: autoint2.e  
 Quant Time: Aug 13 15:55:39 2025  
 Quant Method : Z:\pestpcbsrv\HPCHEM1\ECD\_P\methods\PP080125.M  
 Quant Title : GC EXTRACTABLES  
 QLast Update : Mon Aug 04 11:01:49 2025  
 Response via : Initial Calibration  
 Integrator: ChemStation

Volume Inj. : 2 µl  
 Signal #1 Phase : ZB-MR1 Signal #2 Phase: ZB-MR2  
 Signal #1 Info : 30Mx0.32mmx 0.50µ Signal #2 Info : 30M x 0.32mm x 0.25µm

Compound	RT#1	RT#2	Resp#1	Resp#2	ng/ml	ng/ml
System Monitoring Compounds						
1) SA Tetrachlo...	4.659	3.802	25309574	76068856	22.632	19.838
2) SA Decachlor...	10.438	8.820	16639016	94371869	17.133	15.693
Target Compounds						
3) L1 AR-1016-1	5.808	4.907	367620	2807795	8.911	7.039
4) L1 AR-1016-2	5.833	4.967	346343	2464677	5.702	13.123 #
5) L1 AR-1016-3	5.956f	5.073	1497029	3580526	37.746	33.756
6) L1 AR-1016-4	6.004	5.118	435867	3117342	13.393	28.542 #
7) L1 AR-1016-5	6.220f	5.332	544576	5092654	16.773	43.541 #
8) L2 AR-1221-1	4.857	4.025	721323	276104	43.029	5.625 #
9) L2 AR-1221-2	4.962	4.107	497328	1219485	39.467	33.979
10) L2 AR-1221-3	5.067f	4.174	116229	148695	3.173	1.100 #
11) L3 AR-1232-1	5.067f	4.174	116229	148695	4.003	1.467 #
12) L3 AR-1232-2	5.512	4.907	714690	2807795	47.511	16.112 #
13) L3 AR-1232-3	5.833	5.073	346343	3580526	11.942	78.149 #
14) L3 AR-1232-4	6.004	5.164	435867	5004702	28.177	86.272 #
15) L3 AR-1232-5	6.065	5.332	200337	5092654	17.099	108.402 #
16) L4 AR-1242-1	5.808	4.907	367620	2807795	9.865	8.135
17) L4 AR-1242-2	5.833	4.967	346343	2464677	6.366	15.086 #
18) L4 AR-1242-3	5.956f	5.073	1497029	3580526	41.891	38.814
19) L4 AR-1242-4	6.004	5.164	435867	5004702	14.917	41.908 #
20) L4 AR-1242-5	6.655f	5.688	858263	14392152	24.137	96.230 #
21) L5 AR-1248-1	5.808	4.907	367620	2807795	13.122	13.125
22) L5 AR-1248-2	6.100	5.118	624388	3117342	15.508	21.306 #
23) L5 AR-1248-3	6.220f	5.164	544576	5004702	12.217	29.189 #
24) L5 AR-1248-4	6.655	5.332	858263	5092654	16.493	30.610 #
25) L5 AR-1248-5	6.655f	5.755	858263	17070748	15.072	58.669 #
26) L6 AR-1254-1	6.655	5.688	858263	14392152	16.304	39.303 #
27) L6 AR-1254-2	6.822f	5.857	32555850	17805207	409.484	63.998 #
28) L6 AR-1254-3	7.245	6.250	6023364	28449274	68.983	58.153
29) L6 AR-1254-4	7.491	6.450	880280	5340777	13.795	14.530
30) L6 AR-1254-5	7.886f	6.886	985385	342021	12.144	0.888 #
31) L7 AR-1260-1	7.401	6.539	4632446	4546880	82.200	11.256 #
32) L7 AR-1260-2	7.637	6.722	12524592	453446	183.773	1.450 #
33) L7 AR-1260-3	8.004	6.912	430942	375393	8.086	0.952 #
34) L7 AR-1260-4	8.247	7.189	656679	663763	10.488	2.281 #
35) L7 AR-1260-5	8.564	7.415	704852	677772	6.221	0.895 #
36) L8 AR-1262-1	8.247	6.912	656679	375393	8.664	0.667 #
37) L8 AR-1262-2	8.564	7.164	704852	668867	5.404	1.668 #
38) L8 AR-1262-3	8.910	7.691	167883	439197	1.785	1.222 #
39) L8 AR-1262-4	8.975	7.753	610395	701827	8.379	1.052 #
40) L8 AR-1262-5	9.655	8.254	55993	871687	1.100	3.077 #
41) L9 AR-1268-1	8.910	7.712	167883	370237	1.079	0.340 #

Data Path : Z:\pestpcbsrv\HPCHEM1\ECD\_P\Data\PP081325\  
 Data File : PP074347.D  
 Signal(s) : Signal #1: ECD1A.ch Signal #2: ECD2B.ch  
 Acq On : 13 Aug 2025 15:05  
 Operator : YP\AJ  
 Sample : Q2820-09RX  
 Misc :  
 ALS Vial : 15 Sample Multiplier: 1

**Instrument :**  
 ECD\_P  
**ClientSampleId :**  
 705R-S

Integration File signal 1: autoint1.e  
 Integration File signal 2: autoint2.e  
 Quant Time: Aug 13 15:55:39 2025  
 Quant Method : Z:\pestpcbsrv\HPCHEM1\ECD\_P\methods\PP080125.M  
 Quant Title : GC EXTRACTABLES  
 QLast Update : Mon Aug 04 11:01:49 2025  
 Response via : Initial Calibration  
 Integrator: ChemStation

Volume Inj. : 2 µl  
 Signal #1 Phase : ZB-MR1 Signal #2 Phase: ZB-MR2  
 Signal #1 Info : 30Mx0.32mmx 0.50µ Signal #2 Info : 30M x 0.32mm x 0.25µm

	Compound	RT#1	RT#2	Resp#1	Resp#2	ng/ml	ng/ml
42)	L9 AR-1268-2	8.975	7.771	610395	293548	4.256	0.277 #
43)	L9 AR-1268-3	9.287f	7.967	110785	574527	0.927	0.691 #
44)	L9 AR-1268-4	9.655	8.254	55993	871687	0.952	2.830 #
45)	L9 AR-1268-5	10.082	8.568	107699	436594	0.306	0.171 #

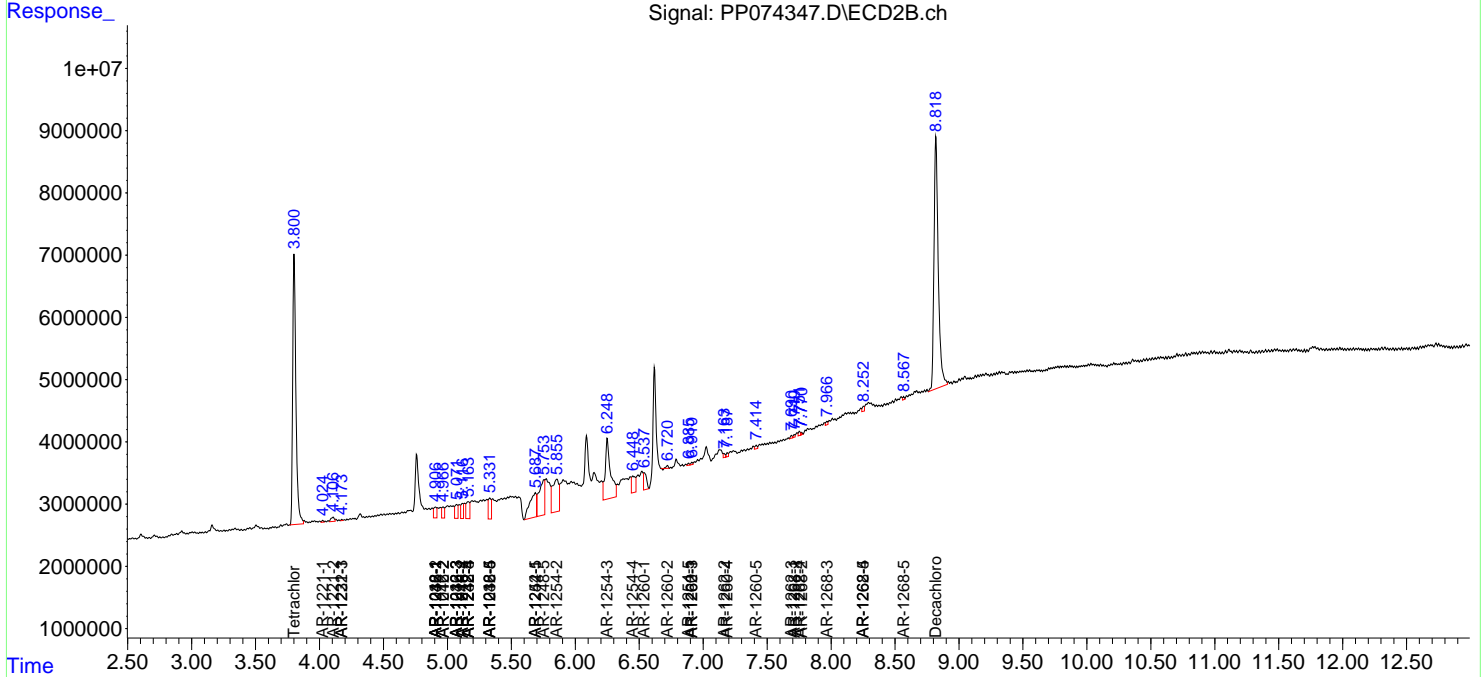
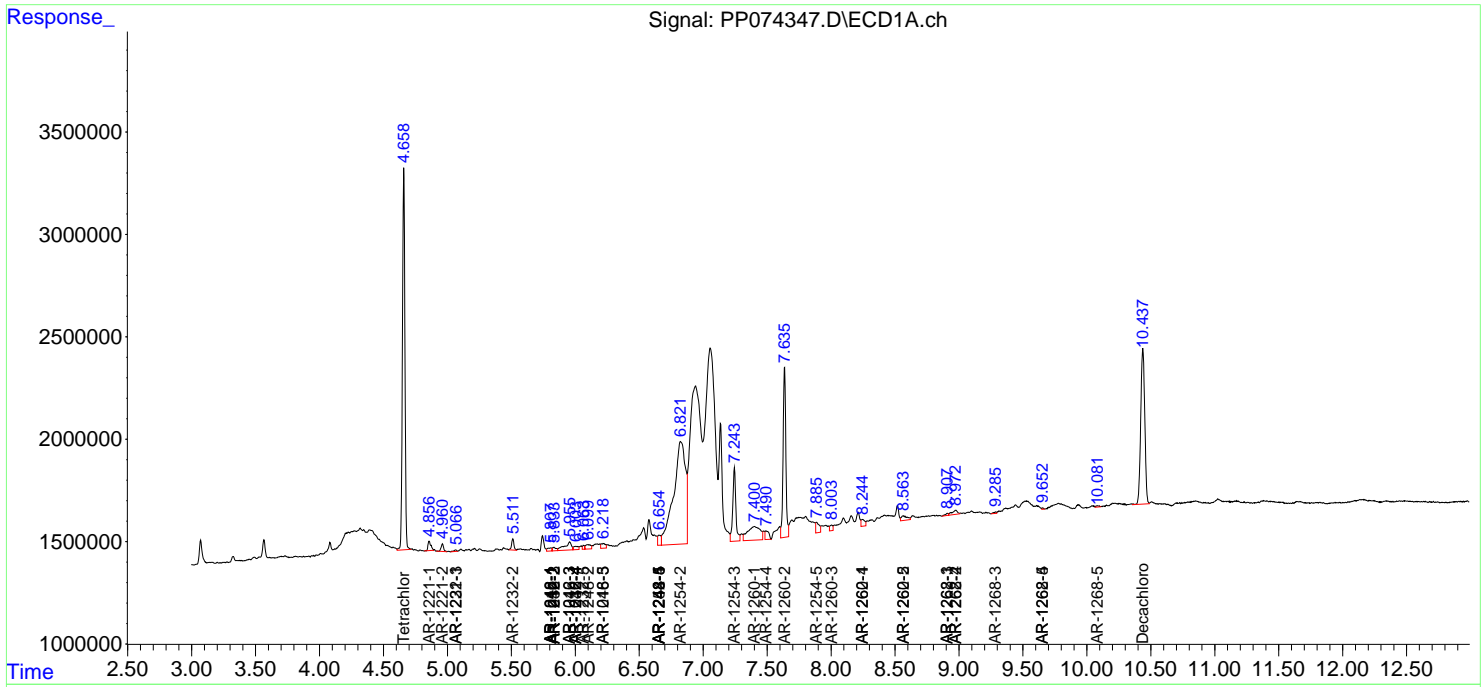
(f)=RT Delta > 1/2 Window (#)=Amounts differ by > 25% (m)=manual int.

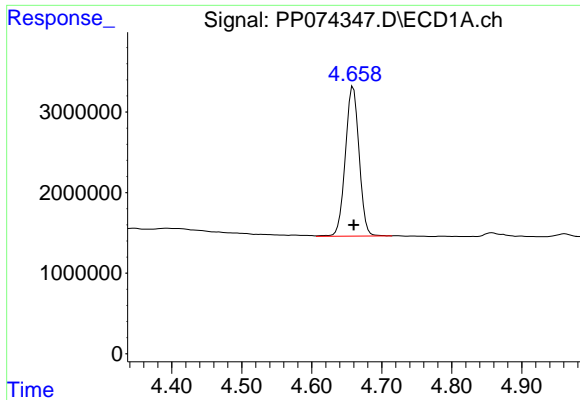
Data Path : Z:\pestpcbsrv\HPCHEM1\ECD\_P\Data\PP081325\  
 Data File : PP074347.D  
 Signal(s) : Signal #1: ECD1A.ch Signal #2: ECD2B.ch  
 Acq On : 13 Aug 2025 15:05  
 Operator : YP\AJ  
 Sample : Q2820-09RX  
 Misc :  
 ALS Vial : 15 Sample Multiplier: 1

Instrument :  
 ECD\_P  
 ClientSampleId :  
 705R-S

Integration File signal 1: autoint1.e  
 Integration File signal 2: autoint2.e  
 Quant Time: Aug 13 15:55:39 2025  
 Quant Method : Z:\pestpcbsrv\HPCHEM1\ECD\_P\methods\PP080125.M  
 Quant Title : GC EXTRACTABLES  
 QLast Update : Mon Aug 04 11:01:49 2025  
 Response via : Initial Calibration  
 Integrator: ChemStation

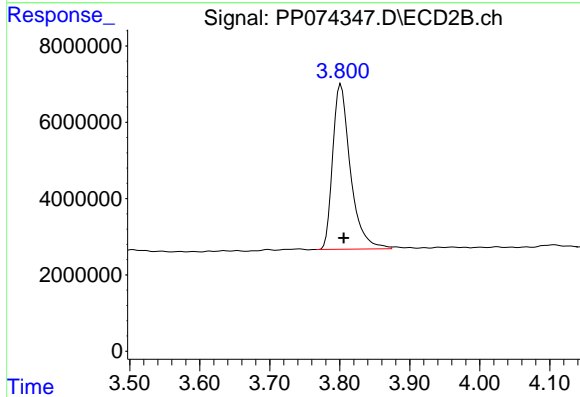
Volume Inj. : 2 µl  
 Signal #1 Phase : ZB-MR1 Signal #2 Phase: ZB-MR2  
 Signal #1 Info : 30Mx0.32mmx 0.50µ Signal #2 Info : 30M x 0.32mm x 0.25µm



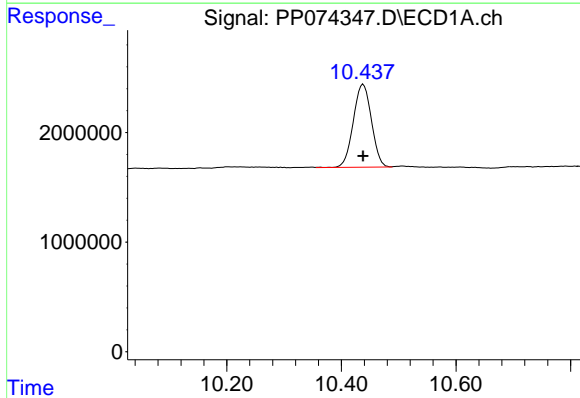


#1 Tetrachloro-m-xylene  
 R.T.: 4.659 min  
 Delta R.T.: 0.000 min  
 Response: 25309574  
 Conc: 22.63 ng/ml

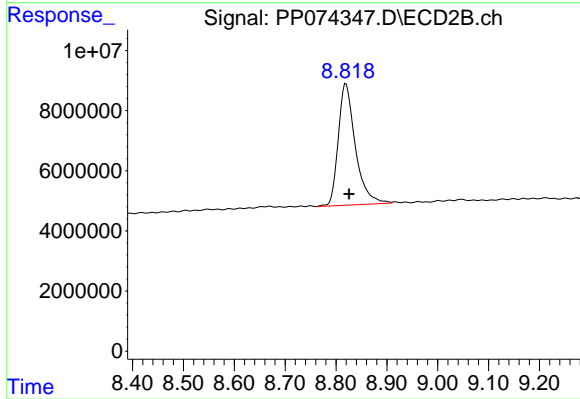
Instrument :  
 ECD\_P  
 ClientSampleId :  
 705R-S



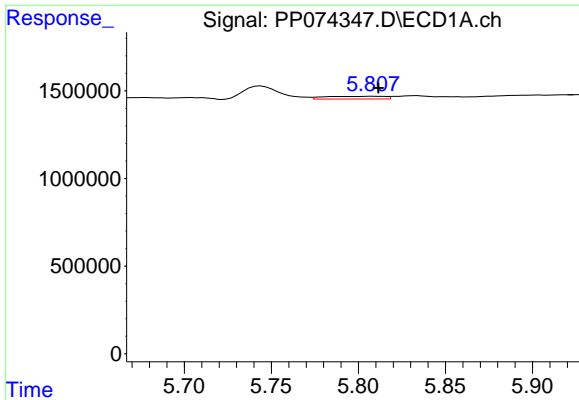
#1 Tetrachloro-m-xylene  
 R.T.: 3.802 min  
 Delta R.T.: -0.004 min  
 Response: 76068856  
 Conc: 19.84 ng/ml



#2 Decachlorobiphenyl  
 R.T.: 10.438 min  
 Delta R.T.: 0.000 min  
 Response: 16639016  
 Conc: 17.13 ng/ml



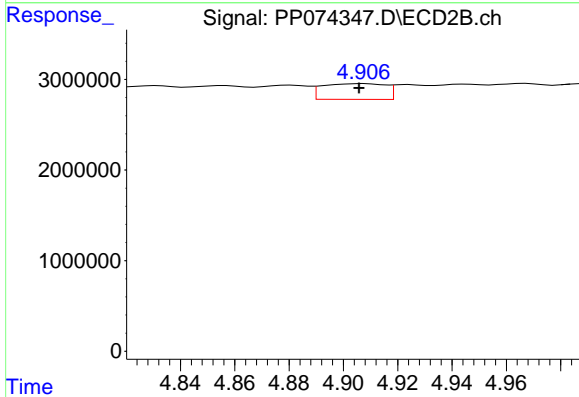
#2 Decachlorobiphenyl  
 R.T.: 8.820 min  
 Delta R.T.: -0.006 min  
 Response: 94371869  
 Conc: 15.69 ng/ml



#3 AR-1016-1

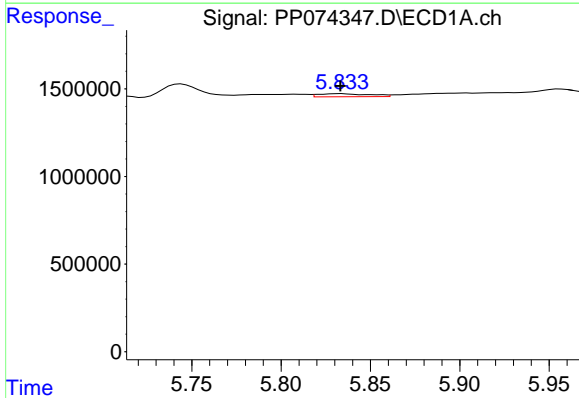
R.T.: 5.808 min  
 Delta R.T.: -0.003 min  
 Response: 367620  
 Conc: 8.91 ng/ml

Instrument :  
 ECD\_P  
 ClientSampleId :  
 705R-S



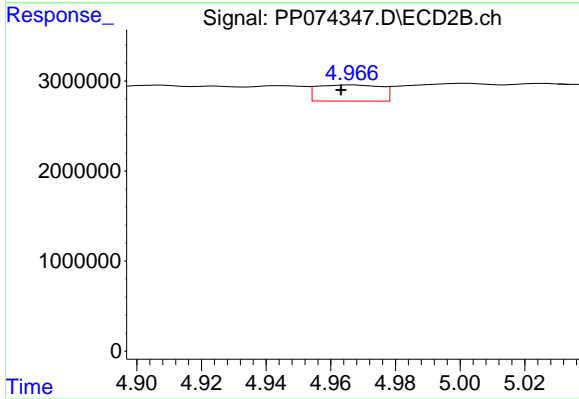
#3 AR-1016-1

R.T.: 4.907 min  
 Delta R.T.: 0.002 min  
 Response: 2807795  
 Conc: 7.04 ng/ml



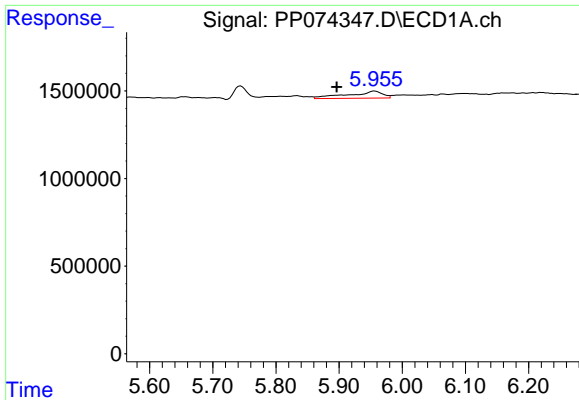
#4 AR-1016-2

R.T.: 5.833 min  
 Delta R.T.: 0.000 min  
 Response: 346343  
 Conc: 5.70 ng/ml



#4 AR-1016-2

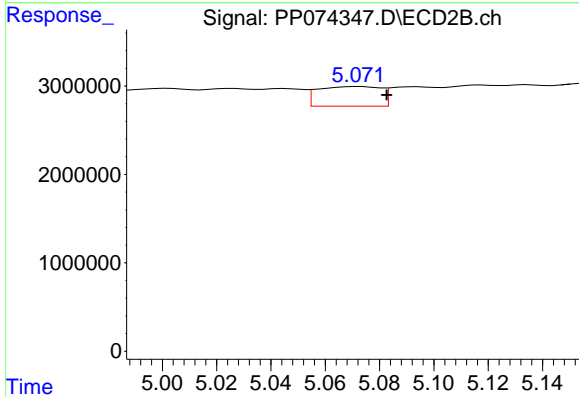
R.T.: 4.967 min  
 Delta R.T.: 0.004 min  
 Response: 2464677  
 Conc: 13.12 ng/ml



#5 AR-1016-3

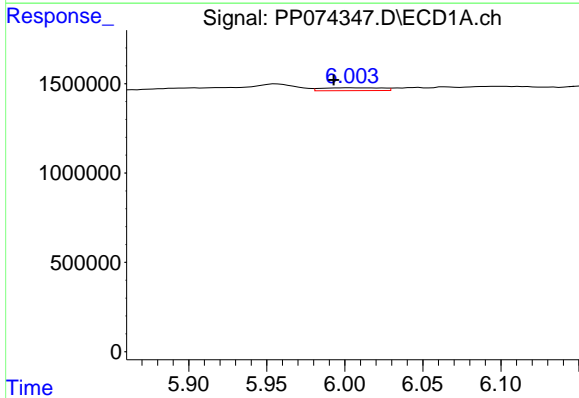
R.T.: 5.956 min  
 Delta R.T.: 0.060 min  
 Response: 1497029  
 Conc: 37.75 ng/ml

Instrument :  
 ECD\_P  
 ClientSampleId :  
 705R-S



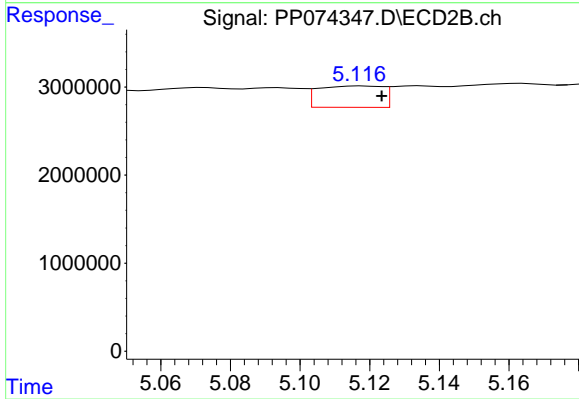
#5 AR-1016-3

R.T.: 5.073 min  
 Delta R.T.: -0.010 min  
 Response: 3580526  
 Conc: 33.76 ng/ml



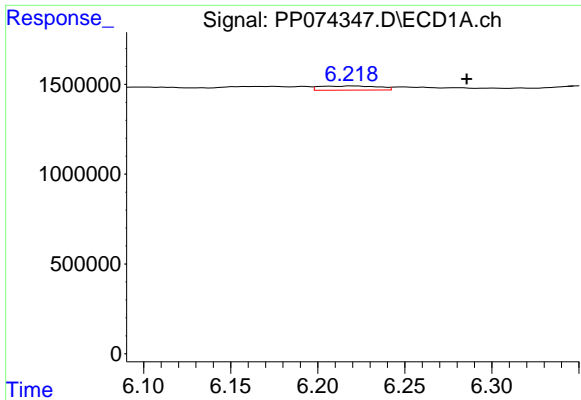
#6 AR-1016-4

R.T.: 6.004 min  
 Delta R.T.: 0.012 min  
 Response: 435867  
 Conc: 13.39 ng/ml



#6 AR-1016-4

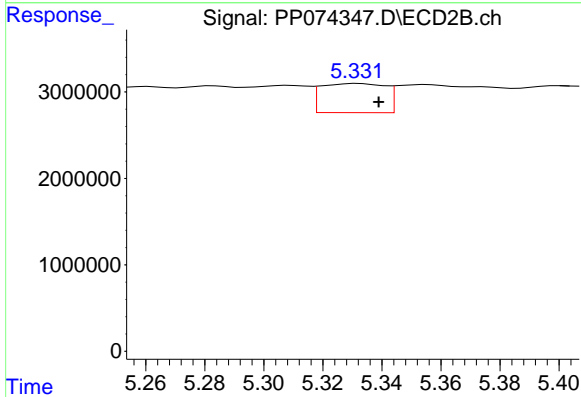
R.T.: 5.118 min  
 Delta R.T.: -0.006 min  
 Response: 3117342  
 Conc: 28.54 ng/ml



#7 AR-1016-5

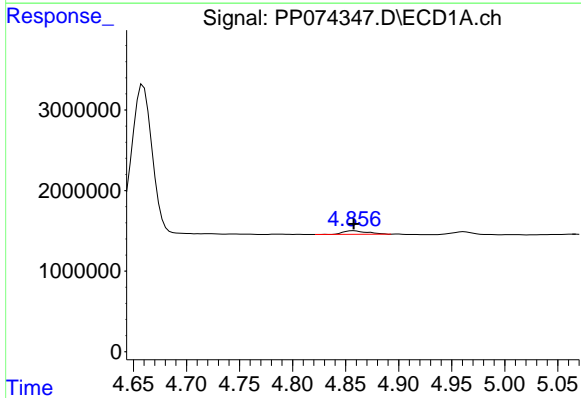
R.T.: 6.220 min  
 Delta R.T.: -0.065 min  
 Response: 544576  
 Conc: 16.77 ng/ml

Instrument :  
 ECD\_P  
 ClientSampleId :  
 705R-S



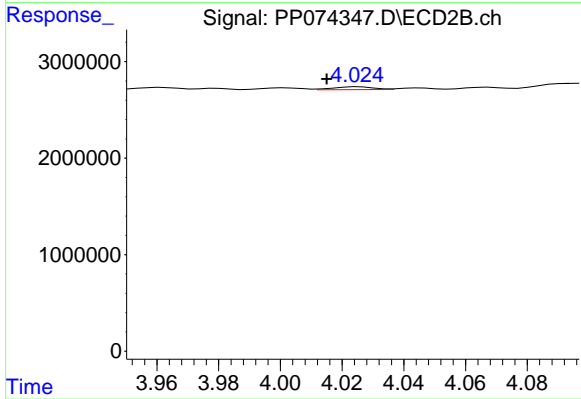
#7 AR-1016-5

R.T.: 5.332 min  
 Delta R.T.: -0.007 min  
 Response: 5092654  
 Conc: 43.54 ng/ml



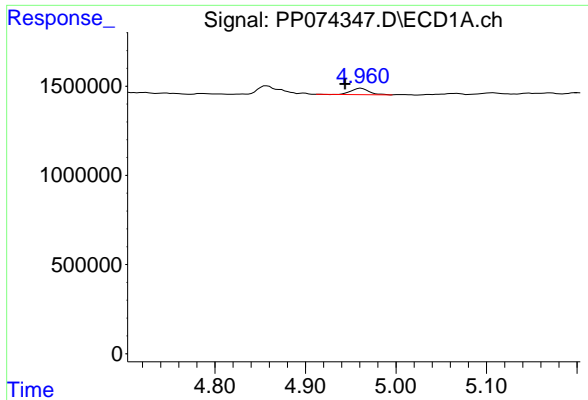
#8 AR-1221-1

R.T.: 4.857 min  
 Delta R.T.: 0.000 min  
 Response: 721323  
 Conc: 43.03 ng/ml



#8 AR-1221-1

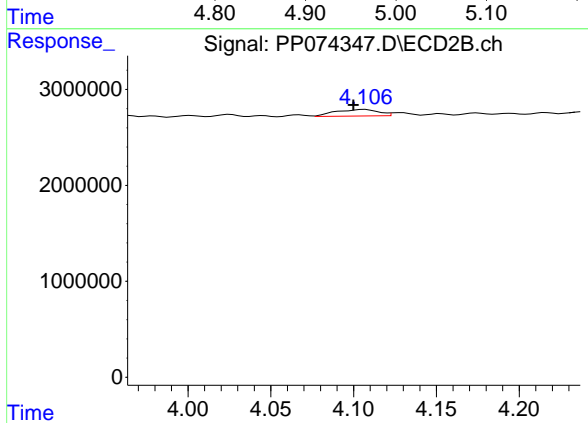
R.T.: 4.025 min  
 Delta R.T.: 0.010 min  
 Response: 276104  
 Conc: 5.63 ng/ml



#9 AR-1221-2

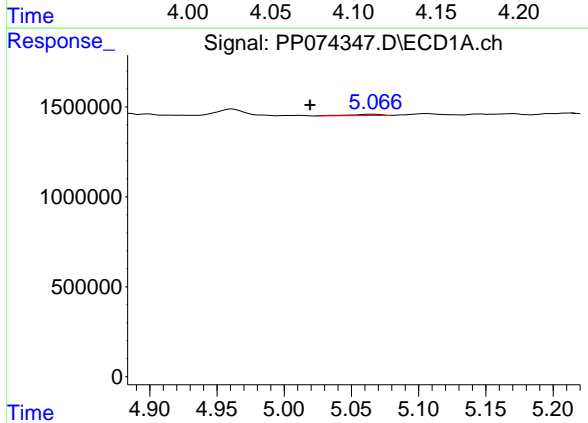
R.T.: 4.962 min  
 Delta R.T.: 0.018 min  
 Response: 497328  
 Conc: 39.47 ng/ml

Instrument :  
 ECD\_P  
 ClientSampleId :  
 705R-S



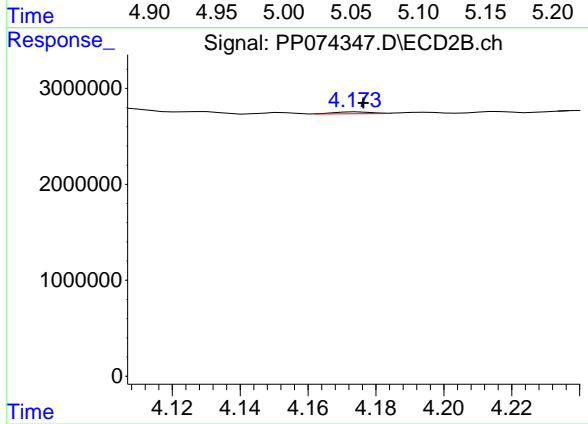
#9 AR-1221-2

R.T.: 4.107 min  
 Delta R.T.: 0.007 min  
 Response: 1219485  
 Conc: 33.98 ng/ml



#10 AR-1221-3

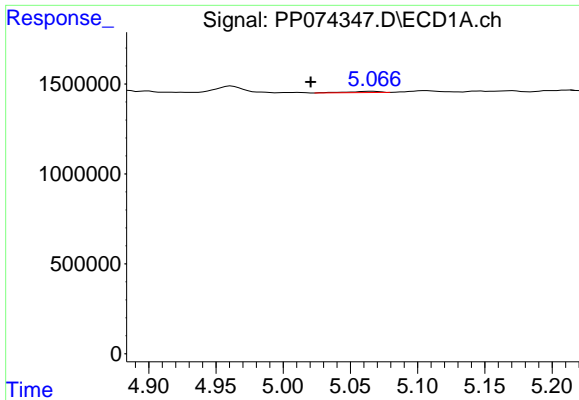
R.T.: 5.067 min  
 Delta R.T.: 0.048 min  
 Response: 116229  
 Conc: 3.17 ng/ml



#10 AR-1221-3

R.T.: 4.174 min  
 Delta R.T.: -0.002 min  
 Response: 148695  
 Conc: 1.10 ng/ml

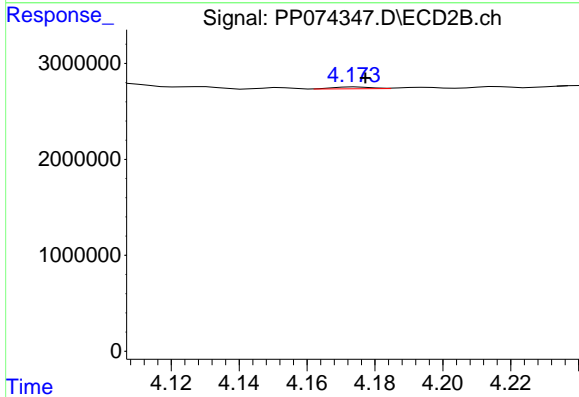




#11 AR-1232-1

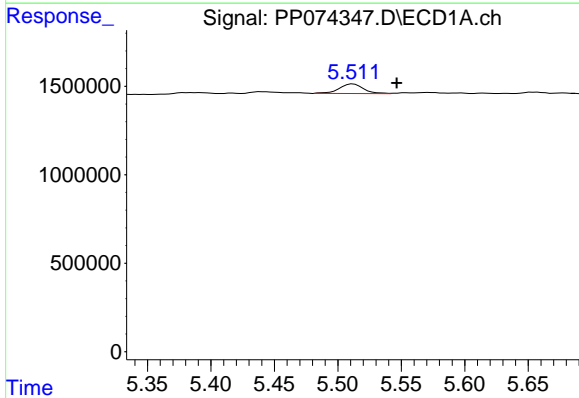
R.T.: 5.067 min  
 Delta R.T.: 0.046 min  
 Response: 116229  
 Conc: 4.00 ng/ml

Instrument :  
 ECD\_P  
 ClientSampleId :  
 705R-S



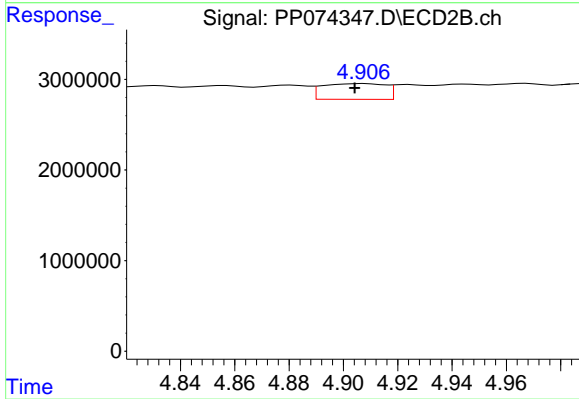
#11 AR-1232-1

R.T.: 4.174 min  
 Delta R.T.: -0.003 min  
 Response: 148695  
 Conc: 1.47 ng/ml



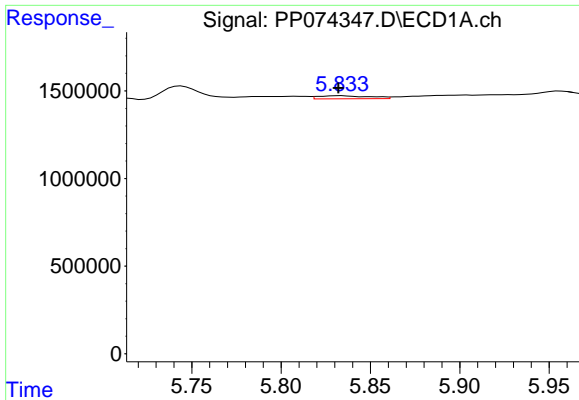
#12 AR-1232-2

R.T.: 5.512 min  
 Delta R.T.: -0.034 min  
 Response: 714690  
 Conc: 47.51 ng/ml



#12 AR-1232-2

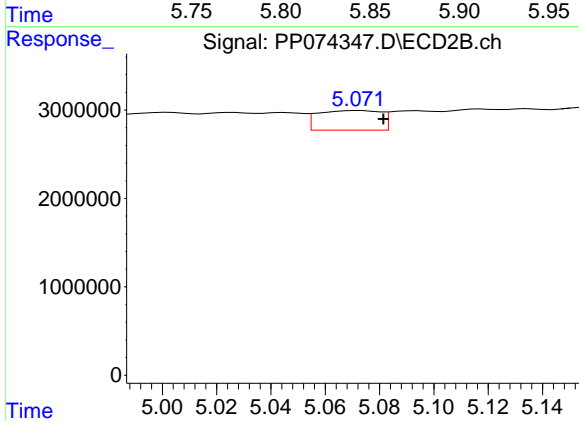
R.T.: 4.907 min  
 Delta R.T.: 0.003 min  
 Response: 2807795  
 Conc: 16.11 ng/ml



#13 AR-1232-3

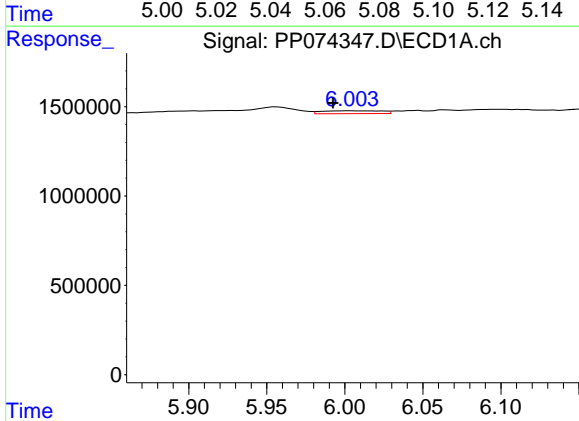
R.T.: 5.833 min  
 Delta R.T.: 0.001 min  
 Response: 346343  
 Conc: 11.94 ng/ml

Instrument :  
 ECD\_P  
 ClientSampleId :  
 705R-S



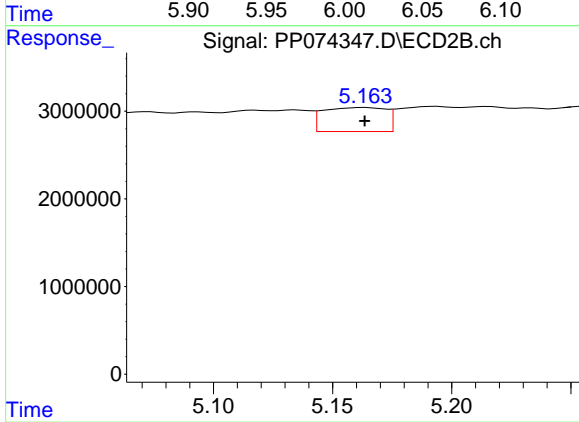
#13 AR-1232-3

R.T.: 5.073 min  
 Delta R.T.: -0.009 min  
 Response: 3580526  
 Conc: 78.15 ng/ml



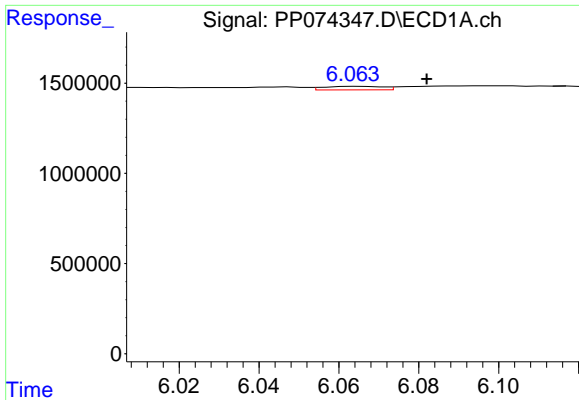
#14 AR-1232-4

R.T.: 6.004 min  
 Delta R.T.: 0.012 min  
 Response: 435867  
 Conc: 28.18 ng/ml



#14 AR-1232-4

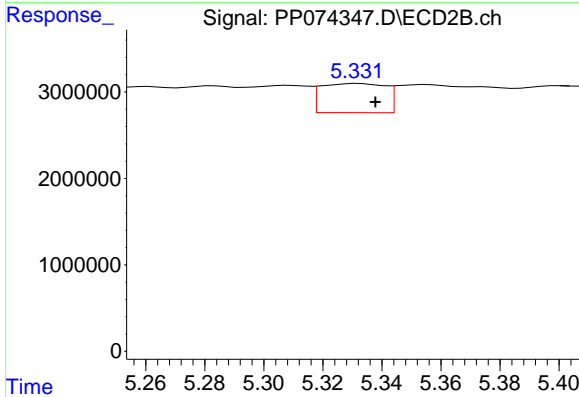
R.T.: 5.164 min  
 Delta R.T.: 0.000 min  
 Response: 5004702  
 Conc: 86.27 ng/ml



#15 AR-1232-5

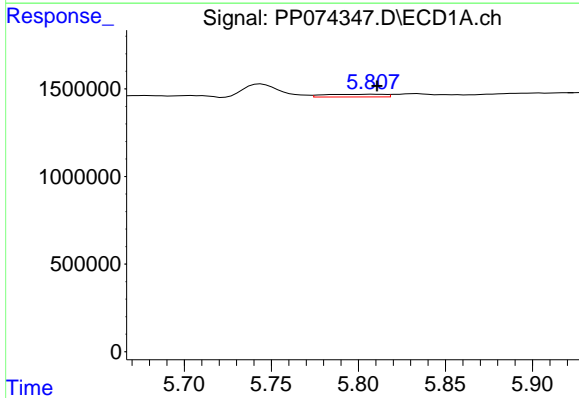
R.T.: 6.065 min  
 Delta R.T.: -0.017 min  
 Response: 200337  
 Conc: 17.10 ng/ml

Instrument :  
 ECD\_P  
 ClientSampleId :  
 705R-S



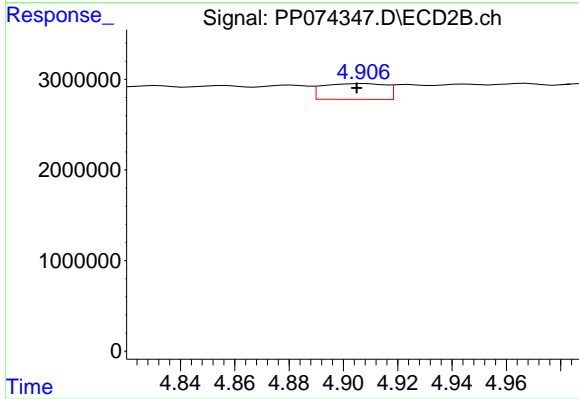
#15 AR-1232-5

R.T.: 5.332 min  
 Delta R.T.: -0.006 min  
 Response: 5092654  
 Conc: 108.40 ng/ml



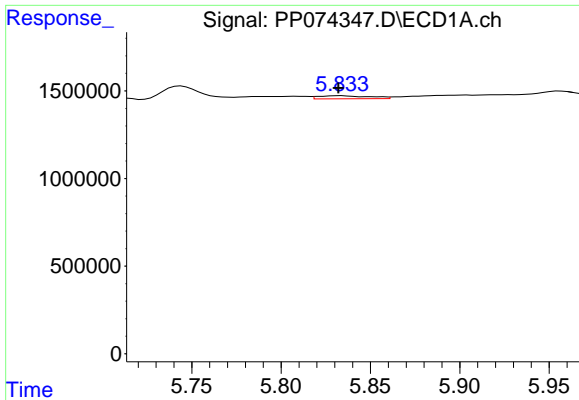
#16 AR-1242-1

R.T.: 5.808 min  
 Delta R.T.: -0.002 min  
 Response: 367620  
 Conc: 9.86 ng/ml



#16 AR-1242-1

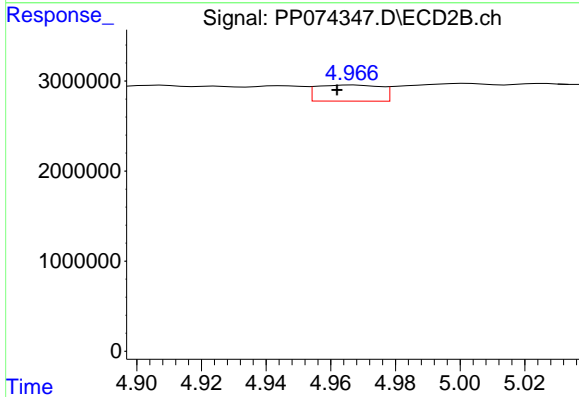
R.T.: 4.907 min  
 Delta R.T.: 0.002 min  
 Response: 2807795  
 Conc: 8.14 ng/ml



#17 AR-1242-2

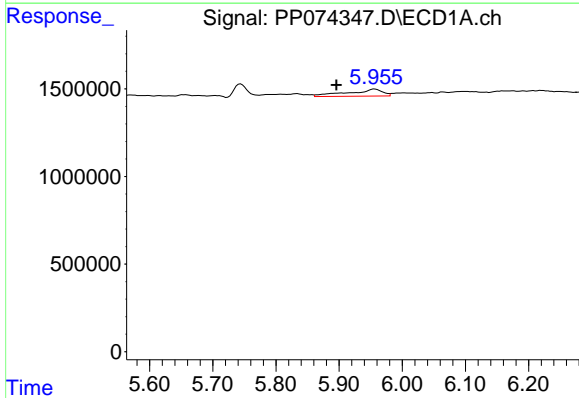
R.T.: 5.833 min  
 Delta R.T.: 0.001 min  
 Response: 346343  
 Conc: 6.37 ng/ml

Instrument :  
 ECD\_P  
 ClientSampleId :  
 705R-S



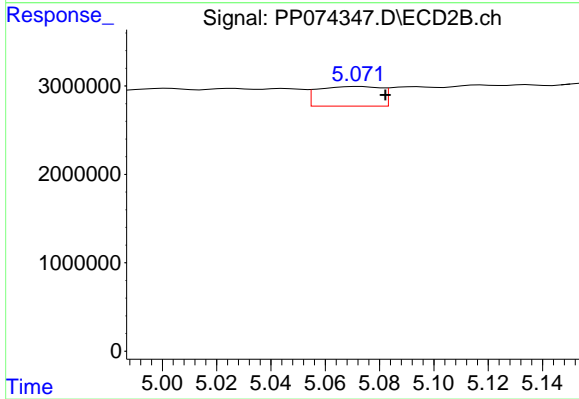
#17 AR-1242-2

R.T.: 4.967 min  
 Delta R.T.: 0.005 min  
 Response: 2464677  
 Conc: 15.09 ng/ml



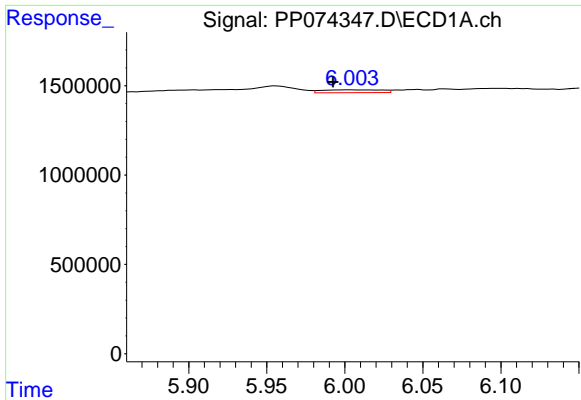
#18 AR-1242-3

R.T.: 5.956 min  
 Delta R.T.: 0.061 min  
 Response: 1497029  
 Conc: 41.89 ng/ml



#18 AR-1242-3

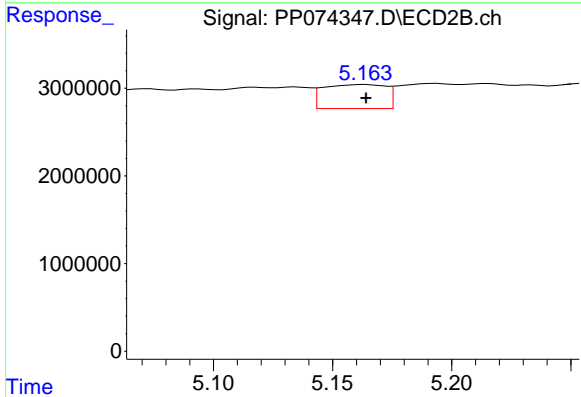
R.T.: 5.073 min  
 Delta R.T.: -0.010 min  
 Response: 3580526  
 Conc: 38.81 ng/ml



#19 AR-1242-4

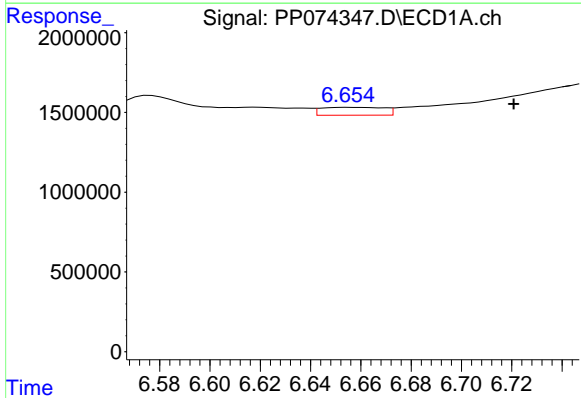
R.T.: 6.004 min  
 Delta R.T.: 0.012 min  
 Response: 435867  
 Conc: 14.92 ng/ml

Instrument :  
 ECD\_P  
 ClientSampleId :  
 705R-S



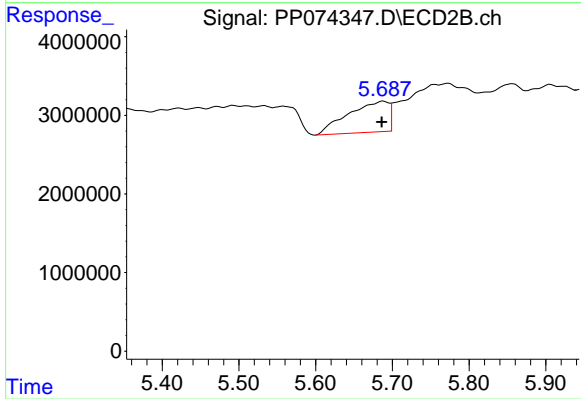
#19 AR-1242-4

R.T.: 5.164 min  
 Delta R.T.: 0.000 min  
 Response: 5004702  
 Conc: 41.91 ng/ml



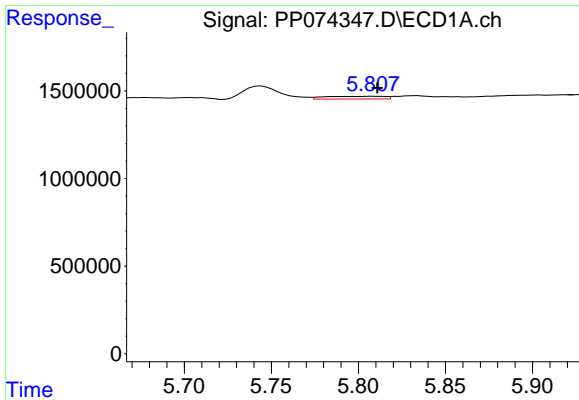
#20 AR-1242-5

R.T.: 6.655 min  
 Delta R.T.: -0.066 min  
 Response: 858263  
 Conc: 24.14 ng/ml



#20 AR-1242-5

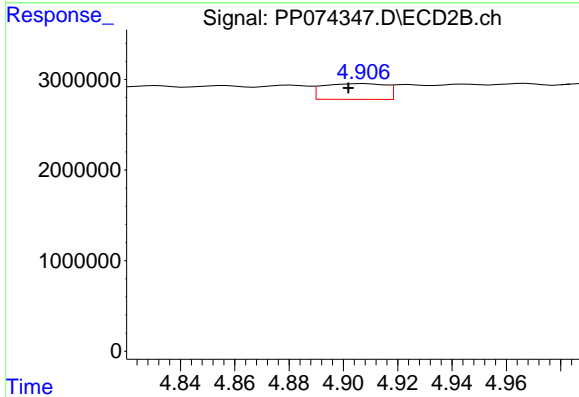
R.T.: 5.688 min  
 Delta R.T.: 0.002 min  
 Response: 14392152  
 Conc: 96.23 ng/ml



#21 AR-1248-1

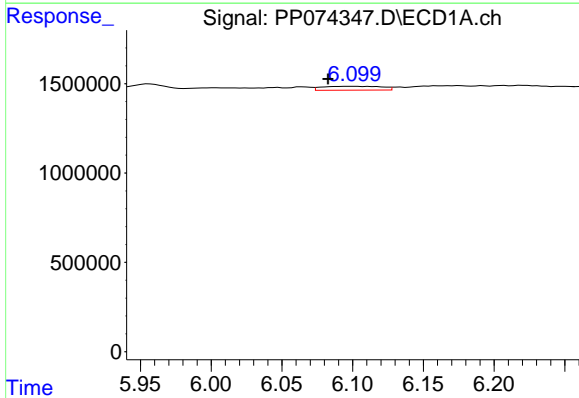
R.T.: 5.808 min  
 Delta R.T.: -0.003 min  
 Response: 367620  
 Conc: 13.12 ng/ml

Instrument :  
 ECD\_P  
 ClientSampleId :  
 705R-S



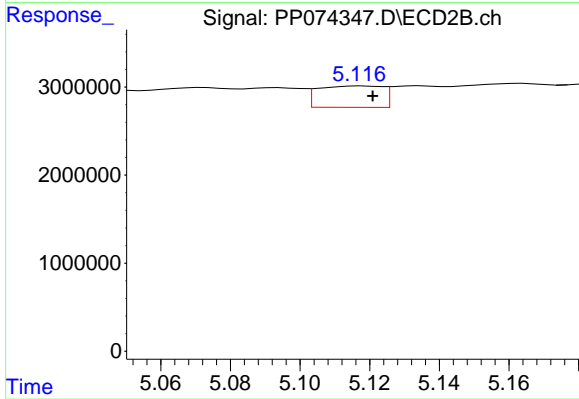
#21 AR-1248-1

R.T.: 4.907 min  
 Delta R.T.: 0.006 min  
 Response: 2807795  
 Conc: 13.12 ng/ml



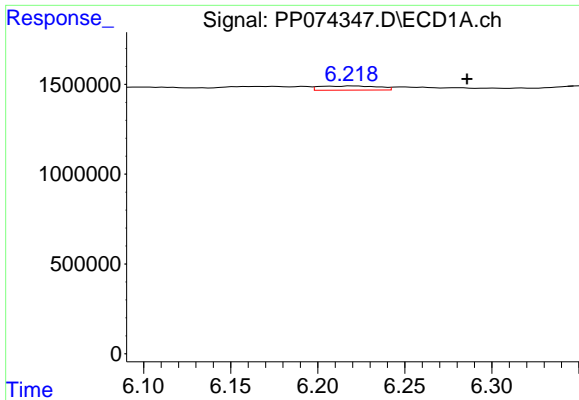
#22 AR-1248-2

R.T.: 6.100 min  
 Delta R.T.: 0.018 min  
 Response: 624388  
 Conc: 15.51 ng/ml



#22 AR-1248-2

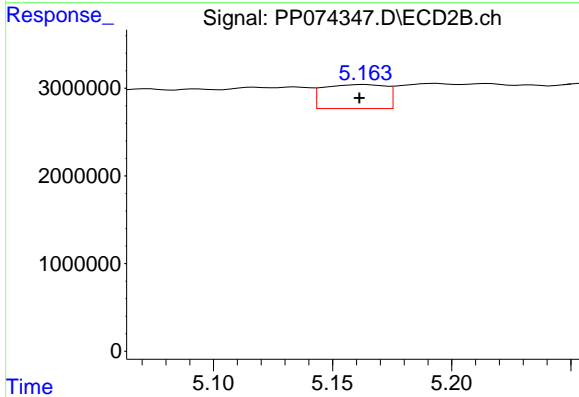
R.T.: 5.118 min  
 Delta R.T.: -0.003 min  
 Response: 3117342  
 Conc: 21.31 ng/ml



#23 AR-1248-3

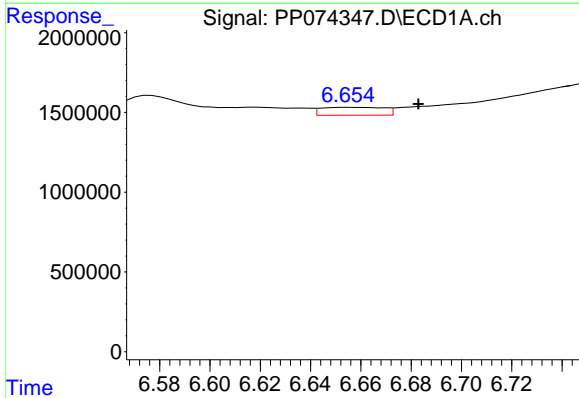
R.T.: 6.220 min  
 Delta R.T.: -0.066 min  
 Response: 544576  
 Conc: 12.22 ng/ml

Instrument :  
 ECD\_P  
 ClientSampleId :  
 705R-S



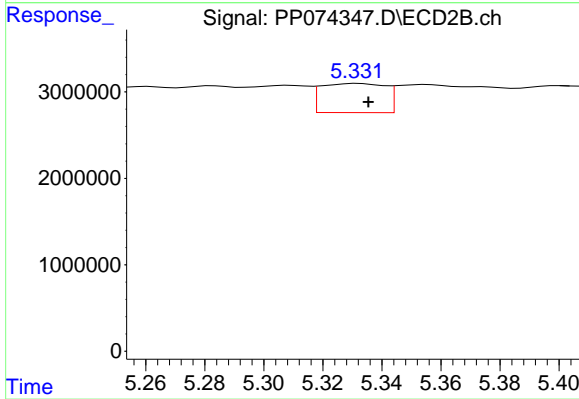
#23 AR-1248-3

R.T.: 5.164 min  
 Delta R.T.: 0.003 min  
 Response: 5004702  
 Conc: 29.19 ng/ml



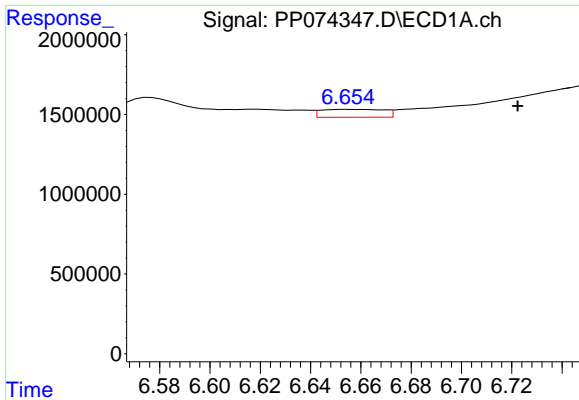
#24 AR-1248-4

R.T.: 6.655 min  
 Delta R.T.: -0.028 min  
 Response: 858263  
 Conc: 16.49 ng/ml



#24 AR-1248-4

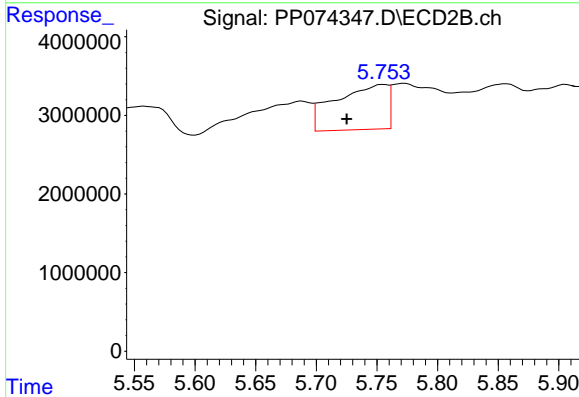
R.T.: 5.332 min  
 Delta R.T.: -0.003 min  
 Response: 5092654  
 Conc: 30.61 ng/ml



#25 AR-1248-5

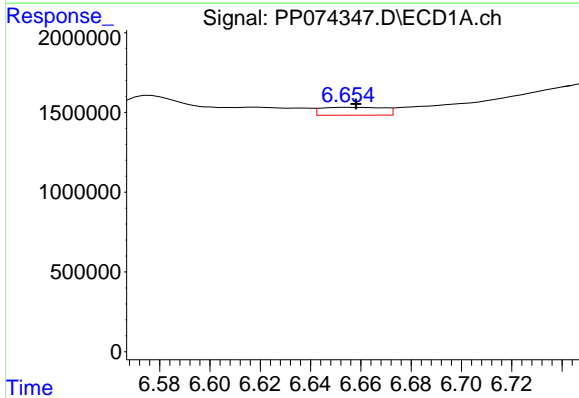
R.T.: 6.655 min  
 Delta R.T.: -0.067 min  
 Response: 858263  
 Conc: 15.07 ng/ml

Instrument :  
 ECD\_P  
 ClientSampleId :  
 705R-S



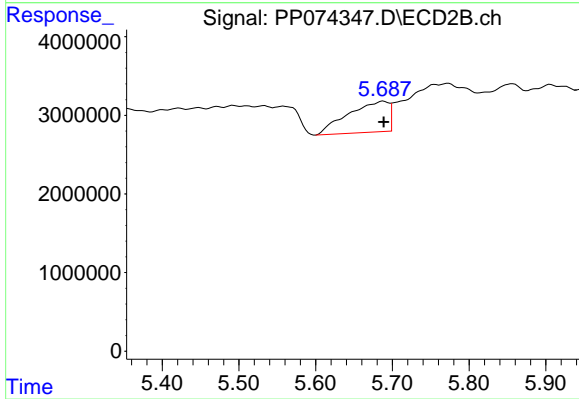
#25 AR-1248-5

R.T.: 5.755 min  
 Delta R.T.: 0.030 min  
 Response: 17070748  
 Conc: 58.67 ng/ml



#26 AR-1254-1

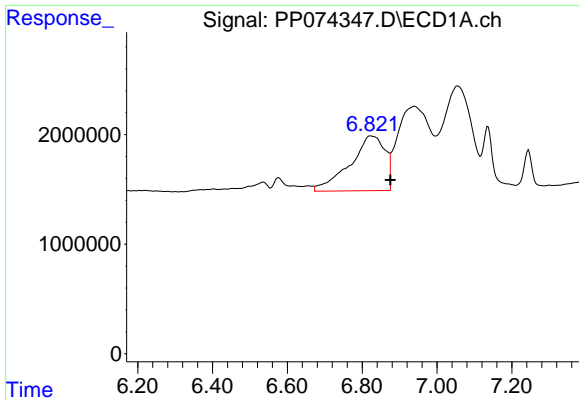
R.T.: 6.655 min  
 Delta R.T.: -0.003 min  
 Response: 858263  
 Conc: 16.30 ng/ml



#26 AR-1254-1

R.T.: 5.688 min  
 Delta R.T.: 0.000 min  
 Response: 14392152  
 Conc: 39.30 ng/ml

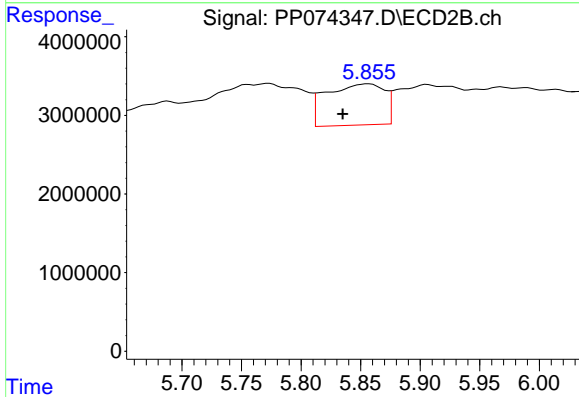




#27 AR-1254-2

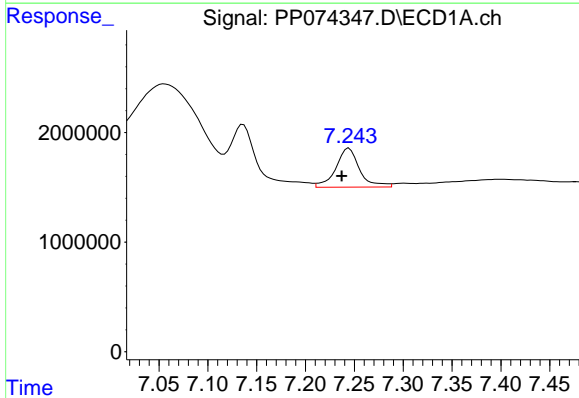
R.T.: 6.822 min  
 Delta R.T.: -0.053 min  
 Response: 32555850  
 Conc: 409.48 ng/ml

Instrument :  
 ECD\_P  
 ClientSampleId :  
 705R-S



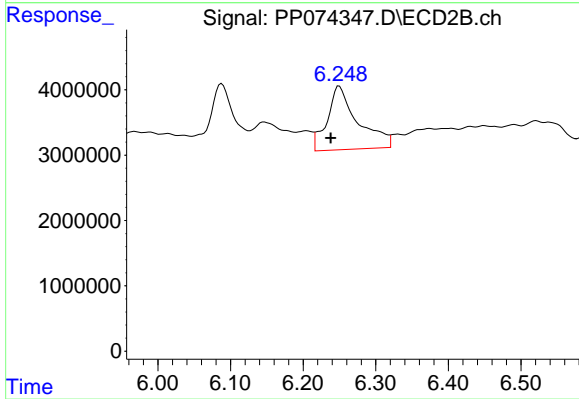
#27 AR-1254-2

R.T.: 5.857 min  
 Delta R.T.: 0.022 min  
 Response: 17805207  
 Conc: 64.00 ng/ml



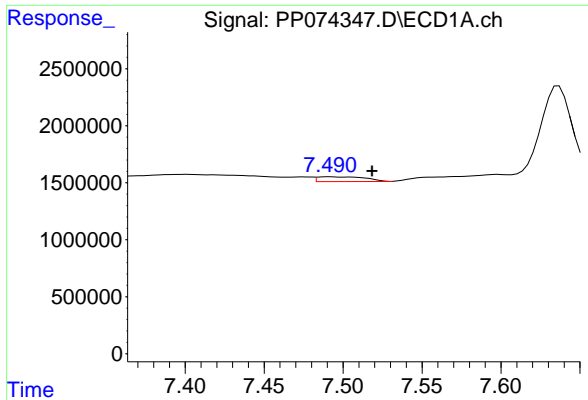
#28 AR-1254-3

R.T.: 7.245 min  
 Delta R.T.: 0.007 min  
 Response: 6023364  
 Conc: 68.98 ng/ml



#28 AR-1254-3

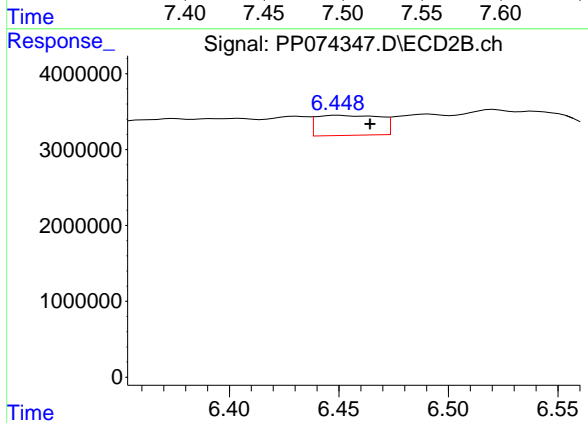
R.T.: 6.250 min  
 Delta R.T.: 0.012 min  
 Response: 28449274  
 Conc: 58.15 ng/ml



#29 AR-1254-4

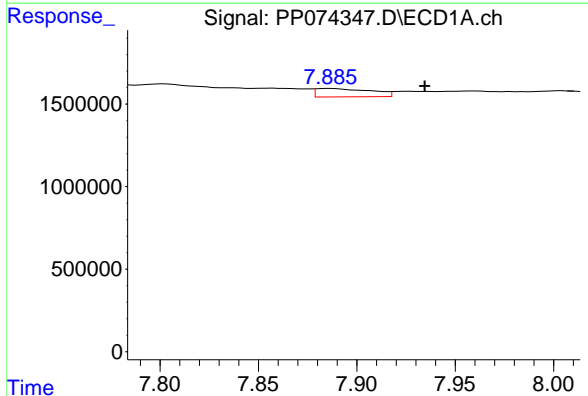
R.T.: 7.491 min  
 Delta R.T.: -0.027 min  
 Response: 880280  
 Conc: 13.80 ng/ml

Instrument :  
 ECD\_P  
 ClientSampleId :  
 705R-S



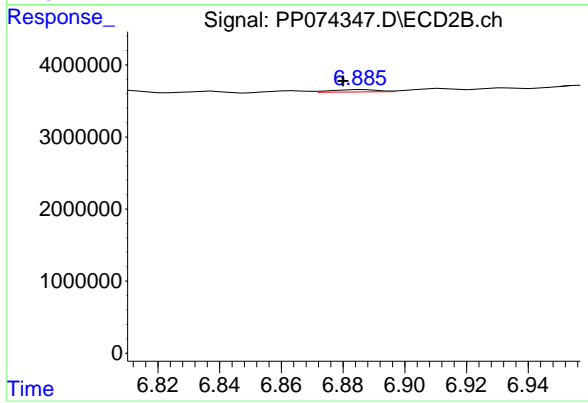
#29 AR-1254-4

R.T.: 6.450 min  
 Delta R.T.: -0.014 min  
 Response: 5340777  
 Conc: 14.53 ng/ml



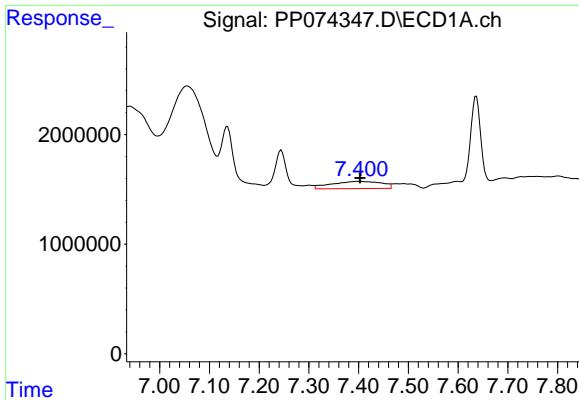
#30 AR-1254-5

R.T.: 7.886 min  
 Delta R.T.: -0.048 min  
 Response: 985385  
 Conc: 12.14 ng/ml



#30 AR-1254-5

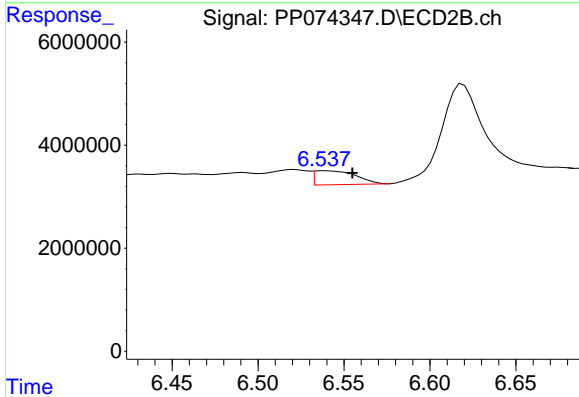
R.T.: 6.886 min  
 Delta R.T.: 0.006 min  
 Response: 342021  
 Conc: 0.89 ng/ml



#31 AR-1260-1

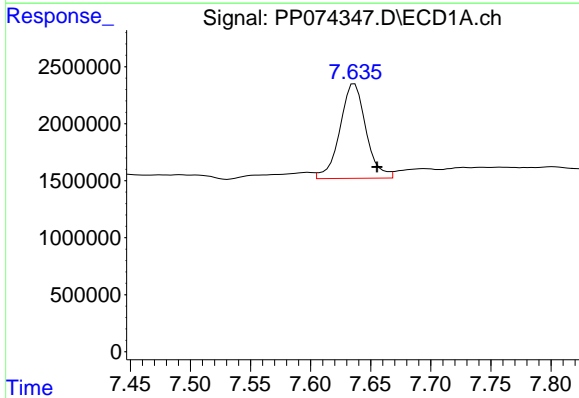
R.T.: 7.401 min  
 Delta R.T.: -0.002 min  
 Response: 4632446  
 Conc: 82.20 ng/ml

Instrument :  
 ECD\_P  
 ClientSampleId :  
 705R-S



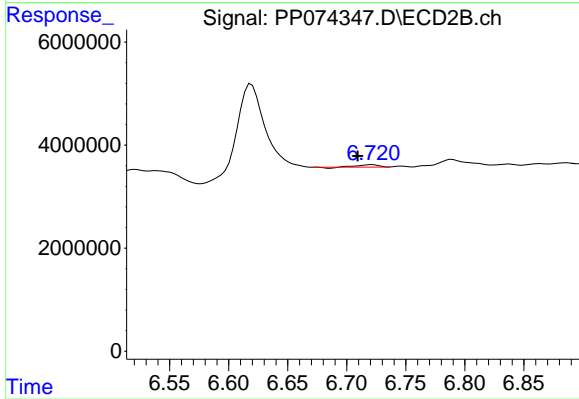
#31 AR-1260-1

R.T.: 6.539 min  
 Delta R.T.: -0.016 min  
 Response: 4546880  
 Conc: 11.26 ng/ml



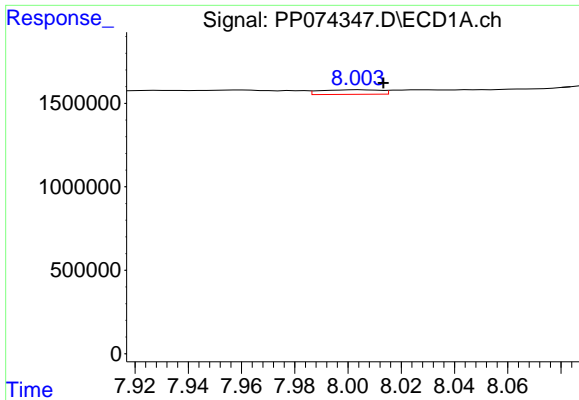
#32 AR-1260-2

R.T.: 7.637 min  
 Delta R.T.: -0.019 min  
 Response: 12524592  
 Conc: 183.77 ng/ml



#32 AR-1260-2

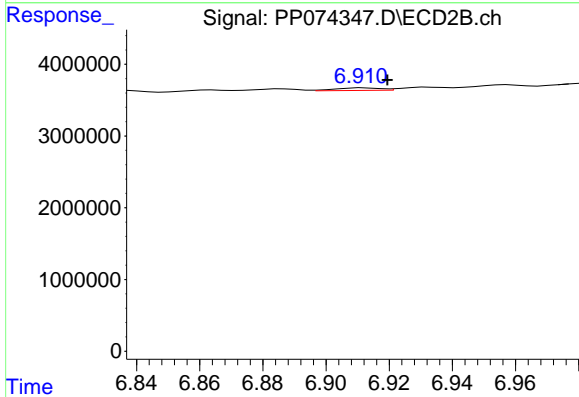
R.T.: 6.722 min  
 Delta R.T.: 0.012 min  
 Response: 453446  
 Conc: 1.45 ng/ml



#33 AR-1260-3

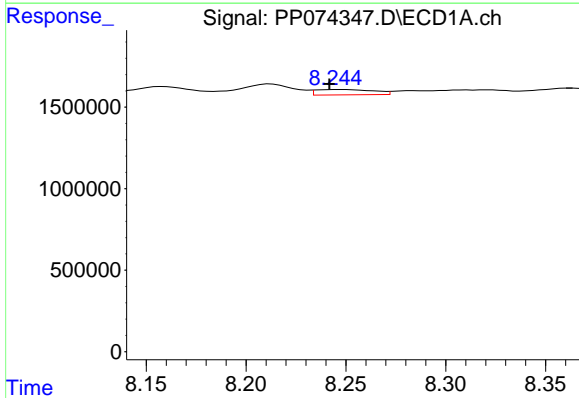
R.T.: 8.004 min  
 Delta R.T.: -0.009 min  
 Response: 430942  
 Conc: 8.09 ng/ml

Instrument :  
 ECD\_P  
 ClientSampleId :  
 705R-S



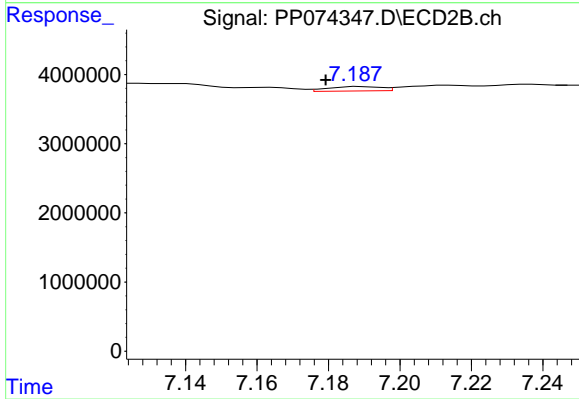
#33 AR-1260-3

R.T.: 6.912 min  
 Delta R.T.: -0.008 min  
 Response: 375393  
 Conc: 0.95 ng/ml



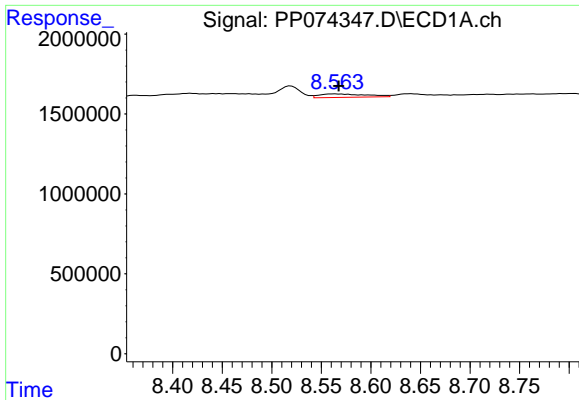
#34 AR-1260-4

R.T.: 8.247 min  
 Delta R.T.: 0.005 min  
 Response: 656679  
 Conc: 10.49 ng/ml



#34 AR-1260-4

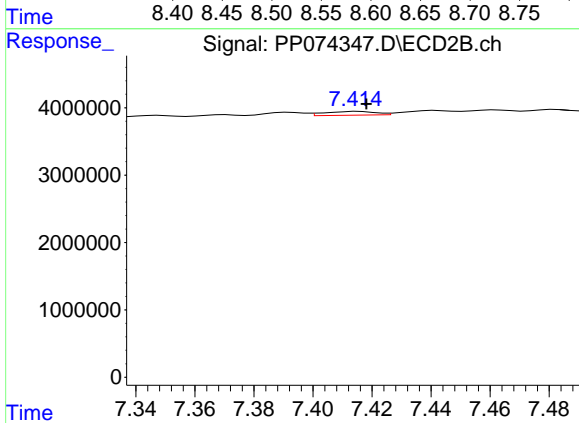
R.T.: 7.189 min  
 Delta R.T.: 0.010 min  
 Response: 663763  
 Conc: 2.28 ng/ml



#35 AR-1260-5

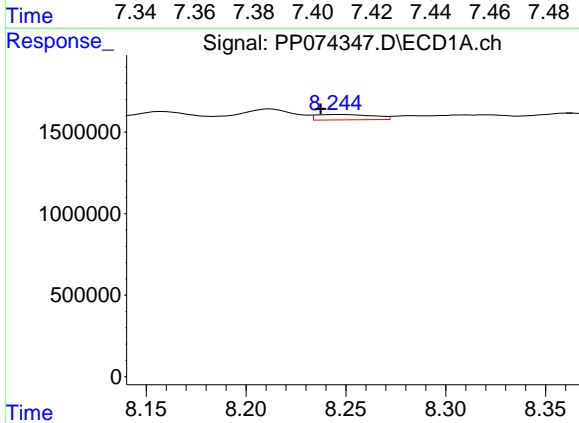
R.T.: 8.564 min  
 Delta R.T.: -0.004 min  
 Response: 704852  
 Conc: 6.22 ng/ml

Instrument :  
 ECD\_P  
 ClientSampleId :  
 705R-S



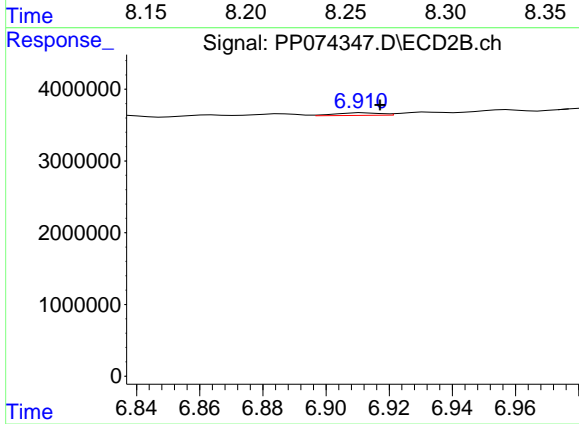
#35 AR-1260-5

R.T.: 7.415 min  
 Delta R.T.: -0.003 min  
 Response: 677772  
 Conc: 0.89 ng/ml



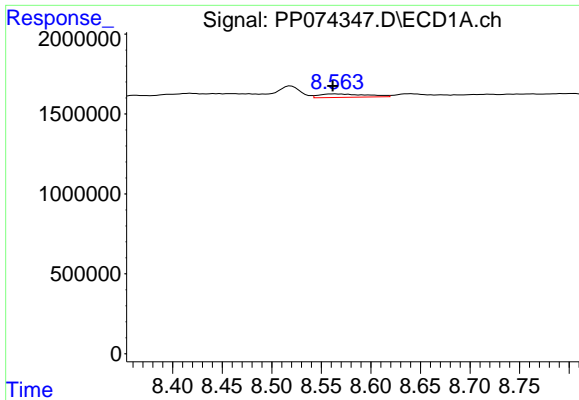
#36 AR-1262-1

R.T.: 8.247 min  
 Delta R.T.: 0.009 min  
 Response: 656679  
 Conc: 8.66 ng/ml



#36 AR-1262-1

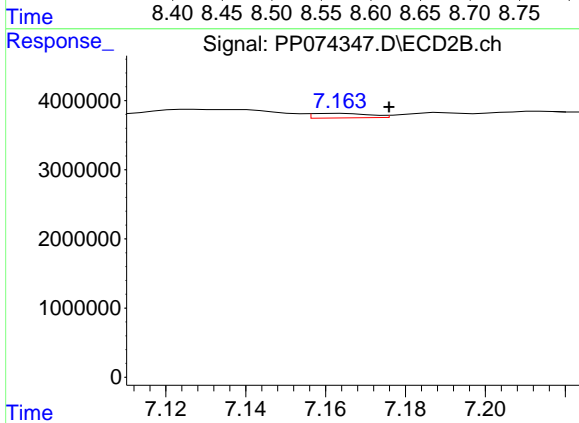
R.T.: 6.912 min  
 Delta R.T.: -0.005 min  
 Response: 375393  
 Conc: 0.67 ng/ml



#37 AR-1262-2

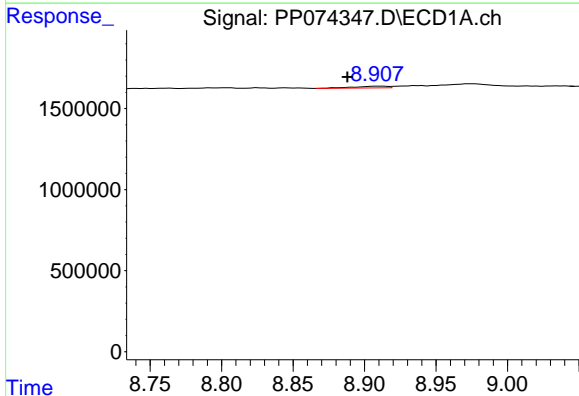
R.T.: 8.564 min  
 Delta R.T.: 0.002 min  
 Response: 704852  
 Conc: 5.40 ng/ml

Instrument :  
 ECD\_P  
 ClientSampleId :  
 705R-S



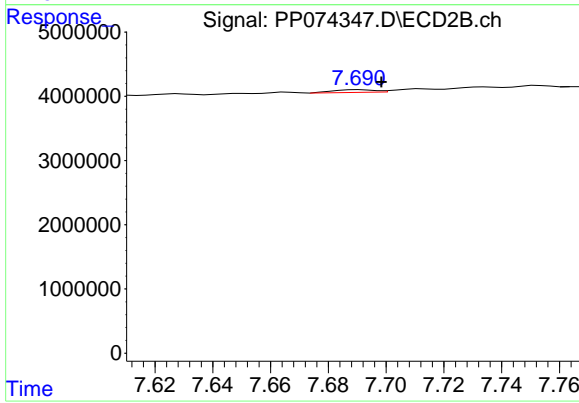
#37 AR-1262-2

R.T.: 7.164 min  
 Delta R.T.: -0.012 min  
 Response: 668867  
 Conc: 1.67 ng/ml



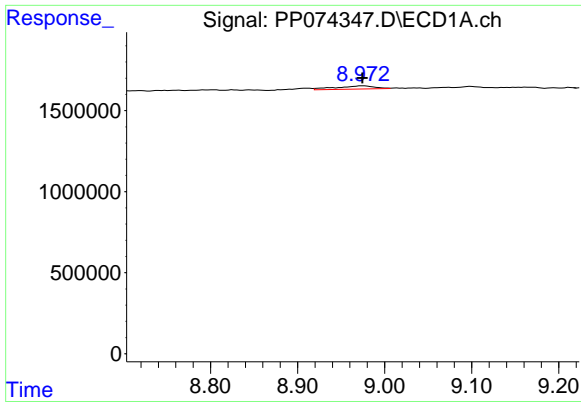
#38 AR-1262-3

R.T.: 8.910 min  
 Delta R.T.: 0.022 min  
 Response: 167883  
 Conc: 1.78 ng/ml



#38 AR-1262-3

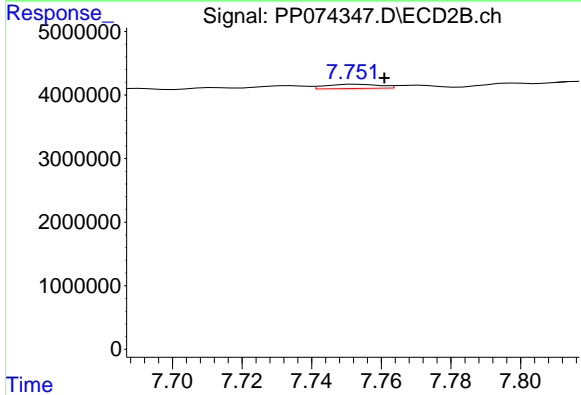
R.T.: 7.691 min  
 Delta R.T.: -0.008 min  
 Response: 439197  
 Conc: 1.22 ng/ml



#39 AR-1262-4

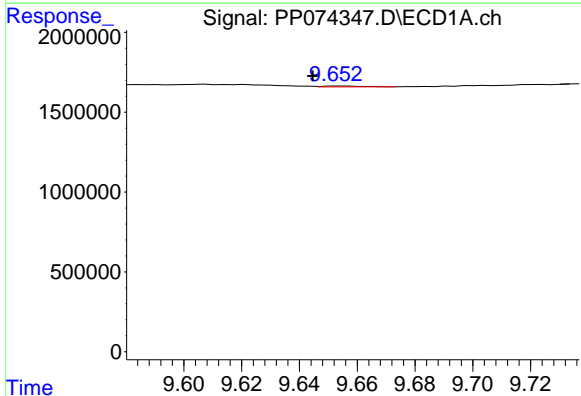
R.T.: 8.975 min  
 Delta R.T.: 0.000 min  
 Response: 610395  
 Conc: 8.38 ng/ml

Instrument :  
 ECD\_P  
 ClientSampleId :  
 705R-S



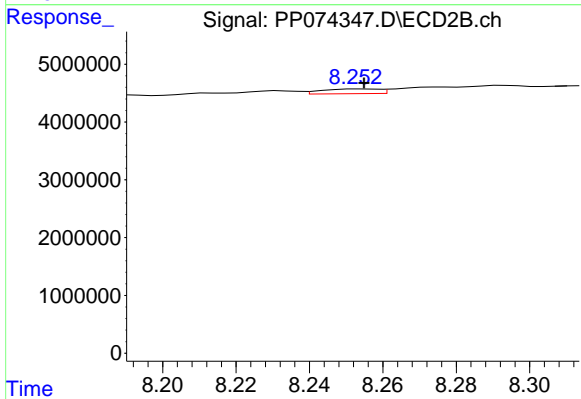
#39 AR-1262-4

R.T.: 7.753 min  
 Delta R.T.: -0.008 min  
 Response: 701827  
 Conc: 1.05 ng/ml



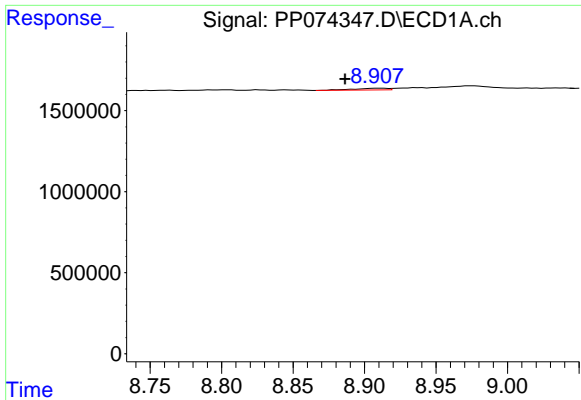
#40 AR-1262-5

R.T.: 9.655 min  
 Delta R.T.: 0.010 min  
 Response: 55993  
 Conc: 1.10 ng/ml



#40 AR-1262-5

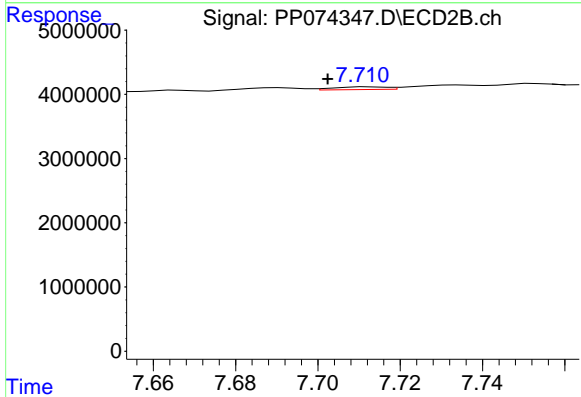
R.T.: 8.254 min  
 Delta R.T.: -0.001 min  
 Response: 871687  
 Conc: 3.08 ng/ml



#41 AR-1268-1

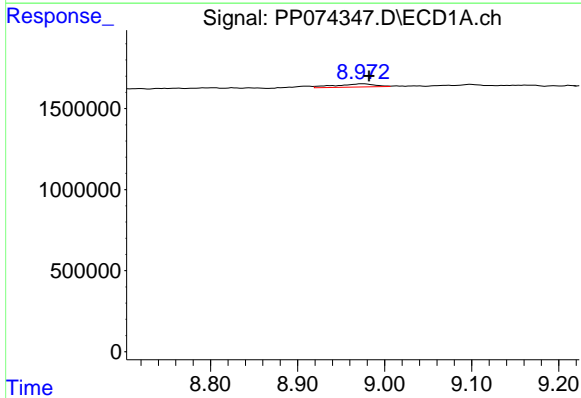
R.T.: 8.910 min  
 Delta R.T.: 0.024 min  
 Response: 167883  
 Conc: 1.08 ng/ml

Instrument :  
 ECD\_P  
 ClientSampleId :  
 705R-S



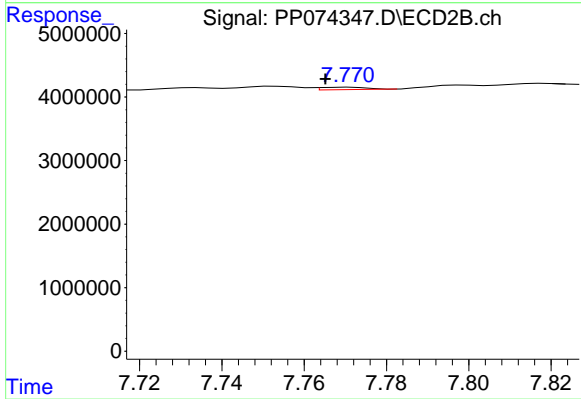
#41 AR-1268-1

R.T.: 7.712 min  
 Delta R.T.: 0.010 min  
 Response: 370237  
 Conc: 0.34 ng/ml



#42 AR-1268-2

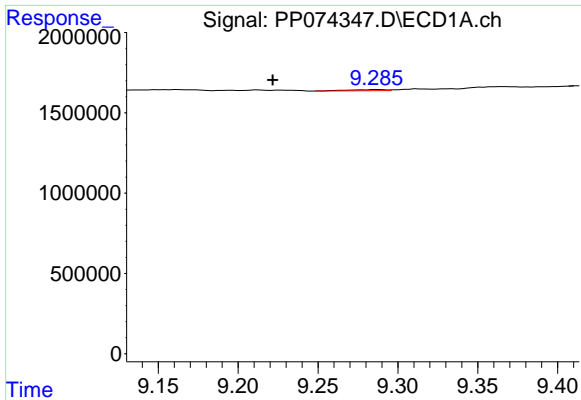
R.T.: 8.975 min  
 Delta R.T.: -0.007 min  
 Response: 610395  
 Conc: 4.26 ng/ml



#42 AR-1268-2

R.T.: 7.771 min  
 Delta R.T.: 0.006 min  
 Response: 293548  
 Conc: 0.28 ng/ml

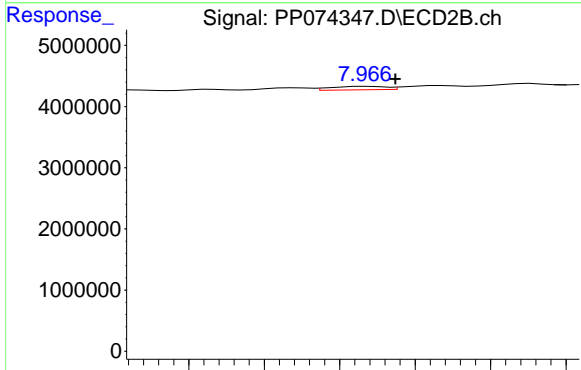




#43 AR-1268-3

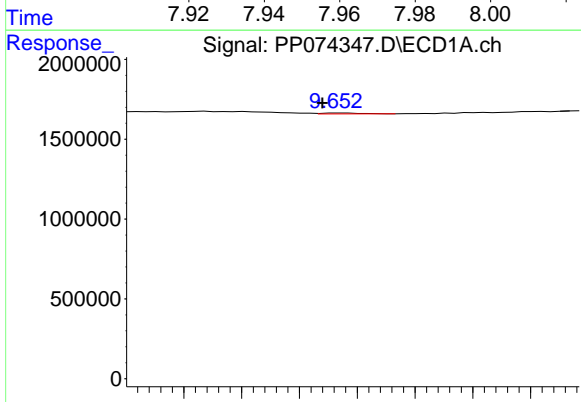
R.T.: 9.287 min  
 Delta R.T.: 0.066 min  
 Response: 110785  
 Conc: 0.93 ng/ml

Instrument :  
 ECD\_P  
 ClientSampleId :  
 705R-S



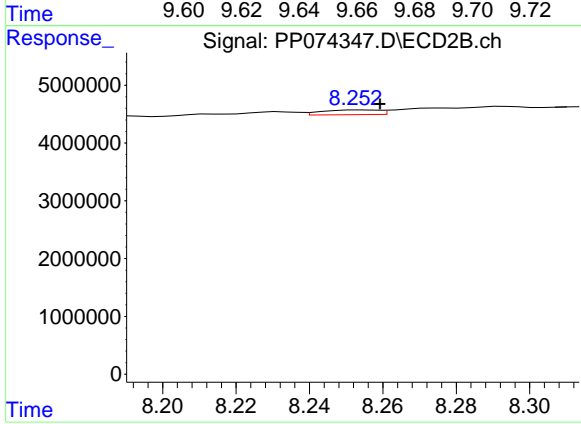
#43 AR-1268-3

R.T.: 7.967 min  
 Delta R.T.: -0.007 min  
 Response: 574527  
 Conc: 0.69 ng/ml



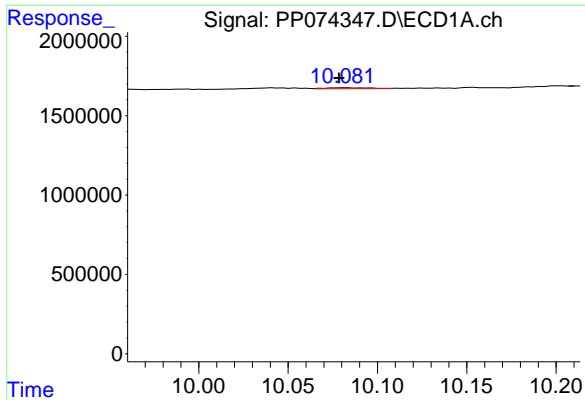
#44 AR-1268-4

R.T.: 9.655 min  
 Delta R.T.: 0.007 min  
 Response: 55993  
 Conc: 0.95 ng/ml



#44 AR-1268-4

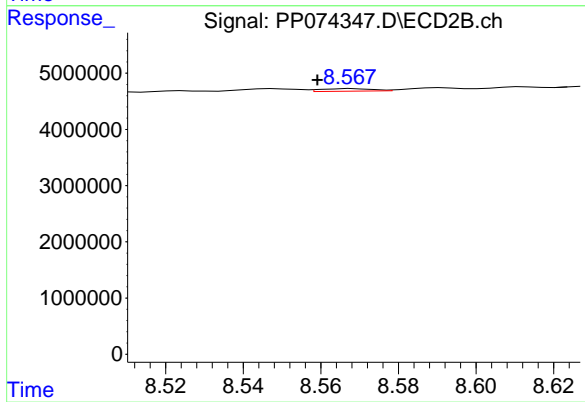
R.T.: 8.254 min  
 Delta R.T.: -0.005 min  
 Response: 871687  
 Conc: 2.83 ng/ml



#45 AR-1268-5

R.T.: 10.082 min  
Delta R.T.: 0.004 min  
Response: 107699  
Conc: 0.31 ng/ml

Instrument :  
ECD\_P  
ClientSampleId :  
705R-S



#45 AR-1268-5

R.T.: 8.568 min  
Delta R.T.: 0.009 min  
Response: 436594  
Conc: 0.17 ng/ml