

Data Path : Z:\pestpcbsrv\HPCHEM1\ECD_P\Data\PP081325\
 Data File : PP074348.D
 Signal(s) : Signal #1: ECD1A.ch Signal #2: ECD2B.ch
 Acq On : 13 Aug 2025 15:54
 Operator : YP\AJ
 Sample : AR1660CCC500
 Misc :
 ALS Vial : 3 Sample Multiplier: 1

Instrument :
 ECD_P
 ClientSampleId :
 AR1660CCC500

Integration File signal 1: autoint1.e
 Integration File signal 2: autoint2.e
 Quant Time: Aug 13 23:57:58 2025
 Quant Method : Z:\pestpcbsrv\HPCHEM1\ECD_P\methods\PP080125.M
 Quant Title : GC EXTRACTABLES
 QLast Update : Mon Aug 04 11:01:49 2025
 Response via : Initial Calibration
 Integrator: ChemStation

Volume Inj. : 2 µl
 Signal #1 Phase : ZB-MR1 Signal #2 Phase: ZB-MR2
 Signal #1 Info : 30Mx0.32mmx 0.50µ Signal #2 Info : 30M x 0.32mm x 0.25µm

Compound	RT#1	RT#2	Resp#1	Resp#2	ng/ml	ng/ml
System Monitoring Compounds						
1) SA Tetrachlo...	4.657	3.800	62025915	228.9E6	55.464	59.690
2) SA Decachlor...	10.438	8.820	47401373	310.3E6	48.809	51.598
Target Compounds						
3) L1 AR-1016-1	5.809	4.901	22252627	229.0E6	539.369	574.107
4) L1 AR-1016-2	5.831	4.959	31546303	110.2E6	519.351	586.937
5) L1 AR-1016-3	5.894	5.078	21273833	61926803	536.398	583.832
6) L1 AR-1016-4	5.991	5.119	17524614	63603006	538.482	582.338
7) L1 AR-1016-5	6.283	5.334	17134940	68692630	527.748	587.301
8) L2 AR-1221-1	4.853	4.011	2723218	7689363	162.448	156.653
9) L2 AR-1221-2	4.943	4.098	3966184	10160097	314.750	283.095
10) L2 AR-1221-3	5.018	4.174	13175761	46719914	359.647	345.499
11) L3 AR-1232-1	5.018	4.174	13175761	46719914	453.753	460.919
12) L3 AR-1232-2	5.545	4.901	16685438	229.0E6	1109.204	1314.105
13) L3 AR-1232-3	5.831	5.078	31546303	61926803	1087.739	1351.623
14) L3 AR-1232-4	5.991	5.161	17524614	112.1E6	1132.899	1932.719 #
15) L3 AR-1232-5	6.080	5.334	15417054	68692630	1315.896	1462.185
16) L4 AR-1242-1	5.809	4.901	22252627	229.0E6	597.132	663.509
17) L4 AR-1242-2	5.831	4.959	31546303	110.2E6	579.800	674.707
18) L4 AR-1242-3	5.894	5.078	21273833	61926803	595.308	671.304
19) L4 AR-1242-4	5.991	5.161	17524614	112.1E6	599.775	938.845 #
20) L4 AR-1242-5	6.721	5.685	6468066	84115490	181.902	562.420 #
21) L5 AR-1248-1	5.809	4.901	22252627	229.0E6	794.324	1070.454 #
22) L5 AR-1248-2	6.080	5.119	15417054	63603006	382.927	434.706
23) L5 AR-1248-3	6.283	5.161	17134940	112.1E6	384.419	653.904 #
24) L5 AR-1248-4	6.657	5.334	22149385	68692630	425.645	412.882
25) L5 AR-1248-5	6.721	5.720	6468066	25146414	113.588	86.424
26) L6 AR-1254-1	6.657	5.685	22149385	84115490	420.763	229.710 #
27) L6 AR-1254-2	6.873	5.832	13969921	67696721	175.712	243.323 #
28) L6 AR-1254-3	7.235	6.249	9148543	131.1E6	104.775	267.911 #
29) L6 AR-1254-4	7.518	6.460	5742669	12264036	89.997	33.366 #
30) L6 AR-1254-5	7.932	6.877	43768784	170.5E6	539.391	442.663
31) L7 AR-1260-1	7.400	6.551	28606206	218.6E6	507.598	541.223
32) L7 AR-1260-2	7.653	6.705	32867113	168.7E6	482.259	539.612
33) L7 AR-1260-3	8.011	6.915	26059301	218.0E6	488.955	553.123
34) L7 AR-1260-4	8.239	7.175	30827910	158.8E6	492.341	545.677
35) L7 AR-1260-5	8.565	7.414	54021439	413.0E6	476.779	545.306
36) L8 AR-1262-1	8.239	6.915	30827910	218.0E6	406.756	387.106
37) L8 AR-1262-2	8.565	7.175	54021439	158.8E6	414.179	395.939
38) L8 AR-1262-3	8.897	7.697	37286993	91756422	396.371	255.255 #
39) L8 AR-1262-4	8.974	7.761	24844677	279.6E6	341.031	419.295
40) L8 AR-1262-5	9.651	8.254	17865325	97004618	350.833	342.448
41) L9 AR-1268-1	8.897	7.697	37286993	91756422	239.583	84.160 #

Data Path : Z:\pestpcbsrv\HPCHEM1\ECD_P\Data\PP081325\
 Data File : PP074348.D
 Signal(s) : Signal #1: ECD1A.ch Signal #2: ECD2B.ch
 Acq On : 13 Aug 2025 15:54
 Operator : YP\AJ
 Sample : AR1660CCC500
 Misc :
 ALS Vial : 3 Sample Multiplier: 1

Instrument :
 ECD_P
 ClientSampleId :
 AR1660CCC500

Integration File signal 1: autoint1.e
 Integration File signal 2: autoint2.e
 Quant Time: Aug 13 23:57:58 2025
 Quant Method : Z:\pestpcbsrv\HPCHEM1\ECD_P\methods\PP080125.M
 Quant Title : GC EXTRACTABLES
 QLast Update : Mon Aug 04 11:01:49 2025
 Response via : Initial Calibration
 Integrator: ChemStation

Volume Inj. : 2 µl
 Signal #1 Phase : ZB-MR1 Signal #2 Phase: ZB-MR2
 Signal #1 Info : 30Mx0.32mmx 0.50µ Signal #2 Info : 30M x 0.32mm x 0.25µm

	Compound	RT#1	RT#2	Resp#1	Resp#2	ng/ml	ng/ml
42)	L9 AR-1268-2	8.974	7.761	24844677	279.6E6	173.223	263.478 #
43)	L9 AR-1268-3	9.223	7.967	944092	4348733	7.902	5.227 #
44)	L9 AR-1268-4	9.651	8.254	17865325	97004618	303.767	314.890
45)	L9 AR-1268-5	10.082	8.553	5119257	23394176	14.556	9.174 #

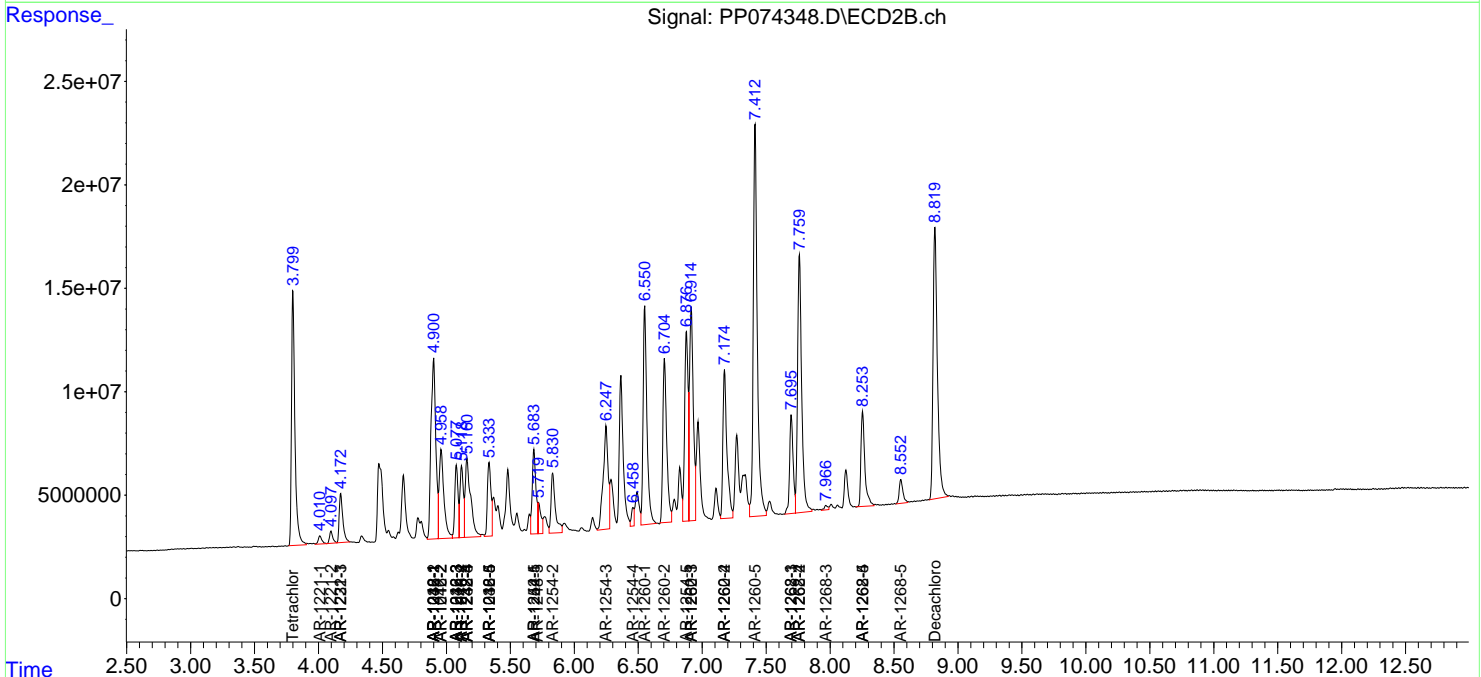
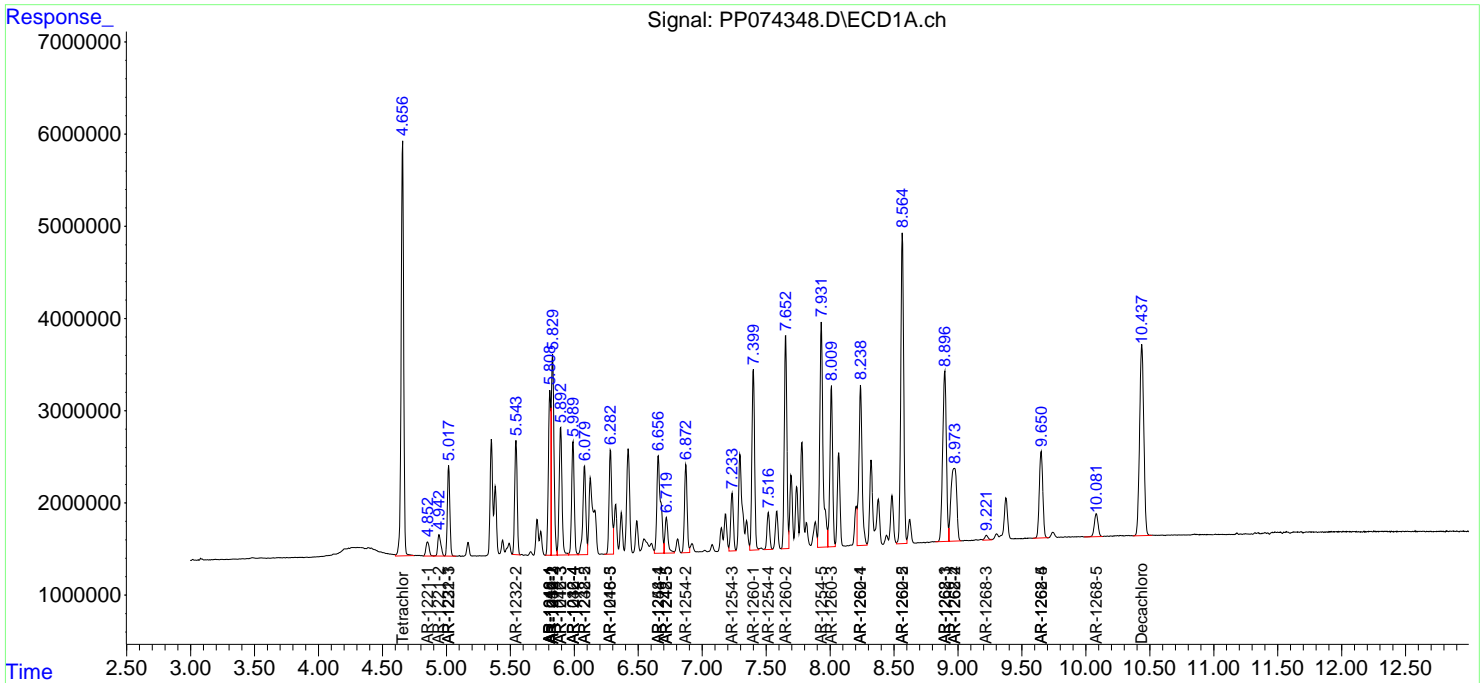
(f)=RT Delta > 1/2 Window (#)=Amounts differ by > 25% (m)=manual int.

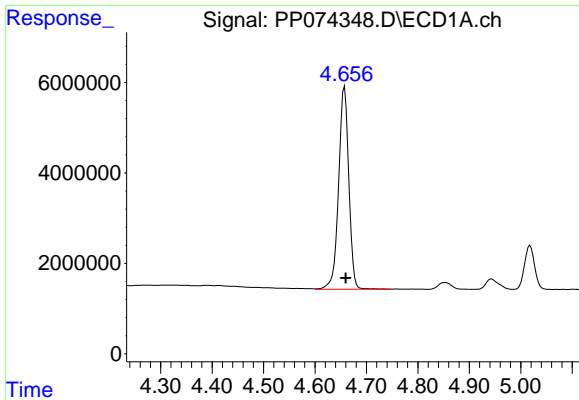
Data Path : Z:\pestpcbsrv\HPCHEM1\ECD_P\Data\PP081325\
 Data File : PP074348.D
 Signal(s) : Signal #1: ECD1A.ch Signal #2: ECD2B.ch
 Acq On : 13 Aug 2025 15:54
 Operator : YP\AJ
 Sample : AR1660CCC500
 Misc :
 ALS Vial : 3 Sample Multiplier: 1

Instrument :
 ECD_P
 ClientSampleId :
 AR1660CCC500

Integration File signal 1: autoint1.e
 Integration File signal 2: autoint2.e
 Quant Time: Aug 13 23:57:58 2025
 Quant Method : Z:\pestpcbsrv\HPCHEM1\ECD_P\methods\PP080125.M
 Quant Title : GC EXTRACTABLES
 QLast Update : Mon Aug 04 11:01:49 2025
 Response via : Initial Calibration
 Integrator: ChemStation

Volume Inj. : 2 µl
 Signal #1 Phase : ZB-MR1 Signal #2 Phase: ZB-MR2
 Signal #1 Info : 30Mx0.32mmx 0.50µ Signal #2 Info : 30M x 0.32mm x 0.25µm

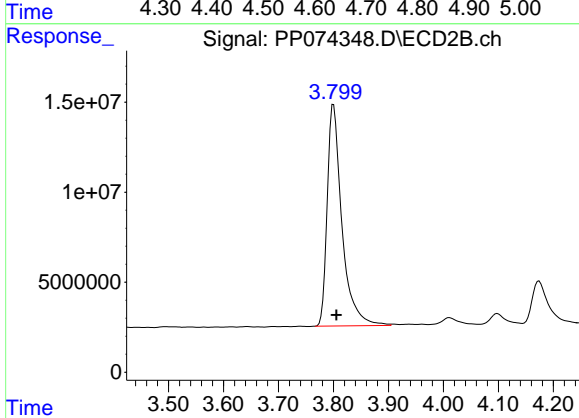




#1 Tetrachloro-m-xylene

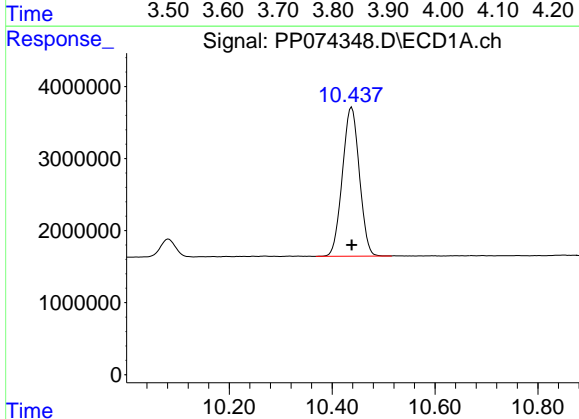
R.T.: 4.657 min
 Delta R.T.: -0.003 min
 Response: 62025915
 Conc: 55.46 ng/ml

Instrument :
 ECD_P
 ClientSampleId :
 AR1660CCC500



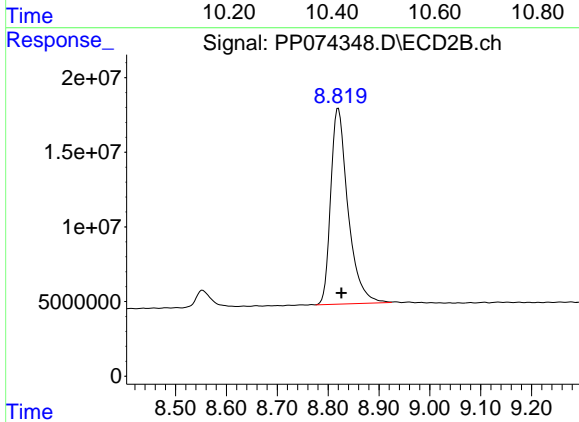
#1 Tetrachloro-m-xylene

R.T.: 3.800 min
 Delta R.T.: -0.005 min
 Response: 228878049
 Conc: 59.69 ng/ml



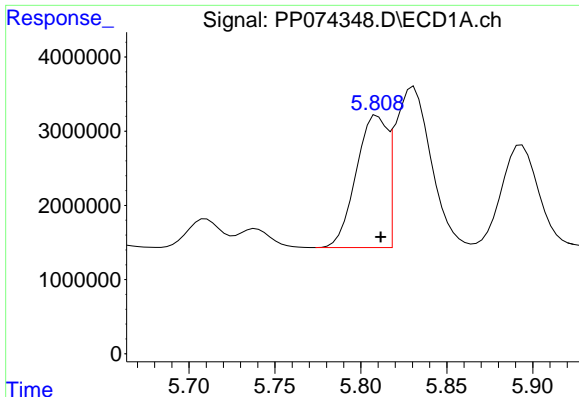
#2 Decachlorobiphenyl

R.T.: 10.438 min
 Delta R.T.: 0.000 min
 Response: 47401373
 Conc: 48.81 ng/ml



#2 Decachlorobiphenyl

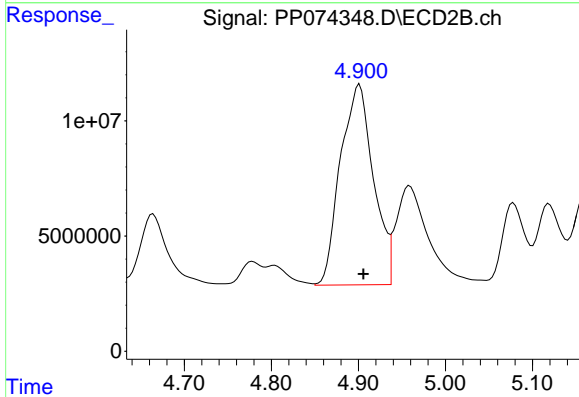
R.T.: 8.820 min
 Delta R.T.: -0.006 min
 Response: 310293637
 Conc: 51.60 ng/ml



#3 AR-1016-1

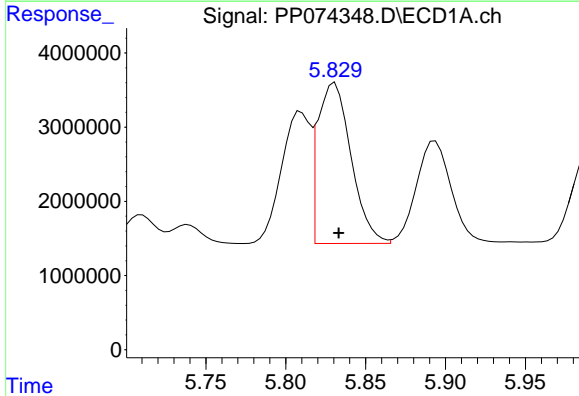
R.T.: 5.809 min
 Delta R.T.: -0.002 min
 Response: 22252627
 Conc: 539.37 ng/ml

Instrument :
 ECD_P
 ClientSampleId :
 AR1660CCC500



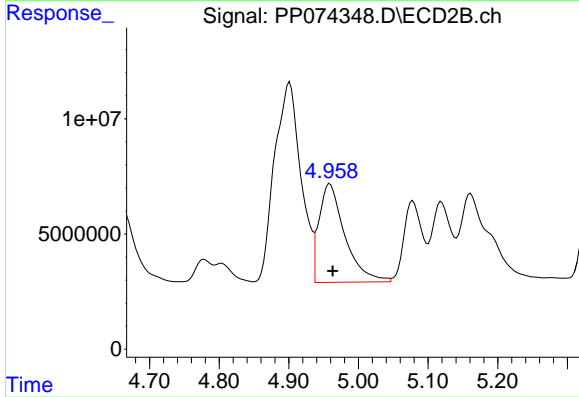
#3 AR-1016-1

R.T.: 4.901 min
 Delta R.T.: -0.004 min
 Response: 229004110
 Conc: 574.11 ng/ml



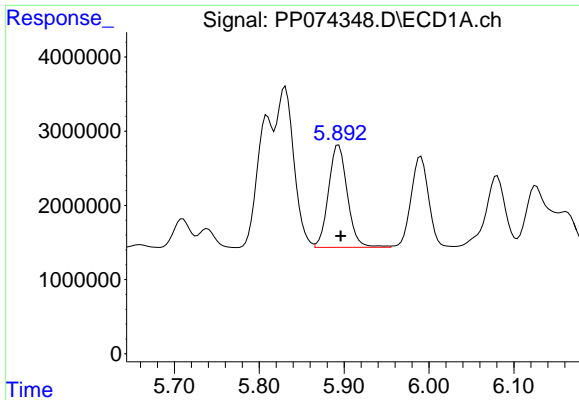
#4 AR-1016-2

R.T.: 5.831 min
 Delta R.T.: -0.003 min
 Response: 31546303
 Conc: 519.35 ng/ml



#4 AR-1016-2

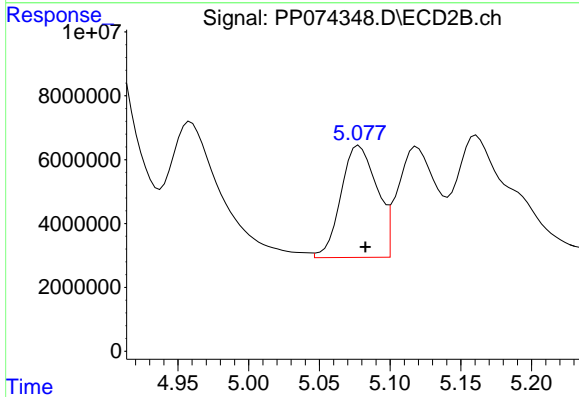
R.T.: 4.959 min
 Delta R.T.: -0.004 min
 Response: 110232020
 Conc: 586.94 ng/ml



#5 AR-1016-3

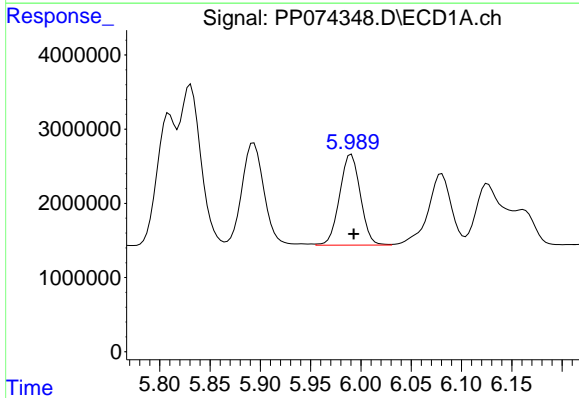
R.T.: 5.894 min
 Delta R.T.: -0.003 min
 Response: 21273833
 Conc: 536.40 ng/ml

Instrument :
 ECD_P
 ClientSampleId :
 AR1660CCC500



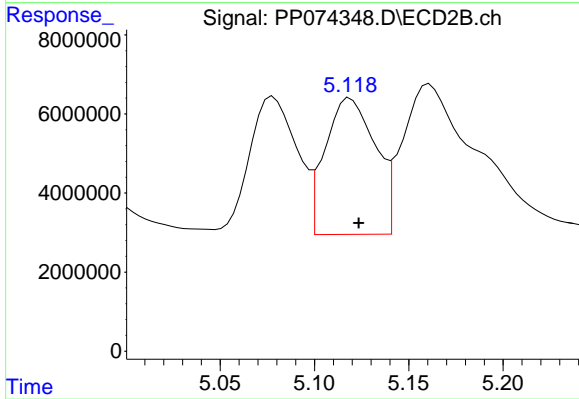
#5 AR-1016-3

R.T.: 5.078 min
 Delta R.T.: -0.005 min
 Response: 61926803
 Conc: 583.83 ng/ml



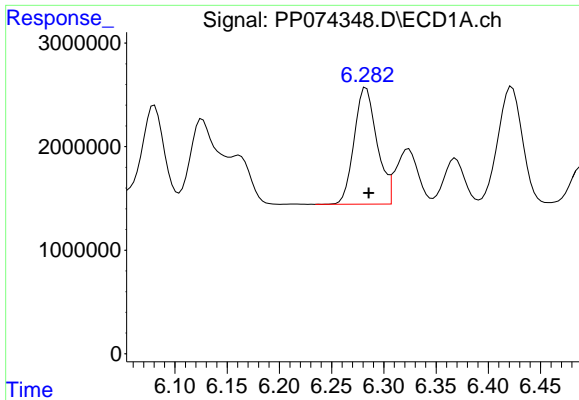
#6 AR-1016-4

R.T.: 5.991 min
 Delta R.T.: -0.002 min
 Response: 17524614
 Conc: 538.48 ng/ml



#6 AR-1016-4

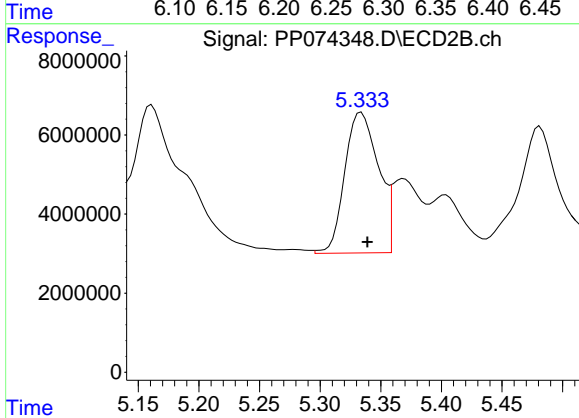
R.T.: 5.119 min
 Delta R.T.: -0.004 min
 Response: 63603006
 Conc: 582.34 ng/ml



#7 AR-1016-5

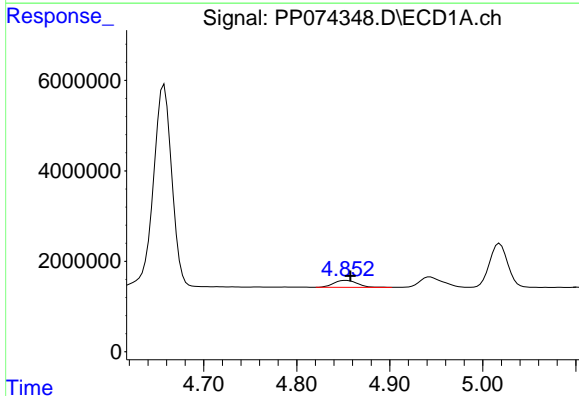
R.T.: 6.283 min
 Delta R.T.: -0.003 min
 Response: 17134940
 Conc: 527.75 ng/ml

Instrument :
 ECD_P
 ClientSampleId :
 AR1660CCC500



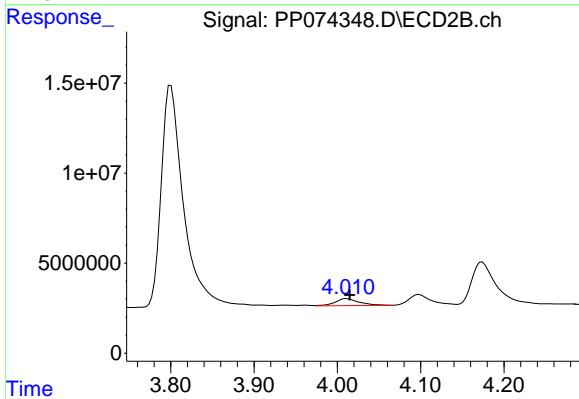
#7 AR-1016-5

R.T.: 5.334 min
 Delta R.T.: -0.005 min
 Response: 68692630
 Conc: 587.30 ng/ml



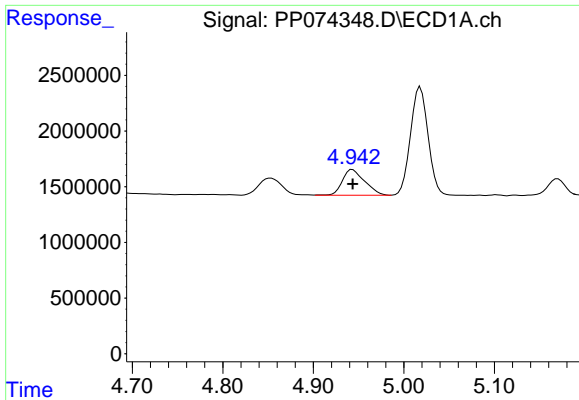
#8 AR-1221-1

R.T.: 4.853 min
 Delta R.T.: -0.005 min
 Response: 2723218
 Conc: 162.45 ng/ml



#8 AR-1221-1

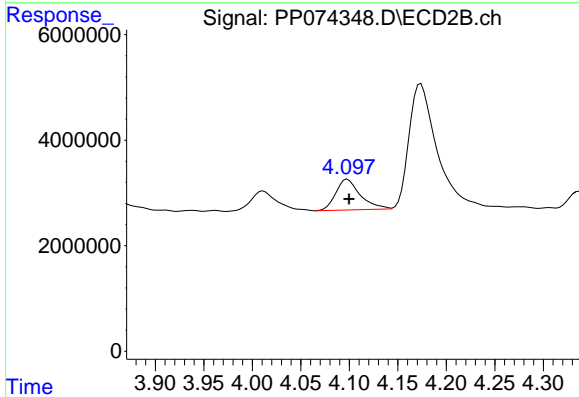
R.T.: 4.011 min
 Delta R.T.: -0.004 min
 Response: 7689363
 Conc: 156.65 ng/ml



#9 AR-1221-2

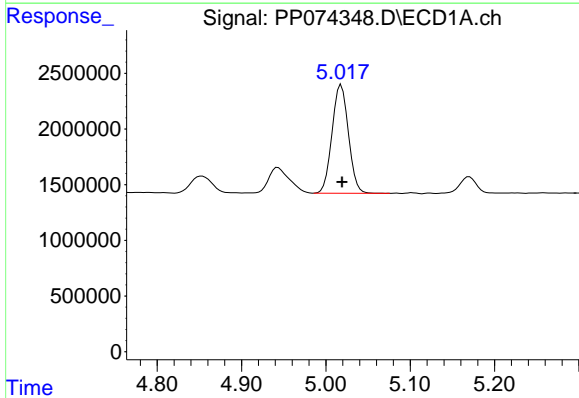
R.T.: 4.943 min
 Delta R.T.: 0.000 min
 Response: 3966184
 Conc: 314.75 ng/ml

Instrument :
 ECD_P
 ClientSampleId :
 AR1660CCC500



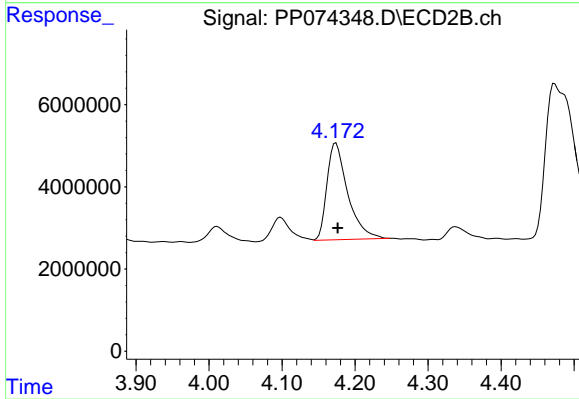
#9 AR-1221-2

R.T.: 4.098 min
 Delta R.T.: -0.002 min
 Response: 10160097
 Conc: 283.10 ng/ml



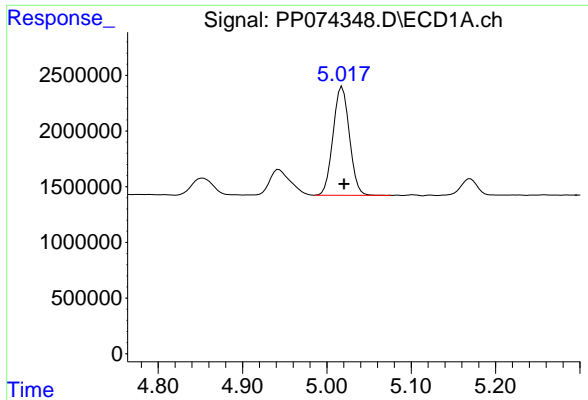
#10 AR-1221-3

R.T.: 5.018 min
 Delta R.T.: -0.001 min
 Response: 13175761
 Conc: 359.65 ng/ml



#10 AR-1221-3

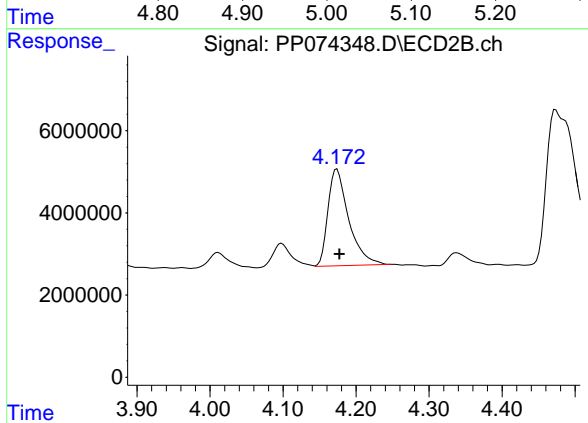
R.T.: 4.174 min
 Delta R.T.: -0.002 min
 Response: 46719914
 Conc: 345.50 ng/ml



#11 AR-1232-1

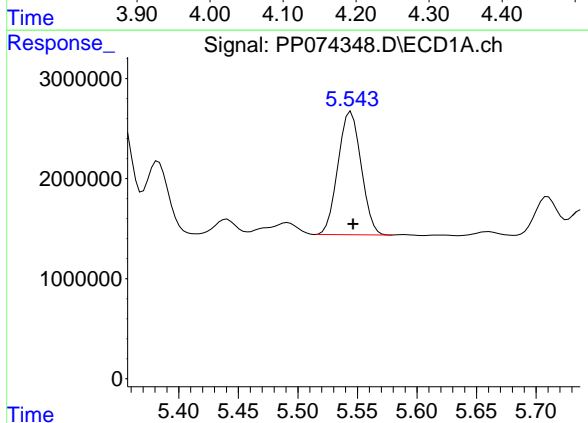
R.T.: 5.018 min
Delta R.T.: -0.002 min
Response: 13175761
Conc: 453.75 ng/ml

Instrument :
ECD_P
ClientSampleId :
AR1660CCC500



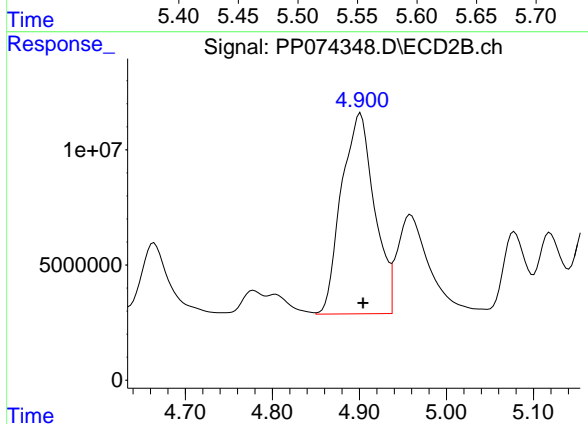
#11 AR-1232-1

R.T.: 4.174 min
Delta R.T.: -0.003 min
Response: 46719914
Conc: 460.92 ng/ml



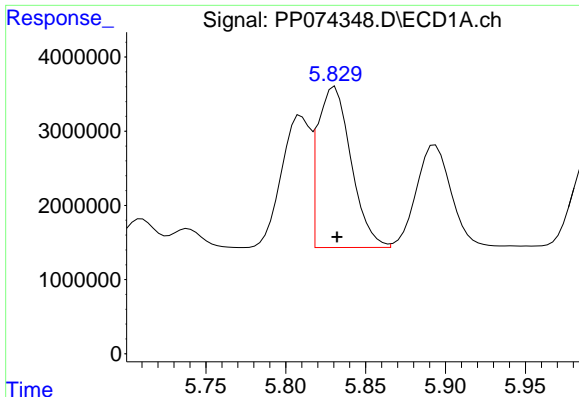
#12 AR-1232-2

R.T.: 5.545 min
Delta R.T.: -0.002 min
Response: 16685438
Conc: 1109.20 ng/ml



#12 AR-1232-2

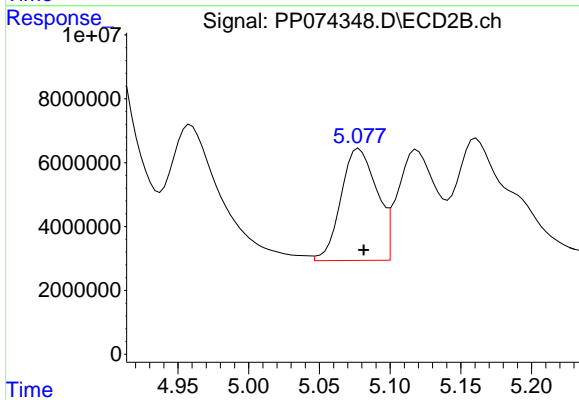
R.T.: 4.901 min
Delta R.T.: -0.003 min
Response: 229004110
Conc: 1314.11 ng/ml



#13 AR-1232-3

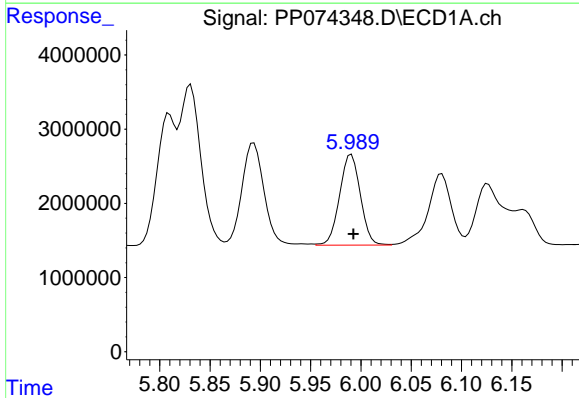
R.T.: 5.831 min
 Delta R.T.: -0.001 min
 Response: 31546303
 Conc: 1087.74 ng/ml

Instrument :
 ECD_P
 ClientSampleId :
 AR1660CCC500



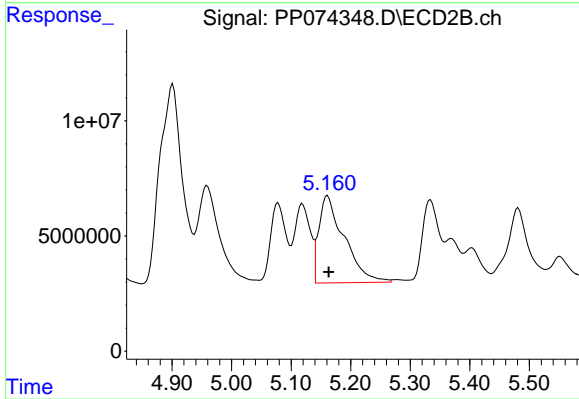
#13 AR-1232-3

R.T.: 5.078 min
 Delta R.T.: -0.003 min
 Response: 61926803
 Conc: 1351.62 ng/ml



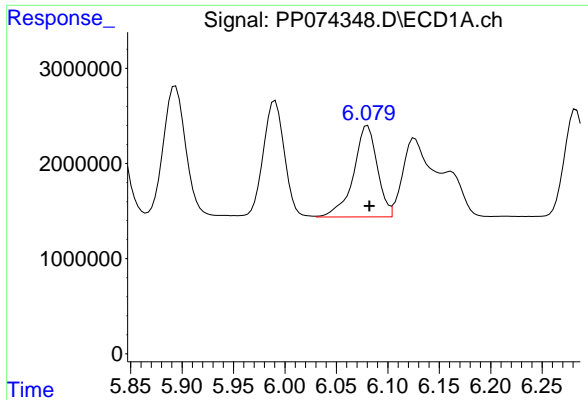
#14 AR-1232-4

R.T.: 5.991 min
 Delta R.T.: -0.002 min
 Response: 17524614
 Conc: 1132.90 ng/ml



#14 AR-1232-4

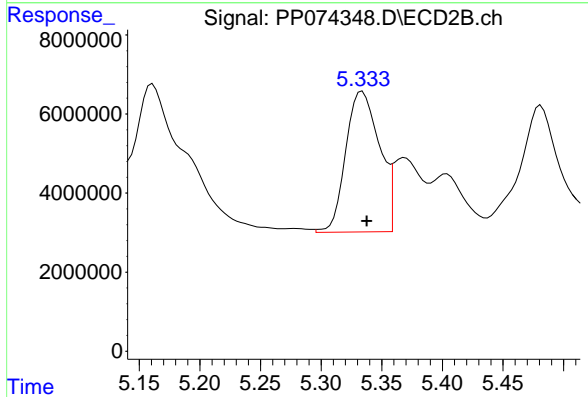
R.T.: 5.161 min
 Delta R.T.: -0.002 min
 Response: 112118409
 Conc: 1932.72 ng/ml



#15 AR-1232-5

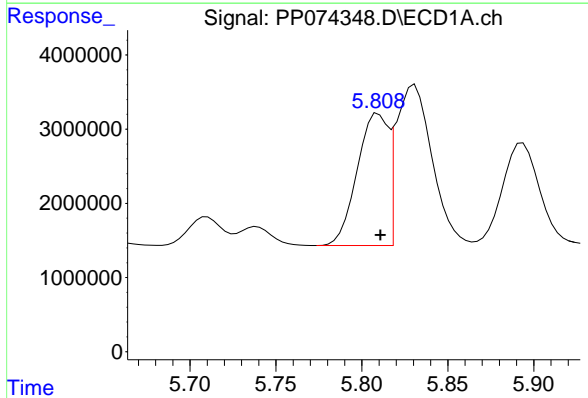
R.T.: 6.080 min
 Delta R.T.: -0.002 min
 Response: 15417054
 Conc: 1315.90 ng/ml

Instrument :
 ECD_P
 ClientSampleId :
 AR1660CCC500



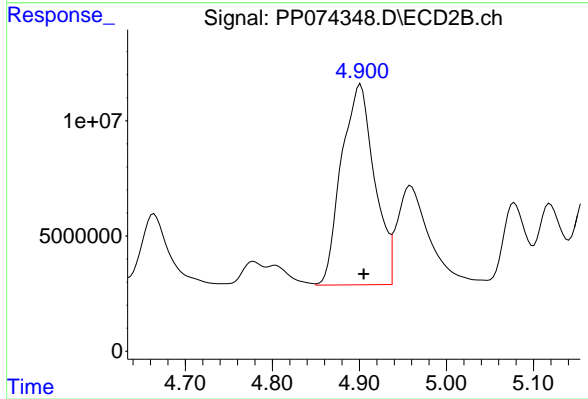
#15 AR-1232-5

R.T.: 5.334 min
 Delta R.T.: -0.004 min
 Response: 68692630
 Conc: 1462.18 ng/ml



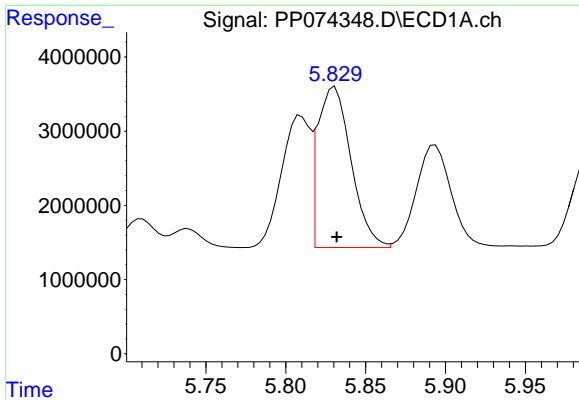
#16 AR-1242-1

R.T.: 5.809 min
 Delta R.T.: -0.001 min
 Response: 22252627
 Conc: 597.13 ng/ml



#16 AR-1242-1

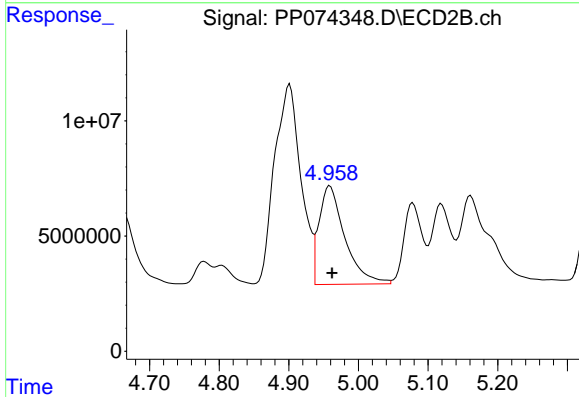
R.T.: 4.901 min
 Delta R.T.: -0.004 min
 Response: 229004110
 Conc: 663.51 ng/ml



#17 AR-1242-2

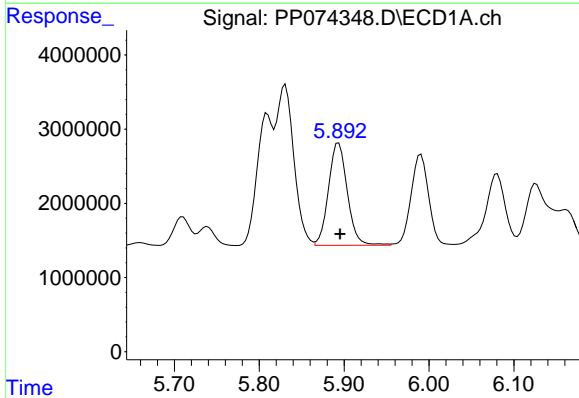
R.T.: 5.831 min
 Delta R.T.: -0.001 min
 Response: 31546303
 Conc: 579.80 ng/ml

Instrument :
 ECD_P
 ClientSampleId :
 AR1660CCC500



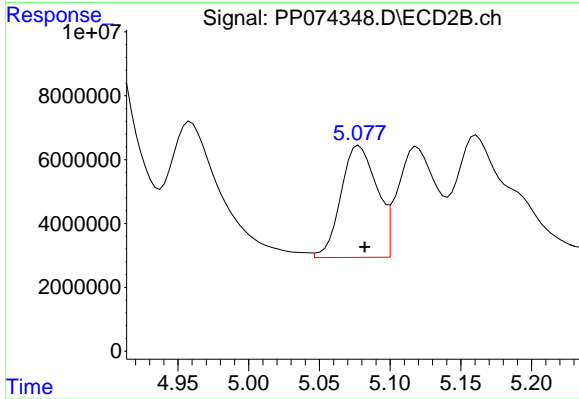
#17 AR-1242-2

R.T.: 4.959 min
 Delta R.T.: -0.003 min
 Response: 110232020
 Conc: 674.71 ng/ml



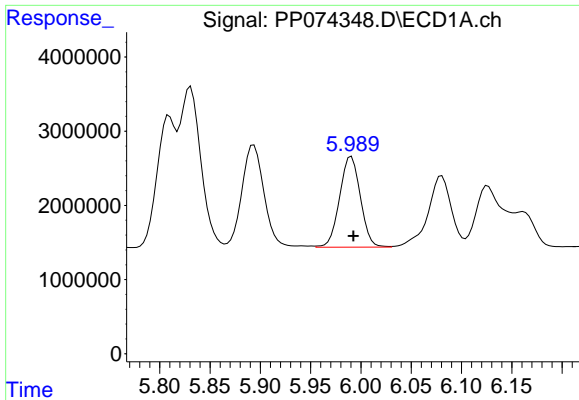
#18 AR-1242-3

R.T.: 5.894 min
 Delta R.T.: -0.002 min
 Response: 21273833
 Conc: 595.31 ng/ml



#18 AR-1242-3

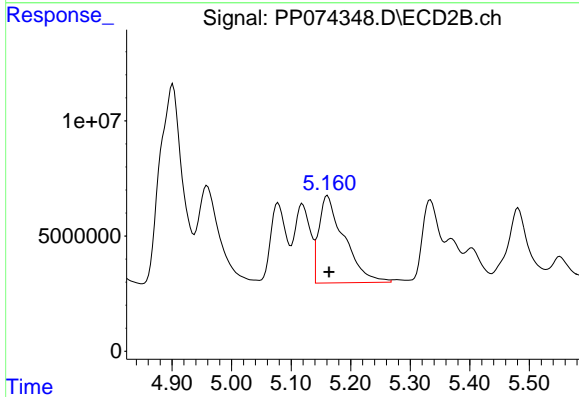
R.T.: 5.078 min
 Delta R.T.: -0.004 min
 Response: 61926803
 Conc: 671.30 ng/ml



#19 AR-1242-4

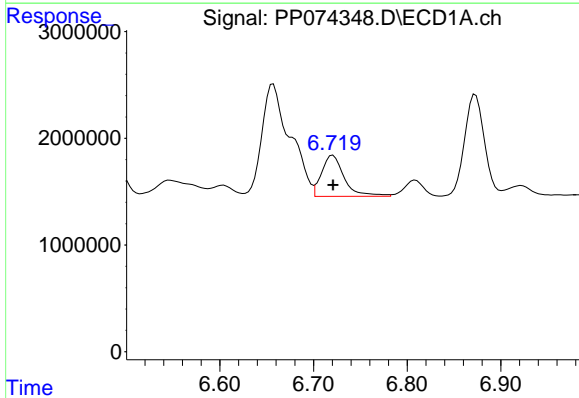
R.T.: 5.991 min
 Delta R.T.: -0.002 min
 Response: 17524614
 Conc: 599.78 ng/ml

Instrument :
 ECD_P
 ClientSampleId :
 AR1660CCC500



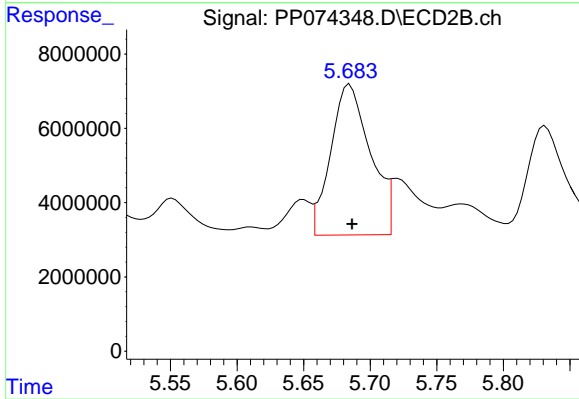
#19 AR-1242-4

R.T.: 5.161 min
 Delta R.T.: -0.003 min
 Response: 112118409
 Conc: 938.85 ng/ml



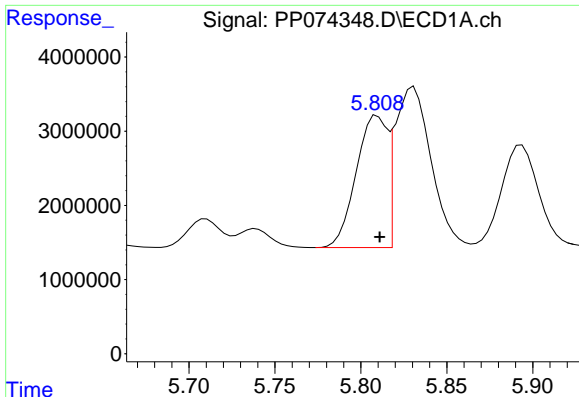
#20 AR-1242-5

R.T.: 6.721 min
 Delta R.T.: 0.000 min
 Response: 6468066
 Conc: 181.90 ng/ml



#20 AR-1242-5

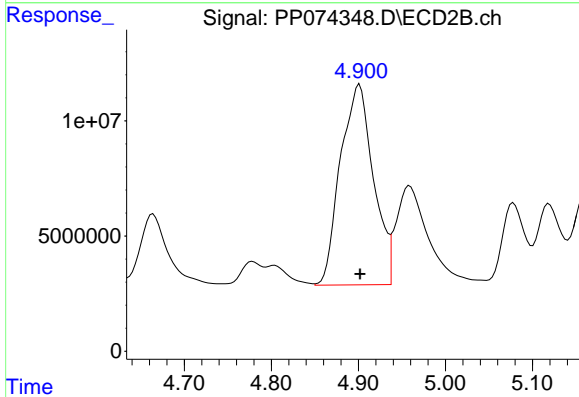
R.T.: 5.685 min
 Delta R.T.: -0.002 min
 Response: 84115490
 Conc: 562.42 ng/ml



#21 AR-1248-1

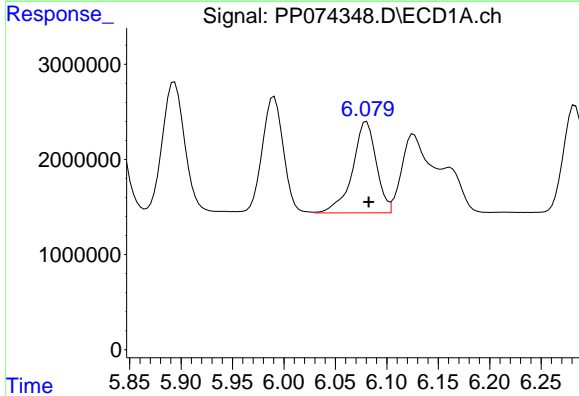
R.T.: 5.809 min
 Delta R.T.: -0.001 min
 Response: 22252627
 Conc: 794.32 ng/ml

Instrument :
 ECD_P
 ClientSampleId :
 AR1660CCC500



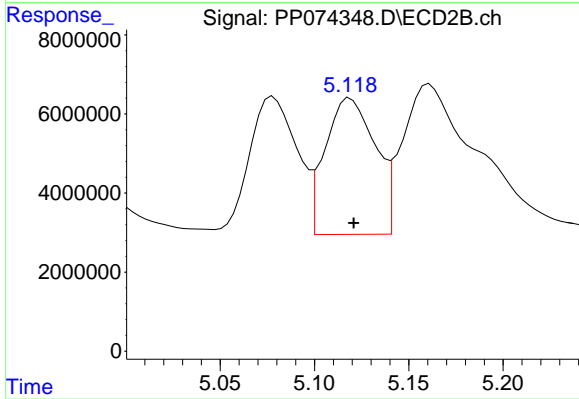
#21 AR-1248-1

R.T.: 4.901 min
 Delta R.T.: 0.000 min
 Response: 229004110
 Conc: 1070.45 ng/ml



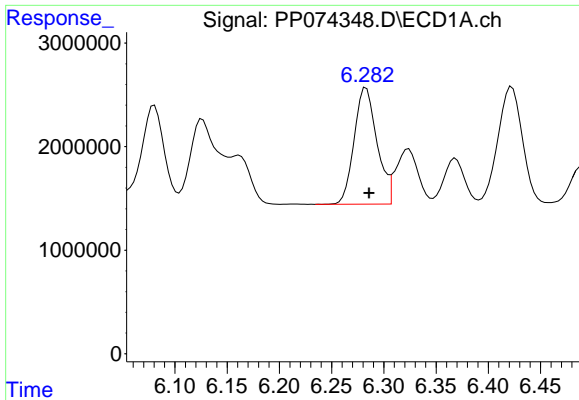
#22 AR-1248-2

R.T.: 6.080 min
 Delta R.T.: -0.002 min
 Response: 15417054
 Conc: 382.93 ng/ml



#22 AR-1248-2

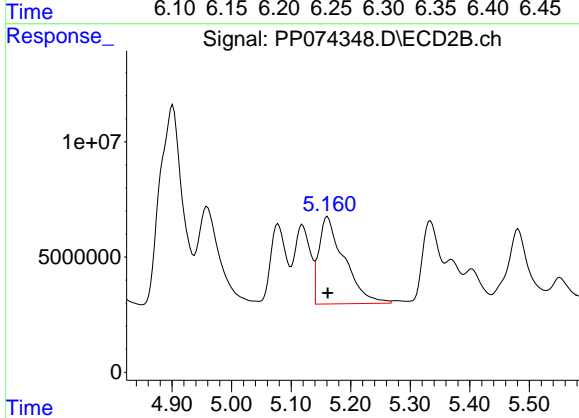
R.T.: 5.119 min
 Delta R.T.: -0.002 min
 Response: 63603006
 Conc: 434.71 ng/ml



#23 AR-1248-3

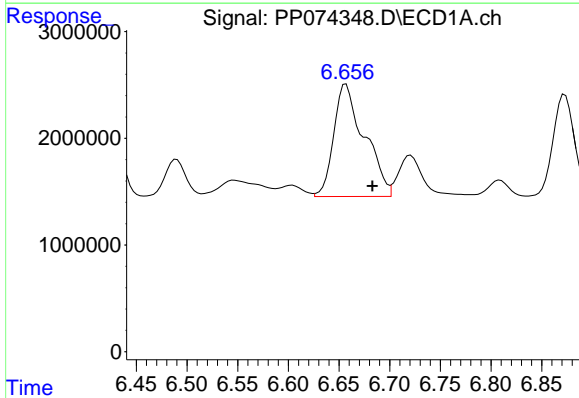
R.T.: 6.283 min
 Delta R.T.: -0.003 min
 Response: 17134940
 Conc: 384.42 ng/ml

Instrument :
 ECD_P
 ClientSampleId :
 AR1660CCC500



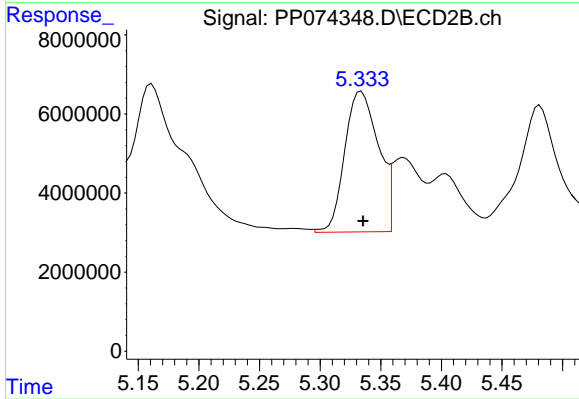
#23 AR-1248-3

R.T.: 5.161 min
 Delta R.T.: 0.000 min
 Response: 112118409
 Conc: 653.90 ng/ml



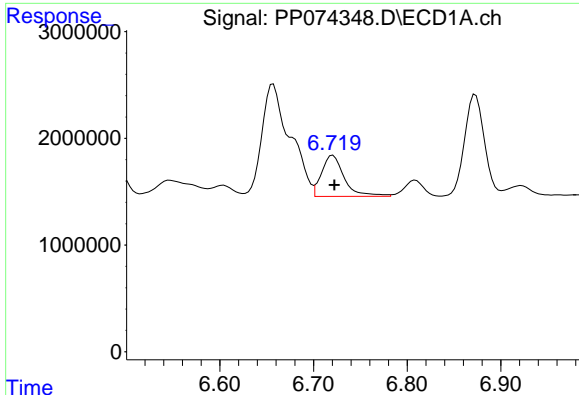
#24 AR-1248-4

R.T.: 6.657 min
 Delta R.T.: -0.026 min
 Response: 22149385
 Conc: 425.65 ng/ml



#24 AR-1248-4

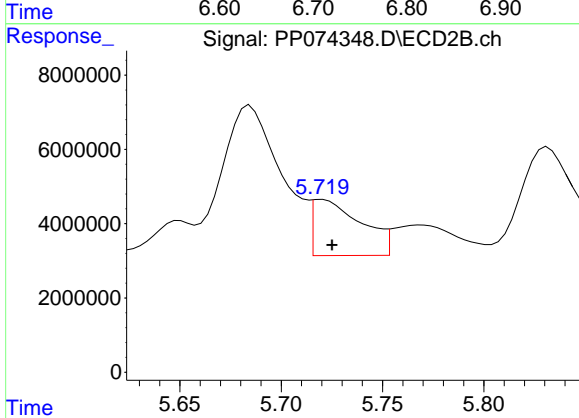
R.T.: 5.334 min
 Delta R.T.: -0.001 min
 Response: 68692630
 Conc: 412.88 ng/ml



#25 AR-1248-5

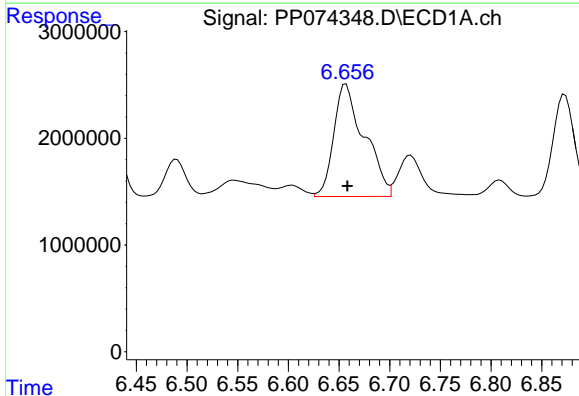
R.T.: 6.721 min
 Delta R.T.: -0.002 min
 Response: 6468066
 Conc: 113.59 ng/ml

Instrument :
 ECD_P
 ClientSampleId :
 AR1660CCC500



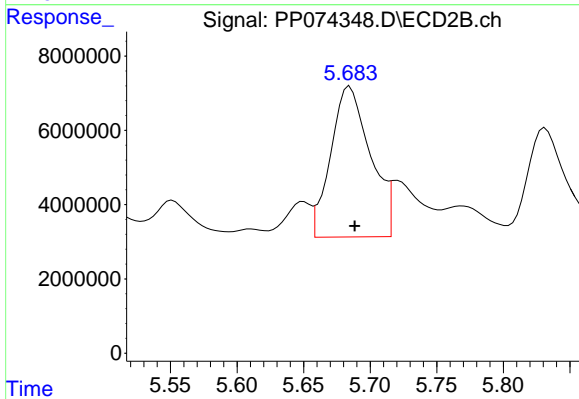
#25 AR-1248-5

R.T.: 5.720 min
 Delta R.T.: -0.005 min
 Response: 25146414
 Conc: 86.42 ng/ml



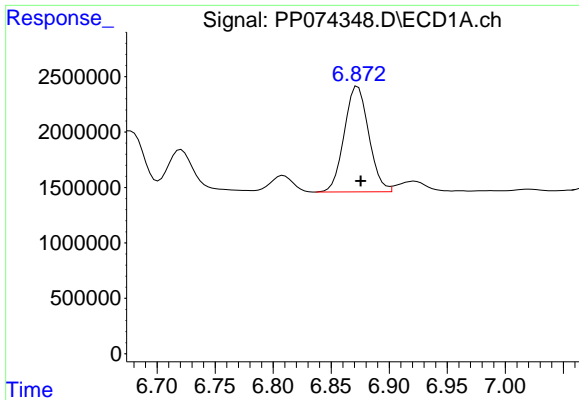
#26 AR-1254-1

R.T.: 6.657 min
 Delta R.T.: -0.001 min
 Response: 22149385
 Conc: 420.76 ng/ml



#26 AR-1254-1

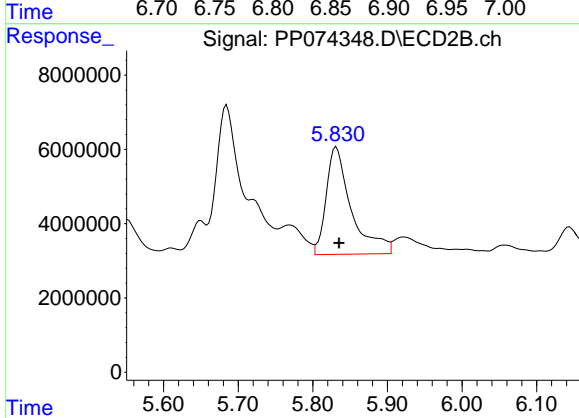
R.T.: 5.685 min
 Delta R.T.: -0.004 min
 Response: 84115490
 Conc: 229.71 ng/ml



#27 AR-1254-2

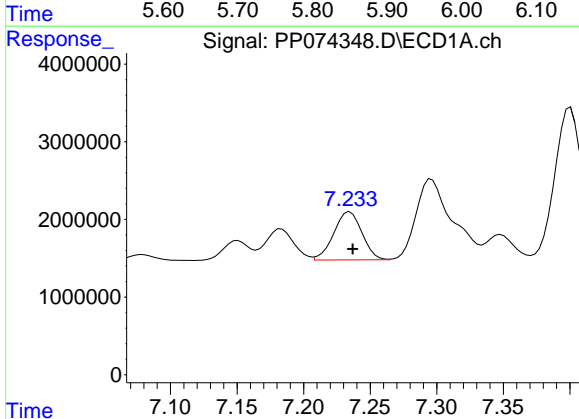
R.T.: 6.873 min
 Delta R.T.: -0.003 min
 Response: 13969921
 Conc: 175.71 ng/ml

Instrument :
 ECD_P
 ClientSampleId :
 AR1660CCC500



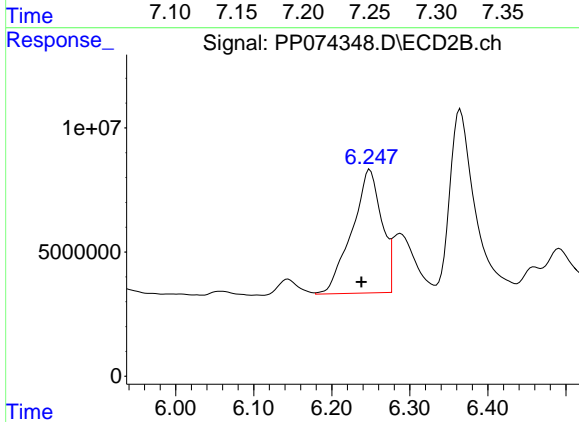
#27 AR-1254-2

R.T.: 5.832 min
 Delta R.T.: -0.003 min
 Response: 67696721
 Conc: 243.32 ng/ml



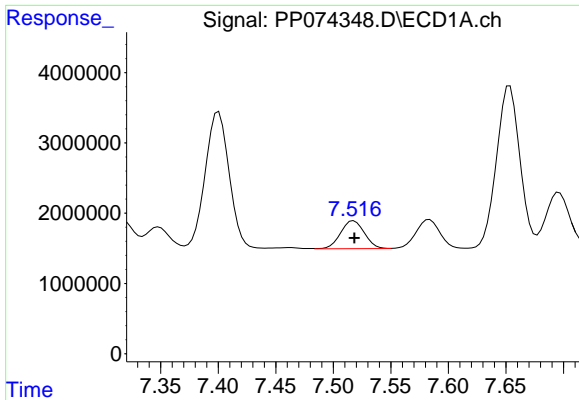
#28 AR-1254-3

R.T.: 7.235 min
 Delta R.T.: -0.002 min
 Response: 9148543
 Conc: 104.77 ng/ml



#28 AR-1254-3

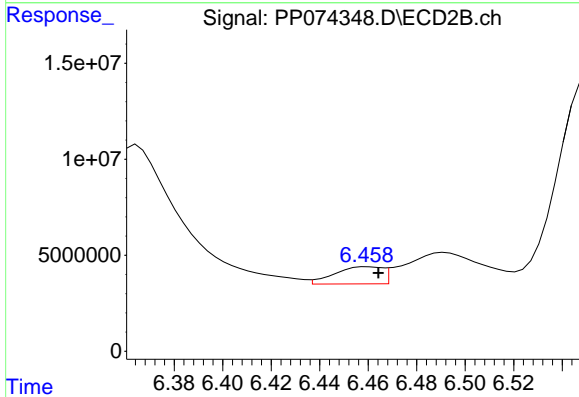
R.T.: 6.249 min
 Delta R.T.: 0.011 min
 Response: 131064979
 Conc: 267.91 ng/ml



#29 AR-1254-4

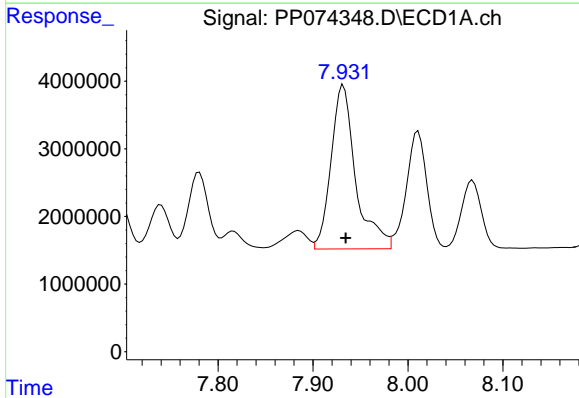
R.T.: 7.518 min
 Delta R.T.: 0.000 min
 Response: 5742669
 Conc: 90.00 ng/ml

Instrument :
 ECD_P
 ClientSampleId :
 AR1660CCC500



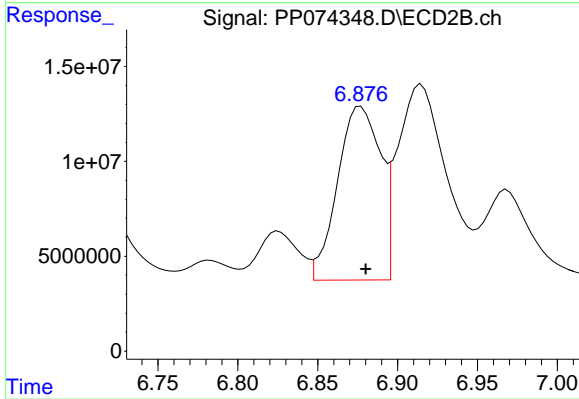
#29 AR-1254-4

R.T.: 6.460 min
 Delta R.T.: -0.004 min
 Response: 12264036
 Conc: 33.37 ng/ml



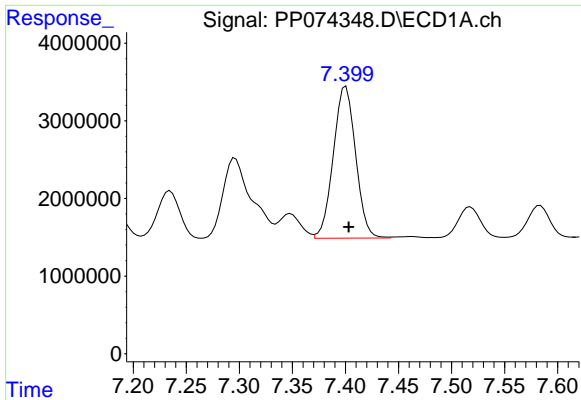
#30 AR-1254-5

R.T.: 7.932 min
 Delta R.T.: -0.002 min
 Response: 43768784
 Conc: 539.39 ng/ml



#30 AR-1254-5

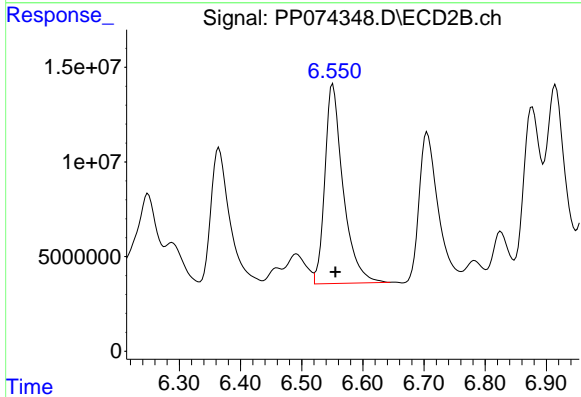
R.T.: 6.877 min
 Delta R.T.: -0.003 min
 Response: 170499389
 Conc: 442.66 ng/ml



#31 AR-1260-1

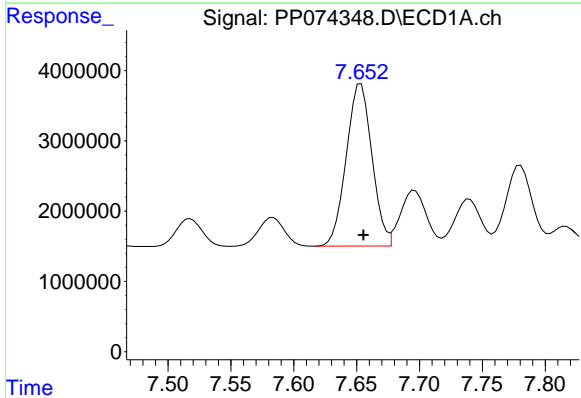
R.T.: 7.400 min
 Delta R.T.: -0.003 min
 Response: 28606206
 Conc: 507.60 ng/ml

Instrument :
 ECD_P
 ClientSampleId :
 AR1660CCC500



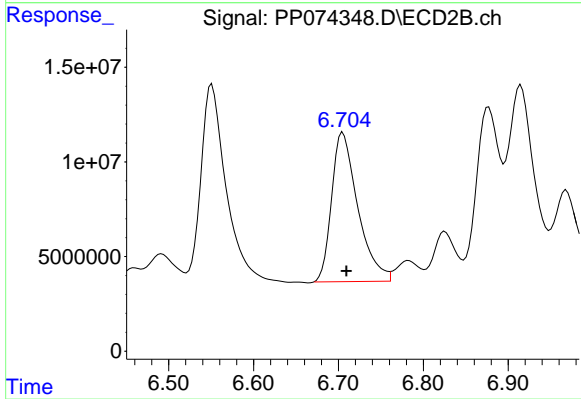
#31 AR-1260-1

R.T.: 6.551 min
 Delta R.T.: -0.004 min
 Response: 218631105
 Conc: 541.22 ng/ml



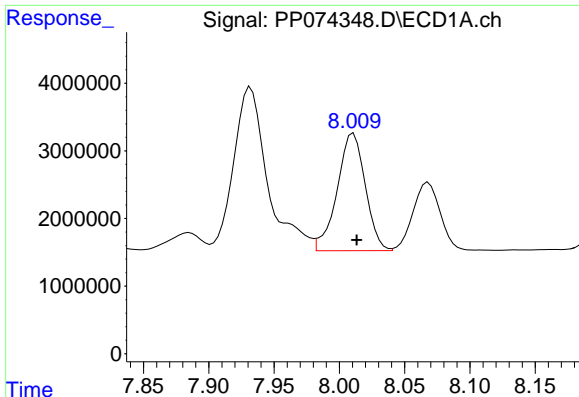
#32 AR-1260-2

R.T.: 7.653 min
 Delta R.T.: -0.002 min
 Response: 32867113
 Conc: 482.26 ng/ml



#32 AR-1260-2

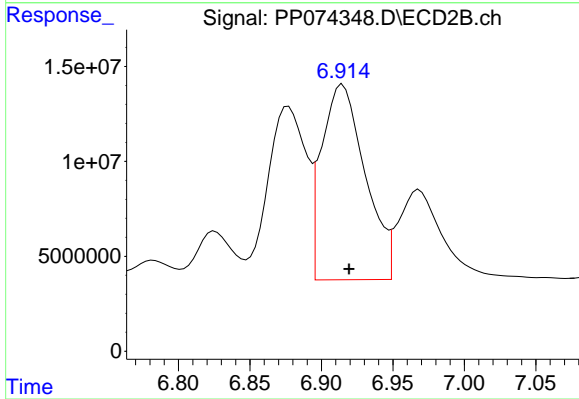
R.T.: 6.705 min
 Delta R.T.: -0.004 min
 Response: 168736166
 Conc: 539.61 ng/ml



#33 AR-1260-3

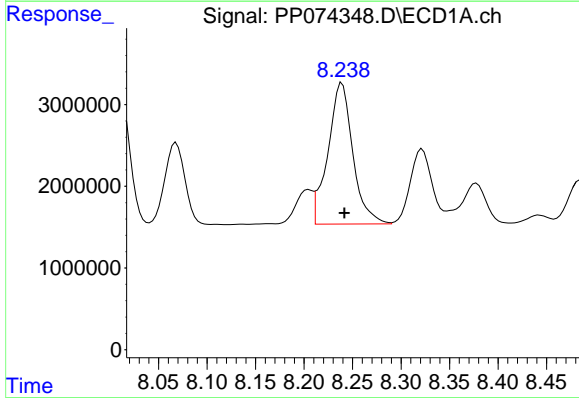
R.T.: 8.011 min
 Delta R.T.: -0.002 min
 Response: 26059301
 Conc: 488.95 ng/ml

Instrument :
 ECD_P
 ClientSampleId :
 AR1660CCC500



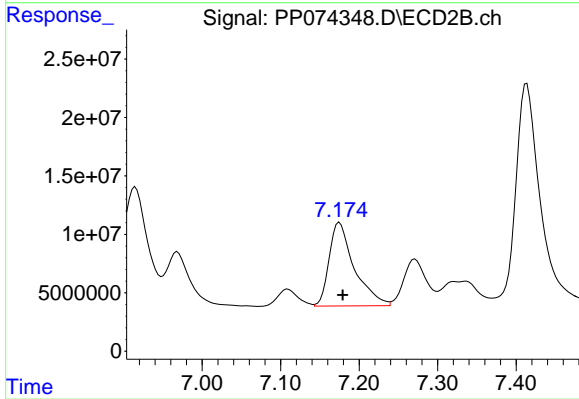
#33 AR-1260-3

R.T.: 6.915 min
 Delta R.T.: -0.005 min
 Response: 217995937
 Conc: 553.12 ng/ml



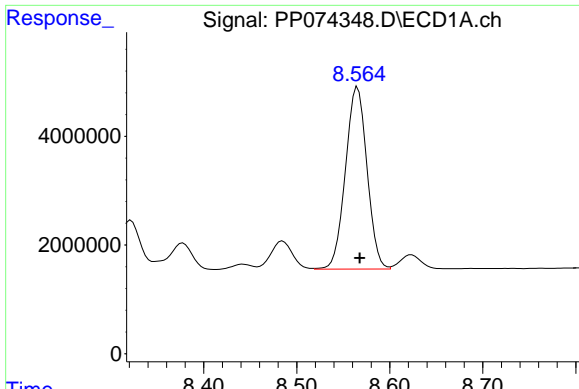
#34 AR-1260-4

R.T.: 8.239 min
 Delta R.T.: -0.003 min
 Response: 30827910
 Conc: 492.34 ng/ml



#34 AR-1260-4

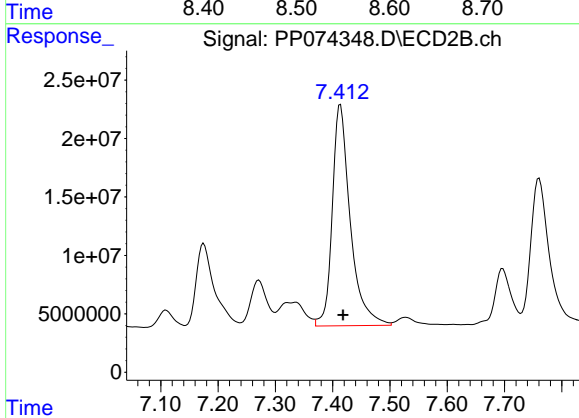
R.T.: 7.175 min
 Delta R.T.: -0.004 min
 Response: 158780859
 Conc: 545.68 ng/ml



#35 AR-1260-5

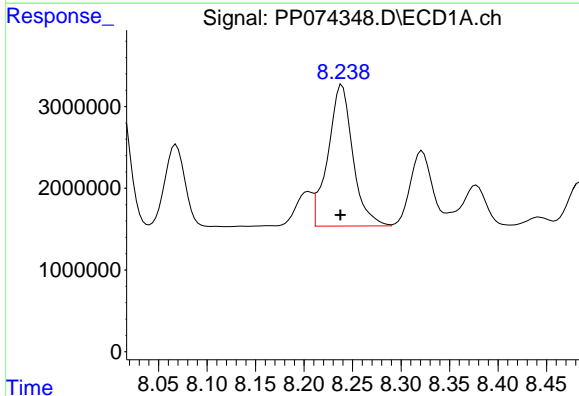
R.T.: 8.565 min
 Delta R.T.: -0.002 min
 Response: 54021439
 Conc: 476.78 ng/ml

Instrument :
 ECD_P
 ClientSampleId :
 AR1660CCC500



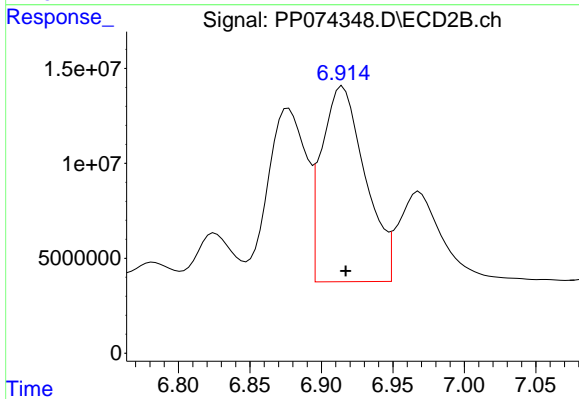
#35 AR-1260-5

R.T.: 7.414 min
 Delta R.T.: -0.004 min
 Response: 413020012
 Conc: 545.31 ng/ml



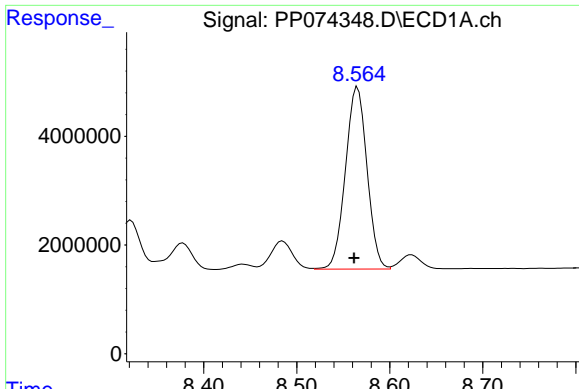
#36 AR-1262-1

R.T.: 8.239 min
 Delta R.T.: 0.002 min
 Response: 30827910
 Conc: 406.76 ng/ml



#36 AR-1262-1

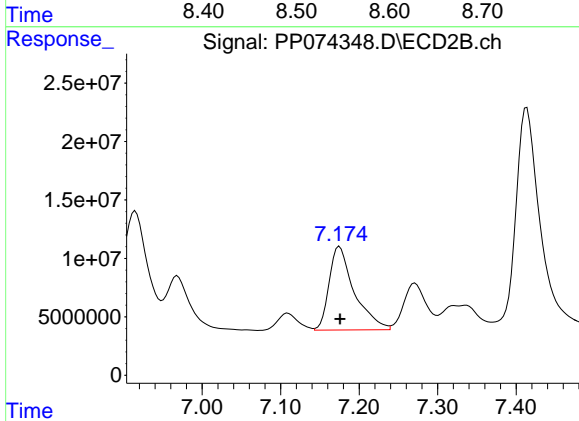
R.T.: 6.915 min
 Delta R.T.: -0.002 min
 Response: 217995937
 Conc: 387.11 ng/ml



#37 AR-1262-2

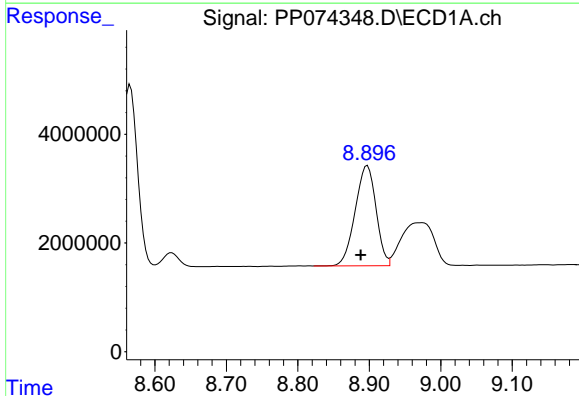
R.T.: 8.565 min
 Delta R.T.: 0.004 min
 Response: 54021439
 Conc: 414.18 ng/ml

Instrument :
 ECD_P
 ClientSampleId :
 AR1660CCC500



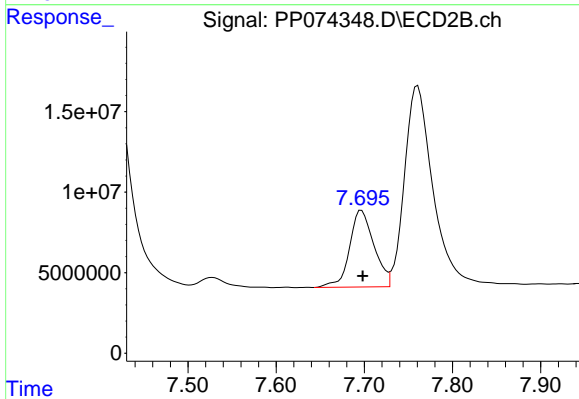
#37 AR-1262-2

R.T.: 7.175 min
 Delta R.T.: 0.000 min
 Response: 158780859
 Conc: 395.94 ng/ml



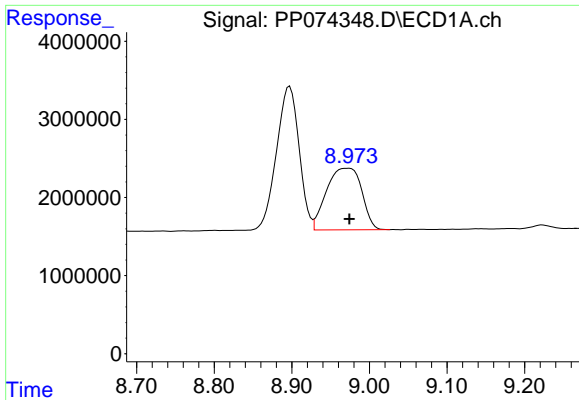
#38 AR-1262-3

R.T.: 8.897 min
 Delta R.T.: 0.009 min
 Response: 37286993
 Conc: 396.37 ng/ml



#38 AR-1262-3

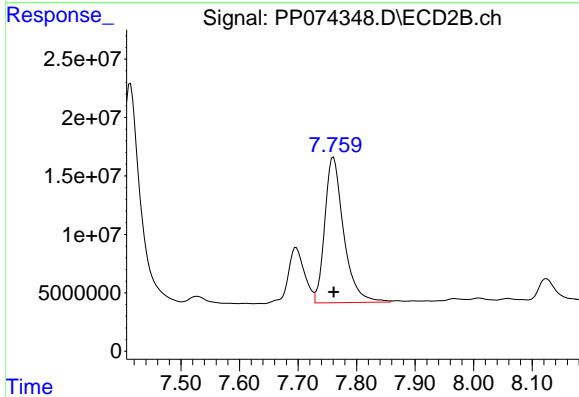
R.T.: 7.697 min
 Delta R.T.: -0.001 min
 Response: 91756422
 Conc: 255.25 ng/ml



#39 AR-1262-4

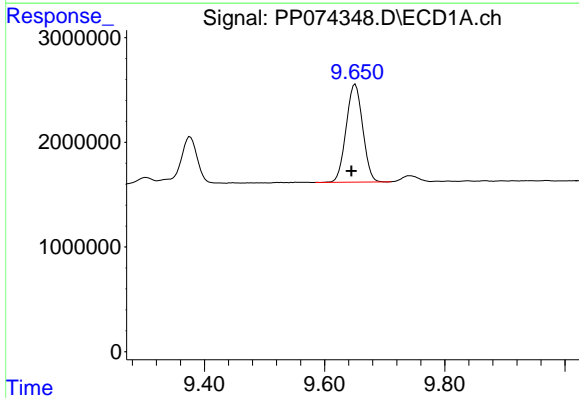
R.T.: 8.974 min
 Delta R.T.: 0.000 min
 Response: 24844677
 Conc: 341.03 ng/ml

Instrument :
 ECD_P
 ClientSampleId :
 AR1660CCC500



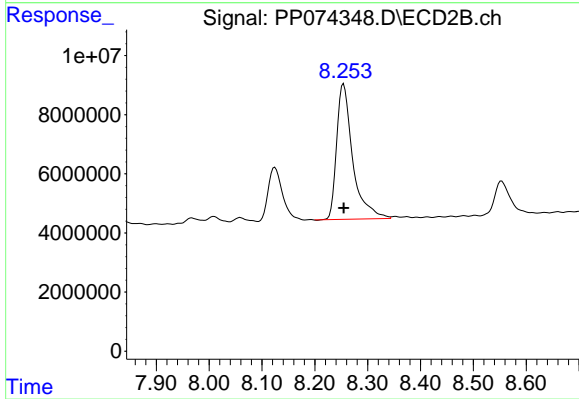
#39 AR-1262-4

R.T.: 7.761 min
 Delta R.T.: 0.000 min
 Response: 279636729
 Conc: 419.29 ng/ml



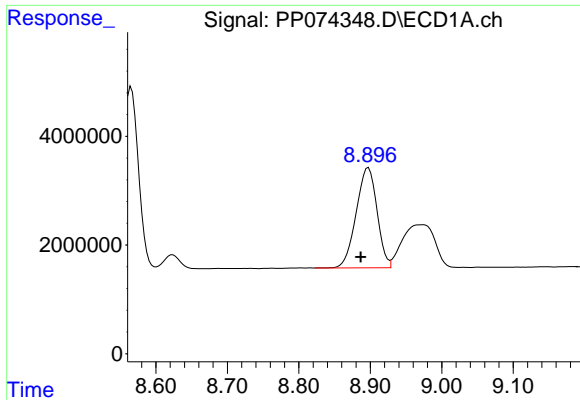
#40 AR-1262-5

R.T.: 9.651 min
 Delta R.T.: 0.006 min
 Response: 17865325
 Conc: 350.83 ng/ml



#40 AR-1262-5

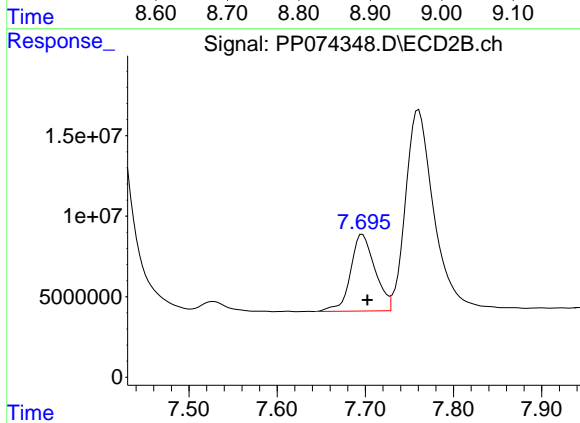
R.T.: 8.254 min
 Delta R.T.: 0.000 min
 Response: 97004618
 Conc: 342.45 ng/ml



#41 AR-1268-1

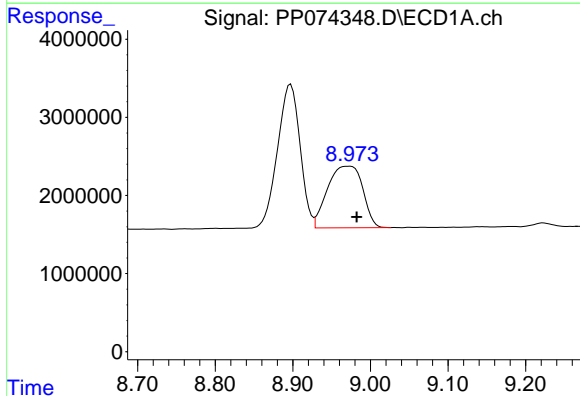
R.T.: 8.897 min
 Delta R.T.: 0.011 min
 Response: 37286993
 Conc: 239.58 ng/ml

Instrument :
 ECD_P
 ClientSampleId :
 AR1660CCC500



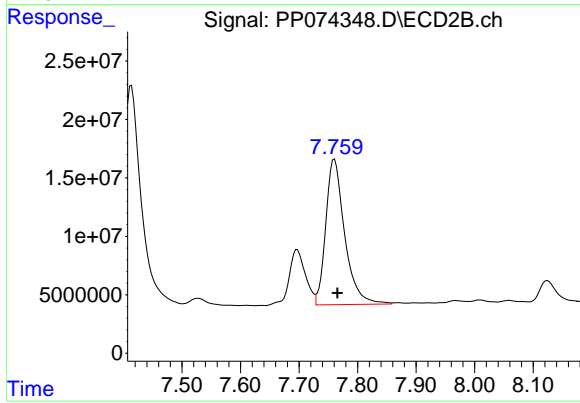
#41 AR-1268-1

R.T.: 7.697 min
 Delta R.T.: -0.006 min
 Response: 91756422
 Conc: 84.16 ng/ml



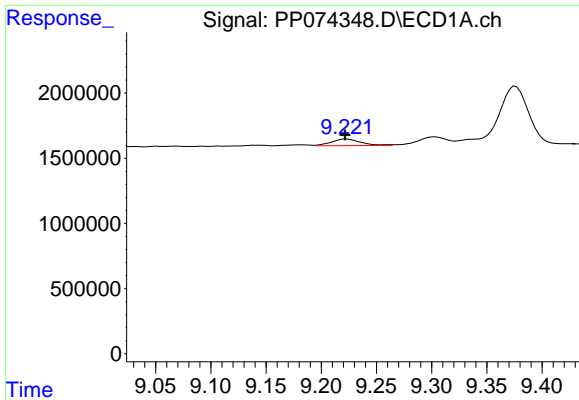
#42 AR-1268-2

R.T.: 8.974 min
 Delta R.T.: -0.008 min
 Response: 24844677
 Conc: 173.22 ng/ml



#42 AR-1268-2

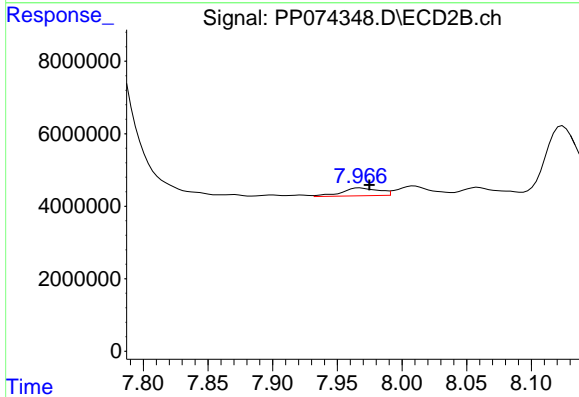
R.T.: 7.761 min
 Delta R.T.: -0.005 min
 Response: 279636729
 Conc: 263.48 ng/ml



#43 AR-1268-3

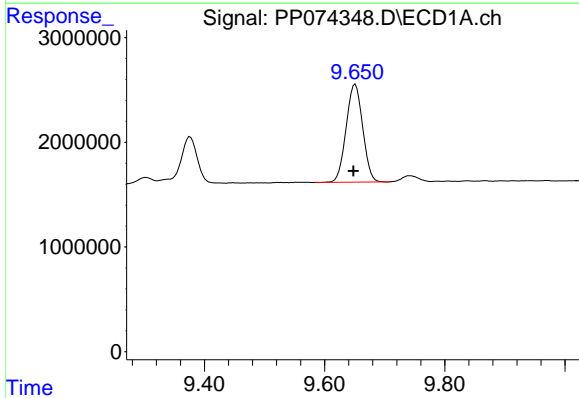
R.T.: 9.223 min
 Delta R.T.: 0.001 min
 Response: 944092
 Conc: 7.90 ng/ml

Instrument :
 ECD_P
 ClientSampleId :
 AR1660CCC500



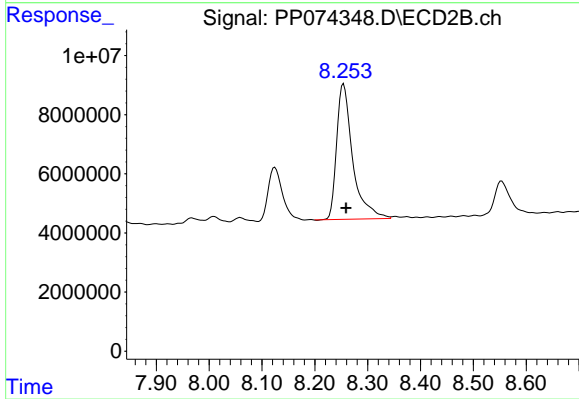
#43 AR-1268-3

R.T.: 7.967 min
 Delta R.T.: -0.007 min
 Response: 4348733
 Conc: 5.23 ng/ml



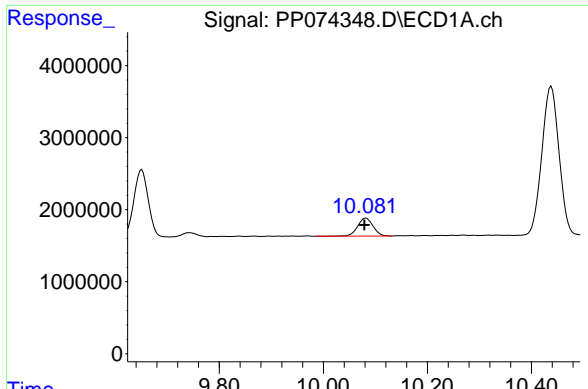
#44 AR-1268-4

R.T.: 9.651 min
 Delta R.T.: 0.003 min
 Response: 17865325
 Conc: 303.77 ng/ml



#44 AR-1268-4

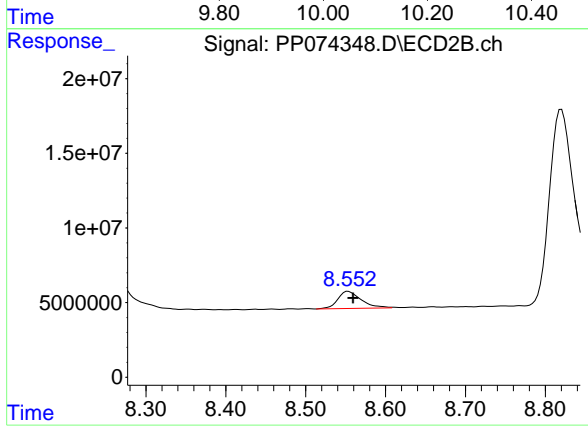
R.T.: 8.254 min
 Delta R.T.: -0.005 min
 Response: 97004618
 Conc: 314.89 ng/ml



#45 AR-1268-5

R.T.: 10.082 min
Delta R.T.: 0.003 min
Response: 5119257
Conc: 14.56 ng/ml

Instrument :
ECD_P
ClientSampleId :
AR1660CCC500



#45 AR-1268-5

R.T.: 8.553 min
Delta R.T.: -0.006 min
Response: 23394176
Conc: 9.17 ng/ml