

Data Path : Z:\pestpcbsrv\HPCHEM1\ECD\_P\Data\PP081325\  
 Data File : PP074349.D  
 Signal(s) : Signal #1: ECD1A.ch Signal #2: ECD2B.ch  
 Acq On : 13 Aug 2025 16:10  
 Operator : YP\AJ  
 Sample : AR1242CCC500  
 Misc :  
 ALS Vial : 4 Sample Multiplier: 1

Instrument :  
 ECD\_P  
 ClientSampleId :  
 AR1242CCC500

Integration File signal 1: autoint1.e  
 Integration File signal 2: autoint2.e  
 Quant Time: Aug 13 23:58:13 2025  
 Quant Method : Z:\pestpcbsrv\HPCHEM1\ECD\_P\methods\PP080125.M  
 Quant Title : GC EXTRACTABLES  
 QLast Update : Mon Aug 04 11:01:49 2025  
 Response via : Initial Calibration  
 Integrator: ChemStation

Volume Inj. : 2 µl  
 Signal #1 Phase : ZB-MR1 Signal #2 Phase: ZB-MR2  
 Signal #1 Info : 30Mx0.32mmx 0.50µ Signal #2 Info : 30M x 0.32mm x 0.25µm

| Compound                    | RT#1   | RT#2  | Resp#1   | Resp#2   | ng/ml    | ng/ml      |
|-----------------------------|--------|-------|----------|----------|----------|------------|
| System Monitoring Compounds |        |       |          |          |          |            |
| 1) SA Tetrachlo...          | 4.661  | 3.804 | 57399269 | 212.9E6  | 51.327   | 55.521     |
| 2) SA Decachlor...          | 10.444 | 8.823 | 43829371 | 289.1E6  | 45.131   | 48.081     |
| Target Compounds            |        |       |          |          |          |            |
| 3) L1 AR-1016-1             | 5.813  | 4.903 | 17662847 | 181.6E6  | 428.120  | 455.317    |
| 4) L1 AR-1016-2             | 5.834  | 4.961 | 25616799 | 85437704 | 421.733  | 454.918    |
| 5) L1 AR-1016-3             | 5.897  | 5.082 | 17204763 | 46942713 | 433.801  | 442.565    |
| 6) L1 AR-1016-4             | 5.994  | 5.123 | 14172111 | 45666539 | 435.469  | 418.115    |
| 7) L1 AR-1016-5             | 6.287  | 5.337 | 13736891 | 53288063 | 423.090  | 455.597    |
| 8) L2 AR-1221-1             | 4.857  | 4.015 | 2256063  | 6558629  | 134.581  | 133.617    |
| 9) L2 AR-1221-2             | 4.947  | 4.100 | 3298125  | 8457500  | 261.734  | 235.655    |
| 10) L2 AR-1221-3            | 5.022  | 4.176 | 10775489 | 37902773 | 294.129  | 280.295    |
| 11) L3 AR-1232-1            | 5.022  | 4.176 | 10775489 | 37902773 | 371.091  | 373.933    |
| 12) L3 AR-1232-2            | 5.548  | 4.903 | 13582992 | 181.6E6  | 902.962  | 1042.201   |
| 13) L3 AR-1232-3            | 5.834  | 5.082 | 25616799 | 46942713 | 883.286  | 1024.578   |
| 14) L3 AR-1232-4            | 5.994  | 5.165 | 14172111 | 86802506 | 916.172  | 1496.319 # |
| 15) L3 AR-1232-5            | 6.084  | 5.337 | 11821239 | 53288063 | 1008.981 | 1134.285   |
| 16) L4 AR-1242-1            | 5.813  | 4.903 | 17662847 | 181.6E6  | 473.969  | 526.221    |
| 17) L4 AR-1242-2            | 5.834  | 4.961 | 25616799 | 85437704 | 470.820  | 522.946    |
| 18) L4 AR-1242-3            | 5.897  | 5.082 | 17204763 | 46942713 | 481.443  | 508.872    |
| 19) L4 AR-1242-4            | 5.994  | 5.165 | 14172111 | 86802506 | 485.037  | 726.858 #  |
| 20) L4 AR-1242-5            | 6.724  | 5.685 | 15647361 | 74727885 | 440.052  | 499.652    |
| 21) L5 AR-1248-1            | 5.813  | 4.903 | 17662847 | 181.6E6  | 630.489  | 848.964 #  |
| 22) L5 AR-1248-2            | 6.084  | 5.123 | 11821239 | 45666539 | 293.615  | 312.116    |
| 23) L5 AR-1248-3            | 6.287  | 5.165 | 13736891 | 86802506 | 308.185  | 506.255 #  |
| 24) L5 AR-1248-4            | 6.685  | 5.337 | 14409775 | 53288063 | 276.913  | 320.292    |
| 25) L5 AR-1248-5            | 6.724  | 5.727 | 15647361 | 90004538 | 274.789  | 309.330    |
| 26) L6 AR-1254-1            | 6.659  | 5.685 | 10843112 | 74727885 | 205.982  | 204.073    |
| 27) L6 AR-1254-2            | 6.880  | 5.834 | 12838154 | 19393124 | 161.477  | 69.705 #   |
| 28) L6 AR-1254-3            | 7.239  | 6.235 | 6504008  | 23232705 | 74.488   | 47.490 #   |
| 29) L6 AR-1254-4            | 7.521  | 6.463 | 4273442  | 19131316 | 66.972   | 52.049     |
| 30) L6 AR-1254-5            | 7.938  | 6.880 | 1814925  | 5139315  | 22.367   | 13.343 #   |
| 31) L7 AR-1260-1            | 7.414  | 6.553 | 746510   | 1917979  | 13.246   | 4.748 #    |
| 32) L7 AR-1260-2            | 7.655  | 6.705 | 1210105  | 2736516  | 17.756   | 8.751 #    |
| 33) L7 AR-1260-3            | 8.030  | 6.947 | 107582   | 606065   | 2.019    | 1.538      |
| 34) L7 AR-1260-4            | 8.254  | 7.174 | 167343   | 264458   | 2.673    | 0.909 #    |
| 35) L7 AR-1260-5            | 8.572  | 7.408 | 334052   | 603287   | 2.948    | 0.797 #    |
| 36) L8 AR-1262-1            | 8.227  | 6.947 | 809544   | 606065   | 10.681   | 1.076 #    |
| 37) L8 AR-1262-2            | 8.572  | 7.174 | 334052   | 264458   | 2.561    | 0.659 #    |
| 38) L8 AR-1262-3            | 8.895  | 7.692 | 65227    | 640147   | 0.693    | 1.781 #    |
| 39) L8 AR-1262-4            | 9.016f | 7.758 | 29106    | 875720   | 0.400    | 1.313 #    |
| 40) L8 AR-1262-5            | 9.671  | 8.248 | 51913    | 63115    | 1.019    | 0.223 #    |
| 41) L9 AR-1268-1            | 8.895  | 7.692 | 65227    | 640147   | 0.419    | 0.587 #    |

Data Path : Z:\pestpcbsrv\HPCHEM1\ECD\_P\Data\PP081325\  
 Data File : PP074349.D  
 Signal(s) : Signal #1: ECD1A.ch Signal #2: ECD2B.ch  
 Acq On : 13 Aug 2025 16:10  
 Operator : YP\AJ  
 Sample : AR1242CCC500  
 Misc :  
 ALS Vial : 4 Sample Multiplier: 1

Instrument :  
 ECD\_P  
 ClientSampleId :  
 AR1242CCC500

Integration File signal 1: autoint1.e  
 Integration File signal 2: autoint2.e  
 Quant Time: Aug 13 23:58:13 2025  
 Quant Method : Z:\pestpcbsrv\HPCHEM1\ECD\_P\methods\PP080125.M  
 Quant Title : GC EXTRACTABLES  
 QLast Update : Mon Aug 04 11:01:49 2025  
 Response via : Initial Calibration  
 Integrator: ChemStation

Volume Inj. : 2 µl  
 Signal #1 Phase : ZB-MR1 Signal #2 Phase: ZB-MR2  
 Signal #1 Info : 30Mx0.32mmx 0.50µ Signal #2 Info : 30M x 0.32mm x 0.25µm

|     | Compound     | RT#1   | RT#2  | Resp#1 | Resp#2 | ng/ml | ng/ml   |
|-----|--------------|--------|-------|--------|--------|-------|---------|
| 42) | L9 AR-1268-2 | 9.016  | 7.758 | 29106  | 875720 | 0.203 | 0.825 # |
| 43) | L9 AR-1268-3 | 9.212  | 7.964 | 78408  | 640575 | 0.656 | 0.770   |
| 44) | L9 AR-1268-4 | 9.671  | 8.269 | 51913  | 154054 | 0.883 | 0.500 # |
| 45) | L9 AR-1268-5 | 10.090 | 8.561 | 299243 | 775897 | 0.851 | 0.304 # |

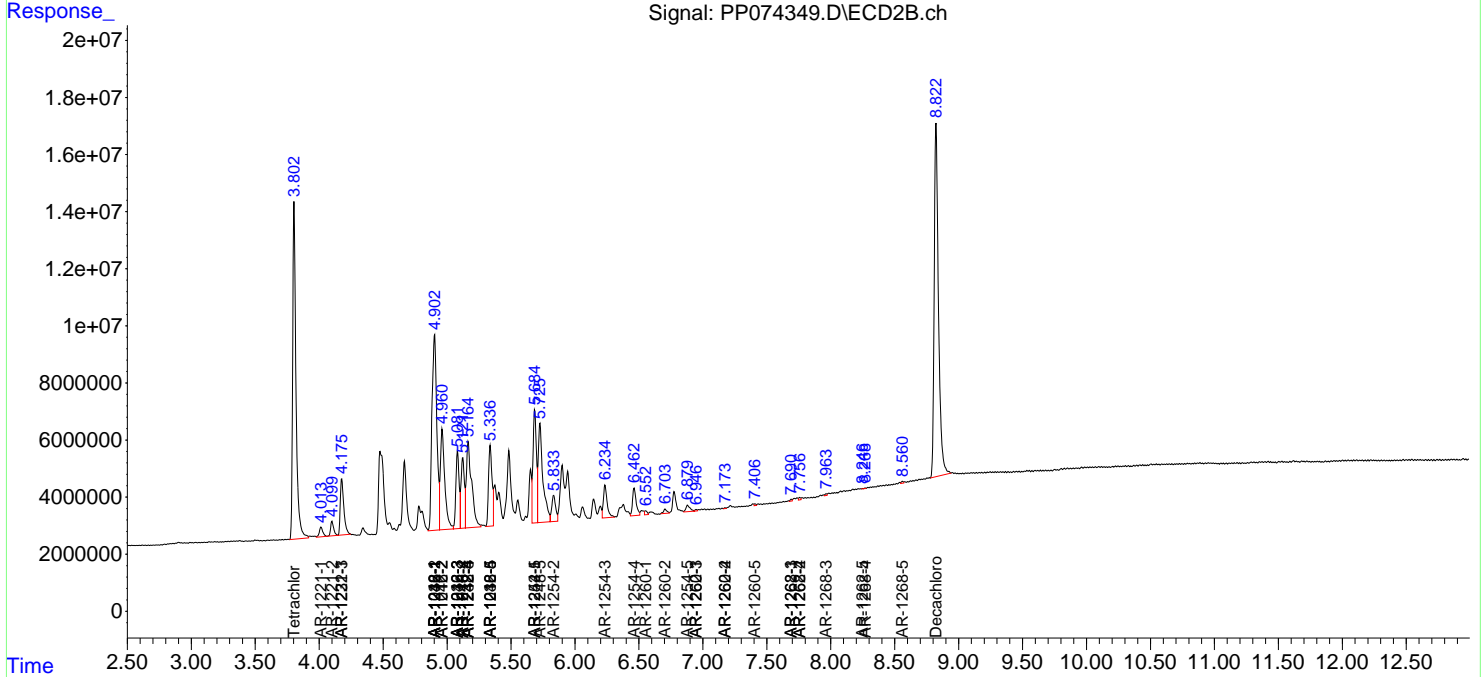
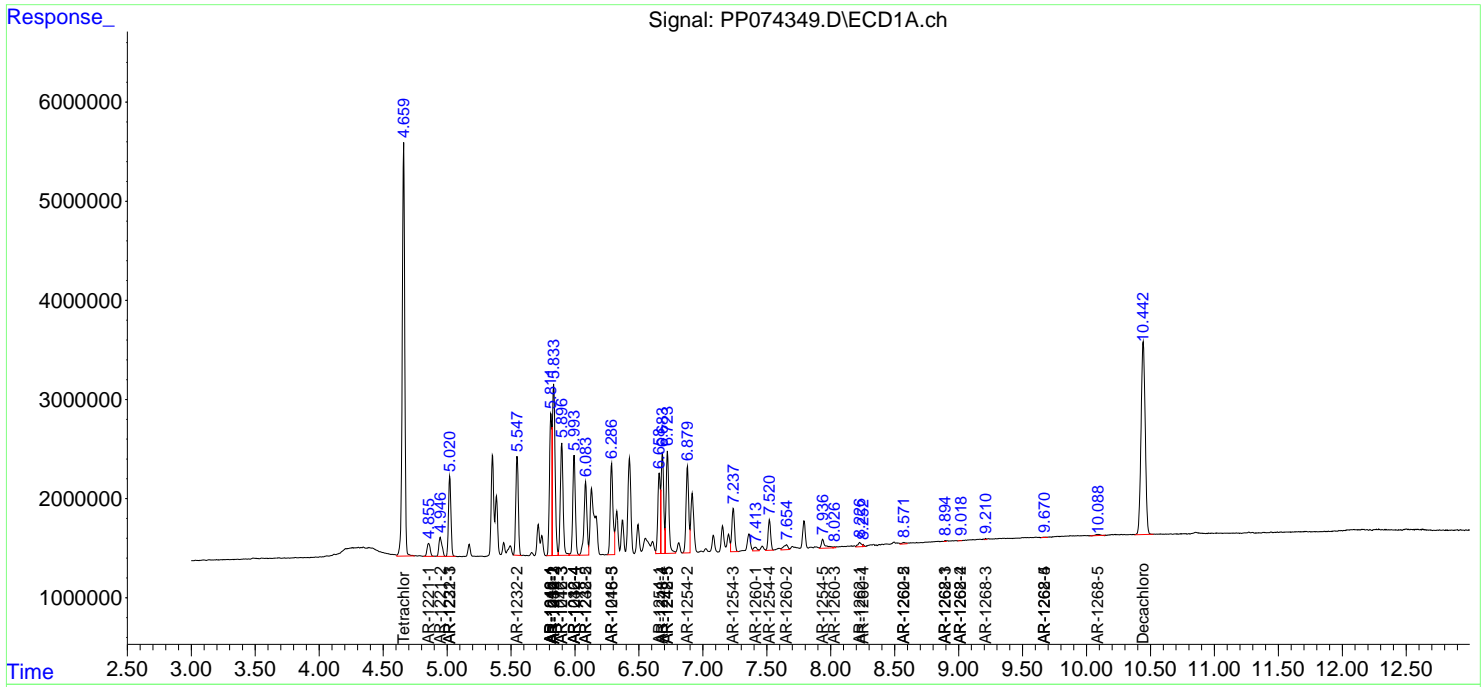
(f)=RT Delta > 1/2 Window (#)=Amounts differ by > 25% (m)=manual int.

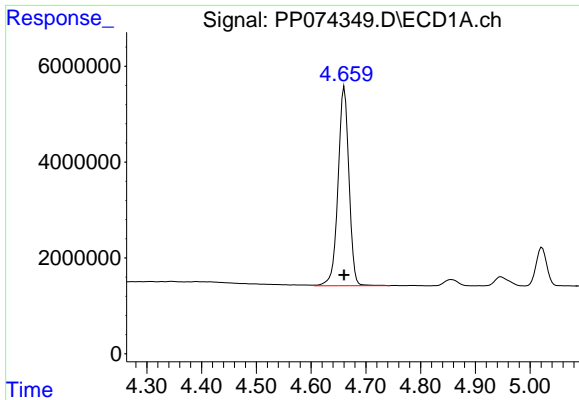
Data Path : Z:\pestpcbsrv\HPCHEM1\ECD\_P\Data\PP081325\  
 Data File : PP074349.D  
 Signal(s) : Signal #1: ECD1A.ch Signal #2: ECD2B.ch  
 Acq On : 13 Aug 2025 16:10  
 Operator : YP\AJ  
 Sample : AR1242CCC500  
 Misc :  
 ALS Vial : 4 Sample Multiplier: 1

Instrument :  
 ECD\_P  
 ClientSampleId :  
 AR1242CCC500

Integration File signal 1: autoint1.e  
 Integration File signal 2: autoint2.e  
 Quant Time: Aug 13 23:58:13 2025  
 Quant Method : Z:\pestpcbsrv\HPCHEM1\ECD\_P\methods\PP080125.M  
 Quant Title : GC EXTRACTABLES  
 QLast Update : Mon Aug 04 11:01:49 2025  
 Response via : Initial Calibration  
 Integrator: ChemStation

Volume Inj. : 2 µl  
 Signal #1 Phase : ZB-MR1 Signal #2 Phase: ZB-MR2  
 Signal #1 Info : 30Mx0.32mmx 0.50µ Signal #2 Info : 30M x 0.32mm x 0.25µm

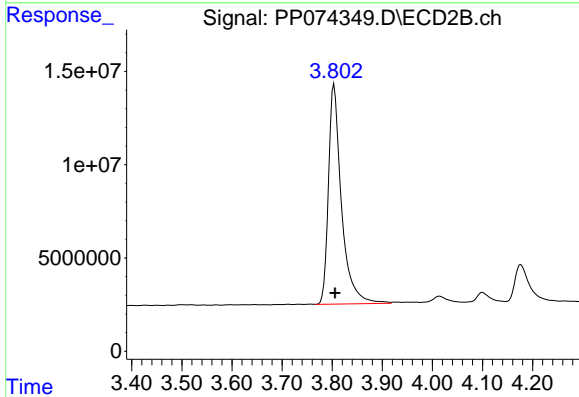




#1 Tetrachloro-m-xylene

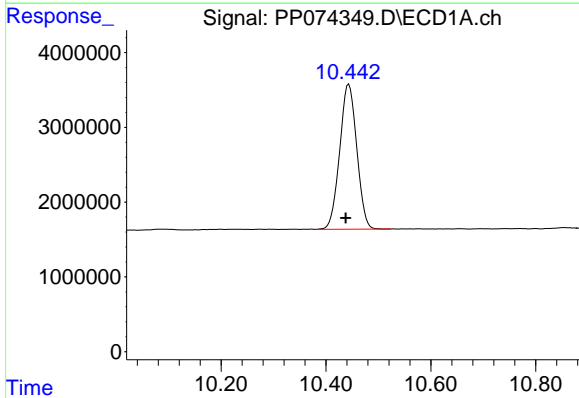
R.T.: 4.661 min  
 Delta R.T.: 0.000 min  
 Response: 57399269  
 Conc: 51.33 ng/ml

Instrument :  
 ECD\_P  
 ClientSampleId :  
 AR1242CCC500



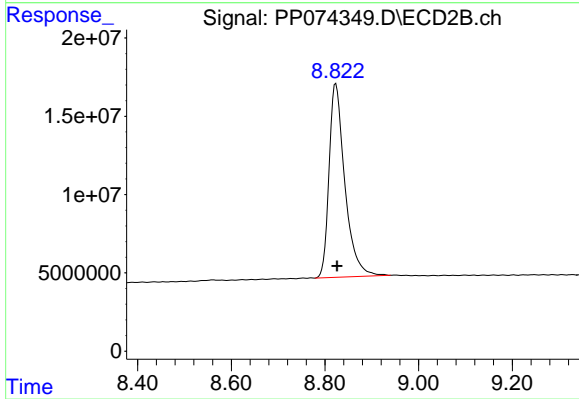
#1 Tetrachloro-m-xylene

R.T.: 3.804 min  
 Delta R.T.: -0.002 min  
 Response: 212890791  
 Conc: 55.52 ng/ml



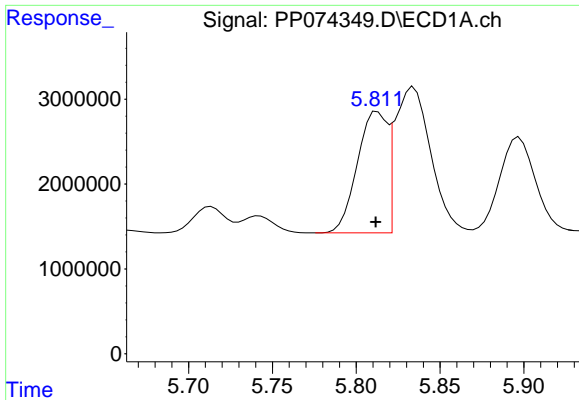
#2 Decachlorobiphenyl

R.T.: 10.444 min  
 Delta R.T.: 0.006 min  
 Response: 43829371  
 Conc: 45.13 ng/ml



#2 Decachlorobiphenyl

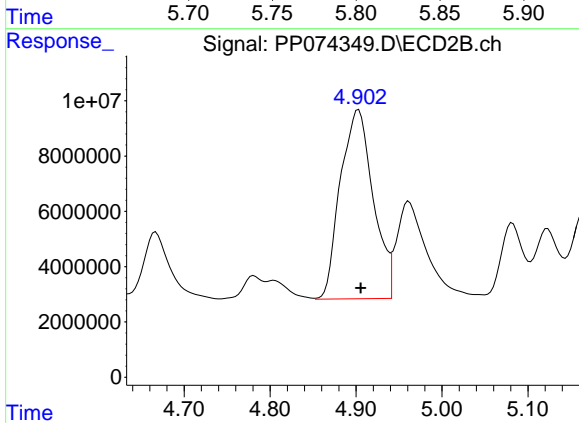
R.T.: 8.823 min  
 Delta R.T.: -0.003 min  
 Response: 289144054  
 Conc: 48.08 ng/ml



#3 AR-1016-1

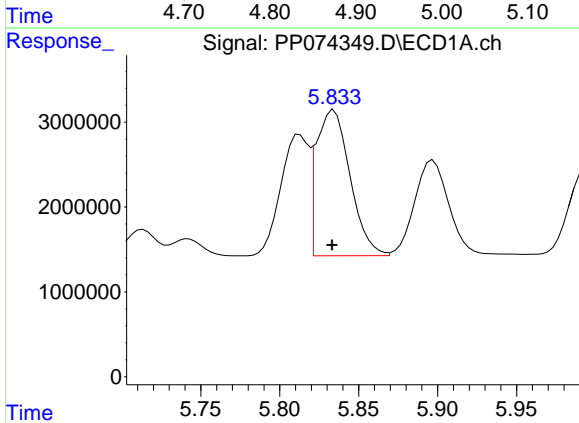
R.T.: 5.813 min  
 Delta R.T.: 0.001 min  
 Response: 17662847  
 Conc: 428.12 ng/ml

Instrument :  
 ECD\_P  
 ClientSampleId :  
 AR1242CCC500



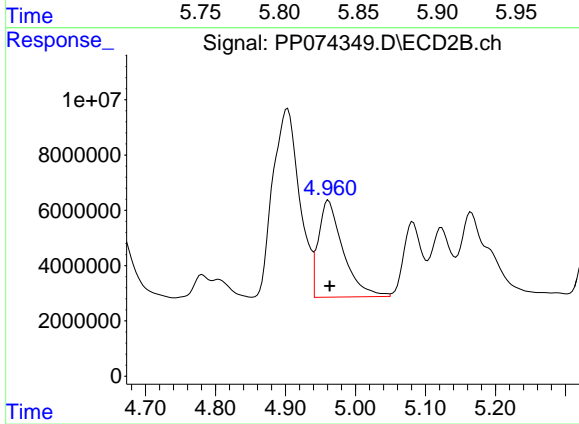
#3 AR-1016-1

R.T.: 4.903 min  
 Delta R.T.: -0.003 min  
 Response: 181620339  
 Conc: 455.32 ng/ml



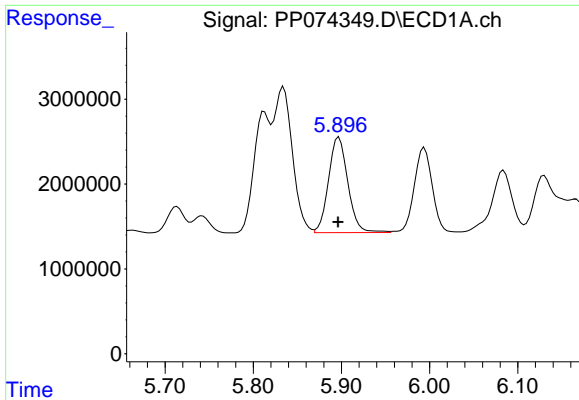
#4 AR-1016-2

R.T.: 5.834 min  
 Delta R.T.: 0.001 min  
 Response: 25616799  
 Conc: 421.73 ng/ml



#4 AR-1016-2

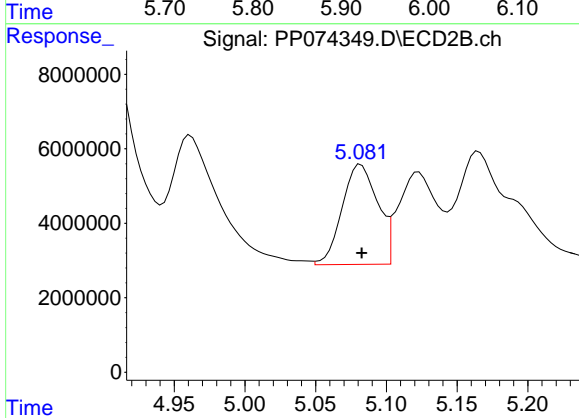
R.T.: 4.961 min  
 Delta R.T.: -0.002 min  
 Response: 85437704  
 Conc: 454.92 ng/ml



#5 AR-1016-3

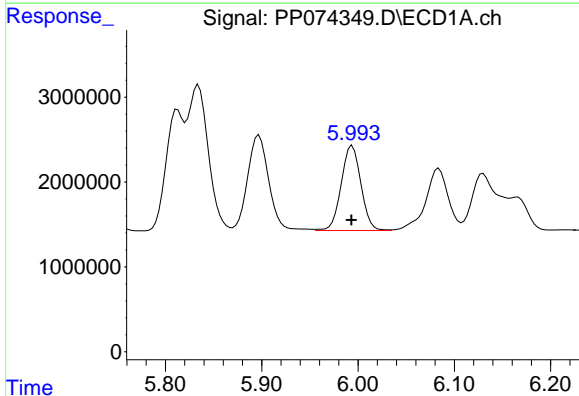
R.T.: 5.897 min  
 Delta R.T.: 0.001 min  
 Response: 17204763  
 Conc: 433.80 ng/ml

Instrument :  
 ECD\_P  
 ClientSampleId :  
 AR1242CCC500



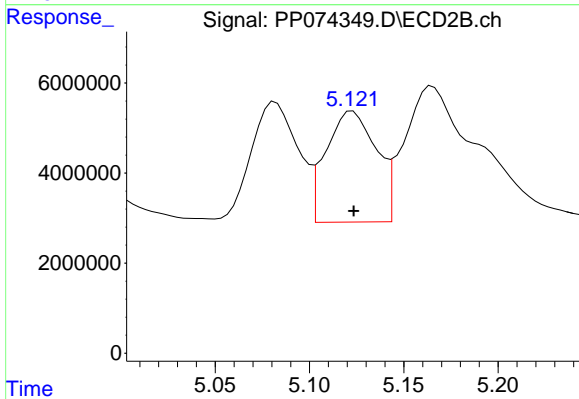
#5 AR-1016-3

R.T.: 5.082 min  
 Delta R.T.: 0.000 min  
 Response: 46942713  
 Conc: 442.57 ng/ml



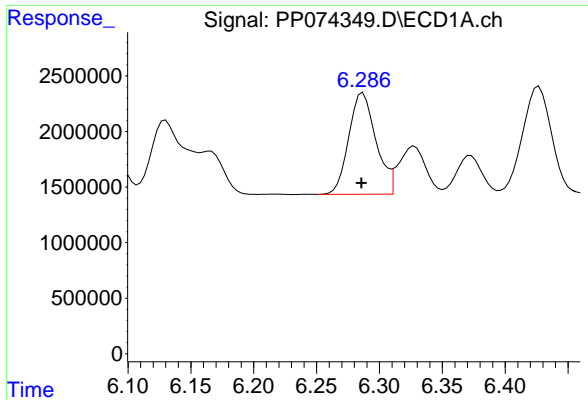
#6 AR-1016-4

R.T.: 5.994 min  
 Delta R.T.: 0.001 min  
 Response: 14172111  
 Conc: 435.47 ng/ml



#6 AR-1016-4

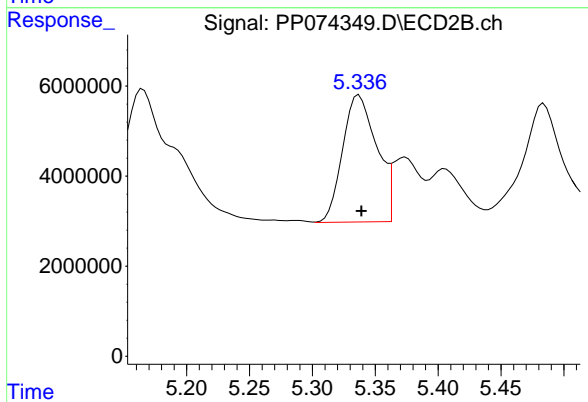
R.T.: 5.123 min  
 Delta R.T.: 0.000 min  
 Response: 45666539  
 Conc: 418.11 ng/ml



#7 AR-1016-5

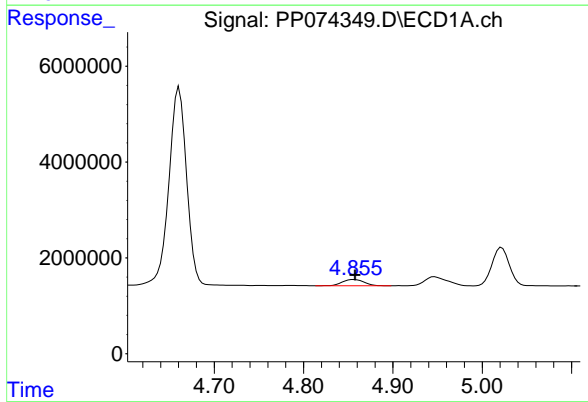
R.T.: 6.287 min  
 Delta R.T.: 0.001 min  
 Response: 13736891  
 Conc: 423.09 ng/ml

Instrument :  
 ECD\_P  
 ClientSampleId :  
 AR1242CCC500



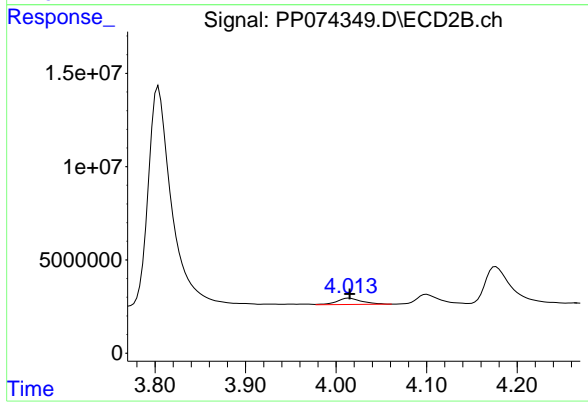
#7 AR-1016-5

R.T.: 5.337 min  
 Delta R.T.: -0.002 min  
 Response: 53288063  
 Conc: 455.60 ng/ml



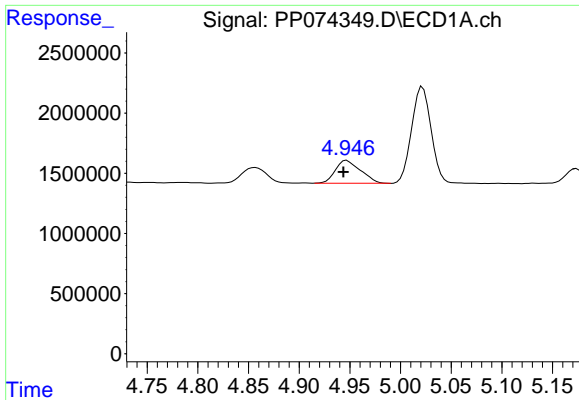
#8 AR-1221-1

R.T.: 4.857 min  
 Delta R.T.: 0.000 min  
 Response: 2256063  
 Conc: 134.58 ng/ml



#8 AR-1221-1

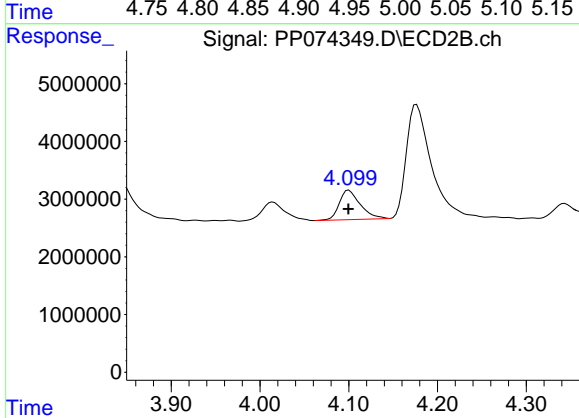
R.T.: 4.015 min  
 Delta R.T.: 0.000 min  
 Response: 6558629  
 Conc: 133.62 ng/ml



#9 AR-1221-2

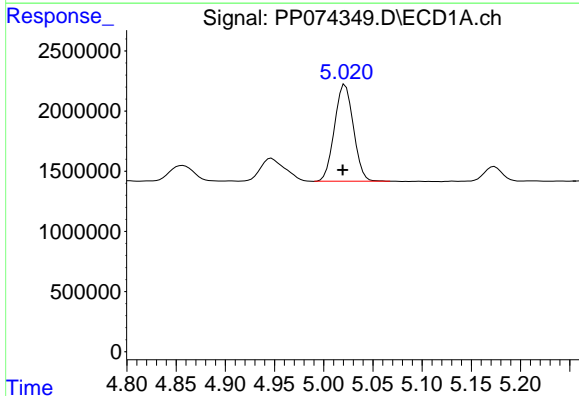
R.T.: 4.947 min  
 Delta R.T.: 0.003 min  
 Response: 3298125  
 Conc: 261.73 ng/ml

Instrument :  
 ECD\_P  
 ClientSampleId :  
 AR1242CCC500



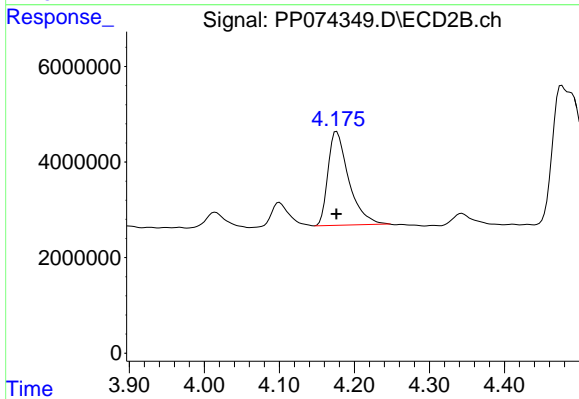
#9 AR-1221-2

R.T.: 4.100 min  
 Delta R.T.: 0.000 min  
 Response: 8457500  
 Conc: 235.66 ng/ml



#10 AR-1221-3

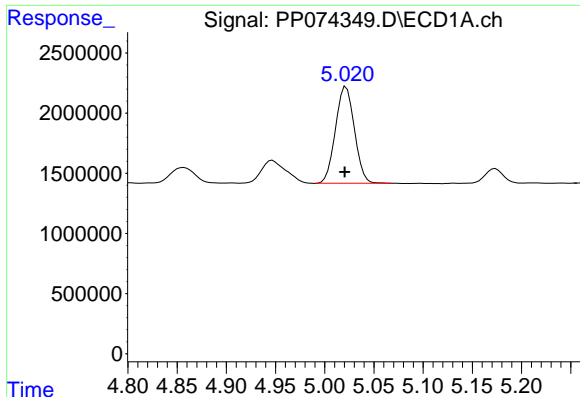
R.T.: 5.022 min  
 Delta R.T.: 0.002 min  
 Response: 10775489  
 Conc: 294.13 ng/ml



#10 AR-1221-3

R.T.: 4.176 min  
 Delta R.T.: 0.000 min  
 Response: 37902773  
 Conc: 280.30 ng/ml

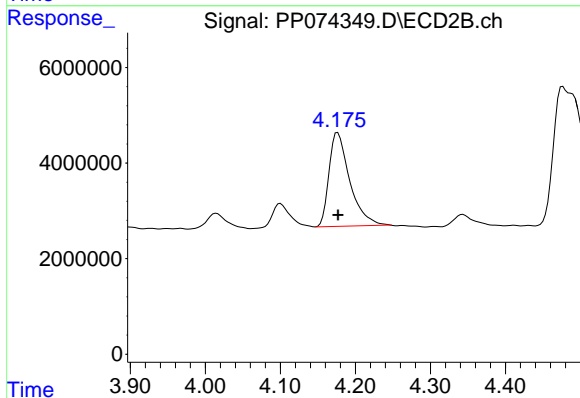




#11 AR-1232-1

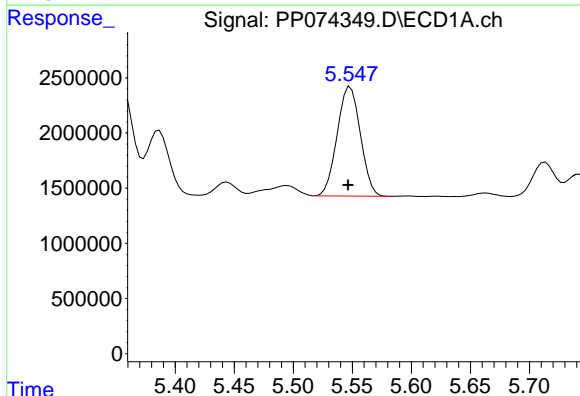
R.T.: 5.022 min  
 Delta R.T.: 0.001 min  
 Response: 10775489  
 Conc: 371.09 ng/ml

Instrument :  
 ECD\_P  
 ClientSampleId :  
 AR1242CCC500



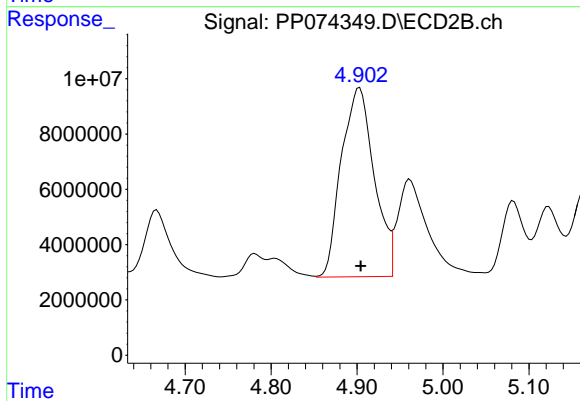
#11 AR-1232-1

R.T.: 4.176 min  
 Delta R.T.: 0.000 min  
 Response: 37902773  
 Conc: 373.93 ng/ml



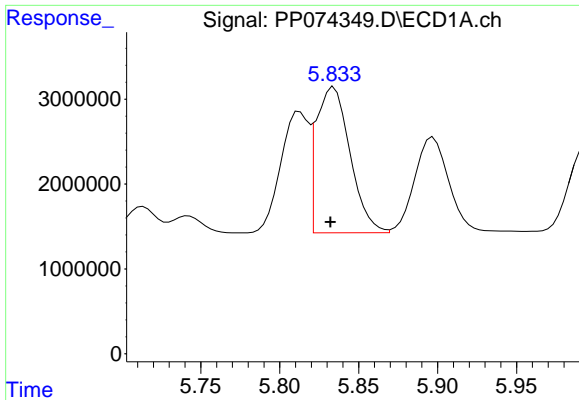
#12 AR-1232-2

R.T.: 5.548 min  
 Delta R.T.: 0.002 min  
 Response: 13582992  
 Conc: 902.96 ng/ml



#12 AR-1232-2

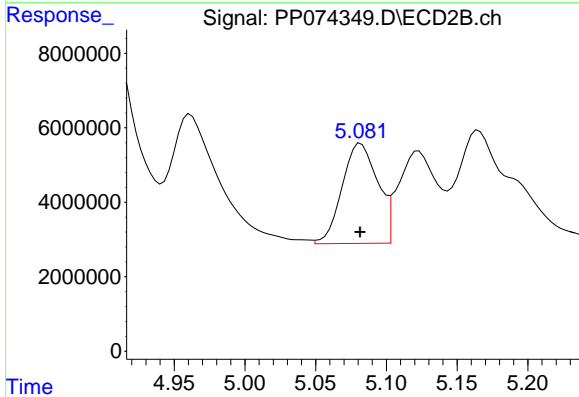
R.T.: 4.903 min  
 Delta R.T.: -0.001 min  
 Response: 181620339  
 Conc: 1042.20 ng/ml



#13 AR-1232-3

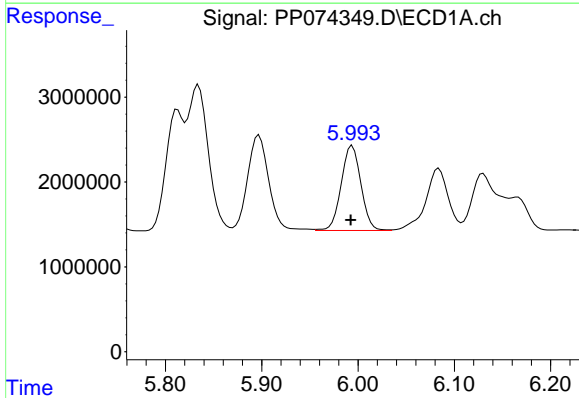
R.T.: 5.834 min  
 Delta R.T.: 0.002 min  
 Response: 25616799  
 Conc: 883.29 ng/ml

Instrument :  
 ECD\_P  
 ClientSampleId :  
 AR1242CCC500



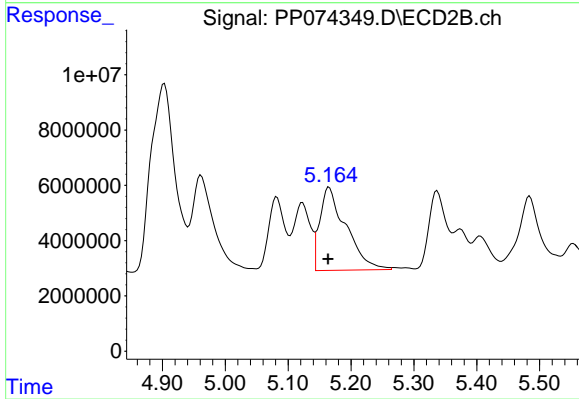
#13 AR-1232-3

R.T.: 5.082 min  
 Delta R.T.: 0.000 min  
 Response: 46942713  
 Conc: 1024.58 ng/ml



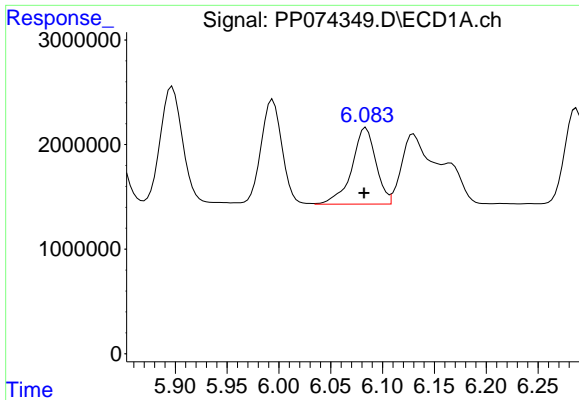
#14 AR-1232-4

R.T.: 5.994 min  
 Delta R.T.: 0.002 min  
 Response: 14172111  
 Conc: 916.17 ng/ml



#14 AR-1232-4

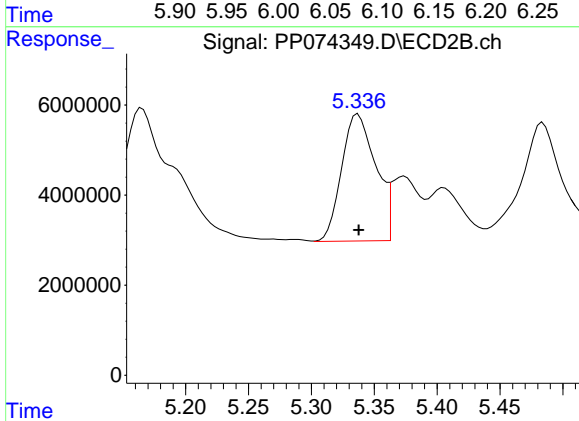
R.T.: 5.165 min  
 Delta R.T.: 0.002 min  
 Response: 86802506  
 Conc: 1496.32 ng/ml



#15 AR-1232-5

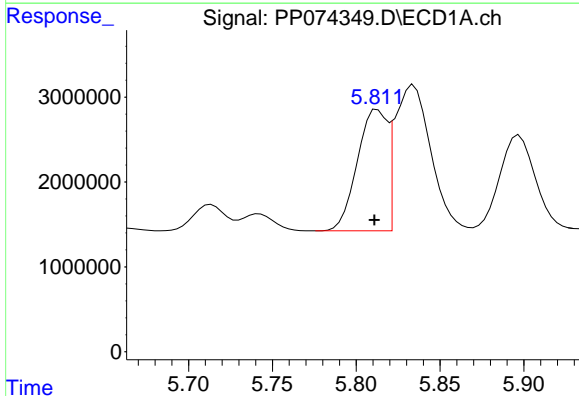
R.T.: 6.084 min  
 Delta R.T.: 0.002 min  
 Response: 11821239  
 Conc: 1008.98 ng/ml

Instrument :  
 ECD\_P  
 ClientSampleId :  
 AR1242CCC500



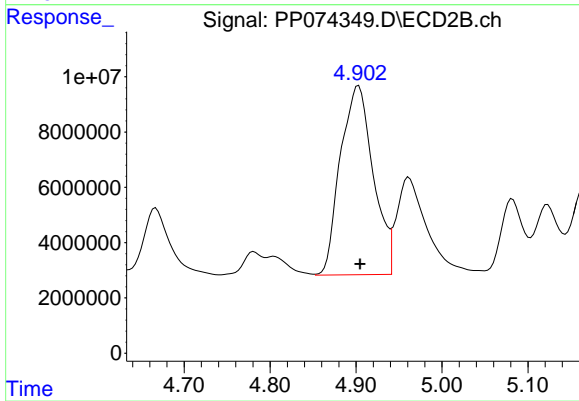
#15 AR-1232-5

R.T.: 5.337 min  
 Delta R.T.: 0.000 min  
 Response: 53288063  
 Conc: 1134.28 ng/ml



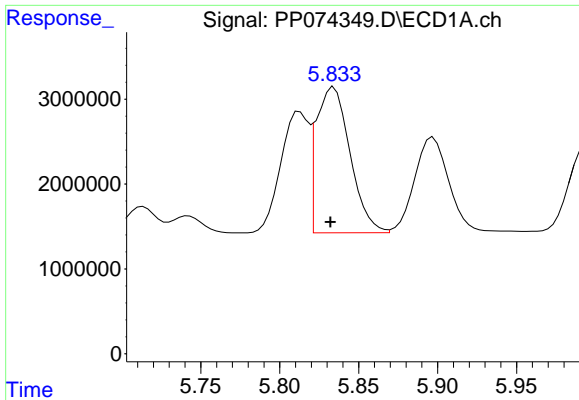
#16 AR-1242-1

R.T.: 5.813 min  
 Delta R.T.: 0.002 min  
 Response: 17662847  
 Conc: 473.97 ng/ml



#16 AR-1242-1

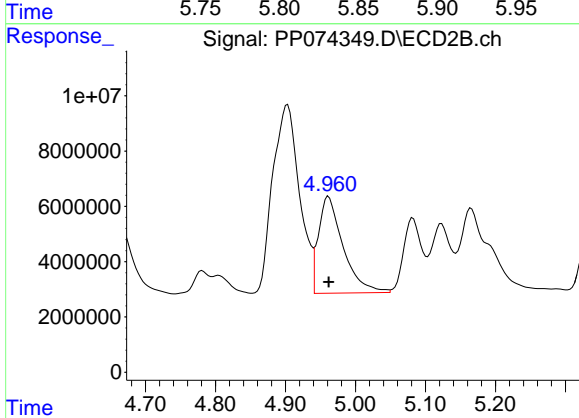
R.T.: 4.903 min  
 Delta R.T.: -0.002 min  
 Response: 181620339  
 Conc: 526.22 ng/ml



#17 AR-1242-2

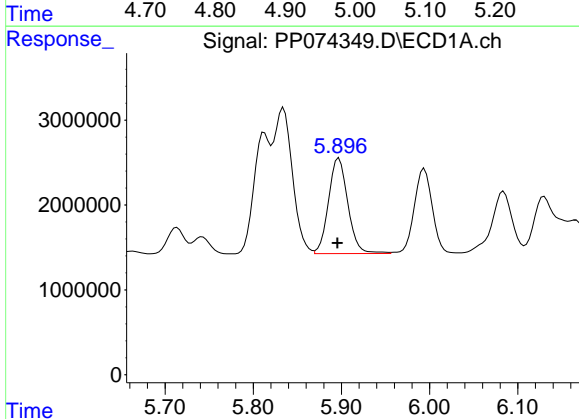
R.T.: 5.834 min  
 Delta R.T.: 0.002 min  
 Response: 25616799  
 Conc: 470.82 ng/ml

Instrument :  
 ECD\_P  
 ClientSampleId :  
 AR1242CCC500



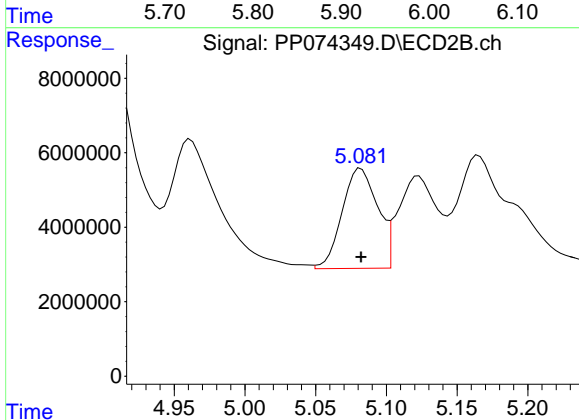
#17 AR-1242-2

R.T.: 4.961 min  
 Delta R.T.: 0.000 min  
 Response: 85437704  
 Conc: 522.95 ng/ml



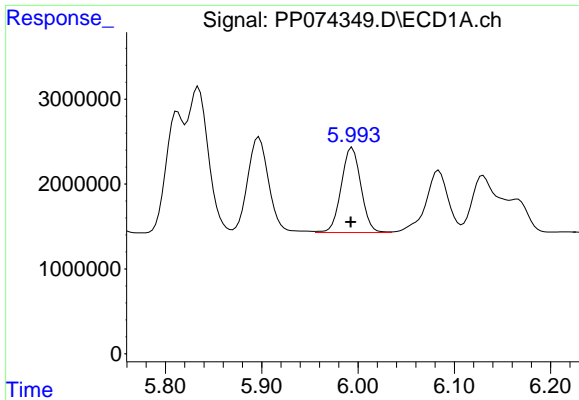
#18 AR-1242-3

R.T.: 5.897 min  
 Delta R.T.: 0.002 min  
 Response: 17204763  
 Conc: 481.44 ng/ml



#18 AR-1242-3

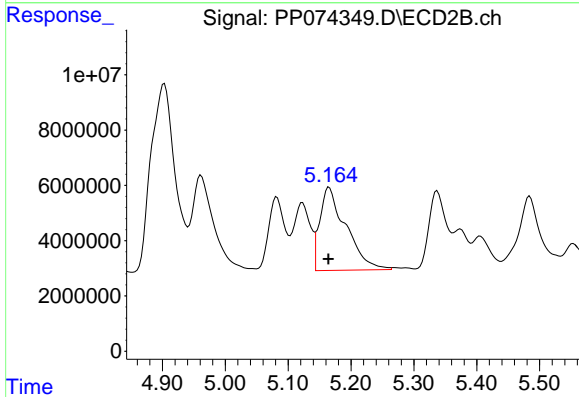
R.T.: 5.082 min  
 Delta R.T.: 0.000 min  
 Response: 46942713  
 Conc: 508.87 ng/ml



#19 AR-1242-4

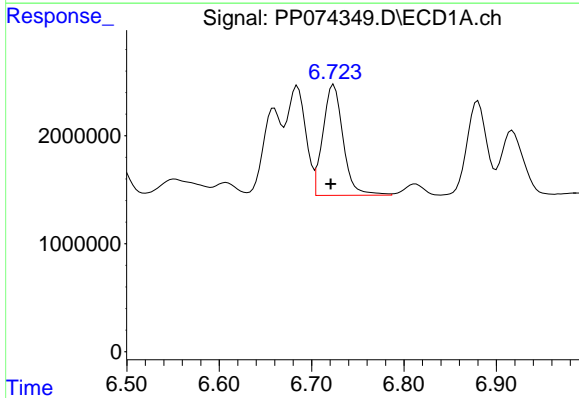
R.T.: 5.994 min  
 Delta R.T.: 0.002 min  
 Response: 14172111  
 Conc: 485.04 ng/ml

Instrument :  
 ECD\_P  
 ClientSampleId :  
 AR1242CCC500



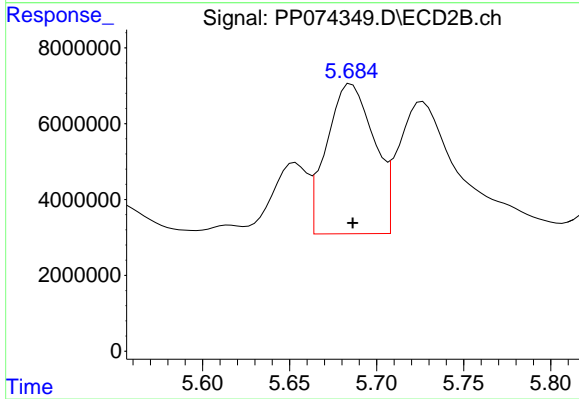
#19 AR-1242-4

R.T.: 5.165 min  
 Delta R.T.: 0.001 min  
 Response: 86802506  
 Conc: 726.86 ng/ml



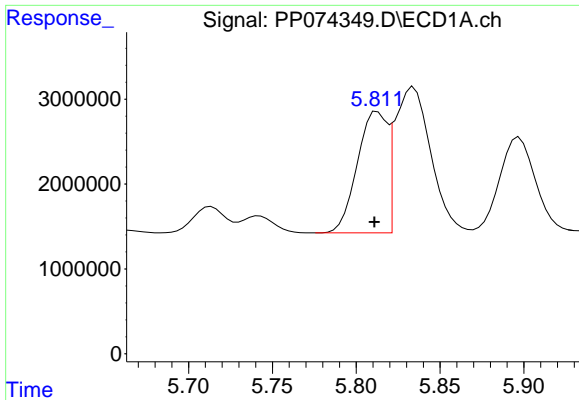
#20 AR-1242-5

R.T.: 6.724 min  
 Delta R.T.: 0.003 min  
 Response: 15647361  
 Conc: 440.05 ng/ml



#20 AR-1242-5

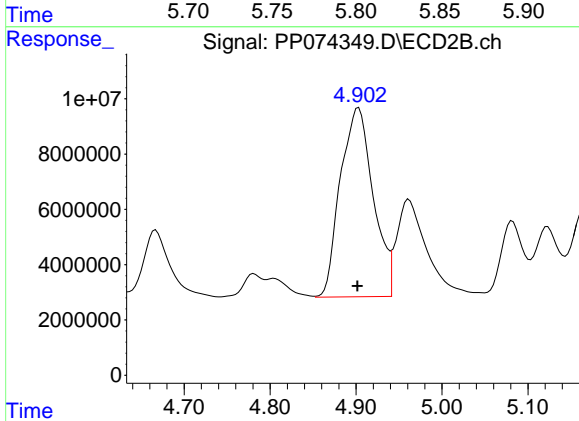
R.T.: 5.685 min  
 Delta R.T.: 0.000 min  
 Response: 74727885  
 Conc: 499.65 ng/ml



#21 AR-1248-1

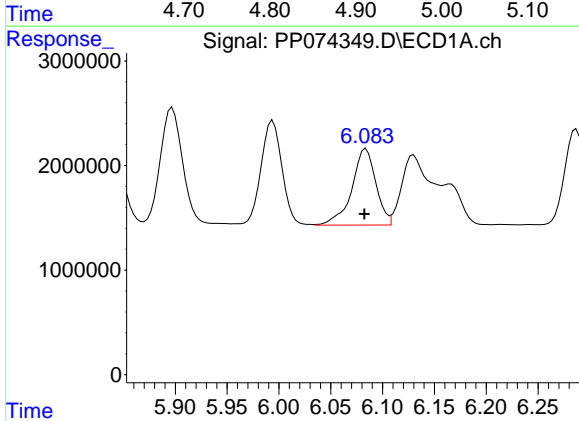
R.T.: 5.813 min  
 Delta R.T.: 0.002 min  
 Response: 17662847  
 Conc: 630.49 ng/ml

Instrument :  
 ECD\_P  
 ClientSampleId :  
 AR1242CCC500



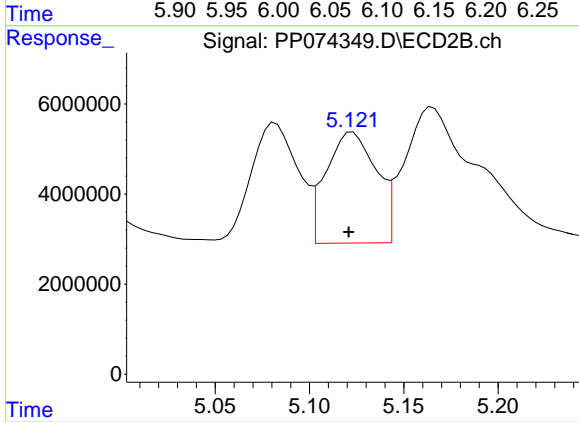
#21 AR-1248-1

R.T.: 4.903 min  
 Delta R.T.: 0.001 min  
 Response: 181620339  
 Conc: 848.96 ng/ml



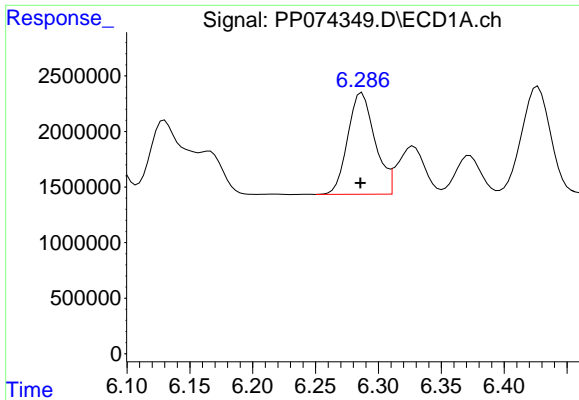
#22 AR-1248-2

R.T.: 6.084 min  
 Delta R.T.: 0.001 min  
 Response: 11821239  
 Conc: 293.61 ng/ml



#22 AR-1248-2

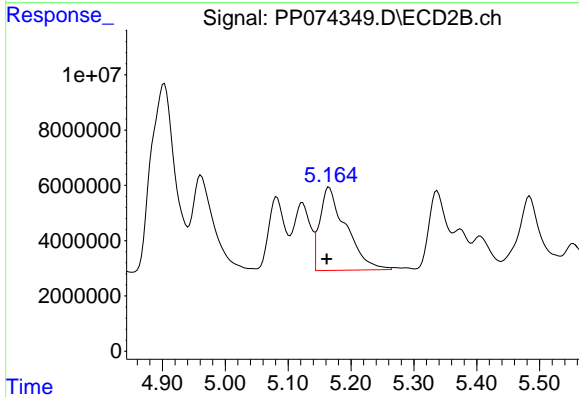
R.T.: 5.123 min  
 Delta R.T.: 0.002 min  
 Response: 45666539  
 Conc: 312.12 ng/ml



#23 AR-1248-3

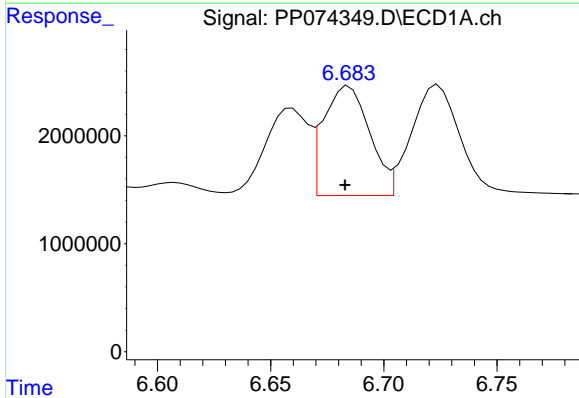
R.T.: 6.287 min  
 Delta R.T.: 0.001 min  
 Response: 13736891  
 Conc: 308.18 ng/ml

Instrument :  
 ECD\_P  
 ClientSampleId :  
 AR1242CCC500



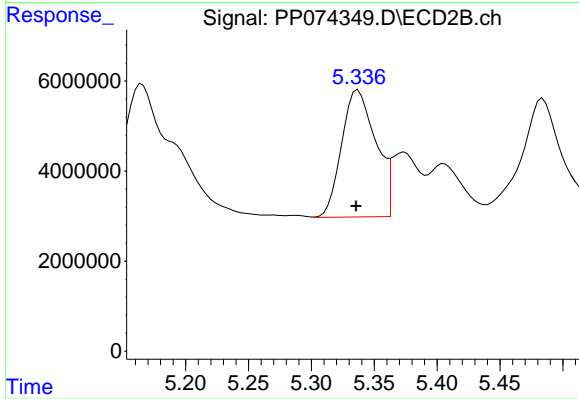
#23 AR-1248-3

R.T.: 5.165 min  
 Delta R.T.: 0.004 min  
 Response: 86802506  
 Conc: 506.26 ng/ml



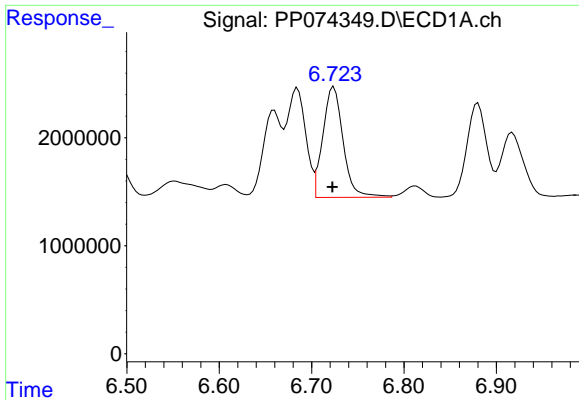
#24 AR-1248-4

R.T.: 6.685 min  
 Delta R.T.: 0.002 min  
 Response: 14409775  
 Conc: 276.91 ng/ml



#24 AR-1248-4

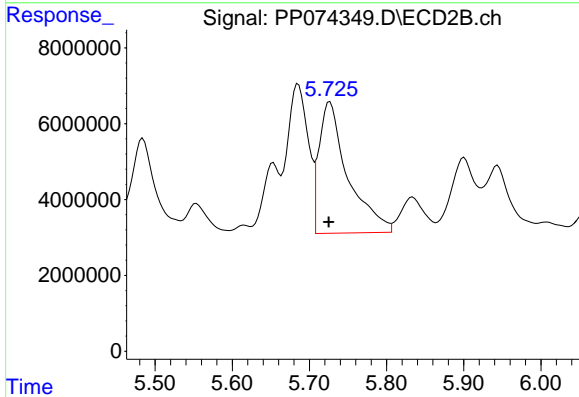
R.T.: 5.337 min  
 Delta R.T.: 0.002 min  
 Response: 53288063  
 Conc: 320.29 ng/ml



#25 AR-1248-5

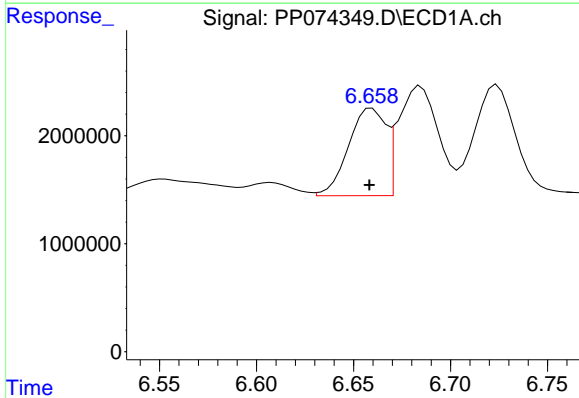
R.T.: 6.724 min  
 Delta R.T.: 0.002 min  
 Response: 15647361  
 Conc: 274.79 ng/ml

Instrument :  
 ECD\_P  
 ClientSampleId :  
 AR1242CCC500



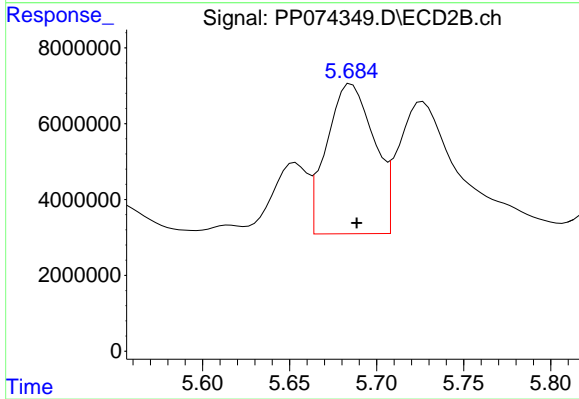
#25 AR-1248-5

R.T.: 5.727 min  
 Delta R.T.: 0.002 min  
 Response: 90004538  
 Conc: 309.33 ng/ml



#26 AR-1254-1

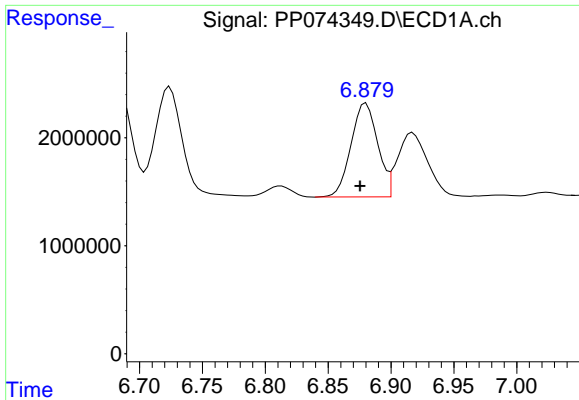
R.T.: 6.659 min  
 Delta R.T.: 0.001 min  
 Response: 10843112  
 Conc: 205.98 ng/ml



#26 AR-1254-1

R.T.: 5.685 min  
 Delta R.T.: -0.003 min  
 Response: 74727885  
 Conc: 204.07 ng/ml

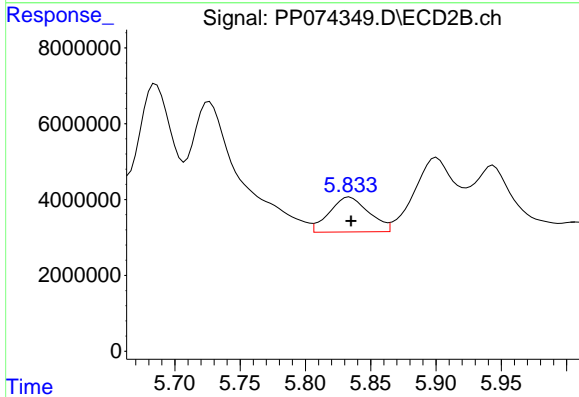




#27 AR-1254-2

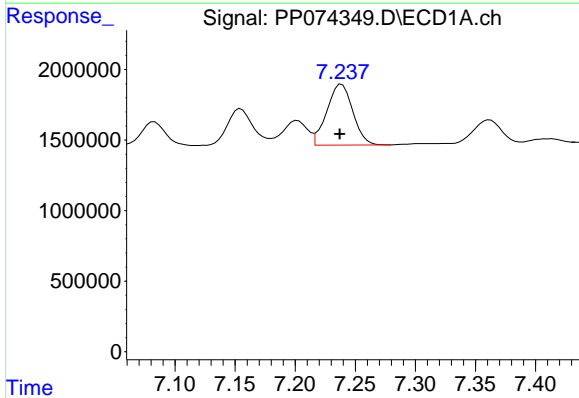
R.T.: 6.880 min  
 Delta R.T.: 0.005 min  
 Response: 12838154  
 Conc: 161.48 ng/ml

Instrument :  
 ECD\_P  
 ClientSampleId :  
 AR1242CCC500



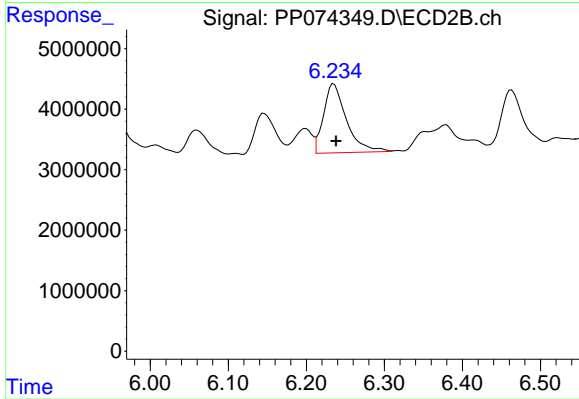
#27 AR-1254-2

R.T.: 5.834 min  
 Delta R.T.: -0.001 min  
 Response: 19393124  
 Conc: 69.71 ng/ml



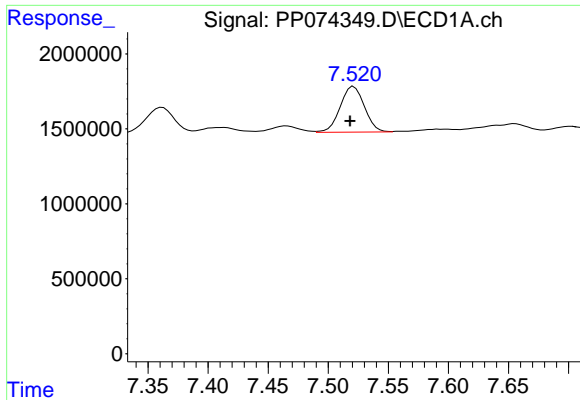
#28 AR-1254-3

R.T.: 7.239 min  
 Delta R.T.: 0.002 min  
 Response: 6504008  
 Conc: 74.49 ng/ml



#28 AR-1254-3

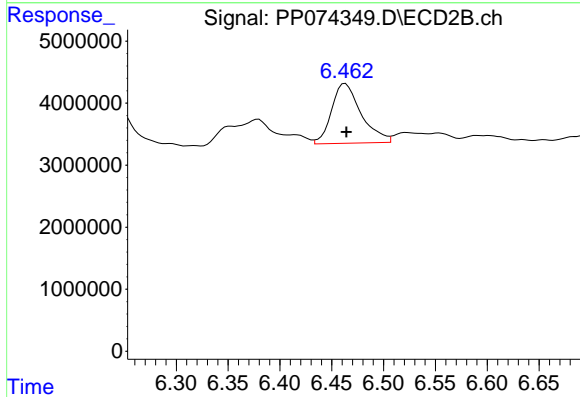
R.T.: 6.235 min  
 Delta R.T.: -0.003 min  
 Response: 23232705  
 Conc: 47.49 ng/ml



#29 AR-1254-4

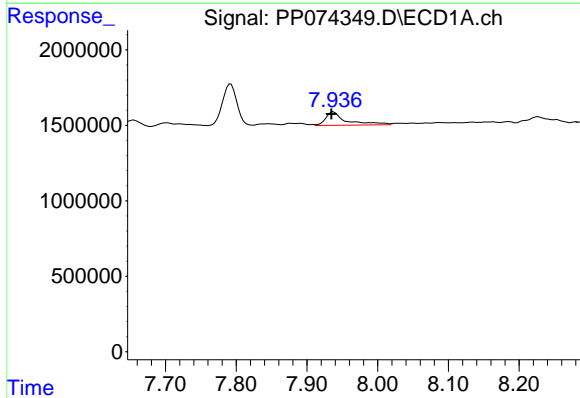
R.T.: 7.521 min  
 Delta R.T.: 0.003 min  
 Response: 4273442  
 Conc: 66.97 ng/ml

Instrument :  
 ECD\_P  
 ClientSampleId :  
 AR1242CCC500



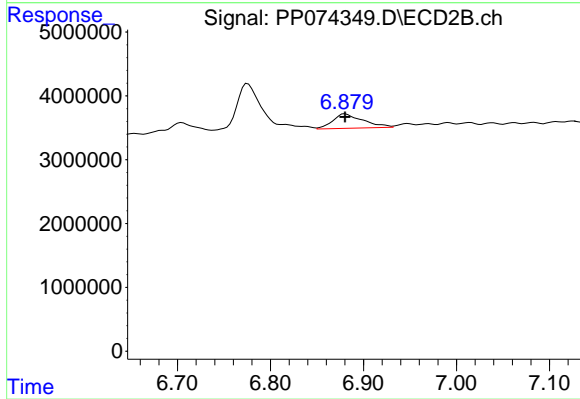
#29 AR-1254-4

R.T.: 6.463 min  
 Delta R.T.: -0.001 min  
 Response: 19131316  
 Conc: 52.05 ng/ml



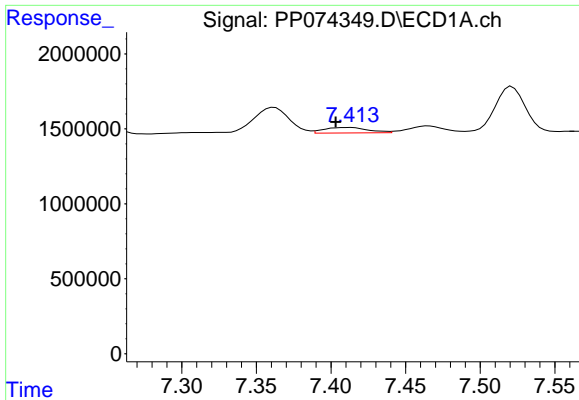
#30 AR-1254-5

R.T.: 7.938 min  
 Delta R.T.: 0.003 min  
 Response: 1814925  
 Conc: 22.37 ng/ml



#30 AR-1254-5

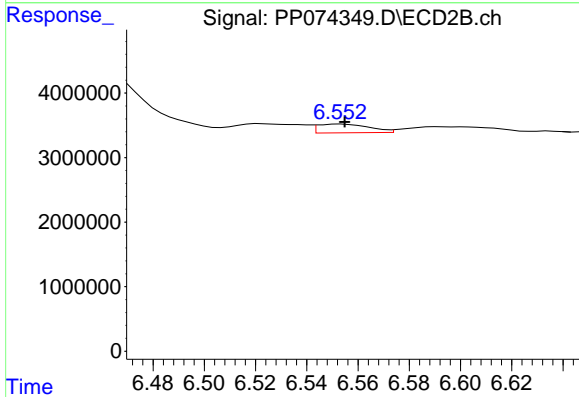
R.T.: 6.880 min  
 Delta R.T.: 0.000 min  
 Response: 5139315  
 Conc: 13.34 ng/ml



#31 AR-1260-1

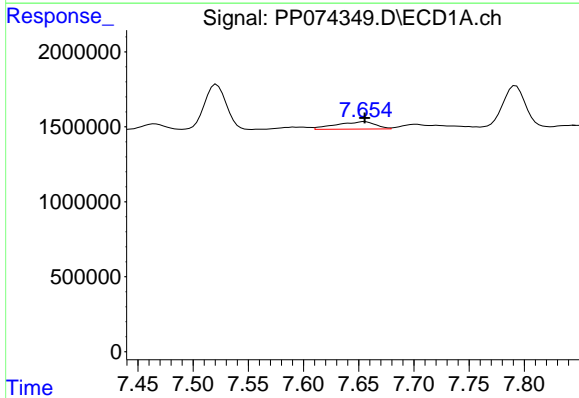
R.T.: 7.414 min  
 Delta R.T.: 0.010 min  
 Response: 746510  
 Conc: 13.25 ng/ml

Instrument :  
 ECD\_P  
 ClientSampleId :  
 AR1242CCC500



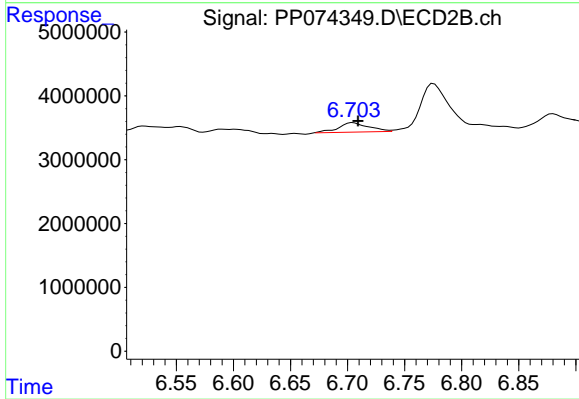
#31 AR-1260-1

R.T.: 6.553 min  
 Delta R.T.: -0.002 min  
 Response: 1917979  
 Conc: 4.75 ng/ml



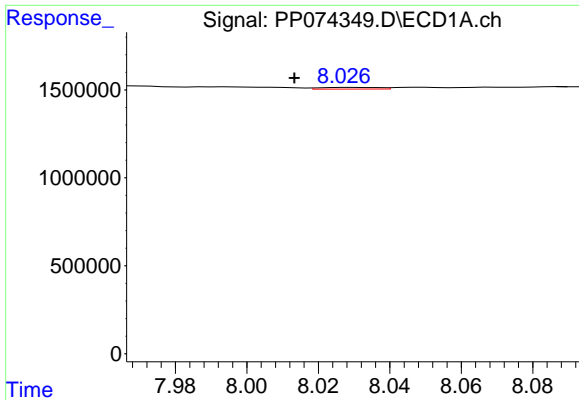
#32 AR-1260-2

R.T.: 7.655 min  
 Delta R.T.: 0.000 min  
 Response: 1210105  
 Conc: 17.76 ng/ml



#32 AR-1260-2

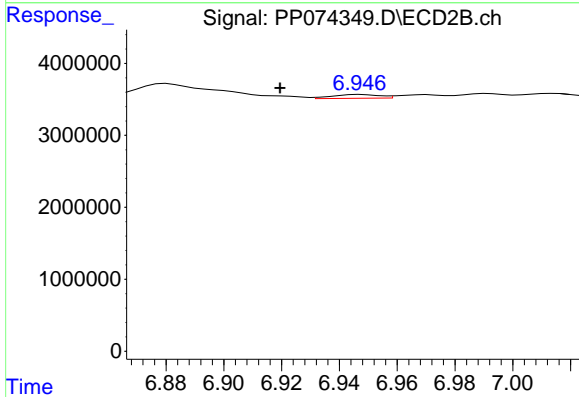
R.T.: 6.705 min  
 Delta R.T.: -0.004 min  
 Response: 2736516  
 Conc: 8.75 ng/ml



#33 AR-1260-3

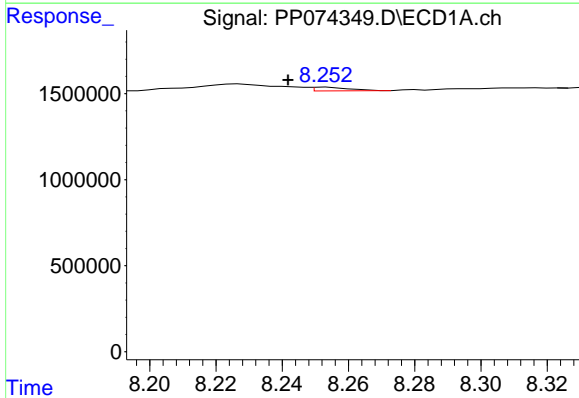
R.T.: 8.030 min  
 Delta R.T.: 0.016 min  
 Response: 107582  
 Conc: 2.02 ng/ml

Instrument :  
 ECD\_P  
 ClientSampleId :  
 AR1242CCC500



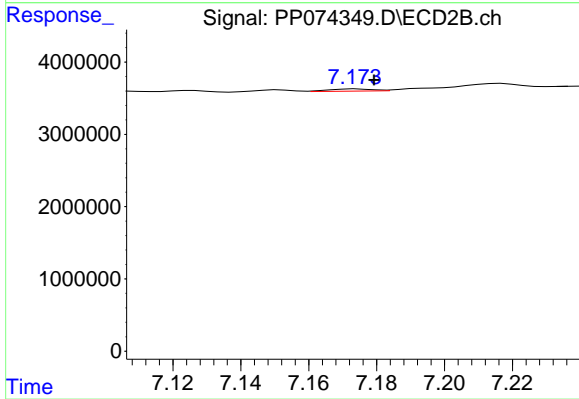
#33 AR-1260-3

R.T.: 6.947 min  
 Delta R.T.: 0.028 min  
 Response: 606065  
 Conc: 1.54 ng/ml



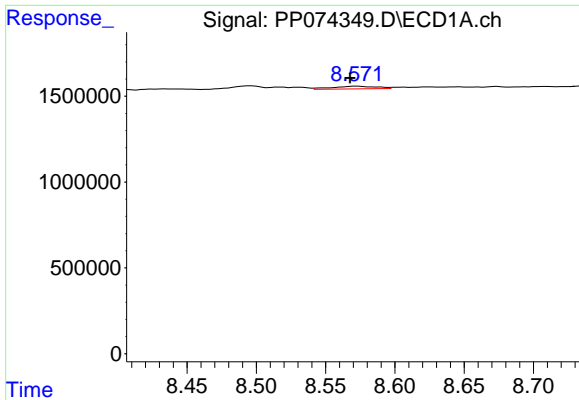
#34 AR-1260-4

R.T.: 8.254 min  
 Delta R.T.: 0.012 min  
 Response: 167343  
 Conc: 2.67 ng/ml



#34 AR-1260-4

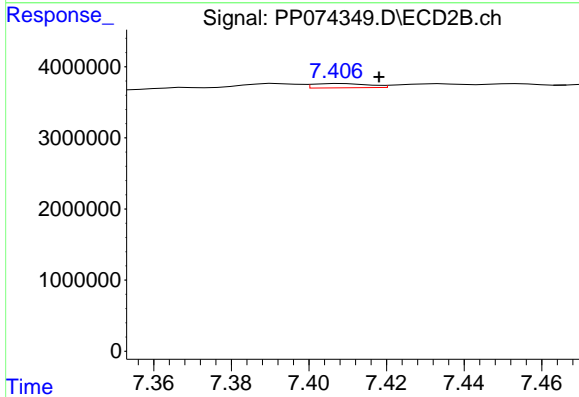
R.T.: 7.174 min  
 Delta R.T.: -0.005 min  
 Response: 264458  
 Conc: 0.91 ng/ml



#35 AR-1260-5

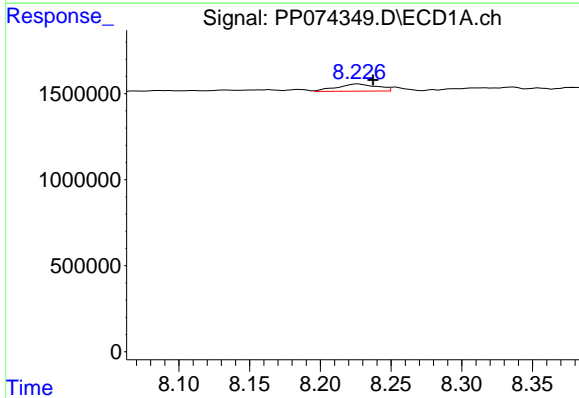
R.T.: 8.572 min  
 Delta R.T.: 0.005 min  
 Response: 334052  
 Conc: 2.95 ng/ml

Instrument :  
 ECD\_P  
 ClientSampleId :  
 AR1242CCC500



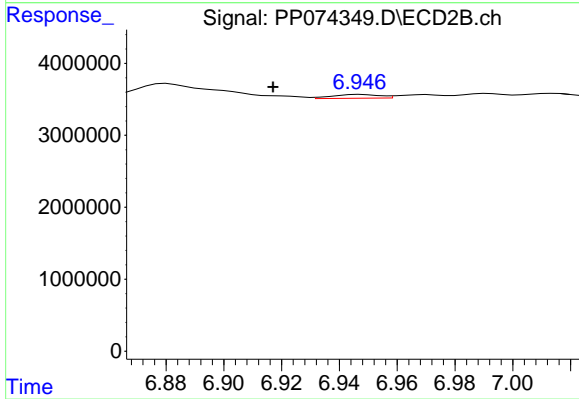
#35 AR-1260-5

R.T.: 7.408 min  
 Delta R.T.: -0.010 min  
 Response: 603287  
 Conc: 0.80 ng/ml



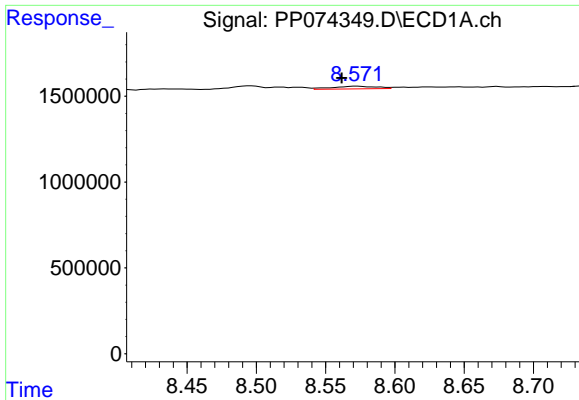
#36 AR-1262-1

R.T.: 8.227 min  
 Delta R.T.: -0.011 min  
 Response: 809544  
 Conc: 10.68 ng/ml



#36 AR-1262-1

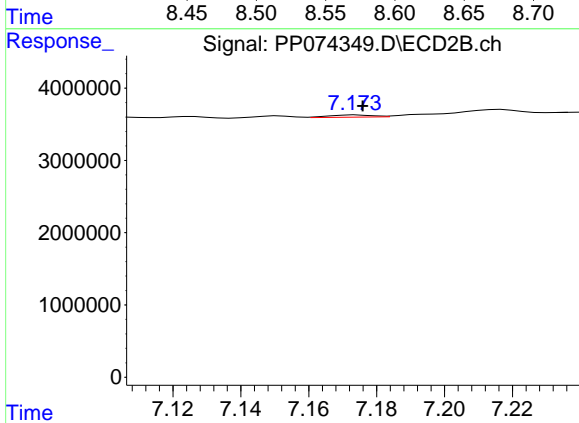
R.T.: 6.947 min  
 Delta R.T.: 0.030 min  
 Response: 606065  
 Conc: 1.08 ng/ml



#37 AR-1262-2

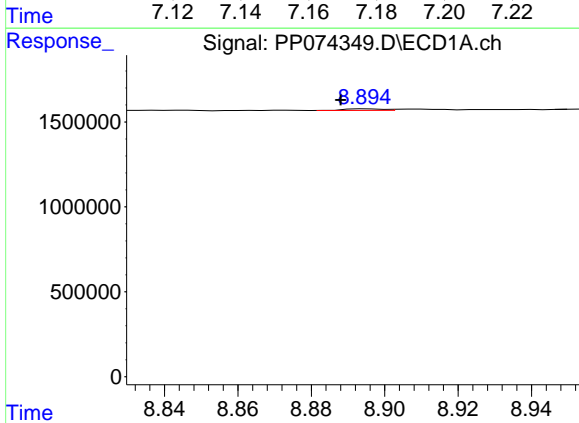
R.T.: 8.572 min  
 Delta R.T.: 0.011 min  
 Response: 334052  
 Conc: 2.56 ng/ml

Instrument :  
 ECD\_P  
 ClientSampleId :  
 AR1242CCC500



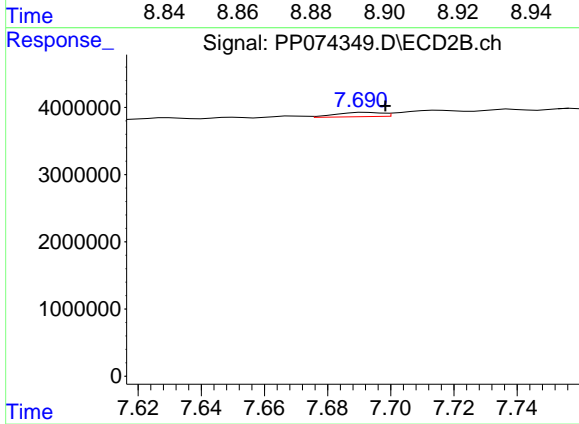
#37 AR-1262-2

R.T.: 7.174 min  
 Delta R.T.: -0.002 min  
 Response: 264458  
 Conc: 0.66 ng/ml



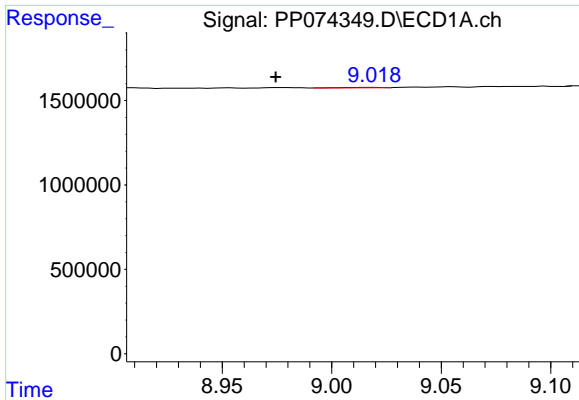
#38 AR-1262-3

R.T.: 8.895 min  
 Delta R.T.: 0.007 min  
 Response: 65227  
 Conc: 0.69 ng/ml



#38 AR-1262-3

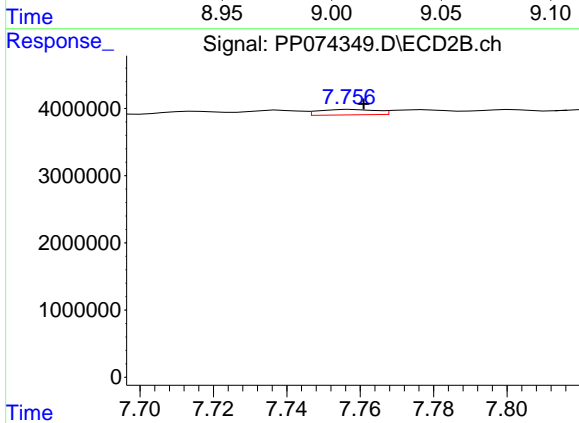
R.T.: 7.692 min  
 Delta R.T.: -0.006 min  
 Response: 640147  
 Conc: 1.78 ng/ml



#39 AR-1262-4

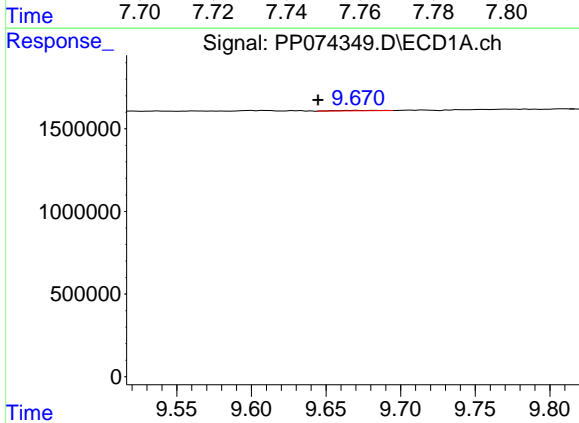
R.T.: 9.016 min  
 Delta R.T.: 0.041 min  
 Response: 29106  
 Conc: 0.40 ng/ml

Instrument :  
 ECD\_P  
 ClientSampleId :  
 AR1242CCC500



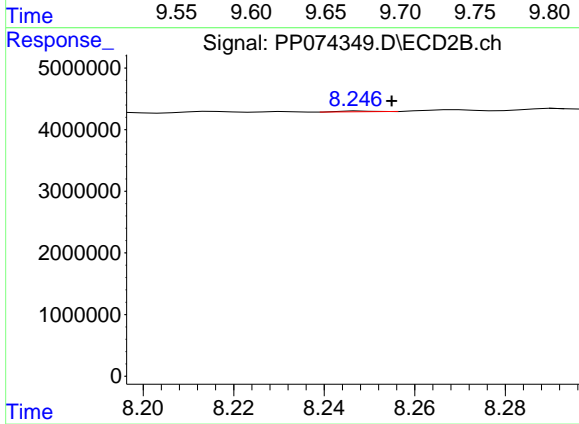
#39 AR-1262-4

R.T.: 7.758 min  
 Delta R.T.: -0.003 min  
 Response: 875720  
 Conc: 1.31 ng/ml



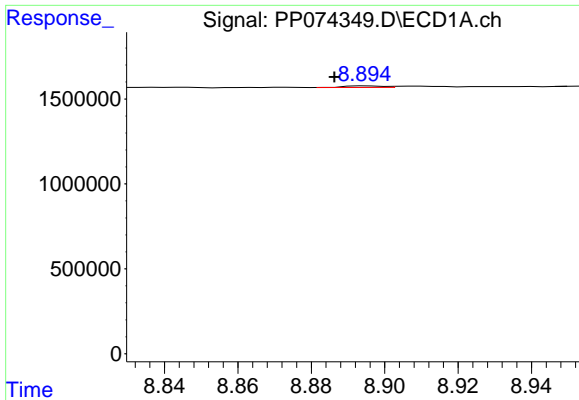
#40 AR-1262-5

R.T.: 9.671 min  
 Delta R.T.: 0.027 min  
 Response: 51913  
 Conc: 1.02 ng/ml



#40 AR-1262-5

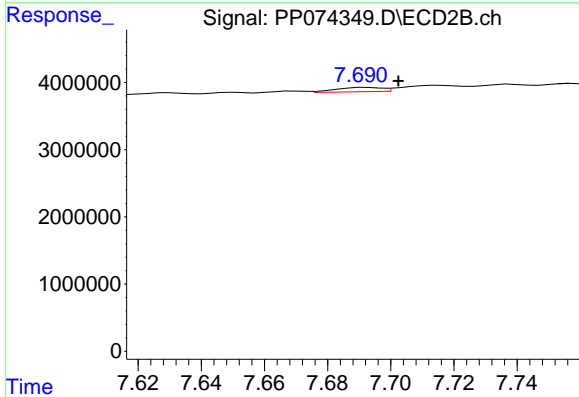
R.T.: 8.248 min  
 Delta R.T.: -0.007 min  
 Response: 63115  
 Conc: 0.22 ng/ml



#41 AR-1268-1

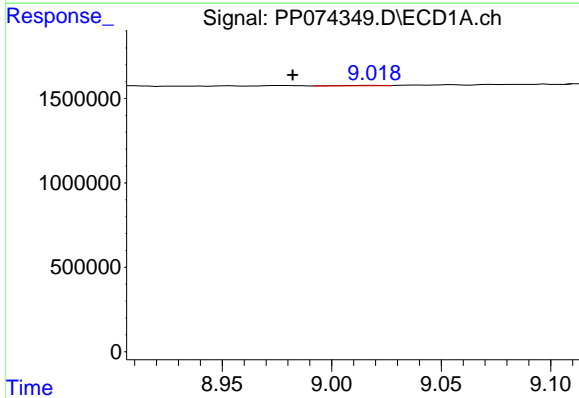
R.T.: 8.895 min  
 Delta R.T.: 0.009 min  
 Response: 65227  
 Conc: 0.42 ng/ml

Instrument :  
 ECD\_P  
 ClientSampleId :  
 AR1242CCC500



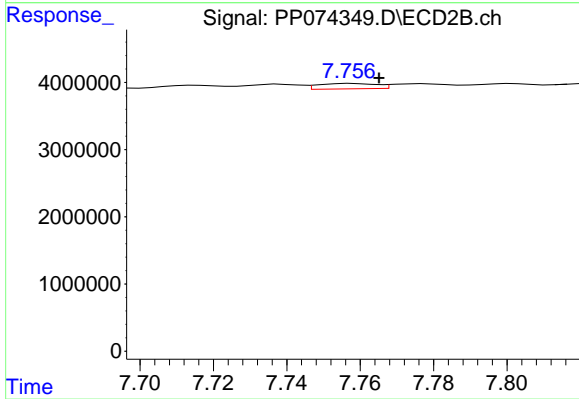
#41 AR-1268-1

R.T.: 7.692 min  
 Delta R.T.: -0.010 min  
 Response: 640147  
 Conc: 0.59 ng/ml



#42 AR-1268-2

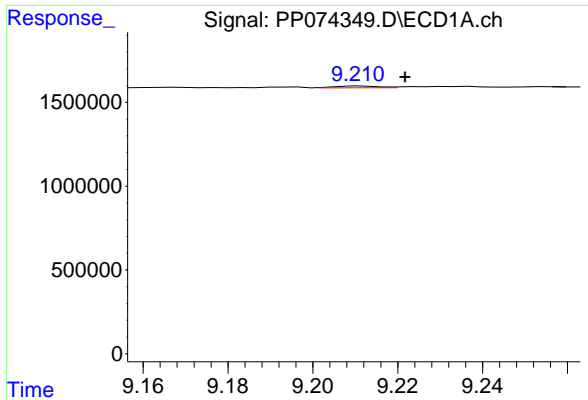
R.T.: 9.016 min  
 Delta R.T.: 0.033 min  
 Response: 29106  
 Conc: 0.20 ng/ml



#42 AR-1268-2

R.T.: 7.758 min  
 Delta R.T.: -0.008 min  
 Response: 875720  
 Conc: 0.83 ng/ml

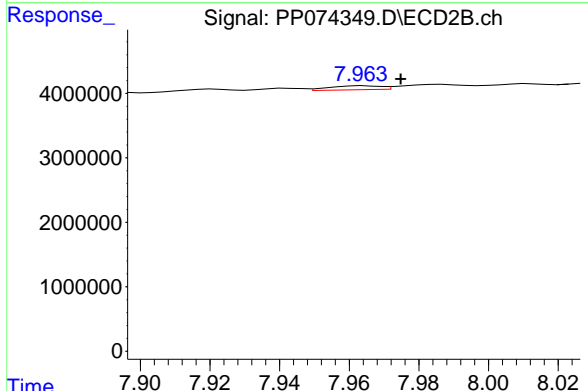




#43 AR-1268-3

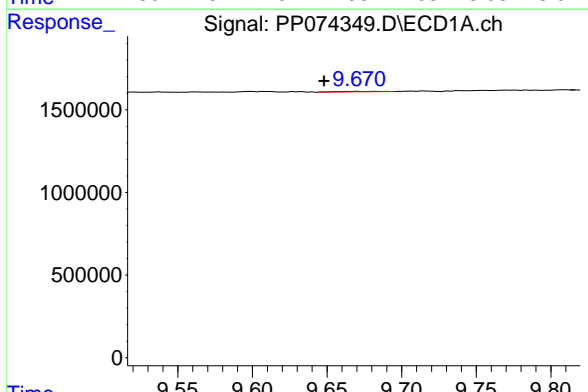
R.T.: 9.212 min  
 Delta R.T.: -0.010 min  
 Response: 78408  
 Conc: 0.66 ng/ml

Instrument :  
 ECD\_P  
 ClientSampleId :  
 AR1242CCC500



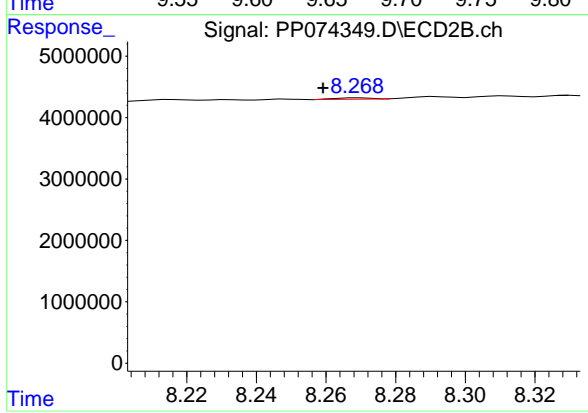
#43 AR-1268-3

R.T.: 7.964 min  
 Delta R.T.: -0.011 min  
 Response: 640575  
 Conc: 0.77 ng/ml



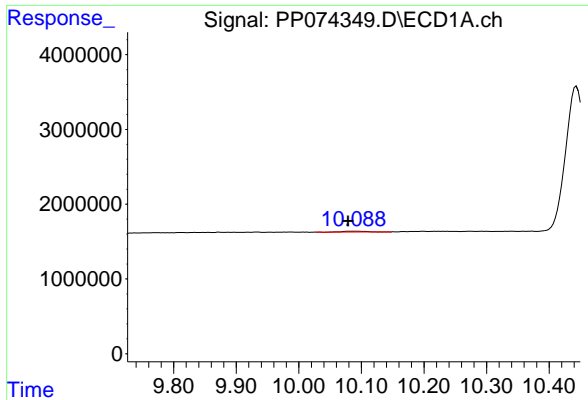
#44 AR-1268-4

R.T.: 9.671 min  
 Delta R.T.: 0.023 min  
 Response: 51913  
 Conc: 0.88 ng/ml



#44 AR-1268-4

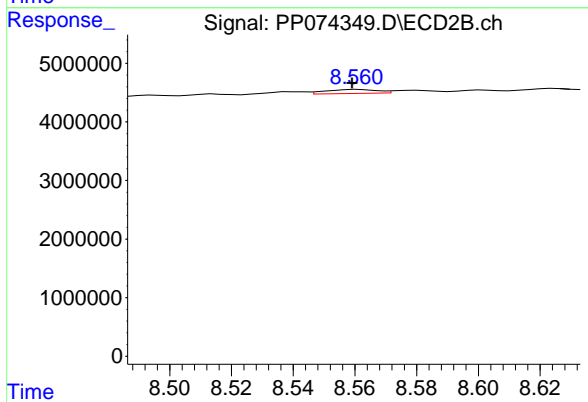
R.T.: 8.269 min  
 Delta R.T.: 0.010 min  
 Response: 154054  
 Conc: 0.50 ng/ml



#45 AR-1268-5

R.T.: 10.090 min  
Delta R.T.: 0.011 min  
Response: 299243  
Conc: 0.85 ng/ml

Instrument :  
ECD\_P  
ClientSampleId :  
AR1242CCC500



#45 AR-1268-5

R.T.: 8.561 min  
Delta R.T.: 0.002 min  
Response: 775897  
Conc: 0.30 ng/ml