

Data Path : Z:\pestpcbsrv\HPCHEM1\ECD\_P\Data\PP081325\  
 Data File : PP074351.D  
 Signal(s) : Signal #1: ECD1A.ch Signal #2: ECD2B.ch  
 Acq On : 13 Aug 2025 16:42  
 Operator : YP\AJ  
 Sample : I.BLK  
 Misc :  
 ALS Vial : 2 Sample Multiplier: 1

Instrument :  
 ECD\_P  
 ClientSampleId :  
 I.BLK

Integration File signal 1: autoint1.e  
 Integration File signal 2: autoint2.e  
 Quant Time: Aug 13 23:58:51 2025  
 Quant Method : Z:\pestpcbsrv\HPCHEM1\ECD\_P\methods\PP080125.M  
 Quant Title : GC EXTRACTABLES  
 QLast Update : Mon Aug 04 11:01:49 2025  
 Response via : Initial Calibration  
 Integrator: ChemStation

Volume Inj. : 2 µl  
 Signal #1 Phase : ZB-MR1 Signal #2 Phase: ZB-MR2  
 Signal #1 Info : 30Mx0.32mmx 0.50µ Signal #2 Info : 30M x 0.32mm x 0.25µm

Compound	RT#1	RT#2	Resp#1	Resp#2	ng/ml	ng/ml
System Monitoring Compounds						
1) SA Tetrachlo...	4.662	3.804	21850996	63872548	19.539	16.658
2) SA Decachlor...	10.445	8.824	17692016	98086578	18.217	16.311
Target Compounds						
3) L1 AR-1016-1	5.748f	4.895	262501	167329	6.363	0.419 #
4) L1 AR-1016-2	0.000	4.952	0	394549	N.D.	2.101 #
5) L1 AR-1016-3	5.933f	5.092	395679	268877	9.977	2.535 #
6) L1 AR-1016-4	5.953f	5.116	225202	321966	6.920	2.948 #
7) L1 AR-1016-5	0.000	5.338	0	527432	N.D.	4.509 #
8) L2 AR-1221-1	4.861	4.019	196350	230849	11.713	4.703 #
9) L2 AR-1221-2	4.964	4.095	490960	1168543	38.962	32.560
10) L2 AR-1221-3	4.964f	4.174	490960	169279	13.401	1.252 #
11) L3 AR-1232-1	4.964f	4.174	490960	169279	16.908	1.670 #
12) L3 AR-1232-2	0.000	4.895	0	167329	N.D.	0.960 #
13) L3 AR-1232-3	0.000	5.071	0	310146	N.D.	6.769 #
14) L3 AR-1232-4	5.953f	5.162	225202	490853	14.558	8.461 #
15) L3 AR-1232-5	0.000	5.338	0	527432	N.D.	11.227 #
16) L4 AR-1242-1	5.748f	4.895	262501	167329	7.044	0.485 #
17) L4 AR-1242-2	0.000	4.952	0	394549	N.D.	2.415 #
18) L4 AR-1242-3	5.933f	5.092	395679	268877	11.072	2.915 #
19) L4 AR-1242-4	5.953f	5.162	225202	490853	7.707	4.110 #
20) L4 AR-1242-5	6.752	5.683	1438068	398355	40.443	2.664 #
21) L5 AR-1248-1	5.748f	4.895	262501	167329	9.370	0.782 #
22) L5 AR-1248-2	0.000	5.116	0	321966	N.D.	2.201 #
23) L5 AR-1248-3	0.000	5.162	0	490853	N.D.	2.863 #
24) L5 AR-1248-4	6.689	5.338	175623	527432	3.375	3.170
25) L5 AR-1248-5	6.752	5.705	1438068	438888	25.254	1.508 #
26) L6 AR-1254-1	6.657	5.683	589854	398355	11.205	1.088 #
27) L6 AR-1254-2	6.878	5.838	141384	1252027	1.778	4.500 #
28) L6 AR-1254-3	7.233	6.236	898390	422123	10.289	0.863 #
29) L6 AR-1254-4	7.513	6.464	130670	336435	2.048	0.915 #
30) L6 AR-1254-5	7.939	6.873	122208	453029	1.506	1.176
31) L7 AR-1260-1	7.408	6.561	128317	441639	2.277	1.093 #
32) L7 AR-1260-2	7.661	6.706	238242	741139	3.496	2.370 #
33) L7 AR-1260-3	8.014	6.916	48304	334404	0.906	0.848
34) L7 AR-1260-4	8.236	7.184	217688	376894	3.477	1.295 #
35) L7 AR-1260-5	8.578	7.423	176889	354442	1.561	0.468 #
36) L8 AR-1262-1	8.236	6.916	217688	334404	2.872	0.594 #
37) L8 AR-1262-2	8.578	7.184	176889	376894	1.356	0.940 #
38) L8 AR-1262-3	8.909	7.700	169475	504248	1.802	1.403
39) L8 AR-1262-4	8.973	7.762	26246	472692	0.360	0.709 #
40) L8 AR-1262-5	9.633	8.248	379402	180548	7.451	0.637 #
41) L9 AR-1268-1	8.909	7.700	169475	504248	1.089	0.463 #

Data Path : Z:\pestpcbsrv\HPCHEM1\ECD\_P\Data\PP081325\  
 Data File : PP074351.D  
 Signal(s) : Signal #1: ECD1A.ch Signal #2: ECD2B.ch  
 Acq On : 13 Aug 2025 16:42  
 Operator : YP\AJ  
 Sample : I.BLK  
 Misc :  
 ALS Vial : 2 Sample Multiplier: 1

Instrument :  
 ECD\_P  
 ClientSampleId :  
 I.BLK

Integration File signal 1: autoint1.e  
 Integration File signal 2: autoint2.e  
 Quant Time: Aug 13 23:58:51 2025  
 Quant Method : Z:\pestpcbsrv\HPCHEM1\ECD\_P\methods\PP080125.M  
 Quant Title : GC EXTRACTABLES  
 QLast Update : Mon Aug 04 11:01:49 2025  
 Response via : Initial Calibration  
 Integrator: ChemStation

Volume Inj. : 2 µl  
 Signal #1 Phase : ZB-MR1 Signal #2 Phase: ZB-MR2  
 Signal #1 Info : 30Mx0.32mmx 0.50µ Signal #2 Info : 30M x 0.32mm x 0.25µm

	Compound	RT#1	RT#2	Resp#1	Resp#2	ng/ml	ng/ml
42)	L9 AR-1268-2	8.973	7.762	26246	472692	0.183	0.445 #
43)	L9 AR-1268-3	9.246	7.981	144088	359977	1.206	0.433 #
44)	L9 AR-1268-4	9.633	8.268	379402	169894	6.451	0.551 #
45)	L9 AR-1268-5	10.093	8.559	176735	241687	0.503	0.095 #

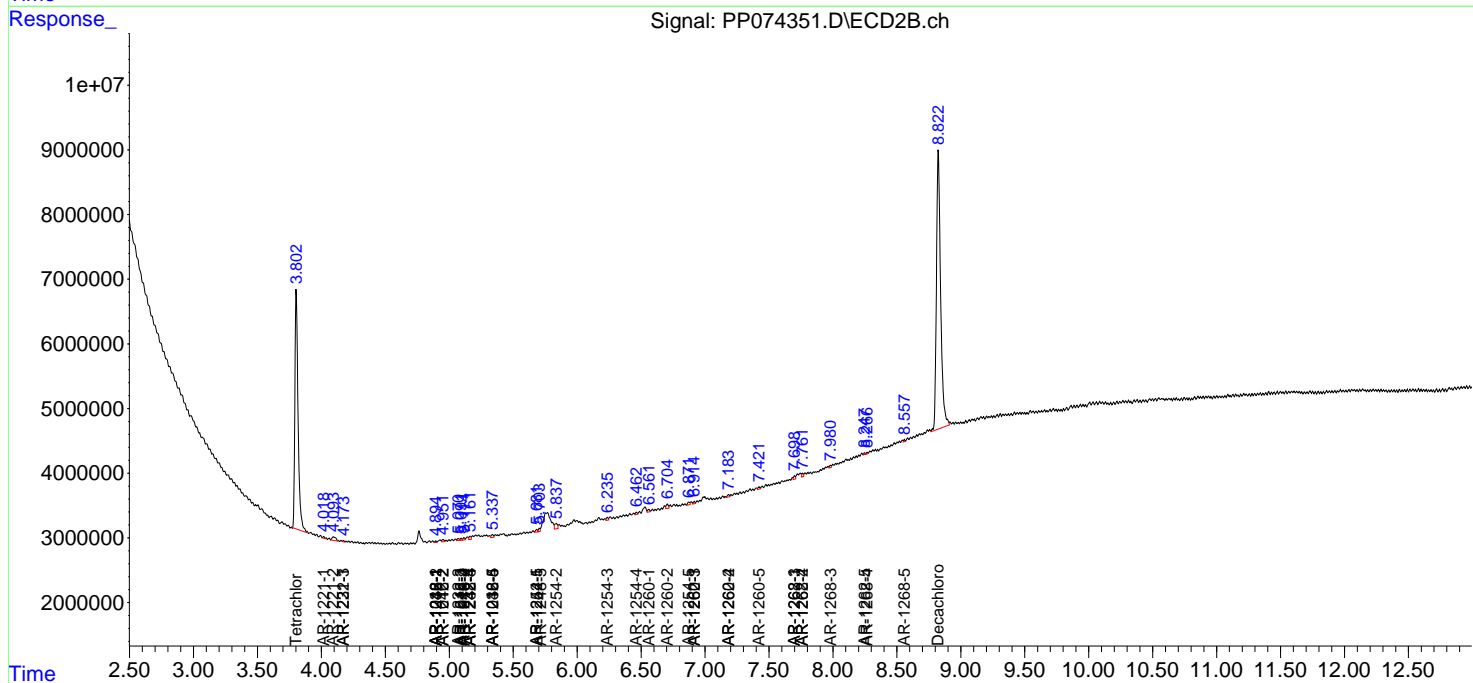
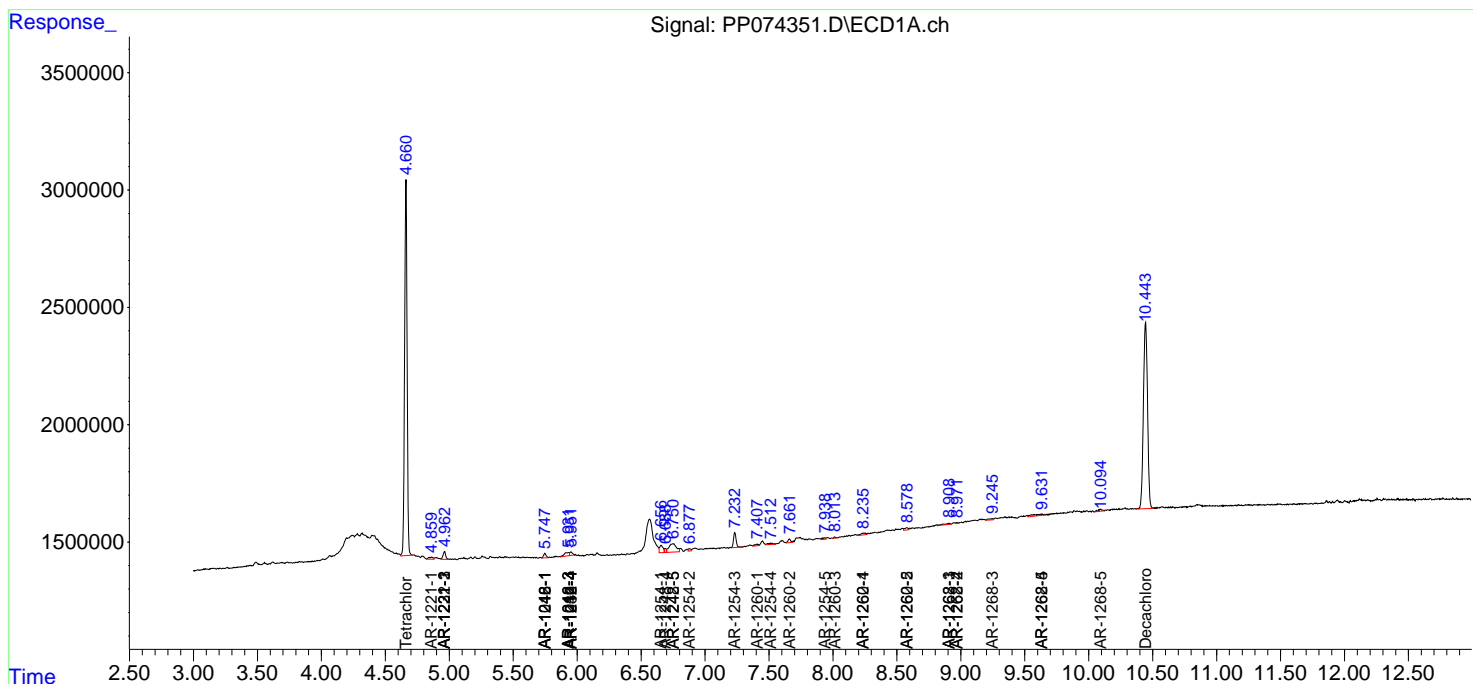
(f)=RT Delta > 1/2 Window (#)=Amounts differ by > 25% (m)=manual int.

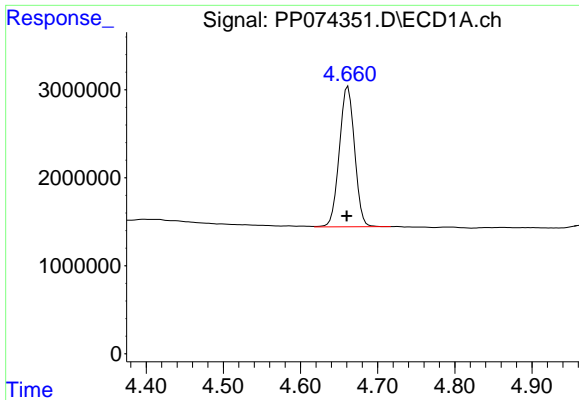
Data Path : Z:\pestpcbsrv\HPCHEM1\ECD\_P\Data\PP081325\  
 Data File : PP074351.D  
 Signal(s) : Signal #1: ECD1A.ch Signal #2: ECD2B.ch  
 Acq On : 13 Aug 2025 16:42  
 Operator : YP\AJ  
 Sample : I.BLK  
 Misc :  
 ALS Vial : 2 Sample Multiplier: 1

**Instrument :**  
 ECD\_P  
**ClientSampleId :**  
 I.BLK

Integration File signal 1: autoint1.e  
 Integration File signal 2: autoint2.e  
 Quant Time: Aug 13 23:58:51 2025  
 Quant Method : Z:\pestpcbsrv\HPCHEM1\ECD\_P\methods\PP080125.M  
 Quant Title : GC EXTRACTABLES  
 QLast Update : Mon Aug 04 11:01:49 2025  
 Response via : Initial Calibration  
 Integrator: ChemStation

Volume Inj. : 2 µl  
 Signal #1 Phase : ZB-MR1 Signal #2 Phase: ZB-MR2  
 Signal #1 Info : 30Mx0.32mmx 0.50µ Signal #2 Info : 30M x 0.32mm x 0.25µm

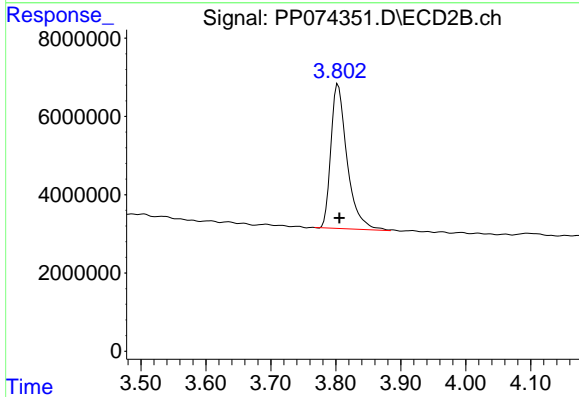




#1 Tetrachloro-m-xylene

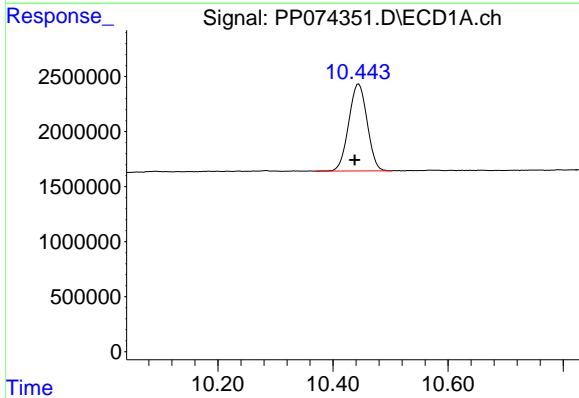
R.T.: 4.662 min  
 Delta R.T.: 0.002 min  
 Response: 21850996  
 Conc: 19.54 ng/ml

Instrument :  
 ECD\_P  
 ClientSampleId :  
 I.BLK



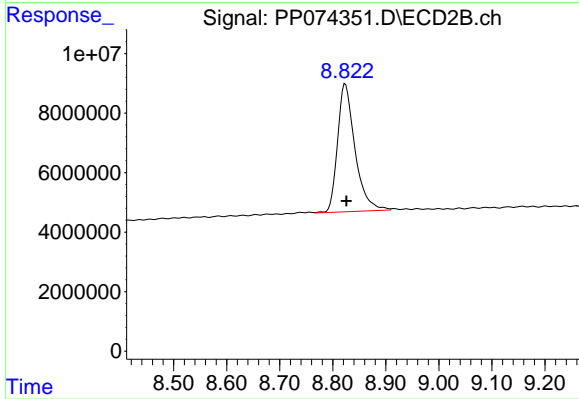
#1 Tetrachloro-m-xylene

R.T.: 3.804 min  
 Delta R.T.: -0.002 min  
 Response: 63872548  
 Conc: 16.66 ng/ml



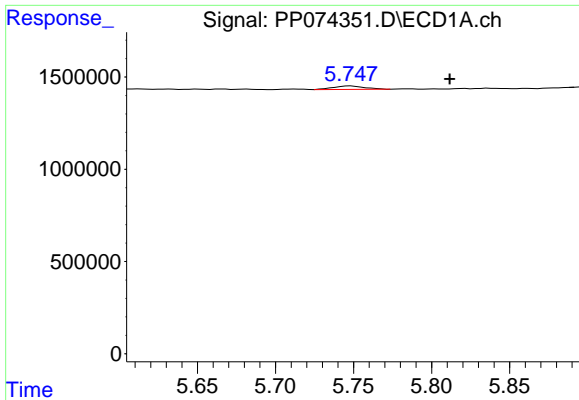
#2 Decachlorobiphenyl

R.T.: 10.445 min  
 Delta R.T.: 0.007 min  
 Response: 17692016  
 Conc: 18.22 ng/ml



#2 Decachlorobiphenyl

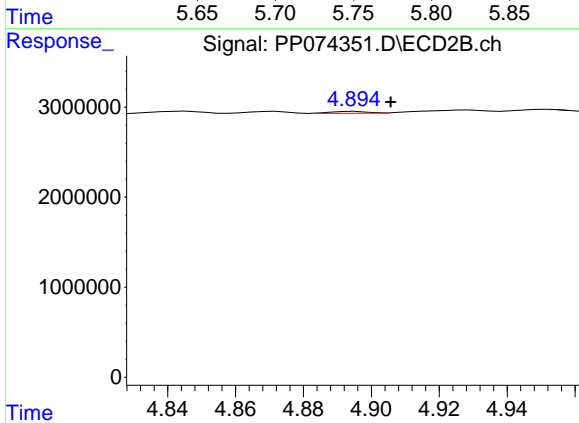
R.T.: 8.824 min  
 Delta R.T.: -0.002 min  
 Response: 98086578  
 Conc: 16.31 ng/ml



#3 AR-1016-1

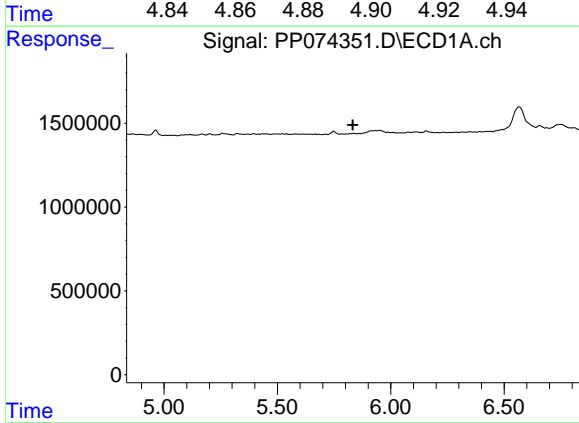
R.T.: 5.748 min  
 Delta R.T.: -0.064 min  
 Response: 262501  
 Conc: 6.36 ng/ml

Instrument :  
 ECD\_P  
 ClientSampleId :  
 I.BLK



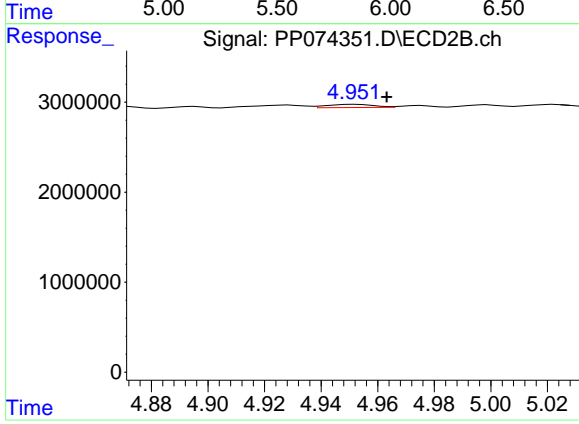
#3 AR-1016-1

R.T.: 4.895 min  
 Delta R.T.: -0.010 min  
 Response: 167329  
 Conc: 0.42 ng/ml



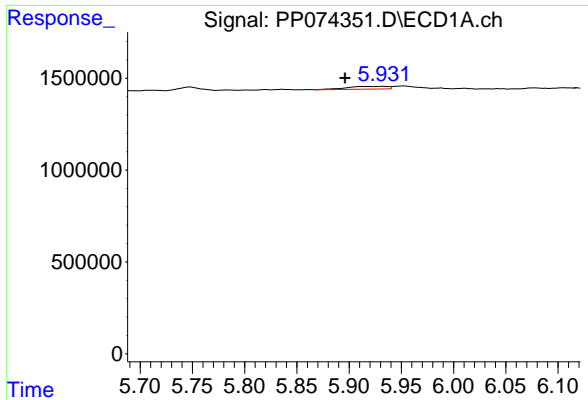
#4 AR-1016-2

R.T.: 0.000 min  
 Exp R.T. : 5.833 min  
 Response: 0  
 Conc: N.D.



#4 AR-1016-2

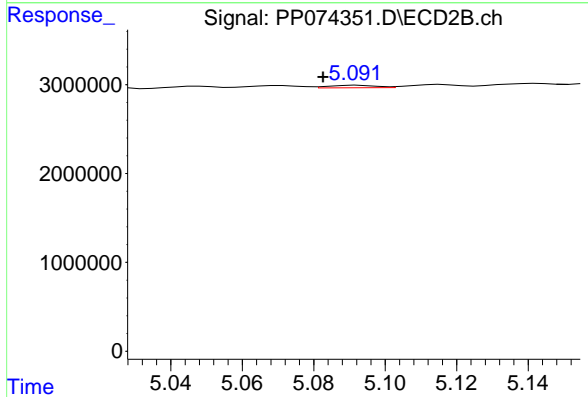
R.T.: 4.952 min  
 Delta R.T.: -0.011 min  
 Response: 394549  
 Conc: 2.10 ng/ml



#5 AR-1016-3

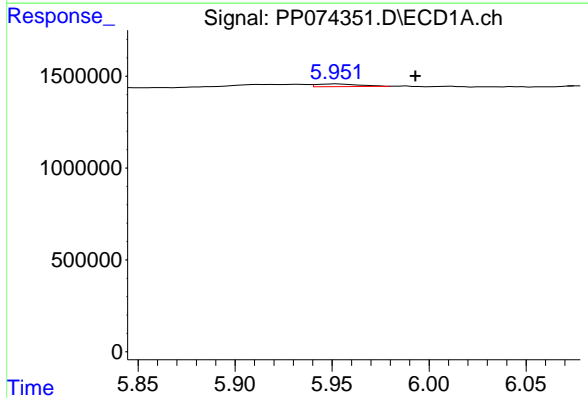
R.T.: 5.933 min  
 Delta R.T.: 0.037 min  
 Response: 395679  
 Conc: 9.98 ng/ml

Instrument :  
 ECD\_P  
 ClientSampleId :  
 I.BLK



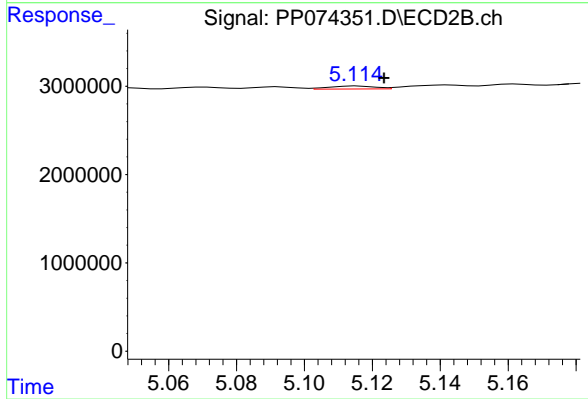
#5 AR-1016-3

R.T.: 5.092 min  
 Delta R.T.: 0.010 min  
 Response: 268877  
 Conc: 2.53 ng/ml



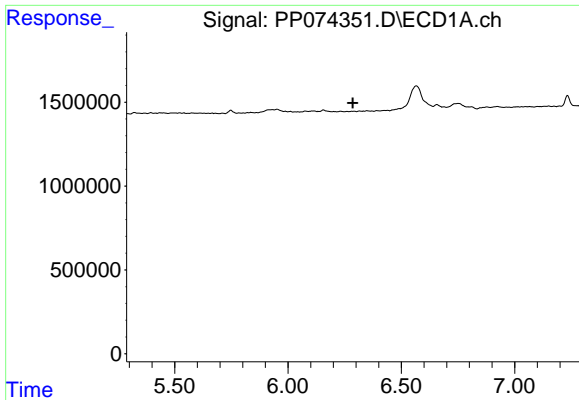
#6 AR-1016-4

R.T.: 5.953 min  
 Delta R.T.: -0.040 min  
 Response: 225202  
 Conc: 6.92 ng/ml



#6 AR-1016-4

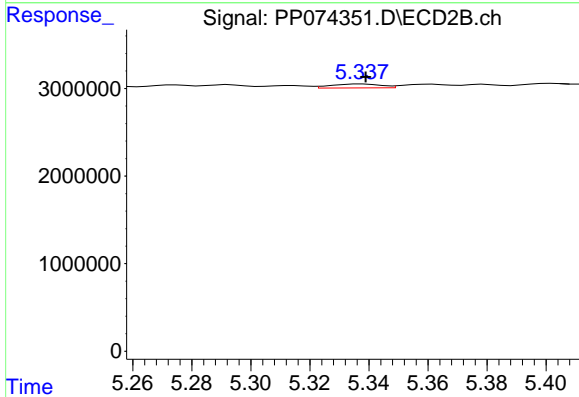
R.T.: 5.116 min  
 Delta R.T.: -0.008 min  
 Response: 321966  
 Conc: 2.95 ng/ml



#7 AR-1016-5

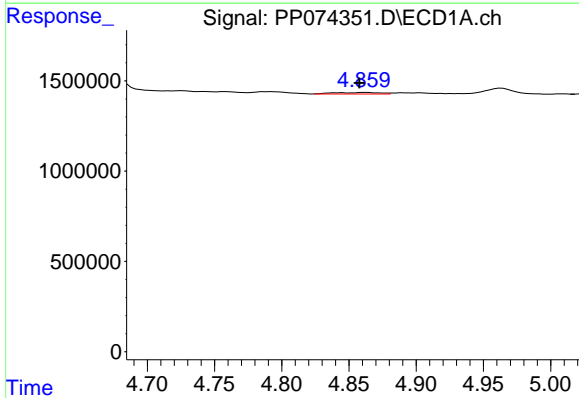
R.T.: 0.000 min  
 Exp R.T.: 6.286 min  
 Response: 0  
 Conc: N.D.

Instrument :  
 ECD\_P  
 ClientSampleId :  
 I.BLK



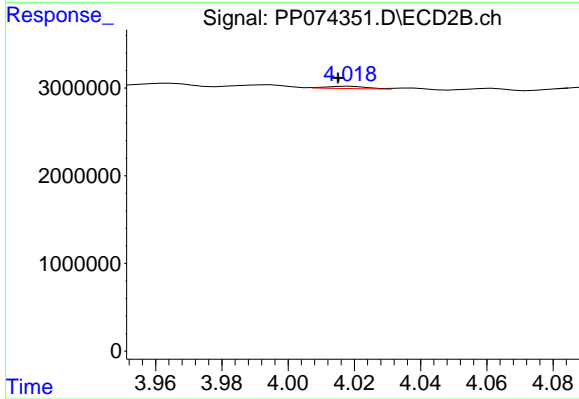
#7 AR-1016-5

R.T.: 5.338 min  
 Delta R.T.: 0.000 min  
 Response: 527432  
 Conc: 4.51 ng/ml



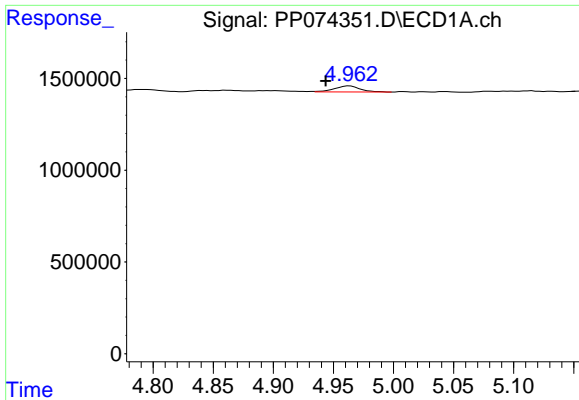
#8 AR-1221-1

R.T.: 4.861 min  
 Delta R.T.: 0.003 min  
 Response: 196350  
 Conc: 11.71 ng/ml



#8 AR-1221-1

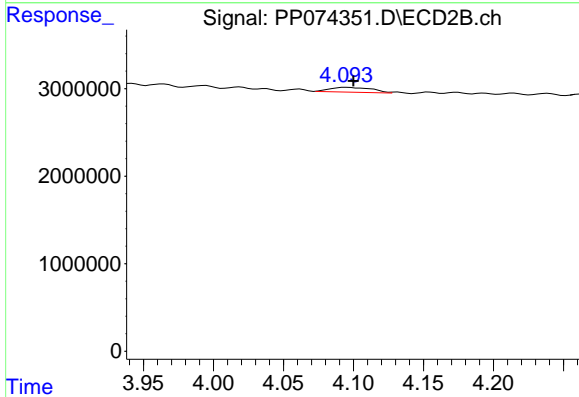
R.T.: 4.019 min  
 Delta R.T.: 0.004 min  
 Response: 230849  
 Conc: 4.70 ng/ml



#9 AR-1221-2

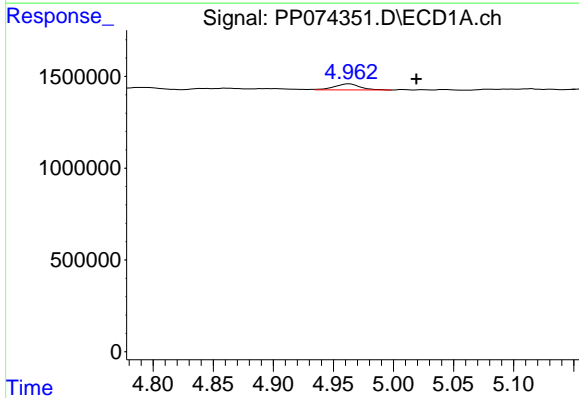
R.T.: 4.964 min  
 Delta R.T.: 0.020 min  
 Response: 490960  
 Conc: 38.96 ng/ml

Instrument :  
 ECD\_P  
 ClientSampleId :  
 I.BLK



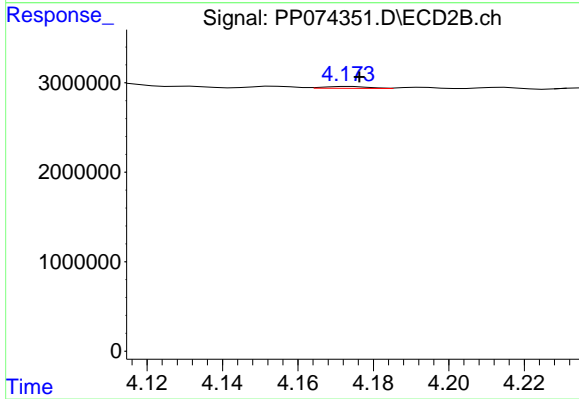
#9 AR-1221-2

R.T.: 4.095 min  
 Delta R.T.: -0.005 min  
 Response: 1168543  
 Conc: 32.56 ng/ml



#10 AR-1221-3

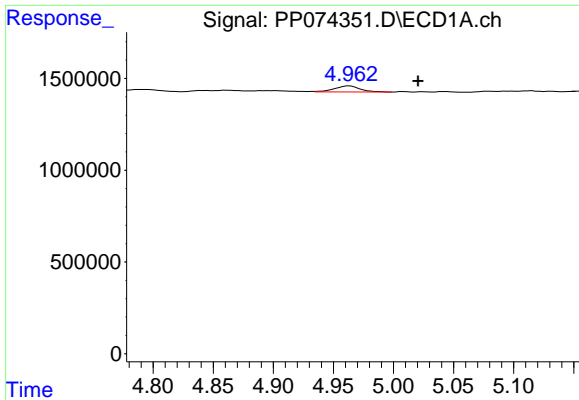
R.T.: 4.964 min  
 Delta R.T.: -0.056 min  
 Response: 490960  
 Conc: 13.40 ng/ml



#10 AR-1221-3

R.T.: 4.174 min  
 Delta R.T.: -0.002 min  
 Response: 169279  
 Conc: 1.25 ng/ml

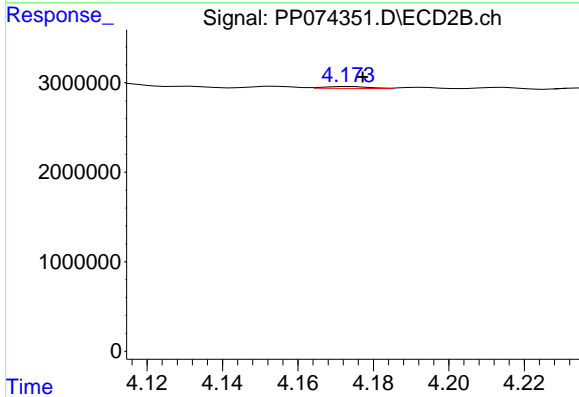




#11 AR-1232-1

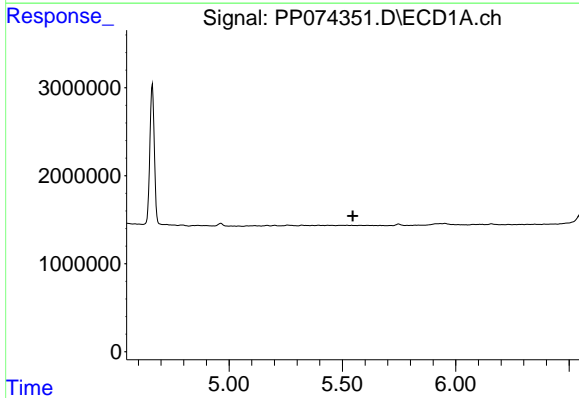
R.T.: 4.964 min  
 Delta R.T.: -0.057 min  
 Response: 490960  
 Conc: 16.91 ng/ml

Instrument :  
 ECD\_P  
 ClientSampleId :  
 I.BLK



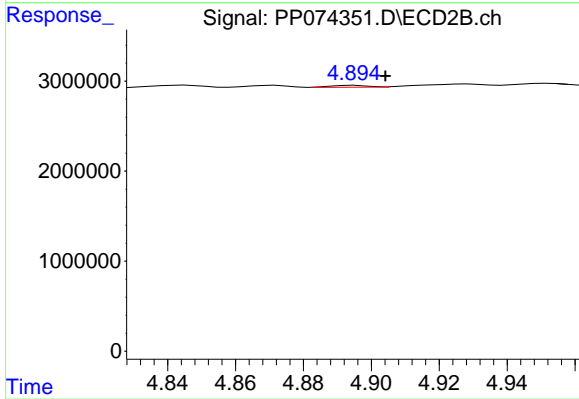
#11 AR-1232-1

R.T.: 4.174 min  
 Delta R.T.: -0.003 min  
 Response: 169279  
 Conc: 1.67 ng/ml



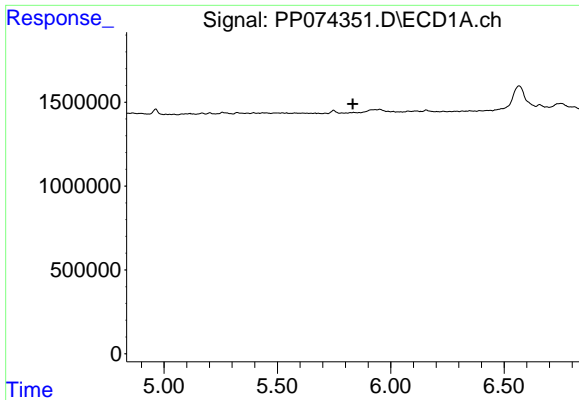
#12 AR-1232-2

R.T.: 0.000 min  
 Exp R.T. : 5.546 min  
 Response: 0  
 Conc: N.D.



#12 AR-1232-2

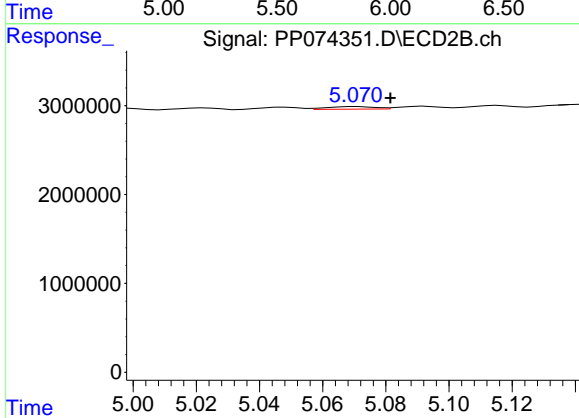
R.T.: 4.895 min  
 Delta R.T.: -0.009 min  
 Response: 167329  
 Conc: 0.96 ng/ml



#13 AR-1232-3

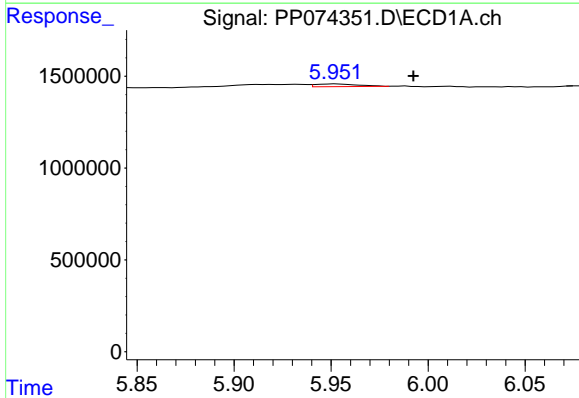
R.T.: 0.000 min  
 Exp R.T.: 5.832 min  
 Response: 0  
 Conc: N.D.

Instrument :  
 ECD\_P  
 ClientSampleId :  
 I.BLK



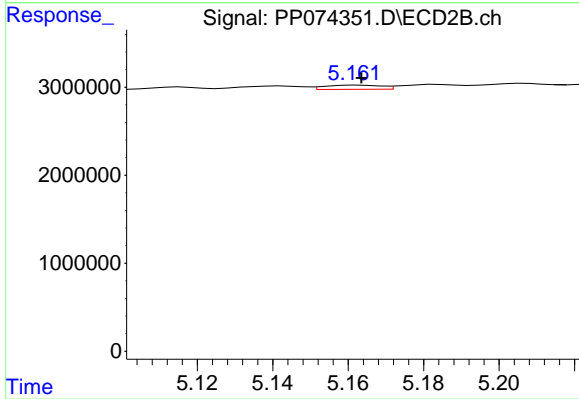
#13 AR-1232-3

R.T.: 5.071 min  
 Delta R.T.: -0.010 min  
 Response: 310146  
 Conc: 6.77 ng/ml



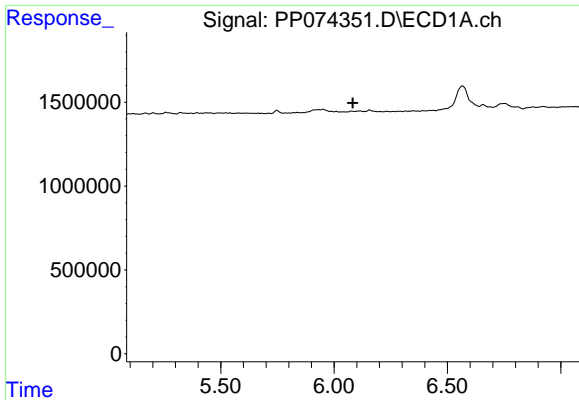
#14 AR-1232-4

R.T.: 5.953 min  
 Delta R.T.: -0.040 min  
 Response: 225202  
 Conc: 14.56 ng/ml



#14 AR-1232-4

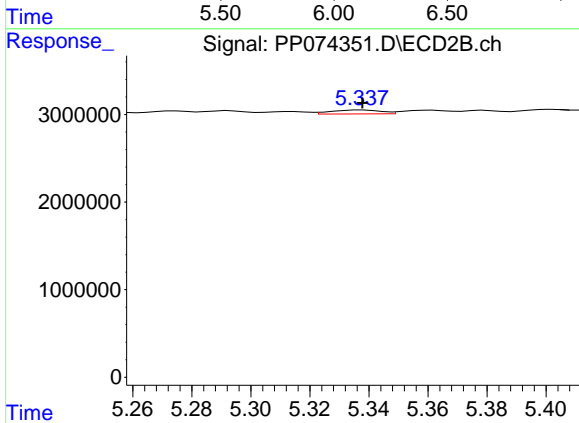
R.T.: 5.162 min  
 Delta R.T.: -0.001 min  
 Response: 490853  
 Conc: 8.46 ng/ml



#15 AR-1232-5

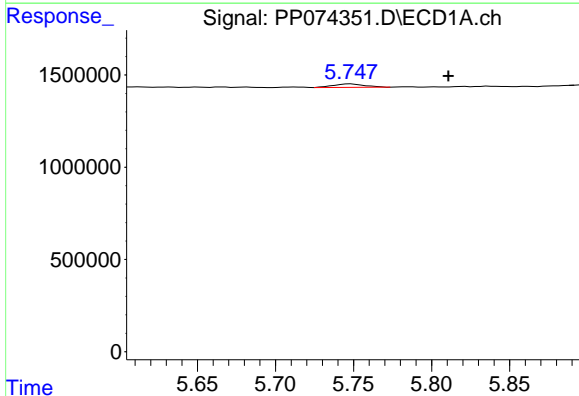
R.T.: 0.000 min  
 Exp R.T.: 6.082 min  
 Response: 0  
 Conc: N.D.

Instrument :  
 ECD\_P  
 ClientSampleId :  
 I.BLK



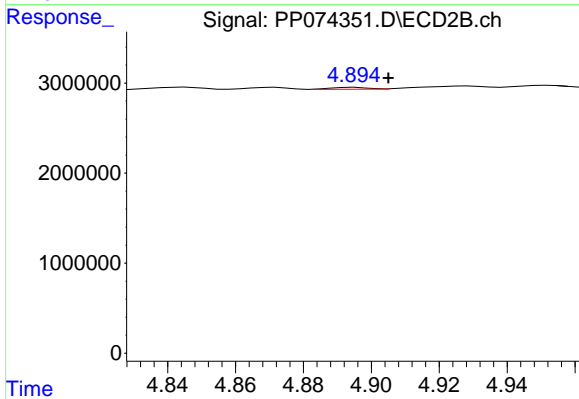
#15 AR-1232-5

R.T.: 5.338 min  
 Delta R.T.: 0.000 min  
 Response: 527432  
 Conc: 11.23 ng/ml



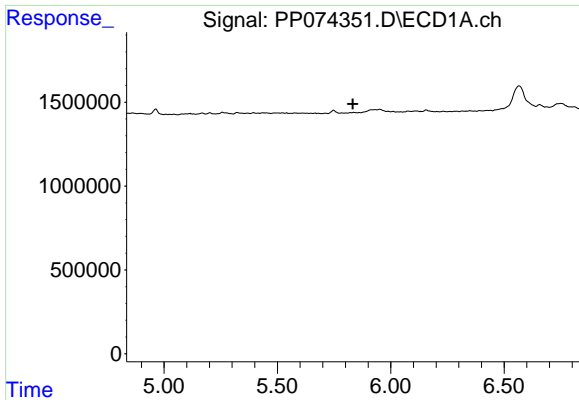
#16 AR-1242-1

R.T.: 5.748 min  
 Delta R.T.: -0.063 min  
 Response: 262501  
 Conc: 7.04 ng/ml



#16 AR-1242-1

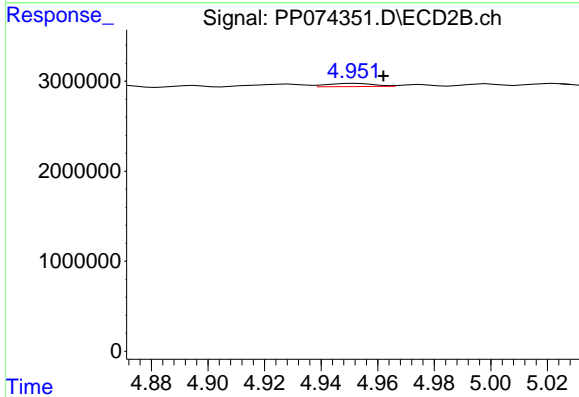
R.T.: 4.895 min  
 Delta R.T.: -0.010 min  
 Response: 167329  
 Conc: 0.48 ng/ml



#17 AR-1242-2

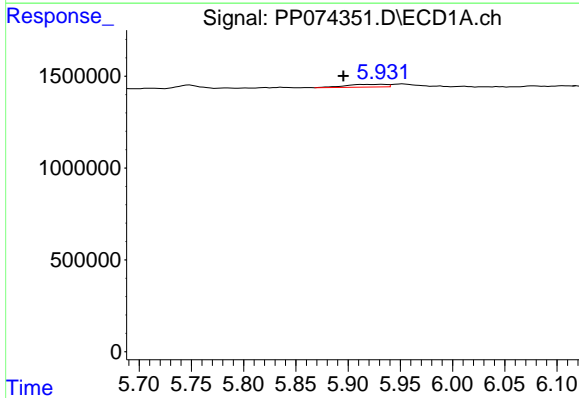
R.T.: 0.000 min  
 Exp R.T.: 5.832 min  
 Response: 0  
 Conc: N.D.

Instrument :  
 ECD\_P  
 ClientSampleId :  
 I.BLK



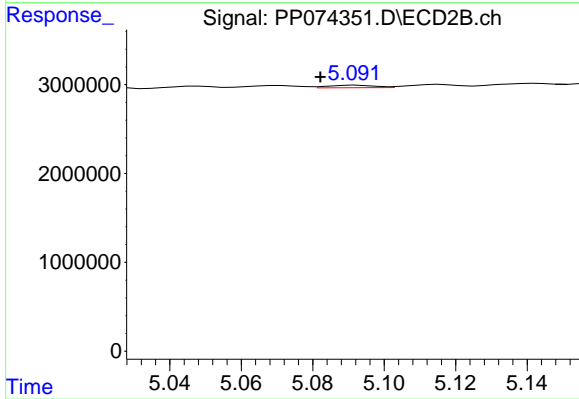
#17 AR-1242-2

R.T.: 4.952 min  
 Delta R.T.: -0.010 min  
 Response: 394549  
 Conc: 2.41 ng/ml



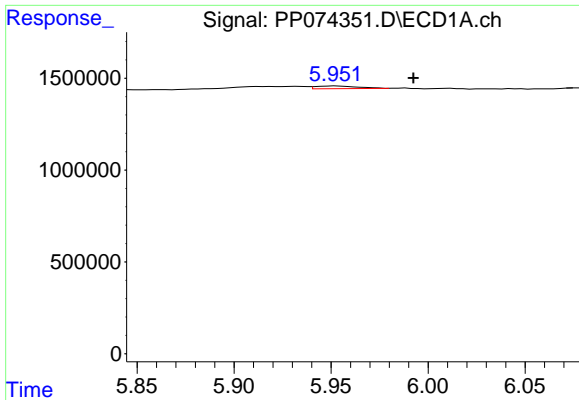
#18 AR-1242-3

R.T.: 5.933 min  
 Delta R.T.: 0.037 min  
 Response: 395679  
 Conc: 11.07 ng/ml



#18 AR-1242-3

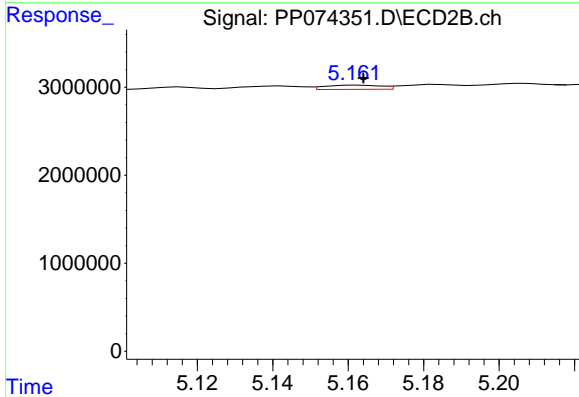
R.T.: 5.092 min  
 Delta R.T.: 0.010 min  
 Response: 268877  
 Conc: 2.91 ng/ml



#19 AR-1242-4

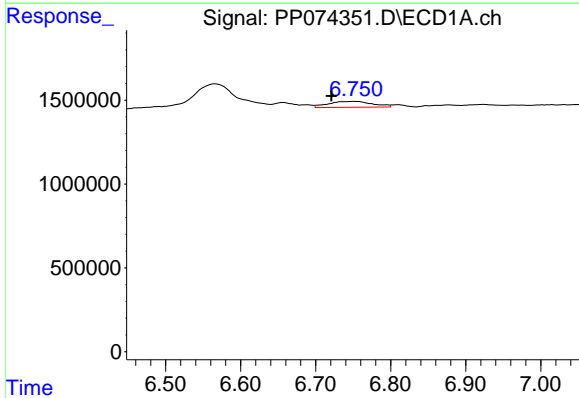
R.T.: 5.953 min  
 Delta R.T.: -0.040 min  
 Response: 225202  
 Conc: 7.71 ng/ml

Instrument :  
 ECD\_P  
 ClientSampleId :  
 I.BLK



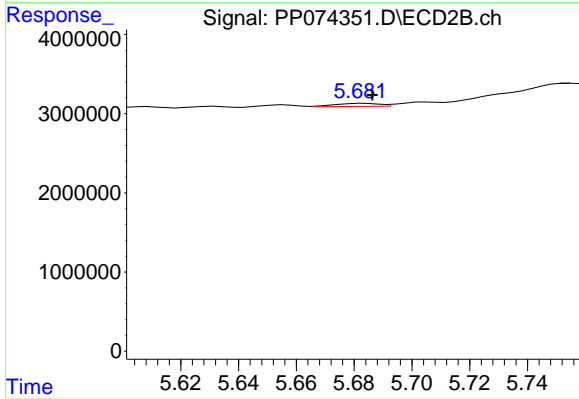
#19 AR-1242-4

R.T.: 5.162 min  
 Delta R.T.: -0.002 min  
 Response: 490853  
 Conc: 4.11 ng/ml



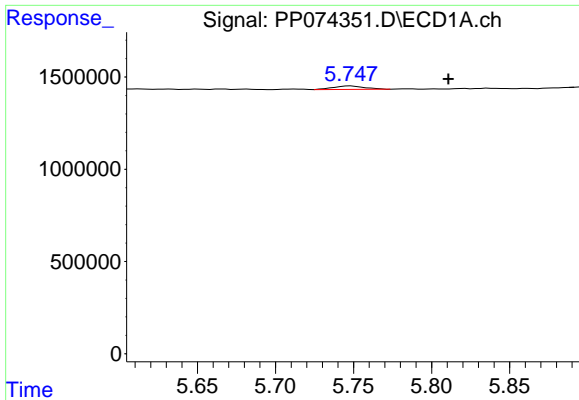
#20 AR-1242-5

R.T.: 6.752 min  
 Delta R.T.: 0.031 min  
 Response: 1438068  
 Conc: 40.44 ng/ml



#20 AR-1242-5

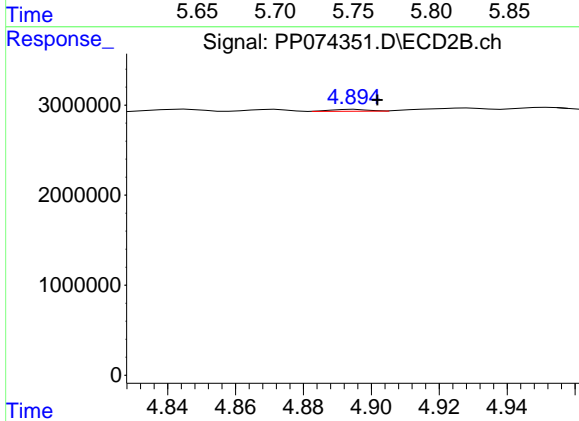
R.T.: 5.683 min  
 Delta R.T.: -0.003 min  
 Response: 398355  
 Conc: 2.66 ng/ml



#21 AR-1248-1

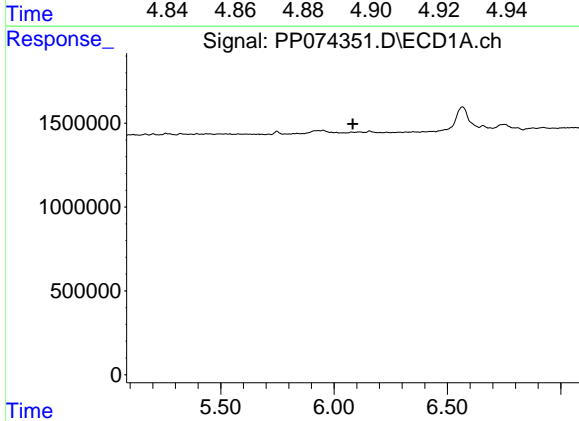
R.T.: 5.748 min  
 Delta R.T.: -0.063 min  
 Response: 262501  
 Conc: 9.37 ng/ml

Instrument :  
 ECD\_P  
 ClientSampleId :  
 I.BLK



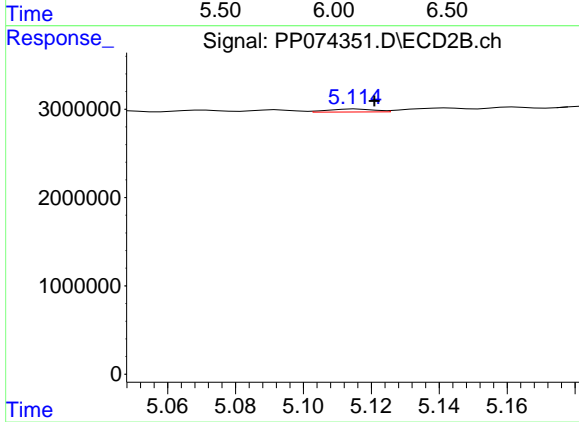
#21 AR-1248-1

R.T.: 4.895 min  
 Delta R.T.: -0.007 min  
 Response: 167329  
 Conc: 0.78 ng/ml



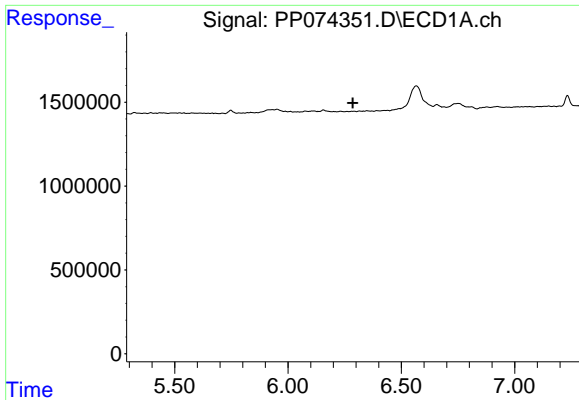
#22 AR-1248-2

R.T.: 0.000 min  
 Exp R.T. : 6.083 min  
 Response: 0  
 Conc: N.D.



#22 AR-1248-2

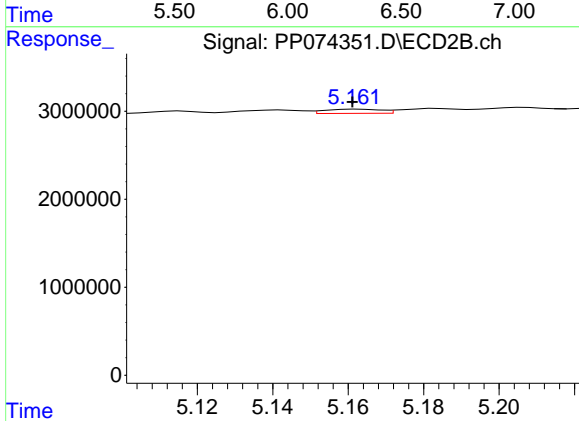
R.T.: 5.116 min  
 Delta R.T.: -0.005 min  
 Response: 321966  
 Conc: 2.20 ng/ml



#23 AR-1248-3

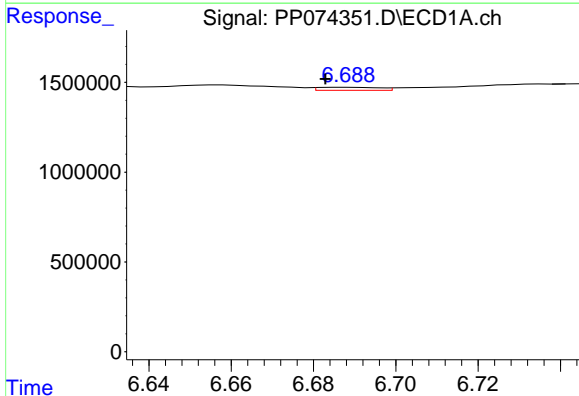
R.T.: 0.000 min  
 Exp R.T.: 6.286 min  
 Response: 0  
 Conc: N.D.

Instrument :  
 ECD\_P  
 ClientSampleId :  
 I.BLK



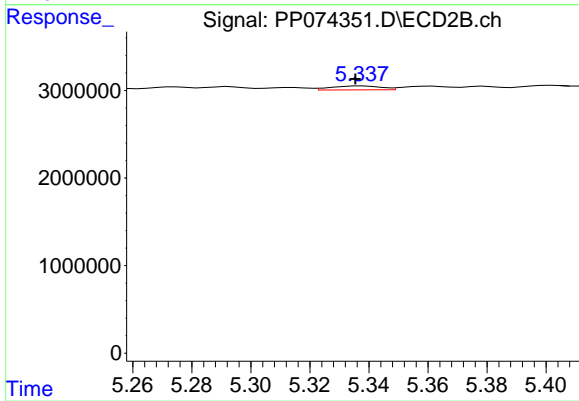
#23 AR-1248-3

R.T.: 5.162 min  
 Delta R.T.: 0.001 min  
 Response: 490853  
 Conc: 2.86 ng/ml



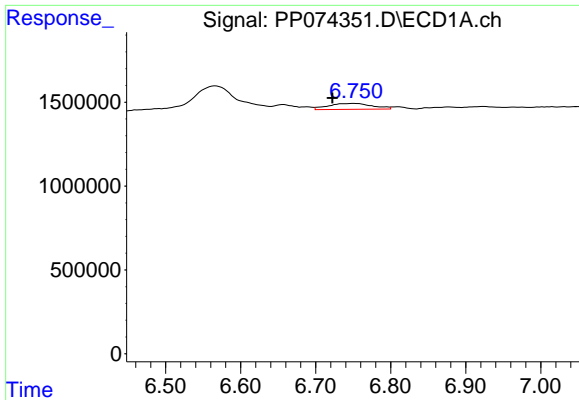
#24 AR-1248-4

R.T.: 6.689 min  
 Delta R.T.: 0.006 min  
 Response: 175623  
 Conc: 3.37 ng/ml



#24 AR-1248-4

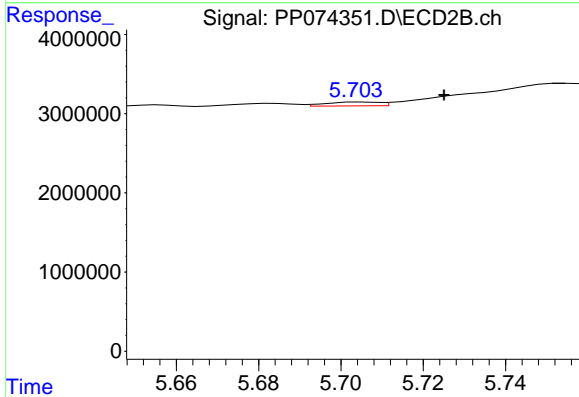
R.T.: 5.338 min  
 Delta R.T.: 0.003 min  
 Response: 527432  
 Conc: 3.17 ng/ml



#25 AR-1248-5

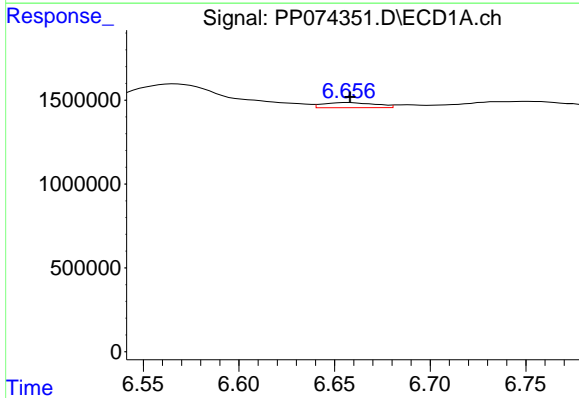
R.T.: 6.752 min  
 Delta R.T.: 0.029 min  
 Response: 1438068  
 Conc: 25.25 ng/ml

Instrument :  
 ECD\_P  
 ClientSampleId :  
 I.BLK



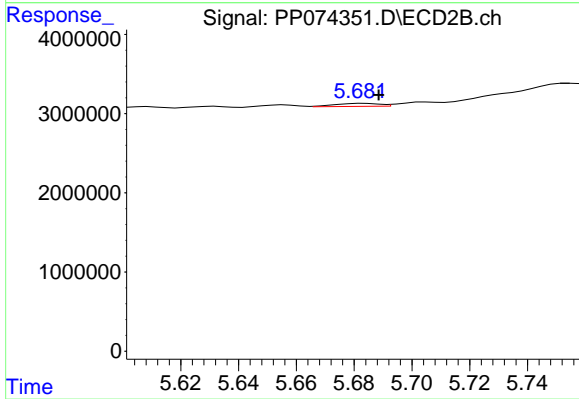
#25 AR-1248-5

R.T.: 5.705 min  
 Delta R.T.: -0.020 min  
 Response: 438888  
 Conc: 1.51 ng/ml



#26 AR-1254-1

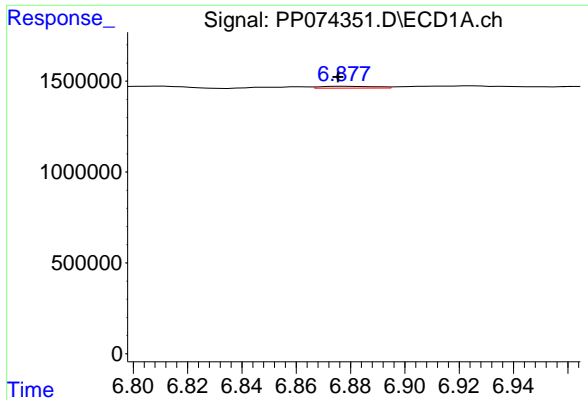
R.T.: 6.657 min  
 Delta R.T.: 0.000 min  
 Response: 589854  
 Conc: 11.21 ng/ml



#26 AR-1254-1

R.T.: 5.683 min  
 Delta R.T.: -0.005 min  
 Response: 398355  
 Conc: 1.09 ng/ml

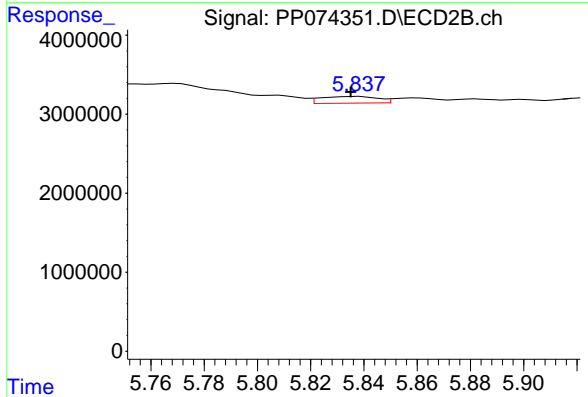




#27 AR-1254-2

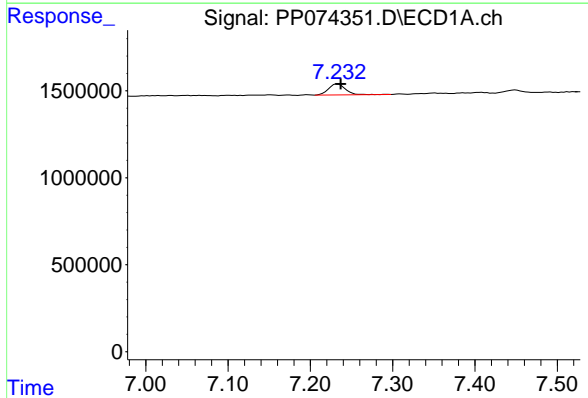
R.T.: 6.878 min  
 Delta R.T.: 0.002 min  
 Response: 141384  
 Conc: 1.78 ng/ml

Instrument :  
 ECD\_P  
 ClientSampleId :  
 I.BLK



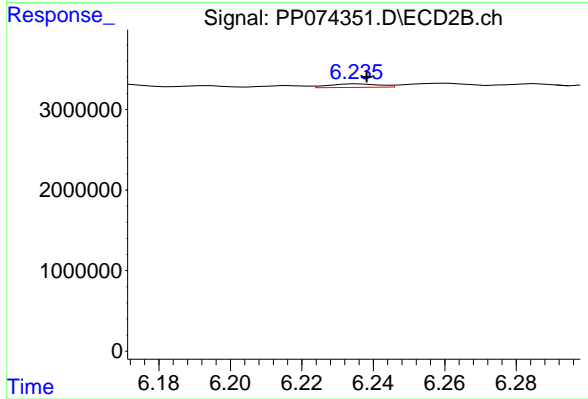
#27 AR-1254-2

R.T.: 5.838 min  
 Delta R.T.: 0.003 min  
 Response: 1252027  
 Conc: 4.50 ng/ml



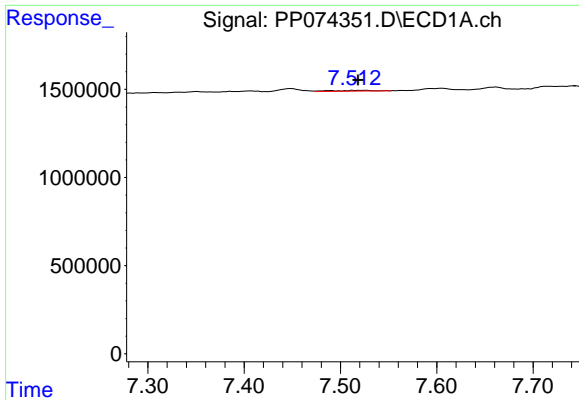
#28 AR-1254-3

R.T.: 7.233 min  
 Delta R.T.: -0.004 min  
 Response: 898390  
 Conc: 10.29 ng/ml



#28 AR-1254-3

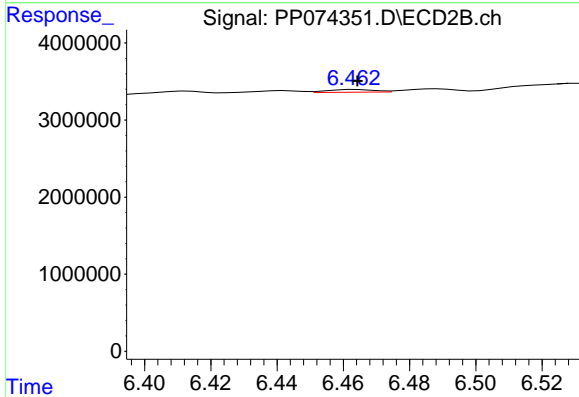
R.T.: 6.236 min  
 Delta R.T.: -0.002 min  
 Response: 422123  
 Conc: 0.86 ng/ml



#29 AR-1254-4

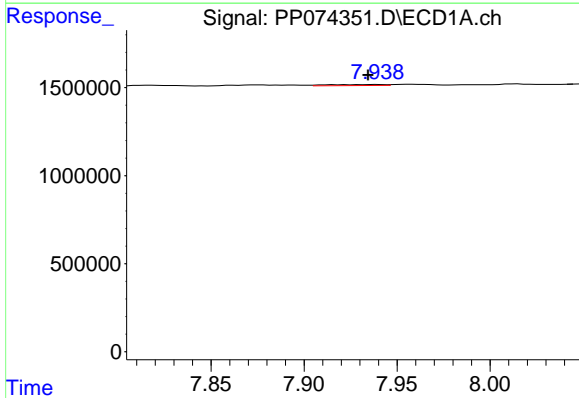
R.T.: 7.513 min  
 Delta R.T.: -0.005 min  
 Response: 130670  
 Conc: 2.05 ng/ml

Instrument :  
 ECD\_P  
 ClientSampleId :  
 I.BLK



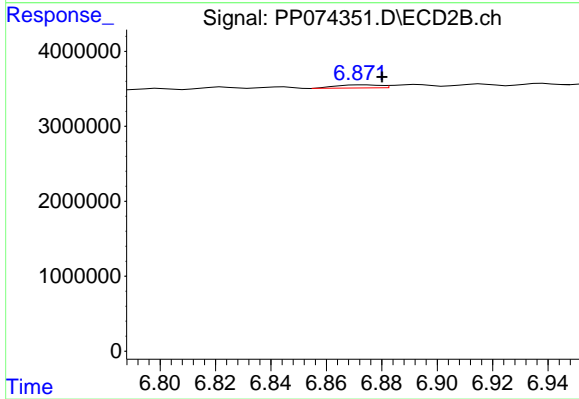
#29 AR-1254-4

R.T.: 6.464 min  
 Delta R.T.: 0.000 min  
 Response: 336435  
 Conc: 0.92 ng/ml



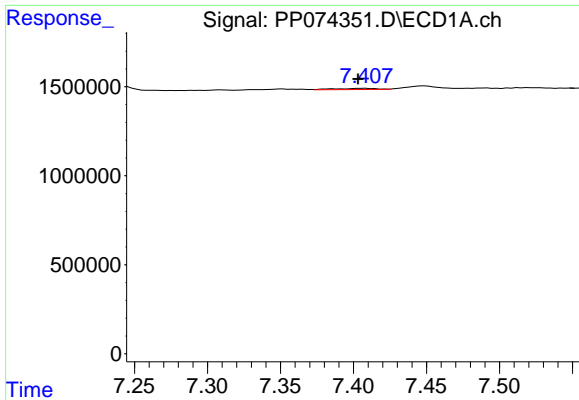
#30 AR-1254-5

R.T.: 7.939 min  
 Delta R.T.: 0.005 min  
 Response: 122208  
 Conc: 1.51 ng/ml



#30 AR-1254-5

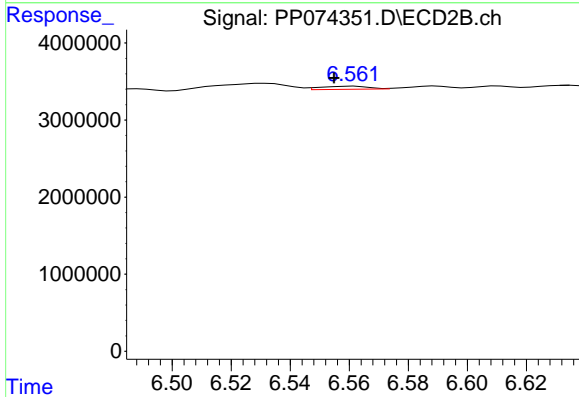
R.T.: 6.873 min  
 Delta R.T.: -0.007 min  
 Response: 453029  
 Conc: 1.18 ng/ml



#31 AR-1260-1

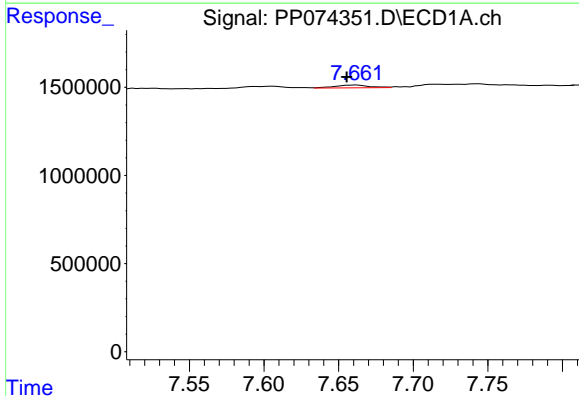
R.T.: 7.408 min  
 Delta R.T.: 0.005 min  
 Response: 128317  
 Conc: 2.28 ng/ml

Instrument :  
 ECD\_P  
 ClientSampleId :  
 I.BLK



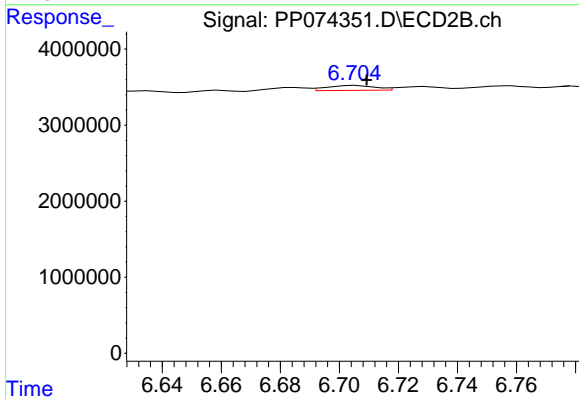
#31 AR-1260-1

R.T.: 6.561 min  
 Delta R.T.: 0.007 min  
 Response: 441639  
 Conc: 1.09 ng/ml



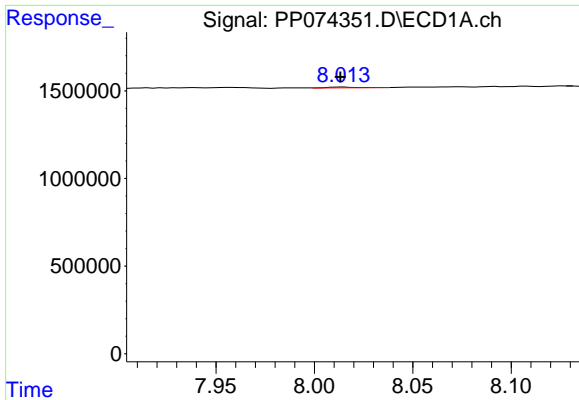
#32 AR-1260-2

R.T.: 7.661 min  
 Delta R.T.: 0.006 min  
 Response: 238242  
 Conc: 3.50 ng/ml



#32 AR-1260-2

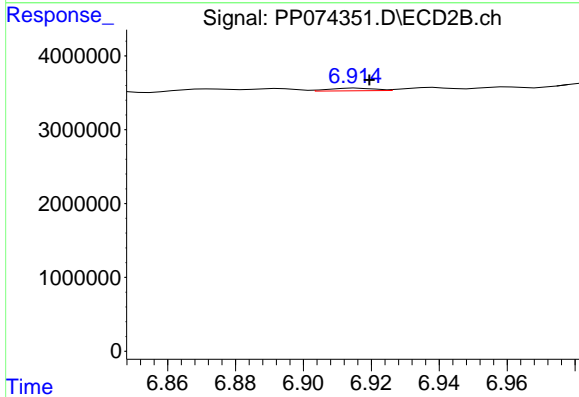
R.T.: 6.706 min  
 Delta R.T.: -0.004 min  
 Response: 741139  
 Conc: 2.37 ng/ml



#33 AR-1260-3

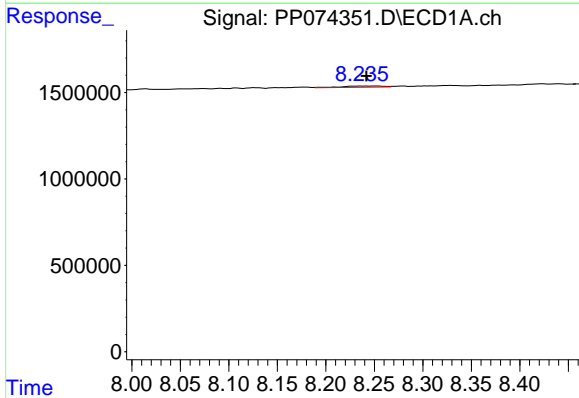
R.T.: 8.014 min  
 Delta R.T.: 0.000 min  
 Response: 48304  
 Conc: 0.91 ng/ml

Instrument :  
 ECD\_P  
 ClientSampleId :  
 I.BLK



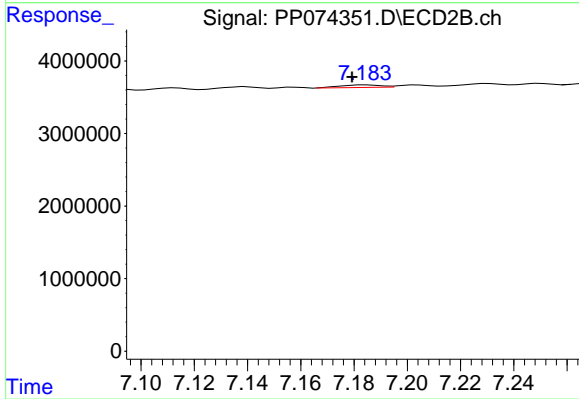
#33 AR-1260-3

R.T.: 6.916 min  
 Delta R.T.: -0.004 min  
 Response: 334404  
 Conc: 0.85 ng/ml



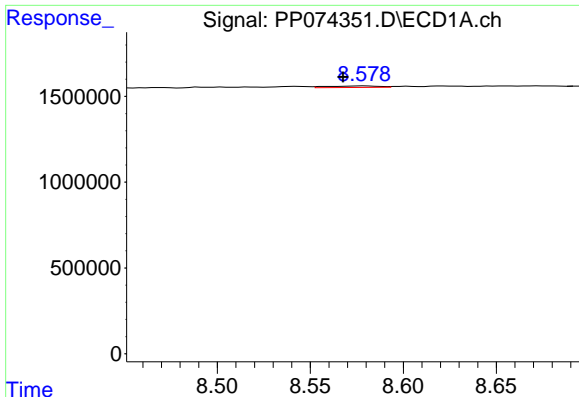
#34 AR-1260-4

R.T.: 8.236 min  
 Delta R.T.: -0.005 min  
 Response: 217688  
 Conc: 3.48 ng/ml



#34 AR-1260-4

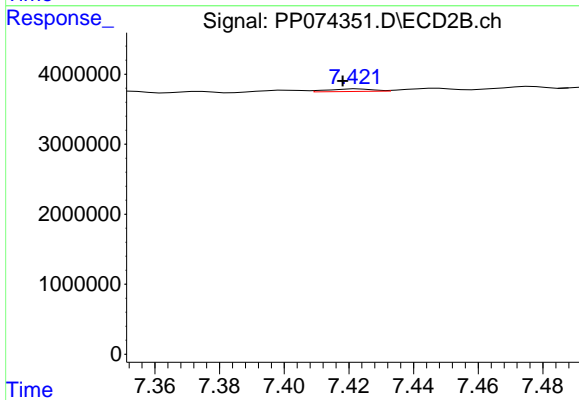
R.T.: 7.184 min  
 Delta R.T.: 0.005 min  
 Response: 376894  
 Conc: 1.30 ng/ml



#35 AR-1260-5

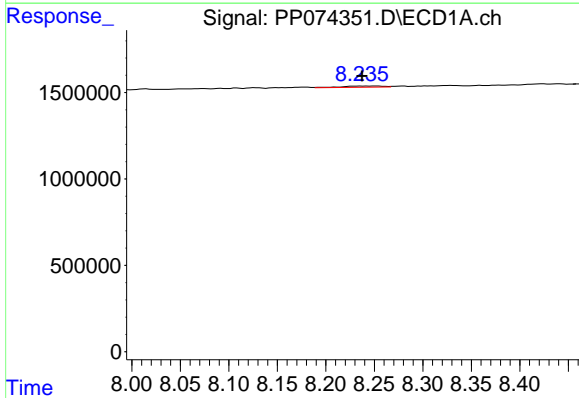
R.T.: 8.578 min  
 Delta R.T.: 0.011 min  
 Response: 176889  
 Conc: 1.56 ng/ml

Instrument :  
 ECD\_P  
 ClientSampleId :  
 I.BLK



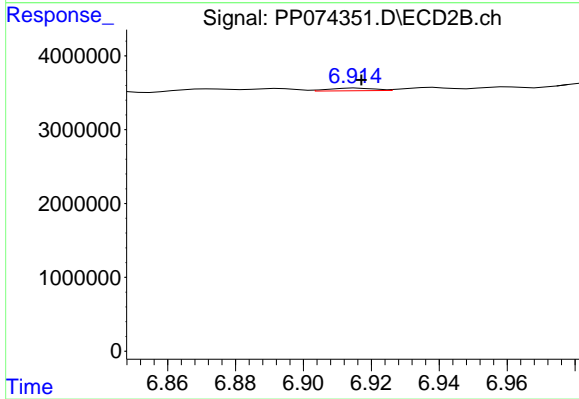
#35 AR-1260-5

R.T.: 7.423 min  
 Delta R.T.: 0.005 min  
 Response: 354442  
 Conc: 0.47 ng/ml



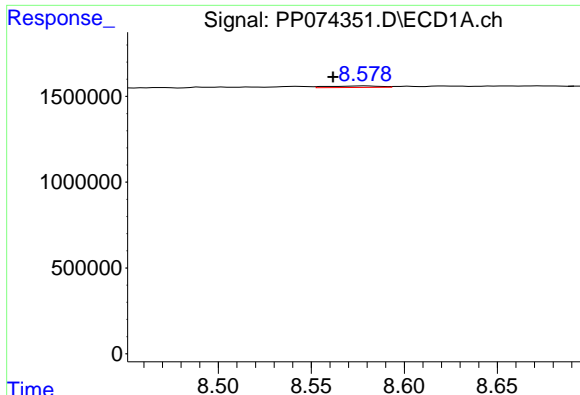
#36 AR-1262-1

R.T.: 8.236 min  
 Delta R.T.: 0.000 min  
 Response: 217688  
 Conc: 2.87 ng/ml



#36 AR-1262-1

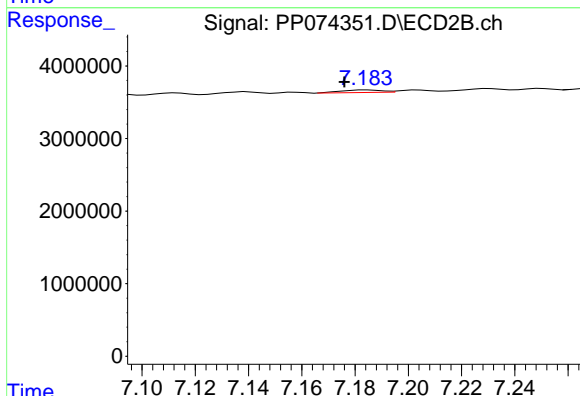
R.T.: 6.916 min  
 Delta R.T.: -0.001 min  
 Response: 334404  
 Conc: 0.59 ng/ml



#37 AR-1262-2

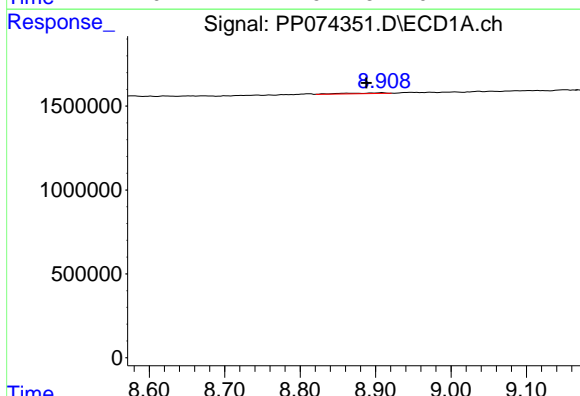
R.T.: 8.578 min  
 Delta R.T.: 0.017 min  
 Response: 176889  
 Conc: 1.36 ng/ml

Instrument :  
 ECD\_P  
 ClientSampleId :  
 I.BLK



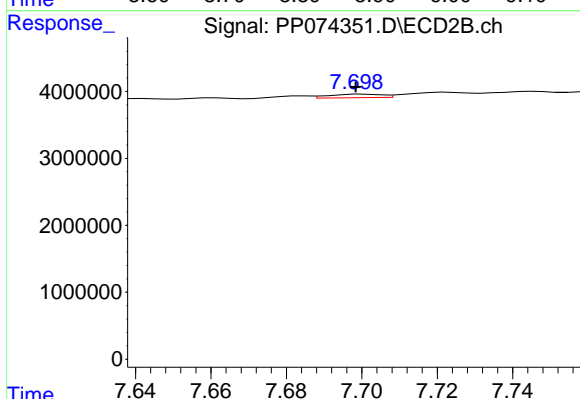
#37 AR-1262-2

R.T.: 7.184 min  
 Delta R.T.: 0.008 min  
 Response: 376894  
 Conc: 0.94 ng/ml



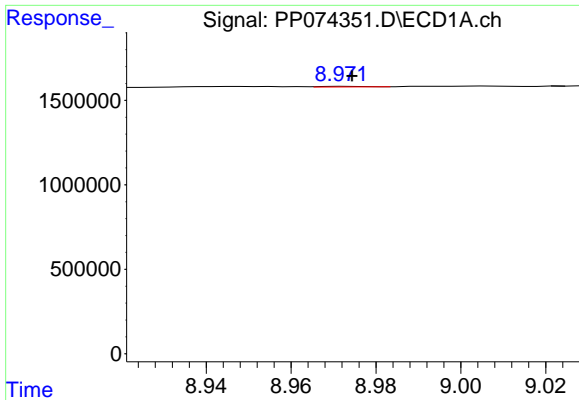
#38 AR-1262-3

R.T.: 8.909 min  
 Delta R.T.: 0.021 min  
 Response: 169475  
 Conc: 1.80 ng/ml



#38 AR-1262-3

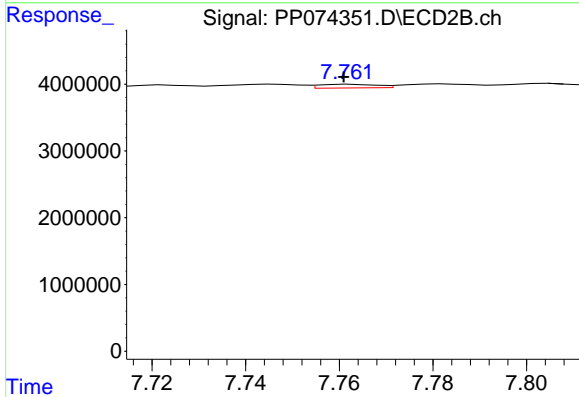
R.T.: 7.700 min  
 Delta R.T.: 0.002 min  
 Response: 504248  
 Conc: 1.40 ng/ml



#39 AR-1262-4

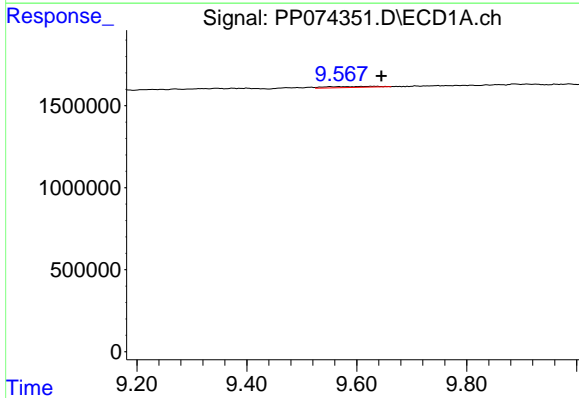
R.T.: 8.973 min  
 Delta R.T.: 0.000 min  
 Response: 26246  
 Conc: 0.36 ng/ml

Instrument :  
 ECD\_P  
 ClientSampleId :  
 I.BLK



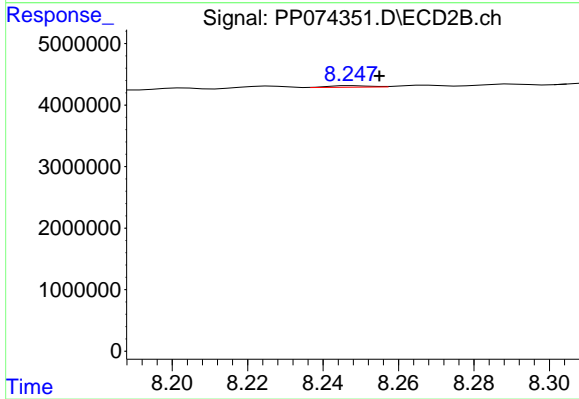
#39 AR-1262-4

R.T.: 7.762 min  
 Delta R.T.: 0.002 min  
 Response: 472692  
 Conc: 0.71 ng/ml



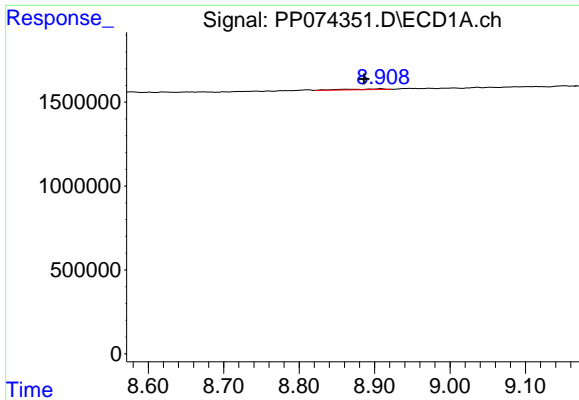
#40 AR-1262-5

R.T.: 9.633 min  
 Delta R.T.: -0.011 min  
 Response: 379402  
 Conc: 7.45 ng/ml



#40 AR-1262-5

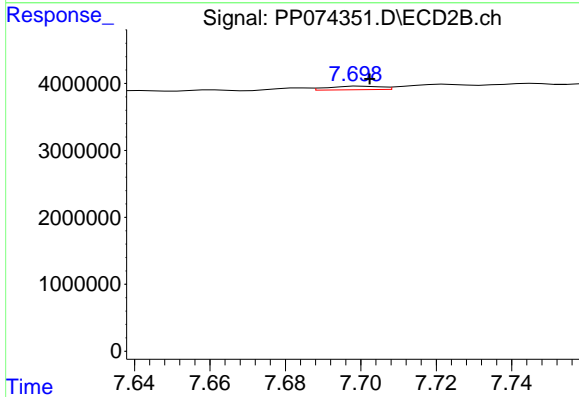
R.T.: 8.248 min  
 Delta R.T.: -0.007 min  
 Response: 180548  
 Conc: 0.64 ng/ml



#41 AR-1268-1

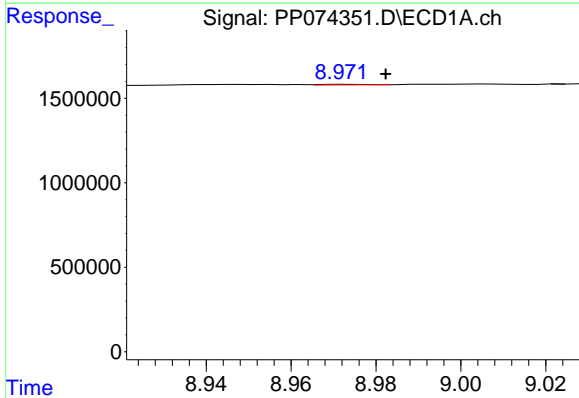
R.T.: 8.909 min  
 Delta R.T.: 0.023 min  
 Response: 169475  
 Conc: 1.09 ng/ml

Instrument :  
 ECD\_P  
 ClientSampleId :  
 I.BLK



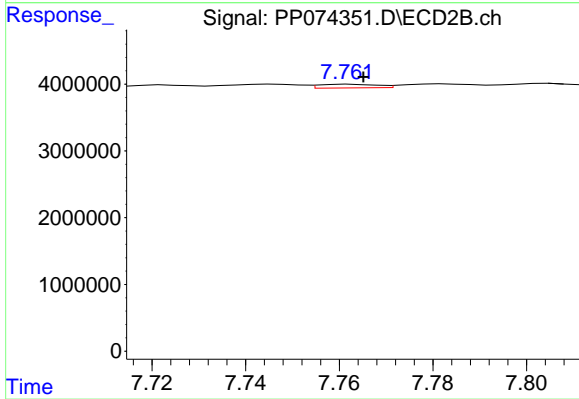
#41 AR-1268-1

R.T.: 7.700 min  
 Delta R.T.: -0.002 min  
 Response: 504248  
 Conc: 0.46 ng/ml



#42 AR-1268-2

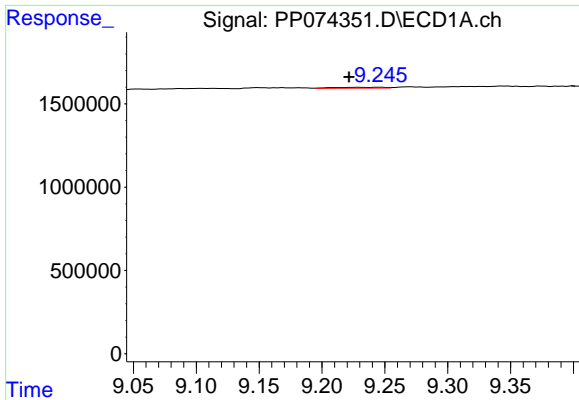
R.T.: 8.973 min  
 Delta R.T.: -0.009 min  
 Response: 26246  
 Conc: 0.18 ng/ml



#42 AR-1268-2

R.T.: 7.762 min  
 Delta R.T.: -0.003 min  
 Response: 472692  
 Conc: 0.45 ng/ml

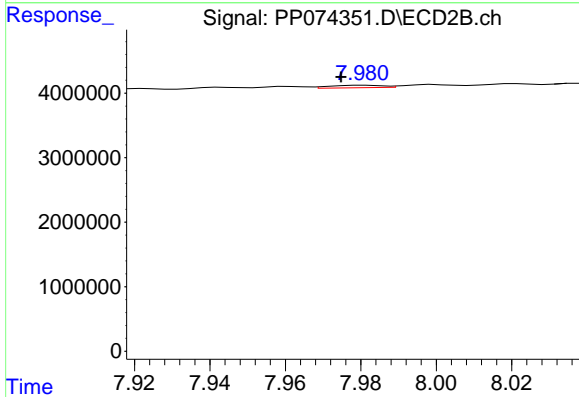




#43 AR-1268-3

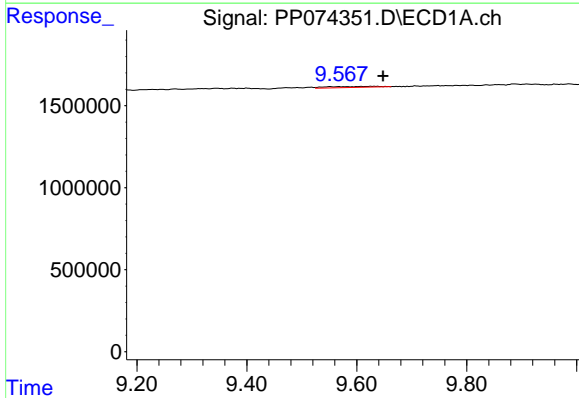
R.T.: 9.246 min  
 Delta R.T.: 0.024 min  
 Response: 144088  
 Conc: 1.21 ng/ml

Instrument :  
 ECD\_P  
 ClientSampleId :  
 I.BLK



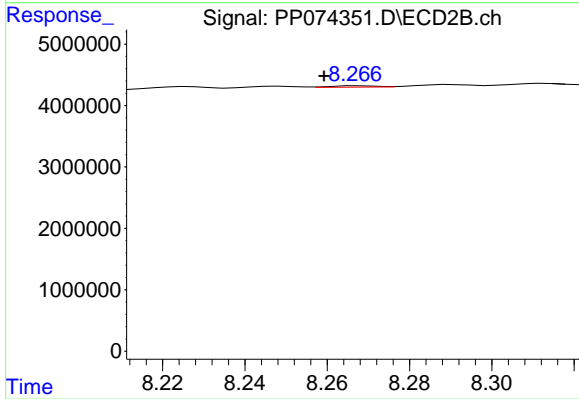
#43 AR-1268-3

R.T.: 7.981 min  
 Delta R.T.: 0.006 min  
 Response: 359977  
 Conc: 0.43 ng/ml



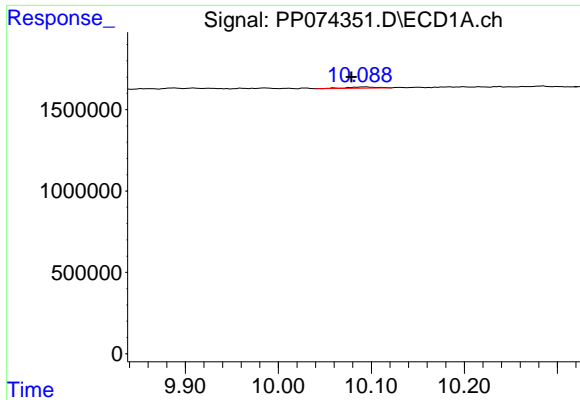
#44 AR-1268-4

R.T.: 9.633 min  
 Delta R.T.: -0.015 min  
 Response: 379402  
 Conc: 6.45 ng/ml



#44 AR-1268-4

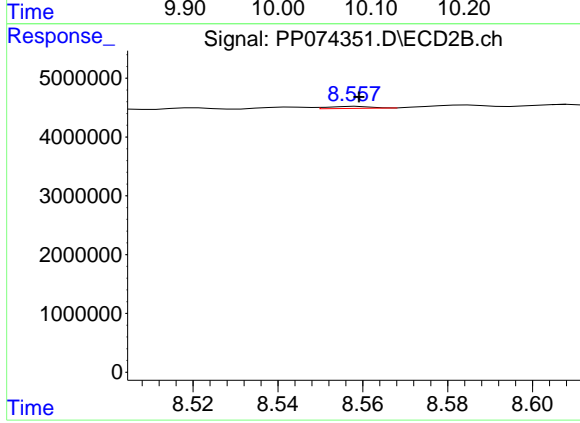
R.T.: 8.268 min  
 Delta R.T.: 0.009 min  
 Response: 169894  
 Conc: 0.55 ng/ml



#45 AR-1268-5

R.T.: 10.093 min  
 Delta R.T.: 0.014 min  
 Response: 176735  
 Conc: 0.50 ng/ml

Instrument :  
 ECD\_P  
 ClientSampleId :  
 I.BLK



#45 AR-1268-5

R.T.: 8.559 min  
 Delta R.T.: 0.000 min  
 Response: 241687  
 Conc: 0.09 ng/ml