

Data Path : Z:\pestpcbsrv\HPCHEM1\ECD_P\Data\PP081325\
 Data File : PP074352.D
 Signal(s) : Signal #1: ECD1A.ch Signal #2: ECD2B.ch
 Acq On : 13 Aug 2025 16:59
 Operator : YP\AJ
 Sample : PB169224BL
 Misc :
 ALS Vial : 16 Sample Multiplier: 1

Instrument :
 ECD_P
 ClientSampleId :
 PB169224BL

Integration File signal 1: autoint1.e
 Integration File signal 2: autoint2.e
 Quant Time: Aug 13 23:59:10 2025
 Quant Method : Z:\pestpcbsrv\HPCHEM1\ECD_P\methods\PP080125.M
 Quant Title : GC EXTRACTABLES
 QLast Update : Mon Aug 04 11:01:49 2025
 Response via : Initial Calibration
 Integrator: ChemStation

Volume Inj. : 2 µl
 Signal #1 Phase : ZB-MR1 Signal #2 Phase: ZB-MR2
 Signal #1 Info : 30Mx0.32mmx 0.50µ Signal #2 Info : 30M x 0.32mm x 0.25µm

| Compound | RT#1 | RT#2 | Resp#1 | Resp#2 | ng/ml | ng/ml |
|-----------------------------|--------|-------|----------|----------|--------|---------|
| System Monitoring Compounds | | | | | | |
| 1) SA Tetrachlo... | 4.658 | 3.801 | 28422919 | 86491849 | 25.416 | 22.557 |
| 2) SA Decachlor... | 10.438 | 8.819 | 23299340 | 132.2E6 | 23.991 | 21.990 |
| Target Compounds | | | | | | |
| 3) L1 AR-1016-1 | 5.742f | 4.912 | 197876 | 197071 | 4.796 | 0.494 # |
| 4) L1 AR-1016-2 | 0.000 | 4.969 | 0 | 228501 | N.D. | 1.217 # |
| 5) L1 AR-1016-3 | 5.943f | 5.078 | 1041710 | 296852 | 26.266 | 2.799 # |
| 6) L1 AR-1016-4 | 5.943f | 5.126 | 1041710 | 239213 | 32.009 | 2.190 # |
| 7) L1 AR-1016-5 | 0.000 | 5.338 | 0 | 367491 | N.D. | 3.142 # |
| 8) L2 AR-1221-1 | 0.000 | 4.010 | 0 | 393428 | N.D. | 8.015 # |
| 9) L2 AR-1221-2 | 4.960 | 4.104 | 543330 | 1179922 | 43.118 | 32.877 |
| 10) L2 AR-1221-3 | 4.960f | 4.164 | 543330 | 482763 | 14.831 | 3.570 # |
| 11) L3 AR-1232-1 | 4.960f | 4.164 | 543330 | 482763 | 18.711 | 4.763 # |
| 12) L3 AR-1232-2 | 0.000 | 4.912 | 0 | 197071 | N.D. | 1.131 # |
| 13) L3 AR-1232-3 | 0.000 | 5.078 | 0 | 296852 | N.D. | 6.479 # |
| 14) L3 AR-1232-4 | 5.943f | 5.153 | 1041710 | 508617 | 67.343 | 8.768 # |
| 15) L3 AR-1232-5 | 6.081 | 5.338 | 122356 | 367491 | 10.443 | 7.822 # |
| 16) L4 AR-1242-1 | 5.742f | 4.912 | 197876 | 197071 | 5.310 | 0.571 # |
| 17) L4 AR-1242-2 | 0.000 | 4.969 | 0 | 228501 | N.D. | 1.399 # |
| 18) L4 AR-1242-3 | 5.943f | 5.078 | 1041710 | 296852 | 29.150 | 3.218 # |
| 19) L4 AR-1242-4 | 5.943f | 5.153 | 1041710 | 508617 | 35.652 | 4.259 # |
| 20) L4 AR-1242-5 | 6.738 | 5.695 | 1251600 | 208989 | 35.199 | 1.397 # |
| 21) L5 AR-1248-1 | 5.742f | 4.912 | 197876 | 197071 | 7.063 | 0.921 # |
| 22) L5 AR-1248-2 | 6.081 | 5.126 | 122356 | 239213 | 3.039 | 1.635 # |
| 23) L5 AR-1248-3 | 0.000 | 5.153 | 0 | 508617 | N.D. | 2.966 # |
| 24) L5 AR-1248-4 | 6.688 | 5.338 | 243256 | 367491 | 4.675 | 2.209 # |
| 25) L5 AR-1248-5 | 6.738 | 5.695 | 1251600 | 208989 | 21.980 | 0.718 # |
| 26) L6 AR-1254-1 | 6.651 | 5.695 | 504963 | 208989 | 9.593 | 0.571 # |
| 27) L6 AR-1254-2 | 6.889 | 5.828 | 112967 | 754462 | 1.421 | 2.712 # |
| 28) L6 AR-1254-3 | 7.230 | 6.244 | 585885 | 365473 | 6.710 | 0.747 # |
| 29) L6 AR-1254-4 | 7.524 | 6.472 | 73288 | 375036 | 1.149 | 1.020 |
| 30) L6 AR-1254-5 | 7.933 | 6.872 | 158958 | 256550 | 1.959 | 0.666 # |
| 31) L7 AR-1260-1 | 7.380 | 6.558 | 66448 | 203930 | 1.179 | 0.505 # |
| 32) L7 AR-1260-2 | 7.660 | 6.706 | 223832 | 576865 | 3.284 | 1.845 # |
| 33) L7 AR-1260-3 | 8.008 | 6.915 | 79499 | 180692 | 1.492 | 0.458 # |
| 34) L7 AR-1260-4 | 8.252 | 7.187 | 201858 | 190907 | 3.224 | 0.656 # |
| 35) L7 AR-1260-5 | 8.570 | 7.415 | 63060 | 183543 | 0.557 | 0.242 # |
| 36) L8 AR-1262-1 | 8.252 | 6.915 | 201858 | 180692 | 2.663 | 0.321 # |
| 37) L8 AR-1262-2 | 8.570 | 7.165 | 63060 | 109773 | 0.483 | 0.274 # |
| 38) L8 AR-1262-3 | 8.952f | 7.694 | 37960 | 459991 | 0.404 | 1.280 # |
| 39) L8 AR-1262-4 | 8.981 | 7.759 | 14702 | 303900 | 0.202 | 0.456 # |
| 40) L8 AR-1262-5 | 9.650 | 8.255 | 53569 | 393180 | 1.052 | 1.388 # |
| 41) L9 AR-1268-1 | 8.952f | 7.694 | 37960 | 459991 | 0.244 | 0.422 # |

Data Path : Z:\pestpcbsrv\HPCHEM1\ECD_P\Data\PP081325\
 Data File : PP074352.D
 Signal(s) : Signal #1: ECD1A.ch Signal #2: ECD2B.ch
 Acq On : 13 Aug 2025 16:59
 Operator : YP\AJ
 Sample : PB169224BL
 Misc :
 ALS Vial : 16 Sample Multiplier: 1

Instrument :
 ECD_P
 ClientSampleId :
 PB169224BL

Integration File signal 1: autoint1.e
 Integration File signal 2: autoint2.e
 Quant Time: Aug 13 23:59:10 2025
 Quant Method : Z:\pestpcbsrv\HPCHEM1\ECD_P\methods\PP080125.M
 Quant Title : GC EXTRACTABLES
 QLast Update : Mon Aug 04 11:01:49 2025
 Response via : Initial Calibration
 Integrator: ChemStation

Volume Inj. : 2 µl
 Signal #1 Phase : ZB-MR1 Signal #2 Phase: ZB-MR2
 Signal #1 Info : 30Mx0.32mmx 0.50µ Signal #2 Info : 30M x 0.32mm x 0.25µm

| | Compound | RT#1 | RT#2 | Resp#1 | Resp#2 | ng/ml | ng/ml |
|-----|--------------|--------|-------|--------|--------|-------|---------|
| 42) | L9 AR-1268-2 | 8.981 | 7.759 | 14702 | 303900 | 0.103 | 0.286 # |
| 43) | L9 AR-1268-3 | 0.000 | 7.985 | 0 | 605238 | N.D. | 0.728 # |
| 44) | L9 AR-1268-4 | 9.650 | 8.255 | 53569 | 393180 | 0.911 | 1.276 # |
| 45) | L9 AR-1268-5 | 10.088 | 8.558 | 170043 | 555697 | 0.483 | 0.218 # |

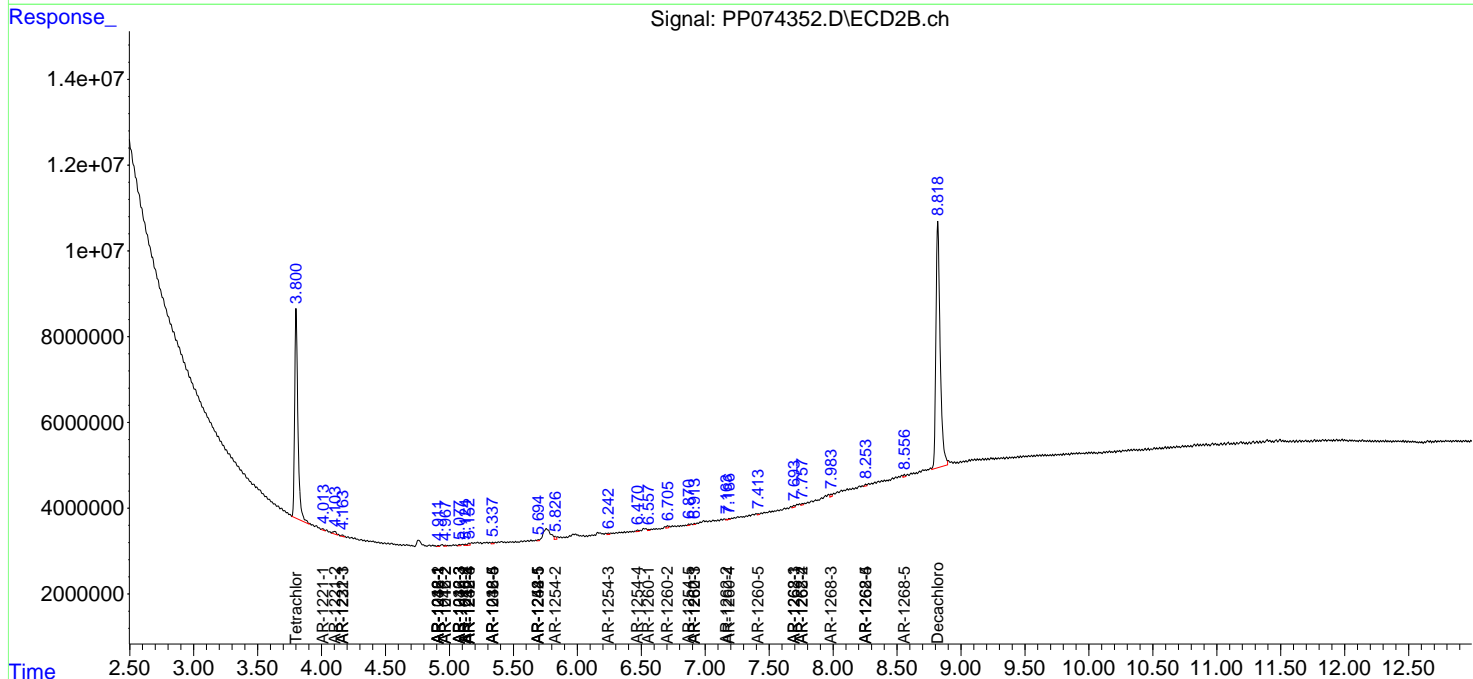
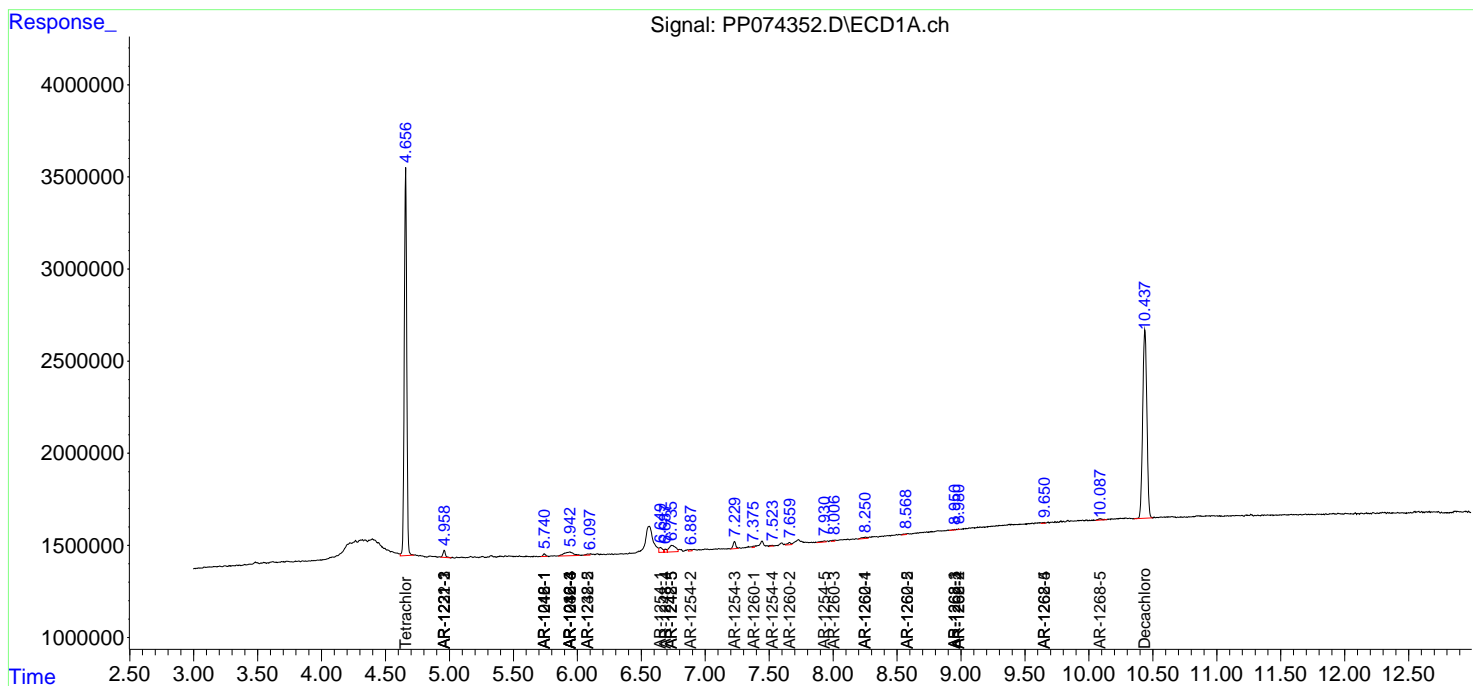
(f)=RT Delta > 1/2 Window (#)=Amounts differ by > 25% (m)=manual int.

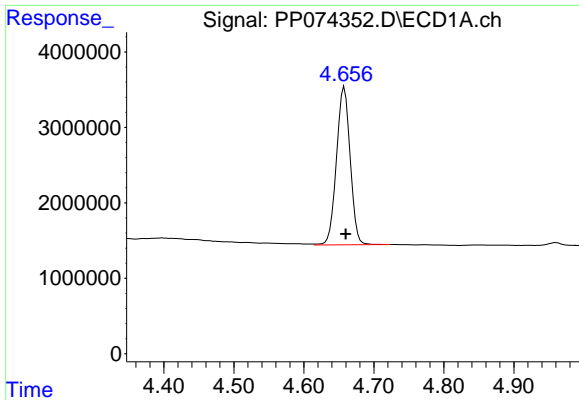
Data Path : Z:\pestpcbsrv\HPCHEM1\ECD_P\Data\PP081325\
 Data File : PP074352.D
 Signal(s) : Signal #1: ECD1A.ch Signal #2: ECD2B.ch
 Acq On : 13 Aug 2025 16:59
 Operator : YP\AJ
 Sample : PB169224BL
 Misc :
 ALS Vial : 16 Sample Multiplier: 1

Instrument :
 ECD_P
 ClientSampleId :
 PB169224BL

Integration File signal 1: autoint1.e
 Integration File signal 2: autoint2.e
 Quant Time: Aug 13 23:59:10 2025
 Quant Method : Z:\pestpcbsrv\HPCHEM1\ECD_P\methods\PP080125.M
 Quant Title : GC EXTRACTABLES
 QLast Update : Mon Aug 04 11:01:49 2025
 Response via : Initial Calibration
 Integrator: ChemStation

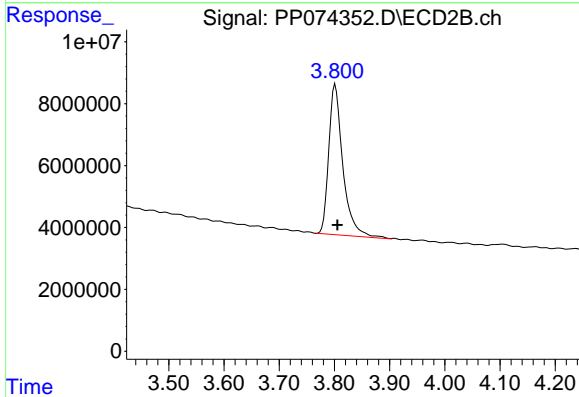
Volume Inj. : 2 µl
 Signal #1 Phase : ZB-MR1 Signal #2 Phase: ZB-MR2
 Signal #1 Info : 30Mx0.32mmx 0.50µ Signal #2 Info : 30M x 0.32mm x 0.25µm



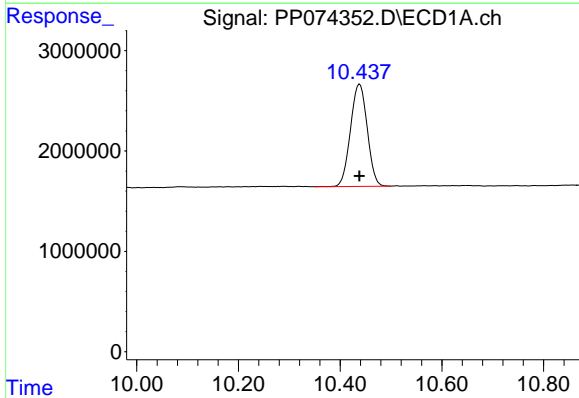


#1 Tetrachloro-m-xylene
R.T.: 4.658 min
Delta R.T.: -0.002 min
Response: 28422919
Conc: 25.42 ng/ml

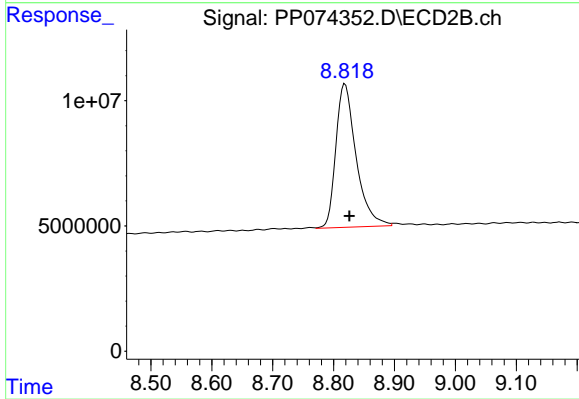
Instrument :
ECD_P
ClientSampleId :
PB169224BL



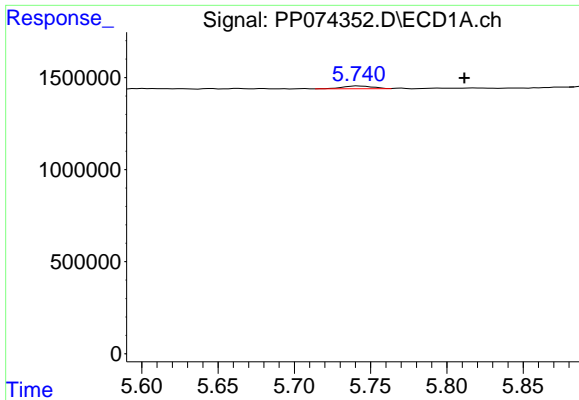
#1 Tetrachloro-m-xylene
R.T.: 3.801 min
Delta R.T.: -0.004 min
Response: 86491849
Conc: 22.56 ng/ml



#2 Decachlorobiphenyl
R.T.: 10.438 min
Delta R.T.: 0.000 min
Response: 23299340
Conc: 23.99 ng/ml



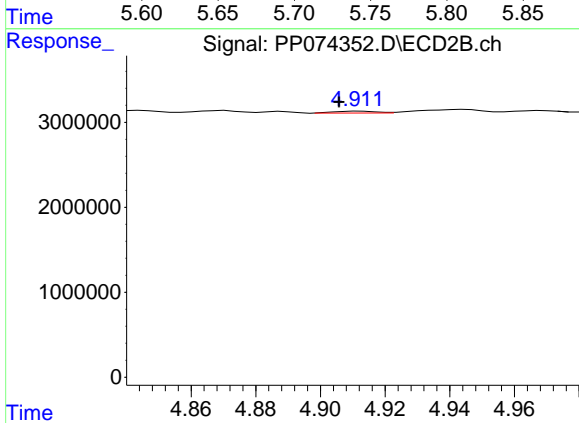
#2 Decachlorobiphenyl
R.T.: 8.819 min
Delta R.T.: -0.007 min
Response: 132239732
Conc: 21.99 ng/ml



#3 AR-1016-1

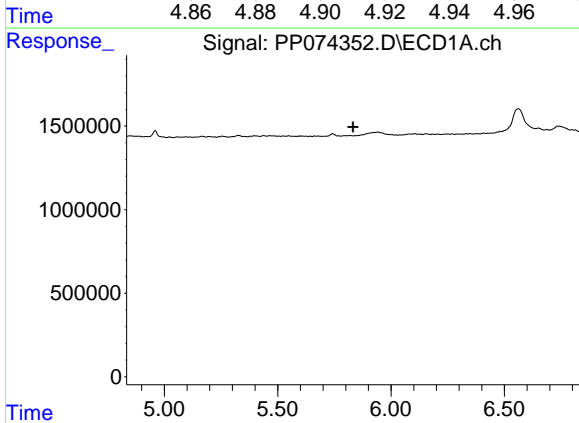
R.T.: 5.742 min
 Delta R.T.: -0.070 min
 Response: 197876
 Conc: 4.80 ng/ml

Instrument :
 ECD_P
 ClientSampleId :
 PB169224BL



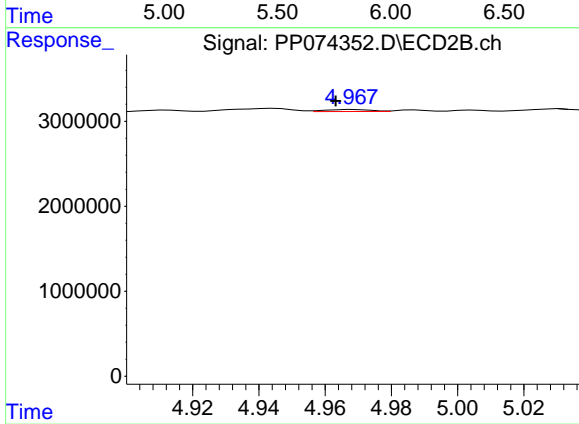
#3 AR-1016-1

R.T.: 4.912 min
 Delta R.T.: 0.006 min
 Response: 197071
 Conc: 0.49 ng/ml



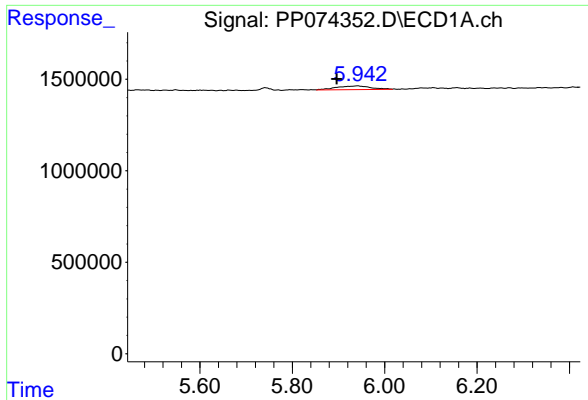
#4 AR-1016-2

R.T.: 0.000 min
 Exp R.T. : 5.833 min
 Response: 0
 Conc: N.D.



#4 AR-1016-2

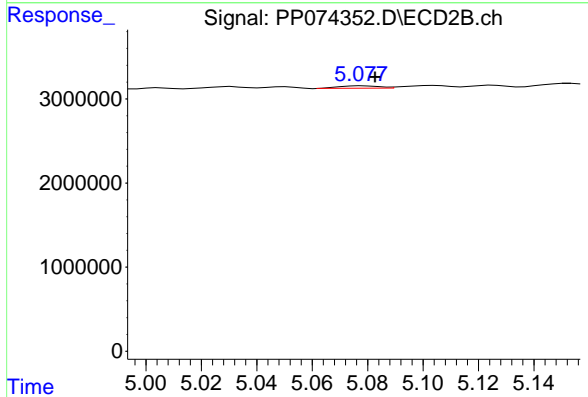
R.T.: 4.969 min
 Delta R.T.: 0.005 min
 Response: 228501
 Conc: 1.22 ng/ml



#5 AR-1016-3

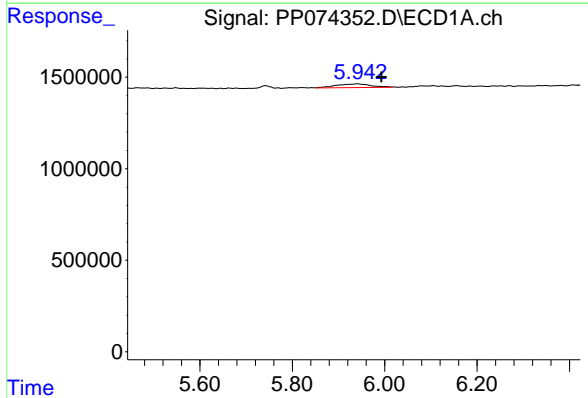
R.T.: 5.943 min
 Delta R.T.: 0.047 min
 Response: 1041710
 Conc: 26.27 ng/ml

Instrument :
 ECD_P
 ClientSampleId :
 PB169224BL



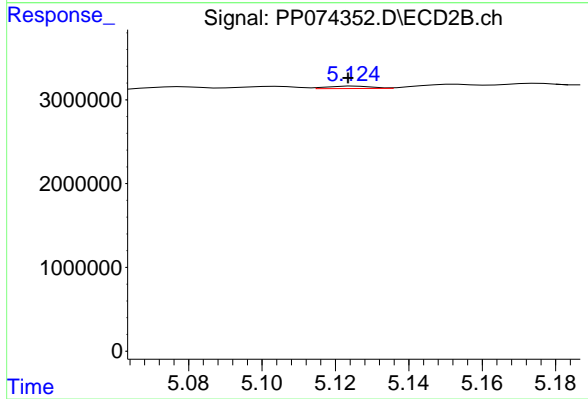
#5 AR-1016-3

R.T.: 5.078 min
 Delta R.T.: -0.004 min
 Response: 296852
 Conc: 2.80 ng/ml



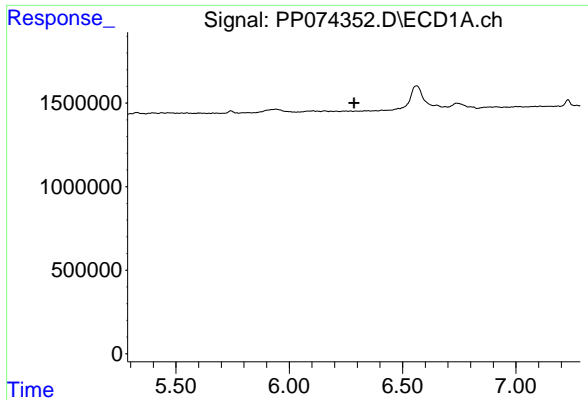
#6 AR-1016-4

R.T.: 5.943 min
 Delta R.T.: -0.050 min
 Response: 1041710
 Conc: 32.01 ng/ml



#6 AR-1016-4

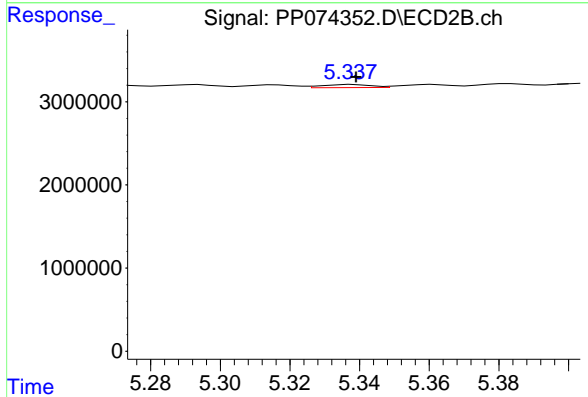
R.T.: 5.126 min
 Delta R.T.: 0.002 min
 Response: 239213
 Conc: 2.19 ng/ml



#7 AR-1016-5

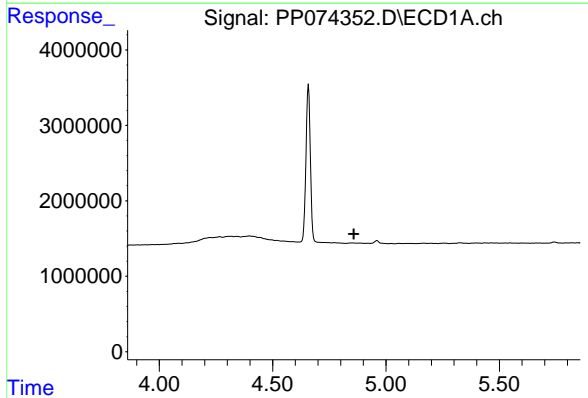
R.T.: 0.000 min
 Exp R.T. : 6.286 min
 Response: 0
 Conc: N.D.

Instrument :
 ECD_P
 ClientSampleId :
 PB169224BL



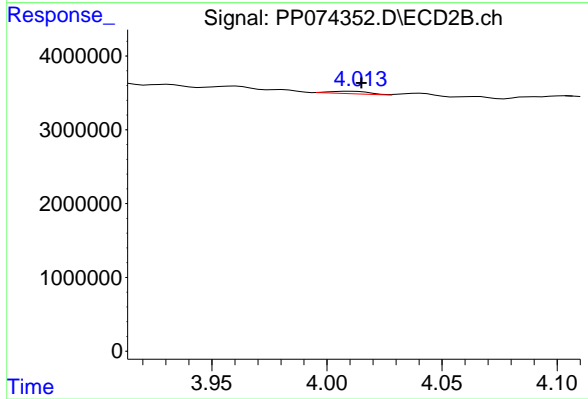
#7 AR-1016-5

R.T.: 5.338 min
 Delta R.T.: 0.000 min
 Response: 367491
 Conc: 3.14 ng/ml



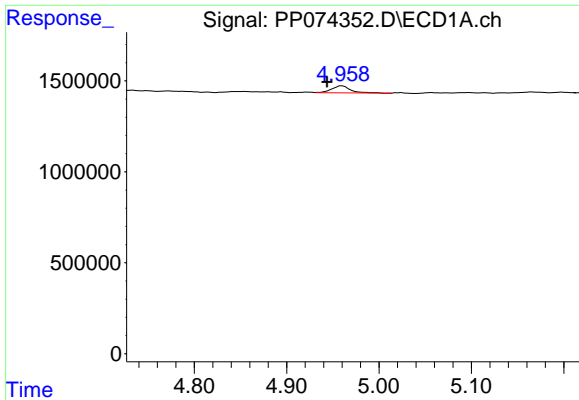
#8 AR-1221-1

R.T.: 0.000 min
 Exp R.T. : 4.858 min
 Response: 0
 Conc: N.D.



#8 AR-1221-1

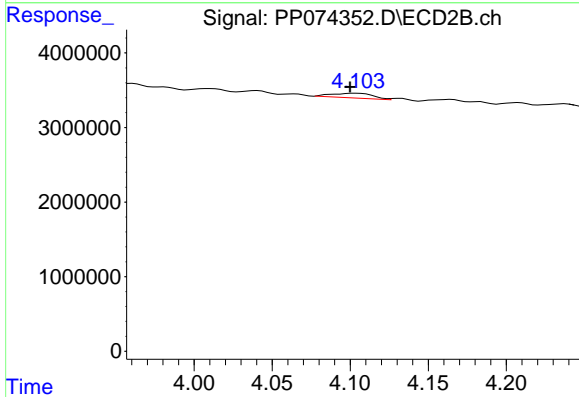
R.T.: 4.010 min
 Delta R.T.: -0.005 min
 Response: 393428
 Conc: 8.02 ng/ml



#9 AR-1221-2

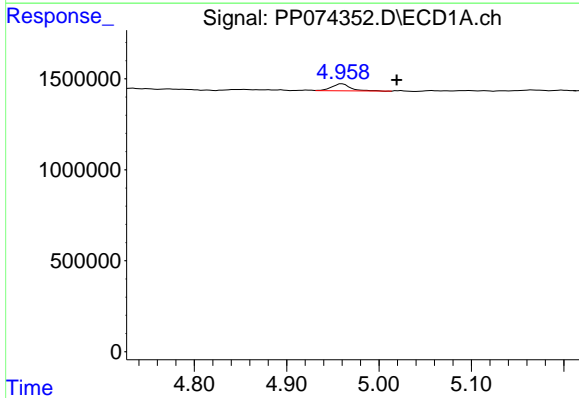
R.T.: 4.960 min
 Delta R.T.: 0.016 min
 Response: 543330
 Conc: 43.12 ng/ml

Instrument :
 ECD_P
 ClientSampleId :
 PB169224BL



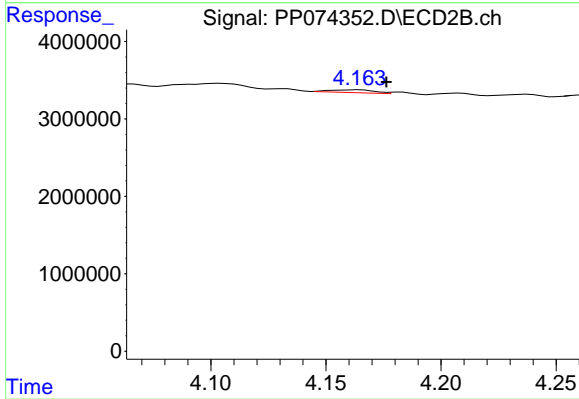
#9 AR-1221-2

R.T.: 4.104 min
 Delta R.T.: 0.004 min
 Response: 1179922
 Conc: 32.88 ng/ml



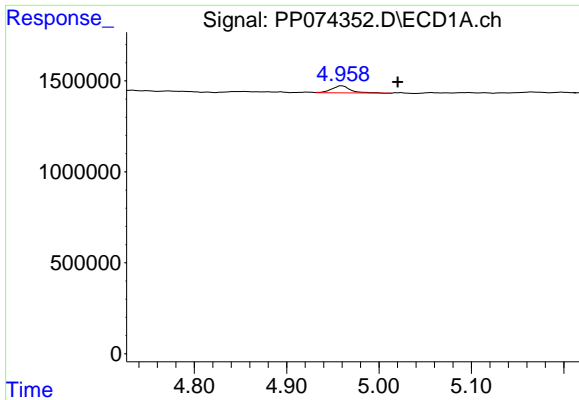
#10 AR-1221-3

R.T.: 4.960 min
 Delta R.T.: -0.059 min
 Response: 543330
 Conc: 14.83 ng/ml



#10 AR-1221-3

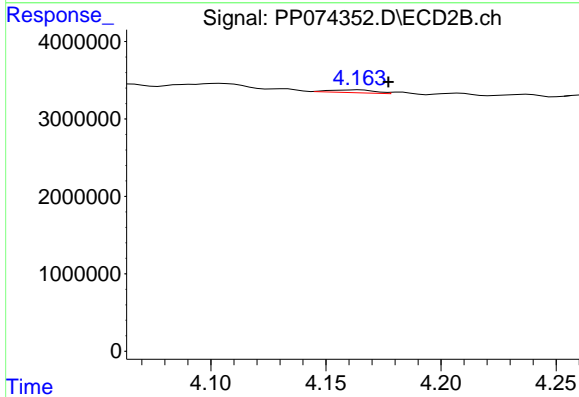
R.T.: 4.164 min
 Delta R.T.: -0.012 min
 Response: 482763
 Conc: 3.57 ng/ml



#11 AR-1232-1

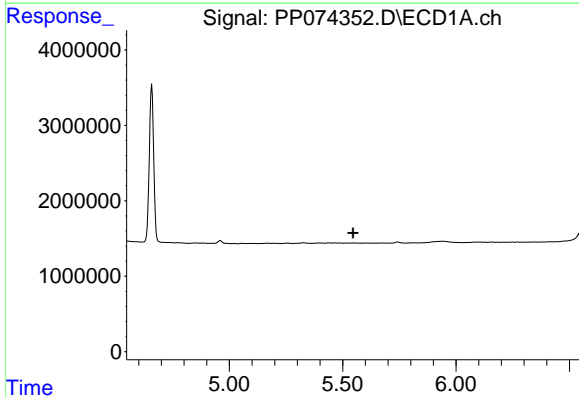
R.T.: 4.960 min
 Delta R.T.: -0.060 min
 Response: 543330
 Conc: 18.71 ng/ml

Instrument :
 ECD_P
 ClientSampleId :
 PB169224BL



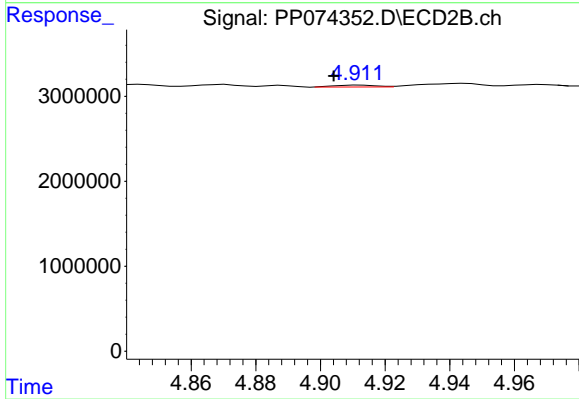
#11 AR-1232-1

R.T.: 4.164 min
 Delta R.T.: -0.013 min
 Response: 482763
 Conc: 4.76 ng/ml



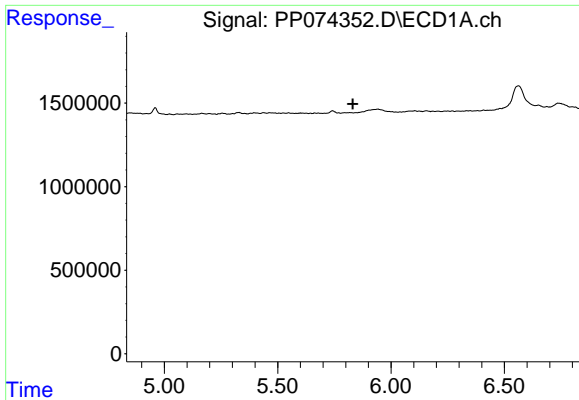
#12 AR-1232-2

R.T.: 0.000 min
 Exp R.T. : 5.546 min
 Response: 0
 Conc: N.D.



#12 AR-1232-2

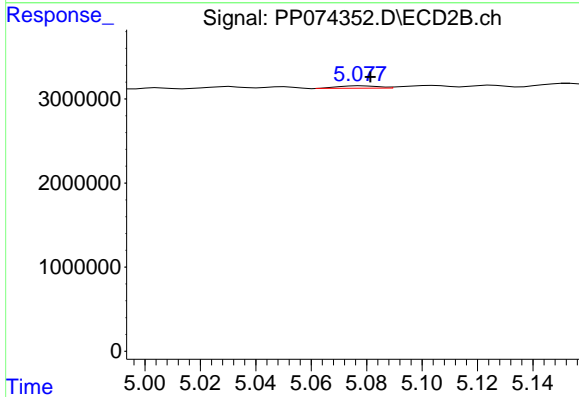
R.T.: 4.912 min
 Delta R.T.: 0.008 min
 Response: 197071
 Conc: 1.13 ng/ml



#13 AR-1232-3

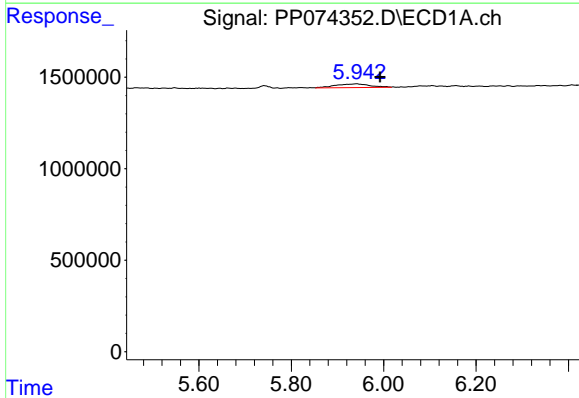
R.T.: 0.000 min
 Exp R.T.: 5.832 min
 Response: 0
 Conc: N.D.

Instrument :
 ECD_P
 ClientSampleId :
 PB169224BL



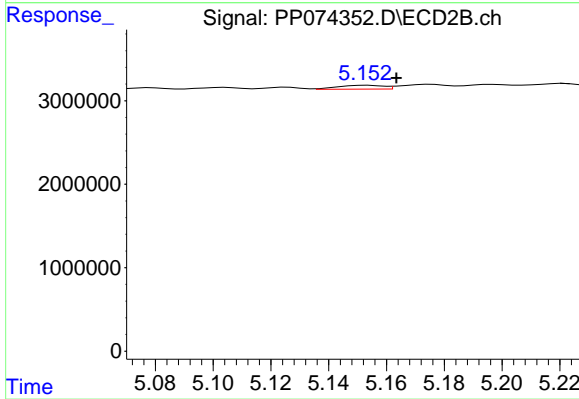
#13 AR-1232-3

R.T.: 5.078 min
 Delta R.T.: -0.003 min
 Response: 296852
 Conc: 6.48 ng/ml



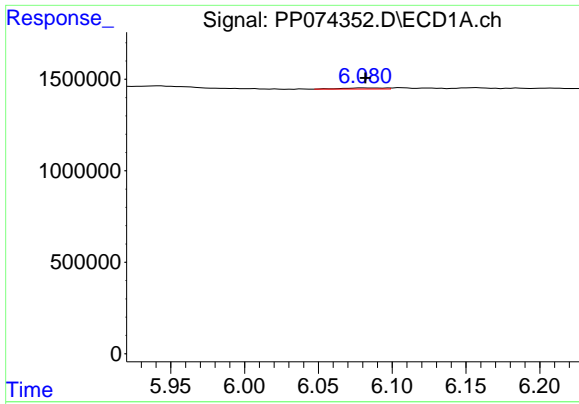
#14 AR-1232-4

R.T.: 5.943 min
 Delta R.T.: -0.049 min
 Response: 1041710
 Conc: 67.34 ng/ml



#14 AR-1232-4

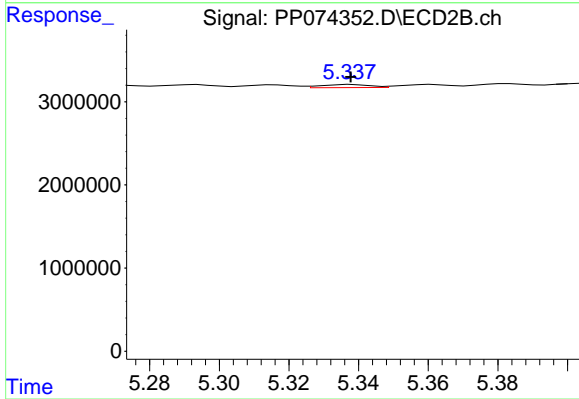
R.T.: 5.153 min
 Delta R.T.: -0.010 min
 Response: 508617
 Conc: 8.77 ng/ml



#15 AR-1232-5

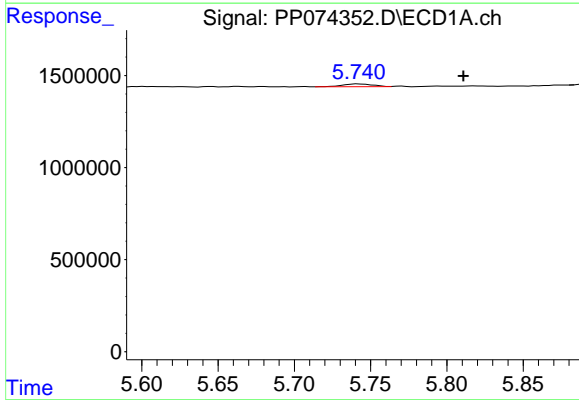
R.T.: 6.081 min
 Delta R.T.: 0.000 min
 Response: 122356
 Conc: 10.44 ng/ml

Instrument :
 ECD_P
 ClientSampleId :
 PB169224BL



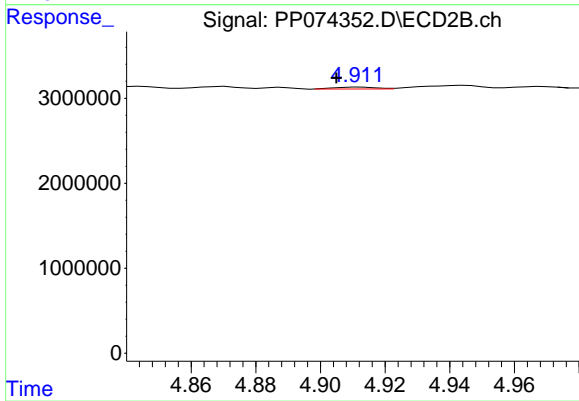
#15 AR-1232-5

R.T.: 5.338 min
 Delta R.T.: 0.000 min
 Response: 367491
 Conc: 7.82 ng/ml



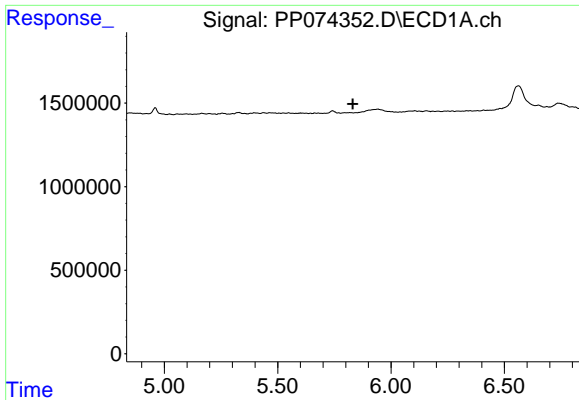
#16 AR-1242-1

R.T.: 5.742 min
 Delta R.T.: -0.069 min
 Response: 197876
 Conc: 5.31 ng/ml



#16 AR-1242-1

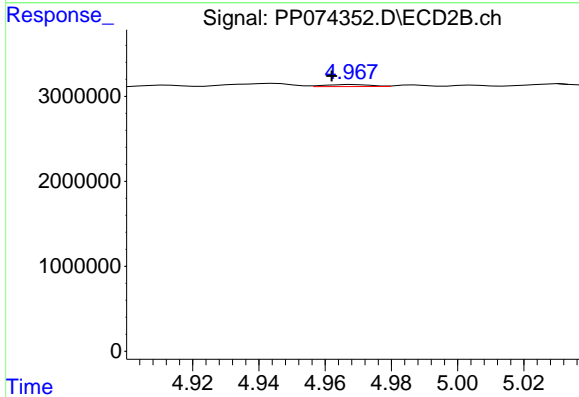
R.T.: 4.912 min
 Delta R.T.: 0.007 min
 Response: 197071
 Conc: 0.57 ng/ml



#17 AR-1242-2

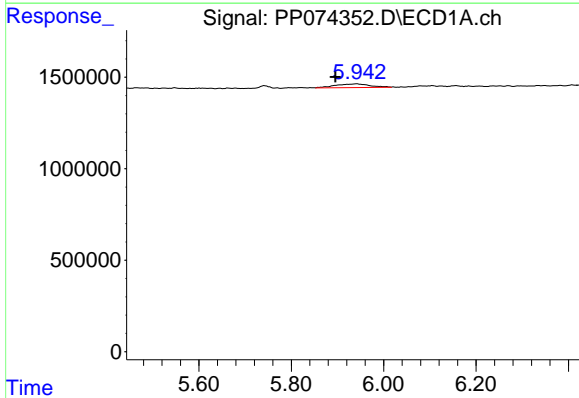
R.T.: 0.000 min
 Exp R.T.: 5.832 min
 Response: 0
 Conc: N.D.

Instrument :
 ECD_P
 ClientSampleId :
 PB169224BL



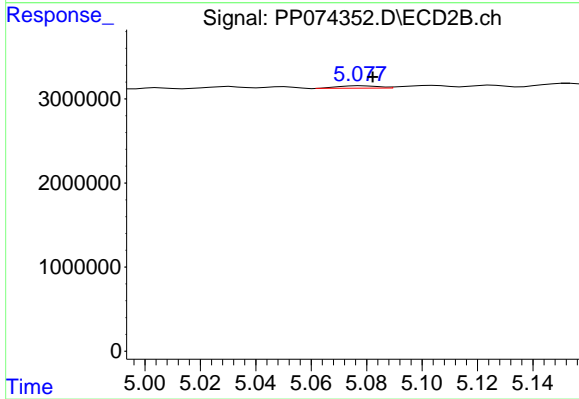
#17 AR-1242-2

R.T.: 4.969 min
 Delta R.T.: 0.007 min
 Response: 228501
 Conc: 1.40 ng/ml



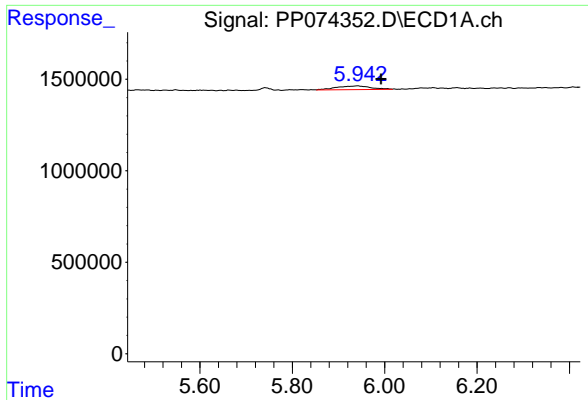
#18 AR-1242-3

R.T.: 5.943 min
 Delta R.T.: 0.048 min
 Response: 1041710
 Conc: 29.15 ng/ml



#18 AR-1242-3

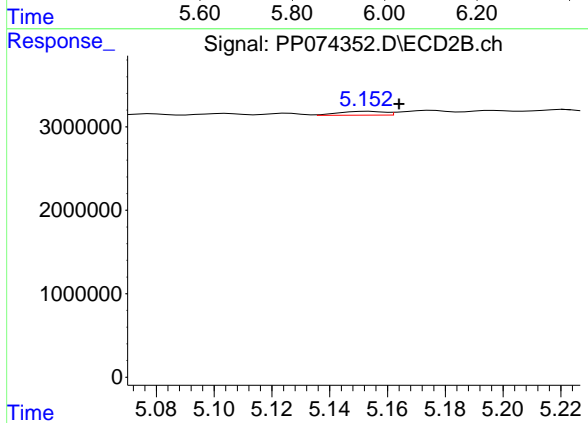
R.T.: 5.078 min
 Delta R.T.: -0.004 min
 Response: 296852
 Conc: 3.22 ng/ml



#19 AR-1242-4

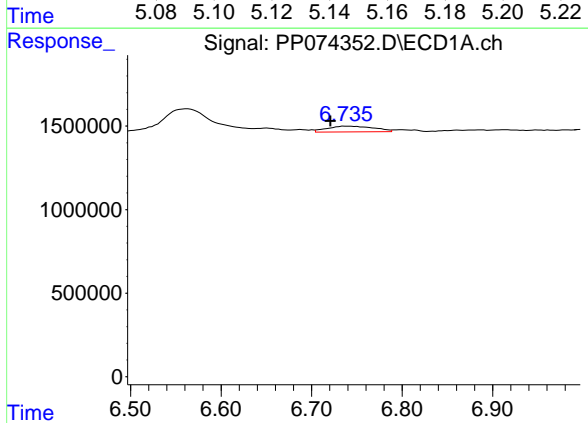
R.T.: 5.943 min
 Delta R.T.: -0.049 min
 Response: 1041710
 Conc: 35.65 ng/ml

Instrument :
 ECD_P
 ClientSampleId :
 PB169224BL



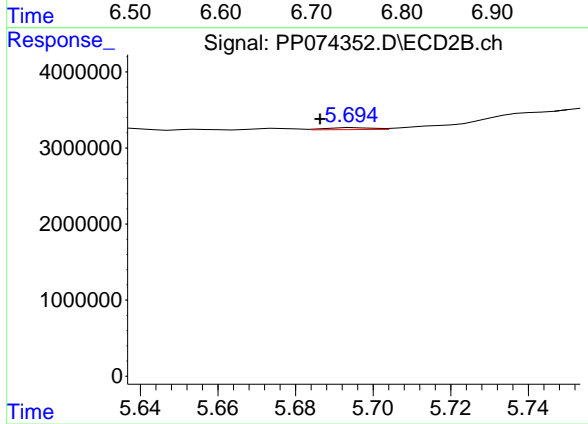
#19 AR-1242-4

R.T.: 5.153 min
 Delta R.T.: -0.011 min
 Response: 508617
 Conc: 4.26 ng/ml



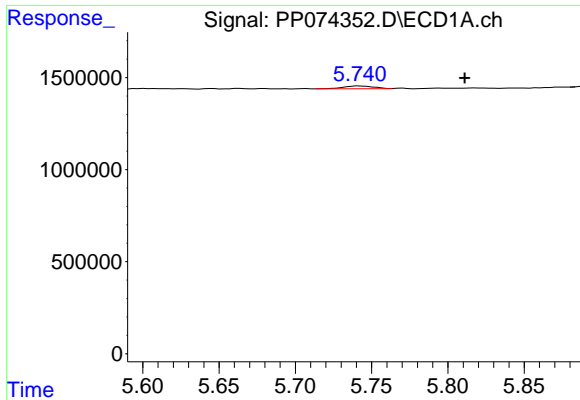
#20 AR-1242-5

R.T.: 6.738 min
 Delta R.T.: 0.017 min
 Response: 1251600
 Conc: 35.20 ng/ml



#20 AR-1242-5

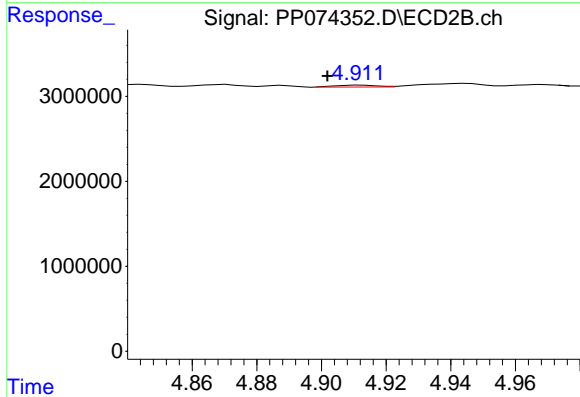
R.T.: 5.695 min
 Delta R.T.: 0.009 min
 Response: 208989
 Conc: 1.40 ng/ml



#21 AR-1248-1

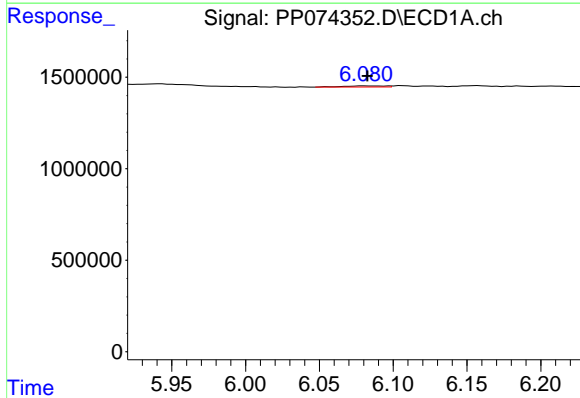
R.T.: 5.742 min
 Delta R.T.: -0.069 min
 Response: 197876
 Conc: 7.06 ng/ml

Instrument :
 ECD_P
 ClientSampleId :
 PB169224BL



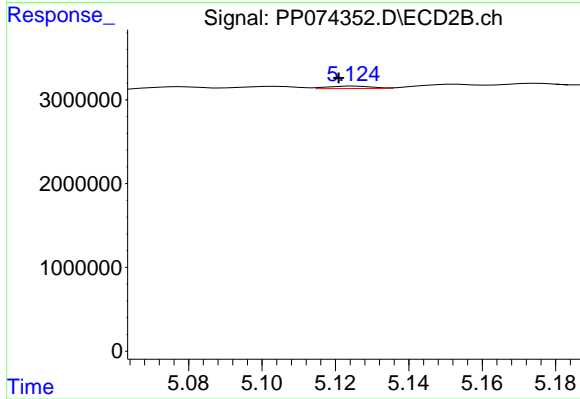
#21 AR-1248-1

R.T.: 4.912 min
 Delta R.T.: 0.010 min
 Response: 197071
 Conc: 0.92 ng/ml



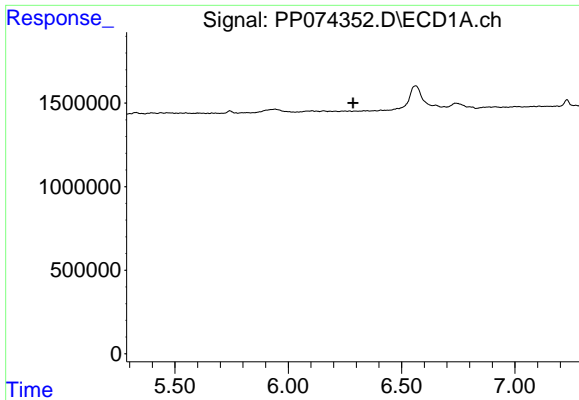
#22 AR-1248-2

R.T.: 6.081 min
 Delta R.T.: -0.001 min
 Response: 122356
 Conc: 3.04 ng/ml



#22 AR-1248-2

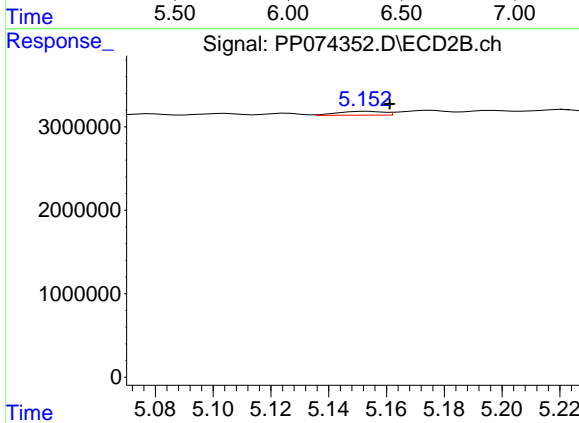
R.T.: 5.126 min
 Delta R.T.: 0.005 min
 Response: 239213
 Conc: 1.63 ng/ml



#23 AR-1248-3

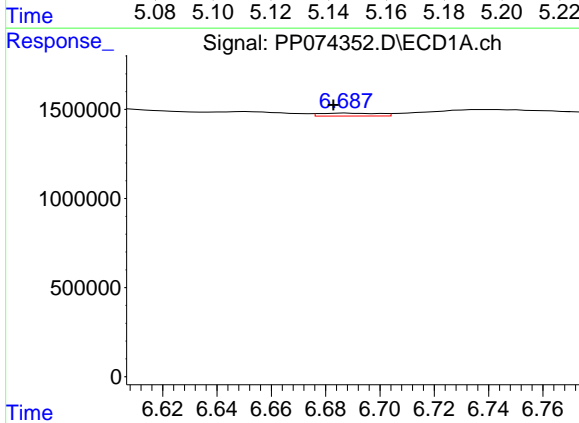
R.T.: 0.000 min
 Exp R.T.: 6.286 min
 Response: 0
 Conc: N.D.

Instrument :
 ECD_P
 ClientSampleId :
 PB169224BL



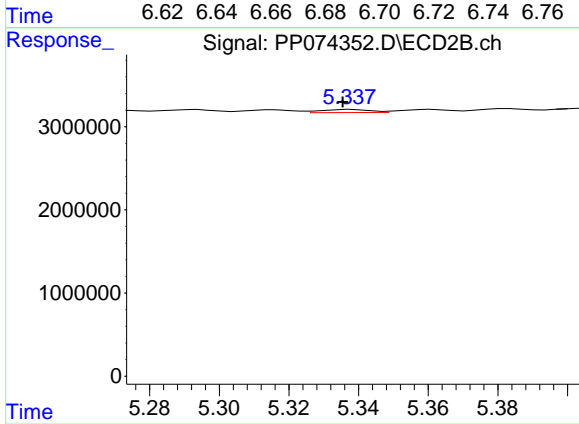
#23 AR-1248-3

R.T.: 5.153 min
 Delta R.T.: -0.008 min
 Response: 508617
 Conc: 2.97 ng/ml



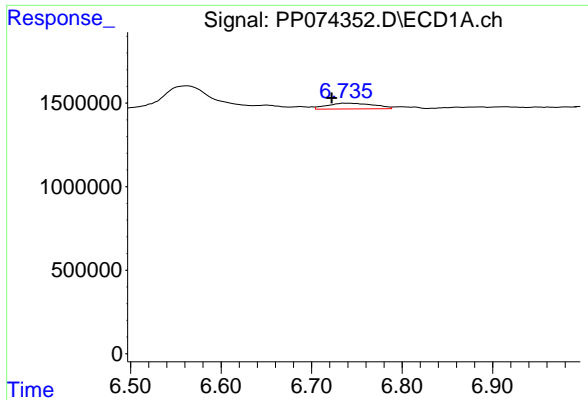
#24 AR-1248-4

R.T.: 6.688 min
 Delta R.T.: 0.005 min
 Response: 243256
 Conc: 4.67 ng/ml



#24 AR-1248-4

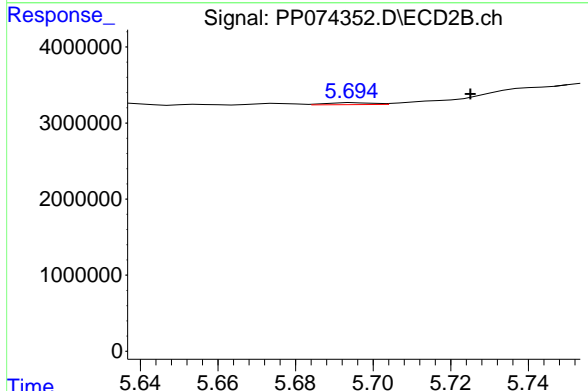
R.T.: 5.338 min
 Delta R.T.: 0.003 min
 Response: 367491
 Conc: 2.21 ng/ml



#25 AR-1248-5

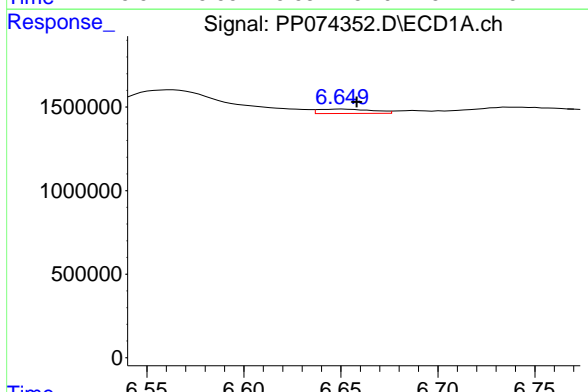
R.T.: 6.738 min
 Delta R.T.: 0.015 min
 Response: 1251600
 Conc: 21.98 ng/ml

Instrument :
 ECD_P
 ClientSampleId :
 PB169224BL



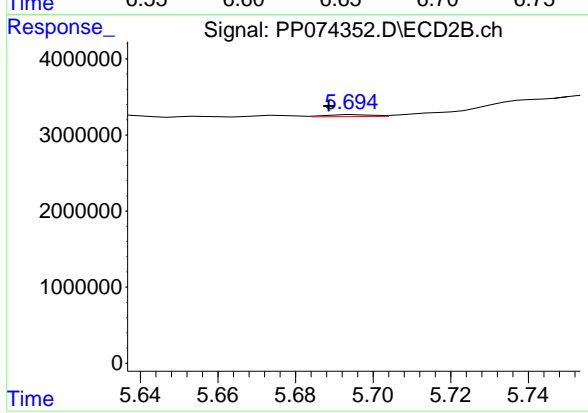
#25 AR-1248-5

R.T.: 5.695 min
 Delta R.T.: -0.030 min
 Response: 208989
 Conc: 0.72 ng/ml



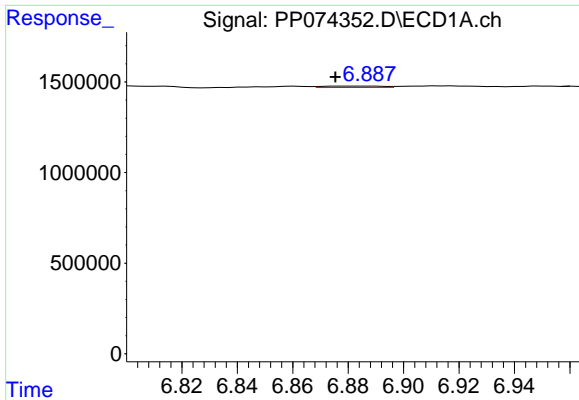
#26 AR-1254-1

R.T.: 6.651 min
 Delta R.T.: -0.008 min
 Response: 504963
 Conc: 9.59 ng/ml



#26 AR-1254-1

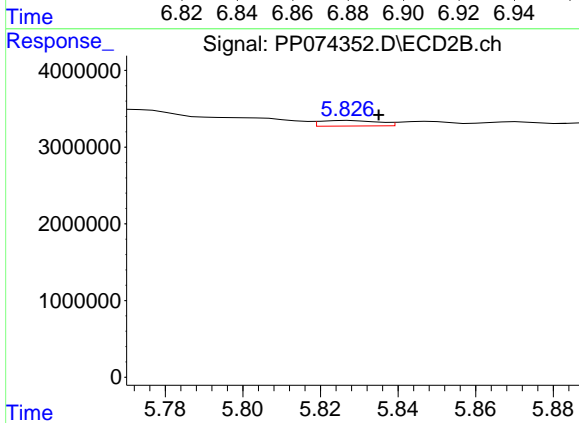
R.T.: 5.695 min
 Delta R.T.: 0.007 min
 Response: 208989
 Conc: 0.57 ng/ml



#27 AR-1254-2

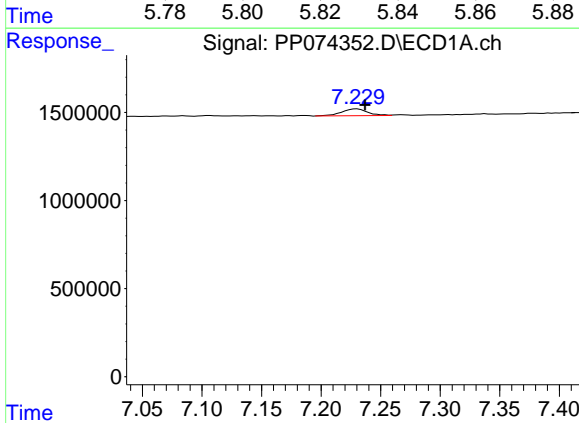
R.T.: 6.889 min
 Delta R.T.: 0.014 min
 Response: 112967
 Conc: 1.42 ng/ml

Instrument :
 ECD_P
 ClientSampleId :
 PB169224BL



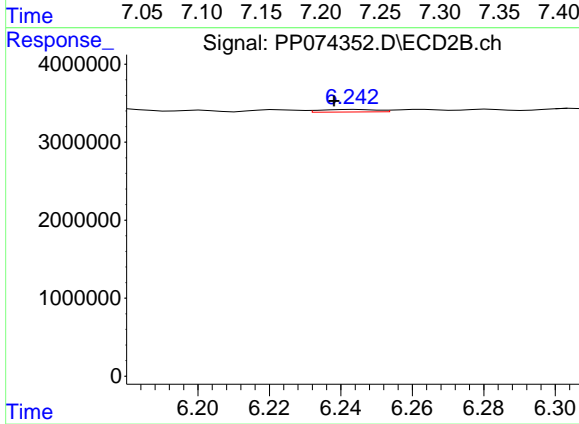
#27 AR-1254-2

R.T.: 5.828 min
 Delta R.T.: -0.007 min
 Response: 754462
 Conc: 2.71 ng/ml



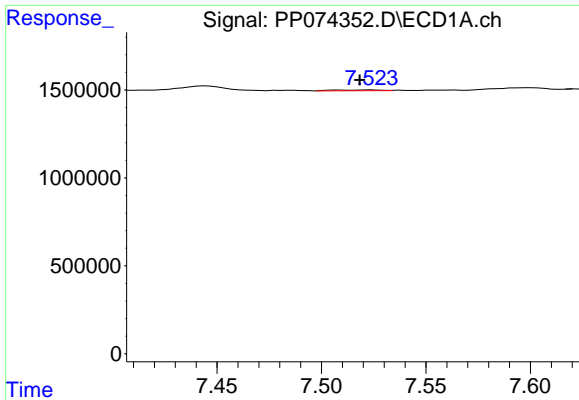
#28 AR-1254-3

R.T.: 7.230 min
 Delta R.T.: -0.007 min
 Response: 585885
 Conc: 6.71 ng/ml



#28 AR-1254-3

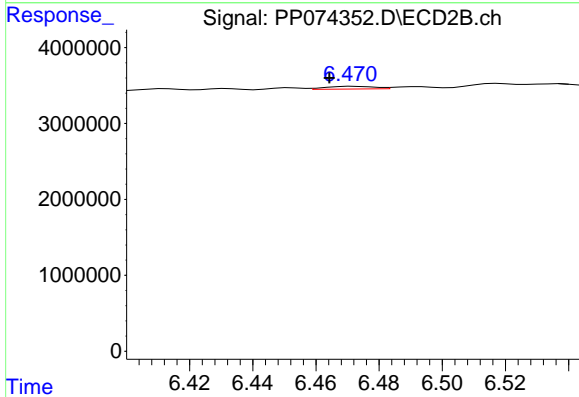
R.T.: 6.244 min
 Delta R.T.: 0.005 min
 Response: 365473
 Conc: 0.75 ng/ml



#29 AR-1254-4

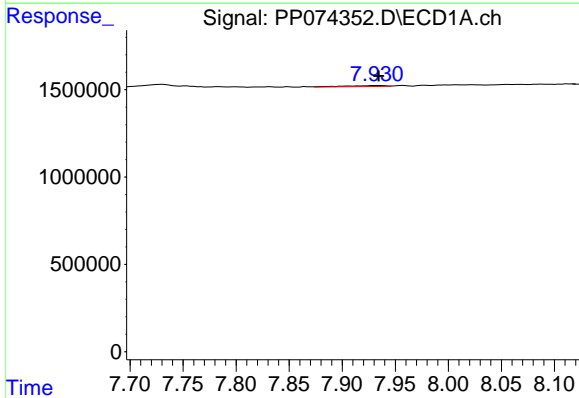
R.T.: 7.524 min
 Delta R.T.: 0.006 min
 Response: 73288
 Conc: 1.15 ng/ml

Instrument :
 ECD_P
 ClientSampleId :
 PB169224BL



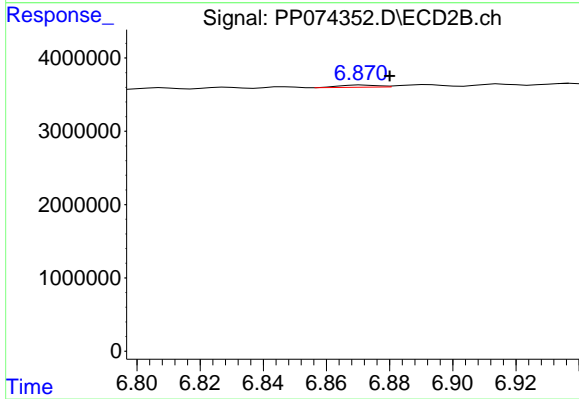
#29 AR-1254-4

R.T.: 6.472 min
 Delta R.T.: 0.008 min
 Response: 375036
 Conc: 1.02 ng/ml



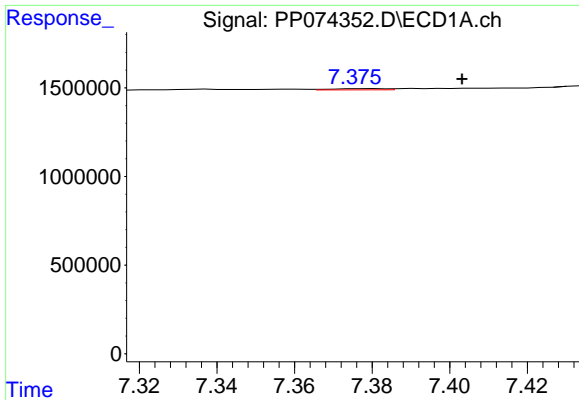
#30 AR-1254-5

R.T.: 7.933 min
 Delta R.T.: -0.002 min
 Response: 158958
 Conc: 1.96 ng/ml



#30 AR-1254-5

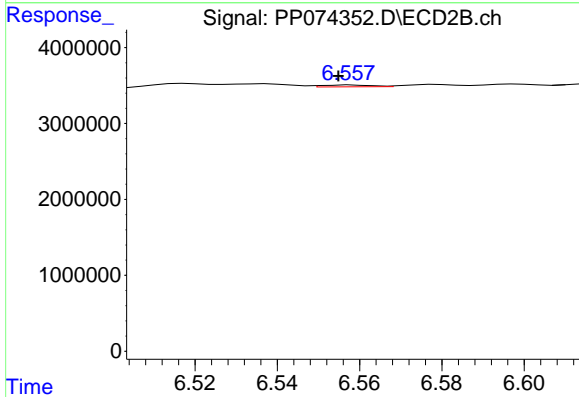
R.T.: 6.872 min
 Delta R.T.: -0.008 min
 Response: 256550
 Conc: 0.67 ng/ml



#31 AR-1260-1

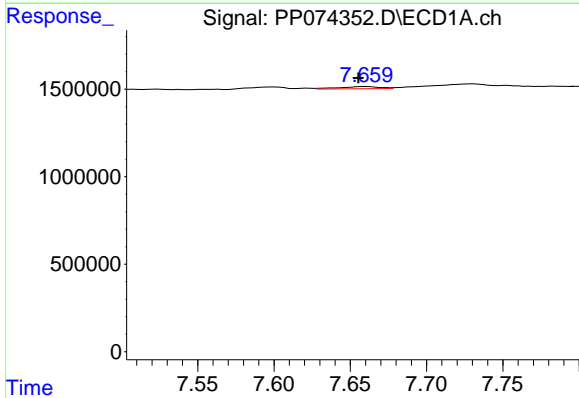
R.T.: 7.380 min
 Delta R.T.: -0.023 min
 Response: 66448
 Conc: 1.18 ng/ml

Instrument :
 ECD_P
 ClientSampleId :
 PB169224BL



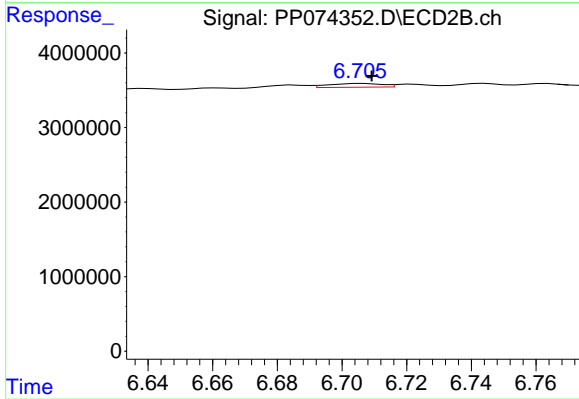
#31 AR-1260-1

R.T.: 6.558 min
 Delta R.T.: 0.003 min
 Response: 203930
 Conc: 0.50 ng/ml



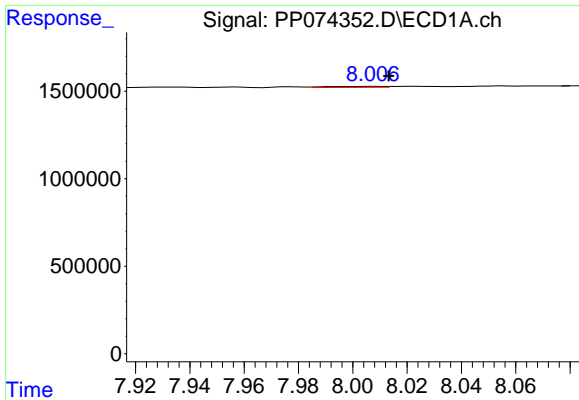
#32 AR-1260-2

R.T.: 7.660 min
 Delta R.T.: 0.005 min
 Response: 223832
 Conc: 3.28 ng/ml



#32 AR-1260-2

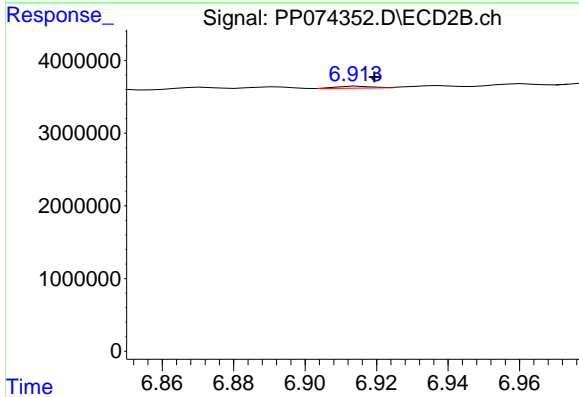
R.T.: 6.706 min
 Delta R.T.: -0.003 min
 Response: 576865
 Conc: 1.84 ng/ml



#33 AR-1260-3

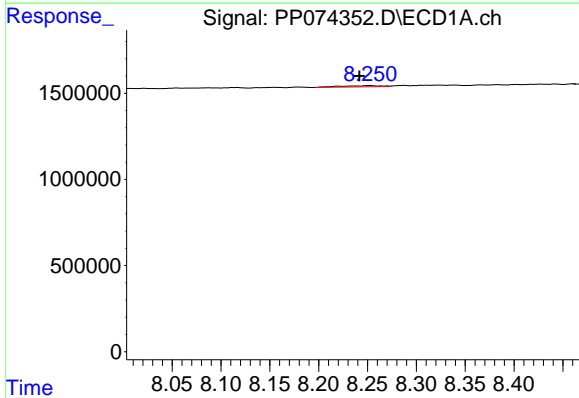
R.T.: 8.008 min
 Delta R.T.: -0.006 min
 Response: 79499
 Conc: 1.49 ng/ml

Instrument :
 ECD_P
 ClientSampleId :
 PB169224BL



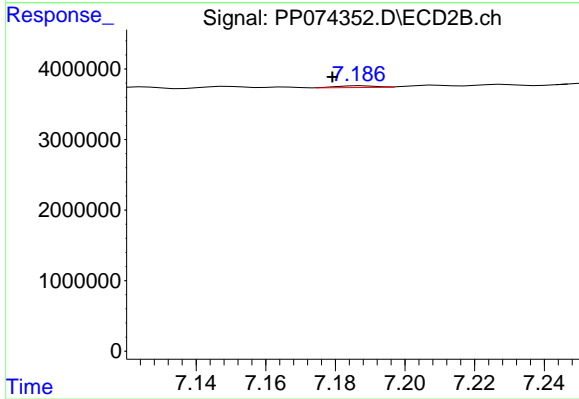
#33 AR-1260-3

R.T.: 6.915 min
 Delta R.T.: -0.004 min
 Response: 180692
 Conc: 0.46 ng/ml



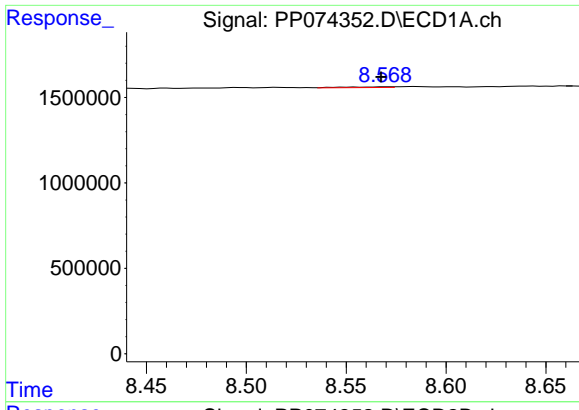
#34 AR-1260-4

R.T.: 8.252 min
 Delta R.T.: 0.011 min
 Response: 201858
 Conc: 3.22 ng/ml



#34 AR-1260-4

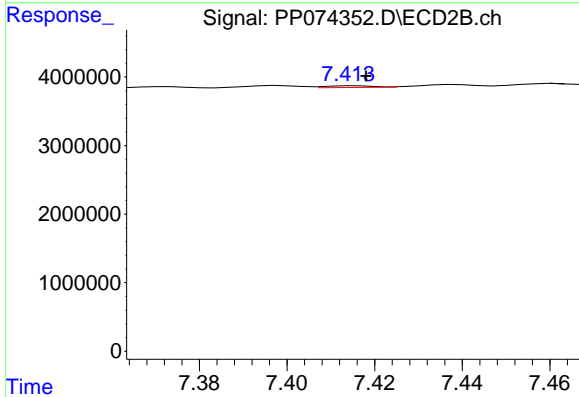
R.T.: 7.187 min
 Delta R.T.: 0.008 min
 Response: 190907
 Conc: 0.66 ng/ml



#35 AR-1260-5

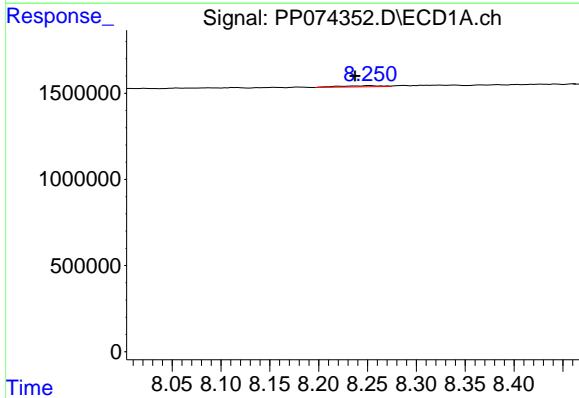
R.T.: 8.570 min
 Delta R.T.: 0.003 min
 Response: 63060
 Conc: 0.56 ng/ml

Instrument :
 ECD_P
 ClientSampleId :
 PB169224BL



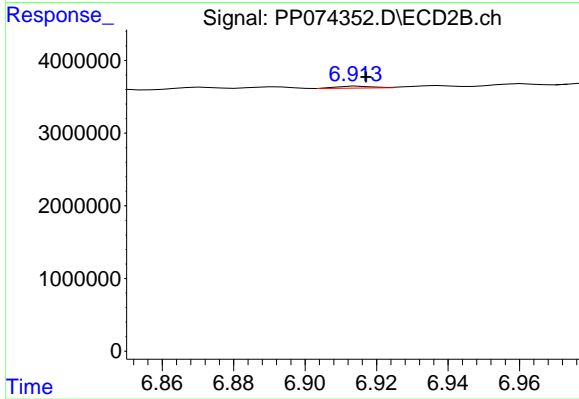
#35 AR-1260-5

R.T.: 7.415 min
 Delta R.T.: -0.003 min
 Response: 183543
 Conc: 0.24 ng/ml



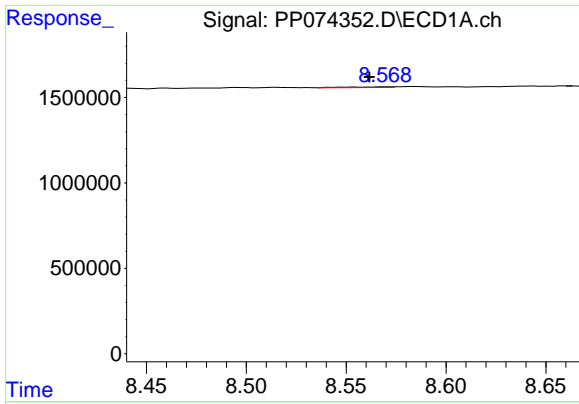
#36 AR-1262-1

R.T.: 8.252 min
 Delta R.T.: 0.015 min
 Response: 201858
 Conc: 2.66 ng/ml



#36 AR-1262-1

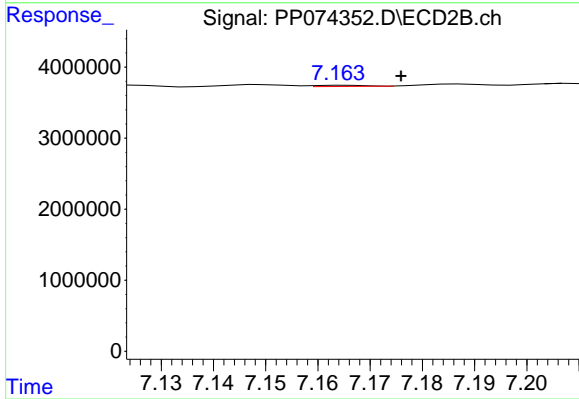
R.T.: 6.915 min
 Delta R.T.: -0.002 min
 Response: 180692
 Conc: 0.32 ng/ml



#37 AR-1262-2

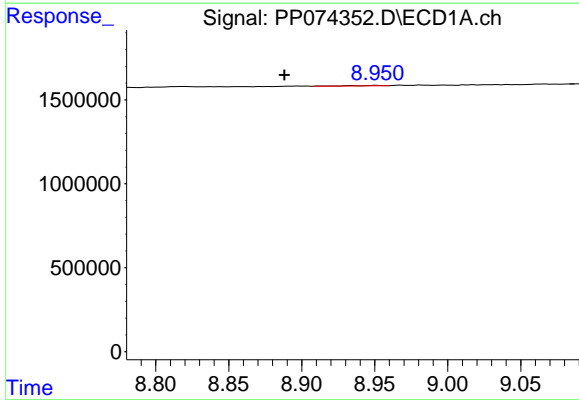
R.T.: 8.570 min
 Delta R.T.: 0.008 min
 Response: 63060
 Conc: 0.48 ng/ml

Instrument :
 ECD_P
 ClientSampleId :
 PB169224BL



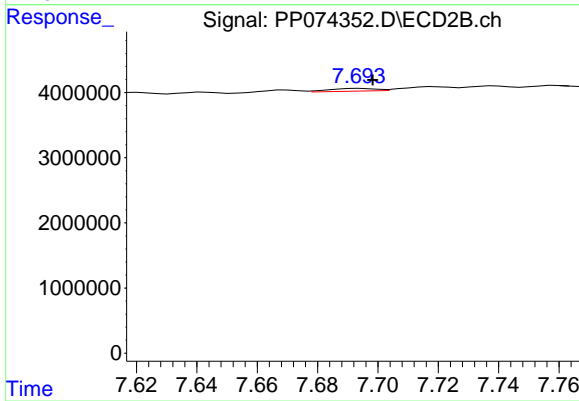
#37 AR-1262-2

R.T.: 7.165 min
 Delta R.T.: -0.011 min
 Response: 109773
 Conc: 0.27 ng/ml



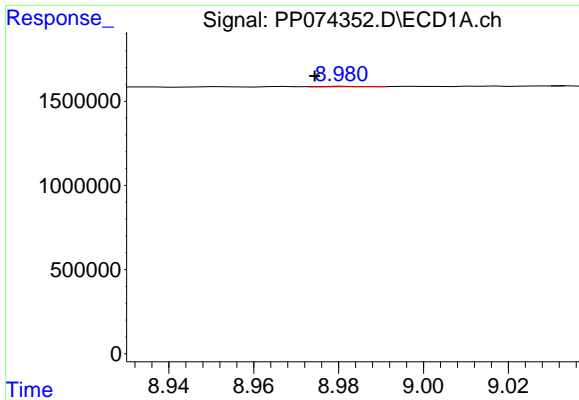
#38 AR-1262-3

R.T.: 8.952 min
 Delta R.T.: 0.063 min
 Response: 37960
 Conc: 0.40 ng/ml



#38 AR-1262-3

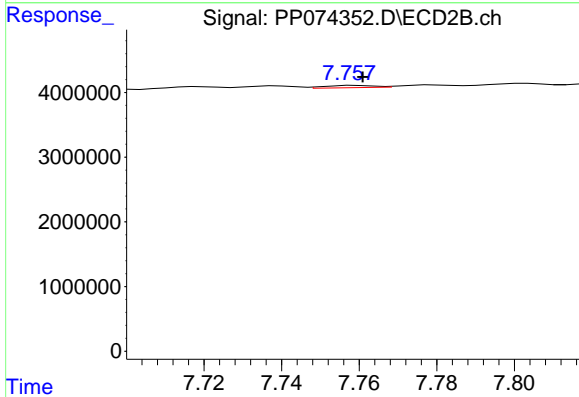
R.T.: 7.694 min
 Delta R.T.: -0.004 min
 Response: 459991
 Conc: 1.28 ng/ml



#39 AR-1262-4

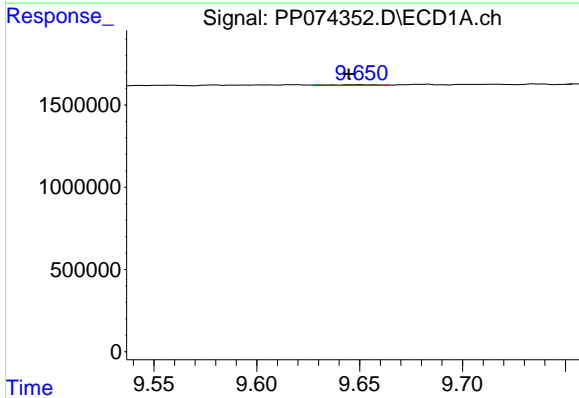
R.T.: 8.981 min
 Delta R.T.: 0.007 min
 Response: 14702
 Conc: 0.20 ng/ml

Instrument :
 ECD_P
 ClientSampleId :
 PB169224BL



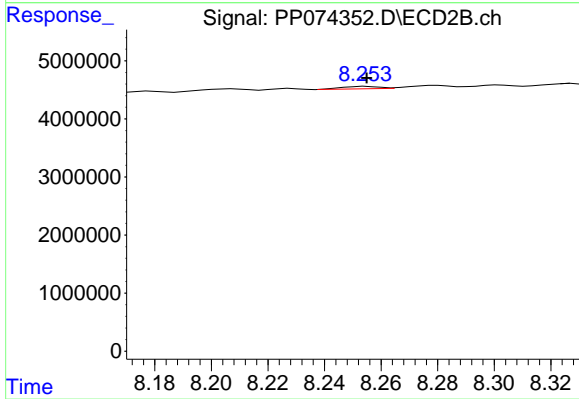
#39 AR-1262-4

R.T.: 7.759 min
 Delta R.T.: -0.002 min
 Response: 303900
 Conc: 0.46 ng/ml



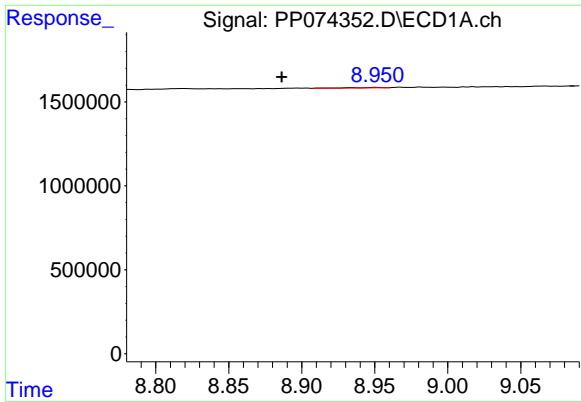
#40 AR-1262-5

R.T.: 9.650 min
 Delta R.T.: 0.005 min
 Response: 53569
 Conc: 1.05 ng/ml



#40 AR-1262-5

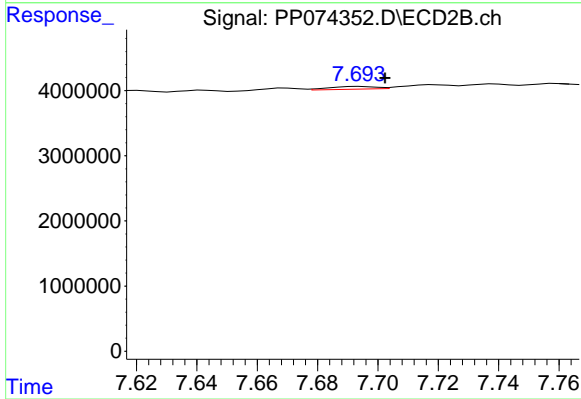
R.T.: 8.255 min
 Delta R.T.: 0.000 min
 Response: 393180
 Conc: 1.39 ng/ml



#41 AR-1268-1

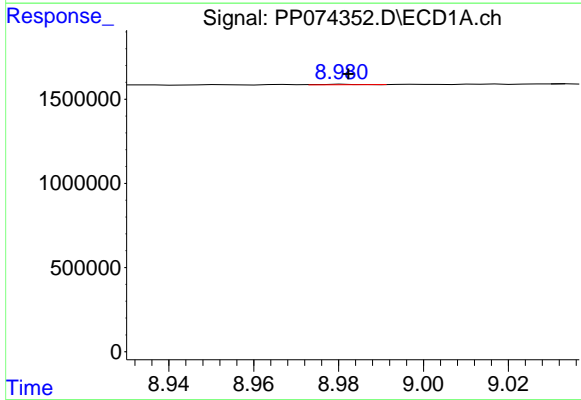
R.T.: 8.952 min
 Delta R.T.: 0.065 min
 Response: 37960
 Conc: 0.24 ng/ml

Instrument :
 ECD_P
 ClientSampleId :
 PB169224BL



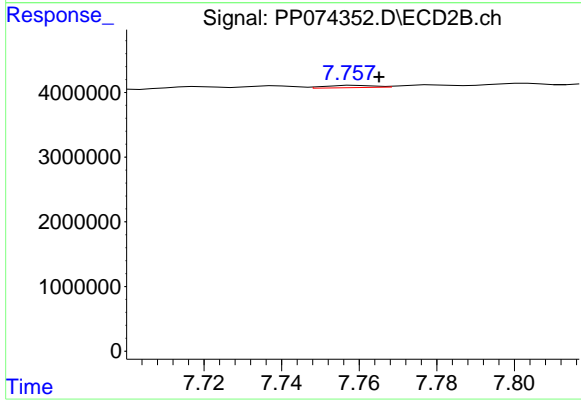
#41 AR-1268-1

R.T.: 7.694 min
 Delta R.T.: -0.008 min
 Response: 459991
 Conc: 0.42 ng/ml



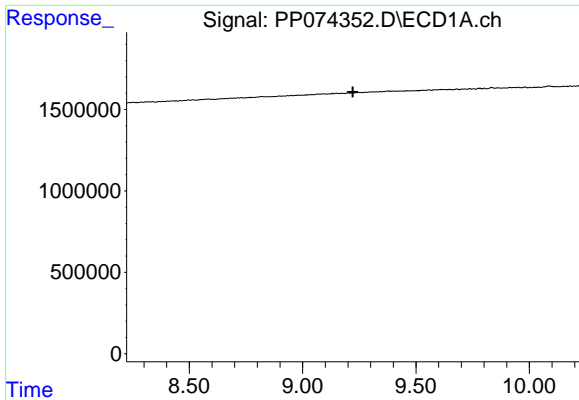
#42 AR-1268-2

R.T.: 8.981 min
 Delta R.T.: 0.000 min
 Response: 14702
 Conc: 0.10 ng/ml



#42 AR-1268-2

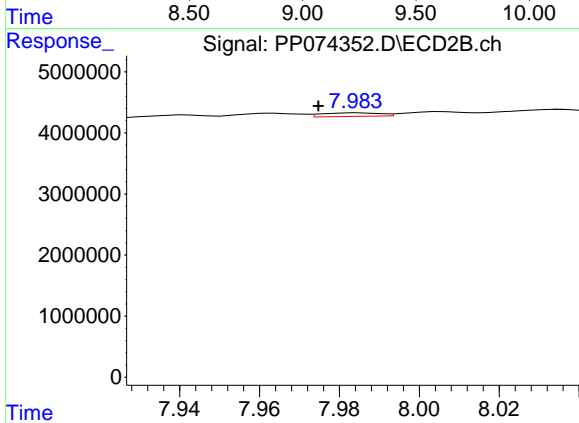
R.T.: 7.759 min
 Delta R.T.: -0.006 min
 Response: 303900
 Conc: 0.29 ng/ml



#43 AR-1268-3

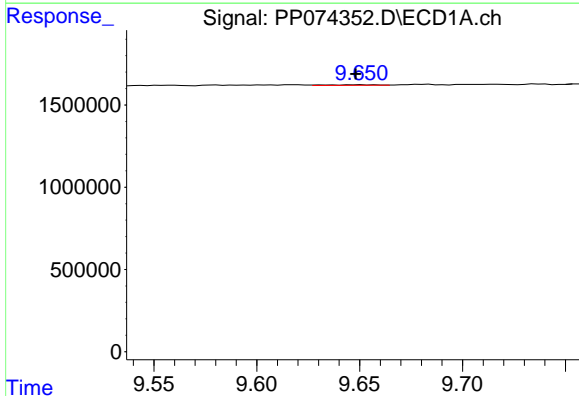
R.T.: 0.000 min
 Exp R.T.: 9.222 min
 Response: 0
 Conc: N.D.

Instrument :
 ECD_P
 ClientSampleId :
 PB169224BL



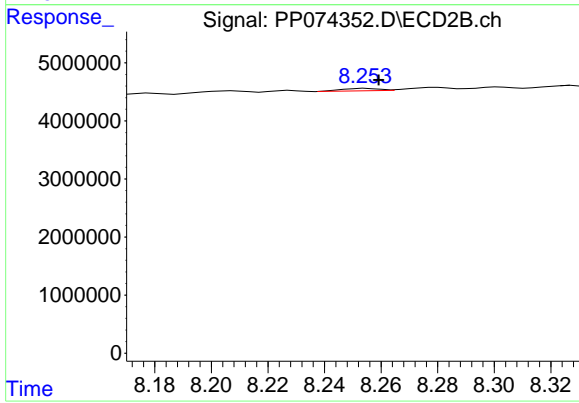
#43 AR-1268-3

R.T.: 7.985 min
 Delta R.T.: 0.010 min
 Response: 605238
 Conc: 0.73 ng/ml



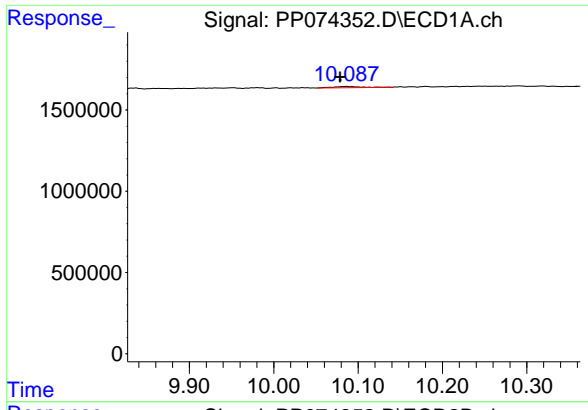
#44 AR-1268-4

R.T.: 9.650 min
 Delta R.T.: 0.002 min
 Response: 53569
 Conc: 0.91 ng/ml



#44 AR-1268-4

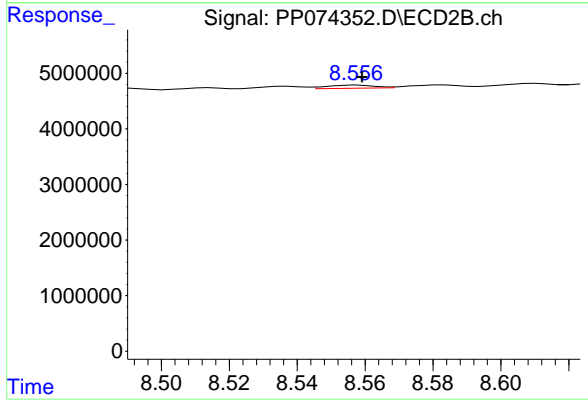
R.T.: 8.255 min
 Delta R.T.: -0.004 min
 Response: 393180
 Conc: 1.28 ng/ml



#45 AR-1268-5

R.T.: 10.088 min
 Delta R.T.: 0.009 min
 Response: 170043
 Conc: 0.48 ng/ml

Instrument :
 ECD_P
 ClientSampleId :
 PB169224BL



#45 AR-1268-5

R.T.: 8.558 min
 Delta R.T.: -0.001 min
 Response: 555697
 Conc: 0.22 ng/ml