

Data Path : Z:\pestpcbsrv\HPCHEM1\ECD_P\Data\PP081325\
 Data File : PP074353.D
 Signal(s) : Signal #1: ECD1A.ch Signal #2: ECD2B.ch
 Acq On : 13 Aug 2025 17:15
 Operator : YP\AJ
 Sample : PB169224BS
 Misc :
 ALS Vial : 17 Sample Multiplier: 1

Instrument :
 ECD_P
 ClientSampleId :
 PB169224BS

Integration File signal 1: autoint1.e
 Integration File signal 2: autoint2.e
 Quant Time: Aug 13 23:59:27 2025
 Quant Method : Z:\pestpcbsrv\HPCHEM1\ECD_P\methods\PP080125.M
 Quant Title : GC EXTRACTABLES
 QLast Update : Mon Aug 04 11:01:49 2025
 Response via : Initial Calibration
 Integrator: ChemStation

Volume Inj. : 2 µl
 Signal #1 Phase : ZB-MR1 Signal #2 Phase: ZB-MR2
 Signal #1 Info : 30Mx0.32mmx 0.50µ Signal #2 Info : 30M x 0.32mm x 0.25µm

Compound	RT#1	RT#2	Resp#1	Resp#2	ng/ml	ng/ml

System Monitoring Compounds						
1) SA Tetrachlo...	4.664	3.807	29534627	90588014	26.410	23.625
2) SA Decachlor...	10.444	8.824	23368219	133.0E6	24.062	22.114
Target Compounds						
3) L1 AR-1016-1	5.816	4.908	22798864	231.1E6	552.609	579.242
4) L1 AR-1016-2	5.838	4.965	33749541	105.7E6	555.624	562.930
5) L1 AR-1016-3	5.901	5.085	22280171	58758494	561.772	553.962
6) L1 AR-1016-4	5.998	5.126	18267001	58997606	561.293	540.172
7) L1 AR-1016-5	6.290	5.340	17480014	64127762	538.376	548.273
8) L2 AR-1221-1	4.860	4.018	2764367	6586567	164.903	134.186
9) L2 AR-1221-2	4.950	4.105	3371496	8085883	267.557	225.301
10) L2 AR-1221-3	5.025	4.180	13140756	42021924	358.692	310.757
11) L3 AR-1232-1	5.025	4.180	13140756	42021924	452.547	414.571
12) L3 AR-1232-2	5.552	4.908	17539812	231.1E6	1166.000	1325.858
13) L3 AR-1232-3	5.838	5.085	33749541	58758494	1163.709	1282.471
14) L3 AR-1232-4	5.998	5.168	18267001	106.3E6	1180.891	1831.843 #
15) L3 AR-1232-5	6.087	5.340	15848958	64127762	1352.761	1365.017
16) L4 AR-1242-1	5.816	4.908	22798864	231.1E6	611.790	669.444
17) L4 AR-1242-2	5.838	4.965	33749541	105.7E6	620.294	647.110
18) L4 AR-1242-3	5.901	5.085	22280171	58758494	623.468	636.959
19) L4 AR-1242-4	5.998	5.168	18267001	106.3E6	625.183	889.843 #
20) L4 AR-1242-5	6.727	5.691	3804960	75696704	107.007	506.129 #
21) L5 AR-1248-1	5.816	4.908	22798864	231.1E6	813.823	1080.028 #
22) L5 AR-1248-2	6.087	5.126	15848958	58997606	393.655	403.230
23) L5 AR-1248-3	6.290	5.168	17480014	106.3E6	392.161	619.774 #
24) L5 AR-1248-4	6.665	5.340	17050055	64127762	327.651	385.444
25) L5 AR-1248-5	6.727	5.691	3804960	75696704	66.820	260.157 #
26) L6 AR-1254-1	6.665	5.691	17050055	75696704	323.893	206.719 #
27) L6 AR-1254-2	6.880	5.837	14794170	67651688	186.080	243.162 #
28) L6 AR-1254-3	7.242	6.254	8760436	131.5E6	100.330	268.860 #
29) L6 AR-1254-4	7.525	6.468	5566820	9529841	87.241	25.927 #
30) L6 AR-1254-5	7.939	6.883	49104829	199.7E6	605.151	518.560
31) L7 AR-1260-1	7.407	6.557	30845385	227.9E6	547.330	564.289
32) L7 AR-1260-2	7.660	6.711	35567117	178.6E6	521.876	571.070
33) L7 AR-1260-3	8.018	6.920	23970241	200.0E6	449.757	507.527
34) L7 AR-1260-4	8.247	7.181	34680138	147.5E6	553.863	506.880
35) L7 AR-1260-5	8.572	7.420	50784218	380.5E6	448.208	502.335
36) L8 AR-1262-1	8.247	6.920	34680138	200.0E6	457.584	355.196
37) L8 AR-1262-2	8.572	7.181	50784218	147.5E6	389.360	367.788
38) L8 AR-1262-3	8.904	7.703	35221593	67494604	374.415	187.762 #
39) L8 AR-1262-4	8.969	7.766	11308657	246.5E6	155.228	369.539 #
40) L8 AR-1262-5	9.657	8.260	14424576	72725881	283.264	256.739
41) L9 AR-1268-1	8.904	7.703	35221593	67494604	226.312	61.907 #

Data Path : Z:\pestpcbsrv\HPCHEM1\ECD_P\Data\PP081325\
 Data File : PP074353.D
 Signal(s) : Signal #1: ECD1A.ch Signal #2: ECD2B.ch
 Acq On : 13 Aug 2025 17:15
 Operator : YP\AJ
 Sample : PB169224BS
 Misc :
 ALS Vial : 17 Sample Multiplier: 1

Instrument :
 ECD_P
 ClientSampleId :
 PB169224BS

Integration File signal 1: autoint1.e
 Integration File signal 2: autoint2.e
 Quant Time: Aug 13 23:59:27 2025
 Quant Method : Z:\pestpcbsrv\HPCHEM1\ECD_P\methods\PP080125.M
 Quant Title : GC EXTRACTABLES
 QLast Update : Mon Aug 04 11:01:49 2025
 Response via : Initial Calibration
 Integrator: ChemStation

Volume Inj. : 2 µl
 Signal #1 Phase : ZB-MR1 Signal #2 Phase: ZB-MR2
 Signal #1 Info : 30Mx0.32mmx 0.50µ Signal #2 Info : 30M x 0.32mm x 0.25µm

	Compound	RT#1	RT#2	Resp#1	Resp#2	ng/ml	ng/ml
42)	L9 AR-1268-2	8.983	7.766	9559501	246.5E6	66.651	232.213 #
43)	L9 AR-1268-3	9.230	7.973	1258621	5410228	10.535	6.503 #
44)	L9 AR-1268-4	9.657	8.260	14424576	72725881	245.263	236.078
45)	L9 AR-1268-5	10.088	8.559	4720548	21616214	13.422	8.477 #

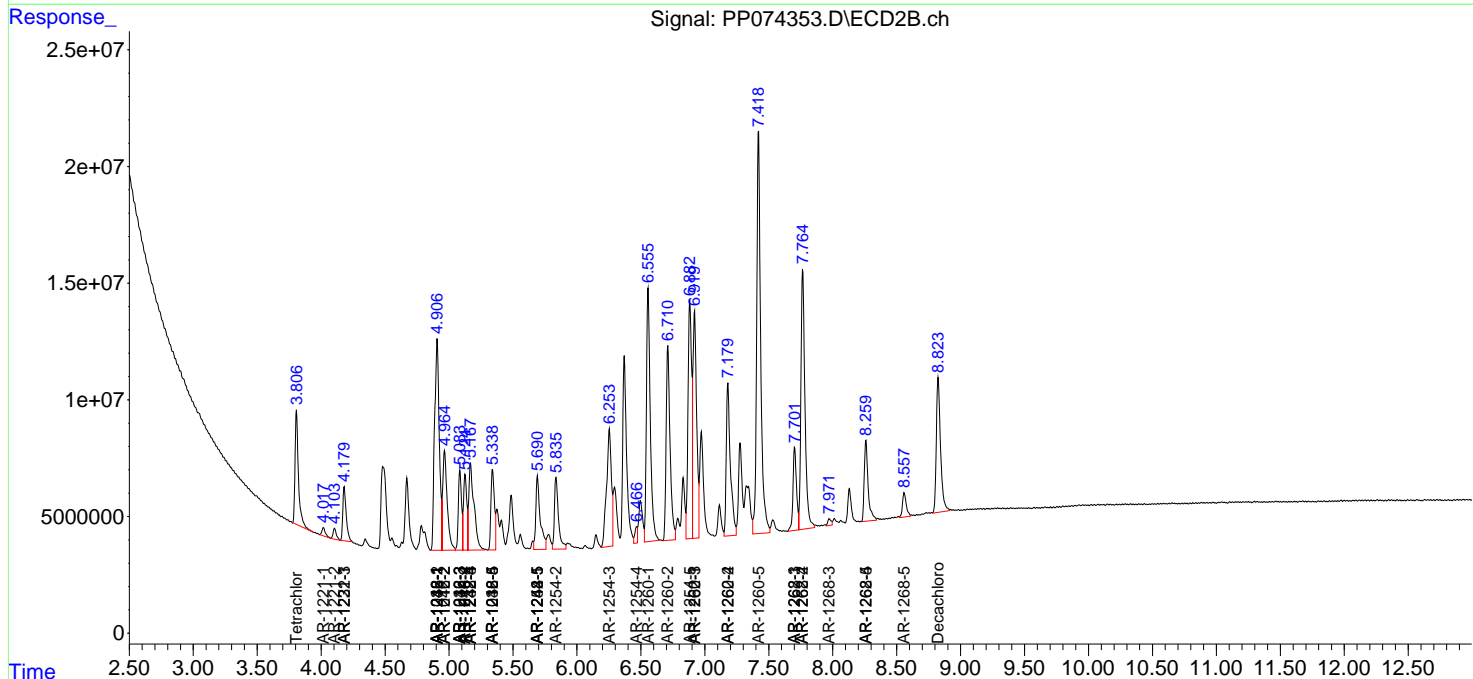
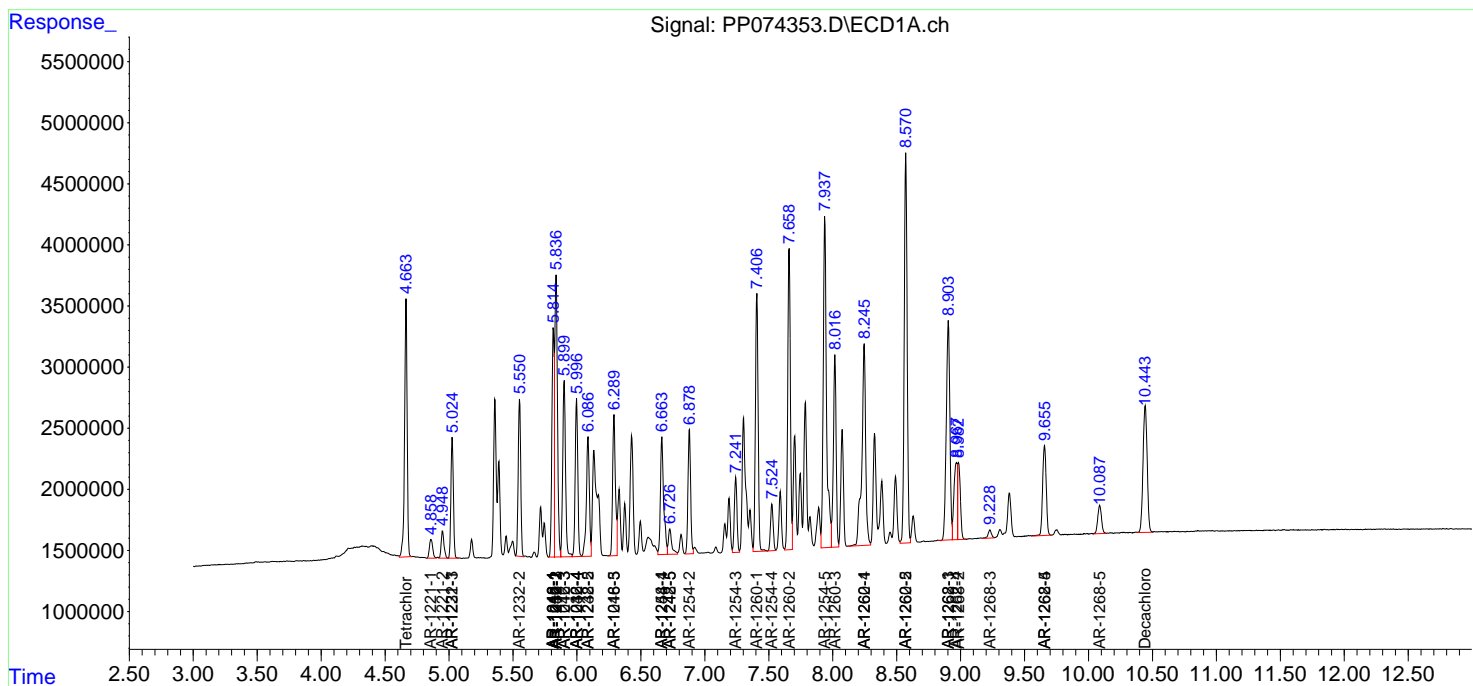
(f)=RT Delta > 1/2 Window (#)=Amounts differ by > 25% (m)=manual int.

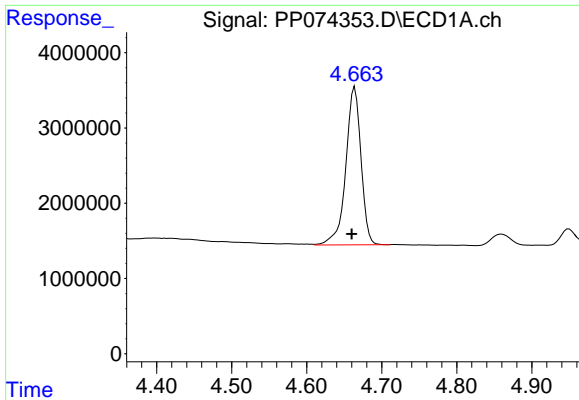
Data Path : Z:\pestpcbsrv\HPCHEM1\ECD_P\Data\PP081325\
 Data File : PP074353.D
 Signal(s) : Signal #1: ECD1A.ch Signal #2: ECD2B.ch
 Acq On : 13 Aug 2025 17:15
 Operator : YP\AJ
 Sample : PB169224BS
 Misc :
 ALS Vial : 17 Sample Multiplier: 1

Instrument :
 ECD_P
 ClientSampleId :
 PB169224BS

Integration File signal 1: autoint1.e
 Integration File signal 2: autoint2.e
 Quant Time: Aug 13 23:59:27 2025
 Quant Method : Z:\pestpcbsrv\HPCHEM1\ECD_P\methods\PP080125.M
 Quant Title : GC EXTRACTABLES
 QLast Update : Mon Aug 04 11:01:49 2025
 Response via : Initial Calibration
 Integrator: ChemStation

Volume Inj. : 2 µl
 Signal #1 Phase : ZB-MR1 Signal #2 Phase: ZB-MR2
 Signal #1 Info : 30Mx0.32mmx 0.50µ Signal #2 Info : 30M x 0.32mm x 0.25µm

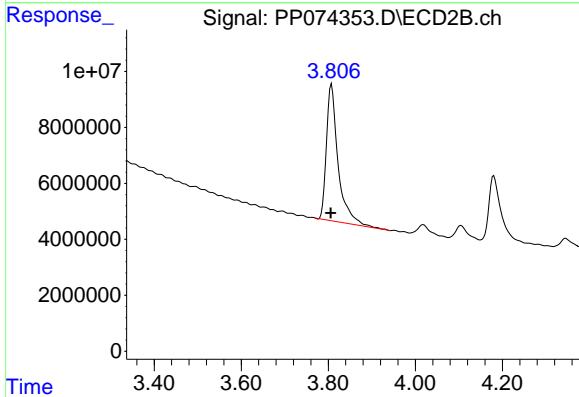




#1 Tetrachloro-m-xylene

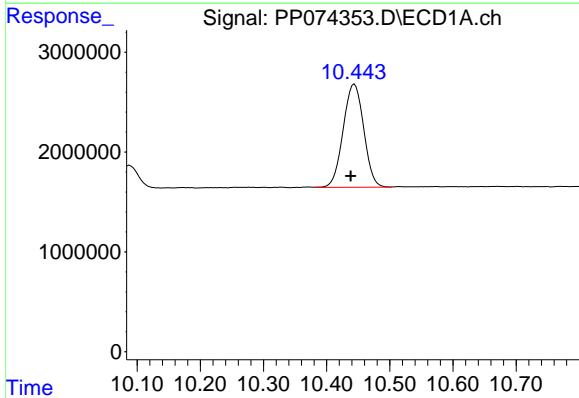
R.T.: 4.664 min
 Delta R.T.: 0.004 min
 Response: 29534627
 Conc: 26.41 ng/ml

Instrument :
 ECD_P
 ClientSampleId :
 PB169224BS



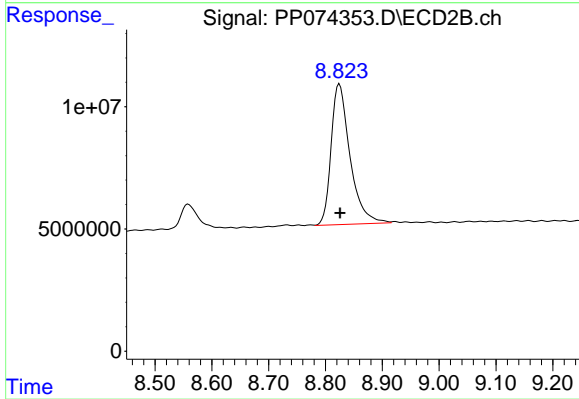
#1 Tetrachloro-m-xylene

R.T.: 3.807 min
 Delta R.T.: 0.002 min
 Response: 90588014
 Conc: 23.62 ng/ml



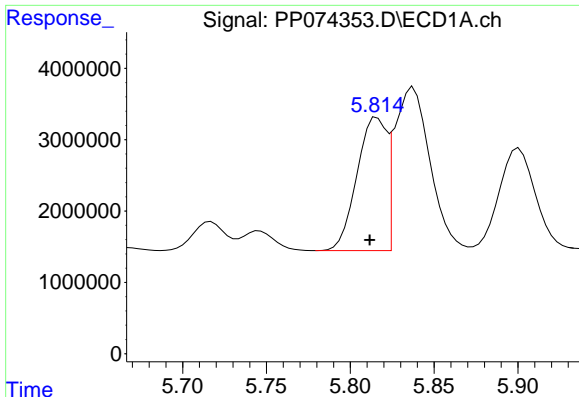
#2 Decachlorobiphenyl

R.T.: 10.444 min
 Delta R.T.: 0.006 min
 Response: 23368219
 Conc: 24.06 ng/ml



#2 Decachlorobiphenyl

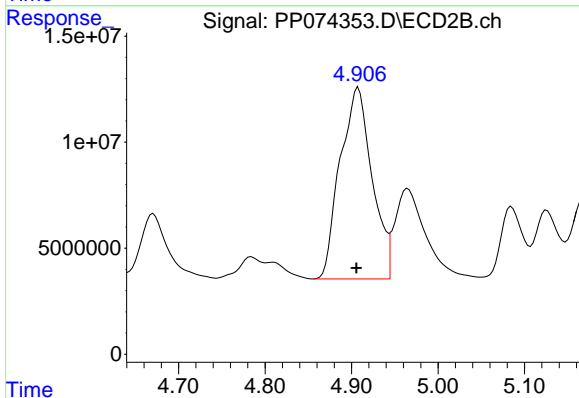
R.T.: 8.824 min
 Delta R.T.: -0.001 min
 Response: 132988054
 Conc: 22.11 ng/ml



#3 AR-1016-1

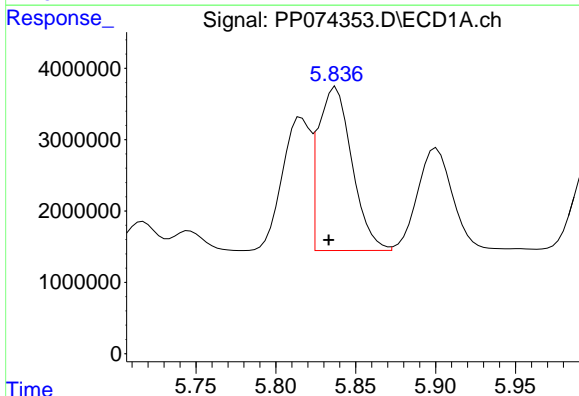
R.T.: 5.816 min
 Delta R.T.: 0.005 min
 Response: 22798864
 Conc: 552.61 ng/ml

Instrument :
 ECD_P
 ClientSampleId :
 PB169224BS



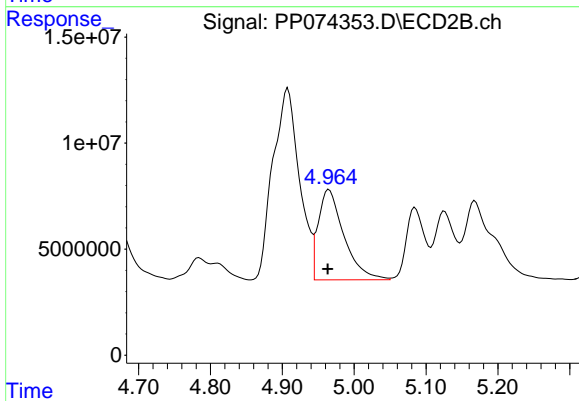
#3 AR-1016-1

R.T.: 4.908 min
 Delta R.T.: 0.002 min
 Response: 231052277
 Conc: 579.24 ng/ml



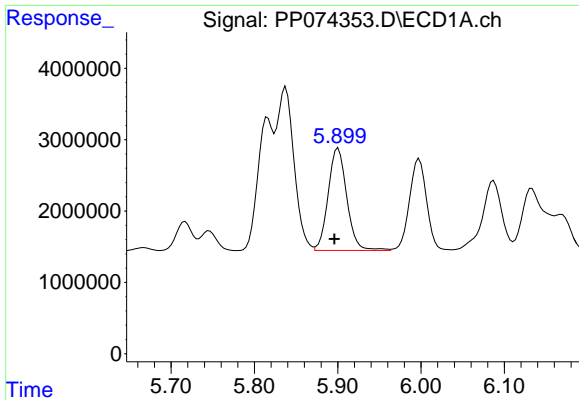
#4 AR-1016-2

R.T.: 5.838 min
 Delta R.T.: 0.004 min
 Response: 33749541
 Conc: 555.62 ng/ml



#4 AR-1016-2

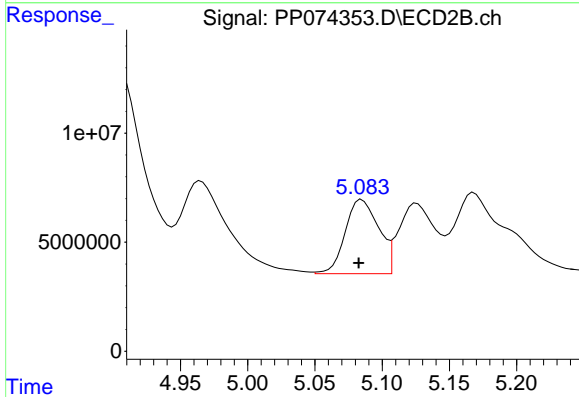
R.T.: 4.965 min
 Delta R.T.: 0.002 min
 Response: 105723299
 Conc: 562.93 ng/ml



#5 AR-1016-3

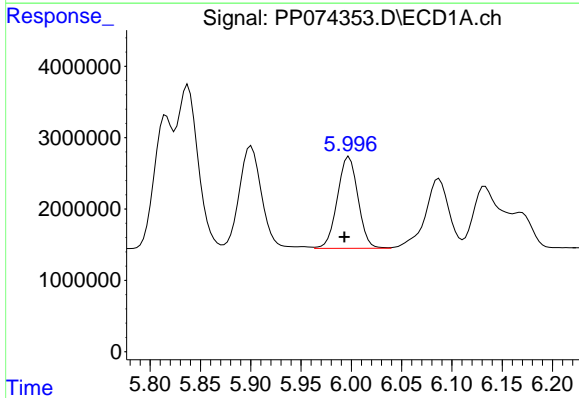
R.T.: 5.901 min
 Delta R.T.: 0.004 min
 Response: 22280171
 Conc: 561.77 ng/ml

Instrument :
 ECD_P
 ClientSampleId :
 PB169224BS



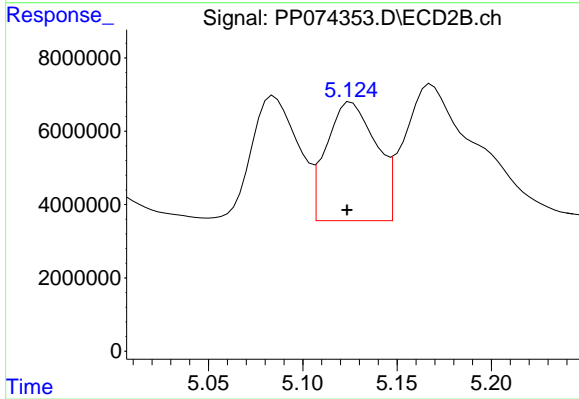
#5 AR-1016-3

R.T.: 5.085 min
 Delta R.T.: 0.002 min
 Response: 58758494
 Conc: 553.96 ng/ml



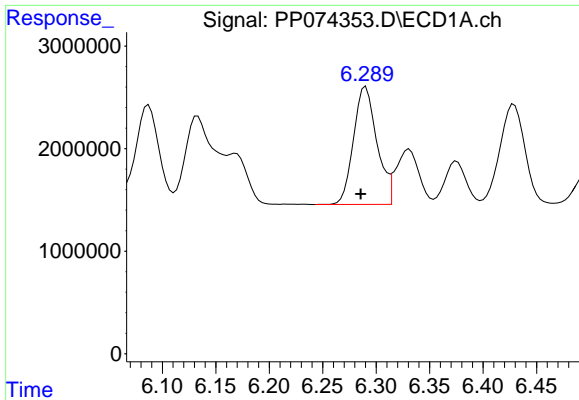
#6 AR-1016-4

R.T.: 5.998 min
 Delta R.T.: 0.005 min
 Response: 18267001
 Conc: 561.29 ng/ml



#6 AR-1016-4

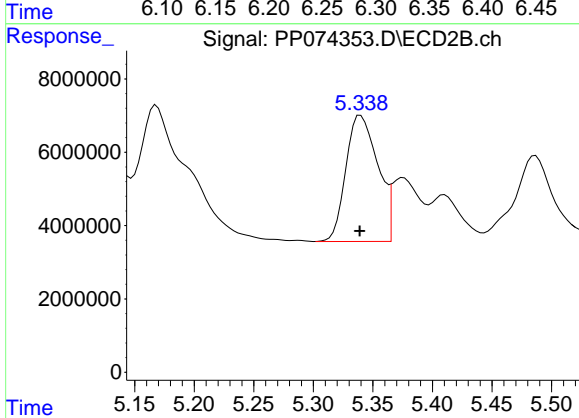
R.T.: 5.126 min
 Delta R.T.: 0.002 min
 Response: 58997606
 Conc: 540.17 ng/ml



#7 AR-1016-5

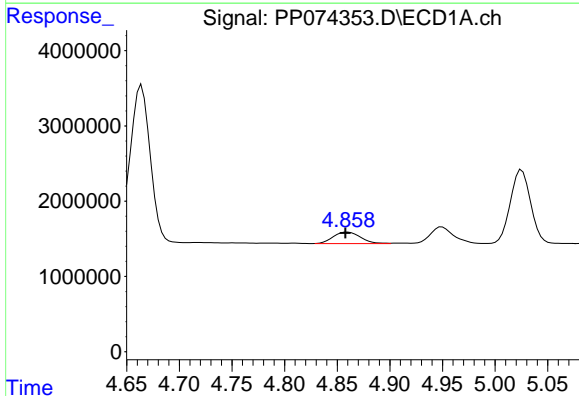
R.T.: 6.290 min
 Delta R.T.: 0.005 min
 Response: 17480014
 Conc: 538.38 ng/ml

Instrument :
 ECD_P
 ClientSampleId :
 PB169224BS



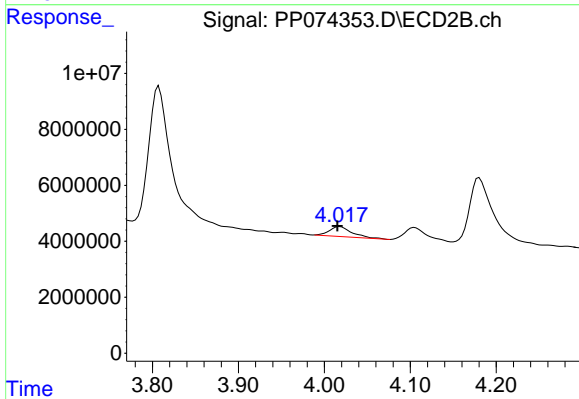
#7 AR-1016-5

R.T.: 5.340 min
 Delta R.T.: 0.000 min
 Response: 64127762
 Conc: 548.27 ng/ml



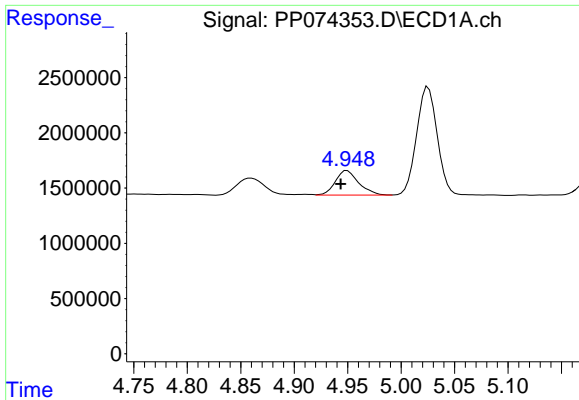
#8 AR-1221-1

R.T.: 4.860 min
 Delta R.T.: 0.002 min
 Response: 2764367
 Conc: 164.90 ng/ml



#8 AR-1221-1

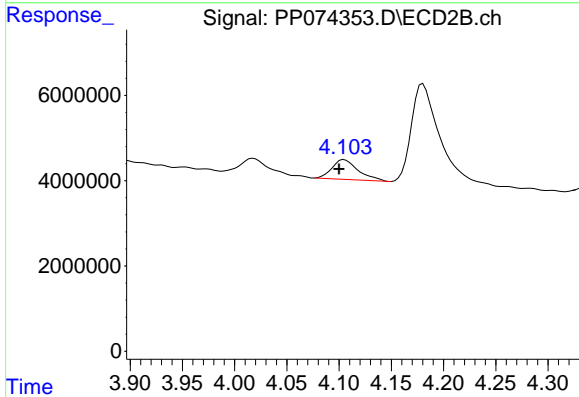
R.T.: 4.018 min
 Delta R.T.: 0.003 min
 Response: 6586567
 Conc: 134.19 ng/ml



#9 AR-1221-2

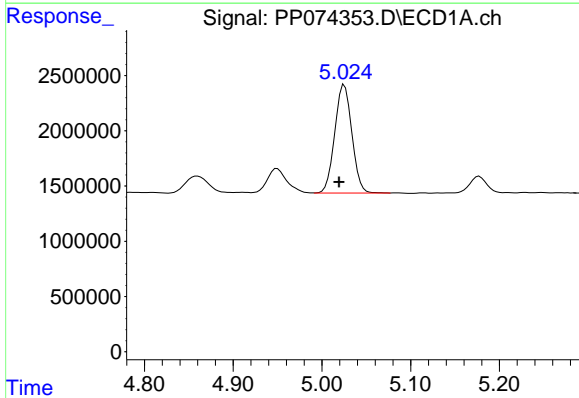
R.T.: 4.950 min
 Delta R.T.: 0.006 min
 Response: 3371496
 Conc: 267.56 ng/ml

Instrument :
 ECD_P
 ClientSampleId :
 PB169224BS



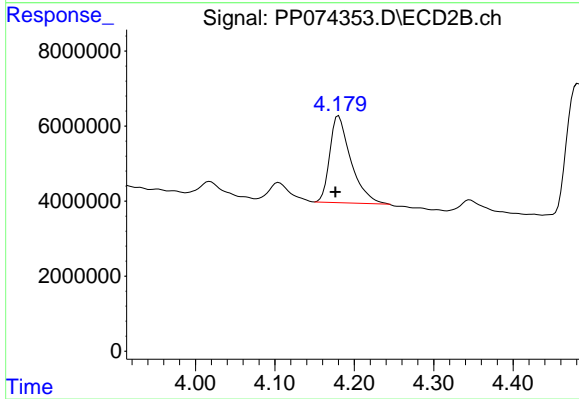
#9 AR-1221-2

R.T.: 4.105 min
 Delta R.T.: 0.005 min
 Response: 8085883
 Conc: 225.30 ng/ml



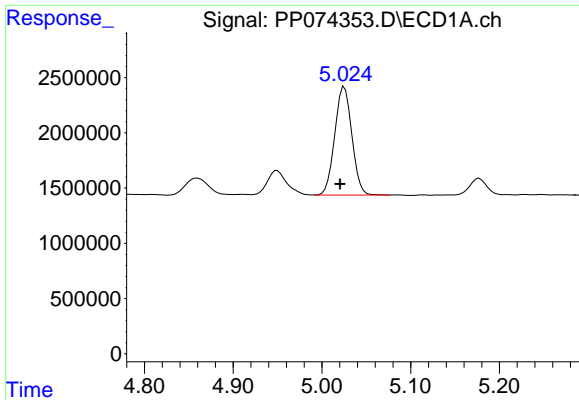
#10 AR-1221-3

R.T.: 5.025 min
 Delta R.T.: 0.006 min
 Response: 13140756
 Conc: 358.69 ng/ml



#10 AR-1221-3

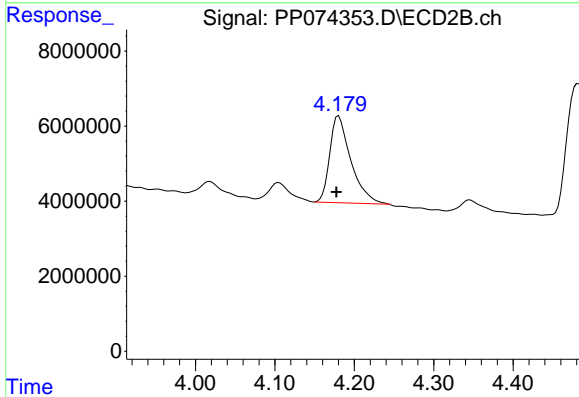
R.T.: 4.180 min
 Delta R.T.: 0.004 min
 Response: 42021924
 Conc: 310.76 ng/ml



#11 AR-1232-1

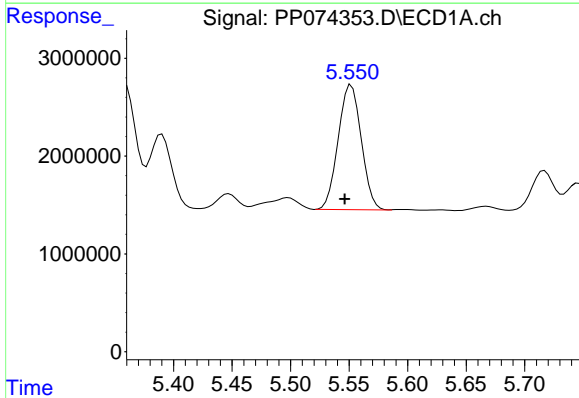
R.T.: 5.025 min
 Delta R.T.: 0.005 min
 Response: 13140756
 Conc: 452.55 ng/ml

Instrument :
 ECD_P
 ClientSampleId :
 PB169224BS



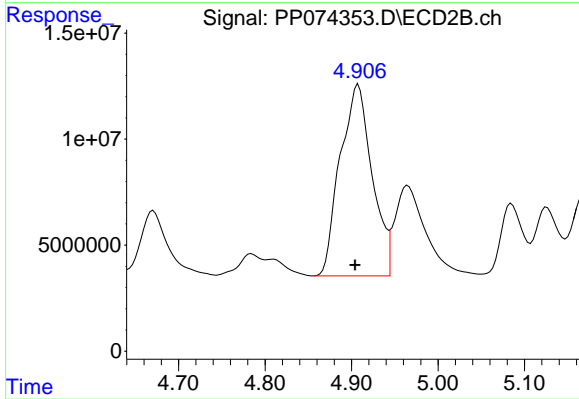
#11 AR-1232-1

R.T.: 4.180 min
 Delta R.T.: 0.003 min
 Response: 42021924
 Conc: 414.57 ng/ml



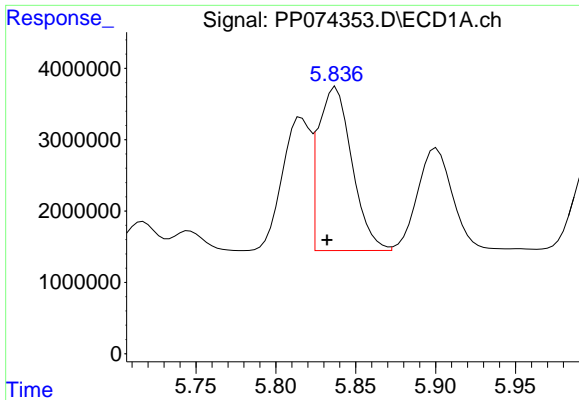
#12 AR-1232-2

R.T.: 5.552 min
 Delta R.T.: 0.006 min
 Response: 17539812
 Conc: 1166.00 ng/ml



#12 AR-1232-2

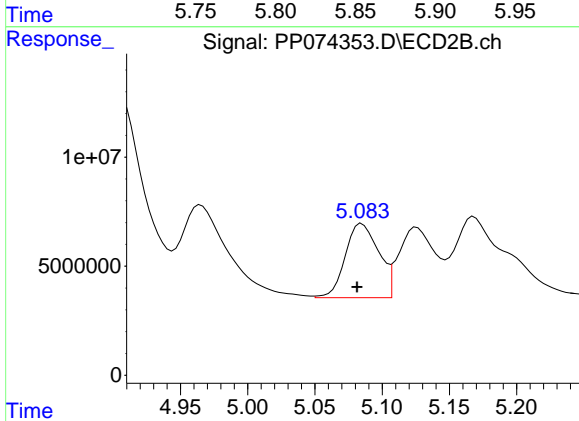
R.T.: 4.908 min
 Delta R.T.: 0.004 min
 Response: 231052277
 Conc: 1325.86 ng/ml



#13 AR-1232-3

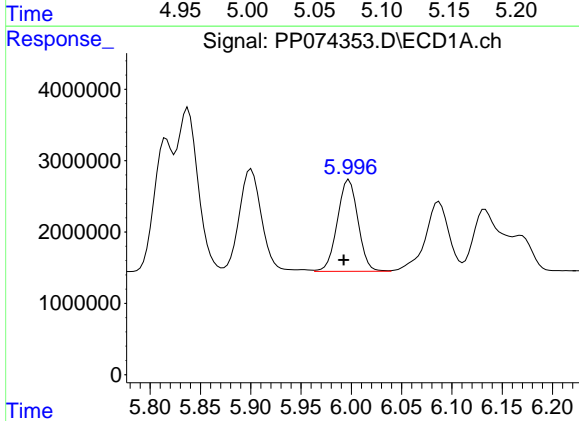
R.T.: 5.838 min
 Delta R.T.: 0.006 min
 Response: 33749541
 Conc: 1163.71 ng/ml

Instrument :
 ECD_P
 ClientSampleId :
 PB169224BS



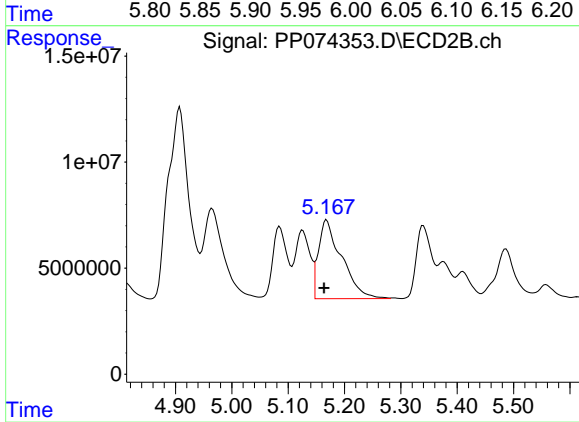
#13 AR-1232-3

R.T.: 5.085 min
 Delta R.T.: 0.003 min
 Response: 58758494
 Conc: 1282.47 ng/ml



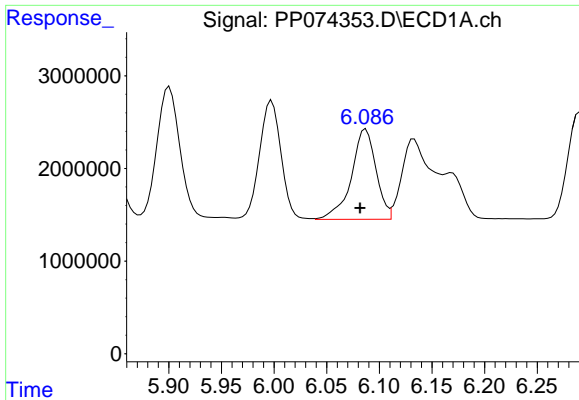
#14 AR-1232-4

R.T.: 5.998 min
 Delta R.T.: 0.005 min
 Response: 18267001
 Conc: 1180.89 ng/ml



#14 AR-1232-4

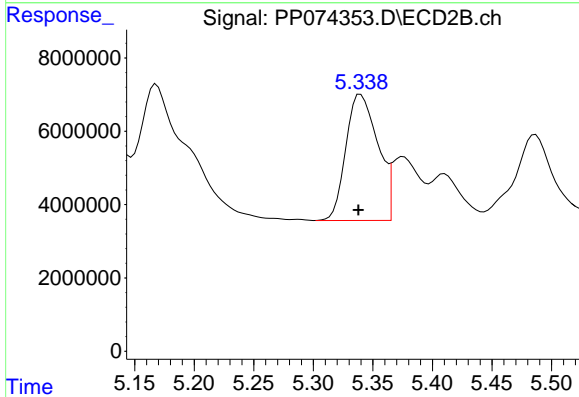
R.T.: 5.168 min
 Delta R.T.: 0.005 min
 Response: 106266519
 Conc: 1831.84 ng/ml



#15 AR-1232-5

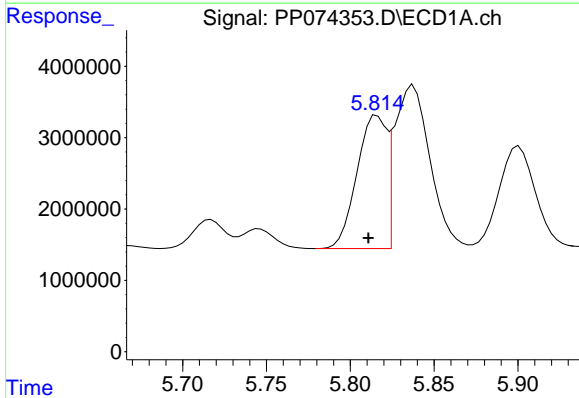
R.T.: 6.087 min
 Delta R.T.: 0.005 min
 Response: 15848958
 Conc: 1352.76 ng/ml

Instrument :
 ECD_P
 ClientSampleId :
 PB169224BS



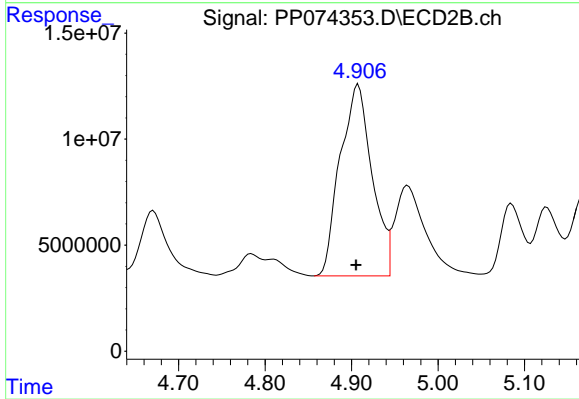
#15 AR-1232-5

R.T.: 5.340 min
 Delta R.T.: 0.002 min
 Response: 64127762
 Conc: 1365.02 ng/ml



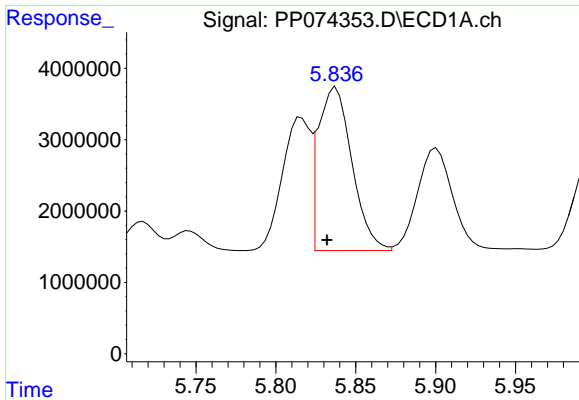
#16 AR-1242-1

R.T.: 5.816 min
 Delta R.T.: 0.006 min
 Response: 22798864
 Conc: 611.79 ng/ml



#16 AR-1242-1

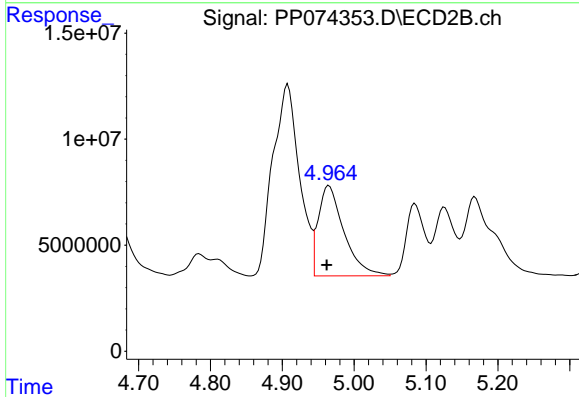
R.T.: 4.908 min
 Delta R.T.: 0.003 min
 Response: 231052277
 Conc: 669.44 ng/ml



#17 AR-1242-2

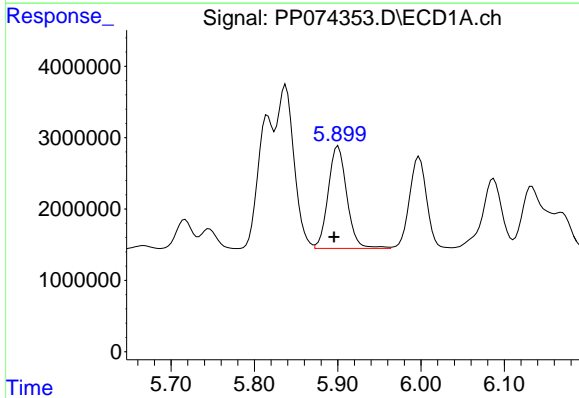
R.T.: 5.838 min
 Delta R.T.: 0.006 min
 Response: 33749541
 Conc: 620.29 ng/ml

Instrument :
 ECD_P
 ClientSampleId :
 PB169224BS



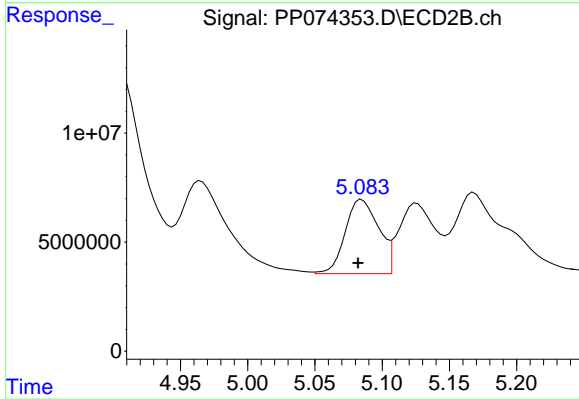
#17 AR-1242-2

R.T.: 4.965 min
 Delta R.T.: 0.003 min
 Response: 105723299
 Conc: 647.11 ng/ml



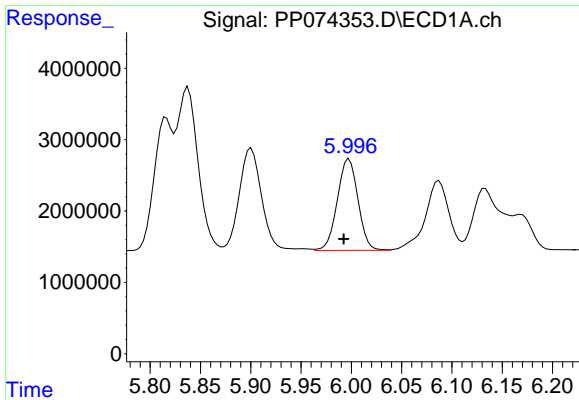
#18 AR-1242-3

R.T.: 5.901 min
 Delta R.T.: 0.005 min
 Response: 22280171
 Conc: 623.47 ng/ml



#18 AR-1242-3

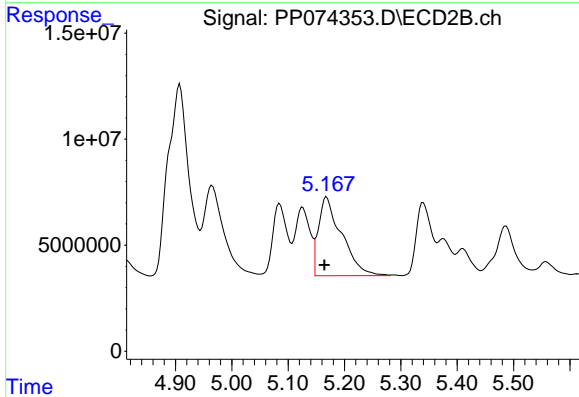
R.T.: 5.085 min
 Delta R.T.: 0.003 min
 Response: 58758494
 Conc: 636.96 ng/ml



#19 AR-1242-4

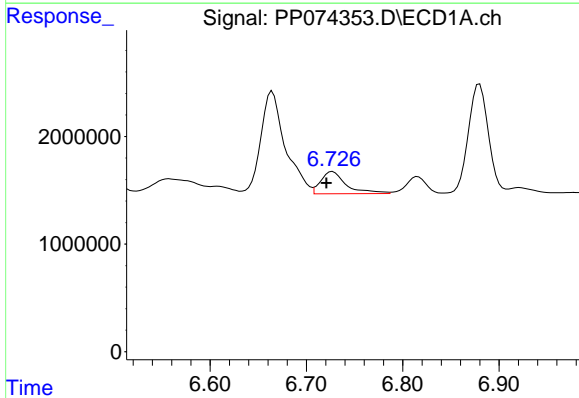
R.T.: 5.998 min
 Delta R.T.: 0.005 min
 Response: 18267001
 Conc: 625.18 ng/ml

Instrument :
 ECD_P
 ClientSampleId :
 PB169224BS



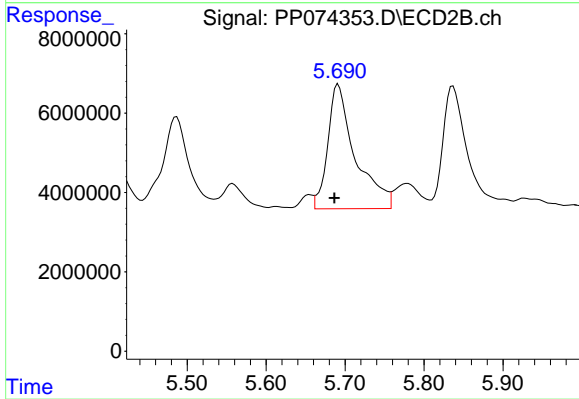
#19 AR-1242-4

R.T.: 5.168 min
 Delta R.T.: 0.004 min
 Response: 106266519
 Conc: 889.84 ng/ml



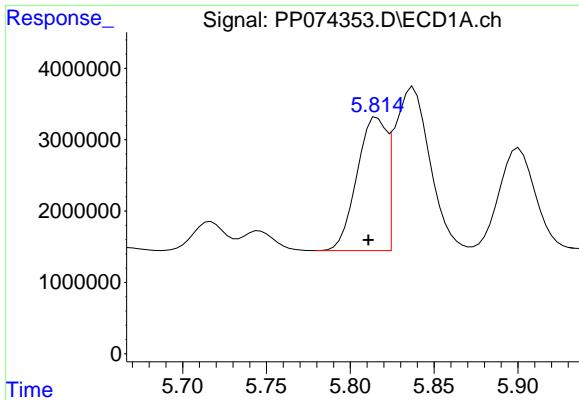
#20 AR-1242-5

R.T.: 6.727 min
 Delta R.T.: 0.006 min
 Response: 3804960
 Conc: 107.01 ng/ml



#20 AR-1242-5

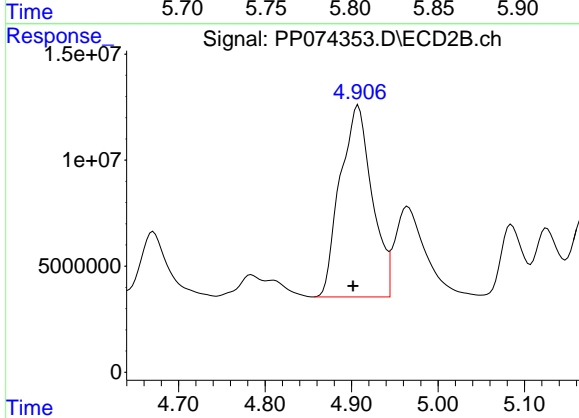
R.T.: 5.691 min
 Delta R.T.: 0.005 min
 Response: 75696704
 Conc: 506.13 ng/ml



#21 AR-1248-1

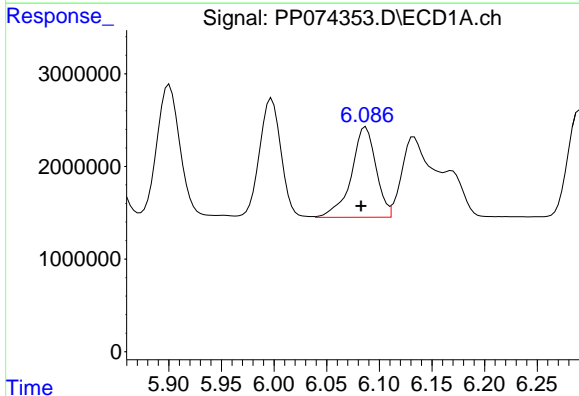
R.T.: 5.816 min
 Delta R.T.: 0.006 min
 Response: 22798864
 Conc: 813.82 ng/ml

Instrument :
 ECD_P
 ClientSampleId :
 PB169224BS



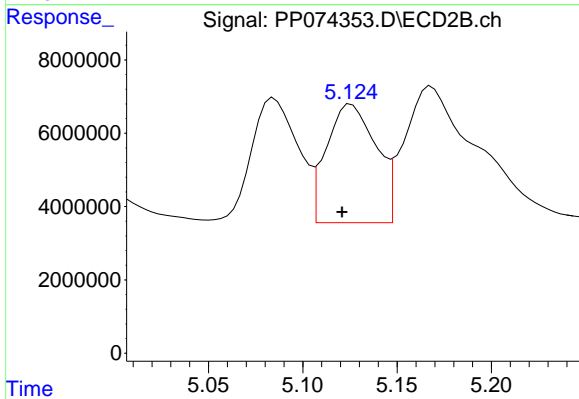
#21 AR-1248-1

R.T.: 4.908 min
 Delta R.T.: 0.006 min
 Response: 231052277
 Conc: 1080.03 ng/ml



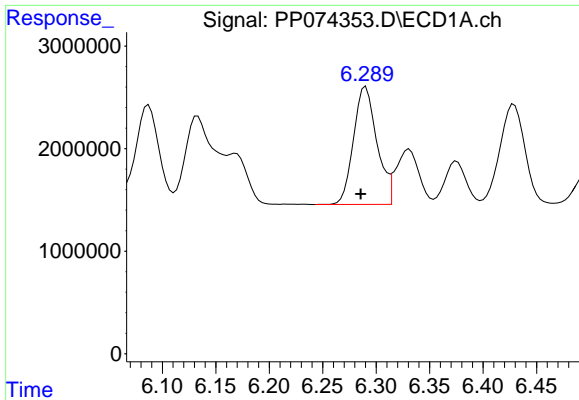
#22 AR-1248-2

R.T.: 6.087 min
 Delta R.T.: 0.005 min
 Response: 15848958
 Conc: 393.65 ng/ml



#22 AR-1248-2

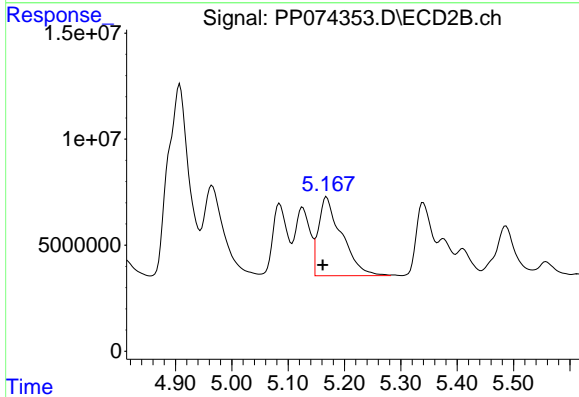
R.T.: 5.126 min
 Delta R.T.: 0.005 min
 Response: 58997606
 Conc: 403.23 ng/ml



#23 AR-1248-3

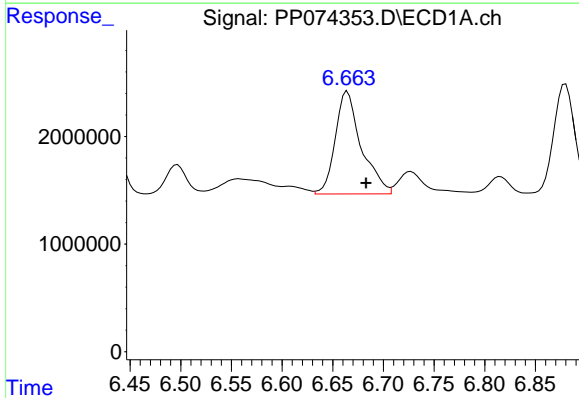
R.T.: 6.290 min
 Delta R.T.: 0.005 min
 Response: 17480014
 Conc: 392.16 ng/ml

Instrument :
 ECD_P
 ClientSampleId :
 PB169224BS



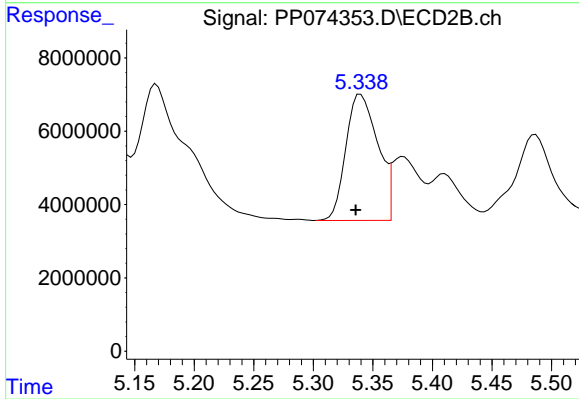
#23 AR-1248-3

R.T.: 5.168 min
 Delta R.T.: 0.007 min
 Response: 106266519
 Conc: 619.77 ng/ml



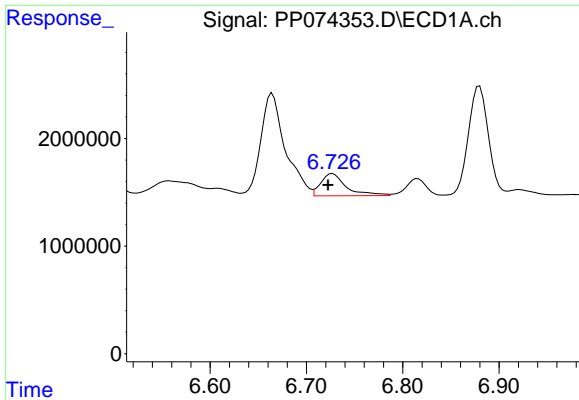
#24 AR-1248-4

R.T.: 6.665 min
 Delta R.T.: -0.018 min
 Response: 17050055
 Conc: 327.65 ng/ml



#24 AR-1248-4

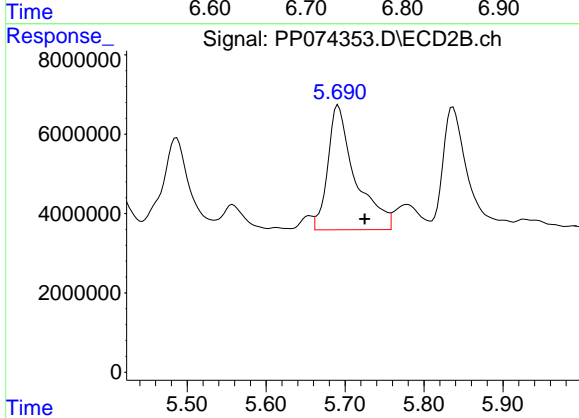
R.T.: 5.340 min
 Delta R.T.: 0.004 min
 Response: 64127762
 Conc: 385.44 ng/ml



#25 AR-1248-5

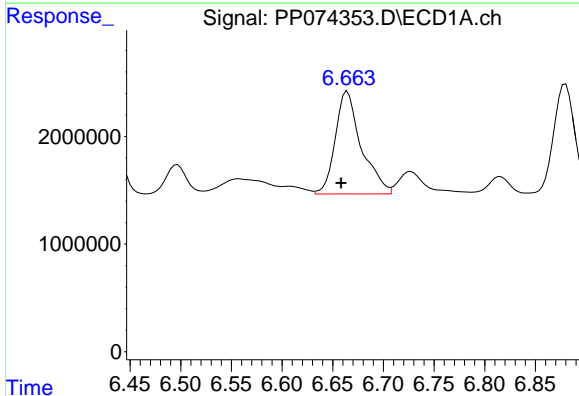
R.T.: 6.727 min
 Delta R.T.: 0.005 min
 Response: 3804960
 Conc: 66.82 ng/ml

Instrument :
 ECD_P
 ClientSampleId :
 PB169224BS



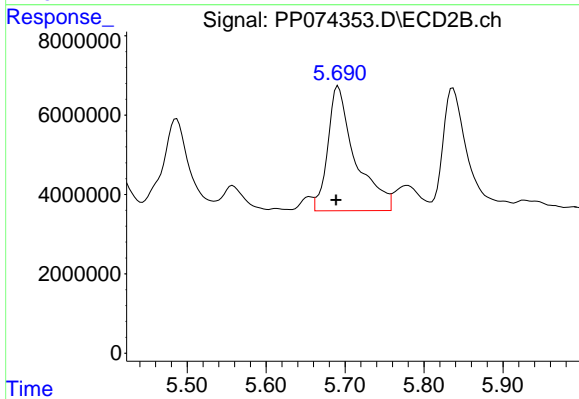
#25 AR-1248-5

R.T.: 5.691 min
 Delta R.T.: -0.034 min
 Response: 75696704
 Conc: 260.16 ng/ml



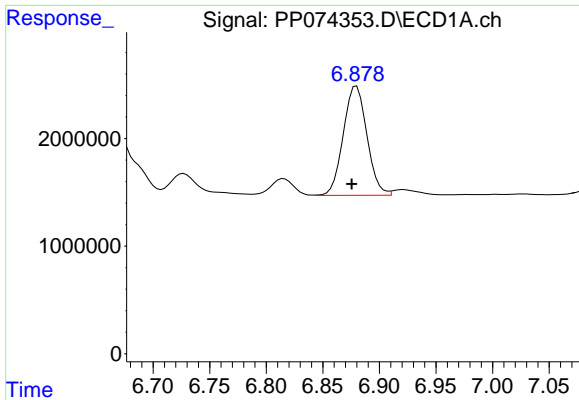
#26 AR-1254-1

R.T.: 6.665 min
 Delta R.T.: 0.006 min
 Response: 17050055
 Conc: 323.89 ng/ml



#26 AR-1254-1

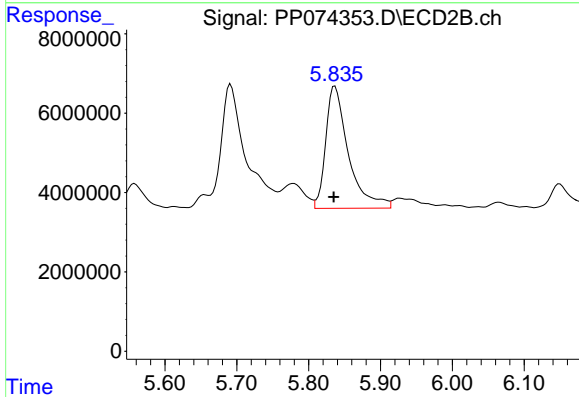
R.T.: 5.691 min
 Delta R.T.: 0.003 min
 Response: 75696704
 Conc: 206.72 ng/ml



#27 AR-1254-2

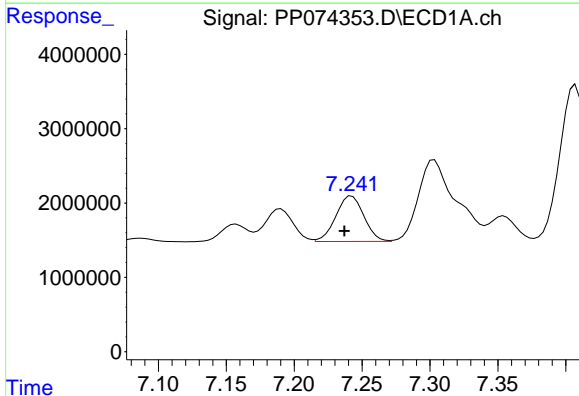
R.T.: 6.880 min
Delta R.T.: 0.004 min
Response: 14794170
Conc: 186.08 ng/ml

Instrument :
ECD_P
ClientSampleId :
PB169224BS



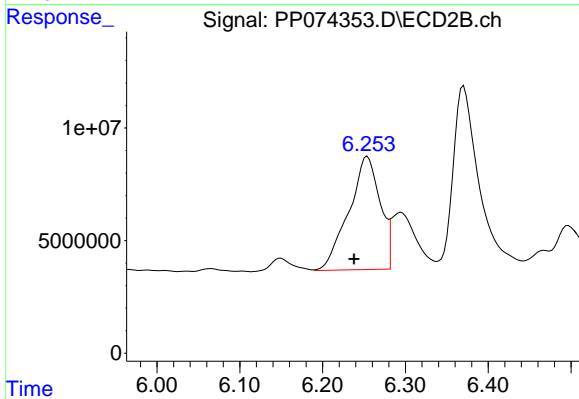
#27 AR-1254-2

R.T.: 5.837 min
Delta R.T.: 0.002 min
Response: 67651688
Conc: 243.16 ng/ml



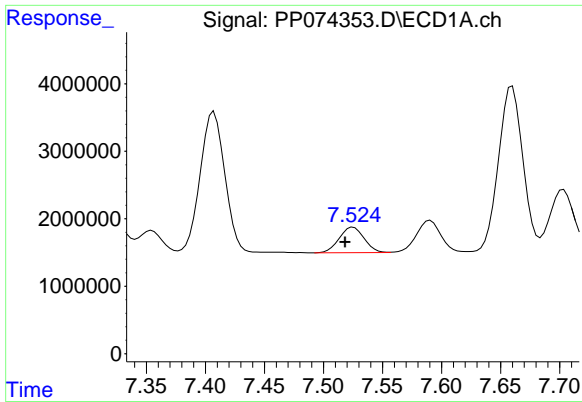
#28 AR-1254-3

R.T.: 7.242 min
Delta R.T.: 0.005 min
Response: 8760436
Conc: 100.33 ng/ml



#28 AR-1254-3

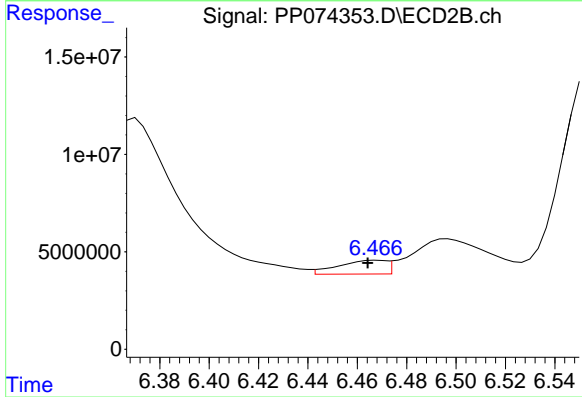
R.T.: 6.254 min
Delta R.T.: 0.016 min
Response: 131529138
Conc: 268.86 ng/ml



#29 AR-1254-4

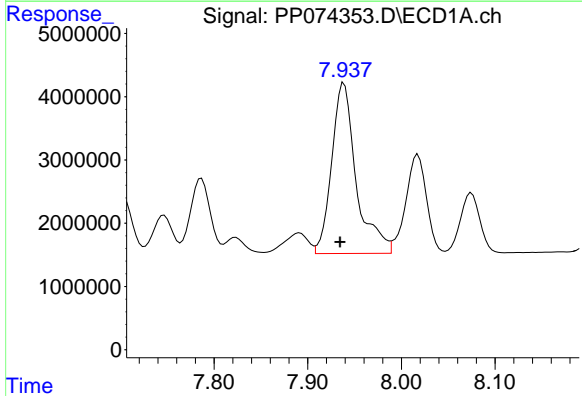
R.T.: 7.525 min
 Delta R.T.: 0.007 min
 Response: 5566820
 Conc: 87.24 ng/ml

Instrument :
 ECD_P
 ClientSampleId :
 PB169224BS



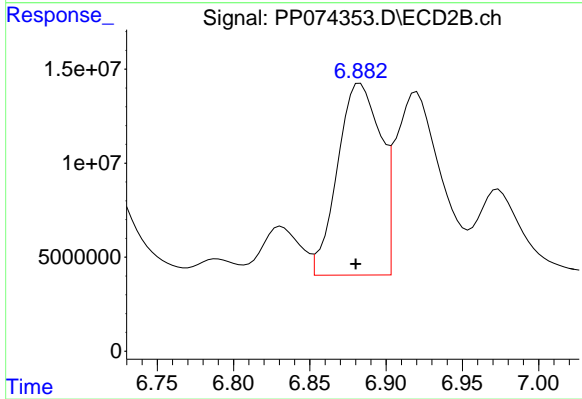
#29 AR-1254-4

R.T.: 6.468 min
 Delta R.T.: 0.004 min
 Response: 9529841
 Conc: 25.93 ng/ml



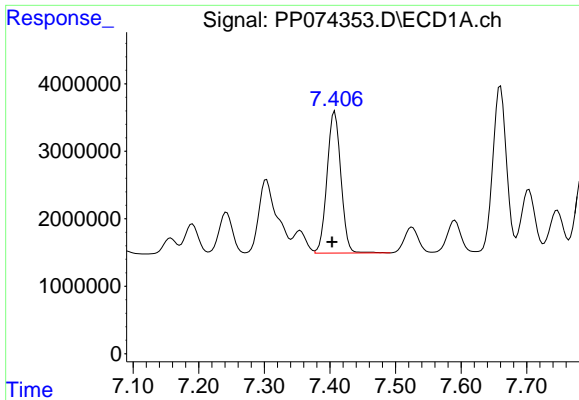
#30 AR-1254-5

R.T.: 7.939 min
 Delta R.T.: 0.004 min
 Response: 49104829
 Conc: 605.15 ng/ml



#30 AR-1254-5

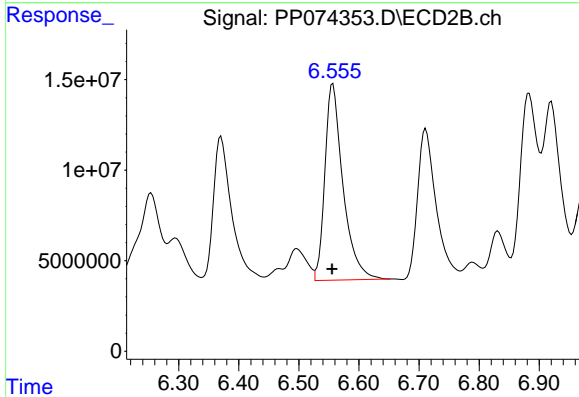
R.T.: 6.883 min
 Delta R.T.: 0.003 min
 Response: 199732415
 Conc: 518.56 ng/ml



#31 AR-1260-1

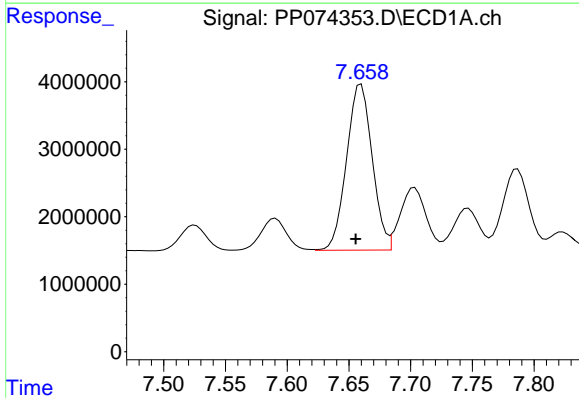
R.T.: 7.407 min
 Delta R.T.: 0.004 min
 Response: 30845385
 Conc: 547.33 ng/ml

Instrument :
 ECD_P
 ClientSampleId :
 PB169224BS



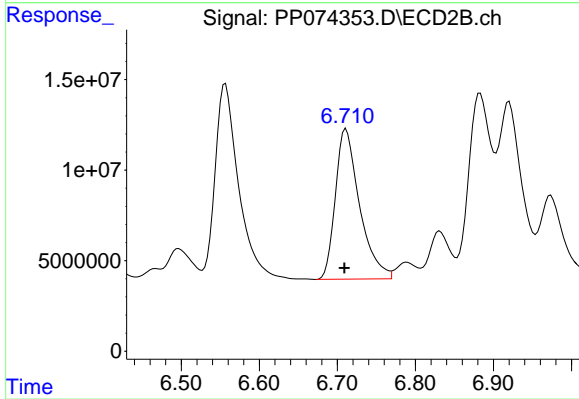
#31 AR-1260-1

R.T.: 6.557 min
 Delta R.T.: 0.002 min
 Response: 227948719
 Conc: 564.29 ng/ml



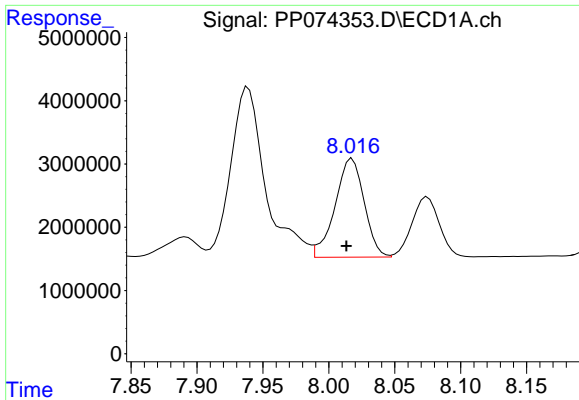
#32 AR-1260-2

R.T.: 7.660 min
 Delta R.T.: 0.005 min
 Response: 35567117
 Conc: 521.88 ng/ml



#32 AR-1260-2

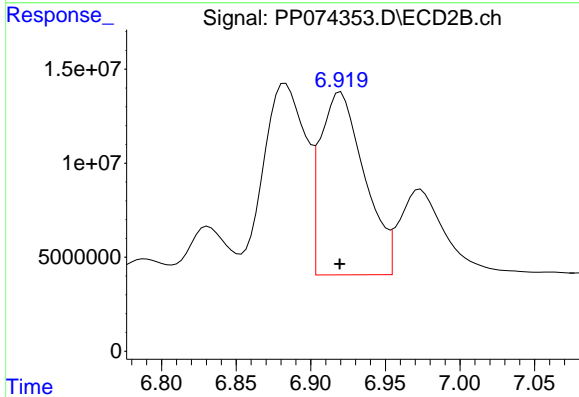
R.T.: 6.711 min
 Delta R.T.: 0.002 min
 Response: 178572901
 Conc: 571.07 ng/ml



#33 AR-1260-3

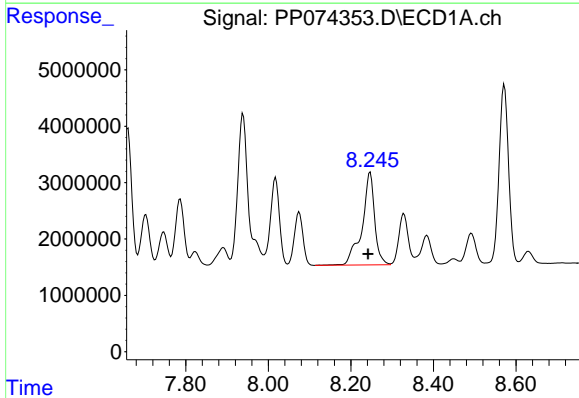
R.T.: 8.018 min
 Delta R.T.: 0.004 min
 Response: 23970241
 Conc: 449.76 ng/ml

Instrument :
 ECD_P
 ClientSampleId :
 PB169224BS



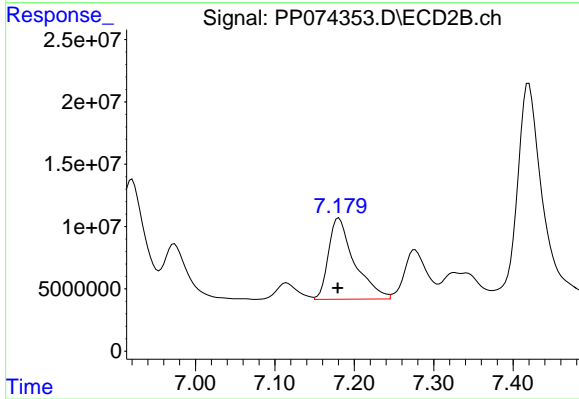
#33 AR-1260-3

R.T.: 6.920 min
 Delta R.T.: 0.000 min
 Response: 200025753
 Conc: 507.53 ng/ml



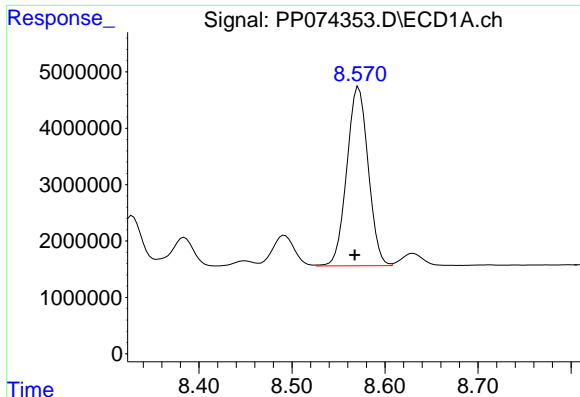
#34 AR-1260-4

R.T.: 8.247 min
 Delta R.T.: 0.005 min
 Response: 34680138
 Conc: 553.86 ng/ml



#34 AR-1260-4

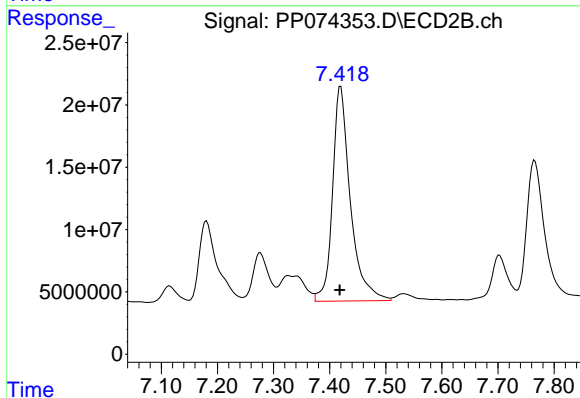
R.T.: 7.181 min
 Delta R.T.: 0.001 min
 Response: 147491712
 Conc: 506.88 ng/ml



#35 AR-1260-5

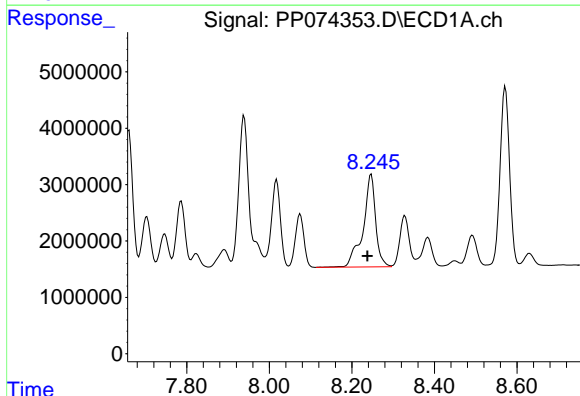
R.T.: 8.572 min
 Delta R.T.: 0.004 min
 Response: 50784218
 Conc: 448.21 ng/ml

Instrument :
 ECD_P
 ClientSampleId :
 PB169224BS



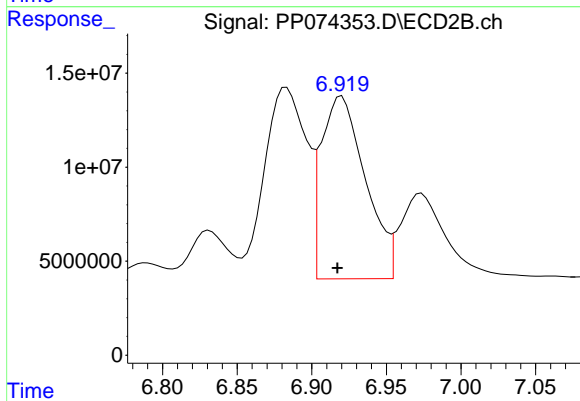
#35 AR-1260-5

R.T.: 7.420 min
 Delta R.T.: 0.002 min
 Response: 380473539
 Conc: 502.34 ng/ml



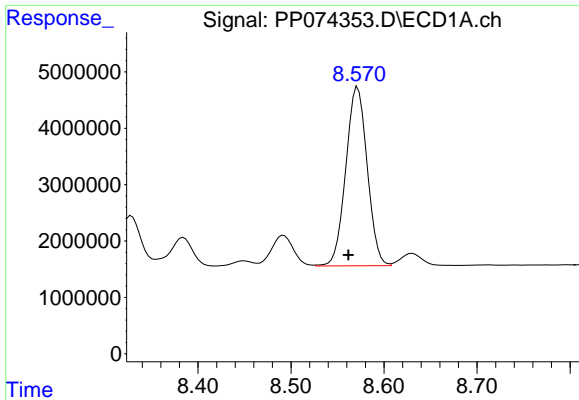
#36 AR-1262-1

R.T.: 8.247 min
 Delta R.T.: 0.009 min
 Response: 34680138
 Conc: 457.58 ng/ml



#36 AR-1262-1

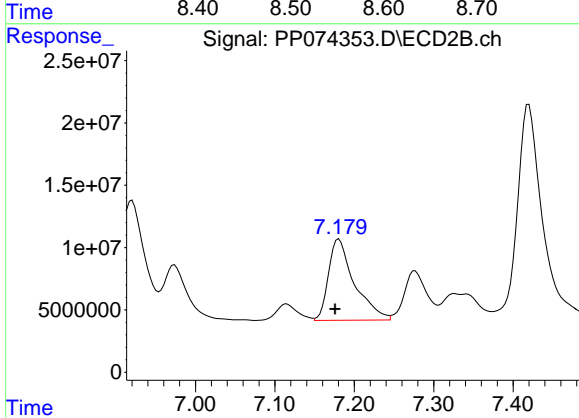
R.T.: 6.920 min
 Delta R.T.: 0.003 min
 Response: 200025753
 Conc: 355.20 ng/ml



#37 AR-1262-2

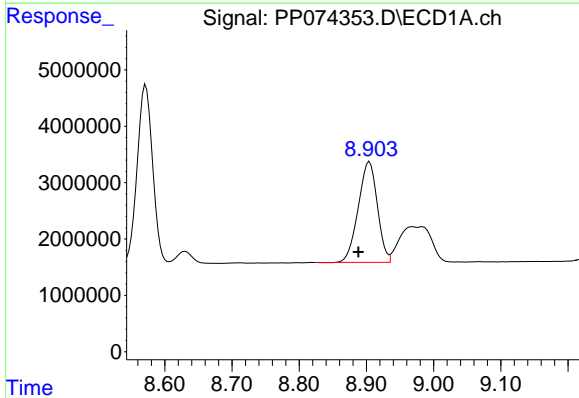
R.T.: 8.572 min
Delta R.T.: 0.010 min
Response: 50784218
Conc: 389.36 ng/ml

Instrument :
ECD_P
ClientSampleId :
PB169224BS



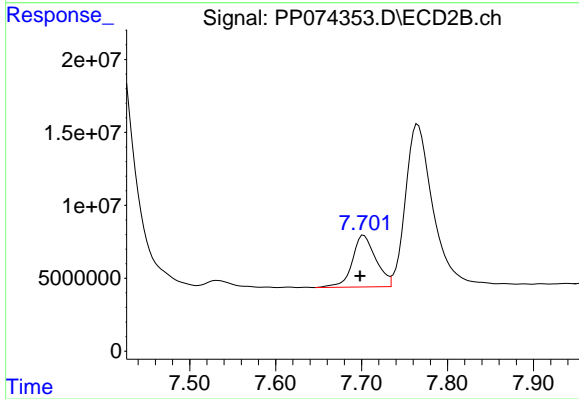
#37 AR-1262-2

R.T.: 7.181 min
Delta R.T.: 0.005 min
Response: 147491712
Conc: 367.79 ng/ml



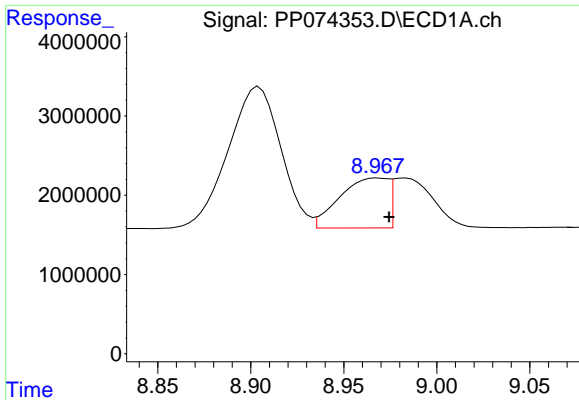
#38 AR-1262-3

R.T.: 8.904 min
Delta R.T.: 0.016 min
Response: 35221593
Conc: 374.42 ng/ml



#38 AR-1262-3

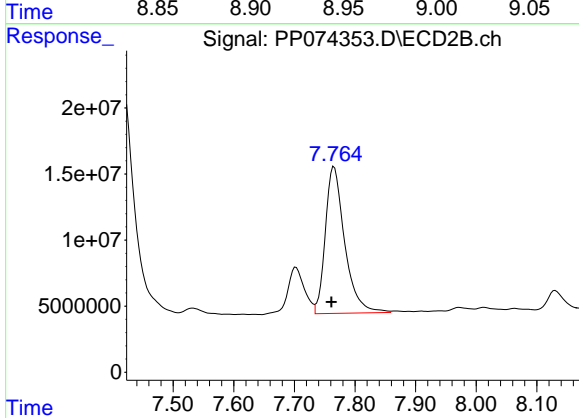
R.T.: 7.703 min
Delta R.T.: 0.004 min
Response: 67494604
Conc: 187.76 ng/ml



#39 AR-1262-4

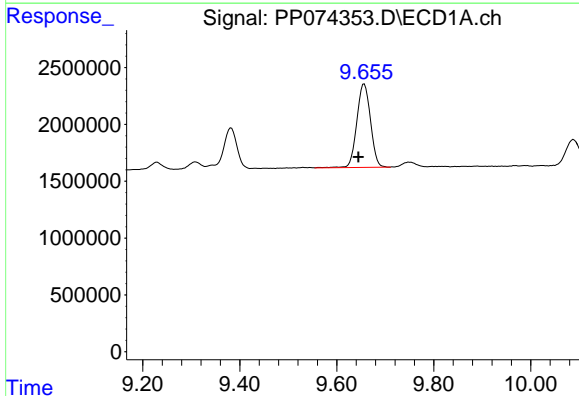
R.T.: 8.969 min
 Delta R.T.: -0.006 min
 Response: 11308657
 Conc: 155.23 ng/ml

Instrument :
 ECD_P
 ClientSampleId :
 PB169224BS



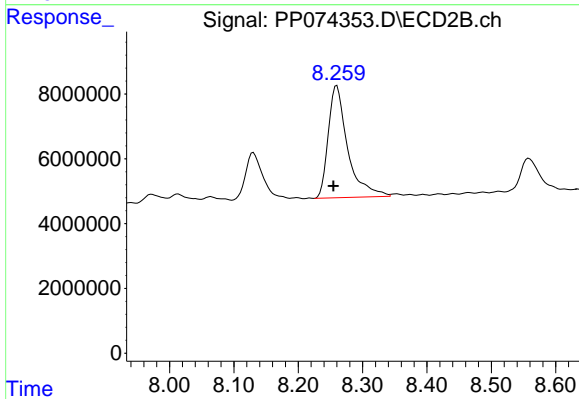
#39 AR-1262-4

R.T.: 7.766 min
 Delta R.T.: 0.005 min
 Response: 246453556
 Conc: 369.54 ng/ml



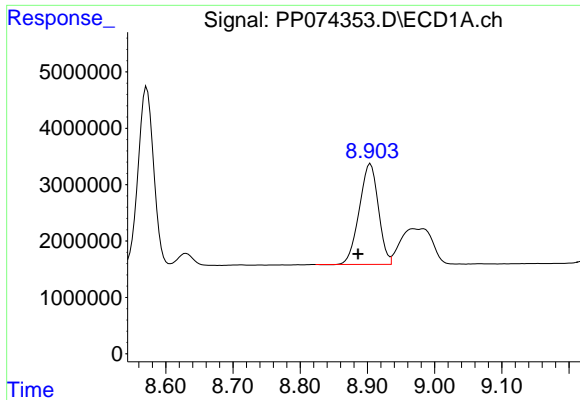
#40 AR-1262-5

R.T.: 9.657 min
 Delta R.T.: 0.012 min
 Response: 14424576
 Conc: 283.26 ng/ml



#40 AR-1262-5

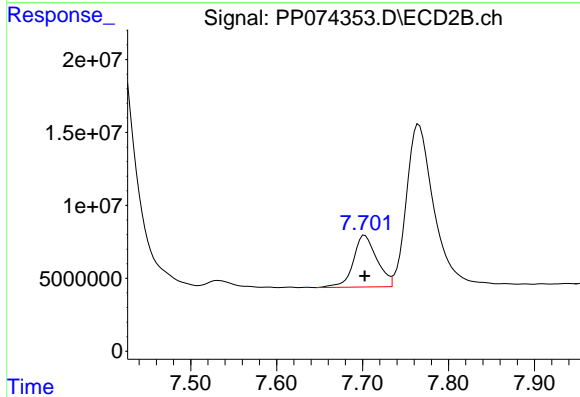
R.T.: 8.260 min
 Delta R.T.: 0.005 min
 Response: 72725881
 Conc: 256.74 ng/ml



#41 AR-1268-1

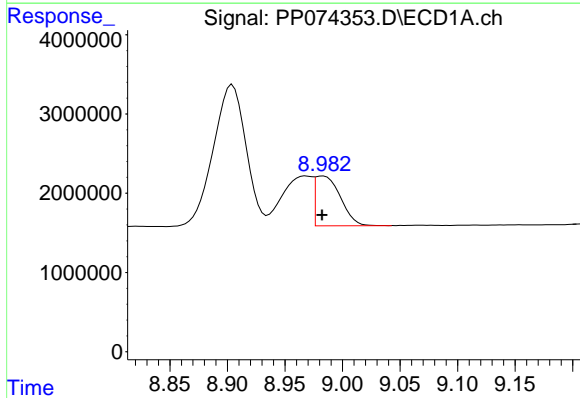
R.T.: 8.904 min
 Delta R.T.: 0.018 min
 Response: 35221593
 Conc: 226.31 ng/ml

Instrument :
 ECD_P
 ClientSampleId :
 PB169224BS



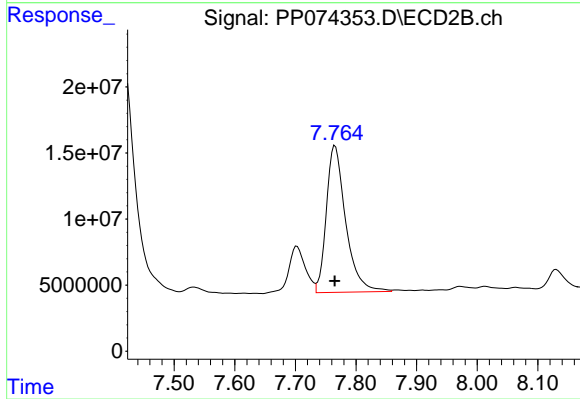
#41 AR-1268-1

R.T.: 7.703 min
 Delta R.T.: 0.000 min
 Response: 67494604
 Conc: 61.91 ng/ml



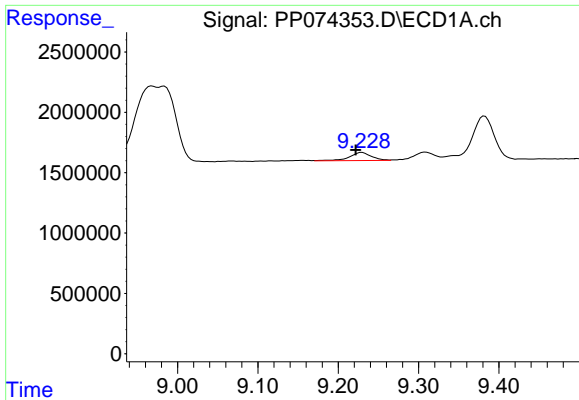
#42 AR-1268-2

R.T.: 8.983 min
 Delta R.T.: 0.000 min
 Response: 9559501
 Conc: 66.65 ng/ml



#42 AR-1268-2

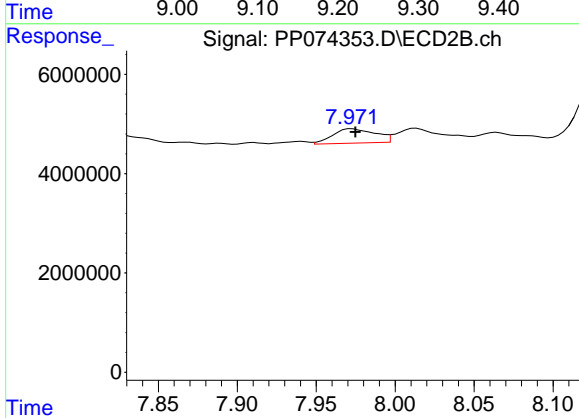
R.T.: 7.766 min
 Delta R.T.: 0.000 min
 Response: 246453556
 Conc: 232.21 ng/ml



#43 AR-1268-3

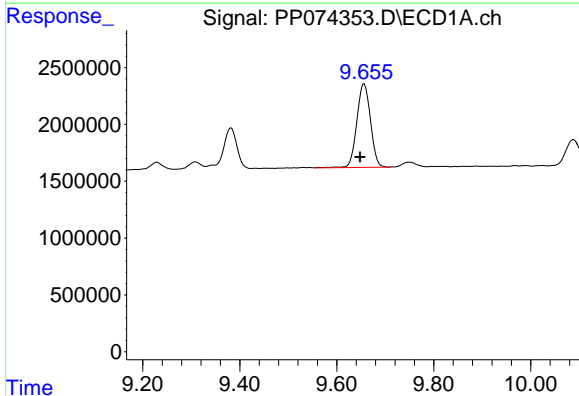
R.T.: 9.230 min
Delta R.T.: 0.008 min
Response: 1258621
Conc: 10.53 ng/ml

Instrument :
ECD_P
ClientSampleId :
PB169224BS



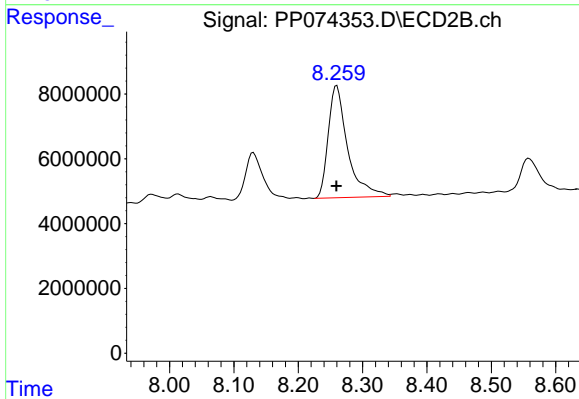
#43 AR-1268-3

R.T.: 7.973 min
Delta R.T.: -0.002 min
Response: 5410228
Conc: 6.50 ng/ml



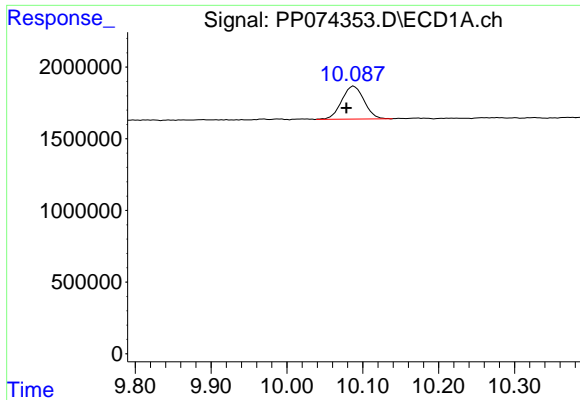
#44 AR-1268-4

R.T.: 9.657 min
Delta R.T.: 0.009 min
Response: 14424576
Conc: 245.26 ng/ml



#44 AR-1268-4

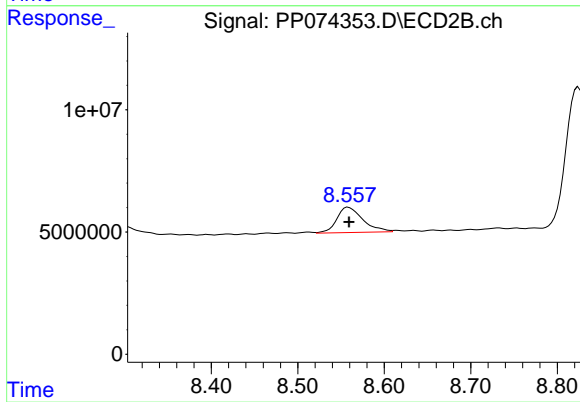
R.T.: 8.260 min
Delta R.T.: 0.000 min
Response: 72725881
Conc: 236.08 ng/ml



#45 AR-1268-5

R.T.: 10.088 min
Delta R.T.: 0.010 min
Response: 4720548
Conc: 13.42 ng/ml

Instrument :
ECD_P
ClientSampleId :
PB169224BS



#45 AR-1268-5

R.T.: 8.559 min
Delta R.T.: 0.000 min
Response: 21616214
Conc: 8.48 ng/ml