

Data Path : Z:\pestpcbsrv\HPCHEM1\ECD\_P\Data\PP081325\  
 Data File : PP074354.D  
 Signal(s) : Signal #1: ECD1A.ch Signal #2: ECD2B.ch  
 Acq On : 13 Aug 2025 17:31  
 Operator : YP\AJ  
 Sample : PB169224BSD  
 Misc :  
 ALS Vial : 18 Sample Multiplier: 1

Instrument :  
 ECD\_P  
 ClientSampleId :  
 PB169224BSD

Integration File signal 1: autoint1.e  
 Integration File signal 2: autoint2.e  
 Quant Time: Aug 13 23:59:46 2025  
 Quant Method : Z:\pestpcbsrv\HPCHEM1\ECD\_P\methods\PP080125.M  
 Quant Title : GC EXTRACTABLES  
 QLast Update : Mon Aug 04 11:01:49 2025  
 Response via : Initial Calibration  
 Integrator: ChemStation

Volume Inj. : 2 µl  
 Signal #1 Phase : ZB-MR1 Signal #2 Phase: ZB-MR2  
 Signal #1 Info : 30Mx0.32mmx 0.50µ Signal #2 Info : 30M x 0.32mm x 0.25µm

Compound	RT#1	RT#2	Resp#1	Resp#2	ng/ml	ng/ml
System Monitoring Compounds						
1) SA Tetrachlo...	4.659	3.803	29387601	89688788	26.279	23.390
2) SA Decachlor...	10.438	8.821	23118371	133.9E6	23.805	22.268
Target Compounds						
3) L1 AR-1016-1	5.812	4.903	22976677	227.8E6	556.918	571.169
4) L1 AR-1016-2	5.833	4.961	33955703	104.6E6	559.018	556.888
5) L1 AR-1016-3	5.896	5.081	22155900	57620496	558.639	543.233
6) L1 AR-1016-4	5.993	5.122	18360430	57752550	564.164	528.772
7) L1 AR-1016-5	6.285	5.336	17695252	65572137	545.005	560.622
8) L2 AR-1221-1	4.856	4.013	2829847	6416544	168.809	130.723
9) L2 AR-1221-2	4.945	4.100	3397677	8195486	269.634	228.354
10) L2 AR-1221-3	5.021	4.177	13319025	42201629	363.558	312.086
11) L3 AR-1232-1	5.021	4.177	13319025	42201629	458.686	416.344
12) L3 AR-1232-2	5.547	4.903	17495681	227.8E6	1163.067	1307.381
13) L3 AR-1232-3	5.833	5.081	33955703	57620496	1170.817	1257.633
14) L3 AR-1232-4	5.993	5.165	18360430	106.1E6	1186.931	1828.776 #
15) L3 AR-1232-5	6.083	5.336	15920006	65572137	1358.825	1395.762
16) L4 AR-1242-1	5.812	4.903	22976677	227.8E6	616.562	660.114
17) L4 AR-1242-2	5.833	4.961	33955703	104.6E6	624.083	640.165
18) L4 AR-1242-3	5.896	5.081	22155900	57620496	619.991	624.622
19) L4 AR-1242-4	5.993	5.165	18360430	106.1E6	628.381	888.353 #
20) L4 AR-1242-5	6.723	5.687	3714376	78340828	104.460	523.809 #
21) L5 AR-1248-1	5.812	4.903	22976677	227.8E6	820.170	1064.976 #
22) L5 AR-1248-2	6.083	5.122	15920006	57752550	395.419	394.720
23) L5 AR-1248-3	6.285	5.165	17695252	106.1E6	396.990	618.737 #
24) L5 AR-1248-4	6.660	5.336	17094811	65572137	328.511	394.126
25) L5 AR-1248-5	6.723	5.687f	3714376	78340828	65.229	269.244 #
26) L6 AR-1254-1	6.660	5.687	17094811	78340828	324.743	213.940 #
27) L6 AR-1254-2	6.875	5.833	14947227	69384103	188.005	249.388 #
28) L6 AR-1254-3	7.238	6.252	8849540	136.4E6	101.350	278.796 #
29) L6 AR-1254-4	7.521	6.462	5580718	9243871	87.459	25.149 #
30) L6 AR-1254-5	7.935	6.880	49507753	199.7E6	610.116	518.590
31) L7 AR-1260-1	7.403	6.553	30802448	237.9E6	546.568	588.926
32) L7 AR-1260-2	7.655	6.707	35694331	183.1E6	523.743	585.432
33) L7 AR-1260-3	8.014	6.916	24021194	209.2E6	450.713	530.763
34) L7 AR-1260-4	8.242	7.177	34879499	151.8E6	557.047	521.581
35) L7 AR-1260-5	8.567	7.416	51415528	391.7E6	453.780	517.124
36) L8 AR-1262-1	8.242	6.916	34879499	209.2E6	460.214	371.457
37) L8 AR-1262-2	8.567	7.177	51415528	151.8E6	394.200	378.455
38) L8 AR-1262-3	8.900	7.699	35792715	68343721	380.487	190.124 #
39) L8 AR-1262-4	8.963	7.762	21143097	258.0E6	290.221	386.789 #
40) L8 AR-1262-5	9.652	8.257	14404412	73799552	282.869	260.529
41) L9 AR-1268-1	8.900	7.699	35792715	68343721	229.982	62.685 #

Data Path : Z:\pestpcbsrv\HPCHEM1\ECD\_P\Data\PP081325\  
 Data File : PP074354.D  
 Signal(s) : Signal #1: ECD1A.ch Signal #2: ECD2B.ch  
 Acq On : 13 Aug 2025 17:31  
 Operator : YP\AJ  
 Sample : PB169224BSD  
 Misc :  
 ALS Vial : 18 Sample Multiplier: 1

Instrument :  
 ECD\_P  
 ClientSampleId :  
 PB169224BSD

Integration File signal 1: autoint1.e  
 Integration File signal 2: autoint2.e  
 Quant Time: Aug 13 23:59:46 2025  
 Quant Method : Z:\pestpcbsrv\HPCHEM1\ECD\_P\methods\PP080125.M  
 Quant Title : GC EXTRACTABLES  
 QLast Update : Mon Aug 04 11:01:49 2025  
 Response via : Initial Calibration  
 Integrator: ChemStation

Volume Inj. : 2 µl  
 Signal #1 Phase : ZB-MR1 Signal #2 Phase: ZB-MR2  
 Signal #1 Info : 30Mx0.32mmx 0.50µ Signal #2 Info : 30M x 0.32mm x 0.25µm

	Compound	RT#1	RT#2	Resp#1	Resp#2	ng/ml	ng/ml
42)	L9 AR-1268-2	8.963	7.762	21143097	258.0E6	147.415	243.053 #
43)	L9 AR-1268-3	9.225	7.970	1140098	4445732	9.543	5.344 #
44)	L9 AR-1268-4	9.652	8.257	14404412	73799552	244.921	239.563
45)	L9 AR-1268-5	10.083	8.556	4739093	22028237	13.475	8.638 #

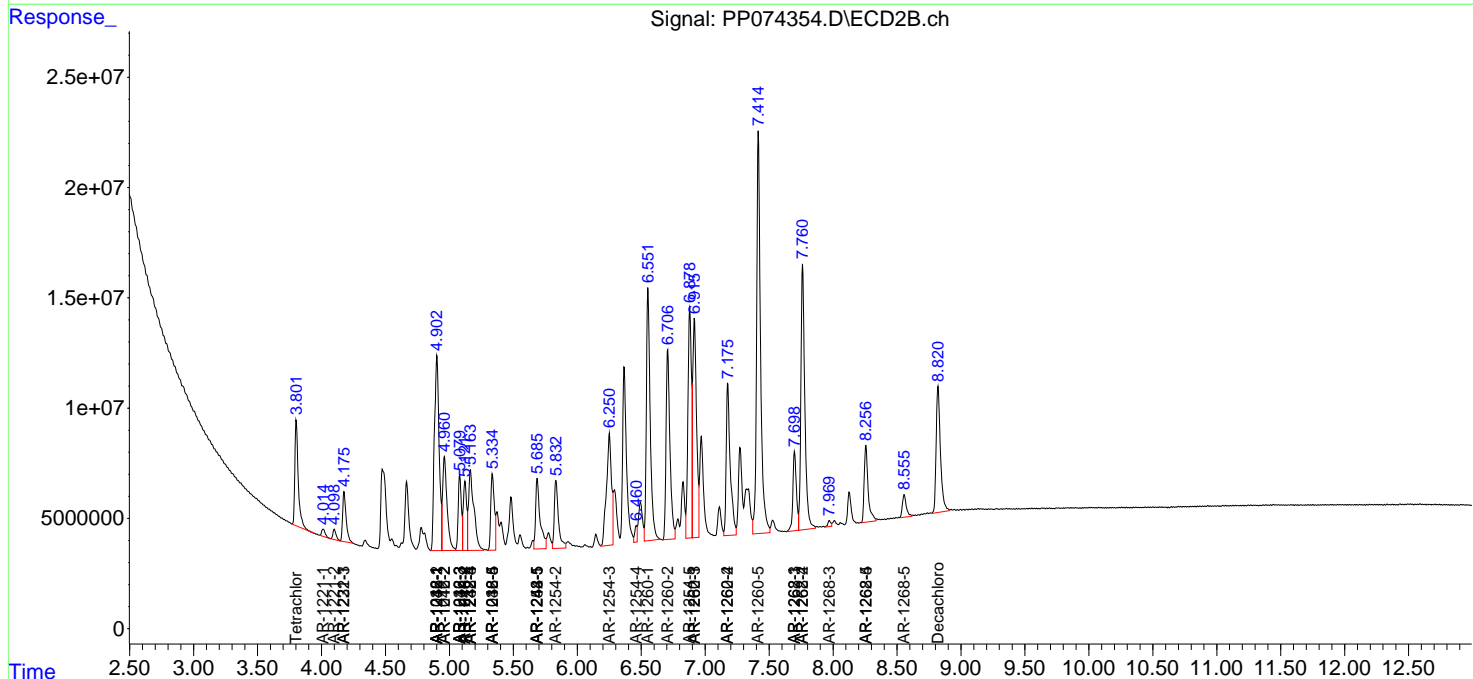
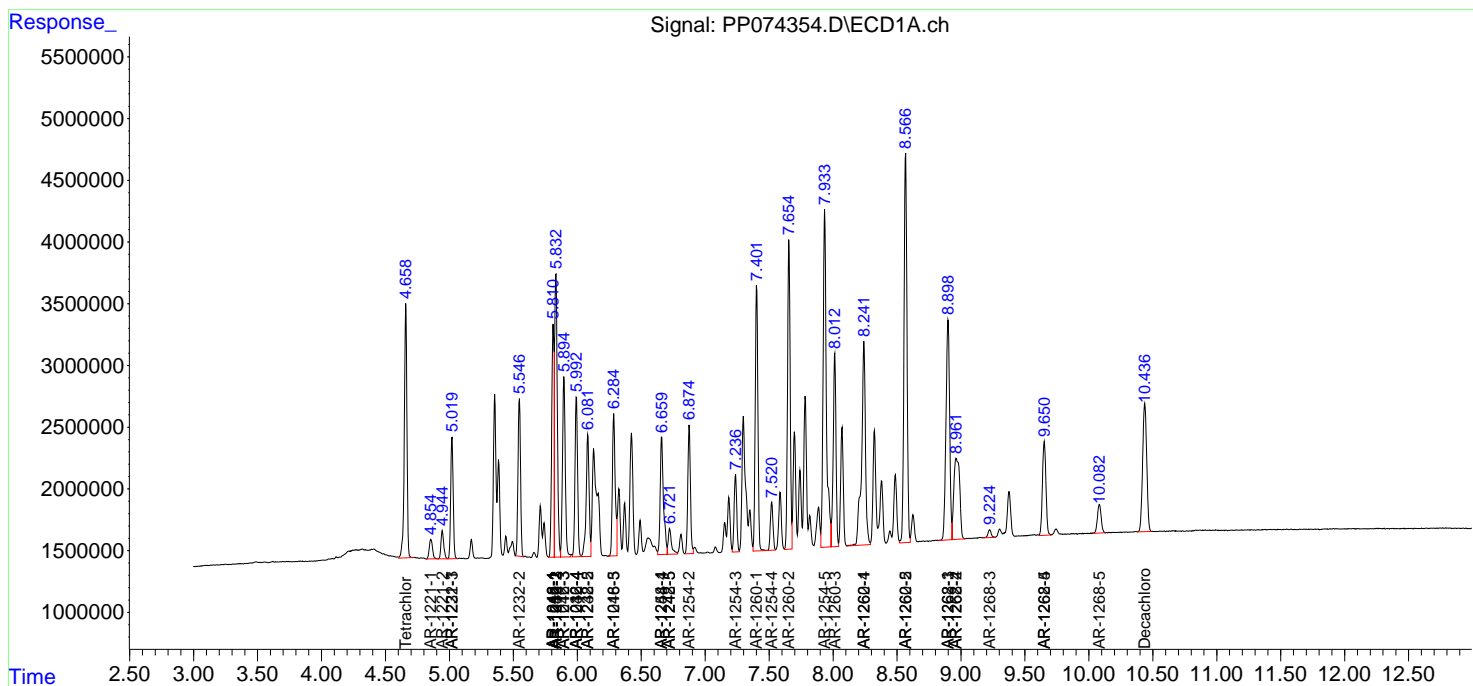
(f)=RT Delta > 1/2 Window (#)=Amounts differ by > 25% (m)=manual int.

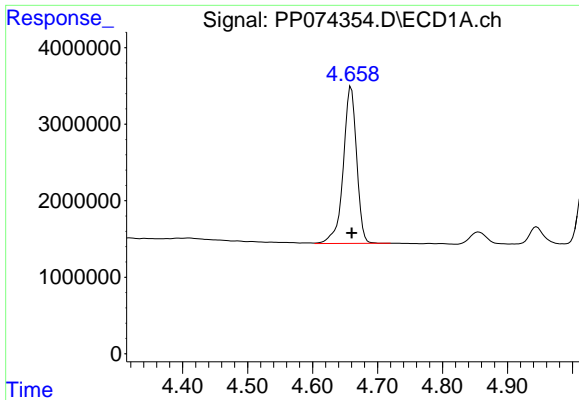
Data Path : Z:\pestpcbsrv\HPCHEM1\ECD\_P\Data\PP081325\  
 Data File : PP074354.D  
 Signal(s) : Signal #1: ECD1A.ch Signal #2: ECD2B.ch  
 Acq On : 13 Aug 2025 17:31  
 Operator : YP\AJ  
 Sample : PB169224BSD  
 Misc :  
 ALS Vial : 18 Sample Multiplier: 1

Instrument :  
 ECD\_P  
 ClientSampleId :  
 PB169224BSD

Integration File signal 1: autoint1.e  
 Integration File signal 2: autoint2.e  
 Quant Time: Aug 13 23:59:46 2025  
 Quant Method : Z:\pestpcbsrv\HPCHEM1\ECD\_P\methods\PP080125.M  
 Quant Title : GC EXTRACTABLES  
 QLast Update : Mon Aug 04 11:01:49 2025  
 Response via : Initial Calibration  
 Integrator: ChemStation

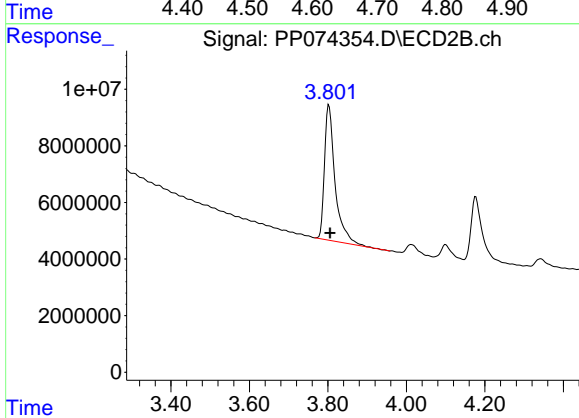
Volume Inj. : 2 µl  
 Signal #1 Phase : ZB-MR1 Signal #2 Phase: ZB-MR2  
 Signal #1 Info : 30Mx0.32mmx 0.50µ Signal #2 Info : 30M x 0.32mm x 0.25µm



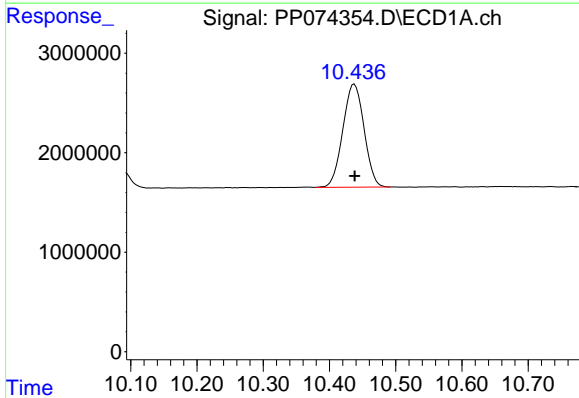


#1 Tetrachloro-m-xylene  
 R.T.: 4.659 min  
 Delta R.T.: 0.000 min  
 Response: 29387601  
 Conc: 26.28 ng/ml

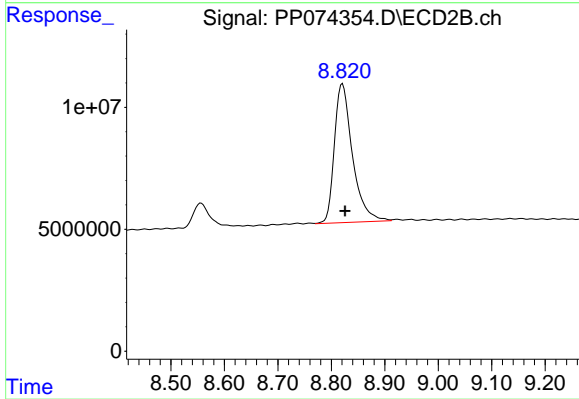
Instrument :  
 ECD\_P  
 ClientSampleId :  
 PB169224BSD



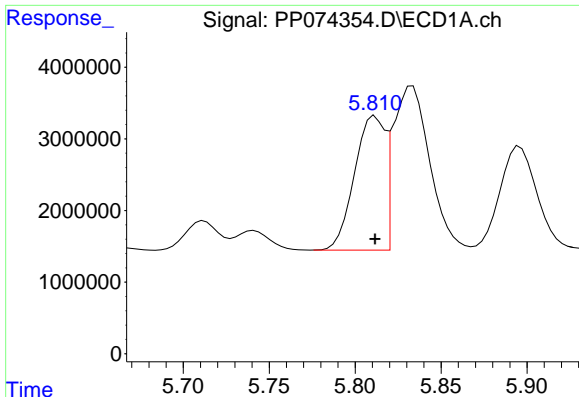
#1 Tetrachloro-m-xylene  
 R.T.: 3.803 min  
 Delta R.T.: -0.003 min  
 Response: 89688788  
 Conc: 23.39 ng/ml



#2 Decachlorobiphenyl  
 R.T.: 10.438 min  
 Delta R.T.: 0.000 min  
 Response: 23118371  
 Conc: 23.80 ng/ml



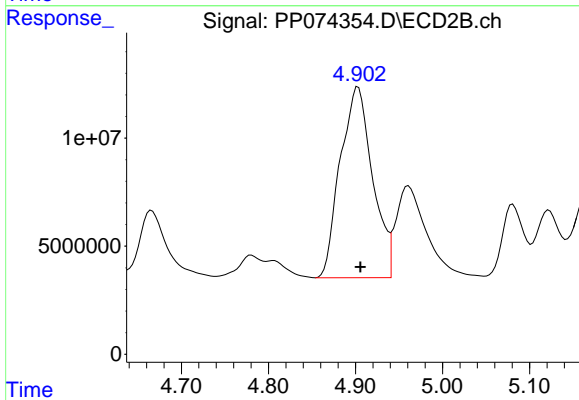
#2 Decachlorobiphenyl  
 R.T.: 8.821 min  
 Delta R.T.: -0.005 min  
 Response: 133913988  
 Conc: 22.27 ng/ml



#3 AR-1016-1

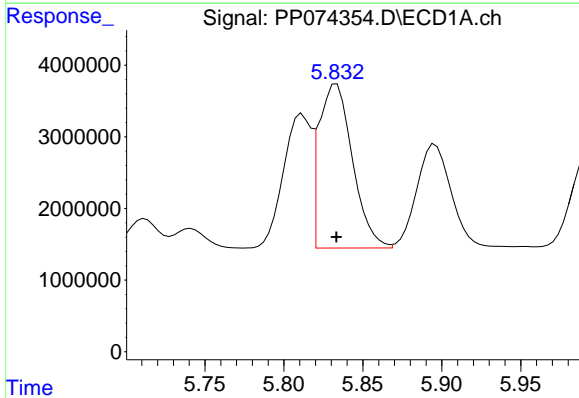
R.T.: 5.812 min  
 Delta R.T.: 0.000 min  
 Response: 22976677  
 Conc: 556.92 ng/ml

Instrument :  
 ECD\_P  
 ClientSampleId :  
 PB169224BSD



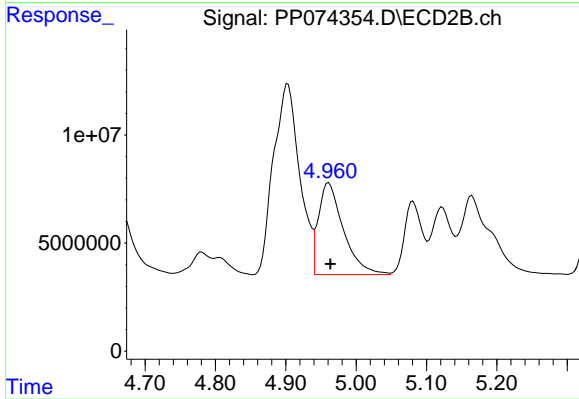
#3 AR-1016-1

R.T.: 4.903 min  
 Delta R.T.: -0.003 min  
 Response: 227832247  
 Conc: 571.17 ng/ml



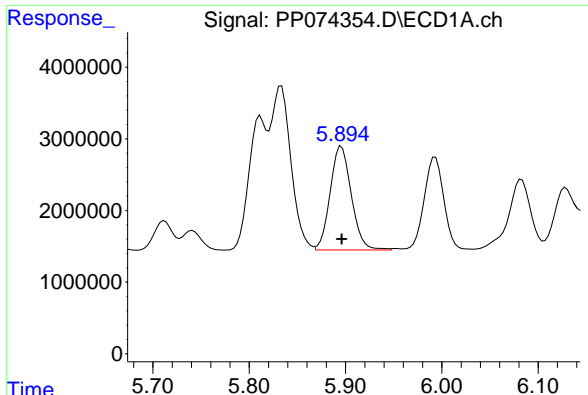
#4 AR-1016-2

R.T.: 5.833 min  
 Delta R.T.: 0.000 min  
 Response: 33955703  
 Conc: 559.02 ng/ml



#4 AR-1016-2

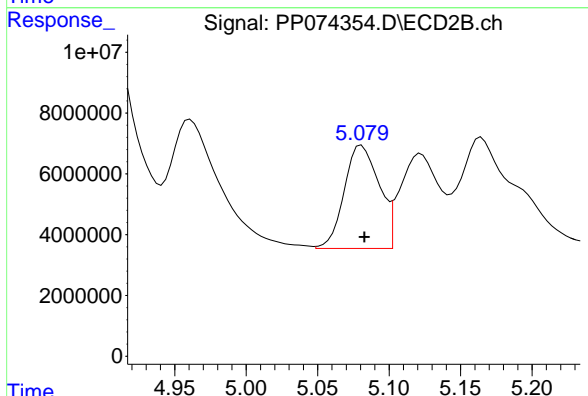
R.T.: 4.961 min  
 Delta R.T.: -0.002 min  
 Response: 104588590  
 Conc: 556.89 ng/ml



#5 AR-1016-3

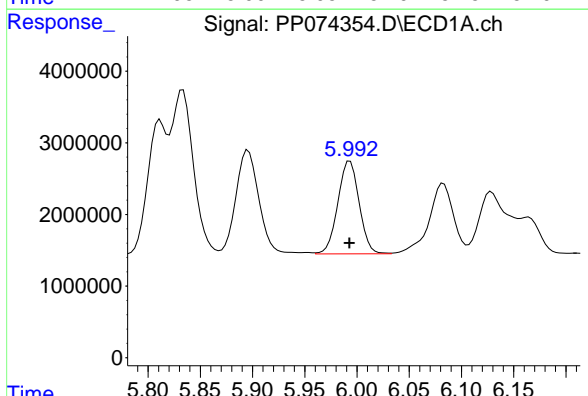
R.T.: 5.896 min  
 Delta R.T.: 0.000 min  
 Response: 22155900  
 Conc: 558.64 ng/ml

Instrument :  
 ECD\_P  
 ClientSampleId :  
 PB169224BSD



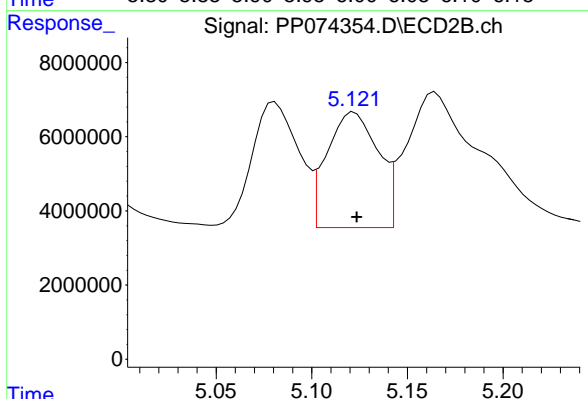
#5 AR-1016-3

R.T.: 5.081 min  
 Delta R.T.: -0.002 min  
 Response: 57620496  
 Conc: 543.23 ng/ml



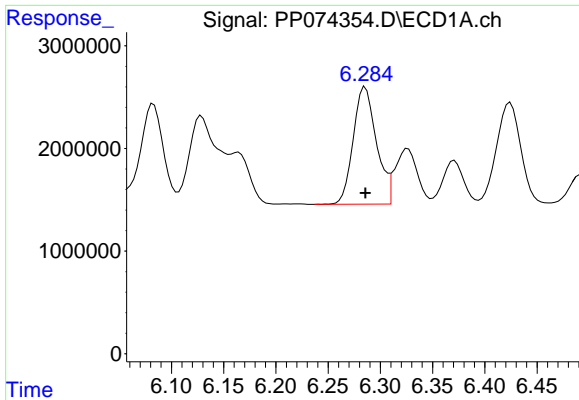
#6 AR-1016-4

R.T.: 5.993 min  
 Delta R.T.: 0.000 min  
 Response: 18360430  
 Conc: 564.16 ng/ml



#6 AR-1016-4

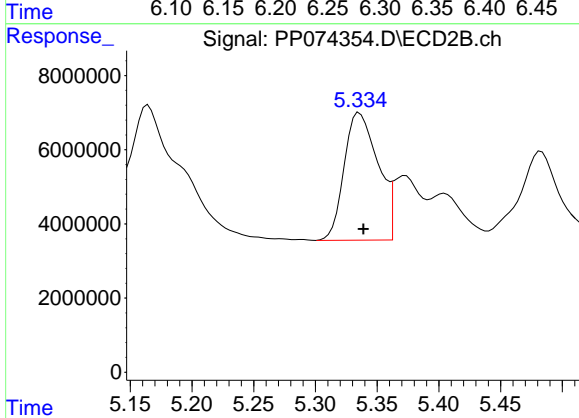
R.T.: 5.122 min  
 Delta R.T.: -0.001 min  
 Response: 57752550  
 Conc: 528.77 ng/ml



#7 AR-1016-5

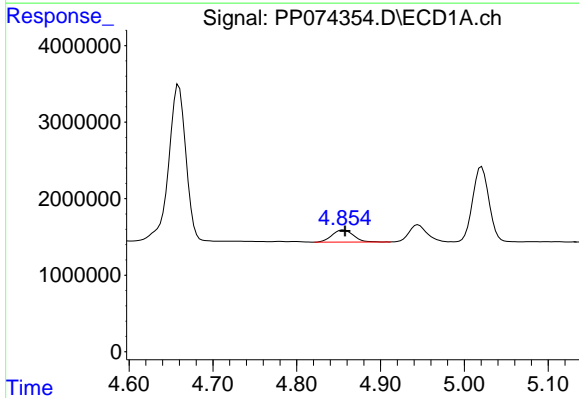
R.T.: 6.285 min  
 Delta R.T.: 0.000 min  
 Response: 17695252  
 Conc: 545.01 ng/ml

Instrument :  
 ECD\_P  
 ClientSampleId :  
 PB169224BSD



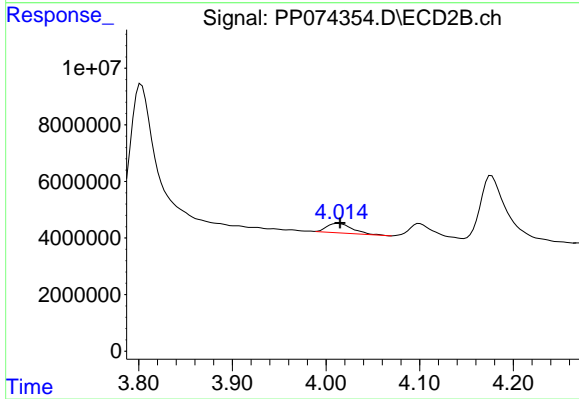
#7 AR-1016-5

R.T.: 5.336 min  
 Delta R.T.: -0.003 min  
 Response: 65572137  
 Conc: 560.62 ng/ml



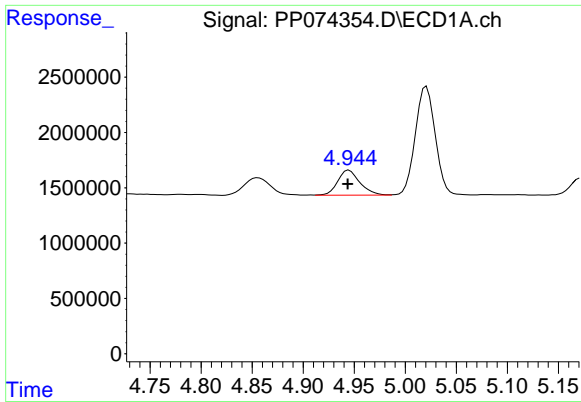
#8 AR-1221-1

R.T.: 4.856 min  
 Delta R.T.: -0.002 min  
 Response: 2829847  
 Conc: 168.81 ng/ml



#8 AR-1221-1

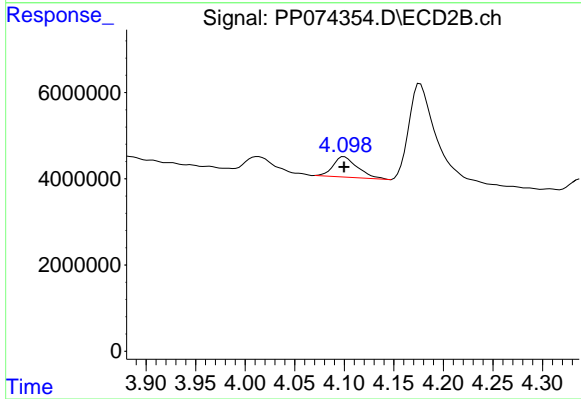
R.T.: 4.013 min  
 Delta R.T.: -0.002 min  
 Response: 6416544  
 Conc: 130.72 ng/ml



#9 AR-1221-2

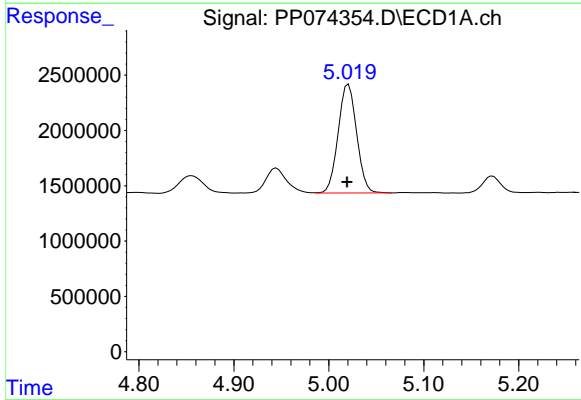
R.T.: 4.945 min  
 Delta R.T.: 0.001 min  
 Response: 3397677  
 Conc: 269.63 ng/ml

Instrument :  
 ECD\_P  
 ClientSampleId :  
 PB169224BSD



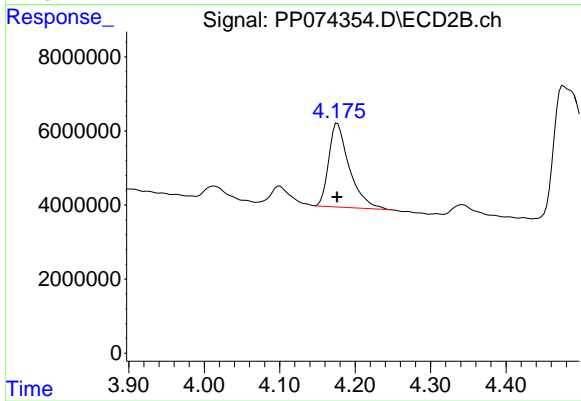
#9 AR-1221-2

R.T.: 4.100 min  
 Delta R.T.: 0.000 min  
 Response: 8195486  
 Conc: 228.35 ng/ml



#10 AR-1221-3

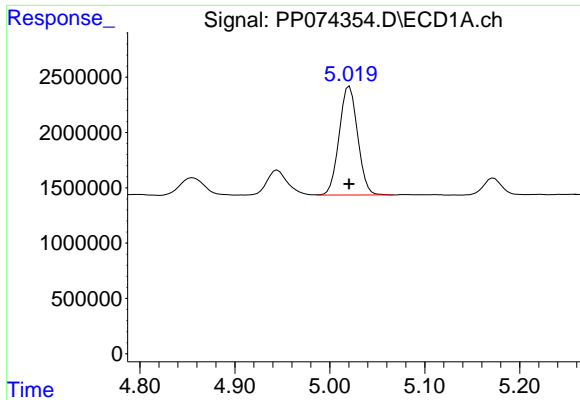
R.T.: 5.021 min  
 Delta R.T.: 0.001 min  
 Response: 13319025  
 Conc: 363.56 ng/ml



#10 AR-1221-3

R.T.: 4.177 min  
 Delta R.T.: 0.000 min  
 Response: 42201629  
 Conc: 312.09 ng/ml

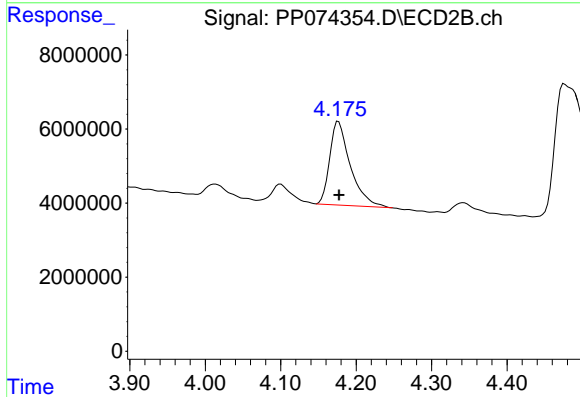




#11 AR-1232-1

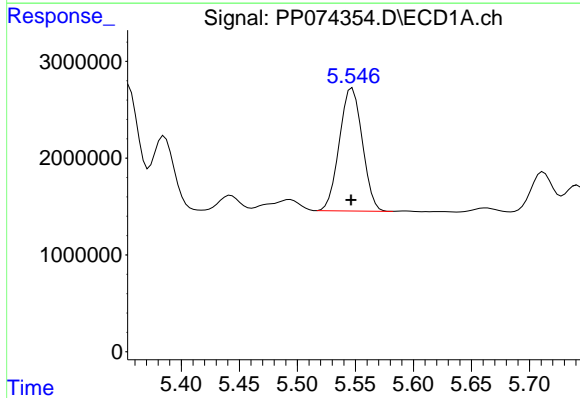
R.T.: 5.021 min  
 Delta R.T.: 0.000 min  
 Response: 13319025  
 Conc: 458.69 ng/ml

Instrument :  
 ECD\_P  
 ClientSampleId :  
 PB169224BSD



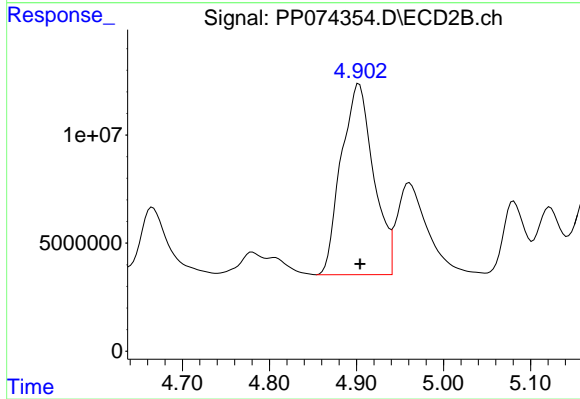
#11 AR-1232-1

R.T.: 4.177 min  
 Delta R.T.: 0.000 min  
 Response: 42201629  
 Conc: 416.34 ng/ml



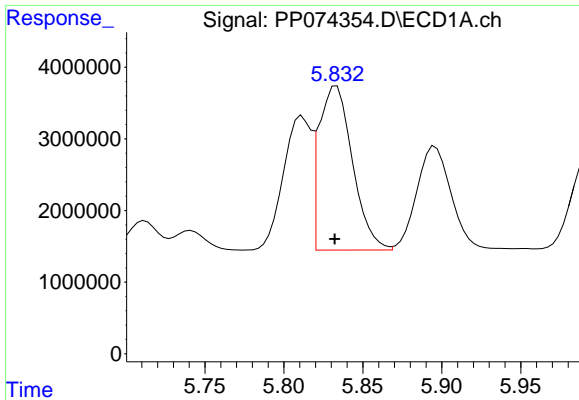
#12 AR-1232-2

R.T.: 5.547 min  
 Delta R.T.: 0.001 min  
 Response: 17495681  
 Conc: 1163.07 ng/ml



#12 AR-1232-2

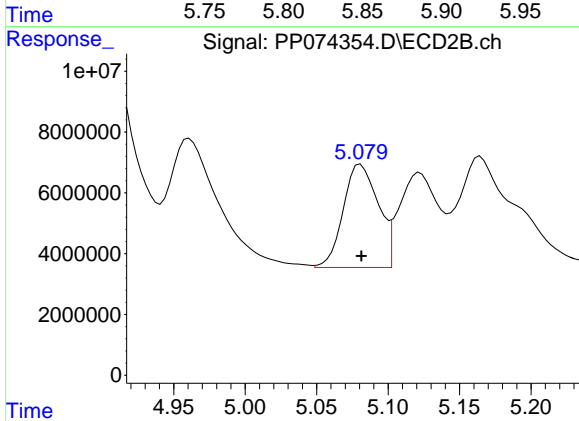
R.T.: 4.903 min  
 Delta R.T.: -0.001 min  
 Response: 227832247  
 Conc: 1307.38 ng/ml



#13 AR-1232-3

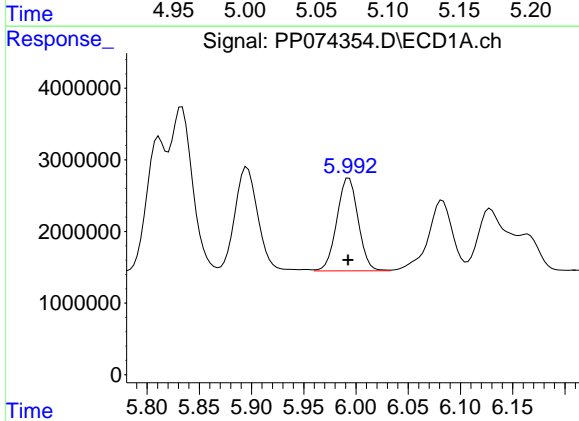
R.T.: 5.833 min  
 Delta R.T.: 0.001 min  
 Response: 33955703  
 Conc: 1170.82 ng/ml

Instrument :  
 ECD\_P  
 ClientSampleId :  
 PB169224BSD



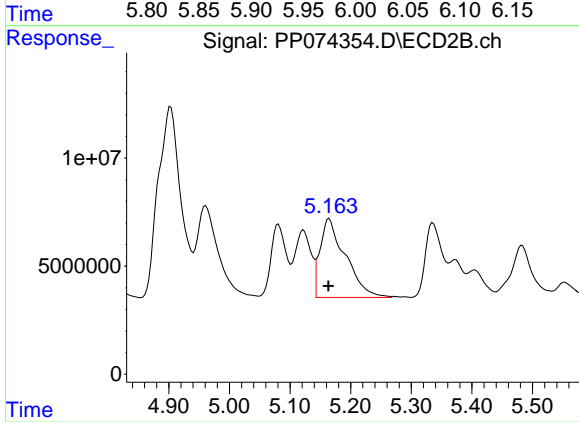
#13 AR-1232-3

R.T.: 5.081 min  
 Delta R.T.: 0.000 min  
 Response: 57620496  
 Conc: 1257.63 ng/ml



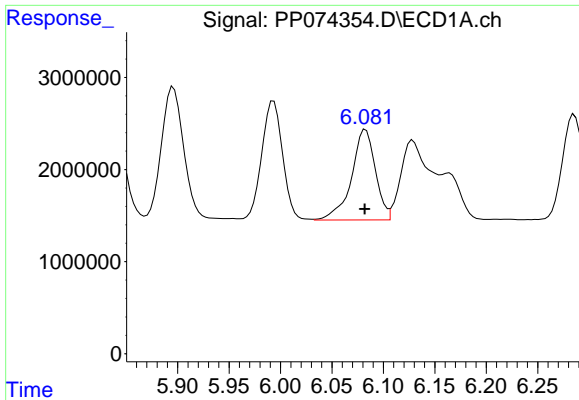
#14 AR-1232-4

R.T.: 5.993 min  
 Delta R.T.: 0.000 min  
 Response: 18360430  
 Conc: 1186.93 ng/ml



#14 AR-1232-4

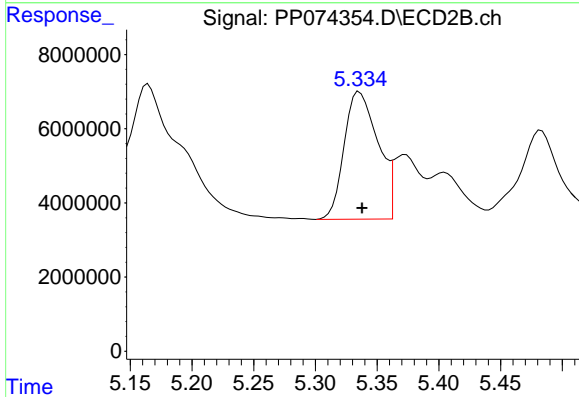
R.T.: 5.165 min  
 Delta R.T.: 0.001 min  
 Response: 106088606  
 Conc: 1828.78 ng/ml



#15 AR-1232-5

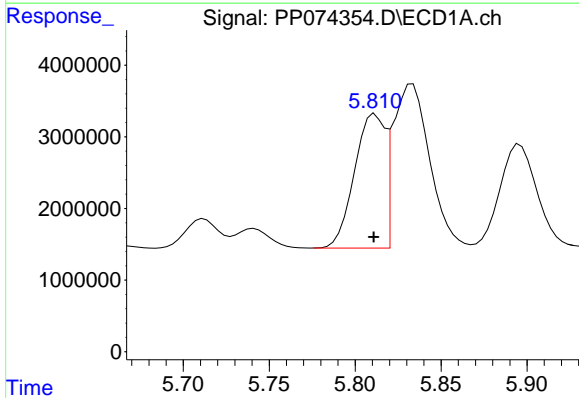
R.T.: 6.083 min  
 Delta R.T.: 0.000 min  
 Response: 15920006  
 Conc: 1358.82 ng/ml

Instrument :  
 ECD\_P  
 ClientSampleId :  
 PB169224BSD



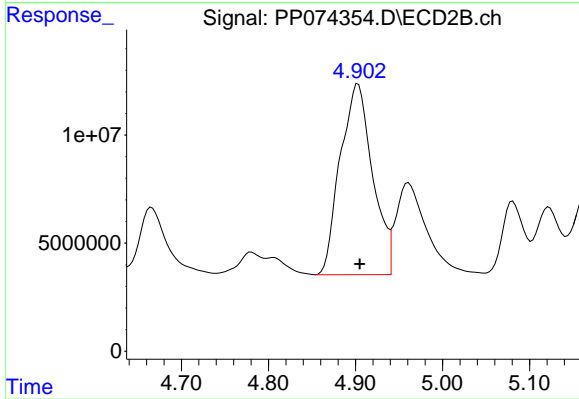
#15 AR-1232-5

R.T.: 5.336 min  
 Delta R.T.: -0.002 min  
 Response: 65572137  
 Conc: 1395.76 ng/ml



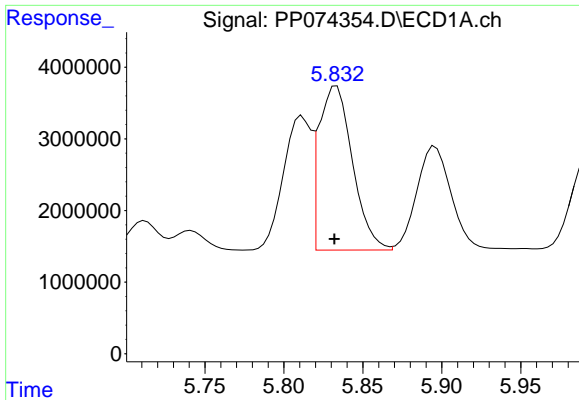
#16 AR-1242-1

R.T.: 5.812 min  
 Delta R.T.: 0.000 min  
 Response: 22976677  
 Conc: 616.56 ng/ml



#16 AR-1242-1

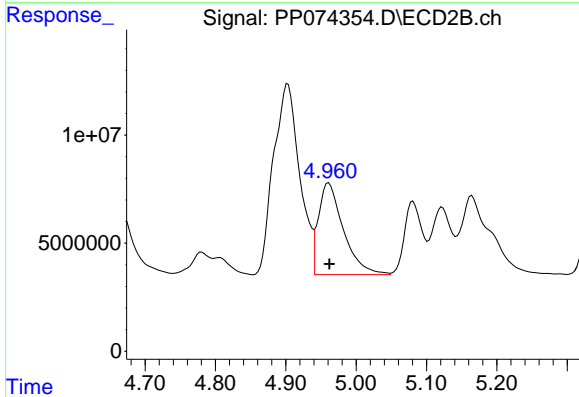
R.T.: 4.903 min  
 Delta R.T.: -0.002 min  
 Response: 227832247  
 Conc: 660.11 ng/ml



#17 AR-1242-2

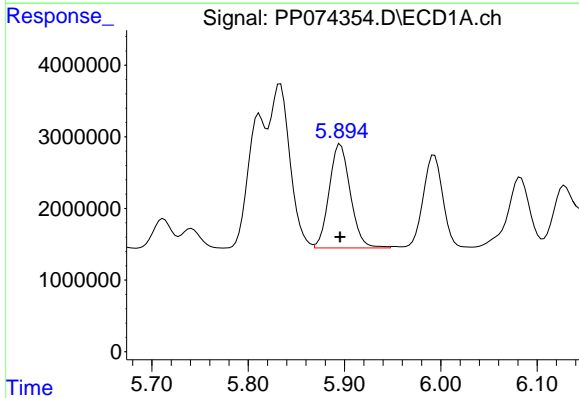
R.T.: 5.833 min  
 Delta R.T.: 0.001 min  
 Response: 33955703  
 Conc: 624.08 ng/ml

Instrument :  
 ECD\_P  
 ClientSampleId :  
 PB169224BSD



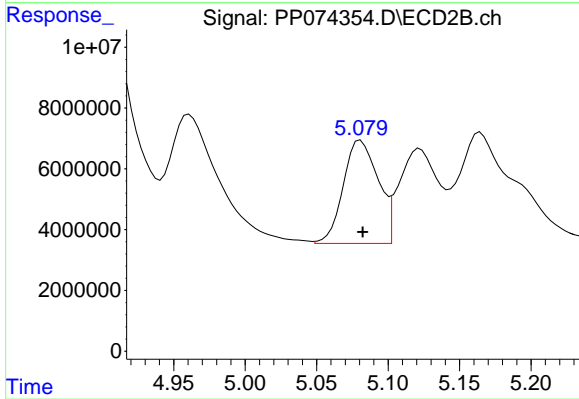
#17 AR-1242-2

R.T.: 4.961 min  
 Delta R.T.: -0.001 min  
 Response: 104588590  
 Conc: 640.16 ng/ml



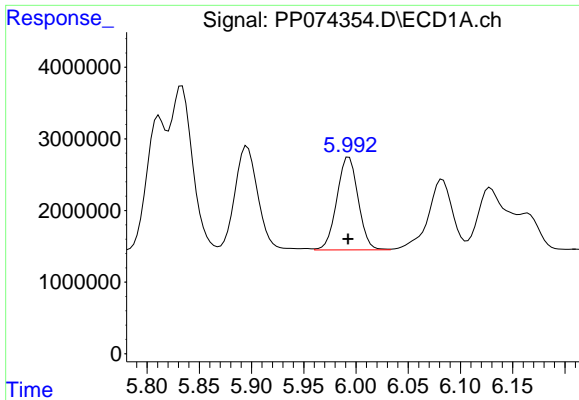
#18 AR-1242-3

R.T.: 5.896 min  
 Delta R.T.: 0.000 min  
 Response: 22155900  
 Conc: 619.99 ng/ml



#18 AR-1242-3

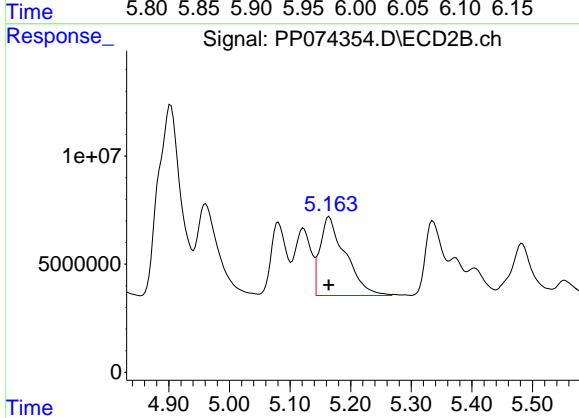
R.T.: 5.081 min  
 Delta R.T.: -0.001 min  
 Response: 57620496  
 Conc: 624.62 ng/ml



#19 AR-1242-4

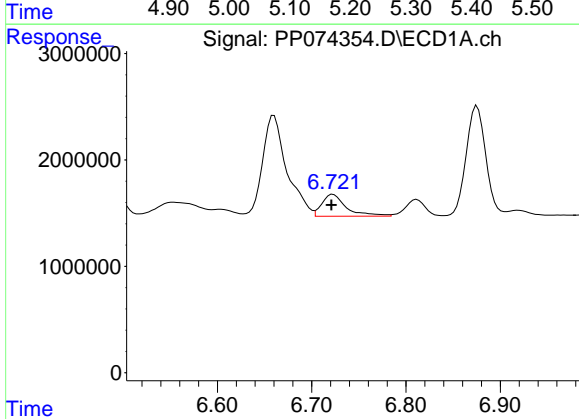
R.T.: 5.993 min  
 Delta R.T.: 0.000 min  
 Response: 18360430  
 Conc: 628.38 ng/ml

Instrument :  
 ECD\_P  
 ClientSampleId :  
 PB169224BSD



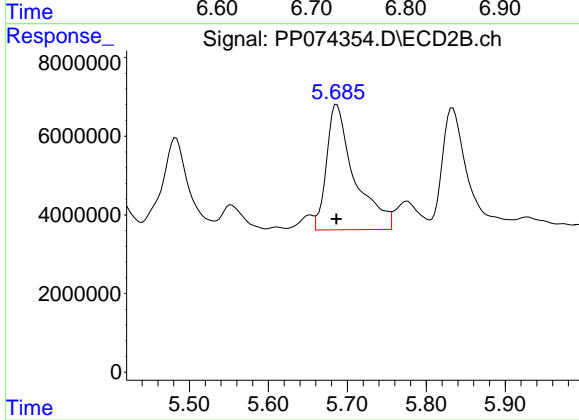
#19 AR-1242-4

R.T.: 5.165 min  
 Delta R.T.: 0.000 min  
 Response: 106088606  
 Conc: 888.35 ng/ml



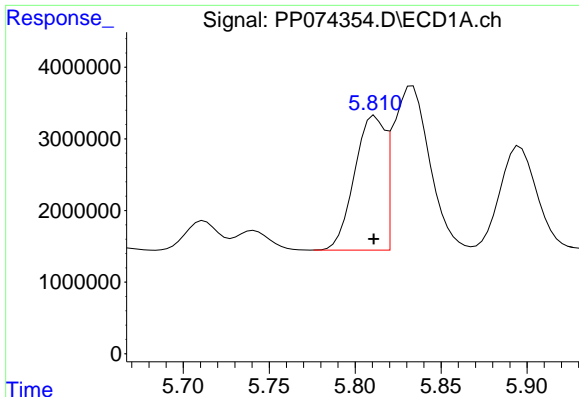
#20 AR-1242-5

R.T.: 6.723 min  
 Delta R.T.: 0.002 min  
 Response: 3714376  
 Conc: 104.46 ng/ml



#20 AR-1242-5

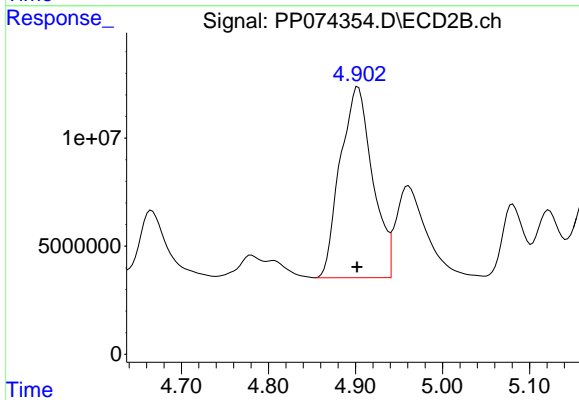
R.T.: 5.687 min  
 Delta R.T.: 0.000 min  
 Response: 78340828  
 Conc: 523.81 ng/ml



#21 AR-1248-1

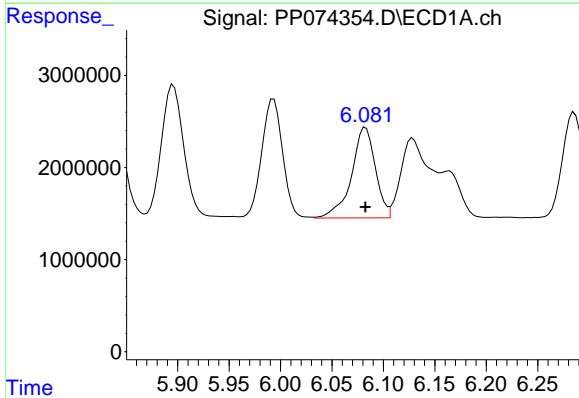
R.T.: 5.812 min  
 Delta R.T.: 0.000 min  
 Response: 22976677  
 Conc: 820.17 ng/ml

Instrument :  
 ECD\_P  
 ClientSampleId :  
 PB169224BSD



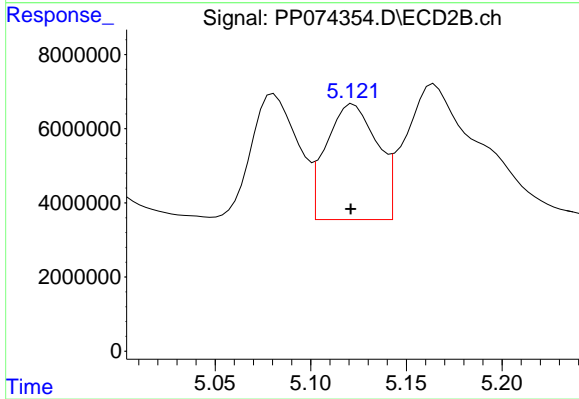
#21 AR-1248-1

R.T.: 4.903 min  
 Delta R.T.: 0.001 min  
 Response: 227832247  
 Conc: 1064.98 ng/ml



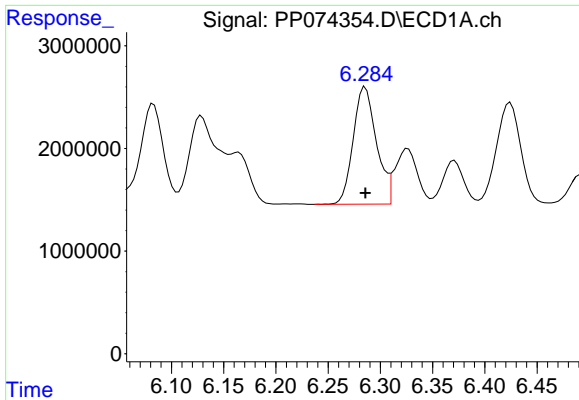
#22 AR-1248-2

R.T.: 6.083 min  
 Delta R.T.: 0.000 min  
 Response: 15920006  
 Conc: 395.42 ng/ml



#22 AR-1248-2

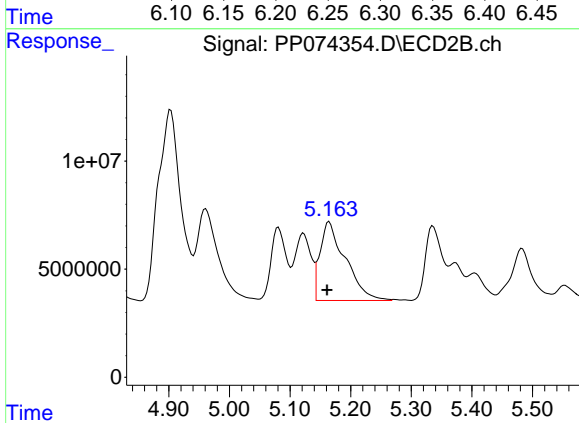
R.T.: 5.122 min  
 Delta R.T.: 0.001 min  
 Response: 57752550  
 Conc: 394.72 ng/ml



#23 AR-1248-3

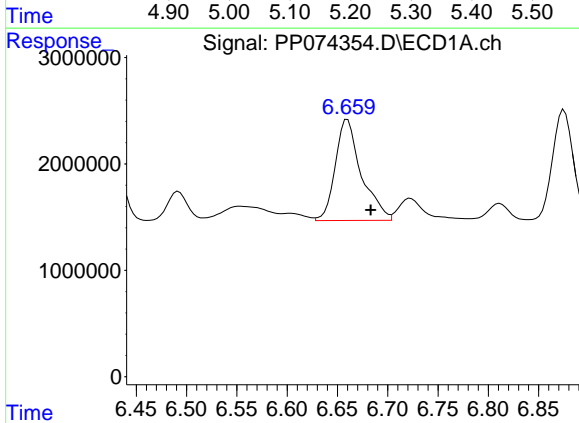
R.T.: 6.285 min  
 Delta R.T.: 0.000 min  
 Response: 17695252  
 Conc: 396.99 ng/ml

Instrument :  
 ECD\_P  
 ClientSampleId :  
 PB169224BSD



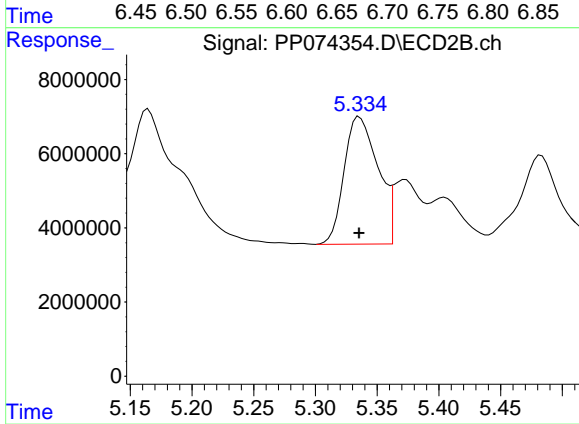
#23 AR-1248-3

R.T.: 5.165 min  
 Delta R.T.: 0.003 min  
 Response: 106088606  
 Conc: 618.74 ng/ml



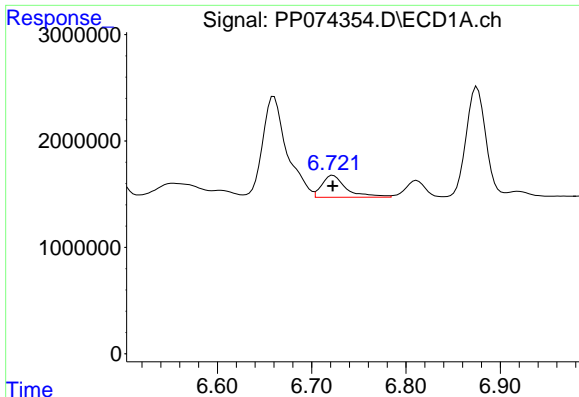
#24 AR-1248-4

R.T.: 6.660 min  
 Delta R.T.: -0.023 min  
 Response: 17094811  
 Conc: 328.51 ng/ml



#24 AR-1248-4

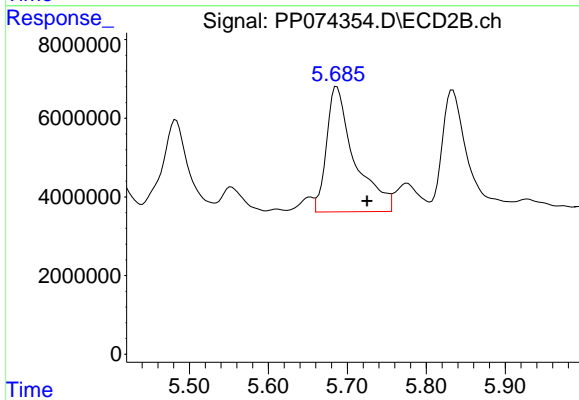
R.T.: 5.336 min  
 Delta R.T.: 0.000 min  
 Response: 65572137  
 Conc: 394.13 ng/ml



#25 AR-1248-5

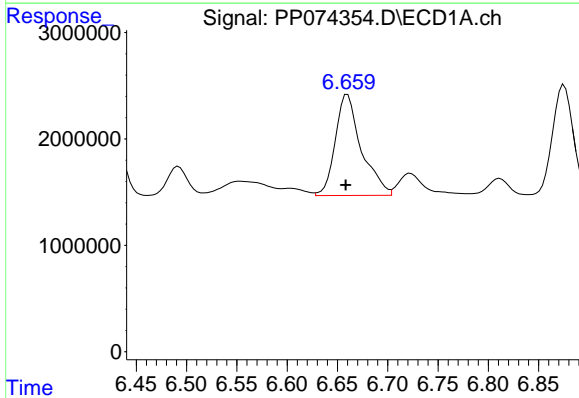
R.T.: 6.723 min  
 Delta R.T.: 0.000 min  
 Response: 3714376  
 Conc: 65.23 ng/ml

Instrument :  
 ECD\_P  
 ClientSampleId :  
 PB169224BSD



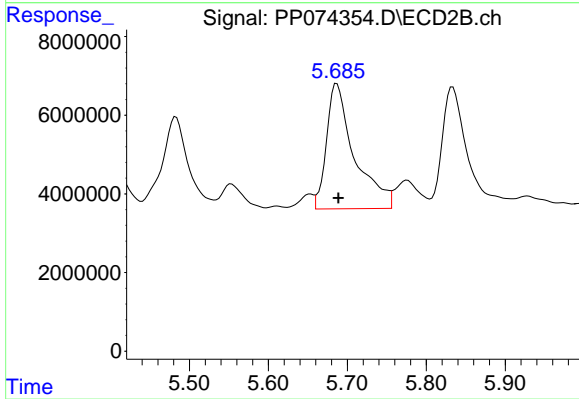
#25 AR-1248-5

R.T.: 5.687 min  
 Delta R.T.: -0.038 min  
 Response: 78340828  
 Conc: 269.24 ng/ml



#26 AR-1254-1

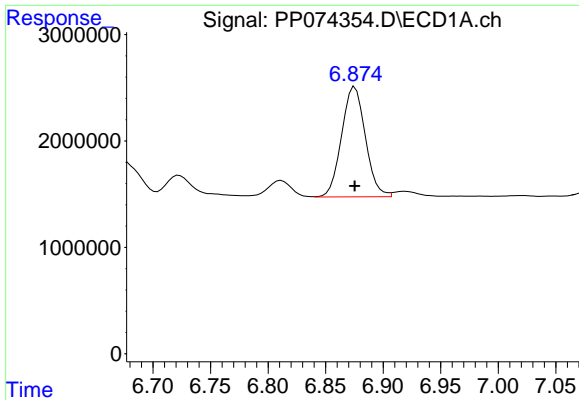
R.T.: 6.660 min  
 Delta R.T.: 0.002 min  
 Response: 17094811  
 Conc: 324.74 ng/ml



#26 AR-1254-1

R.T.: 5.687 min  
 Delta R.T.: -0.002 min  
 Response: 78340828  
 Conc: 213.94 ng/ml

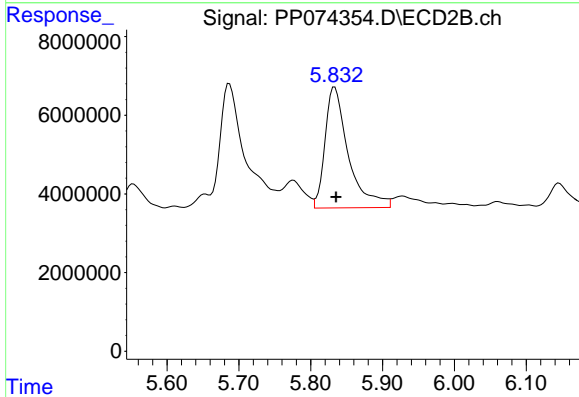




#27 AR-1254-2

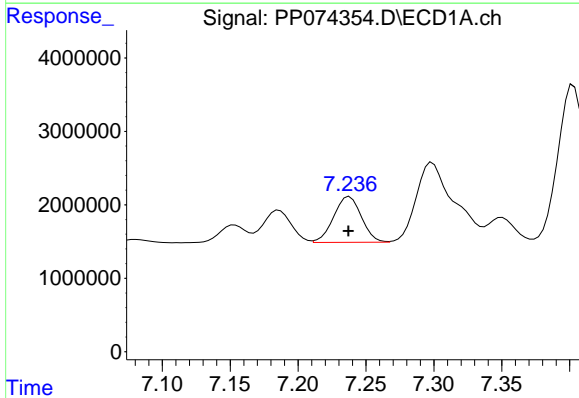
R.T.: 6.875 min  
 Delta R.T.: 0.000 min  
 Response: 14947227  
 Conc: 188.00 ng/ml

Instrument :  
 ECD\_P  
 ClientSampleId :  
 PB169224BSD



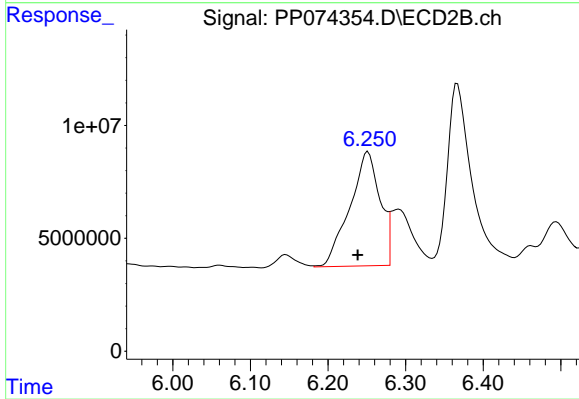
#27 AR-1254-2

R.T.: 5.833 min  
 Delta R.T.: -0.002 min  
 Response: 69384103  
 Conc: 249.39 ng/ml



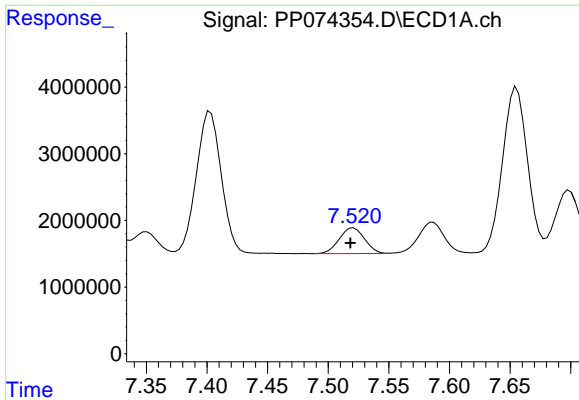
#28 AR-1254-3

R.T.: 7.238 min  
 Delta R.T.: 0.000 min  
 Response: 8849540  
 Conc: 101.35 ng/ml



#28 AR-1254-3

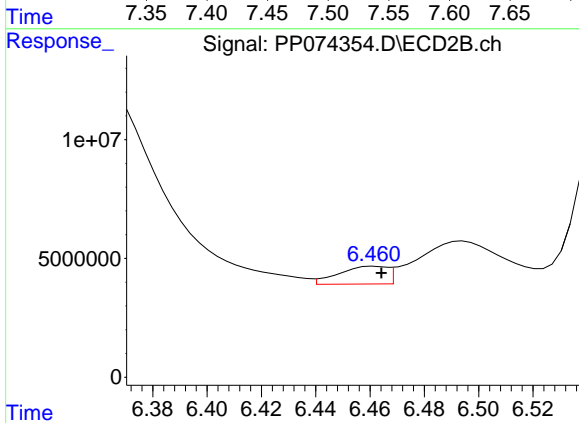
R.T.: 6.252 min  
 Delta R.T.: 0.013 min  
 Response: 136390233  
 Conc: 278.80 ng/ml



#29 AR-1254-4

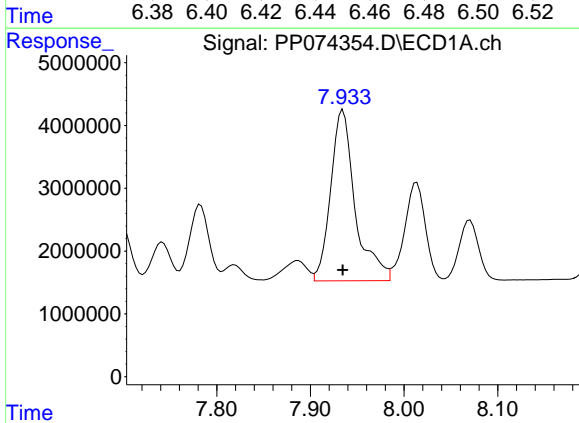
R.T.: 7.521 min  
 Delta R.T.: 0.003 min  
 Response: 5580718  
 Conc: 87.46 ng/ml

Instrument :  
 ECD\_P  
 ClientSampleId :  
 PB169224BSD



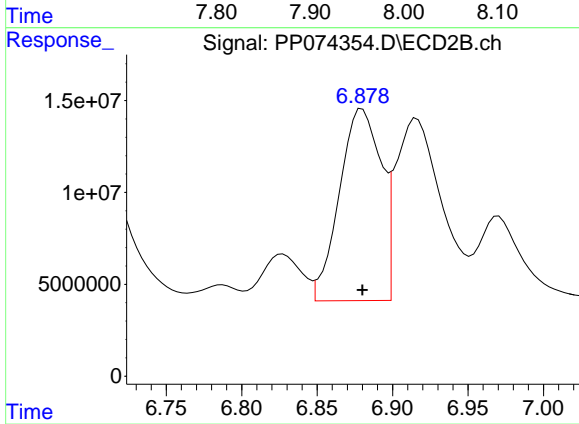
#29 AR-1254-4

R.T.: 6.462 min  
 Delta R.T.: -0.003 min  
 Response: 9243871  
 Conc: 25.15 ng/ml



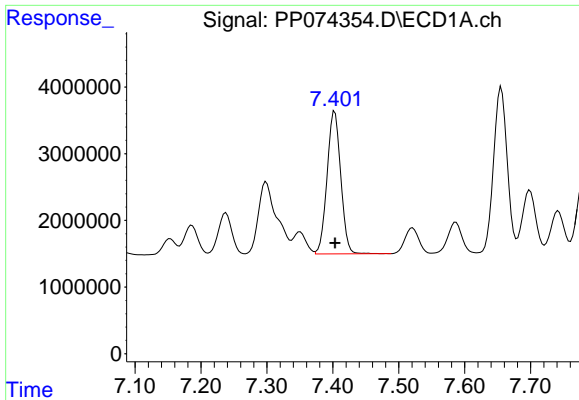
#30 AR-1254-5

R.T.: 7.935 min  
 Delta R.T.: 0.000 min  
 Response: 49507753  
 Conc: 610.12 ng/ml



#30 AR-1254-5

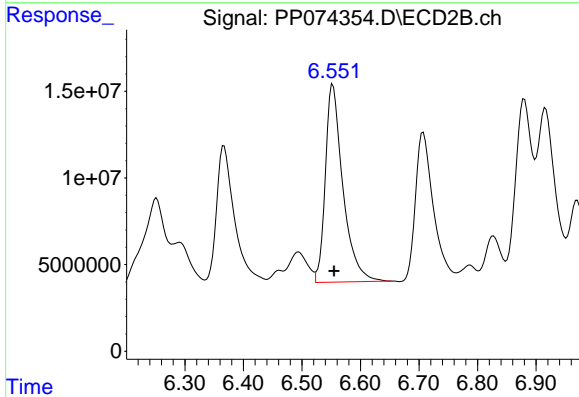
R.T.: 6.880 min  
 Delta R.T.: 0.000 min  
 Response: 199743625  
 Conc: 518.59 ng/ml



#31 AR-1260-1

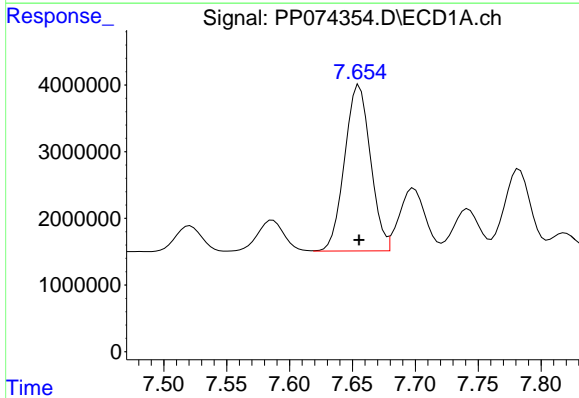
R.T.: 7.403 min  
 Delta R.T.: 0.000 min  
 Response: 30802448  
 Conc: 546.57 ng/ml

Instrument :  
 ECD\_P  
 ClientSampleId :  
 PB169224BSD



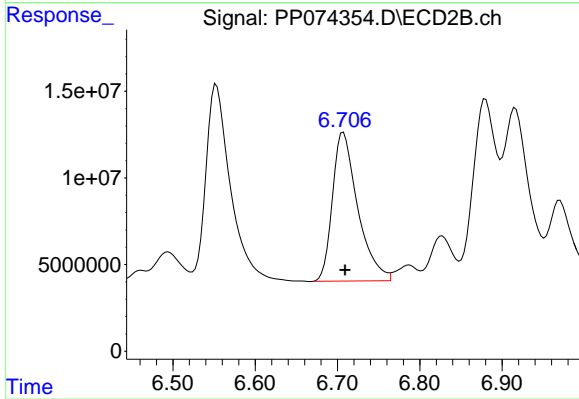
#31 AR-1260-1

R.T.: 6.553 min  
 Delta R.T.: -0.002 min  
 Response: 237900932  
 Conc: 588.93 ng/ml



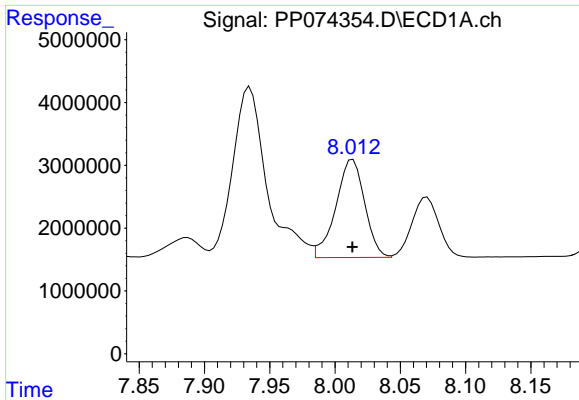
#32 AR-1260-2

R.T.: 7.655 min  
 Delta R.T.: 0.000 min  
 Response: 35694331  
 Conc: 523.74 ng/ml



#32 AR-1260-2

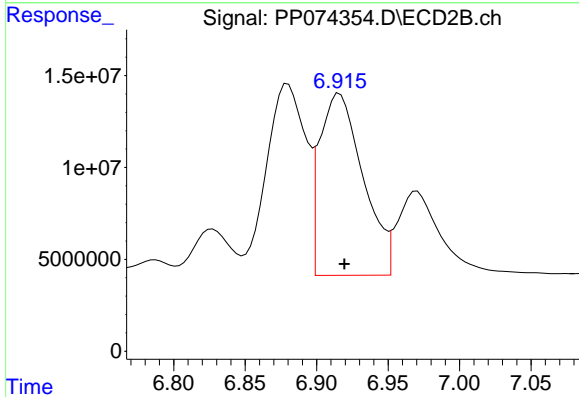
R.T.: 6.707 min  
 Delta R.T.: -0.002 min  
 Response: 183063984  
 Conc: 585.43 ng/ml



#33 AR-1260-3

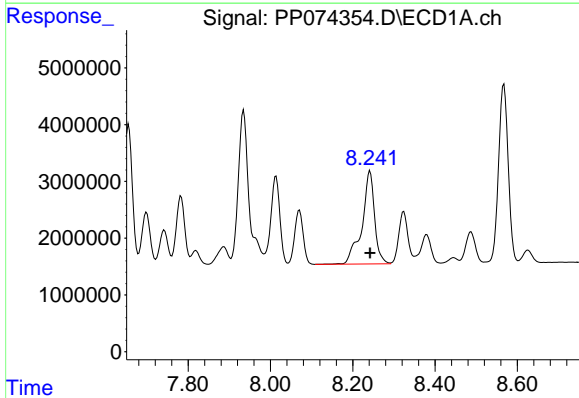
R.T.: 8.014 min  
 Delta R.T.: 0.000 min  
 Response: 24021194  
 Conc: 450.71 ng/ml

Instrument :  
 ECD\_P  
 ClientSampleId :  
 PB169224BSD



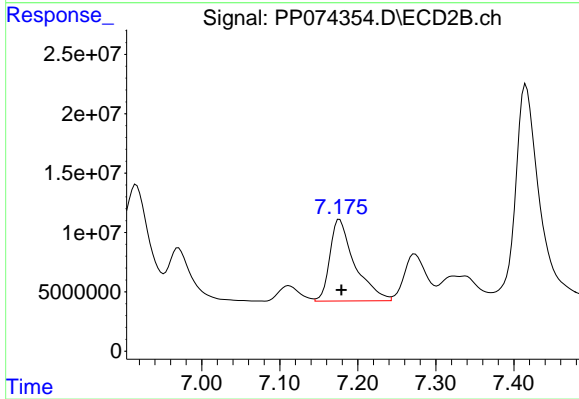
#33 AR-1260-3

R.T.: 6.916 min  
 Delta R.T.: -0.003 min  
 Response: 209183216  
 Conc: 530.76 ng/ml



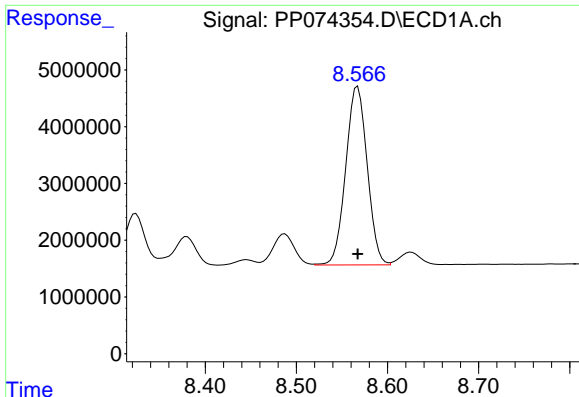
#34 AR-1260-4

R.T.: 8.242 min  
 Delta R.T.: 0.000 min  
 Response: 34879499  
 Conc: 557.05 ng/ml



#34 AR-1260-4

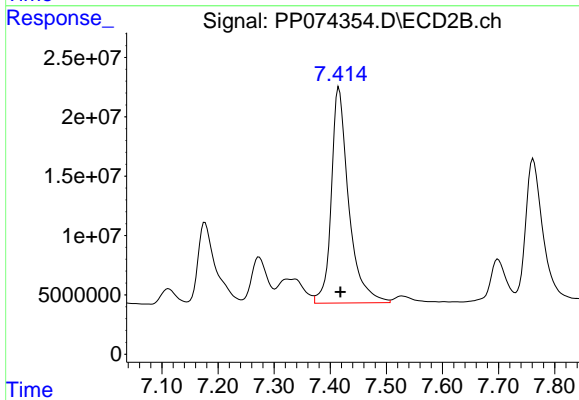
R.T.: 7.177 min  
 Delta R.T.: -0.002 min  
 Response: 151769193  
 Conc: 521.58 ng/ml



#35 AR-1260-5

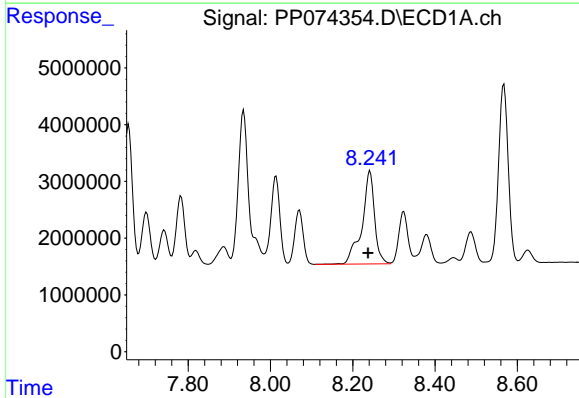
R.T.: 8.567 min  
 Delta R.T.: 0.000 min  
 Response: 51415528  
 Conc: 453.78 ng/ml

Instrument :  
 ECD\_P  
 ClientSampleId :  
 PB169224BSD



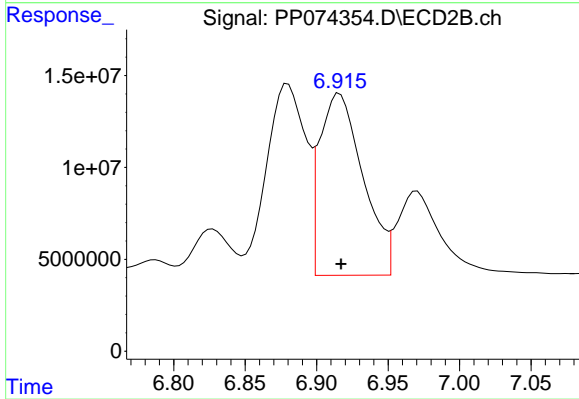
#35 AR-1260-5

R.T.: 7.416 min  
 Delta R.T.: -0.003 min  
 Response: 391674785  
 Conc: 517.12 ng/ml



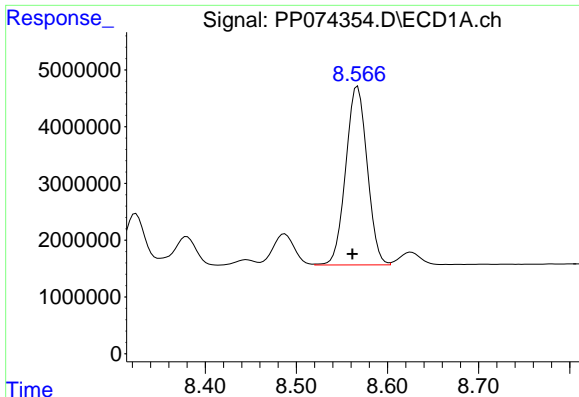
#36 AR-1262-1

R.T.: 8.242 min  
 Delta R.T.: 0.004 min  
 Response: 34879499  
 Conc: 460.21 ng/ml



#36 AR-1262-1

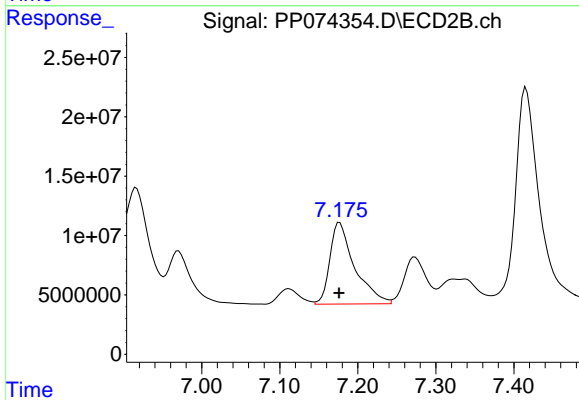
R.T.: 6.916 min  
 Delta R.T.: -0.001 min  
 Response: 209183216  
 Conc: 371.46 ng/ml



#37 AR-1262-2

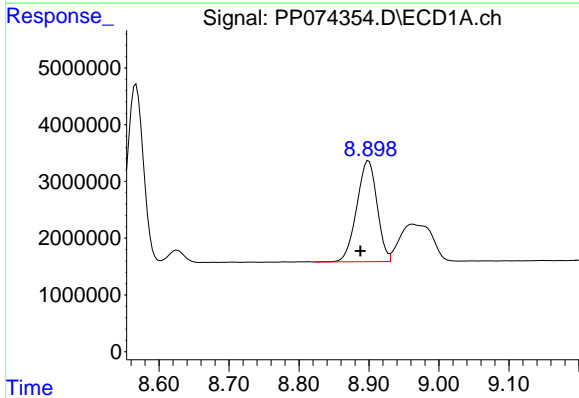
R.T.: 8.567 min  
Delta R.T.: 0.006 min  
Response: 51415528  
Conc: 394.20 ng/ml

Instrument :  
ECD\_P  
ClientSampleId :  
PB169224BSD



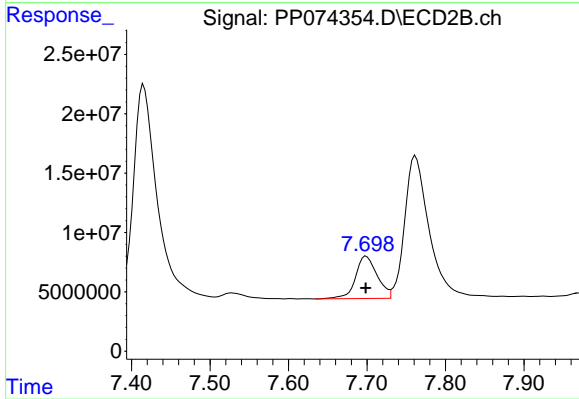
#37 AR-1262-2

R.T.: 7.177 min  
Delta R.T.: 0.000 min  
Response: 151769193  
Conc: 378.45 ng/ml



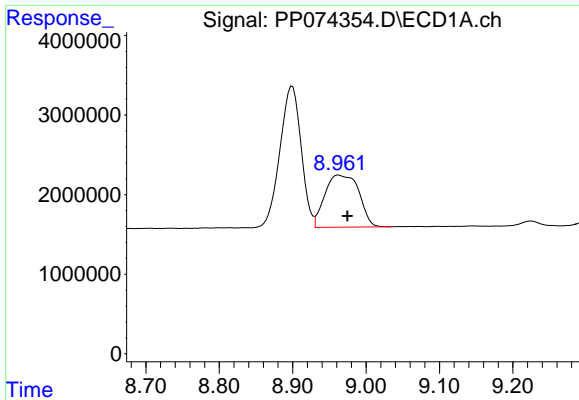
#38 AR-1262-3

R.T.: 8.900 min  
Delta R.T.: 0.011 min  
Response: 35792715  
Conc: 380.49 ng/ml



#38 AR-1262-3

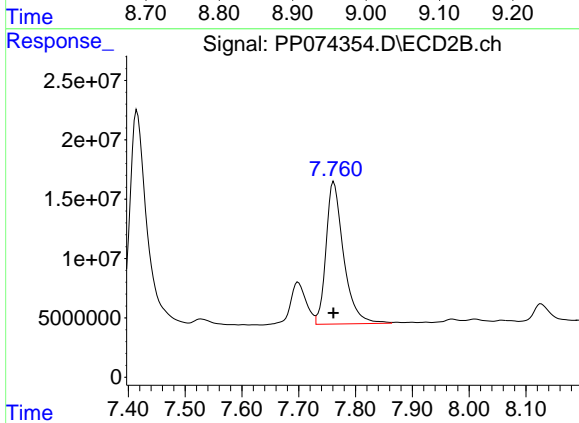
R.T.: 7.699 min  
Delta R.T.: 0.000 min  
Response: 68343721  
Conc: 190.12 ng/ml



#39 AR-1262-4

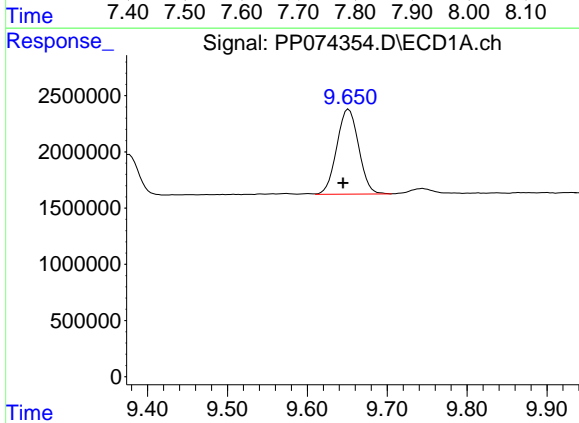
R.T.: 8.963 min  
 Delta R.T.: -0.012 min  
 Response: 21143097  
 Conc: 290.22 ng/ml

Instrument :  
 ECD\_P  
 ClientSampleId :  
 PB169224BSD



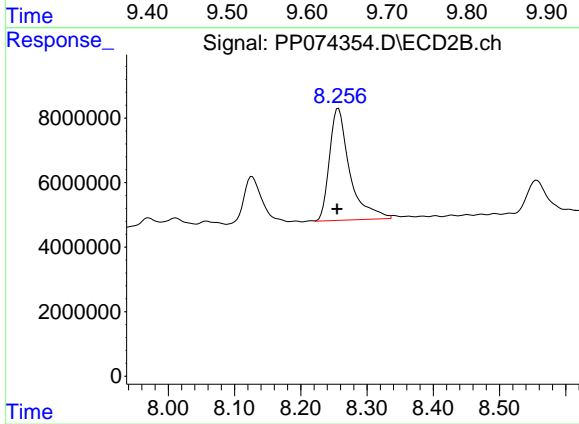
#39 AR-1262-4

R.T.: 7.762 min  
 Delta R.T.: 0.000 min  
 Response: 257958241  
 Conc: 386.79 ng/ml



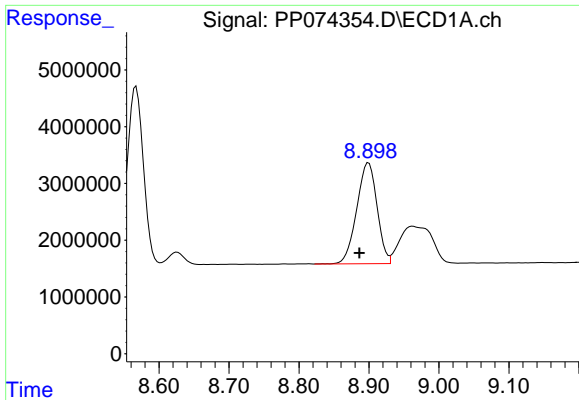
#40 AR-1262-5

R.T.: 9.652 min  
 Delta R.T.: 0.007 min  
 Response: 14404412  
 Conc: 282.87 ng/ml



#40 AR-1262-5

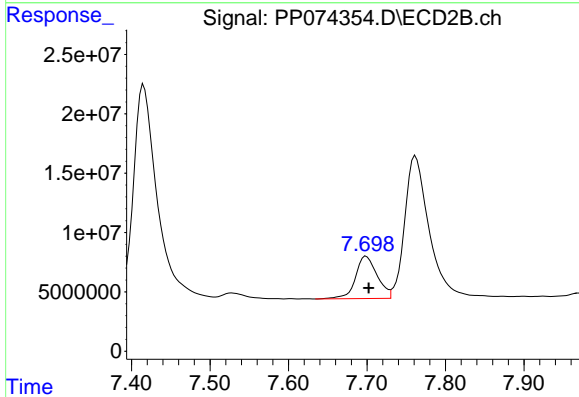
R.T.: 8.257 min  
 Delta R.T.: 0.002 min  
 Response: 73799552  
 Conc: 260.53 ng/ml



#41 AR-1268-1

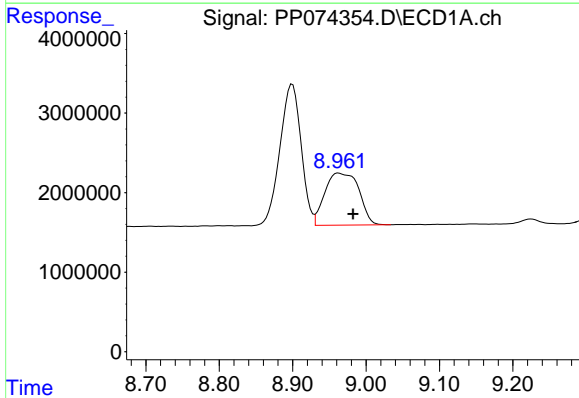
R.T.: 8.900 min  
 Delta R.T.: 0.013 min  
 Response: 35792715  
 Conc: 229.98 ng/ml

Instrument :  
 ECD\_P  
 ClientSampleId :  
 PB169224BSD



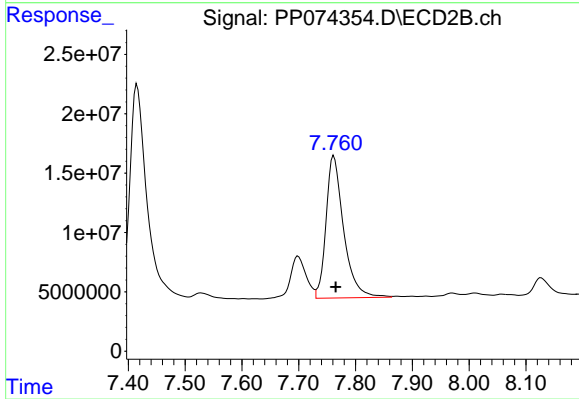
#41 AR-1268-1

R.T.: 7.699 min  
 Delta R.T.: -0.003 min  
 Response: 68343721  
 Conc: 62.69 ng/ml



#42 AR-1268-2

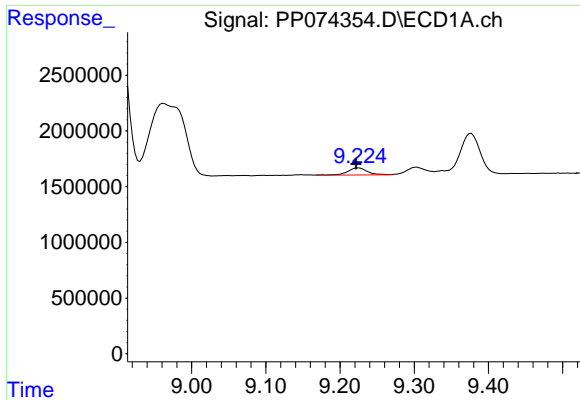
R.T.: 8.963 min  
 Delta R.T.: -0.020 min  
 Response: 21143097  
 Conc: 147.41 ng/ml



#42 AR-1268-2

R.T.: 7.762 min  
 Delta R.T.: -0.003 min  
 Response: 257958241  
 Conc: 243.05 ng/ml

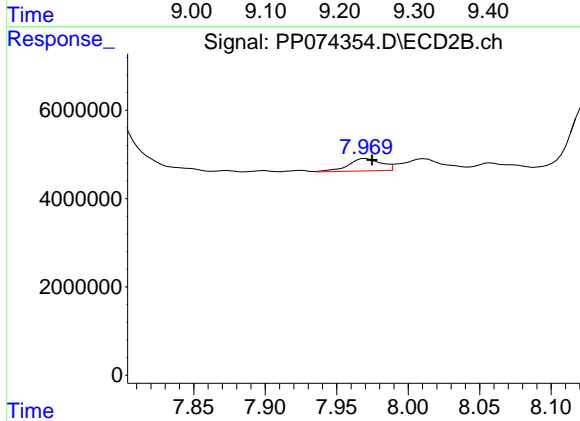




#43 AR-1268-3

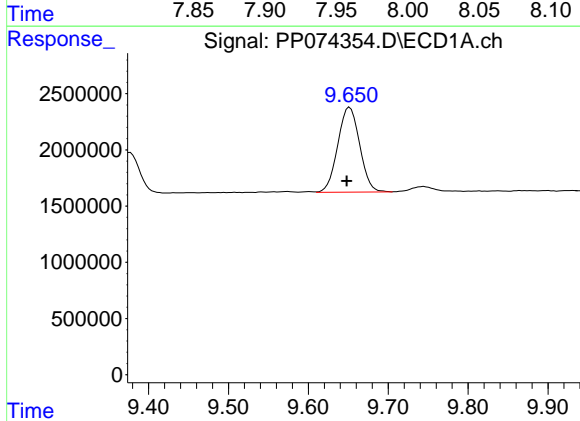
R.T.: 9.225 min  
 Delta R.T.: 0.003 min  
 Response: 1140098  
 Conc: 9.54 ng/ml

Instrument :  
 ECD\_P  
 ClientSampleId :  
 PB169224BSD



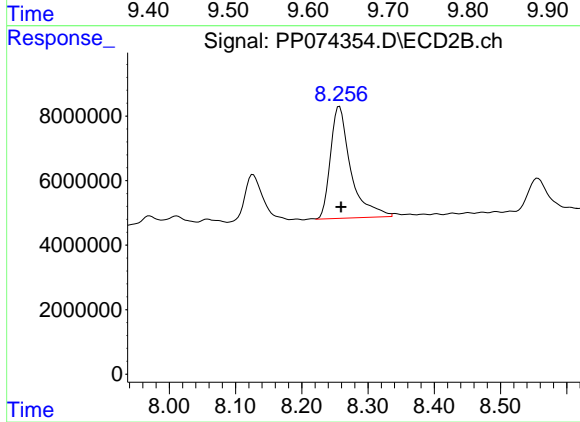
#43 AR-1268-3

R.T.: 7.970 min  
 Delta R.T.: -0.005 min  
 Response: 4445732  
 Conc: 5.34 ng/ml



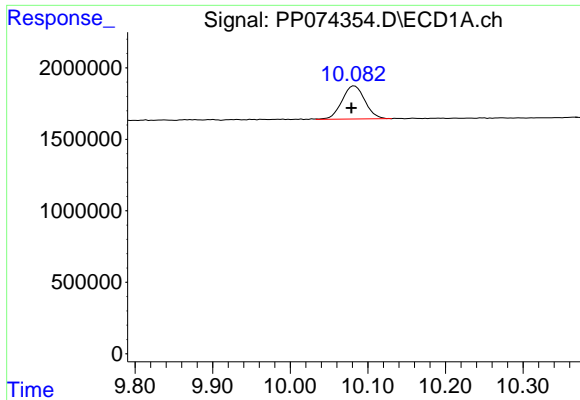
#44 AR-1268-4

R.T.: 9.652 min  
 Delta R.T.: 0.004 min  
 Response: 14404412  
 Conc: 244.92 ng/ml



#44 AR-1268-4

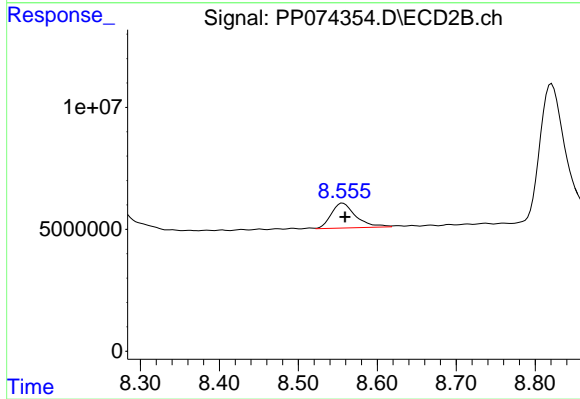
R.T.: 8.257 min  
 Delta R.T.: -0.002 min  
 Response: 73799552  
 Conc: 239.56 ng/ml



#45 AR-1268-5

R.T.: 10.083 min  
Delta R.T.: 0.004 min  
Response: 4739093  
Conc: 13.47 ng/ml

Instrument :  
ECD\_P  
ClientSampleId :  
PB169224BSD



#45 AR-1268-5

R.T.: 8.556 min  
Delta R.T.: -0.003 min  
Response: 22028237  
Conc: 8.64 ng/ml