

Data Path : Z:\pestpcbsrv\HPCHEM1\ECD_P\Data\PP081325\
 Data File : PP074356.D
 Signal(s) : Signal #1: ECD1A.ch Signal #2: ECD2B.ch
 Acq On : 13 Aug 2025 18:04
 Operator : YP\AJ
 Sample : Q2815-23
 Misc :
 ALS Vial : 20 Sample Multiplier: 1

Instrument :
 ECD_P
 ClientSampleId :
 TW-11M-N

Integration File signal 1: autoint1.e
 Integration File signal 2: autoint2.e
 Quant Time: Aug 14 00:00:26 2025
 Quant Method : Z:\pestpcbsrv\HPCHEM1\ECD_P\methods\PP080125.M
 Quant Title : GC EXTRACTABLES
 QLast Update : Mon Aug 04 11:01:49 2025
 Response via : Initial Calibration
 Integrator: ChemStation

Volume Inj. : 2 µl
 Signal #1 Phase : ZB-MR1 Signal #2 Phase: ZB-MR2
 Signal #1 Info : 30Mx0.32mmx 0.50µ Signal #2 Info : 30M x 0.32mm x 0.25µm

Compound	RT#1	RT#2	Resp#1	Resp#2	ng/ml	ng/ml
System Monitoring Compounds						
2) SA Decachlor...	10.462	8.821	11247710	59598185	11.582	9.911
Target Compounds						
3) L1 AR-1016-1	5.837	4.963f	208172	350794	5.046	0.879 #
4) L1 AR-1016-2	5.837	4.963	208172	350794	3.427	1.868 #
5) L1 AR-1016-3	5.928	5.105	751139	570567	18.939	5.379 #
6) L1 AR-1016-4	6.012	5.128	334200	1614447	10.269	14.782 #
7) L1 AR-1016-5	6.283	5.317	187437	333535	5.773	2.852 #
8) L2 AR-1221-1	4.882	0.000	3370178	0	201.041	N.D. #
9) L2 AR-1221-2	4.984f	0.000	969080	0	76.905	N.D. #
10) L2 AR-1221-3	4.984	0.000	969080	0	26.452	N.D. #
11) L3 AR-1232-1	4.984f	0.000	969080	0	33.374	N.D. #
12) L3 AR-1232-2	5.533	4.963f	122014	350794	8.111	2.013 #
13) L3 AR-1232-3	5.837	5.105	208172	570567	7.178	12.453 #
14) L3 AR-1232-4	6.012	5.128f	334200	1614447	21.605	27.830 #
15) L3 AR-1232-5	6.092	5.317	326584	333535	27.875	7.100 #
16) L4 AR-1242-1	5.837	4.963f	208172	350794	5.586	1.016 #
17) L4 AR-1242-2	5.837	4.963	208172	350794	3.826	2.147 #
18) L4 AR-1242-3	5.928	5.105	751139	570567	21.019	6.185 #
19) L4 AR-1242-4	6.012	5.128f	334200	1614447	11.438	13.519
20) L4 AR-1242-5	6.734	5.695	360142	396052	10.128	2.648 #
21) L5 AR-1248-1	5.837	4.963f	208172	350794	7.431	1.640 #
22) L5 AR-1248-2	6.092	5.128	326584	1614447	8.112	11.034 #
23) L5 AR-1248-3	6.283	5.128	187437	1614447	4.205	9.416 #
24) L5 AR-1248-4	6.680	5.317	807266	333535	15.513	2.005 #
25) L5 AR-1248-5	6.734	5.695	360142	396052	6.325	1.361 #
26) L6 AR-1254-1	6.680	5.695	807266	396052	15.335	1.082 #
27) L6 AR-1254-2	6.886	5.836	149566	572463	1.881	2.058
28) L6 AR-1254-3	7.222	6.241	209873	428121	2.404	0.875 #
29) L6 AR-1254-4	7.492	6.460	492394	283173	7.717	0.770 #
30) L6 AR-1254-5	7.964	6.881	183408	186245	2.260	0.484 #
31) L7 AR-1260-1	7.421	6.552	94708	305527	1.681	0.756 #
32) L7 AR-1260-2	7.662	6.706	200657	628496	2.944	2.010 #
33) L7 AR-1260-3	8.026	6.917	142359	110180	2.671	0.280 #
34) L7 AR-1260-4	8.239	7.178	320279	259474	5.115	0.892 #
35) L7 AR-1260-5	8.544	7.413	304059	155707	2.684	0.206 #
36) L8 AR-1262-1	8.239	6.917	320279	110180	4.226	0.196 #
37) L8 AR-1262-2	8.544	7.178	304059	259474	2.331	0.647 #
38) L8 AR-1262-3	8.911	7.708	105586	319911	1.122	0.890
39) L8 AR-1262-4	9.012f	7.771	200347	482293	2.750	0.723 #
40) L8 AR-1262-5	9.653	8.259	41286	346293	0.811	1.222 #
41) L9 AR-1268-1	8.911	7.708	105586	319911	0.678	0.293 #
42) L9 AR-1268-2	9.012	7.771	200347	482293	1.397	0.454 #

Data Path : Z:\pestpcbsrv\HPCHEM1\ECD_P\Data\PP081325\
 Data File : PP074356.D
 Signal(s) : Signal #1: ECD1A.ch Signal #2: ECD2B.ch
 Acq On : 13 Aug 2025 18:04
 Operator : YP\AJ
 Sample : Q2815-23
 Misc :
 ALS Vial : 20 Sample Multiplier: 1

Instrument :
 ECD_P
 ClientSampleId :
 TW-11M-N

Integration File signal 1: autoint1.e
 Integration File signal 2: autoint2.e
 Quant Time: Aug 14 00:00:26 2025
 Quant Method : Z:\pestpcbsrv\HPCHEM1\ECD_P\methods\PP080125.M
 Quant Title : GC EXTRACTABLES
 QLast Update : Mon Aug 04 11:01:49 2025
 Response via : Initial Calibration
 Integrator: ChemStation

Volume Inj. : 2 µl
 Signal #1 Phase : ZB-MR1 Signal #2 Phase: ZB-MR2
 Signal #1 Info : 30Mx0.32mmx 0.50µ Signal #2 Info : 30M x 0.32mm x 0.25µm

	Compound	RT#1	RT#2	Resp#1	Resp#2	ng/ml	ng/ml
43)	L9 AR-1268-3	0.000	7.971	0	532202	N.D.	0.640 #
44)	L9 AR-1268-4	9.653	8.259	41286	346293	0.702	1.124 #
45)	L9 AR-1268-5	10.064	8.553	62404	919794	0.177	0.361 #

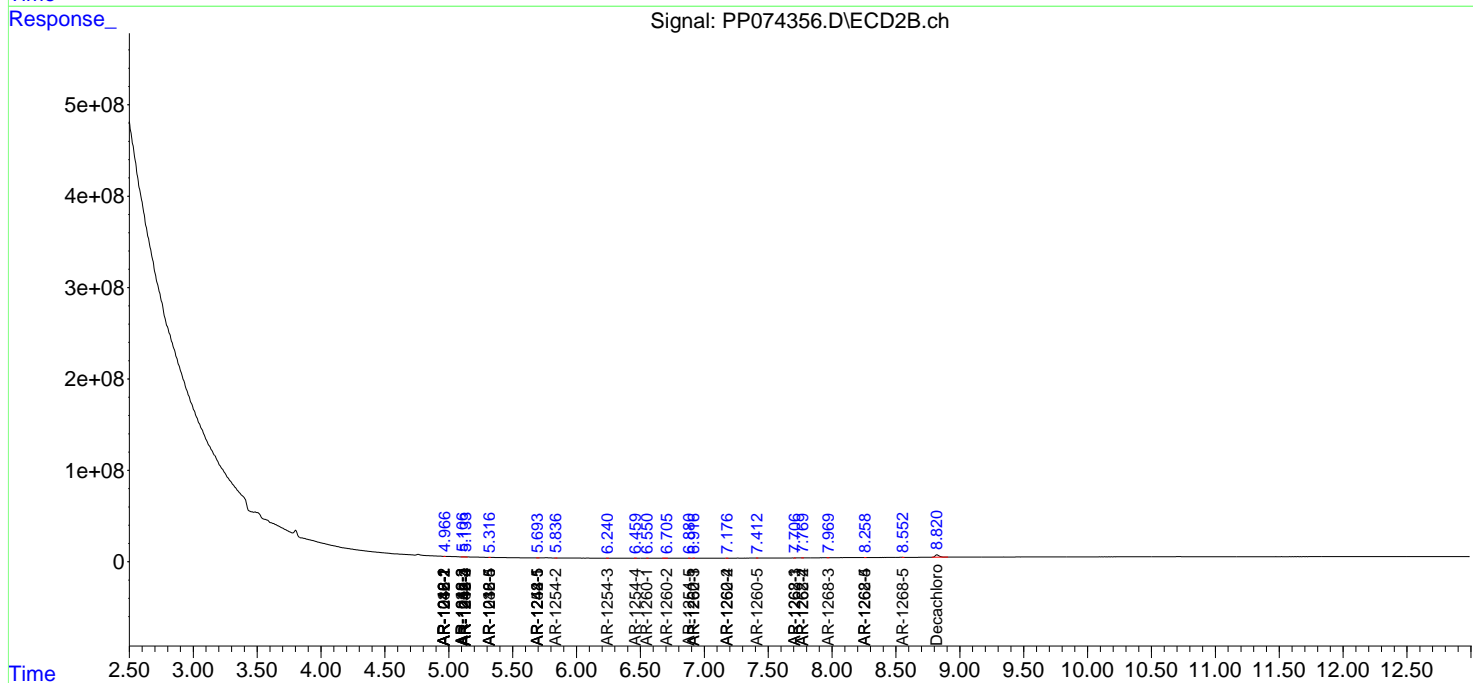
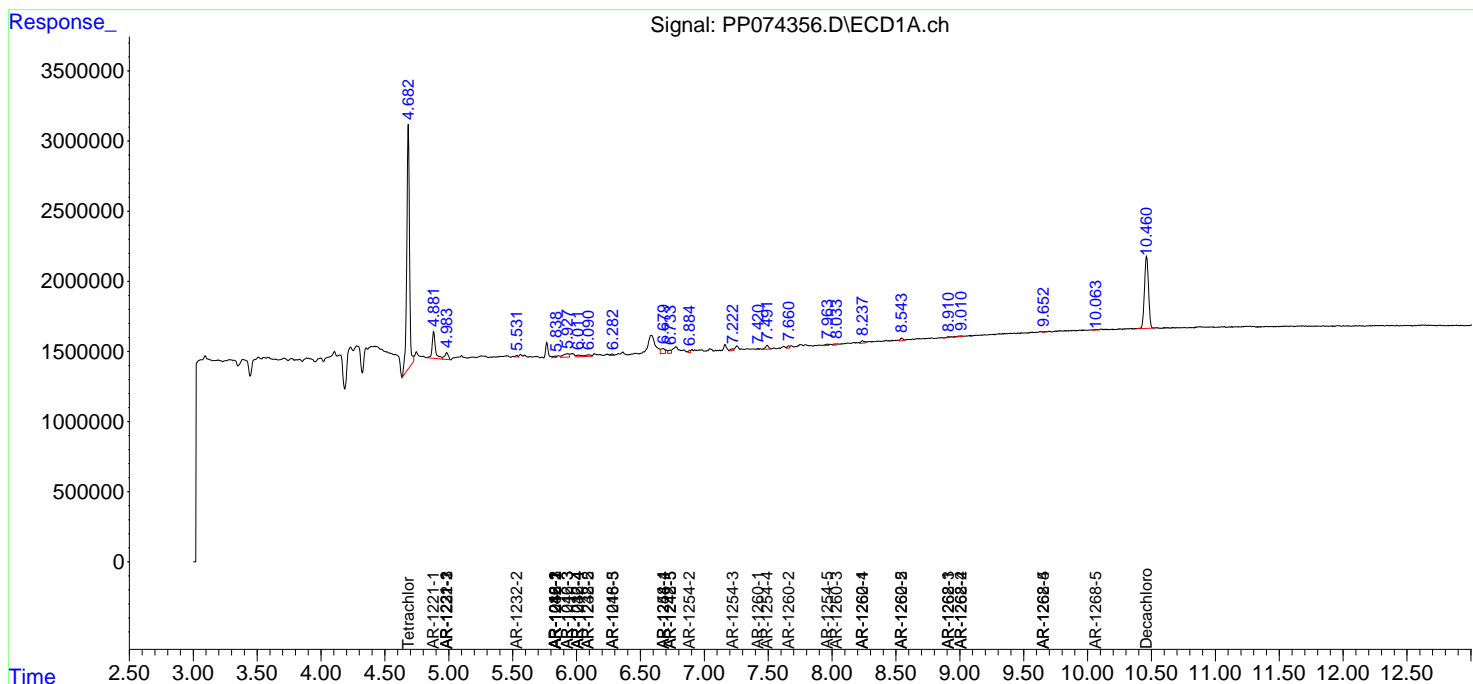
(f)=RT Delta > 1/2 Window (#)=Amounts differ by > 25% (m)=manual int.

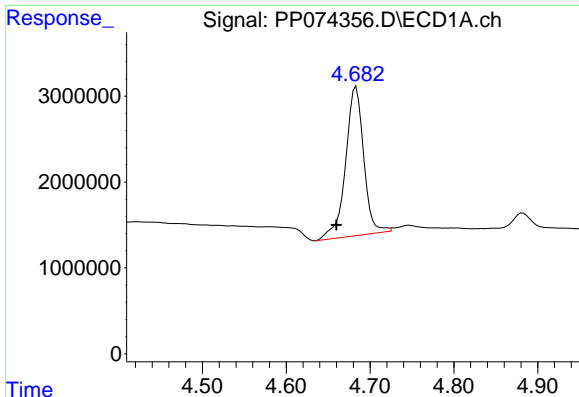
Data Path : Z:\pestpcbsrv\HPCHEM1\ECD_P\Data\PP081325\
 Data File : PP074356.D
 Signal(s) : Signal #1: ECD1A.ch Signal #2: ECD2B.ch
 Acq On : 13 Aug 2025 18:04
 Operator : YP\AJ
 Sample : Q2815-23
 Misc :
 ALS Vial : 20 Sample Multiplier: 1

Instrument :
 ECD_P
 ClientSampleId :
 TW-11M-N

Integration File signal 1: autoint1.e
 Integration File signal 2: autoint2.e
 Quant Time: Aug 14 00:00:26 2025
 Quant Method : Z:\pestpcbsrv\HPCHEM1\ECD_P\methods\PP080125.M
 Quant Title : GC EXTRACTABLES
 QLast Update : Mon Aug 04 11:01:49 2025
 Response via : Initial Calibration
 Integrator: ChemStation

Volume Inj. : 2 µl
 Signal #1 Phase : ZB-MR1 Signal #2 Phase: ZB-MR2
 Signal #1 Info : 30Mx0.32mmx 0.50µ Signal #2 Info : 30M x 0.32mm x 0.25µm

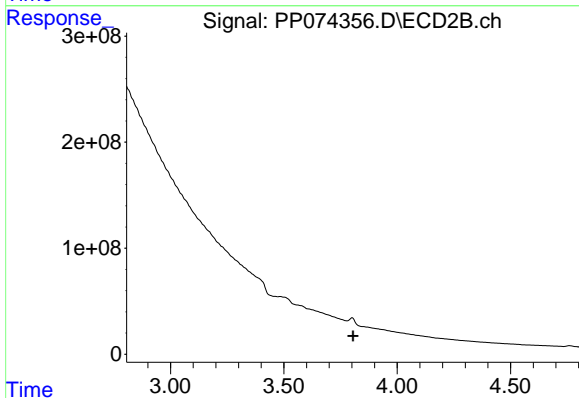




#1 Tetrachloro-m-xylene

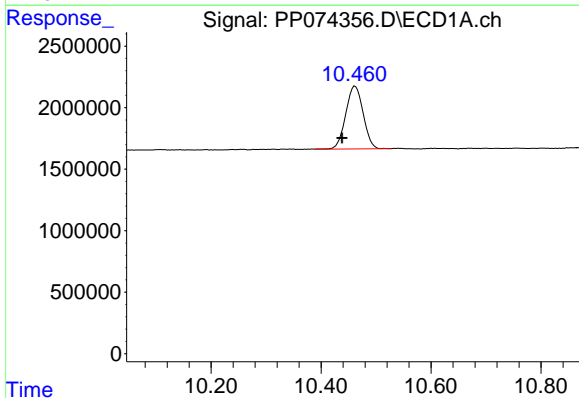
R.T.: 4.683 min
 Delta R.T.: 0.023 min
 Response: 26067450
 Conc: 23.31 ng/ml

Instrument :
 ECD_P
 ClientSampleId :
 TW-11M-N



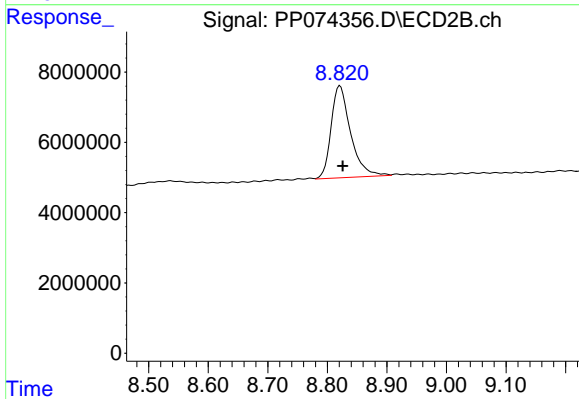
#1 Tetrachloro-m-xylene

R.T.: 3.802 min
 Delta R.T.: -0.004 min
 Response: -464030894
 Conc: N.D.



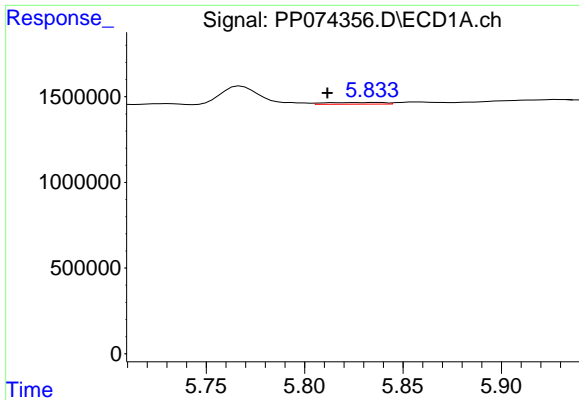
#2 Decachlorobiphenyl

R.T.: 10.462 min
 Delta R.T.: 0.024 min
 Response: 11247710
 Conc: 11.58 ng/ml



#2 Decachlorobiphenyl

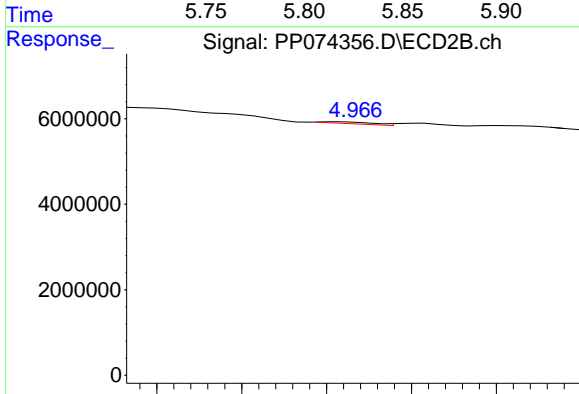
R.T.: 8.821 min
 Delta R.T.: -0.005 min
 Response: 59598185
 Conc: 9.91 ng/ml



#3 AR-1016-1

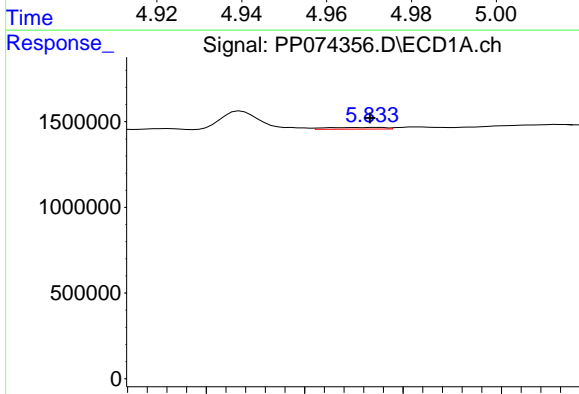
R.T.: 5.837 min
 Delta R.T.: 0.025 min
 Response: 208172
 Conc: 5.05 ng/ml

Instrument :
 ECD_P
 ClientSampleId :
 TW-11M-N



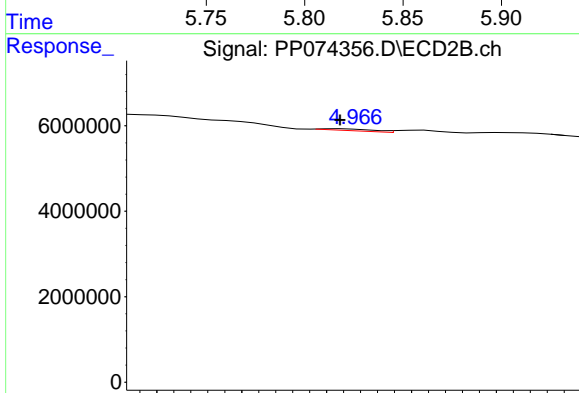
#3 AR-1016-1

R.T.: 4.963 min
 Delta R.T.: 0.058 min
 Response: 350794
 Conc: 0.88 ng/ml



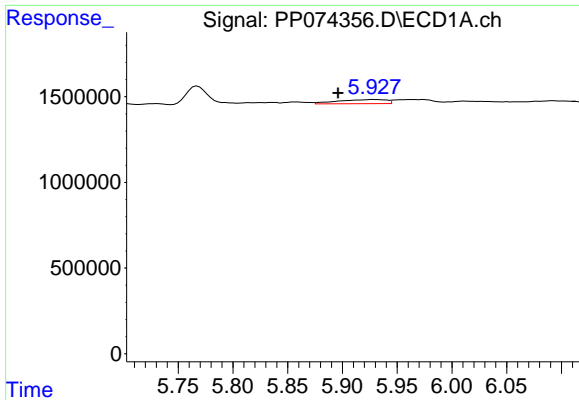
#4 AR-1016-2

R.T.: 5.837 min
 Delta R.T.: 0.003 min
 Response: 208172
 Conc: 3.43 ng/ml



#4 AR-1016-2

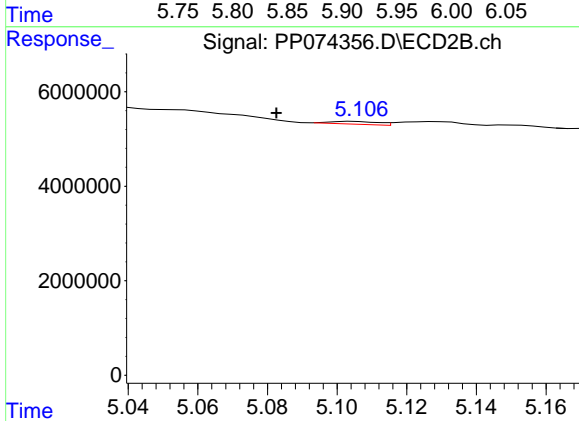
R.T.: 4.963 min
 Delta R.T.: 0.000 min
 Response: 350794
 Conc: 1.87 ng/ml



#5 AR-1016-3

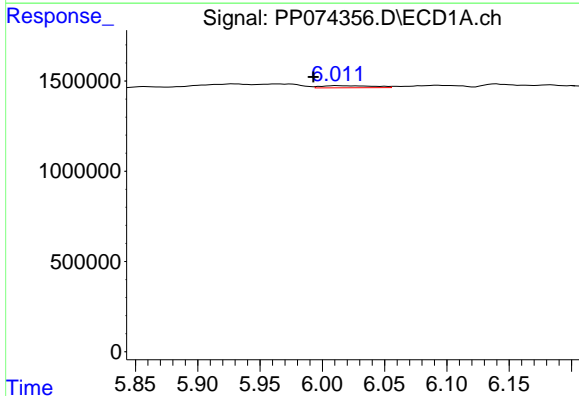
R.T.: 5.928 min
 Delta R.T.: 0.032 min
 Response: 751139
 Conc: 18.94 ng/ml

Instrument :
 ECD_P
 ClientSampleId :
 TW-11M-N



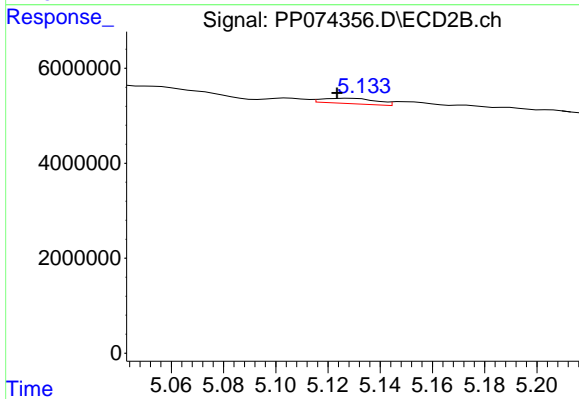
#5 AR-1016-3

R.T.: 5.105 min
 Delta R.T.: 0.022 min
 Response: 570567
 Conc: 5.38 ng/ml



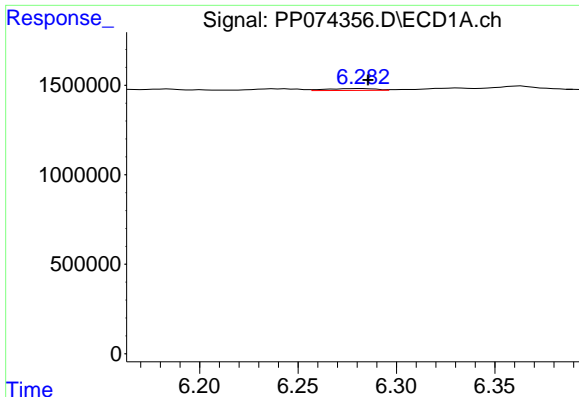
#6 AR-1016-4

R.T.: 6.012 min
 Delta R.T.: 0.019 min
 Response: 334200
 Conc: 10.27 ng/ml



#6 AR-1016-4

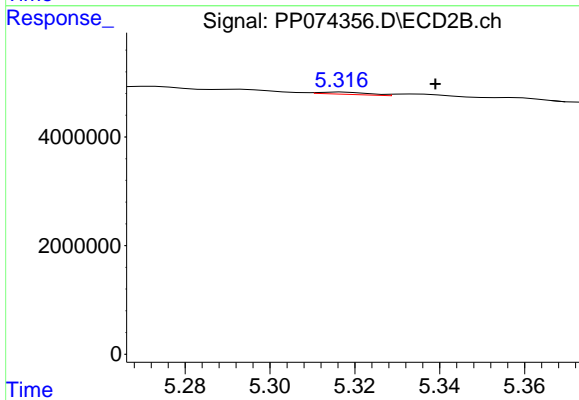
R.T.: 5.128 min
 Delta R.T.: 0.005 min
 Response: 1614447
 Conc: 14.78 ng/ml



#7 AR-1016-5

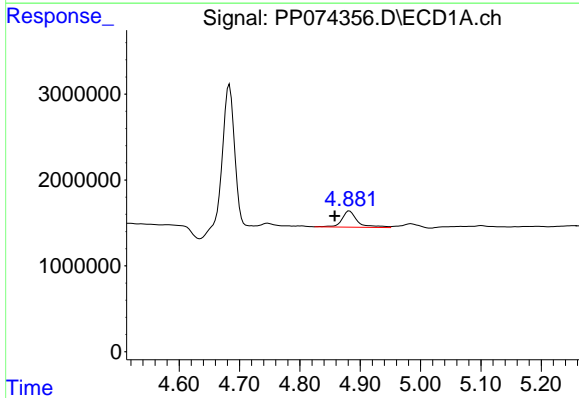
R.T.: 6.283 min
 Delta R.T.: -0.003 min
 Response: 187437
 Conc: 5.77 ng/ml

Instrument :
 ECD_P
 ClientSampleId :
 TW-11M-N



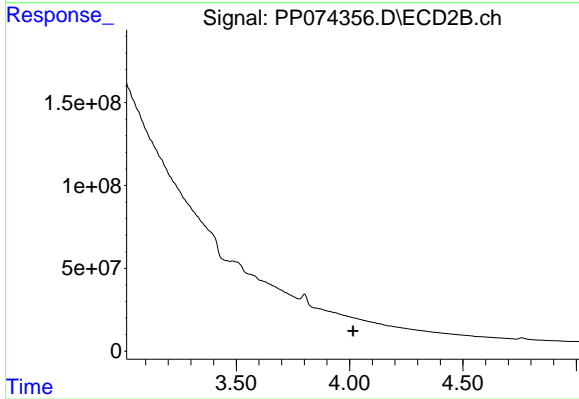
#7 AR-1016-5

R.T.: 5.317 min
 Delta R.T.: -0.022 min
 Response: 333535
 Conc: 2.85 ng/ml



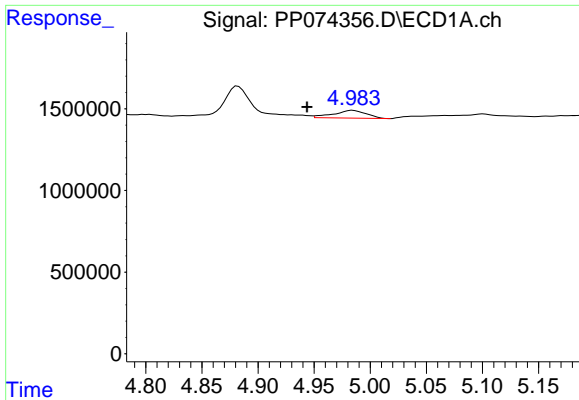
#8 AR-1221-1

R.T.: 4.882 min
 Delta R.T.: 0.024 min
 Response: 3370178
 Conc: 201.04 ng/ml



#8 AR-1221-1

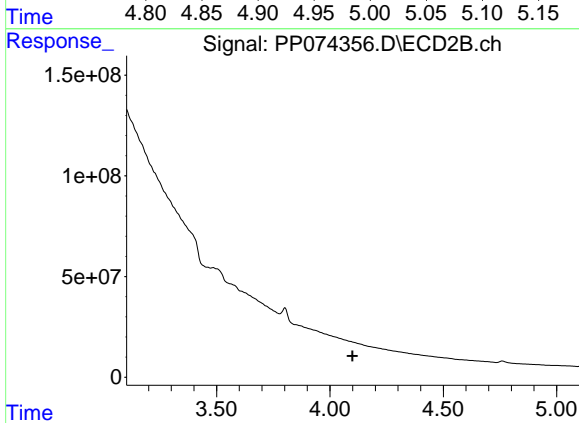
R.T.: 0.000 min
 Exp R.T.: 4.015 min
 Response: 0
 Conc: N.D.



#9 AR-1221-2

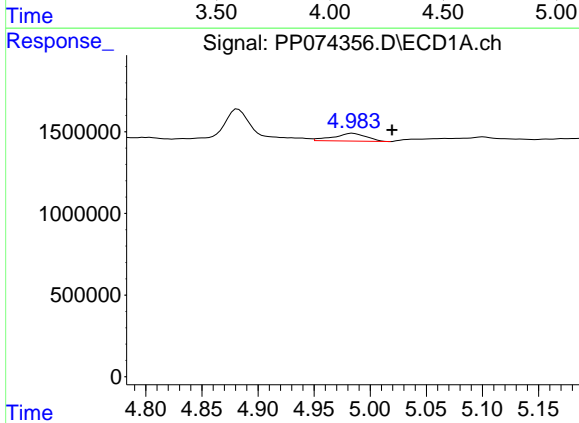
R.T.: 4.984 min
 Delta R.T.: 0.041 min
 Response: 969080
 Conc: 76.90 ng/ml

Instrument :
 ECD_P
 ClientSampleId :
 TW-11M-N



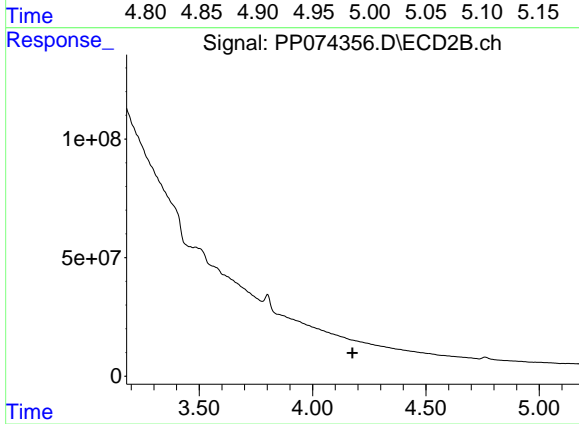
#9 AR-1221-2

R.T.: 0.000 min
 Exp R.T. : 4.100 min
 Response: 0
 Conc: N.D.



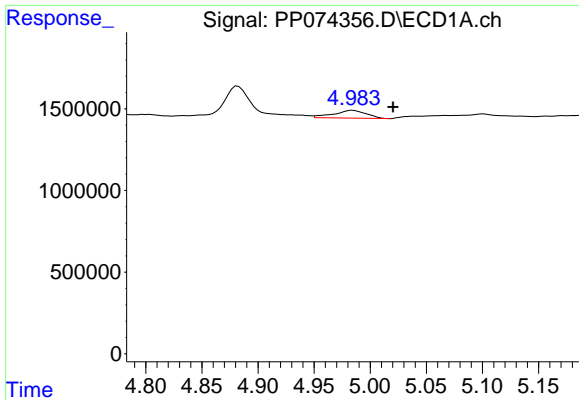
#10 AR-1221-3

R.T.: 4.984 min
 Delta R.T.: -0.035 min
 Response: 969080
 Conc: 26.45 ng/ml



#10 AR-1221-3

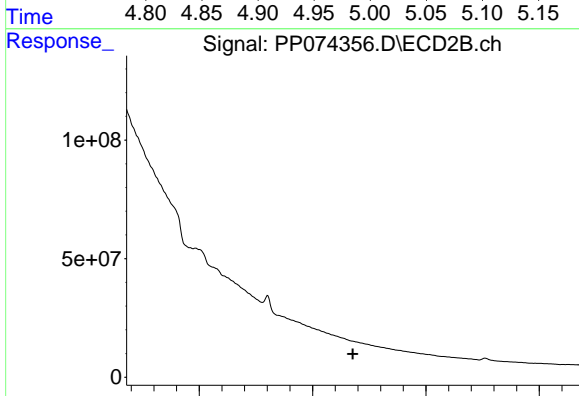
R.T.: 0.000 min
 Exp R.T. : 4.176 min
 Response: 0
 Conc: N.D.



#11 AR-1232-1

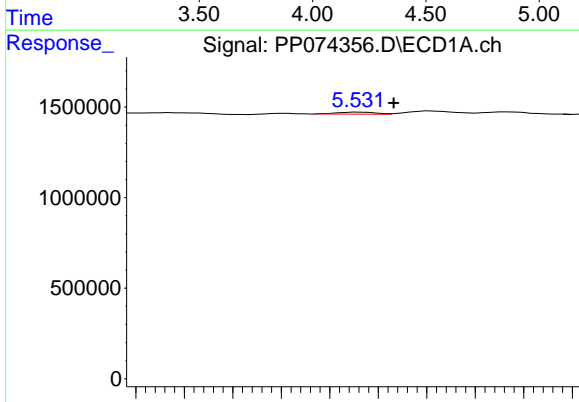
R.T.: 4.984 min
 Delta R.T.: -0.036 min
 Response: 969080
 Conc: 33.37 ng/ml

Instrument :
 ECD_P
 ClientSampleId :
 TW-11M-N



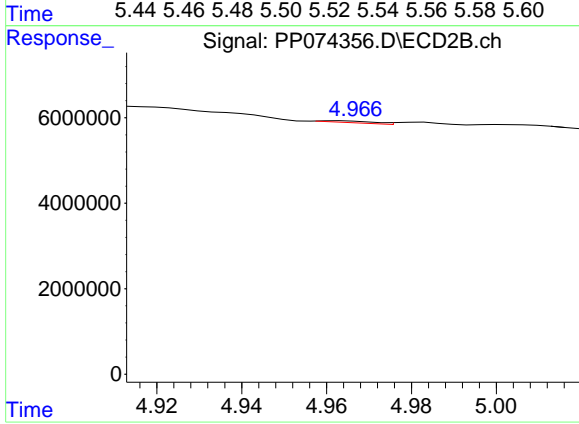
#11 AR-1232-1

R.T.: 0.000 min
 Exp R.T. : 4.177 min
 Response: 0
 Conc: N.D.



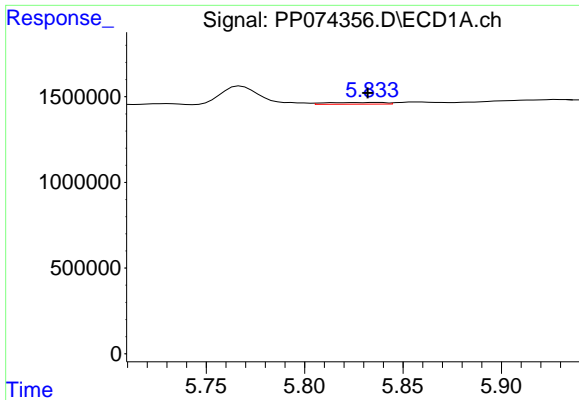
#12 AR-1232-2

R.T.: 5.533 min
 Delta R.T.: -0.014 min
 Response: 122014
 Conc: 8.11 ng/ml



#12 AR-1232-2

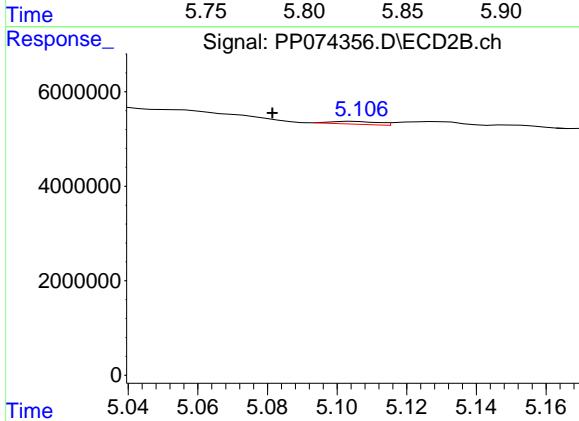
R.T.: 4.963 min
 Delta R.T.: 0.059 min
 Response: 350794
 Conc: 2.01 ng/ml



#13 AR-1232-3

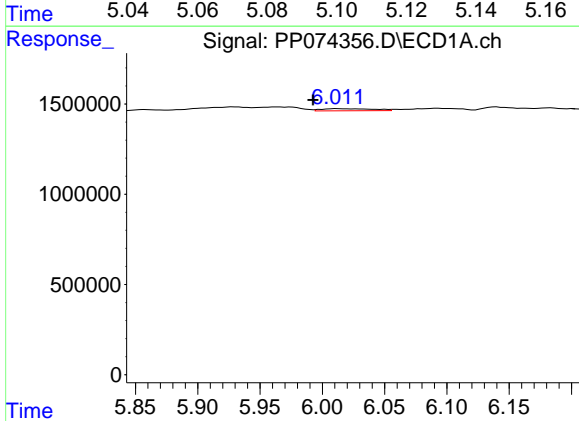
R.T.: 5.837 min
 Delta R.T.: 0.005 min
 Response: 208172
 Conc: 7.18 ng/ml

Instrument :
 ECD_P
 ClientSampleId :
 TW-11M-N



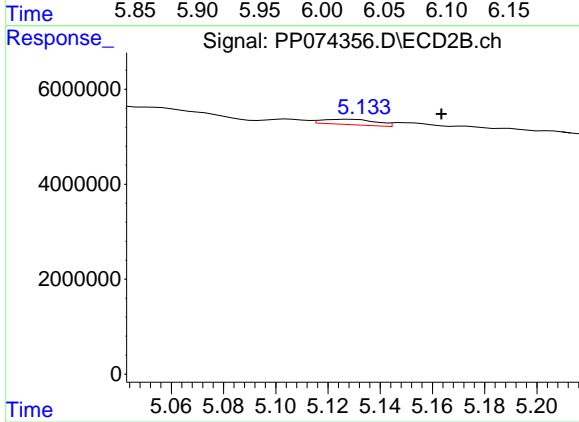
#13 AR-1232-3

R.T.: 5.105 min
 Delta R.T.: 0.023 min
 Response: 570567
 Conc: 12.45 ng/ml



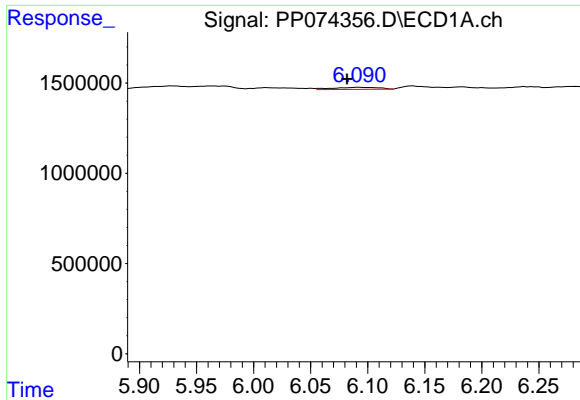
#14 AR-1232-4

R.T.: 6.012 min
 Delta R.T.: 0.020 min
 Response: 334200
 Conc: 21.60 ng/ml



#14 AR-1232-4

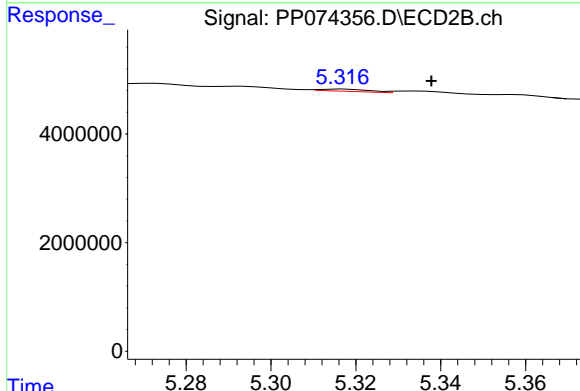
R.T.: 5.128 min
 Delta R.T.: -0.035 min
 Response: 1614447
 Conc: 27.83 ng/ml



#15 AR-1232-5

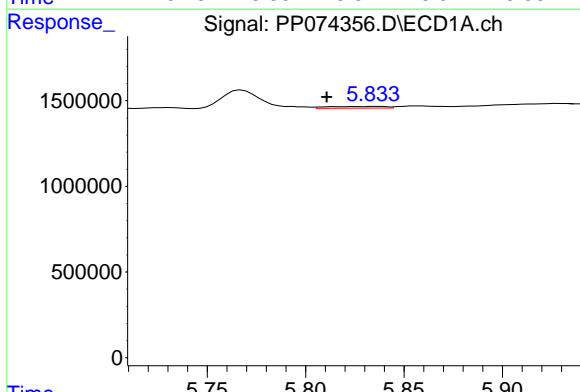
R.T.: 6.092 min
 Delta R.T.: 0.010 min
 Response: 326584
 Conc: 27.88 ng/ml

Instrument : ECD_P
 ClientSampleId : TW-11M-N



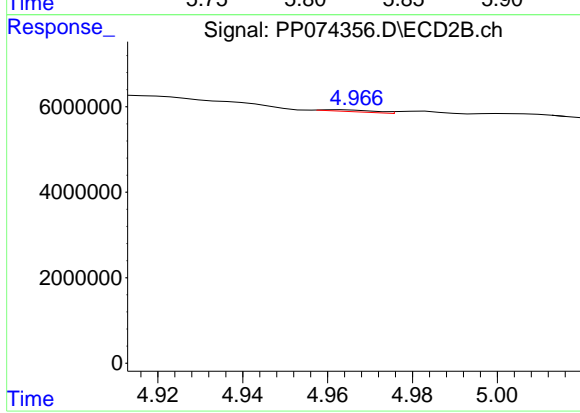
#15 AR-1232-5

R.T.: 5.317 min
 Delta R.T.: -0.021 min
 Response: 333535
 Conc: 7.10 ng/ml



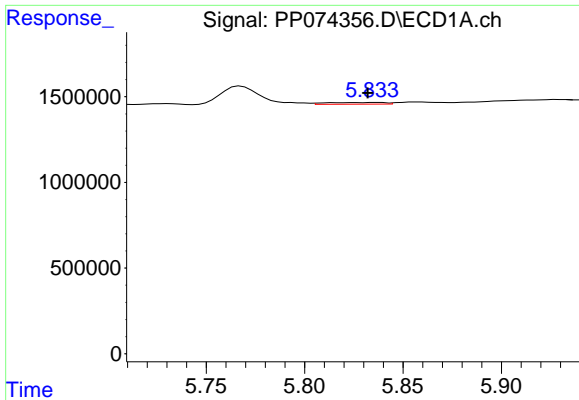
#16 AR-1242-1

R.T.: 5.837 min
 Delta R.T.: 0.026 min
 Response: 208172
 Conc: 5.59 ng/ml



#16 AR-1242-1

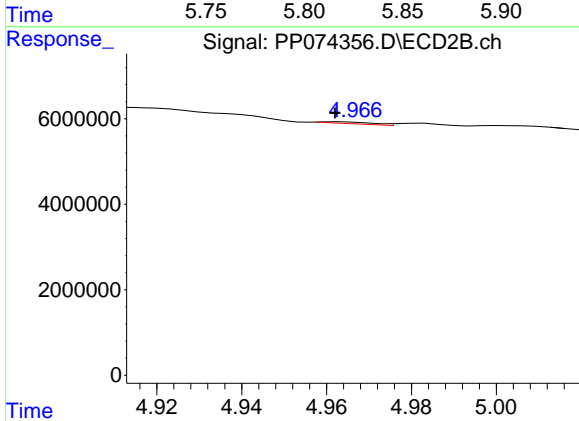
R.T.: 4.963 min
 Delta R.T.: 0.058 min
 Response: 350794
 Conc: 1.02 ng/ml



#17 AR-1242-2

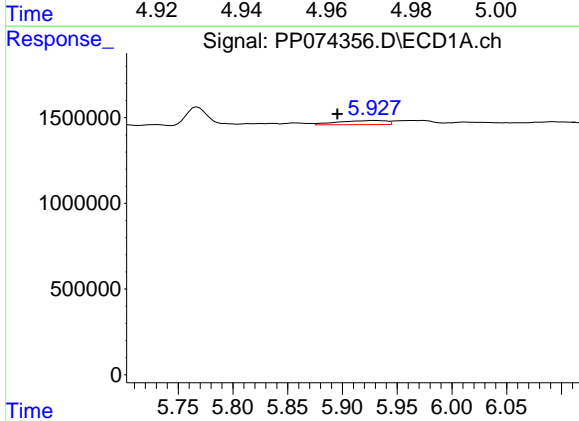
R.T.: 5.837 min
 Delta R.T.: 0.005 min
 Response: 208172
 Conc: 3.83 ng/ml

Instrument :
 ECD_P
 ClientSampleId :
 TW-11M-N



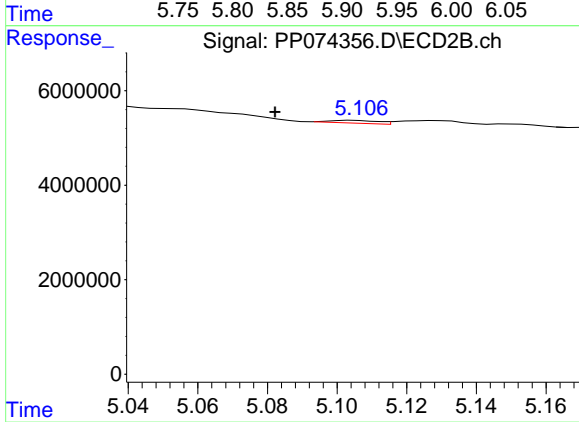
#17 AR-1242-2

R.T.: 4.963 min
 Delta R.T.: 0.001 min
 Response: 350794
 Conc: 2.15 ng/ml



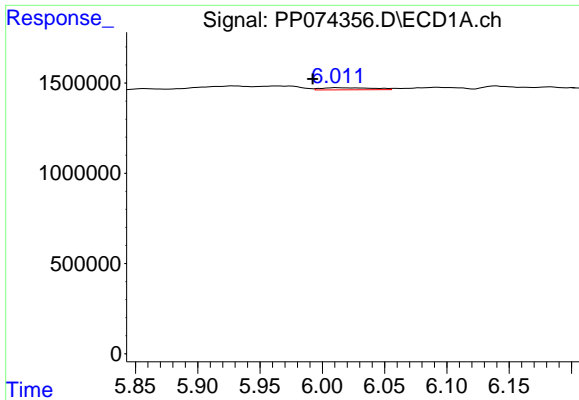
#18 AR-1242-3

R.T.: 5.928 min
 Delta R.T.: 0.033 min
 Response: 751139
 Conc: 21.02 ng/ml



#18 AR-1242-3

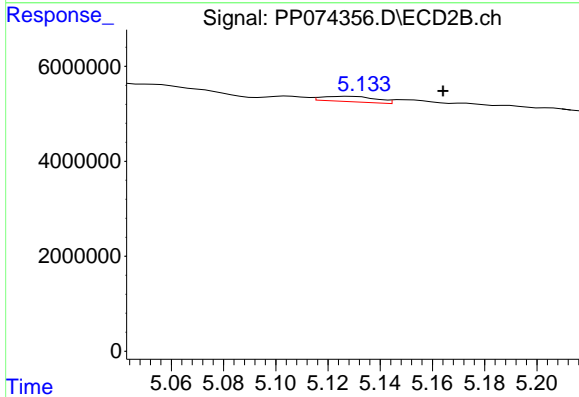
R.T.: 5.105 min
 Delta R.T.: 0.022 min
 Response: 570567
 Conc: 6.19 ng/ml



#19 AR-1242-4

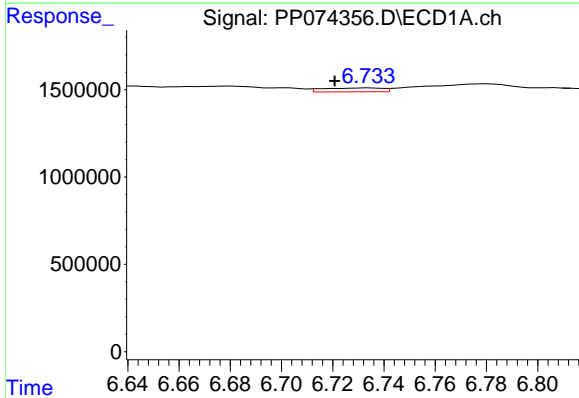
R.T.: 6.012 min
 Delta R.T.: 0.020 min
 Response: 334200
 Conc: 11.44 ng/ml

Instrument :
 ECD_P
 ClientSampleId :
 TW-11M-N



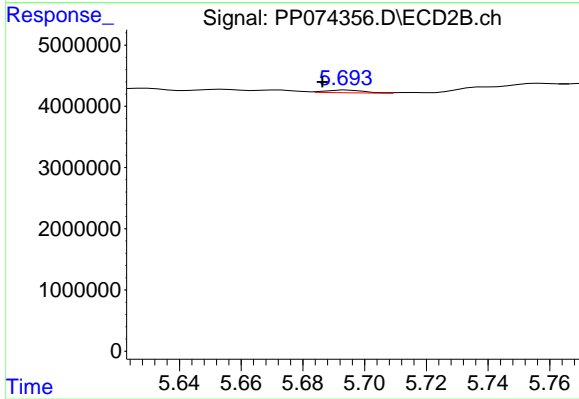
#19 AR-1242-4

R.T.: 5.128 min
 Delta R.T.: -0.036 min
 Response: 1614447
 Conc: 13.52 ng/ml



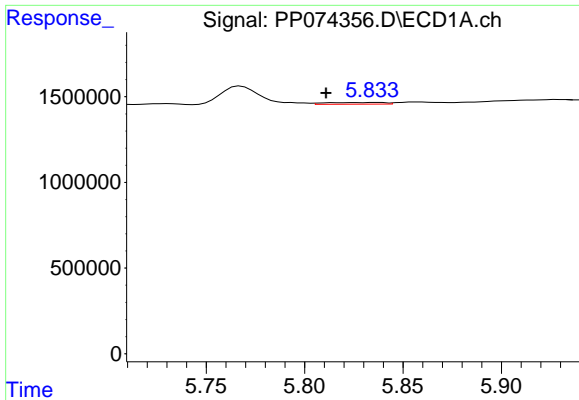
#20 AR-1242-5

R.T.: 6.734 min
 Delta R.T.: 0.014 min
 Response: 360142
 Conc: 10.13 ng/ml



#20 AR-1242-5

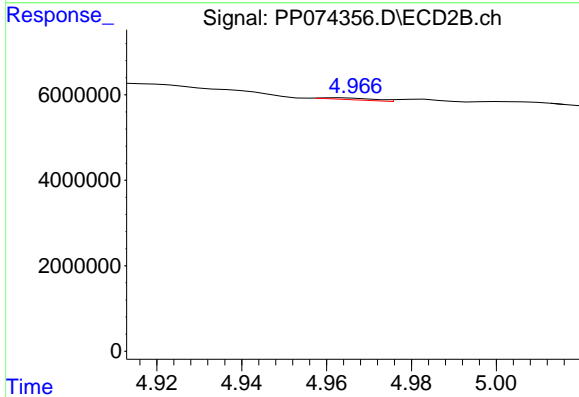
R.T.: 5.695 min
 Delta R.T.: 0.008 min
 Response: 396052
 Conc: 2.65 ng/ml



#21 AR-1248-1

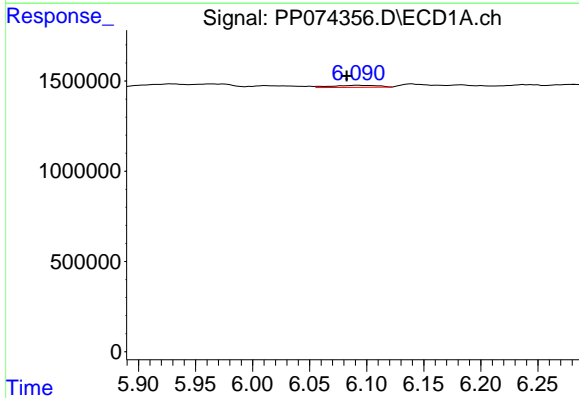
R.T.: 5.837 min
 Delta R.T.: 0.026 min
 Response: 208172
 Conc: 7.43 ng/ml

Instrument :
 ECD_P
 ClientSampleId :
 TW-11M-N



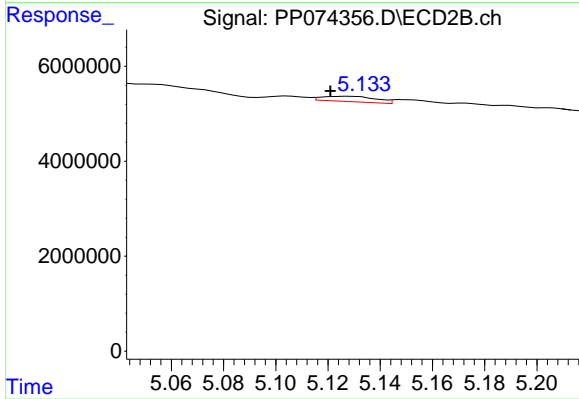
#21 AR-1248-1

R.T.: 4.963 min
 Delta R.T.: 0.062 min
 Response: 350794
 Conc: 1.64 ng/ml



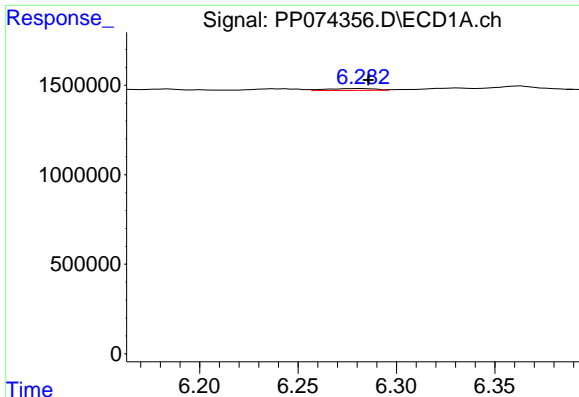
#22 AR-1248-2

R.T.: 6.092 min
 Delta R.T.: 0.010 min
 Response: 326584
 Conc: 8.11 ng/ml



#22 AR-1248-2

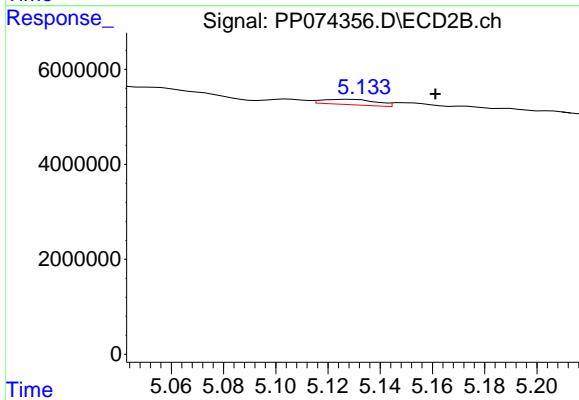
R.T.: 5.128 min
 Delta R.T.: 0.007 min
 Response: 1614447
 Conc: 11.03 ng/ml



#23 AR-1248-3

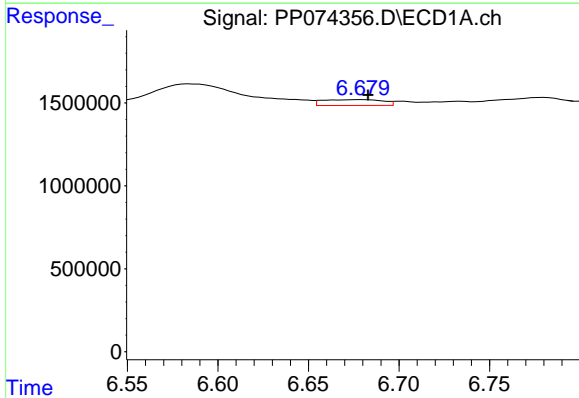
R.T.: 6.283 min
 Delta R.T.: -0.003 min
 Response: 187437
 Conc: 4.21 ng/ml

Instrument :
 ECD_P
 ClientSampleId :
 TW-11M-N



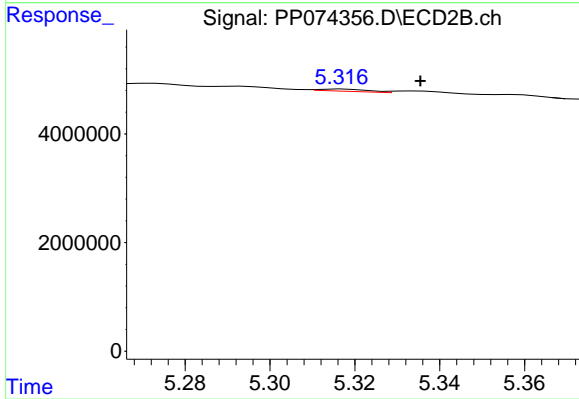
#23 AR-1248-3

R.T.: 5.128 min
 Delta R.T.: -0.033 min
 Response: 1614447
 Conc: 9.42 ng/ml



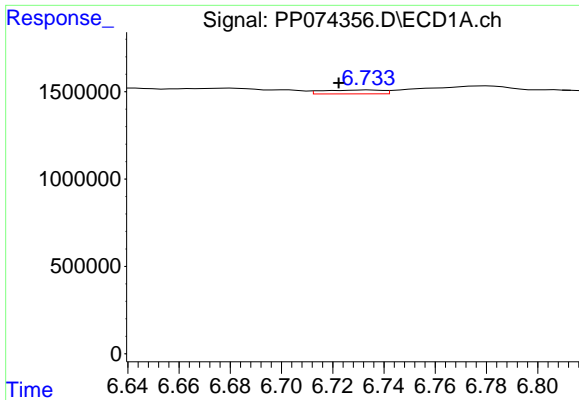
#24 AR-1248-4

R.T.: 6.680 min
 Delta R.T.: -0.003 min
 Response: 807266
 Conc: 15.51 ng/ml



#24 AR-1248-4

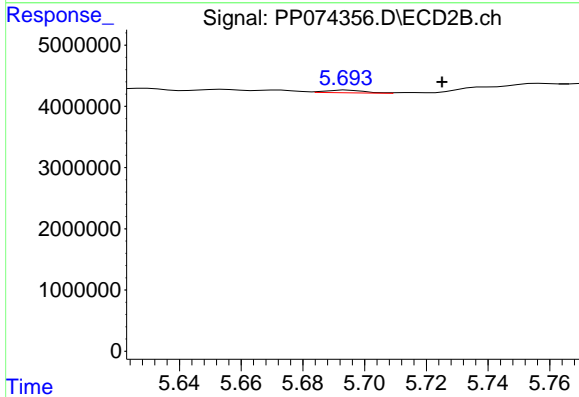
R.T.: 5.317 min
 Delta R.T.: -0.018 min
 Response: 333535
 Conc: 2.00 ng/ml



#25 AR-1248-5

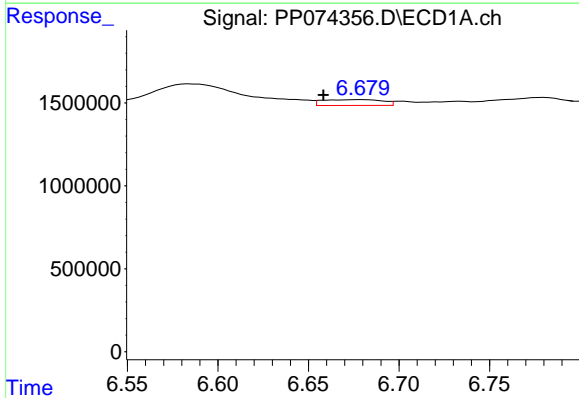
R.T.: 6.734 min
 Delta R.T.: 0.012 min
 Response: 360142
 Conc: 6.32 ng/ml

Instrument :
 ECD_P
 ClientSampleId :
 TW-11M-N



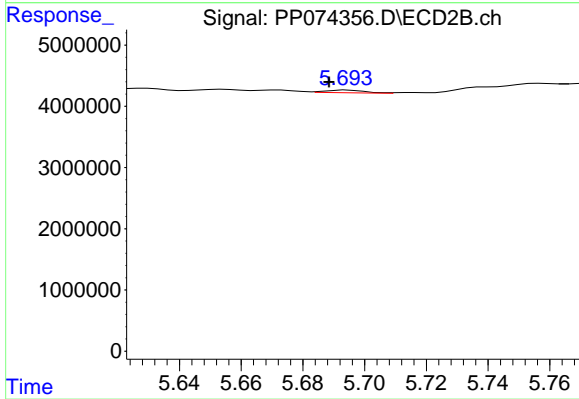
#25 AR-1248-5

R.T.: 5.695 min
 Delta R.T.: -0.031 min
 Response: 396052
 Conc: 1.36 ng/ml



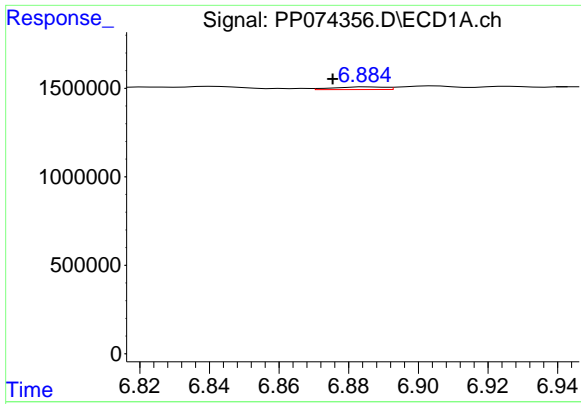
#26 AR-1254-1

R.T.: 6.680 min
 Delta R.T.: 0.022 min
 Response: 807266
 Conc: 15.34 ng/ml



#26 AR-1254-1

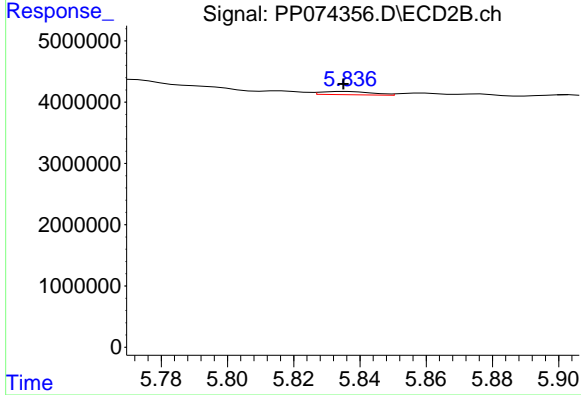
R.T.: 5.695 min
 Delta R.T.: 0.006 min
 Response: 396052
 Conc: 1.08 ng/ml



#27 AR-1254-2

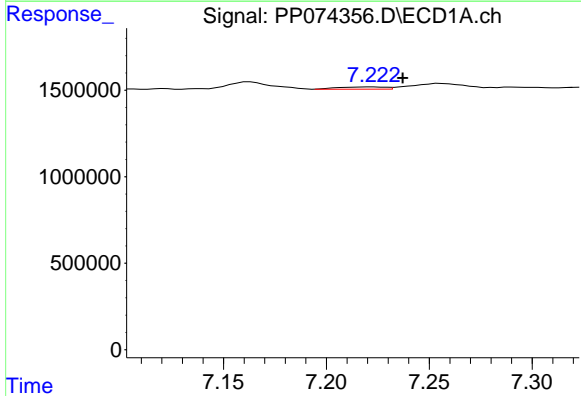
R.T.: 6.886 min
 Delta R.T.: 0.010 min
 Response: 149566
 Conc: 1.88 ng/ml

Instrument :
 ECD_P
 ClientSampleId :
 TW-11M-N



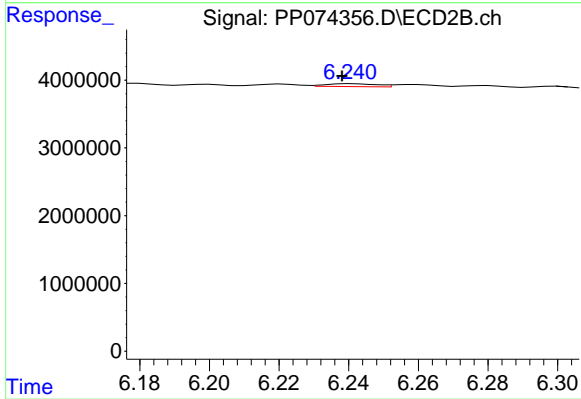
#27 AR-1254-2

R.T.: 5.836 min
 Delta R.T.: 0.001 min
 Response: 572463
 Conc: 2.06 ng/ml



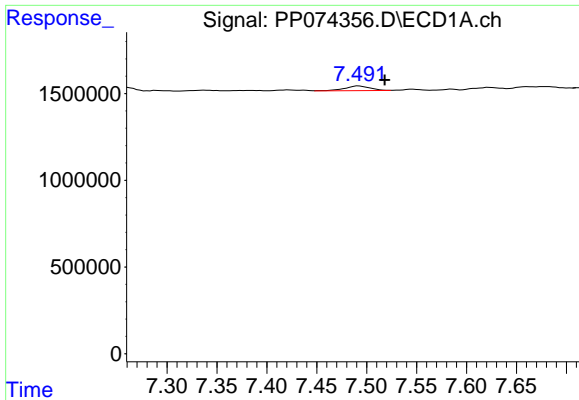
#28 AR-1254-3

R.T.: 7.222 min
 Delta R.T.: -0.015 min
 Response: 209873
 Conc: 2.40 ng/ml



#28 AR-1254-3

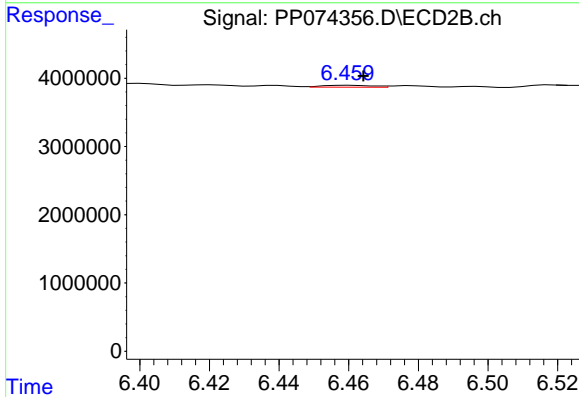
R.T.: 6.241 min
 Delta R.T.: 0.003 min
 Response: 428121
 Conc: 0.88 ng/ml



#29 AR-1254-4

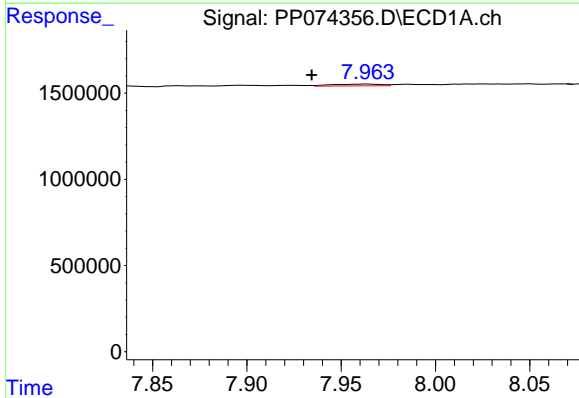
R.T.: 7.492 min
 Delta R.T.: -0.026 min
 Response: 492394
 Conc: 7.72 ng/ml

Instrument :
 ECD_P
 ClientSampleId :
 TW-11M-N



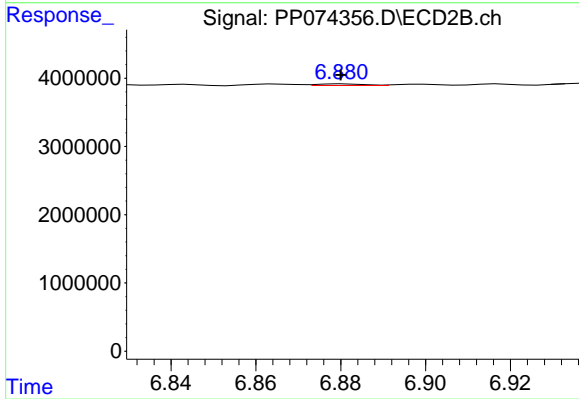
#29 AR-1254-4

R.T.: 6.460 min
 Delta R.T.: -0.004 min
 Response: 283173
 Conc: 0.77 ng/ml



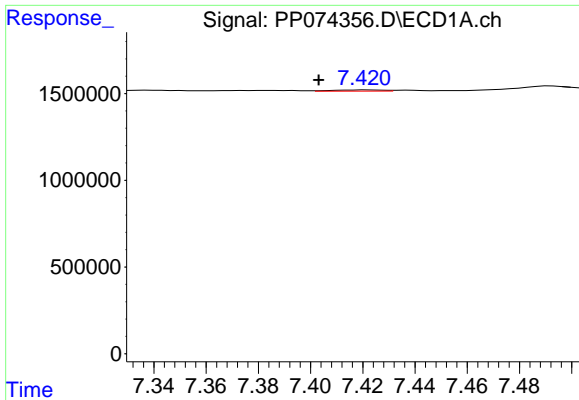
#30 AR-1254-5

R.T.: 7.964 min
 Delta R.T.: 0.030 min
 Response: 183408
 Conc: 2.26 ng/ml



#30 AR-1254-5

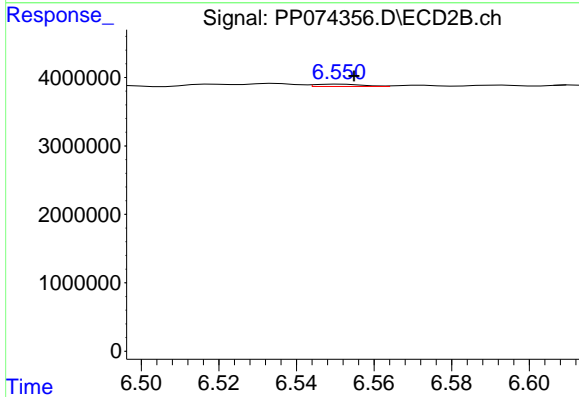
R.T.: 6.881 min
 Delta R.T.: 0.000 min
 Response: 186245
 Conc: 0.48 ng/ml



#31 AR-1260-1

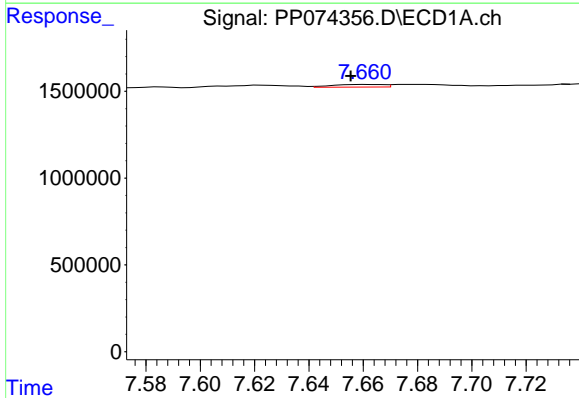
R.T.: 7.421 min
 Delta R.T.: 0.018 min
 Response: 94708
 Conc: 1.68 ng/ml

Instrument :
 ECD_P
 ClientSampleId :
 TW-11M-N



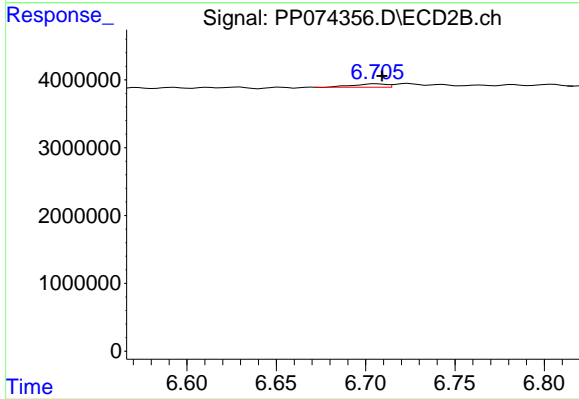
#31 AR-1260-1

R.T.: 6.552 min
 Delta R.T.: -0.003 min
 Response: 305527
 Conc: 0.76 ng/ml



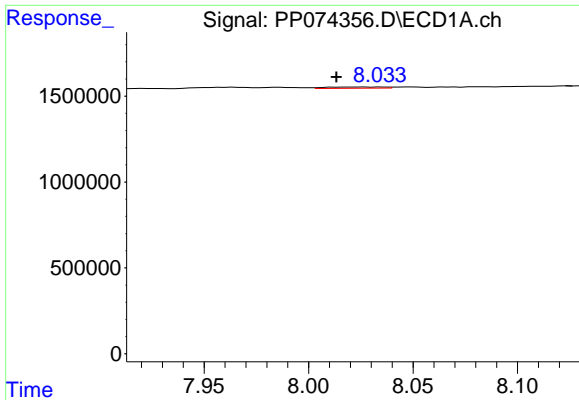
#32 AR-1260-2

R.T.: 7.662 min
 Delta R.T.: 0.006 min
 Response: 200657
 Conc: 2.94 ng/ml



#32 AR-1260-2

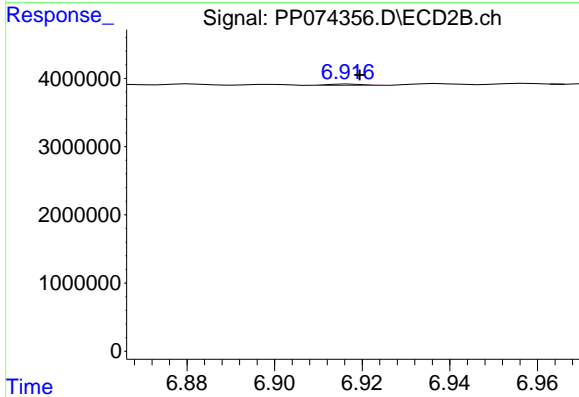
R.T.: 6.706 min
 Delta R.T.: -0.003 min
 Response: 628496
 Conc: 2.01 ng/ml



#33 AR-1260-3

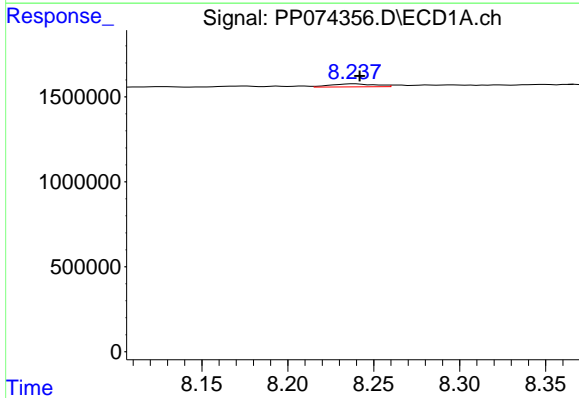
R.T.: 8.026 min
 Delta R.T.: 0.012 min
 Response: 142359
 Conc: 2.67 ng/ml

Instrument :
 ECD_P
 ClientSampleId :
 TW-11M-N



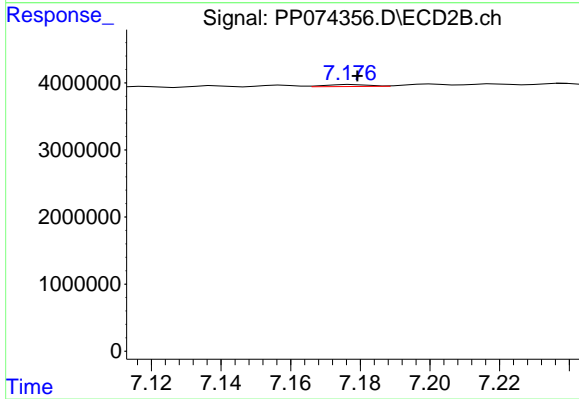
#33 AR-1260-3

R.T.: 6.917 min
 Delta R.T.: -0.002 min
 Response: 110180
 Conc: 0.28 ng/ml



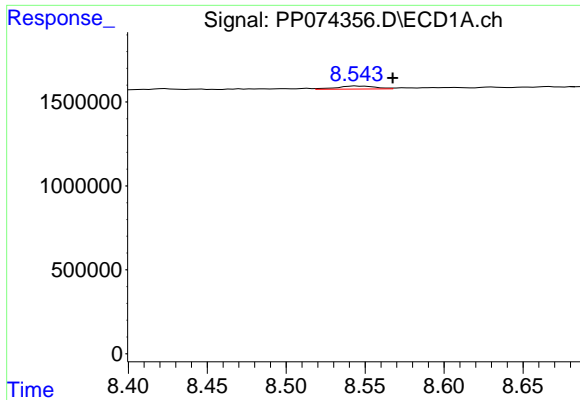
#34 AR-1260-4

R.T.: 8.239 min
 Delta R.T.: -0.003 min
 Response: 320279
 Conc: 5.12 ng/ml



#34 AR-1260-4

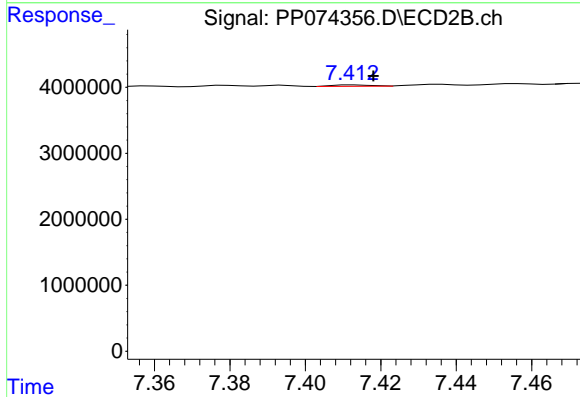
R.T.: 7.178 min
 Delta R.T.: -0.001 min
 Response: 259474
 Conc: 0.89 ng/ml



#35 AR-1260-5

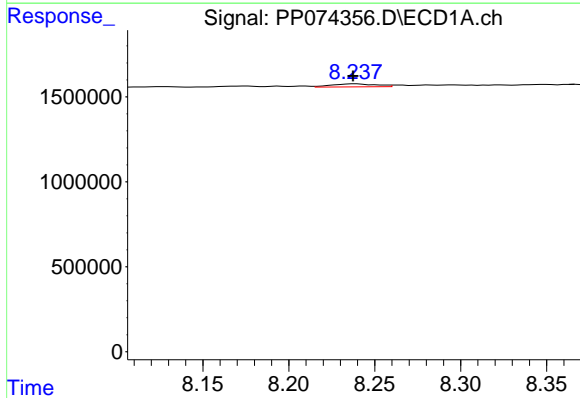
R.T.: 8.544 min
 Delta R.T.: -0.023 min
 Response: 304059
 Conc: 2.68 ng/ml

Instrument :
 ECD_P
 ClientSampleId :
 TW-11M-N



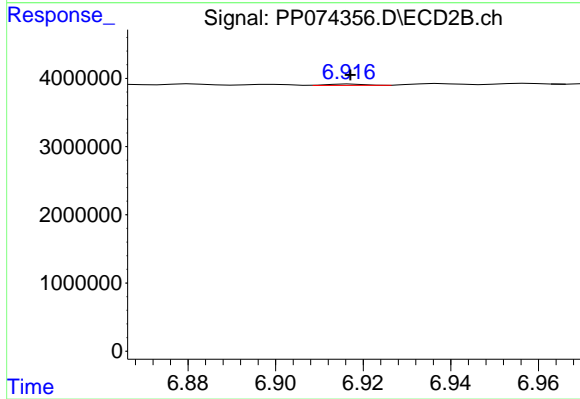
#35 AR-1260-5

R.T.: 7.413 min
 Delta R.T.: -0.005 min
 Response: 155707
 Conc: 0.21 ng/ml



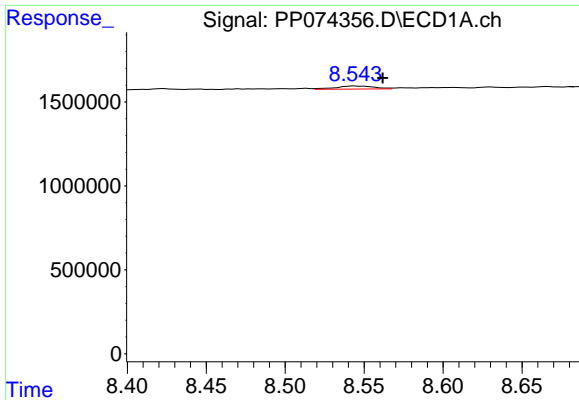
#36 AR-1262-1

R.T.: 8.239 min
 Delta R.T.: 0.001 min
 Response: 320279
 Conc: 4.23 ng/ml



#36 AR-1262-1

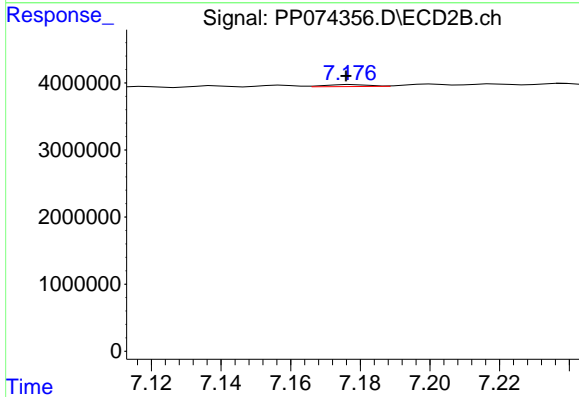
R.T.: 6.917 min
 Delta R.T.: 0.000 min
 Response: 110180
 Conc: 0.20 ng/ml



#37 AR-1262-2

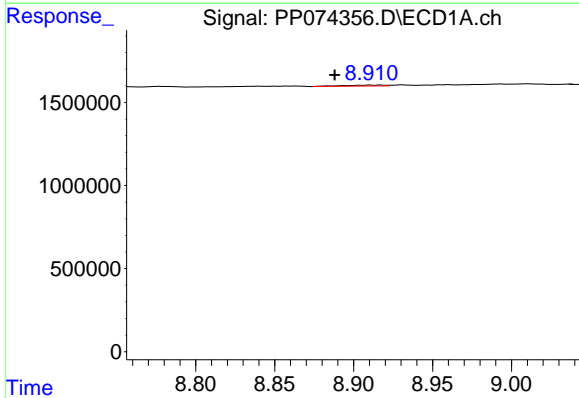
R.T.: 8.544 min
 Delta R.T.: -0.018 min
 Response: 304059
 Conc: 2.33 ng/ml

Instrument :
 ECD_P
 ClientSampleId :
 TW-11M-N



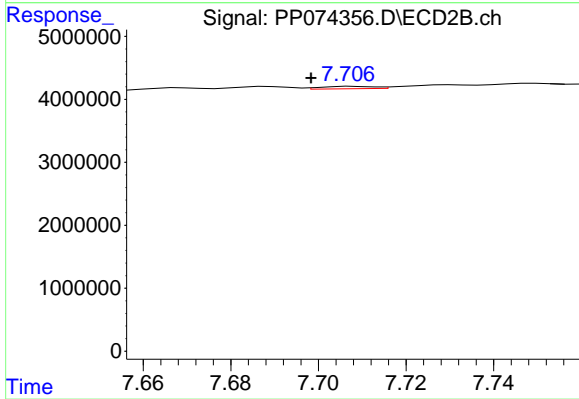
#37 AR-1262-2

R.T.: 7.178 min
 Delta R.T.: 0.002 min
 Response: 259474
 Conc: 0.65 ng/ml



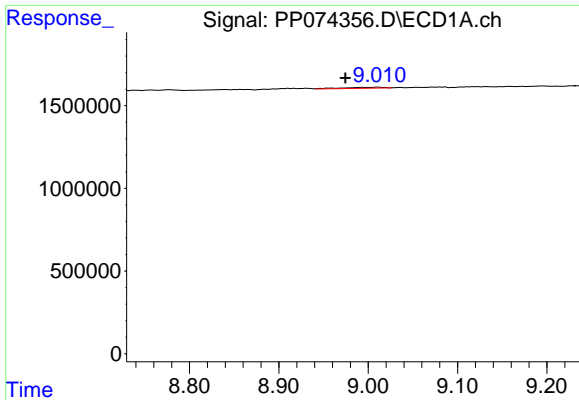
#38 AR-1262-3

R.T.: 8.911 min
 Delta R.T.: 0.023 min
 Response: 105586
 Conc: 1.12 ng/ml



#38 AR-1262-3

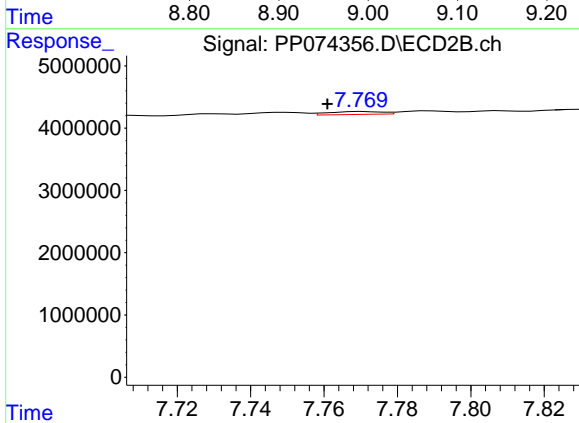
R.T.: 7.708 min
 Delta R.T.: 0.010 min
 Response: 319911
 Conc: 0.89 ng/ml



#39 AR-1262-4

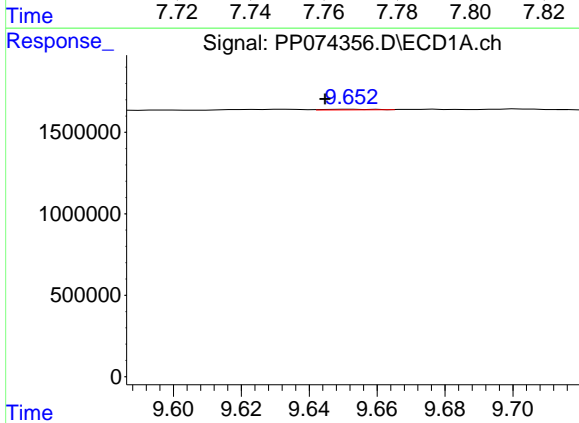
R.T.: 9.012 min
 Delta R.T.: 0.037 min
 Response: 200347
 Conc: 2.75 ng/ml

Instrument :
 ECD_P
 ClientSampleId :
 TW-11M-N



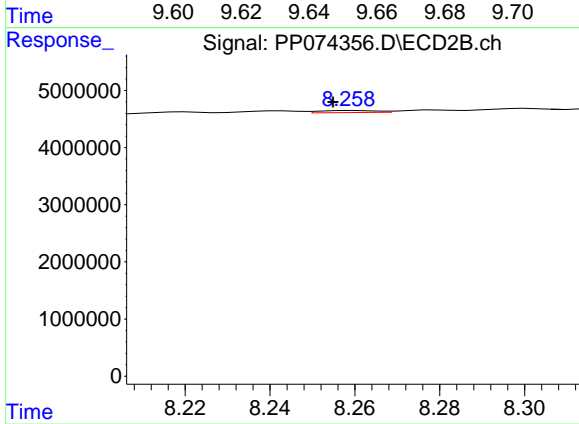
#39 AR-1262-4

R.T.: 7.771 min
 Delta R.T.: 0.010 min
 Response: 482293
 Conc: 0.72 ng/ml



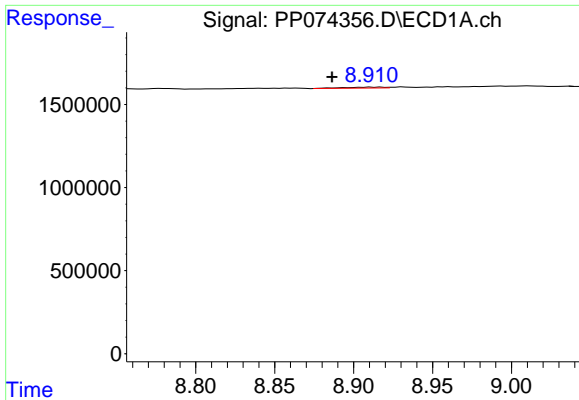
#40 AR-1262-5

R.T.: 9.653 min
 Delta R.T.: 0.008 min
 Response: 41286
 Conc: 0.81 ng/ml



#40 AR-1262-5

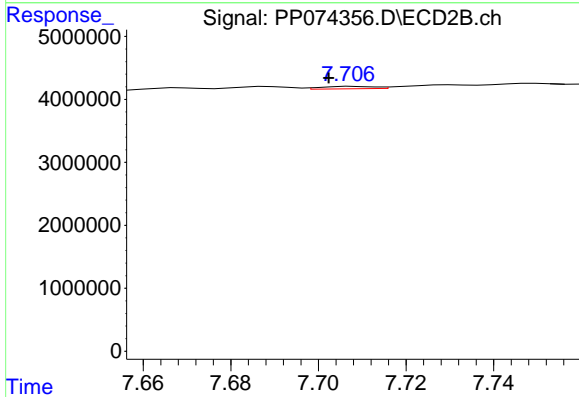
R.T.: 8.259 min
 Delta R.T.: 0.005 min
 Response: 346293
 Conc: 1.22 ng/ml



#41 AR-1268-1

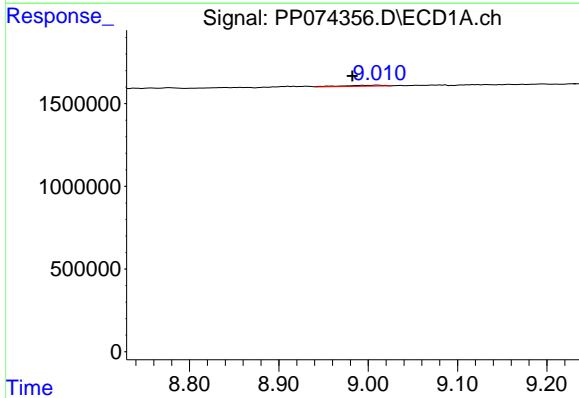
R.T.: 8.911 min
 Delta R.T.: 0.025 min
 Response: 105586
 Conc: 0.68 ng/ml

Instrument :
 ECD_P
 ClientSampleId :
 TW-11M-N



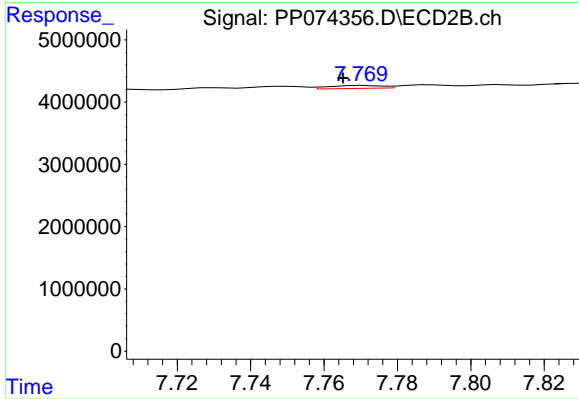
#41 AR-1268-1

R.T.: 7.708 min
 Delta R.T.: 0.006 min
 Response: 319911
 Conc: 0.29 ng/ml



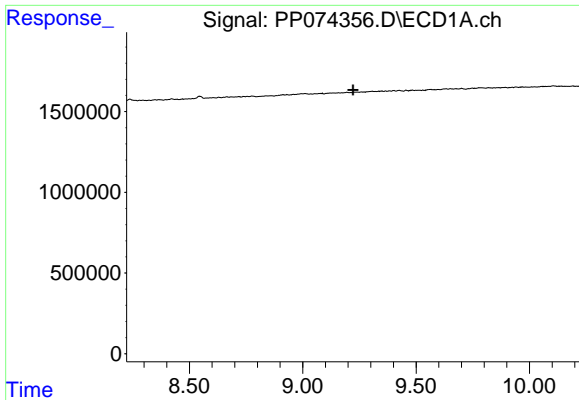
#42 AR-1268-2

R.T.: 9.012 min
 Delta R.T.: 0.029 min
 Response: 200347
 Conc: 1.40 ng/ml



#42 AR-1268-2

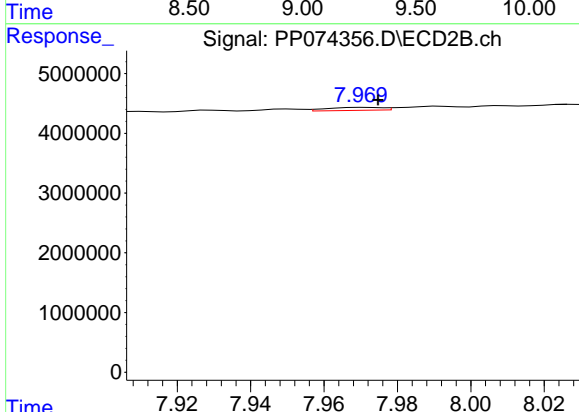
R.T.: 7.771 min
 Delta R.T.: 0.006 min
 Response: 482293
 Conc: 0.45 ng/ml



#43 AR-1268-3

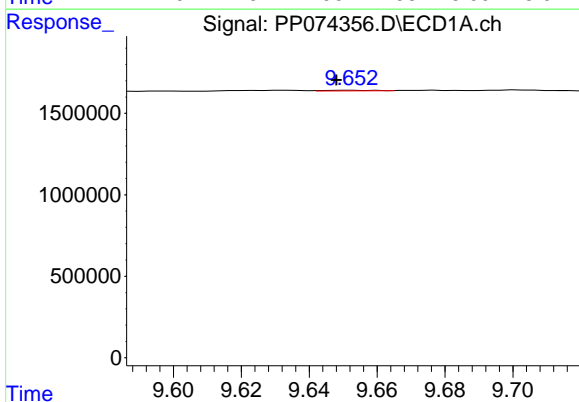
R.T.: 0.000 min
 Exp R.T.: 9.222 min
 Response: 0
 Conc: N.D.

Instrument :
 ECD_P
 ClientSampleId :
 TW-11M-N



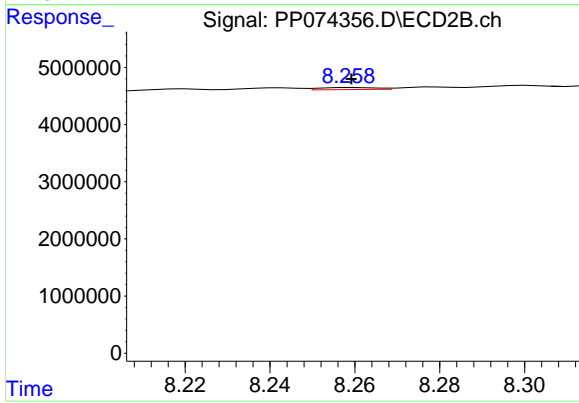
#43 AR-1268-3

R.T.: 7.971 min
 Delta R.T.: -0.004 min
 Response: 532202
 Conc: 0.64 ng/ml



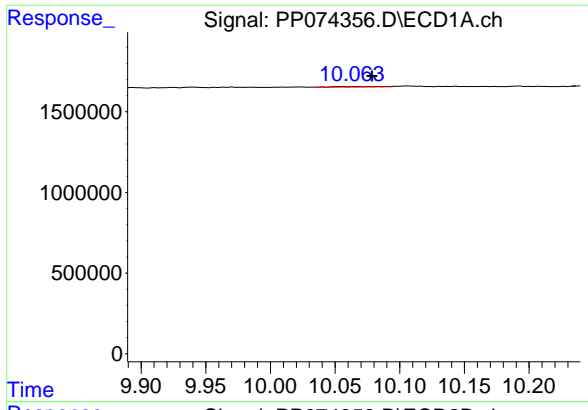
#44 AR-1268-4

R.T.: 9.653 min
 Delta R.T.: 0.005 min
 Response: 41286
 Conc: 0.70 ng/ml



#44 AR-1268-4

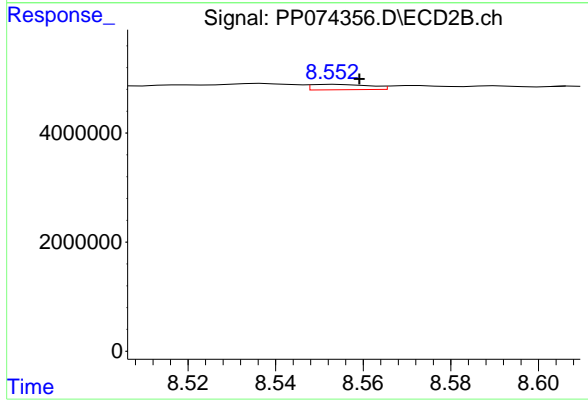
R.T.: 8.259 min
 Delta R.T.: 0.000 min
 Response: 346293
 Conc: 1.12 ng/ml



#45 AR-1268-5

R.T.: 10.064 min
Delta R.T.: -0.014 min
Response: 62404
Conc: 0.18 ng/ml

Instrument :
ECD_P
ClientSampleId :
TW-11M-N



#45 AR-1268-5

R.T.: 8.553 min
Delta R.T.: -0.006 min
Response: 919794
Conc: 0.36 ng/ml