

Data Path : Z:\pestpcbsrv\HPCHEM1\ECD_P\Data\PP081325\
 Data File : PP074358.D
 Signal(s) : Signal #1: ECD1A.ch Signal #2: ECD2B.ch
 Acq On : 13 Aug 2025 18:36
 Operator : YP\AJ
 Sample : Q2821-05
 Misc :
 ALS Vial : 22 Sample Multiplier: 1

Instrument :
 ECD_P
 ClientSampleId :
 GW-COMP

Integration File signal 1: autoint1.e
 Integration File signal 2: autoint2.e
 Quant Time: Aug 14 00:01:01 2025
 Quant Method : Z:\pestpcbsrv\HPCHEM1\ECD_P\methods\PP080125.M
 Quant Title : GC EXTRACTABLES
 QLast Update : Mon Aug 04 11:01:49 2025
 Response via : Initial Calibration
 Integrator: ChemStation

Volume Inj. : 2 µl
 Signal #1 Phase : ZB-MR1 Signal #2 Phase: ZB-MR2
 Signal #1 Info : 30Mx0.32mmx 0.50µ Signal #2 Info : 30M x 0.32mm x 0.25µm

Compound	RT#1	RT#2	Resp#1	Resp#2	ng/ml	ng/ml
System Monitoring Compounds						
2) SA Decachlor...	10.435	8.819	11953504	63929404	12.308	10.631
Target Compounds						
3) L1 AR-1016-1	5.823	0.000	1057243	0	25.626	N.D. #
4) L1 AR-1016-2	5.823	0.000	1057243	0	17.406	N.D. #
5) L1 AR-1016-3	5.896	0.000	1336108	0	33.689	N.D. #
6) L1 AR-1016-4	5.996	0.000	406773	0	12.499	N.D. #
7) L1 AR-1016-5	6.302	5.407f	365943	677275	11.271	5.790 #
8) L2 AR-1221-1	4.855	0.000	602211	0	35.924	N.D. #
9) L2 AR-1221-2	4.959	0.000	429903	0	34.116	N.D. #
10) L2 AR-1221-3	4.959f	0.000	429903	0	11.735	N.D. #
11) L3 AR-1232-1	4.959f	0.000	429903	0	14.805	N.D. #
12) L3 AR-1232-2	5.570	0.000	1332850	0	88.604	N.D. #
13) L3 AR-1232-3	5.823	0.000	1057243	0	36.454	N.D. #
14) L3 AR-1232-4	5.996	0.000	406773	0	26.296	N.D. #
15) L3 AR-1232-5	6.054	5.407f	726230	677275	61.986	14.416 #
16) L4 AR-1242-1	5.823	0.000	1057243	0	28.370	N.D. #
17) L4 AR-1242-2	5.823	0.000	1057243	0	19.431	N.D. #
18) L4 AR-1242-3	5.896	0.000	1336108	0	37.388	N.D. #
19) L4 AR-1242-4	5.996	0.000	406773	0	13.922	N.D. #
20) L4 AR-1242-5	6.744	5.746f	1485198	2710060	41.768	18.120 #
21) L5 AR-1248-1	5.823	0.000	1057243	0	37.739	N.D. #
22) L5 AR-1248-2	6.054	0.000	726230	0	18.038	N.D. #
23) L5 AR-1248-3	6.302	0.000	365943	0	8.210	N.D. #
24) L5 AR-1248-4	6.683	0.000	7995661	0	153.653	N.D. #
25) L5 AR-1248-5	6.744	5.746	1485198	2710060	26.082	9.314 #
26) L6 AR-1254-1	6.646	5.746f	341612	2710060	6.489	7.401
27) L6 AR-1254-2	6.873	0.000	470585	0	5.919	N.D. #
28) L6 AR-1254-3	7.228	6.229	759454	304646	8.698	0.623 #
29) L6 AR-1254-4	7.514	6.474	76744	204796	1.203	0.557 #
30) L6 AR-1254-5	7.942	6.875	72344	251554	0.892	0.653 #
31) L7 AR-1260-1	7.391	6.548	120108	275867	2.131	0.683 #
32) L7 AR-1260-2	7.656	6.713	245592	174594	3.604	0.558 #
33) L7 AR-1260-3	8.029	6.916	270362	113033	5.073	0.287 #
34) L7 AR-1260-4	8.249	7.178	179249	223576	2.863	0.768 #
35) L7 AR-1260-5	8.547	7.415	281723	246136	2.486	0.325 #
36) L8 AR-1262-1	8.249	6.916	179249	113033	2.365	0.201 #
37) L8 AR-1262-2	8.547	7.178	281723	223576	2.160	0.558 #
38) L8 AR-1262-3	8.934f	7.701	141572	721748	1.505	2.008 #
39) L8 AR-1262-4	8.970	7.757	43679	492819	0.600	0.739
40) L8 AR-1262-5	9.614	8.253	87196	276783	1.712	0.977 #
41) L9 AR-1268-1	8.934f	7.701	141572	721748	0.910	0.662 #
42) L9 AR-1268-2	8.986	7.757	51129	492819	0.356	0.464 #

Data Path : Z:\pestpcbsrv\HPCHEM1\ECD_P\Data\PP081325\
 Data File : PP074358.D
 Signal(s) : Signal #1: ECD1A.ch Signal #2: ECD2B.ch
 Acq On : 13 Aug 2025 18:36
 Operator : YP\AJ
 Sample : Q2821-05
 Misc :
 ALS Vial : 22 Sample Multiplier: 1

Instrument :
 ECD_P
 ClientSampleId :
 GW-COMP

Integration File signal 1: autoint1.e
 Integration File signal 2: autoint2.e
 Quant Time: Aug 14 00:01:01 2025
 Quant Method : Z:\pestpcbsrv\HPCHEM1\ECD_P\methods\PP080125.M
 Quant Title : GC EXTRACTABLES
 QLast Update : Mon Aug 04 11:01:49 2025
 Response via : Initial Calibration
 Integrator: ChemStation

Volume Inj. : 2 µl
 Signal #1 Phase : ZB-MR1 Signal #2 Phase: ZB-MR2
 Signal #1 Info : 30Mx0.32mmx 0.50µ Signal #2 Info : 30M x 0.32mm x 0.25µm

	Compound	RT#1	RT#2	Resp#1	Resp#2	ng/ml	ng/ml
43)	L9 AR-1268-3	9.218	7.972	88884	424701	0.744	0.510 #
44)	L9 AR-1268-4	9.614	8.253	87196	276783	1.483	0.898 #
45)	L9 AR-1268-5	0.000	8.562	0	283811	N.D.	0.111 #

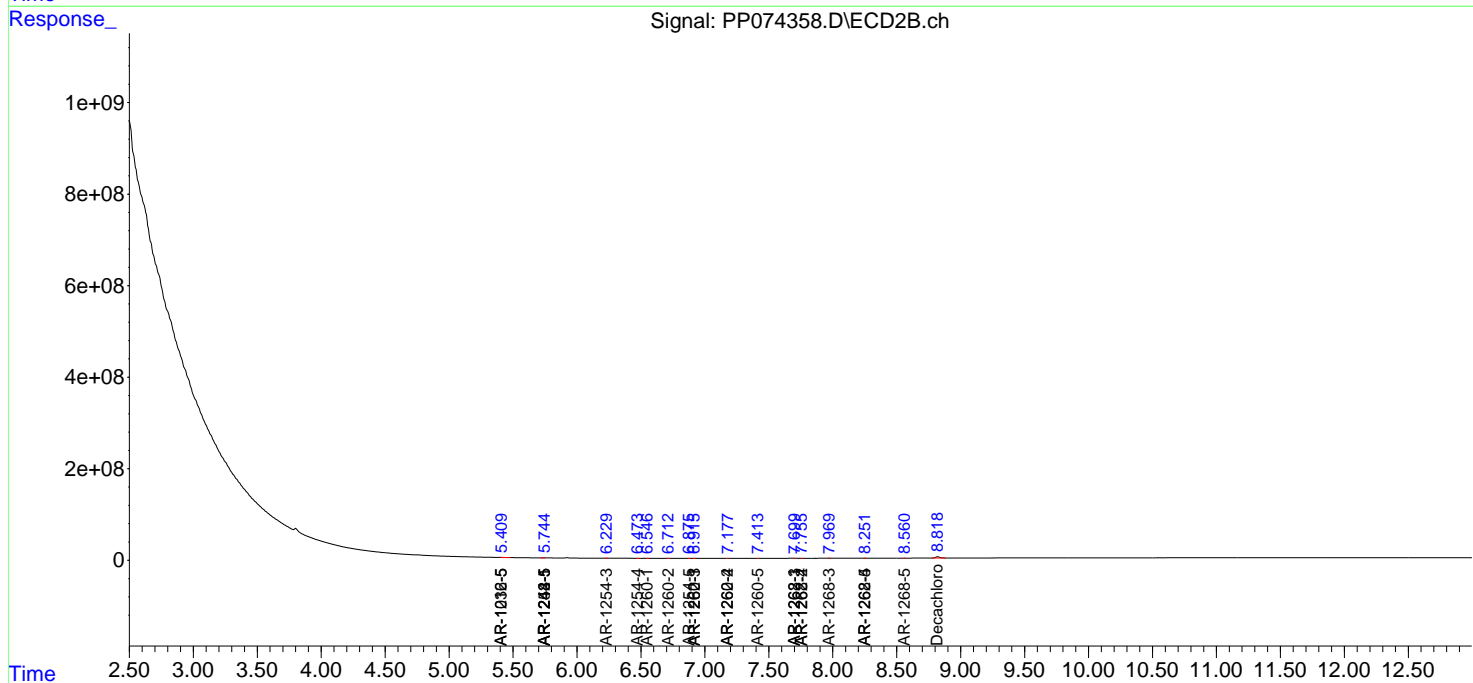
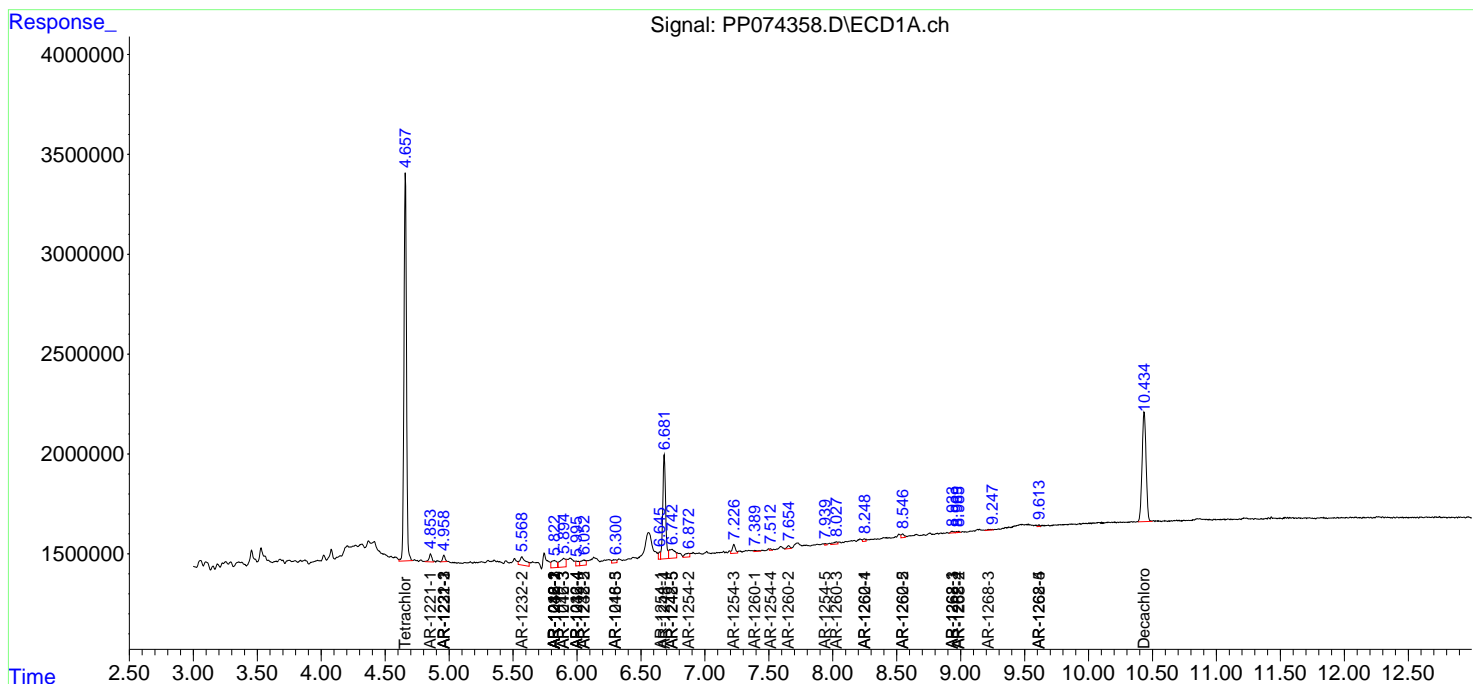
(f)=RT Delta > 1/2 Window (#)=Amounts differ by > 25% (m)=manual int.

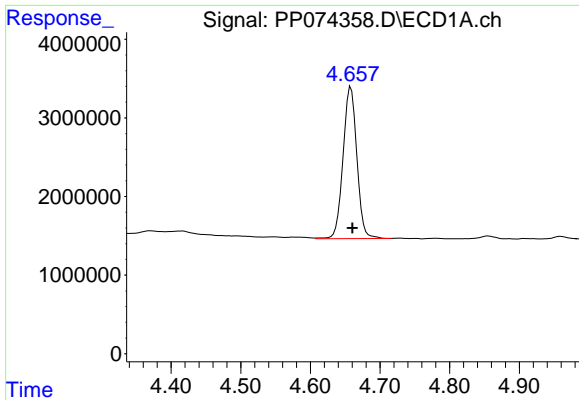
Data Path : Z:\pestpcbsrv\HPCHEM1\ECD_P\Data\PP081325\
 Data File : PP074358.D
 Signal(s) : Signal #1: ECD1A.ch Signal #2: ECD2B.ch
 Acq On : 13 Aug 2025 18:36
 Operator : YP\AJ
 Sample : Q2821-05
 Misc :
 ALS Vial : 22 Sample Multiplier: 1

Instrument :
 ECD_P
 ClientSampleId :
 GW-COMP

Integration File signal 1: autoint1.e
 Integration File signal 2: autoint2.e
 Quant Time: Aug 14 00:01:01 2025
 Quant Method : Z:\pestpcbsrv\HPCHEM1\ECD_P\methods\PP080125.M
 Quant Title : GC EXTRACTABLES
 QLast Update : Mon Aug 04 11:01:49 2025
 Response via : Initial Calibration
 Integrator: ChemStation

Volume Inj. : 2 µl
 Signal #1 Phase : ZB-MR1 Signal #2 Phase: ZB-MR2
 Signal #1 Info : 30Mx0.32mmx 0.50µ Signal #2 Info : 30M x 0.32mm x 0.25µm

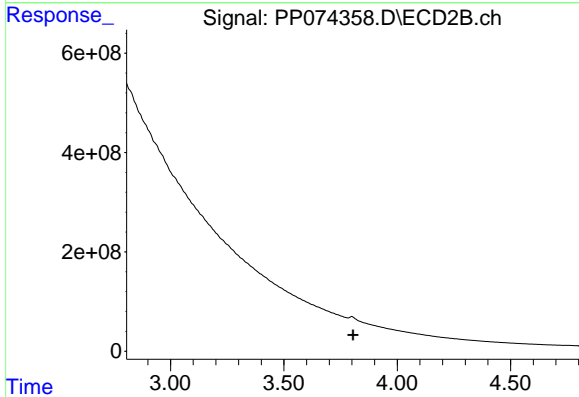




#1 Tetrachloro-m-xylene

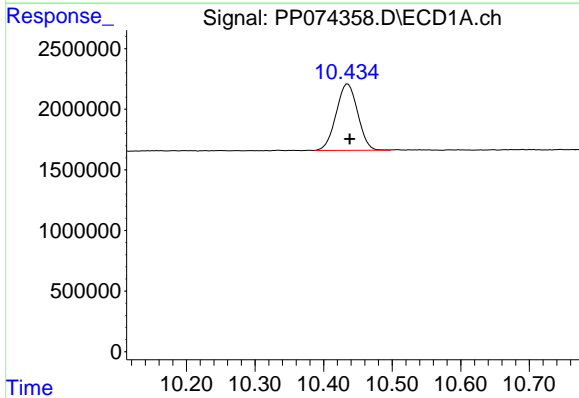
R.T.: 4.658 min
 Delta R.T.: -0.002 min
 Response: 26574373
 Conc: 23.76 ng/ml

Instrument :
 ECD_P
 ClientSampleId :
 GW-COMP



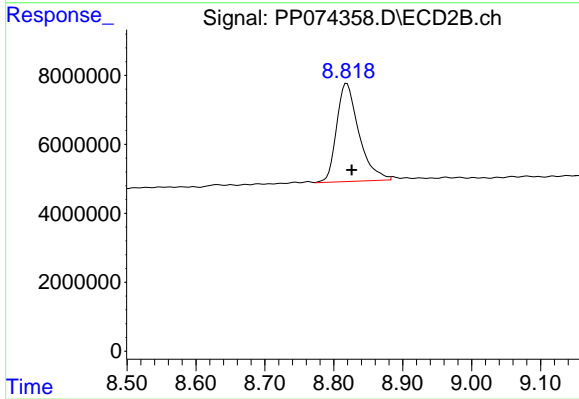
#1 Tetrachloro-m-xylene

R.T.: 3.800 min
 Delta R.T.: -0.006 min
 Response: -1004814397
 Conc: N.D.



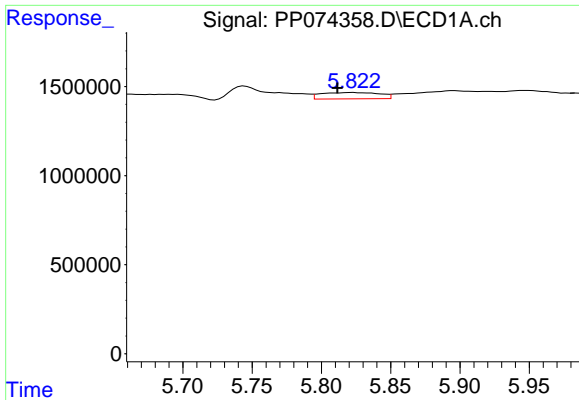
#2 Decachlorobiphenyl

R.T.: 10.435 min
 Delta R.T.: -0.003 min
 Response: 11953504
 Conc: 12.31 ng/ml



#2 Decachlorobiphenyl

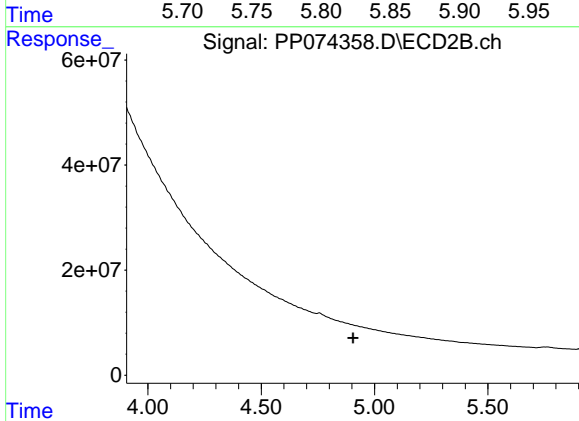
R.T.: 8.819 min
 Delta R.T.: -0.007 min
 Response: 63929404
 Conc: 10.63 ng/ml



#3 AR-1016-1

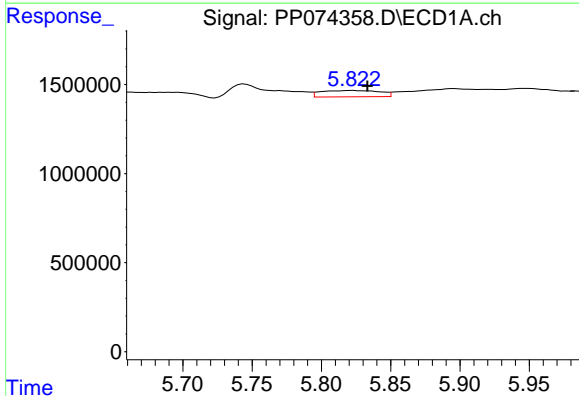
R.T.: 5.823 min
 Delta R.T.: 0.011 min
 Response: 1057243
 Conc: 25.63 ng/ml

Instrument :
 ECD_P
 ClientSampleId :
 GW-COMP



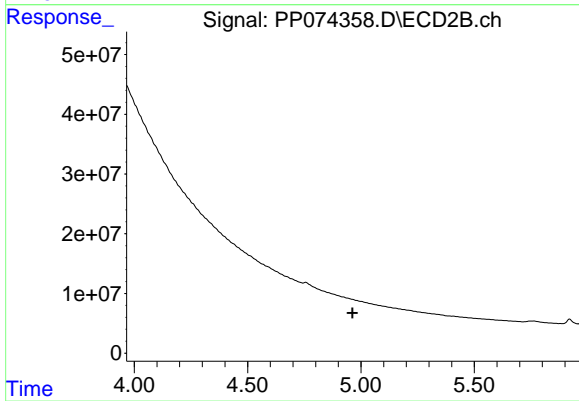
#3 AR-1016-1

R.T.: 0.000 min
 Exp R.T. : 4.906 min
 Response: 0
 Conc: N.D.



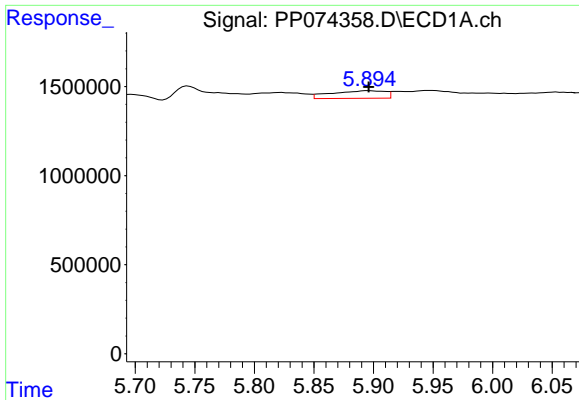
#4 AR-1016-2

R.T.: 5.823 min
 Delta R.T.: -0.010 min
 Response: 1057243
 Conc: 17.41 ng/ml



#4 AR-1016-2

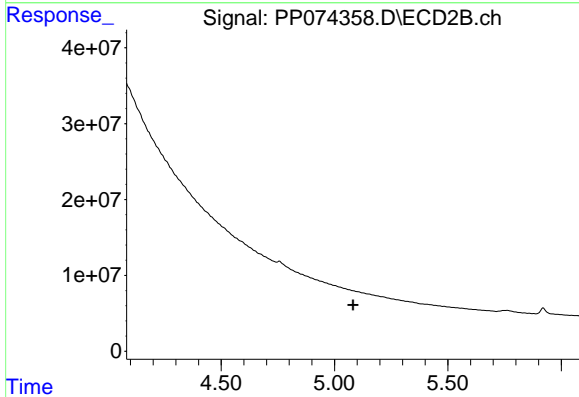
R.T.: 0.000 min
 Exp R.T. : 4.963 min
 Response: 0
 Conc: N.D.



#5 AR-1016-3

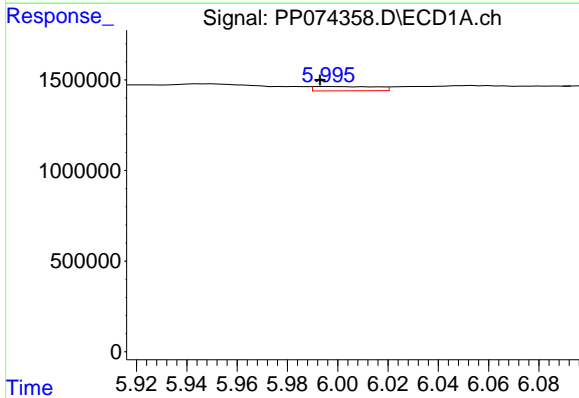
R.T.: 5.896 min
 Delta R.T.: 0.000 min
 Response: 1336108
 Conc: 33.69 ng/ml

Instrument :
 ECD_P
 ClientSampleId :
 GW-COMP



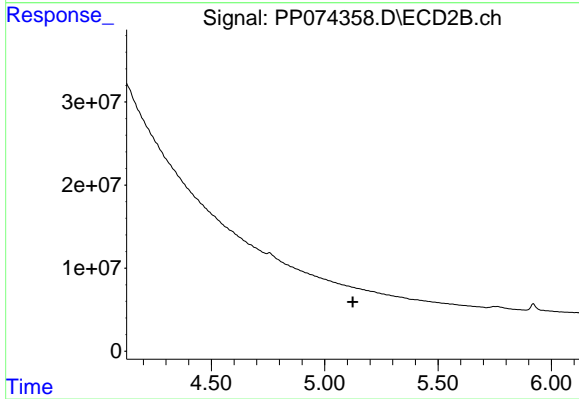
#5 AR-1016-3

R.T.: 0.000 min
 Exp R.T. : 5.083 min
 Response: 0
 Conc: N.D.



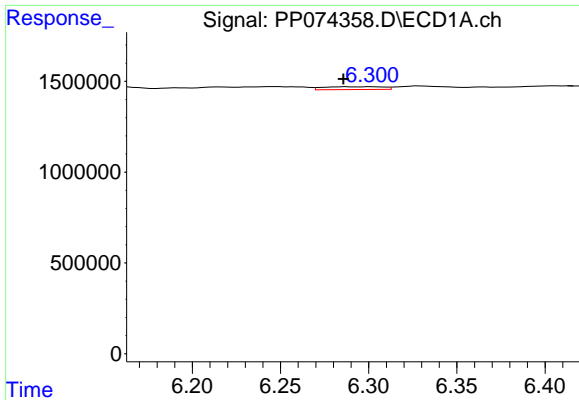
#6 AR-1016-4

R.T.: 5.996 min
 Delta R.T.: 0.003 min
 Response: 406773
 Conc: 12.50 ng/ml



#6 AR-1016-4

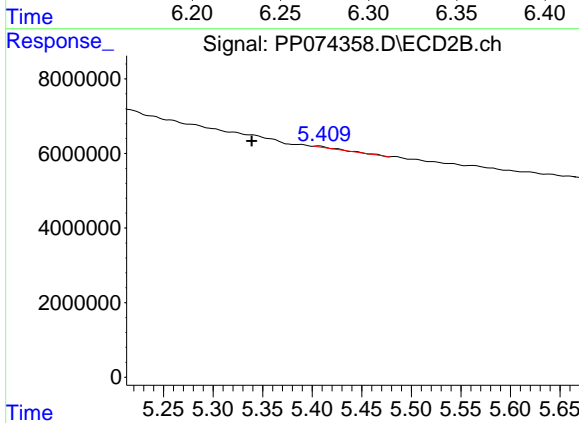
R.T.: 0.000 min
 Exp R.T. : 5.123 min
 Response: 0
 Conc: N.D.



#7 AR-1016-5

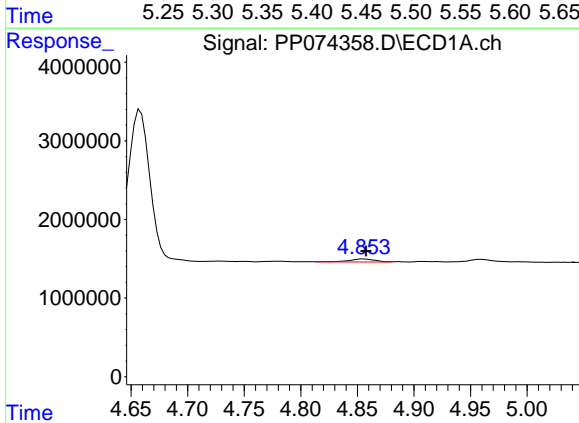
R.T.: 6.302 min
 Delta R.T.: 0.016 min
 Response: 365943
 Conc: 11.27 ng/ml

Instrument :
 ECD_P
 ClientSampleId :
 GW-COMP



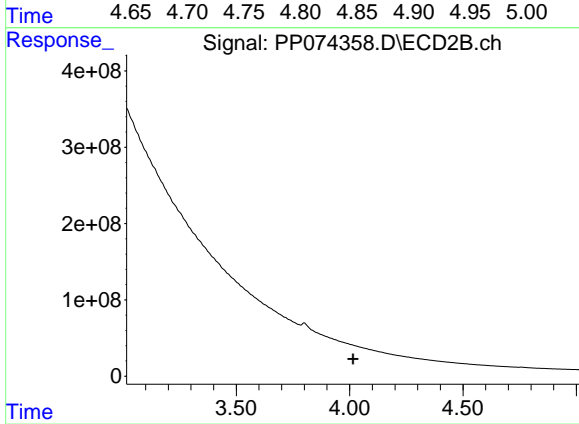
#7 AR-1016-5

R.T.: 5.407 min
 Delta R.T.: 0.069 min
 Response: 677275
 Conc: 5.79 ng/ml



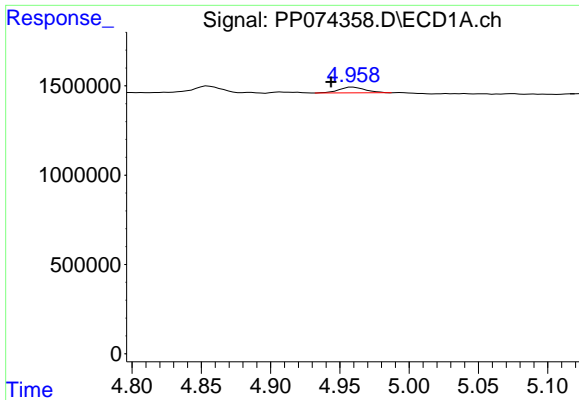
#8 AR-1221-1

R.T.: 4.855 min
 Delta R.T.: -0.003 min
 Response: 602211
 Conc: 35.92 ng/ml



#8 AR-1221-1

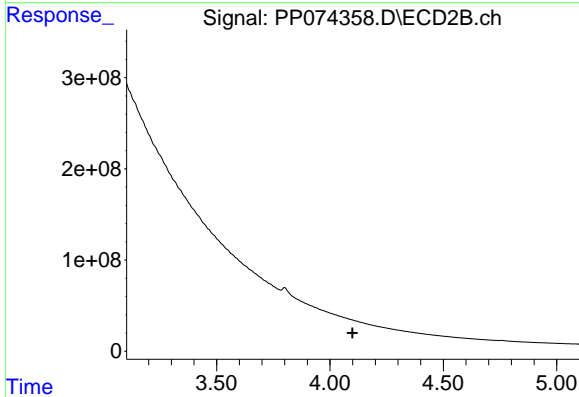
R.T.: 0.000 min
 Exp R.T.: 4.015 min
 Response: 0
 Conc: N.D.



#9 AR-1221-2

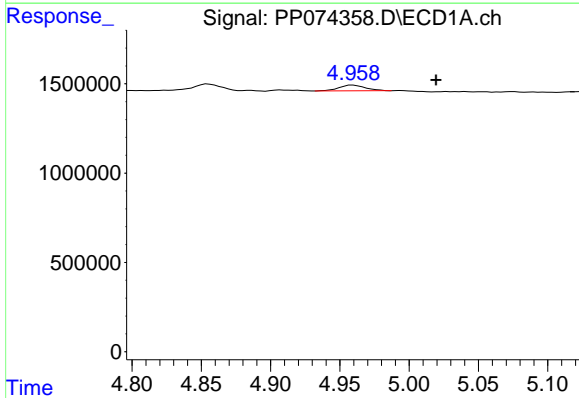
R.T.: 4.959 min
 Delta R.T.: 0.016 min
 Response: 429903
 Conc: 34.12 ng/ml

Instrument :
 ECD_P
 ClientSampleId :
 GW-COMP



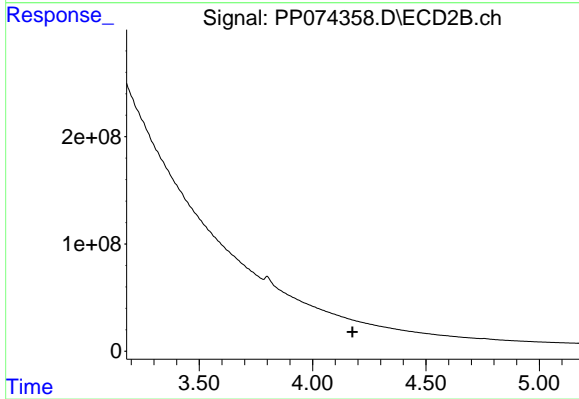
#9 AR-1221-2

R.T.: 0.000 min
 Exp R.T. : 4.100 min
 Response: 0
 Conc: N.D.



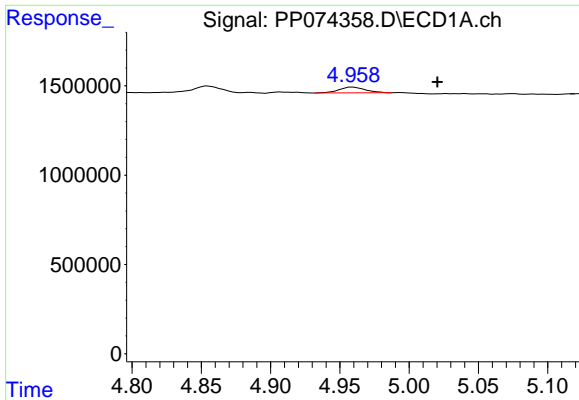
#10 AR-1221-3

R.T.: 4.959 min
 Delta R.T.: -0.060 min
 Response: 429903
 Conc: 11.73 ng/ml



#10 AR-1221-3

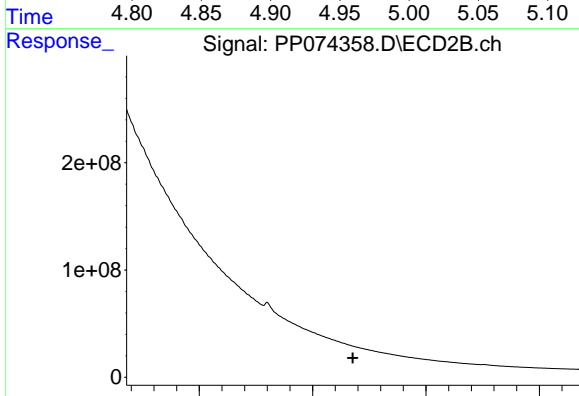
R.T.: 0.000 min
 Exp R.T. : 4.176 min
 Response: 0
 Conc: N.D.



#11 AR-1232-1

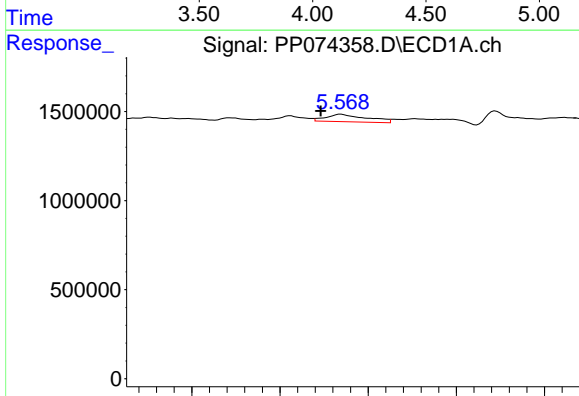
R.T.: 4.959 min
 Delta R.T.: -0.061 min
 Response: 429903
 Conc: 14.81 ng/ml

Instrument :
 ECD_P
 ClientSampleId :
 GW-COMP



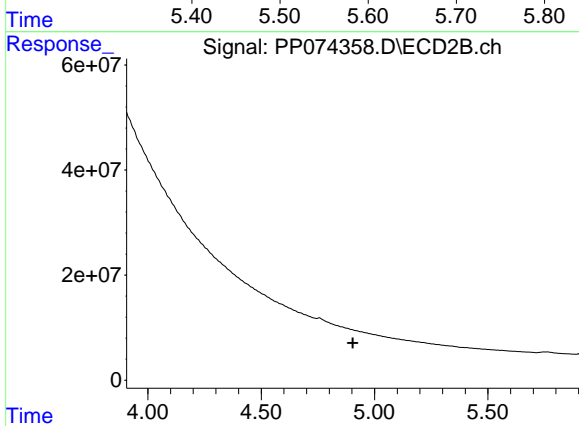
#11 AR-1232-1

R.T.: 0.000 min
 Exp R.T. : 4.177 min
 Response: 0
 Conc: N.D.



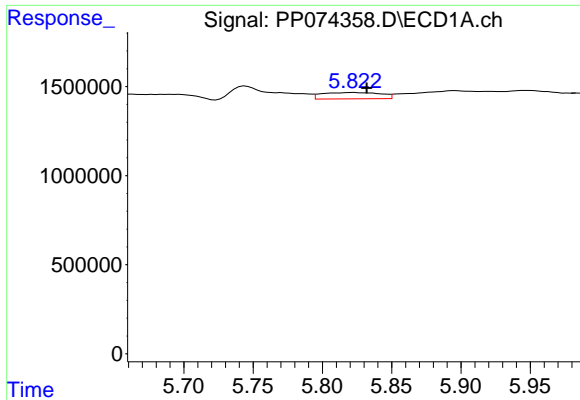
#12 AR-1232-2

R.T.: 5.570 min
 Delta R.T.: 0.023 min
 Response: 1332850
 Conc: 88.60 ng/ml



#12 AR-1232-2

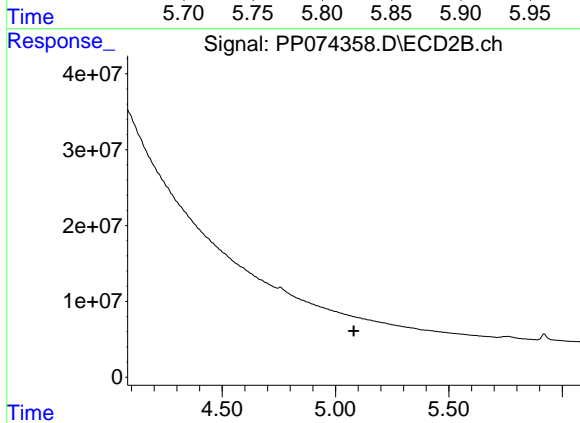
R.T.: 0.000 min
 Exp R.T. : 4.904 min
 Response: 0
 Conc: N.D.



#13 AR-1232-3

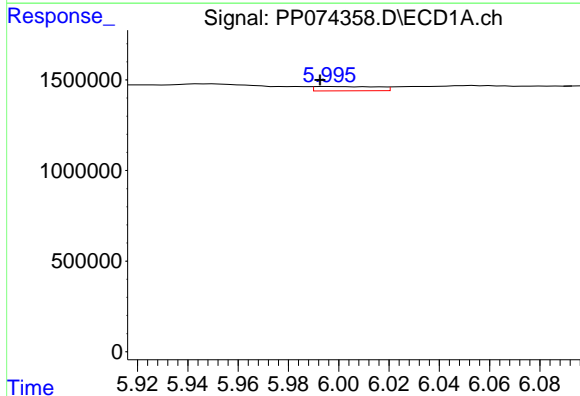
R.T.: 5.823 min
 Delta R.T.: -0.009 min
 Response: 1057243
 Conc: 36.45 ng/ml

Instrument :
 ECD_P
 ClientSampleId :
 GW-COMP



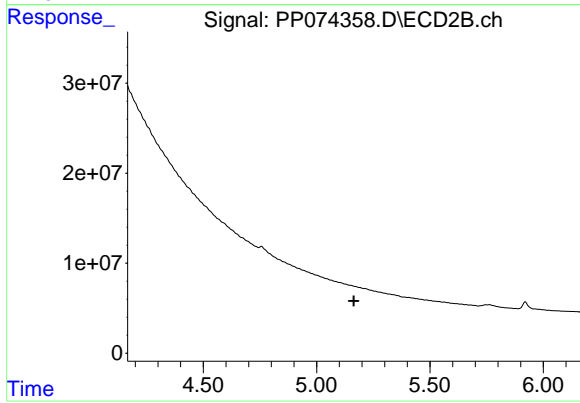
#13 AR-1232-3

R.T.: 0.000 min
 Exp R.T. : 5.081 min
 Response: 0
 Conc: N.D.



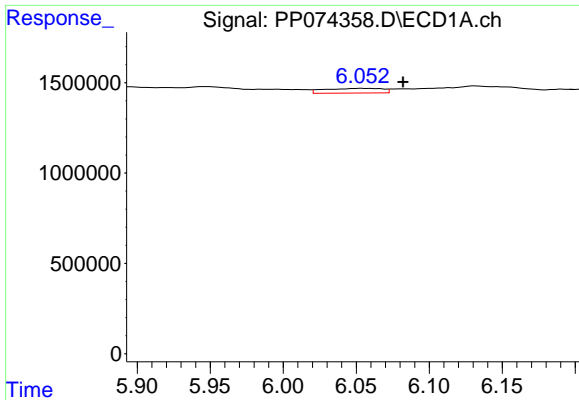
#14 AR-1232-4

R.T.: 5.996 min
 Delta R.T.: 0.004 min
 Response: 406773
 Conc: 26.30 ng/ml



#14 AR-1232-4

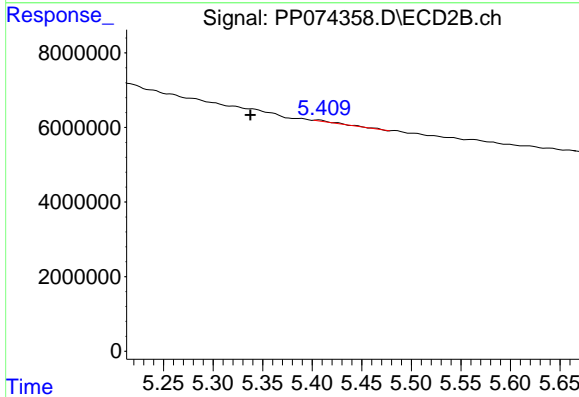
R.T.: 0.000 min
 Exp R.T. : 5.164 min
 Response: 0
 Conc: N.D.



#15 AR-1232-5

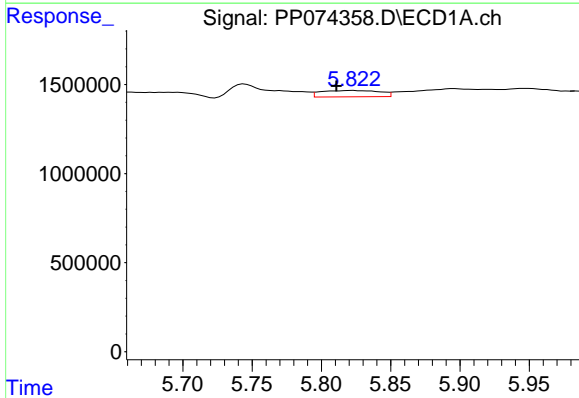
R.T.: 6.054 min
 Delta R.T.: -0.028 min
 Response: 726230
 Conc: 61.99 ng/ml

Instrument :
 ECD_P
 ClientSampleId :
 GW-COMP



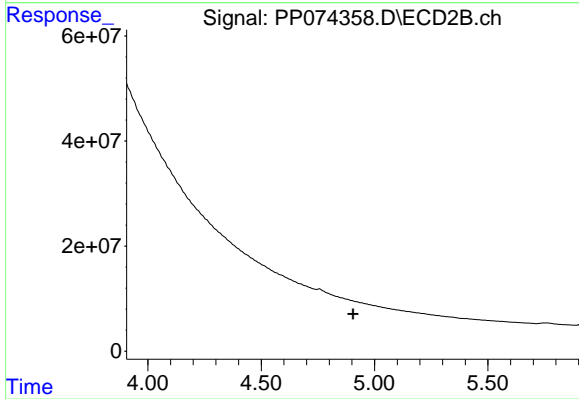
#15 AR-1232-5

R.T.: 5.407 min
 Delta R.T.: 0.070 min
 Response: 677275
 Conc: 14.42 ng/ml



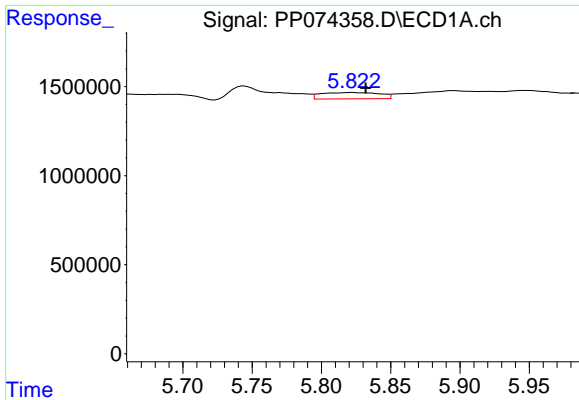
#16 AR-1242-1

R.T.: 5.823 min
 Delta R.T.: 0.012 min
 Response: 1057243
 Conc: 28.37 ng/ml



#16 AR-1242-1

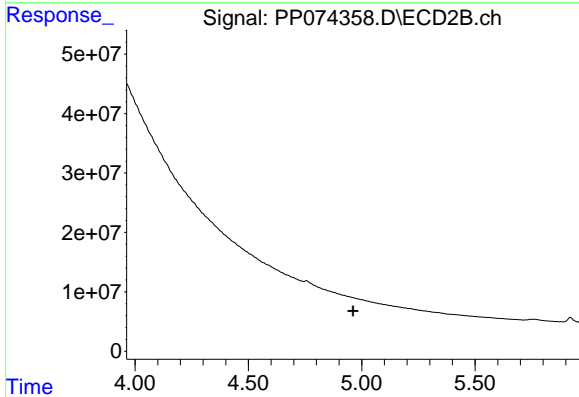
R.T.: 0.000 min
 Exp R.T. : 4.905 min
 Response: 0
 Conc: N.D.



#17 AR-1242-2

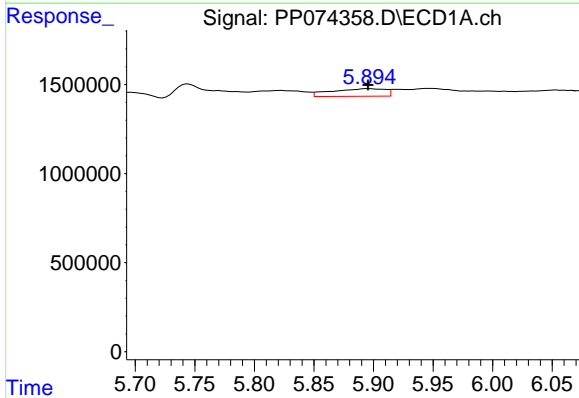
R.T.: 5.823 min
 Delta R.T.: -0.009 min
 Response: 1057243
 Conc: 19.43 ng/ml

Instrument :
 ECD_P
 ClientSampleId :
 GW-COMP



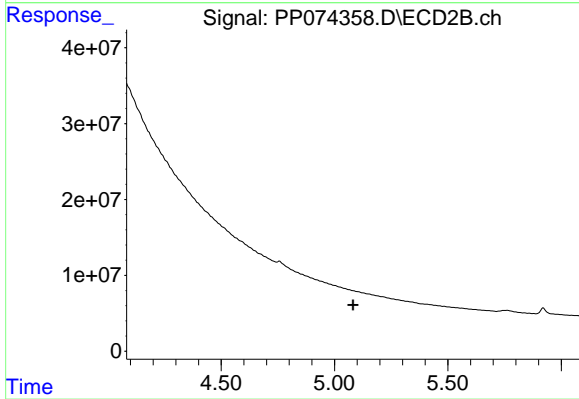
#17 AR-1242-2

R.T.: 0.000 min
 Exp R.T. : 4.962 min
 Response: 0
 Conc: N.D.



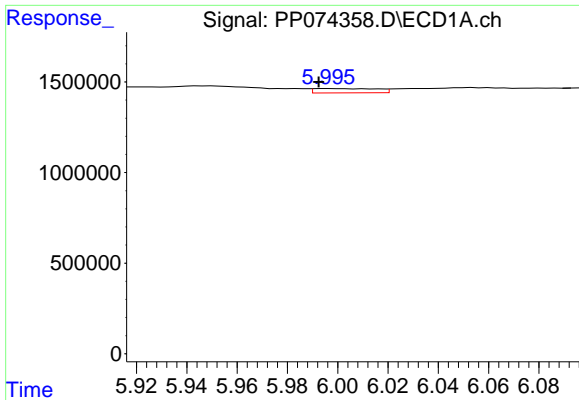
#18 AR-1242-3

R.T.: 5.896 min
 Delta R.T.: 0.000 min
 Response: 1336108
 Conc: 37.39 ng/ml



#18 AR-1242-3

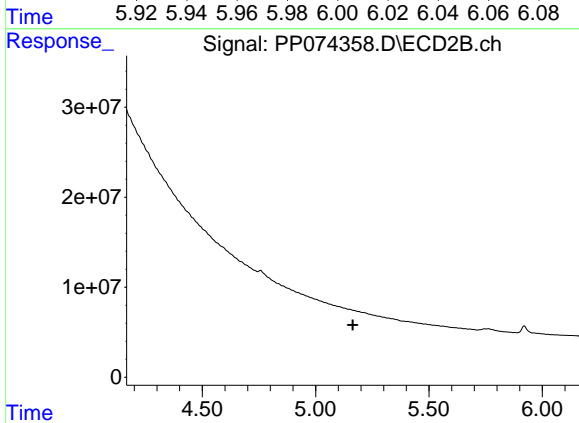
R.T.: 0.000 min
 Exp R.T. : 5.082 min
 Response: 0
 Conc: N.D.



#19 AR-1242-4

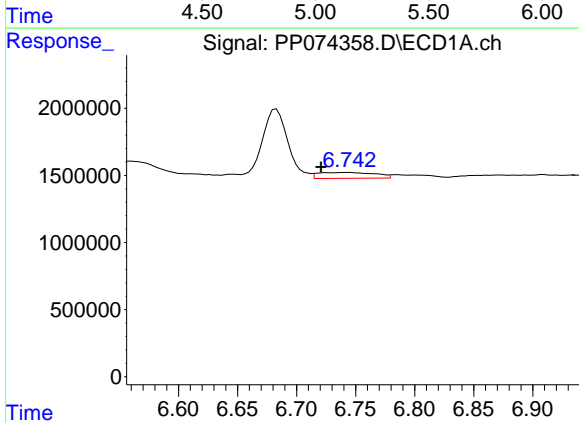
R.T.: 5.996 min
 Delta R.T.: 0.004 min
 Response: 406773
 Conc: 13.92 ng/ml

Instrument :
 ECD_P
 ClientSampleId :
 GW-COMP



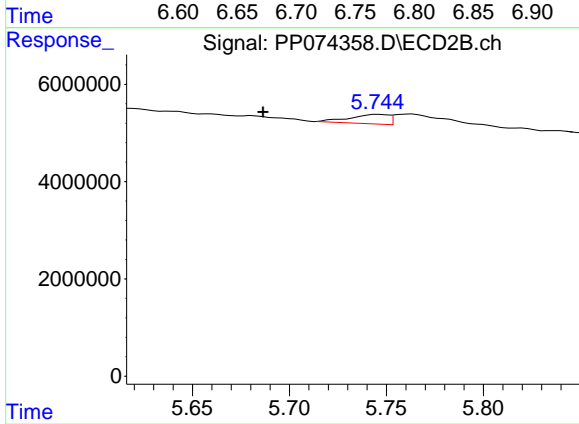
#19 AR-1242-4

R.T.: 0.000 min
 Exp R.T. : 5.164 min
 Response: 0
 Conc: N.D.



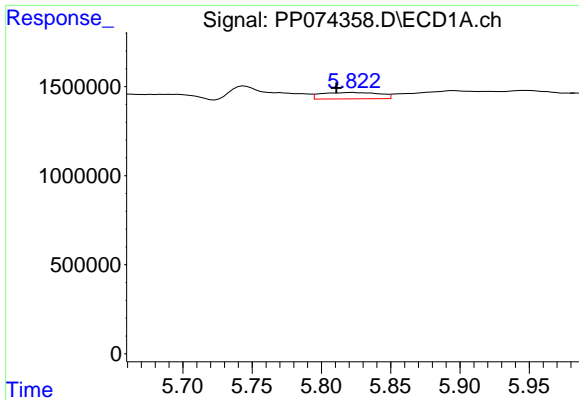
#20 AR-1242-5

R.T.: 6.744 min
 Delta R.T.: 0.023 min
 Response: 1485198
 Conc: 41.77 ng/ml



#20 AR-1242-5

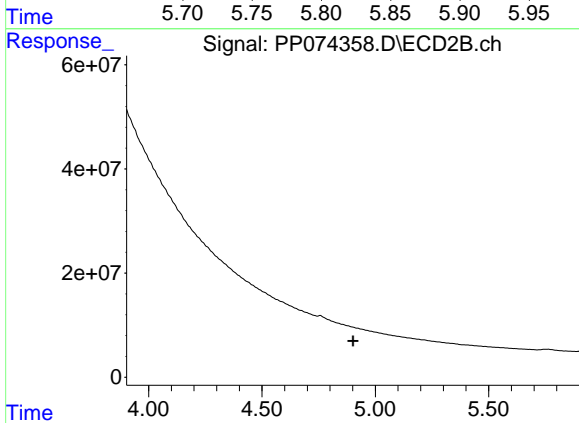
R.T.: 5.746 min
 Delta R.T.: 0.059 min
 Response: 2710060
 Conc: 18.12 ng/ml



#21 AR-1248-1

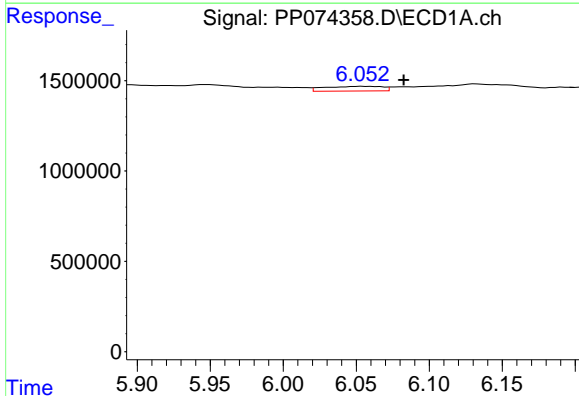
R.T.: 5.823 min
 Delta R.T.: 0.012 min
 Response: 1057243
 Conc: 37.74 ng/ml

Instrument :
 ECD_P
 ClientSampleId :
 GW-COMP



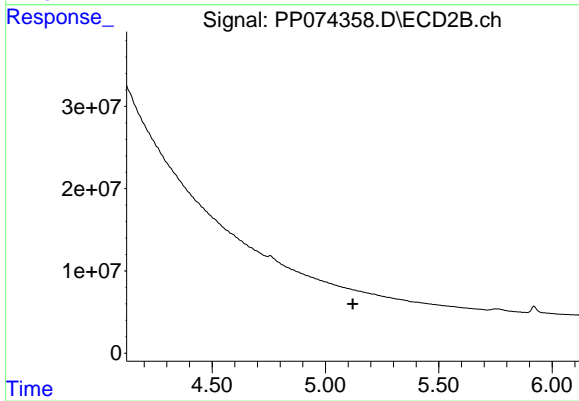
#21 AR-1248-1

R.T.: 0.000 min
 Exp R.T. : 4.902 min
 Response: 0
 Conc: N.D.



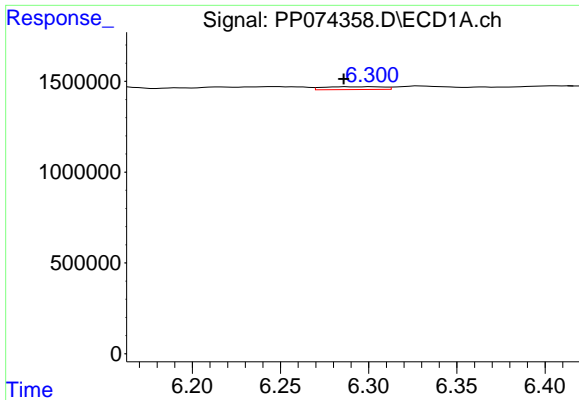
#22 AR-1248-2

R.T.: 6.054 min
 Delta R.T.: -0.029 min
 Response: 726230
 Conc: 18.04 ng/ml



#22 AR-1248-2

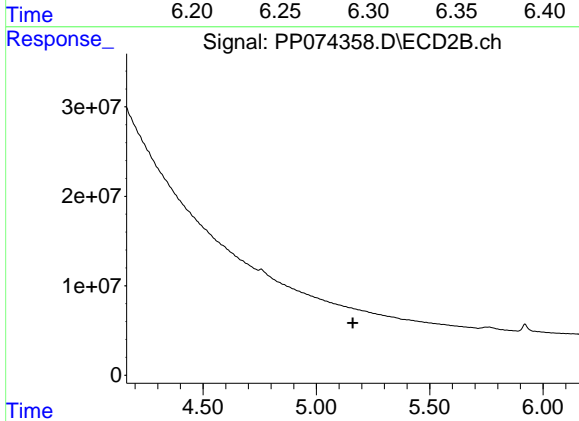
R.T.: 0.000 min
 Exp R.T. : 5.121 min
 Response: 0
 Conc: N.D.



#23 AR-1248-3

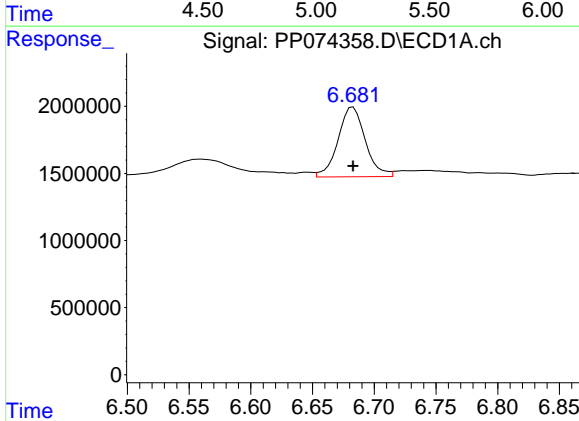
R.T.: 6.302 min
 Delta R.T.: 0.016 min
 Response: 365943
 Conc: 8.21 ng/ml

Instrument :
 ECD_P
 ClientSampleId :
 GW-COMP



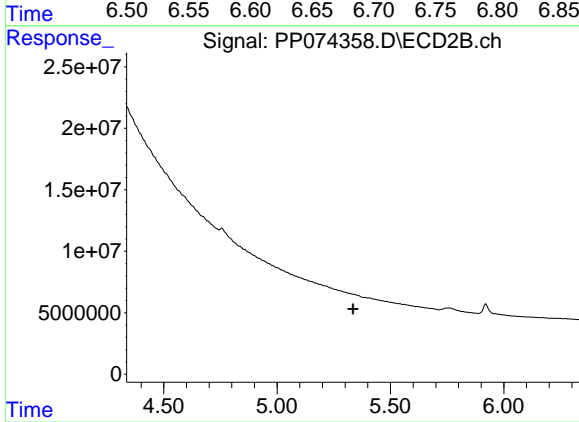
#23 AR-1248-3

R.T.: 0.000 min
 Exp R.T. : 5.161 min
 Response: 0
 Conc: N.D.



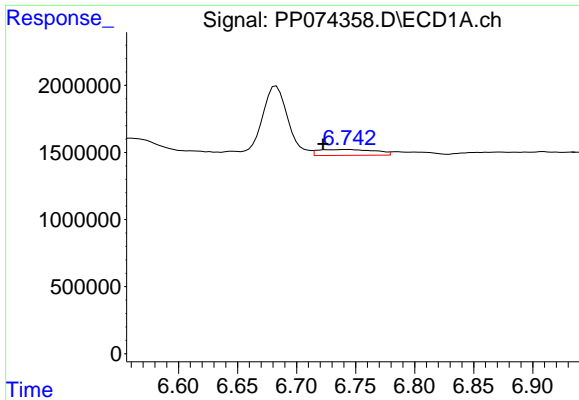
#24 AR-1248-4

R.T.: 6.683 min
 Delta R.T.: 0.000 min
 Response: 7995661
 Conc: 153.65 ng/ml



#24 AR-1248-4

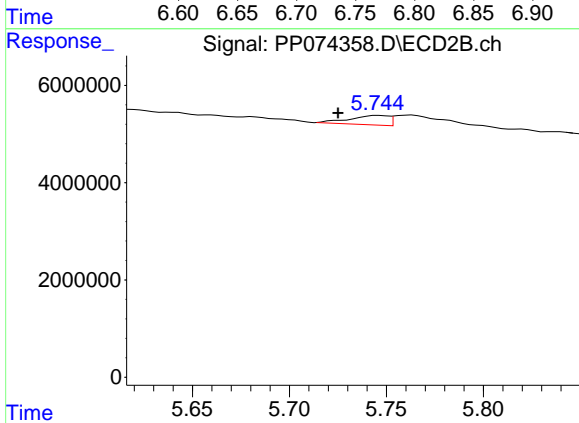
R.T.: 0.000 min
 Exp R.T. : 5.335 min
 Response: 0
 Conc: N.D.



#25 AR-1248-5

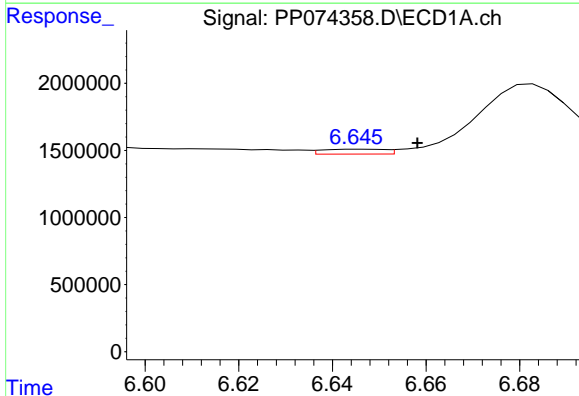
R.T.: 6.744 min
 Delta R.T.: 0.021 min
 Response: 1485198
 Conc: 26.08 ng/ml

Instrument :
 ECD_P
 ClientSampleId :
 GW-COMP



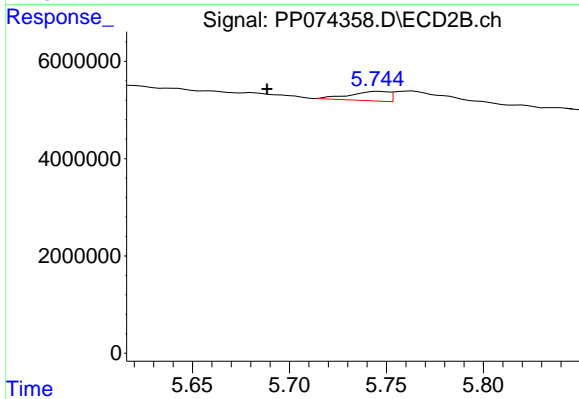
#25 AR-1248-5

R.T.: 5.746 min
 Delta R.T.: 0.021 min
 Response: 2710060
 Conc: 9.31 ng/ml



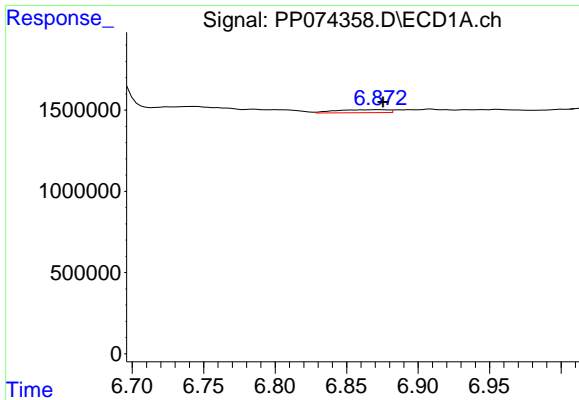
#26 AR-1254-1

R.T.: 6.646 min
 Delta R.T.: -0.012 min
 Response: 341612
 Conc: 6.49 ng/ml



#26 AR-1254-1

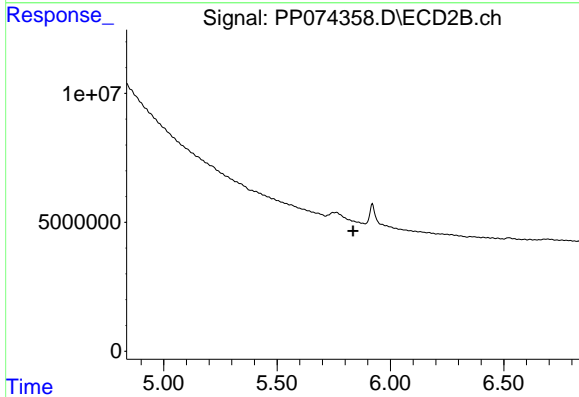
R.T.: 5.746 min
 Delta R.T.: 0.057 min
 Response: 2710060
 Conc: 7.40 ng/ml



#27 AR-1254-2

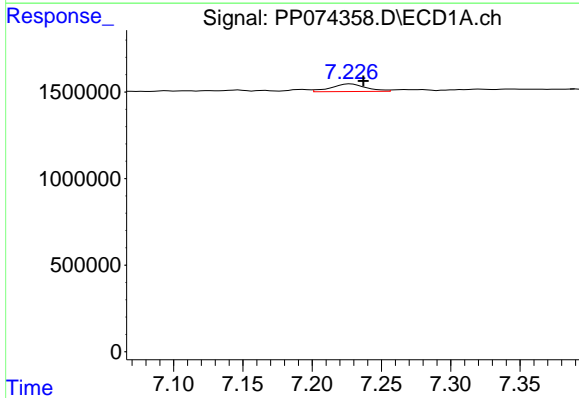
R.T.: 6.873 min
 Delta R.T.: -0.002 min
 Response: 470585
 Conc: 5.92 ng/ml

Instrument :
 ECD_P
 ClientSampleId :
 GW-COMP



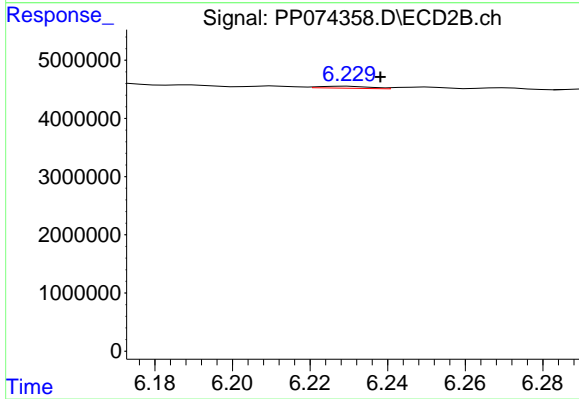
#27 AR-1254-2

R.T.: 0.000 min
 Exp R.T. : 5.835 min
 Response: 0
 Conc: N.D.



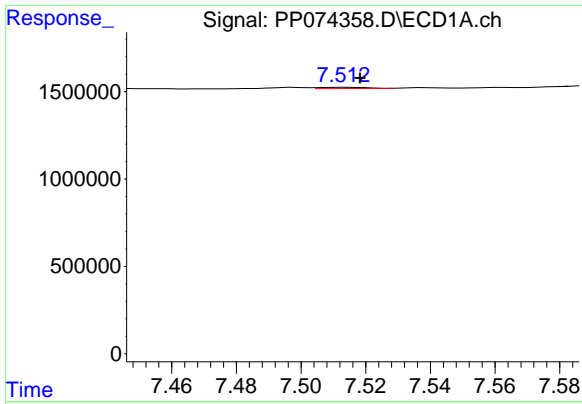
#28 AR-1254-3

R.T.: 7.228 min
 Delta R.T.: -0.009 min
 Response: 759454
 Conc: 8.70 ng/ml



#28 AR-1254-3

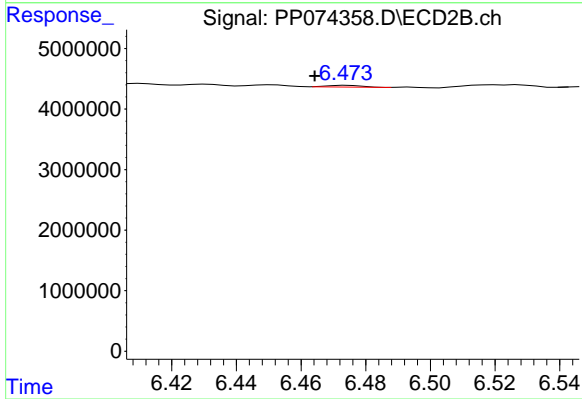
R.T.: 6.229 min
 Delta R.T.: -0.009 min
 Response: 304646
 Conc: 0.62 ng/ml



#29 AR-1254-4

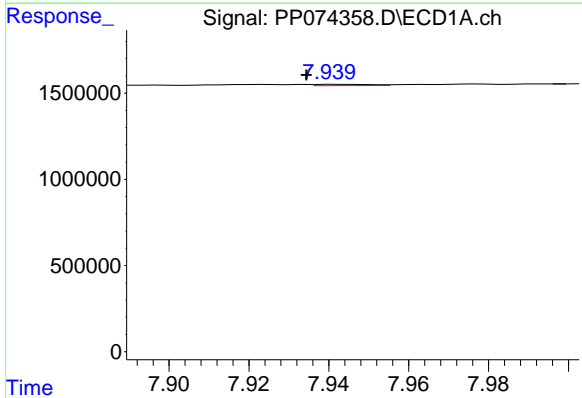
R.T.: 7.514 min
 Delta R.T.: -0.005 min
 Response: 76744
 Conc: 1.20 ng/ml

Instrument :
 ECD_P
 ClientSampleId :
 GW-COMP



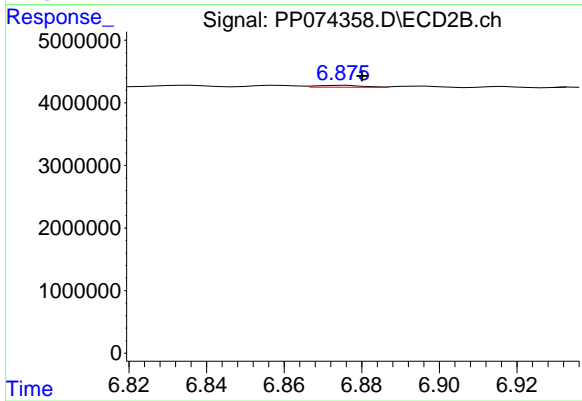
#29 AR-1254-4

R.T.: 6.474 min
 Delta R.T.: 0.010 min
 Response: 204796
 Conc: 0.56 ng/ml



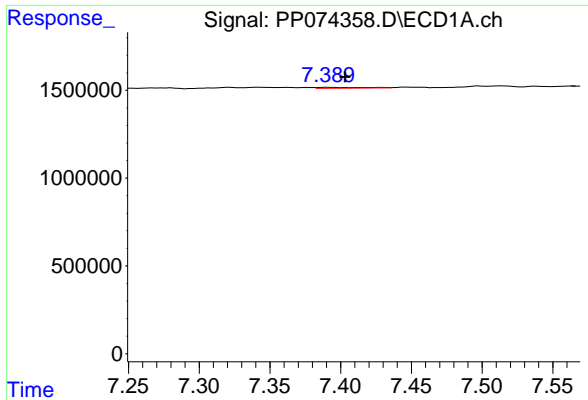
#30 AR-1254-5

R.T.: 7.942 min
 Delta R.T.: 0.008 min
 Response: 72344
 Conc: 0.89 ng/ml



#30 AR-1254-5

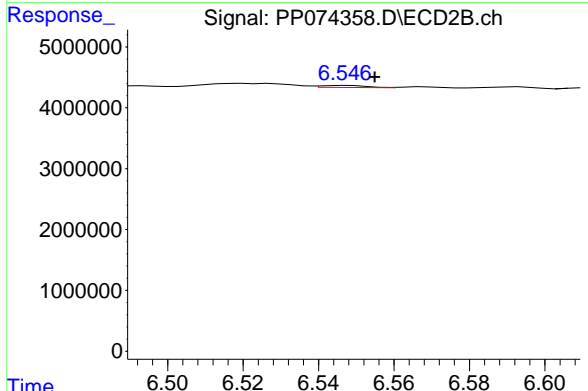
R.T.: 6.875 min
 Delta R.T.: -0.005 min
 Response: 251554
 Conc: 0.65 ng/ml



#31 AR-1260-1

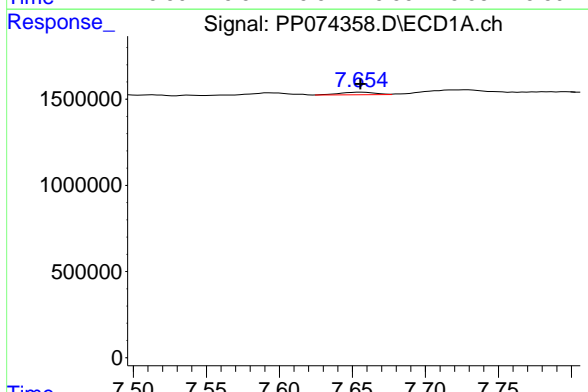
R.T.: 7.391 min
 Delta R.T.: -0.012 min
 Response: 120108
 Conc: 2.13 ng/ml

Instrument :
 ECD_P
 ClientSampleId :
 GW-COMP



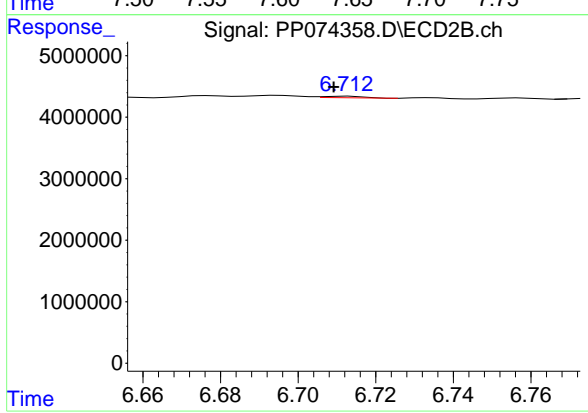
#31 AR-1260-1

R.T.: 6.548 min
 Delta R.T.: -0.007 min
 Response: 275867
 Conc: 0.68 ng/ml



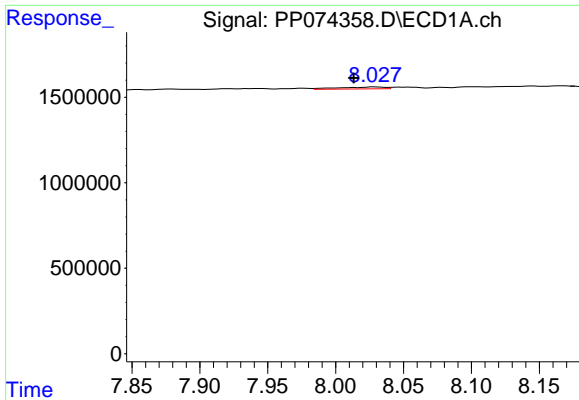
#32 AR-1260-2

R.T.: 7.656 min
 Delta R.T.: 0.000 min
 Response: 245592
 Conc: 3.60 ng/ml



#32 AR-1260-2

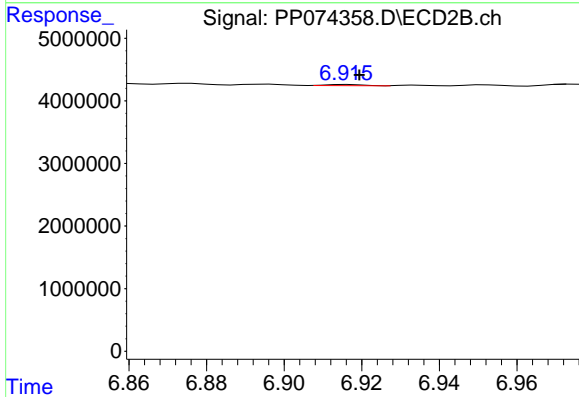
R.T.: 6.713 min
 Delta R.T.: 0.004 min
 Response: 174594
 Conc: 0.56 ng/ml



#33 AR-1260-3

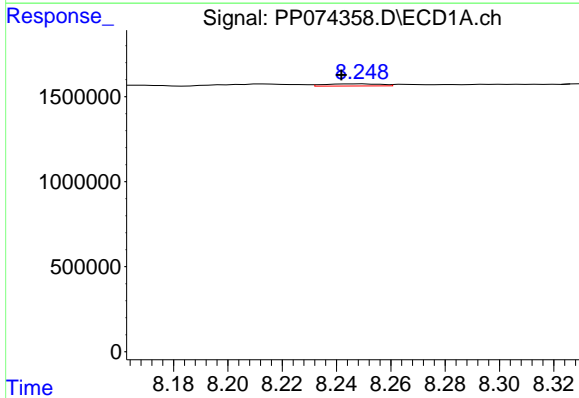
R.T.: 8.029 min
 Delta R.T.: 0.016 min
 Response: 270362
 Conc: 5.07 ng/ml

Instrument :
 ECD_P
 ClientSampleId :
 GW-COMP



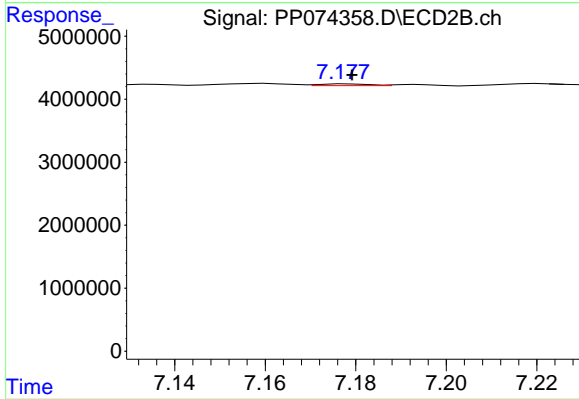
#33 AR-1260-3

R.T.: 6.916 min
 Delta R.T.: -0.003 min
 Response: 113033
 Conc: 0.29 ng/ml



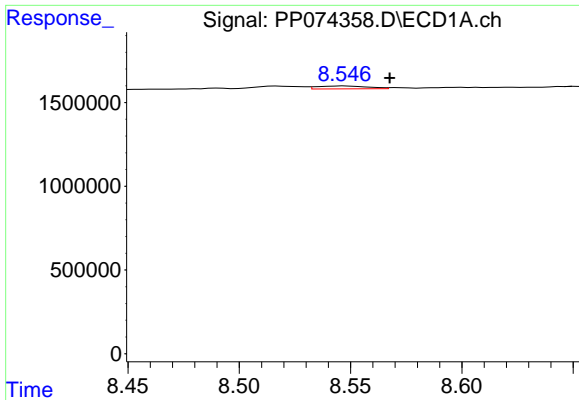
#34 AR-1260-4

R.T.: 8.249 min
 Delta R.T.: 0.007 min
 Response: 179249
 Conc: 2.86 ng/ml



#34 AR-1260-4

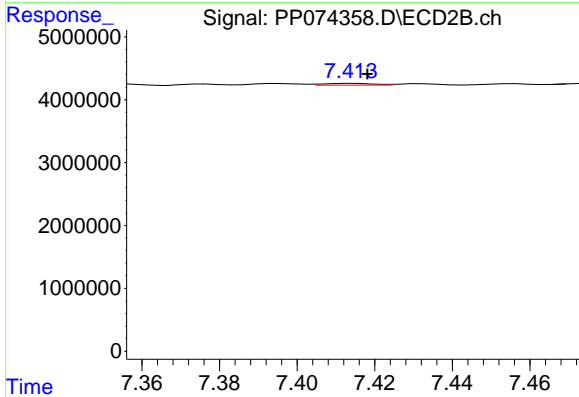
R.T.: 7.178 min
 Delta R.T.: 0.000 min
 Response: 223576
 Conc: 0.77 ng/ml



#35 AR-1260-5

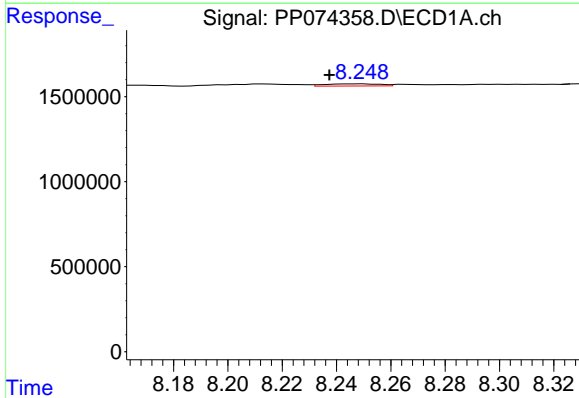
R.T.: 8.547 min
 Delta R.T.: -0.020 min
 Response: 281723
 Conc: 2.49 ng/ml

Instrument :
 ECD_P
 ClientSampleId :
 GW-COMP



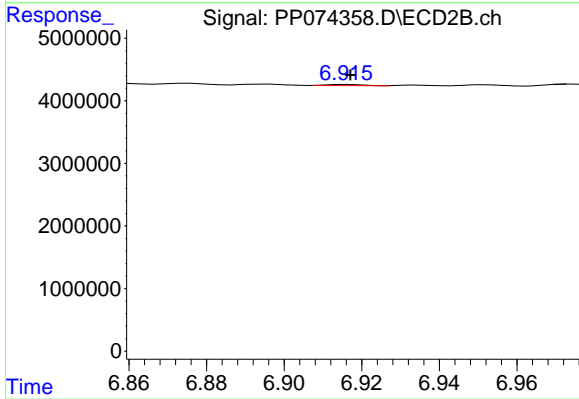
#35 AR-1260-5

R.T.: 7.415 min
 Delta R.T.: -0.003 min
 Response: 246136
 Conc: 0.32 ng/ml



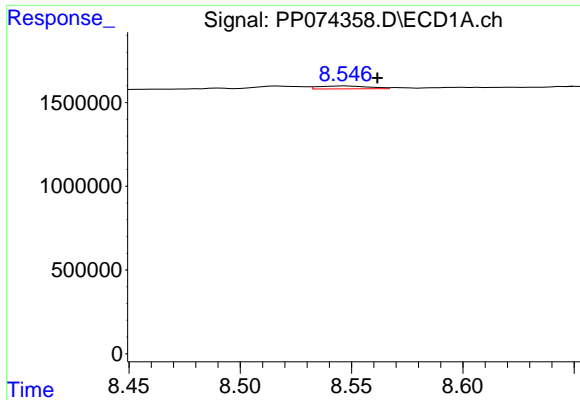
#36 AR-1262-1

R.T.: 8.249 min
 Delta R.T.: 0.012 min
 Response: 179249
 Conc: 2.37 ng/ml



#36 AR-1262-1

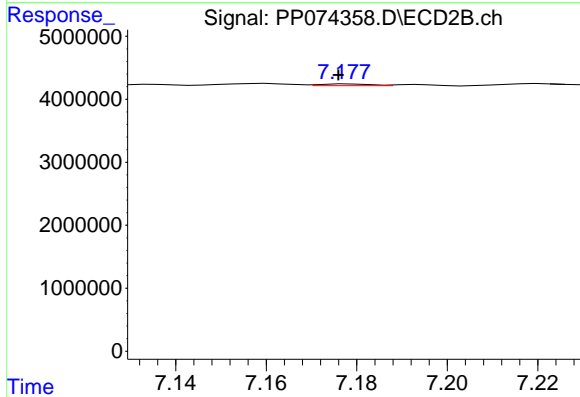
R.T.: 6.916 min
 Delta R.T.: 0.000 min
 Response: 113033
 Conc: 0.20 ng/ml



#37 AR-1262-2

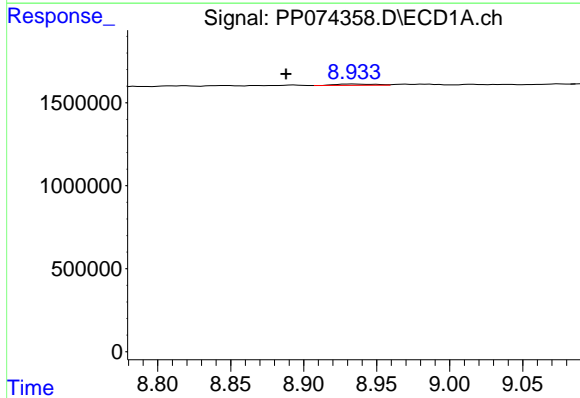
R.T.: 8.547 min
 Delta R.T.: -0.014 min
 Response: 281723
 Conc: 2.16 ng/ml

Instrument :
 ECD_P
 ClientSampleId :
 GW-COMP



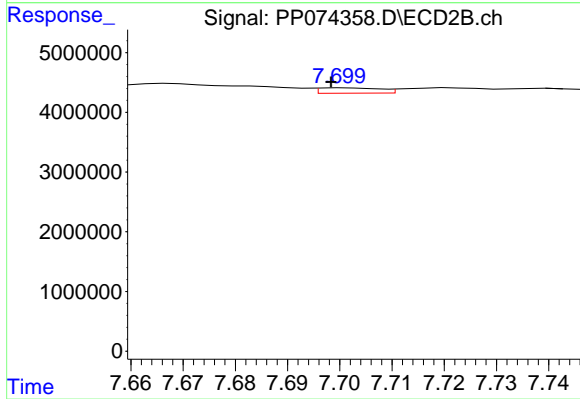
#37 AR-1262-2

R.T.: 7.178 min
 Delta R.T.: 0.002 min
 Response: 223576
 Conc: 0.56 ng/ml



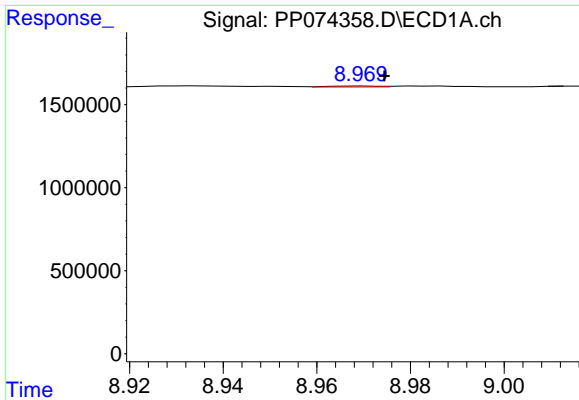
#38 AR-1262-3

R.T.: 8.934 min
 Delta R.T.: 0.046 min
 Response: 141572
 Conc: 1.50 ng/ml



#38 AR-1262-3

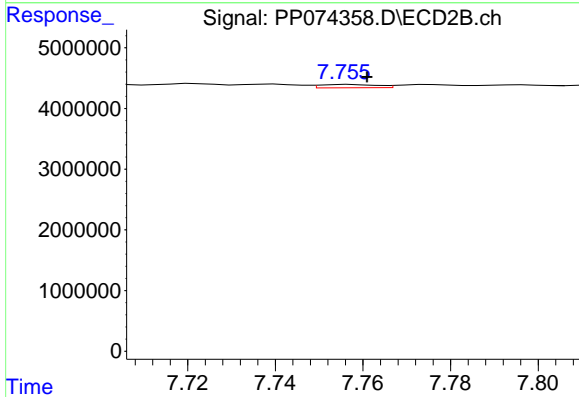
R.T.: 7.701 min
 Delta R.T.: 0.003 min
 Response: 721748
 Conc: 2.01 ng/ml



#39 AR-1262-4

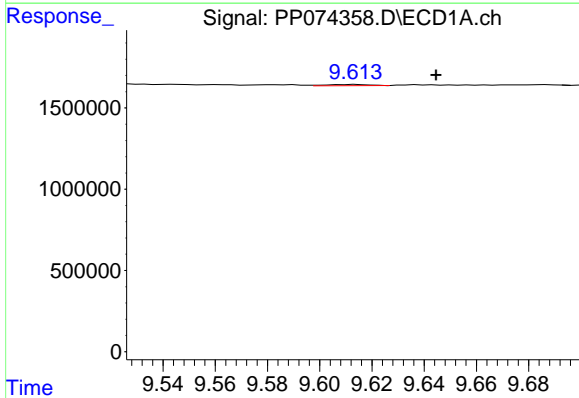
R.T.: 8.970 min
 Delta R.T.: -0.005 min
 Response: 43679
 Conc: 0.60 ng/ml

Instrument :
 ECD_P
 ClientSampleId :
 GW-COMP



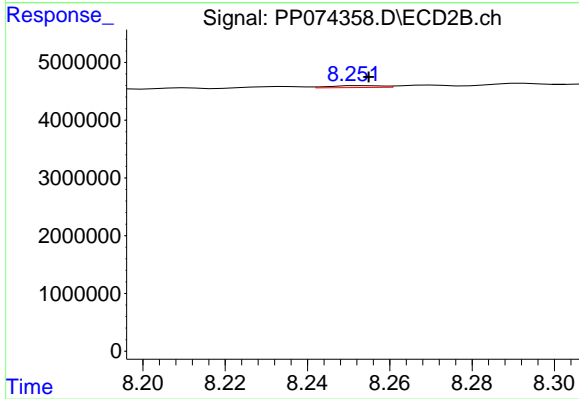
#39 AR-1262-4

R.T.: 7.757 min
 Delta R.T.: -0.004 min
 Response: 492819
 Conc: 0.74 ng/ml



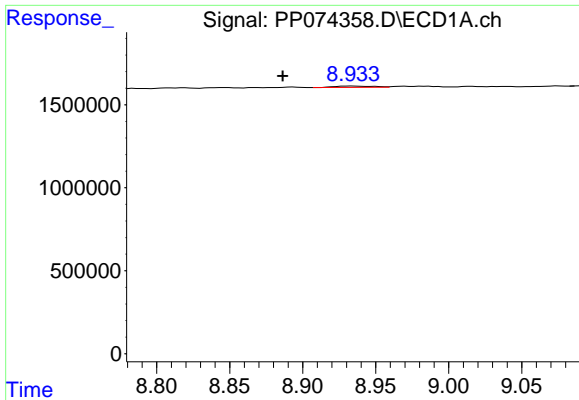
#40 AR-1262-5

R.T.: 9.614 min
 Delta R.T.: -0.030 min
 Response: 87196
 Conc: 1.71 ng/ml



#40 AR-1262-5

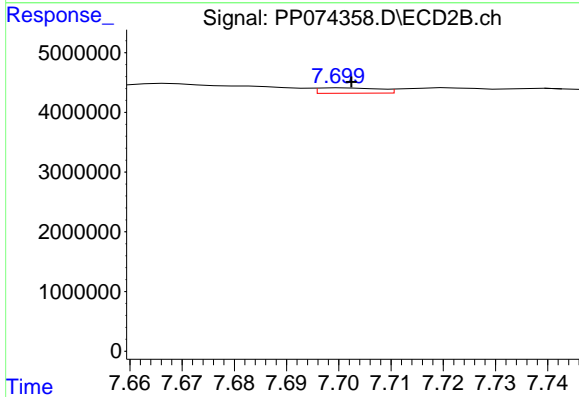
R.T.: 8.253 min
 Delta R.T.: -0.002 min
 Response: 276783
 Conc: 0.98 ng/ml



#41 AR-1268-1

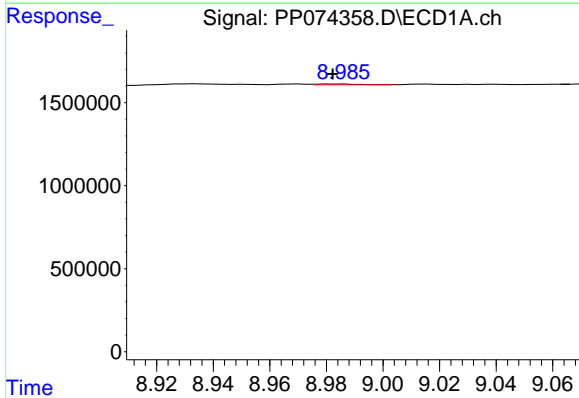
R.T.: 8.934 min
 Delta R.T.: 0.048 min
 Response: 141572
 Conc: 0.91 ng/ml

Instrument :
 ECD_P
 ClientSampleId :
 GW-COMP



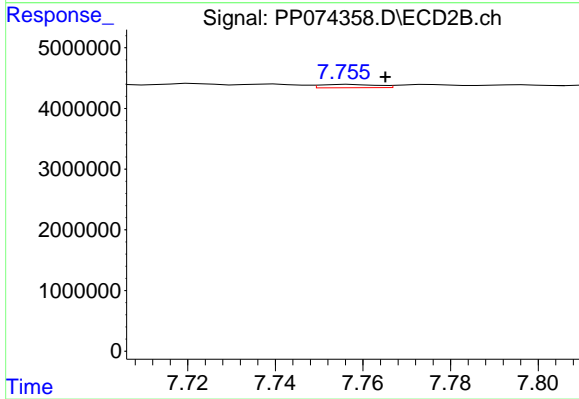
#41 AR-1268-1

R.T.: 7.701 min
 Delta R.T.: -0.001 min
 Response: 721748
 Conc: 0.66 ng/ml



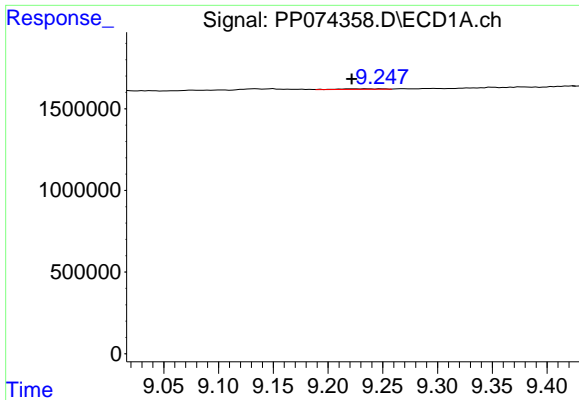
#42 AR-1268-2

R.T.: 8.986 min
 Delta R.T.: 0.003 min
 Response: 51129
 Conc: 0.36 ng/ml



#42 AR-1268-2

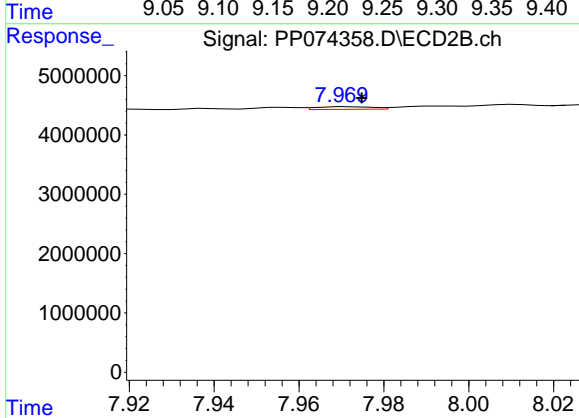
R.T.: 7.757 min
 Delta R.T.: -0.008 min
 Response: 492819
 Conc: 0.46 ng/ml



#43 AR-1268-3

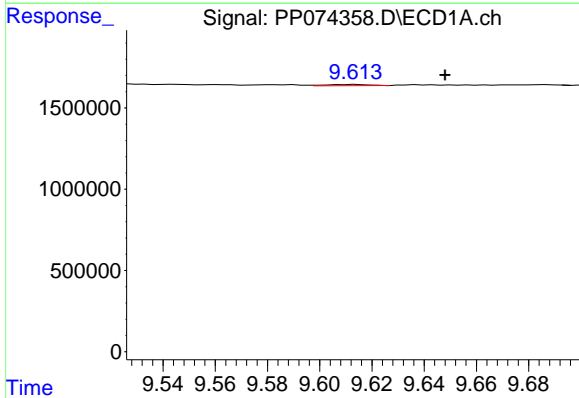
R.T.: 9.218 min
 Delta R.T.: -0.004 min
 Response: 88884
 Conc: 0.74 ng/ml

Instrument :
 ECD_P
 ClientSampleId :
 GW-COMP



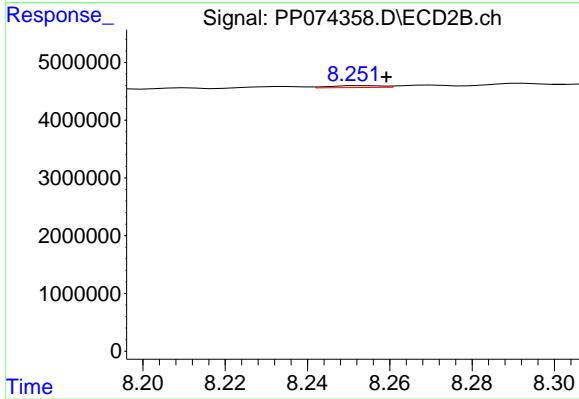
#43 AR-1268-3

R.T.: 7.972 min
 Delta R.T.: -0.003 min
 Response: 424701
 Conc: 0.51 ng/ml



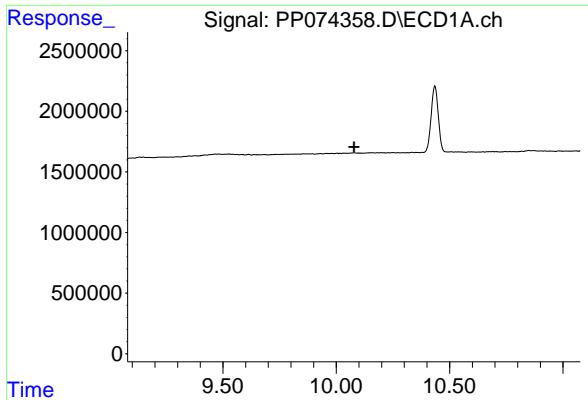
#44 AR-1268-4

R.T.: 9.614 min
 Delta R.T.: -0.034 min
 Response: 87196
 Conc: 1.48 ng/ml



#44 AR-1268-4

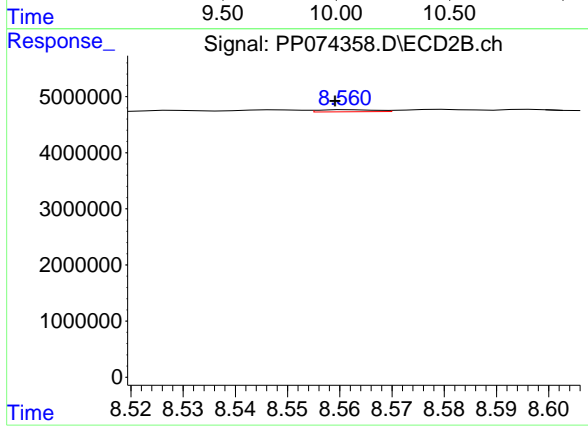
R.T.: 8.253 min
 Delta R.T.: -0.006 min
 Response: 276783
 Conc: 0.90 ng/ml



#45 AR-1268-5

R.T.: 0.000 min
 Exp R.T.: 10.079 min
 Response: 0
 Conc: N.D.

Instrument :
 ECD_P
 ClientSampleId :
 GW-COMP



#45 AR-1268-5

R.T.: 8.562 min
 Delta R.T.: 0.003 min
 Response: 283811
 Conc: 0.11 ng/ml