

Data Path : Z:\pestpcbsrv\HPCHEM1\ECD\_P\Data\PP081325\  
 Data File : PP074359.D  
 Signal(s) : Signal #1: ECD1A.ch Signal #2: ECD2B.ch  
 Acq On : 13 Aug 2025 18:52  
 Operator : YP\AJ  
 Sample : Q2821-08  
 Misc :  
 ALS Vial : 23 Sample Multiplier: 1

Instrument :  
 ECD\_P  
 ClientSampleId :  
 DM-COMP

Integration File signal 1: autoint1.e  
 Integration File signal 2: autoint2.e  
 Quant Time: Aug 14 00:01:20 2025  
 Quant Method : Z:\pestpcbsrv\HPCHEM1\ECD\_P\methods\PP080125.M  
 Quant Title : GC EXTRACTABLES  
 QLast Update : Mon Aug 04 11:01:49 2025  
 Response via : Initial Calibration  
 Integrator: ChemStation

Volume Inj. : 2 µl  
 Signal #1 Phase : ZB-MR1 Signal #2 Phase: ZB-MR2  
 Signal #1 Info : 30Mx0.32mmx 0.50µ Signal #2 Info : 30M x 0.32mm x 0.25µm

Compound	RT#1	RT#2	Resp#1	Resp#2	ng/ml	ng/ml
System Monitoring Compounds						
1) SA Tetrachlo...	4.660	3.803	27990826	46656707	25.030	12.168 #
2) SA Decachlor...	10.438	8.821	15233387	85107713	15.686	14.152
Target Compounds						
5) L1 AR-1016-3	5.883	0.000	2006708	0	50.597	N.D. #
6) L1 AR-1016-4	5.994	0.000	711516	0	21.863	N.D. #
7) L1 AR-1016-5	6.292	5.400f	537949	198688	16.569	1.699 #
9) L2 AR-1221-2	4.926	0.000	263440	0	20.906	N.D. #
10) L2 AR-1221-3	5.021	0.000	237553	0	6.484	N.D. #
11) L3 AR-1232-1	5.021	0.000	237553	0	8.181	N.D. #
13) L3 AR-1232-3	5.833	0.000	818672	0	28.228	N.D. #
14) L3 AR-1232-4	5.994	0.000	711516	0	45.997	N.D. #
15) L3 AR-1232-5	6.084	5.400f	907613	198688	77.468	4.229 #
18) L4 AR-1242-3	5.883	0.000	2006708	0	56.154	N.D. #
19) L4 AR-1242-4	5.994	0.000	711516	0	24.351	N.D. #
20) L4 AR-1242-5	6.734	5.681	1379307	714371	38.790	4.776 #
22) L5 AR-1248-2	6.084	0.000	907613	0	22.543	N.D. #
23) L5 AR-1248-3	6.292	0.000	537949	0	12.069	N.D. #
24) L5 AR-1248-4	6.686	5.400f	816074	198688	15.683	1.194 #
25) L5 AR-1248-5	6.734	5.743	1379307	2205660	24.222	7.580 #
26) L6 AR-1254-1	6.652	5.681	503702	714371	9.569	1.951 #
27) L6 AR-1254-2	6.884	5.833	604137	797771	7.599	2.867 #
28) L6 AR-1254-3	7.229	6.229	1370036	371114	15.691	0.759 #
29) L6 AR-1254-4	7.526	6.467	40331	387988	0.632	1.056 #
30) L6 AR-1254-5	7.925	6.872	119088	280340	1.468	0.728 #
31) L7 AR-1260-1	7.450f	6.561	217861	256743	3.866	0.636 #
32) L7 AR-1260-2	7.660	6.717	217295	353997	3.188	1.132 #
33) L7 AR-1260-3	8.006	6.910	651374	109104	12.222	0.277 #
34) L7 AR-1260-4	8.236	7.179	105869	336539	1.691	1.157 #
35) L7 AR-1260-5	8.607f	7.416	307365	306986	2.713	0.405 #
36) L8 AR-1262-1	8.236	6.910	105869	109104	1.397	0.194 #
37) L8 AR-1262-2	8.523f	7.179	330050	336539	2.530	0.839 #
38) L8 AR-1262-3	8.883	7.692	52161	826515	0.554	2.299 #
39) L8 AR-1262-4	8.994	7.752	91951	869188	1.262	1.303
40) L8 AR-1262-5	9.647	8.259	10236	241334	0.201	0.852 #
41) L9 AR-1268-1	8.883	7.711	52161	545312	0.335	0.500 #
42) L9 AR-1268-2	8.994	7.772	91951	634746	0.641	0.598
43) L9 AR-1268-3	9.224	7.972	44528	526164	0.373	0.632 #
44) L9 AR-1268-4	9.647	8.259	10236	241334	0.174	0.783 #
45) L9 AR-1268-5	10.078	8.560	70831	538537	0.201	0.211

(f)=RT Delta > 1/2 Window (#)=Amounts differ by > 25% (m)=manual int.

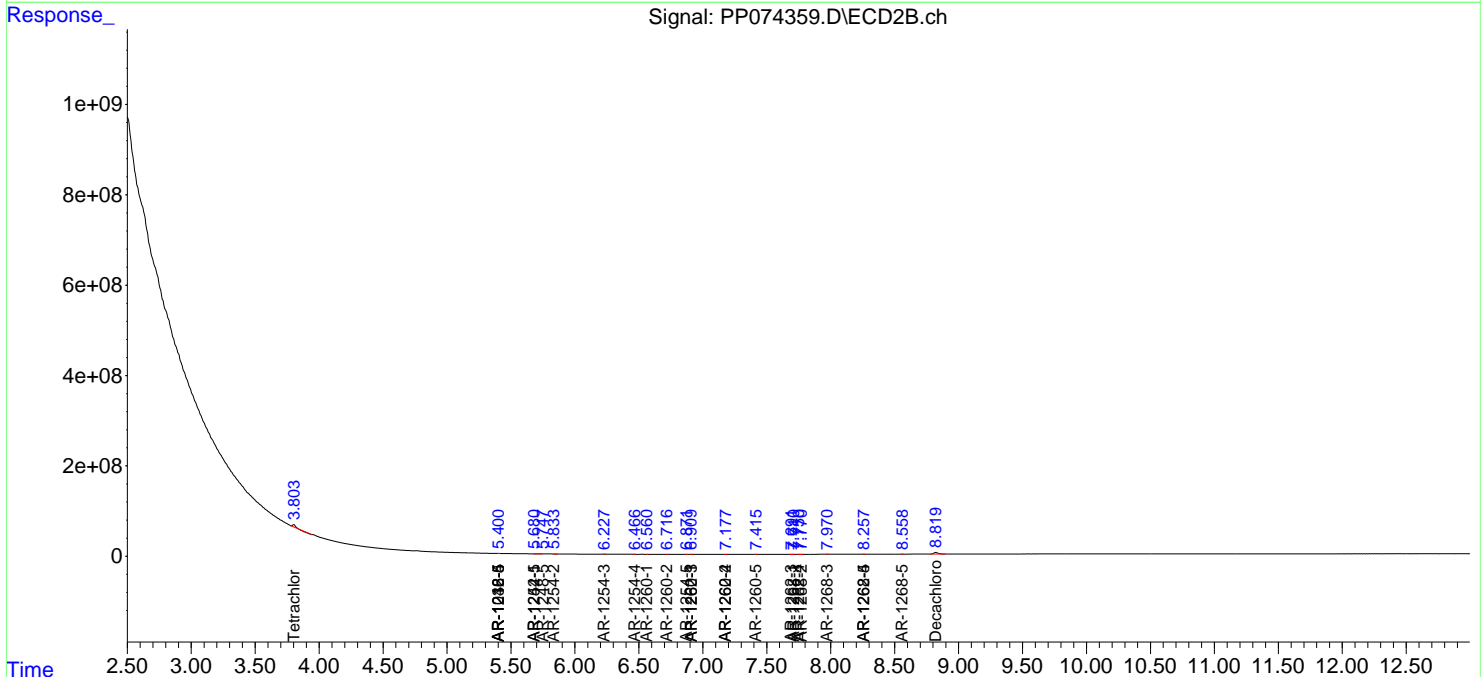
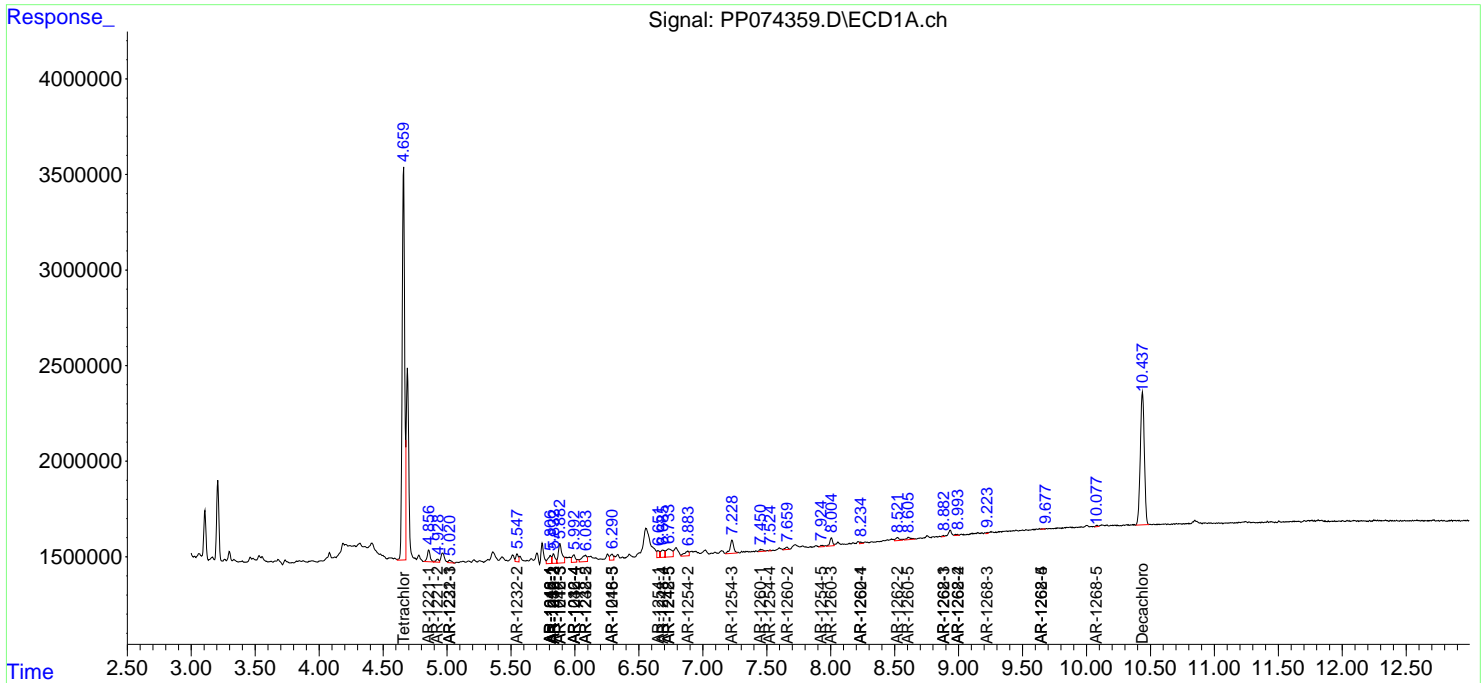
**Instrument :**  
ECD\_P  
**ClientSampleId :**  
DM-COMP

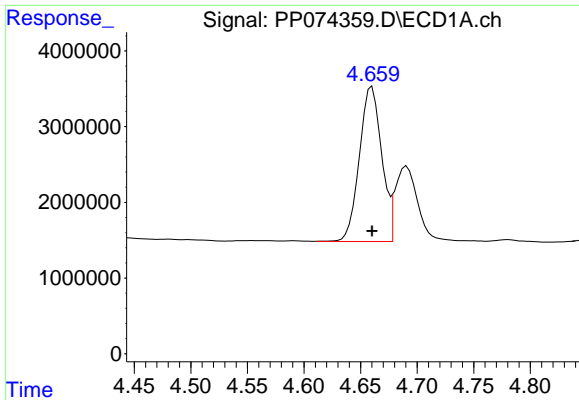
Data Path : Z:\pestpcbsrv\HPCHEM1\ECD\_P\Data\PP081325\  
 Data File : PP074359.D  
 Signal(s) : Signal #1: ECD1A.ch Signal #2: ECD2B.ch  
 Acq On : 13 Aug 2025 18:52  
 Operator : YP\AJ  
 Sample : Q2821-08  
 Misc :  
 ALS Vial : 23 Sample Multiplier: 1

**Instrument :**  
 ECD\_P  
**ClientSampleId :**  
 DM-COMP

Integration File signal 1: autoint1.e  
 Integration File signal 2: autoint2.e  
 Quant Time: Aug 14 00:01:20 2025  
 Quant Method : Z:\pestpcbsrv\HPCHEM1\ECD\_P\methods\PP080125.M  
 Quant Title : GC EXTRACTABLES  
 QLast Update : Mon Aug 04 11:01:49 2025  
 Response via : Initial Calibration  
 Integrator: ChemStation

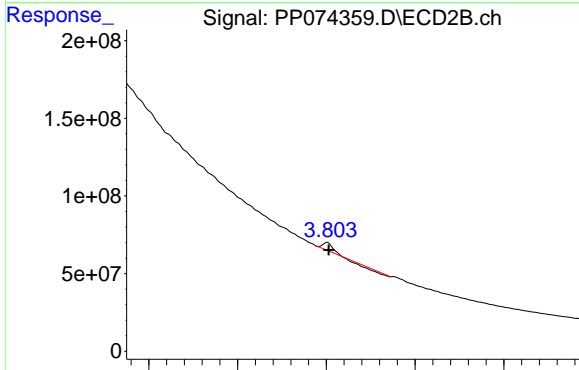
Volume Inj. : 2 µl  
 Signal #1 Phase : ZB-MR1 Signal #2 Phase: ZB-MR2  
 Signal #1 Info : 30Mx0.32mmx 0.50µ Signal #2 Info : 30M x 0.32mm x 0.25µm



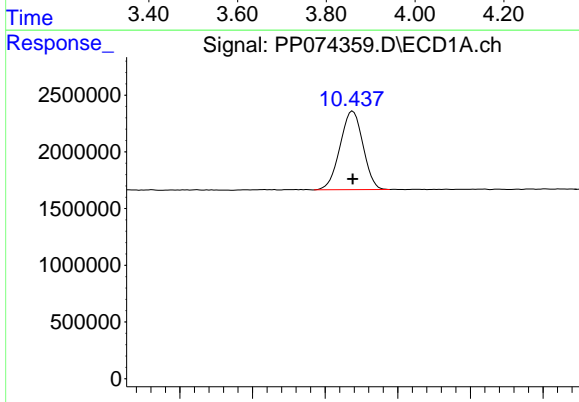


#1 Tetrachloro-m-xylene  
 R.T.: 4.660 min  
 Delta R.T.: 0.000 min  
 Response: 27990826  
 Conc: 25.03 ng/ml

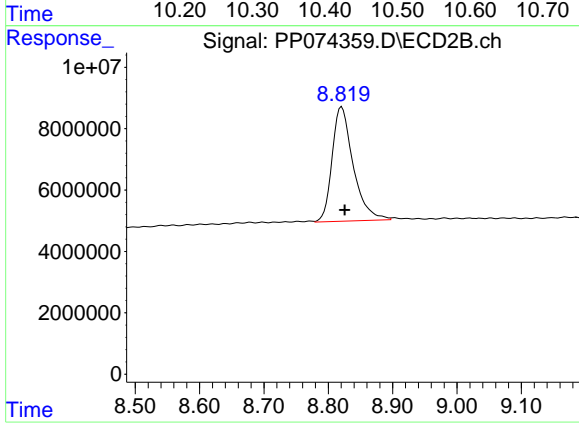
Instrument :  
 ECD\_P  
 ClientSampleId :  
 DM-COMP



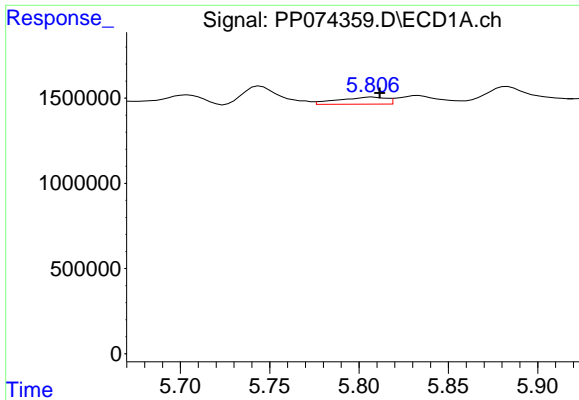
#1 Tetrachloro-m-xylene  
 R.T.: 3.803 min  
 Delta R.T.: -0.003 min  
 Response: 46656707  
 Conc: 12.17 ng/ml



#2 Decachlorobiphenyl  
 R.T.: 10.438 min  
 Delta R.T.: 0.000 min  
 Response: 15233387  
 Conc: 15.69 ng/ml



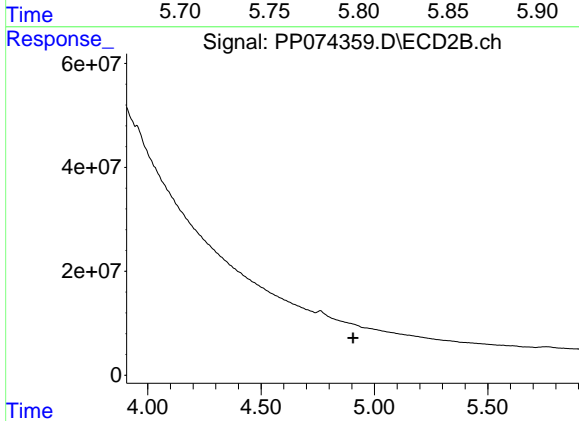
#2 Decachlorobiphenyl  
 R.T.: 8.821 min  
 Delta R.T.: -0.005 min  
 Response: 85107713  
 Conc: 14.15 ng/ml



#3 AR-1016-1

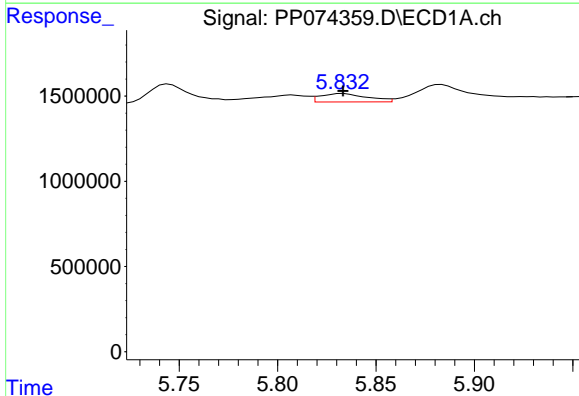
R.T.: 5.808 min  
 Delta R.T.: -0.004 min  
 Response: 781354  
 Conc: 18.94 ng/ml

Instrument :  
 ECD\_P  
 ClientSampleId :  
 DM-COMP



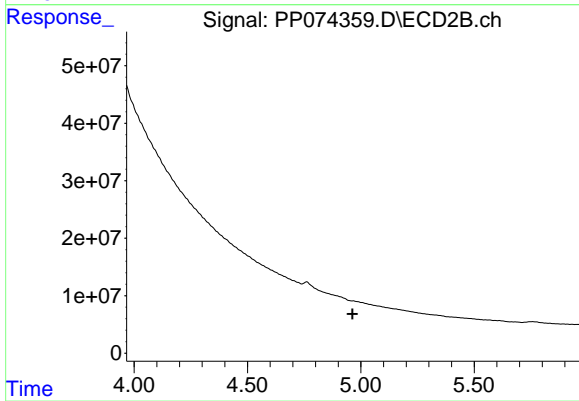
#3 AR-1016-1

R.T.: 4.967 min  
 Delta R.T.: 0.061 min  
 Response: -11689350  
 Conc: N.D.



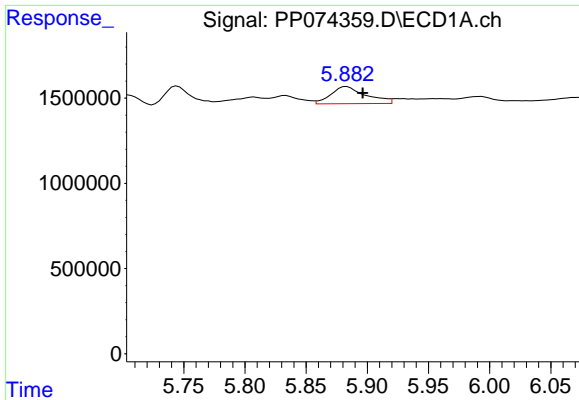
#4 AR-1016-2

R.T.: 5.833 min  
 Delta R.T.: 0.000 min  
 Response: 818672  
 Conc: 13.48 ng/ml



#4 AR-1016-2

R.T.: 4.967 min  
 Delta R.T.: 0.003 min  
 Response: -11689350  
 Conc: N.D.

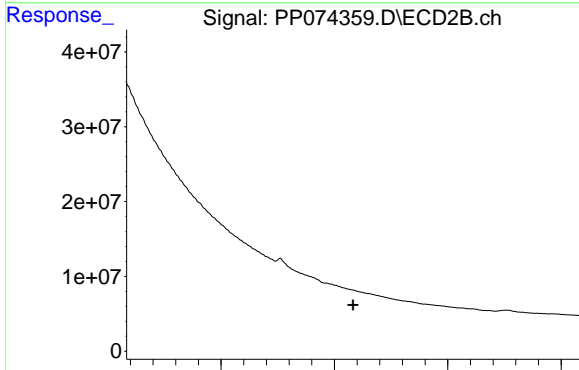


#5 AR-1016-3

R.T.: 5.883 min  
 Delta R.T.: -0.013 min  
 Response: 2006708  
 Conc: 50.60 ng/ml

Instrument :  
 ECD\_P  
 ClientSampleId :  
 DM-COMP

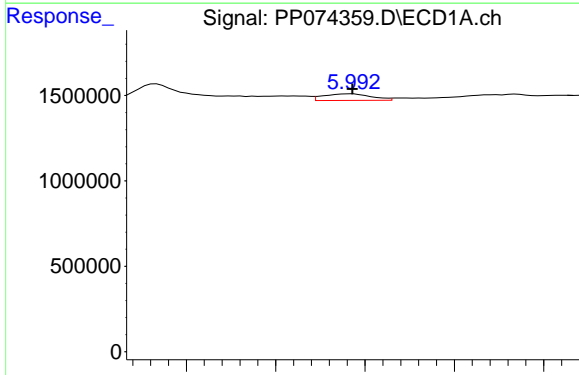
Time 5.75 5.80 5.85 5.90 5.95 6.00 6.05



#5 AR-1016-3

R.T.: 0.000 min  
 Exp R.T. : 5.083 min  
 Response: 0  
 Conc: N.D.

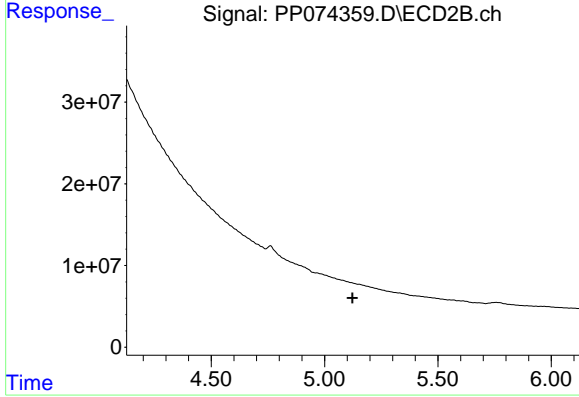
Time 4.50 5.00 5.50



#6 AR-1016-4

R.T.: 5.994 min  
 Delta R.T.: 0.000 min  
 Response: 711516  
 Conc: 21.86 ng/ml

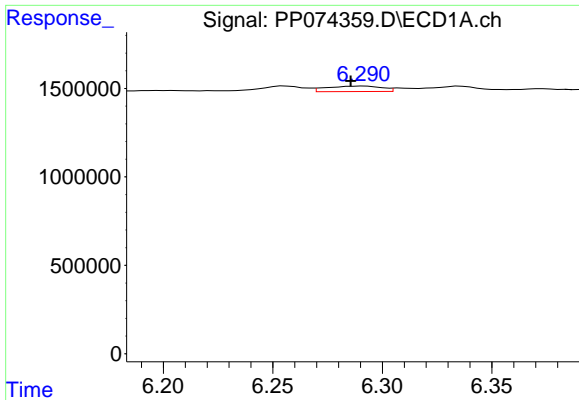
Time 5.90 5.95 6.00 6.05 6.10



#6 AR-1016-4

R.T.: 0.000 min  
 Exp R.T. : 5.123 min  
 Response: 0  
 Conc: N.D.

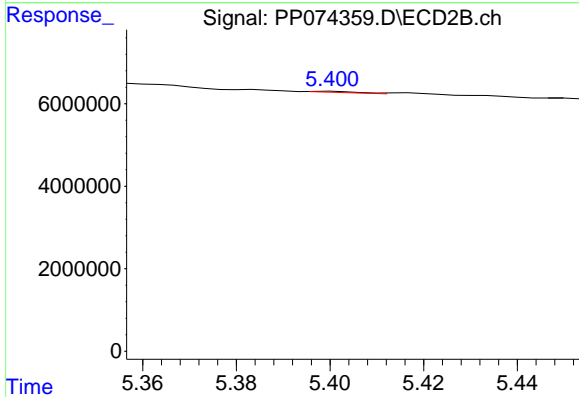
Time 4.50 5.00 5.50 6.00



#7 AR-1016-5

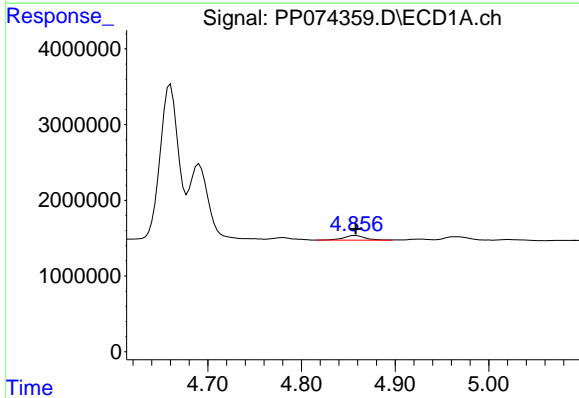
R.T.: 6.292 min  
 Delta R.T.: 0.006 min  
 Response: 537949  
 Conc: 16.57 ng/ml

Instrument :  
 ECD\_P  
 ClientSampleId :  
 DM-COMP



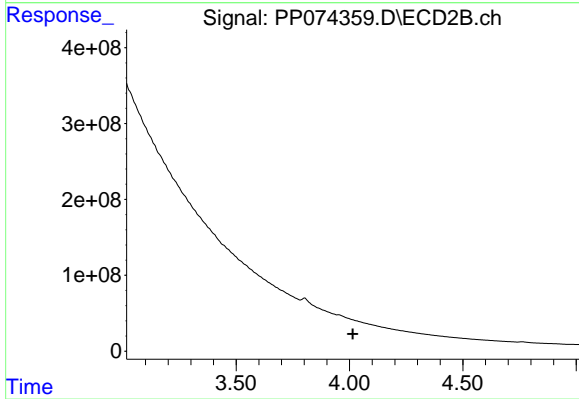
#7 AR-1016-5

R.T.: 5.400 min  
 Delta R.T.: 0.061 min  
 Response: 198688  
 Conc: 1.70 ng/ml



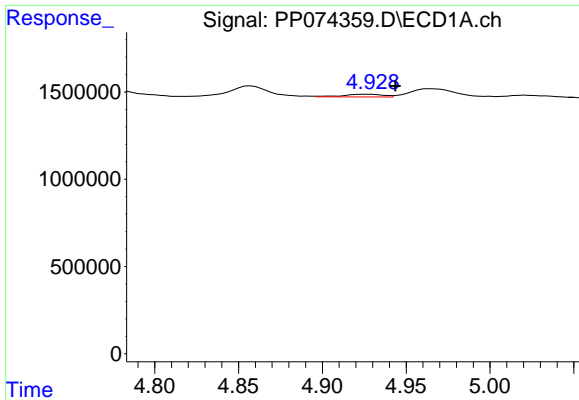
#8 AR-1221-1

R.T.: 4.857 min  
 Delta R.T.: 0.000 min  
 Response: 986322  
 Conc: 58.84 ng/ml



#8 AR-1221-1

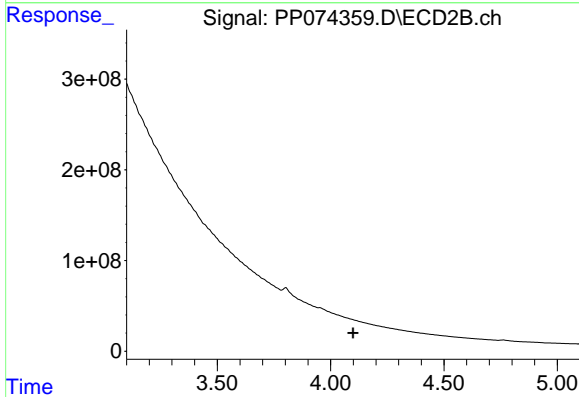
R.T.: 3.952 min  
 Delta R.T.: -0.063 min  
 Response: -246744812  
 Conc: N.D.



#9 AR-1221-2

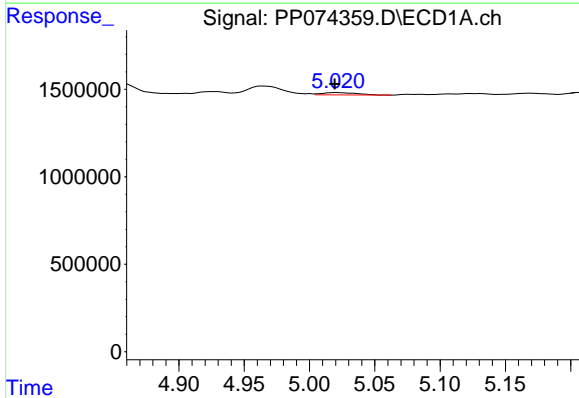
R.T.: 4.926 min  
 Delta R.T.: -0.017 min  
 Response: 263440  
 Conc: 20.91 ng/ml

Instrument :  
 ECD\_P  
 ClientSampleId :  
 DM-COMP



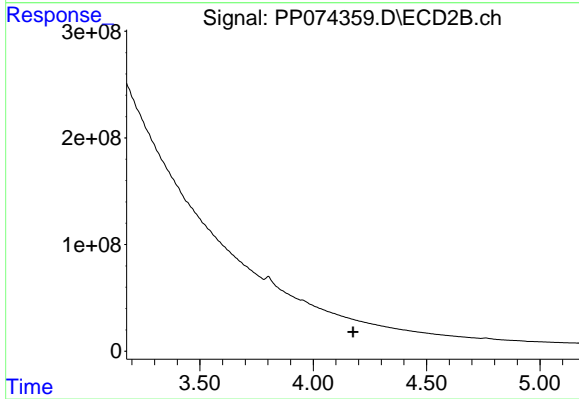
#9 AR-1221-2

R.T.: 0.000 min  
 Exp R.T. : 4.100 min  
 Response: 0  
 Conc: N.D.



#10 AR-1221-3

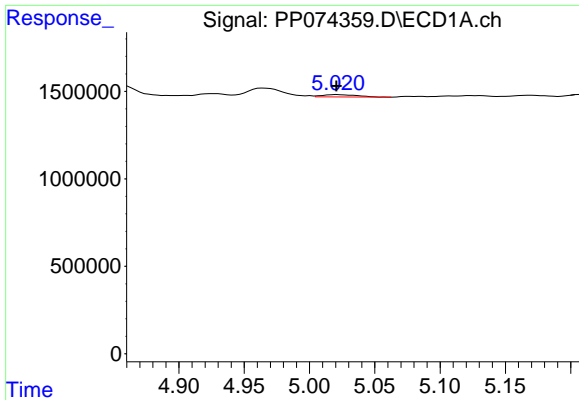
R.T.: 5.021 min  
 Delta R.T.: 0.002 min  
 Response: 237553  
 Conc: 6.48 ng/ml



#10 AR-1221-3

R.T.: 0.000 min  
 Exp R.T. : 4.176 min  
 Response: 0  
 Conc: N.D.

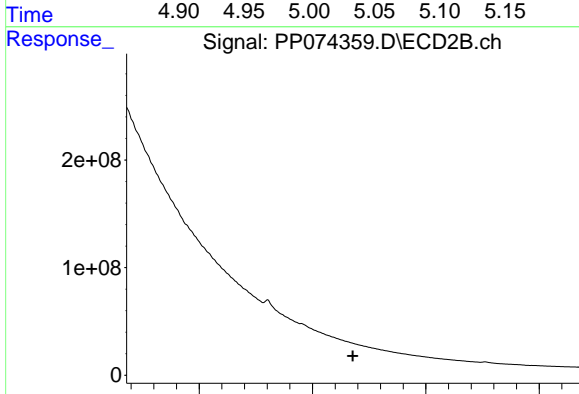




#11 AR-1232-1

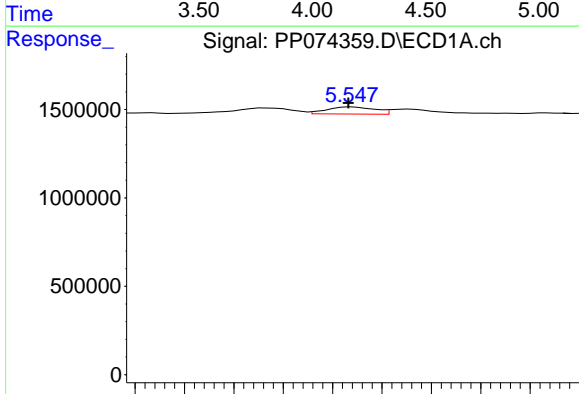
R.T.: 5.021 min  
 Delta R.T.: 0.000 min  
 Response: 237553  
 Conc: 8.18 ng/ml

Instrument :  
 ECD\_P  
 ClientSampleId :  
 DM-COMP



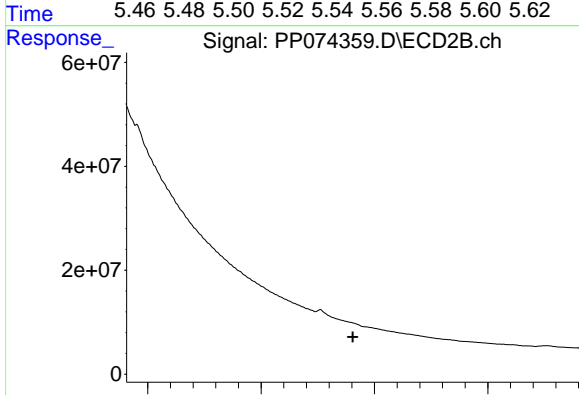
#11 AR-1232-1

R.T.: 0.000 min  
 Exp R.T. : 4.177 min  
 Response: 0  
 Conc: N.D.



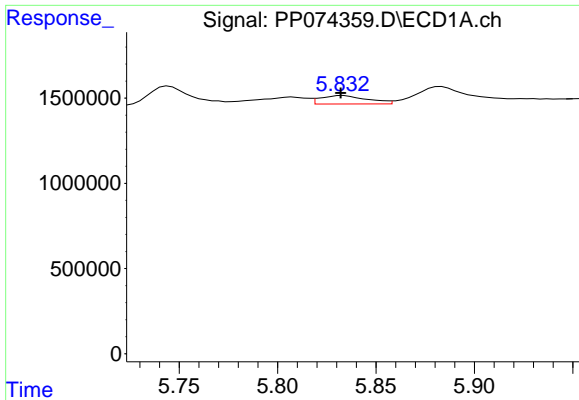
#12 AR-1232-2

R.T.: 5.548 min  
 Delta R.T.: 0.002 min  
 Response: 542478  
 Conc: 36.06 ng/ml



#12 AR-1232-2

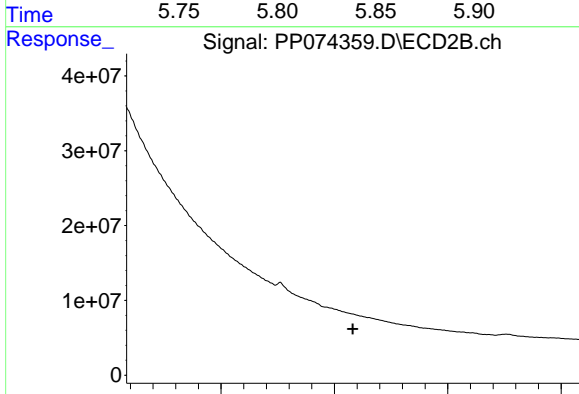
R.T.: 4.967 min  
 Delta R.T.: 0.062 min  
 Response: -11689350  
 Conc: N.D.



#13 AR-1232-3

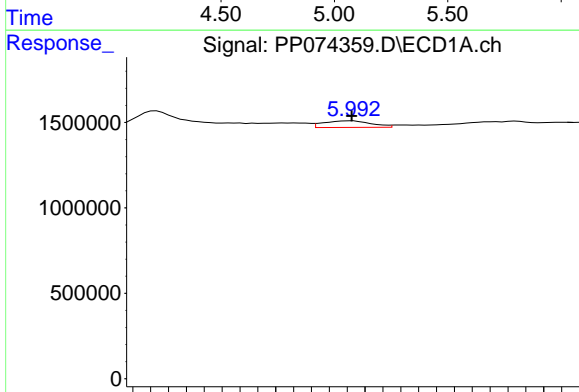
R.T.: 5.833 min  
 Delta R.T.: 0.001 min  
 Response: 818672  
 Conc: 28.23 ng/ml

Instrument :  
 ECD\_P  
 ClientSampleId :  
 DM-COMP



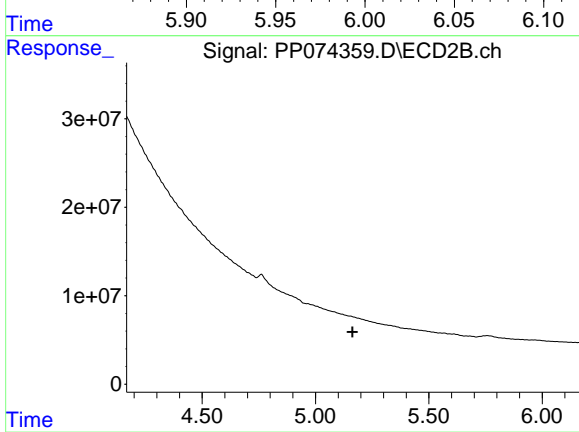
#13 AR-1232-3

R.T.: 0.000 min  
 Exp R.T. : 5.081 min  
 Response: 0  
 Conc: N.D.



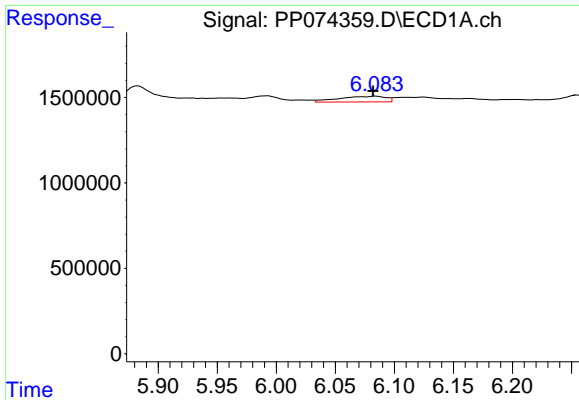
#14 AR-1232-4

R.T.: 5.994 min  
 Delta R.T.: 0.000 min  
 Response: 711516  
 Conc: 46.00 ng/ml



#14 AR-1232-4

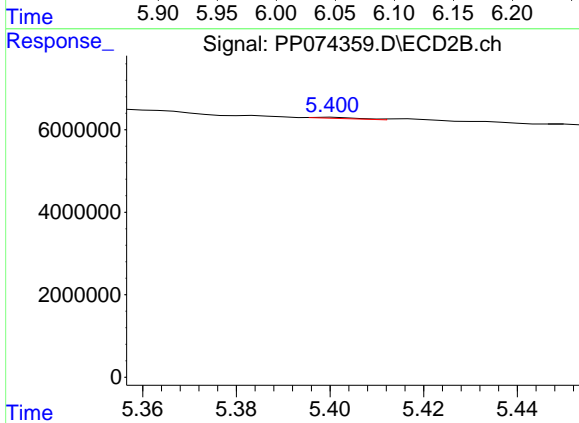
R.T.: 0.000 min  
 Exp R.T. : 5.164 min  
 Response: 0  
 Conc: N.D.



#15 AR-1232-5

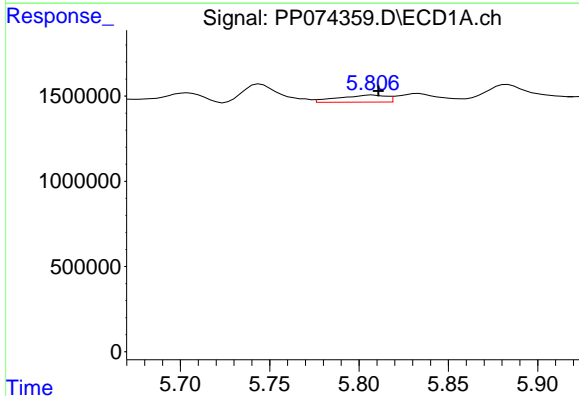
R.T.: 6.084 min  
 Delta R.T.: 0.002 min  
 Response: 907613  
 Conc: 77.47 ng/ml

Instrument :  
 ECD\_P  
 ClientSampleId :  
 DM-COMP



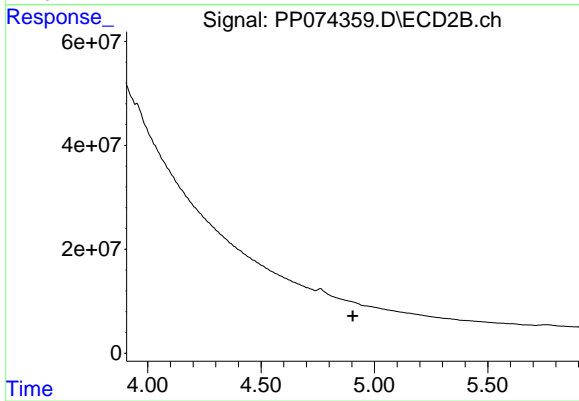
#15 AR-1232-5

R.T.: 5.400 min  
 Delta R.T.: 0.062 min  
 Response: 198688  
 Conc: 4.23 ng/ml



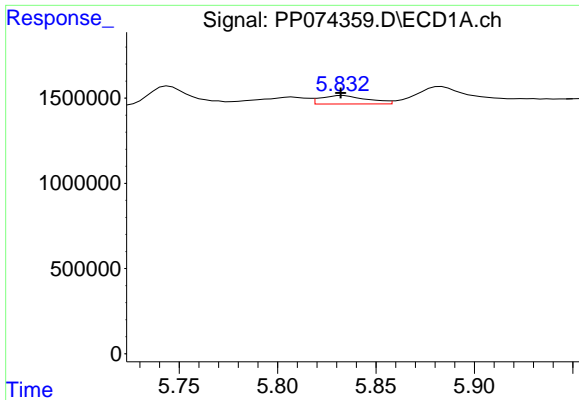
#16 AR-1242-1

R.T.: 5.808 min  
 Delta R.T.: -0.003 min  
 Response: 781354  
 Conc: 20.97 ng/ml



#16 AR-1242-1

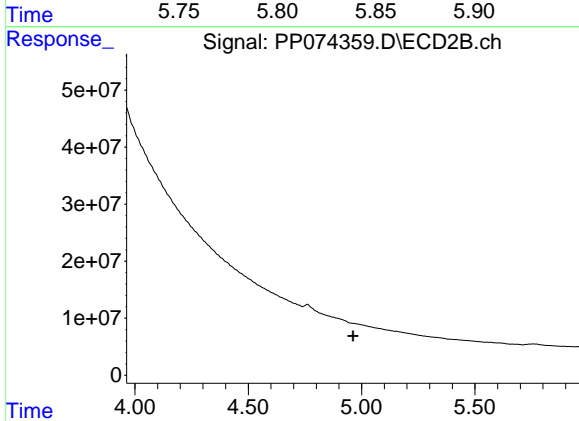
R.T.: 4.967 min  
 Delta R.T.: 0.062 min  
 Response: -11689350  
 Conc: N.D.



#17 AR-1242-2

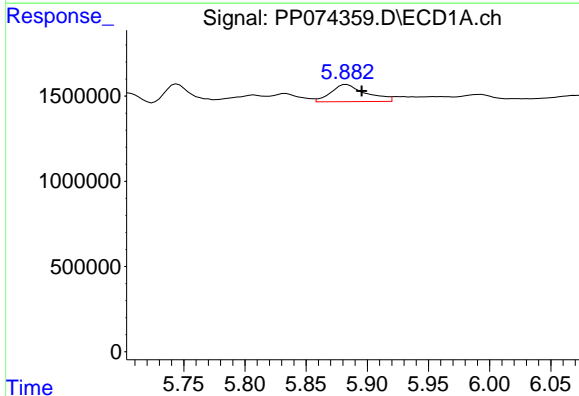
R.T.: 5.833 min  
 Delta R.T.: 0.001 min  
 Response: 818672  
 Conc: 15.05 ng/ml

Instrument :  
 ECD\_P  
 ClientSampleId :  
 DM-COMP



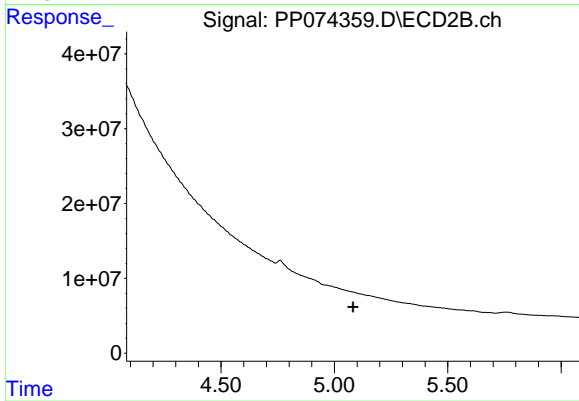
#17 AR-1242-2

R.T.: 4.967 min  
 Delta R.T.: 0.005 min  
 Response: -11689350  
 Conc: N.D.



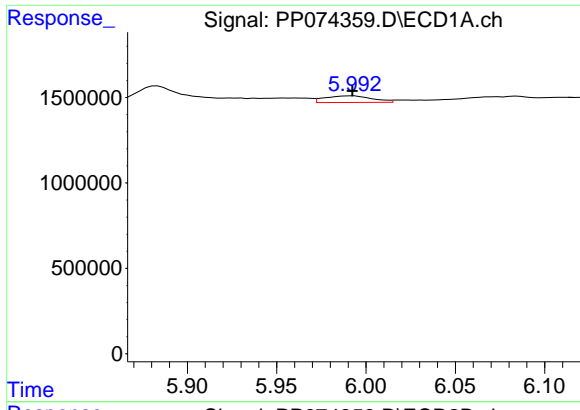
#18 AR-1242-3

R.T.: 5.883 min  
 Delta R.T.: -0.012 min  
 Response: 2006708  
 Conc: 56.15 ng/ml



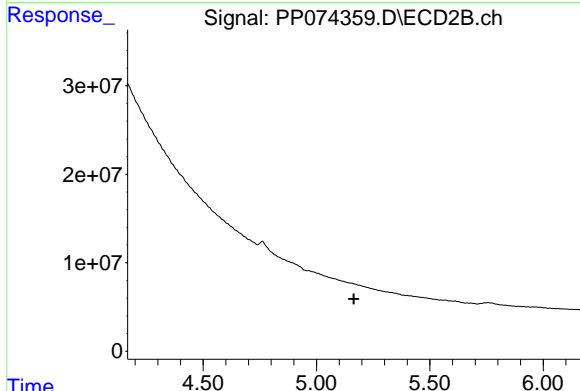
#18 AR-1242-3

R.T.: 0.000 min  
 Exp R.T.: 5.082 min  
 Response: 0  
 Conc: N.D.

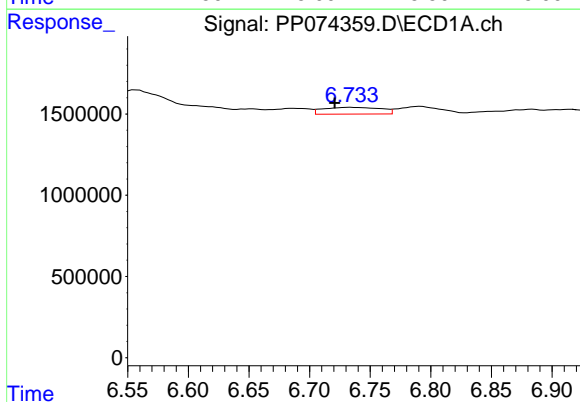


#19 AR-1242-4  
 R.T.: 5.994 min  
 Delta R.T.: 0.001 min  
 Response: 711516  
 Conc: 24.35 ng/ml

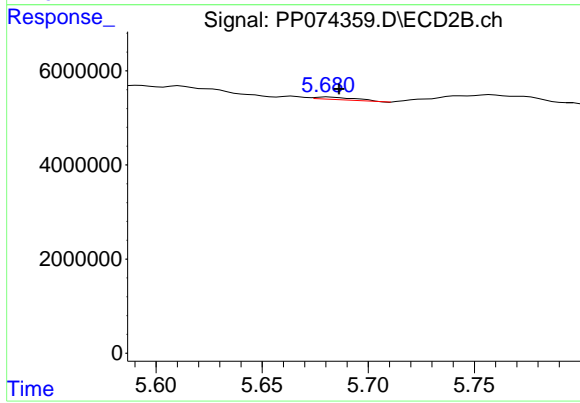
Instrument :  
 ECD\_P  
 ClientSampleId :  
 DM-COMP



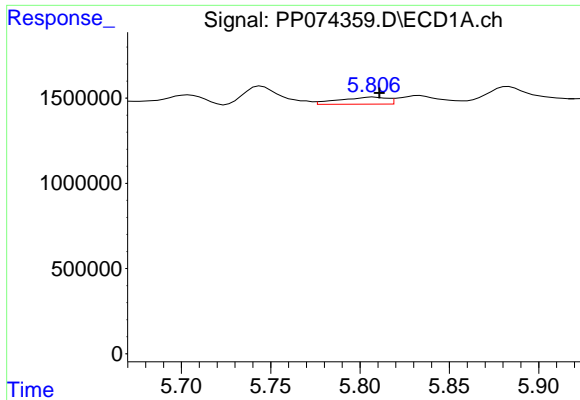
#19 AR-1242-4  
 R.T.: 0.000 min  
 Exp R.T. : 5.164 min  
 Response: 0  
 Conc: N.D.



#20 AR-1242-5  
 R.T.: 6.734 min  
 Delta R.T.: 0.013 min  
 Response: 1379307  
 Conc: 38.79 ng/ml



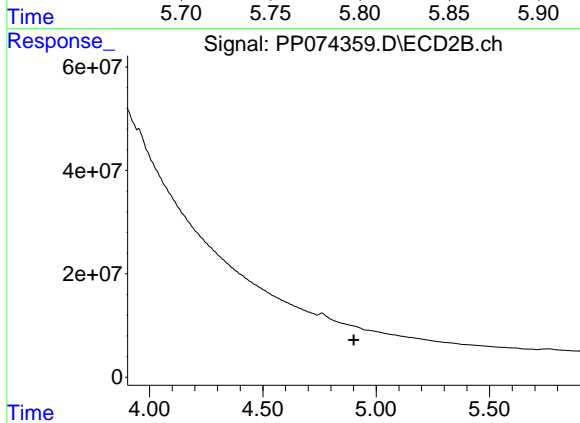
#20 AR-1242-5  
 R.T.: 5.681 min  
 Delta R.T.: -0.005 min  
 Response: 714371  
 Conc: 4.78 ng/ml



#21 AR-1248-1

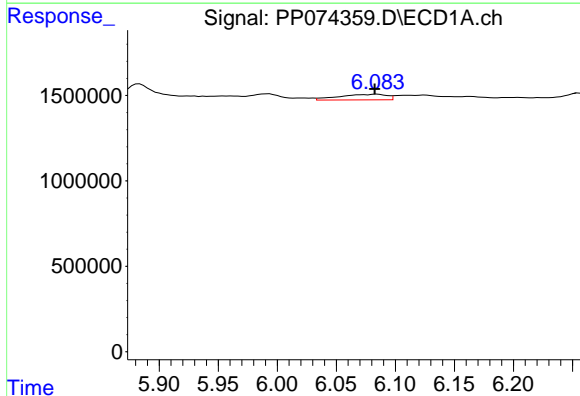
R.T.: 5.808 min  
 Delta R.T.: -0.003 min  
 Response: 781354  
 Conc: 27.89 ng/ml

Instrument :  
 ECD\_P  
 ClientSampleId :  
 DM-COMP



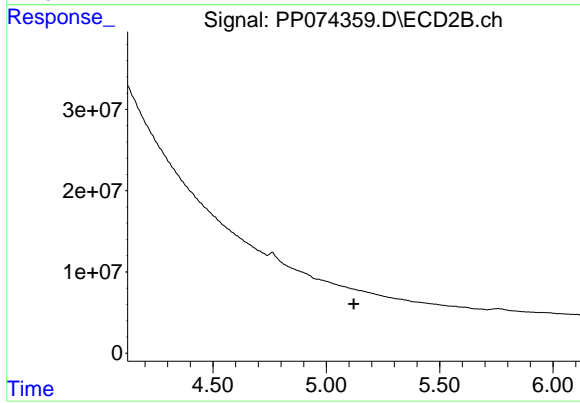
#21 AR-1248-1

R.T.: 4.967 min  
 Delta R.T.: 0.065 min  
 Response: -11689350  
 Conc: N.D.



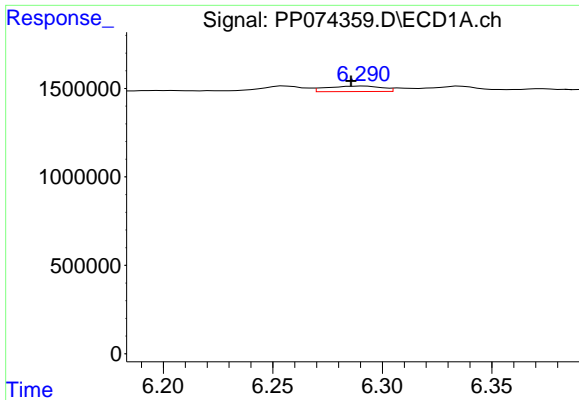
#22 AR-1248-2

R.T.: 6.084 min  
 Delta R.T.: 0.002 min  
 Response: 907613  
 Conc: 22.54 ng/ml



#22 AR-1248-2

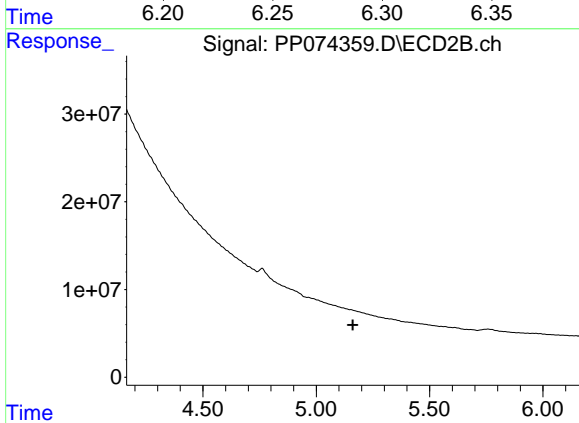
R.T.: 0.000 min  
 Exp R.T.: 5.121 min  
 Response: 0  
 Conc: N.D.



#23 AR-1248-3

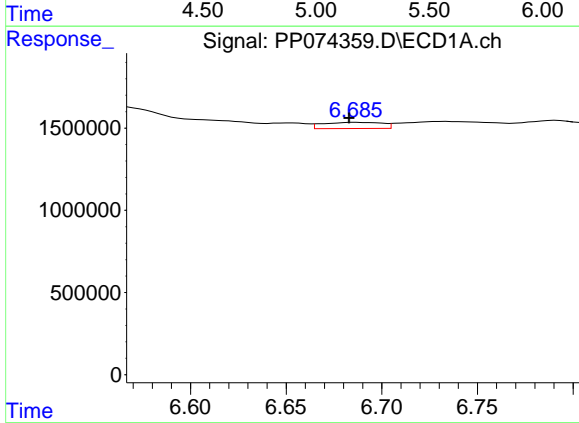
R.T.: 6.292 min  
 Delta R.T.: 0.006 min  
 Response: 537949  
 Conc: 12.07 ng/ml

Instrument :  
 ECD\_P  
 ClientSampleId :  
 DM-COMP



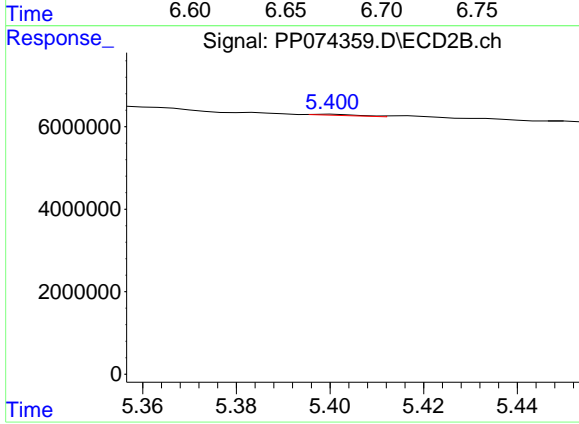
#23 AR-1248-3

R.T.: 0.000 min  
 Exp R.T. : 5.161 min  
 Response: 0  
 Conc: N.D.



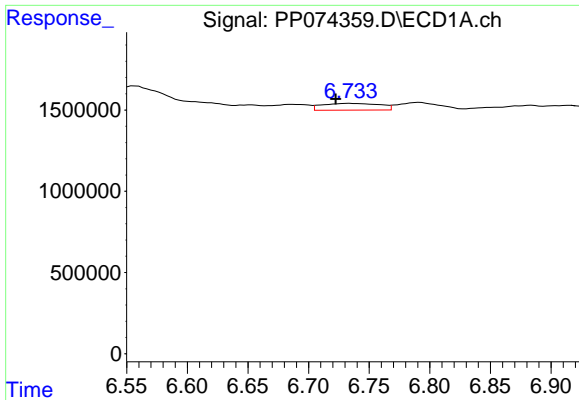
#24 AR-1248-4

R.T.: 6.686 min  
 Delta R.T.: 0.003 min  
 Response: 816074  
 Conc: 15.68 ng/ml



#24 AR-1248-4

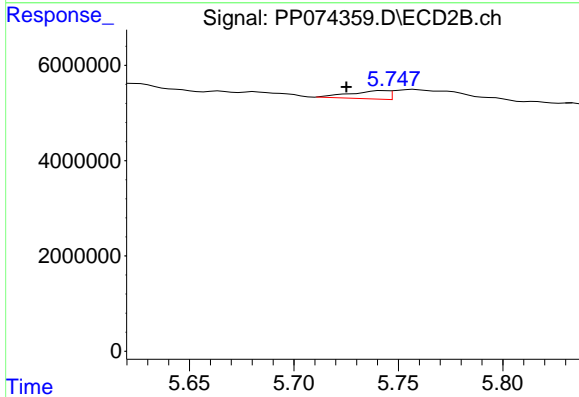
R.T.: 5.400 min  
 Delta R.T.: 0.065 min  
 Response: 198688  
 Conc: 1.19 ng/ml



#25 AR-1248-5

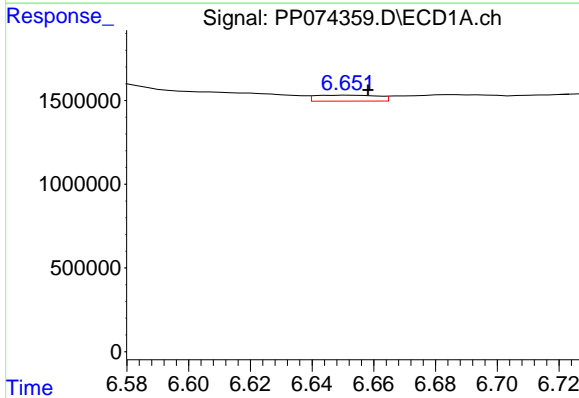
R.T.: 6.734 min  
 Delta R.T.: 0.012 min  
 Response: 1379307  
 Conc: 24.22 ng/ml

Instrument :  
 ECD\_P  
 ClientSampleId :  
 DM-COMP



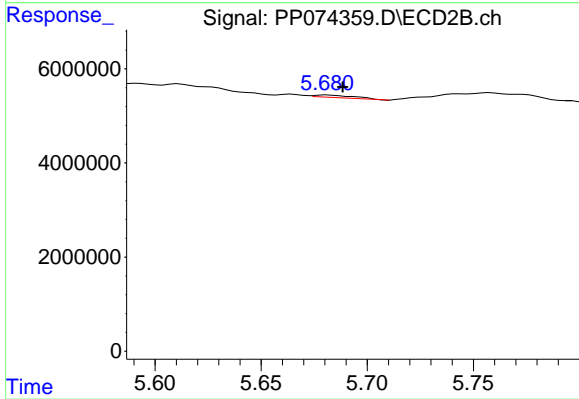
#25 AR-1248-5

R.T.: 5.743 min  
 Delta R.T.: 0.018 min  
 Response: 2205660  
 Conc: 7.58 ng/ml



#26 AR-1254-1

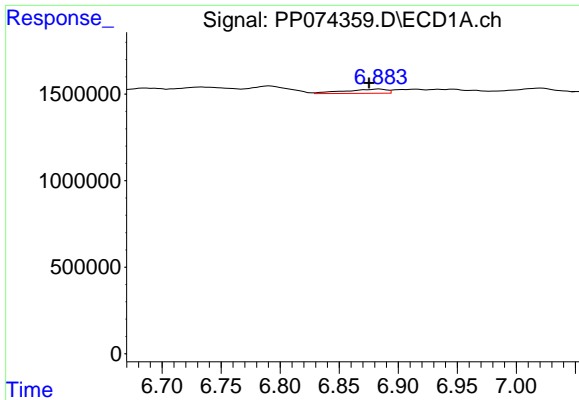
R.T.: 6.652 min  
 Delta R.T.: -0.006 min  
 Response: 503702  
 Conc: 9.57 ng/ml



#26 AR-1254-1

R.T.: 5.681 min  
 Delta R.T.: -0.007 min  
 Response: 714371  
 Conc: 1.95 ng/ml

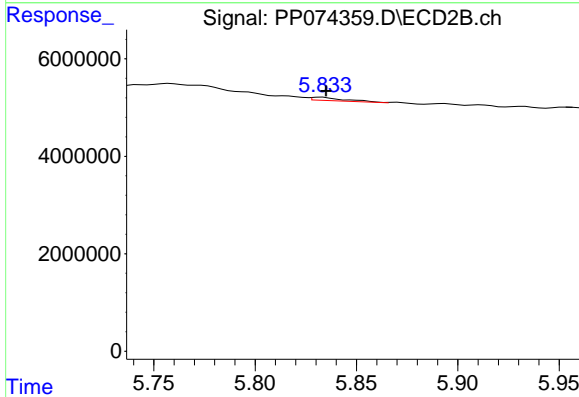




#27 AR-1254-2

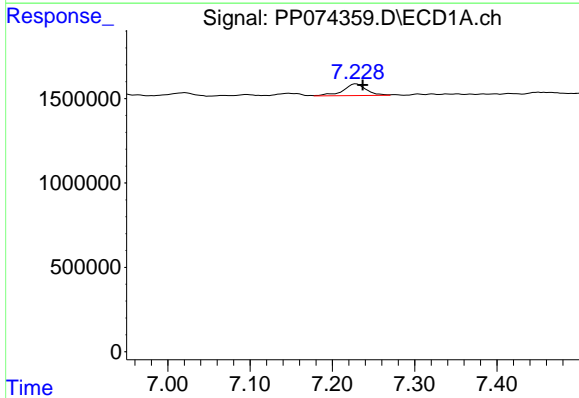
R.T.: 6.884 min  
 Delta R.T.: 0.009 min  
 Response: 604137  
 Conc: 7.60 ng/ml

Instrument :  
 ECD\_P  
 ClientSampleId :  
 DM-COMP



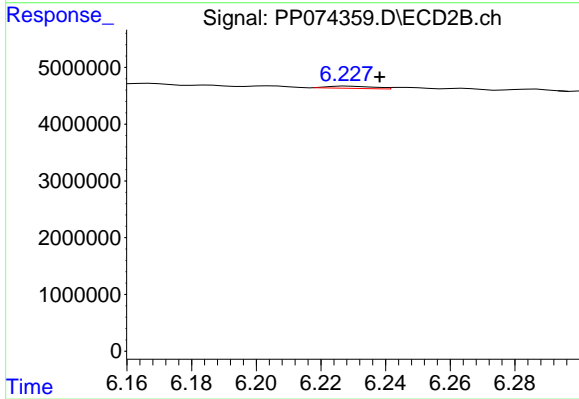
#27 AR-1254-2

R.T.: 5.833 min  
 Delta R.T.: -0.002 min  
 Response: 797771  
 Conc: 2.87 ng/ml



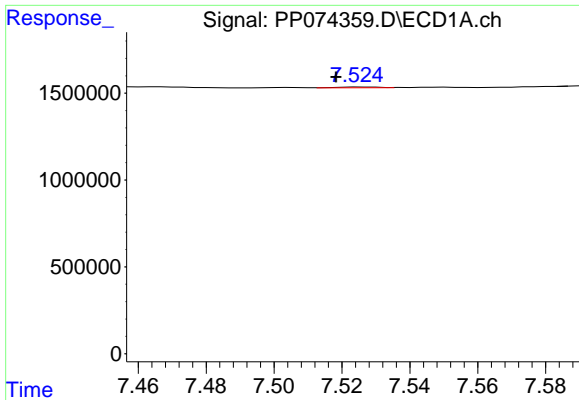
#28 AR-1254-3

R.T.: 7.229 min  
 Delta R.T.: -0.008 min  
 Response: 1370036  
 Conc: 15.69 ng/ml



#28 AR-1254-3

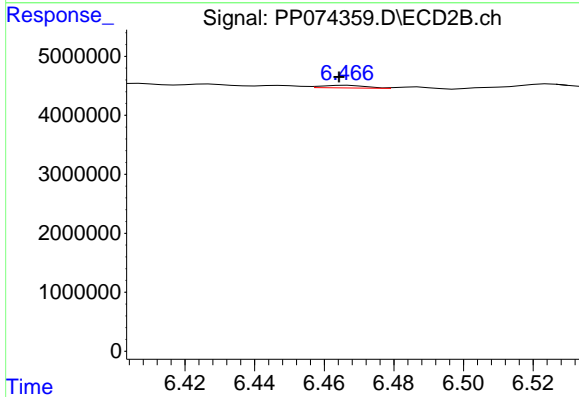
R.T.: 6.229 min  
 Delta R.T.: -0.010 min  
 Response: 371114  
 Conc: 0.76 ng/ml



#29 AR-1254-4

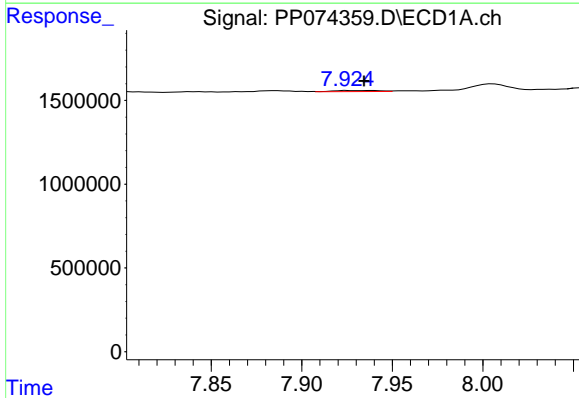
R.T.: 7.526 min  
 Delta R.T.: 0.007 min  
 Response: 40331  
 Conc: 0.63 ng/ml

Instrument :  
 ECD\_P  
 ClientSampleId :  
 DM-COMP



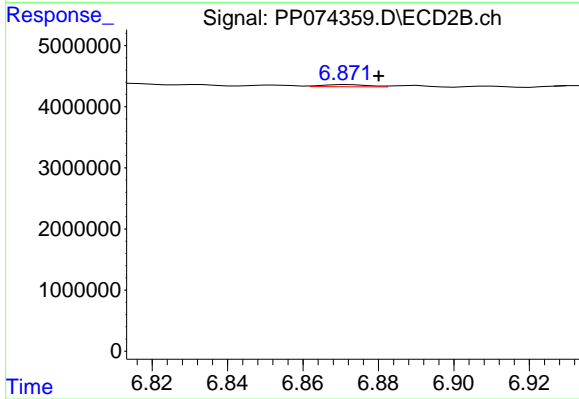
#29 AR-1254-4

R.T.: 6.467 min  
 Delta R.T.: 0.003 min  
 Response: 387988  
 Conc: 1.06 ng/ml



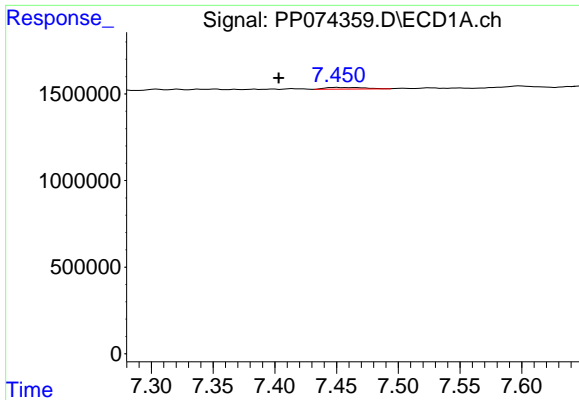
#30 AR-1254-5

R.T.: 7.925 min  
 Delta R.T.: -0.009 min  
 Response: 119088  
 Conc: 1.47 ng/ml



#30 AR-1254-5

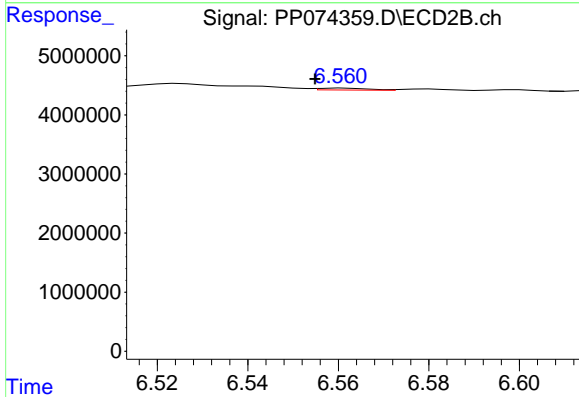
R.T.: 6.872 min  
 Delta R.T.: -0.008 min  
 Response: 280340  
 Conc: 0.73 ng/ml



#31 AR-1260-1

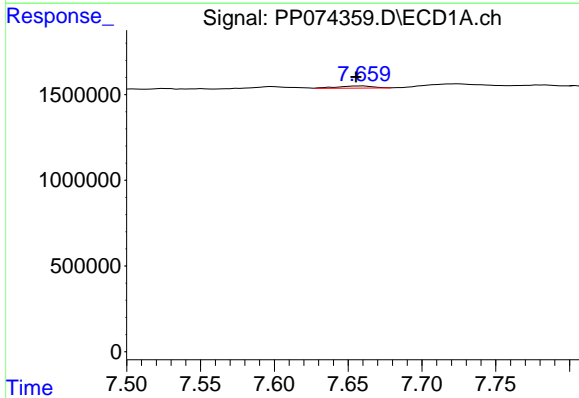
R.T.: 7.450 min  
 Delta R.T.: 0.047 min  
 Response: 217861  
 Conc: 3.87 ng/ml

Instrument :  
 ECD\_P  
 ClientSampleId :  
 DM-COMP



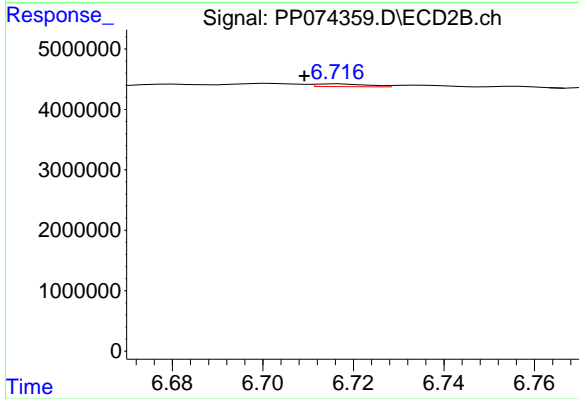
#31 AR-1260-1

R.T.: 6.561 min  
 Delta R.T.: 0.006 min  
 Response: 256743  
 Conc: 0.64 ng/ml



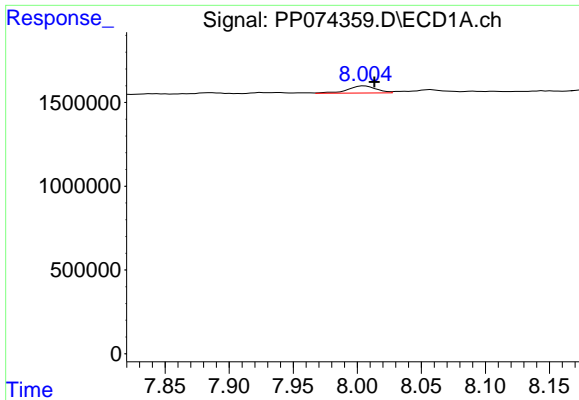
#32 AR-1260-2

R.T.: 7.660 min  
 Delta R.T.: 0.004 min  
 Response: 217295  
 Conc: 3.19 ng/ml



#32 AR-1260-2

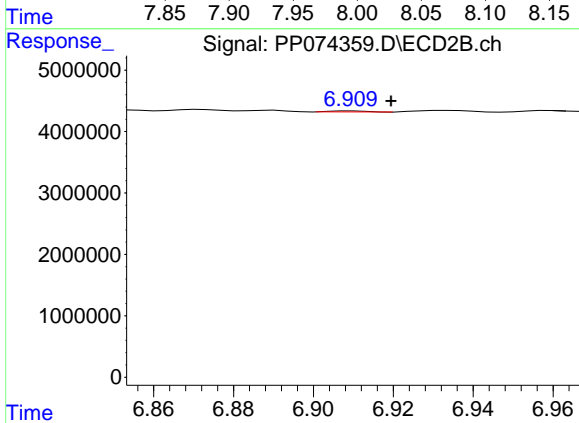
R.T.: 6.717 min  
 Delta R.T.: 0.008 min  
 Response: 353997  
 Conc: 1.13 ng/ml



#33 AR-1260-3

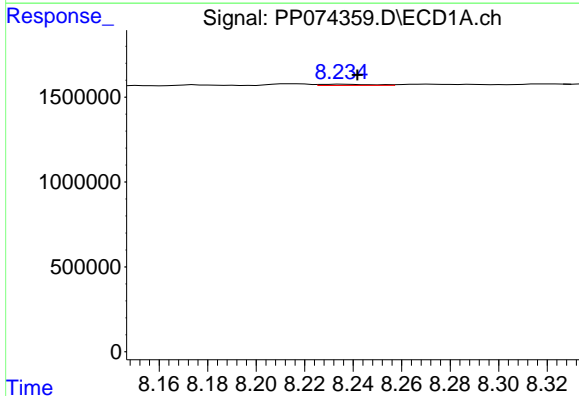
R.T.: 8.006 min  
 Delta R.T.: -0.008 min  
 Response: 651374  
 Conc: 12.22 ng/ml

Instrument :  
 ECD\_P  
 ClientSampleId :  
 DM-COMP



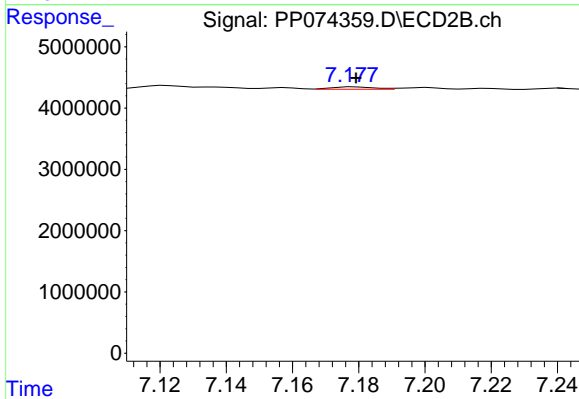
#33 AR-1260-3

R.T.: 6.910 min  
 Delta R.T.: -0.009 min  
 Response: 109104  
 Conc: 0.28 ng/ml



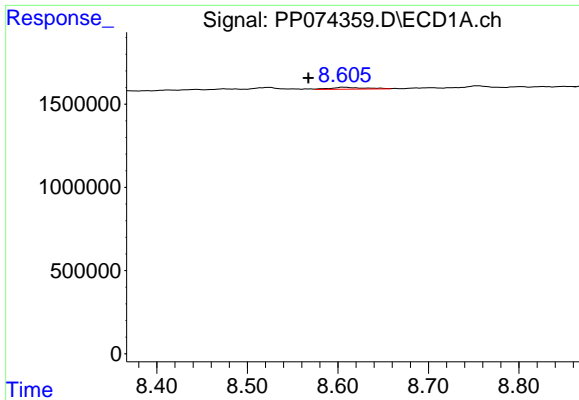
#34 AR-1260-4

R.T.: 8.236 min  
 Delta R.T.: -0.006 min  
 Response: 105869  
 Conc: 1.69 ng/ml



#34 AR-1260-4

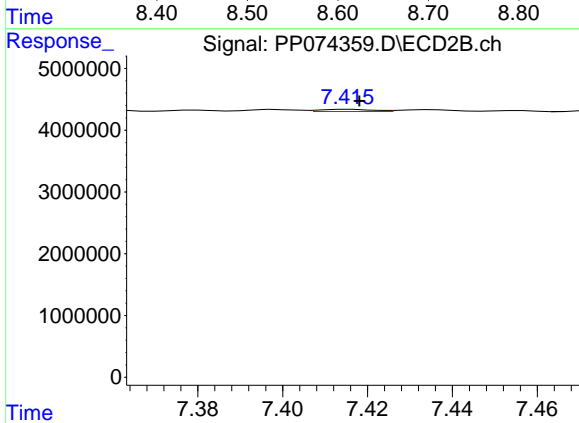
R.T.: 7.179 min  
 Delta R.T.: 0.000 min  
 Response: 336539  
 Conc: 1.16 ng/ml



#35 AR-1260-5

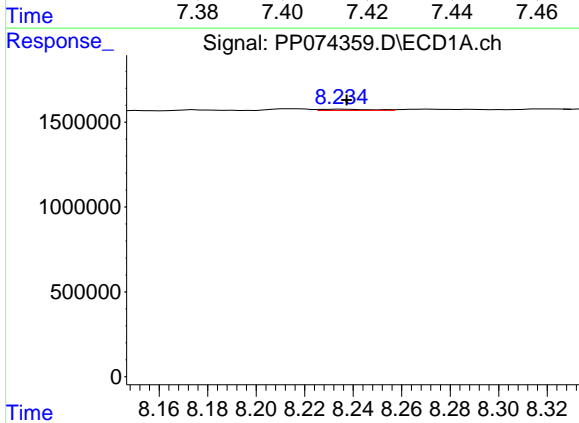
R.T.: 8.607 min  
 Delta R.T.: 0.039 min  
 Response: 307365  
 Conc: 2.71 ng/ml

Instrument :  
 ECD\_P  
 ClientSampleId :  
 DM-COMP



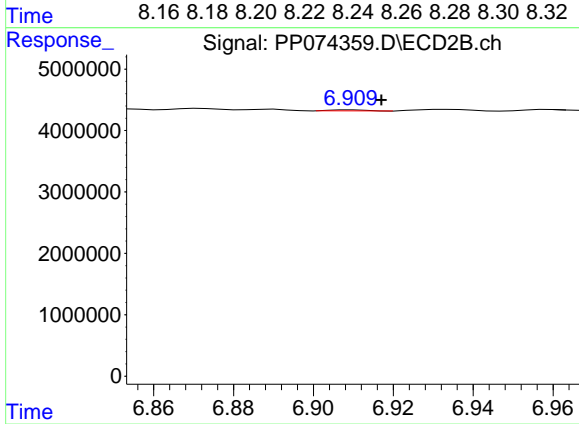
#35 AR-1260-5

R.T.: 7.416 min  
 Delta R.T.: -0.002 min  
 Response: 306986  
 Conc: 0.41 ng/ml



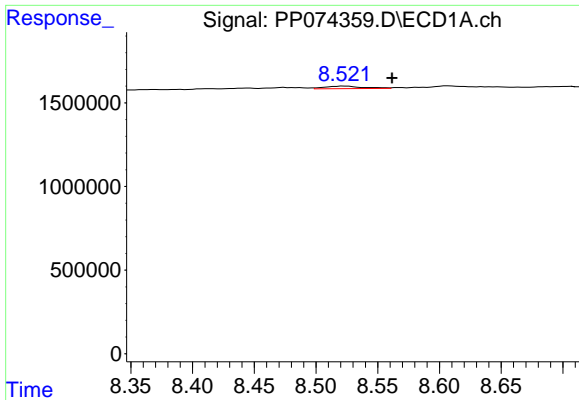
#36 AR-1262-1

R.T.: 8.236 min  
 Delta R.T.: -0.002 min  
 Response: 105869  
 Conc: 1.40 ng/ml



#36 AR-1262-1

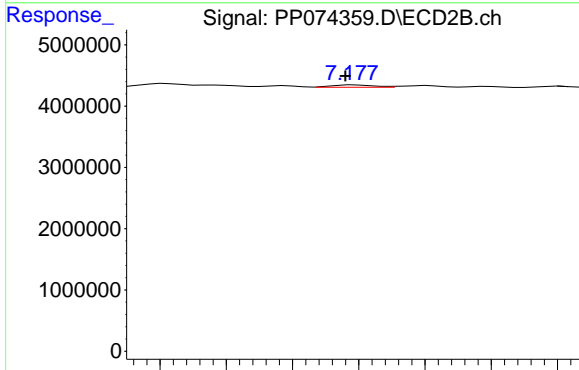
R.T.: 6.910 min  
 Delta R.T.: -0.007 min  
 Response: 109104  
 Conc: 0.19 ng/ml



#37 AR-1262-2

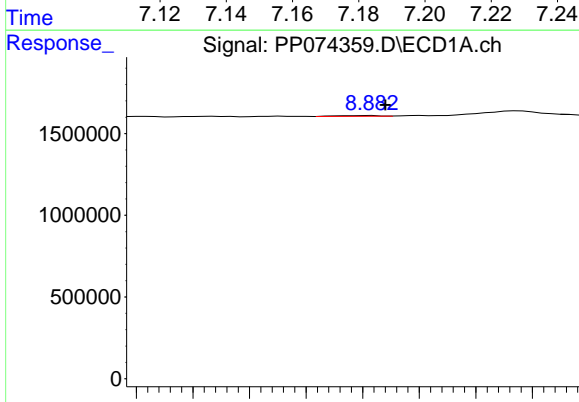
R.T.: 8.523 min  
 Delta R.T.: -0.039 min  
 Response: 330050  
 Conc: 2.53 ng/ml

Instrument :  
 ECD\_P  
 ClientSampleId :  
 DM-COMP



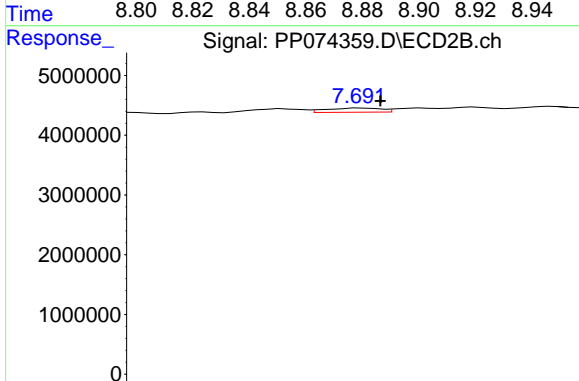
#37 AR-1262-2

R.T.: 7.179 min  
 Delta R.T.: 0.003 min  
 Response: 336539  
 Conc: 0.84 ng/ml



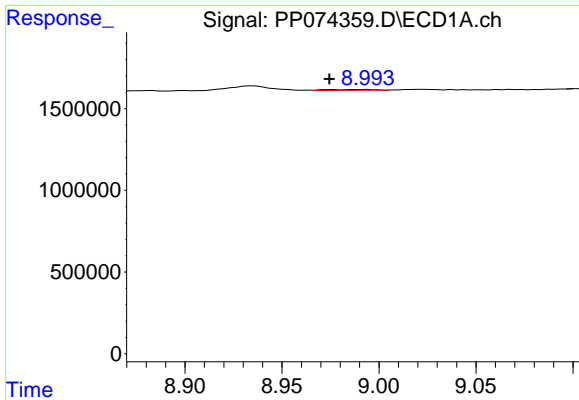
#38 AR-1262-3

R.T.: 8.883 min  
 Delta R.T.: -0.005 min  
 Response: 52161  
 Conc: 0.55 ng/ml



#38 AR-1262-3

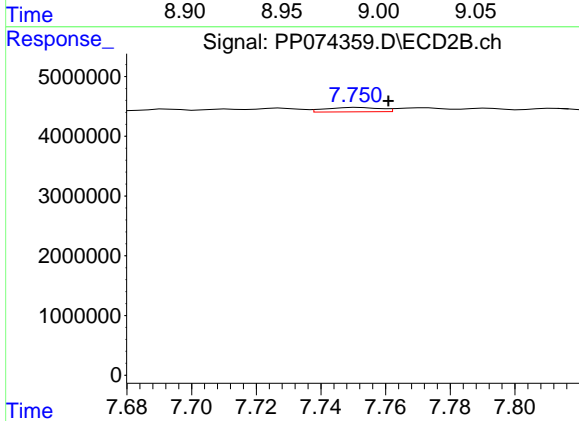
R.T.: 7.692 min  
 Delta R.T.: -0.006 min  
 Response: 826515  
 Conc: 2.30 ng/ml



#39 AR-1262-4

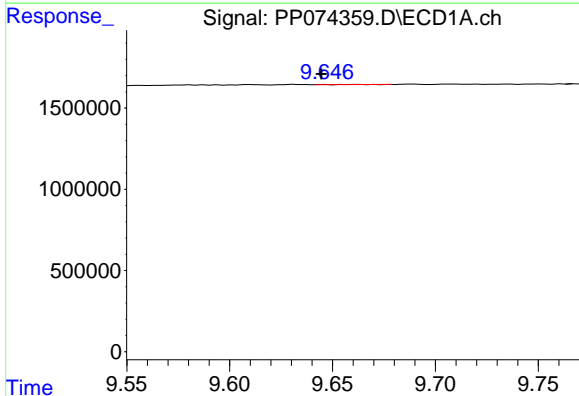
R.T.: 8.994 min  
 Delta R.T.: 0.020 min  
 Response: 91951  
 Conc: 1.26 ng/ml

Instrument :  
 ECD\_P  
 ClientSampleId :  
 DM-COMP



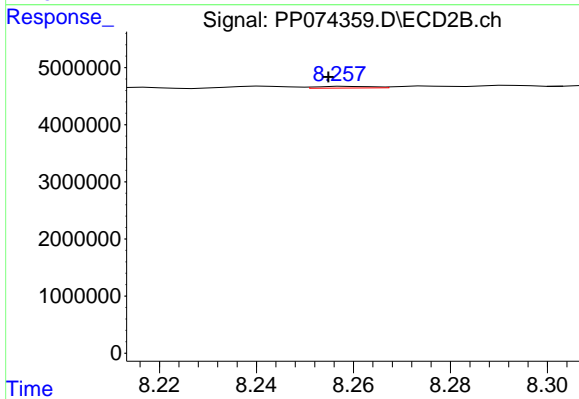
#39 AR-1262-4

R.T.: 7.752 min  
 Delta R.T.: -0.009 min  
 Response: 869188  
 Conc: 1.30 ng/ml



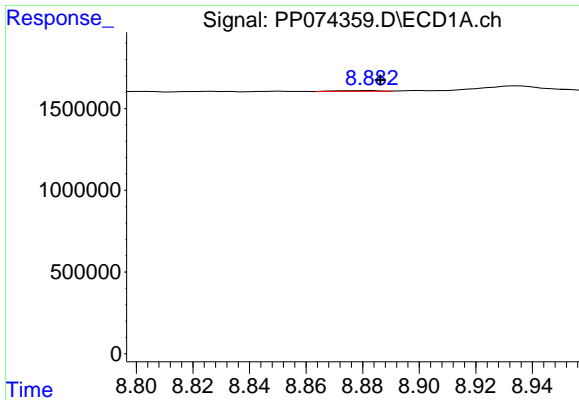
#40 AR-1262-5

R.T.: 9.647 min  
 Delta R.T.: 0.002 min  
 Response: 10236  
 Conc: 0.20 ng/ml



#40 AR-1262-5

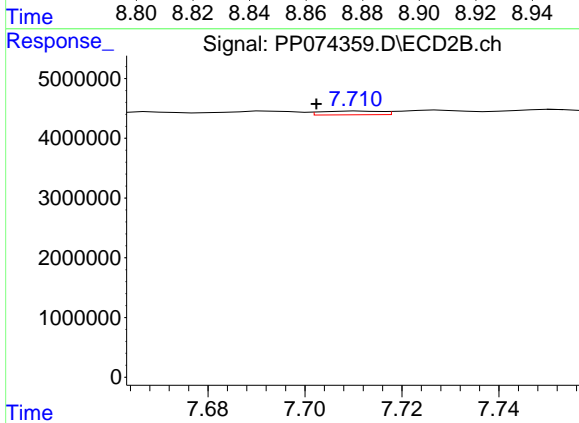
R.T.: 8.259 min  
 Delta R.T.: 0.004 min  
 Response: 241334  
 Conc: 0.85 ng/ml



#41 AR-1268-1

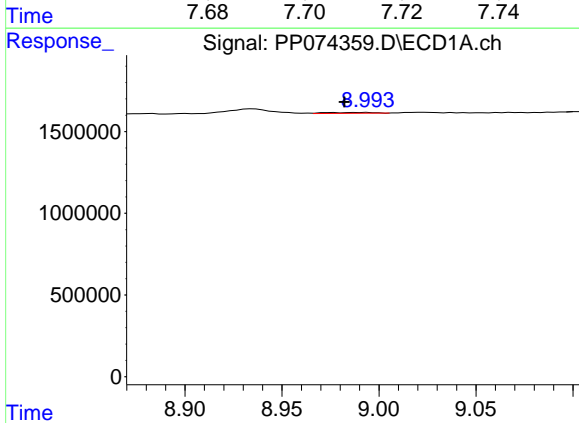
R.T.: 8.883 min  
 Delta R.T.: -0.003 min  
 Response: 52161  
 Conc: 0.34 ng/ml

Instrument :  
 ECD\_P  
 ClientSampleId :  
 DM-COMP



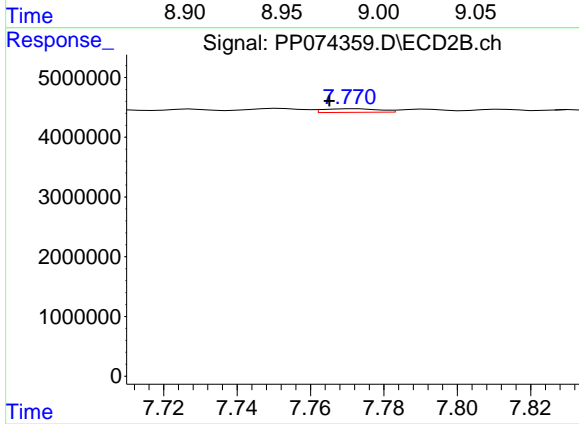
#41 AR-1268-1

R.T.: 7.711 min  
 Delta R.T.: 0.009 min  
 Response: 545312  
 Conc: 0.50 ng/ml



#42 AR-1268-2

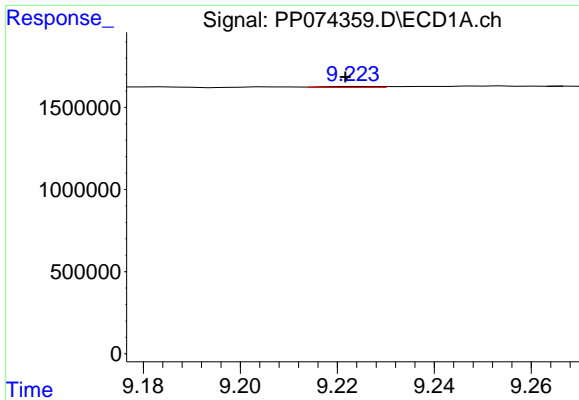
R.T.: 8.994 min  
 Delta R.T.: 0.012 min  
 Response: 91951  
 Conc: 0.64 ng/ml



#42 AR-1268-2

R.T.: 7.772 min  
 Delta R.T.: 0.007 min  
 Response: 634746  
 Conc: 0.60 ng/ml

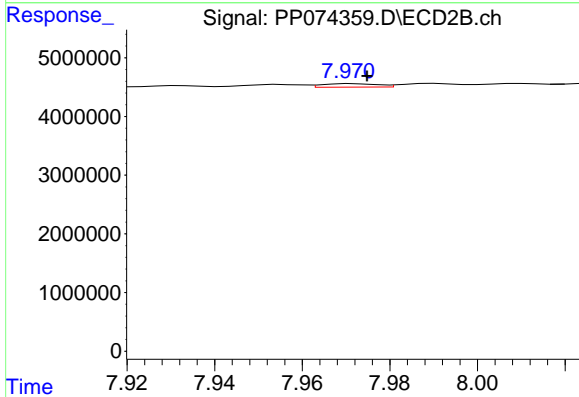




#43 AR-1268-3

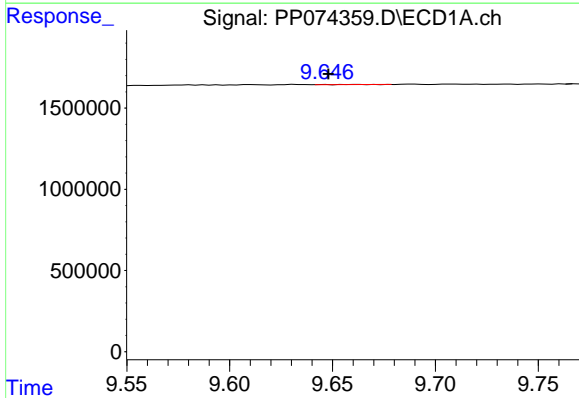
R.T.: 9.224 min  
 Delta R.T.: 0.002 min  
 Response: 44528  
 Conc: 0.37 ng/ml

Instrument :  
 ECD\_P  
 ClientSampleId :  
 DM-COMP



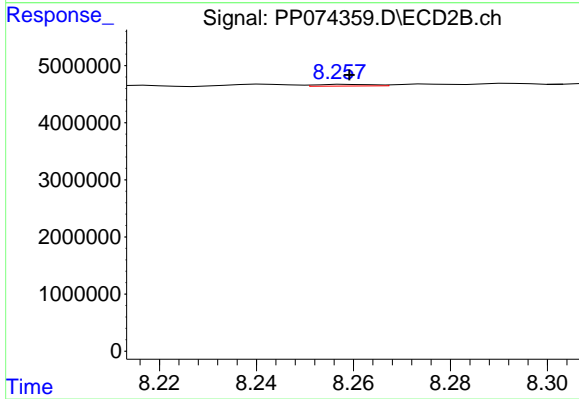
#43 AR-1268-3

R.T.: 7.972 min  
 Delta R.T.: -0.003 min  
 Response: 526164  
 Conc: 0.63 ng/ml



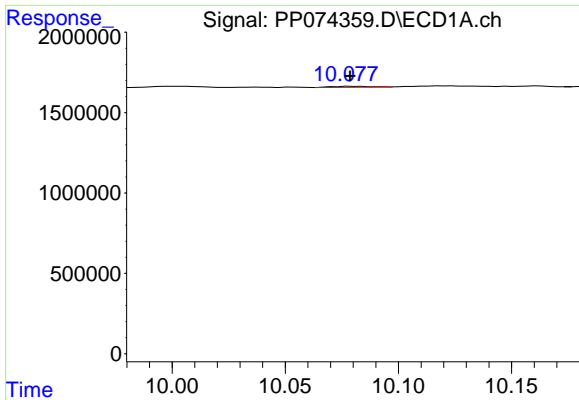
#44 AR-1268-4

R.T.: 9.647 min  
 Delta R.T.: -0.001 min  
 Response: 10236  
 Conc: 0.17 ng/ml



#44 AR-1268-4

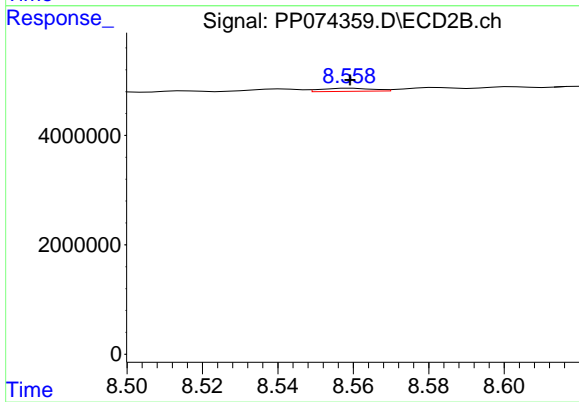
R.T.: 8.259 min  
 Delta R.T.: 0.000 min  
 Response: 241334  
 Conc: 0.78 ng/ml



#45 AR-1268-5

R.T.: 10.078 min  
Delta R.T.: 0.000 min  
Response: 70831  
Conc: 0.20 ng/ml

Instrument :  
ECD\_P  
ClientSampleId :  
DM-COMP



#45 AR-1268-5

R.T.: 8.560 min  
Delta R.T.: 0.000 min  
Response: 538537  
Conc: 0.21 ng/ml