

Data Path : Z:\pestpcbsrv\HPCHEM1\ECD\_P\Data\PP081325\  
 Data File : PP074361.D  
 Signal(s) : Signal #1: ECD1A.ch Signal #2: ECD2B.ch  
 Acq On : 13 Aug 2025 19:25  
 Operator : YP\AJ  
 Sample : Q2822-01  
 Misc :  
 ALS Vial : 25 Sample Multiplier: 1

Instrument :  
 ECD\_P  
 ClientSampleId :  
 NWB-2185

Integration File signal 1: autoint1.e  
 Integration File signal 2: autoint2.e  
 Quant Time: Aug 14 00:01:55 2025  
 Quant Method : Z:\pestpcbsrv\HPCHEM1\ECD\_P\methods\PP080125.M  
 Quant Title : GC EXTRACTABLES  
 QLast Update : Mon Aug 04 11:01:49 2025  
 Response via : Initial Calibration  
 Integrator: ChemStation

Volume Inj. : 2 µl  
 Signal #1 Phase : ZB-MR1 Signal #2 Phase: ZB-MR2  
 Signal #1 Info : 30Mx0.32mmx 0.50µ Signal #2 Info : 30M x 0.32mm x 0.25µm

Compound	RT#1	RT#2	Resp#1	Resp#2	ng/ml	ng/ml
----------	------	------	--------	--------	-------	-------

System Monitoring Compounds

2) SA Decachlor...	10.434	8.819	12045827	67823860	12.404	11.278
--------------------	--------	-------	----------	----------	--------	--------

Target Compounds

3) L1 AR-1016-1	5.827	4.881	2668092	36909940	64.670	92.532 #
4) L1 AR-1016-2	5.827	0.000	2668092	0	43.925	N.D. #
5) L1 AR-1016-3	5.911	5.149f	7270142	9647648	183.309	90.956 #
6) L1 AR-1016-4	5.982	5.149	5356243	9647648	164.582	88.332 #
7) L1 AR-1016-5	6.293	5.364	8925170	2984734	274.891	25.519 #
8) L2 AR-1221-1	4.852	0.000	1674261	0	99.875	N.D. #
9) L2 AR-1221-2	4.924	0.000	425044	0	33.731	N.D. #
10) L2 AR-1221-3	5.036	0.000	1022794	0	27.918	N.D. #
11) L3 AR-1232-1	5.036	0.000	1022794	0	35.223	N.D. #
12) L3 AR-1232-2	5.570	4.881	4657314	36909940	309.606	211.802 #
13) L3 AR-1232-3	5.827	5.149f	2668092	9647648	91.998	210.571 #
14) L3 AR-1232-4	5.982	5.149	5356243	9647648	346.260	166.308 #
15) L3 AR-1232-5	6.083	5.364	6423602	2984734	548.275	63.533 #
16) L4 AR-1242-1	5.827	4.881	2668092	36909940	71.596	106.942 #
17) L4 AR-1242-2	5.827	0.000	2668092	0	49.038	N.D. #
18) L4 AR-1242-3	5.911	5.149f	7270142	9647648	203.441	104.583 #
19) L4 AR-1242-4	5.982	5.149	5356243	9647648	183.316	80.786 #
20) L4 AR-1242-5	6.737	5.686	5749685	3349671	161.699	22.397 #
21) L5 AR-1248-1	5.827	4.881	2668092	36909940	95.240	172.531 #
22) L5 AR-1248-2	6.083	5.149	6423602	9647648	159.549	65.939 #
23) L5 AR-1248-3	6.293	5.149	8925170	9647648	200.235	56.268 #
24) L5 AR-1248-4	6.682	5.364	17496933	2984734	336.239	17.940 #
25) L5 AR-1248-5	6.737	5.749	5749685	4714607	100.972	16.203 #
26) L6 AR-1254-1	6.682	5.686	17496933	3349671	332.382	9.148 #
27) L6 AR-1254-2	6.848	5.882f	3514743	1041407	44.208	3.743 #
28) L6 AR-1254-3	7.227	6.238	3029637	1236328	34.697	2.527 #
29) L6 AR-1254-4	7.500	6.473	3747412	422043	58.728	1.148 #
30) L6 AR-1254-5	7.937	6.868	2176884	1186883	26.827	3.081 #
31) L7 AR-1260-1	7.392	6.582	3647586	756712	64.724	1.873 #
32) L7 AR-1260-2	7.598f	6.712	5988031	3567673	87.862	11.409 #
33) L7 AR-1260-3	8.021	6.934	1797675	256395	33.730	0.651 #
34) L7 AR-1260-4	8.239	7.175	2138644	1109101	34.155	3.812 #
35) L7 AR-1260-5	8.545	7.404	1733948	3763068	15.303	4.968 #
36) L8 AR-1262-1	8.239	6.934	2138644	256395	28.218	0.455 #
37) L8 AR-1262-2	8.545	7.175	1733948	1109101	13.294	2.766 #
38) L8 AR-1262-3	8.881	7.667	35502	117.3E6	0.377	326.367 #
39) L8 AR-1262-4	8.930f	7.817f	285873	2136107	3.924	3.203
40) L8 AR-1262-5	9.648	8.262	258434	10650818	5.075	37.600 #
41) L9 AR-1268-1	8.881	7.667f	35502	117.3E6	0.228	107.606 #
42) L9 AR-1268-2	8.930f	7.817f	285873	2136107	1.993	2.013

Data Path : Z:\pestpcbsrv\HPCHEM1\ECD\_P\Data\PP081325\  
 Data File : PP074361.D  
 Signal(s) : Signal #1: ECD1A.ch Signal #2: ECD2B.ch  
 Acq On : 13 Aug 2025 19:25  
 Operator : YP\AJ  
 Sample : Q2822-01  
 Misc :  
 ALS Vial : 25 Sample Multiplier: 1

**Instrument :**  
 ECD\_P  
**ClientSampleId :**  
 NWB-2185

Integration File signal 1: autoint1.e  
 Integration File signal 2: autoint2.e  
 Quant Time: Aug 14 00:01:55 2025  
 Quant Method : Z:\pestpcbsrv\HPCHEM1\ECD\_P\methods\PP080125.M  
 Quant Title : GC EXTRACTABLES  
 QLast Update : Mon Aug 04 11:01:49 2025  
 Response via : Initial Calibration  
 Integrator: ChemStation

Volume Inj. : 2 µl  
 Signal #1 Phase : ZB-MR1 Signal #2 Phase: ZB-MR2  
 Signal #1 Info : 30Mx0.32mmx 0.50µ Signal #2 Info : 30M x 0.32mm x 0.25µm

	Compound	RT#1	RT#2	Resp#1	Resp#2	ng/ml	ng/ml
43)	L9 AR-1268-3	9.207	7.975	86600	573119	0.725	0.689
44)	L9 AR-1268-4	9.648	8.262	258434	10650818	4.394	34.574 #
45)	L9 AR-1268-5	10.078	8.583	227904	2627662	0.648	1.030 #

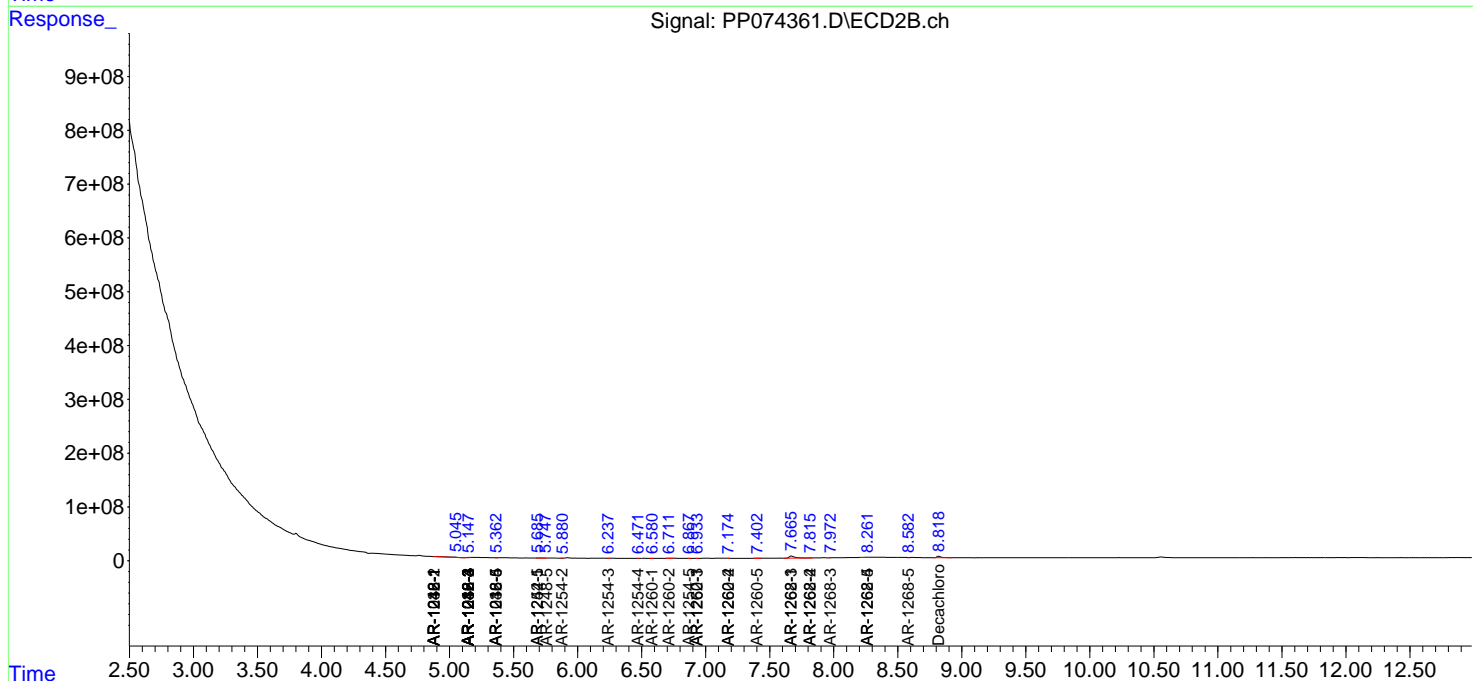
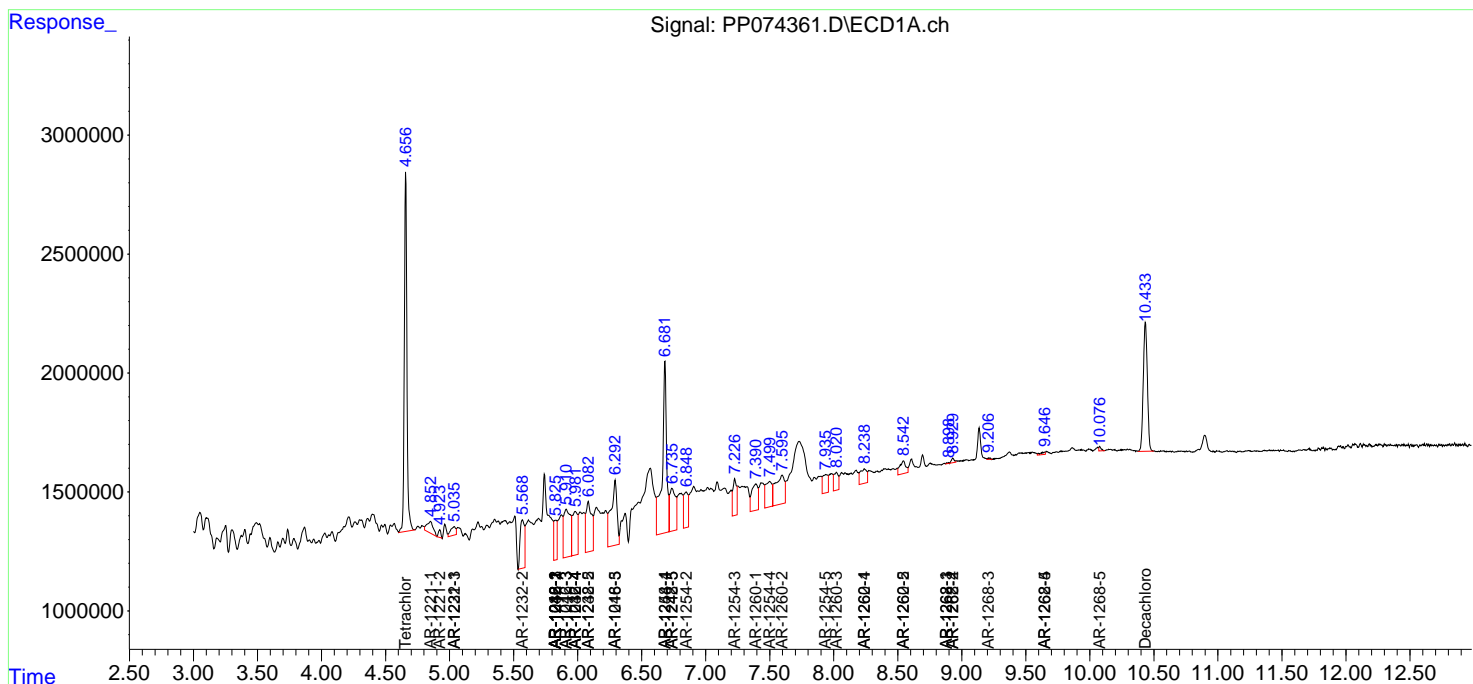
(f)=RT Delta > 1/2 Window (#)=Amounts differ by > 25% (m)=manual int.

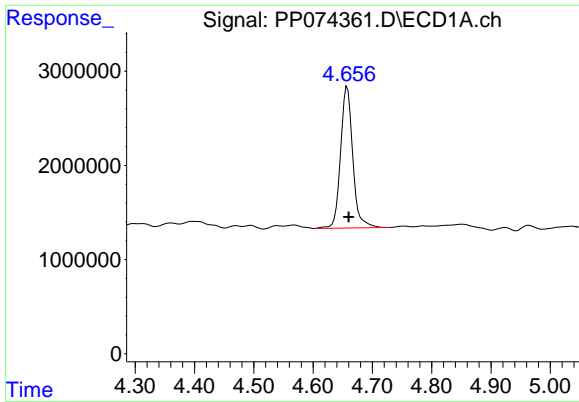
Data Path : Z:\pestpcbsrv\HPCHEM1\ECD\_P\Data\PP081325\  
 Data File : PP074361.D  
 Signal(s) : Signal #1: ECD1A.ch Signal #2: ECD2B.ch  
 Acq On : 13 Aug 2025 19:25  
 Operator : YP\AJ  
 Sample : Q2822-01  
 Misc :  
 ALS Vial : 25 Sample Multiplier: 1

Instrument :  
 ECD\_P  
 ClientSampleId :  
 NWB-2185

Integration File signal 1: autoint1.e  
 Integration File signal 2: autoint2.e  
 Quant Time: Aug 14 00:01:55 2025  
 Quant Method : Z:\pestpcbsrv\HPCHEM1\ECD\_P\methods\PP080125.M  
 Quant Title : GC EXTRACTABLES  
 QLast Update : Mon Aug 04 11:01:49 2025  
 Response via : Initial Calibration  
 Integrator: ChemStation

Volume Inj. : 2 µl  
 Signal #1 Phase : ZB-MR1 Signal #2 Phase: ZB-MR2  
 Signal #1 Info : 30Mx0.32mmx 0.50µ Signal #2 Info : 30M x 0.32mm x 0.25µm

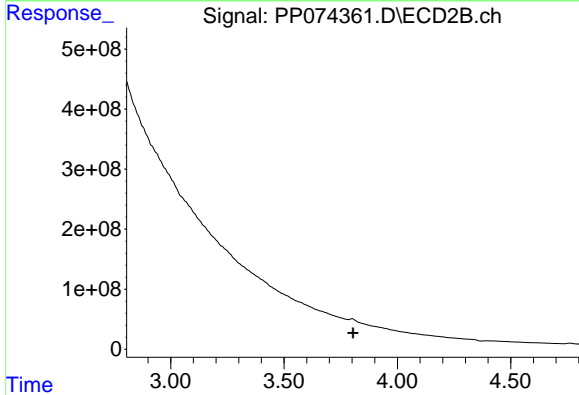




#1 Tetrachloro-m-xylene

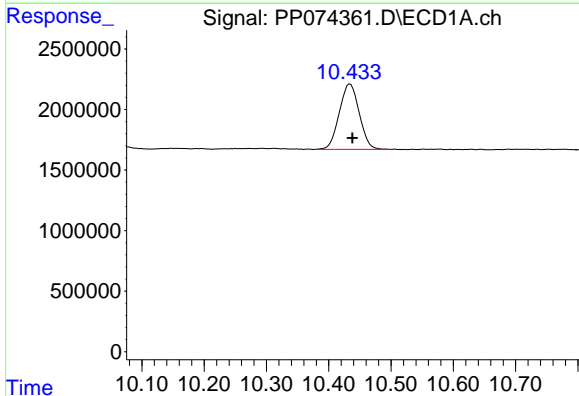
R.T.: 4.658 min  
 Delta R.T.: -0.002 min  
 Response: 21545120  
 Conc: 19.27 ng/ml

Instrument :  
 ECD\_P  
 ClientSampleId :  
 NWB-2185



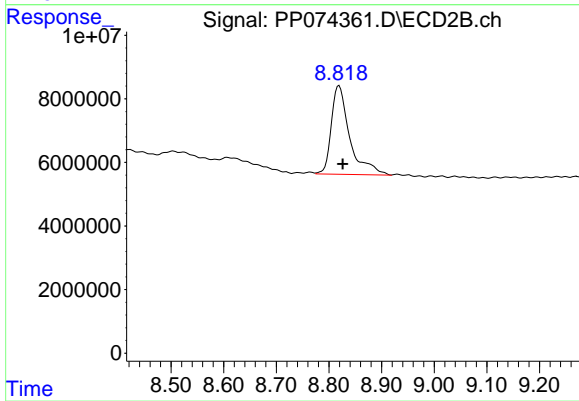
#1 Tetrachloro-m-xylene

R.T.: 3.801 min  
 Delta R.T.: -0.005 min  
 Response: -796929186  
 Conc: N.D.



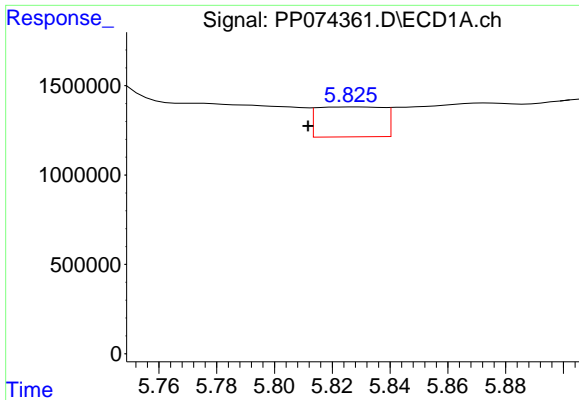
#2 Decachlorobiphenyl

R.T.: 10.434 min  
 Delta R.T.: -0.004 min  
 Response: 12045827  
 Conc: 12.40 ng/ml



#2 Decachlorobiphenyl

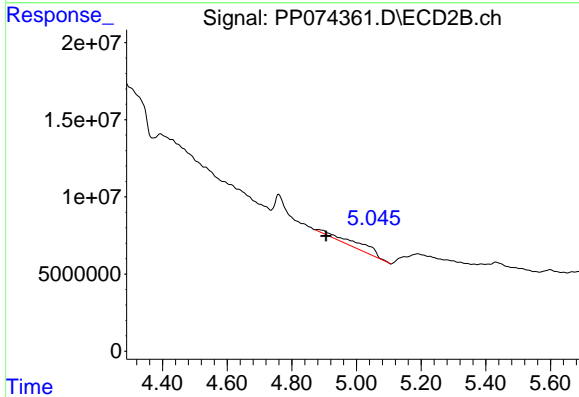
R.T.: 8.819 min  
 Delta R.T.: -0.007 min  
 Response: 67823860  
 Conc: 11.28 ng/ml



#3 AR-1016-1

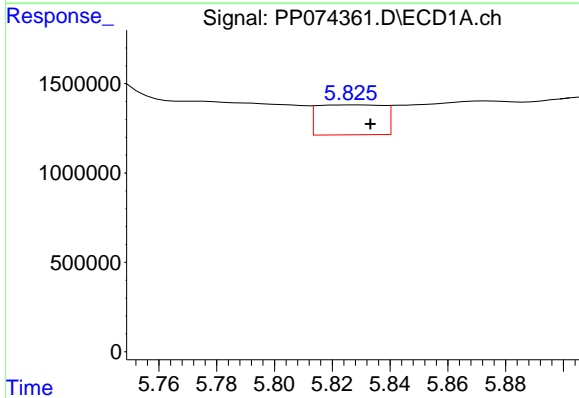
R.T.: 5.827 min  
 Delta R.T.: 0.016 min  
 Response: 2668092  
 Conc: 64.67 ng/ml

Instrument :  
 ECD\_P  
 ClientSampleId :  
 NWB-2185



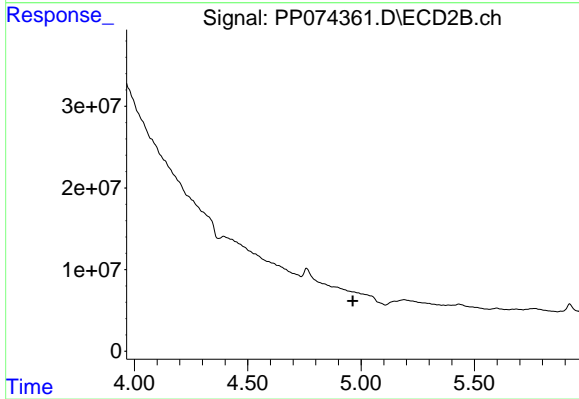
#3 AR-1016-1

R.T.: 4.881 min  
 Delta R.T.: -0.025 min  
 Response: 36909940  
 Conc: 92.53 ng/ml



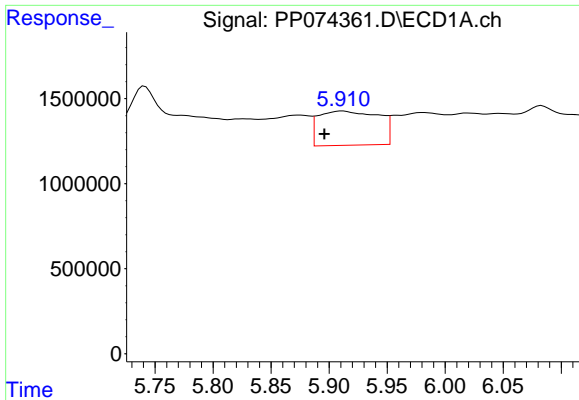
#4 AR-1016-2

R.T.: 5.827 min  
 Delta R.T.: -0.006 min  
 Response: 2668092  
 Conc: 43.93 ng/ml



#4 AR-1016-2

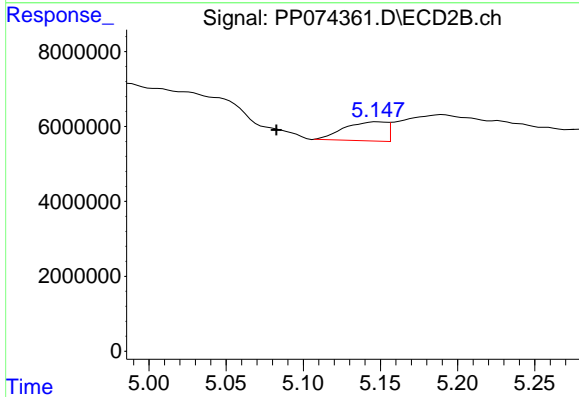
R.T.: 0.000 min  
 Exp R.T. : 4.963 min  
 Response: 0  
 Conc: N.D.



#5 AR-1016-3

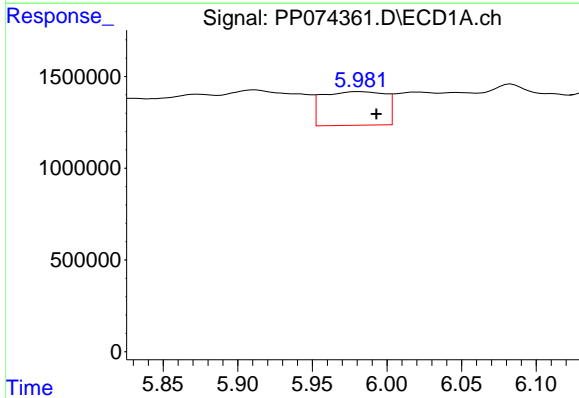
R.T.: 5.911 min  
 Delta R.T.: 0.015 min  
 Response: 7270142  
 Conc: 183.31 ng/ml

Instrument :  
 ECD\_P  
 ClientSampleId :  
 NWB-2185



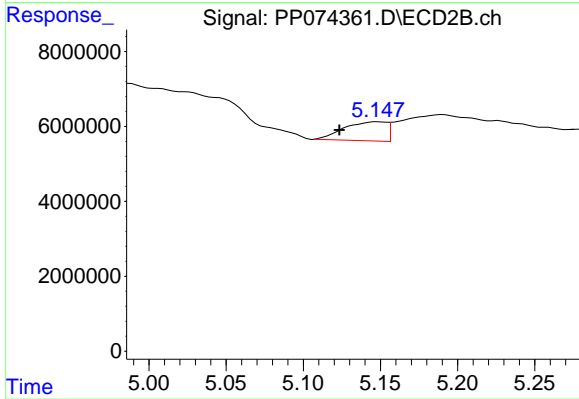
#5 AR-1016-3

R.T.: 5.149 min  
 Delta R.T.: 0.066 min  
 Response: 9647648  
 Conc: 90.96 ng/ml



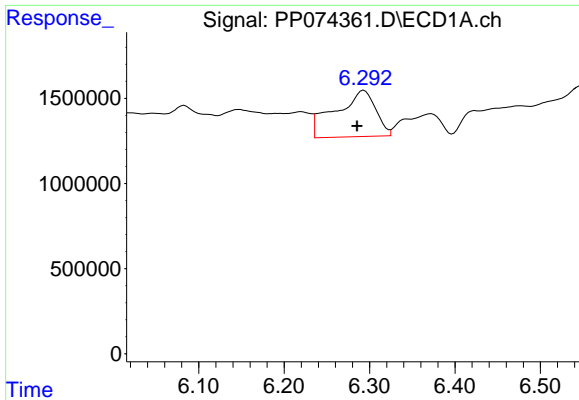
#6 AR-1016-4

R.T.: 5.982 min  
 Delta R.T.: -0.011 min  
 Response: 5356243  
 Conc: 164.58 ng/ml



#6 AR-1016-4

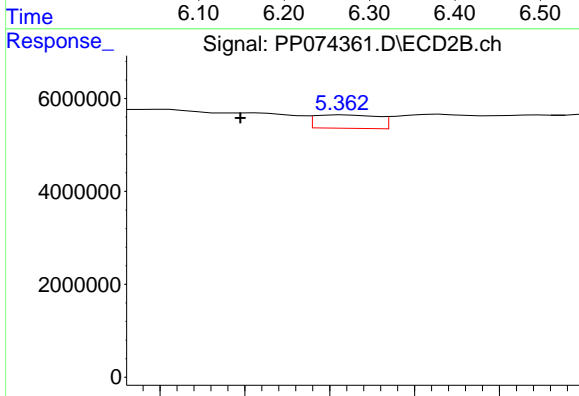
R.T.: 5.149 min  
 Delta R.T.: 0.025 min  
 Response: 9647648  
 Conc: 88.33 ng/ml



#7 AR-1016-5

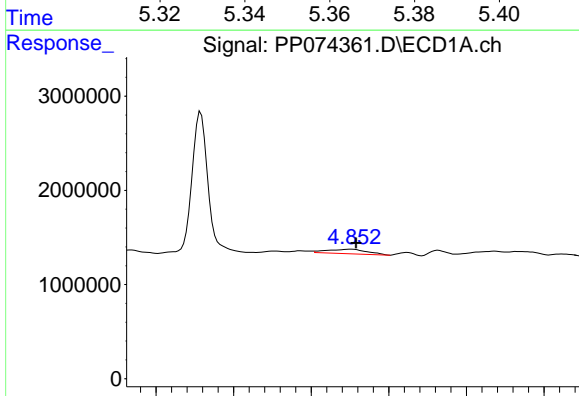
R.T.: 6.293 min  
 Delta R.T.: 0.008 min  
 Response: 8925170  
 Conc: 274.89 ng/ml

Instrument :  
 ECD\_P  
 ClientSampleId :  
 NWB-2185



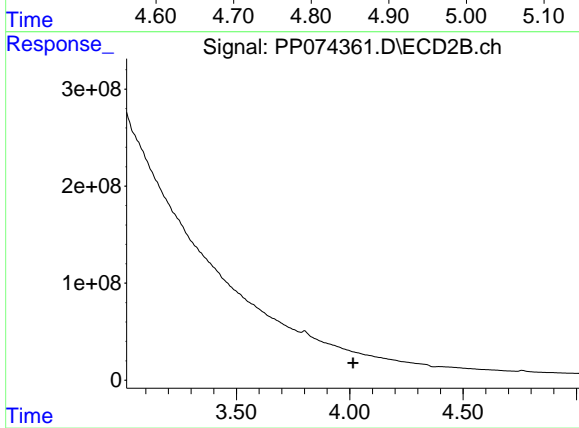
#7 AR-1016-5

R.T.: 5.364 min  
 Delta R.T.: 0.025 min  
 Response: 2984734  
 Conc: 25.52 ng/ml



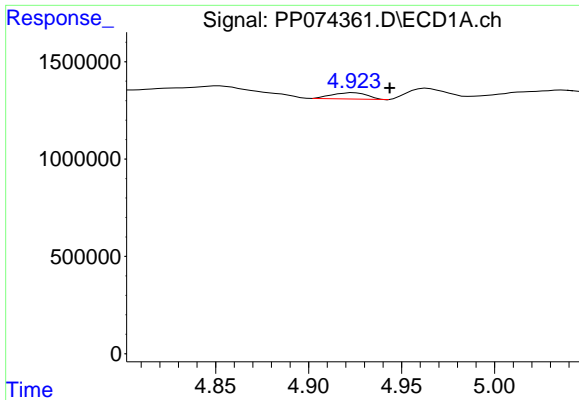
#8 AR-1221-1

R.T.: 4.852 min  
 Delta R.T.: -0.006 min  
 Response: 1674261  
 Conc: 99.87 ng/ml



#8 AR-1221-1

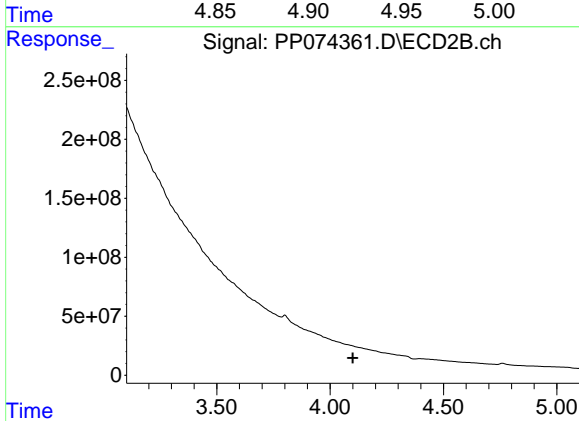
R.T.: 0.000 min  
 Exp R.T. : 4.015 min  
 Response: 0  
 Conc: N.D.



#9 AR-1221-2

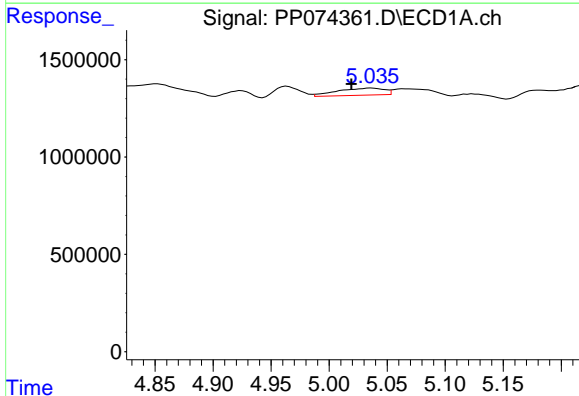
R.T.: 4.924 min  
 Delta R.T.: -0.019 min  
 Response: 425044  
 Conc: 33.73 ng/ml

Instrument :  
 ECD\_P  
 ClientSampleId :  
 NWB-2185



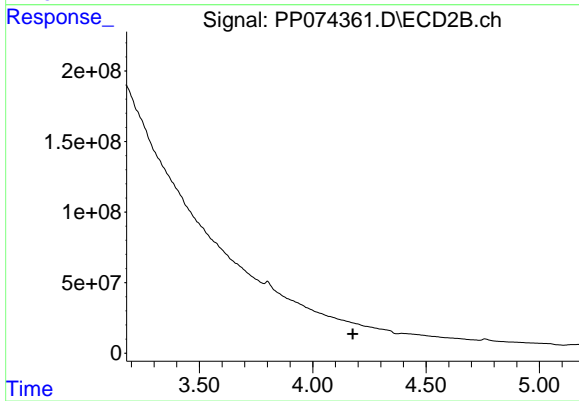
#9 AR-1221-2

R.T.: 0.000 min  
 Exp R.T. : 4.100 min  
 Response: 0  
 Conc: N.D.



#10 AR-1221-3

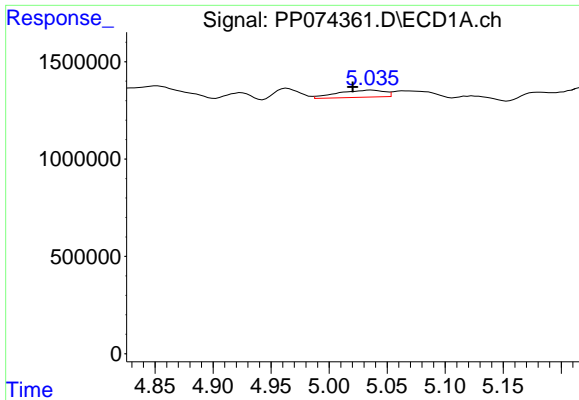
R.T.: 5.036 min  
 Delta R.T.: 0.017 min  
 Response: 1022794  
 Conc: 27.92 ng/ml



#10 AR-1221-3

R.T.: 0.000 min  
 Exp R.T. : 4.176 min  
 Response: 0  
 Conc: N.D.

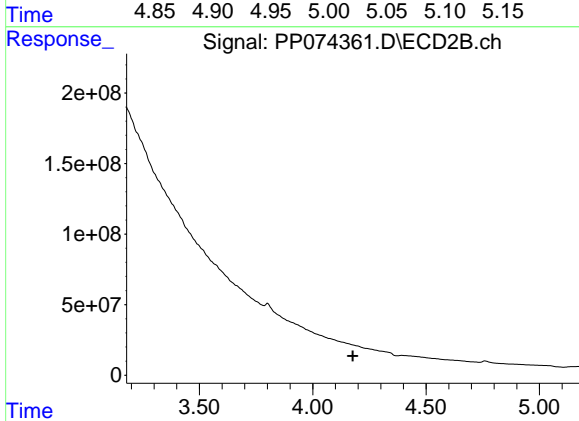




#11 AR-1232-1

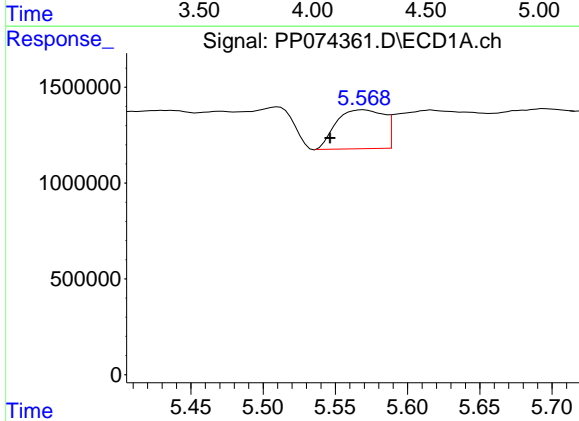
R.T.: 5.036 min  
 Delta R.T.: 0.016 min  
 Response: 1022794  
 Conc: 35.22 ng/ml

Instrument :  
 ECD\_P  
 ClientSampleId :  
 NWB-2185



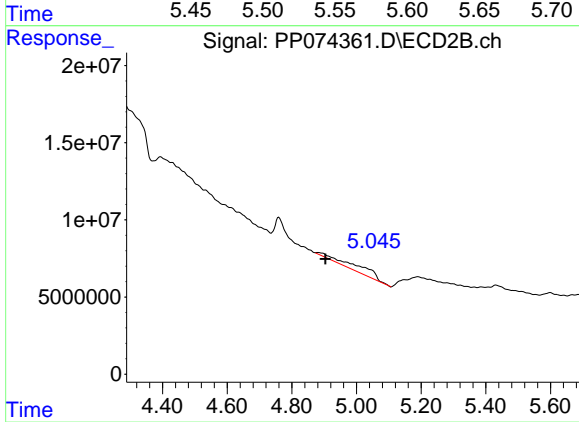
#11 AR-1232-1

R.T.: 0.000 min  
 Exp R.T. : 4.177 min  
 Response: 0  
 Conc: N.D.



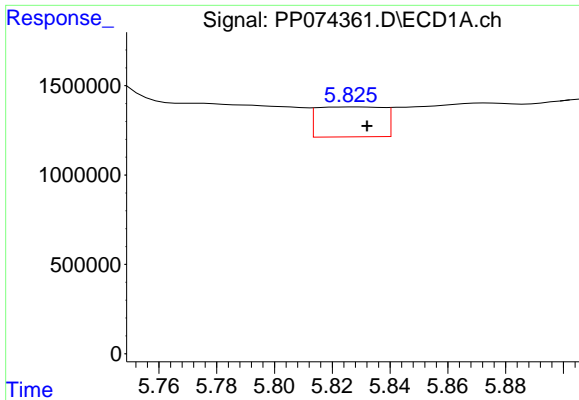
#12 AR-1232-2

R.T.: 5.570 min  
 Delta R.T.: 0.023 min  
 Response: 4657314  
 Conc: 309.61 ng/ml



#12 AR-1232-2

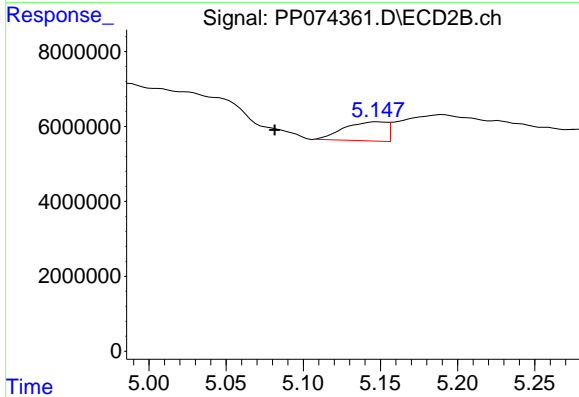
R.T.: 4.881 min  
 Delta R.T.: -0.023 min  
 Response: 36909940  
 Conc: 211.80 ng/ml



#13 AR-1232-3

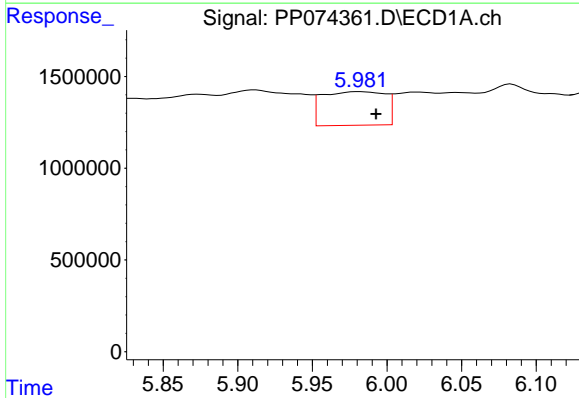
R.T.: 5.827 min  
 Delta R.T.: -0.005 min  
 Response: 2668092  
 Conc: 92.00 ng/ml

Instrument :  
 ECD\_P  
 ClientSampleId :  
 NWB-2185



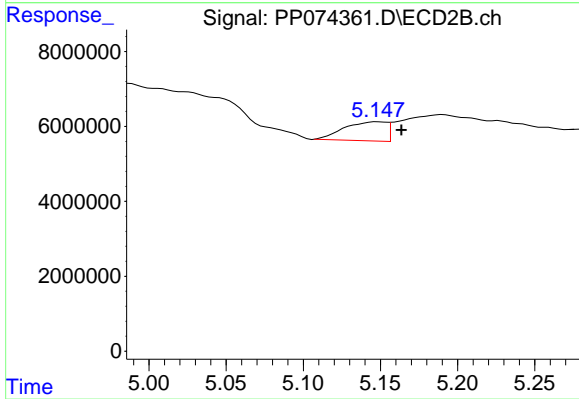
#13 AR-1232-3

R.T.: 5.149 min  
 Delta R.T.: 0.067 min  
 Response: 9647648  
 Conc: 210.57 ng/ml



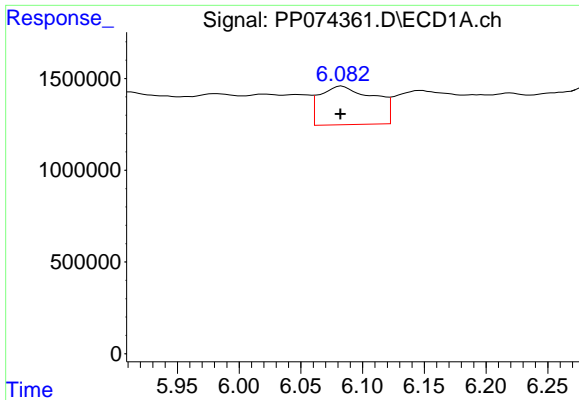
#14 AR-1232-4

R.T.: 5.982 min  
 Delta R.T.: -0.011 min  
 Response: 5356243  
 Conc: 346.26 ng/ml



#14 AR-1232-4

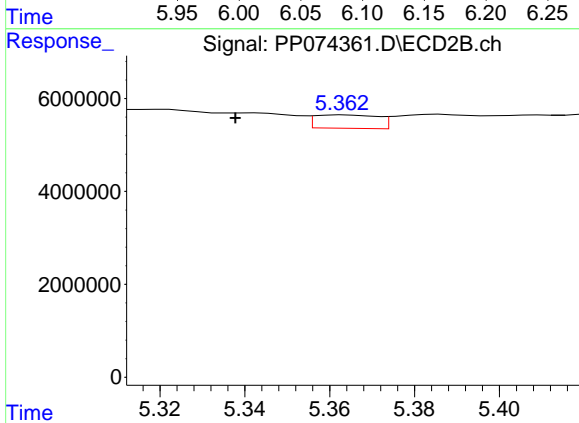
R.T.: 5.149 min  
 Delta R.T.: -0.015 min  
 Response: 9647648  
 Conc: 166.31 ng/ml



#15 AR-1232-5

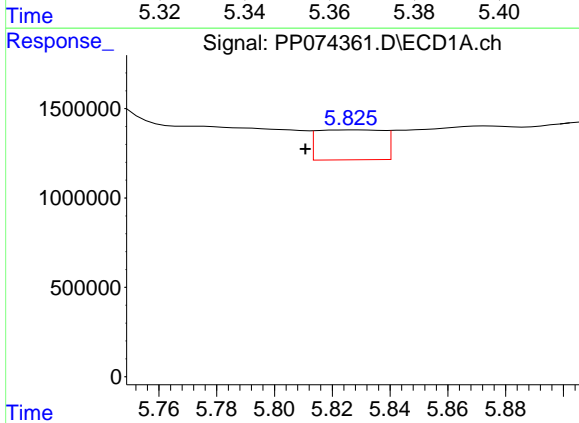
R.T.: 6.083 min  
 Delta R.T.: 0.001 min  
 Response: 6423602  
 Conc: 548.28 ng/ml

Instrument :  
 ECD\_P  
 ClientSampleId :  
 NWB-2185



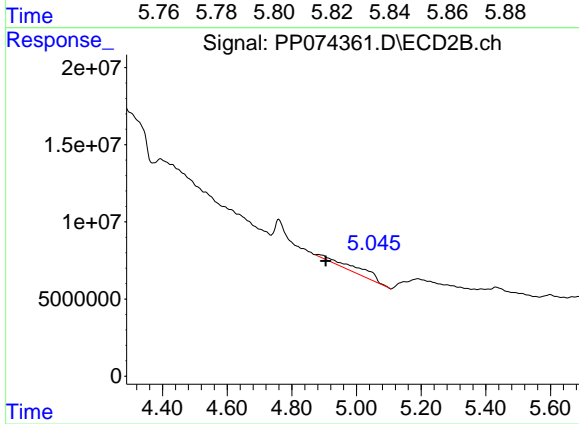
#15 AR-1232-5

R.T.: 5.364 min  
 Delta R.T.: 0.026 min  
 Response: 2984734  
 Conc: 63.53 ng/ml



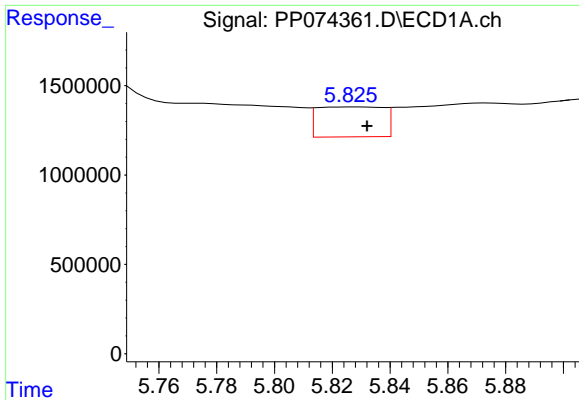
#16 AR-1242-1

R.T.: 5.827 min  
 Delta R.T.: 0.016 min  
 Response: 2668092  
 Conc: 71.60 ng/ml



#16 AR-1242-1

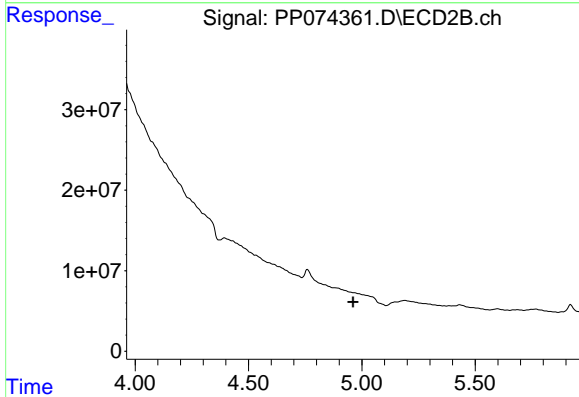
R.T.: 4.881 min  
 Delta R.T.: -0.024 min  
 Response: 36909940  
 Conc: 106.94 ng/ml



#17 AR-1242-2

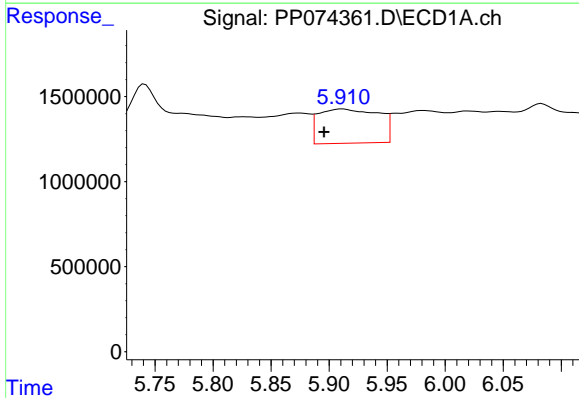
R.T.: 5.827 min  
 Delta R.T.: -0.005 min  
 Response: 2668092  
 Conc: 49.04 ng/ml

Instrument :  
 ECD\_P  
 ClientSampleId :  
 NWB-2185



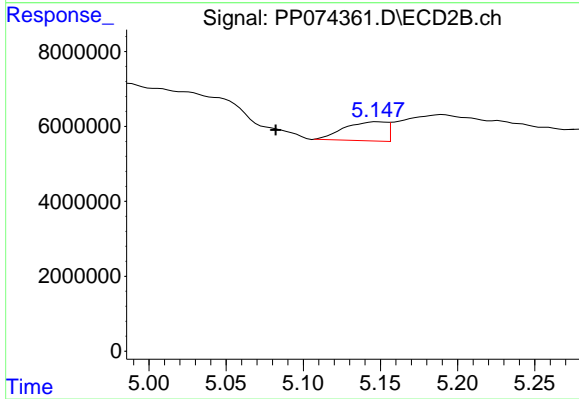
#17 AR-1242-2

R.T.: 0.000 min  
 Exp R.T. : 4.962 min  
 Response: 0  
 Conc: N.D.



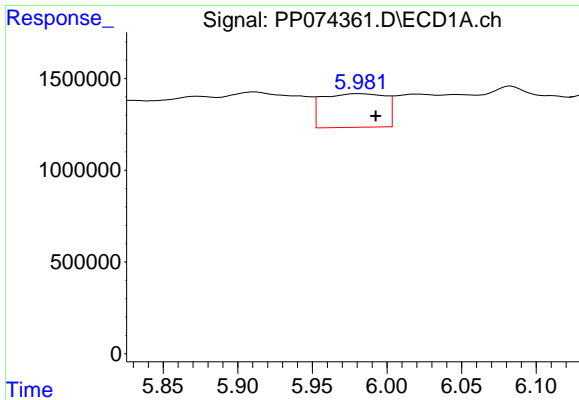
#18 AR-1242-3

R.T.: 5.911 min  
 Delta R.T.: 0.016 min  
 Response: 7270142  
 Conc: 203.44 ng/ml



#18 AR-1242-3

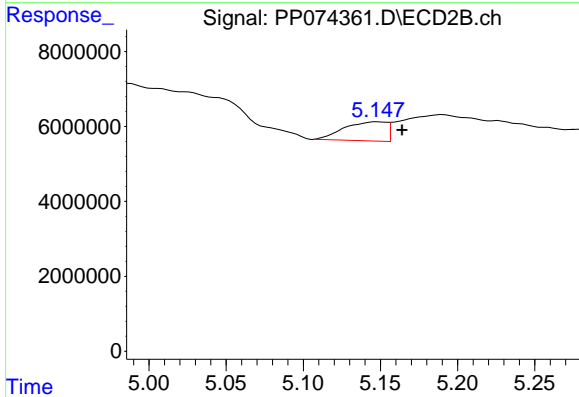
R.T.: 5.149 min  
 Delta R.T.: 0.066 min  
 Response: 9647648  
 Conc: 104.58 ng/ml



#19 AR-1242-4

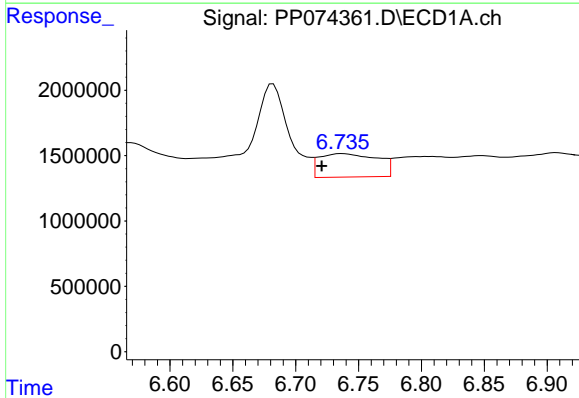
R.T.: 5.982 min  
 Delta R.T.: -0.011 min  
 Response: 5356243  
 Conc: 183.32 ng/ml

Instrument :  
 ECD\_P  
 ClientSampleId :  
 NWB-2185



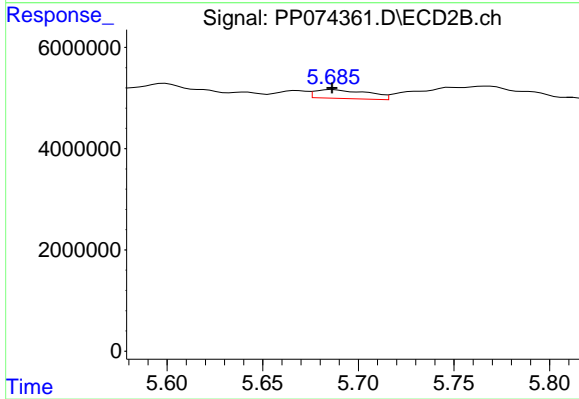
#19 AR-1242-4

R.T.: 5.149 min  
 Delta R.T.: -0.016 min  
 Response: 9647648  
 Conc: 80.79 ng/ml



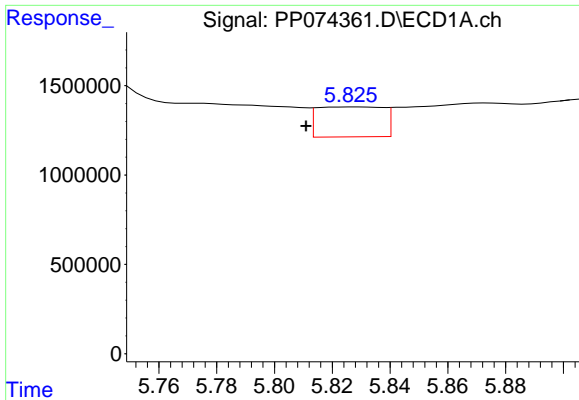
#20 AR-1242-5

R.T.: 6.737 min  
 Delta R.T.: 0.016 min  
 Response: 5749685  
 Conc: 161.70 ng/ml



#20 AR-1242-5

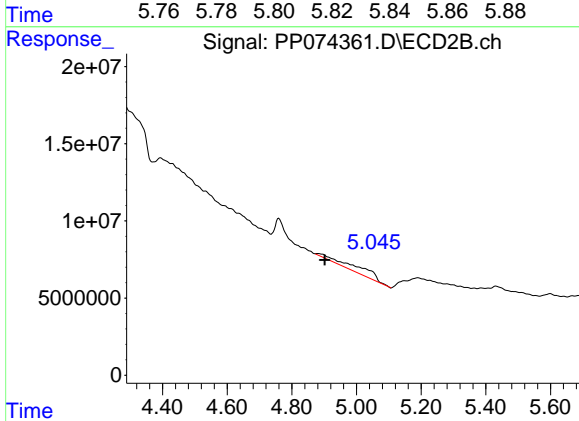
R.T.: 5.686 min  
 Delta R.T.: 0.000 min  
 Response: 3349671  
 Conc: 22.40 ng/ml



#21 AR-1248-1

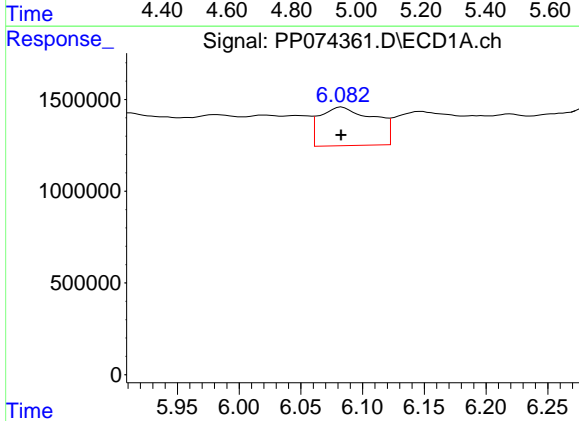
R.T.: 5.827 min  
 Delta R.T.: 0.016 min  
 Response: 2668092  
 Conc: 95.24 ng/ml

Instrument :  
 ECD\_P  
 ClientSampleId :  
 NWB-2185



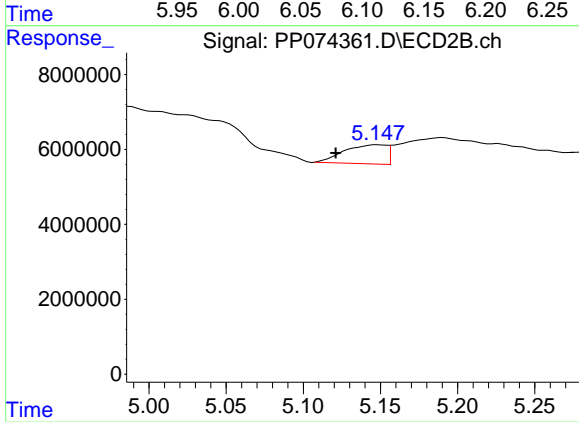
#21 AR-1248-1

R.T.: 4.881 min  
 Delta R.T.: -0.021 min  
 Response: 36909940  
 Conc: 172.53 ng/ml



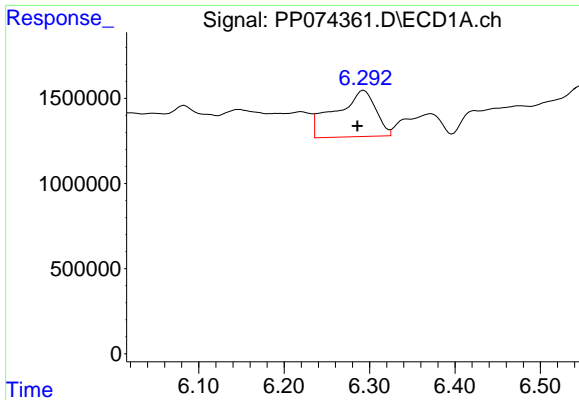
#22 AR-1248-2

R.T.: 6.083 min  
 Delta R.T.: 0.000 min  
 Response: 6423602  
 Conc: 159.55 ng/ml



#22 AR-1248-2

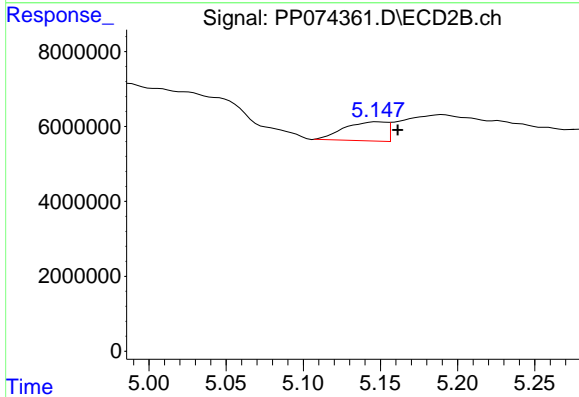
R.T.: 5.149 min  
 Delta R.T.: 0.028 min  
 Response: 9647648  
 Conc: 65.94 ng/ml



#23 AR-1248-3

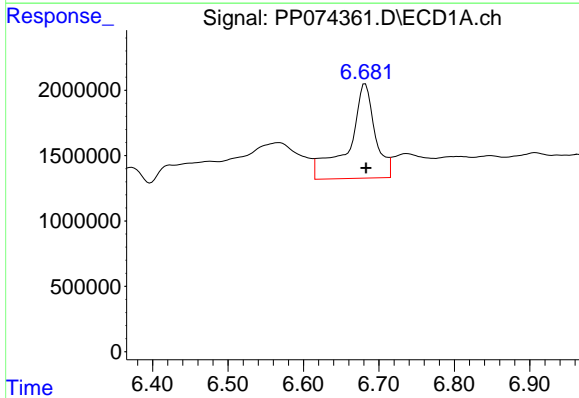
R.T.: 6.293 min  
 Delta R.T.: 0.008 min  
 Response: 8925170  
 Conc: 200.23 ng/ml

Instrument :  
 ECD\_P  
 ClientSampleId :  
 NWB-2185



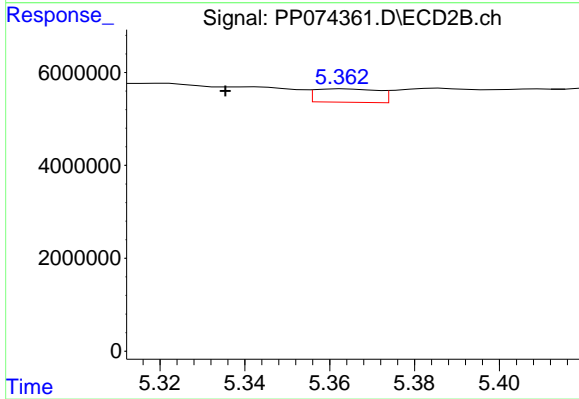
#23 AR-1248-3

R.T.: 5.149 min  
 Delta R.T.: -0.013 min  
 Response: 9647648  
 Conc: 56.27 ng/ml



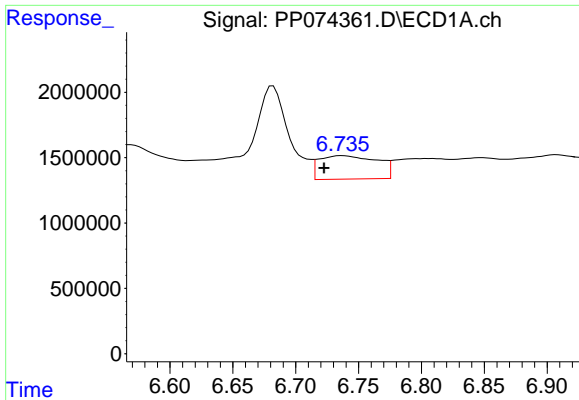
#24 AR-1248-4

R.T.: 6.682 min  
 Delta R.T.: 0.000 min  
 Response: 17496933  
 Conc: 336.24 ng/ml



#24 AR-1248-4

R.T.: 5.364 min  
 Delta R.T.: 0.028 min  
 Response: 2984734  
 Conc: 17.94 ng/ml

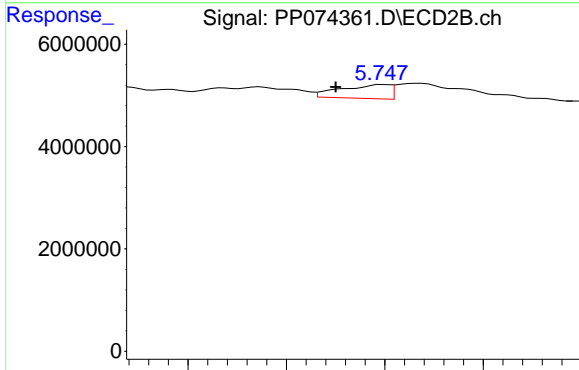


#25 AR-1248-5

R.T.: 6.737 min  
 Delta R.T.: 0.014 min  
 Response: 5749685  
 Conc: 100.97 ng/ml

Instrument :  
 ECD\_P  
 ClientSampleId :  
 NWB-2185

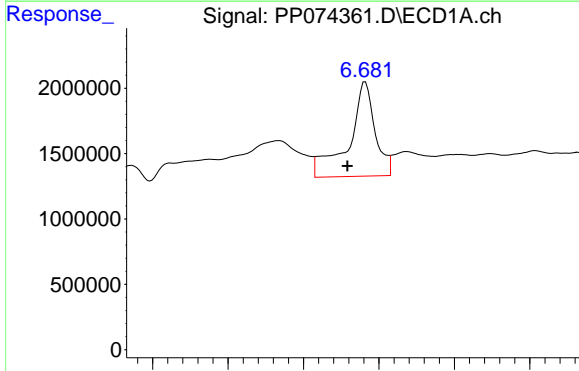
Time



#25 AR-1248-5

R.T.: 5.749 min  
 Delta R.T.: 0.024 min  
 Response: 4714607  
 Conc: 16.20 ng/ml

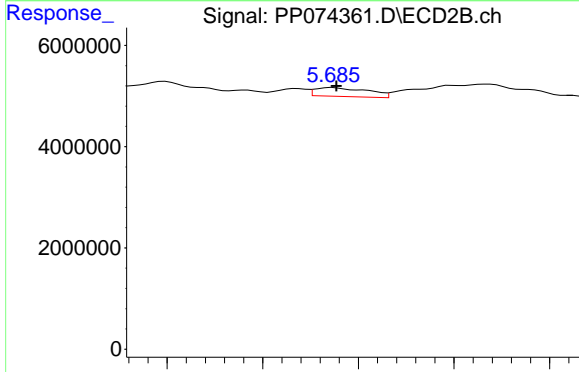
Time



#26 AR-1254-1

R.T.: 6.682 min  
 Delta R.T.: 0.024 min  
 Response: 17496933  
 Conc: 332.38 ng/ml

Time

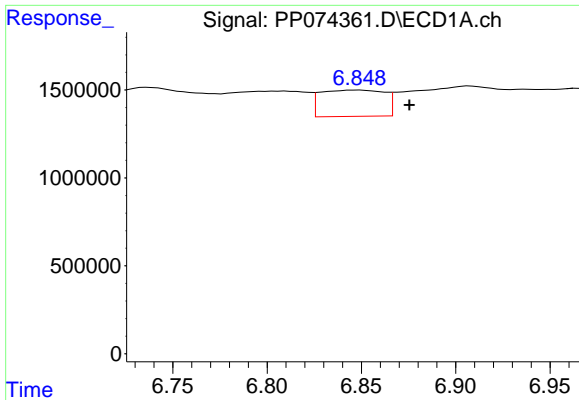


#26 AR-1254-1

R.T.: 5.686 min  
 Delta R.T.: -0.002 min  
 Response: 3349671  
 Conc: 9.15 ng/ml

Time

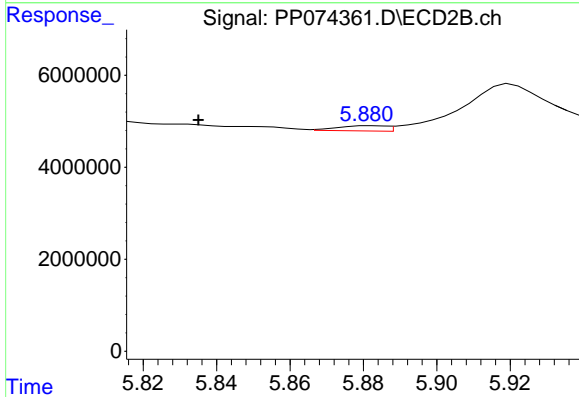




#27 AR-1254-2

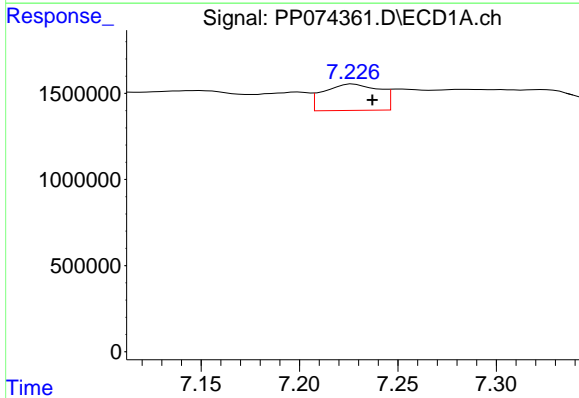
R.T.: 6.848 min  
 Delta R.T.: -0.027 min  
 Response: 3514743  
 Conc: 44.21 ng/ml

Instrument :  
 ECD\_P  
 ClientSampleId :  
 NWB-2185



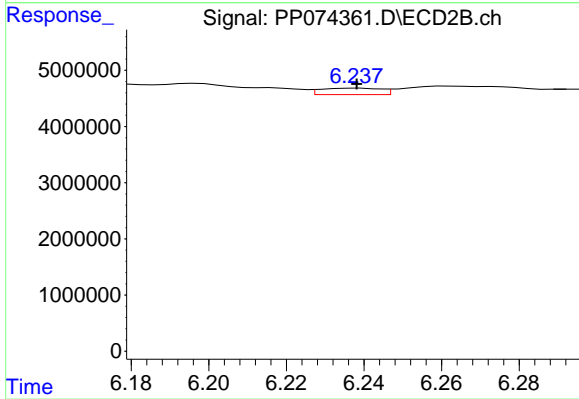
#27 AR-1254-2

R.T.: 5.882 min  
 Delta R.T.: 0.047 min  
 Response: 1041407  
 Conc: 3.74 ng/ml



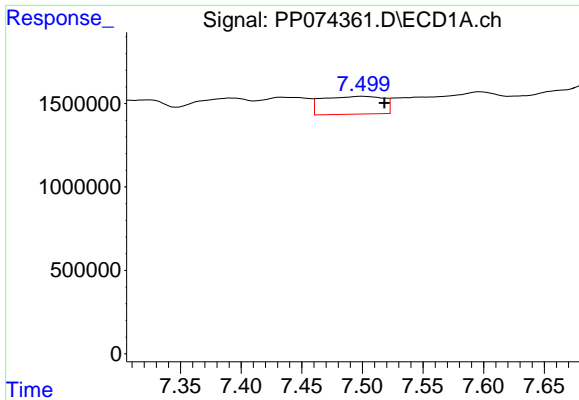
#28 AR-1254-3

R.T.: 7.227 min  
 Delta R.T.: -0.010 min  
 Response: 3029637  
 Conc: 34.70 ng/ml



#28 AR-1254-3

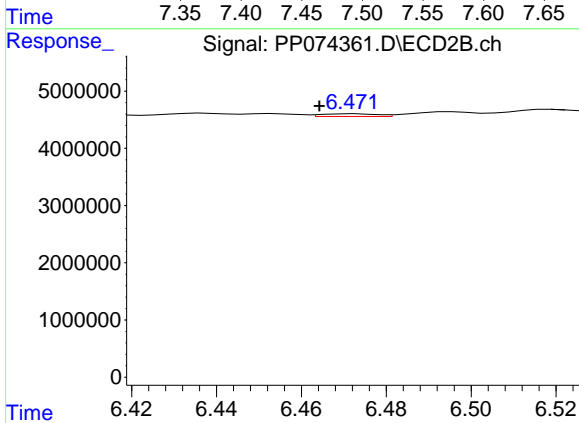
R.T.: 6.238 min  
 Delta R.T.: 0.000 min  
 Response: 1236328  
 Conc: 2.53 ng/ml



#29 AR-1254-4

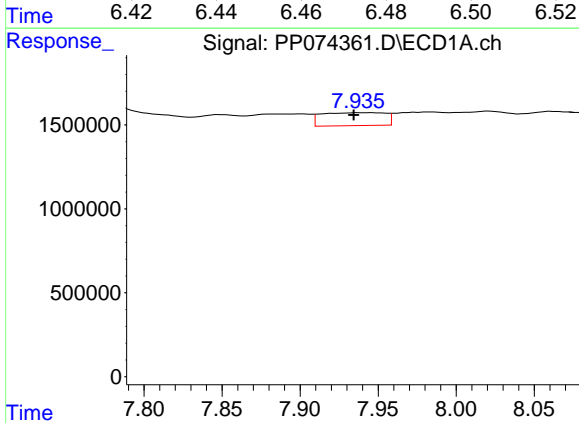
R.T.: 7.500 min  
 Delta R.T.: -0.018 min  
 Response: 3747412  
 Conc: 58.73 ng/ml

Instrument :  
 ECD\_P  
 ClientSampleId :  
 NWB-2185



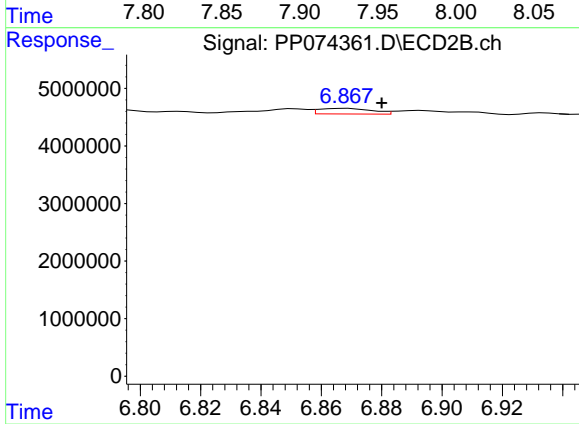
#29 AR-1254-4

R.T.: 6.473 min  
 Delta R.T.: 0.008 min  
 Response: 422043  
 Conc: 1.15 ng/ml



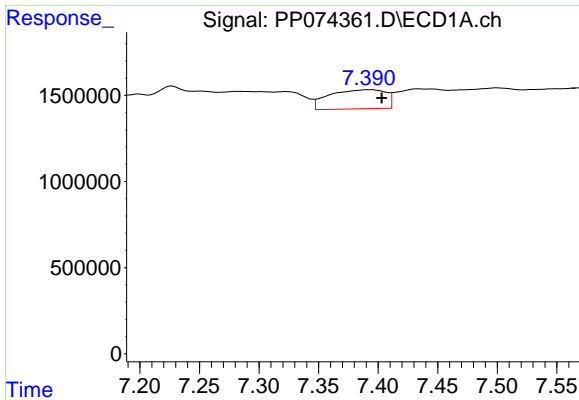
#30 AR-1254-5

R.T.: 7.937 min  
 Delta R.T.: 0.003 min  
 Response: 2176884  
 Conc: 26.83 ng/ml



#30 AR-1254-5

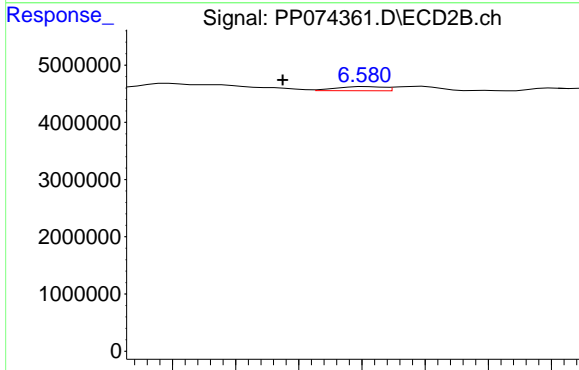
R.T.: 6.868 min  
 Delta R.T.: -0.012 min  
 Response: 1186883  
 Conc: 3.08 ng/ml



#31 AR-1260-1

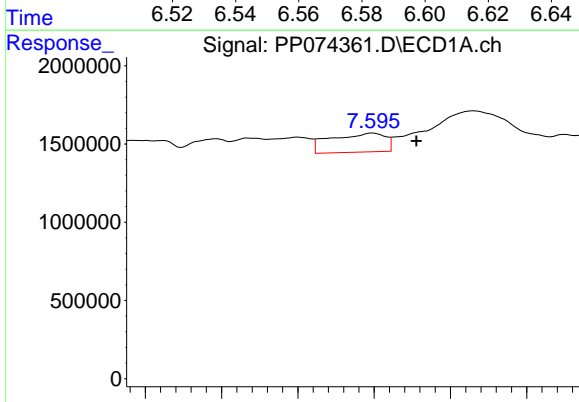
R.T.: 7.392 min  
 Delta R.T.: -0.011 min  
 Response: 3647586  
 Conc: 64.72 ng/ml

Instrument :  
 ECD\_P  
 ClientSampleId :  
 NWB-2185



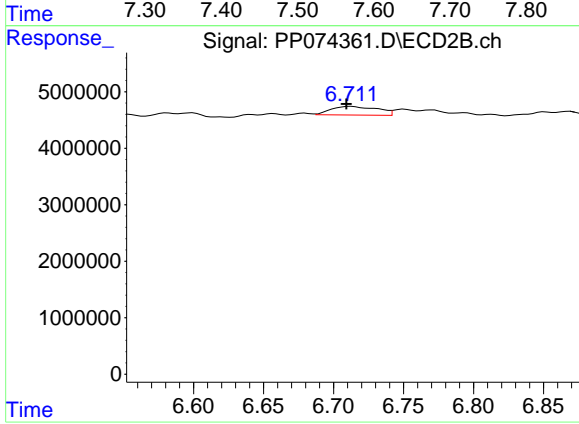
#31 AR-1260-1

R.T.: 6.582 min  
 Delta R.T.: 0.027 min  
 Response: 756712  
 Conc: 1.87 ng/ml



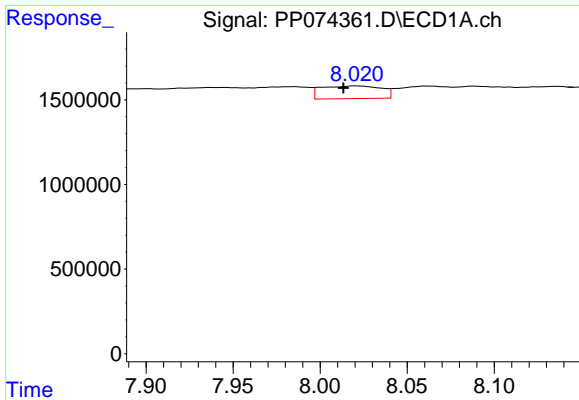
#32 AR-1260-2

R.T.: 7.598 min  
 Delta R.T.: -0.058 min  
 Response: 5988031  
 Conc: 87.86 ng/ml



#32 AR-1260-2

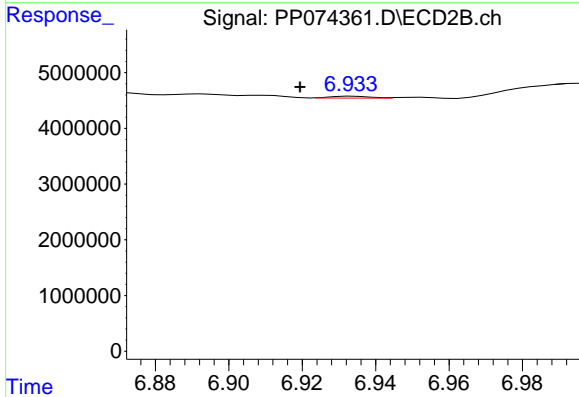
R.T.: 6.712 min  
 Delta R.T.: 0.003 min  
 Response: 3567673  
 Conc: 11.41 ng/ml



#33 AR-1260-3

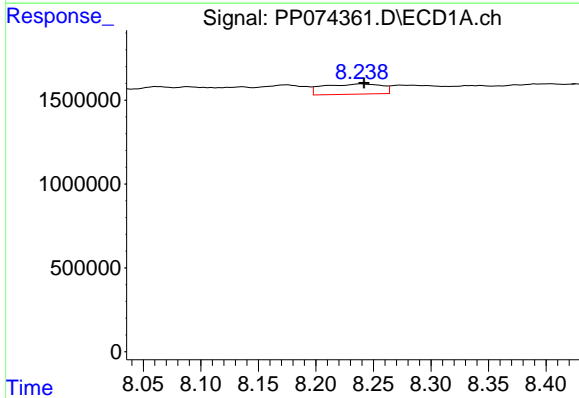
R.T.: 8.021 min  
 Delta R.T.: 0.008 min  
 Response: 1797675  
 Conc: 33.73 ng/ml

Instrument :  
 ECD\_P  
 ClientSampleId :  
 NWB-2185



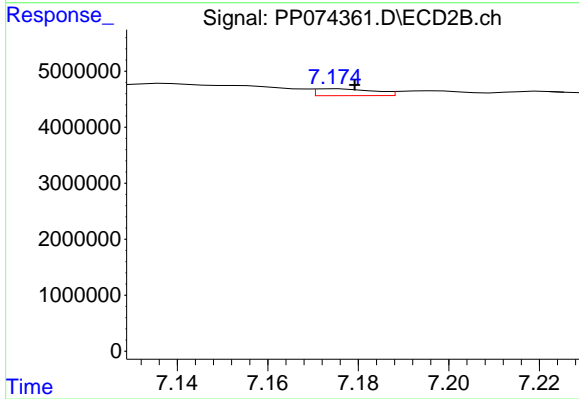
#33 AR-1260-3

R.T.: 6.934 min  
 Delta R.T.: 0.014 min  
 Response: 256395  
 Conc: 0.65 ng/ml



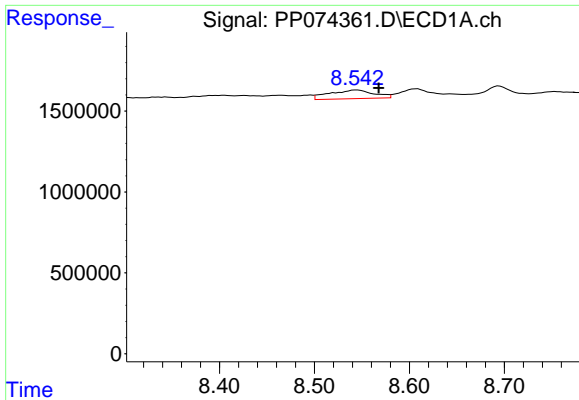
#34 AR-1260-4

R.T.: 8.239 min  
 Delta R.T.: -0.003 min  
 Response: 2138644  
 Conc: 34.16 ng/ml



#34 AR-1260-4

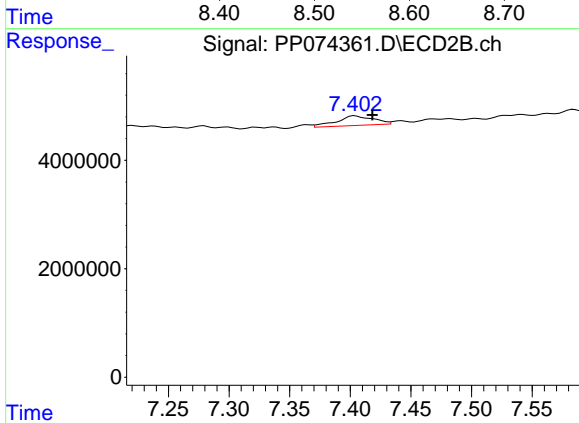
R.T.: 7.175 min  
 Delta R.T.: -0.005 min  
 Response: 1109101  
 Conc: 3.81 ng/ml



#35 AR-1260-5

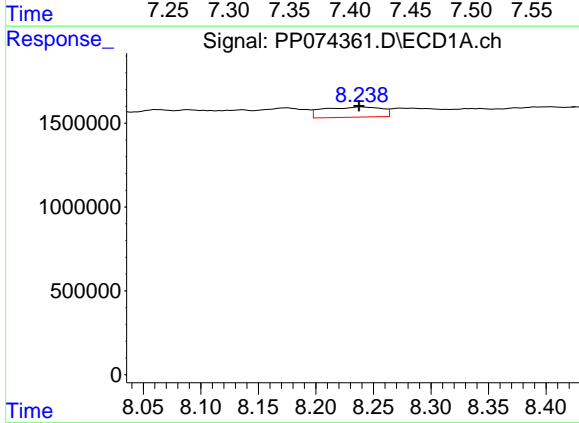
R.T.: 8.545 min  
 Delta R.T.: -0.023 min  
 Response: 1733948  
 Conc: 15.30 ng/ml

Instrument :  
 ECD\_P  
 ClientSampleId :  
 NWB-2185



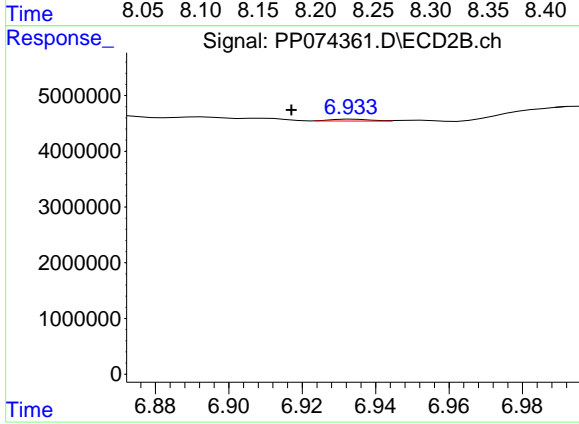
#35 AR-1260-5

R.T.: 7.404 min  
 Delta R.T.: -0.014 min  
 Response: 3763068  
 Conc: 4.97 ng/ml



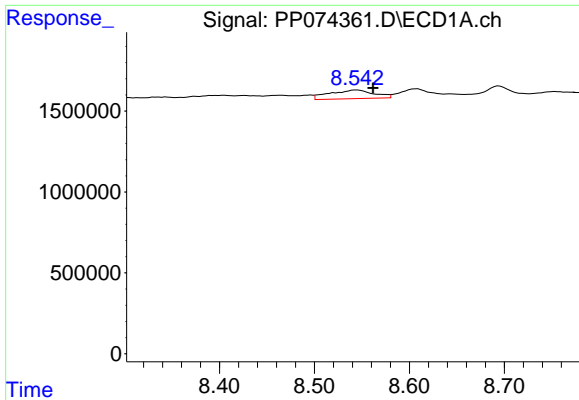
#36 AR-1262-1

R.T.: 8.239 min  
 Delta R.T.: 0.002 min  
 Response: 2138644  
 Conc: 28.22 ng/ml



#36 AR-1262-1

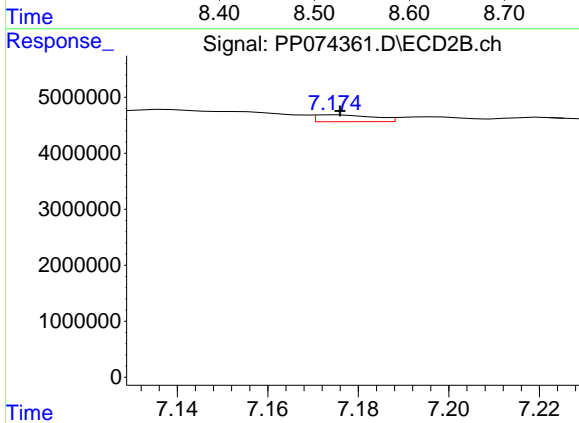
R.T.: 6.934 min  
 Delta R.T.: 0.017 min  
 Response: 256395  
 Conc: 0.46 ng/ml



#37 AR-1262-2

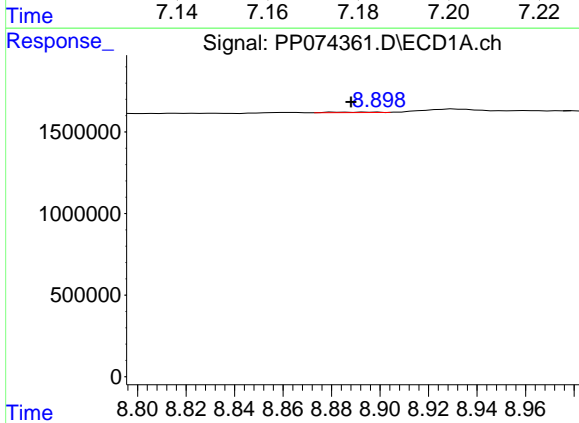
R.T.: 8.545 min  
 Delta R.T.: -0.017 min  
 Response: 1733948  
 Conc: 13.29 ng/ml

Instrument :  
 ECD\_P  
 ClientSampleId :  
 NWB-2185



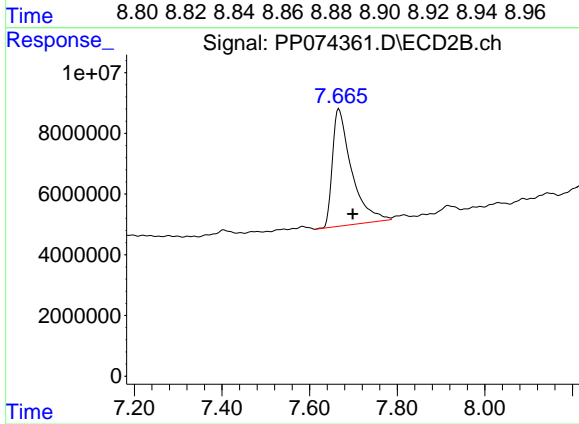
#37 AR-1262-2

R.T.: 7.175 min  
 Delta R.T.: -0.001 min  
 Response: 1109101  
 Conc: 2.77 ng/ml



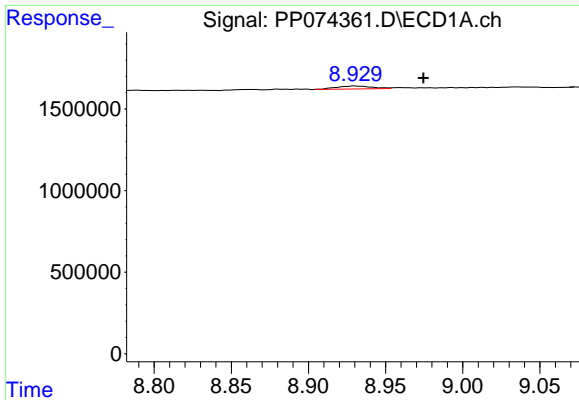
#38 AR-1262-3

R.T.: 8.881 min  
 Delta R.T.: -0.007 min  
 Response: 35502  
 Conc: 0.38 ng/ml



#38 AR-1262-3

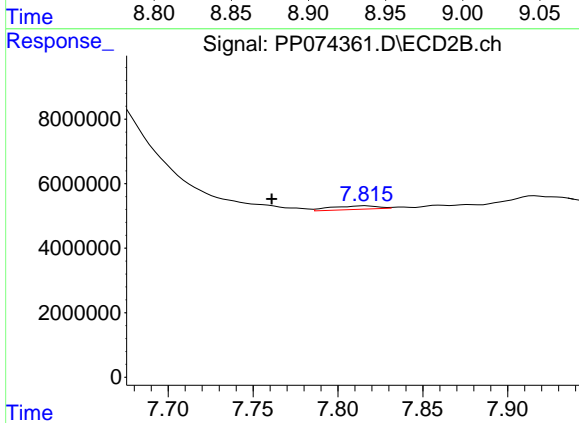
R.T.: 7.667 min  
 Delta R.T.: -0.031 min  
 Response: 117319185  
 Conc: 326.37 ng/ml



#39 AR-1262-4

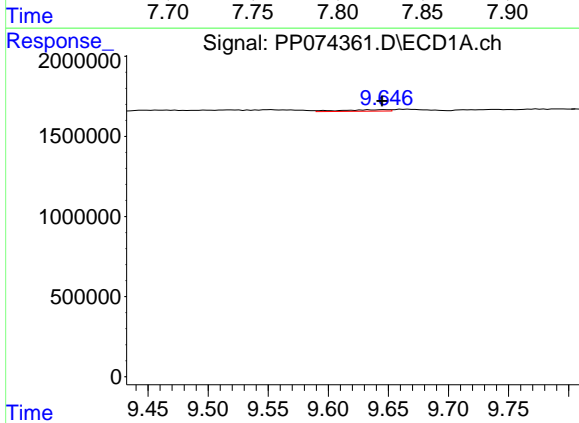
R.T.: 8.930 min  
 Delta R.T.: -0.044 min  
 Response: 285873  
 Conc: 3.92 ng/ml

Instrument : ECD\_P  
 ClientSampleId : NWB-2185



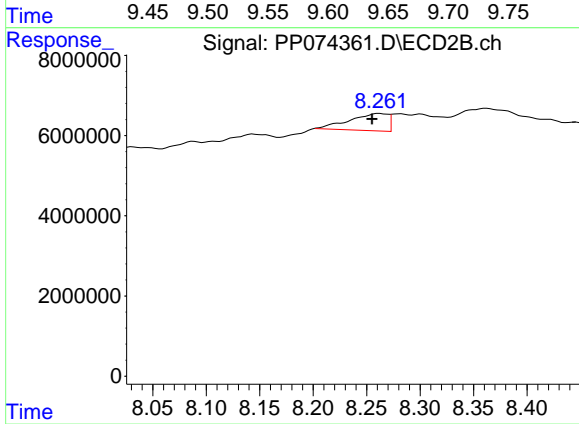
#39 AR-1262-4

R.T.: 7.817 min  
 Delta R.T.: 0.056 min  
 Response: 2136107  
 Conc: 3.20 ng/ml



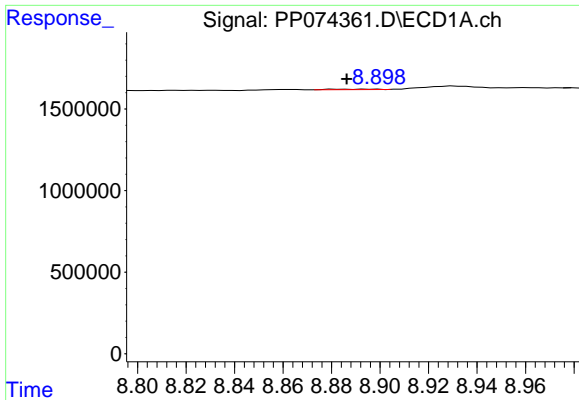
#40 AR-1262-5

R.T.: 9.648 min  
 Delta R.T.: 0.003 min  
 Response: 258434  
 Conc: 5.08 ng/ml



#40 AR-1262-5

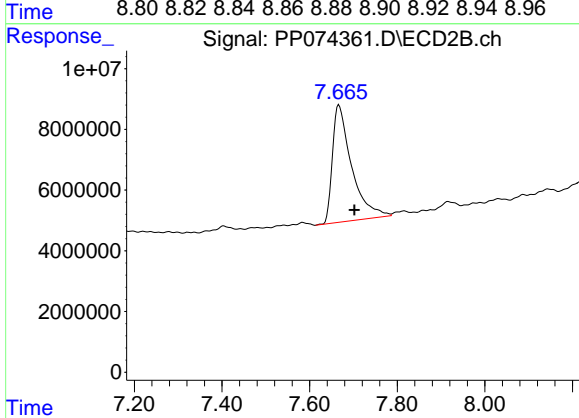
R.T.: 8.262 min  
 Delta R.T.: 0.007 min  
 Response: 10650818  
 Conc: 37.60 ng/ml



#41 AR-1268-1

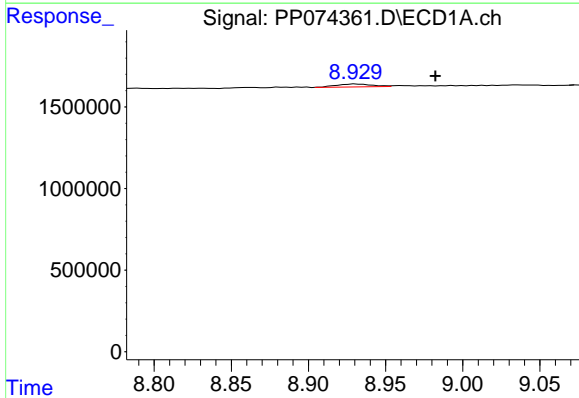
R.T.: 8.881 min  
 Delta R.T.: -0.005 min  
 Response: 35502  
 Conc: 0.23 ng/ml

Instrument :  
 ECD\_P  
 ClientSampleId :  
 NWB-2185



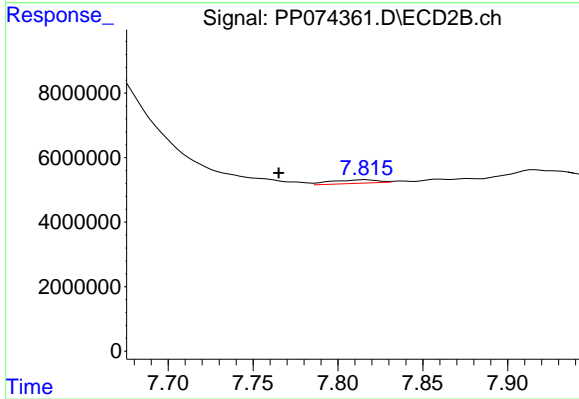
#41 AR-1268-1

R.T.: 7.667 min  
 Delta R.T.: -0.035 min  
 Response: 117319185  
 Conc: 107.61 ng/ml



#42 AR-1268-2

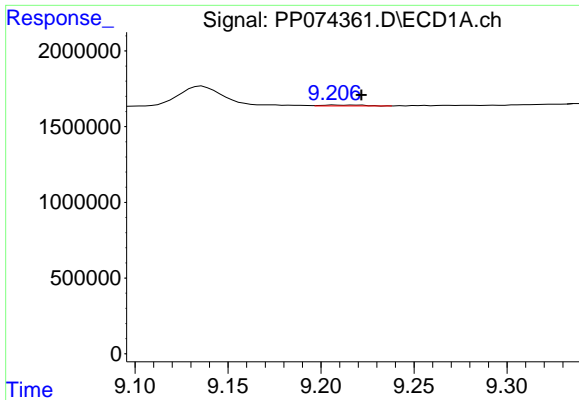
R.T.: 8.930 min  
 Delta R.T.: -0.052 min  
 Response: 285873  
 Conc: 1.99 ng/ml



#42 AR-1268-2

R.T.: 7.817 min  
 Delta R.T.: 0.052 min  
 Response: 2136107  
 Conc: 2.01 ng/ml

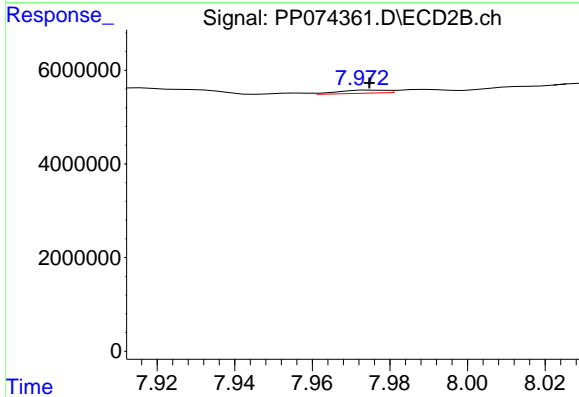




#43 AR-1268-3

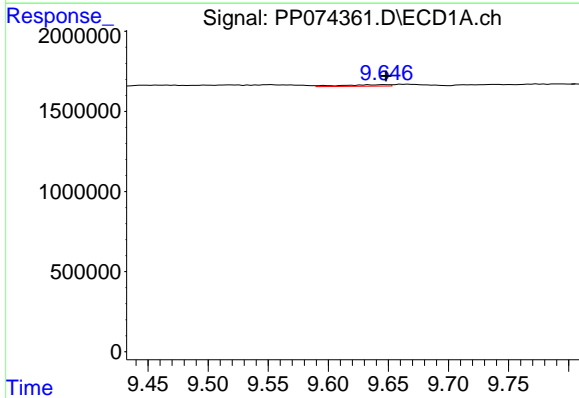
R.T.: 9.207 min  
 Delta R.T.: -0.014 min  
 Response: 86600  
 Conc: 0.72 ng/ml

Instrument :  
 ECD\_P  
 ClientSampleId :  
 NWB-2185



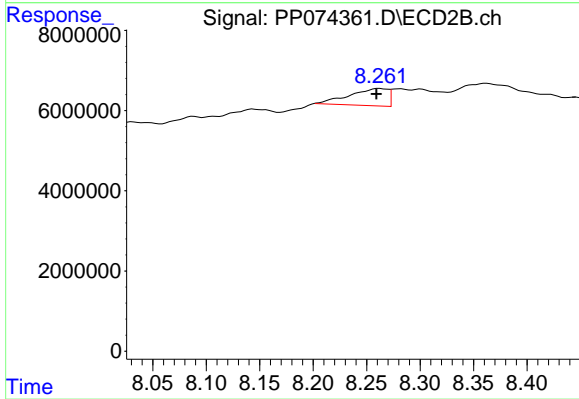
#43 AR-1268-3

R.T.: 7.975 min  
 Delta R.T.: 0.000 min  
 Response: 573119  
 Conc: 0.69 ng/ml



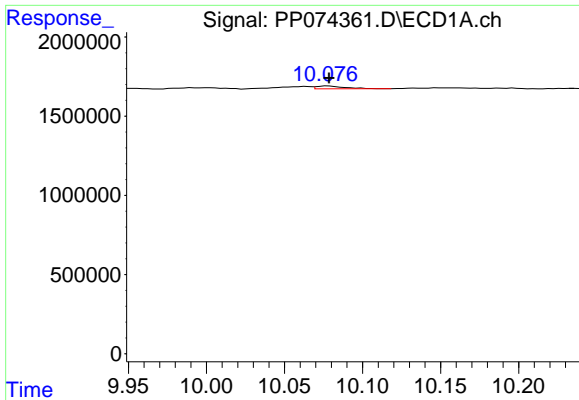
#44 AR-1268-4

R.T.: 9.648 min  
 Delta R.T.: 0.000 min  
 Response: 258434  
 Conc: 4.39 ng/ml



#44 AR-1268-4

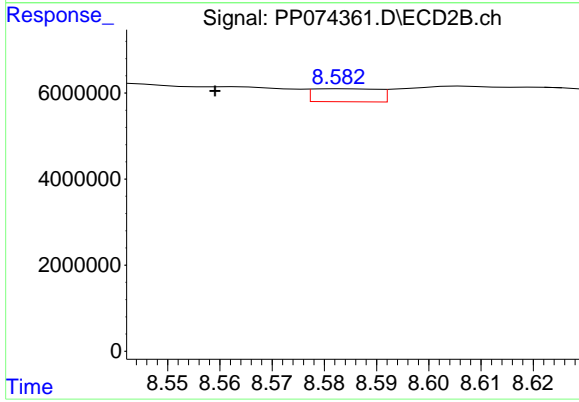
R.T.: 8.262 min  
 Delta R.T.: 0.003 min  
 Response: 10650818  
 Conc: 34.57 ng/ml



#45 AR-1268-5

R.T.: 10.078 min  
 Delta R.T.: -0.001 min  
 Response: 227904  
 Conc: 0.65 ng/ml

Instrument : ECD\_P  
 ClientSampleId : NWB-2185



#45 AR-1268-5

R.T.: 8.583 min  
 Delta R.T.: 0.024 min  
 Response: 2627662  
 Conc: 1.03 ng/ml