

Data Path : Z:\pestpcbsrv\HPCHEM1\ECD_P\Data\PP081325\
 Data File : PP074362.D
 Signal(s) : Signal #1: ECD1A.ch Signal #2: ECD2B.ch
 Acq On : 13 Aug 2025 20:30
 Operator : YP\AJ
 Sample : AR1660CCC500
 Misc :
 ALS Vial : 3 Sample Multiplier: 1

Instrument :
 ECD_P
ClientSampleId :
 AR1660CCC500

Integration File signal 1: autoint1.e
 Integration File signal 2: autoint2.e
 Quant Time: Aug 14 00:02:12 2025
 Quant Method : Z:\pestpcbsrv\HPCHEM1\ECD_P\methods\PP080125.M
 Quant Title : GC EXTRACTABLES
 QLast Update : Mon Aug 04 11:01:49 2025
 Response via : Initial Calibration
 Integrator: ChemStation

Volume Inj. : 2 µl
 Signal #1 Phase : ZB-MR1 Signal #2 Phase: ZB-MR2
 Signal #1 Info : 30Mx0.32mmx 0.50µ Signal #2 Info : 30M x 0.32mm x 0.25µm

Compound	RT#1	RT#2	Resp#1	Resp#2	ng/ml	ng/ml
System Monitoring Compounds						
1) SA Tetrachlo...	4.659	3.802	62495053	231.9E6	55.884	60.469
2) SA Decachlor...	10.437	8.820	47848347	321.7E6	49.269	53.490
Target Compounds						
3) L1 AR-1016-1	5.810	4.902	21767569	235.2E6	527.612	589.560
4) L1 AR-1016-2	5.832	4.961	32376709	111.3E6	533.023	592.869
5) L1 AR-1016-3	5.895	5.080	21611227	62504169	544.905	589.275
6) L1 AR-1016-4	5.992	5.121	17594613	62934228	540.633	576.215
7) L1 AR-1016-5	6.285	5.335	17311303	72464886	533.180	619.553
8) L2 AR-1221-1	4.854	4.013	2674433	7404377	159.538	150.848
9) L2 AR-1221-2	4.945	4.099	3952907	9668240	313.697	269.390
10) L2 AR-1221-3	5.020	4.176	13273579	46119767	362.318	341.061
11) L3 AR-1232-1	5.020	4.176	13273579	46119767	457.121	454.999
12) L3 AR-1232-2	5.546	4.902	16805551	235.2E6	1117.189	1349.475
13) L3 AR-1232-3	5.832	5.080	32376709	62504169	1116.372	1364.225
14) L3 AR-1232-4	5.992	5.164	17594613	112.6E6	1137.424	1941.449 #
15) L3 AR-1232-5	6.082	5.335	15548493	72464886	1327.115	1542.480
16) L4 AR-1242-1	5.810	4.902	21767569	235.2E6	584.116	681.368
17) L4 AR-1242-2	5.832	4.961	32376709	111.3E6	595.062	681.526
18) L4 AR-1242-3	5.895	5.080	21611227	62504169	604.749	677.563
19) L4 AR-1242-4	5.992	5.164	17594613	112.6E6	602.171	943.086 #
20) L4 AR-1242-5	6.722	5.685	6701136	111.3E6	188.456	744.383 #
21) L5 AR-1248-1	5.810	4.902	21767569	235.2E6	777.010	1099.266 #
22) L5 AR-1248-2	6.082	5.121	15548493	62934228	386.192	430.136
23) L5 AR-1248-3	6.285	5.164	17311303	112.6E6	388.376	656.858 #
24) L5 AR-1248-4	6.659	5.335	22532217	72464886	433.002	435.555
25) L5 AR-1248-5	6.722	5.685f	6701136	111.3E6	117.681	382.622 #
26) L6 AR-1254-1	6.659	5.685	22532217	111.3E6	428.035	304.029 #
27) L6 AR-1254-2	6.875	5.833	14228436	70373359	178.964	252.944 #
28) L6 AR-1254-3	7.236	6.250	9387539	135.5E6	107.512	277.050 #
29) L6 AR-1254-4	7.520	6.462	5878822	12861358	92.131	34.991 #
30) L6 AR-1254-5	7.934	6.878	44584208	174.5E6	549.440	453.008
31) L7 AR-1260-1	7.402	6.552	28728677	226.3E6	509.771	560.132
32) L7 AR-1260-2	7.654	6.706	33613481	172.8E6	493.211	552.529
33) L7 AR-1260-3	8.013	6.916	26525957	223.9E6	497.711	568.069
34) L7 AR-1260-4	8.241	7.176	31321316	162.8E6	500.221	559.605
35) L7 AR-1260-5	8.567	7.415	54671864	427.5E6	482.520	564.361
36) L8 AR-1262-1	8.241	6.916	31321316	223.9E6	413.266	397.566
37) L8 AR-1262-2	8.567	7.176	54671864	162.8E6	419.166	406.045
38) L8 AR-1262-3	8.898	7.698	37819272	91826811	402.030	255.451 #
39) L8 AR-1262-4	8.979	7.762	25399770	289.0E6	348.650	433.338
40) L8 AR-1262-5	9.651	8.256	18215646	99290485	357.712	350.518
41) L9 AR-1268-1	8.898	7.698	37819272	91826811	243.003	84.224 #

Data Path : Z:\pestpcbsrv\HPCHEM1\ECD_P\Data\PP081325\
 Data File : PP074362.D
 Signal(s) : Signal #1: ECD1A.ch Signal #2: ECD2B.ch
 Acq On : 13 Aug 2025 20:30
 Operator : YP\AJ
 Sample : AR1660CCC500
 Misc :
 ALS Vial : 3 Sample Multiplier: 1

Instrument :
 ECD_P
ClientSampleId :
 AR1660CCC500

Integration File signal 1: autoint1.e
 Integration File signal 2: autoint2.e
 Quant Time: Aug 14 00:02:12 2025
 Quant Method : Z:\pestpcbsrv\HPCHEM1\ECD_P\methods\PP080125.M
 Quant Title : GC EXTRACTABLES
 QLast Update : Mon Aug 04 11:01:49 2025
 Response via : Initial Calibration
 Integrator: ChemStation

Volume Inj. : 2 µl
 Signal #1 Phase : ZB-MR1 Signal #2 Phase: ZB-MR2
 Signal #1 Info : 30Mx0.32mmx 0.50µ Signal #2 Info : 30M x 0.32mm x 0.25µm

	Compound	RT#1	RT#2	Resp#1	Resp#2	ng/ml	ng/ml
42)	L9 AR-1268-2	8.979	7.762	25399770	289.0E6	177.094	272.303 #
43)	L9 AR-1268-3	9.224	7.968	1045784	4421614	8.753	5.315 #
44)	L9 AR-1268-4	9.651	8.256	18215646	99290485	309.724	322.310
45)	L9 AR-1268-5	10.082	8.555	5325426	23094147	15.142	9.056 #

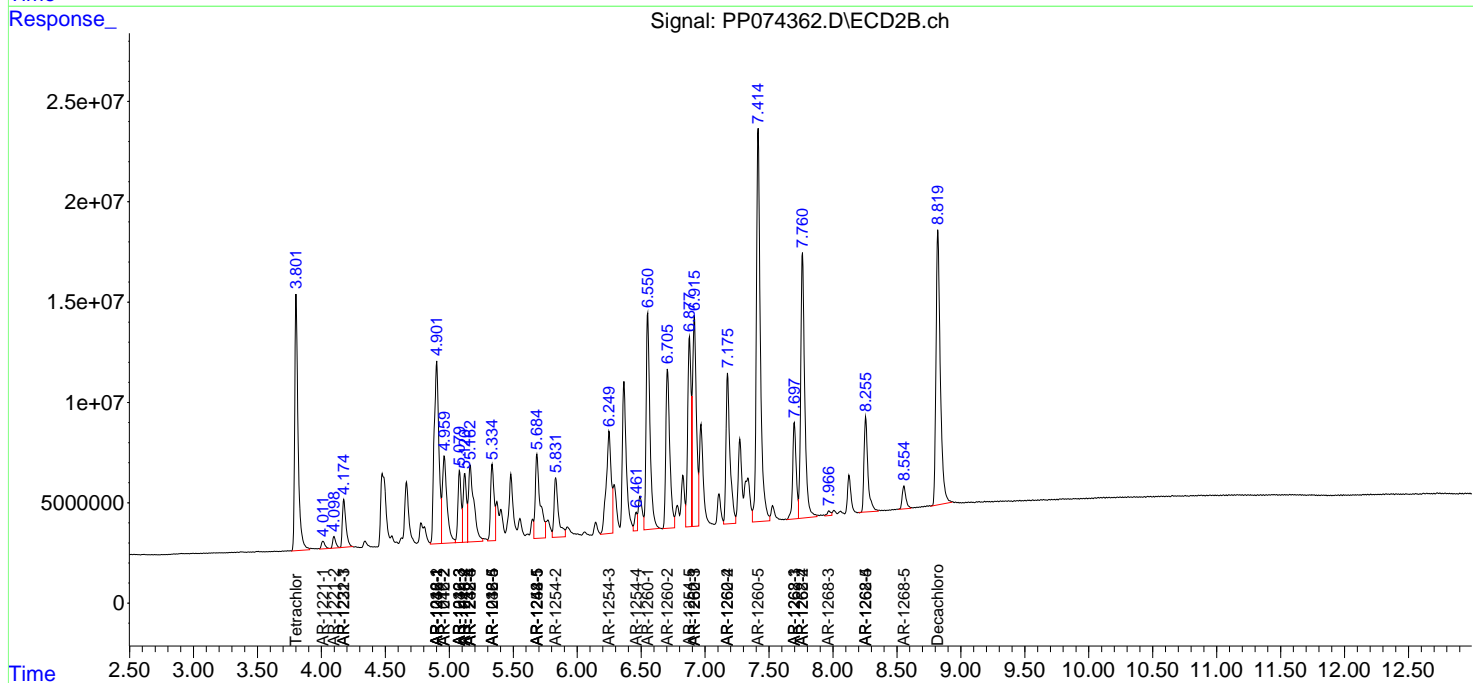
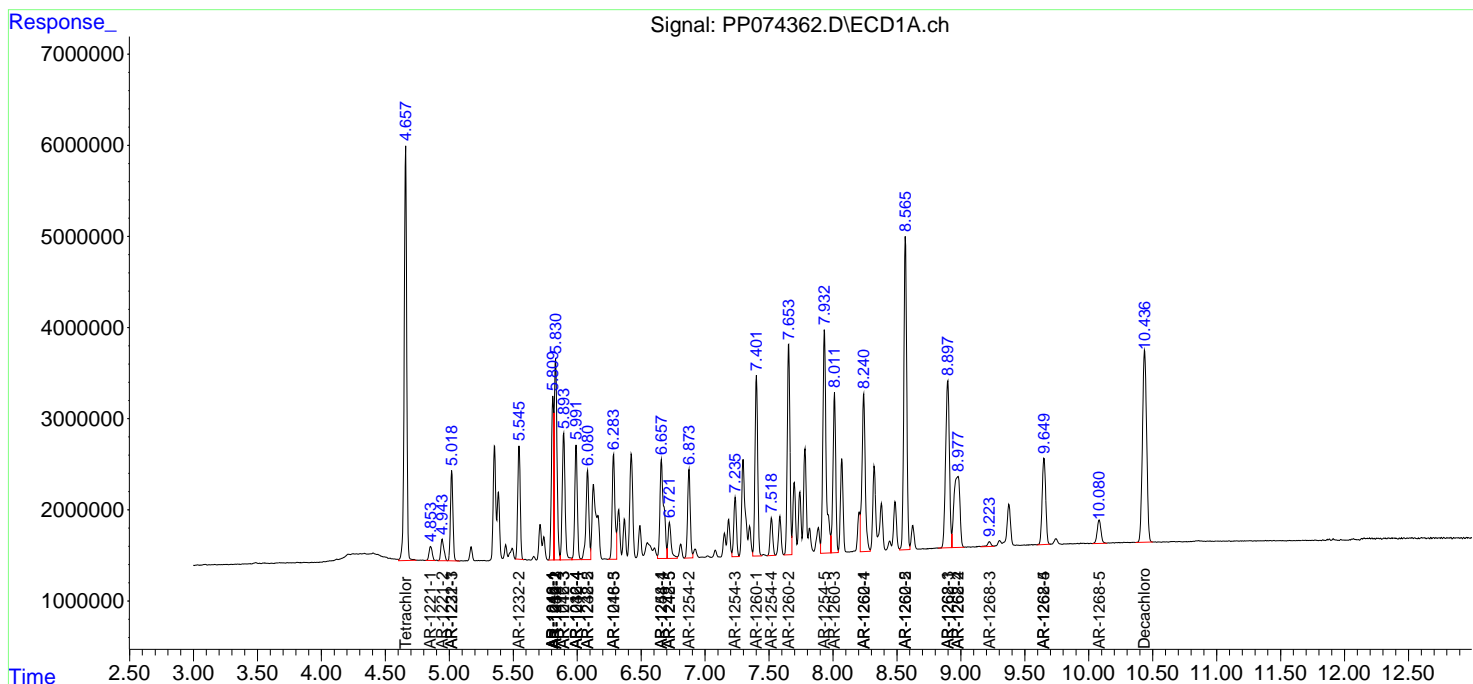
(f)=RT Delta > 1/2 Window (#)=Amounts differ by > 25% (m)=manual int.

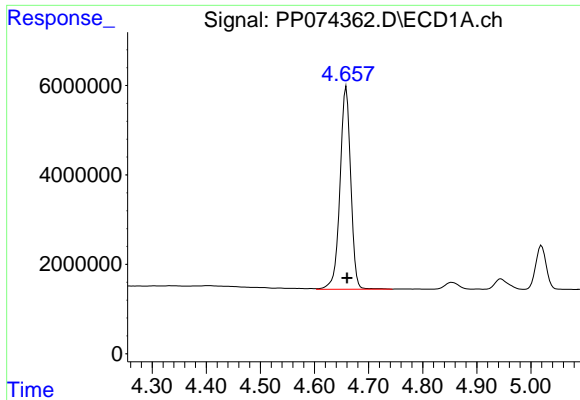
Data Path : Z:\pestpcbsrv\HPCHEM1\ECD_P\Data\PP081325\
 Data File : PP074362.D
 Signal(s) : Signal #1: ECD1A.ch Signal #2: ECD2B.ch
 Acq On : 13 Aug 2025 20:30
 Operator : YP\AJ
 Sample : AR1660CCC500
 Misc :
 ALS Vial : 3 Sample Multiplier: 1

Instrument :
 ECD_P
 ClientSampleId :
 AR1660CCC500

Integration File signal 1: autoint1.e
 Integration File signal 2: autoint2.e
 Quant Time: Aug 14 00:02:12 2025
 Quant Method : Z:\pestpcbsrv\HPCHEM1\ECD_P\methods\PP080125.M
 Quant Title : GC EXTRACTABLES
 QLast Update : Mon Aug 04 11:01:49 2025
 Response via : Initial Calibration
 Integrator: ChemStation

Volume Inj. : 2 µl
 Signal #1 Phase : ZB-MR1 Signal #2 Phase: ZB-MR2
 Signal #1 Info : 30Mx0.32mmx 0.50µ Signal #2 Info : 30M x 0.32mm x 0.25µm

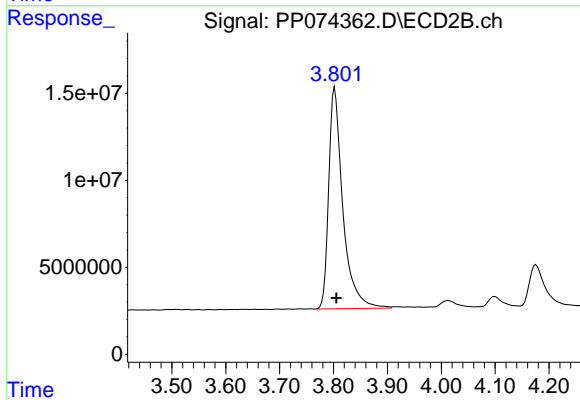




#1 Tetrachloro-m-xylene

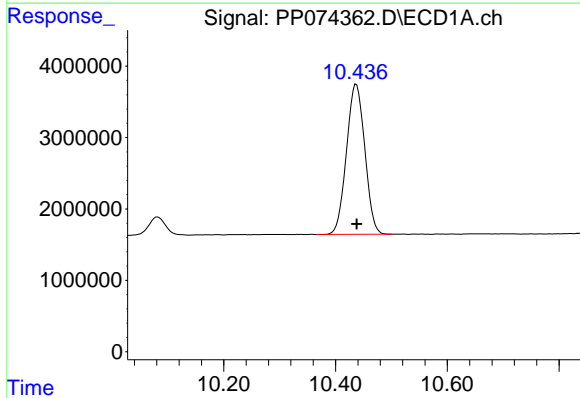
R.T.: 4.659 min
Delta R.T.: -0.001 min
Response: 62495053
Conc: 55.88 ng/ml

Instrument :
ECD_P
ClientSampleId :
AR1660CCC500



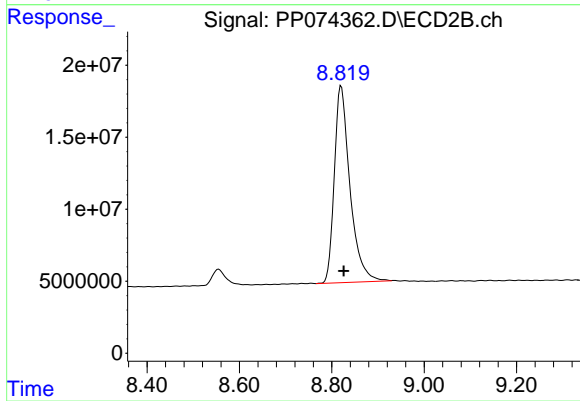
#1 Tetrachloro-m-xylene

R.T.: 3.802 min
Delta R.T.: -0.003 min
Response: 231863358
Conc: 60.47 ng/ml



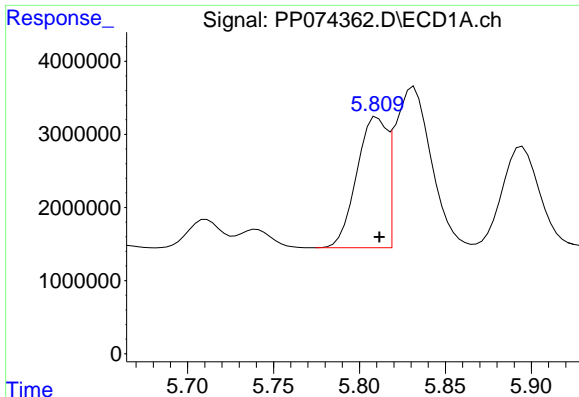
#2 Decachlorobiphenyl

R.T.: 10.437 min
Delta R.T.: 0.000 min
Response: 47848347
Conc: 49.27 ng/ml



#2 Decachlorobiphenyl

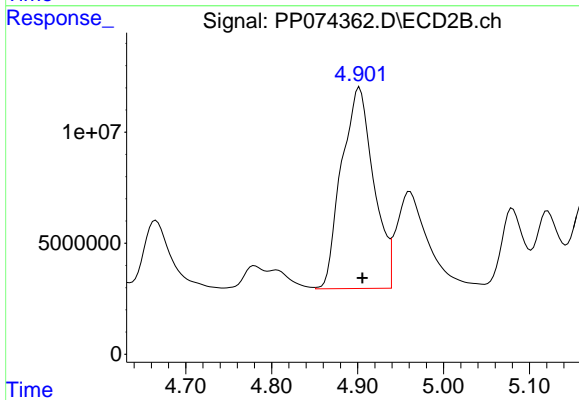
R.T.: 8.820 min
Delta R.T.: -0.006 min
Response: 321667033
Conc: 53.49 ng/ml



#3 AR-1016-1

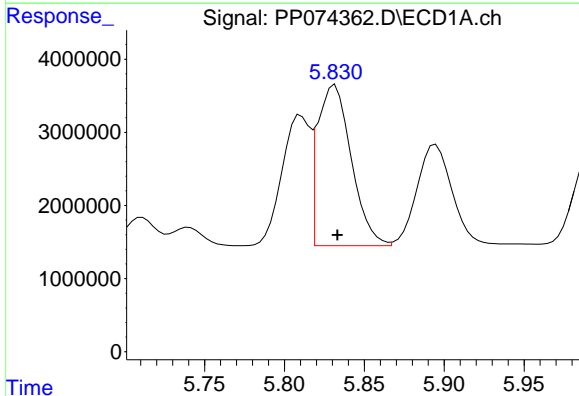
R.T.: 5.810 min
 Delta R.T.: -0.001 min
 Response: 21767569
 Conc: 527.61 ng/ml

Instrument :
 ECD_P
 ClientSampleId :
 AR1660CCC500



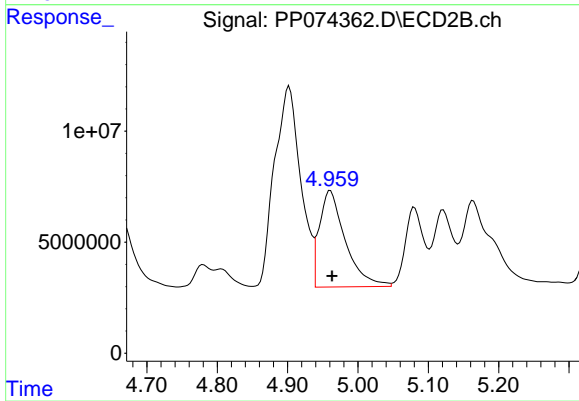
#3 AR-1016-1

R.T.: 4.902 min
 Delta R.T.: -0.003 min
 Response: 235167864
 Conc: 589.56 ng/ml



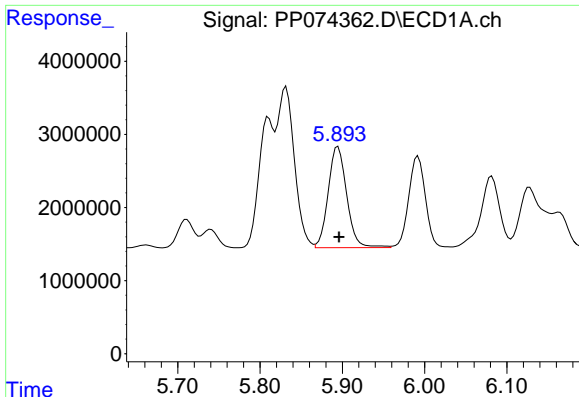
#4 AR-1016-2

R.T.: 5.832 min
 Delta R.T.: -0.002 min
 Response: 32376709
 Conc: 533.02 ng/ml



#4 AR-1016-2

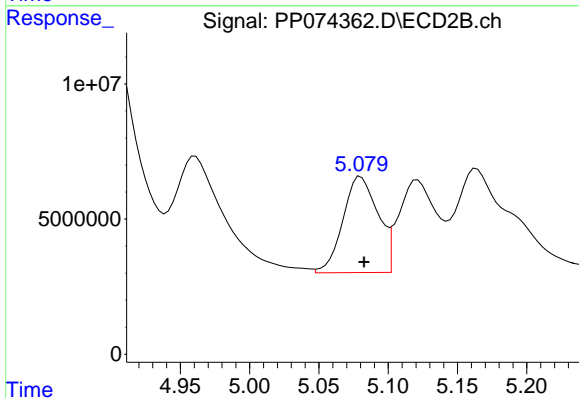
R.T.: 4.961 min
 Delta R.T.: -0.002 min
 Response: 111346118
 Conc: 592.87 ng/ml



#5 AR-1016-3

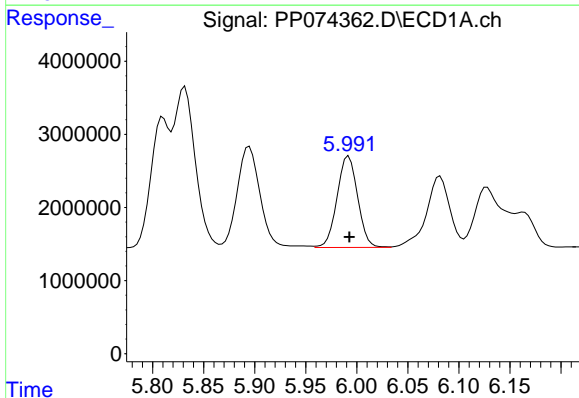
R.T.: 5.895 min
 Delta R.T.: -0.001 min
 Response: 21611227
 Conc: 544.91 ng/ml

Instrument :
 ECD_P
 ClientSampleId :
 AR1660CCC500



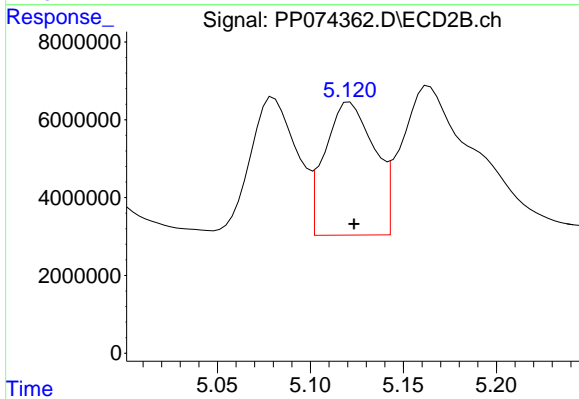
#5 AR-1016-3

R.T.: 5.080 min
 Delta R.T.: -0.002 min
 Response: 62504169
 Conc: 589.27 ng/ml



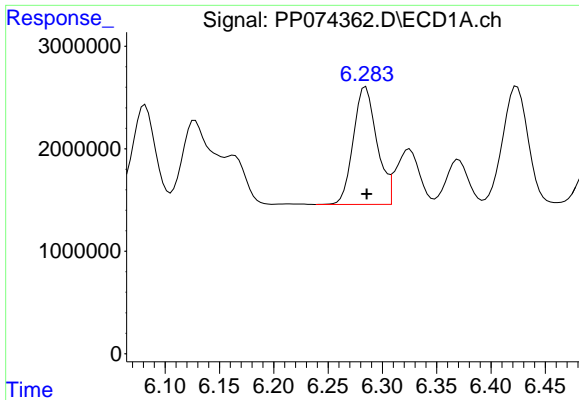
#6 AR-1016-4

R.T.: 5.992 min
 Delta R.T.: 0.000 min
 Response: 17594613
 Conc: 540.63 ng/ml



#6 AR-1016-4

R.T.: 5.121 min
 Delta R.T.: -0.002 min
 Response: 62934228
 Conc: 576.21 ng/ml

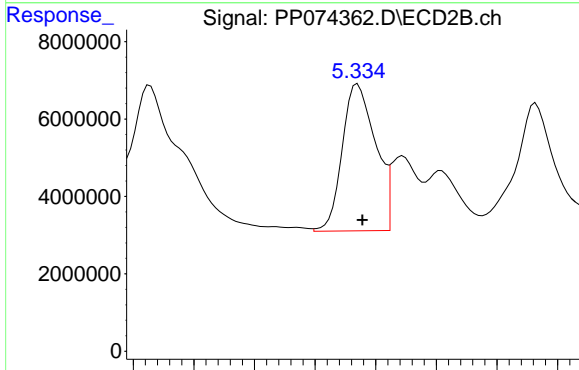


#7 AR-1016-5

R.T.: 6.285 min
 Delta R.T.: 0.000 min
 Response: 17311303
 Conc: 533.18 ng/ml

Instrument :
 ECD_P
 ClientSampleId :
 AR1660CCC500

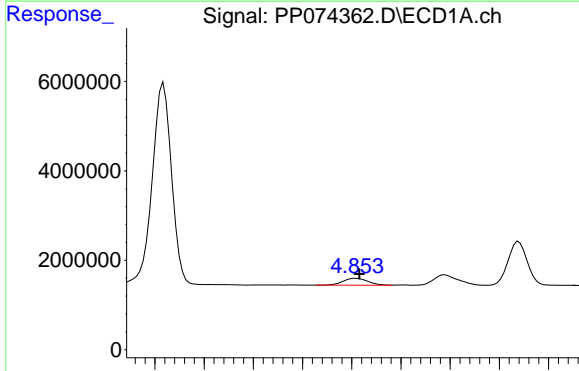
Time 6.10 6.15 6.20 6.25 6.30 6.35 6.40 6.45



#7 AR-1016-5

R.T.: 5.335 min
 Delta R.T.: -0.004 min
 Response: 72464886
 Conc: 619.55 ng/ml

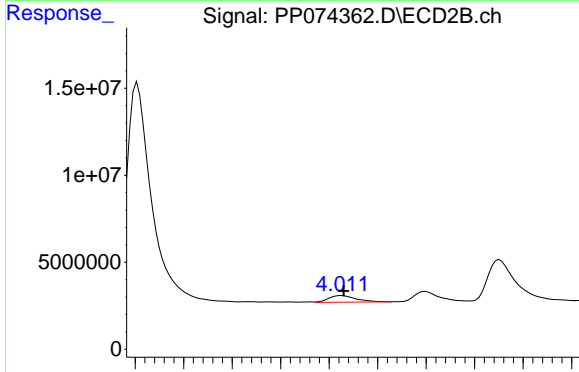
Time 5.15 5.20 5.25 5.30 5.35 5.40 5.45 5.50



#8 AR-1221-1

R.T.: 4.854 min
 Delta R.T.: -0.003 min
 Response: 2674433
 Conc: 159.54 ng/ml

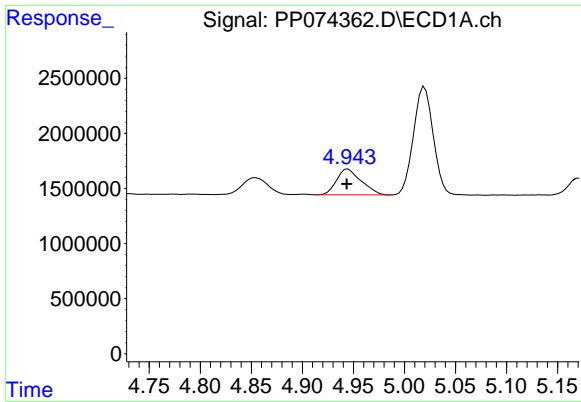
Time 4.65 4.70 4.75 4.80 4.85 4.90 4.95 5.00 5.05



#8 AR-1221-1

R.T.: 4.013 min
 Delta R.T.: -0.002 min
 Response: 7404377
 Conc: 150.85 ng/ml

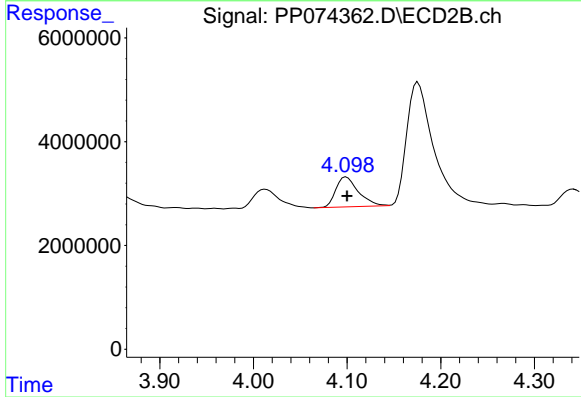
Time 3.80 3.85 3.90 3.95 4.00 4.05 4.10 4.15 4.20



#9 AR-1221-2

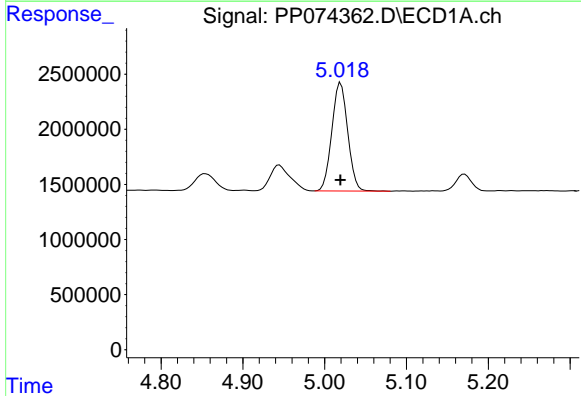
R.T.: 4.945 min
 Delta R.T.: 0.001 min
 Response: 3952907
 Conc: 313.70 ng/ml

Instrument :
 ECD_P
 ClientSampleId :
 AR1660CCC500



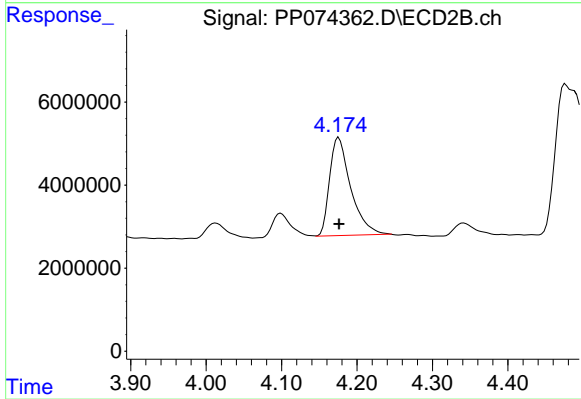
#9 AR-1221-2

R.T.: 4.099 min
 Delta R.T.: 0.000 min
 Response: 9668240
 Conc: 269.39 ng/ml



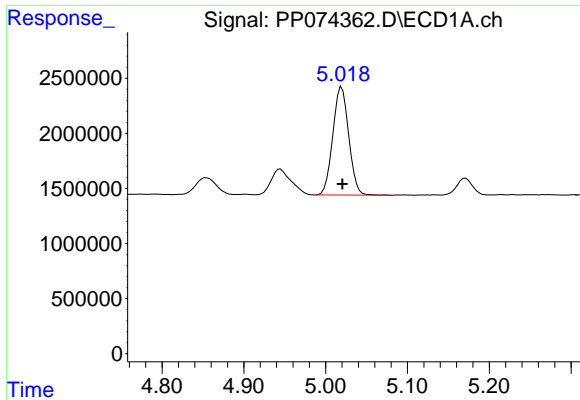
#10 AR-1221-3

R.T.: 5.020 min
 Delta R.T.: 0.000 min
 Response: 13273579
 Conc: 362.32 ng/ml



#10 AR-1221-3

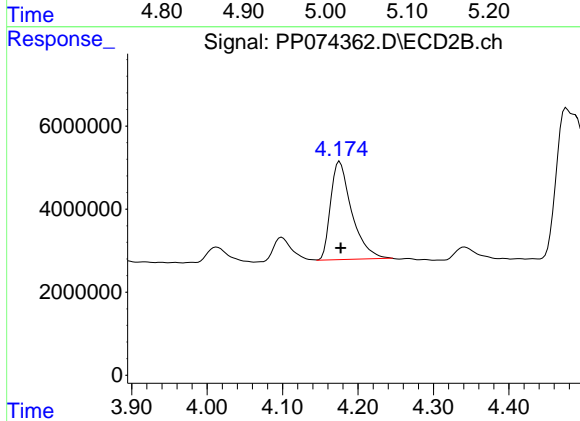
R.T.: 4.176 min
 Delta R.T.: 0.000 min
 Response: 46119767
 Conc: 341.06 ng/ml



#11 AR-1232-1

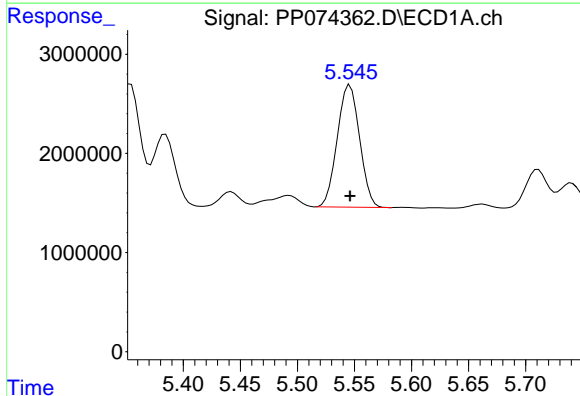
R.T.: 5.020 min
 Delta R.T.: 0.000 min
 Response: 13273579
 Conc: 457.12 ng/ml

Instrument :
 ECD_P
 ClientSampleId :
 AR1660CCC500



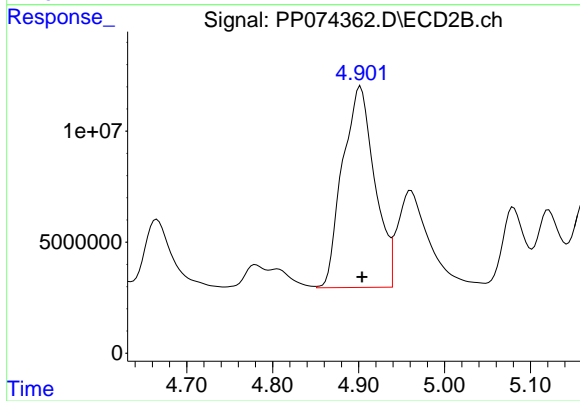
#11 AR-1232-1

R.T.: 4.176 min
 Delta R.T.: -0.001 min
 Response: 46119767
 Conc: 455.00 ng/ml



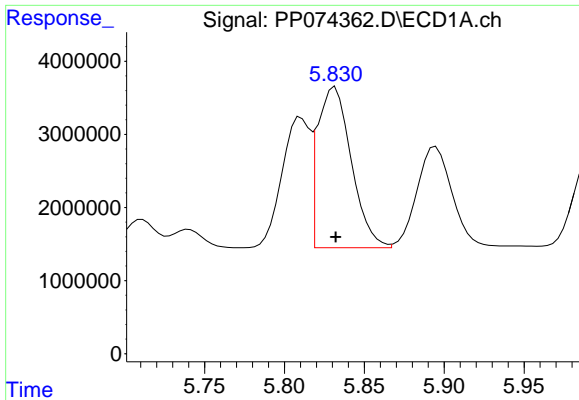
#12 AR-1232-2

R.T.: 5.546 min
 Delta R.T.: 0.000 min
 Response: 16805551
 Conc: 1117.19 ng/ml



#12 AR-1232-2

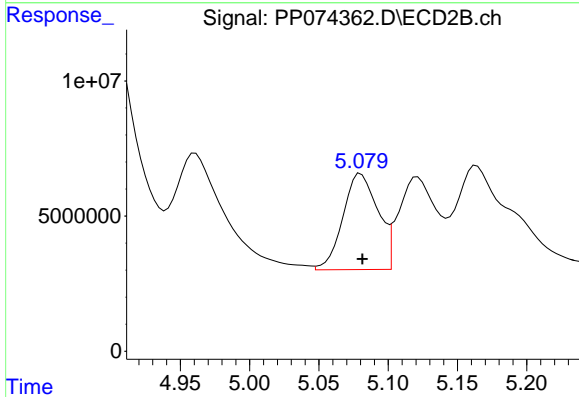
R.T.: 4.902 min
 Delta R.T.: -0.002 min
 Response: 235167864
 Conc: 1349.47 ng/ml



#13 AR-1232-3

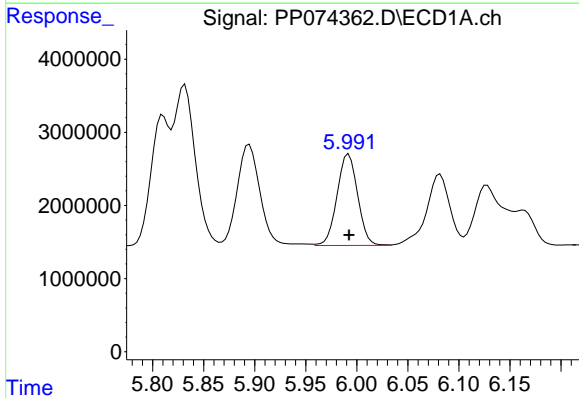
R.T.: 5.832 min
 Delta R.T.: 0.000 min
 Response: 32376709
 Conc: 1116.37 ng/ml

Instrument :
 ECD_P
 ClientSampleId :
 AR1660CCC500



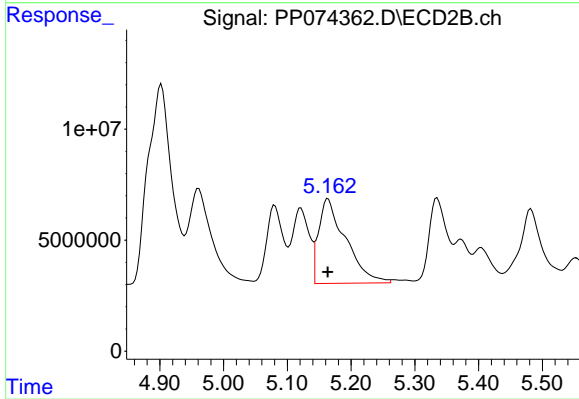
#13 AR-1232-3

R.T.: 5.080 min
 Delta R.T.: -0.001 min
 Response: 62504169
 Conc: 1364.22 ng/ml



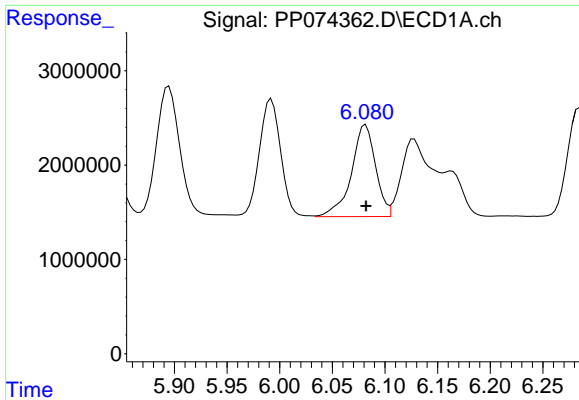
#14 AR-1232-4

R.T.: 5.992 min
 Delta R.T.: 0.000 min
 Response: 17594613
 Conc: 1137.42 ng/ml



#14 AR-1232-4

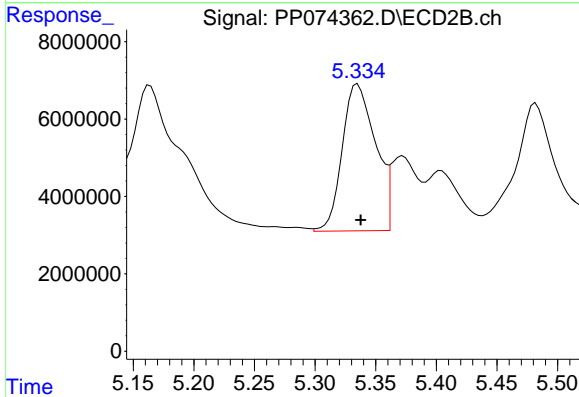
R.T.: 5.164 min
 Delta R.T.: 0.000 min
 Response: 112624857
 Conc: 1941.45 ng/ml



#15 AR-1232-5

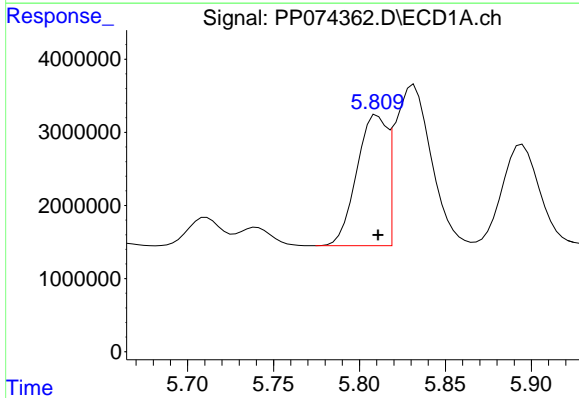
R.T.: 6.082 min
 Delta R.T.: 0.000 min
 Response: 15548493
 Conc: 1327.11 ng/ml

Instrument :
 ECD_P
 ClientSampleId :
 AR1660CCC500



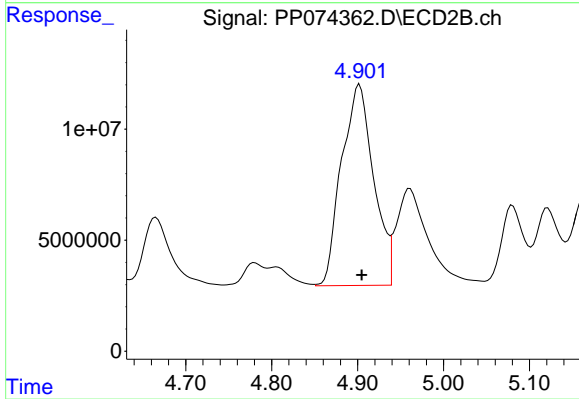
#15 AR-1232-5

R.T.: 5.335 min
 Delta R.T.: -0.003 min
 Response: 72464886
 Conc: 1542.48 ng/ml



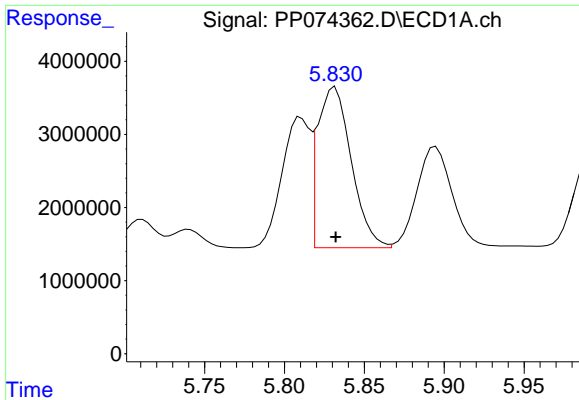
#16 AR-1242-1

R.T.: 5.810 min
 Delta R.T.: 0.000 min
 Response: 21767569
 Conc: 584.12 ng/ml



#16 AR-1242-1

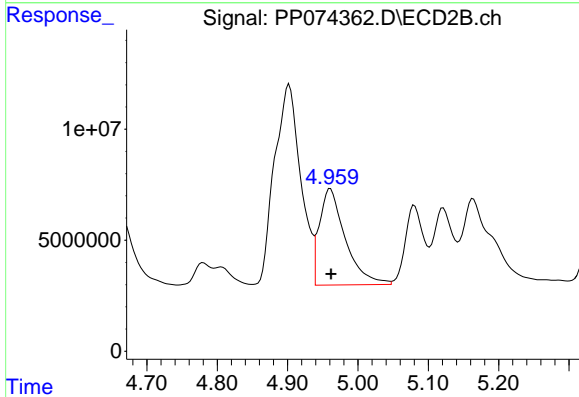
R.T.: 4.902 min
 Delta R.T.: -0.003 min
 Response: 235167864
 Conc: 681.37 ng/ml



#17 AR-1242-2

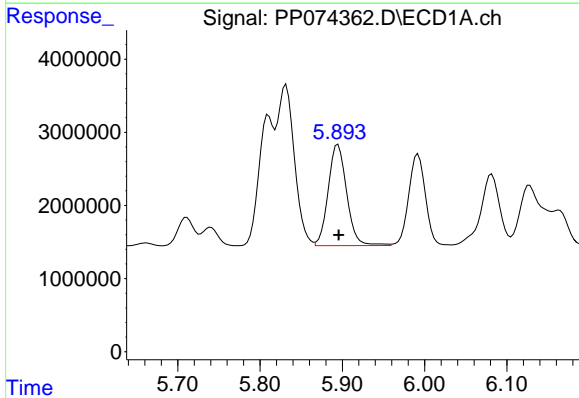
R.T.: 5.832 min
 Delta R.T.: 0.000 min
 Response: 32376709
 Conc: 595.06 ng/ml

Instrument :
 ECD_P
 ClientSampleId :
 AR1660CCC500



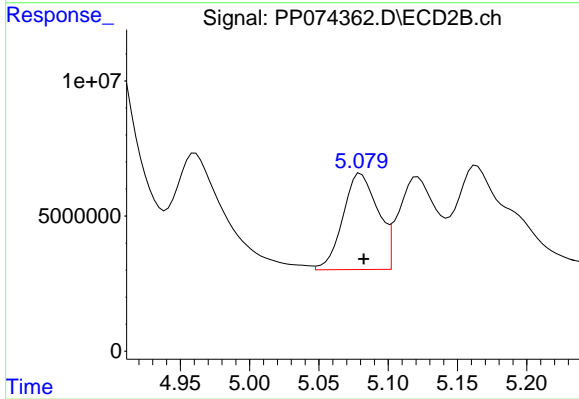
#17 AR-1242-2

R.T.: 4.961 min
 Delta R.T.: -0.001 min
 Response: 111346118
 Conc: 681.53 ng/ml



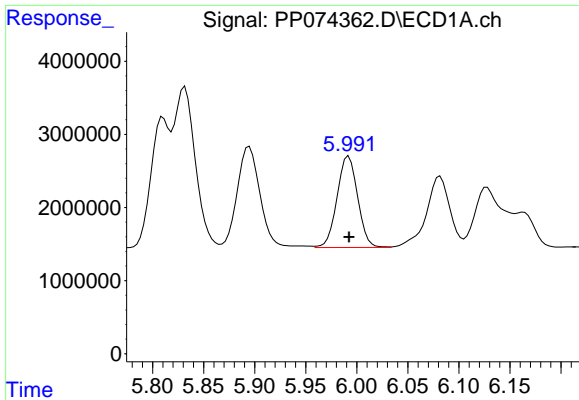
#18 AR-1242-3

R.T.: 5.895 min
 Delta R.T.: 0.000 min
 Response: 21611227
 Conc: 604.75 ng/ml



#18 AR-1242-3

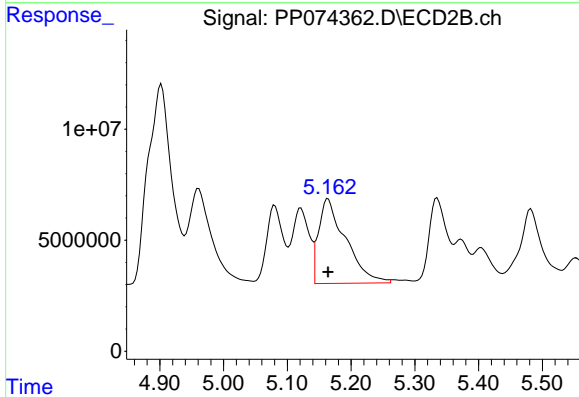
R.T.: 5.080 min
 Delta R.T.: -0.002 min
 Response: 62504169
 Conc: 677.56 ng/ml



#19 AR-1242-4

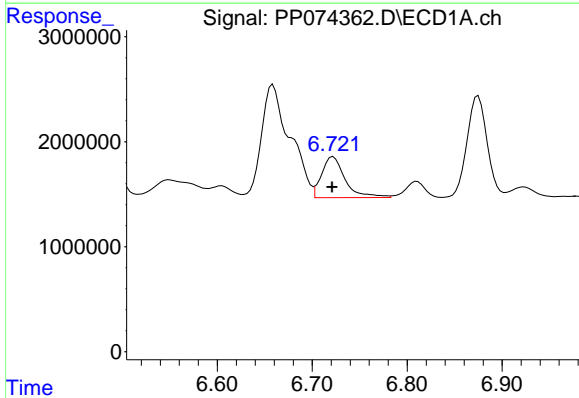
R.T.: 5.992 min
 Delta R.T.: 0.000 min
 Response: 17594613
 Conc: 602.17 ng/ml

Instrument :
 ECD_P
 ClientSampleId :
 AR1660CCC500



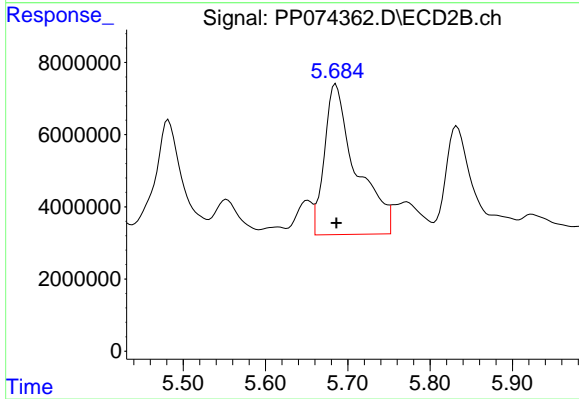
#19 AR-1242-4

R.T.: 5.164 min
 Delta R.T.: 0.000 min
 Response: 112624857
 Conc: 943.09 ng/ml



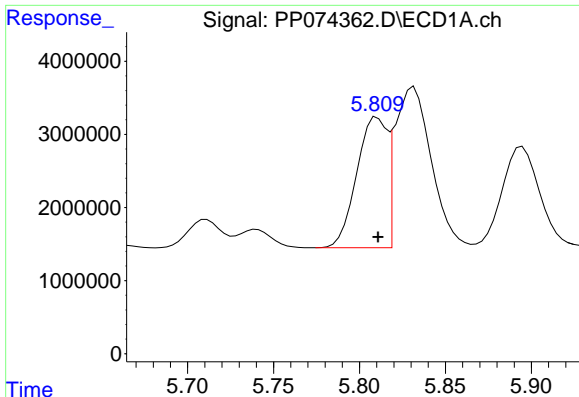
#20 AR-1242-5

R.T.: 6.722 min
 Delta R.T.: 0.001 min
 Response: 6701136
 Conc: 188.46 ng/ml



#20 AR-1242-5

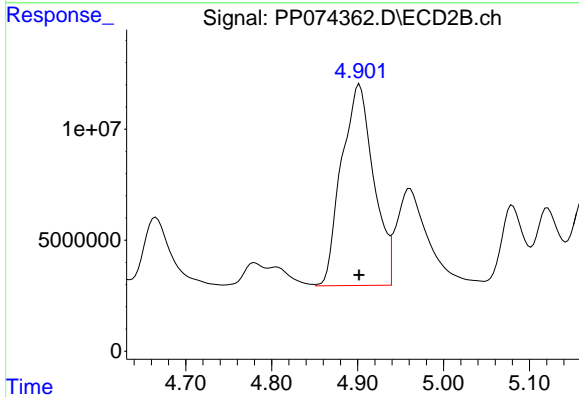
R.T.: 5.685 min
 Delta R.T.: 0.000 min
 Response: 111329924
 Conc: 744.38 ng/ml



#21 AR-1248-1

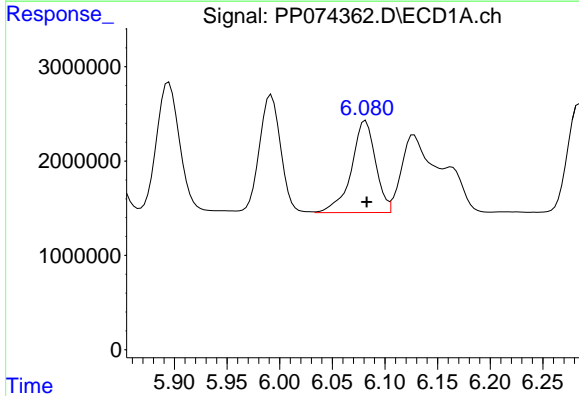
R.T.: 5.810 min
 Delta R.T.: 0.000 min
 Response: 21767569
 Conc: 777.01 ng/ml

Instrument :
 ECD_P
 ClientSampleId :
 AR1660CCC500



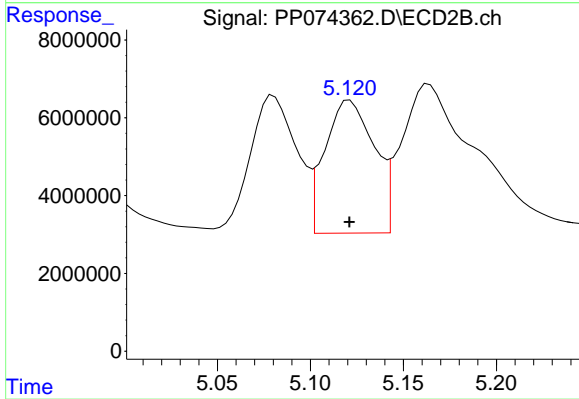
#21 AR-1248-1

R.T.: 4.902 min
 Delta R.T.: 0.000 min
 Response: 235167864
 Conc: 1099.27 ng/ml



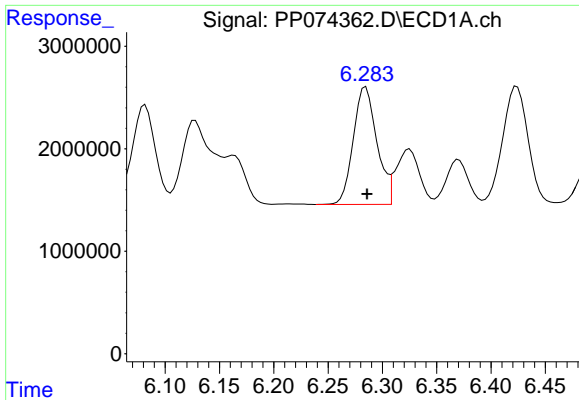
#22 AR-1248-2

R.T.: 6.082 min
 Delta R.T.: 0.000 min
 Response: 15548493
 Conc: 386.19 ng/ml



#22 AR-1248-2

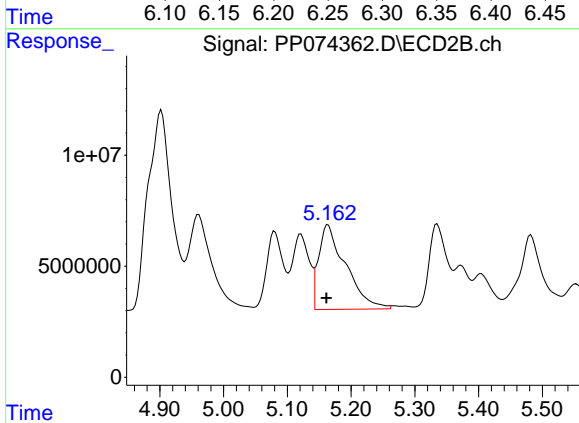
R.T.: 5.121 min
 Delta R.T.: 0.000 min
 Response: 62934228
 Conc: 430.14 ng/ml



#23 AR-1248-3

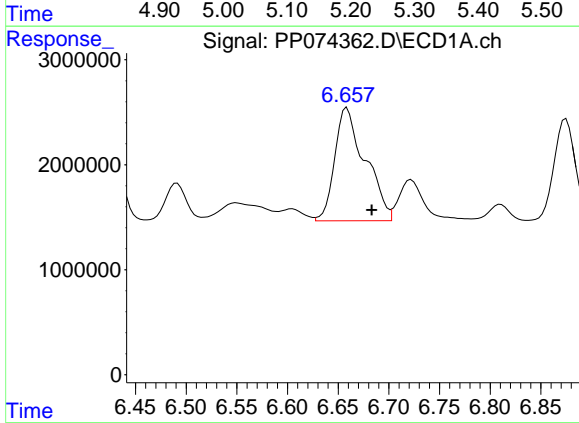
R.T.: 6.285 min
 Delta R.T.: -0.001 min
 Response: 17311303
 Conc: 388.38 ng/ml

Instrument :
 ECD_P
 ClientSampleId :
 AR1660CCC500



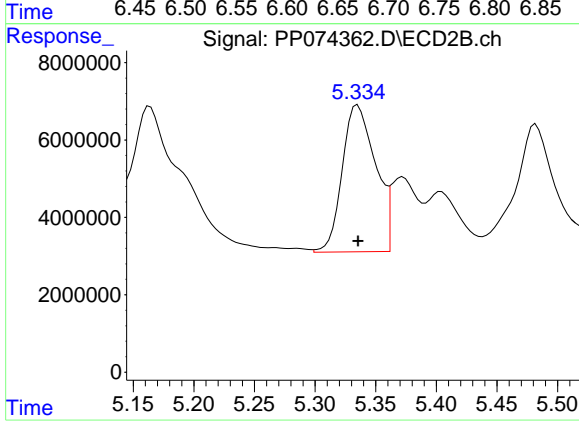
#23 AR-1248-3

R.T.: 5.164 min
 Delta R.T.: 0.003 min
 Response: 112624857
 Conc: 656.86 ng/ml



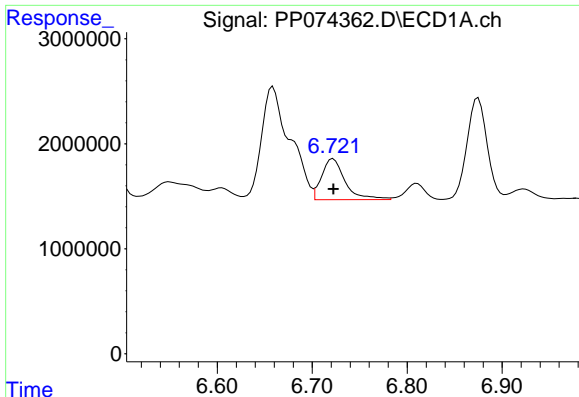
#24 AR-1248-4

R.T.: 6.659 min
 Delta R.T.: -0.024 min
 Response: 22532217
 Conc: 433.00 ng/ml



#24 AR-1248-4

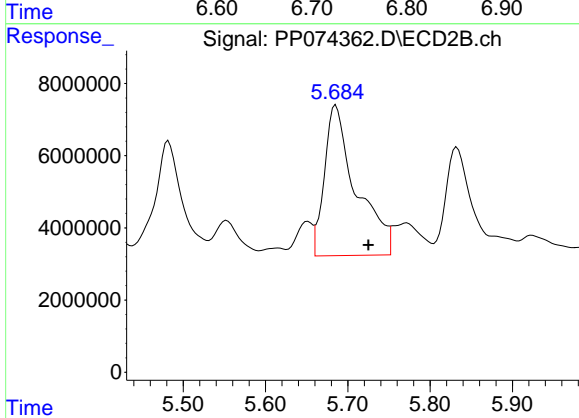
R.T.: 5.335 min
 Delta R.T.: 0.000 min
 Response: 72464886
 Conc: 435.56 ng/ml



#25 AR-1248-5

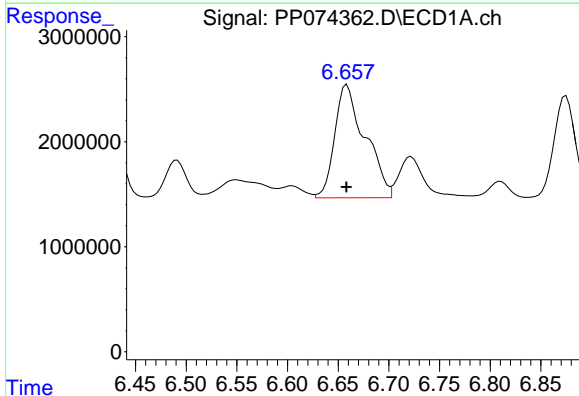
R.T.: 6.722 min
 Delta R.T.: 0.000 min
 Response: 6701136
 Conc: 117.68 ng/ml

Instrument :
 ECD_P
 ClientSampleId :
 AR1660CCC500



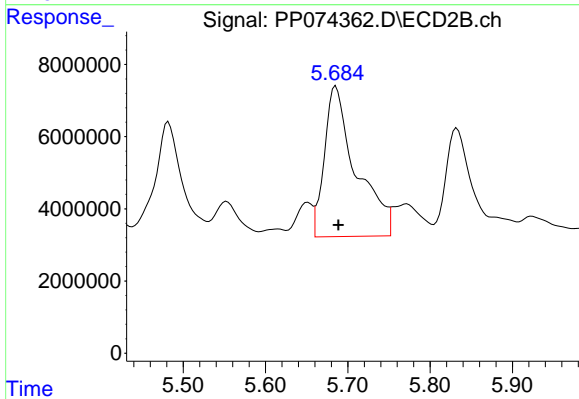
#25 AR-1248-5

R.T.: 5.685 min
 Delta R.T.: -0.040 min
 Response: 111329924
 Conc: 382.62 ng/ml



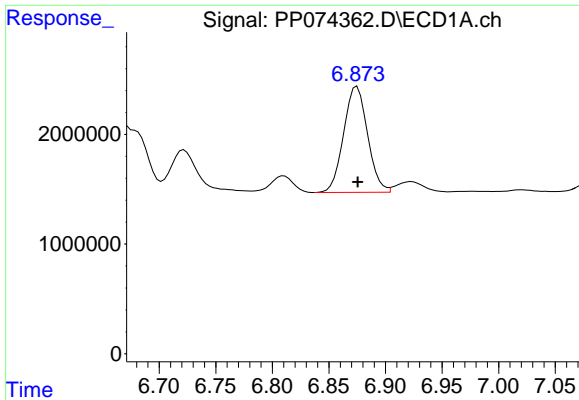
#26 AR-1254-1

R.T.: 6.659 min
 Delta R.T.: 0.000 min
 Response: 22532217
 Conc: 428.04 ng/ml



#26 AR-1254-1

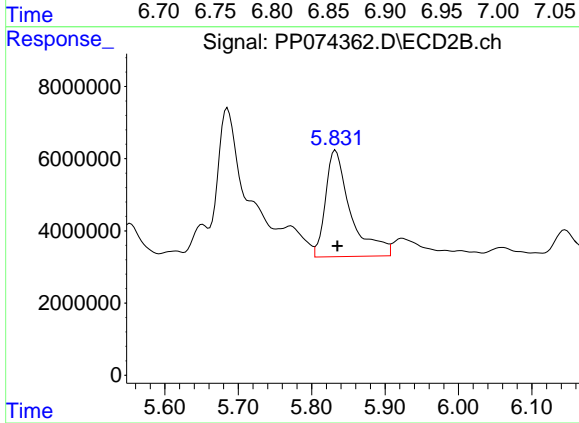
R.T.: 5.685 min
 Delta R.T.: -0.003 min
 Response: 111329924
 Conc: 304.03 ng/ml



#27 AR-1254-2

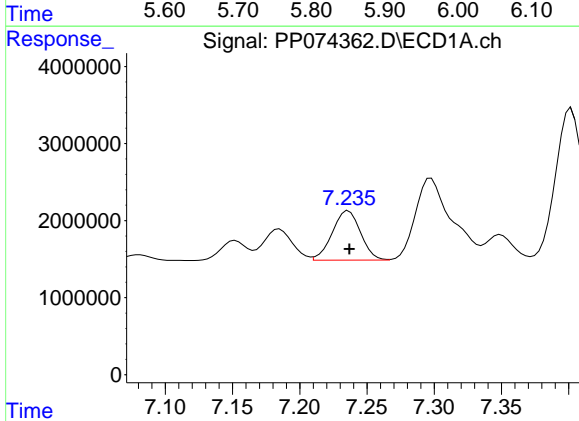
R.T.: 6.875 min
 Delta R.T.: 0.000 min
 Response: 14228436
 Conc: 178.96 ng/ml

Instrument :
 ECD_P
 ClientSampleId :
 AR1660CCC500



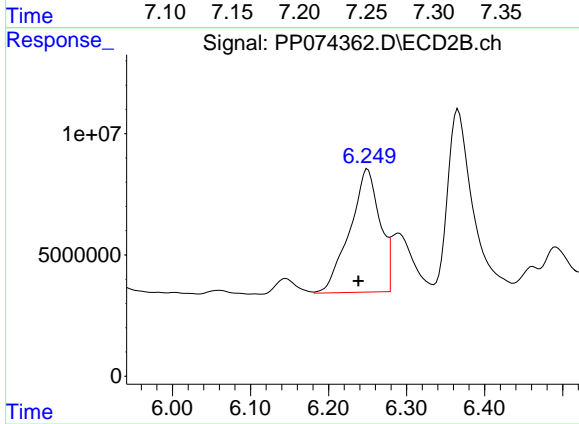
#27 AR-1254-2

R.T.: 5.833 min
 Delta R.T.: -0.002 min
 Response: 70373359
 Conc: 252.94 ng/ml



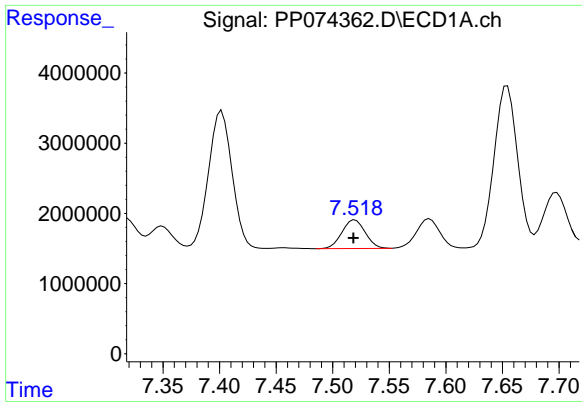
#28 AR-1254-3

R.T.: 7.236 min
 Delta R.T.: 0.000 min
 Response: 9387539
 Conc: 107.51 ng/ml



#28 AR-1254-3

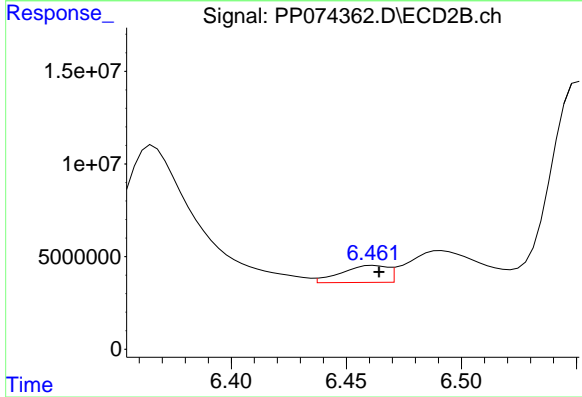
R.T.: 6.250 min
 Delta R.T.: 0.012 min
 Response: 135536253
 Conc: 277.05 ng/ml



#29 AR-1254-4

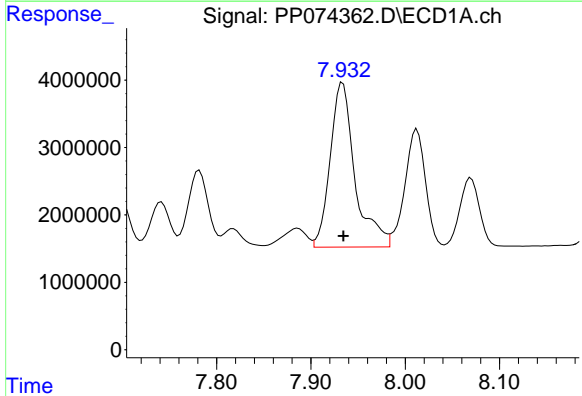
R.T.: 7.520 min
 Delta R.T.: 0.001 min
 Response: 5878822
 Conc: 92.13 ng/ml

Instrument :
 ECD_P
 ClientSampleId :
 AR1660CCC500



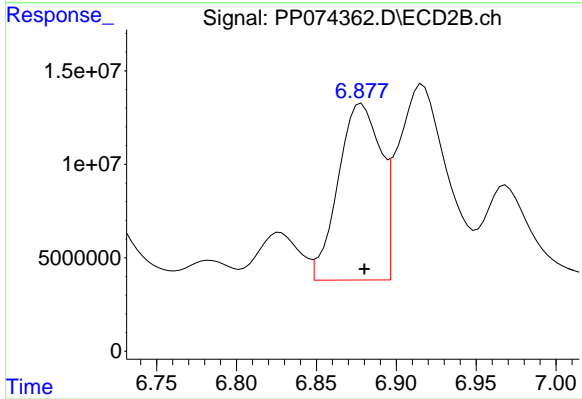
#29 AR-1254-4

R.T.: 6.462 min
 Delta R.T.: -0.002 min
 Response: 12861358
 Conc: 34.99 ng/ml



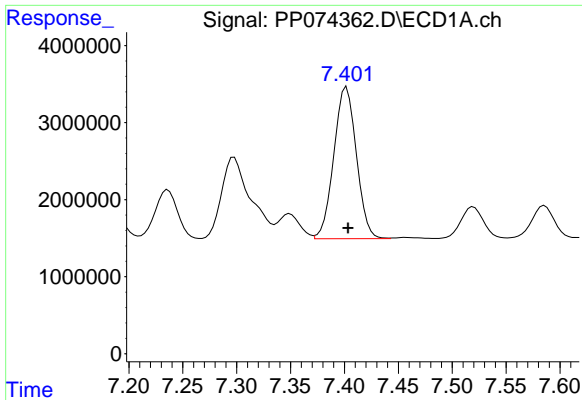
#30 AR-1254-5

R.T.: 7.934 min
 Delta R.T.: 0.000 min
 Response: 44584208
 Conc: 549.44 ng/ml



#30 AR-1254-5

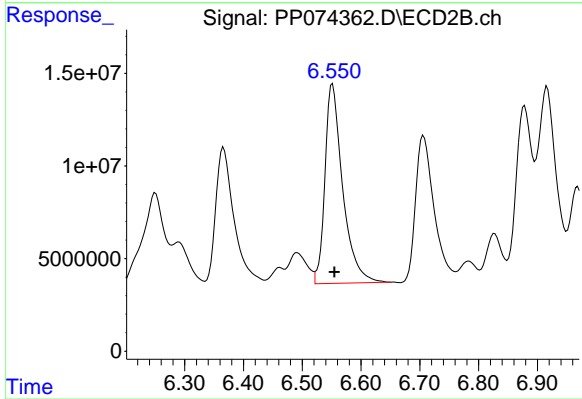
R.T.: 6.878 min
 Delta R.T.: -0.002 min
 Response: 174483739
 Conc: 453.01 ng/ml



#31 AR-1260-1

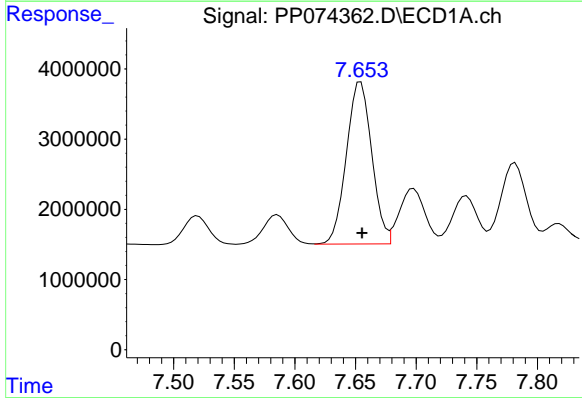
R.T.: 7.402 min
 Delta R.T.: -0.001 min
 Response: 28728677
 Conc: 509.77 ng/ml

Instrument :
 ECD_P
 ClientSampleId :
 AR1660CCC500



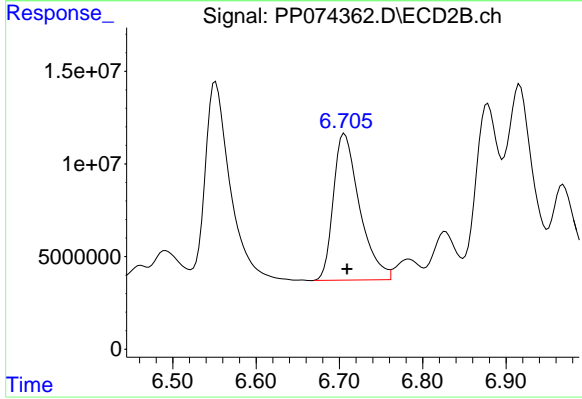
#31 AR-1260-1

R.T.: 6.552 min
 Delta R.T.: -0.003 min
 Response: 226269264
 Conc: 560.13 ng/ml



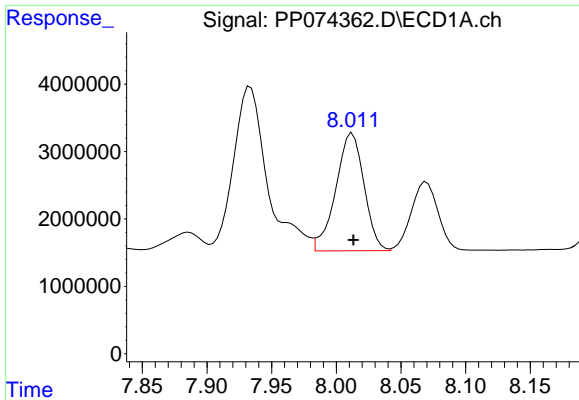
#32 AR-1260-2

R.T.: 7.654 min
 Delta R.T.: -0.001 min
 Response: 33613481
 Conc: 493.21 ng/ml



#32 AR-1260-2

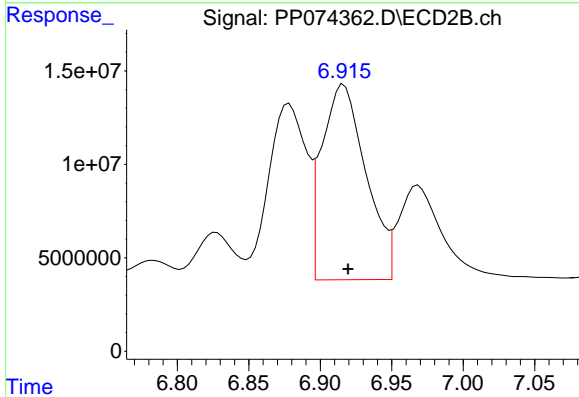
R.T.: 6.706 min
 Delta R.T.: -0.003 min
 Response: 172775212
 Conc: 552.53 ng/ml



#33 AR-1260-3

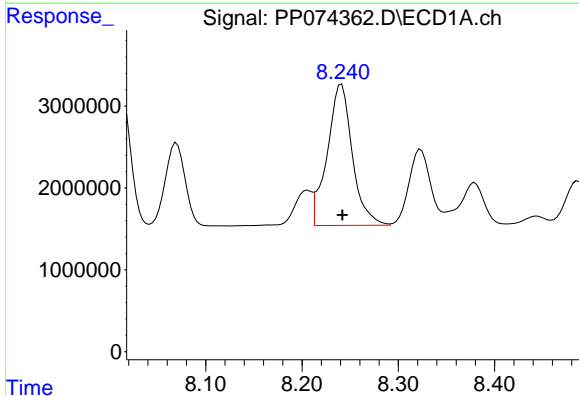
R.T.: 8.013 min
 Delta R.T.: 0.000 min
 Response: 26525957
 Conc: 497.71 ng/ml

Instrument :
 ECD_P
 ClientSampleId :
 AR1660CCC500



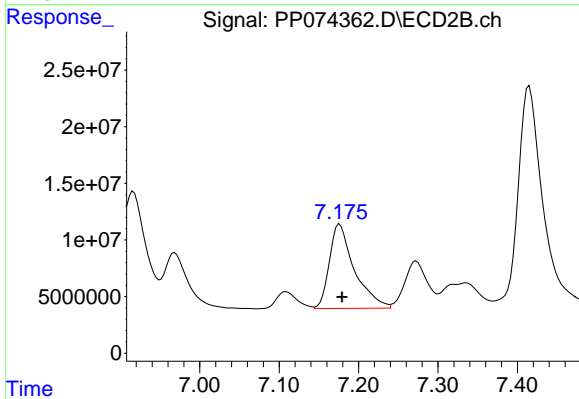
#33 AR-1260-3

R.T.: 6.916 min
 Delta R.T.: -0.003 min
 Response: 223886427
 Conc: 568.07 ng/ml



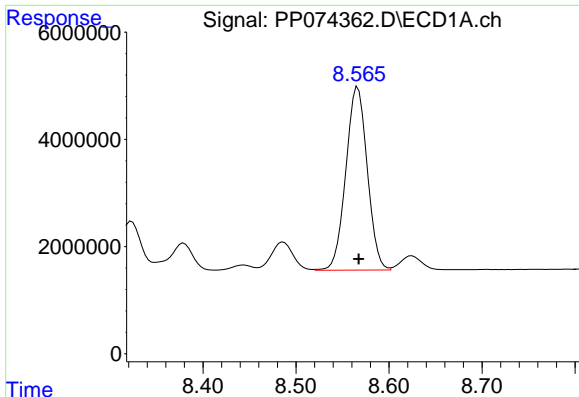
#34 AR-1260-4

R.T.: 8.241 min
 Delta R.T.: 0.000 min
 Response: 31321316
 Conc: 500.22 ng/ml



#34 AR-1260-4

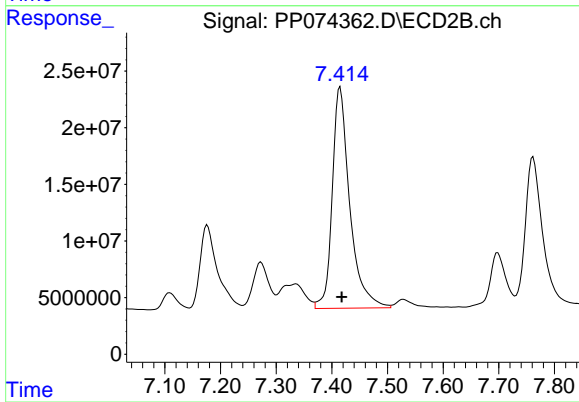
R.T.: 7.176 min
 Delta R.T.: -0.003 min
 Response: 162833478
 Conc: 559.60 ng/ml



#35 AR-1260-5

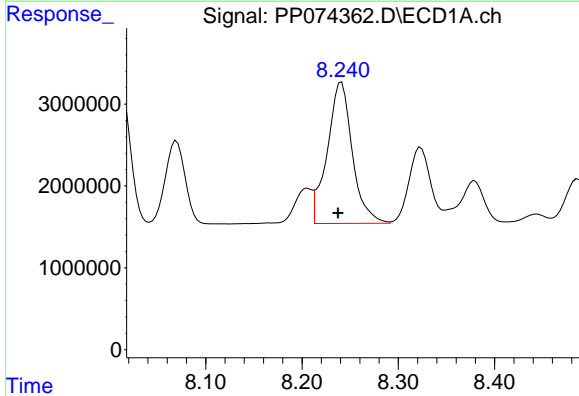
R.T.: 8.567 min
 Delta R.T.: 0.000 min
 Response: 54671864
 Conc: 482.52 ng/ml

Instrument :
 ECD_P
 ClientSampleId :
 AR1660CCC500



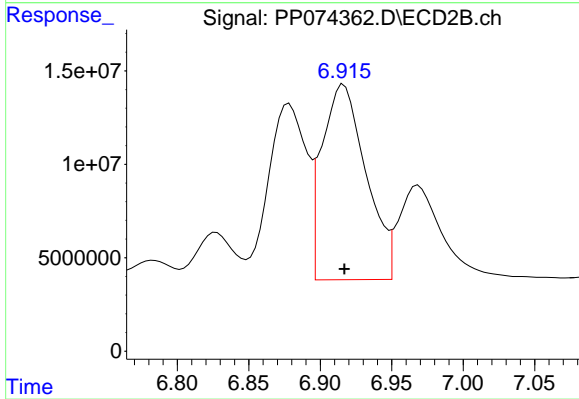
#35 AR-1260-5

R.T.: 7.415 min
 Delta R.T.: -0.003 min
 Response: 427452475
 Conc: 564.36 ng/ml



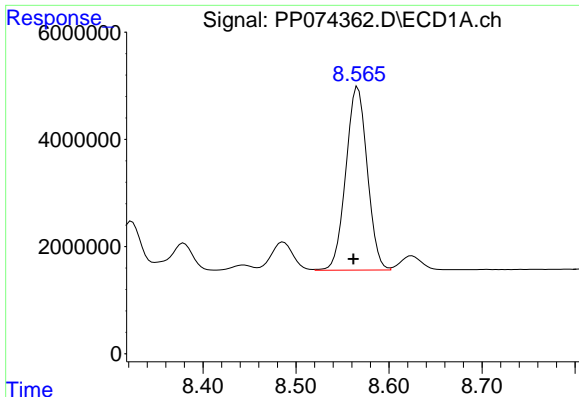
#36 AR-1262-1

R.T.: 8.241 min
 Delta R.T.: 0.004 min
 Response: 31321316
 Conc: 413.27 ng/ml



#36 AR-1262-1

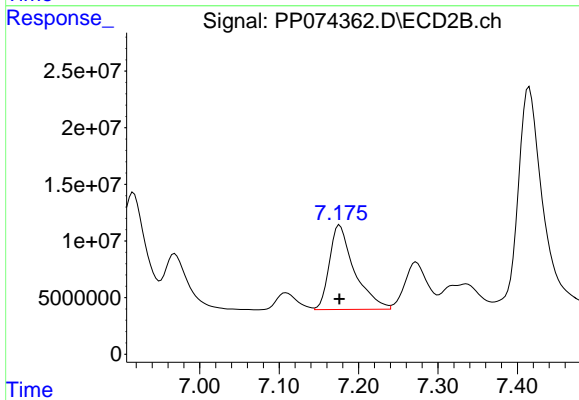
R.T.: 6.916 min
 Delta R.T.: 0.000 min
 Response: 223886427
 Conc: 397.57 ng/ml



#37 AR-1262-2

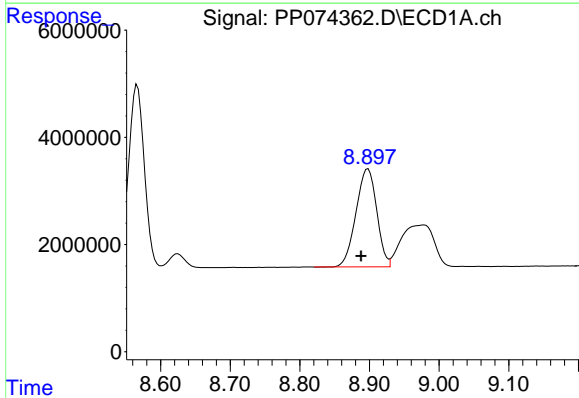
R.T.: 8.567 min
 Delta R.T.: 0.005 min
 Response: 54671864
 Conc: 419.17 ng/ml

Instrument :
 ECD_P
 ClientSampleId :
 AR1660CCC500



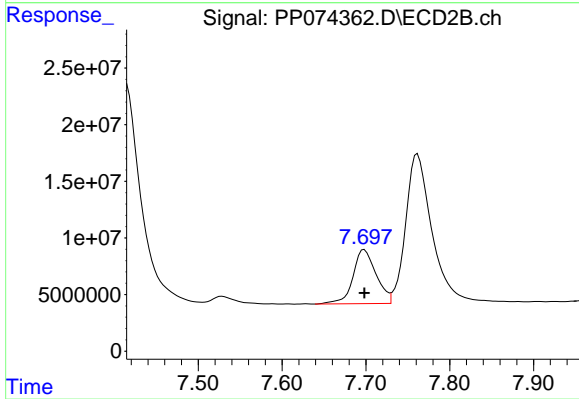
#37 AR-1262-2

R.T.: 7.176 min
 Delta R.T.: 0.000 min
 Response: 162833478
 Conc: 406.04 ng/ml



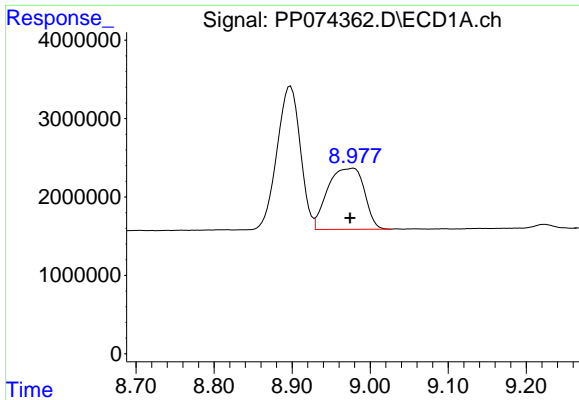
#38 AR-1262-3

R.T.: 8.898 min
 Delta R.T.: 0.010 min
 Response: 37819272
 Conc: 402.03 ng/ml



#38 AR-1262-3

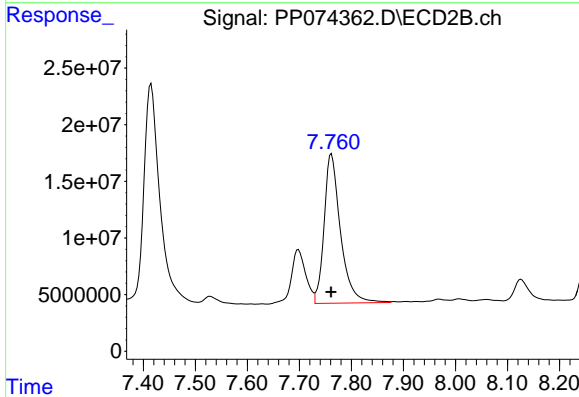
R.T.: 7.698 min
 Delta R.T.: 0.000 min
 Response: 91826811
 Conc: 255.45 ng/ml



#39 AR-1262-4

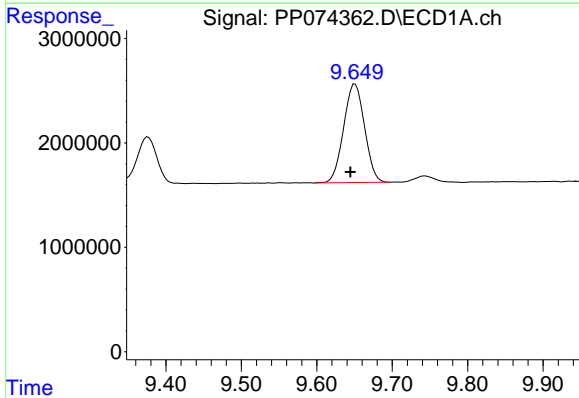
R.T.: 8.979 min
 Delta R.T.: 0.004 min
 Response: 25399770
 Conc: 348.65 ng/ml

Instrument :
 ECD_P
 ClientSampleId :
 AR1660CCC500



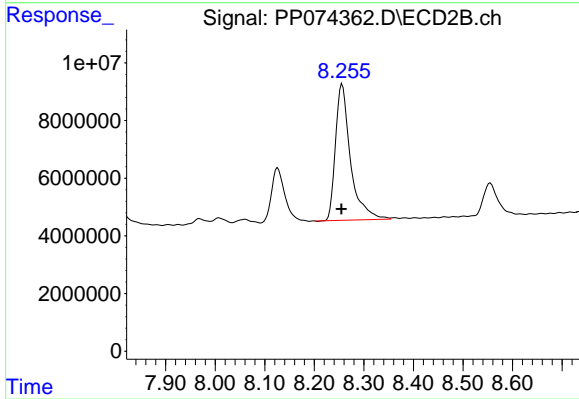
#39 AR-1262-4

R.T.: 7.762 min
 Delta R.T.: 0.000 min
 Response: 289002864
 Conc: 433.34 ng/ml



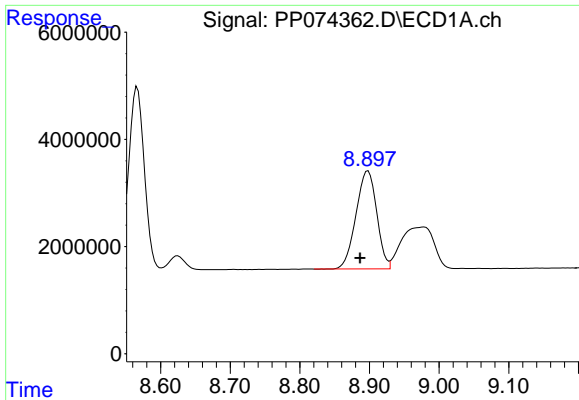
#40 AR-1262-5

R.T.: 9.651 min
 Delta R.T.: 0.006 min
 Response: 18215646
 Conc: 357.71 ng/ml



#40 AR-1262-5

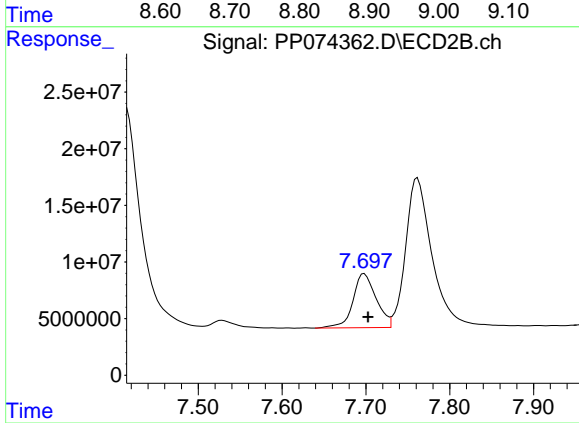
R.T.: 8.256 min
 Delta R.T.: 0.001 min
 Response: 99290485
 Conc: 350.52 ng/ml



#41 AR-1268-1

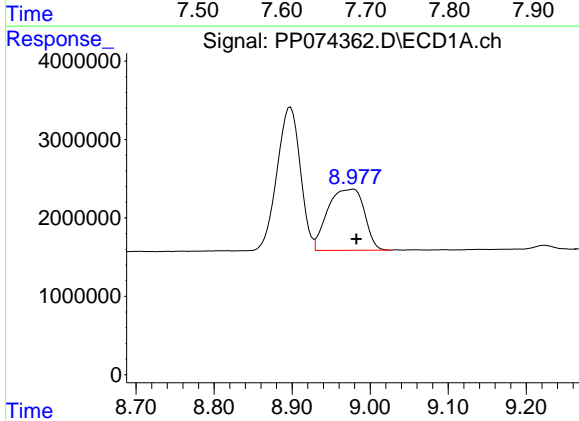
R.T.: 8.898 min
 Delta R.T.: 0.012 min
 Response: 37819272
 Conc: 243.00 ng/ml

Instrument :
 ECD_P
 ClientSampleId :
 AR1660CCC500



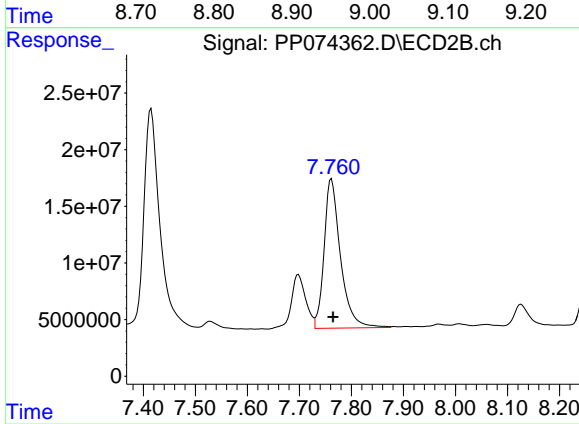
#41 AR-1268-1

R.T.: 7.698 min
 Delta R.T.: -0.004 min
 Response: 91826811
 Conc: 84.22 ng/ml



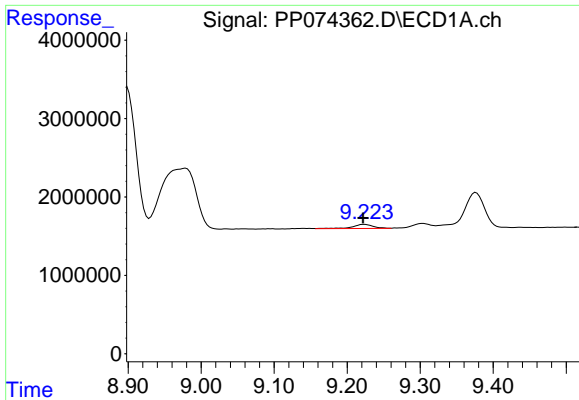
#42 AR-1268-2

R.T.: 8.979 min
 Delta R.T.: -0.004 min
 Response: 25399770
 Conc: 177.09 ng/ml



#42 AR-1268-2

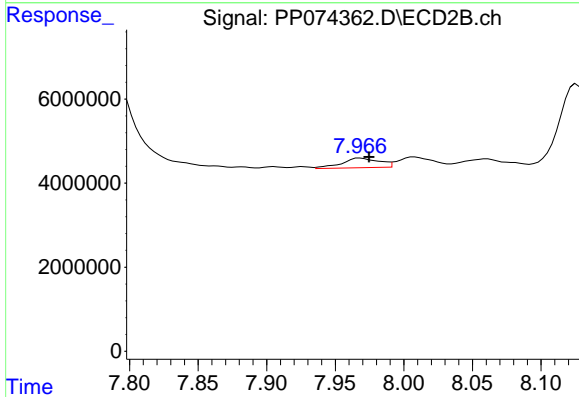
R.T.: 7.762 min
 Delta R.T.: -0.004 min
 Response: 289002864
 Conc: 272.30 ng/ml



#43 AR-1268-3

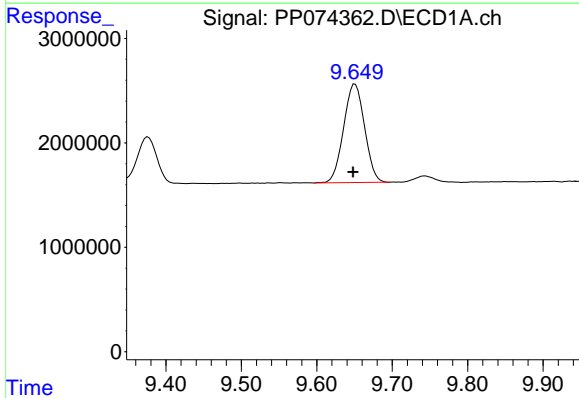
R.T.: 9.224 min
 Delta R.T.: 0.002 min
 Response: 1045784
 Conc: 8.75 ng/ml

Instrument :
 ECD_P
 ClientSampleId :
 AR1660CCC500



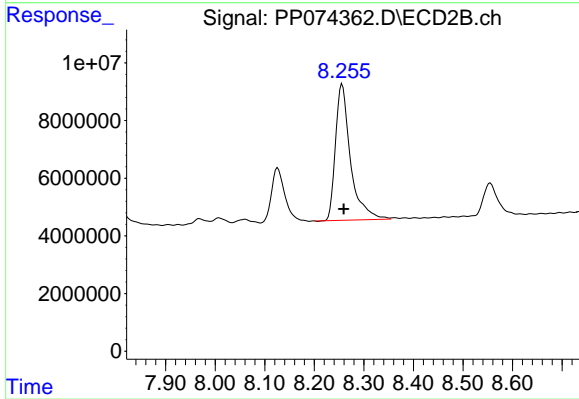
#43 AR-1268-3

R.T.: 7.968 min
 Delta R.T.: -0.007 min
 Response: 4421614
 Conc: 5.31 ng/ml



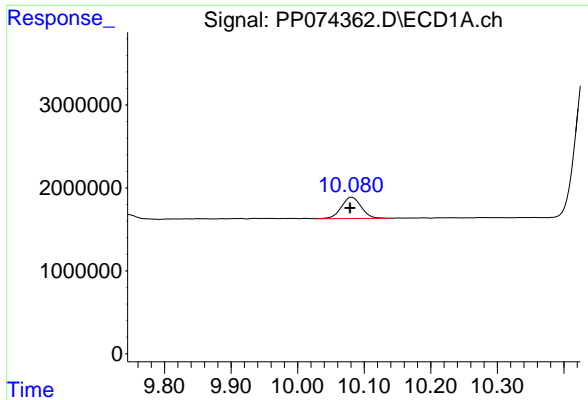
#44 AR-1268-4

R.T.: 9.651 min
 Delta R.T.: 0.003 min
 Response: 18215646
 Conc: 309.72 ng/ml



#44 AR-1268-4

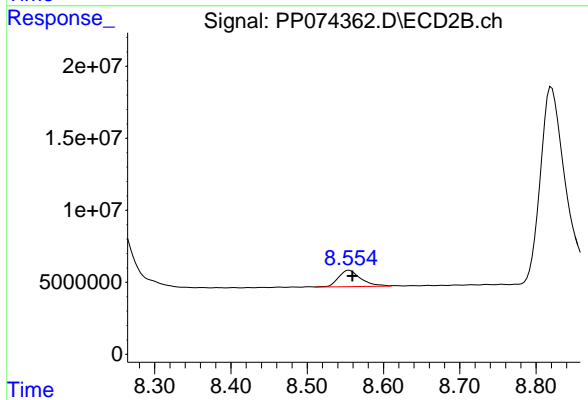
R.T.: 8.256 min
 Delta R.T.: -0.003 min
 Response: 99290485
 Conc: 322.31 ng/ml



#45 AR-1268-5

R.T.: 10.082 min
 Delta R.T.: 0.003 min
 Response: 5325426
 Conc: 15.14 ng/ml

Instrument :
 ECD_P
 ClientSampleId :
 AR1660CCC500



#45 AR-1268-5

R.T.: 8.555 min
 Delta R.T.: -0.004 min
 Response: 23094147
 Conc: 9.06 ng/ml