

Data Path : Z:\pestpcbsrv\HPCHEM1\ECD_P\Data\PP081325\
 Data File : PP074363.D
 Signal(s) : Signal #1: ECD1A.ch Signal #2: ECD2B.ch
 Acq On : 13 Aug 2025 21:19
 Operator : YP\AJ
 Sample : AR1242CCC500
 Misc :
 ALS Vial : 4 Sample Multiplier: 1

Instrument :
 ECD_P
 ClientSampleId :
 AR1242CCC500

Integration File signal 1: autoint1.e
 Integration File signal 2: autoint2.e
 Quant Time: Aug 14 00:02:30 2025
 Quant Method : Z:\pestpcbsrv\HPCHEM1\ECD_P\methods\PP080125.M
 Quant Title : GC EXTRACTABLES
 QLast Update : Mon Aug 04 11:01:49 2025
 Response via : Initial Calibration
 Integrator: ChemStation

Volume Inj. : 2 µl
 Signal #1 Phase : ZB-MR1 Signal #2 Phase: ZB-MR2
 Signal #1 Info : 30Mx0.32mmx 0.50µ Signal #2 Info : 30M x 0.32mm x 0.25µm

Compound	RT#1	RT#2	Resp#1	Resp#2	ng/ml	ng/ml
System Monitoring Compounds						
1) SA Tetrachlo...	4.659	3.802	56345125	206.6E6	50.384	53.891
2) SA Decachlor...	10.436	8.821	44389821	291.8E6	45.708	48.523
Target Compounds						
3) L1 AR-1016-1	5.810	4.902	17522460	177.6E6	424.717	445.160
4) L1 AR-1016-2	5.831	4.960	25549368	84454984	420.623	449.685
5) L1 AR-1016-3	5.895	5.081	17255204	48321200	435.073	455.561
6) L1 AR-1016-4	5.992	5.120	14002068	47600086	430.244	435.818
7) L1 AR-1016-5	6.284	5.335	13665184	53528912	420.881	457.656
8) L2 AR-1221-1	4.854	4.012	2118139	5955156	126.353	121.323
9) L2 AR-1221-2	4.944	4.100	3336249	7897845	264.760	220.061
10) L2 AR-1221-3	5.019	4.175	10653879	36575140	290.810	270.477
11) L3 AR-1232-1	5.019	4.175	10653879	36575140	366.903	360.835
12) L3 AR-1232-2	5.545	4.902	13324724	177.6E6	885.793	1018.951
13) L3 AR-1232-3	5.831	5.081	25549368	48321200	880.961	1054.665
14) L3 AR-1232-4	5.992	5.163	14002068	87525478	905.180	1508.781 #
15) L3 AR-1232-5	6.081	5.335	11739354	53528912	1001.992	1139.411
16) L4 AR-1242-1	5.810	4.902	17522460	177.6E6	470.202	514.482
17) L4 AR-1242-2	5.831	4.960	25549368	84454984	469.580	516.931
18) L4 AR-1242-3	5.895	5.081	17255204	48321200	482.854	523.815
19) L4 AR-1242-4	5.992	5.163	14002068	87525478	479.217	732.911 #
20) L4 AR-1242-5	6.721	5.685	15754017	76122604	443.051	508.977
21) L5 AR-1248-1	5.810	4.902	17522460	177.6E6	625.477	830.025 #
22) L5 AR-1248-2	6.081	5.120	11739354	47600086	291.581	325.332
23) L5 AR-1248-3	6.284	5.163	13665184	87525478	306.576	510.472 #
24) L5 AR-1248-4	6.682	5.335	14485945	53528912	278.377	321.739
25) L5 AR-1248-5	6.721	5.726	15754017	93458976	276.662	321.202
26) L6 AR-1254-1	6.656	5.685	10950518	76122604	208.022	207.882
27) L6 AR-1254-2	6.877	5.832	12834473	21023981	161.431	75.567 #
28) L6 AR-1254-3	7.235	6.234	6971573	23090518	79.843	47.199 #
29) L6 AR-1254-4	7.517	6.462	4191118	18916016	65.682	51.463
30) L6 AR-1254-5	7.934	6.877	1439039	4963294	17.734	12.886 #
31) L7 AR-1260-1	7.405	6.548	674591	2753397	11.970	6.816 #
32) L7 AR-1260-2	7.652	6.707	1116647	2338537	16.385	7.479 #
33) L7 AR-1260-3	7.994	6.945	196623	507540	3.689	1.288 #
34) L7 AR-1260-4	8.223	7.180	522981	384607	8.352	1.322 #
35) L7 AR-1260-5	8.568	7.418	168373	441340	1.486	0.583 #
36) L8 AR-1262-1	8.223	6.945	522981	507540	6.900	0.901 #
37) L8 AR-1262-2	8.557	7.180	104525	384607	0.801	0.959
38) L8 AR-1262-3	8.901	7.714	68566	3291196	0.729	9.156 #
39) L8 AR-1262-4	8.976	7.751	74998	1273309	1.029	1.909 #
40) L8 AR-1262-5	9.646	8.264	49457	170799	0.971	0.603 #
41) L9 AR-1268-1	8.901	7.714	68566	3291196	0.441	3.019 #

Data Path : Z:\pestpcbsrv\HPCHEM1\ECD_P\Data\PP081325\
 Data File : PP074363.D
 Signal(s) : Signal #1: ECD1A.ch Signal #2: ECD2B.ch
 Acq On : 13 Aug 2025 21:19
 Operator : YP\AJ
 Sample : AR1242CCC500
 Misc :
 ALS Vial : 4 Sample Multiplier: 1

Instrument :
 ECD_P
 ClientSampleId :
 AR1242CCC500

Integration File signal 1: autoint1.e
 Integration File signal 2: autoint2.e
 Quant Time: Aug 14 00:02:30 2025
 Quant Method : Z:\pestpcbsrv\HPCHEM1\ECD_P\methods\PP080125.M
 Quant Title : GC EXTRACTABLES
 QLast Update : Mon Aug 04 11:01:49 2025
 Response via : Initial Calibration
 Integrator: ChemStation

Volume Inj. : 2 µl
 Signal #1 Phase : ZB-MR1 Signal #2 Phase: ZB-MR2
 Signal #1 Info : 30Mx0.32mmx 0.50µ Signal #2 Info : 30M x 0.32mm x 0.25µm

	Compound	RT#1	RT#2	Resp#1	Resp#2	ng/ml	ng/ml
42)	L9 AR-1268-2	8.976	7.773	74998	1132535	0.523	1.067 #
43)	L9 AR-1268-3	9.217	7.980	153747	418111	1.287	0.503 #
44)	L9 AR-1268-4	9.646	8.264	49457	170799	0.841	0.554 #
45)	L9 AR-1268-5	10.087	8.554	295291	1353608	0.840	0.531 #

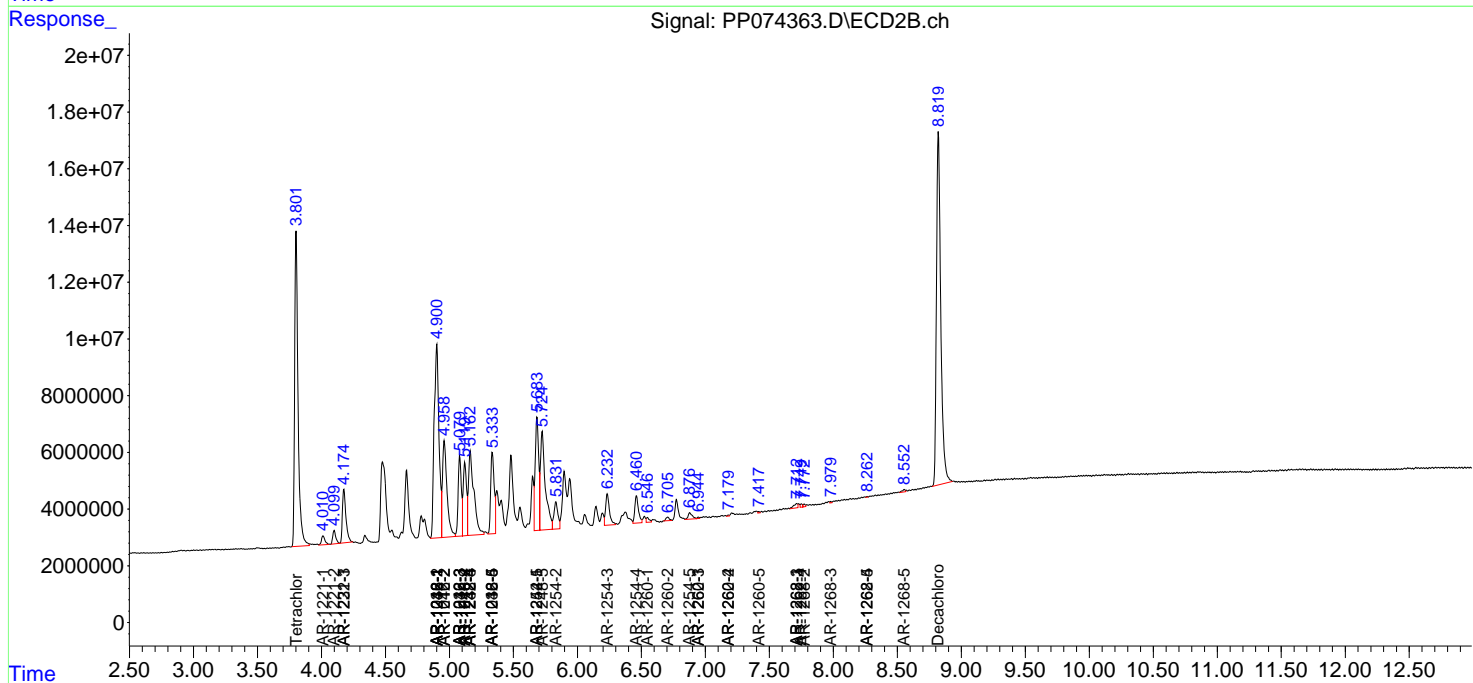
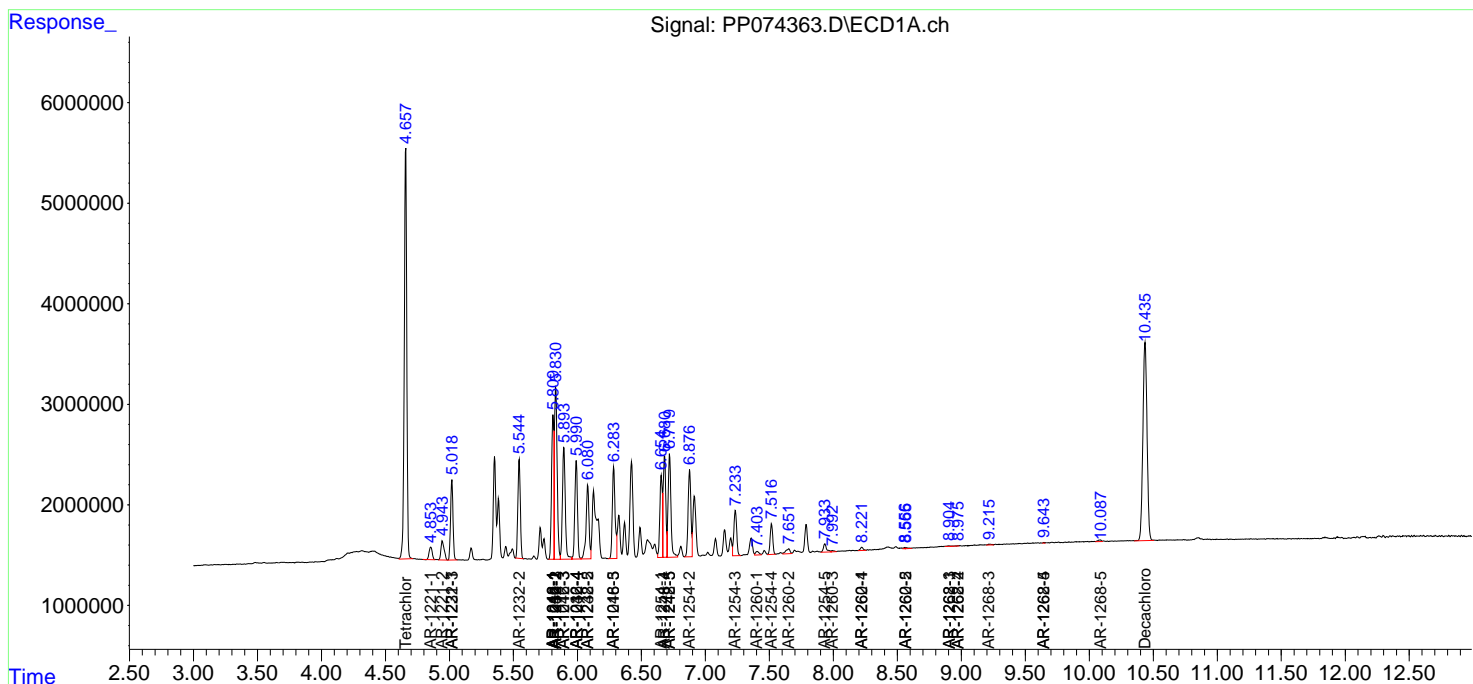
(f)=RT Delta > 1/2 Window (#)=Amounts differ by > 25% (m)=manual int.

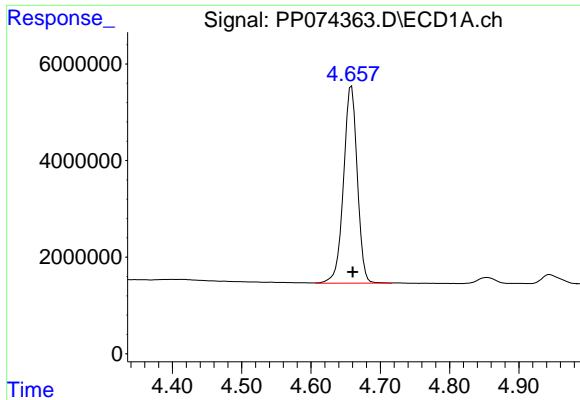
Data Path : Z:\pestpcbsrv\HPCHEM1\ECD_P\Data\PP081325\
 Data File : PP074363.D
 Signal(s) : Signal #1: ECD1A.ch Signal #2: ECD2B.ch
 Acq On : 13 Aug 2025 21:19
 Operator : YP\AJ
 Sample : AR1242CCC500
 Misc :
 ALS Vial : 4 Sample Multiplier: 1

Instrument :
 ECD_P
 ClientSampleId :
 AR1242CCC500

Integration File signal 1: autoint1.e
 Integration File signal 2: autoint2.e
 Quant Time: Aug 14 00:02:30 2025
 Quant Method : Z:\pestpcbsrv\HPCHEM1\ECD_P\methods\PP080125.M
 Quant Title : GC EXTRACTABLES
 QLast Update : Mon Aug 04 11:01:49 2025
 Response via : Initial Calibration
 Integrator: ChemStation

Volume Inj. : 2 µl
 Signal #1 Phase : ZB-MR1 Signal #2 Phase: ZB-MR2
 Signal #1 Info : 30Mx0.32mmx 0.50µ Signal #2 Info : 30M x 0.32mm x 0.25µm

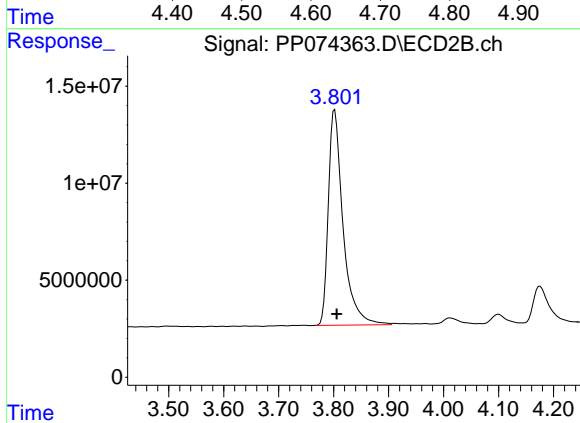




#1 Tetrachloro-m-xylene

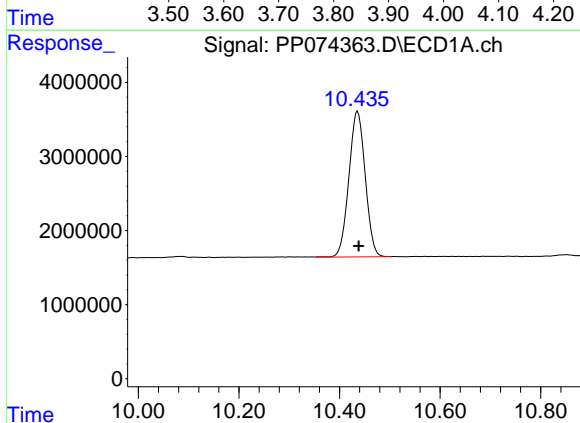
R.T.: 4.659 min
 Delta R.T.: -0.002 min
 Response: 56345125
 Conc: 50.38 ng/ml

Instrument :
 ECD_P
 ClientSampleId :
 AR1242CCC500



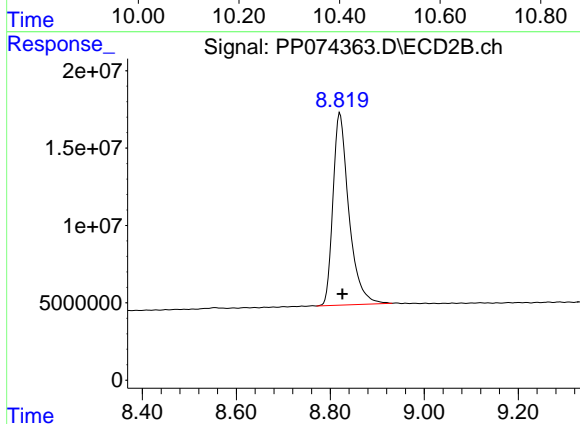
#1 Tetrachloro-m-xylene

R.T.: 3.802 min
 Delta R.T.: -0.003 min
 Response: 206640355
 Conc: 53.89 ng/ml



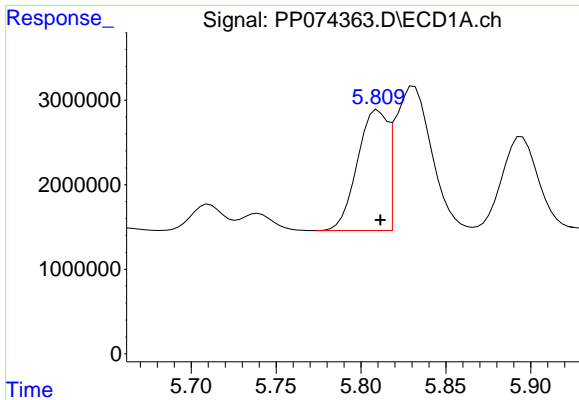
#2 Decachlorobiphenyl

R.T.: 10.436 min
 Delta R.T.: -0.002 min
 Response: 44389821
 Conc: 45.71 ng/ml



#2 Decachlorobiphenyl

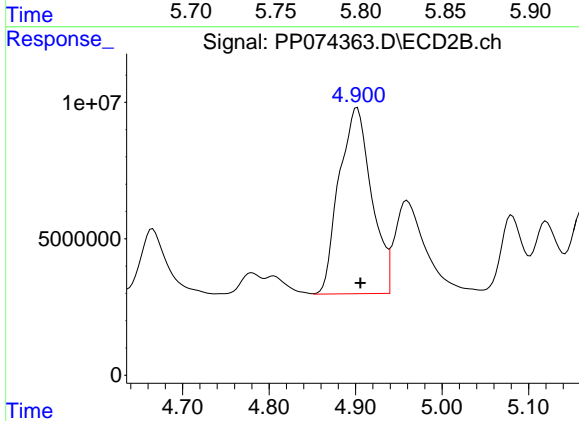
R.T.: 8.821 min
 Delta R.T.: -0.005 min
 Response: 291799115
 Conc: 48.52 ng/ml



#3 AR-1016-1

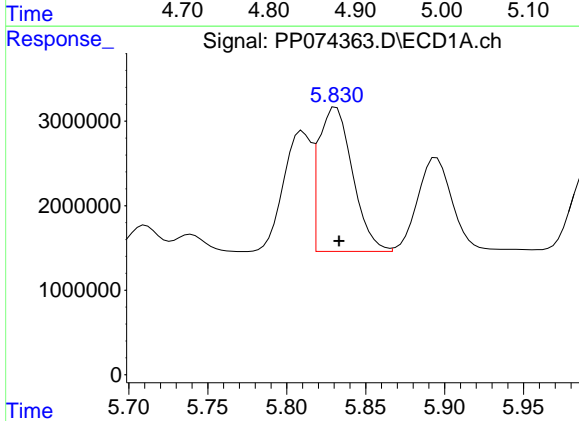
R.T.: 5.810 min
 Delta R.T.: -0.001 min
 Response: 17522460
 Conc: 424.72 ng/ml

Instrument :
 ECD_P
 ClientSampleId :
 AR1242CCC500



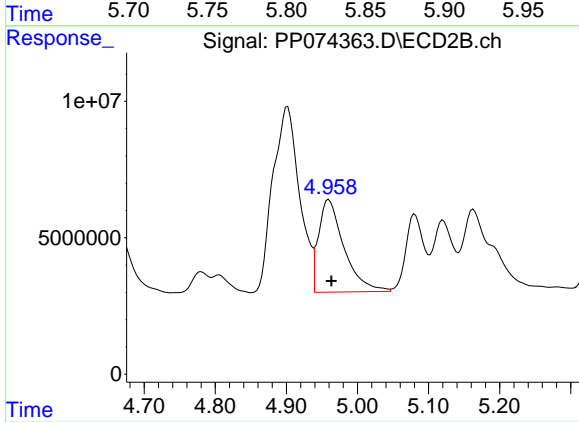
#3 AR-1016-1

R.T.: 4.902 min
 Delta R.T.: -0.004 min
 Response: 177568715
 Conc: 445.16 ng/ml



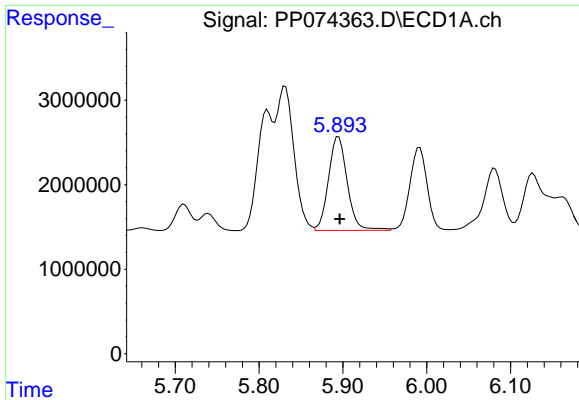
#4 AR-1016-2

R.T.: 5.831 min
 Delta R.T.: -0.002 min
 Response: 25549368
 Conc: 420.62 ng/ml



#4 AR-1016-2

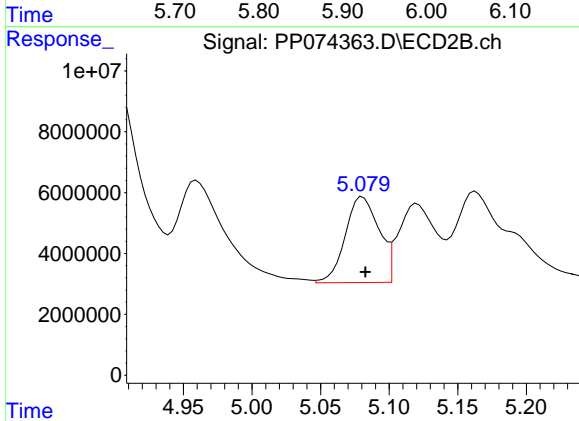
R.T.: 4.960 min
 Delta R.T.: -0.004 min
 Response: 84454984
 Conc: 449.69 ng/ml



#5 AR-1016-3

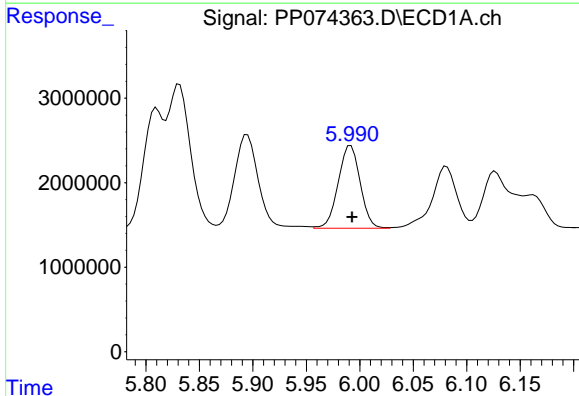
R.T.: 5.895 min
 Delta R.T.: -0.001 min
 Response: 17255204
 Conc: 435.07 ng/ml

Instrument :
 ECD_P
 ClientSampleId :
 AR1242CCC500



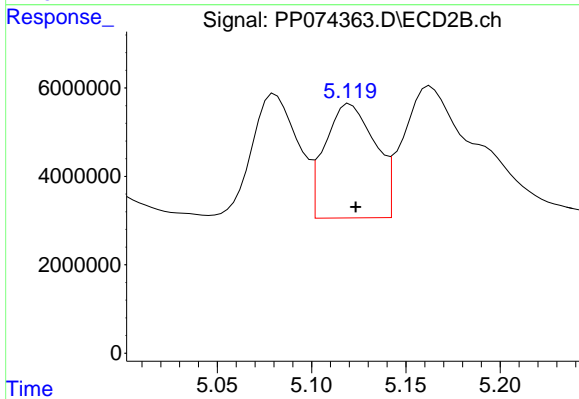
#5 AR-1016-3

R.T.: 5.081 min
 Delta R.T.: -0.002 min
 Response: 48321200
 Conc: 455.56 ng/ml



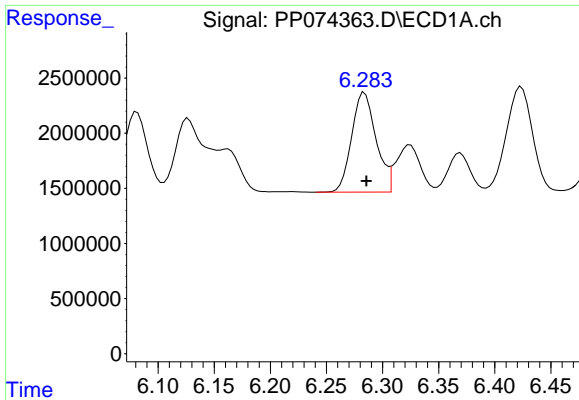
#6 AR-1016-4

R.T.: 5.992 min
 Delta R.T.: -0.001 min
 Response: 14002068
 Conc: 430.24 ng/ml



#6 AR-1016-4

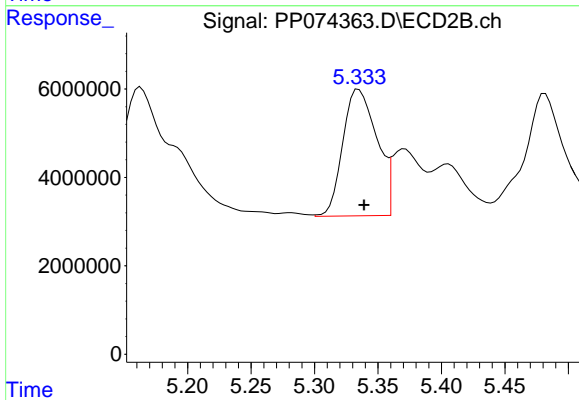
R.T.: 5.120 min
 Delta R.T.: -0.003 min
 Response: 47600086
 Conc: 435.82 ng/ml



#7 AR-1016-5

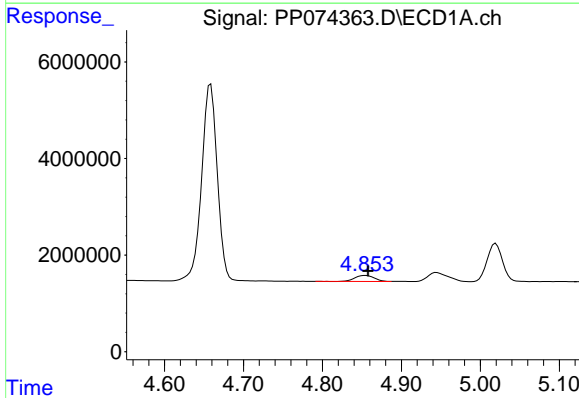
R.T.: 6.284 min
 Delta R.T.: -0.002 min
 Response: 13665184
 Conc: 420.88 ng/ml

Instrument :
 ECD_P
 ClientSampleId :
 AR1242CCC500



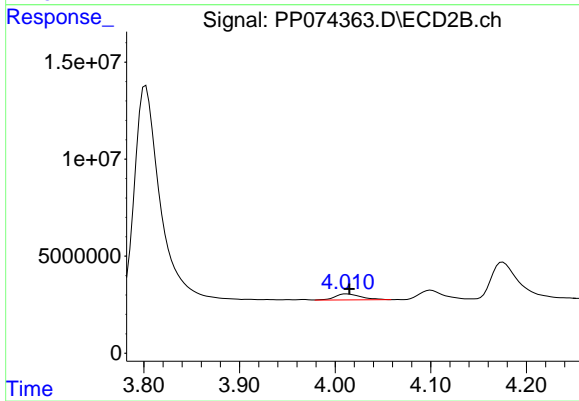
#7 AR-1016-5

R.T.: 5.335 min
 Delta R.T.: -0.004 min
 Response: 53528912
 Conc: 457.66 ng/ml



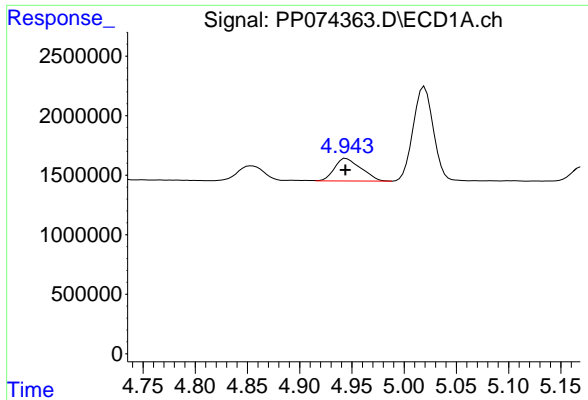
#8 AR-1221-1

R.T.: 4.854 min
 Delta R.T.: -0.004 min
 Response: 2118139
 Conc: 126.35 ng/ml



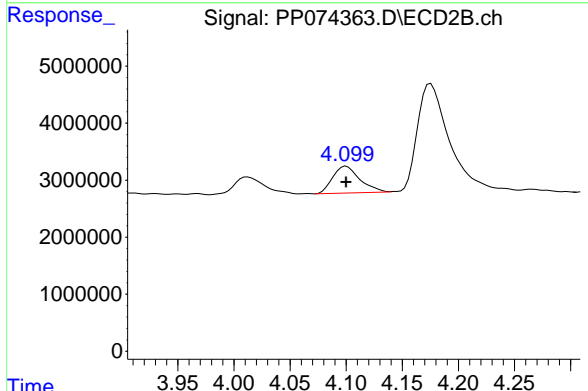
#8 AR-1221-1

R.T.: 4.012 min
 Delta R.T.: -0.003 min
 Response: 5955156
 Conc: 121.32 ng/ml

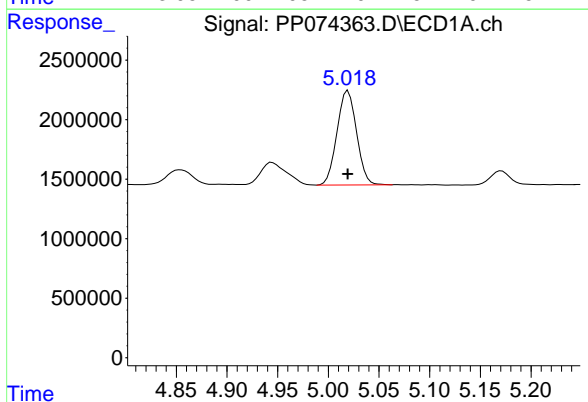


#9 AR-1221-2
 R.T.: 4.944 min
 Delta R.T.: 0.000 min
 Response: 3336249
 Conc: 264.76 ng/ml

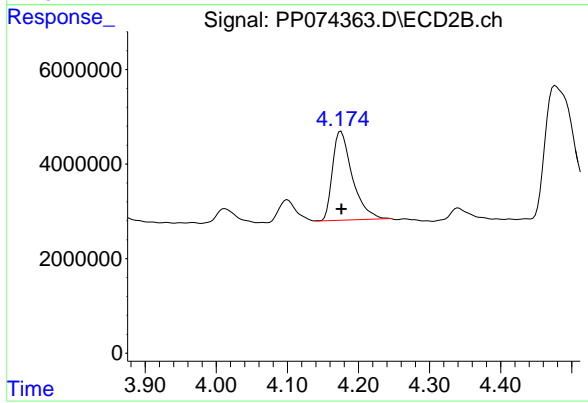
Instrument :
 ECD_P
 ClientSampleId :
 AR1242CCC500



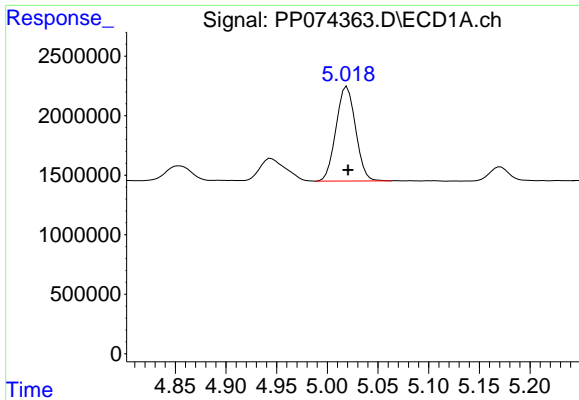
#9 AR-1221-2
 R.T.: 4.100 min
 Delta R.T.: 0.000 min
 Response: 7897845
 Conc: 220.06 ng/ml



#10 AR-1221-3
 R.T.: 5.019 min
 Delta R.T.: 0.000 min
 Response: 10653879
 Conc: 290.81 ng/ml



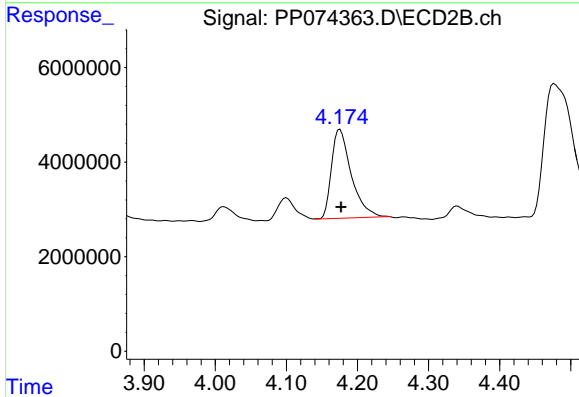
#10 AR-1221-3
 R.T.: 4.175 min
 Delta R.T.: 0.000 min
 Response: 36575140
 Conc: 270.48 ng/ml



#11 AR-1232-1

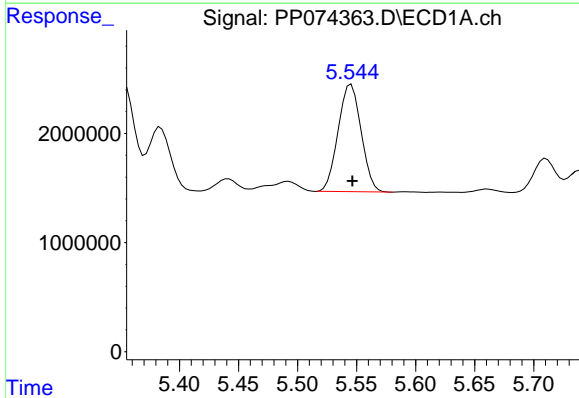
R.T.: 5.019 min
 Delta R.T.: 0.000 min
 Response: 10653879
 Conc: 366.90 ng/ml

Instrument :
 ECD_P
 ClientSampleId :
 AR1242CCC500



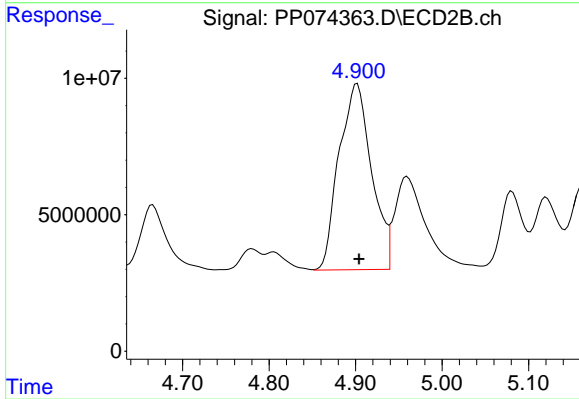
#11 AR-1232-1

R.T.: 4.175 min
 Delta R.T.: -0.002 min
 Response: 36575140
 Conc: 360.84 ng/ml



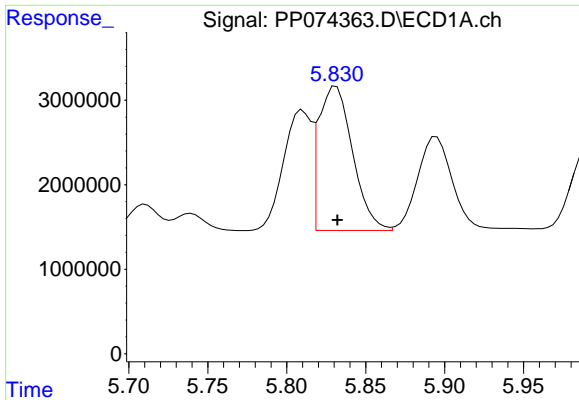
#12 AR-1232-2

R.T.: 5.545 min
 Delta R.T.: 0.000 min
 Response: 13324724
 Conc: 885.79 ng/ml



#12 AR-1232-2

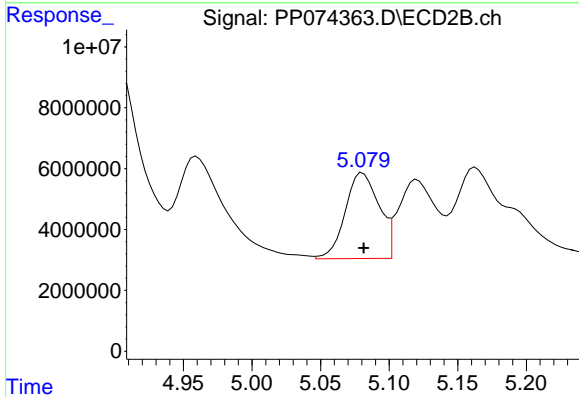
R.T.: 4.902 min
 Delta R.T.: -0.002 min
 Response: 177568715
 Conc: 1018.95 ng/ml



#13 AR-1232-3

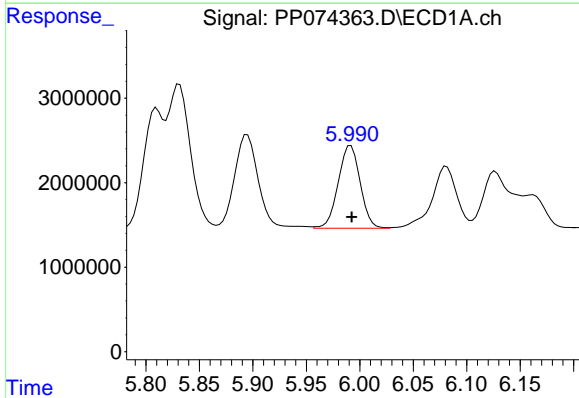
R.T.: 5.831 min
 Delta R.T.: 0.000 min
 Response: 25549368
 Conc: 880.96 ng/ml

Instrument :
 ECD_P
 ClientSampleId :
 AR1242CCC500



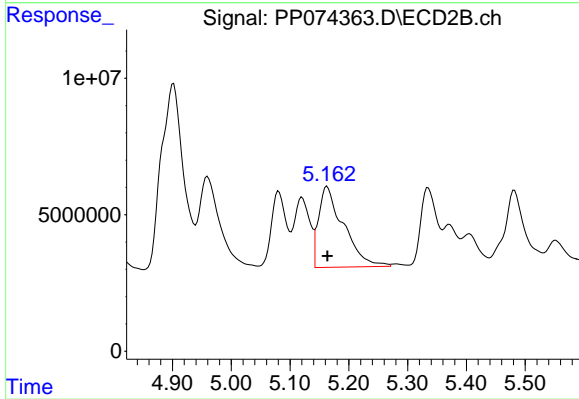
#13 AR-1232-3

R.T.: 5.081 min
 Delta R.T.: 0.000 min
 Response: 48321200
 Conc: 1054.67 ng/ml



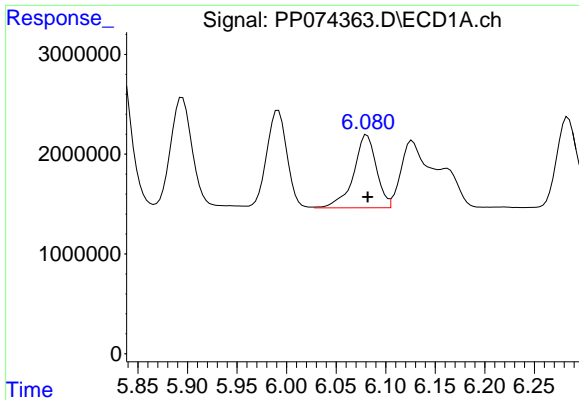
#14 AR-1232-4

R.T.: 5.992 min
 Delta R.T.: 0.000 min
 Response: 14002068
 Conc: 905.18 ng/ml



#14 AR-1232-4

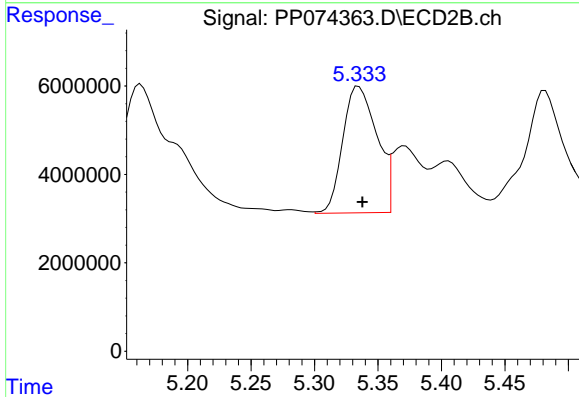
R.T.: 5.163 min
 Delta R.T.: 0.000 min
 Response: 87525478
 Conc: 1508.78 ng/ml



#15 AR-1232-5

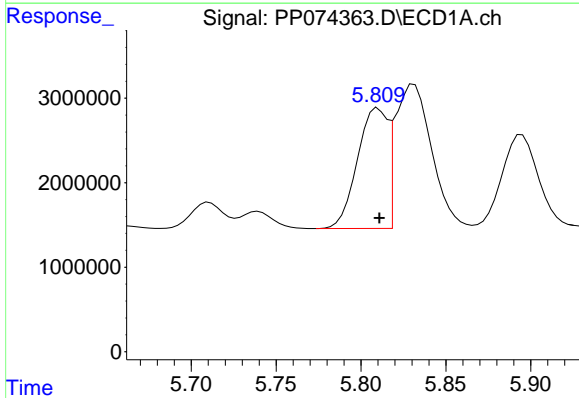
R.T.: 6.081 min
 Delta R.T.: 0.000 min
 Response: 11739354
 Conc: 1001.99 ng/ml

Instrument :
 ECD_P
 ClientSampleId :
 AR1242CCC500



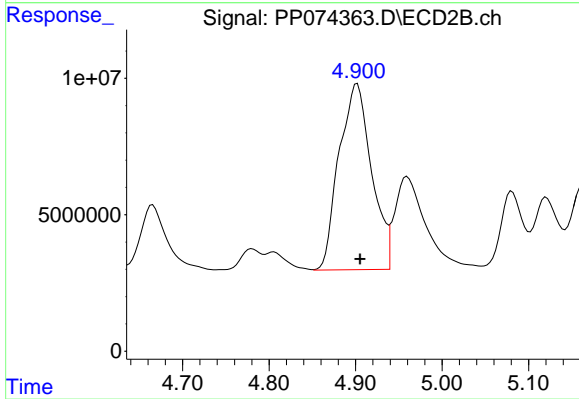
#15 AR-1232-5

R.T.: 5.335 min
 Delta R.T.: -0.003 min
 Response: 53528912
 Conc: 1139.41 ng/ml



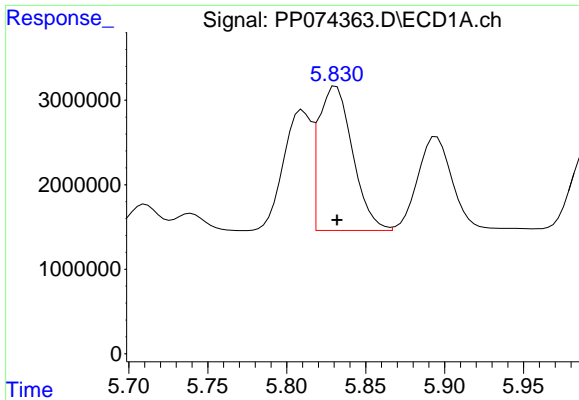
#16 AR-1242-1

R.T.: 5.810 min
 Delta R.T.: 0.000 min
 Response: 17522460
 Conc: 470.20 ng/ml



#16 AR-1242-1

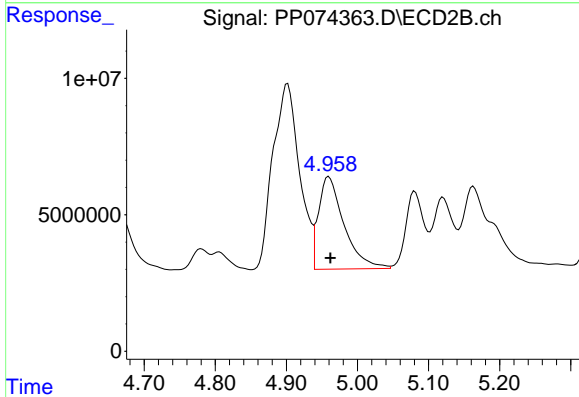
R.T.: 4.902 min
 Delta R.T.: -0.003 min
 Response: 177568715
 Conc: 514.48 ng/ml



#17 AR-1242-2

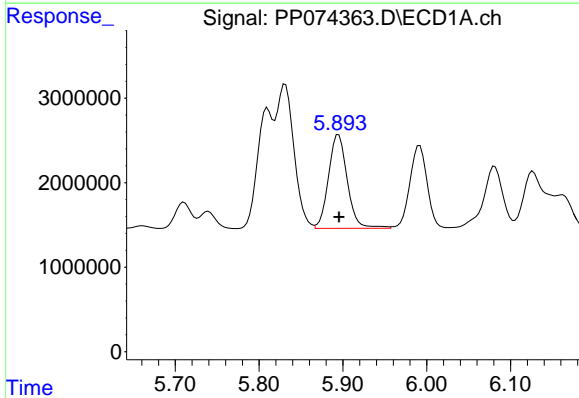
R.T.: 5.831 min
 Delta R.T.: 0.000 min
 Response: 25549368
 Conc: 469.58 ng/ml

Instrument :
 ECD_P
 ClientSampleId :
 AR1242CCC500



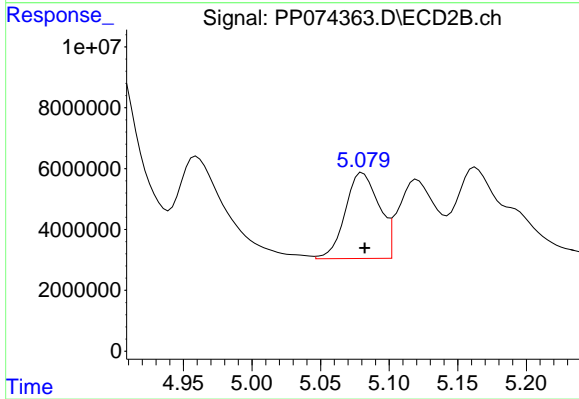
#17 AR-1242-2

R.T.: 4.960 min
 Delta R.T.: -0.002 min
 Response: 84454984
 Conc: 516.93 ng/ml



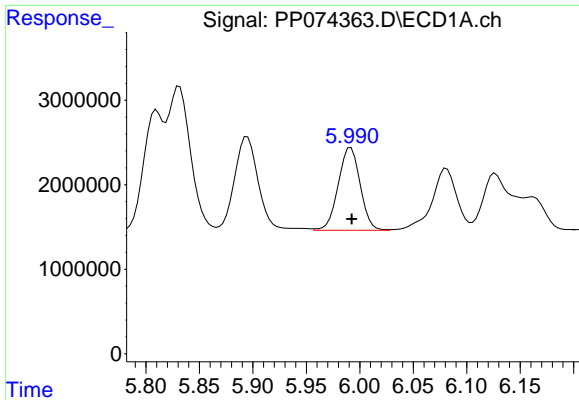
#18 AR-1242-3

R.T.: 5.895 min
 Delta R.T.: 0.000 min
 Response: 17255204
 Conc: 482.85 ng/ml



#18 AR-1242-3

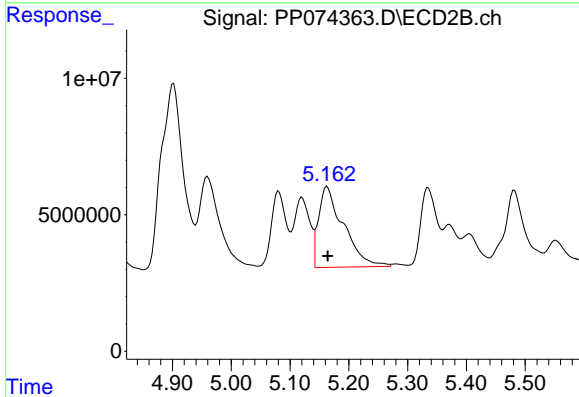
R.T.: 5.081 min
 Delta R.T.: -0.001 min
 Response: 48321200
 Conc: 523.82 ng/ml



#19 AR-1242-4

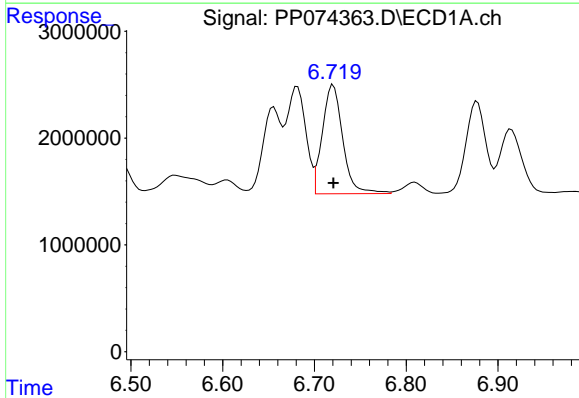
R.T.: 5.992 min
 Delta R.T.: 0.000 min
 Response: 14002068
 Conc: 479.22 ng/ml

Instrument :
 ECD_P
 ClientSampleId :
 AR1242CCC500



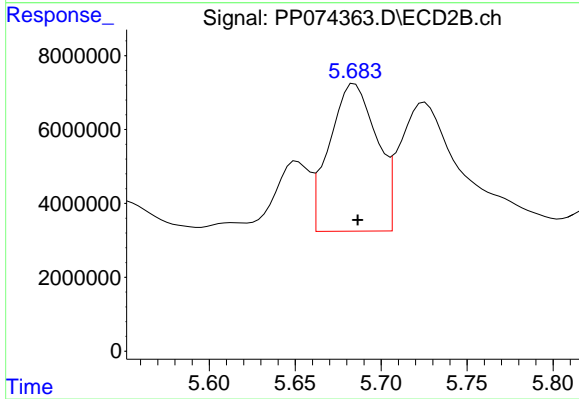
#19 AR-1242-4

R.T.: 5.163 min
 Delta R.T.: -0.001 min
 Response: 87525478
 Conc: 732.91 ng/ml



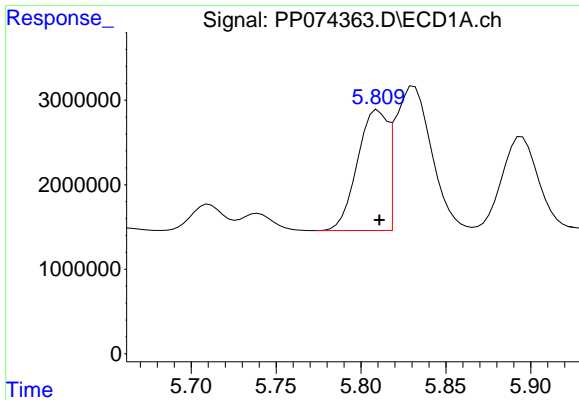
#20 AR-1242-5

R.T.: 6.721 min
 Delta R.T.: 0.000 min
 Response: 15754017
 Conc: 443.05 ng/ml



#20 AR-1242-5

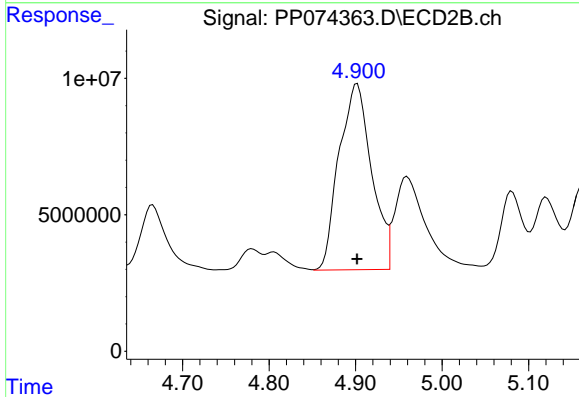
R.T.: 5.685 min
 Delta R.T.: -0.002 min
 Response: 76122604
 Conc: 508.98 ng/ml



#21 AR-1248-1

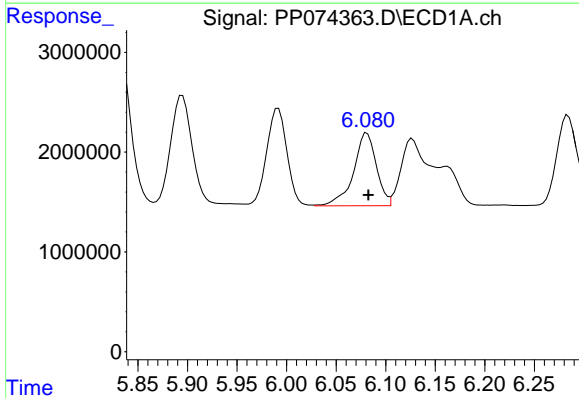
R.T.: 5.810 min
 Delta R.T.: 0.000 min
 Response: 17522460
 Conc: 625.48 ng/ml

Instrument :
 ECD_P
 ClientSampleId :
 AR1242CCC500



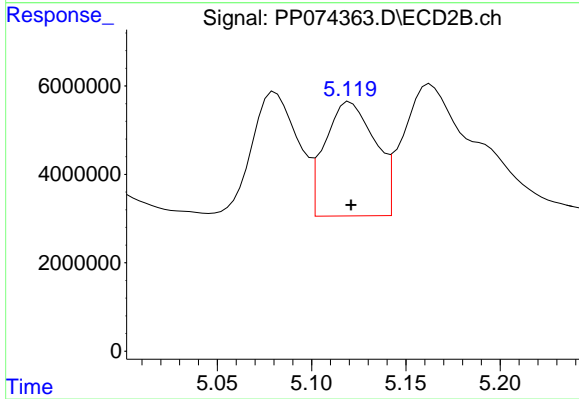
#21 AR-1248-1

R.T.: 4.902 min
 Delta R.T.: 0.000 min
 Response: 177568715
 Conc: 830.02 ng/ml



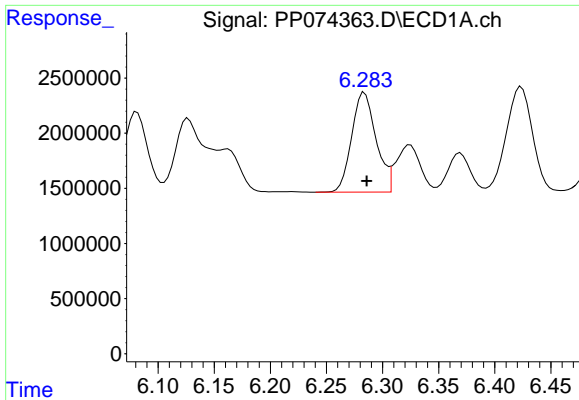
#22 AR-1248-2

R.T.: 6.081 min
 Delta R.T.: -0.002 min
 Response: 11739354
 Conc: 291.58 ng/ml



#22 AR-1248-2

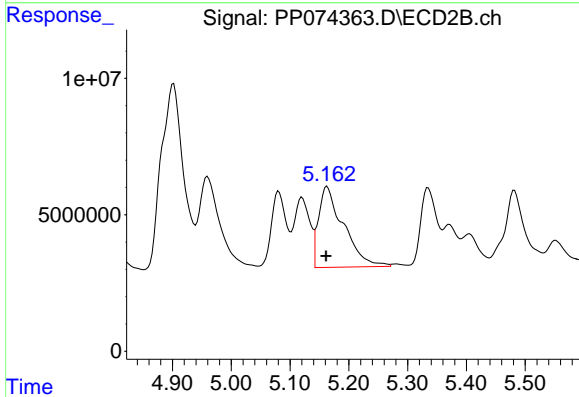
R.T.: 5.120 min
 Delta R.T.: 0.000 min
 Response: 47600086
 Conc: 325.33 ng/ml



#23 AR-1248-3

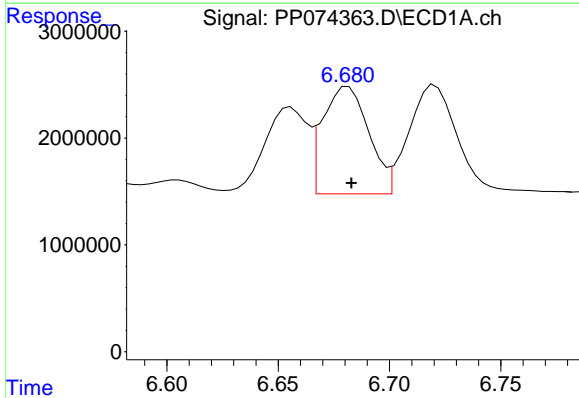
R.T.: 6.284 min
 Delta R.T.: -0.002 min
 Response: 13665184
 Conc: 306.58 ng/ml

Instrument :
 ECD_P
 ClientSampleId :
 AR1242CCC500



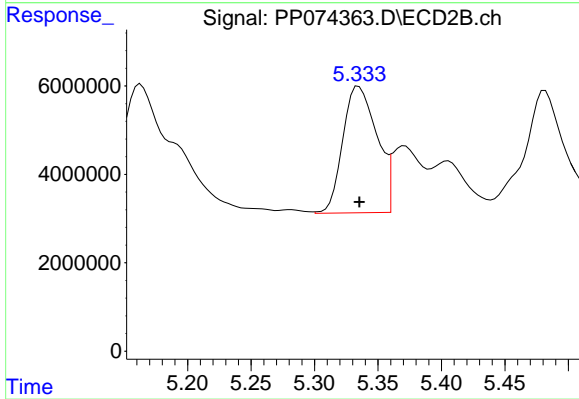
#23 AR-1248-3

R.T.: 5.163 min
 Delta R.T.: 0.002 min
 Response: 87525478
 Conc: 510.47 ng/ml



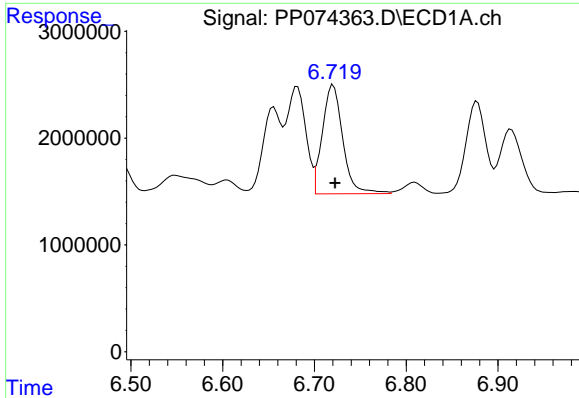
#24 AR-1248-4

R.T.: 6.682 min
 Delta R.T.: -0.001 min
 Response: 14485945
 Conc: 278.38 ng/ml



#24 AR-1248-4

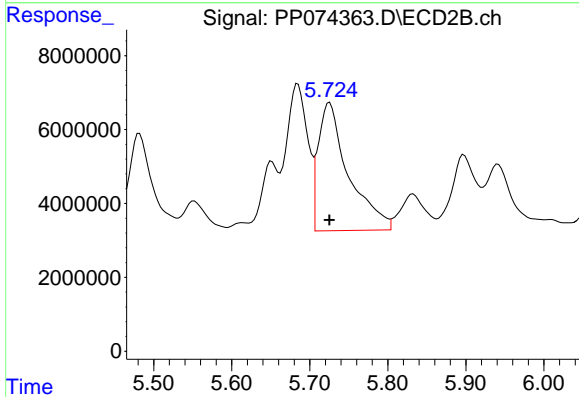
R.T.: 5.335 min
 Delta R.T.: 0.000 min
 Response: 53528912
 Conc: 321.74 ng/ml



#25 AR-1248-5

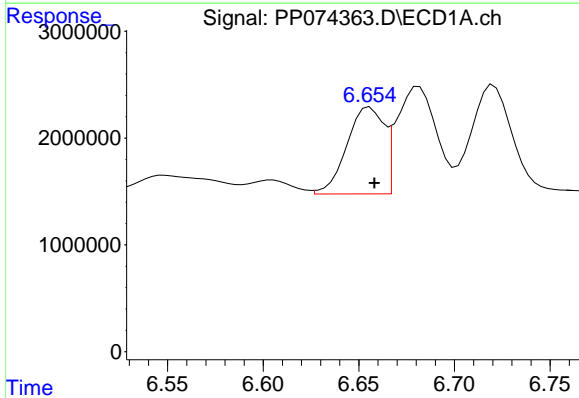
R.T.: 6.721 min
 Delta R.T.: -0.002 min
 Response: 15754017
 Conc: 276.66 ng/ml

Instrument :
 ECD_P
 ClientSampleId :
 AR1242CCC500



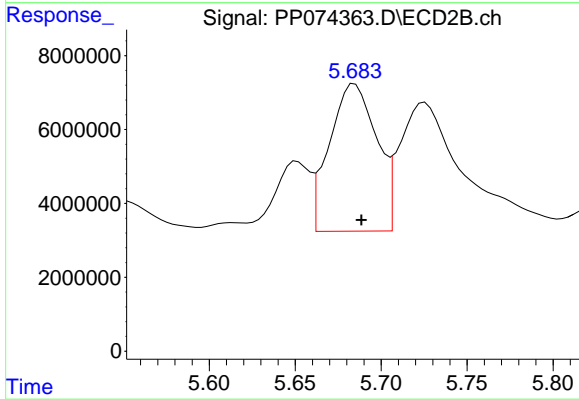
#25 AR-1248-5

R.T.: 5.726 min
 Delta R.T.: 0.000 min
 Response: 93458976
 Conc: 321.20 ng/ml



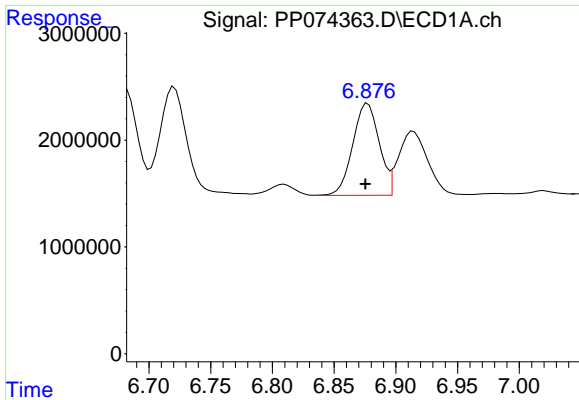
#26 AR-1254-1

R.T.: 6.656 min
 Delta R.T.: -0.002 min
 Response: 10950518
 Conc: 208.02 ng/ml



#26 AR-1254-1

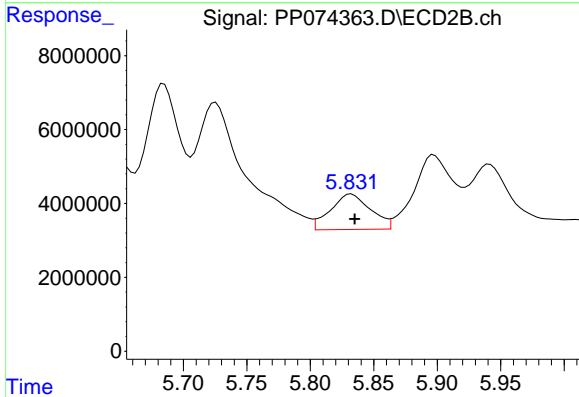
R.T.: 5.685 min
 Delta R.T.: -0.004 min
 Response: 76122604
 Conc: 207.88 ng/ml



#27 AR-1254-2

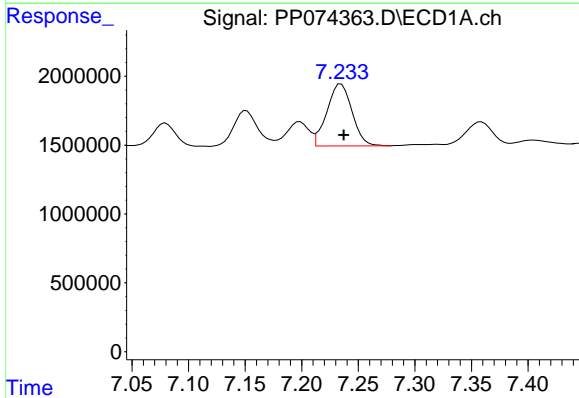
R.T.: 6.877 min
 Delta R.T.: 0.002 min
 Response: 12834473
 Conc: 161.43 ng/ml

Instrument :
 ECD_P
 ClientSampleId :
 AR1242CCC500



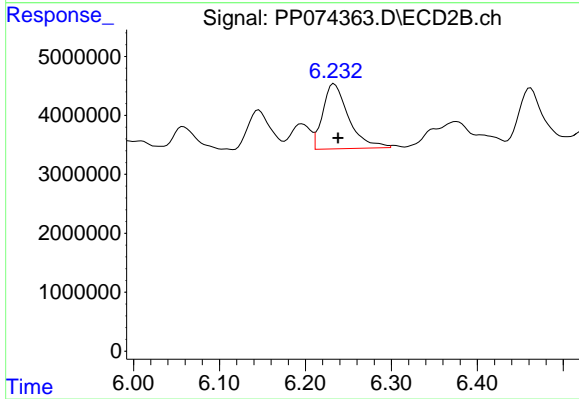
#27 AR-1254-2

R.T.: 5.832 min
 Delta R.T.: -0.003 min
 Response: 21023981
 Conc: 75.57 ng/ml



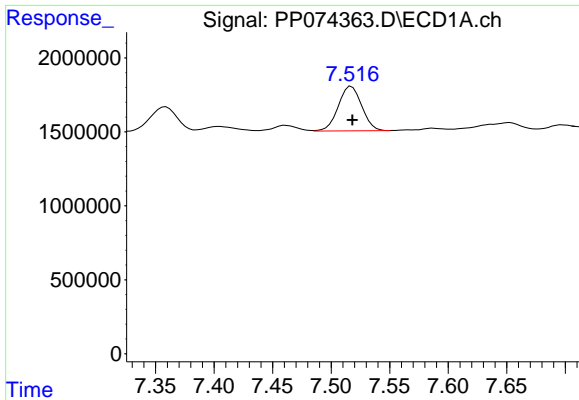
#28 AR-1254-3

R.T.: 7.235 min
 Delta R.T.: -0.002 min
 Response: 6971573
 Conc: 79.84 ng/ml



#28 AR-1254-3

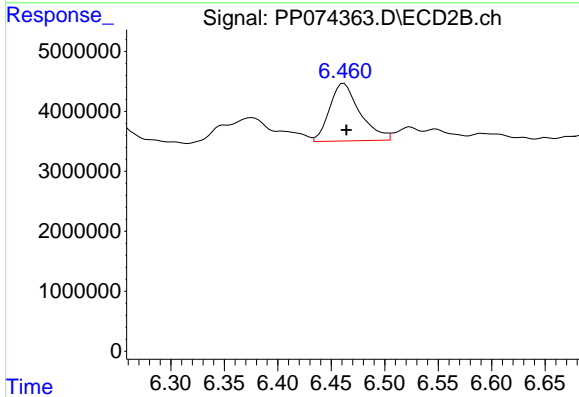
R.T.: 6.234 min
 Delta R.T.: -0.005 min
 Response: 23090518
 Conc: 47.20 ng/ml



#29 AR-1254-4

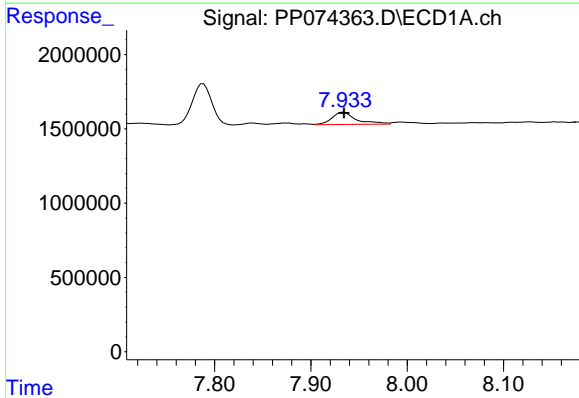
R.T.: 7.517 min
 Delta R.T.: -0.001 min
 Response: 4191118
 Conc: 65.68 ng/ml

Instrument :
 ECD_P
 ClientSampleId :
 AR1242CCC500



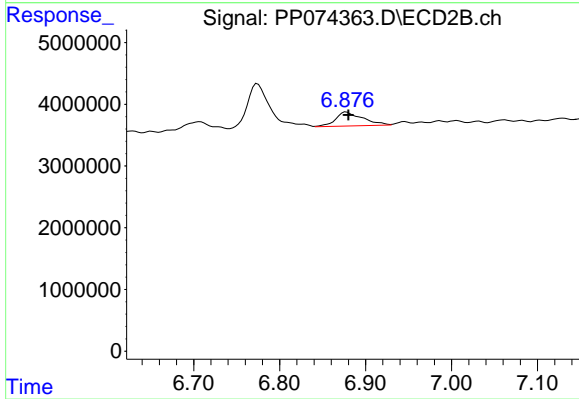
#29 AR-1254-4

R.T.: 6.462 min
 Delta R.T.: -0.002 min
 Response: 18916016
 Conc: 51.46 ng/ml



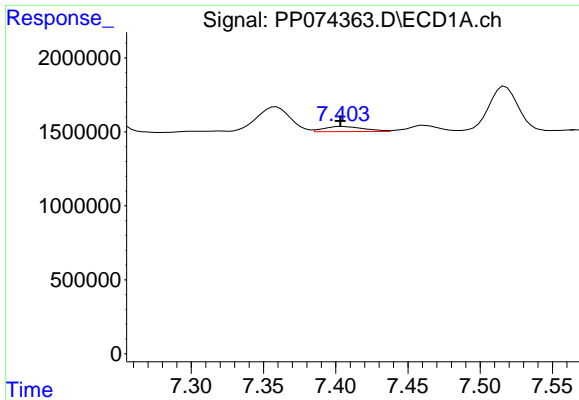
#30 AR-1254-5

R.T.: 7.934 min
 Delta R.T.: 0.000 min
 Response: 1439039
 Conc: 17.73 ng/ml



#30 AR-1254-5

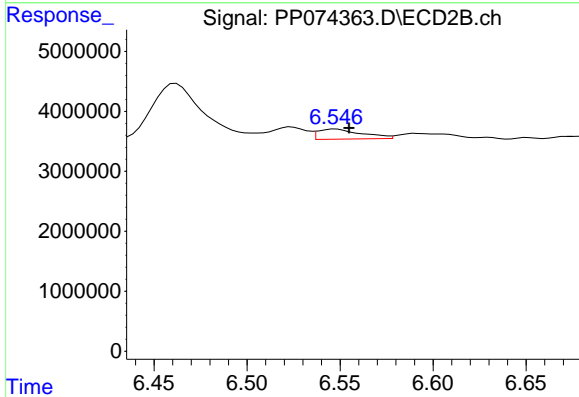
R.T.: 6.877 min
 Delta R.T.: -0.003 min
 Response: 4963294
 Conc: 12.89 ng/ml



#31 AR-1260-1

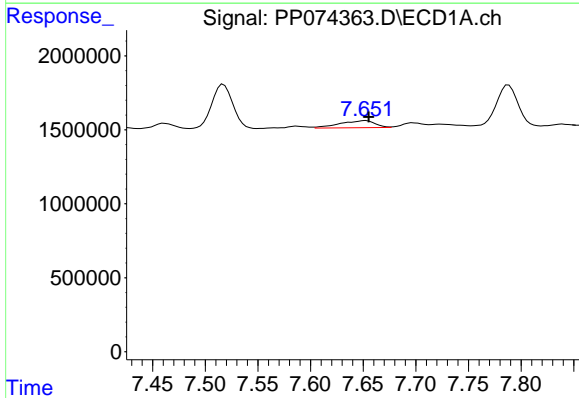
R.T.: 7.405 min
 Delta R.T.: 0.002 min
 Response: 674591
 Conc: 11.97 ng/ml

Instrument :
 ECD_P
 ClientSampleId :
 AR1242CCC500



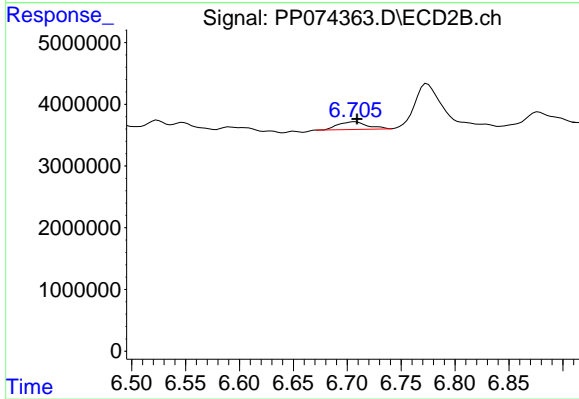
#31 AR-1260-1

R.T.: 6.548 min
 Delta R.T.: -0.007 min
 Response: 2753397
 Conc: 6.82 ng/ml



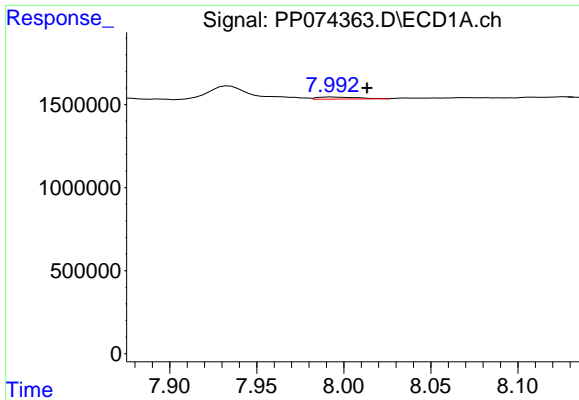
#32 AR-1260-2

R.T.: 7.652 min
 Delta R.T.: -0.003 min
 Response: 1116647
 Conc: 16.38 ng/ml



#32 AR-1260-2

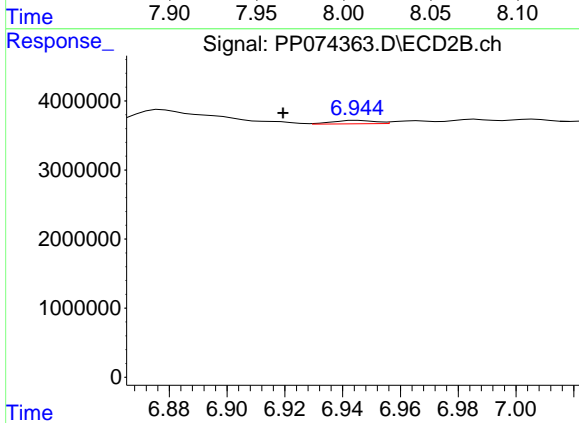
R.T.: 6.707 min
 Delta R.T.: -0.002 min
 Response: 2338537
 Conc: 7.48 ng/ml



#33 AR-1260-3

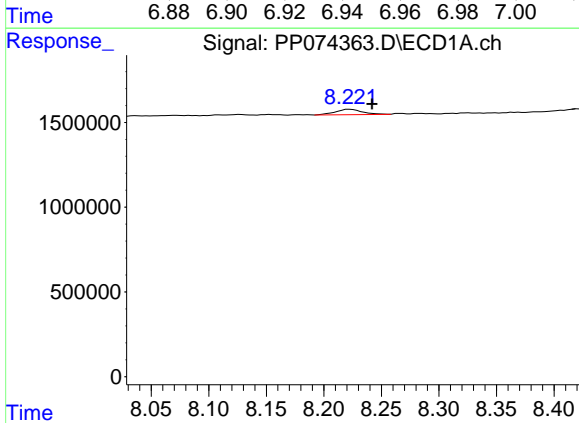
R.T.: 7.994 min
 Delta R.T.: -0.020 min
 Response: 196623
 Conc: 3.69 ng/ml

Instrument :
 ECD_P
 ClientSampleId :
 AR1242CCC500



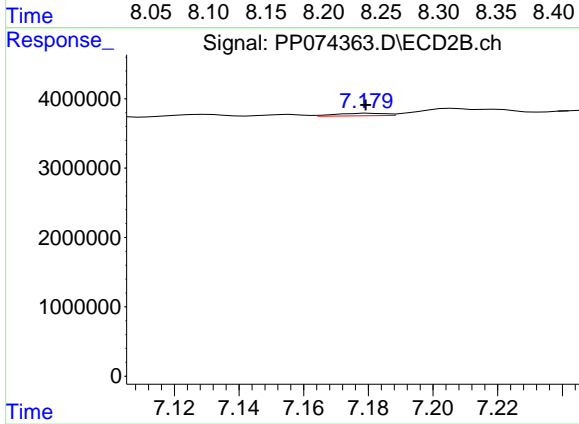
#33 AR-1260-3

R.T.: 6.945 min
 Delta R.T.: 0.026 min
 Response: 507540
 Conc: 1.29 ng/ml



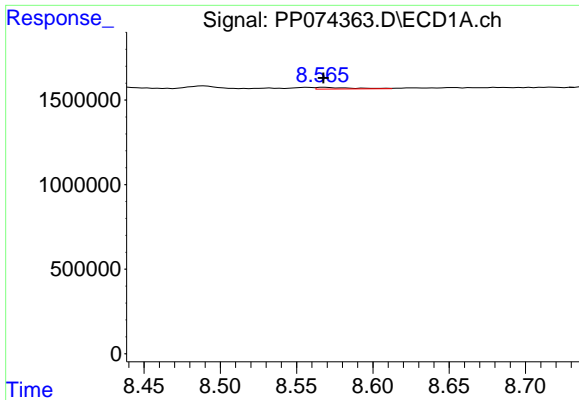
#34 AR-1260-4

R.T.: 8.223 min
 Delta R.T.: -0.019 min
 Response: 522981
 Conc: 8.35 ng/ml



#34 AR-1260-4

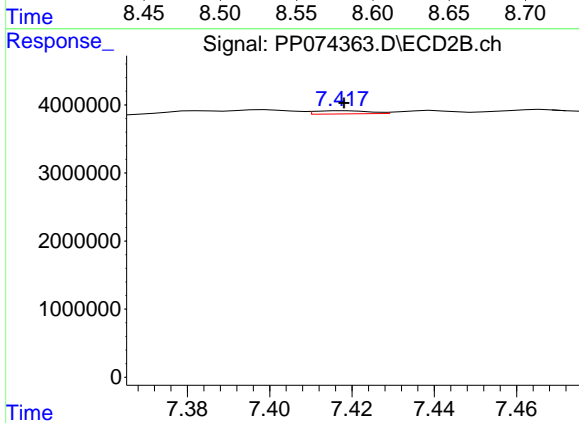
R.T.: 7.180 min
 Delta R.T.: 0.000 min
 Response: 384607
 Conc: 1.32 ng/ml



#35 AR-1260-5

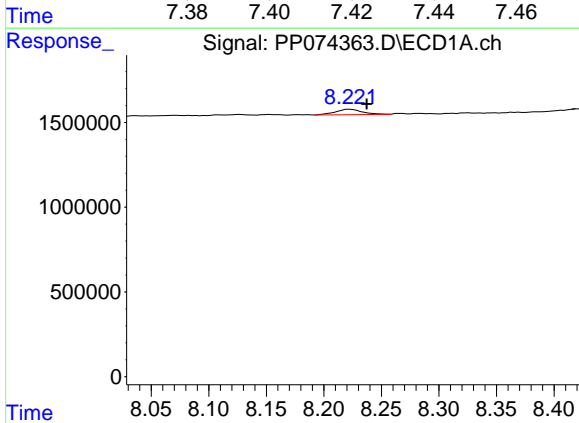
R.T.: 8.568 min
 Delta R.T.: 0.000 min
 Response: 168373
 Conc: 1.49 ng/ml

Instrument :
 ECD_P
 ClientSampleId :
 AR1242CCC500



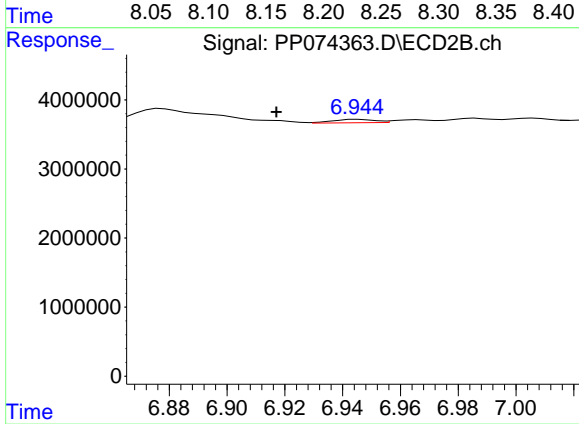
#35 AR-1260-5

R.T.: 7.418 min
 Delta R.T.: 0.000 min
 Response: 441340
 Conc: 0.58 ng/ml



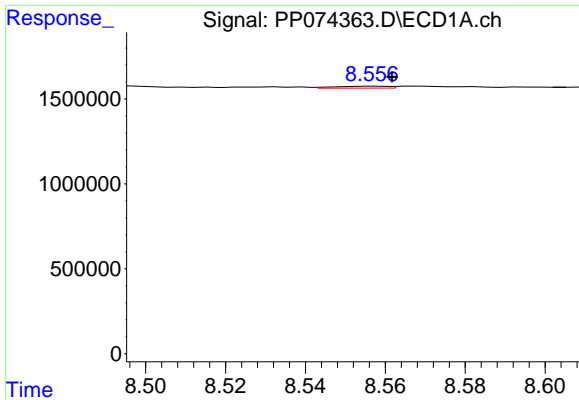
#36 AR-1262-1

R.T.: 8.223 min
 Delta R.T.: -0.015 min
 Response: 522981
 Conc: 6.90 ng/ml



#36 AR-1262-1

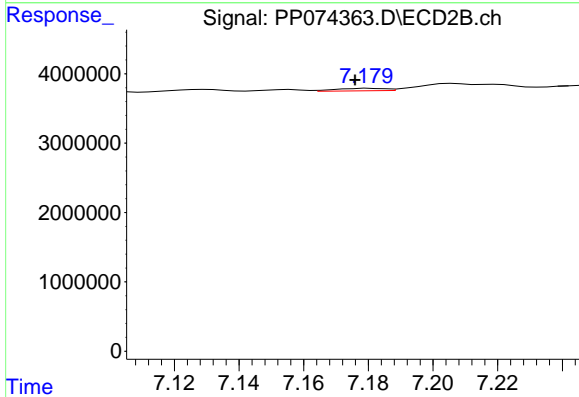
R.T.: 6.945 min
 Delta R.T.: 0.028 min
 Response: 507540
 Conc: 0.90 ng/ml



#37 AR-1262-2

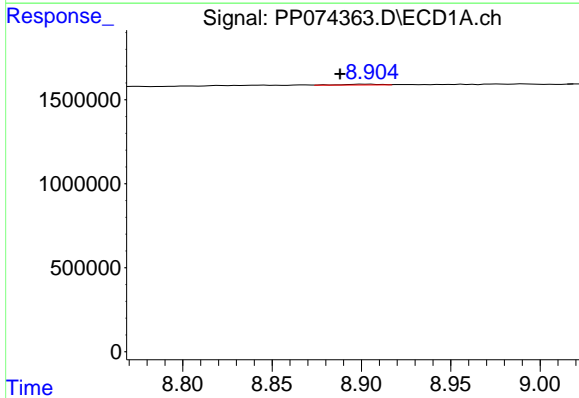
R.T.: 8.557 min
 Delta R.T.: -0.004 min
 Response: 104525
 Conc: 0.80 ng/ml

Instrument :
 ECD_P
 ClientSampleId :
 AR1242CCC500



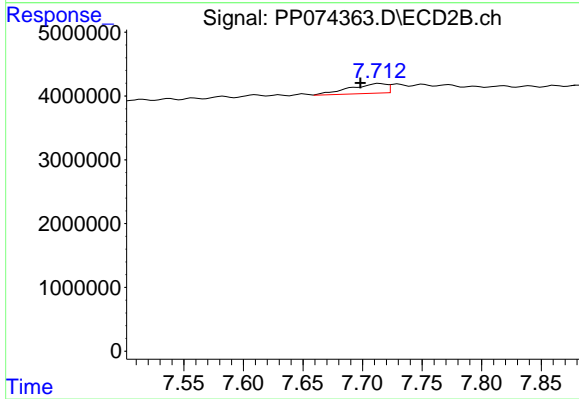
#37 AR-1262-2

R.T.: 7.180 min
 Delta R.T.: 0.004 min
 Response: 384607
 Conc: 0.96 ng/ml



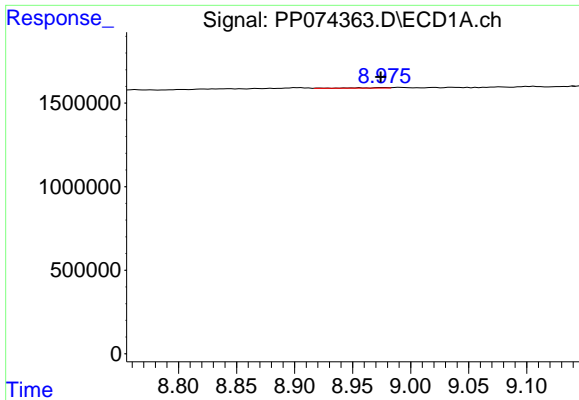
#38 AR-1262-3

R.T.: 8.901 min
 Delta R.T.: 0.013 min
 Response: 68566
 Conc: 0.73 ng/ml



#38 AR-1262-3

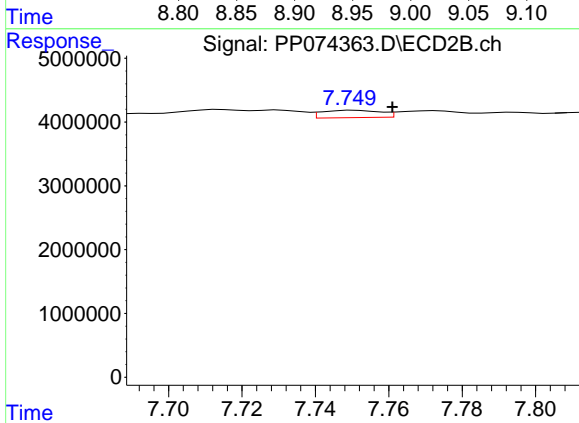
R.T.: 7.714 min
 Delta R.T.: 0.016 min
 Response: 3291196
 Conc: 9.16 ng/ml



#39 AR-1262-4

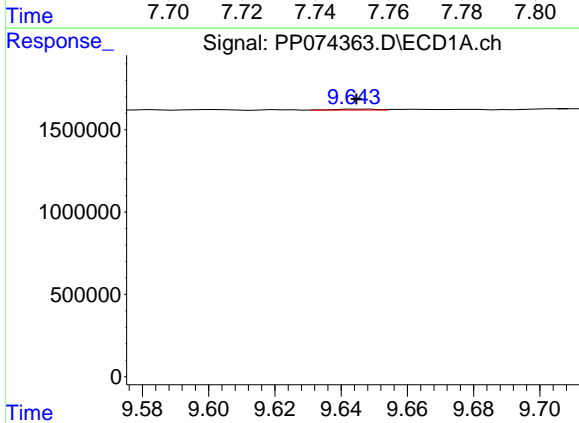
R.T.: 8.976 min
 Delta R.T.: 0.002 min
 Response: 74998
 Conc: 1.03 ng/ml

Instrument :
 ECD_P
 ClientSampleId :
 AR1242CCC500



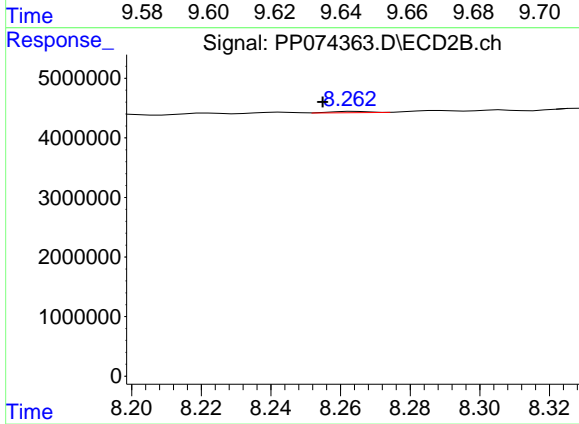
#39 AR-1262-4

R.T.: 7.751 min
 Delta R.T.: -0.010 min
 Response: 1273309
 Conc: 1.91 ng/ml



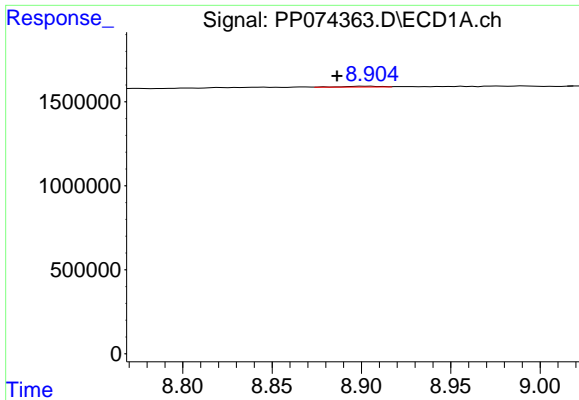
#40 AR-1262-5

R.T.: 9.646 min
 Delta R.T.: 0.001 min
 Response: 49457
 Conc: 0.97 ng/ml



#40 AR-1262-5

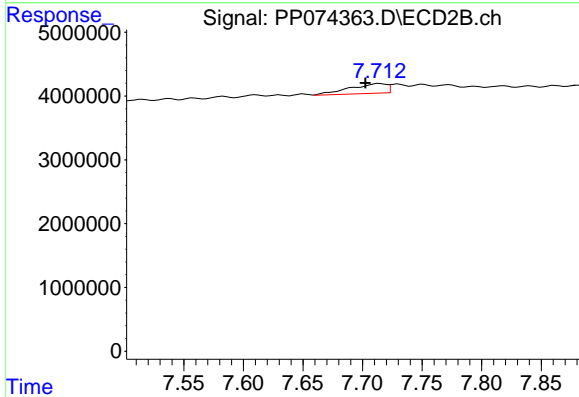
R.T.: 8.264 min
 Delta R.T.: 0.010 min
 Response: 170799
 Conc: 0.60 ng/ml



#41 AR-1268-1

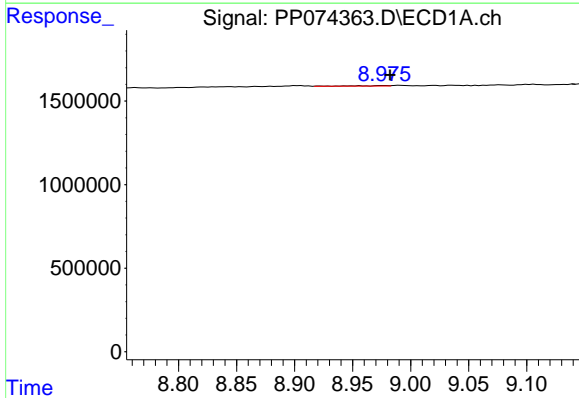
R.T.: 8.901 min
 Delta R.T.: 0.014 min
 Response: 68566
 Conc: 0.44 ng/ml

Instrument :
 ECD_P
 ClientSampleId :
 AR1242CCC500



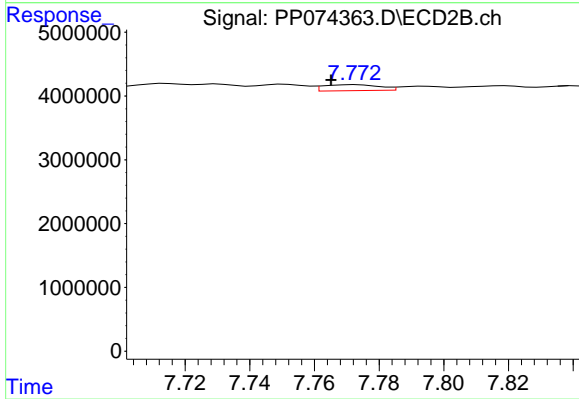
#41 AR-1268-1

R.T.: 7.714 min
 Delta R.T.: 0.012 min
 Response: 3291196
 Conc: 3.02 ng/ml



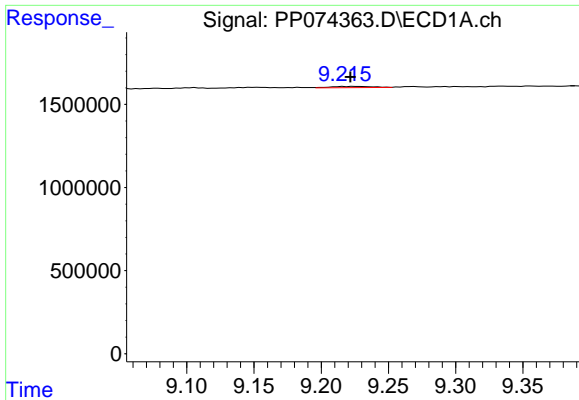
#42 AR-1268-2

R.T.: 8.976 min
 Delta R.T.: -0.006 min
 Response: 74998
 Conc: 0.52 ng/ml



#42 AR-1268-2

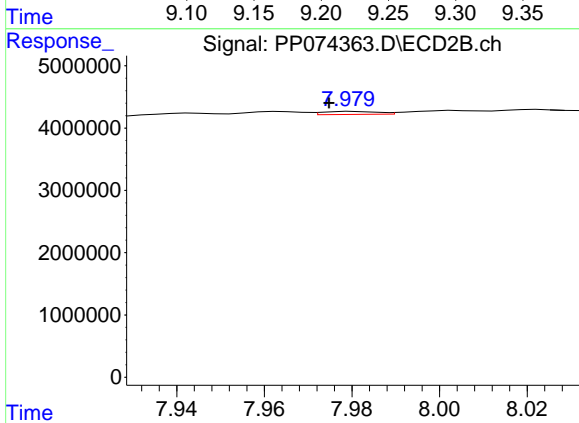
R.T.: 7.773 min
 Delta R.T.: 0.008 min
 Response: 1132535
 Conc: 1.07 ng/ml



#43 AR-1268-3

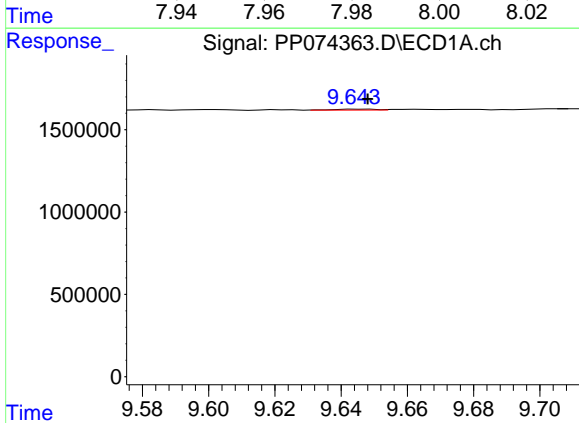
R.T.: 9.217 min
 Delta R.T.: -0.005 min
 Response: 153747
 Conc: 1.29 ng/ml

Instrument :
 ECD_P
 ClientSampleId :
 AR1242CCC500



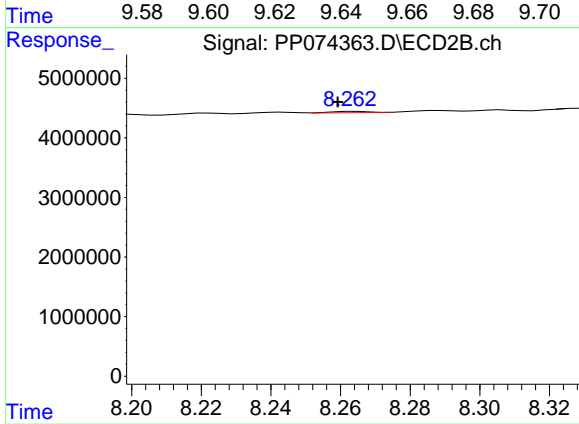
#43 AR-1268-3

R.T.: 7.980 min
 Delta R.T.: 0.005 min
 Response: 418111
 Conc: 0.50 ng/ml



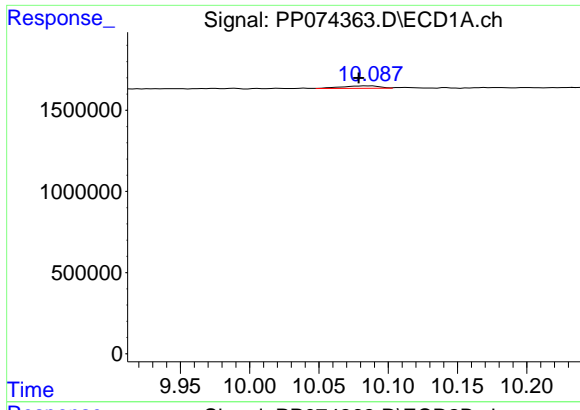
#44 AR-1268-4

R.T.: 9.646 min
 Delta R.T.: -0.002 min
 Response: 49457
 Conc: 0.84 ng/ml



#44 AR-1268-4

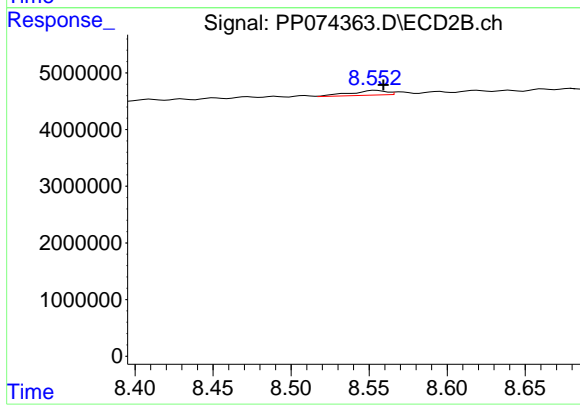
R.T.: 8.264 min
 Delta R.T.: 0.005 min
 Response: 170799
 Conc: 0.55 ng/ml



#45 AR-1268-5

R.T.: 10.087 min
Delta R.T.: 0.008 min
Response: 295291
Conc: 0.84 ng/ml

Instrument :
ECD_P
ClientSampleId :
AR1242CCC500



#45 AR-1268-5

R.T.: 8.554 min
Delta R.T.: -0.005 min
Response: 1353608
Conc: 0.53 ng/ml