

Data Path : Z:\pestpcbsrv\HPCHEM1\ECD_P\Data\PP081325\
 Data File : PP074364.D
 Signal(s) : Signal #1: ECD1A.ch Signal #2: ECD2B.ch
 Acq On : 13 Aug 2025 21:35
 Operator : YP\AJ
 Sample : AR1254CCC500
 Misc :
 ALS Vial : 5 Sample Multiplier: 1

Instrument :
 ECD_P
 ClientSampleId :
 AR1254CCC500

Integration File signal 1: autoint1.e
 Integration File signal 2: autoint2.e
 Quant Time: Aug 14 00:02:48 2025
 Quant Method : Z:\pestpcbsrv\HPCHEM1\ECD_P\methods\PP080125.M
 Quant Title : GC EXTRACTABLES
 QLast Update : Mon Aug 04 11:01:49 2025
 Response via : Initial Calibration
 Integrator: ChemStation

Volume Inj. : 2 µl
 Signal #1 Phase : ZB-MR1 Signal #2 Phase: ZB-MR2
 Signal #1 Info : 30Mx0.32mmx 0.50µ Signal #2 Info : 30M x 0.32mm x 0.25µm

Compound	RT#1	RT#2	Resp#1	Resp#2	ng/ml	ng/ml
System Monitoring Compounds						
1) SA Tetrachlo...	4.658	3.802	58476544	218.2E6	52.290	56.909
2) SA Decachlor...	10.436	8.820	46808113	312.6E6	48.198	51.975
Target Compounds						
3) L1 AR-1016-1	5.808	4.899	827210	2817356	20.050	7.063 #
4) L1 AR-1016-2	5.833	4.958	1024426	1225375	16.865	6.525 #
5) L1 AR-1016-3	5.895	5.083	842819	955624	21.251	9.009 #
6) L1 AR-1016-4	5.989	5.120	630765	65743815	19.382	601.939 #
7) L1 AR-1016-5	6.283	5.333	9594255	42740189	295.498	365.416
8) L2 AR-1221-1	0.000	4.014	0	598636	N.D.	12.196 #
9) L2 AR-1221-2	4.959	4.098	1114450	2898626	88.441	80.766
10) L2 AR-1221-3	5.018	4.181	234243	948914	6.394	7.017
11) L3 AR-1232-1	5.018	4.181	234243	948914	8.067	9.362
12) L3 AR-1232-2	5.544	4.899	343137	2817356	22.811	16.167 #
13) L3 AR-1232-3	5.833	5.083	1024426	955624	35.323	20.858 #
14) L3 AR-1232-4	5.989	5.158	630765	31667322	40.777	545.888 #
15) L3 AR-1232-5	6.080	5.333	15393543	42740189	1313.889	909.763 #
16) L4 AR-1242-1	5.808	4.899	827210	2817356	22.198	8.163 #
17) L4 AR-1242-2	5.833	4.958	1024426	1225375	18.828	7.500 #
18) L4 AR-1242-3	5.895	5.083	842819	955624	23.585	10.359 #
19) L4 AR-1242-4	5.989	5.158	630765	31667322	21.588	265.172 #
20) L4 AR-1242-5	6.725	5.685	9893984	205.0E6	278.249	1370.886 #
21) L5 AR-1248-1	5.808	4.899	827210	2817356	29.528	13.169 #
22) L5 AR-1248-2	6.080	5.120	15393543	65743815	382.343	449.338
23) L5 AR-1248-3	6.283	5.158	9594255	31667322	215.245	184.692
24) L5 AR-1248-4	6.658	5.333	39589761	42740189	760.798	256.893 #
25) L5 AR-1248-5	6.725	5.685	9893984	205.0E6	173.752	704.652 #
26) L6 AR-1254-1	6.658	5.685	39589761	205.0E6	752.070	559.912 #
27) L6 AR-1254-2	6.874	5.833	38630359	155.9E6	485.889	560.334
28) L6 AR-1254-3	7.236	6.234	41266596	280.2E6	472.611	572.732
29) L6 AR-1254-4	7.517	6.461	30962834	204.8E6	485.239	557.109
30) L6 AR-1254-5	7.933	6.878	38925207	210.9E6	479.701	547.680
31) L7 AR-1260-1	7.401	6.551	17824657	123.1E6	316.286	304.677
32) L7 AR-1260-2	7.653	6.704	19518465	88117156	286.395	281.796
33) L7 AR-1260-3	7.994	6.943	4852213	26429165	91.043	67.059 #
34) L7 AR-1260-4	8.222	7.174	14532726	6336136	232.097	21.775 #
35) L7 AR-1260-5	8.564	7.409	5283947	36183732	46.635	47.773
36) L8 AR-1262-1	8.222	6.943	14532726	26429165	191.751	46.932 #
37) L8 AR-1262-2	8.564	7.174	5283947	6336136	40.512	15.800 #
38) L8 AR-1262-3	8.900	7.697	4478327	1107165	47.606	3.080 #
39) L8 AR-1262-4	8.948	7.757	1028773	21059520	14.121	31.577 #
40) L8 AR-1262-5	9.649	8.248	328605	460740	6.453	1.627 #
41) L9 AR-1268-1	8.900	7.697	4478327	1107165	28.775	1.016 #

Data Path : Z:\pestpcbsrv\HPCHEM1\ECD_P\Data\PP081325\
 Data File : PP074364.D
 Signal(s) : Signal #1: ECD1A.ch Signal #2: ECD2B.ch
 Acq On : 13 Aug 2025 21:35
 Operator : YP\AJ
 Sample : AR1254CCC500
 Misc :
 ALS Vial : 5 Sample Multiplier: 1

Instrument :
 ECD_P
ClientSampleId :
 AR1254CCC500

Integration File signal 1: autoint1.e
 Integration File signal 2: autoint2.e
 Quant Time: Aug 14 00:02:48 2025
 Quant Method : Z:\pestpcbsrv\HPCHEM1\ECD_P\methods\PP080125.M
 Quant Title : GC EXTRACTABLES
 QLast Update : Mon Aug 04 11:01:49 2025
 Response via : Initial Calibration
 Integrator: ChemStation

Volume Inj. : 2 µl
 Signal #1 Phase : ZB-MR1 Signal #2 Phase: ZB-MR2
 Signal #1 Info : 30Mx0.32mmx 0.50µ Signal #2 Info : 30M x 0.32mm x 0.25µm

	Compound	RT#1	RT#2	Resp#1	Resp#2	ng/ml	ng/ml
42)	L9 AR-1268-2	8.948	7.757	1028773	21059520	7.173	19.843 #
43)	L9 AR-1268-3	9.220	7.976	150465	732032	1.259	0.880 #
44)	L9 AR-1268-4	9.649	8.266	328605	637027	5.587	2.068 #
45)	L9 AR-1268-5	10.082	8.560	397911	891011	1.131	0.349 #

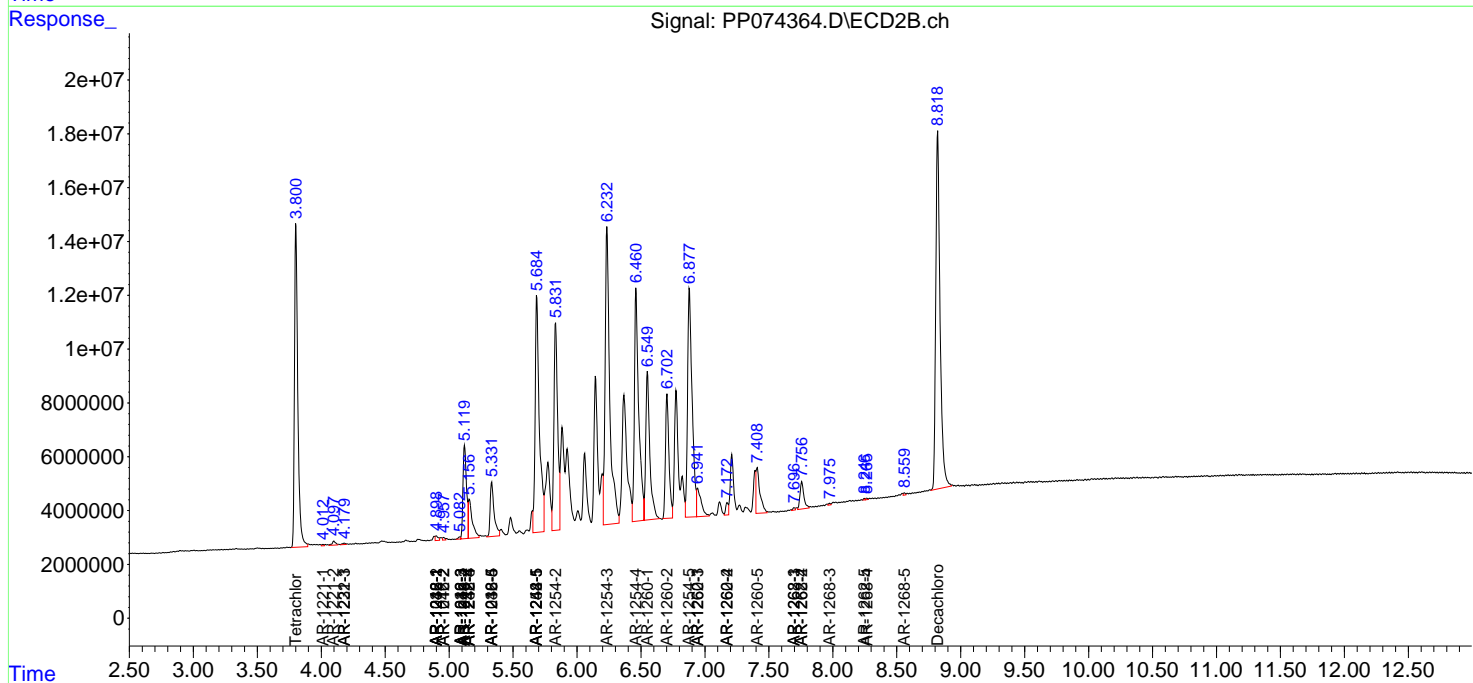
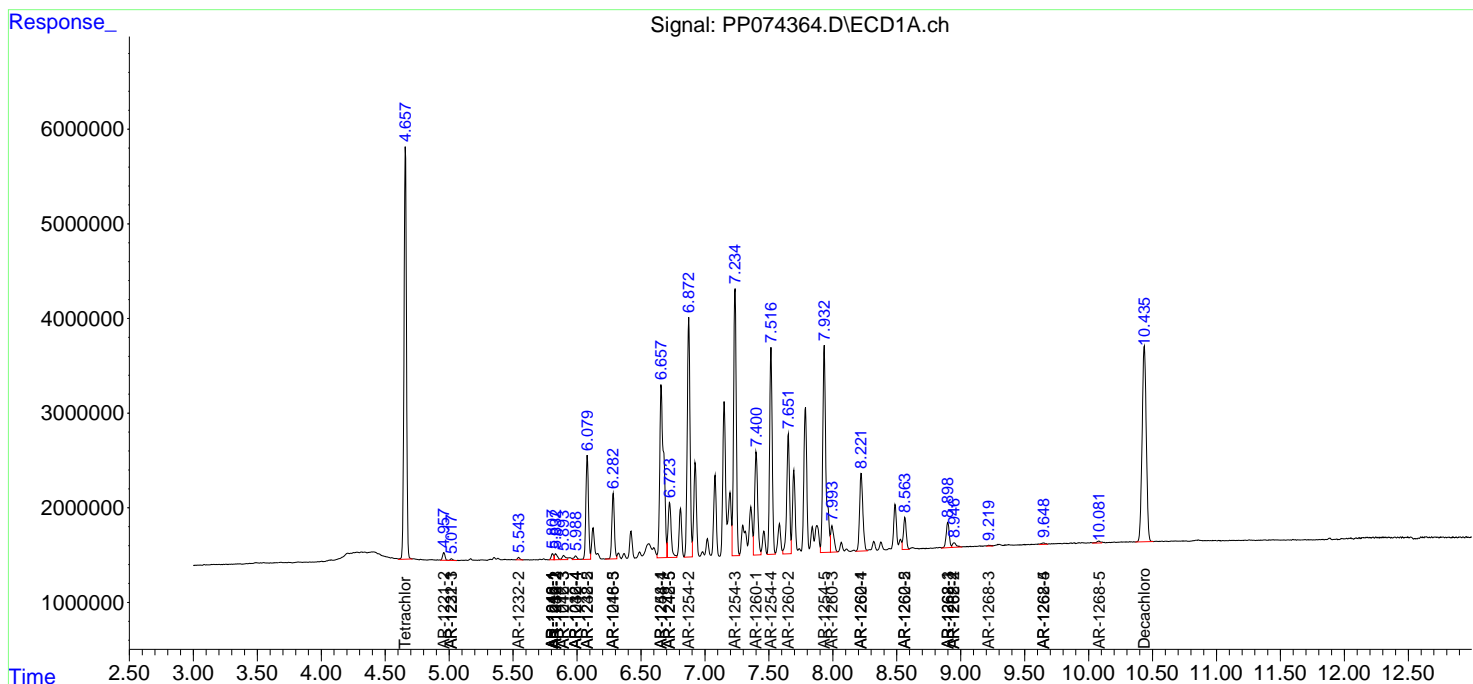
(f)=RT Delta > 1/2 Window (#)=Amounts differ by > 25% (m)=manual int.

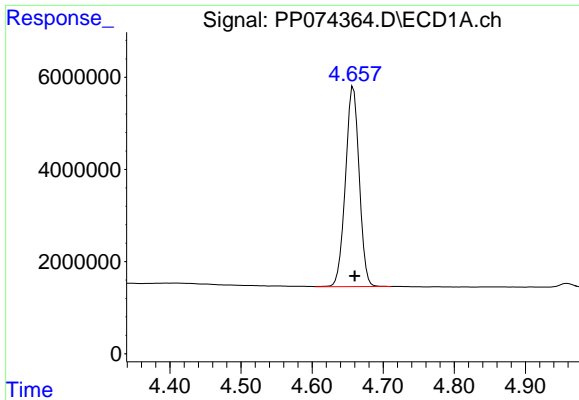
Data Path : Z:\pestpcbsrv\HPCHEM1\ECD_P\Data\PP081325\
 Data File : PP074364.D
 Signal(s) : Signal #1: ECD1A.ch Signal #2: ECD2B.ch
 Acq On : 13 Aug 2025 21:35
 Operator : YP\AJ
 Sample : AR1254CCC500
 Misc :
 ALS Vial : 5 Sample Multiplier: 1

Instrument :
 ECD_P
 ClientSampleId :
 AR1254CCC500

Integration File signal 1: autoint1.e
 Integration File signal 2: autoint2.e
 Quant Time: Aug 14 00:02:48 2025
 Quant Method : Z:\pestpcbsrv\HPCHEM1\ECD_P\methods\PP080125.M
 Quant Title : GC EXTRACTABLES
 QLast Update : Mon Aug 04 11:01:49 2025
 Response via : Initial Calibration
 Integrator: ChemStation

Volume Inj. : 2 µl
 Signal #1 Phase : ZB-MR1 Signal #2 Phase: ZB-MR2
 Signal #1 Info : 30Mx0.32mmx 0.50µ Signal #2 Info : 30M x 0.32mm x 0.25µm

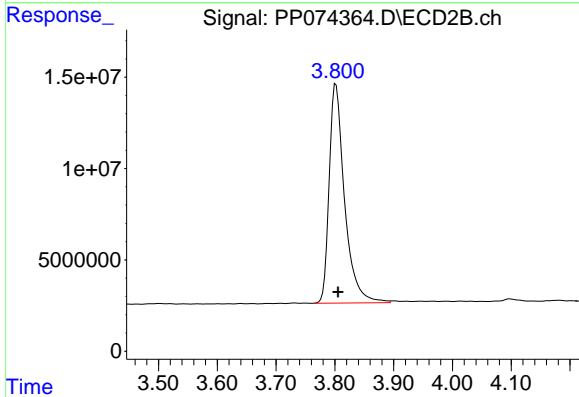




#1 Tetrachloro-m-xylene

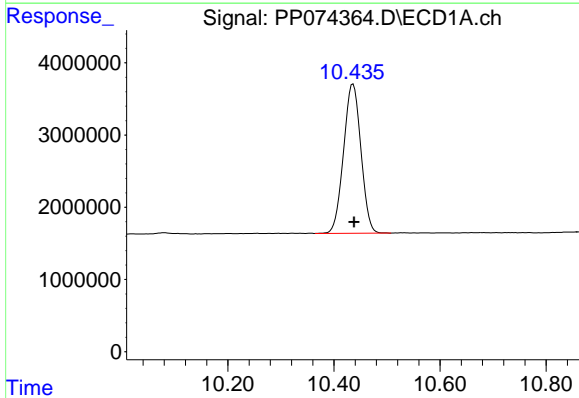
R.T.: 4.658 min
Delta R.T.: -0.002 min
Response: 58476544
Conc: 52.29 ng/ml

Instrument :
ECD_P
ClientSampleId :
AR1254CCC500



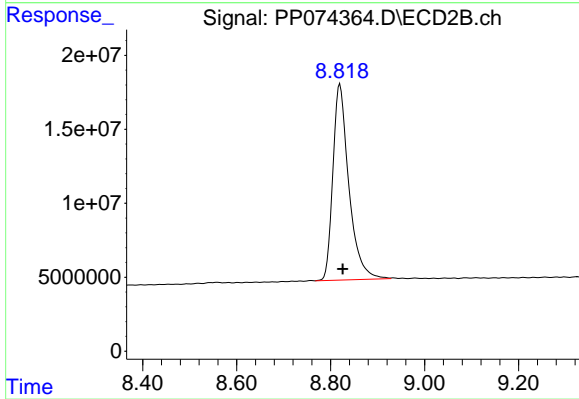
#1 Tetrachloro-m-xylene

R.T.: 3.802 min
Delta R.T.: -0.003 min
Response: 218212858
Conc: 56.91 ng/ml



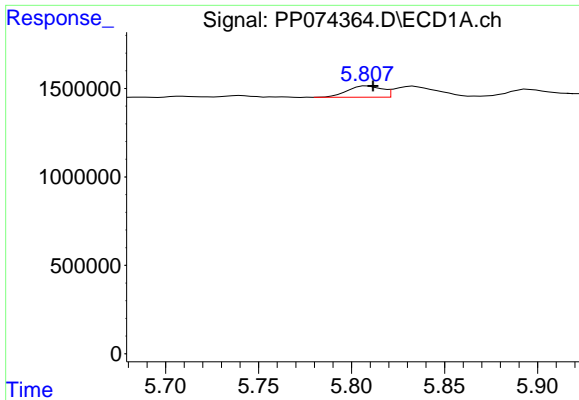
#2 Decachlorobiphenyl

R.T.: 10.436 min
Delta R.T.: -0.002 min
Response: 46808113
Conc: 48.20 ng/ml



#2 Decachlorobiphenyl

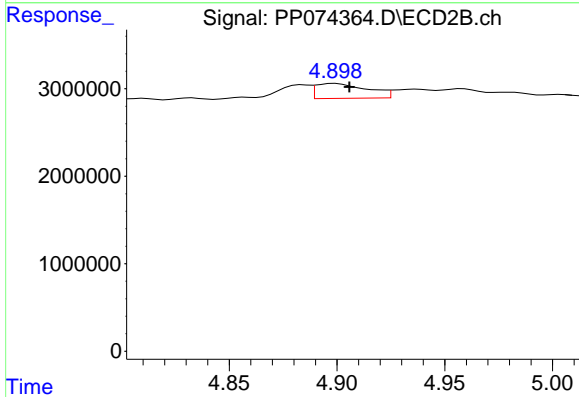
R.T.: 8.820 min
Delta R.T.: -0.006 min
Response: 312559399
Conc: 51.98 ng/ml



#3 AR-1016-1

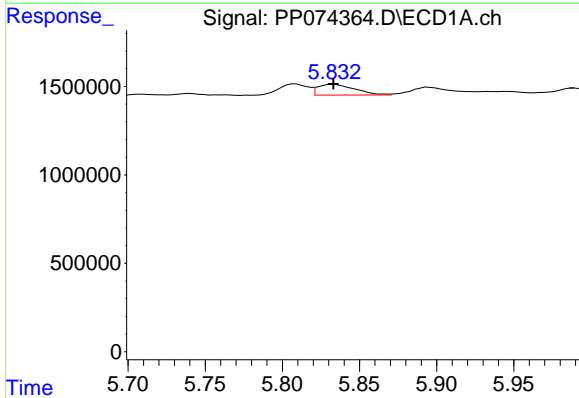
R.T.: 5.808 min
Delta R.T.: -0.003 min
Response: 827210
Conc: 20.05 ng/ml

Instrument :
ECD_P
ClientSampleId :
AR1254CCC500



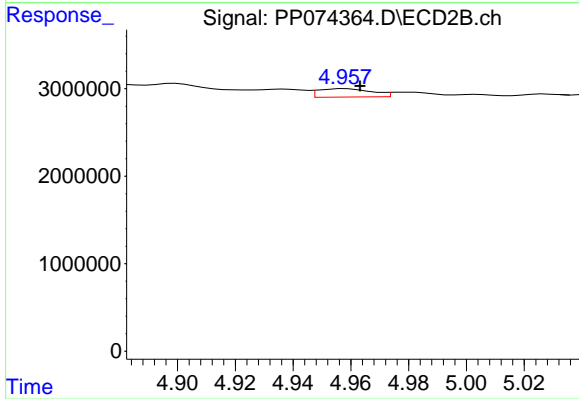
#3 AR-1016-1

R.T.: 4.899 min
Delta R.T.: -0.006 min
Response: 2817356
Conc: 7.06 ng/ml



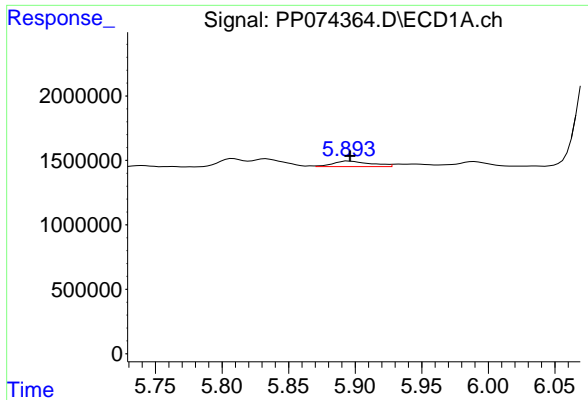
#4 AR-1016-2

R.T.: 5.833 min
Delta R.T.: 0.000 min
Response: 1024426
Conc: 16.87 ng/ml



#4 AR-1016-2

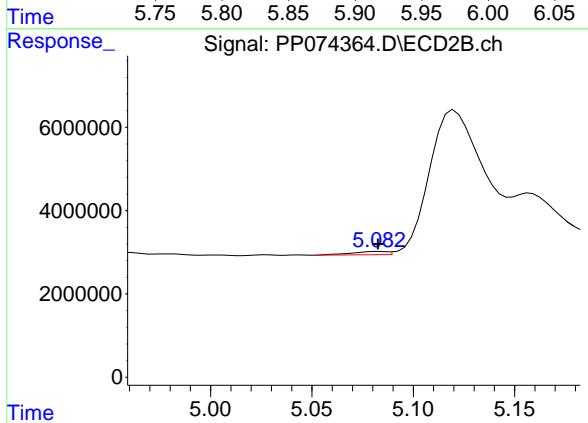
R.T.: 4.958 min
Delta R.T.: -0.005 min
Response: 1225375
Conc: 6.52 ng/ml



#5 AR-1016-3

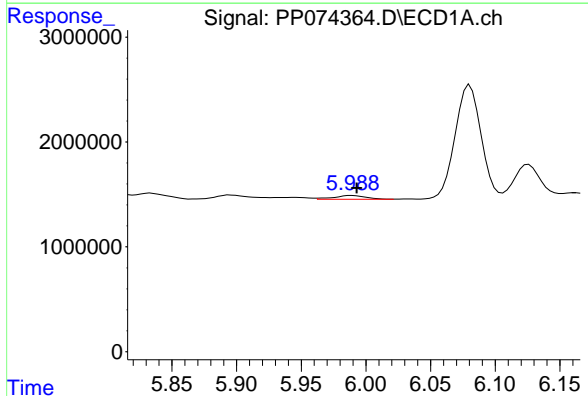
R.T.: 5.895 min
 Delta R.T.: -0.002 min
 Response: 842819
 Conc: 21.25 ng/ml

Instrument :
 ECD_P
 ClientSampleId :
 AR1254CCC500



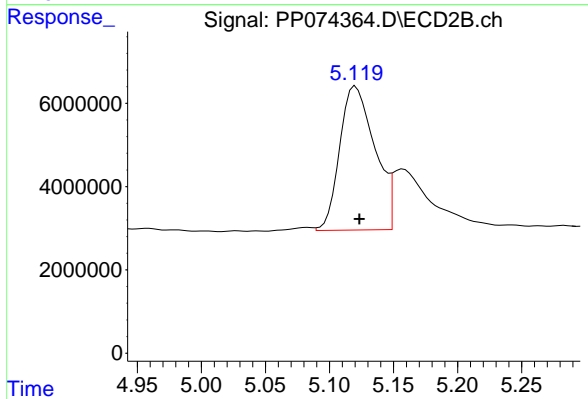
#5 AR-1016-3

R.T.: 5.083 min
 Delta R.T.: 0.000 min
 Response: 955624
 Conc: 9.01 ng/ml



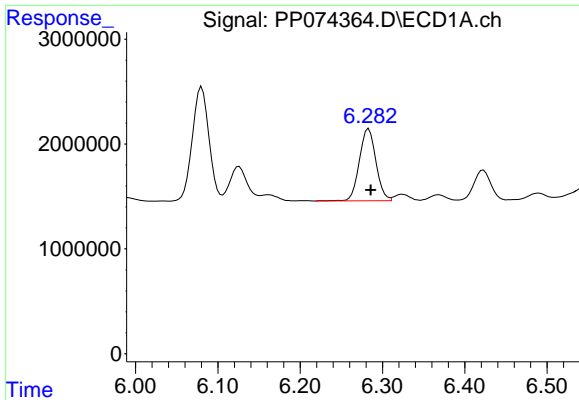
#6 AR-1016-4

R.T.: 5.989 min
 Delta R.T.: -0.004 min
 Response: 630765
 Conc: 19.38 ng/ml



#6 AR-1016-4

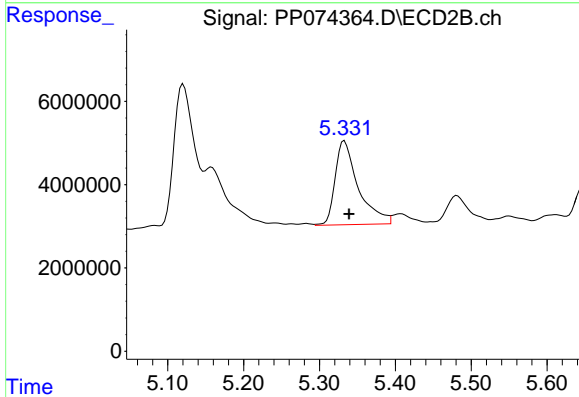
R.T.: 5.120 min
 Delta R.T.: -0.003 min
 Response: 65743815
 Conc: 601.94 ng/ml



#7 AR-1016-5

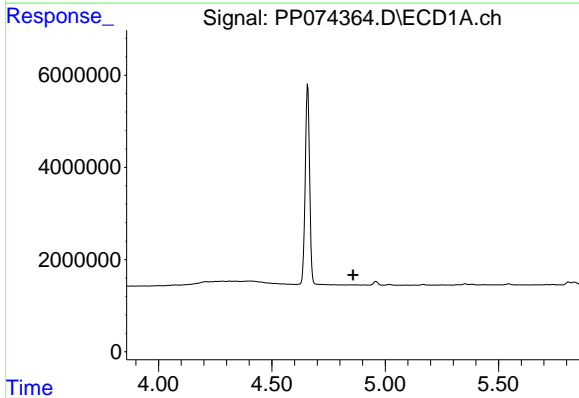
R.T.: 6.283 min
 Delta R.T.: -0.002 min
 Response: 9594255
 Conc: 295.50 ng/ml

Instrument :
 ECD_P
 ClientSampleId :
 AR1254CCC500



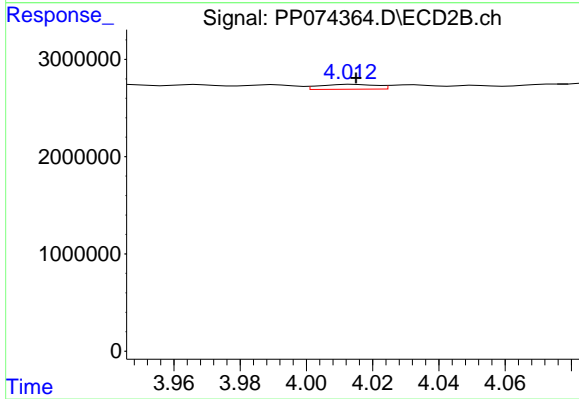
#7 AR-1016-5

R.T.: 5.333 min
 Delta R.T.: -0.006 min
 Response: 42740189
 Conc: 365.42 ng/ml



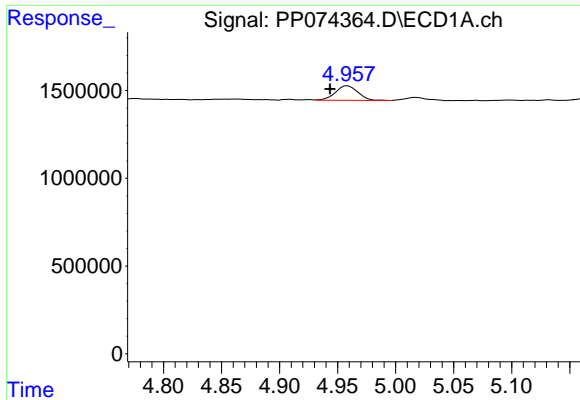
#8 AR-1221-1

R.T.: 0.000 min
 Exp R.T. : 4.858 min
 Response: 0
 Conc: N.D.



#8 AR-1221-1

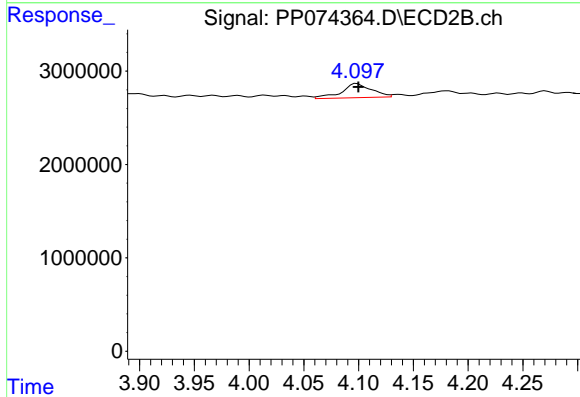
R.T.: 4.014 min
 Delta R.T.: -0.001 min
 Response: 598636
 Conc: 12.20 ng/ml



#9 AR-1221-2

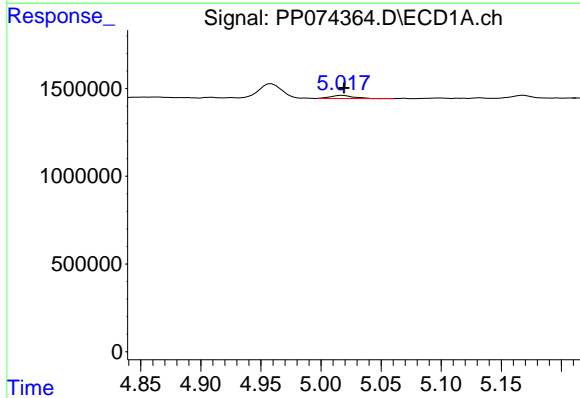
R.T.: 4.959 min
 Delta R.T.: 0.015 min
 Response: 1114450
 Conc: 88.44 ng/ml

Instrument :
 ECD_P
 ClientSampleId :
 AR1254CCC500



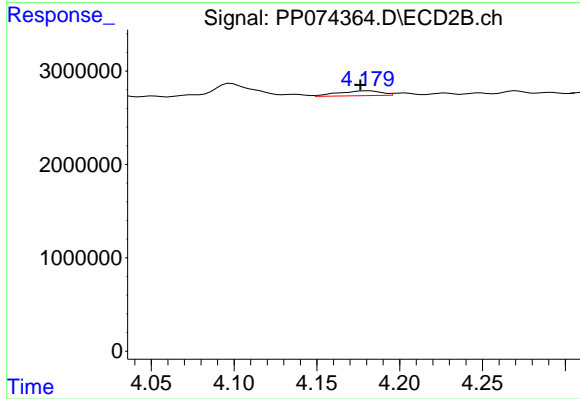
#9 AR-1221-2

R.T.: 4.098 min
 Delta R.T.: -0.002 min
 Response: 2898626
 Conc: 80.77 ng/ml



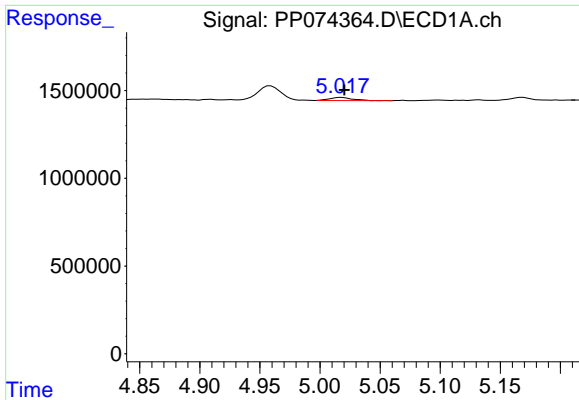
#10 AR-1221-3

R.T.: 5.018 min
 Delta R.T.: -0.001 min
 Response: 234243
 Conc: 6.39 ng/ml



#10 AR-1221-3

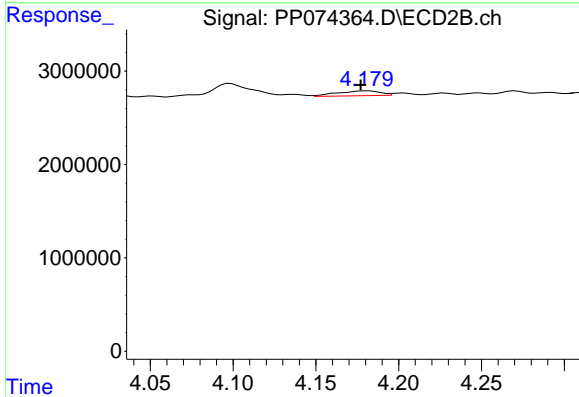
R.T.: 4.181 min
 Delta R.T.: 0.005 min
 Response: 948914
 Conc: 7.02 ng/ml



#11 AR-1232-1

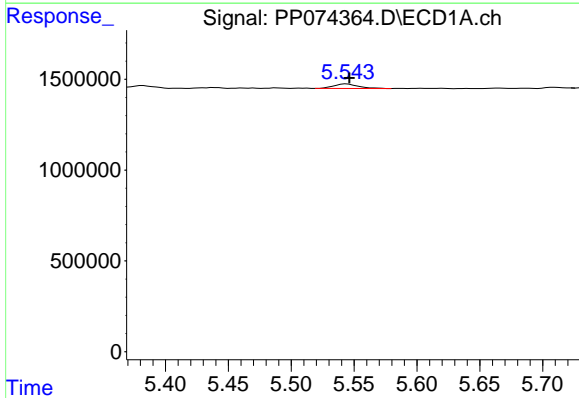
R.T.: 5.018 min
 Delta R.T.: -0.003 min
 Response: 234243
 Conc: 8.07 ng/ml

Instrument :
 ECD_P
 ClientSampleId :
 AR1254CCC500



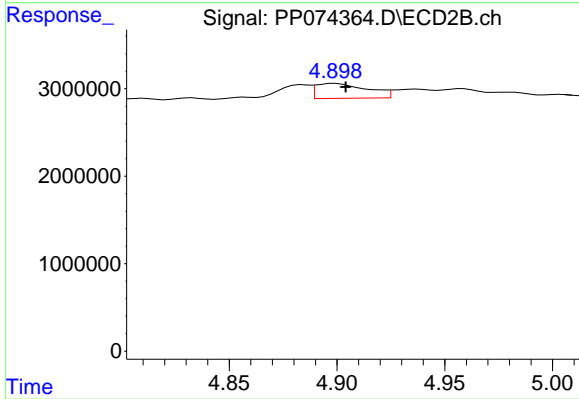
#11 AR-1232-1

R.T.: 4.181 min
 Delta R.T.: 0.004 min
 Response: 948914
 Conc: 9.36 ng/ml



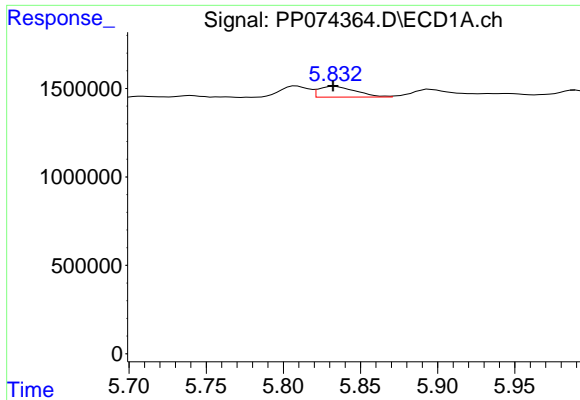
#12 AR-1232-2

R.T.: 5.544 min
 Delta R.T.: -0.002 min
 Response: 343137
 Conc: 22.81 ng/ml



#12 AR-1232-2

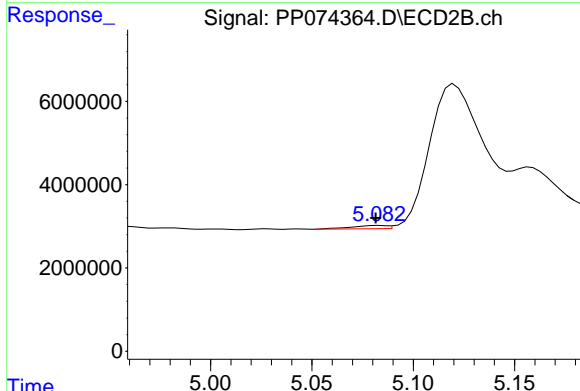
R.T.: 4.899 min
 Delta R.T.: -0.005 min
 Response: 2817356
 Conc: 16.17 ng/ml



#13 AR-1232-3

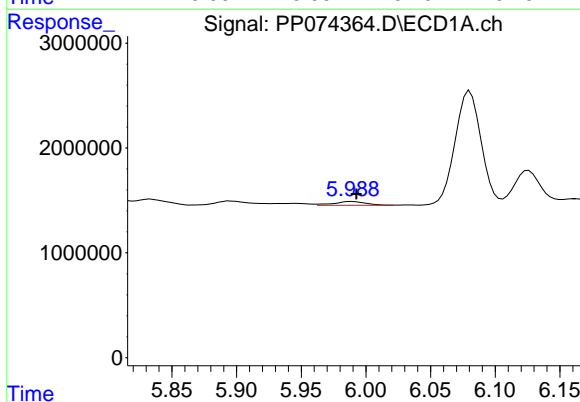
R.T.: 5.833 min
 Delta R.T.: 0.001 min
 Response: 1024426
 Conc: 35.32 ng/ml

Instrument :
 ECD_P
 ClientSampleId :
 AR1254CCC500



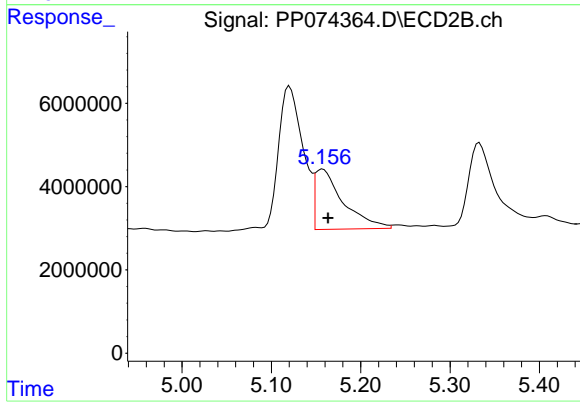
#13 AR-1232-3

R.T.: 5.083 min
 Delta R.T.: 0.002 min
 Response: 955624
 Conc: 20.86 ng/ml



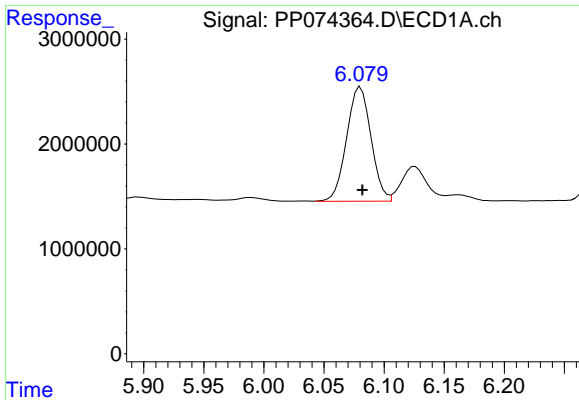
#14 AR-1232-4

R.T.: 5.989 min
 Delta R.T.: -0.003 min
 Response: 630765
 Conc: 40.78 ng/ml



#14 AR-1232-4

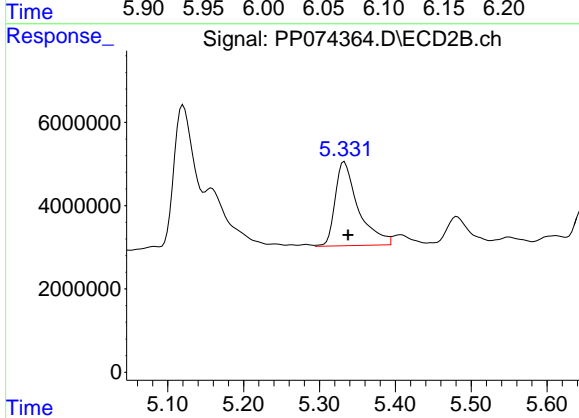
R.T.: 5.158 min
 Delta R.T.: -0.006 min
 Response: 31667322
 Conc: 545.89 ng/ml



#15 AR-1232-5

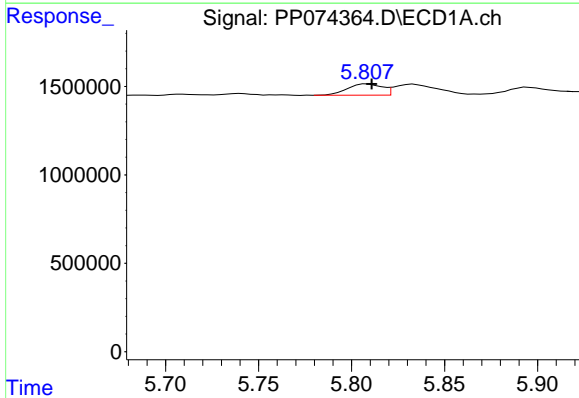
R.T.: 6.080 min
 Delta R.T.: -0.002 min
 Response: 15393543
 Conc: 1313.89 ng/ml

Instrument :
 ECD_P
 ClientSampleId :
 AR1254CCC500



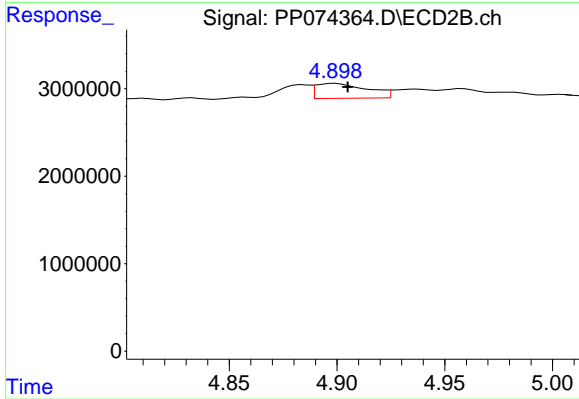
#15 AR-1232-5

R.T.: 5.333 min
 Delta R.T.: -0.005 min
 Response: 42740189
 Conc: 909.76 ng/ml



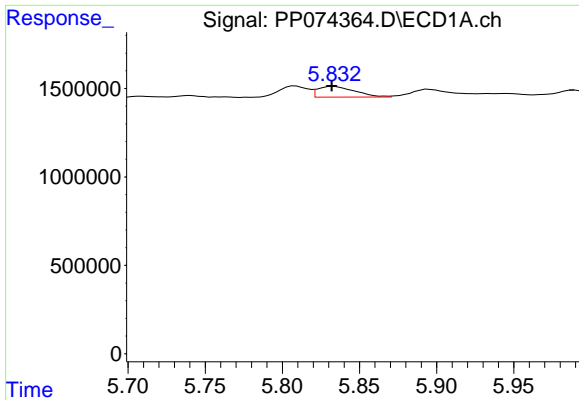
#16 AR-1242-1

R.T.: 5.808 min
 Delta R.T.: -0.002 min
 Response: 827210
 Conc: 22.20 ng/ml



#16 AR-1242-1

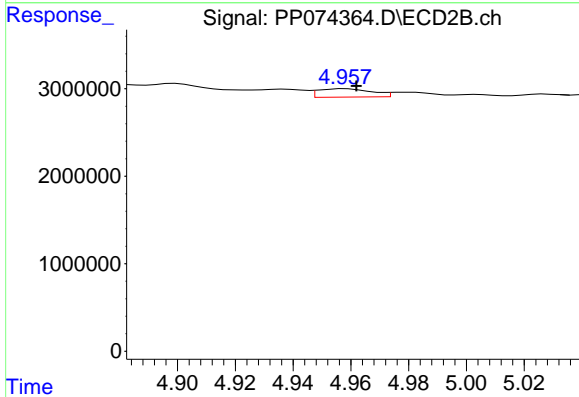
R.T.: 4.899 min
 Delta R.T.: -0.006 min
 Response: 2817356
 Conc: 8.16 ng/ml



#17 AR-1242-2

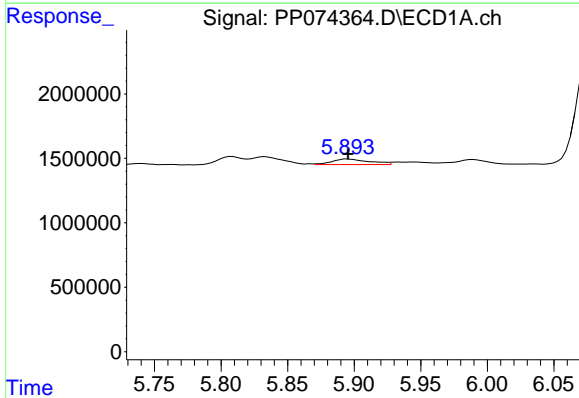
R.T.: 5.833 min
 Delta R.T.: 0.001 min
 Response: 1024426
 Conc: 18.83 ng/ml

Instrument :
 ECD_P
 ClientSampleId :
 AR1254CCC500



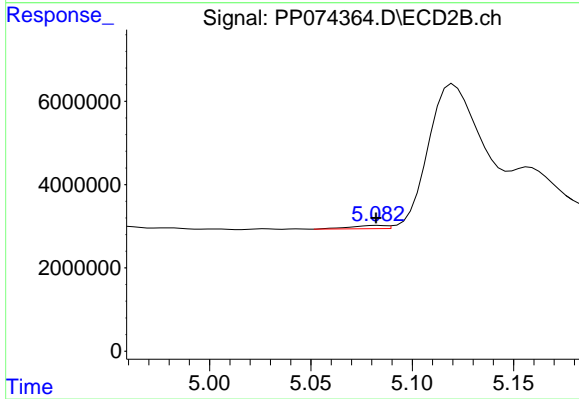
#17 AR-1242-2

R.T.: 4.958 min
 Delta R.T.: -0.004 min
 Response: 1225375
 Conc: 7.50 ng/ml



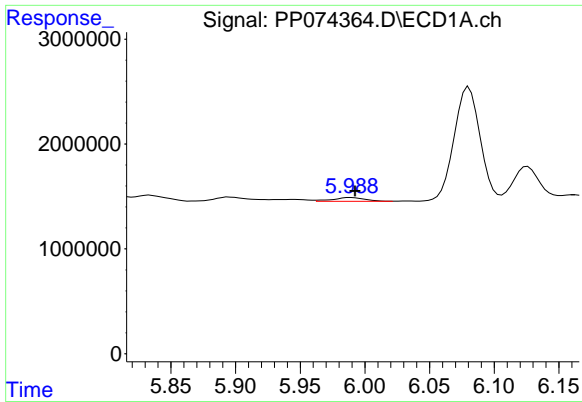
#18 AR-1242-3

R.T.: 5.895 min
 Delta R.T.: 0.000 min
 Response: 842819
 Conc: 23.58 ng/ml



#18 AR-1242-3

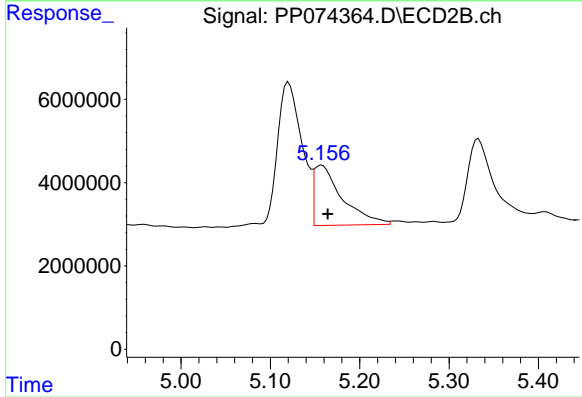
R.T.: 5.083 min
 Delta R.T.: 0.001 min
 Response: 955624
 Conc: 10.36 ng/ml



#19 AR-1242-4

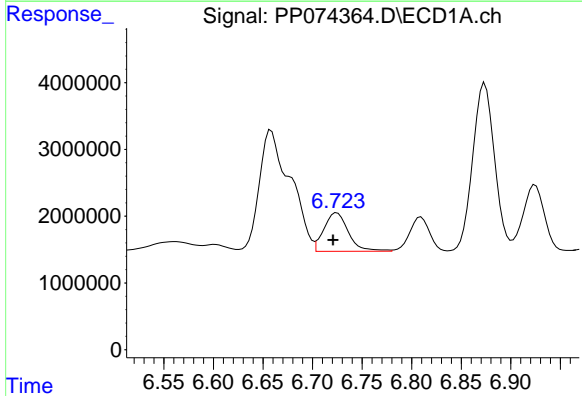
R.T.: 5.989 min
 Delta R.T.: -0.003 min
 Response: 630765
 Conc: 21.59 ng/ml

Instrument :
 ECD_P
 ClientSampleId :
 AR1254CCC500



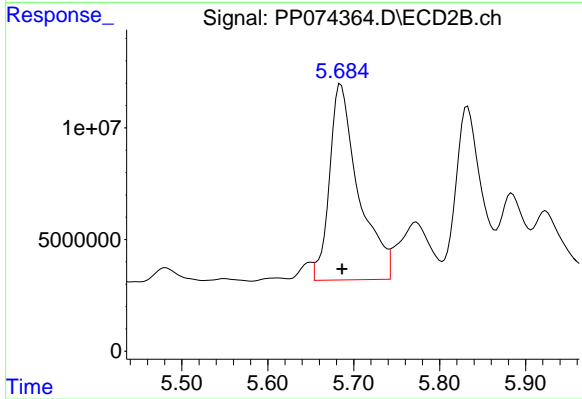
#19 AR-1242-4

R.T.: 5.158 min
 Delta R.T.: -0.006 min
 Response: 31667322
 Conc: 265.17 ng/ml



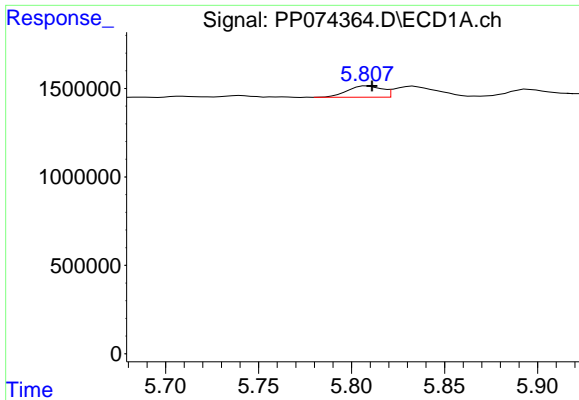
#20 AR-1242-5

R.T.: 6.725 min
 Delta R.T.: 0.004 min
 Response: 9893984
 Conc: 278.25 ng/ml



#20 AR-1242-5

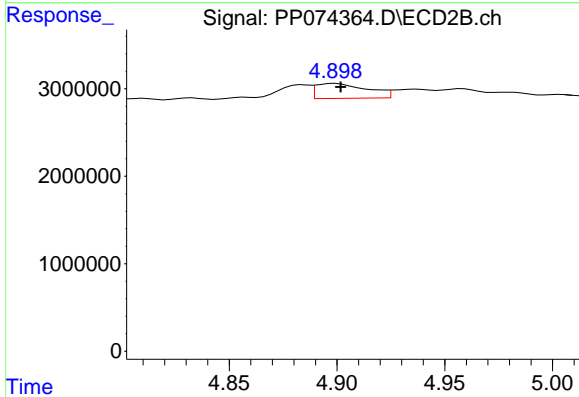
R.T.: 5.685 min
 Delta R.T.: -0.001 min
 Response: 205029790
 Conc: 1370.89 ng/ml



#21 AR-1248-1

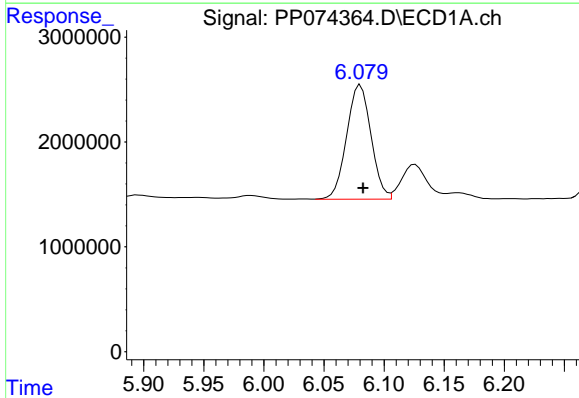
R.T.: 5.808 min
 Delta R.T.: -0.003 min
 Response: 827210
 Conc: 29.53 ng/ml

Instrument :
 ECD_P
 ClientSampleId :
 AR1254CCC500



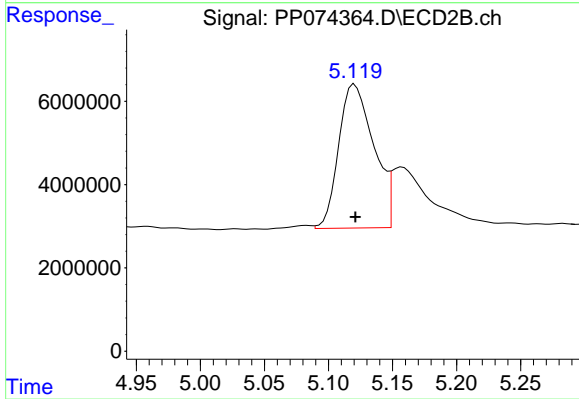
#21 AR-1248-1

R.T.: 4.899 min
 Delta R.T.: -0.002 min
 Response: 2817356
 Conc: 13.17 ng/ml



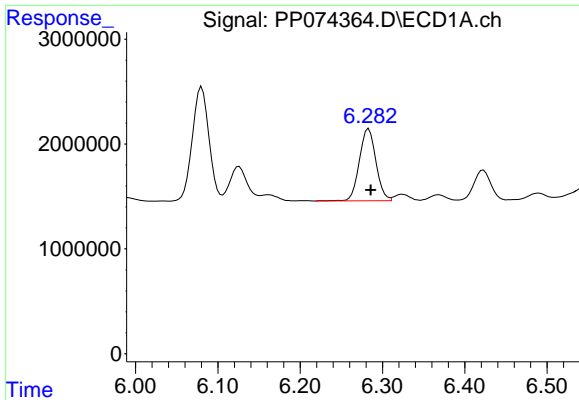
#22 AR-1248-2

R.T.: 6.080 min
 Delta R.T.: -0.002 min
 Response: 15393543
 Conc: 382.34 ng/ml



#22 AR-1248-2

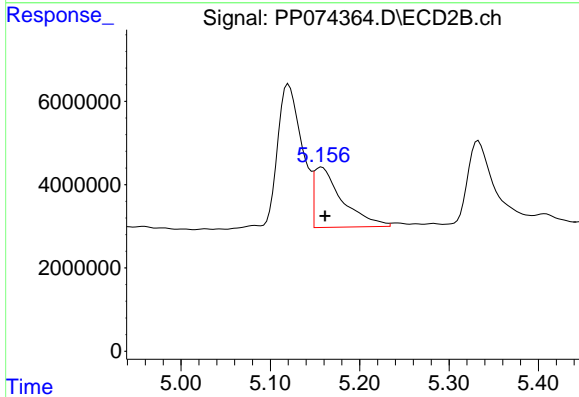
R.T.: 5.120 min
 Delta R.T.: 0.000 min
 Response: 65743815
 Conc: 449.34 ng/ml



#23 AR-1248-3

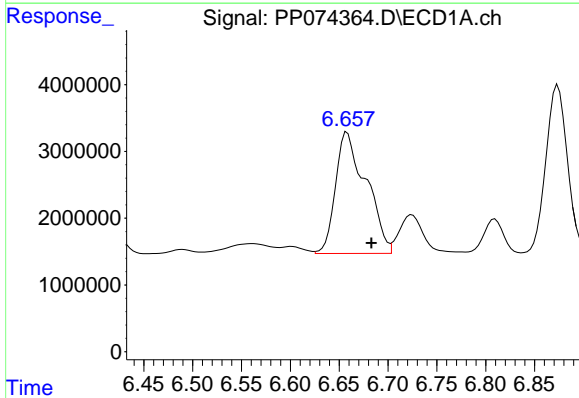
R.T.: 6.283 min
 Delta R.T.: -0.003 min
 Response: 9594255
 Conc: 215.25 ng/ml

Instrument :
 ECD_P
 ClientSampleId :
 AR1254CCC500



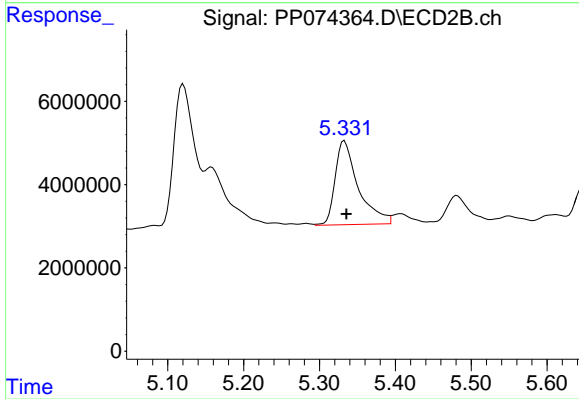
#23 AR-1248-3

R.T.: 5.158 min
 Delta R.T.: -0.003 min
 Response: 31667322
 Conc: 184.69 ng/ml



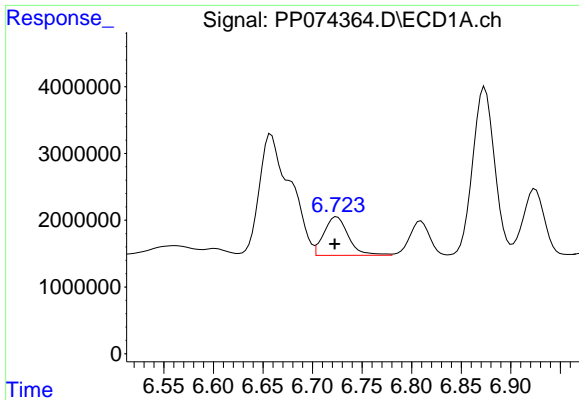
#24 AR-1248-4

R.T.: 6.658 min
 Delta R.T.: -0.025 min
 Response: 39589761
 Conc: 760.80 ng/ml



#24 AR-1248-4

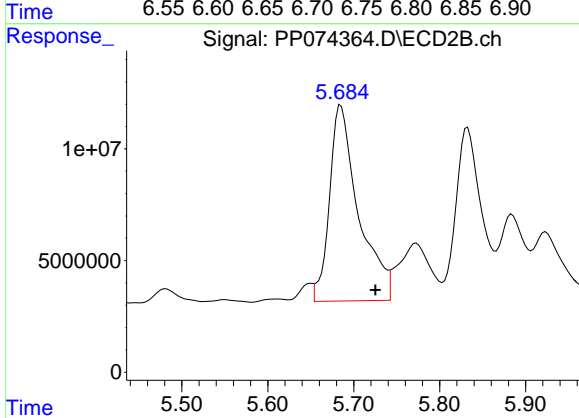
R.T.: 5.333 min
 Delta R.T.: -0.003 min
 Response: 42740189
 Conc: 256.89 ng/ml



#25 AR-1248-5

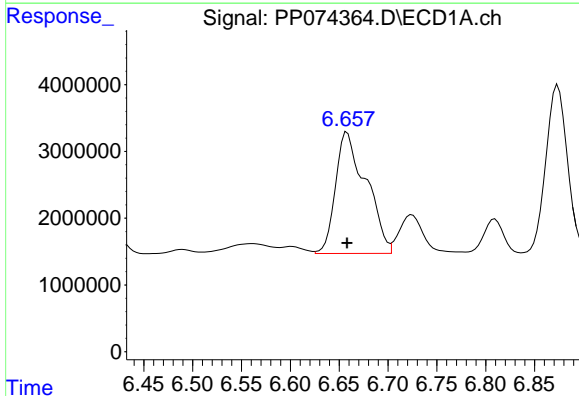
R.T.: 6.725 min
 Delta R.T.: 0.002 min
 Response: 9893984
 Conc: 173.75 ng/ml

Instrument :
 ECD_P
 ClientSampleId :
 AR1254CCC500



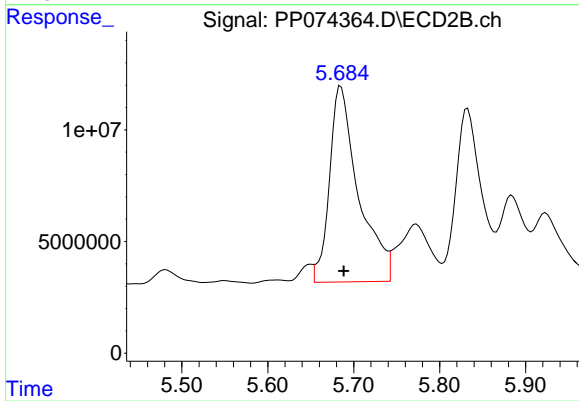
#25 AR-1248-5

R.T.: 5.685 min
 Delta R.T.: -0.040 min
 Response: 205029790
 Conc: 704.65 ng/ml



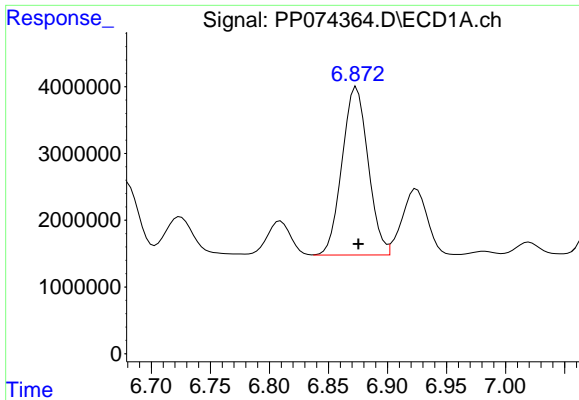
#26 AR-1254-1

R.T.: 6.658 min
 Delta R.T.: 0.000 min
 Response: 39589761
 Conc: 752.07 ng/ml



#26 AR-1254-1

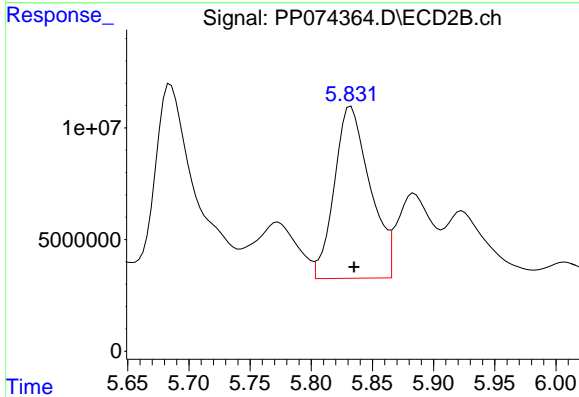
R.T.: 5.685 min
 Delta R.T.: -0.003 min
 Response: 205029790
 Conc: 559.91 ng/ml



#27 AR-1254-2

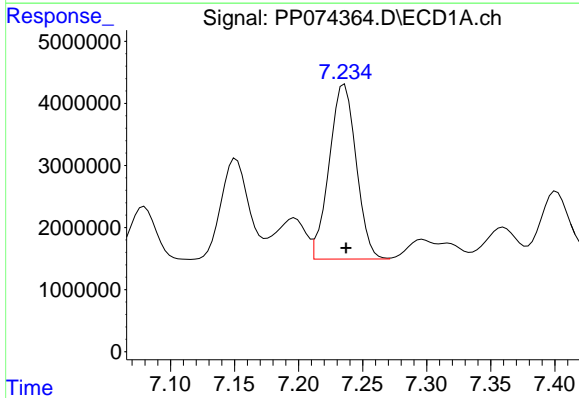
R.T.: 6.874 min
 Delta R.T.: -0.002 min
 Response: 38630359
 Conc: 485.89 ng/ml

Instrument :
 ECD_P
 ClientSampleId :
 AR1254CCC500



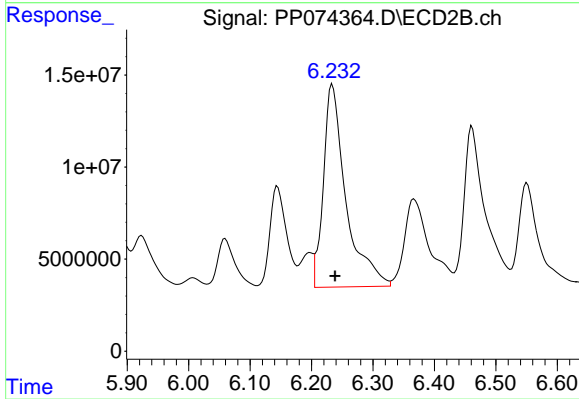
#27 AR-1254-2

R.T.: 5.833 min
 Delta R.T.: -0.002 min
 Response: 155894284
 Conc: 560.33 ng/ml



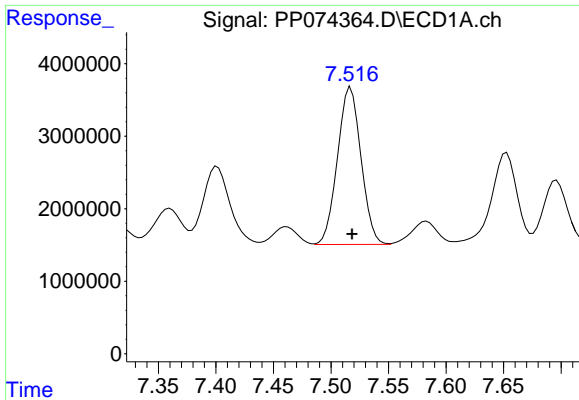
#28 AR-1254-3

R.T.: 7.236 min
 Delta R.T.: -0.001 min
 Response: 41266596
 Conc: 472.61 ng/ml



#28 AR-1254-3

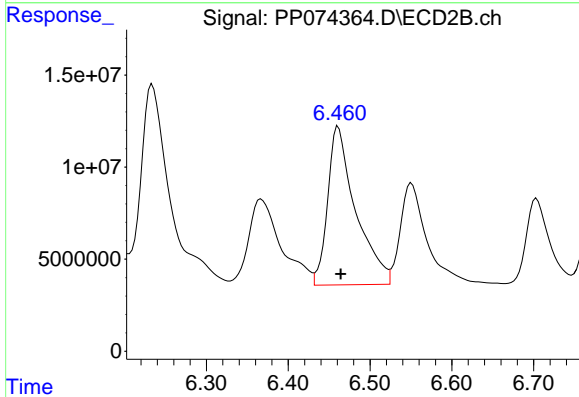
R.T.: 6.234 min
 Delta R.T.: -0.004 min
 Response: 280187078
 Conc: 572.73 ng/ml



#29 AR-1254-4

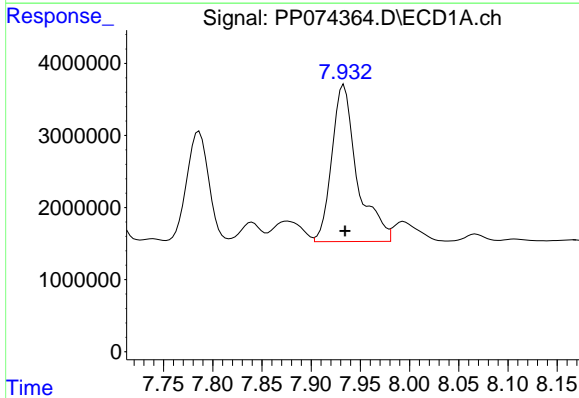
R.T.: 7.517 min
 Delta R.T.: -0.001 min
 Response: 30962834
 Conc: 485.24 ng/ml

Instrument :
 ECD_P
 ClientSampleId :
 AR1254CCC500



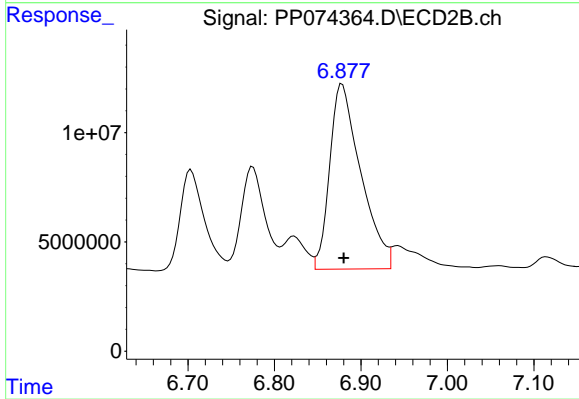
#29 AR-1254-4

R.T.: 6.461 min
 Delta R.T.: -0.003 min
 Response: 204773853
 Conc: 557.11 ng/ml



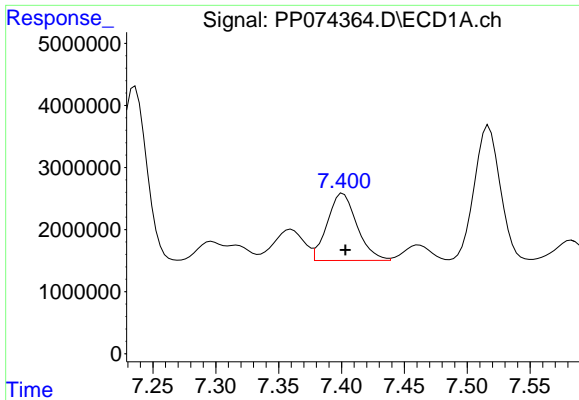
#30 AR-1254-5

R.T.: 7.933 min
 Delta R.T.: -0.001 min
 Response: 38925207
 Conc: 479.70 ng/ml



#30 AR-1254-5

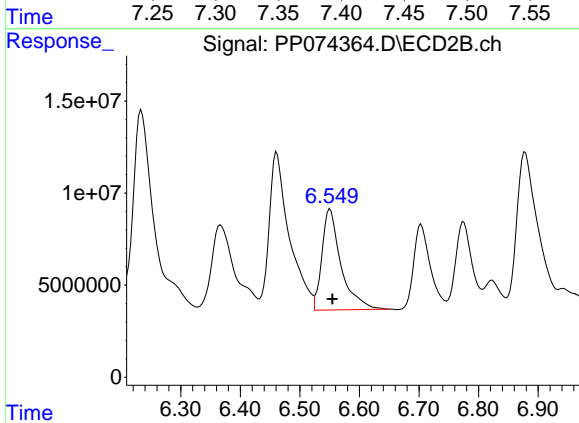
R.T.: 6.878 min
 Delta R.T.: -0.002 min
 Response: 210948409
 Conc: 547.68 ng/ml



#31 AR-1260-1

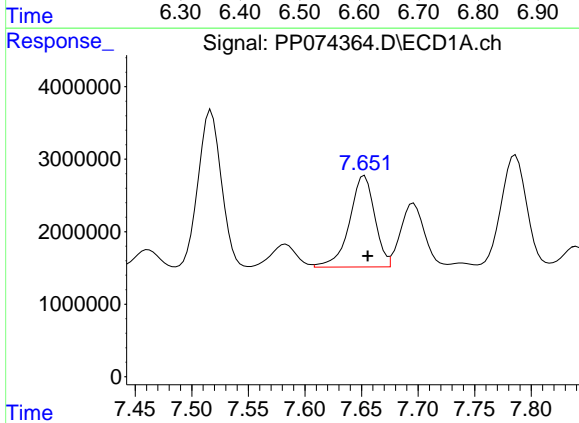
R.T.: 7.401 min
 Delta R.T.: -0.002 min
 Response: 17824657
 Conc: 316.29 ng/ml

Instrument :
 ECD_P
 ClientSampleId :
 AR1254CCC500



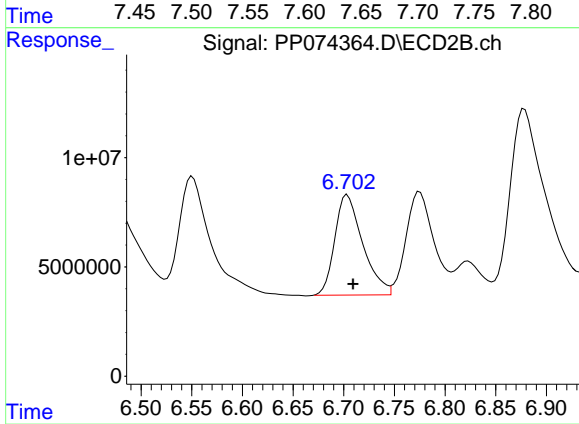
#31 AR-1260-1

R.T.: 6.551 min
 Delta R.T.: -0.004 min
 Response: 123076336
 Conc: 304.68 ng/ml



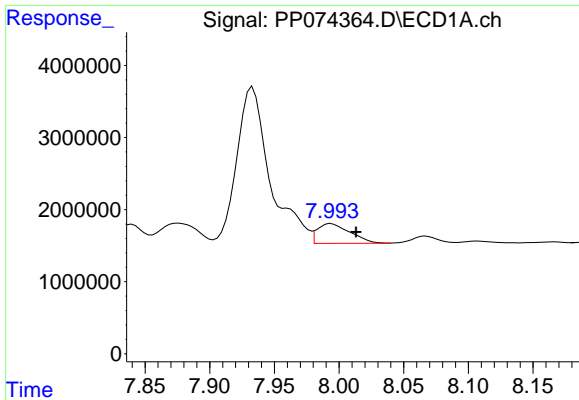
#32 AR-1260-2

R.T.: 7.653 min
 Delta R.T.: -0.003 min
 Response: 19518465
 Conc: 286.39 ng/ml



#32 AR-1260-2

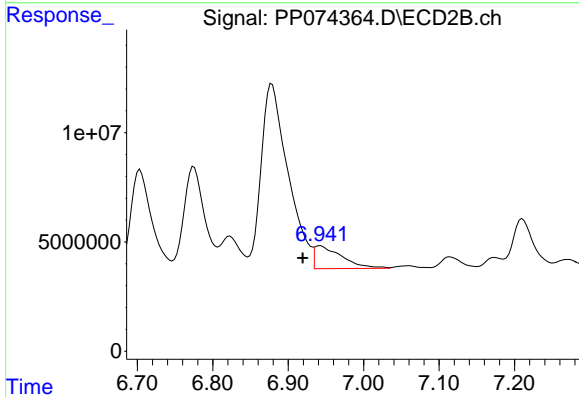
R.T.: 6.704 min
 Delta R.T.: -0.006 min
 Response: 88117156
 Conc: 281.80 ng/ml



#33 AR-1260-3

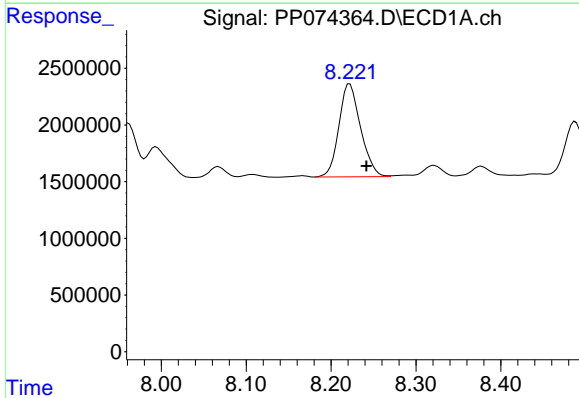
R.T.: 7.994 min
 Delta R.T.: -0.019 min
 Response: 4852213
 Conc: 91.04 ng/ml

Instrument :
 ECD_P
 ClientSampleId :
 AR1254CCC500



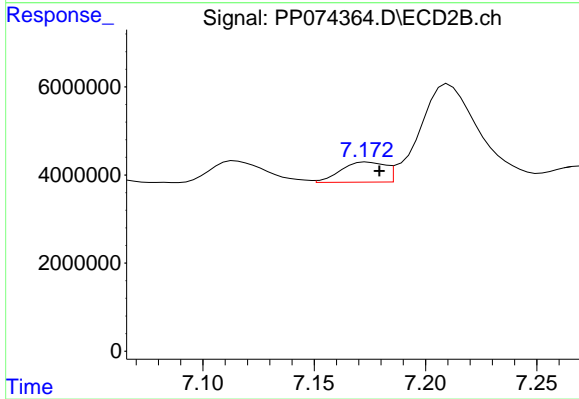
#33 AR-1260-3

R.T.: 6.943 min
 Delta R.T.: 0.023 min
 Response: 26429165
 Conc: 67.06 ng/ml



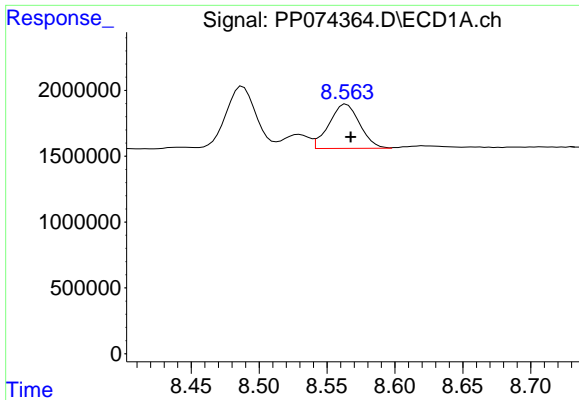
#34 AR-1260-4

R.T.: 8.222 min
 Delta R.T.: -0.020 min
 Response: 14532726
 Conc: 232.10 ng/ml



#34 AR-1260-4

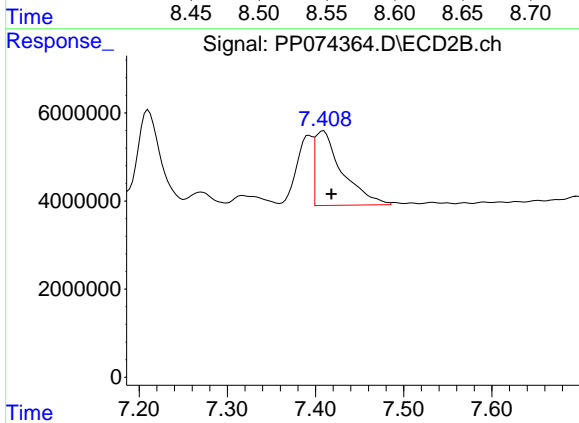
R.T.: 7.174 min
 Delta R.T.: -0.005 min
 Response: 6336136
 Conc: 21.78 ng/ml



#35 AR-1260-5

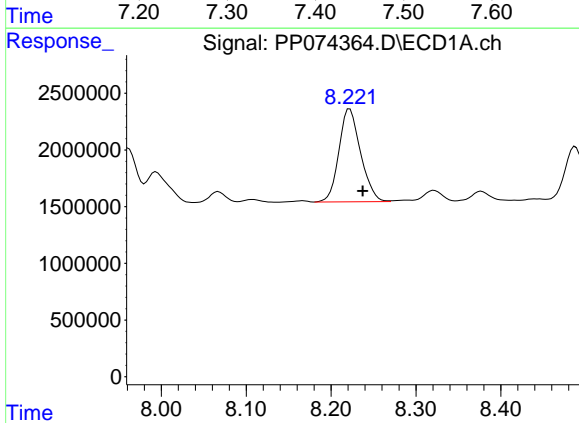
R.T.: 8.564 min
 Delta R.T.: -0.003 min
 Response: 5283947
 Conc: 46.63 ng/ml

Instrument :
 ECD_P
 ClientSampleId :
 AR1254CCC500



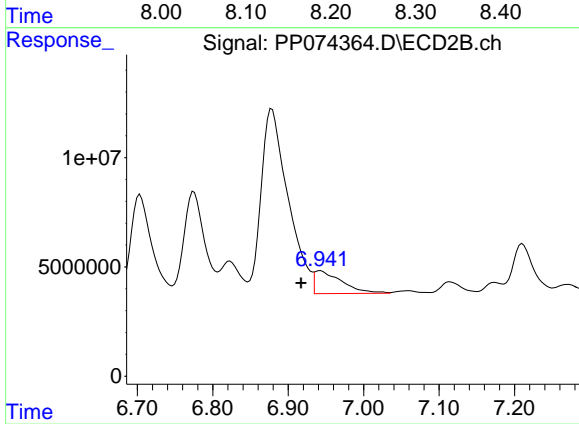
#35 AR-1260-5

R.T.: 7.409 min
 Delta R.T.: -0.009 min
 Response: 36183732
 Conc: 47.77 ng/ml



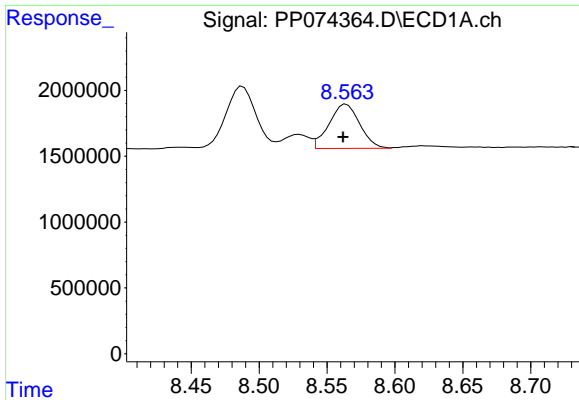
#36 AR-1262-1

R.T.: 8.222 min
 Delta R.T.: -0.015 min
 Response: 14532726
 Conc: 191.75 ng/ml



#36 AR-1262-1

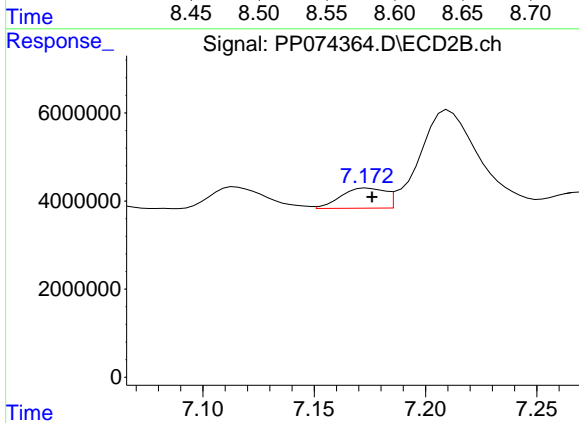
R.T.: 6.943 min
 Delta R.T.: 0.026 min
 Response: 26429165
 Conc: 46.93 ng/ml



#37 AR-1262-2

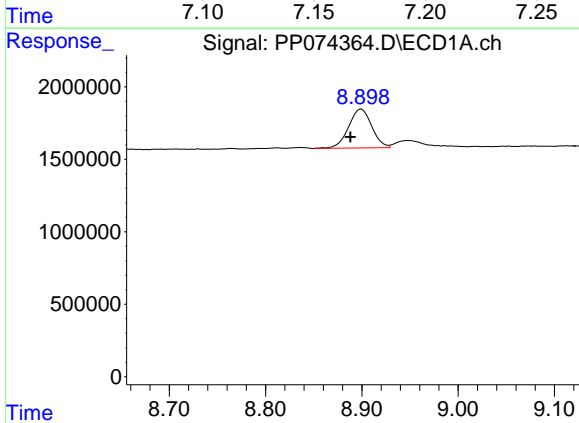
R.T.: 8.564 min
 Delta R.T.: 0.003 min
 Response: 5283947
 Conc: 40.51 ng/ml

Instrument :
 ECD_P
 ClientSampleId :
 AR1254CCC500



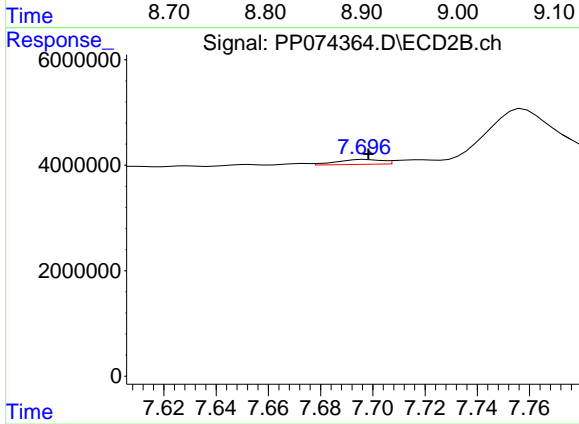
#37 AR-1262-2

R.T.: 7.174 min
 Delta R.T.: -0.002 min
 Response: 6336136
 Conc: 15.80 ng/ml



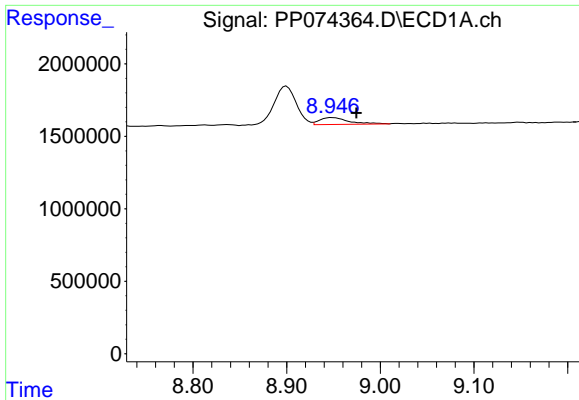
#38 AR-1262-3

R.T.: 8.900 min
 Delta R.T.: 0.012 min
 Response: 4478327
 Conc: 47.61 ng/ml



#38 AR-1262-3

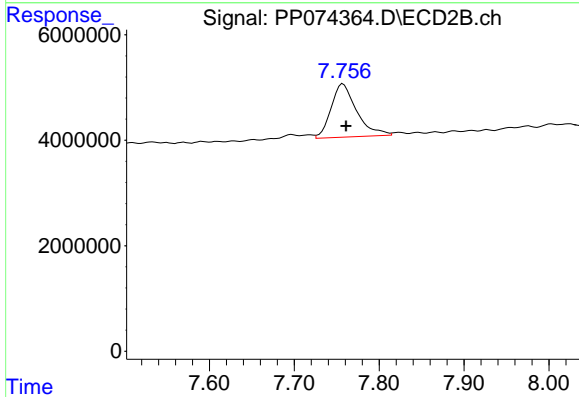
R.T.: 7.697 min
 Delta R.T.: -0.001 min
 Response: 1107165
 Conc: 3.08 ng/ml



#39 AR-1262-4

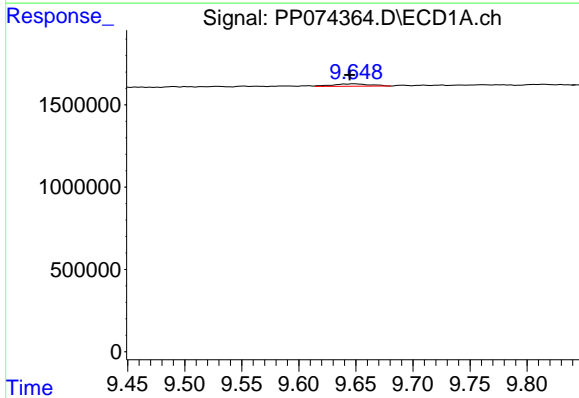
R.T.: 8.948 min
 Delta R.T.: -0.026 min
 Response: 1028773
 Conc: 14.12 ng/ml

Instrument :
 ECD_P
 ClientSampleId :
 AR1254CCC500



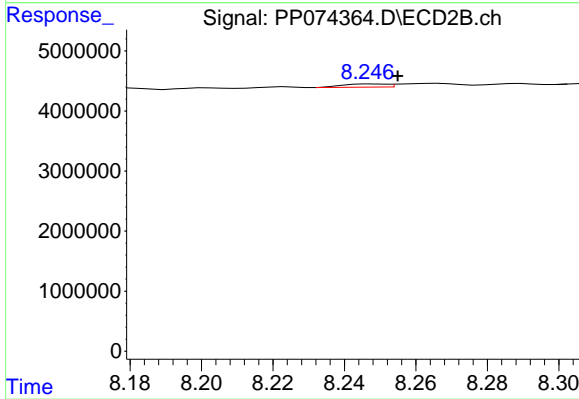
#39 AR-1262-4

R.T.: 7.757 min
 Delta R.T.: -0.003 min
 Response: 21059520
 Conc: 31.58 ng/ml



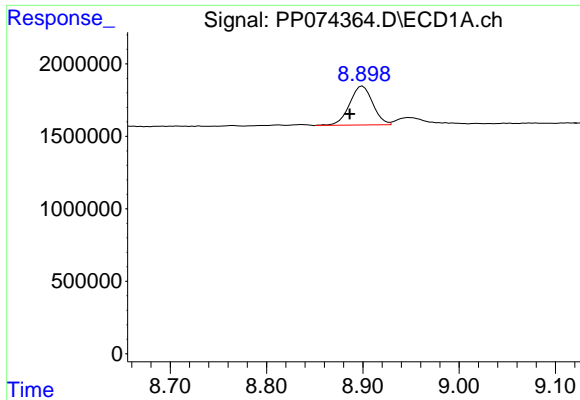
#40 AR-1262-5

R.T.: 9.649 min
 Delta R.T.: 0.005 min
 Response: 328605
 Conc: 6.45 ng/ml



#40 AR-1262-5

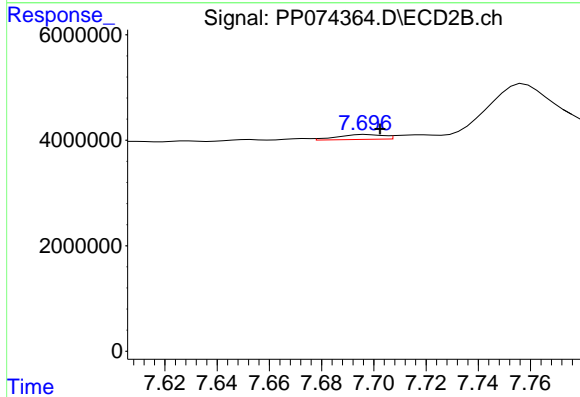
R.T.: 8.248 min
 Delta R.T.: -0.007 min
 Response: 460740
 Conc: 1.63 ng/ml



#41 AR-1268-1

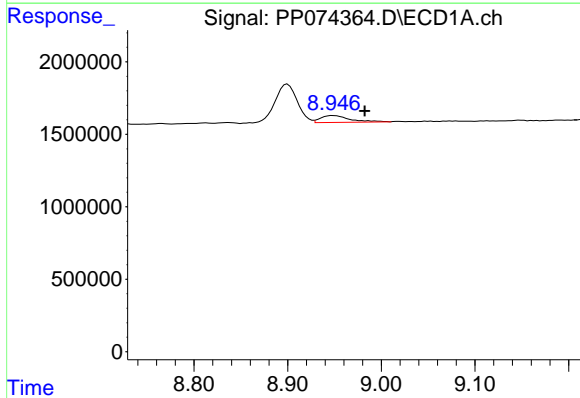
R.T.: 8.900 min
 Delta R.T.: 0.013 min
 Response: 4478327
 Conc: 28.77 ng/ml

Instrument :
 ECD_P
 ClientSampleId :
 AR1254CCC500



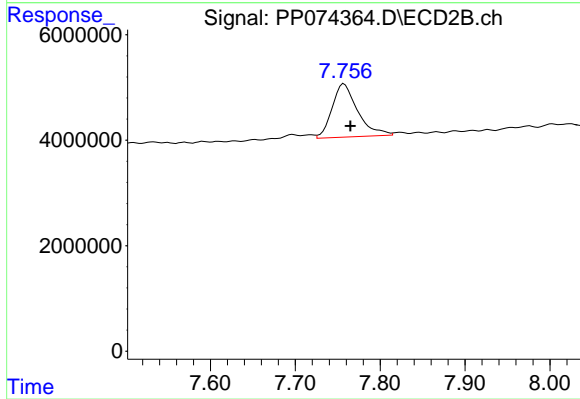
#41 AR-1268-1

R.T.: 7.697 min
 Delta R.T.: -0.005 min
 Response: 1107165
 Conc: 1.02 ng/ml



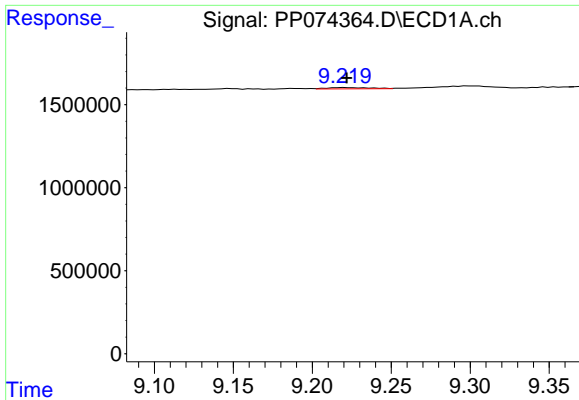
#42 AR-1268-2

R.T.: 8.948 min
 Delta R.T.: -0.034 min
 Response: 1028773
 Conc: 7.17 ng/ml



#42 AR-1268-2

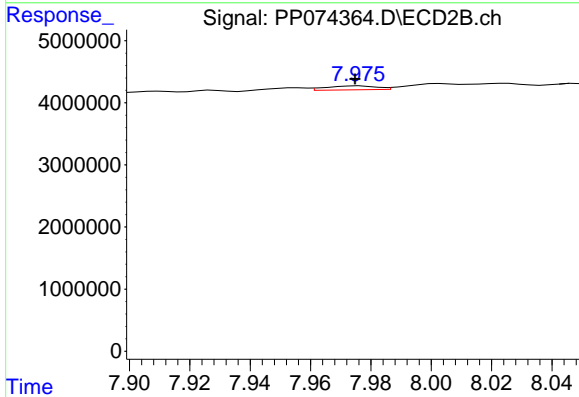
R.T.: 7.757 min
 Delta R.T.: -0.008 min
 Response: 21059520
 Conc: 19.84 ng/ml



#43 AR-1268-3

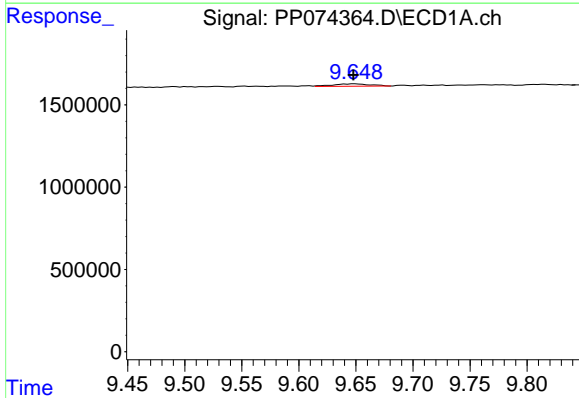
R.T.: 9.220 min
 Delta R.T.: -0.002 min
 Response: 150465
 Conc: 1.26 ng/ml

Instrument :
 ECD_P
 ClientSampleId :
 AR1254CCC500



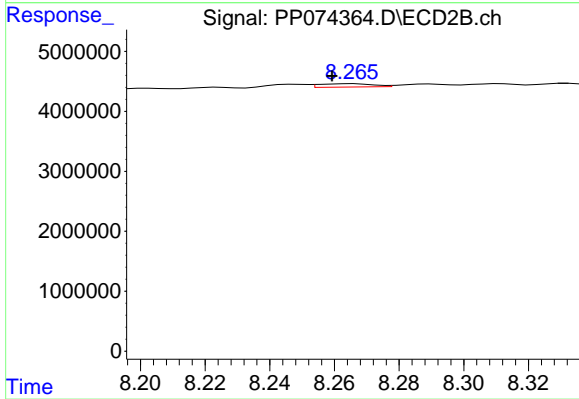
#43 AR-1268-3

R.T.: 7.976 min
 Delta R.T.: 0.001 min
 Response: 732032
 Conc: 0.88 ng/ml



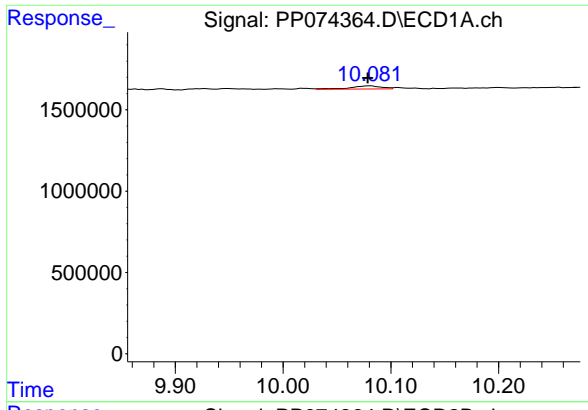
#44 AR-1268-4

R.T.: 9.649 min
 Delta R.T.: 0.001 min
 Response: 328605
 Conc: 5.59 ng/ml



#44 AR-1268-4

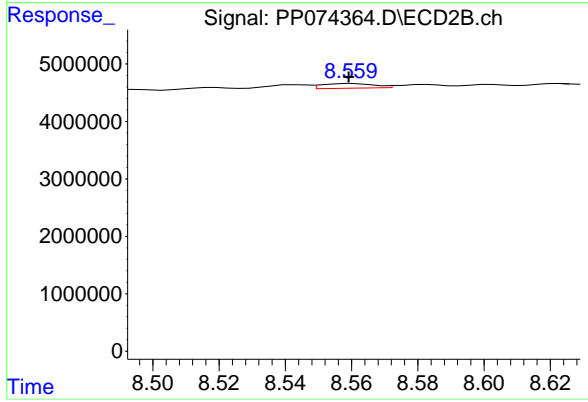
R.T.: 8.266 min
 Delta R.T.: 0.006 min
 Response: 637027
 Conc: 2.07 ng/ml



#45 AR-1268-5

R.T.: 10.082 min
Delta R.T.: 0.003 min
Response: 397911
Conc: 1.13 ng/ml

Instrument :
ECD_P
ClientSampleId :
AR1254CCC500



#45 AR-1268-5

R.T.: 8.560 min
Delta R.T.: 0.001 min
Response: 891011
Conc: 0.35 ng/ml