

Data Path : Z:\pestpcbsrv\HPCHEM1\ECD_P\Data\PP081325\
 Data File : PP074367.D
 Signal(s) : Signal #1: ECD1A.ch Signal #2: ECD2B.ch
 Acq On : 13 Aug 2025 22:24
 Operator : YP\AJ
 Sample : Q2820-09RX
 Misc :
 ALS Vial : 15 Sample Multiplier: 1

Instrument :
 ECD_P
 ClientSampleId :
 705R-S

Integration File signal 1: autoint1.e
 Integration File signal 2: autoint2.e
 Quant Time: Aug 14 00:03:40 2025
 Quant Method : Z:\pestpcbsrv\HPCHEM1\ECD_P\methods\PP080125.M
 Quant Title : GC EXTRACTABLES
 QLast Update : Mon Aug 04 11:01:49 2025
 Response via : Initial Calibration
 Integrator: ChemStation

Volume Inj. : 2 µl
 Signal #1 Phase : ZB-MR1 Signal #2 Phase: ZB-MR2
 Signal #1 Info : 30Mx0.32mmx 0.50µ Signal #2 Info : 30M x 0.32mm x 0.25µm

Compound	RT#1	RT#2	Resp#1	Resp#2	ng/ml	ng/ml

System Monitoring Compounds						
1) SA Tetrachlo...	4.658	3.802	26355209	78597272	23.567	20.498
2) SA Decachlor...	10.435	8.820	17763164	101.1E6	18.291	16.810
Target Compounds						
3) L1 AR-1016-1	5.828	4.904	97264	2188310	2.358	5.486 #
4) L1 AR-1016-2	5.828	4.964	97264	2227341	1.601	11.860 #
5) L1 AR-1016-3	5.881	5.074	322184	2880770	8.124	27.159 #
6) L1 AR-1016-4	5.955f	5.117	1693962	2901734	52.051	26.568 #
7) L1 AR-1016-5	0.000	5.336	0	8373900	N.D.	71.594 #
8) L2 AR-1221-1	4.856	4.025	957282	279918	57.105	5.703 #
9) L2 AR-1221-2	4.959	4.104	440674	1485683	34.971	41.396
10) L2 AR-1221-3	4.959f	4.185	440674	129725	12.029	0.959 #
11) L3 AR-1232-1	4.959f	4.185	440674	129725	15.176	1.280 #
12) L3 AR-1232-2	5.510f	4.904	667134	2188310	44.349	12.557 #
13) L3 AR-1232-3	5.828	5.074	97264	2880770	3.354	62.876 #
14) L3 AR-1232-4	5.955f	5.158	1693962	3428249	109.508	59.097 #
15) L3 AR-1232-5	6.109	5.336	727183	8373900	62.067	178.246 #
16) L4 AR-1242-1	5.828	4.904	97264	2188310	2.610	6.340 #
17) L4 AR-1242-2	5.828	4.964	97264	2227341	1.788	13.633 #
18) L4 AR-1242-3	5.881	5.074	322184	2880770	9.016	31.228 #
19) L4 AR-1242-4	5.955f	5.158	1693962	3428249	57.975	28.707 #
20) L4 AR-1242-5	6.704	5.687	607723	14518379	17.091	97.074 #
21) L5 AR-1248-1	5.828	4.904	97264	2188310	3.472	10.229 #
22) L5 AR-1248-2	6.109	5.117	727183	2901734	18.062	19.832
23) L5 AR-1248-3	0.000	5.158	0	3428249	N.D.	19.994 #
24) L5 AR-1248-4	6.704	5.336	607723	8373900	11.679	50.332 #
25) L5 AR-1248-5	6.740	5.699	1006341	3183375	17.673	10.941 #
26) L6 AR-1254-1	6.656	5.687	989920	14518379	18.805	39.648 #
27) L6 AR-1254-2	6.866	5.853	2096256	17622085	26.366	63.339 #
28) L6 AR-1254-3	7.243	6.251	8084715	33429467	92.591	68.333 #
29) L6 AR-1254-4	7.498	6.460	1284069	3725010	20.123	10.134 #
30) L6 AR-1254-5	7.924	6.887	279434	485033	3.444	1.259 #
31) L7 AR-1260-1	7.391	6.524	582325	14059921	10.333	34.805 #
32) L7 AR-1260-2	7.635	6.711	13041514	749266	191.358	2.396 #
33) L7 AR-1260-3	8.001	6.926	624019	496886	11.709	1.261 #
34) L7 AR-1260-4	8.248	7.188	489585	552711	7.819	1.899 #
35) L7 AR-1260-5	8.563	7.407	174333	678727	1.539	0.896 #
36) L8 AR-1262-1	8.248	6.926	489585	496886	6.460	0.882 #
37) L8 AR-1262-2	8.563	7.188	174333	552711	1.337	1.378
38) L8 AR-1262-3	8.906	7.694	114171	506818	1.214	1.410
39) L8 AR-1262-4	8.975	7.759	432779	1606961	5.941	2.410 #
40) L8 AR-1262-5	9.639	8.247	126423	293248	2.483	1.035 #
41) L9 AR-1268-1	8.906	7.694	114171	506818	0.734	0.465 #

Data Path : Z:\pestpcbsrv\HPCHEM1\ECD_P\Data\PP081325\
 Data File : PP074367.D
 Signal(s) : Signal #1: ECD1A.ch Signal #2: ECD2B.ch
 Acq On : 13 Aug 2025 22:24
 Operator : YP\AJ
 Sample : Q2820-09RX
 Misc :
 ALS Vial : 15 Sample Multiplier: 1

Instrument :
 ECD_P
 ClientSampleId :
 705R-S

Integration File signal 1: autoint1.e
 Integration File signal 2: autoint2.e
 Quant Time: Aug 14 00:03:40 2025
 Quant Method : Z:\pestpcbsrv\HPCHEM1\ECD_P\methods\PP080125.M
 Quant Title : GC EXTRACTABLES
 QLast Update : Mon Aug 04 11:01:49 2025
 Response via : Initial Calibration
 Integrator: ChemStation

Volume Inj. : 2 µl
 Signal #1 Phase : ZB-MR1 Signal #2 Phase: ZB-MR2
 Signal #1 Info : 30Mx0.32mmx 0.50µ Signal #2 Info : 30M x 0.32mm x 0.25µm

	Compound	RT#1	RT#2	Resp#1	Resp#2	ng/ml	ng/ml
42)	L9 AR-1268-2	8.975	7.759	432779	1606961	3.017	1.514 #
43)	L9 AR-1268-3	9.229	7.979	311650	841512	2.609	1.012 #
44)	L9 AR-1268-4	9.639	8.247	126423	293248	2.150	0.952 #
45)	L9 AR-1268-5	10.075	8.570	84301	474820	0.240	0.186

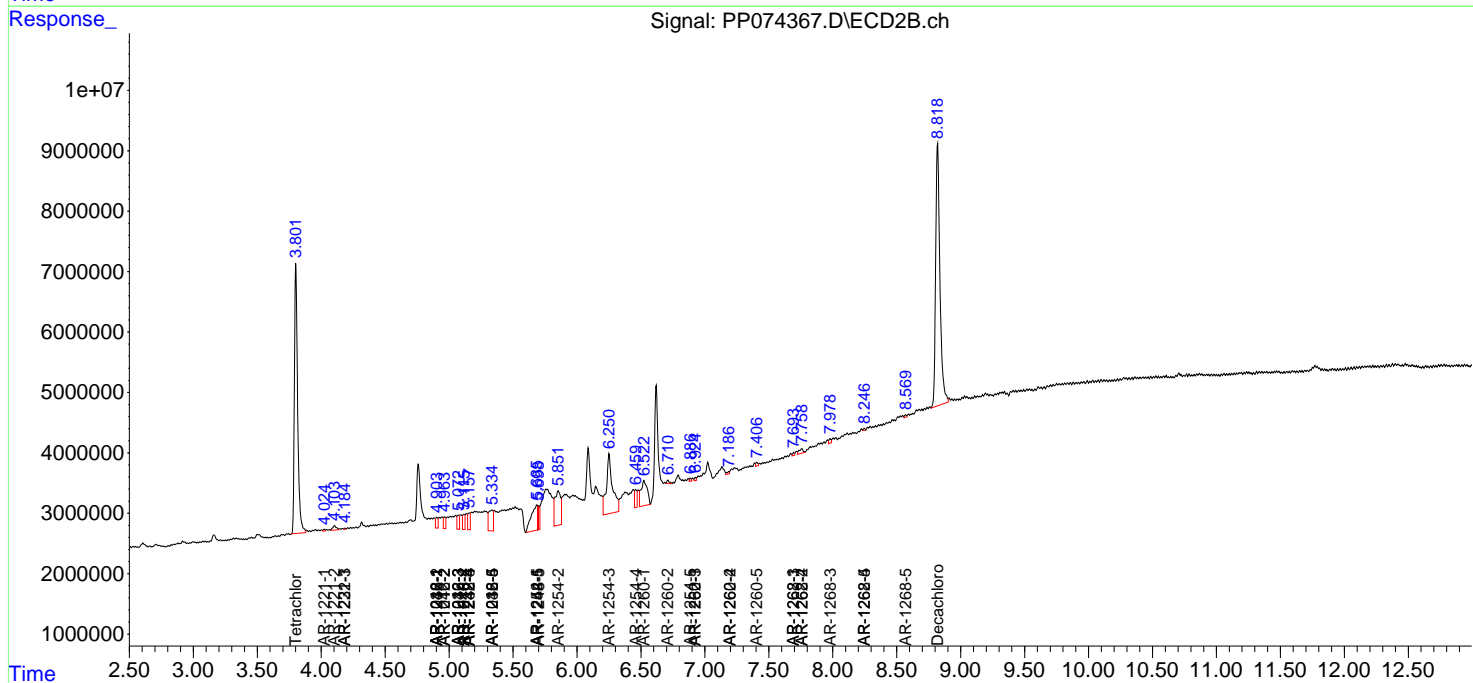
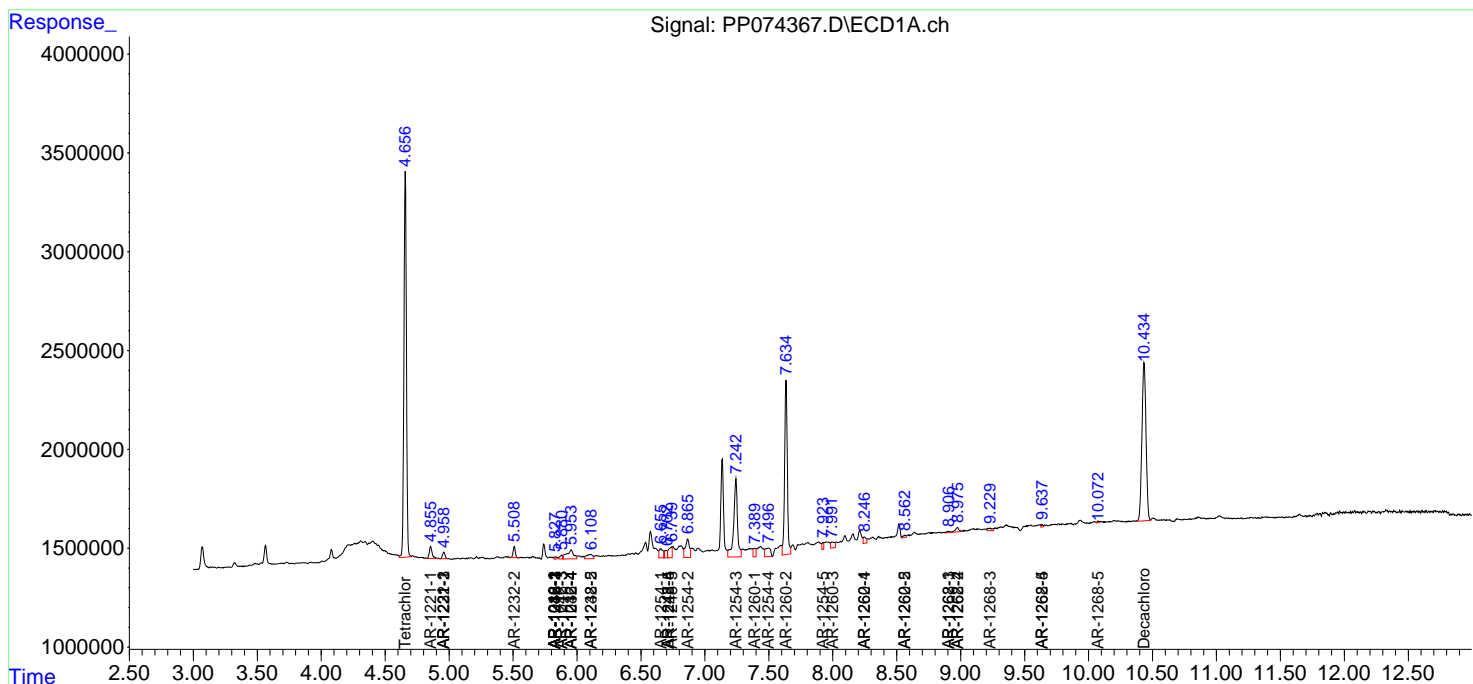
(f)=RT Delta > 1/2 Window (#)=Amounts differ by > 25% (m)=manual int.

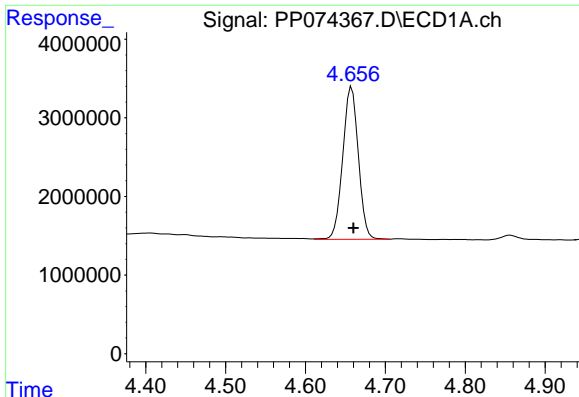
Data Path : Z:\pestpcbsrv\HPCHEM1\ECD_P\Data\PP081325\
 Data File : PP074367.D
 Signal(s) : Signal #1: ECD1A.ch Signal #2: ECD2B.ch
 Acq On : 13 Aug 2025 22:24
 Operator : YP\AJ
 Sample : Q2820-09RX
 Misc :
 ALS Vial : 15 Sample Multiplier: 1

Instrument :
 ECD_P
 ClientSampleId :
 705R-S

Integration File signal 1: autoint1.e
 Integration File signal 2: autoint2.e
 Quant Time: Aug 14 00:03:40 2025
 Quant Method : Z:\pestpcbsrv\HPCHEM1\ECD_P\methods\PP080125.M
 Quant Title : GC EXTRACTABLES
 QLast Update : Mon Aug 04 11:01:49 2025
 Response via : Initial Calibration
 Integrator: ChemStation

Volume Inj. : 2 µl
 Signal #1 Phase : ZB-MR1 Signal #2 Phase: ZB-MR2
 Signal #1 Info : 30Mx0.32mmx 0.50µ Signal #2 Info : 30M x 0.32mm x 0.25µm

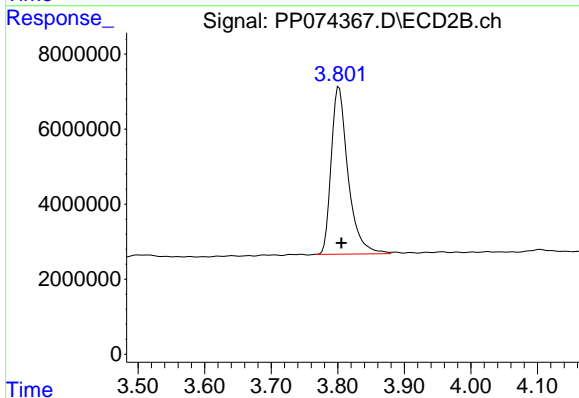




#1 Tetrachloro-m-xylene

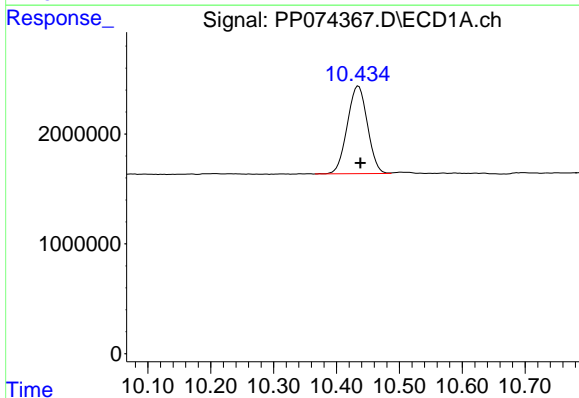
R.T.: 4.658 min
 Delta R.T.: -0.002 min
 Response: 26355209
 Conc: 23.57 ng/ml

Instrument :
 ECD_P
 ClientSampleId :
 705R-S



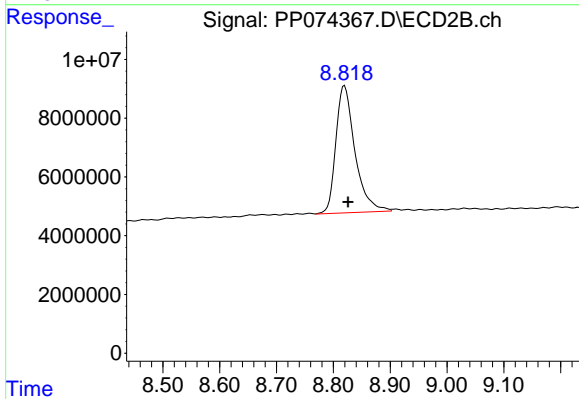
#1 Tetrachloro-m-xylene

R.T.: 3.802 min
 Delta R.T.: -0.003 min
 Response: 78597272
 Conc: 20.50 ng/ml



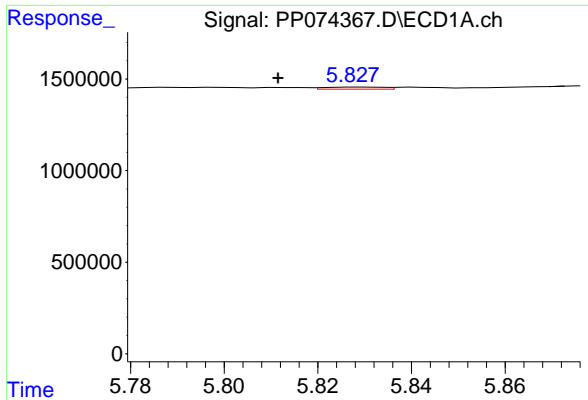
#2 Decachlorobiphenyl

R.T.: 10.435 min
 Delta R.T.: -0.003 min
 Response: 17763164
 Conc: 18.29 ng/ml



#2 Decachlorobiphenyl

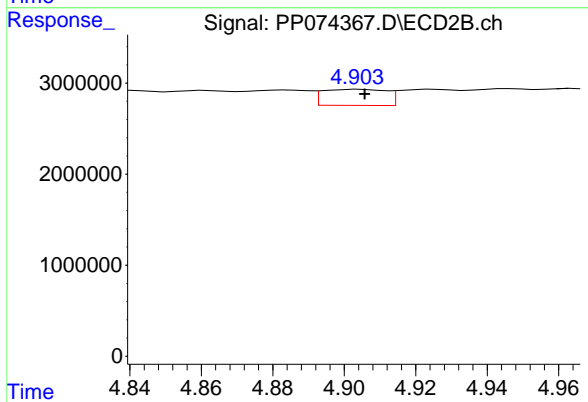
R.T.: 8.820 min
 Delta R.T.: -0.006 min
 Response: 101091694
 Conc: 16.81 ng/ml



#3 AR-1016-1

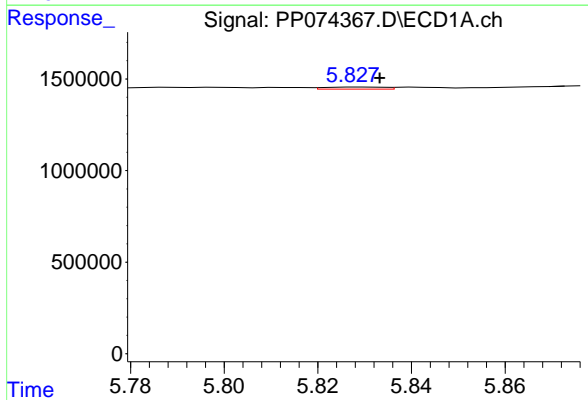
R.T.: 5.828 min
 Delta R.T.: 0.017 min
 Response: 97264
 Conc: 2.36 ng/ml

Instrument :
 ECD_P
 ClientSampleId :
 705R-S



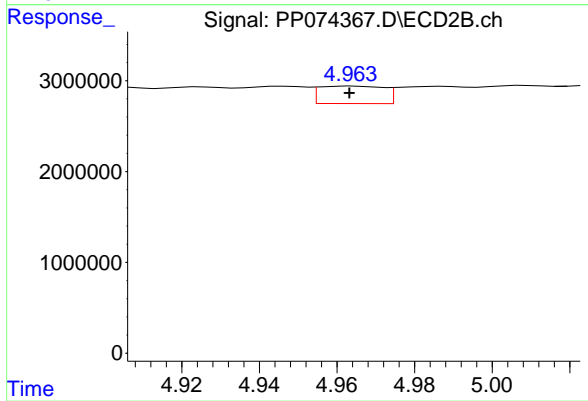
#3 AR-1016-1

R.T.: 4.904 min
 Delta R.T.: -0.002 min
 Response: 2188310
 Conc: 5.49 ng/ml



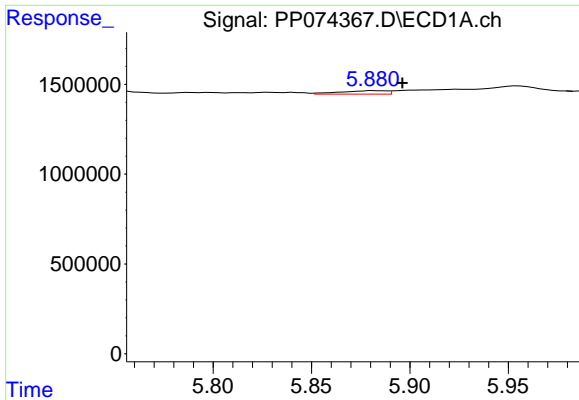
#4 AR-1016-2

R.T.: 5.828 min
 Delta R.T.: -0.005 min
 Response: 97264
 Conc: 1.60 ng/ml



#4 AR-1016-2

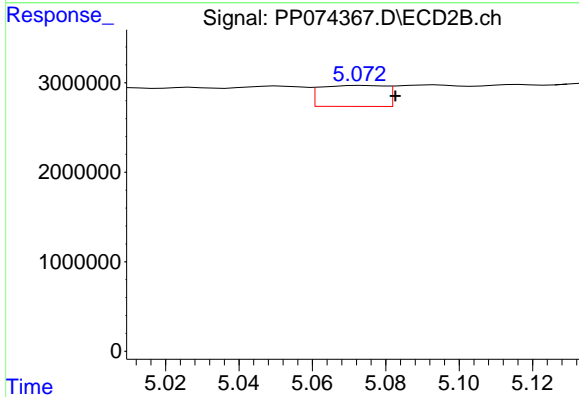
R.T.: 4.964 min
 Delta R.T.: 0.001 min
 Response: 2227341
 Conc: 11.86 ng/ml



#5 AR-1016-3

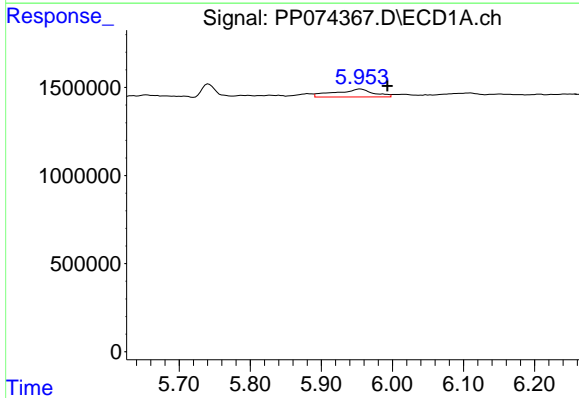
R.T.: 5.881 min
 Delta R.T.: -0.015 min
 Response: 322184
 Conc: 8.12 ng/ml

Instrument :
 ECD_P
 ClientSampleId :
 705R-S



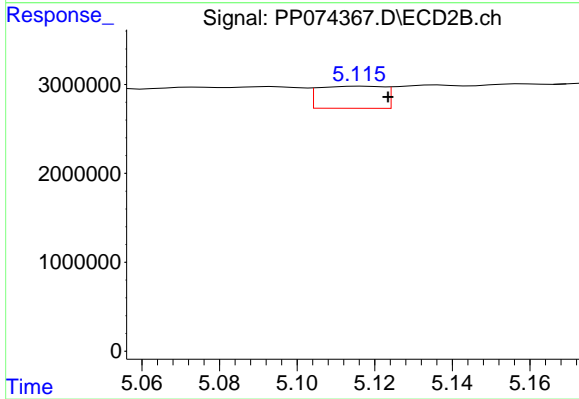
#5 AR-1016-3

R.T.: 5.074 min
 Delta R.T.: -0.009 min
 Response: 2880770
 Conc: 27.16 ng/ml



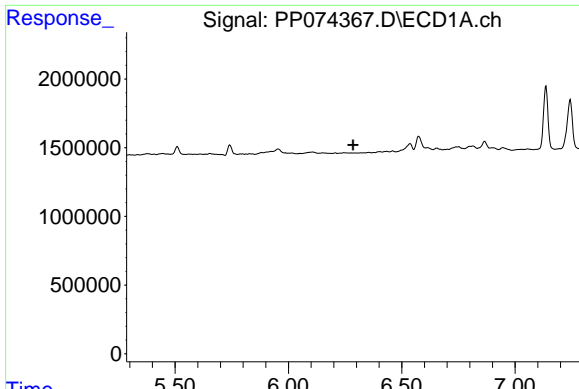
#6 AR-1016-4

R.T.: 5.955 min
 Delta R.T.: -0.038 min
 Response: 1693962
 Conc: 52.05 ng/ml



#6 AR-1016-4

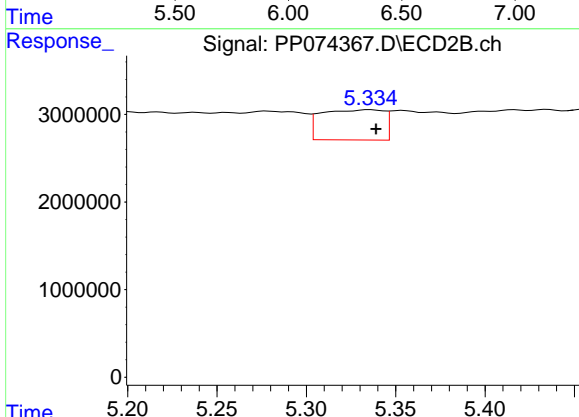
R.T.: 5.117 min
 Delta R.T.: -0.007 min
 Response: 2901734
 Conc: 26.57 ng/ml



#7 AR-1016-5

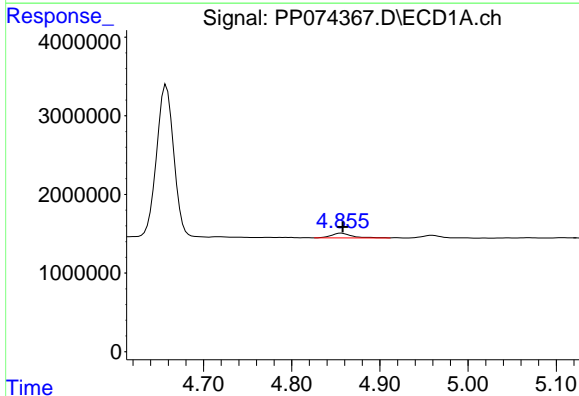
R.T.: 0.000 min
 Exp R.T.: 6.286 min
 Response: 0
 Conc: N.D.

Instrument :
 ECD_P
 ClientSampleId :
 705R-S



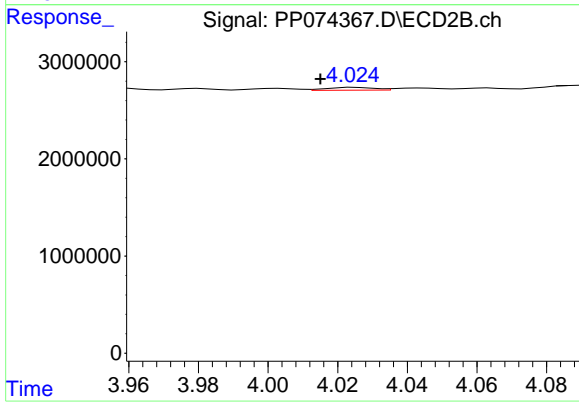
#7 AR-1016-5

R.T.: 5.336 min
 Delta R.T.: -0.003 min
 Response: 8373900
 Conc: 71.59 ng/ml



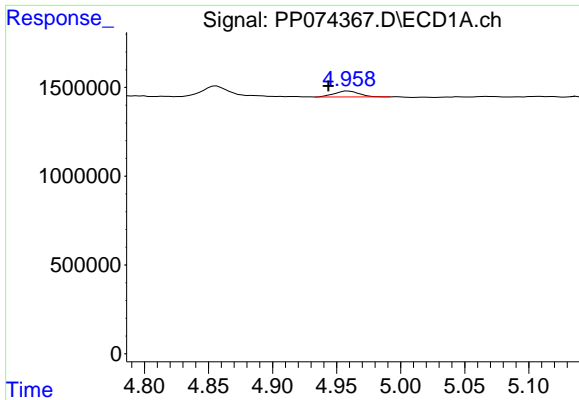
#8 AR-1221-1

R.T.: 4.856 min
 Delta R.T.: -0.002 min
 Response: 957282
 Conc: 57.10 ng/ml



#8 AR-1221-1

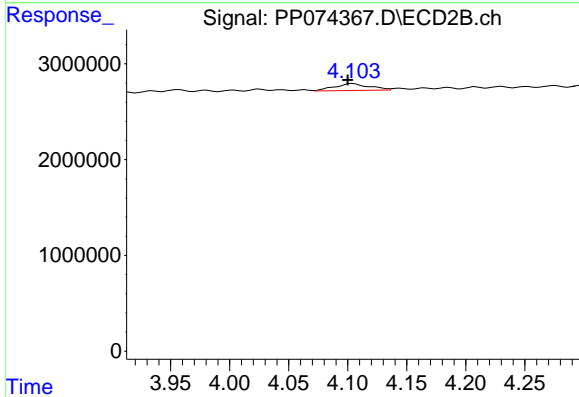
R.T.: 4.025 min
 Delta R.T.: 0.010 min
 Response: 279918
 Conc: 5.70 ng/ml



#9 AR-1221-2

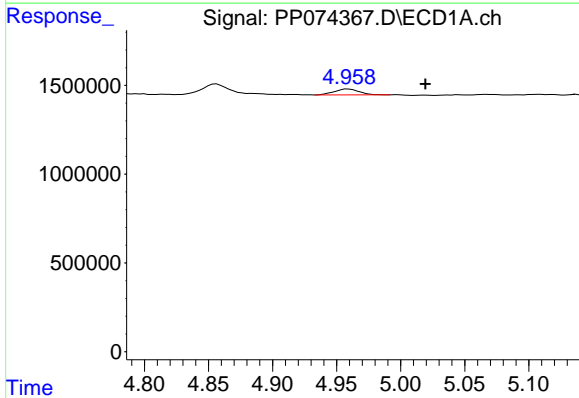
R.T.: 4.959 min
 Delta R.T.: 0.016 min
 Response: 440674
 Conc: 34.97 ng/ml

Instrument :
 ECD_P
 ClientSampleId :
 705R-S



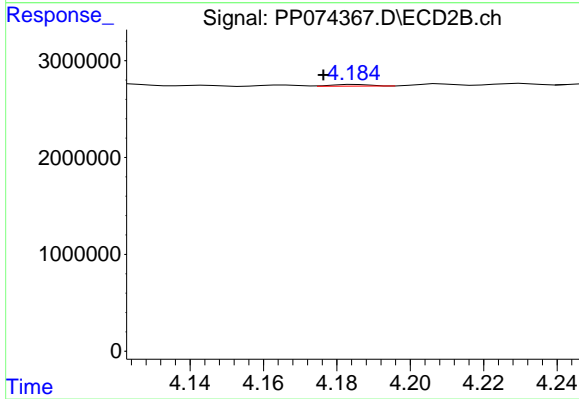
#9 AR-1221-2

R.T.: 4.104 min
 Delta R.T.: 0.004 min
 Response: 1485683
 Conc: 41.40 ng/ml



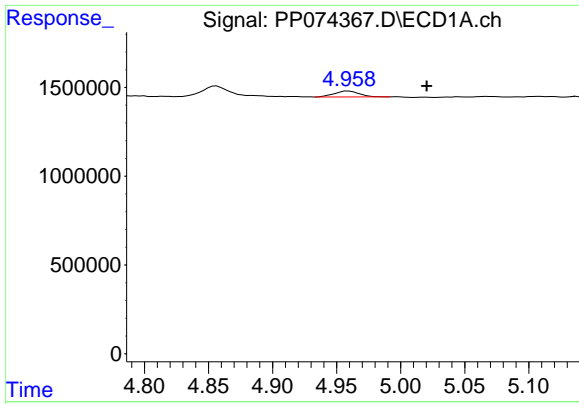
#10 AR-1221-3

R.T.: 4.959 min
 Delta R.T.: -0.060 min
 Response: 440674
 Conc: 12.03 ng/ml



#10 AR-1221-3

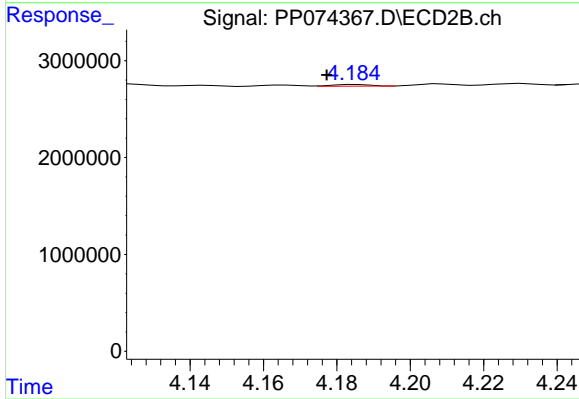
R.T.: 4.185 min
 Delta R.T.: 0.009 min
 Response: 129725
 Conc: 0.96 ng/ml



#11 AR-1232-1

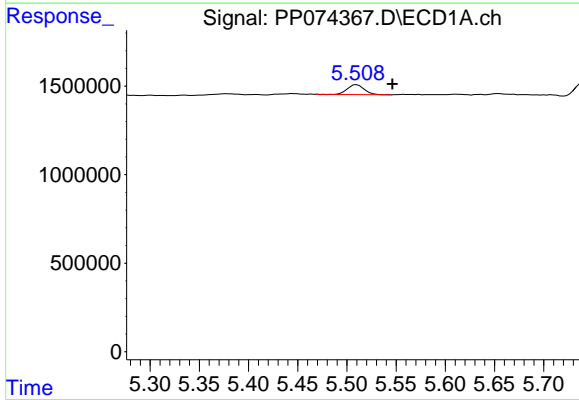
R.T.: 4.959 min
 Delta R.T.: -0.061 min
 Response: 440674
 Conc: 15.18 ng/ml

Instrument :
 ECD_P
 ClientSampleId :
 705R-S



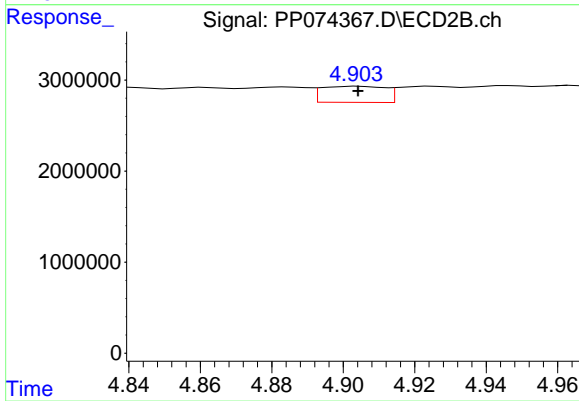
#11 AR-1232-1

R.T.: 4.185 min
 Delta R.T.: 0.008 min
 Response: 129725
 Conc: 1.28 ng/ml



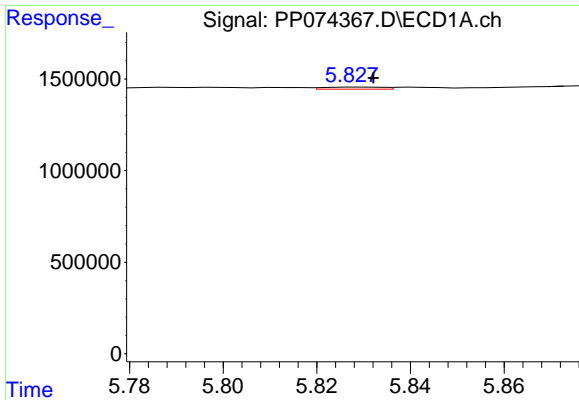
#12 AR-1232-2

R.T.: 5.510 min
 Delta R.T.: -0.036 min
 Response: 667134
 Conc: 44.35 ng/ml



#12 AR-1232-2

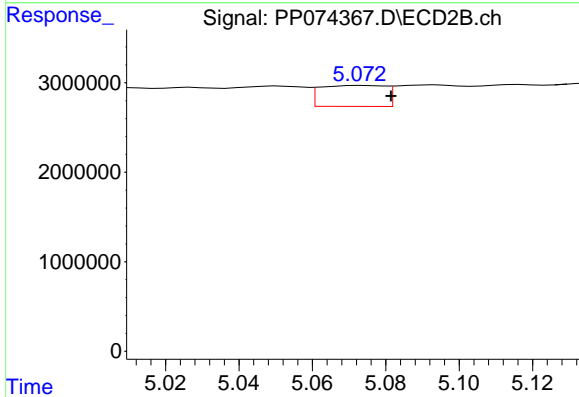
R.T.: 4.904 min
 Delta R.T.: 0.000 min
 Response: 2188310
 Conc: 12.56 ng/ml



#13 AR-1232-3

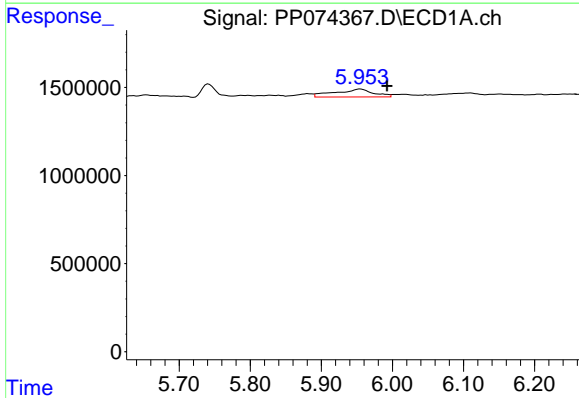
R.T.: 5.828 min
 Delta R.T.: -0.004 min
 Response: 97264
 Conc: 3.35 ng/ml

Instrument :
 ECD_P
 ClientSampleId :
 705R-S



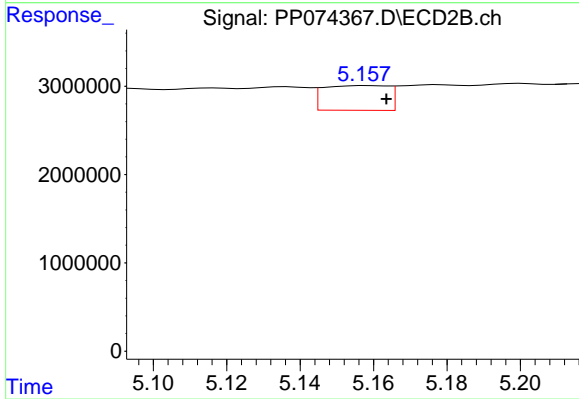
#13 AR-1232-3

R.T.: 5.074 min
 Delta R.T.: -0.008 min
 Response: 2880770
 Conc: 62.88 ng/ml



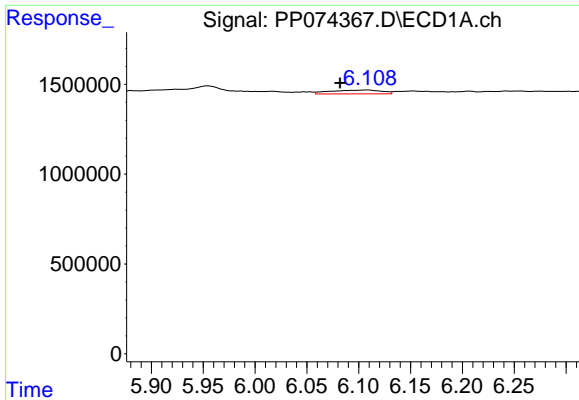
#14 AR-1232-4

R.T.: 5.955 min
 Delta R.T.: -0.038 min
 Response: 1693962
 Conc: 109.51 ng/ml



#14 AR-1232-4

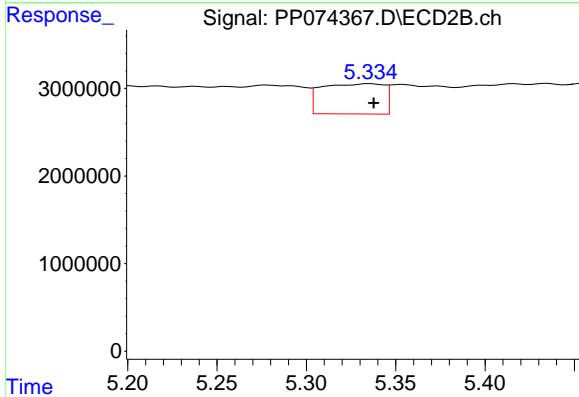
R.T.: 5.158 min
 Delta R.T.: -0.005 min
 Response: 3428249
 Conc: 59.10 ng/ml



#15 AR-1232-5

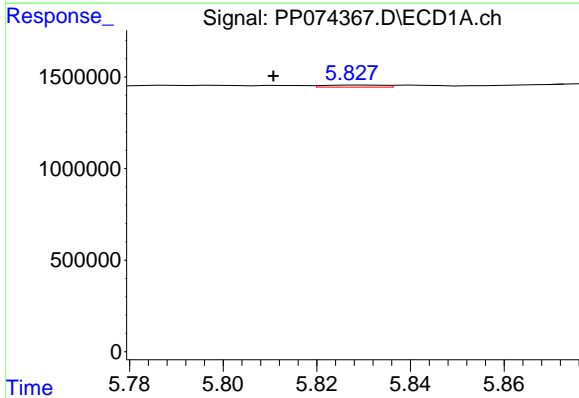
R.T.: 6.109 min
 Delta R.T.: 0.028 min
 Response: 727183
 Conc: 62.07 ng/ml

Instrument :
 ECD_P
 ClientSampleId :
 705R-S



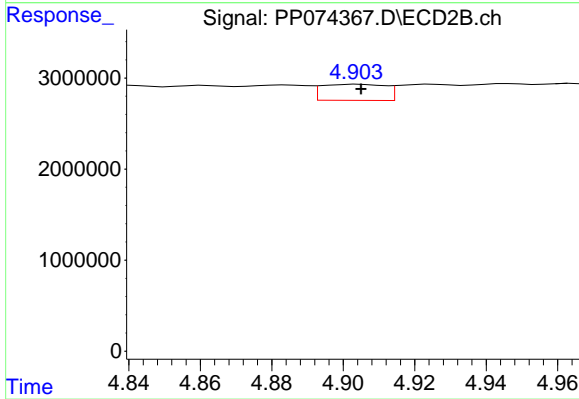
#15 AR-1232-5

R.T.: 5.336 min
 Delta R.T.: -0.002 min
 Response: 8373900
 Conc: 178.25 ng/ml



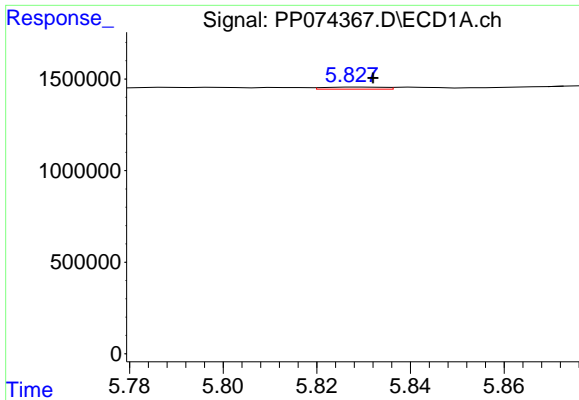
#16 AR-1242-1

R.T.: 5.828 min
 Delta R.T.: 0.018 min
 Response: 97264
 Conc: 2.61 ng/ml



#16 AR-1242-1

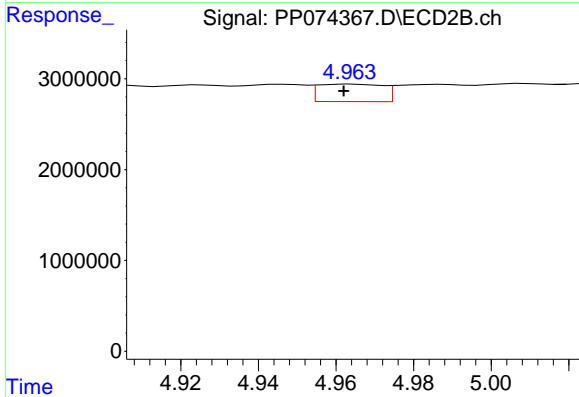
R.T.: 4.904 min
 Delta R.T.: 0.000 min
 Response: 2188310
 Conc: 6.34 ng/ml



#17 AR-1242-2

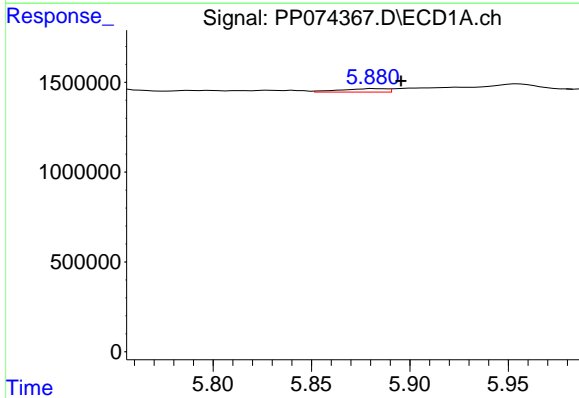
R.T.: 5.828 min
 Delta R.T.: -0.004 min
 Response: 97264
 Conc: 1.79 ng/ml

Instrument :
 ECD_P
 ClientSampleId :
 705R-S



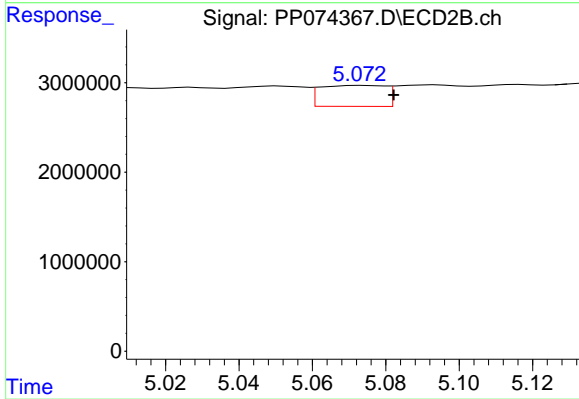
#17 AR-1242-2

R.T.: 4.964 min
 Delta R.T.: 0.002 min
 Response: 2227341
 Conc: 13.63 ng/ml



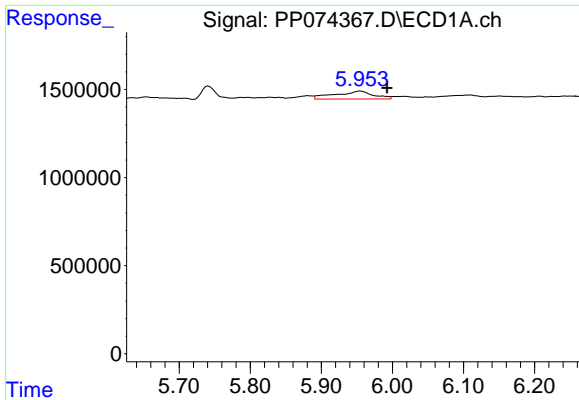
#18 AR-1242-3

R.T.: 5.881 min
 Delta R.T.: -0.014 min
 Response: 322184
 Conc: 9.02 ng/ml



#18 AR-1242-3

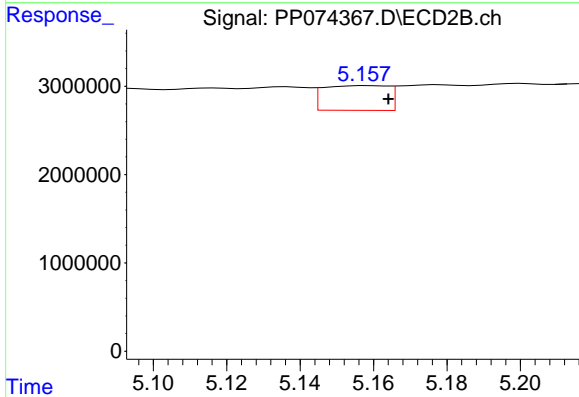
R.T.: 5.074 min
 Delta R.T.: -0.009 min
 Response: 2880770
 Conc: 31.23 ng/ml



#19 AR-1242-4

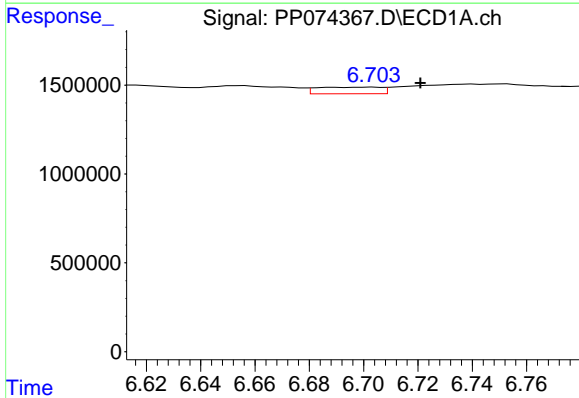
R.T.: 5.955 min
 Delta R.T.: -0.038 min
 Response: 1693962
 Conc: 57.98 ng/ml

Instrument :
 ECD_P
 ClientSampleId :
 705R-S



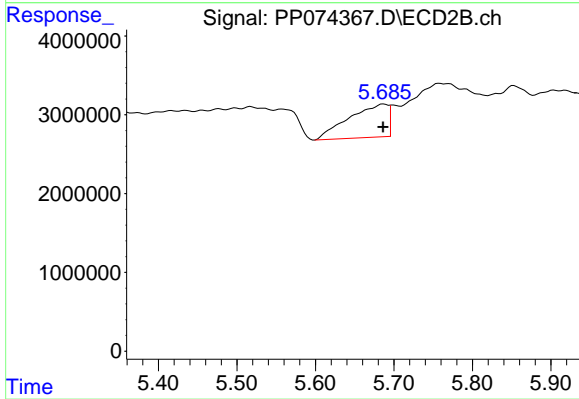
#19 AR-1242-4

R.T.: 5.158 min
 Delta R.T.: -0.006 min
 Response: 3428249
 Conc: 28.71 ng/ml



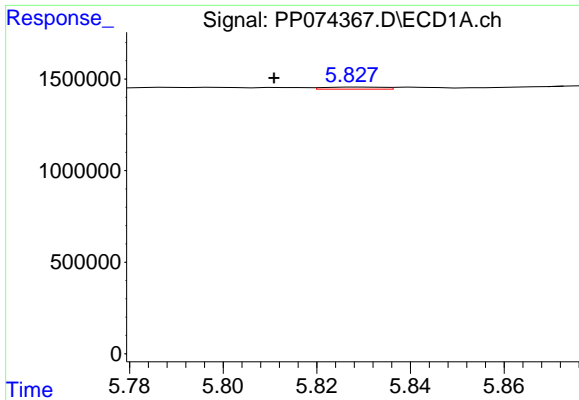
#20 AR-1242-5

R.T.: 6.704 min
 Delta R.T.: -0.017 min
 Response: 607723
 Conc: 17.09 ng/ml



#20 AR-1242-5

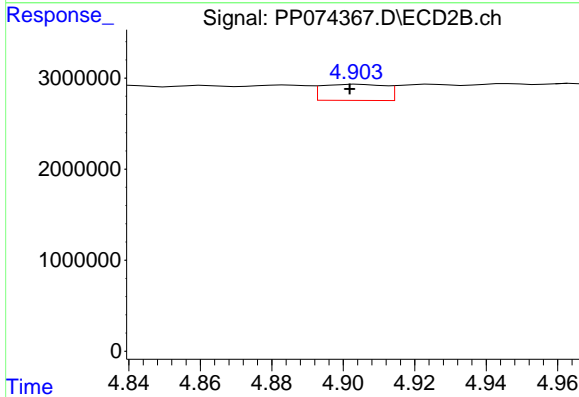
R.T.: 5.687 min
 Delta R.T.: 0.000 min
 Response: 14518379
 Conc: 97.07 ng/ml



#21 AR-1248-1

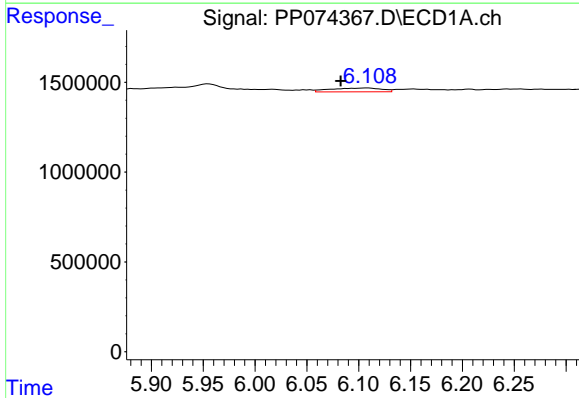
R.T.: 5.828 min
 Delta R.T.: 0.017 min
 Response: 97264
 Conc: 3.47 ng/ml

Instrument :
 ECD_P
 ClientSampleId :
 705R-S



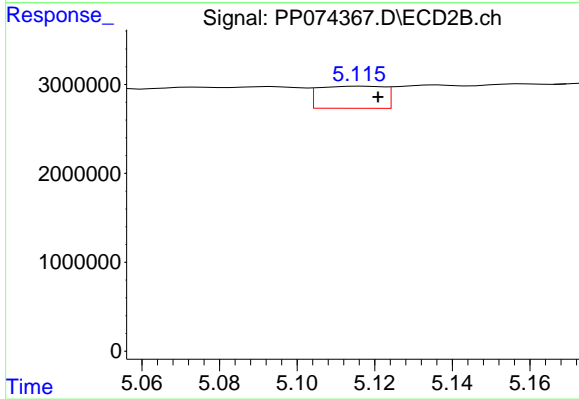
#21 AR-1248-1

R.T.: 4.904 min
 Delta R.T.: 0.002 min
 Response: 2188310
 Conc: 10.23 ng/ml



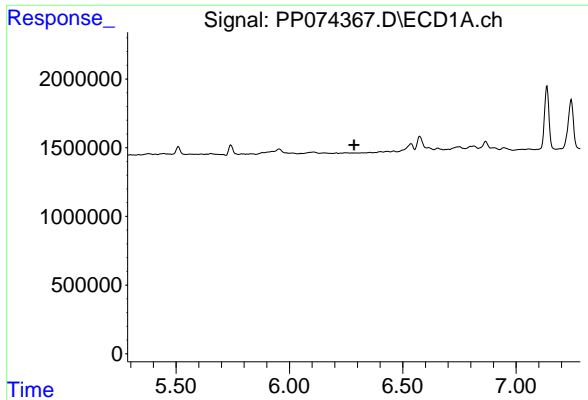
#22 AR-1248-2

R.T.: 6.109 min
 Delta R.T.: 0.027 min
 Response: 727183
 Conc: 18.06 ng/ml



#22 AR-1248-2

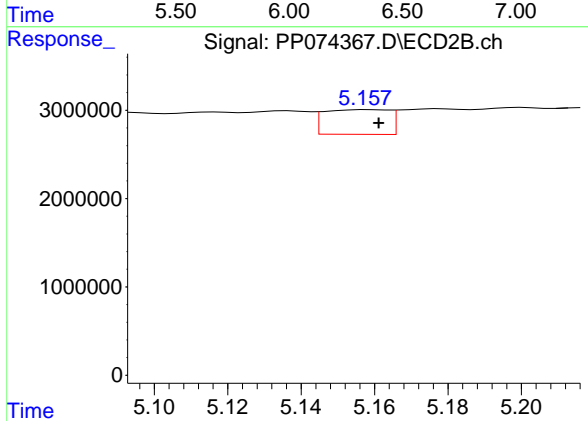
R.T.: 5.117 min
 Delta R.T.: -0.004 min
 Response: 2901734
 Conc: 19.83 ng/ml



#23 AR-1248-3

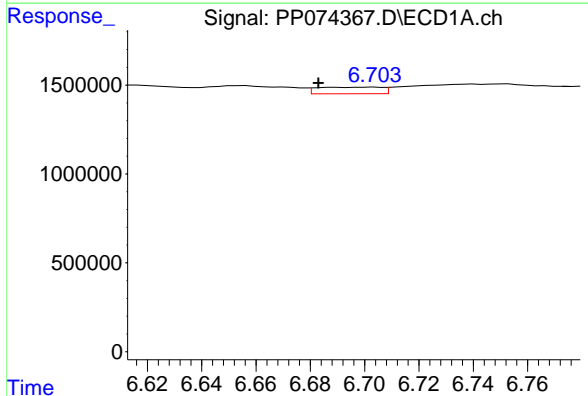
R.T.: 0.000 min
 Exp R.T.: 6.286 min
 Response: 0
 Conc: N.D.

Instrument :
 ECD_P
 ClientSampleId :
 705R-S



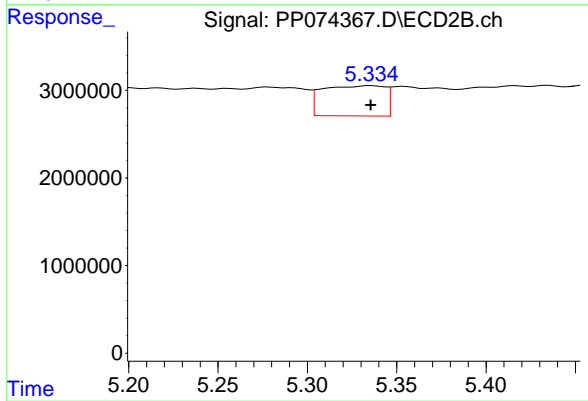
#23 AR-1248-3

R.T.: 5.158 min
 Delta R.T.: -0.003 min
 Response: 3428249
 Conc: 19.99 ng/ml



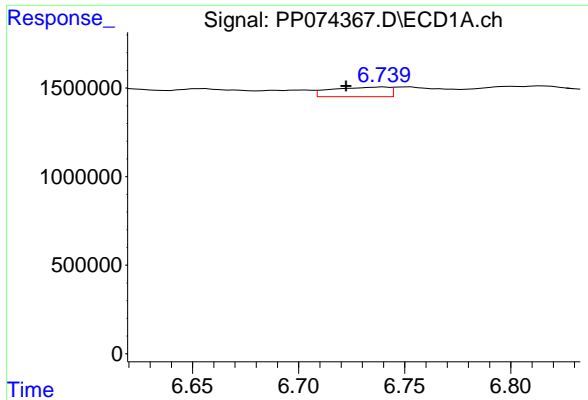
#24 AR-1248-4

R.T.: 6.704 min
 Delta R.T.: 0.021 min
 Response: 607723
 Conc: 11.68 ng/ml



#24 AR-1248-4

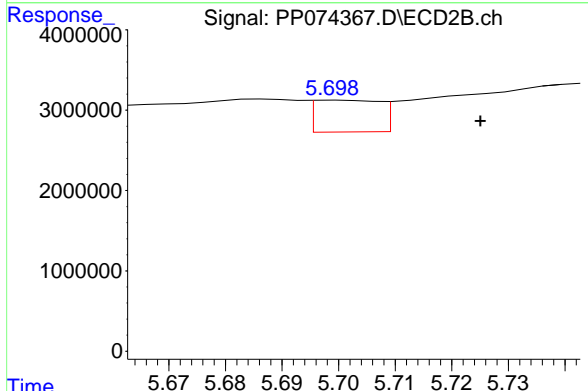
R.T.: 5.336 min
 Delta R.T.: 0.000 min
 Response: 8373900
 Conc: 50.33 ng/ml



#25 AR-1248-5

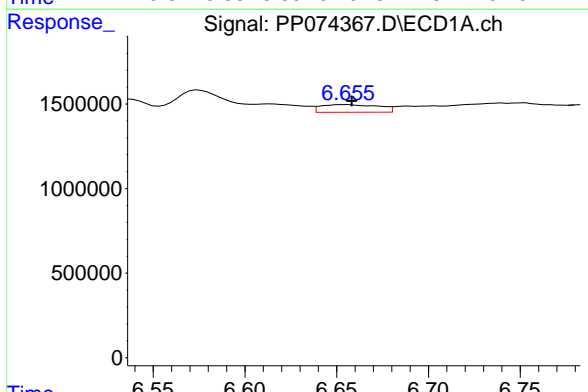
R.T.: 6.740 min
 Delta R.T.: 0.018 min
 Response: 1006341
 Conc: 17.67 ng/ml

Instrument :
 ECD_P
 ClientSampleId :
 705R-S



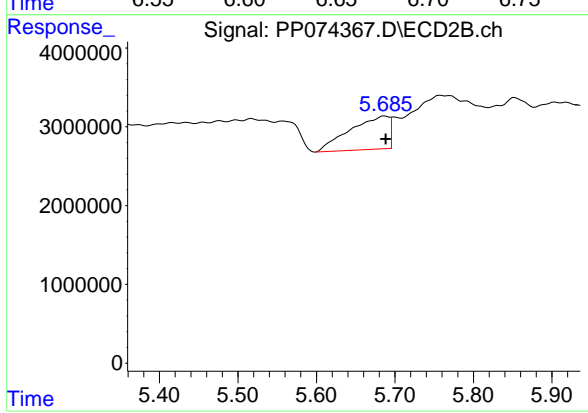
#25 AR-1248-5

R.T.: 5.699 min
 Delta R.T.: -0.026 min
 Response: 3183375
 Conc: 10.94 ng/ml



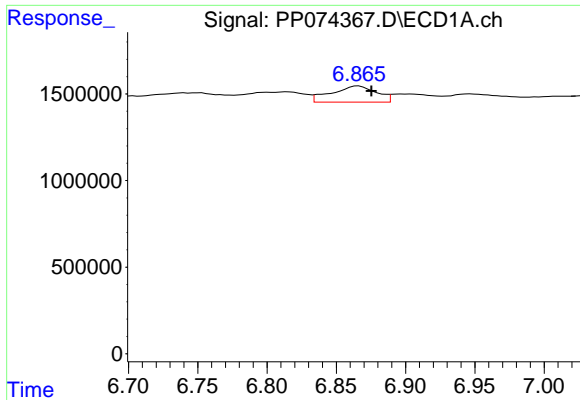
#26 AR-1254-1

R.T.: 6.656 min
 Delta R.T.: -0.002 min
 Response: 989920
 Conc: 18.81 ng/ml



#26 AR-1254-1

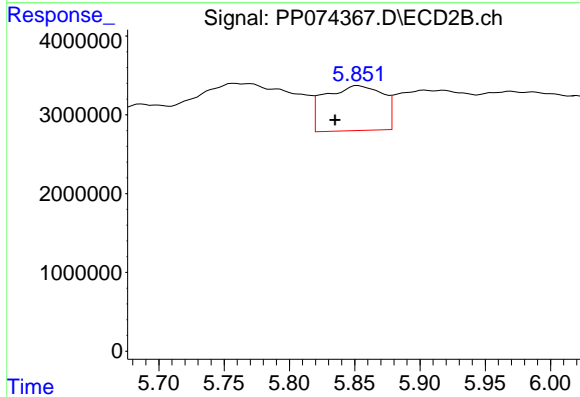
R.T.: 5.687 min
 Delta R.T.: -0.002 min
 Response: 14518379
 Conc: 39.65 ng/ml



#27 AR-1254-2

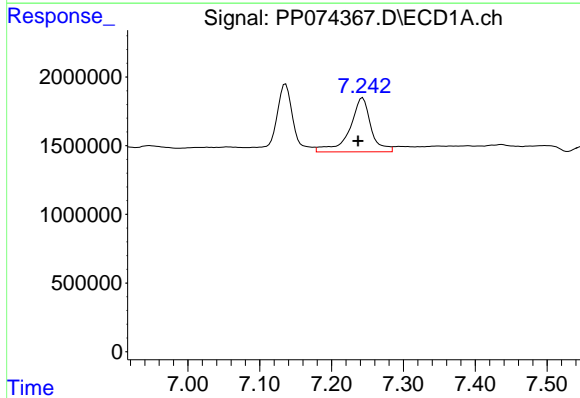
R.T.: 6.866 min
 Delta R.T.: -0.009 min
 Response: 2096256
 Conc: 26.37 ng/ml

Instrument :
 ECD_P
 ClientSampleId :
 705R-S



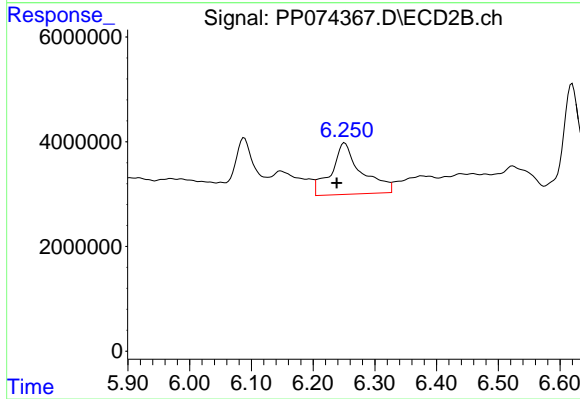
#27 AR-1254-2

R.T.: 5.853 min
 Delta R.T.: 0.018 min
 Response: 17622085
 Conc: 63.34 ng/ml



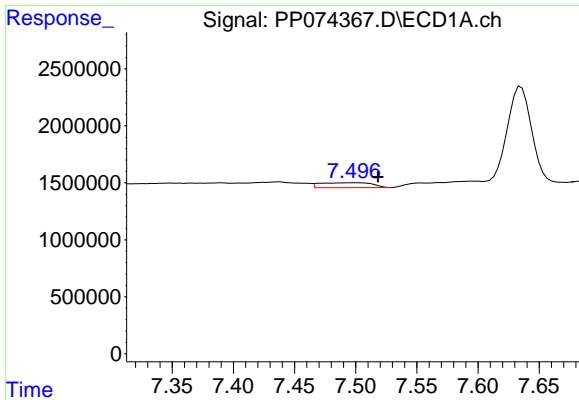
#28 AR-1254-3

R.T.: 7.243 min
 Delta R.T.: 0.006 min
 Response: 8084715
 Conc: 92.59 ng/ml



#28 AR-1254-3

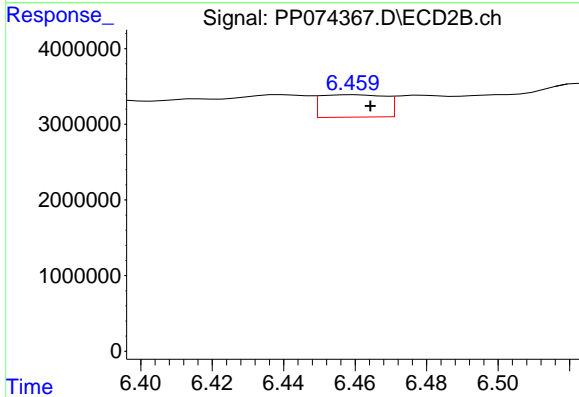
R.T.: 6.251 min
 Delta R.T.: 0.013 min
 Response: 33429467
 Conc: 68.33 ng/ml



#29 AR-1254-4

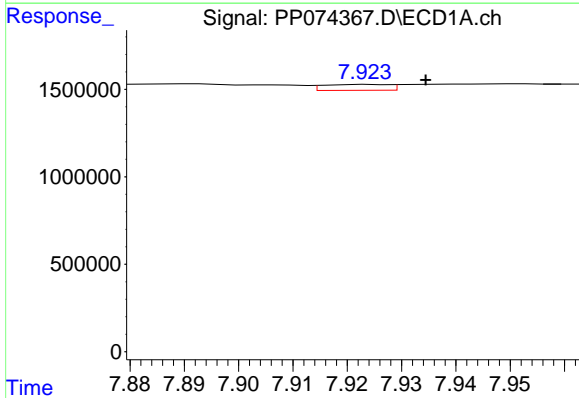
R.T.: 7.498 min
 Delta R.T.: -0.021 min
 Response: 1284069
 Conc: 20.12 ng/ml

Instrument :
 ECD_P
 ClientSampleId :
 705R-S



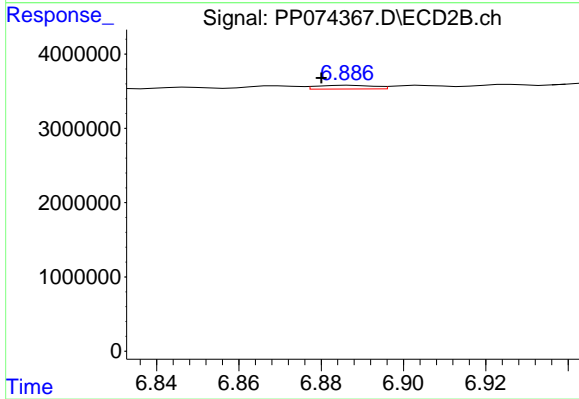
#29 AR-1254-4

R.T.: 6.460 min
 Delta R.T.: -0.005 min
 Response: 3725010
 Conc: 10.13 ng/ml



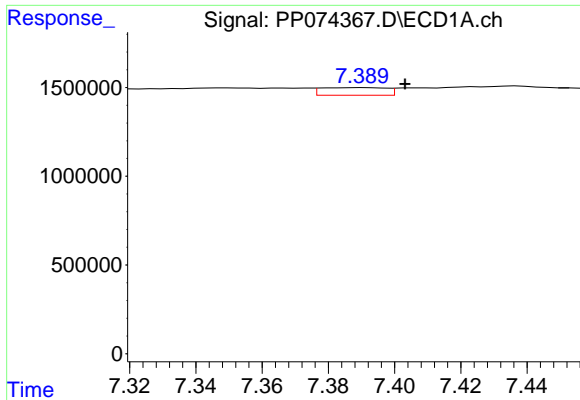
#30 AR-1254-5

R.T.: 7.924 min
 Delta R.T.: -0.010 min
 Response: 279434
 Conc: 3.44 ng/ml



#30 AR-1254-5

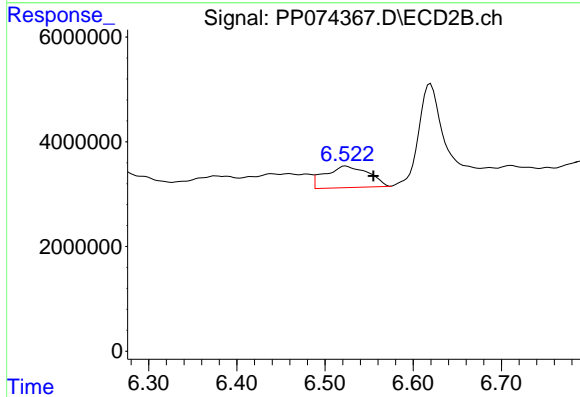
R.T.: 6.887 min
 Delta R.T.: 0.007 min
 Response: 485033
 Conc: 1.26 ng/ml



#31 AR-1260-1

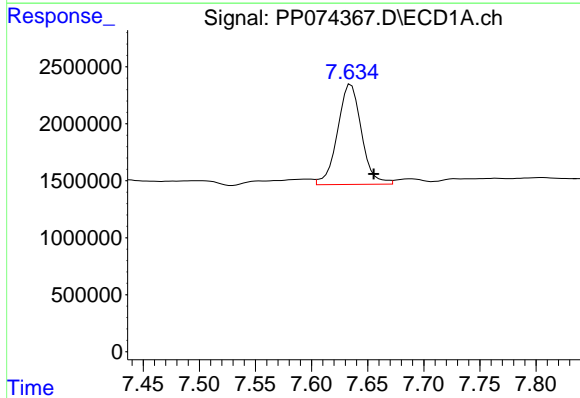
R.T.: 7.391 min
 Delta R.T.: -0.012 min
 Response: 582325
 Conc: 10.33 ng/ml

Instrument :
 ECD_P
 ClientSampleId :
 705R-S



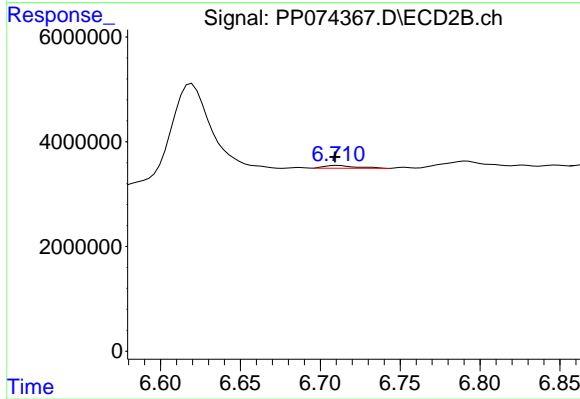
#31 AR-1260-1

R.T.: 6.524 min
 Delta R.T.: -0.031 min
 Response: 14059921
 Conc: 34.81 ng/ml



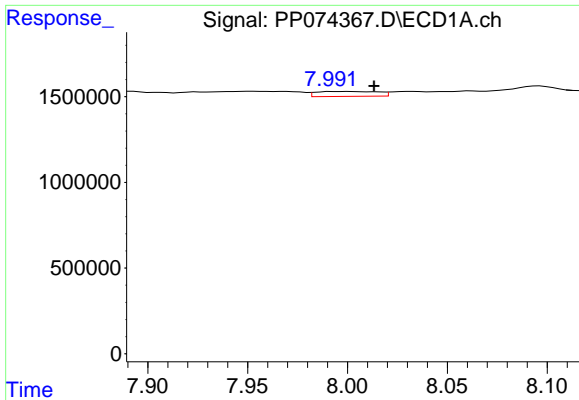
#32 AR-1260-2

R.T.: 7.635 min
 Delta R.T.: -0.020 min
 Response: 13041514
 Conc: 191.36 ng/ml



#32 AR-1260-2

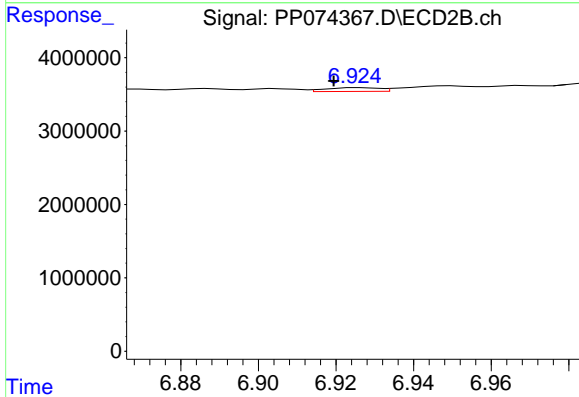
R.T.: 6.711 min
 Delta R.T.: 0.002 min
 Response: 749266
 Conc: 2.40 ng/ml



#33 AR-1260-3

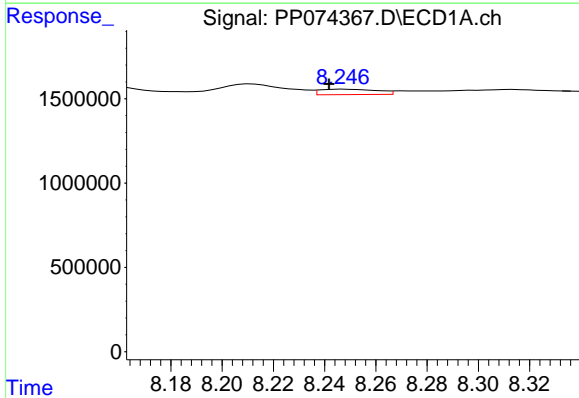
R.T.: 8.001 min
 Delta R.T.: -0.012 min
 Response: 624019
 Conc: 11.71 ng/ml

Instrument :
 ECD_P
 ClientSampleId :
 705R-S



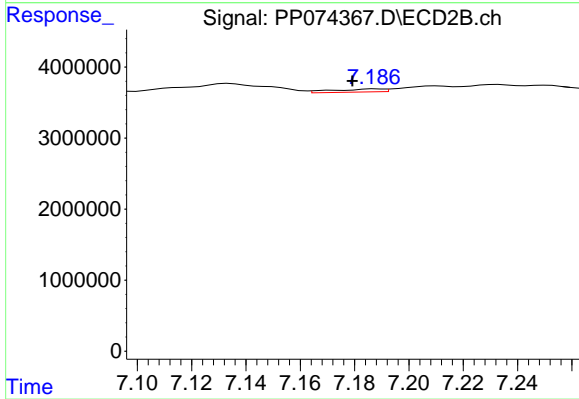
#33 AR-1260-3

R.T.: 6.926 min
 Delta R.T.: 0.006 min
 Response: 496886
 Conc: 1.26 ng/ml



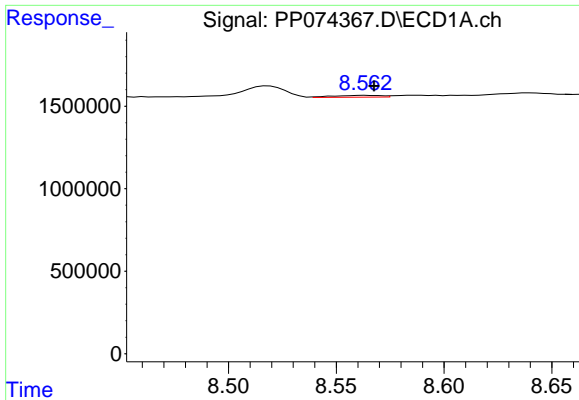
#34 AR-1260-4

R.T.: 8.248 min
 Delta R.T.: 0.006 min
 Response: 489585
 Conc: 7.82 ng/ml



#34 AR-1260-4

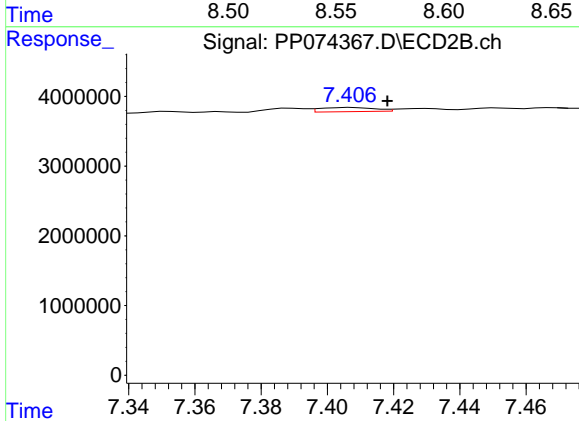
R.T.: 7.188 min
 Delta R.T.: 0.009 min
 Response: 552711
 Conc: 1.90 ng/ml



#35 AR-1260-5

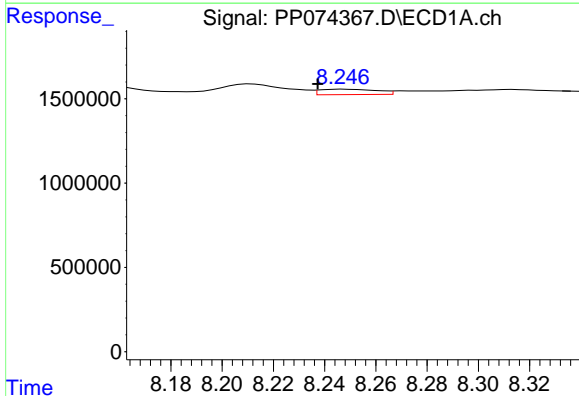
R.T.: 8.563 min
 Delta R.T.: -0.004 min
 Response: 174333
 Conc: 1.54 ng/ml

Instrument :
 ECD_P
 ClientSampleId :
 705R-S



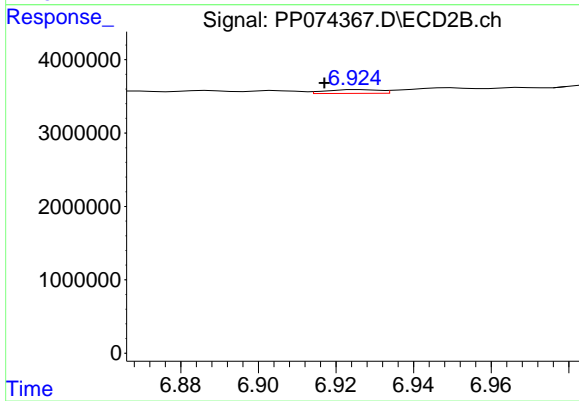
#35 AR-1260-5

R.T.: 7.407 min
 Delta R.T.: -0.011 min
 Response: 678727
 Conc: 0.90 ng/ml



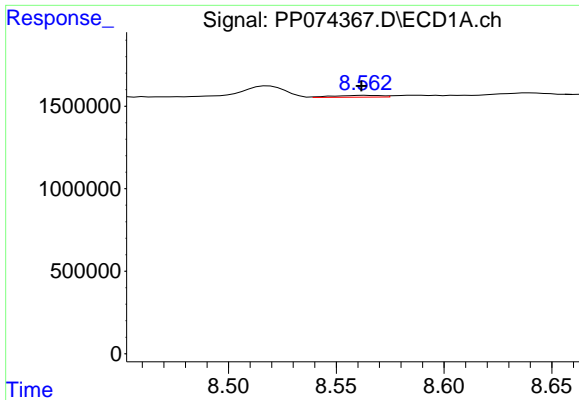
#36 AR-1262-1

R.T.: 8.248 min
 Delta R.T.: 0.011 min
 Response: 489585
 Conc: 6.46 ng/ml



#36 AR-1262-1

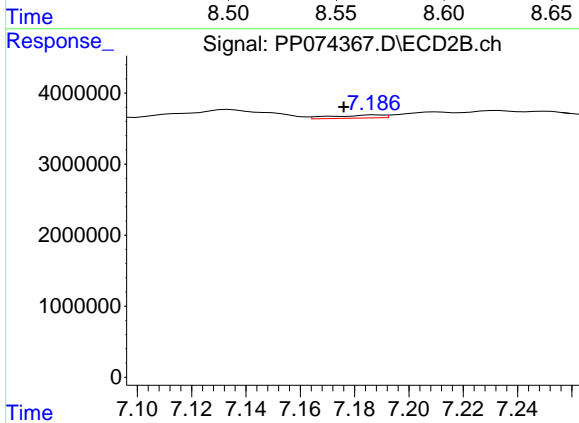
R.T.: 6.926 min
 Delta R.T.: 0.009 min
 Response: 496886
 Conc: 0.88 ng/ml



#37 AR-1262-2

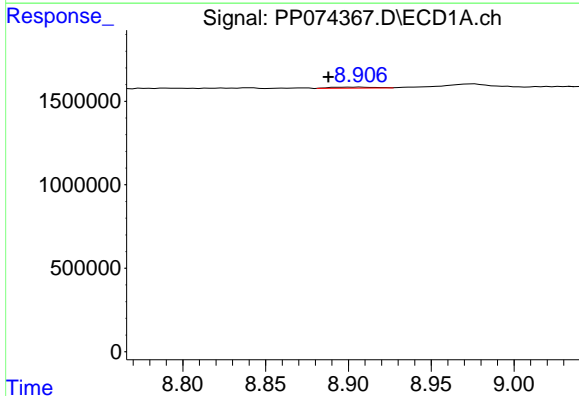
R.T.: 8.563 min
 Delta R.T.: 0.002 min
 Response: 174333
 Conc: 1.34 ng/ml

Instrument :
 ECD_P
 ClientSampleId :
 705R-S



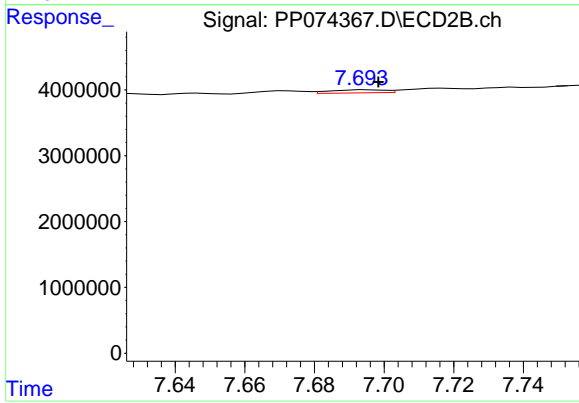
#37 AR-1262-2

R.T.: 7.188 min
 Delta R.T.: 0.012 min
 Response: 552711
 Conc: 1.38 ng/ml



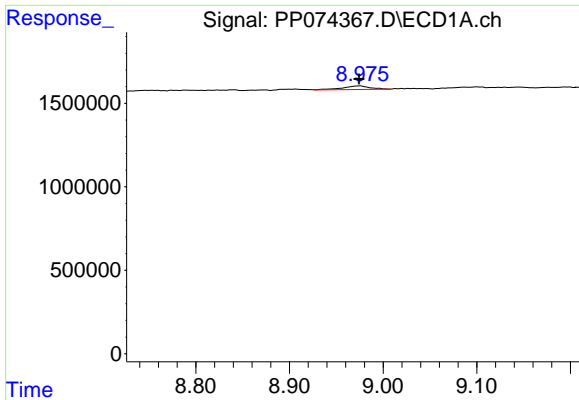
#38 AR-1262-3

R.T.: 8.906 min
 Delta R.T.: 0.018 min
 Response: 114171
 Conc: 1.21 ng/ml



#38 AR-1262-3

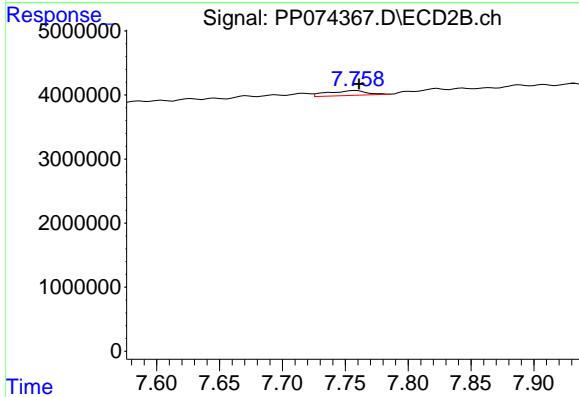
R.T.: 7.694 min
 Delta R.T.: -0.004 min
 Response: 506818
 Conc: 1.41 ng/ml



#39 AR-1262-4

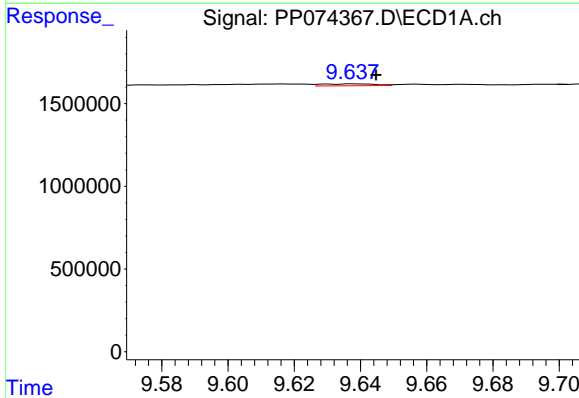
R.T.: 8.975 min
 Delta R.T.: 0.000 min
 Response: 432779
 Conc: 5.94 ng/ml

Instrument :
 ECD_P
 ClientSampleId :
 705R-S



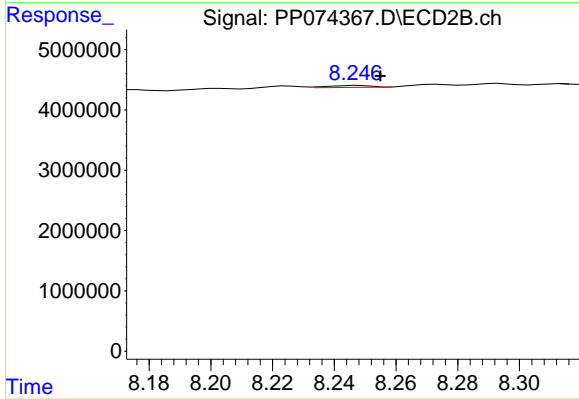
#39 AR-1262-4

R.T.: 7.759 min
 Delta R.T.: -0.002 min
 Response: 1606961
 Conc: 2.41 ng/ml



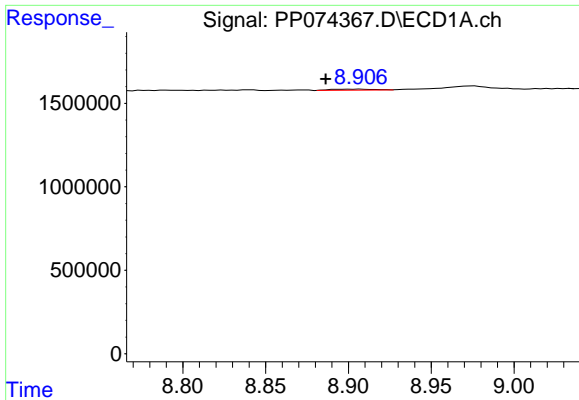
#40 AR-1262-5

R.T.: 9.639 min
 Delta R.T.: -0.006 min
 Response: 126423
 Conc: 2.48 ng/ml



#40 AR-1262-5

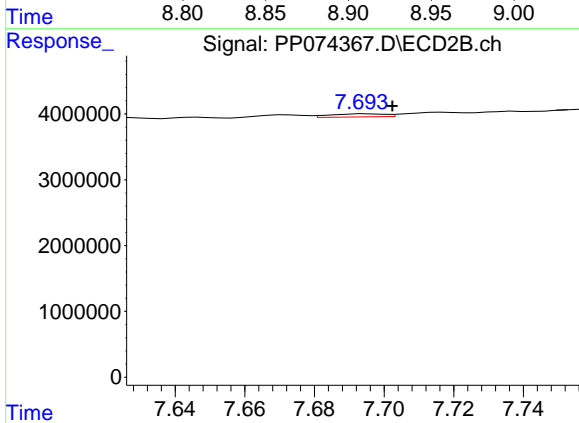
R.T.: 8.247 min
 Delta R.T.: -0.007 min
 Response: 293248
 Conc: 1.04 ng/ml



#41 AR-1268-1

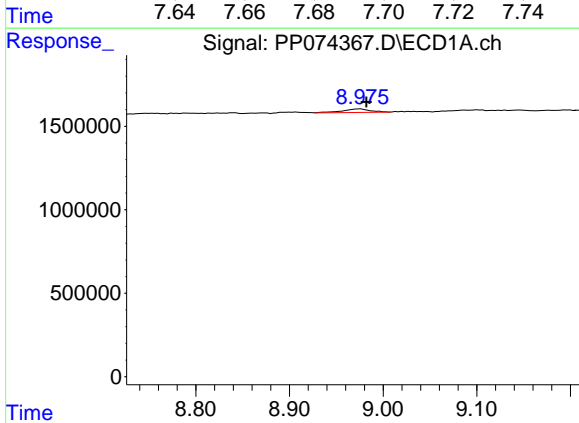
R.T.: 8.906 min
 Delta R.T.: 0.020 min
 Response: 114171
 Conc: 0.73 ng/ml

Instrument :
 ECD_P
 ClientSampleId :
 705R-S



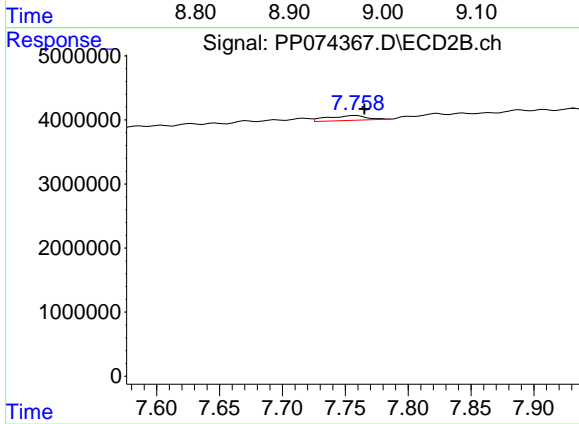
#41 AR-1268-1

R.T.: 7.694 min
 Delta R.T.: -0.008 min
 Response: 506818
 Conc: 0.46 ng/ml



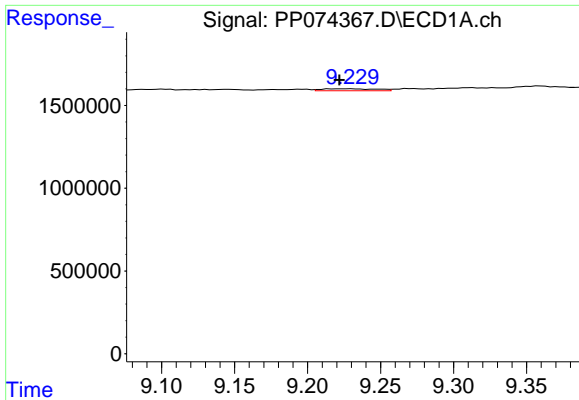
#42 AR-1268-2

R.T.: 8.975 min
 Delta R.T.: -0.007 min
 Response: 432779
 Conc: 3.02 ng/ml



#42 AR-1268-2

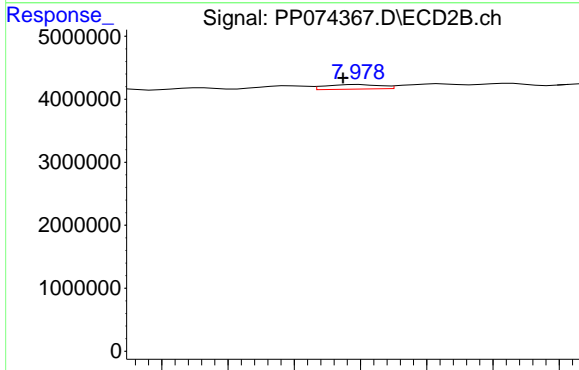
R.T.: 7.759 min
 Delta R.T.: -0.006 min
 Response: 1606961
 Conc: 1.51 ng/ml



#43 AR-1268-3

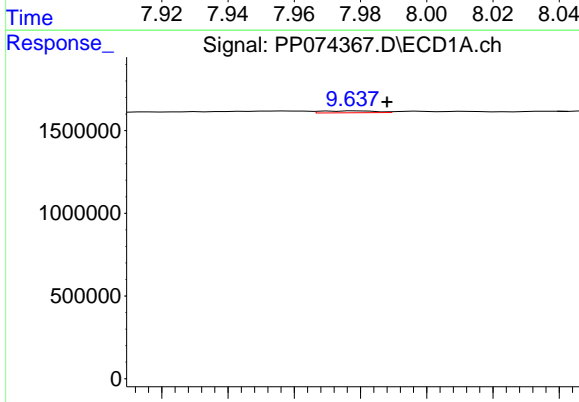
R.T.: 9.229 min
 Delta R.T.: 0.008 min
 Response: 311650
 Conc: 2.61 ng/ml

Instrument :
 ECD_P
 ClientSampleId :
 705R-S



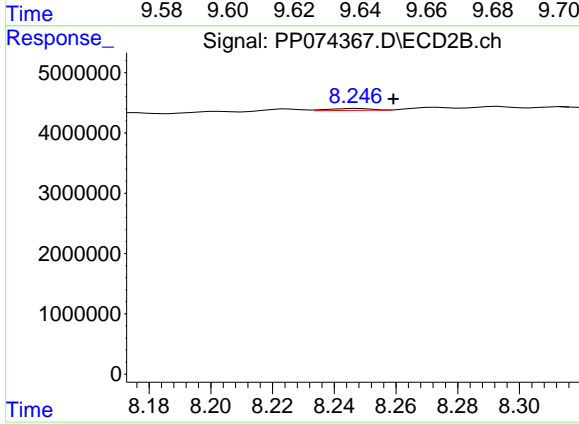
#43 AR-1268-3

R.T.: 7.979 min
 Delta R.T.: 0.005 min
 Response: 841512
 Conc: 1.01 ng/ml



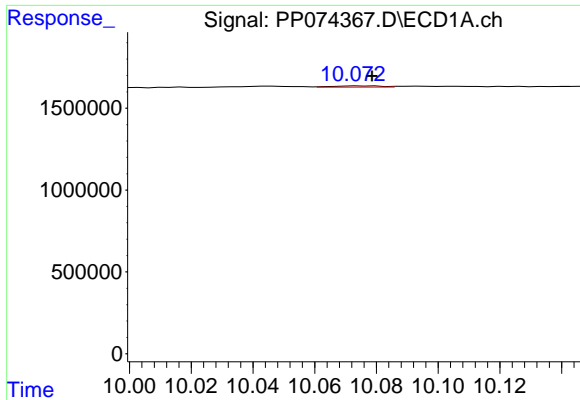
#44 AR-1268-4

R.T.: 9.639 min
 Delta R.T.: -0.009 min
 Response: 126423
 Conc: 2.15 ng/ml



#44 AR-1268-4

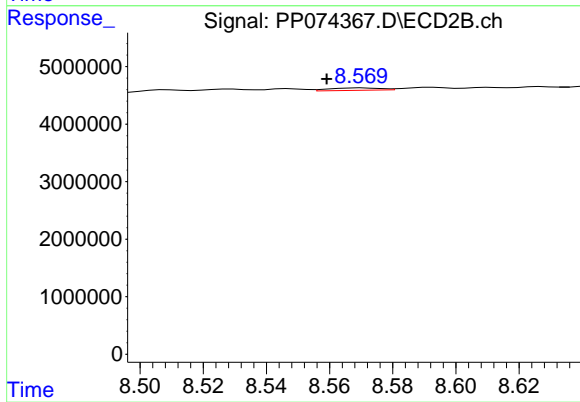
R.T.: 8.247 min
 Delta R.T.: -0.012 min
 Response: 293248
 Conc: 0.95 ng/ml



#45 AR-1268-5

R.T.: 10.075 min
 Delta R.T.: -0.004 min
 Response: 84301
 Conc: 0.24 ng/ml

Instrument :
 ECD_P
 ClientSampleId :
 705R-S



#45 AR-1268-5

R.T.: 8.570 min
 Delta R.T.: 0.011 min
 Response: 474820
 Conc: 0.19 ng/ml