

Data Path : Z:\pestpcbsrv\HPCHEM1\ECD_P\Data\PP081325\
 Data File : PP074368.D
 Signal(s) : Signal #1: ECD1A.ch Signal #2: ECD2B.ch
 Acq On : 13 Aug 2025 23:30
 Operator : YP\AJ
 Sample : AR1660CCC500
 Misc :
 ALS Vial : 3 Sample Multiplier: 1

Instrument :
 ECD_P
 ClientSampleId :
 AR1660CCC500

Integration File signal 1: autoint1.e
 Integration File signal 2: autoint2.e
 Quant Time: Aug 14 00:29:59 2025
 Quant Method : Z:\pestpcbsrv\HPCHEM1\ECD_P\methods\PP080125.M
 Quant Title : GC EXTRACTABLES
 QLast Update : Mon Aug 04 11:01:49 2025
 Response via : Initial Calibration
 Integrator: ChemStation

Volume Inj. : 2 µl
 Signal #1 Phase : ZB-MR1 Signal #2 Phase: ZB-MR2
 Signal #1 Info : 30Mx0.32mmx 0.50µ Signal #2 Info : 30M x 0.32mm x 0.25µm

Compound	RT#1	RT#2	Resp#1	Resp#2	ng/ml	ng/ml

System Monitoring Compounds						
1) SA Tetrachlo...	4.659	3.803	61993358	229.9E6	55.435	59.952
2) SA Decachlor...	10.437	8.819	48496914	328.5E6	49.937	54.624
Target Compounds						
3) L1 AR-1016-1	5.810	4.902	21957828	229.6E6	532.223	575.694
4) L1 AR-1016-2	5.832	4.960	32300948	111.8E6	531.775	595.285
5) L1 AR-1016-3	5.895	5.080	21550699	62903963	543.379	593.044
6) L1 AR-1016-4	5.992	5.121	17644166	62577105	542.156	572.945
7) L1 AR-1016-5	6.284	5.336	17279312	69128339	532.194	591.026
8) L2 AR-1221-1	4.854	4.014	2640500	7392327	157.514	150.602
9) L2 AR-1221-2	4.944	4.100	4039199	10024690	320.545	279.322
10) L2 AR-1221-3	5.019	4.175	13075566	46349187	356.913	342.757
11) L3 AR-1232-1	5.019	4.175	13075566	46349187	450.302	457.262
12) L3 AR-1232-2	5.546	4.902	16802008	229.6E6	1116.953	1317.737
13) L3 AR-1232-3	5.832	5.080	32300948	62903963	1113.760	1372.951
14) L3 AR-1232-4	5.992	5.164	17644166	115.1E6	1140.627	1984.680 #
15) L3 AR-1232-5	6.081	5.336	15543213	69128339	1326.664	1471.459
16) L4 AR-1242-1	5.810	4.902	21957828	229.6E6	589.222	665.343
17) L4 AR-1242-2	5.832	4.960	32300948	111.8E6	593.670	684.303
18) L4 AR-1242-3	5.895	5.080	21550699	62903963	603.055	681.897
19) L4 AR-1242-4	5.992	5.164	17644166	115.1E6	603.867	964.086 #
20) L4 AR-1242-5	6.722	5.686	6759314	115.2E6	190.093	770.469 #
21) L5 AR-1248-1	5.810	4.902	21957828	229.6E6	783.801	1073.412 #
22) L5 AR-1248-2	6.081	5.121	15543213	62577105	386.061	427.695
23) L5 AR-1248-3	6.284	5.164	17279312	115.1E6	387.658	671.484 #
24) L5 AR-1248-4	6.658	5.336	22537280	69128339	433.100	415.501
25) L5 AR-1248-5	6.722	5.686f	6759314	115.2E6	118.703	396.030 #
26) L6 AR-1254-1	6.658	5.686	22537280	115.2E6	428.131	314.683 #
27) L6 AR-1254-2	6.874	5.832	14281495	64666602	179.631	232.432 #
28) L6 AR-1254-3	7.236	6.250	10200228	137.3E6	116.819	280.605 #
29) L6 AR-1254-4	7.519	6.461	5851417	13086750	91.701	35.604 #
30) L6 AR-1254-5	7.933	6.878	44963110	178.6E6	554.110	463.715
31) L7 AR-1260-1	7.401	6.552	28864583	230.6E6	512.182	570.952
32) L7 AR-1260-2	7.654	6.706	33715207	176.0E6	494.703	562.767
33) L7 AR-1260-3	8.012	6.916	26722656	227.5E6	501.401	577.231
34) L7 AR-1260-4	8.240	7.176	31799909	164.1E6	507.864	563.829
35) L7 AR-1260-5	8.566	7.414	55135126	440.2E6	486.608	581.175
36) L8 AR-1262-1	8.240	6.916	31799909	227.5E6	419.581	403.978
37) L8 AR-1262-2	8.566	7.176	55135126	164.1E6	422.718	409.110
38) L8 AR-1262-3	8.897	7.698	38109045	95190616	405.110	264.808 #
39) L8 AR-1262-4	8.977	7.761	25566912	295.3E6	350.945	442.820 #
40) L8 AR-1262-5	9.650	8.255	18434139	103.5E6	362.003	365.218
41) L9 AR-1268-1	8.897	7.698	38109045	95190616	244.865	87.310 #

Data Path : Z:\pestpcbsrv\HPCHEM1\ECD_P\Data\PP081325\
 Data File : PP074368.D
 Signal(s) : Signal #1: ECD1A.ch Signal #2: ECD2B.ch
 Acq On : 13 Aug 2025 23:30
 Operator : YP\AJ
 Sample : AR1660CCC500
 Misc :
 ALS Vial : 3 Sample Multiplier: 1

Instrument :
 ECD_P
 ClientSampleId :
 AR1660CCC500

Integration File signal 1: autoint1.e
 Integration File signal 2: autoint2.e
 Quant Time: Aug 14 00:29:59 2025
 Quant Method : Z:\pestpcbsrv\HPCHEM1\ECD_P\methods\PP080125.M
 Quant Title : GC EXTRACTABLES
 QLast Update : Mon Aug 04 11:01:49 2025
 Response via : Initial Calibration
 Integrator: ChemStation

Volume Inj. : 2 µl
 Signal #1 Phase : ZB-MR1 Signal #2 Phase: ZB-MR2
 Signal #1 Info : 30Mx0.32mmx 0.50µ Signal #2 Info : 30M x 0.32mm x 0.25µm

	Compound	RT#1	RT#2	Resp#1	Resp#2	ng/ml	ng/ml
42)	L9 AR-1268-2	8.977	7.761	25566912	295.3E6	178.259	278.261 #
43)	L9 AR-1268-3	9.223	7.971	931554	4003162	7.797	4.812 #
44)	L9 AR-1268-4	9.650	8.255	18434139	103.5E6	313.439	335.827
45)	L9 AR-1268-5	10.081	8.553	5332587	24221109	15.162	9.498 #

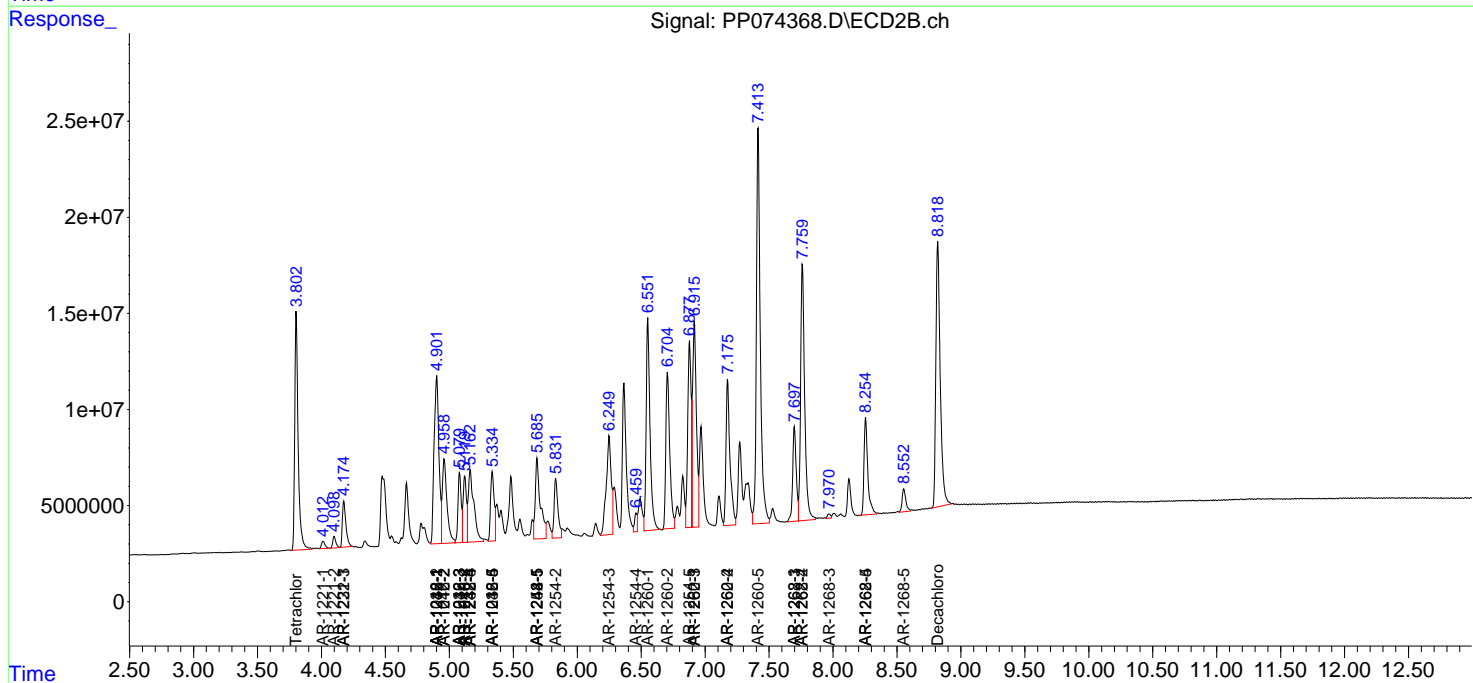
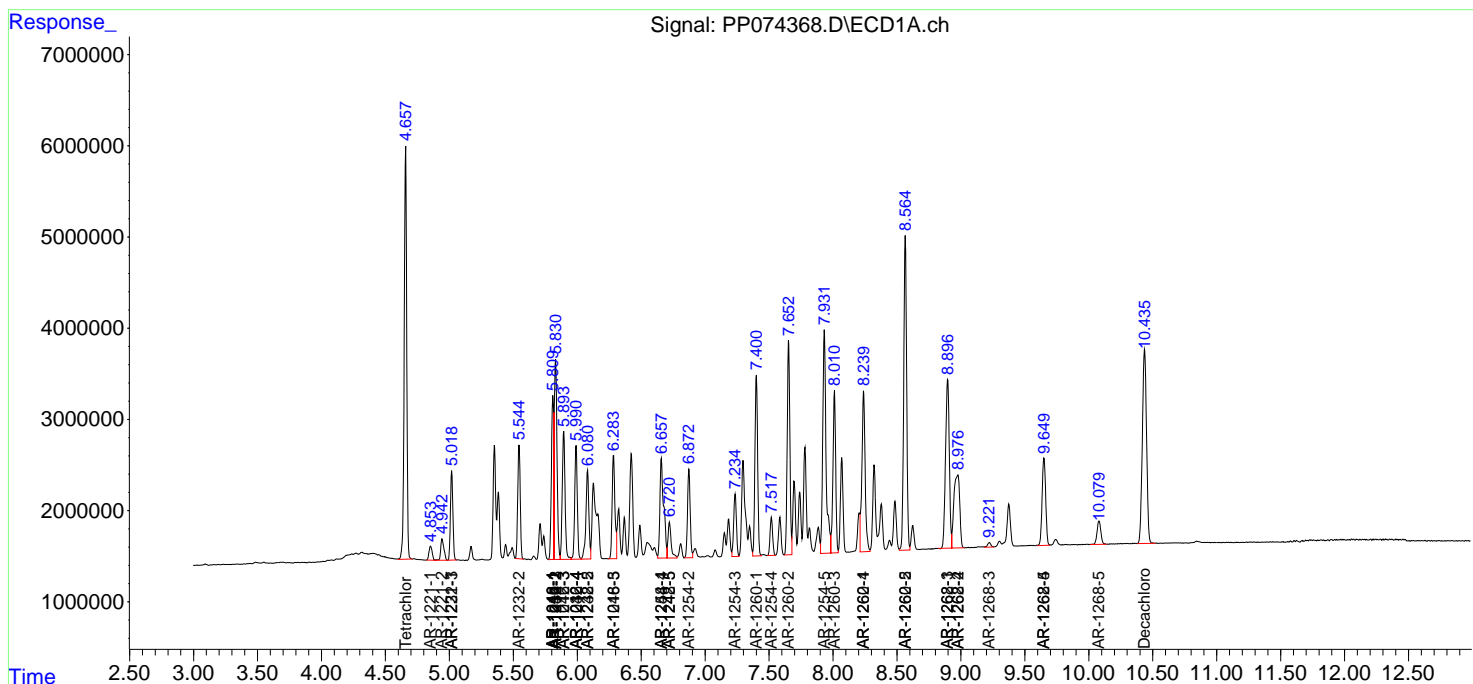
(f)=RT Delta > 1/2 Window (#)=Amounts differ by > 25% (m)=manual int.

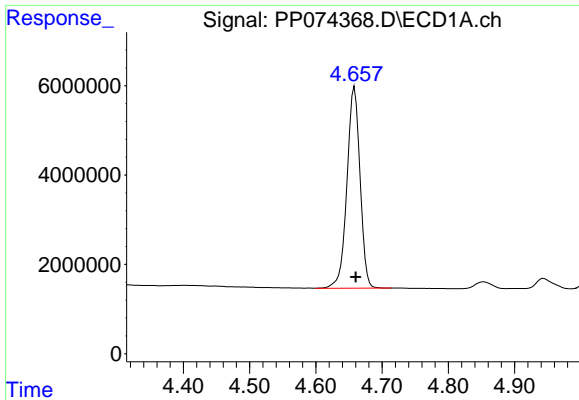
Data Path : Z:\pestpcbsrv\HPCHEM1\ECD_P\Data\PP081325\
 Data File : PP074368.D
 Signal(s) : Signal #1: ECD1A.ch Signal #2: ECD2B.ch
 Acq On : 13 Aug 2025 23:30
 Operator : YP\AJ
 Sample : AR1660CCC500
 Misc :
 ALS Vial : 3 Sample Multiplier: 1

Instrument :
 ECD_P
 ClientSampleId :
 AR1660CCC500

Integration File signal 1: autoint1.e
 Integration File signal 2: autoint2.e
 Quant Time: Aug 14 00:29:59 2025
 Quant Method : Z:\pestpcbsrv\HPCHEM1\ECD_P\methods\PP080125.M
 Quant Title : GC EXTRACTABLES
 QLast Update : Mon Aug 04 11:01:49 2025
 Response via : Initial Calibration
 Integrator: ChemStation

Volume Inj. : 2 µl
 Signal #1 Phase : ZB-MR1 Signal #2 Phase: ZB-MR2
 Signal #1 Info : 30Mx0.32mmx 0.50µ Signal #2 Info : 30M x 0.32mm x 0.25µm

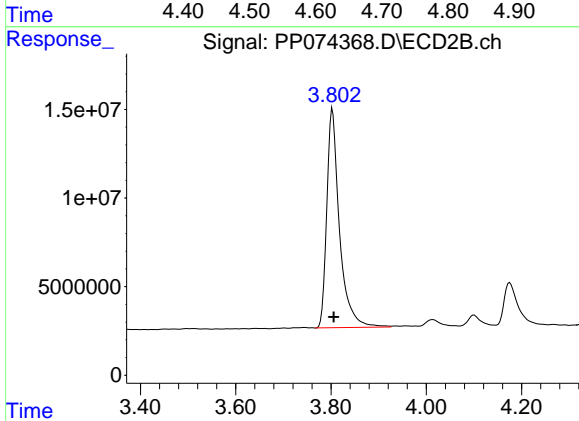




#1 Tetrachloro-m-xylene

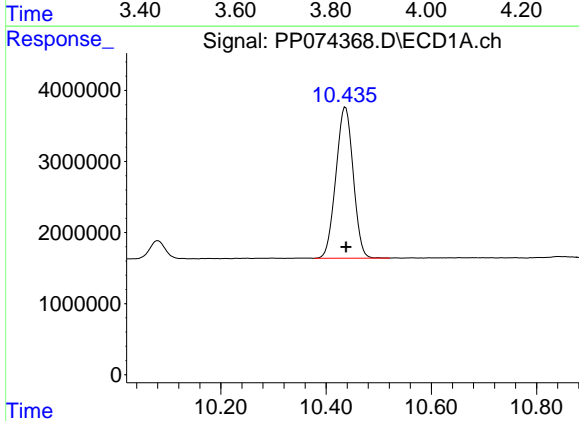
R.T.: 4.659 min
 Delta R.T.: -0.002 min
 Response: 61993358
 Conc: 55.44 ng/ml

Instrument :
 ECD_P
 ClientSampleId :
 AR1660CCC500



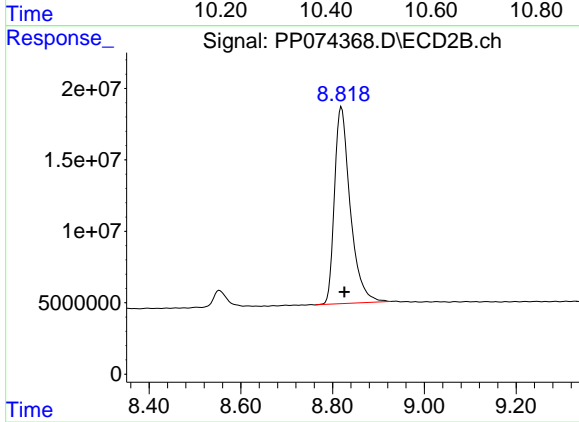
#1 Tetrachloro-m-xylene

R.T.: 3.803 min
 Delta R.T.: -0.002 min
 Response: 229882630
 Conc: 59.95 ng/ml



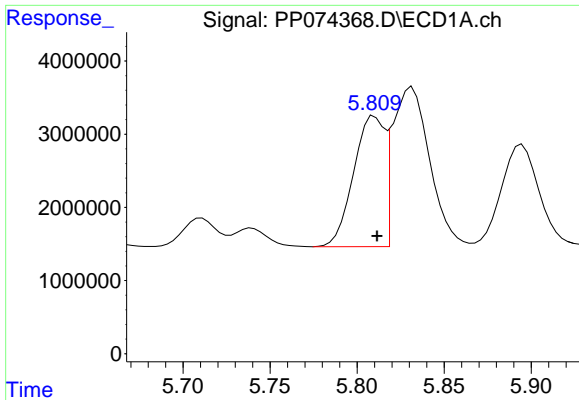
#2 Decachlorobiphenyl

R.T.: 10.437 min
 Delta R.T.: -0.001 min
 Response: 48496914
 Conc: 49.94 ng/ml



#2 Decachlorobiphenyl

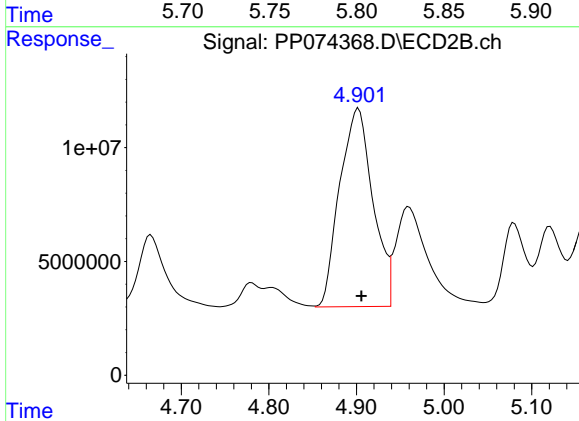
R.T.: 8.819 min
 Delta R.T.: -0.007 min
 Response: 328485700
 Conc: 54.62 ng/ml



#3 AR-1016-1

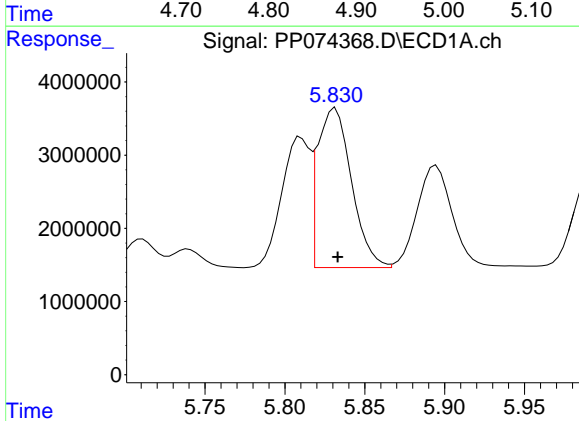
R.T.: 5.810 min
 Delta R.T.: -0.002 min
 Response: 21957828
 Conc: 532.22 ng/ml

Instrument :
 ECD_P
 ClientSampleId :
 AR1660CCC500



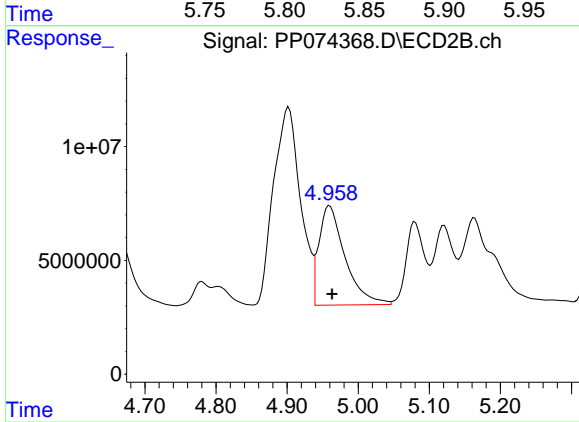
#3 AR-1016-1

R.T.: 4.902 min
 Delta R.T.: -0.003 min
 Response: 229637035
 Conc: 575.69 ng/ml



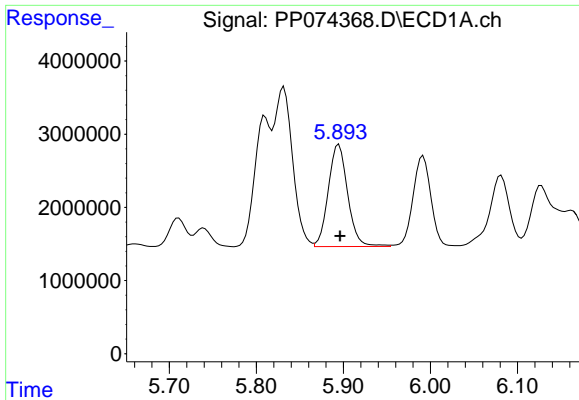
#4 AR-1016-2

R.T.: 5.832 min
 Delta R.T.: -0.002 min
 Response: 32300948
 Conc: 531.78 ng/ml



#4 AR-1016-2

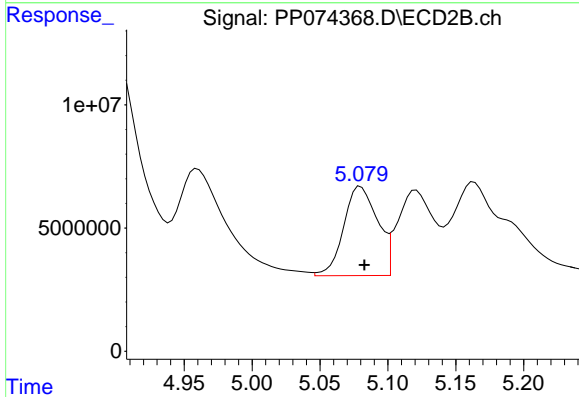
R.T.: 4.960 min
 Delta R.T.: -0.003 min
 Response: 111799864
 Conc: 595.28 ng/ml



#5 AR-1016-3

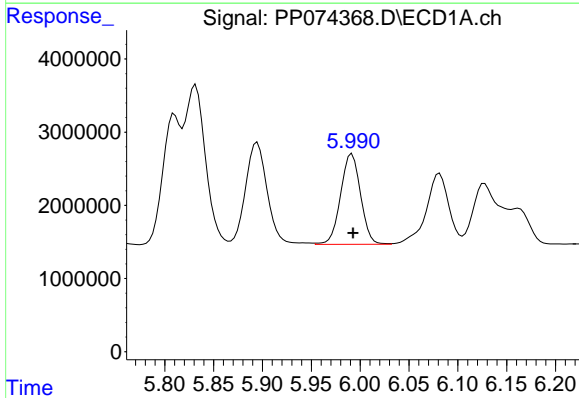
R.T.: 5.895 min
 Delta R.T.: -0.001 min
 Response: 21550699
 Conc: 543.38 ng/ml

Instrument :
 ECD_P
 ClientSampleId :
 AR1660CCC500



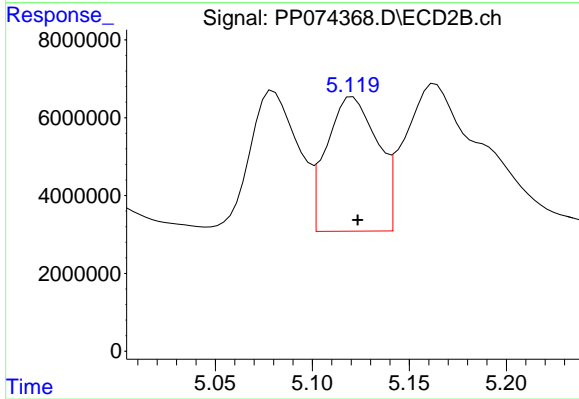
#5 AR-1016-3

R.T.: 5.080 min
 Delta R.T.: -0.003 min
 Response: 62903963
 Conc: 593.04 ng/ml



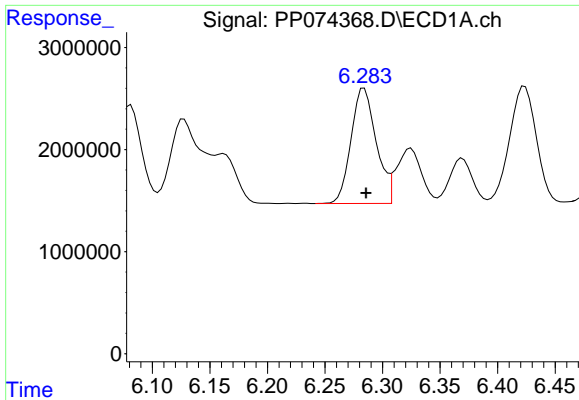
#6 AR-1016-4

R.T.: 5.992 min
 Delta R.T.: -0.001 min
 Response: 17644166
 Conc: 542.16 ng/ml



#6 AR-1016-4

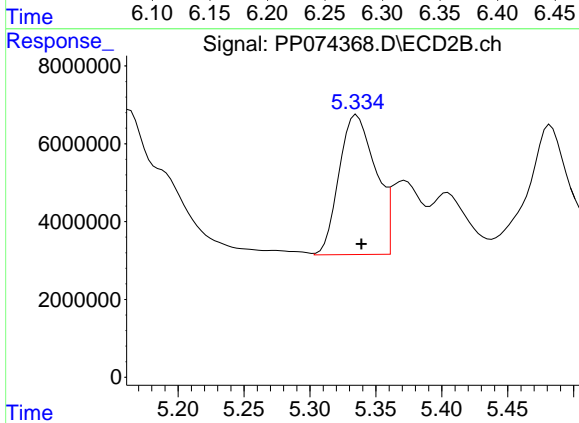
R.T.: 5.121 min
 Delta R.T.: -0.003 min
 Response: 62577105
 Conc: 572.95 ng/ml



#7 AR-1016-5

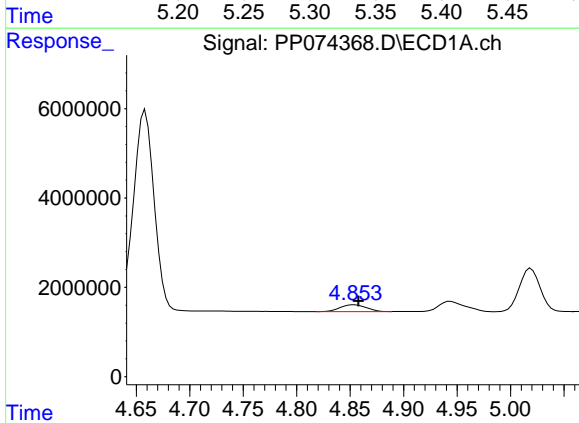
R.T.: 6.284 min
 Delta R.T.: -0.002 min
 Response: 17279312
 Conc: 532.19 ng/ml

Instrument :
 ECD_P
 ClientSampleId :
 AR1660CCC500



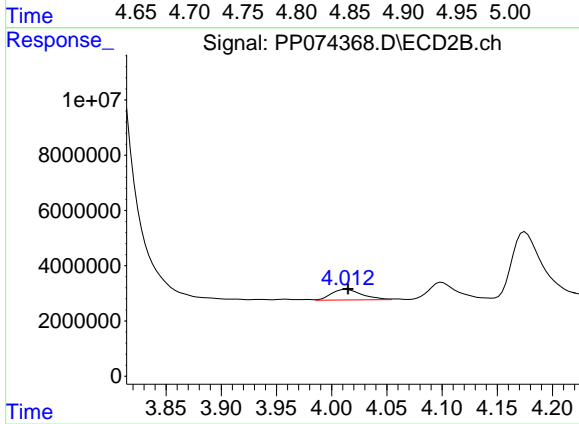
#7 AR-1016-5

R.T.: 5.336 min
 Delta R.T.: -0.003 min
 Response: 69128339
 Conc: 591.03 ng/ml



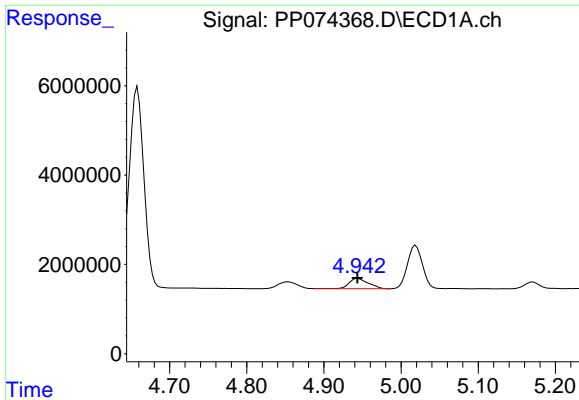
#8 AR-1221-1

R.T.: 4.854 min
 Delta R.T.: -0.004 min
 Response: 2640500
 Conc: 157.51 ng/ml



#8 AR-1221-1

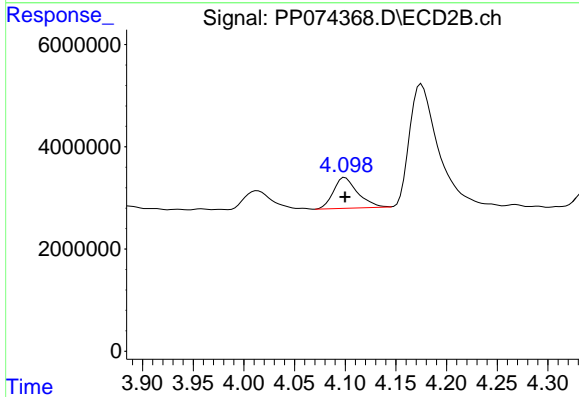
R.T.: 4.014 min
 Delta R.T.: -0.002 min
 Response: 7392327
 Conc: 150.60 ng/ml



#9 AR-1221-2

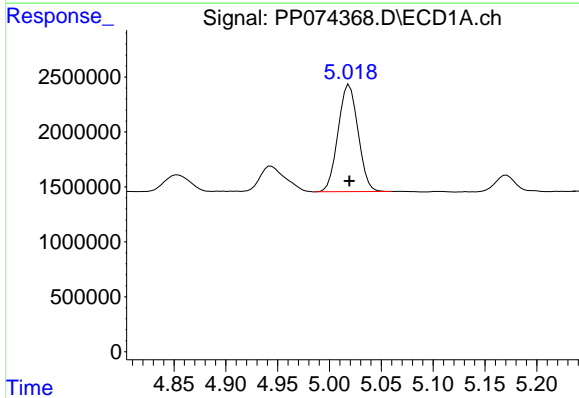
R.T.: 4.944 min
 Delta R.T.: 0.000 min
 Response: 4039199
 Conc: 320.54 ng/ml

Instrument :
 ECD_P
 ClientSampleId :
 AR1660CCC500



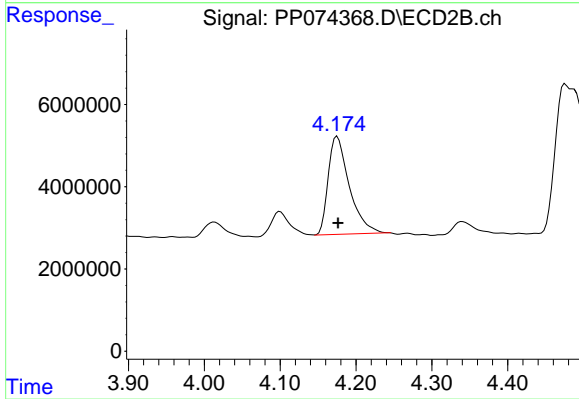
#9 AR-1221-2

R.T.: 4.100 min
 Delta R.T.: 0.000 min
 Response: 10024690
 Conc: 279.32 ng/ml



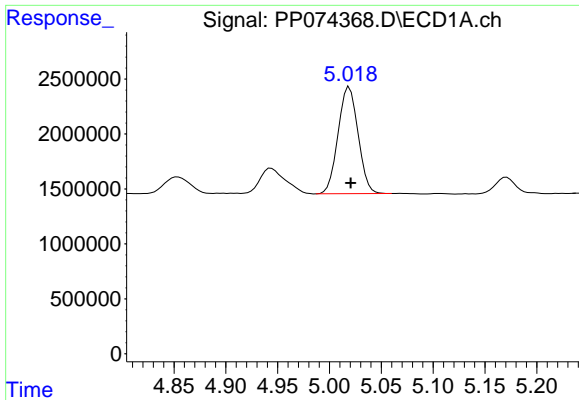
#10 AR-1221-3

R.T.: 5.019 min
 Delta R.T.: 0.000 min
 Response: 13075566
 Conc: 356.91 ng/ml



#10 AR-1221-3

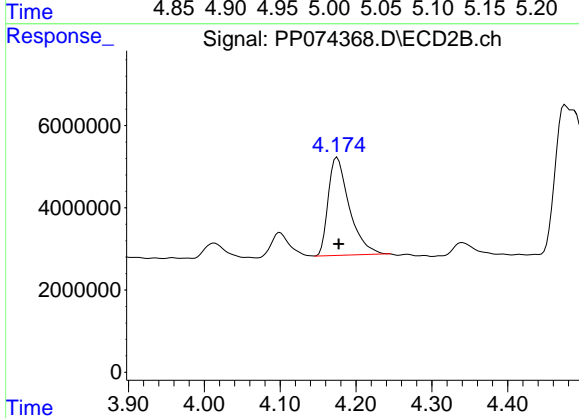
R.T.: 4.175 min
 Delta R.T.: -0.001 min
 Response: 46349187
 Conc: 342.76 ng/ml



#11 AR-1232-1

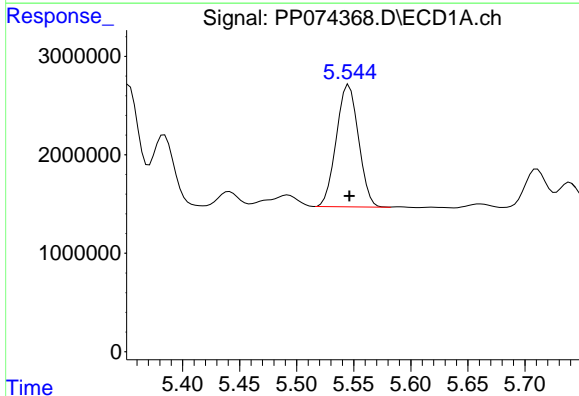
R.T.: 5.019 min
 Delta R.T.: -0.001 min
 Response: 13075566
 Conc: 450.30 ng/ml

Instrument :
 ECD_P
 ClientSampleId :
 AR1660CCC500



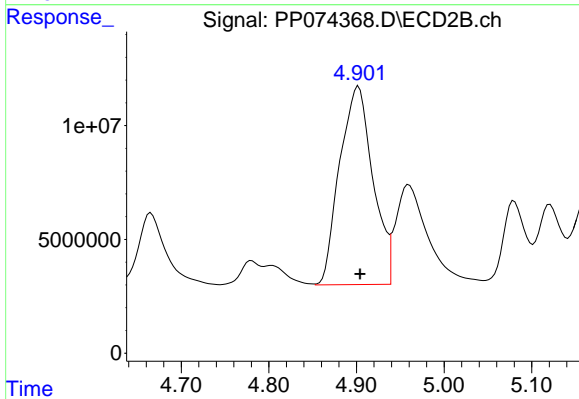
#11 AR-1232-1

R.T.: 4.175 min
 Delta R.T.: -0.002 min
 Response: 46349187
 Conc: 457.26 ng/ml



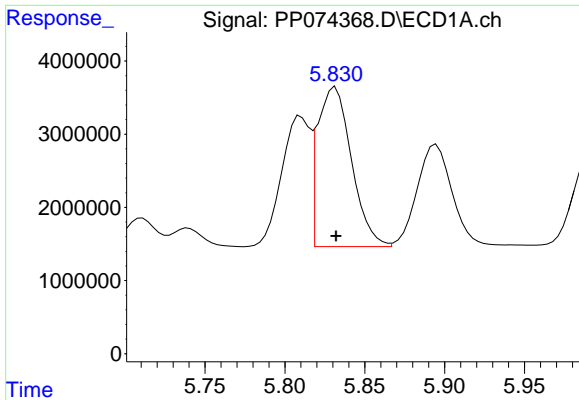
#12 AR-1232-2

R.T.: 5.546 min
 Delta R.T.: 0.000 min
 Response: 16802008
 Conc: 1116.95 ng/ml



#12 AR-1232-2

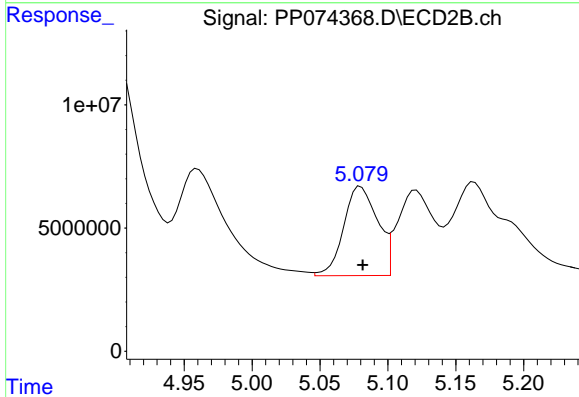
R.T.: 4.902 min
 Delta R.T.: -0.002 min
 Response: 229637035
 Conc: 1317.74 ng/ml



#13 AR-1232-3

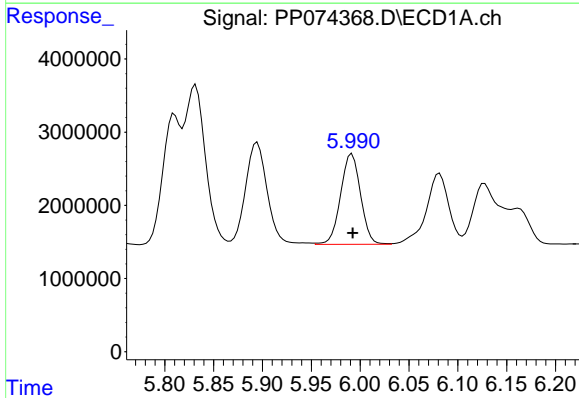
R.T.: 5.832 min
 Delta R.T.: 0.000 min
 Response: 32300948
 Conc: 1113.76 ng/ml

Instrument :
 ECD_P
 ClientSampleId :
 AR1660CCC500



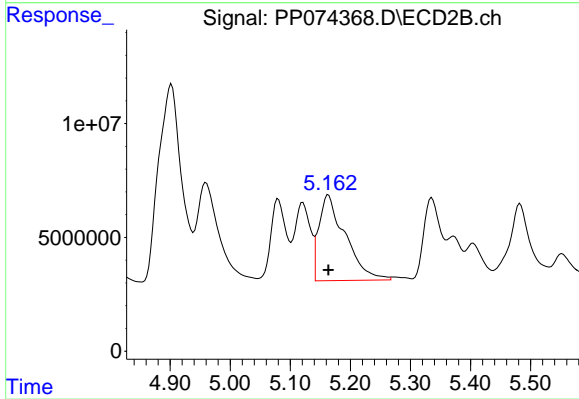
#13 AR-1232-3

R.T.: 5.080 min
 Delta R.T.: -0.001 min
 Response: 62903963
 Conc: 1372.95 ng/ml



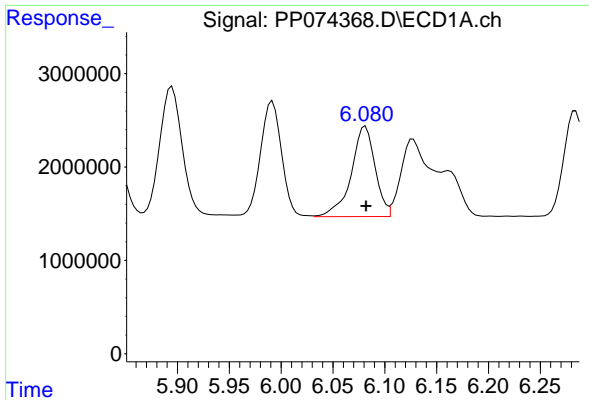
#14 AR-1232-4

R.T.: 5.992 min
 Delta R.T.: 0.000 min
 Response: 17644166
 Conc: 1140.63 ng/ml



#14 AR-1232-4

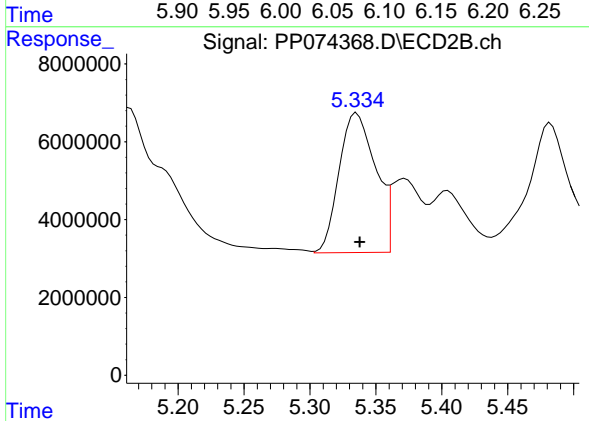
R.T.: 5.164 min
 Delta R.T.: 0.000 min
 Response: 115132695
 Conc: 1984.68 ng/ml



#15 AR-1232-5

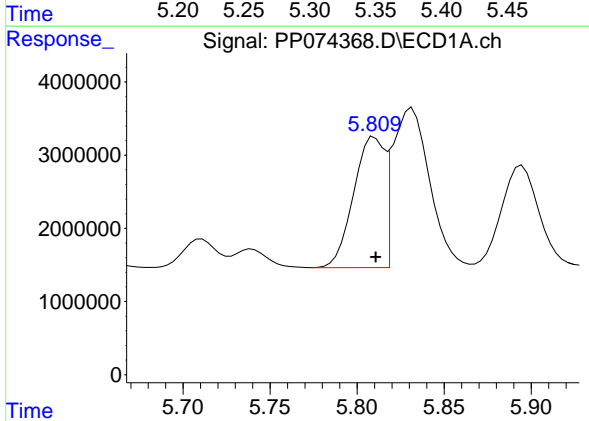
R.T.: 6.081 min
 Delta R.T.: 0.000 min
 Response: 15543213
 Conc: 1326.66 ng/ml

Instrument :
 ECD_P
 ClientSampleId :
 AR1660CCC500



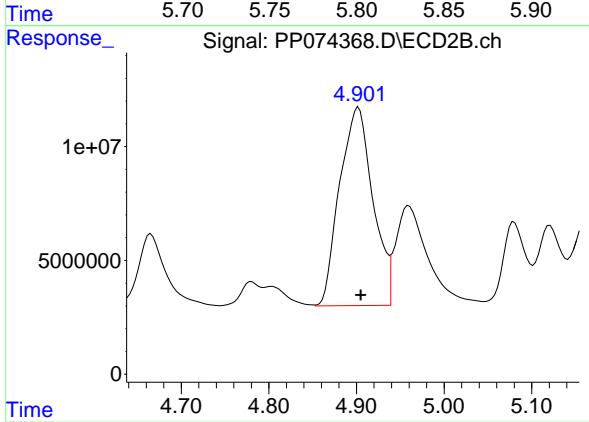
#15 AR-1232-5

R.T.: 5.336 min
 Delta R.T.: -0.002 min
 Response: 69128339
 Conc: 1471.46 ng/ml



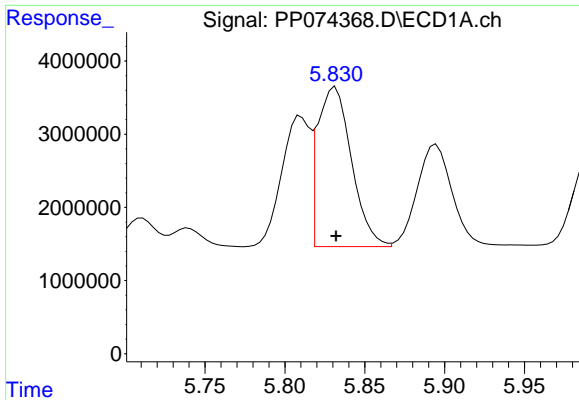
#16 AR-1242-1

R.T.: 5.810 min
 Delta R.T.: 0.000 min
 Response: 21957828
 Conc: 589.22 ng/ml



#16 AR-1242-1

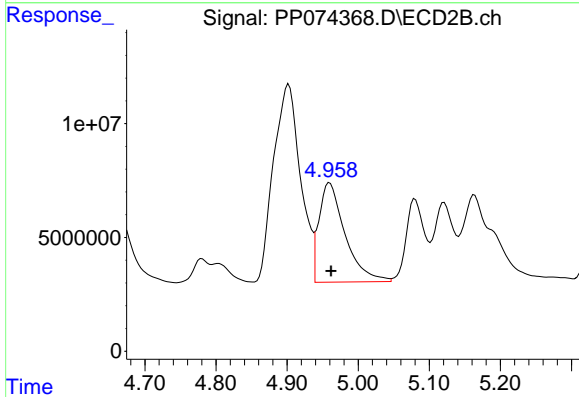
R.T.: 4.902 min
 Delta R.T.: -0.003 min
 Response: 229637035
 Conc: 665.34 ng/ml



#17 AR-1242-2

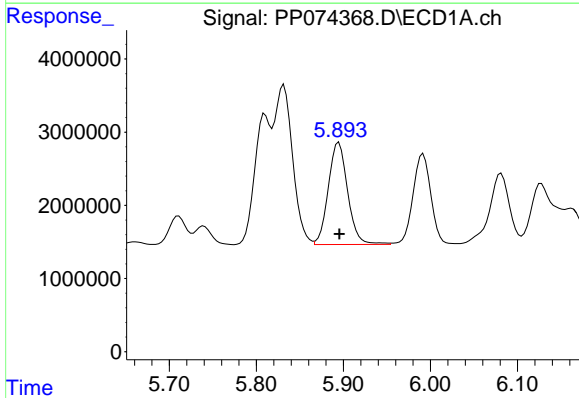
R.T.: 5.832 min
 Delta R.T.: 0.000 min
 Response: 32300948
 Conc: 593.67 ng/ml

Instrument :
 ECD_P
 ClientSampleId :
 AR1660CCC500



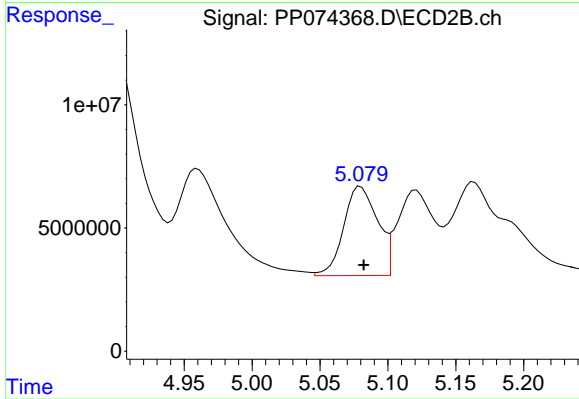
#17 AR-1242-2

R.T.: 4.960 min
 Delta R.T.: -0.002 min
 Response: 111799864
 Conc: 684.30 ng/ml



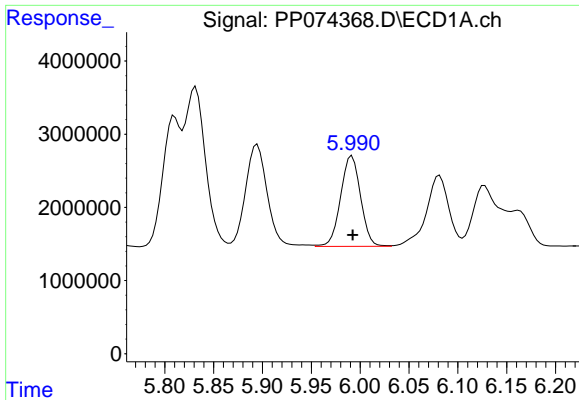
#18 AR-1242-3

R.T.: 5.895 min
 Delta R.T.: 0.000 min
 Response: 21550699
 Conc: 603.06 ng/ml



#18 AR-1242-3

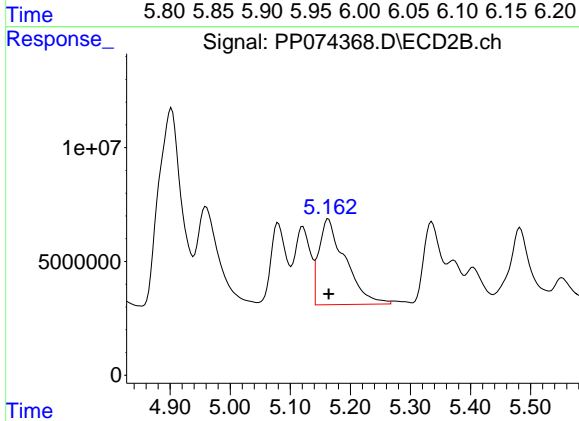
R.T.: 5.080 min
 Delta R.T.: -0.002 min
 Response: 62903963
 Conc: 681.90 ng/ml



#19 AR-1242-4

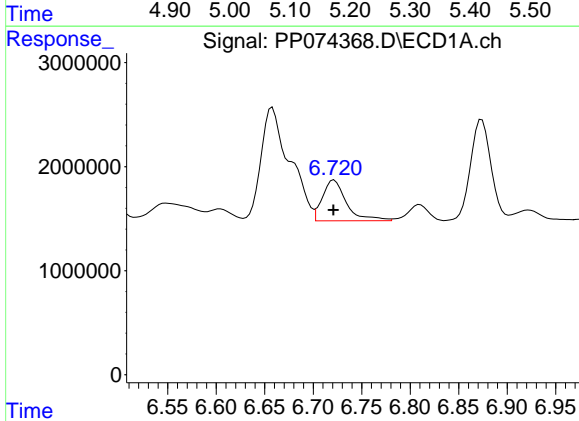
R.T.: 5.992 min
 Delta R.T.: 0.000 min
 Response: 17644166
 Conc: 603.87 ng/ml

Instrument :
 ECD_P
 ClientSampleId :
 AR1660CCC500



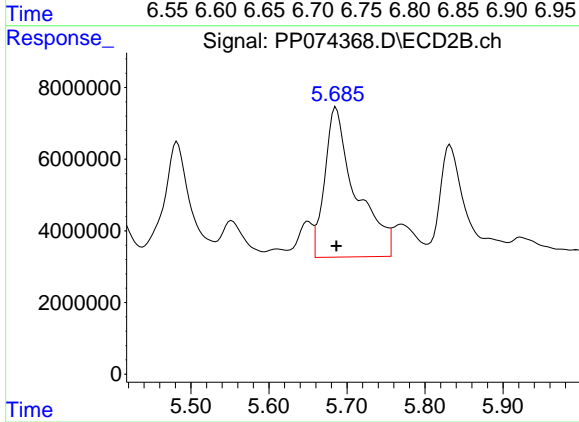
#19 AR-1242-4

R.T.: 5.164 min
 Delta R.T.: 0.000 min
 Response: 115132695
 Conc: 964.09 ng/ml



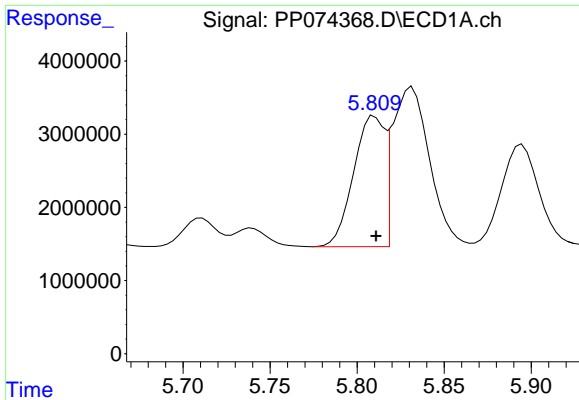
#20 AR-1242-5

R.T.: 6.722 min
 Delta R.T.: 0.000 min
 Response: 6759314
 Conc: 190.09 ng/ml



#20 AR-1242-5

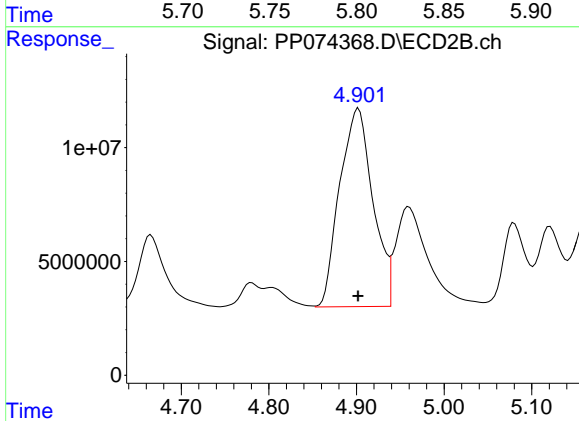
R.T.: 5.686 min
 Delta R.T.: 0.000 min
 Response: 115231331
 Conc: 770.47 ng/ml



#21 AR-1248-1

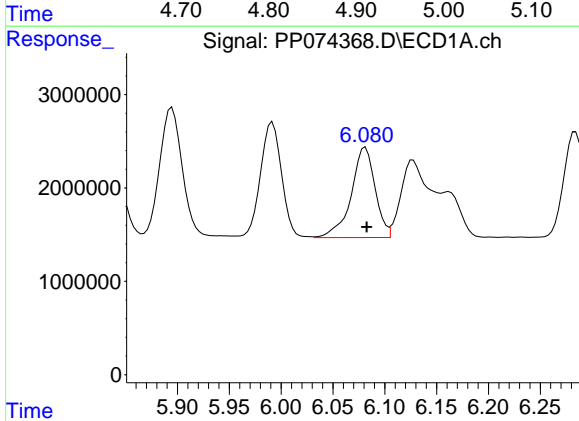
R.T.: 5.810 min
 Delta R.T.: 0.000 min
 Response: 21957828
 Conc: 783.80 ng/ml

Instrument :
 ECD_P
 ClientSampleId :
 AR1660CCC500



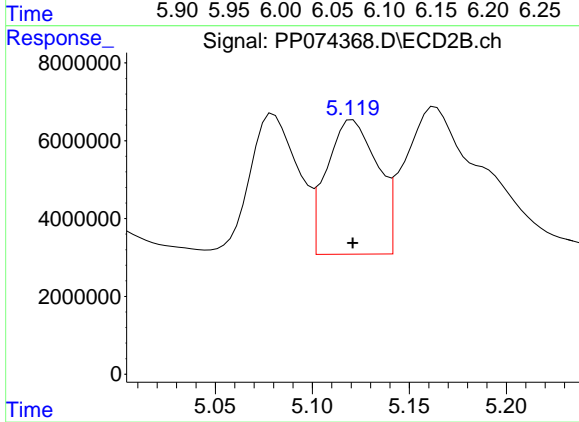
#21 AR-1248-1

R.T.: 4.902 min
 Delta R.T.: 0.000 min
 Response: 229637035
 Conc: 1073.41 ng/ml



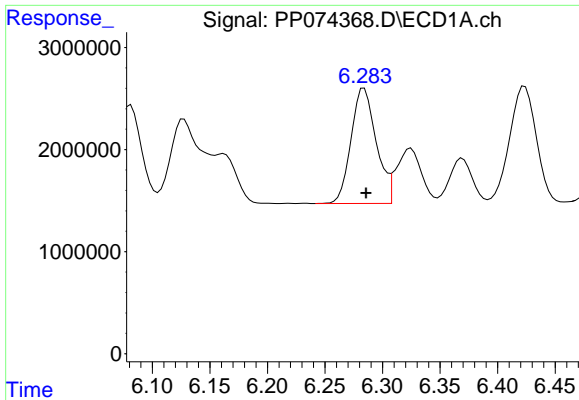
#22 AR-1248-2

R.T.: 6.081 min
 Delta R.T.: -0.001 min
 Response: 15543213
 Conc: 386.06 ng/ml



#22 AR-1248-2

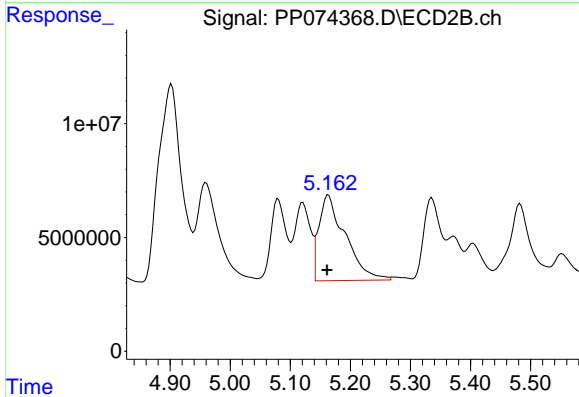
R.T.: 5.121 min
 Delta R.T.: 0.000 min
 Response: 62577105
 Conc: 427.69 ng/ml



#23 AR-1248-3

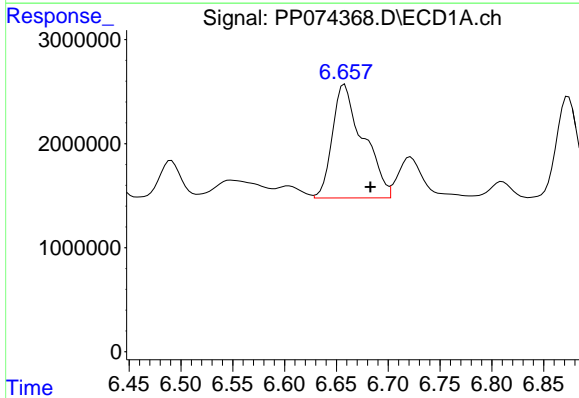
R.T.: 6.284 min
 Delta R.T.: -0.002 min
 Response: 17279312
 Conc: 387.66 ng/ml

Instrument :
 ECD_P
 ClientSampleId :
 AR1660CCC500



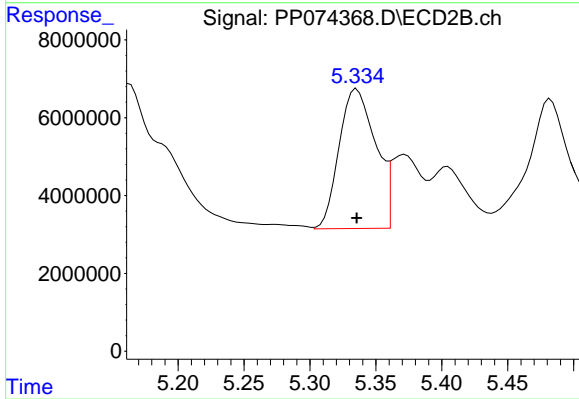
#23 AR-1248-3

R.T.: 5.164 min
 Delta R.T.: 0.002 min
 Response: 115132695
 Conc: 671.48 ng/ml



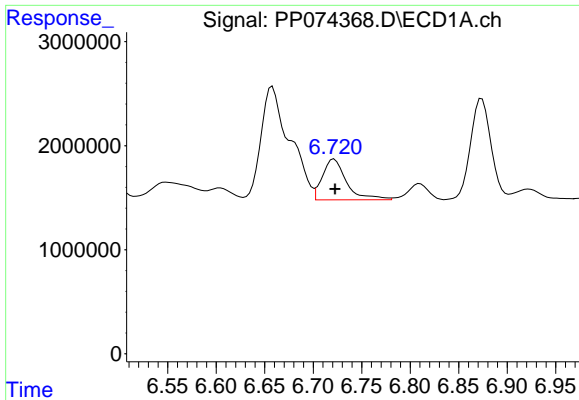
#24 AR-1248-4

R.T.: 6.658 min
 Delta R.T.: -0.025 min
 Response: 22537280
 Conc: 433.10 ng/ml



#24 AR-1248-4

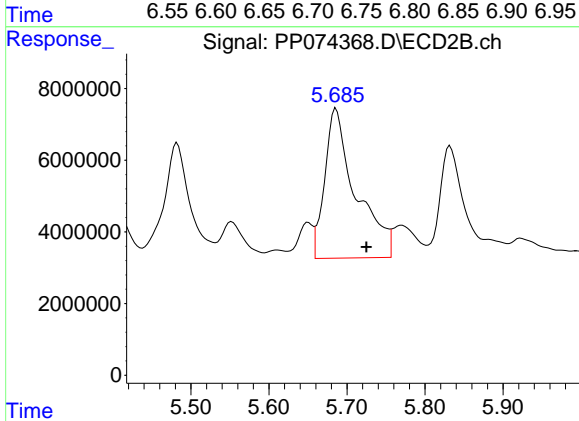
R.T.: 5.336 min
 Delta R.T.: 0.000 min
 Response: 69128339
 Conc: 415.50 ng/ml



#25 AR-1248-5

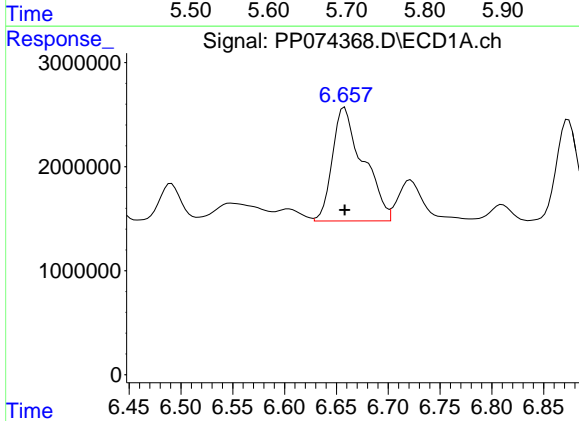
R.T.: 6.722 min
 Delta R.T.: 0.000 min
 Response: 6759314
 Conc: 118.70 ng/ml

Instrument :
 ECD_P
 ClientSampleId :
 AR1660CCC500



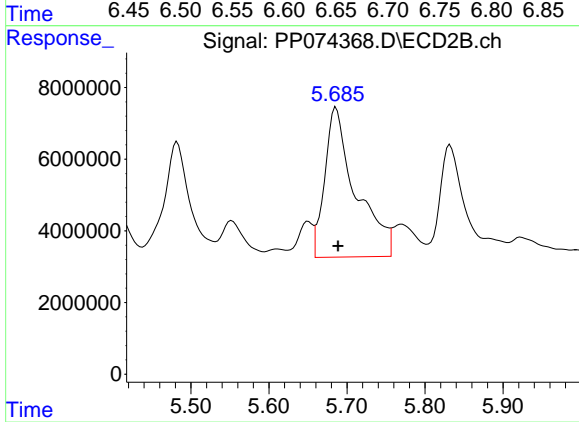
#25 AR-1248-5

R.T.: 5.686 min
 Delta R.T.: -0.039 min
 Response: 115231331
 Conc: 396.03 ng/ml



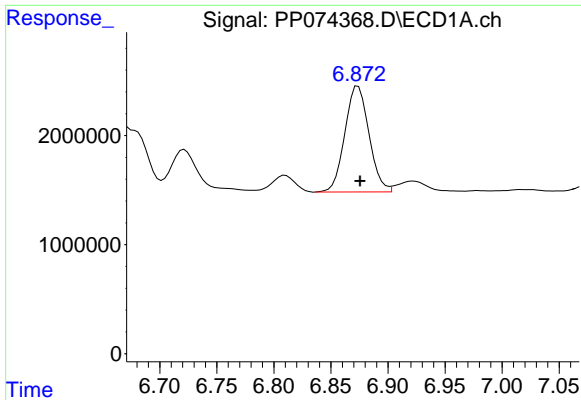
#26 AR-1254-1

R.T.: 6.658 min
 Delta R.T.: 0.000 min
 Response: 22537280
 Conc: 428.13 ng/ml



#26 AR-1254-1

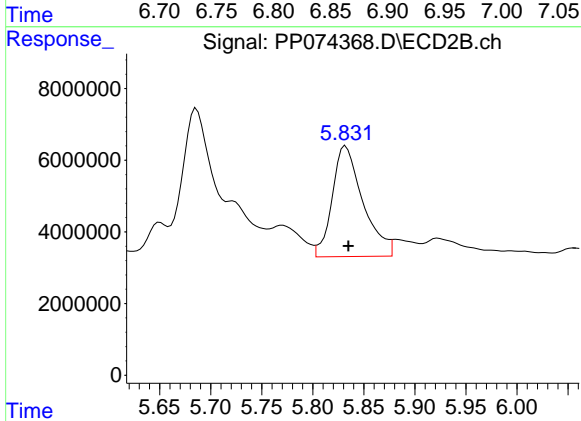
R.T.: 5.686 min
 Delta R.T.: -0.003 min
 Response: 115231331
 Conc: 314.68 ng/ml



#27 AR-1254-2

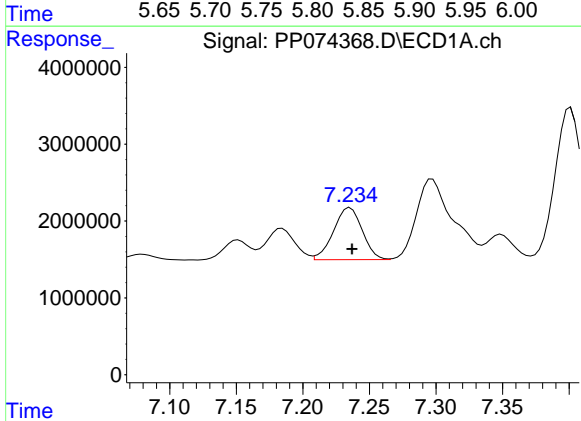
R.T.: 6.874 min
 Delta R.T.: -0.002 min
 Response: 14281495
 Conc: 179.63 ng/ml

Instrument :
 ECD_P
 ClientSampleId :
 AR1660CCC500



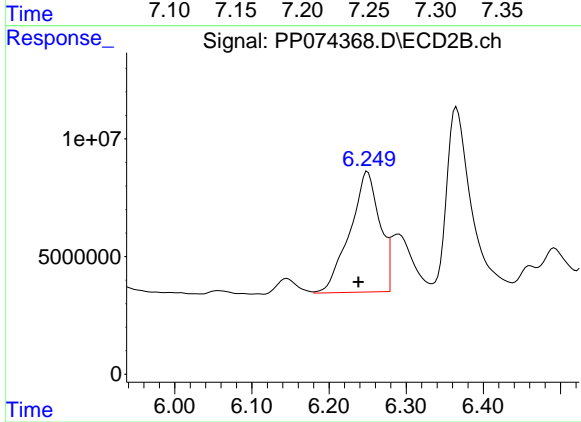
#27 AR-1254-2

R.T.: 5.832 min
 Delta R.T.: -0.003 min
 Response: 64666602
 Conc: 232.43 ng/ml



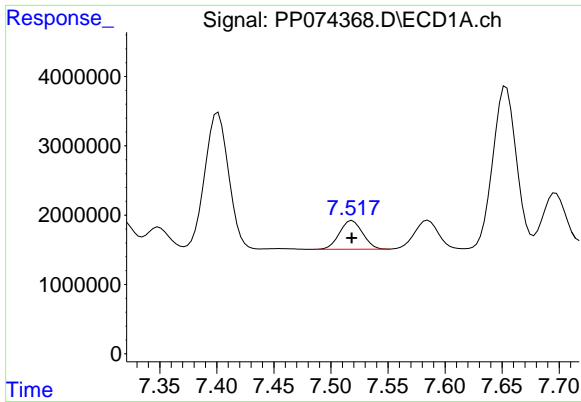
#28 AR-1254-3

R.T.: 7.236 min
 Delta R.T.: -0.002 min
 Response: 10200228
 Conc: 116.82 ng/ml



#28 AR-1254-3

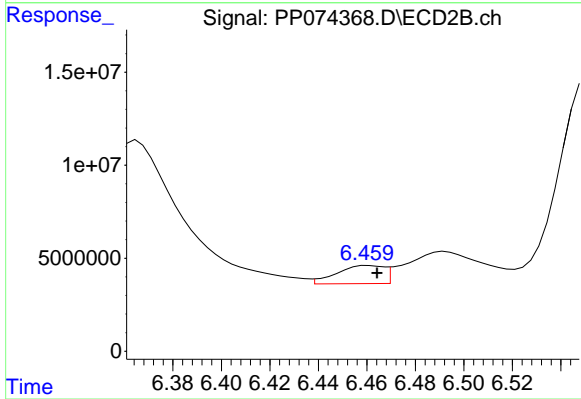
R.T.: 6.250 min
 Delta R.T.: 0.012 min
 Response: 137275344
 Conc: 280.61 ng/ml



#29 AR-1254-4

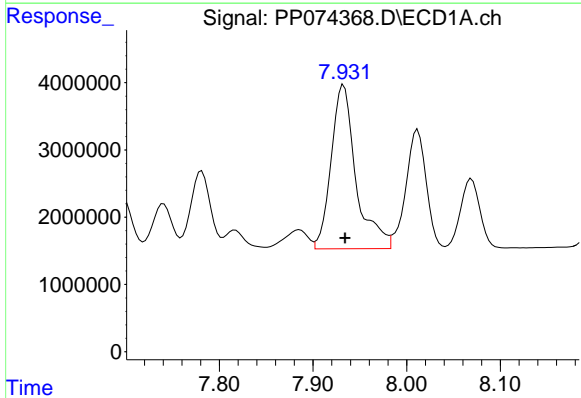
R.T.: 7.519 min
 Delta R.T.: 0.000 min
 Response: 5851417
 Conc: 91.70 ng/ml

Instrument :
 ECD_P
 ClientSampleId :
 AR1660CCC500



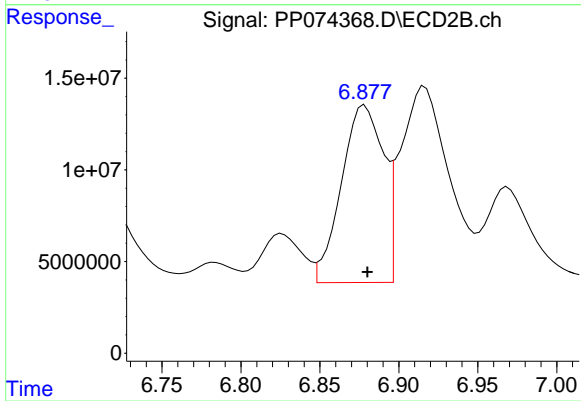
#29 AR-1254-4

R.T.: 6.461 min
 Delta R.T.: -0.004 min
 Response: 13086750
 Conc: 35.60 ng/ml



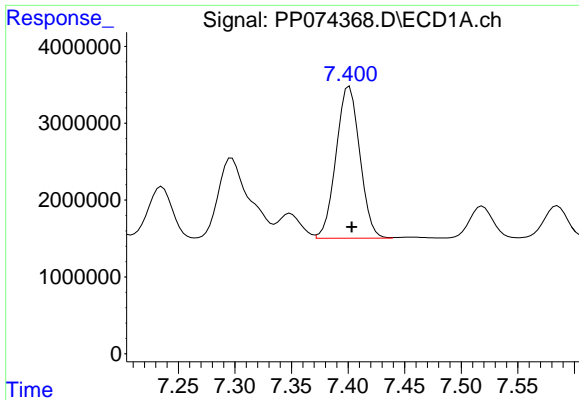
#30 AR-1254-5

R.T.: 7.933 min
 Delta R.T.: -0.002 min
 Response: 44963110
 Conc: 554.11 ng/ml



#30 AR-1254-5

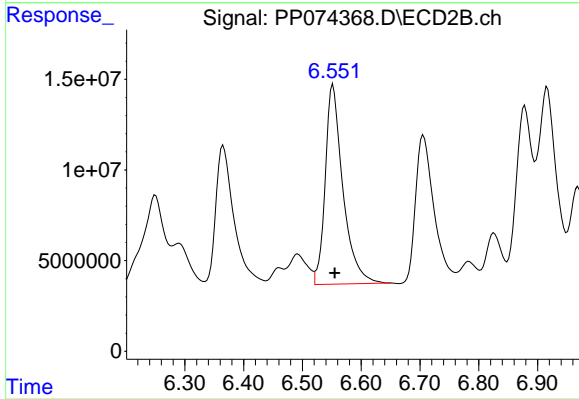
R.T.: 6.878 min
 Delta R.T.: -0.002 min
 Response: 178607704
 Conc: 463.71 ng/ml



#31 AR-1260-1

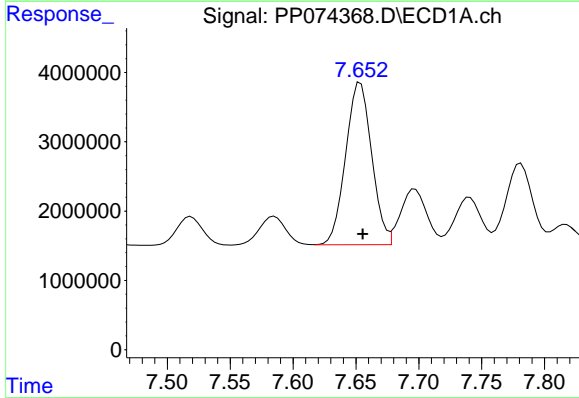
R.T.: 7.401 min
 Delta R.T.: -0.002 min
 Response: 28864583
 Conc: 512.18 ng/ml

Instrument :
 ECD_P
 ClientSampleId :
 AR1660CCC500



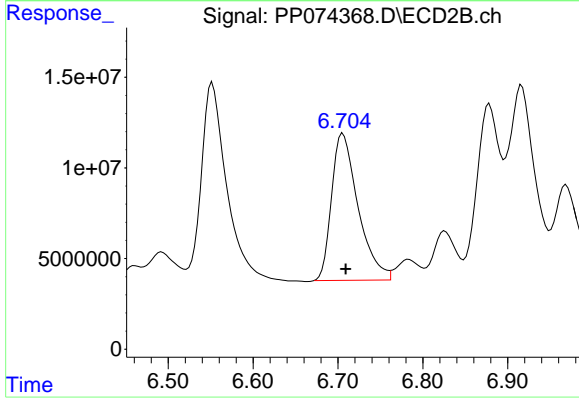
#31 AR-1260-1

R.T.: 6.552 min
 Delta R.T.: -0.003 min
 Response: 230640315
 Conc: 570.95 ng/ml



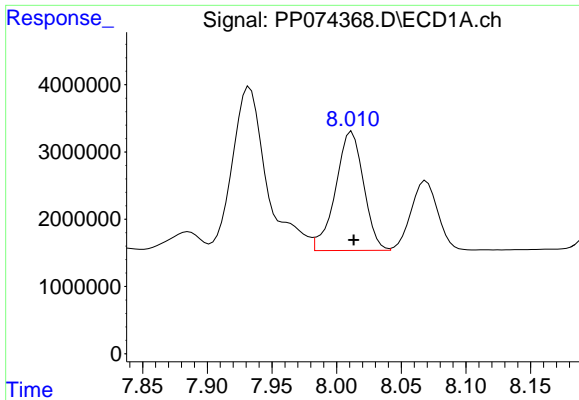
#32 AR-1260-2

R.T.: 7.654 min
 Delta R.T.: -0.002 min
 Response: 33715207
 Conc: 494.70 ng/ml



#32 AR-1260-2

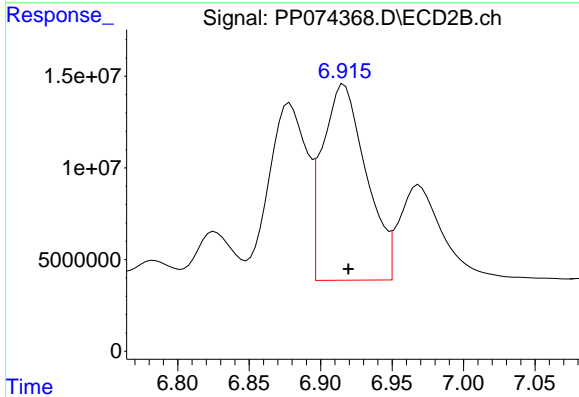
R.T.: 6.706 min
 Delta R.T.: -0.003 min
 Response: 175976478
 Conc: 562.77 ng/ml



#33 AR-1260-3

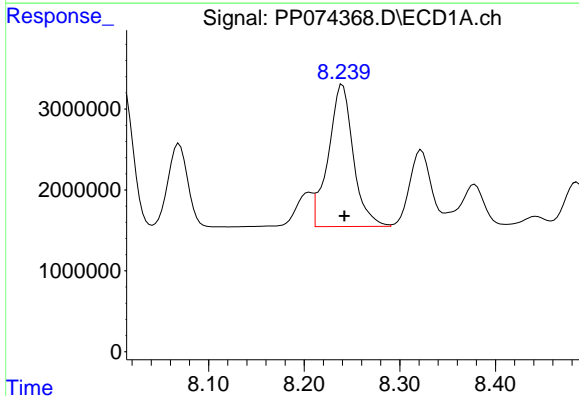
R.T.: 8.012 min
 Delta R.T.: -0.001 min
 Response: 26722656
 Conc: 501.40 ng/ml

Instrument :
 ECD_P
 ClientSampleId :
 AR1660CCC500



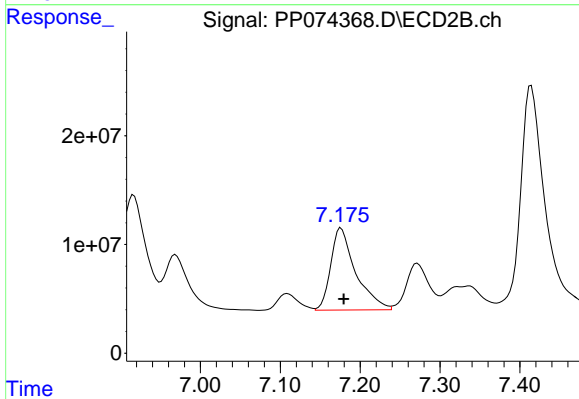
#33 AR-1260-3

R.T.: 6.916 min
 Delta R.T.: -0.003 min
 Response: 227497098
 Conc: 577.23 ng/ml



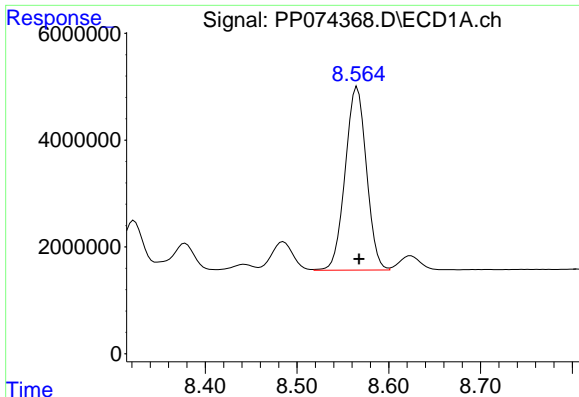
#34 AR-1260-4

R.T.: 8.240 min
 Delta R.T.: -0.002 min
 Response: 31799909
 Conc: 507.86 ng/ml



#34 AR-1260-4

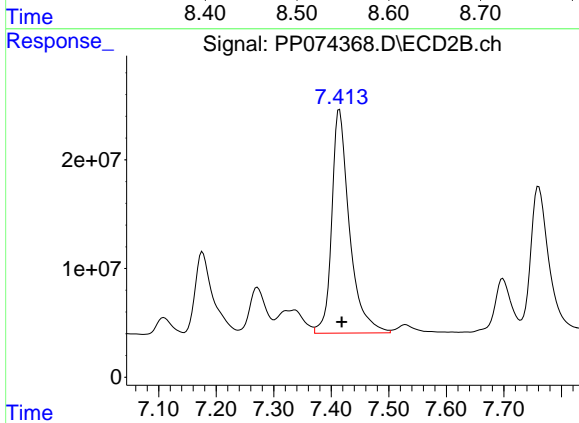
R.T.: 7.176 min
 Delta R.T.: -0.003 min
 Response: 164062451
 Conc: 563.83 ng/ml



#35 AR-1260-5

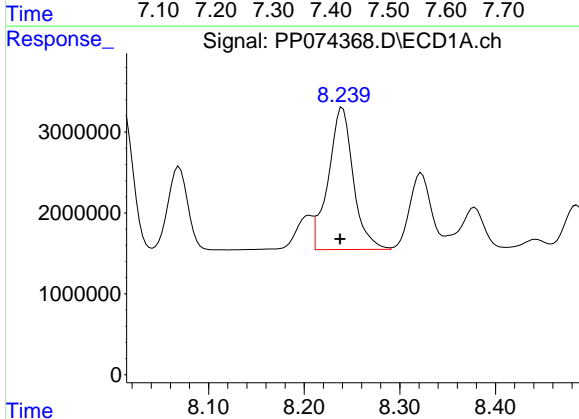
R.T.: 8.566 min
Delta R.T.: -0.002 min
Response: 55135126
Conc: 486.61 ng/ml

Instrument :
ECD_P
ClientSampleId :
AR1660CCC500



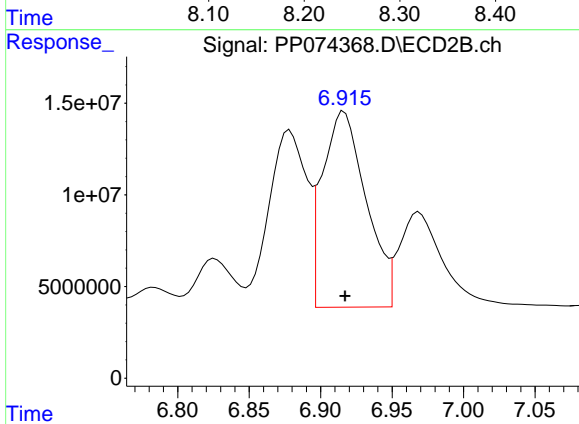
#35 AR-1260-5

R.T.: 7.414 min
Delta R.T.: -0.004 min
Response: 440187778
Conc: 581.18 ng/ml



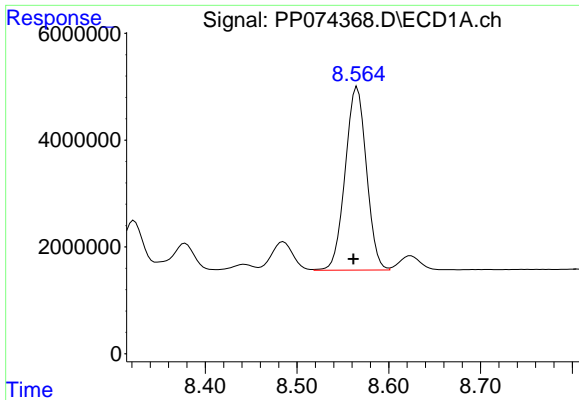
#36 AR-1262-1

R.T.: 8.240 min
Delta R.T.: 0.003 min
Response: 31799909
Conc: 419.58 ng/ml



#36 AR-1262-1

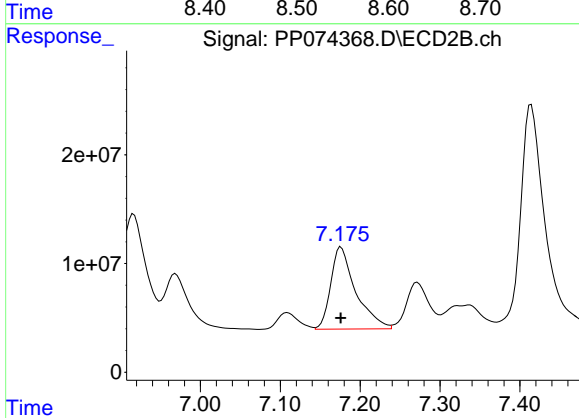
R.T.: 6.916 min
Delta R.T.: 0.000 min
Response: 227497098
Conc: 403.98 ng/ml



#37 AR-1262-2

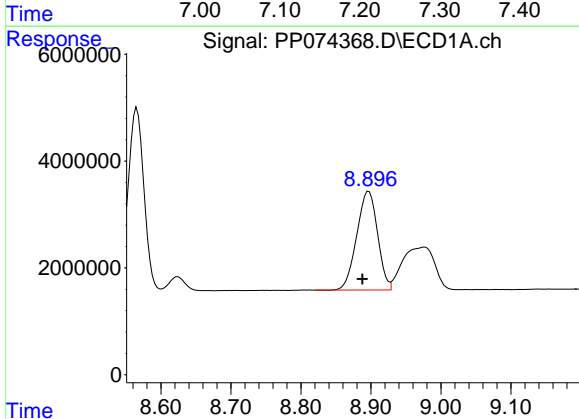
R.T.: 8.566 min
 Delta R.T.: 0.004 min
 Response: 55135126
 Conc: 422.72 ng/ml

Instrument :
 ECD_P
 ClientSampleId :
 AR1660CCC500



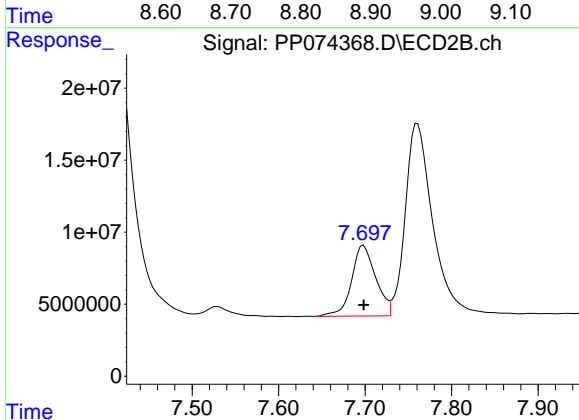
#37 AR-1262-2

R.T.: 7.176 min
 Delta R.T.: 0.000 min
 Response: 164062451
 Conc: 409.11 ng/ml



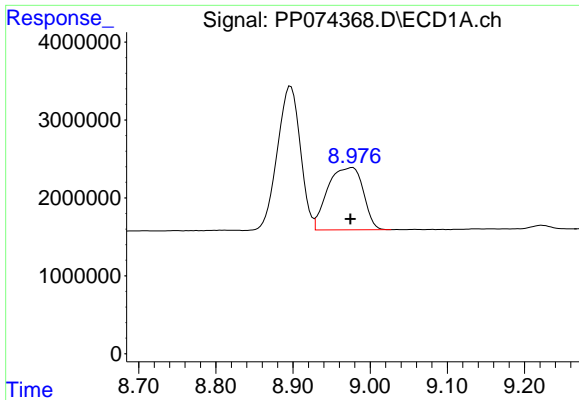
#38 AR-1262-3

R.T.: 8.897 min
 Delta R.T.: 0.009 min
 Response: 38109045
 Conc: 405.11 ng/ml



#38 AR-1262-3

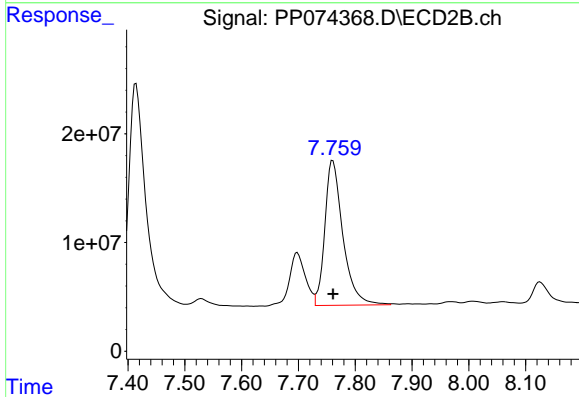
R.T.: 7.698 min
 Delta R.T.: 0.000 min
 Response: 95190616
 Conc: 264.81 ng/ml



#39 AR-1262-4

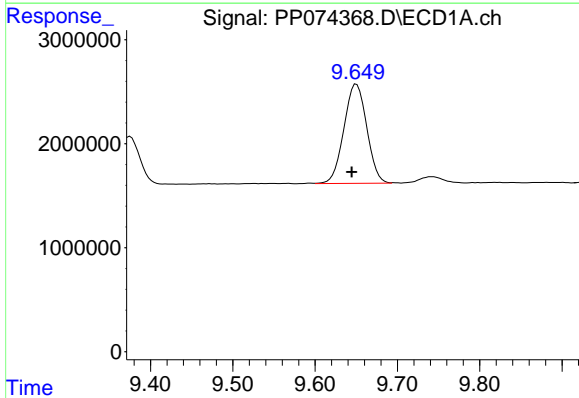
R.T.: 8.977 min
 Delta R.T.: 0.003 min
 Response: 25566912
 Conc: 350.94 ng/ml

Instrument :
 ECD_P
 ClientSampleId :
 AR1660CCC500



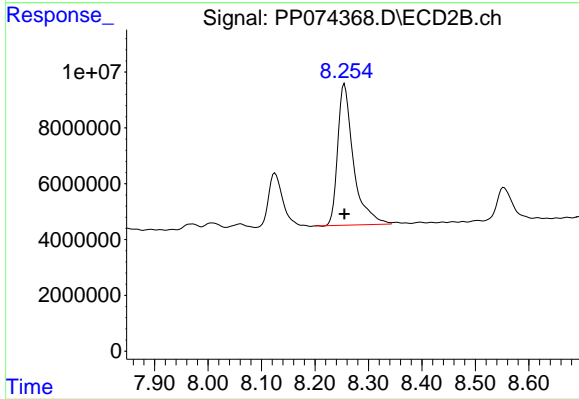
#39 AR-1262-4

R.T.: 7.761 min
 Delta R.T.: 0.000 min
 Response: 295326291
 Conc: 442.82 ng/ml



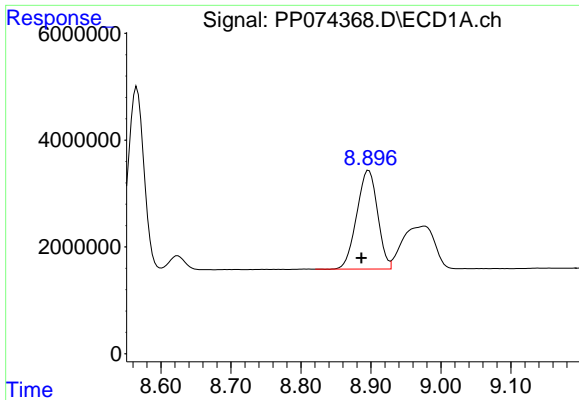
#40 AR-1262-5

R.T.: 9.650 min
 Delta R.T.: 0.006 min
 Response: 18434139
 Conc: 362.00 ng/ml



#40 AR-1262-5

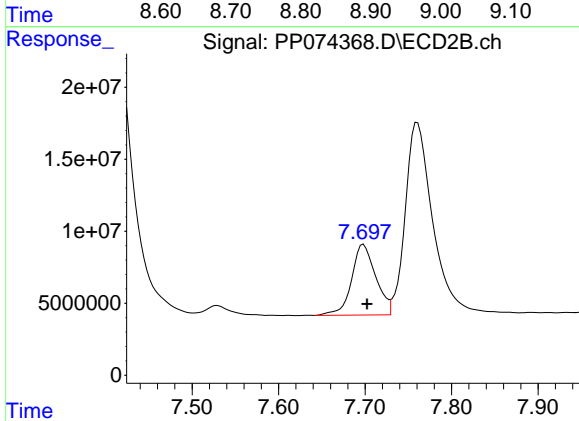
R.T.: 8.255 min
 Delta R.T.: 0.000 min
 Response: 103454533
 Conc: 365.22 ng/ml



#41 AR-1268-1

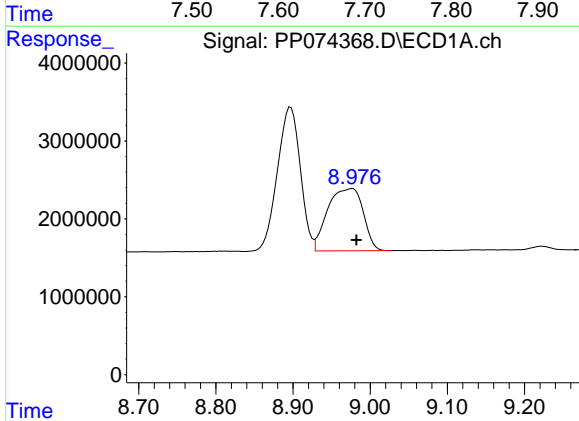
R.T.: 8.897 min
 Delta R.T.: 0.011 min
 Response: 38109045
 Conc: 244.87 ng/ml

Instrument :
 ECD_P
 ClientSampleId :
 AR1660CCC500



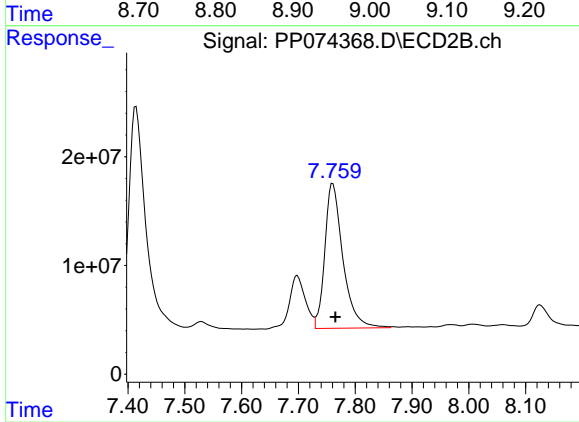
#41 AR-1268-1

R.T.: 7.698 min
 Delta R.T.: -0.004 min
 Response: 95190616
 Conc: 87.31 ng/ml



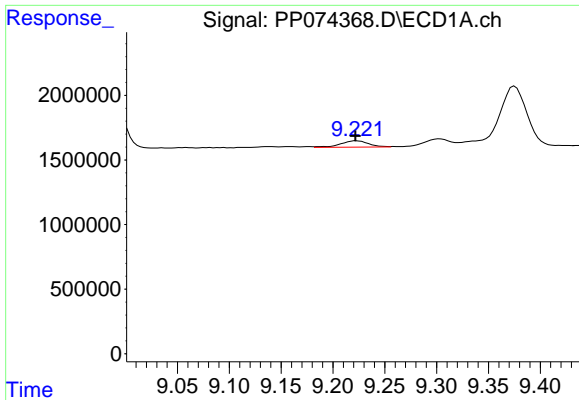
#42 AR-1268-2

R.T.: 8.977 min
 Delta R.T.: -0.005 min
 Response: 25566912
 Conc: 178.26 ng/ml



#42 AR-1268-2

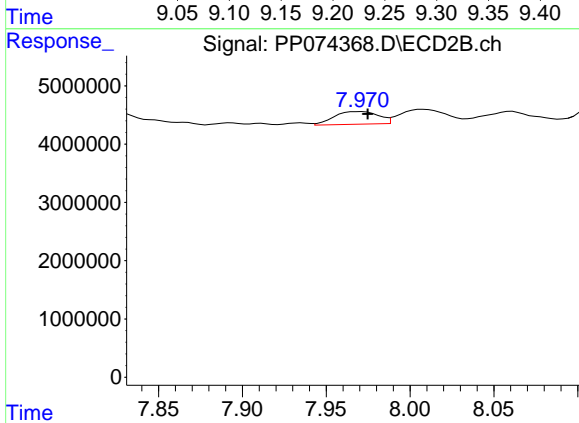
R.T.: 7.761 min
 Delta R.T.: -0.005 min
 Response: 295326291
 Conc: 278.26 ng/ml



#43 AR-1268-3

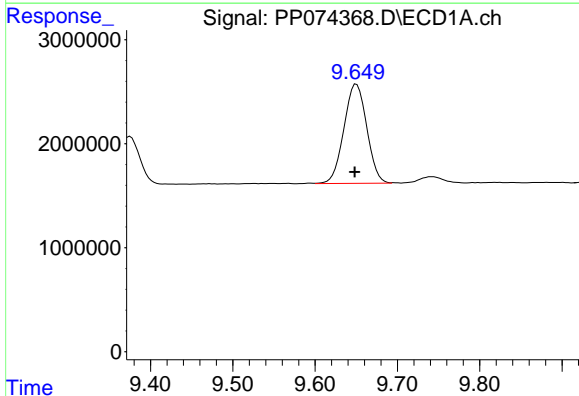
R.T.: 9.223 min
 Delta R.T.: 0.000 min
 Response: 931554
 Conc: 7.80 ng/ml

Instrument :
 ECD_P
 ClientSampleId :
 AR1660CCC500



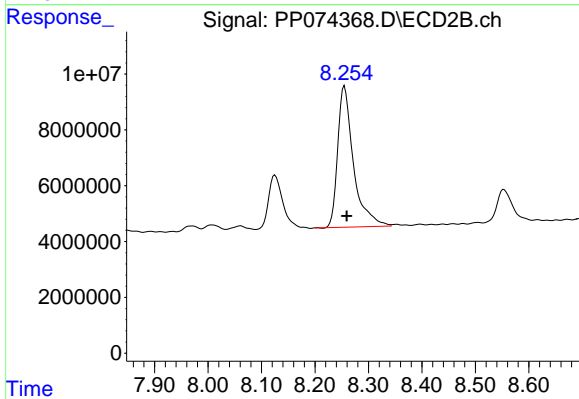
#43 AR-1268-3

R.T.: 7.971 min
 Delta R.T.: -0.003 min
 Response: 4003162
 Conc: 4.81 ng/ml



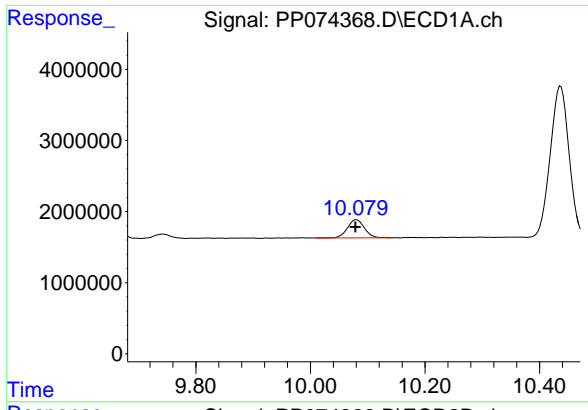
#44 AR-1268-4

R.T.: 9.650 min
 Delta R.T.: 0.002 min
 Response: 18434139
 Conc: 313.44 ng/ml



#44 AR-1268-4

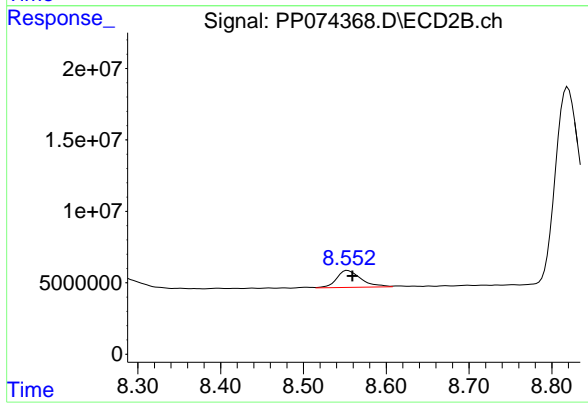
R.T.: 8.255 min
 Delta R.T.: -0.004 min
 Response: 103454533
 Conc: 335.83 ng/ml



#45 AR-1268-5

R.T.: 10.081 min
Delta R.T.: 0.002 min
Response: 5332587
Conc: 15.16 ng/ml

Instrument :
ECD_P
ClientSampleId :
AR1660CCC500



#45 AR-1268-5

R.T.: 8.553 min
Delta R.T.: -0.006 min
Response: 24221109
Conc: 9.50 ng/ml